

Cite this: *J. Mater. Chem. A*, 2021, 9, 4044

Thermodynamic insights into strong metal–support interaction of transition metal nanoparticles on titania: simple descriptors for complex chemistry†

Xing Wang,^{ab} Arik Beck,^{ab} Jeroen A. van Bokhoven^{ab} and Dennis Palagin^{*ab}

The metal–support interaction plays a critical role in heterogeneous catalysis. Under reducing conditions, oxidic supports may interact with supported metal particles, by either forming an oxide overlayer or an alloy. The structure of both the support and the nanoparticle, as well as of the interface itself, changes in response to varying environmental conditions. Here, we present a fully *ab initio* approach to predict the structures and energetics of such systems for a range of transition metals (Me = Cu, Ru, Pd, Ag, Rh, Os, Ir, Pt, Au) supported on titania surfaces as a function of gas atmosphere composition. The competing formation of a monolayer comprising fully oxidized titania (TiO₂), its reduced forms (Ti₂O₃, TiO), and the Ti–Me surface alloy, is investigated. The stability of each of these phases is found to be very sensitive to the environmental conditions and the supported metal. Encapsulation of metal, also known as classical strong metal–support interaction (SMSI), was predicted by thermodynamic driving force analysis. We show that a simple parameter, the Ti–Me alloy formation energy, is a good descriptor for the strength of the interaction between metal substrates and reduced titania monolayers and has predictive power towards the conditions under which an overlayer is stable. The presented thermochemical data and phase diagram analysis can be used to identify the structure and stability of supported metal catalysts under realistic conditions.

Received 30th November 2020
Accepted 13th January 2021

DOI: 10.1039/d0ta11650e

rsc.li/materials-a

1 Introduction

Transition metal nanoparticles on oxide supports are among the most important heterogeneous catalysts and are widely used in chemicals transformation, environmental pollution control and sustainable energy systems.^{1,2} One of the basic roles of the oxide support is to enhance metal dispersion and prevent sintering.³ In many cases, the support is not chemically inert and participates in the catalytic cycle. The metal–support interaction (MSI) gives rise to unique phenomena at the interface between the metal and the oxide, such as electron transfer,^{4,5} chemical composition rearrangement,^{6,7} morphology reconstruction,^{8,9} and the formation of interfacial perimeter.¹⁰ These interfacial phenomena have a profound impact on both the stability and catalytic activity of supported metal catalysts, and render the MSI one of the most effective strategies to tune catalytic performance.^{11–16} A specific case of MSI is the encapsulation of metal particles by (partially) reduced oxide

overlayers migrated from the support, also known as the strong metal–support interaction (SMSI), which was first introduced in 1978 by Tauster *et al.* for titania supported platinum catalysts.¹⁷ Since then, SMSI effects have been subject to intense investigation and significant debate.^{18–22} The effect of SMSI is multi-fold. On the one hand, it could be detrimental for the catalytic function, due to physical blocking of adsorption sites on nanoparticles.^{23,24} On the other hand, it opens a new way to decorate metal nanoparticles by oxide overlayers and/or form a novel interface between the nanoparticle and the support, thereby paving a novel pathway to deliberate altering of catalytic performance.^{25–28} SMSI is widely observed between Pt-group metals and reducible oxide supports, such as Nb₂O₅,²⁹ Fe₂O₃,³⁰ CeO₂,³¹ V₂O₃ (ref. 32) and Ta₂O₅,³³ and was further extended to non-reducible SiO₂,³⁴ transition-metal carbides³⁵ and group IB metals.³⁶

The SMSI effect strongly depends on the gas atmosphere and shows a dynamic behavior under reactive environments.³⁷ For instance, the thickness and the structure of TiO_x overlayers on the Pd (111) surface are very sensitive to the partial pressure of oxygen and hydrogen, with dynamic formation and removal of TiO_x oxide overlayers.³⁷ Our recent work showed that the migration of reduced titanium oxide onto a platinum particle surface and the formation of an Ti–Pt alloy

^aInstitute for Chemical and Bioengineering, ETH Zurich, Vladimir Prelog Weg 1, 8093 Zurich, Switzerland. E-mail: dennis.palagin@chem.ethz.ch

^bLaboratory for Catalysis and Sustainable Chemistry, Paul Scherrer Institute, Forschungsstrasse 111, 5232 Villigen, Switzerland

† Electronic supplementary information (ESI) available. See DOI: 10.1039/d0ta11650e



are competing mechanisms during high-temperature reduction.³⁸

From the thermodynamic point of view, SMSI processes are driven by the minimization of the total free energy of the system. The influence of the bulk, surface and interface energy should be taken into consideration for accurate thermodynamic calculations. However, thermodynamic data on metal/oxide interfaces are rarely available, and, consequently, only bulk and surface data are typically used in the thermodynamic calculations as a reasonable first approximation.¹⁸ At the same time, for thin oxide overlayers, where the ratio of interface to bulk is large, the interface energy plays a significant role. Besides, chemical composition of the interfacial phases is often different from that of the bulk phase. The metal and the oxide can possess different stoichiometry and form complex phases at the interface.³⁹ As a result, despite the importance of and the interest in SMSI, thermodynamic tools, capable of predicting the SMSI state under realistic conditions, are largely unexplored.

Utilizing *ab initio* density functional theory (DFT) to calculate the interface energies for every combination of oxide/metal interface can be very expensive and time-consuming. Identifying a simple, rule of thumb, descriptor, which depends only on properties of the oxide support and the metal, or the properties of bulk systems, would enable circumventing this difficulty and thus saving considerable amount of both computational and human time. Recently, prediction by theory has seen a lot of progress due to considerable advances in the development of materials science databases and machine learning tools.^{40–45} Previously, the adsorption energy of oxygen on metal surfaces and the formation energy of the metal oxide have been reported as reasonable descriptors for the interface strength between fully oxidized supports and metal substrates.^{9,46} For partially reduced supports, the stability of the formed overlayers has a linear scaling relation with the adsorption energy of the oxide-constituting metal atom on the corresponding metal surface.⁴⁷

The goal of this study is to rationally understand the interaction of TiO_x layers with metal surfaces, and to subsequently propose a universal descriptor, applicable to overlayers of different composition on a wide range of transition metals. In order to achieve this, we conducted a systematic *ab initio* investigation of the thermodynamics of SMSI phenomena between a range of surfaces, such as TiO₂, Ti₂O₃, TiO, Ti–Me alloy, and a group of late transition metals (Pt, Pd, Ru, Os, Rh, Ir, Cu, Ag and Au). This study increased the complexity of the considered models step by step, to derive a suitable descriptor for the stability of overlayers. Initially, the stability of unsupported TiO_x structures was studied to understand geometric arrangement of such a monolayer in comparison to its bulk structure and to assess its stability. Consequently, the layers were brought into contact with metal (111) surfaces, which drastically changes the stability and structure due to the newly formed TiO_x–Me interface. Finally, these structures were considered under the influence of different gas phase and temperature conditions.

As a result, we were able to identify a simple, universal and easily calculable descriptor, the formation energy of the Me–Ti alloy, that accurately predicts the stability of reduced TiO_x monolayers on metal substrates. Based on the stability of these monolayers, we were able to construct phase diagrams of all considered systems, which can be used to understand and predict the structure of supported metal catalysts observed under experimental conditions.

2 Results and discussion

2.1 Unsupported monolayers

The TiO₂ monolayers were cut from the thermodynamically most stable crystal facets of bulk rutile and anatase, which are the (110) and (101) facets, respectively. Fig. 1(a) shows that both rutile and anatase monolayers have two-coordinated oxygen atoms (O_{2c}) at the top and the bottom, and three-coordinated oxygen atoms (O_{3c}) in the middle. The main difference between the two monolayers is that titanium atoms are four-coordinated (Ti_{4c}) in the rutile monolayer and five-coordinated (Ti_{5c}) in the case of anatase. At the most stable geometry, the anatase monolayer has a slightly denser structure (0.187 nm² per Ti atom) compared to the rutile monolayer (0.195 nm² per Ti atom), due to the higher coordination number of titanium atoms in anatase.

The stability of the single monolayer (ML) is calculated by:

$$\Delta E_{\text{ML}} = E_{\text{TiO}_x}^{\text{ML}} - E_{\text{TiO}_x}^{\text{bulk}}, \quad (1)$$

which is the difference between the energy per TiO_x formula unit of a fully relaxed single TiO_x monolayer and the energy of the TiO_x bulk. The anatase monolayer exhibits remarkable stability: it is only 0.34 eV higher in energy compared to the bulk, as opposed to 2.05 eV in the case of the rutile monolayer. This is consistent with the fact that anatase is the first titania phase to be formed in many processes.⁴⁸ Another titania monolayer with lepidocrocite-like structure has also been reported to possess high stability.^{22,49} However, since its stability range is very similar to that of the anatase (101) monolayer, it is not considered here.

A Ti₂O₃ monolayer was cut from the (0001) facet of the most stable bulk structure (α -Ti₂O₃). Fig. 1(b) shows that the optimized monolayer maintains a hexagonal unit cell, with a two-coordinated oxygen atom (O_{2c}) in the middle, and a three-coordinated titanium (Ti_{3c}) atom at the top and the bottom, forming a rumpling structure. When the unit cell size increases, the α -Ti₂O₃ monolayer undergoes a slight transformation with a displacement of the top and the bottom titanium atoms into the middle of the structure, and of the oxygen atoms into the bridge sites between two titanium atoms. This eventually results in a conversion of the whole structure into a flat honeycomb configuration. This transformation makes the honeycomb monolayer 0.4 eV more stable than the original monolayer cut from the α -Ti₂O₃, which is marked by a star in Fig. 1(b).

A TiO monolayer was cut from the (111) facet of the rock-salt bulk TiO with cubic unit cell. Fig. 1(c) shows that the monolayer has a hexagonal unit cell, with a three-coordinated oxygen atom (O_{3c}) and a three-coordinated titanium (Ti_{3c}) atom. Similarly to



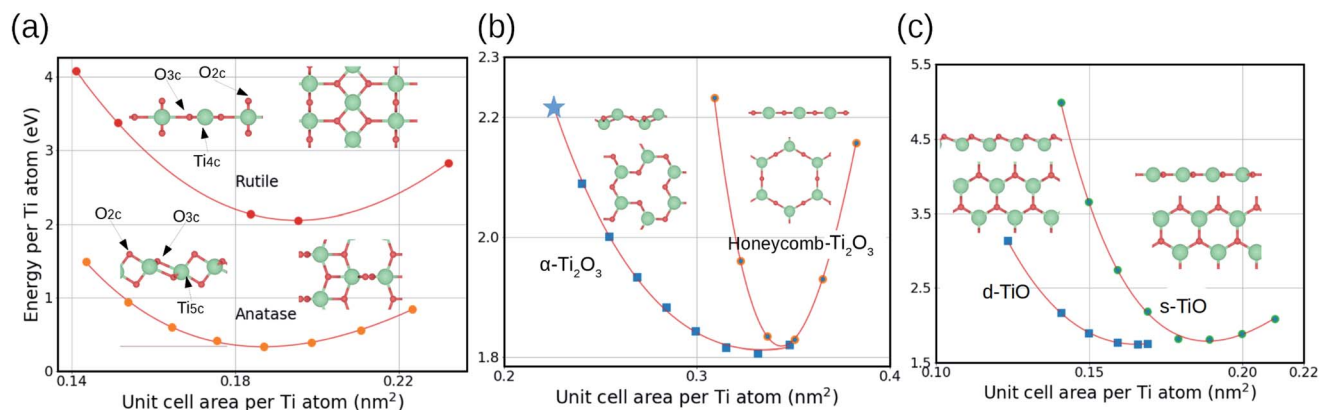


Fig. 1 Potential energy surfaces and structures (side and top view) of unsupported TiO_x monolayers. (a) Rutile and anatase forms of TiO₂; the two-coordinated oxygen (O_{2c}), three-coordinated oxygen (O_{3c}), four-coordinated titanium (Ti_{4c}) and five-coordinated (Ti_{5c}) are labeled on the insets. (b) Original and honeycomb structures of Ti₂O₃; original monolayer cut from the α-Ti₂O₃ is marked with a star. (c) Dense (d-TiO) and sparse (s-TiO) forms of TiO.

the Ti₂O₃ monolayer, the TiO monolayer can have either a rumpling structure in a unit cell designated here as “dense” (d-TiO), or a flat structure in a unit cell designated as “sparse” (s-TiO). The stabilities of these two optimized monolayers are very close with only 0.1 eV difference.

2.2 Supported monolayers

Having derived the structure of unsupported TiO_x monolayers, consequently, these structures as well as Ti–Me alloy layers are studied when positioned as topmost layer of metal surface. An anatase monolayer interacts with the metal surface mainly through forming the bond between aO_{2c} oxygen and a metal atom, as shown in Fig. 2 (a, left). Rutile monolayer, on the other hand, binds strongly with the metal substrate through both O_{2c} and Ti_{4c} atoms, resulting in a dramatic geometry reconstruction. Fig. 2 (a, right) shows that the both anatase and rutile monolayers bind stronger to the metals located to the left in the transition metal series of the periodic table of elements (Ru > Rh > Pd > Ag, and Os > Ir >> Pt > Au), and stronger to 3d metals than to 4d and 5d ones (Cu > Ag > Au). This trend can be explained by the d-band model,⁵⁰ which shows that the interaction between the metal substrate and the adsorbed oxygen atom is determined by the d-band center (with respect to the Fermi level) of metal substrate. A lower d-band center corresponds to an increase in filling of the anti-bonding state, leading to a weaker binding between the metal and the oxygen atom. The d-band center of transition metals decreases from left to right (Ru > Rh > Pd > Ag, and Os > Ir > Pt > Au) and from top to bottom (Cu > Ag > Au) along the periodic table.⁵⁰ This is also consistent with previous literature, where both the adsorption energy of oxygen on metal and the formation energy of the metal oxide have been reported as reasonable descriptors for the interface strength between an oxide and a metal.^{9,46} Despite of the similar trend, rutile monolayer show large stability difference (around 0.4 eV) between Pt and Au surfaces, as well as between Pd and Ag surfaces. This difference can be attributed from the different binding strength between

titanium atom and metal surfaces, which will be discussed in the following part. Overall, both supported rutile and anatase monolayers are less stable with respect to their bulk counterparts for all considered metals, indicating that fully oxidized titania is most stable in its bulk form.

Both the Ti₂O₃ monolayer and the metal (111) surface have a hexagonal unit cell. Therefore, they can form a commensurate interface with titanium and oxygen atoms located in the high-symmetry sites (atop, bridge and hollow) on the (111) surface. Fig. 2 (b, left) shows that titanium atoms prefer to occupy the hollow surface sites, whereas oxygen atoms are located at the atop surface sites. There is a dramatic geometry reconstruction of the α-Ti₂O₃ monolayer, with the top titanium atoms moving close to the interface and forming a flat titanium plane instead of the rumpling structure observed in the unsupported case (Fig. 1(b)). The supported honeycomb monolayer also has a significant structural reordering compared to the unsupported one, with the oxygen atoms relaxing outwards and the titanium atoms approaching the (111) surface. The stability of the monolayer can be decomposed into two contributions: the first one is the energy gained upon the formation of the chemical bonds between the monolayer and the substrate, and the second one is the energy loss due to the strain to keep the lattice constants of the monolayer aligned with those of the substrate. The eventual monolayer structure is a result of the system trying to accommodate these two effects in an optimal way. Fig. 2 (b, right) shows that α-Ti₂O₃ monolayers is significantly less stable than the honeycomb monolayer, especially for copper surface which has the smallest lattice constant, indicating that high strain energy is responsible for the lower stability of α-Ti₂O₃ monolayers. In the case of honeycomb monolayers, Pd, Pt, Ag and Au prefer a commensurate interface, while Cu, Ru, Os, Rh and Ir prefer an incommensurate interface which could help decreasing the strain further.

In contrast to TiO₂, the partially reduced Ti₂O₃ shows a strong interaction with metal substrate, resulting in stable supported Ti₂O₃ monolayers with respect to their bulk counterparts in the cases of Ru, Rh, Pd, Os, Ir, Pt substrates. Besides,



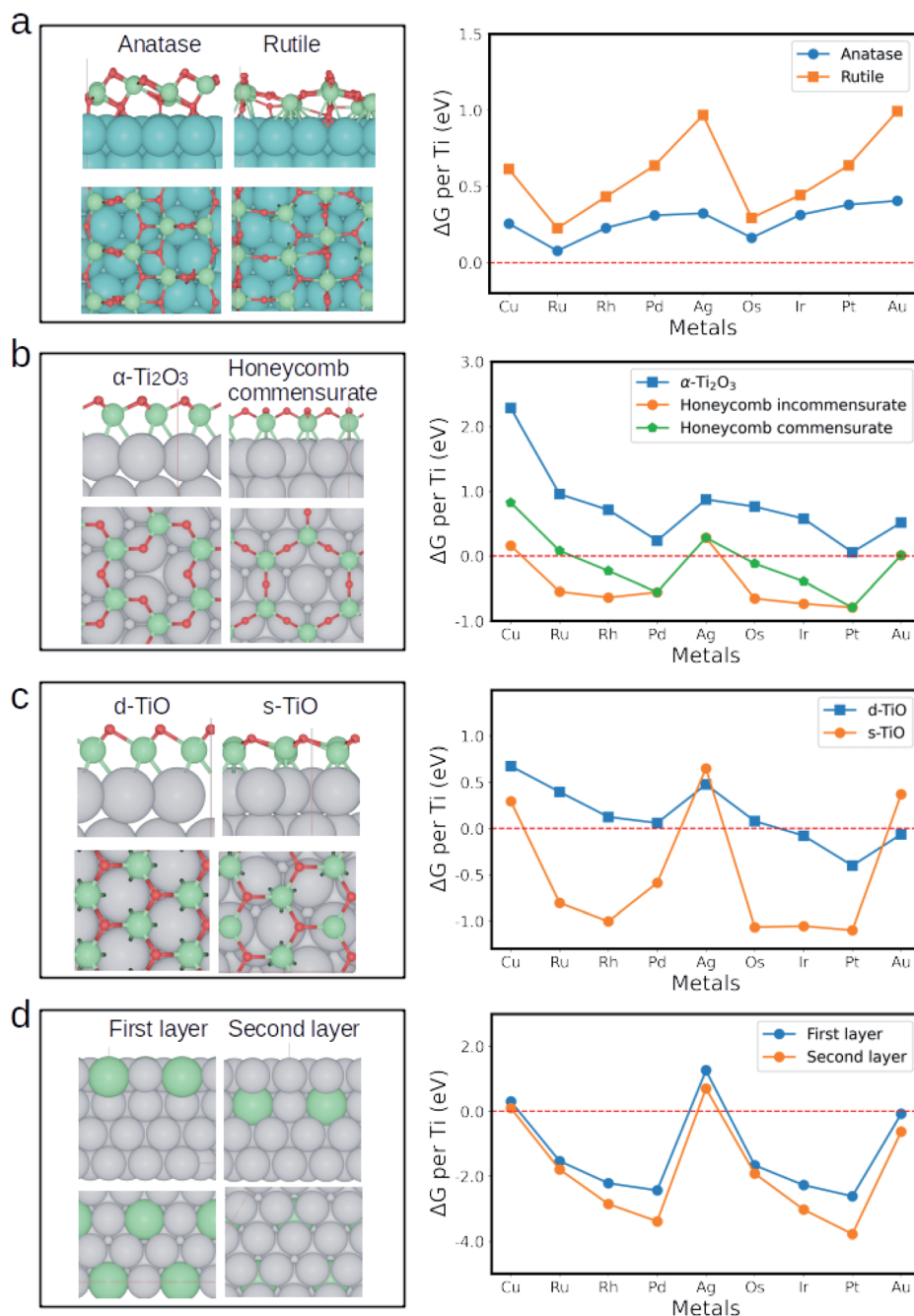


Fig. 2 Geometric structures (side and top view, left) and relative stability (energy difference between supported monolayers and their bulk counterparts, right) of the supported monolayers on metal (111) surfaces. (a) TiO_2 monolayers; (b) Ti_2O_3 monolayers; (c) TiO monolayers; (d) TiMe_3 surface alloys. Only the structures on the metal substrates with the most stable monolayer are shown. The metal substrates are Ru (111) for TiO_2 , and Pt(111) for Ti_2O_3 , TiO and TiMe_3 . Green spheres: Ti, red spheres: O, blue spheres: Ru; grey spheres: Pt.

Fig. 2 (b, left) shows that the Ti_2O_3 monolayer interacts with metals substrate mainly through titanium–metal bonds, resulting in a different stability trend along the periodic table than the TiO_2 monolayers. Ti_2O_3 monolayers bind weakly to the Cu, Ag and Au surfaces, while they bind strongly to the Ru, Rh, Pd, Os, Ir and Pt surfaces. Ti_2O_3 monolayers are slightly more stable on the 5d metals (Os, Ir, Pt, Au) than on the 4d metals (Ru, Rh, Pd, Ag), whereas TiO_2 monolayers exhibit the opposite trend. Fig. S1(a)† shows the electron density difference for the

Ti_2O_3 monolayer on Pt (111). The most visible effect is the accumulation of electron density in the interfacial region between the metal and the oxide. The excess electron density originates mainly from the Ti^{3+} cations and the metal atoms in the first layer of the substrate, which both display large negative difference densities. Fig. S1(b)† shows that the atom-like peak of the d_z^2 component of Ti^{3+} in the unsupported monolayer is pushed above the Fermi level and is entirely emptied when the monolayer is supported by Pt (111), indicating the electron is



transferred from Ti^{3+} cations to the surface. Therefore, the titanium–metal bonds dominate the interfacial bonding here, as opposed to oxygen–metal bonds in the case of TiO_2 . Similar bonding character has previously been reported in the case of N_2O_5 and V_2O_3 honeycomb monolayers on metal (111) substrates.^{29,51}

TiO monolayers can also form a commensurate interface with the metal (111) surface. Fig. 2 (c, left) shows the commensurate interface models of the dense (d-TiO) and sparse (s-TiO) TiO phases on the Pt (111) surface. Similarly to Ti_2O_3 , the metal-supported monolayer interacts with a metal substrate through the titanium–metal bond, with the oxygen atoms relaxing outwards the (111) surface. In the dense TiO case, both the titanium and oxygen atoms are located at the hollow surface sites. The Ti–Ti distance is 2.80 Å, which is the same as the Pt–Pt bond length. In the sparse TiO case, one half of titanium atoms is located at the hollow sites, while the other half is located at the atop site, with a longer Ti–Ti distance of 3.24 Å. Fig. 2 (c, right) shows that on metal substrates with the larger unit cell, such as Au and Ag, TiO prefers to form the d-TiO monolayer, while for the metal substrates with smaller unit cells, the s-TiO monolayer is preferred. In all cases, TiO monolayers show a strong interaction with metal substrates. In the most stable case of platinum, the supported TiO monolayer is 1.1 eV more stable than its bulk counterpart. The stability of supported TiO monolayers exhibits a similar trend along the periodic table as was observed for the case of Ti_2O_3 . TiO monolayers bind weakly to the Cu, Ag and Au, and bind stronger to the 5d metals than to the 4d metals.

A TiMe_3 alloy monolayer was modeled by substituting surface metal atoms either in the top or in the second layer of the metal substrate with titanium. Fig. 2 (d, left) shows typical structures of such top- and second-layer surface alloys for the case of titanium on metal (111) surfaces. The relative stability of the TiMe_3 overlayers compared to their bulk counterparts is given by:

$$\Delta G_{\text{TiMe}_3/(111)} = G_{\text{TiMe}_3/(111)} + G_{\text{Me}} - G_{\text{Me}_3/(111)} - G_{\text{Ti}} \quad (2)$$

where $G_{\text{TiMe}_3/(111)}$, $G_{\text{Me}_3/(111)}$, G_{Me} and G_{Ti} are the free energies of the surface with one surface metal atom replaced by titanium atom, a clean (111) surface and a bulk platinum and titanium phase, respectively. Fig. 2 (d, right) shows that the alloy formation is always preferred in the case of second layer substitution, effectively incorporating titanium atoms into the bulk structure of the substrate metal. This is consistent with the fact that metallic titanium has a higher surface energy compared to other metals.⁵² Alloying of titanium into the second layer of the palladium surface has also been demonstrated experimentally.⁵³ The surface alloys are again more stable for metals with empty d orbital and the 5d metals, as seen in the case of Ti_2O_3 and TiO monolayers. Stability of the surface alloys increases along the series for the 4d metals (Ru < Rh < Pd) and the 5d metals (Os < Ir < Pt), while this is not obvious for the most stable structures of Ti_2O_3 and TiO monolayers. This trend is partially arisen from the strain energy due to the atomic radius difference between titanium and other metals (atomic

radii follow the trend: Ru < Rh < Pd and Os < Ir < Pt). Similar trends were also observed for the commensurate honeycomb Ti_2O_3 monolayers and d-TiO monolayers with high strain energy.

2.3 Descriptor

Having established the structures and the main trends in relative stability of different $\text{TiO}_x/\text{metal}$ phases, we proceed with identifying a descriptor suitable for predictive quality modeling of the binding strength at oxide/metal interfaces. In the case of reduced TiO_x , the monolayer and metal substrate interaction is associated with the d electron transfer from the titanium cations towards the metal substrate. The amount of charge transferred can be estimated with the Bader charge analysis method.⁵⁴ Fig. 3(a) shows the monolayer stability as a function of the difference between the Bader charge on titanium atoms in the supported monolayer and the unsupported one. The negative charge difference on the titanium atoms indicates a charge transfer from the titanium to the metal substrate, which agrees with the electron density difference analysis in Fig. S1.† However, no single linear relationship successfully describes all considered substrate metals. Instead, the considered metals can be separated into two groups according to their stability. The first group, comprising Cu, Ag and Au, shows higher electron transfer but, at the same time, lower stability. This can be rationalized in terms of the d orbital of these metals being already full, thus the energy gained by the electron transfer from Ti atoms being small compared to the elements with lower d orbital occupation. These constitute the second group, comprising Pd, Pt, Ir, Rh, Os, and Ru. Similar trends to those outlined above for Ti_2O_3 are also observed in the case of the TiO monolayer and the TiMe_3 surface alloy. Another possible descriptor is the surface energy of the metal substrates. Strong metal–support interaction is usually reported in systems with high surface energy, thus one would expect the oxide to interact stronger with the metal substrate with high surface energy.³⁹ However, Fig. S2† shows that there is no clear relationship between the monolayer stability and the surface energy of the (111) metal surface.

Since the titanium–metal bonds dominate the interfacial bonding, we investigated whether the interfacial binding strength is correlated to the formation energy of the Ti–Me alloy. As several alloys can be formed for a given Me–Ti binary system, the formation energy of the most stable one was chosen in each case (see Table S5†). For example, Fig. S3 in the ESI† demonstrates how this choice is made in the case of Ti–Pt alloy. The descriptor for a binary system is, therefore, defined as the formation energy of the most stable alloy phase, corresponding to this system. We found that, as shown in Fig. 3(b), the stability of Ti_2O_3 , TiO and Ti–Me alloy monolayers increases linearly from metal to metal with the descriptor, shown by high R^2 values of 0.95, 0.95 and 0.90, respectively. The slopes for the linear fitting equations are 1.30, 1.94 and 4.71 for Ti^{3+} , Ti^{2+} and Ti^0 , respectively, suggesting that the more reduced the monolayer is, the stronger the metal–titanium bond is. Since the alloy formation energy can be computed very quickly, or even be



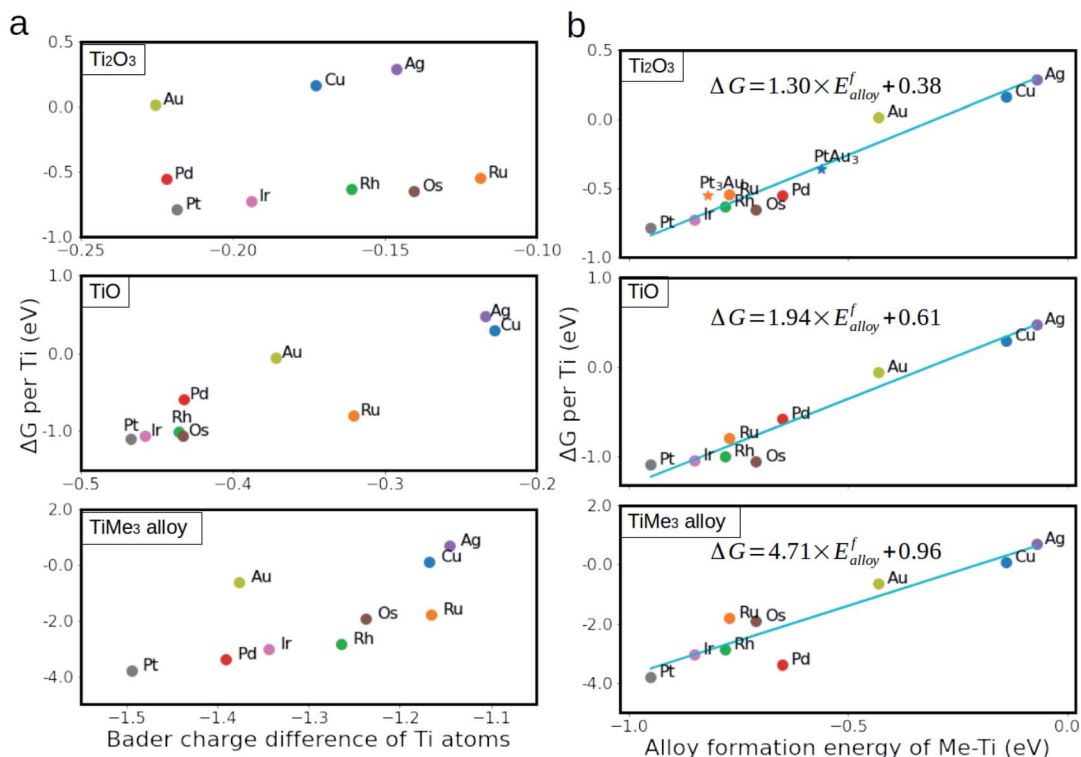


Fig. 3 Relative stability of reduced monolayers on metal (111) surfaces as a function of Bader charge difference on titanium atoms (panels (a)) and as a function of the formation energy of Ti–Me alloy (panels (b)). The Bader charge difference is defined as the difference in Bader charge on titanium atoms between the cases of the metal/monolayer interface and the TiO_x bulk. The stability of ternary alloys (Pt_3Au –Ti and PtAu_3 –Ti) are marked with stars in panel (b).

found tabulated in various databases,⁵⁵ it enables rapid prediction of the interfacial interaction strength and efficient pre-screening of the most favorable monolayer compositions.

The relatively poor prediction for some of the TiMe_3 surface alloys, notably TiPd_3 (see Fig. 3(a)), compared to the cases of Ti_2O_3 and TiO monolayers is partially arisen from the high strain energy, which was introduced upon replacing the surface metal atoms with titanium atoms. Whereas the strain energy in the cases of Ti_2O_3 and TiO monolayers is effectively minimized by using several interface models with different combinations of supercells, for the TiMe_3 alloy this could not be achieved. This is especially obvious for the 4d metals (Ru, Rh and Pd), where large atomic radii of Pd compared to that of Ru and Rh increases the strain energy in the TiPd_3 surface alloy, resulting in a smaller DFT calculated value of the alloy formation energy compared to the one predicted by the descriptor. As such, prediction of the SMSI through the formation energies of the alloys as a descriptor made for metals with significantly different atomic radii will be somewhat less reliable.

We further calculated the stability of the Ti_2O_3 monolayer on two Pt–Au alloy substrates (Pt_3Au and PtAu_3) as an example to validate the extent of the predictive power of this descriptor. The definition of the descriptor for Pt–Au alloys is given in the ESI.† The DFT calculated energies of the Ti_2O_3 monolayers, which are indicated by the stars in Fig. 3(b), fall into the previously predicted linear relationship, with the energy “error” smaller than 0.15 eV. Furthermore, the here suggested descriptor can also be

successfully applied to alloys with more complex structures, such as Pt–Ag, Cu–Ag and Pt–Ir, for which the $Pm\bar{3}m$ structure was used. Fig. S4 in the ESI† shows that our descriptor predicted relative stability for TiO_x monolayers *versus* the value calculated by DFT within 0.13 eV. We are, therefore, confident that the accuracy of the descriptor is adequate for prediction of the relative stabilities of the TiO_x monolayers for all considered systems, and is general enough to extend the proposed model for other systems as well.

2.4 Phase diagrams of monolayers

To understand the structure dependence on the gas environment, the effect of the gaseous composition on the relative stabilities of different monolayers on a range of metal substrates was investigated by *ab initio* atomistic thermodynamics modeling. The calculated Gibbs free energies for different monolayers on Me (111) surfaces at 600 °C as a function of hydrogen pressure are summarized in Fig. S3.† At lower hydrogen pressure ($<10^{-6}$ Pa), all reduced monolayers are thermodynamically unstable and a clean metal surface is preferred. The Ti_2O_3 monolayers are the first to be formed as pressure increases. At the typical conditions for SMSI experiment (10^5 Pa hydrogen pressure and 600 °C),^{17,38} for Pt, Pd, Ru, Os, Rh and Ir, all reduced monolayers exhibit negative formation energies, indicating that encapsulation of these metal nanoparticles by a monolayer is thermodynamically favourable.



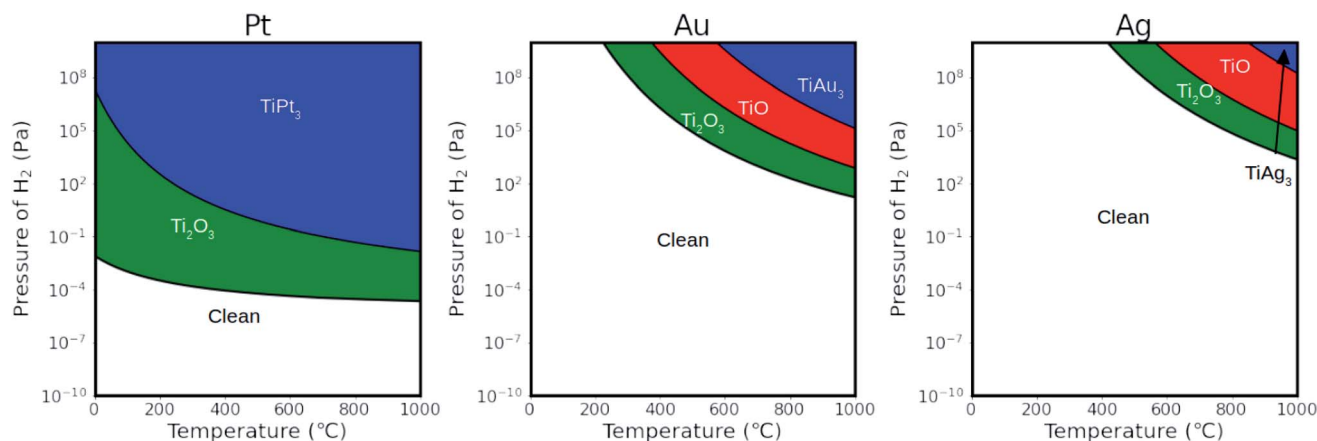


Fig. 4 Thermodynamic phase diagrams showing the preferred TiO_x monolayers on metal (Pt, Au and Ag) (111) surfaces as a function of temperature and H_2 pressure. Partial pressure of H_2O is fixed to be 10^{-1} Pa.

For Au, Ag and Cu, the Ti_2O_3 monolayers has similar Gibbs free energies as the bulk TiO_2 , leading to the competition between an encapsulation state and a clean metal surface state.

To illustrate more clearly these distinctions, we calculated the phase diagrams of the monolayers as a function of hydrogen pressure and temperature. Fig. 4 shows the phase diagrams of monolayers on the Pt (111), Au (111) and Ag (111) surfaces, representing strong, mediate and weak interactions with the

reduced monolayers, respectively. Fig. S4† shows the phase diagrams for other metal surfaces (Cu, Ru, Rh, Pd, Os, Ir). The stability of TiO_x strongly correlates with the strength of the bonding between titanium and the metal atoms of the support, and thus changes dramatically with the supporting surface. On the Pt (111) surface, Ti_2O_3 monolayer is stable at low temperature (0°C) when $P_{\text{H}_2} > 10^{-2}$ Pa. At high temperature (600°C), the presence of hydrogen makes the Ti_2O_3 monolayer stable already

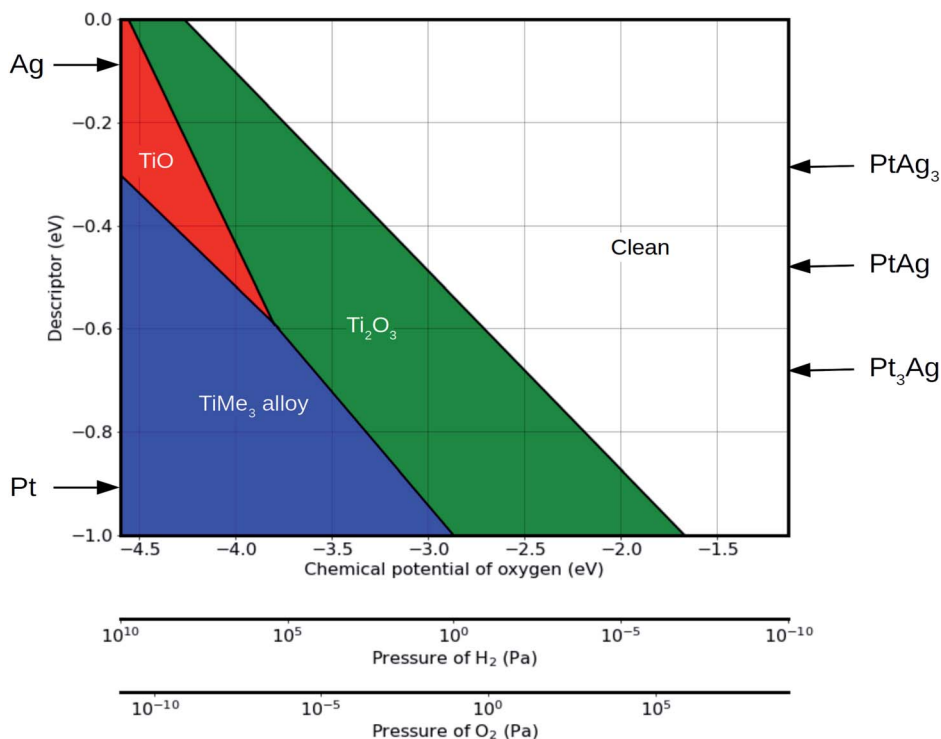


Fig. 5 Phase diagram showing the preferred monolayers on metal (111) surfaces as a function of the external environmental conditions and the descriptor. Values of the descriptor for platinum, silver and their alloys are marked by arrows, representing the cases of strong and weak interaction with the reduced monolayers, respectively. Conversion between the chemical potential of oxygen and the pressure of hydrogen is done by assuming an equilibrium in the following reaction: $\text{H}_2 + \text{O}_2 \rightleftharpoons \text{H}_2\text{O}$. Partial pressure of H_2O is fixed to be 10^{-1} Pa, and temperature is fixed to be 600°C .



Table 1 $\text{TiO}_x/\text{Me}(111)$ supercells used for building the interface models. Cu (lattice constant of 3.65 Å), Pt (3.97 Å) and Au (4.20 Å) were chosen to represent substrates with small, medium and large lattice constants, respectively. As no bulk structure corresponds to the Ti_2O_3 honeycomb monolayer, no mismatch was calculated in this case

Oxide		Metal		Mismatch		
Surface	Supercell	Surface	Supercell	Cu	Pt	Au
TiO_2 rutile (110)	2×6	(111)	$5 \times 4\sqrt{3}$	-0.02	0.16	0.30
	2×5	(111)	$5 \times 3\sqrt{3}$	-0.11	0.04	0.17
	3×5	(111)	$7 \times 3\sqrt{3}$	-0.17	-0.02	0.09
TiO_2 anatase (101)	1×5	(111)	$4 \times 4\sqrt{3}$	-0.07	0.10	0.23
	1×4	(111)	$4 \times 3\sqrt{3}$	-0.13	0.03	0.15
	2×4	(111)	$7 \times 3\sqrt{3}$	-0.24	-0.10	0.01
	3×3	(111)	$3\sqrt{3} \times 3\sqrt{3}$	-0.09	-0.05	0.00
$\alpha\text{-Ti}_2\text{O}_3$ (0001) Ti_2O_3 honeycomb	3×3	(111)	3×3			
	4×4	(111)	7×7			
	4×4	(111)	9×9			
	5×5	(111)	9×9			
	5×5	(111)	11×11			
	4×4	(111)	$5\sqrt{3} \times 5\sqrt{3}$			
	2×2	(111)	$\sqrt{19} \times \sqrt{19}$			
	3×3	(111)	$\sqrt{31} \times \sqrt{31}$			
	4×4	(111)	$\sqrt{57} \times \sqrt{57}$			
TiO <i>Fm3m</i> (111)	2×2	(111)	2×2	-0.01	0.07	0.13
	$\sqrt{3} \times \sqrt{3}$	(111)	2×2	-0.15	-0.08	-0.02

at partial pressures as low as 10^{-4} Pa. No stable range was found for the TiO monolayer on Pt (111) surface. On the Au (111) surface, Ti_2O_3 monolayer is not stable at low temperature ($T < 200$ °C) when $P_{\text{H}_2} < 10^{10}$ Pa. There is a stability range for TiO monolayer between Ti_2O_3 monolayer and the TiAu_3 surface alloy. On the Ag (111) surface, the stability ranges of all monolayers shift towards high temperatures and hydrogen partial pressures. The TiAg_3 surface alloy is only stable at very high temperatures and pressures. Overall, the stability of the monolayer is very sensitive to temperature and pressure. By either lowering the temperature or the hydrogen partial pressure, the monolayer stability transforms in the following order: alloy \rightarrow (TiO) \rightarrow Ti_2O_3 \rightarrow clean surface.

Based on the linear relationship between the binding strength and the proposed descriptor, a phase diagram as a function of external conditions and of the descriptor can be constructed. As an illustration, Fig. 5 shows such a phase diagram at 600 °C (see Fig. S5† for the phase diagrams at 25 °C, 400 °C and 800 °C for comparison). Values of the descriptor for platinum and silver are marked by the arrows. The stability ranges of Ti_2O_3 and TiMe_3 monolayers increase with the absolute value of the descriptor, while the TiO monolayer is not stable on surfaces with a descriptor value higher than 0.6 eV, as in the case of Pt (111) surface, which agrees with the phase diagram in Fig. 4. The descriptor is not limited to pure metals. Values of the descriptor for Pt–Ag alloys, such as Pt_3Ag , PtAg and PtAg_3 , can be calculated based on the linear combination of the descriptors for pure elements. The structure of an overlayer on these alloy surfaces can then be predicted based on the phase diagram.

With the external environmental conditions controlled experimentally, and with the descriptor reflecting the materials composition, such phase diagrams serve as a “structure–

material–environment” map (Fig. 5). Using this map, one can choose the materials and the environmental conditions required to get the structure needed for a specific catalytic application.

3 Conclusions

In summary, this work presents a systematic *ab initio* investigation of fully oxidized and reduced titania monolayers deposited on Cu, Ru, Pd, Ag, Rh, Os, Ir, Pt and Au (111) surfaces. Titania monolayers with the anatase structure are more stable than those with the rutile structure. Reduced titania monolayers exhibit strong interaction with the metal through the electron transfer from the titanium cation to the metal substrate. The binding strength at the interfaces between the metal and the reduced titania varies substantially, ranging from particularly strong (Pt and Pd) to relatively weak (Cu and Ag).

The alloy formation energy is a simple and reliable descriptor for the binding strength between a reduced titania monolayer and a metal substrate. The alloy formation energy descriptor reflects the material's composition at relevant environmental conditions, and thus can be used to identify the material structure at reactive conditions. In the case of alloys comprising metals with significantly different atomic radii, the descriptor might underestimate the effect of the increased strain energy. Notwithstanding this limitation, since alloy formation energies can either be found tabulated or easily computed, using them as a descriptor enables rapid pre-screening of the materials with the given interfacial interaction strength.

The analysis of the phase diagrams of various monolayers as a function of temperature and hydrogen pressure indicates that



the stability range of monolayers are sensitive to the supporting metal, the temperature and the reducing atmosphere used to induce the SMSI. The constructed phase diagrams can be used to predict the complex dynamical behavior of SMSI, and may help to control the structure of supported metal catalysts.

4 Computational details

4.1 Electronic structure methodology

DFT calculations were performed using the Quickstep module in the CP2K simulation package.⁵⁶ The generalized gradient approximation (GGA) using the Perdew, Burke and Ernzerhof (PBE) functional was chosen to evaluate the exchange–correlation energy.⁵⁷ Valence electrons were treated explicitly, whereas interactions with the frozen atom core were described using Goedecker–Teter–Hutter (GTH) pseudo potentials.⁵⁸ A double-zeta valence plus polarization (DZVP) basis set, optimized according to the Mol-Opt method,⁵⁹ has been used. A cutoff of 500 Ry has been used for the auxiliary plane wave expansion of the charge density. Brillouin zone integration was performed with a reciprocal space mesh consisting of only the gamma point. A strict convergence criterion of 10^{-7} Ha was used for the SCF calculations. For transition metal oxides, DFT+U method is important to describe the electronic properties strong correlation effect from the d electrons. Detailed comparison of DFT+U on the key parameter of the current study, *i.e.* the relative stability of supported TiO_x monolayers, indicates that it has only a small effect (see the ESI, Section S1†).

4.2 Formation energy of alloy

Alloy formation energy E_f of a system of n atoms of element A and m atoms of element B is calculated as:

$$E_f = E_{AnBm} - nE_A - mE_B, \quad (3)$$

where E_{AnBm} is the calculated total energy for the system and E_A and E_B are the energies per atom of elements A and B in their reference state, *i.e.* in the low temperature crystal structure at equilibrium lattice spacing.

Geometrical structures of all considered alloys were taken from the Materials Project database.⁵⁵ The formation energies were calculated using the computational setup described in Section 4.1.

The general way of calculating the energies of complex systems from first principles and comparing their relative stabilities has previously been discussed in great detail by the group of Ceder.⁶⁰ This work uses an analogous methodology.

4.3 *Ab initio* thermodynamics

The effect of the gaseous environment on the relative stability of the considered surface structure was captured by the method of *ab initio* atomistic thermodynamics.⁶¹ The Gibbs free energy of a gas phase at temperature T and partial pressure P is given by:

$$G(T, P) = E^{\text{DFT}} + E^{\text{ZPE}} + \Delta G(T, P^0) + k_B T \ln(P/P^0), \quad (4)$$

where E^{DFT} is the energy calculated by DFT at 0 K, E^{ZPE} is the zero point energy, P^0 is the standard pressure, and $\Delta G(T, P^0)$ includes the contributions from translational, rotational, vibrational and electronic free energy terms of the species under consideration. The detailed derivation for $\Delta G(T, P^0)$ can be found elsewhere.⁶² These were implemented in the Atomic Simulation Environment (ASE) Python package.⁶³ The change of the Gibbs free energy of the solid phase with T and P is much smaller compared to the gas phase, and it is therefore neglected in this study. The relative stability of the TiO_x overlayers compared to their bulk counterparts is given by:

$$\Delta G_{\text{TiO}_x/(111)} = G_{\text{TiO}_x/(111)} - G_{\text{TiO}_x} - G_{(111)}, \quad (5)$$

where $G_{\text{TiO}_x/(111)}$, $G_{(111)}$ and G_{TiO_x} are the free energies of the surface with a TiO_x overlayer, a clean (111) surface and a bulk TiO_x phase, respectively.

The equilibrium phase diagram for different surface structures, *e.g.* TiO_m/Me (111) *vs.* TiO_n/Me (111), is calculated by solving the following equation:

$$G_{\text{TiO}_m/\text{Me}(111)}(T, P) - G_{\text{TiO}_n/\text{Me}(111)}(T, P) - (m - n)\mu_{\text{O}}(T, P) = 0, \quad (6)$$

where m and n are the numbers of oxygen atoms in the surface species TiO_m and TiO_n , respectively. The equilibrium point (T, P) is then plotted.

4.4 Interface models

In this work, the face-centered cubic (FCC) structure and its closest packed (111) surfaces are considered. This choice is governed by the nature of the considered systems. For pure metals, we note that Rh, Ir, Ni, Pd, Pt, Cu, Ag, and Au have an FCC structure, while Ru and Os have a hexagonal closest packed (HCP) structure. Both FCC and HCP are closest packed structures, and their closest packed surfaces (the most stable surfaces) have the same structure, and the only difference between FCC and HCP is the packing sequence, with “–A–B–C–A–B–C–” for FCC and “–A–B–A–B–” for HCP. As a result, our choice corresponds to the most stable surfaces for all considered metals. Therefore, all the metal substrates were modeled by four FCC (111) atomic layers with the positions of two bottom layers fixed.

The oxide monolayers were then deposited on top of metal substrates. Since metal substrates have a range of lattice constants, several oxide supercells were used to minimize the strain at the interfaces. Table 1 shows all interface models used in these calculations. A rectangular Me (111) unit cell (abbreviated as $1 \times \sqrt{3}$) was used for the rectangular TiO_2 unit cell. It is important to note that the optimal lattice constants of the oxide monolayers on metal substrates can differ from those of the bulk oxides. Thus the lattice mismatch in Table 1 was used only as a reference to build the interface models that are as realistic as possible, and can not be used to estimate the real strain in the interface.

Conflicts of interest

The authors declare no conflicts of interest.



Acknowledgements

We gratefully acknowledge the computational resources provided by the Paul Scherrer Institute (PSI) and the Swiss National Supercomputing Centre (CSCS). X. W. acknowledges financial support from the China Scholarships Council (No. 201506370019). A. B. and J. A. v. B. acknowledge the SNSF project 200021_178943.

Notes and references

- J. R. Ross, *Heterogeneous catalysis: fundamentals and applications*, Elsevier, 2011.
- R. Prins, A. Wang and X. Li, *Introduction to Heterogeneous Catalysis*, World Scientific Publishing Company, 2016, vol. 1.
- J. A. Farmer and C. T. Campbell, *Science*, 2010, **329**, 933–936.
- Y. Lykhach, S. M. Kozlov, T. Skála, A. Tovt, V. Stetsovych, N. Tsud, F. Dvořák, V. Johánek, A. Neitzel, J. Mysliveček, S. Fabris, V. Matolín, K. M. Neyman and J. Libuda, *Nat. Mater.*, 2016, **15**, 284–288.
- G. Pacchioni and H.-J. Freund, *Chem. Soc. Rev.*, 2018, **47**, 8474–8502.
- S. Zafeiratos, S. Piccinin and D. Teschner, *Catal. Sci. Technol.*, 2012, **2**, 1787–1801.
- S. Penner and M. Armbrüster, *ChemCatChem*, 2015, **7**, 374–392.
- M. Ahmadi, F. Behafarid and B. Roldan Cuenya, *Nanoscale*, 2016, **8**, 11635–11641.
- S. L. Hemmingson and C. T. Campbell, *ACS Nano*, 2017, **11**, 1196–1203.
- L. B. Vilhelmsen and B. Hammer, *ACS Catal.*, 2014, **4**, 1626–1631.
- T. W. v. Deelen, C. H. Mejía and K. P. d. Jong, *Nat. Catal.*, 2019, **2**, 955–970.
- X. Wang, J. A. van Bokhoven and D. Palagin, *Phys. Chem. Chem. Phys.*, 2017, **19**, 30513–30519.
- M. Kottwitz, Y. Li, R. M. Palomino, Z. Liu, G. Wang, Q. Wu, J. Huang, J. Timoshenko, S. D. Senanayake, M. Balasubramanian, D. Lu, R. G. Nuzzo and A. I. Frenkel, *ACS Catal.*, 2019, **9**, 8738–8748.
- X. Wang, J. A. van Bokhoven and D. Palagin, *Phys. Chem. Chem. Phys.*, 2020, **22**, 28–38.
- J. Amsler, B. B. Sarma, G. Agostini, G. Prieto, P. N. Plessow and F. Studt, *J. Am. Chem. Soc.*, 2020, **142**, 5087–5096.
- F. Maurer, J. Jelic, J. Wang, A. Gänzler, P. Dolcet, C. Wöll, Y. Wang, F. Studt, M. Casapu and J.-D. Grunwaldt, *Nat. Catal.*, 2020, **3**, 824–833.
- S. J. Tauster, S. C. Fung and R. L. Garten, *J. Am. Chem. Soc.*, 1978, **100**, 170–175.
- J.-M. Herrmann, *J. Catal.*, 1989, **118**, 43–52.
- T. Suzuki and R. Souda, *Surf. Sci.*, 2000, **448**, 33–39.
- Q. Fu, T. Wagner, S. Olliges and H.-D. Carstanjen, *J. Phys. Chem. B*, 2005, **109**, 944–951.
- X. Liu, M.-H. Liu, Y.-C. Luo, C.-Y. Mou, S. D. Lin, H. Cheng, J.-M. Chen, J.-F. Lee and T.-S. Lin, *J. Am. Chem. Soc.*, 2012, **134**, 10251–10258.
- S. Tosoni and G. Pacchioni, *J. Phys. Chem. C*, 2019, **123**, 7952–7960.
- Z. Weng and F. Zaera, *ACS Catal.*, 2018, **8**, 8513–8524.
- H. Tang, Y. Su, Y. Guo, L. Zhang, T. Li, K. Zang, F. Liu, L. Li, J. Luo, B. Qiao and J. Wang, *Chem. Sci.*, 2018, **9**, 6679–6684.
- A. Corma, P. Serna, P. Concepción and J. J. Calvino, *J. Am. Chem. Soc.*, 2008, **130**, 8748–8753.
- M. Macino, A. J. Barnes, S. M. Althahban, R. Qu, E. K. Gibson, D. J. Morgan, S. J. Freakley, N. Dimitratos, C. J. Kiely, X. Gao, A. M. Beale, D. Bethell, Q. He, M. Sankar and G. J. Hutchings, *Nat. Catal.*, 2019, **2**, 873–881.
- J. Zhang, H. Wang, L. Wang, S. Ali, C. Wang, L. Wang, X. Meng, B. Li, D. S. Su and F.-S. Xiao, *J. Am. Chem. Soc.*, 2019, **141**, 2975–2983.
- Y. Zhang, X. Su, L. Li, H. Qi, C. Yang, W. Liu, X. Pan, X. Liu, X. Yang, Y. Huang and T. Zhang, *ACS Catal.*, 2020, **10**, 12967–12975.
- S. Wang, J. Goniakowski, C. Noguera and M. R. Castell, *Phys. Rev. B*, 2019, **100**, 125408.
- K. Zhang, S. Shaikhutdinov and H.-J. Freund, *ChemCatChem*, 2015, **7**, 3725–3730.
- J. Graciani, A. B. Vidal, J. A. Rodriguez and J. F. Sanz, *J. Phys. Chem. C*, 2014, **118**, 26931–26938.
- S.-i. Ito, C. Chibana, K. Nagashima, S. Kameoka, K. Tomishige and K. Kunimori, *Appl. Catal., A*, 2002, **236**, 113–120.
- H. Sakamoto, T. Ohara, N. Yasumoto, Y. Shiraishi, S. Ichikawa, S. Tanaka and T. Hirai, *J. Am. Chem. Soc.*, 2015, **137**, 9324–9332.
- L. Deng, H. Miura, T. Shishido, S. Hosokawa, K. Teramura and T. Tanaka, *Chem. Commun.*, 2017, **53**, 6937–6940.
- Z. Li, L. Yu, C. Milligan, T. Ma, L. Zhou, Y. Cui, Z. Qi, N. Libretto, B. Xu, J. Luo, E. Shi, Z. Wu, H. Xin, W. N. Delgass, J. T. Miller and Y. Wu, *Nat. Commun.*, 2018, **9**, 5258.
- H. Tang, Y. Su, B. Zhang, A. F. Lee, M. A. Isaacs, K. Wilson, L. Li, Y. Ren, J. Huang, M. Haruta, B. Qiao, X. Liu, C. Jin, D. Su, J. Wang and T. Zhang, *Sci. Adv.*, 2017, **3**, e1700231.
- S. Zhang, P. N. Plessow, J. J. Willis, S. Dai, M. Xu, G. W. Graham, M. Cargnello, F. Abild-Pedersen and X. Pan, *Nano Lett.*, 2016, **16**, 4528–4534.
- A. Beck, X. Huang, L. Artiglia, M. Zabilskiy, X. Wang, P. Rzepka, D. Palagin, M.-G. Willinger and J. A. van Bokhoven, *Nat. Commun.*, 2020, **11**, 3220.
- Q. Fu and T. Wagner, *Surf. Sci. Rep.*, 2007, **62**, 431–498.
- N. J. O'Connor, A. S. M. Jonayat, M. J. Janik and T. P. Senftle, *Nat. Catal.*, 2018, **1**, 531.
- D. Sharma, G. Gautam and S. Narasimhan, *Appl. Surf. Sci.*, 2019, **492**, 16–22.
- L. A. Zotti, S. Sanvito and D. D. O'Regan, *Mater. Des.*, 2018, **142**, 158–165.
- M. Capdevila-Cortada and N. López, *ACS Catal.*, 2015, **5**, 6473–6480.
- Z.-J. Zhao, S. Liu, S. Zha, D. Cheng, F. Studt, G. Henkelman and J. Gong, *Nat. Rev. Mater.*, 2019, **4**, 792–804.
- C. F. Dickens, J. H. Montoya, A. R. Kulkarni, M. Bajdich and J. K. Nørskov, *Surf. Sci.*, 2019, **681**, 122–129.



- 46 E. M. Dietze and P. N. Plessow, *J. Phys. Chem. C*, 2019, **123**, 20443–20450.
- 47 P. N. Plessow, M. Bajdich, J. Greene, A. Vojvodic and F. Abild-Pedersen, *J. Phys. Chem. C*, 2016, **120**, 10351–10360.
- 48 H. Perron, C. Domain, J. Roques, R. Drot, E. Simoni and H. Catalette, *Theor. Chem. Acc.*, 2007, **117**, 565–574.
- 49 A. Vittadini and M. Casarin, *Theor. Chem. Acc.*, 2008, **120**, 551–556.
- 50 J. K. Nørskov, F. Studt, F. Abild-Pedersen and T. Bligaard, *Fundamental concepts in heterogeneous catalysis*, John Wiley & Sons, 2014.
- 51 J. Goniakowski and C. Noguera, *J. Phys. Chem. C*, 2019, **123**, 9272–9281.
- 52 R. Tran, Z. Xu, B. Radhakrishnan, D. Winston, W. Sun, K. A. Persson and S. P. Ong, *Sci. Data*, 2016, **3**, 1–13.
- 53 N. Tsuboi, H. Okuyama, M. Nishijima and T. Aruga, *Phys. Rev. B: Condens. Matter Mater. Phys.*, 2003, **68**, 033408.
- 54 G. Henkelman, A. Arnaldsson and H. Jónsson, *Comput. Mater. Sci.*, 2006, **36**, 354–360.
- 55 A. Jain, S. P. Ong, G. Hautier, W. Chen, W. D. Richards, S. Dacek, S. Cholia, D. Gunter, D. Skinner, G. Ceder and K. a. Persson, *APL Mater.*, 2013, **1**, 011002.
- 56 J. VandeVondele, M. Krack, F. Mohamed, M. Parrinello, T. Chassaing and J. Hutter, *Comput. Phys. Commun.*, 2005, **167**, 103–128.
- 57 J. P. Perdew, K. Burke and M. Ernzerhof, *Phys. Rev. Lett.*, 1996, **77**, 3865–3868.
- 58 S. Goedecker, M. Teter and J. Hutter, *Phys. Rev. B: Condens. Matter Mater. Phys.*, 1996, **54**, 1703–1710.
- 59 G. Lippert, J. Hutter and M. Parrinello, *Mol. Phys.*, 1997, **92**, 477–488.
- 60 S. Ping Ong, L. Wang, B. Kang and G. Ceder, *Chem. Mater.*, 2008, **20**, 1798–1807.
- 61 K. Reuter and M. Scheffler, *Phys. Rev. Lett.*, 2003, **90**, 046103.
- 62 K. Reuter, C. Stampf and M. Scheffler, *Ab Initio Atomistic Thermodynamics and Statistical Mechanics of Surface Properties and Functions*, Springer Netherlands, Dordrecht, 2005, pp. 149–194.
- 63 A. H. Larsen, J. J. Mortensen, J. Blomqvist, I. E. Castelli, R. Christensen, M. Dułak, J. Friis, M. N. Groves, B. Hammer, C. Hargus, E. D. Hermes, P. C. Jennings, P. B. Jensen, J. Kermode, J. R. Kitchin, E. L. Kolsbjerg, J. Kubal, K. Kaasbjerg, S. Lysgaard, J. B. Maronsson, T. Maxson, T. Olsen, L. Pastewka, A. Peterson, C. Rostgaard, J. Schiøtz, O. Schütt, M. Strange, K. S. Thygesen, T. Vegge, L. Vilhelmsen, M. Walter, Z. Zeng and K. W. Jacobsen, *J. Phys.: Condens. Matter*, 2017, **29**, 273002.

