


 Cite this: *RSC Adv.*, 2020, 10, 24243

Correction: A sensitive OFF–ON–OFF fluorescent probe for the cascade sensing of Al³⁺ and F[−] ions in aqueous media and living cells

 Lingjie Hou,^{ac} Wenting Liang,^{*b} Chenhua Deng,^{ac} Caifeng Zhang,^{ac} Bo Liu,^d Shaomin Shuang^b and Yu Wang^{*b}

DOI: 10.1039/d0ra90067b

rsc.li/rsc-advances

 Correction for 'A sensitive OFF–ON–OFF fluorescent probe for the cascade sensing of Al³⁺ and F[−] ions in aqueous media and living cells' by Lingjie Hou *et al.*, *RSC Adv.*, 2020, 10, 21629–21635, DOI: 10.1039/D0RA02848G.

The authors regret that an incorrect version of Fig. 4 was included in the original article. The correct version of Fig. 4 is presented below.

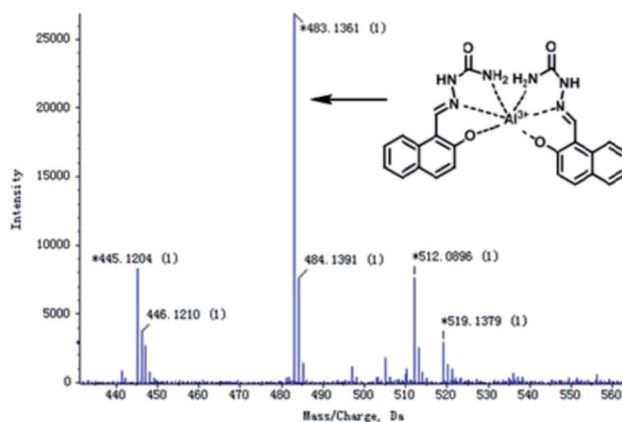


Fig. 4 The ESI-MS spectrum of Al³⁺–HNS complex.

The Royal Society of Chemistry apologises for these errors and any consequent inconvenience to authors and readers.

^aDepartment of Chemistry, Taiyuan Normal University, Jinzhong 030619, P. R. China

^bDepartment of Chemistry, Institute of Environmental Science, Shanxi University, Taiyuan 030006, P. R. China. E-mail: liangwt@sxu.edu.cn; wangyu1168@sxu.edu.cn

^cHumic Acid Engineering and Technology Research Center of Shanxi Province, Jinzhong 030619, P. R. China

^dNational Institutes for Food and Drug Control, Beijing 100050, P. R. of China

