



Cite this: *Biomater. Sci.*, 2020, **8**, 84

## Short to ultrashort peptide-based hydrogels as a platform for biomedical applications

Nitin Yadav,<sup>a,b</sup> Meenakshi K. Chauhan<sup>\*b</sup> and Virander S. Chauhan  <sup>\*a</sup>

Short peptides have attracted significant attention from researchers in the past few years due to their easy design, synthesis and characterization, diverse functionalisation possibilities, low cost, possibility to make a large range of hierarchical nanostructures and most importantly their high biocompatibility and biodegradability. Generally, short peptides are also relatively more stable than their longer variants, non-immunogenic in nature and many of them self-assemble to provide an exciting range of nanostructures, including hydrogels. Thus, the development of short peptide-based hydrogels has become an area of intense investigation. Although these hydrogels have a water content of greater than 90%, they are surprisingly highly stable structures, and thus have been used for various biomedical applications, including cell therapeutics, drug delivery, tissue engineering and regeneration, contact lenses, biosensors, and wound healing, by different researchers. Herein, we review the progress of research in the rapidly expanding field of short to ultrashort peptide-based hydrogels and their possible applications. Special attention is paid to address and review this field with regard to the stability of peptide-based hydrogels, particularly to enzymatic degradation.

Received 16th August 2019,

Accepted 21st October 2019

DOI: 10.1039/c9bm01304k

rscl.li/biomaterials-science

### 1. Introduction

Molecular self-assembly, which is the spontaneous arrangement of individual molecules into ordered structures through non-covalent weak interactions, has become an attractive tool for generating different hierarchical structures such as tubes, spheres, films, tapes and fibrils from nano to microscale sizes using monomeric polymer molecules for biomedical applications.<sup>1–7</sup> Molecular self-assembly and its application are an outcome of chemistry, materials and polymer science, molecular biology, and engineering. Molecular self-assembly can be classified into two types, intramolecular self-assembly, in which complex polymers assemble from random coil conformations into stable secondary and tertiary structures, and intermolecular self-assembly, in which molecules assemble to form well-ordered supramolecular structures, such as micelle formation by surfactant molecules.<sup>6–8</sup> Currently, intermolecular self-assembly is of great interest because scientists are using this tool for generating different structures for biomedical applications including drug delivery, biosensing, tissue engineering, disease diagnosis, and bioimaging.<sup>6,9</sup>

Besides polymers based on high molecular weight natural polymers such as polysaccharides (amylose, chitin, dextran, cellulose and glycosaminoglycans), proteins (gelatin, fibrinogen, silk, and collagen), and polynucleotides (RNA and DNA), and synthetic polymers such as poly(lactic-co-glycolic acid) (PLGA), polyglycolic acid (PGA) and polylactic acid (PLA), self-assembling, natural and synthetic peptides have attracted significant attention from researchers in this field.<sup>10–19</sup> The advantages of peptide-based self-assembling systems such as ease of synthesis and characterization, high stability, chemical diversity, relatively low cost, inherent biocompatibility, and biodegradability have made them attractive candidates for applications in drug delivery, tissue engineering, diagnostics, biosensing, and drug development (Fig. 1). In the last few decades, the finding that relatively short peptides (di-, tri- and tetra-peptides) can self-assemble into ordered nanostructures, such as nanospheres, nanotubes and fibrillar gels, has made this area of research even more active and exciting.<sup>12,20–25</sup>

Hydrogels, a network of three dimensional (3D) self-assembled polymer fibrillar chains, are soft semi-solid-like materials containing large amounts (>90%) of water. The self-assembly of peptides and proteins into fibrils in *in vitro* and *in vivo* conditions is well known and has been the subject of many reviews.<sup>12,14–17,20,22–24</sup> Based on the aggregation of proteins in *in vivo* conditions such as the amyloid beta polypeptide (A $\beta$ <sub>42</sub>), tau proteins, TAR (trans-activator regulatory) DNA-binding protein-43 (TDP-43), and islet amyloid polypeptide (IAPP) indicated in Alzheimer's disease, researchers have

<sup>a</sup>Molecular Medicine Group, International Centre for Genetic Engineering & Biotechnology, Aruna Asaf Ali Marg, New Delhi-110067, India.

E-mail: virander@icgeb.res.in

<sup>b</sup>Delhi Institute of Pharmaceutical Sciences and Research, Mehrauli-Badarpur Road, Sector-3, Pushpvihar, New Delhi-110017, India

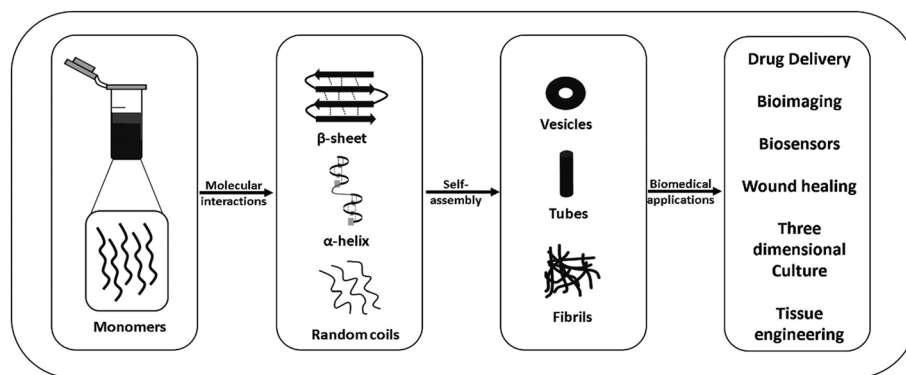


Fig. 1 Schematic representation of the self-assembly of peptides into different nanostructures and their possible applications.

identified many small sequences responsible for the assembly these proteins in their native form.<sup>26–44</sup> The shortest peptide sequence identified from these studies was a dipeptide, Phe-Phe, corresponding to the 19<sup>th</sup> and 20<sup>th</sup> residues of the central hydrophobic cluster of the highly amyloidogenic peptide A $\beta$ <sub>42</sub>.<sup>27,45,46</sup> Although many small peptide sequences have been identified in various disease conditions, the development of peptide-based therapeutics has remained a challenge primarily due to their inherent susceptibility to proteases. Considering that more than 500 putative proteases are present in the human body, peptide-based drugs and drug delivery systems generally suffer from very low bioavailability.<sup>47–54</sup> Thus, researchers have tried many strategies in peptide design to resolve this problem, such as the introduction of conformationally restricted amino acids, D-amino acids and non-protein amino acids.<sup>55–62</sup> In this review, we focus on the peptides that readily form hydrogels and their possible applications in the biomedical field.

## 2. Peptide based hydrogels

Many short peptides have been found to self-assemble into hydrogel-like structures. The self-assembly of short peptide sequences (>8 amino acids) can be categorized into two major classes, *i.e.* amphiphilic peptides and self-complementary peptides. Ultrashort peptides (<8 amino acids) have also been found to self-assemble into different nanostructures due to the amphiphilicity and/or self-complementarity of their peptide sequences. Hydrophobic stacking interactions ( $\pi$ - $\pi$  interactions) due to aromatic residues and bulky protecting groups such as fluorenylmethoxycarbonyl (Fmoc) have also been found to play a crucial role in their self-assembly.<sup>63–72</sup>

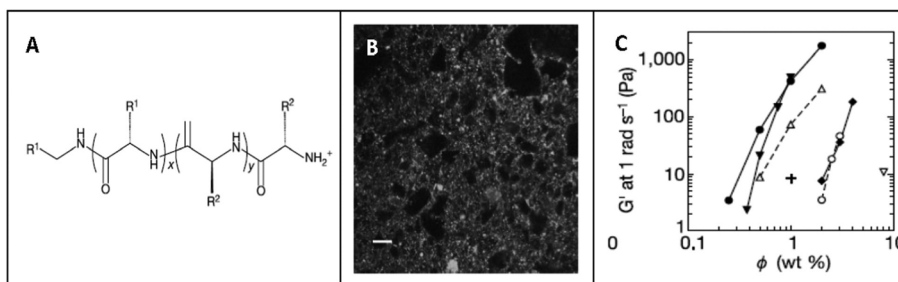
### 2.1 Self-assembly of short peptides into hydrogels

**2.1.1 Non-covalent interactions.** Many non-covalent interactions including hydrogen bonding,  $\pi$ - $\pi$ , van der Waals, electrostatic and hydrophobic interactions have been shown to be responsible for the self-assembly of peptides into different nanostructures. The combination of these weak forces and the synergy among them result in chemically and structurally

stable frameworks of structural architectures.<sup>2,73</sup> Self-assembly depends on the chemical complementarity and structural compatibility of individual components with properties such as polarizability, surface charge and surface functionalities.<sup>6,74,75</sup> Out of all the possible non-covalent interactions, hydrogen bonding is the most important and prevalent interaction participating in the self-assembly of peptides and proteins, which stabilizes key secondary structures such as alpha helix and beta sheets in polypeptides and proteins. In nature, biological molecules including proteins, peptides, carbohydrates, lipids, nucleic acids and other components combine to self-assemble into a basic biological unit, the cell, while the formation of amyloid fibrils, chromatin assembly and antigen-antibody recognition are other examples of self-assembly.<sup>6</sup> In the last few decades, many researchers have shed light on non-covalent interactions to better understand the mechanism of the self-assembly process and design new self-assembling peptides.<sup>6,74–77</sup>

In the case of ultrashort peptides containing aromatic residues, the  $\pi$ - $\pi$  interactions among their aromatic residues have been found to greatly influence the self-assembly of these peptides.<sup>77</sup> As some important examples emphasizing the role of  $\pi$ - $\pi$  interactions in the formation of stable hydrogels, Janmey *et al.* reported the formation of hydrogels from Fmoc derivatives of different dipeptides, *i.e.* Fmoc-Leu-Asp, Fmoc-Ala-Asp and Fmoc-Ile-Asp,<sup>78</sup> Gazit *et al.* used Fmoc-Phe-Phe-COOH, Boc-Phe-Phe-COOH and Z-Phe-Phe-COOH<sup>27</sup> and Chauhan *et al.* used Phe- $\Delta$ Phe and Leu- $\Delta$ Phe.<sup>79,80</sup> A study carried out by Ulijn *et al.* also showed the presence of a high degree of  $\pi$ - $\pi$  stacking of fluorenyl groups upon hydrogelation of Fmoc-Phe-Phe.<sup>81</sup>

**2.1.2 Amphiphilic peptides.** As their name specifies (amphi- both and philia- love), amphiphilic peptides contain both hydrophilic and lipophilic regions, and include long-chain alkylated peptides, peptide phospholipids, and peptide-co-polymers.<sup>82–85</sup> Berndt *et al.* synthesized peptide amphiphiles as dialkylated chain amphiphilic peptides, for the first time in 1995, which were derived from extracellular matrix collagen. Peptide amphiphiles containing peptide fragments from collagen as the hydrophilic component (head) and dialkyl or diacyl chains as the hydrophobic component (tail) were synthesized and characterized.<sup>86</sup> Nowak *et al.* designed



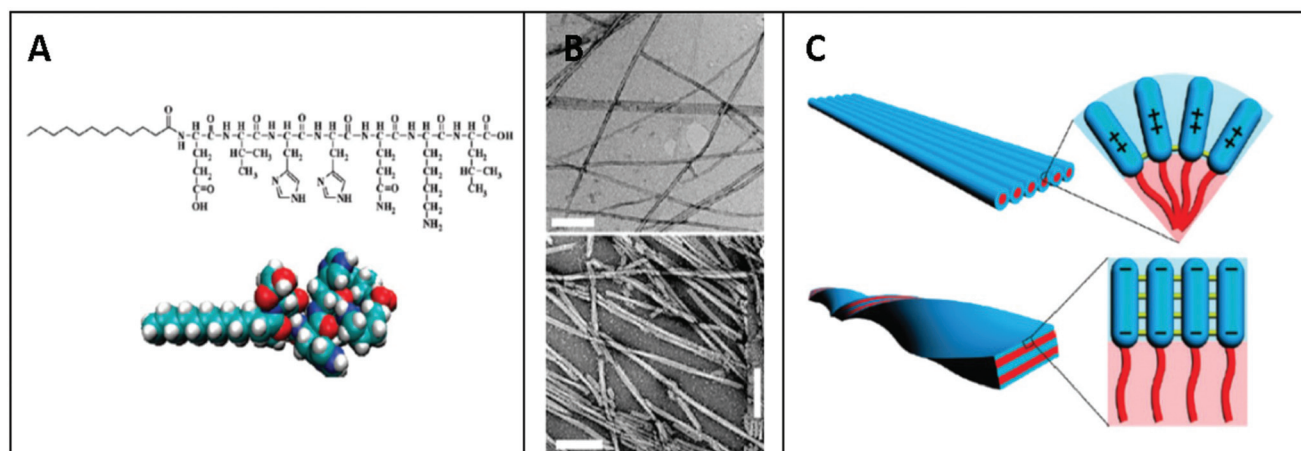
**Fig. 2** Hydrogelation of diblock copolypeptides. (A) Common molecular structure of amphiphilic peptides. (B) Confocal microscopy image showing hydrogel formation from a polypeptide,  $K_{160}L_{40}$ , at 1 wt% concentration. (C) Gel strength of polypeptide amphiphiles (represented by  $G'$  – storage modulus) at different peptide concentrations, where filled circles,  $K_{160}L_{40}$ ; open circles,  $K_{180}L_{20}$ ; filled down triangles,  $K_{160}V_{40}$ ; open down triangles,  $K_{180}V_{20}$ ; filled diamonds,  $K_{160}(\text{rac-L})_{40}$ ; and open up triangles,  $E_{160}L_{40}$ .  $\phi = [(\text{grams of polymer/grams of sample}) \times 100\%]$ . Reprinted with permission from A. P. Nowak, *et al.*, Rapidly recovering hydrogel scaffolds from self-assembling diblock copolypeptide amphiphiles, *Nature*, 2002, **417**(6887), 424. Copyright (2002) Nature Springer.

and synthesized diblock co-polypeptide amphiphiles. These peptides contained poly(L-lysine-HBr) and poly(L-glutamate sodium salt) domains as charged polyelectrolytes to induce water solubility and hydrophobic domains such as poly-L-leucine and poly-L-valine to induce water insolubility and aggregation of the peptides. Different peptide analogs such as  $K_{160}L_{40}$ ,  $K_{160}V_{40}$ ,  $K_{180}L_{20}$ ,  $K_{90}L_{10}$ ,  $K_{160}(\text{rac-L})_{40}$ , and  $K_{180}V_{20}$  were synthesized and tested for their self-assembly into hydrogels (Fig. 2). It was found that the presence of highly charged segments in the peptide sequence is very important for hydrogel formation.<sup>87</sup> The characteristics of these peptide amphiphiles such as the formation of hydrogels at low peptide concentration ( $\sim 1$  wt%), high thermal stability up to 80 °C, high mechanical strength and recovery of get strength after deformation make them attractive for further development.<sup>87</sup>

He *et al.* investigated the self-assembly of two peptide amphiphiles based on the  $A\beta_{(1-40)}$  polypeptide associated with Alzheimer's disease, *i.e.*  $2C_{12}\text{-Lys-A}\beta_{(12-17)}$  and  $C_{12}\text{-A}\beta_{(11-17)}\text{-C}_{12}$ ,

and showed the importance of the alkyl chain positions in their self-assembly behaviour and stability.<sup>88,89</sup>  $2C_{12}\text{-Lys-A}\beta_{(12-17)}$  was found to self-assemble into long fibrillar structures with micrometer length and 25 nm diameter in aqueous solution, while  $C_{12}\text{-A}\beta_{(11-17)}\text{-C}_{12}$  self-assembled into short ribbons and lamellae with a length of  $\sim 100$  nm (Fig. 3). These results clearly indicate that small but subtle changes in the hydrophobic chain positions and charge of peptide sequences can control self-assembly behaviour of peptide amphiphiles into different nanostructures.<sup>89</sup>

Similarly, Hartgerink *et al.* investigated the self-assembly of 12 variants of the peptide amphiphile [CCCCGGGS(PO<sub>4</sub>)RGD] with changes in its alkyl tail length, polymerizable regions, and C-terminal extensions through pH changes. They also showed an alternative mode of peptide self-assembly triggered by divalent ions such as calcium to promote self-assembly at physiological pH, which may be relevant for biomedical applications where gel formation at physiological pH is required.<sup>90</sup>

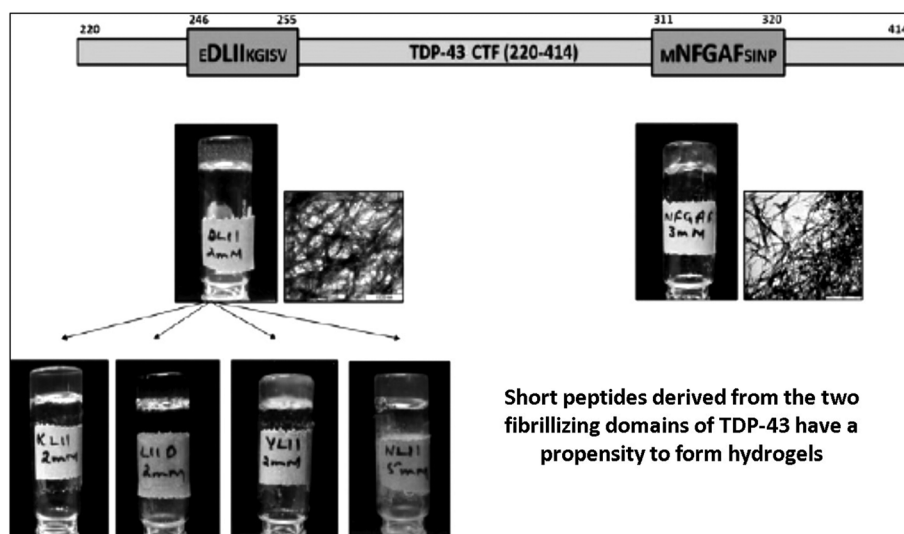


**Fig. 3** Self-assembly of peptide amphiphile  $C_{12}\text{-}\beta_{(11-17)}$  into nanofibrils. (A) Chemical structure of peptide amphiphile,  $C_{12}\text{-}\beta_{(11-17)}$ . (B) TEM images showing the self-assembly of  $C_{12}\text{-A}\beta_{(11-17)}$  into nanofibrils at different pH, at pH 3.0 (top) and pH 10 (bottom). (C) Schematic illustration of the intermolecular interaction within the  $C_{12}\text{-A}\beta_{(11-17)}$  self-assemblies at different pH, at pH 3.0 (top) and at pH 10.0 (bottom). Reprinted with permission from "M. Deng, *et al.*, Self-assembly of Peptide Amphiphile  $C_{12}\text{-A}\beta_{(11-17)}$  into Nanofibrils, *J. Phys. Chem. B*, 2009, **113**(25), 8539–8544". Copyright (2009). American Chemical Society.

**2.1.3 Ionic complementary peptides.** Ionic complementary peptides comprise sequences of ordered charged amino acid residues to induce electrostatic interactions in addition to interactions such as hydrogen bonding and van-der Waals forces, which ultimately result in the self-assembly of these peptides into three-dimensional supramolecular structures such as nano-tapes, nanotubes, nanospheres, and fibrillar hydrogels.<sup>76,91–96</sup> The charge distribution in the peptide sequence plays an important role in the self-assembly of these peptides. Three types of charge distribution patterns are widely studied and used for designing self-complementary peptides, including type-I: – +, type-II: – – ++ and type-III: – – – – ++++ (Fig. 4).<sup>91–94</sup> Many ionic self-complementary peptides have been designed using these charge distribution patterns and/or combining them in a single sequence, which show high self-assembling properties.<sup>76,91–98</sup> Zhang *et al.* reported the first self-assembling ionic self-complementary peptide, EAK16, a 16-residue peptide (AEAEAKAKAEAEAKAK), in 1993 derived from zutotin, a yeast protein.<sup>99</sup> EAK16 spontaneously self-assembled into a macroscopic membrane in the presence of Dulbecco modified Eagle's medium/calf serum (DMEM) and phosphate-buffered saline (PBS). In addition to the interactions between the alternating hydrophobic and hydrophilic chains of amino acid residues in the sequence of EAK16, self-complementary pairs of positively charged lysine and negatively charged glutamic acid-side chains played an important role in its self-assembly.<sup>100</sup> The self-assembled membranes were found to be stable to heat, chemical denaturation agents such as guanidine hydrochloride, sodium dodecyl sulphate and urea, and degradation by proteolytic enzymes such as protease K, trypsin, papain,  $\alpha$ -chymotrypsin, and a commercially available mixture of proteases (Pronase), and to changes in pH (1.5–11) and temperature up to 90 °C.<sup>99</sup>

In 1995, Zhang *et al.* designed a new peptide (RAD16) based on the EAK16 template by substituting positively charged lysine with arginine and negatively charged glutamic acids with aspartic acids. RAD16 also self-assembled into a membranous matrix in water and physiological buffer solutions containing salts. Both EAK16 and RAD16 were tested for cell attachment and their growth using a number of cell types including primary cultures.<sup>101</sup> Several other designed peptides (RAD16-I, RAD16-II, and RAD-IV) based on the EAK16 ionic-complementary peptide by changing its charge distribution pattern were prepared and characterized for their self-assembly by Holmes *et al.*<sup>100,102</sup> These fibrillar membrane/hydrogel-forming peptides (RAD16-I, RAD16-II) were then used as scaffolds for the culture of neuronal cells, and supported their attachment and differentiation with extensive neurite outgrowth, indicating the potential of these peptide-based scaffolds for use in tissue engineering applications.<sup>102</sup> Many other ionic self-complementary peptides were identified to self-assemble into fibrillar hydrogels together with other nano-size structures for various biomedical applications including drug delivery, imaging and tissue engineering.<sup>76,91–93,95,96</sup> A series of short self-assembling designed peptides using these mechanisms or their combinations for self-assembly into fibrillar hydrogels will be discussed in detail in the following sections.

From the above described studies, it is quite clear that based on the general principle of designing peptides containing charge entities and hydrophobic regions it is possible to generate a wide variety of self-assembled peptide-based hydrogels. Further, given the wide choice of diverse amino acids, with both charged as well as hydrophobic residues, and a wide variety of hydrophobic alkyl groups, it should be possible to develop different types of hydrogels with specific designer pro-



**Fig. 4** Hydrogel formation by short fragments derived from TDP-43 CFT (246–255) and TDP-43 CFT (311–320). Tube inversion test showing the formation of self-supportive hydrogels and their respective TEM images showing the presence of dense fibrillar mesh. Reprinted with permission from "A. Saini and V. S. Chauhan, Self-assembling properties of peptides derived from TDP-43 C-terminal fragment, *Langmuir*, 2014, 30(13), 3845–3856". Copyright (2014). American Chemical Society.

perties. Likewise, using design principles from the principles that emerged from the examples described above under ionic peptide, a variety of hydrogels may be generated based on charge-charge interaction.

## 2.2 Self-assembly of ultrashort peptides into hydrogels (less than 8 amino acids)

In search of ultrashort self-assembling synthetic peptides, Chauhan *et al.* demonstrated the self-assembling properties of short peptide sequences derived from EDLIKG and MNFGAFS, the shortest fibrillogenic peptide sequences from the TDP-43 protein (a 414-residue DNA/RNA binding nuclear protein) indicated in neurodegenerative diseases such as amyotrophic lateral sclerosis and frontotemporal lobar degeneration. C-terminal and N-terminal deletions of amino acid residues from MNFGAFS and EDLIKG resulted in a series of peptides (Table 1), and their self-assembling properties were investigated using static light scattering studies, thioflavin T fluorescence assay, TEM, CD and rheology. Among the peptides, a tetrapeptide, DLII, and a pentapeptide, NFGAF, were found to form self-supportive translucent hydrogels (Fig. 4).<sup>43,103</sup> CD spectroscopy of the peptides showed clear sec-

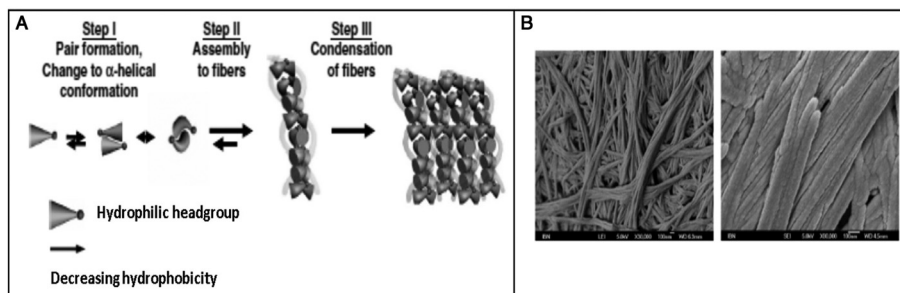
ondary structure changes with time during the self-assembly process, changing from  $\alpha$ -helix to  $\beta$ -sheet post hydrogelation in 24 to 48 h.

Banerjee *et al.* reported the self-assembly of a tetrapeptide, GAIL (peptide 1), leading to hydrogel formation. Hydrogelation of peptide-1 occurred at a very high peptide concentration *i.e.* 17% w/v. An analogue of peptide-1 was prepared by replacing alanine at the 3<sup>rd</sup> position in the peptide-1 sequence with phenylalanine, which formed a hydrogel at a relatively low concentration of 2.65% w/v (peptide-2).<sup>104</sup> CD, FTIR and X-ray diffraction studies showed the presence of anti-parallel  $\beta$ -sheet arrangements in both gels. X-ray diffraction studies also showed the presence of  $\pi$ - $\pi$  packing interactions in the peptide-2 gel. The anticancer drug doxorubicin was entrapped in both hydrogels and the release kinetics was determined. Both gels showed sustained drug release up to 45 h. However, no *in vivo* studies have been reported by these authors.<sup>104</sup>

Hauser *et al.* reported the self-assembly of small aliphatic peptides of 3–6 amino acids long into a hydrogel. These designed peptides consisted of a hydrophilic head with charged nonaromatic amino acids (polar) at the C-terminal, followed by a tail of aliphatic chain of amino acids at their N-terminal. Both, the length of the peptide sequence and the polarity of the peptide head group influenced hydrogel formation. A decrease in non-polar character from the N- to C-terminal in the peptides led to the formation of cone-like structures, which were prone to self-assemble in a parallel anti-parallel stacking pattern (Fig. 5).<sup>105</sup> These authors also showed that the ultrashort sequences can also form  $\alpha$ -helical conformations from random coils upon crossing a threshold concentration. CD and X-ray diffraction studies revealed the presence of a combination of  $\alpha$ -helical and poly-L-proline-like helical conformations. Among the peptides investigated, two hexapeptides (LIVAGD and AIVAGD) and a tripeptide (IVD) were found to form stable hydrogels at a relatively low concentration and were investigated extensively.<sup>105</sup> Following leads from the above described work, Floudas *et al.* synthesized a series of peptides based on the theoretical calculation of fold specificity and association affinity of new peptide sequences. Among the

**Table 1** Peptide sequences derived from self-assembling peptide sequences of TDP-43 (246–255) and TDP-43 (311–320)<sup>103</sup>

S. no.	Peptides derived from TDP-43 (246–255), <i>i.e.</i> MNFGAFSINP	Peptides derived from TDP-43 (311–320), <i>i.e.</i> EDLIKGISV
1.	MNFGAFS	EDLIKG
2.	MNFGAF	EDLIK
3.	MNFGA	EDLII
4.	NFGAF	DLII
5.	FGAF	LII
6.	GAF	II
7.	AFGAF	ALII
8.	NAGAF	KLII
9.	NFGAA	NLII
10.	—	YLII
11.	—	LIID
12.	—	DAII
13.	—	DLAI
14.	—	DLIA



**Fig. 5** Self-assembly of peptides, tri- to hexa-peptides, into amyloid  $\beta$ -type fibrillar structures. (A) Proposed mechanistic representation for the self-assembly of peptide monomers into ordered dense fibrillar network. (B) FESEM images of the trimer, ID3, into fibrillar hydrogels at different peptide concentrations, at 15 mg mL<sup>-1</sup> (left) and at 20 mg mL<sup>-1</sup> (right). Reprinted from "C. A. E. Hauser, *et al.*, Natural tri- to hexapeptides self-assemble in water to amyloid  $\beta$ -type fiber aggregates by unexpected  $\alpha$ -helical intermediate structures, *Proc. Natl. Acad. Sci. U. S. A.*, 2011, **108**(4), 1361–1366".

computationally predicted peptide analogs, two peptides, namely VIE and MYD, readily formed hydrogels and the number of their sequence variants was investigated.<sup>106</sup> Consequently, the authors of this study were able to introduce a computational *de novo* peptide design strategy for self-associating peptides, which may help researchers to design new self-associating peptides and understanding the mechanism of their self-assembly process.

Gazit *et al.* investigated the self-assembly of short fragments of human calcitonin, a 32 amino acid polypeptide hormone (hCT), hCT<sub>15–19</sub> (DFNKF), hCT<sub>16–19</sub> (FNKF), hCT<sub>15–18</sub> (DFNK), and hCT<sub>15–17</sub> (DEN) together with hCT<sub>15–19</sub> (F→A) (DANKA) into amyloid fibrillar structures.<sup>44</sup> Among them, the pentapeptide DFNKF formed fibrillar structures similar to the native hCT polypeptide. The tetrapeptide, DFNK, also self-assembled into fibrils, but its fibrillar structures were less dense compared to that of the pentapeptide, DFNKF. Since amyloid formation in hCT occurs under acidic pH conditions,<sup>44</sup> the authors suggested that the negatively charged residues present in hCT<sub>15–19</sub> undergo protonation, resulting in amyloid formation. The presence of two phenylalanine in hCT<sub>15–19</sub> also plays a key role in its self-assembly. DFNKF showed clear and strong green birefringence in the Congo Red birefringence study, one of the properties of amyloid fibrils. The Fourier transform infrared (FTIR) spectrum of DFNKF showed double minima at 1639 and 1669 cm<sup>-1</sup>, which indicated the presence of antiparallel sheet-like conformations, similar to the amyloid-forming hexapeptide fragment of human islet amyloid polypeptide (hIAPP<sub>22–27</sub>: NFGAIL).<sup>33</sup> Although it is generally believed that amyloidosis in proteins occurs due to the exposure of the hydrophobic patches embedded in the hydrophobic core of the protein structure, the above studies demonstrated that the short hydrophilic sequences in the protein sequence can also induce amyloidosis as efficiently as the hydrophobic sequences. Taken together, these studies have made a major contribution in understanding the fibrilization mechanisms of various amyloidogenic proteins and the design of other fibrillar hydrogel-forming peptides.<sup>43,44,103,105,106</sup>

The development of hydrogels based on ultrashort peptide sequences is a rapidly expanding field of research. Many single amino acids, dipeptides and tripeptides conjugated with bulky aromatic groups such as fluorenylmethyloxycarbonyl (Fmoc), pyrene, naphthalene, cinnamoyl, carboxybenzyl and phenothiazine have been reported to self-assemble into various structural assemblies, especially fibrillar hydrogels, and have received much attention recently.<sup>63,64,66–69,71,72,81,107–109</sup> However, these bulky, mostly aromatic groups are generally toxic in nature, increase the flexibility of the peptide backbone and block N- or C- or both the terminals of the peptides, especially the N-terminal, which hamper their functionalizability.<sup>110</sup>

Vegners *et al.* demonstrated for the first time in 1995 that three Fmoc-based dipeptides, Fmoc-Leu-Asp, Fmoc-Ala-Asp and Fmoc-Ile-Asp, formed viscoelastic hydrogels by boiling peptide solutions at 100 °C in 10 mM phosphate buffer (pH 7.4) followed by vigorous stirring and cooling.<sup>78</sup> The Fmoc-

Leu-Asp hydrogel was used as an adjuvant to deliver antiviral adamantanimine derivatives, 3,5-dimethyl-adamantylamine hydrochloride and 5-methyl-1-adamantine 3-carboxylic acid, to produce specific antibodies against these drugs, which remained non-antigenic unless injected with the hydrogel adjuvant or coupled to protein carriers. The antiviral drugs entrapped in the peptide hydrogels when injected in rabbits showed the generation of antibody titers as high as in animals immunized with bovine serum albumin (BSA) conjugated drug molecules using Freund's adjuvant, which indicated the possible use of these ultrashort peptide hydrogels for a number of practical applications in biomolecular delivery.<sup>78</sup>

Xu *et al.* showed the formation of a self-assembled hydrogel using a mixture of three individual components having two Fmoc-based amino acid derivatives, *i.e.* Fmoc-Leu-OH, Fmoc-lys-OH with a bisphosphonate drug, and pamidronate. Heating the mixture at 70 °C and then cooling to room temperature resulted in the formation of a fibrillar hydrogel in aqueous media at pH 9–10.4. Fmoc-Leu-OH and Fmoc-lys-OH were used as hydrogelators, while pamidronate was reported to act as both a hydrogen acceptor and donor to promote hydrogelation through hydrogen bonding. Application of this hydrogel matrix in mice bearing uranium-infected skin wounds resulted in significant recovery.<sup>111</sup>

In an outstanding study, Gazit *et al.* identified the shortest fibrillogenic sequence, a dipeptide, Phe-Phe, of the amyloid polypeptide A $\beta$ -42 and showed that it formed nanotubes similar to A $\beta$ -42 itself.<sup>27</sup> Further, in 2006, Gazit and co-workers showed the gelation of a derivative of diphenylalanine, Fmoc-diphenylalanine, into a hydrogel and used it as a scaffold for three-dimensional culture of Chinese Hamster Ovary (CHO) cells for tissue engineering applications. The cells grown in the hydrogel matrix were alive, healthy and similar to the cells grown in the control two-dimensional non-hydrogel-coated surfaces.<sup>63</sup> Inspired by these studies on Phe-Phe, Groot *et al.* substituted the N-terminal Phe of the dipeptide with 19 amino acids and investigated its effect on fibrilization. All the substitutions except isoleucine substitution resulted in low aggregation propensities compared to the native peptide. In a further study, de Groot *et al.* found that Ile-Phe self-assembled into a transparent and thermoreversible fibrillar hydrogel.<sup>45</sup> The earlier hypothesis that head-to-tail interactions between the amino and carboxyl-terminus of peptides stabilize the overall peptide assembly may not explain self-assembly of Ile-Phe since an analogous dipeptide, Val-Phe, with a small difference in the side chain of the N-terminal did not self-assemble, even at high concentrations.<sup>45</sup> Clearly, even small changes in the size and hydrophobicity of the N-terminal of X-Phe (X = Ile, Val, *etc.*) can significantly affect its self-assembly behaviour. Yan *et al.* designed a hydride hydrogel using Fmoc-FF and C<sub>60</sub> pyrrolidine tris-acid-based fullerene derivative nanoparticles for photodynamic antibacterial applications. Incorporation of fullerene nanoparticles in the peptide hydrogel resulted in improved mechanical hydrogel properties. Enhanced photodynamic antibacterial activity was observed in *in vitro* and *in vivo* conditions for the hybrid hydrogel.<sup>112</sup> In a recent study,

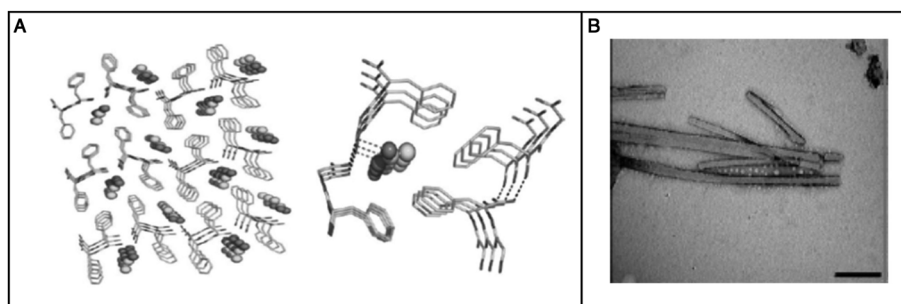
Yan *et al.* also showed the self-assembly of a cyclic-dipeptide, Leu-Phe (CLP), into strong hydrogels in both physiological and harsh conditions, including water, Dulbecco's Modified Eagle's Medium (DMEM), phosphate buffer saline (PBS), aqueous solutions of different pH (pH 3, 5, 9 and 11) and trypsin. The gelation of CLP was driven by hydrogen bonding, which was confirmed by FTIR and computation simulation analysis.<sup>113</sup>

During the last two decades, a large number of studies have suggested that ultrashort peptides, particularly di- and tri-peptides, can form hydrogels as stable and useful as many longer peptides. However, the ease of synthesis of ultrashort peptides, their relatively higher stability to enzymatic degradation and high biocompatibility make them much more attractive candidates for creating hydrogels for multiple biomedical applications. Further, these small peptides can easily be prepared in laboratories that are not necessarily equipped for peptide synthesis, thereby opening the door for other chemists to enter this exciting field of nanomaterial science.

**2.2.1 Self-assembly of ultrashort peptides containing non-natural amino acids.** One of the main hurdles in developing peptide-based therapeutics and nanostructures for *in vivo* applications is their instability to proteolysis, and therefore low *in vivo* stability and bioavailability.<sup>47,48,50,52–54</sup> The use of non-protein amino acids in peptide sequences, which may also impart conformational constraints in the peptide backbone, has been used to address these concerns.<sup>55–62</sup> In particular, C $\alpha$ -substituted non-protein amino acids such as  $\alpha$ -aminoisobutyric acid (Aib) and other  $\alpha$ -substituted amino acids as well as  $\alpha,\beta$ -dehydro amino acids have been shown to impart both conformational rigidity as well as enzymatic stability.<sup>114</sup> Modifications or substitution at C $\alpha$  introduce structural changes that are not recognised by naturally occurring enzymes in biological systems.<sup>115</sup> Chauhan and co-workers over several years developed design principles for making peptides with conformational preferences using a noncoded,  $\alpha,\beta$ -dehydrophenylalanine residue ( $\Delta$ Phe), an analog of the naturally occurring phenylalanine amino acid, with a double bond between the C $\alpha$  and C $\beta$  atoms.<sup>54,116–125</sup> Using these design principles, this research group developed biologically

active peptides with various possible therapeutic applications. After the discovery of the dipeptide Phe-Phe as the main and shortest fibrilizing peptide sequence of the  $\alpha,\beta$ -amyloid peptide, Chauhan *et al.* in 2007 replaced the C-terminal Phe with the conformation restricting residue  $\Delta$ Phe and studied the self-assembling properties of Phe- $\Delta$ Phe.<sup>54,125</sup> Phe- $\Delta$ Phe was found to self-assemble readily into distinct tubular structures of  $\sim 30$  nm, which were stable in a broad pH range and treatment with proteases (Fig. 6).<sup>54</sup> X-ray crystallography studies showed different torsion angles for Phe $\Delta$ Phe ( $149.70^\circ$ ) compared to Phe-Phe ( $40.2^\circ$ ).<sup>54</sup> Phe $\Delta$ Phe entrapped drug such as molecules and other biomolecules in its tubular structures and delivered them in a slow and sustained manner. Subsequently, these researchers synthesized and investigated a set of dipeptides (X- $\Delta$ Phe) containing natural amino acids at their N-terminal and  $\Delta$ Phe at C-terminal. Depending on the X residue at the N-terminal, these dipeptides self-assembled into highly stable nanostructures such as nanotubes, nanospheres and hydrogels (Fig. 7).

They also found that Phe- $\Delta$ Phe can self-assemble into highly stable, and mechanically strong hydrogels at higher peptide concentrations, 0.2–1.0% w/v, in 0.8 M acetate buffer at pH-7 upon boiling and cooling the solution to room temperature (Fig. 8).<sup>79</sup> The dipeptide hydrogel had significantly higher mechanical strength of 209 kPa (storage modulus) compared to other peptide-based hydrogels such as MAX1 (2.5 kPa),<sup>126</sup> Fmoc-Phe-Phe (10 kPa),<sup>63</sup> and tetrapeptide peptide-2 hydrogel.<sup>127</sup> The TEM images of the Phe- $\Delta$ Phe hydrogel revealed the presence of a network of long fibrils with a micrometer length and 15–30 nm diameter (Fig. 8). The thermal circular dichroism (CD) spectra of the hydrogel showed no change with temperature up to 50 °C, indicating the stability of the hydrogel at physiological temperatures. The gel could entrap a number of drug-like molecules of different molecular weights and physicochemical properties and release them in a sustained gradual manner. pH-Sensitive drug release ( $\sim 3$  times increased) from the hydrogel was observed when the environmental pH of the gel was changed from neutral (pH 7) to acidic (pH 2) and basic (pH 10).<sup>79</sup> The dipeptide, Phe- $\Delta$ Phe, hydrogel was used as a scaffold for the three-



**Fig. 6** Self-assembly of a dipeptide containing a conformation restricted residue,  $\alpha,\beta$ -dehydrophenylalanine at its C-terminal, Phe- $\Delta$ Phe, into nanotubes. (A) Crystal structure showing the involvement of four Phe- $\Delta$ Phe molecules to form nanotubes. (B) TEM image showing the morphological characteristics of the Phe- $\Delta$ Phe nanotubes. Reprinted with permission from "M. Gupta, *et al.*, Self-assembly of a dipeptide-containing conformationally restricted dehydrophenylalanine residue to form ordered nanotubes, *Adv. Mater.*, 2007, 19(6), 858–861". Copyright (2007). Wiley.

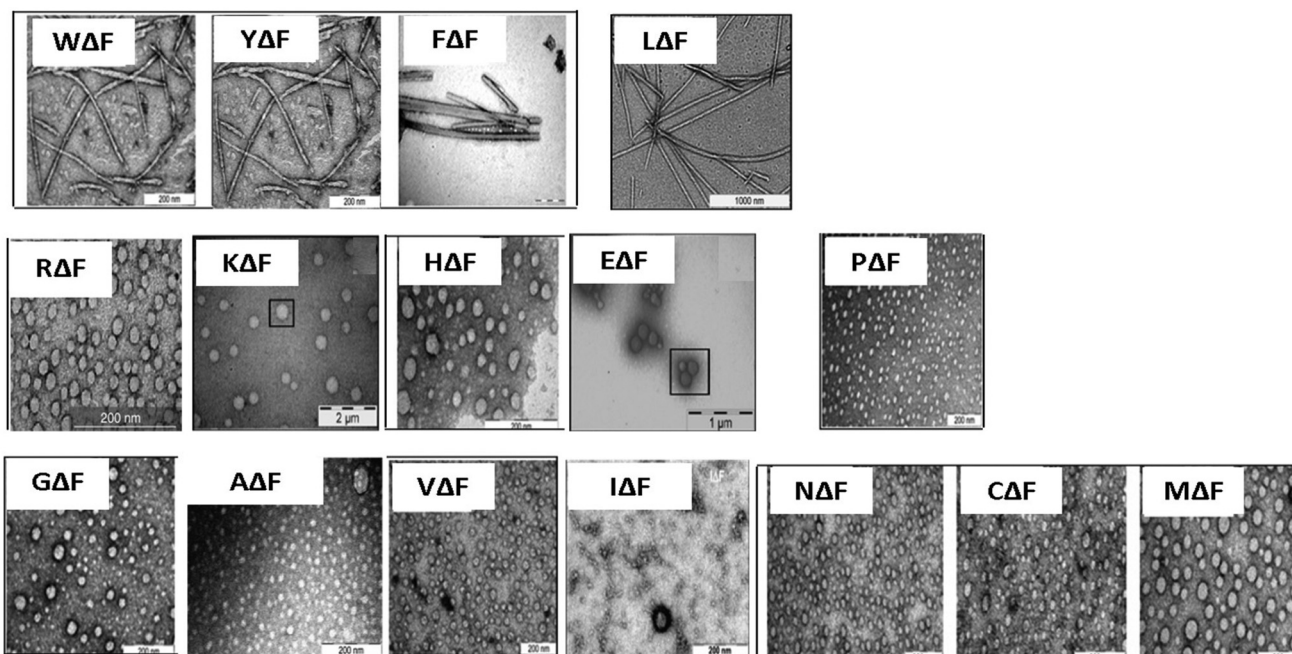


Fig. 7 TEM images showing the self-assembly of dipeptides containing a conformation-restricted residue,  $\alpha,\beta$ -dehydrophenylalanine at their C-terminal. Formation of self-assembled nanostructures by modified dipeptides ( $X\Delta\text{Phe}$ ) depending on their X-residue.

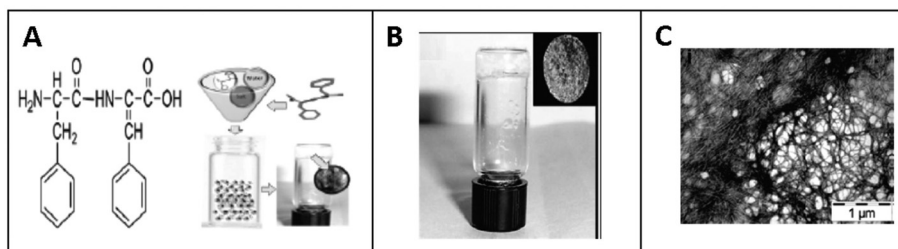


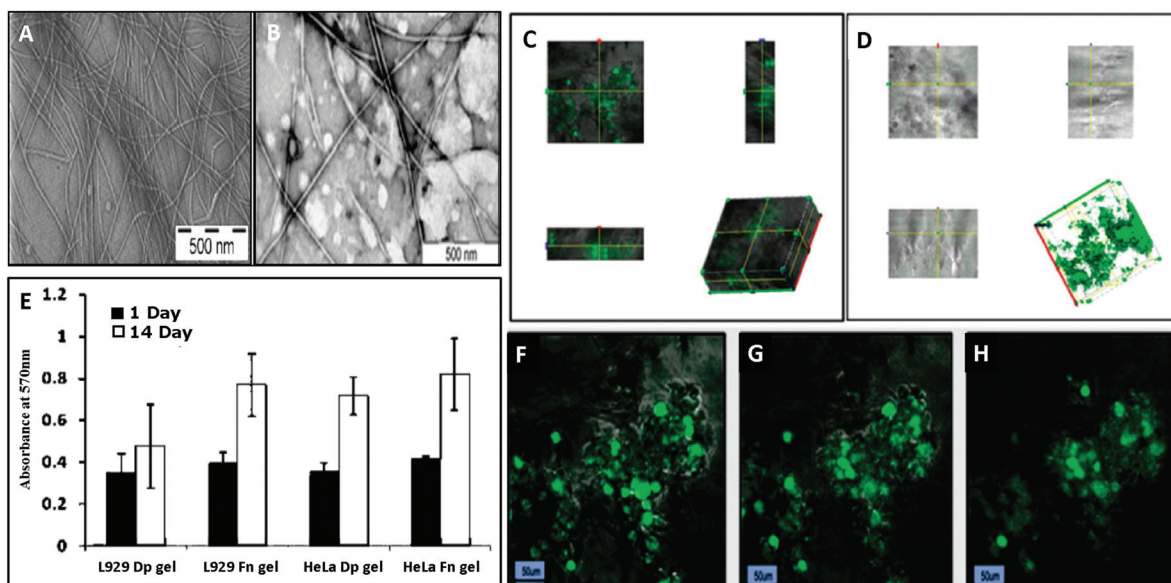
Fig. 8 Hydrogel formation by a modified dipeptide, Phe- $\Delta\text{Phe}$  (A) chemical structure of Phe- $\Delta\text{Phe}$  and schematic representation for hydrogel formation by Phe- $\Delta\text{Phe}$ . (B) Tube inversion test showing the formation of self-supportive hydrogel. (C) TEM image showing the formation of a dense fibrillar network by the dipeptide after its self-assembly. Reprinted with permission from "J. J. Panda, *et al.*, Stimuli responsive self-assembled hydrogel of a low molecular weight free dipeptide with potential for tunable drug delivery, *Biomacromolecules*, 2008, 9(8), 2244–2250". Copyright (2008). American Chemical Society.

dimensional (3D) growth of cells.<sup>128</sup> Due to the availability of free N- and C-terminal groups ( $-\text{NH}_2$  and  $-\text{COOH}$ ) in the Phe- $\Delta\text{Phe}$  hydrogel, the gel was easily functionalized covalently with a peptide ligand, RGDGG, containing the well-known cell adhesion motif, RGD, the shortest sequence of fibronectin, which binds to  $\alpha\text{V}\beta 3$  integrin proteins on the surface of cells. The functionalized dipeptide hydrogel showed enhanced cell growth of cervical cancer cells, HeLa and subcutaneous areolar and adipose tissue cells, L292, in its matrix compared to the non-functionalized gel and two-dimensional (2D) culture of cells (Fig. 9).<sup>128</sup> These characteristics of the Phe- $\Delta\text{Phe}$  hydrogel highlight its suitability for possible use in drug delivery and tissue engineering applications.

As a follow up of the Phe- $\Delta\text{Phe}$  study, the same research group screened a set of 16 dipeptides (Table 2) containing

different N-terminal L-amino acids together with  $\Delta\text{Phe}$  at their C-terminal, for self-assembly into hydrogels. They found that only two dipeptides, Trp- $\Delta\text{Phe}$  and Leu- $\Delta\text{Phe}$ , formed gel-like structures under physiological conditions (Fig. 10).<sup>80</sup> However, the gel formed by Trp- $\Delta\text{Phe}$  was significantly weaker than that of Leu- $\Delta\text{Phe}$ , which self-assembled instantaneously into a highly stable and biocompatible hydrogel under physiological conditions. The Leu- $\Delta\text{Phe}$  hydrogel showed a peptide concentration-dependent increase in mechanical strength ( $5.46 \pm 0.58$  kPa at 0.4 wt% to  $136.0 \pm 29.8$  kPa at 1.0 wt%) in the rheology studies. Also, the hydrogel showed self-healing properties after structural disruption, indicating its injectable nature, a highly desirable characteristic required for the development of hydrogels as platforms for various biomedical applications. The hydrogel entrapped a number of drug-like molecules with





**Fig. 9** Hydrogelation of Phe $\Delta$ Phe and its functionalization with a tripeptide cell adhesive motif, RGDGG (GG as spacer), to promote cell growth in its matrix (RGDGG-F $\Delta$ F) and three-dimensional growth of cells in. (A) TEM image showing the formation of fibrillar network by F $\Delta$ F. (B) TEM image showing the stability of F $\Delta$ F hydrogel after functionalization with the peptide motif. Confocal images showing the three-dimensional growth of (C) HeLa cells and (D) L929 cells in the functionalized hydrogel matrix. (E) Viability of cells, HeLa and L929, cultured on hydrogel matrices of F $\Delta$ F and RGDGG-F $\Delta$ F. Z-Stack confocal images of L929 cells cultured in RGDGG-F $\Delta$ F hydrogel. (F) Stack 63 with 55 viable cells, (G) stack 115 with 74 viable cells, and (H) stack 140 with 79 viable cells. Reprinted with permission from "J. J. Panda, et al., 3D cell growth and proliferation on a RGD functionalized nanofibrillar hydrogel based on a conformationally restricted residue containing dipeptide, *ACS Appl. Mater. Interfaces*, 2010, 2(10), 2839–2848". Copyright (2010). American Chemical Society.

**Table 2** List of  $\Delta$ F ( $\alpha,\beta$ -dehydrophenylalanine)-containing dipeptides screened for their self-assembly into hydrogels<sup>80</sup>

S. no.	Peptide name	Peptide sequence
1.	Arginine- $\alpha,\beta$ -dehydrophenylalanine	R $\Delta$ F
2.	Leucine- $\alpha,\beta$ -dehydrophenylalanine	L $\Delta$ F
3.	Phenylalanine- $\alpha,\beta$ -dehydrophenylalanine	F $\Delta$ F
4.	Glutamic acid- $\alpha,\beta$ -dehydrophenylalanine	E $\Delta$ F
5.	Threonine- $\alpha,\beta$ -dehydrophenylalanine	T $\Delta$ F
6.	Serine- $\alpha,\beta$ -dehydrophenylalanine	S $\Delta$ F
7.	Tyrosine- $\alpha,\beta$ -dehydrophenylalanine	Y $\Delta$ F
8.	Aspartic acid- $\alpha,\beta$ -dehydrophenylalanine	D $\Delta$ F
9.	Glutamine- $\alpha,\beta$ -dehydrophenylalanine	Q $\Delta$ F
10.	Valine- $\alpha,\beta$ -dehydrophenylalanine	V $\Delta$ F
11.	Tryptophan- $\alpha,\beta$ -dehydrophenylalanine	W $\Delta$ F
12.	Glycine- $\alpha,\beta$ -dehydrophenylalanine	G $\Delta$ F
13.	Proline- $\alpha,\beta$ -dehydrophenylalanine	P $\Delta$ F
14.	Asparagine- $\alpha,\beta$ -dehydrophenylalanine	N $\Delta$ F
15.	Isoleucine- $\alpha,\beta$ -dehydrophenylalanine	I $\Delta$ F
16.	Methionine- $\alpha,\beta$ -dehydrophenylalanine	M $\Delta$ F

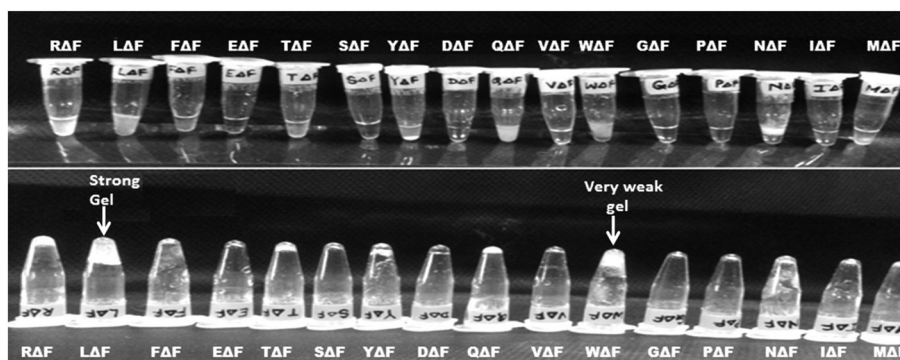
different physicochemical properties and released them in a much more sustained manner than other polymer and peptide-based hydrogels.<sup>79,80,129</sup> A change in environmental pH, from neutral to acidic and basic resulted in faster drug release, which indicated stimuli-responsive drug release from the hydrogel matrix. Furthermore, the hydrogel was completely non-toxic in *in vitro* and *in vivo* conditions. An increase in the regression of tumor size (tumor volume) was observed when the hydrogel entrapped with an anticancer drug, mitoxan-

trone, was injected in mice bearing B<sub>16</sub>F<sub>10</sub> melanoma tumor.<sup>80</sup> The Leu- $\Delta$ Phe hydrogel exhibited all the expectations of an ideal hydrogel system and its gelation represented an unusual and intriguing example of peptide-based self-assembly considering the fact that very similar dipeptides, Ile- $\Delta$ Phe and Val- $\Delta$ Phe, did not form hydrogels under the same conditions.

These studies suggest that the use of non-protein amino acids, particularly those modified at the  $\alpha$ -carbon of their amino acids, may offer additional attractive choices in the toolbox of researchers interested in designing novel self-assembled peptide-based structures, particularly hydrogels.

### 3. Strategies to enhance the biostability of peptide-based hydrogels

Peptide-based drugs and delivery vehicles are attracting increasing interest because of their easy design, synthesis and characterization, low cost, diverse functionalisation possibilities, possibility to make a large range of hierarchical nanostructures and their inherent biocompatibility. However, a major hurdle in the development of these peptides as possible drug and/or drug delivery vehicles is their inherent susceptibility to proteolytic degradation, which limits their biomedical application. Thus, there have been huge efforts by researchers to stabilize peptides against enzymatic degradation, including the use of C $\alpha$  amino acids with the D-configuration, *i.e.*



**Fig. 10** Tube inversion test showing the self-assembly of a set of modified dipeptides,  $X\Delta\text{Phe}$ , into a hydrogel. A dipeptide  $\text{Leu}\Delta\text{Phe}$ , instantaneously self-assembled into a self-supporting hydrogel.<sup>80</sup>

D-amino acids,  $C\alpha$  substituted amino acids such as Aib,  $\alpha,\beta$ -dehydro amino acids,  $C\alpha$ -fluoroalkyl substituted amino acids,  $N$ -alkyl- $C\alpha$  amino acids (peptoids), polymer linked peptides and cyclic peptides.<sup>130</sup>

All amino acids, except glycine, due to the chirality at its  $C\alpha$  carbon, exist in two isomeric forms, *i.e.* D and L forms, and almost all naturally occurring peptides, proteins and synthetic peptides made *via* the recombinant method contain L-amino acids. In biological systems, enzymes recognise only L-amino acids as their substrate for peptide or protein degradation purposes. D-Amino acids can easily be incorporated at defined positions in any peptide using standard chemical peptide synthesis methods. Xu *et al.* reported the self-assembly of a D-tripeptide ( $\text{Phe}^D\text{-Phe}^D\text{-Tyr}^D$ ) by enzymatic dephosphorylation and utilized this hydrogel to inhibit the growth of cancer cells (HeLa cells).<sup>55,131–133</sup> Ding *et al.* also showed the self-assembly of a D-peptide (8 residues,  $\text{Nap-G}^D\text{F}^D\text{F}^D\text{YGRGD}$ ) into biostable hydrogels, which were used as delivery vehicles for an anti-cancer drug, 10-hydroxycamptothecin, for cancer therapy.<sup>134</sup> However, although the stability of these peptides to enzymatic degradation was enhanced, there was significantly reduced cellular uptake in case of these peptides.<sup>55,131,135</sup>

Peptides containing  $\alpha$ -substituted amino acids or  $\alpha,\alpha$ -disubstituted glycine have shown stability towards proteolytic degradation. Many naturally occurring peptides have been identified, which contain  $C\alpha$  substituted amino acids such as antimicrobial peptide-alamethicin.<sup>130,136</sup> The introduction of  $C\alpha$ -substituted amino acids such as Aib introduces conformational constraint in the peptide backbone and provides stability against enzymatic degradation.<sup>137–140</sup> Recently, Chaudhary *et al.* described the self-assembly of different dipeptides, including  $\text{Asn-Gly}$ ,  $\text{Aib-Pro}^D$ , and  $\text{Pro}^D\text{-Gly}$ . They demonstrated drug (doxorubicin) entrapment and the three-dimensional growth of cells (rat pancreatic cell line, RIN-5F and human embryonic kidney cells, HEK-293) in the peptide hydrogel matrices, but did not compare their enzymatic stability with their natural L-amino acid-containing analogs.<sup>141</sup>

Chauhan and co-workers showed that the introduction of a noncoded  $\alpha,\beta$ -dehydro amino acid, namely  $\alpha,\beta$ -dehydrophenylalanine, induced conformational constrain both in the peptide

backbone and the side chain as well as enhanced resistance to enzymatic degradation. Using these design principles, this research group developed conformationally restricted and biologically active peptides with various possible therapeutic applications.<sup>118,119,125,142</sup> They also showed the self-assembly of a series of dipeptides containing  $\Delta\text{Phe}$  at their C-terminal ( $X\Delta\text{Phe}$ ) into different hierarchical nanostructures and investigated their possible use in biomolecular delivery and three-dimensional growth of cells. Out of a panel of twenty dipeptides, two dipeptides, namely  $\text{Phe}\Delta\text{Phe}$  and  $\text{Leu}\Delta\text{Phe}$ , self-assembled into mechanically strong hydrogels with enhanced enzymatic stability. Drug delivery and tissue engineering applications were also investigated by this group.<sup>79,80</sup> The above described studies have attracted keen interest and enhanced efforts in developing more stable hydrogels.

## 4. Biomedical applications of peptide-based hydrogels

As mentioned earlier, peptide-based hydrogels, especially short peptides, due to their high biocompatibility, biodegradability and ease of synthesis have attracted significant interest in the biomedical field and have been used for different applications including drug delivery, scaffolds for wound healing, bioimaging, bioprinting and tissue engineering.

### 4.1 Drug delivery

Administration of drugs conventionally generally suffers from various drawbacks, including solubility issues, burst release, low bioavailability due to high clearance or metabolism, high degradation and nonspecific distribution. To overcome these problems, many researchers have tried drug delivery techniques to deliver drugs using different polymer-based nanostructures. Both hydrophilic and hydrophobic drugs can be encapsulated in polymeric nanostructures depending on their properties, which protect them from the outer environment and deliver them in a controlled manner. Peptide-based nanostructures, especially injectable hydrogels, have attracted great interest in this field and many researchers have used them as

delivery vehicles. Banerjee *et al.* showed the entrapment and sustained release of an anticancer drug, doxorubicin, from tetrapeptide (GAIL and GFIL) hydrogels in *in vitro* studies.<sup>104</sup> Xu *et al.* showed the controlled delivery of a drug, pamidronate, using a hydrogel formed from two Fmoc-based amino acid derivatives, Fmoc-Leu-OH and Fmoc-Lys-OH. They showed significant recovery of uranium-infected skin wounds in mice treated with the hydrogel matrix entrapped with pamidronate.<sup>111</sup> Chauhan *et al.* showed the entrapment and sustained release of a number of drugs, both hydrophilic and hydrophobic, from two chemically modified dipeptide hydrogels, Phe- $\Delta$ Phe and Leu- $\Delta$ Phe. These hydrogels showed pH-sensitive drug release. Mitoxantrone, an anticancer drug, entrapped with Leu- $\Delta$ Phe hydrogel, when injected in tumor-bearing mice showed significant regression of the tumors.<sup>80</sup> Vegners *et al.* used an Fmoc-Leu-Asp hydrogel to deliver antiviral adamantanimine derivatives, 3,5-dimethyl-adamantylamine hydrochloride and 5-methyl-1-adamantine 3-carboxylic acid, to produce specific antibodies against these drugs and showed the generation of antibody titers as high as in rabbits immunized with bovine serum albumin (BSA) conjugated drug molecules.<sup>78</sup>

#### 4.2 Three-dimensional growth and tissue engineering

Hydrogels mimicking the extracellular matrix of cells are promising materials for tissue engineering and 3D cell culture. There is much evidence to support the fact that the extracellular matrix plays a key role in regulating cell behaviour, and therefore many researchers have used different hydrogel matrices to culture cells in the 3D environment of hydrogels.<sup>143</sup> Cells cultured in hydrogels provide the growth of cells in all directions, allow multiple cell–cell and cell–matrix interactions, normal cell cycle, 3D fluid perfusion, complete cellular polarization and protein and gene expression similar to that in *in vivo* conditions.<sup>8,9,20</sup> Zhang *et al.* used EAK16- and RAD16-based hydrogels for cell attachment and growth.<sup>101</sup> Both peptide hydrogels were found to support the attachment of diverse cell types, including hepatocytes, keratinocytes and fibroblasts. In addition to supporting cell growth, hydrogels have been shown to maintain differentiated morphologies and functions of cells.<sup>101</sup> Many analogues of EAK16 were made and tested for 3D cell culture. Holmes *et al.* used RAD16-I- and RAD16-II-, new analogues of EAK16, based hydrogels as scaffolds for the culture of neuronal cells. Both hydrogels supported cell attachment and differentiation with extensive neurite outgrowth.<sup>102</sup> Pilocci *et al.* showed an enzyme, *P. cepacian*, catalysed the hydrogelation of a tripeptide, Fmoc-Phe-Phe-Phe, and used this peptide hydrogel as a 3D matrix for the growth of microglial cells.<sup>144</sup> Puramatrix, a commercially available polypeptide hydrogel, is also intended for use in various 3D growth and tissue engineering applications.<sup>145</sup> Chauhan *et al.* used a dipeptide, Phe- $\Delta$ Phe, hydrogel for 3D cell culture and functionalized it with a ligand, the Arg-Gly-Asp motif, the shortest sequence of fibronectin required for attachment to cell surface integrins, to enhance cell attachment and growth (Fig. 9). The authors showed the enhanced cellular

growth of HeLa (ovarian cancer) and L929 (mouse fibroblast) cells in the functionalized hydrogel and indicated its potential for further development for tissue engineering applications.<sup>128</sup> In a recent study, Chauhan *et al.* used two ultrashort peptide-based hydrogels, a dipeptide, Leu- $\Delta$ Phe, and a tetrapeptide, Asp-Leu-Leu-Ile, for the 3D growth of cells and used them as scaffolds for tibial bone defects and showed that the healing of bone defects was significantly higher in rabbits treated with peptide hydrogels compared to the PBS treatment group (unpublished). Hauser *et al.* showed the self-assembly of two hexapeptides, ILVAGK and LIVAGK, into dense fibrillar structures and made hydrogel patches (25 mm in diameter) for their easy applicability on skin wounds. They showed the significantly higher recovery of partial thickness burn wounds in rats treated with the peptide hydrogels compared to the PBS and Mepitel, a silicone-coated polyamide matrix, groups.<sup>146</sup> Hauser *et al.* also used peptide, LIVAGKC and LK<sub>6</sub>C, hydrogels as dressings for full-thickness excision wounds in mice and found that the wounds treated with the hydrogel dressing potentiated complete re-epithelialization compared to the control non-treated group.<sup>147</sup> These studies clearly suggest that peptide-based hydrogels, especially ultrashort peptides, can further be developed as platforms for tissue engineering and regeneration, bioinks and scaffolds for wound healing applications in clinic.

#### 4.3 Antimicrobials and wound healing

Presently, microbial infections are among the most prevalent cause of death worldwide. Disease conditions such as diabetic foot ulcers, where healing is very slow and chances of getting an infection are very high, are very difficult to treat. Also, the excessive use of antibiotics has resulted in the occurrence of drug-resistant microbial strains and several pharmaceutical industries have now stopped their antibiotic research, which has made this problem even more serious. Many naturally occurring and synthetically designed antimicrobial peptides have been identified by researchers in the past few years.<sup>148</sup> Peptide-based antimicrobials due to their unique mechanism of action seem promising candidates for treating multidrug resistant infections.<sup>149</sup> Antimicrobial peptide hydrogels can be applied to injured areas as wound dressings, implant coating and/or creams and have been used by many researchers. Christman *et al.* developed a synthetic cell-adhesive polypeptide hydrogel, poly(lys)<sub>60</sub>(Ala)<sub>60</sub> and its conjugated version with polyethylene glycol-amide succinimidyl glutarate, with antibacterial activities.<sup>150</sup> Recently Li *et al.* investigated the self-assembly of a series of cationic peptide amphiphiles (PA) into pH-responsive hydrogels with a varying number of lysine (PA-K<sub>n</sub>, where *n* is the number of lysine, which was 0–3). An increase in the number of lysine resulted in reduced self-assembling properties, and as expected, the lysine-containing PA showed higher antibacterial activity than the control PA without lysine.<sup>151</sup>

#### 4.4 Biosensors

The development of peptide hydrogel-based biosensors is a rapidly expanding field of research due to the low biocompat-

ibility and difficult and costly synthesis of other polymer-based hydrogels. Yang *et al.* used a self-assembled hydrogel of the Fmoc-Phe-Phe dipeptide to construct a smart biointerface, which was used for enzyme-based electrochemical biosensing and cell monitoring purposes. The authors used this hydrogel as a host for horseradish peroxidase and showed the detection of H<sub>2</sub>O<sub>2</sub> levels released from HeLa cells in *in vitro* conditions.<sup>152</sup> Similarly, Park *et al.* utilized Fmoc-Phe-Phe dipeptide hydrogel encapsulating enzyme bioreceptors (*e.g.*, glucose oxidase or horseradish peroxidase) and fluorescent reporters (*e.g.*, CdTe and CdSe quantum dots) to make enzyme-based optical biosensors. The authors reported the detection of different levels of glucose and phenolic compounds using the dipeptide-based hydrogel biosensor.<sup>153</sup> Alves *et al.* also used an Fmoc-Phe-Phe hydrogel containing an antigen, *i.e.* *Leishmania infantum chagasi*, for the detection of Leishmaniasis disease in patient samples.<sup>154</sup> Miller *et al.* developed an octapeptide-based hydrogel in combination with a DNA aptamer as a biosensor to identify single or multiple nucleotide polymorphisms, aiming to recognise susceptibility to certain monogenic or complex diseases in patients.<sup>155</sup>

Many peptide-based hydrogels such as Puramatrix and Matrigel are already in use and commercially available, while many others are in clinical trials.<sup>156,157</sup> It is clear from the reviewed literature that in general, peptide-based, short and ultrashort, hydrogels represent nanostructures having better chemical, biophysical, biocompatible characteristics than synthetic organic and inorganic polymers with potential applications in drug delivery, tissue engineering, bioprinting, bioimaging and many other biomedical applications. Considering the significant interest in this field of research, it will not be surprising to see many novel peptide-based hydrogels being developed for various biomedical purposes.

## 5. Current challenges and the way forward

Molecular self-assembly has become an attractive tool for generating different hierarchical structures such as tubes, spheres, films, tapes and fibrils from nano to microscale sizes for biomedical applications. Peptide-based self-assembled nanostructures are inherently more attractive due to their easy and inexpensive synthesis, easy functionalisation with site-specific ligands, biocompatibility and biodegradability. The findings that ultrashort peptides (<8 residue) including even di- and tripeptides can self-assemble to form nanostructures such as hydrogels have made this area of research more active and exciting. Ultrashort self-assembled peptide-based hydrogels are being developed for various biomedical applications, including drug delivery, scaffolds for wound healing, bioimaging, bioprinting and tissue and engineering. However, although these developments are very exciting, several issues such as resemblance of extracellular matrices in tissue engineering, lack of information on the pharmacokinetics of peptide-based hydrogels in *in vivo* conditions, issues of desir-

able mechanical properties in the case of their use as biomolecular delivery and tissue engineering platforms, and careful study of their *in vivo* toxicity have yet to be resolved. As these hydrogels are further developed for their practical use in biomedical applications, their long-term stability will also need to be established. Also, although the preparation, characterization and *in vitro* use of peptide-based hydrogels and their possible use in biomedical applications have been described, there is little information on their clinical trials in humans. Thus, there is an urgent need to take some of the promising peptide-based hydrogels on a translational path and to carry out careful studies under GLP conditions to finally develop them for their intended use.

## Conflicts of interest

The authors declare no competing financial interest.

## Acknowledgements

We acknowledge the Department of Biotechnology (DBT), Government of India (Grant No. BT/HRD/35/07/VSC/2015 and BT/PR2573/NNT/28/534/2011) and Department of Science and Technology (DST), Government of India (Grant No. SB/S2/JCB-41/2014) for the financial support. Nitin Yadav thanks Centre for Cellular and Molecular Platforms (C-Camp) and Biotechnology Ignition Grant (BIG), Biotechnology Industry Research Assistance Council (BIRAC), for financial support (Grant No-BIRAC/CCAMP0770/BIG-13/18).

## References

- 1 T. Ohtake, Bottom-up approaches for material and device designing using practical aspects of self-assembled molecular architectures, *Mol. Syst. Des. Eng.*, 2018, **3**(5), 804–818.
- 2 S. Zhang, Fabrication of novel biomaterials through molecular self-assembly, *Nat. Biotechnol.*, 2003, **21**(10), 1171.
- 3 G. M. Whitesides, J. P. Mathias and C. T. Seto, Molecular self-assembly and nanochemistry: a chemical strategy for the synthesis of nanostructures, *Science*, 1991, **254**(5036), 1312–1319.
- 4 S. Zhang, Emerging biological materials through molecular self-assembly, *Biotechnol. Adv.*, 2002, **20**(5–6), 321–339.
- 5 D. Yan, Y. Zhou and J. Hou, Supramolecular self-assembly of macroscopic tubes, *Science*, 2004, **303**(5654), 65–67.
- 6 K. Subramani and W. Ahmed, Self-Assembly of Proteins and Peptides and Their Applications in Bionanotechnology and Dentistry, in *Emerging Nanotechnologies in Dentistry*, Elsevier, 2012, pp. 209–224.
- 7 K. Subramani, A. Khraisat and A. George, Self-assembly of proteins and peptides and their applications in bionanotechnology, *Curr. Nanosci.*, 2008, **4**(2), 201–207.

- 8 J. A. Pelesko, *Self assembly: the science of things that put themselves together*, Chapman and Hall/CRC, 2007.
- 9 M. Shibata, *et al.*, Intramolecular folding or intermolecular self-assembly of amphiphilic random copolymers: on-demand control by pendant design, *Macromolecules*, 2018, **51**(10), 3738–3745.
- 10 T. J. Deming, Synthetic polypeptides for biomedical applications, *Prog. Polym. Sci.*, 2007, **32**(8–9), 858–875.
- 11 H. Acar, *et al.*, Self-assembling peptide-based building blocks in medical applications, *Adv. Drug Delivery Rev.*, 2017, **110**, 65–79.
- 12 E. Gazit, Self-assembled peptide nanostructures: the design of molecular building blocks and their technological utilization, *Chem. Soc. Rev.*, 2007, **36**(8), 1263–1269.
- 13 M. Reches and E. Gazit, Molecular self-assembly of peptide nanostructures: mechanism of association and potential uses, *Curr. Nanosci.*, 2006, **2**(2), 105–111.
- 14 J. Lu and X. Wang, Biomimetic Self-Assembling Peptide Hydrogels for Tissue Engineering Applications, in *Biomimetic Medical Materials*, Springer, 2018, pp. 297–312.
- 15 T. Sawada, H. Mihara and T. Serizawa, Peptides as New Smart Bionanomaterials: Molecular-Recognition and Self-Assembly Capabilities, *Chem. Rec.*, 2013, **13**(2), 172–186.
- 16 S. Kyle, *et al.*, Recombinant self-assembling peptides as biomaterials for tissue engineering, *Biomaterials*, 2010, **31**(36), 9395–9405.
- 17 K. E. Inostroza-Brito, *et al.*, Cross-linking of a biopolymer-peptide co-assembling system, *Acta Biomater.*, 2017, **58**, 80–89.
- 18 N. Habibi, *et al.*, Self-assembled peptide-based nanostructures: Smart nanomaterials toward targeted drug delivery, *Nano Today*, 2016, **11**(1), 41–60.
- 19 C. J. Edwards-Gayle and I. W. Hamley, Self-assembly of bioactive peptides, peptide conjugates, and peptide mimetic materials, *Org. Biomol. Chem.*, 2017, **15**(28), 5867–5876.
- 20 K. H. Chan, *et al.*, Systematic Moiety Variations of Ultrashort Peptides Produce Profound Effects on Self-Assembly, Nanostructure Formation, Hydrogelation, and Phase Transition, *Sci. Rep.*, 2017, **7**(1), 12897.
- 21 K. H. Chan, *et al.*, C-Terminal Residue of Ultrashort Peptides Impacts on Molecular Self-Assembly, Hydrogelation, and Interaction with Small-Molecule Drugs, *Sci. Rep.*, 2018, **8**(1), 17127.
- 22 M. Ni and S. Zhuo, Applications of self-assembling ultrashort peptides in bionanotechnology, *RSC Adv.*, 2019, **9**(2), 844–852.
- 23 W. Y. Seow and C. A. Hauser, Short to ultrashort peptide hydrogels for biomedical uses, *Mater. Today*, 2014, **17**(8), 381–388.
- 24 J. J. Panda and V. S. Chauhan, Short peptide based self-assembled nanostructures: implications in drug delivery and tissue engineering, *Polym. Chem.*, 2014, **5**(15), 4418–4436.
- 25 S. Bera, *et al.*, Rigid helical-like assemblies from a self-aggregating tripeptide, *Nat. Mater.*, 2019, **1**.
- 26 K. Rajagopal and J. P. Schneider, Self-assembling peptides and proteins for nanotechnological applications, *Curr. Opin. Struct. Biol.*, 2004, **14**(4), 480–486.
- 27 M. Reches and E. Gazit, Casting metal nanowires within discrete self-assembled peptide nanotubes, *Science*, 2003, **300**(5619), 625–627.
- 28 L. Adler-Abramovich, *et al.*, Self-assembled arrays of peptide nanotubes by vapour deposition, *Nat. Nanotechnol.*, 2009, **4**(12), 849.
- 29 C. A. Hauser and S. Zhang, Designer self-assembling peptide nanofiber biological materials, *Chem. Soc. Rev.*, 2010, **39**(8), 2780–2790.
- 30 T. Scheibel, *et al.*, Conducting nanowires built by controlled self-assembly of amyloid fibers and selective metal deposition, *Proc. Natl. Acad. Sci. U. S. A.*, 2003, **100**(8), 4527–4532.
- 31 E. Kasotakis, *et al.*, Design of metal-binding sites onto self-assembled peptide fibrils, *Pept. Sci.*, 2009, **92**(3), 164–172.
- 32 G. T. Westermark, U. Engström and P. Westermark, The N-terminal segment of protein AA determines its fibrillogenic property, *Biochem. Biophys. Res. Commun.*, 1992, **182**(1), 27–33.
- 33 K. Tenidis, *et al.*, Identification of a penta- and hexapeptide of islet amyloid polypeptide (IAPP) with amyloidogenic and cytotoxic properties, *J. Mol. Biol.*, 2000, **295**(4), 1055–1071.
- 34 M. Reches and E. Gazit, Amyloidogenic hexapeptide fragment of medin: homology to functional islet amyloid polypeptide fragments, *Amyloid*, 2004, **11**(2), 81–89.
- 35 Y. Mazor, *et al.*, Identification and characterization of a novel molecular-recognition and self-assembly domain within the islet amyloid polypeptide, *J. Mol. Biol.*, 2002, **322**(5), 1013–1024.
- 36 M. L. de la Paz, *et al.*, De novo designed peptide-based amyloid fibrils, *Proc. Natl. Acad. Sci. U. S. A.*, 2002, **99**(25), 16052–16057.
- 37 F. T. Senguen, *et al.*, Clarifying the influence of core amino acid hydrophobicity, secondary structure propensity, and molecular volume on amyloid- $\beta$  16–22 self-assembly, *Mol. Biosyst.*, 2011, **7**(2), 497–510.
- 38 T. M. Doran, *et al.*, Role of amino acid hydrophobicity, aromaticity, and molecular volume on IAPP (20–29) amyloid self-assembly, *Proteins: Struct., Funct., Bioinf.*, 2012, **80**(4), 1053–1065.
- 39 J. J. Balbach, *et al.*, Amyloid fibril formation by A $\beta$ 16–22, a seven-residue fragment of the Alzheimer's  $\beta$ -amyloid peptide, and structural characterization by solid state NMR, *Biochemistry*, 2000, **39**(45), 13748–13759.
- 40 R. Azriel and E. Gazit, Analysis of the minimal amyloid-forming fragment of the islet amyloid polypeptide: an experimental support for the key role of the phenylalanine residue in amyloid formation, *J. Biol. Chem.*, 2001, **276**(36), 34156–34161.
- 41 E. Gazit, Mechanisms of amyloid fibril self-assembly and inhibition: Model short peptides as a key research tool, *FEBS J.*, 2005, **272**(23), 5971–5978.

- 42 L. M. Igaz, *et al.*, Expression of TDP-43 C-terminal fragments in vitro recapitulates pathological features of TDP-43 proteinopathies, *J. Biol. Chem.*, 2009, **284**(13), 8516–8524.
- 43 A. Saini and V. S. Chauhan, Delineation of the core aggregation sequences of TDP-43 C-terminal fragment, *ChemBioChem*, 2011, **12**(16), 2495–2501.
- 44 M. Reches, Y. Porat and E. Gazit, Amyloid fibril formation by pentapeptide and tetrapeptide fragments of human calcitonin, *J. Biol. Chem.*, 2002, **277**(38), 35475–35480.
- 45 N. S. de Groot, *et al.*, Ile-Phe dipeptide self-assembly: clues to amyloid formation, *Biophys. J.*, 2007, **92**(5), 1732–1741.
- 46 Y. Song, *et al.*, Synthesis of peptide-nanotube platinum-nanoparticle composites, *Chem. Commun.*, 2004, (9), 1044–1045.
- 47 L. Di, Strategic approaches to optimizing peptide ADME properties, *AAPS J.*, 2015, **17**(1), 134–143.
- 48 L. Otvos Jr. and J. D. Wade, Current challenges in peptide-based drug discovery, *Front. Chem.*, 2014, **2**, 62.
- 49 B. J. Bruno, G. D. Miller and C. S. Lim, Basics and recent advances in peptide and protein drug delivery, *Ther. Delivery*, 2013, **4**(11), 1443–1467.
- 50 R. Böttger, R. Hoffmann and D. Knappe, Differential stability of therapeutic peptides with different proteolytic cleavage sites in blood, plasma and serum, *PLoS One*, 2017, **12**(6), e0178943.
- 51 H. H. Gorris, *et al.*, Rapid profiling of peptide stability in proteolytic environments, *Anal. Chem.*, 2009, **81**(4), 1580–1586.
- 52 J. L. Lau and M. K. Dunn, Therapeutic peptides: Historical perspectives, current development trends, and future directions, *Bioorg. Med. Chem.*, 2018, **26**(10), 2700–2707.
- 53 M. L. English and C. H. Stammer, The enzyme stability of dehydropeptides, *Biochem. Biophys. Res. Commun.*, 1978, **83**(4), 1464–1467.
- 54 M. Gupta, *et al.*, Self-assembly of a dipeptide-containing conformationally restricted dehydrophenylalanine residue to form ordered nanotubes, *Adv. Mater.*, 2007, **19**(6), 858–861.
- 55 M. Melchionna, K. E. Styan and S. Marchesan, The unexpected advantages of using D-amino acids for peptide self-assembly into nanostructured hydrogels for medicine, *Curr. Top. Med. Chem.*, 2016, **16**(18), 2009–2018.
- 56 R. Tugyi, *et al.*, Partial D-amino acid substitution: Improved enzymatic stability and preserved Ab recognition of a MUC2 epitope peptide, *Proc. Natl. Acad. Sci. U. S. A.*, 2005, **102**(2), 413–418.
- 57 J. S. Khara, *et al.*, Unnatural amino acid analogues of membrane-active helical peptides with anti-mycobacterial activity and improved stability, *J. Antimicrob. Chemother.*, 2016, **71**(8), 2181–2191.
- 58 C.-L. Towse, *et al.*, Nature versus design: the conformational propensities of D-amino acids and the importance of side chain chirality, *Protein Eng., Des. Sel.*, 2014, **27**(11), 447–455.
- 59 A. Rozek, *et al.*, Structure-based design of an indolicidin peptide analogue with increased protease stability, *Biochemistry*, 2003, **42**(48), 14130–14138.
- 60 G. H. Bird, *et al.*, Hydrocarbon double-stapling remedies the proteolytic instability of a lengthy peptide therapeutic, *Proc. Natl. Acad. Sci. U. S. A.*, 2010, **107**(32), 14093–14098.
- 61 A. A. Strömstedt, *et al.*, Evaluation of strategies for improving proteolytic resistance of antimicrobial peptides by using variants of EFK17, an internal segment of LL-37, *Antimicrob. Agents Chemother.*, 2009, **53**(2), 593–602.
- 62 R. Swanson, Long live peptides—evolution of peptide half-life extension technologies and emerging hybrid approaches, *Drug Discovery World*, 2014, **15**, 57–61.
- 63 A. Mahler, *et al.*, Rigid, self-assembled hydrogel composed of a modified aromatic dipeptide, *Adv. Mater.*, 2006, **18**(11), 1365–1370.
- 64 Z. Yang, *et al.*, Enzymatic formation of supramolecular hydrogels, *Adv. Mater.*, 2004, **16**(16), 1440–1444.
- 65 S. Sutton, *et al.*, Controlled release from modified amino acid hydrogels governed by molecular size or network dynamics, *Langmuir*, 2009, **25**(17), 10285–10291.
- 66 S. Roy and A. Banerjee, Amino acid based smart hydrogel: formation, characterization and fluorescence properties of silver nanoclusters within the hydrogel matrix, *Soft Matter*, 2011, **7**(11), 5300–5308.
- 67 Z. Yang, *et al.*, Phenyl groups in supramolecular nanofibers confer hydrogels with high elasticity and rapid recovery, *J. Mater. Chem.*, 2010, **20**(11), 2128–2132.
- 68 G. Cheng, *et al.*, Hydrogelation of self-assembling RGD-based peptides, *Soft Matter*, 2011, **7**(4), 1326–1333.
- 69 S. Debnath, *et al.*, Hydrogelation through self-assembly of Fmoc-peptide functionalized cationic amphiphiles: potent antibacterial agent, *J. Phys. Chem. B*, 2010, **114**(13), 4407–4415.
- 70 V. Castelletto, *et al.*, Slow-release RGD-peptide hydrogel monoliths, *Langmuir*, 2012, **28**(34), 12575–12580.
- 71 C. Tang, R. V. Ulijn and A. Saiani, Effect of glycine substitution on Fmoc-diphenylalanine self-assembly and gelation properties, *Langmuir*, 2011, **27**(23), 14438–14449.
- 72 C. Tang, *et al.*, Fmoc-diphenylalanine self-assembly mechanism induces apparent pK<sub>a</sub> shifts, *Langmuir*, 2009, **25**(16), 9447–9453.
- 73 L. Wang, *et al.*, Controlling the self-assembly of biomolecules into functional nanomaterials through internal interactions and external stimulations: a review, *Nanomaterials*, 2019, **9**(2), 285.
- 74 J. Wang, *et al.*, Peptide self-assembly: thermodynamics and kinetics, *Chem. Soc. Rev.*, 2016, **45**(20), 5589–5604.
- 75 A. S. Mahadevi and G. N. Sastry, Cooperativity in noncovalent interactions, *Chem. Rev.*, 2016, **116**(5), 2775–2825.
- 76 T. Fan, X. Yu, B. Shen and L. Sun, Peptide Self-Assembled Nanostructures for Drug Delivery Applications, *J. Nanomater.*, 2017, **2017**, 4562474.
- 77 B. Rybtchinski, Adaptive supramolecular nanomaterials based on strong noncovalent interactions, *ACS Nano*, 2011, **5**(9), 6791–6818.

- 78 R. Vegners, I. Shestakova, I. Kalvinsh, R. M. Ezzell and P. A. Janmey, Use of a gel-forming dipeptide derivative as a carrier for antigen presentation, *J. Pept. Sci.*, 1995, **1**(6), 371–378.
- 79 J. J. Panda, *et al.*, Stimuli responsive self-assembled hydrogel of a low molecular weight free dipeptide with potential for tunable drug delivery, *Biomacromolecules*, 2008, **9**(8), 2244–2250.
- 80 C. K. Thota, N. Yadav and V. S. Chauhan, A novel highly stable and injectable hydrogel based on a conformationally restricted ultrashort peptide, *Sci. Rep.*, 2016, **6**, 31167.
- 81 A. M. Smith, R. J. Williams, C. Tang, P. Coppo, R. F. Collins, M. L. Turner, A. Saiani and R. V. Ulijn, Fmoc-diphenylalanine self assembles to a hydrogel via a novel architecture based on  $\pi$ - $\pi$  interlocked  $\beta$ -sheets, *Adv. Mater.*, 2008, **20**(1), 37–41.
- 82 F. Qiu, *et al.*, Amphiphilic peptides as novel nanomaterials: design, self-assembly and application, *Int. J. Nanomed.*, 2018, **13**, 5003.
- 83 K. Kornmueller, *et al.*, Peptides at the interface: self-assembly of amphiphilic designer peptides and their membrane interaction propensity, *Biomacromolecules*, 2016, **17**(11), 3591–3601.
- 84 D. Lombardo, M. A. Kiselev, S. Magazù and P. Calandra, Amphiphiles Self-Assembly: Basic Concepts and Future Perspectives of Supramolecular Approaches, *Adv. Condens. Matter Phys.*, 2015, **2015**, 151683.
- 85 B. Findlay, G. G. Zhanel and F. Schweizer, Cationic amphiphiles, a new generation of antimicrobials inspired by the natural antimicrobial peptide scaffold, *Antimicrob. Agents Chemother.*, 2010, **54**(10), 4049–4058.
- 86 P. Berndt, G. B. Fields and M. Tirrell, Synthetic lipidation of peptides and amino acids: monolayer structure and properties, *J. Am. Chem. Soc.*, 1995, **117**(37), 9515–9522.
- 87 A. P. Nowak, *et al.*, Rapidly recovering hydrogel scaffolds from self-assembling diblock copolypeptide amphiphiles, *Nature*, 2002, **417**(6887), 424.
- 88 M. Deng, *et al.*, Self-assembly of Peptide– Amphiphile C12– A $\beta$  (11– 17) into Nanofibrils, *J. Phys. Chem. B*, 2009, **113**(25), 8539–8544.
- 89 C. He, *et al.*, Self-assembly of A $\beta$ -based peptide amphiphiles with double hydrophobic chains, *Langmuir*, 2012, **28**(7), 3391–3396.
- 90 J. D. Hartgerink, E. Beniash and S. I. Stupp, Peptide-amphiphile nanofibers: a versatile scaffold for the preparation of self-assembling materials, *Proc. Natl. Acad. Sci. U. S. A.*, 2002, **99**(8), 5133–5138.
- 91 P. Chen, Self-assembly of ionic-complementary peptides: a physicochemical viewpoint, *Colloids Surf., A*, 2005, **261**(1–3), 3–24.
- 92 M. Kabiri, *et al.*, Toward a mechanistic understanding of ionic self-complementary peptide self-assembly: role of water molecules and ions, *Biomacromolecules*, 2013, **14**(11), 3943–3950.
- 93 L. Sun, C. Zheng and T. J. Webster, Self-assembled peptide nanomaterials for biomedical applications: promises and pitfalls, *Int. J. Nanomed.*, 2017, **12**, 73.
- 94 Y. Hong, *et al.*, Critical self-assembly concentration of an ionic-complementary peptide EAK16-I, *J. Adhes.*, 2004, **80**(10–11), 913–931.
- 95 B. He, X. Yuan and D. Jiang, Molecular self-assembly guides the fabrication of peptide nanofiber scaffolds for nerve repair, *RSC Adv.*, 2014, **4**(45), 23610–23621.
- 96 M. Rivas, *et al.*, Peptide Self-Assembly into Hydrogels for Biomedical Applications Related to Hydroxyapatite, *Gels*, 2019, **5**(1), 14.
- 97 S. Y. Fung, H. Yang and P. Chen, Sequence effect of self-assembling peptides on the complexation and in vitro delivery of the hydrophobic anticancer drug ellipticine, *PLoS One*, 2008, **3**(4), e1956.
- 98 H. Yang, *et al.*, Modification of hydrophilic and hydrophobic surfaces using an ionic-complementary peptide, *PLoS One*, 2007, **2**(12), e1325.
- 99 S. Zhang, *et al.*, Spontaneous assembly of a self-complementary oligopeptide to form a stable macroscopic membrane, *Proc. Natl. Acad. Sci. U. S. A.*, 1993, **90**(8), 3334–3338.
- 100 S. Jun, *et al.*, Self-assembly of the ionic peptide EAK16: the effect of charge distributions on self-assembly, *Biophys. J.*, 2004, **87**(2), 1249–1259.
- 101 S. Zhang, *et al.*, Self-complementary oligopeptide matrices support mammalian cell attachment, *Biomaterials*, 1995, **16**(18), 1385–1393.
- 102 T. C. Holmes, *et al.*, Extensive neurite outgrowth and active synapse formation on self-assembling peptide scaffolds, *Proc. Natl. Acad. Sci. U. S. A.*, 2000, **97**(12), 6728–6733.
- 103 A. Saini and V. S. Chauhan, Self-assembling properties of peptides derived from TDP-43 C-terminal fragment, *Langmuir*, 2014, **30**(13), 3845–3856.
- 104 J. Naskar, G. Palui and A. Banerjee, Tetrapeptide-based hydrogels: for encapsulation and slow release of an anti-cancer drug at physiological pH, *J. Phys. Chem. B*, 2009, **113**(35), 11787–11792.
- 105 C. A. Hauser, *et al.*, Natural tri- to hexapeptides self-assemble in water to amyloid  $\beta$ -type fiber aggregates by unexpected  $\alpha$ -helical intermediate structures, *Proc. Natl. Acad. Sci. U. S. A.*, 2011, **108**(4), 1361–1366.
- 106 J. Smadbeck, *et al.*, De novo design and experimental characterization of ultrashort self-associating peptides, *PLoS Comput. Biol.*, 2014, **10**(7), e1003718.
- 107 R. Orbach, *et al.*, Self-assembled Fmoc-peptides as a platform for the formation of nanostructures and hydrogels, *Biomacromolecules*, 2009, **10**(9), 2646–2651.
- 108 V. Jayawarna, *et al.*, Introducing chemical functionality in Fmoc-peptide gels for cell culture, *Acta Biomater.*, 2009, **5**(3), 934–943.
- 109 T. Liebmann, *et al.*, Self-assembling Fmoc dipeptide hydrogel for in situ 3D cell culturing, *BMC Biotechnol.*, 2007, **7**(1), 88.
- 110 S. Maude, E. Ingham and A. Aggeli, Biomimetic self-assembling peptides as scaffolds for soft tissue engineering, *Nanomedicine*, 2013, **8**(5), 823–847.

- 111 Z. Yang, *et al.*, Self-assembly of small molecules affords multifunctional supramolecular hydrogels for topically treating simulated uranium wounds, *Chem. Commun.*, 2005, (35), 4414–4416.
- 112 Y. Zhang, *et al.*, An injectable dipeptide–fullerene supramolecular hydrogel for photodynamic antibacterial therapy, *J. Mater. Chem. B*, 2018, **6**(44), 7335–7342.
- 113 M. Yang, *et al.*, A versatile cyclic dipeptide hydrogelator: Self-assembly and rheology in various physiological conditions, *Colloids Surf., A*, 2019, **572**, 259–265.
- 114 I. Tarasenko, *et al.*, Amphiphilic polypeptides with prolonged enzymatic stability for the preparation of self-assembled nanobiomaterials, *RSC Adv.*, 2018, **8**(60), 34603–34613.
- 115 S. Parween, *et al.*, Self-assembled dipeptide nanotubes constituted by flexible  $\beta$ -phenylalanine and conformationally constrained  $\alpha$ ,  $\beta$ -dehydrophenylalanine residues as drug delivery system, *J. Mater. Chem. B*, 2014, **2**(20), 3096–3106.
- 116 R. Jain, *et al.*, First observation of left-handed helical conformation in a dehydro peptide containing two L-Val residues. Crystal and solution structure of Boc-L-Val- $\Delta$ Phe- $\Delta$ Phe- $\Delta$ Phe-L-Val-OMe, *J. Am. Chem. Soc.*, 1997, **119**(14), 3205–3211.
- 117 U. Ramagopal, *et al.*, Crystal structure of Boc-LAla- $\Delta$ Phe- $\Delta$ Phe- $\Delta$ Phe-NHMe: a left-handed helical peptide, *J. Pept. Res.*, 1998, **52**(3), 208–215.
- 118 U. A. Ramagopal, *et al.*, De novo design and characterization of an apolar helical hairpin peptide at atomic resolution: Compaction mediated by weak interactions, *Proc. Natl. Acad. Sci. U. S. A.*, 2001, **98**(3), 870–874.
- 119 P. Mathur, S. Ramakumar and V. Chauhan, Peptide design using  $\alpha$ ,  $\beta$ -dehydro amino acids: From  $\beta$ -turns to helical hairpins, *Pept. Sci.*, 2004, **76**(2), 150–161.
- 120 K. K. Bhandary and V. Chauhan, Peptide design 310-helical conformation of a linear pentapeptide containing two dehydrophenylalanines, Boc-Gly- $\Delta$ ZPhe-Leu- $\Delta$ ZPhe-Ala-NHCH<sub>3</sub>, *Biopolymers*, 1993, **33**(2), 209–217.
- 121 R. Jain and V. S. Chauhan, Conformational characteristics of peptides containing  $\alpha$ ,  $\beta$ -dehydroamino acid residues, *Pept. Sci.*, 1996, **40**(1), 105–119.
- 122 K. Rajashankar, *et al.*, Observation of Water-Mediated Helix-Terminating Conformation in a Dehydrophenylalanine Peptide: Crystal and Solution Structure of the Octapeptide Ac-. DELTA. Phe-Val-. DELTA. Phe-Phe-Ala-Val-. DELTA. Phe-Gly-OMe, *J. Am. Chem. Soc.*, 1995, **117**(47), 11773–11779.
- 123 K. Rajashankar, *et al.*, Role of two consecutive  $\alpha$ ,  $\beta$ -dehydrophenylalanines in peptide structure: Crystal and molecular structure of Boc-Leu- $\Delta$ Phe- $\Delta$ Phe-Ala-Phe-NHMe, *Biopolymers*, 1997, **42**(3), 373–382.
- 124 A. Mishra, *et al.*, Nanovesicles based on self-assembly of conformationally constrained aromatic residue containing amphiphilic dipeptides, *Langmuir*, 2008, **24**(9), 4571–4576.
- 125 M. Gupta and V. S. Chauhan, De novo design of  $\alpha$ ,  $\beta$ -didehydrophenylalanine containing peptides: From models to applications, *Biopolymers*, 2011, **95**(3), 161–173.
- 126 J. P. Schneider, *et al.*, Responsive hydrogels from the intramolecular folding and self-assembly of a designed peptide, *J. Am. Chem. Soc.*, 2002, **124**(50), 15030–15037.
- 127 A. K. Das, *et al.*, Low molecular weight organogelators from self-assembling synthetic tripeptides with coded amino acids: morphological, structural, thermodynamic and spectroscopic investigations, *Supramol. Chem.*, 2006, **18**(8), 645–655.
- 128 J. J. Panda, *et al.*, 3D cell growth and proliferation on a RGD functionalized nanofibrillar hydrogel based on a conformationally restricted residue containing dipeptide, *ACS Appl. Mater. Interfaces*, 2010, **2**(10), 2839–2848.
- 129 J. Liu, *et al.*, Controlled release of paclitaxel from a self-assembling peptide hydrogel formed in situ and antitumor study in vitro, *Int. J. Nanomed.*, 2011, **6**, 2143.
- 130 L. Gentilucci, R. De Marco and L. Cerisoli, Chemical modifications designed to improve peptide stability: incorporation of non-natural amino acids, pseudo-peptide bonds, and cyclization, *Curr. Pharm. Des.*, 2010, **16**(28), 3185–3203.
- 131 J. Li, *et al.*, Dephosphorylation of D-peptide derivatives to form biofunctional, supramolecular nanofibers/hydrogels and their potential applications for intracellular imaging and intratumoral chemotherapy, *J. Am. Chem. Soc.*, 2013, **135**(26), 9907–9914.
- 132 Y. Kuang, *et al.*, Pericellular hydrogel/nanonets inhibit cancer cells, *Angew. Chem., Int. Ed.*, 2014, **53**(31), 8104–8107.
- 133 Z. Feng and B. Xu, Inspiration from the mirror: D-amino acid containing peptides in biomedical approaches, *Biomol. Concepts*, 2016, **7**(3), 179–187.
- 134 J. Liu, J. Liu, L. Chu, Y. Zhang, H. Xu, D. Kong, Z. Yang, C. Yang and D. Ding, Self-assembling peptide of D-amino acids boosts selectivity and antitumor efficacy of 10-hydroxycamptothecin, *ACS Appl. Mater. Interfaces*, 2014, **6**(8), 5558–5565.
- 135 M. Sela and E. Zisman, Different roles of D-amino acids in immune phenomena, *FASEB J.*, 1997, **11**(6), 449–456.
- 136 T. Degenkolb and H. Brückner, Peptaibiotics: towards a myriad of bioactive peptides containing  $\alpha$ -dialkylamino acids?, *Chem. Biodiversity*, 2008, **5**(9), 1817–1843.
- 137 C. Toniolo, *et al.*, Structures of peptides from  $\alpha$ -amino acids methylated at the  $\alpha$ -carbon, *Biopolymers*, 1993, **33**(7), 1061–1072.
- 138 I. L. Karle and P. Balaram, Structural characteristics of alpha-helical peptide molecules containing Aib residues, *Biochemistry*, 1990, **29**(29), 6747–6756.
- 139 P. Maity and B. Koenig, Enantio- and diastereoselective syntheses of cyclic  $\alpha$ -tetrasubstituted  $\alpha$ -amino acids and their use to induce stable conformations in short peptides, *Pept. Sci.*, 2008, **90**(1), 8–27.
- 140 P. Maity, M. Zabel and B. König, Tetrahydrofuran  $\alpha$ -tetrasubstituted amino acids: two consecutive  $\beta$ -turns in a crystalline linear tripeptide, *J. Org. Chem.*, 2007, **72**(21), 8046–8053.



- 141 D. Datta, V. Kumar, S. Kumar, R. Nagaraj and N. Chaudhary, Limpid hydrogels from  $\beta$ -turn motif-connected tandem repeats of A $\beta$ 16–22, *Soft Matter*, 2019, **15**, 4827–4835.
- 142 P. C. Dewan, *et al.*, Antimicrobial action of prototypic amphipathic cationic decapeptides and their branched dimers, *Biochemistry*, 2009, **48**(24), 5642–5657.
- 143 S. R. Caliarì and J. A. Burdick, A practical guide to hydrogels for cell culture, *Nat. Methods*, 2016, **13**(5), 405.
- 144 L. Chronopoulou, S. Sennato, F. Bordi, D. Giannella, A. Di Nitto, A. Barbetta, M. Dentini, A. R. Togna, G. I. Togna, S. Moschini and C. Palocci, Designing unconventional Fmoc-peptide-based biomaterials: Structure and related properties, *Soft Matter*, 2014, **10**(12), 1944–1952.
- 145 K. Liang, K. H. Bae and M. Kurisawa, Recent advances in the design of injectable hydrogels for stem cell-based therapy, *J. Mater. Chem. B*, 2019, **7**, 3775–3791.
- 146 Y. Loo, *et al.*, Ultrashort peptide nanofibrous hydrogels for the acceleration of healing of burn wounds, *Biomaterials*, 2014, **35**(17), 4805–4814.
- 147 W. Y. Seow, G. Salgado, E. B. Lane and C. A. Hauser, Transparent crosslinked ultrashort peptide hydrogel dressing with high shape-fidelity accelerates healing of full-thickness excision wounds, *Sci. Rep.*, 2016, **6**, 32670.
- 148 X. Kang, *et al.*, DRAMP 2.0, an updated data repository of antimicrobial peptides, *Sci. Data*, 2019, **6**(1), 1–10.
- 149 J.-K. Lee, T. Luchian and Y. Park, New antimicrobial peptide kills drug-resistant pathogens without detectable resistance, *Oncotarget*, 2018, **9**(21), 15616.
- 150 A. Song, A. A. Rane and K. L. Christman, Antibacterial and cell-adhesive polypeptide and poly (ethylene glycol) hydrogel as a potential scaffold for wound healing, *Acta Biomater.*, 2012, **8**(1), 41–50.
- 151 Y. Wan, *et al.*, pH-responsive peptide supramolecular hydrogels with antibacterial activity, *Langmuir*, 2017, **33**(13), 3234–3240.
- 152 M. Lian, *et al.*, Self-assembled peptide hydrogel as a smart biointerface for enzyme-based electrochemical biosensing and cell monitoring, *ACS Appl. Mater. Interfaces*, 2016, **8**(38), 25036–25042.
- 153 J. H. Kim, *et al.*, Self-assembled, photoluminescent peptide hydrogel as a versatile platform for enzyme-based optical biosensors, *Biosens. Bioelectron.*, 2011, **26**(5), 1860–1865.
- 154 S. F. Souza, E. R. Silva and W. A. Alves, Nanostructured antigen-responsive hydrogels based on peptides for leishmaniasis detection, *J. Braz. Chem. Soc.*, 2017, **28**(9), 1619–1629.
- 155 P. J. King, A. Saiani, E. V. Bichenkova and A. F. Miller, A de novo self-assembling peptide hydrogel biosensor with covalently immobilised DNA-recognising motifs, *Chem. Commun.*, 2016, **52**(40), 6697–6700.
- 156 S. Koutsopoulos, Self-assembling peptides in biomedicine and bioengineering: Tissue engineering, regenerative medicine, drug delivery, and biotechnology, in *Peptide Applications in Biomedicine, Biotechnology and Bioengineering*, Elsevier, 2018, pp. 387–408.
- 157 M. Silvia, Recent Patents on Peptide Self-Assembled Hydrogels as Nanostructured Biomaterials, *Recent Pat. Nanomed.*, 2014, **4**(2), 77–81.