

Cite this: *Chem. Sci.*, 2019, 10, 4185

All publication charges for this article have been paid for by the Royal Society of Chemistry

# Anisotropic strain release in a thermosalient crystal: correlation between the microscopic orientation of molecular rearrangements and the macroscopic mechanical motion†

Tomohiro Seki,<sup>ID</sup>\*<sup>a</sup> Takaki Mashimo<sup>a</sup> and Hajime Ito<sup>ID</sup>\*<sup>ab</sup>

The salient effect, which refers to a jumping phenomenon of organic and organometallic molecular crystals typically triggered by phase transitions in response to external stimuli, has been investigated intensively in the last five years. A challenging topic in this research area is the question of how to characterize the release of microscopic strain accumulated during phase transitions, which generates macroscopic mechanical motion. Herein, we describe the thermosalient effect of the triphenylethenyl gold 4-chlorophenyl isocyanide complex **1**, which jumps reversibly at approximately  $-100\text{ }^{\circ}\text{C}$  upon cooling at  $50\text{ }^{\circ}\text{C min}^{-1}$  and heating at  $30\text{ }^{\circ}\text{C min}^{-1}$ . Single-crystal X-ray diffraction measurements and differential scanning calorimetric analyses of **1** suggest the occurrence of a thermal phase transition at this temperature. Detailed structural analyses indicate that anisotropic changes to the molecular arrangement occur in **1**, whereby the crystallographic *a* axis contracts upon cooling while the *b* axis expands. Simultaneously, macroscopic changes of the crystal dimensions occur. This is observed as bending, *i.e.*, as an inclination of the crystal edges, and in the form of splitting, which occurs in a perpendicular direction to the major crystal axis. This study thus bridges the gap between macroscopic mechanical responses that are observed in high-speed photographic images and microscopic changes of the crystal structure, which are evaluated by X-ray diffraction measurements with face indexing.

Received 13th December 2018  
Accepted 5th March 2019

DOI: 10.1039/c8sc05563g

rsc.li/chemical-science

## Introduction

Studies on the mechanical motion of molecular crystals upon exposure to external stimuli have attracted much attention owing to potential applications in actuators and sensors based on organic compounds. For example, crystals of diarylethene derivatives show bending/twisting upon photoirradiation due to a ring-closing isomerization in the crystals.<sup>1</sup> Another fascinating mechanical response is the thermally induced walking and rolling of crystals of an azobenzene derivative.<sup>2</sup> One challenging theme in this field is the characterization of the relationship between microscopic molecular arrangements and macroscopic mechanical motion.

The salient effect of molecular crystals, which refers to a jumping phenomenon of molecular crystals upon external

stimulation (Fig. 1, bottom), is another mode of mechanical motion that has quickly developed into a hot topic in this research area during the last decade.<sup>3</sup> Typically, temperature changes and photoirradiation initiate salient effects, which are accordingly called thermo-<sup>4</sup> and photosalient effects.<sup>4c,5</sup> Although crystal-jumping phenomena have been reported only sporadically for a long time,<sup>6</sup> the group of Naumov and other groups have recently reported salient effects for various molecular crystals.<sup>4,5</sup>

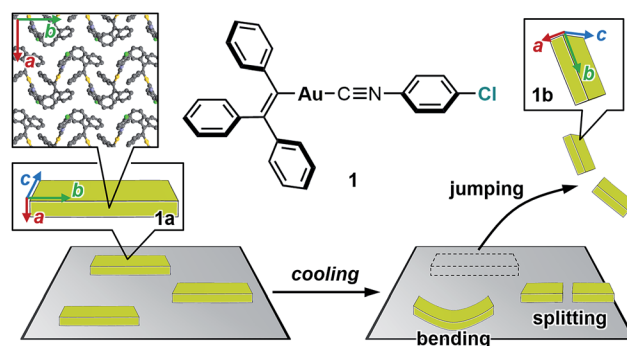


Fig. 1 Chemical structure of **1** and schematic representation of the salient effect. Colored arrows indicate the crystallographic axes of crystals of **1**.

<sup>a</sup>Division of Applied Chemistry, Frontier Chemistry Center, Faculty of Engineering, Hokkaido University, Sapporo, Hokkaido 060-8628, Japan. E-mail: seki@eng.hokudai.ac.jp; hajito@eng.hokudai.ac.jp

<sup>b</sup>Institute for Chemical Reaction Design and Discovery (WPI-ICReDD), Hokkaido University, Sapporo, Hokkaido 060-8628, Japan

† Electronic supplementary information (ESI) available: Additional spectroscopic, crystallographic, and thermal analysis data. CCDC 1884306–1884313. For ESI and crystallographic data in CIF or other electronic format see DOI: 10.1039/c8sc05563g

The mechanism of the salient effect has previously been discussed.<sup>4e,g,i,5a</sup> Certain external stimuli induce a phase transition in molecular crystals. Then, a molecular rearrangement generates strain within these crystals. The accumulation of this microscopic strain results in macroscopic mechanical power that manifests in rapid crystal motion ('jumping').

Several groups have intensively investigated how molecules in the crystal rearrange before and after the jumping. Upon phase transitions, most salient molecules show a slight and anisotropic crystal-structure change without alteration of the space group. For example, thermosalient crystals of 1,2,4,5-tetrabromobenzene show a thermal phase transition and jumping upon heating, whereby the crystallographic *b* and *c* axes slightly elongate ( $\Delta b = +0.475$  Å;  $\Delta c = +0.052$  Å; RT  $\rightarrow$  69.5 °C), while the *a* axis contracts ( $\Delta a = -0.323$  Å).<sup>4a,b</sup> Similar trends have been reported for other salient crystals.<sup>4a,b,d,e,g,i,k,5e</sup>

Compared to crystal-structure analyses, which are conducted on the microscale, macroscopic morphological changes of salient crystals upon jumping have been investigated less extensively. This should be due to the fact that crystal jumping is a significantly more rapid motion, which would render detailed conventional observations on the microscale difficult. To observe such rapid motion, high-speed photographic images of jumping crystals have been recorded by several groups,<sup>4a,b,d,e,g,i,5a,b,d</sup> which revealed various mechanical responses of the salient crystals, including explosions, flipping, twisting, and simply jumping. Moreover, these macroscopic mechanical responses have been correlated with anisotropic changes of the crystal lattice. One of the limited examples has been reported by Skoko, in which a macroscopic crystal expansion along the major crystal axis of a salient crystal was correlated with an expansion of the crystallographic *b* axis ( $\Delta b > 0$ ) upon jumping.<sup>4f</sup>

Herein, we report the thermosalient effect of the triphenylethenyl gold isocyanide complex **1** and the orientational relationship between microscopic molecular rearrangements and macroscopic motion (Fig. 1). The thermosalient effect of **1** occurs at approximately  $-100$  °C upon cooling ( $50$  °C  $\text{min}^{-1}$ ) or heating ( $30$  °C  $\text{min}^{-1}$ ). In addition to the jumping, other macroscopic mechanical types of motion, such as bending and splitting, were also observed. Single-crystal structure analyses and DSC measurements of **1** indicate a thermal phase transition with a small molecular rearrangement in the crystal during the jump. Upon the phase transition of **1**, the crystallographic *a* axis slightly contracts, while the *b* axis elongates. These directions correspond to the crystal thickness and length, respectively (insets in Fig. 1). Thus, the phase-transition-induced contraction and elongation of the macroscopic crystal agrees well with the observed responses of **1**: bending along the major crystal axis and splitting perpendicular to the major crystal axis (Fig. 1). The present study thus represents a rare example of salient materials that exhibit a clear orientational correlation between microscopic molecular rearrangement patterns estimated by single-crystal X-ray diffraction analyses and macroscopic mechanical motion observed through high-speed photographic images. This confirmation represents a successful experimental observation of the generation/release of stress, which has so far been scarce in studies of the salient effect.

## Results and discussion

### Thermosalient effect

Complex **1** was prepared according to a procedure similar to that used for the preparation of a series of arylgold(aryl isocyanide) complexes reported by us.<sup>5e,7</sup> Complex **1** was characterized by  $^1\text{H}$  and  $^{13}\text{C}$  NMR spectroscopy, HR-MS, and elemental analyses. Crystalline samples of **1** were prepared by recrystallization, *i.e.*, solutions of **1** (50 mg) in  $\text{CH}_2\text{Cl}_2$  (2 mL) were carefully layered with hexane (8 mL) to generate yellow crystalline platelets after a few days (Fig. S1†). These crystals, which are stable at room temperature, are henceforth referred to as **1a**.<sup>8</sup>

Crystals of **1** exhibit a prominent thermosalient effect upon exposure to temperature changes. Fig. 2 shows crystals of **1** on a heating/cooling plate under ambient light observed using a high-speed camera. Upon cooling at  $50$  °C  $\text{min}^{-1}$ , crystals of **1** start to jump as high as  $\sim 1$  cm between  $-80$  to  $-150$  °C (Fig. 2 and S3 and ESI Movies S1–S3†), confirming the thermosalient behavior. Hereafter, the crystals obtained after mechanical movement upon cooling will be called **1b**.<sup>9</sup> The thermosalient effect of **1** can be induced by a wide range of cooling rates ( $2$ – $80$  °C  $\text{min}^{-1}$ ), and slower cooling rates tend to increase the temperature for crystal jumping.<sup>10</sup> Although our previously reported gold isocyanide complex showed a photosalient effect, only a small proportion of the crystals ( $\sim 5\%$ ) jumped upon photoexcitation.<sup>5e</sup> Conversely, almost all crystals of **1** engage in jumping upon cooling (ESI Movie S3†). Upon heating from  $-150$  °C at  $\sim 30$  °C  $\text{min}^{-1}$ , crystals of **1** also exhibit a thermosalient effect (Fig. S4†). The resulting crystals jump again upon cooling, demonstrating the reversibility of this process. Several of the hitherto reported thermosalient crystals only jump upon

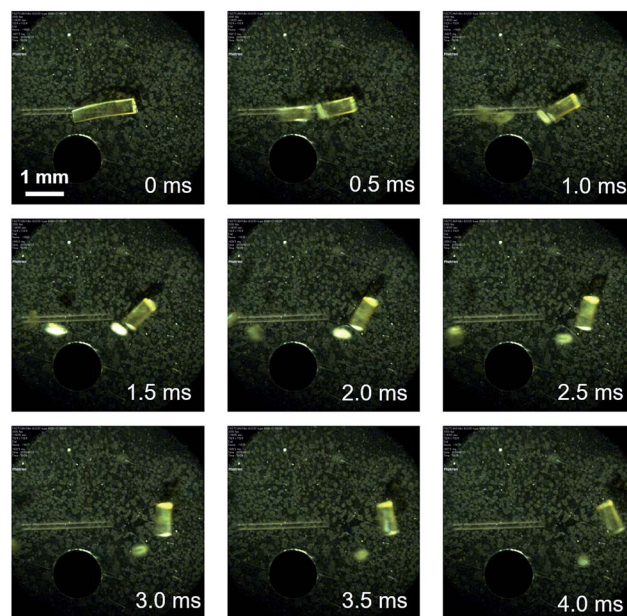


Fig. 2 Photographs of **1** upon cooling ( $50$  °C  $\text{min}^{-1}$ ), derived from a movie using a high-speed camera (2000 fps). The approximate temperature is  $-100$  °C.



heating or cooling, while reversible thermosalient crystals are less common.<sup>4b,e,f,o</sup> We also confirmed that semicrystalline powder samples of **1** do not show a thermosalient effect (Fig. S5†), which demonstrates the importance of crystallinity and crystal size for the mechanical response.<sup>4b</sup>

Detailed observations provided us with three representative types of behavior for the thermosalient effect of **1**. Fig. 3 summarizes the typical mechanical behavior of **1**. In addition to jumping (Fig. 3i), we observed bending of the crystals of **1** (Fig. 3ii). During bending, the faces of the two termini of the crystals bend upwards along the major crystal axis (Fig. 3ii and S6 and ESI Movies S4 and S5†), before typically relaxing to recover the original shape. Further decreasing the temperature induces a thermosalient effect in these crystals. The reproducible bending along the major crystal axis was confirmed by cooling a crystal of **1** on a goniometer head using a flow of nitrogen gas (Fig. S7†). The splitting of crystals is another typical mechanical response of **1** (Fig. 3iii). Careful observation of several splitting crystals indicated that the cross-section is always obtained along the direction orthogonal to the major crystal axis (Fig. 3iii and S8†).<sup>11</sup> Further observation of the jumping behavior of **1** using high-speed recordings revealed that most of the crystals split when the crystals jumped (Fig. 2 and S8 as well as ESI Movies S6 and S7†).<sup>4a,b</sup> The following discussion of the molecular arrangements may help to clarify the origin of the observed trends in the mechanical response of **1**.

### Crystal structure analyses

In order to investigate the mechanism of the thermosalient effect of **1**, single-crystal X-ray diffraction (XRD) analyses were performed. The XRD measurements of crystals of **1a** at 25 °C revealed that **1a** crystallizes in the  $P2_1/c$  space group (Fig. 4 and S9 as well as Table S1†). Only one crystallographically independent molecule is contained within the crystalline lattice (Fig. 4a). Hereafter, we denote the three benzene rings of the triphenylethenyl moiety as A, B, and C, while the isocyanide benzene ring is labelled D (Fig. 4a). Molecules of **1** in crystals of **1a** form dimers (Fig. 4b) that are characterized by two sets of CH- $\pi$  interactions between the H atom of ring D and the  $\pi$ -plane of ring C (2.648 Å; dashed blue lines in Fig. 4b). In these

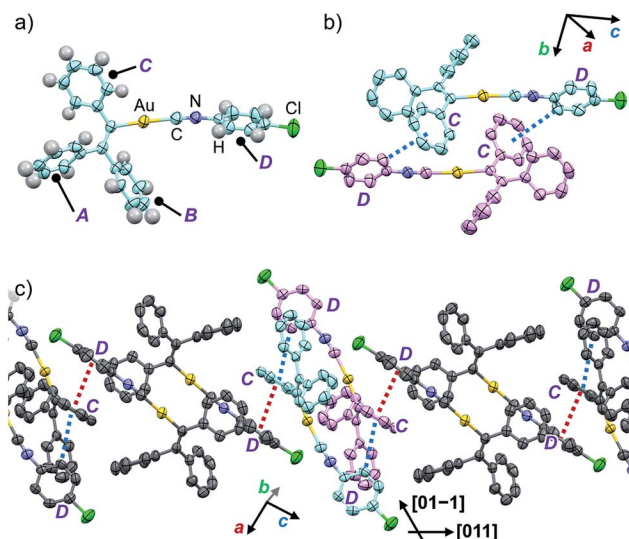


Fig. 4 Single-crystal structure of **1a** measured at 25 °C with thermal ellipsoids at 50% probability. (a) A monomer unit, (b) a dimer unit, and (c) an extended molecular chain segment. H atoms are omitted for clarity in (b) and (c).

dimers, an Au...Au distance of 5.2462(5) Å was observed, which suggests the absence of aurophilic interactions.<sup>12</sup> Between these dimers, intermolecular  $\pi$ - $\pi$  stacking interactions manifest at rings C and D (3.523 Å; dashed red lines in Fig. 4c), leading to the formation of infinite chains extending along the [011] direction, *i.e.*, the diagonal direction relative to the *b*- and *c*-axis. Similarly, the same molecular chains also extend along the [01-1] direction (Fig. 4c), and thus form a molecular sheet along the *bc*-plane (Fig. S10†).

The single-crystal structure of **1b** was investigated at -150 °C, which revealed that the molecular rearrangements were only minimal, manifesting in an anisotropic lattice change from **1a** at 25 °C. The XRD analyses of **1b** at -150 °C<sup>13</sup> indicated that **1b** also crystallizes in the  $P2_1/c$  space group similar to **1a** (Fig. 5 and S11 as well as Table S1†). The overall molecular arrangements of **1a** and **1b** are similar (Fig. 5 and S9 and S11†). However, a careful observation revealed a twisting of the isocyanide moiety (ring D) upon cooling. In other words, a juxtaposition of the structures of monomers **1a** and **1b** shows a twisting of 24.99° (Fig. 6a). Such subtle molecular rearrangements<sup>14</sup> upon cooling lead to a slight rearrangement of the overall molecular packing in an anisotropic manner. For example, the crystallographic *a* and *b* axes contract ( $\Delta a = -0.96$  Å; -7.8%) and expand ( $\Delta b = +0.44$  Å; +4.0%), respectively, upon cooling (25 → -150 °C), while the *c* axis remains almost unaffected ( $\Delta c = -0.18$  Å; -1.1%). Previously reported salient organic crystals show similar anisotropic lattice changes in the unit cell dimensions upon phase transitions between similar phases.<sup>4a,b,d,e,g,i,k,5e</sup> The crystal packing overlay of **1a** and **1b**, viewed along the *c* axis (Fig. 6b) provides a visual understanding of the anisotropic crystal lattice change upon cooling. In Fig. 6b, molecules of **1a** at 25 °C are colored red and those of **1b** at -150 °C are colored light blue within the fixed unit cells, containing four molecules each (*Z* = 4). Focusing on molecules



Fig. 3 Photographs that show jumping, bending, and splitting as typical mechanical responses of crystals of **1** upon cooling.





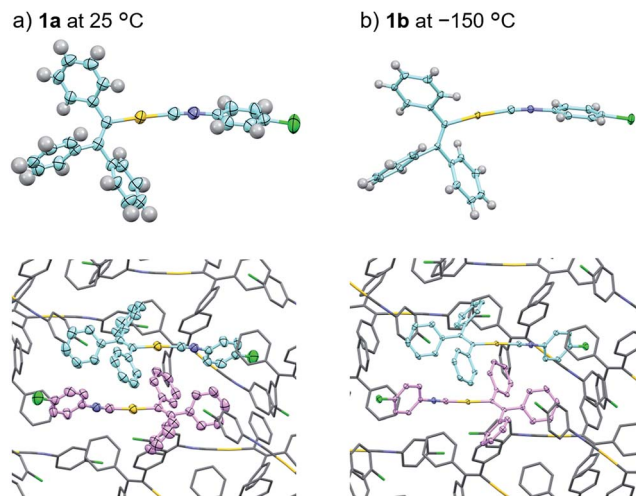


Fig. 5 Comparison of the crystal structures of **1a** at 25 °C (a) and **1b** at -150 °C (b) with thermal ellipsoids at 50% probability. In the bottom figures, H atoms are omitted for clarity.

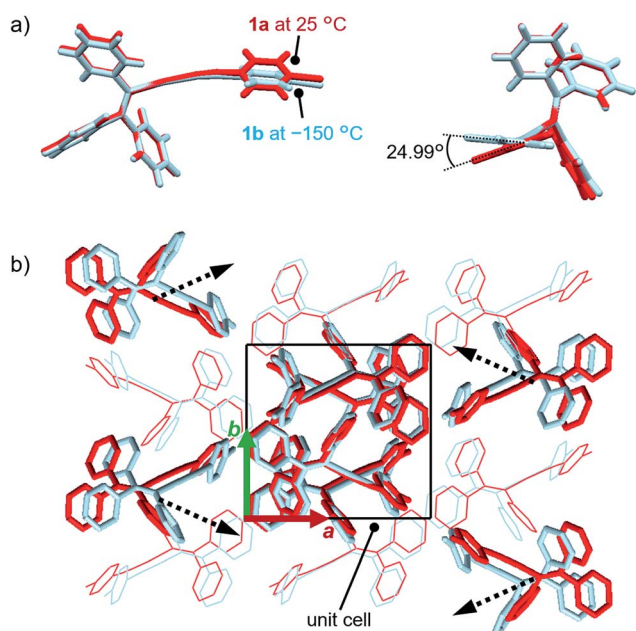


Fig. 6 Juxtaposition of the crystal structures of **1a** (red; 25 °C) and **1b** (light blue; -150 °C). (a) Comparison of the monomer conformations. (b) Comparison of the molecular packing viewed along the *c* axis. Black dotted arrows indicate how molecules rearrange upon cooling (25 °C → -150 °C).

of **1a** and **1b** outside the unit cell, we found that upon cooling (25 → -150 °C), the molecules move away from each other along the direction of the *b* axis and approach each other along the *a* axis (dotted arrows in Fig. 6b). These results are consistent with the aforementioned anisotropic crystallographic changes upon cooling ( $\Delta a < 0$ ;  $\Delta b > 0$ ).

Temperature-dependent single-crystal XRD measurements of **1** indicate an abrupt change in unit cell dimensions at approximately -50 °C, implying a thermal phase transition.

Single-crystal XRD measurements of **1** were carried out between 25 and -150 °C in 25 °C increments. All measurements indicate that the crystal qualities of **1** are satisfactory and the results are summarized in Table S1.† The resulting single-crystal structures of **1** obtained at various temperatures are essentially identical (Fig. S13 and S14†). When the lengths of *a* and *b* of the unit cells are plotted as a function of the temperature, drastic changes are observed between -25 and -50 °C (Fig. 7). Thermal expansion coefficients ( $\alpha$ ) along these directions are estimated to be  $\alpha_a = +579.1 \text{ MK}^{-1}$  and  $\alpha_b = -285.2 \text{ MK}^{-1}$ , respectively (Fig. S15†).<sup>15</sup> These are one of the highest positive/negative thermal expansion coefficients for organic-based molecular crystals.<sup>4e,g,i,l,16</sup> The degree of the change regarding the length of the *c* axis remains rather limited in this temperature region (Fig. S16†), which confirms the anisotropic nature of the crystal-lattice change. Simulated powder XRD patterns derived from the single-crystal XRD structures of **1** also show a clear change in this temperature region (Fig. S17†). All these results indicate the occurrence of a thermal phase transition from **1a** to **1b**.

Differential scanning calorimetric (DSC) analyses of **1** clearly indicate the presence of reversible phase transitions upon temperature changes. Upon cooling **1a** at 5 °C min<sup>-1</sup>, the DSC traces show sawtooth exothermic peaks around -40 to -60 °C with an onset temperature of -40 °C (Fig. 8). Sawtooth profiles are a common sign of phase transitions of molecular crystals with thermosolvent effects.<sup>4b,i,k,n,o</sup> Upon heating **1b** from -80 °C at 5 °C min<sup>-1</sup>, an endothermic peak is again observed at approximately -50 to -30 °C (Fig. 8), confirming the reversibility of the thermal phase transition of **1**. The absence of the sawtooth profile upon heating was attributed to the lower probability of the jumping of **1** upon heating compared to that upon cooling. The broad DSC peak upon heating with a temperature range similar to that of the cooling scan indicates that the phase transition of **1** is enantiotropic. The phase-transition temperature estimated by the DSC studies (-30 to -60 °C) are relatively high compared to the temperature where the thermosolvent effect occurs (-80 to -150 °C). This discrepancy should reflect the different heating rates employed: -50 °C min<sup>-1</sup> for the observation of the thermosolvent effect and -5 °C min<sup>-1</sup> for the DSC measurements. Moreover, another possible reason is that the jumping motion, which requires a certain time in order to accumulate sufficient strain after the phase transition takes place. Thus, the thermal phase transition of **1** triggers mechanical behavior such as jumping.

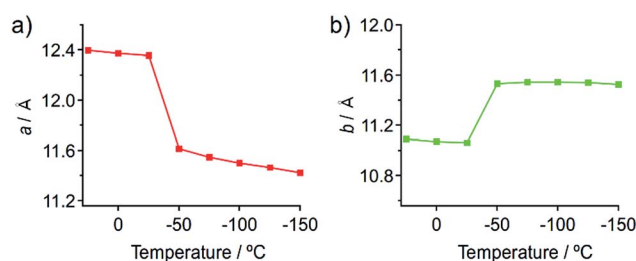


Fig. 7 Changes of the length of the crystallographic *a* (a) and *b* (b) axes of the single crystals of **1** upon temperature changes.



Powder samples of **1** (its crystal structure basically corresponds to that of crystals of **1a**) do not show any peaks in the DSC profiles, indicating the absence of a clear phase transition (Fig. S18†).<sup>17–19</sup> This result supports the notion that a phase transition is required for the jumping of **1**, given that the powder samples do not show a thermosalt effect (Fig. S5†).<sup>4b</sup>

### Mechanistic investigation

Face index experiments of **1** provided information on the orientational relationship between the microscopic molecular arrangements and the macroscopic crystal morphologies. A face index experiment of crystals of **1a** at 25 °C indicates that the largest face of the crystal corresponds to the (100) plane, and that its sides correspond to the (010) and (001) planes (Fig. 9 and S20†). This result suggests that the largest face of the macroscopic crystal corresponds to the crystallographic *bc* plane. Microscopically, a molecular sheet is formed by  $\pi$ - $\pi$  stacking interactions within the *bc* plane (*vide supra*; Fig. 4c and S10†). This result indicates that the macroscopic crystal growth occurs primarily along this molecular sheet. A face index experiment of **1b** at –150 °C afforded results similar to those of **1a** (Fig. S21†), supporting the notion that only small molecular movements occur upon the phase transition, which should maintain crystal integrity.<sup>4b</sup>

The pattern of microscopic changes of the molecular arrangements of **1** matches well with the trends of the mechanical motion of the macroscopic crystals. Based on the observed lattice changes upon cooling ( $\Delta a < 0$ ;  $\Delta b > 0$ ) and the face index results (Fig. 9), the macroscopic major crystal axis of **1** should elongate, while the crystal thickness should decrease upon cooling (green and red arrows, respectively, in Fig. 10i). This anisotropic change of the crystal dimensions can generate strain within the crystals to realize specific mechanical motion. Among the three typical types of mechanical motion (Fig. 3), the splitting and bending seem to exhibit orientational correlation with the dimensional changes of the crystals. For example, regarding the bending motion, it is important that the extension of the crystals of **1** upon cooling starts from the bottom domains given that the crystals are located on the cooling plate (Fig. 10ii). Thus, the bottom domains and the top domains of

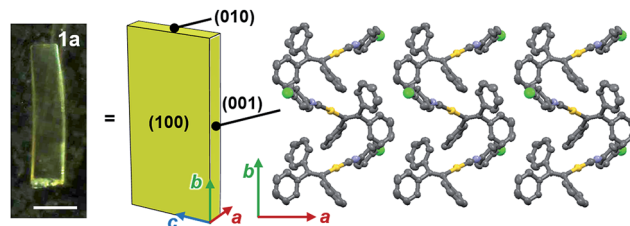


Fig. 9 The results of the face index experiment for **1a**. Scale bar = 0.5 mm.

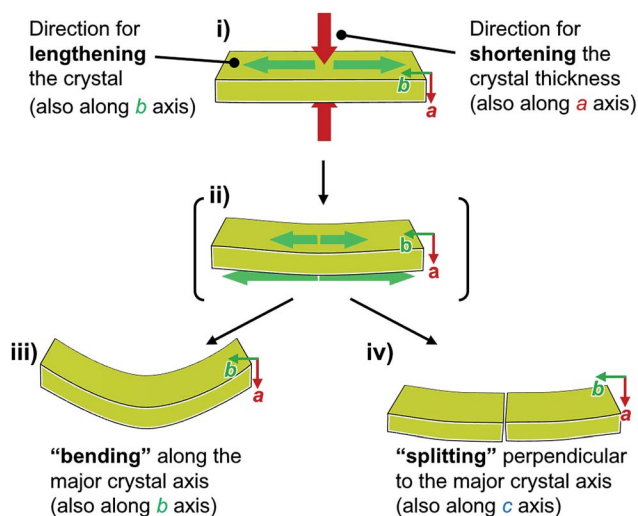


Fig. 10 Schematic representation of the macroscopic behavior of crystals of **1** upon cooling, revealing the mechanism for splitting and bending.

the crystals extend differently, resulting in the observed bending motion that preferentially occurs along the major crystal axis (Fig. 3iii and 10iii). Similarly, the crystal splitting of **1** upon cooling occurs predominantly perpendicular to the major crystal axis (*vide supra*; Fig. 3iii). This may be rationalized in terms of an extension of the crystals of **1** that generates strain to split the crystals preferentially along the *c* axis (Fig. 10iv). Such satisfactory orientational correlations between anisotropic crystal structure changes ( $\Delta a < 0$ ;  $\Delta b > 0$ ) on the microscale and reproducible mechanical motion (splitting and bending) on the macroscale have rarely been reported.<sup>20</sup> Similar to the splitting and bending motion, rapid crystal jumping, which is difficult to evaluate visually, should take place based on the same mechanism, *i.e.*, the crystal length and thickness increase and decrease upon cooling, respectively (Fig. 10i) to induce strain in the crystal lattice. Thus, in this study, we have successfully observed the macroscopic motion for the release of the accumulated strain that is generated by an anisotropic change of the lattice dimension on the microscopic scale.

## Summary

In this report, we investigated the thermosalt effect of triphenylethynyl gold isocyanide complex **1**. X-ray diffraction

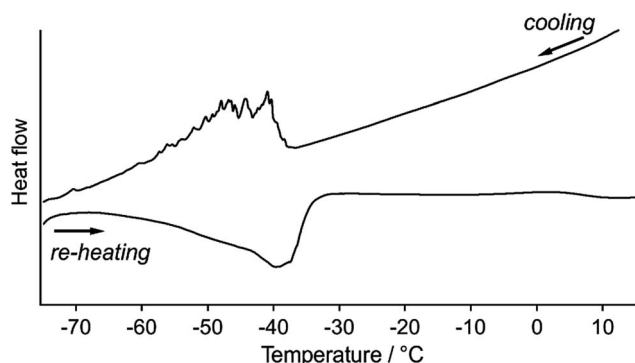


Fig. 8 DSC traces for crystals of **1** at cooling/heating rates of 5 °C min<sup>−1</sup>.



(XRD) and differential scanning calorimetry analyses indicate that crystals and single crystals of **1** are subject to a phase transition between **1a** and **1b** at approximately  $-40\text{ }^{\circ}\text{C}$  at  $5\text{ }^{\circ}\text{C min}^{-1}$ . Using faster cooling rates of  $50\text{ }^{\circ}\text{C min}^{-1}$ , the crystal jump is typically observed at approximately  $-100\text{ }^{\circ}\text{C}$ . Single-crystal XRD studies of **1** also indicate that the crystal dimensions change anisotropically ( $\Delta a < 0$ ;  $\Delta b > 0$ ) upon the phase transition while the space group ( $P2_1/c$ ) is retained. Face index experiments of **1a** and **1b** indicate that the crystallographic  $b$  axis corresponds to the major crystal axis. This suggests that the observed splitting and bending of crystals of **1** occurs due to an elongation of the major crystal axis during the thermal phase transition (Fig. 10). This clear orientational correlation between microscopic changes of the crystal dimensions and macroscopic mechanical responses should also be the key structural factor for the observed jumping motion of crystals of **1**. This study thus provides rare experimental evidence that bridges the gap between microscopic crystal-structure information and macroscopic mechanical responses of crystals of **1**. The information offered here should thus facilitate the understanding of the mechanistic details of the salient effect further.

## Conflicts of interest

There are no conflicts of interest to declare.

## Acknowledgements

This work was financially supported by JSPS KAKENHI grants JP16H06034, JP17H05134, JP17H05344, and JP17H06370. This work was also supported by the Institute for Chemical Reaction Design and Discovery (ICReDD), established by the World Premier International Research Initiative (WPI) of MEXT, Japan. The authors would like to thank Prof. Dr Jian Ping Gong and Dr Muhammad Ilyas (Hokkaido University) for carrying out DSC analyses, and the Photron company for their assistance with the use of high-speed cameras.

## Notes and references

- (a) D. Kitagawa, H. Nishi and S. Kobatake, *Angew. Chem., Int. Ed.*, 2013, **52**, 9320–9322; (b) D. Kitagawa, K. Kawasaki, R. Tanaka and S. Kobatake, *Chem. Mater.*, 2017, **29**, 7524–7532; (c) D. Kitagawa, H. Tsujioka, F. Tong, X. Dong, C. J. Bardeen and S. Kobatake, *J. Am. Chem. Soc.*, 2018, **140**, 4208–4212.
- T. Taniguchi, H. Sugiyama, H. Uekusa, M. Shiro, T. Asahi and H. Koshima, *Nat. Commun.*, 2018, **9**, 538.
- (a) N. K. Nath, M. K. Panda, S. C. Sahoo and P. Naumov, *CrystEngComm*, 2014, **16**, 1850–1858; (b) P. Naumov, S. Chizhik, M. K. Panda, N. K. Nath and E. Boldyreva, *Chem. Rev.*, 2015, **115**, 12440–12490; (c) P. Commens, I. T. Desta, D. P. Karothu, M. K. Panda and P. Naumov, *Chem. Commun.*, 2016, **52**, 13941–13954.
- (a) S. C. Sahoo, S. B. Sinha, M. S. Kiran, U. Ramamurty, A. F. Dericioglu, C. M. Reddy and P. Naumov, *J. Am. Chem. Soc.*, 2013, **135**, 13843–13850; (b) S. C. Sahoo, M. K. Panda, N. K. Nath and P. Naumov, *J. Am. Chem. Soc.*, 2013, **135**, 12241–12251; (c) S. Chandra Sahoo, N. K. Nath, L. Zhang, M. H. Semreen, T. H. Al-Tel and P. Naumov, *RSC Adv.*, 2014, **4**, 7640–7647; (d) M. K. Panda, T. Runcevski, S. Chandra Sahoo, A. A. Belik, N. K. Nath, R. E. Dinnebier and P. Naumov, *Nat. Commun.*, 2014, **5**, 4811; (e) M. K. Panda, T. Runcevski, A. Husain, R. E. Dinnebier and P. Naumov, *J. Am. Chem. Soc.*, 2015, **137**, 1895–1902; (f) E. Nauha, P. Naumov and M. Lusi, *CrystEngComm*, 2016, **18**, 4699–4703; (g) M. K. Panda, R. Centore, M. Causa, A. Tuzi, F. Borbone and P. Naumov, *Sci. Rep.*, 2016, **6**, 29610; (h) T. Takeda and T. Akutagawa, *Chem.–Eur. J.*, 2016, **22**, 7763–7770; (i) D. P. Karothu, J. Weston, I. T. Desta and P. Naumov, *J. Am. Chem. Soc.*, 2016, **138**, 13298–13306; (j) A. Khalil, E. Ahmed and P. Naumov, *Chem. Commun.*, 2017, **53**, 8470–8473; (k) S. Mittapalli, D. Sravanakumar Perumalla and A. Nangia, *IUCrJ*, 2017, **4**, 243–250; (l) I. Lončarić, J. Popović, V. Despoja, S. Burazer, I. Grgičević, D. Popović and Ž. Skoko, *Cryst. Growth Des.*, 2017, **17**, 4445–4453; (m) Y. Shibuya, Y. Itoh and T. Aida, *Chem.–Asian J.*, 2017, **12**, 811–815; (n) H. Rawat, R. Samanta, B. Bhattacharya, S. Deolka, A. Dutta, S. Dey, K. B. Raju and C. M. Reddy, *Cryst. Growth Des.*, 2018, **18**, 2918–2923; (o) L. O. Alimi, D. P. van Heerden, P. Lama, V. J. Smith and L. J. Barbour, *Chem. Commun.*, 2018, **54**, 6208–6211.
- (a) P. Naumov, S. C. Sahoo, B. A. Zakharov and E. V. Boldyreva, *Angew. Chem., Int. Ed.*, 2013, **52**, 9990–9995; (b) R. Medishetty, A. Husain, Z. Bai, T. Runcevski, R. E. Dinnebier, P. Naumov and J. J. Vittal, *Angew. Chem., Int. Ed.*, 2014, **53**, 5907–5911; (c) R. Medishetty, S. C. Sahoo, C. E. Mulijanto, P. Naumov and J. J. Vittal, *Chem. Mater.*, 2015, **27**, 1821–1829; (d) P. Commens, A. Natarajan, C.-K. Tsai, S. I. Khan, N. K. Nath, P. Naumov and M. A. Garcia-Garibay, *Cryst. Growth Des.*, 2015, **15**, 1983–1990; (e) T. Seki, K. Sakurada, M. Muromoto and H. Ito, *Chem. Sci.*, 2015, **6**, 1491–1497; (f) M. K. Mishra, A. Mukherjee, U. Ramamurty and G. R. Desiraju, *IUCrJ*, 2015, **2**, 653–660; (g) E. Hatano, M. Morimoto, K. Hyodo, N. Yasuda, S. Yokojima, S. Nakamura and K. Uchida, *Chem.–Eur. J.*, 2016, **22**, 12680–12683; (h) C. E. Mulijanto, H. S. Quah, G. K. Tan, B. Donnadieu and J. J. Vittal, *IUCrJ*, 2017, **4**, 65–71; (i) E. Hatano, M. Morimoto, T. Imai, K. Hyodo, A. Fujimoto, R. Nishimura, A. Sekine, N. Yasuda, S. Yokojima, S. Nakamura and K. Uchida, *Angew. Chem., Int. Ed.*, 2017, **56**, 12576–12580.
- (a) M. C. Etter and A. R. Siedle, *J. Am. Chem. Soc.*, 1983, **105**, 641–643; (b) J. Ding, R. Herbst, K. Praefcke, B. Kohne and W. Saenger, *Acta Crystallogr., Sect. B: Struct. Sci.*, 1991, **47**, 739–742; (c) T. Steiner, W. Hinrichs, W. Saenger and R. Gigg, *Acta Crystallogr., Sect. B: Struct. Sci.*, 1993, **49**, 708–718; (d) I. Colombier, S. Spagnoli, A. Corval, P. Baldeck, M. Giraud, A. Léaustic and P. Yu, *Mol. Cryst. Liq. Cryst.*, 2005, **431**, 495–499; (e) R. J. Davey, S. J. Maginn, S. J. Andrews, S. N. Black, A. M. Buckley, D. Cottier, P. Dempsey, R. Plowman, J. E. Rout, D. R. Stanley and A. Taylor, *Mol. Cryst. Liq. Cryst.*, 2006, **242**, 79–90; (f)





- T. Siegrist, C. Besnard, S. Haas, M. Schiltz, P. Pattison, D. Chernyshov, B. Batlogg and C. Kloc, *Adv. Mater.*, 2007, **19**, 2079–2082; (g) A. Natarajan, C. Tsai, S. I. Khan, P. McCarren, K. Houk and M. A. Garcia-Garibay, *J. Am. Chem. Soc.*, 2007, **129**, 9846–9847; (h) R. Centore, M. Jazbinsek, A. Tuzi, A. Roviello, A. Capobianco and A. Peluso, *CrystEngComm*, 2012, **14**, 2645–2653.
- 7 (a) H. Ito, T. Saito, N. Oshima, N. Kitamura, S. Ishizaka, Y. Hinatsu, M. Wakeshima, M. Kato, K. Tsuge and M. Sawamura, *J. Am. Chem. Soc.*, 2008, **130**, 10044–10045; (b) H. Ito, M. Muromoto, S. Kurenuma, S. Ishizaka, N. Kitamura, H. Sato and T. Seki, *Nat. Commun.*, 2013, **4**, 2009; (c) T. Seki, K. Sakurada and H. Ito, *Angew. Chem., Int. Ed.*, 2013, **52**, 12828–12832; (d) S. Yagai, S. Okamura, Y. Nakano, M. Yamauchi, K. Kishikawa, T. Karatsu, A. Kitamura, A. Ueno, D. Kuzuhara, H. Yamada, T. Seki and H. Ito, *Nat. Commun.*, 2014, **5**, 4013; (e) T. Seki, T. Ozaki, T. Okura, K. Asakura, A. Sakon, H. Uekusa and H. Ito, *Chem. Sci.*, 2015, **6**, 2187–2195; (f) T. Seki, Y. Takamatsu and H. Ito, *J. Am. Chem. Soc.*, 2016, **138**, 6252–6260; (g) S. Yagai, T. Seki, H. Aonuma, K. Kawaguchi, T. Karatsu, T. Okura, A. Sakon, H. Uekusa and H. Ito, *Chem. Mater.*, 2016, **28**, 234–241; (h) T. Seki, N. Tokodai, S. Omagari, T. Nakanishi, Y. Hasegawa, T. Iwasa, T. Taketsugu and H. Ito, *J. Am. Chem. Soc.*, 2017, **139**, 6514–6517; (i) M. Jin, T. Seki and H. Ito, *J. Am. Chem. Soc.*, 2017, **139**, 7452–7455; (j) T. Seki, K. Kobayashi and H. Ito, *Chem. Commun.*, 2017, **53**, 6700–6703; (k) M. Jin, T. Sumitani, H. Sato, T. Seki and H. Ito, *J. Am. Chem. Soc.*, 2018, **140**, 2875–2879.
- 8 Under UV illumination ( $\lambda = 365$  nm), **1a** only exhibits weak red emission with a low absolute emission quantum yield ( $\Phi_{\text{em}} \leq 1\%$ ; Fig. S2†).
- 9 The emission of **1b** is also very weak ( $\Phi_{\text{em}} \leq 1\%$ ; Fig. S2†).
- 10 Upon cooling at around  $10^\circ\text{C min}^{-1}$ , the crystals of **1** start to jump around at  $-50^\circ\text{C}$ .
- 11 This mechanical behavior is not observed in all thermosolient crystals that show splitting. Other thermosolient crystals show splitting along the major crystal axis; for details, see ref. 3a and 4a.
- 12 (a) P. Pyykkö, *Angew. Chem., Int. Ed.*, 2004, **43**, 4412–4456; (b) H. Schmidbaur and A. Schier, *Chem. Soc. Rev.*, 2008, **37**, 1931–1951.
- 13 In order to investigate the structural origins of the thermosolient effect of **1**, single crystals of **1a** (typical size:  $0.3 \times 0.2 \times 0.05$  mm<sup>3</sup>) were slowly cooled ( $1^\circ\text{C min}^{-1}$ ) on a goniometer head using a flow of nitrogen gas to furnish **1b**. During this procedure, crystals of **1** sometimes broke. Using lots of Paratone oil to fix the crystals decreases the probability of the crystals breaking.
- 14 We also confirmed the slipping motion between two molecules, which is reflected in changes of the distance and angle of the Cl...Cl interaction (Fig. S12†).
- 15 M. J. Cliffe and A. L. Goodwin, *J. Appl. Crystallogr.*, 2012, **45**, 1321–1329.
- 16 For the calculation of  $\alpha$  values of **1**, we use the data at temperature in which the lattice expansion occurs non-linearly. Thus, as suggested by Skoko (ref. 4f), the  $\alpha$  values of **1** with those of other molecular crystals, whose  $\alpha$  values are estimated for the linear expansion region, would not be directly compared.
- 17 Temperature-dependent powder XRD measurements of powder samples of **1** do not show significant changes (Fig. S19†) different from the results of the single-crystal XRD measurements.
- 18 Disappearance of the DSC peak upon powdering was previously reported, see: V. S. Minkov, V. A. Drebuschak, A. G. Ogienkoac and E. V. Boldyreva, *CrystEngComm*, 2011, **13**, 4417–4426. See also ref. 4b.
- 19 The powder XRD pattern of the powder form of **1** exhibits rather low peak intensity (Fig. S19†), indicating the low crystallinity. Thus, the powder samples also contain a certain amount of amorphous components as impurities, which would interfere with the phase transition from **1a** to **1b** upon cooling.
- 20 Limited examples have been reported by Naumov and Skoko: see ref. 4g and l.

