

Cite this: *RSC Adv.*, 2018, 8, 39511

# Experimental study on hydrate anti-agglomeration in the presence of rhamnolipid

Guodong Hou,<sup>ab</sup> Deqing Liang <sup>\*b</sup> and Xiaosen Li<sup>b</sup>

Gas hydrates might cause a potential safety hazard in subsea flow assurance. Anti-agglomeration is a promising approach to keep subsea oil and gas pipelines free from hydrate risks. Effective anti-agglomerants could prevent hydrate agglomeration of small crystallites by lowering the capillary force between hydrate particles. Biosurfactants are widely known for their eco-friendly nature. In this work, *n*-octane, water and methane were used as hydrate-forming ingredients to examine the effectiveness of rhamnolipid. Our investigation was carried out at constant high pressure (10 MPa) with different water cuts, subcooling degrees and rhamnolipid mass fractions. Three agglomeration states of hydrate were observed in a high-pressure visual autoclave apparatus. Torque measurements showed that rhamnolipid could effectively prevent hydrate agglomeration with a concentration of 0.5 wt%. In addition, the structural characteristics and morphology of hydrate were observed by use of powder X-ray diffraction, Raman spectroscopy and cryo-scanning electron microscopy. We noticed that the introduction of rhamnolipid had no effect on hydrate structure, but it could increase the large and small cavity ratio value and hydration number. Through the microscopic images, we inferred that rhamnolipid could make the surface of hydrate smooth, which resulted in a more ordered surface.

Received 29th August 2018  
Accepted 13th November 2018

DOI: 10.1039/c8ra07215a

rsc.li/rsc-advances

## 1. Introduction

Gas hydrates are crystalline inclusion compounds that are formed when light hydrocarbon molecules get trapped in hydrogen bonded cages formed by water molecules.<sup>1</sup> In the past few decades, hydrate flow assurance issues have been a menace for the offshore oil and gas exploration and production industry because gas hydrates can easily form at high pressure and low temperature in subsea flowlines.<sup>2</sup>

Traditional strategies of hydrate prevention include thermal insulation and electrical heating, and also thermodynamic inhibition by methanol and other thermodynamic hydrate inhibitors (THIs).<sup>3,4</sup> The addition of THIs can shift the hydrate equilibrium conditions to higher pressure and lower temperature.<sup>3</sup> Taking into account the high cost and serious environmental impacts of thermodynamic inhibition, low-dosage hydrate inhibitors (LDHIs) have been widely developed and applied.<sup>5</sup> As an alternative to THIs, LDHIs do not change hydrate thermodynamic equilibrium but rather the formation kinetics or agglomeration states. LDHIs are generally subdivided into kinetic inhibitors (KHIs) and anti-agglomerants (AAs), and their effective concentration is relatively low (0.1–1.0 wt%).<sup>6</sup> KHIs are water-soluble polymers that work by

delaying hydrate formation (nucleation) as well as slowing the growth of hydrate crystals; AAs are generally surfactants that work by preventing hydrate particle agglomeration rather than preventing hydrate formation.<sup>7,8</sup>

In the 1990s, Shell calculated by standard nucleation theory that one cannot stop hydrates nucleating at subcoolings above 10 °C, so it was realized that KHIs cannot produce satisfactory results in deepwater projects. Thus, they turned their attention to developing useful AAs. They focused on alkylarylsulfonates, alkylglucosides and quaternary ammonium surfactants; the performance of the first two classes of AAs was mediocre, and Shell reasoned that quaternary ammonium surfactants would be ideal AAs.<sup>6</sup> Some commercially available surfactants can keep hydrate particles suspended in oil emulsions. Huo *et al.* tested hydrate plug prevention by some commercial surfactants (Span20, Span40, Span60, Span80) and their synthesized chemical dodecyl-2-(2-caprolactamyl)ethanamide (CDDA). They point out that both commercial surfactants and synthesized ones have merits and demerits. Span chemicals are cheap but their effective concentrations have to be as high as 3 wt%. However, CDDA is effective at 0.75 wt%, but the cost of CDDA is much higher.<sup>9</sup> Due to the low price of Span, Peng *et al.* adopted a new kind of AA, CAA, a mixture of Span20 and ester polymer with a mixing ratio of 4 : 1. They investigated the flow characteristics, shut down/restart behavior, and morphology of hydrate slurries at different water cuts by using a flow loop device, and the results indicated a favorable effect of CAA on inhibiting hydrates.<sup>10</sup> Lv *et al.* noticed that hydrates often form

<sup>a</sup>Department of Thermal Science and Energy Engineering, University of Science and Technology of China, Hefei 230027, China

<sup>b</sup>Key Laboratory of Gas Hydrate, Guangzhou Institute of Energy Conversion, Chinese Academy of Sciences, Guangzhou 510640, People's Republic of China. E-mail: liangdq@ms.giec.ac.cn

from water-in-oil emulsion and the measurement of slurry viscosity constitutes the basis for the application of hydrate slurry flow technology. They used a novel high-pressure viscometer to measure the viscosity of hydrate slurry produced by different combined sorbitan monolaurate AAs. Their study implies that AAs can notably affect the sensitivity of hydrate slurry viscosity to volume of hydrates and temperature.<sup>11</sup> As time goes by, many researchers have concentrated on developing new AAs and combined AAs. A kind of AA extracted from a saponins plant developed by the Chemical Engineering Department of China University of Petroleum-Beijing<sup>12</sup> was used by Shi *et al.* to prevent hydrate plugging.<sup>13</sup> Kelland *et al.* have developed two new classes of AAs based on zwitterionic surfactants and alkylamide surfactants, the results indicating positive performance for some products but not as good as that of commercial quaternary ammonium-based surfactant AAs.<sup>14,15</sup> Gas hydrate AA performance of a series of *n*-alkyltri(*n*-butyl) ammonium bromides has been studied. An optimum alkyl tail chain length for the anti-agglomerating efficacy of this surfactant class is found, and an increase salinity can improve their performance.<sup>16</sup> The effects of commercial additives in water + oil systems have been evaluated. AEO-3 combined with some commercial additives exhibited good anti-agglomeration performance.<sup>17</sup> Recently, Sun *et al.* and their research group have reported a new AA synthesized by Lubrizol Corporation and carried out a series of researches based on the new AA.<sup>18–21</sup>

Quaternary ammonium salts (QAS) are claimed to be the most effective AAs at high subcooling, but their toxicity and low biodegradability limit their utilization.<sup>22</sup> Because many AAs are toxic and have low biodegradability, the use of environmentally friendly AAs is required to be on the agenda. Biosurfactants are essentially green surfactants with biological origin. They not only have low toxicity and good compatibility with the environment, but also have good emulsification, dispersion, solubilization and other properties of common surfactants. Biosurfactants have promising development value in oil drilling, hydrate plug prevention and other fields and have been applied in the oil industry.<sup>23</sup> York *et al.* are aware of the potential of rhamnolipids and notice that rhamnolipids will be studied further in the future. They examined the effectiveness of a QAS and a rhamnolipid biosurfactant, the visual observation measurements showing that a small concentration of QAS can prevent tetrahydrofuran (THF) hydrate agglomeration and 0.05 wt% can be regarded as an effective concentration for rhamnolipid.<sup>24</sup> Rhamnolipid biosurfactant in cyclopentane hydrates is similar to THF hydrates, and as a co-surfactant, MeOH can improve the performance of rhamnolipid.<sup>25</sup> Surfactants can generally promote the formation of hydrates, and the effects of the biosurfactant surfactin on methane hydrate formation kinetics have been investigated by Bhattacharjee *et al.*<sup>26</sup> Jadav *et al.* investigated the influence of biosurfactants obtained during the cultivation of microorganisms on the formation kinetics of methane gas hydrate, results showing that biosurfactants are more efficient than sodium dodecylsulfate.<sup>27</sup> Purified biosurfactant rhamnolipids can reduce the surface tension of water, and Arora *et al.* observed that 1000 ppm of rhamnolipid solution in C-type silica gel bed system increased

the methane hydrate formation rate by 42.97%, reduced the induction time of hydrate formation by 22.63% and shifted methane hydrate formation temperature to higher values relative to water saturated system.<sup>28</sup>

The purpose of this work was to investigate hydrate anti-agglomeration in the presence of biosurfactant rhamnolipid. Macroscopic experiments were conducted under high pressure by a high-pressure visual autoclave. The influencing factors of water cut, subcooling and mass concentration of rhamnolipid were considered in our study. To further understand the hydrate microstructure and anti-agglomeration mechanism, powder X-ray diffraction (PXRD), Raman spectroscopy and cryo-scanning electron microscopy (cryo-SEM) were employed to determine the hydrate crystal structure and morphology.

## 2. Experimental methods

### 2.1. Experimental materials

The biosurfactant rhamnolipid studied in this work was purchased from Xi'an Boliante Chemical Co. Ltd with a purity of 0.96 mass fraction. The rhamnolipid was a mixture of two forms and the chemical structures are shown in Fig. 1. The concentrations of rhamnolipid used were 0.1, 0.5 and 1.0 wt%. In all test mixtures, deionized water and *n*-octane were used as aqueous and oil phases, respectively. Deionized water with a resistivity of 18.25 mΩ cm<sup>-1</sup> was produced by an ultrapure water system in our laboratory and *n*-octane was purchased from Shanghai Baishun Biological Technology Co. Ltd. CH<sub>4</sub> gas with a stated purity of 99.9% was supplied by Shiyuan Gas Co. Ltd. Materials were weighed on an electronic analytical balance with an uncertainty of ±0.001 g and used without any further purification.

### 2.2. Experimental apparatus

The experiments were carried out using a new fabricated high-pressure visual autoclave apparatus, a schematic diagram of

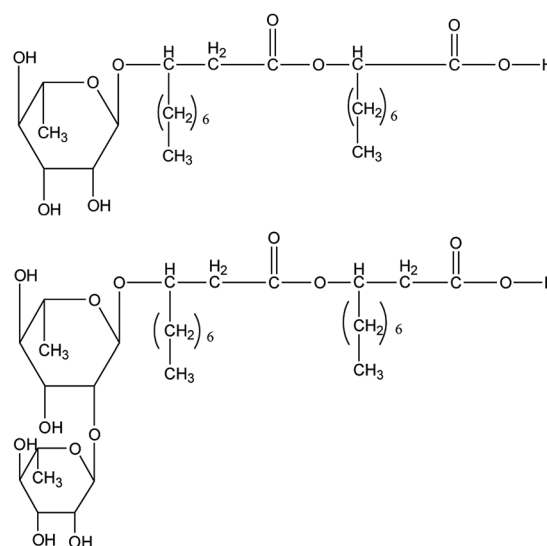


Fig. 1 Two rhamnolipid chemical compounds used in this work.



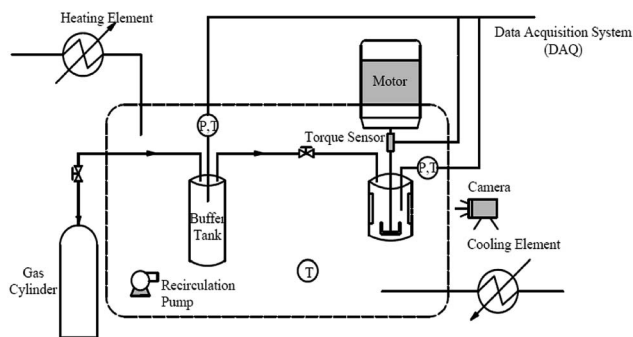


Fig. 2 Schematic diagram of high-pressure visual autoclave apparatus.

which is shown in Fig. 2. A hydrate formation reactor was the core of the apparatus, it consisted of a cylindrical vessel made of 316 stainless steel and two transparent quartz windows (15 × 90 mm each). A total of 100 mL of solution was loaded into the reactor, which had a maximum effective volume of 328 mL. The reactor was designed to operate at pressures up to 20 MPa. A direct-current (DC) motor acting as a stirrer driver was positioned at the top of the reactor to provide sufficient agitation for hydrate formation. A torque sensor was connected below the stirrer driver to measure the torque changes of the hydrate slurry during the experiment. The miniature torque sensor (CYB-806s) was purchased from Beijing Westzh M&E Technology Ltd, with a range of 0–100 N cm and an uncertainty of 0.5%. To mix the liquid phase more effectively, a U-shaped impeller was located on the base of the solid shaft, and the stirring rate was maintained at 500 rpm for all experiments. The reactor was immersed in a glycol–water bath, containing an external heating and cooling system to maintain the temperature at a plateau. A platinum resistance thermometer with an uncertainty of  $\pm 0.1$  K and a pressure transducer with an uncertainty of  $\pm 0.01$  MPa were applied to monitor the temperature and pressure of the system. Temperature, pressure, torque data and process images were recorded throughout each experiment using a data acquisition system (DAQ).

### 2.3. Experimental procedures

**2.3.1. Macroscopic experiments.** The following procedures were used to measure hydrate formation in each experiment using the high-pressure visual autoclave apparatus:

(1) The reactor was rinsed three times with distilled water. The reactor was loaded with 100 mL of aqueous solution and *n*-octane at the desired volumetric ratio after the reactor was dried completely.

(2) In all experiments, the reactor was cooled to the set point temperature over 60 min.

(3) The reactor was purged with methane gas and evacuated by a vacuum pump three times to fully exhaust the air.

(4) The reactor was then pressurized to the desired pressure (10 MPa). Once the temperature and pressure changes caused by the introduced gas phase were eliminated, the stirrer was engaged at 500 rpm.

(5) The end of the formation of hydrate could be verified by the occurrence of stabilized temperature and pressure.

(6) The pressure, temperature and torque were continuously recorded at 10 seconds intervals over the entire experiment.

**2.3.2. Microscopic experiments.** The microscopic experiments in our study were composed of PXRD, Raman and cryo-SEM measurements. All hydrate samples were produced in the system at 10 MPa and 273.15 K. The hydrate samples were stored in liquid nitrogen to prevent hydrate dissociation.

PXRD was used to determine the structural characteristics of the hydrate samples with an X'pert Highscore Plus (PANalytical) diffractometer. The measurements were carried out in the  $\theta/2\theta$  step scan mode with a step width of  $0.017^\circ$  over a  $2\theta$  ranges of  $5\text{--}80^\circ$  using Cu K $\alpha$  radiation ( $\lambda = 1.5406$  Å) and parallel beam optics at 203.15 K at atmospheric pressure. After the hydrate samples were taken out and ground into fine powder, about 100 mg of powder sample was loaded into the sample holder. The temperature was maintained by a liquid nitrogen flow during the experiment. Raman spectra were taken with a confocal Raman spectrometer (LabRAM HR, Horiba) equipped with a multichannel air-cooled charge-coupled device detector. An Ar<sup>+</sup> laser (532 nm) was used as the excitation source with a maximum power of 50 mW. The powder samples used for Raman analysis were slightly thicker than those used for PXRD analysis. About 50 mg of power sample was loaded into a removable sapphire sample holder and the laser beam was allowed to focus on the hydrate surface. The sapphire sample holder was fixed in a temperature-controlled stage (203.15 K), which was also cooled by a liquid nitrogen flow. The structure type and relative cage occupancy of hydrate samples could be determined from Raman spectrum analysis. Cryo-SEM (S-4800, Hitachi) was used to observe the microscopic morphology of the hydrate samples. A small bulk sample (about 50 mg) wrapped in foil was loaded into a copper sample holder. The foil was used to wrap the sample and prevent the sample from falling. Then, the sample was opened from the foil and fed into the observation stage. The whole observation was obtained at 100 K in a vacuum environment.

## 3. Results and discussion

### 3.1 Macroscopic experiments

In this study, the results of hydrate formation kinetics were obtained with isovolumetric experiments at constant temperature. Based on torque change during the experiments and visual observations, the effectiveness of biosurfactant rhamnolipid at various testing conditions could be judged. Since each experiment involved a large subcooling and maintained a vigorous agitation (500 rpm), the hydrate was rapidly formed after the start of the agitation. Pressure and temperature profile with a sharp pressure drop and temperature rise indicated hydrate formation. Through the transparent windows, the formation and plug of hydrate could be observed by the naked eye in real time. Fig. 3 presents the torque, pressure and temperature as a function of time for the experiment at 273.15 K. The rhamnolipid concentration and water-cut in this experiment were 0.1 wt% and 30%. The data presented in this work were



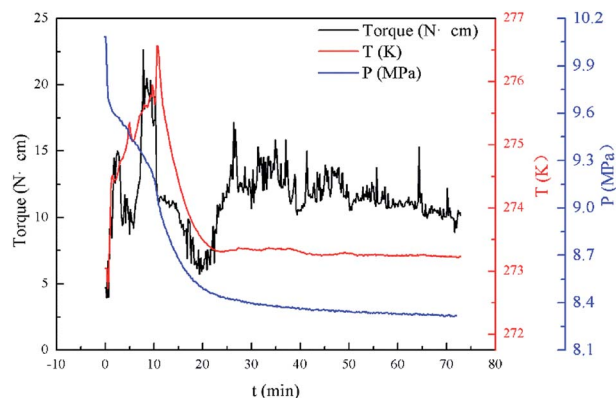


Fig. 3 Example data observed during hydrate formation in the reactor for a 30% water-cut system at 273.15 K.

obtained after the start of the agitation. As shown in Fig. 3, with the start of agitation, the pressure inside the reactor decreased rapidly which indicated the formation of hydrate.

As is well known, some commercial surfactants such as Span80 and Span40 can prevent hydrate agglomeration. In order to verify the performance of the biosurfactant rhamnolipid, we performed comparative experiments at 273.15 K and 10 MPa. Fig. 4 presents the torque profiles of rhamnolipid, Span80 and Span40 with a concentration of 0.5 wt% in 20% water-cut system. The rhamnolipid used in this experiment was more soluble in water than Span80 and Span40. Before the start of experiment, we prepared an aqueous solution of rhamnolipid and water according to the experimental requirements in advance, and then the aqueous solution and *n*-octane were added to the reactor; the added solution showed a clear oil-water interface. Since the stirring in our experiment was sufficient, the experiment was started when the temperature and pressure reached the specified conditions. In 2001, Huo *et al.* used the DC motor current as a criterion to test hydrate plug prevention by some commercial surfactants and their synthesized chemical (CDDA).<sup>9</sup> Their change of motor current was similar to the change of torque in our experiment. But because the mixing speed in their experiment was 300 rpm and the

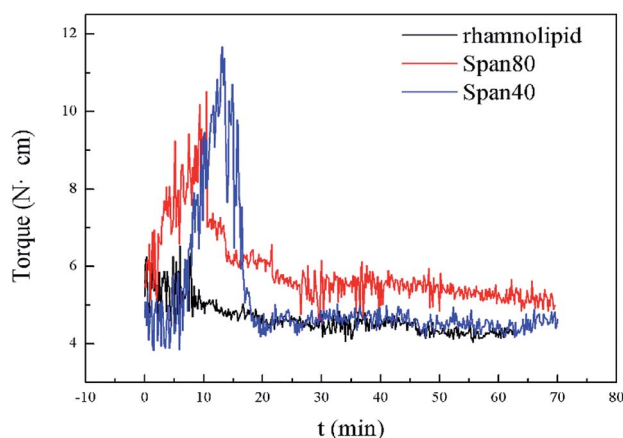


Fig. 4 Torque profiles of rhamnolipid, Span80 and Span40 with a concentration of 0.5 wt% in 20% water-cut system.

experiment device was different, the time of their experiment was longer than that of ours. As shown in Fig. 4, when Span80 and Span40 acted as AAs, the maximum torque was significantly greater than for rhamnolipid. It could be clearly found that the anti-agglomeration effect of rhamnolipid was better than that of Span80 and Span40.

Three factors might affect the torque value in the experiment: viscosity change produced by hydrate formation, hydrate dispersion and dispersion or plug formation. In Fig. 3, at the beginning of the experiment, the hydrate formed quickly and the torque rose to a torque peak. This process is similar to the dangerous restart process of oil and gas pipelines, so the torque variation during this period could be used to evaluate the effectiveness of AA. The initial torque value at 10 MPa and 293.15 K was kept at around 4 N cm; once the hydrate formed, the impeller was required to overcome greater friction, resulting in an increased torque. There was a drop after the torque spiked as high as 20 N cm, and due to the continued mixing, the large amount of hydrate formed was dispersed to the edge of the reactor which resulted in insufficient resistance around the impeller. Through our observation *via* the quartz windows, it was found that this part of the hydrate climbed up and collapsed. Therefore, after the torque dropped, there was another rise, and it then became stable. After we opened the reactor, most of the hydrate was firmly attached to the impeller which caused a serious blockage. This phenomenon and torque variation implied that the rhamnolipid with a concentration of 0.1 wt% could not achieve an anti-agglomeration effect in oil-water system with 30% water cut. When the experimental pressure and temperature were relatively stable, which could be considered as the end of the experiment, the fluctuation of the torque curve was not as much as before and the plug was already formed. However, after the dispersion or plug was formed, the torque variation could not completely reflect the state of hydrate agglomeration in the reactor. It might be unpersuasive to use the torque variation at the end of the experiment as a description of anti-agglomeration effect, so the average torque of the first 15 minutes ( $Torque_{15}$ ) and the maximum torque ( $Torque_{max}$ ) were used to evaluate the performance of the rhamnolipid.

Tables 1–3 present the experimental groupings and results in detail. Three different final hydrate agglomeration states were observed throughout all experiments, which were blockage (blocking at the impeller), wall accumulation (gathering along the wall) and well dispersed. A detailed discussion and explanation are presented below.

**3.1.1 Effect of water cut.** To the best of our knowledge, the application of AAs is mainly in water–oil systems. In high water cut systems, AAs can hardly show a performance. Therefore, in this work, we evaluated the anti-agglomeration performance of rhamnolipid at low water cuts (10–30%). The torque profiles for different water cuts in pure oil–water system at 275.15 K are presented in Fig. 5. In this investigation, since there was a relatively small amount of hydrate formed in the 10% water cut system and quickly squeezed by the impeller, a moderate fluctuation was exhibited. As we expected, there was a sharp rise of torque in the 20% and 30% water cut systems. When the





**Table 1** Experimental groupings and results at 273.15 K, including the  $Torque_{max}$ ,  $\overline{Torque}_{15}$  and agglomeration status for different systems

Exp.	Water cut (%)	AA (wt%)	$Torque_{max}$ (N cm)	$\overline{Torque}_{15}$ (N cm)	Agglomeration status
1	10	0	6.6	5.3	Wall accumulation
2	20	0	29.5	10.3	Blockage
3	30	0	22.9	7.4	Blockage
4	10	0.1	10.1	6.5	Wall accumulation
5	20	0.1	9.1	6.6	Wall accumulation
6	30	0.1	22.6	12.5	Wall accumulation
7	10	0.5	6.7	5.2	Well dispersed
8	20	0.5	6.5	5.2	Well dispersed
9	30	0.5	6.3	4.9	Well dispersed
10	10	1.0	6.8	5.4	Well dispersed
11	20	1.0	6.5	4.8	Well dispersed
12	30	1.0	7.5	5.7	Well dispersed

**Table 2** Experimental groupings and results at 275.15 K, including the  $Torque_{max}$ ,  $\overline{Torque}_{15}$  and agglomeration status for different systems

Exp.	Water cut (%)	AA (wt%)	$Torque_{max}$ (N cm)	$\overline{Torque}_{15}$ (N cm)	Agglomeration status
13	10	0	7.0	5.4	Wall accumulation
14	20	0	20.8	8.1	Blockage
15	30	0	15.9	7.2	Blockage
16	10	0.1	7.8	5.7	Wall accumulation
17	20	0.1	10.8	6.5	Wall accumulation
18	30	0.1	26.6	9.2	Wall accumulation
19	10	0.5	7.4	5.9	Well dispersed
20	20	0.5	9.5	5.9	Well dispersed
21	30	0.5	8.2	5.9	Well dispersed
22	10	1.0	7.8	5.8	Well dispersed
23	20	1.0	7.0	5.3	Well dispersed
24	30	1.0	6.8	4.9	Well dispersed

experiment was carried out for about half an hour, the torque fluctuated at a higher value, which could be thought of as a hazard signal about the plug. Numerous spikes in the torque were observed throughout the investigation, which were similar to the torque variation described by Sohn *et al.* and pressure drop variation reported by Peng *et al.*<sup>10,29</sup> In our experiments, the fed water almost completely formed hydrates; the more water added in the reactor, the more hydrates were formed. A greater amplitude and frequency of torque fluctuation were observed in higher water cut systems with a large amount of hydrates.

Interestingly, as shown in Fig. 5, our measurements of  $Torque_{max}$  and  $\overline{Torque}_{15}$  in 20% water cut system were higher than those in 30% water cut system. In Tables 1 and 3, similar results are presented for systems without the addition of rhamnolipid. A bulk hydrate phase was found to be wrapped on the impeller after opening the reactor. A solid hydrate plug was found stuck firmly around the impeller by Huo *et al.*<sup>9</sup> A likely explanation for the result was that the higher the water cut of the system, the smaller the volume of the remaining hydrocarbon phase, since the water phase was completely converted

**Table 3** Experimental groupings and results at 277.15 K, including the  $Torque_{max}$ ,  $\overline{Torque}_{15}$  and agglomeration status for different systems

Exp.	Water cut (%)	AA (wt%)	$Torque_{max}$ (N cm)	$\overline{Torque}_{15}$ (N cm)	Agglomeration status
25	10	0	13.1	6.5	Wall accumulation
26	20	0	14.9	7.0	Blockage
27	30	0	12.5	5.4	Blockage
28	10	0.1	8.5	5.7	Wall accumulation
29	20	0.1	9.4	6.7	Wall accumulation
30	30	0.1	25.4	10.0	Wall accumulation
31	10	0.5	7.8	5.9	Well dispersed
32	20	0.5	7.7	6.0	Well dispersed
33	30	0.5	7.5	5.8	Well dispersed
34	10	1.0	6.9	4.7	Well dispersed
35	20	1.0	7.2	5.4	Well dispersed
36	30	1.0	7.6	5.9	Well dispersed



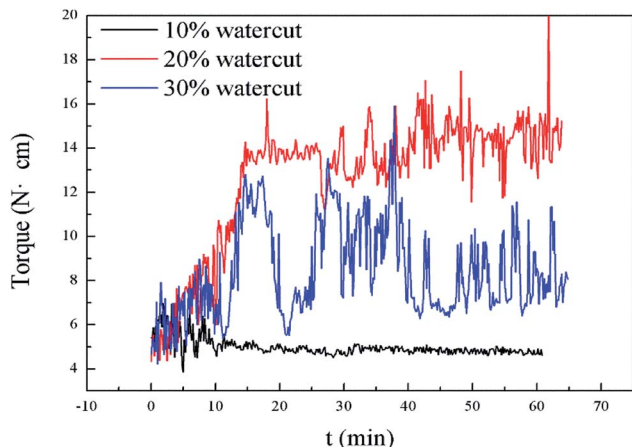


Fig. 5 Torque profiles for different water cuts in pure oil-water system at 275.15 K.

to the hydrate phase. In 20% water cut system, the remaining *n*-octane provided greater friction, which resulted in higher torque value than in 30% water cut system. This phenomenon disappeared in systems with higher water-cut. We measured torque changes of 40% and 50% water-cut systems, and due to the high water cut, there was a large amount of hydrate formation which caused a serious blockage and the motor stopped rotating.

**3.1.2 Effect of subcooling.** It is an indisputable fact that AAs can tolerate high subcooling. In this study, we experimented at three different temperatures, 273.15 K, 275.15 K and 277.15 K. Because the experimental pressure was fixed at 10 MPa and the gas used in the experiments was pure methane gas, the subcoolings corresponding to the three temperatures were 13.7 K, 11.7 K and 9.7 K. As shown in Fig. 6, for 30% water cut system, at 0.5 wt% of rhamnolipid, the torque fluctuation was small and no hydrate plug and accumulation were observed upon opening the reactor. The torque fluctuation in the early stage of the experiment at 277.15 K was slightly more marked than that at the other two experiment temperatures. A higher experiment temperature was accompanied by a lower degree of subcooling, which made the hydrate formation rate slower and hydrate dispersion later. In other words, the hydrate in the experiment at 277.15 K was not completely dispersed while it was well dispersed in the experiment with a lower temperature. With different subcooling, the torque curves showed a small distinction. Therefore, with 0.5 wt% rhamnolipid, subcooling provided a minor effect on hydrate formation. The same results for systems with different AA concentrations are presented in Tables 1–3. According to the values of  $Torque_{max}$  and  $Torque_{15}$  presented in Tables 1–3, it was easy to find that subcooling could affect these two values in pure oil-water system. The greater the subcooling, the faster the formation of hydrate, which accelerated hydrate blockage. When rhamnolipid was loaded into the aqueous phase, the hydrate agglomeration states were changed. We speculated that once the concentration was sufficient, the effect of subcooling could be ignored. On the other hand, it was also proved that rhamnolipid could tolerate a high subcooling.

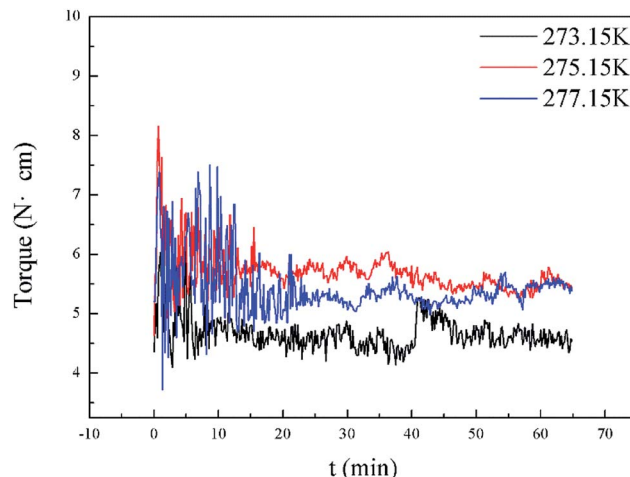


Fig. 6 Torque profiles for different temperatures in 30% water cut system with 0.5 wt% rhamnolipid.

**3.1.3 Effect of concentration of AA.** As discussed earlier, an interesting result was observed in pure oil-water system. Once the rhamnolipid was introduced into the aqueous phase, the above phenomenon disappeared. Three final states of agglomeration were observed in our study, which were hydrate blockage, wall accumulation and well dispersed. The visual observations are shown in Fig. 7. In Fig. 7a, is shown the appearance in pure oil-water system, in Fig. 7b the appearance in the system with rhamnolipid concentration of 0.1 wt%, and in Fig. 7c the observation in the system with a rhamnolipid concentration not less than 0.5 wt%. Hence, it was clear that rhamnolipid could achieve an expected anti-agglomeration effect. In different water-cut systems, there were some differences in the well-dispersed state. When the water cut was 20%, hydrate powders were observed in our investigation, which was

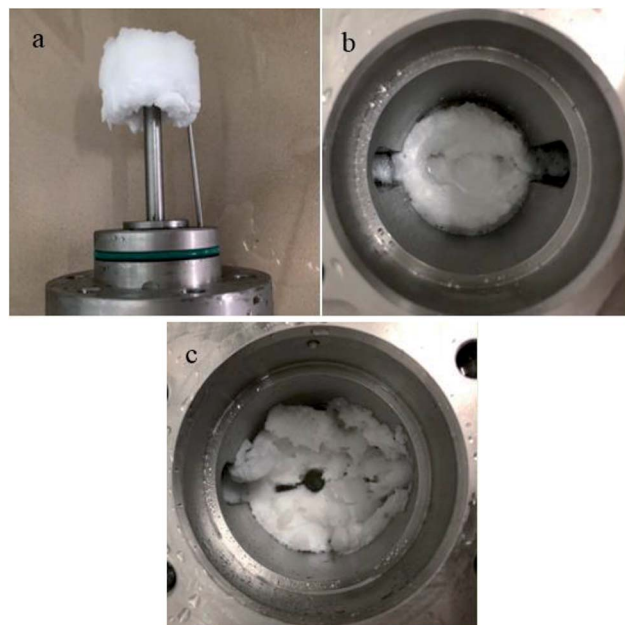


Fig. 7 Images of three final hydrate agglomeration states in this study: (a) blockage; (b) wall accumulation; (c) well dispersed.



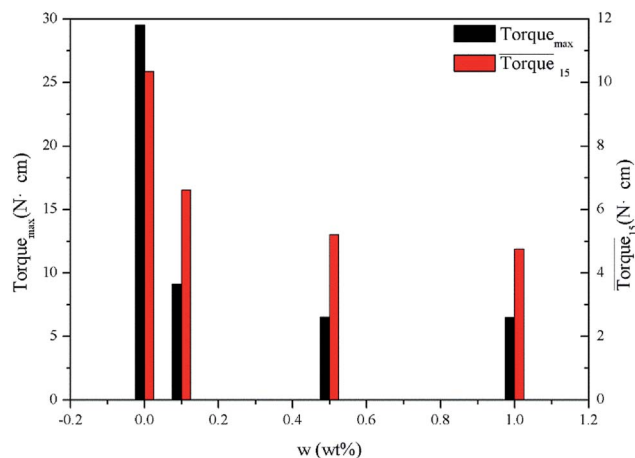


Fig. 8 Histogram of Torque<sub>max</sub> (left ordinate) and Torque<sub>15</sub> (right ordinate) in systems with constant subcooling (13.7 K) and water cut (20%) and different rhamnolipid concentrations.

previously a hydrate slurry. Further, when the water cut was 30%, there was no free *n*-octane observed in the reactor, and the hydrate powders were loosely dispersed. Sun *et al.* observed this phenomenon in their previous research, which was the first report of anti-agglomeration of hydrates in the form of powders.<sup>30</sup>

Fig. 8 presents a comparison of Torque<sub>max</sub> and Torque<sub>15</sub> in systems with the same subcooling (13.7 K) and the same water cut (20%) but different rhamnolipid concentrations. The black column and the red column represent Torque<sub>max</sub> and Torque<sub>15</sub>, respectively. As we can see, the height of columns decreased as the concentration increased. In this work, we considered Torque<sub>max</sub> to be less than 10 N cm and Torque<sub>15</sub> to be no more than 6 N cm as a criterion, and it was used to evaluate the effectiveness of rhamnolipid in 20% and 30% water-cut systems. When the concentration of rhamnolipid reached 0.5 wt%, both Torque<sub>max</sub> and Torque<sub>15</sub> were relatively low. Moreover, when the concentration of rhamnolipid increased, the difference of Torque<sub>max</sub> and the variation of Torque<sub>15</sub> could

be negligible. Meanwhile, as shown in Tables 1–3, the same phenomenon could be observed in other tests. Therefore, in low water cut system, we supposed that 0.5 wt% might be a suitable concentration of hydrate AA. In the natural rhamnolipid biosynthesis process, the hydrophilic groups and hydrophobic groups might be linked to each other and form some homologues with similar chemical structures. In other words, the rhamnolipid used in our experiments was a mixture composed of many homologues. Due to the characteristics of the components of rhamnolipid, as a kind of AA, the rhamnolipid might have a mild synergy effect. In a certain system, the superficial area of the loaded water was constant, and mixed AAs would provide a larger adsorption area than a single AA. A further discussion of the anti-agglomeration effect with rhamnolipid and other AAs is necessary in the future.

### 3.2 Microscopic experiments

**3.2.1 PXRD.** The PXRD patterns of the hydrate samples generated in solution with different concentrations of rhamnolipid are shown in Fig. 9. PXRD is commonly used to determine the type of hydrate. After comparison with standard PXRD patterns of methane hydrate, the hydrate formed in our work was all sI hydrate. This indicated that rhamnolipid could affect the agglomeration states of the hydrate, but it could not affect the hydrate crystal structure. Typical hydrate peaks and ice peaks are marked in Fig. 9. Compared to the hydrate peak intensity (321), the ice peaks were obviously of low intensity. This implied that the hydrate content in our hydrate samples was extremely high, which provided the basis for other microscopic experiments.

**3.2.2 Raman spectra.** Once the presence of hydrate was detected, the hydrate samples were analyzed by Raman spectra to determine the cage occupancies. The Raman spectra measured are shown in Fig. 10. The curves of different colours represent different rhamnolipid concentrations. As reported by Sum *et al.* and Hong *et al.*, the large cage (5<sub>12</sub>6<sub>2</sub>) and small cage (5<sub>12</sub>) of sI hydrate could be represented by the large and small

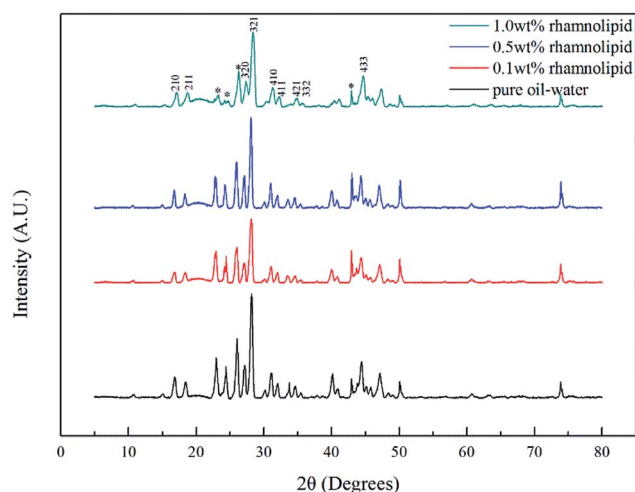


Fig. 9 PXRD patterns of hydrate in the presence of rhamnolipid with different concentrations. Ice peaks are marked by an asterisk.

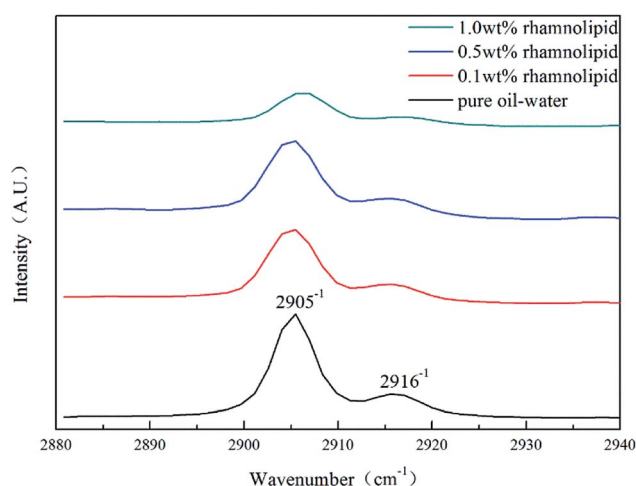


Fig. 10 Raman spectra of hydrate in the presence of rhamnolipid with different concentrations.





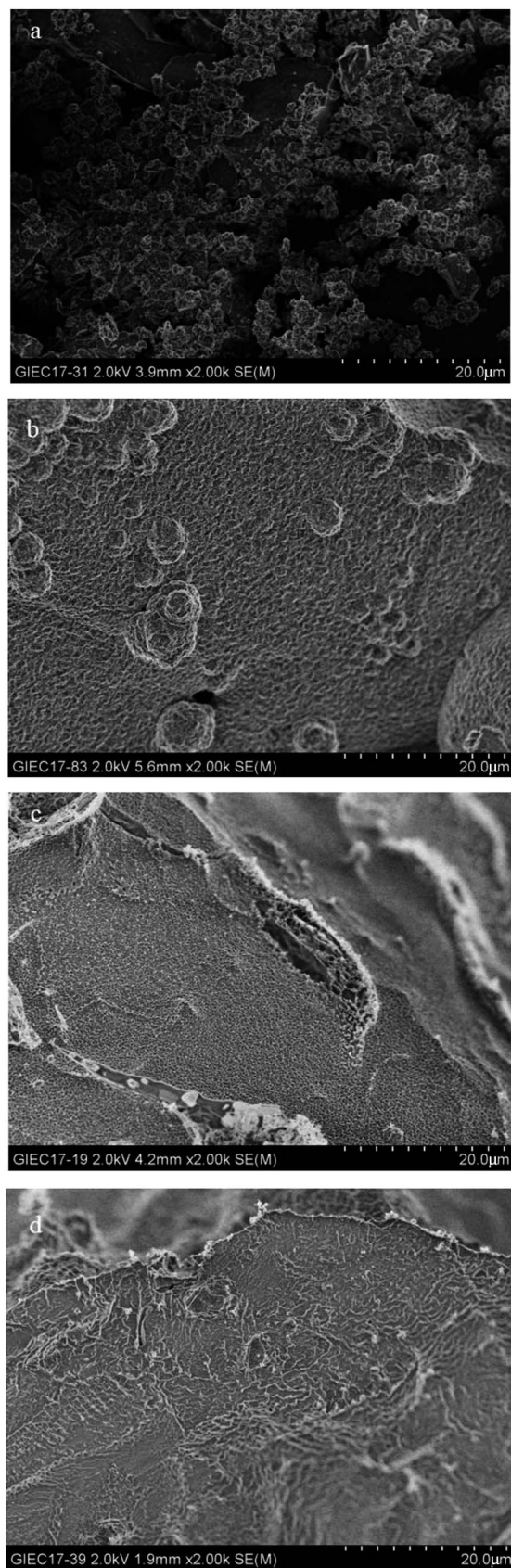


Fig. 11 Microstructure images of hydrate in the presence of rhamnolipid with different concentrations: (a) pure oil–water, (b) 0.1 wt% rhamnolipid, (c) 0.5 wt% rhamnolipid, (d) 1.0 wt% rhamnolipid.

peaks in the Raman spectra, respectively. The peaks at  $2905\text{ cm}^{-1}$  and  $2915\text{ cm}^{-1}$  could correspond to the C–H stretching mode from methane trapped in large and small cages. In previous studies, the ratio of small and large cavities in the unit cell was very close to 1 : 3.<sup>31,32</sup> As shown in Fig. 10, the peak positions in our study were located at  $2905\text{ cm}^{-1}$  and  $2916\text{ cm}^{-1}$ , indicating that the addition of rhamnolipid might barely have contributed to peak positions. In pure oil–water system, the ratio of large to small cavities was 3.03, which was very close to the theoretical value of sI hydrate. The large and small cavity ratio values of 0.1, 0.5 and 1.0 wt% rhamnolipid were 3.35, 3.45 and 3.46. In 2005, Lu *et al.* proposed that the Raman method could be applied quantitatively to estimate the hydration number of pure methane hydrate.<sup>33</sup> In our study, we calculated the hydrate number by this method, and the hydration number was 5.98, 6.03, 6.05, and 6.06 with the rhamnolipid concentration changing from 0 to 1.0 wt%. This implied that the introduction of rhamnolipid could increase the large and small cavity ratio and hydration number.

**3.2.3 Cryo-SEM.** In macroscopic experiments, we observed hydrate powders. In order to further understand the influence of the presence of rhamnolipid on hydrate microstructure, cryo-SEM was used to observe hydrate samples. Zhang *et al.* discussed the microstructure of hydrates with the additive of KHIs (PVCap and PVCSCOOH). In their study, the hydrate surface was chaotic and uneven in the presence of KHIs.<sup>34</sup> In a recent study, Shi *et al.* reported that TBAB could make methane hydrate surface more ordered than could KHIs.<sup>35</sup> The microstructure images of hydrate samples in our study are presented in Fig. 11. Based on the PXRD analysis, most of the components in samples were hydrate. Fig. 11a shows the microstructure of methane hydrate produced by pure oil–water system; a rugged surface was found, the hydrates being clustered and crowded together. Fig. 11b, c and d show the morphology of the hydrate of systems with 0.1 wt%, 0.5 wt% and 1.0 wt% rhamnolipid. As shown in Fig. 11b, a small amount of rhamnolipid could smooth the towering hydrate clusters. There was a clear phenomenon that the higher the rhamnolipid concentration, the smaller the roughness of the hydrate surface, and the hydrate powders were generated based on this. In Fig. 11d, the surface of hydrate became a flat corrugated shape, and the cluster-like hydrate could hardly be observed. Uneven surfaces are prone to hydrate accumulation, which leads to macroscopic hydrate blockage. Therefore, it was reasonable to speculate that rhamnolipid worked on the surface of the hydrate and made it smooth, which resulted in hydrate anti-agglomeration.

## 4. Conclusion

In this study, we investigated the effectiveness of rhamnolipid through macroscopic and microscopic experiments. The average torque of the first 15 minutes, severe local maximum torque and visual observation were adopted to evaluate the performance of rhamnolipid. The following conclusions could be drawn from our work.

The experiments of hydrate anti-agglomeration were successfully performed with a high-pressure visual autoclave





apparatus equipped with a torque sensor.  $Torque_{max}$  to be less than 10 N cm and the  $Torque_{15}$  to be no more than 6 N cm were established as a criterion for hydrate anti-agglomeration. In pure oil-water system, since the remaining hydrocarbon phase provided greater resistance, the values of  $Torque_{max}$  and  $Torque_{15}$  were higher in 20% water-cut system than in system with 30% water cut. Three different agglomeration states were observed, especially for hydrate powders. The addition of rhamnolipid made the phenomenon of hydrate blockage disappear. 0.5 wt% could be regarded as an effective concentration of rhamnolipid to prevent hydrate agglomeration. Rhamnolipid could tolerate high subcooling. In the range of subcooling from 9.7 K to 13.7 K, when rhamnolipid was introduced, the effect of subcooling could be ignored. The PXRD patterns and Raman spectra revealed that rhamnolipid had no impact on hydrate structure, but it could increase the large and small cavity ratio value and hydration number. Rhamnolipid not only affected the macroscopic agglomeration states of hydrate, but also had a significant effect on hydrate surface. Rhamnolipid made the hydrate surface smoother so that it could avoid a severe cluster-like surface.

## Conflicts of interest

There are no conflicts to declare.

## Acknowledgements

This work was supported by NSFC (no. 41473063)

## References

- 1 E. D. Sloan Jr and C. A. Koh, *Clathrate Hydrates of Natural Gases*, Crc Press, 2007.
- 2 D. Sloan, C. Koh, A. K. Sum, A. L. Ballard, J. Creek, M. Eaton, J. Lachance, N. McMullen, T. Palermo and G. Shoup, *Natural Gas Hydrates in Flow Assurance*, 2011.
- 3 P. D. Dholabhai, J. S. Parent and P. R. Bishnoi, *Fluid Phase Equilib.*, 1997, **141**, 235–246.
- 4 M. Cha, K. Shin, J. Kim, D. Chang, Y. Seo, H. Lee and S.-P. Kang, *Chem. Eng. Sci.*, 2013, **99**, 184–190.
- 5 A. Perrin, O. M. Musa and J. W. Steed, *Chem. Soc. Rev.*, 2013, **42**, 1996–2015.
- 6 M. A. Kelland, *Energy Fuels*, 2006, **20**, 825–847.
- 7 S.-P. Kang, J.-Y. Shin, J.-S. Lim and S. Lee, *Chem. Eng. Sci.*, 2014, **116**, 817–823.
- 8 J. L. Creek, *Energy Fuels*, 2012, **26**, 4112–4116.
- 9 Z. Huo, E. Freer, M. Lamar, B. Sannigrahi, D. M. Knauss and E. D. Sloan Jr, *Chem. Eng. Sci.*, 2001, **56**, 4979–4991.
- 10 B.-Z. Peng, J. Chen, C.-Y. Sun, A. Dandekar, S.-H. Guo, B. Liu, L. Mu, L.-Y. Yang, W.-Z. Li and G.-J. Chen, *Chem. Eng. Sci.*, 2012, **84**, 333–344.
- 11 Y. Lv, Y. Guan, S. Guo, Q. Ma, J. Gong, G. Chen, C. Sun, K. Guo, L. Yang, B. Shi, W. Qin and Y. Qiao, *Energies*, 2017, **10**, 1105.
- 12 J. Chen, Y.-F. Wang, C.-Y. Sun, F.-G. Li, N. Ren, M.-L. Jia, K.-L. Yan, Y.-N. Lv, B. Liu and G.-J. Chen, *Energy Fuels*, 2014, **29**, 122–129.
- 13 B. Shi, L. Ding, Y. Liu, J. Yang, S. Song, H. Wu, W. Wang and J. Gong, *RSC Adv.*, 2018, **8**, 11436–11445.
- 14 M. A. Kelland, T. M. Svartaas, J. Øvsthus, T. Tomita and J.-I. Chosa, *Chem. Eng. Sci.*, 2006, **61**, 4048–4059.
- 15 M. A. Kelland, T. M. Svartaas, J. Øvsthus, T. Tomita and K. Mizuta, *Chem. Eng. Sci.*, 2006, **61**, 4290–4298.
- 16 P. C. Chua and M. A. Kelland, *Energy Fuels*, 2013, **27**, 1285–1292.
- 17 J. Chen, C.-Y. Sun, B.-Z. Peng, B. Liu, S. Si, M.-L. Jia, L. Mu, K.-L. Yan and G.-J. Chen, *Energy Fuels*, 2013, **27**, 2488–2496.
- 18 H. Zhao, M. Sun and A. Firoozabadi, *Fuel*, 2016, **180**, 187–193.
- 19 M. Sun and A. Firoozabadi, *J. Colloid Interface Sci.*, 2013, **402**, 312–319.
- 20 S. Dong, M. Li and A. Firoozabadi, *Fuel*, 2017, **210**, 713–720.
- 21 S. Dong and A. Firoozabadi, *J. Chem. Thermodyn.*, 2018, **117**, 214–222.
- 22 M. Sun, Y. Wang and A. Firoozabadi, *Energy Fuels*, 2012, **26**, 5626–5632.
- 23 I. M. Banat, *Bioresour. Technol.*, 1995, **51**, 1–12.
- 24 J. D. York and A. Firoozabadi, *J. Phys. Chem. B*, 2008, **112**, 845.
- 25 X. Li, L. Negadi and A. Firoozabadi, *Energy Fuels*, 2010, **24**, 4937–4943.
- 26 G. Bhattacharjee, V. Barmecha, D. Pradhan, R. Naik, K. Zare, R. B. Mawlankar, S. G. Dastager, O. S. Kushwaha and R. Kumar, *Energy Procedia*, 2017, **105**, 5011–5017.
- 27 S. Jadav, N. Sakthipriya, M. Doble and J. S. Sangwai, *J. Nat. Gas Sci. Eng.*, 2017, **43**, 156–166.
- 28 A. Arora, S. S. Cameotra, R. Kumar, C. Balomajumder, A. K. Singh, B. Santhakumari, P. Kumar and S. Laik, *Sci. Rep.*, 2016, **6**, 20893.
- 29 Y. H. Sohn, J. Kim, K. Shin, D. Chang, Y. Seo, Z. M. Aman and E. F. May, *Chem. Eng. Sci.*, 2015, **126**, 711–718.
- 30 M. Sun and A. Firoozabadi, *Fuel*, 2015, **146**, 1–5.
- 31 A. K. Sum, R. C. Burruss and E. D. Sloan Jr, *J. Phys. Chem. B*, 1997, **101**, 7371–7377.
- 32 S. Y. Hong, J. I. Lim, J. H. Kim and J. D. Lee, *Energy Fuels*, 2012, **26**, 7045–7050.
- 33 H. Lu, I. Moudrakovski, M. Riedel, G. Spence, R. Dutrisac, J. Ripmeester, F. Wright and S. Dallimore, *J. Geophys. Res.*, 2005, **110**, 1–9.
- 34 Q. Zhang, X. Shen, X. Zhou and D. Liang, *Energy Fuels*, 2016, **31**, 839–846.
- 35 L. Shi, X. Shen, J. Ding and D. Liang, *Energy Fuels*, 2017, **31**, 8540–8547.

