



Cite this: *RSC Adv.*, 2018, 8, 33121

# An “off–on–off” sensor for sequential detection of Cu<sup>2+</sup> and hydrogen sulfide based on a naphthalimide–rhodamine B derivative and its application in dual-channel cell imaging†

 Shuai Wang, Haichang Ding, Yuesong Wang, Congbin Fan,  Yayi Tu,  Gang Liu\* and Shouzhi Pu\*

A novel colorimetric and fluorometric sensor with unique dual-channel emission to sequentially detect Cu<sup>2+</sup> and hydrogen sulfide (H<sub>2</sub>S) was synthesized from naphthalimide–rhodamine B through the PET and FRET mechanism. The sensor showed a selective “off–on” fluorescence response with a 120-fold increase toward Cu<sup>2+</sup>, and its limits of detection were 0.26 μM and 0.17 μM for UV-vis and fluorescence measurements, respectively. In addition, 1–Cu<sup>2+</sup> was an efficient “on–off” sensor to detect H<sub>2</sub>S with detection limits of 0.40 μM (UV-vis measurement) and 0.23 μM (fluorescence measurement), respectively. Furthermore, the sensor can also be used for biological imaging of intracellular staining in living cells. Therefore, the sensor should be highly promising for the detection of low level Cu<sup>2+</sup> and H<sub>2</sub>S with great potential in many practical applications.

 Received 13th July 2018  
Accepted 11th September 2018

DOI: 10.1039/c8ra05963b

rsc.li/rsc-advances

## Introduction

As many metal ions/anions play a significant role in various biological and environmental processes,<sup>1</sup> Cu<sup>2+</sup> is an essential transition metal ion in some physiological and pathological processes and as a significant catalytic cofactor for the synthesis of hemoglobin, elastin and collagen.<sup>2,3</sup> However, an abnormal amount of Cu<sup>2+</sup> has significant negative effects on human health since excessive Cu<sup>2+</sup> can cause oxidative stress and neurological disorders, such as Alzheimer's, Parkinson's and Wilson's diseases.<sup>4–7</sup> Therefore, the development of sensitive and selective methods to detect Cu<sup>2+</sup> in biological and environment samples is very important. In the past decade, several techniques have been developed to detect Cu<sup>2+</sup>, such as high-performance liquid chromatography, inductively coupled plasma atomic emission spectrometry, mass spectrometry and atomic absorption spectrometry.<sup>8–10</sup> However, these techniques are laborious and time-consuming, and require expensive instruments. On the contrary, fluorescent chemosensors are better and preferable approach for the recognition of Cu<sup>2+</sup> due to their simplicity, high selectivity and sensitivity, and rapid response. Therefore, sensitive fluorescent chemosensors to trace and visualize Cu<sup>2+</sup> are highly demanded.

Over the past few years, selective recognition of anions has also gained much attention due to their vital role in biological systems,<sup>11</sup> but detection of anion under aqueous condition is still very challenging because water molecules compete with anions for binding sites.<sup>12</sup> Recently, many metal complex-based receptors have been employed, such as Cu<sup>2+</sup>/CN<sup>−</sup>,<sup>13–16</sup> Cu<sup>2+</sup>/H<sub>2</sub>S,<sup>17</sup> Hg<sup>2+</sup>/I<sup>−</sup>,<sup>18</sup> Zn<sup>2+</sup>/H<sub>2</sub>S,<sup>19</sup> Al<sup>3+</sup>/F<sup>−</sup>,<sup>20,21</sup> Cr<sup>3+</sup>/F<sup>−</sup>,<sup>22</sup> Ni<sup>2+</sup>/CN<sup>−</sup>,<sup>23</sup> and Zn<sup>2+</sup>/H<sub>2</sub>PO<sub>4</sub><sup>−</sup>/CN<sup>−</sup>.<sup>24</sup> In the metal replacement process, the binding capacity of anions and metal ions is greater than that of metal ions and sensors, and metal ions escape from the complex and restore to its original state, which leads to a change in the intensity or wavelength of absorption or emission spectra.<sup>25</sup> Compared with the traditional detection approaches, such as colorimetric and electrochemical assays, gas chromatography, the required equipments are complicated, time-consuming and costly, the utilization of known metal-anion affinities that displays the metal ion from the sensor-ion complex releasing the ligand into the solution is an important method for sensing anions, due to its simple operation and high detection sensitivity and simplicity.

Additionally, hydrogen sulfide (H<sub>2</sub>S) is closely associated with these physiological processes, such as mediation of neurotransmission, relaxation of vascular smooth muscle and inhibition of insulin signaling.<sup>26–28</sup> However, excessive H<sub>2</sub>S can have a negative impact on human health.<sup>29</sup> Therefore, it is also significant to develop powerful recognition and detection systems to monitor H<sub>2</sub>S. So far, utilization of copper-sulfide affinity for sensing H<sub>2</sub>S has been reported (ESI Table 1†), most of them exhibit changes only in fluorescence intensity at

Jiangxi Key Laboratory of Organic Chemistry, Jiangxi Science and Technology Normal University, Nanchang, Jiangxi 330013, P. R. China. E-mail: liugang0926@163.com; pushouzhi@tsinghua.org.cn; Fax: +86-791-83831996; Tel: +86-791-83831996

† Electronic supplementary information (ESI) available. See DOI: 10.1039/c8ra05963b



one emission wavelength. By contrast, a dual-channel fluorescence-enhanced/quenched sensor displays fluorescence enhancement/quenched at two emission channels simultaneously upon binding with an analyte. Therefore, the development of dual-channel fluorescent sensors is exceedingly sought because of their particularly favorable features such as high sensitivity, selectivity, and convenient visible emission assays due to improved signal-to-noise ratio.<sup>30</sup> However, to the best of our best knowledge, no sensor with fluorescence-enhanced for sensing Cu<sup>2+</sup> and fluorescence-quenched in dual-channel emissions for detecting H<sub>2</sub>S has been previously reported.

In this study, a new sensor for the sequential detection of Cu<sup>2+</sup> and H<sub>2</sub>S was synthesized based on naphthalimide-rhodamine B derivative. The framework of rhodamine B was used to detect Cu<sup>2+</sup>, and the strategy of metal displacement was employed to detect H<sub>2</sub>S. In addition, the sensor was successfully applied to the biological imaging application in living cells. The whole detecting process for Cu<sup>2+</sup> and H<sub>2</sub>S not only provides a vivid sight by “naked eyes” with significant changes in both color (light yellow-pink-light yellow), but also displays a selective fluorescence “off-on-off” switching.

## Experimental

### Reagents

All reagents were of analytical grade and purchased from commercial suppliers without further purification before use. The stock solutions of metal ions were prepared through dissolving HgCl<sub>2</sub>, KCl, MnCl<sub>2</sub>·4H<sub>2</sub>O, Al(NO<sub>3</sub>)<sub>3</sub>·9H<sub>2</sub>O, Cd(NO<sub>3</sub>)<sub>2</sub>·4H<sub>2</sub>O, Ba(NO<sub>3</sub>)<sub>2</sub>, Cu(NO<sub>3</sub>)<sub>2</sub>·3H<sub>2</sub>O, Ni(NO<sub>3</sub>)<sub>2</sub>·6H<sub>2</sub>O, Pb(NO<sub>3</sub>)<sub>2</sub>, Zn(NO<sub>3</sub>)<sub>2</sub>·6H<sub>2</sub>O, Fe(NO<sub>3</sub>)<sub>3</sub>·9H<sub>2</sub>O, Cr(NO<sub>3</sub>)<sub>3</sub>·9H<sub>2</sub>O, Sr(NO<sub>3</sub>)<sub>2</sub>, Co(NO<sub>3</sub>)<sub>2</sub>·6H<sub>2</sub>O, Ca(NO<sub>3</sub>)<sub>2</sub>·4H<sub>2</sub>O and Mg(NO<sub>3</sub>)<sub>2</sub>·6H<sub>2</sub>O in distilled water, respectively. To get an aqueous solution (0.1 mol L<sup>-1</sup>) of each inorganic salt, these inorganic salts (1 mmol) dissolved in distilled water (10 mL), respectively. The solutions of anion (0.1 mol L<sup>-1</sup> of NO<sub>3</sub><sup>-</sup>, NO<sub>2</sub><sup>-</sup>, SO<sub>4</sub><sup>2-</sup>, SO<sub>3</sub><sup>2-</sup>, HSO<sub>4</sub><sup>-</sup>, HSO<sub>3</sub><sup>-</sup>, S<sub>2</sub>O<sub>3</sub><sup>2-</sup>, PO<sub>4</sub><sup>3-</sup>, SCN<sup>-</sup>, H<sub>2</sub>S, CN<sup>-</sup>, CO<sub>3</sub><sup>2-</sup>, HCO<sub>3</sub><sup>-</sup>, CH<sub>3</sub>COO<sup>-</sup>, F<sup>-</sup>, Cl<sup>-</sup>, Br<sup>-</sup> or I<sup>-</sup>) were prepared in deionized water. Aqueous sulfide (Na<sub>2</sub>S) served as the H<sub>2</sub>S donor,<sup>31–33</sup> and was used to produce H<sub>2</sub>S. The obtained stock solutions, before use, were diluted to required concentrations when needed.

### Instrumentation

NMR spectra were recorded on a Bruker AV400 (<sup>1</sup>H NMR 400 MHz, <sup>13</sup>C NMR 100 MHz) instrument for sample solution in CD<sub>2</sub>Cl<sub>2</sub> with tetramethylsilane (TMS) as an internal reference. Mass spectra were collected on an Agilent 1100 ion trap MSD spectrometer. Melting point was measured with a WRS-1B melting point apparatus. Elemental analysis was carried out with a PE CHN 2400 analyzer. UV-vis spectra were measured on an Agilent 8453 UV/vis spectrophotometer. Fluorescence spectra were recorded on a Hitachi F-4600 fluorescence spectrophotometer. Infrared spectra (IR) were collected on a Bruker Vertex-70 spectrometer. Fluorescence imaging of cells were performed with an OLYMPUS FV1000 confocal laser scanning microscope.

### Methods

A stock solution of **1** ( $1.0 \times 10^{-3}$  mol L<sup>-1</sup>) was prepared in CH<sub>3</sub>CN. The fluorescence and absorption studies on **1** were performed with 2 mL CH<sub>3</sub>CN–H<sub>2</sub>O (9/1, v/v,  $2.0 \times 10^{-5}$  mol L<sup>-1</sup>) solution and appropriate amounts of metal ions at room temperature. In order to make the metal ions chelate with the sensors sufficiently, solutions were kept for about 2 h before the absorption and fluorescent intensity was measured. In the FT-IR experiments, samples (**1**, **1**–Cu<sup>2+</sup> and **1**–Cu<sup>2+</sup> + H<sub>2</sub>S) were prepared in advance and dried in a drying oven and were mixed with KBr prior to spectral acquisition. A pure KBr background was collected and subtracted from all sample spectra prior to statistical. All spectra were recorded in the range 600–4000 cm<sup>-1</sup> with an accumulation of 16 scans and 4 cm<sup>-1</sup> spectral resolution. In the anion detection experiments, **1**–Cu<sup>2+</sup> complex solution was gained after 2.0 eq. Cu<sup>2+</sup> was added into 2 mL CH<sub>3</sub>CN–H<sub>2</sub>O (7/3, v/v) solution of **1** ( $2.0 \times 10^{-5}$  mol L<sup>-1</sup>), and the absorbance and fluorescence spectral data were recorded after 5 min since the addition of the various anions. Fluorescence measurements were carried out with excitation and emission slit of 5 nm and 5 nm ( $\lambda_{\text{ex}} = 325$  nm).

### Calculation of detection limits

The emission intensity and absorbance of sensor **1** were measured 10 times and the standard deviation of blank measurements was determined. To gain the slope, the fluorescence intensity of **1** ( $2.0 \times 10^{-5}$  mol L<sup>-1</sup>) at 610 nm or the ratio change of absorbance ( $A_{564}/A_{425}$ ) was plotted as a concentration of Cu<sup>2+</sup>.

The detection limit was calculated with the following equation:<sup>34,35</sup>

$$\text{Detection limit} = 3\sigma/k$$

Where  $\sigma$  is the standard deviation of blank measurement, and  $k$  is the slope of the intensity *versus* Cu<sup>2+</sup> concentration.

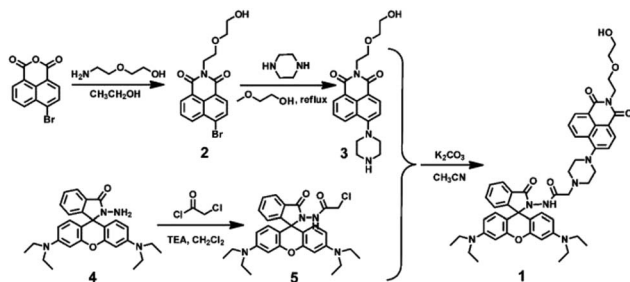
### Cell culture and imaging

HeLa cells (human cervical cancer cell) were cultured in DMEM (Dulbecco modified Eagle's medium) supplemented with 10% FBS (fetal bovine serum) in an atmosphere of 5% CO<sub>2</sub> and 95% air at 37 °C. The cells were plated in 20 mM cell culture dishes and allowed to adhere overnight before experiments. After the HeLa cells were washed with phosphate-buffered saline (PBS) buffer, the cells were incubated with sensor **1** (20  $\mu$ M) in the culture medium for 30 min. After the HeLa cells were rinsed with PBS three times, the cells were imaged with an OLYMPUS FV1000 confocal laser scanning microscope and the fluorescence emissions were collected at 460–560 nm for channel 1 and 570–670 nm for channel 2 (excited at 405 nm).

### Synthesis of the sensor **1**

The synthetic route for **1** was shown in Scheme 1. Compound **2**, **3**, **4** and **5** were synthesized by the reported methods.<sup>36–39</sup> To a stirring mixture of compound **3** (0.15 g, 0.40 mmol) and compound **5**





Scheme 1 Structure and synthesis of 1.

(0.24 g, 0.45 mmol) in  $\text{CH}_3\text{CN}$  (40 mL), and  $\text{K}_2\text{CO}_3$  (0.069 g, 0.50 mmol) was added. After refluxing for 12 h, the mixture was cooled to room temperature. Then the solvent was removed and the crude product purified by column chromatography on silica gel using petroleum ether/ethyl acetate (v/v, 2/1) as the eluent to obtain target compound **1** (0.23 g, 0.27 mmol) in 67.5% yield. Mp 432–433 K;  $^1\text{H}$  NMR (400 MHz,  $\text{CD}_2\text{Cl}_2$ ),  $\delta$  (ppm): 8.56 (d,  $J$  = 8.0 Hz, 1H), 8.47 (d,  $J$  = 8.0 Hz, 1H), 8.36 (d,  $J$  = 4 Hz, 2H), 7.92 (d,  $J$  = 8.0 Hz, 1H), 7.70 (t,  $J$  = 8.0 Hz, 1H), 7.57–7.50 (m, 2H), 7.12–7.07 (m, 2H), 6.62 (d,  $J$  = 8.0 Hz, 2H), 6.33 (d,  $J$  = 8.0 Hz, 2H), 6.28 (s, 2H), 4.39 (t,  $J$  = 4.0 Hz, 2H), 3.81 (t,  $J$  = 4.0 Hz, 2H), 3.62 (s, 4H), 3.32–3.22 (m, 8H), 3.11 (s, 2H), 3.02 (s, 4H), 2.64 (s, 4H), 1.05 (t,  $J$  = 8.0 Hz, 12H) (Fig. S1 $^\dagger$ );  $^{13}\text{C}$  NMR (100 MHz,  $\text{CD}_2\text{Cl}_2$ ),  $\delta$  (ppm): 166.30, 164.11, 163.56, 163.09, 154.96, 152.64, 150.57, 148.05, 132.15, 131.29, 130.06, 129.37, 128.88, 128.33, 127.42, 125.18, 124.76, 122.89, 122.19, 122.13, 115.68, 113.85, 107.03, 103.11, 96.36, 71.36, 67.36, 64.98, 60.68, 59.36, 43.30, 38.41, 11.30 (Fig. S2 $^\dagger$ ); ESI-MS ( $m/z$ ): 866.42 [ $1 + \text{H}^+$ ] $^\dagger$  (Fig. S3 $^\dagger$ ). Anal. calcd for  $\text{C}_{50}\text{H}_{55}\text{N}_7\text{O}_7$ : C, 69.34; H, 6.41; N, 11.32; O, 12.93%. Found: C, 69.27; H, 6.45; N, 11.35; O, 12.90%.

## Results and discussion

### Absorption and fluorescence spectral responses of sensor **1** to metal ions

Firstly, selectivity studies were performed with various metal ions ( $\text{Fe}^{3+}$ ,  $\text{Al}^{3+}$ ,  $\text{Ca}^{2+}$ ,  $\text{Cd}^{2+}$ ,  $\text{Co}^{2+}$ ,  $\text{Cu}^{2+}$ ,  $\text{Ba}^{2+}$ ,  $\text{Cr}^{3+}$ ,  $\text{Hg}^{2+}$ ,  $\text{K}^+$ ,  $\text{Sr}^{2+}$ ,

$\text{Mg}^{2+}$ ,  $\text{Mn}^{2+}$ ,  $\text{Ni}^+$ ,  $\text{Pb}^{2+}$  and  $\text{Zn}^{2+}$ ). As shown in Fig. 1A and D, only  $\text{Cu}^{2+}$  caused significant absorption change of the light yellow solution of **1** with a distinct absorption peak at 564 nm and a color change from light yellow to pink, which corresponded to the characteristic absorption peak of the ring-opened form of the rhodamine B moiety. Meanwhile, no significant response could be observed upon the addition of other metal ions. Similarly, as shown in Fig. 1B, the selectivity of the sensor **1** to various cations was observed in the fluorescence spectra. The sensor **1** showed non-fluorescence upon its excitation at 325 nm in the absence of metal ions in  $\text{CH}_3\text{CN}$ – $\text{H}_2\text{O}$  (v/v, 9/1) solution. However, two fluorescence emission bands were generated with the maximum at 528 nm and 610 nm upon the addition of  $\text{Cu}^{2+}$ . Simultaneously, the fluorescent color changed from green to light yellow due to formation of complex **1**– $\text{Cu}^{2+}$  (Fig. 1E). Although other competing metal ions caused slight fluorescent intensity to enhance, such as  $\text{Fe}^{3+}$ ,  $\text{Al}^{3+}$  and  $\text{Cr}^{3+}$ , the enhanced fluorescent intensity was far less than that of  $\text{Cu}^{2+}$  under the same conditions. These results indicated that sensor **1** could be a “turn-on” chemosensor and serve as a “naked-eyes” chemosensor to selectively detect  $\text{Cu}^{2+}$  over the other metal ions.

Subsequently, as shown in Fig. 1C, competition experiments were carried out through the monitoring of the change in the fluorescence intensity at 610 nm upon the addition of 2.0 eq. of  $\text{Cu}^{2+}$  to a solution of the sensor **1** in the presence of other metal ions (5.0 eq.). The result suggested that the  $\text{Cu}^{2+}$ -induced fluorescence responses were not affected by the competitive metal ions, except for  $\text{Fe}^{3+}$ ,  $\text{Al}^{3+}$  and  $\text{Cr}^{3+}$ , the fluorescent intensity was much weaker than that of  $\text{Cu}^{2+}$ . Thus, the  $\text{Cu}^{2+}$ -selective binding and “turn-on” response could take place in the coexistence of the competitive metal ions, indicating the designed sensor could recognize  $\text{Cu}^{2+}$  with high anti-interference ability even in the presence of other metal ions.

To acquire a better understanding of the reaction of sensor **1** with  $\text{Cu}^{2+}$ , time dependent modulations in the fluorescence spectra were monitored. The fluorescence intensity at 610 nm was plotted as a function of time. As shown in Fig. 2A and B, upon the addition of  $\text{Cu}^{2+}$  (2.0 eq.) to the  $\text{CH}_3\text{CN}$ – $\text{H}_2\text{O}$  (9/1, v/v) solution of



Fig. 1 Spectroscopic changes of **1** (20  $\mu\text{M}$ ) with the addition of various metal ions in  $\text{CH}_3\text{CN}$ – $\text{H}_2\text{O}$  (9/1, v/v) solution. (A) Absorption spectral changes. (B) Fluorescence emission intensity changes. (C) The fluorescence intensity changes at 610 nm (black bars: **1** with other ions, red bars: **1** with  $\text{Cu}^{2+}$  and other metal ions). (D) The color image with the addition of various metal ions. (E) The fluorescence image with the addition of various metal ions.





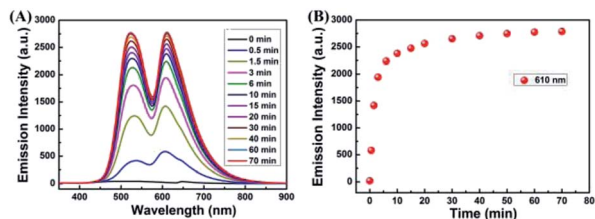


Fig. 2 (A) Time-dependent fluorescence intensity changes of sensor 1 to  $\text{Cu}^{2+}$  in  $\text{CH}_3\text{CN}-\text{H}_2\text{O}$  (9/1, v/v) solution. (B) Relative fluorescence intensity at 610 nm as a function of time in  $\text{CH}_3\text{CN}-\text{H}_2\text{O}$  (9/1, v/v) solution.

sensor 1. With the extended response time, the fluorescence intensity at 610 nm increased dramatically within 10 min. The fluorescence intensity at 610 nm slowly increased, when the reaction time was more than 10 min. Finally, the fluorescence intensity no longer changes and remains at its maximum after 1 h.

In order to investigate the optical response of the sensor to  $\text{Cu}^{2+}$ , absorption and fluorescence titration studies were performed. Different concentrations of  $\text{Cu}^{2+}$  from 0–2.0 eq. were added into in  $\text{CH}_3\text{CN}-\text{H}_2\text{O}$  (v/v, 9/1) solution of the sensor 1 (20  $\mu\text{M}$ ). As shown in Fig. 3A, upon the addition of  $\text{Cu}^{2+}$  to the solution of 1, three new absorption bands centered at 357 nm, 425 nm and 564 nm changed with significant color change from light yellow to pink. Upon the addition of  $\text{Cu}^{2+}$ , the absorption band at 425 nm was gradually decreased, the bands at 357 nm and 564 nm were gradually increased, and two isosbestic points were shown at 403 nm and 465 nm, respectively. These results indicated that several components existed in the equilibrium.<sup>40,41</sup> A linear dependence of the ratio change of absorbance ( $A_{564}/A_{425}$ , red dots line) and the ratio change of absorbance ( $A_{357}/A_{425}$ , black dots line) as a function of  $\text{Cu}^{2+}$  concentration were observed. When the concentration of  $\text{Cu}^{2+}$  was increased up to 2.0 eq., the ratio of absorbance ( $A_{564}/A_{425}$ ,  $A_{357}/A_{425}$ ) all stayed unchanged. For example, within a certain concentration range (0–35  $\mu\text{M}$ ), the ratio change of absorbance ( $A_{564}/A_{425}$ ) exhibited a good linear relationship ( $Y = 0.52887X - 0.44648$ ,  $R = 0.9957$ ) to the concentration of  $\text{Cu}^{2+}$  (Fig. S4†), and the detection limit was determined to be 0.26  $\mu\text{M}$  based on  $3\sigma/k$  (Fig. S5†) ( $\sigma$  is the standard deviation of the blank signal and  $k$  is the slope of the linear calibration plot).<sup>42</sup>

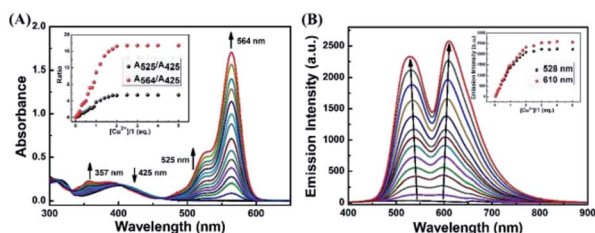


Fig. 3 Absorbance spectra (A) and fluorescence spectra (B) of 1 (20  $\mu\text{M}$ ) in the presence of different amounts of  $\text{Cu}^{2+}$  in  $\text{CH}_3\text{CN}-\text{H}_2\text{O}$  (9/1, v/v) solution. Inset of (A): the ratio of absorbance at 564 nm and absorbance at 425 nm (red dots line) and the ratio of absorbance at 357 nm and absorbance at 425 nm (black dots line) as a function of  $\text{Cu}^{2+}$  concentration. Inset of (B): the fluorescence intensity at 528 nm and 610 nm as a function of  $\text{Cu}^{2+}$  concentration.

As shown in Fig. 3B, without  $\text{Cu}^{2+}$ , the sensor exhibited non-fluorescence, upon the addition of  $\text{Cu}^{2+}$  (0–2.0 eq.) to the  $\text{CH}_3\text{CN}-\text{H}_2\text{O}$  (9/1, v/v) solution of 1, two fluorescence emission bands appeared with the maximum at 528 nm and 610 nm, which is the characteristic of the naphthalimide moiety and rhodamine B group, respectively. However, beyond a certain concentration (2.0 eq.) until reached 5.0 eq., further addition of  $\text{Cu}^{2+}$  did not cause any change in the fluorescence intensity. For example, the fluorescence titration curve showed a steady increase with the increase of  $\text{Cu}^{2+}$  concentration at 610 nm, which demonstrated an efficient fluorescence response. A good linearity was found between the concentration of  $\text{Cu}^{2+}$  and the fluorescence intensity was displayed in the range 0–40  $\mu\text{M}$  ( $Y = 60.5712X + 109.64832$  ( $R = 0.9876$ )) (Fig. S6†). The fluorescence detection limit was 0.17  $\mu\text{M}$  based on  $3\sigma/k$  (Fig. S7†), which was much lower than the maximum level of  $\text{Cu}^{2+}$  (20  $\mu\text{M}$ ) in drinking water (Environmental Protection Agency defined limit).<sup>41,43</sup> These results indicated that the sensor 1 is a potential fluorescent sensor for the detection of low level  $\text{Cu}^{2+}$  in practical applications.

### Absorption and fluorescence spectral responses of 1- $\text{Cu}^{2+}$ complex to anions

Due to the high stability of  $\text{CuS}$ , the  $\text{Cu}^{2+}$  should bind  $\text{H}_2\text{S}$  stronger over sensor 1, and the 1- $\text{Cu}^{2+}$  complex should act as a detecting ensemble for  $\text{H}_2\text{S}$  recognition.

As shown in Fig. 4A, when the same amount of the various anions (8 eq.,  $\text{NO}_3^-$ ,  $\text{NO}_2^-$ ,  $\text{SO}_4^{2-}$ ,  $\text{SO}_3^{2-}$ ,  $\text{HSO}_4^-$ ,  $\text{HSO}_3^-$ ,  $\text{S}_2\text{O}_3^{2-}$ ,  $\text{PO}_4^{3-}$ ,  $\text{SCN}^-$ ,  $\text{H}_2\text{S}$ ,  $\text{CN}^-$ ,  $\text{CO}_3^{2-}$ ,  $\text{HCO}_3^-$ ,  $\text{CH}_3\text{COO}^-$ ,  $\text{F}^-$ ,  $\text{Cl}^-$ ,  $\text{Br}^-$  and  $\text{I}^-$ ) was added to the 1- $\text{Cu}^{2+}$  complex, only  $\text{H}_2\text{S}$  caused significant change in the absorption spectrum, the absorbance at 564 nm was decreased remarkably with visible color change from pink to light yellow (Fig. 4D). Similarly, as shown in Fig. 4B and E, only  $\text{H}_2\text{S}$  caused two fluorescence emission peaks at 528 nm and 610 nm to quench dramatically and the fluorescence color was changed from bright yellow to green. With the addition of other anions to the solution of 1- $\text{Cu}^{2+}$ , none of those other anions caused significant change in the fluorescent spectrum, except that  $\text{CO}_3^{2-}$  caused negligible change in the fluorescence intensity compared to  $\text{H}_2\text{S}$ . The anti-interference performance of the 1- $\text{Cu}^{2+}$  to  $\text{H}_2\text{S}$  was also further confirmed in competitive tests with other anions. As shown in Fig. 4C, the fluorescence emission spectra at 610 nm displayed a similar pattern to that with  $\text{H}_2\text{S}$  alone, and coexistence of equal amounts of other anions did not have any significant interference on the  $\text{H}_2\text{S}$  recognition, suggesting that all the tested anions did not interfere the sensing of  $\text{H}_2\text{S}$ . Therefore, the 1- $\text{Cu}^{2+}$  complex had remarkable selectivity and excellent anti-interference toward  $\text{H}_2\text{S}$ .

To research the time-dependence of 1- $\text{Cu}^{2+}$  complex on  $\text{H}_2\text{S}$  detection, the fluorescence emission intensity of 1- $\text{Cu}^{2+}$  complex solution was studied. As shown in Fig. 5A and B, when  $\text{H}_2\text{S}$  was present in the  $\text{CH}_3\text{CN}-\text{H}_2\text{O}$  (7/3, v/v) solution of 1- $\text{Cu}^{2+}$  complex, the fluorescence intensity of 1- $\text{Cu}^{2+}$  complex completely quenched and reached a steady state within 30 s. These results showed that the sensor 1 would provide method



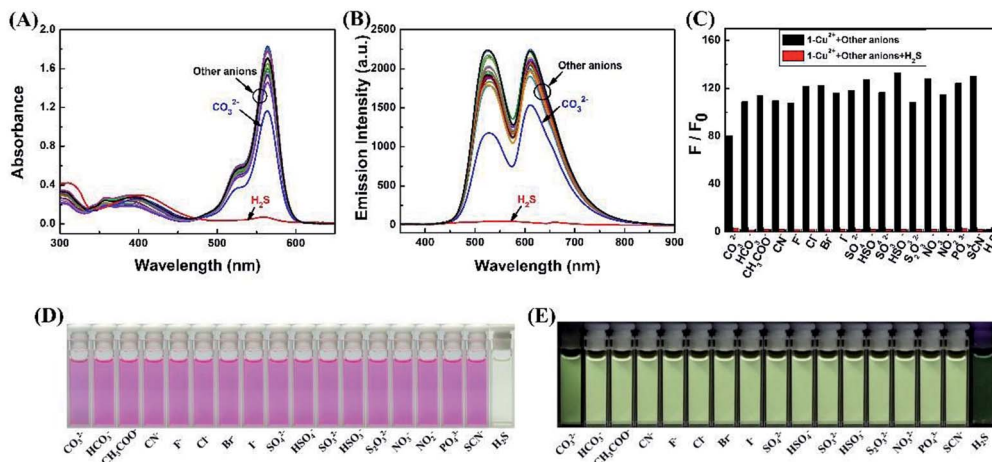


Fig. 4 (A) Spectroscopic changes of  $1\text{-Cu}^{2+}$  complex ( $20\text{ }\mu\text{M}$ ) with the addition of various anions in  $\text{CH}_3\text{CN-H}_2\text{O}$  (7/3, v/v) solution. (A) Absorption spectral changes. (B) Fluorescence emission intensity changes. (C) The fluorescence intensity changes at 610 nm (black bars:  $1\text{-Cu}^{2+}$  complex with other anions, red bars:  $1\text{-Cu}^{2+}$  complex with  $\text{H}_2\text{S}$  and other anions). (D) The color image with the addition of various anions. (E) The fluorescence image with the addition of various anions.

for the detection of  $\text{Cu}^{2+}$ , and the  $\text{H}_2\text{S}$  detection by  $1\text{-Cu}^{2+}$  complex could be potentially used for real-time detection.

To further investigate the interaction between  $\text{H}_2\text{S}$  and  $1\text{-Cu}^{2+}$  complex, the absorption and fluorescence titration experiments were performed in  $\text{CH}_3\text{CN-H}_2\text{O}$  (7/3, v/v) solution. As shown in Fig. 6A, the absorption titration of  $1\text{-Cu}^{2+}$  complex with an increasing amount of  $\text{H}_2\text{S}$  in the range of 0–8.0 eq. in  $\text{CH}_3\text{CN-H}_2\text{O}$  (7/3, v/v) solution was investigated. With the increase of  $\text{H}_2\text{S}$  concentration, the absorbance was gradually decreased at 564 nm and the solution of color was changed from pink to light yellow, which indicated that the coordination of  $1\text{-Cu}^{2+}$  system was broken and spirolactam ring of the rhodamine turned to the closing state. An excellent linear correlation ( $Y = -0.1638X + 16.31734$ ,  $R^2 = 0.9772$ ) between the ratio change of absorbance ( $A_{564}/A_{425}$ ) and the  $\text{H}_2\text{S}$  concentrations from 0 to  $80\text{ }\mu\text{M}$  was observed (Fig. S8†), and the detection limit was estimated to  $0.40\text{ }\mu\text{M}$  based on  $3\sigma/k$  (Fig. S9†). Similarly, as shown in Fig. 6B, when the  $1\text{-Cu}^{2+}$  complex was excited at 325 nm, the fluorescence intensity around 528 nm and 615 nm was decreased with the continuous addition of  $\text{H}_2\text{S}$ , and the fluorescence intensity of  $1\text{-Cu}^{2+}$  complex was completely quenched when 4.0 eq.  $\text{H}_2\text{S}$  were added. As shown in Fig. S10,† there is a linear response relationship between the fluorescence

intensity of  $1\text{-Cu}^{2+}$  complex at 610 nm and  $\text{H}_2\text{S}$  concentration within the range of 0– $40\text{ }\mu\text{M}$ , and the linear equation was found to be  $Y = -39.5825X + 1920.65909$  ( $R^2 = 0.9985$ ). The fluorescence detection limit was measured to be  $0.23\text{ }\mu\text{M}$  based on  $3\sigma/k$  (Fig. S11†).

### Detection mechanism for $\text{Cu}^{2+}$ and $\text{H}_2\text{S}$

The possible mechanism to detect  $\text{Cu}^{2+}$  was studied through emission spectra and ESI-MS spectra. A Job plot experiments was carried out to study the binding stoichiometry between  $\text{Cu}^{2+}$  and sensor 1 (Fig. 7A). In this experiment, the total concentration of 1 and  $\text{Cu}^{2+}$  was kept constant ( $40\text{ }\mu\text{M}$ ). The maximum fluorescence emission intensity at 610 nm was reached when the molar fraction was 0.5, which implied that the binding stoichiometry between  $\text{Cu}^{2+}$  and 1 is 1 : 1. Further confirmation of 1 : 1 stoichiometry was done with ESI-MS analysis, in which the peak at  $m/z$  888.4084, 928.3478, 963.3177 and 1027.3954 in the mass spectrum could be assigned to the mass of  $[1 + \text{Na}]^+$ ,  $[1 + \text{Cu}^{2+} - \text{H}]^+$ ,  $[1 + \text{Cu}^{2+} +$



Fig. 5 (A) Time-dependent fluorescence intensity changes of sensor  $1\text{-Cu}^{2+}$  to  $\text{H}_2\text{S}$  in  $\text{CH}_3\text{CN-H}_2\text{O}$  (7/3, v/v) solution. (B) Relative fluorescence intensity at 610 nm as a function of time in  $\text{CH}_3\text{CN-H}_2\text{O}$  (7/3, v/v) solution.



Fig. 6 (A) Absorbance and (B) fluorescence spectra of  $1\text{-Cu}^{2+}$  complex in the presence of different amounts of  $\text{H}_2\text{S}$  in  $\text{CH}_3\text{CN-H}_2\text{O}$  (7/3, v/v) solution. Inset of (A): the ratio of absorbance at 564 nm and absorbance at 425 nm (red dots line) and the ratio of absorbance at 357 nm and absorbance at 425 nm (black dots line) as a function of  $\text{Cu}^{2+}$  concentration. Inset of (B): the fluorescence intensity at 528 nm and 610 nm as a function of  $\text{Cu}^{2+}$  concentration.



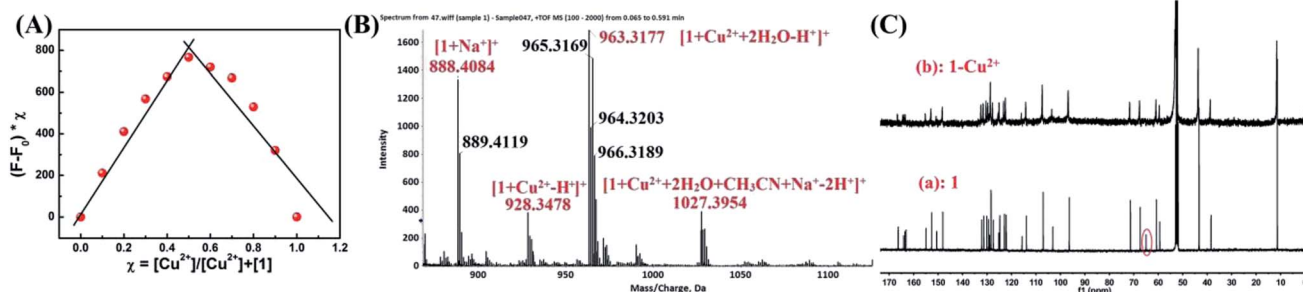


Fig. 7 (A) Job's plot for the complexation of **1** with  $\text{Cu}^{2+}$ , indicating the formation of a 1 : 1 complex. The total  $[\mathbf{1}] + [\text{Cu}^{2+}] = 40 \mu\text{M}$ . (B) ESI-MS spectrum of  $\mathbf{1}\text{-Cu}^{2+}$ . (C)  $^{13}\text{C}$  NMR spectra of **1** upon addition of  $\text{Cu}^{2+}$  in  $\text{CD}_2\text{Cl}_2$ .

$2\text{H}_2\text{O} - \text{H}^+)^+$  and  $[\mathbf{1} + \text{Cu}^{2+} + 2\text{H}_2\text{O} + \text{CH}_3\text{CN} + \text{Na}^+ - 2\text{H}^+)^+$ , respectively. These results confirmed the 1 : 1 stoichiometry between  $\text{Cu}^{2+}$  and sensor **1** in the  $\mathbf{1}\text{-Cu}^{2+}$  complex (Fig. 7B). Meanwhile, rhodamine B group structure changed from spirolactam (non-fluorescent) to ring-opening form in response to  $\text{Cu}^{2+}$  could be explained with  $^{13}\text{C}$  NMR spectrum, in which the  $^{13}\text{C}$  NMR signal of the tertiary carbon (64.98 ppm) in the spirolactam ring of sensor **1** disappeared in the presence of  $\text{Cu}^{2+}$  (Fig. 7C).

FT-IR measurements were performed to investigate the mechanism of interactions between  $\mathbf{1}\text{-Cu}^{2+}$  complex and  $\text{H}_2\text{S}$ . The FT-IR spectra of **1**,  $\mathbf{1}\text{-Cu}^{2+}$  and  $\mathbf{1}\text{-Cu}^{2+} + \text{H}_2\text{S}$  were shown in Fig. 8. As illustrated in Fig. 8A, the two absorption peaks at  $1724 \text{ cm}^{-1}$  and  $1616 \text{ cm}^{-1}$  could be attributed to the antisymmetric and symmetric stretching vibrations of  $\text{C}=\text{O}$  (the rhodamine B unit).<sup>44</sup> By comparing the FT-IR spectra of **1** (Fig. 8A) and  $\mathbf{1}\text{-Cu}^{2+}$  (Fig. 8B), the absorption band of  $\mathbf{1}\text{-Cu}^{2+}$  at  $1724 \text{ cm}^{-1}$  disappeared and the absorption intensity at  $1590 \text{ cm}^{-1}$  was significantly enhanced, which could be caused by the absorption peak shifting from  $1610 \text{ cm}^{-1}$  to  $1590 \text{ cm}^{-1}$  after the addition of  $\text{Cu}^{2+}$ , indicating that the oxygen atom of spirolactam of **1** in the carbonyl group did participate in the coordination. The strong absorption peak at  $1384 \text{ cm}^{-1}$  was attributed to the excess  $\text{Cu}(\text{NO}_3)_2$ . As shown in Fig. 8C, the  $\nu(\text{C}=\text{O})$  (the rhodamine B unit) at  $1724 \text{ cm}^{-1}$  and  $1616 \text{ cm}^{-1}$  were restored, which indicated the re-formation of spirolactam from ring-opened amide. Therefore, it can be concluded that the

rhodamine spirolactam of sensor **1** was transformed to ring-opened amide through the forming  $\mathbf{1}\text{-Cu}^{2+}$  complex, then re-formed spirolactam after the addition of  $\text{H}_2\text{S}$ , which led the escape of  $\text{Cu}^{2+}$  from  $\mathbf{1}\text{-Cu}^{2+}$  complex and the  $\text{Cu}^{2+}$  form a very stable species with the targeting  $\text{H}_2\text{S}$  because  $\text{CuS}$  ( $K_{\text{sp}}$  of  $\text{CuS} = 1.27 \times 10^{-36}$ )<sup>45</sup> was more stable than  $\mathbf{1}\text{-Cu}^{2+}$  complex.

As shown in Fig. 9, without  $\text{Cu}^{2+}$ , the sensor **1** showed non-fluorescence upon its excitation at  $325 \text{ nm}$  because the fluorescence of amino-naphthalimide fluorophore was quenched by the electron lone pair in the amino group of piperazine moiety through photo-induced electron transfer (PET) process.<sup>46,47</sup> When  $\text{Cu}^{2+}$  was added,  $\text{Cu}^{2+}$  formed  $\mathbf{1}\text{-Cu}^{2+}$  complex with the amino group on the piperazine of sensor **1**, which interrupted the PET process and caused fluorescence emission peaks of naphthalimide moiety at  $528 \text{ nm}$ , which indicated that the position of N atom in sensor **1** participate in the coordination with  $\text{Cu}^{2+}$  complexes.<sup>48</sup> Meanwhile, rhodamine B group changed from spirocyclic (non-fluorescent) form to ring-opening one in response to  $\text{Cu}^{2+}$ , resulting in fluorescence emission at  $610 \text{ nm}$ . In this process, the absorption spectrum of the open spirocycle form of the rhodamine B developed a significant overlap with the emission spectrum of naphthalimide moiety and clearly offered the possibility of a FRET process (Fig. S12†).

### Bioimaging applications

To demonstrate the potential application in the biological systems, HeLa cells were chosen to investigate the preliminarily



Fig. 8 Partial FT-IR spectra of **1** (A),  $\mathbf{1}\text{-Cu}^{2+}$  (B) and  $\mathbf{1}\text{-Cu}^{2+} + \text{H}_2\text{S}$  (C).



Fig. 9 The proposed mechanism of **1** to sense  $\text{Cu}^{2+}$  and  $\mathbf{1}\text{-Cu}^{2+}$  to sense  $\text{H}_2\text{S}$ .





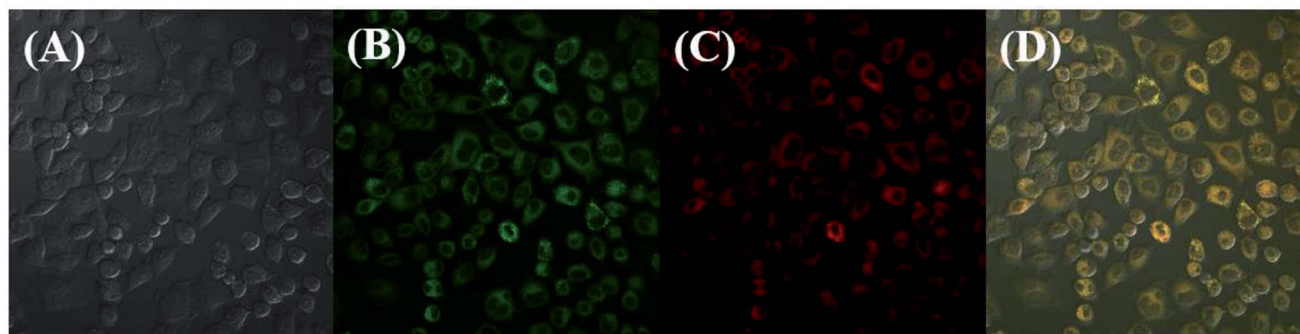


Fig. 10 Confocal fluorescence images of HeLa cells: (A) bright field image (B) dark field image of channel 1 (emission collected at 460–560 nm, pseudo-color: green); (C) dark field image of channel 2 (emission collected at 560–670 nm, pseudo-color: red); (D) merged images of A, B and C. Fluorescence emissions were collected at an excitation wavelength of 405 nm with a [40×] objective.

application viability of the sensor **1** in intracellular imaging. The cells treated were imaged with confocal microscopy (OLYMPUS FV1000) upon the laser irradiation at 405 nm. The HeLa cells were incubated with sensor **1** (20  $\mu$ M) for 30 min, and then HeLa cells were washed three times with PBS. As shown in Fig. 10B and C, the cells showed fluorescence from the intracellular region at channel 1 (460–560 nm) and channel 2 (570–670 nm). These preliminary results suggested that the sensor is permeable to cell membrane and can be used to the biological imaging application for intracellular staining with dual-channel fluorescence emission in living cells, which may have great potentials in bio-medical applications.

## Conclusions

In conclusion, a fluorescent “off-on-off” sensor for the sequential detection of  $\text{Cu}^{2+}$  and  $\text{H}_2\text{S}$  based on naphthalimide-rhodamine B was designed and synthesized. The sensor displayed high selectivity and sensitivity to  $\text{Cu}^{2+}$  over other cations. The  $\text{Cu}^{2+}$  detection of sensor **1** with a 1 : 1 binding stoichiometry was adequately supported by ESI-MS data and Job's plot analysis. Additionally, **1** could be used to the biological imaging application in living cells. More importantly, the  $1\text{-Cu}^{2+}$  complex could be successfully applied to selectively detect  $\text{H}_2\text{S}$  over other anions through a de-complexation reaction. Therefore, the sensor **1** could be used to detect trace amount of  $\text{Cu}^{2+}$  and  $\text{H}_2\text{S}$  with remarkable changes in both color and fluorescence, which was greatly desirable for biological detection and imaging.

## Conflicts of interest

There are no conflicts to declare.

## Acknowledgements

The authors are grateful for the financial support from the National Natural Science Foundation of China (21662015, 21363009, 41867052), the “5511” science and technology innovation talent project of Jiangxi, the key project of Natural Science Foundation of Jiangxi Province (20171ACB20025), the

Science Funds of Natural Science Foundation of Jiangxi Province (20171BAB203014, 20171BAB203011), the Masters' Innovative Foundation of Jiangxi Science and Technology Normal University (YC2017-X30).

## Notes and references

- 1 D. T. Quang and J. S. Kim, *Chem. Rev.*, 2010, **110**, 6280–6301.
- 2 Y. Wang, C. Zhang, X. Chen, B. Yang, L. Yang, C. Jiang and Z. Zhang, *Nanoscale*, 2016, **8**, 5977–5984.
- 3 C. Xie, L. Xiao, S. Peng and X. Shi, *New J. Chem.*, 2014, **38**, 6095–6102.
- 4 Z. Hu, J. Hu, Y. Cui, G. Wang, X. Zhang, K. Uvdal and H. W. Gao, *J. Mater. Chem. A*, 2014, **2**, 4467–4472.
- 5 G. Multhaup, A. Schlicksupp, L. Hesse, D. Beher, T. Ruppert, C. L. Masters and K. Beyreuther, *Science*, 1996, **271**, 1406–1409.
- 6 A. Pal, M. Siotto, R. Prasad and R. Squitti, *J. Alzheimer's Dis.*, 2015, **44**, 343–354.
- 7 E. Carboni and P. Lingor, *Metallomics*, 2015, **7**, 395–404.
- 8 Z. Xiao, F. Loughlin, G. N. George, G. J. Howlett and A. G. Wedd, *J. Am. Chem. Soc.*, 2004, **126**, 3081–3090.
- 9 S. Wustoni, S. Hideshima, S. Kuroiwa, T. Nakanishi, Y. Mori and T. Osaka, *Analyst*, 2015, **140**, 6485–6488.
- 10 D. S. Volkov, M. A. Proskurnin and M. V. Korobov, *Carbon*, 2014, **74**, 1–13.
- 11 P. A. Gale, S. E. García-Garrido and J. Garric, *Chem. Soc. Rev.*, 2008, **37**, 151–190.
- 12 H. Sharma, V. K. Bhardwaj, N. Kaur, N. Singh and D. O. Jang, *Tetrahedron Lett.*, 2013, **54**, 5967–5970.
- 13 G. J. Park, I. H. Hwang, E. J. Song, H. Kim and C. Kim, *Tetrahedron*, 2014, **70**, 2822–2828.
- 14 A. Helal, S. B. Kim and H. S. Kim, *Bull. Korean Chem. Soc.*, 2011, **32**, 3123–3126.
- 15 L. Tang and M. Cai, *Sens. Actuators, B*, 2012, **173**, 862–867.
- 16 L. Tang, N. Wang, Q. Zhang, J. Guo and R. Nandhakumar, *Tetrahedron Lett.*, 2013, **54**, 536–540.
- 17 D. Zhang and W. Jin, *Spectrochim. Acta, Part A*, 2012, **90**, 35–39.
- 18 F. Ma, W. Shi, H. Mi, J. Luo, Y. Lei and Y. Tian, *Sens. Actuators, B*, 2013, **182**, 782–788.



- 19 Z. Dong, X. Le, P. Zhou, C. Dong and J. Ma, *New J. Chem.*, 2014, **38**, 1802–1808.
- 20 Y. Mi, Z. Cao, Y. Chen, S. Long, Q. Xie, D. Liang, W. Zhu and J. Xiang, *Sens. Actuators, B*, 2014, **192**, 164–172.
- 21 Y. S. Mi, D. M. Liang, Y. T. Chen, X. B. Luo and J. N. Xiang, *RSC Adv.*, 2014, **4**, 42337–42345.
- 22 H. Liu, X. Wan, T. Liu, Y. Li and Y. Yao, *Sens. Actuators, B*, 2014, **200**, 191–197.
- 23 J. H. Kang, S. Y. Lee, H. M. Ahn and C. Kim, *Sens. Actuators, B*, 2017, **242**, 25–34.
- 24 A. Pandith, N. Uddin, C. H. Choi and H. S. Kim, *Sens. Actuators, B*, 2017, **247**, 840–849.
- 25 H. Sharma, N. Kaur, A. Singh, A. Kuwar and N. Singh, *J. Mater. Chem. C*, 2016, **4**, 5154–5194.
- 26 K. Abe and H. Kimura, *J. Neurosci.*, 1996, **16**, 1066–1071.
- 27 G. Yang, L. Wu, B. Jiang, W. Yang, J. Qi, K. Cao, Q. Meng, A. K. Mustafa, W. Mu, S. Zhang, S. H. Snyder and R. Wang, *Science*, 2008, **322**, 587–590.
- 28 Y. Kaneko, Y. Kimura, H. Kimura and I. Niki, *Diabetes*, 2006, **55**, 1391–1397.
- 29 W. J. Cai, M. J. Wang, L. H. Ju, C. Wang and Y. C. Zhu, *Cell Biol. Int.*, 2014, **34**, 565–572.
- 30 M. Ren, B. Deng, J. Y. Wang and Z. R. Liu, *J. Mater. Chem. B*, 2015, **3**, 6746–6752.
- 31 Y. Qian, J. Karpus, O. Kabil, S. Y. Zhang, H. L. Zhu, R. Banerjee, J. Zhao and C. He, *Nat. Commun.*, 2011, **2**, 495.
- 32 C. Zhang, G. Zhang, L. Feng and J. Li, *Sens. Actuators, B*, 2015, **216**, 412–417.
- 33 M. L. Aulsebrook, S. Biswas, F. M. Leaver, M. R. Grace, B. Graham, A. M. Barrios and K. L. Tuck, *Chem. Commun.*, 2017, **53**, 4911–4914.
- 34 D. Guo, Z. P. Dong, C. Luo, W. Y. Zan, S. Q. Yan and X. J. Yao, *RSC Adv.*, 2014, **4**, 5718–5725.
- 35 C. Kar, M. D. Adhikari, A. Ramesh and G. Das, *Inorg. Chem.*, 2013, **52**, 743–752.
- 36 M. V. Ramakrishnam Raju, E. Chandra Prakash, H. C. Chang and H. C. Lin, *Dyes Pigm.*, 2014, **103**, 9–20.
- 37 S. Liu, H. Bai, Q. Sun, W. Zhang and J. Qian, *RSC Adv.*, 2015, **5**, 2837–2843.
- 38 S. Goswami, S. Maity, A. C. Maity, A. K. Maity, A. K. Das and P. Saha, *RSC Adv.*, 2014, **4**, 6300–6305.
- 39 H. C. Ding, B. Q. Li, S. Z. Pu, G. Liu, D. C. Jia and Y. Zhou, *Sens. Actuators, B*, 2017, **247**, 26–35.
- 40 W. N. Wu, P. D. Mao, L. Jia, Y. Wang and Z. Q. Xu, *Spectrochim. Acta, Part A*, 2016, **166**, 44–48.
- 41 Z. Q. Xu, X. J. Mao, Y. Wang, W. N. Wu, P. D. Mao, X. L. Zhao, Y. C. Fan and H. J. Li, *RSC Adv.*, 2017, **7**, 42312–42319.
- 42 L. He, X. Yang, Y. Liu and L. Weiying, *Anal. Methods*, 2016, **8**, 8022–8027.
- 43 Y. Ding, S. Z. Shen, H. Sun, K. Sun and F. Liu, *Sens. Actuators, B*, 2014, **203**, 35–43.
- 44 R. Tabit, O. Amadine, Y. Essamlali, K. Danoun, A. Rhihil and M. Zahouily, *RSC Adv.*, 2018, **8**, 1351–1360.
- 45 Y. F. Zhu, D. H. Fan and W. Z. Shen, *J. Phys. Chem. C*, 2008, **112**, 10402–10406.
- 46 X. Zhou, F. Su, H. Lu, P. Senechal-Willis, Y. Tian, R. H. Johnson and D. R. Meldrum, *Biomaterials*, 2012, **33**, 171–180.
- 47 J. Fan, M. Hu, P. Zhan and X. Peng, *Chem. Soc. Rev.*, 2013, **42**, 29–43.
- 48 W. H. Zhu, L. J. Shen and H. Tian, *Angew. Chem.*, 2007, **119**, 5645–5649.

