



Cite this: *Org. Biomol. Chem.*, 2018, **16**, 1083

Received 14th November 2017,  
Accepted 30th November 2017

DOI: 10.1039/c7ob02787g

rsc.li/obc

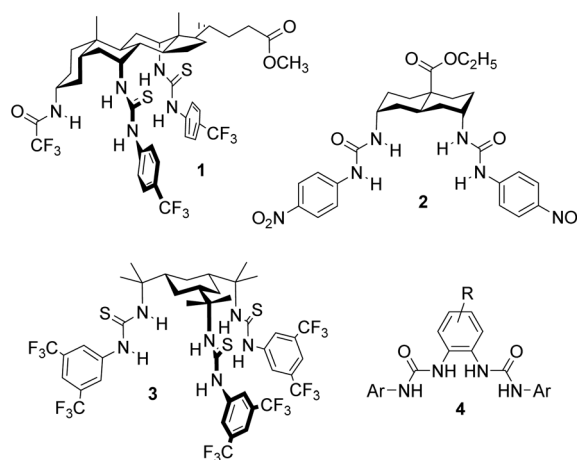
## Anion transport by *ortho*-phenylene bis-ureas across cell and vesicle membranes†

Christopher M. Dias,<sup>a</sup> Hongyu Li,<sup>b</sup> Hennie Valkenier,<sup>c</sup>  
Louise E. Karagiannidis,<sup>d</sup> Philip A. Gale,<sup>d</sup> David N. Sheppard<sup>b</sup> and  
Anthony P. Davis<sup>a\*</sup>

***Ortho*-Phenylene bis-ureas serve as anionophores in cells expressing halide-sensitive yellow fluorescent protein, as well as in synthetic vesicles. Activities can reach high levels, and are strongly dependent on the deliverability of the transporters.**

The development of synthetic anion transporters (anionophores) has become a major theme of supramolecular chemistry.<sup>1</sup> An important motivation is the potential for anionophores to be applied therapeutically, for example in the treatment of cancer and channelopathies such as cystic fibrosis (CF).<sup>2</sup> Much of the work focuses on using small molecule anion carriers, which can bind an anion on one side of the membrane, traverse the membrane and then release the anion on the other side.<sup>2f,3,4</sup>

If anionophores are to be exploited in medicine, it is necessary to show that they can be effective in living cells, and not just in synthetic bilayer systems such as vesicles. We recently developed an assay for biological anion transport which employs Fischer rat thyroid cells expressing the iodide-sensing yellow fluorescent protein (YFP-FRT cells).<sup>5,6</sup> The assay was applied to anionophores of the “1,5-diaxial” family<sup>3</sup> with steroidal, *trans*-decalin or cyclohexane scaffolds (e.g. 1–3, see Fig. 1).<sup>6a</sup> All tested positive for chloride transport, with *trans*-decalin 2 showing especially high activity. Transporter 2 showed negligible toxicity to several cell lines, suggesting that anionophore activity is not necessarily damaging to cells and raising the hope of “channel replacement therapy” as a treatment for CF.



**Fig. 1** 1,5-Diaxial anionophores 1–3, previously shown to be active in YFP-FRT cells and the general structure 4 for the OPBU carriers studied in the present work.

While the 1,5-diaxial anionophores are known to be exceptionally powerful,<sup>7</sup> other families have also shown good activity in synthetic vesicle assays. In particular, *ortho*-phenylene bis-ureas (OPBUs) of general structure 4 have proven effective for  $\text{Cl}^-/\text{NO}_3^-$ ,  $\text{Cl}^-/\text{HCO}_3^-$ , and  $\text{Cl}^-/\text{carboxylate}$  antiport, in some cases at very low transporter : lipid ratios.<sup>8,9</sup> These carriers are also especially easy to prepare, being accessible from commercially available starting materials in one or two steps. They thus provide a valuable opportunity for the study of structure–activity relationships. Here, we report that OPBUs are active in cells, at levels comparable to the 1,5-diaxial anionophores. We also explore the effects of substituents which modify lipophilicity and electronic characteristics, and the correlation between results in synthetic vesicles and data from the biological assay. The results highlight the importance of deliverability in the development of anionophores for biological applications.

The OPBU anionophores employed in this work are shown in Fig. 2. To ensure high activities (and thus ease of measurement), the urea units were uniformly terminated with 3,5-bis

<sup>a</sup>School of Chemistry, University of Bristol, Cantock's Close, Bristol, BS8 1TS, UK.  
E-mail: anthony.davis@bristol.ac.uk

<sup>b</sup>School of Physiology, Pharmacology and Neuroscience, University of Bristol, Biomedical Sciences Building, University Walk, Bristol, BS8 1TD, UK

<sup>c</sup>Engineering of Molecular NanoSystems, Ecole Polytechnique de Bruxelles, Université Libre de Bruxelles, Avenue F.D. Roosevelt 50, CP165/64, B-1050 Brussels, Belgium

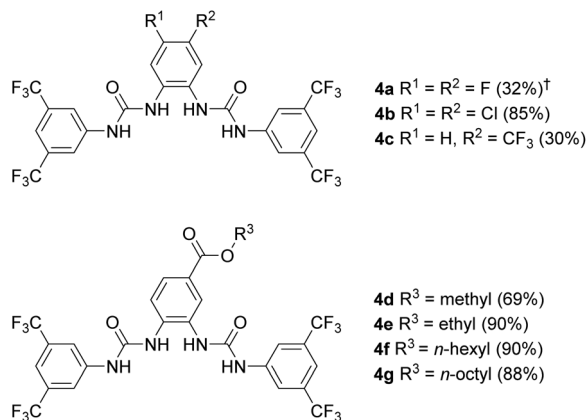
<sup>d</sup>Chemistry, University of Southampton, Southampton, SO17 1BJ, UK

<sup>e</sup>School of Chemistry, The University of Sydney, NSW 2006, Australia.

E-mail: philip.gale@sydney.edu.au

† Electronic supplementary information (ESI) available: Experimental details of the synthesis and binding and transport studies. See DOI: 10.1039/c7ob02787g. All the data supporting this study are included in the ESI.





**Fig. 2** Structures of *ortho*-phenylene bis-ureas investigated in this work. Isolated yields for the final step of the synthesis are given in brackets. <sup>†</sup>Yield reported in previous work (see ref. 9).

(trifluoromethyl)phenyl groups. Studies conducted by ourselves and others have shown that anionophores bearing this substituent are often the most powerful derivatives in their respective series.<sup>7,9,10</sup> Bis-urea **4a** was known, and had previously been shown to possess good transport activity in large unilamellar vesicles (LUVs).<sup>9</sup> The new compounds **4b–g** were synthesised by refluxing the appropriate diaminobenzene with 3,5-bis(trifluoromethyl)phenyl isocyanate in DCM. The preparation of esters **4f** and **4g** required prior synthesis of the corresponding alkyl diaminobenzoates from 3,4-diaminobenzoic acid. Full experimental details are given in the ESI.<sup>†</sup>

To characterise **4a–g**, we first investigated their ability to function as anion receptors by performing NMR titrations in DMSO-*d*<sub>6</sub>/0.5% H<sub>2</sub>O with tetrabutylammonium chloride as guest. In all experiments the most significant movements were observed for the urea NH signals, indicating that they are all involved in chloride binding.<sup>11</sup> Residual distribution analysis indicated that all receptors bind the anion in both 1 : 1 and

1 : 2 (host : guest) stoichiometries (see ESI<sup>†</sup> for further discussion) and titration data were subsequently fitted to this model. The second binding event was found to be very weak in all cases and 1 : 1 binding is the predominant process. The results are given in Table 1. In line with previous work,  $K_{1:1}$  values are rather moderate and not especially sensitive to the type of substituent present on the central aromatic ring.<sup>8,9</sup> For comparison, diureidodecalin **2** bound Bu<sub>4</sub>N<sup>+</sup>Cl<sup>−</sup> with  $K_a = 680 \text{ M}^{-1}$  under the same conditions.<sup>6a</sup>

To assess the transport properties of these molecules in synthetic membranes, we preferred a method which could distinguish between intrinsic activity (the ability to transport anions once in the membrane) and overall practical effectiveness (which also depends on the ability to find and enter the membrane). In the previous studies on OPBUs, transport activity in LUVs was assayed using an ion selective electrode (ISE) to detect chloride anions leaving the vesicles.<sup>8,9</sup> This method requires that the test anionophore be externally added to the vesicles after they have been prepared; this is because preincorporation leaves the vesicles permeable to anions at all stages of the experiment, so that chloride efflux can occur before the measurement is initiated. The test thus gives a measure of practical effectiveness, but cannot be adapted to show intrinsic transport ability.<sup>13</sup> For the present work, we employed an alternative assay which relies on a halide-sensitive fluorophore (lucigenin) which can be trapped inside the vesicles. This detects chloride influx, allowing the experiment to be started by addition of chloride to the external solution. Anionophores can therefore be preincorporated in the vesicles (to measure intrinsic activity) or added externally (to assess practical effectiveness).<sup>6a</sup>

To measure intrinsic activity, we prepared LUVs, (~200 nm diameter) from 1-palmitoyl-2-oleoyl-*sn*-glycero-3-phosphocholine (POPC) and cholesterol (7 : 3 ratio) with the putative transporter preincorporated in the membrane. The interior of the LUVs contained aqueous NaNO<sub>3</sub> (225 mM) and lucigenin. The vesicles were suspended in aqueous NaNO<sub>3</sub> (225 mM) and the experiment commenced by the addition of a pulse of NaCl

**Table 1** Binding and transport data for OPBUs **4a–g**

Compound	clog $P^a$	Binding to Bu <sub>4</sub> N <sup>+</sup> Cl <sup>−</sup> <sup>b</sup>		Transport in LUVs (initial slope $I$ of $F_0/F$ ) <sup>c</sup> (s <sup>−1</sup> )			Transport in YFP-FRT cells <sup>e</sup>  dF/dt  (s <sup>−1</sup> )
		$K_a, 1:1$ (M <sup>−1</sup> )	$K_a, 1:2$ (M <sup>−1</sup> )	Preincorporated	External addition	Deliverability, $D^d$	
<b>4a</b>	9.9	136	1	0.073	0.041	0.57	0.02
<b>4b</b>	10.4	146	1	0.073	0.027	0.37	0.0023
<b>4c</b>	10.1	157	1	0.042	0.018	0.43	0.0093
<b>4d</b>	8.8	166	3	0.0073	0.012	1.61	0.0071
<b>4e</b>	9.2	146	2	0.011	0.013	1.17	0.00099
<b>4f</b>	10.8	138	3	0.017	0.011	0.66	0.0017
<b>4g</b>	11.6	134	1	0.019	0.0029	0.15	0.0018

<sup>a</sup> Calculated log  $P$ , an estimate of lipophilicity where  $P$  is the partition coefficient between *n*-octanol and water. Values were calculated using TorchLite (available as freeware from <http://www.cresset-group.com>). <sup>b</sup> Determined by <sup>1</sup>H NMR titration in DMSO-*d*<sub>6</sub>/0.5% H<sub>2</sub>O at 298 K. Data were analysed using a 1 : 1 + 1 : 2 (host : guest) binding model. <sup>c</sup> Values are proportional to rates of Cl<sup>−</sup>/NO<sub>3</sub><sup>−</sup> exchange. Experiments were conducted in 200 nm POPC/cholesterol (7 : 3) LUVs with transporter : lipid = 1 : 25 000.  $I$  was obtained by fitting  $F_0/F$  versus time (0–500 s) to a double exponential decay function, for further details see ref. 7 and ESI. <sup>d</sup> Ratio of  $I$  from experiments employing external addition/preincorporation of transporter (see discussion in text). <sup>e</sup> I<sup>−</sup>/Cl<sup>−</sup> exchange mediated by the transporter (50 μM) in YFP-FRT cells. Obtained by fitting the decay in YFP fluorescence to a first order exponential function and subtracting fluorescence quenching of the vehicle (0.5–1% v/v DMSO).



(25 mM). The decay in lucigenin fluorescence emission corresponds to an increase in intravesicular chloride concentration. To obtain values for comparison, the data were expressed as  $F_0/F$  (which is proportional to intravesicular chloride concentrations) then initial slopes  $I$  were obtained using a curve fitting procedure.<sup>7</sup> Decay curves ( $F/F_0$ ) for a series of experiments with transporter:lipid = 1 : 25 000 are shown in Fig. 3, and corresponding values for  $I$  are listed in Table 1.

The experiments revealed that all compounds in this series possess high intrinsic anionophore activity, clearly measurable at a very low transporter loading (0.004 mol%). The most powerful were bis-ureas **4a** and **4b**, based on halogenated central scaffolds. In the case of **4a**, a dose-response study was performed and showed activity down to transporter:lipid = 1 : 1000k (Fig. S38†).

When comparing the activities of esters **4d–g**, there is clearly a positive correlation between initial rate and the length of the ester alkyl chain/lipophilicity (Table 1 and Fig. 4, red circles). In principle this effect could arise due to different amounts of transporter in the membrane; less lipophilic esters (shorter chains) might be present in lower concentrations due to leaching from the membrane into the aqueous phase. To

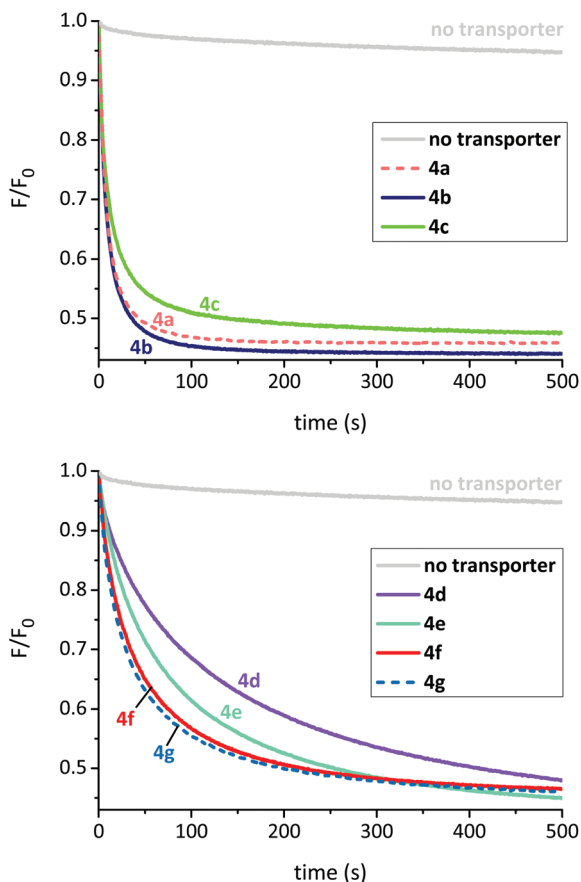


Fig. 3 Chloride transport mediated by OPBUs in 200 nm POPC/cholesterol (7 : 3) LUVs as measured using the lucigenin method. The anionophore was preincorporated in the membrane at a transporter : lipid mole ratio of 1 : 25 000 in all cases.

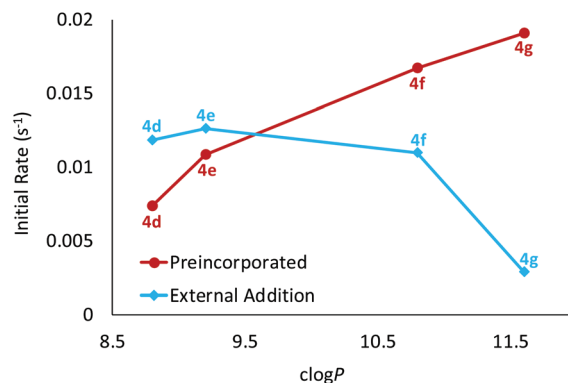


Fig. 4 Plot of the initial rate of chloride transport induced by esters **4d–g** as function of transporter lipophilicity. The transporter was either preincorporated in the membrane or added externally as a solution in acetone to preformed vesicles. The notional transporter to lipid loading was 1 : 25 000 in all experiments.

examine this possibility, we conducted a leaching study<sup>10c,12</sup> on methyl ester **4d**, the least lipophilic member in this series and thus the most likely to partition into water. Briefly, LUVs with **4d** preincorporated in the membrane were prepared as previously described. The vesicles were then successively diluted with aqueous  $\text{NaNO}_3$  which should result in a loss of transporter from the lipid bilayers if it were capable of leaching. However, these studies indicated that **4d** resides exclusively within the membrane and is not lost to the aqueous phase (see ESI† for further details). It thus seems that the longer alkyl chains promote intrinsic transport activity, possibly by positioning the transporter or complex more favourably within the membrane.<sup>10c,13,14</sup>

After measuring the intrinsic activities of OPBUs **4a–g** we next sought to establish how readily they could be delivered by external addition to membranes (the second component of practical effectiveness). LUVs were prepared in a manner analogous to that previously described, except that the anionophore was not added to the initial lipid mixture. Instead a solution of the anionophore in acetone was externally added to rapidly stirred preformed vesicles to give a notional transporter to lipid loading of 1 : 25 000. After 5 minutes,  $\text{NaCl}$  (25 mM) was added and the decay in fluorescence analysed as before (Table 1 and ESI†). Deliverability ( $D$ ) was calculated by dividing the initial rate of transport from this experiment to that observed for preincorporated anionophore. If a transporter is perfectly deliverable, values for  $D$  are found to be  $\geq 1$  and this was observed for esters **4d** and **4e**.<sup>15</sup> However, all other OPBUs tested displayed inferior activity when externally added, indicating that they are not perfectly deliverable ( $D < 1$ ). Within the ester series it is evident that deliverability decreases as a function of lipophilicity (Table 1 and Fig. 4). This has a substantial effect on the activity of **4g**; whereas it was the most powerful transporter in the ester series when preincorporated inside vesicles, it is the least active when added externally. Octyl ester **4g** would thus be an ideal candidate for further investigation in coiled-coil driven membrane fusion studies. As demon-



strated previously,<sup>6b</sup> this is a highly efficient method of delivering lipophilic anionophores to membranes.

Following characterisation of their transport properties in synthetic membranes, OPBUs **4a–g** were tested in cells. For these studies, we used Fischer rat thyroid cells expressing the halide sensor YFP-H148Q/I152L (YFP-FRT cells). YFP-FRT cells were seeded in a 96-well plate and cultured for 3 to 4 days until 90% confluence. The cells were washed twice with phosphate buffered saline (PBS) solution before incubating with a PBS solution containing the test anionophore (50  $\mu$ M) for 10 min. The experiment was commenced by the addition of NaI (100 mM) and the rate of chloride/iodide exchange measured by fitting the decay in YFP fluorescence to a first order exponential function (see ESI† for full experimental details).

All compounds were found to mediate chloride/iodide exchange in cells leading to a decay in YFP fluorescence (Fig. 5, Fig. S45† and Table 1). The most active by some margin was bis-urea **4a**, based on the difluoroaromatic scaffold. Reassuringly, transporter **4a** was also the most active when externally delivered to LUVs, and joint first when preincorporated. This adds to our confidence that the YFP-FRT assay does indeed measure anion transport, rather than some other phenomenon. Anionophore **4a** is somewhat more active than **2**, which gave  $|dF/dt| = 0.013 \text{ s}^{-1}$  in the present assay. The overall relationship between activity in cells and vesicles is shown in Fig. 6. Provided the vesicle measurements involve external addition of anionophore, a rough correlation emerges (Fig. 6a). There is, however, considerable scatter; the poor performance of dichloride **4b** in the cells, despite its good activity in LUVs, is especially noticeable. This is difficult to explain, but may result from a specific interaction between **4b** and the natural membrane. The results imply that, while experiments in LUVs can give some guidance, these synthetic assemblies are not ideal surrogates for cells and cannot substitute for bio-

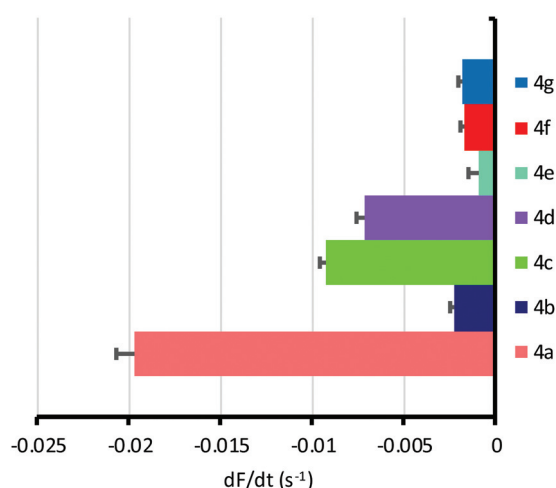


Fig. 5 Anion transport mediated by OPBUs (50  $\mu$ M) in YFP-FRT cells, determined by fitting the decay in YFP fluorescence to a first order exponential function. Data are shown as the mean  $\pm$  SEM ( $n = 16$ –32 from at least four independent experiments), with fluorescence quenching by the vehicle (0.5–1% v/v DMSO) subtracted.

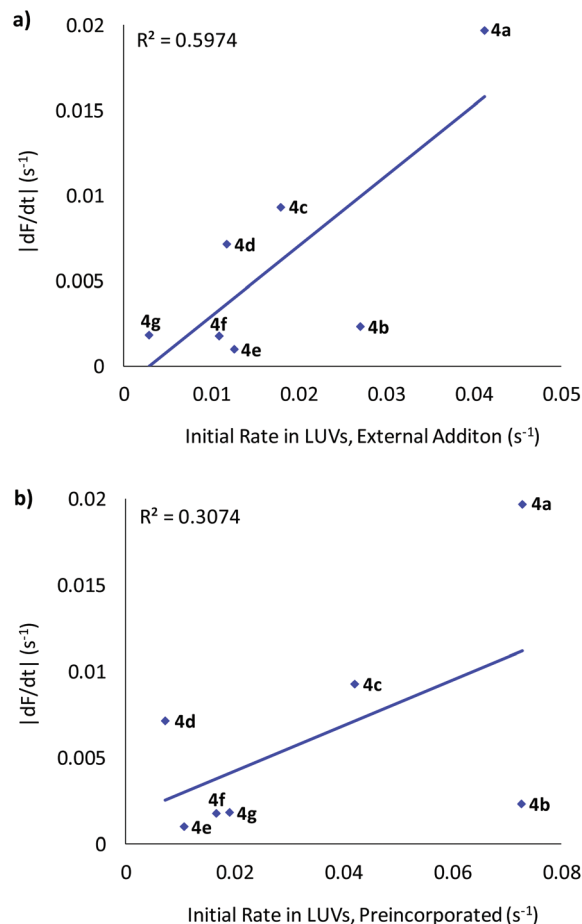


Fig. 6 Plot of the rate of chloride transport mediated by OPBUs **4a–g** in YFP-FRT cells versus LUVs when (a) externally added or (b) preincorporated.

logical testing. When results in cells are compared to those in vesicles with preincorporated OPBU, the correlation is very poor (Fig. 6b). This highlights the importance of considering deliverability as well as intrinsic activity when developing biologically active anionophores.<sup>6</sup>

In conclusion, we have shown that a series of *ortho*-phenylene bis-urea (OPBU) anionophores are active in cells as well as synthetic vesicles. The most effective in all assays is bis-urea **4a**, based on a difluorinated central scaffold. Activities depend both on electronic factors and lipophilicity. In particular, the sequence **4d–g** illustrates the role of lipophilicity in promoting intrinsic activity, but the contrary effect on deliverability and thus on effectiveness in cells. These bis-ureas are readily prepared, so that many other variations are potentially accessible. They therefore hold promise as tools for obtaining further insight into anionophore biological activity, and perhaps for the development of medical applications.

## Conflicts of interest

There are no conflicts to declare.



## Acknowledgements

The authors thank A. S. Verkman for the gift of FRT cells expressing YFP-H148Q/I152L. This work was supported by the EPSRC through the Bristol Chemical Synthesis Centre for Doctoral Training (EP/G036764/1) and research grant number EP/J00961X/1 and by the F. R. S.-FNRS through a Chargée de Recherche grant to HV. PAG thanks the EPSRC for a studentship to LEK and the ARC for funding (DP170100118).

## Notes and references

- (a) A. P. Davis, D. N. Sheppard and B. D. Smith, *Chem. Soc. Rev.*, 2007, **36**, 348–357; (b) P. A. Gale, E. N. W. Howe and X. Wu, *Chem*, 2016, **1**, 351–422; (c) N. Busschaert, C. Caltagirone, W. Van Rossom and P. A. Gale, *Chem. Rev.*, 2015, **115**, 8038–8155; (d) A. Vargas Jentzsch, A. Hennig, J. Mareda and S. Matile, *Acc. Chem. Res.*, 2013, **46**, 2791–2800; (e) S. Matile, A. Vargas Jentzsch, J. Montenegro and A. Fin, *Chem. Soc. Rev.*, 2011, **40**, 2453–2474.
- (a) P. A. Gale, J. T. Davis and R. Quesada, *Chem. Soc. Rev.*, 2017, **46**, 2497–2519; (b) I. Alfonso and R. Quesada, *Chem. Sci.*, 2013, **4**, 3009–3019; (c) N. Busschaert, S. H. Park, K. H. Baek, Y. P. Choi, J. Park, E. N. W. Howe, J. R. Hiscock, L. E. Karagiannidis, I. Marques, V. Felix, W. Namkung, J. L. Sessler, P. A. Gale and I. Shin, *Nat. Chem.*, 2017, **9**, 667–675; (d) S. K. Ko, S. K. Kim, A. Share, V. M. Lynch, J. Park, W. Namkung, W. Van Rossom, N. Busschaert, P. A. Gale, J. L. Sessler and I. Shin, *Nat. Chem.*, 2014, **6**, 885–892; (e) V. Soto-Cerrato, P. Manuel-Manresa, E. Hernando, S. Calabuig-Farinas, A. Martinez-Romero, V. Fernandez-Duenas, K. Sahlholm, T. Knopf, M. Garcia-Valverde, A. M. Rodilla, E. Jantus-Lewintre, R. Farras, F. Ciruela, R. Perez-Tomas and R. Quesada, *J. Am. Chem. Soc.*, 2015, **137**, 15892–15898; (f) J. L. Sessler and W. E. Allen, *CHEMTECH*, 1999, **29**, 16–24.
- H. Valkenier and A. P. Davis, *Acc. Chem. Res.*, 2013, **46**, 2898–2909.
- P. A. Gale, R. Perez-Tomas and R. Quesada, *Acc. Chem. Res.*, 2013, **46**, 2801–2813.
- (a) L. V. J. Galletta, S. Jayaraman and A. S. Verkman, *Am. J. Physiol.: Cell Physiol.*, 2001, **281**, C1734–C1742; (b) A. S. Verkman and L. J. V. Galletta, *Nat. Rev. Drug Discovery*, 2009, **8**, 153–171; (c) D. N. Sheppard, M. R. Carson, L. S. Ostedgaard, G. M. Denning and M. J. Welsh, *Am. J. Physiol.*, 1994, **266**, L405–L413.
- (a) H. Li, H. Valkenier, L. W. Judd, P. R. Brotherhood, S. Hussain, J. A. Cooper, O. Jurček, H. A. Sparkes, D. N. Sheppard and A. P. Davis, *Nat. Chem.*, 2016, **8**, 24–32; (b) N. López Mora, A. Bahreman, H. Valkenier, H. Li, T. H. Sharp, D. N. Sheppard, A. P. Davis and A. Kros, *Chem. Sci.*, 2016, **7**, 1768–1772; (c) X. Wu, L. W. Judd, E. N. W. Howe, A. M. Withecombe, V. Soto-Cerrato, H. Li, N. Busschaert, H. Valkenier, R. Pérez-Tomás, D. N. Sheppard, Y.-B. Jiang, A. P. Davis and P. A. Gale, *Chem*, 2016, **1**, 127–146.
- H. Valkenier, L. W. Judd, H. Li, S. Hussain, D. N. Sheppard and A. P. Davis, *J. Am. Chem. Soc.*, 2014, **136**, 12507–12512.
- S. J. Moore, C. J. E. Haynes, J. Gonzalez, J. L. Sutton, S. J. Brooks, M. E. Light, J. Herniman, G. J. Langley, V. Soto-Cerrato, R. Perez-Tomas, I. Marques, P. J. Costa, V. Felix and P. A. Gale, *Chem. Sci.*, 2013, **4**, 103–117.
- L. E. Karagiannidis, C. J. E. Haynes, K. J. Holder, I. L. Kirby, S. J. Moore, N. J. Wells and P. A. Gale, *Chem. Commun.*, 2014, **50**, 12050–12053.
- (a) H. Valkenier, C. M. Dias, K. L. Porter Goff, O. Jurček, R. Puttreddy, K. Rissanen and A. P. Davis, *Chem. Commun.*, 2015, **51**, 14235–14238; (b) J. A. Cooper, S. T. G. Street and A. P. Davis, *Angew. Chem., Int. Ed.*, 2014, **53**, 5609–5613; (c) S. Hussain, P. R. Brotherhood, L. W. Judd and A. P. Davis, *J. Am. Chem. Soc.*, 2011, **133**, 1614–1617; (d) S. J. Edwards, H. Valkenier, N. Busschaert, P. A. Gale and A. P. Davis, *Angew. Chem., Int. Ed.*, 2015, **54**, 4592–4596; (e) N. Busschaert, M. Wenzel, M. E. Light, P. Iglesias-Hernández, R. Pérez-Tomás and P. A. Gale, *J. Am. Chem. Soc.*, 2011, **133**, 14136–14148; (f) N. Busschaert, I. L. Kirby, S. Young, S. J. Coles, P. N. Horton, M. E. Light and P. A. Gale, *Angew. Chem., Int. Ed.*, 2012, **51**, 4426–4430; (g) C. Lang, X. Zhang, Q. Luo, Z. Dong, J. Xu and J. Liu, *Eur. J. Org. Chem.*, 2015, 6458–6465.
- For modelling and crystallography of OPBU-Cl<sup>−</sup> complexes, see ref. 8 and 9 respectively. Both methods support the participation of all 4 NH groups as H-bond donors.
- H. Valkenier, C. J. E. Haynes, J. Herniman, P. A. Gale and A. P. Davis, *Chem. Sci.*, 2014, **5**, 1128–1134.
- S. J. Edwards, I. Marques, C. M. Dias, R. A. Tromans, N. R. Lees, V. Félix, H. Valkenier and A. P. Davis, *Chem. – Eur. J.*, 2016, **22**, 2004–2011.
- M. Lisbjerg, H. Valkenier, B. M. Jessen, H. Al-Kerdi, A. P. Davis and M. Pittelkow, *J. Am. Chem. Soc.*, 2015, **137**, 4948–4951.
- With some anionophores, external addition to LUVs gives higher rates than preincorporation, resulting in values of  $D > 1$ . We presume that this observation is due to the actual concentration of lipid being lower than the notional 0.4 mM. Vesicle preparation involves some loss of lipid, so that subsequent addition of anionophore (external addition) results in a transporter to lipid loading that is higher than intended. In contrast, when the transporter is preincorporated in the membrane, the lipid and transporter are lost together during vesicle preparation so that the intended transporter to lipid ratio is maintained.

