



Cite this: *Chem. Commun.*, 2018, 54, 10774

DOI: 10.1039/c8cc90396d

rsc.li/chemcomm

Correction: A tumor-targeting probe based on a mitophagy process for live imaging

Lijuan Gui, Zhenwei Yuan, Habtamu Kassaye, Jinrong Zheng, Yuxin Yao, Fei Wang, Qing He, Yuanzhi Shen, Li Liang and Haiyan Chen*

Correction for 'A tumor-targeting probe based on a mitophagy process for live imaging' by Lijuan Gui *et al.*, *Chem. Commun.*, 2018, 54, 9675–9678.

The authors regret that incorrect structures were given for CyT and CyTH in Fig. 1 of the original article and throughout the corresponding Electronic Supplementary Information. The correct version of Fig. 1 is presented below, and the ESI file available online has been replaced with an updated version.

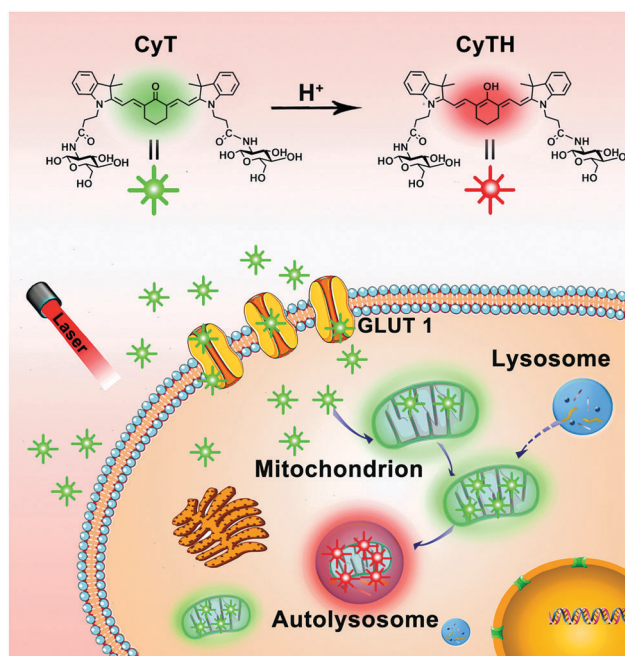


Fig. 1 Schematic diagram of mitochondrial autophagy detected by CyT.

The Royal Society of Chemistry apologises for these errors and any consequent inconvenience to authors and readers.

