



Cite this: *RSC Adv.*, 2019, 9, 6956

Fungal community analysis in seawater of the Mariana Trench as estimated by Illumina HiSeq†

Zhi-Peng Wang,^{‡b} Zeng-Zhi Liu,^{‡c} Yi-Lin Wang,^d Wang-Hua Bi,^c Lu Liu,^c Hai-Ying Wang,^b Yuan Zheng,^b Lin-Lin Zhang,^e Shu-Gang Hu,^e Shan-Shan Xu ^{*c} and Peng Zhang^{*a}

This study assessed the diversity and distribution of fungal communities in thirteen marine seawater samples from four sites (L1, L3, L4 and L7) of the Mariana Trench, with a depth range of 1000–4000 meters, using Illumina HiSeq sequencing with fungal-specific primers targeting the internal transcribed spacer (ITS) region of the ribosomal rRNA gene. Sedimentary fungal communities showed high diversity with 209 880 reads belonging to 91 operational taxonomic units (OTUs). Of these OTUs, 45 belonged to the Ascomycota, 37 to Basidiomycota, 3 to Chytridiomycota, 1 to Glomeromycota, 1 to Cryptomycota, and 4 to unknown fungi. The major fungal orders included Saccharomycetales and Sporidiobolales. The commonly found fungal genera were *Candida*, *Malassezia* and *Cryptococcus*. These results suggest the existence of diverse fungal communities in the Mariana Trench marine seawater, which can be considered as a useful community model for further ecological and evolutionary study of fungi in the trench.

Received 10th December 2018

Accepted 11th February 2019

DOI: 10.1039/c8ra10142f

rsc.li/rsc-advances

Introduction

As is well known, fungi produce a vast range of secondary metabolites, some of which possess high value in pharmaceutical applications, such as penicillin.¹ More specifically, marine fungi are also believed to be a good resource for novel biological natural products.² As previously described, some interesting compounds, such as cytoglobosins and halovirs, had been isolated from marine fungi.¹ Marine fungi are a taxonomically diverse group and exist in various niches within marine ecosystems including marine sediments, sea water, corals, algae, coastal environments and even some extreme environments.^{3,4} They not only serve as major decomposers of organic matters in marine ecosystems⁵ but also have been reported as parasites, pathogens, and mutualists of other marine organisms.^{3,6–8}

Deep-sea environments have extreme settings, including extreme low temperatures, low nutrient, absence of sunlight,

and high hydrostatic pressure.⁹ Recent studies showed great microbial diversity in sediments of many deep-sea environments, such as the Peru Trench,¹⁰ Pacific Ocean,^{8,11} India Ocean,^{12,13} Challenger Deep,¹⁴ Arctic Ocean,³ Saint Helena Bay,¹⁵ and South China Sea.^{16,17} In these deep-sea environments, there are abundant and diverse fungal resources.

The average depth of oceans is 4000 meters, and the deepest recorded part of the ocean is 11 000 meter depth down the Mariana Trench in the central west Pacific Ocean.¹⁸ The Mariana Trench is a non-accretionary convergent plate margin between the Philippine sea plate and subducting Pacific plate.¹⁹ Due to the special ecological environments around the trench, it may contain abundant fungal resources. In the last decades, there were several studies on the diversity of microbes including actinomycetes,²⁰ bacteria, fungi and Picoeukaryotic isolated from sediments and seawaters in the Pacific Ocean and Mariana Trench^{8,11,14,20–22} by culture and molecular approaches.

The advent of high-throughput sequencing technology (HiSeq) have promoted the significant advances in microbial community analysis. With the increased computational capabilities, HiSeq can simultaneously acquire the sequences of large numbers of DNA fragments. By adapting the HiSeq technologies, culture-independent targeted PCR amplification and sequencing of the ITS rRNA gene continues to offer a powerful and economic way to gain insight into the fungal community in deep-sea samples. Although the HiSeq have been used to reveal the presence of diverse microbiol in sediments and seawater of the Pacific Ocean even the Mariana Trench,^{11,21,22} the study of fungal diversity using the Hiseq method performed for analyzing fungal diversities in the Mariana Trench seawater is

^aTobacco Research Institute, Chinese Academy of Agricultural Sciences, Qingdao, 266101, China. E-mail: zhangpeng@caas.cn

^bKey Laboratory of Sustainable Development of Polar Fishery, Ministry of Agriculture and Rural Affairs, Yellow Sea Fisheries Research Institute, Chinese Academy of Fishery Sciences, Qingdao, 266071, China

^cSchool of Medicine and Pharmacy, Ocean University of China, Qingdao, 266003, China. E-mail: xushanshan328@163.com

^dCollege of Science, China University of Petroleum, Qingdao, Shandong 266580, China

^eCollege of Chemistry & Environmental Engineering, Shandong University of Science & Technology, Qingdao, 266510, China

† Electronic supplementary information (ESI) available. See DOI: 10.1039/c8ra10142f

‡ These authors contributed equally to this work.



still less. In the present study, we investigated fungal-community structures in deep seawater of the Mariana Trench with different depths (seawater depth ranging from 1000 to 4000 m) from four locations (L1, L3, L4 and L7, Fig. 1) using Illumina HiSeq technique, which is used to study the environmental microbial diversity and community composition difference by detecting the sequence variation and abundance of the target region. This approach contains a large amount of sequencing and a short cycle, which can provide more comprehensive information on the microorganisms in various environmental samples.

Results

Sequence data

The raw data from 13 seawater samples consisted of 210 290 sequences, of which 209 880 sequences were retained after removing sequences with different tags at each end for quality filtering and denoising. After removing singletons, chimeric sequences and OTUs of nonfungal organisms or those with unreliable BLAST matches (max score below 200 or aligned query sequence below 200 bp), a total of 91 fungal OTUs from 209 880 sequences were included in the final matrix. The length of these sequences ranged from 241 to 315 bp. The number of OTUs in different sediment samples ranged from 34 to 75 (Table 1).

Fungal diversity and community structure in seawater

Based on BLASTn searches in GenBank, 91 OTUs were identified at different levels of taxonomic precision, and most of these OTUs had their best matches against GenBank accessions. Information of these 91 OTUs is presented in Table S2.† These 91 OTUs spanned 4 phyla, 20 classes, 28 orders, 37 families, 42 genera and 43 species. Out of the 91 OTUs, 45 belonged to the Ascomycota, 37

to Basidiomycota, 3 to Chytridiomycota, 1 to Glomeromycota, 1 to Cryptomycota and 4 to unknown fungi (Fig. 2 and Table S2†).

Sequences matching with Ascomycota had high affinities with 6 known classes (Sordariomycetes, Dothideomycetes, Saccharomycetes, Eurotiomycetes, Leotiomycetes and Pezizomycetes), with Sordariomycetes being the most abundant and diverse class (Table 2). Sequences matching with Basidiomycota had high affinities with 9 known classes (Malasseziomycete, Wallemiomycetes, Exobasidiomycetes, Microbotryomycetes, Cystobasidiomycetes, Ustilaginomycetes, Agaricomycetes, Tremellomycetes and Moniliellomycetes) with Malasseziomycete being the most diverse and abundant class (Table 2). Sequences from Ascomycota matched 11 known orders (Hypocreales, Sordariales, Pleosporales, Capnodiales, Saccharomycetales, Chaetothyriales, Eurotiales, Thelebolales, Pezizales, Venturiales, and Hypocreomycetidae), with Hypocreales being the most abundant and the most diverse, followed by Saccharomycetales. Sequences from Basidiomycota matched 14 known orders (Malasseziales, Sporidiobolaceae, Agaricales, Polyporales, Agaricostilbales, Cystobasidiales, Erythrobasidiales, Tremellales, Exobasidiales, Wallemiales, Ustilaginales, Entylomatales, Moniliellales, and Filobasidiales), with Malasseziales being the most abundant and diverse order. Fungal communities in sample M1.4 were most diverse and stretched 23 orders that were detected in the present study, followed by M7.1 which had 22 orders. Besides, fungal diversity in sampling site L1 was most diverse and had 26 orders that were detected, followed by L7 which contained 25 orders, and there were 24 orders in both L3 and L4.

Of the 42 genera detected in the present study, the dominant genera were *Malassezia* (62 376 reads in 13 samples), *Cochliobolus* (16 008 reads in 13 samples) and *Yamadazyma* (10 337 reads in 11 samples). The most common fungal species (>500 reads in more than 10 samples) were *Malassezia globosa* (18 949 reads in 13 samples), *Curvularia lunata* (16 008 reads in 13 samples), *Cladosporium herbarum* (3397 reads in 13 samples), *Emericellopsis maritima* (3181 reads in 13 samples), *Wickerhamomyces anomalus* (2354 reads in 13 samples), *Hortaea werneckii* (2332 reads in 13 samples), *Aspergillus penicillioides* (1591 reads in 13 samples), *Talaromyces purpureogenus* (1503 reads in 13 samples), *Sarocladium kiliense* (965 reads in 13 samples), *Rhodotorula mucilaginosa* (795 reads in 11 samples), *Sporidiobolus pararoseus* (641 reads in 10 samples) and *Candida etchellsii* (569 reads in 11 samples) (Tables S1 and S2†).

Out of the 91 OTUs, 41 had the matching sequences with high similarity ($\geq 97\%$). These matching sequences were derived from fungi found in widely-ranged environments, including plant tissues, soil, food, and air which indicated that most of these fungal OTUs were not seawater specific and were distributed widely in both non-marine and marine habitats. In addition, the other 50 fungal OTUs had the matching sequences with similarity below 97%, which suggests that they are species to be unidentified.

Distribution of fungal communities among different seawater samples

The Good's coverage estimator, Chao 1, and Shannon's indices were used to evaluate and compare the diversity of the fungal

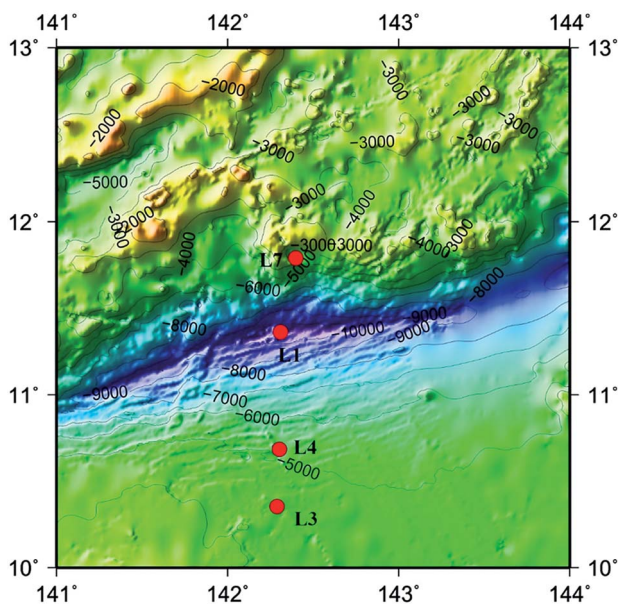


Fig. 1 Map of Mariana Trench showing the sites where seawater samples were collected in this study. Four sampling sites are indicated by red dots.



Table 1 Description of the 13 seawater samples from 4 sampling sites investigated in the present study

Sampling site	Sampling code	Sampling date	Coordination	Depth (m)	Temperature (°C)	Salinity (psu)	OTU	Shannon	Simpson	Chao1	ACE	Goods coverage
SiteL1	M1.1	2016.9.12	11°21.47'N; 142°24.794'E	1000	4.79	34.53	65	2.25	0.64	59.20	55.84	0.996
	M1.2	2016.9.12	11°21.776'N; 142°28.921'E	2000	2.30	34.62	64	2.61	0.74	45.77	51.67	0.997
	M1.3	2016.9.12	11°21.47'N; 142°24.794'E	3000	1.68	34.66	54	2.91	0.79	38.50	35.76	0.998
	M1.4	2016.9.12	11°21.136'N; 142°25.823'E	4000	1.49	34.68	50	3.28	0.83	92.5	64.75	0.995
SiteL3	M3.1	2016.9.14	10°21.359'N; 142°16.413'E	1000	4.81	34.54	70	2.64	0.74	58.14	59.38	0.995
	M3.2	2016.9.14	10°21.442'N; 142°16.545'E	2000	2.26	34.63	49	2.60	0.74	89.50	80.94	0.995
	M3.4	2016.9.14	10°21.384'N; 142°16.809'E	4000	1.49	34.67	42	1.78	0.59	37.55	39.32	0.997
SiteL4	M4.2	2016.9.14	10°41.150'N; 142°18.197'E	2000	2.19	34.63	44	2.54	0.69	45.75	49.42	0.996
	M4.3	2016.9.14	10°41.150'N; 142°18.197'E	3000	1.68	34.66	43	2.62	0.79	31.42	29.43	0.998
	M4.4	2016.9.14	10°41.150'N; 142°18.197'E	4000	1.47	34.69	60	3.75	0.88	57.39	55.85	0.997
SiteL7	M7.1	2016.9.16	11°47.355'N; 142°23.915'E	1000	4.89	34.54	75	2.74	0.71	67.45	66.38	0.996
	M7.2	2016.9.16	11°47.355'N; 142°23.915'E	2000	2.31	34.63	36	2.76	0.78	25.50	26.70	0.999
	M7.3	2016.9.16	11°47.355'N; 142°23.915'E	3000	1.66	34.67	34	2.33	0.76	31.17	28.84	0.998

communities among the 13 seawater samples (Table 1). The Good's coverage estimator ranged from 99.5 to 99.9%. The Chao1 index (31.42–89.50) and Shannon's index ($H' = 1.78$ – 3.75) indicated that the level of diversity varied among the 13 seawater samples.

To gain insight into the differences of fungal communities among the 13 seawater samples from these four sampling sites, we applied network analyses of the 91 OTUs to highlight their distributions (Fig. 3). On one hand, the data showed that richness of fungal taxa in site L1, L3, L4 and L7 was 79, 75, 74 and 82 OTUs (Fig. 3), representing 39, 34, 39 and 39 genera, respectively, indicating that highest fungal richness occurred in site L7, L1, L4. On the other hand, the results showed that sampling site M7.1 had the highest number of OTUs. 75 OTUs were detected in this site, while only 36 and 34 OTUs were detected in M7.2 and M7.3, respectively, which was similar with sampling site L1 and L3. These data indicated that the fungal diversity in 1000 m seawater was higher than deeper seawater in site L1, L4 and L7. In contrast, 60 OTUs were detected in M4.4 while only 44 and 43 OTUs detected in M4.2 and M4.3, which indicated that the fungal diversity in deeper seawater was higher than 1000 m seawater in sampling site L4.

To further investigate the relationship between depth and fungal diversity, we also applied network analyses of the 91 OTUs to highlight their distributions based on the depth of the samples (Fig. 4). The results showed that there were 86 OTUs within the samples from 1000 m (Fig. 4a), 73 OTUs within the samples from 2000 m (Fig. 4b), 65 OTUs within the samples

from 3000 m (Fig. 4c), and 69 OTUs within the samples from 4000 m (Fig. 4d), which showed higher fungal diversity in 1000 m samples. These data confirmed that the fungal diversity in the Mariana Trench is very richness.

Discussion

In previous studies, the fungal diversity of the Mariana Trench sediments was detected,¹¹ while the fungal diversity in the Mariana Trench seawater is poorly understood, which impedes our understanding of the ecological importance of fungi in the marine ecosystem of the Mariana Trench. In this study, 91 fungal taxa at the OTU level were revealed in 4 different sites and various depth seawater in the Mariana Trench, greatly advancing our understanding of the fungal diversity in the Mariana Trench. Moreover, several sequences, especially in sample M3.1 and M4.3 (more than one third of the sequences), could not match the database and failed to be assigned to any known taxa, indicating the existence of considerable unknown biodiversity in the Mariana Trench.

Members of Ascomycota were more frequently identified in the Mariana Trench seawater than those of Basidiomycota, while members of Chytridiomycota and Glomeromycota represented only a small proportion of the seawater fungal communities, which is similar with the fungal diversity of the Mariana Trench sediments.¹¹ Interestingly, Ascomycota was the dominant phylum in samples from L1 and L3, and Basidiomycota was the dominant phylum in samples from L4 and L7. The phylum Chytridiomycota has been detected in some deep-sea



Table 2 Information on the classes and orders with which the OTUs presented in the 13 seawater samples^a

	Site L1				Site L3			Site L4			Site L7		
	M1.1	M1.2	M1.3	M1.4	M3.1	M3.2	M3.4	M4.2	M4.3	M4.4	M7.1	M7.2	M7.3
Ascomycota	61.53	69.91	69.42	57.32	54.61	53.84	62.81	17.28	48.88	39.20	18.13	35.41	39.55
Sordariomycetes	53.82	3.73	17.40	21.78	40.05	43.44	55.32	4.18	24.64	12.55	3.06	14.08	22.95
Hypocreales	53.81	3.72	17.40	21.44	40.02	43.43	55.31	4.18	24.64	12.46	2.86	14.08	22.95
Sordariales	0.01	0.01	—	0.34	0.03	0.01	0.01	—	—	0.09	0.12	—	—
Hypocreomycetidae	—	—	—	—	—	—	—	—	—	—	0.08	—	—
Dothideomycetes	1.54	1.01	41.64	3.28	1.10	1.53	0.35	3.68	9.79	5.32	3.06	9.50	15.46
Pleosporales	1.02	0.41	39.63	1.03	0.26	0.13	0.18	0.17	0.04	0.83	1.91	0.05	15.13
Capnodiales	0.52	0.55	1.99	2.22	0.81	1.40	0.17	3.51	9.74	3.72	1.03	9.44	0.33
Venturiales	—	0.05	0.02	0.03	0.03	0.01	0.05	—	0.01	0.77	0.12	0.01	—
Saccharomycetes	2.64	43.16	1.31	16.06	3.04	2.53	3.15	2.35	0.26	12.74	5.31	9.22	0.28
Saccharomycetales	2.64	43.16	1.31	16.06	3.04	2.53	3.15	2.35	0.26	12.74	5.31	9.22	0.28
Eurotiomycetes	2.56	2.28	8.58	4.73	8.42	5.68	3.41	6.54	13.52	3.76	4.59	0.47	0.80
Chaetothyriales	0.13	0.44	3.05	0.43	2.44	0.15	2.70	0.12	7.35	0.23	0.36	0.13	0.35
Eurotiales	2.43	1.84	5.53	4.30	5.98	5.53	0.71	6.42	6.17	3.53	4.23	0.34	0.45
Leotiomycetes	—	0.02	—	—	—	—	—	—	—	—	—	1.23	—
Thelebolales	—	0.02	—	—	—	—	—	—	—	—	—	1.23	—
Pezizomycetes	—	0.01	—	—	0.05	—	—	—	—	—	—	—	—
Pezizales	—	0.01	—	—	0.05	—	—	—	—	—	—	—	—
Unidentified Ascomycota	0.97	19.70	0.49	11.46	1.95	0.65	0.53	0.58	0.67	4.83	2.11	0.91	0.06
Basidiomycota	36.85	24.15	8.30	36.84	14.98	40.02	4.93	17.11	18.68	40.99	77.61	63.65	59.12
Malasseziomycete	33.74	23.14	7.27	35.38	14.21	37.28	4.56	16.82	18.57	38.86	76.13	47.43	56.97
Malasseziales	33.74	23.14	7.27	35.38	14.21	37.28	4.56	16.82	18.57	38.86	76.13	47.43	56.97
Microbotryomycetes	2.35	0.09	0.07	0.23	0.10	0.02	0.06	0.06	—	0.12	0.17	0.12	—
Sporidiobolaceae	2.35	0.09	0.07	0.23	0.10	0.02	0.06	0.06	—	0.12	0.17	0.01	—
Agaricomycetes	0.19	0.04	—	0.06	0.16	2.48	0.01	—	—	0.02	0.61	—	—
Agaricales	—	0.04	—	0.02	—	2.48	0.01	—	—	0.02	0.61	—	—
Polyporales	0.19	—	—	0.04	0.16	—	—	—	—	—	—	—	—
Agaricostilbomycetes	—	—	—	—	—	—	—	—	—	0.01	0.10	—	—
Agaricostilbales	—	—	—	—	—	—	—	—	—	0.01	0.10	—	—
Cystobasidiomycetes	0.13	0.05	0.04	0.14	0.33	0.03	0.09	0.07	0.01	1.63	0.67	—	—
Cystobasidiales	0.12	0.05	0.04	0.10	0.33	0.02	0.07	0.05	0.01	0.89	0.62	—	—
Erythrobasidiales	0.01	—	—	0.04	—	0.01	0.02	0.02	—	0.74	0.05	—	—
Tremellomycetes	0.13	0.22	0.80	0.17	0.09	0.09	0.10	0.11	—	0.21	0.38	—	0.31
Tremellales	0.13	0.22	0.80	0.17	0.09	0.09	0.10	0.11	—	0.21	0.38	—	0.31
Filobasidiales	0.01	—	—	—	—	—	—	—	—	—	0.01	—	—
Ustilaginomycetes	0.07	0.05	0.01	0.01	—	0.02	0.01	—	0.01	—	—	0.02	1.74
Ustilaginales	0.07	0.05	0.01	0.01	—	0.02	0.01	—	0.01	—	—	0.02	1.74
Exobasidiomycetes	0.10	0.05	0.01	0.66	0.04	0.05	—	—	0.08	—	0.03	15.69	0.08
Exobasidiales	0.09	—	0.01	0.57	—	0.02	—	—	0.01	—	—	0.01	0.01
Entylomatales	0.01	0.50	—	0.09	0.04	0.03	—	—	0.07	—	0.03	15.68	0.07
Wallemiomycetes	0.13	0.06	0.10	0.19	0.05	0.05	0.10	0.05	0.01	0.04	0.11	—	0.02
Wallemiales	0.13	0.06	0.10	0.19	0.05	0.05	0.10	0.05	0.01	0.04	0.11	—	0.02
Moniliellomycetes	—	—	—	—	—	—	—	—	—	0.16	—	—	—
Moniliellales	—	—	—	—	—	—	—	—	—	0.16	—	—	—
Chytridiomycota	—	—	—	0.04	0.02	—	—	—	—	0.01	0.01	—	—
Glomeromycota	0.05	0.12	0.18	0.30	0.07	0.09	0.12	0.07	—	0.05	0.09	—	0.21
Unknown fungi	—	0.01	0.01	—	0.16	0.02	—	—	0.56	0.01	0.01	0.16	0.18
Others	1.57	5.81	22.09	5.50	30.16	6.03	32.14	65.54	31.88	19.74	4.15	0.78	0.94

^a The 13 columns provide a taxonomic overview of the fungal communities found in each of the 13 seawater samples, which are represented as the percentage of reads.

environments, such as methane cold seep²³ and Izu-Ogasawara Trench,²⁴ but no Chytridiomycota sequences were detected in the sediment samples collected from the Pacific Ocean as previously described.¹¹ However, in this study, three putative Chytridiomycota OTUs (OTU 59, OTU 79 and OTU 81) were detected in the Mariana Trench seawater (Tables S1 and S2†). Our results suggest that the fungal communities in the deep-sea seawater from the Mariana Trench appears to be dominated by

Ascomycota and Basidiomycota, while other fungal taxonomic groups are rare.

In Ascomycota, members of Sordariomycetes, Dothideomycetes and Eurotiomycetes have been frequently found in deep-sea sediments in India,²⁵ the Pacific Ocean,⁸ Arctic fjords³ and in subtropical Chinese seas,²⁶ indicating that these three classes are ubiquitous in marine environments. In our study, Dothideomycetes was dominant in sample M1.3, and



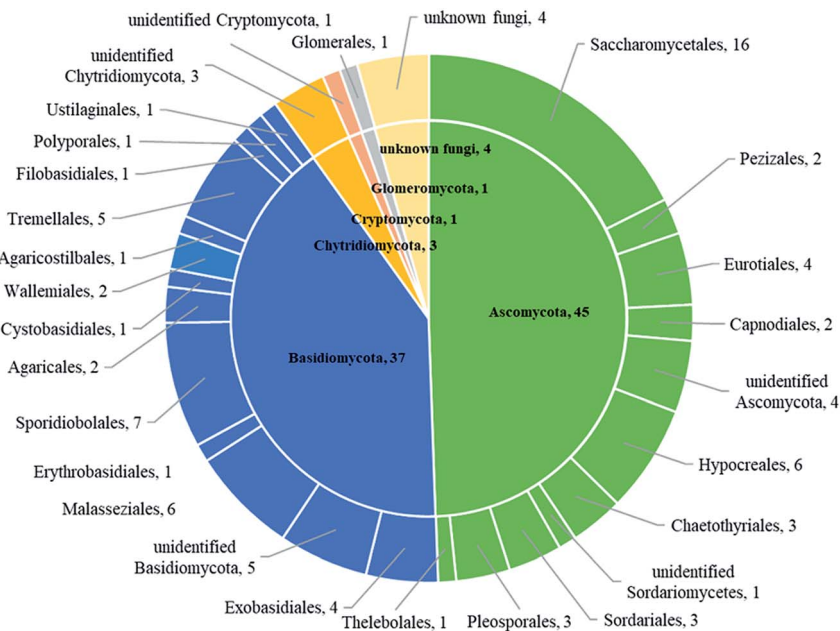


Fig. 2 The taxonomic distribution of 91 OTUs at the phylum and order level.

Saccharomycetes was dominant in M1.2 and M1.4 (Table 2). And Hypocreales was found dominant in site L3 (including M3.1, M3.2 and M3.4) and M1.1, which was quite different from other researches. And the order Pleosporales, members of Dothideomycetes, was dominant in sample M7.3 (Table 2), which may be essential to survival in marine environments.^{24,26}

In our study, the most abundant class of Basidiomycota was Malasseziomycete, primarily represented by *Malassezia* sequences. Interestingly, *Malassezia* was dominant in samples from site L7, with a percentage of more than sixty (Table 2). And *Entylomatales* was found in sample M7.2, being the second large fungi in this sample, which is rarely found in other researches.

And it is very interesting to find that *Glomeromycota* sequences are widely distributed in the seawater samples although the sequence abundance was low (Table 2). *Glomeromycota*, also called arbuscular mycorrhizal fungi, are typical fungal symbionts colonizing the roots of vascular plants and widely-spread on land.²⁷ Recently, the phylum *Glomeromycota* has been also detected in marine environments, including Arctic, marine sediments,³ and hydrothermal ecosystems.²⁸ And it was not detected in the Mariana Trench in previous reports. These results may indicate the strong adaptability of *Glomeromycota* and potential significance in marine ecology. But if *Glomeromycota* act as decomposers needed more research.

Of the 42 fungal genera uncovered in our study, most of them are widespread in terrestrial and marine habitats. The genera *Malassezia*, *Rhodotorula* and *Trichosporon* are extremophilic yeasts that were frequently found in the Arctic, Antarctic and alpine habitats.²⁹ Moreover, the genera *Malassezia* and *Trichosporon* are well known pathogens or parasites of marine animals, indicating that they may also be opportunistic pathogens of deep-sea animals.¹² Other phylotypes of fungi in this study included *Candida*, *Cryptococcus*, *Tilletiopsis*, *Rhodotorula*

and *Erythrobasidium*, which were also reappeared in previous studies on fungal diversity in deep-sea sediments.^{10–12,16,30} Moreover, some of the genera detected in our study are plant pathogens, including *Candida*, *Ceriporia*, *Exobasidium*, *Lophiostoma*, *Moniliella* and *Mucor*. In Eurotiomycetes, *Aspergillus* are known to be ubiquitous in various marine substrates as well as in marine sponge invertebrates,³¹ which was detected in the Mariana Trench seawaters. And *Aspergillus* was also reported that it may produce biologically active natural products,³² indicating that the Mariana Trench may have more fungal resources that can produce active substances. Other genera like *Cochliobolus*, *Emericellopsis*, *Wickerhamomyces*, *Yamadazyma* and *Hortaea* were also abundant in the Mariana Trench, while genera *Yarrowia*, *Gymnopus*, *Kondoa*, *Neurospora*, *Mucor*, *Peziza* and *Acremonium* were rare but indeed exist in the Mariana Trench seawater. These data indicated that the fungal resources in the Mariana Trench seawater is rich and diverse.

Conclusion

In summary, our results indicate that there are many fungal taxa resources in seawater of the Mariana Trench, even in the deep-sea (4000 m in this study), most of which possibly originate from terrestrial environments. Although many of the sequences in our study are unidentified, it shows that the Mariana Trench possesses great potential in discovering fungal resources and active substances. It is necessary to explore new methods and technologies to investigate these fungal resources.

Experimental

Materials and methods

Sample collection. Sampling was performed in September 2016. Seawater samples were collected using a grab sampler



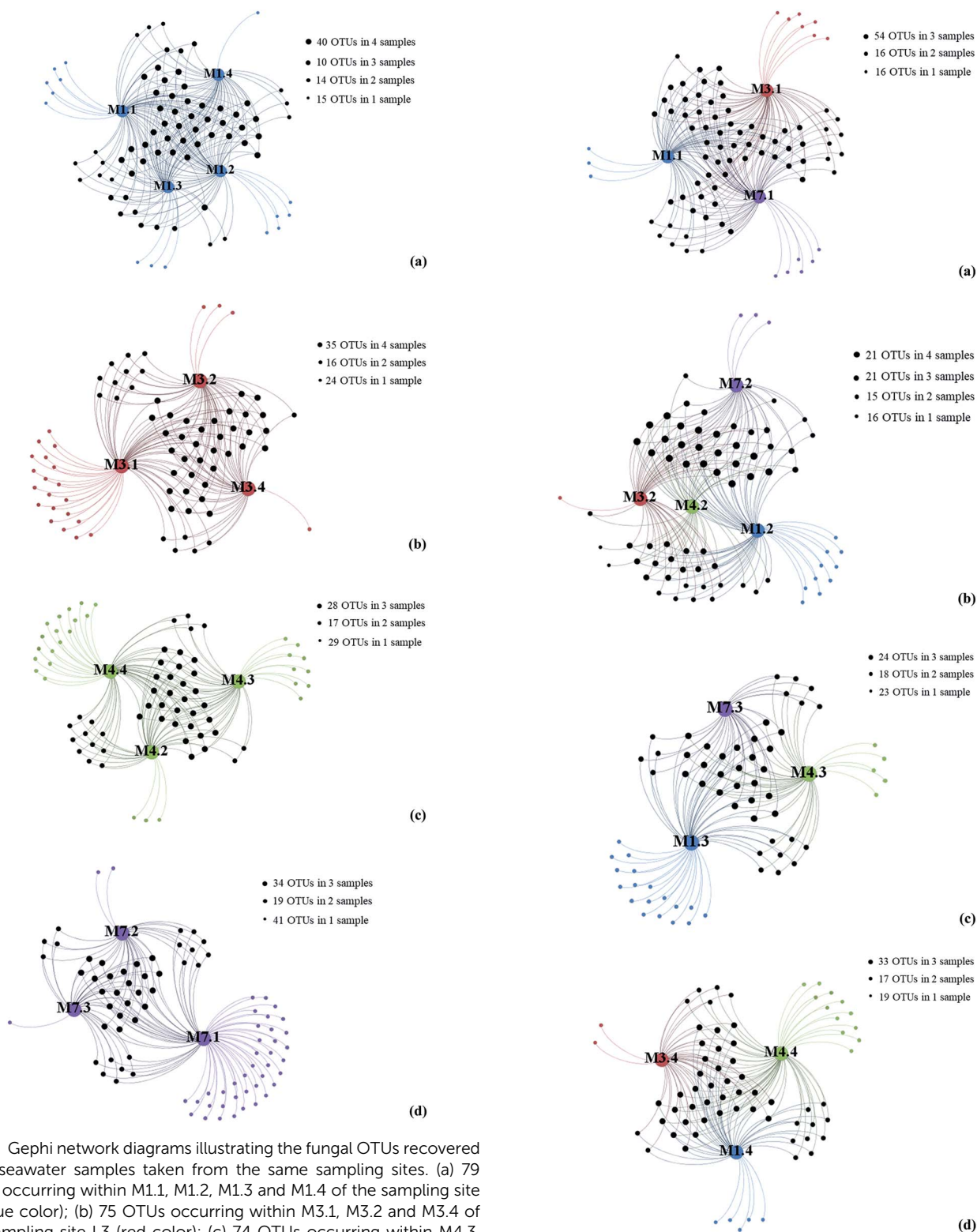


Fig. 3 Gephi network diagrams illustrating the fungal OTUs recovered from seawater samples taken from the same sampling sites. (a) 79 OTUs occurring within M1.1, M1.2, M1.3 and M1.4 of the sampling site L1 (blue color); (b) 75 OTUs occurring within M3.1, M3.2 and M3.4 of the sampling site L3 (red color); (c) 74 OTUs occurring within M4.3, M4.3 and M4.4 of the sampling site L4 (green color); (d) 82 OTUs occurring within M7.1, M7.2 and M7.3 of the sampling site L7 (purple color).

operated from a boat and then directly placed into sterile sampling bottles. The seawater samples were collected from four locations in the Mariana Trench. Four different depth

Fig. 4 Gephi network diagrams illustrating the fungal OTUs recovered from seawater samples with same water depths. (a) 86 OTUs occurring within M1.1, M3.1 and M7.1 samples; (b) 73 OTUs occurring within M1.2, M3.2, M4.2 and M7.2 samples; (c) 65 OTUs occurring within regions of the M1.3, M4.3 and M7.3 samples; (d) 69 OTUs occurring within regions of the M1.4, M3.4 and M4.4 samples; blue color dot represent samples from L1; red color dot represent samples from L3, green color dot represent samples from L4, purple color dot represent samples from L7.



samples (M1.1 to M1.4) were from the location L1, three different depth samples (M3.1, M3.2 and M3.4) were from the L3, three different depth samples (M4.2 to M4.4) were from the location L4, and three different depth samples (M7.1, M7.2 and M7.3) were from location L7 (Fig. 1). Samples were frozen at $-20\text{ }^{\circ}\text{C}$ and transported to laboratory by flight. Samples were then stored at $-80\text{ }^{\circ}\text{C}$ until nucleic acids were extracted. Two physicochemical properties of seawater samples were analyzed, including temperature and salinity.

DNA extraction. Filter seawater samples to the $0.22\text{ }\mu\text{m}$ filters, and total genome DNA was extracted using CTAB/SDS method. DNA concentration and purity were monitored on 1% agarose gels. According to the concentration, DNA was diluted to $1\text{ ng }\mu\text{L}^{-1}$ using sterile water.

Library preparation and sequencing. ITS genes of distinct regions (ITS1/ITS2, Arc V4) were amplified using specific primer (18S V4: 528F-706R) with the barcode. All PCR reactions were carried out with Phusion® High-Fidelity PCR Master Mix (New England Biolabs). Mix same volume of $1\times$ loading buffer (contained SYB green) with PCR products and operate electrophoresis on 2% agarose gel for detection. Then, mixture PCR products was purified with GeneJET™ Gel Extraction Kit (Thermo Scientific). Sequencing libraries were generated using Ion Plus Fragment Library Kit 48 rxns (Thermo Scientific) following manufacturer's recommendations. The library quality was assessed on the Qubit® 2.0 Fluorometer (Thermo Scientific). At last, the library was sequenced on an Ion S5™ XL platform and 400 bp/600 bp single-end reads were generated.

Data analysis. Single-end reads was assigned to samples based on their unique barcode and truncated by cutting off the barcode and primer sequence. Quality filtering on the raw reads were performed under specific filtering conditions to obtain the high-quality clean reads according to the Cutadapt³³ (V1.9.1, <http://cutadapt.readthedocs.io/en/stable/>) quality controlled process. The reads were compared with the reference database (Silva database)³⁴ using UCHIME algorithm³⁵ to detect chimera sequences, and then the chimera sequences were removed.³⁶ Then the Clean Reads finally obtained.

Sequences analysis were performed by Uparse software.³⁷ Sequences with $\geq 97\%$ similarity were assigned to the same Operational Taxonomic Units (OTUs). Representative sequence for each OTU was screened for further annotation. Alpha diversity is applied in analyzing complexity of species diversity for a sample through 5 indices, including Observed-species, Chao1, Shannon, Simpson, Good-coverage. All the indices in our samples were calculated with QIIME (version 1.7.0)³⁸ and displayed with R software (version 2.15.3). Beta diversity analysis was used to evaluate differences of samples in species complexity, Beta diversity on both weighted and unweighted unifracs were calculated by QIIME software (version 1.7.0).

Statistical analyses. Sequences representing the OTUs were subjected to BLASTn search in GenBank (<http://www.ncbi.nlm.nih.gov/genbank/>) in order to determine their taxonomic affiliation. The following criteria were used to interpret the sequences. For sequence identities $\geq 97\%$, the genus and species were accepted, for sequence identities between 95% and 97%, only the genus was accepted, and for

sequence identities $< 95\%$, OTUs were labeled at the order, family or phylum name or as 'unidentified'. The ITS sequences were aligned using a multiple sequence alignment program MAFFT version 7 (<http://mafft.cbrc.jp/alignment/server/>). Network analysis was performed to visualize the distribution of 91 OTUs among the 13 seawater samples from 4 sampling sites using Gephi 0.8.2 software.³⁹

Author contributions

Z.-P. W. performed the sample collection, and wrote this manuscript; Z.-Z. L. performed DNA extraction and help to write this manuscript; Y.-L. W. and W.-H. B. analyzed the data; L. L. and H.-Y. W. performed the microbial enrichment; Y. Z., L.-L. Z. and S.-G. H. performed checking of the DNA library; P. Z. and S.-S. X. supervised the research work and revised the manuscript.

Conflicts of interest

The authors declare no conflicts of interest.

Acknowledgements

This research was supported by the National Natural Science Foundation of China (grant no. 31500032), Natural Science Foundation of Shandong Province (grant no. ZR2017BC029), Central Public Interest Scientific Institution Basal Research Fund (2017RC-YJ01, 20603022017006, 20603022019011), Qingdao Shinan District Science and Technology Development Fund Project (2016-3-005-ZH) and Qingdao Science and Technology Project (17-3-3-59-nsh).

References

- 1 S. K. Pabba, B. Samatha, M. R. Prasad, S. H. Nidadavolu and M. A. S. Charya, Antibacterial Activity of Marine derived Fungi Collected from South East Coast of Tamilnadu, India, *J. Microbiol. Biotechnol. Res.*, 2017, **1**, 86–89.
- 2 K. Liberra and U. Lindequist, Marine fungi—a prolific resource of biologically active natural products?, *Die Pharmazie*, 1995, **50**, 583–588.
- 3 Z. Tao, N. F. Wang, Q. Z. Yu, Y. L. Hong and Y. Y. Li, Diversity and distribution of fungal communities in the marine sediments of Kongsfjorden, Svalbard (High Arctic), *Sci. Rep.*, 2015, **5**, 14524.
- 4 E. B. G. Jones, J. Sakayaroj, S. Suetrong, S. Somrithipol and K. Pang, Classification of marine Ascomycota, anamorphic taxa and Basidiomycota, *Fungal Divers.*, 2009, **35**, 1–187.
- 5 K. D. Hyde, E. B. G. Jones, E. M. Leano, S. B. Pointing, A. D. Poonyth and L. L. P. Vrijmoed, Role of fungi in marine ecosystems, *Biodiversity & Conservation*, 1998, **7**, 1147–1161.
- 6 T. L. Champion-Alsumard, S. Golubic and K. Priess, Fungi in corals: symbiosis or disease? Interaction between polyps and fungi causes pearl-like skeleton biomineralization, *Mar. Ecol.: Prog. Ser.*, 1995, **117**, 137–147.



- 7 C. Raghukumar, Fungal Parasites of the Marine Green Algae, Cladophora and Rhizoclonium, *Bot. Mar.*, 1986, **29**, 289–298.
- 8 W. Xu, K. Pang and Z. Luo, High fungal diversity and abundance recovered in the deep-sea sediments of the Pacific Ocean, *Microb. Ecol.*, 2014, **68**, 688–698.
- 9 Y. Nagano, T. Nagahama, Y. Hatada, T. Nunoura, H. Takami, J. Miyazaki, K. Takai and K. Horikoshi, Fungal diversity in deep-sea sediments—the presence of novel fungal groups, *Fungal Ecology*, 2010, **3**, 316–325.
- 10 V. P. Edgcomb, D. J. Beaudoin, R. J. Gast, J. F. Biddle and A. Teske, Marine subsurface eukaryotes: the fungal majority, *Environ. Microbiol.*, 2011, **13**, 172–183.
- 11 W. Xu, Z. H. Luo, S. Guo and K. L. Pang, Fungal community analysis in the deep-sea sediments of the Pacific Ocean assessed by comparison of ITS, 18S and 28S ribosomal DNA regions, *Deep Sea Res., Part I*, 2016, **109**, 51–60.
- 12 X. Zhang, G. Tang, X. Xu, X. Nong and S. Qi, Insights into Deep-Sea Sediment Fungal Communities from the East Indian Ocean Using Targeted Environmental Sequencing Combined with Traditional Cultivation, *PLoS One*, 2014, **9**, 109–118.
- 13 C. Raghukumar, S. Raghukumar, G. Sheelu, S. M. Gupta, B. N. Nath and B. R. Rao, Buried in time: culturable fungi in a deep-sea sediment core from the Chagos Trench, Indian Ocean, *Deep Sea Res., Part I*, 2004, **51**, 1759–1768.
- 14 T. Nunoura, M. Nishizawa, M. Hirai, S. Shimamura, P. Harnvoravongchai, O. Koide, Y. Morono, T. Fukui, F. Inagaki and J. Miyazaki, Microbial Diversity in Sediments from the Bottom of the Challenger Deep, the Mariana Trench, *Microbes Environ.*, 2018, **33**, 186–194.
- 15 M. Mouton, F. Postma, J. Wilsenach and A. Botha, Diversity and characterization of culturable fungi from marine sediment collected from St. Helena Bay, South Africa, *Microb. Ecol.*, 2012, **64**, 311–319.
- 16 X. Lai, L. Cao, H. Tan, S. Fang, Y. Huang and S. Zhou, Fungal communities from methane hydrate-bearing deep-sea marine sediments in South China Sea, *ISME J.*, 2007, **1**, 756–762.
- 17 X. Y. Zhang, Y. Zhang, X. Y. Xu and S. H. Qi, Diverse Deep-Sea Fungi from the South China Sea and Their Antimicrobial Activity, *Curr. Microbiol.*, 2013, **67**, 525–530.
- 18 R. N. Glud, F. Wenzhofer, M. Middelboe, K. Oguri, R. Turnewitsch, D. E. Canfield and H. Kitazato, High rates of microbial carbon turnover in sediments in the deepest oceanic trench on Earth, *Nat. Geosci.*, 2013, **6**, 284–288.
- 19 Y. Ohara, M. K. Reagan, K. Fujikura, H. Watanabe, K. Michibayashi, T. Ishii, R. J. Stern, I. Pujana, F. Martinez and G. Girard, A serpentinite-hosted ecosystem in the Southern Mariana Forearc, *Proc. Natl. Acad. Sci. U. S. A.*, 2012, **109**, 2831–2835.
- 20 W. Pathom-Aree, J. E. M. Stach, A. C. Ward, K. Horikoshi, A. T. Bull and M. Goodfellow, Diversity of actinomycetes isolated from Challenger Deep sediment (10,898 m) from the Mariana Trench, *Extremophiles*, 2006, **10**, 181–189.
- 21 H. Jing, Y. Zhang, Y. Li, W. Zhu and H. Liu, Spatial Variability of Picoeukaryotic Communities in the Mariana Trench, *Sci. Rep.*, 2018, **8**, 15357.
- 22 Z. Xu, M. Wang, W. Wu, Y. Li, Q. Liu, Y. Han, Y. Jiang, H. Shao, A. Mcminn and H. Liu, Vertical Distribution of Microbial Eukaryotes From Surface to the Hadal Zone of the Mariana Trench, *Front. Microbiol.*, 2018, **9**, 1–13.
- 23 T. Nagahama, E. Takahashi, Y. Nagano, M. A. Abdelwahab and M. Miyazaki, Molecular evidence that deep-branching fungi are major fungal components in deep-sea methane cold seep sediments, *Environ. Microbiol.*, 2011, **13**, 2359–2370.
- 24 Y. Nagano, Fungal diversity in deep-sea extreme environments, *Fungal Ecology*, 2012, **5**, 463–471.
- 25 P. Singh, C. Raghukumar, P. Verma and Y. S. Shouche, Phylogenetic diversity of culturable fungi from the deep-sea sediments of the Central Indian Basin and their growth characteristics, *Fungal Divers.*, 2010, **40**, 89–102.
- 26 W. Li, M. M. Wang, X. G. Wang, X. L. Cheng, J. J. Guo, X. M. Bian and L. Cai, Fungal communities in sediments of subtropical Chinese seas as estimated by DNA metabarcoding, *Sci. Rep.*, 2016, **6**, 26528.
- 27 S. J. Lee, M. Kong, P. Harrison and M. Hijri, Conserved Proteins of the RNA Interference System in the Arbuscular Mycorrhizal Fungus *Rhizoglyphus irregularis* Provide New Insight into the Evolutionary History of Glomeromycota, *Genome Biol. Evol.*, 2018, **10**, 328–343.
- 28 T. L. Calvez, G. Burgaud, S. Mahe, G. Barbier and P. Vandenkoornhuyse, Fungal Diversity in Deep-Sea Hydrothermal Ecosystems, *Appl. Environ. Microbiol.*, 2009, **75**, 6415–6421.
- 29 P. Buzzini and R. Margesin, *Cold-adapted Yeasts. Biodiversity, Adaptation Strategies and Biotechnological Significance*, Springer, Berlin, Heidelberg, 2014.
- 30 V. P. Edgcomb, D. Beaudoin, R. Gast, J. F. Biddle and A. Teske, Marine subsurface eukaryotes: the fungal majority, *Environ. Microbiol.*, 2011, **13**, 172–183.
- 31 Q. Li and G. Wang, Diversity of fungal isolates from three Hawaiian marine sponges, *Microbiol. Res.*, 2008, **164**, 233–241.
- 32 Z. S. Yu, B. H. Zhang, W. Sun, F. L. Zhang and Z. Y. Li, Phylogenetically diverse endozoic fungi in the South China Sea sponges; and their potential in synthesizing bioactive natural products suggested; by PKS gene and cytotoxic activity analysis, *Fungal Divers.*, 2013, **58**, 127–141.
- 33 M. Martin, Cutadapt removes adapter sequences from high-throughput sequencing reads, *EMBnet J.*, 2011, **17**, 10–12.
- 34 Q. Christian, P. Elmar, Y. Pelin, G. Jan, S. Timmy, Y. Pablo, P. Jorg and G. C. Frank Oliver, The SILVA ribosomal RNA gene database project: improved data processing and web-based tools, *Nucleic Acids Res.*, 2013, **41**, 590–596.
- 35 R. C. Edgar, B. J. Haas, J. C. Clemente, Q. Christopher and K. Rob, UCHIME improves sensitivity and speed of chimera detection, *Bioinformatics*, 2011, **27**, 2194.
- 36 B. J. Haas, D. Gevers, A. M. Earl, M. Feldgarden, D. V. Ward, G. Giannoukos, D. Ciulla, D. Tabbaa, S. K. Highlander and E. Sodergren, Chimeric 16S rRNA sequence formation and detection in Sanger and 454-pyrosequenced PCR amplicons, *Genome Res.*, 2011, **21**, 494.



- 37 R. C. Edgar, UPARSE: highly accurate OTU sequences from microbial amplicon reads, *Nat. Methods*, 2013, **10**, 996–998.
- 38 J. G. Caporaso, J. Kuczynski, J. Stombaugh, K. Bittinger, F. D. Bushman, E. K. Costello, N. Fierer, A. G. Pena, J. K. Goodrich and J. I. Gordon, QIIME allows analysis of high-throughput community sequencing data, *Nat. Methods*, 2010, **7**, 335–336.
- 39 M. Bastian, S. Heymann and M. Jacomy, *Gephi: An Open Source Software for Exploring and Manipulating Networks*, International conference on weblogs and social media, 2009.

