

Cite this: *RSC Adv.*, 2018, 8, 31633

# Pharmacokinetic and excretion study of three alkaloids in rats using UPLC-MS/MS after oral administration of menisperm rhizoma capsules†

Jia Yu, Bolin Zhu, Dan Su and Zhen Jiang \*

A sensitive, specific and rapid ultra-performance liquid chromatography tandem mass spectrometry method (UPLC-MS/MS) was developed for simultaneous determination of three main alkaloids (daucicoline, daurisoline, dauricine) in rat plasma, urine and feces after oral administration of menisperm rhizoma capsules. The chromatographic separation was performed on a Waters ACQUITY UPLC® BEH C<sub>18</sub> column (50 mm × 2.1 mm, id, 1.7 μm) with a column temperature of 30 °C and a linear gradient elution using a mobile phase consisting of 0.1% formic acid and acetonitrile. The flow rate was set at 0.3 mL min<sup>-1</sup>, and the total run time was 10 min. The detection was performed, without interference, using positive electrospray ionization with a multiple reaction monitoring mode. A comprehensive validation of the method was performed. The linearity of the analytical response was good over a wide concentration range with correlation coefficients greater than 0.9903 and the lower limits of quantification were 1.5–5.0 ng mL<sup>-1</sup> for all matrices. Both accuracy and precision of the assay were satisfactory. The mean extraction recoveries of analytes and internal standard from rat plasma, urine and feces were all more than 78.3%. The validated methods of the three types of substrates were successfully applied to a pharmacokinetic and excretion study of the three alkaloids in rats after oral administration of menisperm rhizoma capsule. The pharmacokinetics and excretion study of these active components in menisperm rhizoma capsule have not been reported. The results provided a meaningful basis for the clinical application of menisperm rhizoma capsule.

Received 14th May 2018  
Accepted 13th August 2018

DOI: 10.1039/c8ra04084b

rsc.li/rsc-advances

## 1. Introduction

Menisperm rhizoma (MR), called beidougen in Chinese, is prepared from the dried rhizome of *Menispermum dauricum* DC (Menispermaceae). MR is one of traditional Chinese medicines and widely used because of its definite therapeutic effect on sore throat, dysentery and rheumatoid arthralgia.<sup>1</sup> In order to promote the clinical application, MR capsules have been developed and included in the Chinese Pharmacopoeia.<sup>2</sup> With the alkaloid extract of MR as the main material, MR capsules, with the functions of clearing away heat and toxic material, antitussive and expectorant effects, is widely used to treat sore throat, tonsillitis, chronic bronchitis and so on. The previous phytochemical and pharmacological reports on the alkaloid of MR indicated that alkaloids were the major effective constituents responsible for the bioactivities, such as anti-inflammation,<sup>3</sup> anti-arrhythmia,<sup>4</sup> anti-bacterial,<sup>5</sup> anti-tumor,<sup>6</sup> platelet aggregation inhibition,<sup>7</sup> neuroprotection<sup>8</sup> and protection of concurrent myocardial-cerebral ischemia/reperfusion injury.<sup>9–11</sup>

Previous investigations of MR capsules revealed that daucicoline, daurisoline and dauricine were generally considered as the most abundant components responsible which were representative physiologically active alkaloids.<sup>12</sup> Having an activity against blood platelet aggregation induced by adenosine 5'-diphosphate,<sup>13</sup> these three compounds have been demonstrated to have significant effects on inhibiting blood platelet aggregation, arrhythmias, and tumors. The anti-arrhythmic effects of dauricine and daurisoline have been verified in different experimental arrhythmic models and used in cardiac arrhythmia patients.<sup>14</sup> Dauricine blocked the cardiac transmembrane Na<sup>+</sup>, K<sup>+</sup> and Ca<sup>2+</sup> ion currents, which exhibited a reverse use-dependent effect.<sup>15</sup> Daurisoline has been found to prolong the duration of the cardiac action potential in a normal use dependent manner, and its direct effect was investigated on the human ether-a-go-go-related gene current and the expression of mRNA and protein in human embryonic kidney 293 cells stably expressed the human ether-a-go-go-related gene channel.<sup>16</sup> The anti-arrhythmic effect of daurisoline was more potent than that of dauricine.<sup>15</sup> Dauricine was also reported to inhibit human breast cancer angiogenesis by suppressing hypoxia-inducible factor-1α protein accumulation and vascular endothelial growth factor expression.<sup>17</sup> Up to now, much research on MR capsules has been conducted in the fields of pharmacology and quality control.<sup>18,19</sup>

Department of Pharmaceutical Analysis, School of Pharmacy, Shenyang Pharmaceutical University, 103 Wenhua Road, Shenyang, Liaoning Province, PR China 110016. E-mail: jiangzhen8487@163.com; Fax: +86-24-2398 6285

† Electronic supplementary information (ESI) available. See DOI: 10.1039/c8ra04084b



However, although the MR capsules demonstrated various pharmacological activities, information regarding the *in vivo* fate of the MA capsules still remains scarce. This is a great obstacle to its further pharmacological studies, clinically safe medication administration and quality evaluation.<sup>20</sup> As is known, pharmacokinetic study is important for illustrating the action mechanism, druggability, target organs and the first-pass effect on gastrointestinal tract/liver of the active compounds.<sup>21</sup> Furthermore proper knowledge on the excretion of the drug is essential to investigate and interpret the *in vivo* dispersion.<sup>22</sup> Therefore, evaluation of the pharmacokinetic and excretion research of the alkaloids in MR capsules is required to determine its efficacy and safety considerations in clinical applications.

Several analytical techniques, such as high performance liquid chromatography (HPLC) coupled with ultraviolet detection (UV), diode array detection (DAD) and evaporative light scattering detectors, fluorescence detection, and high-performance capillary electrophoresis, have been used to quantify the active ingredients in biological samples. They were insufficient in terms of sensitivity and specificity for pharmacokinetic and excretion studies.<sup>23</sup> Increasing evidence proved that liquid chromatography coupled with tandem mass spectrometry (LC-MS/MS) has become the most efficient way for analysing various bio-samples with high sensitivity and selectivity.<sup>24</sup> In this study, an ultra-performance liquid chromatography – electrospray ionization – tandem mass spectrometry method (UPLC-ESI-MS/MS) method was developed to investigate the pharmacokinetics and excretion of dauricine, daurisolone, daucicolone of MR capsules in rats, and no one has studied MR capsules with this technique before. It is expected that the results will provide helpful information to further determine the action mechanism, safety evaluation and clinical application of MR capsules.

## 2. Experimental

### 2.1. Chemicals and materials

Dauricine, daurisolone and daucicolone were isolated and purified from MR in the laboratory. Their structures were

identified using MS, proton nuclear magnetic resonance spectrometry (<sup>1</sup>H-NMR) and <sup>13</sup>C-NMR data. The purity of each reference standard was above 97.0% with area normalization by HPLC-DAD. The internal standard carbamazepine was supplied by the National Institutes for Drug and Food Control (100142-201105). The structures of reference standards are shown in Fig. 1. The MR capsules were manufactured by the Yichun Pharmaceutical Co. Ltd (Heilongjiang). The LC-MS grade acetonitrile was purchased from Fisher Scientific (Pittsburgh, PA, USA). The LC-MS grade formic acid was obtained from Sigma-Aldrich (St. Louis, MO, USA). Distilled water was obtained from Wahaha Co. Ltd. (Hangzhou, China).

### 2.2. Animals

Male Sprague-Dawley (SD) rats, weighing 260 ± 20 g, were obtained from the Experimental Animal Center of Shenyang Pharmaceutical University (Shenyang, China, SYXK-liao-2014-0004). Animals were bred in a breeding room with temperature of 25 °C, humidity of 55–60%, and a dark–light cycle. All the rats were housed under the conditions mentioned previously for one week for acclimation, and were then were fasted for 12 h, with free access to water, overnight before the experiments.

### 2.3. LC-MS/MS instruments and analytical conditions

The ACQUITY UPLC® system (Waters Corp., Milford, MA, USA) was equipped with a cooling autosampler and a column oven enabling temperature control. Mass spectrometric detection was performed using a Waters Xevo TQ-S tandem quadrupole mass spectrometer (Waters Micromass MS Technologies, Manchester, UK). A UNIFI™ data system (Waters) was used to control the UPLC-MS/MS system and for data acquisition and processing.

Chromatographic separation was performed on a Waters ACQUITY UPLC® ethylene bridged hybrid particle (BEH) C<sub>18</sub> column (50 mm × 2.1 mm, id, 1.7 μm, Waters, Wexford, Ireland). The column temperature was maintained at 30 °C. The mobile phase consisted of A (0.1% aqueous formic acid, v/v) and B (acetonitrile) and the gradient elution was: 0–2.0 min,

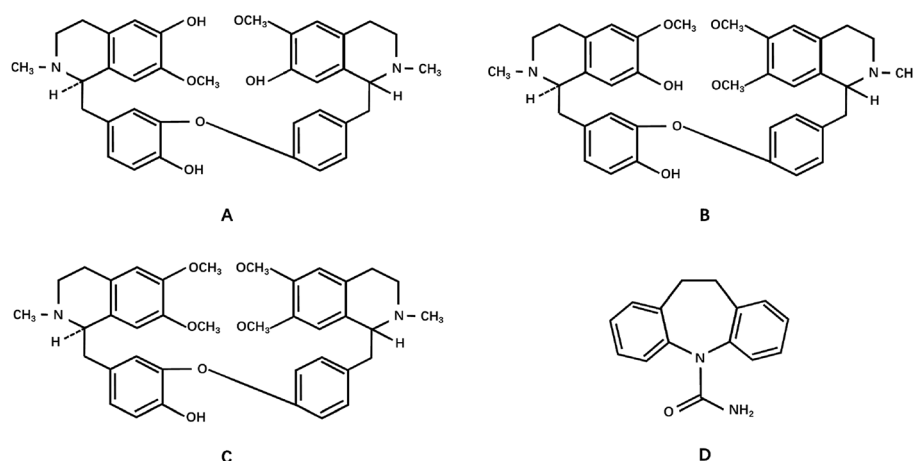


Fig. 1 The chemical structures of (A) daucicolone, (B) daurisolone, (C) dauricine and (D) the internal standard, carbamazepine.



isocratic elution with 92% A; 2.0–4.0 min, linear elution changing from 92% to 80% A; 4.0–7.0 min, linear elution changing from 80% to 50% A; 7.0–10.0 min, linear elution changing from 50% to 20% A, then the system was quickly returned to the initial concentration of A (92%, v/v). This was followed by an equilibration period of 4 min prior to the injection of the next sample. The flow rate was set at 0.3 mL min<sup>-1</sup>. The temperature of the autosampler was kept at 4 °C and the injection volume was 5 µL.

The MS was operated in the positive ESI mode with multiple reaction monitoring (MRM) resolution. High purity nitrogen was used as both a nebulizing and drying gas. The MS/MS setting parameters were as follows: capillary voltage 3.0 kV, source temperature of 150 °C and desolvation temperature of 350 °C, and desolvation and cone gas at a flow rate of 700 L h<sup>-1</sup> and 150 L h<sup>-1</sup>, respectively. Because MRM transitions, cone voltage and collision energy varied with different analytes, the MRM transitions, cone voltage and collision energy were optimized for each analyte (Table 1).

#### 2.4. Preparation of standards and quality control samples

Stock solutions of daucicoline, dauricine and daurisoline, were prepared in acetonitrile–water (1 : 1, v/v) at the concentrations of 0.11, 0.18, 0.15 mg mL<sup>-1</sup>. Then, an appropriate amount of the three stock solutions were mixed and serially diluted with acetonitrile–water (1 : 1, v/v) into a linear concentration of solutions which were then used as the standard mixture working solutions. Stock solution of the internal standard (carbamazepine) was prepared in methanol at the concentration of 0.10 mg mL<sup>-1</sup>. Then, an appropriate amount of the internal standard stock solution was diluted with acetonitrile–

water (1 : 1, v/v) to give a concentration of 50 ng mL<sup>-1</sup> to be used as the internal standard solution. All solutions were stored at 4 °C and brought to room temperature before use.

Calibration standards were freshly prepared in a glass tube by evaporating 100 µL of the standard mixture working solutions to dryness with nitrogen (N<sub>2</sub>) and then thoroughly mixing with a 100 µL of blank plasma, urine or fecal homogenates. The concentration range of the calibration standards are shown in Table 2. Quality control (QC) samples were prepared independently in the same way as the calibration standards, and the concentrations are shown in Table 3.

#### 2.5. Preparation of plasma, urine and feces samples

After thawing the biological samples (plasma, urine and feces) at room temperature, a conventional protein precipitation (PPT) method was applied for the sample preparation.

**2.5.1. Preparation of plasma samples.** An aliquot of 20 µL internal standard solution was first pipetted into a glass tube and then evaporated to dryness under a gentle stream of N<sub>2</sub> at 40 °C. Plasma sample (100 µL) were transferred to the tube. The mixture was vortex mixed for 1 min and then 300 µL acetonitrile was added. After vortex mixing for 3 min and centrifuging for 10 min at 15 000 rpm, the supernatant was collected and evaporated to dryness under a stream of N<sub>2</sub> at 40 °C. The residue was reconstituted in 100 µL of 50% aqueous acetonitrile. Finally, a 5 µL aliquot of supernatant was injected into the UPLC-ESI-MS/MS system in the partial loop mode.

**2.5.2. Preparation of urine samples.** Protein precipitation of 100 µL urine samples was carried out using 500 µL of acetonitrile. The other steps were the same as for the plasma sample preparation.

**Table 1** MRM transitions, dwell times for each MRM transition, cone voltage and collision energy for the detection of the three analytes and the internal standard

Analyte	MRM transition ( <i>m/z</i> )	Dwell times (ms)	Cone voltage (V)	Collision energy (eV)
Daucicoline	597.2/191.8	50	5	32
Daurisoline	611.2/191.9	50	8	34
Dauricine	625.2/205.9	50	7	38
Carbamazepine (internal standard)	237.4/193.8	50	20	20

**Table 2** Calibration curves, correlation coefficients and linear ranges of daucicoline, dauricine and daurisoline in different matrices determined using the UPLC-MS/MS method during method validation (*n* = 3)

Matrix	Compounds	LLOQ (ng mL <sup>-1</sup> )	Linear range (ng mL <sup>-1</sup> )	Linear regression equation	Correlation coefficient ( <i>R</i> )
Plasma	Daucicoline	3.0	3.00–1200	$y = 9.85 \times 10^{-3}x - 7.67 \times 10^{-4}$	0.9956
	Daurisoline	5.0	5.00–2000	$y = 1.59 \times 10^{-2}x - 0.288$	0.9923
	Dauricine	5.0	5.00–2000	$y = 3.30 \times 10^{-2}x - 0.209$	0.9967
Urine	Daucicoline	1.5	1.50–1500	$y = 7.71 \times 10^{-3}x - 2.54 \times 10^{-3}$	0.9975
	Daurisoline	2.5	2.50–2500	$y = 1.55 \times 10^{-2}x - 0.111$	0.9929
	Dauricine	2.5	2.50–2500	$y = 1.62 \times 10^{-2}x - 3.80 \times 10^{-2}$	0.9976
Feces	Daucicoline	1.5	1.50–1500	$y = 9.65 \times 10^{-3}x + 0.146$	0.9919
	Daurisoline	2.5	2.50–2500	$y = 2.20 \times 10^{-2}x - 9.42 \times 10^{-2}$	0.9903
	Dauricine	2.5	2.50–2500	$y = 3.62 \times 10^{-2}x - 2.99 \times 10^{-2}$	0.9960



**Table 3** The QC samples concentrations of three analytes in three matrices

Matrix	Compounds	Low (ng mL <sup>-1</sup> )	Middle (ng mL <sup>-1</sup> )	High (ng mL <sup>-1</sup> )
Plasma	Daucicoline	6.00	75.0	960
	Daurisoline	10.0	125.0	1600
	Dauricine	10.0	125.0	1600
Urine	Daucicoline	3.00	60.0	1200
	Daurisoline	5.00	100.0	2000
	Dauricine	5.00	100.0	2000
Feces	Daucicoline	3.00	60.0	1200
	Daurisoline	5.00	100.0	2000
	Dauricine	5.00	100.0	2000

**2.5.3. Preparation of feces samples.** 0.1 g of feces were pulverized with a pestle and mortar, and then homogenized in methanol (500  $\mu$ L). The homogenized feces sample was processed in a similar manner as the urine samples.

## 2.6. Method validation

The analytical methodology was validated according to the guidelines set by the United States Food and Drug Administration (FDA) for bioanalytical method validation. The method was validated according using linearity, selectivity, precision and accuracy, recovery and stability.<sup>25</sup>

**2.6.1. Selectivity.** The selectivity of the method was investigated by analyzing the six individual blank biological samples (plasma, urine and feces), the blank biological samples spiked with the three analytes at the lower limits of quantification (LLOQs), the internal standard, and the actual samples of plasma, urine and feces taken at 120 min after oral administration of the MR capsules.

**2.6.2. Linearity and limit of quantification.** To evaluate linearity, the calibration curves consisted of eight concentration levels and each concentration were prepared and assayed in duplicate over three consecutive days. The calibration curves were constructed by plotting the peak-area ratio ( $y$ ) of analytes to the internal standard *versus* biological sample (plasma, urine and feces) concentrations ( $x$ ) of analytes using a  $1/x^2$  weighted least-squares linear regression model. The limits of detection (LOD) and quantification (LOQ) were determined at the lowest detectable and quantifiable concentrations of the calibration curve. The signal-to-noise ratio (S/N) was not  $<3$  for a LOD (S/N  $\geq 3$ ) and  $<10$  for LOQ (S/N  $\geq 10$ ). The acceptance criteria were  $\pm 15\%$  deviation from the nominal value for all levels, except at the lower limit of quantification, which was set at  $\pm 20\%$ .

**2.6.3. Precision and accuracy.** The precision and accuracy were evaluated using the analysis of QC samples at three concentration levels in six separate runs on the same day for intra-day and on three consecutive days for the inter-day accuracy variation. The accuracy was demonstrated as the relative error (RE) of the measured mean value deviated from the nominal value, and the precision was demonstrated as relative standard deviation (RSD) of the measured concentration. The RSD determined at each concentration level was required to not exceed 15% and RE was to be within  $\pm 15\%$ .

**2.6.4. Extraction recovery and matrix effect.** The extraction recovery for the three analytes and internal standard was measured by comparing the peak areas of the analytes and internal standard in pre-extraction spiked biological samples with those in post-extraction spiked biological samples at an equivalent concentration. The matrix effects were evaluated by comparing the peak areas of the analytes obtained from the post-extraction spiked samples with those obtained from the pure reference standard solutions at the same concentration. Both the extraction recovery and the matrix effect were determined at three levels, whereas for the internal standard the recovery and matrix effect were determined at a single concentration of 50 ng mL<sup>-1</sup> by analyzing six samples at each concentration level. The results were expressed as mean  $\pm$  standard deviation (SD).

**2.6.5. Stability experiments.** The stability of all analytes in plasma, urine and feces was evaluated by assaying six replicates of the QC samples at three concentration levels.

For freeze-thaw stability, the QC samples were stored at  $-20^\circ\text{C}$  for 24 h and thawed at room temperature which was one cycle. After three freezing and thawing cycles, the concentrations of the analytes and internal standard were determined. For short-term room temperature stability, the QC samples were thawed at room temperature and kept at room temperature for 12 h prior to analysis. For long-term stability, the QC samples were kept at the storage temperature ( $-20^\circ\text{C}$ ) for one week. For post-preparation stability, the extracted QC samples were stored in the auto-sampler ( $4^\circ\text{C}$ ) for 12 h. The stock solutions' (analytes and internal standard) stability was determined at 0, 5, 10, and 15 days.

**2.6.6. Carryover test.** To confirm that carryover had no impact on the accuracy and precision of the proposed method, the carryover effect was determined in each analytical run by injecting two blank plasma samples immediately after the injection of an upper limit of quantification (ULOQ) sample. The outcomes of the carryover effect should be no more than 20% for the analytes and 5% for the internal standard. The typical chromatograms of the carryover test are shown in Fig. S1 (ESI).†

**2.6.7. Dilution test.** To appraise the dilution process, six duplicates of diluted QC samples were analyzed, which were prepared at a concentration above the upper limit of the quantification sample level and diluted 10-fold to a concentration within the calibration curve range. The RSD determined at each concentration level was required to not exceed 15% and the RE had to be within  $\pm 15\%$ . The results of the dilution test are shown in Table S1 (ESI).†

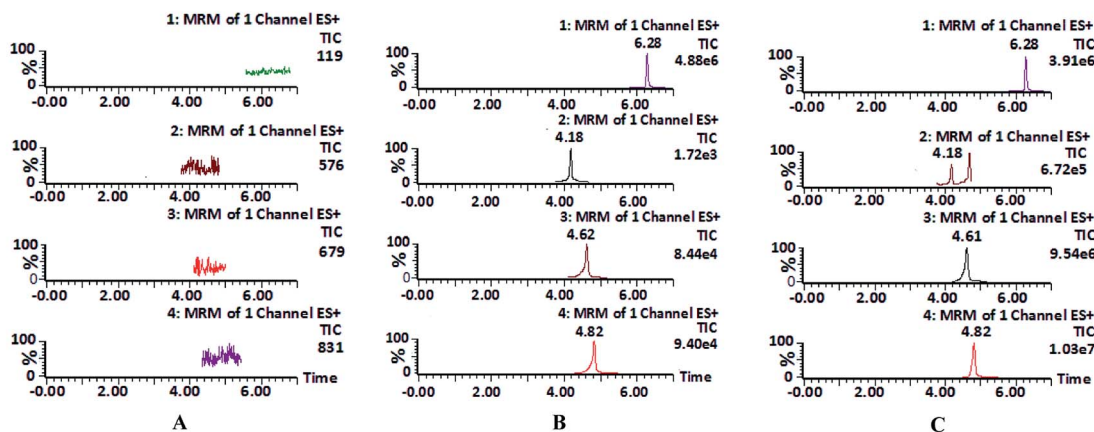
## 2.7. Plasma pharmacokinetics

The validated UPLC-MS/MS method was applied to a pharmacokinetic study of the three alkaloids in rats after single oral administration of MR capsules. Male SD rats ( $260 \pm 20$  g) used for this experiment were supplied by the Experimental Animal Center of Shenyang Pharmaceutical University (Shenyang, China). The rats were housed in a temperature controlled room at ambient temperature (about  $25^\circ\text{C}$ ), humidity of 55–60%, with a 12 h light–dark cycle. Animal experiments were carried out in

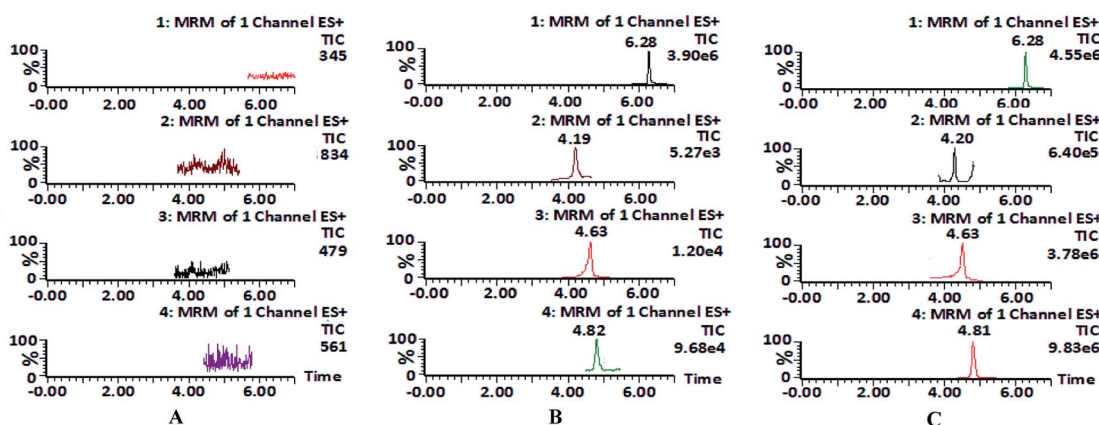




## Plasma



## Urine



## Feces

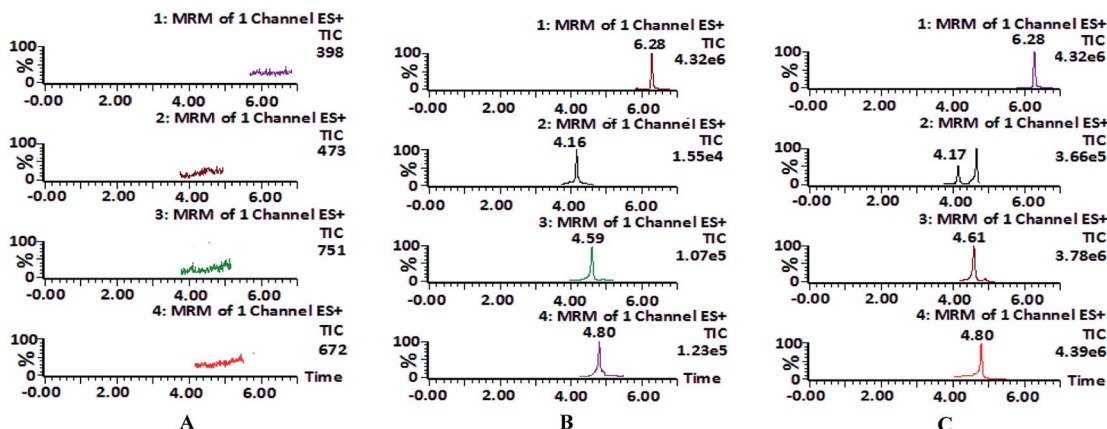


Fig. 2 Representative extract ion MRM chromatograms of internal standard, daucicoline, daurisoline and dauricine in plasma, urine and feces. (A) Blank biological samples for carbamazepine (internal standard) (channel 1), daucicoline (channel 2), daurisoline (channel 3) and dauricine (channel 4) in plasma, urine and feces; (B) blank biological samples spiked with internal standard, daucicoline, daurisoline and dauricine; (C) test plasma sample collected at 120 min after oral administration of MR capsules (a dose of  $2.5 \text{ g kg}^{-1}$ ), test urine and feces sample collected at 8–12 h after oral administration of MR capsules.

accordance with the Regulations of the Experimental Animal Administration issued by the State Commission of Science and Technology of the People's Republic of China. All the rats were

fasted for 12 h but with access to water. The suspension of MR capsules was dissolved in 0.5% carboxymethyl cellulose sodium aqueous solution and was orally administered to the rats at





**Table 4** Intra- and inter-day precision, accuracy, extract recovery and matrix effect of daucicolone, dauricine, daurisolone and internal standard in different matrices ( $n = 6$ )

Matrix	Compounds	Added concentration (ng mL <sup>-1</sup> )	Precision			Accuracy (RE, %)	Extract recovery (mean ± SD, %)	Matrix effect (mean ± SD, %)
			Intra-day (RSD, %)	Inter-day (RSD, %)				
Plasma	Daucicoline	6.00	7.9	8.7	-3.2	85.7 ± 8.3	106.9 ± 3.9	
		75.0	6.7	7.9	4.3	85.9 ± 7.9	97.3 ± 4.6	
	Daurisoline	960	9.0	7.1	6.4	93.2 ± 5.4	100.4 ± 5.7	
		10.0	10.3	7.8	8.3	80.3 ± 6.7	103.9 ± 10.7	
	Dauricine	125.0	3.6	4.9	5.7	81.3 ± 7.1	97.7 ± 9.8	
		1600	4.9	3.8	-4.6	79.8 ± 7.9	107.2 ± 9.9	
		10.0	8.9	8.6	4.6	85.8 ± 5.4	113.0 ± 7.6	
		125.0	8.1	4.1	3.0	89.4 ± 8.9	110.2 ± 7.2	
	Internal standard	1600	7.8	6.8	5.3	90.3 ± 9.6	108.3 ± 8.2	
		50				91.3 ± 4.3	104.2 ± 5.4	
	Urine	Daucicoline	3.00	8.9	10.7	10.7	81.7 ± 7.6	103.9 ± 5.9
			60.0	6.7	6.9	8.2	81.9 ± 5.9	96.3 ± 4.6
Daurisoline		1200	9.3	10.1	7.6	83.2 ± 6.4	106.4 ± 5.7	
		5.00	4.3	6.8	8.6	78.3 ± 7.7	87.9 ± 10.7	
Dauricine		100.0	5.9	7.9	7.6	81.3 ± 7.9	93.7 ± 7.8	
		2000	4.9	8.6	6.5	79.8 ± 7.9	93.2 ± 9.1	
		5.00	2.9	3.7	-2.2	82.8 ± 5.4	115.0 ± 4.6	
		100.0	6.1	6.7	9.7	83.4 ± 8.9	110.2 ± 8.2	
Internal standard		2000	5.2	8.8	5.3	87.3 ± 9.6	107.3 ± 7.2	
		50				89.3 ± 6.3	97.2 ± 6.7	
Feces		Daucicoline	3.00	5.7	8.4	7.3	80.4 ± 7.2	110.9 ± 6.8
			60.0	4.7	6.9	6.2	81.3 ± 6.4	111.6 ± 7.2
	Daurisoline	1200	3.1	4.7	3.3	79.8 ± 9.1	105.4 ± 6.3	
		5.00	4.3	6.8	-1.6	81.2 ± 4.8	97.9 ± 10.7	
	Dauricine	100.0	5.9	7.9	7.5	84.1 ± 5.3	108.5 ± 5.7	
		2000	4.9	9.3	6.7	80.7 ± 7.4	96.2 ± 6.9	
		5.00	2.9	7.2	6.8	83.0 ± 4.5	113.0 ± 4.6	
		100.0	6.1	8.1	10.3	85.4 ± 9.6	107.2 ± 7.8	
	Internal standard	2000	5.2	5.8	3.8	81.6 ± 8.3	97.9 ± 8.6	
		50				90.0 ± 5.5	103.2 ± 6.7	

**Table 5** Stability of daucicoline, daurisoline and dauricine in rat plasma, urine and feces at three QC levels under various storage conditions ( $n = 3$ )

Storage conditions	Compounds	Spike concentration (ng mL <sup>-1</sup> )	Found concentration (ng mL <sup>-1</sup> )	RSD (%)	Accuracy (RE; %)
<b>Plasma</b>					
Short-term stability (room temperature for 12 h)	Daucicoline	6.00	6.19	3.9	3.2
		75.0	79.6	5.6	6.1
		960	987	6.5	2.8
	Daurisoline	10.0	9.34	7.9	−6.6
		125.0	135	7.1	8.0
		1600	1639	8.4	2.4
	Dauricine	10.0	11.1	9.6	11.0
		125.0	131	5.9	4.8
		1600	1699	5.3	6.2
Long-term stability (−20 °C for 20 days)	Daucicoline	6.00	6.19	4.6	3.2
		75.0	77.9	6.9	3.9
		960	980	6.7	2.1
	Daurisoline	10.0	10.5	8.1	5.0
		125	130.6	3.1	4.5
		1600	1559	8.5	−2.6
	Dauricine	10.0	10.3	3.9	3.0
		125	132	5.1	5.6
		1600	1750	7.3	9.4
Freeze–thaw stability	Daucicoline	6.00	6.47	6.7	7.8
		75.0	80.9	3.8	7.9
		960	986	5.4	2.7
	Daurisoline	10.0	11.09	2.9	10.9
		125	120.5	10.7	−3.6
		1600	1672	4.8	4.5
	Dauricine	10.0	10.39	6.3	3.9
		125	134	8.2	7.2
		1600	1658	3.9	3.6
Post-preparation stability (4 °C for 12 h)	Daucicoline	6.00	6.57	11	9.5
		75.0	69.8	7.2	−6.9
		960	977	6.9	1.8
	Daurisoline	10.0	10.79	4.2	7.9
		125	134.5	6.7	7.6
		1600	1499	3.3	−6.3
	Dauricine	10.0	11.01	10.4	10.1
		125	132.3	8.7	5.8
		1600	1664	4.8	4.0
<b>Urine</b>					
Short-term stability (room temperature for 12 h)	Daucicoline	3.00	3.22	4.8	7.3
		60.0	61.6	5.2	2.7
		1200	1247	6.8	3.9
	Daurisoline	5.00	5.46	6.6	9.2
		100.0	107	7.5	7.0
		2000	2207	6.5	10.4
	Dauricine	5.00	4.85	7.2	−3.0
		100.0	95.9	6.9	−4.1
		2000	2190	6.6	9.5
Long-term stability (−20 °C for 20 days)	Daucicoline	3.00	3.23	4.3	7.7
		60.0	62.1	2.8	3.5
		1200	1308	5.7	9.0
	Daurisoline	5.00	5.51	5.6	10.2
		100.0	99.5	7.1	−0.5
		2000	2168	2.8	8.4
	Dauricine	5.00	5.35	10.6	7.0
		100.0	106.7	6.4	6.7
		2000	1886	7.9	−5.7



Table 5 (Contd.)

Storage conditions	Compounds	Spike concentration (ng mL <sup>−1</sup> )	Found concentration (ng mL <sup>−1</sup> )	RSD (%)	Accuracy (RE; %)
Freeze–thaw stability	Daucicoline	3.00	3.22	7.7	7.3
		60.0	58.4	7.1	−2.7
		1200	1265	5.7	5.4
	Daurisoline	5.00	5.38	5.3	7.6
		100.0	104.5	6.7	4.5
		2000	2128	9.6	6.4
	Dauricine	5.00	5.21	7.5	4.2
		100.0	103.7	6.6	3.7
		2000	2104	5.9	5.2
Post-preparation stability (4 °C for 12 h)	Daucicoline	3.00	2.78	10.7	−7.3
		60.0	62.3	2.1	3.8
		1200	1117	6.7	−6.9
	Daurisoline	5.00	5.54	5.2	10.8
		100.0	98.1	6.2	−1.9
		2000	2106	7.2	5.3
	Dauricine	5.00	5.39	4.8	7.8
		100.0	103.2	5.9	3.2
		2000	2136	2.8	6.8
<b>Feces</b>					
Short-term stability (room temperature for 12 h)	Daucicoline	3.00	3.32	10.3	10.7
		60.0	61.9	11.2	3.2
		1200	1256	10.3	4.7
	Daurisoline	5.00	5.36	8.1	7.2
		100.0	108.3	11.1	8.3
		2000	2206	8.7	10.3
	Dauricine	5.00	4.85	5.7	−3.0
		100.0	95.9	4.1	−4.1
		2000	2212	4.6	10.6
Long-term stability (−20 °C for 20 days)	Daucicoline	3.00	3.27	8.7	9.0
		60.0	61.4	3.5	2.3
		1200	1308	10.8	9.0
	Daurisoline	5.00	5.54	5.4	10.8
		100.0	103.5	7.6	3.5
		2000	2168	9.1	8.4
	Dauricine	5.00	5.35	7.8	7.0
		100.0	107.3	9.6	7.3
		2000	2164	5.9	8.2
Freeze–thaw stability	Daucicoline	3.00	3.26	6.7	8.7
		60.0	62.9	9.1	4.8
		1200	1264	6.7	5.3
	Daurisoline	5.00	5.46	5.2	9.2
		100.0	106.5	6.2	6.5
		2000	2178	6.9	8.9
	Dauricine	5.00	5.29	8.4	5.8
		100.0	108.4	10.5	8.4
		2000	2052	8.1	2.6
Post-preparation stability (4 °C for 12 h)	Daucicoline	3.00	2.88	9.6	−4.0
		60.0	63.54	10.3	5.9
		1200	1121	7.5	−6.6
	Daurisoline	5.00	5.21	4.6	4.2
		100.0	107.1	4.8	7.1
		2000	2104	1.5	5.2
	Dauricine	5.00	5.39	1.9	7.8
		100.0	105.2	6.4	5.2
		2000	2136	5.2	6.8

a dose of 2.5 g kg<sup>-1</sup> (equivalent to 0.50 mg kg<sup>-1</sup> of daucicoline, 13.25 mg kg<sup>-1</sup> of dauricine, or 9.17 mg kg<sup>-1</sup> of daurisoline). Blood samples of approximately 0.3 mL were collected from the orbital vein into heparin containing tubes before drug

administration (0 min) and subsequently at 0.033, 0.083, 0.250, 0.333, 0.75, 2.0, 4.0, 6.0, 8.0, 12.0, 24.0, 48.0, 72.0, 96.0 and 120.0 h after a single oral administration. The blood sample was centrifuged at 15 000 rpm for 10 min, and the supernatant was





transferred into a clean tube and stored at  $-20\text{ }^{\circ}\text{C}$  until analysis. The plasma concentration of the three analytes at different times was calculated from the daily calibration curve, which was expressed as mean  $\pm$  SD. The plasma concentration of the three analytes *versus* time data for each rat and the pharmacokinetic parameters [time for maximal concentration ( $T_{\text{max}}$ ), maximum concentration a drug achieves after dosage ( $C_{\text{max}}$ ), half-life ( $t_{1/2}$ ), area under the curve ( $\text{AUC}_{(0-t)}$  and  $\text{AUC}_{(0-\infty)}$ )] were calculated using non-compartmental analysis using the DAS 2.0 pharmacokinetic program (Chinese Pharmacological Society).

## 2.8. Excretion study

The previously described UPLC-MS/MS method was also suitable for use for the excretion study of urine and feces. For urinary and fecal excretion study, six rats were given a single oral dose of  $2.5\text{ g kg}^{-1}$  MR suspension (equivalent to  $13.25\text{ mg kg}^{-1}$  of dauricine,  $9.17\text{ mg kg}^{-1}$  daurisolone,  $0.50\text{ mg kg}^{-1}$  daucicolone) using the same preparation method as described previously. Afterwards, the rats were individually placed in stainless-steel metabolic cages, which allowed the separate collection of urine and feces. The urine and feces samples were collected before administration and at time intervals of 0–8, 8–12, 12–24, 24–36, 36–48, 48–72, 72–96 and 96–120 h post dosing. The volumes of urine and the weight of dry feces samples were recorded. The urine and feces samples were stored at  $-80\text{ }^{\circ}\text{C}$  until analysis. The animal protocol was permitted by the Committee on the Ethics of Animal Experiments of Shenyang Pharmaceutical University (permit number: SYPU-IACUC-C2016-03-15-206).

## 3. Results and discussion

### 3.1. Method development

#### 3.1.1. Optimization of mobile phase and MS parameters.

The selection of the mobile phase is important for achieving ideal chromatographic behavior. The composition of the mobile phase was optimized to enhance the sensitivity and achieve symmetrical peak shape and proper retention time for the analytes. In this study, acetonitrile–water and methanol–water systems were studied. Acetonitrile, rather than methanol, was selected as the organic portion of the mobile phase because it provided a higher mass spectrometric response, higher resolution and lower background noise. Formic acid was added to the mobile phase to improve peak tailing and enhance the sensitivity by improving the protonation of the analytes in the ESI. Finally, the mobile phase was optimized as acetonitrile/0.1% formic acid solution using a gradient elution.

To obtain better responses for each analyte and the internal standard, the MS conditions were optimized using the corresponding standard solutions. As they are all nitrogen compounds, the results showed that the ionization of all the analytes and internal standard were more efficient in the positive mode. Thereby, intense and stable protonated molecular ion peaks,  $[\text{M} + \text{H}]^+$ , were obtained for daucicolone, daurisolone, dauricine and carbamazepine (internal standard) at  $m/z$  597.2, 611.2, 625.2 and 237.4, respectively. Then these precursor ions were used to obtain product ion spectra. The parameters of cone voltage and collision

energy were optimized for the MRM mode and the other parameters were adopted for the recommended value of the instrument. Therefore, the most sensitive response was obtained for MRM

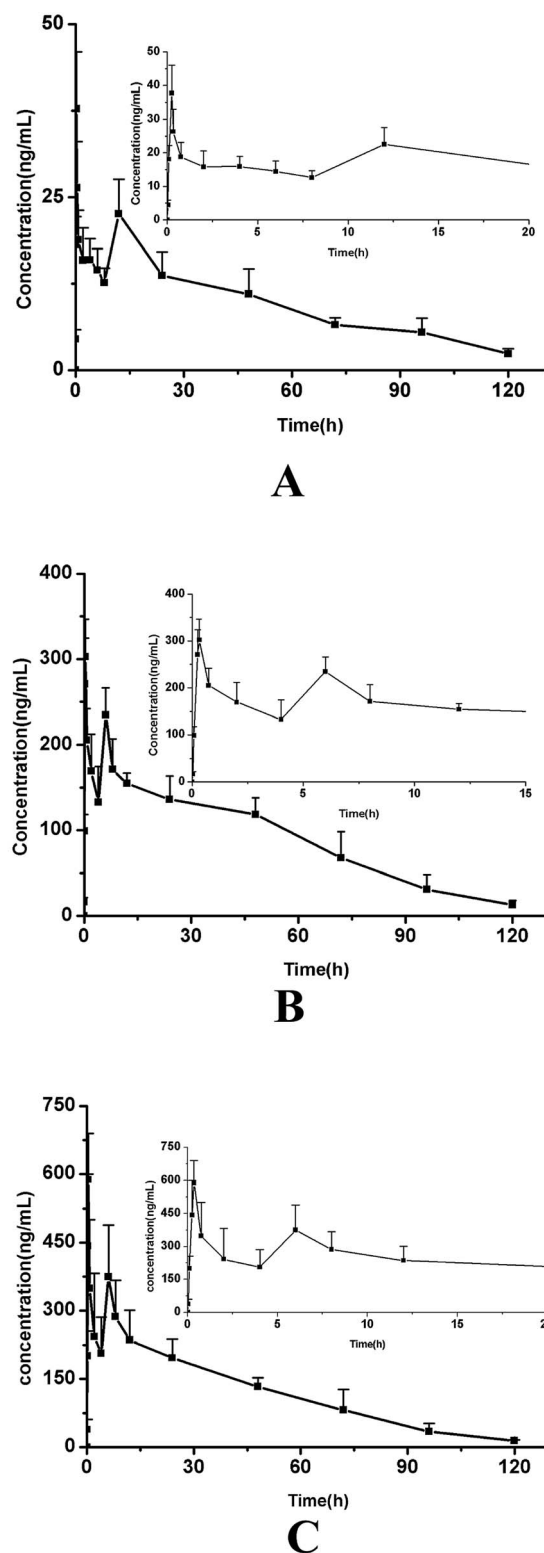


Fig. 3 The mean plasma concentration–time curves of daucicolone (A), daurisolone (B) and dauricine (C) in rat plasma after oral administration of MR capsules.



transitions from  $m/z$  597.2  $\rightarrow$  191.8 for daucicoline,  $m/z$  611.2  $\rightarrow$  191.9 for daurisoline,  $m/z$  625.2  $\rightarrow$  205.9 for dauricine and  $m/z$  237.4  $\rightarrow$  193.8 for carbamazepine (internal standard).

**3.1.2. Optimization of sample pretreatment.** Sample pretreatment is an important part of the LC-MS/MS quantitative assays. The PPT, liquid–liquid extraction (LLE) and solid-phase extraction (SPE) methods were commonly used for sample preparation. The SPE method has the disadvantages of being time-consuming and having a high cost. In order to extract the analytes and internal standard from the plasma, urine and feces samples, both protein precipitation and the LLE method were taken into consideration in this study. The LLE method using ethyl acetate, dichloromethane extraction and their mixture resulted in low extraction recovery. Thus, the PPT method was chosen as being the best method to process the plasma, urine and feces samples. Both acetonitrile and methanol were investigated as precipitation reagents. The results indicated that the samples treated with acetonitrile showed lower background, less interference and high extraction recovery of the three alkaloids. The volume of acetonitrile (200, 300, 400, 500, 600  $\mu$ L) was further investigated, and 300  $\mu$ L of acetonitrile was chosen as the precipitation reagent for the plasma sample and 500  $\mu$ L acetonitrile was used for urine and feces samples.

**3.1.3. Selection of internal standard.** According to the selection principle of internal standard, any internal standard used in biological analysis should be a compound which is similar to the analyte in terms of retention time and structure. Three types of nitrogen compounds: nitramine, villa ramie and carbamazepine, were investigated. The result showed that carbamazepine was best suited as the internal standard, because it had the appropriate chromatographic behavior, relatively strong MS response under positive ion mode and higher extraction efficiency.

## 3.2. Method validation

**3.2.1. Selectivity.** The analytes and internal standard could be effectively separated and no endogenous interference or cross-interference was observed at the retention time of the analytes or the internal standard. The typical MRM chromatograms of blank bio-samples, blank bio-samples spiked with the analytes and

internal standard, and bio-samples after oral administration of the analytes are shown in Fig. 2.

**3.2.2. Linearity.** The calibration curves, correlation coefficients and linear ranges of the three analytes in plasma, urine and feces are listed in Table 2. A good linearity was exhibited when the correlation coefficients ( $R$ ) were all higher than 0.99. The LLOQs of daucicoline, daurisoline and dauricine were 3.0, 5.0 and 5.0  $\text{ng mL}^{-1}$  in plasma, respectively, and 1.5, 2.5 and 2.5  $\text{ng mL}^{-1}$  in urine and feces samples, respectively. The LODs for daucicoline, daurisoline and dauricine were 1.0, 1.5 and 1.5  $\text{ng mL}^{-1}$  in plasma, urine and feces sample, respectively.

**3.2.3. Precision and accuracy.** The intra- and inter-day precision of the three analytes in plasma, urine and feces were determined with using the QC samples at three concentration levels (Table 4). The RSD of the precision ranged from 2.9% to 10.3% for the intra-day and from 3.7% to 10.7% for the inter-day precisions, whereas the accuracy ranged between  $-4.6\%$  and  $10.7\%$ . The results indicated that the values were all in the acceptable ranges for working with biological media.

**3.2.4. Extraction recovery and matrix effect.** The extraction recoveries and matrix effects of the three analytes and internal standard are summarized in Table 4. The mean extraction recoveries were all in the range from 78.3% to 93.2% in plasma, urine and fecal matrices. The matrix effects of all the analytes and internal standard were found to be within the acceptable range, with a range of 93.2–115.3% in different matrices. All the previous results suggested that the method was applicable for the determination of the three analytes in plasma, urine and feces.

**3.2.5. Stability experiments.** The results of stability (Table 5) indicated that all the analytes were stable in the extracted plasma, urine and feces samples after standing in an auto-sampler ( $4^\circ\text{C}$ ) for 12 h (RE:  $-7.3\%$  to  $10.8\%$ , RSD  $< 11.0\%$ ), or in these matrixes before extraction under different conditions, such as 12 h at room temperature (RE:  $-6.6\%$  to  $11.0\%$ , RSD  $< 11.2\%$ ), three freeze–thaw cycles (RE:  $-3.6\%$  to  $10.9\%$ , RSD  $< 10.7\%$ ) and long-term (one week) in a freezer at  $-20^\circ\text{C}$  (RE:  $-2.6\%$  to  $10.8\%$ , RSD  $< 10.8\%$ ). The results of stock stability showed that the stock solutions (the three analytes and internal standard) were stable for up to 15 days (RE:  $-7.3\%$  to  $2.5\%$ , RSD  $< 6.5\%$ ).

**Table 6** The main pharmacokinetic parameters of daucicoline, daurisoline, dauricine in rat plasma after oral administration of MR capsules ( $n = 6$ , mean  $\pm$  SD)<sup>a</sup>

Parameter	Unit	Daucicoline mean $\pm$ SD	Daurisoline mean $\pm$ SD	Dauricine mean $\pm$ SD
AUC <sub>(0–t)</sub>	ng h mL <sup>−1</sup>	1161.8 $\pm$ 233.5	10 863.0 $\pm$ 1748.1	14 461.9 $\pm$ 3279.0
AUC <sub>(0–∞)</sub>	ng h mL <sup>−1</sup>	1400.3 $\pm$ 295.2	11 844.1 $\pm$ 2578.8	15 223.7 $\pm$ 3909.8
MRT <sub>(0–t)</sub>	h	41.844 $\pm$ 2.54	38.845 $\pm$ 3.411	35.241 $\pm$ 2.762
MRT <sub>(0–∞)</sub>	h	54.611 $\pm$ 10.648	43.488 $\pm$ 5.239	38.839 $\pm$ 2.575
$t_{1/2}$	h	27.26 $\pm$ 10.10	28.84 $\pm$ 12.90	24.89 $\pm$ 8.67
$T_{\text{max}1}$	h	0.25 $\pm$ 0.00	0.37 $\pm$ 0.19	0.32 $\pm$ 0.03
$T_{\text{max}2}$	h	11.33 $\pm$ 1.63	6.67 $\pm$ 1.03	6.33 $\pm$ 1.51
$C_{\text{max}1}$	ng mL <sup>−1</sup>	37.80 $\pm$ 9.20	311.99 $\pm$ 55.66	591.01 $\pm$ 102.01
$C_{\text{max}2}$	ng mL <sup>−1</sup>	23.55 $\pm$ 7.37	241.97 $\pm$ 67.05	422.48 $\pm$ 182.77
Cl <sub>z</sub> /F	L h <sup>−1</sup> kg <sup>−1</sup>	0.004 $\pm$ 0.001	0.008 $\pm$ 0.002	0.009 $\pm$ 0.002
V <sub>z</sub> /F	L kg <sup>−1</sup>	0.199 $\pm$ 0.053	0.315 $\pm$ 0.101	0.32 $\pm$ 0.011

<sup>a</sup> Cl<sub>z</sub>/F: apparent oral clearance, MRT: mean residence time, V<sub>z</sub>/F: apparent volume of distribution.



**3.2.6. Carryover test.** No corresponding peak at the retention time of analytes and internal standard was found in blank samples injected immediately following the analysis of the ULOQ sample (Fig. S1, ESI†), which indicated that the carryover effect in this proposed approach was absent.

**3.2.7. Dilution test.** It was shown (Table S1, ESI†) that the RSD values of 1/10 dilution specimens for every analyte were

below 7.1%, whereas the RE results were within 5.2%. All the results were within the acceptance criteria.

### 3.3. Pharmacokinetics

The plasma concentrations of three active components following oral administration of MR capsules at a dose of 2.5 g

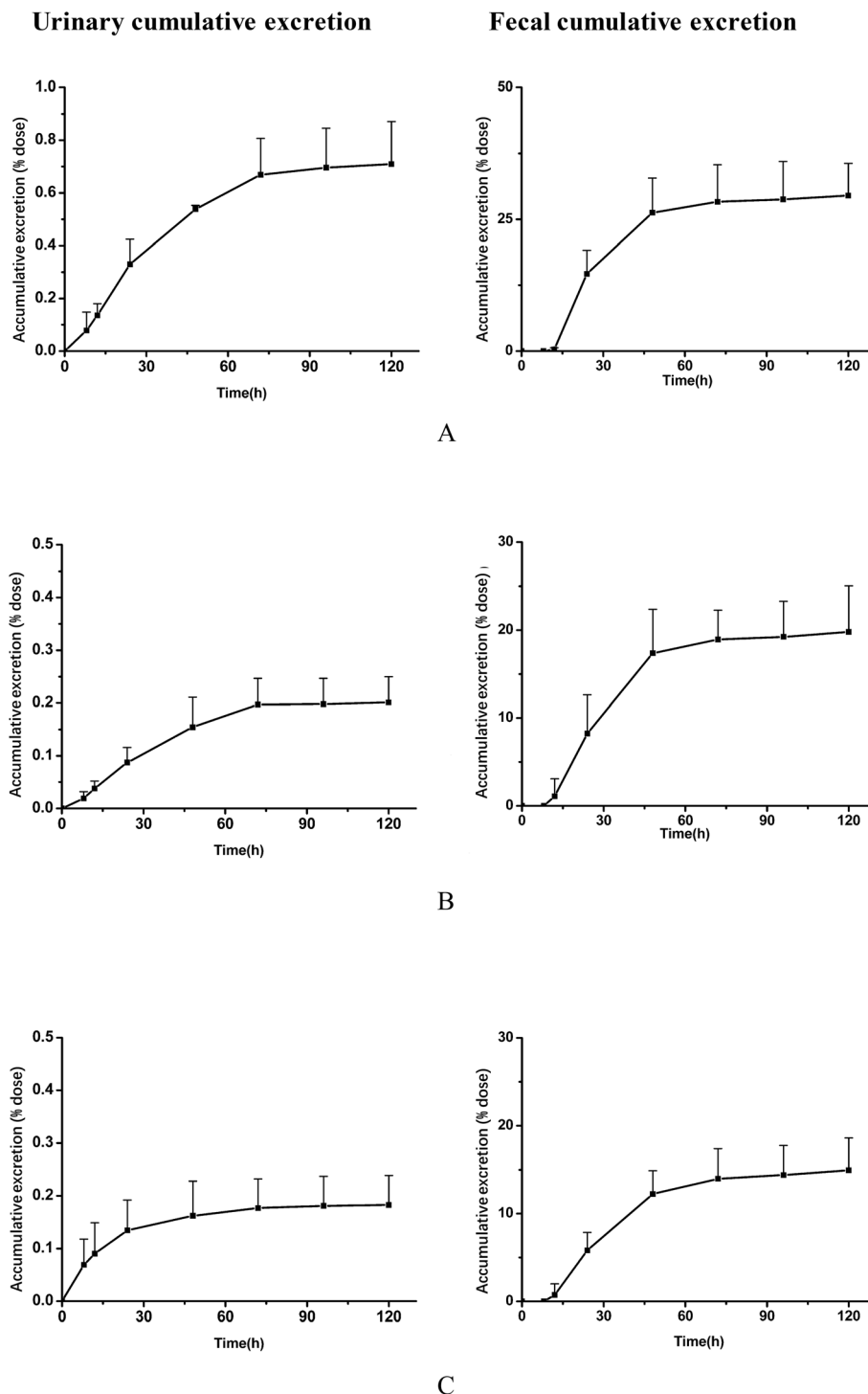


Fig. 4 Mean urinary and fecal cumulative excretion curves of daucicoline (A), daurisolone (B) and dauricine (C) in rats after oral administration of MR capsules ( $2.5 \text{ g kg}^{-1}$ ;  $n = 6$  for male rats; each point represents mean  $\pm$  SD).

$\text{kg}^{-1}$  in rats were successfully determined by the validated method. The mean plasma concentration–time profiles of the three analytes are presented in Fig. 3 and the pharmacokinetic parameters were calculated using DAS 2.0 software with non-compartmental analysis and the results are listed in Table 6.

As shown in the results, the three alkaloids (daucicolone, dauricine, daurisolone) exhibited similar plasma concentration–time plots because of their similar chemical structures, where the basic parent structure was dibenzyl tetrahydroisoquinoline. A double-peak phenomenon of the three alkaloids was observed in the rats' specimens. They all achieved the first maximum plasma concentration between 15–30 min post-dose. But the larger difference occurs at  $T_{\text{max}}$  of the second peak. The second peak appears around 11 h for daucicolone, and less than 7 h for daurisolone and dauricine. Some researchers have previously conducted pharmacokinetic studies on daurisolone, and the results described in this paper are basically consistent with those found in the literature.<sup>26</sup> In the study of pharmacokinetics of traditional Chinese medicine, the double peak phenomenon was a common phenomenon. It has been reported that the main reason for abnormal double-peak phenomenon of dauricine *in vivo* was the stomach–intestine circle.<sup>27</sup> The emergence of the second peak of the plasma concentration–time curve was the equivalent of an “autogenous drug” process, which can affect the intensity of drug action and the elimination process.<sup>28</sup> The retention time of the three compounds in rats was longer, which may be related to the occurrence of the double-peak phenomenon. The study of the double-peak or multimodal phenomenon can provide the basis for the formulation of a more careful drug delivery program.

### 3.4. Excretion

After oral administration to rats of MR capsules at a dose of  $2.5 \text{ g kg}^{-1}$ , the cumulative excretion results of the analytes in rat urine and feces are displayed in Fig. 4. In urine, it could be concluded that the three analytes were mainly excreted during 120 h after oral administration. Compared with the dosing, total recoveries of the three compounds in urine within 120 h were about 0.71% for daucicolone, 0.20% for daurisolone, 0.18% for dauricine. Low recoveries of the three analytes in urine indicated that few unconverted forms were excreted in the urine. The cumulative excretion of the three compounds in feces within 120 h were about 29.5% for daucicolone, 19.8% for daurisolone, 14.9% for dauricine. It could be concluded that there was significant increase for the three alkaloids in fecal excretion after 12 h, and the speed of excretion continued to accelerate within 12 h to 36 h. Then the fecal cumulative excretion of the analytes reached a plateau at 48 h after dosing. These results indicated that fecal excretion was the dominant excretion pathway. It has been reported previously<sup>26</sup> that dauricine was excreted mainly in feces. The results of this study were consistent with the results of the report in the literature. As far as is known, the excretion characteristics of daucicolone and daurisolone were investigated for the first time in this research.

## 4. Conclusions

This research is the first demonstration of a UPLC-MS/MS method that was validated for the simultaneous determination of three main alkaloids (daucicolone, dauricine, and daurisolone) of MR capsules in rat plasma, urine and feces. The analytical procedure was successfully applied to pharmacokinetic and excretion studies of the analytes after oral administration of MR capsules. The pharmacokinetic data showed that the plasma concentration–time plots of the three alkaloids exhibited a similar double-peak phenomenon. The excretion data suggested that the three analytes were mainly excreted by feces. The previously described results will be helpful for the further investigation of the mechanism of action of the active ingredients in MR capsules and may provide a useful tool for the clinical application of the formulation of MR capsules.

## Conflicts of interest

The authors declare no conflict of interest.

## References

- 1 Chinese Pharmacopoeia Committee, *Chinese Pharmacopoeia*, China Medical Science Press, Beijing, 2015, vol. 1, p. 99.
- 2 Chinese Pharmacopoeia Committee, *Chinese Pharmacopoeia*, China Medical Science Press, Beijing, 2015, vol. 1, p. 775.
- 3 Y. Zhang, C. Sun, Q. C. Guan, J. Yang and J. Zhao, Research of anti-inflammatory and analgesic effect of rhizoma of *Menispermum dauricum*, *Mod. Pharm. Clin.*, 2009, **06**, 367–368.
- 4 X. H. Liu and F. L. Han, Antagonistic effect of the total alkaloids of *Menispermum dauricum* injection on experimental arrhythmias, *Heilongjiang Med. J.*, 2000, **13**, 160–162.
- 5 J. Li, H. Bi, B. Du, Y. Sun and H. Zhang, Study on the bacteriostatic action of *Menispermum dauricum* alkaloid by microcalorimetry, *J. Qufu Norm. Univ., Nat. Sci.*, 2010, **04**, 96–102.
- 6 Y. Su, C. Zhang and J. Xiao, Effects of PAMD on the proliferation of human tumour cells of PC-3 and BT5637, *J. Harbin Med. Univ.*, 2007, **41**, 129–131.
- 7 X. Kong, X. Yang and P. Xi, Effects of phenolic alkaloids of *Menispermum dauricum* on platelet aggregation and its mechanism, *Chin. Pharm. J.*, 2006, **41**, 910–913.
- 8 Z. Wang, J. Wang, Y. Guo, T. Lu, X. Wang and Q. Duan, Neuroprotection of phenolic alkaloids from *Menispermum dauricum* versus melatonin against oxygen-glucose-serum-deprivation-mediated injury, *Neural Regener. Res.*, 2009, **4**, 15–19.
- 9 F. Wang, L. Qu, Q. Lv and L. J. Guo, Effect of phenolic alkaloids from *Menispermum dauricum* on myocardial-cerebral ischemia-reperfusion injury in rabbits, *Acta Pharmacol. Sin.*, 2001, **22**, 1130–1134.
- 10 Y. M. Su, H. Su and B. Sheng, Effect of phenolic alkaloids from *Menispermum dauricum* on hemodynamics in



- experimental myocardial ischemia, *China Pharm.*, 2004, **07**, 83–85.
- 11 D. Z. Zhao, Y. Q. Du and B. Jiang, Effect of phenolic alkaloids from *Menispermum dauricum* (PAMD) on apoptosis protein c-fos expression in rats with cerebral ischemia, *China Pharm.*, 2009, **12**, 1005–1008.
  - 12 D. Su, Z. K. Wang, T. T. Sun and X. J. Guo, Simultaneous determination of content of 5 alkaloids in *Menispermum Rhizoma* capsule by HPLC, *J. Shenyang Pharm. Univ.*, 2016, **01**, 46–50.
  - 13 S. M. Hu, S. X. Xu, X. S. Yao, C. B. Cui, Y. Tezuka and T. Kikuchi, Dauricoside, a new glycosidal alkaloid having an inhibitory activity against blood-platelet aggregation, *Chem. Pharm. Bull.*, 1993, **10**, 1866–1868.
  - 14 S. Xia, Z. Li, J. W. Dong, H. Tu and F. D. Zeng, Dauricine-induced changes in monophasic action potentials and effective refractory period of rabbit left ventricle *in situ*, *Acta Pharmacol. Sin.*, 2002, **23**, 371–375.
  - 15 J. Q. Qian, Cardiovascular pharmacological effects of bisbenzylisoquinoline alkaloid derivatives, *Acta Pharmacol. Sin.*, 2002, **23**, 1086–1092.
  - 16 Q. Liu, X. Mao, F. Zeng, S. Jin and X. Yang, Effect of Daurisoline on hERG Channel Electrophysiological Function and Protein Expression, *J. Nat. Prod.*, 2012, **75**, 1539–1545.
  - 17 X. D. Tang, X. Zhou and K. Y. Zhou, Dauricine inhibits insulin-like growth factor-I-induced hypoxia inducible factor 1 $\alpha$  protein accumulation and vascular endothelial growth factor expression in human breast cancer cells, *Acta Pharmacol. Sin.*, 2009, **30**, 605–616.
  - 18 Y. Liu, X. Song, R. Yan, T. Li, X. Chai, A. Qi, Y. Wang and Z. Jiang, Development and validation of a UPLC-DAD-MS method for characterization and quantification of alkaloids in *Menispermum Rhizoma* and its preparations, *J. Food Drug Anal.*, 2013, **21**, 206–218.
  - 19 Y. Zhang, K. Li, P. Zhang, L. Feng and Z. Zhang, Determination of Dauricine and Daurisoline in *Rhizoma Menispermum* and Its Preparations by HPLC, *Chin. Arch. Tradit. Chin. Med.*, 2016, **04**, 921–923.
  - 20 J. L. Geng, Y. Dai, Z. H. Yao, Z. F. Qin, X. L. Wang, L. Qin and X. S. Yao, Metabolites profile of Xian-Ling-Gu-Bao capsule, a traditional Chinese prescription, in rats by ultra performance liquid medicine coupled with quadrupole time-of-flight tandem chromatography spectrometry analysis mass, *J. Pharm. Biomed. Anal.*, 2014, **96**, 90–103.
  - 21 H. Hao, X. Zheng and G. Wang, Insights into drug discovery from natural medicines using reverse pharmacokinetics, *Trends Pharmacol. Sci.*, 2014, **04**, 168–177.
  - 22 Y. Xie, G. Zhong, H. He, G. Fan and Y. Wu, Pharmacokinetics, tissue distribution and excretion of porcine fibrinogen after intraperitoneal injection of a porcine-derived fibrin glue to rats, *J. Pharm. Biomed. Anal.*, 2014, **54**, 148–153.
  - 23 J. Wang, Q. Pang, W. Cen, P. Zhu and Y. Xu, Simultaneous determination of ten active constituents of Yankening in rat plasma by ultra high performance liquid chromatography with tandem mass spectrometry, *J. Chromatogr. B: Anal. Technol. Biomed. Life Sci.*, 2015, **43**, 978–979.
  - 24 Y. Wu, L. Ou, D. Han, Y. Tong, M. Zhang, X. Xu and C. Zhang, Pharmacokinetics, biodistribution and excretion studies of neotuberostemonine, a major bioactive alkaloid of *Stemona tuberosa*, *Fitoterapia*, 2016, **112**, 22–29.
  - 25 Food and Drug Administration, *Guidance for Industry: Bioanalytical Method Validation*, US Department of Health and Human Services, Food and Drug Administration, Center for Drug Evaluation and Research, Center for Biologics Evaluation and Research, 2018.
  - 26 Y. X. Jin, C. C. Song, L. J. Shao, L. T. Wang, X. T. Tu, B. B. Chen, J. Y. Chen, Y. H. Zhi, C. C. Wen and W. Z. Zhu, Determination and Pharmacokinetic Study of Daurisoline in Rat Plasma by UPLC-MS/MS, *Lat. Am. J. Pharm.*, 2017, **36**, 1204–1209.
  - 27 S. Chen, Y. Yang, Y. Liu, B. Zhang, X. Pang and F. Zeng, The pharmacokinetics of dauricine in rats, *Chin. Pharmacol. Bull.*, 2001, **02**, 225–229.
  - 28 J. X. Wei, L. L. Fang, X. L. Liang, D. Su and X. J. Guo, A sensitive and selective UPLC-MS/MS method for simultaneous determination of 10 alkaloids from *Rhizoma Menispermum* in rat plasma and its application to a pharmacokinetic study, *Talanta*, 2015, **144**, 662–670.

