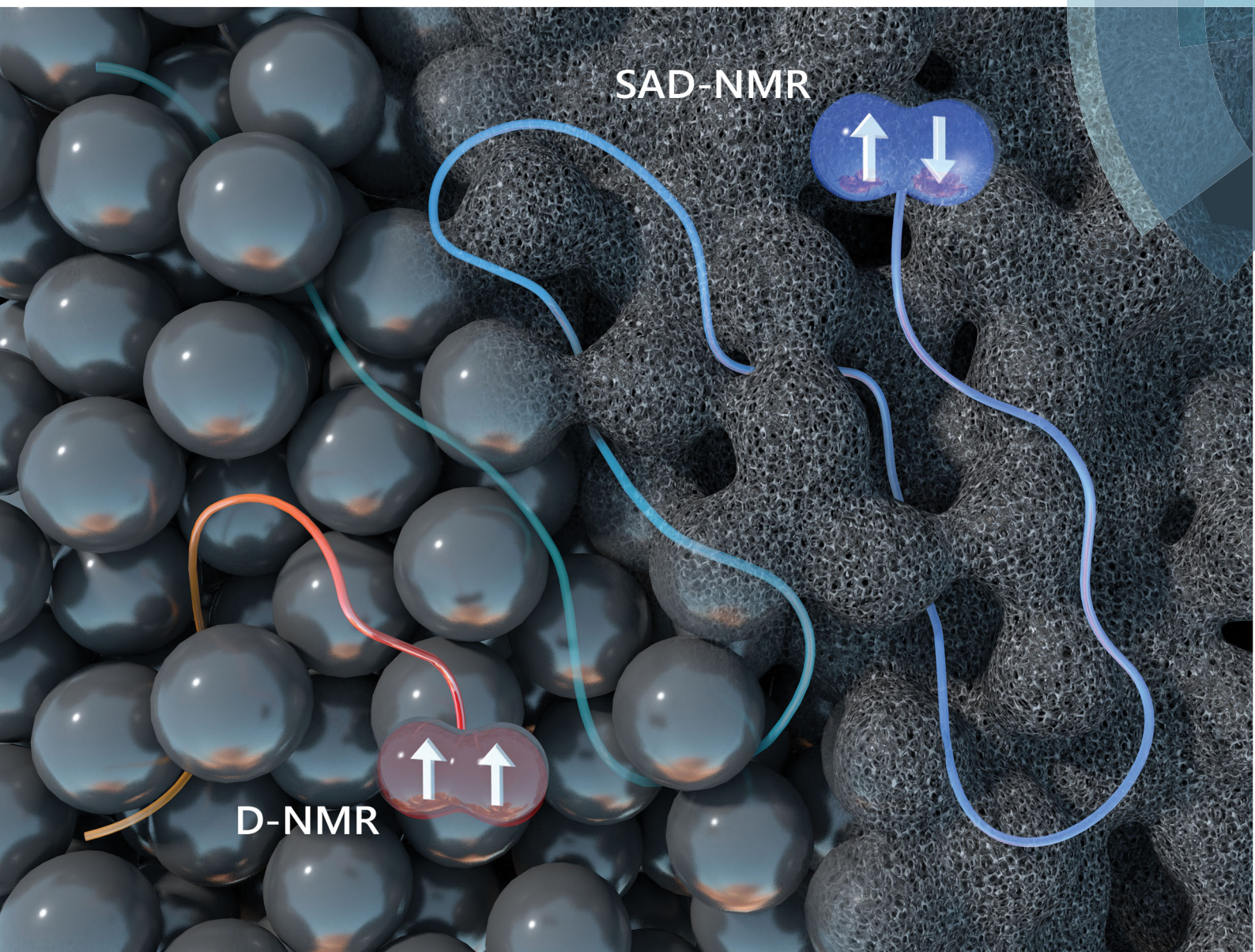


# PCCP

Physical Chemistry Chemical Physics

rsc.li/pccp



ISSN 1463-9076



## PAPER

Giuseppe Pileio *et al.*

Singlet-assisted diffusion-NMR (SAD-NMR): redefining the limits when measuring tortuosity in porous media



Cite this: *Phys. Chem. Chem. Phys.*,  
2018, 20, 13705

# Singlet-assisted diffusion-NMR (SAD-NMR): redefining the limits when measuring tortuosity in porous media†‡

Monique C. Tourell, Ionut-Alexandru Pop,§ Lynda J. Brown, Richard C. D. Brown  
and Giuseppe Pileio \*

Long-lived singlet order is exploited in diffusion NMR experiments to successfully measure the tortuosity of randomly packed spheres with diameters ranging from 500 to 1000  $\mu\text{m}$ . The pore spaces in such packings have characteristic length scales well beyond the length scale limit set by spin relaxation in conventional NMR-diffusion experiments. Diffusion times of up to 240 s were used to obtain the restricted diffusion coefficient as a function of diffusion time in the long-time diffusion regime. Experimental results were validated with numerical simulations and data from X-ray micro-computed tomography.

Received 8th January 2018,  
Accepted 6th February 2018

DOI: 10.1039/c8cp00145f

rsc.li/pccp

## 1. Introduction

Tortuosity is the ratio of the effective path length to the shortest path length in a porous medium and, as an indicator of pore connectivity, is a fundamental quantity in understanding fluid transport through the material. It can also be difficult to measure directly. Nevertheless, it is essential in a wide variety of applications including characterization of porous rock samples,<sup>1</sup> evaluating performance of batteries,<sup>2</sup> understanding nutrient transport pathways in cell cultures and biological tissues<sup>3</sup> and identifying abnormal blood vessels for diagnosis and therapeutic monitoring of numerous diseases.<sup>4</sup>

Diffusion nuclear magnetic resonance (NMR) techniques are a non-destructive means of evaluating tortuosity in porous media by measurement of the restricted self-diffusion coefficient at so-called long measurement times.<sup>5</sup> At these times, the displacement of the diffusing molecules through the porous media is much larger than the characteristic length-scale of the pore space. The measured restricted diffusion coefficient,  $D(\Delta)$ , approaches an asymptotic value that is independent of the measurement time,  $\Delta$ , and directly related to the tortuosity of the porous material,  $\alpha$ , as simply  $D(\Delta)/D_0 = 1/\alpha$ .<sup>6</sup> Unlike other flux-based tortuosity measurements (e.g. analysis of electrical conductivity or diffusion under flow), the restricted self-diffusion

coefficient is directly related to tortuosity without a dependence on porosity.<sup>7</sup> In this, NMR provides a unique advantage over other methods. Additionally, NMR is ideal for *in situ* based measurements and dynamic systems where the pore space changes with time.<sup>8,9</sup> However, the maximum diffusion time,  $\Delta$ , that can be measured using traditional diffusion-NMR methods, such as the pulsed-gradient spin echo (PGSE) and stimulated echo (PGSTE) experiments, is determined by the relaxation time of the associated spin order that has been prepared;  $T_2$  in PGSE and  $T_1$  in PGSTE. Consequently, there is an upper limit on the pore sizes that can be explored using these traditional methods. For typical PGSTE experiment  $T_1$  is of the order of seconds and the diffusing species has an unrestricted diffusion coefficient between  $10^{-10}$  and  $10^{-9} \text{ m}^2 \text{ s}^{-1}$ . Because of this, the maximum displacement that can be measured in conventional NMR experiments is about 50–100  $\mu\text{m}$ , and the true long-time diffusion coefficient can only be reached in materials with characteristic pore sizes several times smaller than this,  $\sim 10 \mu\text{m}$ .

There are many porous materials with characteristic pore spaces larger than this limit in which knowledge of tortuosity and fluid transport is essential. For example, the electrodes in proton-exchange membrane (PEM) fuel cells are multi-scale porous media with pore sizes ranging from 0.1–200  $\mu\text{m}$ .<sup>10,11</sup> A key element of electrode design is management and removal of liquid water, the waste product of the cell. Accumulation of water in the gas diffusion layer (GDL) of the electrodes restricts the access of the reactant gases to the catalytic sites, thereby limiting the upper power limit of the cell. To achieve the power output that is required for commercial use of PEM fuel cells (in electric vehicles, for example), improved water management and a better understanding of water transportation in the cell is

Chemistry, University of Southampton, SO17 1BJ, Southampton, UK.

E-mail: g.pileio@soton.ac.uk

† This paper is dedicated to Prof. J. W. Emsley in occasion of his 50th work anniversary at the University of Southampton, UK.

‡ Electronic supplementary information (ESI) available: Details of the synthesis of compound **1** in Scheme 1. See DOI: 10.1039/c8cp00145f

§ Current address: Concept Life Sciences, CT13 9ND, Sandwich, UK.





necessary. While optical imaging<sup>12</sup> and MR imaging<sup>13</sup> can visualize water pathways in the GDL, computational approaches suggest that tortuosity of the GDL is important in determining water retention and the performance of the cell.<sup>14,15</sup>

Similarly, water transport is a vital element in the design of tissue engineering scaffolds.<sup>16</sup> These are three dimensional, porous structures that support and guide cell growth for the regeneration of biological tissue, with pores sizes of 50–500  $\mu\text{m}$ .<sup>16,17</sup> Infiltration of the pore space by the newly formed tissue causes nutrient and waste transport pathways within the scaffold to become more tortuous. If the scaffold is not designed appropriately, cells at the centre can be cut off from essential nutrients resulting in a necrotic core.<sup>16</sup> Previous studies have provided information on the restricted diffusion coefficient in unseeded<sup>18</sup> and seeded<sup>9</sup> tissue engineering constructs using conventional diffusion-NMR measurements of water protons in the samples. However, given the pore spacing in these structures (150–500  $\mu\text{m}$ ) and the diffusion time accessed ( $\Delta = 18$ –250 ms), these studies can only provide insight into the short to intermediate diffusion regimes. The scaffold tortuosity can only be inferred from these measurements, not directly measured.

Clearly, non-invasive diffusion-NMR still has a significant role to play in the characterization of tortuosity and fluid transport in porous materials. There are two conceivable ways of extending the current spatial limit that restricts traditional NMR diffusion experiments. Firstly, a diffusing species with a diffusion coefficient much larger than what is conventionally used can be chosen. For example, Mair *et al.* used  $^{129}\text{Xe}$  gas ( $D_0 = 5.7 \times 10^{-6} \text{ m}^2 \text{ s}^{-1}$  at 1 bar pressure;  $T_1 = 1.4 \text{ s}$  with added paramagnetic  $\text{O}_2$ ) to reach the long-time diffusion limit and measure the tortuosity in randomly packed glass spheres characterized by pore length scales up to 2000  $\mu\text{m}$ .<sup>19</sup> However, this method requires the preparation of pressurized and hyperpolarized  $^{129}\text{Xe}$  (which requires specialized knowledge and equipment) and suffers from drawbacks directly related to the large diffusion coefficient of the gas. There is now a lower limit on the short-time diffusion behaviour that can be measured, which in turn limits the capability of this method in probing multi-scale systems. Additionally, breach of the narrow-pulse approximation (due to large translational displacement during the application of the pulsed gradients) can render the diffusion data acquired before the asymptotic long-time diffusion regime difficult to interpret.<sup>19</sup>

In this paper, we propose an alternate approach which utilizes long-lived singlet spin order as a means of storing magnetization during the diffusion time. The characteristic decay time of such spin order,  $T_S$ , is typically 10–50 times longer than the  $T_1$ . When combined with diffusion NMR, the long lifetime of singlet spin order has allowed calculation of slow diffusion coefficients,<sup>20</sup> and extended measurement time in  $q$ -space diffusion diffraction experiments.<sup>21,22</sup> Previously, our group has used singlet-enhanced diffusion NMR to image slow flow, and unrestricted diffusion over the course of several millimeters,<sup>23,24</sup> and more recently, have successfully measured cavity sizes up to 2 mm in singlet-enhanced  $q$ -space experiments.<sup>25</sup>

In this work, we present a singlet-assisted diffusion-NMR technique, SAD-NMR. The technique is based on magnetization-to-singlet order transfers and is able to measure tortuosity in

porous samples where the characteristic length-scale of the pore space requires a diffusion time of hundreds of seconds to report on the tortuosity of the medium. Such length-scales are out of reach for traditional NMR-diffusion methods based on spin echoes (PGSE or PGSTE). In particular, we demonstrate and discuss the performances of this method on samples of randomly-packed spheres up to 1 mm in diameter.

## 2. Tortuosity

There are many ways to define tortuosity and relate it to the restricted diffusion coefficient in porous media.<sup>26</sup> While the tortuosity factor is always inversely related to the ratio of restricted *versus* unrestricted diffusion coefficient ( $D(\Delta)/D_0$ ), the absolute relationship is often squared, and can sometimes include porosity<sup>27</sup> and (more rarely) constrictivity terms.<sup>28</sup> Here, we adopt the relationship most commonly used in analysis of NMR diffusion data. In randomly-packed sphere packings, neglecting surface relaxation at the pore walls, the long-time behavior of the diffusion coefficient,  $D(\Delta)$  is related to tortuosity,  $\alpha$ , as:<sup>5,29</sup>

$$\frac{D(\Delta)}{D_0} = \frac{1}{\alpha} + \frac{(1/\alpha - 1)\theta}{\Delta} + O\left(\frac{1}{\Delta}\right)^{3/2} \quad (1)$$

where,  $D_0$  is the unrestricted diffusion coefficient and  $\theta$  is a fitting parameter which has the units of time, and in the case of randomly packed spheres, scales with bead size.<sup>6</sup> In the limit of  $\Delta \rightarrow \infty$ , eqn (1) reduces to  $D(\Delta)/D_0 = 1/\alpha$ .

## 3. Materials and methods

### 3.1 Experimental

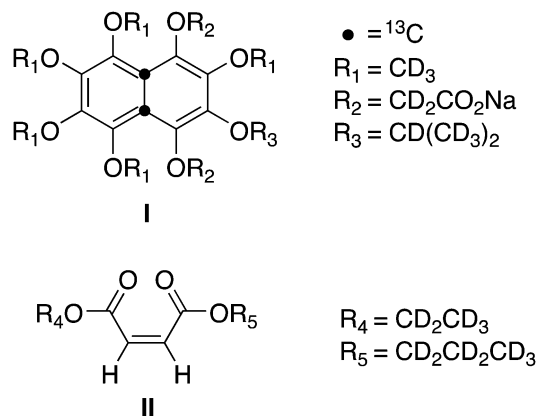
The diffusion-NMR experiments discussed below use two different molecular systems and a variety of beads.

**3.1.1 Molecular probes.** The two molecular systems were both synthesized in house and are shown in Scheme 1.

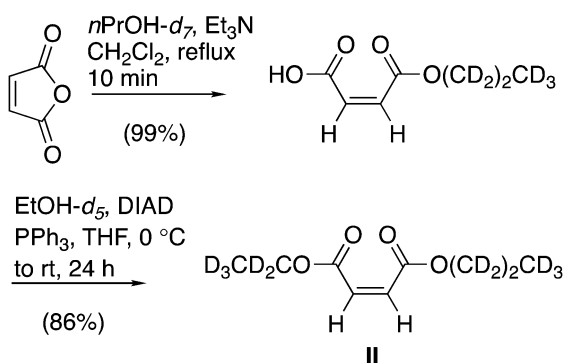
The unsymmetrical maleate diester (**II**, Scheme 1) was synthesised from commercially available maleic anhydride,  $n\text{PrOH-}d_7$  and  $\text{EtOH-}d_5$  in two steps in an 85% overall yield (see Scheme 2). The details of the synthesis are available in literature.<sup>28,29</sup>

The doubly  $^{13}\text{C}$  labelled perdeuterated naphthalene derivative (**I**, Scheme 1) is a water-soluble analogue of a compound previous reported by some of us.<sup>30,31</sup> The synthesis of **I** made use of the previously reported mixture of cyclobutene regioisomers **3a** and **3b** (ratio  $\sim 1:1$ , Scheme 3), which underwent thermal rearrangement, by microwave irradiation, to afford a naphthalene-1,4-diol intermediate that was immediately alkylated with methyl bromoacetate-2,2- $d_2$  in THF to afford the diester **4** in 60% yield over the two steps. Saponification of the diester **4** followed by acid work up delivered the naphthalene diacid **5** in 91% yield after purification. The desired aqueous solubility was achieved through formation of the disodium salt **5**, obtained in quantitative yield from the diacid. Further details on this synthesis are available in the ESI.†

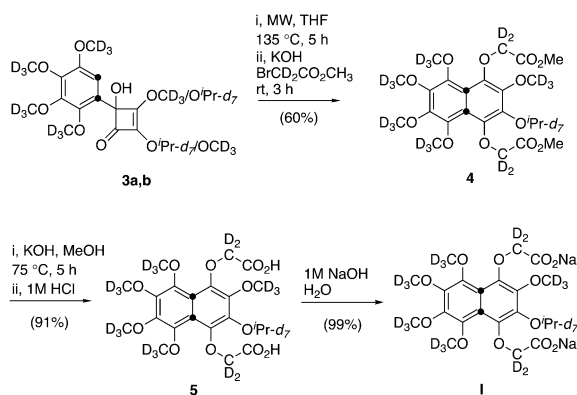




**Scheme 1** Molecular schemes of (I) sodium-2,2'-((1,2,3,4,6-pentakis(methoxy-d3)-7-(propan-2-yl-d7)naphthalene-5,8-diyl)bis(oxy))diacetate-4a,8a-13C2 and (II) 1-(ethyl-d5) 4-(propyl-d7)(Z)-but-2-enedioate.



**Scheme 2** Synthesis of 1-(ethyl-d5) 4-(propyl-d7)(Z)-but-2-enedioate.



**Scheme 3** Synthesis of sodium-2,2'-((1,2,3,4,6-pentakis(methoxy-d3)-7-(propan-2-yl-d7)naphthalene-5,8-diyl)bis(oxy))diacetate-4a,8a-13C.

**3.1.2 Porous structures.** To create model porous structures either polyethylene (PE) beads with diameters 500–600  $\mu\text{m}$ , 710–850  $\mu\text{m}$  and 1000–1180  $\mu\text{m}$  (Cospheric; Santa Barbara, CA) or glass beads (GB) with a diameter of 1000  $\mu\text{m}$  (Sigma Aldrich, UK; acid-washed in house) were used. Three samples containing a solution 0.14–0.18 M of **I** (Scheme 1) dissolved in  $\text{D}_2\text{O}$  were prepared. A fourth sample was prepared containing a 0.14 M solution of **II** (Scheme 1) dissolved in ethanol- $\text{d}_6$ . The solutions

**Table 1** The unrestricted diffusion coefficient measured in solution prior to adding beads and relaxation times  $T_1$  and  $T_2$  before and after the beads were added

	<b>I</b> (in $\text{D}_2\text{O}^a$ )	<b>II</b> (in ethanol- $\text{d}_6$ )
$D_0 \times 10^{-9} (\text{m}^2 \text{s}^{-1})$	$0.22 \pm 0.02$	$1.42 \pm 0.01$
$T_1$ (s) (no beads)	$3.5 \pm 0.2$	$14.6 \pm 0.5$
$T_1$ (s) (with beads)	$3.9 \pm 0.3$ (PE)	$21 \pm 1$ (GB)
$T_2$ (s) (no beads)	$128 \pm 11$	$227 \pm 3$
$T_2$ (s) (with beads)	$123 \pm 25$ (PE)	$120 \pm 20$ (GB)

<sup>a</sup> Averaged over three samples.

were prepared in four separate 10 mm LPV NMR tubes and were degassed to remove paramagnetic  $\text{O}_2$  by bubbling oxygen-free  $\text{N}_2$  gas. At this stage, the unrestricted diffusion coefficient was measured using a conventional PGSTE experiment with bipolar gradients,  $\Delta = 200$  ms and  $\delta = 2$  ms.  $T_1$  and  $T_2$  were also measured using a saturation recovery and an M2S2M<sup>32</sup> pulse sequence, respectively. The results from these preliminary experiments are summarized in Table 1.

All experiments were carried out on a 7 T Bruker Avance III spectrometer equipped with a micro-imaging probe carrying a  $^1\text{H}/^{13}\text{C}$  10 mm resonator and able to deliver a maximum gradient amplitude of  $1.5 \text{ T m}^{-1}$ . Successively, PE beads of the three given sizes were poured to form a random packing into the three NMR tubes filled with the solution of compound **I**. Similarly, the 1000  $\mu\text{m}$  GB were poured in the NMR tube containing the compound **II**. The resulting systems are labelled as in summarized Table 2.

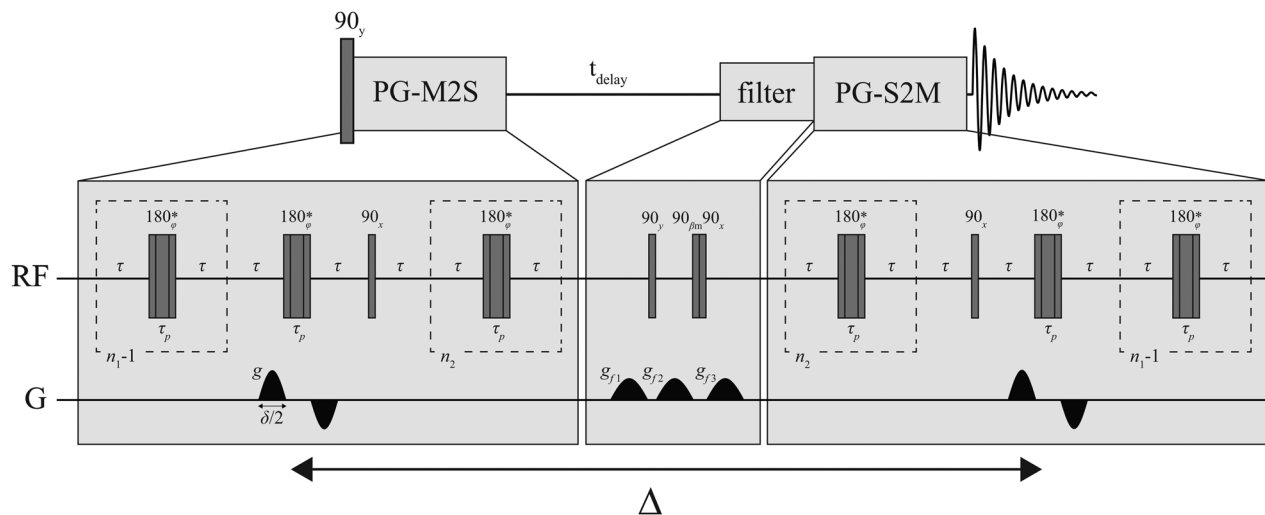
The magnetic susceptibilities of PE and de-ionized water are relatively well matched (0.78 ppm<sup>33</sup>) and, as a result, systems S1–S3 are expected to produce relatively small background magnetic field gradients. Conversely, GBs and ethanol in S4 are not susceptibility matched, resulting in possible internal magnetic field gradients. The spheres were poured into the solutions inside a glove box with low  $\text{O}_2$  and both  $T_1$  and  $T_2$  were measured again (Table 1). In both systems, the  $T_2$  was significantly longer than the  $T_1$ . In the PE systems, the addition of the spheres into the solution did not significantly affected the measured  $T_2$ . This was not the case in the system contain glass beads and could be due to surface relaxation.

**3.1.3 Pulse sequence.** Singlet-diffusion measurements were acquired using the SAD-NMR pulse sequence (Fig. 1).<sup>25</sup> Measurements at multiple diffusion times ranging from 1 s up to 240 s, with a minimum of 6 different gradient strengths at each time point, were obtained. These were fit to a linearized Stejskal–Tanner plot to retrieve the restricted diffusion coefficient,  $D(\Delta)$ , as a function of the diffusion time. The values of  $\tau$ ,  $\tau_p$ ,  $n_1$  and  $n_2$  values for the four samples are reported in Table 3.

**Table 2** Composition of all porous structures used in this work

Name	Molecule	Solvent	Beads type	Beads size ( $\mu\text{m}$ )
S1	<b>I</b>	$\text{D}_2\text{O}$	Polyethylene	500–600
S2	<b>I</b>	$\text{D}_2\text{O}$	Polyethylene	710–850
S3	<b>I</b>	$\text{D}_2\text{O}$	Polyethylene	1000–1180
S4	<b>II</b>	Ethanol- $\text{d}_6$	Glass	1000





**Fig. 1** The SAD-NMR pulse sequence to perform diffusion experiments. Asterisks indicate a composite  $180^\circ$  pulse built as  $90_x180_y90_x$ . The phase  $\varphi$  is cycled as  $[x, x, -x, -x, -x, x, x, -x, -x, -x, x, x, x, -x, -x, x]$  within the train of  $180^\circ$  pulses. The total echo time is  $\tau_e = \tau_p + 2\tau = 1/(2(J^2 + \Delta\nu^2)^{1/2})$  where  $\tau_p$  the duration of the composite  $180^\circ$  pulse.  $n_1 = \pi J/(2\Delta\nu)$  and  $n_2 = n_1/2$ . All gradients have half-sinusoidal shape and  $\beta_m = \arctan(2^{1/2})$ .

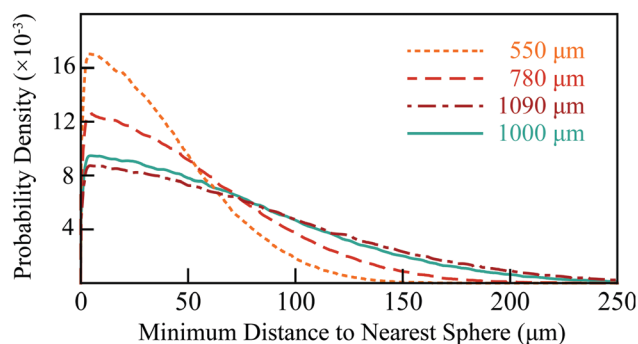
**Table 3** Values of the experimental parameters used in the M2S2M sequence to measure  $T_S$ , and the SAD-NMR sequence (Fig. 1) for diffusion measurements. See the Fig. 1 caption for the relationship between these values

Molecule	$\tau$ (ms)	$\tau_p$ ( $\mu$ s)	$n_1$	$n_2$
I (in $D_2O$ )	4.5	82	20	10
II (in ethanol- $d_6$ )	20.9	36	32	16

### 3.2 Numerical simulations

All numerical simulations were written in *Mathematica* (Wolfram Inc., Illinois). To estimate the pore size in each sample and verify the experimental results, a random packing of 250 monodisperse spheres with periodic boundaries and a porosity 0.385 (appropriate for dense, randomly packed spheres<sup>34</sup>) was constructed using a force-packing algorithm.<sup>35</sup> This volume used to generate four simulation volumes (for the three PE and one glass samples) by rescaling the simulated sphere diameters to the average of the range of diameters specified by the manufacturer; for example, the 500–600  $\mu$ m PE system (S1) was simulated using a sphere diameter of 550  $\mu$ m. The pore size density function for each simulation volume was numerically calculated by distributing a series of test points randomly in the pore volume, and calculating the minimum distance to a sphere.<sup>36</sup> These distributions are shown in Fig. 2. The mean distance across the simulation volumes ranged from 37 to 75  $\mu$ m and can be thought of as the average minimum distance a diffusing molecule must travel to encounter an obstruction from any position in the pore space.

Diffusion of the molecules through these volumes was simulated using a Monte Carlo (MC) algorithm. During the simulation,  $N_p = 5000$  tracer molecules were positioned randomly in the pore space of the sphere packing and their stochastic trajectories over  $N_T$  time-steps were tracked. In each time step,  $\Delta t$ , each molecule attempted a step of length  $\Delta r = \sqrt{(6D_0\Delta t)}$ . The experimentally obtained values of the unrestricted diffusion



**Fig. 2** Radial distance distributions in the simulated sphere packings at 550, 780, 1090 (to simulate the PE system) and 1000  $\mu$ m (to simulate the glass system).

coefficient,  $D_0$ , were used (Table 1) and  $\Delta t$  was chosen such that the resultant  $\Delta r$  ( $\sim 5$   $\mu$ m) was small enough to ensure tracer molecules didn't 'step through' the spheres without encountering them. The direction of the step attempted by a tracer was chosen randomly from a continuous distribution of directions, uniform on the surface of a sphere and centred on that tracer molecule.

The chosen direction was uncorrelated with any of the previous steps for that or any other molecule. If, during a time step, a molecule attempted to move inside the sphere volume, then the position of the tracer was taken as the point of intersection between the attempted step and the sphere surface; the displacement of the tracer for this time step was adjusted accordingly. Such boundary conditions can be considered "weakly absorbing" compared to other, reflective boundary conditions. However, in the limit of small  $\Delta t$ , the effect of choice of boundary condition on the result of the MC simulation is negligible.<sup>37</sup> Standard periodic boundary conditions were applied to molecules moving outside of the random sphere packing unit cell.



The normalized apparent diffusion coefficient at time step  $k$  (diffusion time  $\Delta = \Delta tk$ ) in the simulation was calculated as:

$$\frac{D(\Delta tk)}{D_0} = \frac{1}{6\Delta tk N_P} \sum_n^{N_P} \|\mathbf{r}_{n,k} - \mathbf{r}_{n,0}\|^2 \quad (2)$$

where  $\mathbf{r}_{n,0}$  and  $\mathbf{r}_{n,k}$  are the positions of the  $n$ th tracer molecule initially and in the  $k$ th time-step, respectively.

### 3.3 Micro-CT

To determine the validity of the simulation volume used in the above numerical simulations, a Nikon XT H 255 scanner was used to obtain an X-ray micro-computed tomography ( $\mu$ -CT) 3D volume image of S1 with a resolution of 7.3  $\mu\text{m}$ . Post-processing of this data set was done in Image J. Firstly, a region of interest,  $2450 \times 3500 \times 3500 \mu\text{m}$ , was extracted from the centre of the reconstructed 3D volume and a sigma filter used to smooth and reduce noise. The Bone J package<sup>38</sup> was used to binarize this data set (distinguishing between sphere and pore volume) and determine the porosity ( $\phi$ ) and surface area to volume ratio ( $S/V_P$ ) of the pore space as 0.352 and  $0.021 \mu\text{m}^{-1}$ , respectively. The corresponding values in the mono-disperse 550  $\mu\text{m}$  simulated sphere packing were  $\phi = 0.385$  and  $S/V_P = 0.023 \mu\text{m}^{-1}$ . The radial distribution function in the binarized  $\mu$ -CT data was calculated in *Mathematica* and was also comparable to that in the simulation volume, shown in Fig. 3. The average minimum distance to the nearest obstruction in the mono-sized sphere packing model and the experimental  $\mu$ -CT volume were 37 and 43  $\mu\text{m}$ , respectively.

A 3D square lattice with nodes of 1 indicating sphere volume and nodes of 0 indicating pore space was created from the binarized data and used as the simulation volume for a Monte Carlo lattice random walk, similar to that described above with some small alterations. The initial positions of the tracer molecules lie on lattice points in the pore space, randomly chosen within a volume  $10 \times 100 \times 100$  at the centre of the 3D square lattice (total dimension  $350 \times 500 \times 500$  lattice points 7.3  $\mu\text{m}$  apart). This ensured that the tracer molecules did not move outside of the simulation lattice during the simulation and boundary conditions, with discontinuous sphere boundaries, at

the simulation edge could be avoided. We ensured the tracers still move through enough of the simulation volume to accurately represent the full volume, not just the small initial subset. The step size  $\Delta r$  is automatically defined as the resolution of the  $\mu$ -CT scan (7.3  $\mu\text{m}$ ) and the corresponding time-step value was calculated as  $\Delta t = \Delta r^2/(6D_0)$ , with  $D_0$  the appropriate experimentally obtained value (Table 1).

In each time-step, a tracer may move in one of the six  $\pm x$ ,  $\pm y$  or  $\pm z$  directions, chosen randomly. If in a time-step, a tracer attempted to move onto a lattice node in the sphere volume, the tracer remained stationary for that time-step and the displacement for that time-step was 0 (these boundary conditions can also be considered as weakly absorbing). The normalized apparent diffusion coefficient at different times in the simulation was calculated according to eqn (2).

## 4. Results and discussion

The measured, normalized diffusion coefficients as a function of measurement time for the four sphere packings (S1–S4) are shown in Fig. 4, the solid lines in these plots are the associated simulation data. In the PE spheres (Fig. 4a–c), the onset of the long-diffusion regime occurred at longer times as the sphere size increased consistent with an increase in pore size. Although the onset of the long diffusion regime is accurately modelled by the simulations of the diffusion through the mono-sized sphere packings in each of the PE sphere packings, there was some discrepancy between the simulated and experimental asymptotic values.

Experimentally obtained values for the asymptotic restricted diffusion coefficient, and hence tortuosity, in random packings of monodisperse spheres vary in the literature. Due to the various definitions of tortuosity and, the sometimes-apparent dependence of tortuosity on transport mechanism<sup>27</sup> (e.g. bulk vs. Knudsen diffusion regimes), we limit our comparison to studies of bulk fluid diffusion measured from NMR.

The simulated apparent diffusion coefficient in a model mono-sized sphere packing of diameter 780  $\mu\text{m}$  and 1090  $\mu\text{m}$ , reaches an asymptote for  $D(\Delta)/D_0 = 0.71$ – $0.73$  (the range is a result of statistical noise in the simulations, and the weakly absorbing sphere surfaces), which is in agreement with the experimental data obtained by singlet-enhanced diffusion NMR on the analogous samples S2 and S3. The simulated data agrees with previous MC simulations of tracer molecules through random mono-sized sphere packings. For random sphere packings of porosity 0.36–0.46, generated using two different methods of sphere packing, Khirevich *et al.* report restricted diffusion coefficients in the range of 0.71–0.76.<sup>39</sup> Additionally, our experimental values are comparable to those reported in Latour *et al.* where the restricted diffusion coefficient of water in mono-disperse, random packings of glass spheres (48, 96 and 194  $\mu\text{m}$  in diameter) was around 0.68.<sup>5</sup>

In the 500–600  $\mu\text{m}$  PE sphere packing (S1), the experimental data (Fig. 4a, grey points) reach an asymptote for  $D(\Delta)/D_0 = 0.61$ , a value which is much lower than that predicted by our

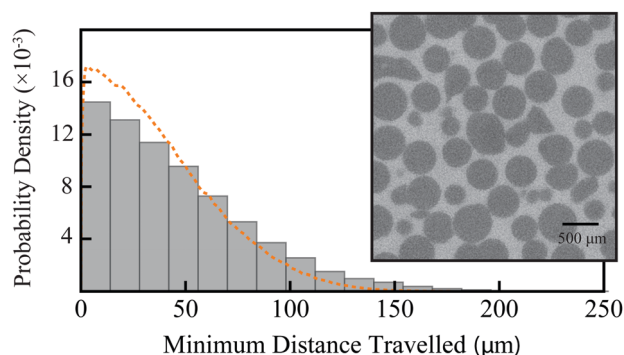


Fig. 3 Comparison of the radial distance distributions in the mono-sized 550  $\mu\text{m}$  sphere packing (dashed, orange line; as in Fig. 2) and the binarized  $\mu$ -CT data (grey histogram). The inset shows a representative sample cross-section of the  $\mu$ -CT data, with darker pixels indicating PE spheres and lighter pixels indicating the pore space.





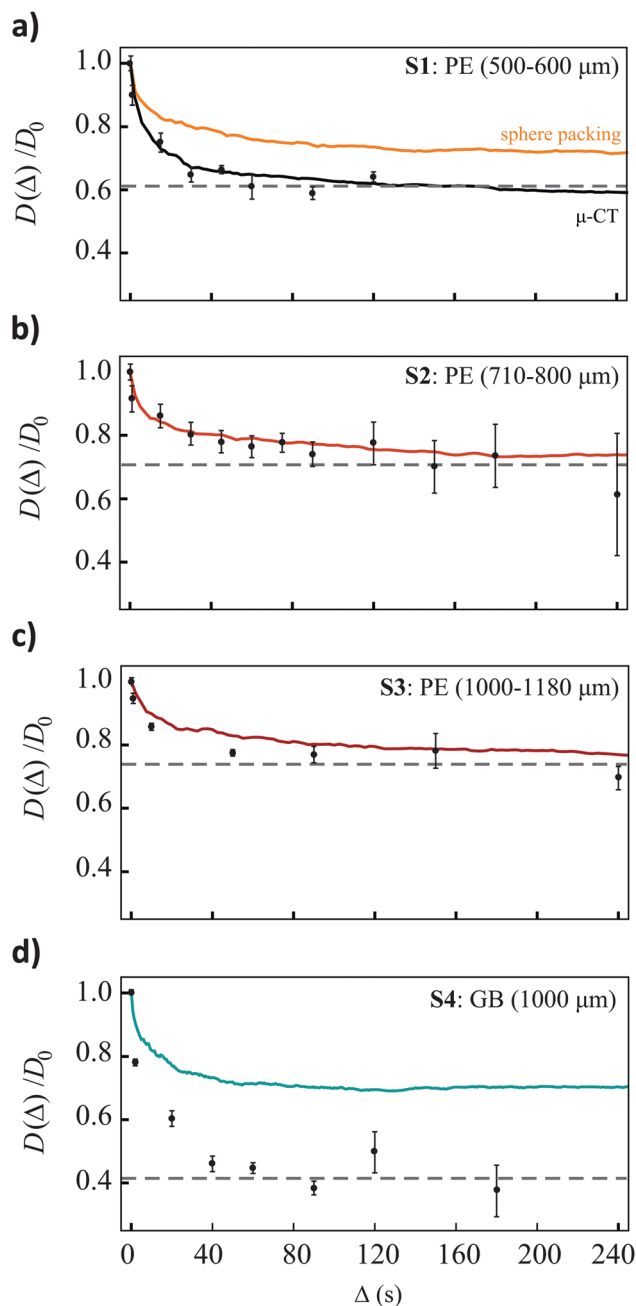


Fig. 4 The restricted diffusion coefficient as a function of measurement time determined experimentally (grey points) and in the simulations (solid lines) for the three PE sphere packing (S1–S3), (a)–(c), and the glass sphere packing (S4), (d) sizes of the spheres in the packing are indicated. In the case of (a), the diffusion simulations through the mono-sized sphere packing (orange line) and through the lattice constructed from the  $\mu$ -CT data (black line) are shown. Dashed lines represent the asymptote for the experimental data.

simulations in the model monodisperse sphere packing with diameter 550  $\mu\text{m}$  (Fig. 4a, orange line). The accurate modeling of the initial drop-off of  $D(\Delta)/D_0$  and the onset of the asymptotic regime, indicates that the  $S/V_p$  of the 500–600  $\mu\text{m}$  PE sphere packing is accurately modelled by the simulated sphere packing (seen above when comparing the  $S/V_p$  of the simulated packing and the  $\mu$ -CT data), but that the tortuosity of the sample is not.<sup>29</sup>

The black solid line in Fig. 4a (labelled  $\mu$ -CT) is the simulated restricted diffusion coefficient as a function of diffusion time through the  $\mu$ -CT data and is in near-perfect agreement with the experimental curve. The inadequate modelling of the sample by the simulated, model sphere packing could be a combination of the distribution of sphere sizes, the slightly higher porosity in the simulated sphere packing and the irregular shaped beads in the actual PE sample (see inset of Fig. 3).

The experimental (grey points) and simulated (solid line) values of  $D(\Delta)/D_0$  in the glass bead system (S4) are shown in Fig. 4d. Again, our simulations of the diffusion through the mono-sized bead packing accurately models the time at which the asymptotic diffusion coefficient is reached, however the value of the experimental asymptote, 0.4, is well below that predicted by the simulations. Unfortunately, because of artifacts arising at glass/solvent interfaces, we were not able to run a  $\mu$ -CT on S4 and therefore we cannot compare diffusion through the actual system to diffusion in the model system. It is possible that, like in the 500–600  $\mu\text{m}$  PE system, the model packing does not accurately represent the actual sample. In sphere packings in cylindrical containers, the container walls can impose some order on the packing geometry when the container diameter is only a few times the sphere diameter.<sup>40</sup> This could alter both porosity and tortuosity of the packing. However, if this effect was present in the glass beads packing, it would also be present in the case of the 1000–1180  $\mu\text{m}$  PE sphere packing. As the restricted diffusion coefficient in this PE system is accurately modelled by the random packing, we can rule out any regions of order affecting the tortuosity in the glass samples as well. Additionally, previous simulations by Sen *et al.* show only minor changes in the measured restricted diffusion coefficient as a result of ordered or disordered packing.<sup>40</sup>

Another possible cause of the discrepancy between the value of the asymptote obtained in the simulated and experimental case is surface relaxation, which, in the case of randomly packed beads, can act to decrease the restricted diffusion coefficient at long diffusion times.<sup>40</sup> The Monte Carlo simulation described above and shown in Fig. 4d assumes no surface relaxation, as does eqn (1). Surface relaxation can be implemented into MC simulations if the relaxivity of the surface,  $\rho$ , is known *a priori*. In each time step,  $\Delta t$ , a molecule encountering a sphere has a probability  $\gamma$ , of being “killed off”:<sup>40</sup>

$$\gamma = \frac{\Delta r \rho}{D_0} \quad (3)$$

where  $\Delta r$  is the tracer molecule step length in the MC simulation. The relaxivity can be estimated using the change in  $T_s$  before and after the beads are added to the sample as:<sup>41</sup>

$$\frac{1}{T_s^{\text{after}}} = \frac{1}{T_s^{\text{before}}} + \rho \frac{S}{V_p} = \frac{1}{T_s^{\text{before}}} + \rho \frac{3(1-\phi)}{R^3} \quad (4)$$

where  $S/V_p$  is the surface to volume ratio of the pore space. In the case of packed mono-sized spheres of radius,  $R$ , and known porosity,  $\phi$ , the ratio  $S/V_p$  is easily estimated. The surface relaxivity for the glass beads packing was calculated from eqn (4) by using the experimentally determined values of  $T_s$



before and after the addition of the glass beads on S4 (Table 1). MC simulations with surface relaxation of diffusion through the simulated sphere packing were carried out, but did not produce any significant difference to the original MC simulated data; the asymptote occurred at  $D(A)/D_0 \sim 0.68$ . This result suggests that surface relaxation is not the main cause of the discrepancy between simulation and experimental data in S4.

The sensitivity of singlet order to surface relaxation has not been modelled in detail yet. However, the above results suggest it may be minimal. Additionally, a simple external-random-field approach would predict that the higher the correlation of the random fields action on the individual spins in the singlet pair the smaller their contribution on singlet relaxation, meaning that if the source of the relaxation is at an equal distance from the two spins its effect (through dipolar interaction for example) is minimised.<sup>42</sup> If the results in Fig. 4 are read in this framework then one can imagine that the singlet pair in **I** is more shielded against surface relaxation than the pair in **II** simply because located more to the core of the molecule.

In addition to surface relaxation effects, the magnetic susceptibility difference between the glass spheres and the fluid phase creates background magnetic field gradients. In this sense, the glass system represents a more physically relevant system (a more realistic model for porous materials of scientific and industrial interest), compared to the PE spheres. In convectional diffusion-NMR experiments the presence of background gradients can substantially affect the ability to measure the apparent diffusion coefficient accurately.<sup>43</sup> The potential effect of background gradients on the singlet diffusion NMR signal is not included here. Singlet order, represented by a rank-zero spherical tensor operator, is immune to magnetic field gradients and for that reason immune to background gradients. These internal gradients, however, may have a subtler effect: spins diffusing in a medium where magnetic susceptibility differences are big and at microscopic level, experience a strong relaxation mechanism that acts on transverse magnetization ( $T_2$ -like). Because of this, the transverse magnetization created during the PG-M2S block of Fig. 1 may decay completely prior to the preparation of the singlet order, in this case the singlet order cannot not be accessed. In systems with large magnetic susceptibility differences, the most effective way of avoiding this effect is to work at low-field, where background magnetic field gradients are minimized.

Future work will investigate the effects of surface interactions and internal gradients on the relaxation of singlet order, to try and better understand the relaxation mechanisms in porous media. A more extensive knowledge of these mechanisms is essential for the rationalisation of the discrepancies between simulated and experimental data on tortuosity, not just in our pseudo-realistic glass system, but, more importantly, in real-world applications.

## Conclusions

We have demonstrated the ability to accurately measure the tortuosity from the long-time diffusion coefficient in model

porous media using long-lived spin order. The characteristic pore-sizes in these model systems ensure that accessing the long-diffusion limit is well beyond the capabilities of traditional diffusion NMR experiments. Using the presented SAD-NMR pulse sequence, the experimentally measured restricted diffusion coefficient in the systems of polyethylene spheres was in excellent agreement with the diffusion simulations.

A more thorough understanding of the relaxation mechanisms of singlet order in porous media is required to understand the apparent discrepancy between the theoretical and experimentally measured tortuosity values in the glass system and this will be the topic of future work. However, the results in this paper clearly demonstrate the ability of singlet-assisted diffusion NMR to probe pore sizes even larger than those used here for the sake of demonstration.

This technique can be applied, for example, to measure the tortuosity and fluid transport in gas diffusion layers in proton-exchange membrane fuel cells and monitor changes to nutrient pathways in tissue engineering scaffolds as a result of cell growth. For these, and other practical cases, the technique should be run in low magnetic field to avoid the susceptibility related issues described above. We are currently developing an apparatus to carry out these measurements in a field-cycling fashion.

## Conflicts of interest

There are no conflicts to declare.

## Acknowledgements

Funding for this project was provided by EPSRC grant EP/N033558/1. We thank Prof. M. H. Levitt and EPSRC grant EP/I036141/1 for support to the synthesis. The authors thank  $\mu$ -VIS X-ray Imaging Centre at the University of Southampton for provision of tomographic imaging facilities, supported by EPSRC grant EP-H01506X. M. C. T. gratefully acknowledges Sean Powell for fruitful discussions and Francesco Giustiniano for technical assistance.

## Notes and references

- 1 M. D. Hurlimann, K. G. Helmer, L. L. Latour and C. H. Sotak, Restricted Diffusion in Sedimentary Rocks. Determination of Surface-Area-to-Volume Ratio and Surface Relaxivity, *J. Magn. Reson., Ser. A*, 1994, **111**(2), 169–178.
- 2 I. V. Thorat, D. E. Stephenson, N. A. Zacharias, K. Zaghbi, J. N. Harb and D. R. Wheeler, Quantifying tortuosity in porous Li-ion battery materials, *J. Power Sources*, 2009, **188**(2), 592–600.
- 3 A. H. Kyle, C. T. O. Chan and A. I. Minchinton, Characterization of three-dimensional tissue cultures using electrical impedance spectroscopy, *Biophys. J.*, 1999, **76**(5), 2640–2648.
- 4 E. Bullitt, G. Gerig, S. M. Pizer, W. L. Lin and S. R. Aylward, Measuring tortuosity of the intracerebral vasculature from MRA images, *IEEE Trans. Med. Imag.*, 2003, **22**(9), 1163–1171.





- 5 L. L. Latour, P. P. Mitra, R. L. Kleinberg and C. H. Sotak, Time-Dependent Diffusion-Coefficient of Fluids in Porous-Media as a Probe of Surface-to-Volume Ratio, *J. Magn. Reson., Ser. A*, 1993, **101**(3), 342–346.
- 6 P. P. Mitra, P. N. Sen, L. M. Schwartz and P. Ledoussal, Diffusion Propagator as a Probe of the Structure of Porous-Media, *Phys. Rev. Lett.*, 1992, **68**(24), 3555–3558.
- 7 R. K. J. Valiullin, *Diffusion NMR of Confined Systems: Fluid Transport in Porous Solids and Heterogeneous Materials*. The Royal Society of Chemistry, 2017.
- 8 A. C. Forse, J. M. Griffin, C. Merlet, J. Carretero-Gonzalez, A. R. O. Raji, N. M. Trease and C. P. Grey, Direct observation of ion dynamics in supercapacitor electrodes using in situ diffusion NMR spectroscopy, *Nat. Energy*, 2017, **2**(3), 16216.
- 9 S. F. Othman, K. Wartella, V. K. Sharghi and H. Xu, The e-incubator: a magnetic resonance imaging-compatible mini incubator, *Tissue Eng., Part C*, 2015, **21**(4), 347–355.
- 10 M. Gobel, M. Godehardt and K. Schladitz, Multi-scale structural analysis of gas diffusion layers, *J. Power Sources*, 2017, **355**, 8–17.
- 11 S. Park, J.-W. Lee and B. N. Popov, A review of gas diffusion layer in PEM fuel cells: materials and designs, *Int. J. Hydrogen Energy*, 2012, **37**(7), 5850–5865.
- 12 S. Litster, D. Sinton and N. Djilali, Ex situ visualization of liquid water transport in PEM fuel cell gas diffusion layers, *J. Power Sources*, 2006, **154**(1), 95–105.
- 13 K. W. Feindel, S. H. Bergens and R. E. Wasylshen, Insights into the distribution of water in a self-humidifying H-2/O-2 proton-exchange membrane fuel cell using H-1 NMR microscopy, *J. Am. Chem. Soc.*, 2006, **128**(43), 14192–14199.
- 14 Y. Wang and S. Wang, Evaluation and modeling of PEM fuel cells with the Bruggeman correlation under various tortuosity factors, *Int. J. Heat Mass Transfer*, 2017, **105**(suppl. C), 18–23.
- 15 Y. Wang, C.-Y. Wang and K. S. Chen, Elucidating differences between carbon paper and carbon cloth in polymer electrolyte fuel cells, *Electrochim. Acta*, 2007, **52**(12), 3965–3975.
- 16 T. S. Karande, J. L. Ong and C. M. Agrawal, Diffusion in musculoskeletal tissue engineering scaffolds: design issues related to porosity, permeability, architecture, and nutrient mixing, *Ann. Biomed. Eng.*, 2004, **32**(12), 1728–1743.
- 17 V. Karageorgiou and D. Kaplan, Porosity of 3D biomaterial scaffolds and osteogenesis, *Biomaterials*, 2005, **26**(27), 5474–5491.
- 18 S. K. Powell, N. Ristovski, S. Liao, K. A. Blackwood, M. A. Woodruff and K. I. Momot, Characterization of the Micro-architecture of Direct Writing Melt Electrospun Tissue Engineering Scaffolds Using Diffusion Tensor and Computed Tomography Microimaging, *3D Print. Addit. Manuf.*, 2014, **1**(2), 95–103.
- 19 R. W. Mair, M. D. Hurlimann, P. N. Sen, L. M. Schwartz, S. Patz and R. L. Walsworth, Tortuosity measurement and the effects of finite pulse widths on xenon gas diffusion NMR studies of porous media, *Magn. Reson. Imaging*, 2001, **19**(3–4), 345–351.
- 20 S. Cavadini, J. Dittmer, S. Antonijevic and G. Bodenhausen, Slow diffusion by singlet state NMR spectroscopy, *J. Am. Chem. Soc.*, 2005, **127**(45), 15744–15748.
- 21 N. N. Yadav, A. M. Torres and W. S. Price, NMR q-space imaging of macroscopic pores using singlet spin states, *J. Magn. Reson.*, 2010, **204**(2), 346–348.
- 22 A. M. Torres, B. Ghadirian and W. S. Price, Diffusion-diffraction using singlet spin states and various NMR coherences in a J-coupled AX spin system, *RSC Adv.*, 2012, **2**(8), 3352–3360.
- 23 G. Pileio, J.-N. Dumez, I.-A. Pop, J. T. Hill-Cousins and R. C. D. Brown, Real-space imaging of macroscopic diffusion and slow flow by singlet tagging MRI, *J. Magn. Reson.*, 2015, **252**(0), 130–134.
- 24 J. N. Dumez, J. T. Hill-Cousins, R. C. D. Brown and G. Pileio, Long-lived localization in magnetic resonance imaging, *J. Magn. Reson.*, 2014, **246**, 27–30.
- 25 G. Pileio and S. Ostrowska, Accessing the long-time limit in diffusion NMR: The case of singlet assisted diffusive diffusion q-space, *J. Magn. Reson.*, 2017, **285**, 1–7.
- 26 L. Shen and Z. Chen, Critical review of the impact of tortuosity on diffusion, *Chem. Eng. Sci.*, 2007, **62**(14), 3748–3755.
- 27 J. M. Zalc, S. C. Reyes and E. Iglesia, The effects of diffusion mechanism and void structure on transport rates and tortuosity factors in complex porous structures, *Chem. Eng. Sci.*, 2004, **59**(14), 2947–2960.
- 28 J. van Brakel and P. M. Heertjes, Analysis of diffusion in macroporous media in terms of a porosity, a tortuosity and a constrictivity factor, *Int. J. Heat Mass Transfer*, 1974, **17**(9), 1093–1103.
- 29 P. N. Sen, Time-dependent diffusion coefficient as a probe of geometry, *Concepts Magn. Reson., Part A*, 2004, **23**(1), 1–21.
- 30 G. Stevanato, J. T. Hill-Cousins, P. Håkansson, S. S. Roy, L. J. Brown, R. C. D. Brown, G. Pileio and M. H. Levitt, A nuclear singlet lifetime of more than one hour in room-temperature solution, *Angew. Chem., Int. Ed.*, 2015, **54**, 3740–3743.
- 31 J. T. Hill-Cousins, I. A. Pop, G. Pileio, G. Stevanato, P. Håkansson, S. S. Roy, M. H. Levitt, L. J. Brown and R. C. Brown, Synthesis of an isotopically labeled naphthalene derivative that supports a long-lived nuclear singlet state, *Org. Lett.*, 2015, **17**(9), 2150–2153.
- 32 G. Pileio, M. Carravetta and M. H. Levitt, Storage of nuclear magnetization as long-lived singlet order in low magnetic field, *Proc. Natl. Acad. Sci. U. S. A.*, 2010, **107**(40), 17135–17139.
- 33 M. C. Wapler, J. Leupold, J. Dragonu, D. von Elverfeld, M. Zaitsev and U. Wallrabe, Magnetic properties of materials for MR engineering, micro-MR and beyond, *J. Magn. Reson.*, 2014, **242**, 233–242.
- 34 F. A. L. Dullien, *Porous Media: Fluid Transport and Pore Structure*, Academic Press, San Diego, CA, 2nd edn, 1992.
- 35 M. Bargiel and J. Moscinski, C-Language Program for the Irregular Close Packing of Hard-Spheres, *Comput. Phys. Commun.*, 1991, **64**(1), 183–192.
- 36 S. Torquato, *Random Heterogeneous Materials: Microstructure and Macroscopic Properties*, Springer, New York, 2002, vol. 16.
- 37 H. Xing, F. Lin, Q. Wu and Q. Gong, Investigation of different boundary treatment methods in Monte-Carlo



- simulations of diffusion NMR, *Magn. Reson. Med.*, 2013, **70**(4), 1167–1172.
- 38 M. Doube, M. M. Klosowski, I. Arganda-Carreras, F. P. Cordelieres, R. P. Dougherty, J. S. Jackson, B. Schmid, J. R. Hutchinson and S. J. Shefelbine, BoneJ Free and extensible bone image analysis in ImageJ, *Bone*, 2010, **47**(6), 1076–1079.
  - 39 S. Khirevich, A. Holtzel, A. Daneyko, A. Seidel-Morgenstern and U. Tallarek, Structure-transport correlation for the diffusive tortuosity of bulk, monodisperse, random sphere packings, *J. Chromatogr. A*, 2011, **1218**(37), 6489–6497.
  - 40 P. N. Sen, L. M. Schwartz, P. P. Mitra and B. I. Halperin, Surface Relaxation and the Long-Time Diffusion-Coefficient in Porous-Media – Periodic Geometries, *Phys. Rev. B: Condens. Matter Mater. Phys.*, 1994, **49**(1), 215–225.
  - 41 W. F. J. Slijkerman and J. P. Hofman, Determination of surface relaxivity from NMR diffusion measurements, *Magn. Reson. Imaging*, 1998, **16**(5-6), 541–544.
  - 42 M. Carravetta and M. H. Levitt, Theory of long-lived nuclear spin states in solution nuclear magnetic resonance. I. Singlet states in low magnetic field, *J. Chem. Phys.*, 2005, **122**, 214505.
  - 43 G. Zheng and W. S. Price, Suppression of background gradients in (B-0 gradient-based) NMR diffusion experiments, *Concepts Magn. Reson., Part A*, 2007, **30**(5), 261–277.

