

Cite this: *RSC Adv.*, 2017, 7, 52200

Peperomin E and its synthetic amino derivatives: potent agents targeting leukaemia stem cells†

Ming Gao,^{‡a} Xin-zhi Wang,^{‡a} Ye-ting Shu,^a Jie Liang,^a Liang Chen,^a Rui Liu,^b Jing-yu Liang^c and Hong-mei Wen^{*a}

Recent studies have described leukaemia stem cells (LSCs) as being central to the initiation, growth, and relapse of acute myelogenous leukaemia (AML). However, to date, very few small molecules have been shown to directly target this LSC population. The present study, for the first time, demonstrates that peperomin E (PepE), a naturally occurring secolignan, induces apoptosis in cultured AML and LSC-like cell lines, while sparing normal bone marrow stromal cells (hBMSCs). Furthermore, a series of eighteen amino derivatives was synthesised through a diastereoselective conjugate addition of several primary and secondary amines to the α -methylene- γ -butyrolactone moiety of PepE to increase its water-solubility and anti-AML/LSC activity. The synthesised amino analogues were evaluated for *in vitro* cytotoxicity against AML cell lines (KG-1, HL-60, THP-1) and an LSC-like cell line (KG-1a CD34⁺CD38⁻). Most of the secondary open-chain amine derivatives showed enhanced water solubility and high activities against AML/LSC cells. The most potent compound, **6**, derived from *N*-methylethanamine, exhibited exclusive cytotoxicity against KG-1a CD34⁺CD38⁻ cells, with an IC₅₀ value of 0.5 ± 0.1 μ M, which was 13-fold more potent than PepE. Moreover, compound **6** showed low toxicity against hBMSCs (inhibition of 11.2% at 50 μ M). Preliminary mechanistic studies revealed that compound **6** could induce apoptosis of KG-1a CD34⁺CD38⁻ cells. Therefore, we propose that compound **6** should be tested further for its *in vivo* activity and safety with the aim to develop it as a new type of drug for LSC-targeted therapy.

Received 6th September 2017
Accepted 4th November 2017

DOI: 10.1039/c7ra09928b

rsc.li/rsc-advances

Introduction

Acute myelogenous leukaemia (AML) is the most common leukaemia, characterised by the clonal expansion of immature myeloblasts initiating from rare leukemic stem cells (LSCs).^{1,2} As one of the most common types of lethal leukaemia, AML typically leads to death within weeks to months after clinical presentation. Current chemotherapy for AML commonly uses drugs, such as nucleoside analogues (*e.g.*, cytarabine) and anthracyclines (*e.g.*, idarubicin), which interfere with DNA replication and induce apoptosis primarily in replicating cells.³ Although remission can be achieved in most patients by standard chemotherapy, relapse is common and long-term survival is poor for most cases.² It has been

reported that LSCs are refractory to standard chemotherapy and thereby contribute to relapse. However, there are few compounds that can selectively inhibit LSCs.⁴ Therefore, novel therapeutic agents with selective activity against LSCs are urgently needed.

Peperomin E (PepE) is a naturally occurring secolignan, isolated from *Peperomia dindygulensis* (Piperaceae), a commonly used folk medicine to treat cancers in southern China.⁵ Although PepE was first to be extracted from nature plants, it can also be fully synthesized from phosphorylated cyclopropanes, which broadens its further study.⁶ There has been increasing interest in this compound, due to its remarkable activity against multiple cancer cells *in vitro* and *in vivo* with low toxicity against normal cells.^{7,8} The presence of the α -methylene- γ -butyrolactone moiety in this compound was reported to be essential for its antitumour properties.⁷ The *exo*-methylene moiety is considered important because of its reactivity toward biological nucleophiles, especially the thiol groups of cysteines in target proteins, which act as Michael acceptors.⁹ Recently, our laboratory discovered that PepE could exceptionally target and initiate apoptosis in AML cells (*e.g.*, KG-1 cells) and AML stem cells (*e.g.*, KG-1a CD34⁺CD38⁻ cells), with high survival rates for normal bone marrow stromal cells (hBMSCs). Studies to elucidate the anti-AML mechanism of this promising agent are underway in our laboratory; however, preliminary

^aSchool of Pharmacy, Nanjing University of Chinese Medicines, Xianlin Avenue No. 138, Nanjing 210023, The People's Republic of China. E-mail: njwenhm@126.com; Fax: +86-025-858-11839; Tel: +86-025-858-11839

^bMarine Drug Research and Development Center of Jiangsu Province, Nanjing University of Chinese Medicines, Xianlin Avenue No. 138, Nanjing 210023, The People's Republic of China. E-mail: wxzatnj@sina.com

^cDepartment of Natural Medicinal Chemistry, China Pharmaceutical University, Tongjia Lane No. 24, 210009 Nanjing, The People's Republic of China

† Electronic supplementary information (ESI) available. See DOI: 10.1039/c7ra09928b

‡ These authors contributed equally to this work.



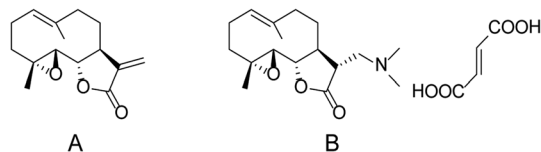


Fig. 1 Structures of PTL and its Michael adducts DMAPT.

experiments have suggested that NF- κ B and DNA methyltransferases are the main targets of this compound (unpublished results).

Although PepE has shown potent activity against AML, its naked α -methylene- γ -butyrolactone substructure is unstable in both acidic and basic conditions and imparts poor water solubility and bioavailability;¹⁰ these issues have limited its potential therapeutic use in humans. Converting the α -methylene- γ -butyrolactone moiety to its prodrug with a masking group, such as a primary or secondary amine, effectively increases its stability, water solubility, and bioavailability, while maintaining or even enhancing its biological activity.^{11–15} Amino adducts of α -methylene- γ -butyrolactone have been previously prepared from sesquiterpene lactones, including helenalin, ambrosin, costunolide, alantolactone, and parthenolide (PTL). Among them, the dimethylamino analogue of PTL (DMAPT, Fig. 1) has advanced to a phase I clinical trial for evaluation as a treatment for AML.^{11,16–20}

Therefore, the aim of the present study was to overcome the poor water solubility of PepE, while at least maintaining its activity, by derivatizing it with several primary and secondary amino compounds. These analogues were then converted into water-soluble organic/inorganic salts and assessed for their cytotoxicity against AML cells and LSCs. To the best of our knowledge, there is no published record available concerning the anti-AML or anti-LSC effects of PepE and its amino analogues.

Experimental

Chemistry

General methods. All commercial reagents and solvents were used without purification. All reactions were performed under a nitrogen atmosphere with dry solvents under anhydrous conditions. ¹H and ¹³C NMR (1D and 2D) spectra were recorded with a 500 MHz (¹H NMR: 500 MHz, ¹³C NMR: 125 MHz) Bruker spectrometer (Bruker, Germany) with tetramethylsilane (TMS) as the internal standard. Chemical shifts are reported in ppm, multiplicities are indicated by s (singlet), d (doublet), t (triplet), q (quartet), and m (multiplet). NMR data are reported as follows: chemical shift, multiplicity, coupling constants, and integration. Reactions were monitored by thin-layer chromatography (TLC) on GF-254 silica gel plates (Tsingdao Silica Gel Corp., Tsingdao, China). Visualisation was achieved using UV light (254 nm). A silica gel column was used for flash column chromatography (300–400 mesh, Tsingdao Silica Gel Corp., Tsingdao, China). High-resolution electrospray ionisation mass spectrometry (HRMS-ESI) was measured using a 5600 time-of-

flight (TOF) system equipped with a TurboIonSpray™ source (Applied Biosystems, Foster City, USA) tested in positive ionisation mode. The electron-capture dissociation (ECD) spectra of each compound were recorded in methanol solution by the Jasco J-810 detector (Jasco Corp., USA). Infrared (IR) spectra were recorded on a Thermo Nicolet IR-100 spectrometer with NaCl plates as a thin film dispersed from CH₂Cl₂ and are reported in wavenumbers (cm⁻¹).

General synthesis procedure for compounds 2–19. To a stirred solution of PepE (0.2 mmol) and triethylamine (0.6 mmol) in methanol (4 mL) the indicated amino compound (0.2 mmol) was added. The reaction mixture was stirred at ambient temperature for 18 h. After completion of the reaction (monitored by TLC), the reaction mixture was concentrated under reduced pressure to afford the crude compound. Water (10 mL) was added to the crude compound, and the solution was extracted with dichloromethane (2 × 10 mL). The organic layer was dried over Na₂SO₄, concentrated, and then purified by flash column chromatography [hexane : EtOAc = 3 : 1 to 1 : 1] to yield the desired compounds 2–19. Purity of the compounds was established by HPLC analysis, confirming a purity ≥95%. The characterisation data for these compounds are listed below.

(2S,3S)-6-Dimethylamino-2,6-dihydropeperomin E (2). Pale yellow oil (yield 85%); 98.5% HPLC purity; IR (thin film) ν_{\max} 2904.94, 1758.52, 1633.46, 1508.44, 1450.62, 1431.89, 1130.91, 1091.96, 1042.72, 928.07, and 823.67 cm⁻¹; ¹H NMR (500 MHz, CDCl₃) δ_{H} 6.56 (d, J = 2.0 Hz, 1H), 6.51 (d, J = 1.5 Hz, 1H), 6.47 (d, J = 2.0 Hz, 1H), 6.43 (d, J = 1.5 Hz, 1H), 5.93–5.96 (m, 4H), 4.36 (dd, J = 9.0, 12.5 Hz, 1H), 4.01 (dd, J = 4.5, 12.5 Hz, 1H), 3.93 (s, 3H), 3.91 (3H, s), 3.62 (d, J = 15.5 Hz, 1H), 3.36–3.43 (m, 1H), 2.53 (dd, J = 9.5, 15.5 Hz, 1H), 2.42–2.46 (m, 1H), 2.20 (dd, J = 6.5, 15.5 Hz, 1H) and 2.10 (s, 6H) ppm; ¹³C NMR (125 MHz, CDCl₃) δ_{C} 178.7, 149.5, 149.2, 143.6, 143.5, 136.6, 136.9, 134.2, 134.1, 108.1, 108.0, 101.9, 101.5 (×2), 101.3, 70.6, 58.1, 57.0, 56.8, 55.4, 45.8 (×2), 44.7 and 41.4 ppm; HRMS-ESI calcd for C₂₄H₂₈NO₈ [M + H]⁺ 458.1815, found 458.1797.

(2S,3S)-6-Diethylamino-2,6-dihydropeperomin E (3). Pale yellow oil (yield 87%); 97.0% HPLC purity; IR (thin film) ν_{\max} 2919.07, 1763.85, 1633.47, 1508.71, 1450.46, 1432.51, 1132.31, 1091.86, 1042.90, 926.56, and 818.35 cm⁻¹; ¹H NMR (500 MHz, CDCl₃) δ_{H} 6.54 (d, J = 1.5 Hz, 1H), 6.48 (d, J = 2.0 Hz, 1H), 6.42 (d, J = 1.5 Hz, 2H), 5.93–5.96 (m, 4H), 4.36 (dd, J = 8.5, 12.0 Hz, 1H), 4.05 (dd, J = 3.5, 12.0 Hz, 1H), 3.92 (s, 3H), 3.91 (s, 3H), 3.65 (d, J = 15.5 Hz, 1H), 3.27–3.31 (m, 1H), 2.69 (dd, J = 12.0, 18.0 Hz, 1H), 2.42–2.54 (m, 4H), 2.39 (dd, J = 9.0, 16.5 Hz, 1H), and 0.98 (t, J = 9.5 Hz, 6H) ppm; ¹³C NMR (125 MHz, CDCl₃) δ_{C} 178.9, 149.5, 149.2, 143.6, 143.5, 137.1, 136.6, 134.2, 134.1, 108.3, 108.2, 101.8, 101.5, 101.4, 101.3, 70.6, 60.3, 56.9, 56.8, 56.7, 55.1, 44.7, 41.9, 41.8, 20.3 and 11.8 ppm; HRMS-ESI calcd for C₂₆H₃₂NO₈ [M + H]⁺ 486.2128, found 486.2110.

(2S,3S)-6-Ethyl(methyl)amino-2,6-dihydropeperomin E (4). Pale yellow oil (yield 81%); 100.0% HPLC purity; IR (thin film) ν_{\max} 2920.97, 1767.51, 1633.26, 1508.64, 1450.71, 1432.08, 1131.95, 1091.38, 1042.65, 927.23, and 827.68 cm⁻¹; ¹H NMR (500 MHz, CDCl₃) δ_{H} 6.56 (d, J = 2.0 Hz, 1H), 6.50 (d, J = 2.0 Hz, 1H), 6.44 (d, J = 1.5 Hz, 2H), 6.42 (d, J = 2.0 Hz, 2H), 5.93–5.97 (m, 4H), 4.37 (dd, J = 9.0, 12.0 Hz, 1H), 4.04 (dd, J = 3.0, 12.0 Hz, 1H),



3.92 (s, 3H), 3.91 (s, 3H), 3.63 (d, $J = 15.5$ Hz, 1H), 3.30–3.37 (m, 1H), 2.62 (dd, $J = 10.5, 16.0$ Hz, 1H), 2.44–2.50 (m, 2H), 2.31–2.36 (m, 2H), 2.05 (s, 3H), and 1.03 (t, $J = 8.0$ Hz, 3H) ppm; ^{13}C NMR (125 MHz, CDCl_3) δ_{C} 179.0, 149.4, 149.2, 143.6, 143.5, 137.1, 136.6, 134.2, 134.1, 108.4, 108.3, 101.7, 101.5, 101.4, 101.2, 70.6, 57.0, 56.9, 56.8, 54.7, 52.7, 44.9, 42.2, and 11.3 ($\times 2$) ppm; HRMS-ESI calcd for $\text{C}_{25}\text{H}_{30}\text{NO}_8$ $[\text{M} + \text{H}]^+$ 472.1971, found 472.1949.

(2S,3S)-6-Methyl(propyl)amino-2,6-dihydropeperomin **E** (5). Pale yellow oil (yield 78%); 99.0% HPLC purity; IR (thin film) ν_{max} 2960.34, 1770.08, 1633.32, 1508.85, 1451.98, 1432.89, 1132.41, 1092.48, 1044.01, 929.64, and 828.77 cm^{-1} ; ^1H NMR (500 MHz, CDCl_3) δ_{H} 6.55 (d, $J = 2.0$ Hz, 1H), 6.48 (d, $J = 2.0$ Hz, 1H), 6.44 (d, $J = 2.0$ Hz, 1H), 6.42 (d, $J = 2.0$ Hz, 1H), 5.93–5.96 (m, 4H), 4.36 (dd, $J = 9.0, 12.0$ Hz, 1H), 4.02 (dd, $J = 4.0, 12.0$ Hz, 1H), 3.92 (s, 3H), 3.91 (s, 3H), 3.62 (d, $J = 15.5$ Hz, 1H), 3.36–3.39 (m, 1H), 2.62 (dd, $J = 10.0, 15.5$ Hz, 1H), 2.46–2.49 (m, 1H), 2.29 (dd, $J = 6.5, 16.0$ Hz, 1H), 2.24 (t, $J = 9.5$ Hz, 2H), 2.03 (s, 3H), 1.43–1.50 (m, 2H), 0.92 (t, 3H, $J = 9.0$ Hz); ^{13}C NMR (125 MHz, CDCl_3) δ_{C} 178.9, 149.5, 149.2, 143.6, 143.5, 137.1, 136.6, 134.2, 134.1, 108.3, 108.2, 101.8, 101.5, 101.4, 101.3, 70.6, 60.3, 56.9, 56.8, 56.7, 55.1, 44.7, 41.8, 41.7, 20.3, 11.8 ppm; HRMS-ESI calcd for $\text{C}_{26}\text{H}_{32}\text{NO}_8$ $[\text{M} + \text{H}]^+$ 486.2128, found 486.2102.

(2S,3S)-6-Methyl(hydroxyethyl)amino-2,6-dihydropeperomin **E** (6). Colourless powder (yield 82%); 100.0% HPLC purity; IR (thin film) ν_{max} 3445.62, 2917.98, 1767.13, 1633.65, 1507.61, 1451.75, 1435.25, 1192.73, 1135.07, 1090.75, 1042.05, 927.53, and 852.33 cm^{-1} ; ^1H NMR (500 MHz, CDCl_3) δ_{H} 6.50 (d, $J = 2.0$ Hz, 1H), 6.48 (d, $J = 2.0$ Hz, 1H), 6.44 (d, $J = 2.0$ Hz, 1H), 6.41 (d, $J = 2.0$ Hz, 1H), 5.95–5.97 (m, 4H), 4.37 (dd, $J = 9.0, 12.0$ Hz, 1H), 4.00 (dd, $J = 5.5, 12.0$ Hz, 1H), 3.92 (s, 6H), 3.64 (d, $J = 15.5$ Hz, 1H), 3.62–3.58 (m, 2H), 3.14–3.20 (m, 1H), 2.54–2.64 (m, 3H), 2.42–2.53 (m, 2H), 2.08 (s, 3H); ^{13}C NMR (125 MHz, CDCl_3) δ_{C} 178.5, 149.5, 149.3, 143.7, 143.6, 136.6, 136.4, 134.3 ($\times 2$), 108.2, 108.1, 101.6, 101.5, 101.2 ($\times 2$), 70.5, 59.5, 58.9, 57.4, 56.9 ($\times 2$), 55.4, 44.4, 42.4, and 41.7 ppm; HRMS-ESI calcd for $\text{C}_{25}\text{H}_{30}\text{NO}_9$ $[\text{M} + \text{H}]^+$ 488.1921, found 488.1890.

(2S,3S)-6-Methylglycine-2,6-dihydropeperomin **E** (7). Pale yellow oil (yield 64%); 98.5% HPLC purity; IR (thin film) ν_{max} 3420.91, 2917.98, 1767.13, 1633.65, 1507.61, 1451.75, 1435.25, 1192.73, 1135.07, 1090.75, 1042.05, and 928.05 cm^{-1} ; ^1H NMR (500 MHz, CDCl_3) δ_{H} 6.48 (d, $J = 2.0$ Hz, 1H), 6.47 (d, $J = 2.0$ Hz, 1H), 6.40 (d, $J = 1.5$ Hz, 1H), 6.28 (d, $J = 1.5$ Hz, 1H), 5.96–5.97 (m, 4H), 4.35 (dd, $J = 9.0, 12.0$ Hz, 1H), 4.01 (dd, $J = 5.5, 12.0$ Hz, 1H), 3.92 (s, 3H), 3.91 (s, 3H), 3.68 (d, $J = 14.5$ Hz, 1H), 3.50–3.59 (m, 1H), 3.09 (q, $J = 9.5$ Hz, 2H), 2.51 (dd, $J = 9.5, 14.5$ Hz, 1H), 2.18–2.40 (m, 2H), 2.06 (s, 3H) ppm; ^{13}C NMR (125 MHz, CDCl_3) δ_{C} 174.0, 170.7, 149.6, 149.3, 143.7, 143.4, 136.1 ($\times 2$), 135.9, 108.5, 108.1, 101.6, 101.5 ($\times 2$), 101.2, 69.7, 60.7, 60.4, 57.0, 56.9, 55.3, 45.8, 45.6 ($\times 2$), and 42.5 ppm; HRMS-ESI calcd for $\text{C}_{25}\text{H}_{28}\text{NO}_{10}$ $[\text{M} + \text{H}]^+$ 502.1718, found 502.1720.

(2S,3S)-6-Pyrrolidin-2,6-dihydropeperomin **E** (8). Pale yellow oil (yield 89%); 99.5% HPLC purity; IR (thin film) ν_{max} 2926.35, 2789.59, 1632.74, 1609.01, 1507.80, 1449.91, 1431.09, 1128.95, 1089.54, 1043.00, 927.88, and 828.35 cm^{-1} ; ^1H NMR (500 MHz, CDCl_3) δ_{H} 6.59 (d, $J = 2.0$ Hz, 1H), 6.57 (d, $J = 1.5$ Hz, 1H), 6.54 (d, $J = 1.5$ Hz, 1H), 6.45 (d, $J = 1.5$ Hz, 1H), 5.89–5.95 (m, 4H),

4.01 (dd, $J = 3.5, 12$ Hz, 1H), 3.90 (s, 6H), 3.89 (d, $J = 15.5$ Hz, 1H), 3.52 (dd, $J = 4.5, 15.5$ Hz, 1H), 3.41–3.48 (m, 1H), 2.47–2.56 (m, 3H), 2.39–2.46 (m, 3H), 2.05–2.13 (m, 1H), 1.94–1.98 (m, 2H), and 1.88–1.92 (m, 2H) ppm; ^{13}C NMR (125 MHz, CDCl_3) δ_{C} 173.1, 149.2, 148.9, 143.7, 143.4, 138.5, 138.2, 133.7, 133.6, 108.3, 107.7, 101.7, 101.4, 101.2, 101.1, 71.2, 58.2, 57.0, 56.7 ($\times 2$), 54.3 ($\times 2$), 44.3, 43.7, 23.6 ($\times 2$) ppm; HRMS-ESI calcd for $\text{C}_{26}\text{H}_{30}\text{NO}_8$ $[\text{M} + \text{H}]^+$ 484.1971, found 484.1964.

(2S,3S)-6-Morpholin-2,6-dihydropeperomin **E** (9). Pale yellow oil (yield 82%); 98.0% HPLC purity; IR (thin film) ν_{max} 2921.57, 1759.13, 1636.71, 1508.44, 1449.62, 1436.61, 1118.32, 1092.17, 1045.22, and 925.09 cm^{-1} ; ^1H NMR (500 MHz, CDCl_3) δ_{H} 6.56 (d, $J = 2.0$ Hz, 1H), 6.50 (d, $J = 2.0$ Hz, 1H), 6.41 (d, $J = 2.0$ Hz, 2H), 5.92–5.97 (m, 4H), 4.36 (dd, $J = 9.0, 12.0$ Hz, 1H), 4.03 (d, $J = 4.5, 12.0$ Hz, 1H), 3.93 (s, 3H), 3.91 (s, 3H), 3.63–3.69 (m, 4H), 3.61 (d, $J = 15.0$ Hz, 1H), 3.33–3.40 (m, 1H), 2.59 (dd, $J = 10.5, 15.5$ Hz, 1H), 2.51–2.62 (m, 1H), 2.32–2.51 (m, 3H), and 2.20–2.26 (m, 2H); ^{13}C NMR (125 MHz, CDCl_3) δ_{C} 178.5, 149.5, 149.2, 143.6, 143.4, 136.8, 136.6, 134.2, 134.1, 108.7, 108.3, 101.5, 101.4 ($\times 2$), 101.1, 70.6, 67.0, 66.8, 57.2, 57.0, 56.9, 55.0, 52.0, 43.9, and 41.8 ppm; HRMS-ESI calcd for $\text{C}_{26}\text{H}_{30}\text{NO}_9$ $[\text{M} + \text{H}]^+$ 500.1921, found 500.1895.

(2S,3S)-6-Piperidin-2,6-dihydropeperomin **E** (10). Pale yellow oil (yield 85%); 99.5% HPLC purity; IR (thin film) ν_{max} 2922.04, 2851, 1767.84, 1633.33, 1508.21, 1450.80, 1431.92, 1132.96, 1090.35, 1043.20, 927.59, and 851.45 cm^{-1} ; ^1H NMR (500 MHz, CDCl_3) δ_{H} 6.58 (d, $J = 2.0$ Hz, 1H), 6.51 (d, $J = 2.0$ Hz, 1H), 6.42 (d, $J = 2.5$ Hz, 2H), 5.93–5.99 (m, 4H), 4.36 (dd, $J = 8.5, 11.5$ Hz, 1H), 4.02 (d, $J = 6.0, 12.5$ Hz, 1H), 3.93 (s, 3H), 3.91 (s, 3H), 3.61 (d, $J = 15.5$ Hz, 1H), 3.35–3.39 (m, 1H), 3.52 (dd, $J = 4.5, 15.5$ Hz, 1H), 2.56 (dd, $J = 10.5, 15.5$ Hz, 1H), 2.48–2.51 (m, 1H), 2.22–2.47 (m, 3H), 2.12–2.16 (m, 1H), 1.52–1.57 (m, 4H), and 1.40–1.45 (m, 2H) ppm; ^{13}C NMR (125 MHz, CDCl_3) δ_{C} 179.1, 149.4, 149.2, 143.6, 143.4, 137.1, 136.7, 134.2, 134.1, 108.4, 108.2, 101.5, 101.4 ($\times 2$), 101.2, 70.7, 57.5, 57.0, 56.8, 55.0, 54.8, 44.2, 41.8, 29.7 ($\times 2$), 22.7 ppm; HRMS-ESI calcd for $\text{C}_{26}\text{H}_{30}\text{NO}_9$ $[\text{M} + \text{H}]^+$ 498.2128, found 498.2119.

(2S,3S)-6-(9-Methylpiperidin)-2,6-dihydropeperomin **E** (11). Pale yellow oil (yield 78%); 97.0% HPLC purity; IR (thin film) ν_{max} 2922.87, 1763.10, 1633.91, 1509.18, 1450.56, 1433.50, 1131.33, 1090.99, 1043.45, 926.68, and 847.34 cm^{-1} ; ^1H NMR (500 MHz, CDCl_3) δ_{H} 6.56 (d, $J = 2.0$ Hz, 1H), 6.51 (d, $J = 1.5$ Hz, 1H), 6.42 (d, $J = 1.5$ Hz, 1H), 6.41 (d, $J = 2.0$ Hz, 1H), 5.93–5.96 (m, 4H), 4.35 (dd, $J = 8.5, 12.0$ Hz, 1H), 4.03 (dd, $J = 4.5, 13.5$ Hz, 1H), 3.93 (s, 3H), 3.91 (s, 3H), 3.61 (d, $J = 15.5$ Hz, 1H), 3.39–3.41 (m, 1H), 2.57–2.66 (m, 1H), 2.51 (dd, $J = 15.5, 10.0$ Hz, 1H), 2.46–2.49 (m, 1H), 2.30–2.34 (m, 1H), 2.24 (dd, $J = 15.5, 6.0$ Hz, 1H), 1.98–2.03 (m, 1H), 1.81–1.84 (m, 1H), 1.61–1.63 (m, 1H), 1.45–1.48 (m, 1H), 1.19–1.25 (m, 2H), and 0.93 (d, $J = 8.0$ Hz, 3H) ppm; ^{13}C NMR (125 MHz, CDCl_3) δ_{C} 179.1, 149.4, 149.2, 143.6, 143.4, 137.1, 136.7, 134.1 ($\times 2$), 108.4, 108.3, 101.7, 101.6, 101.5, 101.4, 70.7, 60.4, 57.0, 56.9, 55.1, 54.9, 53.6, 44.4, 41.7, 34.1, 30.5, 21.7, 14.2 ppm; HRMS-ESI calcd for $\text{C}_{28}\text{H}_{34}\text{NO}_8$ $[\text{M} + \text{H}]^+$ 512.2284, found 512.2270.

(2S,3S)-6-(9-Hydroxymethylpiperidin)-2,6-dihydropeperomin **E** (12). Pale yellow oil (yield 73%); 96.4% HPLC purity; IR (thin film) ν_{max} 3430.79, 2919.26, 1767.42, 1633.44, 1508.59, 1450.63,



1432.37, 1315.59, 1134.16, 1090.66, 1042.21, 925.88, and 828.06 cm^{-1} ; ^1H NMR (500 MHz, CDCl_3) 6.56 (d, $J = 2.0$ Hz, 1H), 6.50 (d, $J = 2.0$ Hz, 1H), 6.41 (d, $J = 2.0$ Hz, 2H), 5.92–5.96 (m, 4H), 4.35 (dd, $J = 8.5, 12.0$ Hz, 1H), 4.01 (dd, $J = 4.5, 12.0$ Hz, 1H), 3.93 (s, 3H), 3.91 (s, 3H), 3.61 (d, $J = 15.5$ Hz, 1H), 3.52 (d, $J = 8.0$ Hz, 2H), 3.36–3.38 (m, 1H), 2.61–2.72 (m, 1H), 2.57 (dd, $J = 15.6, 10.0$ Hz, 1H), 2.41–2.45 (m, 1H), 2.35–2.40 (m, 1H), 2.24 (dd, $J = 15.6, 5.8$ Hz, 1H), 2.00–2.06 (m, 1H), 1.74–1.80 (m, 1H), 1.72–1.74 (m, 2H), 1.59–1.63 (m, 2H), 1.63–1.66 (m, 2H), 1.44–1.47 (m, 1H); ^{13}C NMR (125 MHz, CDCl_3) δ_{C} 179.0, 149.5, 149.2, 143.6, 143.4, 137.0, 136.7, 134.2, 134.1, 108.5, 108.3, 101.5 ($\times 2$), 101.4, 101.2, 70.7, 67.8, 57.1, 57.0, 56.9, 55.1, 54.5, 53.2, 44.4, 41.7, 38.3, 29.0, and 28.5 ppm; HRMS-ESI calcd for $\text{C}_{28}\text{H}_{34}\text{NO}_9$ $[\text{M} + \text{H}]^+$ 528.2234, found 528.2213.

(2*S*,3*S*)-6-Ethylamino-2,6-dihydropeperomin E (13). Pale yellow oil (yield 65%); 98.0% HPLC purity; IR (thin film) 3444.34, 2910.17, 1765.11, 1631.23, 1501.60, 1451.70, 1431.11, 1120.21, 1031.18, 1040.15, 920.20, and 825.12 cm^{-1} ; ^1H NMR (500 MHz, CDCl_3) δ_{H} 6.55 (d, $J = 2.0$ Hz, 1H), 6.49 (d, $J = 1.5$ Hz, 1H), 6.44 (d, $J = 1.5$ Hz, 1H), 6.42 (d, $J = 2.0$ Hz, 1H), 5.92–5.96 (m, 4H), 4.36 (dd, $J = 8.5, 12.0$ Hz, 1H), 4.01 (dd, $J = 4.5, 12.0$ Hz, 1H), 3.91 (s, 3H), 3.89 (s, 3H), 3.62 (d, $J = 15.0$ Hz, 1H), 3.33–3.37 (m, 1H), 2.61 (dd, $J = 10.0, 15.5$ Hz, 1H), 2.43–2.53 (m, 2H), 1.02 (t, $J = 8.5$ Hz, 3H); ^{13}C NMR (125 MHz, CDCl_3) δ_{C} 179.0, 149.4, 149.2, 143.6, 143.4, 137.0, 136.6, 134.2, 134.1, 108.1 ($\times 2$), 101.8, 101.6, 101.5, 101.4, 70.6, 56.9, 56.4, 56.8, 55.0, 44.7, 42.1, 41.5, and 12.1 ppm; HRMS-ESI calcd for $\text{C}_{24}\text{H}_{28}\text{NO}_8$ $[\text{M} + \text{H}]^+$ 458.1815, found 458.1820.

(2*S*,3*S*)-6-(4''-Chloropyridinemethylamino)-2,6-dihydropeperomin E (14). Pale yellow oil (yield 79%); 100.0% HPLC purity; IR (thin film) ν_{max} 3441.55, 2902.33, 1765.23, 1633.21, 1507.99, 1452.10, 1432.43, 1315.90, 1042.06, 927.21, and 826.15 cm^{-1} ; ^1H NMR (500 MHz, CDCl_3) 8.26 (d, $J = 2.7$ Hz, 1H), 7.59 (dd, $J = 2.7, 10.2$ Hz, 1H), 7.31 (d, $J = 10.2$ Hz, 1H), 6.48 (d, $J = 2.0$ Hz, 1H), 6.42 (d, $J = 2.0$ Hz, 1H), 6.40 (d, $J = 2.0$ Hz, 2H), 5.92–5.95 (m, 4H), 4.35 (dd, $J = 9.0, 12.0$ Hz, 1H), 3.92 (s, 3H), 3.89 (s, 3H), 3.87 (dd, $J = 4.0, 12.0$ Hz, 1H), 3.59–3.64 (m, 3H), 3.23–3.28 (m, 1H), 2.67 (dd, $J = 5.5, 15.2$ Hz, 1H), 2.52–2.55 (m, 1H), and 2.30 (dd, $J = 7.5, 15.2$ Hz, 1H) ppm; ^{13}C NMR (125 MHz, CDCl_3) δ_{C} 175.5, 149.1, 149.0, 143.6, 143.5, 139.5, 138.9, 138.3, 133.9, 133.8 ($\times 2$), 128.7, 128.6, 128.0, 127.8, 107.8, 107.7, 101.6, 101.4, 101.3, 101.2, 70.9, 56.9, 56.8, 53.7, 51.6, 45.8, and 42.2 ppm; HRMS-ESI calcd for $\text{C}_{28}\text{H}_{28}\text{ClN}_2\text{O}_8$ $[\text{M} + \text{H}]^+$ 555.1534, found 555.1508.

(2*S*,3*S*)-6-Benzylamino-2,6-dihydropeperomin E (15). Pale yellow oil (yield 87%); 96.4% HPLC purity; IR (thin film) ν_{max} 3404.80, 2922.65, 1762.13, 1633.55, 1508.00, 1451.40, 1431.05, 1313.60, 1194.09, 1130.23, 1089.83, 1043.31, 928.59, and 828.26 cm^{-1} ; ^1H NMR (500 MHz, CDCl_3) 7.31–7.37 (m, 4H), 7.20–7.27 (m, 1H), 6.53 (d, $J = 2.0$ Hz, 1H), 6.49 (d, $J = 2.0$ Hz, 1H), 6.44 (d, $J = 2.0$ Hz, 1H), 6.40 (d, $J = 2.0$ Hz, 1H), 5.90–5.94 (m, 4H), 4.38 (dd, $J = 8.5, 12.0$ Hz, 1H), 4.00 (dd, $J = 4.5, 12.0$ Hz, 1H), 3.91 (s, 3H), 3.90 (s, 3H), 3.80 (d, $J = 15.5$ Hz, 1H), 3.72–3.75 (m, 1H), 3.59–3.63 (m, 1H), 3.36–3.39 (m, 1H), 3.16–3.18 (m, 1H), 2.95–2.98 (m, 1H), and 2.46–2.48 (m, 1H) ppm; ^{13}C NMR (125 MHz, CDCl_3) δ_{C} 178.6, 149.5, 149.4, 146.5, 144.0, 143.7, 143.6, 136.8, 136.4, 134.3, 131.8, 121.3, 114.4, 111.3, 107.9, 101.5, 101.3 ($\times 2$), 101.1, 70.9, 57.0, 56.9, 56.1, 55.9, 51.4, 48.0,

45.9, 41.6, and 35.9 ppm; HRMS-ESI calcd for $\text{C}_{29}\text{H}_{30}\text{NO}_8$ $[\text{M} + \text{H}]^+$ 520.1971, found 520.1952.

(2*S*,3*S*)-6-(4''-Aminobenzylamino)-2,6-dihydropeperomin E (16). Pale yellow oil (yield 72%); 99.0% HPLC purity; IR (thin film) ν_{max} 3435.85, 2924.67, 2793.68, 1770.11, 1622.13, 1508.11, 1451.41, 1431.95, 1315.88, 1042.77, 928.64, and 814.32 cm^{-1} ; ^1H NMR (500 MHz, CDCl_3) 7.35 (d, $J = 8.5$ Hz, 2H), 7.29 (d, $J = 8.5$ Hz, 2H), 6.44 (d, $J = 2.0$ Hz, 1H), 6.41 (d, $J = 2.0$ Hz, 2H), 6.38 (d, $J = 2.0$ Hz, 1H), 5.86–5.93 (m, 4H), 4.29 (dd, $J = 8.5, 12.0$ Hz, 1H), 4.07 (dd, $J = 4.5, 12.0$ Hz, 1H), 3.89 (s, 3H), 3.83 (s, 3H), 3.59 (d, $J = 15.5$ Hz, 1H), 3.40–3.51 (m, 2H), 3.12–3.17 (m, 1H), 2.64 (dd, $J = 5.7, 15.5$ Hz, 1H), 2.42–2.45 (m, 1H), and 2.31–2.34 (m, 1H) ppm; ^{13}C NMR (125 MHz, CDCl_3) δ_{C} 178.8, 149.4, 149.2, 143.6, 143.4, 138.9, 137.0, 136.7, 134.1 ($\times 2$), 129.2, 128.4, 127.4, 108.1 ($\times 2$), 101.7, 101.5, 101.4, 101.2, 70.6, 62.9, 56.9, 56.8, 55.6, 54.7, 44.6, 42.6, 42.1 ppm; HRMS-ESI calcd for $\text{C}_{29}\text{H}_{30}\text{N}_2\text{O}_8$ $[\text{M}]^+$ 534.2002, found 534.2092.

(2*S*,3*S*)-6-(4''-Hydroxy-5''-methoxyphenethylamino)-2,6-dihydropeperomin E (17). Pale yellow oil (yield 80%); 98.4% HPLC purity; IR (thin film) ν_{max} 3441.18, 2919.51, 1762.85, 1633.20, 1514.00, 1450.68, 1431.22, 1315.85, 1131.42, 1091.13, 1041.34, 926.12, and 819.81 cm^{-1} ; ^1H NMR (500 MHz, CDCl_3) 6.85 (d, $J = 8.5$ Hz, 1H), 6.71 (d, $J = 2.0$ Hz, 1H), 6.69 (dd, $J = 2.0, 8.5$ Hz, 1H), 6.47 (d, $J = 2.0$ Hz, 2H), 6.46 (d, $J = 2.0$ Hz, 1H), 6.43 (d, $J = 2.0$ Hz, 1H), 5.92–5.96 (m, 4H), 4.30 (dd, $J = 10.0, 12.0$ Hz, 1H), 3.92 (s, 3H), 3.90 (s, 3H), 3.89 (s, 3H), 3.87 (dd, $J = 4.5, 12.0$ Hz, 1H), 3.61 (d, $J = 14.5$ Hz, 1H), 3.24–3.27 (m, 1H), 2.80 (dd, $J = 10.0, 15.5$ Hz, 1H), 2.72–2.76 (m, 1H), 2.64–2.67 (m, 2H), 2.48–2.51 (m, 2H), and 2.29 (dd, $J = 7.0, 15.5$ Hz, 1H) ppm; ^{13}C NMR (125 MHz, CDCl_3) δ_{C} 178.7, 154.2, 149.4 ($\times 2$), 143.6 ($\times 2$), 136.7, 136.4, 134.3, 131.9, 130.9, 129.8 ($\times 2$), 115.5 ($\times 2$), 108.1, 107.9, 101.5, 101.3, 101.2 ($\times 2$), 70.9, 57.1 ($\times 2$), 56.9, 56.1, 51.2, 48.0, 45.9, 41.5, 35.3 ppm; HRMS-ESI calcd for $\text{C}_{31}\text{H}_{34}\text{NO}_{10}$ $[\text{M} + \text{H}]^+$ 580.2183, found 580.2151.

(2*S*,3*S*)-6-(4''',5''-Dihydroxyphenethylamino)-2,6-dihydropeperomin E (18). Pale yellow oil (yield 75%); 99.0% HPLC purity; IR (thin film) ν_{max} 3451.21, 2916.40, 1761.75, 1632.11, 1513.21, 1448.38, 1429.12, 1305.87, 1130.12, 1071.03, 1031.54, 925.31, and 816.51 cm^{-1} ; ^1H NMR (500 MHz, CDCl_3) 6.85 (d, $J = 2.0$ Hz, 1H), 6.70 (d, $J = 8.3$ Hz, 1H), 6.69 (d, $J = 2.0$ Hz, 1H), 6.68 (dd, $J = 2.0, 8.3$ Hz, 1H), 6.47 (d, $J = 2.0$ Hz, 2H), 6.46 (d, $J = 2.0$ Hz, 1H), 6.43 (d, $J = 2.0$ Hz, 1H), 5.92–5.96 (m, 4H), 4.29 (dd, $J = 10.0, 12.0$ Hz, 1H), 3.90 (s, 3H), 3.89 (s, 3H), 3.85 (dd, $J = 4.5, 12.0$ Hz, 1H), 3.60 (d, $J = 15.0$ Hz, 1H), 3.23–3.27 (m, 1H), 2.79 (dd, $J = 10.0, 15.5$ Hz, 1H), 2.71–2.74 (m, 1H), 2.60–2.65 (m, 3H), 2.49–2.52 (m, 1H), and 2.30 (dd, $J = 7.0, 15.5$ Hz, 1H) ppm; ^{13}C NMR (125 MHz, CDCl_3) δ_{C} 178.0, 149.4, 149.3, 146.4, 144.0, 143.6, 143.5, 136.8, 136.4, 134.2 ($\times 2$), 131.7, 121.2, 114.3 ($\times 2$), 111.2, 107.8, 101.4, 101.2, 101.1 ($\times 2$), 70.8, 56.9, 56.8, 55.9, 51.3, 48.0, 45.9, 41.6, 35.8 ppm; HRMS-ESI calcd for $\text{C}_{30}\text{H}_{32}\text{NO}_{10}$ $[\text{M} + \text{H}]^+$ 566.2026, found 566.2024.

(2*S*,3*S*)-6-(4''-Hydroxyphenethylamino)-2,6-dihydropeperomin E (19). Pale yellow oil (yield 75%); 98.5% HPLC purity; IR (thin film) ν_{max} 3420.78, 2926.96, 1762.35, 1633.09, 1513.83, 1450.58, 1432.88, 1316.05, 1132.70, 1091.71, 1042.23, 926.38, and 827.66 cm^{-1} ; ^1H NMR (500 MHz, CDCl_3) 7.03 (s, 1H), 6.79 (s, 1H), 6.77 (s, 1H), 6.74 (s, 1H), 6.45 (d, $J = 1.5$ Hz, 1H), 6.41 (d, $J = 2.0$ Hz, 2H), 6.39 (d, $J = 2.0$ Hz, 1H), 5.92–5.97 (m, 4H), 4.28 (dd,



$J = 10.0, 12.0$ Hz, 1H), 3.92 (s, 3H), 3.89 (s, 3H), 3.83 (dd, $J = 8.5, 12.0$ Hz, 1H), 3.58 (d, $J = 14.5$ Hz, 1H), 3.18–3.23 (m, 1H), 2.73–2.80 (m, 2H), 2.52–2.60 (m, 3H), 2.45–2.48 (m, 1H), and 2.26 (dd, $J = 7.0, 15.5$ Hz, 1H) ppm; ^{13}C NMR (125 MHz, CDCl_3) δ_{C} 178.4, 150.2, 149.6, 149.4, 149.3, 143.7, 143.5, 138.5, 136.6, 136.1, 136.0, 134.4, 134.3, 134.2, 124.1 ($\times 2$), 108.0, 107.8, 101.6, 101.5, 101.1 ($\times 2$), 71.0, 57.0 ($\times 2$), 56.2, 50.2, 48.0, 45.9, and 42.0 ppm; HRMS-ESI calcd for $\text{C}_{30}\text{H}_{32}\text{NO}_9$ $[\text{M} + \text{H}]^+$ 550.2077, found 550.2049.

General phosphate adducts formation procedure. To a flask containing a chloroformic solution (0.1 M) of above amino derivative was added 1 equivalent of phosphate acid. Almost immediately, a white-colored precipitate formed, and the reaction mixture was stirred for an additional 60 min. The precipitated salt was filtered and dried *in vacuo* to furnish the phosphate salt.

Computational methods for determining the absolute configurations. Conformational analysis was initially performed using Confab²¹ at Merck Molecular Force Field 94 (MMFF94) for all configurations of the amino-analogues. Room-temperature equilibrium populations were calculated, according to the Boltzmann distribution law (eqn (1)). The conformers with Boltzmann populations of over 1% were chosen for ECD calculations.

$$\frac{N_i}{N} = \frac{g_i e^{-\frac{E_i}{k_B T}}}{\sum g_i e^{-\frac{E_i}{k_B T}}} \quad (1)$$

where N_i is the number of conformer i with energy E_i and degeneracy g_i at temperature T , and k_B is the Boltzmann constant.

The theoretical calculation was performed using Gaussian 09 (Revision D.01. Gaussian Inc. Wallingford CT, USA). First, the chosen conformer was optimized at 6-31g* using the Hartree-Fock method, and then optimized at B3LYP/6-311G** in methanol using the polarizable continuum model (PCM). The theoretical calculation of ECD was conducted in methanol using time-dependent density functional theory (TD-DFT) at the same theory level. Rotatory strengths for a total of 30 excited states were calculated. The ECD spectrum was simulated in SpecDis²² by overlapping Gaussian functions for each transition, according to (eqn (2)):

$$\Delta\varepsilon(E) = \frac{1}{2.297 \times 10^{-39}} \times \frac{1}{\sqrt{2\pi\sigma}} \sum_i \Delta E_i R_i e^{-\left(\frac{E - E_i}{2\sigma}\right)^2} \quad (2)$$

where σ represents the width of the band at $1/e$ height, and ΔE_i and R_i are the excitation energies and rotatory strengths for transition i , respectively.

The parameters of σ and UV-shift for each configuration are listed in Table S3.†

Biological assay

Cell culture. HL-60, KG-1, and THP-1 cells were purchased from KeyGen Biotechnology (Nanjing, Jiangsu, China). KG-1a and hBMSCs were purchased from BeNa Culture Collection Biotechnology (Suzhou, Jiangsu, China). All cells were grown in

complete medium, consisting of 90% RPMI 1640 medium (Hyclone, GE, USA) and 10% foetal bovine serum (Gibco, Invitrogen, USA), supplemented with 100 U mL⁻¹ penicillin and 100 μg mL⁻¹ streptomycin in 25 cm² flasks (Corning, New York, USA) at 37 °C in a 5% CO₂ incubator (Thermo Scientific, Massachusetts, USA).

Differentiation assay. KG-1a cells were collected and washed with PBS twice and then diluted with PBS ($1 \times 10^7/0.1$ mL). After adding CD38-FITC monoclonal antibody (Miltenyi Biotech, Germany), the cells were incubated at 37 °C for 30 min in the dark and washed with prechilled PBS solution. Then, the cells were resuspended and enriched by magnetic-activated cell sorting (MACS), using Midi MACS starting kits and anti-FITC microbeads (Miltenyi Biotec), according to the manufacturer's protocol. After the enrichment, the purity of the CD34⁺CD38⁻ cells was assessed with the BD AccuriTM C6 flow cytometer (BD Biosciences, New Jersey, USA), after staining with anti-CD38-FITC and anti-CD34-phycoerythrin (PE) monoclonal antibodies (Miltenyi Biotech), according to the manufacturer's protocol.

Cell growth inhibition assay. HL-60, KG-1, THP-1, and KG-1a CD34⁺CD38⁻ cells were seeded at 2×10^3 cells per well in 96-well plates (Corning, New York, USA) and incubated for 2 h. Then, the cells were treated with different concentrations of PepE, its amino-derivatives, or the positive control, PTL, at 37 °C in the 5% CO₂ incubator for 48 h. After 48 h, 10 μL of Cell Counting Kit-8 solution (CCK-8, Yifeixue Biotech Ltd., Nanjing, China) was added to each well and incubated at 37 °C for 2 h. The absorbance at 450 nm was finally measured with a microplate reader (Thermo Scientific, Massachusetts, USA).

Apoptosis assay. Cell apoptosis was assessed using an annexin V-FITC/PI (propidium iodide) double-staining cell apoptosis detection kit (KeyGen Tech., Nanjing, China). The enriched KG-1a CD34⁺CD38⁻ cells were seeded into 6-well tissue culture dishes at 1×10^6 cells per well and treated with PepE or its derivative **6** at 1 and 5 μM . After incubation at 37 °C for 48 h, the cells were collected and diluted to 10^6 cells per mL well with $1 \times$ binding buffer. Five microliters of annexin V-FITC and 5 μL PI reagents were added to the drug-treated cells and allowed to stain in the dark for 15 min for the determination of early and late apoptosis. The cells were detected according to the manufacturer's instructions using the BD AccuriTM C6 flow cytometer (BD Biosciences).

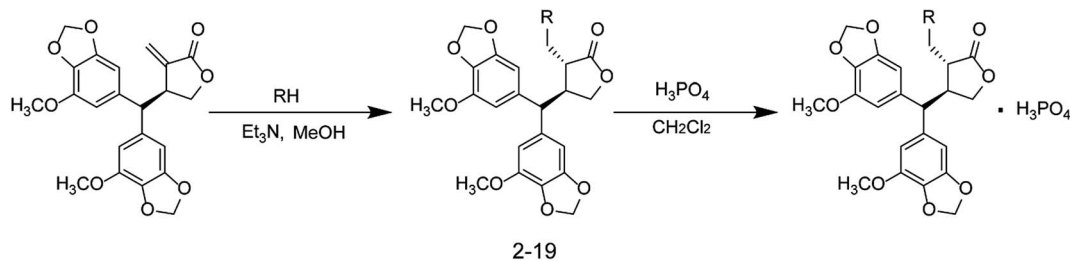
Results and discussion

Chemistry

In this manuscript, we report the synthesis of a series of PepE analogues derived from open chain secondary aliphatic (2–7), cyclic secondary aliphatic (8–12), and several open chain or arylalkyl primary (13–19) amines. The choice of amines was based on the results recently reported in studies on PTL derivatives.^{16,18} The synthesis of PepE derivatives 2–19 was carried out using the procedures outlined in Scheme 1.

PepE was obtained from the CH_2Cl_2 extract of whole *P. dindygulensis* plants, according to methodology described previously.⁸ Its structure was unambiguously confirmed by





	2	3	4	5	6	7
R						
	8	9	10	11	12	13
R						
	14	15	16	17	18	19
R						

Scheme 1 Synthesis of 18 peperomin E amino-analogs.

a combination of spectroscopic methods, including infrared spectroscopy, NMR, and high-resolution mass spectrometry.

To obtain a library of water-soluble PepE analogues, 0.2 mM of PepE in methanol was treated with one equivalent of an appropriate primary or secondary amine, using trimethylamine as a catalyst at room temperature (15–20 °C), which led to a significant consumption of PepE within 8 h. The reaction product was purified by flash column chromatography. A good yield (65–92%) of product was obtained, but unreacted PepE persisted even after prolonged reaction time, addition of excess amine, or increased temperature.

The amino PepE analogues thus obtained (2–19) were then converted into water-soluble salts, thereby increasing their water solubility. Multiple inorganic/organic acid were tested for salt formation including fumarate acid, citric acid, sulphate acid, phosphate acid and hydrochloride acid. The phosphate salts have the best crystallinity, and relatively low hygroscopic properties, therefore selected it as the salt-forming acid.

The ^1H NMR spectra of the synthesised analogues showed the absence of the two olefinic proton resonances at 6.15 and 4.94 ppm in the PepE molecule.^{6–8} The appearance of new methine and methylene resonances in the distortionless enhancement by polarization transfer (DEPT) spectrum of ^{13}C NMR was also apparent, indicating that amination at C-6 of the exocyclic double bond had occurred by Michael-addition reactions. The newly formed C-2 chiral carbon was found to be highly stereospecific based on the nuclear Overhauser effect spectroscopy (NOESY) spectrum. The cross-peaks of H-6/H-3 and H-2/H-5, as well as the absence of NOESY correlation between H-6 and H-5 (Fig. 2), indicated a *trans* configuration at the γ -butyrolactone ring of the synthesised products. Thus, there were only two possible absolute configurations of the γ -butyrolactone ring (Fig. 3), namely (2*S*,3*S*) or (2*R*,3*R*). The structures of the synthesised products were elucidated by NMR, ultraviolet spectroscopy, and mass spectrometry data; all NMR

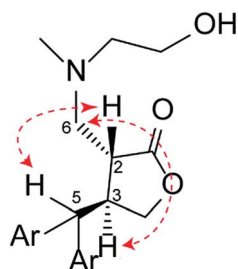


Fig. 2 The key NOE correlations of compound 6.

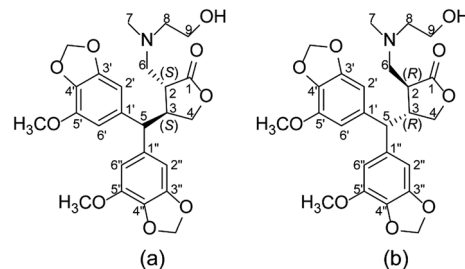


Fig. 3 Two possible absolute configurations of compound 6, namely (2*S*,3*S*)-6 (a) or (2*R*,3*R*)-6 (b).



signals were accordingly assigned based on heteronuclear multiple bond correlation (HMBC) and heteronuclear single-quantum correlation (HSQC) experiments (see Experimental sections).

Our repeated attempts to obtain suitable crystals for X-ray diffraction were unsuccessful, and so the absolute configurations of the γ -butyrolactone ring of the analogues were established by comparing the experimental and theoretical electronic circular dichroism (ECD) spectra predicted using the time-dependent density functional theory (TDDFT) at the B3LYP/6-311G** level. Take compound **6** for instance, the energies and populations of all dominative conformers of **6** are provided in Table S1.† The energies of the all conformers of **6** optimized at B3LYP/6-311G** in methanol are provided in Fig. 4 and Table S2.† The ECD spectrum of **6** showed intense positive Cotton effects at 220 and 280 nm, as well as weakly negative Cotton effects at 254 nm, which were similar to those of reported peperomin B.^{22,23} This indicated that **6** might share the same configuration as peperomin B, which is (2*S*,3*S*).²⁴ Moreover, the overall pattern of the simulated ECD spectrum for the (2*S*,3*S*) stereoisomer was in good agreement with the measured spectrum of **6** (Fig. 5, the parameters of σ and UV-shift for each configuration are listed in Table S3†). Therefore, the absolute configuration of **6** was unambiguously assigned as 2*S*,3*S*. In addition, we have confirmed the (2*S*,3*S*) configuration in many of our synthesised products by comparing the experimental and calculated ECD spectra.

The exclusive formation of the 2*S* configuration in the γ -butyrolactone ring, according to the literature, is due to the protonation of the enolate formed during Michael addition, which occurs exclusively from the *exo* face of the γ -butyrolactone ring, resulting in an *S* configuration at C-2 in the product.¹⁶

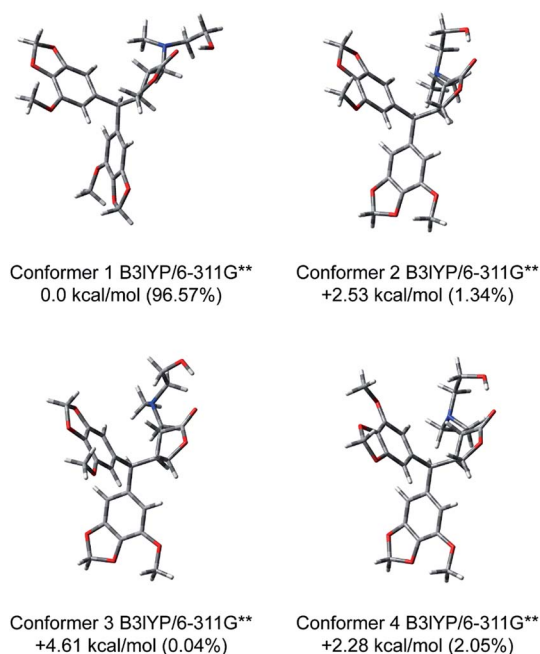


Fig. 4 Optimized structures and relative energies of the four lowest-energy conformers of (2*S*,3*S*)-**6** at the B3LYP/6-311G** level in methanol.

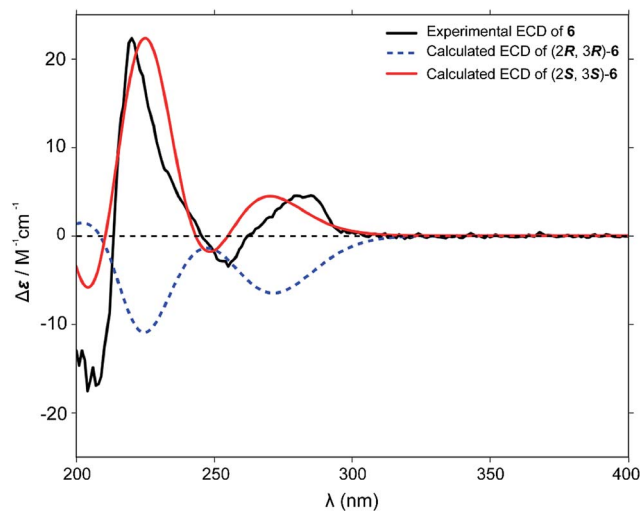


Fig. 5 Comparison of the ECD spectrum of measured compound **6** (black line) with the calculated [B3LYP/6-311G**] ECD spectra of the Boltzmann average of the lowest conformers of the corresponding (2*R*,3*R*)-**6** (blue dot line) and (2*S*,3*S*)-**6** (red line).

Biological activity

To evaluate the anti-AML activity of PepE and its amino analogues, all of the synthesised compounds were tested against cultured cell lines, including KG-1 (acute myelogenous leukaemia), HL-60 (acute promyelocytic leukaemia), THP-1 (acute monocytic leukaemia), and KG-1a (acute myelogenous leukaemia), using PTL (a drug that selectively ablates acute leukaemia stem cells and has advanced to a phase I clinical trial for treatment of AML²⁵) as a positive control. hBMSCs were used as a model to test the toxicity of PepE and its derivatives against normal cells. It has been reported that bearing a CD34⁺CD38⁻ immunophenotype is a characteristic of LSCs.²⁶ From our results of flow cytometry, the percentage of CD34⁺ cells in the KG-1a cell line was 98.9%, and the percentage of CD34⁺CD38⁻ was 50.1%. These results corroborated those reported by Liu *et al.*,²⁷ confirming that KG-1a represents an AML stem cell-like line. Then, CD34⁺CD38⁻ cells were enriched from the KG-1a cell line using MACS, as reported previously by Zhang *et al.*²⁸ The percentage of the CD34⁺CD38⁻ cell population in the KG-1a cells was significantly increased after sorting (92.1 ± 1.3% versus 50.1 ± 5.5% before sorting).

Eighteen amino analogues were then studied with a CCK-8 cytotoxicity assay against the KG-1, HL-60, THP-1, and KG-1a CD34⁺CD38⁻ cell lines. Preliminary cytotoxic screening of the analogues was performed at 10 μM. The analogues that exhibited greater than 50% growth inhibition at 10 μM were further assayed at varying concentrations to generate the IC₅₀ values shown in Table 1. It is evident from Table 1 that the parent molecule, PepE, exhibited similar cytotoxicity against AML and LSC cells as the positive control, PTL, did, while its toxicity at 50 μM against hBMSCs was half that of PTL. It is also evident from Table 1 that several of the amino-PepE products exhibited increased cytotoxicity toward AML and LSC cells compared to that of the parent molecule, while others showed decreased activity. The structure and activity relationship (SAR) of these synthetic derivatives is discussed below.



Table 1 Antileukemic activities of PepE and its amino derivatives

Compounds	KG-1		HL-60		THP-1		KG-1a CD34 ⁺ CD38 ⁻		hBMSC
	Inhibition ^a (%)	IC ₅₀ ^b (μM)	Inhibition (%)	IC ₅₀ (μM)	Inhibition (%)	IC ₅₀ (μM)	Inhibition (%)	IC ₅₀ (μM)	Inhibition ^c (%)
PepE	78.7	3.3 ± 0.2	77.1	4.3 ± 0.3	63.7	8.3 ± 0.3	61.4	6.4 ± 0.2	19.3
2	54.2	6.2 ± 0.9	66.5	4.0 ± 0.8	56.9	7.0 ± 2.4	65.9	7.3 ± 0.2	8.3
3	59.9	8.0 ± 2.0	78.3	3.4 ± 0.6	64.7	8.5 ± 0.2	62.1	6.9 ± 0.2	12.1
4	74.8	6.9 ± 0.6	73.7	4.0 ± 0.4	56.3	9.1 ± 1.3	66.8	7.2 ± 0.2	16.7
5	81.5	3.9 ± 0.5	70.4	2.4 ± 0.2	66.1	7.7 ± 1.0	59.2	10.0 ± 1.0	18.7
6	81.2	4.9 ± 0.3	78.4	1.4 ± 0.3	73.9	2.0 ± 0.6	88.2	0.5 ± 0.1	11.2
7	63.2	5.2 ± 0.4	65.4	3.8 ± 0.3	60.8	8.6 ± 0.5	59.7	7.3 ± 0.2	16.6
8	38.5	nd ^d	67.8	7.1 ± 0.3	43.8	nd	52.6	8.8 ± 0.3	9.1
9	36.1	nd	64.5	8.6 ± 0.5	38.1	nd	28.5	nd	7.2
10	43.3	nd	55.8	9.6 ± 0.6	31.4	nd	48.7	nd	10.1
11	37.5	nd	32.1	nd	56.4	15.1 ± 0.8	60.1	9.6 ± 0.2	8.3
12	68.9	5.8 ± 1.0	71.4	2.4 ± 0.5	68.3	6.3 ± 0.3	76.3	3.3 ± 0.3	13.4
13	19.6	nd	15.3	nd	12.4	nd	17.5	nd	7.7
14	35.9	nd	34.3	nd	34.9	nd	30.3	nd	16.8
15	38.1	nd	58	9.3 ± 0.3	37.8	nd	15.9	nd	17.2
16	39.5	nd	42.9	nd	55.2	9.3 ± 2.9	29.5	nd	3.9
17	74.6	7.3 ± 0.5	71.8	3.9 ± 0.4	30.1	nd	40.4	nd	8.4
18	71.1	6.2 ± 0.1	69.8	2.0 ± 0.1	38.4	nd	37.3	nd	11.1
19	56.3	9.3 ± 0.7	71	1.6 ± 0.2	42.7	nd	55.4	9.8 ± 0.3	8.6
PTL ^e	79.8	5.2 ± 0.5	73.6	4.8 ± 0.9	68.9	5.7 ± 1.0	69.8	5.2 ± 0.4	40.2

^a % Inhibition refers to growth inhibition measured at 10 μM concentration. ^b All values are the mean of three independent experiments. ^c % Inhibition refers to growth inhibition measured at 50 μM concentration. ^d nd, not determined in the given concentration range. ^e PTL, parthenolide, used as a positive control.

The open-chain secondary aliphatic amine series (2–5, 7) was found to be nearly as active as was the parent molecule, PepE. However, compound 6, with a hydroxyl group replacing the 10-methyl group of compound 5, was the exception. The cytotoxicity of compound 6 (IC₅₀ = 0.5 μM) significantly improved up to 13-fold compared to that of the parent molecule against KG-1a

CD34⁺CD38⁻ cells, while there was little effect on the viability of normal hBMSCs (inhibition rate of 11.2% at 50 μM).

The toxicity level against AML cells of the cyclic aliphatic amine series (8–11), in contrast, was significantly decreased when compared with that of the parent molecule. However, replacing the 3-methyl piperidine moiety in compound 11 with a 3-hydroxymethyl piperidine moiety to form compound 12

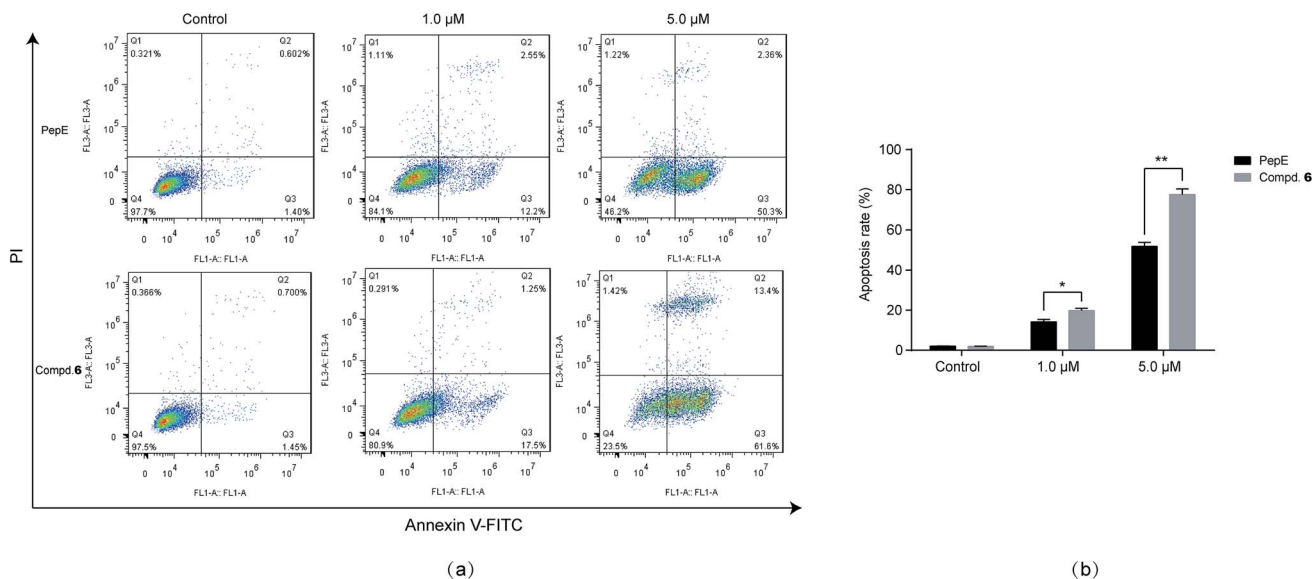


Fig. 6 Compound 6 and PepE induced apoptosis in KG-1a CD34⁺CD38⁻ cells. (a) Apoptosis induced by compound 6 in KG-1a CD34⁺CD38⁻ cells at different concentration by flow cytometry analysis. After the treatment of 6 for 12 h, the cells were stained with annexin V–FITC and PI for 15 min for flow cytometry analysis. The X axis represents annexin V–FITC signal intensity and the Y axis represents PI signal intensity. (b) Data were presented as mean ± SD.



increased the cytotoxicity against HL-60 and KG-1a CD34⁺CD38⁻ cells (IC₅₀ = 2.4 and 3.3 μM, respectively) up to 2-fold compared to that of PepE and >3-fold compared to that of compound **11**; the safety level of compound **12** was approximately the same as that of PepE (13.4% at 50 μM).

The primary amine series (**13–19**) was generally less active against AML cells when compared with that of the parent molecule and the secondary amine series; some analogues (**13**, **14**) displayed low growth inhibition at the preliminary screening concentration. However, introduction of tyramine (**18**) or its hydroxyl derivatives (**19**) into the PepE structure resulted in a significant increase in cytotoxicity against HL-60 cells (IC₅₀ = 2.0 and 1.6 μM, respectively), increasing cytotoxicity up to 2-fold compared to that of the parent molecule.

In summary, 18 amino-PepE products were synthesised and evaluated for anti-leukaemic activity against AML cell lines in culture. The phosphate salts of all the synthesised compounds were more water soluble than PepE was, especially compound **6**, which exhibited 1000-fold greater water-solubility than did PepE. A range of anti-leukaemic activities was observed, with several products exhibiting enhanced activities compared to that of PepE.

Compound **6** was the most potent compound of all synthesised amino analogues, especially against the immature AML stem cells, KG-1a CD34⁺CD38⁻, inducing 80–90% cell death at 10 μM, and affording an IC₅₀ value of 0.5 μM with little effect on hBMSCs. Therefore, the mechanism of action of compound **6** was further explored in preliminary experiments. Apoptosis was analysed by flow cytometric assay. The percentages of apoptotic cells were 18.7% and 75.1% in the KG-1a CD34⁺CD38⁻ cells after treatment with 1 μM and 5 μM, respectively, and were significantly higher than those of the parent molecule (Fig. 6). This result indicated that **6** can significantly induce apoptosis of leukaemia stem cells.

As reported by many clinicians, the CD34⁺CD38⁻ AML cell subpopulation is frequently impervious to conventional chemotherapy, making it largely responsible for relapse of AML. Therefore, targeting and eliminating these cells has been proposed as a promising strategy for treatment of AML to decrease the rate of relapse or drug-resistance.² However, small molecules that can selectively target LSCs are rare and still at early stages of development. As reported in this manuscript, compound **6** may be considered as a new lead compound to eliminate these AML stem cells. Further pharmacological and pharmacokinetic evaluation of this compound is underway.

Conclusions

In conclusion, for the first time, we have reported a newly found naturally occurring agent, PepE, which targets leukaemia stem cells. A series of 18 novel amino-derivatives of PepE was then synthesised and evaluated for anti-AML and anti-LSC activity. All of the compounds showed higher water solubility than the parent molecule. More importantly, this study found that one of the amino derivatives, compound **6**, was more potent than was the parent drug, PepE, against the LSC-like cells (KG-1a CD34⁺CD38⁻), with no apparent toxicity on hBMSCs.

According to the above results, the following SAR of the PepE amino derivatives can be formulated: (1) the secondary open-chain aliphatic amino analogues generally exhibited better activity than the cyclic aliphatic and primary amino analogues did; and (2) introducing a hydroxyl group at the methyl group of the secondary open-chain amine adduct could significantly potentiate the activity against AML stem cells, and result in the most active compound **6**.

Based on the above results, further optimization and biological evaluation of **6** as a promising agent targeting LSC are ongoing in our laboratory, and the results will be reported shortly.

Conflicts of interest

The authors declare no conflict of interest.

Acknowledgements

This work was supported by Grants from the Natural Science Foundation of China (No. 81402812), the Natural Science Foundation of Jiangsu Province (No. BK20130954) and the Priority Academic Program Development of Jiangsu Higher Education Institutions.

References

- H. Dohner, D. J. Weisdorf and C. D. Bloomfield, *N. Engl. J. Med.*, 2015, **373**, 1136–1152.
- U. Testa, *Ann. Hematol.*, 2011, **90**, 245–271.
- A. K. Burnett, N. Russell, R. K. Hills, N. Panoskaltis, A. Khwaja, C. Hemmaway, P. Cahalin, R. E. Clark and D. Milligan, *Leukemia*, 2015, **29**, 1312–1319.
- D. C. Hassane, M. L. Guzman, C. Corbert, X. J. Li, R. Abboud, F. Young, J. L. Liesveld, M. Carroll and C. T. Jordan, *Blood*, 2008, **111**, 5654–5662.
- T. R. Govindachari, G. N. Krishna Kumari and P. D. Partho, *Phytochemistry*, 1998, **49**, 2129–2131.
- M. G. Lloyd, R. J. K. Taylor and W. P. Unsworth, *Org. Biomol. Chem.*, 2016, **14**, 8971.
- X. Z. Wang, Y. Cheng, K. L. Wang, R. Liu, X. L. Yang, H. M. Wen, C. Chai, J. Y. Liang and H. Wu, *Cancer Sci.*, 2016, **10**, 1506–1519.
- X. Z. Wang, Y. Cheng, H. Wu, N. Li, R. Liu, X. L. Yang, Y. Y. Qiu, H. M. Wen and J. Y. Liang, *Phytomedicine*, 2016, **23**, 818–827.
- A. Ghantous, H. Gali-Muhtasib, H. Vuorela, N. A. Saliba and N. Darwiche, *Drug Discovery Today*, 2010, **15**, 668–678.
- X. Z. Wang, H. M. Wen, C. Chai, W. Y. Zhang, M. Gao, R. Liu, H. Wu and J. Y. Liang, *Biomed. Chromatogr.*, 2017, **31**, e3930.
- J. R. Woods, H. Mo, A. A. Bieberich, T. Alavanja and D. A. Colby, *MedChemComm*, 2013, **4**, 27–33.
- A. Kumar, D. Kumar, A. K. Maurya, Y. S. Padwad and V. K. Agnihotri, *Phytochem. Lett.*, 2016, **18**, 117–121.
- S. Zimmermann, G. Franche, M. D. Mieri, Y. Yoshimoto, T. Usuki, R. Nthambeleni, C. J. Parkinson, C. van der Westhuyzen, M. Kaiser, M. Hamburger and M. Adams, *Molecules*, 2014, **19**, 3523–3538.



- 14 X. J. Wang, X. M. Zhang, B. B. Zheng, N. Hu, W. D. Xie and K. Row, *Nat. Prod. Res.*, 2015, **29**, 756–763.
- 15 Y. H. Ding, H. E. Gao, Y. Zhang, Y. Li, N. Vasdev, Y. D. Gao, Y. Chen and Q. Zhang, *J. Hematol. Oncol.*, 2016, **9**, 93–99.
- 16 S. Nasim and P. A. Crooks, *Bioorg. Med. Chem. Lett.*, 2008, **18**, 3870–3873.
- 17 H. Nakshatri, H. N. Appaiah, M. Anjanappa, D. Gilley, H. Tanaka, S. Badve, P. A. Crooks, W. Mathews, C. Sweeney and P. Bhat-Nakshatri, *Cell Death Dis.*, 2015, **6**, e1608.
- 18 M. Moumou, A. El Bouakher, H. Allouchi, A. El Hakmaoui, A. Benharref, V. Mathieu, G. Guillaumet and M. Akssira, *Bioorg. Med. Chem. Lett.*, 2014, **24**, 4014–4018.
- 19 Z. Yang, B. Kuang, N. Kang, Y. Ding, W. Ge, L. Lian, Y. Gao, Y. Wei, Y. Chen and Q. Zhang, *Eur. J. Med. Chem.*, 2017, **127**, 296–304.
- 20 M. L. Guzman, R. M. Rossi, L. Karnischky, X. J. Li, D. R. Peterson, D. S. Howard and C. T. Jordan, *Blood*, 2005, **105**, 4163–4168.
- 21 N. M. OBoyle, T. Vandermeersch, C. J. Flynn, A. R. Maguire and G. R. Hutchison, *J. Cheminf.*, 2011, **3**, 3–8.
- 22 T. Bruhn, A. Schaumlffl, Y. Hernberger and G. Bringmann, *Chirality*, 2013, **25**, 243–249.
- 23 C. M. Chen, F. Y. Fan, M. T. Chen and T. J. Lee, *Heterocycles*, 1989, **29**, 411–414.
- 24 T. J. Lee and T. Y. Lee, *Acta Crystallogr., Sect. C: Cryst. Struct. Commun.*, 1990, **46**, 338–340.
- 25 A. Ghantous, A. Sinjab, Z. Herceg and N. Darwiche, *Drug discovery today*, 2013, **18**, 894–905.
- 26 M. Terwijn, W. Zeijlemaker, A. Kelder, A. P. Rutten, A. N. Snel, W. J. Scholten and G. J. Ossenkoppele, *PLoS One*, 2014, **9**, e107587.
- 27 Y. Liu, F. Chen, S. Wang, X. Guo, P. Shi and W. Wang, *Cell Death Dis.*, 2013, **4**, e948.
- 28 Y. Zhang, S. Y. Zhou, H. Z. Yan, D. D. Xu, H. X. Chen, X. Y. Wang, X. Wang, Y. T. Liu, L. Zhang, S. Wang, P. J. Zhou, W. Y. Fu, B. B. Ruan, D. L. Ma, Y. Wang, Q. Y. Liu, Z. Ren, Z. Liu, R. Zhang and Y. F. Wang, *Sci. Rep.*, 2016, **6**, 19995.

