

CORRECTION

[View Article Online](#)
[View Journal](#) | [View Issue](#)CrossMark
click for updatesCite this: *RSC Adv.*, 2016, 6, 21735

DOI: 10.1039/c6ra90014c

www.rsc.org/advances**Correction: High shear-induced exfoliation of graphite into high quality graphene by Taylor–Couette flow**Tuan Sang Tran,^a Seung Jun Park,^a Sung Sic Yoo,^b Tae-Rin Lee^b and TaeYoung Kim^{*a}

Correction for ‘High shear-induced exfoliation of graphite into high quality graphene by Taylor–Couette flow’ by Tuan Sang Tran *et al.*, *RSC Adv.*, 2016, 6, 12003–12008.

In the original manuscript, Fig. 2 was displayed incorrectly. The corrected Fig. 2 is shown below:

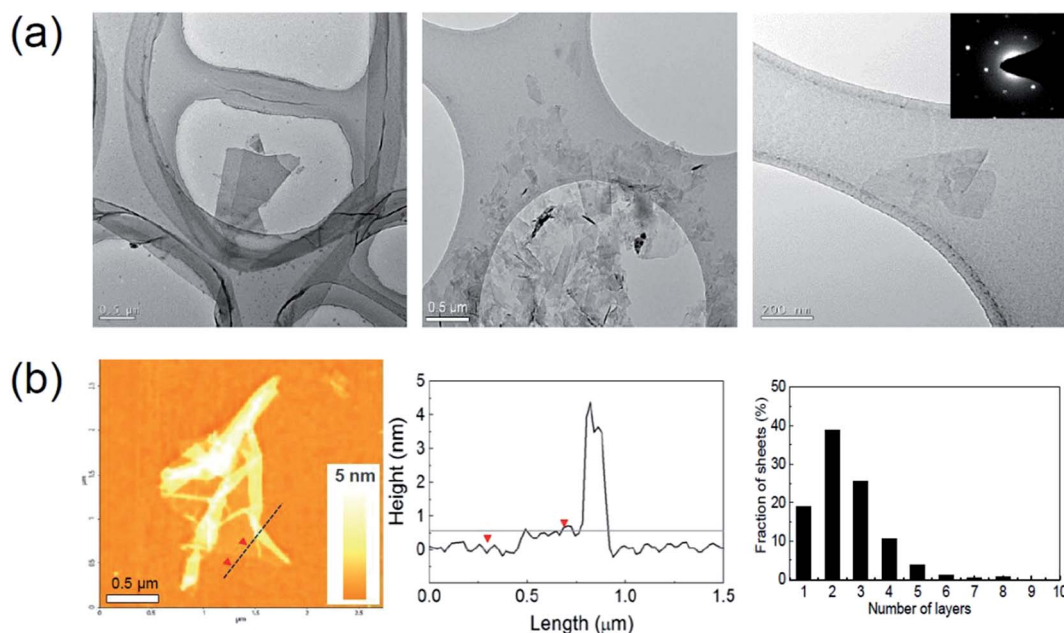


Fig. 2 (a) TEM images of exfoliated flakes (inset: electron diffraction pattern), (b) AFM image of the exfoliated flake, where the corresponding height profile displays a height of close to ~0.6 nm, and histogram of number of layers per flake.

The Royal Society of Chemistry apologises for these errors and any consequent inconvenience to authors and readers.

^aDepartment of Bionanotechnology, Gachon University, Seongnam, Gyeonggi-do 13120, Korea. E-mail: taeykim@gachon.ac.kr

^bAdvanced Institutes of Convergence Technology, Seoul National University, Suwon, Gyeonggi-do 443-270, Korea