

## PAPER

[View Article Online](#)  
[View Journal](#) | [View Issue](#)

# Development of a diffuse reflectance infrared fourier transform spectroscopy (DRIFTS) cell for the *in situ* analysis of co-electrolysis in a solid oxide cell

Denis J. Cumming,<sup>\*a</sup> Christopher Tumilson,<sup>ab</sup> S. F. Rebecca Taylor,<sup>b</sup> Sarayute Chansai,<sup>b</sup> Ann V. Call,<sup>a</sup> Johan Jacquemin,<sup>b</sup> Christopher Hardacre<sup>\*b</sup> and Rachael H. Elder<sup>\*a</sup>

Received 2nd March 2015, Accepted 12th March 2015

DOI: 10.1039/c5fd00030k

Co-electrolysis of carbon dioxide and steam has been shown to be an efficient way to produce syngas, however further optimisation requires detailed understanding of the complex reactions, transport processes and degradation mechanisms occurring in the solid oxide cell (SOC) during operation. Whilst electrochemical measurements are currently conducted *in situ*, many analytical techniques can only be used *ex situ* and may even be destructive to the cell (e.g. SEM imaging of the microstructure). In order to fully understand and characterise co-electrolysis, *in situ* monitoring of the reactants, products and SOC is necessary. Diffuse Reflectance Infrared Fourier Transform Spectroscopy (DRIFTS) is ideal for *in situ* monitoring of co-electrolysis as both gaseous and adsorbed CO and CO<sub>2</sub> species can be detected, however it has previously not been used for this purpose. The challenges of designing an experimental rig which allows optical access alongside electrochemical measurements at high temperature and operates in a dual atmosphere are discussed. The rig developed has thus far been used for symmetric cell testing at temperatures from 450 °C to 600 °C. Under a CO atmosphere, significant changes in spectra were observed even over a simple Au|10Sc1CeSZ|Au SOC. The changes relate to a combination of CO oxidation, the water gas shift reaction, carbonate formation and decomposition processes, with the dominant process being both potential and temperature dependent.

## 1 Introduction

Electrochemical devices based on solid-state ceramic electrolytes have a wide range of applications from sensors to membrane reactors; batteries to fuel cells.

<sup>a</sup>Department of Chemical and Biological Engineering, University of Sheffield, Mappin St, Sheffield, S1 3JD, UK.  
E-mail: d.cumming@sheffield.ac.uk; r.elder@sheffield.ac.uk

<sup>b</sup>School of Chemistry and Chemical Engineering, Queen's University Belfast, Belfast, BT9 5AG, N. Ireland.  
E-mail: c.hardacre@qub.ac.uk



One of the attractive features of these devices is their flexibility and efficiency when operated at high temperature. Solid oxide fuel cells have received much attention over the last four decades, resulting in many advances in the understanding of the technology. It was recognised very early on that solid oxide cells (SOC) were equally capable of reverse operation in electrolysis mode, for example the pioneering work of Doenitz *et al.*<sup>1,2</sup> on steam electrolysis.

Recent research interest has focused on the co-electrolysis of steam and carbon dioxide for the single-step production of syngas. This process is attractive because it represents an efficient route to producing synthetic liquid hydrocarbon fuels with all of the associated benefits of high energy density, transport infrastructure and ease of handling. In cases where the carbon dioxide used during electrolysis is recycled from the air or another point source, a closed carbon cycle is possible. Furthermore, the efficient conversion of electricity into an energy-dense chemical offers the possibility for commercially viable large-scale energy storage.

There are compelling reasons to pursue high temperature co-electrolysis, but as it stands the technology remains by-and-large in the laboratory. One of the key challenges facing co-electrolysis is the lack of understanding of fundamental reaction mechanisms. Knowledge of the rate-limiting reactions within a cell would aid rational design of materials and microstructures, leading to increased device efficiency and longevity. Comprehensive understanding of the relationship between the electrolysis, surface catalytic and water gas shift reactions would enable advancement of electrolysis technology. To achieve the level of detailed understanding required, the development of *in situ* analysis techniques is essential.

Typical *in situ* or *operando* testing of fuel cells and electrolyzers has been limited to electrochemical methods such as impedance spectroscopy and direct current techniques. *In situ* spectroscopy could provide invaluable information about the surfaces and species that play a crucial role in the overall macroscopic reaction, along with information on the complex interplay of reactions occurring during co-electrolysis. Progress in the development and application of *in situ* spectroscopy methods to high temperature electrochemical devices has accelerated recently and techniques such as Raman<sup>3–11</sup> and X-ray photoelectron spectroscopy<sup>7,12–15</sup> now deliver valuable information from operational devices. Typically these techniques give potential-dependent structural or chemical information, but do not always yield direct information about the chemistry of the reactions, intermediates or surface interactions.

Infrared absorption spectroscopy can bridge the gap between the surface electronic/crystal structure and link to the chemistry of the gas-phase and absorbed species. It is particularly suited to this application because most molecular vibrational modes fall into the energy range of mid-infrared light (2.5–50  $\mu\text{m}$ , 4000–200  $\text{cm}^{-1}$ ). Fourier transform infrared (FTIR) spectroscopy has become routine in most analytical laboratories throughout the world and commercially available instruments tend to be highly adaptable, allowing numerous combinations of gas–solid interactions to be probed. This has made *in situ* IR techniques highly popular for heterogeneous catalysis research.<sup>16–18</sup> The majority of early catalysis studies were carried out in transmission mode (TIR) whereby the incident beam passes through the sample/gases of interest. This requires that samples are self-supporting and not completely opaque to



the incident beam. Whilst this method has been applied to the study of fuel cell materials,<sup>19,20</sup> *operando* studies are difficult and not representative of working conditions due to the requirement of transparent electrodes for cell polarization. An alternative is to use diffuse reflectance infrared Fourier transform spectroscopy (DRIFTS), another technique commonly employed in the catalysis community.<sup>16</sup> The experimental configuration has the advantage of allowing the typical powder-basket arrangement to be replaced by a small solid oxide cell operated in a scenario very similar to most lab-scale electrochemical tests.

There are few reported studies using FTIR to probe SOCs and those that exist mainly focus on fuel cell operation. Lu *et al.* used IR emission spectroscopy to study the oxygen electrode material in SOCs, finding that two to three different oxygen ion species were present on the electrode surface. Murai *et al.*<sup>21</sup> simplified the experiment by using symmetric Pt|YSZ|Pt cells to study the oxygen reduction reaction, finding electrode microstructure and silica contamination caused significant variation in both electrochemical performance and spectroscopic response. There have been very few IR studies to examine the fuel electrode in detail, with the exception of Kirtley *et al.*<sup>22</sup> It is rather surprising that there are so few examples of *in situ* or *operando* research on the fuel electrode given the large number of examples of application of IR spectroscopy to low and high temperature water-gas shift reactions<sup>23–32</sup> using metal catalyst particles on active catalyst supports (such as zirconia and ceria), which bear close resemblance to the reactions and materials systems in a SOC.

In this paper we report the development of a modified commercial DRIFTS unit for the study of SOCs under operating conditions. Herein, we describe the technical design of this apparatus, and demonstrate its viability and potential to provide surface specific information on the electrochemistry of polarized electrodes and ionic surfaces. This is illustrated by preliminary experiments using symmetric gold electrodes on scandia-stabilized zirconia substrates under a range of technologically relevant conditions.

## 2 Technical design of the DRIFTS apparatus

A schematic of the DRIFTS setup is shown in Fig. 1. The Spectra-Tech system fits an environmental chamber (from here on referred to as the base unit) into a demountable mirror assembly (Fig. 1D), which decouples the base unit from the mirror assembly allowing modifications to be made to the base unit design. Previous catalysis studies in our laboratory<sup>33</sup> required modifications to the original factory base unit design (Fig. 1A) to improve sealing around the crucible and reduce the pressure drop through the catalyst bed (Fig. 1B). Further improvements to this design were incorporated to include electrical feed-throughs and gas ports (Fig 1C and detail in Fig. 2). There are several design requirements for the modified apparatus to operate SOCs effectively, which can be broken down into four main categories:

- Temperature;
- Geometrical considerations;
- Electrical and spectroscopic measurement;
- Materials.



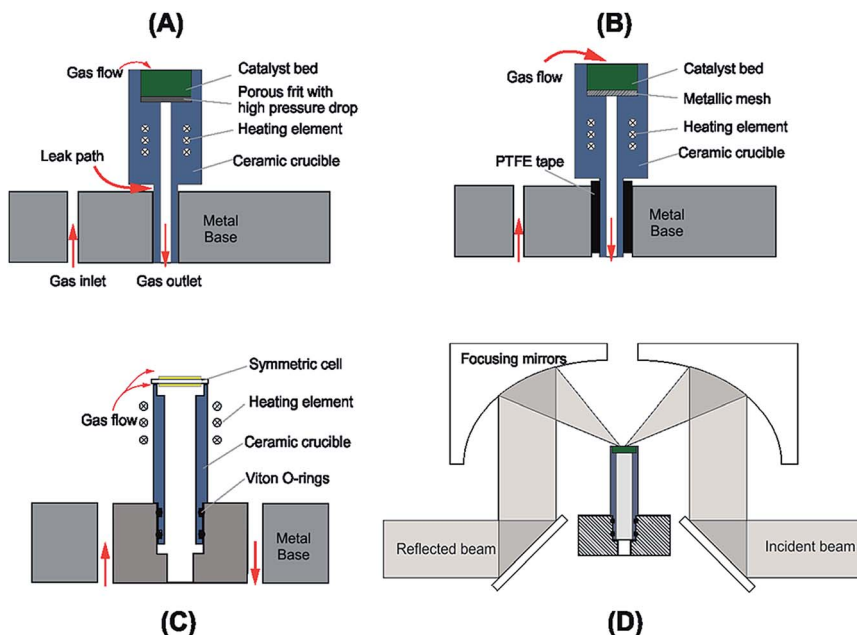


Fig. 1 Schematic drawing the evolution of the base unit design and the optical path through the DRIFTS apparatus. (A) As purchased Spectra-Tech configuration. (B) Modification to reduce gas leak in chamber. (C) SOC operation configuration. (D) Full schematic view of DRIFTS rig showing mirror assembly and beam path.

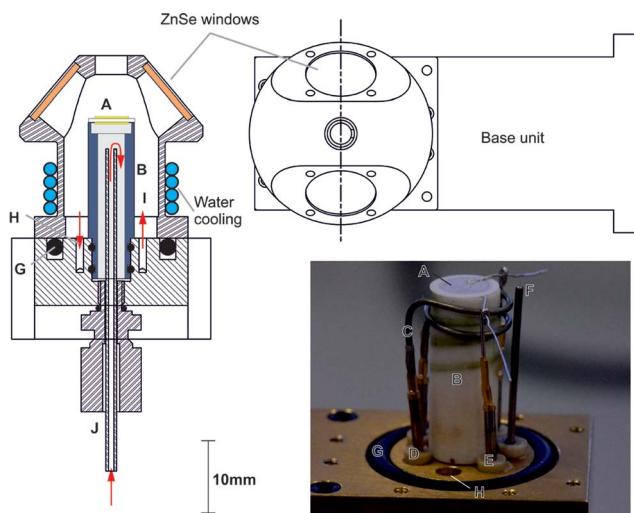


Fig. 2 Detailed cross section of base and dome and a photograph of apparatus showing electrochemical cell (A), crucible (B) heating element (C), gold crimp connections for the heating wire (D) and the electrical cell connections (E), K-type thermocouple (F), dome Viton O-ring seal (G) cell, gas feed-throughs (H and I) and underside inlet port (J) (see text for more detail).



## 2.1 Overview of design criteria

**2.1.1 Temperature.** In many commercially available base units, temperature is limited to around 500 °C and the space available for crucible heating elements is restricted by the small geometrical volume (*i.e.*  $\sim 5\text{ cm}^3$ ) within the chamber. The operating temperature is also limited by the optical windows, composed of ZnSe, which must be kept below 200 °C to prevent oxidation. In order to reduce the temperature of the optical windows, cooling water is flowed around a closed circuit in the base of the dome, keeping the temperature of the optical windows close to room temperature (*i.e.*  $<60\text{ °C}$ ).

To gather data relevant to solid oxide electrolysis cells, operation in the range of 500–800 °C is required. The temperature needs to be distributed evenly across the cell to ensure reproducible electrochemical performance and to correlate the spectra with the correct operational temperature. Heating is achieved by placing an electrical resistance wire as near to the sample as possible. This is commonly achieved by utilizing a wire-wrapped crucible<sup>33</sup> or by installing a cartridge heater close the sample.<sup>34</sup>

**2.1.2 Geometrical considerations.** The base unit must retain the original dimensions of the factory unit to fit inside the existing optical mirror assembly. In this setup, the environmental compartment where gas and electrical feed through components pass is only 18 mm in diameter and at least four electrical feed-throughs (two each for the heater and cell electrical connections) are necessary in addition to inlet and outlet gas ports. For full cell testing with two atmospheres, provision must also be made for gas flow to the counter electrode.

The cell configuration design is only limited by the cell diameter, which has to be a minimum of 8.5 mm to fit the top of the cell and be supported by the crucible used in this rig (Fig. 2A). As with any electrochemical cell it must be self-supporting, but can be either electrode or electrolyte supported.

The previous version of this DRIFTS apparatus<sup>33</sup> used a crucible with a narrow neck which was susceptible to cracking during sample loading or high temperature operation. More recent iterations of the design widened the crucible neck to accommodate an internal gas feed and which also reduced the likelihood of cell failure due to cracking at the crucible neck.

**2.1.3 Electrical and spectroscopic measurements.** Achieving both optical and electrical access to the cell whilst maintaining a leak tight chamber is challenging. The use of IR transparent ZnSe windows enables spectroscopic access to the cell. Careful sealing is required around electrical feed-throughs for heating and measurement. Electrodes and current collector geometries were carefully considered to collect accurate spectroscopic measurements from a known area as near to the electrode–electrolyte interface as possible. At this stage materials with low reflectivity (such as Ni–YSZ and many oxygen electrodes) present a real challenge. Gold electrodes, therefore, make an excellent model electrode for preliminary work.

**2.1.4 Materials.** Due to the high temperatures, small volume, and therefore very high thermal gradients present, rig materials near to the hot zone must have a small thermal expansion coefficient to withstand multiple, fast thermal cycles without damage. The base unit and dome should have high thermal conductivity to maximize the effect of water cooling. Materials must not degrade significantly under the range of highly oxidising and highly



reducing gas compositions used and must not produce volatile species that may poison the electrochemical cell or form layers that interfere with spectroscopic measurement. Version 1 of the base unit was built from brass for ease of construction, whilst version 2 is made from stainless steel. PEEK, ceramics, silver and gold were selected as materials suitable for components within the rig.

## 2.2 Detailed design of the cell used in these studies

Fig. 2 shows the base unit in detail: the electrochemical cell (Fig. 2A) is mounted on the crucible (Fig. 2B) which is machined from a commercial glass ceramic (Macor, RS Components). Previous crucible designs (Fig. 1B) had a very narrow neck which was susceptible to mechanical failure, causing loss of the gas-tight seal. In the design iteration reported herein, the wider base adds space for a gas tube to feed gas to the internal electrode of the cell. Introduction of a double Viton O-ring seal (Fig. 2G) prevents gas leakage between the crucible and the base. In another departure from previous reported designs,<sup>33</sup> an exposed heater wire (Fig. 2C) was used which can be detached independently from the crucible. The heater consisted of a spiral-wound length of nichrome furnace wire, 0.8 mm in diameter and 16 cm in length with a total resistance of  $\sim 0.7\ \Omega$ . It was attached to the feed-through pins (Fig. 2D) using gold plated crimp connectors (RS components). Temperature control was achieved within an accuracy of  $\pm 1\ ^\circ\text{C}$  by means of a custom built 24 V system with a furnace controller (2216e, Eurotherm) with the input from a type K thermocouple (Fig. 2F) mounted as close to the cell as practically possible. Hot zone temperatures were limited to  $600\ ^\circ\text{C}$  as the low heater wire resistance means a very large current is drawn to deliver the power needed for operation above  $600\ ^\circ\text{C}$ . This heater configuration was retained as it allows significant flexibility in the chamber configuration. Future iterations are planned to increase the heater resistance to allow higher temperature operation.

For the testing reported in this paper, a symmetric cell was operated in a single atmosphere. To achieve this, the outlet below the crucible (Fig. 2J) was closed and the cell placed on top of the crucible suspended by a few dots of silver paste to form a small gap below the cell, allowing gas flow across both electrodes. Electrode wires were connected to the same type of pins and crimp connectors (Fig. 2E) used for the heater wire. Gas feed-throughs consist of gold plated pins embedded in a barbed PEEK collar (Fig. 2H). Within the collar, the pin is soldered to a length of wire. To achieve a hermetic seal, the PEEK collar, along with the pin, is press fit into the base unit. Both the feed-through and the O-rings are all capable of withstanding temperatures up to  $200\ ^\circ\text{C}$ .

Water cooling of the base unit is required when the cell operating temperature is above  $200\ ^\circ\text{C}$  and is supplied *via* internal channels in the base unit, fed (*via* a peristaltic pump) into a tube coil wrapped around the neck of the dome (shown in Fig. 2). The base unit remains below  $50\ ^\circ\text{C}$  when the water-cooling is in operation up to hot zone temperatures of  $600\ ^\circ\text{C}$ . Addition of the gas feed-throughs, extra gas port and compression fitting on the underside of the base unit provide the capability to perform full cell testing while still fitting into the existing mirror assembly.



## 3 Experimental

### 3.1 Sample preparation

SOCs were prepared by brushing 6 mm diameter symmetric Au electrodes (C5756, Heraeus) onto commercial 10Sc1CeSZ electrolytes (Kerafol) before being dried at 120 °C for 1 h. Cells were then sintered in air at 600 °C for 1 h. Typical electrolyte thicknesses were 130 μm with electrode thicknesses of 90 μm. The cells were then placed on top of the crucible and Ag flying lead current collectors were attached to the electrodes using Ag paste (Gwent Electronic Materials), which were subsequently fired *in situ* at 600 °C for 1 h.

### 3.2 Sample characterisation

The reactant gases, Ar (99.998% Ar), Kr (5% Kr in Ar), and CO (10% CO in Ar) supplied by BOC, were individually regulated by Aera™ FC-7700C mass flow controllers at a total flow rate of 40 cm<sup>3</sup> min<sup>-1</sup>. The cell was heated to temperature in Ar at a rate of 3 °C min<sup>-1</sup> and pre-cleaned by two potentiodynamic scans in Ar between ±2.0 V prior to testing. The experimental atmosphere was then applied for a minimum of 30 min to achieve steady state conditions. Infrared spectra were obtained using a Bruker Vertex 70 FTIR spectrometer equipped with a liquid N<sub>2</sub> cooled detector. The *in situ* DRIFTS spectra were recorded twice at each voltage with a resolution of 4 cm<sup>-1</sup>. A background spectrum of the cell (56 scans averaged over 30 s) was taken in the reactant atmosphere at temperature, at open circuit, and has been subtracted from the results presented. All DRIFT spectra are displayed as log 1/*R* where *R* is the relative reflectance (*R* = reflectance of the sample recorded in the gas feed at temperature and potential/reflectance of the sample recorded under gas feed at temperature and open circuit potential). During measurements potential was applied, starting at 0 V, in steps of 200 mV. The cell was held at each step voltage for a duration of 1 min to enable the data for two spectra to be recorded. Spectra were then analyzed using proprietary OPUS software. Electrochemical measurements were performed using a potentiostat (Ecochemie B.V., Autolab PGSTAT302) with the error in the applied potentials of ±10 mV. The reacted gas phase species were analyzed using an online Hiden Analytical HPR20 Mass Spectrometer (MS). Hermetic sealing of the system was verified by monitoring the levels of H<sub>2</sub>O (*m/z* = 18), O<sub>2</sub> (*m/z* = 32) and CO<sub>2</sub> (*m/z* = 44) using the MS.

## 4 Results

The effect of potential on surface species during polarization (−2 V to +2 V) of the symmetric Au|10Sc1CeSZ|Au SOC as detected by *in situ* infrared spectroscopy under a gas feed of 5% CO in Ar is depicted in Fig. 3. For clarity, only steps at 0 V, ±0.8 V and ±1.6 V are shown.

DRIFTS data recorded at 450 °C (selected potentials shown in Fig. 3A) show distinct peaks at 3245, 2360 and 1320–1896 cm<sup>-1</sup>. An increase in the intensity of peaks at 3245 and 1320–1896 cm<sup>-1</sup>, attributed to surface hydroxyl species,<sup>19,20</sup> is observed when a negative potential is applied. Interestingly, these hydroxyl species appear to accumulate with applied potential over time and the surface response does not return to base levels even at zero potential, indicating a





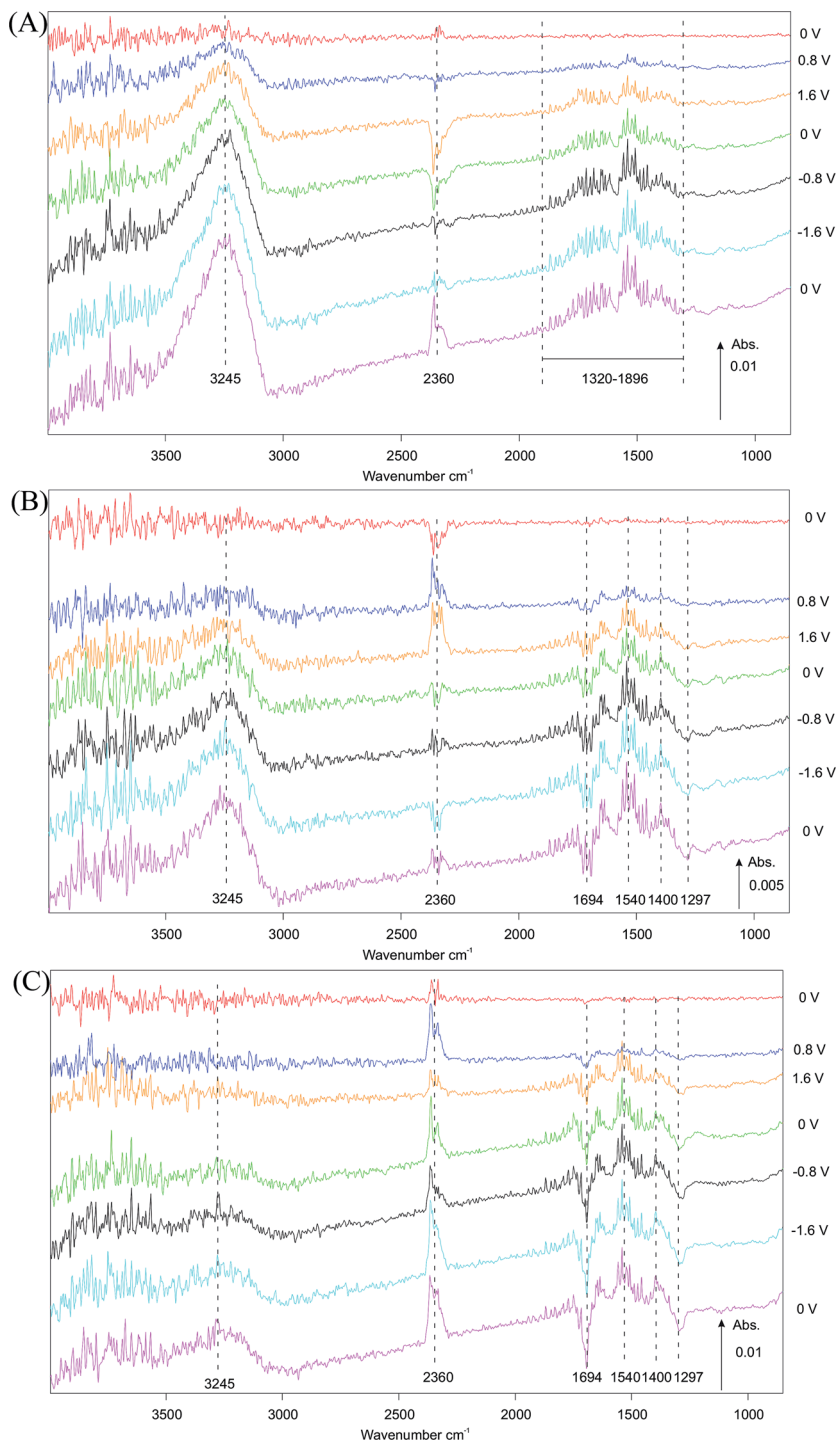


Fig. 3 Comparison of DRIFTS spectra obtained for symmetric SOC utilizing a doped zirconia electrolyte and Au electrodes, operated in a 5% CO in Ar atmosphere under D.C. polarization at (A) 450 °C, (B) 550 °C and (C) 600 °C.



non-reversible accumulation. In contrast, the strong signal associated with gas-phase  $\text{CO}_2$  ( $2360\text{ cm}^{-1}$ ) is clearly potential dependent. This band shows a negative feature when positive potential is applied, which is associated with a loss of  $\text{CO}_2$  from the gas phase, *i.e.* a reduction in the rate of  $\text{CO}_2$  formation compared with that formed at open circuit potential at  $450\text{ }^\circ\text{C}$ . This loss, still present on returning to  $0\text{ V}$ , is then reversed under negative applied potential, resulting in an increase in the production rate of gas phase  $\text{CO}_2$  compared with the initial state of the catalyst.

When increasing the temperature from  $450\text{ }^\circ\text{C}$  to  $550\text{ }^\circ\text{C}$  (Fig. 3A and B) or to  $600\text{ }^\circ\text{C}$  (Fig. 3C), the peaks attributed to surface hydroxyls<sup>20</sup> ( $3245\text{ cm}^{-1}$ ) and  $\text{CO}_2$  ( $2360\text{ cm}^{-1}$ ) persist. The intensity of the hydroxyl signal shows a distinct decrease in intensity with increasing temperature across the three experiments. A noticeable change in the potential dependence of the band associated with  $\text{CO}_2$  is observed by comparing spectra at  $450\text{ }^\circ\text{C}$  and  $550\text{ }^\circ\text{C}$ . At  $550\text{ }^\circ\text{C}$  (Fig. 3B) the intensity of the  $\text{CO}_2$  signal increases and then decreases under positive and negative potentials, respectively. Inspection of the  $1200\text{--}1800\text{ cm}^{-1}$  region reveals several possible species with signals observed at  $1694$ ,  $1540$ ,  $1400$  and  $1297\text{ cm}^{-1}$ . These peaks are tentatively assigned to carbonate and bicarbonate<sup>19,20</sup> species on the electrode surface with the positive peaks indicating formation and negative peaks removal from the surface. The positive signal detected at  $1540\text{ cm}^{-1}$ , assigned to bidentate carbonate species formation, shows the largest change in intensity under positive potentials, while bicarbonate species ( $1694$ ,  $1400$  and  $1297\text{ cm}^{-1}$ ) exhibited significant response under applied negative potential. In the latter case, both formation and removal are observed.

In contrast to observations at  $450\text{ }^\circ\text{C}$  (Fig. 3A) and  $550\text{ }^\circ\text{C}$  (Fig. 3B), the  $\text{CO}_2$  peak observed at  $600\text{ }^\circ\text{C}$  (Fig. 3C) remains positive throughout the experiment, showing an increased rate of gas phase  $\text{CO}_2$  production with respect to the initial open circuit potential state of the catalyst over time when a potential is applied. When comparing data collected at  $550\text{ }^\circ\text{C}$  and at  $600\text{ }^\circ\text{C}$  (Fig. 3B *vs.* 3C), the intensity of the signals associated with carbonate and bicarbonate species ( $1200\text{--}1800\text{ cm}^{-1}$ ) also increase with operating temperature. This indicates that the formation of carbonate and bicarbonate species is both potential and temperature dependent. Increased operating temperature induces the formation of carbonate and bicarbonate species while more complex effects such as formation/adsorption and removal are observed when a potential is applied.

## 5 Discussion

A rig for *operando* DRIFTS studies of SOCs has been designed and constructed and used successfully to analyse the surface and gas species under both fuel cell and electrolysis operating potentials.

DRIFTS spectra are collected from the top electrode of the cell with the option to switch polarization between positive and negative potential, resulting in electrode dynamics which reflects either electrolysis (negative) or fuel cell (positive) operation. Since the atmosphere is swept continuously by the feed gas, it is unlikely that products from electrode reactions occurring at the bottom electrode are detected by the spectroscopy and that changes observed in the DRIFTS are only associated with the top electrode.



The results show three clear processes occurring during cell operation: (1) the potential dependent production of  $\text{CO}_2$ , (2) the formation of complex carbonate species,<sup>19,20</sup> and (3) the role of water in the form of an associated surface hydroxide species<sup>35</sup> which are surface species that interact *via* hydrogen bonding giving rise to the broad hydroxyl peak in the 3500–3000  $\text{cm}^{-1}$  range. There are frequent spectroscopic observations in the literature of carbonate formation in both the ceramic-only zircona system<sup>19,20</sup> and the phenomena is more widely observed in the supported catalysis literature, particularly with reference to the water–gas shift reaction (WGS).<sup>36</sup> Additionally, there is some debate in the literature as to the precise assignment of the carbonate species due to the possibility of the development of formate species.<sup>32</sup> However, it should be noted that as well as the features between 1200–1800  $\text{cm}^{-1}$ , additional bands, just below 3000  $\text{cm}^{-1}$ , are also typically observed<sup>24</sup> when formates are present. In the present study, these features were not present and thus it is thought that carbonate rather than formate is the predominant surface species.

For carbonates to form from  $\text{CO}$ , either water or a hydroxylated species must be present.<sup>35</sup> Gas phase  $\text{CO}_2$  can then subsequently be formed by decomposition of the carbonate. The surface and gas phase species observed are not thought to originate from outgassing of organics from the electrode paste due to the combination of high temperature preprocessing of the electrodes in air (600 °C), long equilibration time in each atmosphere, and evidence in the literature suggesting that preparation methods using pastes were not considered an origin of carbonate and hydration products.<sup>37</sup>

It is possible that the hydroxyl species observed, which are prevalent throughout the experiments and continuously increase, may indicate some water ingress in the experimental apparatus. This is, however, unlikely due to the high purity of the feed gases, the very low water concentration detected by the mass spectrometer during the measurements and the gas-tight seal of the chamber. These species are, therefore, thought to arise from the fact that the surface and sub-surface of the zirconia electrolyte was partially hydroxylated<sup>35,38</sup> before testing and the electrochemical cleaning procedure used was not sufficient to remove surface species. This is in agreement with previous studies which showed that pre-treatment of yttria-doped zirconia at 600 °C in 20%  $\text{O}_2/\text{Ar}$  for 1 h did not completely remove surface hydroxyl species.<sup>20</sup>

Fig. 3A shows a large band at 450 °C associated with OH species (3245  $\text{cm}^{-1}$ ). As the temperature increases this band became smaller in keeping with higher protonic (or hydroxylates species) surface diffusion observed in zirconia.<sup>39</sup> At 450 °C, as the cell is polarized in the positive direction, there is a marked decrease in  $\text{CO}_2(\text{g})$ . This is consistent with the formation of surface carbonate according to Fig. 4.

Electrochemically, a negative bias corresponds to pumping oxygen away from the spectroscopically probed surface (electrolysis mode). The changes observed can be attributed to both the thermal hydroxide/ $\text{CO}$  reaction, *i.e.* the water gas shift reaction, and electrochemical processes; however, it is not clear at this point which dominates. When the cell polarity is reversed, we see an increase in  $\text{CO}_2$  production. Once again this could be due to carbonate decomposition or the electrochemical oxidation of  $\text{CO}$  with oxygen ion transport. However, given the low temperature the oxygen ion conductivity is expected to be small, therefore, it is more likely that the heterogeneous catalytic reaction is controlled by the



diffusion of protonic species and which is modified by the applied bias. At 550 °C (Fig. 3B), the OH bands are noticeably weaker. Carbonate species are removed throughout the period of the experiment, but the potential dependent change in the CO<sub>2</sub> concentration has switched. The fuel cell mode produces CO<sub>2</sub>, presumably through the decomposition of remaining surface carbonates. There is no longer a sufficient amount of protonic species to allow carbonate formation during this process. During polarisation in electrolysis mode, very little CO<sub>2</sub> production is observed, but carbonate removal continues. At 600 °C (Fig. 3C), the trend continues with the OH band decreasing, carbonate removal increasing, resulting in an increase in CO<sub>2</sub> production, both from carbonate decomposition and CO oxidation.

There is some difficulty accounting for the presence of some of these species on the gold surface. Hydroxides and carbonates are often observed on the surfaces of metal oxides, but the mechanism for their existence on a pure metal surface is less well understood. Some studies have suggested that the penetration depth of an IR beam in a reflectance geometry is a few hundred microns<sup>33</sup> suggesting subsurface detection would be possible. However, at 90 μm thick it is unlikely that the beam is passing through the electrode but further work is required to confirm this. It should also be noted that the observations from IR studies and the electrochemical behaviour of the cell do not necessarily match. This is because the majority of the electrochemistry occurring at the triple-phase boundaries is located at the Au|SSZ interface. Species and chemical responses that are observed in the IR spectra are, therefore, not necessarily dominated by intermediates or products of the electrochemical reactions. This is also why the only potential dependent species observed in this study is CO<sub>2</sub>, a by-product of the catalysis and electrochemical reactions.

One would also expect that, particularly in fuel cell mode when oxygen is pumped towards the spectroscopically active electrode, that a marked increase in CO oxidation would be observed. If the presence of hydroxides and carbonates preferentially react with electrochemically supplied oxygen or simply adsorb to sites active to CO oxidation at the phase boundary between gas|Au|SSZ, the absence of CO peaks at (2200–1950 cm<sup>-1</sup>) would be justified.

In summary, under negative bias the water gas shift reaction occurs at 450 °C but its importance decreases with temperature due to the fact that it is an exothermic equilibrium reaction. The changes with temperature under this bias are, therefore, likely to be due to the thermal/proton mediated decomposition of carbonates which increases in importance with temperature. Under positive bias, little CO oxidation occurs at 450 °C due to slow oxygen ion conduction; however, this process becomes more important as the temperature increases due to the increase in oxygen ion conduction. Hence at 450 °C, CO<sub>2</sub> production only occurs at negative bias whereas at 600 °C it occurs under positive and negative bias.

## 6 Outlook

One of the main challenges facing any *in situ* measurement is to characterise the sample as close to realistic operational conditions as possible. Many of the limitations associated with this challenge have been overcome with this design of experimental apparatus, however, there remain some key aspects that need further development. Achieving the desired cell operating temperature and



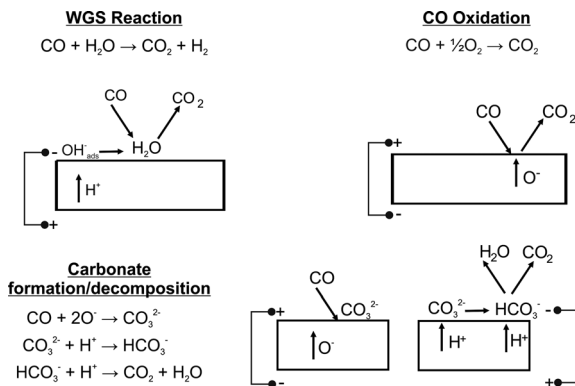


Fig. 4 Proposed reaction mechanisms at the electrode surface.

distribution remains a challenge as operating closer to 800 °C will induce even higher thermal gradients across the base unit components. The location of the heating element within the chamber atmosphere presents challenges to the integrity of the furnace wire but also introduces the risk of contamination of SOCs from volatile elements (such as chromium) in the heater wire. Future work will focus on a more improved thermal design to minimize these issues. Another limitation of the reflectance technique is difficulty in analysing the surface of electrodes that absorb strongly – which includes most state-of-the-art materials. Efforts are being focused on improved collection efficiency for the optical path and IR spectrometer.

Despite careful control of gas inlet composition and design of a hermetically sealed chamber, the spectra showed that surface hydroxyl and complex carbonate species play a subtle but crucial role in the surface chemistry in a SOC. Although regularly discussed in the catalysis literature, the origin and nature of these species is not documented in the solid-state electrochemistry literature. From what has been observed in this study and those in literature, these species influence the water–gas shift reaction, an important reaction during co-electrolysis, and may also influence rate limiting intermediates during electrochemical reaction. These observations also highlight that IR spectroscopy will see all species present on the electrode surface meaning it is not only important to determine the region of the cell or electrode the IR signal originates from, but it is crucial to interpret which species are participating in the electrochemical reaction, which are influenced by those reactions and which are spectating. Once this is understood the key rate-limiting reactions may be identified and steps taken to improve cell chemistry and microstructure. This will be developed using analysis of the temporal behaviour of the electrochemistry and spectroscopic species by inducing a step change in potential or gas composition, for example.<sup>40,41</sup>

The above observations also highlight the importance of cell cleanliness. What is the origin of the observed surface species? Have they formed recently or is their occurrence based on sample history? Factors such as sample processing (e.g. electrode pastes) and the previous testing history are very relevant to cell cleanliness. Based on the results presented here, and from other IR studies in the literature, it is essential to monitor and tightly control the moisture in the system.



A suitable cleaning routine, which could include electrochemical pre-treatment, is necessary to form a benchmark during future testing.

In an effort to better understand the role of some of the species observed in this work there is significant scope for use of alternative materials, such as doped ceria instead of zirconia for some electrode components. There is a large body of catalysis literature that shows the mechanism of carbonate formation and decomposition is highly dependent on the how easily the cations can be reduced in the ionic conductor support material. Comparison with the zirconia system and the influence of electrochemical bias will give further insights into the carbonate cycle.

The inability to determine the exact depth profile of the DRIFTS beam has meant there is some uncertainty surrounding the precise location of the observed species. By switching from pure metal electrodes to composite electrodes containing an ionic conductor the electrochemically active region will be extended away from the electrode–electrolyte interface to make it more optically accessible. Other *in situ* experiments have overcome this problem by using well defined patterned electrodes, however this reduces the cell performance to a level that is difficult to reconcile with a real cell. Another issue with this approach is the low concentration of surface species which will decrease the available spectroscopic information.

Finally, the main thrust of future work should be focused on the operation of full SOC *in situ*. The apparatus we present here has the capability to do this and future publications will cover this area. There are important reactions on both the fuel and oxygen electrode which will benefit from full cell testing. This paper demonstrates the sensitivity of DRIFTS and it is anticipated that full cell testing will enable detailed *operando* study of degradation and poisoning mechanisms.

## 7 Conclusions

A new diffuse reflectance spectroscopic setup has been developed to enable the surface reactions within a SOC under bias and at temperature to be probed. Under a CO atmosphere, even over a simple Au|10Sc1CeSZ|Au significant changes were observed related to a combination of CO oxidation, the water–gas shift reaction and carbonate decomposition processes. The dominant process was found to be both potential and temperature dependent. This is a powerful technique with which to understand SOC in electrolysis and fuel cell mode and is currently being developed to allow the use of asymmetric cells in the presence of different atmospheres.

## Acknowledgements

This work was carried out as part of the “4CU” programme grant, aimed at sustainable conversion of carbon dioxide into fuels, led by The University of Sheffield and carried out in collaboration with The University of Manchester, Queens University Belfast and University College London. The authors acknowledge gratefully the Engineering and Physical Sciences Research Council (EPSRC) for supporting this work financially (Grant no. EP/K001329/1).



## References

- 1 W. Doenitz and R. Schmidberger, *Int. J. Hydrogen Energy*, 1982, **7**, 321–330.
- 2 W. Doenitz, R. Schmidberger, E. Steinheil and R. Streicher, *Int. J. Hydrogen Energy*, 1980, **5**, 55–63.
- 3 M. B. Pomfret, J. C. Owrutsky and R. A. Walker, *J. Phys. Chem. B*, 2006, **110**, 17305–17308.
- 4 R. C. Maher, L. F. Cohen, P. Lohsoontorn, D. J. Brett and N. P. Brandon, *J. Phys. Chem. A*, 2008, **112**, 1497–1501.
- 5 J. Malzbender, R. W. Steinbrech and L. Singheiser, *Fuel Cells*, 2009, **9**, 785–793.
- 6 D. J. L. Brett, A. R. Kucernak, P. Aguiar, S. C. Atkins, N. P. Brandon, R. Clague, L. F. Cohen, G. Hinds, C. Kalyvas, G. J. Offer, B. Ladewig, R. Maher, A. Marquis, P. Shearing, N. Vasileiadis and V. Vesovic, *ChemPhysChem*, 2010, **11**, 2714–2731.
- 7 M. B. Pomfret, J. C. Owrutsky and R. A. Walker, in *Annual Review of Analytical Chemistry*, 2010, vol. 3, pp. 151–174.
- 8 R. C. Maher, G. Offer, N. P. Brandon and L. F. Cohen, *2011 MRS Fall Meeting*, Boston, MA, 2012.
- 9 J. E. A. Saunders and M. H. Davy, *Int. J. Hydrogen Energy*, 2012, **37**, 3403–3414.
- 10 B. C. Eigenbrodt and R. A. Walker, *Spectroscopy*, 2014, **29**, 24–30.
- 11 X. Li, M. Liu, S. Y. Lai, D. Ding, M. Gong, J. P. Lee, K. S. Blinn, Y. Bu, Z. Wang, L. A. Bottomley, F. M. Alamgir and M. Liu, *Chem. Mater.*, 2015, **27**, 822–828.
- 12 S. C. DeCaluwe, G. S. Jackson, R. L. Farrow, A. H. McDaniel, F. El Gabaly, K. F. McCarty, S. Nie, M. A. Linne, H. Bluhm, J. T. Newberg, Z. Liu and Z. Hussain, *Solid State Ionic Devices 6-Nanoionics - 214th ECS Meeting*, Honolulu, HI, 2008.
- 13 M. Yang, E. Bucher and W. Sitte, *J. Power Sources*, 2011, **196**, 7313–7317.
- 14 B. Bozzini, M. Amati, L. Gregoratti, C. Mele, M. K. Abyaneh, M. Prasciolu and M. Kiskinova, *Electrochem. Commun.*, 2012, **24**, 104–107.
- 15 Y. Yu, B. Mao, A. Geller, R. Chang, K. Gaskell, Z. Liu and B. W. Eichhorn, *Phys. Chem. Chem. Phys.*, 2014, **16**, 11633–11639.
- 16 F. Zaera, *Chem. Soc. Rev.*, 2014, **43**, 7624–7663.
- 17 C. Lamberti, A. Zecchina, E. Groppo and S. Bordiga, *Chem. Soc. Rev.*, 2010, **39**, 4951–5001.
- 18 J. Ryzkowski, *Catal. Today*, 2001, **68**, 263–381.
- 19 E.-M. Köck, M. Kogler, R. Pramsoler, B. Klötzer and S. Penner, *Rev. Sci. Instrum.*, 2014, **85**, 084102.
- 20 E. M. Kock, M. Kogler, T. Bielez, B. Klotzer and S. Penner, *J. Phys. Chem. C*, 2013, **117**, 17666–17673.
- 21 T. Murai, K. Yashiro, A. Kaimai, T. Otake, H. Matsumoto, T. Kawada and J. Mizusaki, *30th Symposium on Solid State Ionics in Japan*, 2005, **176**, 2399–2403.
- 22 J. D. Kirtley, D. A. Steinhurst, J. C. Owrutsky, M. B. Pomfret and R. A. Walker, *Phys. Chem. Chem. Phys.*, 2014, **16**, 227–236.
- 23 F. C. Meunier, A. Goguet, C. Hardacre, R. Burch and D. Thompsett, *J. Catal.*, 2007, **252**, 18–22.
- 24 F. C. Meunier, D. Reid, A. Goguet, S. Shekhtman, C. Hardacre, R. Burch, W. Deng and M. Flytzani-Stephanopoulos, *J. Catal.*, 2007, **247**, 277–287.



- 25 D. Tibiletti, F. C. Meunier, A. Goguet, D. Reid, R. Burch, M. Boaro, M. Vicario and A. Trovarelli, *J. Catal.*, 2006, **244**, 183–191.
- 26 F. C. Meunier, D. Tibiletti, A. Goguet and R. Burch, *Oil Gas Sci. Tech.*, 2006, **61**, 497–502.
- 27 G. Jacobs, P. M. Patterson, L. Williams, E. Chenu, D. Sparks, G. Thomas and B. H. Davis, *Appl. Catal.*, A, 2004, **262**, 177–187.
- 28 E. Chenu, G. Jacobs, A. C. Crawford, R. A. Keogh, P. M. Patterson, D. E. Sparks and B. H. Davis, *Appl. Catal.*, B, 2005, **59**, 45–56.
- 29 G. Jacobs, U. M. Graham, E. Chenu, P. M. Patterson, A. Dozier and B. H. Davis, *J. Catal.*, 2005, **229**, 499–512.
- 30 T. Tabakova, F. Boccuzzi, M. Manzoli and D. Andreeva, *Appl. Catal.*, A, 2003, **252**, 385–397.
- 31 T. Shido and Y. Iwasawa, *J. Catal.*, 1993, **141**, 71–81.
- 32 G. Jacobs, E. Chenu, P. M. Patterson, L. Williams, D. Sparks, G. Thomas and B. H. Davis, *Appl. Catal.*, A, 2004, **258**, 203–214.
- 33 F. C. Meunier, A. Goguet, S. Shekhtman, D. Rooney and H. Daly, *Appl. Catal.*, A, 2008, **340**, 196–202.
- 34 X. Lu, P. W. Faguy and M. Liu, *J. Electrochem. Soc.*, 2002, **149**, A1293–A1298.
- 35 M. Kogler, E. M. Kock, T. Bielz, K. Pfaller, B. Klotzer, D. Schmidmair, L. Perfler and S. Penner, *J. Phys. Chem. C*, 2014, **118**, 8435–8444.
- 36 S. Hilaire, X. Wang, T. Luo, R. J. Gorte and J. Wagner, *Appl. Catal.*, A, 2001, **215**, 271–278.
- 37 P. Vernoux, L. Lizarraga, M. N. Tsampas, F. M. Sapountzi, A. De Lucas-Consuegra, J. L. Valverde, S. Souentie, C. G. Vayenas, D. Tsiplakides, S. Balomenou and E. A. Baranova, *Chem. Rev.*, 2013, **113**, 8192–8260.
- 38 D. L. Hoang and H. Lieske, *Catal. Lett.*, 1994, **27**, 33–42.
- 39 B. Scherrer, M. V. F. Schlupp, D. Stender, J. Martynczuk, J. G. Grolig, H. Ma, P. Kocher, T. Lippert, M. Prestat and L. J. Gauckler, *Adv. Funct. Mater.*, 2013, **23**, 1957–1964.
- 40 S. Chansai, R. Burch, C. Hardacre, J. Breen and F. Meunier, *J. Catal.*, 2011, **281**, 98–105.
- 41 S. Chansai, R. Burch and C. Hardacre, *J. Catal.*, 2012, **295**, 223–231.

