

# Chem Soc Rev

Chemical Society Reviews

rsc.li/chem-soc-rev



ISSN 0306-0012

**TUTORIAL REVIEW**

Chusen Huang, He Tian, Juyoung Yoon,  
Jonathan L. Sessler, Tony D. James *et al.*  
Förster resonance energy transfer (FRET)-based  
small-molecule sensors and imaging agents



Cite this: *Chem. Soc. Rev.*, 2020, **49**, 5110

Received 31st March 2020

DOI: 10.1039/c9cs00318e

[rsc.li/chem-soc-rev](http://rsc.li/chem-soc-rev)

## Förster resonance energy transfer (FRET)-based small-molecule sensors and imaging agents

Luling Wu,<sup>id</sup><sup>ab</sup> Chusen Huang,<sup>id</sup><sup>\*ab</sup> Ben P. Emery,<sup>id</sup><sup>b</sup> Adam C. Sedgwick,<sup>id</sup><sup>c</sup> Steven D. Bull,<sup>id</sup><sup>b</sup> Xiao-Peng He,<sup>id</sup><sup>d</sup> He Tian,<sup>id</sup><sup>\*d</sup> Juyoung Yoon,<sup>id</sup><sup>\*e</sup> Jonathan L. Sessler<sup>id</sup><sup>\*c</sup> and Tony D. James<sup>id</sup><sup>\*ab</sup>

In this tutorial review, we will explore recent advances in the construction and application of Förster resonance energy transfer (FRET)-based small-molecule fluorescent probes. The advantages of FRET-based fluorescent probes include: a large Stokes shift, ratiometric sensing and dual/multi-analyte responsive systems. We discuss the underlying energy donor–acceptor dye combinations and emphasise their applications for the detection or imaging of cations, anions, small neutral molecules, biomacromolecules, cellular microenvironments and dual/multi-analyte responsive systems.

### Key learning points

1. The major classes of fluorophores that can act as donors or acceptors in a FRET combination.
2. A focus on biological applications, including sensing and imaging of cellular environments. However, the understanding we hope to impart could be applied to the development of any new FRET-based sensing system.
3. The construction of FRET-based systems where the acceptors are quenchers. Such combinations are typically found in enzyme-based sensor systems.
4. The design and construction of dual/multiple-responsive FRET-based systems.

## Introduction

Fluorescent sensors have been widely applied in diverse fields, such as biology, physiology, medicine, and pharmacology. They have also been the subject of intense research interest on the part of many chemists and biologists. Fluorescent sensor-based detection methods possess many advantageous features, such as simplicity, low cost, high sensitivity, facile adaptation to automated analysis, an ability to support spatially resolved

imaging, and provide for diverse signal output modes. More broadly, fluorescent sensors offer a unique route to detecting biologically and/or environmentally important analytes and can help to uncover physiological and pathological functions of these analytes.<sup>1</sup> Within the cadre of fluorescent sensors, those based on Förster resonance energy transfer (FRET) involving changes in the electronic interactions between a donor and an acceptor, have seen wide applicability.<sup>2,3</sup> Particularly, FRET-based small-molecule probes used as chemosensors and imaging agents are often the chosen detection method for biological applications due to their fast uptake by cells, the non-destructive visualisation techniques whose use they permit, and the potential for *in situ* detection with little interference to the structure–function of key biomacromolecules, and their readily tuned structural features.<sup>2,3</sup>

The term FRET is named after Theodor Förster, who proposed an equation to quantify the electronic excitation transfer efficiency from an energy donor to acceptor in 1948.<sup>4</sup> Förster was a theoretical physicist by training but devised his theory while working at the Max Planck Institute for Physical Chemistry in Göttingen. FRET is a process of non-radiative energy transfer through long-range dipole–dipole interactions between the donor–acceptor pair. Upon photoexcitation, the electronic excitation energy of the donor in its excited state can be transferred to the acceptor in its ground state. When the donor and acceptor are

<sup>a</sup> The Education Ministry Key Laboratory of Resource Chemistry, Shanghai Key Laboratory of Rare Earth Functional Materials, and Shanghai Municipal Education Committee Key Laboratory of Molecular Imaging Probes and Sensors, Department of Chemistry, Shanghai Normal University, 100 Guilin Road, Shanghai 200234, China. E-mail: [huangcs@shnu.edu.cn](mailto:huangcs@shnu.edu.cn)

<sup>b</sup> Department of Chemistry, University of Bath, Bath, BA2 7AY, UK. E-mail: [t.d.james@bath.ac.uk](mailto:t.d.james@bath.ac.uk)

<sup>c</sup> Department of Chemistry, The University of Texas at Austin, 105 E 24th Street A5300, Austin, 78712-1224, USA. E-mail: [ssessler@cm.utexas.edu](mailto:ssessler@cm.utexas.edu)

<sup>d</sup> Key Laboratory for Advanced Materials and Joint International Research Laboratory of Precision Chemistry and Molecular Engineering, Feringa Nobel Prize Scientist Joint Research Center, School of Chemistry and Molecular Engineering, East China University of Science and Technology, 130 Meilong Rd., Shanghai 200237, China. E-mail: [tianhe@ecust.edu.cn](mailto:tianhe@ecust.edu.cn)

<sup>e</sup> Department of Chemistry and Nano Science, Ewha Womans University, Seoul 120-750, Korea. E-mail: [jyoon@ewha.ac.kr](mailto:jyoon@ewha.ac.kr)



both fluorophores, FRET is often referred to “fluorescence resonance energy transfer” (Scheme 1).

As a general rule, molecules being considered for use in FRET applications should have the following prerequisites: (1) The donor–acceptor pair should be positioned in proximity of each other (typically 10–100 Å), a requirement that helps rationalise the distance dependency of FRET and its efficiency.

(2) The emission spectra of the donor should overlap with the absorption spectra of the acceptor. (3) The donor emission moment, the acceptor absorption moment, and their separation vector must be in a favorable mutual orientation.

Because they rely on a distance-dependent energy transfer process, FRET-based fluorescent probes typically display an inherent sensitivity to the environment and probe structure



**From left to right: Luling Wu, Tony D. James, Steven D. Bull and Adam C. Sedgwick**

*the supervision of Prof. Jonathan L. Sessler at The University of Texas in Austin. His research interests are in the realms of stimuli-responsive materials, molecular imaging agents, and theranostic agents.*

*Luling Wu received his MSc in 2017 from Shanghai Normal University. In 2017, he was awarded scholarships by the China Scholarship Council (CSC) and The University of Bath to carry out research towards a PhD at The University of Bath.*

*Tony D. James is a Professor at The University of Bath and Fellow of the Royal Society of Chemistry. He was awarded the Daiwa-Adrian Prize (2013), Inaugural CASE Prize (2015), MSMLG Czarnik Award (2018) and currently holds a prestigious Royal Society Wolfson Research Merit Award (2017–2022).*

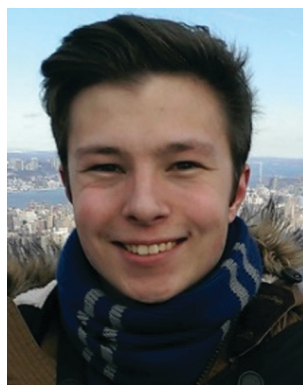
*Steven D. Bull is a Professor of Organic Chemistry at The University of Bath. He was awarded a Royal Society Industrial Fellowship (2002–2006), the Daiwa-Adrian Prize (2013) and University of Bath prize for outstanding PhD supervision (2013).*

*Adam C. Sedgwick is a postdoctoral research fellow working under*



**Chusen Huang**

*Chusen Huang is an Associate Professor at Shanghai Normal University (SHNU). In 2017, he was awarded a Humboldt Research Fellowship to carry out his Postdoctoral Research with Prof. Werner Nau at Jacobs University Bremen (2017–2019). His research focuses on chemical biotechnology and synthesis of new supramolecular ring structures.*



**Ben P. Emery**

*Ben P. Emery completed his undergraduate master's degree in chemistry for Drug Discovery at The University of Bath in 2017. In 2017 he began his PhD in synthetic organic chemistry under the supervision of Prof. Steven D. Bull.*



**Xiao-Peng He**

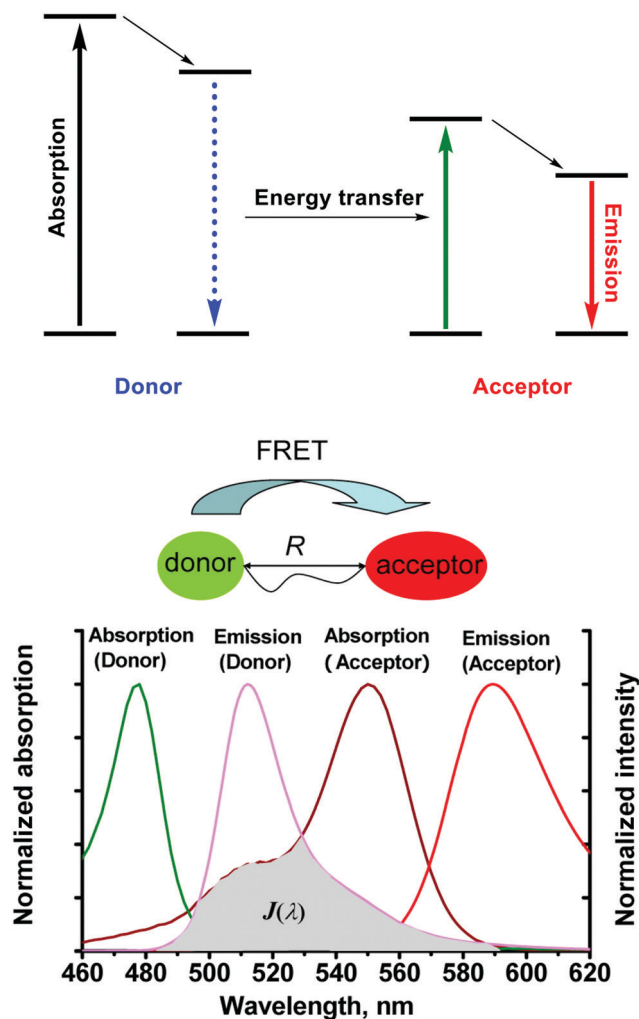
*Xiao-Peng He is professor at Feringa Nobel Prize Scientists Research Center, School of Chemistry and Molecular Engineering, ECUST. He obtained his BSc (2006) and PhD (2011) from ECUST. He completed a co-tutored doctoral program at ENS Cachan (France) (2008 to 2009) and postdoctoral research with Kaixian Chen (SIMM, CAS) from 2011 to 2013 at ECUST.*



**He Tian**

*He Tian was born in China in 1962. In 1999, he was appointed Cheung Kong Distinguished Professor by the Education Ministry of China. In 2011, he was selected as a member of the Chinese Academy of Science. He has been listed by Thomson Reuters as a Highly Cited Researcher in Chemistry (2014) and Materials Science (2014–2019).*





**Scheme 1** The mechanism of Förster resonance energy transfer (FRET).  $R$  is the distance between the energy donor and acceptor,  $J(\lambda)$  represents the degree of spectral overlap between the donor emission and the acceptor absorption. Reproduced with permission from ref. 3 (*Acc. Chem. Res.*, 2013, **46**, 1462–1473). Copyright (2013) American Chemical Society.

that has made them attractive for use in a wide range of biological studies. For instance, they have enabled explorations

of various biomacromolecules and biological phenomena where function and events can lead to changes in molecular proximity or, more precisely, donor–acceptor overlap.

The general strategy of designing FRET-based small-molecule fluorescent probes is anchoring the donor–acceptor pair in close proximity to one another in one single system or molecule. A reactive unit that can be used as a specific recognition group is then introduced synthetically to construct the final FRET system. When the FRET system or molecules are exposed to specific target analytes, the FRET process is initiated or prevented. As a result, a change in fluorescence signal can be observed, allowing for confirmation of the presence (or absence) of the target analytes.

To date, four common approaches have been used for the construction of FRET probes (Scheme 2). One approach involves alteration of the chemical structure of an acceptor from the non-fluorescent form to fluorescent form (Scheme 2a). Initially, there is relatively little overlap between the absorption band of the non-fluorescent acceptor and the emission band of the donor. After interaction between the non-fluorescent form of the acceptor and the target analyte, the absorption band of the acceptor is shifted such that it increases overlap with the emission band of the donor, facilitating FRET.

This review will summarise recent progress in the development of small-molecule FRET-based chemosensors and imaging agents. Since to many end users, these systems operate as a “black box”, we will discuss how they work, what they can do, and where they can be applied. The goal is to help readers gain insight into the importance of this vibrant area and understand both the opportunities it affords, its basis for action, and merits and demerits relative to the sensing field as a whole. Specifically, this review will describe the design principles required for the construction of FRET-based small-molecule probes and provide a basic tutorial on how they work. A number of donor–acceptor combinations used to prepare FRET scaffolds will be detailed and their utility linked to recent leading literature references since 2008. Potential biological applications of FRET-based small-molecule probes will also be highlighted. Then, this review will include personal perspectives from the authors and insights into how and where FRET-based fluorescent sensors are important. Finally, key challenges that need



**Juyoung Yoon**

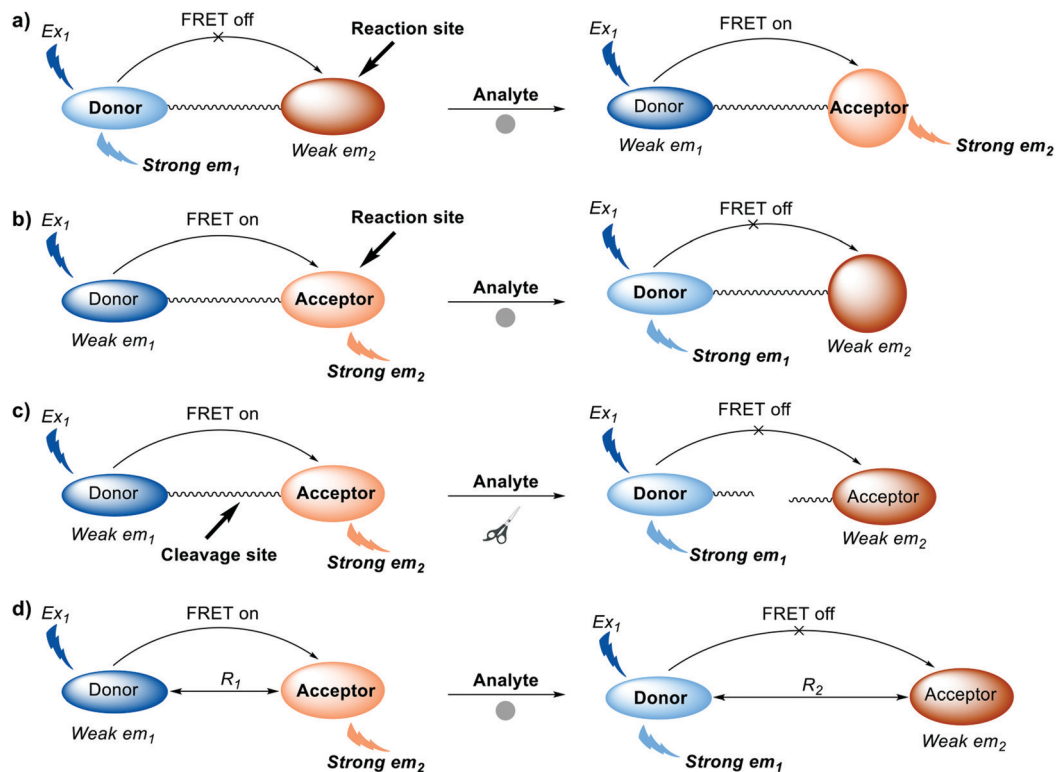
*Juyoung Yoon received his PhD (1994) from The Ohio State University. After completing post-doctoral research at UCLA and at Scripps Research Institute, he joined the faculty at Silla University in 1998. In 2002, he moved to Ewha Womans University, where he is currently a Distinguished Professor of the Department of Chemistry and Nano Science. Department of Chemistry and Nano Science, Ewha Womans University, Seoul 120-750, Korea.*



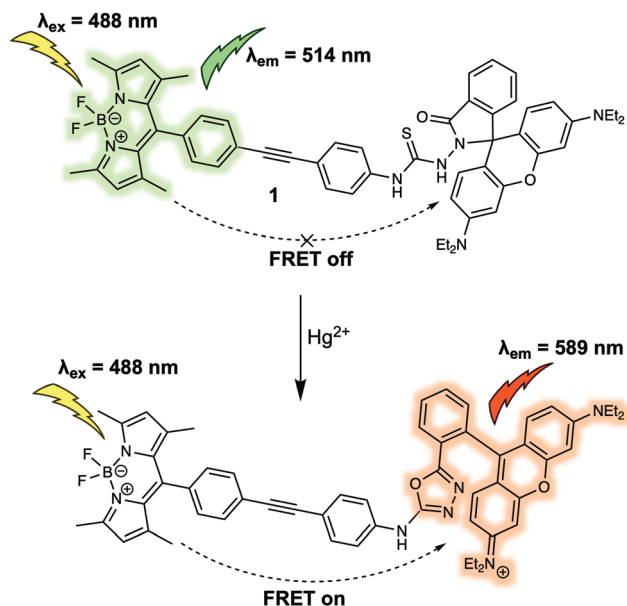
**Jonathan L. Sessler**

*Jonathan L. Sessler received a BSc degree in Chemistry in 1977 from the University of California, Berkeley. He obtained his PhD from Stanford University in 1982. After postdoctoral stays in Strasbourg and Kyoto, he accepted a position as an Assistant Professor of Chemistry at the University of Texas at Austin, where he is currently a Doherty-Welch Chair.*





**Scheme 2** Diagrammatic representation of the four common strategies used to generate FRET-based small-molecule fluorescent probes. (a) Turn-on FRET systems: alteration of the chemical structure of an acceptor from the non-fluorescent form. (b) Turn-off FRET systems: alteration of the chemical structure of an acceptor from the fluorescent form to the non-fluorescent form. (c) Turn-off FRET systems: chemical or enzymatic cleavage of the covalent linker between donor and acceptor. (d) Turn-off FRET systems: intermolecular dissociation of FRET donor and acceptor. Where Ex is excitation wavelength and em is maximum emission wavelength.  $R_1$  and  $R_2$  represent two different distances between energy donor and energy acceptor. Note: donor and acceptor are fluorophores.



**Fig. 1** BODIPY/rhodamine (energy donor/acceptor)-based FRET fluorescent probe **1** used for  $\text{Hg}^{2+}$  sensing.

to be overcome for the future development of FRET-based systems will be outlined.

## FRET-based sensors for cations

Metal cations play numerous roles in regulating various biological process and many are recognised environmental pollutants. Many fluorescent sensors have been developed for sensing cations in recent decades. Compared to other commonly used design strategies for the detection of cations, such as photoinduced electron transfer (PeT) and intramolecular charge transfer (ICT), FRET-based fluorescent sensors exhibit properties ideal for ratiometric sensing. They also benefit from facile structural design. In this section some representative FRET-based fluorescent sensors are showcased to illustrate the thought processes used in the construction of FRET-based sensors. The coverage is not exhaustive; however, it is hoped that these examples will help the reader access the primary literature with a greater level of understanding.

Mercury ions ( $\text{Hg}^{2+}$ ) can cause serious damage to the central nervous and endocrine systems. Therefore, the first example we discuss is the FRET-based fluorescent probe **1** for the detection of  $\text{Hg}^{2+}$  (Fig. 1).<sup>5</sup> Probe **1** was constructed by covalently linking BODIPY and rhodamine as a fluorescent donor-acceptor system to generate a FRET pair. Upon interaction with  $\text{Hg}^{2+}$ , the thiosemicarbazide moiety present in **1** irreversibly cyclised to form a 1,3,4-oxadiazole. This caused the spirolactam of rhodamine to ring open, allowing FRET to occur. As prepared, **1** exhibited a



maximum emission at 514 nm upon excitation at 488 nm, which was ascribed to the emission profile of the fluorescent donor BODIPY. Such an observation was consistent with the design expectation for **1**, namely that prior to interaction with  $\text{Hg}^{2+}$ , no FRET occurred. On the other hand, addition of  $\text{Hg}^{2+}$  caused a maximum absorption at 560 nm to appear and a concurrent reduction in the BODIPY-based fluorescence emission at 514 nm and an increase in the emission intensity at 589 nm. Such observations were consistent with the “turning on” of a FRET process, presumably resulting from  $\text{Hg}^{2+}$ -promoted formation of the oxadiazole and induced ring opening of the spirolactam group of the rhodamine subunit. The FRET efficiency of the product was calculated to be 99%. Additionally, **1** could be shown to detect  $\text{Hg}^{2+}$  down to ppb (parts per billion) in mixed aqueous media ( $\text{C}_2\text{H}_5\text{OH}/\text{H}_2\text{O}$  (8:2); pH 7.0). Probe **1** was further used for detection of  $\text{Hg}^{2+}$  in MCF-7 cancer cells *via* ratiometric fluorescent imaging, wherein the ratio of the two emission maxima, rather than the overall change in intensity, was monitored.

Poisonous cadmium ions ( $\text{Cd}^{2+}$ ) may enter the body through the consumption of contaminated food, water, or inhalation of cigarette smoke. The exposure to  $\text{Cd}^{2+}$  can cause renal dysfunction, mutations, calcium metabolism disorders, as well as Itai-itai disease. In 2015, Goswami *et al.* developed probe **2** bearing the quinoline-benzothiazole based donor and rhodamine-based acceptor, and demonstrated its use in  $\text{Cd}^{2+}$  sensing (Fig. 2).<sup>6</sup> Upon excitation at 360 nm, **2** displayed a strong emission at 470 nm that was ascribed to the emission of the quinoline-benzothiazole fluorophore. However, no emission peak at around 585 nm was present, which led the authors to suggest that the rhodamine moiety existed predominantly in its spirolactam form. Upon addition of  $\text{Cd}^{2+}$ , a new absorption peak at 565 nm developed. This was taken as an indication that ring opening of the spirolactam of the rhodamine moiety occurred, which in turn allowed for FRET from the quinoline-benzothiazole to the rhodamine moiety, shifting the emission to 585 nm. The emission intensity ratio ( $I_{585}/I_{470}$ ) displayed a linear relationship with increasing  $\text{Cd}^{2+}$  concentration (from 0 to 9.5  $\mu\text{M}$ ). The proposed binding mode was further supported by a single-crystal X-ray analysis of the 2- $\text{Cd}^{2+}$  complex, which revealed a six-coordinate  $\text{Cd}^{2+}$  centre. The design strategy of **2** resulted in high selectivity towards  $\text{Cd}^{2+}$  even in the presence of other potential interferants, such as  $\text{Zn}^{2+}$ ,  $\text{Cr}^{3+}$ , and  $\text{Pb}^{2+}$ . Probe **2** was used to detect  $\text{Cd}^{2+}$  in

live RAW264.7 cells through ratiometric fluorescence cell imaging. It was also developed into a portable qualitative test kit using TLC plates soaked with probe **2**, which allowed for the rapid sensing of  $\text{Cd}^{2+}$ .

Both **1** and **2** are typical FRET systems that rely on a rhodamine dye as the energy acceptor. In these systems, ring opening of the spirolactam portion of the rhodamine dye is controlled by the coordination of heavy metal cations to produce a turn-on FRET corresponding to the emission of rhodamine, something made possible because of the spectral overlap between the absorption of the fluorescence acceptor and the emission of the donor. The turn-off FRET design strategy has been widely used in FRET-based systems for the detection of various cations in biological systems. For instance, Chang *et al.* reported a new FRET system (probe **3**) for the detection of elevated  $\text{Fe}^{2+}$  levels in living cells.<sup>7</sup> Despite its importance in numerous regulatory systems involved in cellular iron homeostasis, the real time monitoring of  $\text{Fe(II)}/\text{Fe}^{2+}$  concentrations in live biological systems remains a largely unsolved problem in part because of the potent fluorescence quenching ability of  $\text{Fe}^{2+}$ . Many current approaches employ fluorescence on-off systems, many of which fail to provide critical spatiotemporal information. Probe **3** was designed to overcome these limitations. It was constructed by attaching a 5-aminomethyl fluorescein (5-AMF) donor and a cyanine 3 (Cy3) acceptor to an endoperoxide core that is known to be an  $\text{Fe}^{2+}$  responsive trigger (Fig. 3). As prepared, **3** displayed maximum emissions at 515 and 556 nm, corresponding to the 5-AMF donor and Cy3 acceptor, respectively, when the probe was excited with 488 nm radiation. In this case, the default state of the probe is FRET on before addition of an analyte. Addition of  $\text{Fe}^{2+}$  resulted in an increased emission at 515 nm, corresponding to the emission of the 5-AMF donor, and a loss at emission at 556 nm was observed. This result could be rationalised by the  $\text{Fe}^{2+}$ -promoted cleavage of the endoperoxide core, resulting in the donor/acceptor pair being broken apart and the FRET process quenched. Probe **3** exhibited selectivity for  $\text{Fe}^{2+}$  over other metal cations such as  $\text{Fe}^{3+}$ ,  $\text{Cu}^{2+}$  and  $\text{Zn}^{2+}$ . It was then tested in cells. Firstly, exogenously induced changes in labile  $\text{Fe}^{2+}$  levels in HEK 293T cells were tracked using probe **3** by exploiting its ratiometric fluorescence imaging features. Then, endogenous changes in the labile  $\text{Fe}^{2+}$  concentrations in different cell types were tracked using **3**, leading the authors to suggest its potentially

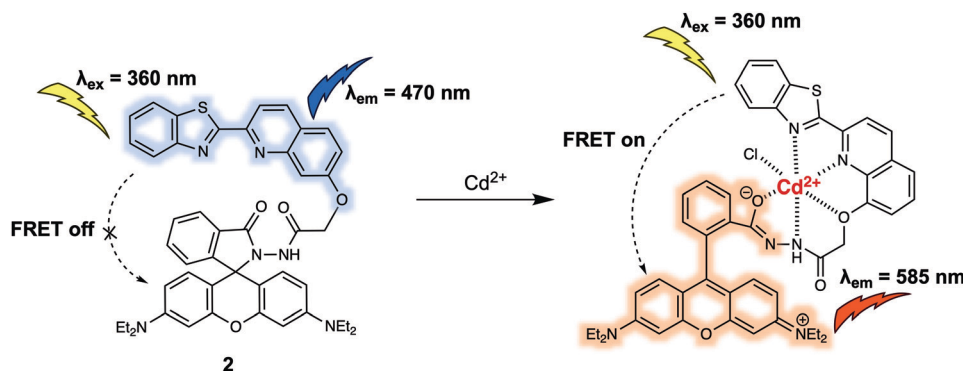


Fig. 2 Quinoline-benzothiazole/rhodamine (energy donor/acceptor)-based FRET probe **2** used for the ratiometric detection of  $\text{Cd}^{2+}$ .



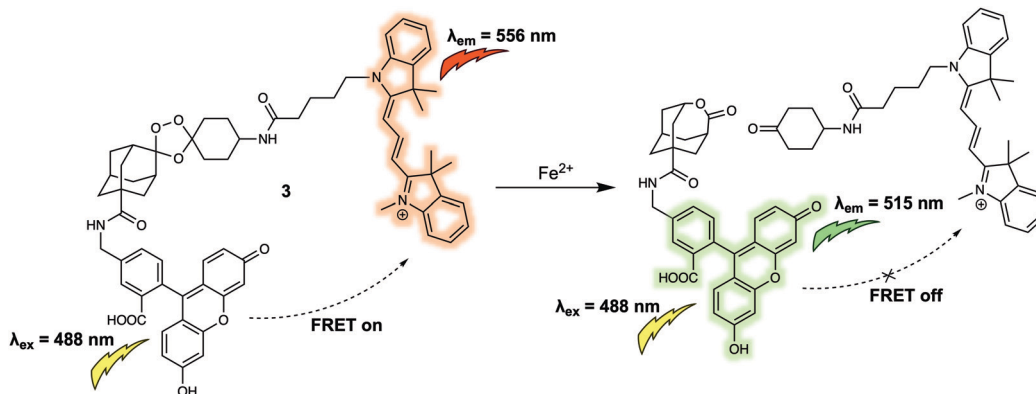


Fig. 3 5-Aminomethyl fluorescein/cyanine 3 (energy donor/acceptor)-based FRET fluorescent probe **3** that permits the ratiometric detection of  $\text{Fe}^{2+}$ .

generalisable utility for exploring the role of labile  $\text{Fe}^{2+}$  in biological systems.

Copper ions ( $\text{Cu}^+$ ) exist in labile pools, weakly bound to low-molecular weight ligands, which can control numerous transition metal signalling processes including neural communication and olfaction, lipolysis, rest-activity cycles, and kinase pathways crucial in tumour development. A FRET platform (probe **4**) for the detection of labile  $\text{Cu}^+$  was recently reported.<sup>8</sup> In probe **4**, fluorescein and rhodamine moieties are used as the energy donor and acceptor respectively. These subunits were anchored to a tris[(2-pyridyl)methyl]amine (TPA) group that was designed to serve a dual roles as the linker and as the selective recognition site for  $\text{Cu}^+$  (Fig. 4). As prepared, probe **4** displayed emissions at 526 and 576 nm corresponding to the fluorescein and rhodamine when excited at 458 nm, respectively. The presence of emission at 576 nm was taken as evidence of energy transfer from the excited fluorescein moiety to the rhodamine subunit present in **4**. Upon addition of  $\text{Cu}^+$ , a strong emission at 526 nm was observed whose increase in intensity over time was accompanied by a reduction in the fluorescence intensity at 576 nm. On this basis it was proposed that the FRET process was inhibited in the presence of  $\text{Cu}^+$  as the result of fragmentation of the fluorescein/rhodamine FRET pair. Support for this proposed mechanism of FRET quenching came from LC-MS analyses that confirmed the appearance of separate fluorescein

methyl ester and rhodamine-TPA fragments in solution after treatment with  $\text{Cu}^+$  under aerobic conditions, because, the  $\text{Cu}^+$  promotes oxidative cleavage of the benzylic ether C–O bond of the TPA group within the probe. The fluorescence intensity at 526 vs. 576 nm ( $I_{526}/I_{576}$ ) displayed a linear dose-response towards  $\text{Cu}^+$  (from 0.01 to 1  $\mu\text{M}$ ). Consistent with the excellent performance of **4** in detecting  $\text{Cu}^+$  in aqueous buffered solution, labile cellular  $\text{Cu}^+$  could be tracked *via* ratiometric fluorescence imaging. Specifically, dynamic changes in the labile  $\text{Cu}^+$  concentrations under the stimulus of reagents could be monitored directly, an ability that could prove useful in elucidating the potential relationships between labile  $\text{Cu}^+$  homeostasis and endogenous central redox mediators in the cell. It is known, for instance, that glutathione (GSH) can increase and/or reduce labile  $\text{Cu}^+$  pools in a GSH-linked manner subject to total GSH levels, in addition to GSH/GSSG redox ratios. In addition, **4** may have a role to play as a chemical visualisation tool useful in exploring the connections within labile  $\text{Cu}^+$  pools, GSH metabolism, and oncogenic transformation.

## FRET-based sensors for anions

Similar to cations, anions are crucial for a wide variety of biological processes. For instance, hypochlorite ( $\text{ClO}^-$ ) has high

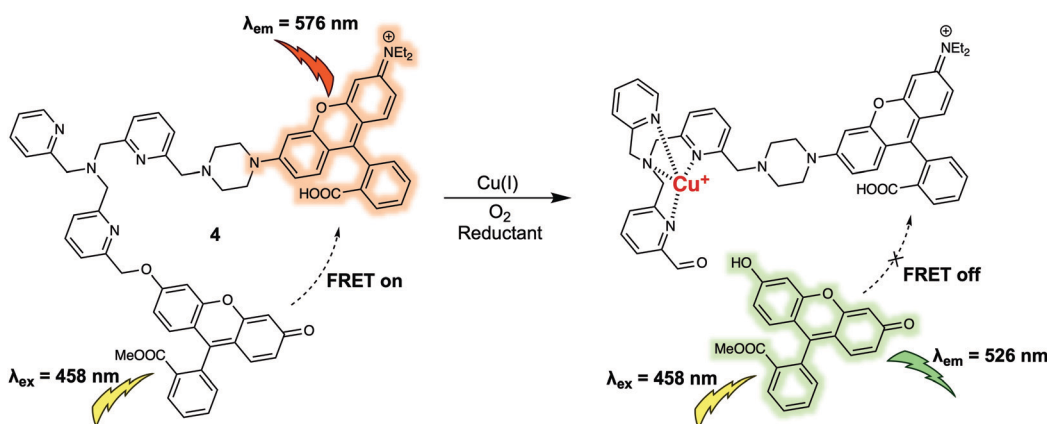


Fig. 4 Fluorescein and rhodamine (energy donor/acceptor)-based FRET fluorescent probe **4** used for the ratiometric detection of  $\text{Cu}^+$ .



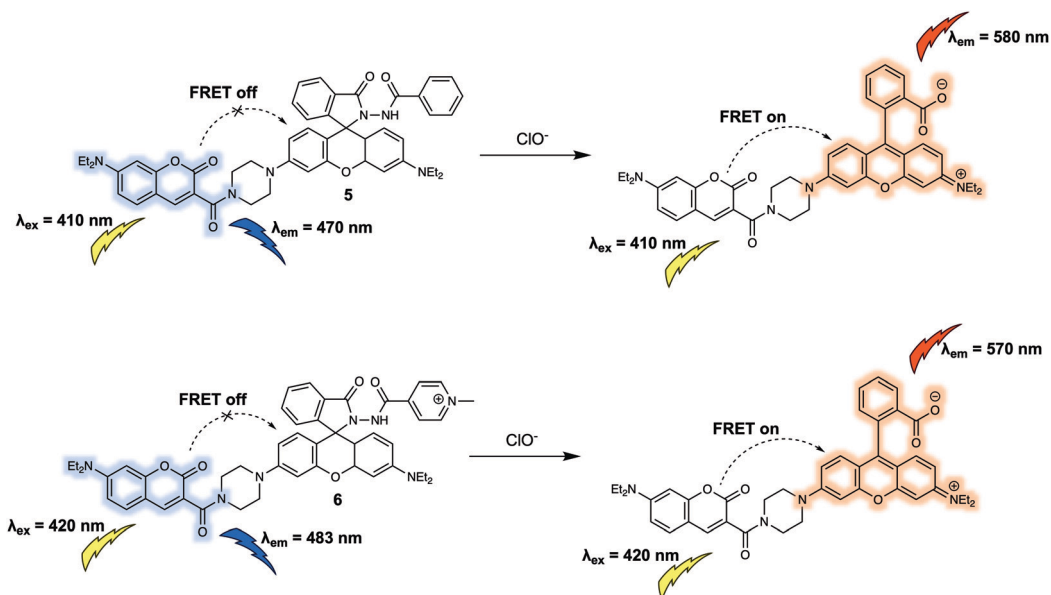


Fig. 5 Coumarin/rhodamine (energy donor/acceptor)-based FRET fluorescent probes **5** and **6** developed for the ratiometric detection of  $\text{ClO}^-$ .

reactivity towards numerous biomolecules including amino acids, nucleotides, carbohydrates, and lipids *etc.* which, if unregulated, can contribute to a variety of diseases. Additionally, as a reactive oxygen species (ROS),  $\text{ClO}^-$  works as a powerful microbicidal agent towards invading microbes. Therefore, the development of suitable chemical tools for monitoring dynamic changes in biologically relevant concentrations of  $\text{ClO}^-$  in living systems is likely to aid the exploration of  $\text{ClO}^-$  related biological processes. In 2014, Zhao and colleagues designed a new FRET sensor (probe **5**) for the ratiometric detection of  $\text{ClO}^-$ .<sup>9</sup> Probe **5** was constructed using a coumarin/rhodamine dyad as the FRET report pair, and a diacylhydrazine group coupled to the rhodamine moiety as the specific recognition site for  $\text{ClO}^-$  (Fig. 5). In the absence of analyte, **5** displayed an emission at 470 nm characteristic of coumarin when excited at 410 nm. This fluorescence behaviour was ascribed to the predominant existence of the leuco-spirolactam form of the rhodamine moiety of the probe. Addition of  $\text{ClO}^-$  to **5** was found to induce ring opening of rhodamine, and concurrent selective cleavage of the diacylhydrazine to afford the carboxylic acid. As a result of the increased overlap between the absorption band of the ring-opened rhodamine moiety and emission of the coumarin part, a strong fluorescence emission centred at 580 nm was seen upon excitation at 410 nm. This was ascribed to a FRET process. Analysis of the fluorescence intensity ratio ( $I_{580}/I_{470}$ ), facilitated the quantitative detection of  $\text{ClO}^-$  with a linear range from 170 to 230  $\mu\text{M}$  in  $\text{Na}_2\text{HPO}_4$  (0.1 M, pH = 8):DMF (6:4, v/v) solution. To further improve the water solubility and achieve mitochondrial localisation in live cells, the phenyl group in **5** was replaced synthetically by a quaternized pyridine moiety.<sup>10</sup> This gave **6**, which exhibited a fluorescent response towards  $\text{ClO}^-$  in buffered aqueous solution that was similar to that of **5**. Additionally, **6** was found to localise in the mitochondria of RAW264.7 cells. Changes in the endogenous production of  $\text{ClO}^-$  stimulated by lipopolysaccharide (LPS) in

RAW264.7 cells could be tracked *via* ratiometric fluorescence imaging using **6**; moreover, the fluorescence signals produced in this way proved consistent with mitochondrial targeting.

Peroxynitrite ( $\text{ONOO}^-$ ) is an important reactive nitrogen species (RNS) that plays critical roles in living systems.<sup>11</sup> Excessive accumulation of  $\text{ONOO}^-$  can cause adverse effects to organisms due to its high reactivity towards various biomolecules. For instance, peroxynitrite has been linked to many pathological conditions including chronic inflammation, Alzheimer's disease, cancer, and autoimmune diseases. In 2016, Qian *et al.* designed a new FRET platform (probe **7**) for the selective detection of  $\text{ONOO}^-$  (Fig. 6).<sup>12</sup> To create **7**, a Cy3/Cy5 dyad, designed to serve as the fluorescence energy donor and acceptor pair, respectively, were linked *via* an acetyl-piperazyl-hexanoyl linker. The proximity of the Cy3 and Cy5 cores in the parent structure facilitated FRET and enabled the probe to emit a strong fluorescence emission at 660 nm upon excitation at 530 nm. Upon addition of  $\text{ONOO}^-$ , the Cy5 moiety was selectively oxidised to its oxindole derivative, quenching the FRET process. This chemical transformation is shown in terms of the characteristic fluorescence emission of Cy3 at 560 nm increasing in intensity, while the fluorescence intensity at 660 nm is seen to undergo a commensurate decrease. The proposed cleavage-based mechanism of action was supported by mass spectrometric analyses, which confirmed the formation of the oxidised daughter product **8**. A linear relationship between the fluorescence intensity ratio ( $I_{560}/I_{660}$ ) and concentration of  $\text{ONOO}^-$  (0–700 nM) was observed in 0.1 M phosphate buffer (pH = 7.4, 0.2% DMF, v/v) solution. Probe **7** was then used as a ratiometric sensor for both exogenous and endogenous  $\text{ONOO}^-$  in RAW264.7 macrophages *via* fluorescence imaging. The intracellular fluorescence signal from **7** was found to be largely localised in the mitochondria, allowing the authors to suggest that it could be used as a chemical tool for exploring mitochondrial  $\text{ONOO}^-$  concentrations in living systems.



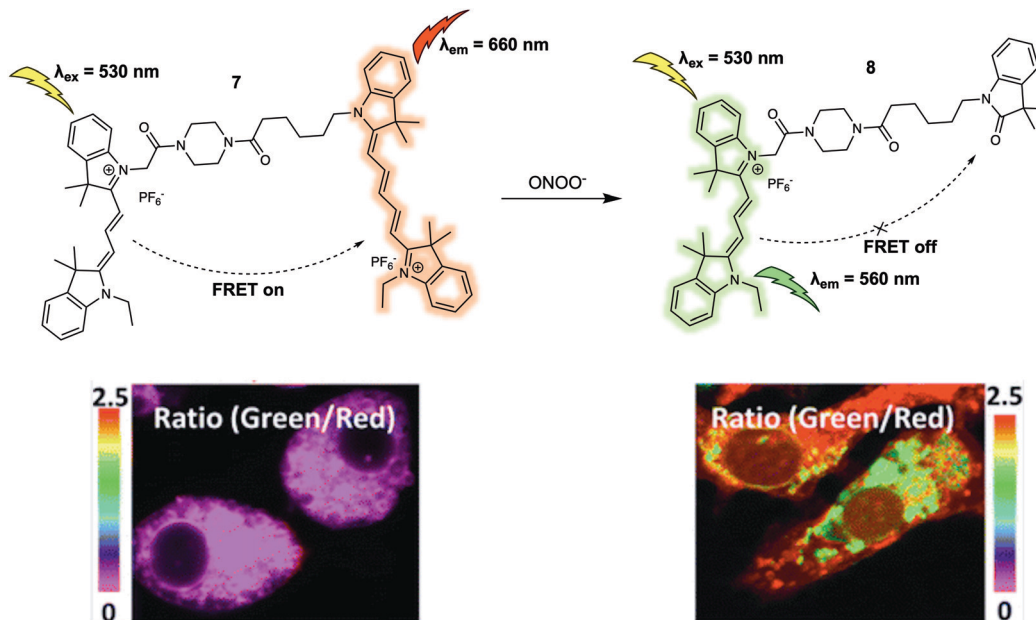


Fig. 6 Cy3/Cy5 (energy donor/acceptor)-based FRET fluorescent probe **7** developed for the ratiometric detection of  $\text{ONOO}^-$ . Also shown is the structure of its daughter product, **8**. Reproduced with permission from ref. 12 (*J. Am. Chem. Soc.*, 2016, **138**, 10778–10781). Copyright (2016) American Chemical Society.

Another example of a FRET-based probe for the ratiometric detection of  $\text{ONOO}^-$  is probe **10** (Fig. 7) designed by Yuan *et al.*<sup>13</sup> They took a screening approach and explored the sensitivity and selectivity of 19 commercially available or rationally synthesized dyes as putative sensors for  $\text{ONOO}^-$ . Based on their results, these authors suggested that the monomeric dye **9** was selectively oxidized by  $\text{ONOO}^-$  but was unreactive towards other ROS, such

as hypochlorous acid ( $\text{HOCl}$ ) and hydrogen peroxide ( $\text{H}_2\text{O}_2$ ). In addition, **9** exhibited relatively long wavelength fluorescence emission, enabling it to act as a good candidate as an energy acceptor in the construction of a FRET-based sensor system. After introducing a coumarin group as the energy donor, these researchers constructed the FRET probe **10**. As prepared, **10** displayed a strong emission at 651 nm and a weak emission at

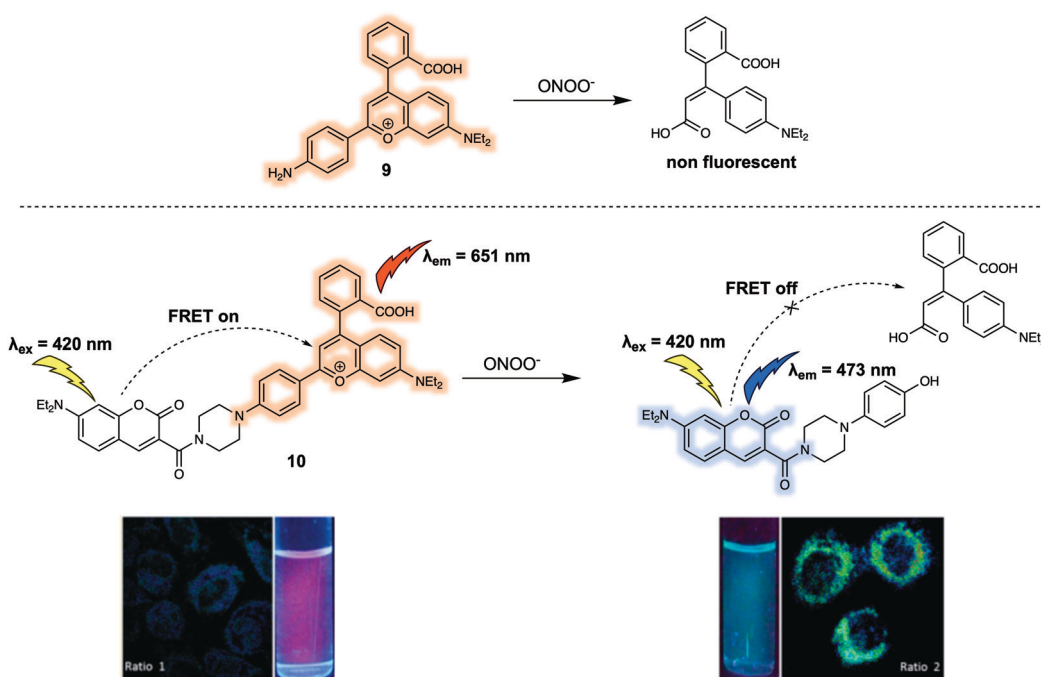


Fig. 7 FRET fluorescent probe **10** developed for the ratiometric detection of  $\text{ONOO}^-$ . Also shown is the structure of **9** upon which it was based. Reproduced with permission from ref. 13 (*J. Am. Chem. Soc.*, 2017, **139**, 285–292). Copyright (2016) American Chemical Society.



473 nm upon excitation at 420 nm, a finding considered consistent with a FRET process. The addition of ONOO<sup>-</sup> resulted in a decrease of the emission at 651 nm and concomitant increase in emission at 473 nm, characteristic of the free coumarin dye. The response of **10** towards ONOO<sup>-</sup> in PBS buffer (25 mM, cosolvent 30% ethanol) solution could be observed within 20 seconds. The detection limit was determined to be 11.3 nM on the basis of reading out the ONOO<sup>-</sup>-dependent ratiometric fluorescence signal ( $I_{473}/I_{651}$ ), which was taken as evidence that **10** would display high sensitivity in applications involving the quantitative detection of ONOO<sup>-</sup>. Probe **10** was then used for the ratiometric imaging of endogenous ONOO<sup>-</sup> concentrations in live HepG-2 and RAW264.7 cells. The dynamic changes in the endogenous ONOO<sup>-</sup> levels stimulated by LPS and IFN- $\gamma$  (interferon-gamma) were successfully tracked using **10** *via* ratiometric fluorescence imaging. The fluorescence signal proved to be strongly localised in the mitochondria, a finding attributed to the positive charge of the probe. Additionally, **10** could be used as a two-photon fluorescent probe. Upon excitation at 800 nm, fluorescence emission consistent with the response seen under single photon excitation at 405 nm was observed. These favourable attributes allowed **10** to be used for the detection of endogenous ONOO<sup>-</sup> in living hepatic tissue and for the observation of elevated peroxynitrite levels in the artificially inflamed leg tissues of live mice.

The sulfite (SO<sub>3</sub><sup>2-</sup>) and bisulfite (HSO<sub>3</sub><sup>-</sup>) anions constitute another important type class of negatively charged analytes that play recognised roles in the environment and in living systems. For instance, aqueous concentrations of HSO<sub>3</sub><sup>-</sup>/SO<sub>3</sub><sup>2-</sup> are directly related to the concentration of sulfur dioxide (SO<sub>2</sub>), which has been reported to be involved in febrile seizures associated with brain injury. In 2016, Zhao *et al.* reported the FRET probe **11** (Fig. 8) designed to permit the ratiometric detection of HSO<sub>3</sub><sup>-</sup>/SO<sub>3</sub><sup>2-</sup> in cancer cells.<sup>14</sup> In this probe, dansyl and hemicyanine fluorophores were used as the energy

donor and acceptor, respectively. When excited at 410 nm, probe **11** gave rise to an emission centred at 582 nm leading the authors to propose that it operated with a FRET efficiency of 95%. Treatment of **11** with NaHSO<sub>3</sub> (source of HSO<sub>3</sub><sup>-</sup>/SO<sub>3</sub><sup>2-</sup>) resulted in a decrease of emission intensity at 582 nm, accompanied by an increase in emission intensity centred at 530 nm. The sensing mechanism behind the efficacy of **11** was ascribed to nucleophilic addition of HSO<sub>3</sub><sup>-</sup>/SO<sub>3</sub><sup>2-</sup> to the conjugated alkene of the hemicyanine acceptor. This addition interrupts the  $\pi$ -conjugated system, leading to a reduced overlap between the absorption of the acceptor and emission of the donor, thus interfering with the FRET process. Having established that **11** could selectively detect HSO<sub>3</sub><sup>-</sup>/SO<sub>3</sub><sup>2-</sup> *via* the ratiometric fluorescence changes in solution, the probe was then used to successfully track exogenous HSO<sub>3</sub><sup>-</sup>/SO<sub>3</sub><sup>2-</sup> in live HeLa cells. Probe **11** was also shown to be capable of differentiating endogenous bisulfite in human liver cancer cells (HepG2 cells) and healthy human liver cells (L-02 cells). The distribution of the fluorescence signal was consistent with the probe being localised in the mitochondria. On this basis the authors concluded that **11** could potentially be used to investigate mitochondrial HSO<sub>3</sub><sup>-</sup>/SO<sub>3</sub><sup>2-</sup> concentrations in living systems.

In the same year, Yang and colleagues reported a new two-photon excited fluorescence resonance energy transfer (TP-FRET) strategy for the selective detection of HSO<sub>3</sub><sup>-</sup>/SO<sub>3</sub><sup>2-</sup>.<sup>15</sup> The 2-acetyl-6-dialkylaminonaphthalene (acedan) moiety, which could be used with two-photon excitation, was chosen as the energy donor and hemicyanine as the energy acceptor. As true for **11**, the alkene of the hemicyanine was designed to prove the reaction-based response site for HSO<sub>3</sub><sup>-</sup>/SO<sub>3</sub><sup>2-</sup>, whereas the positive charge was expected to promote localisation of **12** (Fig. 8) within the mitochondria of living cells. The major advantage of **12** lies in its ability to be excited at a much longer wavelength (*i.e.* 760 nm) than **11** due to the fact that it can be activated through two-photon excitation. This capability was expected to address the

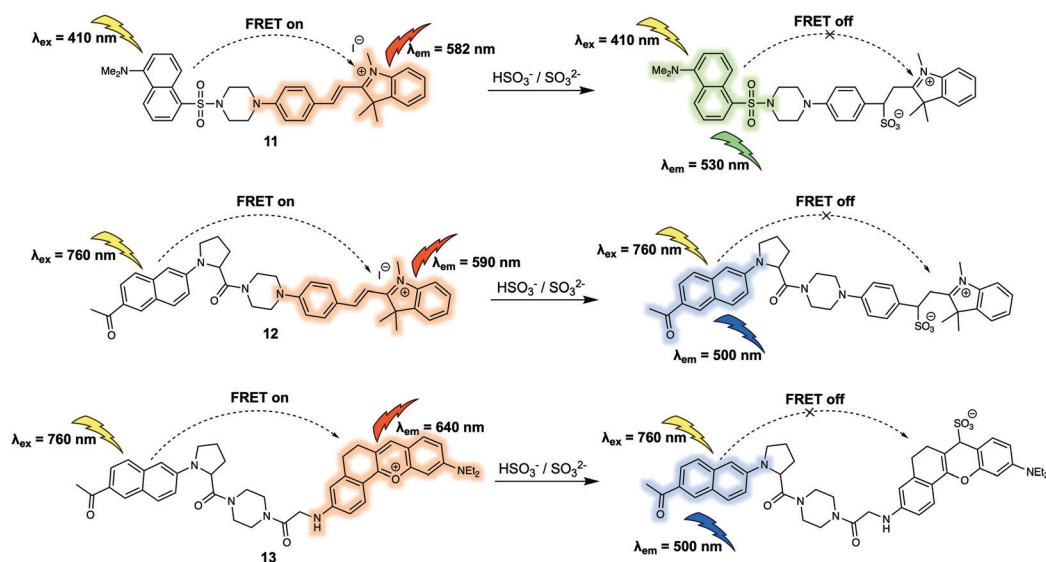


Fig. 8 FRET-based probes (**11**, **12** and **13**) developed for the ratiometric detection of HSO<sub>3</sub><sup>-</sup>/SO<sub>3</sub><sup>2-</sup>.



issue of background noise, while reducing cell damage and obviating concerns associated with poor tissue penetration. As expected, endogenous  $\text{HSO}_3^-/\text{SO}_3^{2-}$  generated by the reaction between  $\text{Na}_2\text{S}_2\text{O}_3$  and GSH catalysed by thiosulphate sulphur-transferase in HepG2 cells could be tracked using **12** via two-photon ratiometric fluorescence imaging. Additionally, endogenous  $\text{HSO}_3^-/\text{SO}_3^{2-}$  in fresh rat liver tissues at a depth of 120  $\mu\text{m}$  was imaged using **12**. In subsequent research, Yang and co-workers prepared another TP-FRET-based fluorescent probe **13** (Fig. 8), which was used to explore the role of  $\text{SO}_2$  in febrile seizure-induced brain injury.<sup>16</sup> In probe **13**, acedan was again used as the donor while anthocyanidin was chosen as the energy acceptor. As previously demonstrated, reaction with  $\text{HSO}_3^-/\text{SO}_3^{2-}$  served to break the  $\pi$ -conjugation of the anthocyanidin derivative thus inhibiting the FRET process. Compared to the first-generation probe **12**, probe **13** exhibited a much larger FRET efficiency and faster reaction kinetics (a maximum response was observed within 3 seconds). These features allowed **13** to be used to trace endogenous  $\text{HSO}_3^-/\text{SO}_3^{2-}$  in febrile seizure-treated rat hippocampus tissues. Due to the fact  $\text{HSO}_3^-/\text{SO}_3^{2-}$  and  $\text{SO}_2$  are in direct equilibrium in aqueous solution, it was suggested that these FRET-based fluorescent probes (**11**, **12** and **13**) could serve as chemical tools that could be used to explore how  $\text{SO}_2$  acts as a gas transmitter in various biological processes.

## FRET-based sensors for small neutral molecules

In addition to cations and anions, small neutral molecules are important in the regulation of biological processes. A variety of fluorescent probes based on differing design strategies have been reported for detecting small neutral molecules. This section will include some representative FRET-based sensors for biologically important small neutral molecules, including their underlying design strategy, sensing mechanisms and biological applications. The first example is probe **14** that was developed by Sun *et al.*<sup>17</sup> for

the detection of nitroxyl (HNO). With this probe, a coumarin/fluorescein dyad was used as the FRET reporter (Fig. 9). Diphenylphosphino benzoate was used as the recognition group for HNO; it was chosen for this purpose due to the expected interaction between the 2-(diphenylphosphino)-benzoate moiety and HNO via formation of an aza-ylide intermediate. In fact, this functional group has been widely applied as a HNO recognition site in many previously developed sensors. Initially, **14** displayed a characteristic coumarin emission band centred at 470 nm, which gradually disappeared upon addition of Angeli's salt (AS), which serves as a source of HNO in aqueous media. Concurrent with the reduction in the intensity of the 470 nm feature, an emission band centred at 517 nm was seen to appear. These spectral changes were interpreted in terms of the proposed FRET process, which was triggered by ring opening of the central lactone via an aza-ylide intermediate and release of the active fluorescein moiety. A linear relationship between the fluorescence intensity ratio ( $I_{517}/I_{470}$ ) and the AS concentration (0–100  $\mu\text{M}$ ) was observed. Using **14**, exogenous HNO in HeLa cells could be detected via ratiometric fluorescence imaging.

To facilitate the investigation of HNO concentrations in living cells and live tissues, Tan *et al.* designed a new FRET-based two-photon fluorescent sensor, **15** (Fig. 9).<sup>18</sup> As in the case of **15**, the 2-(diphenylphosphino)-benzoate moiety was used as the recognition site for HNO. A naphthalene derivative was chosen as the energy donor since it was expected to facilitate two-photon absorption, while a rhodol fluorophore was chosen as the energy acceptor. The presence of 2-(diphenylphosphino)-benzoate on the phenol group of rhodol stabilizes the lactone form. Thus, as prepared **15** displays an emission band centred at 448 nm when excited at 740 nm. Addition of AS led to the appearance of the characteristic rhodol emission band centred at 541 nm. A simultaneous decrease in the fluorescence intensity at 448 nm was observed, as expected for an efficient FRET process. Detection of HNO in a frozen rat liver slice was successfully achieved with **15** by means of two-photon ratiometric fluorescent imaging. An imaging depth of

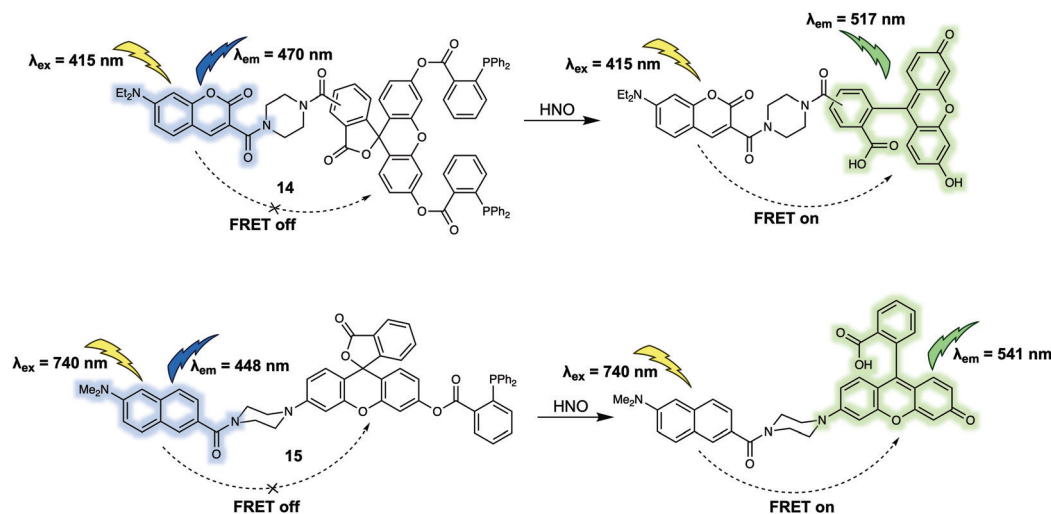


Fig. 9 FRET-based probes (**14** and **15**) developed for the ratiometric detection of HNO.



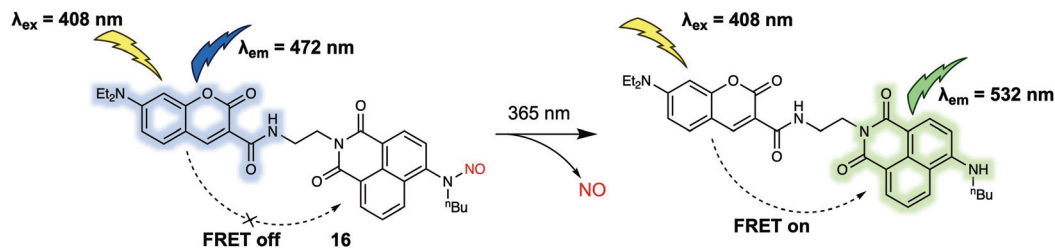


Fig. 10 Photoinduced decomposition and fluorescence alteration of probe **16**.

40–150  $\mu\text{m}$  was obtained with the naphthalene channel and 20–130  $\mu\text{m}$  with the rhodol channel.

Nitric oxide (NO) is one of the widely recognised gasotransmitters, playing an important role in numerous signalling events in physiology and pathophysiology. In 2017, Tang and colleagues reported a two-photon FRET-based system for monitoring *in situ* release of NO.<sup>19</sup> Probe **16** was constructed by conjugation of coumarin and naphthalimide cores with NO (Fig. 10). This compound differed from previously discussed probes in this review in that instead of reacting with an analyte to produce a response which can be observed by fluorescence, **16** responded to specific photoirradiation by releasing a small gaseous molecule (NO), which initiated the FRET process and resulted in a change in the fluorescence output. As prepared, **16** displayed a fluorescence emission band centered at around 472 nm when subject to excitation at 408 nm. Upon photoirradiation at 365 nm, the *N*-nitrosoamine is photocleaved to trigger the release of NO. This, in turn, leads to the production of a new emission at 532 nm that is ascribed to FRET. The release of NO could also be promoted by irradiation under two-photon excitation conditions using a 800 nm laser light with two-photon excitation at 840 nm being used to detect the changes in probe-based fluorescence. This allowed for NO imaging in live HeLa cells.

Hydrogen sulfide ( $\text{H}_2\text{S}$ ) is also a key gasotransmitter. Abnormal levels of  $\text{H}_2\text{S}$  may induce many types of diseases including Down syndrome. In 2015, Lin *et al.* reported a new FRET sensor **17** for the detection of  $\text{H}_2\text{S}$ .<sup>20</sup> In this system, based on a coumarin/naphthalimide dyad, an azide group at the 4-position of

naphthalimide was utilised as the specific recognition site due to the well-appreciated fact that it undergoes selective reduction by  $\text{H}_2\text{S}$  to form the corresponding naphthyl amine (Fig. 11). The parent probe **17** displayed an emission band centred at around 474 nm corresponding to the coumarin but featured no characteristic naphthalimide emission at around 534 nm, indicating a lack of FRET. The addition of increasing concentrations of  $\text{H}_2\text{S}$  led to the gradual appearance of a fluorescence emission band centred at 534 nm. A concomitant decrease in the intensity of the emission at 474 nm was seen, consistent with a FRET process. Importantly, a linear relationship between the fluorescence intensity ratio ( $I_{534}/I_{474}$ ) and the concentration of  $\text{H}_2\text{S}$  (from 1.0  $\mu\text{M}$  to 30  $\mu\text{M}$ ) was observed. Consistent with this postulate, it was found that **17** could be used for tracing both exogenous and endogenous  $\text{H}_2\text{S}$  in live PC-3 cells. In the same year (2015), Yuan and colleagues reported a FRET platform for sensing  $\text{H}_2\text{S}$ .<sup>21</sup> In this FRET system, acedan and anthocyanidin type fluorophores were used as the energy donor and acceptor, respectively. Due to the fact that acedan may be photoexcited *via* either one- or two-photon absorption, **18** could be excited directly at either 378 nm or at 760 nm using a two-photon laser setup (Fig. 11). As prepared, **18** displayed a strong emission at 625 nm under the two-photon excitation (760 nm). This emission was seen to decrease in intensity while that of a new emission band centred at 500 nm was seen to increase upon exposure to  $\text{H}_2\text{S}$ . These spectroscopic changes were attributed to the nucleophilic attack of  $\text{H}_2\text{S}$  on to the benzopyrylium part of **18**, leading to an interruption in the  $\pi$ -conjugated system of the anthocyanidin-analogue, a chemical

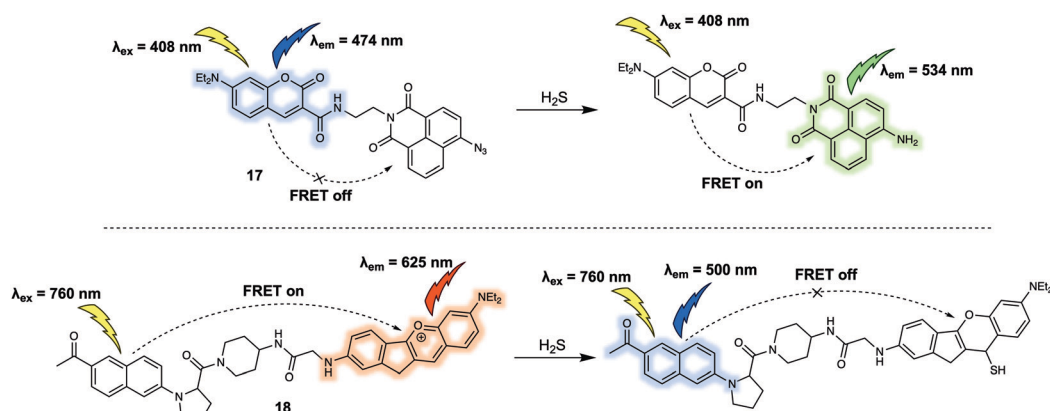


Fig. 11 FRET-based probes (**17** and **18**) developed for the ratiometric detection of  $\text{H}_2\text{S}$ .



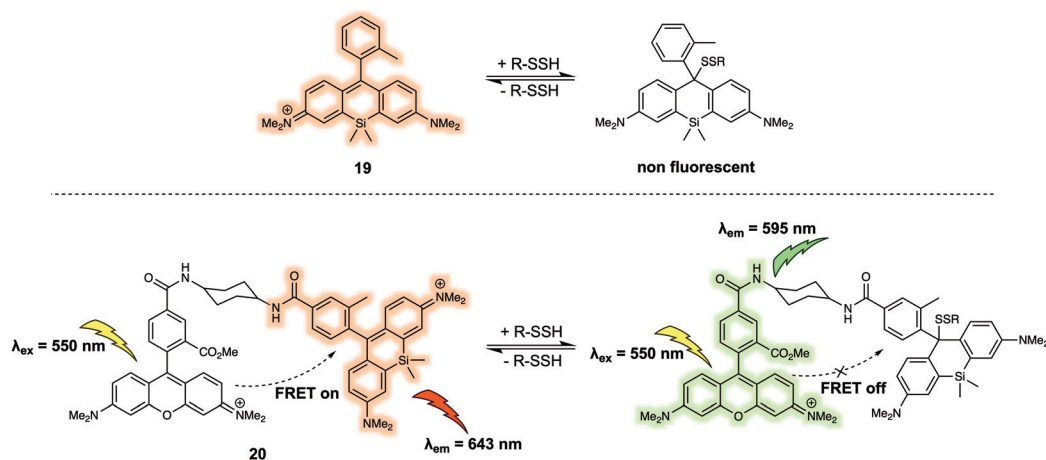


Fig. 12 FRET-based reversible probe **20** developed to allow for the ratiometric detection of R-SSH.

change that leads to the inhibition of the FRET process. The major advantage of **18** is associated with two well-resolved emission bands that allow for a distinct ratiometric response in both HeLa cells and rat liver slices upon interaction with H<sub>2</sub>S. As a result, this FRET platform displays minimal cross-talk between dual emission channels when used for ratiometric fluorescence imaging.

Hydropolysulfides (R-S<sub>n</sub>SH,  $n \geq 1$ ) are a class of reactive sulphur species that are considered to play a vital role in maintaining redox homeostasis in living systems. In 2018, Urano *et al.* reported the FRET probe **20** (Fig. 12) that proved effective for the real time detection of RSSHs.<sup>22</sup> The design relied on the use of a tetramethylrhodamine methyl ester (TMRM) fluorophore as the energy donor. The acceptor was the silicon-derived rhodamine, **19**, which was selected because it displays high inherent selectivity for Na<sub>2</sub>S<sub>2</sub> over GSH and other sulfane sulphur species, including GSSSG and S<sub>8</sub>. Upon addition of Na<sub>2</sub>S<sub>2</sub>, the maximum emission of **20** shifted from 643 nm to 595 nm as a result of nucleophilic attack by the hydropolysulfides on the acceptor, thereby quenching the FRET process. The reaction of the probe with hydropolysulfides

proved reversible, thereby enabling real-time tracking of fluctuations in cellular concentrations of RSSHs *via* fluorescence imaging. For example, using **20** the GSSH-GSSSG redox cycle (an important process in the regulation of oxidative stress within cells) could be visualised in intact cells and in real time.

Urano *et al.* developed a similar FRET probe **22** (Fig. 13) for the selective and reversible detection of GSH.<sup>23</sup> Nucleophilic attack by GSH on the xantheno ring of **21** occurs rapidly and reversibly. TMRM was used as the energy donor owing to its excellent spectral overlap with **21**. It is noteworthy that **22** permitted intracellular GSH concentrations to be successfully determined in different cell lines *via* ratiometric fluorescence imaging. As part of this study, the authors demonstrated that **22** could be used to monitor changes in the GSH levels in live cells induced by exposure to thiol scavengers or H<sub>2</sub>O<sub>2</sub>, or resulting from glucose-deprivation.

Adenosine triphosphate (ATP) is known to promote many biological processes as the fundamental energy source. It can also be a marker of metabolic activity. However, monitoring of lysosomal ATP is still a challenge due to a lack of efficient techniques for its selective visualisation. In 2018, Ahn *et al.*

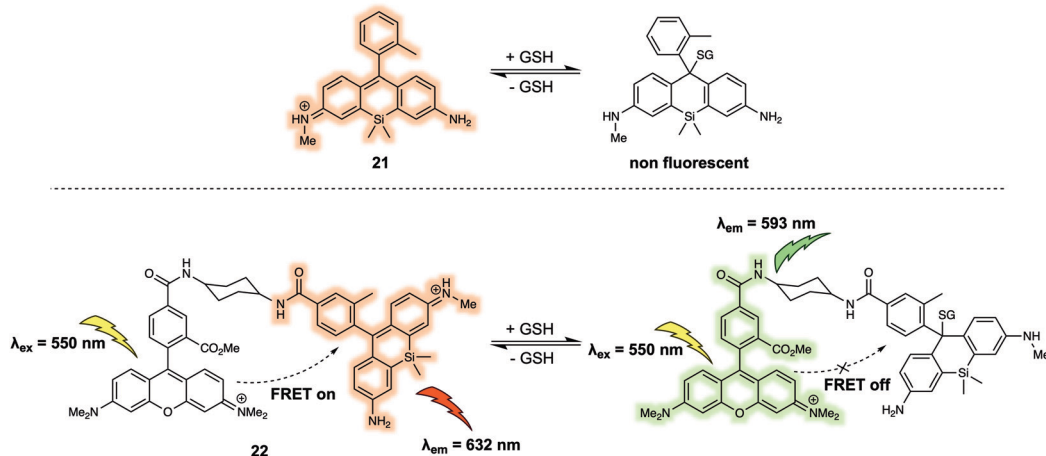


Fig. 13 FRET-based probe **22** developed for the ratiometric detection of GSH.



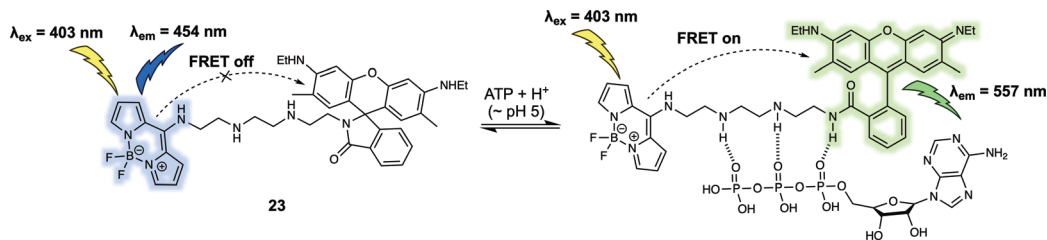


Fig. 14 Rhodamine 6G/BODIPY (energy donor/acceptor)-based FRET fluorescent probe **23** developed to permit the ratiometric detection of ATP.

developed a FRET-based fluorescent sensor, probe **23** (Fig. 14), that permitted the ratiometric detection of lysosomal ATP in live cells.<sup>24</sup> In probe **23**, a rhodamine 6G derivative/BODIPY dyad was used as the FRET pair. The probe itself displayed an emission at 454 nm upon excitation at 403 nm. Addition of ATP gradually induced ring opening of the rhodamine lactam because of hydrogen bonding interactions between the tetramine linker and the phosphate groups present in ATP. Additionally, it was suggested that  $\pi$ - $\pi$  interactions between the adenosine base of ATP and the rhodamine core contributed to the high affinity of **23** towards ATP over other adenosine phosphates, including adenosine diphosphate (ADP) and adenosine monophosphate (AMP). The ATP-induced opening of the rhodamine lactam ring enables a FRET process as evidenced by the appearance of a new fluorescence emission at 557 nm. Since the interaction with ATP, only occurred at acidic pH and not cytosolic pH, the system was suitable for the selective detection of lysosomal ATP in live cells. Using ratiometric fluorescence imaging, lysosomal ATP in live cells and in the corpus callosum of a mouse brain was successfully tracked using **23**.

A majority of the small neutral molecules discussed above are endogenously generated or secreted by the living organism itself. However, there is also a need for systems that permit exogenously administered agents, such as prodrugs, to be detected and tracked within cells. In 2019, Ang *et al.* reported a FRET sensor **24** (Fig. 15) that allowed cisplatin to be detected in live cells and permitted for the mechanism of platinum(IV) ( $\text{Pt}^{\text{IV}}$ ) prodrug reduction to be explored *in vitro*.<sup>25</sup> Probe **24** relied on the use of a coumarin-466/rhodamine 6G dyad as the FRET pair. As prepared, **24** displayed an emission at 470 nm upon excitation at 400 nm. Addition of cisplatin produced a strong fluorescence emission band centred at 565 nm with concomitant decrease in fluorescence intensity at 470 nm. A sensing mechanism was proposed that involved interaction between the dithiocarbamate recognition motif of the probe and cisplatin, triggered the ring opening of the rhodamine 6G.

The resulting fluorescence intensity ratio exhibited a linear dose-dependence response towards cisplatin (0–160  $\mu\text{M}$ ). Additionally, they reported that **24** could discriminate  $\text{Pt}^{\text{II}}$  complexes from  $\text{Pt}^{\text{IV}}$  complexes, allowing for the tracking of  $\text{Pt}^{\text{IV}}$ -based prodrug complexes in HeLa cells *via* ratiometric fluorescence imaging. Using this approach, the authors were able to determine how the relative hydrophobicity of  $\text{Pt}^{\text{IV}}$ -based prodrugs modulated their cellular uptake and concordant reduction to the active  $\text{Pt}^{\text{II}}$  form. It was proposed that information derived from these studies could be used for the development of more efficacious Pt-based chemotherapy agents.

## FRET-based sensors for biomacromolecules

Biomacromolecules are large molecules that are commonly made up of monomers through covalent conjugation. As a result of their large size and conformational flexibility, most biomolecules, for instance proteins, DNA and RNA, encompass not only primary and secondary structures, but also tertiary structures, all of which play a key role in the regulation of their bioactivity. Being able to sense and monitor biomacromolecules is all-important in terms of exploring their function. One of the time honoured approaches involves the use of green fluorescent protein (GFP)-based fluorescent probes and related systems. Small molecule sensors have some advantages when compared to these nano-sized protein-based fluorescent probes. For instance, bulky fluorescent proteins permit only small ratiometric changes, whereas small-molecular sensors often enjoy high FRET efficiencies due to their relatively small molecular weights and the large analyte-induced changes in structure and optical features that can often be built in as a consequence. Arenz *et al.* designed the small-molecule based acid sphingomyelinase (ASM) FRET probe **26** (Fig. 16), which bears sphingomyelin analogues for the selective monitoring of the activity

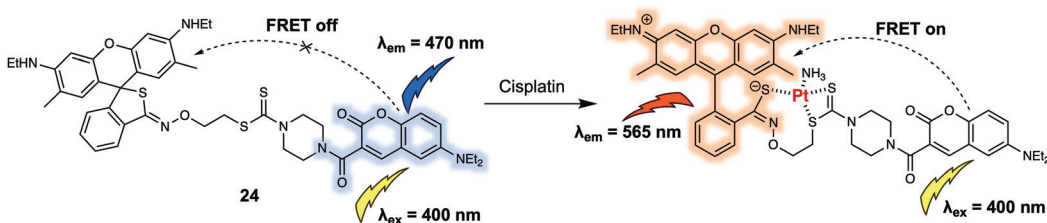


Fig. 15 Coumarin-466/rhodamine 6G (energy donor/acceptor)-based FRET fluorescent probe **24** that allows for the ratiometric detection of cisplatin and related  $\text{Pt}^{\text{II}}$  species.



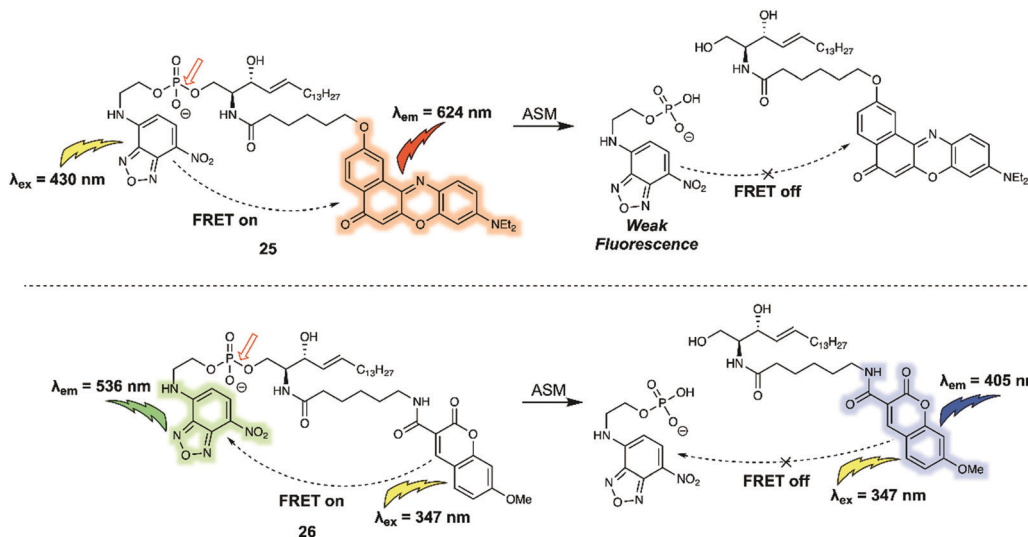


Fig. 16 Structures of FRET probe **25** (NBD/NR) and probe **26** (MCC/NBD). The red arrow indicates the site of ASM-induced hydrolysis.

of the ASM enzyme in micelles, liposomes, and live cells.<sup>26</sup> In a first set of predictive studies, nitrobenzoxadiazole (NBD) and Nile Red (NR) were used as the FRET donor/acceptor pair to develop **25** (Fig. 16). Upon excitation at 430 nm, **25** exhibited exclusively acceptor emission at 624 nm, consistent with high FRET efficiency from the donor NBD to the acceptor NR. The addition of ASM induced a rapid decrease in the acceptor's fluorescence. However, no significant increase in the fluorescence expected for the cleaved donor product, NBD, was observed. The authors attributed this finding to the polar NBD dye displaying only very weak fluorescence in aqueous environments. To address this limitation, FRET probe **26** was prepared. In this case an NBD moiety was used as the acceptor rather than donor, while 7-methoxycoumarin-3-carboxylate (MCC) was used as the energy donor. In the case of **26**, a high FRET efficiency of 90% was observed. Upon cleavage of the phosphodiester by ASM, **26** exhibited an 87% decrease in the acceptor (NBD) fluorescence that was accompanied by a 900% increase in the donor (MCC) fluorescence intensity.

An additional benefit of FRET-based small-molecule probes is their relatively easy design and preparation as compared to their GFP counterparts; this is particularly advantageous when preparing systems that can act as fluorescent substrates for enzymes. A variety of compounds, including short peptides, sugars and other nucleotides, act as specific substrates for a

number of enzymes; many of these substrates can be incorporated into FRET reporter systems to afford enzyme-specific FRET sensors. One such example (probe **27**) was reported by Schultz *et al.* who synthesized a FRET-based membrane-targeted reporter to monitor the activity of matrix metalloproteinase 12 (MMP-12).<sup>27</sup> Probe **27** (Fig. 17) was created by anchoring a coumarin343/TAMRA FRET pair to a MMP-12 sensitive small peptide, which displayed high selectivity for MMP-12 over other matrix metalloproteases. As prepared, **27** displays an emission at 575 nm, when excited at 450 nm, corresponding to the acceptor (TAMRA) because of FRET. When exposed to MMP-12 *in vitro*, **27** a new donor emission at 490 nm appeared and a 4.5-fold increase in  $I_{490}/I_{575}$  was observed. MMP-12 activity in RAW264.7 macrophages could then be monitored *via* real-time ratiometric imaging. Due to lipidation of this probe, once the cleavage event took place, it was internalised into the lipid membrane, enabling the authors to decipher the location of MMP-12 at the cellular level.

Using a similar design strategy, the same research team prepared two new small peptide-based fluorescent substrates for monitoring the activity of neutrophil elastase (NE).<sup>28</sup> Here, methoxycoumarin/coumarin343 (probe **28**) and coumarin343/TAMRA (probe **29**) were used as the FRET pairs (Fig. 18). Probe **28** relied on the peptide sequence QPMAVVQSVQP as

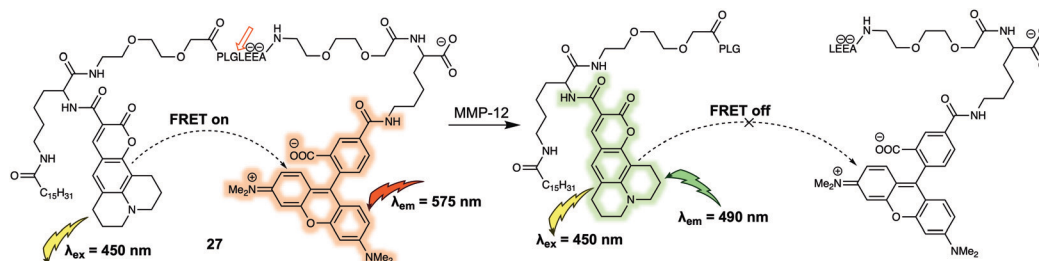


Fig. 17 Structure of probe **27** used for the detection of MMP-12. The digestion site is between glycine and leucine.



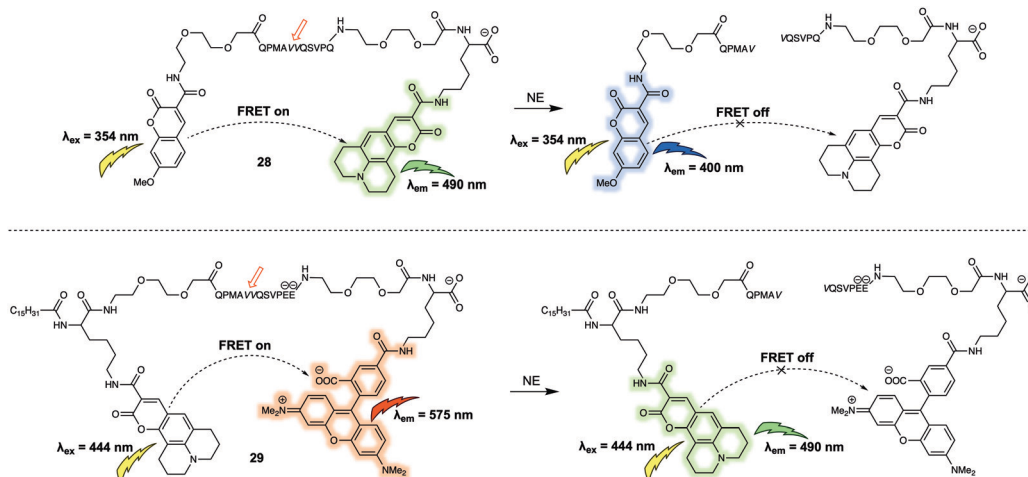


Fig. 18 Water soluble **28** and membrane-targeting lipidated **29** probes designed to monitor NE activity.

the specific recognition site for NE. To avoid diffusion of the intact reporter through the hydrophobic membrane, negative charges were included in the substrate sequence in the form of two glutamic acid residues in the case of **29**. Probe **28** and **29** were used to measure NE activity in lung fluid and on neutrophils, respectively.

The FRET-based systems discussed so far in this review have been based on combinations of fluorescent dyes used as energy donors and acceptors, respectively. This has the advantage of affording in favourable cases a ratiometric change in the fluorescence signal upon exposure to the target analyte. An alternative design strategy for FRET-based sensors is an “turn-off” FRET approach, where the acceptor behaves as a quencher. Such sensor combinations are typically used in enzyme-based sensor systems since they can allow for real-time detection, and monitoring of enzyme activity, especially when used in conjunction with live cell imaging. In 2014, Xing *et al.* developed the FRET-based fluorescent probe **30** (Fig. 19)

and showed that it could be used for the real-time visualisation of endogenous cell-surface-associated proteolytic enzymes (furin).<sup>29</sup> As with some of the biomolecule probes summarised above, an enzyme-responsive short peptide was used as the specific recognition substrate for the enzyme. 4-(Dimethylamino)benzene-4-carboxamide (Dabcyl) was used as the quencher for the fluorescence donor fluorescein; this pair was chosen due to the spectral overlap between the absorption of the Dabcyl quencher and the emission of the fluorescein donor. When intact, **30** exhibited near baseline levels of fluorescence intensity. This was taken as evidence of efficient FRET between the fluorescein and Dabcyl subunits. After incubation with the enzyme (furin), the fluorescent emission intensity at 525 nm gradually increased with time, a finding interpreted in terms of **30** being degraded by furin to release fluorescein in free, fluorescent state. An optimised lipid moiety was used to anchor **30** to the cell surface, ensuring the response could be correlated with surface activity. The probe was then

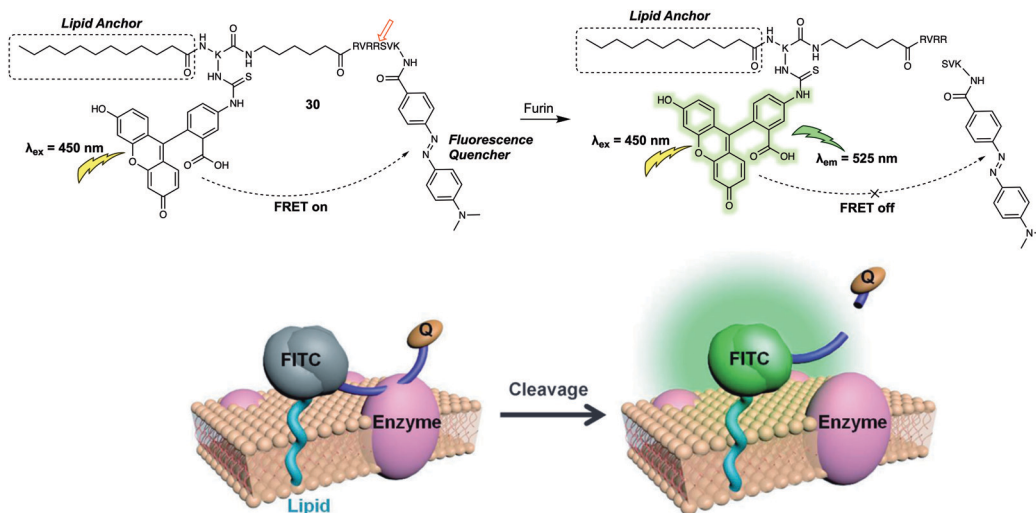


Fig. 19 Probe **30** for the detection of cell-surface-associated furin. Reproduced with permission from ref. 29 (*Angew. Chem., Int. Ed.*, 2014, **53**, 14357–14362). Copyright (2014) Wiley-VCH Verlag GmbH & Co. KGaA, Weinheim.



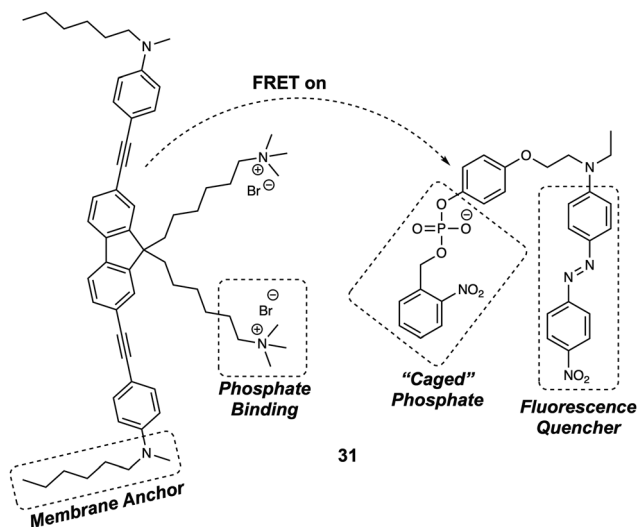


Fig. 20 Structure of probe **31** designed to facilitate detection of membrane-associated RPTPs.

used for the real-time monitoring of furin expression in the cell lysates of U251 and Lovo cells. Interestingly, time-lapse images of U251 cells treated with **30** allowed the authors to visualise the dynamic enzymatic processes on the cell surface. In addition, interactions between **30** and cell-surface-associated furin enzyme in U251 cells and mouse ear tissue could be visualised using two-photon microscopy.

Membrane bound enzymes play vital roles in various cellular processes, such as membrane transport and cell adhesion. Yao *et al.* designed a switchable FRET-based fluorescent sensor (probe **31**) (Fig. 20) for the real-time imaging of receptor-like protein tyrosine phosphatases (RPTPs).<sup>30</sup> In this case, a novel two-photon fluorescent dye (Flu7) was prepared, containing two aliphatic chains. A separate molecule (Q12) containing a “photocaged” phosphorylated phenolic group coupled to a fluorescence quencher (Disperse Red 1), was also synthesized. When anchored to the cell membrane, the positively charged side chains of the Flu7 fluorophore binds with the negatively charged phosphate anion incorporated in Q12. This interaction served to hold the quencher in close proximity to the donor, facilitating FRET-based quenching. As initially prepared, the two components were non-fluorescent, due to this FRET quenching process. Moreover, the photocaged nature of the Q12 quencher resulted in no response being seen in the presence of RPTPs. However, upon irradiation with UV light, the 2-nitrobenzyl group was cleaved from the Q12, allowing RPTPs to dephosphorylate Q12 and release the quencher. This release, in turn, triggered an increase in the fluorescence emission of Flu7. It was found that the FRET system **31** could be used for the real-time imaging of endogenous membrane associated RPTPs in live cells. Due to the fact that it could be photoexcited under two-photon conditions, this FRET system was successfully employed for the real-time imaging of membrane-associated RPTPs in *Drosophila* brains. The results confirmed that the switchable nature of **31** was both RPTPs and UV dependent. These features allowed for the selective and fast

modulation of the fluorescent output under conditions of UV irradiation.

Compared to proteases containing cleft-like architectures for cleavage, some enzymes have sterically constrained pocket-shaped active sites, which could hinder the design of FRET-based small-molecular probes. For instance, the design of probes for *exo*-glycoside hydrolases, these enzymes are characterised by their pocket-shaped active site topologies. Therefore, the designed probes require an enzyme-responsive substrate that is built to interact with the pocket-like active site. In 2015, Vocadlo *et al.* designed the FRET-based probe **33** (Fig. 21) to monitor the activity of lysosomal human glycoside hydrolase glucocerebrosidase (GCCase) in live cells.<sup>31</sup> In their initial design, these authors used a 5-[(2-azidoethyl)amino]naphthalene-1-sulfonic acid (EDANS) group as the fluorescence donor and a 4-[[4-(dimethylamino)phenyl]azo]benzoic acid (DABCYL) derivative as the quencher; to afford **32** (Fig. 21). In probe **32**, the quencher moiety was attached to the anomeric centre of the glucose to prevent steric congestion of the active site. Concurrently, the fluorescence donor was installed at the 6-position of glucopyranose to ensure close proximity within the fluorophore (donor)-quencher pair. In fact, **32** exhibited 97.6% quenching efficiency of the EDANS subunit by the linked DABCYL. However, relatively low water solubility precluded the determination of the  $K_m$  values (a composite rate constant) while short emission wavelengths limited its application in live cell imaging. Therefore, this research team designed and synthesized **33**, which relied on a BODIPY fluorophore, a dye with more red-shifted emission than the EDANS subunit in **32**, as the fluorescence donor and Black Hole Quencher 2 (BHQ2) as the acceptor. This latter species was chosen due to the fact that its absorption overlaps with the BODIPY emission. Appending the fluorophore (donor) to the non-cleaved side of the glucopyranose ring had the effect of localising the fluorophore in lysosomes after cleavage of the FRET probe by GCCase, an effect ascribed to the high polarity of the sugar. Meanwhile, the mildly basic aniline subunit present on **33** also promoted its accumulation in the acidic lysosomes. Fluorescence microscopic studies revealed that the fluorescence of live cells incubated with **33** gradually increased with time. Additionally, the fluorescence signal exhibited a dotted pattern which indicated lysosomal localisation, that was further confirmed by a co-localisation assay with commercially available LysoTracker Green DND-26. These findings led the authors to suggest that dynamic changes in the GCCase activity could be monitored using **33**. The authors also concluded that **33** could be used for the quantitative detection of the chaperoning of GCCase in human fibroblasts.

Although probe **33** proved effective in monitoring GCCase activity, attaching a fluorophore to the 6-position hydroxyl group of glucopyranose represents a design strategy that is not generally applicable. In 2017, Vocadlo *et al.* positioned both the fluorophore and quencher outside of the active site of glucopyranose.<sup>32</sup> In this case, the fluorescence donor (EDANS) and quencher (DABCYL) were anchored to the *O*-linked  $\beta$ -*N*-acetylglucosamine through a hemiacetal aglycon group. Using this design, the probes preserved the active carbohydrate recognition motif. The FRET quenching efficiency was calculated



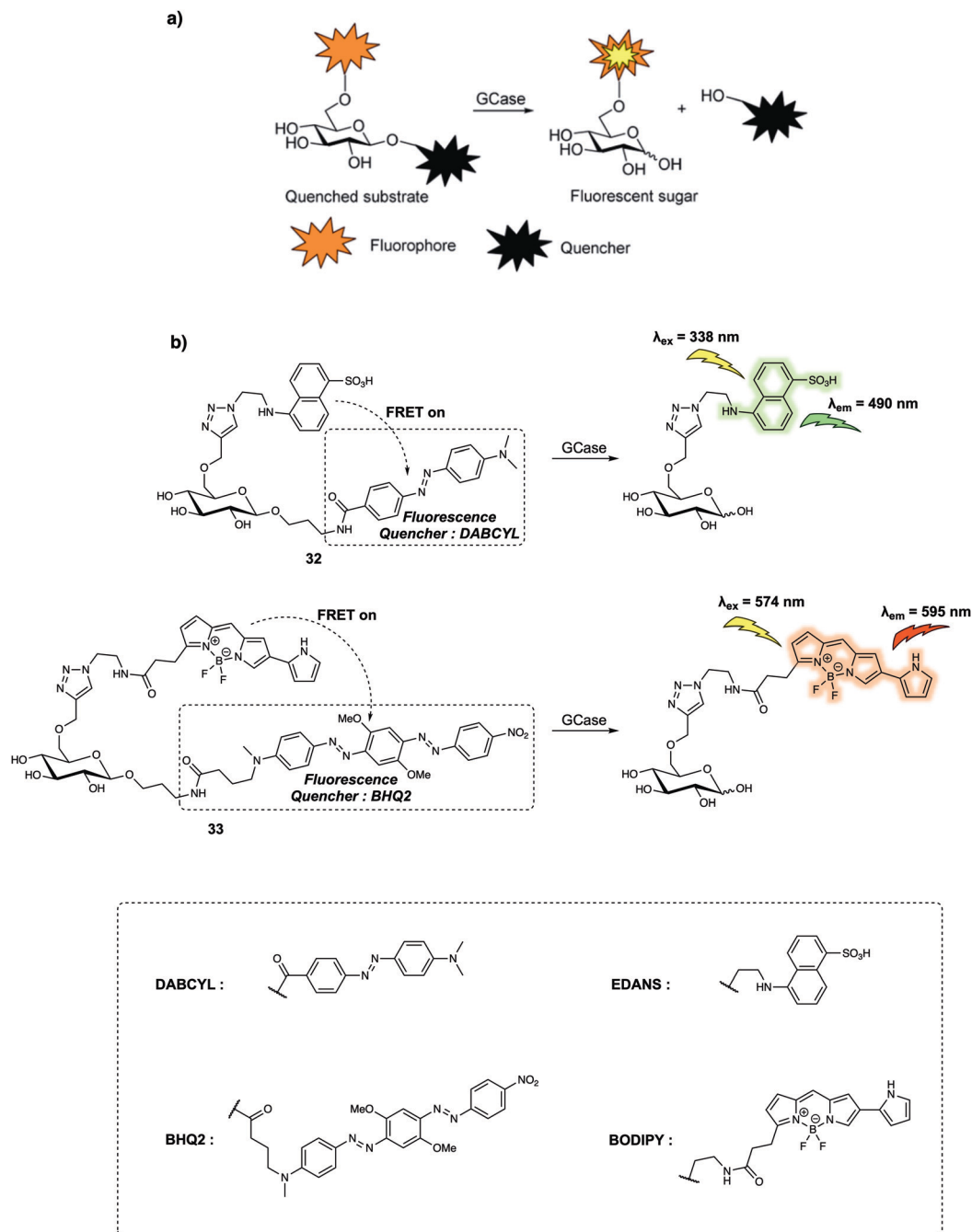


Fig. 21 (a) General reaction scheme showing the design of probes that can be used for the fluorescence-quenched monitoring of GCase activity. (b) Sensing mechanism of probes **32** and **33** for the detection of GCase. Reproduced from ref. 31 (*J. Am. Chem. Soc.*, 2015, **137**, 1181–1189). Copyright (2015) American Chemical Society.

to be about 99.93% and 99.89% for probes **34** and **35**, respectively (Fig. 22). Such high quenching efficiency is thought to reflect the proximity of the FRET partners, presumably enabling contact quenching. It is to be noted that the bis-acetal unit remained stable in solution between pH 2 and 10. Upon addition of *exo*-acting human *O*-GlcNAcase (hOGA), the fluorescence intensity of probes **34** and **35** gradually increased with time. Second-order rate constants for the interaction probes **34** and **35** with hOGA were calculated to be

263 and  $519 \text{ M}^{-1} \text{ s}^{-1}$ , respectively; these values are comparable to those seen for the native substrate methyl  $\beta$ -*D*-*N*-acetylglucopyranoside. Furthermore, **34** could be used to monitor the activity of hOGA in SK-N-SH cell lysate. After cleavage by hOGA, probes **34** and **35** released a hemiacetal, which underwent spontaneous hydrolysis. Resulting in separated fluorescence donor and quencher, giving rise to readily discernible fluorescence changes. It was proposed by the authors that the concept embodied in probes **34**



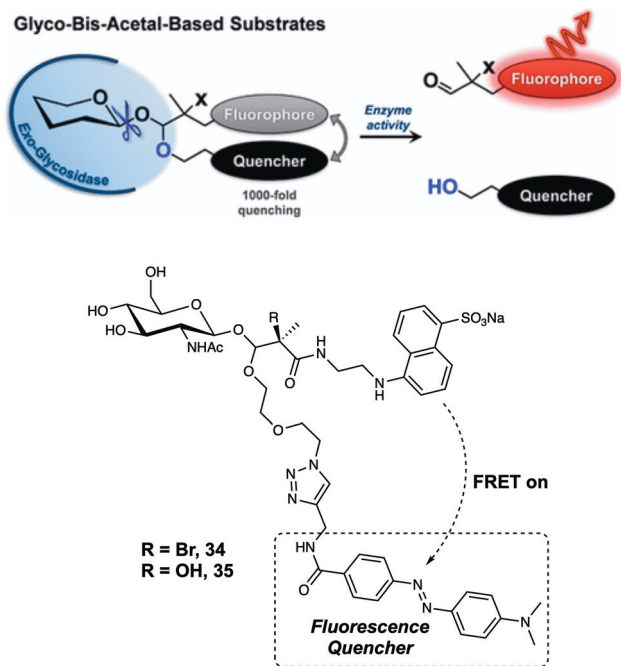


Fig. 22 Glycosidase-induced hydrolysis of the fluorescence-quenched probes **34** and **35** serves to increase in fluorescence intensity as the result of releasing a free fluorophore in a form that is not subject to FRET quenching. Reproduced from ref. 32 (*J. Am. Chem. Soc.*, 2017, **139**, 8392–8395). Copyright (2017) American Chemical Society.

and **35** could be applied to many other types of hydrolases for instance sulfatases.

Another important class of enzymes are the  $\beta$ -lactamases (Blas), which are responsible for the hydrolysis of the  $\beta$ -lactam moiety. In 2012, Xing *et al.* designed a ruthenium(II) cephalosporin-based FRET fluorescent sensor (probe **36**) (Fig. 23) that was designed to permit the intracellular imaging of Blas in bacteria.<sup>33</sup> In probe **36**, a luminescent Ru(II)(bpy)<sub>3</sub><sup>2+</sup> complex served as the fluorescence donor while a BHQ3 subunit with a broad absorption from 550 nm to 700 nm was used as the quencher. The BHQ3 group was anchored to the 7'-amino group of the cephalosporin core structure through a glycol linker to form the final FRET system. As prepared, the FRET system displayed weak fluorescence due to quenching of the Ru(II)(bpy)<sub>3</sub><sup>2+</sup> complex by the BHQ3 subunit. After treatment of **36** with TEM-1 Bla, an 8-fold enhancement in

fluorescence intensity at 645 nm was observed. This is consistent with the inherent FRET quenching process being inhibited and cleavage of the probe. It was suggested by the authors that **36** had the potential to be used in photodynamic therapy since the constituent Ru(II)(bpy)<sub>3</sub><sup>2+</sup> complex is commonly used as a photosensitizing agent for the generation of reactive oxygen species (such as singlet oxygen, <sup>1</sup>O<sub>2</sub>). In addition, it was thought that the <sup>1</sup>O<sub>2</sub> generated by the Ru(II)(bpy)<sub>3</sub><sup>2+</sup> photosensitizer could be scavenged by BHQ3 due to the close proximity of these two key elements within **36**. Finally, **36** could be used to discriminate several types of bacteria pathogens with varying resistance profiles towards  $\beta$ -lactam antibiotics.

When designing a FRET quenching system, the choice of a suitable quencher is an important consideration. As implied above, an effective quencher should possess an absorption profile that overlaps significantly with the emission band of the donor. To date, several typical dark quenchers, including DABCYL, members of the Black Hole Quencher (BHQ) family, and the QSY series have been studied extensively; a number are now commercially available. Despite these efforts, the development of new quenchers represents a recognised need within the FRET-based sensor community. For instance, quenchers with a near-infrared (NIR) absorption compatible with NIR fluorescence donors would be advantageous in terms of *in vivo* imaging since they would be subject to lower levels of interference from endogenous fluorophores. In 2015, Urano and colleagues developed a series of silicon-substituted rhodamines (SiRs) for use as NIR quenchers.<sup>34</sup> SiRs exhibit a far-red to NIR absorption due to the replacement of the O atom by a Si atom within the xantheno moiety of rhodamine. By attaching aromatic rings directly to the nitrogen atoms of the xantheno skeleton, the fluorescence intensity of the SiRs could be reduced to near background. This reduction was ascribed to fluorescence quenching resulting from free rotation of the bond between the N atom and the xantheno moiety. In the context of this research, both hydrophobic and hydrophilic SiRs were synthesized; this was done by modifying the core structure of the SiRs subunit. This had the additional advantage of enabling their use in a diverse array of solvents. Thus, this series of SiRs could be applied as NIR dark quenchers and used to construct FRET systems. As such, a new FRET system **41**, based on SiRs, designed to allow the detection of

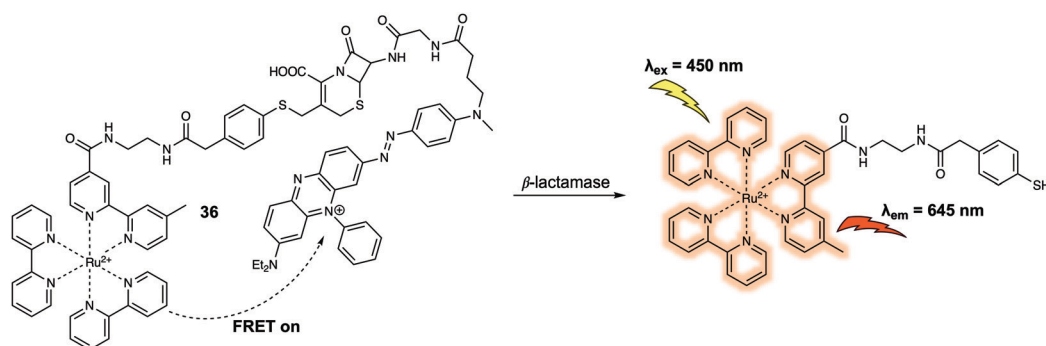


Fig. 23 Structures of probe **36** developed for the detection of Blas.



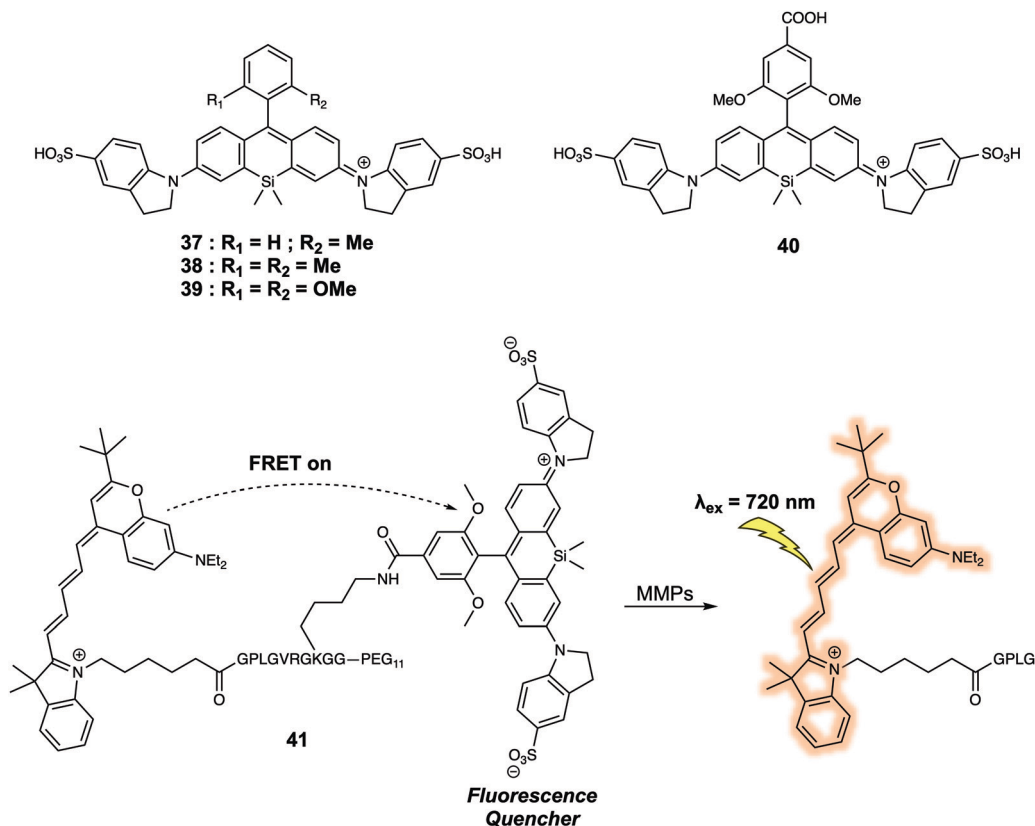


Fig. 24 Structures of the water soluble quencher **37–39**, and the application of **40** in the construction of FRET probe **41** that allows for the detection of MMPs.

matrix metalloproteinases (MMPs), could be constructed (Fig. 24). As prepared the fluorescence quantum yield of **41** proved to be less than 0.001. However, a 20-fold fluorescence increase in the emission was seen after interaction with two members of the MMP family (MMP-9 or MT1-MMP). The activity of MMP in tumour tissue could also be followed using this FRET system, thus underscoring the practical utility of SiRs in constructing NIR FRET systems for *in vivo* imaging.

Another set of quenchers that have been used to create FRET-based sensing systems are the so-called aggregation-induced emission luminogens (AIEgens). AIEgens display unique fluorescence properties when compared to traditional dyes due to their ability to exhibit strong emission upon aggregation in solution. Liu *et al.*<sup>35</sup> constructed the FRET system **42** (Fig. 25) using coumarin as the energy donor and an AIEgen as the energy quencher. In **42**, the short peptide Asp-Glu-Val-Asp (DEVD) was used as the specific recognition site for the caspase-3 enzyme. Upon excitation at 405 nm, a weak fluorescence signal was observed due to FRET quenching of the donor coumarin by the AIEgen. Addition of caspase-3 induced cleavage of the recognition peptide and release of the coumarin and AIEgen. Subsequently, a fluorescence emission at 465 nm gradually appeared that was ascribed to the recovery of the coumarin fluorescence. In tandem with these spectral changes, a new emission at 665 nm appeared. The presence of this new feature was taken as evidence that upon release from

the coumarin moiety, the AIEgen would aggregate in solution thus becoming fluorescent. This FRET probe was then used to monitor the activity of caspase-3 in live HeLa cells by taking advantage of the dual-signal readout. Given the key role of caspase-3 in cancer biology, it was proposed that **42** could have a role to play in screening the apoptosis-inducing capabilities of potential drug candidates.

In 2019, a FRET-based strategy for DNA sensing was reported by Nau *et al.* These researchers prepared a cucurbit[7]uril (CB7)-containing FRET system (**43**) (Fig. 26).<sup>36</sup> Here, the supramolecular CB7 host was covalently attached to a fluorescein dye that was designed to serve as the energy acceptor. A non-covalently bound 4',6-diamidino-2-phenylindole (DAPI) dye was used as the energy donor. DAPI is well-known to bind strongly to the minor groove of DNA. In the case of **43**, where the DAPI is held close to the tethered fluorescein acceptor after encapsulation of DAPI within the hydrophobic environment of the CB7 receptor, therefore, FRET is promoted upon excitation at 360 nm. The incremental additions of DAPI into a fixed concentration of CB7-carboxyfluorescein (CB7-CF) resulted in enhanced emission intensities at both 450 nm and 520 nm. Upon the addition of salmon sperm DNA, the DAPI energy donor is no longer bound appreciably within the CB7 host. Rather, it binds in preference to the minor groove of DNA. This equilibrium-based decomplexation reflects the relatively strong interaction between DNA and DAPI. The loss of DAPI inhibits the FRET process, resulting in a decrease in the fluorescence emission



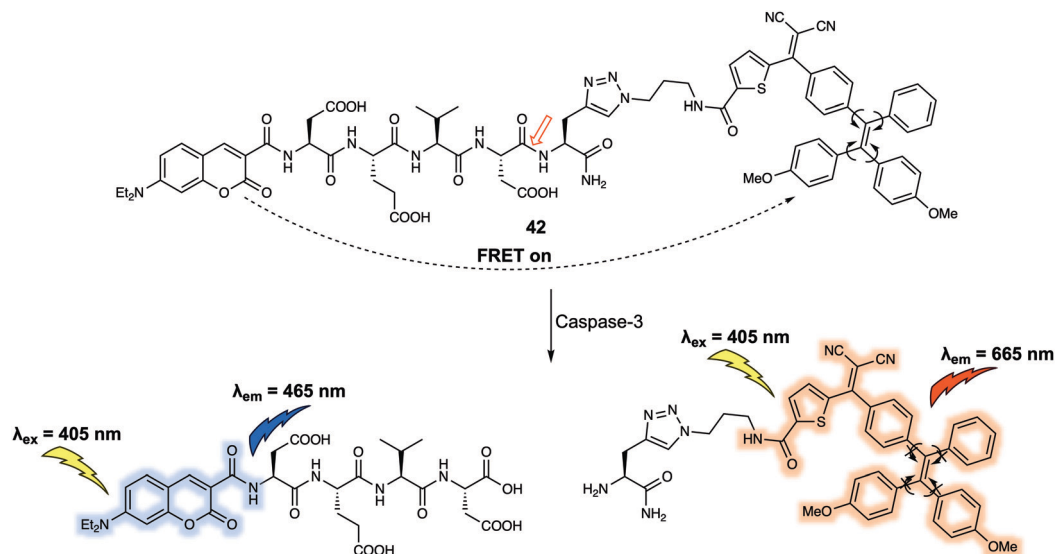


Fig. 25 Structure of probe **42** that was developed to detect and monitor caspase-3.

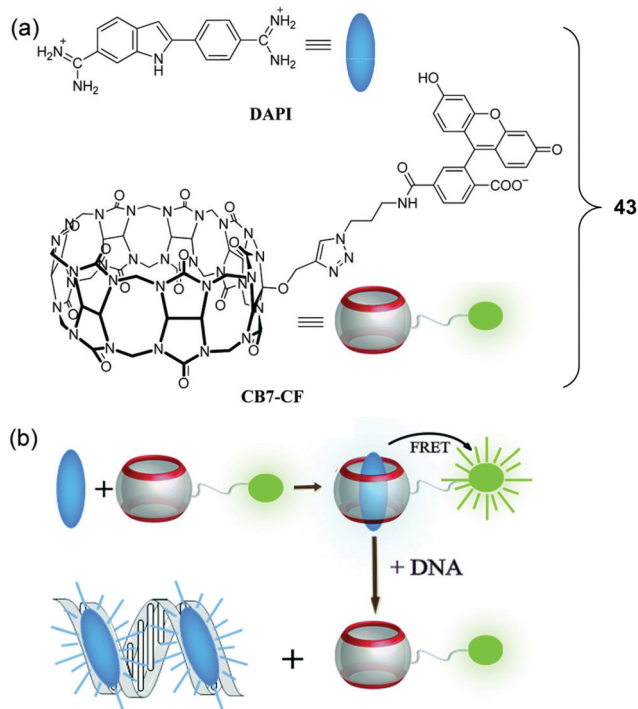


Fig. 26 (a) Molecular structures of DAPI and CB7-CF. (b) Schematic illustration of the resulting DNA chemosensing ensemble, which relies on a FRET process between DAPI (donor) and CB7-carboxyfluorescein (acceptor), as well as the relative affinities of the DAPI guest for the CB7 host and double-stranded DNA (dsDNA). Reproduced with permission from ref. 36 (*Chem. Commun.*, 2019, **55**, 671–674). Copyright (2019) The Royal Society of Chemistry.

intensity of the fluorescein at 520 nm with concomitant enhancement in the DAPI-derived emission feature centred at 450 nm. This host-guest FRET system was used for the quantitative detection of DNA with an excellent linear dependence of the ratiometric fluorescence signal being observed.

FRET-based systems have also been developed that allow for protein sensing. In 2014, Zhu *et al.* developed a FRET system (probe **44**) (Fig. 27) designed to permit the ratiometric detection of vicinal dithiol-containing proteins (VDPs).<sup>37</sup> This FRET probe relies on the fluorescent dyes coumarin and naphthalimide, which serve as the energy donor and acceptor, respectively. An organic arsenic moiety is incorporated into **44** as a highly selective recognition site for the targeted VDPs. Upon excitation at 405 nm (an appropriate excitation wavelength for coumarin), **44** displayed an emission at 540 nm. This is ascribed to the emission of naphthalimide, which was taken as evidence that energy transfer from the coumarin to the naphthalimide occurs. Addition of one equivalent of reduced bovine serum albumin (rBSA), taken as a model VDP induced a remarkable fluorescence enhancement at 470 nm which was assigned to the coumarin emission, reflecting inhibition of the FRET process. A control probe **45** was also prepared. In this case no significant changes in the fluorescence features are seen upon the addition of rBSA. These results led the authors to suggest that the cyclic dithiarsane moiety provides a selective recognition site for rBSA through exchange with the vicinal dithiols of the targeted VDPs. Specifically, it was proposed that the FRET probe **44** was cleaved upon interaction with vicinal dithiols present in the VDPs allowing for attachment of the coumarin. This results in a change in the fluorescent signature that permits ratiometric sensing. In fact, **44** was used for tracing endogenous VDPs in live MCF-7 cells *via* readout of the ratiometric fluorescence signal. By using this FRET probe the effect of selected redox reagents on cell-surface VDPs could be monitored. The ratiometric features of **44** also permitted the semi-quantitative detection of intracellular VDPs in live cells. Moreover, the distribution of VDPs in live MCF-7 cells could be mapped using this probe. Considering the key roles of VDPs in regulating cellular redox homeostasis, it was suggested by the authors that this FRET-based technique could provide a new and visible chemical tool



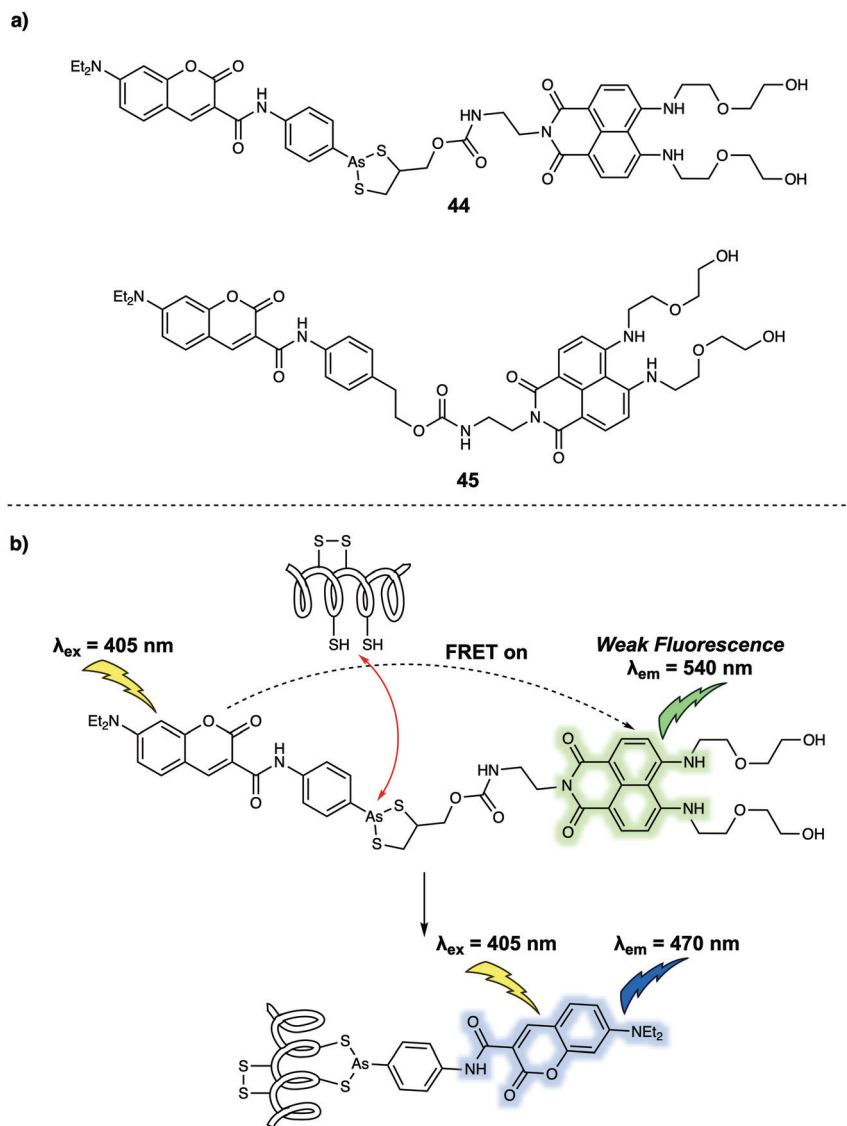


Fig. 27 (a) Chemical structures of FRET probes **44** (target probe) and **45** (control probe); (b) design strategy underlying probe **44** and its use for the ratiometric monitoring of VDPs via a FRET process.

for the investigation of VDP-related biological processes and may be useful in drug screening assays.

## FRET-based sensors for the visualisation of cellular microenvironments

Cellular microenvironments refer to the local environment of a cell, which includes both intracellular and extracellular effects that have a direct and indirect effect on cell behaviour. Understanding these environs in detail remains a challenge. FRET-based systems are providing useful tools for this purpose. For the sake of illustration, FRET-based probes designed to explore the effect of pH, hypoxia and mitochondrial membrane potential are discussed in this section. pH is an important factor that is closely related to cellular function and can be used

as an indicator for abnormal cell physiology. For instance, the pH of cancer cells is typically lower than that of healthy cells. Meanwhile, the pH of different cellular organelles varies as such lysosomes (below 7.0) and mitochondria (above 7.0). In 2014, Zhang and colleagues designed a new FRET probe **46** for monitoring pH changes in HeLa cells.<sup>38</sup> Probe **46** relies on bispyrene and fluorescein subunits as the energy donor and acceptor, respectively (Fig. 28). In acidic solution (pH 3.0), the two pyrene fluorophores form an excimer which resulted in an emission at 459 nm being observed upon excitation at 358 nm. No appreciable fluorescence emission from the fluorescein moiety present in **46** was seen under these conditions, a finding ascribed to the ring closed spirolactam form predominating in acidic media. With increasing pH, the fluorescein spirolactam moiety underwent ring opening and the phenol group becomes subject to deprotonation; this led to an increase in the absorption feature centred around 500 nm. Overlap with pyrenyl



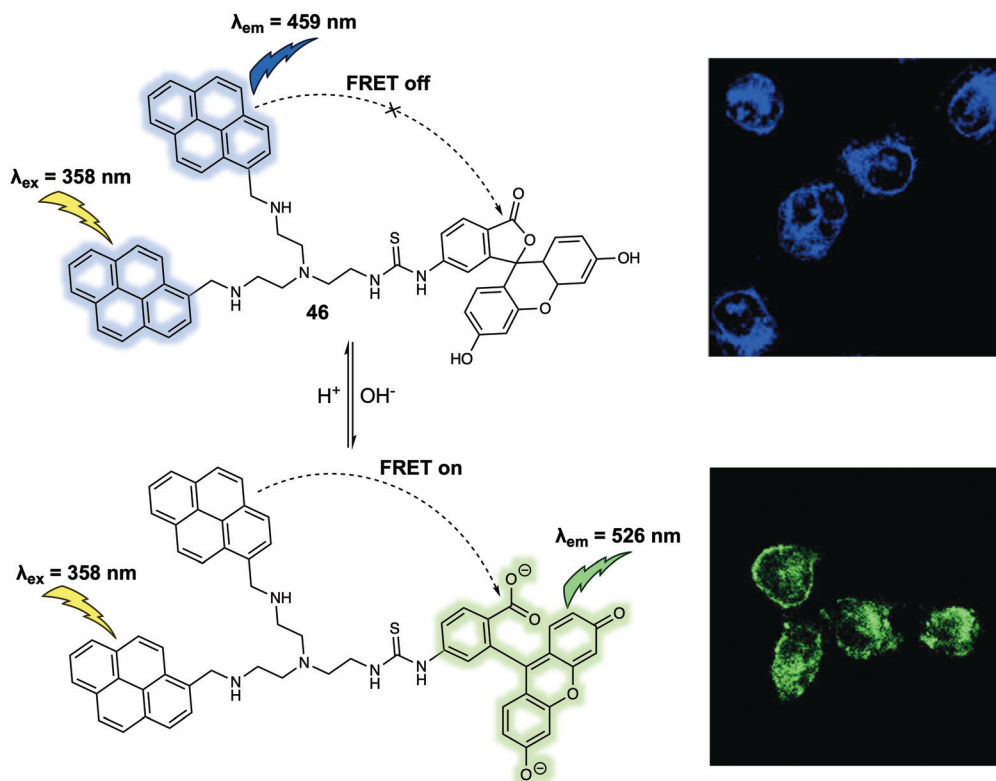


Fig. 28 FRET-based probe **46** that permit monitoring of pH changes in HeLa cells. Reproduced with permission from ref. 38 (*Anal. Chem.*, 2014, **86**, 10389–10396). Copyright (2014) American Chemical Society.

excimer emission band allows for energy transfer to the fluorescein subunit *via* a FRET process; this resulted in an easy-visualised emission at 526 nm. Intracellular pH changes were revealed *via* ratiometric fluorescence imaging using the probe. By analysing various fluorescence images, it was found that the relative ratio ( $I_{510-550\text{nm}}/I_{440-480\text{nm}}$ ) increased from 0.27 to 2.25 as the pH increased from 4.0 to 8.0 in HeLa cells. These differences allowed the use of **46** for the real-time monitoring of pH-related biological processes in live cells.

Another critical cellular environmental factor is hypoxia, which can trigger production of the hypoxia-inducible factor-1 (HIF-1) and accelerate bioreductive reactions. Hypoxia has been associated with a number of diseases, including cancer, cardiovascular disease, and stroke. In 2012, Hanaoka and colleagues designed and synthesized a new FRET-based fluorescence probe **47** and demonstrated that it could be used to detect hypoxia.<sup>39</sup> Probe **47** was constructed using Cy5 as the fluorescence donor and QSY-21 as the fluorescence quencher (Fig. 29). QSY-21 is appreciated as being an efficient quencher for the fluorescence emission in the red to NIR region. Hence, under normoxic conditions, no fluorescence response was observed at an excitation wavelength of 650 nm, an observation attributed to the emission of Cy5 being quenched by QSY-21 *via* a FRET process. In contrast, hypoxic conditions result in the reduction of QSY-21. This caused the absorbance maximum to shift from 660 nm to 470 nm precluding overlap with the Cy5 emission and inhibiting the FRET process. In principle, the

radical of QSY-21 generated from the reduction could quench the fluorescence of linked Cy5 *via* electron transfer. However, no evidence for this quenching mode was seen, a finding ascribed to the relative long linker (above five methylenes) used to construct **47**. In operational terms, the salient feature of **47** is that the QSY-21 moiety undergoes reversible reduction/oxidation when subject to hypoxia–normoxia cycles. This proved true when it was tested with live A549 cells. Here, by placing a cover glass over the cells and then removing it, hypoxic–normoxic conditions could be generated. Probe **47** was then dosed into the cells, resulting in the observation of a reversible “off–on” and “on–off” fluorescence signal under these hypoxia–normoxia cycling conditions. The authors stated that **47** was a FRET-based system that could be used to follow repeated hypoxia–normoxia cycles in live cells. As such it offered a crucial visual tool for exploring the response of live cells to hypoxia.

The mitochondrial membrane potential ( $\Delta\Psi_m$ ) has been proposed as an indicator of apoptosis and necrosis. Polarized mitochondria are characterised by high  $\Delta\Psi_m$  values, while depolarized mitochondria exhibit low  $\Delta\Psi_m$ . Fluorescent probes that provide a visual tool for tracking dynamic changes in  $\Delta\Psi_m$  are thus of interest in the context of fundamental mechanistic research and as tools for assessing the effects of potential drug candidates. Most probes reported exhibit a fluorescence signal readout based on  $\Delta\Psi_m$ -induced changes in the fluorescence intensity. More effective systems would be



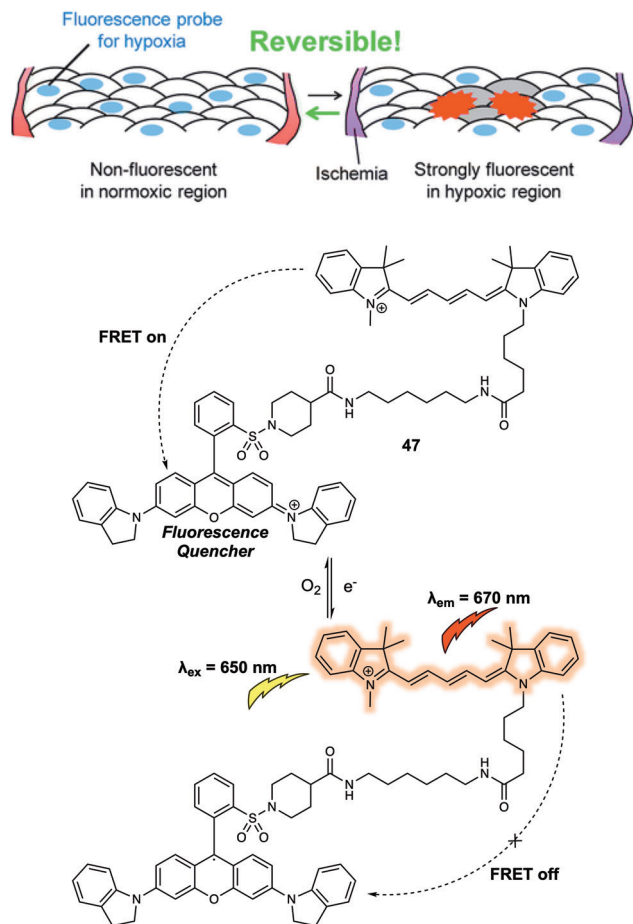


Fig. 29 Design of the FRET-based probe **47** that allowed hypoxia in live cells to be monitored by visual means. Reproduced with permission from ref. 39 (*J. Am. Chem. Soc.*, 2012, **134**, 19588–19591). Copyright (2012) American Chemical Society.

those that permit ratiometric sensing. With this desire in mind, Yu *et al.* reported a new FRET system in 2019 that could be used for monitoring  $\Delta\Psi_m$  levels through readout of a ratiometric fluorescence signal.<sup>40</sup> The FRET system was constructed using a carbazole linked to a benzyl chloride functionalized pyridinium group (**48**) as the fluorescent donor and a quinoline derivative providing for an extended D- $\pi$ -A structure (**49**) as the fluorescence acceptor (Fig. 30). Initially, the fluorescent donor (**48**) was immobilized to the mitochondria by means of covalent bonds formed between the benzyl chloride moiety of **48** and endogenous protein thiol groups localised in the mitochondria. In this state, **48** displayed a fluorescence signal (green channel, 510–550 nm) under excitation at 405 nm, irrespective of changes in the  $\Delta\Psi_m$ . The acceptor (**49**) was then added and found to localise selectively to the mitochondria. In this two-component system, an organelle localised fluorescence emission (DR channel, 665–735 nm) was observed upon excitation at 405 nm. When the  $\Delta\Psi_m$  decreased by the exogenous addition of carbonyl cyanide 3-chlorophenylhydrazone (CCCP), the FRET signal decreased. This was ascribed to the acceptor **49** no longer binding well to the mitochondrial membrane leading to breakup of the FRET

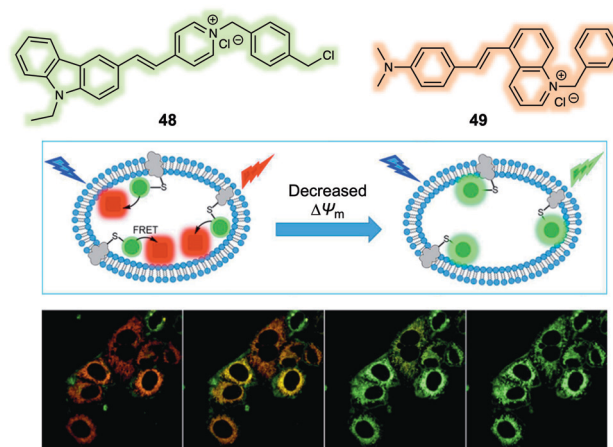


Fig. 30 Design of a FRET system (**48/49**) for the ratiometric detection of mitochondria membrane potential ( $\Delta\Psi_m$ ). Reproduced with permission from ref. 40 (*Anal. Chem.*, 2019, **91**, 3704–3709). Copyright (2019) American Chemical Society.

pair **48/49**. This FRET system was used to monitor decreases in the  $\Delta\Psi_m$  induced by CCCP in live A549 cells. In addition, this FRET system could be used to monitor cell damage induced by  $\text{H}_2\text{O}_2$  and chloral hydrate reflecting the close relationship between  $\Delta\Psi_m$  and cell viability.

One limitation of the above **48/49**-based FRET system is that it relies on the non-specific intracellular targeting of **49** to the mitochondria and as such may still target depolarized mitochondria due to its hydrophobic nature and limiting its sensitivity to  $\Delta\Psi_m$ . To address this issue, the Lin group designed and synthesized a FRET system that relies on **50** and **51** as the FRET reporter pair (Fig. 31).<sup>41</sup> Both **50** and **51** were fluorescent and found to localise in the mitochondria at high  $\Delta\Psi_m$ . In addition, the overlap of the emission of **50** (maximum at around 540 nm) and the absorption of **51** (maximum at around 530 nm in most

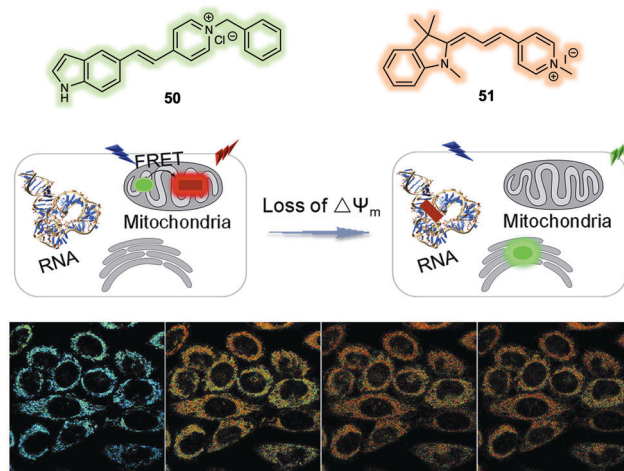


Fig. 31 FRET system (**50/51**) that allows for the ratiometric detection of changes in the mitochondrial membrane potential ( $\Delta\Psi_m$ ). Reproduced with permission from ref. 41 (*Anal. Chim. Acta*, 2019, **1097**, 196–203). Copyright (2019) Elsevier B.V.



solvents) was observed. FRET from **50** to **51** was found when the  $\Delta\Psi_m$  was high as evidenced by a strong red emission being observed. Conversely, both **50** and **51** were released from the mitochondria under conditions of a reduced  $\Delta\Psi_m$ . This resulted in a reduction of the FRET effect and as a consequence the cells were found to display a strong green emission and weak red emission. This change in fluorescence features allowed monitoring of  $\Delta\Psi_m$  in live cells. After release, probe **50** was found to localise in the cytoplasm, while **51** moved to the nucleolus because of its relatively high affinity towards RNA. The FRET system **50/51** was used by the authors to monitor cell oxidative damage induced by  $H_2O_2$  via ratiometric fluorescence imaging.

## Dual/multiple-responsive FRET-based probes

Most small-molecule sensors for use in biological systems are designed to detect a single analyte. This emphasis has afforded robust techniques that permit the role of single species to be studied with minimal interference. However, the ability to monitor simultaneously two or more analytes within the same biological sample is allowing the study of more complex biological processes and has important ramifications for clinical applications, where two or more species may be intimately responsible for a given phenotypic response.<sup>42</sup> A common approach to the problem of detecting multiple analytes involves the synchronous use of several single species sensors within one homogeneous solution or in a given single type of cell. While typically easy to implement, this approach is subject to inherent drawbacks. This has motivated efforts to prepare more advanced sensing systems that allow for the simultaneous detection of two or more analytes using a single sensor. The design of such multi-analyte sensor systems is made challenging by the fact that they need incorporate multiple recognition sites and fluorescence reporter subunits within a single molecule while permitting reasonable signal communication (*i.e.* energy transfer) between the constituent moieties or between the target analytes and the reporter subunits. FRET-based systems containing various fluorescent dyads and suitable linkers have been explored in an effort to address these challenges. For instance, oxidative stress is another disease-correlated complication related to redox imbalance. Its determinants and effects are currently being actively explored in the hopes of understanding a range of disorders from cancer to neurodegenerative disease, as well as in the context of drug

discovery efforts. Classic probes for oxidative stress have been intensity-based. In an effort to create a more effective system for quantifying oxidative stress in live cells, New *et al.* designed an intriguing FRET system (probe **52**) based on a coumarin/flavin dyad.<sup>43</sup> In its oxidized state, **52** emits a characteristic flavin emission at 520 nm upon excitation at 405 nm, presumably *via* a FRET process (Fig. 32). In contrast, **52** only displayed coumarin emission at 470 nm in its reduced state as determined from model studies carried out in HEPES buffer using  $NaBH_3CN$  as the reductant. A linear response in the fluorescence intensity ratio ( $I_{520}/I_{470}$ ) was observed. This FRET platform was then used for tracing oxidative stress in HeLa cells *via* ratiometric fluorescence imaging. Probe **52** permitted visualisation by means of three different detection modalities: confocal microscopy, fluorescence lifetime imaging and flow cytometry.

Lin *et al.* reported a FRET-based fluorescent sensor (probe **53**) (Fig. 33) that permits the simultaneous monitoring of endogenously produced NO and  $H_2O_2$  in living macrophage cells.<sup>44</sup> Probe **53** contains a coumarin/rhodamine dyad, to which an  $H_2O_2$ -responsive boronate group and an NO-responsive phenylenediamine group were anchored. As prepared, **53** exhibited no fluorescence emission upon excitation at 400 nm or 550 nm. Upon addition of NO, followed by excitation at 550 nm, a strong emission at 580 nm was observed, whilst little emission was observed upon excitation at 400 nm. Subsequent addition of  $H_2O_2$  led to the appearance of a new strong emission feature at 580 nm upon excitation at 400 nm, as would be expected for a FRET process from the coumarin to the rhodamine moiety. Similarly, just addition of  $H_2O_2$  resulted in a fluorescence emission increase at 460 nm upon excitation at 400 nm, whilst no fluorescence emission was observed upon excitation at 550 nm. However, a strong fluorescence emission at 580 nm was observed upon excitation at 400 nm after the sequential addition of NO. This system thus displayed logic gate-like sensing, leading the authors to propose that this single FRET probe could emerge as a unique chemical tool that might allow the interplay of  $H_2O_2$  and NO in various complex biological processes to be explored in greater detail.

Understanding the cross-talk between  $H_2S$  and NO in biological systems is of particular importance since they could have interlinked roles in a number of prevalent medical disorders, including cardiovascular diseases (ischemia reperfusion) and inflammation. Wu and colleagues reported a FRET-based chemosensor **54** (Fig. 34) that permitted the simultaneous detection of  $H_2S$  and NO.<sup>45</sup> In their design, an  $H_2S$ -responsive azide group was anchored to a naphthalimide core while an NO-responsive

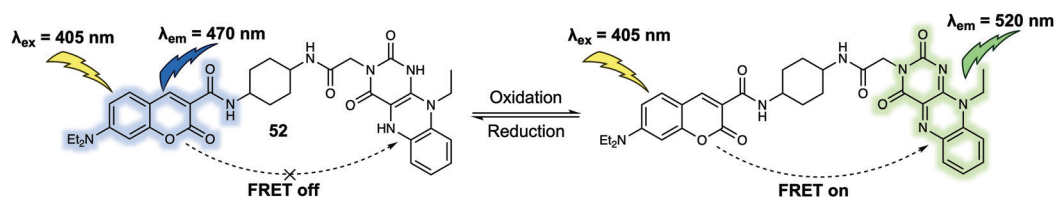


Fig. 32 FRET-based probe **52** that facilitates the monitoring of oxidative stress.



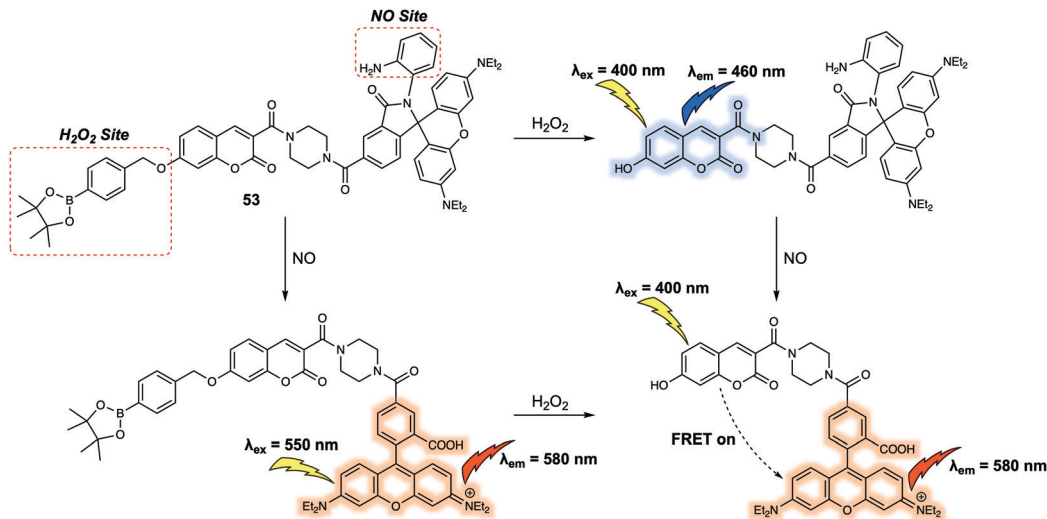


Fig. 33 Chemical structure of the dual-responsive probe **53** and its proposed mechanism action when used as a sensor for  $\text{H}_2\text{O}_2$  and NO.

phenylenediamine was anchored to a rhodamine. The two subunits were connected *via* a linker to create the final FRET-based system. In the absence of  $\text{H}_2\text{S}$  and NO, **54** produced a very weak fluorescence signal upon excitation, a finding rationalised in terms of the azide acting as a quenching group for the photo-excited states of the naphthalimide and spirocyclic form of the rhodamine. When exposed to  $\text{H}_2\text{S}$  and excited at 425 nm, **54** was found to give rise to an emission centred at 539 nm. Separate addition of NO to **54** led to an emission at 570 nm upon excitation at 550 nm. Simultaneous addition of the two analytes resulted in a fluorescence emission at 570 nm when excited at 425 nm or 550 nm a result of the FRET process from the naphthalimide to rhodamine unit. The authors then demonstrated that **54** could be used to monitor  $\text{H}_2\text{S}$  and/or NO in L929 cells.

Another dual-responsive FRET system (probe **55**) (Fig. 35) was reported by Xian *et al.*<sup>46</sup> This probe, which relies on a coumarin/rhodol dyad as the FRET pair, proved effective for measuring both  $\text{H}_2\text{S}$  and hydrogen polysulfides ( $\text{H}_2\text{S}_n$ ,  $n > 1$ ). In terms of design, both an  $\text{H}_2\text{S}$ -responsive azide and an  $\text{H}_2\text{S}_n$ -response phenyl 2-(benzoylthio)benzoate were positioned on

the FRET dyad. As expected, the addition of  $\text{Na}_2\text{S}_2$  (commonly used for generation of  $\text{H}_2\text{S}_n$ ) induced a strong fluorescence emission at 542 nm, corresponding to the emission of the rhodol. In contrast, the addition of  $\text{Na}_2\text{S}$  (commonly used for generation of  $\text{H}_2\text{S}$ ) induced characteristic coumarin fluorescence emission at 452 nm as the result of azide reduction. Unfortunately, the reaction of the azide subunit in **55** with  $\text{H}_2\text{S}$  also generates a small amount of  $\text{H}_2\text{S}_n$ , which led to a peak appearing at 542 nm, corresponding to the fluorescence emission of rhodol. In spite of this complication, **55** could be used to discriminate between  $\text{H}_2\text{S}$  and  $\text{H}_2\text{S}_n$  both in solution and in living cells by taking advantage of the dual-channel fluorescence signal readout it permits. Moreover, the fluorescence intensity ratio could be used to detect the relative concentrations of  $\text{H}_2\text{S}$  and  $\text{H}_2\text{S}_n$  in aqueous solution under conditions where both analytes are present.

Hlaváč *et al.* constructed a FRET system (probe **56**) with three signal readouts as a ratiometric chemosensor for the simultaneous detection of chymotrypsin and trypsin. Probe **56** (Fig. 36) was constructed by attaching three fluorescent dyes

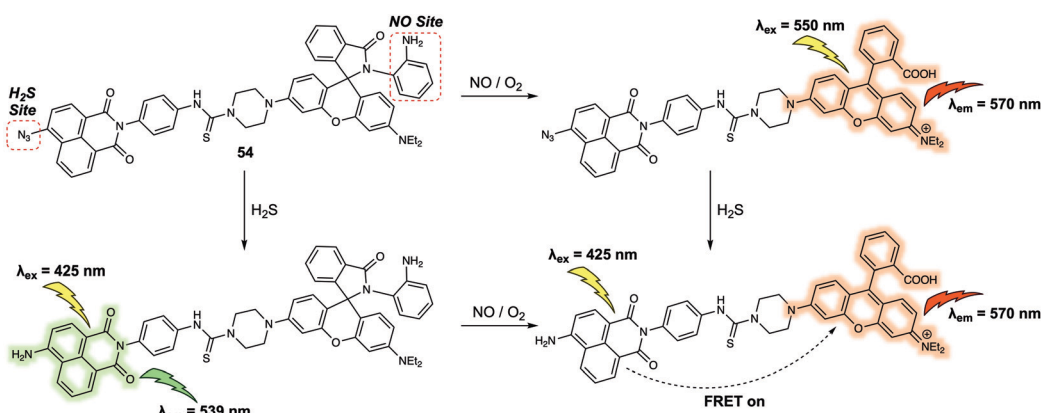


Fig. 34 Chemical structure of the dual-responsive probe **54** and its proposed mechanism action when used to detect NO and  $\text{H}_2\text{S}$ .



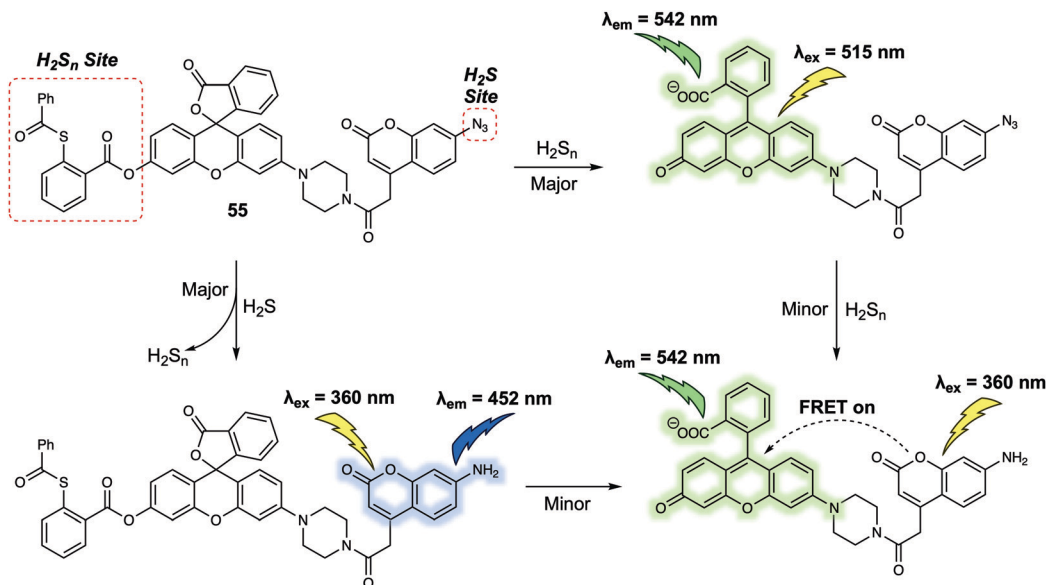


Fig. 35 Chemical structure of the dual-responsive probe **55** and the proposed chemical transformations that allow it to be used as a sensor for  $\text{H}_2\text{S}$  and  $\text{H}_2\text{S}_n$ .

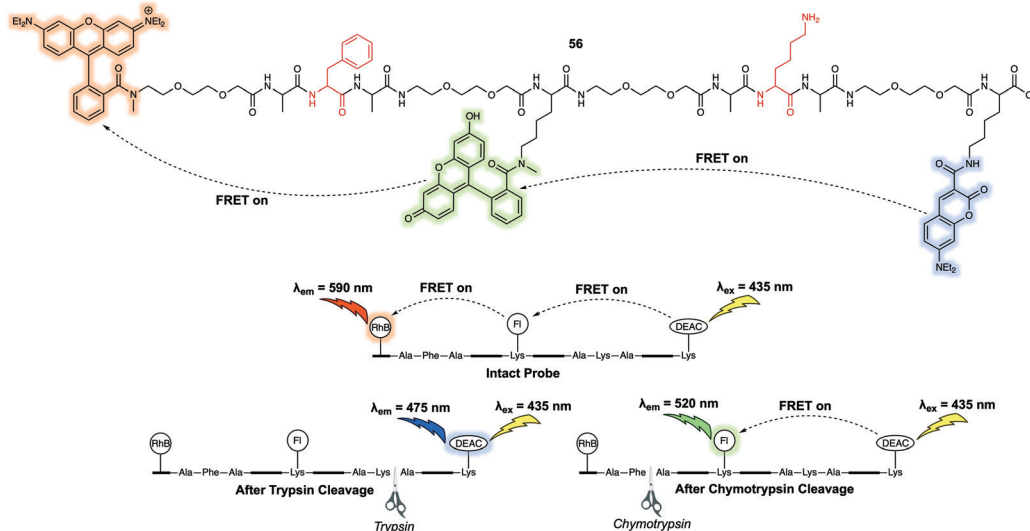


Fig. 36 Chemical structure of the dual-responsive, three-fluorophore probe **56** and the working mechanism proposed that allows for the detection of chymotrypsin and trypsin.

7-diethylaminocoumarin-3-carboxylic acid (DEAC), fluorescein (FI) and rhodamine B (RhB) to a short peptide.<sup>47</sup> Upon excitation of the donor (DEAC) at 435 nm, FRET to FI occurs, followed by FRET from FI to RhB. The system thus exhibited a cascade-like energy transfer process. The two cleavage sites (phenylalanine (specific for chymotrypsin) and lysine (specific for trypsin)) of this short peptide-based fluorescent probe allowed it to discriminate chymotrypsin and trypsin through the cascade-like FRET process. Specifically, it was found to display three discrete fluorescence signals when excited at one single wavelength (435 nm). The disparate signal readouts provided a means to quantify the activity of the target protease.

In 2019, Zhang and colleagues reported a dual-responsive FRET-based fluorescent sensor (probe **57**) (Fig. 37) that was designed to allow investigations of how phosphatase activity in cells depend on  $\text{H}_2\text{S}$  levels.<sup>48</sup> In analogy to other dual-responsive FRET systems, a coumarin/rhodol dyad exists at the core of this FRET system. Probe **57** incorporated an azide group as the recognition unit for  $\text{H}_2\text{S}$ . It also contains a phosphate group that was expected to serve as a recognition site for the phosphatase enzyme being targeted for study. Probe **57** itself exhibited relatively weak fluorescence upon excitation at 360 nm or 510 nm. However, the separate addition of either  $\text{H}_2\text{S}$  or phosphatase resulted in the appearance of the



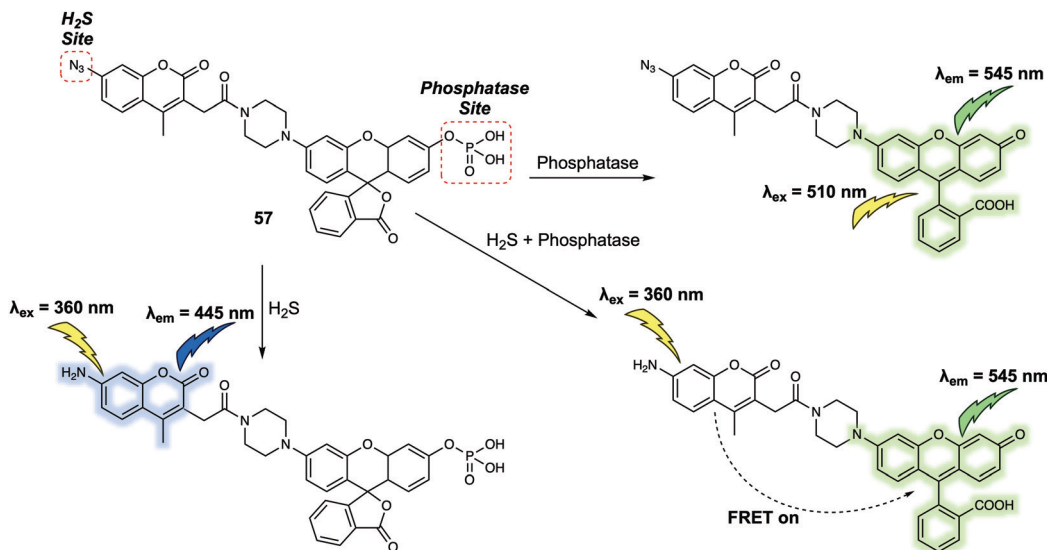


Fig. 37 Structure of probe **57** and its proposed fluorescent response mechanism when exposed to H<sub>2</sub>S, phosphatase, and an H<sub>2</sub>S/phosphatase mixture.

characteristic coumarin or rhodol fluorescence emission at 445 nm and 545 nm, respectively. Addition of a fixed concentration of H<sub>2</sub>S followed by increasing phosphatase additions, enhancement of the emission at 545 nm and concurrent decrease of the emission at 445 nm were observed. These findings were ascribed to a FRET process between donor with the reduced amine and the ring-opened fluorescent acceptor. Importantly, **57** exhibited a high selectivity for H<sub>2</sub>S and phosphatase over polysulfides and other enzymes. Using this system and a three-channel fluorescence imaging setup it proved possible to detect H<sub>2</sub>S and phosphatase simultaneously in HeLa cells. Using **57** as a chemosensor, this research team was able to confirm that *in vitro* the intracellular concentrations of H<sub>2</sub>S played a vital role in regulating the activity of phosphatase. In particular, it was discovered that cells regulate

their H<sub>2</sub>S concentrations so as to maintain an optimal levels of phosphatase activity.

A dual-responsive FRET system (probe **58**) (Fig. 38) was developed by Yang *et al.* to permit the monitoring of  $\beta$ -D-glucosidase (GCD) and phosphodiesterase I (PDE).<sup>49</sup> The proposed sensing mechanism is depicted in Fig. 36. In the absence of either target enzyme probe **58** emits at 656 nm due to FRET from the 7- $\beta$ -D-glucopyranosyl-oxycoumarin donor to the *meso*-tetraphenylporphyrin (TPP) acceptor. Addition of GCD cleaves the  $\beta$ -glycosidic bond to release the 7-hydroxycoumarin, which emits at 460 nm. A slight decrease in the emission of the TPP acceptor at 656 nm was observed, presumably due to a somewhat weakened FRET process. In contrast, sole addition of PDE induced fluorescence emission at 390 nm because the FRET process from 7- $\beta$ -D-glucopyranosyl-oxycoumarin to

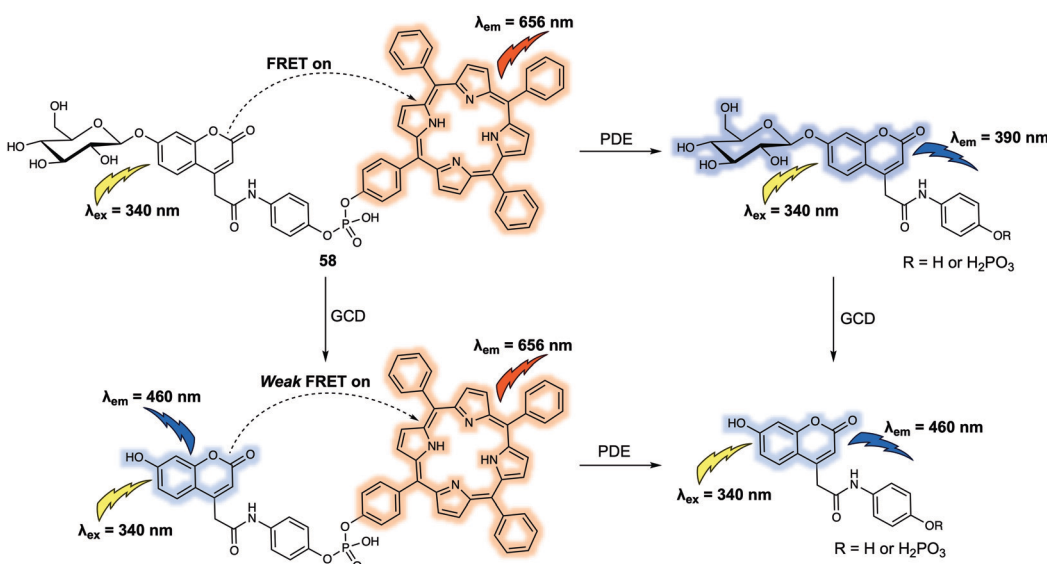
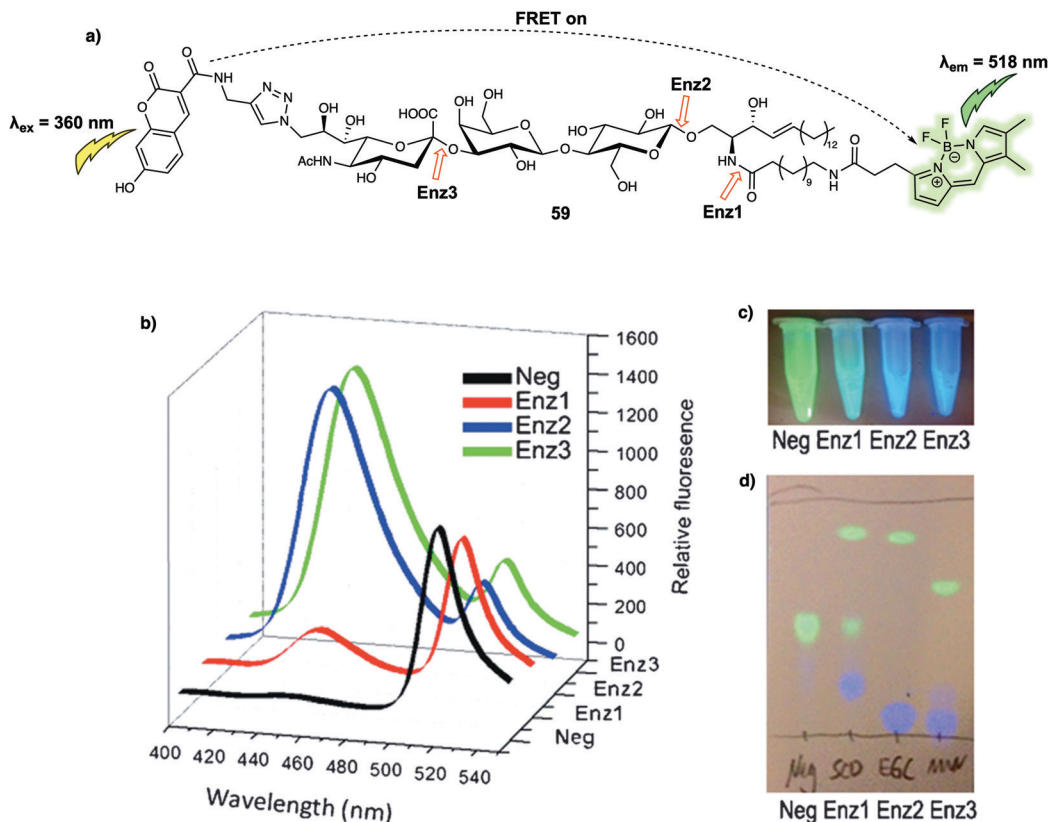


Fig. 38 Chemical structure of the dual-responsive probe **58** and the mechanism proposed for the simultaneous detection of GCD and PDE.





**Fig. 39** (a) Structure of probe **59** and proposed mechanism for the detection of Enz1, Enz2, and Enz3. Red arrows represent the position where each enzyme cleaved the substrate. (b) Fluorescence spectra recorded before and after incubation with each test enzyme (30 min). (c) Visual detection of the reactions under a UV lamp. (d) Different hydrolysis patterns of probe **59** after incubating with Enz1, Enz2, and Enz3. Neg: unreacted probe **59** as a negative control. Reproduced with permission from ref. 50 (*Angew. Chem., Int. Ed.*, 2015, **54**, 5389–5393). Copyright (2015) Wiley-VCH Verlag GmbH & Co. KGaA, Weinheim.

TPP was fully inhibited. Finally, addition of both GCD and PDE resulted in strong emission at 460 nm but very weak emission at 656 nm. This FRET system could be used to detect GCD and PDE levels in Huh7 cells.

Gangliosides, functionalized oligosaccharides critical to cell signal transduction, have also been used to construct FRET-based probes for enzymes. For instance, in 2015 Withers *et al.* designed and synthesized a FRET system (probe **59**) (Fig. 39) for monitoring ganglioside-processing enzyme activity.<sup>50</sup> Within probe **59**, a 7-hydroxycoumarin served as the FRET donor and a BODIPY as the acceptor. These subunits were attached to the C9 position of the sialic acid and the terminus of the constituent fatty acid alkyl chain, respectively, as shown in Fig. 39. Probe **59** could be cleaved by three ganglioside-degrading enzymes, which are sphingolipid ceramide *N*-deacylase (Enz1), endoglycoceramidase (Enz2), and neuraminidase (Enz3). In the absence of one of these enzymes, excitation of the 7-hydroxycoumarin donor at 360 nm gave rise to the BODIPY-derived emission at around 518 nm. The FRET efficiency was calculated to be > 95%, indicating a highly efficient energy transfer system. Addition of ENz1, ENz2 or ENz3, respectively, induced a substantial increase in the fluorescence intensity at 450 nm corresponding to 7-hydroxycoumarin-based emission. A decrease in the fluorescence intensity at 518 nm

was also observed. The change in the ratio  $I_{450}/I_{518}$  was up to 70-fold for both ENz2 and ENz3; however, a relatively low (7.3-fold) change was observed for ENz1, a finding ascribed to an equilibrium being established between hydrolysis and enzymatic synthesis. The ratiometric signal readout from the donor and acceptor of **59** permitted quantification of ENz2 and ENz3 levels in lysate expressed from *E. coli* cells. Moreover, **59** enabled the fluorescence imaging of ENz3 activity in human lymphoma (Jurkat) cells.

## Conclusions and perspectives

Förster resonance energy transfer (FRET) is a photochemical process that relies on energy transfer from the donor to the acceptor. This process can be regulated by the distance between the donor and acceptor, as well as the overlap between the emission of the donor and absorption of the acceptor. The unique features of FRET have resulted in the approach being widely applied to the design of various fluorescent probes for the detection of specific analytes. In particular, many small-molecule FRET-based probes exhibit properties that make them ideal for biological applications, including fast uptake by cells, non-invasive imaging, *in situ* detection with minimal biological



interference, and easy structural variability. In this review, we have aimed to summarise recent progress towards the development of small-molecule FRET-based chemosensors and imaging agents. We began with the design principles of donor-acceptor interactions and how they are modulated to create FRET-based sensors. A number of recently developed small-molecule FRET-based chemosensors were then presented so as to illustrate a range of working mechanisms and selected biological applications. In the final section, design strategies used to create dual/multiple-responsive FRET probes were discussed. We then highlight the potential of selected systems to monitor two or more analytes within the same biological sample. The ability to detect multiple targets is expected to allow a greater understanding of complex biological processes since in many cases two or more species may be intimately responsible for a given biological response. Therefore, we strongly believe that future efforts should focus in part on designing FRET-based probes that can detect multiple analytes and provide signal outputs that allow for their easy discrimination. Such systems are expected to follow the rules of logic gates and the associated complexity is expected to aid research in a range of areas, including cell biology and laboratory tests designed to enable faster clinical diagnoses. Another notable area for development is in the area of NIR fluorescent FRET-based probes and their quenchers. Since they permit relatively deep tissue penetration, NIR fluorescent probes are particularly desirable, especially for *in vivo* analysis. One major challenge associated with the design of FRET-based NIR fluorescent probes involves the synthesis of the constituent NIR fluorescent donors and acceptors. This will require the development of NIR fluorophores with high photostability and significant water solubility, as well as quenchers.

Given the combination of challenges and opportunities associated with FRET-based small-molecule probes, we believe that the area remains open for continued development. Unsurprisingly, at this time the need for improved systems is even greater than ever. At the same time, the possibilities to contribute to advances in a wide range of fields is almost limitless. We hope, therefore, that with this review we have inspired the reader to contribute to the further development of the area while providing a knowledge base that will facilitate this task. In this way, we believe the best is yet to come for those working to prepare and exploit new FRET-based small-molecule probes as research tools.

## Conflicts of interest

There are no conflicts to declare.

## Acknowledgements

LW wishes to thank China Scholarship Council and The University of Bath for supporting his PhD work in the UK. BE, SDB and TDJ would like to thank the EPSRC and The University of Bath for funding. TDJ wishes to thank the Royal Society for a

Wolfson Research Merit Award. CH thanks the National Natural Science Foundation of China (Grants 21672150, 21302125), Alexander von Humboldt Foundation (AvH), Shanghai Rising-Star Program (19QA1406400), Shanghai Engineering Research Center of Green Energy Chemical Engineering (18DZ2254200), and Program for Changjiang Scholars and Innovative (IRT\_16R49). XPH, HT thank the Natural Science Foundation of China (No. 21788102, 21722801 and 91853201), Shanghai Municipal Science and Technology Major Project (2018SHZDZX03), the National Key Sci-Tech Special Projects of Infection Diseases of China (2018ZX10-732202) and the international cooperation program of Shanghai Science and Technology Committee (17520750100). JY acknowledges a grant from the National Creative Research Initiative programs of the National Research Foundation of Korea (NRF) funded by the Korean government (MSIP) (No. 2012R1A3A-2048814). JLS thanks the National Institutes of Health (R01 GM103790) and the Robert A. Welch Foundation (F-0018) for support of the work carried out in Austin.

## References

- 1 D. Wu, A. C. Sedgwick, T. Gunnlaugsson, E. U. Akkaya, J. Yoon and T. D. James, *Chem. Soc. Rev.*, 2017, **46**, 7105–7123.
- 2 J. Fan, M. Hu, P. Zhan and X. Peng, *Chem. Soc. Rev.*, 2013, **42**, 29–43.
- 3 L. Yuan, W. Lin, K. Zheng and S. Zhu, *Acc. Chem. Res.*, 2013, **46**, 1462–1473.
- 4 T. Förster, *Ann. Phys.*, 1948, **437**, 55–75.
- 5 X. Zhang, Y. Xiao and X. Qian, *Angew. Chem., Int. Ed.*, 2008, **47**, 8025–8029.
- 6 K. Aich, S. Goswami, S. Das, C. D. Mukhopadhyay, C. K. Quah and H.-K. Fun, *Inorg. Chem.*, 2015, **54**, 7309–7315.
- 7 A. T. Aron, M. O. Loehr, J. Bogena and C. J. Chang, *J. Am. Chem. Soc.*, 2016, **138**, 14338–14346.
- 8 C. Y.-S. Chung, J. M. Posimo, S. Lee, T. Tsang, J. M. Davis, D. C. Brady and C. J. Chang, *Proc. Natl. Acad. Sci. U. S. A.*, 2019, **116**, 18285–18294.
- 9 Y.-R. Zhang, X.-P. Chen, J. Shao, J.-Y. Zhang, Q. Yuan, J.-Y. Miao and B.-X. Zhao, *Chem. Commun.*, 2014, **50**, 14241–14244.
- 10 S.-L. Shen, X. Zhao, X.-F. Zhang, X.-L. Liu, H. Wang, Y.-Y. Dai, J.-Y. Miao and B.-X. Zhao, *J. Mater. Chem. B*, 2017, **5**, 289–295.
- 11 L. Wu, A. C. Sedgwick, X. Sun, S. D. Bull, X.-P. He and T. D. James, *Acc. Chem. Res.*, 2019, **52**, 2582–2597.
- 12 X. Jia, Q. Chen, Y. Yang, Y. Tang, R. Wang, Y. Xu, W. Zhu and X. Qian, *J. Am. Chem. Soc.*, 2016, **138**, 10778–10781.
- 13 D. Cheng, Y. Pan, L. Wang, Z. Zeng, L. Yuan, X. Zhang and Y.-T. Chang, *J. Am. Chem. Soc.*, 2017, **139**, 285–292.
- 14 D.-P. Li, Z.-Y. Wang, X.-J. Cao, J. Cui, X. Wang, H.-Z. Cui, J.-Y. Miao and B.-X. Zhao, *Chem. Commun.*, 2016, **52**, 2760–2763.
- 15 X. Yang, Y. Zhou, X. Zhang, S. Yang, Y. Chen, J. Guo, X. Li, Z. Qing and R. Yang, *Chem. Commun.*, 2016, **52**, 10289–10292.
- 16 S. Yang, X. Wen, X. Yang, Y. Li, C. Guo, Y. Zhou, H. Li and R. Yang, *Anal. Chem.*, 2018, **90**, 14514–14520.
- 17 H. Zhang, R. Liu, Y. Tan, W. H. Xie, H. Lei, H.-Y. Cheung and H. Sun, *ACS Appl. Mater. Interfaces*, 2015, **7**, 5438–5443.



- 18 X. Zhu, M. Xiong, H.-W. Liu, G.-J. Mao, L. Zhou, J. Zhang, X. Hu, X.-B. Zhang and W. Tan, *Chem. Commun.*, 2016, **52**, 733–736.
- 19 X. Xie, J. Fan, M. Liang, Y. Li, X. Jiao, X. Wang and B. Tang, *Chem. Commun.*, 2017, **53**, 11941–11944.
- 20 L. He, W. Lin, Q. Xu and H. Wei, *Chem. Commun.*, 2015, **51**, 1510–1513.
- 21 L. Yuan, F. Jin, Z. Zeng, C. Liu, S. Luo and J. Wu, *Chem. Sci.*, 2015, **6**, 2360–2365.
- 22 K. Umezawa, M. Kamiya and Y. Urano, *Angew. Chem., Int. Ed.*, 2018, **57**, 9346–9350.
- 23 K. Umezawa, M. Yoshida, M. Kamiya, T. Yamasoba and Y. Urano, *Nat. Chem.*, 2017, **9**, 279–286.
- 24 Y. W. Jun, T. Wang, S. Hwang, D. Kim, D. Ma, K. H. Kim, S. Kim, J. Jung and K. H. Ahn, *Angew. Chem., Int. Ed.*, 2018, **57**, 10142–10147.
- 25 J. X. Ong, C. S. Q. Lim, H. V. Le and W. H. Ang, *Angew. Chem., Int. Ed.*, 2019, **131**, 170–173.
- 26 T. Pinkert, D. Furkert, T. Korte, A. Herrmann and C. Arenz, *Angew. Chem., Int. Ed.*, 2017, **56**, 2790–2794.
- 27 A. Cobos-Correa, J. B. Trojanek, S. Diemer, M. A. Mall and C. Schultz, *Nat. Chem. Biol.*, 2009, **5**, 628–630.
- 28 S. Gehrig, M. A. Mall and C. Schultz, *Angew. Chem., Int. Ed.*, 2012, **51**, 6258–6261.
- 29 J. Mu, F. Liu, M. S. Rajab, M. Shi, S. Li, C. Goh, L. Lu, Q.-H. Xu, B. Liu, L. G. Ng and B. Xing, *Angew. Chem., Int. Ed.*, 2014, **53**, 14357–14362.
- 30 L. Li, X. Shen, Q.-H. Xu and S. Q. Yao, *Angew. Chem., Int. Ed.*, 2013, **52**, 424–428.
- 31 A. K. Yadav, D. L. Shen, X. Shan, X. He, A. R. Kermode and D. J. Vocadlo, *J. Am. Chem. Soc.*, 2015, **137**, 1181–1189.
- 32 S. Cecioni and D. J. Vocadlo, *J. Am. Chem. Soc.*, 2017, **139**, 8392–8395.
- 33 Q. Shao and B. Xing, *Chem. Commun.*, 2012, **48**, 1739–1741.
- 34 T. Myochin, K. Hanaoka, S. Iwaki, T. Ueno, T. Komatsu, T. Terai, T. Nagano and Y. Urano, *J. Am. Chem. Soc.*, 2015, **137**, 4759–4765.
- 35 Y. Yuan, R. Zhang, X. Cheng, S. Xu and B. Liu, *Chem. Sci.*, 2016, **7**, 4245–4250.
- 36 S. Zhang, K. I. Assaf, C. Huang, A. Hennig and W. M. Nau, *Chem. Commun.*, 2019, **55**, 671–674.
- 37 C. Huang, T. Jia, M. Tang, Q. Yin, W. Zhu, C. Zhang, Y. Yang, N. Jia, Y. Xu and X. Qian, *J. Am. Chem. Soc.*, 2014, **136**, 14237–14244.
- 38 Y.-X. Wu, X.-B. Zhang, J.-B. Li, C.-C. Zhang, H. Liang, G.-J. Mao, L.-Y. Zhou, W. Tan and R.-Q. Yu, *Anal. Chem.*, 2014, **86**, 10389–10396.
- 39 S. Takahashi, W. Piao, Y. Matsumura, T. Komatsu, T. Ueno, T. Terai, T. Kamachi, M. Kohno, T. Nagano and K. Hanaoka, *J. Am. Chem. Soc.*, 2012, **134**, 19588–19591.
- 40 R. Feng, L. Guo, J. Fang, Y. Jia, X. Wang, Q. Wei and X. Yu, *Anal. Chem.*, 2019, **91**, 3704–3709.
- 41 J. Sun, M. Tian and W. Lin, *Anal. Chim. Acta*, 2020, **1097**, 196–203.
- 42 X.-P. He, X.-L. Hu, T. D. James, J. Yoon and H. Tian, *Chem. Soc. Rev.*, 2017, **46**, 6687–6696.
- 43 A. Kaur, M. A. Haghghatbin, C. F. Hogan and E. J. New, *Chem. Commun.*, 2015, **51**, 10510–10513.
- 44 L. Yuan, W. Lin, Y. Xie, B. Chen and S. Zhu, *J. Am. Chem. Soc.*, 2012, **134**, 1305–1315.
- 45 P. Zhang, J. Li, B. Li, J. Xu, F. Zeng, J. Lv and S. Wu, *Chem. Commun.*, 2015, **51**, 4414–4416.
- 46 W. Chen, A. Pacheco, Y. Takano, J. J. Day, K. Hanaoka and M. Xian, *Angew. Chem., Int. Ed.*, 2016, **55**, 9993–9996.
- 47 Y. Okoroichenkova, M. Porubský, S. Benická and J. Hlaváč, *Chem. Commun.*, 2018, **54**, 7589–7592.
- 48 P. Ou, R. Zhang, Z. Liu, X. Tian, G. Han, B. Liu, Z. Hu and Z. Zhang, *Angew. Chem., Int. Ed.*, 2019, **58**, 2261–2265.
- 49 Y. Li, H. Wang, J. Li, J. Zheng, X. Xu and R. Yang, *Anal. Chem.*, 2011, **83**, 1268–1274.
- 50 G.-Y. Yang, C. Li, M. Fischer, C. W. Cairo, Y. Feng and S. G. Withers, *Angew. Chem., Int. Ed.*, 2015, **54**, 5389–5393.

