

Cite this: *Chem. Sci.*, 2019, 10, 6035

All publication charges for this article have been paid for by the Royal Society of Chemistry

Received 4th April 2019
Accepted 23rd May 2019

DOI: 10.1039/c9sc01652j

rsc.li/chemical-science

Fluorescent probes for organelle-targeted bioactive species imaging

Peng Gao,¹ Wei Pan,¹ Na Li^{1*} and Bo Tang^{1*}

Bioactive species, including reactive oxygen species (ROS, including $O_2^{\cdot-}$, H_2O_2 , HOCl, 1O_2 , $\cdot OH$, HOBr, etc.), reactive nitrogen species (RNS, including ONOO⁻, NO, NO₂, HNO, etc.), reactive sulfur species (RSS, including GSH, Hcy, Cys, H₂S, H₂S_n, SO₂ derivatives, etc.), ATP, HCHO, CO and so on, are a highly important category of molecules in living cells. The dynamic fluctuations of these molecules in subcellular microenvironments determine cellular homeostasis, signal conduction, immunity and metabolism. However, their abnormal expressions can cause disorders which are associated with diverse major diseases. Monitoring bioactive molecules in subcellular structures is therefore critical for bioanalysis and related drug discovery. With the emergence of organelle-targeted fluorescent probes, significant progress has been made in subcellular imaging. Among the developed subcellular localization fluorescent tools, ROS, RNS and RSS (RONSS) probes are highly attractive, owing to their potential for revealing the physiological and pathological functions of these highly reactive, interactive and interconvertible molecules during diverse biological events, which are rather significant for advancing our understanding of different life phenomena and exploring new technologies for life regulation. This review mainly illustrates the design principles, detection mechanisms, current challenges, and potential future directions of organelle-targeted fluorescent probes toward RONSS.

1. Introduction

Revolutions in science and technology have greatly enhanced our lives. As a prominent example, in the past few decades fluorescent imaging technology has made great achievements, which have brought increasingly fascinating news for diverse fields including biomedicine and bioanalysis.¹ Extensive evidence shows that diverse bioactive species are critical for conducting physiological processes throughout the cell cycle, and numerous major diseases are associated with the abnormal expression of these species.² Meanwhile, the concentrations of these molecules are inhomogeneous in different subcellular environments at different times.³ Therefore, a better understanding of diverse physiological and pathological processes can be obtained *via* accurate monitoring of subcellular molecular concentrations of these molecules, which is beneficial for exploring novel strategies for regulating biological phenomena and improving diagnosis, treatment and prognosis of different diseases.⁴

Subcellular microenvironments are maintained by the cell endomembrane system, typically known as organelles, including the nucleus, mitochondria, lysosomes, endoplasmic reticulum (ER), Golgi apparatus, lipid droplets and so on. These

organelles with complex but ordered structures play important roles in ensuring the smooth progress of cell growth, proliferation, fission, signal transduction and apoptosis. They are also the main sources as well as targets of diverse bioactive species. However, the disruption of intracellular homeostasis can result in various disorders.^{2g,3a,c,d} For example, owing to the extremely rapid respiration rate, reactive oxygen species (ROS) are usually overexpressed in diverse organelles of cancer cells, which are also associated with lower intracellular pH. To maintain cell proliferation, the contents of antioxidants in malignant cells are elevated accordingly. Therefore, detecting the real status of subcellular microenvironments is critical in understanding different pathogenesises of a broad spectrum of major diseases.

Unfortunately, the real-time, *in situ*, dynamic, accurate, and reversible monitoring of bioactive molecules in subcellular microenvironments has been a great challenge due to theoretical and technological limitations, and many related investigations have remained at the cellular level during the last few decades.^{1e,g,3c,d,5} Notably, over the past several years, significant efforts have been devoted to the design and development of organelle-targeted fluorescent probes for precise monitoring of subcellular microenvironments, including pH,⁶ polarity,⁷ ions,⁸ viscosity,⁹ ROS (including $O_2^{\cdot-}$, H_2O_2 , HOCl, 1O_2 , $\cdot OH$, HOBr, etc.),¹⁰ reactive nitrogen species (RNS, including ONOO⁻, NO, NO₂, HNO, etc.),¹¹ reactive sulfur species (RSS, including GSH, Hcy, Cys, H₂S, H₂S_n, SO₂ derivatives, etc.),^{1e,f,12} ATP,¹³ HCHO¹⁴ and so on. Among these targets, ROS, RNS and RSS (termed

College of Chemistry, Chemical Engineering and Materials Science, Collaborative Innovation Center of Functionalized Probes for Chemical Imaging in Universities of Shandong, Key Laboratory of Molecular and Nano Probes, Ministry of Education, Institute of Molecular and Nano Science, Shandong Normal University, Jinan 250014, P. R. China. E-mail: lina@sdnu.edu.cn; tangb@sdnu.edu.cn



RONSS) have attracted increasing interest because they are closely related to the intracellular redox homeostasis. In other words, they are capable of buffering the subcellular redox balance during different processes, which can further determine a number of biological events. Therefore, organelle-targeted RONSS fluorescent probes are of great significance for explaining and exploring the physiological and pathological functions of these molecules, and could offer theoretical bases for clinical diagnosis as well as drug design.^{2g,3b-d,4c}

This review mainly focuses on the latest achievements of organelle-targeted fluorescent probes for RONSS imaging. The design principles, detection mechanisms and biological applications of these fluorescence tools are carefully illustrated. Moreover, the current challenges and the potential future directions, which would evoke more research interest and open new avenues for biological analysis, are included as well.

2. General rules for functional probe design

The advancement of microscopic imaging technology has introduced new opportunities for visualizing subtle intracellular structures. To investigate the critical events in living cells on the organelle and even more subtle levels, elaborately designed fluorescent probes are indispensable.¹⁵ Currently, benefiting from their easy design, preparation and functionalization, fluorescent molecular and nanoprobe are being widely employed for biological imaging.^{1a,b,f,2c} Organelle-targeted fluorescent probes mainly contain three moieties: targeting groups, fluorophores, and recognition units.^{3a,d} Benefiting from the different physicochemical properties of diverse organelles, probes with diverse targeting groups can localize in specific organelles.^{3b} After reaching subcellular locations of interest, they can subsequently react with diverse bioactive species through specific reaction mechanisms and further make detectable signal changes *via* different response mechanisms, which enables us to readily and effectively monitor these species in different organelles. In this part, diverse targeting approaches, reaction mechanisms and response mechanisms of organelle-targeted RONSS probes will be elaborated.

2.1. Approaches for delivering fluorescent probes into organelles

2.1.1. Nucleus-targeting. As the container of the majority of DNA in cells, the nucleus is the most important organelle of eukaryotic cells.¹⁶ Detection of RONSS in the nucleus of living cells holds great promise for chemical biology. For instance, Chang's group¹⁷ reported a nucleus-targeted H₂O₂ probe (NucPE1) and successfully revealed the reduced nuclear H₂O₂ level in sir-2.1 over-expressed worms, which revealed the relationships between enhanced ROS regulation capability and longevity (see details in Section 3.1).

Typically, the nucleus is enveloped by a double-layered membrane, which contains numerous nuclear pores as well as ribosomes. Some small molecules and ions can permeate through the nuclear membrane freely, while large biomolecules, such as

ribosomes and RNA, can pass through the nuclear pores *via* energy related pathways. By targeting the minor grooves in negatively charged DNA double-strands, small cationic fluorescent probes with two or more cationic centers and hydrophobic planar aromatic structures can preferentially label DNA molecules, and some of them have been commercialized (Fig. 1A).^{16a,18} In addition to labelling DNA, decorating probes with nuclear localization signal peptides, which enables binding of probes with importins and further actively delivering them into the nucleus through nuclear pores, is also an established protocol.^{16b,19}

2.1.2. Mitochondrion-targeting. Mitochondria are double-membrane constructed organelles. They are the main compartments for intracellular respiration (oxidative phosphorylation).^{4a} Mitochondria regulate energy generation, calcium circulation, protein synthesis, apoptosis pathways and so on. It is well known that mitochondria are the primary sources of diverse ROS and RNS. Therefore, probes that specifically accumulate in mitochondria play essential roles in monitoring the mitochondrial function and investigating numerous mitochondrion-related diseases.^{9a,20}

During mitochondrial respiration, the proton pumps in the inner mitochondrial membrane transport protons to the mitochondrial intermembrane space, which results in the formation of a highly negative mitochondrial transmembrane potential (MMP, ~ -180 mV).²¹ Inspired by this process, many delocalized lipophilic cations have been proved to exhibit mitochondrion targeting capabilities.²² Fluorescent probes with intrinsic or post-functionalized cationic aromatic structures can be used for mitochondrial imaging. Typical targeting ligands including triphenylphosphonium (TPP), positively charged pyridine and quinoline derivatives, cyanine and rhodamine are popular fluorophores for designing mitochondrion-targeted probes (Fig. 1B).^{3d,7a,23} In addition to MMP, mitochondrial transport proteins have also been used as targets. Some functional groups, such as peptides and pyruvate, have also been developed for constructing mitochondrion-targeted probes owing to their affinities for specific mitochondrial proteins.²⁴

2.1.3. Lysosome-targeting. Lysosomes are the digestive compartments of cells. Acidic microenvironments (pH ~ 5.0) and an abundance of hydrolases are the most prominent properties of lysosomes with a single-layered membrane structure. Lysosomes play essential roles in living cells. They take charge of foreign substance scavenging, digestion and autophagy.²⁵ RONSS are capable of regulating the lysosomal enzyme activity and membrane permeability, which can further affect diverse biological processes. Thus, monitoring RONSS in lysosomes has become another important task for chemical biology.

Currently, modification of probes with lipophilic amines is the most widely employed strategy for driving probes into lysosomes/endosomes.^{6a,26} The protonated amines in lysosomes are membrane impermeable, which results in the lysosomal/endosomal selective entrapment of the probes. 4-(2-Hydroxyethyl) morpholine and *N,N*-dimethylethylenediamine are the most popular groups for constructing lysosome-targeted fluorescent probes (Fig. 1C).^{26a,b,27} Interestingly, fluorescent probes without lysosomotropic groups can also be used to detect



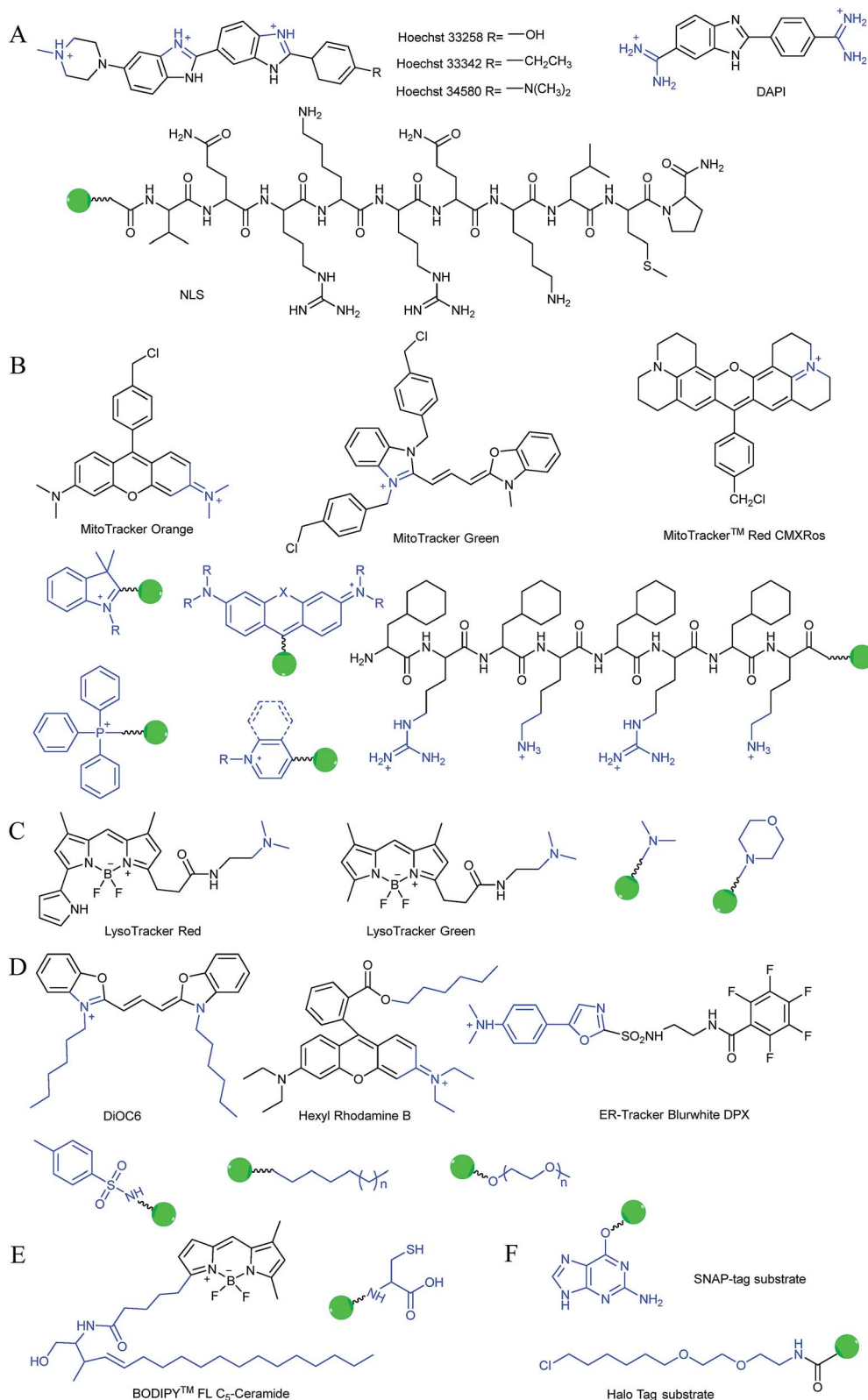


Fig. 1 Structures of diverse commercialized organelle-labelling dyes and common groups for organelle-targeted probe design: (A) for nucleus, (B) for mitochondria, (C) for lysosomes, (D) for endoplasmic reticulum, (E) for Golgi apparatus and (F) substrates for protein tagging probes.

species in lysosomes specifically, and they are usually logic molecules and can only release fluorescence signals in acidic environments after reacting with analytes.²⁸

2.1.4. Endoplasmic reticulum/Golgi apparatus-targeting. The ER can be divided into rough ER and smooth ER based on whether they contain ribosomes. Typically, the rough ER takes



charge of protein synthesis, while the smooth ER mainly controls lipid and carbohydrate metabolism, calcium signalling and so on. The intrinsic molecular mechanism of ER-targeted fluorescence probes remains unclear, but the common features of these probes may be concluded as small amphiphilic or lipophilic cationic molecules, and some ER specific dyes have been commercialized (Fig. 1D).²⁹ Recently, by using *p*-toluene sulfonamide as the ER localization group, our group developed several fluorescent probes for ER-targeted imaging.^{7b,d,30}

The Golgi apparatus is another important intracellular compartment for the modification, storage and transportation of lipids, carbohydrates and protein. After modification and labelling, cargoes in the Golgi apparatus can be transferred into their final destinations, such as lysosomes and the cytoplasmic membrane, and subsequently exert their biological functions. It has been proved that a stress-signalling overload in the Golgi apparatus can induce a series of disorders, which can further cause diverse diseases as well as cell death. Therefore, development of efficient Golgi apparatus specific probes has also attracted certain interest in recent years.^{3b,31} However, the intrinsic rules of Golgi apparatus-targeted probes are still vague, which has severely hampered the development of related fluorescent tools. Very recently, inspired by the rich cysteine residues in Golgi apparatus localized galactosyltransferase and protein kinase D, Huang and co-workers demonstrated L-cysteine (Fig. 1E) as an efficient Golgi apparatus targeting ligand, and several probes have been developed using this strategy.^{31a-c}

2.1.5. Protein tagging. In addition to the above targeting strategies, protein tagging is another widely investigated method for anchoring probes into organelles. The general procedure for protein tagging is to transfect and express specific fusion tags/enzymes with the protein of interest (POI). Subsequently, probes containing related substrates can spontaneously and efficiently connect with tags *via* highly specific biochemical reactions. By choosing different plasmids, fusion tags can bind with specific protein in different locations, thereby enabling probes to be labelled into different organelles. The major advantage of the protein tagging technique is the covalent connection of probes with protein, which is more stable, less toxic and environmentally insensitive. Importantly, protein tagging probes do not need to change their chemical structures during labelling different subcellular structures, which can avoid potential interference caused by chemical targeting ligands. Nowadays, SNAP-tag³² (based on benzylguanine-ligated substrates and mutant human O⁶-alkylguanine-DNA alkyltransferase (AGT) fusion proteins) and HaloTag³³ (based on alkyl chlorides and dehalogenase enzymes) are the most widely investigated protein labelling technologies (Fig. 1F).

2.2. Detection mechanisms toward RONSS

As the most reactive bioactive species in living cells, RONSS are responsible for intracellular redox homeostasis. Any uncontrolled expression of RONSS could cause oxidative, nitrative or reductive stress owing to the capabilities of these molecular

species in reacting with diverse biomolecules, such as DNA, lipids and enzymes.^{3c} Such imbalances can hamper the smooth progress of different biological activities and further result in a series of major diseases, such as cardiovascular disease, neurodegenerative disease, diabetes, inflammation and cancer.^{1e,f,2a,10a,b} Many other pathological processes, like drug induced liver injury (DILI), ischemia reperfusion injury (IRI) and so on, are also accompanied by the overproduction of RONSS.^{3c} More importantly, an increasing number of research studies have revealed that RONSS can be potential messengers for cell signalling, which further spurred investigations into the development of efficient tools for tracing subcellular concentrations of diverse RONSS.^{3a,d}

Among the diverse detection strategies, fluorescence imaging represents a simple, sensitive and non-invasive technique, which enables real-time, dynamic and selective imaging of numerous targets in living cells, and has greatly advanced biological analysis, clinical drug discovery and so on.^{1b,g,3a,7a,10a,21b} Intracellular RONSS feature short life span, low concentration, high reactivity and environmental sensitivity, and they are non-emissive. Therefore the specific imaging of RONSS cannot leave out efficient fluorescent probes.^{1d,e,4b,11} Up to now, a series of probes based on different reaction mechanisms have been developed for selective labelling of RONSS in living cells. A summary of the detection mechanisms of organelle targeted fluorescent probes toward RONSS is shown in Table 1.

2.3. Response mechanisms of RONSS fluorescent probes

After reacting with RONSS, the signal outputs of the fluorescent probes can give appropriate changes *via* specific mechanisms that can subsequently be detected by a detector. In general, fluorescence resonance energy transfer (FRET), photo-induced electron transfer (PET), intramolecular charge transfer (ICT) and excited-state intramolecular proton transfer (ESIPT) are the most popular response mechanisms for organelle-targeted fluorescent probes.

2.3.1. FRET-based probes. FRET is an energy transfer phenomenon between two or more chromophores. The “donor (D)” can transfer excited state energy to the nearby “acceptor (A)” in a non-radiative manner through long-range dipole-dipole interactions due to their spectral overlap, which enables the excitation of “A” chromophores with the excitation wavelength of “D”.⁶⁰ Strategies for designing FRET-based probes include (1) constructing probes with cleavable linkers, and (2) synthesizing probes from analyte-responsive D and A (Fig. 2A).^{45,61} By virtue of the stoichiometric relation between “D” and “A”, FRET-based probes are sensitive and can be employed for ratiometric imaging. The energy transfer efficiency of FRET probes is highly dependent on the spectral overlap efficiency between “D” and “A”. However, the available FRET pairs are still rare.

2.3.2. PET-based probes. PET is an intramolecular electron transfer phenomenon. Probes based on PET can be divided into a-PET and d-PET: a-PET represents the electron transfer from “D” to the excited fluorophore and causes fluorophore reduction as well as fluorescence quenching, and is also called



Table 1 Detection mechanisms of organelle-targeted fluorescent probes toward RONSS

| Bioactive species | Detection mechanisms | Ref. | | |
|-------------------|----------------------|--|--|----------------|
| ROS | $O_2^{\cdot-}$ | Nucleophilic substitution Oxidation of benzothiazoline | 24a and 34 35 | |
| | H_2O_2 | Oxidation of phenylboronic acid Oxidation of a diketone Oxidation of phenol | 36 36c 37 | |
| | HOCl | Oxidation of double bonds (C=N, C=C and C=S) Oxidation of a lactam or thiolactone Oxidation of a thioether or selenide | 38 39 40 | |
| | 1O_2 | Formation of an endoperoxide | 41 | |
| | $\cdot OH$ | Oxidation of phenothiazine | 42 | |
| | HOBr | Catalytic cyclization between the amino and S-methyl group | 43 | |
| | ONOO ⁻ | Oxidation of phenylhydrazine Oxidation of an unsaturated bond Deboronation | 44 45 46 | |
| | RNS | NO | Decomposition of an α -ketoamide group Formation of a triazole with <i>o</i> -phenylenediamine N-Nitrosation of an aromatic secondary amine | 47 48 49 |
| | | HNO | Staudinger reaction | 50 |
| | | GSH | Michael addition | 51 |
| RSS | | Cys | Nucleophilic substitution | 52 |
| | H_2S | Michael addition | 53 | |
| | H_2S_n | Reduction of an aryl azide/nitro group | 26b and 54 | |
| | | Thiolysis | 55 | |
| | | Cu^{2+} precipitation | 56 | |
| | | Nucleophilic addition | 57 | |
| | SO_2 | Nucleophilic aromatic substitution Nucleophilic addition | 58 59 | |

reductive-PET; on the other hand, d-PET is the process of electron transfer from an excited fluorophore to the electron deficient "A", and is also called oxidative-PET (Fig. 2B). PET-based probes are usually characterized by "turn-on", which is beneficial for fluorescence imaging with a high signal-to-noise ratio.⁶² Nevertheless, traditional PET-based probes cannot quantify analytes based on the fluorescence intensity change. To solve

this problem, an extra inner reference fluorophore can be introduced during designing functional probes.

2.3.3. ICT-based probes. ICT based probes are constructed by directly conjugating "D" and "A" with fluorophores. This "D- π -A" structure results in strong "push-pull" effects within fluorophores, which is beneficial for fluorescence intensity enhancement and emission wavelength red shift (Fig. 2C).^{2c}

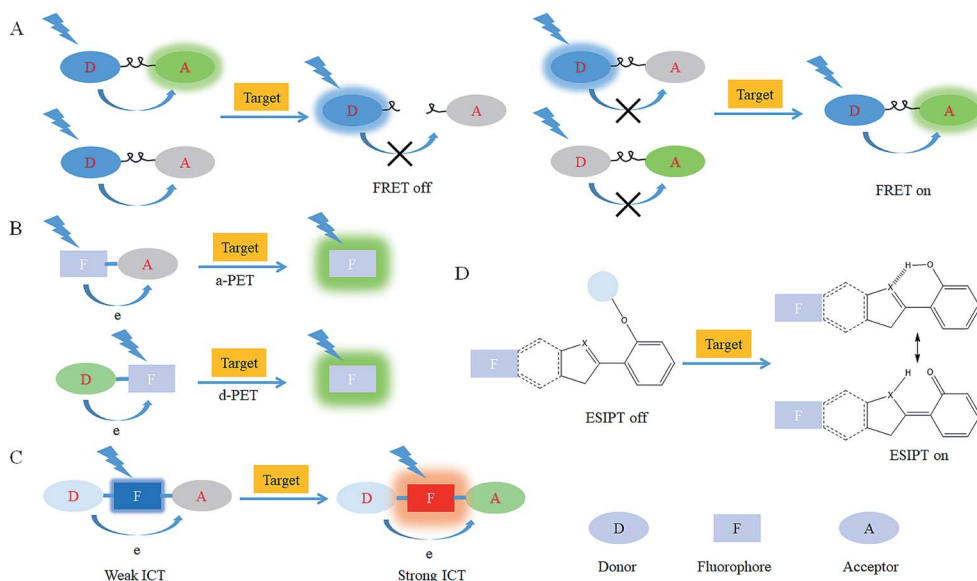


Fig. 2 Response mechanisms for organelle-targeted probe design: (A) FRET, (B) PET, (C) ICT and (D) ESIPT.



Thus, ICT-based probes can be used to detect analytes with high sensitivity and accuracy. Ideal ICT-based probes should have an apparent fluorescence intensity change and a large emission wavelength shift for effective ratiometric measurement.^{2f} It should be noted that the lone pair electrons of N, O, and S heteroatoms in ICT-based probes may diminish and even quench the initial fluorescence of the fluorophores, being able to further impair the calibration functions of related probes.⁶³

2.3.4. ESIPT-based probes. ESIPT refers to the phenomenon of transfer of hydrogen atoms (mainly from hydroxyl or amino groups) in the fluorescent compound to nearby heteroatoms (mainly N, O or S) under laser excitation (Fig. 2D). Fluorophores with ESIPT characteristics can build the fast four-level photocycle between the ketal and enol isomers under excitation.^{2e} Because of the different energy level structures between the tautomers, ESIPT fluorophores can emit two distinct emission bands with large Stokes shifts, which makes it another attractive strategy for functional fluorescent probe design.^{2e} However, the ESIPT phenomenon may be restricted in protic environments.⁶⁴ Therefore, in the design of acidic organelle-targeted probes, ESIPT-based probes should be avoided.

3. Nucleus-targeted probes

As discussed above, the nucleus is a crucial organelle of eukaryotic cells. An increasing number of reports have proved that RONSS can be important messengers during gene expression. However, only a limited number of nucleus-targeted probes have been devised up to now, though they are favourable for further revealing/verifying the potential biological functions of these molecules (Fig. 3).

3.1. Imaging of ROS in the nucleus

ROS can diffuse into the nucleus and regulate numerous critical physiological processes, while excess ROS can cause DNA damage/mutation and disrupt nuclear homeostasis.^{3c} Thus tracing the nuclear ROS concentration holds promise for revealing the molecular mechanisms of some related biological events. However, there are only limited reports on nucleus-targeted ROS imaging up to now, most likely because it is challenging to drive probes into the nucleus effectively and selectively image the bioactive molecules of interest at ultralow concentrations.

By screening an arylboronate based probe, Chang's research group discovered a nucleus-targeted H₂O₂ probe, **1** (NucPE1).¹⁷ Interestingly, although without a specific targeting moiety, this probe can accumulate in the nucleus of several mammalian cell lines and *C. elegans*. Moreover, once **1** reacted with H₂O₂ in the cytoplasm, it lost its targeting capability, which enables the nucleus-selective H₂O₂ imaging. Although the targeting mechanism remains to be further clarified, this probe can serve as a novel fluorescent tool for monitoring the nucleus H₂O₂ fluxes. Importantly, they revealed the relationships between sir-2.1 overexpression and enhanced regulation of nuclear ROS pools with this probe, which proved that the longevity is closely related to the ROS regulation capacity.

Using nuclear-localization signal peptides (NLS, detailed structure shown in Fig. 1A) as the targeting moiety, Yi *et al.* successfully prepared a naphthalimide based probe, **2** (pep-NP1), for nucleus-targeted H₂O₂ imaging.¹⁹ Confocal laser scanning microscope (CLSM) experiments indicated the successful nuclear localization of **2**, while probe NP1 without NLS peptide functionalization was retained in the cytoplasm. **2** was used for ratiometric imaging of the intra-nuclear H₂O₂ in HeLa cells (Fig. 4).

Protein tagging is another effective strategy for delivering probes into the nucleus. Chang's group reported SNAP-tag based H₂O₂ probes **3** (SPG1, membrane-impermeable, and SPG2, membrane-permeable), which can specifically bind with AGT fused protein.⁶⁵ Upon coming into contact with the localized H₂O₂, 32-fold turn-on fluorescence can be detected due to the deprotection of boronate groups. By transfecting different plasmids, H₂O₂ in the nucleus, mitochondria, plasma membrane and ER of living cells was detected with the probes, which offered a versatile fluorescent platform for tracing the subcellular H₂O₂ level.

3.2. Imaging of RNS in the nucleus

In addition to ROS, RNS are also critical bioactive species for living organisms. Due to the ultrashort lifespan and diffuse distance of RNS, the action sites of these molecules are usually determined by their locations. Therefore, precise imaging of the subcellular RNS distribution will accelerate our understanding of the biological functions of these molecules.

NO is an important signalling molecule that can exert multiple biological effects on living cells, and it has also been widely investigated for cancer treatment. Clarifying the function and identifying the target sites of NO can facilitate related research studies. By taking advantage of the HaloTag technology, Yang and Hu *et al.* developed an organelle-targetable probe, **4** (HTDAF-2DA).⁶⁶ The probe has excellent cell permeability due to the introduction of diacetate groups. After entering living cells, the ester groups were hydrolyzed and the probe was subsequently immobilized by HaloTag protein. Upon the addition of exogenous NO, the fluorescence of probes can be turned on due to the inhibition of the PET process after formation of a triazole product. Based on different plasmids, the probe was specifically delivered into the nucleus, cytosol, mitochondria and plasma membrane. The target site of exogenous NO was successfully revealed to be the plasma membrane with **4**.

By connecting the rhodamine derivative with the SNAP-tag substrate, Xiao's group reported another organelle-targetable genetically encoded NO probe, **5** (TMR-NO-SNAP), which has been used for imaging the endogenous subcellular NO generation in LPS/IFN- γ stimulated RAW264.7 cells and etoposide treated COS-7 cells.⁶⁷

3.3. Imaging of RSS in the nucleus

RSS are another group of bioactive species closely related to cellular redox homeostasis. Benefiting from the reductive activity of these species, RSS can interact with diverse proteins



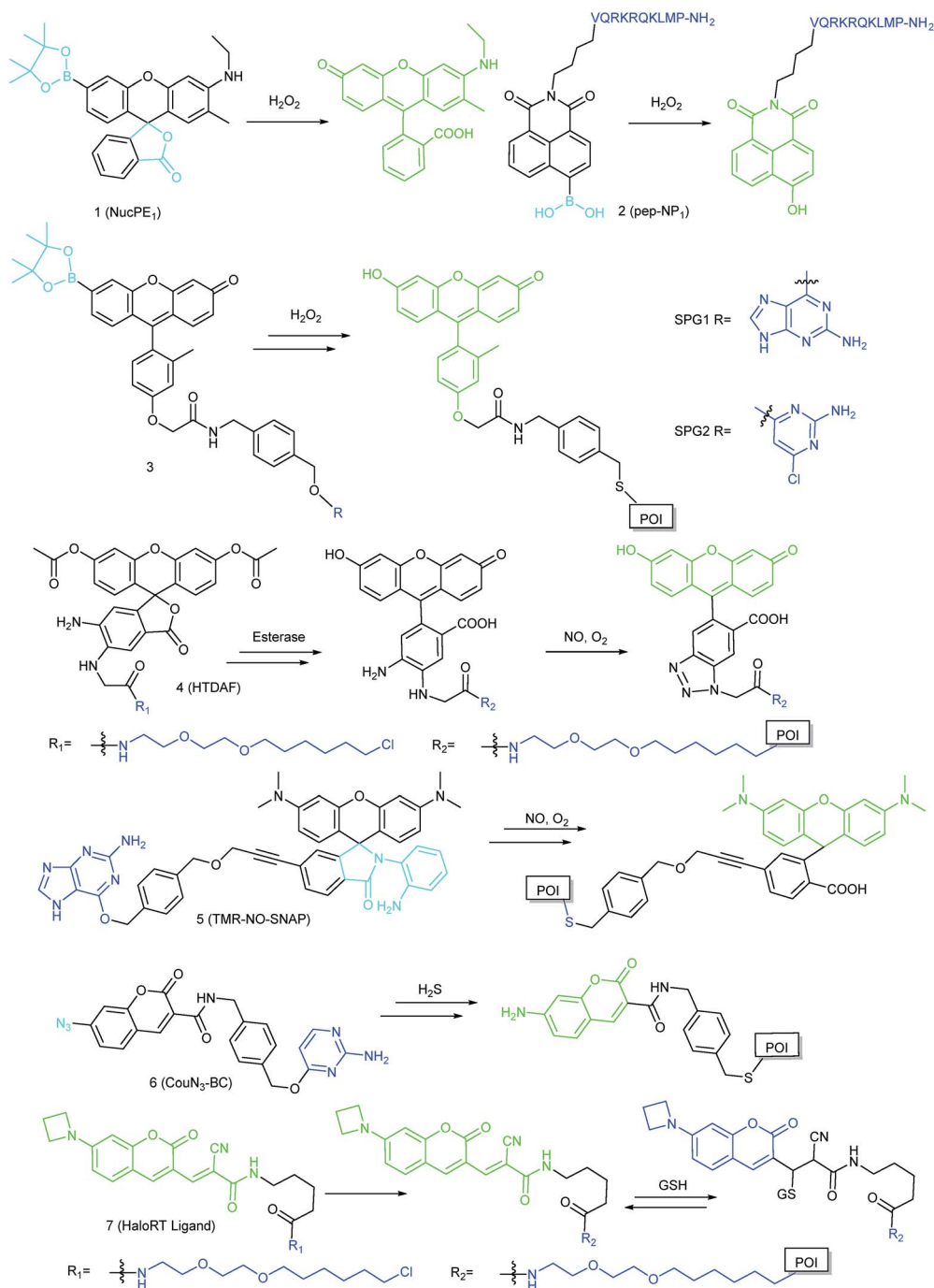


Fig. 3 Fluorescent probes for imaging RONSS in the nucleus.

within the nucleus, which can further influence the gene expression. Therefore, mapping the intra-nuclear concentration and distribution of RSS is another significant task for investigating the redox biology in the nucleus.

In 2016, Wang's group reported a genetically encoded coumarin based probe, **6** (CouN₃-BC), for nucleus- and mitochondrion-targeted H₂S imaging.⁶⁸ After transfecting pCLIP-H2B and pCLIP-COX8A plasmids,⁶⁹ the tag protein was successfully fused with H2B protein (in the nucleus) and a cytochrome c oxidase subunit (in the mitochondrial inner

membrane and matrix), respectively. Subsequently, probe CouN₃-BC was selectively anchored to the nucleus or mitochondria and further lit up localized H₂S. H₂S accumulation in the nucleus of HeLa cells under NO donor sodium nitroprusside stimulation was successfully tracked with this probe. In 2018, they proposed another genetically encoded probe, **7** (HaloRT Ligand), for reversible GSH imaging.⁷⁰ Based on the HaloTag technique, **7** was successfully labelled in the nucleus, mitochondria, ER, and cytosol. And they revealed for the first time that under various stimulations, the GSH concentrations



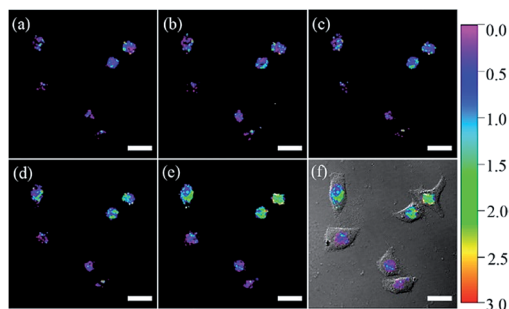


Fig. 4 CLSM ratio images of HeLa cells loaded with 50 μM **2** and stimulated with 200 μM H_2O_2 for (a) 0, (b) 15, (c) 30, (d) 60, and (e) 75 min at 37 $^\circ\text{C}$. (f) The overlay image of (e) and the brightfield image. Adapted with permission from ref. 19. Copyright 2014 American Chemical Society.

in the nucleus and cytosol remained nearly the same, which suggested that there is no GSH pool in the nucleus.

3.4. Challenges for nucleus-targeted fluorescent probes

Several reports have suggested that the conjugation of molecular or nanomaterials with NLS peptides can offer them the capability for nucleus specific accumulation, and nucleus-targeted cancer therapy has been widely investigated.^{16a,18,71} However, novel nucleus-targeted fluorescent probes are still rare, and due to the fact that the targeting efficiency of those materials is unsatisfactory, many probes require long incubation time for nuclear localization. Moreover, direct conjugation

of probes with nucleus-targeted molecular scaffolds or NLS peptides is usually unsuccessful, most likely because minor structural alterations can reduce the affinity of the targeting ligands.^{3a} Protein tagging seems to be an ideal strategy for anchoring probes into almost any organelles including the nucleus. But the synthetic difficulty and complexity, and loss of solubility of probes after binding with the substrates can hinder the application of genetically encoded probes. Excess un-tagged probes during imaging must be washed out several times to reduce the background fluorescence, which can hamper the activity and change the subcellular microenvironments of cells. Moreover, only the RONSS near the fusion protein can be detected by the probes, which further diminished the applications of genetically encoded probes. Thus, more attention should be paid to establish novel methodologies for nucleus-targeted ultrasensitive probe design.

4. Mitochondrion-targeted probes

Mitochondria are the energy center of living cells, and they produce the majority of ATP for numerous biological events, including cell proliferation, division, biomolecule fabrication and so on.^{24d} Therefore, the mitochondrial function and homeostasis determine the physiological and pathological processes of living cells. RONSS are closely related to the signal conducting and mitochondrial microenvironments.⁷² The past decade has witnessed significant progress of mitochondrion targeted fluorescent probes for localized RONSS imaging, owing

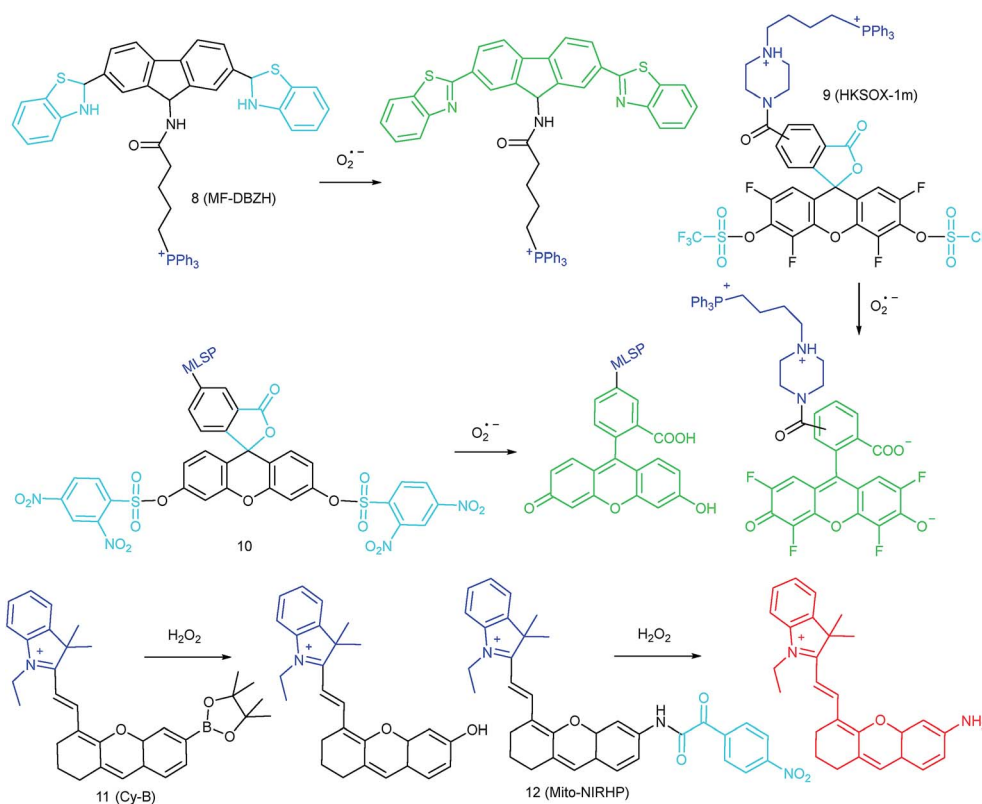


Fig. 5 Mitochondrion-targeted probes for $\text{O}_2^{\cdot-}$ and H_2O_2 imaging.



to its potential in offering theoretical bases for disease diagnosis and therapy (Fig. 5).

4.1. Imaging of ROS in mitochondria

To ensure intracellular energy supply, mitochondria perform diverse electron-transport chain (ETC) reactions for ATP synthesis. Once the electrons leak from the ETC, they can react with oxygen molecules to generate $O_2^{\cdot-}$. Under the catalysis of diverse enzymes, $O_2^{\cdot-}$ can be further transformed into H_2O_2 , $ONOO^-$, $\cdot OH$, 1O_2 and so on.^{23a,b,35,43a,44} These bioactive species can serve not only as oxides to maintain the mitochondrial redox homeostasis, but also as signal molecules to regulate the cellular function. However, once overexpressed, they can cause serious oxidative stress and further hamper the mitochondrial function, resulting in diverse disorders as well as diseases.^{2g,3d,7a,38b,39a,43b} In the past decade, a variety of mitochondrion specific fluorescent probes have been developed for tracing ROS fluctuations during diverse physiological and pathological processes.

4.1.1. Imaging of $O_2^{\cdot-}$ in mitochondria. $O_2^{\cdot-}$ is the reaction product of oxygen and the electrons leaked from the mitochondrial ETC; it can also be generated during monoamine oxidase directed oxidative deamination. The intracellular concentration of $O_2^{\cdot-}$ is about 10^{-10} M, and the half-life is 10^{-6} s.^{3c} Because $O_2^{\cdot-}$ is the precursor of a series of bioactive species, its concentration determines the levels of the downstream species to some extent. Precise imaging of the mitochondrial $O_2^{\cdot-}$ concentration plays a critical role in the understanding of its physiological and pathological functions.

Inspired by the mitochondrion targeting capability of the cationic lipophilic group TPP, our group developed a two-photon (TP) fluorescent probe, **8** (MF-DBZH), for mitochondrial endogenous $O_2^{\cdot-}$ detection.³⁵ The probe is composed of TPP, $O_2^{\cdot-}$ sensitive benzothiazoline and TP fluorophore fluorene. Upon the addition of $O_2^{\cdot-}$ to a solution of **8**, the specific benzothiazoline dehydrogenation reaction results in an extended conjugate plane, leading to TP fluorescence enhancement due to the disruption of the PET process. The limit of detection (LOD) of this probe was calculated to be 9.5 nM. Living cell co-staining revealed that **8** effectively localized into the mitochondria under TPP guidance. This pH-insensitive and photostable TP probe has been used to selectively image the mitochondrial endogenous $O_2^{\cdot-}$ fluctuation during the inflammation process at cellular and living body levels with the assistance of TP microscopy (Fig. 6).

Another TPP functionalized mitochondrion-targeted $O_2^{\cdot-}$ probe, **9** (HKSOX-1m), was reported by Yang's group.³⁴ **9** employs fluorescein as the fluorophore and aryl trifluoromethanesulfonate as the recognition group. The cleavage of the aryl trifluoromethanesulfonate group and rearrangement reaction during the nucleophilic reaction between **9** and $O_2^{\cdot-}$ resulted in dramatic fluorescence intensity enhancement. The emission intensity of **9** increased linearly upon the addition of $O_2^{\cdot-}$ into the probe solution. The mitochondrial $O_2^{\cdot-}$ concentration fluctuation in human THP-1 cells in the resting state or under antimycin A stimulation was monitored with this probe.

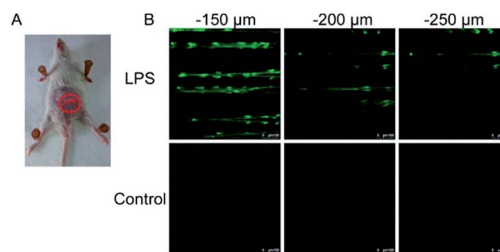


Fig. 6 TP microscopy images of mice with LPS-mediated abdomen injury using probe **8**. (A) $O_2^{\cdot-}$ was produced inside the peritoneal cavity of the mice during the LPS-mediated inflammatory response. (B) TP fluorescence *in situ* images of mice abdomen incubated with **8** (100 μ M). Adapted with permission from ref. 35. Copyright 2013 American Chemical Society.

9 also showed promise for revealing other biological and pathological functions of $O_2^{\cdot-}$.

Apart from using TPP as the localization group, peptides have also been employed for mitochondrion-specific probe design.^{24a} Zhong's group reported a mitochondrial localization signal peptide (MLSP) functionalized $O_2^{\cdot-}$ probe, **10**, which has been successfully used for monitoring mitochondrial $O_2^{\cdot-}$ generation in RAW264.7 macrophages under the stimulation of chemical molecules or single-walled carbon nanotubes.^{24a}

4.1.2. Imaging of H_2O_2 in mitochondria. $O_2^{\cdot-}$ can convert into H_2O_2 under the catalysis of superoxide dismutase (SOD), which has lower activity than other ROS, but serves as an important messenger for signal conduction.^{23b,73} The half-life of H_2O_2 is 10^{-5} s and its intracellular concentration is about 10^{-7} M. Investigations revealed that the intracellular concentration of H_2O_2 is much higher in diseased cells, such as diverse cancer cells. Therefore, H_2O_2 is another important biomarker to be monitored. Tracing the spatial distribution and concentration fluctuation of H_2O_2 in the mitochondria is beneficial for understanding the pathogenesis of H_2O_2 -associated diseases and further exploring novel drugs for clinical therapy.

Generally speaking, aryl boronates and phenylboronic acid are the most widely employed groups for H_2O_2 specific probes. Peng's group reported a hemicyanine based H_2O_2 probe, **11** (Cy-B), which was prepared by direct modification of hemicyanine dye with a borate ester moiety.^{36a} The cationic feature of **11** makes it specifically accumulate in the mitochondria (overlapped with rhodamine 123, Pearson's coefficient = 0.98), while the mitochondrial H_2O_2 can specifically oxidize the boronate moiety and cause the "turn-on" of fluorescence. **11** was successfully employed for imaging mitochondrial H_2O_2 during autophagy induced by rapamycin. Benefiting from its NIR emissive behavior, *in vivo* H_2O_2 imaging was also demonstrated.

IRI occurs in many cases, including traumatic shock, surgery, organ transplantation, frostbite, thrombosis and so on, and can cause deadly damage to organs. Recent research studies have revealed that ROS are associated with IRI. Fluorescent probes capable of monitoring the subcellular ROS level during IRI are critical for understanding the pathogenesis and may further accelerate the related drug discovery. By using α -ketoamide as the responsive moiety, Our group developed



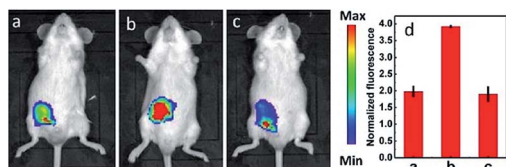


Fig. 7 Fluorescence imaging (pseudocolor) of H_2O_2 in Kunming mice. (a) Only **12** (20 μM , 100 μL) was injected as a control. (b) Mouse pretreated with rotenone for 1 h and then injected with **12**. (c) Mouse successively injected with rotenone, NAC, and **12**. (d) Relative fluorescence intensities of (a–c). Adapted with permission from ref. 36c. Copyright 2013 American Chemical Society.

another hemicyanine-based mitochondrion-targeted H_2O_2 probe, **12** (Mito-NIRHP).^{36c} Benefiting from the ICT mechanism as well as the specific response capability of α -ketoamide, **12**

was used for H_2O_2 imaging under both *in vitro* and *in vivo* conditions (Fig. 7). Importantly, with this probe, the relationship between H_2O_2 and kidney IRI was elucidated in subcellular, organ, and living body levels.

4.1.3. Imaging of HOCl in mitochondria. Hypochlorous acid (HOCl)/ OCl^- can be produced from H_2O_2 and Cl^- *via* catalysis by heme enzyme myeloperoxidase (MPO).^{38a} They are closely related to cellular immunity because of their high reactivity. An appropriate level of HOCl/ OCl^- in the mitochondria can defend the host cells from infection caused by a variety of pathogens. Overproduction of HOCl/ OCl^- may cause a series of problems due to their reactivity, which can break a broad spectrum of biomolecules, including DNA, lipids, proteins, iron–sulfur clusters, and thiols, among others.^{40b} Numerous diseases, like cancer, inflammation and atherosclerosis, are accompanied by HOCl overexpression. Mitochondrial HOCl/

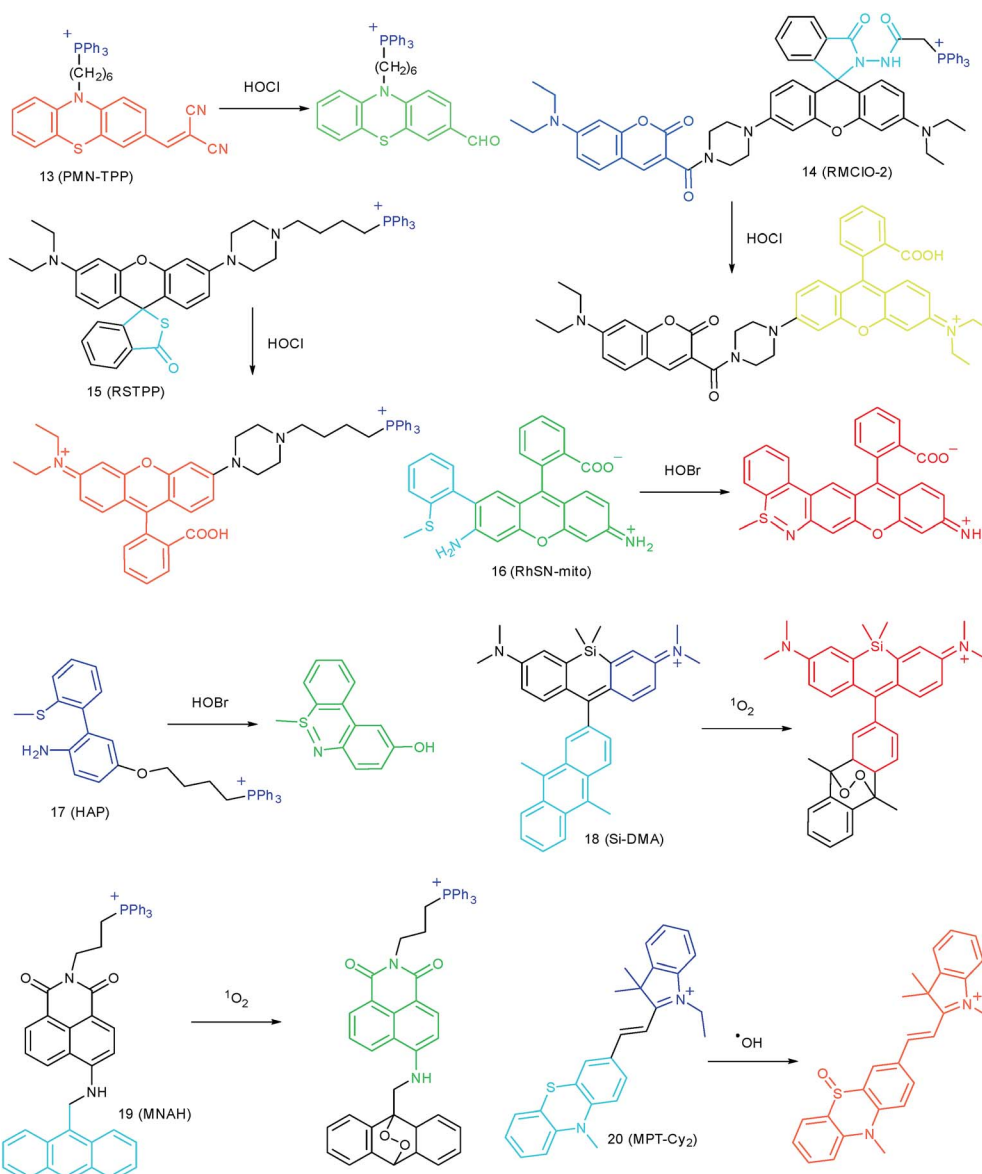


Fig. 8 Mitochondrion-targeted probes for HOCl, HOBr, ¹O₂ and ·OH imaging.



OCl^- imaging is therefore of great significance. In the past, many reaction mechanisms have been proposed for detecting HOCl in living cells, typically including oxidative cleavage of double bonds (C=N, C=C, C=S and N=N), lactams, and thiolactones, and oxidation of thioethers and selenides (Fig. 8).^{38a,b,39,40c,74}

Wang's group reported **13** (PMN-TPP) as a colorimetric and ratiometric probe for HOCl imaging.^{38c} In the presence of HOCl, the specific oxidative cleavage of C=C disrupts the conjugated structure and disturbs the ICT process, which results in a decrease in the fluorescence at 640 nm as well as the appearance of a new emission peak at 522 nm. Confocal imaging experiments revealed that **13** localized well in the mitochondria of macrophages due to the TPP functionalization. **13** has been successfully used for ratiometric imaging of endogenous HOCl in nude mice with acute inflammation (Fig. 9).

Apart from double bonds, many other groups have also been introduced for mitochondrion-targeted HOCl probe design. By using rhodamine as the fluorophore and benzoyl acetohydrazide as the responsive group, Yu's group developed several mitochondrion specific HOCl probes.^{39a,75} Based on the FRET pair of coumarin and rhodamine, TPP modified probe **14** (RMCIO-2) was facilely prepared.^{39a} **14** has excellent membrane permeability, mitochondrion localization capacity, and HOCl selectivity, with an ultralow LOD of 0.84 nM. Benefiting from these features, **14** was used to quantify the basal mitochondrial HOCl of cancer cells for the first time.

As important immune cells, macrophages play a critical role in the innate immune system. Though it has been reported that HOCl could be detected in the cytoplasm, it was unclear whether HOCl can appear in the mitochondria during infection before Ma and co-workers developed the rhodamine based probe **15** (RSTPP).^{39b} The fluorescence quantum yield of **15** remained low (<0.01), but was elevated to 0.34 in the presence of HOCl, with a >200-fold fluorescence intensity enhancement due to the oxidative cleavage of the thiolactone ring and formation of a large conjugated plane. **15** exhibits high specificity toward HOCl over other ROS with a LOD of 9 nM. Confocal laser fluorescence experiments revealed that this TPP decorated rhodamine thiolactone probe localizes at the mitochondria of RAW264.7 cells specifically. The HOCl fluctuation in

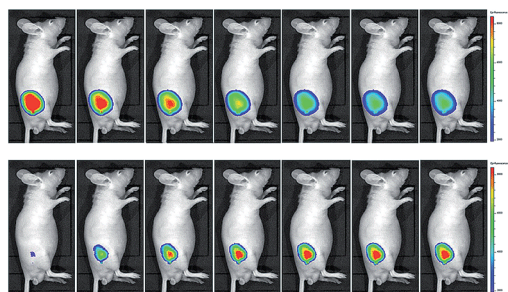


Fig. 9 *In vivo* dual channel imaging of LPS and PMA treated nude mice with probe **13**. Images were taken after stimulation for 0, 5, 10, 15, 20, 30, 45 and 60 min, respectively. Adapted with permission from ref. 38c. Copyright 2015 Royal Society of Chemistry.

macrophages during microbial infection was visualized for the first time, which further proved the great potential of subcellular localized probes for bioanalysis.

4.1.4. Imaging of HOBr in mitochondria. HOBr is another important ROS that is responsible for numerous physiological and pathological processes. But the ultralow concentration, high reactivity and short life span of HOBr make it hard for it to be visualized in living cells. Based on the catalytic cyclization reaction between the amino group and *S*-methyl group, our group reported the first HOBr probe BPP, with high selectivity and ultralow LOD (17 pM), for imaging endogenous HOBr under both *in vitro* and *in vivo* conditions.⁷⁶

Later, a mitochondrion-targeted HOBr probe, **16** (RhSN-mito), was developed. Rhodamine 110 was employed as the fluorophore owing to its high quantum yield, excellent solubility and mitochondrion-targeting capability.^{43a} **16** exhibits a large Stokes shift (~100 nm) after reacting with HOBr. The quantum yield of the final product was determined to be 0.68, and the LOD of **16** was 20 pM. Endogenous HOBr in HepG2 cells and zebrafish were tracked with this novel probe (Fig. 10). Very recently, TPP decorated probe **17** (HAP)^{43b} was devised by Tian's group for tracing mitochondrial HOBr burst in RAW264.7 cells during $\text{O}_2^{\cdot-}$ triggered oxidative stress (Fig. 11).

4.1.5. Imaging of $^1\text{O}_2$ in mitochondria. $^1\text{O}_2$ can be generated when molecular oxygen is excited to its lowest excited state. $^1\text{O}_2$ may oxidize numerous biomolecules and cause cell apoptosis, which has been employed in cancer treatment for a long time.⁷⁷ During photodynamic therapy (PDT), $^1\text{O}_2$ is the main reactive species generated from excited photosensitizers that induces cancer cell death. Evidence also suggested that $^1\text{O}_2$ participates in signal conduction and gene expression. The fluorescent imaging of $^1\text{O}_2$ in subcellular structures is quite essential for assessing the therapeutic efficiency and revealing the physiological functions of $^1\text{O}_2$.

In 2014, Majima and co-workers reported a silicon-containing rhodamine-based probe, **18** (Si-DMA), for mitochondrial $^1\text{O}_2$

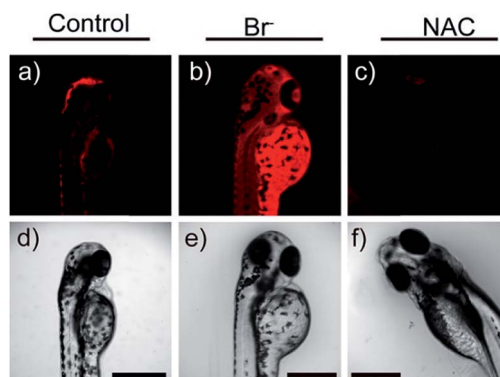


Fig. 10 *In vivo* fluorescence imaging of HOBr in zebrafish embryos. (a) Zebrafish fed with **16** for 30 min (50.0 μM), (b) zebrafish fed with Br^- (100 μM) for 30 min and then fed with **16** (50.0 μM) for 30 min, and (c) zebrafish incubated with NAC (20.0 μM) for 30 min and then with **16** (50.0 μM) for 30 min. (d)–(f) are the corresponding bright-field images of (a)–(c). Adapted with permission from ref. 43a. Copyright 2017 American Chemical Society.



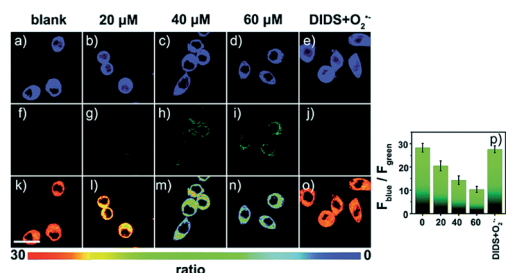


Fig. 11 Confocal fluorescence images of RAW264.7 cells stained with $5 \mu\text{M}$ **17** under different treatments: (a, f and k) control; (b, g and l) $20 \mu\text{M}$ $\text{O}_2^{\cdot-}$; (c, h and m) $40 \mu\text{M}$ $\text{O}_2^{\cdot-}$; (d, i and n) $60 \mu\text{M}$ $\text{O}_2^{\cdot-}$; (e, j and o) $100 \mu\text{M}$ DIDS + $60 \mu\text{M}$ $\text{O}_2^{\cdot-}$. (p) The corresponding $F_{\text{blue}}/F_{\text{green}}$. Adapted with permission from ref. 43b. Copyright 2018 Royal Society of Chemistry.

imaging.^{41b} In this probe, 9,10-dimethylanthracene (DMA) is employed as the $^1\text{O}_2$ recognition moiety, and mitochondrion-specific cationic lipophilic silicon-containing rhodamine (Si-rhodamine) serves as the fluorophore. Initially, the fluorescence of rhodamine is quenched due to the PET effect between DMA and Si-rhodamine. During the reaction between **18** and $^1\text{O}_2$, an endoperoxide is formed between anthracene and $^1\text{O}_2$, resulting in the disruption of the PET process in the probe, accompanied by fluorescence intensity enhancement. Using this far-red fluorescent probe, the $^1\text{O}_2$ generation in the mitochondria near the perinuclear region during PDT has been successfully recorded (Fig. 12). Using TPP as the targeting group and naphthalimide as the TP fluorophore, Zhang *et al.* reported $^1\text{O}_2$ probe **19** (MNAH)^{41a} and successfully visualized the mitochondrial $^1\text{O}_2$ accumulation during PDT, which offered an alternative tool for tracing PDT in deeper tissues.

4.1.6. Imaging of $\cdot\text{OH}$ in mitochondria. Xu *et al.* reported a fluorescent probe, **20** (MPT-Cy2), for mitochondrion-targeted $\cdot\text{OH}$ imaging.⁴² Cyanine dye was employed as the mitochondrion-targeted group as well as the fluorophore, while phenothiazine was used as the responsive group owing to its high electron cloud density. During the reaction of **20** and $\cdot\text{OH}$, the sulfur atom of phenothiazine was oxidized to sulfoxide, inducing the turn-on of fluorescence with a maximum wavelength of 590 nm. The mitochondrial endogenous $\cdot\text{OH}$ in HeLa cells and bacteria was successfully visualized, and the size-dependent $\cdot\text{OH}$ generation performance of TiO_2 nanoparticles in zebrafish was also revealed with this probe.

4.2. Imaging of RNS in mitochondria

As another group of bioactive species for living cells, RNS also has critical impacts on mitochondrial functions.^{44,45,47,78} Tracing the real concentrations of mitochondrial RNS remains challenging, but it is vitally significant for investigating related physiological and pathological processes, which may offer new insights for chemical–biological bioanalysis and clinical disease theranostics.

4.2.1. Imaging of NO in mitochondria. NO is an important cellular messenger molecule that plays critical roles in the nervous, immune, and cardiovascular systems among others.

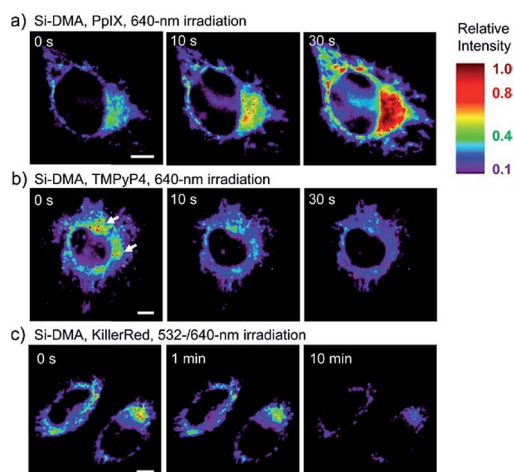


Fig. 12 Fluorescence microscopy images of HeLa cells treated with **18** and (a) 5-ALA induced protoporphyrin IX (PpIX), (b) tetrakis(*N*-methyl-4-pyridyl)porphyrin (TMPyP4) and a lysosome marker (A647-dextran), and (c) mitochondrion-targeted KillerRed. (a and b) Cells were irradiated with a 640 nm laser to generate $^1\text{O}_2$ and monitor the fluorescence induced by **18** simultaneously. (c) Two-color irradiation at 532 and 640 nm was used to excite **18** and KillerRed. Adapted with permission from ref. 41b. Copyright 2014 American Chemical Society.

NO can be synthesized *via* catalysis by mitochondrial nitric oxide synthases.^{48a,c,49} The disruption of NO homeostasis results in a series of diseases, including cancer, endothelial dysfunction and neurodegenerative diseases. Monitoring mitochondrial NO is therefore of great significance, and requires efforts in functional probe design. Currently, *o*-phenylenediamine and aromatic secondary amines are the main recognition groups for mitochondrion-targeted NO fluorescent probes.

Jin *et al.* reported the first mitochondrion-targeted NO probe **21** (Mito-RhNO).^{48c} This probe employed TPP as the targeting group, rhodamine as the fluorophore and *o*-phenylenediamine as the recognition moiety. The ring-opening of rhodamine spiro-lactam during the specific reaction between *o*-phenylenediamine and NO caused significant fluorescence enhancement at 585 nm. The LOD of **21** was determined to be 4.0 nM. Endogenous mitochondrial NO in the RAW264.7 macrophages under different stimulations was visualized with this biocompatible probe.

Guo *et al.* demonstrated another fluorescent probe (**22**) for mitochondrion-targeted NO imaging.^{48a} **22** was prepared by connecting *o*-phenylenediamine with cationic pyronin dye, which could effectively accumulate in the mitochondria. The fluorescence of **22** was dark due to the PET process. Addition of NO to the solution of **22** induced a 2743-fold fluorescence enhancement at 616 nm, attributed to the triazole generating reaction that lead to the disruption of the PET process. The LOD of **22** was calculated to be 12 nM. Interestingly, in the presence of Cys or GSH, a substitution–rearrangement reaction would occur and a bright green or red fluorescence could be generated, ensuring that the mitochondrial NO could be visualized in two distinct emission channels (Fig. 13).

Based on the N-nitrosation of aromatic secondary amines, Miao and coworkers developed mitochondrion-targeted NO



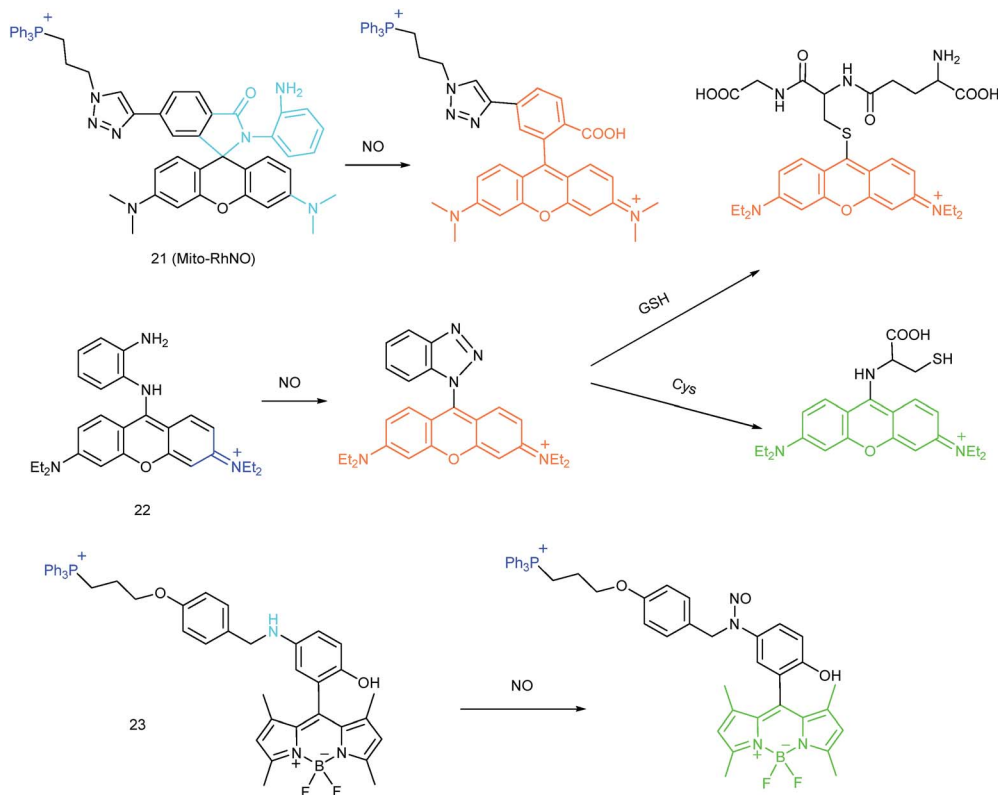


Fig. 13 Fluorescent probes for imaging NO in mitochondria.

probe **23**.⁴⁹ In this BODIPY based probe, TPP was introduced as the targeting group and an *N*-benzyl-4-hydroxyaniline moiety was the reaction site. The PET process in **23** was disrupted when the fast and specific *N*-nitrosation of the aromatic secondary amine occurred, resulting in a 92-fold fluorescence enhancement at 518 nm. The LOD of **23** was estimated to be 4.8 nM. With probe **23**, the NO levels in macrophages in the resting state or under diverse stimulations were successfully visualized.

4.2.2. Imaging of ONOO⁻ in mitochondria. ONOO⁻ can be generated from the reaction between the NO and O₂⁻. ONOO⁻ has high reactivity and excellent membrane permeability, which makes it an ideal intracellular regulator toward diverse biomacromolecules.^{45,46,78} It has been reported that ONOO⁻ is involved in the development of numerous major diseases, such as cardiovascular disease, neurodegenerative disease, acute inflammation and cancer.^{44,47,79} Therefore, fluorescent probes for tracing the subcellular ONOO⁻ levels during different processes are of significant importance. Oxidation of phenylhydrazine and unsaturated bonds, deboration and decomposition of α -ketoamide groups are the most popular mechanisms for subcellular localized ONOO⁻ probe design (Fig. 14).

Qian and co-workers devised a ratiometric probe, **24** (PNCy3Cy5), for mitochondrial endogenous ONOO⁻ imaging.⁴⁵ **24** was prepared by covalent connection of the famous FRET pair, Cy3 and Cy5, through a 1.4 nm linker. In this probe, Cy5 could be readily oxidized by ONOO⁻, while Cy3 was stable due to the shorter polymethine chain. Under 530 nm laser excitation, **24** emitted fluorescence at 660 nm (belonging to Cy5) due

to the FRET effect. Upon the addition of ONOO⁻ to the probe solution, the fluorescence intensity at 660 nm decreased due to the oxidation of Cy5 and the emission band at 560 nm emerged as a result of disruption of FRET. Confocal imaging experiments revealed the excellent cellular permeability and mitochondrion-targeting capability of this probe, and the LOD of **24** was determined to be 0.65 nM. Endogenous ONOO⁻ in macrophage cells under diverse stimulations was monitored in a ratiometric imaging manner, which suggested that **24** was promising for revealing the biological and pathological functions of ONOO⁻.

Yuan and co-workers reported TP probe **25** (MITO-CC) for mitochondrial ONOO⁻ imaging.⁷⁸ 19 fluorescent compounds were screened under physiological conditions, and they obtained a mitochondrion-specific fluorophore with high sensitivity and selectivity toward ONOO⁻. By further connecting coumarin as the energy donor, a mitochondrion-targeted ratiometric probe with high fluorescence quantum yield, high molar absorbance, excellent photostability and solubility was obtained. **25** has a fast response rate (less than 20 s) and low LOD (1.13×10^{-8} M) toward ONOO⁻. Ratiometric imaging of endogenous mitochondrial ONOO⁻ differences between normal and inflamed cells or tissues was realized with this probe (Fig. 15), and it suggested that **25** was favourable for tracing the small fluctuations of ONOO⁻ in diverse biological processes.

DILI is a common threat for public health. It has been reported that ONOO⁻ could be an important DILI indicator, so imaging of the ONOO⁻ levels in living cells can be critical for drug toxicity testing. Yuan *et al.* further developed **26** (Rhod-



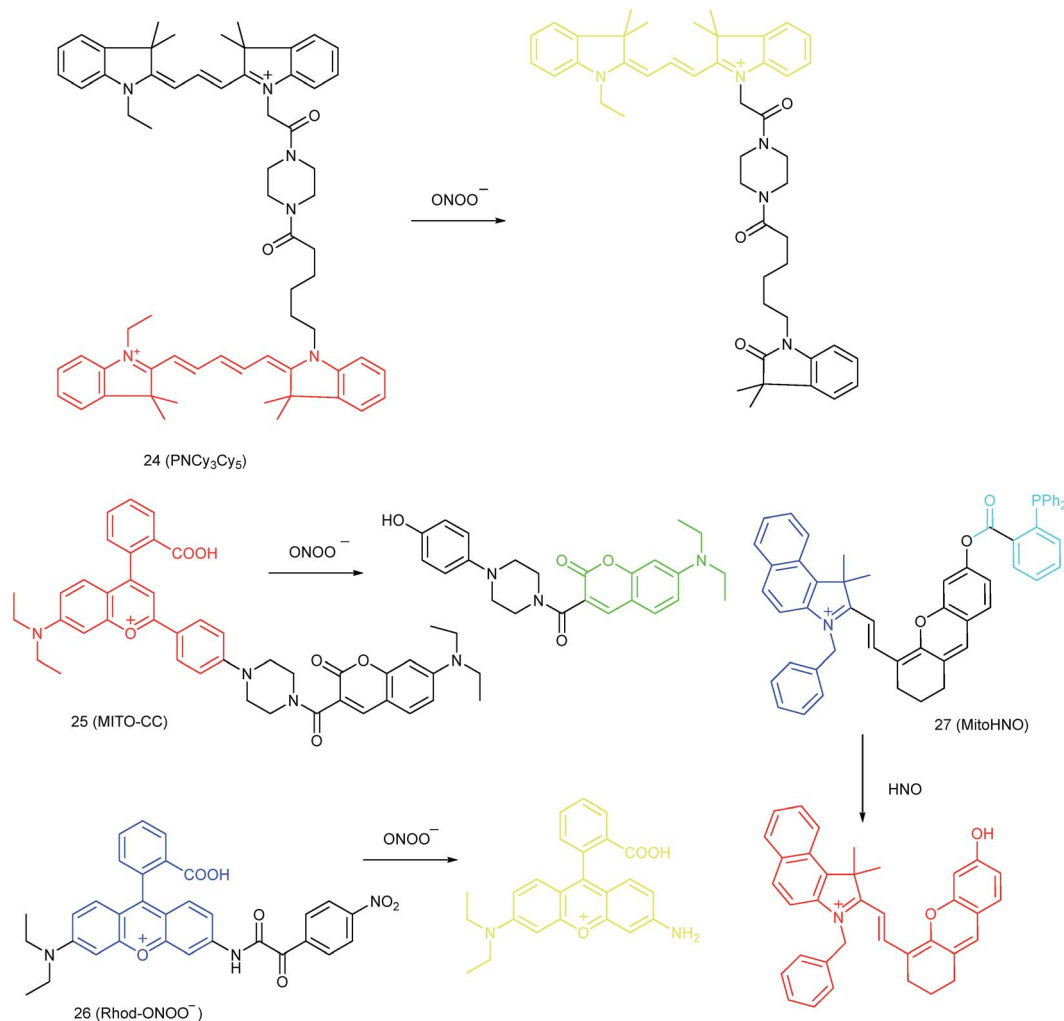


Fig. 14 Fluorescent probes for imaging ONOO⁻ and HNO in mitochondria.

ONOO⁻) by a combination of ICT and PET mechanisms, for mitochondrion-targeted ONOO⁻ detection.⁴⁷ Confocal imaging experiments in HepG2 cells revealed the excellent mitochondrion-targeting capacity of **26**. Mitochondrial ONOO⁻ generation during DILI was visualized with this probe, and the drug-induced hepatotoxicity pathway was successfully

discriminated. Therefore, **26** is a powerful tool for DILI measurement and it also proved the great promise of subcellular localized fluorescent probes in bioanalysis and drug discovery.

4.2.3. Imaging of HNO in mitochondria. HNO can be generated from *N*-hydroxy-L-arginine *via* catalysis by NO[•]

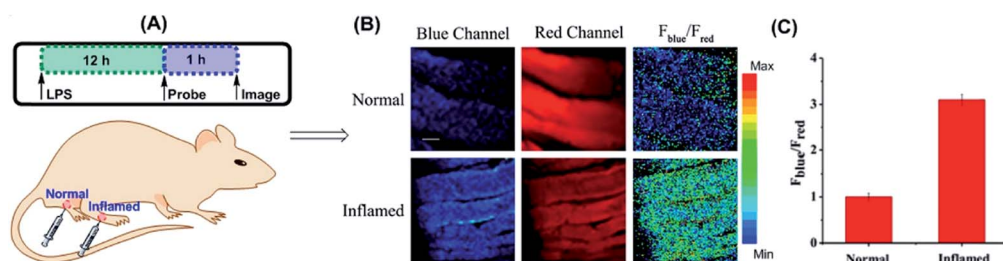


Fig. 15 TP fluorescence imaging of ONOO⁻ generation in inflamed tissues. (A) 200 μ L of LPS (1 mg mL⁻¹) was subcutaneously injected into the right leg of mice to cause inflammation. After 12 h, 20 μ L of 500 μ M **25** was subcutaneously injected *in situ*. After 1 h, the leg skin of mice was sectioned after being anaesthetized. (B) Fluorescence images of **25** in the normal and inflamed tissues. (C) Average $F_{\text{blue}}/F_{\text{red}}$ intensity ratios in panel (B). Blue channel, $\lambda_{\text{Em}} = 460\text{--}500$ nm; red channel, $\lambda_{\text{Em}} = 605\text{--}680$ nm. $\lambda_{\text{Ex}} = 800$ nm. Adapted with permission from ref. 78. Copyright 2016 American Chemical Society.



synthase.^{50b,80} HNO exerts numerous biological functions in organisms. For instance, it can adjust diverse signal channels, inhibit the activity of diverse enzymes and prevent platelet aggregation. The Staudinger reaction is the most popular mechanism for bio-orthogonal HNO probes.⁸¹

In 2016, Yang *et al.* reported **27** (MitoHNO) as the first mitochondrion-targetable NIR HNO probe.^{81a} A 2-(diphenylphosphino)benzoyl group was employed as the HNO recognition group, and a lipophilic indolium cation was used as the targeting moiety. During the reaction between **27** and HNO, 38-fold fluorescence intensity enhancement at 727 nm was observed due to the release of a fluorophore. The LOD of **27** was estimated to be 60 nM. Mitochondrial HNO in SMMC-7721 cells was specifically detected with this probe.

4.3. Imaging of RSS in mitochondria

As discussed above, mitochondria perform numerous respiration reactions to maintain cellular ATP synthesis, and this makes the mitochondrial ROS and RNS levels higher than those in other subcellular compartments. Reductive species are indispensable for signal transduction and protecting mitochondria from oxidative stress; therefore, they are also reliable biomarkers for diverse bioactivities as well as diseases.^{56,58,59,82} Fluorescent probes for tracing the localized RSS concentration in mitochondria hold great promise for advancing our understanding of the physiological and pathological functions of RSS, which should also be beneficial for the exploration of novel drugs toward diverse related diseases (Fig. 16).

4.3.1. Imaging of GSH in mitochondria. Intracellular GSH has drawn increasing interest since it is one of the most abundant biothiols in living cells, and acts as an antioxidant reservoir to mitochondria and a biomarker of oxidative stress. Several probes have been reported for mitochondrial GSH imaging, based on either the Michael addition or nucleophilic substitution reaction.

Kim's group reported a mitochondrion-targeted NIR probe, **28** (MitoGP), for GSH imaging.⁵² A heptamethine unit was used as the fluorophore owing to its NIR emissive and mitochondrion-targeting capacity, while a nitroazo group was employed as the GSH recognition group and fluorescence quencher. Significant fluorescence enhancement at 810 nm was observed in the presence of GSH, due to the specific 1,6-conjugate addition and subsequent elimination reaction triggered fluorophore release. **28** exhibited high selectivity toward GSH over other biothiols, and the LOD was estimated to be 10 μ M. The mitochondrion-targeting capability of **28** was demonstrated to be comparable to that of the commercialized MitoTracker, and mitochondrial GSH in HeLa cells under different stimulations was easily monitored with this probe (Fig. 17).

Zhao *et al.* reported a BODIPY based probe (**29**) for monitoring mitochondrial GSH.⁸³ The self-immolative group *para*-dinitrophenoxy benzyl pyridinium was introduced at the *meso* position of BODIPY, and it could simultaneously act as the targeting ligand and responsive group. Upon reaction with GSH, the dinitrophenyl moiety of **29** was first cleaved through an S_NAr reaction; subsequently, the fluorophore BODIPY was released

via a self-immolation reaction, which results a 32-fold fluorescence intensity enhancement at 599 nm. **29** was used for mitochondrion-targeted GSH imaging in HeLa cells.

Compared to traditional fluorescent probes, the design of molecular tools for bioactive species imaging based on a reversible reaction is still a challenge. However, reversible probes are promising for elucidating the dynamic states of analytes of interest in different processes, and would offer more information in cell imaging. Wang *et al.* introduced the first mitochondrion-targeted probe, **30** (MitoRT), for the reversible detection of GSH.⁵¹ TPP was linked with the fluorophore through the optimized 4-carbon linker. Benefiting from the reversibility, **30** responds to both increases and decreases of GSH levels and can be used for ratiometric imaging. The response time of this probe was less than 30 s. **30** has been successfully used to monitor mitochondrial GSH levels during redox perturbation. Importantly, with this probe, it was demonstrated that cells prioritize to maintain mitochondrial GSH levels during cell growth.

4.3.2. Imaging of Cys in mitochondria. Cys is an important amino acid for protein fabrication, and it plays critical roles in protein disulfide bond formation during protein cross-linking and folding.^{53b,c,84} Moreover, Cys has the potential to coordinate with metal ions in living cells, and thereby to regulate their intracellular concentration and avoid toxicity effects caused by excess heavy metal ions. The abnormal Cys concentration in living cells is closely related to diverse diseases, including rheumatic arthritis, Alzheimer's disease, Parkinsonism and so on.^{53c,84a} Tracing subcellular Cys concentration fluctuation has drawn research interest due to its potential in facilitating healthcare.

Li and Feng *et al.* reported a semiheptamethine derivative, **31** (NFL1), for selective detection of Cys in mitochondria.^{53b} Based on the specific Michael addition and subsequent cyclization reaction, strong NIR emission intensity enhancement at 735 nm was observed in the presence of Cys, as a result of the disruption of the PET process. The LOD of **31** was estimated to be as low as 14.5 nM. **31** has been successfully applied for the assessment of mitochondrial oxidative stress. Cys imaging in a living nude mice model was also demonstrated owing to its NIR emissive features (Fig. 18).

4.3.3. Imaging of H₂S in mitochondria. H₂S, as the simplest biothiol, has been reported to be another important gasotransmitter in living cells after NO and CO.⁵⁶ Endogenous H₂S can be synthesized by several enzymes in living cells. Research studies have suggested that H₂S can regulate many physiological processes, such as vascular tension, myocardial preservation, angiogenesis and mitochondrial powering.^{12c,26b} The unregulated expression of H₂S is often involved in numerous major diseases, like cancer, Alzheimer's diseases and diabetes. In the past decade, a series of probes have been developed for subcellular H₂S detection. The detection mechanisms of these probes mainly include the reduction of aryl azide and nitro groups, nucleophilic addition reaction, precipitation of Cu²⁺, and disulfide exchanges.^{3c}

Yoon *et al.* reported a naphthalimide-based probe (**32**) with the 7-nitro-1,2,3-benzoxadiazole (NBD) moiety for mitochondrial H₂S detection.⁸⁵ The fluorescence of **32** was dark due to the



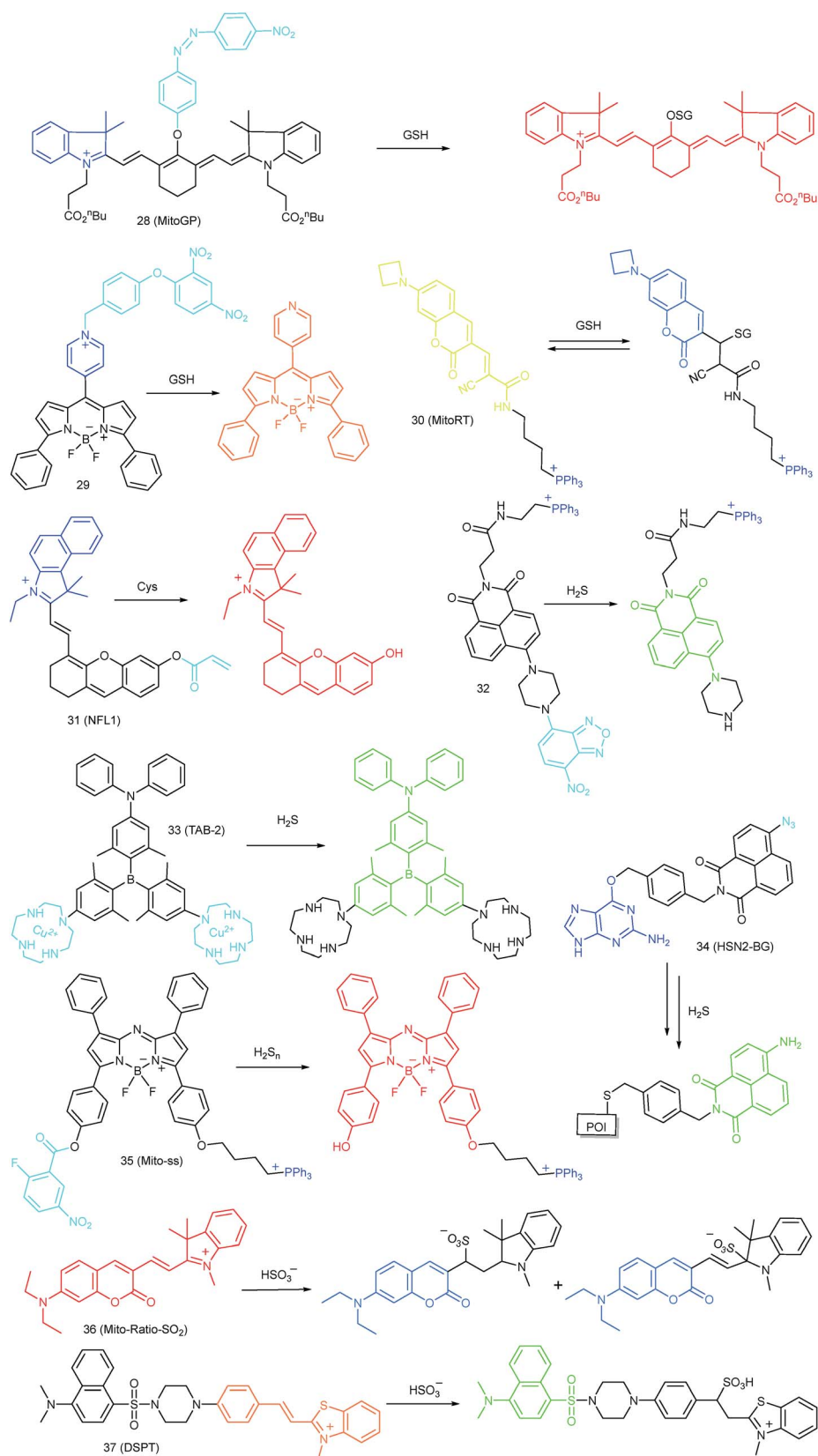


Fig. 16 Fluorescent probes for imaging RSS in mitochondria.



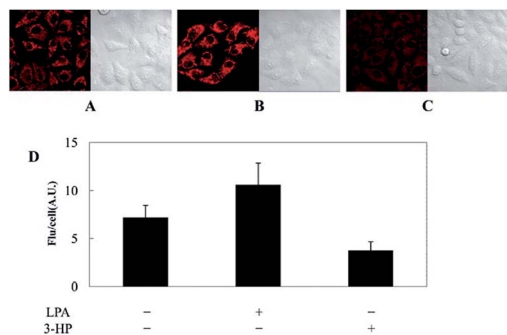


Fig. 17 CLSM images of HeLa cells subjected to different treatments (A–C) with **28**. (A) **28** only, (B) **28** + LPA (1.8 mM, 24 h), and (C) **28** + 3-HP (1 mM, 5 min then 2 h incubation); (D) their histograms of fluorescence intensities. Adapted with permission from ref. 52. Copyright 2014 American Chemical Society.

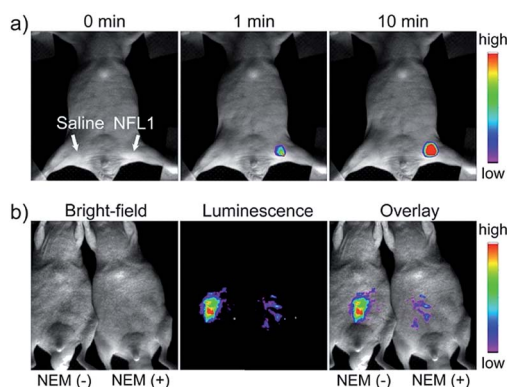


Fig. 18 *In vivo* NIR imaging of living mice subjected to different treatments with probe **47**. (a) The mice was treated with 0.1 mL of saline (left side) or **31** (10 μ M, right side) solution and imaged at different times after subcutaneous injection of **47**. (b) The left mice was injected with probe **31** (10 μ M, 0.2 mL) only for 10 min. The right mice was preinjected with NEM (1 mM, 0.2 mL) for 30 min and then injected with **31** (10 μ M, 0.2 mL) for 10 min. Adapted with permission from ref. 53b. Copyright 2015 American Chemical Society.

quenching effect of the NBD moiety, but it underwent 68-fold intensity enhancement at 532 nm in the presence of Na_2S as a consequence of the cleavage of the NBD amine and release of a fluorophore. Confocal imaging experiments revealed that the probe localized in mitochondria well. The mitochondrial H_2S of HeLa cells under different treatments could be monitored with this biocompatible probe.

Yang *et al.* devised a triarylboron based “turn-on” probe, **33** (TAB-2), for mitochondrial H_2S imaging.⁵⁶ The probe was prepared by functionalization of one diphenylamine and two cyclens at the *para* position of phenyl groups of triarylboron. After complex formation with Cu^{2+} , the fluorescence of TAB-2 was quenched due to the inhibition of the ICT process. Upon exposure to H_2S , dramatic fluorescence intensity recovery was observed; the LOD of **33** was 47 nM. Interestingly, the lipophilic cationic structure endowed **33** with the capability of mitochondrion-targeting. **33** has been employed for TP and fluorescence lifetime imaging of H_2S in NIH/3T3 cells.

Taking advantage of the SNAP-tag technology, Pluth's group reported a probe, **34** (HSN2-BG), for discriminating the H_2S release profiles of different H_2S donor molecules.^{12b} In view of the existence of H_2S synthase in mitochondria, and some that the H_2S donor can store in the lysosomes, they transfected and expressed AGT protein into mitochondria and lysosomes, respectively. Benefiting from the precise subcellular localization of the probes, they revealed the disparate H_2S release profiles between different H_2S donors in mitochondria and lysosomes, offering a new fluorescent tool for the investigation of subcellular H_2S .

4.3.4. Imaging of H_2S_n in mitochondria. Chen *et al.* developed a bis-electrophilic group containing probe, **35** (Mito-ss), for mitochondrial H_2S_n detection.⁵⁸ TPP was employed as the targeting ligand to endow the probe with mitochondrion-targeting capability. Nitro-activated fluorobenzoate was introduced into the fluorophore, acting as the fluorescence quencher and H_2S_n recognition site. In the presence of H_2S_2 , **35** underwent a nucleophilic aromatic substitution reaction, and formed a $-\text{SH}$ containing intermediate. Subsequently, an intramolecular cyclization took place. Thereby the PET process of **35** was blocked, and 24-fold fluorescence enhancement was observed during this process. Based on the two-step reaction, this probe can avoid interference from thiols. The reaction could be finished in 30 s, and the LOD of **35** was 25 nM. The process of the conversion of H_2S into H_2S_n to eliminate the intracellular ROS directed by glutathione peroxidase was confirmed with this probe. *In vivo* visualization of H_2S_n was also carried out owing to the NIR emissive merit of **35**.

4.3.5. Imaging of SO_2 in mitochondria. SO_2 is a key air pollutant involved in the formation of acid rain, and can cause diverse side effects in the human body. SO_2 can also be synthesized in living cells by the oxidation of sulfur-containing molecules including amino acids.^{12a,59} Abnormal cell metabolism may result in the disruption of homeostasis of SO_2 in living cells. An increasing number of reports have proved that SO_2 is involved in a series of pathological processes, including lung cancer, and urticarial and gastrointestinal disorders.⁸⁶ For *in situ* and real-time visualization of SO_2 in living cells, a variety of probes have been designed in recent years. Among them, mitochondrion-targeted ones are quite attractive.

In 2015, Yuan and Chang *et al.* reported the first example of a mitochondrion-targeted ratio probe, **36** (Mito-Ratio- SO_2).^{59a} A mechanism study revealed that the nucleophilic addition of SO_2 to **36** could generate two stable adducts and block the ICT process within the probe. The blocked ICT process between coumarin and indole groups resulted in a blue-shifted emission. Interestingly, the emission shift between the two bands was as large as 170 nm. **36** had high selectivity toward SO_2 with a LOD of 0.09 μ M. The generation of SO_2 in the mitochondria of HeLa cells was detected with this ratiometric probe.

Zhao's group devised probe **37** (DSPT) based on the FRET mechanism, and it was constructed from the dansyl-piperazine-benzothiazolium conjugate platform.⁸⁷ In this probe, the cationic benzothiazolium group was employed as the targeting group, while a neighbouring $\text{C}=\text{C}$ bond was the recognition moiety. The FRET process of the probe was “on” due to the



spectral overlap, but was “switched off” in the presence of HSO_3^- , as a consequence of the fact that the Michael addition reaction disrupted the conjugated structure of the acceptor fluorophore. The LOD of **37** was 69 nM, which indicates that it was suitable for detecting SO_2 derivatives in diverse real samples. The exogenous and endogenous SO_2 derivatives in the mitochondria of HepG2 cells were visualized in a ratiometric imaging manner.

4.4. Challenges for mitochondrion-targeted probes

Benefiting from the critical biological function and high activity of mitochondria, fluorescent probes, taking mitochondria as the targeting sites, have been widely developed and employed for RONSS imaging in different cases. However, the majority of targeting ligands are lipophilic cationic structures that carry the risk of reducing MMP. Also, during diverse stimulations or fixation with chemical agents, these dyes can easily leak out due to the MMP lost, and cannot work in these situations. Genetically encoded probes are capable of covalently anchoring to mitochondria with high selectivity and may avoid the dye leakage. But the gene transfection efficiency cannot be guaranteed, while repeated washing may change the mitochondrial microenvironment. Also, the gene transfecting process makes the probes difficult to use for *in vivo* imaging (imaging mitochondria during liver/kidney IRI and so on). Moreover, there are hundreds of biomolecules in mitochondria, including enzymes, cations, anions, lipids, mitochondrial DNA, RNA and so on. *In situ* selective staining of bioactive molecules at ultralow concentrations (usually nanomolar amounts) using fluorescent probes is quite challenging. Many reported probes only work when large amounts of exogenous analytes are added or cells are stimulated by diverse chemical agents. Probes capable of selectively imaging bioactive species at basal concentrations are still rare, which hampers the further explorations of the physiological functions of these species. Ratiometric probes are promising for eliminating diverse interferences, but only limited mitochondrion-targeted ratiometric probes have been designed and constructed up to now.

5. Lysosome-targeted probes

As the main digestive compartments of cells, lysosomes store numerous enzymes for degradation/recycling of diverse exogenous and endogenous biomolecules, and can effectively defend cells from infection, starvation and stress.^{3b,40a,b,88} The bioactivity of RONSS makes them feasible for regulating the enzyme activity in such organelle, and serious disorders can be caused when expressed in an uncontrolled manner. As people have gradually recognized the importance of lysosomes, more and more lysosome-targeted fluorescent probes have been explored for RONSS imaging in different study models.

5.1. Imaging of ROS in lysosomes

Benefiting from the acidic and digestive lysosomal microenvironments, the activities of diverse ROS scavenging enzymes (such as SOD and peroxidase) in lysosomes are restricted, which

facilitates the ROS accumulation in such single-layered membrane bounded organelle.^{28,89} The lysosomal ROS level is closely related to the lysosomal enzyme regulation, which can be critical for maintaining cellular homeostasis. Lysosomal oxidative stress caused by over-accumulation of ROS can result in lipid peroxidation, which will further cause lysosomal membrane permeabilization (LMP) and cell disorders.⁹⁰ Therefore, monitoring the lysosomal ROS concentration has been recognized as an important task for molecular pathology. Novel fluorescent probes capable of tracing the lysosomal ROS fluctuation are highly significant for bioanalysis (Fig. 19).

5.1.1. Imaging of H_2O_2 in lysosomes. Lin *et al.* developed a lysosome-targeted naphthalimide based TP H_2O_2 probe, **38** (Lyso-HP).⁹¹ Morpholine was employed as the lysosome-targeting group, while the electron-deficient boronate group was used as the recognition site. The “A- π -A” structure made **38** emit weakly. When the boronate group of **38** was specifically oxidized to hydroxyl, a “D- π -A” electronic structure was formed, and the re-activated ICT process resulted in significant fluorescence “turn-on”. TP imaging experiments in living cells and tissues demonstrated that **38** could act as a novel candidate for lysosomal H_2O_2 detection.

Kumar *et al.* reported another morpholine decorated naphthalimide based probe, **39** (LyNC), for lysosomal H_2O_2 imaging, and it employed catechol as the reaction site.³⁷ In the absence of H_2O_2 , the PET process between the catechol moiety and naphthalimide blocked the fluorescence; in the presence of H_2O_2 , the probe emitted evidently due to the disruption of the PET process caused by oxidation of catechol into *o*-quinone. **39** was successfully used for tracing the lysosomal H_2O_2 in C6 glioma cells, BV-2 microglial cells and nematodes under different stimulations.

In view of the acidic lysosomal microenvironments, probes that can simultaneously respond to the pH and H_2O_2 should be promising for reducing the background during fluorescent imaging. Wu and Zhao *et al.* introduced an acidic pH activatable probe, **40** (HP-L1), for lysosomal H_2O_2 detection.²⁸ In this probe, boronate was employed as the responsive moiety, and spirobenzopyran as the pH switchable fluorophore. This probe could only emit intensive fluorescence in lysosomes after reacting with H_2O_2 , which made it a powerful tool for avoiding the background fluorescence during lysosomal H_2O_2 imaging.

5.1.2. Imaging of HOCl in lysosomes. HOCl plays critical roles in cell immune systems and is closely related to diverse pathological processes.^{40b,88,92} Development of lysosomal-targeted probes for HOCl has attracted increasing interest in recent years. As discussed above, the detection mechanisms of fluorescent probes toward HOCl mainly rely on the oxidation capacity of HOCl.

In 2015, Chang's group reported an “off-on” HOCl probe, **41** (TP-HOCl 1), with a fast response rate (within seconds) and low LOD (16.6 nM).^{40b} The response mechanism of **41** was the HOCl mediated oxidative deprotection of the oxathiolane/mercaptal group, which resulted in the recovery of the “push-pull” structure in acedan and production of fluorescence at 500 nm. **41** exhibited remarkable specificity toward HOCl among diverse ROS. Further modification of morpholine or TPP with **41**



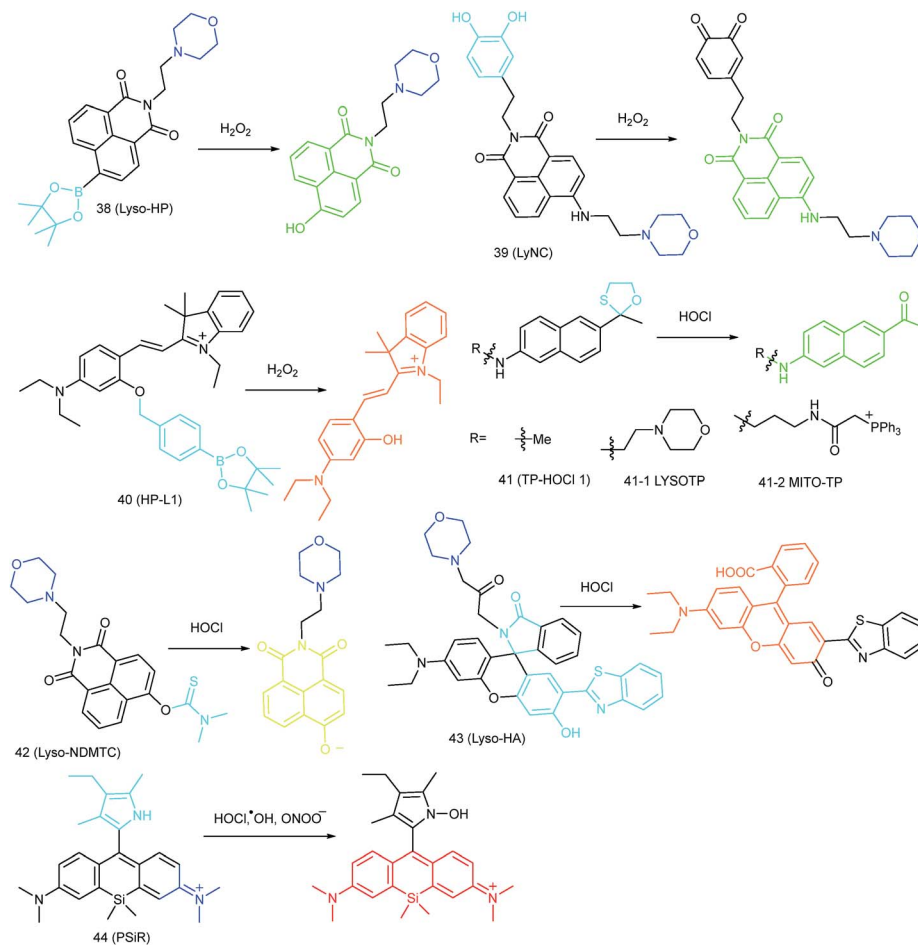


Fig. 19 Fluorescent probes for imaging ROS in mitochondria.

yielded lysosome- and mitochondrion-targeted probes (**41-1** LYSOTP and **41-2** MITO-TP, respectively). They were successfully employed for TP imaging under both *in vitro* and *in vivo* conditions, and the subcellular distribution of HOCl was elucidated.

Our group prepared a thiocarbamate derivative based TP probe, **42** (Lyso-NDMTC), for lysosomal HOCl imaging.⁸⁸ This probe was fabricated by decorating naphthalimide with morpholine and *N,N*-dimethylthiocarbamate (DMTC). **42** emitted faintly initially but highly after reacting with the analyte of interest, due to the electrophilic addition reaction of Cl^+ induced cleavage of DMTC. Benefiting from the reaction reactivity of DMTC and sensitivity of the ICT process, the LOD of **42** was estimated to be 7.6 pM. **42** is the first probe capable of imaging the basal lysosomal HOCl at the picomolar level, and it has been successfully employed to distinguish tumor tissue *in vivo* with the assistance of TP microscopy (Fig. 20).

Lin's group devised a lysosome-targeted ratiometric HOCl probe, **43** (Lyso-HA), based on the ESIPT mechanism.⁹² Before coming into contact with HOCl, **43** adopted the spirocyclic form and the probe underwent the ESIPT process between the phenolic hydroxyl group and benzazole ring, which gave

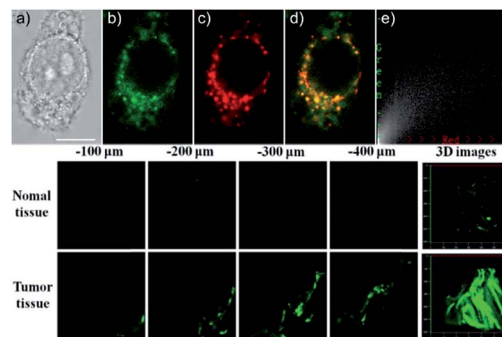


Fig. 20 Top: CLSM images of live HepG2 cells pretreated with **42** (20.0 μ M) and Lyso-Tracker Red (100.0 nM) for 20 min: (a) bright-field image, (b) green channel for probe fluorescence, (c) red channel for Lyso-Tracker fluorescence, (d) merged image from panels (b) and (c); and (e) intensity correlation plot of **42** and Lyso-Tracker Red. Bottom: Two-photon fluorescence imaging at different depths and the 3D distribution of HOCl in the normal and cancerous breasts of mice pretreated with **42** (100.0 μ M) for 30 min. Fluorescence images were obtained with an 800 nm light source. Adapted with permission from ref. 88. Copyright 2016 American Chemical Society.



emission at 450 nm. Upon reaction with HOCl, the spirocyclic ring opened and there was no proton close to the benzazole ring. The blocking of the ESIPT process resulted in a decrease in the emission peak at 450 nm as well as the appearance of a new emission band at 586 nm. Benefiting from the remarkable emission wavelength red shift (136 nm), **43** is an ideal tool for exogenous and endogenous lysosomal HOCl imaging (Fig. 21).

5.1.3. Imaging of hROS in lysosomes. Highly reactive oxygen species (hROS, including ClO^- , $\cdot\text{HO}$ and so on) are closely related to oxidative stress due to their reactivity and they are overexpressed in diverse diseased cells. Novel probes for monitoring hROS in subcellular microenvironments are promising for disease diagnosis. In 2017, Guo *et al.* reported a lysosome-targeted Si-rhodamine-based probe, **44** (PSiR), for hROS imaging.⁸⁹ **44** employed Si-rhodamine dye as the fluorophore, and 2,4-dimethyl-3-ethylpyrrole as the electron donor and responsive site. **44** was non-emissive due to the intramolecular PET process. Upon reaction with hROS (ClO^- , ONOO^- , and $\cdot\text{HO}$), 180-fold fluorescence enhancement at 680 nm was observed from the solution of **44**. Endogenous hROS in the lysosomes of A549 cells after chemotherapeutic drug stimulation was observed. Moreover, cancer cells and tissues (Fig. 22)

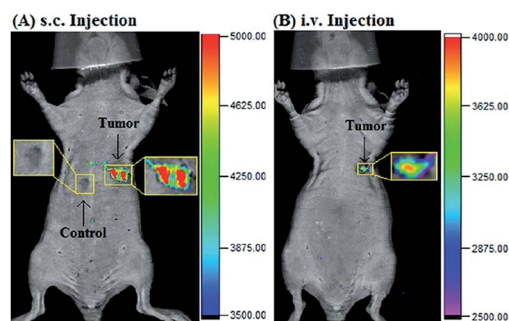


Fig. 22 Imaging tumor using **44** in the tumor-bearing mouse xenograft models prepared by subcutaneous inoculation of HeLa cells. (A) The mouse was subcutaneously injected with **44** (2 mM, 10 μL) in the tumor region and normal region, respectively, and then imaged immediately. (B) The mouse was intravenously injected with **44** (1.5 mg kg^{-1}), and then imaged after 25 min. Adapted with permission from ref. 89. Copyright 2017 Elsevier Ltd.

were facilyly discriminated with this NIR probe, demonstrating the great potential of the probe for drug screening and cancer diagnosis.

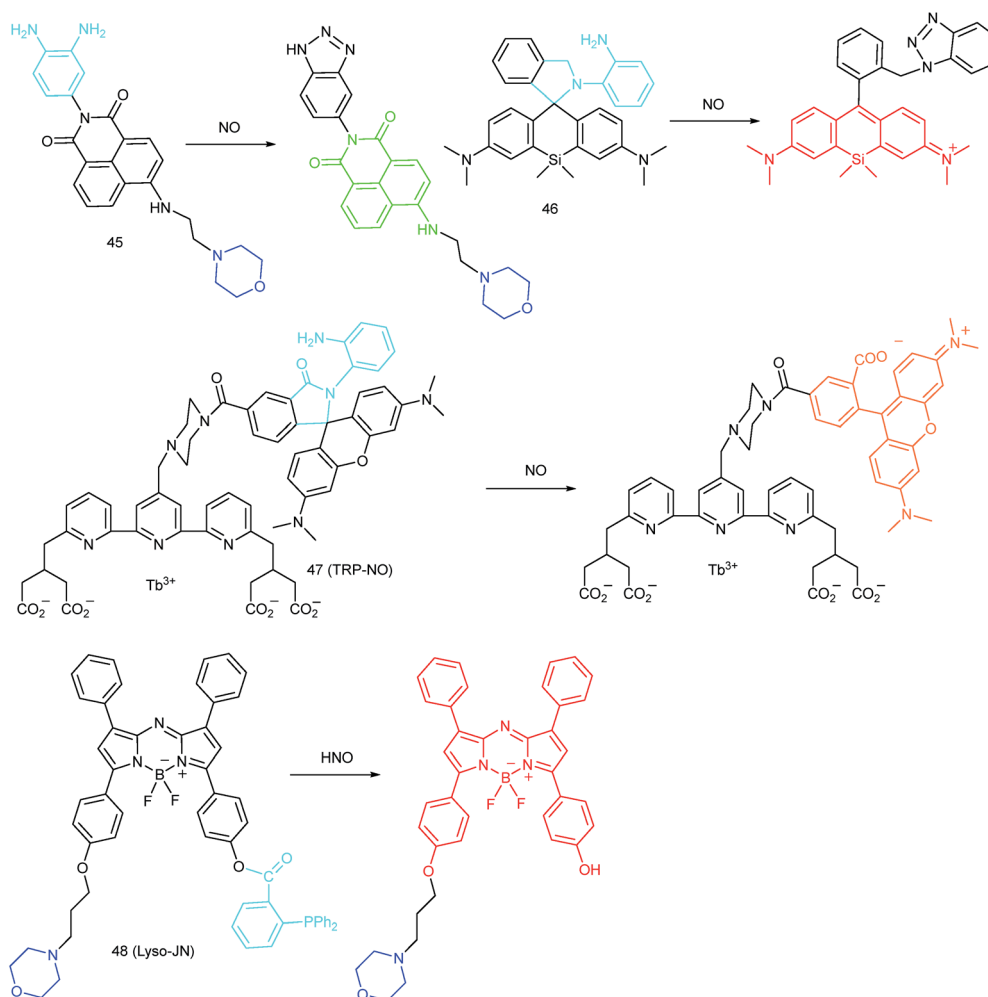


Fig. 21 Fluorescent probes for imaging RNS in lysosomes.



5.2. Imaging of RNS in lysosomes

RNS in lysosomes are important for lysosomal microenvironment regulation. The overproduction of RNS in lysosomes can cause lysosomal nitrate stress and diverse disorders.^{48b,d,50a,93}

Therefore, lysosomal RNS can be promising biomarkers for diverse diseases. For example, overproduction of NO in the lysosomes was discovered in diverse cancerous and inflamed cells.^{93b} Thus, lysosome targetable RNS probes are helpful for further understanding the biological and pathological functions of these molecules.

5.2.1. Imaging of NO in lysosomes. Our group reported a three-component lysosome targeted NO probe (45), which was prepared by tethering the NO trapping agent *o*-phenylenediamine to the imide position of the TP fluorophore naphthalimide, and the lysosome targeting moiety morpholine was introduced to the 4-position.^{93b} The TP fluorescence of the probe was quenched due to the PET process between naphthalimide and *o*-phenylenediamine, but it recovered as a consequence of the generation of triazole from the NO and *o*-phenylenediamine trapper. 45 was used to capture the endogenous lysosomal NO in living cells for the first time, and the lysosomal NO generation under different stimulations was successfully monitored.

In 2017, Guo's group developed a Si-rhodamine deoxylactam-based fluorescent probe (46) for the detection of lysosomal NO.^{48b} Benefiting from the characteristics of the PET mechanism and the Si-rhodamine fluorophore, this probe had a large fluorescence "off-on" ratio (6300-fold), strong emission intensity, low detection limit (0.12 nM), fast response rate (within seconds) and high specificity. Interestingly, 46 localized in the lysosomes specifically owing to its easy protonation in mild acidic environments. Endogenous NO in a series of normal and inflamed cells as well as streptozotocin-treated mouse models was successfully visualized with this probe (Fig. 23).

Song and Yuan *et al.* developed a time-gated luminescence probe, 47 (TRP-NO), for *in vivo* NO imaging.^{48d} The luminescence resonance energy transfer process from the luminescent

Tb³⁺ complex to rhodamine was activated when the non-emissive spiro lactam derivative was opened upon reacting with NO. 47 could be used for ratiometric and luminescence lifetime imaging, and the LOD of this probe was determined to be 1.8 μM. Interestingly, dye co-localization studies revealed that 47 had high affinity toward lysosomes. NO imaging in HepG2 cells and *Daphnia magna* was realized with this probe (Fig. 24).

5.2.2. Imaging of HNO in lysosomes. Chen *et al.* reported a BODIPY based NIR probe, 48 (Lyso-JN), for imaging of HNO in lysosomes.^{50a} Morpholine was employed as the targeting group to endow the probe with lysosome-localization capacity; NIR emissive tetraarylazadipyromethane was employed as the fluorophore because of its unique physiochemical properties; the diphenylphosphinobenzoyl group was chosen as the recognition moiety, which can quench the fluorescence of BODIPY, and can be specifically cleaved with HNO. 48 had high selectivity toward HNO among other bioactive species. Apparent fluorescent enhancement is observed after the cleavage of the diphenylphosphinobenzoyl group with HNO, and the LOD of 48 was calculated to be 0.06 μM. 48 has been successfully employed for background-free fluorescence imaging of HNO in macrophage cells and living mice.

5.3. Imaging of RSS in lysosomes

RSS are also important for lysosomal microenvironment adjustment and cellular signal conduction.^{53a,94} Recently, some attention has been paid to the design and application of novel probes for lysosome-targeted detection of RSS. However, this type of probe is much rarer than mitochondrion-targeted ones (Fig. 25).

5.3.1. Imaging of thiols in lysosomes. In 2016, Peng *et al.* reported a naphthalimide based TP probe (49) for imaging thiols in lysosomes.^{94b} This probe employed 2,4-dinitrobenzene-sulfonyl (DNBS) as the responsive group and morpholine as the lysosome-targeting group. Before coming into contact with thiols, the fluorescence of 49 remained weak due to the PET process between DNBS and naphthalimide,

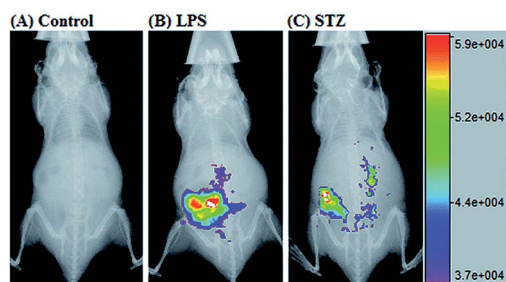


Fig. 23 Overlay of the fluorescence and X-ray images of mice. (A) The mouse was intraperitoneally injected with 46 (100 μL, 2 μM) for 30 min. (B) The mouse was first intraperitoneally injected with LPS (1 mg mL⁻¹, 100 μL) for 24 h, and then intraperitoneally injected with 46 (2 μM, 100 μL) for 30 min. (C) The mouse was first intraperitoneally injected with streptozotocin (40 mg kg⁻¹) for 24 h, and then intraperitoneally injected with 46 (100 μL, 2 μM) for 30 min. Adapted with permission from ref. 48b. Copyright 2017 Royal Society of Chemistry.

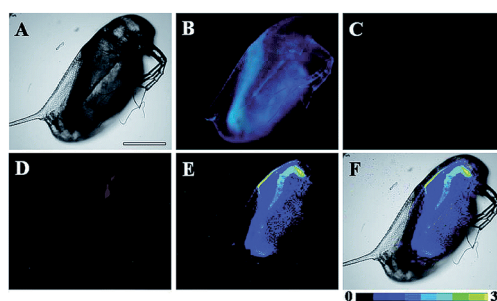


Fig. 24 Bright-field (A), steady-state (B) and time-gated ((C) Tb³⁺ luminescence; (D) rhodamine luminescence) luminescence images of the 47 loaded *D. magna* after being treated with 0.5 mM NOC-13 for 10 min. (E) is the ratiometric (ratio = I_{red}/I_{green}) luminescence image of the *D. magna*. (F) is the merged image of brightfield and ratiometric images. Scale bar: 200 μm. Adapted with permission from ref. 48d. Copyright 2017 Royal Society of Chemistry.



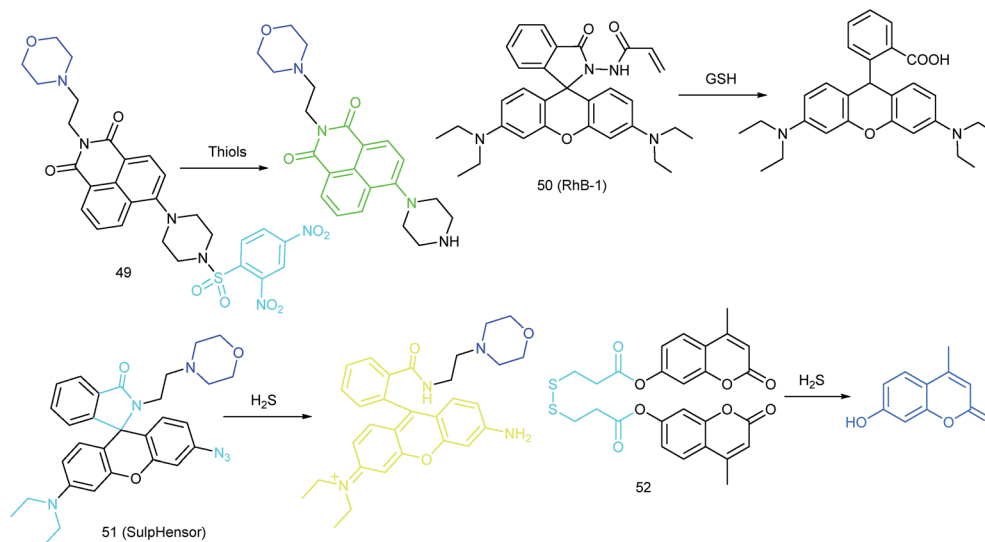


Fig. 25 Fluorescent probes for imaging RSS in lysosomes.

while significant fluorescence intensity enhancement was observed in the presence of thiols. The detection limits of **49** toward Cys, GS and Hcy are 2.6×10^{-7} M, 2.41×10^{-6} M and 4.87×10^{-6} M, respectively. Colocalization experiments revealed that **49** localized in the lysosomes of cells specifically. Thiol imaging in living cells and tissues was successfully visualized using TP microscopy.

5.3.2. Imaging of GSH in lysosomes. Liu and Jiang *et al.* reported Rhodamine B-based lysosome-targeted probe **50** (RhB-1) for GSH imaging.^{53a} Based on the PET mechanism, the fluorescence of **50** was quenched before coming into contact with the analyte of interest. Benefiting from the high reactivity of acryloyl, the spirolactam ring of **50** was opened after the Michael addition reaction with GSH. The response time of this probe was less than 10 s, and 16-fold fluorescence intensity enhancement is detected during the reaction between **50** and GSH. The LOD of **50** was 190 nM. Further experiments revealed that this probe is biocompatible and cell permeable, which indicated that **50** was a highly attractive “off-on” GSH probe for cell imaging. The lysosomal GSH in normal and NEM (sulfhydryl group blocker) treated HeLa cells was successfully distinguished with this probe.

5.3.3. Imaging of H₂S in lysosomes. Yang *et al.* reported Rhodamine B-based probe **51** (SulpHensor).^{94a} Morpholine was introduced as the targeting group, and the spirolactam moiety and azide group were employed to quench the fluorescence of the probe. The spirolactam moiety of **51** was opened in lysosomal acidic microenvironments, while the azide group was specifically reduced by H₂S. Therefore, the fluorescence of the probe was only turned on in acidic environments in the presence of H₂S, which was beneficial for enhancing the lysosome specificity and avoiding the undesired background fluorescence during cell imaging. Lysosomal H₂S imaging in HeLa cells with different stimulations was realized with this probe.

Zhou and Zhang *et al.* reported a coumarin based probe (**52**) for lysosome-targeted H₂S imaging.⁹⁵ **52** was facilely prepared by connecting two coumarin fluorophores with disulfide bonds. Before the reaction with H₂S, the emission of **52** remained weak. However, after coming into contact with H₂S, 15-fold fluorescence enhancement was observed due to the specific cleavage of disulfide bonds. Interestingly, co-localization experiments demonstrated the lysosome-targeting capability of **52**. Fluorescence imaging of endogenous and exogenous H₂S in HeLa cells, *D. melanogaster* and *C. elegans* was successfully realized with this probe.

5.4. Challenges for lysosome-targeted probes

Significant progress has been made in the development of lysosome-targeted fluorescent probes in recent years. However, there are still several limitations for related probes. For example, the targeting mechanisms of most developed probes are the trapping of protonated lipophilic amines, which cannot be used to distinguish between endosomes, autophagosomes, autolysosomes and other acidic compartments. Moreover, these ligands are toxic to living cells because they can alkalinize lysosome microenvironments and hinder the smooth progress of diverse lysosome activities, which make them unsuitable for long-term tracing. Therefore, lysosome selective probes without the alkalinization effect are required. As discussed above, genetically encoded probes need to be frequently washed to diminish the background during imaging, and this can also influence the lysosomal microenvironments. Therefore, designing bio-orthogonal probes with strong anti-interference capability, excellent selectivity and high sensitivity is still hard. Moreover, some probes may be quenched in the acidic lysosomal microenvironments, which poses extra challenges for designing related probes. Most of the current developed probes emit in the visible region, indicating that they cannot be used for deep tissue imaging due to their poor penetration capacity.



6. Endoplasmic reticulum targeted probes

The ER is the main place for protein fabrication, modification, folding and transportation. It also takes charge of the synthesis of other molecules, like lipids and carbohydrates, as well as Ca^{2+} storage.^{30b,96} During synthesis of diverse proteins, RONSS are indispensable for controlling their functional three-dimensional structures and chemical groups.^{50b,97} Therefore, maintaining suitable oxidative microenvironments is essential for ER functions. Once the redox homeostasis in the ER is out of control, it can hamper the formation of proper protein structures and cause diverse disorders as well as ER stress.^{30a,96b,c} Development of ER-targeted probes and tracing localized RONSS has been recognized as a new strategy for investigating the molecular mechanisms of different diseases.

6.1. Imaging of ROS in the endoplasmic reticulum

ROS are critical for protein synthesis because they are involved in the formation of the disulfide bond, which is essential for protein folding. However, overexpression of ROS in the ER may cause oxidative stress, which can lead to protein crosslinking and further result in morbid effects on living cells. Developing novel fluorescent probes capable of tracing the ROS flux in the ER is significant for revealing the potential physiological and pathological functions of ROS during different bio-events, which should also help to improve the understanding of different major diseases (Fig. 26).

6.1.1. Imaging of $\text{O}_2^{\cdot-}$ in the endoplasmic reticulum. Recently, Xiao *et al.* reported an ER-targeted TP probe, $\text{O}_2^{\cdot-}$ 53 (ER-BZT).^{30a} In this probe, *p*-toluene sulfonamide was employed as the targeting group, naphthalimide as the fluorophore and benzothiazoline as the responsive group. The fluorescence of naphthalimide was quenched based on the PET mechanism.

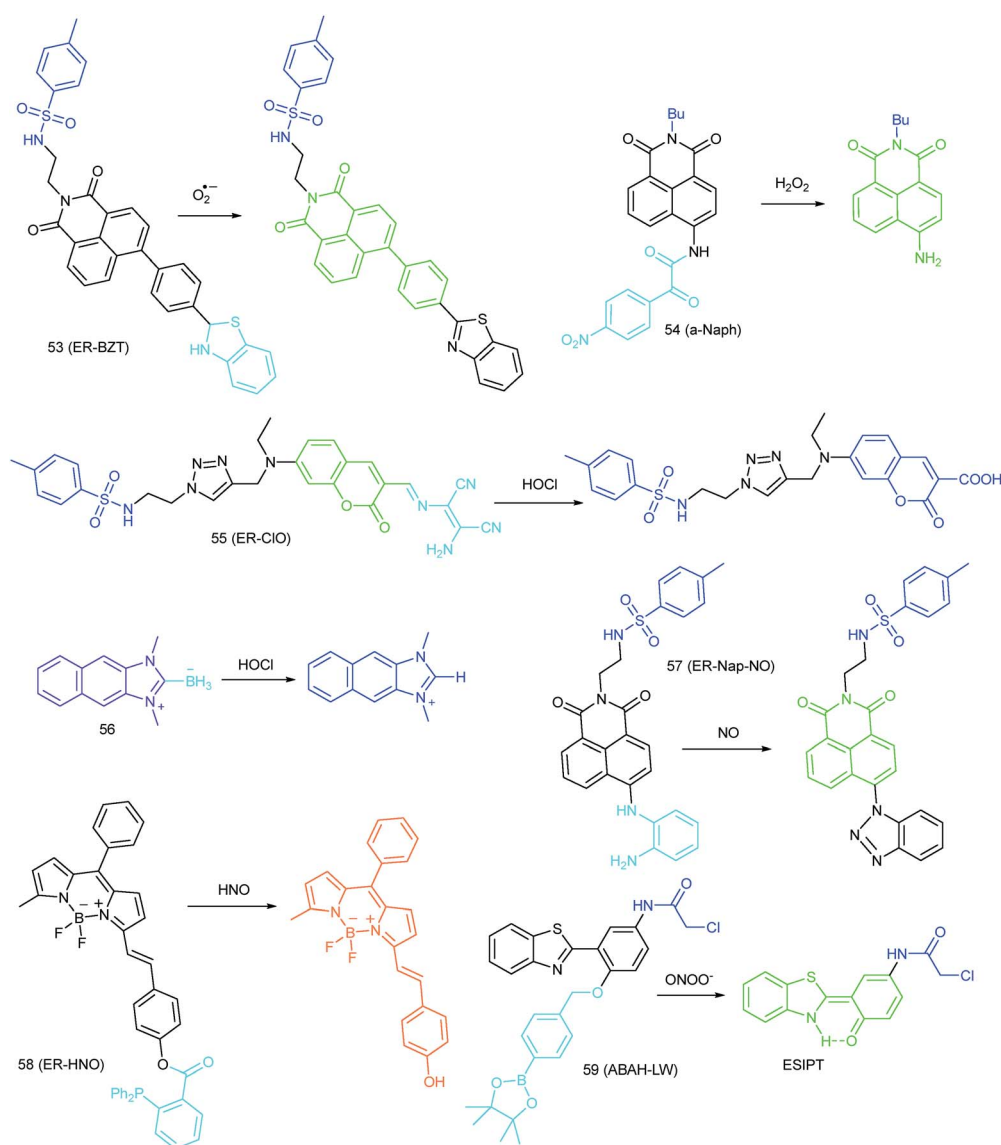


Fig. 26 Fluorescent probes for imaging of ROS and RNS in the ER.



Upon the addition of $O_2^{\cdot-}$, dramatic fluorescence enhancement was observed from the probe solution, as a consequence of the dehydrogenation reaction between $O_2^{\cdot-}$ and benzothiazoline disrupting the PET process. The probe localized in the ER well (Fig. 27) and the LOD of **53** was determined to be 60 nM. $O_2^{\cdot-}$ burst in the ER of HepG2 cells during ER stress was detected with this probe, and the higher endogenous $O_2^{\cdot-}$ level in abdominal and hepatic tissue of diabetic mice was demonstrated with **53** by using TP microscopy, which indicated that this probe holds promise for revealing the chemical–biological roles of $O_2^{\cdot-}$ in diverse ER-associated diseases.

6.1.2. Imaging of H_2O_2 in the endoplasmic reticulum. In 2017, Zhang and co-workers reported another naphthalimide based probe, **54** (α -Naph), for selectively tracing the H_2O_2 in the ER.^{97a} In this probe, α -ketoamide was selected as the H_2O_2 responsive group. Upon addition of H_2O_2 to the solution of **54**, the α -ketoamide was converted into a stronger electron donating amino group, resulting in a ratiometric fluorescence signal change. The LOD of **54** is 38 nM and confocal imaging experiments revealed that **54** localized in the ER well. With this probe, the basal H_2O_2 concentration of HeLa cells in the ER was detected (estimated to be 0.692 μ M), and it was found to be elevated to 1.26 μ M under PMA stimulation.

6.1.3. Imaging of HOCl in the endoplasmic reticulum. Using *p*-toluene sulfonamide as the targeting group, Kim and co-workers reported a curcumin based ratiometric probe, **55** (ER-CIO).^{96c} **55** had a maximum absorption peak at 488 nm and emitted at 554 nm. After reacting with HOCl, the cleavage of diaminomaleonitrile resulted in a shift of the main adsorption peak to 437 nm, while the emission peak blue-shifted to 480 nm. This probe had excellent selectivity toward HOCl, with a LOD of 0.59 μ M. **55** has been successfully employed for ratiometric tracing of endogenous HOCl in the ER of HeLa cells under the PMA stimuli.

ER-selective fluorescent probes based on other groups have also been developed. Yoon, Bouffard and Kim reported

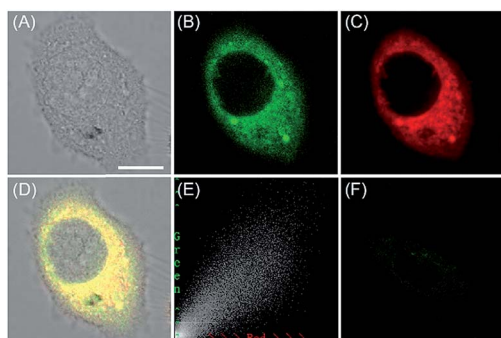


Fig. 27 The colocalization imaging of **53** and ER-tracker Red in Tm-treated HepG2 cells. (A) The bright-field image. (B) The fluorescence image of **53** (10 μ M, Ex = 405 nm, collected 420–480 nm). (C) The fluorescence image of ER-Tracker Red (0.5 μ M, Ex = 543 nm, collected 580–630 nm). (D) The merged image of (A)–(C). (E) Intensity correlation plot of stain **53** and ER-Tracker Red. (F) The fluorescence image of ER-BZT in Tm-induced HepG2 cells pretreated with Tiron (5.0 mM) for 20 min. Scale bar: 10 μ m. Adapted with permission from ref. 30a. Copyright 2016 Royal Society of Chemistry.

N-heterocyclic carbene borane-based HOCl probe **56** with ER-targeting capability.⁹⁸ In the presence of HOCl, the specific oxidation of the B-H bond occurred, yielding the emissive naphthoimidazolium derivative and a 470-fold ratiometric signal response. Confocal imaging experiments revealed that probe **56** overlapped well with commercialized ER-Tracker Red (Fig. 28), and HOCl imaging in RAW264.7 cells as well as rat hippocampal slices was realized.

6.2. Imaging of RNS in the endoplasmic reticulum

Although fluorescent probes for tracing RNS in living cells have attracted significant interest during the past few decades, probes capable of imaging the RNS fluctuations in subcellular structures are still rare, especially in the ER. However, ER nitrate stress caused by RNS overproduction also has deadly effects on living cells. Therefore, ER-targeted RNS probes are urgently needed due to their potential in early warning and diagnosis. Several groups have devoted efforts and made progress in related areas in the past 3 years.

6.2.1. Imaging of NO in the endoplasmic reticulum. Very recently, Li and co-workers devised an ER-targeted NO probe, **57** (ER-Nap-NO), based on the *p*-toluene sulfonamide and *o*-phenylenediamino (OPD) functionalized naphthalimide platform.^{96a} Initially, the fluorescence of naphthalimide was quenched by the OPD moiety. In the presence of NO and O_2 , significant turn-on fluorescence could be observed due to the prohibition of PET. **57** was applied for TP imaging of the NO level in the ER of HeLa cells, mouse liver tissues and leg tissues through TP microscopy (Fig. 29), which offered an alternative candidate for investigating the relationships between NO and ER associated diseases.

6.2.2. Imaging of HNO in the endoplasmic reticulum. Das's group synthesized a BODIPY based fluorescent probe, **58** (ER-HNO), for imaging HNO in the ER.^{50b} The fluorescence of **58** was faint due to the quenching capability of the diphenylphosphinobenzoyl group, and was recovered upon the specific

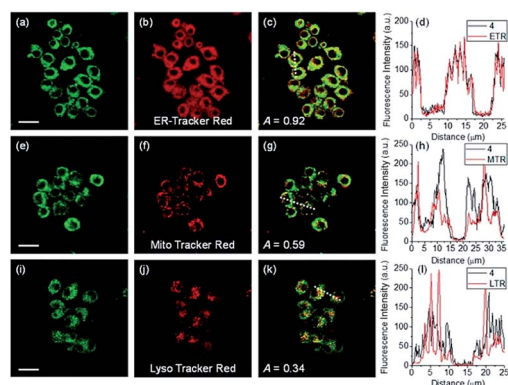


Fig. 28 TPM (a, e, and i), OPM (b, f, and j), and merged (c, g, and k) images of RAW264.7 cells colabeled with **56** (10 μ M) and organelle trackers (1.0 μ M). Line profile of fluorescence intensity (d, h, and l) obtained from the corresponding cells images. Scale bars = 20 μ m. Adapted with permission from ref. 98. Copyright 2016 Royal Society of Chemistry.



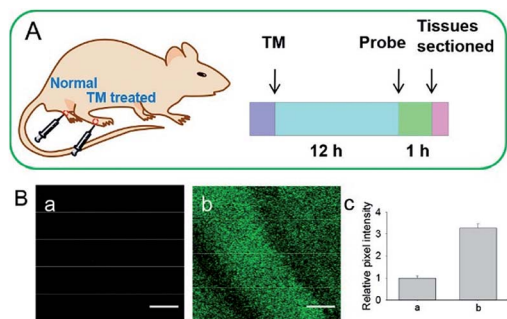


Fig. 29 (A) Preparation of normal tissues and tunicamycin-treated tissues from a mouse model. (B) Two-photon fluorescence images of tissues during ER stress: (a) normal tissues, (b) tunicamycin-treated tissues, and (c) relative pixel intensities for images (a) and (b). Scale bar is 100 μm . Adapted with permission from ref. 96a. Copyright 2016 Royal Society of Chemistry.

Staudinger reaction with HNO. Benefiting from the photostability of BODIPY, this probe was suitable for structured illumination microscopy. Colocalization experiments revealed that the probe localized in the ER of macrophage cells specifically. **52** was employed in the visualization of HNO in living cells as well as *Artemia nauplii*.

6.2.3. Imaging of ONOO⁻ in the endoplasmic reticulum. ONOO⁻ is known for its toxic effect on the ER, which can deplete the Ca²⁺ in the ER while elevating the cytosol Ca²⁺ and inducing cell apoptosis.^{96b} ONOO⁻ overproduction in the ER is closely related to numerous disorders including atherogenesis. Recently, James *et al.* reported an ESIPT based ER-targeted fluorescent probe, **59** (ABAH-LW), for ONOO⁻ imaging.^{96b} The ESIPT process in **59** was first blocked by the benzyl boronic ester group, which resulted in the probe only emitting the enol emission peak at 405 nm. Addition of ONOO⁻ specifically released the keto fluorophore, accompanied by a 103-fold ratiometric fluorescence enhancement (F_{481}/F_{405}). The LOD of **59** was calculated to be 21.4 nM and this probe had been successfully employed for tracing the ONOO⁻ in the ER of HeLa cells under LPS and IFN- γ stimulation. As the first ER-targeted ONOO⁻ probe, **59** may offer new ideas for investigation of the chemical-biological functions of ONOO⁻.

6.3. Imaging of RSS in the endoplasmic reticulum

ER-targeted RSS probes are beneficial for mapping the fluctuation of RSS during diverse processes, and this can offer direct evidence for the cellular functions of RSS. Related investigations have gradually received attention, and several probes have been devised and successfully used for RSS imaging in the ER. But it should be recognized that this is still in its infancy, there is plenty of room for better performance fluorescent probes.

6.3.1. Imaging of thiols in the endoplasmic reticulum. Recent studies have revealed that depression phenotypes might be associated with oxidative stress-related ER disorders. In view of the antioxidant function of thiols, tracing thiols in the ER should have implications for depression investigations.

Recently, our group developed a PET based TP probe, **60** (ER-SH), with ER-targeting capability, for selective thiol imaging.^{30c} With the assistance of TP microscopy, this probe successfully revealed the reduced thiol levels in the ER of mice brains with depression phenotypes.

6.3.2. Imaging of H₂S in the endoplasmic reticulum. Lin's group reported the first ER-targeted H₂S probe, **61** (Na-H₂S-ER),⁹⁹ which could selectively image H₂S in the ER of HeLa cells based on the ICT mechanism: the fluorescence of the probe was firstly quenched by the azide group and the probe could localize into the ER under the direction of *p*-toluene sulfonamide; after coming into contact with H₂S, the azide can be reduced into an amino group, resulting in the formation of a "D- π -A" structure and producing "turn-on" fluorescence at 545 nm. **61** was demonstrated to be capable of tracing H₂S in the ER of living cells and tissues as well as zebrafish.

6.3.3. Imaging of H₂S_n in the endoplasmic reticulum. By virtue of the reactivity of H₂S_n, more and more investigations find that H₂S_n may be the actual signal molecule, and is associated with numerous physiological and pathological phenomena. However, the implication of H₂S_n in the ER function has rarely been checked due to the lack of ideal probes.

Recently, Das, Thomas and co-workers devised probe **62** (MB-S_n) for ER H₂S_n imaging.^{97c} The fluorescence of the probe is blocked initially. Upon reacting with H₂S_n, the cleavage of a thioester and subsequent nucleophilic attack occurs, releasing a fluorophore. The LOD of **62** was as low as 26.01 nM. Benefiting from the excellent photostability and ER-targeting capability, **62** was employed for imaging H₂S_n in the ER of living cells with the assistance of super-resolution structured illumination microscopy, which showed promise for mapping the intracellular distribution of H₂S_n and further exploring their biological functions. Very recently, Zhou's group reported a probe, **63** (ER-H₂S₂), and successfully traced H₂S₂ in the ER of living cells as well as zebrafish.¹⁰⁰

6.4. Challenges for endoplasmic reticulum targeted probes

Over the past three years, a series of ER-targeted fluorescent probes have been developed for selectively staining bioactive species in different research models, such as diabetes, inflammation and depression. However, the targeting mechanisms of ER-selective probes are still unknown, which severely limited our pursuit of better performing fluorescent tools and further understanding the chemical-biological functions of different species. Conjugating responsive groups with ER-targeted dyes seems to be feasible, but the subtle alteration of molecular charges and bulk usually hampers the localization capability. The protein tagging technique has also been employed to resolve the localization of fluorescent probes, but the complexity as well as efficiency remain to be further resolved. Moreover, almost all the reported probes emit visible light, and the *in vivo* applications of these probes are limited. Many bioactive species still cannot be visualized in the ER due to the lack of applicable probes. Probes for the quantification of the basal concentrations of diverse species in the ER are also rare (Fig. 30).



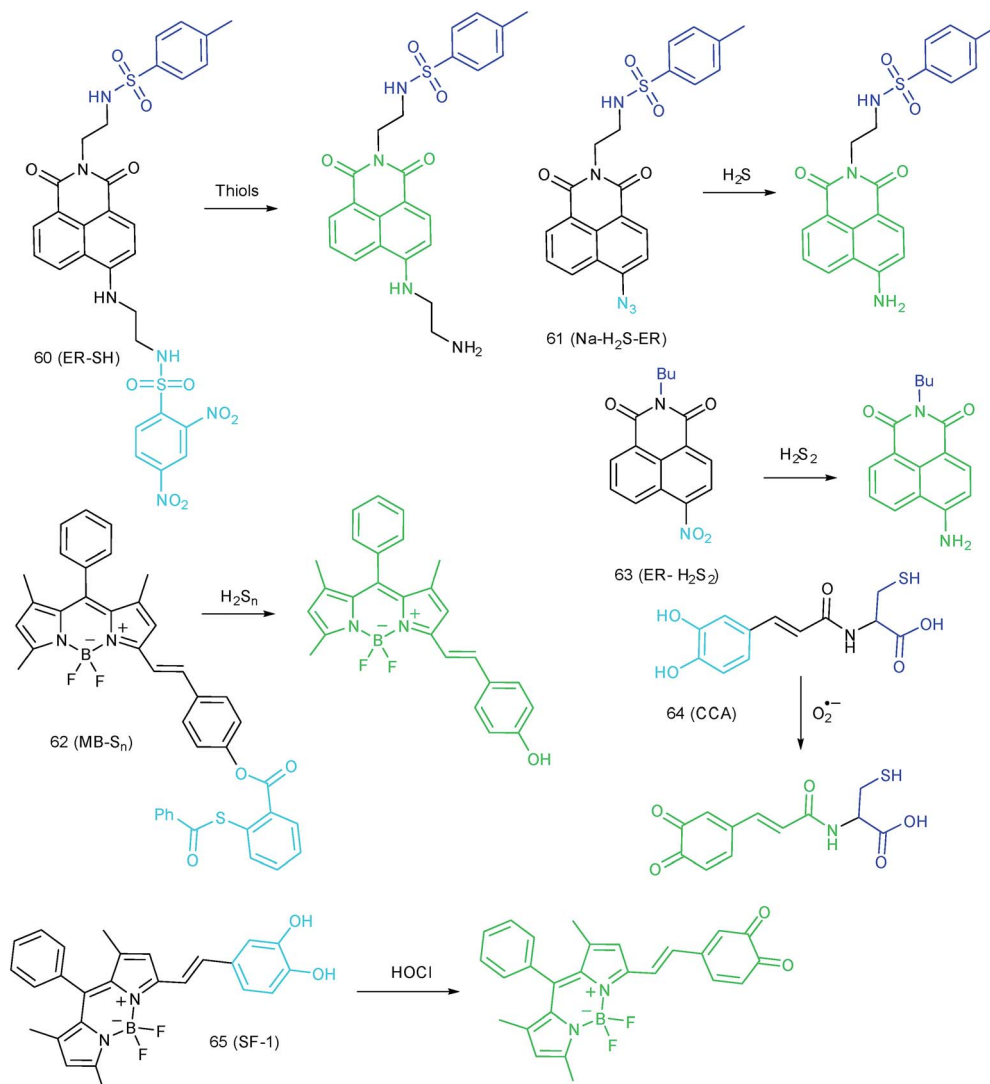


Fig. 30 Fluorescent probes for imaging RSS in the ER (60–63) and ROS in the Golgi apparatus (64 and 65).

7. Golgi apparatus-targeted probes

To reveal the intrinsic molecular mechanisms of hepatic IRI, our group developed an L-cysteine containing TP probe, **64** (CCA), for reversible imaging of the O₂^{•-} fluctuation in the Golgi apparatus.^{31a} **64** was prepared by connecting caffeic acid with L-cysteine through an amide bond. When reacting with O₂^{•-}, the fluorescence intensity of **64** increased linearly to the change of O₂^{•-} concentration in the range of 0–5 μM, and the LOD of this probe was estimated to be 18 nM. Benefiting from the abundance of cysteine residue recognition receptors in the Golgi apparatus, probe **64** could target this organelle effectively. With this probe, the significant increase of O₂^{•-} levels in the Golgi apparatus of mice liver during IRI was disclosed by using TP microscopy. More significantly, the tumor necrosis factor (TNF-α) as the positive O₂^{•-} mediator was demonstrated (Fig. 31). Therefore, **64** not only revealed the molecular mechanism of hepatic IRI, but also provided a promising treatment strategy,

which further proved the significance of organelle-targeted fluorescent probes for disease diagnosis and drug discovery.

Das, Thomas and Smythe *et al.* reported BODIPY derivative probe **65** (SF-1) for HOCl imaging.^{97b} Interestingly, the low charge/intermediate amphiphilicity made **65** selectively accumulate in the Golgi apparatus and lysosomes, and “turn-on” fluorescence is observed only upon addition of HOCl into the probe solution, with a LOD of 4.3 nM. Endogenous HOCl in the Golgi apparatus and lysosomes of macrophage cells under LPS stimulation was visualized with **65** with the assistance of structured illumination microscopy, with a lateral resolution of 120 nm.

7.1. Challenges for Golgi apparatus-targeted probes

Golgi apparatus-targeted RONSS fluorescent probes have not received enough interest in the past decade, mostly due to the lack of efficient targeting ligands. Although several probes have been reported for imaging metal ions in the Golgi apparatus,



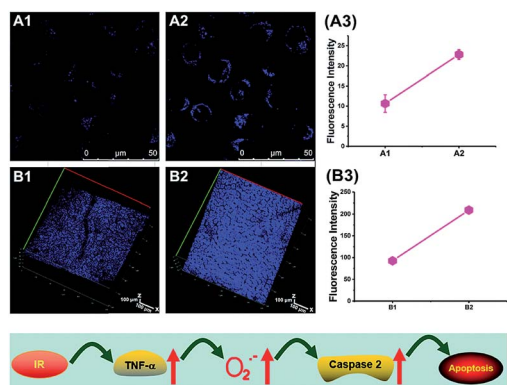


Fig. 31 Top: Increased $O_2^{\bullet-}$ levels in IR cells and mice. (A) The normal (A1) and IR hepatic (A2) cells loaded with $10 \mu\text{M}$ **64** for TP fluorescence imaging, and (A3) the average fluorescence intensity output of (A). (B) The *in vivo* 3D images of normal (B1) and IR mice (B2) injected with $10 \mu\text{M}$ **64** for TP fluorescence imaging, and (B3) the average fluorescence intensity output of (B). Images were acquired at an excitation wavelength of 800 nm and emission wavelengths corresponding to the blue channel of 430–530 nm. Bottom: Model for the signalling role of $O_2^{\bullet-}$ in IR cells and mice. Adapted with permission from ref. 31a. Copyright 2019 Royal Society of Chemistry.

the targeting mechanisms should be explored for further accelerating the development of related probes. L-Cysteine has been proved to be a promising targeting ligand, but the universality remains to be further checked. Though enzyme-activated probes hold promise for localization selective imaging, the scope has not been extended to Golgi apparatus-targeted RONSS probes.

8. Probes for multi-parameter imaging

Apart from the above-discussed probes that can only image one species in different organelles, probes for sequential or simultaneous tracing of two or more targets have been recognized to be another group of important tools for bioanalysis, owing to their potential in clarifying the inter-conversion and “crosstalk” between different species as well as different organelles.^{8c,101} Such interesting tasks can be realized by using fluorescent probes with two or more responsive groups or employing several probes without spectral overlap. Nanoprobes containing several recognition molecules are also alternative candidates.

8.1. Simultaneous imaging of bioactive species in an organelle

RONSS are highly reactive, interactive and interconvertible molecules. Sequential or simultaneous imaging of two or more species can reveal their internal relationships in specific organelles and further advance our understanding of diverse biological events.^{30b,101c,102} Probes for sequential or simultaneous imaging can be applied for tracing diverse critical biological events. For example, probes capable of simultaneous imaging are helpful for monitoring the real-time distribution of different species, and they can even be explored to identify the

“crosstalk” between different subcellular structures. On the other hand, probes for sequential imaging are helpful for revealing the upstream and downstream relationships between different species. Recently, several probes have been developed for organelle-targeted multiple analyte imaging, and they can be divided into molecular probes and nanoprobes (Fig. 32).

8.1.1. Molecular probes. It was reported that $O_2^{\bullet-}$ can directly react with H_2S to generate H_2S_n , and sulfane sulfur might be the real signalling molecule in living cells. Therefore, fluorescent probes that can sequentially image $O_2^{\bullet-}$ and H_2S_n in subcellular structures are useful for tracing this important biosynthetic reaction. Chen *et al.* reported a NIR probe, **66** (HCY-FN), with dual responsive sites for sequential $O_2^{\bullet-}$ and H_2S_n imaging in mitochondria.^{102c} Heptamethine cyanine was employed as the fluorophore due to its NIR emissive features, and nitro-activated fluorobenzoate was used as the H_2S_n recognition moiety because of its bis-electrophilic reaction characteristic toward H_2S_n . The $O_2^{\bullet-}$ mediated hydrogen abstraction reaction could recover the conjugated system of the hydrocyanine, which caused the fluorescence intensity enhancement at 794 nm; when the product came into contact with H_2S_n , the specific bis-electrophilic reaction revoked the d-PET process, and the released fluorophore had a maximum emission wavelength of 625 nm. With **66**, $O_2^{\bullet-}$ directed H_2S conversion was demonstrated to be a promising H_2S_n biosynthetic pathway through the mitochondrion-targeted dual-channel imaging in exogenous superoxide and NaHS treated macrophages.

The inter-relationship of mitochondrial $O_2^{\bullet-}$ and pH is unclear for cellular signal transduction and homeostasis. Novel probes for precise evaluation of the subcellular pH and ROS fluctuation in the mitochondria are beneficial for revealing their interactions. A TP probe, **67** (CFT), was reported by our group.^{102d} **67** is prepared by covalent linkage of caffeoyl, fluorescein and TPP. This probe could make distinguishable optical signal changes upon coming into contact with different analytes. Benefiting from the reversible response and specificity, instantaneous, dynamic and reversible monitoring of the concentration fluctuations of H^+ and $O_2^{\bullet-}$ in mitochondria of 4T1 cells was achieved with the assistance of TP microscopy. Importantly, with this probe, Drp1 deficiency was revealed to be a promising signal pathway to induce mitochondrial hyperfusion and subsequent cell apoptosis.

Unlike the complicated design of multi-responsive probes, simultaneous employment of different probes with distinguishable spectral properties to detect bioactive species in specific organelles is more feasible and easier to perform. Using probe **68-1** (M- H_2O_2 , H_2O_2 probe, LOD = 18 nM) and **68-2** (M-Zn, Zn^{2+} probe, LOD = 11 nM), simultaneous imaging of H_2O_2 and Zn^{2+} fluctuation in the mitochondria of living cells was realized by our group.^{102b} *In vitro* and *in vivo* tests revealed the synergistic concentration enhancement of H_2O_2 and Zn^{2+} in mitochondria during apoptosis and inflammation (Fig. 33), and this offered a new idea for investigating the correlations between different bioactive species in diverse organelles of living cells.

8.1.2. Nanoprobes. Nanomaterials are novel platforms for constructing organelle-targeted probes to trace multiple



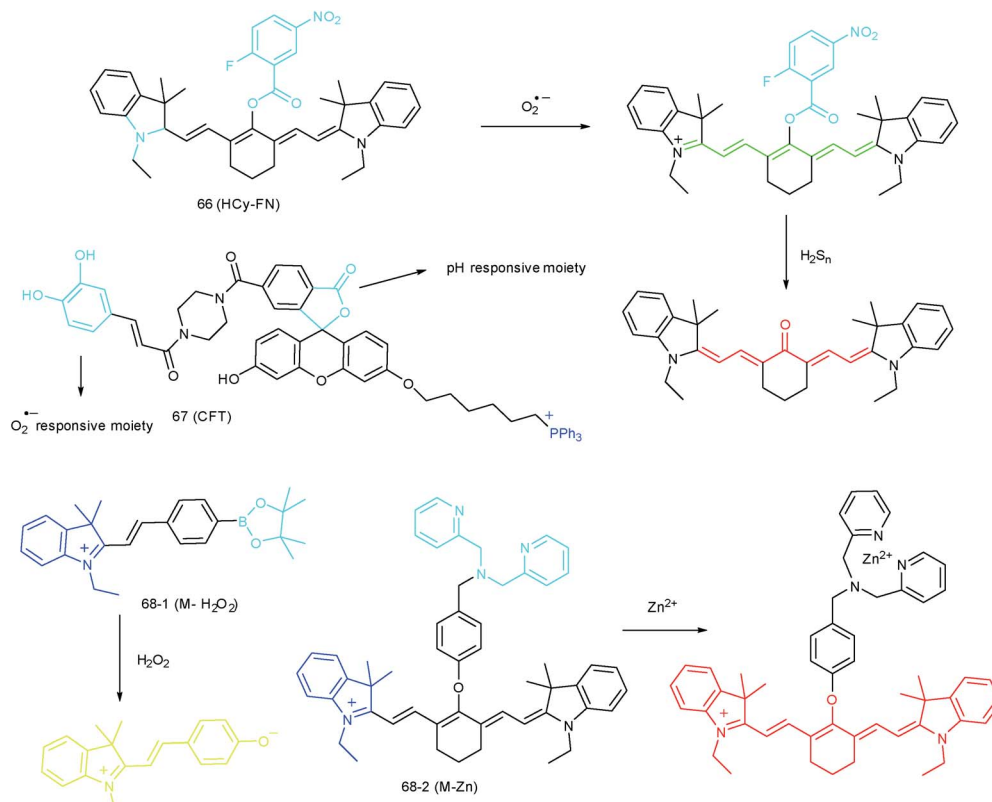


Fig. 32 Molecular probes for simultaneous imaging of bioactive species in one organelle.

analytes during different biological events, because they can simultaneously connect abundant reporter molecules and targeting groups.^{8c,101a,b,103} Our group developed a mitochondrion-targeted silica based nanoprobe (**69**) for simultaneously imaging the fluctuation of H_2O_2 and pH in living cells.^{101c} H_2O_2 probe Cy-O-SeH and pH probe fluorescein were loaded into the MSNs. To further prevent the leakage of the dyes and endow the probes with mitochondrion-targeting capability, PEI and TPP were grafted on the surface of MSNs. The final obtained nanoprobe had an average size of 30 nm. Mitochondrial H_2O_2 and pH fluctuation in MCF-7 and MCF-10A cells under different stimulations were successfully tracked with **69**. This work showed the great promise of organelle-targeted nanoprobe for bioanalysis (Fig. 34).

A QD based ratiometric probe (**70**) was developed by Tian's group.¹⁰⁴ Silica encapsulated CdSe/ZnS QDs were employed as

the inner reference. The pH responsive probe, fluorescein isothiocyanate (FITC) and $\text{O}_2^{\bullet-}$ selective probe, hydroethidine (HE) were grafted onto the surface of the nanocomposites, respectively. The mitochondrion-targeted ratiometric probe was obtained after further TPP modification. With this probe, they revealed that $\text{O}_2^{\bullet-}$ could enter into the mitochondria and elevate the $\text{O}_2^{\bullet-}$ amount as well as pH, while mitochondrial acidification could cause the $\text{O}_2^{\bullet-}$ burst. This probe offered an admirable candidate for investigating the relationships between mitochondrial $\text{O}_2^{\bullet-}$ and pH.

8.2. Simultaneous imaging of bioactive species in different organelles

Apart from using multi-analyte responsive molecular or nanoprobe for imaging bioactive species in organelles, simultaneous visualization of bioactive species in different organelles is another important task, since it can facilitate the investigation of bioactive species' fluctuations in different subcellular structures. Visualization of bioactive species in different organelles may offer more opportunities for tracing the "cross-talk" between different organelles and further advance our understanding of diverse physiological and pathological processes (Fig. 35).

Our group demonstrated the simultaneous visualization of H_2O_2 fluctuations in the mitochondria and ER with two molecular probes (**71-1**, MI- H_2O_2 , mitochondrion-targeted H_2O_2 probe, LOD = 80 nM and **71-2**, ER- H_2O_2 , ER targeted H_2O_2

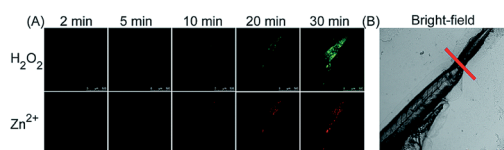


Fig. 33 The simultaneous fluorescence imaging of H_2O_2 and Zn^{2+} in zebrafish upon local injury of the tail fin. (A) The fluorescence images of **68-1** (50 mM, green channel) and **68-2** (50 mM, red channel). (B) The bright-field image (the red line indicates a cut injury). Adapted with permission from ref. 102b. Copyright 2016 Royal Society of Chemistry.



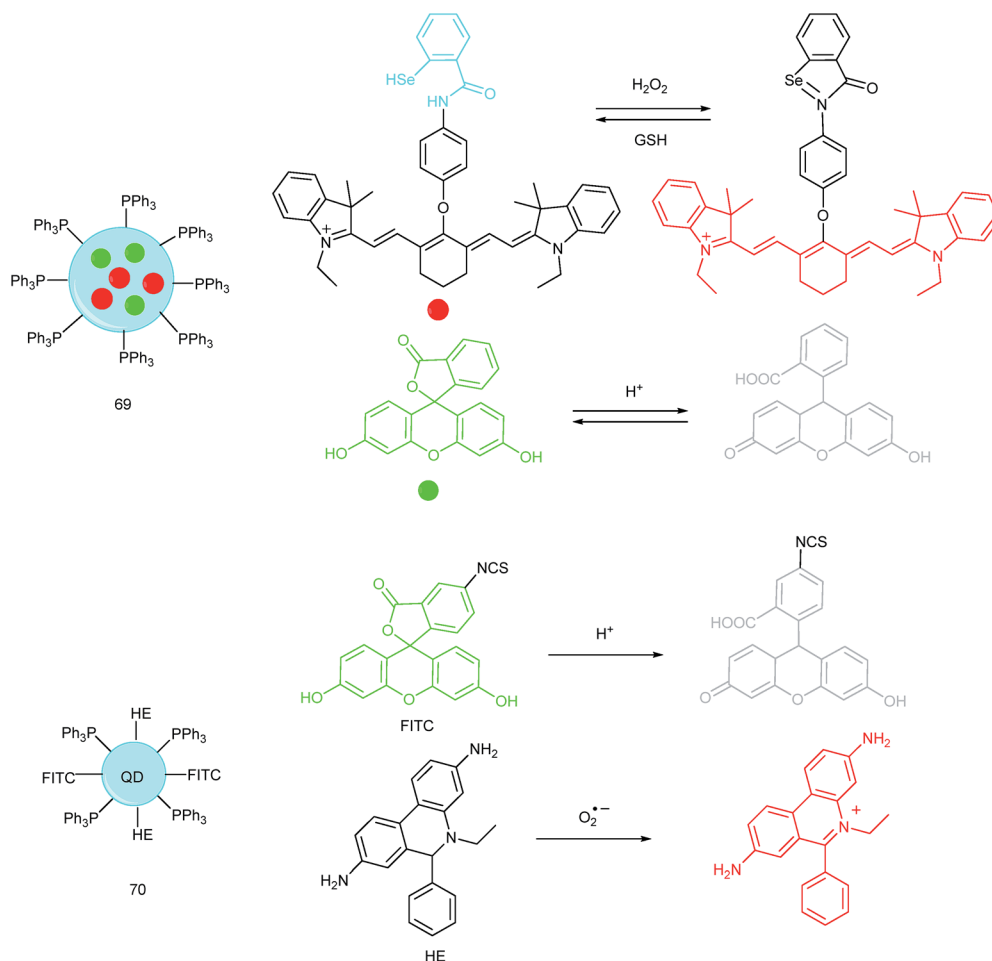


Fig. 34 Nanoprobes for simultaneous imaging of bioactive species in mitochondria.

probe, LOD = 120 nM).^{30b} **71-1** and **71-2** could accumulate in mitochondria and lysosomes, respectively. Under different stimulations, the H₂O₂ concentration in the two subcellular structures could be easily tracked owing to the sensitivity and specificity of the probes, which offered the possibility of real-time discriminating the subcellular H₂O₂ fluctuation (Fig. 36). Interestingly, delayed H₂O₂ rise effects between the ER and mitochondria during different apoptosis pathways were

observed for the first time; this work offered a new method for investigating the “organelle crosstalk” during different processes.

8.3. Challenges for multi-parameter imaging

Simultaneous or sequential imaging of the fluctuations of bioactive species in one or different organelles holds great

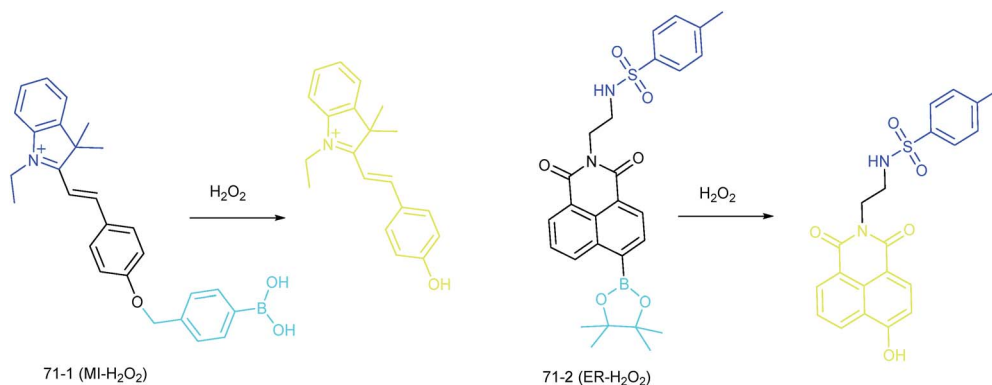


Fig. 35 Structures and the responses of probes **71-1** and **71-2**.



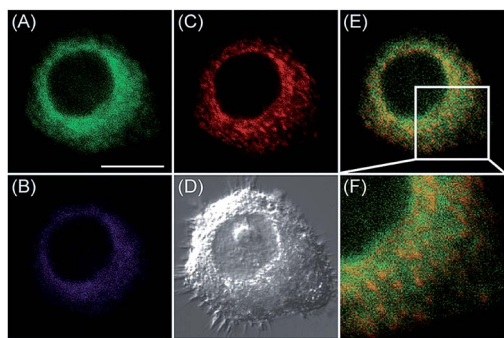


Fig. 36 CLSM images of HepG2 cells stained simultaneously with 71-1 and 71-2 (10 mM). 71-2 was excited at 405 nm, and collected at 500–620 nm for the green channel (image A) and at 430–470 nm for the blue channel (image B). 71-1 was excited at 543 nm, and collected at 550–600 nm for the red channel (image C). (D) The bright-field image. (E) The overlay of (A) and (C). (F) The enlarged image from the square marked in image (E). Adapted with permission from ref. 30b. Copyright 2016 Royal Society of Chemistry.

promise for clarifying their upstream and downstream relationships, which will further deepen our understanding of the biological functions of these species and facilitate related bioanalysis. However, construction of molecular probes with two or more responsive moieties is complicated. On the other hand, organelle-targeted nanoprobe usually suffer from inferior targeting efficiency because nanostructures are less permeable during traveling through the complicated intracellular barriers, which makes them usually require longer incubation time during cell imaging. Employment of different molecular tools to image diverse analytes is feasible, and it can easily be extended to investigate communication between different subcellular compartments and open new avenues for bioanalysis. However, probes that have distinct emission bands and can work under single wavelength excitation have not been demonstrated yet.

9. Conclusion and outlook

Organelle-targeted RONSS fluorescent probes have aroused increasing interest over the past decade, owing to their potential for better monitoring diverse physiological and pathological activities, and elucidating the molecular mechanisms of different biological events. Based on various fluorophores, recognition groups and targeting ligands, a great number of subcellular localized probes have been elaborately prepared and successfully employed for different applications, including monitoring cancer, diabetes, depression, PDT, drug induced oxidative/nitrative stress, IRI, inflammation and so on. These probes have significantly facilitated our understanding of life science and have undoubtedly become powerful fluorescent tools for bioanalysis. By highlighting the latest and most representative probes, this review summarized current strategies for designing organelle-targeted RONSS probes. The targeting, detection and response mechanisms are carefully discussed, and they will offer valuable references to investigators interested in this area and facilitate the pursuit of better

organelle-targeted fluorescent probes. Although the significant superiority of organelle-targeted fluorescent probes over their traditional counterparts has been demonstrated, several obstacles still exist for their practical application. The current challenges as well as the potential future directions are listed below.

9.1. Solubility

During living cell imaging, water solubility is a critical parameter for fluorescent probes. The large aromatic structures in fluorescent probes may cause fluorophore aggregation through π - π stacking, which can not only reduce cellular permeability and subcellular localization, but also quench the fluorescence (aggregation caused quenching effect, ACQ) of fluorescent probes. Organic solvents like DMSO are often used to enhance the solubility of organelle-targeted probes, and this can place extra burden on the cell/tissue samples, and interfere with the subcellular microenvironments. Therefore, development of organelle-targeted probes that have better solubility and can avoid ACQ is highly desired in future work. For this purpose, devising efficient modification strategies and developing water-soluble aggregation induced emission nanoprobe are ideal tactics.

9.2. Localization capability

Precisely driving probes into organelles of interest is the prerequisite for subcellular imaging. However, the current available probes suffer from several limitations, including poor targeting efficiency, potential toxic effects and so on. For instance, the widely used mitochondrion targeting group TPP can reduce MMP owing to its cationic feature, and such kind of probe may leak from mitochondria when the MMP is lost. On the other hand, lysosome targeting group morpholine modified probes have an alkalization effect. The high concentration of morpholine decorating the probes can elevate the pH value of lysosomes, which also has certain toxic effects on the analysed samples. Moreover, highly efficient targeting strategies toward many other important organelles, including the Golgi apparatus, nucleus and lipid droplets, are still rare, which severely limits the determination of critical biological events in these subcellular structures. Genetically encoded probes also suffer from several limitations as discussed above. Therefore, exploration of reliable targeting mechanisms and novel targeting ligands toward diverse subcellular organelles is still urgently required. This aspect relies on the expansion of biological research to identify the intrinsic characteristics and metabolic pathways of diverse organelles. It also relies greatly on chemical synthesis to develop and optimize the structure of targeting ligands. Therefore, collaboration of chemists and biologists is essential for developing highly selective, efficient and non-toxic organelle-targeted ligands, which would further advance chemo-biological investigations.

9.3. Detection performance

After reaching the organelles of interest, probes need to specifically and effectively interact with the detected targets for





Table 2 Summary of the physicochemical properties of organelle-targeted RONSS probes

| Analyte | Targeting site ^a | Probe | $\lambda_{\text{Ex}}/\lambda_{\text{Em}}$ ^b (nm) | Probe concentration vs. dynamic range | Response time | LOD | ϕ^c | Comments ^d | Ref. |
|-------------------------------|------------------------------|--|---|--|--------------------|--------------------|--------------------------------------|---|------|
| ROS | O ₂ ^{•-} | 8 (MF-DBZH) | 483, 800/512 | 20 $\mu\text{M}/3\text{--}12 \mu\text{M}$ | — | 9.5 nM | — | TP probe for <i>in vivo</i> imaging | 35 |
| | | 9 (HKSOX-1m) | 509/534 | 10 $\mu\text{M}/0\text{--}13 \mu\text{M}$ | <10 min | 23 nM | — | Imaging O ₂ ^{•-} in the resting state, imaging O ₂ ^{•-} in quantitative microplate assays | 34 |
| H ₂ O ₂ | Nu | 10 | 494/520 | 10 $\mu\text{M}/0.65\text{--}25 \mu\text{M}$ | <10 min | — | — | Off-on probe | 24a |
| | | 53 (ER-BZTf) | 365, 700/450 | 10 $\mu\text{M}/0.1\text{--}15 \mu\text{M}$ | In seconds | 60 nM | 0.19 | TP probe for <i>in vivo</i> imaging | 30a |
| | | 64 (CCA) | 370, 800/495 | 10 $\mu\text{M}/0\text{--}5 \mu\text{M}$ | — | 18 nM | 0.21 | TP probe for <i>in vivo</i> imaging | 31a |
| | | 1 (NucPE1) | 505/530 | — | — | — | 0.626 | Off-on probe | 17 |
| | | 2 (pep-NP1) | 380/ <i>F</i> _{555/403} | 5 $\mu\text{M}/1\text{--}10 \mu\text{M}$ | — | 0.17 μM | — | RT probe | 19 |
| | | 3 (SPG2) | 495/513 | — | — | — | 0.57 | Targets diverse organelles | 65 |
| | | 11 (Cy-B) | 685/709 | 10 $\mu\text{M}/0\text{--}18 \mu\text{M}$ | — | 13 nM | — | NIR probe for <i>in vivo</i> imaging | 36a |
| | | 12 (Mito-NIRHP) | 670/704 | 10 $\mu\text{M}/0\text{--}50 \mu\text{M}$ | ~20 min | 26 nM | 0.636 | NIR probe for <i>in vivo</i> imaging | 36c |
| | | 38 (Lyso-HP) | 450, 780/550 | 10 $\mu\text{M}/1\text{--}20 \mu\text{M}$ | <1 min | 1.21 μM | — | TP probe for imaging in tissues | 91 |
| | | 39 (Lyso-NC) | 450/537 | 5 $\mu\text{M}/0\text{--}220 \mu\text{M}$ | <1 h | 0.22 μM | 0.17 | Imaging in nematodes | 37 |
| HOCl | Mito | 40 (HP-L1) | 520/584 | 1 $\mu\text{M}/0\text{--}80 \mu\text{M}$ | ~8 min | 0.23 μM | — | Logic probe, reduced background | 28 |
| | | 54 (α -Naph) | 395/ <i>F</i> _{540/465} | 10 $\mu\text{M}/0\text{--}10 \mu\text{M}$ | — | 37 nM | — | RT probe for quantitative measurement of H ₂ O ₂ in the ER | 97a |
| hROS | Gol & Lyso | 13 (PMN-TPP) | 410/ <i>F</i> _{522/640} | 5 $\mu\text{M}/0\text{--}10 \mu\text{M}$ | In seconds | 0.43 μM | — | RT probe for <i>in vivo</i> imaging | 38c |
| | | 14 (RMClO-2) | Ex _{412/540} / <i>F</i> _{Em570/476} | — | <5 s | 0.84 nM | — | RT probe for quantifying cancer mitochondrial basal HOCl | 39a |
| | | 15 (RSTPP) | 553/580 | 10 $\mu\text{M}/2\text{--}35 \mu\text{M}$ | <1 min | 9 nM | 0.34 | Off-on probe | 39b |
| | | 41-1 (LYSOTP) | 375, 750/500 | 5 $\mu\text{M}/50 \text{ nM}\text{--}10 \mu\text{M}$ | In seconds | 19.6 nM | 0.35 | TP probe for <i>in vivo</i> imaging | 40b |
| | | 42 (Lyso-NDMTC) | 410,800/547 | 5 $\mu\text{M}/1\text{--}20 \mu\text{M}$ | ~1 min | 7.6 pM | — | TP probe for imaging HOCl at the pM level | 88 |
| | | 43 (Lyso-HA) | 420/ <i>F</i> _{386/450} | 10 $\mu\text{M}/0\text{--}50 \mu\text{M}$ | In seconds | 0.11 μM | — | RT probe with a large Stokes shift | 92 |
| | | 55 (ER-CIO) | 425/ <i>F</i> _{480/554} | 10 $\mu\text{M}/0\text{--}120 \mu\text{M}$ | ~30 s | 0.59 μM | — | RT probe | 96c |
| | | 56 | 326, 720/ <i>F</i> _{450/361} | — | <1 min | 3.6 μM | 0.29 | TP and RT probe | 98 |
| | | 65 (SF-1) | 550/586 | — | <15 min | 4.3 nM | 0.116 | For structured illumination microscopy imaging | 97b |
| | | 18 (Si-DMA) | 640/678 | — | — | — | 0.17 | NIR probe | 41b |
| | | 19 (MNAH) | 440, 820/536 | — | — | — | — | TP probe for deep tissue imaging | 41a |
| | | 20 (MPT-Cy2) | 450/595 | 10 $\mu\text{M}/0\text{--}10 \mu\text{M}$ | — | 1.16 μM | — | <i>In vivo</i> imaging | 42 |
| | | 16 (RhSN-mito) | 624/663 | 6 $\mu\text{M}/0\text{--}100 \text{ nM}$ | — | 20 pM | 0.68 | Large Stokes shift, high quantum yield | 43a |
| | | 17 (HAP) | 405/ <i>F</i> _{437/528} | 5 $\mu\text{M}/15\text{--}135 \text{ nM}$ | ~30 s | 1.8 \pm 0.2 nM | 0.113 | RT probe | 43b |
| 44 (PSiR) | 620/680 | 2 $\mu\text{M}/0\text{--}2 \mu\text{M}$ HOCl, 0–1.5 μM ONOO ⁻ , 0–20 μM *OH | In seconds | 10.6 nM, 7.9 nM, 0.12 | 0.14 μM | — | NIR probe for <i>in vivo</i> imaging | 89 | |
| RNS | Mito | 24 (PNCy3Cy5) | 530/ <i>F</i> _{560/660} | 2 $\mu\text{M}/0\text{--}700 \text{ nM}$ | <30 s | 0.65 nM | — | RT probe for semiquantitatively image | 45 |
| | | 25 (MITO-CC) | 420/ <i>F</i> _{473/651} | 2 $\mu\text{M}/0\text{--}7.5 \mu\text{M}$ | <20 s | 11.3 nM | 0.546 | RT and TP probe for <i>in vivo</i> imaging | 78 |
| | | 26 (Rhod-ONOO ⁻) | 500, 800/558 | — | ~30 min | 43 nM | — | TP probe | 47 |
| | | 59 (ABAH-LW) | 370/ <i>F</i> _{481/405} | — | In seconds | 21.4 nM | — | RT probe | 96b |
| NO | Nu | 4 (HTDAF-2DA) | 488/512 | — | — | — | — | Targets diverse organelles, fast cell permeability | 66 |
| | | 5 (TMR-NO-SNAP) | 533/564 | — | In seconds | 0.5 μM | 0.59 | Targets diverse organelles | 67 |
| | | 21 (Mito-RhNO) | 555/585 | 1 $\mu\text{M}/1\text{--}10 \mu\text{M}$ | — | 4.0 nM | — | Off-on probe | 48c |
| | Mito | 22 | 570/616 | 2 $\mu\text{M}/0\text{--}120 \mu\text{M}$ | — | 12 nM | 0.25 | Dual-color NO imaging | 48a |
| | | 23 | 490/518 | 4 $\mu\text{M}/0\text{--}12.8 \mu\text{M}$ | In seconds | 4.8 nM | — | Imaging NO in the resting state | 49 |



Table 2 (Contd.)

| Analyte | Targeting site ^a | Probe | $\lambda_{\text{ex}}/\lambda_{\text{em}}^b$ (nm) | Probe concentration vs. dynamic range | Response time | LOD | ϕ^c | Comments ^d | Ref. | |
|-------------------------------|-----------------------------|-------------|--|--|--|---------------------------------|--------------------|---|--|-----|
| Lyso | 45 | 45 | 440, 840/530 | 11 $\mu\text{M}/1\text{--}1.3 \mu\text{M}$ | — | 5 nM | 0.3 | TP probe | 93b | |
| | 46 | 46 | 645/680 | 4 $\mu\text{M}/0\text{--}20 \mu\text{M}$ | In seconds | 0.12 nM | — | NIR probe for <i>in vivo</i> imaging | 48b | |
| | 47 | (TRP-NO) | 330/ <i>F</i> _{565/540} | 15 $\mu\text{M}/0\text{--}160 \mu\text{M}$ | In seconds | 1.8 μM | — | RT probe for quantitative time-gated luminescence detection | 48d | |
| ER | 57 | (ER-Nap-NO) | 440/538 | 10 $\mu\text{M}/0.01\text{--}20 \mu\text{M}$ | <6 min | 3.3 nM | 0.214 | TP probe for <i>in vivo</i> imaging | 96a | |
| | 27 | (MitoHNO) | 690/727 | 5 $\mu\text{M}/0\text{--}10 \mu\text{M}$ | ~12 min | 60 nM | 0.23 | NIR probe | 81a | |
| | 48 | (Lyso-JN) | 690/700 | 2 $\mu\text{M}/0\text{--}10 \mu\text{M}$ | — | 0.06 μM | 0.37 | NIR probe for background-free imaging | 50a | |
| | 58 | (ER-HNO) | 530/586 | 10 $\mu\text{M}/2\text{--}15 \mu\text{M}$ | <20 min | 2 μM | 0.105 | For structured illumination microscopy | 50b | |
| RSS | GSH | 7 | (HaloRT Ligand) | Ex ₄₀₅ , Em ₄₈₀ /Ex ₄₈₈ , Em ₅₆₅ | Within minutes | $K_d = 23.7 \text{ mM}$ | — | Targets diverse organelles, reversible GSH imaging | 70 | |
| | | 28 | (MitoGP) | 600/810 | 10 $\mu\text{M}/0\text{--}10 \mu\text{M}$ | — | 26 nM | 0.187 | NIR probe with high targeting efficiency | 52 |
| Cys | H ₂ S | 29 | 550/599 | 10 $\mu\text{M}/1\text{--}15 \mu\text{M}$ | <30 min | 109 nM | 0.238 | Off-on probe | 83 | |
| | | 30 | (MitoRT) | Ex ₄₀₅ , Em ₄₈₈ /Ex ₄₈₈ , Em ₅₆₇ | 26.5 s for 90% | $K_d = 3.7 \text{ mM}$ | — | Reversible GSH imaging | 51 | |
| | | 50 | (RhB-1) | 520/582 | — | 9 s | 190 nM | — | Off-on probe | 53a |
| H ₂ S _h | Mito | 31 | (NFL1) | 630/735 | <10 min | 14.5 nM | 0.05 | NIR probe for <i>in vivo</i> imaging | 53b | |
| | | 6 | (CouN ₃ -BC) | 405/450 | — | — | — | Targets diverse organelles | 68 | |
| | | 32 | (TAB-2) | 394/532 | 10 $\mu\text{M}/0\text{--}100 \mu\text{M}$ | ~40 min | 2.46 μM | 0.11 | Off-on probe | 85 |
| ER | Mito | 33 | (HSN2-BG) | 365,760/500–550 | — | 47 nM | 0.501 | TP probe | 56 | |
| | | 34 | (SulpHensor) | 435/515 | — | — | — | Targets diverse organelles | 112b | |
| | | 51 | (SulpHensor) | 530/555 | 5 $\mu\text{M}/0\text{--}10 \mu\text{M}$ | ~60 min | 0.5 μM | 0.6 | Logic probe for background-free imaging | 94a |
| | | 52 | 345/453 | 10 $\mu\text{M}/0\text{--}300 \mu\text{M}$ | <30 min | $7.9 \times 10^{-7} \text{ M}$ | — | Off-on probe | 95 | |
| H ₂ S _h | ER | 61 | (Na-H ₂ S-ER) | 440, 760/545 | <30 min | $7.77 \times 10^{-6} \text{ M}$ | — | TP probe for <i>in vivo</i> imaging | 99 | |
| | | 35 | (Mito-ss) | 635/730 | <30 s | 25 nM | — | NIR probe for <i>in vivo</i> imaging | 58 | |
| SO ₂ | Mito | 62 | (MB-S _n) | 530/584 | <10 min | 26.01 nM | 0.125 | For super-resolution structured illumination microscopy | 97c | |
| | | 63 | (ER-H ₂ S ₂) | 435/540 | 12 min | 26 nM | — | Imaging H ₂ S ₂ in zebrafish | 100 | |
| | | 36 | (Mito-Ratio-SO ₂) | 405/ <i>F</i> _{480/650} | <3 min | 0.09 mM | — | RT probe | 59a | |
| | | 37 | (DSPT) | 390/ <i>F</i> _{540/590} | 1.5 min | 69 nM | — | RT probe | 87 | |

^a Nu = nucleus; Mito = mitochondria; Lyso = lysosomes; ER = endoplasmic reticulum; Gol = Golgi apparatus. ^b λ_{ex} is the excitation wavelength of the probe in the presence of an analyte. λ_{em} is the maximum emission wavelength/emission range of the probe in the presence of an analyte. ^c ϕ is the quantum yield of the probe in the presence of an analyte. ^d TP probe = two-photon excitation probe; RT probe = ratiometric probe.

in situ imaging. However, it is well known that bioactive species suffer from ultralow concentration, short life span and environmental sensitivity, while most developed probes failed in tracing the bioactive species in the resting state due to the high LOD, and poor specificity and sensitivity. Therefore, new organelle-targeted probes with higher specificity and sensitivity are highly required. Exploration of new reaction mechanisms, and combination with theoretical calculation as well as high throughput probe screening systems should be promising solutions. In addition, subcellular localized probes with signal amplification have not been investigated, although they should also be study-worthy schemes in future work.

9.4. Optical performance

Signal-noise ratio is another critical parameter during subcellular analysis. Many biomolecules, like reduced nicotinamide adenine dinucleotide and some proteins, are emissive under laser irradiation, and can interfere with the resolution and reality of detection information. But the emission wavelengths of most developed organelle-targeted fluorescent probes locate in the visible region, making them unsuitable for background-free/*in vivo* fluorescent imaging. Therefore, probes with high quantum yields, excellent photostability, long lifetime and strong brightness are attractive. Probes with two or more photon excitation, NIR-I and even NIR-II emissions are also useful for live cell imaging. Development of new fluorophores with higher performances may pave the road to deep penetration, high resolution fluorescence imaging in the near future.

9.5. Multifunctionality

Nowadays, theranostic probes have been extensively explored owing to their simplicity and multifunctionality. As reaction-based probes are capable of capturing/adjusting diverse bioactive species, they are promising for controlling diverse disorders caused by RONSS overexpression. However, the therapeutic effects of these probes have rarely been explored. Furthermore, probes with cascade targeting, multiparameter detection and multimodal imaging functions are still rare. Related investigations will tremendously accelerate personalized diagnosis and therapy. Recently, photo-caged probes have drawn great interest for bio-imaging, and they enable us to monitor biomolecules of spatiotemporal interest. However, to the best of our knowledge, such function has not been introduced in organelle-targeted probes.

9.6. Research models

Bioactive species participate in almost all the bioactivities and are closely related to diverse major diseases. Research models are indispensable for shedding light on the molecular mechanisms of different biological phenomena. From this review, it can be clearly found that the developed models are still limited. Thus, other models with different important biological activities, including cell immunity, drug resistance, cell communication, cancer metastasis and so on, remain to be further developed and investigated. Besides, communication between bioactive species from different organelles has been

demonstrated to be another promising research field, and it should also be explored to further advance our understanding of different biological events.

In summary, considerable research efforts have been devoted to the development of organelle-targeted fluorescent probes during the past decade, with the focus on the preparation of powerful fluorescent tools to enhance the resolution and sensitivity during cell imaging and better explain the molecular mechanisms of diverse biological events. Although research in this field is still in its infancy and many challenges remain to be resolved, it is expected that more organelle-targeted fluorescent probes with high performance will emerge and further advance our understanding in the near future through the conjoint efforts from researchers worldwide.

Finally, a summary of the physiochemical properties of organelle-targeted RONSS probes is provided in the Appendix. However, it is difficult to compare the selectivity/anti-interference capability of probes, even those based on the same detection mechanism, by studying the summary table. We encourage the reader to examine the primary papers and further assess the selectivity during choosing probes for bioanalysis (Table 2).

10. Appendix

Conflicts of interest

The authors declare no competing financial interest.

Acknowledgements

This work was supported by the National Natural Science Foundation of China (21535004, 91753111, 21874086, and 21775094) and the Key Research and Development Program of Shandong Province (2018YFJH0502).

Notes and references

- (a) K. P. Carter, A. M. Young and A. E. Palmer, *Chem. Rev.*, 2014, **114**, 4564–4601; (b) H. M. Kim and B. R. Cho, *Chem. Rev.*, 2015, **115**, 5014–5055; (c) J. Liu, Z. Cao and Y. Lu, *Chem. Rev.*, 2009, **109**, 1948–1998; (d) Z. Guo, S. Park, J. Yoon and I. Shin, *Chem. Soc. Rev.*, 2014, **43**, 16–29; (e) V. S. Lin, W. Chen, M. Xian and C. J. Chang, *Chem. Soc. Rev.*, 2015, **44**, 4596–4618; (f) L.-Y. Niu, Y.-Z. Chen, H.-R. Zheng, L.-Z. Wu, C.-H. Tung and Q.-Z. Yang, *Chem. Soc. Rev.*, 2015, **44**, 6143–6160; (g) D. Wu, A. C. Sedgwick, T. Gunnlaugsson, E. U. Akkaya, J. Yoon and T. D. James, *Chem. Soc. Rev.*, 2017, **46**, 7105–7123; (h) M. C. Heffern, L. M. Matosziuk and T. J. Meade, *Chem. Rev.*, 2013, **114**, 4496–4539.
- (a) J. Chan, S. C. Dodani and C. J. Chang, *Nat. Chem.*, 2012, **4**, 973–984; (b) W. Chyan, D. Y. Zhang, S. J. Lippard and R. J. Radford, *Proc. Natl. Acad. Sci. U. S. A.*, 2014, **111**, 143–148; (c) H. W. Liu, L. Chen, C. Xu, Z. Li, H. Zhang, X. B. Zhang and W. Tan, *Chem. Soc. Rev.*, 2018, **47**, 7140–7180; (d) X. Qian and Z. Xu, *Chem. Soc. Rev.*, 2015, **44**, 4487–4493; (e) A. C. Sedgwick, L. Wu, H. H. Han,



- S. D. Bull, X. P. He, T. D. James, J. L. Sessler, B. Z. Tang, H. Tian and J. Yoon, *Chem. Soc. Rev.*, 2018, **47**, 8842–8880; (f) Y. Tang, D. Lee, J. Wang, G. Li, J. Yu, W. Lin and J. Yoon, *Chem. Soc. Rev.*, 2015, **44**, 5003–5015; (g) Roopa, N. Kumar, V. Bhalla and M. Kumar, *Chem. Commun.*, 2015, **51**, 15614–15628.
- 3 (a) W. Xu, Z. Zeng, J.-H. Jiang, Y.-T. Chang and L. Yuan, *Angew. Chem., Int. Ed.*, 2016, **55**, 13658–13699; (b) H. Zhu, J. Fan, J. Du and X. Peng, *Acc. Chem. Res.*, 2016, **49**, 2115–2126; (c) X. Jiao, Y. Li, J. Niu, X. Xie, X. Wang and B. Tang, *Anal. Chem.*, 2018, **90**, 533–555; (d) Z. Xu and L. Xu, *Chem. Commun.*, 2016, **52**, 1094–1119; (e) R. Zhang, B. Song and J. Yuan, *TrAC, Trends Anal. Chem.*, 2018, **99**, 1–33.
- 4 (a) J. Zielonka, J. Joseph, A. Sikora, M. Hardy, O. Ouari, J. Vasquez-Vivar, G. Cheng, M. Lopez and B. Kalyanaraman, *Chem. Rev.*, 2017, **117**, 10043–10120; (b) A. Fernandez and M. Vendrell, *Chem. Soc. Rev.*, 2016, **45**, 1182–1196; (c) M. H. Lee, A. Sharma, M. J. Chang, J. Lee, S. Son, J. L. Sessler, C. Kang and J. S. Kim, *Chem. Soc. Rev.*, 2018, **47**, 28–52; (d) K. Qiu, Y. Chen, T. W. Rees, L. Ji and H. Chao, *Coord. Chem. Rev.*, 2019, **378**, 66–86.
- 5 (a) T. Kowada, H. Maeda and K. Kikuchi, *Chem. Soc. Rev.*, 2015, **44**, 4953–4972; (b) M. H. Lee, J. S. Kim and J. L. Sessler, *Chem. Soc. Rev.*, 2015, **44**, 4185–4191.
- 6 (a) Q. Wan, S. Chen, W. Shi, L. Li and H. Ma, *Angew. Chem., Int. Ed.*, 2014, **53**, 10916–10920; (b) K. Zhou, Y. Wang, X. Huang, K. Luby-Phelps, B. D. Sumer and J. Gao, *Angew. Chem., Int. Ed.*, 2011, **50**, 6109–6114; (c) M. H. Lee, N. Park, C. Yi, J. H. Han, J. H. Hong, K. P. Kim, D. H. Kang, J. L. Sessler, C. Kang and J. S. Kim, *J. Am. Chem. Soc.*, 2014, **136**, 14136–14142; (d) Y. Liu, J. Zhou, L. Wang, X. Hu, X. Liu, M. Liu, Z. Cao, D. Shangguan and W. Tan, *J. Am. Chem. Soc.*, 2016, **138**, 12368–12374.
- 7 (a) N. Jiang, J. Fan, F. Xu, X. Peng, H. Mu, J. Wang and X. Xiong, *Angew. Chem., Int. Ed.*, 2015, **54**, 2510–2514; (b) H. Xiao, C. Wu, P. Li and B. Tang, *Anal. Chem.*, 2018, **90**, 6081–6088; (c) H. Xiao, P. Li, W. Zhang and B. Tang, *Chem. Sci.*, 2016, **7**, 1588–1593; (d) H. Xiao, C. Wu, P. Li, W. Gao, W. Zhang, W. Zhang, L. Tong and B. Tang, *Chem. Sci.*, 2017, **8**, 7025–7030.
- 8 (a) P. Chabosseau, E. Tuncay, G. Meur, E. A. Bellomo, A. Hessels, S. Hughes, P. R. V. Johnson, M. Bugliani, P. Marchetti, B. Turan, A. R. Lyon, M. Merckx and G. A. Rutter, *ACS Chem. Biol.*, 2014, **9**, 2111–2120; (b) A. M. Hessels, P. Chabosseau, M. H. Bakker, W. Engelen, G. A. Rutter, K. M. Taylor and M. Merckx, *ACS Chem. Biol.*, 2015, **10**, 2126–2134; (c) Y. Han, C. Ding, J. Zhou and Y. Tian, *Anal. Chem.*, 2015, **87**, 5333–5339; (d) K. P. Divya, S. Sreejith, P. Ashokkumar, K. Yuzhan, Q. Peng, S. K. Maji, Y. Tong, H. Yu, Y. Zhao, P. Ramamurthy and A. Ajayaghosh, *Chem. Sci.*, 2014, **5**, 3469–3474; (e) Y. Chen, Y. Bai, Z. Han, W. He and Z. Guo, *Chem. Soc. Rev.*, 2015, **44**, 4517–4546; (f) Y. Matsui, Y. Funato, H. Imamura, H. Miki, S. Mizukami and K. Kikuchi, *Chem. Sci.*, 2017, **8**, 8255–8264; (g) G. Zhang, J. J. Gruskos, M. S. Afzal and D. Buccella, *Chem. Sci.*, 2015, **6**, 6841–6846; (h) A. Rodriguez-Garcia, J. Rojo-Ruiz, P. Navas-Navarro, F. J. Aulestia, S. Gallego-Sandin, J. Garcia-Sancho and M. T. Alonso, *Proc. Natl. Acad. Sci. U. S. A.*, 2014, **111**, 2584–2589.
- 9 (a) Z. Yang, Y. He, J.-H. Lee, N. Park, M. Suh, W. S. Chae, J. Cao, X. Peng, H. Jung, C. Kang and J. S. Kim, *J. Am. Chem. Soc.*, 2013, **135**, 9181–9185; (b) D. Li, X. Tian, A. Wang, L. Guan, J. Zheng, F. Li, S. Li, H. Zhou, J. Wu and Y. Tian, *Chem. Sci.*, 2016, **7**, 2257–2263; (c) M. K. Kuimova, S. W. Botchway, A. W. Parker, M. Balaz, H. A. Collins, H. L. Anderson, K. Suhling and P. R. Ogilby, *Nat. Chem.*, 2009, **1**, 69–73.
- 10 (a) L. M. Hyman and K. J. Franz, *Coord. Chem. Rev.*, 2012, **256**, 2333–2356; (b) A. J. Shuhendler, K. Pu, L. Cui, J. P. Uetrecht and J. Rao, *Nat. Biotechnol.*, 2014, **32**, 373–380; (c) H.-S. Wang, *TrAC, Trends Anal. Chem.*, 2016, **85**, 181–202.
- 11 (a) X. Chen, F. Wang, J. Y. Hyun, T. Wei, J. Qiang, X. Ren, I. Shin and J. Yoon, *Chem. Soc. Rev.*, 2016, **45**, 2976–3016; (b) X. Jiang, L. Wang, S. L. Carroll, J. Chen, M. C. Wang and J. Wang, *Antioxid. Redox Signaling*, 2018, **29**, 518–540.
- 12 (a) X. Yang, Y. Zhou, X. Zhang, S. Yang, Y. Chen, J. Guo, X. Li, Z. Qing and R. Yang, *Chem. Commun.*, 2016, **52**, 10289–10292; (b) L. A. Montoya and M. D. Pluth, *Anal. Chem.*, 2016, **88**, 5769–5774; (c) H. D. Li, Q. C. Yao, J. L. Fan, N. Jiang, J. Y. Wang, J. Xia and X. J. Peng, *Chem. Commun.*, 2015, **51**, 16225–16228; (d) V. S. Lin, A. R. Lippert and C. J. Chang, *Proc. Natl. Acad. Sci. U. S. A.*, 2013, **110**, 7131–7135; (e) B. Tang, L. Yin, X. Wang, Z. Chen, L. Tong and K. Xu, *Chem. Commun.*, 2009, 5293–5295; (f) Q. Gao, W. Zhang, B. Song, R. Zhang, W. Guo and J. Yuan, *Anal. Chem.*, 2017, **89**, 4517–4524; (g) F. Yang, H. Gao, S. S. Li, R. B. An, X. Y. Sun, B. Kang, J. J. Xu and H. Y. Chen, *Chem. Sci.*, 2018, **9**, 5556–5563.
- 13 (a) K.-Y. Tan, C.-Y. Li, Y.-F. Li, J. Fei, B. Yang, Y.-J. Fu and F. Li, *Anal. Chem.*, 2017, **89**, 1749–1756; (b) L. Wang, L. Yuan, X. Zeng, J. Peng, Y. Ni, J. C. Er, W. Xu, B. K. Agrawalla, D. Su, B. Kim and Y.-T. Chang, *Angew. Chem., Int. Ed.*, 2016, **55**, 1773–1776; (c) J. Deng, K. Wang, M. Wang, P. Yu and L. Mao, *J. Am. Chem. Soc.*, 2017, **139**, 5877–5882.
- 14 (a) Y. Tang, X. Kong, A. Xu, B. Dong and W. Lin, *Angew. Chem., Int. Ed.*, 2016, **55**, 3356–3359; (b) X. Xie, F. Tang, X. Shangguan, S. Che, J. Niu, Y. Xiao, X. Wang and B. Tang, *Chem. Commun.*, 2017, **53**, 6520–6523; (c) T. F. Brewer and C. J. Chang, *J. Am. Chem. Soc.*, 2015, **137**, 10886–10889; (d) A. Roth, H. Li, C. Anorma and J. Chan, *J. Am. Chem. Soc.*, 2015, **137**, 10890–10893.
- 15 (a) V. S. Harrison, C. E. Carney, K. W. MacRenaris, E. A. Waters and T. J. Meade, *J. Am. Chem. Soc.*, 2015, **137**, 9108–9116; (b) H. Li, G. Parigi, C. Luchinat and T. J. Meade, *J. Am. Chem. Soc.*, 2019, **141**, 6224–6233.
- 16 (a) A. Nakamura, K. Takigawa, Y. Kurishita, K. Kuwata, M. Ishida, Y. Shimoda, I. Hamachi and S. Tsukiji, *Chem. Commun.*, 2014, **50**, 6149–6152; (b) Y. Cheng, C. Sun, X. Ou, B. Liu, X. Lou and F. Xia, *Chem. Sci.*, 2017, **8**, 4571–4578.
- 17 B. C. Dickinson, Y. Tang, Z. Chang and C. J. Chang, *Chem. Biol.*, 2011, **18**, 943–948.



- 18 G. Lukinavicius, C. Blaukopf, E. Pershagen, A. Schena, L. Reymond, E. Derivery, M. Gonzalez-Gaitan, E. D'Este, S. W. Hell, D. W. Gerlich and K. Johnsson, *Nat. Commun.*, 2015, **6**, 8497.
- 19 Y. Wen, K. Liu, H. Yang, Y. Li, H. Lan, Y. Liu, X. Zhang and T. Yi, *Anal. Chem.*, 2014, **86**, 9970–9976.
- 20 (a) K. Henze and W. Martin, *Nature*, 2003, **426**, 127–128; (b) M. T. Lin and M. F. Beal, *Nature*, 2006, **443**, 787–795; (c) K. Krumova, L. E. Greene and G. Cosa, *J. Am. Chem. Soc.*, 2013, **135**, 17135–17143; (d) E. K. Lei and S. O. Kelley, *J. Am. Chem. Soc.*, 2017, **139**, 9455–9458; (e) C. W. T. Leung, Y. Hong, S. Chen, E. Zhao, J. W. Y. Lam and B. Z. Tang, *J. Am. Chem. Soc.*, 2013, **135**, 62–65.
- 21 (a) B. C. Dickinson and C. J. Chang, *J. Am. Chem. Soc.*, 2008, **130**, 9638–9639; (b) J. Qian and B. Z. Tang, *Chem*, 2017, **3**, 56–91.
- 22 (a) L. V. Johnson, M. L. Walsh and L. B. Chen, *Proc. Natl. Acad. Sci. U. S. A.*, 1980, **77**, 990–994; (b) K. L. Horton, K. M. Stewart, S. B. Fonseca, Q. Guo and S. O. Kelley, *Chem. Biol.*, 2008, **15**, 375–382; (c) L. B. Chen, *Annu. Rev. Cell Biol.*, 1988, **4**, 155–181.
- 23 (a) A. R. Sarkar, C. H. Heo, H. W. Lee, K. H. Park, Y. H. Suh and H. M. Kim, *Anal. Chem.*, 2014, **86**, 5638–5641; (b) Y. Wen, K. Liu, H. Yang, Y. Liu, L. Chen, Z. Liu, C. Huang and T. Yi, *Anal. Chem.*, 2015, **87**, 10579–10584; (c) Z. Xue, R. Zhu, S. Wang, J. Li, J. Han, J. Liu and S. Han, *Anal. Chem.*, 2018, **90**, 2954–2962; (d) Y. Chen, C. Zhu, J. Cen, Y. Bai, W. He and Z. Guo, *Chem. Sci.*, 2015, **6**, 3187–3194; (e) T. B. Ren, Q. L. Zhang, D. Su, X. X. Zhang, L. Yuan and X. B. Zhang, *Chem. Sci.*, 2018, **9**, 5461–5466.
- 24 (a) F. Si, Y. Liu, K. Yan and W. Zhong, *Chem. Commun.*, 2015, **51**, 7931–7934; (b) H. Wang, Z. Gao, X. Liu, P. Agarwal, S. Zhao, D. W. Conroy, G. Ji, J. Yu, C. P. Jaronec, Z. Liu, X. Lu, X. Li and X. He, *Nat. Commun.*, 2018, **9**, 562–577; (c) L. D. Field, J. B. Delehanty, Y. Chen and I. L. Medintz, *Acc. Chem. Res.*, 2015, **48**, 1380–1390; (d) S. R. Jean, M. Ahmed, E. K. Lei, S. P. Wisnovsky and S. O. Kelley, *Acc. Chem. Res.*, 2016, **49**, 1893–1902.
- 25 (a) C. Wang, T. Zhao, Y. Li, G. Huang, M. A. White and J. Gao, *Adv. Drug Delivery Rev.*, 2017, **113**, 87–96; (b) H. Lan, F. Xue, Z. Liu, L. Chen, C. Huang and T. Yi, *Adv. Opt. Mater.*, 2016, **4**, 1367–1372; (c) Z. Wu and X. Tang, *Anal. Chem.*, 2015, **87**, 8613–8617.
- 26 (a) X. Zhang, B. Wang, C. Wang, L. Chen and Y. Xiao, *Anal. Chem.*, 2015, **87**, 8292–8300; (b) Z. Wu, D. Liang and X. Tang, *Anal. Chem.*, 2016, **88**, 9213–9218; (c) W. Zhu, X. Chai, B. Wang, Y. Zou, T. Wang, Q. Meng and Q. Wu, *Chem. Commun.*, 2015, **51**, 9608–9611; (d) Y. Cai, C. Gui, K. Samedov, H. Su, X. Gu, S. Li, W. Luo, H. H. Y. Sung, J. W. Y. Lam, R. T. K. Kwok, I. D. Williams, A. Qin and B. Z. Tang, *Chem. Sci.*, 2017, **8**, 7593–7603; (e) R. Duncan, J. Kopecek and J. B. Lloyd, *Biochem. Soc. Trans.*, 1984, **12**, 913–915.
- 27 (a) G. Niu, P. Zhang, W. Liu, M. Wang, H. Zhang, J. Wu, L. Zhang and P. Wang, *Anal. Chem.*, 2017, **89**, 1922–1929; (b) R. A. Firestone, J. M. Pisano and R. J. Bonney, *J. Med. Chem.*, 1979, **22**, 1130–1133.
- 28 J. Liu, J. Ren, X. Bao, W. Gao, C. Wu and Y. Zhao, *Anal. Chem.*, 2016, **88**, 5865–5870.
- 29 (a) J. M. Meinig, L. Fu and B. R. Peterson, *Angew. Chem., Int. Ed.*, 2015, **54**, 9696–9699; (b) M. Terasaki, J. Song, J. R. Wong, M. J. Weiss and L. B. Chen, *Cell*, 1984, **38**, 101–108.
- 30 (a) H. Xiao, X. Liu, C. Wu, Y. Wu, P. Li, X. Guo and B. Tang, *Biosens. Bioelectron.*, 2017, **91**, 449–455; (b) H. Xiao, P. Li, X. Hu, X. Shi, W. Zhang and B. Tang, *Chem. Sci.*, 2016, **7**, 6153–6159; (c) P. Li, X. Shi, H. Xiao, Q. Ding, X. Bai, C. Wu, W. Zhang and B. Tang, *Analyst*, 2018, **144**, 191–196.
- 31 (a) W. Zhang, J. Zhang, P. Li, J. Liu, D. Su and B. Tang, *Chem. Sci.*, 2018, **10**, 879–883; (b) R. S. Li, P. F. Gao, H. Z. Zhang, L. L. Zheng, C. M. Li, J. Wang, Y. F. Li, F. Liu, N. Li and C. Z. Huang, *Chem. Sci.*, 2017, **8**, 6829–6835; (c) P. Li, X. Guo, X. Bai, X. Wang, Q. Ding, W. Zhang, W. Zhang and B. Tang, *Anal. Chem.*, 2019, **91**, 3382–3388; (d) T. Hirayama, M. Inden, H. Tsuboi, M. Niwa, Y. Uchida, Y. Naka, I. Hozumi and H. Nagasawa, *Chem. Sci.*, 2019, **10**, 1514–1521.
- 32 A. Keppler, S. Gendrezig, T. Gronemeyer, H. Pick, H. Vogel and K. Johnsson, *Nat. Biotechnol.*, 2003, **21**, 86–89.
- 33 G. V. Los, L. P. Encell, M. G. McDougall, D. D. Hartzell, N. Karassina, C. Zimprich, M. G. Wood, R. Learish, R. F. Ohana, M. Urh, D. Simpson, J. Mendez, K. Zimmerman, P. Otto, G. Vidugiris, J. Zhu, A. Darzins, D. H. Klaubert, R. F. Bulleit and K. V. Wood, *ACS Chem. Biol.*, 2008, **3**, 373–382.
- 34 J. J. Hu, N.-K. Wong, S. Ye, X. Chen, M.-Y. Lu, A. Q. Zhao, Y. Guo, A. C.-H. Ma, A. Y.-H. Leung, J. Shen and D. Yang, *J. Am. Chem. Soc.*, 2015, **137**, 6837–6843.
- 35 P. Li, W. Zhang, K. Li, X. Liu, H. Xiao, W. Zhang and B. Tang, *Anal. Chem.*, 2013, **85**, 9877–9881.
- 36 (a) F. Xu, H. Li, Q. Yao, J. Fan, J. Wang and X. Peng, *J. Mater. Chem. B*, 2016, **4**, 7363–7367; (b) G. Masanta, C. H. Heo, C. S. Lim, S. K. Bae, B. R. Cho and H. M. Kim, *Chem. Commun.*, 2012, **48**, 3518–3520; (c) X. Xie, X. Yang, T. Wu, Y. Li, M. Li, Q. Tan, X. Wang and B. Tang, *Anal. Chem.*, 2016, **88**, 8019–8025.
- 37 S. I. Reja, M. Gupta, N. Gupta, V. Bhalla, P. Ohri, G. Kaur and M. Kumar, *Chem. Commun.*, 2017, **53**, 3701–3704.
- 38 (a) Q. Xu, C. H. Heo, J. A. Kim, H. S. Lee, Y. Hu, D. Kim, K. M. K. Swamy, G. Kim, S.-J. Nam, H. M. Kim and J. Yoon, *Anal. Chem.*, 2016, **88**, 6615–6620; (b) G. Cheng, J. Fan, W. Sun, K. Sui, X. Jin, J. Wang and X. Peng, *Analyst*, 2013, **138**, 6091–6096; (c) H. Xiao, J. Li, J. Zhao, G. Yin, Y. Quan, J. Wang and R. Wang, *J. Mater. Chem. B*, 2015, **3**, 1633–1638.
- 39 (a) J.-T. Hou, K. Li, J. Yang, K.-K. Yu, Y.-X. Liao, Y.-Z. Ran, Y.-H. Liu, X.-D. Zhou and X.-Q. Yu, *Chem. Commun.*, 2015, **51**, 6781–6784; (b) J. Zhou, L. Li, W. Shi, X. Gao, X. Li and H. Ma, *Chem. Sci.*, 2015, **6**, 4884–4888.
- 40 (a) B. Zhang, X. Yang, R. Zhang, Y. Liu, X. Ren, M. Xian, Y. Ye and Y. Zhao, *Anal. Chem.*, 2017, **89**, 10384–10390; (b) L. Yuan, L. Wang, B. K. Agrawalla, S.-J. Park, H. Zhu,



- B. Sivaraman, J. Peng, Q.-H. Xu and Y.-T. Chang, *J. Am. Chem. Soc.*, 2015, **137**, 5930–5938; (c) F. Tian, Y. Jia, Y. Zhang, W. Song, G. Zhao, Z. Qu, C. Li, Y. Chen and P. Li, *Biosens. Bioelectron.*, 2016, **86**, 68–74; (d) Z. Qu, J. Ding, M. Zhao and P. Li, *J. Photochem. Photobiol., A*, 2015, **299**, 1–8.
- 41 (a) H.-W. Liu, S. Xu, P. Wang, X.-X. Hu, J. Zhang, L. Yuan, X.-B. Zhang and W. Tan, *Chem. Commun.*, 2016, **52**, 12330–12333; (b) S. Kim, T. Tachikawa, M. Fujitsuka and T. Majima, *J. Am. Chem. Soc.*, 2014, **136**, 11707–11715.
- 42 F. Liu, J. Du, D. Song, M. Xu and G. Sun, *Chem. Commun.*, 2016, **52**, 4636–4639.
- 43 (a) X. Liu, A. Zheng, D. Luan, X. Wang, F. Kong, L. Tong, K. Xu and B. Tang, *Anal. Chem.*, 2017, **89**, 1787–1792; (b) H. Huang and Y. Tian, *Chem. Commun.*, 2018, **54**, 12198–12201.
- 44 H. Li, X. Li, X. Wu, W. Shi and H. Ma, *Anal. Chem.*, 2017, **89**, 5519–5525.
- 45 X. Jia, Q. Chen, Y. Yang, Y. Tang, R. Wang, Y. Xu, W. Zhu and X. Qian, *J. Am. Chem. Soc.*, 2016, **138**, 10778–10781.
- 46 A. C. Sedgwick, H.-H. Han, J. E. Gardiner, S. D. Bull, X.-P. He and T. D. James, *Chem. Commun.*, 2017, **53**, 12822–12825.
- 47 D. Cheng, W. Xu, L. Yuan and X. Zhang, *Anal. Chem.*, 2017, **89**, 7693–7700.
- 48 (a) Y.-Q. Sun, J. Liu, H. Zhang, Y. Huo, X. Lv, Y. Shi and W. Guo, *J. Am. Chem. Soc.*, 2014, **136**, 12520–12523; (b) Y. Huo, J. Miao, L. Han, Y. Li, Z. Li, Y. Shi and W. Guo, *Chem. Sci.*, 2017, **8**, 6857–6864; (c) H. Yu, X. Zhang, Y. Xiao, W. Zou, L. Wang and L. Jin, *Anal. Chem.*, 2013, **85**, 7076–7084; (d) Z. Dai, L. Tian, B. Song, X. Liu and J. Yuan, *Chem. Sci.*, 2017, **8**, 1969–1976.
- 49 J. Miao, Y. Huo, X. Lv, Z. Li, H. Cao, H. Shi, Y. Shi and W. Guo, *Biomaterials*, 2016, **78**, 11–19.
- 50 (a) X. Jing, F. Yu and L. Chen, *Chem. Commun.*, 2014, **50**, 14253–14256; (b) F. Ali, S. Sreedharan, A. H. Ashoka, H. K. Saeed, C. G. W. Smythe, J. A. Thomas and A. Das, *Anal. Chem.*, 2017, **89**, 12087–12093.
- 51 J. Chen, X. Jiang, C. Zhang, K. R. MacKenzie, F. Stossi, T. Palzkill, M. C. Wang and J. Wang, *ACS Sens.*, 2017, **2**, 1257–1261.
- 52 S.-Y. Lim, K.-H. Hong, D. I. Kim, H. Kwon and H. J. Kim, *J. Am. Chem. Soc.*, 2014, **136**, 7018–7025.
- 53 (a) R. Huang, B.-B. Wang, X.-M. Si-Tu, T. Gao, F.-F. Wang, H. He, X.-Y. Fan, F.-L. Jiang and Y. Liu, *Chem. Commun.*, 2016, **52**, 11579–11582; (b) C. Han, H. Yang, M. Chen, Q. Su, W. Feng and F. Li, *ACS Appl. Mater. Interfaces*, 2015, **7**, 27968–27975; (c) C.-Y. Kim, H.-J. Kang, S.-J. Chung, H.-K. Kim, S.-Y. Na and H.-J. Kim, *Anal. Chem.*, 2016, **88**, 7178–7182.
- 54 X. Zhang, H. Tan, Y. Yan, Y. Hang, F. Yu, X. Qu and J. Hua, *J. Mater. Chem. B*, 2017, **5**, 2172–2180.
- 55 L. Zhou, D. Lu, Q. Wang, S. Liu, Q. Lin and H. Sun, *Biosens. Bioelectron.*, 2017, **91**, 699–705.
- 56 J. Liu, X. Guo, R. Hu, X. Liu, S. Wang, S. Li, Y. Li and G. Yang, *Anal. Chem.*, 2016, **88**, 1052–1057.
- 57 X. Feng, T. Zhang, J.-T. Liu, J.-Y. Miao and B.-X. Zhao, *Chem. Commun.*, 2016, **52**, 3131–3134.
- 58 M. Gao, F. Yu, H. Chen and L. Chen, *Anal. Chem.*, 2015, **87**, 3631–3638.
- 59 (a) W. Xu, C. L. Teoh, J. Peng, D. Su, L. Yuan and Y.-T. Chang, *Biomaterials*, 2015, **56**, 1–9; (b) Y. Liu, K. Li, M.-Y. Wu, Y.-H. Liu, Y.-M. Xie and X.-Q. Yu, *Chem. Commun.*, 2015, **51**, 10236–10239.
- 60 W. Pan, Y. Li, M. Wang, H. Yang, N. Li and B. Tang, *Chem. Commun.*, 2016, **52**, 4569–4572.
- 61 M. Luan, N. Li, W. Pan, L. Yang, Z. Yu and B. Tang, *Chem. Commun.*, 2017, **53**, 356–359.
- 62 W. Zhang, P. Li, F. Yang, X. Hu, C. Sun, W. Zhang, D. Chen and B. Tang, *J. Am. Chem. Soc.*, 2013, **135**, 14956–14959.
- 63 X. Li, S. Zhang, J. Cao, N. Xie, T. Liu, B. Yang, Q. He and Y. Hu, *Chem. Commun.*, 2013, **49**, 8656–8658.
- 64 (a) J. Seo, S. Kim and S. Y. Park, *J. Am. Chem. Soc.*, 2004, **126**, 11154–11155; (b) J. Zhao, S. Ji, Y. Chen, H. Guo and P. Yang, *Phys. Chem. Chem. Phys.*, 2012, **14**, 8803–8817.
- 65 D. Srikun, A. E. Albers, C. I. Nam, A. T. Iavarone and C. J. Chang, *J. Am. Chem. Soc.*, 2010, **132**, 4455–4465.
- 66 J. Wang, Y. Zhao, C. Wang, Q. Zhu, Z. Du, A. Hu and Y. Yang, *PLoS One*, 2015, **10**, e0123986.
- 67 C. Wang, X. B. Song, Z. Han, X. Y. Li, Y. P. Xu and Y. Xiao, *ACS Chem. Biol.*, 2016, **11**, 2033–2040.
- 68 J. Chen, M. Zhao, X. Jiang, A. Sizovs, M. C. Wang, C. R. Provost, J. Huang and J. Wang, *Analyst*, 2016, **141**, 1209–1213.
- 69 A. Gautier, A. Juillerat, C. Heinis, I. R. Correa Jr, M. Kindermann, F. Beaufilet and K. Johnsson, *Chem. Biol.*, 2008, **15**, 128–136.
- 70 X. Jiang, C. Zhang, J. Chen, S. Choi, Y. Zhou, M. Zhao, X. Song, X. Chen, M. Maletic-Savatic, T. Palzkill, D. Moore, M. C. Wang and J. Wang, *Antioxid. Redox Signaling*, 2019, **30**, 1900–1910.
- 71 (a) L. Pan, Q. He, J. Liu, Y. Chen, M. Ma, L. Zhang and J. Shi, *J. Am. Chem. Soc.*, 2012, **134**, 5722–5725; (b) Z. Yu, W. Pan, N. Li and B. Tang, *Chem. Sci.*, 2016, **7**, 4237–4244.
- 72 A. T. Hoye, J. E. Davoren, P. Wipf, M. P. Fink and V. E. Kagan, *Acc. Chem. Res.*, 2008, **41**, 87–97.
- 73 (a) J. Qiao, Z. Liu, Y. Tian, M. Wu and Z. Niu, *Chem. Commun.*, 2015, **51**, 3641–3644; (b) F. Du, Y. Min, F. Zeng, C. Yu and S. Wu, *Small*, 2014, **10**, 964–972.
- 74 Q. Hu, C. Qin, L. Huang, H. Wang, Q. Liu and L. Zeng, *Dyes Pigm.*, 2018, **149**, 253–260.
- 75 (a) J.-T. Hou, M.-Y. Wu, K. Li, J. Yang, K.-K. Yu, Y.-M. Xie and X.-Q. Yu, *Chem. Commun.*, 2014, **50**, 8640–8643; (b) K. Li, J.-T. Hou, J. Yang and X.-Q. Yu, *Chem. Commun.*, 2017, **53**, 5539–5541.
- 76 K. Xu, D. Luan, X. Wang, B. Hu, X. Liu, F. Kong and B. Tang, *Angew. Chem., Int. Ed.*, 2016, **55**, 12751–12754.
- 77 (a) Q. Hu, M. Gao, G. Feng and B. Liu, *Angew. Chem., Int. Ed.*, 2014, **53**, 14225–14229; (b) W. Lv, Z. Zhang, K. Y. Zhang, H. Yang, S. Liu, A. Xu, S. Guo, Q. Zhao and W. Huang, *Angew. Chem., Int. Ed.*, 2016, **55**, 9947–9951; (c) C. Gui, E. Zhao, R. T. K. Kwok, A. C. S. Leung, J. W. Y. Lam, M. Jiang, H. Deng, Y. Cai, W. Zhang, H. Su and B. Z. Tang, *Chem. Sci.*, 2017, **8**, 1822–1830; (d) H.-W. Liu, X.-X. Hu, K. Li, Y. Liu, Q. Rong, L. Zhu,



- L. Yuan, F.-L. Qu, X.-B. Zhang and W. Tan, *Chem. Sci.*, 2017, **8**, 7689–7695; (e) S. Chakraborty, B. K. Agrawalla, A. Stumper, N. M. Vegi, S. Fischer, C. Reichardt, M. Kogler, B. Dietzek, M. Feuring-Buske, C. Buske, S. Rau and T. Weil, *J. Am. Chem. Soc.*, 2017, **139**, 2512–2519.
- 78 D. Cheng, Y. Pan, L. Wang, Z. Zeng, L. Yuan, X. Zhang and Y.-T. Chang, *J. Am. Chem. Soc.*, 2017, **139**, 285–292.
- 79 B. C. Zhu, M. Zhang, L. Wu, Z. Y. Zhao, C. Y. Liu, Z. K. Wang, Q. X. Duan, Y. W. Wang and P. Jia, *Sens. Actuators, B*, 2018, **257**, 436–441.
- 80 K. Sunwoo, K. N. Bobba, J.-Y. Lim, T. Park, A. Podder, J. S. Heo, S. G. Lee, S. Bhuniya and J. S. Kim, *Chem. Commun.*, 2017, **53**, 1723–1726.
- 81 (a) X. Gong, X.-F. Yang, Y. Zhong, Y. Chen and Z. Li, *Dyes Pigm.*, 2016, **131**, 24–32; (b) M. Ren, B. Deng, K. Zhou, J.-Y. Wang, X. Kong and W. Lin, *J. Mater. Chem. B*, 2017, **5**, 1954–1961.
- 82 D. P. Li, Z.-Y. Wang, X.-J. Cao, J. Cui, X. Wang, H.-Z. Cui, J.-Y. Miao and B.-X. Zhao, *Chem. Commun.*, 2016, **52**, 2760–2763.
- 83 J. Zhang, X. Bao, J. Zhou, F. Peng, H. Ren, X. Dong and W. Zhao, *Biosens. Bioelectron.*, 2016, **85**, 164–170.
- 84 (a) W. Niu, L. Guo, Y. Li, S. Shuang, C. Dong and M. S. Wong, *Anal. Chem.*, 2016, **88**, 1908–1914; (b) K. Yin, F. Yu, W. Zhang and L. Chen, *Biosens. Bioelectron.*, 2015, **74**, 156–164.
- 85 Y. L. Pak, J. Li, K. C. Ko, G. Kim, J. Y. Lee and J. Yoon, *Anal. Chem.*, 2016, **88**, 5476–5481.
- 86 L. Tang, P. He, X. Yan, J. Sun, K. Zhong, S. Hou and Y. Bian, *Sens. Actuators, B*, 2017, **247**, 421–427.
- 87 W.-L. Wu, H.-L. Ma, M.-F. Huang, J.-Y. Miao and B.-X. Zhao, *Sens. Actuators, B*, 2017, **241**, 239–244.
- 88 B. Zhu, P. Li, W. Shu, X. Wang, C. Liu, Y. Wang, Z. Wang, Y. Wang and B. Tang, *Anal. Chem.*, 2016, **88**, 12532–12538.
- 89 H. Zhang, J. Liu, C. Liu, P. Yu, M. Sun, X. Yan, J.-P. Guo and W. Guo, *Biomaterials*, 2017, **133**, 60–69.
- 90 (a) W. Gao, W. Cao, H. Zhang, P. Li, K. Xu and B. Tang, *Chem. Commun.*, 2014, **50**, 8117–8120; (b) W. Gao, L. Ji, L. Li, G. Cui, K. Xu, P. Li and B. Tang, *Biomaterials*, 2012, **33**, 3710–3718.
- 91 M. Ren, B. Deng, J.-Y. Wang, X. Kong, Z.-R. Liu, K. Zhou, L. He and W. Lin, *Biosens. Bioelectron.*, 2016, **79**, 237–243.
- 92 M. Ren, B. Deng, K. Zhou, X. Kong, J.-Y. Wang, G. Xu and W. Lin, *J. Mater. Chem. B*, 2016, **4**, 4739–4745.
- 93 (a) B. Wang, S. Yu, X. Chai, T. Li, Q. Wu and T. Wang, *Chem.–Eur. J.*, 2016, **22**, 5649–5656; (b) H. Yu, Y. Xiao and L. Jin, *J. Am. Chem. Soc.*, 2012, **134**, 17486–17489.
- 94 (a) S. Yang, Y. Qi, C. Liu, Y. Wang, Y. Zhao, L. Wang, J. Li, W. Tan and R. Yang, *Anal. Chem.*, 2014, **86**, 7508–7515; (b) J. Fan, Z. Han, Y. Kang and X. Peng, *Sci. Rep.*, 2016, **6**, 19562–19569.
- 95 X. J. Zou, Y. C. Ma, L. E. Guo, W. X. Liu, M. J. Liu, C. G. Zou, Y. Zhou and J. F. Zhang, *Chem. Commun.*, 2014, **50**, 13833–13836.
- 96 (a) S. J. Li, D. Y. Zhou, Y. Li, H. W. Liu, P. Wu, J. Ou-Yang, W. L. Jiang and C. Y. Li, *ACS Sens.*, 2018, **3**, 2311–2319; (b) L. Wu, Y. Wang, M. Weber, L. Liu, A. C. Sedgwick, S. D. Bull, C. Huang and T. D. James, *Chem. Commun.*, 2018, **54**, 9953–9956; (c) J.-T. Hou, H. S. Kim, C. Duan, M. S. Ji, S. Wang, L. Zeng, W. X. Ren and J. S. Kim, *Chem. Commun.*, 2019, **55**, 2533–2536.
- 97 (a) C. Gao, Y. Tian, R. Zhang, J. Jing and X. Zhang, *Anal. Chem.*, 2017, **89**, 12945–12950; (b) F. Ali, S. Aute, S. Sreedharan, H. A. Anila, H. K. Saeed, C. G. Smythe, J. A. Thomas and A. Das, *Chem. Commun.*, 2018, **54**, 1849–1852; (c) A. Hoskere, S. Sreedharan, F. Ali, C. G. Smythe, J. A. Thomas and A. Das, *Chem. Commun.*, 2018, **54**, 3735–3738.
- 98 Y. L. Pak, S. J. Park, G. Song, Y. Yim, H. Kang, H. M. Kim, J. Bouffard and J. Yoon, *Anal. Chem.*, 2018, **90**, 12937–12943.
- 99 Y. Tang, A. Xu, Y. Ma, G. Xu, S. Gao and W. Lin, *Sci. Rep.*, 2017, **7**, 12944.
- 100 H. Zhou, J. Tang, L. Sun, J. Zhang, B. Chen, J. Kan, W. Zhang, J. Zhang and J. Zhou, *Sens. Actuators, B*, 2019, **278**, 64–72.
- 101 (a) L. Yang, Y. Chen, Z. Yu, W. Pan, H. Wang, N. Li and B. Tang, *ACS Appl. Mater. Interfaces*, 2017, **9**, 27512–27521; (b) Z. Liu, H. Pei, L. Zhang and Y. Tian, *ACS Nano*, 2018, 12357–12368; (c) L. Yang, N. Li, W. Pan, Z. Yu and B. Tang, *Anal. Chem.*, 2015, **87**, 3678–3684; (d) K. Dou, G. Chen, F. Yu, Z. Sun, G. Li, X. Zhao, L. Chen and J. You, *J. Mater. Chem. B*, 2017, **5**, 8389–8398.
- 102 (a) Y. Zhou, X. Zhang, S. Yang, Y. Li, Z. Qing, J. Zheng, J. Li and R. Yang, *Anal. Chem.*, 2017, **89**, 4587–4594; (b) H. Xiao, P. Li, S. Zhang, W. Zhang, W. Zhang and B. Tang, *Chem. Commun.*, 2016, **52**, 12741–12744; (c) F. Yu, M. Gao, M. Li and L. Chen, *Biomaterials*, 2015, **63**, 93–101; (d) W. Zhang, X. Wang, P. Li, H. B. Xiao, W. Zhang, H. Wang and B. Tang, *Anal. Chem.*, 2017, **89**, 6840–6845.
- 103 W. Pan, H. Wang, L. Yang, Z. Yu, N. Li and B. Tang, *Anal. Chem.*, 2016, **88**, 6743–6748.
- 104 H. Huang, F. Dong and Y. Tian, *Anal. Chem.*, 2016, **88**, 12294–12302.

