


Cite this: *J. Mater. Chem. A*, 2022, 10, 5530Received 23rd December 2021  
Accepted 9th February 2022

DOI: 10.1039/d1ta10920k

rsc.li/materials-a

# The growth mechanism of lithium dendrites and its coupling to mechanical stress†

Julian Becherer, Dominik Kramer \* and Reiner Mönig

*Operando* high-resolution light microscopy with extended depth of field is used to observe large regions of an electrode during electrodeposition of lithium. The analysis of the morphology of the evolving deposit reveals that besides electrochemistry, mechanics and crystalline defects play a major role in the growth mechanism. Based on the findings, a growth mechanism is proposed that involves the diffusion of lithium atoms from the lithium surface into grain boundaries and the insertion into crystalline defects in the metal. Crystalline defects are a result of plastic deformation and hence mechanical stimulation augments the insertion of lithium.

## Introduction

Lithium metal is the ideal anode material to improve the energy density of batteries compared to the state-of-the-art lithium-ion batteries. However, the commercialization of lithium metal cells is impeded by safety and reliability threats associated with the growth of so-called dendrites during the electrodeposition of lithium, *i.e.* during the charging of such cells. Dendrites are relevant not only for lithium metal batteries, but also for today's lithium-ion batteries where they will grow at fast charging rates, especially at low temperature. The mechanisms of the deposition and dissolution of lithium are still under debate. Several recent reviews point out the importance of new *operando* characterization techniques for a better understanding of these mechanisms.<sup>1–5</sup> Nishikawa *et al.*<sup>6,7</sup> found a linear relationship between the length of the deposits and the square root of time in their study of the growth rate of electrodeposited lithium. They attributed this behavior to the ionic mass transfer within the electrolyte. They only observed lithium bushes, *i.e.* agglomerates of lithium dendrites and mentioned that it would be beneficial to be able to observe individual dendrites. Several experimental studies, often at higher resolution, observed a growth outside of the tip region of deposits,<sup>8–15</sup> which is in contradiction with growth models based on ionic mass transfer limitations in the electrolyte. In previous *operando* investigations of our group, the lithium insertion into the crystal lattice at defects such as kinks was identified as dominating growth mechanism.<sup>12–15</sup> Our most recent study showed that this mechanism is important at all rates from  $-0.05 \text{ mA cm}^{-2}$  to  $-100 \text{ mA cm}^{-2}$ , and it even occurs during ionic depletion of the electrolyte.<sup>15</sup> For a cell with an area

specific capacity of  $3 \text{ mA h cm}^{-2}$ , these rates would correspond to C-rates from C/60 to 33C and hence all rates that are relevant for practical battery applications. Similar to our observations, Rulev *et al.*<sup>16</sup> observed the insertion at grain boundaries (GBs) and a growth from the “root” of large lithium grains when lithium was electrodeposited onto a lithium foil.

On several scales, mechanical effects play an important role in the formation of lithium structures. On the cell level, stack pressure has been reported to be a decisive parameter for the suppression of dendrites.<sup>17–20</sup> The displacement of an individual component (*e.g.* separator) within a cell can damage the solid–electrolyte interphase (SEI) and trigger the growth of fast-growing bushes.<sup>15</sup> The mechanical properties of the SEI have been often associated with the onset of dendritic growth.<sup>21,22</sup> Even at the lowest scales, growth models exist where the formation of dendrites is caused by mechanical stresses.<sup>8,11</sup>

Metal deposition results in adatoms on the surface that diffuse, form dimers, and evolve into islands and mounds.<sup>23</sup> These islands can coalesce and form polycrystalline films or can transform into protrusions. This might result in needles.<sup>14,24</sup> Growth very much depends on atomistic diffusion barriers, including the step-edge (Ehrlich–Schwoebel) barrier.<sup>25</sup> Moreover, crystalline defects play a major role: compared to an adatom on the surface, which has only a few nearest neighboring metal atoms, an atom in a GB has more bonds to other atoms, which is energetically favorable. From the theory of thin film growth it is known that due to a difference in the chemical potentials, there is a thermodynamic driving force for adatoms to diffuse from surfaces into GBs.<sup>26,27</sup> In addition to the energetics that drives the transport of adatoms into GBs and from there into crystal lattice sites, GBs are also kinetically favored compared to the bulk because surface and GB diffusion are significantly faster than diffusion through the bulk.

So far, the growth of lithium needles and kinked structures, which are the building blocks of many lithium deposits, is not

Institute for Applied Materials, Karlsruhe Institute of Technology, Hermann-von-Helmholtz-Platz 1, 76344 Eggenstein-Leopoldshafen, Germany. E-mail: dominik.kramer@kit.edu

† Electronic supplementary information (ESI) available. See DOI: 10.1039/d1ta10920k



fully understood. Experimental studies using *in situ/operando* microscopy can be found in literature: High resolution images of growing lithium structures were obtained by *in situ* scanning electron microscope (SEM)<sup>28</sup> and *in situ* transmission electron microscopy (TEM).<sup>11,29–31</sup> Although these studies significantly contribute to a better understanding, the experiments are usually limited to very thin cells that constricts the growth of dendrites and is very different to the growth in practical battery applications. In open cell configurations, the choice of electrolytes is limited to non-volatile ionic liquids, which additionally changes the environment compared to those in most practical applications. Furthermore, it is well known that the growth is influenced by the electron beam.<sup>28,29</sup> With optical microscopy, the growth of lithium can be observed *operando* without the presence of an electron beam. Many studies helped to better understand the growth of lithium deposits and the lithium dissolution.<sup>6–8,10,32,33</sup> However, the depth of field is limited to about 1  $\mu\text{m}$  or less when optics are chosen that enable microscopy close to the resolution limitations of visible light. Therefore, in most reports, the resolution is reduced to be able to observe the three-dimensional lithium deposits and consequently individual filaments can be hardly resolved. In this work, we focus on the growth of these individual structures using optimized *operando* light microscopy. This involves fast focus stacking and the observation of large electrode areas ( $\sim 0.5 \text{ mm}^2$ ) close to the physical resolution limit of light. In these large representative electrode areas, the influence of different shapes on the growth velocity of individual structures is analyzed. The results indicate that geometrical constraints and resulting stresses have a strong influence on the growth velocity.

## Results

Before each experiment, a dense film of lithium was electro-deposited onto a copper substrate (for details see experimental section and our previous publication<sup>15</sup>). In this work, we study the electrodeposition of lithium at  $-0.05 \text{ mA cm}^{-2}$  onto this lithium film. Additional data for  $-0.5 \text{ mA cm}^{-2}$  can be found in the ESI.<sup>†</sup> During the experiments, many needles grow on the electrode. They evolve in length and some form kinks and

generally grow as described before.<sup>15</sup> At later stages of needle growth, it becomes evident that certain structures grow particularly fast. These structures with multiple kinks are attached to electrode at both ends and from now on will be referred to as loops.

Fig. 1a shows an exemplary needle and a loop. The cyan squares indicate the base where the needle nucleated and the tip of the needle (cyan plot in Fig. 1b). The green circles highlight all visible kinks of the loop (green plot in Fig. 1b). Fig. 1b shows the evolution of the lengths of ten arbitrarily chosen needles and two loops. The total length of each loop is the sum of the lengths of all visible segments between neighboring kinks calculated from 3D data based on the image stacks. The segments at the bases of loops are typically covered by other lithium deposits and hence are not visible. Therefore, the length of the loops shown in Fig. 1b is an underestimation of the actual length. The black line in Fig. 1b is the calculated thickness of a dense lithium film deposited at the same current density. The growth of both, needles and loops, is considerably faster than the growth of a dense film.

The observed needles nucleated between 9 and 27 hours after the start of the experiment. After nucleation, they typically exhibit accelerating growth that later diminishes and eventually the growth stops (*e.g.* the orange triangles in Fig. 1b). The total length of needles that stopped varies between  $\sim 20 \mu\text{m}$  and  $\sim 80 \mu\text{m}$ . The growth of the needle N1 is shown in Fig. 2 and the ESI video SV1,<sup>†</sup> where a growth from the base of the needle is clearly visible. This base growth was typically observed for needles without kinks. The velocities given in Fig. 2b–f increase initially and decrease later. Between Fig. 2e and f, a kink appeared and the distance between base and tip does not represent the length of the needle anymore. Kinking of some needles and the blocking of the view onto the tip caused by other deposits complicated the length measurements at later times. In spite of these experimental difficulties, the observed deceleration of the growth as seen in Fig. 1b, is a real and general trend.

Compared to needles, loops appear later in the experiments. In Fig. 1b, it becomes apparent that loops can grow significantly faster than the needles. The growth of the loop L1 (red plot) is shown in detail in Fig. 3 and the ESI video SV2.<sup>†</sup> In Fig. 3, all

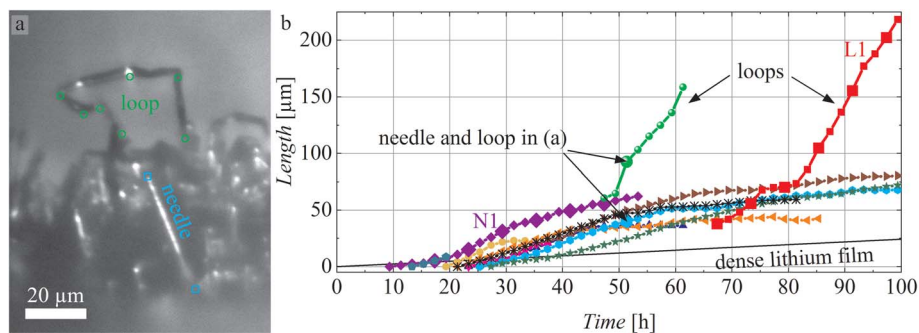


Fig. 1 (a) A needle and a loop after approximately 51 h deposition at  $-0.05 \text{ mA cm}^{-2}$ . (b) The lengths of ten needles and two loops (represented by different colors) during the lithium electrodeposition at  $-0.05 \text{ mA cm}^{-2}$ . The black line is the calculated thickness of a dense lithium film. Large symbols for the needle N1 and the loop L1 indicate when the images in Fig. 2 and 3 were recorded.



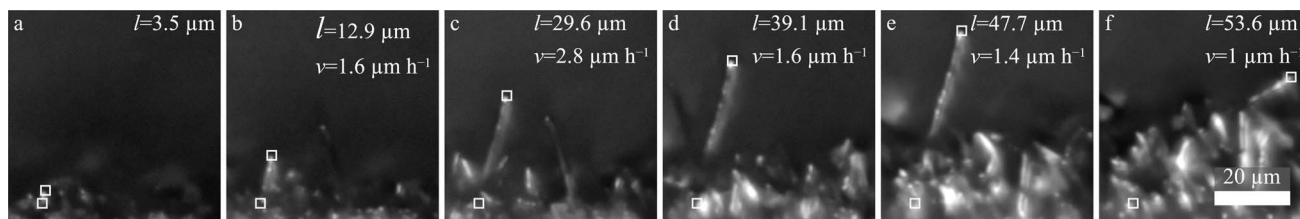


Fig. 2 (a) Needle N1 after nucleation. (b–f) 6 hours of deposition at  $-0.05 \text{ mA cm}^{-2}$  between the images. White squares in the lower left of each image marks the position of nucleation, while the second square marks the tip of the needle. The larger symbols in the N1-plot of Fig. 1b indicate when the images (a–f) were recorded.

visible kinks are marked by white circles and numbered. From the images, it becomes clear that the segments grow at different speeds and individual segments dominate the growth. The segments that dominate (red arrows in Fig. 3) can change over time. The fastest growing segments are either next to newly formed kinks (kink 6 in b, kink 10 in d, and kink 4, 11, and 12 in e) or next to segments that grew fast beforehand (segment 3–5 in c and segment 3–4 in f). The segments between kink 7 and 9 hardly grow during the 30 h of deposition shown in Fig. 3, while some segments reached growth velocities beyond  $4 \mu\text{m h}^{-1}$  (measured for 2 h intervals), which is significantly faster than the fastest velocities observed for individual needles (up to  $3 \mu\text{m h}^{-1}$ ). During deposition, the number of kinks increases. Freshly formed kinks appear either next to another kink (kink 2, 6, and 10) or between two kinks (kink 4, 11, and 12).

The crystal orientations of the segments of a loop that grew during the deposition shown in Fig. 1, 2, and 3 were analyzed using electron backscatter diffraction (EBSD) in the SEM. Although the EBSD patterns are weak, as it is expected for lithium, they clearly show that the crystal orientation of each

segment is constant but changes at kinks, *i.e.* GBs are present at the kinks. The ESI video SV3† (see also the explanatory note in the ESI†) shows the EBSD patterns for various measurement points. As previously reported,<sup>12,15</sup> the lithium insertion occurs at the kinks and hence at GBs.

Fig. 4 shows SEM images of kinked lithium structures after 100 h deposition at  $-0.05 \text{ mA cm}^{-2}$ . Fig. 4a contains a small loop where both ends are connected to the surface. It shows an abrupt change in diameter on its right limb. The end of the loop at the bottom of the image appears to be almost parallel to the substrate. Fig. 4b shows a strongly kinked needle containing segments with different contrast and different diameter. Their surface structure and faceting seems to vary. A striking feature are the periodic fine rings perpendicular to the growth direction. Fig. 4a and b show dark regions. The image of Fig. 4c was taken at low accelerating voltage (more surface sensitivity) and shows these dark regions more clearly. According to energy dispersive X-ray (EDX) analysis (see supporting Fig. S1†), these dark regions contain more oxygen and more carbon than the surrounding surfaces.

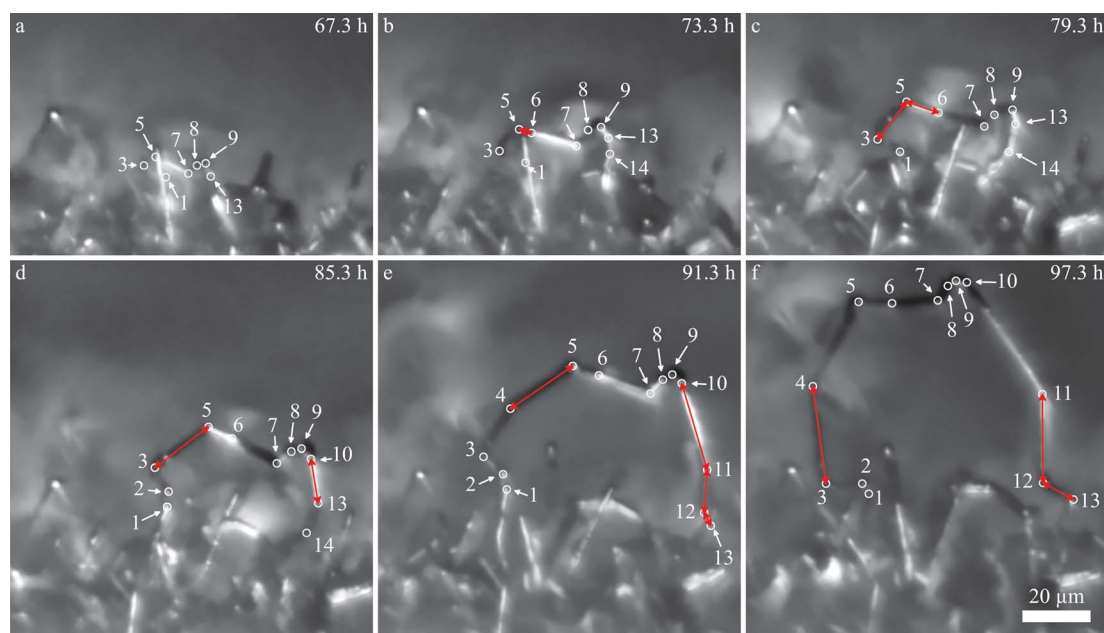


Fig. 3 (a–f) Growth of the lithium loop L1 at  $-0.05 \text{ mA cm}^{-2}$  with 6 hours of deposition between the images. White circles indicate kinks of the loop. The number of kinks increases over time. Kink 14 is not visible in all of the images as other needles block the view. The larger symbols in the L1-plot of Fig. 1b indicate when the images (a–f) were taken.





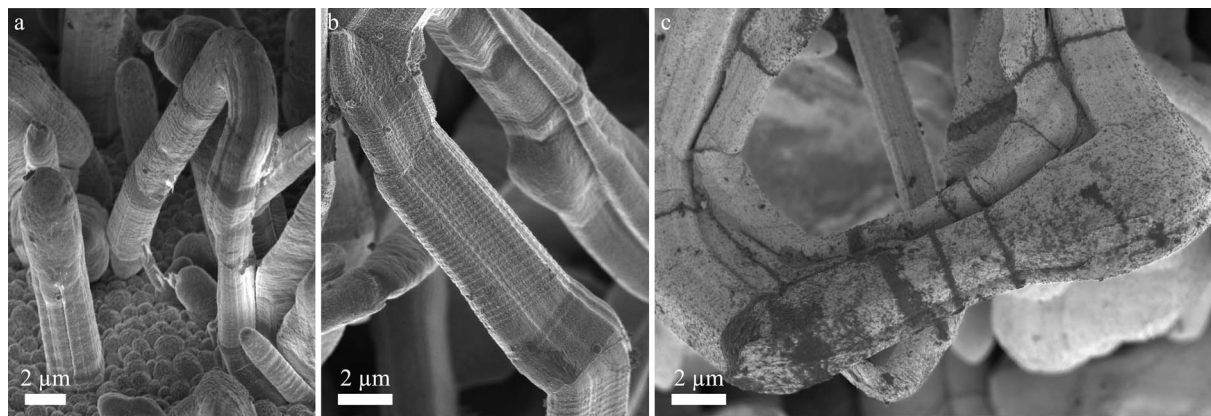


Fig. 4 Lithium deposits formed at a current density of  $-0.05 \text{ mA cm}^{-2}$ . (a) A small loop and its connection to the substrate. (b) Needles with multiple kinks and defects at the kinks. The different segments exhibit different surface structures. (c) Image of a loop recorded at low acceleration voltage (high surface sensitivity). The images were taken at acceleration voltages of (a) 1.5 kV, (b) 1 kV, and (c) 0.3 kV.

Similar observations as described for the deposition at  $-0.05 \text{ mA cm}^{-2}$  were made for a ten times higher deposition rate of  $-0.5 \text{ mA cm}^{-2}$ . The results can be found in the ESI (Fig. S2 and S3†). The general growth behavior was the same. The following minor differences that were observed: (i) the individual needles grow significantly shorter; (ii) loops tend to kink more frequently, which results mostly in shorter segments (see ESI video SV4 and Fig. S3†); (iii) spherical bulges were regularly observed at kinks (inset Fig. S3d†); (iv) an acceleration in the growth rate of the needles was not observed after nucleation; (v) the needles and loops grew significantly faster compared to Fig. 1b, but slower than expected given the ten times higher rate.

## Discussion

Experimental evidence at high resolution is hard to obtain for nanoscale lithium deposits in a liquid electrolyte. For example, photons and electrons show little sensitivity for the light element and interfere with the deposition process. In this work, we used optimized light microscopy at the physical resolution limit and observed relatively large areas. Although the spatial resolution is limited, electrochemical processes are not distorted. The data clearly show a trend: loops and needles differ. Since it is impossible to measure the local mechanical stresses within tiny lithium structures during the electrodeposition and it is impossible to observe atoms diffusing on dendrites, our discussion has to be based on the indirect evidence as obtained from our measurements. The fundamental growth mechanism that we suggest can also explain observations found in the literature.

### Transport limitations do not seem to govern growth

The growth of individual structures, needles and loops, during the electrodeposition of lithium was investigated by *operando* light microscopy. Root growth and growth at kinks were observed as reported before.<sup>8,12,15</sup> Growth by insertion into these locations is not in agreement with models based on the ionic

mass transport limitations of the electrolyte that result in growth at the tips. Examples of such models are those valid in diluted solutions at high rate<sup>34</sup> and in polymers electrolytes.<sup>35</sup>

The observed growth kinetics does not correspond to the change in ionic concentration that is expected for a galvanostatic experiment. Based on light microscopy, Nishikawa *et al.*<sup>6,7</sup> concluded that the ionic transport limits the growth because the length of the deposit scaled with the square-root of time ( $\sqrt{t}$ ) as is characteristic for diffusion. However, other mechanisms like a random-walk movement of a tip of a kinking structure can result in a very similar time dependence.<sup>13</sup> For individual needles, we did not observe such a  $\sqrt{t}$  dependence; the length vs. time curve of a needle often has an inflection point (*i.e.* a maximum growth rate). Given the kinked geometry of needles, loops, and bushes and the location of insertion sites, we also do not see a physical reason to assume that there is a diffusional transport limitation in the solution that causes a simple  $\sqrt{t}$  law (for a more detailed discussion, see ESI section A3†). SEI thicknesses are often assumed to grow with  $\sqrt{t}$ , but at the active insertion points the lithium surface is renewed continuously, so it is not expected that the SEI thickness grows with a  $\sqrt{t}$  law. Therefore, the apparent  $\sqrt{t}$  dependence might be rather a coincidence than a diffusion-related effect. For all battery relevant deposition rates, ionic transport limitations in the electrolyte anyway only play a minor role compared to the defect related insertion mechanism.<sup>15</sup>

### Microstructure, self-diffusion, and deformation of the lithium deposits

Here, deformation-mechanism maps are used to infer on important diffusion pathways within the lithium structures. These diffusion pathways are expected to be relevant not only for deformation but also for growth. Despite that kinked needles have been reported to be single-crystalline,<sup>36,37</sup> we observed GBs at kinks (ESI video SV3 and explanatory note in the ESI†). GBs consist of crystalline defects and contain vacancies. High-angle boundaries can be described by amorphous regions and



low angle boundaries are often treated as arrays of dislocations. For lithium, room temperature is approximately  $0.65 T_m$  (melting temperature in K). Typical deformation mechanism maps of alkali metals<sup>38</sup> show that at such high homologous temperatures, deformation is not necessarily based on dislocation glide. Three diffusive processes are already active at lower stresses: these are (i) GB diffusion (in bulk materials known as Coble creep) and (ii) dislocation creep (climb). Since the deposits have very small dimensions (Fig. 4) and hence exhibit high surface to volume ratios, (iii) surface diffusion may also contribute to the deformation and growth of segments. It may be expected that at room temperature diffusion along the surface is even faster than the already facile GB diffusion. A coupling of the transport paths is very likely. A similar coupling between surface and interface diffusion (interfacial Coble creep) has already been identified for a combination of lithium and a mixed ionic–electronic conductor.<sup>39</sup>

### Diffusion pathways and their coupling

From literature, it is known that most metal atoms can diffuse from the surface into and out of GBs and thereby cause mechanical stresses.<sup>26,40,41</sup> This has been observed on metal thin films on rigid substrates. During physical vapor deposition of metallic thin films, adatoms migrate into the GBs and cause compressive stresses.<sup>26,27,41</sup> For thin films on substrates, compressive stress arises due to the mechanical constraints of the growing film that is rigidly attached to a substrate. This is different in the kinked needles where grains are arranged sequentially and can elongate by displacing their neighbors. Our deposits contain GBs between their segments: EBSD shows that segments that are separated by kinks have different crystal orientations (ESI video SV3†). The observation of elongating segments (Fig. 2 and 3, *cf.* Steiger *et al.*<sup>12</sup>) suggests that growth takes place by lithium insertion into these GBs. During electrodeposition, lithium adatoms are deposited onto the substrate and onto the segments of the needles. On the surface of the segments, there are few defects (*e.g.* islands with ledges) and the probability for adsorption (*i.e.* crystal growth) is low.

Therefore, adatoms remain mobile and can diffuse towards a GB (Fig. 5). Inside the GB, atoms have a higher coordination (number of neighbors) than on the surface and adatom insertion into the GB is expected to be energetically favorable. Since diffusion is facile there as well, the lithium atom can move along the GB. For example, such a coupled diffusion path of surface and GB diffusion has been identified as a stress relaxation mechanism for copper films at high temperature.<sup>40</sup>

### Diffusion, plasticity, and insertion defects – a possible growth mechanism

The GB itself consists of crystalline defects, and additional crystalline defects (plasticity) are introduced into the GBs and the segments by mechanical stresses. Typical defects are dislocations, which are line-like distortions of the crystalline lattice. Along the line of a dislocation, diffusion is enhanced (pipe diffusion) compared to the undistorted bulk. Atoms may move away from the GB into dislocations or vacancies (Fig. 5) and thereby enter the bulk. Here again, the coordination of the lithium atom is higher and hence the insertion into a defect is energetically favorable. The insertion of atoms into crystalline defects contributes to the healing of the defects and causes a growth of a segment. Growth requires the diffusion of atoms to the insertion site, *i.e.* vacancy diffusion away from it. Vacancies always diffuse from tensile regions to compressive regions. From thin film growth it is known that the diffusion of adatoms into GBs generates extremely high compressive stresses<sup>26,42</sup> and hence it is likely that the vacancies in the lithium structures diffuse to the GBs where compressive stresses or at least excess atoms are available. This corresponds to the motion of atoms away from the GB and may contribute to the growth of the segment. For example for an edge dislocation in the proximity of a GB, this stress driven insertion could introduce negative climb. Here, an atom is added at the edge of the extra half-plane and the dislocation displaces. With this step, the crystalline lattice as a whole shifts/grows perpendicular to the extra half-plane by a fraction of a Burgers vector (*cf.* ESI Fig. S4†). Repeated insertion of this type leads to crystal

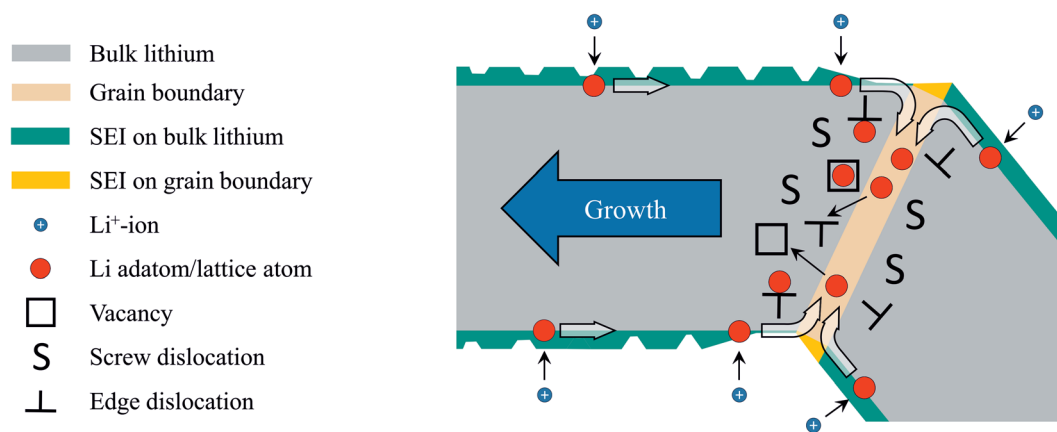


Fig. 5 Schematic illustration of lithium insertion into a kinked deposit. Adatoms diffuse along the surface into grain boundaries where they then move into crystalline defects and cause growth of the segment on the left side.



growth along the Burgers vector. For a body-centered cubic (bcc) lattice, the Burgers vector lies along the  $\langle 111 \rangle$  direction. This growth direction has been observed and reported as predominant one in the literature.<sup>36,37,43</sup> Maybe instead of the minimization of the surface energy,<sup>36,44</sup> the insertion of atoms into defects determines the growth direction. For single-crystalline whiskers of lithium and tin, growth has been described by the climb of prismatic dislocation loops (Bardeen–Herring climb source).<sup>37,45</sup> This mechanism is based on climbing dislocations as well and may also be relevant here. In general, defects act as sinks for lithium atoms and thereby continuously heal and reform during growth. Most likely, this healing during ongoing deposition is different from the well-known and more static healing/annealing of defects while no excess atoms are present.

It can be expected that due to geometrical reasons and the resulting stress distribution, the number of defects differs between neighboring segments. Growth may be faster in one of the two segments (*e.g.* the left segment in Fig. 5). Instead of healing, dislocations (defects) can minimize the energy by building regular arrays *i.e.* low-angle grain boundaries. In polycrystalline bulk materials, this is known as subgrain formation and happens during dynamic recrystallization. In loops, similar processes could lead to the formation of additional kinks. Several freshly formed kinks can be found in Fig. 3 (*e.g.* kink 4 formed between Fig. 3d and e).

The crystalline defects that act as insertion sites might facilitate unidirectional growth. The observations clearly show that segments elongate, but do not grow in their diameter. The high homologous temperature, which enables the facile diffusion of atoms on the faceted surfaces, results in a faceted shape of the segments that is determined by the minimization of surface energy (Wulff construction<sup>46</sup>). Steps and irregularities at the surfaces that can be created by dislocation activity (*i.e.* lateral growth) may decay. Their atoms may diffuse along the surface to the GB where they are reinserted. In addition, the influence of the mechanically stiff SEI might be of importance in the way that it mechanically restricts lateral growth.

### Possible influence of the SEI

Beside the crystalline effects favoring the insertion at the base and at kinks, the SEI will most likely play an important role. Since it is known that even the crystal orientation of lithium influences the SEI,<sup>47</sup> it is very likely that the SEI on a GB differs significantly from the SEI on bulk lithium. The different surfaces we have found at kinks or in their vicinity with surface sensitive SEM images at low acceleration voltages (Fig. 4b and c) and the differences in the chemical composition (Fig. S1†) support the concept of an altered SEI at the insertion locations. The higher concentration of carbon and oxygen in Fig. S1† may indicate a higher content of crystalline  $\text{Li}_2\text{CO}_3$  grains within the SEI on the grain boundaries.  $\text{Li}_2\text{CO}_3$  was found in the SEI with a similar electrolyte by high-resolution TEM.<sup>36</sup> This most likely affects the transport of lithium-ions through the SEI in these regions. Also important seems the fact that the SEI has to rupture frequently in locations where growth occurs and thus the transport to the insertion sites can occur without SEI or

through a thin and defective SEI. For example, the periodic rings perpendicular to the growth direction shown in Fig. 4b could be caused by repetitive changes (*e.g.* cracking) of the SEI during growth. Slower growth may not result in such patterns since the SEI has sufficient time to recover. The cracking and healing of the SEI during growth of lithium whiskers was observed by Yang *et al.*<sup>37</sup> in a TEM study where  $\text{Li}_2\text{CO}_3$  was used as solid electrolyte. They conclude that cracking dominates at high rates, resulting in the axial growth of lithium whiskers, while self-healing of cracks resulted in the growth of spherical particles at lower rates. Our observations show that, for the larger currents, bulges often form at kinks (inset Fig. S3d†). In this case, the transport inside the GB might not be fast enough to accommodate the flux of adatoms from the surface. Often bulges appear at the end of short segments (Fig. S3†) in the proximity of other bulges. Therefore, either a short segment is a consequence of the limited transport through a bulge or the slow diffusion at a given location induces a bulge. The electrolyte and additives can strongly influence the SEI composition. Therefore, the transport through the SEI may differ significantly in different electrolytes. Chen *et al.*<sup>48</sup> proposed that the lithium ion depletion within a SEI with a low conductivity of lithium ions can result in dendritic growth, while a SEI with a high conductivity results in spherical deposits. Even when initially spherical lithium is deposited, a transition to the growth of kinked needles can be observed for longer deposition times.<sup>49</sup> After this transition, the mechanism proposed here may play an important role independent of the liquid electrolyte used.

### Loop formation

We found that loops, which are structures connected to the electrode at both ends, grow significantly faster than individual needles. The formation of features that are connected to the electrode at both ends seems not straightforward. Unfortunately, the initial growth of loops could not be observed. Loops only became visible at later stages of the deposition when the electrode was already covered by lithium needles. Based on the SEM observation in Fig. 4a, we assume that loops can form when needles grow almost parallel to the electrode surface and meet an obstacle, *e.g.* other needles. The tip of the needle and the obstacle can reduce their surface energy by coalescence. Given the high surface-to-volume ratio of these structures and the high homologous temperature, this type of diffusion bonding is plausible. Continued lithium insertion at the base of the needle may then result in a buckling of the structure and the loop becomes visible. The hypothesis of an obstacle-based loop formation is in agreement with the increasing number of loops that occur at later stages of the deposition when the electrode surface is covered by a sufficient number of potential obstacles.

### Loops and needles exhibit different mechanical boundary conditions

The electrochemical conditions for loops are not significantly different from those of needles growing in their vicinity. Mechanically, they are very different: while loops are constrained by being connected to the substrate at both ends, needles can



freely elongate and kink since they are connected to the substrate only at one point. These freestanding needles will not develop forces along their segments and consequently their crystalline defects may heal. In contrast, the growth of segments in loops that are attached at both ends inevitably induces tensile and compressive stresses, and depending on the angle at the kinks, different stress concentrations and stress gradients exist. Therefore, significant growth in loops causes plastic deformation, for example at kinks. Plastic deformation is based on dislocation motion. During deformation, dislocations interfere with each other and multiply. For example, mobile dislocations can interfere with the immobile dislocations of GBs and thereby continuously generate crystalline defects, which increase the number of insertion sites. Furthermore, mechanical stress is expected to induce defects in the SEI. Both of these effects together can explain the faster growth of a segment of a loop compared to that of an individual needle. Due to the constraints of a loop, the mechanical stresses of all of the kinks are interlinked and insertion into a given kink might also trigger mechanical effects and insertion at distant kinks. This could additionally fuel loop growth. Our observations show that new dominating insertion sites occur in the proximity of rapidly growing segments. It is plausible that the stresses are highest close to the insertion points and that the number of kinks between two insertion sites mitigate the stress on kinks that are farther apart. There is no simple pathway of stress relief in growing loops: growth induces mechanical stress and this stress enhances insertion. Therefore, the growth of loops may be self-sustaining.

The aforementioned arguments may also apply for bushes, which have not been observed here. Previously we have reported strongly accelerating growth for lithium bushes, which grow from their inside, during the electrodeposition at higher rates.<sup>15</sup> Growth in all directions can result in coalescence with other lithium deposits, creating bushes, which are 3D-interconnected structures. The geometrical constraints inside a strongly interlinked bush are even more severe than the constraints in a loop since the 3D confinement of a bush increases the stiffness in three dimensions and geometrical changes induce additional stresses. This means that insertion into kinks leads to a stronger activation of insertion sites. Since the lithium deposits located at the perimeter of the bush are less constrained, little stress is induced in their GBs and growth is slower. Therefore, the insertion into the GBs is only promoted in the inner part of the bush where the ligaments are strongly interlinked, resulting in the observed growth from the inside of the bushes. This effect of an enhanced insertion at deforming GBs appears to be significant since this growth mode is even dominant while the electrolyte ionically depletes.<sup>15</sup> Models only based on ionic mass transport limitations predict a growth at the tips of the bush. In the experiments, a three-dimensional growth from the inside of the bush was observed.<sup>15</sup>

### Implications of the discussed growth mechanism

Many publications have shown that large area substrates (e.g. porous metals or carbons) minimize dendritic growth.<sup>50–52</sup> A usual interpretation of this effect is the smaller current

density at such substrates, which has been suggested to avoid electrolyte depletion. Since our previous results indicate that depletion is not dominating the growth,<sup>15</sup> we suggest an alternative explanation of the effect: the larger substrate area results in a large substrate–lithium interface, which might provide large number of insertion sites. Furthermore, similar to the preferred insertion inside a bush, the insertion in a porous and stiff substrate can create mechanical stresses due to the limited space, enhancing lithium growth inside the porous structure.

It has been reported by several groups that stack pressure can prevent dendrite formation in lithium metal cells with liquid<sup>17–20</sup> or solid<sup>53</sup> electrolytes. In the context of this work this strategy might work best if it stresses (pressures) above the yield stress of bulk lithium (<1 MPa (ref. 54)) are maintained throughout a cycle, resulting in continuous plasticity of the electrode and a homogeneous generation of insertion sites. A size-dependent yield strength of lithium was observed for micro pillars<sup>55</sup> and for electrochemically grown lithium whiskers.<sup>43</sup> Therefore, small and hence strong features may develop that will not plastically deform due to the stack pressure. Without plasticity, they may not be able to sustain their insertion sites and hence cease growth. Plasticity in large flat regions or in larger features with low yield stress may still be maintained and these regions therefore may bypass the small and strong protrusions during growth.

## Conclusion

*Operando* light microscopy close to the physical resolution limit of visible light was used to investigate the growth of lithium during electrodeposition. Lithium is inserted into needles and loops at their base and at kinks. EBSD showed that kinks coincide with GBs between lithium segments. The statistically representative data shows that growth of a loop segment can be faster than that of a needle. Loops and needles exhibit similar shapes and hence we attribute the observed difference in growth velocity to different mechanical boundary conditions. While needles are freestanding, loops are held at both ends. Consequently, the growth of loops induces mechanical stresses. The observations suggest that electrodeposition of lithium couples to mechanical stress: electrodeposition not only generates stresses but is also affected by them. During electrodeposition, plastic deformation of the lithium may generate insertion sites for lithium that can control the growth of a structure. After the deposition of an adatom, surface diffusion and diffusion along GBs are important transport mechanisms: coupled diffusion along the surface and in a GB moves lithium atoms inside the lithium structures where they are inserted into the crystal. Here the climb of dislocations and the occupation of vacancies act as sinks for atoms and mediate crystal growth. Maintained plasticity can continuously generate these defects and hence can drive the growth of segments. The Burgers vector in bcc lattices is the  $\langle 111 \rangle$  direction. If climb of dislocations controls growth, the segments will be oriented along this direction.

Following these interpretations, two very different strategies may be used to prevent the non-uniform growth of lithium: (i) shutting down GB diffusion, either by SEI components that





block lithium from entering into the GB or by foreign atoms within the GB blocking lithium transport. (ii) Distribute the insertion sites uniformly and facilitate the growth of a large number lithium grains. This might be accomplished by a uniform stack pressure causing homogeneous plastic deformation.

This work highlights the importance of crystalline defects and mechanical stresses for the growth of lithium. Since sodium and potassium also have low melting points, the suggested growth mechanism can be expected to be also relevant for their deposition.

## Experimental

Lithium was electrodeposited onto a copper electrode, prepared from a 0.5 mm thick foil (99.9999% puratronic foil from Alfa Aesar), in a liquid electrolyte (1 M LiPF<sub>6</sub> in a 1 : 1 volume ratio mixture of ethylene carbonate (EC) and dimethyl carbonate (DMC) from Merck). The counter electrode was a piece of lithium (99.9% from Alfa Aesar). The *operando* light microscopy cells were prepared and assembled as described in our previous work.<sup>15</sup> After an electrochemical pretreatment,<sup>15</sup> the copper electrode was covered with a dense film of lithium spheres and lithium was galvanostatically deposited onto this layer at current densities of  $-0.05 \text{ mA cm}^{-2}$  and  $-0.5 \text{ mA cm}^{-2}$  with a potentiostat (CompactStat.e, Ivium Technologies B.V.). The *operando* light microscopy experiments were performed with a Nikon Eclipse LV-UDM in bright field using an objective scanning system with a piezo drive (Physik Instrumente (PI) GmbH & Co. KG) for the fast acquisition of image stacks. We investigate individual structures and hence the images of the full electrode were cropped to sections with these analyzed structures. To increase the image quality, only the images of each acquired z-stack that were relevant for these structures were used to calculate the images with an extended depth of field. Images with an extended depth of field were calculated with an algorithm based on Laplacian pyramids.<sup>56</sup> For better visibility, the microscopy images were processed using noise reduction and greyscale adjustments. For the measurement of the length and growth velocity of the lithium structures, the image stacks of the raw images were evaluated to determine the z-coordinates of the measured features in addition to their x- and y-coordinates. The distance z-direction between two images of the stack is  $2.2 \text{ }\mu\text{m}$  and the error in z-direction will dominate the total error since the lateral resolution is about  $0.5 \text{ }\mu\text{m}$ . Therefore, we expect an uncertainty of the length measurements of needles and segments below  $3 \text{ }\mu\text{m}$ . After *operando* microscopy, the electrodes were examined in the SEM. For that, the cell was disassembled inside an argon-filled glove box (H<sub>2</sub>O and O<sub>2</sub> content typically <0.1 ppm) and the electrodes were washed in DMC. They were transferred to the SEM using a vacuum transfer system (Leica EM VCT 100).

## Author contributions

J. B., D. K., and R. M. (lead) conceptualized the experiments. J. B. performed the experiments and implemented the software

for the focus stacking. He acquired and evaluated the data under the supervision of D. K. and R. M. The results were regularly discussed by all authors. J. B. visualized the results and wrote the original draft. All authors reviewed and edited the manuscript. R. M. acquired the funding and was responsible for the project administration.

## Conflicts of interest

There are no conflicts to declare.

## Acknowledgements

The author J. Becherer gratefully acknowledges funding by the Friedrich and Elisabeth Boysen Foundation (project number BOY-161).

## References

- 1 J. H. Um and S. H. Yu, Unraveling the Mechanisms of Lithium Metal Plating/Stripping *via In situ/Operando* Analytical Techniques, *Adv. Energy Mater.*, 2020, **11**(27), 2003004.
- 2 T. Foroozan, S. Sharifi-Asl and R. Shahbazian-Yassar, Mechanistic understanding of Li dendrites growth by in-situ/operando imaging techniques, *J. Power Sources*, 2020, **461**, 228135.
- 3 Z. Xie, Z. Wu, X. An, X. Yue, J. Wang, A. Abudula, *et al.*, Anode-free rechargeable lithium metal batteries: Progress and prospects, *Energy Storage Mater.*, 2020, **32**, 386–401.
- 4 H. Liu, X.-B. Cheng, Z. Jin, R. Zhang, G. Wang, L.-Q. Chen, *et al.*, Recent advances in understanding dendrite growth on alkali metal anodes, *EnergyChem*, 2019, **1**(1), 100003.
- 5 P. Zou, Y. Sui, H. Zhan, C. Wang, H. L. Xin, H. Cheng, *et al.*, Polymorph Evolution Mechanisms and Regulation Strategies of Lithium Metal Anode under Multiphysical Fields, *Chem. Rev.*, 2021, **121**(10), 5986–6056.
- 6 K. Nishikawa, T. Mori, T. Nishida, Y. Fukunaka, M. Rosso and T. Homma, *In situ* Observation of Dendrite Growth of Electrodeposited Li Metal, *J. Electrochem. Soc.*, 2010, **157**(11), A1212.
- 7 K. Nishikawa, T. Mori, T. Nishida, Y. Fukunaka and M. Rosso, Li dendrite growth and Li<sup>+</sup> ionic mass transfer phenomenon, *J. Electroanal. Chem.*, 2011, **661**(1), 84–89.
- 8 J. I. Yamaki, S. I. Tobishima, K. Hayashi, K. Saito, Y. Nemoto and M. Arakawa, A consideration of the morphology of electrochemically deposited lithium in an organic electrolyte, *J. Power Sources*, 1998, **74**(2), 219–227.
- 9 O. Crowther and A. C. West, Effect of electrolyte composition on lithium dendrite growth, *J. Electrochem. Soc.*, 2008, **155**(11), A806–A811.
- 10 P. Bai, J. Li, F. R. Brushett and M. Z. Bazant, Transition of lithium growth mechanisms in liquid electrolytes, *Energy Environ. Sci.*, 2016, **9**(10), 3221–3229.
- 11 A. Kushima, K. P. So, C. Su, P. Bai, N. Kuriyama, T. Maebashi, *et al.*, Liquid cell transmission electron microscopy observation of lithium metal growth and dissolution: Root





- growth, dead lithium and lithium flotsams, *Nano Energy*, 2017, **32**, 271–279.
- 12 J. Steiger, D. Kramer and R. Mönig, Mechanisms of dendritic growth investigated by *in situ* light microscopy during electrodeposition and dissolution of lithium, *J. Power Sources*, 2014, **261**, 112–119.
- 13 J. Steiger, D. Kramer and R. Mönig, Microscopic observations of the formation, growth and shrinkage of lithium moss during electrodeposition and dissolution, *Electrochim. Acta*, 2014, **136**, 529–536.
- 14 J. Steiger, G. Richter, M. Wenk, D. Kramer and R. Mönig, Comparison of the growth of lithium filaments and dendrites under different conditions, *Electrochem. Commun.*, 2015, **50**, 11–14.
- 15 J. Becherer, D. Kramer and R. Mönig, Similarities in Lithium Growth at Vastly Different Rates, *ChemElectroChem*, 2021, **8**(20), 3882–3893.
- 16 A. A. Rulev, Y. O. Kondratyeva, L. V. Yashina and D. M. Itkis, Lithium Planar Deposition vs. Whisker Growth: Crucial Role of Surface Diffusion, *J. Phys. Chem. Lett.*, 2020, **11**(24), 10511–10518.
- 17 D. P. Wilkinson, H. Blom, K. Brandt and D. Wainwright, Effects of physical constraints on Li cyclability, *J. Power Sources*, 1991, **36**(4), 517–527.
- 18 T. Hirai, I. Yoshimatsu and J. Yamaki, Influence of Electrolyte on Lithium Cycling Efficiency with Pressurized Electrode Stack, *J. Electrochem. Soc.*, 1994, **141**(3), 611–614.
- 19 L. Gireaud, S. Grugeon, S. Laruelle, B. Yrieix and J. M. Tarascon, Lithium metal stripping/plating mechanisms studies: A metallurgical approach, *Electrochem. Commun.*, 2006, **8**(10), 1639–1649.
- 20 X. Yin, W. Tang, I. D. Jung, K. C. Phua, S. Adams, S. W. Lee, *et al.*, Insights into morphological evolution and cycling behaviour of lithium metal anode under mechanical pressure, *Nano Energy*, 2018, **50**, 659–664.
- 21 Y. S. Cohen, Y. Cohen and D. Aurbach, Micromorphological studies of lithium electrodes in alkyl carbonate solutions using *in situ* atomic force microscopy, *J. Phys. Chem. B*, 2000, **104**(51), 12282–12291.
- 22 D. Aurbach, E. Zinigrad, Y. Cohen and H. Teller, A short review of failure mechanisms of lithium metal and lithiated graphite anodes in liquid electrolyte solutions, *Solid State Ionics*, 2002, **148**(3–4), 405–416.
- 23 T. Michely and J. Krug, *Islands, Mounds and Atoms*, ed. Ertl G., Lüth H. and Mills D. L., Springer-Verlag, Berlin, 2004.
- 24 M. Schamel, C. Schopf, D. Linsler, S. T. Haag, L. Hofacker, C. Kappel, *et al.*, The filamentary growth of metals, *Int. J. Mater. Res.*, 2011, **102**(7), 828–836.
- 25 M. Jäckle, K. Helmbrecht, M. Smits, D. Stottmeister and A. Groß, Self-diffusion barriers: Possible descriptors for dendrite growth in batteries?, *Energy Environ. Sci.*, 2018, **11**(12), 3400–3407.
- 26 E. Chason, B. W. Sheldon, L. B. Freund, J. A. Floro and S. J. Hearne, Origin of Compressive Residual Stress in Polycrystalline Thin Films, *Phys. Rev. Lett.*, 2002, **88**(15), 156103.
- 27 C. W. Pao, S. M. Foiles, E. B. Webb, D. J. Srolovitz and J. A. Floro, Thin film compressive stresses due to adatom insertion into grain boundaries, *Phys. Rev. Lett.*, 2007, **99**(3), 036102.
- 28 C.-Y. Tang and S. J. Dillon, *In situ* Scanning Electron Microscopy Characterization of the Mechanism for Li Dendrite Growth, *J. Electrochem. Soc.*, 2016, **163**(8), A1660–A1665.
- 29 A. J. Leenheer, K. L. Jungjohann, K. R. Zavadil, J. P. Sullivan and C. T. Harris, Lithium electrodeposition dynamics in aprotic electrolyte observed *in situ via* transmission electron Microscopy, *ACS Nano*, 2015, **9**(4), 4379–4389.
- 30 B. L. Mehdi, J. Qian, E. Nasybulin, C. Park, D. A. Welch, R. Faller, *et al.*, Observation and quantification of nanoscale processes in lithium batteries by *operando* electrochemical (S)TEM, *Nano Lett.*, 2015, **15**(3), 2168–2173.
- 31 C.-Y. Chen, T. Tsuda, Y. Oshima and S. Kuwabata, *In situ* Monitoring of Lithium Metal Anodes and Their Solid Electrolyte Interphases by Transmission Electron Microscopy, *Small Struct.*, 2021, **2**(6), 2100018.
- 32 K. N. Wood, E. Kazyak, A. F. Chadwick, K. H. Chen, J. G. Zhang, K. Thornton, *et al.*, Dendrites and pits: Untangling the complex behavior of lithium metal anodes through *operando* video microscopy, *ACS Cent. Sci.*, 2016, **2**(11), 790–801.
- 33 Y. S. Hong, N. Li, H. Chen, P. Wang, W. L. Song and D. Fang, *In operando* observation of chemical and mechanical stability of Li and Na dendrites under quasi-zero electrochemical field, *Energy Storage Mater.*, 2018, **11**, 118–126.
- 34 J. N. Chazalviel, Electrochemical aspects of the generation of ramified metallic electrodeposits, *Phys. Rev. A*, 1990, **42**(12), 7355–7367.
- 35 C. Monroe and J. Newman, Dendrite Growth in Lithium/Polymer Systems - A propagation model for liquid electrolytes under galvanostatic conditions, *J. Electrochem. Soc.*, 2003, **150**(10), A1377–A1384.
- 36 Y. Li, Y. Li, A. Pei, K. Yan, Y. Sun, C. L. Wu, *et al.*, Atomic structure of sensitive battery materials and interfaces revealed by cryo-electron microscopy, *Science*, 2017, **358**(6362), 506–510.
- 37 T. Yang, H. Li, Y. Tang, J. Chen, H. Ye, B. Wang, *et al.*, *In situ* observation of cracking and self-healing of solid electrolyte interphases during lithium deposition, *Sci. Bull.*, 2021, **66**(17), 1754–1763.
- 38 P. M. Sargent and M. F. Ashby, Deformation mechanism maps for alkali metals, *Scr. Metall.*, 1984, **18**(2), 145–150.
- 39 Y. Chen, Z. Wang, X. Li, X. Yao, C. Wang, Y. Li, *et al.*, Li metal deposition and stripping in a solid-state battery *via* Coble creep, *Nature*, 2020, **578**(7794), 251–255.
- 40 D. Weiss, H. Gao and E. Arzt, Constrained diffusional creep in UHV-produced copper thin films, *Acta Mater.*, 2001, **49**(13), 2395–2403.
- 41 D. Magnfält, G. Abadias and K. Sarakinos, Atom insertion into grain boundaries and stress generation in physically vapor deposited films, *Appl. Phys. Lett.*, 2013, **103**(5), 4–7.



- 42 J. Leib, R. Mönig and C. V. Thompson, Direct evidence for effects of grain structure on reversible compressive deposition stresses in polycrystalline gold films, *Phys. Rev. Lett.*, 2009, **102**(25), 256101.
- 43 L. Zhang, T. Yang, C. Du, Q. Liu, Y. Tang, J. Zhao, *et al.*, Lithium whisker growth and stress generation in an *in situ* atomic force microscope-environmental transmission electron microscope set-up, *Nat. Nanotechnol.*, 2020, **15**(2), 94–98.
- 44 Y. He, X. Ren, Y. Xu, M. H. Engelhard, X. Li, J. Xiao, *et al.*, Origin of lithium whisker formation and growth under stress, *Nat. Nanotechnol.*, 2019, **14**(11), 1042–1047.
- 45 B. Z. Lee and D. N. Lee, Spontaneous growth mechanism of tin whiskers, *Acta Mater.*, 1998, **46**(10), 3701–3714.
- 46 G. Wulff, XXV. Zur Frage der Geschwindigkeit des Wachstums und der Auflösung der Krystallflächen, *Z. Kristallogr. Cryst. Mater.*, 1901, **34**(1–6), 449.
- 47 Y. Zhang and V. Viswanathan, Not all fluorination is the same: Unique effects of fluorine functionalization of ethylene carbonate for tuning solid–electrolyte interphase in Li metal batteries, *Langmuir*, 2020, **36**(39), 11450–11466.
- 48 X. R. Chen, Y. X. Yao, C. Yan, R. Zhang, X. B. Cheng and Q. Zhang, A Diffusion-Reaction Competition Mechanism to Tailor Lithium Deposition for Lithium-Metal Batteries, *Angew. Chem., Int. Ed.*, 2020, **59**(20), 7743–7747.
- 49 S. H. Park and Y. J. Lee, Morphological control of electrodeposited lithium metal: *Via* seeded growth: Stepwise spherical to fibrous lithium growth, *J. Mater. Chem. A*, 2021, **9**(3), 1803–1811.
- 50 Y. X. Zhan, P. Shi, X. Q. Zhang, F. Ding, J. Q. Huang, Z. Jin, *et al.*, The Insights of Lithium Metal Plating/Stripping in Porous Hosts: Progress and Perspectives, *Energy Technol.*, 2021, **9**(2), 2000700.
- 51 J. Zheng, M. S. Kim, Z. Tu, S. Choudhury, T. Tang and L. A. Archer, Regulating electrodeposition morphology of lithium: Towards commercially relevant secondary Li metal batteries, *Chem. Soc. Rev.*, 2020, **49**(9), 2701–2750.
- 52 H. Yang, C. Guo, A. Naveed, J. Lei, J. Yang, Y. Nuli, *et al.*, Recent progress and perspective on lithium metal anode protection, *Energy Storage Mater.*, 2018, **14**, 199–221.
- 53 P. Barai, K. Higa and V. Srinivasan, Impact of External Pressure and Electrolyte Transport Properties on Lithium Dendrite Growth, *J. Electrochem. Soc.*, 2018, **165**(11), A2654–A2666.
- 54 A. Masias, N. Felten, R. Garcia-Mendez, J. Wolfenstine and J. Sakamoto, Elastic, plastic, and creep mechanical properties of lithium metal, *J. Mater. Sci.*, 2019, **54**(3), 2585–2600, DOI: 10.1007/s10853-018-2971-3.
- 55 C. Xu, Z. Ahmad, A. Aryanfar, V. Viswanathan and J. R. Greer, Enhanced strength and temperature dependence of mechanical properties of Li at small scales and its implications for Li metal anodes, *Proc. Natl. Acad. Sci. U. S. A.*, 2017, **114**(1), 57–61.
- 56 W. Wang and F. Chang, A Multi-focus Image Fusion Method Based on Laplacian Pyramid, *J. Comput.*, 2011, **6**(12), 2559–2566.

