

Cite this: *Sustainable Food Technol.*,
2023, 1, 886

Pulsed electric field assisted extraction of soluble proteins from nettle leaves (*Urtica dioica* L.): kinetics and optimization using temperature and specific energy

Morgana Kronbauer,^{ac} Ivan Shorstkii,^{id}^b Suse Botelho da Silva,^{id}^{*c} Stefan Toepfl,^a
Alica Lammerskitten^a and Claudia Siemer^a

Plant-based proteins are rapidly emerging, while novel technologies are explored to offer more efficient extraction processes. The current study aimed to evaluate the effects of pulsed electric fields (PEFs) and temperature on the extraction of soluble proteins from nettle leaves (*Urtica dioica* L.) and identify an optimal operational range for the highest yield of soluble proteins. Extractions and kinetic modeling were conducted with whole and ground dried leaves at different temperatures (30–70 °C) and specific energy of PEF (0–30 kJ kg⁻¹) with extraction times of up to 60 min. The influence of temperature and specific energy on the soluble protein extraction yields was investigated and modeled using composite central design and response surface methodology. The experimental results were fitted to Peleg's kinetic model, which satisfactorily described the extraction process ($R^2 > 0.902$), and PEF treated samples resulted in a higher soluble protein yield and shortened processing time. Response surface methodology showed that the linear effect of temperature and quadratic effect of PEF ($p < 0.01$) were highly significant for protein yield. In the optimized PEF-extraction region (specific energy between 10 and 24 kJ kg⁻¹, and 70–78 °C), soluble protein yield was higher than 60% after 5 minutes of extraction. The achieved results are relevant for developing processes for PEF assisted extraction of soluble proteins from leaves. Understanding the effects of PEFs and process parameters is crucial to obtain high protein yields, while requiring low energy and short processing time.

Received 17th April 2023
Accepted 27th August 2023

DOI: 10.1039/d3fb00053b

rsc.li/susfoodtech

Sustainability spotlight

The promotion of health and environmental sustainability is driving the trend towards plant-based diets. To attain this global trend, alternative proteins and novel processing methods are urgently needed, especially for the supply of soluble vegetable proteins for the plant-based beverage industry. Addressing this, pulsed electric field technology provides a solution by improving yield and efficiency, and reducing energy, time, and solvent usage in extraction processes. Our work, aligned with UN SDGs 3, 9 and 12, gives serious consideration to improved health, and promotes innovation and responsible consumption. This research analyzes the effects of pulsed electric fields and temperature on the extraction of soluble proteins from nettle leaves and identifies an optimal operational range for this process.

1 Introduction

Urtica dioica L. is a wild herbaceous perennial plant that belongs to the Urticaceae family. This plant is known as stinging nettle, due to stinging trichomes that cover the stems and leaves, which cause blistering when it comes into contact with skin; however, this characteristic is lost by thermal processing or drying.¹ Nettles usually grow in temperate and

tropical regions of Europe, Africa, Asia and America,^{2,3} usually being commercialized as dried leaves for use as an herbal tea or addition to soups and broths. Beyond these conventional uses, stinging nettle has acquired scientific interest because it is a source of many value added natural products, such as proteins, polyphenols, minerals and vitamins.^{4,5} Indeed, protein content represents approximately 30% of the dry mass of nettle leaves and provides all essential amino acids needed for humans,⁶ demonstrating the potential of this plant as an alternative source of this nutrient.

At the present time, plant-based diets represent a trend in the promotion of physical health and environmental sustainability. Indeed, the plant protein market is estimated to grow worldwide at 14.1% CAGR (compound annual growth rate) by 2025.⁷ According to recent market studies, Germany has the

^aElea Vertriebs- und Vermarktungsgesellschaft mbH, Prof.-von-Klitzing Str. 9, 49610 Quakenbrück, Germany

^bAdvanced Technologies and New Materials Laboratory, Kuban State Technological University, Moskovskaya 2, 350072, Krasnodar, Russia

^cPolytechnic School, Unisinos University, Av. Unisinos 950, 93022-970, São Leopoldo, RS, Brazil. E-mail: susebs@unisinos.br



largest growth rate in the sector of vegan food and beverages in the world and together with the United Kingdom are the leading markets for meat substitutes in Europe.⁸ To attain this global trend, substitutes to currently used proteins and novel processing methods are urgently needed, especially for the supply of soluble vegetable proteins for the plant-based beverage industry. In this sense, nettle leaves are an outstanding alternative, as they provide a non-allergenic, high biological value protein with a unique nutrient profile.

In this scenario, the development of novel technologies for protein extraction from plants and studies for process optimization are rather required to maintain the functionality of valuable compounds and to ensure the sustainability of the food chain. Chemical or thermal conventional extraction methods typically require a large amount of energy and chemicals and, depending on intensity, can degrade constituents, causing loss of functionality and bioavailability. In contrast, enzymatic processes use mild operational conditions, causing less environmental impact; however, they often extract lower quantities of protein than conventional treatments. To solve this issue, the assisted use of novel technologies for extraction, such as a pulsed electric field (PEF), can significantly improve yield and efficiency, while reducing time, energy consumption and solvent usage.^{9–12}

Pulsed electric field (PEF) is a nonthermal technology known in food science for increasing cell membrane permeability. This technology is based on the application of electrical pulses (0.5 to 40 kV cm⁻¹) of short duration to a product placed between a set of electrodes in a chamber. The electric field generated induces polarization of the cell membrane, leading to electroporation.¹³ Due to the increase in cytoplasmic membrane porosity, a PEF promotes enhanced extraction of intracellular components, such as proteins, polyunsaturated fatty acids, amino acids, lipids, antioxidants, minerals, or pigments.^{14–16} Although it is still unclear if a PEF could affect intracellular components such as proteins,¹⁷ alteration in protein conformation and functionality,¹⁸ changes in secondary and tertiary structure of proteins and formation of protein aggregates, denaturation and insolubility were reported.¹⁹ These results highlight the need for optimization of PEF treatments for protein extraction and demonstrate that this is an area of research that is quickly growing.¹⁷

Most studies concerning PEF assisted extractions focus on extraction of fruit and vegetable juices,^{10,16,20} phenolic compounds and antioxidants,^{21,22} pigments and proteins from microalgae and cyanobacteria^{20,23–25} and extraction of lipids and proteins from insects^{26,27} and from microorganisms.²⁸ Nevertheless, to the best of our knowledge, only a few research studies have been performed for protein extraction from leaves using pulsed electric field technology.^{29,30} Barba *et al.* (2015)³⁰ studied the influence of emerging technologies on the intensification of the extraction of valuable compounds from *Stevia* leaves, showing that the treatments improved both kinetics and extraction yield of soluble matter. Furthermore, Yu *et al.* (2015)²⁹ demonstrated the effectiveness of PEF-treatment as a new way of rapeseed stem and leaf valorization, as the extraction yields of polyphenols and proteins were highly increased. While these studies enhanced the understanding of the impact of PEF on

protein extraction from leaves, the optimization of conditions and the analysis of parameter interactions were not performed. Moreover, nettle leaves have not been explored as a protein source yet, although they have a high content of this nutrient. The current study hypothesizes that the increase in PEF intensity and temperature will cause higher protein yields, with the possibility of a synergistic interaction between these variables. Therefore, the aim of this study is to evaluate the effects of pulsed electric fields and temperature on the extraction of soluble proteins from nettle leaves and identify an optimal operational range for this process.

2 Materials and methods

2.1 Materials

Nettle leaves were provided dried, partially fragmented, with irregular dimensions (<3 mm), by Justaste GmbH (Germany). All analyses were conducted with the same batch. The samples were stored at room temperature (20 °C) prior to treatment. The current study was performed with dried leaves to standardize raw material.

The samples were grated in two categories for extraction experiments: non-ground and ground leaves. The non-ground samples were not subjected to any type of processing, although the dimensions were classified between 1–3 mm. The ground samples were processed (Kenwood, CH58, UK) for 2 min and grated through wire mesh (<1 mm).

2.2 Proximate analysis

All analyses were conducted according to AOAC official methods.³¹ Moisture content was measured by drying at 105 °C for 4 hours in an oven (Heraeus T 5050 E, Germany) and ash remained after combustion at 550 °C for 4 hours in a muffle furnace (Nabertherm L40/11, Germany). Fat content was determined by Soxhlet extraction (SOX THERM, Germany) using petroleum ether as the solvent. Determination of proteins was performed by the Kjeldahl method (VAPODEST 450, Germany) and nitrogen content was expressed as protein concentration (N × 6.25). The trials were performed at least in triplicate. Total carbohydrate was obtained from the difference as follows: 100 – (moisture + crude protein + crude fat + ash).

2.3 PEF treatment

PEF treatment was performed using a PEF-Cell Crack II batch system (Elea Vertriebs- und Vermarktungsgesellschaft mbH, Germany). High-voltage exponential decay, monopolar pulses with an interval of 0.5 s (2 Hz) and pulse duration of 40 μs were supplied by the PEF system. Treatment settings were defined as a fixed value for electric field strength (3 kV cm⁻¹), and the number of applied exponential decay pulses was 7, 15, and 22. The number of pulses was chosen based on the desired specific energy input (varying from 10 kJ kg⁻¹ to 30 kJ kg⁻¹) and orientation from Siemer *et al.* (2012).³² Their study shows that disintegration of cellular material requires low values for electric field strength (range of 0.7 to 3 kV cm⁻¹) and a specific energy (range of 1 to 20 kJ kg⁻¹). Electric field strength refers to



the field strength present in the treatment chamber during the treatment. It depends on the voltage applied between two electrodes, and the distance between them, according to eqn (1).

$$E = \frac{U}{d} \quad (1)$$

where U is the voltage (kV) and d is the distance between the electrodes (cm).

The specific energy applied to the product was adjusted by changing the number of pulses, while taking into consideration the total mass in the chamber. The specific energy intake W_{spec} (kJ kg⁻¹) is calculated according to eqn (2),

$$W_{\text{spec}} = \frac{U^2 C n}{2m} \quad (2)$$

where n is the number of pulses; m is the mass of the treated samples (kg); U is the voltage (kV); C is the capacitance (1 μF).

The treatment occurred inside a batch treatment chamber, where the pulses were applied to the product placed between two sets of stainless-steel electrodes 10 cm apart. In each experiment, 20 g of nettle leaves were placed in the chamber and 300 g of tap water ($\sigma = 218.5 \mu\text{S cm}^{-1}$, $T = 22 \pm 1 \text{ }^\circ\text{C}$, conductometer WTW-Cond 3310, Germany) was added as a conductive medium. PEF treatment was conducted with pre-heated water at 30 °C, 50 °C and 70 °C prior to extraction. The temperature rise during PEF-treatment was less than 3.0 °C. The current study was performed with a focus on industrial application, and therefore, tap water was used.

2.4 Extraction experiments

The experiments consisted of aqueous extractions of soluble proteins with a solid to liquid ratio of 1 : 15, which was established from previous tests. After PEF pre-treatment, the samples were transferred into a Thermomix (Profi Cook, PC-MKM 1074, Germany) for further diffusion for one hour, while the Thermomix provided heat to reach the desired temperature (30 °C, 50 °C or 70 °C) and agitation at 240 rpm. At each temperature, control samples were analyzed. To follow the kinetics of protein extraction, samples were collected 1, 5, 10, 20, 30, 40, 50 and 60 minutes after PEF treatment. The supernatant collected was subjected to centrifugation at 5000× g for 8 minutes to remove leaf particles and stored at 4 °C until further analysis. Extractions were conducted in duplicate.

2.5 Soluble protein content

Soluble proteins of extracts were determined by the Thermo Scientific™ Pierce™ BCA Protein Assay for colorimetric detection and quantification. This method is based on the biuret reaction, which is the reduction of Cu²⁺ to Cu¹⁺ by proteins in an alkaline medium with the highly sensitive and selective colorimetric detection of the cuprous cation (Cu¹⁺) using bicinchoninic acid (BCA). The color formation is due to the chelation of two molecules of BCA with one cuprous ion.³³

The supernatant collected after centrifugation was mixed with the working reagent and incubated for 1 hour at room

temperature, and absorbance was measured at the wavelength of 562 nm using a UV-vis spectrophotometer (Biochrom – GeneQuant 1300, Cambridge, UK). Bovine serum albumin – BSA (Thermo scientific, USA) was used as a standard.

The results of duplicate analysis are expressed as the percentage yield of soluble protein extracted (Y_{proteins}), which were calculated using the following eqn (3):

$$Y_{\text{proteins}} = \frac{\text{Protein}_{(t)}}{\text{Protein}_{(\text{max})}} \times 100 \quad (3)$$

where $\text{Protein}_{(t)}$ refers to soluble protein at time t , calculated as grams of BSA equivalent and $\text{Protein}_{(\text{max})}$ refers to the total protein content in nettle leaves (in dry matter), determined by the Kjeldahl method.

Solubility is a key factor that defines the protein functionality, with the yield of soluble protein extracted taken as a parameter or index to assess the effectiveness of the extraction process. This parameter is very relevant in our study considering its focus on maximizing the extraction of soluble protein for future utilization in protein beverages. Investigation of other functional characteristics of the extracted protein could also be important for further application.

2.6 Kinetic model of protein extraction

A kinetic study was performed to investigate the dynamics of PEF-assisted extraction and identify the time for the maximum protein extraction yield. The kinetic modeling was based on the suitability of Peleg's empirical model to represent the experimental data. In current experimental work, the extraction curves (protein yield) displayed a similar shape to the moisture sorption curves described by Peleg's model, suggesting that this model could be used to explain protein extraction kinetics,³⁴ according to eqn (4):

$$Y(t) = Y_0 + \frac{t}{K_1 + K_2 \cdot t} \quad (4)$$

where $Y(t)$ is the percentage yield of protein extracted at time t (g protein extracted/100 g total protein), Y_0 is the initial protein yield at time $t = 0$ (g soluble protein extracted/100 g total protein), t is the extraction time (min), K_1 is the Peleg rate constant (min. 100 g total protein/g soluble protein extracted) and K_2 is the Peleg capacity constant (100 g total protein/g soluble protein extracted). In all experiments, Y_0 was zero, so eqn (4) was used in the final form as:

$$Y(t) = \frac{t}{K_1 + K_2 \cdot t} \quad (5)$$

In eqn (5) the Peleg rate constant K_1 is related to the extraction rate (b_0) at the very beginning ($t = t_0$)

$$b_0 = \frac{1}{K_1} \quad (6)$$

The Peleg capacity constant K_2 is related to the maximum soluble protein extraction yield. When $t \rightarrow \infty$ eqn (7) gives the relation between equilibrium concentration and constant K_2 .



$$Y_{\max} = \frac{1}{K_2} \quad (7)$$

The parameters of the Peleg model (5) were determined from experimental data using non-linear regression (Quasi-Newton method). Model fitting was judged based on the regression coefficient (R^2).³⁵

2.7 Composite central design (CCD)

The influence of temperature and PEF specific energy on the protein yield was investigated using composite central design (CCD) and response surface methodology (RSM). This methodology was used to identify the optimal combination of factors that lead to the desired response in a specific time. The values assigned to the independent variables were based on the results of the kinetic study: minimum and maximum values (30 and 70 °C for temperature and 10 and 30 kJ kg⁻¹ for specific energy), alongside the axial values computed by CCD design are presented in Table 1. Response surface methodology (RSM) was used to seek a relationship between the input variables and the response affected by them. The influence of factors on protein yield was analyzed during the ascending phase of the extraction kinetic curves for ground leaves (<1 mm), aiming to identify the conditions that maximize the efficiency of protein extraction.

A CCD ($k = 2$, $\alpha = 1.414$) consisting of 4 factorial, 4 axial, and 3 central points was designed. All points were duplicated, resulting in a total of 22 runs. A second-order polynomial regression model was obtained from experimental design according to the following equation:

$$Y = \beta_0 + \sum_{i=1}^k \beta_i X_i + \sum_{i=1}^k \beta_{ii} X_{ii}^2 + \sum_{i < j} \beta_{ij} X_i X_j \quad (8)$$

where Y is the response variable (protein yield); β_0 is a constant; β_i , β_{ii} and β_{ij} are the coefficients for the linear, quadratic, and interaction effects, respectively; X_i and X_j are the coded independent variables or factors.

The adequacy of the regression model obtained from CCD was assessed by analyzing the lack of fit and the coefficient of determination (R^2). The significance of each effect and regression coefficients was determined by the F test obtained from ANOVA. Response surface and contour plots were obtained from the validated regression model. Through examination of response surface and contour plots, the optimal temperature and specific energy parameters for attaining the highest yield of soluble protein were determined.

Table 1 Independent variables in protein extraction

Factors	Levels				
	-1.414	-1	0	1	1.414
Temperature (°C)	21.7	30	50	70	78.3
Specific energy (kJ kg ⁻¹)	5.90	10	20	30	34.1

2.8 Statistical analysis

Experiments were repeated three times, unless otherwise specified, and the results are expressed as mean values and standard deviations (SD). The statistical analysis, including the CCD design, multivariate regression and response surface methodology (RSM) plots were performed with STATISTICA 13 (Statsoft, USA). To assess significant differences between protein yields, variance analysis was performed at $\alpha = 0.05$.

3 Results and discussion

3.1 Proximate analysis

The results for crude protein, crude fat, ash, and total carbohydrate of dried nettle leaves are presented in Table 2. The moisture of the dried leaves was determined to be 9.70% and further results are presented on a dry basis.

Protein content in nettle leaves usually ranges between 28.8% and 33.7%.^{36,37} In the present study, protein determination analysis also demonstrated that nettle leaves contain an appreciable amount of crude protein ($32.3 \pm 0.1\%$). According to the US FDA,³⁸ nettle is a rich source of protein and presents a higher protein content than spinach (*Spinacia oleracea*), alfalfa (*Medicago sativa*) and *ora pro nobis* (*Pereskia aculeate*) (26.0%, 26.1%, and 28.4%, respectively).^{37,39,40}

The mineral content in nettle was approximately 18% of the dry mass. This result is in close agreement with what has been previously reported.⁴¹ Crude fat content in the leaves was 1.03%, which is higher than the values (0.6%) presented in the study performed by Rutto *et al.*⁴² and lower than the values presented by Alemayehu *et al.*⁴³ (4.4%). Different proportions of all these compounds are related to plant variety, climate, soil, vegetative stage, and harvest time.⁴⁴

3.2 Protein extraction kinetics and Peleg's model

The extraction kinetics of proteins from nettle leaves pre-treated by using a PEF at different specific energies, temperatures, and particle sizes are presented in Fig. 1.

Extraction yield of ground leaves (<1 mm) was larger compared to that of non-ground leaves (1–3 mm). This phenomenon was expected according to the mass transfer theory, because of reduced interfacial area between the solid and liquid.⁴⁵ At 50 °C, particle size reduction increased protein yields up to 17%, when 30 kJ kg⁻¹ was applied. At 70 °C, an increase in yield (21%) was observed, when subjected to 20 kJ kg⁻¹. This phenomenon could be due to the increase in

Table 2 Proximate analysis of nettle leaves (dry basis)^a

Component	(% db)
Ash	18.5 ± 0.1
Crude fat	1.03 ± 0.00
Crude protein	32.3 ± 0.1
Total carbohydrate	48.2 ± 0.2

^a Values represent the mean of three replicates ± standard deviation, and the total carbohydrate was obtained from the difference.



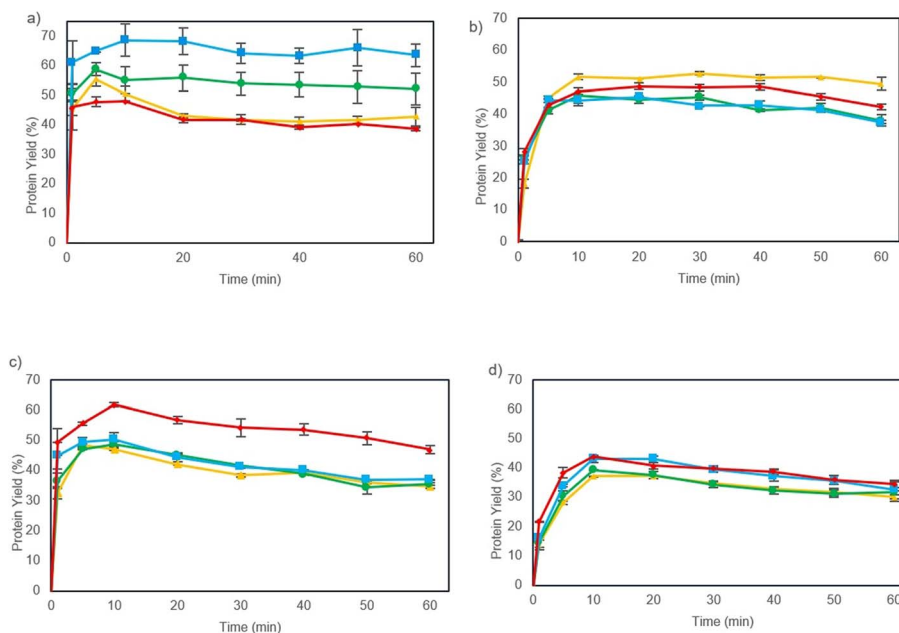


Fig. 1 Extraction kinetics of soluble proteins from nettle leaves: (a) 70 °C (<1 mm), (b) 70 °C (<3 mm), (c) 50 °C (<1 mm), and (d) 50 °C (<3 mm), from 0 to 30 kJ kg⁻¹ of specific energy (yellow triangle – control; green circle – 10 kJ kg⁻¹; blue square – 20 kJ kg⁻¹; red rhombus – 30 kJ kg⁻¹).

available surface area for interaction with the solvent and a greater disruption of cell walls by grinding. Grinding leaves resulted in a significant increase in extraction yield and should be considered an essential part of this process.

As evident from Fig. 1, the extraction yield increased rapidly with an increase in treatment time until 10 min after which it became constant ($p < 0.05$). Applying a PEF decreased the required time to reach higher yields. For instance, at 70 °C and particle size <1 mm, the PEF (20 kJ kg⁻¹) extracts 68% of protein in 10 minutes, which equals 22.0 g of soluble protein from a total of 32.3 g/100 g of crude protein present in this material. Under the same conditions, control samples (without PEF treatment) achieved almost 15% less extraction yield (17.8 g of soluble protein from a total of 32.3 g/100 g of crude protein). The PEF increased protein yield in all the extractions, as depicted in Fig. 1, and control samples did not reach a protein yield higher than 50%. Similar findings have been previously reported in the literature. Yu *et al.* (2015)²⁹ also found comparable results where the increase in PEF treatment (0–160 kJ kg⁻¹) in rapeseed leaves resulted in shorter extraction time and an increase in protein yield (approximately 60% at 160 kJ kg⁻¹).

The modified Peleg's model (eqn (5)) was used for experimental data approximation. Elhag *et al.*⁴⁶ applied Peleg's model to describe the kinetics of water-soluble proteins in root extracts of *Eurycoma apiculata* by microwave assisted extraction. The authors reported that all the experimental data fitted well with the model's calculated data with a regression coefficient (R^2) value of 0.97 indicating the suitability of Peleg's model to optimize water-soluble proteins in root extracts. Kumari *et al.*⁴⁷ used Peleg's equation for kinetic modeling of polyphenols from potato peels. Peleg's equation demonstrated a good correlation ($R^2 > 0.92$) between the experimental and the predicted values.

The initial extraction rate b_0 (eqn (6)) and maximum extraction yield under experimental conditions Y_{\max} (eqn (7)) were calculated from constants K_1 and K_2 . The regression coefficients were high in all experiments ($R^2 > 0.902$) which implied good concordance between experimental and calculated data (Table 3), suggesting that the modified Peleg's equation can capture underlying patterns or relationships. In this way, the model and its parameters can be used as a tool to gain insights, identify trends, or assess the impact of different variables on the outcome.

The Peleg rate constant (K_1) and the Peleg capacity constant (K_2) were lower for ground particles (<1 mm) than for non-ground particles (1–3 mm). These results implied that the initial extraction rate (b_0) and maximum protein extraction yield (Y_{\max}) were higher with ground particles. For instance, the extractions conducted at 70 °C and a specific energy of 20 kJ kg⁻¹ showed that an increase in PEF specific energy input will affect the initial extraction rate and maximum extraction yield of ground particles ($b_0 = 909 \pm 385$; $Y_{\max} = 65.8 \pm 4.3$) more than that of bigger particles ($b_0 = 78.7 \pm 56.4$; $Y_{\max} = 45.9 \pm 2.5$). At 50 °C, particle size reduction increased maximum soluble protein extraction yield ($1/K_2$) by 14% when 30 kJ kg⁻¹ was applied, reaching $40.0 \pm 2.5\%$ for particle size 1–3 mm and $54.3 \pm 3.1\%$ for particle size <1 mm. Moreover, the increase in extraction temperature and increase in specific energy of PEF treatment generally lead to a higher extraction rate b_0 , and therefore, lower K_1 values for ground samples, showing that they tend to be more specific energy and temperature sensitive.

The maximum protein extraction yield ($1/K_2$) is analyzed as shown in Fig. 2, where the influence of the PEF specific energy input on the maximum protein extraction yield at different temperatures (30, 50 and 70 °C) is shown. Overall, the



Table 3 Values of extraction extent, Peleg's constants (K_1 and K_2) for soluble protein extraction with a regression coefficient (R^2) at different particle sizes, specific energy and extraction temperature

Particle size (mm)	Temperature (°C)	Specific energy (kJ kg ⁻¹)	K_1 (min. 100 g total protein/g soluble protein extracted)	K_2 (100 g total protein/g soluble protein extracted)	R^2	
<1	30	0	0.0248 ± 0.0165	0.0231 ± 0.0023	0.928	
		10	0.0061 ± 0.0052	0.0246 ± 0.0014	0.965	
		20	0.0033 ± 0.0050	0.0230 ± 0.0016	0.951	
	50	30	0.0045 ± 0.0055	0.0223 ± 0.0016	0.948	
		0	0.0038 ± 0.0063	0.0245 ± 0.0020	0.933	
		10	0.0017 ± 0.0056	0.0241 ± 0.0020	0.931	
	70	20	0.0018 ± 0.0043	0.0223 ± 0.0017	0.902	
		30	0.0013 ± 0.0033	0.0184 ± 0.0011	0.959	
		0	-0.0013 ± 0.0041	0.0223 ± 0.0017	0.938	
	<3	30	10	0.0012 ± 0.0038	0.0183 ± 0.0013	0.945
			20	0.0011 ± 0.0030	0.0152 ± 0.0010	0.953
			30	-0.0025 ± 0.0039	0.0238 ± 0.0018	0.943
50		0	0.0887 ± 0.0315	0.0321 ± 0.0022	0.977	
		10	0.0578 ± 0.0290	0.0324 ± 0.0027	0.957	
		20	0.0620 ± 0.0218	0.0283 ± 0.0017	0.979	
70		30	0.0461 ± 0.0160	0.0314 ± 0.0017	0.979	
		0	0.0213 ± 0.0130	0.0261 ± 0.0021	0.946	
		10	0.0295 ± 0.0177	0.0281 ± 0.0024	0.944	
70		50	20	0.0269 ± 0.0153	0.0250 ± 0.0021	0.949
			30	0.0164 ± 0.0092	0.0250 ± 0.0016	0.960
			0	0.0269 ± 0.0076	0.0184 ± 0.0008	0.987
	70	10	0.0123 ± 0.0063	0.0218 ± 0.0012	0.971	
		20	0.0127 ± 0.0063	0.0218 ± 0.0012	0.971	
		30	0.0129 ± 0.0045	0.0199 ± 0.0008	0.985	

maximum soluble protein extraction yield ($1/K_2$) showed a tendency to increase with the increase in PEF specific energy input and extraction temperature, showing that PEF treatment can also enhance extraction of soluble proteins from dried nettle leaves. This PEF-temperature synergistic effect is likely

because of an increase in fluidity of biological cells and a loss in their mechanical resistance on increasing the processing temperature, making the cell membrane more suitable for electroporation.⁴⁸ The level of membrane electroporation will influence the diffusion rates facilitating extraction, since the

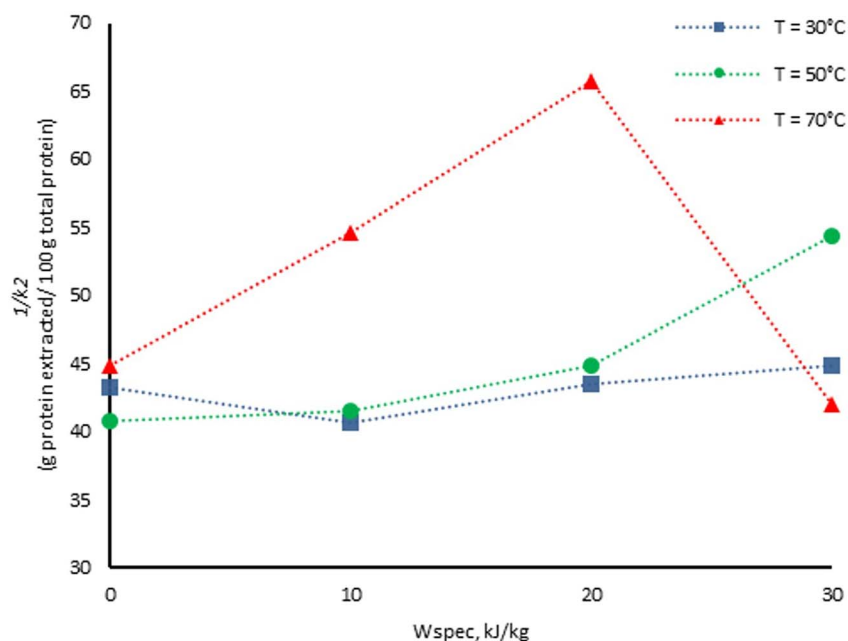


Fig. 2 Effect of the PEF energy input and temperature on the maximum soluble protein extraction yield ($1/K_2$) for ground particles (blue square – $T = 30$ °C; green circle – $T = 50$ °C; red triangle – $T = 70$ °C).



compounds can easily diffuse into the solvent.³² However, a notable decrease under the conditions of 70 °C and 30 kJ kg⁻¹ suggests that Peleg's constant $1/K_2$ is not only a PEF or temperature linear dependent value, but possibly a property affected by both variables or in a nonlinear relationship.

As the effect of temperature and specific energy on extraction remained inconclusive, we opted for the response surface methodology to improve the understanding of the process mechanics. To perform our analysis, we used the data collected at the 5 minute mark during extraction. This timeframe was selected because it had the highest protein extraction yield or showed a consistent increase in yield across all trials. These data were considered, and more experiments were conducted to complete all the runs for a 2² composite central design. This procedure is designed to identify the conditions that yield the highest efficiency in protein extraction, and the results will be analyzed in detail in the next section.

3.3 Evaluation of parameters for extraction by response surface methodology (RSM)

A full quadratic model in coded factors was constructed using the general form of eqn (8), based on the data collected from the CCD to analyze the variables in the experimental design, and is shown in eqn (9). The terms of the regression model are X_1 (linear temperature), X_2^2 (quadratic specific energy) and X_1X_2 (interaction of linear temperature and linear specific energy), (X_1^2 , quadratic temperature) and X^2 (linear specific energy) and Y_{proteins} is the response variable (protein yield).

$$Y_{\text{proteins}} = -56.28 + 8.74X_1 - 1.98X_1^2 + 0.687X_2 - 7.99X_2^2 - 3.95X_2X_1 \quad (9)$$

ANOVA was employed to evaluate the significance of effects and to assess the adequacy of the quadratic model used in describing the relationship between the protein yield and the studied parameters. The linear effect of temperature and quadratic effect of specific energy on protein yield were highly significant ($p < 0.01$), indicating them to be crucial factors in this extraction process. The interaction effect between temperature and specific energy was also important; however, it did not reach statistical significance ($p = 0.115$). The determination coefficient R^2 of the quadratic model was 0.81, which is a satisfactory fit to the experimental data, as models are considered successful when R^2 is greater than 0.75.⁴⁹ The p -value for the lack of fit was not significant ($p = 0.52$), confirming the accuracy of the quadratic model for predicting a relevant response.

The regression coefficient analysis of the model also revealed that only the linear temperature and the quadratic specific energy coefficient hold high significance, while the interaction coefficient can be considered marginally significant. Nonetheless, we chose to retain all coefficients in the fitted model. In some cases, it is important to maintain the interpretability of the model by including all coefficients. Using only significant coefficients could result in a simplified model that neglects potentially meaningful variables or interactions. By considering all coefficients, even those that are not statistically significant, the model can provide a more complete

picture of the relationships and factors influencing the response. Besides this, the removal of the non-significant terms did not result in an appreciable increase in significance of the model in our case.

The regression model of the CCD data using actual factors is shown in eqn (10), where X_1 is the temperature, X_2 is specific energy, and Y_{proteins} is the response variable (protein yield). This equation allows us to directly estimate the soluble protein yield from the actual values of temperature and specific energy.

$$Y_{\text{proteins}} = -28.31 + 1.32X_1 - 0.0049X_1^2 + 4.12X_2 - 0.0801X_2^2 - 0.0198X_2X_1 \quad (10)$$

Table 4 shows the actual values of the factors, and observed and predicted yield for each run at 5 min for ground leaves (<1 mm). Higher yield ($68.0 \pm 0.6\%$) was observed at an energy input of 20 kJ kg⁻¹ and temperature of 78.3 °C. Application of 70 °C and 30 kJ kg⁻¹ showed a sharp decrease in yield (47.9 ± 3.5) when compared to samples at 70 °C and 10 kJ kg⁻¹. Lower temperatures (30 °C) resulted in low yields (40–46%), depending on PEF treatment.

The three-dimensional (3D) response surface plot is the graphical representation of the regression equation (eqn (10)), and the results of protein yield, as affected by the extraction temperature (X_1) and specific energy (X_2), are presented in Fig. 3. They provide a better visualization of the relationship between response and experimental levels of each variable and the type of interactions between them.

Table 4 Central composite design and observed values for soluble protein yield

Run	Uncoded variables		Soluble protein yield (%)	
	X_1 temperature (°C)	X_2 W_{spec} (kJ kg ⁻¹)	Y_e experimental yield	Y_p predicted yield
1	30.0	10.0	41.7	34.3
2	30.0	30.0	46.3	40.8
3	70.0	10.0	55.7	59.7
4	70.0	30.0	50.3	50.4
5	21.7	20.0	31.7	40.0
6	78.3	20.0	68.6	64.7
7	50.0	5.90	35.8	41.3
8	50.0	34.1	39.4	39.4
9	30.0	10.0	40.5	34.3
10	30.0	30.0	45.5	40.8
11	70.0	10.0	62.0	59.7
12	70.0	30.0	45.4	50.4
13	21.7	20.0	33.2	40.0
14	78.3	20.0	67.3	64.7
15	50.0	5.90	40.1	41.3
16	50.0	34.1	37.5	39.4
17	50.0	20.0	59.7	56.3
18	50.0	20.0	55.5	56.3
19	50.0	20.0	60.4	56.3
20	50.0	20.0	51.8	56.3
21	50.0	20.0	61.2	56.3
22	50.0	20.0	49.1	56.3



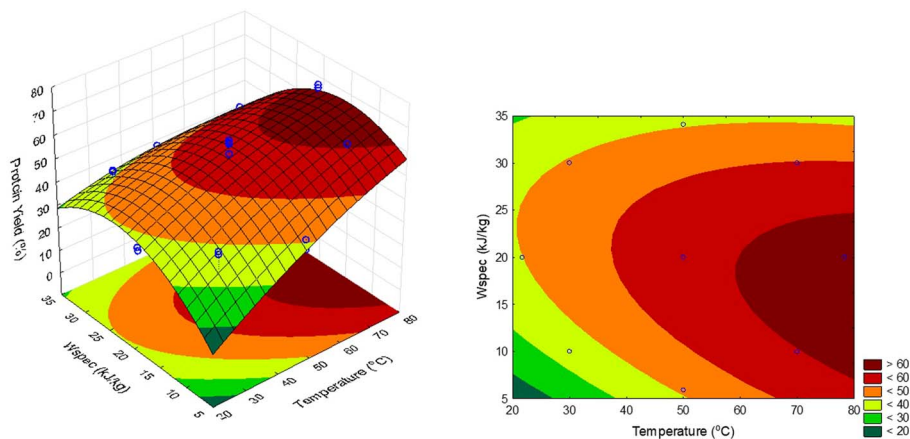


Fig. 3 Effect of dependent variables (temperature and specific energy) on soluble protein yield: surface and contour plots.

The highly significant quadratic effect of specific energy can be noted in Fig. 3. This quadratic effect on protein yield implies that there is an optimum condition for the energy applied. According to Toepfl *et al.*,⁴³ in most cases, the higher the process intensity, the larger the number and size of the pores. However, the beneficial effect has certain limits, since high permeabilization does not always represent a positive impact on subsequent processes. An increase in specific energy (0 to 20 kJ kg⁻¹) led to higher protein yield until a decrease is observed at specific energies higher than 25 kJ kg⁻¹. This effect is intensified by temperature, and the degree of specific energy at which the curvature arises is also temperature-dependent, highlighting the necessity of examining both variables together to completely comprehend the investigated phenomenon. The negative impact on protein yield may be due to high exposure to electric fields and temperature, which causes irreversible changes in proteins, thus affecting soluble protein extraction yield. Reduction in solubility of soy protein isolates was also reported by Y. Li *et al.*⁵⁰ after PEF treatment. The insolubilization could be due to protein denaturation and aggregation, during higher PEF treatment. This behavior is in close agreement with that observed by Zhou *et al.*,⁵¹ which evaluated the effect of PEF on protein extraction from mussels. The linear effect of temperature on protein yield is also observed as shown in Fig. 3, indicating that with an increase in temperature, protein yield also escalated. This effect is observed due to higher solubility and diffusivity of components being extracted at higher temperature levels, thus yielding higher extraction rates.⁴⁵ As shown in Fig. 3, it is possible to observe a region with high extraction yields above 60 °C and between 10 and 24 kJ kg⁻¹, evidencing the influence of both temperature and specific energy on protein yield. A point within the region with maximum yield was chosen for additional validation of the prediction power of the model. At 70 °C and 20 kJ kg⁻¹, the prediction made by the model suggests a yield of 63.0%, which closely agrees with the observed protein yield of 65.1% ± 0.6, obtained previously in the kinetics study. At the same time, the model predicted a yield of 64.7% when extraction was conducted at 78 °C and 20 kJ kg⁻¹. Thus, the best regions to

perform the extractions and obtain >60% yield are found at 70–78 °C with specific energy ranging from 10 to 24 kJ kg⁻¹, using an electric field intensity of 3 kV cm⁻¹, liquid–solid ratio of 1 : 15, and extraction time of 5 minutes with ground leaves <1 mm.

Previous studies have mainly focused on utilizing RSM to optimize PEF-assisted extraction processes for antioxidants and phenolic compounds.^{21,22} In the current work, the same approach contributed to a better understanding of the combined effects of temperature and PEFs on extraction of soluble protein from leaves and allowed the identification of an optimal operational range. These findings are strongly relevant for scientists and engineers seeking alternative plants for protein extraction and developing innovative and sustainable applications for food processing.

4 Conclusions

This study demonstrated the significance of specific energy and temperature in extracted protein yield. PEF application can increase the extraction yield and reduce the extraction time, acting as a promising methodology for protein extraction from leaves. The PEF specific energy input, extraction temperature and particle size had a high influence on solid–liquid extraction kinetics. The CCD analysis showed that the linear effect of temperature and quadratic effect of specific energy are highly significant for protein yield. The best conditions to obtain the maximum extraction yield of protein from nettle leaves were found in the following regions: an electric field intensity of 3 kV cm⁻¹, specific energy ranging from 10 to 24 kJ kg⁻¹, temperature from 70–78 °C, liquid–solid ratio of 1 : 15, extraction time of 5 minutes, and ground leaves (<1 mm), where the protein yield is over 60%.

Author contributions

Morgana Kronbauer: investigation, writing – original draft. Ivan Shorstkii: conceptualization, data curation, formal analysis, writing – review & editing. Suse Botelho da Silva: conceptualization, data curation, formal analysis, writing – review & editing.



Stefan Toepfl: funding acquisition, validation, supervision. Alica Lammerskitten: conceptualization, funding acquisition, project administration, writing – review & editing. Claudia Siemer: conceptualization, funding acquisition, project administration, writing – review & editing.

Conflicts of interest

The authors M. Kronbauer, S. B. Silva, and I. Shorstkii declare they have no financial interests. S. Toepfl, C. Siemer, and A. Lammerskitten report a relationship with Elea Vertriebs- und Vermarktungsgesellschaft mbH that includes board membership and/or employment.

Acknowledgements

The authors gratefully acknowledge the funding to the project (ZF4371003) provided by the Federal Ministry for Economic Affairs and Climate Action (BMWK) on the basis of a decision by the German Bundestag.

References

- M. Ahmed Kk and S. Parsuraman, *Syst. Rev. Pharm.*, 2014, **5**, 6–8.
- L. Grauso, B. de Falco, V. Lanzotti and R. Motti, *Phytochem. Rev.*, 2020, **19**, 1341–1377.
- G. Kutlu, F. Bozkurt and F. Tornuk, *Int. J. Biol. Macromol.*, 2020, **162**, 480–489.
- B. C. Joshi, M. Mukhija and A. N. Kalia, *Int. J. Green Pharm.*, 2014, **8**(4), 201–209.
- K. Movagharnejad, F. Vahdatkhoram and S. Nanvakenari, *J. Therm. Anal. Calorim.*, 2019, **135**, 1677–1685.
- A. A. H. Said, I. S. El Otmani, S. Derfoufi and A. Benmoussa, *Int. J. Pharm. Pharm. Sci.*, 2015, **7**, 8–14.
- Grandview Research, *Protein ingredients market analysis by product, by application, and segment forecasts to 2020*, <https://www.grandviewresearch.com/industry-analysis/protein-ingredients-market>.
- L. Rehder and K. Luxbacher, *Plant-Based Food Goes Mainstream in Germany*, 2023.
- P. W. Baker and A. Charlton, *Innovative Food Sci. Emerging Technol.*, 2020, **59**, 102239.
- Z. Li, Y. Fan and J. Xi, *Food Chem.*, 2019, **277**, 246–260.
- F. A. Wani, R. Rashid, A. Jabeen, B. Brochier, S. Yadav, T. Aijaz, H. A. Makroo and B. N. Dar, *Int. J. Food Sci. Technol.*, 2021, **56**, 4823–4833.
- M. Velusamy, A. Rajan and M. Radhakrishnan, *Int. J. Food Sci. Technol.*, 2023, **58**, 2021–2041.
- S. Toepfl, C. Siemer and V. Heinz, in *Emerging Technologies for Food Processing*, Elsevier, 2nd edn, 2014, pp. 147–154.
- S. Mahnič-Kalamiza, E. Vorobiev and D. Miklavčič, *J. Membr. Biol.*, 2014, **247**, 1279–1304.
- M. A. Maza, C. Pereira, J. M. Martínez, A. Camargo, I. Álvarez and J. Raso, *Innovative Food Sci. Emerging Technol.*, 2020, **63**, 102375.
- O. Parniakov, E. Roselló-Soto, F. J. Barba, N. Grimi, N. Lebovka and E. Vorobiev, *Food Res. Int.*, 2015, **77**, 711–717.
- S. Zhang, L. Sun, H. Ju, Z. Bao, X. an Zeng and S. Lin, *Food Res. Int.*, 2021, **139**, 109914.
- D. E. Chafai, V. Sulimenko, D. Havelka, L. Kubínová, P. Dráber and M. Cifra, *Adv. Mater.*, 2019, **31**, 1903636.
- L. Zhang, L. J. Wang, W. Jiang and J. Y. Qian, *LWT*, 2017, **84**, 73–81.
- O. Parniakov, F. J. Barba, N. Grimi, N. Lebovka and E. Vorobiev, *Food Chem.*, 2016, **192**, 842–848.
- M. Gagnetten, G. Leiva, D. Salvatori, C. Schebor and N. Olaiz, *Food Bioprocess Technol.*, 2019, **12**, 1102–1109.
- D. Frontuto, D. Carullo, S. M. Harrison, N. P. Brunton, G. Ferrari, J. G. Lyng and G. Pataro, *Food Bioprocess Technol.*, 2019, **12**, 1708–1720.
- D. P. Jaeschke, G. D. Mercali, L. D. F. Marczak, G. Müller, W. Frey and C. Gusbeth, *Bioresour. Technol.*, 2019, **283**, 207–212.
- O. Parniakov, F. J. Barba, N. Grimi, L. Marchal, S. Jubeau, N. Lebovka and E. Vorobiev, *Innovative Food Sci. Emerging Technol.*, 2015, **27**, 79–85.
- A. Robin, M. Kazir, M. Sack, A. Israel, W. Frey, G. Mueller, Y. D. Livney and A. Golberg, *ACS Sustain. Chem. Eng.*, 2018, **6**, 13696–13705.
- M. C. Alles, S. Smetana, O. Parniakov, I. Shorstkii, S. Toepfl, K. Aganovic and V. Heinz, *Innovative Food Sci. Emerging Technol.*, 2020, **64**, 102403.
- S. Smetana, H. Mhemdi, S. Mezdour and V. Heinz, in *Pulsed Electric Fields to Obtain Healthier and Sustainable Food for Tomorrow*, Elsevier, 2020, pp. 247–266.
- M. A. Maza, C. Delso, I. Álvarez, J. Raso and J. M. Martínez, *LWT*, 2020, **118**, 108788.
- X. Yu, O. Bals, N. Grimi and E. Vorobiev, *Ind. Crops Prod.*, 2015, **74**, 309–318.
- F. J. Barba, N. Grimi and E. Vorobiev, *J. Food Eng.*, 2015, **149**, 222–228.
- Association of Official Agricultural Chemists (AOAC), *Official methods of analysis*, 1975, vol. 222.
- C. Siemer, S. Toepfl and V. Heinz, in *Distillation: Advances from Modeling to Applications*, InTech, 2012, pp. 211–232.
- Thermo Fisher Scientific, *User Guide: Pierce BCA Protein Assay Kit*, 2020.
- A. Bucić-Kojić, M. Planinić, S. Tomas, M. Bilić and D. Velić, *J. Food Eng.*, 2007, **81**, 236–242.
- I. Shorstkii, E. H. A. Mounassar, U. Bindrich, V. Heinz and K. Aganovic, *Chem. Ing. Tech.*, 2022, DOI: [10.1002/cite.202200034](https://doi.org/10.1002/cite.202200034).
- D. Kregiel, E. Pawlikowska and H. Antolak, *Molecules*, 2018, **23**, 1–21.
- T. T. Shonte, K. G. Duodu and H. L. de Kock, *Heliyon*, 2020, e03938.
- US FDA, *A Food Labeling Guide*, 2013, pp. 123–191.
- M. P. Hojilla-Evangelista, G. W. Selling, R. Hatfield and M. Digman, *J. Sci. Food Agric.*, 2017, **97**, 882–888.
- C. Y. Takeiti, G. C. Antonio, E. M. P. Motta, F. P. Collares-Queiroz and K. J. Park, *Int. J. Food Sci. Nutr.*, 2009, **60**, 148–160.



- 41 B. M. Adhikari, A. Bajracharya and A. K. Shrestha, *Food Sci. Nutr.*, 2016, **4**, 119–124.
- 42 L. K. Rutto, Y. Xu, E. Ramirez and M. Brandt, *Int. J. Food Sci.*, 2013, 1–7.
- 43 D. Alemayehu, G. Desse, K. Abegaz, B. B. Desalegn and D. Getahun, *Int. J. Food Sci. Nutr. Eng.*, 2016, **6**, 55–61.
- 44 A. Paulauskienė, Ž. Tarasevičienė and V. Laukagalis, *Plants*, 2021, **10**, 686.
- 45 T. Varzakas and C. Tzia, *Food Engineering Handbook: Food Engineering Fundamentals*, 2014.
- 46 H. E. E. A. Elhag, A. Ajit and A. Z. Sulaiman, *Mater. Today: Proc.*, 2020, **31**, 1–8.
- 47 B. Kumari, B. K. Tiwari, M. B. Hossain, D. K. Rai and N. P. Brunton, *Int. J. Food Sci. Technol.*, 2017, **52**, 1432–1439.
- 48 J. Raso, W. Frey, G. Ferrari, G. Pataro, D. Knorr, J. Teissie and D. Miklavčič, *Innovative Food Sci. Emerging Technol.*, 2016, **37**, 312–321.
- 49 B. Chauhan and R. Gupta, *Process Biochem.*, 2004, **39**, 2115–2122.
- 50 Y. Li, Z. Chen and H. Mo, *LWT–Food Sci. Technol.*, 2007, **40**, 1167–1175.
- 51 Y. Zhou, Q. He and D. Zhou, *J. Food Process. Preserv.*, 2017, **41**(3), e12962.

