



Cite this: *Phys. Chem. Chem. Phys.*, 2022, 24, 1638

Role of conical intersection seam topography in the chemiexcitation of 1,2-dioxetanes†

Ignacio Fdez. Galván,^{id}*^a Anders Brakestad^{id}^{bc} and Morgane Vacher^{id}*^d

Chemiexcitation, the generation of electronic excited states by a thermal reaction initiated on the ground state, is an essential step in chemiluminescence, and it is mediated by the presence of a conical intersection that allows a nonadiabatic transition from ground state to excited state. Conical intersections classified as sloped favor chemiexcitation over ground state relaxation. The chemiexcitation yield of 1,2-dioxetanes is known to increase upon methylation. In this work we explore to which extent this trend can be attributed to changes in the conical intersection topography or accessibility. Since conical intersections are not isolated points, but continuous seams, we locate regions of the conical intersection seams that are close to the configuration space traversed by the molecules as they react on the ground state. We find that conical intersections are energetically and geometrically accessible from the reaction trajectory, and that topographies favorable to chemiexcitation are found in all three molecules studied. Nevertheless, the results suggest that dynamic effects are more important for explaining the different yields than the static features of the potential energy surfaces.

Received 3rd November 2021,
 Accepted 23rd December 2021

DOI: 10.1039/d1cp05028a

rsc.li/pccp

1 Introduction

Conical intersections (CIs) are known to play a key role in photochemistry.^{1–3} Absorption of light can promote a molecule into an electronically excited state. CIs, when present and accessible, offer an ultrafast non-radiative pathway to relax back to the electronic ground state. This nonadiabatic relaxation path can be associated with a chemical reaction, *i.e.* the formation of a new chemical compound. Chemiluminescence can be seen as a reverse photochemical process: it is the emission of light as a result of a nonadiabatic chemical reaction.⁴ More precisely, a thermally activated molecule reacts and, by doing so, undergoes a nonadiabatic transition from the reactant in the electronic ground state up to an electronic excited state of the product or an intermediate. The latter then releases the excess energy in the form of a photon.

Chemiluminescence occurring in living organisms is called bioluminescence.⁵ While the most typical example is the

firefly,⁶ bioluminescence is mainly found in animals living in the sea.^{7,8} Light emission serves several important functions in Nature with, in general, bioluminescent glows acting as attractant signals while sudden flashes are thought to be repellent.⁷ Examples include various defensive mechanisms against predators,^{9–12} offensive strategies to illuminate, lure or confuse preys,^{11,13–15} and means of communication to attract partners.^{16–19} Chemiluminescence also has practical applications,²⁰ for instance in real-time *in vivo* imaging,²¹ immunoassays developed for diverse biochemical and clinical analytes,²² combustion diagnostics,²³ analysis of atmospheric pollution,²⁴ and biosensing for environmental pollutants and food industry, *etc.*²⁵

Almost all currently known chemiluminescent systems have the –O–O– peroxide bond in common.⁴ The smallest such system with chemiluminescent properties is the 1,2-dioxetane molecule which breaks down into two formaldehydes (see Fig. 1).²⁶ Theoretical studies, involving in particular non-adiabatic dynamics simulations, provided insights into the mechanism and yield of chemiluminescent reactions of 1,2-dioxetane and other larger molecules, *e.g.* the firefly dioxetane anion, luminol, and 1,2-dioxetanedione.^{26–30} According to previous works, the general mechanism of the decomposition

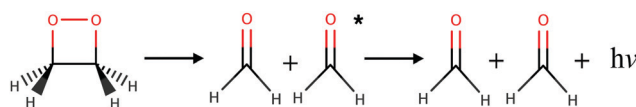


Fig. 1 Chemiluminescent decomposition reaction of 1,2-dioxetane into two formaldehydes.

^a Department of Chemistry – BMC, Uppsala University, P.O. Box 576, SE-751 23 Uppsala, Sweden. E-mail: ignacio.fernandez@kemi.uu.se

^b Hylleraas Centre for Quantum Molecular Sciences, UiT The Arctic University of Norway, 9037 Tromsø, Norway

^c Department of Chemistry, UiT The Arctic University of Norway, 9037 Tromsø, Norway

^d Université de Nantes, CNRS, CEISAM UMR 6230, F-44000 Nantes, France.

E-mail: morgane.vacher@univ-nantes.fr

† Electronic supplementary information (ESI) available: Transition dipole moments along the reference trajectories. Geometries of the three studied molecules, **OMe**, **1Me** and **2Me**, for the reference trajectories, and for the optimized conical intersection “valleys”. See DOI: 10.1039/d1cp05028a



reaction in the 1,2-dioxetane molecule implies a stepwise process:^{26,27} (i) the O–O bond breaks leading to a biradical intermediate with four singlet and four triplet electronic states that are energetically quasi-degenerate; and (ii) the C–C bond breaks leading to dissociation of the molecule into two formaldehyde molecules. For the second step, dark decomposition is said to occur if the two formed formaldehyde molecules are in the ground state, while chemiluminescent decomposition occurs if one formaldehyde molecule ends up in a singlet or triplet excited state. Chemical titrations of formaldehyde and chemiluminescence measurements have shown that the yield of the triplet excited states is much higher than that of the singlet excited states.³¹

Already in the 1980s, dioxetane molecules with systematic substitution of a hydrogen atom by a methyl group were studied experimentally in solution in an attempt to rationalize the chemiluminescence yields.³¹ An important observation is that the chemiexcitation efficiency increases significantly with the degree of methylation: substituting all four hydrogen atoms by methyl groups enhances the chemiluminescence yield from approximately 0.3% to 35%. The reason for this impressive increase in chemiluminescence yield remained an outstanding question for several decades. In 2007, it was suggested that adding substituents to 1,2-dioxetane, thereby increasing the number of degrees of freedom for the molecule, would increase the time spent in the electronically quasi-degenerate region of the potential energy surface, thus creating an “entropic trap” that enhances the possibility of populating the product excited states.²⁶ This view was supported in a more recent theoretical investigation that used *ab initio* molecular dynamics in gas phase to study five of the methyl-substituted 1,2-dioxetanes. It was found that the higher chemiexcitation yield in the methyl-substituted molecules could be attributed to an increased lifetime of the biradical intermediates.³² However, this is partly due to a simple mass effect. The rotation around the O–C–C–O dihedral angle is slowed down; thus, the molecular system stays longer in the entropic trap region. In that latter study, a kinetic model was also presented to explain how slower dissociation can lead to a higher chemiluminescence yield.³²

In addition to the dynamic effects considered above, the probability to undergo a nonadiabatic transition is generally expected to depend on the topography of a CI and on the approach to this CI (direction and speed of the nuclear trajectory or wavepacket).^{33,34} In particular, one distinguishes between peaked CIs, where the intersection point is a minimum on the upper state surface, and sloped CIs, where the energy of the upper state can become lower than that of the intersection along some directions.³⁵ On the one hand, during a photochemical reaction, peaked CIs are generally thought to yield to a more efficient nonadiabatic decay to a lower-energy electronic state, due to either topographical or dynamical effects.³⁴ Indeed, as a peaked intersection is a minimum on the upper state surface, it can act as a funnel or attractor for processes occurring on this upper surface. On the other hand, chemiexcitation is expected to be favored by sloped CIs since, in that case, there exists a relaxation path on the upper surface,

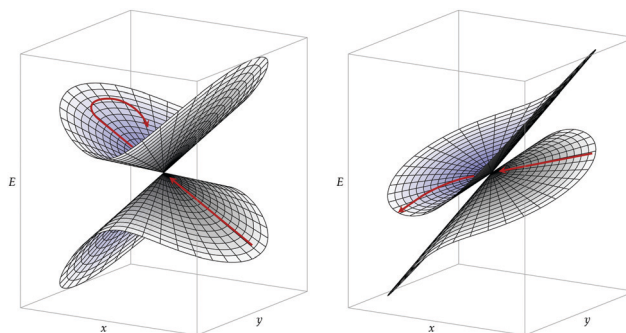


Fig. 2 Representation of the potential energy surfaces on the branching plane (the x and y axes) around two conical intersections. Left: Peaked intersection. Right: Sloped intersection. The red arrows illustrate a possible trajectory starting on the lower surface.

i.e. a path along which the potential energy of the excited state decreases as one goes away from the CI (see Fig. 2).³³

The aim of the present work is to understand further the increase in chemiexcitation yields upon methylation of 1,2-dioxetanes, through a detailed study of the CI seams. How close is the intersection seam from the ground state decomposition pathway (in energy and geometry)? Does the CI topography favor chemiexcitation in certain regions of the seams? Are there significant differences between methyl-substituted compounds that can further explain the observed trend in yields? Can a “static” analysis replace or complement the *ab initio* molecular dynamics simulations? These are important questions, not only to understand the chemiluminescence in the dioxetane molecules but also to understand how Nature has designed efficient bioluminescent systems and how researchers can potentially design more efficient chemiluminescent systems with, for instance, medical applications.

The article is structured as follows: in Sections 2 and 3, the theory and computational details used in this work, respectively, are presented. In Section 4, the results are exposed and discussed. Section 5 offers some concluding remarks.

2 Conical intersection characterization

Two electronic diabatic states may cross. If the adiabatic potential energy surfaces (PES) are degenerate at some point, they typically form a conical intersection.³⁶ The set of geometries where the surfaces are degenerate is the intersection space, and it has a dimensionality of $K - 2$ degrees of freedom, where K is the dimensionality of the PES themselves. The remaining 2 degrees of freedom form the branching space (or, locally, branching plane), where the degeneracy is lifted. For more details about conical intersection characterization, the reader is advised to refer to previous works, especially ref. 33 and 35–37, only a quick summary is provided here. At a conical intersection point, two independent geometrical distortions can linearly break the degeneracy. These directions, usually obtained as \mathbf{g}^{AB} (the half-difference between the gradients of the



two intersecting states) and \mathbf{h}^{AB} (the derivative coupling between the two states), thus define the branching plane. In general, \mathbf{g}^{AB} and \mathbf{h}^{AB} are not orthogonal, but a suitable unitary rotation between the intersecting states can be chosen such that the corresponding vectors are orthogonal, denoted as $\hat{\mathbf{g}}$ and $\hat{\mathbf{h}}$. The average length of $\hat{\mathbf{g}}$ and $\hat{\mathbf{h}}$ determines the pitch, δ_{gh} , or overall steepness of the intersecting PES. The relative difference between the same lengths determines the asymmetry, Δ_{gh} , or the extent in which the shape deviates from a radially symmetric double cone. A third vector, \mathbf{s}^{AB} , the average gradient of the two states, and its orientation relative to $\hat{\mathbf{g}}$ and $\hat{\mathbf{h}}$, determine the tilt, σ , and tilt heading, θ_s , parameters. All these parameters can be used to define a linear model that describes the two intersecting PES around the intersection point for geometries in the branching plane:³³

$$E(r, \theta) = E^{\times} + \delta_{\text{gh}} r \left(\sigma \cos(\theta - \theta_s) \pm \sqrt{1 + \Delta_{\text{gh}} \cos 2\theta} \right) \quad (1)$$

where r and θ are the polar coordinates on the branching plane, and E^{\times} is the energy at the conical intersection, placed at the origin.

Conical intersections can be classified as peaked or sloped according to the behavior of the upper surface in the branching plane around the intersection. In peaked intersection, the intersection point is a minimum on the upper surface, *i.e.* any small displacement from the intersection point in the branching plane would result in an increase of energy of the upper surface. In a sloped intersection there are some directions in the branching plane in which a displacement from the intersection point results in a decrease of energy of the upper surface. See Fig. 2.

To characterize an intersection as peaked or sloped, a condition number \mathcal{P} can be computed:³³

$$\mathcal{P} = \frac{\sigma^2}{1 - \Delta_{\text{gh}}^2} (1 - \Delta_{\text{gh}} \cos 2\theta_s) \quad (2)$$

If $\mathcal{P} < 1$, the intersection is peaked; if $\mathcal{P} > 1$, the intersection is sloped. From the point of view of chemiexcitation, sloped intersections are particularly interesting, as they provide a possible pathway that simultaneously stabilizes the excited state and avoids further nonadiabatic transitions to the ground state by breaking the degeneracy between the surfaces.

However, although the $\mathcal{P} > 1$ condition is a rigorously mathematical one, it is not necessarily the best way to characterize the likelihood of a system escaping the CI region on the excited state. In the first place, the condition is binary: it only tells whether or not a downhill escape path exists in the branching plane on the upper surface. It should not, in principle, be used to compare intersections to decide which one is more sloped or closer to being sloped. In the second place, the peaked/sloped classification is only strictly valid for minimum energy intersection points, or at least for points which are critical points in the intersection space, where the gradient along every direction not in the branching plane (the intersection space) vanishes. For any other intersection point, there is a nonzero gradient in the intersection space, which means

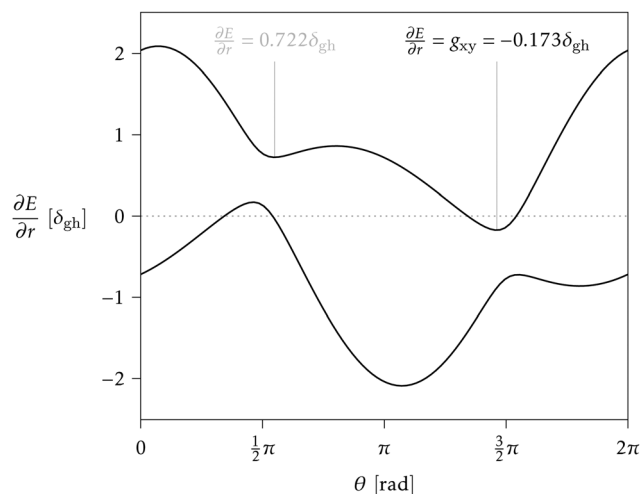


Fig. 3 Example of a $\partial E/\partial r$ vs. θ plot for a conical intersection with $\Delta_{\text{gh}} = 0.9$, $\sigma = 0.8$ and $\theta_s = 0.6$ rad. The two curves correspond to the lower and upper surface, and the gradient is given in units of δ_{gh} . The upper surface shows two minimum gradient directions (vertical lines), the lowest of which determines g_{xy} . Since the lowest gradient is negative, this intersection can be classified as sloped (accordingly, $\mathcal{P} = 2.27 > 1$).

that it is always possible to find directions with negative gradient on the upper surface by combining contributions from the branching plane and intersection space.

In this work, therefore, to compare intersections and quantify their degree of “slopedness”, we use the minimum radial gradient on the upper surface in the branching plane, g_{xy} , *i.e.*

$$g_{xy} = \min \frac{\partial E(r, \theta)}{\partial r} \quad (3)$$

$$\frac{\partial E(r, \theta)}{\partial r} = \delta_{\text{gh}} \left(\sigma \cos(\theta - \theta_s) + \sqrt{1 + \Delta_{\text{gh}} \cos 2\theta} \right) \quad (4)$$

where the \pm sign from eqn (1) is now + because we are looking only at the upper surface. This minimum will be negative if $\mathcal{P} > 1$ and positive if $\mathcal{P} < 1$. Finding the minimum numerically is easy, once δ_{gh} , Δ_{gh} , σ , and θ_s are known, especially given the fact that a plot of $\partial E/\partial r$ vs. θ can only have one or two local minima in the range $[0, 2\pi]$.³³ But obtaining a closed analytical expression resulted too cumbersome to be of practical use. For an example see Fig. 3.

We also want to take into account the effect of the gradient in the intersection space, \mathbf{g}_z , which is obtained from the average gradient of the two states, \mathbf{s}^{AB} , by projecting out the components in the branching plane:

$$\mathbf{s}^{\text{AB}} = \frac{1}{2}(\mathbf{g}^{\text{B}} + \mathbf{g}^{\text{A}}) \quad (5)$$

$$\mathbf{g}_z = \mathbf{s}^{\text{AB}} - (\mathbf{s}^{\text{AB}} \cdot \hat{\mathbf{x}})\hat{\mathbf{x}} - (\mathbf{s}^{\text{AB}} \cdot \hat{\mathbf{y}})\hat{\mathbf{y}} \quad (6)$$

where $\hat{\mathbf{x}}$, $\hat{\mathbf{y}}$ are orthogonal unit vectors defining the branching plane, *i.e.* unit vectors in the directions of $\hat{\mathbf{g}}$ and $\hat{\mathbf{h}}$. As mentioned above, when \mathbf{g}_z is not zero (*i.e.* when the system is not at a minimum energy intersection point), it is always possible to find directions not lying entirely on the branching plane that satisfy the sloped condition: a displacement in that direction



breaks the degeneracy and stabilizes the upper surface. We consider how much this direction must deviate from the branching plane in order for the upper surface gradient to become zero, and express it as an angle, α_s :

$$g_{xy} \cos \alpha_s - g_z \sin \alpha_s = 0 \quad (7)$$

$$\alpha_s = \arctan \frac{g_{xy}}{g_z} \quad \alpha_s \in \left[-\frac{1}{2}\pi, \frac{1}{2}\pi\right] \quad (8)$$

where g_z is the magnitude of \mathbf{g}_z and it is a positive number. This angle can be interpreted as the “mixing” between the direction of the minimum gradient in the branching plane and the direction of \mathbf{g}_z that results in zero total gradient. If g_{xy} is negative (the intersection is normally classified as sloped), α_s will be negative, meaning that an uphill contribution from the intersection space would be needed to obtain a zero slope. For the purpose of this work we can say these intersections are “conditionally sloped”, in the sense that no component in the intersection space is needed to obtain a negative slope on the upper surface, and if such a component is added, they are more likely to be sloped than peaked. If g_{xy} is positive, α_s will be positive, and some downhill contribution from the intersection space is needed to obtain a negative slope on the upper surface, we call these intersections “conditionally peaked”. In the case of a minimum energy intersection point (or conical intersection, MECI), $g_z = 0$ and $\alpha_s = \pm\frac{1}{2}\pi$. No contribution from the intersection space gradient can change the sign of g_{xy} , and the intersection is “always peaked” or “always sloped”. To summarize:

$$\alpha_s \in \begin{cases} -\frac{1}{2}\pi & \text{(MECI) always sloped} \\ (-\frac{1}{2}\pi, 0) & \text{conditionally sloped} \\ 0 & \text{level} \\ (0, \frac{1}{2}\pi) & \text{conditionally peaked} \\ \frac{1}{2}\pi & \text{(MECI) always peaked} \end{cases} \quad (9)$$

It is reminded that this discussion is based on the linear model, eqn (1), and it can only describe the potential energy surfaces in the close vicinity of the intersection seam, so extrapolations to other regions must be done with caution. The range of validity of this model would depend on the importance of higher-order terms in the description of the surfaces.³⁸ Nevertheless, we suggest that lower values of g_{xy} and α_s are indications of a topography more favorable to a relaxation on the upper surface, and therefore to chemiexcitation.

Besides the shape of the potential energy surfaces, it is also interesting to compare the wave functions involved in conical intersections. There are two main difficulties that make this task not trivial. The first one is due to the complexity of a general polyelectronic wave function. As chemists, we like to refer to electronic configurations, orbital occupations or state characters, but these are only partial aspects of a wave function. A more formal measure of the similarity between two wavefunctions is their overlap,³⁹ although it offers little insight into their differences. The second difficulty is more specific to conical intersections, where two electronic states are degenerate. The degeneracy

means any linear combination of the two crossing wave functions is also an equally valid solution with the same energy. It is therefore not meaningful to analyze or compare the states one by one.

We address this last difficulty by comparing not the individual states, but the electronic space spanned by a set of states, *i.e.* the ensemble of possible wave functions that can be expressed as a linear combination of the states in the set. The two states crossing at an intersection are not uniquely defined, but the electronic space spanned by them is invariant, *i.e.* it is not altered by unitary rotations among the states. These electronic spaces can be compared by means of their “principal angles”⁴⁰ or, more succinctly, with a single number, R , that results from the product of the cosines of the principal angles. If all angles are zero, the two electronic spaces are coincident, all the cosines are 1 and $R = 1$. As any angle approaches $\frac{\pi}{2}$, its cosine will approach 0 and $R \rightarrow 0$. So, analogously to the dot or inner product, R gives a measure of the overlap between two electronic spaces.

In practice, we compute the matrix of state overlaps \mathbf{A} , with elements

$$A_{ij} = \langle \Psi'_i | \Psi_j \rangle \quad (10)$$

where $\Psi'_i \{i = 1, \dots, N\}$ and $\Psi_j \{j = 1, \dots, M\}$ are the wave functions of different sets of states at possibly different geometries. The value R can be obtained as the product of the singular values of \mathbf{A} :

$$\mathbf{A} = \mathbf{U} \text{diag}(\zeta) \mathbf{V}^T \quad (\text{singular value decomposition}) \quad (11)$$

$$R = \prod \zeta_i \quad (12)$$

For normalized wave functions, ζ_i and R are between 0 and 1. Thus, a value of R close to 1 indicates high overlap (similarity) between the electronic spaces spanned by $\Psi'_{1\dots N}$ and $\Psi'_{1\dots M}$, while a value of 0 indicates one of the electronic spaces contains at least one degree of freedom that cannot be represented in the other electronic space. Note that we do not require that N and M are equal, *i.e.* the two electronic spaces may have different dimensionality. In that case R indicates the extent to which the smaller electronic space can be represented as a subspace of the larger one.

A useful tool in understanding electronic states and their differences is their natural orbitals and corresponding occupation numbers. They are the eigenvectors and eigenvalues of the one-electron density matrix of the state. If one tries to obtain the natural orbitals for the states in an intersection, the same problem discussed above arises: different unitary rotations of the crossing states are equally valid, and they could result in completely different natural orbital descriptions. However, the average density matrix of the crossing states is invariant to these unitary rotations, and therefore the corresponding eigenvectors and eigenvalues could be an appropriate description for the pair of states as a whole. We will call the orbitals obtained in this way the “natural intersection orbitals” (NIO). The concept is essentially the same as the natural average orbitals regularly used in state-average CASSCF calculations, but in this case the averaging is restricted to the states that are degenerate in energy. In addition to the R values, comparing the NIOs and



their occupations for different intersections can provide insight into the similarities or differences between the wave functions involved.

3 Computational details

The CI seams of 1,2-dioxetane and methylated derivatives were explored with particular attention to their relationship with the corresponding dissociating trajectories. A full dynamical study would include the computation of a number of trajectories with different initial geometries and momenta intended to represent the quantum nuclear wavepacket delocalization, as was done in ref. 27 and 32. However, in this work we take a “classical” approach, using a single reference trajectory for each compound (see below for details) and comparing the obtained CI seams with it.

We studied three compounds of the methylated dioxetane series, namely 1,2-dioxetane (**0Me**), 3-methyl-1,2-dioxetane (**1Me**) and *trans*-3,4-dimethyl-1,2-dioxetane (**2Me**), shown in Fig. 4, in gas phase. Among the several dimethyl-1,2-dioxetane isomers, we have chosen the *trans* isomer because this is the one with the highest reported chemiexcitation yield. As a result, substituting two of the four hydrogen atoms by methyl groups enhances the chemiexcitation yield by a factor of more than 50.³¹ This increase is large enough to test the importance of “static” explanations. Although tri- and tetra-methylated derivatives show even higher chemiexcitation yield, we considered that the lighter members of the series should already be representative of the trend, and thus avoid the increased computational cost that would be needed. The reference trajectories were obtained from a simulation of the ground state only, starting from the transition state (TS) of the O–O bond breaking, with 1 kcal mol^{−1} kinetic energy along the transition vector. This is the “unsampled” trajectory described in ref. 27 for **0Me**, and identical settings were used for the corresponding trajectories of **1Me** and **2Me**. From the initial structure, the trajectories were obtained by numerical integration of the classical equations of motion with the velocity Verlet algorithm, using a time step of 10 a.u. (~0.24 fs) and including all nuclear coordinates.

Once the reference trajectories were obtained, conical intersections between the two lowest singlet states were searched for in their vicinity. A possible approach would be finding the CI seam region closest to the reference trajectory, by locating minimum distance crossing points.⁴¹ We chose, however, to search not necessarily the closest points, but low energy regions roughly parallel to the reference trajectory. Thus, CI structures were optimized on hyperplanes perpendicular to the reference trajectories at specific points (every 5th step, 1.2 fs, for **0Me** and **1Me**;

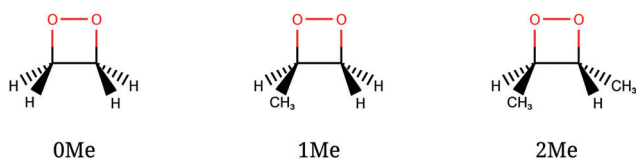


Fig. 4 Dioxetane species studied in this work.

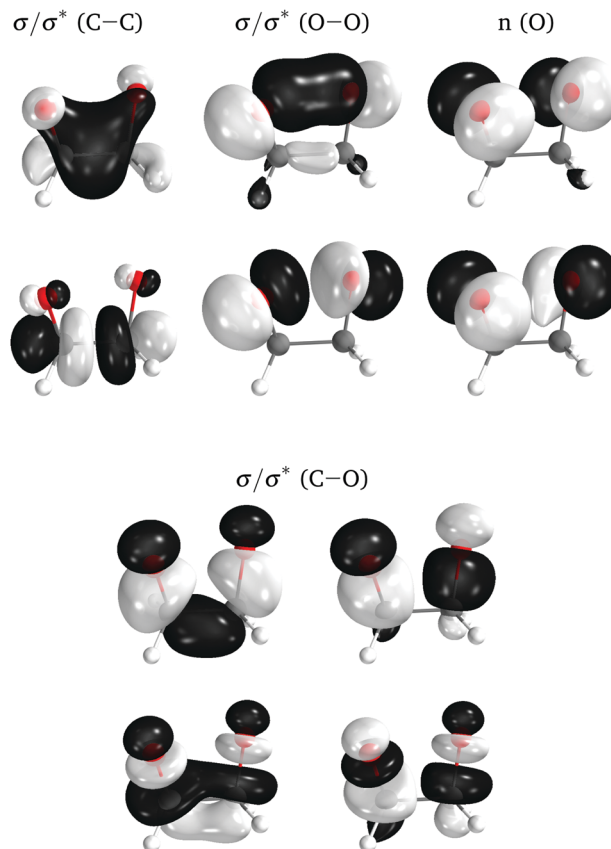


Fig. 5 Active space orbitals for **0Me**, represented as the ground state natural orbitals at the TS geometry.

every 7th step, 1.7 fs, for **2Me**). The hyperplanes were defined as the subspace of nuclear coordinates orthogonal to the trajectory velocity at each time step, in mass-weighted Cartesian coordinates, and the trajectory velocity was considered simply as the geometry difference between two consecutive time steps. While this optimization on hyperplanes may lead to geometries farther away from the trajectory than needed (accessible crossing points could be found closer to the trajectory), locating minimum distance crossing points could instead lead to geometries that are close to the trajectory but too high in energy. The CI optimization algorithm is based on the projected constrained optimization method (PCO),^{42,43} and is described in ref. 33. The algorithm makes use of analytical energy gradients and non-adiabatic couplings, and the hyperplane restriction is easily introduced as an additional geometrical constraint.

The electronic structure of the molecules was computed with complete active space self-consistent field (CASSCF) method,^{44,45} with an active space of 12 electrons distributed in 10 orbitals, corresponding to the eight σ and σ^* orbitals of the four-membered ring plus the two lone-pair orbitals on the oxygens perpendicular to the ring (Fig. 5). A state average of the four lowest singlet states was used to optimize the orbitals. The basis set employed was the relativistic atomic natural orbital basis set ANO-RCC, with polarized valence triple- ζ contraction.⁴⁶ Two-electron integrals were computed with density fitting with



an auxiliary basis set obtained through the atomic compact Cholesky decomposition (acCD).⁴⁷ All calculations were done with OpenMolcas,⁴⁸ version 19.11-276-g12757fc. The use of CASSCF was justified in ref. 27.

4 Results and discussion

Along the reference trajectories, the O–C–C–O torsion angle increases monotonically with the simulation time from its initial value of $\sim 40^\circ$, but does so at different rates depending on the mass of the molecule,³² with **0Me** reaching about 95° after 80 fs, while **1Me** reaches only 80° , and **2Me** 65° . This is displayed in Fig. 6.

In the following, the CI structures are labeled according to the O–C–C–O torsion angle of their reference structure in the reference trajectory, since this is the most distinctive change along this initial part of the trajectory. It should be kept in mind that the same angle corresponds to different times for each compound, as shown in Fig. 6, and that the angle at the optimized structure may differ from this reference. CI structures labeled with a particular reference angle were always optimized on the hyperplane perpendicular to the trajectory at that torsion angle, regardless of the starting geometry used for the optimization.

As a general result, it was noticed that the CI seams obtained from independent optimizations, *i.e.* by optimizing each CI structure starting from the corresponding point on the reference trajectory, showed several discontinuities, with sudden geometry changes between consecutive points. The energies were in general much smoother, indicating that there may be several seams or seam regions accessible during the reaction. In order to simplify the discussion, we tried to obtain continuous seams, by restarting the optimizations from previously optimized structures from contiguous reference time steps. Eventually, we located several sets of smoothly changing

CI structures for each compound, or “valleys” in the intersection space.

4.1 Dimethylated: 2Me

We start discussing the results with the larger molecule, **2Me**, since, perhaps unexpectedly, it shows the simplest behavior among the studied compounds. In Fig. 7 we represent the variation of several quantities along the two identified CI valleys, which we label A and B. Fig. 7a shows the evolution of the energies of the four lowest singlet states along each valley. The first two states are degenerate so they appear as a single line, and there are therefore three lines per valley; the (ground state) energy of the reference trajectory is plotted as a dotted line. The lines for valley B are interrupted below 50° because we did not find optimized CI structures to smoothly continue the valley (instead, the optimization fell back to valley A). Fig. 7b focuses on the energy difference between the CI valleys and the reference trajectory, the energy of the trajectory is again represented by the dotted line at $0.0 \text{ kcal mol}^{-1}$, and the parts of the valleys that are lower in energy than the reference trajectory are easily seen on the negative side.

In Fig. 7c we represent the root mean square displacement (rmsd) between each optimized CI structure and the corresponding point of the reference trajectory. Fig. 7d shows the α_s angle to measure the degree of “slopedness”: where it is negative, the intersection is classified as (conditionally) sloped. Finally, Fig. 7e and f display the variation of the C–C bond length and the two O–C–C angles in the initial dioxetane ring. There are two angles for each valley, but in some parts they show as a single line because they are identical. In these last two panels, the values corresponding to the geometries along the reference trajectory are again represented as dotted lines.

We can see that valley A starts $2.5 \text{ kcal mol}^{-1}$ above the reference trajectory energy, and at about 45° is already within 1 kcal mol^{-1} and below the initial TS energy. From 50° the seam is below the trajectory energy, except for a small region close to 70° . The rmsd falls quickly below 0.15 \AA and for the most part stays below 0.10 \AA , with a minimum below 0.05 \AA at around 43° ; at 70° there is another minimum in the rmsd of similar value.

The CI topography shows a region of negative α_s (conditionally sloped) around torsions of 40° , and then the values increase and stay positive and above 60° . The values of α_s close to 90° at a reference dihedral of $\sim 70^\circ$ indicate that at these points the valleys are very nearly MECIs (so $g_z \simeq 0$). Although the molecule has symmetrical substitution, the valley has a broken symmetry at lower dihedral angles, but after $\sim 50^\circ$ the two O–C–C angles become almost equal for the rest of the valley.

A second CI valley, valley B, is stable, as mentioned above, for reference dihedral angles above 50° . It is about $0.4 \text{ kcal mol}^{-1}$ above valley A, until about 70° where their energies become equal, and slightly farther away from the reference trajectory (larger rmsd). Its topography differs significantly from valley A, at least for reference angles between 50° and 70° , with α_s values very close to zero and even negative, which may indicate that regions of the CI seam close to this valley could be important for

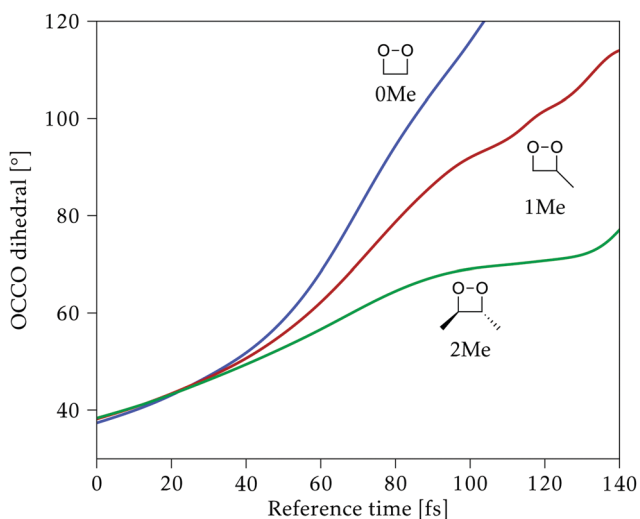


Fig. 6 Time evolution of the O–C–C–O torsion angle for the reference (unsampled) trajectories.



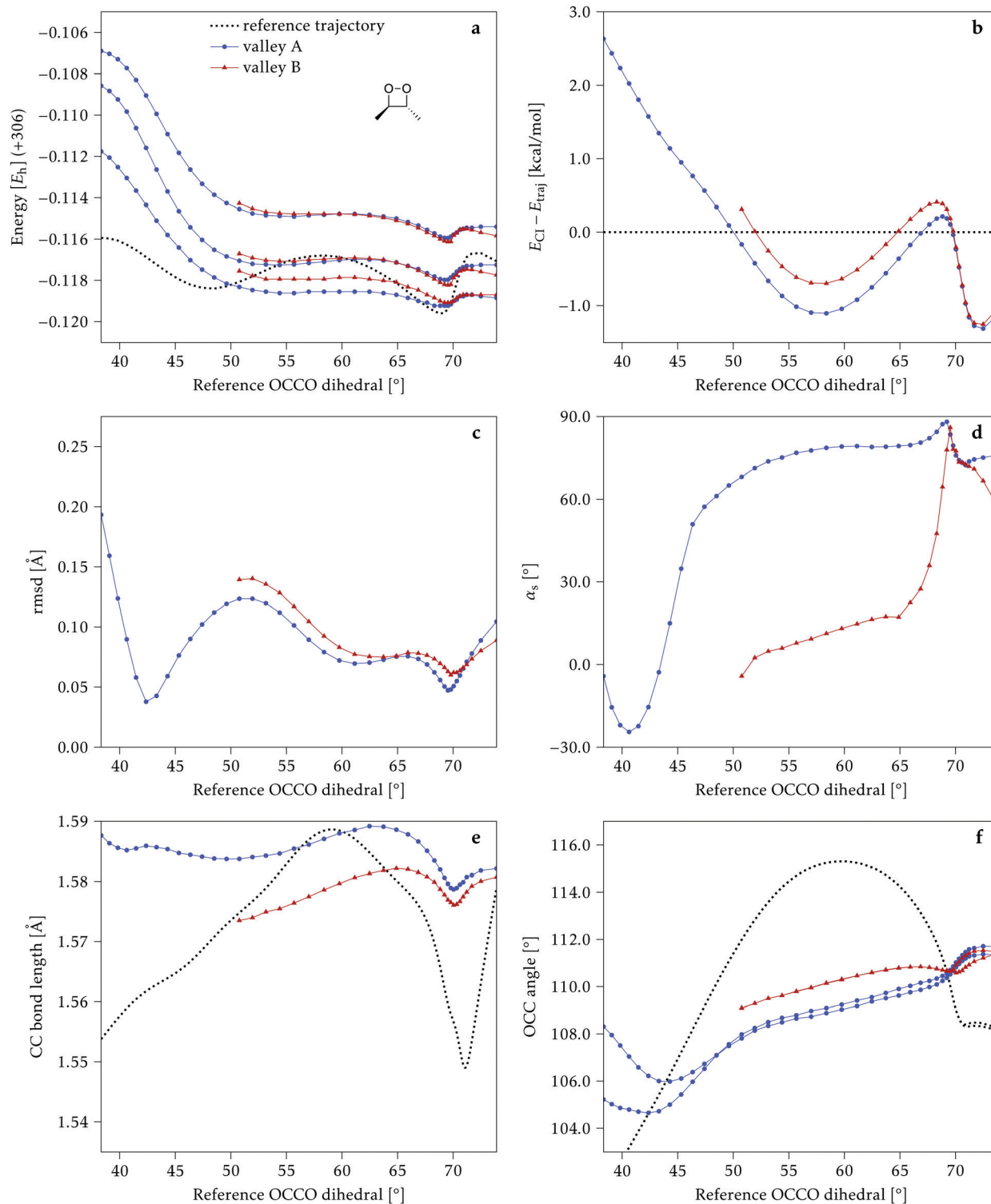


Fig. 7 Some energetic and geometric parameters along the CI valleys found for **2Me**. (a) Energies of the four lowest singlet states, the first two being degenerate. (b) Energy difference between the CI and the reference trajectory. (c) Rmsd between the CI and the reference trajectory. (d) α_s angle. (e) Central C–C bond length. (f) Central O–C–C angles. The values for the reference trajectory are shown as a dotted line in panels (a, b, e and f).

chemiexcitation. Geometrically, it has a shorter C–C bond by almost 0.01 \AA , and completely symmetric O–C–C angles.

The reference trajectory (Fig. 7e and f) shows an oscillation of C–C distance and O–C–C angles before dissociation

(which would occur at later times). The rather sharp shape of the graph in Fig. 7e at $\sim 70^\circ$ is an artifact of the representation with respect to the reference dihedral, a representation vs. time would be much smoother. The values of these geometrical



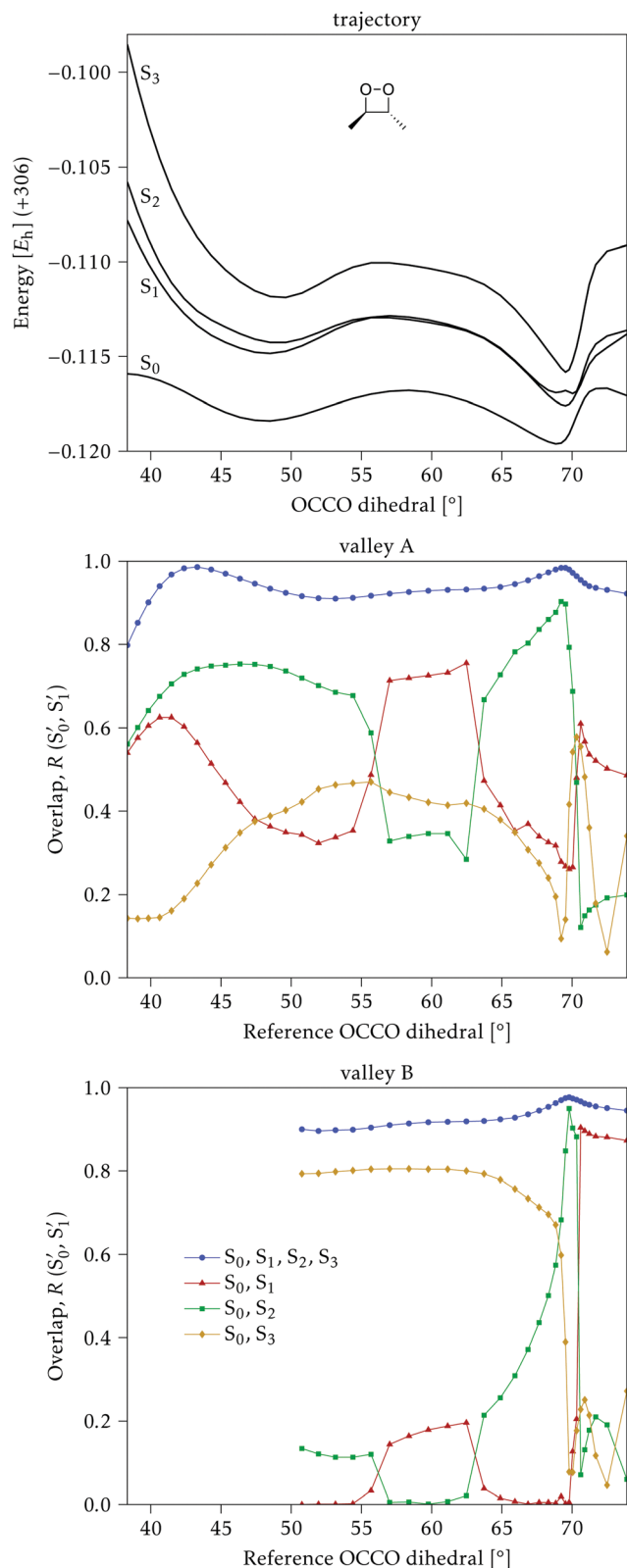


Fig. 8 Top: Energies of the computed states along the reference trajectory for **2Me**. Middle and bottom: Overlaps of the space of the intersection states, S'_0 and S'_1 , with the space of different sets of reference states, S_i .

parameters for the CI valleys are within the ranges accessible to the trajectory, indicating that the intersection geometries are not heavily distorted.

The electronic states in the intersection are analyzed in Fig. 8. In this figure we display, at the top, the energies of the four lowest singlet states along the reference trajectory, showing that S'_0 and S'_3 remain relatively well separated, but S'_1 and S'_2 cross several times. In all the cases we computed conical intersections between the two lowest states, but these are the states at the intersection geometry, and need not be the same as the S'_0 and S'_1 states at the corresponding reference trajectory geometry. To make this clearer, we label the states at the intersection with a prime, so S'_0 and S'_1 . The lower panels show for each of the valleys, the overlaps between the electronic space spanned by S'_0 and S'_1 , and different electronic spaces spanned by the states of the reference trajectory.

The blue line closer to the top is the overlap with the set of the four states. It is always 0.9 or larger, except at the

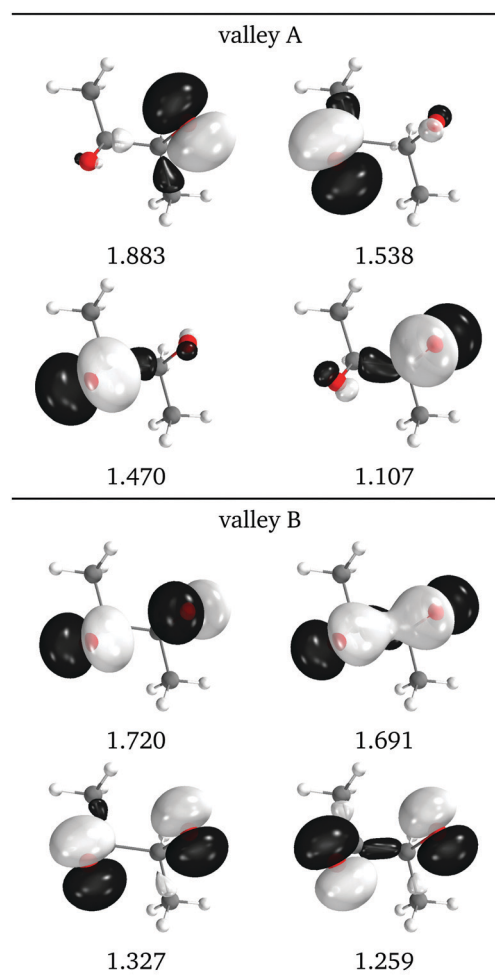


Fig. 9 Relevant natural intersection orbitals and occupation numbers for the two valleys in **2Me**, at a reference dihedral of 55.7° (top, valley A and bottom, valley B). The other NIOs are almost identical in both valleys. The molecule is viewed from the top, as represented in Fig. 4, with the oxygens pointing towards the viewer.



lower angles, signifying that the intersecting states are well represented by the four lowest singlet states of the reference trajectory, with no significant contribution from higher states. The difference from 1.0 is mostly due to the geometry difference between the reference trajectory and the valleys, that necessarily

lowers the overlaps. We expected the shape of this line to be roughly inverse to the rmsd in Fig. 7c, and this is confirmed. The other lines are more interesting and different between the two valleys. In both cases the lines corresponding to the overlaps with S'_0 , S'_1 and S'_0 , S'_2 cross at $\sim 55^\circ$, $\sim 63^\circ$ and $\sim 70^\circ$.

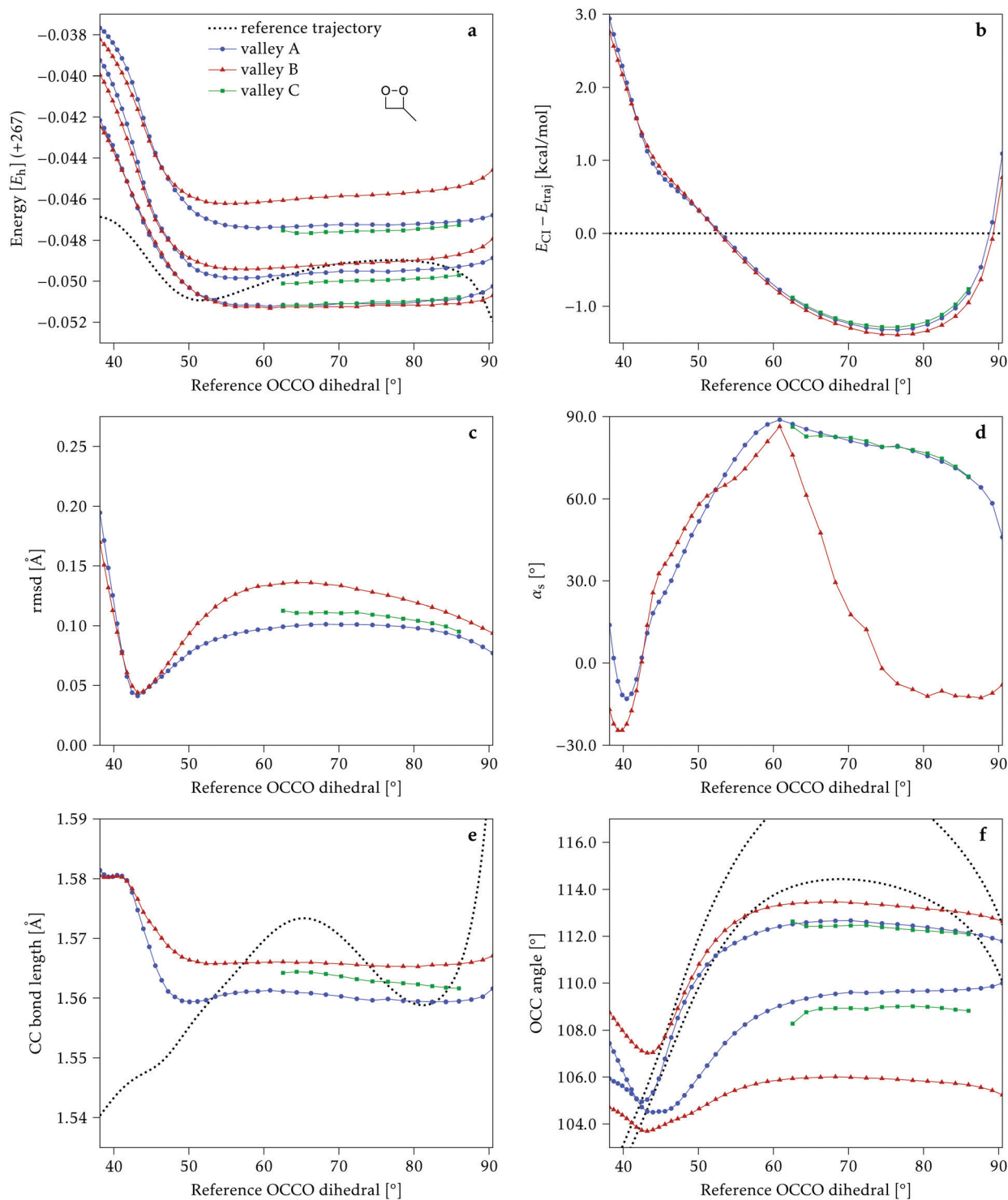


Fig. 10 Some energetic and geometric parameters along the CI valleys found for **1Me**. (a) Energies of the four lowest singlet states, the first two being degenerate. (b) Energy difference between the CI and the reference trajectory. (c) Rmsd between the CI and the reference trajectory. (d) α_s angle. (e) Central C–C bond length. (f) Central O–C–C angles. The values for the reference trajectory are shown as a dotted line in panels (a, b, e and f).



This is not due to sudden changes in the intersecting states S'_0 and S'_1 , but to the crossings in the reference states S'_1 and S'_2 , as can be observed in the top panel. A confirmation of this can be obtained from the transition dipole moments, which also display a switch between S'_1 and S'_2 at $\sim 55^\circ$, $\sim 63^\circ$ and $\sim 70^\circ$ (see Fig. S1 in the ESI[†]). Apart from that, the intersecting states in valley A seem to be better described by the states S'_0 and S'_2 most of the time, although contributions from S'_1 and S'_3 are not negligible, while valley B, agrees more with S'_0 and S'_3 , with S'_3 being replaced by S'_1 or S'_2 at larger angles. Overall, it can be said that the two valleys involve different reference states, although it is not possible to know from these results whether they actually form part of the same intersection seam or they belong to disjoint intersection spaces.

Another view of the difference between the two valleys is provided by the natural intersection orbitals. As a representative example, Fig. 9 shows the NIOs for both valleys at a similar geometry. It is clear that the wave functions in valley A are more asymmetrical than those of valley B, as is also reflected in the O–C–C angles in Fig. 7d.

4.2 Monomethylated: 1Me

The data for **1Me** is represented in Fig. 10, with panels (a–f) equivalent to those in Fig. 7 (note that they also have the same vertical scale). As in **2Me**, two main valleys, A and B, are located, although in this case they are almost completely degenerate and can hardly be distinguished by their energy. Another similarity with **2Me** is that from $\sim 45^\circ$ on, the CI energy is within 1 kcal mol⁻¹ of the reference trajectory and below the initial TS energy, and shortly after 50° it falls below the reference trajectory energy (Fig. 10b).

In terms of geometry, except for the very beginning, valley A is always within 0.1 Å rmsd of the reference trajectory, while valley B is found up to 0.15 Å away (Fig. 10c). The main differences between the two valleys can be seen in Fig. 10e and f: valley B has a larger asymmetry between the two O–C–C angles, and a C–C distance longer than valley A by about 0.005 Å. As in **2Me**, both valleys show geometries that are in the range of values explored along the reference trajectory.

The CI topography, as in **2Me**, shows a region of negative α_s around 40° that then rises to positive values and stays above 60°

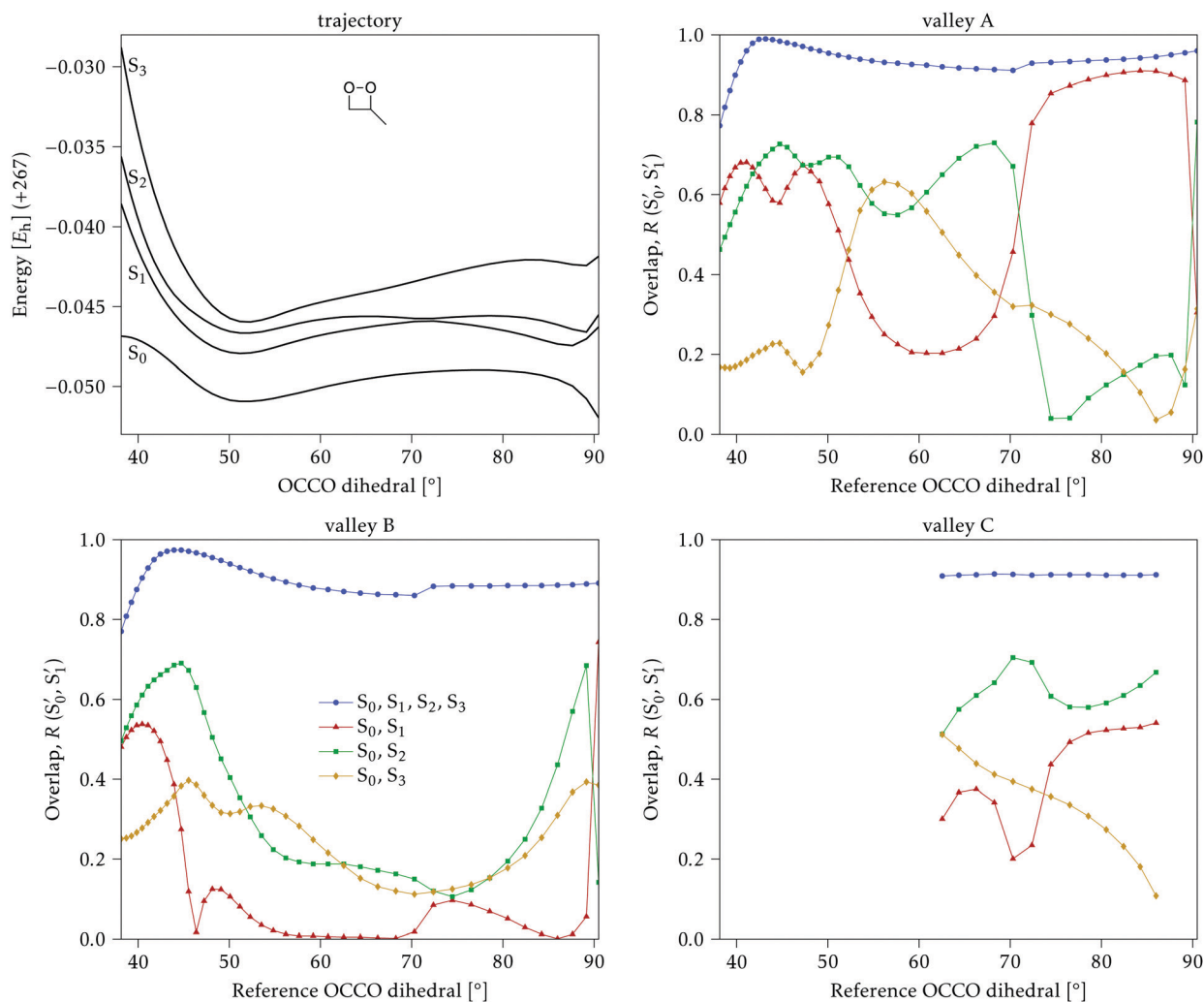


Fig. 11 Top left: Energies of the computed states along the reference trajectory for **1Me**. Top right and bottom: Overlaps of the space of the intersection states, S'_0 and S'_1 , with the space of different sets of reference states, S'_i .



for valley A, while for valley B the value decreases again and from a dihedral of $\sim 70^\circ$ it becomes very close to zero and even negative (Fig. 10d). It would therefore seem that although valley A is closer to the reference trajectory, valley B (with a longer C–C bond and more asymmetric O–C–C angles) could be more favorable for chemiexcitation.

In addition to the two valleys described above, a third valley C could be located between torsions of 65° and 85° . It has in general features very similar to valley A, but the C–C bond length is intermediate between valleys A and B.

The overlaps of the electronic spaces spanned by the intersecting states with the ones of the reference trajectory are shown in Fig. 11 (transition dipole moments are shown in Fig. S2 in the ESI[†]). As with **2Me**, the blue line near the top in all three valleys indicates that the intersecting states are well represented by the four lowest singlets of the trajectory. It is also observed that states S'_1 and S'_2 cross along the trajectory at around 70° , a feature that's reflected in the crossing red and green lines in valley A, but interestingly not in valleys B and C. Another significant feature is that the overlaps for valley B with all the state pairs shown is below 0.5 for most of the angles. In fact, the overlaps with the pairs S'_1, S'_2 and S'_1, S'_3 (not shown) are the highest (0.5–0.6) between 50° and 85° . In summary, the assignment is not as clear as for **2Me**, but it is evident that the wave functions of the crossing states are different in the different valleys.

The natural intersection orbitals are represented in Fig. 12. As in **2Me**, their differences appear in the oxygen p orbitals, although in this case the two oxygens are never symmetrically equivalent. In the three valleys the orbitals can be described as two p orbitals on one oxygen with occupations close to 1.5, and two p orbitals on the other oxygen with occupations close to 2.0 and 1.0. They differ in which of the four orbitals has the ~ 1.0 occupation. In this respect, valleys A and C look the most similar to valley A of **2Me** (see Fig. 9).

4.3 Unmethylated: **0Me**

Fig. 13 shows the data for **0Me**, again with the same layout and scales as for the previous molecules. Up to four different valleys can be identified, but none of them is stable along the whole range of reference dihedrals.

Valley A is stable below 55° and valley B is stable above 45° . Their energetic behavior is similar to the one of the other molecules and they stay within an rmsd of 0.1 \AA of the reference trajectory. The main difference between these two valleys, in the region where they coexist, is that valley A has asymmetric O–C–C angles, while valley B has a symmetric structure, although at larger dihedrals the symmetry is broken in this valley too. Valley C is stable only in the region between 45° and 65° , it has symmetric O–C–C angles and an energy similar or higher than valleys A and B.

Valley D can be classified as an outlier, with an energy that starts below the reference trajectory but quickly increases, an rmsd above 0.2 \AA , and C–C bond length and O–C–C angles significantly larger than the other valleys (see Fig. 13e and f, insets). Except for

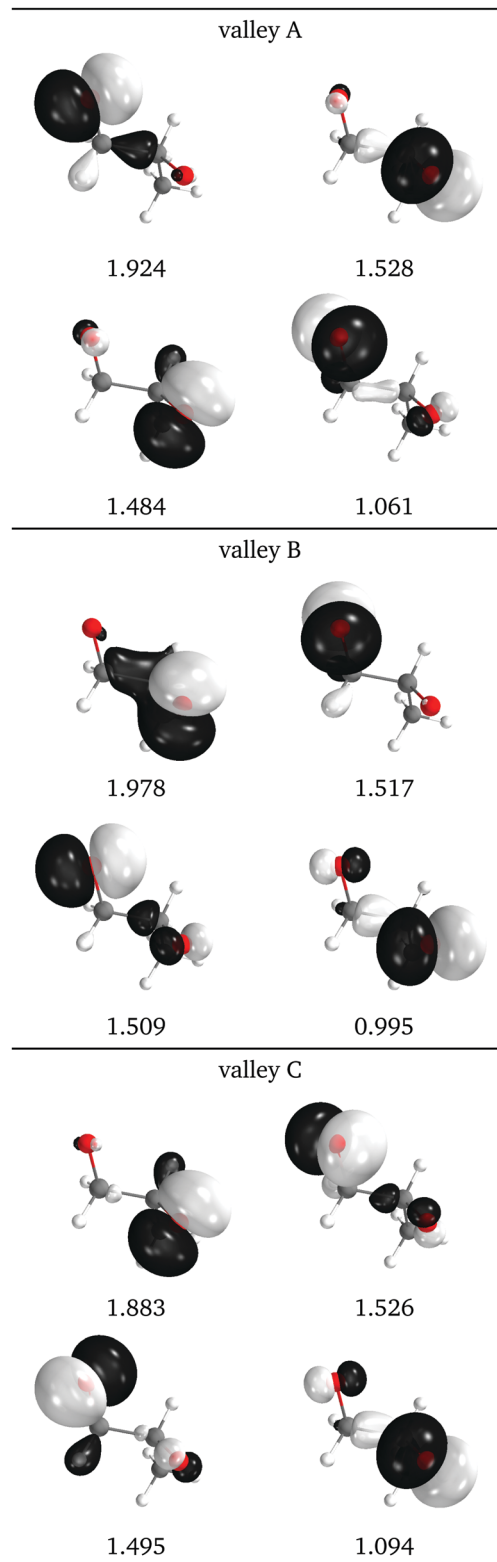


Fig. 12 Relevant natural intersection orbitals and occupation numbers for the three valleys in **1Me**, at a reference dihedral of 76.5° (top, valley A; middle, valley B and bottom, valley C). The other NIOs are very similar in all three valleys. The molecule is viewed from the top, as represented in Fig. 4, with the oxygens pointing towards the viewer.



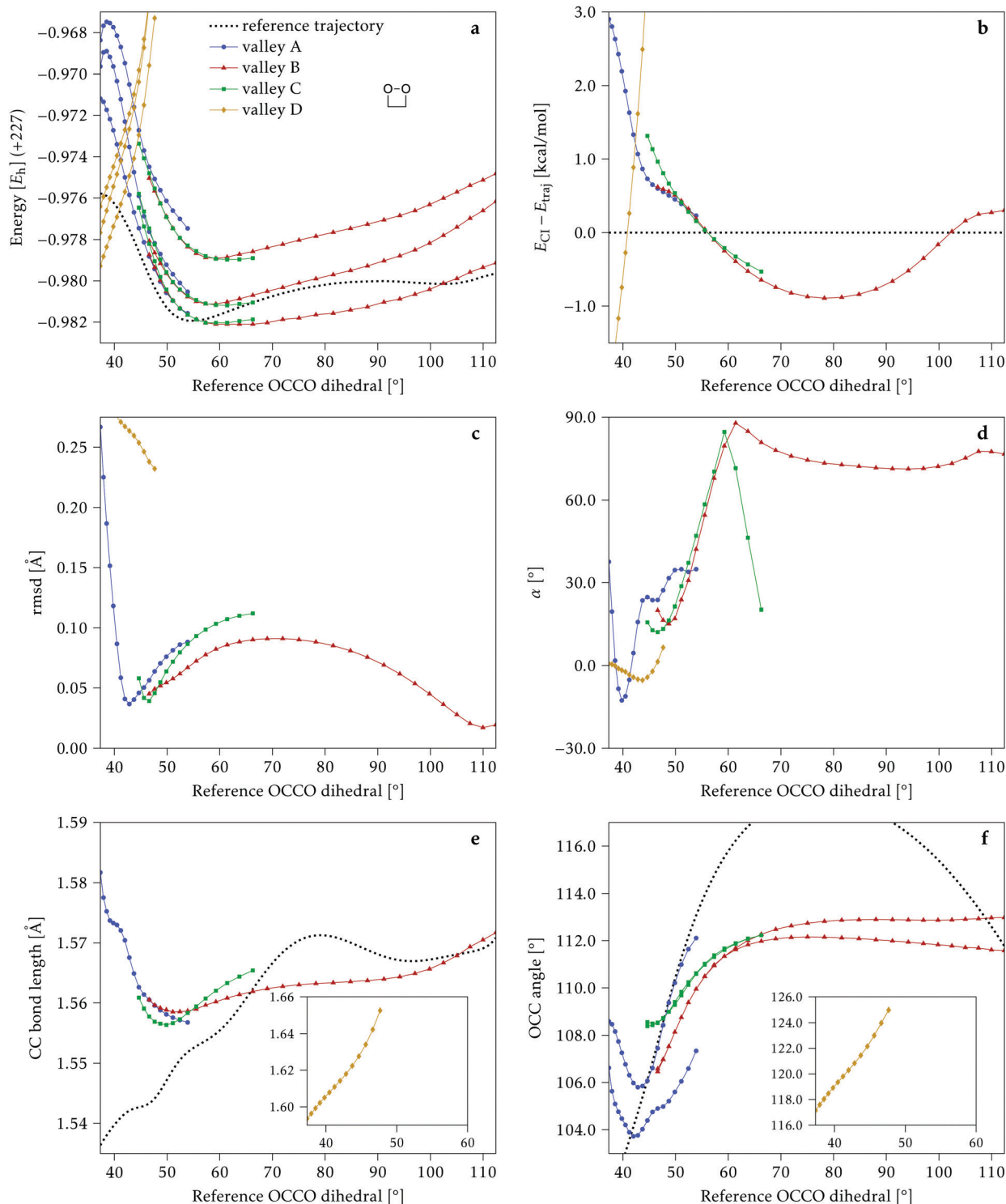


Fig. 13 Some energetic and geometric parameters along the CI valleys found for **OMe**. (a) Energies of the four lowest singlet states, the first two being degenerate. (b) Energy difference between the CI and the reference trajectory. (c) Rmsd between the CI and the reference trajectory. (d) α_s angle. (e) C–C bond length. (f) O–C–C angles. The insets in panels (e) and (f) show parts that would off-scale in the main graphs. The values for the reference trajectory are shown as a dotted line in panels (a, b, e and f).

valley D, the C–C distance and O–C–C angles of the intersections are within the range of values accessible along the trajectory.

As in the other molecules, a region of negative α_s is found around 40° , but then values become positive for all valleys and

valley B rises above 60° . Valley C shows a sharply decreasing α_s with higher reference dihedral angles before it becomes unstable (Fig. 13d). Valley D has a negative α_s for a longer range, but the energy rises so much, even above the initial TS



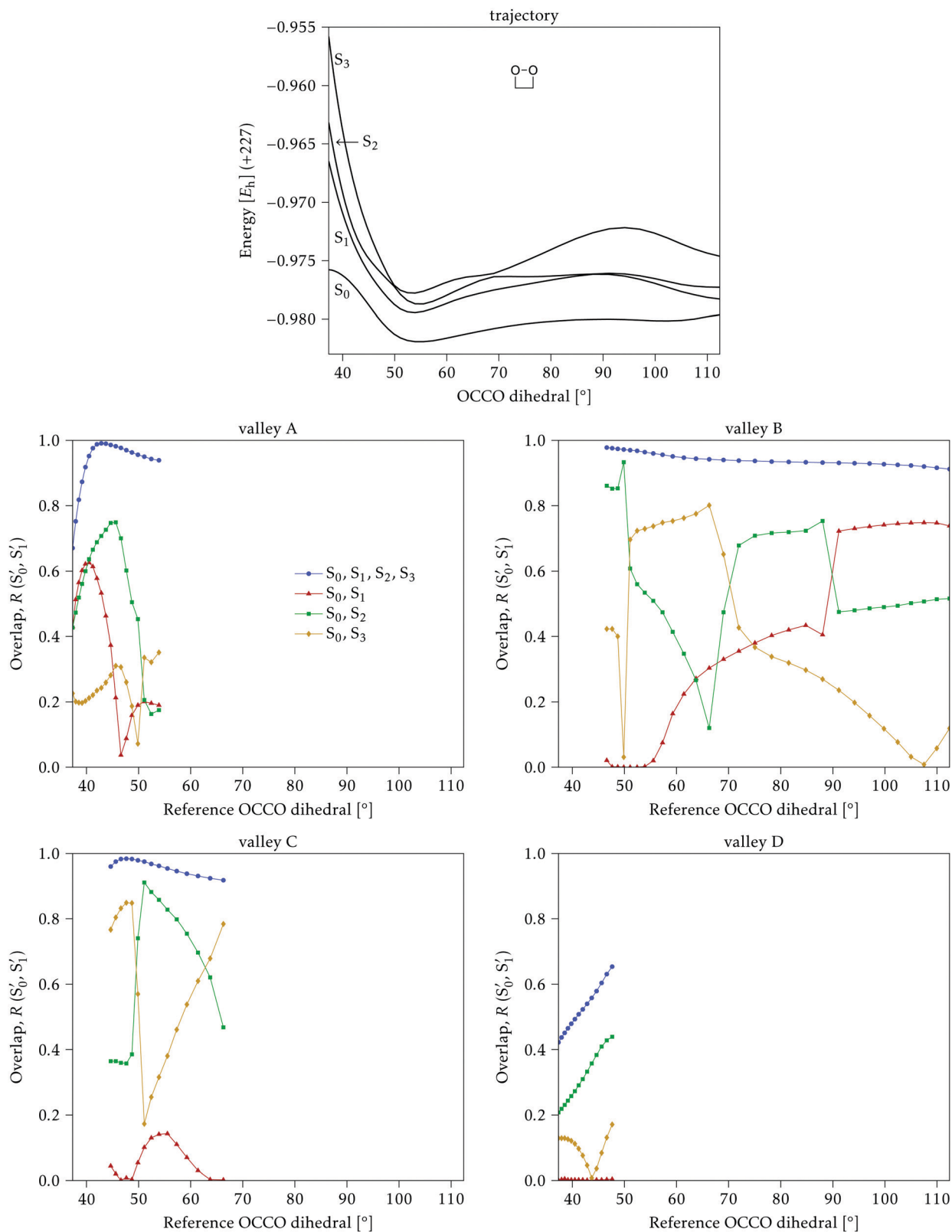


Fig. 14 Top: Energies of the computed states along the reference trajectory for **OMe**. Middle and bottom: Overlaps of the space of the intersection states, S'_0 and S'_1 , with the space of different sets of reference states, S'_i .



point, that it is doubtful that this valley could be relevant for chemiexcitation.

The electronic space overlaps for **OMe** are displayed in Fig. 14 (transition dipole moments are shown in Fig. S3 in the ESI†). Again, crossings between excited states can be observed in the trajectory energies, but the ground state is always well separated. In this case, the crossings occur between S'_2 and S'_3 at $\sim 50^\circ$ and $\sim 70^\circ$, and between S'_1 and S'_2 at $\sim 90^\circ$. The crossing signatures can also be clearly seen in the graphs for valleys B and C. The overlap with the electronic space spanned by the full set of four states (blue lines) is high, except in valley D; this is probably a consequence of the geometry difference between the valley and the reference trajectory, as valley D is the one that shows larger rmsd values. Given the limited extent of most of the valleys, comparisons are not straightforward, but the intersecting states of valley B seem to be well represented by the initial (at the TS geometry) states S'_0 and S'_2 , with the index of the higher state changing as the crossings occur in the reference trajectory. On the other hand, valley C appears to be better described as the intersection between the initial states S'_0 and S'_3 .

Natural intersection orbitals for all four valleys close to a reference dihedral of 50° are shown in Fig. 15. Except for valley A, they are all quite symmetrical, as could be expected from the geometries (see Fig. 13f). The shapes and occupations of the NIOs for valley A agree with the other A valleys of **1Me** and **2Me**. The orbitals for valleys B and C can be described as $\sigma(\text{O-O})$, $\sigma^*(\text{O-O})$ and two “lone” p orbitals: in valley B the lone orbitals have occupations of around 1.7 and the σ/σ^* have occupations of 1.3, while in valley C the numbers are reversed. This allows to match the nature of valley C with that of valley B for **2Me** (Fig. 9).

4.4 Comparison

In spite of the evident differences, there are some common traits among the CI seams found for the three studied molecules. In all three molecules the CI energy quickly falls below the initial TS energy, and even below the energy of the reference trajectory, making the seam easily accessible, at least from the energetic point of view. After a reference O-C-C-O dihedral of 40° , the CI seam valleys can be found at an rmsd relative to the reference trajectory below 0.1 \AA in most cases. At the TS structure, CI seams tend to be found at longer C-C distances, and as the reference trajectory progresses CI structures keep smaller O-C-C angles than the corresponding reference trajectory. A region of negative α_s is found for reference dihedrals around 40° . Interestingly, this matches roughly with the region where most transitions to an upper state occurred in surface-hopping simulations of **OMe**.²⁷ At larger reference dihedrals we could also find CI structures with very small or negative α_s (valley B for **2Me** and **1Me**), or indications that they may exist (valley C for **OMe**). At least in the **2Me** and **OMe** cases, these correspond to crossings between the initial states S'_0 and S'_2 , and have similar NIOs. It should be kept in mind that the fact that a valley becomes unstable outside some range does not

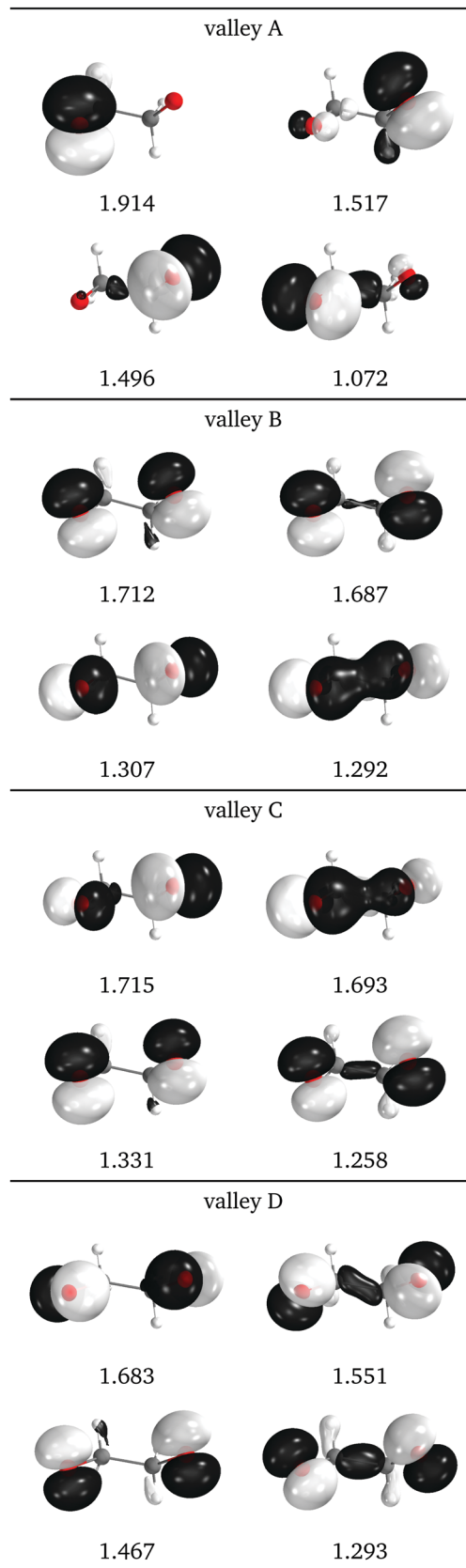


Fig. 15 Relevant natural intersection orbitals and occupation numbers for the four valleys in **OMe**, at a reference dihedral of 47.6° . The other NIOs are very similar in all four valleys. The molecule is viewed from the top, as represented in Fig. 4, with the oxygens pointing towards the viewer.



mean that the seam disappears, it only means that the seam is no longer at a minimum in the optimization space (hyperplane perpendicular to the trajectory, in this case). The possible CI structures accessible to the system are certainly not limited to either MECIs, or seam valleys. Moreover, despite our efforts to follow all the different CI valleys, the results are far from exhaustive, and are undoubtedly biased by the strategy used in the optimization.

Can the calculated different CI topographies explain the different chemiexcitation yields obtained in 1,2-dioxetanes? The negative or low α_s angles obtained for conical intersections at large dihedral angles in **1Me** and **2Me** might facilitate chemiexcitation in those molecules, as compared to **0Me**. However, energetically and geometrically, the differences between the CI seams of the three molecules do not appear to be significant. This finding is in agreement with the previous dynamical study that showed that most of the difference in chemiexcitation yield is due to a mass effect.³²

5 Conclusions

We have studied the conical intersection seams of 1,2-dioxetane and methylated derivatives, using a multi-reference electronic structure method. Our calculations have demonstrated, for each compound, the existence of several seams in the vicinity of the nuclear trajectory describing the ground state decomposition pathway into two formaldehyde molecules. We have analysed each of these conical intersection seams using detailed and new descriptors. More specifically, the seams have been characterized in terms of their energetic accessibility and geometrical distance from the ground state decomposition pathway, their degree of “slopedness” using the angle α_s , and specific nuclear coordinates such as bond lengths and angles. In addition, in order to characterize the electronic states involved in the CI seams, we have calculated the electronic space spanned by the intersecting states and compared it with the electronic space of different sets of states from the reference trajectories. We have also calculated “natural intersection orbitals” as eigenvectors of the average density matrix of the crossing states. Interestingly, those indicate that the different intersection seams involve different pairs of “diabatic” states.

For all three studied molecules, the intersection seam is relatively close (in both energy and geometry) from the ground state decomposition pathway. More precisely, the energies of the intersection seams are below the one of the ground state decomposition pathway for O–C–C–O dihedral angles larger than approximately 50°. Those regions of the seams are also all relatively geometrically close to the ground state decomposition pathway with an rmsd lower than 0.15 Å. There, the O–C–C angles range from 104° to 114° (they are symmetric for some intersection seams and asymmetric for others), while the C–C bond length ranges from 1.56 Å to 1.57 Å and a bit larger for **2Me**.

The CI topography seems to favor chemiexcitation in certain parts of the seams. For all three molecules, the optimized

conical intersections are sloped for small O–C–C–O dihedral angles: $\alpha_s < 0$. This is consistent with the numerous hops from the ground state to the first excited state and the longer time spent in the excited states predicted to occur for low O–C–C–O dihedral angles in the nonadiabatic surface hopping simulations of 1,2-dioxetane of ref. 27. For larger O–C–C–O dihedral angles, we could optimize conical intersections with relatively low α_s angles for both **1Me** and **2Me** (even $\alpha_s < 0$ for **1Me**), while we could not find optimized conical intersections with $\alpha_s < 30^\circ$ for **0Me**.

While the latter fact could contribute to the higher chemiexcitation yield measured for the methylated derivatives, the absence of significant differences between the topography of the conical intersection seams of the different molecules seems to indicate that the increase of chemiexcitation yield upon methylation does not come from a “static” origin. Our results are thus consistent with and complement the nonadiabatic surface hopping simulations of 1,2-dioxetane and methylated derivatives that showed that most of the increase of chemiexcitation yield upon methylation comes from a mass effect, hence a dynamical origin.³² It would be interesting to re-visit our previous dynamics results in the light of the new knowledge acquired in the present static study: in a future work, we could for instance analyze which conical intersection seam valley is used in the non-adiabatic transitions from the electronic ground state to the first excited state.

It is reminded that the yield of the triplet excited states was measured to be much higher than that of the singlet excited states.³¹ While the triplet excited state may behave similarly to the singlet excited state, future similar analysis of the inter-system crossings would provide complementary insights into the chemiexcitation and chemiluminescence of 1,2-dioxetanes.

Conflicts of interest

There are no conflicts to declare.

Acknowledgements

The computations were partially enabled by resources provided by the Swedish National Infrastructure for Computing (SNIC) at UPPMAX and NSC, partially funded by the Swedish Research Council through grant agreement no. 2018-05973. M. V. acknowledges the Région des Pays de la Loire for financial support through the framework of the PULSAR programme. I. F. G. acknowledges the Institut Français de Suède for financial support through the FRÖ programme.

Notes and references

- 1 M. Klessinger, *Angew. Chem., Int. Ed. Engl.*, 1995, **34**, 549–551.
- 2 F. Bernardi, M. Olivucci and M. A. Robb, *Chem. Soc. Rev.*, 1996, **25**, 321–328.
- 3 W. Domcke and D. R. Yarkony, *Annu. Rev. Phys. Chem.*, 2012, **63**, 325–352.



- 4 M. Vacher, I. Fdez Galván, B.-W. Ding, S. Schramm, R. Berraud-Pache, P. Naumov, N. Ferré, Y.-J. Liu, I. Navizet, D. Roca-Sanjuán, W. J. Baader and R. Lindh, *Chem. Rev.*, 2018, **118**, 6927–6974.
- 5 I. Navizet, Y.-J. Liu, N. Ferré, D. Roca-Sanjuán and R. Lindh, *ChemPhysChem*, 2011, **12**, 3064–3076.
- 6 H. H. Seliger and W. D. McElroy, *Proc. Natl. Acad. Sci. U. S. A.*, 1964, **52**, 75–81.
- 7 S. H. D. Haddock, M. A. Moline and J. F. Case, *Annu Rev. Mar. Sci.*, 2010, **2**, 443–493.
- 8 E. A. Widder, *Science*, 2010, **328**, 704–708.
- 9 R. E. Young and F. M. Mencher, *Science*, 1980, **208**, 1286–1288.
- 10 B. H. Robison, *J. Mar. Biol. Assoc. U. K.*, 1992, **72**, 463–472.
- 11 B. H. Robison, K. R. Reisenbichler, J. C. Hunt and S. H. D. Haddock, *Biol. Bull.*, 2003, **205**, 102–109.
- 12 S. Johnsen, *Integr. Comp. Biol.*, 2005, **45**, 234–246.
- 13 J. E. Purcell, *Science*, 1980, **209**, 1045–1047.
- 14 R. H. Douglas, J. K. Bowmaker and C. W. Mullineaux, *Bioluminescence and Chemiluminescence*, World Scientific, 2002, pp. 391–394.
- 15 S. H. D. Haddock, C. W. Dunn, P. R. Pugh and C. E. Schnitzler, *Science*, 2005, **309**, 263.
- 16 A. B. Lall, H. H. Seliger, W. H. Biggley and J. E. Lloyd, *Science*, 1980, **210**, 560–562.
- 17 W. A. Woods, Jr., H. Hendrickson, J. Mason and S. M. Lewis, *Am. Nat.*, 2007, **170**, 702–708.
- 18 P. J. Herring, *J. Mar. Biol. Assoc. U. K.*, 2007, **87**, 829–842.
- 19 J. G. Morin and A. C. Cohen, *J. Crustacean Biol.*, 2010, **30**, 56–67.
- 20 C. Dodeigne, L. Thunus and R. Lejeune, *Talanta*, 2000, **51**, 415–439.
- 21 S. Daunert and S. K. Deo, *Photoproteins in Bioanalysis*, Wiley-VCH Verlag GmbH & Co. KGaA, 2006, pp. 235–240.
- 22 S. Beck and H. Koster, *Anal. Chem.*, 1990, **62**, 2258–2270.
- 23 V. N. Nori and J. M. Seitzman, *Proc. Combust. Inst.*, 2009, **32**, 895–903.
- 24 P. Stella, M. Kortner, C. Ammann, T. Foken, F. X. Meixner and I. Trebs, *Biogeosciences*, 2013, **10**, 5997–6017.
- 25 S. Ripp, K. A. Daumer, T. McKnight, L. H. Levine, J. L. Garland, M. L. Simpson and G. S. Saylor, *J. Ind. Microbiol. Biotechnol.*, 2003, **30**, 636–642.
- 26 L. De Vico, Y.-J. Liu, J. W. Krogh and R. Lindh, *J. Phys. Chem. A*, 2007, **111**, 8013–8019.
- 27 M. Vacher, A. Brakestad, H. O. Karlsson, I. Fdez. Galván and R. Lindh, *J. Chem. Theory Comput.*, 2017, **13**, 2448–2457.
- 28 L. Yue, Z. Lan and Y.-J. Liu, *J. Phys. Chem. Lett.*, 2015, **6**, 540–548.
- 29 L. Yue and Y.-J. Liu, *J. Chem. Theory Comput.*, 2019, **15**, 1798–1805.
- 30 L. Yue and Y.-J. Liu, *J. Chem. Theory Comput.*, 2021, **17**, 3483–3494.
- 31 W. Adam and W. J. Baader, *J. Am. Chem. Soc.*, 1985, **107**, 410–416.
- 32 M. Vacher, P. Farahani, A. Valentini, L. M. Frutos, H. O. Karlsson, I. Fdez. Galván and R. Lindh, *J. Phys. Chem. Lett.*, 2017, **8**, 3790–3794.
- 33 I. Fdez. Galván, M. G. Delcey, T. B. Pedersen, F. Aquilante and R. Lindh, *J. Chem. Theory Comput.*, 2016, **12**, 3636–3653.
- 34 J. P. Malhado and J. T. Hynes, *J. Chem. Phys.*, 2016, **145**, 194104.
- 35 G. J. Atchity, S. S. Xantheas and K. Ruedenberg, *J. Chem. Phys.*, 1991, **95**, 1862–1876.
- 36 D. R. Yarkony, *Conical Intersections. Electronic Structure, Dynamics & Spectroscopy*, World Scientific, 2004, pp. 41–127.
- 37 D. R. Yarkony, *J. Phys. Chem. A*, 2001, **105**, 6277–6293.
- 38 L. Blancafort, B. Lasorne, M. J. Bearpark, G. A. Worth and M. A. Robb, *The Jahn–Teller Effect*, Springer, Berlin Heidelberg, 2009, pp. 169–200.
- 39 F. Plasser, M. Ruckebauer, S. Mai, M. Oppel, P. Marquetand and L. González, *J. Chem. Theory Comput.*, 2016, **12**, 1207–1219.
- 40 Å. Björck and G. H. Golub, *Math. Comput.*, 1973, **27**, 579.
- 41 B. G. Levine, J. D. Coe and T. J. Martinez, *J. Phys. Chem. B*, 2008, **112**, 405–413.
- 42 J. M. Anglada and J. M. Bofill, *J. Comput. Chem.*, 1997, **18**, 992–1003.
- 43 L. De Vico, M. Olivucci and R. Lindh, *J. Chem. Theory Comput.*, 2005, **1**, 1029–1037.
- 44 B. O. Roos, P. R. Taylor and P. E. M. Sigbahn, *Chem. Phys.*, 1980, **48**, 157–173.
- 45 B. O. Roos, *Advances in Chemical Physics*, John Wiley & Sons, Inc., 1987, vol. 69, pp. 399–445.
- 46 B. O. Roos, R. Lindh, P.-Å. Malmqvist, V. Veryazov and P.-O. Widmark, *J. Phys. Chem. A*, 2004, **108**, 2851–2858.
- 47 F. Aquilante, L. Gagliardi, T. B. Pedersen and R. Lindh, *J. Chem. Phys.*, 2009, **130**, 154107.
- 48 I. Fdez. Galván, M. Vacher, A. Alavi, C. Angeli, F. Aquilante, J. Autschbach, J. J. Bao, S. I. Bokarev, N. A. Bogdanov, R. K. Carlson, L. F. Chibotaru, J. Creutzberg, N. Dattani, M. G. Delcey, S. S. Dong, A. Dreuw, L. Freitag, L. M. Frutos, L. Gagliardi, F. Gendron, A. Giussani, L. González, G. Grell, M. Guo, C. E. Hoyer, M. Johansson, S. Keller, S. Knecht, G. Kovačević, E. Källman, G. Li Manni, M. Lundberg, Y. Ma, S. Mai, J. P. Malhado, P. Å. Malmqvist, P. Marquetand, S. A. Mewes, J. Norell, M. Olivucci, M. Oppel, Q. M. Phung, K. Pierloot, F. Plasser, M. Reiher, A. M. Sand, I. Schapiro, P. Sharma, C. J. Stein, L. K. Sørensen, D. G. Truhlar, M. Ugandi, L. Ungur, A. Valentini, S. Vancoillie, V. Veryazov, O. Weser, T. A. Wesolowski, P.-O. Widmark, S. Wouters, A. Zech, J. P. Zobel and R. Lindh, *J. Chem. Theory Comput.*, 2019, **15**, 5925–5964.

