

# JAAS

Accepted Manuscript



This is an *Accepted Manuscript*, which has been through the Royal Society of Chemistry peer review process and has been accepted for publication.

*Accepted Manuscripts* are published online shortly after acceptance, before technical editing, formatting and proof reading. Using this free service, authors can make their results available to the community, in citable form, before we publish the edited article. We will replace this *Accepted Manuscript* with the edited and formatted *Advance Article* as soon as it is available.

You can find more information about *Accepted Manuscripts* in the [Information for Authors](#).

Please note that technical editing may introduce minor changes to the text and/or graphics, which may alter content. The journal's standard [Terms & Conditions](#) and the [Ethical guidelines](#) still apply. In no event shall the Royal Society of Chemistry be held responsible for any errors or omissions in this *Accepted Manuscript* or any consequences arising from the use of any information it contains.

1  
2  
3 **A simple dilute-and-shoot approach for the determination of**  
4 **ultra-trace levels of arsenic in biological fluids *via* ICP-MS using**  
5 **CH<sub>3</sub>F/He as a reaction gas**  
6  
7  
8  
9

10 M.R. Flórez,<sup>a,b</sup> E. García-Ruiz,<sup>a</sup> E. Bolea-Fernández,<sup>b</sup> F. Vanhaecke<sup>b</sup> and M. Resano<sup>a\*</sup>

11  
12 <sup>a</sup> University of Zaragoza, Department of Analytical Chemistry, Aragón Institute of  
13 Engineering Research (I3A), Pedro Cerbuna 12, 50009 Zaragoza, Spain  
14  
15

16  
17 <sup>b</sup> Ghent University, Department of Analytical Chemistry, Krijgslaan 281-S12, 9000  
18 Ghent, Belgium  
19

20  
21 **Abstract**  
22

23  
24 The performance of a mixture of CH<sub>3</sub>F/He (1/9) as reaction gas for the  
25 determination of As in biological fluids using a quadrupole ICP-MS instrument has  
26 been explored. A simple (dilute-and-shoot), interference-free method has been  
27 developed to quantify As concentrations at trace and ultra-trace levels in matrices  
28 with high Cl content. As<sup>+</sup> reacts with CH<sub>3</sub>F (through CH<sub>3</sub>F addition, followed by HF  
29 elimination) with high efficiency forming AsCH<sub>2</sub><sup>+</sup> as the primary reaction product,  
30 which can be monitored at a mass-to-charge ratio of 89, free from the Cl-based  
31 interferences (e.g., <sup>40</sup>Ar<sup>35</sup>Cl<sup>+</sup> and <sup>40</sup>Ca<sup>35</sup>Cl<sup>+</sup>) that hamper the monitoring of <sup>75</sup>As<sup>+</sup>.  
32  
33 Matrix effects are overcome by the use of Te as an internal standard and the  
34 addition of 3% v/v ethanol to all samples and calibration standard solutions. The  
35 method presented was validated by analysing a set of reference materials (blood,  
36 serum and urine) and by assessing As recovery from a set of real blood samples.  
37  
38 With this method, the limit of detection was calculated to be 0.8 ng L<sup>-1</sup> As,  
39 comparing favourably with the vast majority of the values reported in the  
40  
41  
42  
43  
44  
45  
46  
47  
48  
49  
50  
51  
52  
53  
54  
55  
56  
57  
58  
59  
60

1  
2  
3 literature, even with those obtained using more sophisticated sector-field  
4  
5 instrumentation.  
6  
7  
8  
9  
10  
11  
12  
13  
14  
15  
16  
17  
18  
19  
20  
21  
22  
23  
24  
25  
26  
27  
28  
29  
30  
31  
32  
33  
34  
35  
36  
37  
38  
39  
40  
41  
42  
43  
44  
45  
46  
47  
48  
49  
50  
51  
52  
53  
54  
55  
56  
57  
58  
59  
60

## 1. Introduction

Arsenicosis or As poisoning is most commonly due to long-term exposure to As-rich drinking water.<sup>1,2</sup> The World Health Organization (WHO) sets a guideline value of 10  $\mu\text{g L}^{-1}$  of As in drinking waters, but this value is mainly governed by the traditional limits of detection (LODs).<sup>3</sup> There is still a demand for simple, direct and interference-free methodologies that allow better LODs to be obtained and, therefore, provide more reliable results for lower As concentrations, for instance when analysing biological fluids as a proxy for tracking potentially elevated As exposure and the related risks.

Several spectroscopic techniques have been employed for As determination, although none of them is free of hindrances.<sup>4</sup> Due to its high detection power, inductively coupled plasma-mass spectrometry (ICP-MS) has been widely used to monitor low As contents in a variety of samples. However, accurate determination of As at trace and ultra-trace levels by ICP-MS is strongly jeopardized by the occurrence of spectral overlap of the signals from  $\text{ArCl}^+$  ( $^{40}\text{Ar}^{35}\text{Cl}^+$ ,  $^{38}\text{Ar}^{37}\text{Cl}^+$ ) and  $^{40}\text{Ca}^{35}\text{Cl}^+$  ions with that of the mono-isotopic target element at the mass-to-charge ratio ( $m/z$ ) of 75.<sup>5</sup> This interference represents a great challenge when aiming to determine As in matrices such as blood, urine or serum, due to the high amount of dissolved chloride salts present and the very low As concentrations expected.

Several analytical methodologies have been developed to overcome the aforementioned spectral interferences, but many of them require a separation of the analyte from the matrix prior to the measurement. An obvious choice for a direct and complete resolution of the spectral interferences would be using a sector-field ICP-MS (SF-ICP-MS) instrument, capable of working at higher mass resolution.<sup>6</sup> However, at the resolution required, there is a significant drop in

1  
2  
3 sensitivity, which is not desirable when aiming to determine very low  
4  
5 concentrations of the analyte.<sup>7</sup>  
6

7  
8 The use of quadrupole-based ICP-MS (Q-ICP-MS) instrumentation equipped with  
9  
10 a collision/reaction cell is a good alternative, especially as such instrumentation is  
11  
12 more affordable to routine labs than SF-ICP-MS and, thus, it is more widespread.<sup>8-</sup>

13  
14 <sup>10</sup> Several gases/mixtures of gases have been explored in the context of As  
15  
16 determination in Cl-containing matrices, in an attempt to alleviate the spectral  
17  
18 interferences. Examples of reactive gases widely used and documented in the  
19  
20 literature are H<sub>2</sub>, O<sub>2</sub> or N<sub>2</sub>O. H<sub>2</sub> reacts with ArCl<sup>+</sup> helping in reducing the  
21  
22 interference at m/z = 75 to some extent.<sup>11-15</sup> On the other hand, O<sub>2</sub> reacts with As<sup>+</sup>,  
23  
24 forming the oxide ion <sup>75</sup>As<sup>16</sup>O<sup>+</sup>, which can be monitored at m/z = 91, free from Cl-  
25  
26 based polyatomic interferences.<sup>16,17</sup> However, it has to be kept in mind that Co can  
27  
28 form <sup>59</sup>Co<sup>32</sup>O<sub>2</sub><sup>+</sup>, which also shows a m/z = 91.<sup>18</sup> It is likely that this fact led Funk *et*  
29  
30 *al.* to state that “quantification of As in the DRC mode resulted in interfering ions at  
31  
32 m/z 91” when aiming at blood analysis.<sup>19</sup> N<sub>2</sub>O reacts with As<sup>+</sup> in the same way as  
33  
34 O<sub>2</sub> does, as O-atom donor.<sup>20,21</sup>  
35  
36

37  
38 NH<sub>3</sub> could be another possibility. NH<sub>3</sub> reacts with <sup>40</sup>Ar<sup>35</sup>Cl<sup>+</sup> successfully removing  
39  
40 the interference, but it also reacts with As<sup>+</sup> according to what has been described  
41  
42 as an “unusually complex condensation reaction” by Baramov and Tanner,<sup>22</sup>  
43  
44 leading to the formation of various species, of which As(NH<sub>3</sub>)NH<sub>2</sub><sup>+</sup> seems to be the  
45  
46 most abundant ion. To the best of the authors’ knowledge, the formation of such  
47  
48 product has not been used yet for analytical purposes.  
49  
50

51  
52 He is also typically used as collision gas in combination with kinetic energy  
53  
54 discrimination to reduce the contribution from polyatomic interferences, although  
55  
56 such approach tends to significantly reduce the sensitivity, providing a signal-to-  
57  
58  
59  
60

1  
2  
3 noise ratio that is not competitive with those obtained with the reactions  
4  
5 described above.<sup>23</sup>  
6

7  
8 Despite these possibilities, As determination at the low levels required in some  
9  
10 complex clinical samples remains a challenge. A clear example of these difficulties  
11  
12 can be found in a very recent publication, that reports on As values obtained using  
13  
14 various approaches, based on collision/reaction cell ICP-MS and SF-ICP-MS, for a  
15  
16 new blood CRM material. The results obtained showed so much scatter (one order  
17  
18 of magnitude range) that the As value could not be certified finally, and only an  
19  
20 informative  $<5 \mu\text{g L}^{-1}$  value was provided instead.<sup>4</sup> It is worthwhile mentioning  
21  
22 that the typical As level in human blood is precisely a few  $\mu\text{g L}^{-1}$ , and thus clinical  
23  
24 labs should be able to routinely determine such levels reliably.  
25  
26

27  
28 High efficiency has been reported for the reaction of  $\text{As}^+$  with  $\text{CH}_3\text{F}$ , with  
29  
30 predominant formation of  $\text{AsCH}_2^+$  ( $m/z=89$ ), upon  $\text{CH}_3\text{F}$  addition and subsequent  
31  
32 elimination of  $\text{HF}$ .<sup>24</sup> However, this reactive gas has been tested very seldom in  
33  
34 reaction cells.<sup>25</sup> Nevertheless, very good results (both in terms of sensitivity and  
35  
36 LODs) have been obtained recently for As determination in some biological CRMs  
37  
38 (tissues and plants) using a tandem ICP-mass spectrometer (ICP-MS/MS), a new  
39  
40 type of ICP-MS instrumentation with a collision/reaction cell situated in-between  
41  
42 two quadrupole units.<sup>26</sup> Such instrumentation is more expensive than a traditional  
43  
44 quadrupole ICP-MS unit, but enables a better control of the reactions taking place  
45  
46 within the reaction cell (an octopole) by removing all ions with a  $m/z$  different  
47  
48 from that defined by the first quadrupole, and subsequently selecting the desired  
49  
50  $m/z$  ratio to be monitored using the second quadrupole.  
51  
52  
53  
54

55  
56 It is the purpose of this work to investigate the potential of  $\text{CH}_3\text{F}$  for As  
57  
58 determination in a more simple and standard (and thus, more widespread)  
59  
60

1  
2  
3 reaction cell ICP-MS instrument. Plasma, urine and, especially, blood have been  
4  
5 selected as target samples owing to their intrinsic interest and the problems  
6  
7 mentioned above. The goal of the work was to develop a simple, but accurate  
8  
9 dilute-and-shoot approach.  
10

## 11 **2. Experimental**

### 12 **2.1. Instrumentation**

13  
14  
15 All the measurements were carried out using a quadrupole-based ICP-MS  
16  
17 instrument (NexION 300X), which is commercially available from Perkin Elmer  
18  
19 (Waltham, USA). This instrument is equipped with a cell (a quadrupole) that can be  
20  
21 used both as a collision cell in combination with kinetic energy discrimination  
22  
23 (KED) and as a dynamic reaction cell (DRC). The instrument is equipped with a  
24  
25 triple cone interface, with an additional hyper skimmer cone, providing a more  
26  
27 gradual pressure reduction within the interface, which results in less dispersion of  
28  
29 the ion beam. A quadrupole ion deflector reflects the ion beam over a 90 degree  
30  
31 angle, focusing it into the cell.  
32  
33  
34  
35

36  
37 The sample introduction system comprises a 0.4 mL min<sup>-1</sup> concentric quartz  
38  
39 nebulizer and a quartz cyclonic spray chamber, with 0.38 mm inner diameter PVC  
40  
41 flared tubing for the peristaltic pump.  
42

### 43 **2.2. Samples and standards**

#### 44 **2.2.1. Standards and reagents**

45  
46 Purified water was obtained from a Milli-Q system (Millipore, Billerica, USA).  
47  
48 Moreover, high purity water TraceSELECT Ultra was purchased from Fluka  
49  
50 Analytical (Sigma-Aldrich, St. Louis, USA).  
51  
52

53  
54 HNO<sub>3</sub> solutions were prepared from 14 mol L<sup>-1</sup> HNO<sub>3</sub> SupraPur, obtained from  
55  
56 Merck Millipore (Darmstadt, Germany), and used for dilutions.  
57  
58  
59  
60

As and Te solutions were prepared from commercially available 1 g L<sup>-1</sup> single-element standards (Merck) by appropriate dilution with 0.14 mol L<sup>-1</sup> HNO<sub>3</sub> Suprapur. Anhydrous, denatured ethanol of spectrophotometric purity grade (90% alcoholic purity) was purchased from Alfa Aesar (Karlsruhe, Germany). KCl solid salt (pro analysis purity grade) was obtained from Merck.

### 2.2.2. Samples

Reference materials with different As contents were analysed in order to validate the method developed. Seronorm trace elements in whole blood level I, II and III, and Seronorm trace elements in serum level I, all of them available as lyophilized materials, were purchased from Sero AS (Billingstad, Norway). ClinChek trace elements in urine control level I and II, also available as lyophilized materials, were purchased from Recipe (Munich, Germany).

In addition, whole blood samples from healthy volunteers were obtained from the University Hospital Miguel Servet (Zaragoza, Spain).

### 2.3. Analytical method for sample analysis

All the samples and reference materials were analysed using the instrumental settings and data acquisition settings listed in **Table 1**.

The samples were not treated prior to analysis, except for dilution. Different dilution factors were evaluated (25-, 50-, 100- and 200-fold), but the final solutions always contained 3% ethanol and 1% HNO<sub>3</sub>.

A new set of 5 calibration standard solutions of suitable concentrations, adapted to the expected As sample levels and also containing 3% ethanol and 1% HNO<sub>3</sub>, was prepared for every measurement session.

SupraPur grade HNO<sub>3</sub> and TraceSelect purity grade water were used for dilutions, in order to assure low blank signals.



Te was added as internal standard to all sample and standard solutions for a final concentration of 20  $\mu\text{g L}^{-1}$  Te.

### 3. Results and discussion

#### 3.1. Study of the reaction between As and $\text{CH}_3\text{F}/\text{He}$ within the reaction cell

In order to avoid the major interferences found at  $m/z=75$ , the possibility to promote a reaction between As and  $\text{CH}_3\text{F}$  was investigated.

Zhao *et al.*<sup>24</sup> listed  $\text{AsCH}_2^+$  (in a 97% distribution) as the primary product of the reaction between As and  $\text{CH}_3\text{F}/\text{He}$ , with a minor (3%) formation of the addition product  $\text{As}(\text{CH}_3\text{F})^+$ , using ICP/selected-ion flow tube-MS (ICP/SIFT-MS). Bolea-Fernandez *et al.*<sup>26</sup> confirmed this behaviour using ICP-MS/MS. This type of reaction with  $\text{CH}_3\text{F}$  ( $\text{CH}_3\text{F}$  addition and ulterior elimination of HF) is not very common. Fluorination or  $\text{CH}_3\text{F}$  addition are much more usual. In fact, As is the only element listed in ref. 18 to undergo this process as the main reaction with  $\text{CH}_3\text{F}$ . Recently, it has been shown that the same is true for Se, but in a much less effective way.<sup>26</sup> In any case, this reaction between As and  $\text{CH}_3\text{F}$  is quite characteristic and has been demonstrated to be very efficient in ICP-MS/MS.<sup>26</sup>

In this work,  $\text{CH}_3\text{F}/\text{He}$  is studied as reaction gas for the determination of As, making use of a more conventional reaction cell-ICP-MS instrumentation. To evaluate the efficiency of the reaction and the products generated under the reaction cell conditions, a 5  $\mu\text{g L}^{-1}$  As aqueous standard solution was nebulized and measured at different  $m/z$  ratios. The reaction cell was pressurized with different  $\text{CH}_3\text{F}/\text{He}$  flow rates to find the best settings in terms of sensitivity. The results, represented in **Figure 1**, show an evident preference of the reaction to evolve towards the formation of  $\text{AsCH}_2^+$ , also in the present study.

As shown in **Figure 1**, the maximum  $\text{AsCH}_2^+$  signal that can be attained is lower than the initial  $^{75}\text{As}^+$  signal. The  $\text{AsCH}_2^+$  signal reaches approx. 40% of the initial  $^{75}\text{As}^+$  signal at a flow of  $1.6 \text{ mL min}^{-1} \text{ CH}_3\text{F/He}$ , and even decreases at higher flows. This fact is not due to poor reaction efficiency, as the remaining  $^{75}\text{As}^+$  signal and the signals corresponding to other As species are rather low at such  $\text{CH}_3\text{F/He}$  flows. Instead, this is most likely due to the presence of He, which, at these high flows, is expected to result in scattering losses. Nevertheless, the addition of He is highly recommended for this type of reaction in order to slow down the ions sufficiently to obtain a good reaction efficiency.<sup>24</sup> In any case, this loss of raw sensitivity (roughly a factor of 3) seems like a reasonable price to pay for an interference-free detection of As, as will be demonstrated later on.

### 3.2. Optimization of the reaction cell parameters

A further optimization of the reaction gas flow rate was carried out by monitoring the signal intensity of  $\text{AsCH}_2^+$  in a 50-fold diluted blood sample at different  $\text{CH}_3\text{F/He}$  flow rates. A blank solution containing  $4 \text{ g L}^{-1} \text{ Cl}$  (the concentration typically found in blood), added as KCl, was also measured in the same way, in order to find the conditions providing the best S/N ratio.

**Figure 2** shows how the signal intensity at  $m/z = 89$  increases (left y-axis) with the reaction gas flow rate, reaching a maximum sensitivity at  $1.6 \text{ mL min}^{-1} \text{ CH}_3\text{F/He}$ . The use of higher flow rates leads to signal losses, probably due to scattering. On the other hand, the blank signal (right y-axis) remains rather low (below 40 cps) and stable along all the conditions evaluated. Therefore, an optimum signal-to-noise ratio is obtained at  $1.6 \text{ mL min}^{-1}$ .

The rejection parameter  $q$  of the DRC (RP $q$ ), associated with the low-mass cut-off, was also adjusted. An RP $q$  value of 0.55-0.65 was found to bring the best results in

1  
2  
3 terms of LOD. A summary of the optimized instrument settings is presented in  
4  
5 **Table 1.**

6  
7 In order to further assure that no spectral interference is affecting the  
8  
9 measurements under these optimized conditions, two sets of 0.5, 1, 2.5 and 5  $\mu\text{g L}^{-1}$   
10  
11 As aqueous standard solutions were prepared, a first one diluted with 1%  $\text{HNO}_3$   
12  
13 and a second one diluted with 1%  $\text{HCl}$ . A calibration curve was plotted based on  
14  
15 the results obtained for each set of standard solutions so to compare the slopes.  
16  
17 These results are presented in **Figure 3**, where the lack of any significant  
18  
19 difference can be appreciated. From this direct comparison, it can be concluded  
20  
21 that the presence of a high Cl content in the matrix does not influence the results  
22  
23 when monitoring the  $\text{AsCH}_2^+$  species at  $m/z = 89$ , thus enabling the determination  
24  
25 of As free from spectral interference.  
26  
27  
28  
29

### 30 **3.3. Overcoming non-spectral interferences**

31  
32 As has a high ionization potential (9.79 eV),<sup>27</sup> and displays a very pronounced  
33  
34 matrix-induced signal enhancement in some matrices, especially in the presence of  
35  
36 organic C (C-effect).<sup>5,28-35</sup> Due to this fact, some strategies to correct for matrix  
37  
38 effects need to be explored.  
39

40  
41 On the one hand, a suitable internal standard is required, in order to correct for  
42  
43 any instrumental instability or signal drift and improve the precision of the  
44  
45 measurements. An adequate internal standard has to be absent from the sample  
46  
47 matrix, should not lead to or suffer from spectral overlap and must have a mass  
48  
49 number close to that of the analyte and a similar ionization potential.<sup>36</sup>  
50  
51 Additionally, in this case, particular attention has to be paid not to introduce an  
52  
53 element that will react with  $\text{CH}_3\text{F}/\text{He}$ , thus creating a new spectral interference.  
54  
55 Ge, for instance, would react with  $\text{CH}_3\text{F}/\text{He}$  via F atom transfer,<sup>24</sup> leading to the  
56  
57  
58  
59  
60

1  
2  
3 formation of  $^{70}\text{Ge}^{19}\text{F}^+$  at  $m/z = 89$ , making the selection of this element, often used  
4  
5 for this task when As determination is aimed at, prohibited for our method.  
6  
7 Overall, Te (IP= 9.01 eV)<sup>27</sup> seems to be the best choice for this work and was used  
8  
9 as internal standard in all following experiments.

10  
11 On the other hand, differences in the matrix composition may preclude a direct  
12  
13 quantification of As in the samples based on external calibration *versus* aqueous  
14  
15 standard solutions. When aiming to determine As in very low concentrations,  
16  
17 sample treatment needs to be minimized in order to avoid analyte losses or  
18  
19 significant external contamination. Moreover, depending on the concentration, it  
20  
21 might not be possible to dilute the sample until no matrix effect is observed. The  
22  
23 high organic load of blood and, to a lower extent, serum samples, significantly  
24  
25 affects the plasma conditions. Even when applying internal standard correction,  
26  
27 such effect may not be completely compensated for.

28  
29 Thus, the approach finally developed was based on using a sufficiently high sample  
30  
31 dilution factor (at least 1:24) to minimize matrix effects and, also, on adding an  
32  
33 amount of ethanol to both the samples and the standard solutions, such that  
34  
35 basically its presence would control the plasma conditions, helping in matching the  
36  
37 potentially different behaviour expected between standard solutions and samples.  
38  
39 Moreover, it is well-known that the addition of an appropriate amount of an  
40  
41 organic compound, such as ethanol, will lead to a more complete ionization of As  
42  
43 though the C-effect, thus increasing the sensitivity for this element.<sup>5,28-35</sup>

44  
45 An optimization of the amount of ethanol added was carried out, as shown in  
46  
47 **Figure 4**. As can be seen (**Figure 4A**), the presence of ethanol initially increases  
48  
49 the sensitivity, until a value of 3-5%. However, the LOD does not follow the same  
50  
51 trend. After initially dropping, the LOD tends to increase with higher values,  
52  
53  
54  
55  
56  
57  
58  
59  
60

1  
2  
3 because the blanks are rising even more than the sensitivity. A value between 1  
4 and 3% ethanol seems optimum from this point of view. Even more important,  
5  
6  
7 **Figure 4B** shows that overestimated results are obtained if blood is analysed in  
8 the absence of ethanol, because the organic matrix tends to increase the As signal.  
9  
10 This phenomenon is corrected for when ethanol is added, and good agreement  
11 with the reference value is attained at 3% ethanol. The same trend was observed  
12 for all the blood samples tested: results biased 15-40% high (depending on the  
13 dilution) in the absence of ethanol, and values in agreement with the expected  
14 ones when samples and standards contained 3% ethanol. Thus, this value was  
15 used in further work.  
16  
17  
18  
19  
20  
21  
22  
23  
24

25 Under these conditions, the LOD was calculated to be 0.8 ng L<sup>-1</sup>. A comparison with  
26 the values found in the literature for different interference-free As determination  
27 strategies is presented in **Table 2**. As can be seen, the LOD presented in this work  
28 compares favourably with the vast majority of them, even with those obtained  
29 using SF-ICP-MS. It seems that only when using CH<sub>3</sub>F/He as reaction gas and the  
30 ICP-MS/MS mode a better LOD can be achieved. If CH<sub>3</sub>F/He is used in a triple  
31 quadrupole instrument but the mass window of the first quadrupole is maintained  
32 open (no mass filtering), a very similar LOD as the one reported in the current  
33 work is obtained.<sup>26</sup>  
34  
35  
36  
37  
38  
39  
40  
41  
42  
43  
44

45 It has to be mentioned that the LODs presented in the table are instrumental LODs.  
46 Therefore, any dilution required as a consequence of sample pretreatment needs  
47 to be factored in as well. Thus, the method proposed in this work ultimately  
48 provides a LOD of 20 ng L<sup>-1</sup> and a LOQ of 70 ng L<sup>-1</sup> (for a dilution factor of 25).  
49 These values are sufficiently low to determine As in real blood samples, as will be  
50 demonstrated in the next section.  
51  
52  
53  
54  
55  
56  
57  
58  
59  
60

### 3.4. Method validation and sample results

In order to validate the method developed, all the reference samples listed in section 2.2.2. were analysed. All of them were diluted in a 3% ethanol solution to four different dilution levels: 25-, 50-, 100- and 200-fold.

As determination was carried out according to the optimized instrumental settings listed in **Table 1**. The results obtained are presented in **Table 3**. As can be seen, for every sample, the results obtained were found to be in good agreement with the corresponding reference value. The confidence intervals obtained for the different dilutions factors tested always overlapped among them and, also, with the certified range. However, it was also observed that the values obtained with higher dilution factors tended to be a bit lower (see 1:199 values), even if this difference could not be considered as statistically significant. In any case, using such an extreme dilution factor is not really necessary, and it seems preferable to use intermediate dilution factors (1:49 or 1:99) to guarantee the best accuracy, while minimizing residues in the spray chamber.

It is worth mentioning here that, although all the samples and standards were diluted and measured under the same conditions, urine samples do not really require the addition of ethanol, as no significant matrix effect was observed for such samples. It was experimentally confirmed that very similar results were attained for urine when no ethanol was added.

Finally, five real blood samples were also analysed. Since no reference value was available for As, recovery assays were carried out by doping the samples (diluted 1:99) with a  $0.1 \mu\text{g L}^{-1}$  As standard solution. Samples were measured with and without As spike and the results thus obtained are presented in **Table 4**. In all cases, recoveries were higher than 90%, with an average recovery of  $96.8 \pm 3.9\%$ ,

1  
2  
3 further proving the validity of the approach proposed for analysis of real blood  
4  
5 samples.  
6

#### 7 **4. Conclusions**

8  
9  
10 This work presents a simple and straightforward analytical method for the  
11  
12 interference-free determination of As at ultra-trace levels in biological fluids with  
13  
14 high Cl content and a organic matrix.  
15

16  
17 A 1/9 gas mixture of CH<sub>3</sub>F/He was evaluated as reaction gas in a dynamic reaction  
18  
19 cell of a quadrupole ICP-MS instrument. As reacts very efficiently and with a high  
20  
21 selectivity with CH<sub>3</sub>F/He, leading to the formation of AsCH<sub>2</sub><sup>+</sup> as the primary  
22  
23 product.  
24

25  
26 Despite the strong matrix effects due to the high organic load of the samples, it was  
27  
28 possible to develop a simple “dilute and shoot” approach by diluting the samples  
29  
30 using 3% of ethanol.  
31

32  
33 This simple method provides very competitive limits of detection (0.8 ng L<sup>-1</sup>), as  
34  
35 well as high accuracy and precision (typically better than 7% RSD).  
36

#### 37 **Acknowledgements**

38  
39 This work has been funded by the Spanish Ministry of Economy and  
40  
41 Competitiveness (Project CTQ2012-33494) and the Aragón Government (Fondo  
42  
43 Social Europeo). The authors acknowledge Dr. Luis Rello from the Miguel Servet  
44  
45 University Hospital (Zaragoza, Spain) for providing the real blood samples.  
46  
47  
48  
49  
50  
51  
52  
53  
54  
55  
56  
57  
58  
59  
60

## References

1. A. Gomez-Caminero, P. Howe, M. Hughes, E. Kenyon, D. R. Lewis, M. Moore, J. Ng, A. Aitio and G. Becking, *Arsenic and Arsenic compounds*, World Health Organization, 2 edn., Geneva, 2001.
2. J. C. Ng, J. Wang and A. Shraim, *Chemosphere*, 2003, **52**, 1353–1359.
3. WHO, *Guidelines for drinking-water quality*, World Health Organization, 4 edn., Geneva, 2011.
4. R. L. Paul, W. C. Davis, L. Yu, K. E. Murphy, W. F. Guthrie, D. D. Leber, C. E. Bryan, T. W. Vetter, G. Shakirova, G. Mitchell, D. J. Kyle, J. M. Jarrett, K. L. Caldwell, R. L. Jones, S. Eckdahl, M. Wermers, M. Maras, C. D. Palmer, M. F. Verostek, C. M. Geraghty, A. J. Steuerwald and P. J. Parsons, *J. Radioanal. Nucl. Chem.*, 2014, **299**, 1555–1563.
5. J. Goossens, F. Vanhaecke, L. Moens and R. Dams, *Anal. Chim. Acta*, 1993, **280**, 137–143.
6. F. Vanhaecke and L. Moens, *Anal. Bioanal. Chem.*, 2004, **378**, 232–240.
7. C. Turetta, G. Cozzi, C. Barbante, G. Capodaglio and P. Cescon, *Anal. Bioanal. Chem.*, 2004, **380**, 258–268.
8. S. D. Tanner, V. I. Baranov and D. R. Bandura, *Spectrochim. Acta B*, 2002, **57**, 1361–1452.
9. D. R. Bandura, V. I. Baranov, A. E. Litherland and S. D. Tanner, *Int. J. Mass Spectrom.*, 2006, **255-256**, 312–327.
10. S. D'Ilio, N. Violante, C. Majorani and F. Petrucci, *Anal. Chim. Acta*, 2011, **698**, 6–13.
11. K. Neubauer and U. Völlkopf, *Atom. Spectrosc.*, 1999, **20**, 64–68.
12. M. Resano, E. García Ruiz, V. G. Mihucz, Á. M. Móricz, Gy. Záray and F.



- 1  
2  
3 Vanhaecke, *J. Anal. At. Spectrom.*, 2007, **22**, 1158–1162.
- 4  
5 13. J. Darrouzès, M. Bueno, G. Lespès, M. Holeman and M. Potin-Gautier, *Talanta*,  
6  
7 2007, **71**, 2080–2084.
- 8  
9 14. C. D. Pereira, E. E. Garcia, F. V. Silva, A. R. A. Nogueira and J. A. Nóbrega, *J. Anal.*  
10  
11 *At. Spectrom.*, 2010, **25**, 1763–1768.
- 12  
13 15. M. Colon, M. Hidalgo and M. Iglesias, *Talanta*, 2011, **85**, 1941–1947.
- 14  
15 16. K. Kawabata, Y. Kishi and R. Thomas, *Anal. Chem.*, 2003, **75**, 422 A–428 A.
- 16  
17 17. S. D'Ilio, N. Violante, M. Di Gregorio, O. Senofonte and F. Petrucci, *Anal. Chim.*  
18  
19 *Acta*, 2006, **579**, 202–208.
- 20  
21 18. [http://www.chem.yorku.ca/profs/bohme/research/selection\\_table.html](http://www.chem.yorku.ca/profs/bohme/research/selection_table.html), last  
22  
23 accessed, July 2015.
- 24  
25 19. W. E. Funk, J. K. McGee, A. F. Olshan and A. J. Ghio, *Biomarkers*, 2013, **18**, 174–  
26  
27 177.
- 28  
29 20. V. Blagojevic, E. Flaim, M. J. Y. Jarvis, G. K. Koyanagi and D. K. Bohme, *J. Phys.*  
30  
31 *Chem. A*, 2005, **109**, 11224–11235.
- 32  
33 21. M. Grotti and R. Frache, *J. Anal. At. Spectrom.*, 2007, **22**, 1481–1487.
- 34  
35 22. V. I. Baranov and S. D. Tanner, *J. Anal. At. Spectrom.*, 1999, **14**, 1133–1142.
- 36  
37 23. M. Niemelä, P. Perämäki, H. Kola and J. Piispanen, *Anal. Chim. Acta*, 2003, **493**,  
38  
39 3–12.
- 40  
41 24. X. Zhao, G. K. Koyanagi and D. K. Bohme, *J. Phys. Chem. A*, 2006, **110**, 10607–  
42  
43 10618.
- 44  
45 25. E. Bolea-Fernández, L. Balcaen, M. Resano and F. Vanhaecke, *Anal. Chem.*, 2014,  
46  
47 **86**, 7969–7977.
- 48  
49 26. E. Bolea-Fernández, L. Balcaen, M. Resano and F. Vanhaecke, *Anal. Bioanal.*  
50  
51 *Chem.*, 2015, **407**, 919–929.
- 52  
53  
54  
55  
56  
57  
58  
59  
60

- 1  
2  
3 27. D. R. Lide, Ed., *CRC Handbook of Chemistry and Physics*, CRC Press (Taylor &  
4 Francis group), Boca Ratón, 89 edn. 2008.  
5  
6  
7 28. P. Allain, L. Jaunault, Y. Mauras, J. M. Mermet and T. Delaporte, *Anal. Chem.*,  
8 1991, **63**, 1497–1498.  
9  
10  
11 29. E. H. Larsen and S. Stürup, *J. Anal. At. Spectrom.*, 1994, **9**, 1099–1105.  
12  
13  
14 30. F. Vanhaecke, J. Riondato, L. Moens and R. Dams, *Fresenius J. Anal. Chem.*, 1996,  
15 **355**, 397–400.  
16  
17  
18 31. V. L. Dressler, D. Pozebon and A. J. Curtius, *Anal. Chim. Acta*, 1999, **379**, 175–  
19 183.  
20  
21  
22 32. Z. Hu, S. Hu, S. Gao, Y. Liu and S. Lin, *Spectrochim. Acta B*, 2004, **59**, 1463–1470.  
23  
24  
25 33. Z. Hu, S. Gao, S. Hu, H. Yuan, X. Liu and Y. Liu, *J. Anal. At. Spectrom.*, 2005, **20**,  
26 1263–1269.  
27  
28  
29 34. W. Guo, S. Hu, X. Li, J. Zhao, S. Jin, W. Liu and H. Zhang, *Talanta*, 2011, **84**, 887–  
30 894.  
31  
32  
33 35. G. Grindlay, J. Mora, M. de Loos-Vollebregt and F. Vanhaecke, *Spectrochim.*  
34 *Acta B*, 2013, **86**, 42–49.  
35  
36  
37 36. F. Vanhaecke, H. Vanhoe, R. Dams and C. Vandecasteele, *Talanta*, 1992, **39**,  
38 737–742.  
39  
40  
41 37. J. Frank, M. Krachler and W. Shotyk, *Anal. Chim. Acta*, 2005, **530**, 307–316.  
42  
43  
44 38. B. P. Jackson, A. Liba and J. Nelson, *J. Anal. At. Spectrom.*, 2015, **30**, 1179–1183.  
45  
46  
47 39. C. D. B. Amaral, R. S. Amais, L. L. Fialho, D. Schiavo, T. Amorim, A. R. A.  
48 Nogueira, F. R. P. Rocha and J. A. Nóbrega, *Anal. Methods*, 2015, **7**, 1215–1220.  
49  
50  
51  
52  
53  
54  
55  
56  
57  
58  
59  
60

**Table 1.** Instrumental settings and data acquisition parameters for the NexION 300X Q-ICP-MS instrument

NexION 300X	As determination
Mode	DRC
Reaction cell gas	CH <sub>3</sub> F/He (1/9)
Reaction cell gas flow rate	1.6 mL min <sup>-1</sup>
Nebulizer gas flow rate	1.02 L min <sup>-1</sup>
Auxiliary gas flow rate	1.20 L min <sup>-1</sup>
Plasma gas flow rate	18.00 L min <sup>-1</sup>
RF power	1600 W
RPa	0.00
RPq	0.65
Nuclides monitored	<sup>89</sup> AsCH <sub>2</sub> <sup>+</sup> , <sup>126</sup> Te <sup>+</sup>
Sweeps/Reading	100
Readings/Replicate	1
Replicates	10
Dwell time	20 ms

**Table 2.** Comparison of the LODs reported in the literature for As determination by means of ICP-MS.<sup>1</sup>

Species monitored	System* (gas)	LODs/ng L <sup>-1</sup>	Sample	Publication
As <sup>+</sup>	CC (H <sub>2</sub> /He)	147	Biological samples	Ref. 23
As <sup>+</sup>	RC (H <sub>2</sub> )	25	Rain water	Ref. 13
As <sup>+</sup>	CRI (H <sub>2</sub> )	19-95	Biological samples	Ref. 14
AsO <sup>+</sup>	DRC (O <sub>2</sub> , N <sub>2</sub> O)	40	Sea water	Ref. 21
AsO <sup>+</sup>	DRC (O <sub>2</sub> )	2.0	Digested blood	Ref. 17
As <sup>+</sup>	SF-ICP-MS	10	Solutions	Ref. 26
As <sup>+</sup>	SF-ICP-MS	3.0	Digested plants	Ref. 37
AsO <sup>+</sup>	MS/MS (O <sub>2</sub> )	1.0	Digested plants	Ref. 38
AsO <sup>+</sup>	MS/MS (O <sub>2</sub> )	1.6	Drinking water	Ref. 39
AsO <sup>+</sup>	MS/MS (O <sub>2</sub> )	7.0	Solutions	Ref. 26
AsCH <sub>2</sub> <sup>+</sup>	MS/MS (CH <sub>3</sub> F)	0.2	Biological samples	Ref. 26
AsCH <sub>2</sub> <sup>+</sup>	MS/MS (CH <sub>3</sub> F) SQ mode	1.0	Biological samples	Ref. 26
AsCH <sub>2</sub> <sup>+</sup>	DRC (CH <sub>3</sub> F)	0.8	Blood, urine, serum	This work

<sup>1</sup>LODs were calculated as 3 times the standard deviation of the blank signal intensities divided by the slope of the calibration curve.

\*CC= collision cell; RC: reaction cell; CRI: collision reaction interface; DRC=dynamic reaction cell; SF: sector field; SQ: single quadrupole.

**Table 3.** Results obtained for As determination of the biological certified reference materials mentioned in section 2.2.2. Uncertainty is expressed as 95% confidence intervals (n=4).

Reference material	Reference value	Dil. factor 1:24	Dil. factor 1:49	Dil. factor 1:99	Dil. factor 1:199
Whole blood, level I / $\mu\text{g L}^{-1}$	$2.4 \pm 0.5$	$3.1 \pm 0.2$	$2.9 \pm 0.2$	$2.9 \pm 0.2$	$2.9 \pm 0.2$
Whole blood, level II / $\mu\text{g L}^{-1}$	$14.3 \pm 2.9$	$15.3 \pm 1.1$	$14.6 \pm 1.2$	$13.4 \pm 1.3$	$12.6 \pm 1.7$
Whole blood, level III / $\mu\text{g L}^{-1}$	$30.4 \pm 7.3$	$30.0 \pm 3.1$	$27.1 \pm 3.1$	$26.5 \pm 3.7$	$26.1 \pm 3.4$
Serum, level I / $\mu\text{g L}^{-1}$	0.40*	$0.45 \pm 0.07$	$0.52 \pm 0.10$	$0.42 \pm 0.08$	---
Urine, level I / $\mu\text{g L}^{-1}$	$43.0 \pm 8.6$	$42.9 \pm 3.4$	$43.4 \pm 3.9$	$44.1 \pm 3.5$	$38.8 \pm 3.6$
Urine, level II / $\mu\text{g L}^{-1}$	$83.3 \pm 16.6$	$83.2 \pm 4.9$	$81.2 \pm 5.8$	$78.5 \pm 5.1$	$75.9 \pm 5.4$

\* Indicative value

**Table 4.** Results obtained for As determination in real blood samples. Uncertainty is expressed as 95% confidence intervals (n=4).

Sample code	As content / $\mu\text{g L}^{-1}$	Recovery assay / %
MSHBlood01	$5.10 \pm 0.48$	94.5
MSHBlood02	$5.18 \pm 0.46$	91.9
MSHBlood03	$3.13 \pm 0.25$	98.5
MSHBlood04	$2.84 \pm 0.24$	102.1
MSHBlood05	$14.6 \pm 1.3$	97.0

**Figure captions.**

**Figure 1.** Overview of the As-based reaction products generated within the dynamic reaction cell at different CH<sub>3</sub>F/He flow rates

**Figure 2.** A) Optimization of the CH<sub>3</sub>F/He reaction gas flow rate for the generation of AsCH<sub>2</sub><sup>+</sup> (monitored at m/z=89) from a 1:49 diluted blood sample (left y-axis) and from an equivalent Cl-containing blank (right y-axis).

**Figure 3.** Direct comparison of a calibration curve prepared by dilution with 1% HNO<sub>3</sub> and a calibration curve prepared by dilution with 1% HCl, both sets of standard solutions measured under the conditions listed in **Table 1**.

**Figure 4.** Optimization of the concentration of ethanol in samples and standards.

A) Variation of the sensitivity and of the limit of detection with every ethanol concentration tested. B) Results obtained for the determination of As in a 1:49 diluted reference blood sample (the certified As concentration, 30.4 ± 7.3 µg L<sup>-1</sup>, is represented by a red line), for all different ethanol concentrations studied. Uncertainty is indicated as the standard deviation of 5 replicates.

Figure 1.

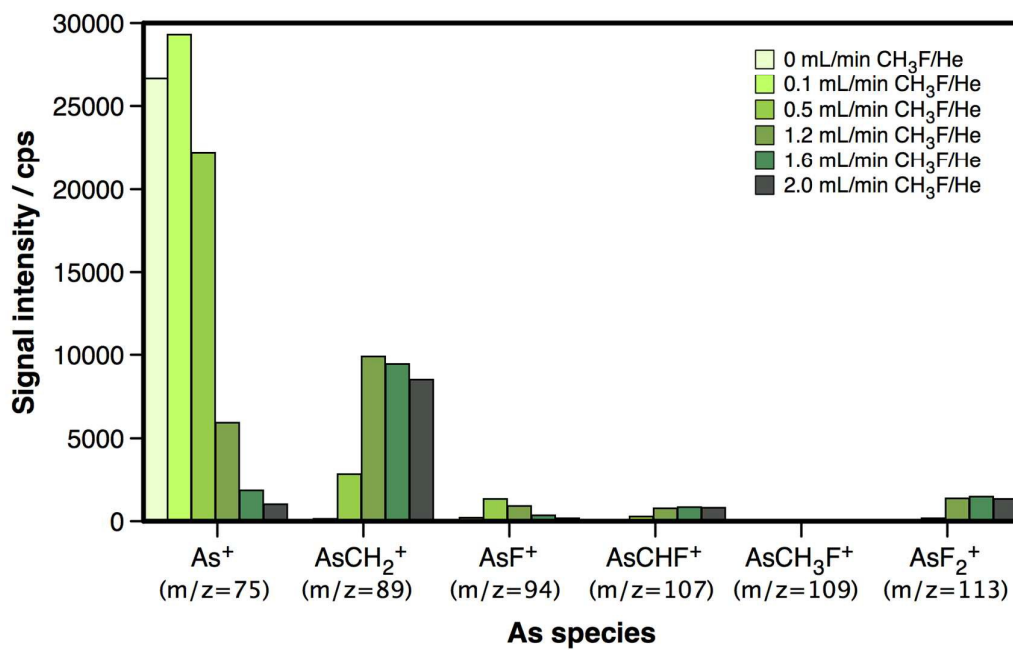




Figure 2.

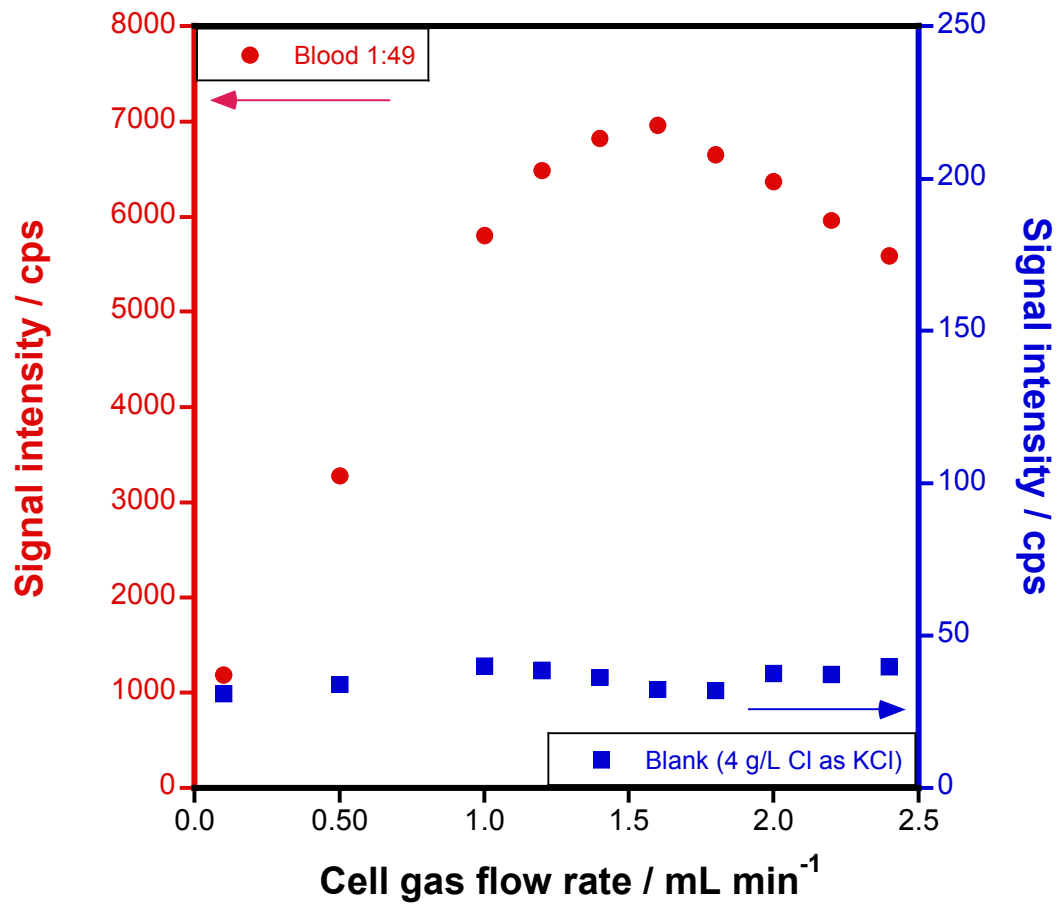


Figure 3.

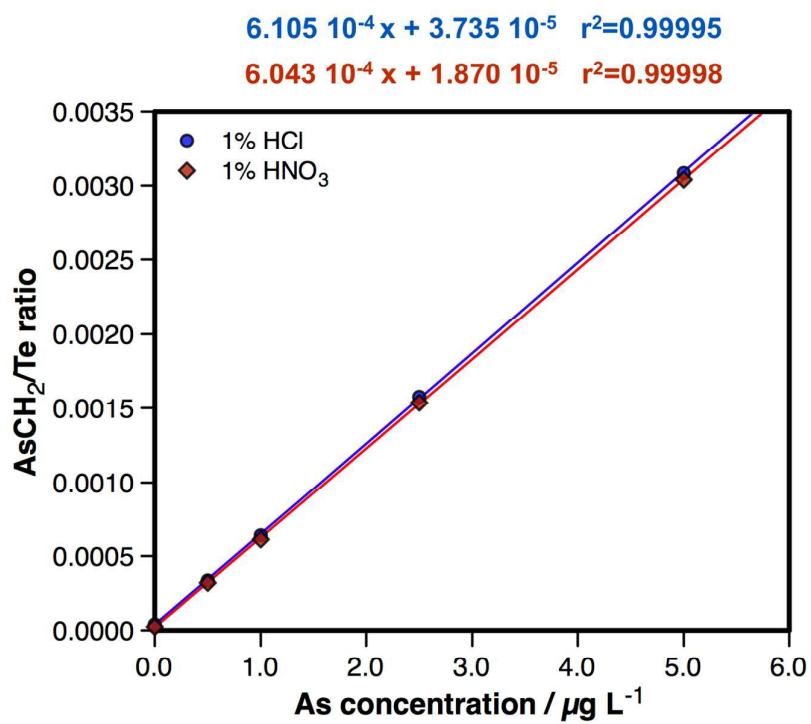
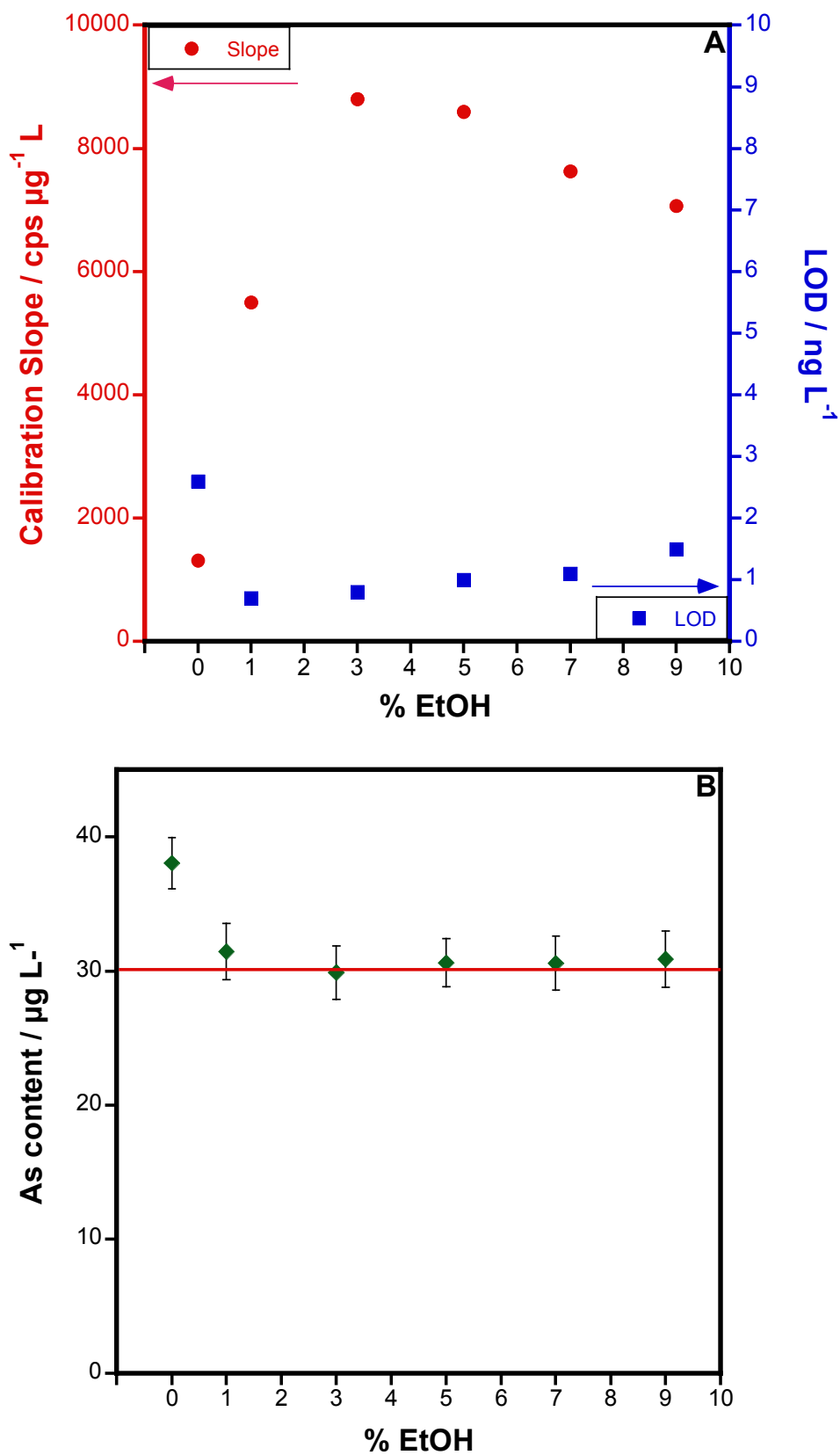
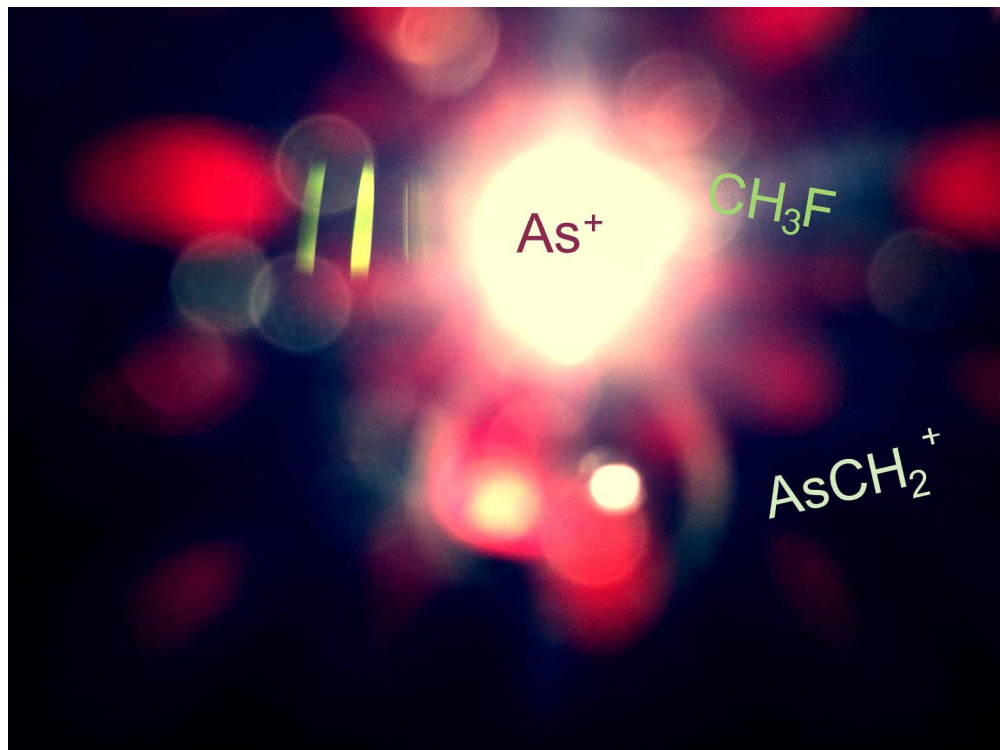


Figure 4.



1  
2  
3  
4  
5  
6  
7  
8  
9  
10  
11  
12  
13  
14  
15  
16  
17  
18  
19  
20  
21  
22  
23  
24  
25  
26  
27  
28  
29  
30  
31  
32  
33  
34  
35  
36  
37  
38  
39  
40  
41  
42  
43  
44  
45  
46  
47  
48  
49  
50  
51  
52  
53  
54  
55  
56  
57  
58  
59  
60



914x682mm (72 x 72 DPI)

1  
2  
3  
4  
5  
6  
7  
8  
9  
10  
11  
12  
13  
14  
15  
16  
17  
18  
19  
20  
21  
22  
23  
24  
25  
26  
27  
28  
29  
30  
31  
32  
33  
34  
35  
36  
37  
38  
39  
40  
41  
42  
43  
44  
45  
46  
47  
48  
49  
50  
51  
52  
53  
54  
55  
56  
57  
58  
59  
60

This article demonstrates the potential of CH<sub>3</sub>F as reaction gas for the interference-free monitoring of As by ICP-MS

1  
2  
3  
4  
5  
6  
7  
8  
9  
10  
11  
12  
13  
14  
15  
16  
17  
18  
19  
20  
21  
22  
23  
24  
25  
26  
27  
28  
29  
30  
31  
32  
33  
34  
35  
36  
37  
38  
39  
40  
41  
42  
43  
44  
45  
46  
47  
48  
49  
50  
51  
52  
53  
54  
55  
56  
57  
58  
59  
60