

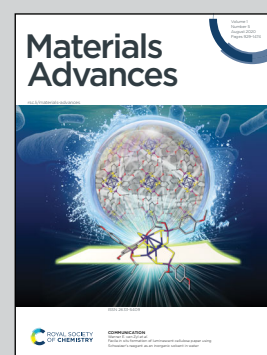


Showcasing research from Tiwari's laboratory, Faculty of Life Sciences and Environment, Goa University, India, and Jin's laboratory, RIKEN Centre for Biosystems Dynamics Research, Japan.

Near-infrared fluorescent protein and bioluminescence-based probes for high-resolution *in vivo* optical imaging

NIR optical imaging has become as an indispensable modality for the non-invasive imaging of deep tissues in fundamental life science and preclinical research. Compared to other conventional imaging modalities such as MRI, X-ray CT, and PET, NIR optical imaging has high spatiotemporal resolution enough to visualize molecular and cellular dynamics at the whole-body level. This review describes the recent progress on NIR fluorescent proteins and bioluminescence-based probes for high-resolution *in vivo* optical imaging. The review also covers several cutting-edge optical imaging techniques using NIR fluorescent and bioluminescent probes.

As featured in:



See Dharmendra K. Tiwari,
Takashi Jin *et al.*,
Mater. Adv., 2020, 1, 967.

Cite this: *Mater. Adv.*, 2020,
1, 967

Near-infrared fluorescent protein and bioluminescence-based probes for high-resolution *in vivo* optical imaging

Dhermendra K. Tiwari, *^a Manisha Tiwari^a and Takashi Jin *^b

In the last few years, high-resolution near-infrared (NIR) optical imaging has become an indispensable modality for non-invasive visualization of deep tissues both in fundamental life science and preclinical research. This is due to the high tissue permeability, low absorption and low scattering of NIR light as well as the low autofluorescence in the NIR wavelength region (700–1400 nm) in living systems. Compared to magnetic resonance imaging (MRI), X-ray computer tomography (X-ray CT), and positron emission tomography (PET), NIR optical imaging has a high spatiotemporal resolution ($\sim\mu\text{m}$) enough to visualize cellular dynamics at the whole-body level. Additionally, NIR optical imaging does not require high-energy ionizing radiation, such as X-rays, that leads to serious radiation damage of living cells. Furthermore, NIR optical imaging can easily achieve molecular imaging with the aid of NIR optical probes, which specifically bind to biomarkers expressed on cell surfaces. Thus, NIR optical imaging has great potential to be used for non-invasive optical diagnostics of diseases in medical and clinical fields. For such NIR optical imaging, NIR fluorescent probes with high brightness and biocompatibility are crucial. Although a variety of NIR imaging probes based on nanoparticles such as quantum dots and dye-incorporated polymers have been developed, possible applications of these imaging probes to optical contrast agents are limited due to their cytotoxicity. In contrast, fluorescent proteins and bioluminescence-based probes are highly biocompatible and practical for biomedical applications. During the last few years, a variety of NIR optical probes based on engineered proteins have been reported for fluorescence and/or bioluminescence *in vivo* imaging. This review describes the recent progress on NIR fluorescent proteins and bioluminescence-based probes for high-resolution *in vivo* optical imaging. The review also covers several cutting-edge optical imaging techniques using NIR fluorescent proteins and bioluminescent probes.

Received 4th May 2020,
Accepted 15th June 2020

DOI: 10.1039/d0ma00273a

rsc.li/materials-advances

1. Introduction

NIR optical imaging of living systems is widely used for tracking of live phenomena, detection of cancerous tumours, and secure handling of surgery.^{1–3} Currently, NIR optical imaging has become an indispensable modality for the non-invasive imaging of deep tissues in fundamental life science and preclinical research. Compared to other conventional imaging modalities such as MRI, X-ray CT, and PET, NIR optical imaging has a high spatiotemporal resolution ($\sim\mu\text{m}$) enough to visualize molecular and cellular dynamics at the whole-body level.^{4,5} Recent development in NIR fluorescent proteins (FPs) and

bioluminescence-based probes permits non-invasive molecular imaging *in vivo*, where it is difficult to achieve high-resolution *in vivo* molecular imaging with the conventional imaging modalities such as MRI and X-ray CT.

To date, conventional FPs emitting in the visible region have been commonly used for imaging of live cells.⁶ However, visible-emitting FPs are not suitable for tissue imaging at the whole-body level,^{7,8} because of the strong tissue absorption and scattering of visible light (400–700 nm). In contrast, NIR light in the wavelength range of 700–1400 nm, the so-called “first and second NIR window” (Fig. 1a), is preferable for deep-tissue imaging.^{9–11} This is due to the high permeability, and low absorption and scattering of NIR light in living tissues in addition to the low tissue autofluorescence in the NIR wavelength region (Fig. 1b and c).^{10–15} These superior properties of NIR light lead to clearer deep-tissue imaging with high signal-to-noise (S/N) ratios (Fig. 1d).¹⁵

In the last few years, a variety of NIR FPs have been developed for non-invasive *in vivo* imaging in animals.^{16–25}

^a Department of Biotechnology, Faculty of Life Sciences and Environment, Goa University, Taleigao Plateau, Goa 403206, India.
E-mail: dhermendratiwari@gmail.com

^b RIKEN Centre for Biosystems Dynamics Research, RIKEN, Furuedai 6-2-3, Suita, Osaka 565-0874, Japan. E-mail: tjin@riken.jp



NIR FPs have several advantages over chemically synthesized fluorescent dyes. NIR FPs can be genetically expressed in living systems with cellular protein tags, which help in tracking the activities of a gene of interest inside living cells. So far, many effective NIR FPs have been developed from bacterial phytochromes, leading to various applications in NIR *in vivo* imaging. These NIR FPs are categorized into three groups, namely, dimeric NIR FPs (iRFPs and IFPs),^{7,17,18} monomeric NIR FPs (miRFPs, mIFP, miRFPnano and Wi-Phy),^{19–24} and photo-switchable NIR FPs (PAiRFPs).²⁵ Most of the NIR FPs have high extinction coefficients. Therefore their relatively low quantum



Dhermendra K. Tiwari

Dhermendra K. Tiwari obtained his PhD degree from Jawaharlal Nehru University, New Delhi, India, in 2011. He worked as a postdoctoral fellow at Hokkaido University and Osaka University, Japan, for four years on fluorescent proteins, fluorescent nano-materials and superresolution microscopy imaging. He moved to Mechanobiology Institute, National University of Singapore, and worked for two years on light sheet microscopy and mechanobiology study of hepatocytes. At present he is UGC-Assistant Professor and Ramalingaswami re-entry research fellow funded by Govt. of India, in the Department of Biotechnology, Faculty of Life Sciences and Environment, Goa University, India. His research interest is nanobiotechnology, fluorescence and luminescence probe development for cellular application, photodynamic therapy based probe development and mechanobiology study.



Manisha Tiwari

Manisha Tiwari received her Master's degree in microbiology from Kanpur University (India), in 2006. She worked at Osaka University as a visiting research fellow from 2008–2009. She obtained her PhD degree from Hokkaido University, Japan, in 2013. She moved to Osaka and joined as a postdoctoral fellow in the Quantitative Biology Centre, RIKEN Osaka. Currently, she is working as Woman Scientist (DBT-BioCARE) in Department of Biotechnology, Goa University, India. Her research interest is mainly focused on the construction of luminescence and fluorescence based biosensors for heavy metal detection in contaminated water, fluorescence imaging and FCCS to explore molecular mechanisms.

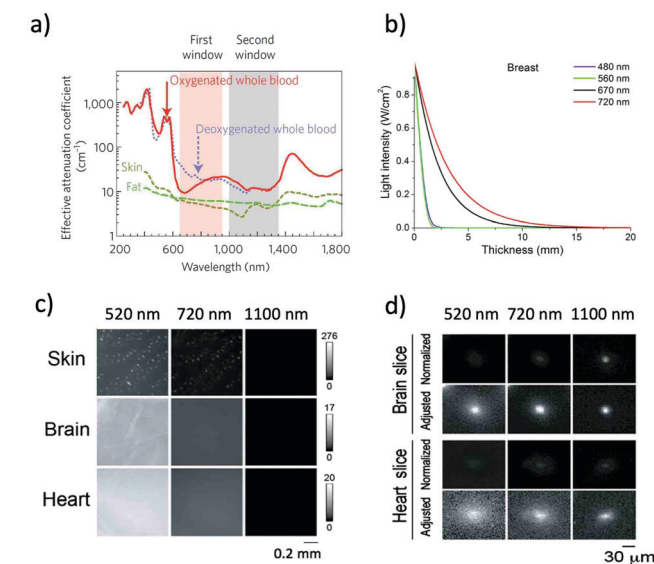


Fig. 1 (a) The first and second NIR window ranging from 700 nm to 1400 nm shows minimal light absorption by deoxy-hemoglobin (Hb), hemoglobin (HbO₂), and water. Reproduced with permission from ref. 11 (Copyright 2009, Springer-Nature). (b) Attenuation of light in breast tissue. Reproduced from ref. 14 (Copyright 2016, Creative Commons). (c) Autofluorescence from skin, brain, and heart tissues. The images were taken at a wavelength of 520 nm, 720 nm, and 1100 nm by excitation at 482 nm, 670 nm, and 785 nm, respectively. (d) Microscopic fluorescence images of QD-doped porous beads (15 μm in diameter) and their passage images through brain and heart tissues. The images were taken at a wavelength of 520 nm, 720 nm, and 1100 nm by excitation at 482 nm, 670 nm, and 785 nm, respectively. The slice thicknesses of the brain and heart are 100 and 200 μm , respectively. Normalized images show the fluorescence intensities normalized against the intensities in the absence of tissue slices. Adjusted images show the fluorescence intensities normalized to the peak to peak intensity. Figure (c) and (d) are reproduced with permission from ref. 15 (Copyright 2014, Royal Society of Chemistry).

yields are compensated by their high extinction coefficients for live imaging applications. Among the available NIR-FPs,



Takashi Jin

*Takashi Jin obtained his master's (1985) and PhD degrees (1990) from Hokkaido University. From 1988 to 2007, he was an assistant professor at the Research Institute of Applied Electricity (Research Institute for Electronic Science), Hokkaido University. In 2007, he moved to the Immunology Frontier Research Center, Osaka University, as a specially appointed professor. He is presently a principle investigator of Nano-Bio Probes Laboratory, RIKEN Center for Biosystems Dynamics Research. Also, he is a guest professor at the Graduate School of Frontier Biosciences, Osaka University. His research interests focus on the development of highly sensitive *in vivo* optical probes and deep-tissue imaging techniques in the near-infrared and shortwave infrared regions.*



miRFP680 is the brightest FP. All NIR-FPs emit fluorescence by utilizing endogenous chromophores in eukaryotic and mammalian cells.

In addition to NIR FPs, bioluminescence-based probes can also be used for non-invasive *in vivo* imaging in the NIR window. Unlike NIR FPs, bioluminescent proteins do not need external excitation, leading to high signal to background imaging because of almost no tissue autofluorescence. However, only a limited number of bioluminescent proteins are available for non-invasive *in vivo* imaging in the NIR window. Most bioluminescent protein–substrate systems emit luminescence in the visible region.²⁶ For example, firefly luciferase/*D*-luciferin and *Renilla* luciferase/coelenterazine (CTZ) systems emit bioluminescence at around 480 nm and 560 nm, respectively.²⁶ However, red-shifted bioluminescent protein–substrate pairs (luciferase/luciferin) have recently been developed for *in vivo* imaging by modification of the chemical structures of luciferins to emit in the longer wavelength region.^{27–32} To date, a variety of luciferin analogues with extended π -conjugation have been synthesized to achieve bioluminescence *in vivo* imaging in living systems.^{33–35} For instance, a red-shifted luciferin analogue (AkaLumine) emits in the NIR region over 700 nm, which was used for single-cell bioluminescence imaging in freely moving animals.³⁴ Red-shifted luciferin analogues were also used for NIR *in vivo* imaging of cancer cells and cancer metastasis in living mice.^{30,35}

The use of bioluminescence resonance energy transfer (BRET) is an alternative method to achieve bioluminescence imaging beyond the visible region.^{36,37} BRET consists of a luciferase/luciferin system as an energy donor and a NIR fluorophore as an energy acceptor. Several types of NIR fluorophores such as organic dyes, NIR FPs, and quantum dots (QDs) have been used as energy acceptors in the BRET system.³⁸ Compared to organic dyes and nanoparticle-based fluorophores such as QDs, NIR FPs can be genetically encoded into cells and tissues in living systems. The genetically encoded NIR FPs are relatively easy to use to label specific biomolecules and organelles to track their functional roles in living systems.

Owing to the development of NIR FPs and bioluminescence-based probes, a variety of high-resolution *in vivo* imaging techniques in the NIR region have been developed. These include wide field/confocal NIR fluorescence microscopy, super-resolution microscopy, and light sheet fluorescence microscopy. These imaging techniques have been applied to high-resolution *in vivo* imaging to visualize the three-dimensional structure of molecular and cellular dynamics at a sub-micrometer scale. In this review, we present the recent progress on NIR FPs and bioluminescence-based probes as well as high-resolution *in vivo* imaging techniques.

2. NIR FP-based probes for *in vivo* imaging

In the past two decades, genetically encoded FPs have been widely used for visualization of a variety of biological functions

such as calcium ion fluctuation, protein–protein interactions, and cell-cycle study in living cells.⁶ Recently, several types of NIR FPs have been developed for their applications in non-invasive *in vivo* imaging.¹⁶ Compared to visible light, NIR light (wavelength: 700–1400 nm) is relatively permeable in living tissues because of its low absorption and low scattering in tissues. In addition, tissue autofluorescence in the NIR region is very weak compared to that in the visible region (wavelength: 400–700 nm) (Fig. 1c). By combining NIR FPs with advanced imaging techniques such as two-photon microscopy, non-invasive deep-tissue imaging enables a high spatial resolution of $\sim\mu\text{m}$ at millimeter depths. NIR FPs for *in vivo* imaging can be categorized into three groups, dimeric NIR proteins, monomeric NIR proteins, and photo-switchable NIR proteins (Tables 1 and 2).

2.1. Dimeric NIR FPs

More than twenty NIR FPs are now available. These NIR FPs can be selected based on the user's choice and the type of biological imaging applications. Typical NIR FPs are summarised in Table 1. Among them, iRFP720 is the most far-red emitting dimeric FP (34.6 kDa) which emits in the conventional NIR region ($E_{x,\text{max}}$: 702 nm and $E_{m,\text{max}}$: 720 nm).¹⁷ This is a dimeric NIR FP based on iRFP713, which is derived from the RpBphP2 phytochrome photoreceptor of *Rhodospseudomonas palustris*³⁹ (Fig. 2). iRFP720 requires the cofactor biliverdin for fluorescence emission. Because of its low acid sensitivity, it can also be utilized for specific applications where the cellular environment is acidic.¹⁷ iRFP720 works well with multicolor *in vivo* imaging with other iRFP variants fused with several cellular protein tags.¹⁷ However, this protein has limited use for *in vivo* tracking and protein dynamics study due to its dimeric nature. Another variant, iRFP702, has among the highest quantum yields (QY = 8.2%);^{17,18} iRFP720 gives superior brightness in *in vivo* imaging owing to the NIR-shifted emission, weak autofluorescence, low scattering and better tissue penetration of the NIR light.^{40,41}

iRFP720 can also be used as a BRET acceptor for BRET-based *in vivo* deep-tissue imaging. Verkhusha *et al.* engineered two novel chimeric probes based on RLuc8 luciferase fused iRFP670 and iRFP720 NIR FPs.¹⁴ Due to intramolecular BRET between RLuc8 and iRFP, the chimeric probes show NIR bioluminescence with maxima at 670 nm and 720 nm. These BRET probes enable combined multi-color bioluminescence imaging of the iRFPs, leading to BRET-based highly sensitive NIR detection of cancer cells as well as continuous spatiotemporal analysis of metastatic cells in living mice.

IFP1.4 and IFP2.0 are other dimeric NIR FPs with an emission maximum of 708 nm and 711 nm, respectively. IFP1.4 is a 34.8 kDa protein derived from a chromophore-binding domain (DrCBD) of *Deinococcus radiodurans*.⁸ However, an exogenous supply of biliverdin cofactor is required to achieve fluorescence imaging of these NIR-FPs in mammalian cells. IFP2.0, a brighter version of IFP1.4, was developed after insertion of 11 mutations in cDNA of IFP1.4.¹⁸ In some cases, dimeric NIR FPs are preferred over monomer NIR FPs due to the superior



Table 1 Properties of NIR FPs

NIR-FPs	Characteristics							Ref.
	Excitation (nm)	Emission (nm)	QY (%)	Dimeric state	Extinction coefficient ($M^{-1} cm^{-1}$)	Molecular brightness vs. miRFP720 (%)	Brightness in mammalian cells vs. miRFP720 (%)	
emiRFP670	642	670	14	Monomeric	87 700	204.7	117	42
miRFP670	642	670	14	Monomeric	87 400	204.7	67.9	19
miRFP670-2	643	670	13.6	Monomeric	103 000	234.3	80.8	42
miRFP670nano	645	670	10.8	Monomeric	95 000	171.9	67.9	23
miRFP680	661	680	14.5	Monomeric	94 000	228	156.7	42
miRFP682	663	682	11.2	Monomeric	91 000	170.5	101.8	42
iRFP702	673	702	8.2	Dimeric	93 000		56	17
miRFP702	673	702	8.1	Monomeric	88 000	119.2	40.6	20
emiRFP703	674	703	8.6	Monomeric	90 900	130.8	77.6	42
miRFP703	674	703	8.6	Monomeric	90 900	130.8	49.8	42
miRFP709	683	709	5.4	Monomeric	78 400	79.8	29	19
mIFP	683	705 (704)	6.9 (8.4)	Monomeric	65 900 (82 000)	114.6	17.6	22
IFP1.4 ^a	684	708	7	Dimeric	92 000	NA	NA	18
IFP2.0 ^a	688 (690)	709 (711)	6.8 (8.1)	Dimeric	72 900 (98 000)	NA	NA	18
iRFP713 (akaiRFP)	690	713	6.3	Dimeric	98 000	NA	90	7
miRFP713	690	713	7	Monomeric	99 000	115.9	94.9	42
Wi-Phy ^a	701	719	4.7	Monomeric	92 991	NA	NA	24
miRFP720	702	720	6.1	Monomeric	98 000	100	100	21
iRFP720	702	720	6	Dimeric	96 000	NA	96	17

^a An exogenous supply of biliverdin chromophore is required for fluorescence emission in eukaryotic and mammalian cells.

Table 2 Properties of photo-switchable NIR FPs

Properties	NIR-FP	
	PAiRFP1	PAiRFP2
Excitation-max (nm)	373/659 (relaxed) 390/690 (photoactivatable)	383/657 (relaxed) 389/692 (photoactivatable)
Emission-max (nm)	703 (relaxed) 717 (photoactivatable)	708 (relaxed) 719 (photoactivatable)
QY (%)	4.8	4.7
Dimeric state	Monomeric	Monomeric
Molecular brightness	ND	ND
Extinction coefficient ($M^{-1} cm^{-1}$)	48 700 (relaxed) 67 100 (excited)	39 500 (relaxed) 63 600 (excited)
Half time for conversion	58 minutes	233 minutes
Photoconversion	Reversible	Reversible
Fate of conversion	Weakly fluorescent to highly fluorescent	Weakly fluorescent to highly fluorescent
Ref.	25	25

brightness of dimeric NIR FPs. They work well with many but not all cellular tags as fusion partners. However, they have limited use in live-cell dynamics and tracking applications due to their dimeric nature.

2.2. Monomeric NIR FPs

The development of monomeric NIR FPs makes *in vivo* live cell imaging and dynamics study more easy with lower laser power.^{1,10,12} Monomeric NIR FP variants have nearly similar photophysical properties to dimeric NIR FPs with slightly compromised brightness (Table 1). However, they are preferred over dimer NIR FPs for live-cell study and animal imaging with other cellular fusion protein tags because of their monomeric nature. Also, because of their monomeric nature, the localization efficiency of these NIR FPs is better than that of dimer NIR FPs.

The first set of bright monomeric NIR FPs engineered from bacterial phytochromes are mIFP²² and miRFPs (miRFP670,

miRFP670-2, emiRFP670, miRFP680, miRFP682, miRFP703, emiRFP703, miRFP709, miRFP713 and miRFP720)^{19,21,42} (Fig. 3). They work as a good fusion partner with several cellular protein tags like collagen, H2B, vimentin, tubulin, and actin and in free form in a living system without showing any aggregation. The molecular weight of mIFPs and miRFPs is 35.1 kDa and 34.6 kDa, respectively. Among them, miRFP680 has the highest QY and superior molecular brightness; this protein expressed very well with many cellular tag-proteins and miRFP720. Other bright and photostable NIR-FPs such as emiRFP670 and emiRFP703 with enhanced photophysical characteristics have been successfully utilized for single and multiplex non-invasive whole body imaging of mice.⁴² However, miRFP713 and miRFP720 are more preferable for deep-tissue *in vivo* imaging because of their NIR-shifted emission maximum ($E_{m,max}$: 713 nm and $E_{m,max}$: 720 nm, respectively). These proteins can be used for dual-colour multiplex imaging with other



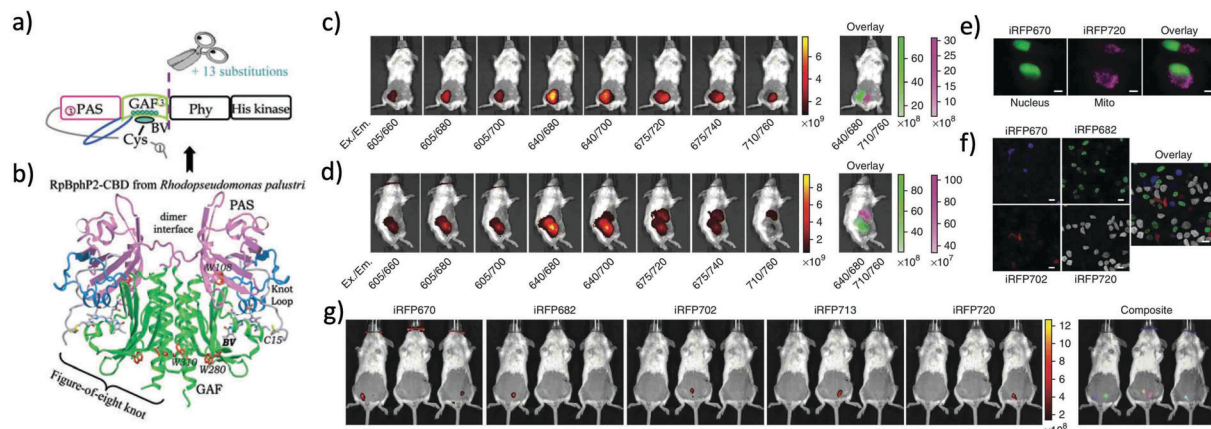


Fig. 2 (a) iRFP is engineered from *R. palustris* bacterial phytochrome RbBphP2 by removal of the PHY and His kinase domains, and consists only of the CBD comprising the PAS and GAF domains, which differs from the CBD of wildtype RbBphP2 by 13 amino acid substitutions. (b) The 3D structure of the CBD of bacterial phytochrome RbBphP2. Figure (a) and (b) are reproduced with permission from ref. 39 (Copyright 2014, FEBS Journal). (c) and (d) Multicolor imaging of a living mouse with two injected tumors expressing iRFP670 (left tumor) and iRFP720 (right tumor). (e) Microscopy of HeLa cells coexpressing iRFP670 and iRFP720 in the nucleus and mitochondria (Mito). Pseudocolor images (iRFP670 channel in green and iRFP720 channel in magenta) and the overlay are shown. Scale bars, 10 μm . (f) Confocal microscopy with spectral detection and linear unmixing of MTLn3 cells expressing iRFP670, iRFP682, iRFP702 and iRFP720. The unmixed channels and the overlay are shown in pseudocolors. Scale bars, 20 μm . (g) Separate detection of five types of tumors expressing iRFPs in living mice. Mice were injected with two types of MTLn3 cells each, from left to right in each image: iRFP670, iRFP682, iRFP702, iRFP713 and iRFP720. Figures (c)–(g) are reproduced with permission from ref. 17 (Copyright 2013, Springer-Nature).

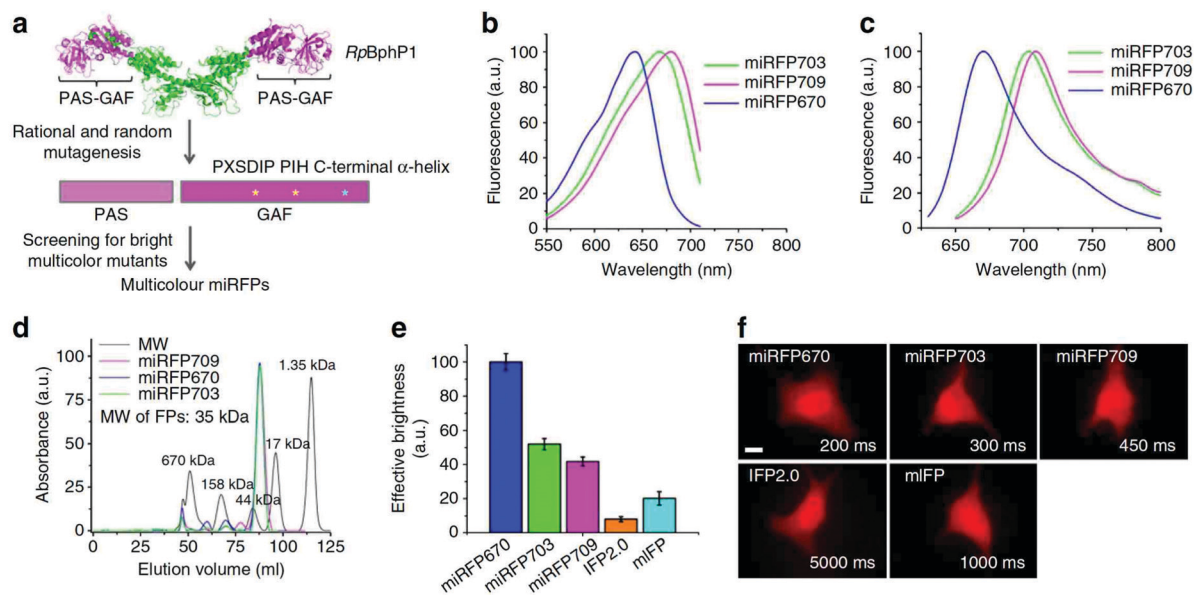


Fig. 3 (a) Schematics of directed molecular evolution resulting in three monomeric miRFPs. The chromophore-binding PAS-GAF domains, which are not involved in dimerization of RbBphP1, were used as a starting point. To exclude formation of even weak dimers, residues in the C-terminal α -helix in the GAF domain were mutated. To obtain spectrally distinct variants, residues 201 and 202 in the –PXS DIP– motif and residue 253 in the –PIH– motif in the GAF domain were mutated. (b) Fluorescence excitation spectra of engineered miRFP670, miRFP703 and miRFP709. (c) Fluorescence emission spectra of miRFPs. (d) Size-exclusion chromatography of miRFPs. (e) Brightness of live HeLa cells transiently transfected with several BphP-based NIR FPs. (f) Representative fluorescence images of several BphP-based NIR FPs in live HeLa cells. Reproduced from ref. 19 (Copyright 2016, Creative Commons).

spectrally far NIR-FP bright variants of miRFPs like miRFP 680, miRFP670 and emiRFP670 for dual-colour *in vivo* imaging.

Among the monomeric NIR FPs, miRFP670nano is the latest and smallest NIR FP (17 kDa). This protein has an emission maximum at 670 nm upon excitation at 645 nm with a 95 000

extinction coefficient.¹⁹ The monomeric protein miRFP670nano has nearly half the molecular weight of miRFP670, which makes it a better fusion partner candidate with other cellular proteins. In mammalian cells, miRFP670nano exhibits 2.8- and 1.3-fold higher photostability than miRFP670 and miRFP703.



It shows precise expression with several fusion tag cellular proteins and behaves as a perfect fluorescence resonance energy transfer (FRET) donor with mRFP720 for *in vitro* and *in vivo* imaging.¹⁹

NIR FPs also prove to be useful in super-resolution imaging as they generate low autofluorescence signals in living cells. Structured illumination microscopy with mRFP703 and other variants provides superior spatial resolution compared to wide-field fluorescence imaging for tubulin, H2B and various other cellular tags.⁹ The enhanced brightness and photostability of the newly developed emiRFP670 and emiRFP703 worked perfectly well in single and dual-colour STED imaging with an 11–36 fold decrease in the STED illumination dose in mammalian cells compared to their previously existing monomer NIR-FPs.⁴²

2.3. Photo-switchable NIR FPs

Photo-switchable FPs allow illuminating only the area of interest, which drastically improves the spatial and temporal resolution and image quality. PAiRFP1 and PAiRFP2 are the only photo-switchable NIR FPs emitting above 700 nm (Table 2).²⁵ They are capable of undergoing multiple dark–bright cycles upon excitation with NIR light before bleaching.²⁵ The emission peak of PAiRFPs is almost 50 nm red-shifted relative to that of the conventional red-shifted photo-switchable GFP-like protein, PSmOrange, leading to the use of PAiRFPs for dual-colour imaging.

PAiRFPs are developed from a bacterial phytochrome photo-receptor (BphP) known as AtBphP2,^{43,44} which utilizes heme-derived biliverdin (ubiquitous in mammalian tissues) as the chromophore. Initially, weakly fluorescent PAiRFPs undergo photoconversion into a highly fluorescent state with an excitation/emission wavelength of 690 nm/717 nm. They are not as bright as the other monomeric NIR FPs but can be used in protein tracking with localized excitation and super-resolution imaging. Verkhusha *et al.* reported that whole-body imaging of mice using PAiRFPs gave two times higher signals than iRFP because of their photo-conversion properties.²⁵ Photo-switchable FPs have been widely used for various 2D and 3D super-resolution imaging in photoactivated localization microscopy (PALM), reversible saturable optical fluorescence transition (RESOLFT), structured illumination microscopy (SIM) and light sheet fluorescence microscopy (LSFM).⁴⁵ Photo-switchable NIR FPs could have the potential to be used for *in vivo* super-resolution imaging with superior signal-to-noise ratios.

NIR FPs with two-photon excitation have proven to give better signal-to-noise contrast and tissue scattering for *in vivo* and deep-tissue non-invasive imaging. Several NIR-FPs have been applied in two-photon imaging of primary neuronal cell culture, mouse brain, and brain slices of mice and monkeys.^{46–50} The Verkhusha group conducted two colour imaging of EGFP and iRFP680 by low-dose 880 nm two-photon excitation (6.5 mW).⁴⁶ They achieved sub-cellular resolution *in vivo* imaging of neurons with a penetration depth as deep as 285 μm from the brain surface. NIR-FP based sensors have been recently developed for high-resolution *in vivo* neuroimaging using two-photon excitation in various animal models.

The Betzig group achieved wavefront sensing and visualization of the mouse cortex up to a 700 μm depth using two-photon excitation with iRFP713 NIR-FP.⁴⁷ Other groups developed NIR-FP based voltage and calcium sensors using mRFP and mRFPs to monitor brain and neuronal activity in mice, zebrafish, *C. elegans* and *Xaenopus laevis*.^{48–50} Two-photon neuronal calcium imaging and sensing have been reported by utilizing NIR genetically encoded calcium ion indicators (GECIs) namely, NIR-GECO1 and NIR-GECO2, based on mRFP NIR-FPs.^{48,49} The Campbell group reported multiplex calcium imaging by utilizing 1250 nm two-photon excitation of NIR-GECO1 together with other previously developed calcium sensors such as GCaMP6f and RCaMP1.07 in live brain slices of mice.⁴⁹ The same group reported other improved GECI variants such as NIR-GECO2 and NIR-GECO2G based on mRFP703.⁵⁰ Bright NIR-FPs (*e.g.* mRFP680, emiRFP670 and mRFP720) will be good candidates for deeper-tissue calcium and voltage sensors with the two-photon excitation technique.

The major advantage of NIR-FPs over chemical dyes is genetic encodability with the fusion tag protein of interest. This helps in allowing live *in vivo* imaging of the whole animal. Several such studies have been done in the past to develop transgenic animals such as mice, rats and fruit flies, expressing NIR-FPs. The Miwa group developed the first iRFP based transgenic animal where they showed iRFP expression in almost every organ such as the liver, kidney, lungs, heart, brain, spleen, pancreas, bone, testis, thymus and adipose tissues.⁵¹ In two separate studies, mRFP713 was used to develop a transgenic cre-dependent inducible mouse model. In the first study, tumor development and *in vivo* recombinase activity were explored.⁵² They investigated live tumor progression, metastasis events and recombination events upon conditional activation of a cre-inducible system expressing mRFP713. In another study, a mRFP713 based mouse transgenic model was used to image a neuronal network *in vivo* without the supply of exogenous chromophore biliverdin.⁵³

A transgenic mouse model expressing Ucp1-iRFP720 was developed by the Hisatake group to study the role of uncoupling protein 1 (UCP1) activity in thermogenesis control in non-invasive *in vivo* systems.⁵⁴ Uncoupling protein 1 (UCP1) is a mitochondrially expressed protein helping to uncouple the electron transport chain from ATP synthesis to produce heat. The mouse model developed in this study is useful for the *in vivo* study of pathways where adipocyte induction and non-shivering thermogenesis are involved.⁵⁴

Gu *et al.* developed a two cell homologous recombination (2C-HR-CRISPR) method utilizing histone2B-miRFP703 NIR-FP to demonstrate the CRISPR-cas9 gene editing method for the generation of a transgenic mouse line and achieved three color imaging with mCherry, Halo-tag and mRFP703.⁵⁵ McDole *et al.* achieved the fine detail of the developing heart of a mouse embryo with light-sheet microscopy by utilizing a histone2B-miRFP703 NIR-FP expressing transgenic mouse.⁵⁶ They utilized a transgenic mouse embryo expressing histone2B-miRFP703, where they were able to achieve cellular level resolution up to a 600 μm depth covering the entire linear



heart tube, head-fold and foregut pocket region.⁵⁶ These studies have demonstrated the efficient use of NIR-FPs for non-invasive deep-tissue imaging and successful expression in transgenic animal systems.

3. Bioluminescence based probes for *in vivo* imaging

Compared to fluorescence imaging, bioluminescence *in vivo* imaging has a superior advantage in that the background signals due to tissue autofluorescence are almost zero, because external excitation is not needed in bioluminescence imaging. In addition, bioluminescence imaging permits long-term observation of living cells without irradiation using excitation light, leading to no photobleaching and photocytotoxicity. There are several types of bioluminescent proteins (luciferases) derived from fireflies,^{57–60} beetles,^{61–64} bacteria,^{65–68} and various marine species,^{69–83} which can be applied to *in vivo* imaging. Although bioluminescence imaging has such superior properties over fluorescence imaging, the observation wavelengths in bioluminescence imaging have been limited to the visible region.²⁶ Recently, bioluminescence imaging probes based on red-shifted bioluminescent protein–substrate pairs and BRET systems have been developed for the non-invasive visualization of deep-tissues in the NIR region (Table 3).

3.1. Red-shifted bioluminescent protein–substrate pairs

Despite the high sensitivity of bioluminescence imaging, its potential use in bioimaging is mostly restricted to the visible region less than 600 nm. Visible-emission bioluminescence is strongly absorbed and scattered in biological samples, leading to the attenuation of the bioluminescence signals. To overcome this drawback, red-shifted bioluminescent protein–substrate pairs have been developed for bioluminescence *in vivo* imaging, where the chemical structure of bioluminescent substrates (luciferins) has been modified to emit at longer wavelengths.^{27–38}

Conley *et al.* reported a selenium analogue of firefly D-luciferin with red-shifted bioluminescence emission over 600 nm.⁸¹ The emission of the selenium analogue gives a 40 nm red-shift compared to the parent D-luciferin, enabling *in vivo* imaging of tumor cells, which express luciferin in nude mice. Shakhimin *et al.* reported coelenterazine analogues with red-shifted bioluminescence with NanoLuc for deep-tissue imaging.⁸² The direct attachment of an aryl moiety to the imidazopyrazinone core of furimazine at the C8 position provides a significant red-shift of the emission maximum (480 nm) of coelenterazine. The modified NanoLuc substrates (coelenterazine analogues) are capable of efficient BRET to far-red and NIR fluorophores.

A recently developed luciferin analogue, AkaLumine, can emit in the NIR region over 700 nm (Fig. 4).^{30,32} AkaLumine is a D-luciferin analogue with an extended π -conjugation system.

Table 3 Properties of red-shifted luciferase–substrate pairs and BRET probes

Type	Luciferase	Substrate	BRET acceptor	$\lambda_{em,max}$ (nm)	Ref.
(1) Luciferase–substrate pairs	Firefly luciferase (FLuc)	Luciferin analog		675, 706, 800, 667	28, 29, 31 and 32
	FLuc	AlaLumine		675	30 and 35
	Synthetic enzyme, Akaluc	AlaLumine		650	34
	FLuc	Se-luciferin		600	81
	NanoLuc luciferase	Coelenterazine (CTZ) analog		589	82
	Click beetle luciferase	Naphthyl luciferin		758	83
(2) BRET probes					
(a) Luciferase–FP	Renilla luciferase (RLuc8)	CTZ derivatives	iRFP670, iRFP720	670, 720	14
	FLuc	Luciferin	mCherry	575	84
	RLuc8.6	CTZ	mKusabira Orange	570	85
	RLuc8.6	CTZ	Turbo FP635	635	117
	(b) Luciferase–dye	FLuc	Luciferin	Alexa Fluor680, 750	705, 785
RLuc8.6SG		Cy5-CTZ	Cy5	684	87
RLuc8		CTZ	NIR 775	775	88
RLuc8.6		CTZ	Alexa Fluor680	700	89
Firefly luciferase		Cy7-luciferin	Cy7	800	27
(c) Luminol–dye	Cypridina luciferase (CLuc)	Cypridina luciferin	HiLite Fluor647	670	36
		Luminol	Cyanine dye	670	90
		Luminol	Choline	725, 800	91
(d) Luciferase–QD	RLuc8, RLuc9	CTZ	QD655, QD705, QD800, QD625	655, 705, 800, 625	92–98, 102, 103 and 109
	RLuc8	CTZ	PbS QD	950	100
	RLuc8	CTZ	CdTe/CdS QD	650	104
	RLuc	CTZ	CdSeTe/CdS QD	830	106, 112, 113 and 115
	CLuc	Cypridina luciferin	QD705	705	101
	FLuc	Luciferin	CdSe/CdS Qrod, QD556	675, 556	105, 107, 108 and 111
			Qrod615, 650	615, 650	
(e) Luminol–QD	NanoLuc	Furimazine	QD705	705	110
		Luminol	CdHgTe/CdS QD	754	99



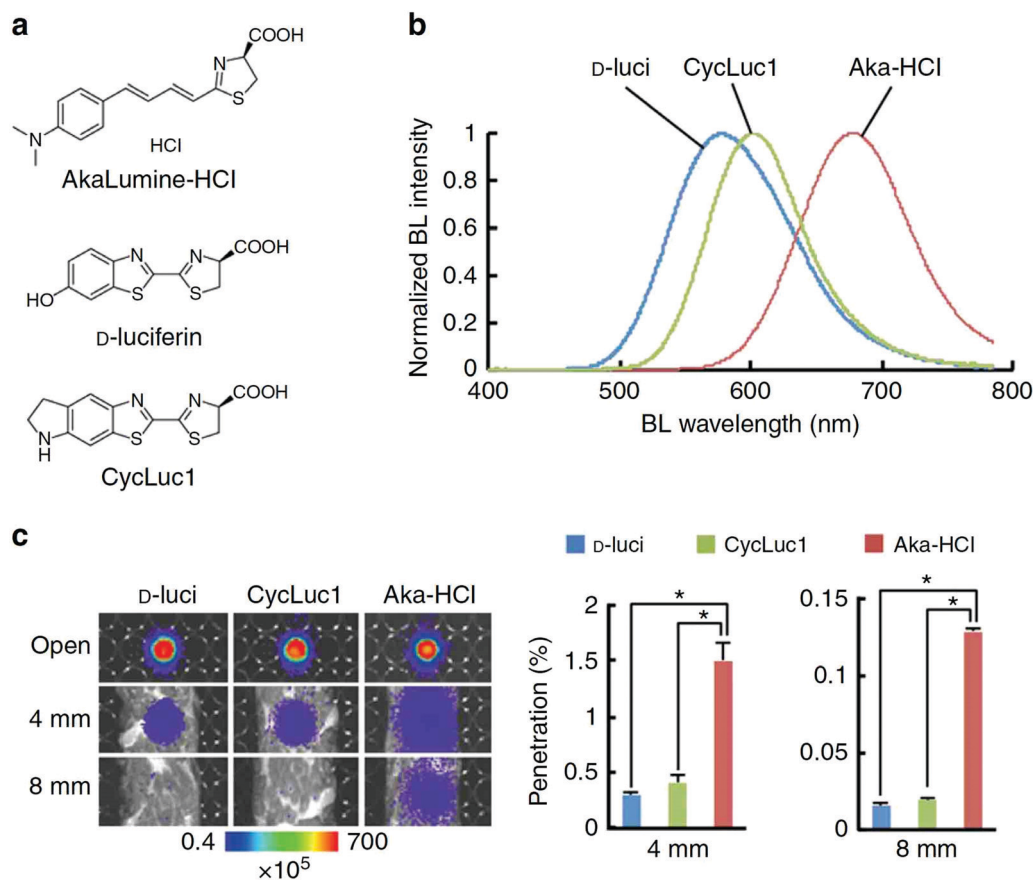


Fig. 4 Properties of AkaLumine-HCl. (a) Chemical structures of AkaLumine-HCl, D-luciferin and CycLuc1. (b) Bioluminescence emission spectra of D-luciferin (D-luci), CycLuc1 or AkaLumine-HCl (Aka-HCl). (c) Biological tissue penetration efficiency of bioluminescence generated by D-luci, CycLuc1 or Aka-HCl. The penetration efficiency indicates the relative bioluminescence intensities of the wells covered with a biological tissue (4 or 8 mm thick) versus open wells (open). $n = 3$, $*P < 0.05$ (t-test). Reproduced from ref. 30 (Copyright 2016, Creative Commons).

This red-shifted luciferin analogue has shown the capability of its NIR bioluminescence for highly sensitive deep-tissue imaging in mice.³⁰ Recently, the Miyawaki group reported a bioluminescence deep-tissue imaging system AkaBLi (Akaluc/AkaLumine), which is 100 to 1000 times brighter than conventional systems.³⁴ They achieved non-invasive bioluminescence visualization of single cells deep inside freely moving animals, mice, and marmosets. Hall *et al.* reported a click beetle luciferase mutant utilizing two naphthyl-luciferin substrates to produce NIR emission (730 nm and 743 nm) for performing deep tissue multispectral tomography in mice.⁸³

3.2. BRET systems

The use of BRET is an alternative method to achieve bioluminescence imaging at longer wavelengths. BRET consists of a luciferase-luciferin system as a resonance energy donor and a fluorescent acceptor as a resonance energy acceptor. BRET is a special case of resonance energy transfer, where the donor is a luciferase/luciferin system. As BRET acceptors, fluorescent materials such as FPs,^{14,84,85} organic dyes,^{35,86–91} and QDs^{92–115} have been employed (Fig. 5a–c).¹¹⁴ BRET occurs by non-radiative dipole-dipole coupling, and not by electron transfer. The efficiency of BRET is inversely proportional to the

sixth power of the distance between the donor and acceptor dipole.¹¹⁶

$$E = 1/[1 + (r/R_0)^6] \quad (1)$$

where r is the distance between the donor and acceptor and R_0 is the Förster distance at which the BRET efficiency is 50%. The Förster distance is given by the following equation:¹¹⁶

$$R_0 = 0.21[\kappa^2 Q_D n^{-4} J(\lambda)]^{1/6} \quad (2)$$

where κ^2 is an orientation parameter depending on the relative orientation of the donor and acceptor dipoles, Q_D is the quantum yield of the donor, n is the refractive index of the medium, and $J(\lambda)$ is the spectral overlap integral between the normalized donor emission and the acceptor excitation spectra. To achieve effective BRET in the combination of the donor (luciferase/luciferin system) and the fluorescent acceptor, the two molecules must be close with a distance within 10 nm. In addition, the spectrum of the donor emission should overlap with the excitation spectrum of the acceptor.

3.2.1. BRET probes using FPs. Although there are many types of visible-emitting FPs, the number of far-red and NIR FPs as BRET acceptors is very limited for bio-imaging. To date, several groups have applied red-shifted FPs as BRET acceptors



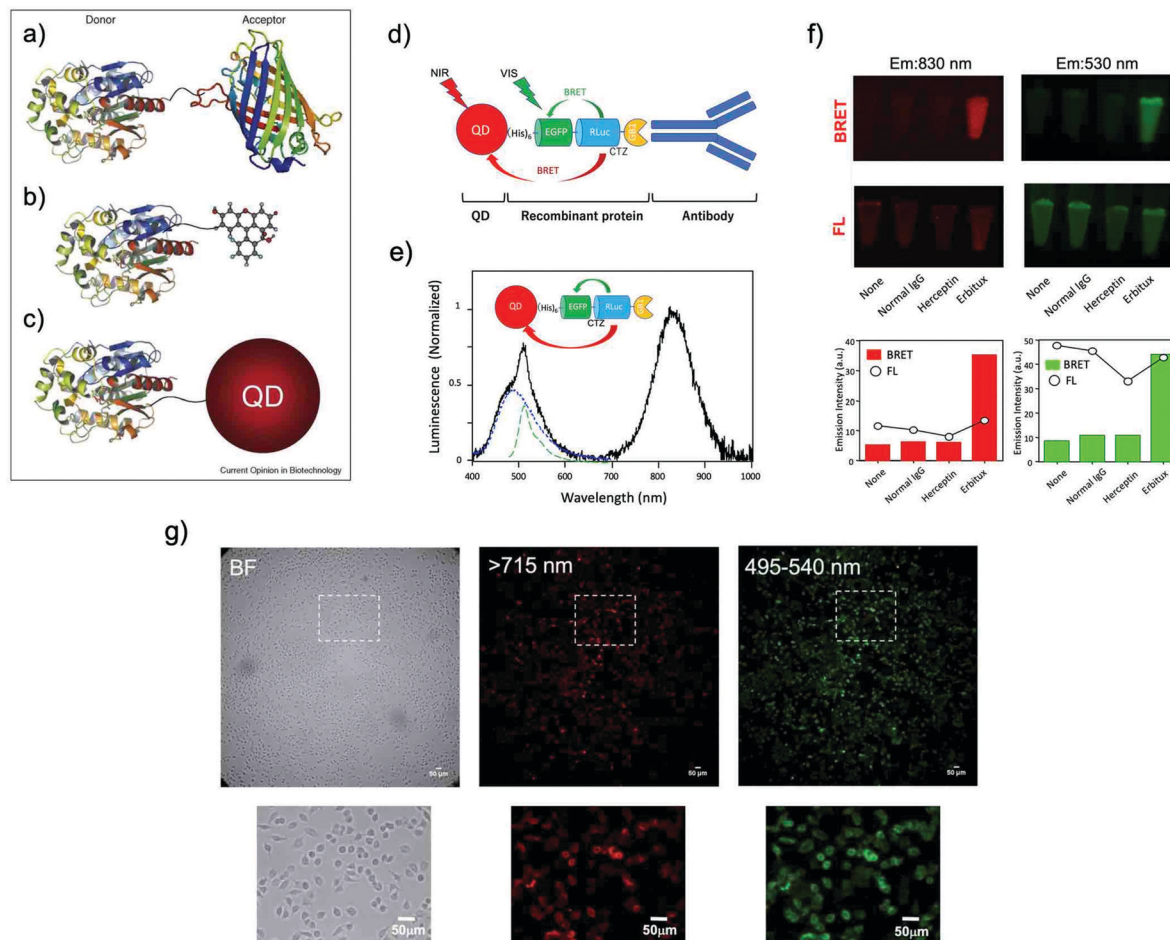


Fig. 5 BRET systems consisting of a light-emitting protein and a fluorophore (acceptor) that can be (a) a FP, (b) a small organic dye, or (c) a quantum dot (QD). Reproduced with permission from ref. 114 (Copyright 2009, Elsevier). (d) A schematic structure of a BRET-based dual-color molecular-imaging probe. The probe consists of a NIR-emitting QD, fused protein (His-EGFP-RLuc-GB1), and monoclonal antibody. BRET is expected to occur from coelenterazine (CTZ) to EGFP and to the QD, leading to visible and NIR dual-color bioluminescence emission. (e) Bioluminescence spectra for the conjugate of a NIR-emitting QD and His-EGFP-RLuc-GB1. (f) Skin cancer cells (A431, $\sim 10^6$ cells) treated with QD-His-EGFP-RLuc-GB1 (None), normal human IgG/QD-His-EGFP-RLuc-GB1 (Normal IgG), Herceptin/QD-His-EGFP-RLuc-GB1 (Herceptin), and Erbitux/QD-His-EGFP-RLuc-GB1 (Erbitux). The lower graphs show the emission intensity of BRET and FL for the above images. (g) Bright field (BF) and bioluminescence images of KLP-4 cells treated with Herceptin and His-EGFP-RLuc-GB1 conjugated QDs. Reproduced with permission from ref. 115 (Copyright 2019, Royal Society of Chemistry).

for BRET-based imaging *in vitro* and *in vivo*.^{14,84,85,117} Costoya *et al.* reported a novel BRET-based biosensor for the functional imaging of hypoxia,⁸⁴ where the sensor consists of a fused protein from mCherry, firefly luciferase and HIF- α (E-M-H). They achieved *in vivo* BRET imaging for detecting hypoxia in SCID mice. Gambhir *et al.* used BRET-based imaging of protein-protein interactions within deep tissues in the visible region.¹¹⁷ They constructed BRET systems consisting of *Renilla reniformis* luciferase (RLuc) variants, and two red FPs (TagRFP and TurboFP635) for the study of rapamycin induced protein-protein interactions in living mice. Verkhusha *et al.* reported that iRFPs can be used as BRET receptors for two-color multi-modal NIR bioluminescence and fluorescence imaging in small animals.¹⁴

3.2.2. BRET probes using NIR organic dyes. The use of conjugates between luciferase and NIR fluorescent dyes is a simple and convenient method to construct a BRET system for

in vivo imaging. To date, several types of far-red and NIR fluorescent dyes have been employed as BRET acceptors.^{27,36,86–91} To induce efficient energy transfer in the BRET system of a luciferase-dye conjugate, the bioluminescence spectrum (donor) of luciferin should be overlapped with the absorption spectrum of the fluorescence dye (acceptor). High fluorescence quantum yields as well as high extinction coefficients for the acceptor dyes are also important to achieve efficient BRET, leading to strong NIR emission from the NIR acceptor dye.

Ohmiya *et al.* reported a BRET system using the conjugate between *Cypridina* luciferase (CLuc) and commercially available cyanine dye HiLyte Fluor 647.³⁶ This BRET system showed a bimodal bioluminescence spectrum, attributable to intramolecular BRET, having emission peaks at 460 nm and at 645 nm. They obtained high-resolution BRET images of Dlk-1-expressing Huh-7 cells, and monitored the accumulation of the BRET probe in tumor-bearing mice. Recently, Kizaka-Kondoh *et al.*



reported an Alexa Fluor 680 conjugated BRET-probe for the detection of a ubiquitin-protease system regulated hypoxia-inducible factor.⁸⁹ They achieved BRET-based NIR imaging of hypoxic liver metastasis in nude mice. Rao *et al.* also developed a BRET-based NIR imaging system that contains a fluorescent phthalocyanine dye, NIR775, as a resonance energy acceptor.⁸⁸ They achieved BRET-based *in vivo* lymph-node mapping and tumor imaging. For BRET-based NIR imaging, Suzuki *et al.* reported a unique luciferase substrate consisting of a coelenterazine-cyanine-5 dye (CTZ-Cy5) conjugate. They developed BRET based NIR imaging using the CTZ-Cy5 substrate as a through-bond energy transfer cassette.⁸⁷

3.2.3. BRET probes using NIR QDs. Compared to NIR FPs and organic dyes, NIR emitting QDs have broad absorption spectra ranging from the visible to NIR regions, which results in large spectral overlap between the luminescence of luciferase substrates and the absorption of the QDs. Thus, effective BRET in the conjugate of luciferase and QDs can occur. In 2006, Rao *et al.* first reported QD-based BRET-probes for *in vivo* imaging.⁹² They prepared conjugates consisting of Luc8 and CdSe/ZnS core-shell QDs (QD605-Luc8, QD655-Luc8, QD705-Luc8, and QD800-Luc8), and applied these conjugates to BRET imaging of mice. They found that the QD-Luc8 conjugates show enhanced sensitivity in small animal imaging with *in vivo* signal to background ratios of $>10^3$. Since then, QDs have been widely used as energy acceptors for BRET-based NIR imaging.⁹³⁻¹¹⁵ Kobayashi *et al.* used the conjugate of *Renilla* luciferase and QD655 for *in vivo* lymphatic imaging in mice.¹¹⁸ They achieved the visualization of each lymphatic basin in all mice with low background signals. Cai *et al.* reported luciferase-QD conjugates for *in vivo* molecular imaging of cancerous tumors in living mice,¹¹⁰ where a cyclic arginine-glycine-aspartic acid (cRGD) peptide was used as a targeting ligand for integrin $\alpha_v\beta_3$ on tumor cells.

In most of the BRET-based QD probes, luciferase was directly conjugated to the surface of QDs using chemical coupling methods. Since chemical coupling often results in the decrease in the enzymatic activities of luciferases, mild conjugation methods using tag technology such as Halo-tag,⁹⁴ GST-tag,¹⁰⁶ and His-tag¹⁰⁸ are desirable. Recently, Jin *et al.* reported a facile method for preparing RLuc-EGFP fused protein conjugated NIR-QDs for dual-color molecular imaging of cancer cells (Fig. 5d-g).¹¹⁵ The major advantage in the use of QDs as BRET acceptors is the bright emission from the QDs because of the high extinction coefficients and large Stokes shifts. Although most QDs contain heavy metals with cytotoxicity, the improvement of the biocompatibility of QDs is necessary to develop the biological applications of QD-based BRET probes for NIR *in vivo* imaging.

4. *In vivo* NIR imaging systems

In *in vivo* NIR imaging systems, imaging microscopes are also important as well as optical NIR probes to achieve high-resolution imaging. Although many types of *in vivo* imaging instruments are

commercially available, most of the NIR imaging instruments are the type of macro fluorescence imaging systems, where the spatial resolution is not enough to visualize molecular and cellular dynamics in living tissues. In addition, the excitation and emission wavelengths for NIR imaging are mostly restricted to less than 900 nm (the first NIR window). In this section, we summarize *in vivo* NIR imaging systems consisting of wide field, confocal and super-resolution microscopes for the high-resolution visualization of living tissues at the cellular level.

4.1. Wide field epi-NIR fluorescence microscopy

In most of the commercially available *in vivo* imaging systems, the NIR wavelength region of 700 to 900 nm (first NIR optical window wavelength) has been employed. This is because the conventional NIR photo-detectors (silicon CCD cameras) are sensitive in the first NIR region, and many kinds of NIR emitting probes (*e.g.* Indocyanine green, Cy 7, and CdSeTe QDs) are easily available. Although NIR fluorescence imaging in the first NIR optical window is useful for the non-invasive visualization of organs and tissues, its spatial resolution is not enough to observe cellular dynamics. Recently, NIR optical imaging in the second NIR window (1000–1400 nm) as well as in the first NIR window (700–900 nm) has attracted much attention to achieve better spatiotemporal-resolution imaging for deep tissue in small animals.^{11,119}

Dai *et al.* have reported a high-resolution epi-microscopic system for NIR imaging of brain imaging cerebral vessels (Fig. 6a).¹²⁰⁻¹²⁵ High-magnification intravital imaging of cerebral vessels was carried out in epifluorescence mode with an 808 nm diode laser (RMPC lasers, 160 mW) as an excitation source and two objective lenses (4 \times and 10 \times) (Fig. 6b).¹²⁰ A mouse with the scalp hair removed was intravenously injected with a solution of single walled carbon nanotubes (SWNTs) and placed in a home-made stereotactic platform fixed on a motorized 3D translational stage that allowed for the digital position adjustment and readout of the mouse relative to the objective. The emitted fluorescence was filtered through a 1000 nm long-pass filter, a 1300 nm long-pass filter and a 1400 nm short-pass filter to ensure only photons in the range of 1300–1400 nm.

Jin *et al.* have also reported a wide field epi-NIR fluorescence imaging system which can be used in both the first and second NIR window (Fig. 6c).^{15,126,127} In this imaging system, solid lasers for 645, 785, and 978 nm excitation, and emission filters of 1100 ± 25 nm, 1300 ± 25 nm, and 1500 ± 25 nm are equipped with the imaging system. A Si EM-CCD camera was employed for VIS and NIR fluorescence imaging in the first NIR window and an InGaAs CMOS camera for NIR fluorescence imaging in the second NIR window. By using the epi-NIR fluorescence microscope, non-invasive imaging of cerebral blood vasculatures in a nude mouse was easily achieved (Fig. 6d).¹²⁷

4.2. Confocal NIR fluorescence microscopy

In order to achieve three-dimensional NIR fluorescence imaging with a high-spatial resolution, one-photon confocal imaging in the second NIR window has been recently reported by the Dai group



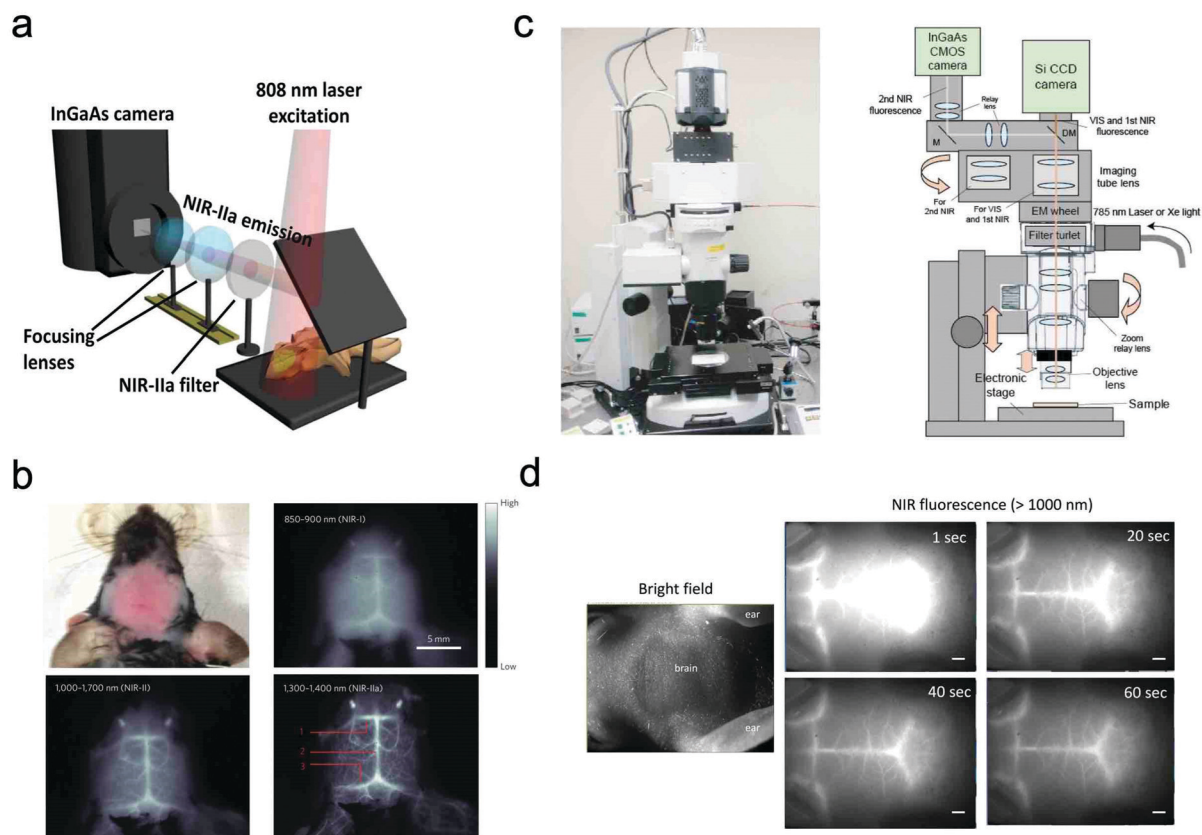


Fig. 6 (a and b) NIR fluorescence imaging system for non-invasive through-scalp and through-skull brain vascular imaging. NIR-II emission: 1300–1400 nm. NIR fluorescence imaging of mouse brain vasculatures with SWNT-IRDye800 in different NIR subregions. Reproduced with permission from ref. 120 (Copyright 2014, Springer-Nature). (c) Upright fluorescence microscope system for *in vivo* imaging in the vis, first NIR, and second NIR region (400–1400 nm). (d) NIR fluorescence images of cerebral blood vessels in a nude mouse. NIR fluorescence images were taken 1 s, 20 s, 40 s, and 60 s post-injection of PbS QDs (200 μ L, 2 μ M) through a tail vein. Reproduced from ref. 127 (Copyright 2018, Creative Commons).

(Fig. 7).^{128,129} Confocal imaging collects fluorescence signals from a small confocal volume, leading to high-resolution images with three-dimensional structures. They have developed a one-photon confocal NIR imaging microscope with ~ 1 mm depth and high spatial resolution (sub ~ 10 μ m). By using the confocal NIR microscope, they achieved three dimensional images of blood vasculatures in fixed mouse brain tissue ~ 5 –7 μ m in diameter at depth up to ~ 1.3 mm. Dai *et al.* also achieved three-dimensional molecular imaging of targeted organs with high-performance hormone conjugated NIR dyes and quantum dots.¹²⁹ Recently, Boghossian *et al.* reported a spinning-disc confocal laser microscope (SDCLM) in the second NIR window.¹³⁰ They developed the SDCLM for high-speed optical sectioning of biological tissues in the second NIR window. The SDCLM achieved a lateral resolution of 0.5 ± 0.1 μ m and an axial resolution of 0.6 ± 0.1 μ m, showing a $\sim 17\%$ and $\sim 45\%$ enhancement in lateral and axial resolution, respectively.

4.3. Super-resolution microscopy

4.3.1. Photoactivated localization microscopy (PALM) and stochastic optical reconstruction microscopy (STORM). Super-resolution localization methods are based on an indirect approach to achieve diffraction unlimited resolution in light

microscopy using high-precision localization of a fluorophore. Under the optimum concentration of emitting fluorophores, the localized positions of the emitting fluorophores can be created from the thousands of image frames to achieve super-resolution imaging. Blinking behavior of both NIR and visible fluorophores is utilized to achieve resolution below the diffraction limit of light in PALM and STORM imaging. In these techniques, single molecule localization is determined by photon detection using the Poisson process, and thus the most crucial factor during imaging is the signal-to-noise ratio.^{131,132} Single molecule detection is achieved by utilizing intrinsic blinking or photo-switching of fluorophores.

The controlled photoblinking of a fluorophore is produced with a specific wavelength of light either by switching them on-off or bleaching a subset of fluorophores so that only a few labeled fluorophores emit in each frame.^{131–137} This method is efficient in achieving a lateral resolution up to 10–20 nm, much superior to the diffraction limit in other optical microscopies. Several visible and NIR photo-switchable fluorophores are used to attain live-cell nanoscopy and *in vivo* super-resolution imaging; these can be repeatedly or irreversibly switchable between dark and bright states.^{133–135} However, organic dyes labeled with a suitable tag could also be used for various



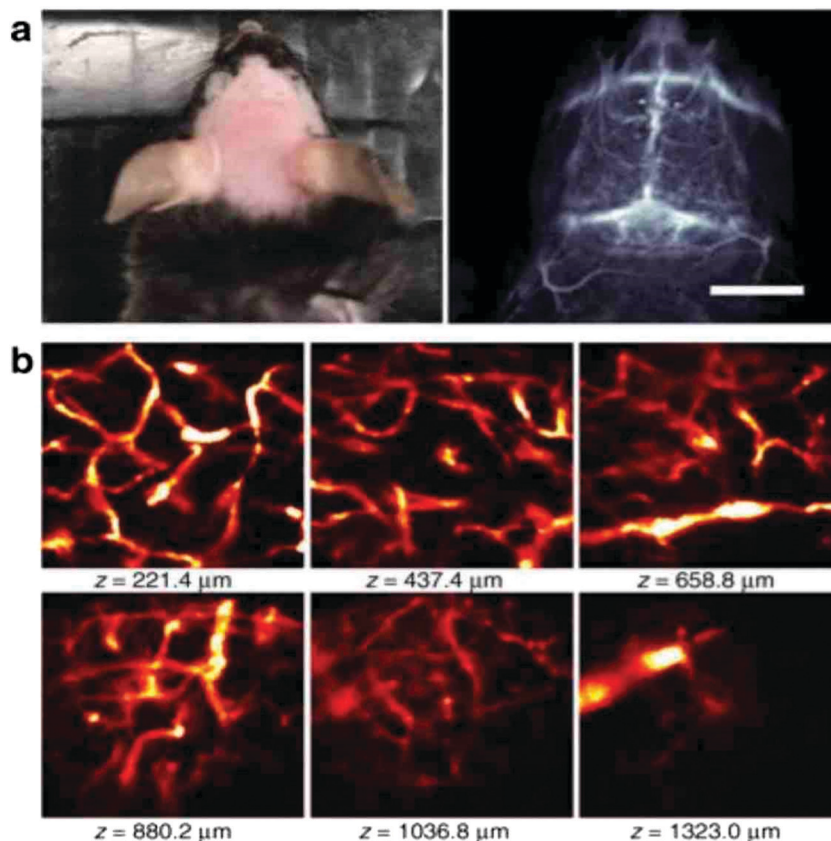


Fig. 7 (a) Photo and wide-field NIR-II epi-fluorescence imaging of brain in a mouse injected with p-FE (808 nm excitation, emission >1200 nm) with an exposure time of 5 ms. (b) *Ex vivo* confocal imaging of brain in a mouse injected with p-FE (785 nm excitation, emission >1100 nm, laser power ~30 mW, PMT voltage ~500 V). Reproduced from ref. 128 (Copyright 2018, Creative Commons).

applications in living systems.^{132,136,137} In the past, several approaches using localization precision-based imaging techniques have been developed for live imaging like PALM, PALM with independent running acquisition, STORM and direct STORM, *etc.*^{132,134–137} In the latest development, combining these microscopy techniques with light-sheet microscopy drastically improved the resolution for thick samples and small animal *in vivo* imaging. The below equation explains the localization precision efficiency determination as described earlier:^{131,133,136}

$$(\sigma_{x,y}^2)_m \approx \frac{s^2 + \frac{a^2}{12}}{N_m} + \frac{4\sqrt{\pi}s^3 b_m^2}{aN_m^2} \quad (3)$$

where 's' represents the standard deviation of the PSF, 'a' is the pixel size in the image, 'N_m' is the total photons emitted from molecule 'm', and 'b_m' is the background photons from molecule 'm'.

4.3.2. Stimulated emission depletion (STED) and reversible saturable optical fluorescence transition (RESOLFT) microscopy. Patterned illumination based super-resolution microscopies like STED^{138,139} and RESOLFT^{140–144} use another donut shape depletion beam to constrain the point-spread function. This second donut shape beam is based on a simple but powerful concept to directly erase peripheral fluorescence.¹³⁸ A diffraction unlimited spot is

achieved in STED and RESOLFT by increasing the power of the donut beam. A modified Abbe's equation describes this sub-diffraction resolution as:

$$D = \frac{\lambda}{2n \sin \alpha \sqrt{1 + \frac{I}{I_{\text{sat}}}}} \quad (4)$$

where λ represents the wavelength, $n \sin \alpha$ is the numerical aperture, I is the applied intensity of the STED or RESOLFT pulse, and I_{sat} is the STED intensity that gives 50% depletion of the emission.¹³⁸ STED usually uses very strong laser power, which drastically affects live-cell imaging and bleaches fluorophores in parallel. Hence, STED applications have limited use in short time live-cell imaging.

The concept of RESOLFT emerged from STED after replacing conventional fluorophores with photo-switchable fluorophores. This improvement drastically reduces the excitation and STED beam several fold to achieve long-time super-resolution imaging of live systems. RESOLFT is an extended advancement of STED microscopy using a special fluorophore, where the on-off states are controlled by two different wavelengths to achieve super-resolution up to 10–20 nm.^{140–144} RESOLFT has the unique advantage of reducing the laser power several fold ($<10^{-6}$ times) in live-cell imaging.^{140,143,144} Recently, NIR FPs such as emiRFP670 and emiRFP703 achieved 50–70 nm spatial



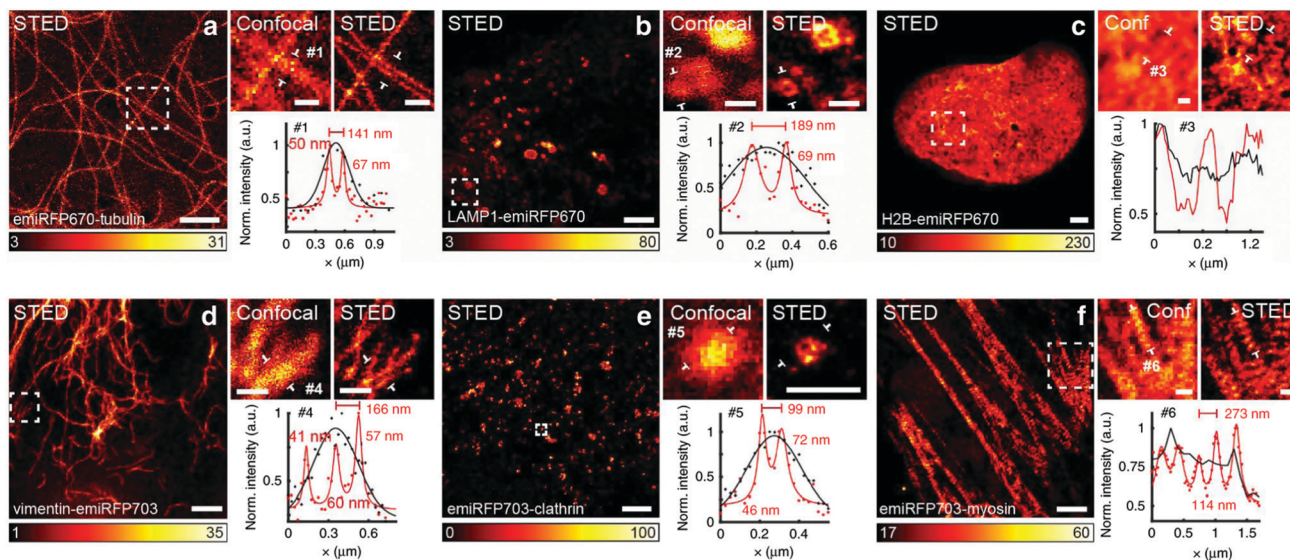


Fig. 8 Live-cell STED NIR imaging of emiRFP670 and emiRFP703 NIR-FPs with various cellular tags. (a) Confocal and STED images of HeLa cells expressing emiRFP670-tubulin. (b) Confocal and STED images of U2OS cells expressing LAMP1-emiRFP670. (c) Confocal and STED images of U2OS cells expressing H2B-emiRFP670. (d) Confocal and STED images of HeLa cells expressing vimentin-emiRFP703 NIR FP. (e) Confocal and STED images of U2OS cells expressing emiRFP703-clathrin NIR FP. (f) Confocal and STED images of U2OS cells expressing emiRFP703-myosin NIR FP. A Gaussian was used to fit the confocal data (black solid line) and a Lorentzian to fit the STED data (red solid line). Scale bar: 2 μm for the full images and 500 nm for the inserts. Reproduced from ref. 42 (Copyright 2018, Creative Commons).

resolution in STED imaging of various cellular structures in live-cell imaging (Fig. 8).⁴² Development of bright photo-switchable NIR FPs will provide opportunity to users to reduce the laser power to extend the imaging time and resolution.

4.3.3. Structured illumination microscopy (SIM) and saturated structured illumination microscopy (SSIM). SIM and SSIM are based on the nonlinearity principle. In SSIM imaging, the sample is illuminated with high frequency sinusoidal striped light.^{145–149} The requirement of high laser intensity to achieve nonlinearity in SSIM is the limiting factor to achieve high-resolution in three dimensions.^{145–149} SSIM together with photo-switchable fluorophores emitting in the visible and near-infrared region succeeds in achieving nonlinearity at very low laser power, because the power of light needed for photoconversion in the on-off states could be reduced several fold compared to conventional fluorophores used in SSIM.^{147–149}

Live imaging of dendrites and dendritic spines in zebra-fish brain and mice has been achieved by SIM using green FP (GFP).¹⁴⁹ The combination of NIR photo-switchable FPs with SSIM will further improve the resolution of such imaging conditions as proven earlier. In another study, high resolution of the neuronal structure of mouse brain was achieved using patterned illumination-based microscopy in two-photon excitation.¹⁵⁰ This could further be improved by replacing fluorescein with NIR probes. However, the only limitation now is the availability of super-bright NIR FPs and NIR dyes. Recently, a NIR, small size and highly photostable dye, HD-Br, was successfully employed for three-dimensional super-resolution imaging of liver organoids and in *Caenorhabditis elegans* using SIM.¹⁵¹

4.4. Light sheet fluorescence microscopy (LSFM)

LSFM is widely used for 3D deep-tissue imaging. Most of the above discussed super-resolution microscopy techniques were used for thick samples, where the excitation laser light illuminates the sample in all planes (wide-field, PALM, STED and SSIM). In contrast, in LSFM imaging, a nanometer-thin sheet of light is used to excite an optically sectioned object perpendicular to the direction of observation. Dai *et al.* reported amazing resolution in NIR-LSFM imaging with 1300–1700 nm excitation and emission, respectively (Fig. 9).¹⁵²

Several versions of LSFM have been invented with improved resolution in both 2D and 3D imaging. Bessel beam plane illumination microscopy (BBPIM) is the advancement in this line developed by the Eric Betzig group, which used nanometer-thin light sheet illumination.¹⁵³ The resolution of BBPIM could be further improved using photo-controllable or photo-switchable fluorophores in both the visible and NIR range. BBPIM combined with a structured illumination approach proved to achieve excellent resolution (both x - y and x - z direction) with reduced phototoxicity. This new nanoscopy approach is known as lattice light sheet nanoscopy (LLSN).¹⁵⁴ Both BBPIM and LLSN are considered as great imaging tools for 3D imaging with very low photo-cytotoxicity.

5. Conclusion and perspective

In this review, we present NIR FPs and bioluminescence-based NIR probes with their application to high-resolution *in vivo* imaging, which has been developed in the last decade. In living systems, there are strong tissue absorption, scattering, and



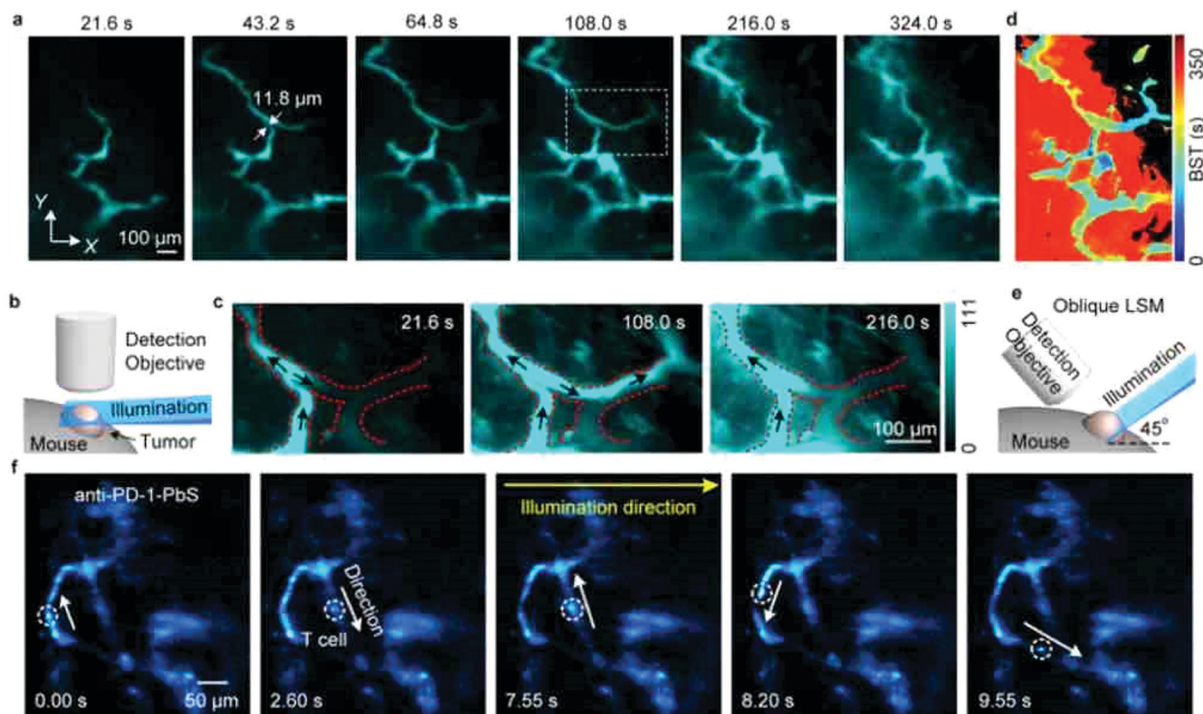


Fig. 9 Non-invasive *in vivo* NIR-II light sheet microscopy of tumors on mice. (a) Time-course LSM of tumor vasculatures at a fixed illumination plane below the top of a xenograft MC38 tumor on a mouse ear at $Z \sim 300 \mu\text{m}$ after intravenous injection of a NIR probe, p-FE (excitation: 785 nm, emission: 1000–1200 nm). A $4\times$ detection objective and a $5\times$ illumination objective in a normal, non-oblique configuration of (b) were used. (c) Abnormal blood flows in tumor vessels, showing on-off intermittency and direction reversal in the rectangular highlighted region in (a) and gradual extravasation into the tumor space. Similar results for $n = 3$ (C57BL/6, female, 6 weeks old). Black arrows represent the flow direction. (d) A BST map showing highly heterogeneous blood perfusion in tumor vessels and slow, inhomogeneous extravasation behavior into the tumor space (C57BL/6, female, 6 weeks old; similar results for $n = 2$). (e) Schematic illustration of *in vivo* oblique NIR-II LSM with illumination and detection at 45° to the mouse body. (f) Time-course recording of PD-1+ cells (white circles) in a CT26 tumor labeled with anti-PD-1-CS QDs 2 h after intravenous injection of anti-PD-1-CS QDs at 20 fps by oblique LSM. Reproduced with permission from ref. 152 (Copyright 2019, Springer-Nature).

autofluorescence in the visible region. Thus, the use of NIR-emitting optical probes is crucial to achieve high-resolution *in vivo* imaging. The combination of NIR-emitting optical probes with high-resolution imaging systems enables the non-invasive visualization of living tissues at the cellular resolution level.

Among the NIR FPs designed from the bacterial phytochrome photoreceptor, miRFP680 is the brightest NIR-FP in mammalian cells.⁴² The brightness of miRFP613 and miRFP720 is approximately $\sim 30\%$ lower than miRFP680, however their $\sim 33 \text{ nm}$ and $\sim 40 \text{ nm}$ red-shifted emission spectra would be advantageous for *in vivo* imaging and multiplex imaging with other spectrally distinct NIR-FPs. Another recently developed NIR-FP, miRFP670nano, has nearly similar brightness to miRFP720 in mammalian cells but its monomeric nature and smallest size are the advantage for use as a fusion tag for live *in vivo* imaging.²³ Considering their monomeric nature and brightness, these NIR-FPs are suitable for high-resolution *in vivo* imaging.

These proteins can also be used for dual-color and FRET imaging in deep-tissues. Photo-switchable NIR FPs PAmiRFP1 and PAmiRFP2 are unique FPs, and their emission can be controlled by switching on/off with light in a localized region, which is useful for super-resolution imaging. The use of photo-switchable FPs for *in vivo* imaging avoids the excitation of the

out-of-focus area, leading to the significant improvement of signal-to-noise ratios by a factor of several fold. After the expansion of NIR photo-switchable FPs, they could also be used with other switchable NIR proteins to develop FRET pairs to improve signal-to-noise ratios for the accuracy of NIR based FRET imaging.

Red-shifted bioluminescent protein–substrate pairs as well as NIR FPs can also be used for high-resolution *in vivo* imaging. Luciferin analogues modified with a longer π -conjugation such as AkaLumine enable high-resolution deep-tissue imaging at the cellular level. The use of BRET is an alternative method to achieve *in vivo* imaging in the NIR region. BRET-based molecular imaging has a higher detection sensitivity compared to fluorescence-based molecular imaging due to its low background signals. However, NIR bioluminescent proteins are still limited with only a few good NIR emitting bioluminescent substrates like AkaLumine, which is available to use alone or as a BRET acceptor for deep-tissue imaging.

NIR FP-based fluorescence imaging and bioluminescence-based imaging are promising modalities for high-resolution *in vivo* imaging. These imaging techniques can be applied to non-invasive visualization of cancer metastasis, neovascularization, immune cell response and stem cell implantation both in basic life science and preclinical research. Although several



types of NIR FPs and red-shifted bioluminescent protein-substrate pairs have emerged in recent years, there is a need to focus more on the development of bright and stable ones for high-resolution *in vivo* imaging applications. Through the development of bright NIR molecular imaging probes, NIR optical imaging would greatly contribute to optical diagnostics of diseases in biomedical and clinical fields.^{155–159}

Conflicts of interest

There are no conflicts to declare.

Acknowledgements

We would like to thank Setsuko Tsuboi and Sayumi Yamada of RIKEN for their help in the preparation of the manuscript. DKT thanks Department of Biotechnology, Ministry of Science and Technology, India, for a Ramalingaswami fellowship, and University Grant Commission, India, for financial support from the faculty position in Goa University. Manisha Tiwari thanks Department of Biotechnology, Ministry of Science and Technology, India, for a BioCARE women scientist fellowship. TJ is thankful for the financial support from the Ministry of Education, Science, Sports, and Culture of Japan (Grant-in-Aid for Scientific Research (B) 19H04459 to TJ).

References

- J. V. Frangioni, *In vivo* near-infrared fluorescence imaging, *Curr. Opin. Chem. Biol.*, 2003, **7**, 626–634.
- S. A. Hilderbrand and R. Weissleder, Near-infrared fluorescence: application to *in vivo* molecular imaging, *Curr. Opin. Chem. Biol.*, 2010, **14**, 71–79.
- R. R. Zhang, A. B. Schroeder, J. J. Grudzinski, E. L. Rosenthal, J. M. Warram, A. N. Pinchuk, K. W. Eliceiri, J. S. Kuo and J. P. Weichert, Beyond the margins: real-time detection of cancer using targeted fluorophores, *Nat. Rev. Clin. Oncol.*, 2017, **14**, 347–364.
- A. R. Kherlopian, T. Song, Q. Duan, M. A. Neimark, M. J. Po, J. K. Gohagan and A. F. Laine, A review of imaging techniques for systems biology, *BMC Syst. Biol.*, 2008, **2**, 74.
- R. A. de Kemp, F. H. Epstein, C. Catana, B. M. W. Tsui and E. L. Ritman, Small-animal molecular imaging methods, *J. Nucl. Med.*, 2010, **51**, 18S–32S.
- D. M. Chudakov, M. V. Matz, S. Lukyanov and K. A. Lukyanov, Fluorescent proteins and their applications in imaging living cells and tissues, *Physiol. Rev.*, 2010, **90**, 1103–1163.
- G. S. Filonov, K. D. Piatkevich, L.-M. Ting, J. Zhang, K. Kim and V. V. Verkhusha, Bright and stable near-infrared fluorescent protein for *in vivo* imaging, *Nat. Biotechnol.*, 2011, **29**, 757–761.
- X. Shu, A. Royant, M. Z. Lin, T. A. Aguilera, V. Lev-Ram, P. A. Steinbach and R. Y. Tsien, Mammalian expression of infrared fluorescent proteins engineered from a bacterial phytochrome, *Science*, 2009, **324**, 804–807.
- K. Konig, Multiphoton microscopy in life sciences, *J. Microsc.*, 2000, **200**, 83–104.
- R. Weissleder, A clearer vision for *in vivo* imaging, *Nat. Biotechnol.*, 2001, **19**, 316–317.
- A. M. Smith, M. C. Mancini and S. Nie, Second window for *in vivo* imaging, *Nat. Nanotechnol.*, 2009, **4**, 710–711.
- C. L. Amiot, S. Xu, S. Liang, L. Pan and J. X. Zhao, Near-infrared fluorescent materials for sensing of biological targets, *Sensors*, 2008, **8**, 3082–3105.
- G. Hong, A. L. Antaris and H. Dai, Near-infrared fluorophores for biomedical imaging, *Nat. Biomed. Eng.*, 2017, **1**, 0010.
- K. A. Rumyantsev, K. K. Turoverov and V. V. Verkhusha, Near-infrared bioluminescent proteins for two-color multimodal imaging, *Sci. Rep.*, 2016, **6**, 36588.
- Y. Tsukasaki, M. Morimatsu, G. Nishimura, T. Sakata, H. Yasuda, A. Komatsuzaki, T. M. Watanabe and T. Jin, Synthesis and optical properties of emission-tunable PbS/CdS core-shell quantum dots for *in vivo* fluorescence imaging in the second near-infrared window, *RSC Adv.*, 2014, **4**, 41164–41171.
- M. M. Karasev, O. V. Stepanenko, K. A. Rumyantsev, K. K. Turoverov and V. V. Verkhusha, Near-infrared fluorescent proteins and their applications, *Biochemistry*, 2019, **84**, S32–S50.
- D. M. Shcherbakova and V. V. Verkhusha, Near-infrared fluorescent proteins for multicolor *in vivo* imaging, *Nat. Methods*, 2013, **10**, 751–754.
- D. Yu, W. C. Gustafson, C. Han, C. Lafaye, M. Noirclerc-Savoie, W.-P. Ge, D. A. Thayer, H. Huang, T. B. Kornberg, A. Royant, L. Y. Jan, Y. N. Jan, W. A. Weiss and X. Shu, An improved monomeric infrared fluorescent protein for neuronal and tumor brain imaging, *Nat. Commun.*, 2014, **5**, 3626.
- D. M. Shcherbakova, M. Baloban, A. V. Emelyanov, M. Brenowitz, P. Guo and V. V. Verkhusha, Bright monomeric near-infrared fluorescent proteins as tags and biosensors for multiscale imaging, *Nat. Commun.*, 2016, **7**, 12405.
- D. M. Shcherbakova, O. V. Stepanenko, K. K. Turoverov and V. V. Verkhusha, Near-Infrared fluorescent proteins: multiplexing and optogenetics across scales, *Trends Biotechnol.*, 2018, **36**, 1230–1243.
- D. M. Shcherbakova, N. C. Cammer, T. M. Huisman, V. V. Verkhusha and L. Hodgson, Direct multiplex imaging and optogenetics of Rho GTPases enabled by near-infrared FRET, *Nat. Chem. Biol.*, 2018, **14**, 591–600.
- D. Yu, M. A. Baird, J. R. Allen, E. S. Howe, M. P. Klassen, A. Reade, K. Makhijani, Y. Song, S. Liu, Z. Murthy, S.-Q. Zhang, O. D. Weiner, T. B. Kornberg, Y. N. Jan, M. W. Davidson and X. Shu, A naturally monomeric infrared fluorescent protein for protein labeling *in vivo*, *Nat. Methods*, 2015, **12**, 763–765.
- O. S. Oliinyk, A. A. Shemetov, S. Pletnev, D. M. Shcherbakova and V. V. Verkhusha, Smallest near-infrared



- fluorescent protein evolved from cyanobacteriochrome as versatile tag for spectral multiplexing, *Nat. Commun.*, 2019, **10**, 279.
- 24 M. E. Auldridge, K. A. Satyshur, D. M. Anstrom and K. T. Forest, Structure-guided engineering enhances a phytochrome-based infrared fluorescent protein, *J. Biol. Chem.*, 2012, **287**, 7000–7009.
- 25 K. D. Piatkevich, F. V. Subach and V. V. Verkhusha, Far-red light photoactivatable near-infrared fluorescent proteins engineered from a bacterial phytochrome, *Nat. Commun.*, 2013, **4**, 2153.
- 26 C. E. Badr and B. A. Tannous, Bioluminescence imaging: progress and applications, *Trends Biotechnol.*, 2011, **29**, 624–633.
- 27 R. Kojima, H. Takakura, T. Ozawa, Y. Tada, T. Nagano and Y. Urano, Rational design and development of near-infrared-emitting firefly luciferins available *in vivo*, *Angew. Chem., Int. Ed.*, 2013, **52**, 1175–1179.
- 28 S. Iwano, R. Obata, C. Miura, M. Kiyama, K. Hama, M. Nakamura, Y. Amano, S. Kojima, T. Hirano, S. Maki and H. Niwa, Development of simple firefly luciferin analogs emitting blue, green, red, and near-infrared biological window light, *Tetrahedron*, 2013, **69**, 3847–3856.
- 29 A. P. Jathoul, H. Grounds, J. C. Anderson and M. A. Pule, A dual-color far-red to near-infrared firefly luciferin analogue designed for multiparametric bioluminescence imaging, *Angew. Chem., Int. Ed.*, 2014, **53**, 13059–13063.
- 30 T. Kuchimaru, S. Iwano, M. Kiyama, S. Mitsumata, T. Kadonosono, H. Niwa, S. Maki and S. Kizaka-Kondoh, A luciferin analogue generating near-infrared bioluminescence achieves highly sensitive deep-tissue imaging, *Nat. Commun.*, 2016, **7**, 11856.
- 31 J. C. Anderson, H. Grounds, A. P. Jathoul, J. A. H. Murray, S. J. Pacman and L. Tisi, Convergent synthesis and optical properties of near-infrared emitting bioluminescent firefly luciferins, *RSC Adv.*, 2017, **7**, 3975–3982.
- 32 R. Saito, T. Kuchimaru, S. Higashi, S. W. Lu, M. Kiyama, S. Iwano, R. Obata, T. Hirano, S. Kizaka-Kondoh and S. A. Maki, Synthesis and luminescence properties of near-infrared N-heterocyclic luciferin analogues for *in vivo* optical imaging, *Bull. Chem. Soc. Jpn.*, 2019, **92**, 608–618.
- 33 M. Kiyama, S. Iwano, S. Otsuka, S. W. Lu, R. Obata, A. Miyawaki, T. Hirano and S. A. Maki, Quantum yield improvement of red-light-emitting firefly luciferin analogues for *in vivo* bioluminescence imaging, *Tetrahedron*, 2018, **74**, 652–660.
- 34 S. Iwano, M. Sugiyama, H. Hama, A. Watakabe, N. Hasegawa, T. Kuchimaru, K. Z. Tanaka, M. Takahashi, Y. Ishida, J. Hata, S. Shimosono, K. Namiki, T. Fukano, M. Kiyama, H. Okano, S. Kizaka-Kondoh, T. J. McHugh, T. Yamamori, H. Hioki, S. Maki and A. Miyawaki, Single-cell bioluminescence imaging of deep tissue in freely moving animals, *Science*, 2018, **359**, 935–939.
- 35 H. W. Yeh, T. Wu, M. Chen and H. W. Ai, Identification of factors complicating bioluminescence imaging, *Biochemistry*, 2019, **58**, 1689–1697.
- 36 C. Wu, K. Mino, H. Akimoto, M. Kawabata, K. Nakamura, M. Ozaki and Y. Ohmiya, *in vivo* far-red luminescence imaging of a biomarker based on BRET from Cypridina bioluminescence to an organic dye, *Proc. Natl. Acad. Sci. U. S. A.*, 2009, **106**, 15599–15603.
- 37 K. Saito, Y. F. Chang, K. Horikawa, N. Hatsugai, Y. Higuchi, M. Hashida, Y. Yoshida, T. Matsuda, Y. Arai and T. Nagai, Luminescent proteins for high-speed single-cell and whole-body imaging, *Nat. Commun.*, 2012, **3**, 1262.
- 38 F. Weihs and H. Dacres, Red-shifted bioluminescence resonance energy transfer: improved tools and materials for analytical *in vivo* approaches., *Trends Anal. Chem.*, 2019, **116**, 61–73.
- 39 O. V. Stepanenko, G. S. Bublikov, O. V. Stepanenko, D. M. Shcherbakova, V. V. Verkhusha, K. K. Turoverov and I. M. Kuznetsova, A knot in the protein structure – probing the near-infrared fluorescent protein iRFP designed from a bacterial phytochrome, *FEBS J.*, 2014, **281**, 2284–2298.
- 40 M. Isomura, K. Yamada, K. Noguchi and A. Nishizono, Near-infrared fluorescent protein iRFP720 is optimal for *in vivo* fluorescence imaging of rabies virus infection, *J. Gen. Virol.*, 2017, **98**, 2689–2698.
- 41 K. E. Luker, P. Pata, I. I. Shemiakina, A. Preverzeva, A. C. Stacer, D. S. Shcherbo, V. Z. Pletnev, M. Skolnaja, K. A. Lukyanov, G. D. Luker, I. Pata and D. M. Chudakov, Comparative study reveals better far-red fluorescent protein for whole body imaging, *Sci. Rep.*, 2015, **5**, 10332.
- 42 M. E. Matlashov, D. M. Shcherbakova, J. Alvelid, M. Baloban, F. Pennacchietti, A. A. Shemetov, I. Testa and V. V. Verkhusha, A set of monomeric near-infrared fluorescent proteins for multicolor imaging across scales, *Nat. Commun.*, 2020, **11**, 1–12.
- 43 T. Lamparter, N. Michael, F. Mittmann and B. Esteban, Phytochrome from *Agrobacterium tumefaciens* has unusual spectral properties and reveals an N-terminal chromophore attachment site, *Proc. Natl. Acad. Sci. U. S. A.*, 2002, **99**, 11628–11633.
- 44 B. Karniol and R. D. Vierstra, The pair of bacteriophytochromes from *Agrobacterium tumefaciens* are histidine kinases with opposing photobiological properties, *Proc. Natl. Acad. Sci. U. S. A.*, 2003, **100**, 2807–2812.
- 45 X. X. Zhou and M. Z. Lin, Photoswitchable fluorescent proteins: ten years of colorful chemistry and exciting applications, *Curr. Opin. Chem. Biol.*, 2013, **17**, 682–690.
- 46 K. D. Piatkevich, H. J. Suk, S. B. Kodandaramaiah, F. Yoshida, E. M. DeGennaro, M. Drobizhev, T. E. Hughes, R. Desimone, E. S. Boyden and V. V. Verkhusha, Near-Infrared fluorescent proteins Engineered from Bacterial Phytochromes in Neuroimaging, *Biophys. J.*, 2017, **113**, 2299–2309.
- 47 K. Wang, W. Sun, C. T. Richie, B. K. Harvey, E. Betzig and N. Ji, Direct wavefront sensing for high-resolution *in vivo* imaging in scattering tissue, *Nat. Commun.*, 2015, **6**, 1–6.
- 48 K. D. Piatkevich, E. E. Jung, C. Straub, C. Linghu, D. Park, H. J. Suk, D. R. Hochbaum, D. Goodwin, E. Pnevmatikakis,



- N. Pak, T. Kawashima, C. T. Yang, J. L. Rhoades, O. Shemesh, S. Asano, Y. G. Yoon, L. Freifeld, J. L. Saulnier, C. Riegler, F. Engert, T. Hughes, M. Drobizhev, B. Szabo, M. B. Ahrens, S. W. Flavell, B. L. Sabatini and E. S. Boyden, A robotic multidimensional directed evolution approach applied to fluorescent voltage reporters article, *Nat. Chem. Biol.*, 2018, **14**, 352–360.
- 49 Y. Qian, K. D. Piatkevich, B. Mc Larney, A. S. Abdelfattah, S. Mehta, M. H. Murdock, S. Gottschalk, R. S. Molina, W. Zhang, Y. Chen, J. Wu, M. Drobizhev, T. E. Hughes, J. Zhang, E. R. Schreiter, S. Shoham, D. Razansky, E. S. Boyden and R. E. Campbell, A genetically encoded near-infrared fluorescent calcium ion indicator, *Nat. Methods*, 2019, **16**, 171–174.
- 50 Y. Qian, D. M. O. Cosio, K. D. Piatkevich, S. Aufmkolk, W.-C. Su, O. T. Celiker, A. Schohl, M. H. Murdock, A. Aggarwal, Y.-F. Chang, P. W. Wiseman, E. S. Ruthazer, E. S. Boyden and R. E. Campbell, Improved genetically encoded near-infrared fluorescent calcium ion indicators for *in vivo* imaging, *bioRxiv*, 2020, 2020.04.08.032433.
- 51 M. T. N. Tran, J. Tanaka, M. Hamada, Y. Sugiyama, S. Sakaguchi, M. Nakamura, S. Takahashi and Y. Miwa, *In vivo* image analysis using iRFP transgenic mice, *Exp. Anim.*, 2014, **63**, 311–319.
- 52 A. K. Hock, E. C. Cheung, T. J. Humpton, T. Monteverde, V. Paulus-Hock, P. Lee, E. McGhee, A. Scopelliti, D. J. Murphy, D. Strathdee, K. Blyth and K. H. Vousden, Development of an inducible mouse model of iRFP713 to track recombinase activity and tumour development *in vivo*, *Sci. Rep.*, 2017, **7**, 1–9.
- 53 C. T. Richie, L. R. Whitaker, K. W. Whitaker, J. Necarsulmer, H. A. Baldwin, Y. Zhang, L. Fortunato, J. J. Hinkle, P. Koivula, M. J. Henderson, W. Sun, K. Wang, J. C. Smith, J. Pickel, N. Ji, B. T. Hope and B. K. Harvey, Near-infrared fluorescent protein iRFP713 as a reporter protein for optogenetic vectors, a transgenic Cre-reporter rat, and other neuronal studies, *J. Neurosci. Methods*, 2017, **284**, 1–14.
- 54 A. Fukuda, N. Honda, Y. Fujioka, S. Sekiguchi, Y. Mizuno, F. Miwa, Y. Sugiyama, K. Hayashi, K. Nishimura and K. Hisatake, Non-invasive *in vivo* imaging of UCP1 expression in live mice *via* near-infrared fluorescent protein iRFP720, *PLoS One*, 2019, **14**, 1–16.
- 55 B. Gu, E. Posfai and J. Rossant, Efficient generation of targeted large insertions by microinjection into two-cell-stage mouse embryos, *Nat. Biotechnol.*, 2018, **36**, 632–637.
- 56 K. McDole, L. Guignard, F. Amat, A. Berger, G. Malandain, L. A. Royer, S. C. Turaga, K. Branson and P. J. Keller, *In Toto* Imaging and Reconstruction of Post-Implantation Mouse Development at the Single-Cell Level, *Cell*, 2018, **175**, 859–876.
- 57 A. Rehemtulla, L. D. Stegman, S. J. Cardozo, S. Gupta, D. E. Hall, C. H. Contag and B. D. Ross, Rapid and quantitative assessment of cancer treatment response using *in vivo* bioluminescence imaging, *Neoplasia*, 2000, **2**, 491–495.
- 58 B. A. Rabinovich, Y. Ye, T. Etto, J. Q. Chen, H. I. Levitsky, W. W. Overwijk, L. J. N. Cooper, J. Gelovani and P. Hwu, Visualizing fewer than 10 mouse T cells with an enhanced firefly luciferase in immunocompetent mouse models of cancer, *Proc. Natl. Acad. Sci. U. S. A.*, 2008, **105**, 14342–14346.
- 59 J. B. Kim, K. Urban, E. Cochran, S. Lee, A. Ang, B. Rice, A. Bata, K. Campbell, R. Coffee, A. Gorodinsky, Z. Lu, H. Zhou, T. K. Kishimoto and P. Lassota, Non-invasive detection of a small number of bioluminescent cancer cells *in vivo*, *PLoS One*, 2010, **5**, e9364.
- 60 Y. Liang, P. Walczak and J. W. Bulte, Comparison of red-shifted firefly luciferase Ppy RE9 and conventional Luc2 as bioluminescence imaging reporter genes for *in vivo* imaging of stem cells, *J. Biomed. Opt.*, 2012, **17**, 016004.
- 61 Y. Nakajima, T. Yamazaki, S. Nishii, T. Noguchi, H. Hoshino, K. Niwa, V. R. Viviani and Y. Ohmiya, Enhanced beetle luciferase for high-resolution bioluminescence imaging, *PLoS One*, 2010, **5**, e10011.
- 62 M. Chang, K. P. Anttonen, S. L. G. Cirillo, K. P. Francis and J. D. Cirillo, Real-time bioluminescence imaging of mixed mycobacterial infections, *PLoS One*, 2014, **9**, e108341.
- 63 V. Villalobos, S. Naik, M. Bruinsma, R. S. Dothager, M. H. Pan, M. Samrakandi, B. Moss, A. Elhammali and D. Piwnicka-Worms, Dual-color click beetle luciferase heteroprotein fragment complementation assays, *Chem. Biol.*, 2010, **17**, 1018–1029.
- 64 M. Yasunaga, Y. Nakajima and Y. Ohmiya, Dual-color bioluminescence imaging assay using green- and red-emitting beetle luciferases at subcellular resolution, *Anal. Bioanal. Chem.*, 2014, **406**, 5735–5742.
- 65 M. Cronin, A. R. Akin, S. A. Collins, J. Meganck, J. B. Kim, C. K. Baban, S. A. Joyce, G. M. van Dam, N. Zhang, D. van Sinderen, G. C. O'Sullivan, N. Kasahara, C. G. Gahan, K. P. Francis and M. Tangney, High resolution *in vivo* bioluminescent imaging for the study of bacterial tumor targeting, *PLoS One*, 2012, **7**, e30940.
- 66 Y. Guo, R. I. Ramos, J. S. Cho, N. P. Donegan, A. L. Cheung and L. S. Miller, *In vivo* bioluminescence imaging to evaluate systemic and topical antibiotics against community-acquired methicillin-resistant *Staphylococcus aureus*-infected skin wounds in mice, *Antimicrob. Agents Chemother.*, 2013, **57**, 855–863.
- 67 T. Xu, S. Ripp, G. S. Saylor and D. M. Close, Expression of a humanized viral 2A-mediated *lux* operon efficiently generates autonomous bioluminescence in human cells, *PLoS One*, 2014, **9**, e96347.
- 68 D. M. Close, S. S. Patterson, S. Ripp, S. J. Baek, J. Sanseverino and G. S. Saylor, Autonomous bioluminescent expression of the bacterial luciferase gene cassette (*lux*) in a mammalian cell line, *PLoS One*, 2010, **5**, e12441.
- 69 A. M. Loening, T. D. Fenn, A. M. Wu and S. S. Gambhir, Consensus guided mutagenesis of *Renilla luciferase* yields enhanced stability and light output, *Protein Eng., Des. Sel.*, 2006, **19**, 391–400.
- 70 A. M. Loening, A. M. Wu and S. S. Gambhir, Red-shifted *Renilla reniformis* luciferase variants for imaging in living subjects, *Nat. Methods*, 2007, **4**, 641–643.



- 71 W. W. Lorenz, M. J. Cormier, D. J. Okane, D. Hua, A. A. Escher and A. A. Szalay, Expression of the *Renilla reniformis* luciferase gene in mammalian cells, *J. Biolumin. Chemilumin.*, 1996, **11**, 31–37.
- 72 B. A. Tannous, D. E. Kim, J. L. Fernandez, R. Weissleder and X. O. Breakefield, Codon-optimized *Gaussia* luciferase cDNA for mammalian gene expression in culture and *in vivo*, *Mol. Ther.*, 2005, **11**, 435–443.
- 73 S. B. Kim, H. Suzuki, M. Sato and H. Tao, Superluminescent variants of marine luciferases for bioassays, *Anal. Chem.*, 2011, **83**, 8732–8740.
- 74 S. V. Markova, S. Golz, L. A. Frank, B. Kalthof and E. S. Vysotski, Cloning and expression of cDNA for a luciferase from the marine copepod *Metridia longa* – a novel secreted bioluminescent reporter enzyme, *J. Biol. Chem.*, 2004, **279**, 3212–3217.
- 75 S. V. Markova, M. D. Larionova, L. P. Burakova and E. S. Vysotski, The smallest natural high-active luciferase: cloning and characterization of novel 16.5 kDa luciferase from copepod *Metridia longa*, *Biochem. Biophys. Res. Commun.*, 2015, **457**, 77–82.
- 76 S. E. Webb and A. L. Miller, Aequorin-based genetic approaches to visualize Ca²⁺ signaling in developing animal systems, *Biochim. Biophys. Acta*, 2012, **1820**, 1160–1168.
- 77 E. M. Thompson, P. Adenot, F. I. Tsuji and J. P. Renard, Real-time imaging of transcriptional activity in live mouse preimplantation embryos using a secreted luciferase, *Proc. Natl. Acad. Sci. U. S. A.*, 1995, **92**, 1317–1321.
- 78 O. Shimomura, F. H. Johnson and T. Masugi, Cypridina bioluminescence: light-emitting oxyluciferin–luciferase complex, *Science*, 1969, **164**, 1299–1300.
- 79 M. P. Hall, J. Unch, B. F. Binkowski, M. P. Valley, B. L. Butler, M. G. Wood, P. Otto, K. Zimmerman, G. Vidugiris, T. Machleidt, M. B. Robers, H. A. Benink, C. T. Eggers, M. R. Slater, P. L. Meisenheimer, D. H. Klaubert, F. Fan, L. P. Encell and K. V. Wood, Engineered luciferase reporter from a deep sea shrimp utilizing a novel imidazopyrazinone substrate, *ACS Chem. Biol.*, 2012, **7**, 1848–1857.
- 80 A. A. Homaei, A. B. Mymandi, R. Sariri, E. Kamrani, R. Stevanato, S. M. Etezzad and K. Khajeh, Purification and characterization of a novel thermostable luciferase from *Benthoosema pterotum*, *J. Photochem. Photobiol., B*, 2013, **125**, 131–136.
- 81 N. R. Conley, A. Dragulescu-Andrasi, J. Rao and W. E. Moerner, A selenium analogue of firefly D-luciferin with red-shifted bioluminescence emission, *Angew. Chem., Int. Ed.*, 2012, **51**, 3350–3353.
- 82 A. Shakhmin, M. P. Hall, T. Machleidt, J. R. Walker, K. V. Wood and T. A. Kirkland, Coelenterazine analogues emit red-shifted bioluminescence with NanoLuc, *Org. Biomol. Chem.*, 2017, **15**, 8559–8567.
- 83 M. P. Hall, C. C. Woodroffe, M. G. Wood, I. Que, M. Van't Root, Y. Ridwan, C. Shi, T. A. Kirkland, L. P. Encell, K. V. Wood, C. Löwik and L. Mezzanotte, Click beetle luciferase mutant and near infrared naphthyl-luciferins for improved bioluminescence imaging, *Nat. Commun.*, 2018, **9**, 132.
- 84 P. Iglesias and J. A. Costoya, A novel BRET-based genetically encoded biosensor for functional imaging of hypoxia, *Biosens. Bioelectron.*, 2009, **24**, 3126–3130.
- 85 A. Takai, M. Nakano, K. Saito, R. Haruno, T. M. Watanabe, T. Ohyanagi, T. Jin, Y. Okada and T. Nagai, Expanded palette of Nano-lanterns for real-time multicolor luminescence imaging, *Proc. Natl. Acad. Sci. U. S. A.*, 2015, **112**, 4352–4356.
- 86 B. R. Branchini, D. M. Ablamsky and J. C. Rosenberg, Chemically modified firefly luciferase is an efficient source of near-infrared light, *Bioconjugate Chem.*, 2010, **21**, 2023–2030.
- 87 M. Abe, R. Nishihara, Y. Ikeda, T. Nakajima, M. Sato, N. Iwasawa, S. Nishiyama, R. Paulmurugan, D. Citterio, S. B. Kim and K. Suzuki, Near-infrared bioluminescence imaging with a through-bond energy transfer cassette, *ChemBioChem*, 2019, **20**, 1919–1923.
- 88 L. Xiong, A. J. Shuhendler and J. Rao, Self-luminescing BRET-FRET near-infrared dots for *in vivo* lymph-node mapping and tumor imaging, *Nat. Commun.*, 2012, **3**, 1193.
- 89 T. Kuchimaru, T. Suka, K. Hirota, T. Kadonosono and S. Kizaka-Kondoh, A novel injectable BRET-based *in vivo* imaging probe for detecting the activity of hypoxia-inducible factor regulated by the ubiquitin-proteasome system, *Sci. Rep.*, 2016, **6**, 34311.
- 90 R. Liu, J. Tang, Y. Xu and Z. Dai, Bioluminescence Imaging of inflammation *in vivo* based on bioluminescence and fluorescence resonance energy transfer using nanobubble ultrasound contrast agent, *ACS Nano*, 2019, **13**, 5124–5132.
- 91 X. Xu, H. An, D. Zhang, H. Tao, Y. Dou, X. Li, J. Huang and J. Zhang, A self-illuminating nanoparticle for inflammation imaging and cancer therapy, *Sci. Adv.*, 2019, **5**, eaat2953.
- 92 M. K. So, C. Xu, A. M. Loening, S. S. Gambhir and J. Rao, Self-illuminating quantum dot conjugates for *in vivo* imaging, *Nat. Biotechnol.*, 2006, **24**, 339–343.
- 93 M. K. So, A. M. Loening, S. S. Gambhir and J. Rao, Creating self-illuminating quantum dot conjugates, *Nat. Protoc.*, 2006, **1**, 1160–1164.
- 94 Y. Zhang, M. So, A. M. Loening, H. Yao, S. S. Gambhir and J. Rao, HaloTag protein-mediated site-specific conjugation of bioluminescent proteins to quantum dots, *Angew. Chem., Int. Ed.*, 2006, **45**, 4936–4940.
- 95 H. Yao, Y. Zhang, F. Xiao, Z. Xia and J. Rao, Quantum dot/bioluminescence resonance energy transfer based highly sensitive detection of proteases, *Angew. Chem., Int. Ed.*, 2007, **46**, 4346–4349.
- 96 Y. Xing, M. K. So, A. L. Koh, R. Sinclair and J. Rao, Improved QD-BRET conjugates for detection and imaging, *Biochem. Biophys. Res. Commun.*, 2008, **372**, 388–394.
- 97 K. A. Cissell, S. Campbell and S. K. Deo, Rapid, single-step nucleic acid detection, *Anal. Bioanal. Chem.*, 2008, **391**, 2577–2581.
- 98 Z. Xia, Y. Xing, M. K. So, A. L. Koh, R. Sinclair and J. Rao, Multiplex detection of protease activity with quantum dot



- nanosensors prepared by intein-mediated specific bioconjugation, *Anal. Chem.*, 2008, **80**, 8649–8655.
- 99 J. Du, C. Yu, D. Pan, J. Li, W. Chen, M. Yan, T. Segura and Y. Lu, Quantum-dot-decorated robust transducible bioluminescent nanocapsules, *J. Am. Chem. Soc.*, 2010, **132**, 12780–12781.
- 100 N. Ma, A. F. Marshall and J. Rao, Near-infrared light emitting luciferase *via* biomineralization, *J. Am. Chem. Soc.*, 2010, **132**, 6884–6885.
- 101 C. Wu, K. Kawasaki, S. Ohgiya and Y. Ohmiya, Chemical studies on the BRET system between the bioluminescence of Cypridina and quantum dots, *Photochem. Photobiol. Sci.*, 2011, **10**, 1531–1534.
- 102 M. Kumar, D. Zhang, D. Broyles and S. K. Deo, A rapid, sensitive, and selective bioluminescence resonance energy transfer (BRET)-based nucleic acid sensing system, *Biosens. Bioelectron.*, 2011, **30**, 133–139.
- 103 G. A. Quinones, S. C. Miller, S. Bhattacharyya, D. Sobek and J. P. Stephan, Ultrasensitive detection of cellular protein interactions using bioluminescence resonance energy transfer quantum dot-based nanoprobe, *J. Cell. Biochem.*, 2012, **113**, 2397–2405.
- 104 Q. Wu and M. Chu, Self-illuminating quantum dots for highly sensitive *in vivo* real-time luminescent mapping of sentinel lymph nodes, *Int. J. Nanomed.*, 2012, **7**, 3433–3443.
- 105 R. Alam, D. M. Fontaine, B. R. Branchini and M. M. Maye, Designing quantum rods for optimized energy transfer with firefly luciferase enzymes, *Nano Lett.*, 2012, **12**, 3251–3256.
- 106 M. Hasegawa, Y. Tsukasaki, T. Ohyanagi and T. Jin, Bioluminescence resonance energy transfer coupled near-infrared quantum dots using GST-tagged luciferase for *in vivo* imaging, *Chem. Commun.*, 2013, **49**, 228–230.
- 107 R. Alam, J. Zylstra, D. M. Fontaine, B. R. Branchini and M. M. Maye, Novel multistep BRET-FRET energy transfer using nanoconjugates of firefly proteins, quantum dots, and red fluorescent proteins, *Nanoscale*, 2013, **5**, 5303–5306.
- 108 R. Alam, L. M. Karam, T. L. Doane, J. Zylstra, D. M. Fontaine, B. R. Branchini and M. M. Maye, Near infrared bioluminescence resonance energy transfer from firefly luciferase-quantum dot bionanoconjugates, *Nanotechnology*, 2014, **25**, 495606.
- 109 A. Samanta, S. A. Walper, K. Susumu, C. L. Dwyer and I. L. Medintz, An enzymatically-sensitized sequential and concentric energy transfer relay self-assembled around semiconductor quantum dots, *Nanoscale*, 2015, **7**, 7603–7614.
- 110 A. Kamkaew, H. Sun, C. G. England, L. Cheng, Z. Liu and W. Cai, Quantum dot–NanoLuc bioluminescence resonance energy transfer enables tumor imaging and lymph node mapping *in vivo*, *Chem. Commun.*, 2016, **52**, 6997–7000.
- 111 R. Alam, L. M. Karam, T. L. Doane, K. Coopersmith, D. M. Fontaine, B. R. Branchini and M. M. Maye, Probing bioluminescence resonance energy transfer in quantum rod–luciferase nanoconjugates, *ACS Nano*, 2016, **10**, 1969–1977.
- 112 S. Tsuboi and T. Jin, Bioluminescence resonance energy transfer (BRET)-coupled annexin V-functionalized quantum dots for near-infrared optical detection of apoptotic cells, *ChemBioChem*, 2017, **18**, 2231–2235.
- 113 S. Tsuboi and T. Jin, Recombinant protein (luciferase-IgG binding domain) conjugated quantum dots for BRET-coupled near-infrared imaging of epidermal growth factor receptors, *Bioconjugate Chem.*, 2018, **29**, 1466–1474.
- 114 Z. Xia and J. Rao, Biosensing and imaging based on bioluminescence resonance energy transfer, *Curr. Opin. Biotechnol.*, 2009, **20**, 37–44.
- 115 S. Tsuboi and T. Jin, BRET based dual-colour (visible/near-infrared) molecular imaging using a quantum dot/EGFP–luciferase conjugate, *RSC Adv.*, 2019, **9**, 34964–34971.
- 116 J. R. Lakowicz, *Principles of Fluorescence Spectroscopy*. Springer, New York, 3rd edn, 2006.
- 117 A. Dragulescu-Andrasi, C. T. Chan, A. De, T. F. Massoud and S. S. Gambhir, Bioluminescence resonance energy transfer (BRET) imaging of protein–protein interactions within deep tissues of living subjects, *Proc. Natl. Acad. Sci. U. S. A.*, 2011, **108**, 12060–12065.
- 118 N. Kosaka, M. Mitsunaga, S. Bhattacharyya, S. C. Miller, P. L. Choyke and H. Kobayashi, Self-illuminating *in vivo* lymphatic imaging using a bioluminescence resonance energy transfer quantum dot nano-particle, *Contrast Media Mol. Imaging*, 2011, **6**, 55–59.
- 119 F. Ding, Y. Zhan, X. Lu and Y. Sun, Recent advances in near-infrared II fluorophores for multifunctional biomedical imaging, *Chem. Sci.*, 2018, **9**, 4370–4380.
- 120 G. Hong, S. Diao, J. Chang, A. L. Antaris, C. Chen, B. Zhang, S. Zhao, D. N. Atochin, P. L. Huang, K. I. Andreasson, C. J. Kuo and H. Dai, Through-skull fluorescence imaging of the brain in a new near-infrared window, *Nat. Photon.*, 2014, **8**, 723–730.
- 121 G. Hong, J. C. Lee, J. T. Robinson, U. Raaz, L. Xie, N. F. Huang, J. P. Cooke and H. Dai, Multifunctional *in vivo* vascular imaging using near-infrared II fluorescence, *Nat. Med.*, 2012, **18**, 1841–1846.
- 122 K. Welsher, S. P. Sherlock and H. Dai, Deep-tissue anatomical imaging of mice using carbon nanotube nanoprobe in the second near-infrared window, *Proc. Natl. Acad. Sci. U. S. A.*, 2011, **108**, 8943–8948.
- 123 K. Welsher, Z. Liu, S. P. Sherlock, J. T. Robinson, Z. Chen, D. Daranciang and H. Dai, A route to brightly fluorescent carbon nanotubes for near-infrared imaging in mice, *Nat. Nanotechnol.*, 2009, **4**, 773–780.
- 124 K. Welsher, Z. Liu, D. Daranciang and H. Dai, Selective probing and imaging of cells with single walled carbon nanotubes as near-infrared fluorescent molecules, *Nano Lett.*, 2008, **8**, 586–590.
- 125 Z. Liu, W. Cai, L. He, N. Nakayama, K. Chen, X. Sun, X. Chen and H. Dai, *in vivo* biodistribution and highly efficient tumor targeting of carbon nanotubes in mice, *Nat. Nanotechnol.*, 2007, **2**, 47–52.
- 126 T. Jin and Y. Imamura, Applications of highly bright PbS quantum dots for non-invasive near-infrared fluorescence imaging in the second optical window, *ECS J. Solid State Sci. Technol.*, 2016, **5**, R3138–R3145.



- 127 S. Tsuboi, S. Yamada, Y. Nakane, T. Sakata, H. Yasuda and T. Jin, Water-soluble near-infrared fluorophores emitting over 1000 nm and their applications to *in vivo* imaging in the second optical window (1000–1400 nm), *ECS J. Solid State Sci. Technol.*, 2018, 7, R3093–R3101.
- 128 H. Wan, J. Yue, S. Zhu, T. Uno, X. Zhang, Q. Yang, K. Yu, G. Hong, J. Wang, L. Li, Z. Ma, H. Gao, Y. Zhong, J. Su, A. L. Antaris, Y. Xia, J. Luo, Y. Liang and H. Dai, A bright organic NIR-II nanofluorophore for three-dimensional imaging into biological tissues, *Nat. Commun.*, 2018, 9, 1171.
- 129 S. Zhu, S. Herraiz, J. Yue, M. Zhang, H. Wan, Q. Yang, Z. Ma, Y. Wang, J. He, A. L. Antaris, Y. Zhong, S. Diao, Y. Feng, Y. Zhou, K. Yu, G. Hong, Y. Liang, A. J. Hsueh and H. Dai, 3D NIR-II molecular imaging distinguishes targeted organs with high-performance NIR-II bioconjugates, *Adv. Mater.*, 2018, 30, 1705799.
- 130 V. Zubkovs, A. Antonucci, N. Schuergers, B. Lambert, A. Latin, R. Ceccarelli, A. Santinelli, A. Rogov, D. Ciepiewski and A. A. Boghossian, Spinning-disc confocal microscopy in the second near-infrared window (NIR-II), *Sci. Rep.*, 2018, 8, 13770.
- 131 E. Betzig, G. H. Patterson, R. Sougrat, O. W. Lindwasser, S. Olenych, J. S. Bonifacino, M. W. Davidson, J. Lippincott-Schwartz and H. F. Hess, Imaging intracellular fluorescent proteins at nanometer resolution, *Science*, 2006, 313, 1642–1645.
- 132 M. Bates, S. A. Jones and X. Zhuang, Stochastic optical reconstruction microscopy (STORM): A method for super-resolution fluorescence imaging, *Cold Spring Harb. Protoc.*, 2013, 6, 498–520.
- 133 M. Zhang, H. Chang, Y. Zhang, J. Yu, L. Wu, W. Ji, J. Chen, B. Liu, J. Lu, Y. Liu, J. Zhang, P. Xu and T. Xu, Rational design of true monomeric and bright photoactivatable fluorescent proteins, *Nat. Methods*, 2012, 9, 727–729.
- 134 H. Shroff, C. G. Galbraith, J. A. Galbraith, H. White, J. Gillette, S. Olenych, M. W. Davidson and E. Betzig, Dual-color superresolution imaging of genetically expressed probes within individual adhesion complexes, *Proc. Natl. Acad. Sci. U. S. A.*, 2007, 104, 20308–20313.
- 135 D. M. Shcherbakova, P. Sengupta, J. Lippincott-Schwartz and V. V. Verkhusha, Photocontrollable fluorescent proteins for superresolution imaging, *Annu. Rev. Biophys.*, 2014, 43, 303–329.
- 136 M. J. Rust, M. Bates and X. Zhuang, Sub-diffraction-limit imaging by stochastic optical reconstruction microscopy (STORM), *Nat. Methods*, 2006, 3, 793–796.
- 137 S. Van De Linde, A. Loschberger, T. Klein, M. Heidebreder, S. Wolter, M. Heilemann and M. Sauer, Direct stochastic optical reconstruction microscopy with standard fluorescent probes, *Nat. Protoc.*, 2011, 6, 991–1009.
- 138 T. A. Klar, S. Jakobs, M. Dyba, A. Egner and S. W. Hell, Fluorescence microscopy with diffraction resolution barrier broken by stimulated emission, *Proc. Natl. Acad. Sci. U. S. A.*, 2000, 97, 8206–8210.
- 139 R. E. Thompson, D. R. Larson and W. W. Webb, Precise nanometer localization analysis for individual fluorescent probes, *Biophys. J.*, 2002, 82, 2775–2783.
- 140 T. Grotjohann, I. Testa, M. Reuss, T. Brakemann, C. Eggeling, S. W. Hell and S. Jakobs, rsEGFP2 enables fast RESOLFT nanoscopy of living cells, *eLife*, 2012, 1, e00248.
- 141 A. Chmyrov, J. Keller, T. Grotjohann, M. Ratz, E. d'Este, S. Jakobs, C. Eggeling and S. W. Hell, Nanoscopy with more than 100 000 'doughnuts', *Nat. Methods*, 2013, 10, 737–740.
- 142 T. Grotjohann, I. Testa, M. Leutenegger, H. Bock, N. T. Urban, F. Lavoie-Cardinal, K. L. Willing, C. Eggeling, S. Jakobs and S. W. Hell, Diffraction-unlimited all-optical imaging and writing with a photochromic GFP, *Nature*, 2011, 478, 204–208.
- 143 M. Andresen, A. C. Stiel, J. Fölling, D. Wenzel, A. Schönle, A. Egner, C. Eggeling, S. W. Hell and S. Jakobs, Photoswitchable fluorescent proteins enable monochromatic multi-label imaging and dual color fluorescence nanoscopy, *Nat. Biotechnol.*, 2008, 26, 1035–1040.
- 144 T. Brakemann, A. C. Stiel, G. Weber, M. Andresen, I. Testa, T. Grotjohann, M. Leutenegger, U. Plessmann, H. Urlaub, C. Eggeling, M. C. Wahl, S. W. Hell and S. Jakobs, A reversibly photoswitchable GFP-like protein with fluorescence excitation decoupled from switching, *Nat. Biotechnol.*, 2011, 29, 942–947.
- 145 R. Heintzmann, T. M. Jovin and C. Cremer, Saturated patterned excitation microscopy – a concept for optical resolution improvement, *J. Opt. Soc. Am. A*, 2002, 19, 1599–1609.
- 146 E. Mudry, K. Belkebir, J. Girard, J. Savatier, E. Le Moal, C. Nicoletti, M. Allain and A. Sentenac, Structured illumination microscopy using unknown speckle patterns, *Nat. Photonics*, 2012, 6, 312–315.
- 147 L. Shao, P. Kner, E. H. Rego and M. G. L. Gustafsson, Super-resolution 3D microscopy of live whole cells using structured illumination, *Nat. Methods*, 2011, 8, 1044–1046.
- 148 E. H. Rego, L. Shao, J. J. Macklin, L. Winoto, G. A. Johansson, N. Kamps-Hughes, M. W. Davidson and M. G. L. Gustafsson, Nonlinear structured-illumination microscopy with a photoswitchable protein reveals cellular structures at 50 nm resolution, *Proc. Natl. Acad. Sci. U. S. A.*, 2012, 109, E135–E143.
- 149 R. Turcotte, Y. Liang, M. Tanimoto, Q. Zhang, Z. Li, M. Koyama, E. Betzig and N. Ji, Dynamic super-resolution structured illumination imaging in the living brain, *Proc. Natl. Acad. Sci. U. S. A.*, 2019, 116, 9586–9591.
- 150 A. Doi, R. Oketani, Y. Nawa, Y. Nawa and K. Fujita, High-resolution imaging in two-photon excitation microscopy using *in situ* estimations of the point spread function, *Biomed. Opt. Express*, 2018, 9, 202–213.
- 151 H. Fang, S. Yao, Q. C. Liu, Y. Cai, S. Geng, Y. Bai, Z. Tian, A. L. Zacharias, T. Takebe, Y. Chen, Z. Guo, W. He and J. Diao, De Novo-designed near-infrared nanoaggregates for super-resolution monitoring of lysosomes in cells, in whole organoids, and *in vivo*, *ACS Nano*, 2019, 13, 14426–14436.
- 152 F. Wang, H. Wan, Z. Ma, Y. Zhong, Q. Sun, Y. Tian, L. Qu, H. Du, M. Zhang, L. Li, H. Ma, J. Luo, Y. Liang, W. J. Li, G. Hong, L. Liu and H. Dai, Light-sheet microscopy in the near-infrared II window, *Nat. Methods*, 2019, 16, 545–552.



- 153 L. Gao, L. Shao, B.-C. Chen and E. Betzig, 3D live fluorescence imaging of cellular dynamics using Bessel beam plane illumination microscopy, *Nat. Protoc.*, 2014, **9**, 1083–1101.
- 154 B. C. Chen, W. R. Legant, K. Wang, L. Shao, D. E. Milkie, M. W. Davidson, C. Janetopoulos, X. S. Wu, J. A. Hammer 3rd, Z. Liu, B. P. English, Y. Mimori-Kiyose, D. P. Romero, A. T. Ritter, J. Lippincott-Schwartz, L. Fritz-Laylin, R. D. Mullins, D. M. Mitchell, J. N. Bembenek, A. C. Reyman, R. Böhme, S. W. Grill, J. T. Wang, G. Seydoux, U. S. Tulu, D. P. Kiehart and E. Betzig, Lattice light-sheet microscopy: imaging molecules to embryos at high spatiotemporal resolution, *Science*, 2014, **346**, 1257998.
- 155 J. A. Carr, D. Franke, J. R. Caram, C. F. Perkinson, M. Saif, V. Askoxylakis, M. Datta, D. Fukumura, R. K. Jain, M. G. Bawendi and O. T. Bruns, Shortwave infrared fluorescence imaging with the clinically approved near-infrared dye indocyanine green, *Proc. Natl. Acad. Sci. U. S. A.*, 2018, 4465–4470.
- 156 R. Bhavane, Z. Starosolski, I. Stupin, K. B. Ghaghada and A. Annaparagada, NIR-II fluorescence imaging using indocyanine green nanoparticles, *Sci. Rep.*, 2018, **8**, 14455.
- 157 J. Y. K. Lee, J. P. Thawani, J. Pierce, R. Zeh, M. Martinez-Lage, M. Chanin, O. Venegas, S. Nims, K. Learned, J. Keating and S. Singhal, Intraoperative Near-infrared optical imaging can localize gadolinium-enhancing gliomas during surgery, *Neurosurgery*, 2016, **79**, 856–871.
- 158 R. Zeh, S. Sheikh, L. Xia, J. Pierce, A. Newton, J. Predina, S. Cho, M. Nasrallah, S. Shinghal, J. Dorsey and J. Y. K. Lee, The second window ICG technique demonstrates a broad plateau period for near-infrared fluorescence tumor contrast in glioblastoma, *PLoS One*, 2017, **12**, e0182034.
- 159 J. Y. K. Lee, J. T. Pierce, J. P. Thawani, R. Zeh, S. Nie, M. Martinez-Lage and S. Singhal, Near-infrared fluorescence image-guided surgery for intracranial meningioma, *J. Neurosurg.*, 2018, **128**, 380–390.

