



Cite this: *Nanoscale*, 2023, **15**, 6105

## Reconfigurable scaffolds for adaptive tissue regeneration

Mingxing Peng, <sup>a,b</sup> Qilong Zhao, \*<sup>a</sup> Min Wang <sup>c</sup> and Xuemin Du \*<sup>a</sup>

Tissue engineering and regenerative medicine have offered promising alternatives for clinical treatment of body tissue traumas, losses, dysfunctions, or diseases, where scaffold-based strategies are particularly popular and effective. Over the decades, scaffolds for tissue regeneration have been remarkably evolving. Nevertheless, conventional scaffolds still confront grand challenges in bio-adaptions in terms of both tissue-scaffold and cell-scaffold interplays, for example complying with complicated three-dimensional (3D) shapes of biological tissues and recapitulating the ordered cell regulation effects of native cell micro-environments. Benefiting from the recent advances in “intelligent” biomaterials, reconfigurable scaffolds have been emerging, demonstrating great promise in addressing the bio-adaption challenges through altering their macro-shapes and/or micro-structures. This mini-review article presents a brief overview of the cutting-edge research on reconfigurable scaffolds, summarizing the materials for forming reconfigurable scaffolds and highlighting their applications for adaptive tissue regeneration. Finally, the challenges and prospects of reconfigurable scaffolds are also discussed, shedding light on the bright future of next-generation reconfigurable scaffolds with upgrading adaptability.

Received 18th January 2023,  
Accepted 27th February 2023

DOI: 10.1039/d3nr00281k

[rsc.li/nanoscale](http://rsc.li/nanoscale)

### 1. Introduction

There are urgent and abundant clinical demands for tissue regeneration for reconstituting/reconstructing body tissues with large defects, especially for those lacking sufficient innate renewal potential such as cartilage, nerve, and cardiovascular systems. Since formally introduced by Professor Robert Langer and Professor Joseph Vacanti for the first time in 1993,<sup>1</sup> tissue engineering that involves synergistic efforts of biomaterials, cells, and bio-signals has attracted much attention owing to its great potential for assisting tissue regeneration. To date, multiple tissue engineering strategies have been developed and investigated, among which scaffold-based strategies exhibited the highest versatility.<sup>2–4</sup> Scaffold-based tissue engineering involves building scaffolds with tailored biophysical and biochemical cues suiting for facilitating cell attachment, proliferation, and differentiation.<sup>5</sup> As an important prerequisite for supporting cellular growth, biomaterial scaffolds must be first biocompatible. Over the past two decades, scaffolds have also been continuing to evolve to be biodegradable and bioactive,<sup>6</sup> with the aim to avoid secondary surgeries for the removal of implants, stimulating cellular activities and functions, and finally facilitating *in situ* tissue regeneration by harnessing the innate renewal capability of body tissues.<sup>7</sup>

However, facilitating *in situ* tissue regeneration using appropriate scaffolds remains greatly challenging, which will require excellent interplays between implanted scaffolds and target tissues/cells. Upon implantation, both tissue-scaffold and

<sup>a</sup>Institute of Biomedical & Health Engineering, Shenzhen Institute of Advanced Technology (SIAT), Chinese Academy of Sciences (CAS), Shenzhen, 518055, China.

E-mail: [ql.zhao@siat.ac.cn](mailto:ql.zhao@siat.ac.cn), [xm.du@siat.ac.cn](mailto:xm.du@siat.ac.cn)

<sup>b</sup>University of Chinese Academy of Sciences, China

<sup>c</sup>Department of Mechanical Engineering, The University of Hong Kong, Pokfulam Road, Hong Kong



**Qilong Zhao**

Dr Qilong Zhao is currently an Associate Professor at Shenzhen Institute of Advanced Technology (SIAT), Chinese Academy of Sciences (CAS). He obtained his BS in chemistry from Nankai University in 2010 and PhD in biomedical engineering from the University of Hong Kong in 2016. He was awarded with “Member of Youth Innovation Promotion Association, CAS”. He is now a PI of Institute of Biomedical and Health Engineering at SIAT, CAS,

focusing on biointerfaces, biomaterial scaffolds, and tissue engineering, especially adaptive biomaterials and biointerfaces for vascular tissue engineering.



cell–scaffold interplays occur at their biointerfaces.<sup>8</sup> For attaining desirable tissue–scaffold and cell–scaffold interplays, biointerfaces shall comply with the 3D shapes of target tissues at the macroscopic scale as well as be capable of ordered regulation of different cellular behaviours and functions at the microscopic scale for meeting the requirements of dynamic cell manipulation at diverse tissue regeneration stages (Fig. 1), for example initially promoting the recruitment/migration of endothelial cells and subsequently assisting the formation of cell–cell junctions throughout the vascular remodelling process.<sup>9</sup> Therefore, higher requirements of bio-adaption would be laid on scaffolds, including not only conformal interfacing with target tissues, but also ordered regulation of cellular behaviours and functions at their biointerfaces. However, it would be a grand challenge for conventional scaffolds. On one hand, conventional scaffolds with pre-defined planar or curved geometries would be difficult to be perfectly conformal to biological tissues possessing complicated three-dimensional (3D) and even sometimes continuously changing shapes.<sup>10</sup> On another hand, it would also be extremely challenging to manipulate cellular functions in programmable manners for adapting to a specific tissue regeneration process by the scaffolds lacking dynamic biointerfaces.<sup>11,12</sup>

To address the above bio-adaption challenges, reconfigurable scaffolds have recently emerged with the advances in “intelligent” polymers. They have brought the opportunities of enhancing conformal bio-integration with 3D-shaped tissues and manipulating cellular functions on demand by altering their macro-shapes and micro-structures, respectively (Fig. 2). Through programming their macro-shapes by application of a stimulus from either the body itself (*e.g.*, body temperature, body fluids, biomolecules, and cells) or external fields (*e.g.*, light, magnet, and ultrasound), reconfigurable scaffolds could adapt to the 3D shapes of target tissues in an actively compli-

ant manner. Such active shape adaptation would generate less stress concentration in comparison with the conventional passively compliant shaping process,<sup>13</sup> which would be particularly important for forming conformal and stable biointerfaces between scaffolds and tissues. Meanwhile, since cells sense the micro-structures at scaffold biointerfaces and react according to the corresponding biomechanical cues,<sup>14–16</sup> scaffolds with reconfigurable micro-structures, which could also be modulated by body’s environments or external stimuli, could manipulate cellular behaviours and functions in a stage-specific manner by offering dynamic biomechanical induction, subsequently meeting the requirements of ordered cell regulation in specific tissue regeneration processes.

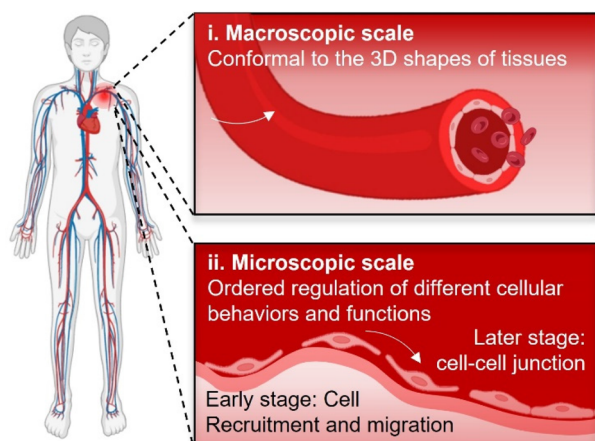
With the significant merits of conformal interfacing and ordered regulation of cellular behaviours and functions, reconfigurable scaffolds have received increasing attention over the past decade, opening a new avenue for adaptive tissue regeneration. Here, we will present a brief overview of the recent advances in reconfigurable scaffolds, introducing popular materials for forming them, highlighting their applications for adaptive tissue regeneration, as well as discussing the current challenges and future direction, with the aim of inspiring a broad range of attention from multidisciplinary fields to develop next-generation scaffolds with upgrading bio-adaption performances for better accommodating complicate and dynamic tissue regeneration processes.

## 2. Materials for forming reconfigurable scaffolds

Reconfigurable scaffolds, with reconfigurable macro-shapes and/or micro-structures, are usually constructed based on the morphing polymer-based materials capable of dynamically altering their shapes in programmable routes. Considering the applications of tissue engineering and regenerative medicine, the morphing polymer-based materials for forming reconfigurable scaffolds should further be cytocompatible, convenient to be processed/manufactured, and capable of being actuated *via* a mild approach. For meeting these requirements, shape-memory polymers (SMPs), hydrogels, liquid crystalline elastomers (LCEs), and cell-actuating materials have been widely employed for preparing reconfigurable scaffolds owing to their good cytocompatibility and the capabilities of being conveniently actuated by either body’s internal signals or the external stimuli that could safely penetrate through biological tissues. Varying with different morphing mechanisms and characteristics of these materials, the resulting reconfigurable scaffolds will possess different features and will be actuated by different ways, imparting them diverse promise for adaptive tissue regeneration (Table 1).

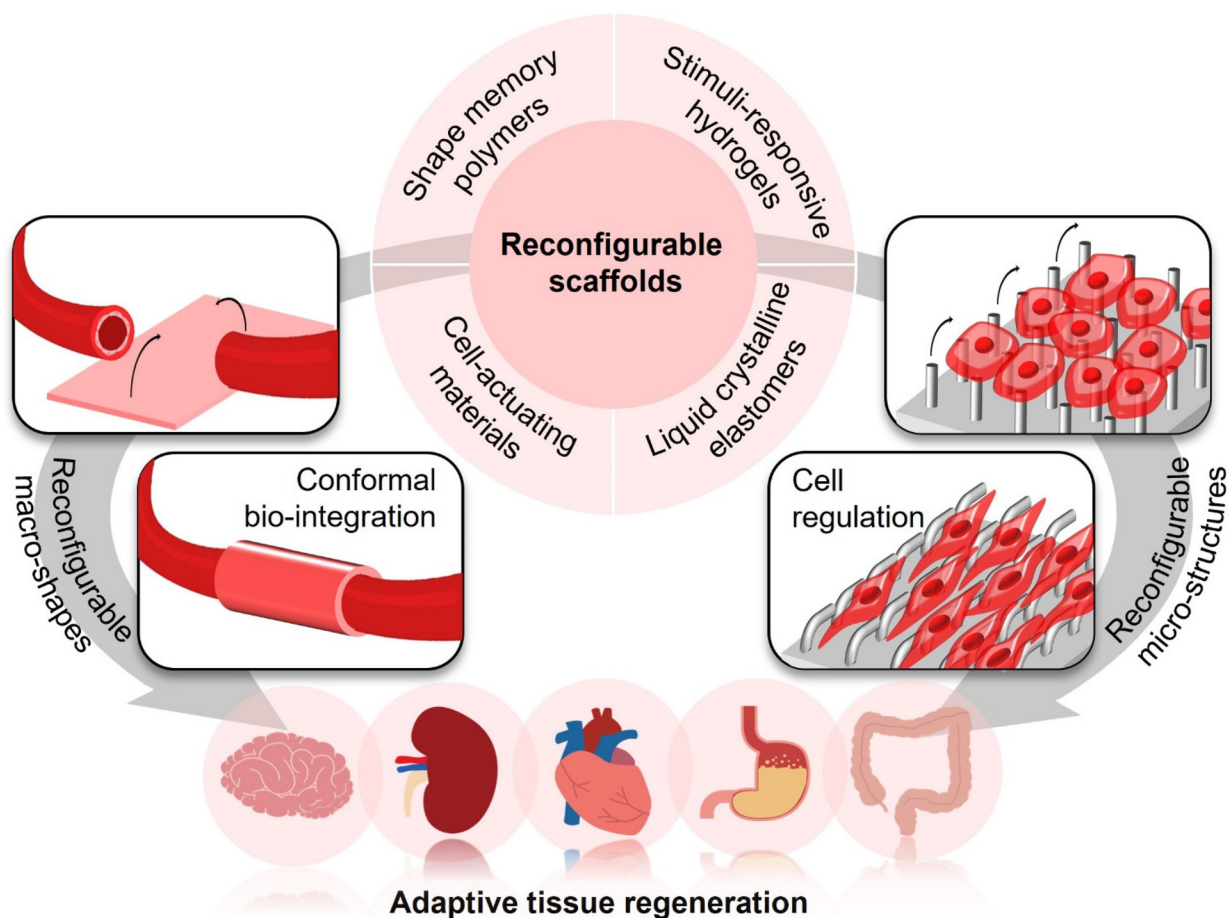
### 2.1 SMPs

SMPs are one group of polymers with shape-memory effects, possessing the capability of shape recovery from their temporary to permanent shapes upon appropriate stimuli.<sup>17</sup> Unlike



**Fig. 1** Bio-adaption requirements of scaffolds. In the macroscopic scale, scaffolds should possess conformal interfacing with 3D-shaped target tissues for achieving reliable scaffold functions. In the microscopic scale, the scaffolds should possess dynamic biointerfaces for an ordered regulation of different cellular behaviours and functions.





**Fig. 2** Reconfigurable scaffolds formed using different materials for adaptive tissue regeneration. Through altering their macro-shapes, reconfigurable scaffolds can promote conformal bio-integration *via* actively compliant shape adaptations. Through altering their micro-structures, reconfigurable scaffolds can realize an ordered regulation of different cellular behaviours and functions by their dynamic topographical cues.

the elastic recovery of rubber-like materials, SMPs can be locked into specific reshaped temporary geometries, then undergo a controllable morphing process to return their originally permanent shapes. Such shape-morphing capabilities of SMPs result from their unique networks, containing permanent netpoints and stimuli-responsive switchable phases.<sup>18</sup> Switchable phases can be formed by either physical interactions or reversible covalent bonding, contributing to locking the SMPs to be temporary shapes after reshaping them into any intended geometries. Once tuning the switchable phases by specific stimulations, it will trigger the shape recovery of SMPs.<sup>18</sup>

Poly( $\epsilon$ -caprolactone) (PCL), poly(urethane) (PU), poly(lactide) (PLA), and their copolymers, which possess excellent biocompatibility and biodegradability, are popular SMPs that have been widely used for various biomedical applications such as controlled drug delivery,<sup>19</sup> wound closure,<sup>20</sup> intervention stents,<sup>21</sup> and neuroelectronics.<sup>22,23</sup> Given that these biodegradable SMPs are semi-crystalline with the crystalline regions as the permanent netpoints and switchable phases formed based on physical interactions,<sup>24</sup> heating to trigger the

melting or glass transition is the common approach for actuating their shape recovery. To achieve reconfigurations within human bodies, it is necessary to tune their melting temperature ( $T_m$ ) or glass transition temperature ( $T_g$ ) approximating to the physiological temperature (37 °C). However, the temperatures for actuating the shape recovery of pure PCL ( $T_m$ : 59–64 °C),<sup>25</sup> PU ( $T_g$ : 50–90 °C),<sup>26</sup> and PLA ( $T_g$ : 60–65 °C)<sup>27</sup> are much higher than the physiological temperature (37 °C). To reduce the actuating temperature near the range of physiological temperature, methods for reinforcing the netpoints and/or softening the switchable phase within their networks have been applied, which could be realized by means of grafting cross-linkable end groups,<sup>28</sup> copolymerization,<sup>29</sup> or blending.<sup>30</sup> Notably, these modified thermoresponsive biodegradable SMPs are easy to be processed into diverse scaffold forms by different manufacturing techniques. For instance, branched PCL with grafting allyl alcohol groups enabling covalent cross-linking could be facily manufactured *via* thermal embossing micro-imprint lithography to be patterned scaffolds, whose surface microstructures could be altered in response to body temperature.<sup>31</sup> A PLA-based copolymer, poly(D,L-lactide-*co*-tri-



**Table 1** A summary of representative materials for forming reconfigurable scaffolds

Classifications	Materials	Scaffold architectures/forms	Manufacturing techniques	Ways to actuate	Response time	Ref.
SMPs	PCL with grafting allyl alcohol	Patterned scaffold	Thermal embossing micro-imprint lithography	Body temperature	~40 min	31
	PDLLA-co-TMC	Nanofibrous scaffold	Electrospinning	Body temperature	~6 s	32 and 33
	PDLLA-co-TMC	Porous scaffold	Extrusion-based 3D printing	Body temperature	Not provided	34
	PLLA/PCL-diacrylate	Porous scaffold	Salt leaching	Body temperature	Not provided	36
	PU/gelatin	Porous scaffold	Extrusion-based low-temperature 3D printing	Body temperature	Not provided	37
	Poly(lactic-co-glycolic acid)	Porous scaffold	Hot pressing	Ultrasound	~120 s	39
	PCL/Fe <sub>3</sub> O <sub>4</sub>	Nanofibrous scaffold	Electrospinning	Magnetic field	~120 s	40
	PU/magnesium	Porous scaffold	Extrusion-based low-temperature 3D printing	NIR light	~100 s	41
	CNC-pyridine/PEG-PCL-PU	Film scaffold	Casting	pH	~30 min	42
PCL/Pellethane®	Nanofibrous scaffold	Electrospinning	Enzyme	~7 days	43	
Keratin protofibril	Hierarchical fibrous scaffold	Self-assembly and extrusion-based 3D printing	Hydration	~105 s	44	
Hydrogels	MA-Alg/MA-HA	Tubular scaffold	Extrusion-based 3D printing and photocrosslinking	Hydration	Not provided	54
	Alginate/polydopamine	Porous scaffold	Extrusion-based 3D printing and ion crosslinking	NIR light	~180 s	55
	PNIPAM/gold nanorods	Patterned scaffold	Microfabrication and photocrosslinking	NIR light	~4 s	59
	Alginate	Patterned scaffold	Casting	Na <sup>+</sup> /Ca <sup>2+</sup>	7 min	62
LCES	PMHS-DUB-MPBB	Film scaffold	Thermal polymerization	Heating	~1 s	83
	MCPAHB-AHOPAHOB-AZ	Film scaffold	Photocrosslinking and thermal polymerization	Green light	~150 ms	84
Cell-actuating materials	Parylene/NIH-3T3 cells	Film scaffold	Microfabrication	Cell traction force	~72 h	92
	NorHA/MSCs	Nanofibrous scaffold	Electrospinning, extrusion-based 3D printing and photocrosslinking	Cell traction force	Not provided	100

methylene carbonate) (PDLLA-co-TMC) with tuneable  $T_g$  in the range from 20–45 °C, has been used for preparing reconfigurable nanofibrous scaffolds *via* electrospinning for bone and vascular tissue engineering.<sup>32,33</sup> Such copolymers could also be suitable for extrusion-based 3D printing,<sup>34</sup> subsequently forming porous scaffolds with initially customized geometries.<sup>35</sup> The polymer blends, such as poly(L-lactic acid) (PLLA)/PCL-diacrylate and PU/gelatin, could also be simply processed to be porous scaffolds *via* salt leaching or extrusion-based low-temperature 3D printing, which showed semi-interpenetrating networks and excellent shape-memory effects that could be actuated by body temperature.<sup>36–38</sup>

Although shape-memory scaffolds made of biodegradable thermoresponsive SMPs that could be actuated by body temperature have shown numerous promises in tissue engineering, challenges remain such as controlling the scaffold reconfigurations in a programmable spatiotemporal fashion. Once implanted into human bodies, such scaffolds would undergo spontaneous shape recovery. To enhance the controllability of

deformation, SMP-based reconfigurable scaffolds that could be actuated by ultrasound,<sup>39</sup> magnet,<sup>40</sup> and near-infrared (NIR) light<sup>41</sup> have been developed through the incorporation of functional nano-/micro-materials. Shape transformations of these scaffolds are also realized on the basis of thermoresponsive SMPs. However, instead of directly heating *via* body temperature, the energies generated from high-intensity focused ultrasound, the hyperthermia of magnetic nanoparticles under an alternating magnetic field, or photothermal nano-/micro-agents (gold nanorods, carbon nanotubes, black phosphorus nanosheets, magnesium nano-/micro-particles, MXenes, polydopamine, *etc.*) under NIR irradiation are used for actuating the shape recovery of SMPs, subsequently resulting in remotely controlled shape-memory reconfigurable scaffolds.

Apart from biodegradable thermoresponsive SMPs, some new types of SMPs with innovative molecular designs have also been studied for preparing reconfigurable scaffolds with versatile responsive behaviours. For example, through blending pyridine-functionalized cellulose nanocrystals (CNCs) and poly



(ethylene glycol-*co*-caprolactone-*co*-urethane) (PEG-PCL-PU), the hydrogen bonding between the pyridine moieties and carboxyl groups in PEG-PCL-PU would be stabilized under a high-pH condition yet dissociated at a low pH value. Using such blends, pH-responsive shape-memory scaffolds have been prepared *via* casting.<sup>42</sup> Besides, through forming interpenetrating networks between enzymatically degradable PCL (as the switchable phase) and enzymatically stable Pellethane® (as the permanent netpoint), the resultant polymer hybrids could obtain enzyme-responsive shape-memory capabilities, which could be used for forming scaffolds undergoing slow shape transformations within a long period of 7 days in the presence of a lipase.<sup>43</sup> Recently, a natural material, keratin protofibril derived from animal's hair, has also been investigated for forming a shape-memory reconfigurable scaffold consisting of self-assembled long-range ordered keratin molecules.<sup>44</sup> The transition of the keratin secondary structure from  $\alpha$ -helix to  $\beta$ -sheet upon hydration would actuate the macro-shape transformations of 3D printed keratin-based scaffolds, holding promise in fitting for sophisticated 3D geometries of body tissues.

SMPs have offered important candidates for constructing reconfigurable scaffolds that could be actuated by interior body temperature or an applied external stimulus. The SMP-based reconfigurable scaffolds with excellent shape-memory effects would exhibit high reliability in shape transformations as their permanent shapes could be pre-determined. However, they usually show limited freedom in shape transformations owing to the normal one-way actuation of SMPs. With the advances of two-way and even multi-way SMPs,<sup>45–47</sup> it will be expected to develop shape-memory reconfigurable scaffolds with enhanced freedom of shape transformation for a better perspectives of adaptive tissue regeneration.

## 2.2 Hydrogels

Hydrogels are commonly hydrophilic networks containing significant amounts of water. The water-rich networks of hydrogels make them not only highly friendly to biological systems but also mechanically compatible with biological tissues owing to their tissue-like viscoelasticity.<sup>48</sup> These outstanding features have made hydrogels excellent candidates for tissue engineering scaffolds, for example, engineering biomimetic cell microenvironments for 3D cell culture.<sup>49</sup> In addition, the water-rich networks also make the hydrogels easy to tune their volumes *via* controllable swelling/shrinkage,<sup>50</sup> therefore offering opportunities for preparing hydrogel-based reconfigurable scaffolds.

Taking advantage of the common phenomena that hydrogels undergo volumetric expansion/shrinkage during hydration/dehydration, hydrogel-based reconfigurable structures enabling programmable shape transformations through controlling their swelling behaviours have been widely studied. The programmable shape transformations from the as-fabricated two-dimensional (2D) states to certain target 3D geometries through swelling can be realized by modulating the spatial swelling gradients (either through the thickness or in

the plane) by employing different components with varying swelling ratios<sup>51</sup> or designing mono-component hydrogels with different crosslinking densities.<sup>52</sup> Alternatively, shape transformations of a swollen hydrogel could also be programmed by simply controlling the dimensions (thickness, length, and width) of its original shape.<sup>53</sup> Such hydration-actuated shape-morphing strategies are universal for a variety of hydrogels. Under this principle, reconfigurable cell-laden hydrogel scaffolds made of two modified natural polymers, methacrylated alginate (MA-Alg) and methacrylated hyaluronic acid (MA-HA) have been developed *via* four-dimensional (4D) bioprinting.<sup>54</sup> Bioprinted 2D cell-laden films with a crosslinking gradient through the thickness of the film scaffolds formed by top-down photocrosslinking and mild drying could be self-folded into vessel-like 3D tubes upon immersion in water, phosphate buffered saline (PBS), or cell culture medium. In addition to the hydration-induced mechanism, shape transformations of hydrogel-based reconfigurable scaffolds could also be realized by controlling the dehydration for inducing volumetric shrinkage. For example, a bilayer scaffold made of alginate hydrogels and a photothermal agent, polydopamine, has been fabricated by extrusion-based 3D printing and ion crosslinking.<sup>55</sup> Upon NIR irradiation, the incorporated polydopamine would convert light energy to heat, subsequently inducing the shape transformations of the scaffolds along with the thermos-induced dehydration of the alginate hydrogels.

Though controlling hydration/dehydration has offered convenient and universal strategies for programming hydrogel shapes between their dry and swollen states, such methods still confront challenges in dynamically modulating the scaffold shapes in biological environments containing cell culture medium or body fluids. To realize controllable shape transformations of hydrogels among their different equilibrium swelling states, stimuli-responsive hydrogels that can respond to diverse environmental and/or external stimuli have received numerous attention in developing hydrogel-based reconfigurable scaffolds.<sup>56</sup> One representative example is poly(*N*-isopropylacrylamide) (PNIPAM), which undergoes a reversible sol-gel phase transition above its lower critical solution temperature ( $\sim 32$  °C). The sol-gel phase transition can alter the hydrophilic/hydrophobic states of polymer backbones, therefore resulting in thermoresponsive volumetric changes of the PNIPAM hydrogels among different equilibrium swelling states.<sup>57</sup> Through incorporating photothermal agents such as gold nanorods, the shape transformations of PNIPAM-based hydrogels can further be remotely controlled by light.<sup>58</sup> On the basis of the responsive capabilities, PNIPAM-based hydrogels have been used for preparing scaffolds with light-controlled changing topographies for the dynamic manipulation of cell focal adhesion.<sup>59</sup> Besides, some other polymers such as poly(acrylic acid) (PAA),<sup>60</sup> chitosan,<sup>53</sup> poly[2-(dimethylamino) ethyl methacrylate] (PDMAEMA),<sup>61</sup> and their derivatives could also be used for preparing hydrogels, enabling controllable shape transformations among their different equilibrium swelling states in response to different pH values. These polymers



would undergo protonation/deprotonation with changing pH values, therefore affecting the net charges of polymer backbones and subsequently their electrostatic repulsion/attraction to induce different swelling states of the hydrogels. However, a few studies reported reconfigurable scaffolds made of pH-responsive hydrogels because of normally a narrow range of pH values for cell culture medium and the physiological environments within the human body. Recently, a biopolymer, alginate, has also been found to show stimuli-responsive behaviours in response to the concentrations of two ions ( $\text{Na}^+/\text{Ca}^{2+}$ ) abundant in physiological environments, which thereby leads to the inside-out 3D reversible shape transformations of alginate hydrogels.<sup>62</sup> It can be envisioned that the development of hydrogel-based reconfigurable scaffolds that can be actuated under mild conditions compatible with cells and biological tissues would pave new avenues for diverse tissue engineering applications such as 4D bioprinting and engineering biomimetic environments for cell manipulation.<sup>63,64</sup>

### 2.3 LCEs

Liquid crystal (LC) is an inter-mediate phase, referring to a condensed fluid state with a crystal-like long-range order.<sup>65</sup> The mobility of LC molecules brings LC materials with tuneable multiple mesophases, which can be simply realized by controlling the molecular orientations between ordered and disordered states. LCEs, with LC moieties being either a part of the polymer backbone or pendant groups to the main chain, can obtain combinational properties of tuneable orientation orders of LC moieties and rubber-like elasticity of elastomers. Based on that, LCEs have shown attractive stimuli-responsive behaviours, *i.e.*, reversibly changing their bulk shapes and surface microstructures in response to various external stimuli.<sup>66,67</sup>

LCEs, with stimuli-responsive shape-morphing properties, have demonstrated great promise for the applications of actuation,<sup>68–70</sup> soft robotics,<sup>71–73</sup> and controllable drug delivery.<sup>74–76</sup> In the field of tissue engineering and regenerative medicine, LCEs have also received intensive attention first because of their biomimetic architectures.<sup>77</sup> By engineering the orientations of LC moieties to resemble the anisotropic organizations between cells and extracellular matrix (ECM) fibrils in some biological tissues such as muscle, it could achieve directional alignments of cells on LCE-based scaffolds,<sup>78–80</sup> Diverse cellular functions (*e.g.*, cellular function maturation<sup>81</sup> and stem cell differentiation<sup>82</sup>) for facilitating tissue regeneration could be subsequently modulated. Second, LCEs would also pave new avenues for preparing reconfigurable scaffolds to modulate cell behaviours and functions towards intended directions through engineering dynamic cell microenvironments. For example, a LCE-based scaffold has been prepared based on the combinations of an elastomer, poly(methyl hydrosiloxane) (PMHS), a crosslinker, 4-di(10-undecenyloxy)benzene (DUB), and a reactive LC mesogen, 4-methoxyphenyl 4-(3-butenyloxy)benzoate (MPBB).<sup>83</sup> Through transient heating *via* an integrated resistive heater, the PMHS–DUB–MPBB film scaffold would undergo fully reversible, fast-

response (about 1 s) and large-amplitude (beyond 30% in strain) shape changes along with a nematic-to-isotropic transition of the LC moieties, which could subsequently direct uniaxial contraction and elongation of neonatal rat ventricular myocytes *via* cyclic strain. By introducing photo responsive segments, *e.g.*, an organic dye azobenzene (AZ), within the LC networks formed by the polymerization of 4-[[4-methoxyphenoxy]carbonyl] phenyl 4-[[6-(acryloyloxy)hexyl]oxy]benzoate (MCPAHB, mesogen) and 4-[[6-(acryloyloxy)hexyl]oxy]phenyl 4-[[6-(acryloyloxy)hexyl]oxy]benzoate (AHOPAHOB, crosslinker), the LCE-based scaffold (MCPAHB–AHOPAHOB–AZ) could even realize light-controlled shape transformations upon the irradiation of a green laser (514–525 nm).<sup>84</sup> Such shape-morphing features of the LCE-based reconfigurable scaffold could assist cardiac contraction *via* active tension in a non-contact fashion. Despite the great promise of engineering dynamic cell microenvironments, conventional LCE-based reconfigurable scaffolds still suffer from complicated synthesis procedures and low bioactivity. Recently, a new type of natural LCE has been emerging. Cytoskeletal fibrous components, *e.g.*, actin filaments (F-actin), which exhibit sufficient mechanical stability to sustain cellular shape and simultaneously sufficient fluidity for cellular remodelling, can show essential properties of an active nematic LC,<sup>85</sup> holding promise for preparing next-generation living reconfigurable scaffolds enabling enhanced integrations with cells and biological tissues.

### 2.4 Cell-actuating materials

“Intelligent” polymers enabling volumetric changes upon the application of an external stimulus have provided excellent candidates in forming reconfigurable scaffolds. However, they still confront challenges in a relatively low energy conversion efficiency and lack the capability of close-hooped sensing/actuation in dynamic physiological environments. With the evolution for billions of years, biological systems, *e.g.*, cells, have demonstrated various high-efficiency sensing and actuating capabilities, which have offered alternative building blocks for constructing reconfigurable scaffolds with enhanced bio-adaptive features.

Cells can generate traction force in the scale of dozens of nano-Newtons for each during their geometric changes, which has proven sufficient to bend elastic micro-pillars.<sup>86</sup> Though the traction force of one single cell is difficult to induce reconfigurations of macro-shapes for bulk materials, their collective behaviours will generate a large amplitude of mechanical force up to dozens of micro-Newtons enough to reshape flexible materials or power actuators.<sup>87,88</sup> By employing cells derived from biological tissues enabling cyclic contraction/relaxation such as myocardium and skeletal muscles, numerous bio-hybrid robots that could be actuated by cell traction force have been constructed through the combinations of these living cells and synthetic flexible substrates.<sup>89–91</sup> Accordingly, it was also reasonable to employ cell traction force to actuate the reconfigurations of tissue-engineering scaffolds. For example, through culturing NIH-3T3 cells onto a flexible parylene sheet with predesigned hinges, the traction force of the adherent



cells would trigger the reconfigurations of the cell-laden sheet from a 2D planar shape to various designated 3D configurations by just adjusting the geometries of the sheet and/or patterns of the hinges.<sup>92</sup> Such reconfigurations could be implemented along with cellular remodelling in physiological environments in a non-supervised fashion. Nevertheless, reshaping a flexible scaffold *via* cell traction force by simply seeding cells exhibits low controllability. Neither the degree nor the orientation of deformation could be precisely programmed. To address this challenge, advanced methodologies such as computer-aided reverse engineering design and optogenetic tools have been introduced,<sup>93,94</sup> significantly enhancing the controllability of actuation by programming the cell traction force in controllable spatiotemporal manners.

Notably, cells as one type of living “component” further endow the cell-actuating materials with self-adaptable potentials, corresponding to the ability of feedback control over cellular behaviours and functions during the reconfiguration process.<sup>95</sup> It has been well known that the cellular shape affects a variety of cellular behaviours and functions such as adhesion, migration, proliferation, differentiation, and apoptosis *via* mechanotransduction.<sup>96,97</sup> When reshaping a cell-laden scaffold, the mechanical forces generated accompanying with the scaffold deformation process would impose on cellular shapes and subsequently induce feedback modulation effects on the synthetic scaffold in return along with cellular remodelling.<sup>98</sup> Such close-loop control of cellular behaviours and functions resemble the cell–ECM interactions during tissue morphogenesis and regeneration, which would mediate the reorganization of cellular cytoskeletons and the following a cascade of downstream gene transcriptions *via* biomechanical signalling pathways.<sup>99</sup> Self-adaptable cell-actuating materials have been developed accordingly through incorporating mesenchymal stem cells (MSCs) within a nanofibrous norbornene-modified hyaluronic acid (NorHA) hydrogel scaffold.<sup>100</sup> Due to cell contraction, the attached MSCs within the scaffold could cause the re-assembly/re-arrangements of hydrogel nanofibers and subsequent changes of scaffold macro-shapes. In return, the changes of scaffold macro-shapes would cause re-programming of stem cell fate. In addition to the mechano-mediating modulation, cell behaviours and functions could also be programmed by other biophysical cues, *e.g.*, electrical stimulations. Recently, flexible piezoelectric materials that can generate electrical signals under cell traction force have attracted broad attention in the field of tissue engineering and regenerative medicine, offering new opportunities for forming cell-actuating materials capable of feedback cell modulation *via* the electrical stimulation actuated by cell traction force.<sup>101–103</sup> Through the combinations of appropriate cells and the “intelligent” polymers introduced above, it will be likely to prepare reconfigurable scaffolds promising for specific tissue engineering applications of interest by provoking self-adaptable interactivity between materials and cells. Moreover, through integrating rationally designed cell-actuating materials and recently emerging bioengineering technologies, such as synthetic biology,<sup>104</sup> it will be possible to

further develop “living” tissue engineering scaffolds with programmable cellular behaviours and functions in the future that can better accommodate for complicated and dynamic physiological environments.

#### 2.4 Design rationale for reconfigurable scaffolds using different materials

The functions of scaffolds are highly dependent on the properties of constituting materials. When seeking to construct reconfigurable scaffolds suitable for specific tissue engineering applications, it would be greatly important to choose and use materials with appropriate responsive properties. For the scaffolds requiring reliable one-way reconfiguration, it would be favourable to simply trigger their spontaneous shape transformations *via* internal signals within human bodies, such as body temperature, bio-fluids, or enzymes. Such scaffolds were designed to be deformed into target macro-shapes/micro-structures in pre-determined routes once implanted into bodies, without the needs of any additional facilities. Thermoresponsive SMPs are representative examples that have been commonly used in forming reconfigurable scaffolds whose shapes could undergo spontaneous transformations upon being placed in physiological environments at body temperature.<sup>31–37</sup> Some SMPs and hydrogels whose shapes could be deformed upon hydration have also provided candidates for fabricating one-way reconfigurable scaffolds to be triggered by bio-fluids abundant within human bodies.<sup>44,54</sup> Besides, enzyme-responsive SMPs would be promising for forming reconfigurable scaffolds enabling spontaneous shape transformations in specific pathophysiological environments within a relatively long time period (~7 days).<sup>43</sup> In addition, cell-actuated materials could also be used for preparing reconfigurable scaffolds with the potential of spontaneous shape transformations within bodies actuated by cell traction force,<sup>92</sup> whereas their reconfigurations would be less controllable and reliable than those formed by using SMPs and hydrogels.

As for constructing reconfigurable scaffolds requiring alteration in their macro-shapes/micro-structures even after implantation, it should be necessary to introduce materials whose shapes could be controlled upon applications of specific external fields. The reconfigurations of such scaffolds would be expected to be actuated or modulated by specific external stimuli in homeostatic physiological environments with the assistances of appropriate stimuli-responsive materials. To obtain high-efficiency actuation within bodies, the materials used for forming the scaffolds should be able to respond to the external stimuli that can effectively and safely penetrate biological tissues, including NIR light, magnetic field, and ultrasound. SMPs, hydrogels, and LCEs all could obtain field-controlled responsiveness through the incorporation of field-responsive agents, which could convert the energies from the external fields to some specific stimuli, usually in the form of heat, capable of actuating the shape transformations of composite materials. Some hydrogel- and LCE-based composite materials could even realize reversible and/or dynamic reconfigurations controlled by specific external



stimuli,<sup>51,59,84</sup> offering the possibilities of constructing reconfigurable scaffolds capable of adjusting their macro-shapes/micro-structures on demand for meeting the requirements of dynamic bio-adaptions in changing physiological environments.

### 3. Adaptive tissue regeneration assisted by scaffolds with reconfigurable macro-shapes

Emerging “intelligent” polymers and “living” cell-actuated materials have laid the foundations for developing reconfigurable scaffolds whose macro-shapes and/or micro-structures could be modulated on demand, subsequently bringing exciting promise in the field of tissue engineering and regenerative medicine from different aspects. First, the scaffold with reconfigurable macro-shapes has offered an innovative alternative for intervention therapies *via* minimally invasive injection.<sup>105</sup> Specifically, using an elastic and biodegradable SMP poly[octamethylene maleate (anhydride) citrate] (POMAC), a cardiomyocyte-laden microfabricated scaffold has been prepared, capable of altering their macro-shapes *via* shape recovery triggered by body temperature. Thanks to their reconfigurable macro-shapes, the cardiomyocyte-laden scaffold could be first reconfigured into a small-diameter tube suitable for injection into targeted body sites using a syringe in a minimally invasive manner *via* a small orifice with a diameter down to 1 mm. Upon minimally invasive injection to the epicardium, the shape of the scaffold would recover to its permanent shape (a planar patch with a size of 1 cm × 1 cm) for treating myocardial infarction (Fig. 3a). Owing to the mild conditions to trigger shape recovery, the viability and functions of the incorporated cardiomyocytes were well preserved during the reconfiguration process. Benefitting from the well-preserved cell viability and functions, as well as a less risky intervention approach of minimally invasive injection, this shape-memory cardiomyocyte-laden scaffold with reconfigurable macro-shapes has significantly improved cardiac functions in both small-animal (rat) and large-animal (porcine) myocardial infarction models.

Second, the reconfigurable macro-shapes of scaffolds have brought them the conveniences of fitting irregular shaped defects of biological tissues, which should be particularly difficult, if possible, for conventional scaffolds with pre-defined geometries. For treating irregular shaped cranial bone defects, a nanocomposite scaffold with NIR-controlled reconfigurable capabilities has been developed through the integrations of shape-memory PDLLA-*co*-TMC, photothermal black phosphorus nanosheets, osteoconductive  $\beta$ -tricalcium phosphate, and osteoinductive peptides.<sup>106</sup> The scaffold could be initially compressed into a small-size temporary shape for minimally invasive injection. Upon implanted into bone defect sites and the accompanying NIR irradiation for heating up the scaffold to reach the  $T_g$  of PDLLA-*co*-TMC (45 °C), the scaffold would be softened and concurrently self-expanded its shape to

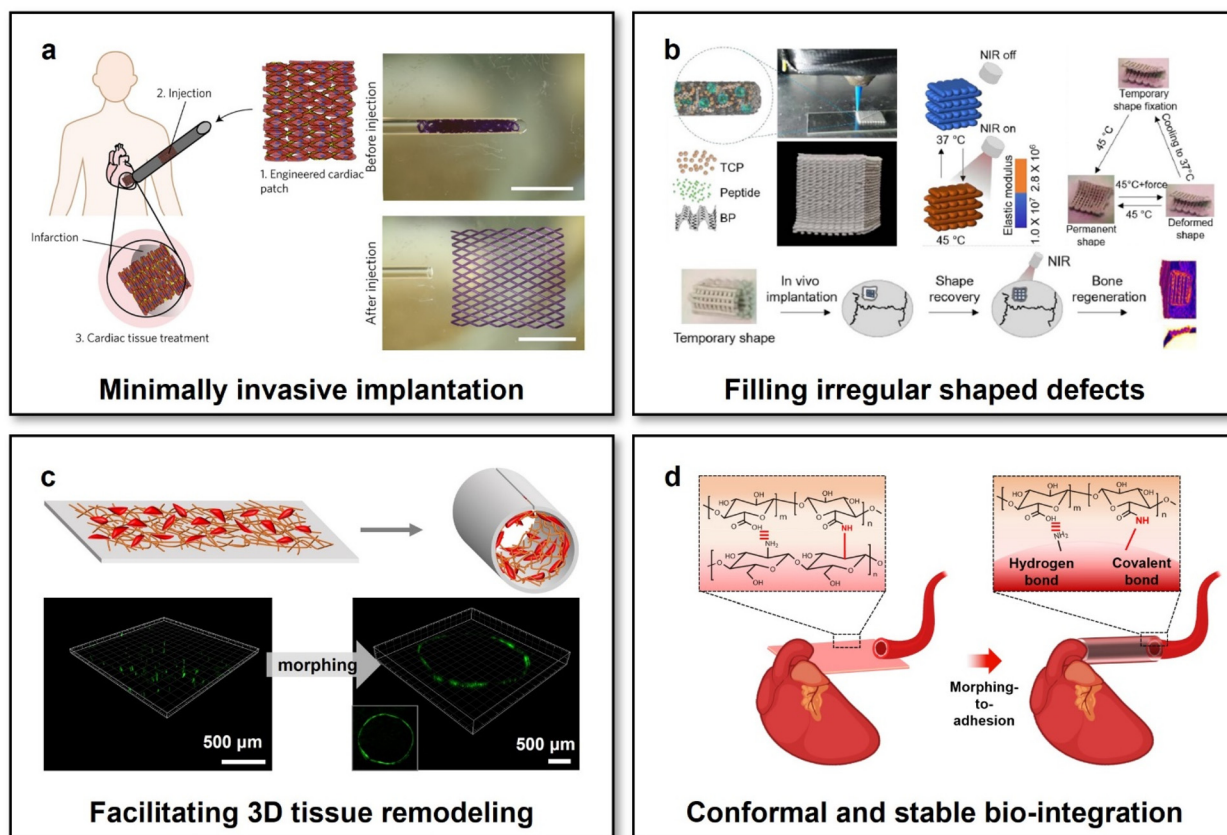
fill an irregular shaped bone defect *via* shape recovery (Fig. 3b). The low elastic modulus of the scaffold during the shape filling process made it feasible to perfectly match the zigzag borders of irregular shaped cranial bone defects in a rat model yet cause negligible additional stress. The NIR-irradiated reconfiguration process has also been proven safe for preserving the bioactivities of incorporated osteoconductive and osteoinductive agents. Moreover, NIR irradiation could trigger the pulsed release of osteoinductive agents, imparting the reconfigurable scaffolds with coupling multi-functions for adaptive bone integration.

Third, scaffolds with reconfigurable macro-shapes have offered the possibility of adapting to 3D shapes of biological tissues in an actively compliant fashion, which would significantly facilitate 3D tissue-scaffold interplays at the macroscopic biointerfaces. To enhance the interplays between endothelial cells and tissue engineering vascular grafts for adaptive vascular regeneration, Zhao *et al.* developed a reconfigurable scaffold consisting of a shape-memory actuating layer and an electrospun nanofibrous functional layer made of PDLLA-*co*-TMC and PCL/gelatin methacrylate (GelMA) blends, respectively.<sup>107</sup> The electrospun PCL/GelMA nanofibrous functional layer possessed desirable mechanical properties and bioactivity for supporting the focal adhesion and intercellular junction of endothelial cells.<sup>108</sup> The scaffold, possessing reconfigurable capabilities and desirable microenvironments for endothelial cells, could therefore achieve high-efficiency incorporations of endothelial cells at its initially planar shapes and facile 3D endothelium remodelling after the body-temperature-triggered shape recovery of the scaffold to its permanent 3D tubular shapes (Fig. 3c). Through adjusting the permanent tubular shapes of the 3D reconfigurable scaffolds *via* different template-assisted fabrication, it could make the scaffolds compliant with the surfaces of blood vessels of different diameters, ranging from 3 to 7 mm for meeting the respective therapeutic requirements of small-diameter and large-diameter blood vessels in the proof-of-concept studies. In addition to conformal interfacing with 3D-shaped biological tissues, the scaffolds with programmable reconfigurable macro-shapes would further be available for fitting the changing shapes of growing tissues. By using a viscoplastic material, referring to a type of material showing strain-rate-dependent mechanical properties (the liquid-like flowable state at low strain rates and the stiff state at high strain rates), to form the flexible substrate of bioelectronics, the macro-shapes of bioelectronics could be reconfigured and maintained conformal to gradually growing sciatic nerves without any mechanical constraints to the tissues.<sup>109</sup> Thanks to the viscoplasticity of the flexible substrate, nearly zero stress was generated for the bio-integrated bioelectronics during the low-rate strain of the gradual tissue growing process. This study also offered the inspiration of developing scaffolds with self-adaptable reconfigurable macro-shapes for adapting to growing 3D-shaped biological tissues.

Besides conformal interfacing, one additional factor affecting tissue-scaffold interplays should be their interfacial stability. In the field of bioelectronics, it has been demon-







**Fig. 3** Scaffolds with reconfigurable macro-shapes for adaptive tissue regeneration. (a) Shape-memory scaffolds with incorporated cardiomyocytes for cardiac tissue treatment *via* minimally invasive implantation. This figure has been reproduced from ref. 105 with permission from Spring Nature; copyright: 2017. (b) NIR-controlled reconfigurable bone tissue engineering scaffolds for filling irregular shaped cranial defects. This figure has been reproduced from ref. 106 with permission from IOP Publishing; copyright: 2020. (c) Shape-memory bilayer scaffolds facilitating facile 3D remodeling of endothelium tissue. This figure has been reproduced from ref. 107 with permission from the WILEY-VCH Verlag GmbH & Co. KGaA, Weinheim; copyright: 2018. (d) Reconfigurable scaffolds based on multifunctional hydrogels achieving conformal and stable interfacing with high-curvature biological tissues *via* a morphing-to-adhesion way. This figure has been reproduced from ref. 112 with permission from the American Chemical Society; copyright: 2022.

stated that mechanically stable biointerfaces formed assisted by a biocompatible bio-adhesive functional layer were effective to significantly enhance the reliability of implanted bioelectronics.<sup>110,111</sup> Recently, we have developed a multifunctional tissue engineering scaffold with coupled reconfigurable and bio-adhesive capabilities.<sup>112</sup> The scaffold was formed based on two types of naturally derived polysaccharide hydrogels, *i.e.*, chitosan and alginate. The two polysaccharide hydrogels at the two scaffold layers exhibited distinct different swelling behaviours upon immersion in water or bio-fluids, therefore endowing the scaffolds with swelling-triggered reconfigurable capabilities. Through functionalizing alginate with *N*-hydroxysuccinimide ester (NHS), the activated carboxylic acid groups of NHS-functionalized alginate could form instant binding with the terminal primary amine groups, in either chitosan hydrogels or biological tissues, *via* hydrogen and covalent bonds. Accordingly, the morphing-to-adhesion scaffold could not only be self-sealed after the programmable reconfigurations from an initially 2D planar sheet to 3D tubes

with tuneable diameters but also formed conformal and mechanically stable interfaces with diverse tubular tissues in a wide range of surface curvatures ( $2.8 \times 10^2$ – $1.3 \times 10^3 \text{ m}^{-1}$ ) (Fig. 3d). Such a scaffold with superior adaptability over the scaffolds with just reconfigurable functions in both interfacial conformality and stability paves new avenues for facilitating tissue–scaffold interplays.

Despite the various promises of the scaffolds with reconfigurable macro-shapes in the field of tissue engineering and regenerative medicine, it is somewhat interesting to note that most of the established scaffolds with reconfigurable macro-shapes could only undergo a one-way shape transformation. It does not mean that just one-way reconfigurations of macro-shapes are “ideal” enough for adaptive tissue regeneration. To investigate cellular responses under reversible mechanical stimulations, a NIR-controlled PNIPAM-based hydrogel has been developed,<sup>113</sup> realizing rapidly reversible reconfigurations of its macro-shapes for programming stem cells in mechanically and geometrically dynamic microenvironments. It has



been revealed that the reversible changes of scaffold macro-shapes could determine stem cell fates in different ways compared with their non-reversible counterparts. In the future, it can be expected to develop reconfigurable scaffolds capable of reversibly and dynamically adjusting their macro-shapes to direct the cellular behaviours and functions in a designed spatiotemporal manner for enhanced adaptive tissue regeneration.

#### 4. Adaptive tissue regeneration assisted by scaffolds with reconfigurable micro-structures

Engineering scaffolds with defined micro-structures has emerged as a popular method for directing the cellular morphology and subsequently a cascade of gene expressions *via* activating specific mechanotransduction signalling pathways by topographical cues.<sup>114</sup> Topography-mediated effects have been proven vital to affect cell traction force orientation, and then determining a series of cellular functions essential for tissue regeneration, for example, cellular focal adhesion,<sup>115</sup> cell maturation,<sup>116</sup> stem cell differentiation,<sup>117</sup> and macrophage polarization.<sup>118</sup> However, tissue regeneration usually requires dynamically programming cellular functions at different stages, which would be challengeable for scaffolds with pre-defined static micro-structures. It should be therefore of great value to develop scaffolds with reconfigurable micro-structures and to explore whether cellular functions could be programmed on demand by dynamic topographical cues when altering the micro-structures of scaffolds.

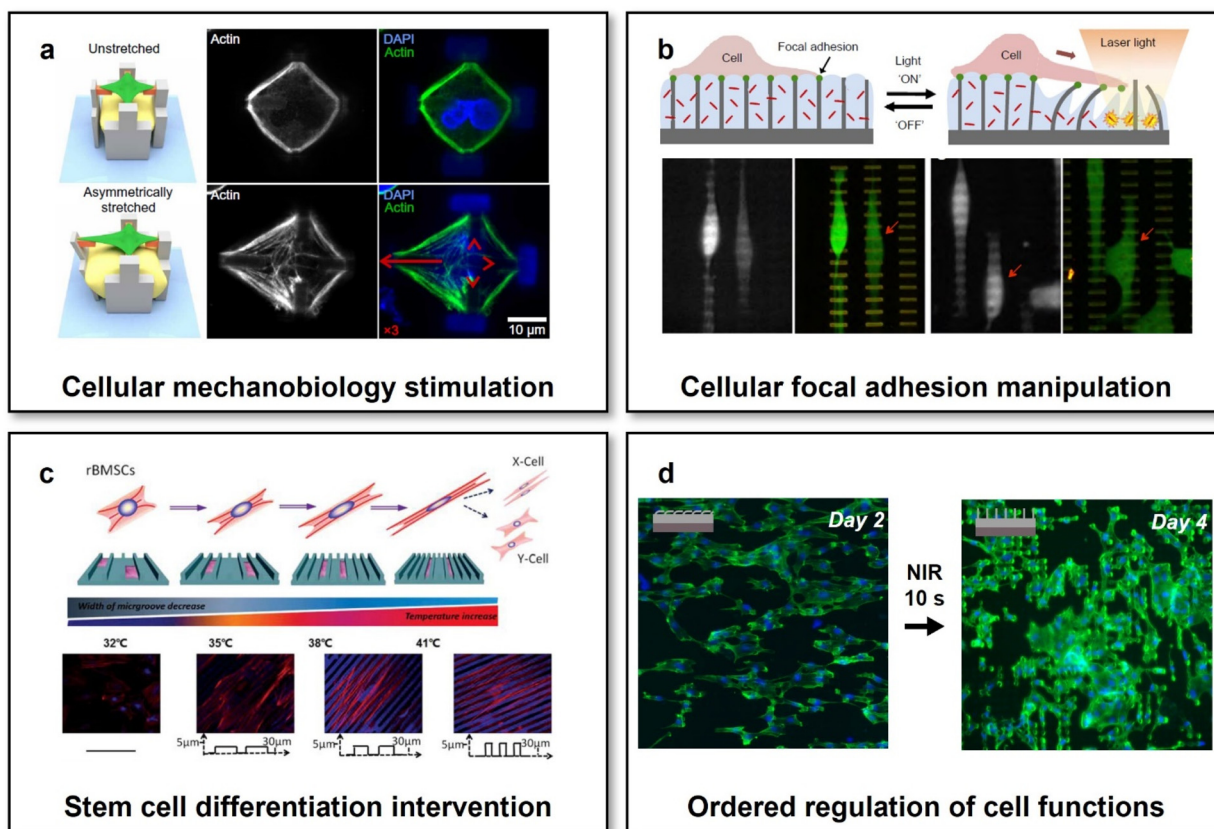
Using a stimuli-responsive material with dynamic host-guest interactions, a scaffold with reconfigurable micro-structures has been fabricated by 3D laser lithography.<sup>119</sup> Upon application or removal of soluble competitive guests, the micro-structures of the scaffold could be reversibly changed in physiological environments, exerting programmable mechanical stretching on individual cells to provoke the reorganizations of their actin cytoskeleton (Fig. 4a). In addition to the morphology of a single cell, the cellular focal adhesion, highly critical for cell mechanobiology, could also be modulated *in vitro* through controlling the reconfigurations of scaffold micro-structures.<sup>59</sup> A nanofabricated scaffold for the dynamic manipulation of cellular focal adhesion was formed based on a thermoresponsive PNIPAM hydrogel and photothermal gold nanorods. Upon application of NIR irradiation, initially upstanding sub-micron posts would be actuated and bent due to the shrinkage of the hydrogel, thereby manipulating the focal adhesion of attached cells in a sub-cellular high resolution (Fig. 4b).

Though the feasibility of altering the morphology and focal adhesion of individual cell through programming the reconfigurations of scaffold micro-structures has been widely investigated and the potential outcomes of evoking the cascade of gene expression *via* mechanotransduction could be predicted,

it is still difficult to assume the similar effects on the collective behaviours and functions of the amounts of cells involving complicated cell–cell interactions.<sup>120,121</sup> By using SMPs and micro-fabrication/micro-embossing methods, a variety of scaffolds with temperature-actuated reconfigurable microstructures, enabling reconfigurations either from micro-/nano-topographies to flat or in a reverse way, have been developed and employed to investigate the mechanotransduction of dynamic topographical cues on collective cellular behaviours and functions.<sup>28,122–125</sup> For different cell models such as NIH-3T3 fibroblast cell lines,<sup>28,122</sup> primary mouse embryonic fibroblasts,<sup>122</sup> and human-derived stem cells,<sup>123,124</sup> the reconfigurations of scaffold micro-structures could always cause the switches of cellular shapes and reorientations of cytoskeletons for a large number of cells. Therefore, it was reasonable to hypothesize that collective cellular functions could also be programmed by the reconfigurable microstructures of the scaffolds, which has then been confirmed by controllable collective migration,<sup>126</sup> contraction,<sup>127</sup> and differentiation<sup>31</sup> on shape-memory scaffolds with reconfigurable micro-structures. Specifically, using shape-memory PU, electrospun scaffolds whose nanofiber arrangements could be programmed in unaligned-to-aligned or aligned-to-unaligned manners. The rearrangements of nanofiber orientations *via* the shape recovery of PU actuated by altering environmental temperatures (from 30 to 37 °C) would cause changes in the cellular morphology and thereby the differential polarized motility of cells.<sup>126</sup> On a nanofabricated shape-memory PCL scaffold with dynamic anisotropic nanogrooves, primary cardiac muscle cell functions such as cytoskeletal developments, focal adhesion alignment, and collective contraction orientation in cell monolayers could also be regulated through controlling the reconfigurations of its micro-structures (altering the orientation of nanogrooves by 90°) *via* shape recovery by tuning the environmental temperature from 32 to 37 °C.<sup>127</sup> As for rat bone marrow-derived mesenchymal stem cells (rBMSCs), the reconfigurations of micro-structures realized by a PCL-based SMP scaffold have been proven visible to promote the myogenic differentiation of rBMSCs (Fig. 4c).<sup>31</sup> When increasing the environmental temperature from 32 to 41 °C, the engineered surface micro-structures of the scaffold could be tuned gradually *via* shape recovery from temporary smooth states to permanent microgroove arrays. Such reconfigurations of micro-structures would exert dynamic mechanical forces on the attached rBMSCs and thereby mimicking the functions of the native ECM in the muscular developmental and regenerative processes.<sup>128</sup> Through gene expression and western blot analyses, it was revealed that such biomechanically dynamic microenvironments could significantly enhance the directional differentiation of rBMSCs to a myogenic phenotype even without the additions of any induction factors.

Despite demonstrated the effectiveness of the above-introduced SMP-based scaffolds for manipulating collective cellular functions through controlling the reconfigurations of their micro-structures, there has been two factors remaining that might limit their practical translational applications, *i.e.*, (1)





**Fig. 4** Scaffolds with reconfigurable micro-structures for adaptive tissue regeneration. (a) Reversible mechanical stimulation of one single cell by the reconfigurable micro-structures of a 3D scaffold. This figure has been reproduced from ref. 119 with permission from American Association for the Advancement of Science; copyright: 2020. (b) NIR-controlled reconfigurable microstructures for manipulating cellular focal adhesion *in vitro*. This figure has been reproduced from ref. 59 with permission from Spring Nature; copyright: 2017. (c) Shape-memory scaffolds for programming the differentiation of stem cells. This figure has been reproduced from ref. 31 with permission from the WILEY-VCH Verlag GmbH & Co. KGaA, Weinheim; copyright: 2014. (d) Reconfigurable scaffolds with NIR-controlled microstructures for the state-specific manipulation of vascular endothelial cells. This figure has been reproduced from ref. 130 with permission from Oxford Academic; copyright: 2020.

the approach to actuate the reconfigurations (usually actuated by altering the overall environmental temperature) and (2) the match between dynamically controlled cellular functions and specific requirements of ordered cell regulation in specific tissue regeneration processes. Though cell viability has been reported to be negligibly affected by the changes in the environmental temperature during the reconfigurations of micro-structures for the above-mentioned SMP-based scaffolds, it would be still preferred to develop a reconfigurable scaffold whose micro-structures could be programmed in a remote-controlled fashion, particularly for *in vivo* applications. Through embedding magnetic nanoparticles within a micro-fabricated elastic scaffold, the micro-structures of the scaffold could be maintained in stable physiological environments and actively actuated by a gradient magnetic field in a remote-controlled manner. It has been proven effective to prevent micro-organism attachment and even remove the established biofilm by using such a scaffold, enabling magnet-actuated high-frequency and reversible reconfigurations of its microstructures.<sup>129</sup> Our research group has recently developed a scaffold

with reconfigurable microstructures that could be remotely actuated by NIR light at the physiological temperature.<sup>130</sup> The scaffold was designed to consist of two layers: one microfabricated actuating upper layer made of a poly(L-lactide-co-D,L-lactide) (PLLADLLA) SMP and one photothermal bottom layer containing gold nanorods. The surface micro-structures of the scaffold could be shaped into temporary anisotropic topography with oriented bent micropillar arrays, which could be well preserved when immersed in a 37 °C cell culture medium due to the high  $T_g$  of PLLADLLA (~53 °C). Upon exposure to biosafe NIR irradiation (with a power density of 5 W cm<sup>-2</sup>) for just 10 s, the heat generated in the bottom photothermal layer would trigger the shape recovery of PLLADLLA and then the reconfigurations of the micro-structures at the upper layer of the scaffold to be permanent upstanding micropillar arrays. Owing to the relatively short time of NIR irradiation and thermal diffusion gradient arising from the bilayer scaffold design, the NIR-triggered actuation process was found to show negligible influences on the viability and functions of cells grown on the upper actuating layer. Moreover, we observed the



NIR-controlled changes in the surface micro-structures of the scaffold could effectively induce the transitions of cell morphology and cytoskeleton (F-actin) development from initially anisotropic to later isotropic states (Fig. 4d). Under the mechanotransduction effects resulting from the shifted cellular morphology and F-actin arrangements, the scaffold with NIR-programmable reconfigurable micro-structures achieved enhanced migration of endothelial cells at the initially anisotropic state and improved focal adhesion and intercellular junction of endothelial cells in the monolayer at the later isotropic state. Such ordered regulation of endothelial cells would meet the dynamic requirements of endothelium remodelling, *i.e.*, first recruiting endothelial cells from surroundings and then directing the formation of a stable confluent endothelial cell monolayer, enabling such reconfigurable scaffolds with specific implications to adaptive vascular regeneration. This study would also inspire to develop reconfigurable scaffolds capable of manipulating the behaviours and functions of other cell types on demand for different tissue engineering and regenerative medicine applications.

## 5. Summary and outlook

Over the past decade, reconfigurable scaffolds, showing obvious superiorities in adaptability over conventional static non-responsive scaffolds by offering an additional temporal dimension for tuning their properties and features, have been rapidly emerging and promoted remarkable advances in tissue engineering and regenerative medicine. With the assistance of “intelligent” polymers, it has been possible to program the macro-shapes of scaffolds compliant with the 3D shapes of biological tissues for optimizing tissue-scaffold interplays at bio-interfaces. Meanwhile, the dynamic manipulation of different cellular functions has also been realized *via* mechanotransduction for meeting the requirements of ordered cell regulation within specific tissue developmental and regenerative processes through programming the micro-structures of scaffolds to attain dynamic cell-scaffold interplays. Moreover, some efforts have been recently made to construct multi-scale responsive scaffolds enabling combinational reconfigurations in both macro-shapes and micro-structures. Not only oriented cellular alignments could further be stimulated by the combinational guidance of reconfigurable macro-shapes and micro-structures,<sup>131</sup> but also conformal integration with 3D biological tissues and directional programming of cellular fates could be simultaneously achieved by the multi-scale responsive scaffolds.<sup>132</sup> We are witnessing emerging reconfigurable scaffolds with upgrading adaptability “re-shaping” the field of tissue engineering and regenerative medicine. Additionally, reconfigurable scaffolds further hold promise to facilitate some emerging biotechnologies in tissue engineering and regenerative medicine, such as organoid engineering.<sup>133</sup> As far as functional organoids were conventionally built on the Matrigel possessing inherent drawbacks in batch-to-batch variability and immunogenicity, reconfigurable scaffolds

might provide promising alternatives for programming stem cells to functional organoids *via* offering adaptable *in vitro* microenvironments with well-defined compositions and functions for reliably assisting morphogenesis.<sup>134,135</sup>

Despite the great promise in adaptive tissue regeneration, reconfigurable scaffolds, in the endeavour of perfect bio-adaptations to complicated and dynamic pathophysiological environments, still confront challenges, such as spatiotemporally controllable modulations of cell behaviours and functions as compared with the native ECM. In the spatial scale, it remains challenging to control the reconfigurations of scaffolds with a high resolution down to the nanoscale, which would be important for precise manipulation of cellular behaviours and functions *via* specific biomolecule-mediated approaches, for example tuning integrin binding to modulate the mechanobiology of cells.<sup>136</sup> In the temporal scale, on one hand, for either macro-shapes or micro-structures of the scaffolds, realizing transient and cyclic (>1 Hz) reconfigurations with excellent mechanical robustness which resembles some natural microenvironments such as a beating heart is still difficult. On another hand, it is also extremely hard to realize ultra-slow reconfigurations accommodating for the developmental or growing processes of biological tissues within an actuating period from several days to even several months. It will be expected that innovative multidisciplinary efforts, particularly innovations in materials sciences,<sup>137,138</sup> nanoscience,<sup>139</sup> and engineering technologies,<sup>140</sup> should be made for addressing these challenges of reconfigurable scaffolds. In addition, through coupling multiple biophysical cues and/or introducing sensing capabilities to enhance the environmental interactivity of scaffolds,<sup>16,141–144</sup> it can even be envisioned that reconfigurable scaffolds will further obtain superior adaptability, even the “intelligence” of closed-loop control, for matching the extreme physiological complexities among different body tissues.

## Conflicts of interest

There are no conflicts to declare.

## Acknowledgements

The authors acknowledge the financial support provided by the National Key R&D Program of China (2017YFA0701303), the National Natural Science Foundation of China (52173148, 52022102, 51903245, and 52003287), the National Natural Science Foundation of China/RGC Joint Research Scheme (52261160380), the Youth Innovation Promotion Association of CAS (2022368, 2019353), the Guangdong Regional Joint Fund-Key Project (2021B1515120076), the Natural Science Foundation of Guangdong Province (2114050001067), and the Shenzhen Science and Technology Innovation Committee (JCYJ20220818101800001).



## References

- 1 R. Langer and J. P. Vacanti, *Science*, 1993, **260**, 920–926.
- 2 E. S. Place, J. H. George, C. K. Williams and M. M. Stevens, *Chem. Soc. Rev.*, 2009, **38**, 1139–1151.
- 3 M. P. Lutolf and J. A. Hubbell, *Nat. Biotechnol.*, 2005, **23**, 47–55.
- 4 S. J. Hollister, *Nat. Mater.*, 2005, **4**, 518–524.
- 5 J. Gao, X. Yu, X. Wang, Y. He and J. Ding, *Engineering*, 2022, **13**, 31–45.
- 6 L. L. Hench and J. M. Polak, *Science*, 2002, **295**, 1014–1017.
- 7 A. K. Gaharwar, I. Singh and A. Khademhosseini, *Nat. Rev. Mater.*, 2020, **5**, 686–705.
- 8 Q. Zhao and X. Du, *Smart Mater. Med.*, 2022, **3**, 37–40.
- 9 S. Hauser, F. Jung and J. Pietzsch, *Trends Biotechnol.*, 2017, **35**, 265–277.
- 10 Q. Zhao, C. Li, H. C. Shum and X. Du, *Lab Chip*, 2020, **20**, 4321–4341.
- 11 S. E. Iismaa, X. Kaidonis, A. M. Nicks, N. Bogush, K. Kikuchi, N. Naqvi, R. P. Harvey, A. Husain and R. M. Graham, *npj Regen. Med.*, 2018, **3**, 6.
- 12 E. S. Place, N. D. Evans and M. M. Stevens, *Nat. Mater.*, 2009, **8**, 457–470.
- 13 A. Nojoomi, J. Jeon and K. Yum, *Nat. Commun.*, 2021, **12**, 603.
- 14 P. Cai, B. Hu, W. R. Leow, X. Wang, X. J. Loh, Y. L. Wu and X. Chen, *Adv. Mater.*, 2018, **30**, 1800572.
- 15 G. Brusatin, T. Panciera, A. Gandin, A. Citron and S. Piccolo, *Nat. Mater.*, 2018, **17**, 1063–1075.
- 16 X. Wan, Z. Liu and L. Li, *Adv. Funct. Mater.*, 2021, **31**, 2010626.
- 17 M. D. Hager, S. Bode, C. Weber and U. S. Schubert, *Prog. Polym. Sci.*, 2015, **49–50**, 3–33.
- 18 H. Ramaraju, R. E. Akman, D. L. Safranski and S. J. Hollister, *Adv. Funct. Mater.*, 2020, **30**, 2002014.
- 19 A. Melocchi, M. Uboldi, M. Cerea, A. Foppoli, A. Maroni, S. Moutaharrik, L. Palugan, L. Zema and A. Gazzaniga, *Adv. Drug Delivery Rev.*, 2021, **173**, 216–237.
- 20 A. Lendlein and R. Langer, *Science*, 2002, **296**, 1673–1676.
- 21 Y. Deng, B. Yang, F. Zhang, Y. Liu, J. Sun, S. Zhang, Y. Zhao, H. Yuan and J. Leng, *Biomaterials*, 2022, **291**, 121886.
- 22 Y. C. Zhang, N. Zheng, Y. Cao, F. L. Wang, P. Wang, Y. J. Ma, B. W. Lu, G. H. Hou, Z. Z. Fang, Z. W. Liang, M. K. Yue, Y. Li, Y. Chen, J. Fu, J. Wu, T. Xie and X. Feng, *Sci. Adv.*, 2019, **5**, eaaw1066.
- 23 J. Wang, Q. Zhao, Y. Wang, Q. Zeng, T. Wu and X. Du, *Adv. Mater. Technol.*, 2019, **4**, 1900566.
- 24 G. I. Peterson, A. V. Dobrynin and M. L. Becker, *Adv. Healthcare Mater.*, 2017, **6**, 1700694.
- 25 M. A. Woodruff and D. W. Hutmacher, *Prog. Polym. Sci.*, 2010, **35**, 1217–1256.
- 26 Z. G. Wei, R. Sandstrom and S. Miyazaki, *J. Mater. Sci.*, 1998, **33**, 3743–3762.
- 27 L. S. Nair and C. T. Laurencin, *Prog. Polym. Sci.*, 2007, **32**, 762–798.
- 28 M. Ebara, K. Uto, N. Idota, J. M. Hoffman and T. Aoyagi, *Adv. Mater.*, 2012, **24**, 273–278.
- 29 M. Saatchi, M. Behl, U. Nochel and A. Lendlein, *Macromol. Rapid Commun.*, 2015, **36**, 880–884.
- 30 J. Wang, Q. Zhao, H. Cui, Y. Wang, H. Chen and X. Du, *J. Mater. Chem. A*, 2018, **6**, 24748–24755.
- 31 T. Gong, K. Zhao, G. Yang, J. Li, H. Chen, Y. Chen and S. Zhou, *Adv. Healthcare Mater.*, 2014, **3**, 1608–1619.
- 32 M. Bao, X. X. Lou, Q. H. Zhou, W. Dong, H. H. Yuan and Y. Z. Zhang, *ACS Appl. Mater. Interfaces*, 2014, **6**, 2611–2621.
- 33 L. Han, Y. Wang, L. Wu, Z. Wu, Y. He, H. Mao and Z. Gu, *ACS Biomater. Sci. Eng.*, 2023, **9**, 520–530.
- 34 T. Kivijarvi, G. Oyvind, M. A. Yassin, S. Jain, S. Yamada, A. Morales-Lopez, K. Mustafa and A. Finne-Wistrand, *Mater. Today Bio*, 2022, **17**, 100483.
- 35 X. Chen, S. Y. Han, W. H. Wu, Z. H. Wu, Y. Yuan, J. Wu and C. Liu, *Small*, 2022, **18**, 2106824.
- 36 M. R. Pfau, K. G. McKinzey, A. A. Roth, L. M. Graul, D. J. Maitland and M. A. Grunlan, *J. Mater. Chem. B*, 2021, **9**, 3826–3837.
- 37 L. N. Woodard, K. T. Kmetz, A. A. Roth, V. M. Page and M. A. Grunlan, *Biomacromolecules*, 2017, **18**, 4075–4083.
- 38 Y. J. Wang, U. S. Jeng and S. H. Hsu, *ACS Biomater. Sci. Eng.*, 2018, **4**, 1397–1406.
- 39 M. Bao, Q. H. Zhou, W. Dong, X. X. Lou and Y. Z. Zhang, *Biomacromolecules*, 2013, **14**, 1971–1979.
- 40 T. Gong, W. B. Li, H. M. Chen, L. Wang, S. J. Shao and S. B. Zhou, *Acta Biomater.*, 2012, **8**, 1248–1259.
- 41 Y. C. Zhang, C. R. Li, W. Zhang, J. J. Deng, Y. Y. Nie, X. F. Du, L. Qin and Y. X. Lai, *Bioact. Mater.*, 2022, **16**, 218–231.
- 42 Y. Li, H. M. Chen, D. Liu, W. X. Wang, Y. Liu and S. B. Zhou, *ACS Appl. Mater. Interfaces*, 2015, **7**, 12988–12999.
- 43 S. L. Buffington, J. E. Paul, M. M. Ali, M. M. Macios, P. T. Mather and J. H. Henderson, *Acta Biomater.*, 2019, **84**, 88–97.
- 44 L. Cera, G. M. Gonzalez, Q. H. Liu, S. Choi, C. O. Chantre, J. Lee, R. Gabardi, M. C. Choi, K. Shin and K. K. Parker, *Nat. Mater.*, 2021, **20**, 242–249.
- 45 T. Xie, *Nature*, 2010, **464**, 267–270.
- 46 J. J. Li, W. R. Rodgers and T. Xie, *Polymer*, 2011, **52**, 5320–5325.
- 47 T. Chung, A. Rorno-Urbe and P. T. Mather, *Macromolecules*, 2008, **41**, 184–192.
- 48 S. Correa, A. K. Grosskopf, H. Lopez Hernandez, D. Chan, A. C. Yu, L. M. Stapleton and E. A. Appel, *Chem. Rev.*, 2021, **121**, 11385–11457.
- 49 J. Z. Lou and D. J. Mooney, *Nat. Rev. Chem.*, 2022, **6**, 726–744.
- 50 S. J. Jeon, A. W. Hauser and R. C. Hayward, *Acc. Chem. Res.*, 2017, **50**, 161–169.



- 51 Z. J. Wang, C. N. Zhu, W. Hong, Z. L. Wu and Q. Zheng, *Sci. Adv.*, 2017, **3**, e1700348.
- 52 A. S. Gladman, E. A. Matsumoto, R. G. Nuzzo, L. Mahadevan and J. A. Lewis, *Nat. Mater.*, 2016, **15**, 413–418.
- 53 H. Hu, C. Huang, M. Galluzzi, Q. Ye, R. Xiao, X. Yu and X. Du, *Research*, 2021, **2021**, 9786128.
- 54 A. Kirillova, R. Maxson, G. Stoychev, C. T. Gomillion and L. Ionov, *Adv. Mater.*, 2017, **29**, 1703443.
- 55 Y. Luo, X. Lin, B. Chen and X. Wei, *Biofabrication*, 2019, **11**, 045019.
- 56 M. A. Mohamed, A. Fallahi, A. M. A. El-Sokkary, S. Salehi, M. A. Akl, A. Jafari, A. Tamayol, H. Fenniri, A. Khademhosseini, S. T. Andreadis and C. Cheng, *Prog. Polym. Sci.*, 2019, **98**, 101147.
- 57 M. A. Haq, Y. L. Su and D. J. Wang, *Mater. Sci. Eng., C*, 2017, **70**, 842–855.
- 58 X. Du, H. Cui, B. Sun, J. Wang, Q. Zhao, K. Xia, T. Wu and M. S. Humayun, *Adv. Mater. Technol.*, 2017, **2**, 1700120.
- 59 A. Sutton, T. Shirman, J. V. Timonen, G. T. England, P. Kim, M. Kolle, T. Ferrante, L. D. Zarzar, E. Strong and J. Aizenberg, *Nat. Commun.*, 2017, **8**, 14700.
- 60 O. E. Philippova, D. Hourdet, R. Audebert and A. R. Khokhlov, *Macromolecules*, 1997, **30**, 8278–8285.
- 61 A. Zengin, G. Karakose and T. Caykara, *Eur. Polym. J.*, 2013, **49**, 3350–3358.
- 62 X. Du, H. Cui, Q. Zhao, J. Wang, H. Chen and Y. Wang, *Research*, 2019, **2019**, 6398296.
- 63 R. Y. Tam, L. J. Smith and M. S. Shoichet, *Acc. Chem. Res.*, 2017, **50**, 703–713.
- 64 S. Miao, N. Castro, M. Nowicki, L. Xia, H. Cui, X. Zhou, W. Zhu, S. J. Lee, K. Sarkar, G. Vozzi, Y. Tabata, J. Fisher and L. G. Zhang, *Mater. Today*, 2017, **20**, 577–591.
- 65 C. Tschierske, *Chem. Soc. Rev.*, 2007, **36**, 1930–1970.
- 66 T. J. White and D. J. Broer, *Nat. Mater.*, 2015, **14**, 1087–1098.
- 67 G. Babakhanova, T. Turiv, Y. B. Guo, M. Hendrikx, Q. H. Wei, A. P. H. J. Schenning, D. J. Broer and O. D. Lavrentovich, *Nat. Commun.*, 2018, **9**, 456.
- 68 A. M. Rather, Y. Xu, Y. Chang, R. L. Dupont, A. Borbora, U. I. Kara, J. C. Fang, R. Mamtani, M. Zhang, Y. X. Yao, S. Adera, X. P. Bao, U. Manna and X. G. Wang, *Adv. Mater.*, 2022, **34**, 2110085.
- 69 J. A. Lv, Y. Liu, J. Wei, E. Chen, L. Qin and Y. Yu, *Nature*, 2016, **537**, 179–184.
- 70 T. Guin, M. J. Settle, B. A. Kowalski, A. D. Auguste, R. V. Beblo, G. W. Reich and T. J. White, *Nat. Commun.*, 2018, **9**, 2531.
- 71 H. R. Liu, H. M. Tian, X. M. Li, X. L. Chen, K. Zhang, H. Y. Shi, C. H. Wang and J. Y. Shao, *Sci. Adv.*, 2022, **8**, eabn5722.
- 72 J. H. Lee, J. Bae, J. H. Hwang, M. Y. Choi, Y. S. Kim, S. Park, J. H. Na, D. G. Kim and S. K. Ahn, *Adv. Funct. Mater.*, 2022, **32**, 2110360.
- 73 M. Camacho-Lopez, H. Finkelmann, P. Palfy-Muhoray and M. Shelley, *Nat. Mater.*, 2004, **3**, 307–310.
- 74 W. K. Fong, T. Hanley and B. J. Boyd, *J. Controlled Release*, 2009, **135**, 218–226.
- 75 R. Huang, R. Lan, C. Shen, Z. Zhang, Z. Wang, J. Bao, Z. Wang, L. Zhang, W. Hu, Z. Yu, S. Zhu, L. Wang and H. Yang, *ACS Appl. Mater. Interfaces*, 2021, **13**, 59221–59230.
- 76 A. Zabara and R. Mezzenga, *J. Controlled Release*, 2014, **188**, 31–43.
- 77 B. Gurboga, E. B. Tuncgovde and E. Kemiklioglu, *Biotechnol. Bioeng.*, 2022, **119**, 1047–1052.
- 78 D. Martella, L. Pattelli, C. Matassini, F. Ridi, M. Bonini, P. Paoli, P. Baglioni, D. S. Wiersma and C. Parmeggiani, *Adv. Healthcare Mater.*, 2019, **8**, 1970009.
- 79 A. Nasajpour, A. Mostafavi, A. Chlanda, C. Rinoldi, S. Sharifi, M. S. Ji, M. Ye, S. J. Jonas, W. Swieszkowski, P. S. Weiss, A. Khademhosseini and A. Tamayol, *ACS Mater. Lett.*, 2020, **2**, 1067–1073.
- 80 J. Jiang, N. P. Dhakal, Y. Guo, C. Andre, L. Thompson, O. Skalli and C. Peng, *Adv. Healthcare Mater.*, 2020, **9**, 2000487.
- 81 D. Martella, P. Paoli, J. M. Pioner, L. Sacconi, R. Coppini, L. Santini, M. Lulli, E. Cerbai, D. S. Wiersma, C. Poggessi, C. Ferrantini and C. Parmeggiani, *Small*, 2017, **13**, 1702677.
- 82 E. Sleep, B. D. Cosgrove, M. T. McClendon, A. T. Preslar, C. H. Chen, M. H. Sangji, C. M. R. Perez, R. D. Haynes, T. J. Meade, H. M. Blau and S. I. Stupp, *Proc. Natl. Acad. Sci. U. S. A.*, 2017, **114**, E7919–E7928.
- 83 A. Agrawal, O. Adetiba, H. Kim, H. Chen, J. G. Jacot and R. Verduzco, *J. Mater. Res.*, 2015, **30**, 453–462.
- 84 C. Ferrantini, J. M. Pioner, D. Martella, R. Coppini, N. Piroddi, P. Paoli, M. Calamai, F. S. Pavone, D. S. Wiersma, C. Tesi, E. Cerbai, C. Poggessi, L. Sacconi and C. Parmeggiani, *Circ. Res.*, 2019, **124**, e44–e54.
- 85 T. B. Saw, W. Xi, B. Ladoux and C. T. Lim, *Adv. Mater.*, 2018, **30**, 1802579.
- 86 J. Fu, Y. K. Wang, M. T. Yang, R. A. Desai, X. Yu, Z. Liu and C. S. Chen, *Nat. Methods*, 2010, **7**, 733–736.
- 87 J. Yoon, T. W. Eyster, A. C. Misra and J. Lahann, *Adv. Mater.*, 2015, **27**, 4509–4515.
- 88 A. W. Feinberg, A. Feigel, S. S. Shevkoplyas, S. Sheehy, G. M. Whitesides and K. K. Parker, *Science*, 2007, **317**, 1366–1370.
- 89 L. Sun, Y. Yu, Z. Chen, F. Bian, F. Ye, L. Sun and Y. Zhao, *Chem. Soc. Rev.*, 2020, **49**, 4043–4069.
- 90 C. Appiah, C. Arndt, K. Siemsen, A. Heitmann, A. Staubitz and C. Selhuber-Unkel, *Adv. Mater.*, 2019, **31**, 1807747.
- 91 L. Ricotti, B. Trimmer, A. W. Feinberg, R. Raman, K. K. Parker, R. Bashir, M. Sitti, S. Martel, P. Dario and A. Menciassi, *Sci. Robot.*, 2017, **2**, eaaq0495.
- 92 K. Kuribayashi-Shigetomi, H. Onoe and S. Takeuchi, *PLoS One*, 2012, **7**, e51085.
- 93 S. J. Park, M. Gazzola, K. S. Park, S. Park, V. Di Santo, E. L. Blevins, J. U. Lind, P. H. Campbell, S. Dauth, A. K. Capulli, F. S. Pasqualini, S. Ahn, A. Cho, H. Yuan, B. M. Maoz, R. Vijaykumar, J. W. Choi, K. Deisseroth,



- G. V. Lauder, L. Mahadevan and K. K. Parker, *Science*, 2016, **353**, 158–162.
- 94 J. C. Nawroth, H. Lee, A. W. Feinberg, C. M. Ripplinger, M. L. McCain, A. Grosberg, J. O. Dabiri and K. K. Parker, *Nat. Biotechnol.*, 2012, **30**, 792–797.
- 95 T.-C. Tang, B. An, Y. Huang, S. Vasikaran, Y. Wang, X. Jiang, T. K. Lu and C. Zhong, *Nat. Rev. Mater.*, 2020, **6**, 332–350.
- 96 C. S. Chen, M. Mrksich, S. Huang, G. M. Whitesides and D. E. Ingber, *Science*, 1997, **276**, 1425–1428.
- 97 T. C. von Erlach, S. Bertazzo, M. A. Wozniak, C. M. Horejs, S. A. Maynard, S. Attwood, B. K. Robinson, H. Autefage, C. Kallepitis, A. Del Rio Hernandez, C. S. Chen, S. Goldoni and M. M. Stevens, *Nat. Mater.*, 2018, **17**, 237–242.
- 98 L. Q. Li, J. Eyckmans and C. S. Chen, *Nat. Mater.*, 2017, **16**, 1164–1168.
- 99 M. S. Sakar, J. Eyckmans, R. Pieters, D. Eberli, B. J. Nelson and C. S. Chen, *Nat. Commun.*, 2016, **7**, 11036.
- 100 M. D. Davidson, M. E. Prendergast, E. Ban, K. L. Xu, G. Mickel, P. Mensah, A. Dhand, P. A. Janmey, V. B. Shenoy and J. A. Burdick, *Sci. Adv.*, 2021, **7**, eabi8157.
- 101 Z. Liu, M. Cai, X. Zhang, X. Yu, S. Wang, X. Wan, Z. Wang and L. Li, *Adv. Mater.*, 2021, **33**, 2106317.
- 102 X. Zhang, X. Cui, D. Wang, S. Wang, Z. Liu, G. Zhao, Y. Zhang, Z. Li, Z. L. Wang and L. Li, *Adv. Funct. Mater.*, 2019, **29**, 1900372.
- 103 X. Wan, Y. Zhao, Z. Li and L. Li, *Exploration*, 2022, **2**, 20210029.
- 104 J. Larouche and C. A. Aguilar, *Trends Biotechnol.*, 2019, **37**, 604–617.
- 105 M. Montgomery, S. Ahadian, L. Davenport Huyer, M. Lo Rito, R. A. Civitarese, R. D. Vanderlaan, J. Wu, L. A. Reis, A. Momen, S. Akbari, A. Pahnke, R. K. Li, C. A. Caldarone and M. Radisic, *Nat. Mater.*, 2017, **16**, 1038–1046.
- 106 C. Wang, H. Yue, J. Liu, Q. Zhao, Z. He, K. Li, B. Lu, W. Huang, Y. Wei, Y. Tang and M. Wang, *Biofabrication*, 2020, **12**, 045025.
- 107 Q. Zhao, J. Wang, H. Cui, H. Chen, Y. Wang and X. Du, *Adv. Funct. Mater.*, 2018, **28**, 1801027.
- 108 Q. Zhao, H. Cui, J. Wang, H. Chen, Y. Wang, L. Zhang, X. Du and M. Wang, *ACS Appl. Mater. Interfaces*, 2018, **10**, 23583–23594.
- 109 Y. Liu, J. Li, S. Song, J. Kang, Y. Tsao, S. Chen, V. Mottini, K. McConnell, W. Xu, Y. Q. Zheng, J. B. Tok, P. M. George and Z. Bao, *Nat. Biotechnol.*, 2020, **38**, 1031–1036.
- 110 C. Wang, X. Chen, L. Wang, M. Makihata, H.-C. Liu, T. Zhou and X. Zhao, *Science*, 2022, **377**, 517–523.
- 111 J. Deng, H. Yuk, J. Wu, C. E. Varela, X. Chen, E. T. Roche, C. F. Guo and X. Zhao, *Nat. Mater.*, 2020, **20**, 229–236.
- 112 S. Wang, Q. Zhao, J. Li and X. Du, *ACS Appl. Mater. Interfaces*, 2022, **14**, 42420–42429.
- 113 Y. Chandorkar, A. Castro Nava, S. Schweizerhof, M. Van Dongen, T. Haraszti, J. Kohler, H. Zhang, R. Windoffer, A. Mourran, M. Moller and L. De Laporte, *Nat. Commun.*, 2019, **10**, 4027.
- 114 M. F. A. Cutiongco, B. S. Jensen, P. M. Reynolds and N. Gadegaard, *Nat. Commun.*, 2020, **11**, 1384.
- 115 A. K. Yip, A. T. Nguyen, M. Rizwan, S. T. Wong, K. H. Chiam and E. K. F. Yim, *Biomaterials*, 2018, **181**, 103–112.
- 116 Z. Wang, W. J. Lee, B. T. H. Koh, M. Hong, W. Wang, P. N. Lim, J. Feng, L. S. Park, M. Kim and E. S. Thian, *Sci. Adv.*, 2018, **4**, eaat4537.
- 117 S. Zhang, B. Ma, F. Liu, J. Duan, S. Wang, J. Qiu, D. Li, Y. Sang, C. Liu, D. Liu and H. Liu, *Nano Lett.*, 2018, **18**, 2243–2253.
- 118 Y. Z. Zhu, H. Liang, X. M. Liu, J. Wu, C. Yang, T. M. Wong, K. Y. H. Kwan, K. M. C. Cheung, S. L. Wu and K. W. K. Yeung, *Sci. Adv.*, 2021, **7**, eabf6654.
- 119 M. Hippler, K. Weissenbruch, K. Richler, E. D. Lemma, M. Nakahata, B. Richter, C. Barner-Kowollik, Y. Takashima, A. Harada, E. Blasco, M. Wegener, M. Tanaka and M. Bastmeyer, *Sci. Adv.*, 2020, **6**, eabc2648.
- 120 R. Mayor and S. Etienne-Manneville, *Nat. Rev. Mol. Cell Biol.*, 2016, **17**, 97–109.
- 121 C. L. Marchant, A. N. Malmi-Kakkada, J. A. Espina and E. H. Barriga, *Nat. Mater.*, 2022, **21**, 1314–1323.
- 122 M. Ebara, M. Akimoto, K. Uto, K. Shiba, G. Yoshikawa and T. Aoyagi, *Polymer*, 2014, **55**, 5961–5968.
- 123 L. F. Tseng, P. T. Mather and J. H. Henderson, *Acta Biomater.*, 2013, **9**, 8790–8801.
- 124 D. M. Le, K. Kulangara, A. F. Adler, K. W. Leong and V. S. Ashby, *Adv. Mater.*, 2011, **23**, 3278–3283.
- 125 K. A. Davis, K. A. Burke, P. T. Mather and J. H. Henderson, *Biomaterials*, 2011, **32**, 2285–2293.
- 126 J. Wang, A. Quach, M. E. Brasch, C. E. Turner and J. H. Henderson, *Biomaterials*, 2017, **140**, 150–161.
- 127 P. Y. Mengsteab, K. Uto, A. S. T. Smith, S. Frankel, E. Fisher, Z. Nawas, J. Macadangang, M. Ebara and D. H. Kim, *Biomaterials*, 2016, **86**, 1–10.
- 128 R. O. Hynes, *Science*, 2009, **326**, 1216–1219.
- 129 H. Gu, S. W. Lee, J. Carnicelli, T. Zhang and D. Ren, *Nat. Commun.*, 2020, **11**, 2211.
- 130 Q. Zhao, J. Wang, Y. Wang, H. Cui and X. Du, *Natl. Sci. Rev.*, 2020, **7**, 629–643.
- 131 K. Uto, T. Aoyagi, C. A. DeForest, A. S. Hoffman and M. Ebara, *Adv. Healthcare Mater.*, 2017, **6**, 1601439.
- 132 D. You, G. Chen, C. Liu, X. Ye, S. Wang, M. Dong, M. Sun, J. He, X. Yu, G. Ye, Q. Li, J. Wu, J. Wu, Q. Zhao, T. Xie, M. Yu and H. Wang, *Adv. Funct. Mater.*, 2021, **31**, 2103920.
- 133 M. Hofer and M. P. Lutolf, *Nat. Rev. Mater.*, 2021, **6**, 402–420.
- 134 A. Chrisnandy, D. Blondel, S. Rezakhani, N. Broguiere and M. P. Lutolf, *Nat. Mater.*, 2022, **21**, 479–487.
- 135 E. Karzbrun, A. H. Khankhel, H. C. Megale, S. M. K. Glasauer, Y. Wyle, G. Britton, A. Warmflash, K. S. Kosik, E. D. Siggia, B. I. Shraiman and S. J. Streichan, *Nature*, 2021, **599**, 268–272.
- 136 S. H. D. Wong, B. Yin, B. Yang, S. Lin, R. Li, Q. Feng, H. Yang, L. Zhang, Z. Yang, G. Li, C. H. J. Choi and L. Bian, *Adv. Funct. Mater.*, 2019, **29**, 1806822.



- 137 F. Wang, M. Liu, C. Liu, C. Huang, L. Zhang, A. Cui, Z. Hu and X. Du, *Natl. Sci. Rev.*, 2023, **10**, nwac164.
- 138 F. Wang, M. Liu, C. Liu, Q. Zhao, T. Wang, Z. Wang and X. Du, *Sci. Adv.*, 2022, **8**, eabp9369.
- 139 S. Z. Sharabani, N. Edelstein-Pardo, M. Molco, N. B. Schwartz, M. Morami, A. Sivan, Y. G. Rom, R. Evental, E. Flaxer and A. Sitt, *Adv. Funct. Mater.*, 2022, **32**, 2111471.
- 140 L. R. Zhang, B. R. Liu, C. W. Wang, C. Xin, R. Li, D. W. Wang, L. Q. Xu, S. Y. Fan, J. Zhang, C. C. Zhang, Y. L. Hu, J. W. Li, D. Wu, L. Zhang and J. R. Chu, *Nano Lett.*, 2022, **22**, 5277–5286.
- 141 Y. Wang, H. Cui, Q. Zhao and X. Du, *Matter*, 2019, **1**, 626–638.
- 142 X. Du, H. Cui, T. Xu, C. Huang, Y. Wang, Q. Zhao, Y. Xu and X. Wu, *Adv. Funct. Mater.*, 2020, **30**, 1909202.
- 143 H. Cui, Q. Zhao, L. Zhang and X. Du, *Adv. Intell. Syst.*, 2020, **2**, 2000138.
- 144 H. Chen, L. Wang, Y. Lu and X. Du, *Microsyst. Nanoeng.*, 2020, **6**, 58.

