



Cite this: *Soft Matter*, 2025, 21, 5296

Equilibrium phases and phase transitions in multicritical magnetic polymers

Alberto Raiola,^{ab} Emanuele Locatelli,^{ab} Davide Marenduzzo^{ab,c*} and Enzo Orlandini^{ab}

Magnetic polymers are examples of composite soft materials in which the competition between the large configurational entropy of the soft substrate (polymer) and the magnetic interaction may give rise to rich equilibrium phase diagrams as well as non-standard critical phenomena. Here, we study a self-avoiding walk model decorated by Ising spins of value 0 and ± 1 that interact according to a Blume–Emery–Griffith-like Hamiltonian. By using mean-field approximations and Monte Carlo simulations, we report the existence of three distinct equilibrium phases: swollen disordered, compact ordered, and compact disordered. Notably, these phases are separated by phase boundaries that meet at multicritical points, whose nature and location are tunable and depend on the strength of the interactions. In our conclusion, we discuss the relevance of the phase diagrams we have obtained to the physics of magnetic polymers and their application to chromatin biophysics.

Received 28th February 2025,
Accepted 12th May 2025

DOI: 10.1039/d5sm00212e

rsc.li/soft-matter-journal

1. Introduction

Models of magnetic polymers, where each monomer carries a magnetic moment or spin, are an interesting class of interacting systems that have recently received much attention in polymer physics, biophysics, and statistical mechanics. There are multiple reasons for this. First, the flexibility of the polymeric substrate and its relatively low density are important features to exploit in organic magnetic materials with technological applications in, for instance, communication and information.^{1–3} Second, from the statistical mechanics perspective, they are examples of interacting systems where the spatial organisation (entropy) of the polymer chain and the magnetic interactions between spins may give rise to several conformational phases and phase transitions.^{4–8} Finally, in the last few years, models of magnetic polymers have been successfully exploited to understand how the interplay between the chromatin folding in 3D and the epigenetic landscape in 1D, regulated by histone marks, can contribute to shaping the genome organization in the nucleus.^{9,10}

A precursor of these models, introduced in ref. 4, described the polymer as a self-avoiding walk (SAW) on a hypercubic lattice whose monomers are decorated by Ising spin variables $\sigma_i = \pm 1$; the monomers interact *via* the standard ferromagnetic Ising Hamiltonian among themselves, when they are nearest

neighbours in 3D space, and with an external magnetic field h . By performing both a mean-field analysis and Monte Carlo simulations of the 3D system (the SAW on the cubic lattice) it was shown that, by increasing the ferromagnetic coupling, this model displays, at $h = 0$, a first-order phase transition between a swollen and paramagnetic (disordered) phase (SD) and a compact ferromagnetic (ordered) phase (CO). The first-order character is a notable feature of this magnetic model, since in a standard (*i.e.*, non-magnetic) polymer collapse the (θ) phase transition is known to be second order.¹¹ Later studies have either focused on better determining the location and nature of the transition in two and three dimensions by numerical simulations and finite-size scaling,^{5,7} or studied the emergence of a ferromagnetic phase transition as a function of the fractal dimension of the polymer substrate.⁶

Recently, a model of magnetic polymers with 3-state variables ($q_i = 1, -1, 0$) each representing an epigenetic mark, has been introduced to describe the interplay between the 3D organisation of the eukaryotic genome and the 1D epigenetic profile of biochemical marks on chromatin (the DNA-histone composite polymer which provides the building block of chromosomes in eukaryotes).⁹ Analytical calculations based on mean-field approximation and molecular dynamics simulations have shown that a first-order phase transition rules both the spreading of a single epigenetic mark and the folding of the chromosome into a compact structure. The first-order nature of the transition is important, as it endows the system with memory, which allows a cell to “remember” its state following cell division.¹⁰

Note that, similarly to the works cited above, this biophysical model can display only two equilibrium phases: a swollen

^a Dipartimento di Fisica e Astronomia, Università di Padova, Via Marzolo 8, I-35131 Padova, Italy

^b INFN, Sezione di Padova, Via Marzolo 8, I-35131 Padova, Italy

^c SUPA, School of Physics and Astronomy, University of Edinburgh, Peter Guthrie Tait Road, Edinburgh EH9 3FD, UK. E-mail: davide.marenduzzo@ed.ac.uk



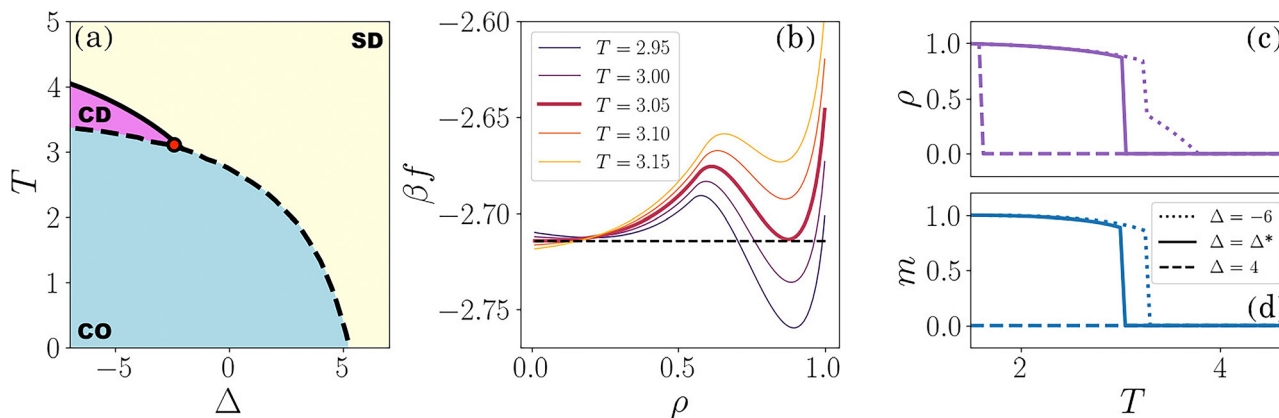


Fig. 2 Mean-field results at $K/J = 0.8$. (a) Equilibrium phase diagram in the (Δ, T) plane: note the emergence of three phases – SD, CO and CD – for $\Delta < \Delta^* \simeq -2.04$. Dashed (first order) and solid (continuous) lines show the corresponding phase boundaries. The location of the multicritical point (here coinciding with the triple point) $(\Delta^*, T^*) \simeq (-2.04, 3.05)$ is highlighted with a red circle. (b) ρ dependence of the free energy density at $\Delta = \Delta^*$. The thickest red curve marks the case $T = T^*$. (c) and (d) Temperature dependence of the polymer density ρ (c) and the average magnetization per spin m (d) at three different values of Δ .

gives as a result

$$f(\beta, \phi, \alpha, \rho) = -\frac{1}{\beta N} \log(\mathcal{Z}) = -\frac{1}{\beta} \log \frac{z}{e} + \frac{1-\rho}{\beta \rho} \log(1-\rho) + \frac{1}{2\beta^2 z \rho} \left(\frac{\phi^2}{J} + \frac{\alpha^2}{K} \right) - \frac{1}{\beta} \log(1 + 2e^{-\beta\Delta+\alpha} \cosh(\phi)) - \Delta, \quad (3)$$

where \log denotes the natural logarithm. The free energy density eqn (3) allows to obtain the magnetization per spin $m = \langle S_i \rangle$ and the average concentration of neutral spins x as:

$$m = \langle S_i \rangle = \frac{2e^{-\beta\Delta+\alpha} \sinh \phi}{1 + 2e^{-\beta\Delta+\alpha} \cosh \phi}, \quad (4)$$

$$x = 1 - \langle S_i^2 \rangle = \frac{1}{1 + 2e^{-\beta\Delta+\alpha} \cosh \phi}, \quad (5)$$

respectively. Minimizing eqn (3) with respect to ϕ , α , and ρ we obtain

$$\frac{\phi}{\beta J z \rho} - \frac{\sinh(\phi)}{\frac{e^{\beta\Delta-\alpha}}{2} + \cosh(\phi)} = 0 \quad (6)$$

$$\frac{\alpha}{\beta K z \rho} - \frac{\cosh(\phi)}{\frac{e^{\beta\Delta-\alpha}}{2} + \cosh(\phi)} = 0 \quad (7)$$

$$\rho + \log(1-\rho) + \frac{1}{2\beta z} \left(\frac{\phi^2}{J} + \frac{\alpha^2}{K} \right) = 0. \quad (8)$$

Comparing eqn (4) and (6) we obtain the self-consistent condition $\phi = \beta J z \rho m$. Similarly, matching eqn (5) and (7) we get $\alpha = \beta K z \rho (1-x)$.

III. Mean-field phase diagrams

To analyse the mean-field free energy eqn (3) in the (Δ, T) plane we first divided eqn (7) by eqn (6), obtaining

$$\alpha(\phi) = \frac{K}{J} \phi \coth \phi. \quad (9)$$

Following the steps reported in Section B.3 of the Appendix, we next obtain a virial expansion of eqn (3), up to order ϕ^6 . We then numerically estimate the signs of $a(\beta, \Delta)$, $b(\beta, \Delta)$, and $c(\beta, \Delta)$ as functions of $T = 1/\beta$ ($k_B = 1$) and Δ (see Fig. 11 of the Appendix). Since we are interested in the competition between the ferromagnetic strength, J , and the self-attraction strength, K , we fix $J = 1$ and consider four cases: $K = 0.8, 1.8, 2.3, 3.0$. For each case, we discuss the phase diagram and the nature of the critical points and transition lines by looking at the free energy as a function of ρ as well as m and ρ as a function of T .

A. The $K/J < 1$ case

We start from the mean-field phase diagram in the (Δ, T) plane, reported in Fig. 2a, for the case $K/J = 0.8$, which is representative of the mean-field phase behaviour when $K/J < 1$.

The first significant feature of note is the presence of three equilibrium phases: (i) a magnetically disordered phase, where the polymer chain is extended (swollen disordered or SD phase); (ii) a compact ordered or CO phase where the polymeric substrate is globular and magnetically ordered (*i.e.* with most of the spins either up or down); (iii) a magnetically disordered but compact phase (compact disordered or CD phase) where the polymer density is non-zero but the spins are in the paramagnetic phase. The CD phase is especially notable here because it is generally difficult to be observed at equilibrium in simpler models of magnetic polymers.^{13,14}

The phase diagram shows the presence of three phase boundary curves: (i) two first-order phase transition lines, one between the CO and SD phases and the other between the CO and CD phases, and (ii) a second-order (continuous) phase transition between the



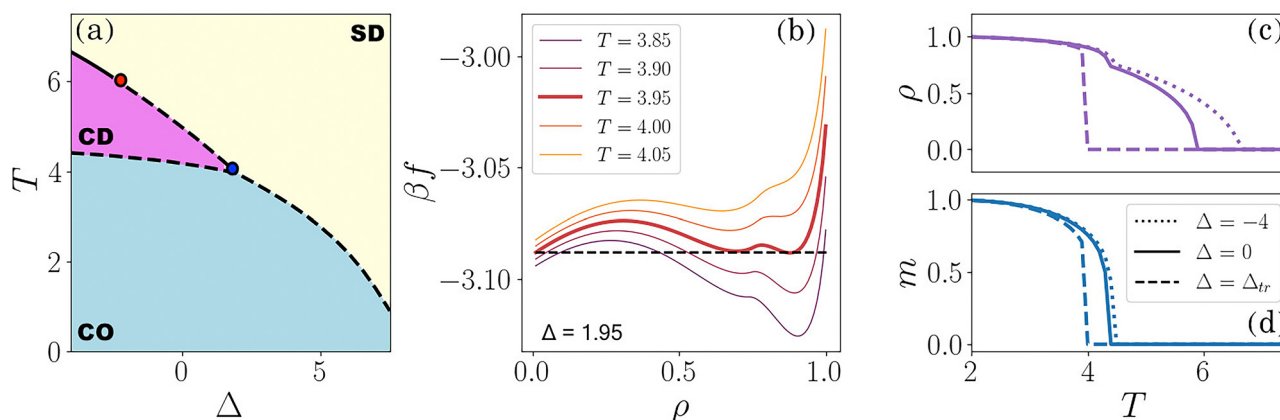


Fig. 3 Mean-field results at $K/J = 1.8$. (a) Equilibrium phase diagram in the (Δ, T) . The SD/CD phase boundary is partitioned into a continuous (solid) and a first-order transition curve (dashed curve). The corresponding tricritical point, located at $(\Delta^*, T^*) \approx (-2.46, 6.08)$ is highlighted by a red circle, while the blue circle marks the triple point $(\Delta_{tr}, T_{tr}) \approx (1.95, 3.95)$. (b) Free energy density landscapes at $\Delta = \Delta_{tr} = 1.95$ as a function of the polymer density ρ . The coexistence of the three phases at the triple point is marked by the three equal height minima at $T_{tr} = 3.95$ (thickest line). (c) and (d) Density ρ (c) and magnetization m (d) as functions of T at $\Delta = -4$ (dotted line), $\Delta = \Delta_{tr}$ (solid line) and $\Delta = 4$ (dot-dashed line).

CD and the SD phase. The three boundaries meet at a multicritical point, at $(\Delta, T) = (\Delta^*, T^*)$ (the red circle in Fig. 2a): in the present case of $K/J = 0.8$, this is also a triple point as the CO, CD and SD phases are all coexisting there.

The nature of the multicritical point is elucidated by the ρ dependence of the free energy density, estimated at $\Delta = \Delta^*$ (see Fig. 2b). For $T > T^*$ the absolute minimum of the free energy is at $\rho = 0$ (swollen phase, SD), while in the region $T < T^*$ the global minimum is located at $\rho \approx 0.9$ (corresponding to the compact ordered phase, CO); at $T = T^*$ (the thickest red curve) two equal height minima are observed, one at $\rho = 0$ and one at $\rho \approx 0.85$. Additionally, as we cross the multicritical point by varying T at fixed $\Delta = \Delta^* \approx -2.04$ (see solid lines in Fig. 2c and d), both the m vs. T and the ρ vs. T curves display a finite jump.

Examining the behavior of the curve $\rho(T)$ at different values of Δ clarifies the nature of the transition lines. At $\Delta = -6$ (see

the dotted curve in Fig. 2c), upon increasing T , we encounter a discontinuity near the CO/CD boundary; after this jump, the curve gradually decreases, approaching zero as it approaches the CD/SD phase boundary. This suggests a first-order transition at the CO/CD boundary (confirmed by the finite discontinuity in the m vs. T curve, Fig. 2d), followed by a continuous phase transition at the CD/SD boundary.

Finally, the finite discontinuities observed in the m vs. T and ρ vs. T curves at $\Delta = 4$ (see dashed curves in Fig. 2c and d) confirm the first-order nature of the CO/SD phase transition.

B. The $K/J > 1$ case

When the self-attraction strength exceeds the ferromagnetic interaction, the phenomenology becomes more complex.

We start from $K/J = 1.8$, where the analysis of the corresponding virial coefficients (as shown in Fig. 11c) reveals two key

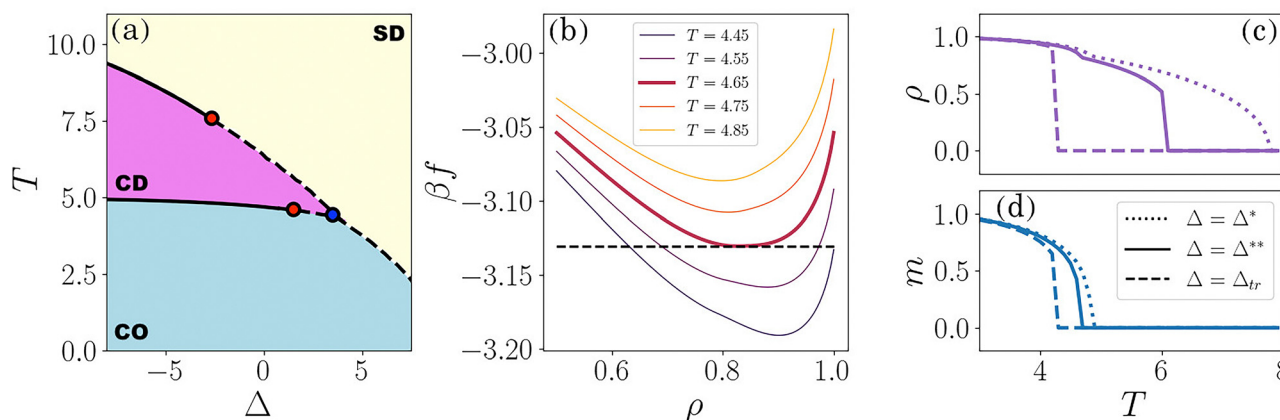


Fig. 4 Mean-field results at $K/J = 2.3$ (a) equilibrium phase diagram in the (Δ, T) plane. The two red circles highlight the two multicritical points located at $(\Delta^*, T^*) = (-3.15, 7.76)$ and $(\Delta^{**}, T^{**}) = (0.63, 4.65)$. The blue circle locates the triple point $(\Delta_{tr}, T_{tr}) = (3.98, 4.23)$ (b) free energy profiles for $\Delta = \Delta^{**} = 0.63$. The extended flatness of the thicker red line suggests the tricritical nature of the (Δ^{**}, T^{**}) point. (c) and (d) Temperature dependence of the polymer density ρ (c) and magnetization m (d) for $\Delta = \Delta^*$ (i.e. crossing the leftmost multicritical point), $\Delta = \Delta^{**}$ (crossing the second multicritical point) and $\Delta = \Delta_{tr}$ (crossing the triple point).



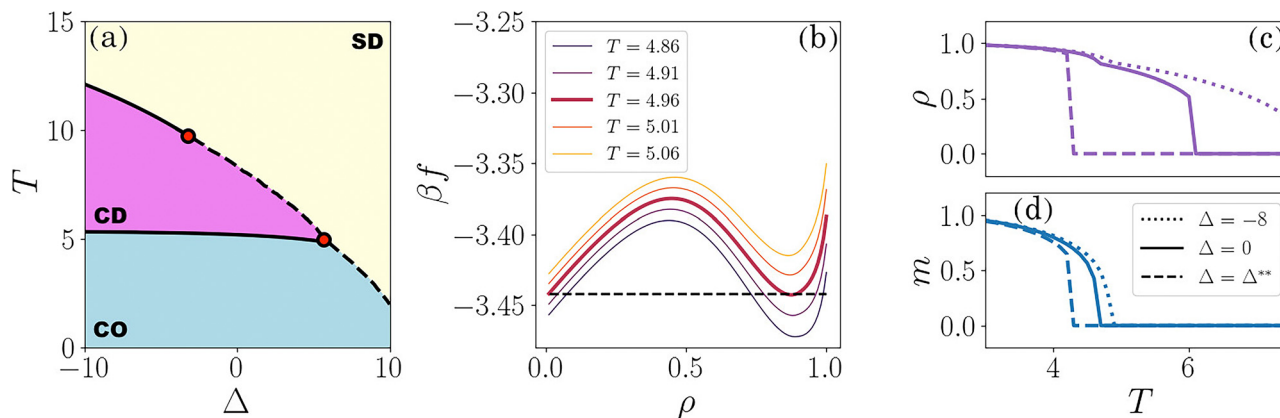


Fig. 5 Mean-field results at $K/J = 3.0$ (a) equilibrium phase diagram in the (Δ, T) plane. The two red circles highlight the location of the two multicritical points, $(\Delta^*, T^*) = (-4.10, 10.13)$ and $(\Delta^{**}, T^{**}) = (6.00, 4.83)$ (b) density dependence of the free energy at $\Delta = \Delta^*$. The two equal-height minima displayed by the red thickest curve signal the coexistence of a swollen $\rho = 0$ and a compact $\rho = 0.87$ phase. (c) and (d) Temperature dependence of the polymer's density ρ (c) and magnetization m (d) for $\Delta = -8$ (i.e. crossing the two continuous phase boundaries), $\Delta = 0$ (crossing the continuous CO/CD boundary and the first-order CD/SD boundary) and $\Delta = \Delta^*$ (crossing the multicritical point).

properties of the system: (i) the compact disordered (CD) phase region expands towards higher Δ values, indicating stability at greater dilutions; (ii) as we progress from lower dilution regimes (i.e., from negative Δ values), the nature of the CD/SD phase boundary changes from continuous to first-order. This latter switch coincides with a sign change in the third virial coefficient along this curve, revealing the presence of a tricritical point at $\Delta^* = -2.46$ and $T^* = 6.08$. Simultaneously, the triple point shifts to $\Delta_{\text{tr}} = 1.95$, $T_{\text{tr}} = 3.95$. In other words, the topology of the phase diagram has fundamentally changed, as the multicritical point at $K/J = 0.8$ has split into a tricritical and a triple point (see Fig. 3a).

The three-phase coexistence at the triple point can be understood by looking at the ρ dependence of the free energy density computed at Δ_{tr} and for some values of T above, below and at T_{tr} (see Fig. 3b). There are three key points to note. First, for $T < T_{\text{tr}}$ there is a unique absolute minimum located at $\rho \simeq 0.88$, that corresponds to the CO phase. Second, for $T > T_{\text{tr}}$ the absolute minimum is at $\rho = 0$, as expected in the swollen phase. Third, at the triple point temperature $T = T_{\text{tr}}$, the system exhibits three minima of equal depth in its free energy landscape. One of these minima occurs at $\rho = 0$, while the other two occur at $\rho = 0.71$ and $\rho = 0.88$ respectively. This free energy profile describes the coexistence of three distinct phases: two compact (ordered and disordered) and one swollen (disordered). The triple minimum was absent in the lower K/J case, as the transitions between the phases were not all first-order.

This scenario is confirmed in Fig. 3c and d where we report the temperature behavior of ρ and m for $\Delta = -4.0$ and Δ_{tr} .

For yet larger values of K/J , the CD phase expands further into the $\Delta > 0$ region and, notably, for $K/J \simeq 1.805$, the nature of the CO/CD phase boundary splits into a second-order and first-order transition curves that are governed by a novel critical point. Such a phenomenon is evidenced by the analysis of the virial coefficients reported in Fig. 11c and d, which also shows that this crossover is indeed a new, second, tricritical point (Δ^{**}, T^{**}) . For $K/J \simeq 1.805$, such a point is located at $\Delta^{**} = -\infty$

and moves to larger values of Δ with increasing K/J . As showcased in the phase diagram of Fig. 4a, for $K/J = 2.3$ the point is located at $\Delta^{**} = 0.63$, $T^{**} = 4.65$. The corresponding free energy profile is illustrated by the thickest curve of Fig. 4b and also by the m vs. T and ρ vs. T curves in Fig. 4c and d.

A consequence of the phenomenology discussed above is that, when $K/J \gg 1$, the entire CO/CD phase boundary becomes continuous. Consequently, the original triple point (indicated by a blue circle in Fig. 4a) is superseded by the multicritical point at (Δ^{**}, T^{**}) as in the phase diagram of Fig. 5a, obtained for $K/J = 3$. At this point, two first-order phase boundaries converge with a continuous one. The corresponding free energy profile is reported as the thicker line in Fig. 5b: one can notice the concomitant presence of one minimum at $\rho = 0$ (swollen) and one higher-order minimum located at $\rho = 0.86$. The T dependence of m and ρ are reported in Fig. 5c and d for three special cases, as we cross (i) the two continuous phase boundaries ($\Delta = -6$), (ii) the continuous and first-order phase boundaries ($\Delta = 0$) and (iii) the multicritical point.

This concludes our mean-field analysis. In the next section, we ask whether the rich scenario obtained within the mean-field theory is confirmed by the numerical results of a 3D lattice model magnetic polymer simulated using Monte Carlo methods.

IV. Numerical results

To simulate the model defined by eqn (2) in 3D space, we consider the set of self-avoiding walks on a cubic lattice where each node is decorated by a spin variable S_b , which can take on the values $0, \pm 1$. The set of configurations $\{\gamma, \{S\}\}$ is sampled by a Monte Carlo (MC) algorithm based on a collection of elementary moves. These are: (i) pivot moves, essential for the ergodicity of the algorithm;¹⁶ (ii) a set of local Verdier-Stockmayer-style moves¹⁷ that are known to increase the mobility of the Markov chain in proximity of compact phase;¹⁸ (iii) a spin flip or Glauber dynamics to update the spin configurations along



the walk. For an N -steps walk, an MC step (sometimes called sweep) consists of attempting 1 pivot moves intercalated by $N/4$ local moves and N spin updates. By using a Metropolis heat bath sampling with $\beta \equiv k_B T$, the resulting Markov chain at temperature T is expected to converge to the equilibrium distribution

$$\pi(\beta) = \frac{1}{Z(\beta)} \exp(-\beta \mathcal{H}(\gamma, \{S\})), \quad (10)$$

where $Z(\beta)$ and $\mathcal{H}(\gamma, \{S\})$ are given by eqn (1) and (2) respectively.

To enhance the sampling efficiency, we implement a multiple Markov chain algorithm. This approach, also known as replica exchange or parallel tempering algorithm, involves running N_p parallel Markov chains, each at a distinct, fixed temperature T . A coupling between the Markov chains is established by trying to swap the configurations between chains that are contiguous in temperature space. By using a suitable swap protocol (here we have attempted a swap each 5×10^3 MC steps, a number sufficiently high to avoid significant correlations between pairs of replicas) one can show that the collection of parallel Markov chains is itself a Markov chain whose stationary distribution is the product of the Boltzmann distribution along each chain (see ref. 18–21).

For each value of the parameter K considered (at fixed $J = 1$), we sample every $M = 50$ MC steps and along $N_p \approx 30$ parallel chains for systems of size $N \in \{50, 100, 200, 300, 400\}$. This amounts to a total of at least 2×10^7 sampled configurations for each value of the set of parameters (N, K, J) .

For each multiple Markov chain run we measure observables describing the state of the system. To characterise the polymer conformation, we compute the average number of contacts $\langle c \rangle$ – *i.e.*, the number of pairs of nearest-neighbor lattice nodes occupied by the polymer that are not contiguous along the polymer backbone –, its variance per monomer $\text{Var}(c) \equiv (\langle n_c^2 \rangle - \langle n_c \rangle^2)/N$, and the mean squared radius of gyration

$$R_G^2 = \frac{1}{N} \sum_{i=1}^N \|\mathbf{R}_i - \mathbf{R}_{\text{CM}}\|^2, \quad (11)$$

where $\mathbf{R}_{\text{CM}} = \frac{1}{N} \sum_{i=1}^N \mathbf{R}_i$ is the position of the centre of mass and \mathbf{R}_i is the position of the i -th monomer. To monitor the magnetic properties of the system, we estimate the degree of dilution, *i.e.*, the concentration of neutral spins $x = 1 - \langle S^2 \rangle$, the magnetization per spin $\langle m \rangle = \frac{1}{N} \sum_i \langle S_i \rangle$, and the magnetic susceptibility per spin $\chi_M = \frac{\langle m^2 \rangle - \langle m \rangle^2}{k_B T}$. Finally, we also computed the average total energy $\langle E \rangle$ and the specific heat $C = \frac{\langle E^2 \rangle - \langle E \rangle^2}{k_B T^2}$.

To locate the phase boundaries, we look at the T dependence of the specific heat, the magnetic susceptibility, and the variance of the number of contacts. We further perform a finite-size scaling (FSS) analysis on the specific heat, the magnetic susceptibility, the variance of the contacts, and the radius of

gyration. FSS theory predicts, for instance, that the location of the peaks of the specific heat, $T^*(N)$, shifts towards the critical temperature T_c as $N \rightarrow \infty$, as

$$T^*(N) \sim T_c + AN^{-\frac{1}{2-\alpha}}. \quad (12)$$

For a continuous phase transition, such as, for instance, the polymer Θ -point transition,²² we know that $\alpha = 0$. Hence, by plotting $T^*(N)$ vs. $1/\sqrt{N}$, a linear convergence toward the critical temperature is expected. On the contrary, a first-order transition corresponds to the value $\alpha = 1$, which implies that $T^*(N)$ vs. $1/N$ should display a linear behaviour.

Similarly, we plot the value of the peaks of C , χ_M , and $\text{Var}(c)/N$. FSS predicts that these peaks behave in the proximity of the critical region (*i.e.*, for N large enough) as

$$H_{\text{max}} \sim N^{\frac{\alpha}{2-\alpha}}, \quad (13)$$

where again $\alpha = 1$ for a discontinuous phase transition and $\alpha = 0$ for a continuous one. In the latter case, a logarithmic term should dominate, and thus, by plotting the values of these peaks as a function of $\log N$, a linear growth is expected.

In addition, we estimate the order of the transitions by computing the fourth-order Binder cumulant of the distribution function of a given observable O : $B_n(O) = 1 - \langle O^4 \rangle / 3 \langle O^2 \rangle^2$. According to FSS theory, the location of the minimum of $B_n(O)$ may be extrapolated to estimate the transition point. Importantly, if the phase transition is continuous, the values of $B_n(O)$ at the minimum should asymptotically approach $2/3$ with increasing N . In contrast, it should go to another limit if the transition is first-order.²³

We estimate the errors associated with each observable O by using the corresponding integrated autocorrelation times τ_O . Some estimates of τ_O (given in units of the sampling, *i.e.*, each $M = 50$ attempted pivot moves for $O = E, m, R_G$) are reported in Appendix B for $\Delta = -5, 0$ and 6 , respectively (see Tables 1–3): as expected, sampled configurations are increasingly more correlated as T is decreased. At the lowest values of T , the simulations performed yield only a few hundred fully uncorrelated configurations. This impacts on the size of the error bars that increase rapidly as T decreases, as exemplified in Fig. 13 of the Appendix. To show the trends of the various observables more clearly, the error bars have been omitted from the other figures.

Although simulating polymers on the lattice is more efficient computationally compared to off-lattice models, a full numerical exploration of the (Δ, T) plane, even for a single specific K/J value, is still virtually impossible. We therefore restrict ourselves to the case $K/J = 3$, where the mean-field approximation suggests the emergence of a rich phase diagram with multiple phase transitions and critical points.

In particular, we focus on the CO/CD and CD/SD phase transitions at different values of Δ ($\Delta = -5, 0, 6$).

A. Simulations for $K/J = 3$, $\Delta = -5$

For negative values of Δ , neutral spins are not favourable and the dilution is weak; here, mean-field theory predicts the presence of two continuous phase transitions (see Fig. 5a). In Fig. 6 we report snapshots of typical configurations at $T = 2.2$, $T = 4.5$, and $T = 10$,



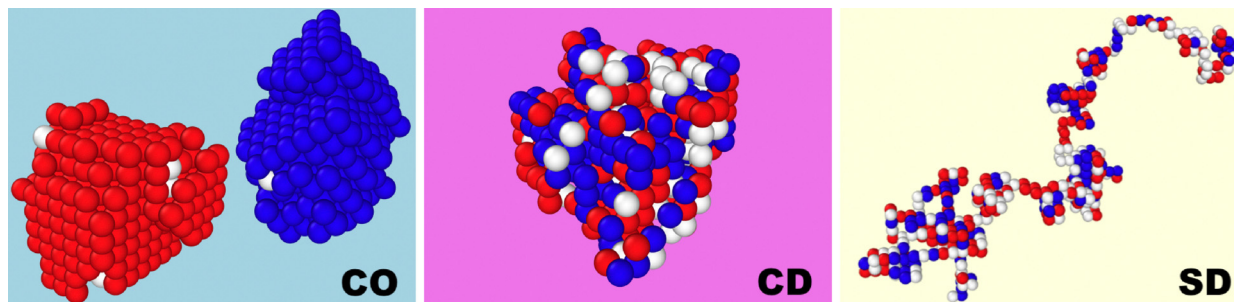


Fig. 6 Snapshots of typical MC configurations of a magnetic self-avoiding walk with $N = 400$, $K/J = 3$ and $\Delta = -5$. The three panels were sampled respectively in the CO (left, $T = 2.2$), CD (middle, $T = 4.5$), and SD (right, $T = 10$) equilibrium phases. Red, white, and blue monomers correspond to spin values $S = -1, 0$ and 1 , respectively. Note that in the CO phase, the polymer is greatly packed and almost all the monomers carry the same spin value; because of the Z_2 symmetry, the two values of the magnetization $m = \pm 1$ can occur with equal probability.

where we expect the system to be, at equilibrium, in the CO, CD, and SD phases, respectively. The snapshots confirm the presence of all three phases, and importantly of the CD phase for the intermediate $T = 4.5$ temperature. More quantitatively, we looked at the T dependence of the specific heat (see Fig. 7a): the presence of two consecutive phase transitions is suggested by two sets of peaks whose heights increase with N . The fact that the set of peaks at low values of T refers to the CO/CD transition is confirmed by the concomitant formation of peaks in the magnetic susceptibility (see

Fig. 12a in the Appendix). Instead, the set of peaks at high values of T corresponds to the CD/SD phase transition, since the variance of the number of contacts shows similar behavior in the same range of temperatures (see Fig. 12b in the Appendix).

An observable that better describes the conformational properties of the polymer, but is not easily accessible through the mean-field calculations, is the statistical size of the chain, which we measured in terms of its mean-squared radius of gyration $\langle R_G^2 \rangle$. Since in the two compact phases $\langle R_G^2 \rangle \sim N^{2/d}$, in

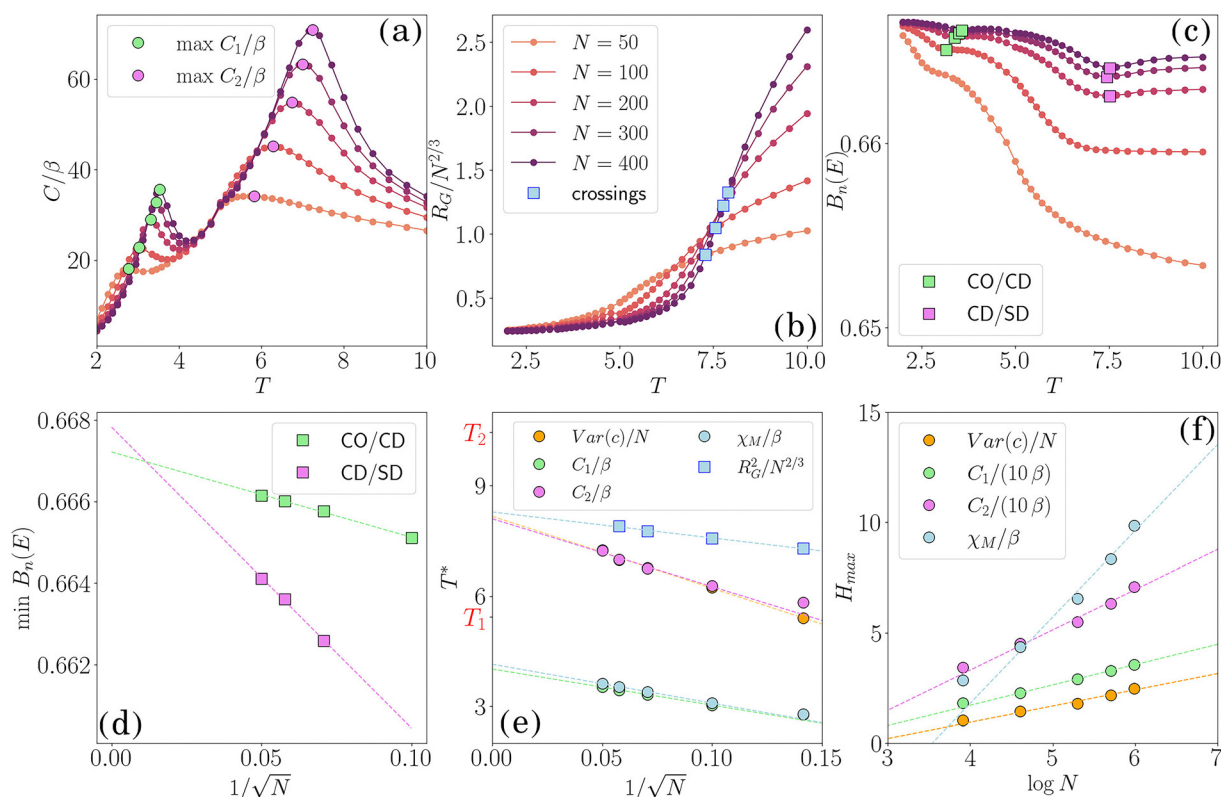


Fig. 7 Monte Carlo results for $K/J = 3$, $\Delta = -5$. In panels (a)–(c), different curves refer to different values of N (see legend in (b)). (a) Variance of the total energy C/β as a function of T . The estimated locations of the maxima are highlighted by larger coloured circles. (b) $R_G^2/N^{2/3}$ as a function of T . Crossings with the $N = 400$ curve are highlighted by blue squares. (c) Binder cumulant of the energy $B_n(E)$ as a function of T . Minima are marked with green (CO/CD transition) and violet (CD/SD transition) squares. (d) Values of T at which $B_n(E)$ has a minimum as a function of $N^{-1/2}$. (e) Values of T at which different quantities (reported in the legend) display a maximum as a function of $1/\sqrt{N}$; they converge linearly to an asymptotic ($N \rightarrow \infty$) value. We extrapolate estimates for the transition temperatures and highlight the mean-field predictions T_1 and T_2 on the y -axis. (f) Height of the maxima of different quantities (reported in the legend; note that, for C/β , we plot $H'_{\max} = H_{\max}/10$) as a function of $\log N$.



Fig. 7b we report $\langle R_G^2 \rangle / N^{2/3}$ as a function of T . It can be seen that, at large values of T , the scaled curves increase with N . This is expected since $\langle R_G^2 \rangle \sim N^{2\nu_{\text{SAW}}}$ for polymers in the swollen phase, with $\nu_{\text{SAW}} \approx 0.5889 > 1/2$.²⁴ On the other hand, at low values of T , where the polymer is in a compact (either disordered or ordered) phase, data for large polymers collapse onto a master curve. The finite N crossover between the SD and the CD phase is revealed by the crossings of these curves, whose location can be used as a further estimate of the location of the SD/CD phase transition.

In addition, we determine the nature of the transitions by looking at the Binder cumulant of the energy $B_n(E)$ as a function of T (see Fig. 7c).²³ The onset of two sets of minima further confirms the presence of two phase transitions. Moreover, as N increases, both sets seem to converge to the limiting value $2/3$, a clear indication that both transitions are continuous (see Fig. 7d).

Finally, we provide estimates for the location of the phase boundaries *via* finite-size scaling (FSS). The plots reported in Fig. 7e and f corroborate the continuous nature of the transition, not only for the location of the maxima of C , χ_M and $\text{Var}(c)$, but also for the value of the peaks for the same quantities, as well as the crossings of the R_G curves. By averaging the set of extrapolated values over the different observables, we obtained $T_c(\text{SD/CD}) = 8.2 \pm 0.1$ and $T_c(\text{CD/CO}) = 4.08 \pm 0.08$. Note that both estimates are significantly smaller than the mean-field ones.

In summary, the MC findings for $K/J = 3$ and $\Delta = -5$ corroborate the mean-field picture, namely the presence of three equilibrium phases with the SD/CD and CD/CO phase boundaries, both of which are continuous. Note that the presence of the CD phase in the 3D system occurs at values of K/J that are larger than those for which this phase is expected in MF (see Appendix C).

B. Simulations for $K/J = 3$, $\Delta = 0$

Increasing Δ favors neutral spins, or in other words, dilution increases. At $\Delta = 0$ the mean field theory predicts that there should once again be two phase transitions, an SD/CD and a CD/CO transition. Whilst the CD/CO transition remains continuous, the SD/CD transition is predicted to be discontinuous in this case (see Fig. 5).

The corresponding MC results indeed show two sets of peaks in the specific heat, corresponding to two transitions. The height of both sets of peaks increases with N (see Fig. 8a). As for $\Delta = -5$, the set of peaks at low values of T localises with the one observed in χ_M (see Fig. 12c) and hence refers to the CO/CD phase transition. The second set, occurring at higher values of T , originates from the corresponding non-monotonic behaviour of $\text{Var}(c)$ (see Fig. 12d) and signals the SD/CD phase transition. This is confirmed by the crossings of the $R_G^2/N^{2/3}$ curves (see Fig. 8b). Notably, both sets of minima observed in the Binder parameter of

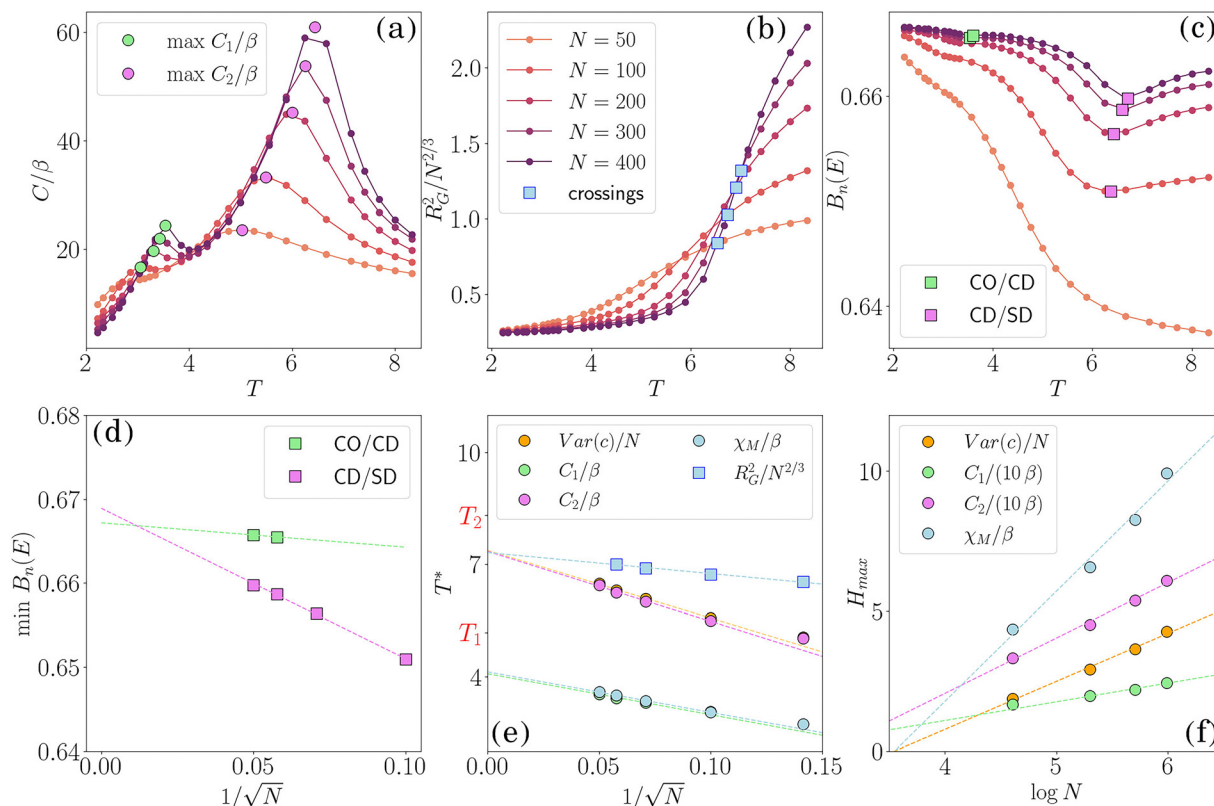


Fig. 8 Monte Carlo results for $K/J = 3$, $\Delta = 0$. In panels (a)–(c), different curves and points are as in Fig. 7. (a) Variance of the total energy C/β as a function of T . (b) $R_G^2/N^{2/3}$ as a function of T . (c) Binder cumulant of the energy $B_n(E)$ as a function of T . (d) Values of T at which $B_n(E)$ has a minimum as a function of $1/\sqrt{N}$. (e) Values of T at which different quantities (reported in the legend) display a maximum as a function of $1/\sqrt{N}$. We extrapolate estimates for the transition temperatures and highlight the mean-field estimates T_1 and T_2 on the y -axis. (f) Height of the maxima of different quantities (reported in the legend; for C/β , we plot $H'_{\text{max}} = H_{\text{max}}/10$) as a function of $\log N$.



the energy (see Fig. 8c) converge (as $N \rightarrow \infty$) to $2/3$, as expected for a continuous phase transition (see Fig. 8d).

Finally, the linear trends of the location of the peaks of C , χ_M , $\text{Var}(c)$, and the crossings of the scaled R_g curves, once plotted as a function of $1/\sqrt{N}$ as well as the \sqrt{N} growth of the peaks' heights (see Fig. 8e and f) corroborates this finding.

By averaging the extrapolated values of $T^*(N)$ on the different observables (see Fig. 8), we estimate $T_c(\text{SD/CD}) = 7.3 \pm 0.1$ and $T_c(\text{CD/CO}) = 4.106 \pm 0.006$. Note that, again, the estimated values are lower than the mean-field ones.

Therefore, the Monte Carlo results at $\Delta = 0$ confirm the mean-field prediction for the CO/CD phase boundary. However, there is a discrepancy regarding the nature of the SD/CD phase transition: while the mean field theory predicts a first-order transition, the magnetic polymer model in 3D is suggestive of a second-order transition.

To understand more in-depth the relation between the mean field prediction and the behaviour of the system in 3D, we extended the MC investigation to $\Delta = 6$.

C. Simulations for $K/J = 3$, $\Delta = 6$

The mean-field theory predicts that, at $\Delta \approx 6.00$ and $T \approx 4.83$, the system is at the multicritical point where the two first-order

phase boundaries SD/CD and SD/CO meet the continuous phase transition line between CD and CO. According to what was observed at $\Delta = 0$, we expect the 3D system to be in the region where the SD/CD and CD/CO boundaries are still well separated. We aim to verify whether the SD/CD boundary has become first-order as predicted by MF (see Fig. 5a).

The onset of two distinct, although close, sets of peaks in the variance of the energy (see Fig. 9a) confirms the presence of two phase boundaries that, according to the concomitant developments of the peaks in χ_M/β and $\text{Var}(c)/N$, we can identify as the SD/CD and the CD/CO phase transitions, respectively (see Fig. 12e and f). The presence of the SD/CD transition at large values of T is corroborated by the crossings of the radius of gyration curves when scaled by $N^{2/3}$, and by the minima of $B_n(E)$ (see Fig. 9b and c).

We highlight that the set of minima of $B_n(E)$ at high values of T , which were already rather shallow at $\Delta = 0$, are not observed in this case since all curves rapidly approach the value $2/3$ in that range of T . This suggests that the CD/CO phase boundary remains continuous.

Instead, at low values of T , the set of minima converges as N increases to a value that is far from $2/3$ (see Fig. 9c and d): this is a clear signal that the CO/CD phase transition has now become first order. We remark that the mean-field calculations

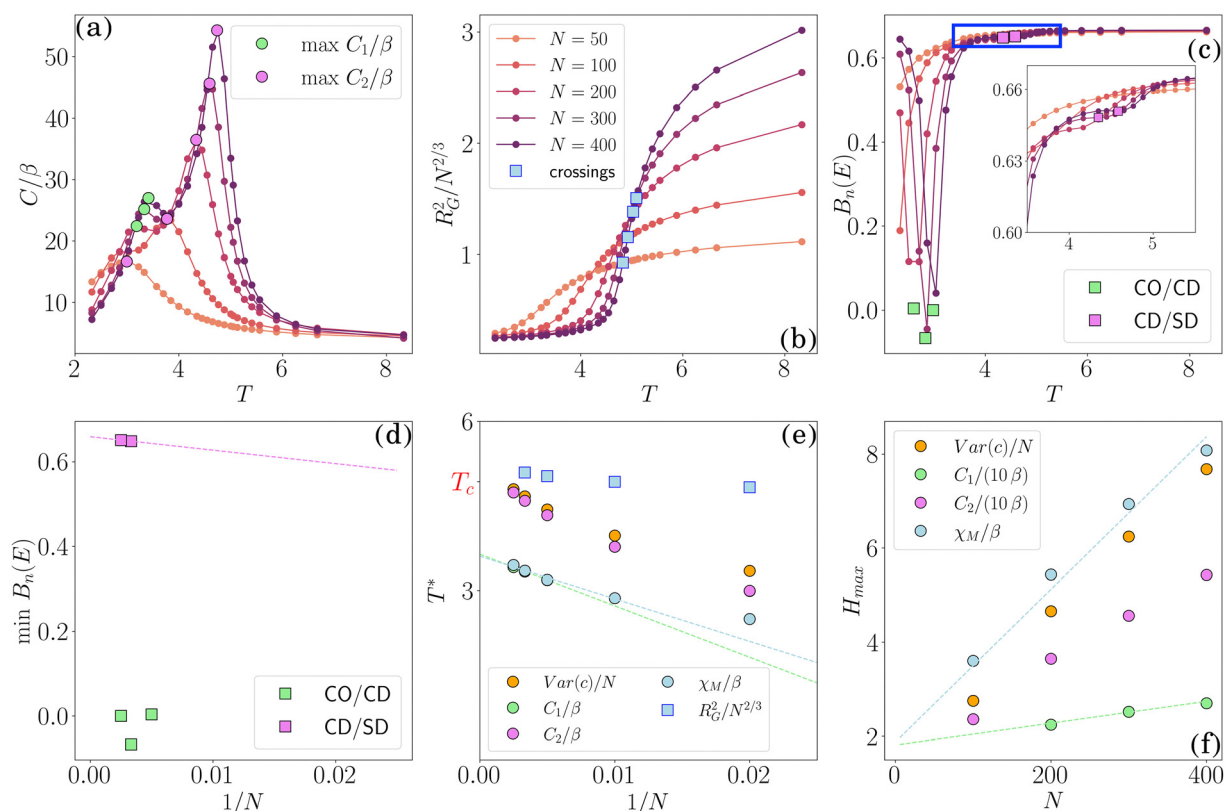


Fig. 9 Monte Carlo results for $K/J = 3$, $\Delta = 6$. In panels (a)–(c), different curves and points are as in Fig. 7. (a) Variance of the total energy as a function of T . (b) $R_g^2/N^{2/3}$ as a function of T . (c) Binder cumulant of the energy $B_n(E)$ as a function of T . (d) Values of T at which $B_n(E)$ has a minimum as a function of $1/N$. (e) Values of T at which different quantities (reported in the legend) display a maximum as a function of $1/N$. We extrapolate an estimate for the temperature corresponding to the CD/CO transition, highlighting the mean-field prediction T_c on the y-axis. (f) Height of the maxima of different quantities (reported in the legend; for C/β , we plot $H_{\max} = H_{\max}/10$) as a function of N .



predicted a qualitatively different scenario, with a continuous CO/CD transition and a first-order CD/SD transition. The discontinuous nature of the CO/CD transition is confirmed by the trends of the location of the peaks of C/β , and χ_M , once plotted as a function of $1/N$, as well as the linear dependence in N of the height of the peaks (see Fig. 9e and f). Thus, at $\Delta = 6$ the 3D system shows a change of the nature of a phase boundary from continuous to first-order; however, we observe it for the CO/CD boundary, rather than for the CD/SD one. This suggests that thermal fluctuations have a strong effect on the phase behaviour of the system and qualitatively modify the mean-field picture at high values of the dilution parameter Δ , altering not only the location of the phase boundaries in the (Δ, T) plane but also their nature.

V. Conclusions

In this work, we have studied the equilibrium properties of a magnetic polymer endowed with a spin model (the Blume–Emery–Griffiths). There are three terms in the Hamiltonian, which respectively describe: (i) exchange interactions between ± 1 spins, favouring alignment (*i.e.*, ferromagnetic interactions), (ii) self-attraction between monomers and (iii) relative balance between neutral and ± 1 spins, which we refer to as dilution (as increasing dilution increases the average portion of neutral spins on the chain).

We first studied this problem using a mean-field (MF) approximation. The resulting MF phase diagram is very rich, and features phase boundaries whose nature and location depend on the

degree of dilution Δ and the relative strength of the self-attraction parameter over the ferromagnetic one K/J . In addition to the previously reported swollen-disordered (SD) and compact-ordered (CO) phases,^{4,6,7} the MF results reveal the presence of an equilibrium phase characterized by a globular polymer conformation with zero magnetization. This compact-disordered (CD) phase was not observed at equilibrium in previously studied models of magnetic polymers where the conformational transitions were triggered exclusively by the ferromagnetic coupling J .

To validate these findings and to test the validity of the MF phase diagram against thermal fluctuations, we performed Monte Carlo simulations of the corresponding model on the cubic lattice. We considered a fixed value of the K/J ratio ($K/J = 3$), at which the MF analysis displays a rich phase diagram as a function of the dilution parameter Δ (see Fig. 5). Our results show that upon increasing Δ , the MC picture fundamentally deviates from the mean-field one. At $\Delta = -5$, where dilution is weak, we confirm the presence and continuous nature of both phase transitions (CO/CD and CD/SD) predicted by the mean-field (MF) theory. At $\Delta = 0$, the nature of the CO/CD transition is confirmed, and the transition temperature appears to be independent of Δ (as in mean-field). However, the CD/SD transition retains its continuous nature, at variance with the mean-field prediction (see Fig. 5). Upon increasing the dilution further ($\Delta = 6$), we find that the scenario predicted by the MC simulations deviates even more from the mean-field, as the CO/CD transition becomes first-order, whereas the CD/SD remains second order – this is the opposite of what MF predicts. Results and comparison are summarized in Fig. 10.

Our results show that fluctuations are important in 3D, as they modify the nature of the transitions as predicted by the MF theory, most notably for the CO/CD transition. The traditional BEG model on the lattice (*i.e.*, not on a polymer) also yields qualitative differences between mean-field calculations and Monte Carlo simulations have also been found on the lattice: for example, it has been shown that tricritical points may disappear, upon varying K/J , when moving from the microcanonical to the canonical ensemble.²⁵ As such, the discrepancies between MC and MF reported here may align with what has been found for the traditional BEG model. An additional important element that is not present in the original BEG problem is the entropy of the polymer configurations that is encoded in the term $\sum_{i,j} A_{ij}^v$ (see Appendix A after eqn (18)). In our MF approach, this term is approximated by restricting the sum to the subset of the Hamiltonian walks (see Appendix A). The Hamiltonian walk approximation is quite appropriate in the case of polymers in compact phases, but underestimates the configurational entropy of the polymer in extended phases. We believe that a possible improvement of the MF approximation should require a more precise estimate of this entropic term.

It is also of interest to discuss the results found here in the context of biophysics, where magnetic polymer models have previously been used to study the spreading of epigenetic marks on chromatin,^{9,10,13,26,27} the DNA–protein complex which provides the building block of eukaryotic chromosomes. With respect to those models, the main additional ingredient considered here is

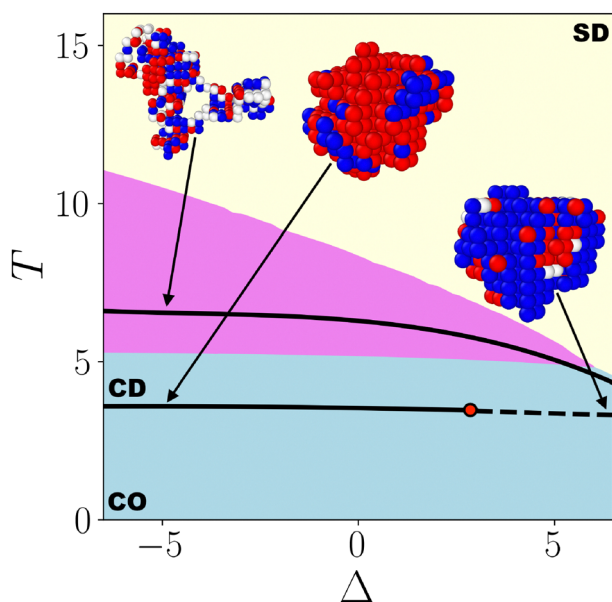


Fig. 10 Estimated phase diagram of the magnetic polymer model on the cubic lattice ($K/J = 3$) from Monte Carlo simulations. The solid and dashed lines represent, respectively, the continuous and discontinuous phase boundaries, as estimated by the Monte Carlo simulations, and the stable SD, CD, and CO phases are enclosed between these lines. These regions should be compared with the uniformly colored zones, which correspond to the values of (T, Δ) at which the same phases are predicted to be stable by the mean-field (MF) theory. The red circle is the expected location of the multicritical point (Δ^*, T^*) .



the ± 1 spin dilution, or the presence of neutral spins, corresponding to inert or unmarked chromatin beads, devoid of active and inactive epigenetic marks (which can in turn be modeled as ± 1 spins). This feature can effectively mimic the fact that marks need to be deposited by enzymes, which are limited in number in a living cell. Our results show that dilution leads to the emergence of the compact disordered phase, which was previously only found with polymer models out of thermodynamic equilibrium. The CD phase can represent chromatin regions compactified by bridging proteins which are not epigenetic readers or writers (an example of such a bridge could be cohesin or another SMC protein). Another important finding is that changing dilution can lead to a switch between a continuous and a discontinuous transition between the compact ordered and the compact disordered phase. The order of the transition is relevant to the physics of chromatin, as a first-order transition endows the system with memory,¹⁰ such that, for instance, it is now possible, within our model, for a compact and disordered state to retain its state following replication.

In the future it would be interesting to investigate numerically the 2D case, where fluctuations can further affect the mean-field predictions, to see if the phase diagram changes also qualitatively. From the biophysics viewpoint, an avenue to extend our study would also be to introduce epigenetic bookmarks as in ref. 13, and investigate whether this can lead to the formation of stable unmarked inert, alongside marked active or inactive, epigenetic domains in chromatin.

Data availability

The data supporting this article have been included as part of the Appendices.

Conflicts of interest

There are no conflicts to declare.

Appendices

A: Mean-field theory

Hubbard–Stratonovich transformation. To decouple the quadratic and bi-quadratic terms of the model eqn (2), we perform a double Hubbard–Stratonovich transformation and introduce two sets of local fields $\{\phi_i\}$ and $\{\alpha_i\}$. This gives

$$\begin{aligned} \mathcal{Z} = & \sum_{\gamma \in \text{SAW}} \sum_{\{S\}} \int D\phi D\alpha \exp \left(-\frac{1}{2\beta J} \sum_{ij} \phi_i (A_{ij}^\gamma)^{-1} \phi_j \right. \\ & \left. + \frac{1}{2\beta K} \sum_{ij} \alpha_i (A_{ij}^\gamma)^{-1} \alpha_j \right. \\ & \left. + \sum_i (\phi_i S_i + \alpha_i S_i^2 - \beta \Delta S_i^2) + \beta \Delta N \right) \end{aligned} \quad (14)$$

where $D\alpha$ and $D\phi$ are defined as:

$$D\phi \equiv (2\pi)^{-N/2} (\beta J)^{-N/2} \det(A)^{-1/2} d^N \phi \quad (15)$$

$$D\alpha \equiv (2\pi)^{-N/2} (\beta K)^{-N/2} \det(A)^{-1/2} d^N \alpha. \quad (16)$$

By summing over all possible spin configurations $\{S_i\}$ we get

$$\begin{aligned} \mathcal{Z} = & \sum_{\gamma \in \text{SAW}} \int D\phi D\alpha \exp \left(-\frac{1}{2\beta J} \sum_{ij} \phi_i (A_{ij}^\gamma)^{-1} \phi_j \right. \\ & \left. - \frac{1}{2\beta K} \sum_{ij} \alpha_i (A_{ij}^\gamma)^{-1} \alpha_j + \beta \Delta N \right. \\ & \left. + \sum_{i=1}^N \log(1 + 2e^{-\beta \Delta + \alpha_i} \cosh(\phi_i)) \right) \end{aligned} \quad (17)$$

The two integrals can be evaluated using a homogeneous saddle point approximation that replaces the integral with the maximum value of the integrand attained for $\phi_i = \phi$ and $\alpha_i = \alpha$. This gives

$$\begin{aligned} \mathcal{Z} = & A \sum_{\gamma \in \text{SAW}} \exp \left(-\frac{\phi^2}{2\beta J} \sum_{ij} (A_{ij}^\gamma)^{-1} - \frac{\alpha^2}{2\beta K} \sum_{ij} (A_{ij}^\gamma)^{-1} \right. \\ & \left. + \sum_{i=1}^N \log(1 + 2e^{-\beta \Delta + \alpha} \cosh(\phi)) + \beta \Delta N \right), \end{aligned} \quad (18)$$

where A is a normalisation constant. Since the term $\sum_{ij} A_{ij}^\gamma$ depends on a given SAW it cannot be computed exactly. We can, however, approximate it by restricting the sum to the subset of space-filling SAWs within a volume V known as Hamiltonian walks.^{4,28} For a given Hamiltonian walk, A^γ simplifies to the adjacency matrix of the underlying lattice with coordination number z . This approximation is appropriate for SAWs in the compact phase, which is space-filling. However, it is rather strong for swollen SAWs: we mitigate this issue by replacing the lattice coordination number z with ρz , thus considering SAWs that, having $\rho = N/V < 1$, display an effective lower mean number of nearest neighbors. This gives

$$\sum_{ij} A_{ij}^\gamma \approx \frac{N}{z\rho}. \quad (19)$$

Within this approximation, the number of N -steps SAWs confined in a volume V is given by²⁹

$$\mathcal{Z}_{\text{SAW}} = \left(\frac{z}{e}\right)^N \exp(-V(1-\rho) \log(1-\rho)). \quad (20)$$

By plugging eqn (19) and (20) in eqn (18) we obtain the mean-field partition function as

$$\begin{aligned} \mathcal{Z} = & A \left(\frac{z}{e}\right)^N \exp \left(-V(1-\rho) \log(1-\rho) - \frac{N\phi^2}{2\beta z J \rho} - \frac{N\alpha^2}{2\beta z K \rho} \right. \\ & \left. + N \log(1 + 2e^{-\beta \Delta + \alpha} \cosh(\phi + \beta h)) \right), \end{aligned} \quad (21)$$

By taking the $-1/\beta \log$ of eqn (21) and dividing by the system's size N we obtain the mean-field free energy density of eqn (3).

Expansion of the mean-field free energy density. Here we expand the free energy density eqn (3) and the corresponding



self-consistent equations eqn (6)–(8) in the proximity of the different phase boundaries.

CO–SD phase boundary. Since we expect a transition where ϕ and ρ change from zero (SD) to a nonzero value (CO), we can expand around $\rho = 0$ and $\phi = 0$. By substituting the $\beta z\rho$

expression obtained from eqn (7) into eqn (6), and then Taylor expanding eqn (8) around $\rho = 0$, we obtain

$$\alpha(\phi) = \frac{K}{J}\phi \coth(\phi), \quad (22)$$

that is eqn (9) of the main text, and

$$\rho^2 = \frac{\phi^2}{\beta J z} + \frac{\alpha^2}{\beta K z}. \quad (23)$$

Expanding up to second order eqn (22) around $\phi = 0$ and plugging the result in eqn (23), we find a simple expression for the local field ϕ as a function of ρ :

$$\phi(\rho) = \frac{\sqrt{\beta J^2 \rho^2 z - K}}{\sqrt{J}}. \quad (24)$$

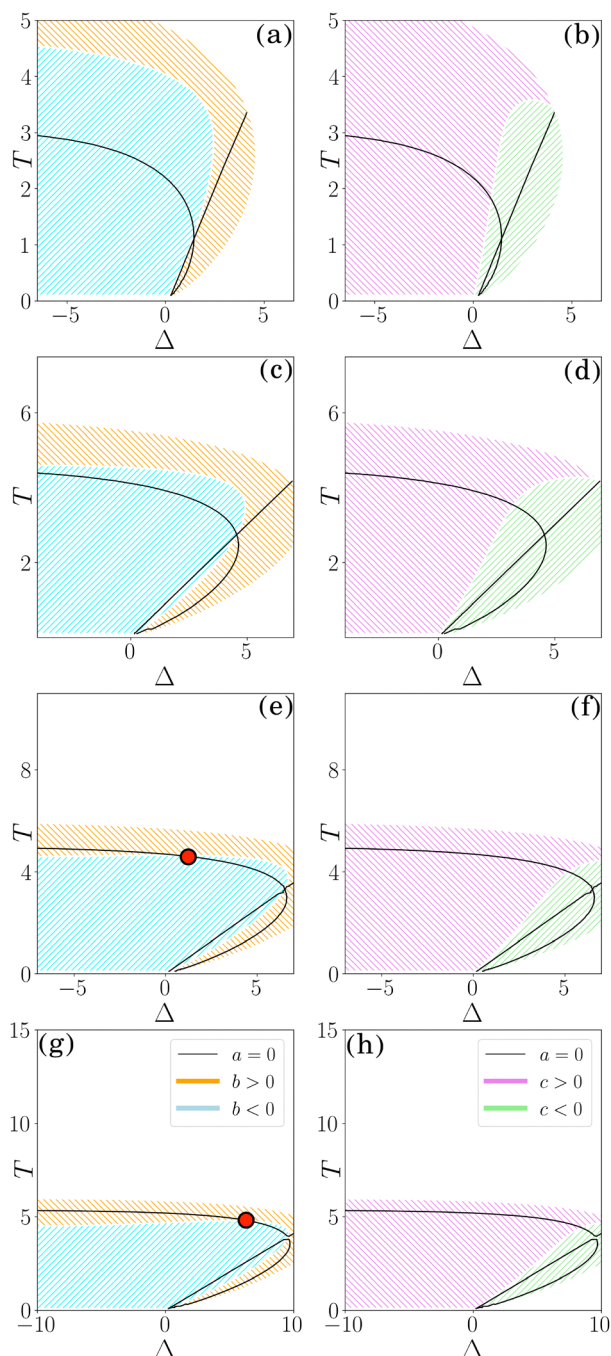


Fig. 11 Contour plots of the coefficients $b(\Delta, T)$ and $c(\Delta, T)$ for $K/J = 0.8$ (a) and (b), 1.8 (c) and (d), 2.3 (e) and (f) and 3.0 (g) and (h). In all panels, red dots mark the position of multicritical points, while black lines mark the values where $a(\Delta, T) = 0$. In the full white regions the functions $b(\Delta, T)$ and $c(\Delta, T)$ are not defined. Colored-white patterned regions (see legend in panels (g) and (h)) represent the regions where $b(\Delta, T)$ and $c(\Delta, T)$ have definite sign, separated by white lines marking either $b(\Delta, T) = 0$ (left column) or $c(\Delta, T) = 0$ (right column).

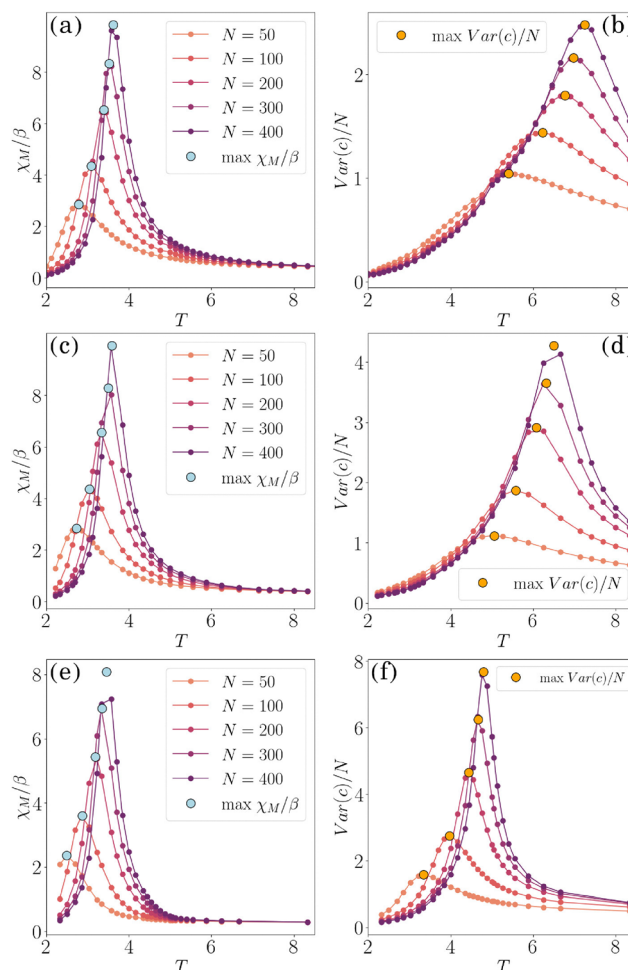


Fig. 12 (a), (c) and (e) Magnetic susceptibility per spin χ_M/β and (b), (d) and (f) variance of the number of contacts $\text{Var}(c)/N$ as a function of T for the systems studied in the main text, $K/J = 3$ and (a) and (b) $\Delta = -5$, (c) and (d) $\Delta = 0$, (e) and (f) $\Delta = 6$.



Table 1 Autocorrelation times of the energy, magnetization, and radius of gyration for $K/J = 3$, $\Delta = -5$, and $N = 400$. Data are reported using the sampling time ($M = 50$ MC steps) as the unit of time

T	τ_E	τ_M	τ_{RG}
2.00	$5.0(4) \times 10^4$	$2.0(2) \times 10^5$	$8.0(8) \times 10^4$
2.13	$2.0(2) \times 10^4$	$1.2(5) \times 10^4$	$6.0(3) \times 10^3$
2.27	$3.0(1) \times 10^3$	$5.0(2) \times 10^3$	$2.7(9) \times 10^3$
2.38	$2.0(8) \times 10^3$	$2.7(8) \times 10^3$	$2.2(7) \times 10^3$
2.50	$1.1(4) \times 10^3$	$4.5(7) \times 10^2$	$1.3(2) \times 10^3$
2.63	$4.4(10) \times 10^2$	$2.3(2) \times 10^2$	$1.1(2) \times 10^3$
2.78	$2.3(4) \times 10^2$	$2.3(2) \times 10^2$	$9.0(2) \times 10^2$
2.94	$1.0(1) \times 10^2$	$1.0(8) \times 10^2$	$7.0(1) \times 10^2$
3.13	$6.7(6) \times 10^1$	$3.9(2) \times 10^1$	$6.0(1) \times 10^2$
3.33	$4.7(4) \times 10^1$	$1.03(3) \times 10^1$	$6.0(1) \times 10^2$
3.45	$3.9(4) \times 10^1$	$4.92(8) \times 10^0$	$5.8(8) \times 10^2$
3.57	$3.2(3) \times 10^1$	$2.39(3) \times 10^0$	$5.6(7) \times 10^2$
3.70	$2.8(2) \times 10^1$	$1.202(8) \times 10^0$	$6.3(4) \times 10^2$
3.85	$2.9(2) \times 10^1$	$7.62(3) \times 10^{-1}$	$4.7(6) \times 10^2$
4.00	$2.9(2) \times 10^1$	$5.9(2) \times 10^{-1}$	$4.3(6) \times 10^2$
4.17	$3.1(2) \times 10^1$	$5.29(1) \times 10^{-1}$	$3.9(5) \times 10^2$
4.35	$3.1(2) \times 10^1$	$5.1(1) \times 10^{-1}$	$3.7(5) \times 10^2$
4.55	$3.2(2) \times 10^1$	$5.02(8) \times 10^{-1}$	$3.9(5) \times 10^2$
4.76	$3.4(2) \times 10^1$	$5.01(8) \times 10^{-1}$	$3.9(5) \times 10^2$
5.00	$1.7(8) \times 10^1$	$5.01(7) \times 10^{-1}$	$6.8(4) \times 10^1$
5.13	$1.6(8) \times 10^1$	$5.01(1) \times 10^{-1}$	$6.3(4) \times 10^1$
5.26	$1.72(9) \times 10^1$	$5.01(7) \times 10^{-1}$	$6.9(6) \times 10^1$
5.41	$1.9(1) \times 10^1$	$5.0(4) \times 10^{-1}$	$7.0(5) \times 10^1$
5.56	$2.1(1) \times 10^1$	$5.0(4) \times 10^{-1}$	$7.2(6) \times 10^1$
5.71	$2.4(2) \times 10^1$	$5.0(1) \times 10^{-1}$	$7.5(6) \times 10^1$
5.88	$3.0(2) \times 10^1$	$5.0(4) \times 10^{-1}$	$7.7(7) \times 10^1$
6.06	$3.5(3) \times 10^1$	$5.0(4) \times 10^{-1}$	$8.0(7) \times 10^1$
6.25	$4.0(3) \times 10^1$	$5.01(1) \times 10^{-1}$	$7.7(7) \times 10^1$
6.45	$4.7(4) \times 10^1$	$5.01(1) \times 10^{-1}$	$6.7(5) \times 10^1$
6.67	$5.6(4) \times 10^1$	$5.02(1) \times 10^{-1}$	$6.7(5) \times 10^1$
6.90	$7.0(5) \times 10^1$	$5.02(1) \times 10^{-1}$	$6.8(5) \times 10^1$
7.14	$6.6(5) \times 10^1$	$5.0(4) \times 10^{-1}$	$5.7(4) \times 10^1$
7.41	$4.3(2) \times 10^1$	$5.01(7) \times 10^{-1}$	$3.3(2) \times 10^1$
7.69	$2.7(1) \times 10^1$	$5.0(4) \times 10^{-1}$	$1.9(7) \times 10^1$
8.00	$1.52(5) \times 10^1$	$5.0(4) \times 10^{-1}$	$1.0(3) \times 10^1$
8.33	$7.8(2) \times 10^0$	$5.0(4) \times 10^{-1}$	$4.9(1) \times 10^0$

Finally, by inserting eqn (24) in eqn (3), Taylor expanding around $\rho = 0$ and computing the osmotic pressure as

$$\Pi(\beta, \rho) = -\frac{\partial f}{\partial(1/\rho)} = \rho^2 \frac{\partial f}{\partial \rho}, \quad (25)$$

we obtain the virial expansion:

$$\beta\Pi(\beta, \rho) = B_1(\beta, \rho)\rho + B_2(\beta, \rho)\rho^2 + B_3(\beta, \rho)\rho^3 + \dots \quad (26)$$

with

$$B_2(\beta, \Delta) = 1, \quad (27a)$$

$$B_3(\beta, \Delta) = \frac{1}{3} - \frac{2\beta J^{3/2} \sqrt{K} z e^{K/J} \sin\left(\frac{\sqrt{K}}{\sqrt{J}}\right)}{2Ke^{K/J} \cos\left(\frac{\sqrt{K}}{\sqrt{J}}\right) + Ke^{\beta\Delta}}, \quad (27b)$$

$$B_4(\beta, \Delta) = \frac{1}{4}. \quad (27c)$$

Note that the second virial coefficient is always positive, an indication that the SD–CO transition is always first order.

CD–SD phase boundary. Since this transition involves two disordered phases, it is convenient to fix $\phi = 0$ in eqn (7), solve

Table 2 Autocorrelation times of the energy, magnetization, and radius of gyration for $K/J = 3$, $\Delta = 0$, and $N = 400$. Data are reported using the sampling time ($M = 50$ MC steps) as the unit of time

T	τ_E	τ_M	τ_{RG}
2.22	$1.6(5) \times 10^3$	$2.0(2) \times 10^4$	$6.0(4) \times 10^3$
2.33	$6.0(2) \times 10^2$	$7.0(4) \times 10^3$	$2.0(1) \times 10^3$
2.50	$2.2(4) \times 10^2$	$2.2(8) \times 10^3$	$6.0(1) \times 10^2$
2.63	$1.0(2) \times 10^2$	$9.0(2) \times 10^2$	$3.4(7) \times 10^2$
2.70	$5.7(6) \times 10^1$	$6.0(2) \times 10^2$	$3.6(7) \times 10^2$
2.86	$3.7(4) \times 10^1$	$2.4(5) \times 10^2$	$2.1(4) \times 10^2$
3.03	$1.5(1) \times 10^1$	$6.6(8) \times 10^1$	$3.3(4) \times 10^1$
3.13	$1.17(7) \times 10^1$	$3.3(2) \times 10^1$	$1.5(2) \times 10^2$
3.23	$1.02(6) \times 10^1$	$2.2(1) \times 10^1$	$2.3(2) \times 10^1$
3.33	$9.3(5) \times 10^0$	$1.31(5) \times 10^1$	$3.6(4) \times 10^1$
3.57	$6.8(3) \times 10^0$	$2.94(4) \times 10^0$	$3.3(3) \times 10^1$
3.85	$5.3(2) \times 10^0$	$7.82(5) \times 10^{-1}$	$4.3(3) \times 10^1$
4.00	$4.4(2) \times 10^0$	$5.77(2) \times 10^{-1}$	$3.5(2) \times 10^1$
4.17	$4.2(2) \times 10^0$	$5.28(3) \times 10^{-1}$	$3.3(2) \times 10^1$
4.35	$4.4(2) \times 10^0$	$5.06(2) \times 10^{-1}$	$2.3(2) \times 10^1$
4.55	$4.5(2) \times 10^0$	$5.01(1) \times 10^{-1}$	$2.2(2) \times 10^1$
4.76	$5.4(2) \times 10^0$	$5.0(6) \times 10^{-1}$	$1.7(1) \times 10^1$
5.00	$6.5(3) \times 10^0$	$5.0(6) \times 10^{-1}$	$1.8(1) \times 10^1$
5.26	$8.7(4) \times 10^0$	$5.0(6) \times 10^{-1}$	$2.4(1) \times 10^1$
5.56	$1.52(1) \times 10^1$	$5.0(6) \times 10^{-1}$	$3.4(3) \times 10^1$
5.88	$2.4(2) \times 10^1$	$5.0(6) \times 10^{-1}$	$3.7(2) \times 10^1$
6.25	$3.6(2) \times 10^1$	$5.0(6) \times 10^{-1}$	$3.8(2) \times 10^1$
6.67	$2.9(1) \times 10^1$	$5.01(1) \times 10^{-1}$	$2.4(1) \times 10^1$
7.14	$9.5(3) \times 10^0$	$5.03(2) \times 10^{-1}$	$7.0(2) \times 10^0$
7.41	$5.3(2) \times 10^0$	$5.0(6) \times 10^{-1}$	$3.7(1) \times 10^0$
7.69	$3.3(1) \times 10^0$	$5.0(6) \times 10^{-1}$	$2.1(4) \times 10^0$
8.00	$2.09(5) \times 10^0$	$5.0(6) \times 10^{-1}$	$1.51(3) \times 10^0$
8.33	$1.78(4) \times 10^0$	$5.0(6) \times 10^{-1}$	$1.33(2) \times 10^0$

Table 3 Autocorrelation times of the energy, magnetization, and radius of gyration for $K/J = 3$, $\Delta = 6$, and $N = 400$. Data are reported using the sampling time ($M = 50$ MC steps) as the unit of time

T	τ_E	τ_M	τ_{RG}
2.33	$1.3(2) \times 10^2$	$2.5(8) \times 10^3$	$4.9(1) \times 10^2$
2.50	$2.9(3) \times 10^1$	$7.0(3) \times 10^2$	$1.2(1) \times 10^2$
2.703	$7.3(4) \times 10^0$	$1.1(2) \times 10^2$	$3.9(4) \times 10^1$
2.8	$4.4(2) \times 10^0$	$4.1(3) \times 10^1$	$2.0(1) \times 10^1$
3.03	$2.67(9) \times 10^0$	$2.1(1) \times 10^1$	$1.41(7) \times 10^1$
3.23	$2.07(6) \times 10^0$	$9.8(4) \times 10^0$	$9.8(4) \times 10^0$
3.33	$2.02(5) \times 10^0$	$6.0(2) \times 10^0$	$8.4(3) \times 10^0$
3.57	$1.83(4) \times 10^0$	$1.13(2) \times 10^0$	$7.2(3) \times 10^0$
3.70	$2.03(6) \times 10^0$	$6.8(4) \times 10^{-1}$	$6.4(2) \times 10^0$
3.85	$2.35(8) \times 10^0$	$5.5(3) \times 10^{-1}$	$6.1(2) \times 10^0$
4.00	$2.8(1) \times 10^0$	$5.1(1) \times 10^{-1}$	$5.9(2) \times 10^0$
4.17	$3.08(9) \times 10^0$	$5.06(2) \times 10^{-1}$	$6.1(2) \times 10^0$
4.35	$4.7(2) \times 10^0$	$5.0(8) \times 10^{-1}$	$6.2(2) \times 10^0$
4.44	$5.7(2) \times 10^0$	$5.0(8) \times 10^{-1}$	$6.8(2) \times 10^0$
4.55	$8.4(4) \times 10^0$	$5.0(8) \times 10^{-1}$	$8.0(3) \times 10^0$
4.65	$1.1(6) \times 10^1$	$5.0(8) \times 10^{-1}$	$9.8(4) \times 10^0$
4.76	$1.3(6) \times 10^1$	$5.0(8) \times 10^{-1}$	$1.1(5) \times 10^1$
4.88	$1.25(6) \times 10^1$	$5.0(8) \times 10^{-1}$	$8.8(4) \times 10^0$
5.00	$7.8(3) \times 10^0$	$5.04(2) \times 10^{-1}$	$5.4(2) \times 10^0$
5.05	$6.8(3) \times 10^0$	$5.0(2) \times 10^{-1}$	$4.4(1) \times 10^0$
5.13	$4.9(2) \times 10^0$	$5.0(8) \times 10^{-1}$	$3.3(1) \times 10^0$
5.26	$3.17(1) \times 10^0$	$5.0(8) \times 10^{-1}$	$2.1(6) \times 10^0$
5.41	$2.68(9) \times 10^0$	$5.0(8) \times 10^{-1}$	$1.55(3) \times 10^0$
5.56	$2.14(7) \times 10^0$	$5.01(1) \times 10^{-1}$	$1.22(2) \times 10^0$
5.88	$1.74(6) \times 10^0$	$5.0(1) \times 10^{-1}$	$9.9(1) \times 10^{-1}$
6.250	$1.38(4) \times 10^0$	$5.0(8) \times 10^{-1}$	$8.68(8) \times 10^{-1}$
6.67	$1.06(2) \times 10^0$	$5.0(8) \times 10^{-1}$	$8.1(7) \times 10^{-1}$
8.33	$9.2(2) \times 10^{-1}$	$5.0(8) \times 10^{-1}$	$7.2(7) \times 10^{-1}$

it for α , and then plug this expression into eqn (3). Finally, by computing the corresponding osmotic pressure and expanding



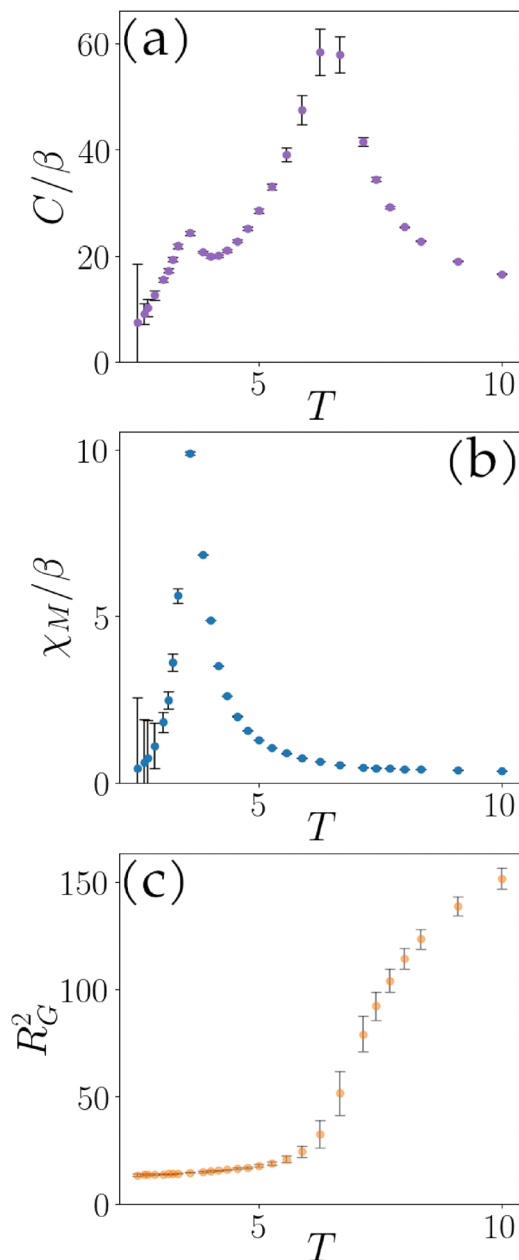


Fig. 13 Estimations of (a) C/β , (b) χ_M/β and (c) R_G^2 , complete with error bars, when $K = 3$, $J = 1$, $\Delta = 0$ and $N = 400$.

it for $\rho \simeq 0$ we obtain the virial coefficients

$$B_2(T, \Delta) = 1 - \frac{2\sqrt{\beta Kz}}{(e^{\beta\Delta} + 2)} \quad (28a)$$

$$B_3(T, \Delta) = \frac{1}{3} - \frac{2\beta Kze^{\beta\Delta}}{(e^{\beta\Delta} + 2)^2} \quad (28b)$$

$$B_4(T, \Delta) = \frac{1}{4} - \frac{\beta Kze^{\beta\Delta}(e^{\beta\Delta} - 2)\sqrt{\beta Kz}}{3(e^{\beta\Delta} + 2)^3}. \quad (28c)$$

CD-CO phase boundary. In this case, the transition is between two compact phases ($\rho \neq 0$), one magnetically disordered and one

magnetically ordered. We first plug the expression for α from eqn (22) into eqn (6) and solve for ρ . This gives

$$\rho(\phi) = \frac{\phi e^{\beta\Delta - K/J\phi \coth \phi}}{2\beta Jz \sinh \phi} + \frac{\phi \coth \phi}{\beta Jz} \quad (29)$$

Inserting eqn (22) and (29) in eqn (3) and expanding the result around $\phi = 0$ we find the polynomial expression

$$f(\beta, \Delta) = f_0 + a(\beta, \Delta)\phi^2 + b(\beta, \Delta)\phi^4 + O(\phi^6). \quad (30)$$

The explicit analytic expressions of $a(\beta, \Delta)$, $b(\beta, \Delta)$, and $c(\beta, \Delta)$ are cumbersome and will not be reported explicitly.

In Fig. 11 we show the contour plots of the coefficient $b(\beta, \Delta)$ and $c(\beta, \Delta)$ for the four different values of the ratio K/J discussed in the main text. Condition $a(\Delta, T) = 0$ is represented on the plane as black lines. For all K/J considered, this locus of points is made of straight and curved lines, originating from $\Delta = 0$ and $T = 0$. Condition $b(\Delta, T) = 0$ is displayed instead as a white line. Both this white line and the curved black line display a horizontal asymptote as $\Delta \rightarrow -\infty$. From Landau's theory of phase transitions, critical points arise when $a(\Delta, T) = 0$, $b(\Delta, T) > 0$, and $c(\Delta, T) > 0$. Instead, a tricritical point is observed when $a(\Delta, T) = b(\Delta, T) = 0$ and $c(\Delta, T) > 0$. Thus, despite the presence of the straight black line, no critical points are observed in the green regions where $c(\Delta, T) < 0$ (see Fig. 11b, d, f and g). When $K/J = 0.8$ (Fig. 11a and b), the black line lies totally inside the blue region, where $b(\Delta, T) < 0$: no critical points appear on the CO/CD phase boundary. When $K/J = 1.8$ (Fig. 11c and d), the black line intercepts the white one when $\Delta \rightarrow -\infty$: thus, a tricritical point is observed when there are no neutral states. Indeed, we compute, numerically, the values of K/J and β such that a continuous CO/CD transition occurs: we solve the system of equations

$$\begin{cases} a_{\Delta \rightarrow -\infty}(\beta, K) = 0 \\ b_{\Delta \rightarrow -\infty}(\beta, K) = 0 \end{cases} \quad (31)$$

where

$$a_{\Delta \rightarrow -\infty}(\beta, K) = -\frac{2\beta J^2 z \log\left(1 - \frac{1}{\beta Jz}\right) + 2J + K}{6\beta J} \quad (32)$$

$$b_{\Delta \rightarrow -\infty}(\beta, K) = \frac{24\beta J^2 z (\beta Jz - 1) \log\left(1 - \frac{1}{\beta Jz}\right) + \frac{9\beta J^2 z + 2\beta JKz + J - 2K}{180\beta J (\beta Jz - 1)}}{180\beta J (\beta Jz - 1)} \quad (33)$$

Such a system of equations cannot be solved analytically because of the logarithm appearing in both expressions. However, setting $J = 1$ and $z = 6$, we can solve eqn (31) numerically, to obtain $K \approx 1.8$ and $\beta \approx 0.2$. As such, for $K \ll 1.8$ the transition is always discontinuous, at $K \approx 1.8$ becomes continuous at very negative values of Δ , and for $K \gg 1.8$ the transition is always continuous, in agreement with the results reported in Fig. 2–5.

By increasing the K/J ratio, the tricritical point moves towards higher values of Δ , and in Fig. 11e it is represented



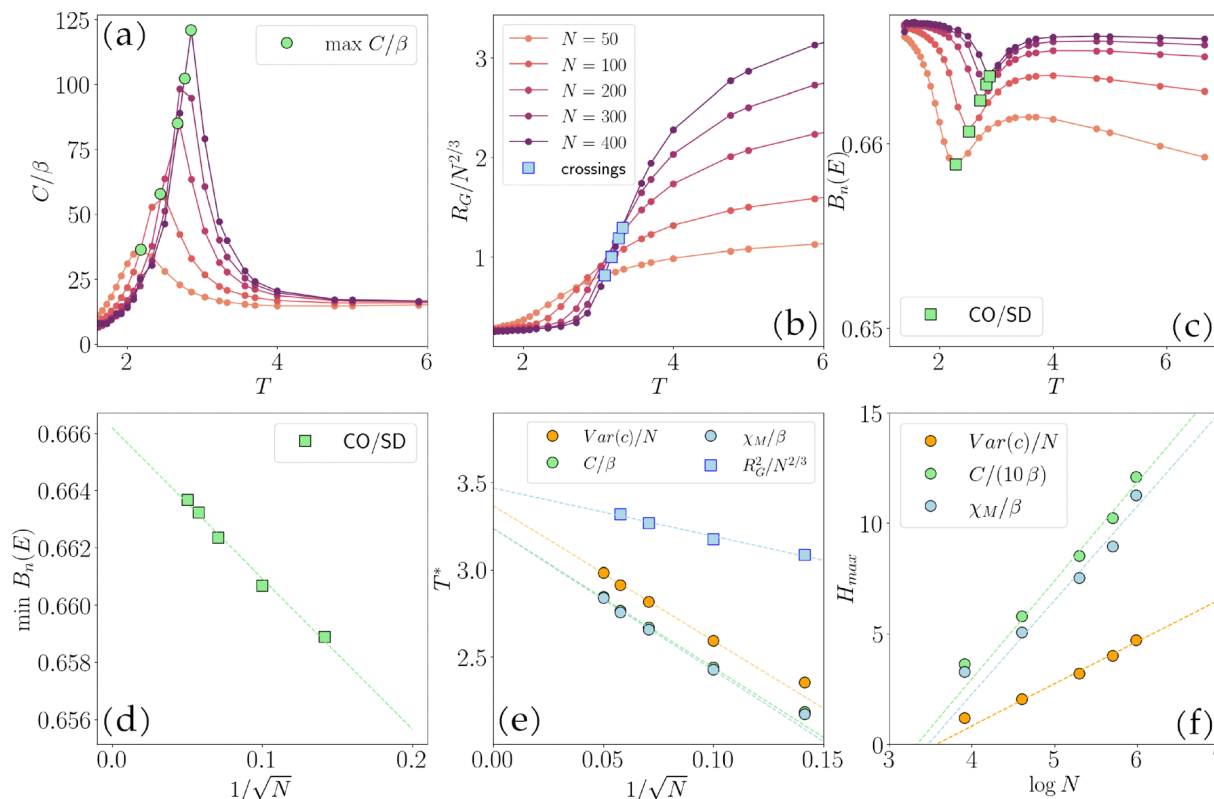


Fig. 14 Monte Carlo results for $K/J = 0.8$, $\Delta = -6$. In panels (a)–(c), different curves and points are as in Fig. 7. (a) Variance of the total energy as a function of T . (b) $R_G^2/N^{2/3}$ as a function of T . (c) Binder cumulant of the energy $B_n(E)$ as a function of T . (d) Values of T at which $B_n(E)$ has a minimum as a function of $1/\sqrt{N}$. (e) Values of T at which different observables (reported in the legend) display a maximum as a function of $1/\sqrt{N}$. We extrapolate an estimate for the temperature corresponding to the CD/CO transition. (f) Height of the maxima of different quantities (reported in the legend; for C/β , we plot $H'_{\max} = H_{\max}/10$) as a function of $\log N$.

as a red dot. Increasing further the K/J ratio, the tricritical point moves further towards the right (Fig. 11g), but in the phase diagram shown in Fig. 5a a CO/CD tricritical point is not observed because of the presence of a first-order CO/SD phase transition.

B: Monte Carlo simulations

Variance of magnetisation and contacts. We report here the data regarding the dependence of the magnetic susceptibility per spin χ_M , and of the variance of the number of contacts $\text{Var}(c)$ as a function of T for the different systems considered ($\Delta = -5, 0, 6$). Fig. 12 reports such data for $\Delta = -5$ (panels a and b), $\Delta = 0$ (panels c and d), and $\Delta = 6$ (panels e and f). We observe that the sets of peaks for χ_M/β always occur at low temperatures and correspond, as highlighted in the main text, to the CO/CD transition. We note that the positions of these maxima do not change much with changing Δ , in agreement with the mean-field predictions. Indeed, in Fig. 5a the transition line between the CO and CD phases in the Δ - T plane is flat and practically does not depend on the temperature.

Instead, the sets of peaks of $\text{Var}(c)/N$ always happen at high values of T and correspond to the CD/SD transition. In this case, the positions of these maxima shift to lower values of T with increasing Δ , which is also in qualitative agreement with the mean-field predictions.

Correlation times and error bars. Tables 1–3 report the estimates of the integrated autocorrelation times³⁰ for

$\Delta = -5$, $\Delta = 0$ and $\Delta = 6$, respectively. Since data are collected every 50 MC steps, the data reported use this quantity (that is, the sampling time) as the time unit.

These estimates contribute to the error bars of the observables since the variance of an observable O is $2\tau_O$ larger than it would be for statistically independent samples. In Tables 1–3 we report the values of τ_O for the total energy, the magnetisation, and the radius of gyration.

The T dependence of some observables with their corresponding error bars is exemplified in Fig. 13, where we reported the data at $\Delta = 0$. We note that the largest error bars appear at low temperatures: this is because of the difficulty in efficiently sampling the system there, due to the large autocorrelation. Error bars are also large at temperatures close to the critical point, where critical slowing down is expected.

C: Monte Carlo simulations for the case $K/J = 0.8$ and $\Delta = -6$

Here we present some preliminary results for MC simulations regarding the intermediate case $K/J = 0.8$ and $\Delta = -6$. As reported in Fig. 2a, the mean field theory predicts the existence of a CD phase, which borders the CO phase with a discontinuous transition and the SD phase with a continuous transition.

The presence of a unique peak in the specific heat (see Fig. 14a) suggests that, at variance with the MF prediction, the simulated 3D system does not display an intervening CD phase



between the CO and SD phases. The presence of the single SD/CO transition is confirmed by the crossing of the radius of gyration curves once scaled by $N^{2/3}$ (see Fig. 14b). Additionally, the fact that the minima of the Binder cumulant curves (reported in Fig. 14c) tend to $2/3$ as $N \rightarrow \infty$, as shown in Fig. 14d, suggests that the SD/CO transition is continuous (as in the case $K/J = 3$ and $\Delta = 6$). The continuous character of the transition is further corroborated both by the shift of the locations of the maxima of C_v , χ_M and $\text{Var}(c)$ (see also the crossing points of the $R_g^2/N^{2/3}$ curves) as a function of $1/\sqrt{N}$ (see Fig. 14e) and by the growth of the heights of these observables as a function of $\log N$ (see (Fig. 14f)).

These findings, complemented with those reported in the text for $K/J = 3$, suggest that in the 3D system the CD phase will appear at a value of the ratio K/J between 0.8 and 3.0.

Acknowledgements

E. O. acknowledges support from grant PRIN 2022R8YXMR funded by the Italian Ministry of University and Research. The authors acknowledge CloudVeneto for the use of computing and storage facilities.

References

- 1 A. Rajca, J. Wongsriratanakul and S. Rajca, Magnetic ordering in an organic polymer, *Science*, 2001, **294**(5546), 1503–1505.
- 2 J. S. Miller, Organic-and molecule-based magnets, *Mater. Today*, 2014, **17**(5), 224–235.
- 3 B. W. Boudouris and Y. Joo, Spin-Active and Magnetic Polymers, *ACS Macro Lett.*, 2024, **13**(7), 832–833.
- 4 T. Garel, H. Orland and E. Orlandini, Phase diagram of magnetic polymers, *Eur. Phys. J. B*, 1999, **12**(2), 261–268.
- 5 M. B. Luo, Finite-size scaling analysis on the phase transition of a ferromagnetic polymer chain model, *J. Chem. Phys.*, 2006, **124**(3), 034903.
- 6 A. Papale and A. Rosa, The Ising model in swollen vs. compact polymers: Mean-field approach and computer simulations, *Eur. Phys. J. E:Soft Matter Biol. Phys.*, 2018, **41**, 1–9.
- 7 D. P. Foster and D. Majumdar, Critical behavior of magnetic polymers in two and three dimensions, *Phys. Rev. E*, 2021, **104**(2), 024122.
- 8 S. Rudra, D. P. Foster and S. Kumar, Critical behavior of magnetic polymers on the three-dimensional Sierpiński Gasket, *Phys. Rev. E*, 2023, **108**(4), L042502.
- 9 D. Coli, E. Orlandini, D. Michieletto and D. Marenduzzo, Magnetic polymer models for epigenetics-driven chromosome folding, *Phys. Rev. E*, 2019, **100**(5), 052410.
- 10 D. Michieletto, E. Orlandini and D. Marenduzzo, Polymer model with epigenetic recoloring reveals a pathway for the de novo establishment and 3D organization of chromatin domains, *Phys. Rev. X*, 2016, **6**(4), 041047.
- 11 I. Lifshitz, A. Y. Grosberg and A. Khokhlov, Some problems of the statistical physics of polymer chains with volume interaction, *Rev. Mod. Phys.*, 1978, **50**(3), 683.
- 12 G. J. Fillion, J. G. van Bommel, U. Braunschweig, W. Talhout, J. Kind and L. D. Ward, *et al.*, Systematic protein location mapping reveals five principal chromatin types in *Drosophila* cells, *Cell*, 2010, **143**(2), 212–224.
- 13 D. Michieletto, D. Coli, D. Marenduzzo and E. Orlandini, Nonequilibrium theory of epigenomic microphase separation in the cell nucleus, *Phys. Rev. Lett.*, 2019, **123**(22), 228101.
- 14 R. Nakanishi and K. Hukushima, Emergence of compact disordered phase in a polymer Potts model, *Phys. Rev. E*, 2024, **109**(1), 014405.
- 15 M. Blume, V. J. Emery and R. B. Griffiths, Ising Model for the λ Transition and Phase Separation in He^3 - He^4 Mixtures, *Phys. Rev. A*, 1971, **4**(3), 1071–1077.
- 16 N. Madras, A. Orlitsky and L. A. Shepp, Monte Carlo generation of self-avoiding walks with fixed endpoints and fixed length, *J. Stat. Phys.*, 1990, **58**(1), 159–183.
- 17 P. H. Verdier and W. H. Stockmayer, Monte Carlo calculations on the dynamics of polymers in dilute solution, *J. Chem. Phys.*, 1962, **36**(1), 227–235.
- 18 M. C. Tesi, J. E. Janse van Rensburg, E. Orlandini and S. G. Whittington, Monte Carlo Study of the Interacting Self-Avoiding Walk Model in Three Dimensions, *J. Stat. Phys.*, 1996, **82**, 155–181.
- 19 C. J. Geyer, Practical markov chain monte carlo, *Stat. Sci.*, 1992, 473–483.
- 20 K. Hukushima and K. Nemoto, Exchange Monte Carlo method and application to spin glass simulations, *J. Phys. Soc. Jpn.*, 1996, **65**(6), 1604–1608.
- 21 U. H. Hansmann, Parallel tempering algorithm for conformational studies of biological molecules, *Chem. Phys. Lett.*, 1997, **281**(1–3), 140–150.
- 22 C. Vanderzande, *Lattice Models of Polymers*, Cambridge University Press, 1998.
- 23 K. Binder, *Monte Carlo Methods in Statistical Mechanics*, Springer-Verlag, Berlin, 2nd edn, 1986.
- 24 N. Clisby, Accurate estimate of the critical exponent ν for self-avoiding walks via a fast implementation of the pivot algorithm, *Phys. Rev. Lett.*, 2010, **104**(5), 055702.
- 25 V. Hovhannisyan, N. Ananikian, A. Campa and S. Ruffo, Complete analysis of ensemble inequivalence in the Blume-Emery-Griffiths model, *Phys. Rev. E*, 2017, **96**(6), 062103.
- 26 D. Jost and C. Vaillant, Epigenomics in 3D: importance of long-range spreading and specific interactions in epigenomic maintenance, *Nucleic Acids Res.*, 2018, **46**(5), 2252–2264.
- 27 J. A. Owen, D. Osmanović and L. Mirny, Design principles of 3D epigenetic memory systems, *Science*, 2023, **382**(6672), eadg3053.
- 28 Hamiltonian walks are walks that visit each node of a lattice of volume V exactly once and have been used as a lattice model of highly compact polymers.
- 29 H. Orland, C. Itzykson and C. de Dominicis, An evaluation of the number of Hamiltonian paths, *J. Phys., Lett.*, 1985, **46**(8), 353–357.
- 30 N. Madras and A. D. Sokal, The pivot algorithm: A highly efficient Monte Carlo method for the self-avoiding walk, *J. Stat. Phys.*, 1988, **50**, 109–186.

