

Cite this: *Mater. Horiz.*, 2023, 10, 2883Received 1st March 2023,  
Accepted 26th April 2023

DOI: 10.1039/d3mh00314k

rsc.li/materials-horizons

## Room-temperature stacking disorder in layered covalent-organic frameworks from machine-learning force fields†

Ju Huang,<sup>a</sup> Seung-Jae Shin,<sup>b</sup> Kasper Tolborg,<sup>a</sup> Alex M. Ganose,<sup>c</sup> Gabriel Krenzer<sup>b</sup> and Aron Walsh<sup>b\*ad</sup>

The local structures of layered covalent-organic frameworks (COFs) deviate from the average crystal structures assigned from X-ray diffraction experiments. For two prototype COFs of Tp-Azo and DAAQ-TFP, density functional theory calculations have shown that the eclipsed structure is not an energy minimum and that the internal energy is lowered for an inclined stacking arrangement. Here we explore the structural disorder of these frameworks at 300 K through molecular dynamics (MD) simulations using an on-the-fly machine learning force field (MLFF). We find that an initially eclipsed stacking mode spontaneously distorts to form a zigzag configuration that lowers the free energy of the crystal. The simulated diffraction patterns show good agreement with experimental observations. The dynamic disorder from the MLFF MD trajectories is found to persist in mesoscale MD simulations of 155 thousand atoms, giving further confidence in our conclusions. Our simulations show that the stacking behaviour of layered COFs is more complicated than previously understood.

### New concepts

Covalent organic frameworks (COFs) are materials formed from rigid organic building blocks that connect in two or three dimensions. They are often heralded for their ordered nature and high crystallinity, especially in comparison to traditional organic polymers with strong connections in only one dimension. However, there is growing evidence from crystallographic and spectroscopic probes, as well as from materials modelling, that these frameworks contain high amounts of disorder. In particular, an eclipsed configuration is often assumed for layered COFs for applications ranging from gas storage to batteries. The structure is however a saddle point on the potential energy surface. The energy of the system is lowered when adjacent layers are displaced. Our study probes this phenomenon using a multi-technique approach with a room temperature description provided by a machine-learning force field that has been actively learned from density functional theory energies, forces, and stresses. We show how the local structure distorts in time and gives rise to the average features that can be seen in slow experimental probes. Hidden stacking disorder is likely a common feature across many families of layered COFs and metal-organic frameworks.

## 1. Introduction

Covalent-organic frameworks (COFs) are a class of porous organic materials synthesized from secondary building units through reticular chemistry.<sup>1,2</sup> COFs are a rich materials platform and have gained attention due to their compositional modularity, structural diversity, pore size tunability, and chemical stability.<sup>3–5</sup> Despite these advantages, experimental and computational studies have reported the presence of various types of defects and disorder within COF structures, which can influence

their crystallinity, stability, porosity, and conductivity.<sup>6–14</sup> One example is stacking disorder, in which layers of a COF with two-dimensional (2D) connectivity are offset at different amounts relative to adjacent layers. Recent evidence for stacking disorder comes from athermal density functional theory (DFT) calculations, which revealed a variety of stacking modes can exist in contrast to eclipsed stacking (*i.e.* zero layer offset) typically reported in experiments.<sup>6,8,13,15</sup> However, the stacking behaviour obtained from DFT simulations is inherently static in nature and limited by the small system size that can be studied. As a result, prior models may not be representative of the true stacking behaviour of layered COFs at ambient temperature.

The stacking disorder in COFs is challenging to probe experimentally due to the averaging effect of time and space from various probes. In 2011, Lukose *et al.*<sup>16</sup> used DFT calculations and X-ray diffraction (XRD) to investigate the formation of four different stacking sequences (eclipsed, zigzag, serrated and inclined) in a set of reported and hypothetical 2D COFs and found that these

<sup>a</sup> Department of Materials, Imperial College London, London SW7 2AZ, UK.  
E-mail: a.walsh@imperial.ac.uk

<sup>b</sup> Department of Materials Science and Engineering, Yonsei University, Seoul 03722, Republic of Korea

<sup>c</sup> Department of Chemistry, Imperial College London, London W12 0BZ, UK

<sup>d</sup> Department of Physics, Ewha Womans University, Seoul 03760, Korea

† Electronic supplementary information (ESI) available. See DOI: <https://doi.org/10.1039/d3mh00314k>



stackings exhibit different diffraction patterns and band gaps. In 2017, Fan *et al.*<sup>17</sup> confirmed that SIOC-COF-8 and SIOC-COF-9 stack in an inclined arrangement using a combination of powder XRD, pore-size distribution analysis, and transmission electron microscopy (TEM) analysis. In 2022, Kang *et al.*<sup>11</sup> used <sup>13</sup>C solid-state nuclear magnetic resonance (ssNMR) to study the chemical environment of atoms in adjacent layers of 2D COFs and reported that different stacking modes can be quantitatively characterized by the split signals of the methoxy/methyl side groups. In the same year, Natraj *et al.*<sup>10</sup> employed continuous rotation electron diffraction and XRD to demonstrate that TAPPy-PDA and TAPB-DMPDA COFs are disordered along the stacking *c* direction while remaining ordered within the *ab* plane.

COFs can be viewed as organic macromolecules with typically more than 100 atoms in the crystallographic unit cell. Thus, it is unfeasible to study their dynamics and disorder over long time and length scales using *ab initio* molecular dynamics (MD) simulations. As an alternative, more efficient but generally less accurate simulation methods, such as Grand Canonical Monte Carlo (GCMC)<sup>12,18</sup> and classical MD simulations,<sup>13,19,20</sup> have been applied to study COFs and related metal-organic frameworks (MOFs).<sup>21–23</sup> For classical MD simulations, force fields with fixed functional forms are required to describe the interatomic forces. Popular force fields such as OPLS<sup>24,25</sup> and DREIDING<sup>12,26–29</sup> have been used to study the dynamics of COFs. However, the accuracy depends strongly on the particular force field parameterization and its ability to describe the local structure and extended interactions.

An alternative approach to obtain near DFT accuracy for dynamic simulations at a lower computational cost is machine learning force fields (MLFFs).<sup>28,30–36</sup> MLFFs trained on DFT data have demonstrated high efficiency and accuracy in predicting atomic energies and forces.<sup>32,34,37</sup> On-the-fly learning is an efficient method for force field training. It constructs a DFT reference database by sampling an MD trajectory for structures with high predicted uncertainty.<sup>31</sup> This approach means that during the MD simulation, only a fraction of the force evaluations are performed using DFT, with the rest provided by the MLFF. This state-of-the-art method has been used to study the dynamical properties of many materials, including the melting points of Al, Si, Ge, Sn and MgO,<sup>31</sup> the phase transitions of hybrid perovskites,<sup>38</sup> and the thermal conductivity of zirconia.<sup>39</sup> These previous studies indicate the potential of applying MLFFs to understand the dynamics of structurally and compositionally complex materials such as COFs.

In this work, on-the-fly MLFF models are trained for the prototype COFs, Tp-Azo<sup>40,41</sup> and DAAQ-TFP<sup>42</sup> (Fig. S1, ESI<sup>†</sup>), which have exhibited high energy storage performance as battery electrodes. We find COF structures that are initialized in an eclipsed stacking arrangement spontaneously shift to a zigzag stacking mode during MLFF-MD simulations. In contrast, the inclined structures retain their stacking throughout, suggesting that both zigzag and inclined stacking are locally stable arrangements. Using classical force fields to simulate longer time and length scales, similar, but more diverse, stacking properties are observed. These different stacking sequences in COFs lead to

different radial distribution functions (RDF) and predicted XRD patterns, and we show that a zigzag motif is in best agreement with experimental observations.

## 2. Computational methods

Kohn–Sham DFT is a powerful tool for calculating atomic energies and forces from first principles. However, its computational cost generally limits its applicability to relatively small systems and short-range time scales. We employ MLFFs to model the dynamics of two COFs at room temperature for intermediate system sizes. The results obtained from the MLFF were compared to those obtained from a classical force field for large-scale simulations.

### 2.1 Crystal structure optimisation

The starting crystal structures for Tp-Azo<sup>41</sup> and DAAQ-TFP<sup>42</sup> COFs were taken from our previous DFT study,<sup>15</sup> in which the structures were relaxed from experimental reports. To further optimize the structures and determine the lattice parameters, we employed the projector augmented wave (PAW) formalism<sup>43</sup> within the VASP<sup>43,44</sup> code. The Perdew–Burke–Ernzerhof (PBE)<sup>45</sup> exchange–correlation functional was used in conjunction with the Tkatchenko–Scheffler method incorporating iterative Hirshfeld partitioning for the treatment of interlayer van der Waals (vdWs) interactions.<sup>46</sup> Wave functions were expanded in a plane-wave basis with an energy cutoff of 520 eV. Gaussian broadening with a width of 0.01 eV was employed to set the electronic occupations. At each ionic step of the DFT calculation, the total energy was converged to within 10<sup>−6</sup> eV. These parameters were used consistently throughout the study. The optimised eclipsed and inclined Tp-Azo and DAAQ-TFP structures and their lattice parameters are shown in Fig. 1 and Table S1 (ESI<sup>†</sup>).

### 2.2 Machine-learning force field

Following the geometry optimization, 1 × 1 × 2 supercells (containing 216 atoms) were used to generate the MLFF datasets for eclipsed and inclined Tp-Azo and DAAQ-TFP. The isothermal–isobaric (*NpT*) ensemble with the Langevin thermostat<sup>47</sup> and a time step of 0.5 fs was used during the training process. We employed the on-the-fly MLFF generation scheme implemented in VASP,<sup>31,48</sup> which uses Gaussian approximation potentials (GAP) with the Smooth Overlap of Atomic Positions (SOAP) approach for structural features.<sup>49</sup> Radial and angular cutoffs of 7 Å and 5 Å were used to describe the local environments. Other parameters of the on-the-fly MLFF scheme were kept at their default settings. These settings were consistently applied throughout the MLFF study.

Initially, we trained the force field from the equilibrium ground state structure at 300 K. Next, we trained the model on a gradual heating run from 300 K to 500 K starting from the equilibrium structure to probe a more diverse region of the potential energy surface. The time for each training is shown in Fig. 3 for Tp-Azo and Fig. S2 (ESI<sup>†</sup>) for DAAQ-TFP. The temperature was kept below the degradation temperature of the



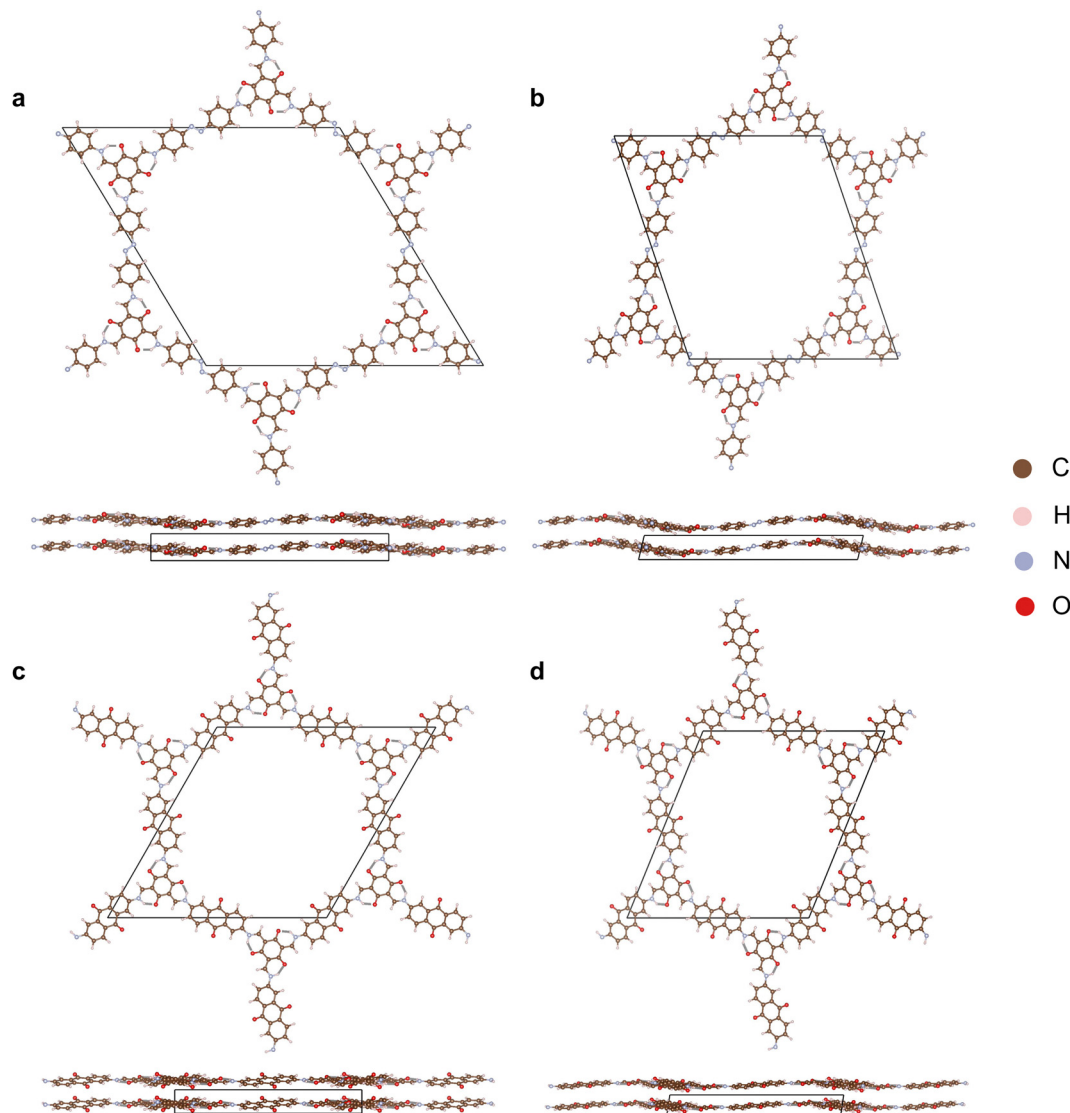


Fig. 1 Crystal structures of (a) eclipsed Tp-Azo, (b) inclined Tp-Azo, (c) eclipsed DAAQ-TFP, (d) inclined DAAQ-TFP viewed along the *c* direction (top) and *ab* plane (bottom).

COFs but high enough to widely sample the potential energy surface.<sup>1,50</sup> In total, the MLFF was trained for more than 150 ps, including several restarts in each training run as shown in Fig. 3 and Fig. S2 (ESI†).

The trained force fields were validated using a test set of 500 structures, each consisting of a  $1 \times 1 \times 2$  supercell of each stacking mode for the two COFs. These structures were randomly sampled from 10 MD trajectories, each generated with a different random seed. Each MD trajectory was obtained within an *NpT* ensemble at 300 K for 50 ps, utilizing the generated MLFF. The energies, forces and stresses for these 500 structures were subsequently calculated using DFT and compared with those obtained from the MLFF, in order to investigate the accuracy of the trained force field. Large errors in the validation process indicate the training should be continued.

To study the dynamic behaviour of large COFs under ambient pressure at 300 K, validated force fields were applied to  $2 \times 2 \times 8$

supercells containing 3456 atoms using an *NpT* ensemble. The expansion of supercell along the stacking axis is to enable the description of short to medium-range fluctuations. The simulation process involved the use of separately trained force fields for each stacking mode of each COF, with production runs lasting over 100 ps with a time step of 0.5 fs.

To analyze the disorder present in the COFs, the structures from the MD trajectory were analyzed for interlayer offsets. The overall process described above is illustrated in Fig. 2.

### 2.3 Classical force field

Classical force field-based MD simulations were carried out using the large-scale atomic/molecular massively parallel simulator (LAMMPS) code.<sup>51</sup> The OPLS-AA force field was chosen for its general applicability in predicting the structure of organic molecules.<sup>25</sup> A  $5\sqrt{3} \times 3 \times 48$  supercell (containing 155 520 atoms) was utilized for both the eclipsed and inclined configurations.



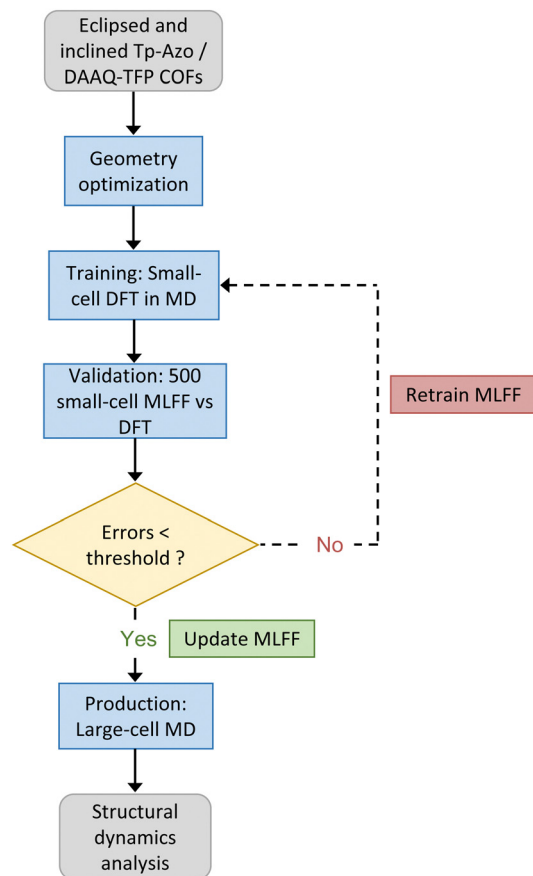


Fig. 2 The computational workflow used for on-the-fly MLFF training, validation, and production runs for the Tp-Azo and DAAQ-TFP COFs studied in this work.

We performed MD simulations with the  $NpT$  ensemble at 300 K and 1 atm using the Nosé–Hoover thermostat<sup>52</sup> and barostat.<sup>53</sup> The simulations were run for 300 ps with the last 100 ps used for sampling and analysis after allowing for equilibration. The initial structures for each configuration were constructed based on the DFT-optimized structures presented in Fig. 1.

### 3. Results and discussion

#### 3.1 MLFF molecular dynamics

The number of DFT calculations performed during on-the-fly training, along with the root-mean-squared error (RMSE) in the energies per atom, forces and stresses are summarized in

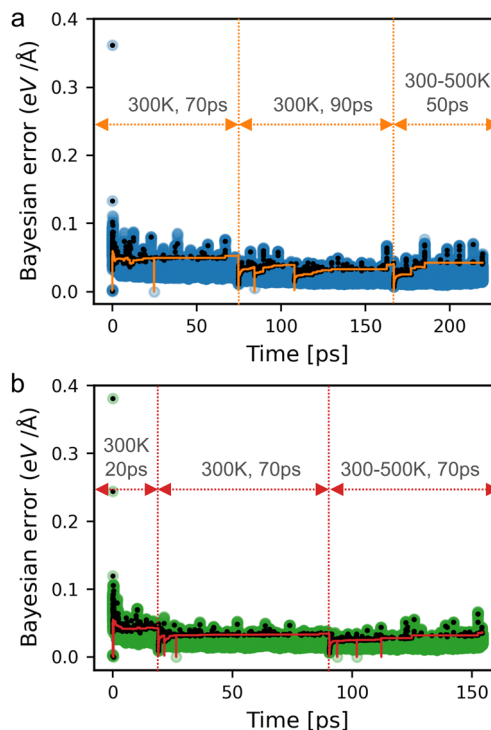


Fig. 3 Maximum Bayesian errors of the force for per atom for (a) eclipsed and (b) inclined Tp-Azo during the whole training process. The black dots indicate the steps where *ab initio* calculations were performed. The orange and red lines in each plot correspond to the threshold criterion used in the training of eclipsed and inclined Tp-Azo, respectively. The dips in the threshold curves correspond to restarts of the training runs, where the threshold was reset to its default value. The three sets of temperatures and times indicated on the plot correspond to the training, retraining, and heating runs described in the methodology.

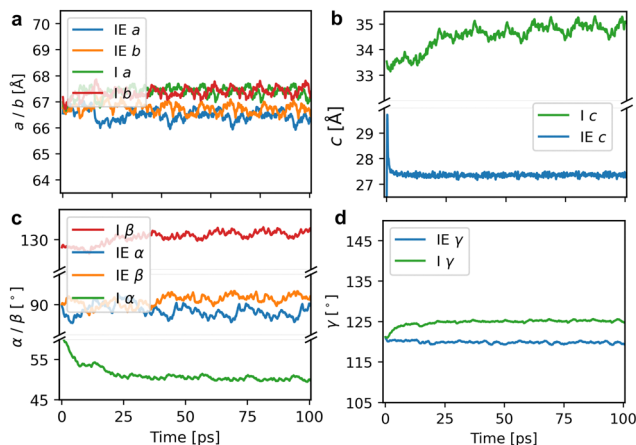
Table 1. Fig. 3 illustrates the Bayesian errors, the structures that were sampled with DFT, and the force error threshold during the training process for eclipsed (a) and inclined (b) Tp-Azo. The Bayesian errors in the training of eclipsed and inclined DAAQ-TFP are provided in Fig. S2 (ESI<sup>†</sup>).

During the training process, over 99% of force evaluations were performed using the MLFF rather than expensive DFT calculations, saving a significant portion of computational time. The final models show small RMSEs in the predicted energy (0.41–0.58 meV per atom), force (0.076–0.082 eV Å<sup>-1</sup>), and stress (0.30–0.39 kbar). Furthermore, the maximum Bayesian errors during training remain low and stable as illustrated in Fig. 3 and Fig. S2 (ESI<sup>†</sup>). These errors are similar to other studies that have utilized MLFFs for MD.<sup>31,38,48</sup>

Table 1 Summary of root mean squared error (RMSE) in energies, forces, and stresses for the training and validation datasets. We also list the number of DFT calculations performed in the training process (# DFT calculations). In the system name, the letters 'E' and 'I' indicate eclipsed and inclined starting structures, respectively

System	# DFT calcs	Energy (meV atom <sup>-1</sup> )		Force (eV Å <sup>-1</sup> )		Stress (kbar)	
		Training	Validation	Training	Validation	Training	Validation
E-Tp-Azo	1213	0.58	0.55	0.080	0.079	0.38	0.38
I-Tp-Azo	1221	0.52	0.66	0.076	0.077	0.30	0.30
E-DAAQ-TFP	1181	0.41	0.42	0.082	0.084	0.39	0.44
I-DAAQ-TFP	1243	0.41	0.56	0.082	0.080	0.38	0.40





**Fig. 4** Evolution of the lattice parameters of (a)  $a$  and  $b$ , (b)  $c$ , (c)  $\alpha$  and  $\beta$ , (d)  $\gamma$  in initially eclipsed and inclined Tp-Azo during the MD trajectory at  $T = 300$  K. The x-axis represents the time in picoseconds. The y-axis represents the lattice parameters in Angstroms or degrees. 'IE' and 'I' correspond to initially eclipsed and inclined configurations, respectively. In the simulation of MLFF-MD, the initially eclipsed COF distorted into zigzag stacking.

We validated the trained force fields to demonstrate their performance. Energies, forces, and stresses calculated from the MLFFs and DFT for the eclipsed and inclined validation structures are shown in Fig. S3 and S4 (ESI<sup>†</sup>). The RMSE of energy (0.42–0.66 meV per atom), force (0.077–0.084 eV Å<sup>-1</sup>), and stress (0.30–0.44 kbar) of the validation dataset, as presented in Table 1, are almost the same as the RMSEs observed during the training. These results indicate that the force fields have been trained to sufficient accuracy.

To investigate the stacking behaviour of the COFs, we performed production calculations in a  $2 \times 2 \times 8$  supercell (containing 3456 atoms). Calculations were performed with the  $NpT$  ensemble at 300 K for a total of 100 ps and a time step of 0.5 fs. MLFF-MD runs were performed for the eclipsed and inclined structures of both COFs. The Bayesian errors for the production MD runs remained stable throughout the entire trajectory and are illustrated in Fig. S5 (ESI<sup>†</sup>). The lattice parameters of the eclipsed and inclined Tp-Azo structures during the production runs are presented in Fig. 4 (Fig. S6, ESI<sup>†</sup> gives the results for DAAQ-TFP). The cell lengths ( $a$ ,  $b$ ,  $c$ ) and angles ( $\alpha$ ,  $\beta$ ,  $\gamma$ ) averaged over the whole trajectory are given in Table 2. We also report the internal energy ( $E_0$ ) of the final

**Table 2** Averaged unit cell lattice parameters and total energy of eclipsed and inclined Tp-Azo and DAAQ-TFP from MLFF-MD calculations. The energy ( $E_0$ ) is the internal energy per unit cell calculated from a relaxation of the final structures at the end of the MD simulation using the MLFF.  $\Delta E_0$  is the energy difference per unit cell between the zigzag and inclined structures. 'Z' and 'I' correspond to zigzag and inclined configurations after MLFF-MD, respectively

System	$\bar{a}$ (Å)	$\bar{b}$ (Å)	$\bar{c}$ (Å)	$\bar{\alpha}$ (°)	$\bar{\beta}$ (°)	$\bar{\gamma}$ (°)	$E_0$ (eV)	$\Delta E_0$ (eV)
Z-Tp-Azo	33.24	33.35	3.42	88.59	91.15	119.81	-760.36	—
I-Tp-Azo	33.69	33.73	4.36	50.15	131.14	125.23	-760.59	0.24
Z-DAAQ-TFP	30.44	30.51	3.43	90.78	92.19	59.78	-787.43	—
I-DAAQ-TFP	30.34	30.52	4.09	58.83	53.44	58.40	-787.55	0.11

structure at the end of the MD run after being relaxed using the MLFF. The average lattice parameters differ slightly from the initial equilibrium starting structures ( $a$  and  $b$  change less than 0.5%,  $c$  expands in the range of 3–6%) as expected due to the inclusion of temperature in the MD run (Table S1, ESI<sup>†</sup>). Fig. 4 (Tp-Azo) and Fig. S6, ESI<sup>†</sup> (DAAQ-TFP) reveal the structures are dynamically stable during the trajectories with lattice parameters that remain roughly constant.

The plots of total internal energy *versus* time, presented in Fig. S7 (ESI<sup>†</sup>), demonstrate the excellent stability of the entire MLFF-MD trajectory. The stability of the simulations indicates that both configurations can be considered metastable states, which will be further rationalized in the following section.

A comparison of the internal energy calculated from the relaxation of the final structures in the MD using MLFF also shows that the internal energy of the inclined stacking is lower than that of initially eclipsed COFs that distort to a zigzag structure during the simulation in Table 2. In Tp-Azo, the energy difference between the zigzag and inclined structures is 0.24 eV per unit cell (2.20 meV per atom), while it is 0.11 eV per unit cell (1.04 meV per atom) in DAAQ-TFP. However, the energy difference between the two stacking modes is relatively small suggesting competition between the two arrangements will be present at ambient temperatures.

## 3.2 Tracking disorder

**3.2.1 Layer offsets in three dimensions.** During the MD simulations, it was observed that the eclipsed COFs shifted into a zigzag stacking mode while the inclined COFs retained their original stacking behaviour (Fig. 5 and Fig. S8, ESI<sup>†</sup>). This indicates that eclipsed stacking is not a stable stacking mode whereas inclined stacking is locally stable. We find that the layers in the inclined COFs are more corrugated than those in the zigzag COFs. This follows similar reports of corrugated frameworks in 2D COFs, which are believed to originate from inter-layer interactions between polycyclic aromatic hydrocarbons.<sup>54</sup>

Our results reveal that the main source of disorder occurs along the  $c$  direction of stacking rather than in the  $ab$  plane. This is in agreement with continuous rotational electron diffraction experiments, which found that 2D COFs of TAPPy-PDA and TAPB-DMPDA behave as single-crystals in the  $ab$  plane but are disordered in the  $c$  dimension.<sup>10</sup> To demonstrate this point, in Fig. 6 we plot the stacking disorder averaged over the full MD trajectories for initially eclipsed and inclined Tp-Azo (the same analysis is presented in Fig. S11 (ESI<sup>†</sup>) for DAAQ-TFP). The disorder is quantified by the offset of each layer relative to adjacent layers. The offsets are decomposed into their components along the  $x$ ,  $y$  and  $z$  directions and are averaged along the MD trajectories after equilibration (Fig. S9 and S10, ESI<sup>†</sup>). For the  $x$  and  $y$  directions, an offset of 0 Å indicates a fully eclipsed structure, whereas a constant positive or negative offset indicates inclined stacking. A constant offset in the  $z$  direction indicates a fixed layer separation.

For zigzag Tp-Azo (initially eclipsed pre-equilibration), the average absolute offset for the  $x$ ,  $y$ , and  $z$  directions are 0.2 Å, 2.2 Å, and 3.4 Å, respectively. The small values for the  $x$  offset



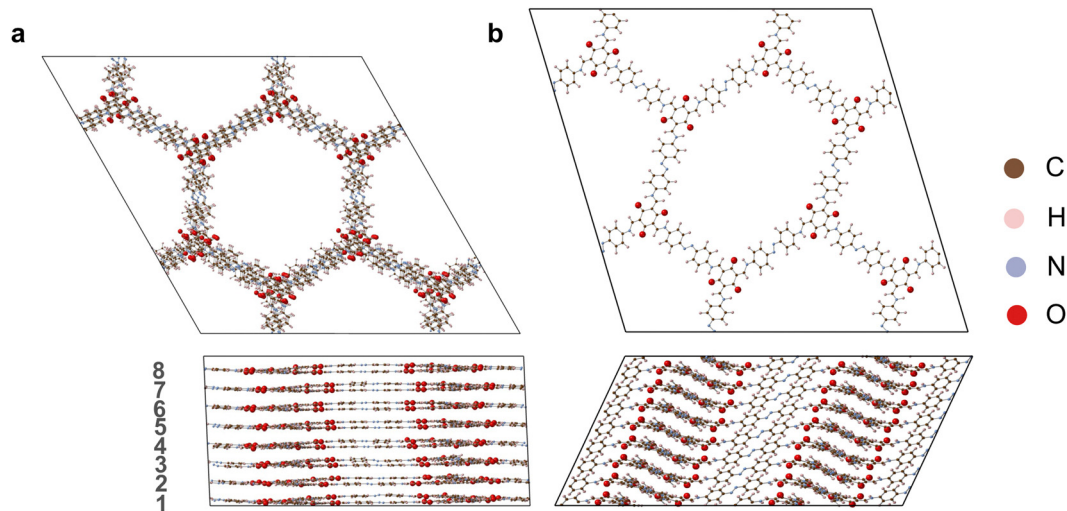


Fig. 5 COF structures obtained by relaxing the final structure at the end of the MD simulations using the MLFF for (a) zigzag Tp-Azo, (b) inclined Tp-Azo. The structures are viewed along the *c* direction (top panel) and *ab* plane (bottom panel). The layers are numbered from 1 to 8.

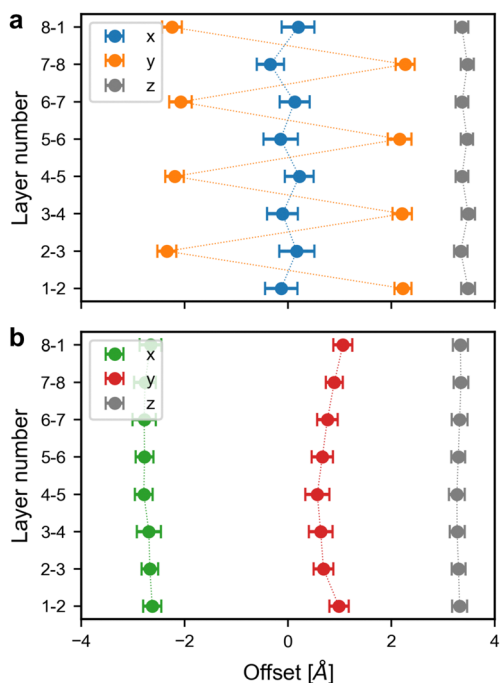


Fig. 6 Offsets in the *x*, *y*, *z* directions between adjacent layers in (a) zigzag and (b) inclined Tp-Azo. The layer numbers correspond to the numbers in Fig. 5.

(close to zero) indicate adjacent layers are almost perfectly stacked in the *x* direction. The offsets for the *y* direction oscillate from  $\sim -2.2$  to  $\sim 2.2$  Å, indicating each layer is shifted by an equal but opposite amount relative to adjacent layers. This oscillating offset is a characteristic signature of a zigzag stacking mode. The relatively constant offset in the *z* direction indicates the layer separation remains roughly fixed throughout the entire MD run. The total absolute displacement in the *ab* plane is 2.1 Å, highlighting the strong deviation from the idealised

eclipsed structure. The eclipsed DAAQ-TFP structure also shifts to a zigzag stacking mode during equilibration. The interlayer offsets show broadly the same features as Tp-Azo, with a relatively large overall displacement distance in the *ab* plane of 1.8 Å (Fig. S11a, ESI<sup>†</sup>).

The inclined COF structures retain their inclined stacking throughout the entire MD run. This can be seen in the stacking disorder analysis which reveals a roughly constant negative offset of 2.6–2.8 Å in the *x* direction and 0.6–1.1 Å in the *y* direction for Tp-Azo (offsets in DAAQ-TFP are 2.1–2.4 Å and 0.4–0.7 Å in *x* and *y*, respectively). The overall offsets in the *ab* plane are 2.4 Å (Tp-Azo) and 2.5 Å (DAAQ-TFP) (Fig. 6b and Fig. S11b, ESI<sup>†</sup>). Thus, the overall offsets are marginally larger for inclined stacking than initially eclipsed stacking in both COFs. The inter-layer distances are very similar, around 3.4 Å in each case, independent of the stacking mode (Fig. 6 and Fig. S11, ESI<sup>†</sup>). The calculated offsets in the *ab* plane fall in the predicted energy minimum basin from static DFT calculations which span 1.7 Å to 3.5 Å.<sup>15</sup>

Configurational entropy is a thermodynamic driving force for the observed behaviour. In the *ab* plane, there are multiple degrees of freedom in the zigzag configuration, but only one in the inclined configuration. As there is only a small difference in the internal energy of zigzag and inclined configurations, an entropic contribution from stacking faults in a zigzag configuration, which is not present in the inclined configuration would be sufficient to change the order of free energies at  $T = 300$  K. Thus, we expect the zigzag mode to be the favoured structure at ambient temperature.

**3.2.2 Radial distribution functions.** The radial distribution function (RDF) describes the probability of finding a particle at a distance *r* from another particle. A recent study of the imine-linked TTI-COF used RDF analysis and simulations to compare the total scattering functions of different stacking modes, revealing random layer offsets at low temperature.<sup>14</sup>

We first calculate the RDF of the eclipsed and inclined structures from static DFT relaxed structure. The O–O RDF of



the eclipsed Tp-Azo structure reveals a sharp peak at 3.2 Å, corresponding to the inter-layer distance. In the inclined stacking structure, the peak position is shifted to 4.2 Å due to additional displacement along the *ab* plane (Fig. 7).<sup>15</sup> Comparable results are found for DAAQ-TFP (Fig. S12, ESI†).

We next calculate the average RDF across the MLFF-MD trajectories after the structures are equilibrated. We find that the small-distance sharp peaks are broadened and shifted to larger distances compared to the static DFT RDFs. The shift in the initially eclipsed structures is larger than that of the inclined structures, primarily as the eclipsed structures shifted to a zigzag arrangement during the simulation. There is a qualitative difference in the RDFs of the inclined and zigzag structures, indicating that RDF analysis can be used as a probe for stacking disorder.

**3.2.3 Simulated diffraction patterns.** The stacking modes of 2D COFs can be experimentally observed through powder XRD measurements. To establish a connection between simulation results and experiments, we predict the diffraction patterns of COFs in different stacking modes. The averaged diffraction patterns of zigzag and inclined COFs were simulated by sampling the trajectory every 5 ps. We compare these to the eclipsed and inclined structures obtained from static DFT relaxations. XRD patterns were simulated using pymatgen.<sup>55</sup>

There are significant differences in the simulated XRD patterns of the zigzag and inclined structures (Fig. 8 and Fig. S14, ESI†). The zigzag structure shows a single sharp low-angle diffraction peak, whereas the inclined structure has a split low-angle peak. The peak splitting in the inclined structure is due to the reduced symmetry in slip-stacked structures and is consistent with previous simulated XRD patterns from DFT relaxed COFs.<sup>14,56</sup>

For both Tp-Azo<sup>41</sup> and DAAQ-TFP,<sup>42</sup> the simulated XRD of the zigzag structure shows a significantly improved fit with the experimental PXRD pattern compared to the inclined structure. Interestingly, the averaged zigzag XRD pattern and the XRD from the eclipsed static DFT relaxation look similar up to high angles (subtle differences are observed for the (001) reflection peaks in Fig. S13 and S14, ESI†). Many studies have concluded that the stacking of COFs is eclipsed based on good agreement between the PXRD data and the simulated eclipsed diffraction patterns.

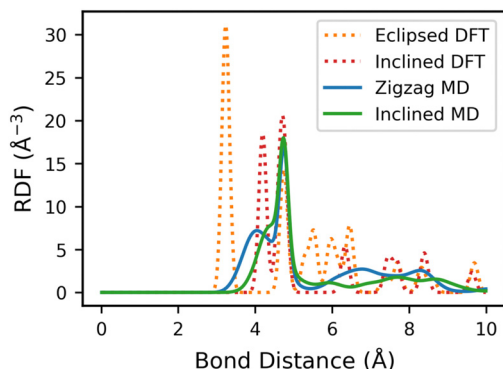


Fig. 7 RDF of O–O bonds in initially eclipsed, inclined and zigzag Tp-Azo. The orange and red dotted lines represent the RDF of the initial eclipsed and inclined Tp-Azo at the beginning of the MD simulation. The blue and green solid lines are the average RDF in the trajectory after the structures have stabilized.



Fig. 8 Simulated average diffraction patterns of (a) zigzag Tp-Azo, (b) inclined Tp-Azo were generated by selecting structures every 5 ps in the MD trajectory. (a and b) Cover the  $2\theta$  range of 0–30°. The bottom diffraction pattern in each plot is from the initial structure of each COF.

However, our work demonstrates that comparisons of experimental diffraction patterns with simulated patterns from static DFT are not sufficient to unambiguously assign the stacking mode. Indeed, the instability of the eclipsed stacking in our simulations combined with the good agreement of the zigzag structure with experimental XRD patterns, suggest that previous work may be incorrectly assigning the eclipsed configurations.

### 3.3 Mesoscopic dynamics

To further investigate the dynamic structures of the COFs on a mesoscopic length scale of over 15 nm, MD simulations using a classical force fields were performed (Fig. 9 and Fig. S16, ESI†). Lower accuracy is expected here as there has been no system-specific tuning of the model parameters; however, the equilibrium structures obtained from the OPLS-AA force field show reasonable agreement with the MLFF (and underlying DFT) values (Table S2 and Fig. S15, ESI†).

Again we considered room temperature dynamics starting from the two initial stacking configurations. Qualitatively similar dynamic behaviour is observed. Importantly, the eclipsed COFs spontaneously disorder into the zigzag configuration at equilibrium, while the inclined COFs maintain their stacking mode in these large-scale MD simulations (Fig. 9, Fig. S16 and S17, ESI†). This analysis gives us confidence that our predictions with the MLFF are not limited by finite size-effects in the MD simulations.

## 4. Conclusions

To investigate the dynamic properties of the layer disorders in 2D COFs, we performed MD simulations of two prototypes of COFs: Tp-Azo and DAAQ-TFP, using on-the-fly MLFFs and the classical OPLS-AA force field. The small Bayesian errors



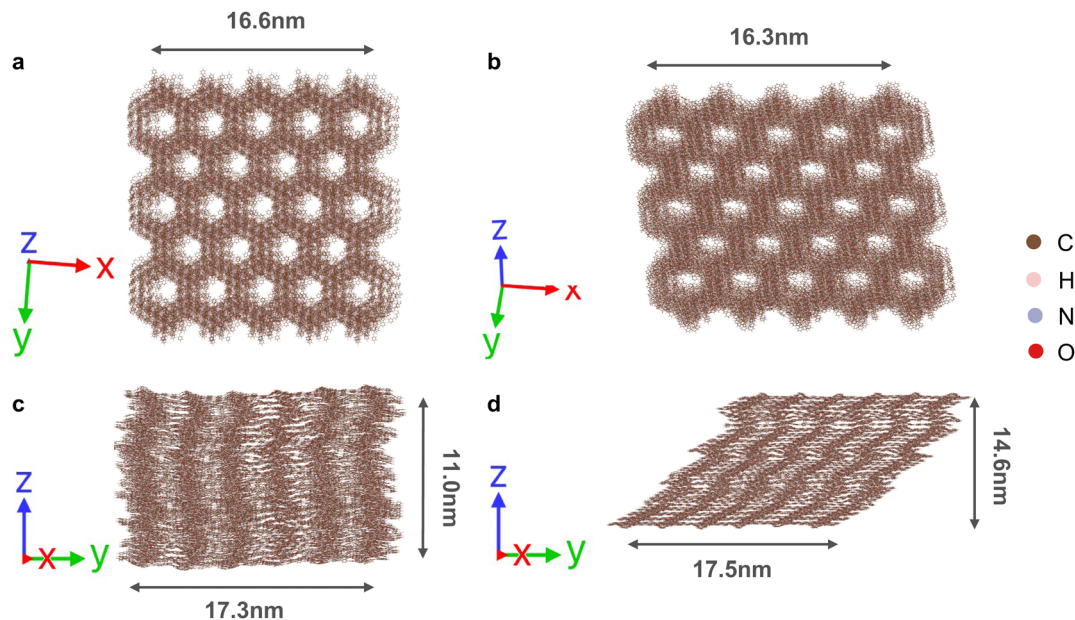


Fig. 9 Snapshots of the supercells of (a and c) zigzag Tp-Azo, (b and d) inclined Tp-Azo at equilibrium from classical force field calculations. The scale size of each snapshot of a, b and c are labelled. The viewed direction of each snapshot is indicated at the bottom left.

observed in the training and validation of the on-the-fly MLFF indicate the trained force field can be used to accurately describe the dynamics of these systems.

In the MLFF-MD simulations, the initially eclipsed configurations shift into a zigzag stacking sequence, while the inclined configurations remain in the inclined mode, showing that both are locally stable states at ambient conditions. However, due to the larger entropic contribution to the zigzag stacking, we expect this to be the favoured structure. The predicted diffraction patterns of the “random” zigzag mode from the MLFF exhibit significantly better agreement with the reported experimental PXRD than the (perfectly) eclipsed or inclined stacking patterns, highlighting the importance of sampling the dynamic structures. This questions the common assignment of eclipsed structures on the basis of low-quality PXRD patterns often reported for 2D COFs in the literature. The results from classical force field dynamics are qualitatively consistent MLFF-MD simulations, supporting that a zigzag stacking structure is realistic on longer lengths scales.

Overall, the results of the room temperature simulations indicate that the on-the-fly MLFF is a valuable tool for accurately describing the dynamic properties of 2D COFs and that the stacking structure of these materials is more complicated than previously reported.

## Author contributions

Ju Huang: conceptualization, investigation, methodology, visualization, writing – original draft, writing – review & editing. Seung-Jae Shin: methodology, formal analysis, writing – original draft, writing – review & editing. Kasper Tolborg: formal analysis, methodology, visualization, writing – review & editing. Alex M. Ganose: software, writing – review & editing. Gabriel Krenzer: software,

writing – review & editing. Aron Walsh: conceptualization, methodology, resources, supervision, writing – review & editing.

## Conflicts of interest

The authors declare no interest conflicts.

## Acknowledgements

We thank Matthias Golomb for useful discussions on porous frameworks. J. H. acknowledges Imperial College London and the Chinese Scholarship Council (CSC) for providing a PhD scholarship. S.-J. S. is funded by the National Research Foundation of Korea (NRF-2018M3D1A1058793). K. T. is funded by the Independent Research Fund Denmark through the International Postdoctoral grant (0164-00015B). G. K. acknowledges the Faraday Institution for funding a PhD studentship (faraday.ac.uk; EP/S003053/1), grant number FIRG025. A. M. G. was supported by EPSRC Fellowship EP/T033231/1. We are also grateful to the UK Materials and Molecular Modelling Hub for computational resources, which is partially funded by EPSRC (EP/P020194/1 and EP/T022213/1). *Via* our membership of the UK’s HEC Materials Chemistry Consortium, which is funded by EPSRC (EP/L000202), this work used the ARCHER2 UK National Supercomputing Service (<https://www.archer2.ac.uk>). Also, this work was supported by the Korea National Supercomputing Center with supercomputing resources including technical support (KSC-2022-CRE-0245).

## References

- 1 A. P. Cote, A. I. Benin, N. W. Ockwig, M. O’Keeffe, A. J. Matzger and O. M. Yaghi, *Science*, 2005, **310**, 1166–1170.





- 2 H. M. El-Kaderi, J. R. Hunt, J. L. Mendoza-Cortés, A. P. Côté, R. E. Taylor, M. O'Keeffe and O. M. Yaghi, *Science*, 2007, **316**, 268–272.
- 3 Y. Hu, L. J. Wayment, C. Haslam, X. Yang, S.-H. Lee, Y. Jin and W. Zhang, *EnergyChem*, 2021, **3**, 100048.
- 4 C. Stähler, L. Grunenber, M. W. Terban, W. R. Browne, D. Doellerer, M. Kathan, M. Etter, B. V. Lotsch, B. L. Feringa and S. Krause, *Chem. Sci.*, 2022, **13**, 8253–8264.
- 5 S.-Y. Ding and W. Wang, *Chem. Soc. Rev.*, 2013, **42**, 548–568.
- 6 E. L. Spitler, B. T. Koo, J. L. Novotney, J. W. Colson, F. J. Uribe-Romo, G. D. Gutierrez, P. Clancy and W. R. Dichtel, *J. Am. Chem. Soc.*, 2011, **133**, 19416–19421.
- 7 A. Mähringer and D. D. Medina, *Nat. Chem.*, 2020, **12**, 985–987.
- 8 F. Haase, K. Gottschling, L. Stegbauer, L. Germann, R. Gutzler, V. Duppel, V. Vyas, K. Kern, R. Dinnebier and B. Lotsch, *Mater. Chem. Front.*, 2017, **1**, 1354–1361.
- 9 F. Haase and B. V. Lotsch, *Chem. Soc. Rev.*, 2020, **49**, 8469–8500.
- 10 A. Natraj, W. Ji, J. Xin, I. Castano, D. W. Burke, A. M. Evans, M. J. Strauss, M. Ateia, L. S. Hamachi and N. C. Gianneschi, *et al.*, *J. Am. Chem. Soc.*, 2022, **144**, 19813–19824.
- 11 C. Kang, Z. Zhang, A. K. Usadi, D. C. Calabro, L. S. Baugh, K. Yu, Y. Wang and D. Zhao, *J. Am. Chem. Soc.*, 2022, **144**, 3192–3199.
- 12 M. Tong, Q. Yang, Y. Xiao and C. Zhong, *Phys. Chem. Chem. Phys.*, 2014, **16**, 15189–15198.
- 13 B. T. Koo, W. R. Dichtel and P. Clancy, *J. Mater. Chem.*, 2012, **22**, 17460–17469.
- 14 A. M. Pütz, M. W. Terban, S. Bette, F. Haase, R. E. Dinnebier and B. V. Lotsch, *Chem. Sci.*, 2020, **11**, 12647–12654.
- 15 J. Huang, M. J. Golomb, S. R. Kavanagh, K. Tolborg, A. M. Ganose and A. Walsh, *J. Mater. Chem. A*, 2022, **10**, 13500–13507.
- 16 B. Lukose, A. Kuc, J. Frenzel and T. Heine, *Beilstein J. Nanotechnol.*, 2010, **1**, 60–70.
- 17 Y. Fan, Q. Wen, T.-G. Zhan, Q.-Y. Qi, J.-Q. Xu and X. Zhao, *Chem. – Eur. J.*, 2017, **23**, 5668–5672.
- 18 Y. Wang, W. Wang, Z. Zhang and P. Li, *Applied Surf. Sci.*, 2022, **571**, 151355.
- 19 P. G. Boyd, S. M. Moosavi, M. Witman and B. Smit, *J. Phys. Chem. Lett.*, 2017, **8**, 357–363.
- 20 D. Feng, Y. Feng, Y. Liu, W. Zhang, Y. Yan and X. Zhang, *J. Phys. Chem. C*, 2020, **124**, 8386–8393.
- 21 G. Fraux, S. Chibani and F.-X. Coudert, *Phil. Trans. Roy. Soc. A*, 2019, **377**, 20180220.
- 22 J. Keupp and R. Schmid, *Adv. Theory Simul.*, 2019, **2**, 1900117.
- 23 M. R. Momeni, Z. Zhang and F. A. Shakib, *Chem. Commun.*, 2021, **57**, 315–318.
- 24 J. M. Cox, B. Mileson, A. Sadagopan and S. A. Lopez, *J. Phys. Chem. C*, 2020, **124**, 9126–9133.
- 25 W. L. Jorgensen, D. S. Maxwell and J. Tirado-Rives, *J. Am. Chem. Soc.*, 1996, **118**, 11225–11236.
- 26 S. L. Mayo, B. D. Olafson and W. A. Goddard, *J. Phys. Chem.*, 1990, **94**, 8897–8909.
- 27 X. Zhang, M. Wei, Z. Zhang, X. Shi and Y. Wang, *Desalination*, 2022, **526**, 115548.
- 28 J. P. Mailoa, M. Kornbluth, S. Batzner, G. Samsonidze, S. T. Lam, J. Vandermause, C. Ablitt, N. Molinari and B. Kozinsky, *Nat. Mach. Intell.*, 2019, **1**, 471–479.
- 29 L.-C. Lin, J. Choi and J. C. Grossman, *Chem. Commun.*, 2015, **51**, 14921–14924.
- 30 V. Botu, R. Batra, J. Chapman and R. Ramprasad, *J. Phys. Chem. C*, 2017, **121**, 511–522.
- 31 R. Jinnouchi, F. Karsai and G. Kresse, *Phys. Rev. B*, 2019, **100**, 014105.
- 32 D. Bayerl, C. M. Andolina, S. Dwaraknath and W. A. Saidi, *Digital Discovery*, 2022, **1**, 61–69.
- 33 M. F. C. Andrade, H.-Y. Ko, L. Zhang, R. Car and A. Selloni, *Chem. Sci.*, 2020, **11**, 2335–2341.
- 34 C. Chen and S. P. Ong, *Nat. Comput. Sci.*, 2022, **2**, 718–728.
- 35 Y. Kang, H. Park, B. Smit and J. Kim, *Nat. Mach. Intell.*, 2023, **5**, 309–318.
- 36 Y. Zuo, C. Chen, X. Li, Z. Deng, Y. Chen, J. Behler, G. Csányi, A. V. Shapeev, A. P. Thompson and M. A. Wood, *et al.*, *J. Phys. Chem. A*, 2020, **124**, 731–745.
- 37 R. Jinnouchi, F. Karsai, C. Verdi, R. Asahi and G. Kresse, *J. Chem. Phys.*, 2020, **152**, 234102.
- 38 R. Jinnouchi, J. Lahnsteiner, F. Karsai, G. Kresse and M. Bokdam, *Phys. Rev. Lett.*, 2019, **122**, 225701.
- 39 C. Verdi, F. Karsai, P. Liu, R. Jinnouchi and G. Kresse, *npj Comput. Mater.*, 2021, **7**, 1–9.
- 40 G. Zhao, Y. Zhang, Z. Gao, H. Li, S. Liu, S. Cai, X. Yang, H. Guo and X. Sun, *ACS Energy Lett.*, 2020, **5**, 1022–1031.
- 41 S. Chandra, T. Kundu, S. Kandambeth, R. BabaRao, Y. Marathe, S. M. Kunjir and R. Banerjee, *J. Am. Chem. Soc.*, 2014, **136**, 6570–6573.
- 42 C. R. DeBlase, K. E. Silberstein, T.-T. Truong, H. D. Abruña and W. R. Dichtel, *J. Am. Chem. Soc.*, 2013, **135**, 16821–16824.
- 43 G. Kresse and J. Furthmüller, *Phys. Rev. B: Condens. Matter Mater. Phys.*, 1996, **54**, 11169.
- 44 J. Hafner and G. Kresse, *Properties of Complex Inorganic Solids*, Springer, 1997, pp. 69–82.
- 45 J. P. Perdew, K. Burke and M. Ernzerhof, *Phys. Rev. Lett.*, 1996, **77**, 3865.
- 46 P. Bultinck, C. Van Alsenoy, P. W. Ayers and R. Carbó-Dorca, *J. Chem. Phys.*, 2007, **126**, 144111.
- 47 R. Scott, *Computer Simulation of Liquids*, 1991.
- 48 P. Liu, C. Verdi, F. Karsai and G. Kresse, *Phys. Rev. Mater.*, 2021, **5**, 053804.
- 49 A. P. Bartók, R. Kondor and G. Csányi, *Phys. Rev. B: Condens. Matter Mater. Phys.*, 2013, **87**, 184115.
- 50 A. M. Evans, M. R. Ryder, W. Ji, M. J. Strauss, A. R. Corcos, E. Vitaku, N. C. Flanders, R. P. Bisbey and W. R. Dichtel, *Faraday Discuss.*, 2021, **225**, 226–240.
- 51 S. Plimpton, *J. Comput. Phys.*, 1995, **117**, 1–19.
- 52 S. Nosé, *J. Chem. Phys.*, 1984, **81**, 511–519.
- 53 W. G. Hoover, *Phys. Rev. A*, 1985, **31**, 1695.
- 54 M. Martnez-Abada, C. T. Stoppiello, K. Strutynski, B. Lerma-Berlanga, C. Mart-Gastaldo, A. Saeki, M. Melle-Franco, A. N. Khlobystov and A. Mateo-Alonso, *J. Am. Chem. Soc.*, 2019, **141**, 14403–14410.
- 55 S. P. Ong, W. D. Richards, A. Jain, G. Hautier, M. Kocher, S. Cholia, D. Gunter, V. L. Chevrier, K. A. Persson and G. Ceder, *Computational Mater. Sci.*, 2013, **68**, 314–319.
- 56 Y. Zhang, M. Položij and T. Heine, *Chem. Mater.*, 2022, **34**, 2376–2381.

