

## PAPER

View Article Online  
View Journal | View Issue



Cite this: *Environ. Sci.: Processes Impacts*, 2021, 23, 1158

## Uptake of perfluorinated alkyl acids by crops: results from a field study†

Sebastian Felizeter,<sup>‡a</sup> Heinrich Jüring,<sup>b</sup> Matthias Kotthoff,<sup>§b</sup> Pim De Voogt<sup>ac</sup> and Michael S. McLachlan<sup>id \*d</sup>

Four crops with different edible plant parts (radish, lettuce, pea and maize) were grown in outdoor lysimeters on soil spiked with 13 perfluorinated alkyl acids (PFAAs) at 4 different levels. PFAA concentrations were measured in soil, soil pore water, and different plant parts at harvest. Edible part/soil concentration factors ranged over seven orders of magnitude and decreased strongly with increasing PFAA chain length, by a factor of 10 for each additional fluorinated carbon ( $n_{CF}$ ) for pea. Three processes were responsible for most of the variability. The first was sorption to soil; calculating whole plant concentration factors on the basis of concentration in pore water instead of soil reduced the variability from five orders of magnitude to two. Second, the journey of the PFAAs with the transpiration stream to the leaves was hindered by retention in the roots driven by sorption; root retention factors increased by a factor 1.7 for each  $n_{CF}$ . Third, transfer of PFAAs from the leaves to the fruit via the phloem flow was also hindered – presumably by sorption; fruit/leaf concentration factors decreased by a factor 2.5 for each  $n_{CF}$ . A simple mathematical model based on the above principles described the measured concentrations in roots, leaves, fruits and radish bulbs within a factor 4 in most cases. This indicates that the great diversity in PFAA transfer from soil to crops can be largely described with simple concepts for four markedly different species.

Received 25th April 2021

Accepted 5th July 2021

DOI: 10.1039/d1em00166c

rsc.li/espi

### Environmental significance

Due to their persistence and hydrophilicity, many PFAAs have a strong potential to be taken up from soil into plants and to accumulate in foliage. There they can harm the plant and enter the food web, contributing to exposure of higher organisms including humans. Here we show that sorption to soil is the major process modulating plant uptake of PFAAs. Furthermore, we show that accumulation in the plant occurs primarily where the water is lost (in the leaves), while transport from there to fruits is inversely correlated with the tendency of the PFAA to sorb (chain length). Finally, we present a model that provides a simple framework for understanding and assessing PFAA accumulation in plants.

## Introduction

In addition to having been detected ubiquitously in several environmental compartments including water,<sup>1,2</sup> biota<sup>3</sup> and the atmosphere,<sup>4</sup> perfluorinated alkyl acids (PFAAs) have also been found in human blood serum and breast milk.<sup>5–8</sup> Because of their known and suspected toxic effects,<sup>9–11</sup> it is important to

understand the pathways of human exposure to minimize the risk for exposure and possible adverse health effects. The European Food Safety Authority therefore established tolerable daily intakes (TDIs) for perfluorooctanoic acid (PFOA), and perfluorooctane sulfonic acid (PFOS) in response to concerns about these chemicals.<sup>12</sup> They recently revised these TDIs and established a new and much lower tolerable weekly intake rate of 4.4 ng per kg bw per week for the extended group of PFOA, PFNA, PFHxS and PFOS.<sup>13</sup> Food has been identified as the main source of human exposure,<sup>14–19</sup> and crops are one possible vector for PFAAs into the food supply. PFAAs are taken up by crops when grown in soil that has been contaminated, for instance via water reuse irrigation or biosolids application,<sup>20,21</sup> and there are two known cases where agricultural sites have been widely contaminated with PFAAs in Germany.<sup>22,23</sup> The aim of the presented work is to further our understanding of how PFAAs are transferred from soils to crops.

Current knowledge of plant uptake of PFAAs has been summarized in several recent reviews.<sup>24–26</sup> In early research on

<sup>a</sup>Universiteit van Amsterdam, Institute for Biodiversity and Ecosystem Dynamics, Science Park 904, 1098XH Amsterdam, The Netherlands

<sup>b</sup>Fraunhofer Institute for Molecular Biology and Applied Ecology (IME), Schmallingenberg, Germany

<sup>c</sup>KWR Water Research Institute, 3430BB Nieuwegein, The Netherlands

<sup>d</sup>Department of Environmental Science (ACES), Stockholm University, 106 91 Stockholm, Sweden. E-mail: michael.mclachlan@aces.su.se

† Electronic supplementary information (ESI) available: Additional graphics and tables as mentioned. See DOI: 10.1039/d1em00166c

‡ Current address: Eurofins Dr. Specht International GmbH, Hamburg, Germany.

§ Current address: Hamm-Lippstadt University of Applied Sciences, Department 2, Hamm, Germany.



this subject, Stahl *et al.*<sup>20</sup> and Lechner *et al.*<sup>27</sup> showed that the concentration of PFOA and PFOS in the vegetative parts of several crops was linearly proportional to the concentration in the soil they were grown in. Yoo *et al.* found that the foliage/soil concentration factors of C6–C14 perfluoroalkyl carboxylic acids (PFCAs) in grass decreased logarithmically with increasing chain length, while the foliage/soil pore water concentration factors increased with chain length.<sup>28</sup> This evidence for a pronounced influence of soil-pore water partitioning on uptake was supported by Blaine *et al.*, who found that uptake by crops varied between soils.<sup>29</sup> In another field experiment Blaine and coworkers studied the distribution of C4–C10 PFAAs in four crops. They found that root/soil concentration factors (RCF<sub>s</sub>) varied little or not at all with chain length, but in agreement with Yoo *et al.* they found that both the shoot/soil concentration factors and the fruit/soil concentration factors decreased with increasing chain length, the first by 0.11–0.36 log units per CF<sub>2</sub> group, the second by 0.54–0.58 log units. They incorporated these relationships into a simple conceptual model of PFAA uptake, attributing the lower accumulation of longer chained PFAAs in fruit compared to roots and shoot to an increased number of biological barriers that must be crossed (*e.g.* the cambium during loading into the phloem for transport to the fruit, and the Casparian strip separating root epidermis and cortex from root vascular tissue).<sup>30</sup> Wen *et al.*, on the other hand, postulated that transport within the plant was mediated by the sorption of PFAAs to plant tissue and explored correlations between shoot/soil and root/soil concentration factors and the lipid and protein content of the respective tissue.<sup>31</sup>

Further mechanistic insight into plant uptake of PFAAs can be obtained by studying hydroponic systems without the influence of soil. Transport of organic chemicals from the root zone to foliage is governed by the transpiration stream concentration factor (TSCF, the quotient of the concentration in the xylem flow and that in the nutrient solution) and the quantity of water transpired.<sup>32–34</sup> In hydroponic experiments the TSCFs for C4–C11 PFCAs were similar in tomato, cabbage and zucchini and only weakly influenced by chain length, varying by less than a factor of 2.5 within a given species.<sup>35</sup> In a hydroponic study with grass, the foliage-solution accumulation factors also varied by less than a factor 2.5 for C4–C10 PFAAs.<sup>36</sup> This suggests that the combined effects of biological barriers hindering PFAA uptake into the root and sorption to root vascular tissue retarding transport to foliage are similar across chain lengths and between species. Lettuce, on the other hand, showed a decidedly different, V-shaped, chain length dependency, with TSCF values for perfluorododecanoic acid (PFDoDA) that were 6 times greater than for perfluoroheptanoic acid (PFHpA) suggesting the presence of a chain length specific barrier to root uptake.<sup>37</sup> Salinity and temperature were shown to be positively correlated with PFAA uptake rate, whereby this was attributed to the influence of these variables on transpiration rate.<sup>38</sup> Concerning accumulation in roots, root uptake factors from soil calculated on the basis of concentrations in pore water were up to two orders of magnitude lower than root uptake factors for the same crop (lettuce) in a hydroponic exposure. This was attributed to lower sorption to the roots surface as

a result of competition from other molecules in the pore water and indicates that hydroponic experiments are of limited value for studying accumulation in roots.<sup>39</sup> It has also been suggested that differences in root development between hydroponic and soil growing conditions lead to differences in PFAA accumulation.<sup>40</sup>

Despite this wealth of research, there is still limited understanding of the dominant factors controlling uptake of PFAAs from soil into edible plant parts under real-world exposure conditions. To contribute to progressing knowledge in the area, we grew four crops in outdoor lysimeters containing soil spiked with PFAAs. Radish, lettuce, pea and maize were chosen because their edible parts come from different parts of the plant (roots *vs.* leaves *vs.* pulses *vs.* cereal grain). A broad range of PFAAs was studied: 11 PFCAs (C4–C14) and 2 perfluoroalkane sulfonates (C4 and C8). Five lysimeters were used for each crop, four of which were spiked at different PFAA levels plus one non-spiked control. The different plant parts (roots, stems, leaves, *etc.*) were analyzed separately. Uptake factors based on PFAA concentrations in soil and pore water were calculated and compared across chain length and species.

## Materials and methods

### Chemical reagents and lab materials

The names, abbreviations and molecular formulas of the test chemicals, their suppliers and purities, and the <sup>13</sup>C-labeled internal standards used for their quantification can be found in Tables S1 and S2 of the ESI.† All standards had a purity >95%.

Materials used for extraction and clean-up of the samples included Florisil SPE cartridges (1000 mg, 6 mL) from Applied Separations (Allentown, PA, USA); Acrodisc LC13 GHP Pall 0.2 µm filters from Pall Corporation (Port Washington, NY, USA); 50 and 15 mL polypropylene (PP) tubes with screw caps from Sartstedt (Nümbrecht, Germany); and Supelclean ENVI-Carb 120/140 from Supelco (Bellefonte, PA, USA). Tetrabutylammoniumhydrogensulfate and sodium hydrogencarbonate were purchased from Merck (Darmstadt, Germany). Sodium carbonate and ammonium hydroxide ACS reagent were from Sigma Aldrich; 2.0 and 0.3 mL PP vials were purchased from VWR International (Amsterdam, Netherlands). Centrifugation filter tubes (50 mL, 0.2 µm nylon filter) were obtained from Grace (Breda, Netherlands). For solvents see Table S1.†

### Field experiment

The field experiment was conducted at the Fraunhofer Institute for Molecular Biology and Applied Ecology in Schmallenberg, Germany (51.15N, 8.29E) between June and October 2011. Each plant species was grown in 5 lysimeters, one containing soil with background concentrations of PFAAs (non-spiked), and 4 spiked with a mixture of PFAAs in which each PFAA had a nominal concentration in soil of 0.1 mg per kg dw, 1 mg per kg dw, 5 mg per kg dw and 10 mg per kg dw, respectively. For comparison, the PFOA and PFOS concentrations measured in contaminated agricultural soil in Arnsberg (51.41N, 8.05E), ~30 km from Schmallenberg, were ~1 mg per kg dw.<sup>22</sup> The



lysimeters had a surface area of 1 m<sup>2</sup> and a total depth of 60 cm and were each filled with ~450 kg sand (30–60 cm depth) and ~450 kg of loamy sand (0–30 cm depth; 71% sand, 24% silt, 5% clay, pH 5.67, organic carbon content 0.93%). This resembled a typical soil in northwestern Germany. The soil used for the upper layer is available as a reference soil (Refesol 01-A) from Fraunhofer IME ([www.refesol.de/boden01a.shtml](http://www.refesol.de/boden01a.shtml)). The lysimeters were outdoors and unprotected (see Fig. S1†). Precipitation was measured with a rain gauge located close to the lysimeters (Table S3†).

The spiking of the soil was described in a previous paper.<sup>41</sup> Briefly, a stock solution was prepared containing equal concentrations of all PFAAs. This stock solution was spiked into 2 kg of soil which was homogenized and then mixed with approx. 90 kg of soil in a concrete mixer to achieve the desired concentration. This was repeated 5 times for each layer in each lysimeter. Samples were taken from each batch and combined to determine the final PFAA concentration in the soil of each lysimeter.

The lysimeters were planted with onion, carrot, radish, lettuce, pea, bean or maize (Table 1). Each crop was planted in one lysimeter of each spiked soil level. Onion, carrot and radish were planted together as were pea and bean, while lettuce and maize were the only crops in their respective lysimeters. Within one week of preparing the spiked soil, 6 bean seeds, 20 radish seeds, 20 onion seeds, 20 carrot seeds and 6 pea seeds plus 9 maize seedlings and 20 lettuce seedlings (pre-grown in uncontaminated soil) were planted in the respective lysimeters (on June 21, 2011). The lysimeters were watered after planting, and kept humid by natural precipitation and additional watering if needed (see Table S3† for water inputs).

Onion, carrot and bean did not germinate in either the exposed or the control lysimeters. The other plants were harvested at maturity (see schedule in Table S4†). At harvest soil samples were also taken. The soil samples were collected with a corer for lettuce, pea and maize. The soil core was separated into the upper (30 cm loamy sand) and lower (30 cm sand)

layers, and the soil was packed in freezer bags and stored at –20 °C until analysis. It was not possible to sample the lower soil layer in some of the lysimeters. Consequently, only the results for the upper soil layer are presented here. For radish only the top 1–2 cm of the soil were sampled, because at the time of radish harvest it was still hoped that the onions and carrots seeded in the same lysimeters would germinate. The whole plant was harvested and divided into plant parts as detailed in Table 1. All plant parts were packed in polyethylene freezer bags and stored at –20 °C until analysis.

## Extraction

Root and radish bulb samples were gently washed (no brushes were used) under running demineralized water to remove adherent soil and afterwards dried superficially by patting with kitchen towels. No cleaning of the other plant samples was necessary. The material was homogenized with a household blender (Braun Multiquick MX 2050). For the extraction of the PFAAs from the samples, the method by Hansen *et al.*<sup>42</sup> was used with modifications proposed by Vestergren *et al.*,<sup>43</sup> as described in our previous work.<sup>35,37</sup> Briefly, 10 g of the homogenate were weighed in a 50 mL PP tube, spiked with isotope-labeled surrogate standards and mixed with 5 mL of 0.4 M NaOH solution. The samples were then left in the fridge overnight to allow the internal standards to distribute in the slurry. Next, the samples were mixed with 4 mL of 0.5 M tetrabutylammonium hydrogen sulfate solution and 5 mL of a carbonate buffer (0.25 M Na<sub>2</sub>CO<sub>3</sub>/NaHCO<sub>3</sub>) and extracted with 10 mL methyl *tert*-butyl ether (MTBE). After centrifugation for 10 minutes at 3000 rpm and room temperature the MTBE phase was transferred to a new 50 mL PP tube and the extraction with MTBE was repeated two times. The extracts were combined and concentrated to approximately 2 mL using a Rapidvap (Labconco Corp., Kansas City, MO, USA). After a clean-up step using Florisil SPE-cartridges to remove non-polar matrix, the final extract was evaporated to 1 mL using a Rapidvap. If the extract was still strongly colored then an additional clean-up step following the Powley method with ENVI-Carb was added.<sup>44</sup>

For the analysis of PFAAs in soil, the soil was dried in an oven at 40 °C until no further weight loss was recorded. After homogenization, 1 g of soil was weighed in a 15 mL PP tube and spiked with internal standards. The soil was then extracted with 10 mL MeOH by vortex mixing for 1 minute and sonication for 10 minutes. The supernatant after centrifugation (10 min, 3000 rpm) was transferred to a new 15 mL PP tube and concentrated in the Rapidvap. The extraction was repeated twice with 5 mL MeOH. The extracts were combined and concentrated in the Rapidvap to a final volume of 1 mL.

For pore water analysis, 20 g of the soil was put in a 50 mL centrifugation filter tube with a 0.2 µm nylon filter. After 20 minutes of centrifugation at 2000 rpm, 0.5 mL of pore water was transferred to a vial. The internal standards and MeOH were added to achieve a final volume of 1 mL.

All final extracts were passed through an Acrodisc LC 13 GHP Pall nylon filter into 2 mL PP vials and stored at 4 °C until analysis.

Table 1 Summary of the field experiment

Crop	Soil concentration (nominal, mg kg <sup>-1</sup> )	Plant compartments sampled
Onion ( <i>Allium cepa</i> )	B <sup>a</sup> , 0.1, 1, 5, 10	Did not germinate
Carrot ( <i>Daucus carota</i> )	B <sup>a</sup> , 0.1, 1, 5, 10	Did not germinate
Radish ( <i>Rapahnus sativus</i> )	B <sup>a</sup> , 0.1, 1, 5, 10	Roots, bulb, foliage
Lettuce <sup>b</sup> ( <i>Lactuca sativa</i> )	B <sup>a</sup> , 0.1, 1, 5, 10	Roots, foliage
Pea ( <i>Pisum sativum</i> )	B <sup>a</sup> , 0.1, 1, 5, 10	Roots, stem, twigs, leaves, pods, peas
Bean ( <i>Phaseolus vulgaris</i> )	B <sup>a</sup> , 0.1, 1, 5, 10	Did not germinate
Maize ( <i>Zea mays</i> )	B <sup>a</sup> , 0.1, 1, 5, 10	Roots, stem, leaves, hull leaves, cobs, kernels

<sup>a</sup> B = the background contamination present in the test soil. <sup>b</sup> The results for lettuce have already been published in a comparison of PFAA uptake under hydroponic and soil growing conditions.<sup>39</sup>



## Analysis

For PFAA analysis an HPLC system (LC-20AD XR pump, SIL-20A autosampler and SCL-10A VP system controller, Shimadzu, Kyoto, Japan) coupled with a tandem mass spectrometer (4000 QTrap, Applied Biosystems, Toronto, Canada) was used. A pre-column (Pathfinder 300 PS-C<sub>18</sub> column, ID 4.6 mm; length 50 mm; 3 µm particle diameter; Shimadzu, Duisburg, Germany) prior to the injection valve was used to remove potential background contamination.

The analytes were separated on an ACE 3 C18-300 column (ID 2.1 mm; length 150 mm; 3 µm particle diameter; Advanced Chromatography Technologies, Aberdeen, Scotland) maintained at 30 °C with a mobile phase gradient consisting of two eluents A (40 : 60 MeOH : H<sub>2</sub>O, v/v) and B (95 : 5 MeOH : H<sub>2</sub>O; v/v), both with 2 mM ammonium acetate. The gradient used for separation and the mass transitions as well as other mass spectrometer settings can be found in our previous papers.<sup>35,37,39</sup> The mass spectrometer was equipped with an electrospray ionization interface operating in the negative ionization mode, and it was run in the scheduled MRM-mode.

The purified extracts were diluted 1 : 1 with UPLC grade water prior to analysis to match the injection conditions of the HPLC. As pore water samples already had a water : methanol ratio of 1 : 1, no further dilution was performed for these samples. A volume of 20 µL was injected.

Raw data were processed with the Analyst 1.5 software package (Applied Biosystems).

## Quality assurance and control

Each sample was extracted in duplicate and each extract was injected in duplicate. The relative standard deviation of the concentrations derived from these four injections was <10% for all analytes in all samples.

Concentrations were quantified using a twelve-point calibration, with  $R^2 > 0.99$  for all analytes; no weighting was applied. Further information on quality assurance and quality control is provided in our previous studies.<sup>35,37</sup>

Recoveries were determined by comparison with a matrix free solution spiked with internal standard immediately prior to injection. Average recoveries of the internal standards in the samples were between 22% (PFBA) and 112% (PFDoDA) (see Table S5†). Despite the low recovery of PFBA, the use of an isotope labeled PFBA surrogate standard provided for satisfactory data quality as evidenced by good method repeatability.

Limits of quantification (LoQs) (Table S6†) were calculated on the basis of the lowest validated calibration standard (signal noise ratio  $\geq 10$ ). They were derived from the amount injected back calculated to an extract volume of 1 mL and divided by the average extracted sample quantity. A method blank (beginning with simulated extraction without matrix) was prepared with every batch of samples; these blanks showed no quantifiable contamination. Solvent blanks were injected every ten injections to check for contamination of the LC system and for memory effects, but no contamination or memory effects were observed during the study.

All PFAA concentrations from the non-spiked lysimeters (in plant parts as well as in soil or pore water) were subtracted from the concentrations in the spiked lysimeters. This corrected for any impact of atmospheric deposition or other sources besides soil on PFAA levels in the plants. Resulting concentrations below the LoQ were neglected.

Since PFOS is the only compound for which branched isomers were included in the standards used for the calibration curve, branched isomers could only be quantified for PFOS. All reported PFOS concentrations are sum concentrations of non-branched and branched isomers.

## Results and discussion

Radish and lettuce plants grown in the highest exposure level soil were markedly smaller at the time of harvest than those growing in the lower exposure levels, suggesting that the PFAAs had phytotoxic effects (see Fig. S2† and Felizeter *et al.*<sup>39</sup>). Results for radish and lettuce from the highest exposure level were therefore not used in the data interpretation. Pea and maize plants showed no visible signs of phytotoxicity.

### PFAA fate in soil

After spiking, the concentrations in soil were generally within the intended concentration range (Table S7†). At harvest, concentrations in soil of the shortest chain PFAAs, the C4–C6 PFCAs and PFBS, were almost reduced to background concentrations through the whole soil column (<3% of the initial mass remaining, Table S8†). A large fraction of the short chain PFAAs was recovered in the drainage water, illustrating the transient nature of surface soil contamination with these substances.<sup>41</sup> From this perspective, lysimeter studies can provide a more realistic simulation of plant uptake than laboratory hydroponic or pot experiments with constant exposure concentrations. In contrast to the shortest chain PFAAs, 80–90% of the spiked PFDoDA, PFTrDA and PFTeDA was found in the soil at the harvest date. The mid-chain length compounds (PFOA, PFNA and PFOS) generally had the highest concentrations in soil pore water (Table S9†).

The behavior of PFAAs in the lysimeter soil was analyzed in another paper.<sup>41</sup> We showed that leaching was the dominant process for the loss of the short-chain PFAAs from the soil. Furthermore, leaching occurred at a faster rate than expected from calculated  $K_D$  values, and this accelerated leaching was greater when the initial spiked soil concentration level was higher. We attributed the accelerated leaching to interactions between the PFAAs related to competition for sorption sites in the soil. Analysis of the leachate collected from the lysimeters suggested that leaching occurred primarily at the beginning of the experiment. Additionally, lower rainfall towards the end of the experiment resulted in more stable conditions. The evidence indicates that soil concentrations were more stable towards the end of the experiment.

### Concentration factors

To evaluate the plant uptake of the PFAAs, concentration factors were calculated for the different plant tissues on the basis of the





sampled exposure media, soil and pore water ( $\text{ng g}^{-1}$  ww plant tissue/ $\text{ng g}^{-1}$  dw soil, or  $\text{ng g}^{-1}$  ww plant tissue/ $\text{ng mL}^{-1}$  pore water, respectively). Soil and pore water concentrations were only available for the start and the end of the experiment. We used the soil and pore water concentrations at the end of the experiment (*i.e.* date of harvest) for the calculation of concentration factors because the bulk of transpiration and hence pore water uptake occurred during the latter part of the growth period. Soil concentrations were judged to have been more stable during this period, but it is nevertheless possible that the concentration factors were overestimated for the shorter chained PFAAs for which the concentration in soil decreased over the experiment (see above). As the soil sampled from the radish lysimeters was from the top 1–2 cm only (see above) and not representative for the root zone, the concentration in these samples was not used. The PFAA concentrations in surface soil at harvest were comparable between crops for most PFAAs, except for the concentrations of the shorter chained PFAAs which tended to decrease over time. Since lettuce was the first crop sampled after radish, the concentrations in soil from the lettuce lysimeters were used to evaluate the radish results.

### Effect of exposure concentration

The PFAA concentrations in the different tissues for each of the different plants and exposure concentrations are reported in Tables S10–S13.† In the literature, the uptake of PFAAs by plants has generally been observed to be linearly correlated with exposure concentration.<sup>20,27,29,35,37,45,46</sup> However, in hydroponic studies we observed lower root concentration factors for C7–C14 PFCAs and PFOS at  $10 \text{ ng mL}^{-1}$  compared to lower exposure concentrations.<sup>35,37</sup> Although we had higher pore water concentrations in the present study (Table S9†), there was no consistent pattern of lower root concentration factors at higher exposure levels for these PFAAs (Tables S14 and S15†). This indicates that the non-linear root – pore water isotherms observed under hydroponic conditions cannot be extrapolated to soil systems. We therefore averaged the concentration factors from all exposure levels for our evaluation. The geometric mean was used because concentration factors are logarithmically distributed. Concentration factors for each exposure level can be found in Tables S14–S19.† It was not possible to retrieve any pore water from the pea lysimeters at the time of harvest, so concentrations in pore water from the lettuce lysimeters were used for calculating pore water-based concentration factors for pea.

Differences in the log concentration factor were statistically assessed using the *t*-test (two tailed, two sample unequal variance, significance threshold  $p < 0.05$ ) in Excel (Microsoft). However, due to the limited number of data points (max. 4 per species and compound) the explanatory power of the statistical analysis is limited.

### Accumulation in edible plant parts

Of primary interest for human exposure is accumulation in edible plant parts. Edible plant part concentration factors referenced to soil ( $\text{ECF}_s$ ) were calculated for radish bulbs,

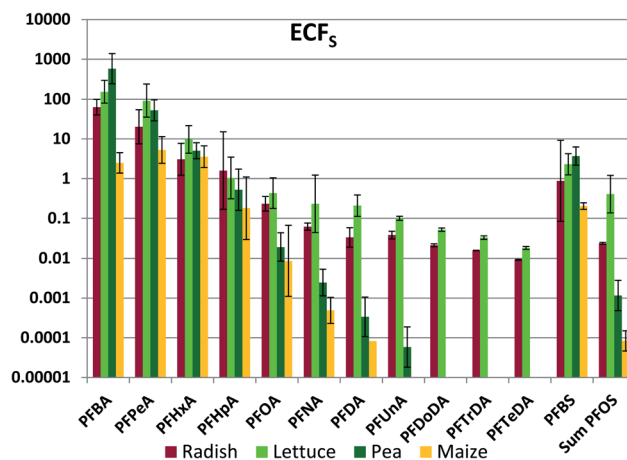


Fig. 1 Edible part concentration factor based on concentration in soil ( $\text{ECF}_s$ , kg soil dry weight per kg edible part fresh weight). The average and standard deviation from experiments conducted at different exposure levels are shown, assuming a log-normal distribution. In cases with no error bars,  $\text{ECF}_s$  could be determined in just one exposure level.

lettuce leaves, peas and maize kernels (Fig. 1, Table S16†). Very large variability was observed between the different PFAAs, with  $\text{ECF}_s$  ranging by as much as seven orders of magnitude for a given edible part. In addition, there were large differences between different edible parts for a given PFAA, in some cases in excess of three orders of magnitude. Within this great variability there was also evidence of systematic structure. In particular,  $\text{ECF}_s$  tended to decrease with PFAA chain length.

In order to explore the factors determining PFAA transfer to edible plant parts, we use a mechanistically-based framework. In this framework, uptake occurs from soil into the root, and this is the rate limiting step for accumulation in the plant. From there the transpiration stream transports the PFAAs through the roots and the stem to the leaves, where they accumulate due to evaporation of the transpired water. Transport into plant fruits originates in the leaves, where PFAAs enter the phloem and flow to fruit tissues. In alignment with this framework, we first examine the PFAA uptake into the whole plant. We then consider what fraction of this uptake is retained in the roots and the stem. Finally, we study the relationship between concentrations in fruits and leaves before assembling a mathematical model to describe the observations.

### Whole plant concentration factors

Whole plant concentrations  $C_p$  were calculated by summing the PFAA quantities in the different plant parts and dividing by the total plant biomass.  $C_p$  was used to determine whole plant concentration factor referenced to soil ( $\text{PCF}_s$ , Fig. 2, Table S17†). The between species variability in  $\text{PCF}_s$  was low; significant differences between species exceeding a factor two were observed only nine times: PFBA (between lettuce and pea), PFHxA (pea/corn), PFNA (radish/corn), PFDoDA (radish/all others) and PFBS (pea/all others) (Fig. 2). This is a quite remarkable finding. We had expected  $\text{PCF}_s$  to depend on plant



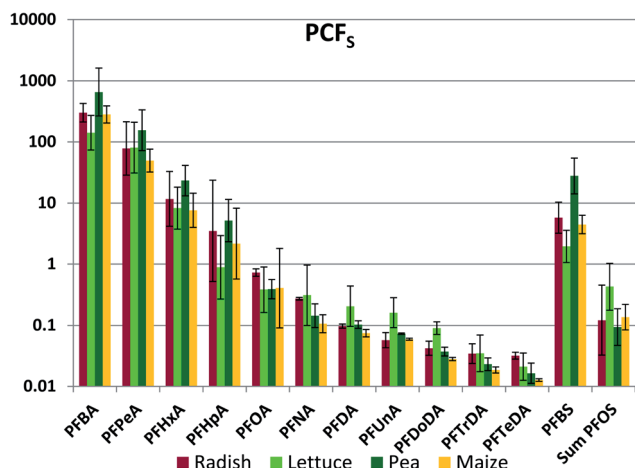


Fig. 2 Whole plant concentration factor based on concentration in soil ( $PCF_s$ , kg soil dry weight per kg plant fresh weight). The average and standard deviation from experiments conducted at different exposure levels are shown, assuming a log-normal distribution.

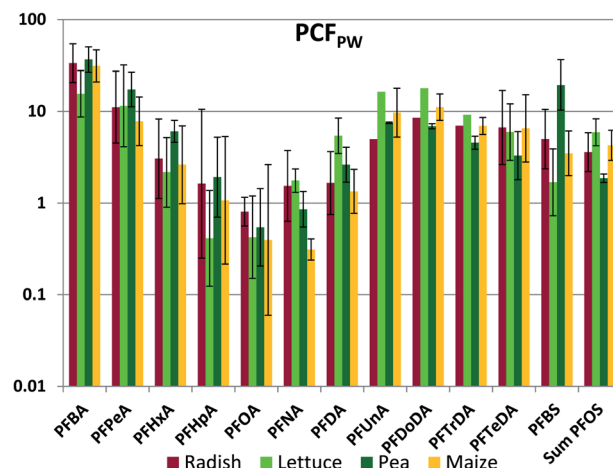


Fig. 3 Whole plant concentration factor based on concentration in pore water ( $PCF_{PW}$ , L pore water per kg plant fresh weight). The average and standard deviation from experiments conducted at different exposure levels are shown, assuming a log-normal distribution.

variables such as the cumulative amount of water transpired per unit plant biomass as well as species-specific differences in the barrier limiting PFAA transport across the root endodermis into the transpiration stream. Fig. 2 suggests that these factors did not differ greatly between the plants studied here.

The inter-chemical variability in  $PCF_s$  was large, ranging up to 4.5 orders of magnitude, but nevertheless considerably less than the inter-chemical variability in  $ECF_s$  (Fig. 2). There was a very consistent trend of decreasing  $PCF_s$  with increasing chain length for the PFCAs.  $PCF_s$  for the PFSAs corresponded to  $PCF_s$  for the PFCA with the same or a slightly longer perfluorinated chain;  $PCF_s$  for PFBS was similar to PFHxA, while  $PCF_s$  for PFOS was similar to PFNA/PFDA. Increasing chain length corresponds to increasing tendency of the PFAAs to sorb to the soil solids.<sup>41</sup> This suggests that the strong inverse relationship between  $PCF_s$  and chain length may have been a result of PFAA sequestration to soil solids reducing availability for uptake.

The whole plant concentration factor referenced to pore water ( $PCF_{PW}$ ) eliminates the influence of sorption to soil solids on the bioaccumulation metric.  $PCF_{PW}$  shows a much lower inter-chemical variability than  $PCF_s$  (Fig. 3, Table S18†).  $PCF_{PW}$  ranged over 1.5–2 orders of magnitude for a given species compared to 4 orders of magnitude for  $PCF_s$ . The variability between species was once again small, with significant differences observed for only five pairs: PFNA (lettuce/corn and pea/corn), PFBS (lettuce/pea and pea/corn) and PFOS (pea/corn). There was a pronounced chain length trend in mean  $PCF_{PW}$ , with similar  $PCF_{PW}$  for short and long chain lengths and decreasing  $PCF_{PW}$  towards intermediate chain lengths with a minimum in the vicinity of PFOA. The trends were overlain by pronounced  $PCF_{PW}$  variability between the exposure levels, so that there were few significant differences between PFAAs for radish and lettuce. However, for pea and maize the concentrations of PFOA (maize only) and PFOA (pea and maize) were significantly lower than most of the other PFAAs (Table S19†). The trends suggest that the uptake of the intermediate chain

length PFAAs across the root endodermis is restricted compared to the other PFAAs. However,  $PCF_{PW}$  for the shorter chain PFAA may be overestimated due to the uncertainty in the concentrations in pore water (see above), and  $PCF_{PW}$  for the longer chain PFAAs may contain a contribution from sorption to the root surface or contamination of foliage with soil particles (see below). Similar to  $PCF_s$ ,  $PCF_{PW}$  for the PFSAs corresponded to  $PCF_{PW}$  for the PFCA with a one  $CF_2$  unit longer perfluoroalkyl chain; PFBS was similar to PFHxA, while PFOS was similar to PFDA. The strong reduction in variability of  $PCF_{PW}$  (Fig. 3) compared to  $PCF_s$  (Fig. 2) demonstrates the dominant role that sorption to soil plays in regulating plant uptake of PFAAs.

One significant departure from the species similarity in  $PCF_{PW}$  is seen for PFHpA, which was 4–5 times lower in lettuce than in the other four species.  $PCF_{PW}$  was also lower in lettuce for PFHxA, PFOA and PFBS. This is consistent with measured transpiration stream concentration factors, which showed a pronounced V-shaped dependence with chain-length with a minimum at PFHpA that was more pronounced for lettuce than for other plant species.<sup>35,37</sup> A second significant departure is seen for PFNA in maize. In maize, the minimum for  $PCF_{PW}$  was shifted to the right from PFOA to PFNA.

### Retention in roots

Once having entered the roots from the soil, some portion of the chemical will be retained in the roots and some portion may be transported to the aerial plant parts with the transpiration stream. We assessed this using a root retention factor (RRF), defined as the fraction of the chemical mass in the whole plant at harvest that was present in the roots. RRF ranged from 99.5% (PFDoDA in maize) to 1% (PFBA in maize) (Fig. 4 (normal scale) and Fig. S3† (log scale), Table S20†). For a given PFAA the RRF was not significantly different between species for 50 out of 78 sample pairs (Table S21†), indicating that plant specific



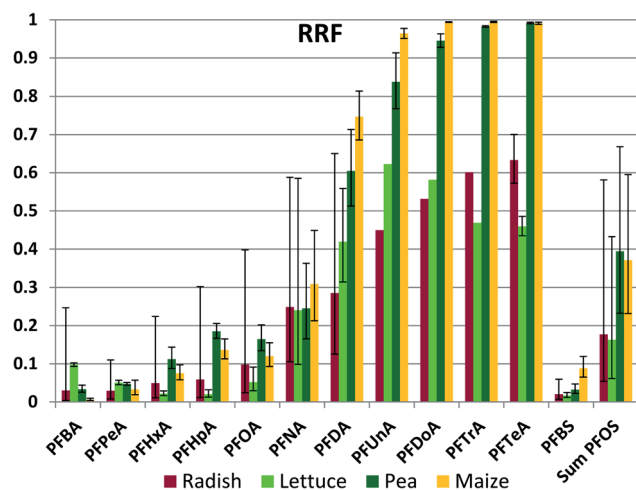


Fig. 4 Root Retention Factor (RRF), equal to the PFAA mass in the roots as a fraction of the PFAA mass in the whole plant. The average and standard deviation from experiments conducted at different exposure levels are shown, assuming a log-normal distribution. There are no error bars when  $n$  was  $\leq 2$ .

properties did not have a dominant influence on root retention. No species had an RRF that was greater than another species for all PFAAs. For a given plant species, RRF generally increased with chain length up to  $n_{CF} = 10$ , after which it remained approximately constant. This observation is consistent with the increase in sorption tendency of PFAAs with increasing  $n_{CF}$ ,<sup>41</sup> the longer chained PFAA sorb more strongly to root tissue after they are taken up, resulting in a smaller fraction being available for further transport with the transpiration stream. Once again, the RRFs for the PFSAAs corresponded to the RRF for the PFCA with the same or a slightly longer perfluorinated chain.

There are several notable exceptions to these trends. One is that RRF of the longer chained PFAAs ( $n_{CF} \geq 10$ ) is consistently lower for radish and lettuce than for pea and maize, in most cases significantly (Fig. 4, Table S21†). The latter two plants have RRFs of 99% for the longest chained PFAAs, while for radish and lettuce it is only 50–60%. Radish and lettuce also have a large fraction of the longest chained PFAAs in the leaves. This may be due to contamination of the leaves with soil particles by processes such as rain splash. A leaf/soil concentration factor of 0.1–0.25 kg dry soil per kg leaf dry weight (roughly equivalent to 0.01–0.025 kg dry soil per kg leaf wet weight) in leaves growing close to the soil has been observed for other organic contaminants that are not taken up appreciably *via* the roots.<sup>47</sup> Hence the lower RRFs for these plants may not reflect a lower root retention, but instead be an artifact arising from contributions of another uptake pathway to plant contamination.

A second exception is the significantly lower RRF for PFHxA, PFHpA, PFOA and PFBS in lettuce compared to pea and maize. As noted above,  $PCF_{PW}$  of these substances was also lower in lettuce compared to the other species, presumably due to more restricted uptake across the root endodermis. However, we could identify no mechanistic link that would explain a positive

relationship between uptake efficiency across the root epidermis and retention in root tissue. At this time we can offer no explanation for the weaker retention of these particular PFAAs in lettuce roots.

PFBA builds a third exception to the general trends in RRF. The differences in RRF between species exceed an order of magnitude. This may be due to the temporal variability in PFBA exposure. Due to its low  $K_D$ , PFBA was rapidly leached out of the soil. In addition, concentrations in pore water would be expected to increase as soil dries out since PFBA in pore water is not buffered by a sorbed fraction. Levels in roots will tend to reflect more recent exposure while levels in foliage represent cumulative exposure, so consequently a dynamic exposure situation can result in changing RRF values over time.

### Retention in stems

For pea and corn it was also possible to evaluate retention in stems. A stem retention factor (SRF) was calculated as the fraction of the PFAA mass in the above-ground plant parts that was present in the stem. Like the RRF, SRF increased with PFAA chain length, reflecting the increasing tendency of the PFAAs to sorb to plant tissue with increasing chain length (Fig. S4†). For the shorter chain PFAAs ( $n_{CF} \leq 7$ ) there was little variation in SRF with chain length and there was a marked difference between the two species ( $\sim 0.15$  in pea and 0.05 in maize). However, the stem played a minor role in the storage of these PFAAs in pea and maize.

### Distribution between leaves and edible plant parts

The bulk of the PFAAs in aerial plant parts was stored in the leaves (see Fig. S5†). This was expected, as PFAAs would be expected to accumulate at the location where water is lost from the plant. We anticipate that the leaves are the primary source of PFAAs in fruits because the molecular building blocks for the fruit are synthesized largely in leaves and then transported *via* the phloem to the fruit.<sup>48</sup> Edible plant part/leaf concentration factors (ELCFs) were calculated as the quotient of PFAA concentration in the edible plant part (radish bulbs, peas and maize kernels) and in the respective leaf or foliage sample (Fig. 5, Table S22†). ELCFs for pea and maize were similar, with only PFBA and PFBS being significantly different (lower for maize). For these crops the ELCF generally decreased with increasing  $n_{CF}$ . Interestingly, the plant parts enclosing peas and maize displayed a different accumulation pattern. The maize husk/leaf and maize cob/leaf concentration factors were relatively independent of  $n_{CF}$ , with log values of  $-1.47 \pm 0.16$  and  $-1.96 \pm 0.32$ , respectively, and pea pod/leaf concentration factors were independent of  $n_{CF}$  for  $n_{CF} \geq 6$  (Fig. S6 and S7†). Concentration factors calculated from PFAA measurements in corn leaves, husks, cobs and kernels made by Liu *et al.* were similar to our results with the exception of PFOS, which shows a unique behavior in their study (Fig. S8†). Liu *et al.* also studied soybean, and the pod/leaf and soybean/leaf concentration factors in their study were similar to our observations for pea pods and peas (Fig. S9†).<sup>49</sup> Blaine *et al.* measured PFAAs in pea



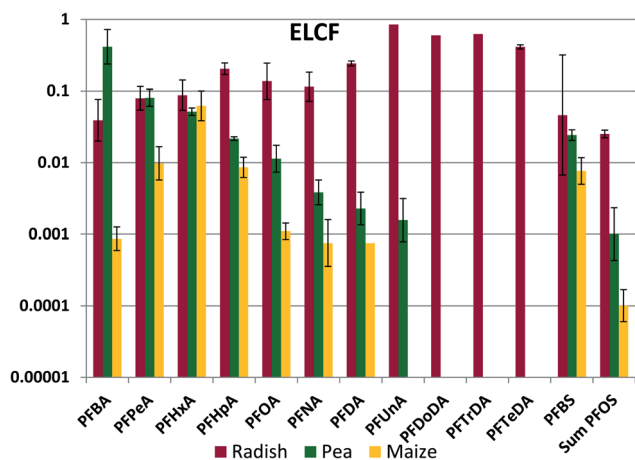


Fig. 5 Edible part to leaf concentration factor (ELCF, kg leaf fresh weight per kg edible part fresh weight). The average and standard deviation from experiments conducted at different exposure levels are shown, assuming a log-normal distribution.

shoots (stem + leaves) and fruit, and the derived pea pod/leaf concentration factors agreed quite well with ours (Fig. S9†).<sup>30</sup>

The lack of chain length dependence of the concentration factors for husks, cobs and pods suggest that the primary source of PFAAs to these tissues may be the same as the primary source to the leaves, namely the transpiration stream. The low values of the concentration factors (generally 0.01–0.04) could suggest much lower cumulative transpiration flow to these tissues than to the leaves. The pronounced chain length dependence for the peas, beans and kernels suggest that they have a different primary PFAA source. The chain length differentiation may arise during loading of the phloem. If there is no barrier preventing equilibration of PFAAs between the phloem contents and the freely dissolved fraction in the plant part where the phloem is loaded, then the phloem contents would contain a PFAA pattern that represents the freely dissolved fraction in the plant part, modified by any sorption occurring to solids in the phloem contents. If the sorption capacity of the phloem contents is lower than for the leaf as a whole, then the longer chained PFAAs will be more weakly represented in the phloem.

A pronounced chain length dependence of fruit/leaf concentration factors has been observed for other plants. For instance, we measured a log-linear relationship between the tomato fruit/leaf concentration factor and chain length in a hydroponic study, the concentration factor decreasing by three orders of magnitude from PFPeA to PFUnA, and similar trends were observed for tomato in two soil-based studies (see Fig. S10†).<sup>30,35,50</sup> However, not all crops show this pronounced chain length selection in PFAA transfer to edible plant parts. Little chain length dependence was observed in wheat grain/leaf (straw) concentration factors,<sup>51</sup> suggesting that other phenomena are governing transfer of PFAAs to grains.

In contrast to the other edible plant parts, the ELCF for radish showed no pronounced chain length dependence, varying around 0.1 for  $n_{CF}$  of 3–8 (Fig. 5). Similar values of ELCF were calculated from the measurements of Blaine *et al.*<sup>30</sup> and

Liu *et al.*,<sup>49</sup> with no chain length dependence for  $n_{CF}$  of 3–8 (Fig. S11†). Radish bulbs are in between the roots and the foliage of the radish plant, so it is likely that PFAAs also reached the bulbs *via* the transpiration stream (xylem) from the roots. The fraction of the total plant residue that was present in the bulb was similar for the different PFAAs, ranging between 0.16 and 0.40 with the exception of PFBA (0.11) and PFOS (0.06).

### A quantitative model of PFAA uptake into crops

The experimental results assembled here, with concentrations of 13 PFAAs in different tissues of four crop species exposed at four different levels, provided a large, internally consistent data set with which to explore the influence of different parameters on PFAA uptake in plants. We used this data to develop a simple quantitative empirical model of PFAA accumulation in roots, leaves, fruits and radish bulbs, taking into consideration the limitations in the data arising from the experimental design and information available in the literature.

**Uptake in the whole plant.** PFAA uptake into the plant is treated as the sum of two processes, uptake from soil *via* the roots and uptake from soil directly to foliage. The former is estimated using a function of  $PCF_{PW}$  versus  $n_{CF}$  based on Fig. 3, with constant  $PCF_{PW}$  for shorter and longer chain lengths and a V-shaped minimum centered at  $n_{CF} = 7$  (Table 2). Here and in the remainder of the model, an extra unit is added to  $n_{CF}$  of the PFSA's to account for their stronger sorption compared to the PFCA of equivalent  $n_{CF}$ . Uptake from soil directly to foliage is estimated using a soil-to-leaf concentration factor (SLCF) of 0.02 kg dry soil per kg leaf wet weight and applied only to plants growing close to the soil surface (here radish and lettuce).

$$N_P = N_{PR} + N_{PL} \quad (1)$$

$$N_{PR} = m_P PCF_{PW} C_{PW} \quad (2)$$

$$N_{PL} = m_L SLCF C_S \quad (3)$$

where  $N_P$  is the quantity of PFAA in the plant (mol),  $N_{PR}$  is the quantity of PFAA in the plant due to uptake *via* roots (mol),  $N_{PL}$  is the quantity of PFAA in the plant due to uptake *via* leaves (mol),  $m_P$  is the mass of the plant (kg wet weight),  $m_L$  is the mass

Table 2 Whole plant/pore water concentration factors  $PCF_{PW}$  (L kg<sup>−1</sup> wet weight) as a function of perfluorinated chain length  $n_{CF}$  used in the model. When modeling PFSA's, one unit was added to  $n_{CF}$

$n_{CF}$	$PCF_{PW}$
3	6
4	6
5	4.1
6	2.7
7	0.9
8	1.6
9	2
10	6
11	6
12	6
13	6





of the leaves (kg wet weight),  $C_{PW}$  is the PFAA concentration in pore water ( $\text{mol L}^{-1}$ ) and  $C_S$  is the PFAA concentration in soil ( $\text{mol kg}^{-1}$  dry soil).

**Concentration in roots.** The PFAA concentration in roots  $C_R$  ( $\text{mol kg}^{-1}$  wet weight) is calculated according to:

$$C_R = \frac{N_{PR} RRF}{m_R} \quad (4)$$

where  $m_R$  is the mass of the roots (kg wet weight) and RRF is defined by:

$$\log RRF = 0.21n_{CF} - 2.24 \quad (\max RRF = 1) \quad (5)$$

where this equation was determined from the data in Fig. S3† neglecting PFBA in all species and PFHxA, PFHpA and PFOA in lettuce.

**Concentration in leaves.** The PFAA concentration in leaves  $C_L$  ( $\text{mol kg}^{-1}$  wet weight) is calculated according to:

$$C_L = \frac{(1 - RRF)N_{PR} + N_{PL}}{m_L} \quad (6)$$

where  $m_L$  is the mass of the leaf (kg wet weight). This approach assumes that all of the residues not retained in the roots are retained in the leaves. This is clearly a simplification, but most of the residues were retained in the leaves for almost all substances (Fig. S4†). Hence, we judge this to be a reasonable approach to estimate  $C_L$ . Furthermore, the model cannot predict  $C_L$  for  $n_{CF} > 10$  since  $RRF = 1$ . However, the concentrations of these long-chained PFAAs in leaves are very low and unlikely to be of relevance for exposure assessment.

**Concentration in fruit.** The PFAA concentration in fruit  $C_F$  ( $\text{mol kg}^{-1}$  wet weight) is calculated according to:

$$C_F = \text{FLCF} C_L \quad (7)$$

where FLCF, the fruit/leaf concentration factor (kg wet weight per kg wet weight), is defined using a relationship derived from Fig. 5:

$$\log \text{FLCF} = -0.38n_{CF} + 0.33 \quad (8)$$

**Concentrations in bulbs.** The PFAA concentration in bulbs  $C_B$  ( $\text{mol kg}^{-1}$  wet weight) was derived from the radish bulb data and is calculated according to:

$$C_B = \frac{0.24N_{PR}}{m_B} \quad (9)$$

where  $m_B$  is the mass of the bulb (kg wet weight). This model assumes that 24% of the PFAA taken up from the soil is stored in the bulb.

**Model evaluation.** The ability of this simple model to describe the experimental observations was tested by calculating  $C_R$ ,  $C_L$ ,  $C_F$  and  $C_B$  from measured  $C_{PW}$  and  $C_S$  using the above equations and comparing the modeled values with the measured values for each PFAA at each exposure level in each species. Good agreement was obtained, with most of the modeled concentrations lying within a factor 3 ( $C_L$  and  $C_B$ ) or

factor 4 ( $C_R$  and  $C_F$ ) of the measured concentrations (Fig. 6). The simple model explains a very large portion of the variability in plant/soil concentration factors, which covered up to 7 orders of magnitude (Fig. 1). This indicates that the basic structure of the model, uptake into the roots followed by transport *via* the transpiration stream and accumulation in the leaves, captures the central features of PFAA behavior. Furthermore, the processes described in the model give an indication of the key factors controlling PFAA transfer from soil to plant parts. These are: (i) decreasing bioavailability in soil with increasing chain length (captured by using the concentration in pore water instead of soil as the driver for uptake); (ii) increasing retention of PFAAs in the roots (and hence decreasing transfer to the leaves) with increasing chain length (eqn (5)); (iii) decreasing transfer from leaves to fruits with increasing chain length (eqn (8)). Each of these three processes is governed by the sorption properties of the PFAAs. Since they act sequentially on the transfer of PFAAs from soil to fruit, there is a multiplicative effect that leads to the very strong influence of chain length on  $\text{ECF}_S$  seen in Fig. 1.

An independent evaluation of fruit-leaf model (eqn (8)) was performed by forecasting the concentrations in tomatoes and soybeans from concentration in tomato and soybean leaves using data from studies in the literature.<sup>35,49</sup> The agreement was better than a factor 4 for most of the 33 data points (Fig. S11†), but still poorer than the agreements for fruits from this study which were modeled from the PFAA concentration in pore water (Fig. 6c). We recall that there was no chain length dependence in wheat grain/leaf transfer factors<sup>51</sup> and hence the model cannot be expected to perform well for all fruits. Measurement of the leaf to fruit transfer of PFAAs for a broader spectrum of plant species is required.

The nature of the data points showing poor model-measurement agreement provides insight into which features of PFAA accumulation behavior are not captured well by the model. A considerable number of the poorly fitting data were for PFHxA, PFHpA, PFOA or PFBS in lettuce or for PFOA, PFNA or PFDA in maize (Fig. 6). In these cases, the poor agreement can be attributed to the shift in the minimum for  $\text{PCF}_{PW}$  from PFOA to PFHpA in lettuce and from PFOA to PFNA in maize (Fig. 3). For lettuce the deviation is amplified by lower RRF for the same substances (Fig. 4). In our model we have assumed that the dip in  $\text{PCF}_{PW}$  for mid-chain length PFAAs is the same for all species. This is clearly an oversimplification. Better understanding of this dip in  $\text{PCF}_{PW}$  and its variability between species is one key for improving our ability to describe PFAA accumulation in plants.

PFBA also generally showed poorer agreement than the other PFAAs (Fig. 6). This may be due to the particularly high uncertainty in exposure for this substance. Most of the other data points outside of the dotted lines were not grouped according to chemical or species, but rather reflected the experimental variability. We believe that the major source of experimental variability was the uncertainty in the concentrations in pore water during the growth period. In future work, more effort should be devoted to measuring the exposure over time.



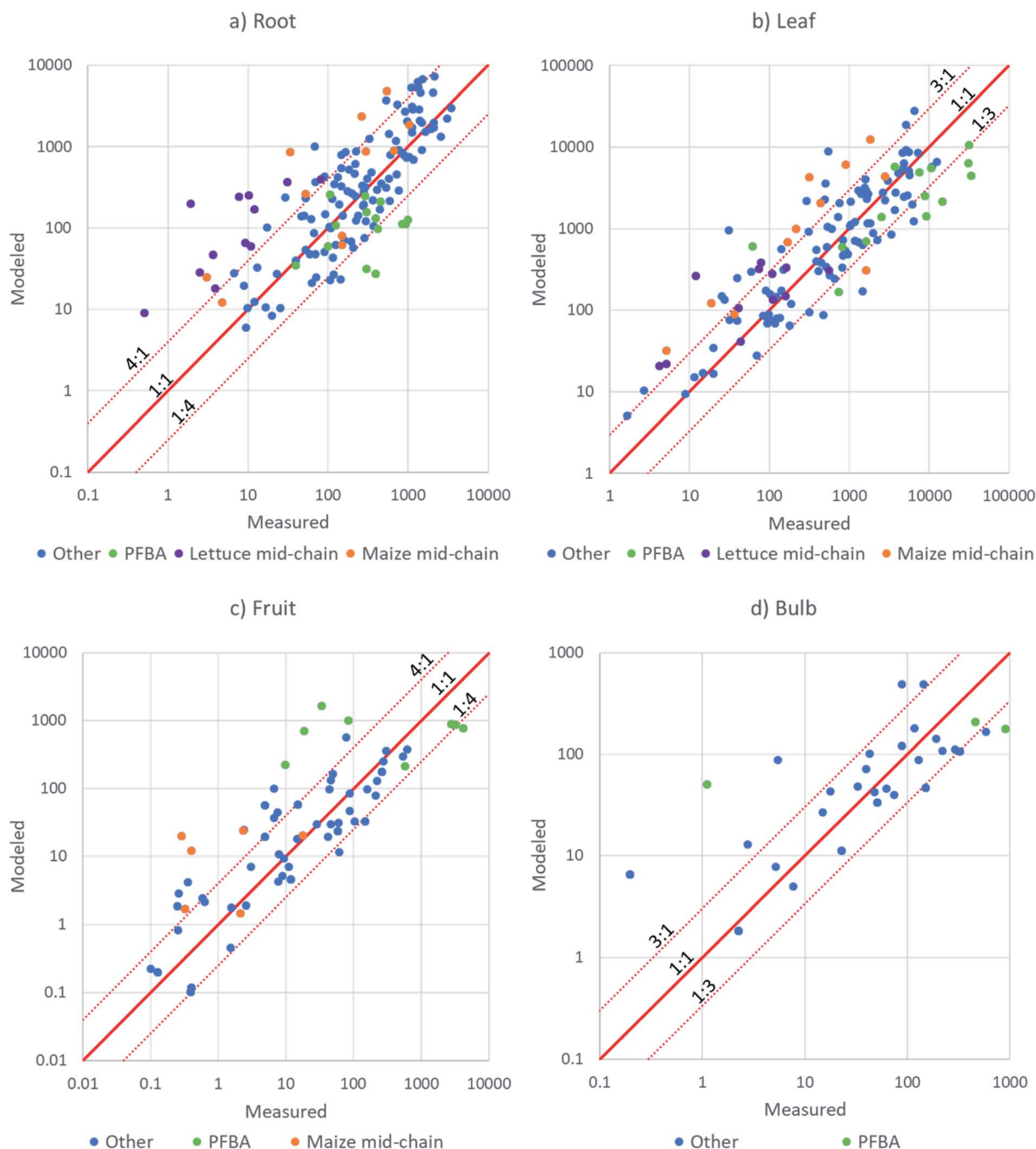


Fig. 6 X–Y plots of modeled versus measured PFAA concentration in: (a) roots; (b) leaves; (c) fruit; (d) radish bulb.

## Perspectives

In general, we found the highest concentrations in the leaves and the roots of the plants and the lowest in the fruit, regardless of the species. Hence leafy and root vegetables pose the highest risk for dietary exposure followed by fruit-bearing crops. This was also concluded by other studies, *e.g.* Blaine *et al.*<sup>30</sup> The concentrations in the leaves depend on the concentrations in the pore water, which reflect the bioavailable fraction in the soil.

When confronted with an agricultural soil with elevated PFAA concentrations, the type of crop posing the greatest risk

for exposure is dependent on which PFAAs are present in the soil. If long chained PFAAs are present, root vegetables like potatoes, carrots or radishes or crops for which the edible part can be in direct contact with the soil pose the highest risk for exposure, while the fruits of fruit-bearing crops will remain largely unaffected. If only short chain PFAAs are present in the soil then the differences between crops are smaller (see Fig. 1) and it may be difficult to identify a crop that will have lower concentrations in the edible part. In this case crops that are used for animal feed may be preferential, as a significant



portion of the PFAA will be removed from the human food chain due to incomplete absorption or metabolism in the livestock.<sup>52</sup>

The chain length dependence of soil to crop transfer is particularly relevant in the context of recent and ongoing changes in PFAA production. Manufacturers switched their production from C8-compounds towards shorter chain compounds<sup>53</sup> due to phase-out actions driven by adverse health effects and bioaccumulation in humans and wildlife.<sup>54,55</sup> From a bioaccumulation point of view this change is questionable as ECF<sub>s</sub> values are much higher for C4 than for C8 PFAAs (up to 30 000 times higher for pea, see Fig. 1). The shorter residence time of short chain PFAAs in soil means that crops will not be impacted for as long a period of time. However, the higher mobility of the short chain PFAAs in soil will lead to groundwater becoming contaminated faster and with higher concentrations. Farmers also often use groundwater from their own fields for irrigation. In such cases a contamination cycle will result, prolonging the contamination of the respective fields.

To address concerns arising from the presence of PFAAs in agricultural soil, it is first necessary to determine the PFAA concentrations in porewater. The concentrations in crops can then be predicted using models. The simple models presented here are a first step in this direction, but more sophisticated models should be developed. More extensive empirical observations from controlled field studies are required to this end, whereby particular care needs to be paid to accounting for variable exposure concentrations of more mobile PFAS. Finally, while this study has shown the strong influence of chain length on PFAA behavior, many replacement PFAS are not PFCAs or PFSAAs but instead contain other structural modifications that may also influence their fate in soil and uptake from soil into edible plant parts.

## Funding

This study was part of the EU project PERFOOD (KBBE-227525), and the financial support of the European Union is gratefully acknowledged.

## Conflicts of interest

There are no conflicts of interest to declare.

## Acknowledgements

We thank the staff of Fraunhofer IME for their help setting up the field experiments and for taking care of the plants during the growth phase. We thank three anonymous reviewers for helpful suggestions.

## References

- 1 C. Eschauzier, P. de Voogt, H.-J. Brauch and F. Lange, in *Polyfluorinated Chemicals and Transformation Products*, ed. T. P. Knepper and F. T. Lange, Springer, Berlin/Heidelberg, 2012, vol. 17, pp. 73–102.
- 2 L. Ahrens, Polyfluoroalkyl compounds in the aquatic environment: a review of their occurrence and fate, *J. Environ. Monit.*, 2011, **13**, 20–31.
- 3 J. P. Giesy and K. Kannan, Global distribution of perfluorooctane sulfonate in wildlife, *Environ. Sci. Technol.*, 2001, **35**, 1339–1342.
- 4 A. Dreyer, I. Weinberg, C. Temme and R. Ebinghaus, Polyfluorinated Compounds in the Atmosphere of the Atlantic and Southern Oceans: Evidence for a Global Distribution, *Environ. Sci. Technol.*, 2009, **43**, 6507–6514.
- 5 A. Barbarossa, R. Masetti, T. Gazzotti, D. Zama, A. Astolfi, B. Veyrand, A. Pession and G. Pagliuca, Perfluoroalkyl substances in human milk: a first survey in Italy, *Environ. Int.*, 2013, **51**, 27–30.
- 6 A. Karrman, J. L. Domingo, X. Llebaria, M. Nadal, E. Bigas, B. van Bavel and G. Lindstrom, Biomonitoring perfluorinated compounds in Catalonia, Spain: concentrations and trends in human liver and milk samples, *Environ. Sci. Pollut. Res.*, 2010, **17**, 750–758.
- 7 J.-P. Antignac, B. Veyrand, H. Kadar, P. Marchand, A. Oleko, B. Le Bizec and S. Vandentorren, Occurrence of perfluorinated alkylated substances in breast milk of French women and relation with socio-demographical and clinical parameters: results of the ELFE pilot study, *Chemosphere*, 2013, **91**, 802–808.
- 8 W. Volkel, O. Genzel-Boroviczeny, H. Demmelmair, C. Gebauer, B. Koletzko, D. Twardella, U. Raab and H. Fromme, Perfluorooctane sulphonate (PFOS) and perfluorooctanoic acid (PFOA) in human breast milk: results of a pilot study, *Int. J. Hyg. Environ. Health*, 2008, **211**, 440–446.
- 9 C. Lau, K. Anitole, C. Hodes, D. Lai, A. Pfahles-Hutchens and J. Seed, Perfluoroalkyl acids: a review of monitoring and toxicological findings, *Toxicol. Sci.*, 2007, **99**, 366–394.
- 10 S. Saikat, I. Kreis, B. Davies, S. Bridgman and R. Kamanyire, The impact of PFOS on health in the general population: a review, *Environ. Sci.: Processes Impacts*, 2013, **15**, 329–335.
- 11 J. L. Domingo, Health risks of dietary exposure to perfluorinated compounds, *Environ. Int.*, 2012, **40**, 187–195.
- 12 N. Johansson, D. Benford, A. Carere, r. J. De Boe, E. Dellatte, P. De Voogt, A. Di Domenico, C. W. Heppner, G. Schoeters and D. Schrenk, EFSA's risk assessment on PFOS and PFOA in the food, *Toxicol. Lett.*, 2009, **189**, S42.
- 13 EFSA, Risk to human health related to the presence of perfluoroalkyl substances in food, *EFSA J.*, 2020, **18**, 6223.
- 14 W. D'Hollander, P. de Voogt, W. De Coen and L. Bervoets, Perfluorinated Substances in Human Food and Other Sources of Human Exposure, *Rev. Environ. Contam. Toxicol.*, 2010, **208**, 179–215.
- 15 I. Ericson, R. Marti-Cid, M. Nadal, B. Van Bavel, G. Lindstrom and J. L. Domingo, Human exposure to perfluorinated chemicals through the diet: intake of perfluorinated compounds in foods from the Catalan (Spain) Market, *J. Agric. Food Chem.*, 2008, **56**, 1787–1794.
- 16 E. Dellatte, G. Brambilla, S. P. De Filippis, A. di Domenico, J. Pulkarova, C. Eschauzier, S. Klenow, G. Heinemeyer and P. de Voogt, Occurrence of selected perfluorinated



- alkyl acids in lunch meals served at school canteens in Italy and their relevance for children's intake, *Food Addit. Contam., Part A*, 2013, **30**, 1590–1597.
- 17 H. Fromme, S. A. Tittlemier, W. Volkel, M. Wilhelm and D. Twardella, Perfluorinated compounds – exposure assessment for the general population in western countries, *Int. J. Hyg. Environ. Health*, 2009, **212**, 239–270.
  - 18 D. Herzke, S. Huber, L. Bervoets, W. D'Hollander, J. Hajslova, J. Pulkrabova, G. Brambilla, S. Filippis, S. Klenow, G. Heinemeyer and P. Voogt, Perfluorinated alkylated substances in vegetables collected in four European countries; occurrence and human exposure estimations, *Environ. Sci. Pollut. Res.*, 2013, 1–10, DOI: 10.1007/s11356-013-1777-8.
  - 19 J. B. Brown, J. M. Conder, J. A. Arblaster and C. P. Higgins, Assessing human health risks from per- and polyfluoroalkyl substance (PFAS)-impacted vegetable consumption: a tiered modeling approach, *Environ. Sci. Technol.*, 2020, **54**, 15202–15214.
  - 20 T. Stahl, J. Heyn, H. Thiele, J. Huther, K. Failing, S. Georgii and H. Brunn, Carryover of Perfluorooctanoic Acid (PFOA) and Perfluorooctane Sulfonate (PFOS) from Soil to Plants, *Arch. Environ. Contam. Toxicol.*, 2009, **57**, 289–298.
  - 21 H. Zhao, Y. Guan, G. Zhang, Z. Zhang, F. Tan, X. Quan and J. P. Chen, Uptake of perfluorooctane sulfonate (PFOS) by wheat (*Triticum aestivum* L.) plant, *Chemosphere*, 2013, **91**, 139–144.
  - 22 M. Wilhelm, M. Kraft, K. Rauchfuss and J. Holzer, Assessment and management of the first German case of a contamination with perfluorinated compounds (PFC) in the region Sauerland, North Rhine-Westphalia, *J. Toxicol. Environ. Health, Part A*, 2008, **71**, 725–733.
  - 23 Regierungspräsidium Karlsruhe, Stabsstelle PFC, *PFC-Problematik: Zwischenbilanz und Ausblick*, 2018, [https://rp.baden-wuerttemberg.de/rpk/Abt5/Ref541/PFC/Documents/pfc\\_buergerinfo\\_1808.pdf](https://rp.baden-wuerttemberg.de/rpk/Abt5/Ref541/PFC/Documents/pfc_buergerinfo_1808.pdf).
  - 24 R. Ghisi, T. Vamerali and S. Manzetti, Accumulation of perfluorinated alkyl substances (PFAS) in agricultural plants: a review, *Environ. Res.*, 2019, **169**, 326–341.
  - 25 X. Jiao, Q. Shi and J. Gan, Uptake, accumulation and metabolism of PFASs in plants and health perspectives: a critical review, *Crit. Rev. Environ. Sci. Technol.*, 2020, DOI: 10.1080/10643389.2020.1809219.
  - 26 W. Wang, G. Rhodes, J. Ge, X. Yu and H. Li, Uptake and accumulation of per- and polyfluoroalkyl substances in plants, *Chemosphere*, 2020, **261**, 127584.
  - 27 M. Lechner and H. Knapp, Carryover of Perfluorooctanoic Acid (PFOA) and Perfluorooctane Sulfonate (PFOS) from Soil to Plant and Distribution to the Different Plant Compartments Studied in Cultures of Carrots (*Daucus carota* ssp. *Sativus*), Potatoes (*Solanum tuberosum*), and Cucumbers (*Cucumis sativus*), *J. Agric. Food Chem.*, 2011, **59**, 11011–11018.
  - 28 H. Yoo, J. W. Washington, T. M. Jenkins and J. J. Ellington, Quantitative Determination of Perfluorochemicals and Fluorotelomer Alcohols in Plants from Biosolid-Amended Fields using LC/MS/MS and GC/MS, *Environ. Sci. Technol.*, 2011, **45**, 7985–7990.
  - 29 A. C. Blaine, C. D. Rich, L. S. Hundal, C. Lau, M. A. Mills, K. M. Harris and C. P. Higgins, Uptake of Perfluoroalkyl Acids into Edible Crops via Land Applied Biosolids: Field and Greenhouse Studies, *Environ. Sci. Technol.*, 2013, **47**, 14062–14069.
  - 30 A. C. Blaine, C. D. Rich, E. M. Sedlacko, L. S. Hundal, K. Kumar, C. Lau, M. A. Mills, K. M. Harris and C. P. Higgins, Perfluoroalkyl Acid Distribution in Various Plant Compartments of Edible Crops Grown in Biosolids-Amended soils, *Environ. Sci. Technol.*, 2014, **48**, 7858–7865.
  - 31 B. Wen, Y. Wu, H. Zhang, Y. Liu, X. Hu, H. Huang and S. Zhang, The roles of protein and lipid in the accumulation and distribution of perfluorooctane sulfonate (PFOS) and perfluorooctanoate (PFOA) in plants grown in biosolids-amended soils, *Environ. Pollut.*, 2016, **216**, 682–688.
  - 32 L. K. Dodgen, A. Ueda, X. Wu, D. R. Parker and J. Gan, Effect of transpiration on plant accumulation and translocation of PPCP/EDCs, *Environ. Pollut.*, 2015, **198**, 144–153.
  - 33 D. Q. Zhang, M. Wang, Q. He, X. Niu and Y. Liang, Distribution of perfluoroalkyl substances (PFASs) in aquatic plant-based systems: from soil adsorption and plant uptake to effects on microbial community, *Environ. Pollut.*, 2020, **257**, 113575.
  - 34 G. G. Briggs, R. H. Bromilow and A. A. Evans, Relationships between lipophilicity and root uptake and translocation of non-ionized chemicals by barley, *Pestic. Sci.*, 1982, **13**, 495–504.
  - 35 S. Felizeter, M. S. McLachlan and P. De Voogt, Root uptake and translocation of perfluorinated alkyl acids by three hydroponically grown crops, *J. Agric. Food Chem.*, 2014, **62**, 3334–3342.
  - 36 A. I. Valcárcel, E. Molero, M. C. Escorial, M. C. Chueca and J. L. Tadeo, Uptake of perfluorinated compounds by plants grown in nutrient solution, *Sci. Total Environ.*, 2014, **472**, 20–26.
  - 37 S. Felizeter, M. S. McLachlan and P. de Voogt, Uptake of Perfluorinated Alkyl Acids by Hydroponically Grown Lettuce (*Lactuca sativa*), *Environ. Sci. Technol.*, 2012, **46**, 11735–11743.
  - 38 H. Zhao, B. Qu, Y. Guan, J. Jiang and X. Chen, Influence of salinity and temperature on uptake of perfluorinated carboxylic acids (PFCAs) by hydroponically grown wheat (*Triticum aestivum* L.), *SpringerPlus*, 2016, **5**, 541.
  - 39 S. Felizeter, H. Jüriling, M. Kotthoff, P. De Voogt and M. S. McLachlan, Influence of soil on the uptake of perfluorinated alkyl acids by lettuce: a comparison between a hydroponic and a field study, *Chemosphere*, 2020, **260**, 127608.
  - 40 A. Gredelj, C. Nicoletto, S. Polesello, C. Ferrario, S. Valsecchi, R. Lava, A. Barausse, F. Zanon, L. Palmeri, L. Guidolin and M. Bonato, Uptake and translocation of perfluoroalkyl acids (PFAAs) in hydroponically grown red chicory (*Cichorium intybus* L.): growth and developmental toxicity,





- comparison with growth in soil and bioavailability implications, *Sci. Total Environ.*, 2020, **720**, 137333.
- 41 M. S. McLachlan, S. Felizeter, M. Klein, M. Kotthoff and P. Voogt, Fate of a perfluoroalkyl acid mixture in an agricultural soil studied in lysimeters, *Chemosphere*, 2019, **223**, 180–187.
  - 42 K. Hansen, L. A. Clemen, M. Ellefson and H. Johnson, Compound-Specific, Quantitative Characterization of Organic Fluorochemicals in Biological Matrices, *Environ. Sci. Technol.*, 2001, **35**, 766–770.
  - 43 R. Vestergren, S. Ullah, I. T. Cousins and U. Berger, A matrix effect-free method for reliable quantification of perfluoroalkyl carboxylic acids and perfluoroalkane sulfonic acids at low parts per trillion levels in dietary samples, *J. Chromatogr. A*, 2012, **1237**, 64–71.
  - 44 C. R. Powley, S. W. George, T. W. Ryan and R. C. Buck, Matrix effect-free analytical methods for determination of perfluorinated carboxylic acids in environmental matrixes, *Anal. Chem.*, 2005, **77**, 6353–6358.
  - 45 J. Krippner, H. Brunn, S. Falk, S. Georgii, S. Schubert and T. Stahl, Effects of chain length and pH on the uptake and distribution of perfluoroalkyl substances in maize (*Zea mays*), *Chemosphere*, 2014, **94**, 85–90.
  - 46 A. C. Blaine, C. D. Rich, E. M. Sedlacko, K. C. Hyland, C. Stushnoff, E. R. V. Dickenson and C. P. Higgins, Perfluoroalkyl Acid Uptake in Lettuce (*Lactuca sativa*) and Strawberry (*Fragaria ananassa*) Irrigated with Reclaimed Water, *Environ. Sci. Technol.*, 2014, **48**, 14361–14368.
  - 47 B. Prinz, G. H. M. Krause and L. Radermacher, Criteria for the evaluation of dioxins in the environment, *Chemosphere*, 1991, **23**, 1743–1761.
  - 48 S. Das and S. S. Bhattacharya, Plant essential nutrients, nutrient composition in soil, and activity of plant metabolites, in *Plant secondary metabolites – their roles in stress ecophysiology*, ed. M. W. Siddiqui and V. Bansal, Apple Academic Press, Oakville (Canada), 2017.
  - 49 Z. Liu, Z. Lu, X. Song, K. Jones, A. J. Sweetman, A. C. Johnson, M. Zhang, X. Lu and C. Su, Multiple crop bioaccumulation and human exposure of perfluoroalkyl substances around a mega fluorochemical industrial park, China: implications for planting optimization and food safety, *Environ. Int.*, 2019, **127**, 671–684.
  - 50 I. Narvarro, A. de la Torre, P. Sanz, M. A. Porcel, J. Pro, G. Carbonell and M. Martínez, Uptake of perfluoroalkyl substances and halogenated flame retardants by crop plants grown in biosolids-amended soils, *Environ. Res.*, 2017, **152**, 199–206.
  - 51 B. Wen, L. Li, H. Zhang, Y. Ma, X.-Q. Shan and S. Zhang, Field study on the uptake and translocation of perfluoroalkyl acids (PFAAs) by wheat (*Triticum aestivum* L.) grown in biosolids-amended soils, *Environ. Pollut.*, 2014, **184**, 547–554.
  - 52 R. Vestergren, F. Orata, U. Berger and I. T. Cousins, Bioaccumulation of perfluoroalkyl acids in dairy cows in a naturally contaminated environment, *Environ. Sci. Pollut. Res.*, 2013, **20**, 7959–7969.
  - 53 A. Ahearn, A regrettable substitute: the story of GenX, *Environ. Health Perspect.*, 2019, <https://ehp.niehs.nih.gov/doi/10.1289/EHP5134>.
  - 54 P. Grandjean and R. Clapp, Changing Interpretation of Human Health Risks from Perfluorinated Compounds, *Public Health Rep.*, 2014, **129**, 482–485.
  - 55 M. Houde, A. O. De Silva, D. C. G. Muir and R. J. Letcher, Monitoring of Perfluorinated Compounds in Aquatic Biota: An Updated Review PFCs in Aquatic Biota, *Environ. Sci. Technol.*, 2011, **45**, 7962–7973.

