


Cite this: *Analyst*, 2017, **142**, 1442

Detection of chemical warfare agent simulants and hydrolysis products in biological samples by paper spray mass spectrometry†

Josiah McKenna,^{‡a} Elizabeth S. Dhummakupt,^{‡b} Theresa Connell,^c Paul S. Demond,^c Dennis B. Miller,^b J. Michael Nilles,^c Nicholas E. Manicke*^a and Trevor Glaros  *^b

Paper spray ionization coupled to a high resolution tandem mass spectrometer (a quadrupole orbitrap) was used to identify and quantitate chemical warfare agent (CWA) simulants and their hydrolysis products in blood and urine. Three CWA simulants, dimethyl methylphosphonate (DMMP), trimethyl phosphate (TMP), and diisopropyl methylphosphonate (DIMP), and their isotopically labeled standards were analyzed in human whole blood and urine. Calibration curves were generated and tested with continuing calibration verification standards. Limits of detection for these three compounds were in the low ng mL⁻¹ range for the direct analysis of both blood and urine samples. Five CWA hydrolysis products, ethyl methylphosphonic acid (EMPA), isopropyl methylphosphonic acid (IMPA), isobutyl methylphosphonic acid (iBuMPA), cyclohexyl methylphosphonic acid (CHMPA), and pinacolyl methylphosphonic acid (PinMPA), were also analyzed. Calibration curves were generated in both positive and negative ion modes. Limits of detection in the negative ion mode ranged from 0.36 ng mL⁻¹ to 1.25 ng mL⁻¹ in both blood and urine for the hydrolysis products. These levels were well below those found in victims of the Tokyo subway attack of 2 to 135 ng mL⁻¹. Improved stability and robustness of the paper spray technique in the negative ion mode was achieved by the addition of chlorinated solvents. These applications demonstrate that paper spray mass spectrometry (PS-MS) can be used for rapid, sample preparation-free detection of chemical warfare agents and their hydrolysis products at physiologically relevant concentrations in biological samples.

Received 24th January 2017,

Accepted 14th March 2017

DOI: 10.1039/c7an00144d

rsc.li/analyst

Introduction

Modern use of chemical warfare agents (CWAs) dates back to World War I with the use of chlorine gas and other agents.² More recent CWA usage on human populations occurred during the Iran-Iraq War in the 1980s³ and the Tokyo subway sarin attack in 1995.⁴ While efforts to ban the stockpiling and use of these weapons have been made, CWAs continue to be a threat to the warfighters, first responders, and civilian populations, especially when possessed by rogue states and terrorist groups. For example, in the last few years Syrian populations have been

attacked with sarin.^{5–7} Additionally, a recent news report indicates terrorist groups have been using sulfur mustard.⁸

Analysis of CWAs by mass spectrometry (MS) has grown substantially in the last 10 years.^{9–13} Many of the fielded MS methods require the use of gas chromatography (GC) and/or liquid chromatography (LC), which pose difficulties for rapid analysis due to sample preparation needs¹⁴ and lengthy run times. Several rapid, on-site methods have been proposed, such as atmospheric pressure chemical ionization (APCI) MS,^{15,16} selected ion flow tube (SIFT) MS,^{17,18} and proton transfer reaction (PTR) MS.¹⁹ However, these methods can only measure a limited range of volatile small molecules and have strong carry-over between runs, which decreases the rate of sample analysis. Direct analysis in real time (DART) MS, an ambient ionization method, has been shown to successfully analyze (and quantitate) CWAs²⁰ and explosives.²¹ However, DART ionization has the logistical burden of using a heated purified gas flow.

Paper spray ionization (PS) MS is an alternative approach to these fieldable techniques. PS-MS is an ambient ionization technique that requires little to no sample preparation,²²

^aDepartment of Chemistry and Chemical Biology, Indiana University-Purdue University Indianapolis, Indianapolis, IN 46202, USA. E-mail: nmanicke@iupui.edu

^bBioSciences Division, BioDefense Branch, US Army Edgewood Chemical Biological Center, Aberdeen Proving Ground, MD 21010, USA.
E-mail: trevor.g.glaros.civ@mail.mil

^cExcet, Inc., 6225 Brandon Ave, Suite 360, Springfield, VA 22150, USA

†Electronic supplementary information (ESI) available. See DOI: 10.1039/c7an00144d

‡Joint first author/contributed equally.



analysis can be performed in seconds, and can directly sample complex biological and environmental samples.^{23–27} Numerous papers have utilized paper spray coupled to low resolution tandem mass spectrometers such as ion traps and triple quadrupole MS.²⁵ Combining paper spray with mass spectrometers capable of both high resolution and tandem mass spectrometry further improves selectivity.^{28,29} To date, PS-MS has been used to analyze pesticides and herbicides in food and environmental samples,^{30,31} which have chemical similarities to CWAs. However, this type/class of chemicals has not been analyzed *via* paper spray MS in complex biological matrices (*i.e.* whole blood and urine). Paper spray has the potential to improve upon the robustness and fieldability of other low/no prep ambient ionization methods because it does not require purified ionizing gas. Improvements in fieldable mass spectrometers are still needed to fully realize the advantages of ambient ionization techniques. Progress toward miniaturization has been made by several vendors including the BaySpec Portability, MassTech Explorer, Inficon Hapsite, Bruker E2 M, and Griffon 824.³² Additionally, an effort to integrate paper spray cartridges in a plug-and-play format with a miniaturized MS has been reported.³³ In this format, paper spray would be useful in a field-forward lab to rapidly analyze unknown samples collected by the warfighter and feedback the relevant information regarding CWAs.

Previous analysis of CWAs has focused not only on the parent compound but also on the breakdown products or hydrolysis products.³⁴ This is due to the short half-life and low stability of parent compounds in environments containing water.³⁵ An example of the short half-life was shown in Noort *et al.* analysis of serum samples from the 1995 Tokyo subway sarin attack victims. In blood samples collected 1.5–2.5 hours after the attack, sarin was not detectable but the hydrolysis product *O*-isopropyl methylphosphonic acid (IMPA) was detected and ranged from 2 to 135 ng mL^{−1}.¹ As a result of the rapid hydrolysis of the CWA parent compounds in biofluids, detection of the hydrolysis products is essential. However, the CWA hydrolysis products in the field are traditionally analyzed *via* GC-MS and thus require extensive derivatization prior to analysis³⁴ which pose difficulties for rapid analysis. In this study, PS-MS analyses of CWA simulants of G-series nerve agents (*i.e.*, sarin, soman, tabun) as well as major hydrolysis products of sarin, VX, soman, Russian VX, and cyclosarin were conducted in blood and urine matrices.

Materials and methods

Chemicals and materials

High-performance liquid chromatography (HPLC) grade solutions of methanol, acetonitrile, formic acid, and water were purchased from Sigma Aldrich (St Louis, MO, USA); anhydrous carbon tetrachloride was also purchased from Sigma Aldrich. Optima grade ammonium hydroxide and ultra-high-performance liquid chromatography (UHPLC) grade methanol were purchased from Fisher Scientific (Fair Lawn, NJ, USA). Raw

human urine and human whole blood with K₂EDTA anti-coagulant were purchased from Innovative Research (Novi, MI, USA). Trimethyl phosphate (TMP), diisopropyl methylphosphonate (DIMP), and dimethyl methylphosphonate (DMMP) were purchased from Sigma. The d₉TMP was purchased from Cerilliant (Round Rock, TX, USA), and the ¹³Cd₃DIMP was synthesized by Dr. Bob Williams and Mark Alvarez at the Los Alamos National Laboratory (Los Alamos, NM, USA). Ethyl methylphosphonic acid (EMPA), isopropyl methylphosphonic acid (IMPA), isobutyl methylphosphonic acid (iBuMPA), cyclohexyl methylphosphonic acid (CHMPA), and pinacolyl methylphosphonic acid (PinMPA) dissolved in water were from Cerilliant (product number NAX8-CAL). A mixture of stable isotope labeled (SIL) analogs of the hydrolysis products—d₅EMPA, ¹³C₃IMPA, ¹³Cd₃iBuMPA, ¹³C₆CHMPA, and ¹³C₆PinMPA dissolved in water—was also from Cerilliant (product number NAX8-IS). Velox sample cartridges were purchased from Prosolia (Indianapolis, IN, USA).

Sample preparation

The CWA simulant stock solutions—TMP, DIMP, and DMMP—were diluted from neat material to a stock concentration of 10 mg mL^{−1} in high purity methanol for DIMP and HPLC grade water for all others. These were then diluted to 100 µg mL^{−1} in HPLC grade water. The calibration curve standards were then prepared in blood or urine at concentrations of 1000, 500, 200, 100, 50, and 0 ng mL^{−1} by performing dilutions of the aqueous working solution in the biological matrix. The internal standards were spiked into the biological matrix under study to a final concentration of approximately 1000 ng mL^{−1}.

Solutions containing the CWA hydrolysis products (EMPA, IMPA, iBuMPA, CHMPA, and PinMPA) were purchased in concentrations of 5000, 2500, 1250, 625, 250, 125, 63, and 25 ng mL^{−1}. Calibration standards were then prepared in blood or urine at concentrations of 250, 125, 62.5, 31.25, 12.5, 5, 2.5, and 1.25 ng mL^{−1} by performing 1:20 dilutions of the aqueous working solutions in the biological matrix. A 5 µL aliquot of an aqueous internal standard (ISTD) solution was spiked into a 100 µL aliquot of each biological sample; the ISTD solution contained 525 ng mL^{−1} each of the five SIL CWA hydrolysis products.

Paper spray ionization

The Velox360 autosampler and ionization source from Prosolia (Indianapolis, IN, USA) was used. Prior to MS analysis, a 12 µL aliquot of blood or urine sample was pipetted onto the PS cartridge, taking care to make sure the sample spot wicked to the edges of the triangular-shaped paper. Sample spots were dried at 37 °C for 30 minutes immediately prior to analysis. All cartridges were loaded into the Velox360 for analysis. For positive ion mode, the spray solvent was 95:5 methanol:water with 0.01% formic acid. During the solvent addition step, pump A was programmed to dispense 3 µL of solvent five times for a total of 15 µL solvent directly onto the dried sample spot. This was immediately followed by pump B dispensing 10 µL of



solvent eight times for a total of 80 μL at the rear of the cartridge. The addition of this solvent was spread out over 60 seconds.

In the negative ion mode, a spray solvent of 9 : 1 methanol : carbon tetrachloride with 0.01% ammonium hydroxide was used to reduce the propensity for discharge and encourage ion formation. Pump A was programmed to dispense 3 μL four times and pump B was programmed to dispense 10 μL thirteen times, using 142 μL of solvent total. When directly comparing both positive and negative ion polarities, the solvent pump programming was spread out over the course of 1.4 minutes, with the negative ion mode program utilizing smaller delays between subsequent pumps to prevent excessive solvent evaporation.

Mass spectrometry data acquisition

MS analyses of CWA simulants were performed using a Thermo Fisher Orbitrap Elite mass spectrometer (Thermo Scientific Inc., San Jose, CA, USA). The temperature of the MS capillary inlet was set at 325 $^{\circ}\text{C}$. The tube lens voltage was set at 60 V. The MS method run time was 1.0 minute, broken down into 4 time segments with varying spray voltages: 0–0.1 min, 0 kV; 0.1–0.8 min, +5 kV; 0.8–0.9 min, 0 kV; and 0.9–1.0 min, –5 kV. Tandem mass spectra were recorded using collision-induced dissociation (CID). The observed precursor ions and primary fragment ions for the five simulant compounds, as well as the optimized collision energy (CE) for each, can be found in ESI Table 1.[†]

Detection of CWA hydrolysis products was performed on a Thermo Q-Exactive Focus mass spectrometer with the S-lens set to 50 and capillary temperature set to either 325 $^{\circ}\text{C}$ or 320 $^{\circ}\text{C}$ for positive or negative ion modes, respectively. The instrument methods were both 1.4 minutes long with the spray voltage on at +4 kV or –4 kV (depending on the method-specified polarity) from 0–1.1 min, the voltage then being set to 0 kV from 1.1–1.4 min. The spray voltage was turned off to give zero-intensity scans, a requirement for automatic peak integration. The mass spectrometer was operated in tandem mass spectrometry (MS/MS) mode using an inclusion list. The precursor and fragment ions for the five hydrolysis products and their SIL analogs can be found in ESI Table 1.[†]

Data processing and statistics

For all CWA simulants, raw data were manually extracted and processed using XCalibur v. 2.2 (Thermo Scientific Inc., San Jose, CA, USA). Briefly, base peaks for each transition were extracted from the raw total ion chromatogram (TIC) within a 10 ppm window and the total area was determined. The total area was then used to determine the ratio relative to the fixed ISTD. MS analysis was performed on each of the calibration standards in triplicate. To generate the calibration curves, average ratios were graphed with the known concentrations. Linear lines of best fit were calculated by using 1/x weighted least squares. The limit of detection (LOD) was determined by multiplying the error in the y-intercept by 3.3 and dividing by the slope.

All data for the CWA hydrolysis products were automatically processed using TraceFinder v. 3.3 (Thermo Fisher Scientific Inc., Waltham, MA, USA). Peaks within a 5 ppm window of the target compound's fragment ion were integrated. The analyte peak area was divided by the area of the corresponding fragment ion of the appropriate ISTD. Each calibration point was run in triplicate and the ratios of analyte signal to ISTD signal were plotted against their known concentrations to generate the calibration curve, which was linearly fit using 1/x weighted least squares. LODs for the CWA hydrolysis products were determined by multiplying the standard error of the y-intercept by 3.3 and dividing by the slope of the curve; for positive ion mode, some of these calculated LODs were lower than the lowest-detected calibration samples, in which case the concentration of the first reliably detected calibration level was reported as the LOD.

Results and discussion

Chemical warfare agent simulants

Full-scan paper spray mass spectra were collected for DMMP, TMP, and DIMP and the isotopically labeled internal standards d_5TMP and $^{13}\text{Cd}_3\text{DIMP}$ spiked into human blood and urine (Fig. 1). TMP and DMMP were detected primarily as protonated ions whereas DIMP was sodiated in both urine and blood. Additionally, it demonstrates that 10 $\mu\text{g mL}^{-1}$ (DMMP,

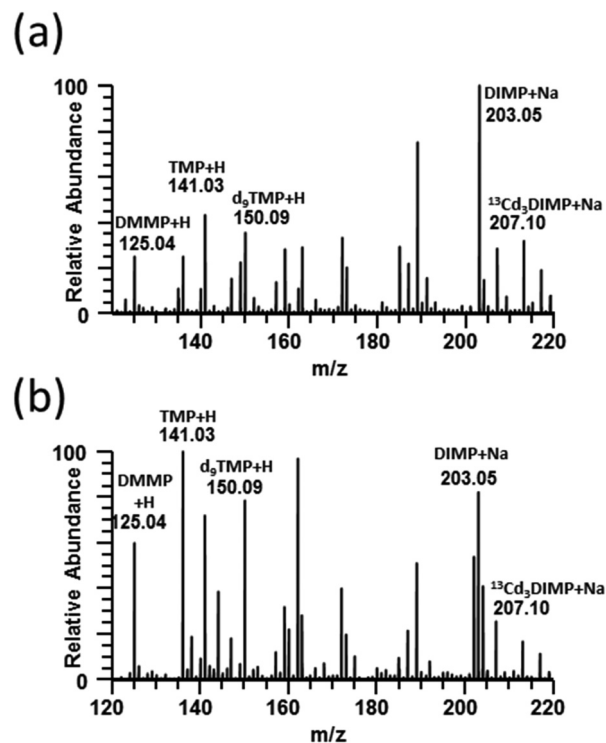


Fig. 1 PS-MS full scan mass spectra for 10 ppm TMP, d_5TMP , & DMMP; 2 ppm DIMP & $^{13}\text{Cd}_3\text{DIMP}$ spiked into blood (a) and urine (b). Data were collected in positive ion mode using 95/5 methanol/water with 0.01% formic acid.



TMP, d₉TMP) and 2 µg mL⁻¹ (DIMP and ¹³Cd₃DIMP) concentrations were easily distinguishable even among the complex biological background. For all subsequent CWA simulant experiments, tandem mass spectra generated by CID for each of the five compounds were used (ESI Fig. 1†).

When developing a paper spray method, optimization of spray solvent composition for PS ionization is important because the solvent needs to sufficiently extract the analyte(s) from the paper while also being compatible with ionization. Solvent considerations even for the same compound can vary widely based upon its source or matrix background. Therefore, for the CWA simulants in blood and urine, we optimized the solvent system by varying ratios of acetonitrile (ESI Fig. 2a and d†) and methanol (ESI Fig. 2b and e†) in water. A spray solvent of 95 : 5 methanol : water was found to produce the highest signal intensity universally in both blood and urine. Next, formic acid was used as a solvent modifier to determine the ideal concentration of free protons. As is evident in blood (ESI Fig. 2c†) and urine (ESI Fig. 2f†), the addition of formic acid did not seem to have an effect on the overall signal intensity except when the concentration exceeded 0.1% for blood. In the case of urine, formic acid did not suppress the total signal even at 1.0%. For all subsequent experiments, we used 95 : 5 methanol : water with 0.01% formic acid. A small amount of formic acid was included in the final spray solvent because prior experience suggested that it improves spray stability.

Quantitative analyses of the three CWA simulants were performed by spiking internal standards (ISTDs) and analyte(s) into blood or urine. ISTD selection is crucial for quantitative analysis, with stable isotope labeled (SIL) analogs of the analytes being the optimal choice. However, isotopically labeled standards are sometimes difficult to obtain. In this study, d₉TMP and ¹³Cd₃DIMP were available, but a SIL analog of DMMP was not available. Calibration curves of each CWA simulant were generated using both d₉TMP and ¹³Cd₃DIMP to evaluate the quantitative performance of PS-MS. Table 1 shows the average LOD, standard deviation of the LOD, relative error in the slope, and range of *R*² values of the two calibration curves generated for each of the 3 analytes from repeats of the same urine donor. As expected, the SIL analogs resulted in better calculated LODs for TMP and DIMP. In the case of DMMP, d₉TMP yielded the more reproducible results than

when using ¹³Cd₃DIMP as the ISTD. These differences are likely because both DMMP and d₉TMP are protonated ions, whereas ¹³Cd₃DIMP is a sodiated ion. [¹³Cd₃DIMP + Na]⁺ consistently produced significantly higher signal intensities than the [DMMP + H]⁺, typically on the order of 10–30× (ESI Fig. 2†). These higher intensities resulted in proportionally higher absolute variances. These translated, through the relative ratios to ISTD, to greater variation in the y-intercept and therefore the calculated LOD. Calibration curves for the three CWA simulants using the best performing ISTD in both blood and urine are shown in Fig. 2. Two continuing calibration verification (CCV) standards were analyzed 24–48 hours following the generation of the calibration curve to verify the accuracy of the calibration. All CCVs fell on the calibration curve, demonstrating excellent recovery. In all cases, the percent error was less than ±20% (ESI Table 2†).

Ion suppression due to different matrix sources was evaluated by preparing calibration curves in blood and urine from three different donors and are presented in Tables 2 and 3, respectively. The LOD, standard line slopes, and *R*² values showed minimal variation across the three donors, indicating that the matrix did not affect the assay performance across these three lots of biofluid. DIMP, which was detected as the [M + Na]⁺ ion, consistently had a tenfold lower detection limit in urine compared to blood.

For the measurements described above, ISTD was mixed into the liquid samples prior to spotting. One advantage of paper spray MS is the possibility to store samples as dried matrix spots, which could improve analyte stability³⁶ and, in the case of a dry blood spot (DBS), make it easier to ship since DBSs are not considered a biological hazard.³⁷ However, to fully take advantage of PS-MS, biofluids would need to be applied to the paper spray cartridges in the field, necessitating the addition of the ISTD to the dried sample spot after transporting the cartridge to the laboratory for analysis. To evaluate the feasibility of this approach, blood and urine standards were dried on the paper spray cartridge followed by addition of an ISTD solution containing d₉TMP and ¹³Cd₃DIMP. Previous studies have demonstrated that the spot location and size are critical factors for PS-MS analysis, especially reproducibility. To improve robustness of the technique, an apparatus was developed and adapted to the PS cartridge to aid in reproducibly applying both the samples and especially the ISTD solution (Fig. 3). This device was 3D printed with autoclavable polylactic acid plastic filament on a Pegasus Touch (Full Spectrum Laser, Las Vegas, NV). It was designed to improve user reproducibility when samples are prepared in restricted spaces such as a biosafety cabinet. Table 4 shows the average LOD, standard deviation in the LOD, relative error in the slope, and range of *R*² values for calibration curves prepared in blood and urine by applying the ISTD solution to the dried samples. Performances of the non-ideal ISTDs in the same experiment are highlighted in red. The quality of the curves in this experiment appear to be more sensitive to the selection of the internal standard. The difference in the quality of the curves between the ideal and non-ideal internal standard is more pro-

Table 1 Internal standard cross comparison in urine (single donor). Data were collected in positive ion mode with 95/5 methanol/water with 0.01% formic acid solvent. *N* = 3

Analyte	ISTD	Avg. LOD [ng mL ⁻¹]	St. dev. LOD [ng mL ⁻¹]	Rel. error in slope [%]	<i>R</i> ² range
<i>T</i> _{dry} = 30 minutes					
DIMP	d ₉ TMP	29.0	5.0	8.0	0.986–0.998
	¹³ Cd ₃ DIMP	7.0	2.0	2.0	0.999–1.000
DMMP	d ₉ TMP	28.6	0.9	8.0	0.999–1.000
	¹³ Cd ₃ DIMP	31.0	14.0	9.0	0.986–0.997
TMP	d ₉ TMP	7.4	0.7	2.0	0.986–0.997
	¹³ Cd ₃ DIMP	37.0	6.0	10.0	0.976–0.993



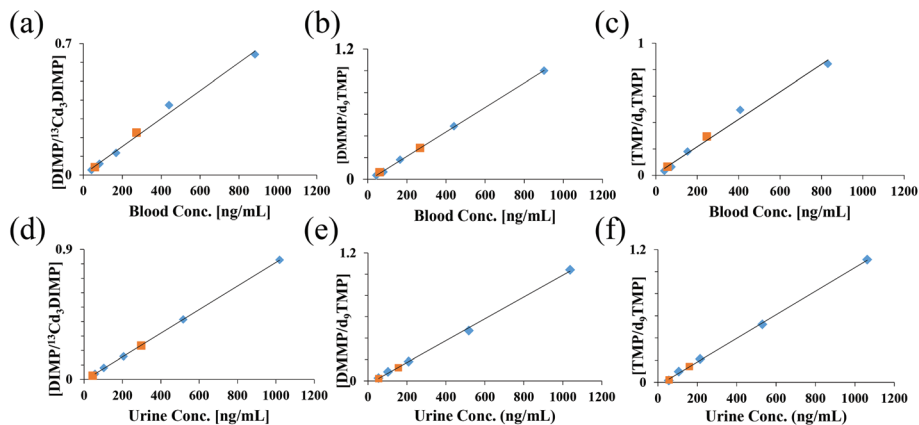


Fig. 2 Calibration curves for each compound from 10 μL of blood (a–c) or urine (d–f) using an isotopically labeled internal standard were generated by PS-MS. Average ratios ($N = 3$) were plotted against the known concentration. Data were collected in positive ion mode using 95/5 methanol/water w 0.01% formic acid. Blue points – calibration curve levels; orange points – continuing calibration verification; refer to ESI Table 2.†

Table 2 Differences among blood donors. Data collected in positive ion mode with 95/5 methanol/water with 0.01% formic acid solvent. The average and standard deviations were calculated from three calibration curves, each prepared in a separate lot of blood

	Donor #	LOD [ng mL ⁻¹]	Slope ($\times 10^4$)	R^2
DIMP/ ¹³ Cd ₃ DIMP	1	28.0	7.7	0.992
	2	28.0	7.6	0.994
	3	33.0	6.4	0.990
	Avg	30.0	7.2	
	Std dev	3.0	0.7	
DMMP/d ₉ TMP	1	12.0	11.4	>0.999
	2	16.0	14.0	0.999
	3	13.0	11.3	0.999
	Avg	14.0	12.0	
	Std dev	2.0	2.0	
TMP/d ₉ TMP	1	37.0	11.0	0.987
	2	12.0	12.4	>0.999
	3	10.0	14.0	>0.999
	Avg	20.0	12.0	
	Std dev	15.0	2.0	

Table 3 Differences among urine donors. Data collected in positive ion mode with 95/5 methanol/water with 0.01% formic acid solvent. The average and standard deviations were calculated from three calibration curves, each prepared in a separate lot of urine

	Donor #	LOD [ng mL ⁻¹]	Slope ($\times 10^4$)	R^2
DIMP/ ¹³ Cd ₃ DIMP	1	4.1	8.2	>0.999
	2	2.0	8.1	>0.999
	3	3.1	7.7	>0.999
	Avg	3.1	8.0	>0.999
	Std dev	1.1	0.2	
DMMP/d ₉ TMP	1	17.6	10.1	0.998
	2	12.7	12.1	>0.999
	3	7.4	10.7	>0.999
	Avg	12.6	11.0	
	Std dev	5.1	1.0	
TMP/d ₉ TMP	1	24.8	10.8	0.999
	2	6.6	11.1	>0.999
	3	12.6	11.1	>0.999
	Avg	14.7	11.0	
	Std dev	9.3	0.2	

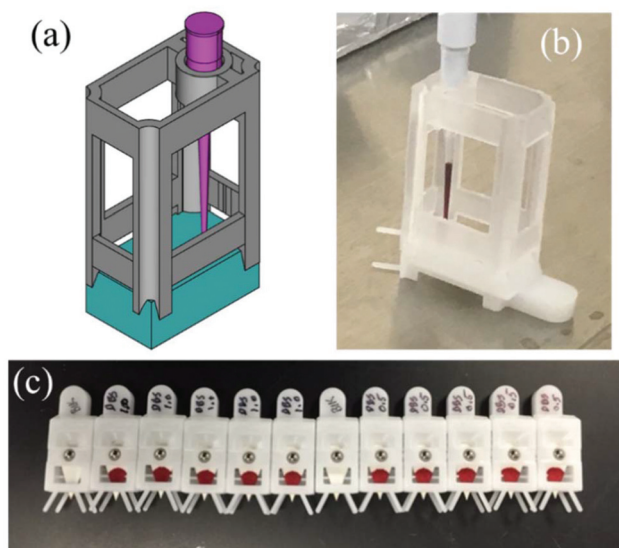


Fig. 3 A spotting apparatus was designed (a) and used to spot 12 μL of blood onto the Prosolia paper spray cartridges (b, c).

nounced when applying the ISTD to the dried spot (Table 4) as compared to mixing the ISTD into the liquid samples (Table 1). Another important variable, not investigated here, is the amount of time between sample deposition and ISTD deposition. These results do show, however, that as long as the proper internal standard is utilized, application of the ISTD to the dried sample has the potential for real-world application with acceptable quantitative performance.

The CWA simulants are representative of organophosphate nerve agents such as tabun, sarin, and soman. These chemical warfare agents are highly lethal and volatile with an inhalation LC_{50} of 1 ppm for 10 minutes of exposure and a percutaneous LD_{50} of 300 mg per person.³⁵ The data presented here show PS-MS is capable of detecting these simulants below lethal concentrations in clinical matrices.



Table 4 Application of internal standard solution to the dried blood spot. Data collected in positive ion mode with 95/5 methanol/water with 0.01% formic acid solvent

Analyte $T_{\text{dry}} =$ 30 min	ISTD $T_{\text{dry}} =$ 30 min	Avg. LOD [ng mL ⁻¹]	St. dev. LOD [ng mL ⁻¹]	Rel. error in slope [%]	R^2 range
Blood					
DIMP	¹³ Cd ₃ DIMP	38	13	6	0.993–0.998
	d ₅ TMP	112	41	17	0.920–0.977
DMMP	d ₅ TMP	27	3	5	0.991–0.998
	¹³ Cd ₃ DIMP	225	212	40	0.930–0.972
TMP	d ₅ TMP	35	6	6	0.988–0.998
	¹³ Cd ₃ DIMP	125	34	15	0.922–0.959
Urine					
DIMP	¹³ Cd ₃ DIMP	11	10	2	0.998–1.000
	d ₅ TMP	55	25	8	0.977–0.998
DMMP	d ₅ TMP	20	9	3	0.997–0.999
	¹³ Cd ₃ DIMP	52	14	8	0.982–0.991
TMP	d ₅ TMP	12	10	2	0.999–1.000
	¹³ Cd ₃ DIMP	47	27	7	0.968–0.998

Chemical warfare agent hydrolysis products

The CWA hydrolysis products can be detected in the positive ion mode as both protonated and sodiated ions, but they also form intense $[M - H]^-$ ions in the negative ion mode because they contain an acidic phosphonic acid moiety. We compared the quantitative performance in both positive and negative ion modes for five organophosphonate compounds. Using the optimized solvent system as determined with the parent CWA simulants—95 : 5 methanol : water with 0.01% formic acid—calibration curves could be generated in both blood and urine (ESI Fig. 3 and 4†). Detection limits, the relative error of the slopes, and the correlation coefficients obtained from the five calibration curves are shown in Table 5. Overall, detection of the CWA hydrolysis products as positive ions was complicated by their poor fragmentation in MS/MS mode. Despite good intensities for the positive molecular ions, the signal strength of their corresponding fragment ions was typically 10–100×

lower than their negative ion counterparts, making quantitative analysis for positive ionization generally less sensitive. Furthermore, fragmentation for some of the hydrolysis products in positive ion mode was found to be unreliable, resulting in poor precision of analyte/ISTD measurements, as demonstrated for IMPA in ESI Fig. 5.† When operating in negative ion mode, $[M - H]^-$ molecular ions formed readily, and fragmentation by HCD in the q-orbitrap was efficient. The difficulty with pursuing negative ionization, however, was poor Taylor cone stability and irreproducibility of the MS signal. Greater spray instability in the negative ion mode is known to occur in conventional electrospray due to the lower onset potential for corona discharge compared to positive ion electrospray.^{38–41} This problem appears to be more pronounced in paper spray.²⁶ Formation of corona discharge significantly interferes with Taylor cone formation and typically eliminates any ion signal from analytes or endogenous blood/urine compounds generated *via* ESI.† The tendency to discharge is sensitive to several experimental parameters, such as the tip-to-inlet distance, absolute applied voltage, solvent composition, and, in the case of paper spray, even the amount of solvent used. There are several potential ways to eliminate or minimize corona discharge, some of which involve the incorporation of electron-scavenging gases such as SF₆^{39,42} or O₂.⁴³ However, the use of electron-scavenging gases is complicated, particularly for fieldable or field-forward applications. Another option is to utilize different types of porous substrates; polyethylene and polyester were shown to have better sensitivity and lower onset voltages compared to wood, a cellulosic material.⁴⁴ Polyethylene and polyester are both hydrophobic materials, however; blood and urine samples will bead up on the surface of these materials rather than wick into the pores.

We explored alternative solvents to improve paper spray stability in the negative ion mode. Because of the high surface tension of water, it was eliminated from the solvent and a purely organic solvent was used in order to reduce the electrospray onset potential.^{39,45,46} Studies have also shown that the

Table 5 Summary of CWA hydrolysis product calibration curves for both positive and negative ion modes. Solvent used for positive ion mode was 95/5 methanol/water w 0.01% formic acid, and solvent used for negative ion mode was 90/10 methanol/CCl₄ w 0.01% ammonium hydroxide

		Positive ion mode			Negative ion mode		
ISTD		LOD [ng mL ⁻¹]	Rel. error in slope [%]	R^2	LOD [ng mL ⁻¹]	Rel. error in slope [%]	R^2
Blood							
EMPA	d ₅ EMPA	3.0	2.0	0.99	1.2	2.0	0.994
IMPA	¹³ C ₃ IMPA	10.0	26.0	0.46	0.9	2.0	0.997
iBuMPA	¹³ Cd ₃ iBuMPA	10.0	12.0	0.90	0.9	1.0	0.996
CHMPA	¹³ C ₆ CHMPA	10.0	7.0	0.97	0.8	1.0	0.998
PinMPA	¹³ C ₆ PinMPA	25.0	3.0	0.98	0.5	1.0	0.995
Urine							
EMPA	d ₅ EMPA	0.7	1.0	0.99	1.2	3.0	0.982
IMPA	¹³ C ₃ IMPA	6.0	10.0	0.72	1.2	2.0	0.994
iBuMPA	¹³ Cd ₃ iBuMPA	3.0	8.0	0.83	1.1	2.0	0.996
CHMPA	¹³ C ₆ CHMPA	3.0	5.0	0.98	0.6	1.0	0.999
PinMPA	¹³ C ₆ PinMPA	6.0	4.0	0.97	0.4	1.0	0.998



use of halogenated solvents in electrospray—particularly chlorinated solvents with a higher percent weight of chlorine—helps increase the onset potential for corona discharge, allowing for a larger working range of electrospray voltages.^{45,47,48} Chloroform was tested in the solvent base, but it failed to significantly inhibit discharge, even when comprising 10% of the solvent. When testing carbon tetrachloride (CCl_4), we found that a 9:1 (v:v) mixture of methanol: CCl_4 significantly decreased the propensity for corona discharge. Lower amounts of CCl_4 were also tested, but they were not able to reduce the current to low ($\sim 1 \mu\text{A}$) or stable enough values for both blood and urine to be considered free of discharge consistently from sample to sample. To this 9:1 base solvent, ammonium hydroxide was added at a concentration of 0.01% to facilitate the production of negative ions. Fig. 4A shows a photograph of the paper tip and a typical mass spectrum obtained when using methanol with 0.01% NH_4OH as the spray solvent for a blood sample. The expected $[\text{M} - \text{H}]^-$ molecular ions of the hydrolysis products as well as ions from endogenous blood compounds such as amino acids and other metabolites are entirely absent. The spectrum is instead dominated by ions formed *via* corona discharge such as $\text{CO}_3^{\cdot-}$ (m/z 59.98), HCO_3^- (m/z 60.99), and HCO_4^- (m/z 76.99).⁴⁹ The glowing tip, lack of a Taylor cone, and the relatively high unstable spray current (7–10 μA) are all further indications of corona discharge. Fig. 4B shows a typical result for the 9:1 methanol: CCl_4 solvent under identical conditions. A stable Taylor cone can be observed, and a relatively low spray current of around 0.5 μA is obtained. The ions detected by the

mass spectrometer indicate electrospray ionization, including endogenous compounds from the blood as well as the $[\text{M} - \text{H}]^-$ ions of the hydrolysis products. The $\text{CO}_3^{\cdot-}$ ion at m/z 59.98 is present but at an intensity $\sim 1000\times$ lower than in Fig. 4A, indicating the success of the CCl_4 in suppressing discharge and the formation of ions that accompany it.

Using this new solvent—optimized for paper spray in negative ion mode—calibration curves were generated for each of the CWA hydrolysis products. Calibration curves for IMPA, EMPA, PinMPA, iBuMPA, and CHMPA in both blood and urine are shown in Fig. 5. These compounds are major hydrolysis products of sarin (IMPA), VX (EMPA), soman (PinMPA), Russian VX (iBuMPA), and cyclosarin (CHMPA), respectively. The quantitative measures of these calibration curves are summarized in Table 5, comparing their LODs, relative errors in slope, and R^2 values with the curves generated using positive and negative ionization paper spray. MS/MS was solely utilized for the quantitation of each analyte and ISTD—the specific fragmentations generating the ions monitored in negative ion mode are shown in ESI Fig. 1.†

In general, detection limits in negative ion mode improved with increasing analyte weight, achieving sub-ng mL^{-1} LODs for most compounds—down to 0.55 ng mL^{-1} in blood and 0.36 ng mL^{-1} in urine for PinMPA, respectively 50- and 15-fold improvements over its detection in positive ion mode. The hydrolysis products demonstrated better quantitation when moving from positive ionization to negative ionization. IMPA and iBuMPA especially showed marked improvement in linearity of the calibration curve and sample-to-sample precision.

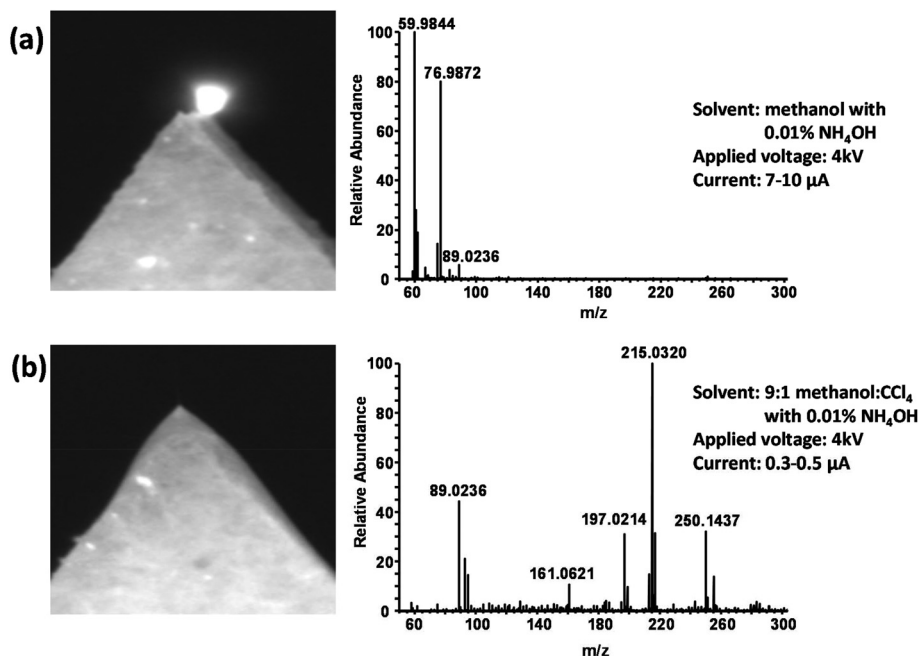


Fig. 4 (a) Photograph of the paper tip after application of high voltage and a typical mass spectrum when using methanol as a spray solvent. Corona discharge is indicated by the glowing spot in the photograph, the high spray current, and the ions detected that overwhelm the full-MS spectrum. (b) Photograph and mass spectrum obtained under identical conditions using 9:1 methanol: CCl_4 as the spray solvent. The lower spray current as well as the visible Taylor cone indicate a stable electrospray.



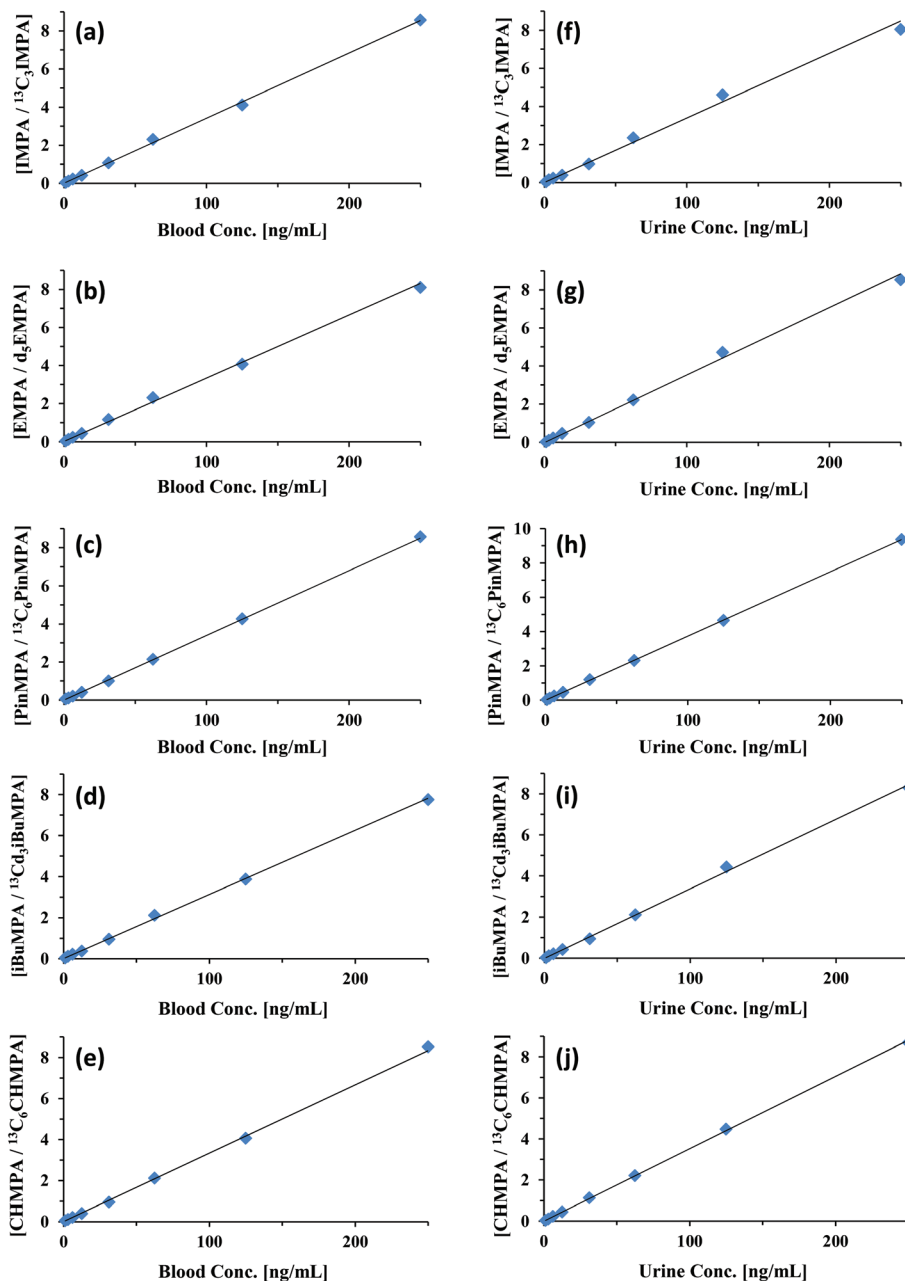


Fig. 5 Paper spray MS/MS negative ion calibration curves for IMPA, EMPA, PinMPA, iBuMPA, and CHMPA from blood (a–e) and urine (f–j) using their corresponding SIL analogs as the internal standard. Average ratios ($N = 3$) were plotted against the prepared concentration. Data were collected in negative ion mode using 90/10 methanol/ CCl_4 w 0.01% ammonium hydroxide.

EMPA showed comparable quantitation between positive and negative ion modes for blood and urine (Table 5). As demonstrated with the parent CWA simulant data, the resolving power of orbitrap mass analyzers was capable of significantly reducing matrix interference as a potential problem for these analytes. Blank biofluid showed no signal within the 5 ppm m/z window for the fragment ions.

In summary, hydrolysis products can be detected as both positive and negative ions using PS-MS. Positive ion mode detection of hydrolysis products is useful because the parent

CWAs generally ionize better in the positive ion mode. Negative ion mode, however, affords higher sensitivity, which is important for detecting CWA exposure in biological samples. To date, the levels of hydrolyzed CWA products found in exposure victims ranges from 2 to 135 ng mL^{-1} .¹

Conclusions

The objective of this work was to demonstrate paper spray's ability to analyze chemical warfare agent simulants as well as



CWA hydrolysis products from biological matrices. PS-MS analysis requires no sample preparation, even when the CWA simulants are in complex matrices such as urine and whole blood. The three CWA parent simulants tested showed good linearity when isotopically labeled standards were spiked into the samples. Additionally, it was shown that the LOD and calibration curves are reproducible across different lots of biofluid.

The evaluation of the CWA hydrolysis products was also demonstrated. Paper spray MS is capable of analyzing these hydrolysis products in both positive and negative ionization modes; however, higher sensitivity was found in negative ion mode. Utilizing a chlorinated spray solvent helped reduce the corona discharge potential and stabilize the spray, which are two problems that have plagued negative mode PS-MS analysis. The five CWA hydrolysis products showed good linearity when isotopically labeled standards were spiked into the samples. Additionally, the calculated LODs in negative mode are lower than the concentrations reported in real CWA exposure victims, which were between 2 and 135 ng mL⁻¹. This is crucial, as the parent CWA compound is not likely to be seen in biofluids as a result of their rapid hydrolysis. While the 95/5 methanol/water with 0.01% formic acid is capable of analyzing the hydrolysis products, their LOD values are higher than some of the concentrations found in the Noort *et al.* study.

This work demonstrates that paper spray mass spectrometry is capable of rapidly detecting CWA and hydrolysis products in clinical biofluids. This distinction is important because MS-based methods are highly regarded in terms of specificity and sensitivity, but traditionally MS techniques require significant sample handling and processing procedures typically in a 'brick and mortar' laboratory. Furthermore, most MS detection techniques, especially if they required extensive processing, could take as long as 24 hours to get interpretable results. Using PS-MS, we have been able to get quantitative results in as little as one minute. This technology and approach could have immediate utility since analytical grade mass spectrometers such as the orbitrap are currently used in field-forward portable laboratories such as the US Army's JUPITR program.

Acknowledgements

Funding for this project is provided by the Defense Threat Reduction Agency – Joint Science and Technology Office for Chemical and Biological Defense to TG. The authors would like to thank Donna Hollinshead and Dr. Justin Wiseman at Prosolia for the use of the Velox360 paper spray source. The authors would like to thank Dr. Bob Williams and Mark Alvarez the Los Alamos National Lab for generating ¹³Cd₃DIMP. Special thanks to Dr. Bao Q. Tran and Dr. Phillip Mach for their critical review of this manuscript. This research was performed while the author (ESD) held an NRC Research Associateship Award at Edgewood Chemical Biological Center. Conclusions and opinions presented here are those of the authors and are not the official policy of the US Army, ECBC,

or the US Government. Information in this report is cleared for public release and distribution is unlimited.

Notes and references

- 1 D. Noort, A. G. Hulst, D. H. J. M. Platenburg, M. Polhuijs and H. P. Benschop, *Arch. Toxicol.*, 1998, **72**, 671–675.
- 2 N. M. Elsayed and H. Salem, in *Inhalation Toxicology*, ed. H. Salem and S. A. Katz, CRC Press, 2nd edn, 2005, ch. 22, pp. 521–542.
- 3 Report of the Mission Dispatched by the Secretary-General to Investigate Allegations of the use of Chemical Weapons in the Conflict between the Islamic Republic of Iran and Iraq, United Nations Security Council, New York City, New York, 1986.
- 4 A. T. Tu, *Forensic Sci. Rev.*, 2014, **26**, 115–120.
- 5 A. King, *Chem. Ind.*, 2013, **77**, 8–8.
- 6 D. A. Jett, *Ann. N. Y. Acad. Sci.*, 2016, **1374**, 5–9.
- 7 O. Hakeem and S. Jabri, *Lancet Glob. Health*, 2015, **3**, E196–E196.
- 8 A. Deutsch, *Samples Confirm Islamic State used Mustard Gas in Iraq*, Published by Reuters on 23 February 2016.
- 9 H. John, F. Worek and H. Thiermann, *Anal. Bioanal. Chem.*, 2008, **391**, 97–116.
- 10 A. Gapeev and J. Yinon, *J. Forensic Sci.*, 2004, **49**, 227–237.
- 11 C. L. Crawford and H. H. Hill, Jr., in *Mass Spectrometry Handbook*, ed. M. S. Lee, John Wiley and Sons, New York, 2012, pp. 441–476.
- 12 P. D'Agostino, J. Hancock and L. Provost, *J. Chromatogr., A*, 1999, **840**, 289–294.
- 13 A. Weissberg, N. Tzanani and S. Dagan, *J. Mass Spectrom.*, 2013, **48**, 1340–1348.
- 14 H. Yoon, *Arch. Pharmacol. Res.*, 2007, **30**, 387–395.
- 15 Y. Seto, M. Kanamori-Kataoka, K. Tsuge, I. Ohsawa, K. Iura, T. Itoi, H. Sekiguchi, K. Matsushita, S. Yamashiro, Y. Sano, H. Maruko, Y. Takayama, R. Sekioka, A. Okumura, Y. Takada, H. Nagano, I. Waki, N. Ezawa, H. Tanimoto, S. Honjo, M. Fukano and H. Okada, *Anal. Chem.*, 2013, **85**, 2659–2666.
- 16 S. N. Ketkar, J. G. Dulak, W. L. Fite, J. D. Buchner and S. Dheandhanoo, *Anal. Chem.*, 1989, **61**, 260–264.
- 17 D. Smith and P. Spanel, *Mass Spectrom. Rev.*, 2005, **24**, 661–700.
- 18 D. B. Milligan, G. J. Francis, B. J. Prince and M. J. McEwan, *Anal. Chem.*, 2007, **79**, 2537–2540.
- 19 R. S. Blake, C. Whyte, C. O. Hughes, A. M. Ellis and P. S. Monks, *Anal. Chem.*, 2004, **76**, 3841–3845.
- 20 J. Nilles, T. Connell and H. Durst, *Anal. Chem.*, 2009, **81**, 6744–6749.
- 21 J. M. Nilles, T. R. Connell, S. T. Stokes and H. D. Durst, *Propellants, Explos., Pyrotech.*, 2010, **35**, 446–451.
- 22 J. J. Liu, H. Wang, N. E. Manicke, J. M. Lin, R. G. Cooks and Z. Ouyang, *Anal. Chem.*, 2010, **82**, 2463–2471.
- 23 N. E. Manicke, Q. A. Yang, H. Wang, S. Oradu, Z. Ouyang and R. G. Cooks, *Int. J. Mass Spectrom.*, 2011, **300**, 123–129.
- 24 H. Evard, A. Krueve, R. Lohmus and I. Leito, *J. Food Compos. Anal.*, 2015, **41**, 221–225.



- 25 N. E. Manicke, B. J. Bills and C. Zhang, *Bioanalysis*, 2016, **8**, 589–606.
- 26 N. E. Manicke, Q. Yang, H. Wang, S. Oradu, Z. Ouyang and R. G. Cooks, *Int. J. Mass Spectrom.*, 2011, **300**, 123–129.
- 27 Y. Su, H. Wang, J. Liu, P. Wei, R. G. Cooks and Z. Ouyang, *Analyst*, 2013, **138**, 4443–4447.
- 28 A. Y. Li, P. Wei, H. C. Hsu and R. G. Cooks, *Analyst*, 2013, **138**, 4624–4630.
- 29 F. P. M. Ijzerman, S. Maher, D. E. Damon, R. M. Barrett, S. U. Syed, R. M. A. Heeren, S. Taylor and A. K. Badu-Tawiah, *Anal. Chem.*, 2016, **88**, 1391–1400.
- 30 Z. Zhang, R. G. Cooks and Z. Ouyang, *Analyst*, 2012, **137**, 2556–2558.
- 31 S. Reeber, S. Gadi, S. Huang and G. Glish, *Anal. Methods*, 2015, **7**, 9808–9816.
- 32 S. Giannoukos, B. Brkic, S. Taylor, A. Marshall and G. Verbeck, *Chem. Rev.*, 2016, **116**, 8146–8172.
- 33 L. Li, T.-C. Chen, Y. Ren, P. I. Hendricks, R. G. Cooks and Z. Ouyang, *Anal. Chem.*, 2014, **86**, 2909–2916.
- 34 R. M. Black and B. Muir, *J. Chromatogr., A*, 2003, **1000**, 253–281.
- 35 N. B. Munro, S. S. Talmage, G. D. Griffin, L. C. Waters, A. P. Watson, J. F. King and V. Hauschild, *Environ. Health Perspect.*, 1999, **107**, 933–974.
- 36 N. E. Manicke, P. Abu-Rabie, N. Spooner, Z. Ouyang and R. G. Cooks, *J. Am. Soc. Mass Spectrom.*, 2011, **22**, 1501–1507.
- 37 Shipping Guidelines for Dried Blood Spot Specimens, http://www.cdc.gov/labstandards/pdf/nsqap/Bloodspot_Transportation_Guidelines.pdf, (accessed May 11, 2015).
- 38 A. P. Bruins, in *Electrospray ionization mass spectrometry*, ed. R. B. Cole, Wiley, New York, 1997, pp. 107–136.
- 39 M. G. Ikononou, A. T. Blades and P. Kebarle, *J. Am. Soc. Mass Spectrom.*, 1991, **2**, 497–505.
- 40 G. J. Van Berkel, in *Electrospray ionization mass spectrometry*, ed. R. B. Cole, Wiley, New York, 1997, pp. 65–105.
- 41 M. Yamashita and J. B. Fenn, *J. Phys. Chem.*, 1984, **88**, 4451–4459.
- 42 F. M. Wampler, A. T. Blades and P. Kebarle, *J. Am. Soc. Mass Spectrom.*, 1993, **4**, 289–295.
- 43 M. Yamashita and J. B. Fenn, *J. Phys. Chem.*, 1984, **88**, 4671–4675.
- 44 M. Y.-M. Wong, S.-H. Man, C.-M. Che, K.-C. Lau and K.-M. Ng, *Analyst*, 2014, **139**, 1482–1491.
- 45 K. Hiraoka and I. Kudaka, *Rapid Commun. Mass Spectrom.*, 1990, **4**, 519–526.
- 46 H. Wang, J. Liu, R. G. Cooks and Z. Ouyang, *Angew. Chem.*, 2010, **122**, 889–892.
- 47 R. B. Cole and A. K. Harrata, *Rapid Commun. Mass Spectrom.*, 1992, **6**, 536–539.
- 48 K. Hiraoka and I. Kudaka, *Rapid Commun. Mass Spectrom.*, 1992, **6**, 265–268.
- 49 J. D. Skalny, T. Mikoviny, S. Matejcik and N. J. Mason, *Int. J. Mass Spectrom.*, 2004, **233**, 317–324.

