

PAPER

View Article Online
View Journal | View Issue

Combination of theoretical and *in situ* experimental investigations of the role of lithium dopant in manganese nitride: a two-stage reagent for ammonia synthesis

Said Laassiri,^a Constantinos D. Zeinalipour-Yazdi,^d
Nicolas Bion,^e C. Richard A. Catlow^{fg} and Justin S. J. Hargreaves^b

Received 8th December 2019, Accepted 22nd January 2020

DOI: 10.1039/c9fd00131j

Manganese nitride related materials are of interest as two-stage reagents for ammonia synthesis *via* nitrogen chemical looping. However, unless they are doped with a co-cation, manganese nitrides are thermochemically stable and a high temperature is required to produce ammonia under reducing conditions, thereby hindering their use as nitrogen transfer materials. Nevertheless, when lithium is used as dopant, ammonia generation can be observed at a reaction temperature as low as 300 °C. In order to develop strategies for the improvement of the reactivity of nitride materials in the context of two-stage reagents, it is necessary to understand the intrinsic role of the dopant in the mechanism of ammonia synthesis. To this end, we have investigated the role of lithium in increasing the manganese nitride reactivity by *in situ* neutron diffraction studies and N₂ and H₂ isotopic exchange reactions supplemented by DFT calculations.

1. Introduction

In the design of a novel generation of materials for ammonia synthesis, metal nitrides have significant potential for the development of very active catalysts that could operate under less severe conditions than the conventional Haber Bosch Process. While the mechanism of ammonia synthesis is still not unequivocally

^aUniv. Lille, CNRS, ENSCL, Centrale Lille, Univ. Artois, UMR 8181, UCCS - Unité de Catalyse et Chimie du Solide, F-59000, Lille, France. E-mail: Said.laassiri@um6p.ma

^bWestCHEM, School of Chemistry, University of Glasgow, Glasgow, G12 8QQ, UK

^cChemical & Biochemical Sciences, Green Process Engineering (CBS), Mohamed VI Polytechnic University, UM6P, 43150, Ben Guerir, Morocco

^dSchool of Science, University of Greenwich, Central Avenue, Chatham Maritime, Kent, ME4 4TB, UK

^eInstitut de Chimie des Milieux et Matériaux de Poitiers (IC2MP), University of Poitiers, CNRS, 4 Rue Michel Brunet, TSA51106, F86073 Poitiers Cedex 9, France

^fSchool of Chemistry, Cardiff University, Park Place, Cardiff CF10 1AT, UK

^gDepartment of Chemistry, University College London, 20 Gordon Street, London, WC1H 0AJ, UK



elucidated for nitride based materials, lattice nitrogen mobility and reactivity have been demonstrated in a number of nitride materials including mono- and bimetallic nitrides such as Ta_3N_5 , Mg_3N_2 and $\text{Co}_3\text{Mo}_3\text{N}$, leading to the possibility of ammonia production through pathways based upon the Mars–van Krevelen (MvK) mechanism.^{1–4} In this mechanism, some of the lattice nitrogen can react directly with dihydrogen to produce ammonia, resulting in the generation of nitrogen vacancies that can activate N_2 to complete the cycle.

Over the years, oxide materials operating *via* the MvK mechanism have inspired the development of chemical looping technology for combustion reactions. The idea is based upon separating the reaction into different steps where the combustion stage occurs in the absence of dioxygen and the oxygen required for the reaction is provided by an oxide-based material. The oxygen-depleted material is subsequently regenerated in a second reaction step. The possibility to deconstruct processes into multiple sub-reactions conducted under different conditions (such as temperature, pressure and gas composition) is an advantage of looping material design when compared to catalytic material design. Considering the thermodynamic limitation of the ammonia synthesis reaction, the application of the chemical looping principle in ammonia synthesis presents an interesting alternative to the Haber Bosch Process. In a similar manner to the oxide based chemical looping processes, ammonia synthesis can be deconstructed into sub-reactions undertaken in the presence of a nitride material acting as a nitrogen transfer agent, where the nitride can be reduced in a first step to produce ammonia and its resultant nitrogen deficiency replenished in a second step using N_2 .^{5,6} The sub-reactions could be conducted under different conditions which could alleviate some of the limitations related to the adsorption and dissociation of dinitrogen in the catalytic cycle. Amongst materials that can act as nitrogen transfer materials, manganese has attracted a degree of attention due to its ability to activate molecular dinitrogen at moderate temperature and ambient pressure to form a range of nitrides with different crystal structure and stoichiometry, including Mn_4N , Mn_3N_2 and $\text{Mn}_6\text{N}_{5+x}$.^{7,8} Furthermore, previous studies have shown that the lattice nitrogen in manganese nitride is both labile and reactive under reducing conditions.^{5,9} When manganese nitride is reacted with hydrogen at ambient pressure, ammonia is produced. The possibility of manganese based systems to “breathe in” nitrogen and “breathe out” ammonia by simply cycling between different reaction environments at ambient pressure offers an interesting route for the development of alternative approaches for ammonia generation under milder reaction conditions. However, the thermochemical stability of manganese nitride and its apparent low selectivity towards ammonia generation hinder its application as a nitrogen transfer material. In order to improve the reactivity of nitride materials, we have demonstrated that doping with small amounts of lithium containing dopant results in high reactivity towards hydrogen at a reaction temperature as low as 300 °C.⁵ A related effect has been reported in the catalytic ammonia synthesis reaction, where the addition of LiH to transition metal-based materials as co-catalyst facilitated the production of ammonia at 350 °C.¹⁰

Historically, the development of highly active catalysts for ammonia synthesis is closely related to the use of suitable dopants to enhance performance. For example, in the case of promoted iron catalysts, Al_2O_3 is used as a structure promoter. The difference in terms of accessible surface area between promoted



and bare iron catalysts is twenty-fold. However, the role of dopants is not only restricted to structural modification, but also includes modification of the electronic properties. In the case of the industrial ammonia catalyst, the addition of K_2O in the doubly promoted iron catalyst considerably increases catalytic activity at higher pressure when compared to the singly promoted catalyst.¹¹ In the context of the Ru based catalyst system, which is very active for ammonia generation at low pressure, density functional theory (DFT) indicated that the addition of Cs^+ on the Ru(0001) surface reduced the N_2 dissociation barrier and the coverage of other intermediates along the reaction path.¹¹ However, to the authors' current knowledge, the role of lithium doping in both catalytic and chemical looping ammonia synthesis is not yet clearly understood.

In order to investigate the origin of the increase in manganese reactivity upon lithium doping, a series of *in situ* neutron diffraction studies and N_2 and H_2 isotopic exchange reactions were performed and were supplemented by DFT calculations. Initially, a series of *in situ* neutron diffraction studies was conducted to provide information on the structural evolution of lithium doped and non-doped manganese nitride materials under reducing reaction conditions. Furthermore, the role of lithium in the process of hydrogen and nitrogen activation was studied by isotopic exchange reactions, while detailed DFT calculations provide insight into the energetic aspects of the interaction between the reactant and the surface in the presence and absence of the dopant.

2. Methods and materials

2.1 Experimental methods

2.1.1 Material synthesis. The synthesis procedures applied for the preparation of undoped and Li-doped manganese nitrides have been described in detail elsewhere.^{5,12} In summary, 0.3 g of Mn_2O_3 (Sigma Aldrich, 99%) and 1.0 g of $NaNH_2$ (Sigma Aldrich, 98%) were loaded into a Teflon-lined steel autoclave inside a nitrogen-filled glovebox. The autoclave was tightly closed and kept in an oven at 240 °C for 36 h. The product was then collected by filtration, washed with ethanol and water, and dried overnight at room temperature. For the preparation of Li doped manganese nitride, first an oxide precursor was prepared by a conventional co-precipitation route, using aqueous ammonia as precipitation agent, followed by calcination under static air at 800 °C for 8 h. The nitride phase was then prepared in a similar manner to the non-doped manganese nitride. The results of structural and textural characterisation have been presented previously.⁵

2.1.2 Isotopic exchange experiments. Isotopic exchange experiments were performed in an apparatus described elsewhere.¹³ In summary, the system comprised a closed-loop reactor coupled to a mass spectrometer for monitoring the composition of the gas evolved. A recirculating pump was connected to the system to minimise gas phase diffusion limitations. Temperature-programmed isotopic exchange and isothermal isotopic exchange experiments were undertaken on 100 mg of the manganese nitride materials. Prior to the isotopic exchange experiments, samples were subjected to an *in situ* 3 : 1 H_2 : N_2 activation step at 700 °C for 1 h.

2.1.2.1 Nitrogen activation process. The study of the nitrogen activation process was performed using labeled nitrogen $^{15}N_2$ (98%+ purity, supplied by



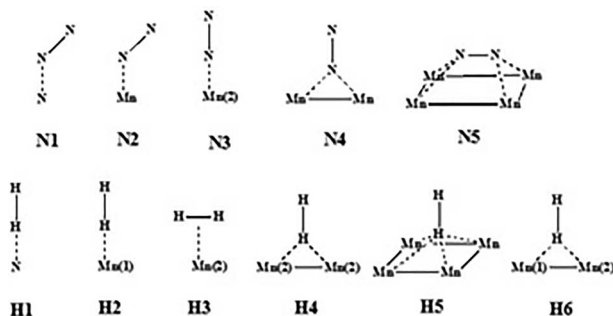
Cambridge Isotope Laboratories, Inc.). The mass-to-charge ratios of 28, 29 and 30 m/z were monitored as a function of time to follow the process.

2.1.2.2 Hydrogen activation process. Hydrogen activation was studied *via* the H_2/D_2 exchange reaction. Isothermal homoexchange experiments were conducted at temperatures ranging between 100 °C and 300 °C. After the activation step, D_2 (20 mbar) and H_2 (20 mbar) were introduced in the system and the evolution of the partial pressures of reactants and products was monitored by mass spectrometry.

2.1.3 *In situ* powder neutron diffraction. *In situ* controlled atmosphere high temperature time-of-flight (ToF) PND data was collected using the high intensity Polaris diffractometer at the ISIS pulsed spallation source (Rutherford Appleton Laboratory, UK). Powder samples (*ca.* 1 g) were loaded into 11 mm diameter thin walled stainless steel cells and held in place between quartz glass frits to permit a flow of reaction gas to circulate through the samples during data collection. The cell assembly was mounted in a dedicated neutron diffraction furnace capable of heating it from room temperature to ~ 900 °C and connected to a gas panel fitted with mass flow controllers allowing a mixture of gases to flow through the sample at controlled rates during data collection. A collimator manufactured from neutron-absorbing boron nitride ceramic was placed around the cell and enabled diffraction patterns to be collected in the Polaris $2\theta \approx 90^\circ$ detector bank which were free of Bragg reflections from the steel walls of the cell. Rietveld refinements against the PND data were performed using the General Structure Analysis System (GSAS) through the EXPGUI interface.^{14,15}

2.2. Density functional theory

All DFT calculations were periodic Γ -point¹⁶ and spin-polarised calculations obtained with the use of the VASP 5.4.1 code.^{17,18} Exchange and correlation effects were considered within the generalized gradient approximation (GGA) using the revised Perdew–Burke–Ernzerhof (revPBE) exchange-correlation (XC) functional,¹⁹ with the projector augmented-wave (PAW) method^{20,21} used to represent core states. These were 1s to 3p for Mn and 1s for N and Li. Geometry optimizations were performed with a residual force threshold on each atom of $0.02 \text{ eV } \text{\AA}^{-1}$, using the conjugate-gradient algorithm. The convergence criterion for electronic relaxation was 10^{-1} eV . The initial charge density was obtained by superposition of atomic charges. Various initial adsorption configurations were considered



Scheme 1 Potential N_2 and H_2 adsorption sites on the (100) η - Mn_3N_2 surface.



where the adsorbate was either in a side-on or in an end-on configuration, and the adsorbate bond length for N_2 (r_{N-N}) = 1.11 Å, and that for H_2 (r_{H-H}) = 0.75 Å. The various adsorption sites were the symmetry unique surface sites shown in Scheme 1, which resulted in 8 sites. The adsorption energy was taken as the total energy difference between the fully relaxed bound state of the surface-adsorbate complex and the fully relaxed surface slab and the isolated molecules given by eqn (1),

$$\Delta E_{\text{ads,D3}} = E_{\text{slab-X}} - E_{\text{slab}} - E_{\text{X}}, \quad (1)$$

where X = N_2 , H_2 and Li. Grimme's dispersion corrections were included *via* the zero-damping DFT-D3 correction method,²² in which the following dispersion energy correction is added to the Kohn-Sham energies,

$$E_{\text{disp}} = -\frac{1}{2} \sum_{i=1}^N \sum_{j=1}^N \left(s_6 \frac{C_{6,ij}}{r_{ij}^6} + s_8 \frac{C_{8,ij}}{r_{ij}^8} \right), \quad (2)$$

where $C_{6,ij}$ and $C_{8,ij}$ denote the averaged (isotropic) 6th and 8th order dispersion coefficients for atom pair ij , and r_{ij} is the internuclear distance between atoms i and j . s_6 and s_8 are the functional-dependent scaling factors. The D3 correction was invoked in calculating the adsorption energies, as it is generally known that the revPBE is unable to completely recover dispersion interactions as a result of polarisation effects primarily of the transition metals (TMs).

3. Results and discussion

3.1. Structural evolution of manganese nitride materials under reducing conditions: *in situ* neutron diffraction

3.1.1 Nitride phase identification: starting material. The neutron diffraction data collected for the manganese nitride materials are presented in Fig. 1 and 2. Rietveld refinement against the PND data was performed using the previously published θ - Mn_6N_{5+x} structure as the starting model. Considering that θ - Mn_6N_{5+x}

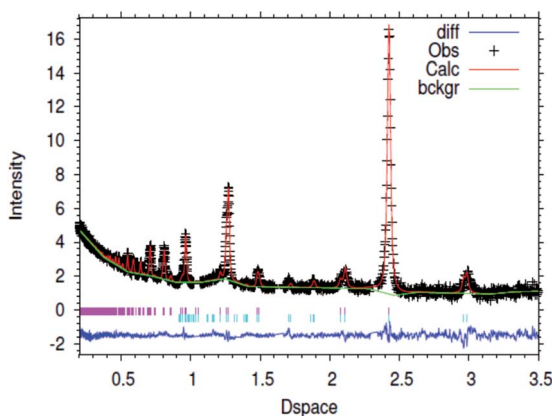


Fig. 1 Fitted powder neutron diffraction profile from Rietveld refinement for the 1% wt Li/ Mn_6N_{5+x} sample at ambient temperature.



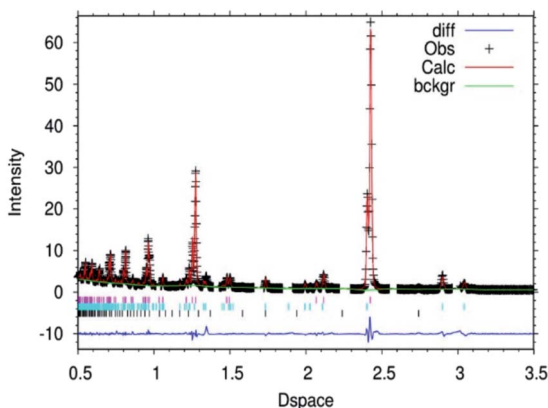


Fig. 2 Fitted powder neutron diffraction profile from Rietveld refinement for the θ - $\text{Mn}_6\text{N}_{5+x}$ sample at ambient temperature.

exhibits an antiferromagnetic ordering of the first kind, the magnetic structure was considered as a second phase using the magnetic symmetry group $FC2'/m$.⁸

In the case of the lithium doped material, the crystal structure derived from the Rietveld refinement, Fig. 1, corresponded closely to the θ - $\text{Mn}_6\text{N}_{5+x}$ structure as described by Leineweber *et al.*⁸ In summary, it presented a defective NaCl type structure with tetragonal distortion ($F4/mmm$). The overall details of the refinement are summarized in Table 1. In the case of the non-doped manganese nitride, the material was found to comprise two phases, being predominantly composed of θ - $\text{Mn}_6\text{N}_{5+x}$ and to a lesser extent of η - Mn_3N_2 (θ - $\text{Mn}_6\text{N}_{5+x}$ / Mn_3N_2 = 1/0.2 weight ratio) as extracted from the Rietveld refinement as presented in Fig. 2. In the lithium doped manganese nitride, only the θ - $\text{Mn}_6\text{N}_{5+x}$ phase was observed, indicating that the addition of lithium favours the formation of θ - $\text{Mn}_6\text{N}_{5+x}$. The application of powder neutron diffraction provides a much greater insight into the phase complexity of these materials, for which the powder X-ray diffraction pattern was assigned previously to Mn_3N_2 .⁵

3.1.2. *In situ* neutron diffraction studies under reducing conditions. The structural evolution of both the non-doped and lithium doped manganese nitride materials during lattice nitrogen discharge was followed by *in situ* neutron diffraction under 60 mL min⁻¹ 75 vol% H_2 in Ar (BOC, 99.98%) to reproduce the conditions of lattice nitrogen reduction in chemical looping. All diffraction

Table 1 Summary of crystallographic parameters of the 1% wt Li/ $\text{Mn}_6\text{N}_{5+x}$ system derived from room temperature neutron diffraction data

	Nuclear structure	Magnetic structure
Space group	$F4/mmm$	$FC2'/m'$
Cell parameter $a/\text{\AA}$	4.2195(3)	4.2195(3)
Cell parameter $c/\text{\AA}$	4.1514(4)	4.1514(4)
Occupancy for N site	1.00 ± 0.02	
R_p	0.041	
wR_p	0.056	
χ^2	1.396	



patterns were analysed by the Rietveld method using θ - $\text{Mn}_6\text{N}_{5+x}$ and/or η - Mn_3N_2 as starting models.

Fig. 3 presents a selection of *in situ* diffraction patterns collected at 400 °C for the undoped θ - $\text{Mn}_6\text{N}_{5+x}$ sample. Following the reaction no structural changes were apparent in both the θ - $\text{Mn}_6\text{N}_{5+x}$ and the η - Mn_3N_2 phase fractions, confirming the thermochemical stability of manganese nitrides during the discharge reaction as had been reported earlier in the literature.⁵ Furthermore, no changes were observed upon increasing the reaction temperature to 500 °C.

Fig. 4 presents *in situ* neutron diffraction patterns of the lithium doped manganese nitride material collected at different times on stream at 400 °C. At low temperature, ≤ 200 °C, no noticeable changes were detected in the sample and only the θ - $\text{Mn}_6\text{N}_{5+x}$ phase was apparent. This observation is consistent with the low reactivity of θ - $\text{Mn}_6\text{N}_{5+x}$ for ammonia production under reducing conditions at reaction temperatures below 300 °C.⁵ However, upon increasing the temperature, a linear decrease in the nitrogen occupancy was observed, indicating reduction of the θ - $\text{Mn}_6\text{N}_{5+x}$ proceeding through a nitrogen vacancy creation pathway. However, when the concentration of nitrogen vacancies reached a critical concentration ($n = 0.88$), the reduction of the θ - $\text{Mn}_6\text{N}_{5+x}$ was accompanied by a structural rearrangement, resulting in two inequivalent Mn sites, with the resulting structure being related to η - Mn_3N_2 .

3.2. Effect of Li in the N_2 and H_2 activation processes: isotopic exchange experiment

3.2.1. N_2 activation process. The ability of the manganese nitride related materials to activate molecular nitrogen was studied *via* heterolytic temperature programmed nitrogen isotopic exchange (TPNIE) in the range of 400 °C to 700 °C as presented in Fig. 5. The results of the TPNIE experiment, shown in Fig. 5(a), indicate

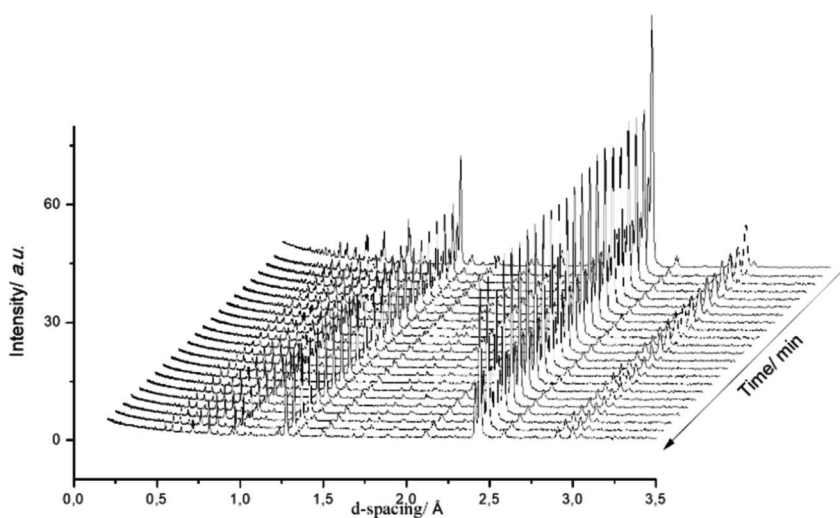


Fig. 3 Diffraction patterns of θ - $\text{Mn}_6\text{N}_{5+x}$ during the discharge reaction at 400 °C. *In situ* measurements were conducted under 60 mL min⁻¹ 75 vol% H_2 in Ar (BOC, 99.98%). Patterns were collected for 10 min.



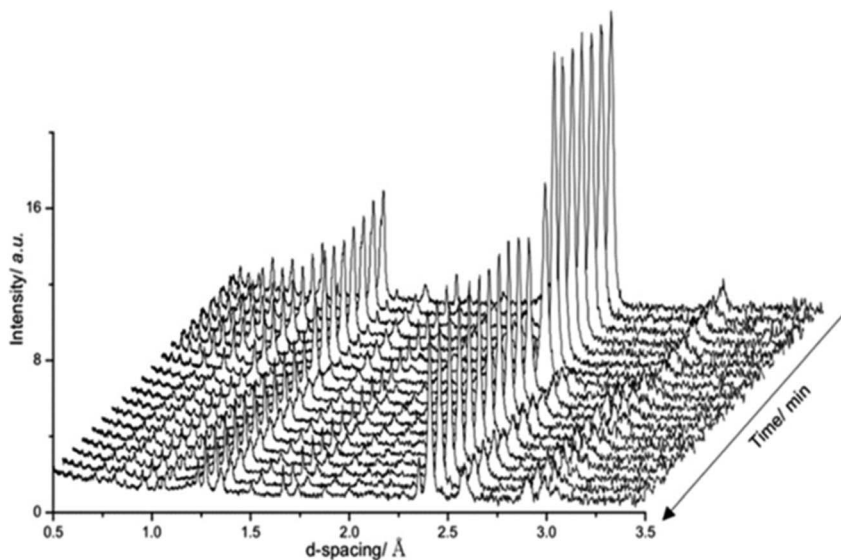


Fig. 4 Diffraction patterns of 1% wt Li/Mn₆N_{5+x} during the discharge reaction at 400 °C. *In situ* measurements were conducted under 60 mL min⁻¹ 75 vol% H₂ in Ar (BOC, 99.98%). Patterns were collected for 10 min.

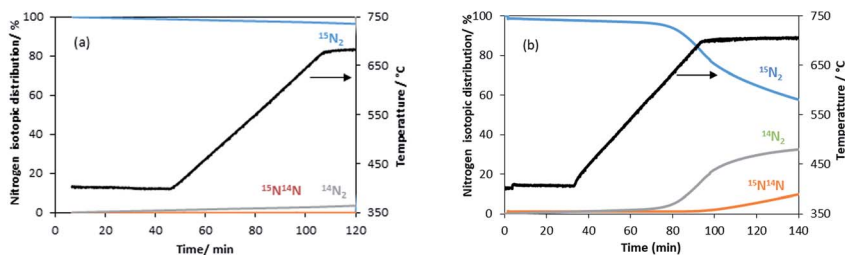


Fig. 5 Evolution of the nitrogen isotopomer distribution during the heterolytic TPNIE experiment on the manganese related materials. (a) θ -Mn₆N_{5+x} and (b) 1% wt Li/Mn₆N_{5+x}.

that, under these conditions, θ -Mn₆N_{5+x} is not able to undergo the exchange process between isotopically labelled ¹⁵N₂ and surface/bulk nitrogen. However, when a similar temperature-programmed experiment was performed with the lithium doped system, a major difference in the exchange profile can be observed. The results are presented in Fig. 5(b), where it can be seen that there was a significant decrease in the concentration of ¹⁵N₂ as a function of temperature, which is offset by the production of ¹⁴N₂ and ¹⁴N¹⁵N. In parallel, an increase in the total pressure of the system occurred. The increase in the system pressure, beyond that normally expected in a closed loop due to increasing temperature, can be tentatively explained by decomposition producing ¹⁴N₂ at the beginning of the process.

A similar exchange pattern was observed during the heterolytic isothermal nitrogen exchange experiment at 700 °C, as presented in Fig. 6. During the exchange reaction, a significant reduction in ¹⁵N₂ concentration was observed



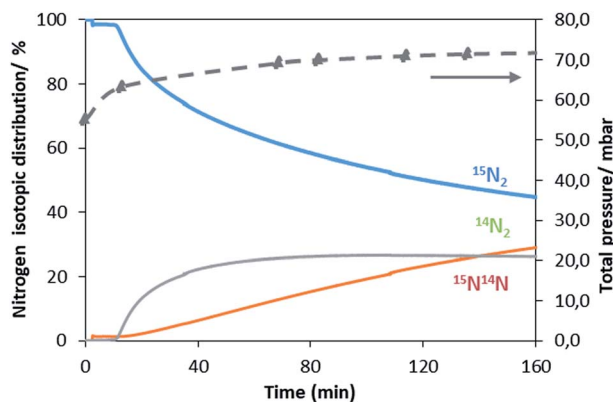


Fig. 6 Evolution of the nitrogen isotopomer distribution and of the total pressure during the heterolytic isothermal nitrogen exchange experiment at 700 °C on 1% wt Li/Mn₆N_{5+x}.

accompanied by production of $^{14}\text{N}_2$ during the first 40 minutes of reaction whilst $^{14}\text{N}^{15}\text{N}$ was only detected following $^{14}\text{N}_2$ production. Simultaneously, an increase in the system pressure was observed during the initial stage of the experiment. This suggests possible reduction of the system prior to the activation of its exchange activity. In summary, the activation process is very limited in the non-doped system. However, a pronounced effect of lithium dopant upon the nitrogen activation process is observed, which may be a result of lowering of the nitrogen vacancy formation energy (NVFE) as suggested by the DFT calculations detailed later.

3.2.2. H_2 activation process. Hydrogen activation was studied *via* the H_2/D_2 exchange reaction at 200 °C and 250 °C. The results of the exchange experiments are presented in Fig. 7.

In the case of the non-doped manganese nitride sample, the H_2/D_2 exchange reaction results indicate that at 200 °C the exchange starts occurring only at a very low rate and only a small amount of HD was detected (Fig. 7(a)). Conducting the exchange at 250 °C slightly increases the exchange rate (Fig. 7(b)). Hydrogen is usually expected to spontaneously dissociate on transition metal surfaces at low temperature (<200 °C). However, absence of the H_2/D_2 exchange reaction on $\theta\text{-Mn}_6\text{N}_{5+x}$ at room temperature and up to 150 °C was found. In the lithium promoted system, the exchange occurred at a very low rate at 200 °C, in a very similar manner to the non-doped system (Fig. 7(c)). However, at 250 °C the presence of lithium accelerated the H_2/D_2 equilibration reaction compared to its non-doped counterpart, as can be seen from the significant increase in the concentration of HD produced (Fig. 7(d)). This observation indicates that at 250 °C, the lithium dopant lowers the barrier for hydrogen dissociation and possibly increases the number of sites where H_2/D_2 can adsorb dissociatively *via* lithium-mediated chemisorption.

3.3. DFT study of H_2 and N_2 adsorption on manganese nitride materials

In order to elucidate the role of Li in the reactivity of manganese nitride in ammonia synthesis, H_2 and N_2 activation has been studied by DFT calculations.



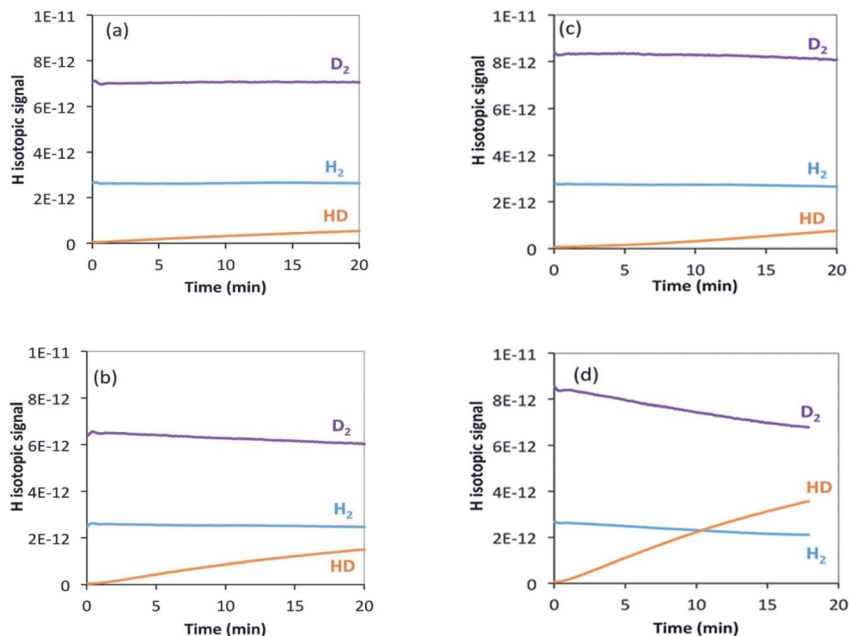


Fig. 7 H_2/D_2 exchange reaction on (a) $\theta\text{-Mn}_6\text{N}_{5+x}$ at 200°C , (b) $\theta\text{-Mn}_6\text{N}_{5+x}$ at 250°C , (c) 1% wt Li/ $\text{Mn}_6\text{N}_{5+x}$ at 200°C , (d) 1% wt Li/ $\text{Mn}_6\text{N}_{5+x}$ at 250°C .

3.3.1. DFT study of H_2 and N_2 adsorption on $\text{Mn}_6\text{N}_{5+x}$. H_2 and N_2 adsorption and activation have already been reported in an earlier study.²³ Various adsorption energies were calculated in relation to N_2 adsorption on non-doped $\text{Mn}_6\text{N}_{5+x}$. In this study, the adsorption and the activation of N_2 have been investigated on the (111), (111)', (110) and (100) surfaces,²³ and the adsorption energies were found to range between -5 kJ mol^{-1} and -43 kJ mol^{-1} in most cases. However, a value of -120 kJ mol^{-1} was reported for the (111) surface. These results indicate that the adsorption of N_2 is mostly molecular in the case of $\text{Mn}_6\text{N}_{5+x}$ and only the (111) surface can effectively chemisorb nitrogen. Although the adsorption energy is very large, $\text{N}\equiv\text{N}$ activation was found to be less than 4% (in terms of bond length elongation). Hydrogen adsorption was found to be exclusively molecular with adsorption energies varying between -81 and -84 kJ mol^{-1} .

3.3.2. DFT study of H_2 and N_2 adsorption on $\eta\text{-Mn}_3\text{N}_2$. The adsorption of N_2 and H_2 was studied on $\eta\text{-Mn}_3\text{N}_2$ surfaces using periodic DFT-D3 calculations (Table 2). It is interesting to note that $\eta\text{-Mn}_3\text{N}_2$ has a similar structure to $\text{Mn}_6\text{N}_{5+x}$ with an ordered vacancy array (*i.e.* intrinsic N-vacancies) which may play an important role in $\text{N}\equiv\text{N}$ activation. The adsorption and activation of nitrogen on $\eta\text{-Mn}_3\text{N}_2$ were studied on the (100) surface as it was identified previously as the preferred surface termination. The adsorption properties were calculated at the five symmetry unique sites of the (100) surface as depicted in Scheme 1, and the values are presented in Table 2. The adsorption energies of N_2 were found to be very low, varying between -3.6 kJ mol^{-1} and -48 kJ mol^{-1} . In fact, the adsorption energy for most adsorption sites (*i.e.* N1, N2, N4 and N5) was low, being between -3.6 and -10.8 kJ mol^{-1} and only reaching -48 kJ mol^{-1} for N_2 adsorption at the





Table 2 Dispersion-corrected adsorption energies ($\Delta E_{\text{ads},\text{D3}}$), adsorbate bond lengths ($r(\text{H-H})$, $r(\text{N-N})$), nearest surface to adsorbate separations ($r(\text{S-H})$, $r(\text{S-N})$), adsorbate tilt angles ($a(\text{S-H-H})$, $a(\text{S-N-N})$), adsorption sites and % activation of adsorbate bonds for H_2 and N_2 adsorbed on the (100)-surface of $\eta\text{-Mn}_3\text{N}_2$

N₂ adsorption									
Bound to	N5	N3	N1	N2	N4	N2	N3	N1	N3
Type	Tilt	End-on	Tilt	Tilt	End-on	End-on	End-on	Tilt	End-on
$\Delta E_{\text{N}_2, \text{D3}}$	−9.5	−47.9	−9.7	−10.8	−8.6	−3.6	−48.0	−8.4	
$r(\text{N-N})$	1.118	1.134	1.117	1.119	1.118	1.128	1.134	1.118	
$a(\text{S-N-N})$	137	176	111	131	165	180	177	116	
$r(\text{S-N})$	3.765	1.909	3.420	3.095	3.562	2.090	1.910	3.405	
N ₂ activation ^a	2	3	2	2	2	3	3	2	
H₂ adsorption									
Bound to	H5	H3	H1	H4	H4	H3	H3	H1	H3
Type	End-on	Side-on	End-on	End-on	End-on	End-on	Side-on	End-on	Side-on
$\Delta E_{\text{H}_2, \text{D3}}$	−81.0	−81.5	−80.4	−80.6	−80.5	−79.9	−81.4	−80.3	
$r(\text{H-H})$	0.752	0.749	0.749	0.750	0.749	0.748	0.749	0.749	
$a(\text{S-H-H})$	137	98	173	140	152	176	97	173	
$r(\text{S-H})$	3.177	2.791	2.661	3.014	2.948	2.881	2.869	2.646	
H ₂ activation ^b	2	1	1	1	1	1	1	1	

^a Percentage N₂ activation is defined as $[r(\text{N}_{\text{ss}}\text{ads}) - 1.098] \times 100/1.098$. ^b Percentage H₂ activation is defined as $[r(\text{H}_{\text{ss}}\text{ads}) - 0.74] \times 100/0.74$.

Mn(2) site. In contrast with the situation for N₂, H₂ was found to interact more strongly with η -Mn₃N₂. The calculated adsorption energies ranged between $-79.9 \text{ kJ mol}^{-1}$ and $-81.5 \text{ kJ mol}^{-1}$. In this case, H₂ adsorption is likely to be molecular and activated adsorption is not expected, at least for the studied (100) surface. A parallel can be established with the adsorption energy we previously reported for H₂ adsorption over Ta₃N₅-(100), (010) and (001) surfaces, which was also reported as being mainly molecular.

In summary, hydrogen was found to adsorb end-on on N (H1) and Mn(1) (H2), changing to side-on for Mn(2) (H3). It can also adsorb end-on on a two-fold Mn bridge (H4) and a four-fold Mn hollow (H5). Nitrogen adsorbs in the tilt configuration on N (N1), Mn(1) (N2) and a four-fold Mn hollow (N5). We have previously attributed the three adsorption modes to the symmetry of the molecular orbitals closest to the highest occupied molecular orbital of N₂.²⁴ Nitrogen can also adsorb end-on on a Mn atom (N3) and a Mn–Mn bridge (N4).

3.3.3. Role of Li in H₂ and N₂ activation. The role of lithium dopant in the reactivity of manganese nitride was studied using η -Mn₃N₂ as the host structure. The choice of η -Mn₃N₂ was motivated by the results obtained from the *in situ* neutron diffraction studies detailed above, for which the predominant phase at $T \geq 300 \text{ }^{\circ}\text{C}$ is η -Mn₃N₂.

3.3.3.1 Lithium adsorption on the η -Mn₃N₂ surface. The adsorption of Li on η -Mn₃N₂ has been studied by DFT calculations (Fig. 8). Five different adsorption configurations for Li on η -Mn₃N₂ have been identified and are depicted in Scheme 2. In particular, we find that Li chemisorbs strongly (-174 kJ mol^{-1} to -247 kJ mol^{-1}) on each of the eight symmetry unique adsorption sites of the (100) surface. The adsorption of Li was found to be non-selective towards Mn or N. Therefore, Li may electronically affect both Mn and N when used as a dopant. This behaviour is in contrast with our observations for Co doped Ta₃N₅, for which Co

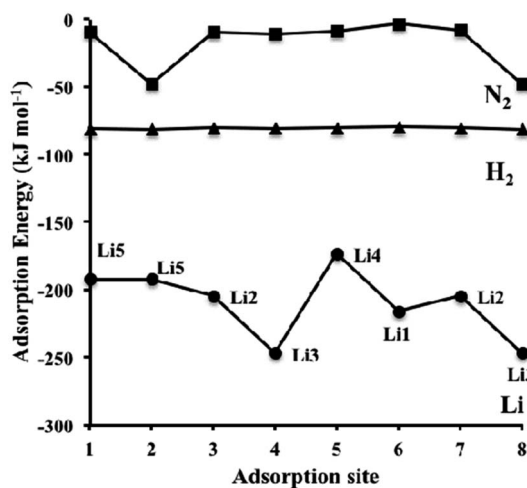
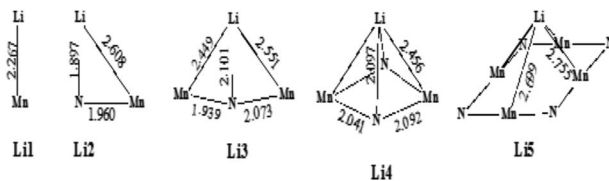


Fig. 8 Dispersion-corrected (revPBE-D3) adsorption energies of Li (circles), H₂ (triangles) and N₂ (squares) over the symmetry unique adsorption sites on η -Mn₃N₂ depicted in Scheme 1 (for H₂ and N₂). The data for Li corresponds to the adsorption site configuration depicted in Scheme 2. Lines connecting the data points have been drawn to guide the eye.





Scheme 2 Various binding configurations of Li atoms on η - Mn_3N_2 along with selected bond lengths given in Å.

was found to adsorb mostly on N-rich sites, which may be attributed to the metallic property of Co .²³

The adsorption energy of Li is much stronger than that of H_2 or N_2 , as shown in Fig. 8; therefore, the adsorption of the reactants for ammonia synthesis is predicted not to perturb significantly the structure of the $\text{Li-}\eta\text{-Mn}_3\text{N}_2$ phase at low temperatures. Furthermore, it was observed that Li decreases the number of unpaired electrons on the Mn atoms as indicated by changes in their effective magnetic moment. In particular, we observe a decrease by an average value of $0.9 \mu_{\text{B}}$, indicating pairing of the lone electron of Li with the unoccupied d-orbitals of the Mn atoms. This observation suggests that the promoting effect of lithium on $\eta\text{-Mn}_3\text{N}_2$ is electronic in nature, which is a result of electron injection from Li into the unoccupied d-states of Mn.

3.3.3.2 Nitrogen vacancy formation energy in Li doped $\eta\text{-Mn}_3\text{N}_2$. The evolution of the nitrogen vacancy formation energy (NVFE) was studied as a function of coverage of Li on the surface vacancies of $\eta\text{-Mn}_3\text{N}_2$. The results are presented in Fig. 9.

In the absence of Li, the NVFE of $\eta\text{-Mn}_3\text{N}_2$ in bulk is 1.3 eV, which is identical to the NVFE at the (100) surface. This indicates some degree of rehybridization of the bonding orbitals of surface-N compared to bulk-N in order to keep the NVFE of the 6-fold bound N in the bulk the same as the 5-fold bound N on the surface. A comparison of the band structures of bulk and surface $\eta\text{-Mn}_3\text{N}_2$ shows an up-shift of the N 2s band by about 0.5 eV in the slab DOS. Having examined the NVFE at

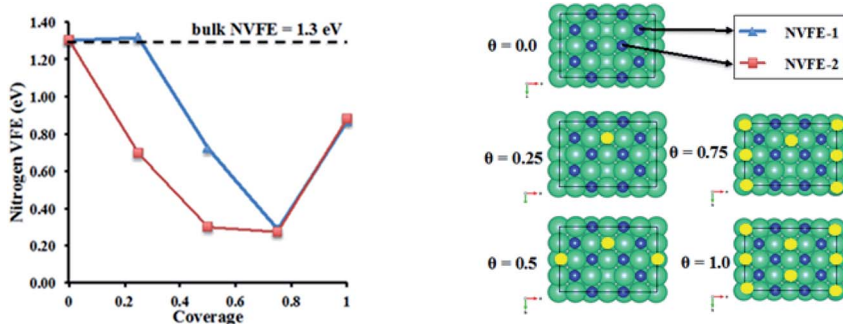
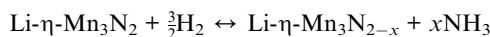


Fig. 9 Nitrogen vacancy formation energy (NVFE) as a function of coverage of Li promoters on $\eta\text{-Mn}_3\text{N}_2$. Li: yellow, Mn: green and N: blue. The NVFE was calculated based on the following equation: $\text{NVFE} = E_{\text{Nvac}} + 1/2 E_{\text{N}_2} - E_{\text{slab}}$ where E_{Nvac} is the total energy of the surface that has the nitrogen vacancy, E_{N_2} is the total energy of N_2 , and E_{slab} is the total energy of the defect-free slab.



two sites (*i.e.* NVFE-1 and NVFE-2), it was found that the location of the Li promoter with respect to the prospective N-vacancy determines the reducing effect on the NVFE (*i.e.* promoting effect). In particular, it appears that there is a promotional effect only when the Li promoter is separated from N, and a vacancy is formed by a Mn–Mn bond rather than a Mn atom (see $\theta = 0.25$ in Fig. 9 for the position of Li compared to N for NVFE-1 and NVFE-2). Intriguingly, both NVFE curves (*i.e.* NVFE-1 and NVFE-2) as a function of coverage show that there is an optimum surface concentration for the Li atoms so that the promoting effect is maximized, which corresponds to a coverage of $\theta = 0.75$ and a ratio of Mn : Li surface atoms (*i.e.* $\text{Mn}_{\text{surf}} : \text{Li}_{\text{surf}}$) of 4 : 1. Higher Li coverage appears to increase the NVFE and would additionally prevent the reactants from interacting directly with the $\eta\text{-Mn}_3\text{N}_2$ phase. Low Li coverage results in a NVFE which is almost 1 eV higher than that at $\theta = 0.75$. The NVFE is an indication of the energy required to remove surface N *via* reactions with hydrogen:



On this basis, we expect that a Li surface concentration of $\text{Mn}_{\text{surf}} : \text{Li}_{\text{surf}} = 4 : 1$ to be specific for promoting ammonia synthesis reactions on $\eta\text{-Mn}_3\text{N}_2$.

3.4. Integration of experimental work and computational modelling in Li doped manganese nitride materials

The ability of manganese to activate nitrogen to form an array of nitrides with different structure and nitrogen content has attracted much interest for the development of two-stage reactants for ammonia synthesis by chemical looping. However, unless they are doped with Li, the reactivity of manganese nitrides was found to be limited in the low temperature range. The stability of manganese nitride was clearly observed by *in situ* neutron diffraction studies (Fig. 3) where no changes in the structural properties of $\theta\text{-Mn}_6\text{N}_{5+x}$ or of $\eta\text{-Mn}_3\text{N}_2$ (present as a minor phase) were observed during the discharge reaction conducted using 60 mL min^{−1} 75 vol% H₂ in Ar (BOC, 99.98%). To extend the study, H₂ and N₂ adsorption and activation have been studied using isotopic exchange and DFT modelling. The adsorption energies as evaluated using periodic DFT-D3 calculations showed that N₂ only weakly interacted with $\eta\text{-Mn}_3\text{N}_2$ and $\theta\text{-Mn}_6\text{N}_{5+x}$ (with adsorption energy ranging between −3.6 kJ mol^{−1} and −48 kJ mol^{−1}), ruling out an activated adsorption process. These results agree with those of nitrogen isotopic exchange where no significant N₂ activation and dissociation was observable under the reaction conditions applied. The energy relating to H₂ adsorption was also calculated for the non-doped nitrides and ranged between −79.9 kJ mol^{−1} and −81.5 kJ mol^{−1}. Despite the stronger interaction, H₂ was found to be adsorbed mainly in a molecular form. The H₂ isotopic exchange reaction also showed limited activation of H₂/D₂ at temperatures below 250 °C and only limited production of HD was observed, indicating an important energy barrier for the dissociative chemisorption of H₂ on manganese nitride materials.

Li doping was found to be critical in the reactivity of manganese nitride during the discharge reaction. Doping with a low level of Li was found to enhance greatly the production of ammonia during the discharge reaction. The same positive effect was observed in the N₂ and H₂ isotopic exchange reactions. *In situ* neutron



diffraction studies have shown that the reaction of 1% wt Li/Mn₆N_{5+x} is accompanied by significant structural changes. The reduction process started with nitrogen vacancy creation at low temperature followed by the transformation of θ -Mn₆N_{5+x} into η -Mn₃N₂ at ~ 300 °C. A parallel might be established with the heterolytic TPNIE experimental results, where an increase in ¹⁴N₂ concentration and total pressure occurred prior to the initiation of the ¹⁵N₂/¹⁴N₂ exchange reaction. Taking into account that the differences between the θ -Mn₆N_{5+x} and η -Mn₃N₂ structures lie in the presence of an ordered nitrogen vacancy array, the nitrogen vacancy formation energy as a function of Li concentration has been calculated (Fig. 9). The presence of Li was found to decrease the NVFE from 1.3 eV (in the absence of dopant, *i.e.* $\theta = 0$) to 0.3 eV ($\theta = 0.75$). Hence, doping with Li enhances greatly the formation of nitrogen vacancies, lowering the energy required to remove N from the surface. Such nitrogen vacancy sites have been reported as active sites for N₂ activation in the case of Co₃Mo₃N,²⁴ and this could explain the reactivity of doped manganese nitrides.

It is interesting to draw comparisons between the present study and previous investigations relating to manganese nitride being applied for solar ammonia synthesis upon reaction with water²⁵ and the thermochemical synthesis of ammonia and syngas from natural gas at atmospheric pressure.⁶ In the former investigation, the inclusion of transition metal dopants to modify the reactivity of lattice nitrogen to generate desirable processes and redox properties was modelled using electronic structure theory, and experimental validation was undertaken using iron doped manganese nitride.²⁵

4. Conclusion

A combined experimental and computational modelling based study has been undertaken to provide additional understanding of the beneficial role of lithium doping in the enhancement of ammonia synthesis upon hydrogenation of manganese nitride. Powder neutron diffraction demonstrates that lithium doping enhances the phase fraction of θ -Mn₆N_{5+x} which was shown to progressively lose nitrogen as a function of temperature upon reduction, yielding a structure related to η -Mn₃N₂. The observation of enhanced lattice nitrogen reactivity upon lithium doping was apparent in isotopic exchange studies, which also demonstrated that lithium enhanced hydrogen activation. Consistent with these experimental observations, in computational modelling studies, lithium doping is found to reduce the nitrogen vacancy formation energy which is anticipated to lead to enhanced reactivity.

Conflicts of interest

There are no conflicts to declare.

Acknowledgements

The authors acknowledge the support from the PRESTIGE H2020 program and the financial support from MOPGA and the Region Haut de France Research Funding Program. This study was supported by EPSRC funding (EP/L026317/1, EP/L02537X/1). *Via* our membership of the UK's HEC Materials Chemistry Consortium, which is funded by EPSRC (EP/L000202/1), this work used the ARCHER UK National



Supercomputing Service (<http://www.archer.ac.uk>). The authors acknowledge the use of the UCL Legion and Grace High Performance Computing Facility (Legion@UCL, Grace@UCL), and associated support services, in the completion of this work. European Union (ERDF) and Région Nouvelle Aquitaine region are also gratefully acknowledged for their financial support.

Notes and references

- 1 S. Laassiri, C. D. Zeinalipour-Yazdi, C. R. A. Catlow and J. S. J. Hargreaves, *Catal. Today*, 2017, **286**, 147–155.
- 2 G. E. Veitch, K. L. Bridgwood and S. V. Ley, *Org. Lett.*, 2008, **10**, 3623–3625.
- 3 D. McKay, D. H. Gregory, J. S. J. Hargreaves, S. M. Hunter and X. Sun, *Chem. Commun.*, 2007, 3051–3053.
- 4 I. AlShibane, A. Daisley, J. S. J. Hargreaves, A. L. Hector, S. Laassiri, J. L. Rico and R. I. Smith, *ACS Sustainable Chem. Eng.*, 2017, **5**, 9214–9222.
- 5 S. Laassiri, C. D. Zeinalipour-Yazdi, C. R. A. Catlow and J. S. Hargreaves, *Appl. Catal., B*, 2018, **223**, 60–66.
- 6 M. G. Heidlage, E. A. Kezar, K. C. Snow and P. H. Pfromm, *Ind. Eng. Chem. Res.*, 2017, **56**, 14014–14024.
- 7 M. Widenmeyer, T. C. Hansen, A. Leineweber, A. Weidenkaff and R. Niewa, *Z. Anorg. Allg. Chem.*, 2017, **643**, 1929–1938.
- 8 A. Leineweber, R. Niewa, H. Jacobs and W. Kockelmann, *J. Mater. Chem.*, 2000, **10**, 2827–2834.
- 9 R. Michalsky, A. M. Avram, B. A. Peterson, P. H. Pfromm and A. A. Peterson, *Chem. Sci.*, 2015, **6**, 3965–3974.
- 10 P. Wang, F. Chang, W. Gao, J. Guo, G. Wu, T. He and P. Chen, *Nat. Chem.*, 2017, **9**, 64.
- 11 R. Schlögl, *Angew. Chem., Int. Ed.*, 2003, **42**, 2004–2008.
- 12 A. Miura, T. Takei and N. Kumada, *Inorg. Chem.*, 2013, **52**, 11787–11791.
- 13 S. Laassiri, N. Bion, D. Duprez, S. Royer and H. Alamdari, *Phys. Chem. Chem. Phys.*, 2014, **16**, 4050–4060.
- 14 B. Toby, *J. Appl. Crystallogr.*, 2001, **34**, 210–213.
- 15 A. C. Larson and R. B. V. Dreele, *Gsas General Structure Analysis System*, Los Alamos National Laboratory, 2000, pp. 86–748.
- 16 H. J. Monkhorst and J. D. Pack, *Phys. Rev. B: Solid State*, 1976, **13**, 5188–5192.
- 17 G. Kresse and J. Hafner, *Phys. Rev. B: Condens. Matter Mater. Phys.*, 1993, **47**, 558–561.
- 18 G. Kresse and J. Furthmüller, *Phys. Rev. B: Condens. Matter Mater. Phys.*, 1996, **54**, 11169–11186.
- 19 J. P. Perdew, K. Burke and M. Ernzerhof, *Phys. Rev. Lett.*, 1996, **77**, 3865–3868.
- 20 G. Kresse and D. Joubert, *Phys. Rev. B: Condens. Matter Mater. Phys.*, 1999, **59**, 1758–1775.
- 21 P. E. Blöchl, *Phys. Rev. B: Condens. Matter Mater. Phys.*, 1994, **50**, 17953–17979.
- 22 S. Grimme, J. Antony, S. Ehrlich and H. Krieg, *J. Chem. Phys.*, 2010, **132**, 154104.
- 23 C. D. Zeinalipour-Yazdi, *Phys. Chem. Chem. Phys.*, 2019, **21**, 19365–19377.
- 24 C. D. Zeinalipour-Yazdi, J. S. J. Hargreaves and C. R. A. Catlow, *J. Phys. Chem. C*, 2015, **119**, 28368–28376.
- 25 R. Michalsky, P. H. Pfromm and A. Steinfeld, *Interface Focus*, 2015, **5**, 20140084.

