



Cite this: *Anal. Methods*, 2018, 10, 1431

# Determination of amphetamine-type stimulants (ATs) and synthetic cathinones in urine using solid phase micro-extraction fibre tips and gas chromatography-mass spectrometry

Khalid A. Alsenedi <sup>\*a</sup> and Calum Morrison <sup>\*b</sup>

In recent years, an increasing number of stimulant drugs and new psychoactive substances (NPSs) have caused concern in scientific communities and therefore innovative methods to extract compounds from complex biological samples are required. This work is aimed at developing and validating a clean, convenient and straightforward extraction procedure with microliter amounts of organic solvent using Solid Phase Micro-Extraction tips (SPME tips) and analysis using Gas Chromatography-Mass Spectrometry (GC-MS) in human urine samples. Another aim is to evaluate three different types of SPME fibre tips C18, C18-SCX (mixed mode) and PDMS-DVB. The quantification method examined the different classes of stimulant compounds included Amphetamine-Type Stimulants (ATs) (amphetamine, methamphetamine, *para*-methoxyamphetamine (PMA), and ( $\pm$ )-3,4-methylenedioxymethamphetamine (MDMA)) and synthetic cathinones (mephedrone, buphedrine (buphedrone ephedrine metabolite), 4-methylephedrine (mephedrone metabolite), and pentylone). The method was developed with respect to several areas of the experimental design including pH, ionic strength, addition of salts, vial dimensions, analytes and derivatisation, type of solvents, solvent volume, extraction and desorption time, agitation speeds in the extraction and desorption steps and matrix volume. The optimised method was validated for eight compounds using the SPME PDMS/DVB fibre tips with satisfactory linearity and selectivity ranging between 50 and 2000 ng mL<sup>-1</sup>, and limits of detection (LODs) and low limits of quantification (LLOQs) ranging between (5–25) and (25–100) ng mL<sup>-1</sup> respectively. Within-run and between-run accuracy and precision were <15%. The method was applied to real human urine samples indicating its suitability for common stimulant drugs and provided clean chromatograms with no interfering peaks. The assessment of green analytical chemistry for the method used was discussed and compared with Solid Phase Extraction (SPE). According to the results obtained we recommend the method for use in routine laboratories carrying out drug/forensic analysis for confirmation tests of the studied compounds.

Received 8th January 2018  
Accepted 10th February 2018

DOI: 10.1039/c8ay00041g

rsc.li/methods

## Introduction

Over the past few years, approximately one compound has entered the recreational drug market on a weekly basis within the category of new psychoactive substances (NPSs). These are synthesised to bypass regulations and laws, and to have similar or stronger effects than existing drugs. Throughout the world, amphetamine-type stimulants (ATs) are the second most commonly used drugs and often exceed heroin and cocaine use.<sup>1–3</sup>

Synthetic cathinones covered approximately 23% of the global trends of individual NPSs reported in the Early Warning

Advisory (EWA) from 2008 to 2015.<sup>3</sup> Cathinone is found in the plant *Catha edulis* (khat) and synthesized derivatives have a varied range of  $\beta$ -ketoamphetamines and have been sold as alternatives to ATs. Fatalities and toxicity related to the abuse of stimulant drugs and synthetic cathinones are of international concern with several deaths reported.<sup>4–11</sup>

Consequently, the proof of identity of ATs and synthetic cathinones in biological specimens is vital in the clinical, forensic and toxicology fields since most of the NPSs are not fully detected using routine immunoassay screening methods. This may be a result of cost-ineffectiveness or unavailability of reagents. Moreover, the confirmation of positive results in chromatographic and mass spectrometric techniques is required for accurate molecule identification and to distinguish between isomers and structures.

Biological samples contain various components with urine and blood which are not compatible with complex instrumentation.

<sup>a</sup>Forensic Medicine and Science, School of Medicine, Dentistry and Nursing, College of Medical, Veterinary and Life Sciences, University of Glasgow, Glasgow, G12 8QQ, UK. E-mail: khalidsenedi@gmail.com

<sup>b</sup>Forensic Medicine and Science, School of Medicine, Dentistry and Nursing, College of Medical, Veterinary and Life Sciences, University of Glasgow, Glasgow, G12 8QQ, UK. E-mail: calum.morrison@glasgow.ac.uk



This can be solved by using a sample preparation technique which eliminates some components in biological samples and keeps the analytes of interest. Therefore, the requirement for a fast, clean and convenient procedure to reduce instrument contamination plays an essential role in any laboratory.

Solid Phase Micro-Extraction (SPME) was used for the first time in 1989 by Pawliszyn and his colleagues.<sup>12</sup> It was carried out to minimise the time taken for the sample preparation and reduce the amount of both solvents and samples on the micro-liter scale.<sup>12</sup> SPME is easy to employ, allows rapid screening with minimum contact with toxic solvents, and can be both manual or automated. It is a sensitive, efficient technique and reduces the time required and cost. It is highly efficient for screening purposes due to its speed and ease of use. The problem of sample loss, contamination and dilution can be avoided by the use of this technique.<sup>13</sup>

GC-MS is the most common technique in clinical toxicology and forensic laboratories and is more economical than LC-MS-MS, and therefore methods developed using GC-MS have an extensive range of applicability in forensic toxicology laboratories.

The aims of this work were:

- To develop and validate a clean and convenient method on a microliter scale using SPME tips and GC-MS for the analysis of 8 stimulant drugs including ATSS and synthetic cathinones in urine, and the compounds studied are shown in Table 1.
- To evaluate the new biocompatible SPME LC tips containing fibres of C18, C18/SCX and PDMS/DVB.
- To reduce the environmental and health impacts compared to traditional sample preparation methods such as solid phase extraction (SPE).
- To address the need for green analytical chemistry.
- To evaluate this method when it is applied for real human urine samples.

## Materials and methods

### Materials

The reference standards of amphetamine, methamphetamine, PMA, MDMA, cathinone, mephedrone, buphedrine, 4-methylephedrine, and pentylone, three internal standards (ISDs) –

amphetamine-d11 ( $1 \mu\text{g mL}^{-1}$ ), cathinone d5 ( $0.1 \mu\text{g mL}^{-1}$ ) and pentylone-d3 ( $0.1 \mu\text{g mL}^{-1}$ ) as hydrochloride salts, pentafluoropropionic anhydride (PFPA), formic acid (FA), three types of SPME fiber tips: PDMS-DVB, C18 and C18-SCX silica, vial kits of two sizes, 0.3 mL and 1.2 mL, natural PTFE/silicone septa (with slit), and thread 9 mm were purchased from Sigma-Aldrich, Gillingham, UK. The SPME fibre tips with stationary phase C18-SCX were kindly donated by Sigma Aldrich.

Methanol (MeOH), acetonitrile, ethyl acetate (EtOAc), acetone, 2-propanol, ammonium hydroxide ( $\text{NH}_4\text{OH}$ ), sodium phosphate dibasic, sodium chloride, sodium phosphate monobasic, dichloromethane (DCM), isopropanol (IPA), hydrogen chloride (HCl), acetic acid, sodium hydroxide (NaOH), sodium chloride (NaCl) and microcentrifuge Eppendorf tubes 1.5 mL were obtained from VWR International, East Grinstead, UK.

Phosphate buffer and sodium phosphate were purchased from Fisher Scientific, Loughborough, UK. 200  $\mu\text{g}$  solid phase extraction (SPE) clean screen extraction columns, United Chemical Technologies (UCT), part number ZSDAU20, were purchased from Chromatography Direct, Runcorn, UK.

Deionised water was generated from an ultrapure water purification system (Merck Direct QR 3UV water deionizer).

### Ethics statement

Written informed consent was obtained from all subjects. The protocol was reviewed and approved by the MVLS College Ethics Committee, University of Glasgow (200160055) and the Research Committee at Security Forces Hospital, Riyadh, Saudi Arabia (16-190-24).

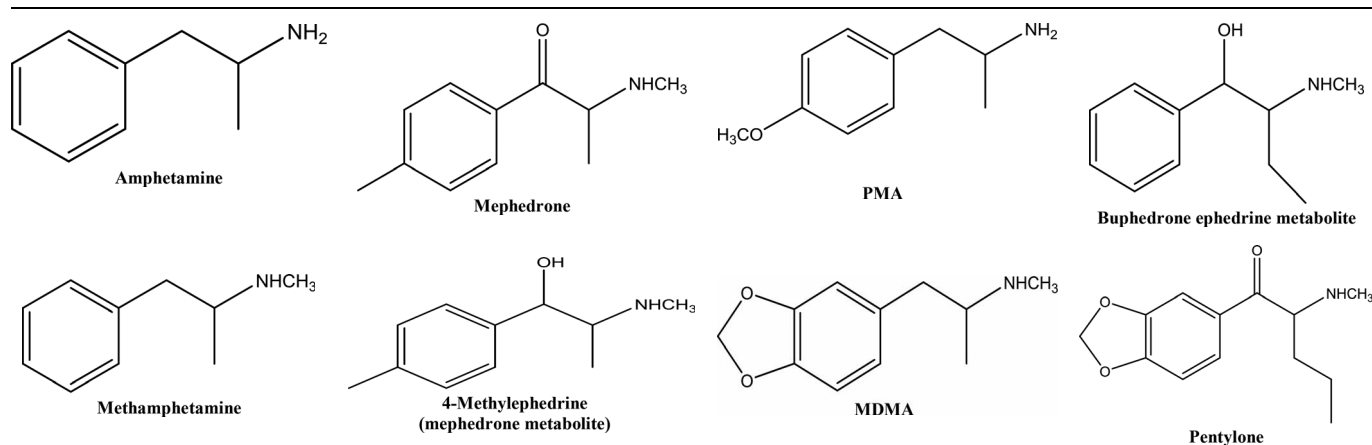
Drug-Free Urine (DFU) specimens were collected from volunteers and confirmed negative for the target analytes. The protocol was reviewed and approved by the MVLS College Ethics Committee, University of Glasgow (200160020).

## Methods

### Preparation of standards

Stock solutions ( $100 \mu\text{g mL}^{-1}$ ) of the eight drugs, listed in Table 1, were prepared by the dilution of purchased standards *via*

Table 1 Chemical structures



1 : 10 dilution in methanol. A mixture of the working solution of each standard was prepared by the dilution of the  $100\ \mu\text{g mL}^{-1}$  stock solutions *via* 1 : 50 dilution in Drug-Free Urine (DFU) to reach a concentration of  $2\ \mu\text{g mL}^{-1}$ .

Working internal standards (ISDs) of the deuterated standards were prepared by the dilution of purchased internal standards *via* 1 : 10 dilution in methanol to reach  $10\ \mu\text{g mL}^{-1}$ . The mixture of the 8 drugs in urine and ISDs were stored at  $-20\ ^\circ\text{C}$  until use.

### Optimised procedure

The optimised procedure was applied to assess the parameters of the method validation work.

Initially, the SPME tips (PDMS-DVB fibre) were conditioned between 10 and 20 minutes in MeOH : distilled water (50 : 50).

1 mL of the drug mixture in urine (for example  $2\ \mu\text{g mL}^{-1}$ ) and 100  $\mu\text{L}$  of ISDs of amphetamine d11 and pentylone d5 ( $1\ \mu\text{g mL}^{-1}$ ) with 0.5 g NaCl and 100  $\mu\text{L}$  of 10% NaOH (pH 12.6) were added to 1.5 mL microcentrifuge Eppendorf tubes. The Eppendorf tubes were pierced before inserting the SPME tips.

The samples including tips were placed in a shaker (IKA VIBRAX VXR) for agitation at a speed of 2000 rpm. They were left for at least 1 hour so that equilibrium between the analytes and stationary phase was reached.

The SPME tips were transferred to 0.3 mL vials with the addition of 65  $\mu\text{L}$  of MeOH and left for 10 minutes at an agitation speed of 2000 rpm. 10  $\mu\text{L}$  of acidified methanol (1 : 9) was added, and the vials were evaporated under a stream of nitrogen at room temperature (RT) until fully dry.

The vials were then derivatised by adding 50  $\mu\text{L}$  PFPA and EtOAc (2 : 1). The samples were capped and vortexed immediately for 3–5 seconds and then incubated for 10–15 minutes at  $60\ ^\circ\text{C}$ . The samples were evaporated under a stream of nitrogen at RT. The time required until fully dried in the evaporation steps was 2–5 minutes only. The samples were reconstituted in 50  $\mu\text{L}$  of ethyl acetate before 1  $\mu\text{L}$  was injected into the GCMS for analysis (see Fig. 1).

### Method development preparation

The method development of SPME tips was assessed based on the following criteria: the pH of buffer, ionic strength, addition of salts, size of vials, analyte and derivatisation, type of solvents, solvent volume, extraction time, agitation speed in the extraction step, desorption time, agitation speed in the desorption step and matrix volume. Each criterion was evaluated as a single factor keeping the other factors constant.

The parameters were assessed based on the absolute recovery<sup>14</sup> by adding 1 mL urine containing the mixture of the 8 drugs ( $1\ \mu\text{g mL}^{-1}$ ). A 50  $\mu\text{L}$  ISD ( $0.5\ \mu\text{g mL}^{-1}$ ) of amphetamine d11 was added prior to the evaporation step.

100  $\mu\text{L}$  of a duplicate unextracted mixture of the 8 drug samples ( $1\ \mu\text{g mL}^{-1}$ ) and a 50  $\mu\text{L}$  ISD of amphetamine d11 ( $0.5\ \mu\text{g mL}^{-1}$ ) were added on each evaluation day.

The response of extracted (response of extracted analyte – response of ISD)/response of unextracted (response of unextracted analyte – response of ISD) ratio (%) is calculated as the recovery rate on each day of the method development process.

The pH buffering of urine was evaluated on the three fibres and adjusted to pH 3, 5, 7, 9 and 11 by adding small drops of formic acid, HCl for acidity products, 25% NaOH for alkaline products and phosphate buffer for pH 7.

The ionic strength and the additive of NaOH and KOH salts (5%, 10% and 25% (w/v)) with and without NaCl (0.1, 0.25, 0.5, 0.75 and 1 g; 5%, 10% and 25% (w/v)) were examined in duplicate samples. The experiments were repeated three times on three different days for NaOH (5%, 10% and 25%) with NaCl (0.1, 0.25, 0.5, 0.75 and 1 g) to confirm the results.

The evaluation of the sample volume was performed in triplicate vials at volumes of 1000, 500 and 100  $\mu\text{L}$  at a concentration of  $1\ \mu\text{g mL}^{-1}$ .

The derivatisation agent was evaluated by the application of the duplicate samples of PFPA derivatives added pre-, during and post-extraction and after the first evaporation step.

The solvents MeOH, acetonitrile, EtOAc, ( $\text{NH}_4\text{OH} : \text{MeOH}$ ; 2 : 98), ( $\text{NH}_4\text{OH} : \text{MeOH}$ ; 0.5 : 99.5), ( $\text{DCM} : \text{IPA} : \text{NaOH}_4$ ;

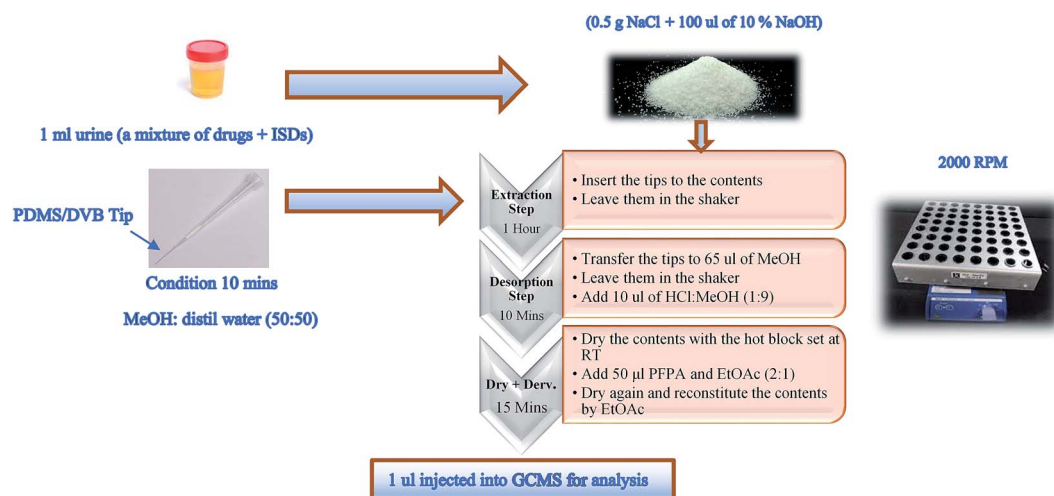


Fig. 1 Illustration of the optimum condition procedure applied to SPME PDMS/DVB fibre tips in the mixture of drugs in urine samples.



78 : 20 : 2), IPA and (acetone : water; 20 : 80) were evaluated in triplicate samples on two days.

The triplicate samples at extraction times of 15, 30, 45, 60, 90 and 120 min with agitation speeds of 500, 1000, 1500 and 2000 rpm were evaluated on two days.

The triplicate samples in the desorption step at times of 15, 30, 45, 60 and 90 min with agitation speeds of 500, 1000, 1500 and 2000 rpm were assessed. The triplicate samples in the desorption step were evaluated again at times of 20, 30, 40 and 50 min with agitation speeds of 1500 and 2000 rpm. The triplicate samples in the desorption step were evaluated once more at times of 1, 5, 10 and 20 min at an agitation speed of 2000 rpm.

The evaluation of two types of vials, Eppendorf vials (1.5 mL) and kit vials (1.2 mL), was performed by applying the optimum procedure in duplicate samples. They were examined once more to evaluate the linearity at concentrations of 50, 100, 250, 500, 750, 1000, and 2000 ng mL<sup>-1</sup> (duplicate samples at each point). All the developed method parameters were tested in the spiked urine containing the 8 stimulant drugs at a concentration of 1 µg mL<sup>-1</sup>.

### Method validation

The method was validated through evaluating the method validation parameters based on the Scientific Working Group for Forensic Toxicology (SWGTOX, 2012) guidelines: linearity, limit of detection (LOD), lower limit of quantitation (LLOQ), accuracy, precision, selectivity, interference and carryover.

The linearity study was performed for each substance by spiking 1 mL of drug-free urine (DFU) with the mixture of standards to obtain the concentrations of 50, 100, 250, 500, 750, 1000, and 2000 ng mL<sup>-1</sup>. Calibration curves for the mixtures in urine were plotted by the linearity method to calculate the linear regression ( $R^2$ ) of the area ratio of each compound with the ISDs versus the concentration of the analyte. It was assessed by analysing 20 separate calibration curves on five consecutive days. The accuracy of each point was calculated in the linearity study and should not exceed 20%.

The limit of detection (LOD) and the lower limit of quantitation (LLOQ) were defined as a signal-to-noise (S/N) ratio exceeding three and ten respectively which were assessed for at least three ions of each substance. The assessment of the mixtures of the urine samples was repeated for each concentration ten times at concentrations of 200, 100, 50, 25, 10, 5, and 1 ng mL<sup>-1</sup>. The LLOQ parameter was assessed once more by calculating the lowest concentration at which the analyte could be quantified (relative standard deviation (RSD) and bias ≤ 20%).

The accuracy and precision of the method were determined by the analysis of four replicate samples at three quality controls (QC): QC<sub>1</sub> = 250, QC<sub>2</sub> = 850 and QC<sub>3</sub> = 1500 ng mL<sup>-1</sup> on the same days of the linearity study. Within-run and between-run accuracy and precision were determined for each analyte with the maximum of RSD and bias values not exceeding 15%.

The interference study was performed by analysing ten different individual blank urine samples for verifying the absence of the peaks interfering with the analytes of interest *via* SIM mode.

The selectivity of the method was assessed by running triplicate mixture samples of 22 similar drugs cathinone, methcathinone, flephedrone, 4-methyl-*N*-ethyl-norephedrine (4-MEC metabolite), bupherone, *N*-ethylecathinone, *para*-methoxyamphetamine (PMA), pentedrone, methedrone, methylone, butylone, ethylone, pyrovalerone, 3,4-methylenedioxyamphetamine (MDA), *para*-methoxy-*N*-methylamphetamine (PMMA), 4-ethylmethylcathinone (4-EMC), methedrone, (±)-*N*-ethyl-3,4-methylenedioxyamphetamine (MDEA), α-pyrrolidinovalerophenone (α-PVP), 3',4'-methylenedioxy-α-pyrrolidinopropiophenone (MDPPP), naphyrone, and methylenedioxypropyvalerone (MDPV) at a concentration of 2 µg mL<sup>-1</sup> spiked with DFU.

Carryover effects were checked by analysing blank urine specimens after the injection of the highest point of the calibrator.

All method validation parameters were obtained by applying the optimised procedure mentioned above (see the Optimised procedure section; Fig. 1).

### Application to real urine samples

The method was applied to three urine samples collected from Saudi Arabia that were confirmed positive for cathinone when previously analysed with a valid solid phase extraction method (SPE). The SPE method was validated in our laboratory for the determination of 20 stimulant drugs based on GC-mass spectrometry.

### Fragmentation criteria

The criteria for the identification of the mixture compounds were the retention time ( $t_R$ ) with the presence of at least three fragmentation ions and their relative ion intensities%. For the identification of an analyte,  $t_R$  should not vary more than ±1%; relative ion intensities should not exceed more than ±10% for ions with relative intensities > 50%.

### GC-MS methodology

The method was carried out with Gas Chromatography-Mass Spectrometry (GC-MS) using a 7890A GC/5975C MSD, a split/splitless inlet and a DB-5ms (5% phenyl/95% methylpolysiloxane; 30 m × 0.25 mm, 0.25 µm film thickness) separation column (all from Agilent Technologies, Waldbronn, Germany). Helium was used as a carrier gas (99.99% purity). Splitless injection at 225 °C was employed. The column temperature programme was initially started at 70 °C and then raised to 200 °C at a rate of 11 °C min<sup>-1</sup> (held for 4 minutes), and 200 °C to 280 °C at a rate of 10 °C min<sup>-1</sup> (held for 1 minute). The total time was 25 minutes. The MS transfer line temperature was kept at 250 °C. The MS was operated in the electron impact ionisation mode (70 eV). The ion source was maintained at 200 °C. MS data acquisition was initiated at 7 minutes and was performed in the selected ion monitoring (SIM) mode. The method was developed to provide an excellent separation and response. All data acquisition and processing steps were performed using GC/MSD ChemStation Software Version 6.5.



## Results and discussion

### SPME tip extraction and GC-MS methods

GC MS was initially developed until the desired responses were achieved along with separation and detection by applying the mixture of the 8 stimulant drugs. Each standard of the mixture compounds was prepared alone by running unextracted samples with PFPA derivatives. The separation,  $t_R$  and fragmentation patterns with the ion intensity ratio% were considered and recorded. The random procedure of SPME tips was initially applied to the optimised conditions of the GC MS. The responses of the SMPE tips were compared with unextracted

sample responses (ISD was involved in the calculation). This process showed an initial successful separation and detection in the chromatogram through the procedure of SPME tips (see Fig. 2 and Table 2).

### Method development

The presence of an efficient, convenient, clean and reliable method for the sample preparation of stimulant drugs such as ATs and synthetic cathinones and other related compounds of NPSs is important in forensic toxicology laboratories, specifically for confirmation tests. The final products of the method development processes enabled the detection of ATs and

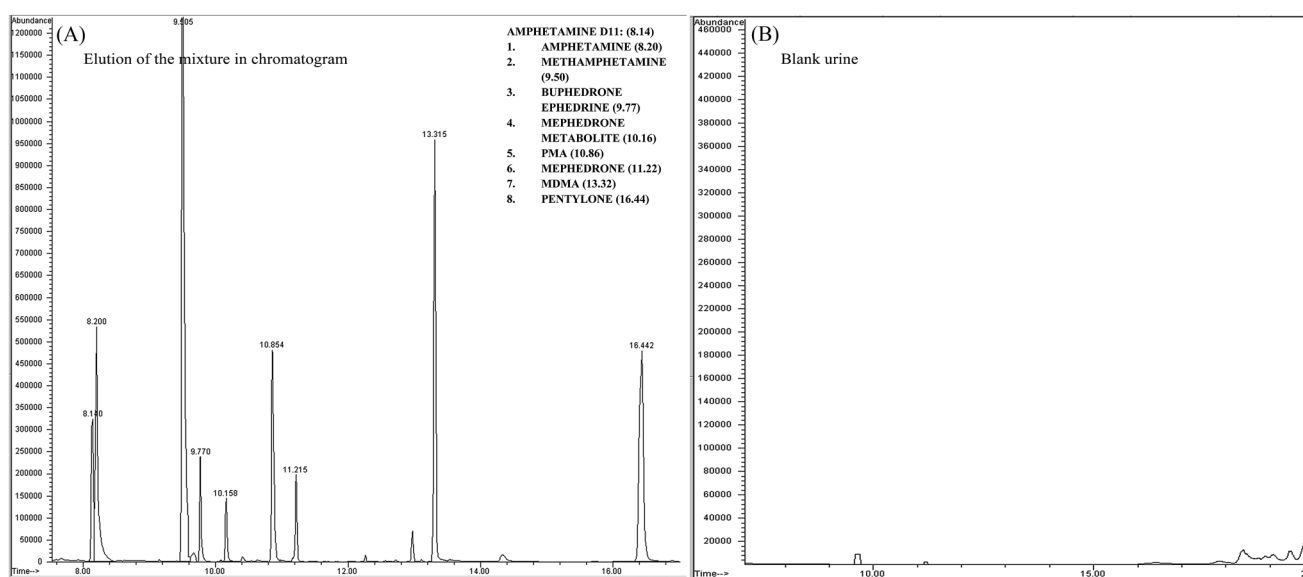


Fig. 2 (A) SIM chromatogram for the eight stimulant drugs (SPME tips and PFPA derivative; optimum conditions were applied) at a concentration of  $1 \mu\text{g mL}^{-1}$  in a urine sample. (B) Chromatogram (SIM) for a blank urine sample.

Table 2 SIM fragmentation patterns ( $m/z$ ) and relative ion intensities (ratio%) with the retention time ( $t_R$ ). Quantification ions in bold. The remaining ions were used as qualifier ions with the ratio (%)

Target compounds	$t_R$	$m/z$	Ratio (%)	Target compounds	$t_R$	$m/z$	Ratio (%)
Amphetamine d11	8.422	<b>194</b>	100	4-Methylephedrine (mephedrone metabolite)	10.158	<b>204</b>	100
		128	72			119	13
		98	33			160	20
						308	3
Amphetamine	8.486	<b>190</b>	100	PMA	10.854	<b>121</b>	100
		118	79			148	42
		91	36			190	5
		65	9			311	7
Methamphetamine	9.505	<b>204</b>	100	Mephedrone	11.215	<b>119</b>	100
		160	31			204	25
		118	24			91	20
		91	14			160	14
Pentylone d5	16.339	<b>193</b>	100	MDMA	13.315	<b>204</b>	100
		235	86			162	73
		148	380			<b>135</b>	43
						339	12
Buphedrine (buphedrone metabolite)	9.770	<b>218</b>	100	Pentylone	16.442	<b>149</b>	100
		119	12			<b>190</b>	22
		308	3			232	19
		160	18			381	5





cathinones to provide excellent repeatability and reproducibility using only microliter quantities of organic solvent (50  $\mu\text{L}$  of MeOH). The advantage of using SPME PDMS/DVB fibre tips is that the equilibrium between the analyte and the stationary phase occurs in only one step. This provides safety and less handling of the operators. Furthermore, it benefits the environment and economy with less consumption of vials, solvents and chemicals making this procedure favourable.

Two types of vials were used in the procedure, the first one (1.5 mL Eppendorf vial) was used for the sample preparation and extraction steps. The second vial (0.3 mL kit vial) was used in the following stages: the desorption, evaporation, derivatisation and GC-MS stages. The extraction proficiency proved the validity of the method to extract and quantify the target analytes even at low sample volumes and concentrations. The total time required for the sample preparation process until running the samples was 2–3 hours (as an average of preparing 20–30 samples). The conditions of gas chromatography were adjusted to provide an excellent peak shape and responses which allow

the separation of the 8 stimulant substances in 25 minutes by using PFPA derivatives. In addition, the conditions of chromatography also permitted the separation of two metabolites in urine (buphedrone ephedrine metabolite and mephedrone metabolite).

GC MS is commonly used in the majority of laboratories and is attractive in terms of financial sustainability.

The method was applied to the collected urine samples to demonstrate the validity of the technique for application as a confirmation method in forensic toxicology analysis.

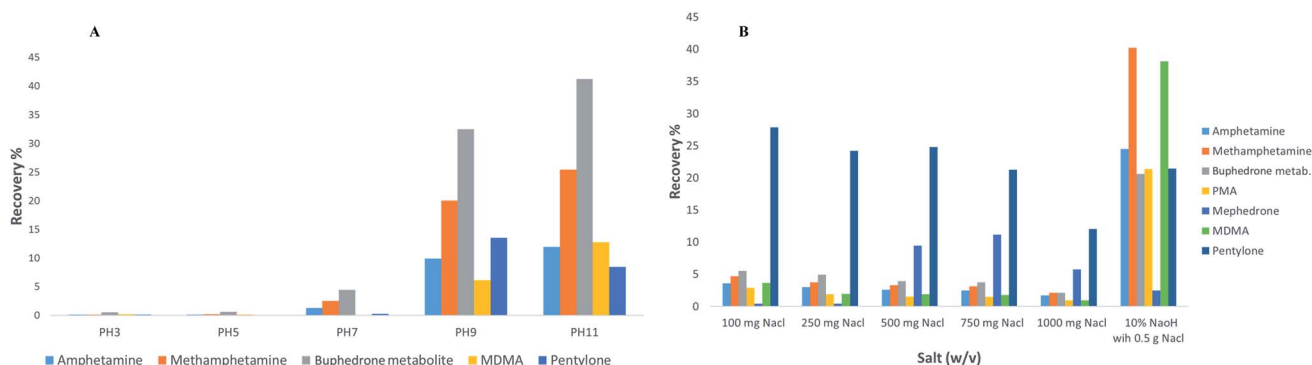
The main aims of the method development were:

- To reach the highest equilibrium between the analyte and stationary phase in SPME tips.
- To obtain the highest recovery%.
- To assess the three different fibre tips.
- To validate the SPME tips for the quantification of the 8 compounds in urine using GC MS.

The extraction products can be optimised by altering the sample conditions.<sup>15</sup> Therefore, several parameters of

**Table 3** Summary of the optimum conditions of the method development parameters. The outcome was concluded based on the most significant recovery% of the 8 stimulant drugs at a concentration of  $1 \mu\text{g mL}^{-1}$  in urine. Invalid (mentioned in the table) was concluded after the calculation of RSD and bias in each parameter

Parameters versus fiber type	PDMS/DVB	C18	Mixed mode
Salts	NaOH + NaCl	Formic acid	Formic acid + HCL
Ionic strength (v/w)	10% NaOH + 0.5 g NaCl (pH 12.6)	100 $\mu\text{L}$ formic acid	100 $\mu\text{L}$ pH 3 FA + 100 $\mu\text{L}$ 0.1 HCL
pH	$\geq 11$ , the greatest recovery results were at pH 12.6	pH 2.8	pH 3.3
Sample volume	1 mL	Invalid	Invalid
Derivatisation agent (PFPA)	When the PFPA was added after the evaporation step	After the evaporation step	After the evaporation step
Extraction time	$\geq 1$ hour	Invalid	Invalid
Extraction speed	2000 rpm	Invalid	Invalid
Desorption type	MeOH, acetonitrile and DCM: ISO: NaOH <sub>4</sub>	Invalid	Invalid
Desorption time	10 min	Invalid	Invalid
Desorption speed	2000 rpm	Invalid	Invalid
Linearity	0.992–999	Invalid	Invalid
Recovery	2–80%	0.1–10%	0.1–10%
Vial type	Both Eppendorf vials and kit vials were valid	Invalid	Invalid



**Fig. 3** An example of the developed method results for some compounds examined showing the effect of buffering pH (A) and the additive of salts (B); in SPME PDMS/DVB fibre tips (duplicate samples of the drug mixture at a concentration of  $1 \mu\text{g mL}^{-1}$  in urine).





**Table 4** Method evaluation applied to SPME tip and SPE procedures for green analytical chemistry assessment. Both extraction procedures met the method validation parameters for similar compounds tested (quantification method)

Chemicals used/sample														
Method & criteria	Chemicals amount/ sample	NFBA health rating	NFBA flammability rating	NFBA reactivity rating	Energy rate <sup>a</sup> (kW h)	Waste rate <sup>b</sup>	Health rate <sup>c</sup>	Safety rate <sup>d</sup>	Environmental rate <sup>e</sup>					
SPME tips procedure used in this paper	● 100 µL of 10% NaOH	3	0	0	3	1	3	0 (F*)	1					
	● 0.5 g NaCl	1	0	0	● The time required for evaporation was roughly 5 min and the volume was 75 µL per sample. ● Agitation speed was 2000 rpm and total time was 70 min. ● GC-MS	The volume of waste per sample was 1.6 mL (urine and chemicals)	3	0 (F)	1					
	● 65 µL of MeOH	1	3	0										
	● 10 µL of acidified methanol (1 : 9)	3	0	0										
	● 50 µL of PFPA and EtOAc (2 : 1)	3 : 2	0 : 3	0 : 0										
	Total score	13	6	0										
	Total amount of chemicals used = 725 µL per sample													
SPE procedure <sup>16</sup>	● 4 mL of 0.10 M phosphate buffer – pH 6	1	0	0	3	1	3	0 (F)	1					
	● 1 mL of 100 mM acetic acid	3	2	0	● The time required for evaporation was (30–40 min) and the volume was 2.6 mL per sample. ● SPE vacuum was used for 5 min. ● Centrifuged for 10 min at 3000 rpm. ● GC-MS	The volume of waste per sample was 18 mL (urine and chemicals)	3	0 (F)	1					
	● 5 mL of MeOH	1	3	0										
	● 3 mL of DCM : IPA : NH <sub>4</sub> OH (78 : 20 : 2)	2 : 2 : 3	1 : 3 : 0	0 : 0 : 0										
	● 10 µL of acidified methanol (1 : 9)	3	0	0										
	● 50 µL of PFPA and EtOAc (2 : 1)	3 : 2	0 : 3	0 : 0										
	Total score 20 12 0													
Overall	Total amount of chemicals used = 13.6 mL per sample													
	The total amount of chemicals consumed per sample using the SPME tip procedure decreased by approximately 95% compared to the total amount of chemicals consumed by SPE per sample					The variation and uncertainty values may be very high		SPME tip procedure decreased the waste by 91% compared to the SPE procedure per sample		The method of SPME tips decreased the harm by 35% compared to the harm that might be caused by using the SPE procedure		The method of SPME tips decreased the flammability compared to SPE by 50%		The above data obtained should be considered as estimation only

<sup>a</sup> Energy rating: 1 = wet chemistry and very little solvent in the evaporation step; 2 = GC and moderate solvent used in the evaporation step; 3 = GC-MS and high volume of solvent used in the evaporation step. <sup>b</sup> Waste rating: 1 = full waste per sample ≤50 g; 2 = full waste ≤250 g; 3 = full waste >250 g. <sup>c</sup> Health rating: NFPA (National Fire Protection Association) score is 0 or 1 = slightly toxic and irritant; NFPA 2 or 3 = moderately toxic and temporary incapacitation; NFPA = 4 serious injury and exposure. <sup>d</sup> Safety rating: NFPA score 0 or 1 = instability score, no special hazards, flammable; 2 or 3 = instability score, a special hazard is used, flammable; 4 = instability score, flammable. <sup>e</sup> Environmental rating: 1 = <50 g; 2 = ≥50 g and ≤250 g; 3 = >250 g. \*Flammable.

This journal is © The Royal Society of Chemistry 2018



**Table 6** The comparison of the results of three positives of cathinone in urine specimens when it's applied to SPE and SPME tips in GC MS (the urine samples were collected from real human cases in Saudi Arabia under the approval of the ethics committee). The unit of concentration is ng mL<sup>-1</sup>. The results were obtained after plotting great linearity and QCs. The average of the concentration of triplicate samples was applied to each sample

Serial & extraction method type	The average conc. for the validated method of SPE with $\pm$ SD	The average conc. for the new trends of SPME PDMS/DVB fibre tips with $\pm$ SD
Sample number 1	802 $\pm$ 32	806 $\pm$ 76
Sample number 2	1209 $\pm$ 47	1201 $\pm$ 98
Sample number 3	227 $\pm$ 30	285 $\pm$ 51

results in SIM mode. The outcome data to evaluate the method validation parameters are presented in Table 5.

The SPME PDMS/DVB fiber tip method was applied to real human samples (three cases) to confirm three positives of cathinone. The confirmation results of SPME tips were compared with the confirmation results of the validated SPE method. The positive results obtained from the case samples prove the ability of the method for the quantification and qualification of similar drugs such as cathinone compounds. The repeatability and reproducibility of the method with excellent selectivity and sensitivity were successfully demonstrated in the detection of the specimens. See Table 6 for the results.

## Conclusion

A clean, expedient, reliable and less costly procedure was developed and validated using urine samples for the determination of ATSS and cathinone groups. The method used minimum solvent to meet the requirements of green analytical chemistry with the evaluation of two procedures in the sample preparation stage. The final method included SPME fibre tips (PDMS/DVB) with a PFPa derivative providing an efficient extraction procedure followed by GC-MS analysis. The SPME fibre tip (PDMS/DVB) method can be used for the confirmation of eight substances with excellent repeatability and reproducibility. The sensitivity and selectivity of the technique were established for the determination and detection of the compounds concerned. The limits of quantitation were sufficient to quantify the positive of amphetamine, methamphetamine, PMA, MDMA, mephedrone, buphedrine, 4-methylephedrine and pentylone. The developed procedure delivers only one system to confirm the eight stimulant compounds including ATSS and designer cathinones in human urine specimens. Real urine case samples were applied for the confirmation test only. The specimens demonstrated the validity and the suitability of the method for routine analysis of toxicology forensic samples for the drugs mentioned and for the confirmation test only. The applicability of GC-MS in many laboratories worldwide enables this method to have the potential for widespread use.

## Conflicts of interest

There are no conflicts to declare.

## Acknowledgements

This work was gratefully supported by Forensic Medicine and Science, University of Glasgow, UK, and the Ministry of High Education of Saudi Arabia (1946). The authors would like to thank Dr Craig Aurand and Dr Denise Wallworth of Sigma Aldrich for the samples of SPME fibre tips.

## References

- 1 EMCDDA, EU Drug Markets Report: In-depth Analysis, 2016 cited 2017, 21 November, <http://www.emcdda.europa.eu/system/files/publications/2373/TD0216072ENN.PDF>.
- 2 UNODC, World Drug Report, 2016, [https://www.unodc.org/documents/scientific/WORLD\\_DRUG\\_REPORT\\_2016\\_web.pdf](https://www.unodc.org/documents/scientific/WORLD_DRUG_REPORT_2016_web.pdf).
- 3 UNODC, global smart update, 2016 cited 2017, 15 December, <https://www.unodc.org/documents/scientific/Global-SMARTUpdate-2016-vol-16.pdf>.
- 4 H. Torrance and G. Cooper, The detection of mephedrone (4-methylmethcathinone) in 4 fatalities in Scotland, *Forensic Sci. Int.*, 2010, **202**(1), e62–e63.
- 5 P. D. Maskell, *et al.*, Mephedrone (4-methylmethcathinone)-related deaths, *J. Anal. Toxicol.*, 2011, **35**(3), 188–191.
- 6 K. J. Lusthof, *et al.*, A case of extreme agitation and death after the use of mephedrone in The Netherlands, *Forensic Sci. Int.*, 2011, **206**(1), e93–e95.
- 7 B. K. Logan, *et al.*, Recommendations for toxicological investigation of drug-impaired driving and motor vehicle fatalities, *J. Anal. Toxicol.*, 2013, bkt059.
- 8 K. Liveri, *et al.*, A fatal intoxication related to MDPV and pentadone combined with antipsychotic and antidepressant substances in Cyprus, *Forensic Sci. Int.*, 2016, **265**, 160–165.
- 9 P. Kriikku, *et al.*, New designer drug of abuse: 3,4-methylenedioxypyrovalerone (MDPV). Findings from apprehended drivers in Finland, *Forensic Sci. Int.*, 2011, **210**(1), 195–200.
- 10 M. Wikström, *et al.*, Two fatal intoxications with the new designer drug methedrone (4-methoxymethcathinone), *J. Anal. Toxicol.*, 2010, **34**(9), 594–598.
- 11 M. Sykuter, M. Cychowska and E. Bloch-Boguslawska, A fatal case of pentadone and  $\alpha$ -pyrrolidinovalephorone poisoning, *J. Anal. Toxicol.*, 2015, **39**(4), 324–329.



- 12 R. P. Belardi and J. B. Pawliszyn, The application of chemically modified fused silica fibers in the extraction of organics from water matrix samples and their rapid transfer to capillary columns, *Water Qual. Res. J. Can.*, 1989, **24**(1), 179–191.
- 13 H. Kataoka, Recent developments and applications of microextraction techniques in drug analysis, *Anal. Bioanal. Chem.*, 2010, **396**(1), 339–364.
- 14 W. Figg and H. L. McLeod, *Handbook of Anticancer Pharmacokinetics and Pharmacodynamics*, Springer Science & Business Media, 2004.
- 15 G. Theodoridis, E. d. Koster and G. De Jong, Solid-phase microextraction for the analysis of biological samples, *J. Chromatogr. B: Biomed. Sci. Appl.*, 2000, **745**(1), 49–82.
- 16 K. A. Alsenedi and C. Morrison, Comparison of six derivatizing agents for the determination of nine synthetic cathinones using gas chromatography-mass spectrometry, *Anal. Methods*, 2017, **9**(18), 2732–2743.
- 17 A. Gałuszka, *et al.*, Analytical Eco-Scale for assessing the greenness of analytical procedures, *TrAC, Trends Anal. Chem.*, 2012, **37**, 61–72.
- 18 D. Raynie and J. L. Driver, *Green assessment of Chemical Methods. In 13th Green Chem Conf.*, USA, 2009.
- 19 P. J. Dunn, The importance of green chemistry in process research and development, *Chem. Soc. Rev.*, 2012, **41**(4), 1452–1461.
- 20 J. Plotka-Wasyłka, A new tool for the evaluation of the analytical procedure: Green Analytical Procedure Index, *Talanta*, 2018, **181**, 204–209.

