



Diagnostic technologies for neuroblastoma

Cite this: *Lab Chip*, 2025, 25, 3630

Leena Khelifa,^a Yubing Hu,^b Jennifer Tall,^b Rasha Khelifa,^c Amina Ali,^c Evon Poon,^b Mohamed Zaki Khelifa,^c Guowei Yang,^c Catarina Jones,^d Rosalia Moreddu,^e Nan Jiang,^e Savas Tasoglu,^f Louis Chesler^{bh} and Ali K. Yetisen^a

Neuroblastoma is an aggressive childhood cancer characterised by high relapse rates and heterogeneity. Current medical diagnostic methods involve an array of techniques, from blood tests to tumour biopsies. This process is associated with long-term physical and psychological trauma. Moreover, current technologies do not identify neuroblastoma at an early stage while tumours are easily resectable. In recent decades, many advancements have been made for neuroblastoma diagnosis, including liquid biopsy platforms, radiomics, artificial intelligence (AI) integration and biosensor technologies. These innovations support the trend towards rapid, non-invasive and cost-effective diagnostic methods which can be utilised for accurate risk stratification. Point-of-care (POC) diagnostic devices enable rapid and accurate detection of disease biomarkers and can be performed at the location of the patient. Whilst POC diagnostics has been well-researched within the oncological landscape, few devices have been reported for neuroblastoma, and these remain in the early research phase and as such are limited by lack of clinical validation. Recent research has revealed several potential biomarkers which have great translational potential for POC diagnosis, including proteomic, metabolic and epigenetic markers such as *MYCN* amplification and microRNAs (miRNAs). Using POC devices to detect high-risk biomarkers in biofluids such as blood and urine, offers a non-invasive approach to diagnosis of neuroblastoma, enabling early screening at a population level as well as real-time health monitoring at home. This is critical to mitigating long-term morbidity associated with late diagnosis and unnecessary treatment, in turn improving outcomes for neuroblastoma patients.

Received 2nd January 2024,
Accepted 13th June 2025

DOI: 10.1039/d4lc00005f

rsc.li/loc

1. Introduction

Neuroblastoma, a neural-crest cell-derived malignancy arising from the peripheral sympathetic nervous system,¹ is the most common extra-cranial solid tumour in children, representing around 5% of all paediatric cancer diagnoses but disproportionately accounting for 15% of childhood paediatric oncology deaths.^{2,3} It is characterised by wide clinical

heterogeneity and frequent metastasis.¹ Neuroblastoma originates from neural crest progenitor cells due to disrupted differentiation processes involving pathways such as WNT, BMPs, and SWI/SNF complexes, resulting in highly heterogeneous tumours.^{4–6} Key genetic drivers include *MYCN* amplification (seen in ~20% of cases), *ALK* mutations, and *PHOX2B* alterations, all linked to poor prognosis and aggressive disease.^{7–12} Children diagnosed under 1 year of age typically fall into low-risk categories with excellent survival (>95%), whereas high-risk neuroblastoma, often presenting in children over 1 year old, has poor survival and high relapse rates.^{13–16} Predominantly, neuroblastoma is a sporadic disease; however some familial cases have been documented.¹⁷ Most cases of neuroblastoma are diagnosed following the development of symptoms in children; since tumours arise from tissue of the sympathetic nervous system, typically the adrenal medulla, neuroblastoma is often first suspected due to mass lesions in the abdomen or associated symptoms such as weight loss and breathing difficulties.¹⁸ Metastatic disease is noted in 60% of neuroblastoma patients, and it is often not until the disease has spread that patients present with symptoms of the disease.¹⁹ Early

^a Department of Chemical Engineering, Imperial College London, South Kensington, London, SW7 2BU, UK. E-mail: yubing.hu@imperial.ac.uk

^b Division of Clinical Studies, The Institute of Cancer Research, London, SM2 5NG, UK

^c Faculty of Medicine, Imperial College London, South Kensington, SW7 5NH, UK

^d School of Electronics and Computer Science, University of Southampton, Southampton, SO17 1BJ, UK

^e Institute for Life Sciences, University of Southampton, Southampton, SO17 1BJ, UK

^f West China School of Basic Medical Sciences & Forensic Medicine, Sichuan University, Chengdu 610041, China. E-mail: jiangnansophia@scu.edu.cn

^g Research Center for Translational Medicine, Koc University, Istanbul 34450, Turkey

^h Children's and Young People's Unit, Royal Marsden NHS Foundation Trust, Sutton, SM2 5PT, UK



diagnosis and accurate risk stratification are essential to the provision of appropriate treatment in patients.²⁰ Multimodal treatment approaches include stem cell transplantation, surgery and chemotherapy which induce long-term permanent morbidity.²¹ For neuroblastoma, the most significant prognostic factor is age at diagnosis: earlier diagnosis of disease, whilst tumours are still localised and surgically resectable, contributes to significantly favourable outcomes.²² Several attempts at screening young infants for neuroblastoma have been unsuccessful. Elevated urinary catecholamine metabolites homovanillic acid (HVA) and vanillylmandelic acid (VMA) have been indicated for neuroblastoma diagnosis for many decades.²³ In the early-to-mid 1970s, Japan pioneered a small scale screening

programme to measure VMA concentrations in infants at 6 months of age.²⁴ Although screening led to increased diagnosis of neuroblastoma, there was no improvement in outcomes for patients. This was because screening detected only favourable characteristics and led to the over-diagnosis of low-risk cases, many of which may have experienced spontaneous disease regression; this contributed to morbidity in patients following unnecessary therapy.²⁵ Other similar studies in Canada²⁶ and Germany²⁷ concluded the same findings. The ability to screen for and diagnose neuroblastoma at an early stage has been a longstanding issue, and the development of highly sensitive, selective, and rapid diagnostic methods is of great importance to improving outcomes for these patients.^{28,29} The success of such a device



Leena Khelifa

Leena Khelifa is a medical student at Imperial College London. Leena achieved a bachelor's degree in Medical Sciences (Endocrinology) from Imperial College in 2021. She is currently undertaking an intercalated PhD funded by the Cancer Research UK Convergence Science Centre. Her PhD focuses on lateral-flow assays as a point-of-care diagnostic device for early neuroblastoma detection.



Yubing Hu

Yubing Hu is a Research Associate and Assistant Supervisor in the Department of Chemical Engineering at Imperial College London. Dr. Hu received a bachelor's degree from Zhejiang University in 2016 and earned a Ph.D. degree from the Hong Kong University of Science and Technology in 2020. Her PhD study focused on the development of fluorescent polymer materials for advanced sensing and imaging applications. Her current research aims to develop a variety of optical biosensors for portable, wearable and implantable diagnostic devices. She has been awarded FoE Julia Higgins Research Award at Imperial.



Amina Ali

Amina Ali is currently completing her foundation training in the London Deanery. She graduated from Imperial College London with a bachelor's degree in Medical Sciences (Endocrinology) in 2021, followed by a medical degree (MBBS) in 2023. Beyond clinical practice, she is actively involved in research and is committed to continuous learning and evidence-based practice, with a keen interest in benign gynaecology, early pregnancy, and reproductive medicine.



Catarina Jones

Catarina Jones is a PhD student in Electrical Engineering at the University of Southampton, where she is developing novel nanobio-interfaces to map electromechanical signals of cancer cells and unveil how they can be harnessed as a therapeutic target. With a background in biomedical engineering from Instituto Superior Técnico (IST) (Lisbon, Portugal), Catarina has a strong interdisciplinary foundation in bioelectronics and nanotechnology. During her time at IST as a student and researcher, she developed wireless nanobioelectronic platforms to hijack the bioelectric signals associated with breast cancer progression, acquiring skills from chemical synthesis and characterisation to cell culture and manipulation.



would be highly dependent on the selection of appropriate biomarkers which are specific to high-risk neuroblastoma and present early in the disease.

Despite the rarity of the disease, the global neuroblastoma market held a value of 1.92 billion pounds in 2016.³⁰ The neuroblastoma treatment market was worth over £327m in 2020 and is expected to reach £418m by 2027.³¹ The high cost of multimodal therapy approaches in young cancer patients is a great burden to the National Health Service (NHS) and this highlights the need for initiation of lower intensity and more targeted therapy at an earlier stage.³² Further, this will facilitate treatment implementation only where necessary and avoidance of treatment for patients whose disease may spontaneously regress (stage 4S).³³ Current diagnostic procedures for neuroblastoma involve biochemical profiling, multimodal imaging approaches, and histologic confirmation.³⁴ These methods are laborious, invasive, and expensive. Furthermore, none of these methods are appropriate for routine screening of infants for high-risk neuroblastoma before symptoms present.¹³ The introduction of more advanced technologies would allow for more rapid and less invasive diagnosis would revolutionise medical approaches to neuroblastoma. POC tests are often referred to as near patient, bedside or extra laboratory testing.³⁵ The main advantages of these techniques over conventional diagnostic methods are reduced length of hospital stay, reduced clinic visits, earlier discharge from hospital and fewer unnecessary hospital admissions.³⁵ It also facilitates optimised treatment and mitigates the use of inappropriate drugs, consequently improving longevity and quality of life.³⁵ The introduction of POC devices for neuroblastoma would significantly improve diagnosis of paediatric cancers and facilitate the move towards personalised medicine. Recently, there has been a great interest in POC devices for cancer diagnosis,³⁶ given that cancer is the most prevalent disease

in the world.³⁷ It is well-documented that early diagnosis and targeted therapy are essential to providing good outcomes for oncology patients.³⁸ For cancer diagnosis, POC devices have shown several limitations;³⁹ this means that such devices are not ready to be used commercially, and these issues must be considered when developing new tools for neuroblastoma. Mainly, lateral flow assays (LFAs) and lab-on-a-chip (LoC) technologies have been researched for cancer diagnosis and monitoring.³⁷ LFAs are rapid and cost-effective paper-based devices which have the ability to detect very low concentrations of analytes in biofluids.⁴⁰ However, in the cancer field, they are limited to lack of multiplexing, commercialisation, and clinical validation.⁴¹ Further, LFAs for nucleic acid detection, which is currently an exciting avenue of research, require multiple steps for gene extraction and amplification, thus making them too complex for routine use in clinical settings and at home by patients.⁴² LoC technologies are highly promising, however again they are often limited by the requirement of complex steps, and most attempts to develop such devices for cancer detection will require more optimisation and testing before they can be employed for use in hospitals.⁴³ Little to no research has been undertaken for other POC technologies, such as smartphone-based devices, leaving a gap for future research to focus.

Herein, current diagnostic approaches to neuroblastoma and their relative performances and limitations are explored. A comprehensive overview is provided of emerging technologies that are reshaping the diagnostic landscape and paving the way for POC applications. This review also explores POC platforms, and the advantages of these over conventional methods for broader cancer and neuroblastoma diagnosis are considered. Circulating biomarkers in neuroblastoma patients are also investigated and their potential for rapid disease detection. Specifically, the ability



Nan Jiang

Nan Jiang earned her Ph.D. degree from Wuhan University of Technology. After her PhD study, she worked as a postdoctoral fellow and a research associate at Harvard University and Imperial College London. She is currently working as the Principal Investigator at Sichuan University. Her research is aimed at optical biosensors and microfluidic devices. She has been selected as the high-level overseas talent in Sichuan

Province. She has published more than 30 peer-reviewed papers as first and corresponding authors. Some important works have been selected as "Cover Paper", "Hot Paper", and "Highly-cited Paper".



Ali K. Yetisen

Ali K. Yetisen is an Associate Professor in the Department of Chemical Engineering at Imperial College London. He was previously a Tosteson fellow at Harvard University. He holds a Ph.D. degree in Chemical Engineering and Biotechnology from the University of Cambridge. He has been awarded several international prizes including IChemE Nicklin Medal, Birmingham Fellowship, MGH ECOR Award, Humboldt

Research Fellowship Award, Carl Friedrich von Siemens Fellowship Award, and Fellowship of the Royal Society of Chemistry, Fellowship of the Higher Education Academy, and Fellowship of the Institute of Physics.



to differentially-detect high-risk neuroblastoma using POC devices is of great interest to clinicians and researchers alike, and the future potential and feasibility is explored.

2. Neuroblastoma diagnosis

2.1 Current clinical methods

Neuroblastoma is often initially identified when a child presents with signs and symptoms of the disease.¹⁹ Biochemical analyses coupled with multimodal imaging techniques may be undertaken if a patient is suspected of suffering from the disease.⁴⁴ However, ultimately, diagnosis of neuroblastoma is confirmed by either tumour tissue biopsy and histopathologic analysis, or a combination of the detection of neuroblastoma tumour cells in the bone marrow and either elevated urine or serum catecholamines³⁴ (Table 1). Here, we have summarised current techniques utilised to diagnose patients with neuroblastoma (Fig. 1). Detailed information will be demonstrated to compare the accuracy of current diagnostic techniques and their relative convenience in diagnosing neuroblastoma. We explore the complexity, cost, advantages and disadvantages, sensitivity, and accessibility of the techniques.

2.1.1 Clinical presentation and initial examinations. The clinical presentation of neuroblastoma varies widely depending on age, stage, location of the primary tumour, and presence of metastases. Tumours in the neck may cause Horner syndrome (ptosis, miosis, anhidrosis),⁴⁵ whilst thoracic and pelvic tumours can cause respiratory or bladder dysfunction, respectively.^{46,47} Metastases are present in around 50% of neuroblastoma patients, often affecting the bone marrow, lymph nodes and bones, leading to anaemia, bone pain, and characteristic signs like “raccoon eyes” (Hutchinson syndrome).^{48,49} Systemic symptoms, including abdominal pain, confusion, fever, weight loss, and catecholamine-induced hypertension and flushing, are also common in neuroblastoma patients. Direct compression of optic nerves or the optic chiasm can lead to visual loss or papilledema.⁵⁰ Opsoclonus myoclonus syndrome (OMS) is rare but highly associated with neuroblastoma.⁵¹ Currently, no environmental factors are

known to increase the chances of developing neuroblastoma.⁵² Neuroblastoma is common in infants and extremely rare in those over the age of 10, and familial cases tend to present earlier and involve multiple sites.⁵³ Genetic factors such as *BRCA2*, *NRAS* and *TP53* mutations, along with *BARD1* and *LMO1* polymorphisms, also lead to an increased risk of disease.^{2,54} Some perinatal factors such as maternal anaemia and neonatal complications have been linked to neuroblastoma, although the findings have been inconsistent.^{55–66} When a patient presents with these symptoms, initial assessments include reviewing family history, palpating the abdomen to check for masses, measuring blood pressure, and checking for nodules.^{67–70} Neurological examinations may also be performed such as nerve and pain testing of the arms and legs, since tumours near the spinal cord may cause nerve compression, ultimately affecting sensory or motor functions.⁶⁹

2.1.2 Blood and urine tests. If a patient is suspected of having neuroblastoma, blood and urine tests will be among the first investigations to be undertaken by the clinician given their accessibility and rapidity in producing results (1–2 days). Catecholamine metabolites such as VMA and HVA are elevated in over 90% of neuroblastoma, although they do not differentiate between high and low risk cases. Levels of these metabolites are measured using high pressure liquid chromatography (HPLC) in urine, providing a non-invasive test.^{18,71} Blood analysis may reveal anaemia,⁷² thrombocytopenia,⁷² elevated lymphocyte counts⁷³ or other haematological manifestations due to bone marrow infiltration,⁷⁴ although these are not specific to neuroblastoma. Urine cytology is not routinely used but shows promise in the detection of tumour cells and could offer a potential pathway for rapid, non-invasive diagnostics in the future.⁷⁵ Results from liver and kidney function tests help doctors to identify if tumours have spread^{76,77} although, again, they are not conclusive or specific for neuroblastoma diagnosis and obtaining blood samples from children is challenging.

2.1.3 Imaging. Functional imaging plays a key role in the assessment, diagnosis and staging of neuroblastoma. Imaging modalities can be used to identify image defined risk factors (IDRFs) according to the INRG guidelines, for

Table 1 Summary of conventional diagnostic techniques for neuroblastoma

Diagnostic technique	Cost	Duration	Invasive or harmful?	Is it specific to neuroblastoma?	Can it aid in staging?	Conclusive for diagnosis?
Patient history and physical examination	Low	POC	No	No	No	No
Catecholamine metabolites	Medium	Rapid	Yes	No	No	No
Blood cell count	Medium	Rapid	Yes	No	No	No
Urine cytology	Medium	Rapid	Yes	No	No	No
Liver and kidney function tests	Medium	Rapid	Yes	No	No	No
Ultrasonography (US)	Medium	Rapid	No	No	No	No
Computed tomography (CT)	High	Time-consuming	Yes	No	Yes	No
Magnetic resonance imaging (MRI)	High	Time-consuming	Yes	No	Yes	No
Metaiodobenzylguanidine (MIBG) scintigraphy	High	Time-consuming	Yes	Yes	No	No
Positron emission tomography (PET) scan	High	Time-consuming	Yes	No	No	No
X-ray	High	Time-consuming	Yes	No	No	No
Biopsy	High	Time-consuming	Yes	Yes	No	Yes



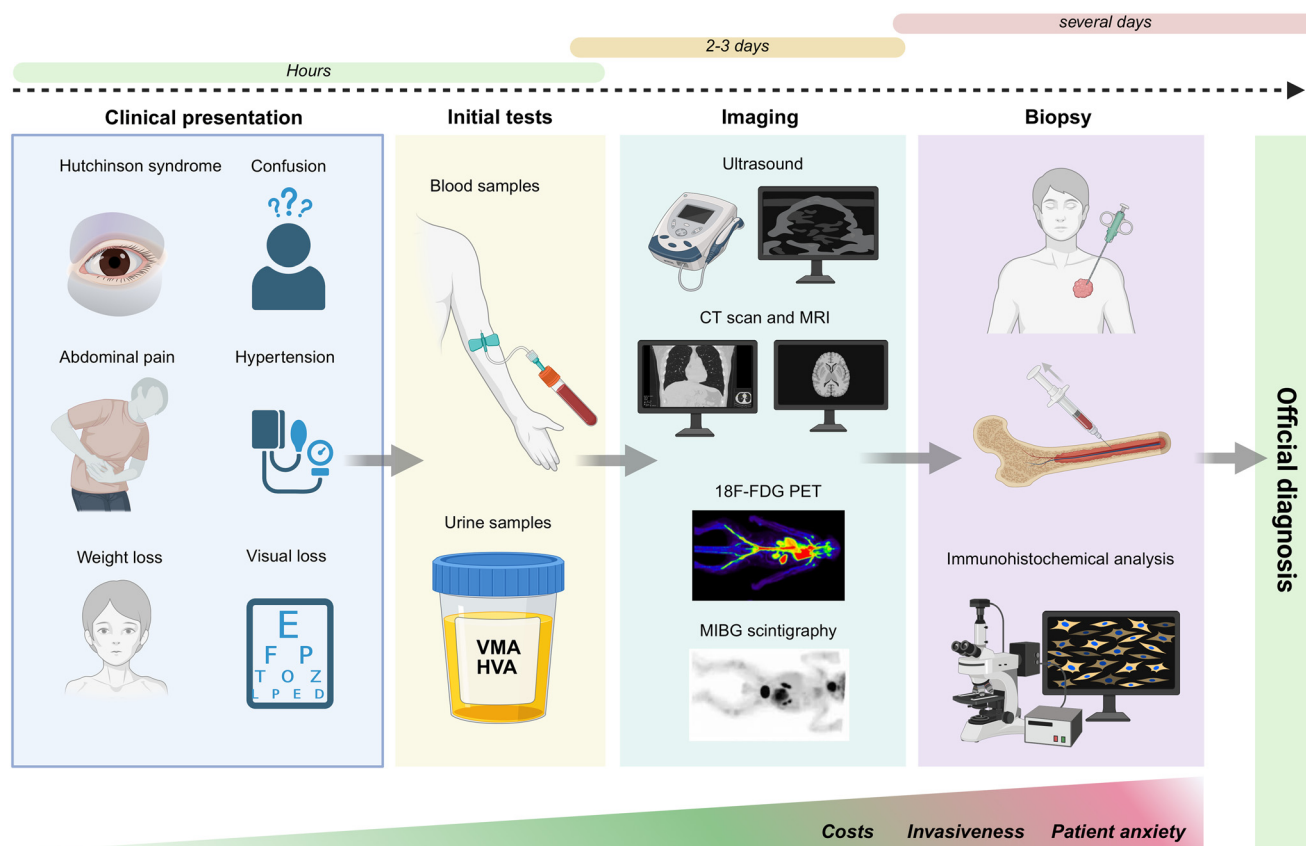


Fig. 1 Overview of the current clinical pathway for neuroblastoma diagnosis. Patients often present with non-specific symptoms such as abdominal pain, hypertension, weight loss, or Hutchinson syndrome. Initial diagnostic steps include blood and urine tests (e.g., VMA/HVA levels), followed by imaging techniques such as ultrasound, CT, MRI, 18F-FDG PET, and MIBG scintigraphy. Confirmation requires invasive tissue or bone marrow biopsy and immunohistochemical analysis. The diagnostic timeline spans from hours to several days, with increasing costs, invasiveness, and patient anxiety along the pathway.

staging and diagnosis.⁷⁸ Imaging of young children often requires general sedation, which must be carefully justified due to neurotoxicity risks. US is the first line imaging modality used to investigate patients with a palpable abdominal mass.⁶⁷ It provides a rapid, non-invasive method to analyse tumour location and characteristics and it is able to differentiate neuroblastoma from other abdominal masses.⁷⁹ However, there are several limitations including lack of penetration through dense structures like bone.⁸⁰ Furthermore, US has been found to be less sensitive and accurate for neuroblastoma diagnosis compared to CT and MRI.⁸¹ CT creates more detailed images of internal body structures and can help identify tumour size, vascular encasement, and metastases.^{82–86} Despite this, major drawbacks include high cost, exposure to ionising radiation and the requirement for general sedation, making CT an invasive procedure for young children.⁸² Furthermore, it has been suggested that the size of adrenal tumours can be underestimated by CT.⁸⁷ MRI has become increasingly preferred as it does not expose patients to ionising radiation. Furthermore, MRI has the advantage of determining marrow infiltration and intra-spinal tumour extension due to overall superior resolution of anatomical detail.⁸⁸ However, adverse

effects of gadolinium administered during MRI have been documented.⁸⁹ MIBG scintigraphy is perhaps one of the most important and useful diagnostic tools for neuroblastoma and is routinely used for staging and follow up,⁹⁰ although it is difficult to distinguish between tumour types.⁷⁹ Whilst MRI demonstrates higher sensitivity than MIBG, MIBG offers the great advantage of enhanced specificity for neuroblastoma diagnosis.²¹ More recently, 18F-FDG PET scans have demonstrated high sensitivity (100%) and can detect more lesions than MIBG.⁹¹ However, this technique was shown to have a relatively low specificity of 50%, and therefore must be used in conjunction with other findings (biochemical or pathological) to ensure accurate diagnosis of neuroblastoma.⁹¹ Finally, X-rays can be used to show the presence of tumours, however their diagnostic value for neuroblastoma is limited, and the exposure to radiation may be harmful to children.⁸⁰

2.1.4 Biopsies and immunohistochemistry. Biopsies are crucial to confirm a diagnosis of neuroblastoma and for staging of neuroblastoma; CT scans alone have been found to be 82% accurate, whilst CT complemented with biopsy showed 97% accuracy.⁹² Incisional (or open) biopsies provide important information for paediatric tumour cells; however



they are invasive and carry surgical risks including infection and gross tumour spillage.^{93–95} Needle (or closed) biopsies such as fine-needle aspiration or core needle biopsy are generally preferred since they are less invasive although they are often guided by CT or US, making them more expensive despite the reduced risks.⁹⁶ The small samples obtained are often insufficient for the completion of all necessary tests, and further do not differentiate neuroblastoma from other tumours.⁹⁵ Bone marrow aspiration is useful, especially for detecting metastatic spread in advanced-stage disease.⁹⁷ Alongside raised urinary or circulating catecholamine levels, positive biopsy results from bone marrow are sufficient to confirm the diagnosis of neuroblastoma. Routinely, bone marrow aspiration and biopsy are performed simultaneously from pelvic bones following local or often general anaesthetic. Following collection of neuroblastoma samples and aspirates, immunohistochemical analysis is a prerequisite for diagnosis confirmation. Therefore, although biopsies provide the most definitive results in terms of diagnosing neuroblastoma, each method presents limitations regarding invasiveness, specificity, and diagnostic completeness.

2.1.5 Downfalls in current techniques. Despite significant advances in neuroblastoma diagnosis, current methods have several limitations which make timely and accurate diagnosis difficult. Blood and urine testing show suboptimal sensitivity, often requiring expensive techniques such as HPLC which are unsuitable for routine POC use.⁹⁸ Imaging modalities include CT, MRI and MIBG scintigraphy. Although these provide critical information for staging and treatment planning, the high costs, radiation exposure, and reliance on sedation make them undesirable for use in paediatric populations.⁹⁹ US is safe and widely available, however cannot offer definitive diagnosis.⁹⁹ Ultimately, positive biopsy findings are required to confirm the diagnosis of neuroblastoma, which are invasive and pose surgical risks, and distinguishing neuroblastoma from other similar tumours can be difficult with many of these techniques.¹⁰⁰ Altogether, this makes the current diagnostic workflow for neuroblastoma expensive, time-consuming, and invasive, and importantly they are unable to detect neuroblastoma early, before the disease has advanced to a late stage. This highlights the need for cheap, rapid and convenient tools that could be used to screen for children with high-risk forms of neuroblastoma, to avoid significant morbidity associated with late-stage disease as well as for earlier implementation of personalised therapy. The development of POC technologies for neuroblastoma could revolutionise diagnosis and improve outcomes for patients.

2.2 Recent advances in neuroblastoma diagnosis

Over recent years, refinements have been made to conventional diagnostic techniques for neuroblastoma, however the methods have remained largely the same and diagnosis relies on imaging and histopathology. There is an urgent need to direct research towards the development of

novel technologies that can address the limitations in current methods, for rapid diagnosis and early screening, both of which would play a major role in mitigating the aggressive consequences of this disease. Herein, a summary of recent developments in the diagnosis of neuroblastoma is provided, and how these are paving the way for the creation of rapid and cost-effective tools.

2.2.1 Nuclear imaging. Since the early 2000s, nuclear imaging techniques for neuroblastoma have evolved significantly. Imaging has remained foundational in neuroblastoma diagnosis, evolving from primitive techniques to advanced modalities that enhance sensitivity and specificity. Nuclear imaging remains an essential tool in the diagnosis and management of neuroblastoma, particularly for staging at presentation and monitoring treatment response. The standard approach is 123I-MIBG scintigraphy, often combined with SPECT-CT¹⁰¹ (Fig. 2a). This technique leverages the norepinephrine transporter (NET) expressed by most neuroblastomas, allowing for targeted imaging. When performed correctly, 123I-MIBG imaging has high diagnostic accuracy, with reported sensitivity and specificity values around 90% for detecting neuroblastoma lesions.¹⁰² That said, there are important limitations to note. Roughly 10% of neuroblastomas are MIBG non-avid, either due to insufficient NET expression or alterations in uptake mechanisms, which can result in false negatives.^{101,103,104} Also, 123I-MIBG imaging has relatively low spatial resolution, making it less reliable for detecting small lesions, especially in areas with high physiological uptake like the liver or bladder.¹⁰⁵

To address these gaps, newer PET-based radiotracers are being explored. PET offers clear advantages over SPECT: superior spatial resolution, faster acquisition times (around 15 minutes *versus* 90 for SPECT), better quantification of tracer uptake, and full-body tomographic coverage.^{105,106} Tracers like 18F-MFBG and 123I-MIBG have the same uptake mechanism as 123I-MIBG but benefit from the higher image quality of PET. For instance, 18F-MFBG PET-CT has been shown to detect all lesions seen on 123I-MIBG imaging, plus additional ones, in early human studies.¹⁰⁷ Similarly, 124I-MIBG PET can improve lesion detection, but has drawbacks such as significantly higher radiation dose—up to 30 times higher than 123I-MIBG in children under 5 years—and more complex logistics due to the tracer's long half-life.¹⁰⁸ Alternative PET tracers like 18F-FDG and [68Ga]Ga-DOTATATE are especially useful for MIBG-negative cases. 18F-FDG, while not tumour-specific, has shown good sensitivity in such scenarios. In one study, 18F-FDG PET had higher sensitivity (78%) and specificity (92%) than 123I-MIBG (50% and 75%, respectively) for detecting lesions in patients with MIBG-negative tumours or discordant imaging findings.¹⁰⁹ However, 18F-FDG's use is limited by high physiological uptake in bone marrow and the brain, which can obscure small lesions and lead to false positives, especially after chemotherapy or G-CSF treatment.^{110–112} [68Ga]Ga-DOTATATE PET-CT, which targets somatostatin receptors (primarily SSTR2), has also demonstrated excellent performance. In a study comparing [68Ga]Ga-DOTATATE PET with 123I-MIBG



Recent Advances in Neuroblastoma Diagnosis

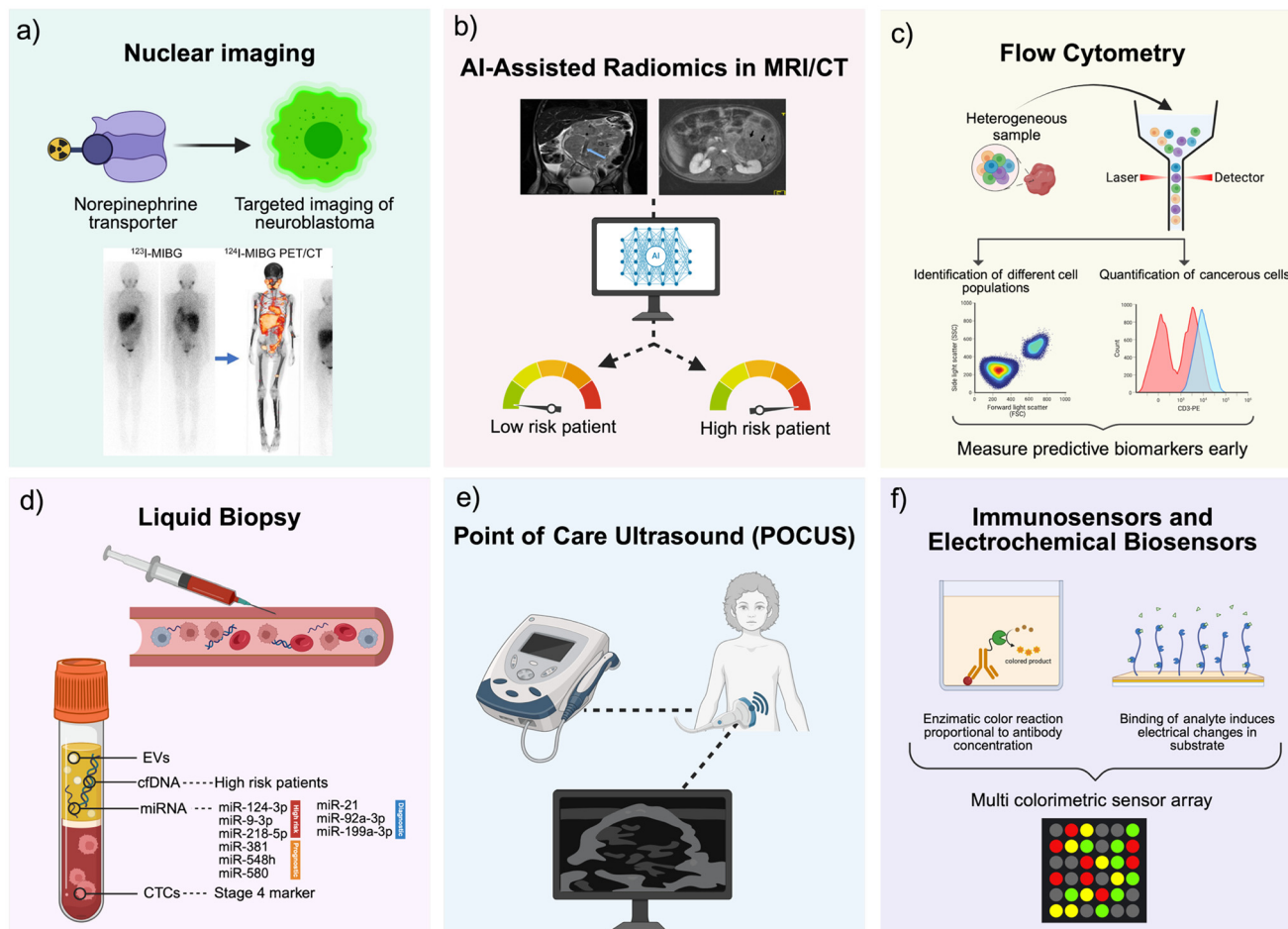


Fig. 2 Recent advances in neuroblastoma diagnostics. (a) Nuclear imaging using radiolabelled MIBG enables targeted visualization of neuroblastoma via the norepinephrine transporter. (b) AI-assisted radiomics applied to MRI/CT allows risk stratification of patients based on extracted imaging features. (c) Flow cytometry identifies and quantifies cancerous cells within heterogeneous populations to detect early biomarkers. (d) Liquid biopsy captures circulating biomarkers (EVs, cfDNA, miRNAs, CTCs) for non-invasive risk and stage assessment. (e) POCUS offers real-time, bedside imaging to support rapid clinical decision-making. (f) Immunosensors and electrochemical biosensors detect analytes through colorimetric or electrical signals, enabling sensitive multiplexed diagnostics.

scintigraphy in 42 patients with high-risk neuroblastoma, DOTATATE PET detected more bone and soft tissue lesions in the majority of cases and was positive in all patients, while ^{123}I -MIBG failed to detect disease in two patients.¹¹³ Moreover, PET imaging with ^{68}Ga [Ga-DOTATATE enables identification of patients eligible for peptide receptor radionuclide therapy (PRRT), offering a theragnostic pathway.¹¹⁴

Despite the promise of PET imaging, these newer techniques aren't yet standard in all centres due to limited availability, higher cost, and the need for further validation in larger cohorts. Still, the diagnostic and prognostic potential—especially in MIBG-negative or relapsed cases—is significant. As access to PET tracers improves and more prospective studies are published, these methods are likely to become integrated into standard neuroblastoma management. However, these methods are not likely to support early screening, staging or diagnosis of disease, and

are costly and time-consuming, relying on specialised radiotracers and equipment.

2.2.2 AI-assisted Radiomics in MRI/CT. Radiomics and artificial intelligence (AI) have emerged as promising tools for the non-invasive diagnosis of neuroblastoma (Fig. 2b). Radiomics involves extracting large amounts of data from medical images and uncovering patterns that may not be visible to the naked eye, and the implementation of trained AI algorithms allows for this process to be automated.¹¹⁵ They have been used to predict *MYCN* amplification, which is a key genetic marker and linked to high-risk disease. In a study by Wu *et al.*¹¹⁶ (2020), AI was used to extract seven radiomic features from three-phase CT images and combine these with clinical factors. The nomogram produced achieved an area under the curve (AUC) of 0.95 in the training cohort and 0.91 in the test cohort, where a value of 1 signifies perfect discrimination between healthy and diseased states.



This was superior to the clinical model. Another similar study¹¹⁷ in 2021 constructed a CT-based radiomics model using logistic regression, support vector machine, and random forest. The study was able to extract more radiomic features (1218) and demonstrated strong performance across all of the models. Building on this, Wang *et al.*¹¹⁷ (2021) utilised XGBoost to integrate CT-based radiomic features to classify MYCN amplification status. This model achieved an AUC of 0.930 and 0.880 in the training and testing groups, respectively, emphasising the potential of integrating advanced machine learning methods in neuroblastoma imaging. MRI-based radiomics have also been introduced but less widely explored. In 2023, Ghosh *et al.*¹¹⁸ reported AUCs of 0.75 and 0.78 using logistic regression and random forest by using MRI-derived features to predict MYCN amplification. The results were promising, but less impressive than the CT-based studies. More recently, Qian *et al.*¹¹⁹ used 18F-FDG PET/CT radiomics to predict gene alterations, however the specificity for neuroblastoma was low. Overall, these studies suggest how radiomics and AI models show potential for improving non-invasive high risk neuroblastoma diagnosis. However, it is unlikely that such methods will be available at POC for screening young children, due to the requirement for high quality infrastructure.

2.2.3 Flow cytometry. Flow cytometry (FC) is another recent tool which has great diagnostic value for neuroblastoma that enables quantitative assessment of tumour cells in several biological samples. FC utilises a beam of light (usually laser) to detect and measure the properties of cells, and markers are used to tag specific proteins (Fig. 2c). A study by Furlanetto *et al.* Furlanetto, Spagnol, Alegretti, Farias, Soares, Daudt, Loss, Scroferneker and Michalowski¹²⁰ (2021) found that of 48 samples from 21 patients, FC demonstrated a sensitivity of 100% and specificity of 86% compared to the gold standard of anatomopathological examination (PA) and immunohistochemistry (IHC). In fact, FC was able to identify neuroblastoma cells in samples that PA/IHC could not, highlighting its potential for early detection. A retrospective review at Great Ormond Street Hospital compared FC with cytology and histology for the assessment of bone marrow involvement in neuroblastoma patients. They also found FC to be superior to traditional methods since it was able to identify low-level residual disease.¹²¹ The identification of minimal residual disease (MRD) by FC was also noted by Cai *et al.*¹²² (2007) through assessment of bone marrow samples. They found that patients who were MRD-negative after treatment had improved outcomes. Similarly, Ye, Wang, Li and Shen¹²³ compared FC to cytomorphology (CM) and found that FC also aided in early diagnosis. These findings suggest that FC could be beneficial not only for risk stratification and therapy planning but to support early diagnosis and for prognosis prediction. Moreover, there are attempts to miniaturise and simplify cytometry, such as the development of microfluidic-based FC,¹²⁴ of which a few commercial systems such as the Accelix exist.¹²⁵ This could

support early diagnosis and at-home relapse monitoring. However, further research is needed to standardise FC methods and integrate this into routine clinical practice.

2.2.4 Point of care ultrasound (POCUS). There have been numerous recent cases where POCUS has been utilised as a diagnostic tool in neuroblastoma. In one case, POCUS was able to identify neuroblastoma where numerous other investigations were unable to identify an underlying pathology.¹²⁶ One of the most significant advantages of POCUS is its ability to expedite the evaluation and treatment of patients. The technique is quick, painless, and non-invasive, making it particularly suitable for children (Fig. 2e). Unlike more traditional imaging modalities such as CT scans, POCUS does not involve exposure to ionising radiation, which is a crucial consideration when diagnosing paediatric patients.¹²⁷ A noteworthy characteristic of POCUS in the context of neuroblastoma is its accessibility. In emergency departments, doctors were able to identify abdominal masses in children who presented with non-specific symptoms.¹²⁸ Currently, detailed published studies examining the diagnostic sensitivity and specificity of POCUS for neuroblastoma are limited, making it difficult to form a comprehensive evaluation.¹²⁹ Despite recent promising cases showing the utility of POCUS in the diagnosis of neuroblastoma, it cannot independently diagnose neuroblastoma due to lack of specificity, and is likely to be more useful in combination with other more specific tests. Furthermore, it relies on a trained and experienced person to analyse the results. Nevertheless, it can be used to guide early specialist referral and initiate diagnostic workup.

2.2.5 Liquid biopsy. Since around 2010, liquid biopsy techniques have shown significant promise as non-invasive alternatives to traditional biopsies. By analysing circulating tumour DNA (ctDNA), circulating tumour cells (CTCs), extracellular vesicles (EV) and exosomal miRNAs, these techniques have been investigated for their potential diagnostic and prognostic roles (Fig. 2d). Cell-free DNA (cfDNA) has shown significant promise, especially in high-risk patients. Lodrini *et al.*¹³⁰ reported median cfDNA levels of 94.75 ng mL⁻¹ in high-risk neuroblastoma patients at diagnosis, compared to 0.72 ng mL⁻¹ in healthy individuals, with levels reaching even higher in patients with bone marrow infiltration (median 113.3 ng mL⁻¹), highlighting its association with disease burden and severity. MYCN amplification has been detected in circulating cfDNA with frequencies ranging from 20% to 42% across studies.^{131–134} 5-Hydroxymethylcytosine (5hmC) is a recently recognised epigenetic marker associated with tumorigenesis. It can be profiled in cfDNA isolated from plasma, providing an avenue for non-invasive diagnostics. In neuroblastoma, 5hmC signatures in cfDNA are strongly associated with disease status, tumour burden, and patient outcomes.¹³⁵ A study by Chennakesavalu *et al.*¹³⁵ used chromatin immunoprecipitation and sequencing methods to investigate different neuroblastoma cell lines. They found that low expression of bivalent genes was significantly associated with



worse survival in high-risk patients. These findings support cfDNA's role in non-invasive molecular profiling, since liquid biopsy genotyping has been achieved on lateral flow assays¹³⁶ and DNA chips.¹³⁷

Circulating tumour cells (CTCs) have also emerged as strong candidates for diagnosis and prognostication. Kojima *et al.*¹³⁸ isolated CTCs in 8 of 10 newly diagnosed and 3 of 4 relapsed neuroblastoma patients using FACS, with key mutations like MYCN amplification detectable in 12 of 13 patients. Another study by Merugu *et al.*¹³⁹ detected CTCs in 26 out of 42 patients, reporting a mean of 40 cells per mL at diagnosis and 6 cells per mL at relapse. Prognostic relevance is underscored by data showing that 55.6% of stage 4 patients had detectable CTCs compared to none in stage 3, and CTC-positive patients had significantly lower 5 year survival (42%) than CTC-negative patients (90%).¹⁴⁰ Detection of CTC on several POC platforms is possible and has been achieved for other cancers.^{141,142} It is possible to isolate and detect CTC on point-of-care platforms for cancer diagnosis, such as portable cytometers,¹⁴² microfluidics¹⁴³ and biosensors.¹⁴⁴ Thus, research into developing and optimising such devices for neuroblastoma should be a point of focus for the future. Recent advances in molecular diagnostics have highlighted circulating RNAs as promising tools for identifying tumour presence in neuroblastoma.¹⁴⁵ For instance, elevated levels of tyrosine hydroxylase (TH) mRNA in blood have been associated with advanced disease stages and a higher risk of relapse, supporting its role as a non-invasive marker for neuroblastoma detection.¹⁴⁶ Moreover, the combined expression of neuroblastoma -related genes—such as PHOX2B, CHGA, DCX, DDC, and TH—in blood and bone marrow has shown strong predictive value for disease progression.¹⁴⁷ Circulating miRNAs, especially those found within exosomes, have also gained traction as potential biomarkers. Several tumour-specific miRNAs, including miR-124-3p, miR-9-3p, and miR-218-5p, have been identified in the serum of high-risk neuroblastoma patients,¹⁴⁸ while others such as miR-381, miR-548h, and miR-580 have demonstrated prognostic relevance.¹⁴⁹ Notably, exosomal miRNAs—like miR-21, miR-92a-3p, and plasma miR-199a-3p—are consistently elevated in neuroblastoma cell lines and patient samples, indicating strong diagnostic potential.^{150,151} These exosomal signatures not only reflect tumour presence but may also shift during therapy, offering a dynamic tool for monitoring treatment response.¹³³ Exosomes are isolated from blood using ultracentrifugation or commercial kits, followed by RNA extraction and analysis *via* qPCR or NGS, which are expensive, time-consuming and require trained personnel. Given the increasingly important role of miRNA as biomarkers for cancers, POC platforms for their detection have gained attention in recent years to overcome the limitations of current methods.¹⁵² However, such devices have not yet been developed for neuroblastoma. Since these biomarkers are present in the blood, and can offer selective diagnosis of high-risk disease, their contribution to next-generation POC diagnostic devices for neuroblastoma could be great.

Despite encouraging results, liquid biopsy in neuroblastoma still faces a number of limitations that need to be addressed before routine clinical implementation. One of the main challenges is the lack of standardisation across methodologies—different studies use various kits, detection platforms, and thresholds, making it difficult to compare results or define clear diagnostic cut-offs. Additionally, many studies do not report sensitivity and specificity figures, relying instead on associations with known tumour features. Biological variability, such as inconsistent shedding of tumour DNA or cells, can lead to false negatives, particularly in early-stage disease or minimal residual disease scenarios. Furthermore, most studies have relatively small sample sizes and are often single centre, which limits generalisability. As the field moves forward, larger multicentre trials and the adoption of standardised protocols will be crucial to translating these findings into clinical practice.

2.2.6 Immunosensors and electrochemical biosensors. The development of immunosensors and electrochemical biosensors is a promising approach for rapid, sensitive and minimally invasive neuroblastoma diagnosis, with the potential for POC applications (Fig. 2f). These devices can quantify targets from small sample volumes. One such application is the development of sensors for catecholamine detection. The measurement of urinary catecholamine metabolites—specifically vanillylmandelic acid (VMA) and homovanillic acid (HVA)—has long been a hallmark in neuroblastoma diagnostics. Studies indicate that these markers possess sensitivities exceeding 90% for the disease, although specificity may be compromised due to their elevations in other conditions^{153,154} alongside other diagnostic indicators. Recent studies have showed increased sensitivity (95%) when all eight metabolites – VMA, HVA, 3-methoxytyramine (3-MT), dopamine, epinephrine, metanephrine, norepinephrine, and NMN – are combined.¹⁵⁵ In recent decades, some novel methods for measuring urinary catecholamines have been explored. In 2021, an AI-enabled multi colorimetric sensor array was developed.¹⁵⁶ Colorimetric fingerprints were generated by gold nanorods and used as signal transducers which produced colour when exposed to neuroblastoma-associated metabolites. The colorimetric patterns were analysed through machine learning algorithms and were able to differentiate between neuroblastoma and control samples. This technique also produced quantitative results, with very low limits of detection of 0.22 μM and 0.29 μM for HVA and VMA, respectively. This proves the potential of AI for improved diagnosis, despite the requirement of validation in larger cohorts. Shetty *et al.*¹⁵⁷ developed a novel electrochemical sensing system that enabled real-time monitoring of dopamine secretion from neuroblastoma cells. This is valuable for studying tumour biology and for monitoring treatment, and the sensor was highly stable, and the results were reproducible, with a low limit of detection. This is promising for *in vitro* diagnostics, and future validation in blood, where tumour cells are present, could make this viable for POC diagnostic and monitoring. Later in 2024, a POC electrochemical sensor was



developed for the detection of HVA, which utilised a nickel-doped zinc oxide nanoparticle-modified carbon paste electrode.¹⁵⁸ The sensor produced results rapidly and required minimal sample preparation, making it portable. Furthermore, it was low cost, highly sensitive and had a low limit of detection. Despite its promise, further validation in larger cohorts would be required, and the technology would need to integrate into user-friendly POC platforms (handheld, disposable device) in order to be used by patients and clinicians alike. Multiplexing for the detection of several neuroblastoma metabolites could also be a promising improvement in the future.

In 2023, Chen *et al.*¹⁵⁹ developed an electrochemical immunosensor which targeted the disialoganglioside GD2 which is expressed on neuroblastoma cells. They designed a graphene/gold nanoparticle (AuNP)/GD2 antibody-functionalised electrochemical biosensor capable of detecting GD2-positive cells in bone marrow samples. The sensor demonstrated high sensitivity and could detect cells in the range of 10^2 to 10^5 cells per mL, and the results matched 100% with gold-standard immunocytochemical staining techniques. Whilst interesting, the requirement for bone marrow samples means painful and invasive procedures for children and thus is not useful in terms of POC testing or rapid diagnostics. Nonetheless, these advancements prove how new-generation technologies are providing promising results that mitigate some of the disadvantages of conventional techniques. Graphene quantum dots (GQDs) have also been used for *in vivo* imaging of neuroblastoma.¹⁶⁰ Anti-GD2/GQDs were shown to accumulate in neuroblastoma tumours in mice, which enabled fluorescence imaging of the tumours. The combination of nanotechnology with immunosensing could be an interesting avenue of research for future diagnostics, although unlikely to support POC use.

2.2.7 The move towards POC diagnosis. For neuroblastoma, a transformative shift has been observed over the last two decades from conventional, hospital and laboratory-based imaging and histopathology, towards data-driven, molecular, and minimally invasive methods. This is driven by the demand for screening tools, earlier diagnosis, treatment stratification, treatment efficacy monitoring, and monitoring of patients in remission. Future research must prioritise detection of high-risk disease, where early diagnosis would transform outcomes for this aggressive disease. Convergence of AI-powered analytics, biosensor engineering, and minimally invasive biomarker discovery will drive future diagnostics, enabling faster decision-making, more precise risk stratification, and ultimately improving outcomes for children with neuroblastoma.

3. POC technologies

Diagnosing neuroblastoma remains a complex and resource-intensive process. Many patients, often young children, undergo invasive procedures or are exposed to ionising radiation simply to confirm a diagnosis.^{161,162} These methods

are not only costly and time-consuming, but also emotionally and physically consuming for both patients and their families.^{163,164} Recent research has focused efforts in creating more rapid and convenient tests. However, even so, current diagnostic approaches often fail to differentiate between low- and high-risk forms of the disease.¹⁶⁵ This makes them ineffective for early screening and, in some cases, may lead to overtreatment or delayed intervention. The goal has been to decrease therapy for low-risk patients to avoid long-term complications while increasing and targeting therapies for high-risk patients to improve overall survival.¹⁶⁶ POC technologies have the potential to address these limitations. Designed to deliver diagnostic results quickly and closer to the patient, POC tools can bypass the need for centralised labs or highly specialised equipment.¹⁶⁷ While they've gained traction in infectious disease and chronic condition monitoring, POC devices for neuroblastoma are not yet available.^{168,169} Still, the idea of a rapid, low-cost, and non-invasive diagnostic tool for neuroblastoma is compelling—and increasingly feasible. Such tools could help reduce diagnostic delays and limit the physical and psychological strain of the current clinical pathway. The COVID-19 pandemic accelerated interest in POC technologies by demonstrating their ability to provide rapid, decentralised testing at scale.¹⁷⁰ Since then, advances in areas like microfluidics, biosensing, and device miniaturisation have led to new generations of portable diagnostic platforms.¹⁷¹ Many of these can now deliver quantitative results and are even compatible with smartphones, making them more user-friendly and accessible in non-clinical settings.^{172,173} With POC devices, a diagnosis can often be made in a single visit, allowing for faster treatment decisions. This is particularly beneficial in regions where access to pathology services is limited, or where time is a critical factor.^{174,175} Distributing POC tools through primary care providers, pharmacies, or directly to patients could expand access and reduce the overall burden on healthcare systems.¹⁷⁶ Although there are no neuroblastoma-specific POC devices currently available, the technology landscape is diverse and growing. POC platforms now include a range of systems—from lateral flow assays (LFAs)^{177,178} and lab-on-a-chip (LoC) devices^{179,180} to electrochemical^{181,182} and optical biosensors,^{183,184} many of which are increasingly being integrated with smartphones. Each of these offers unique advantages, and their continued development could play a significant role in transforming how neuroblastoma—and other many other cancers—are diagnosed and managed in the future.

3.1 Types of POC devices

3.1.1 Lateral flow assays. LFAs are widely used in hospitals, clinics, and laboratories due to their ease of use, affordability, and ability to deliver results within 5–30 minutes. These tests rely on capillary action, which drives the liquid sample across a series of overlapping membranes mounted on a backing card for structural support¹⁸⁵ (Fig. 3). First, the sample is applied to





Fig. 3 Schematic of a general LFA device and examples of application. (a) Schematic of a colorimetric LFA enhanced by platinum-group metal (PGM) nanoparticles with peroxidase-like activity. The PGM NPs are functionalised with antibodies to form detection probes that bind target analytes, enabling sensitive signal amplification at the test line via catalytic colour development after a post-treatment step. Reproduced from ref. 196 with permission from Demetrios A. Spandidos Ed. & Pub., copyright 2017. (b) MARQ-LFIA platform for SARS-CoV-2 detection. Nasal swab samples are applied to a lateral flow strip functionalised with a multiple aptamer recognition-based quantum dot fluorescent probe (ApMQS). Multiple aptamers target distinct epitopes on the viral N protein, enhancing sensitivity. A portable fluorescence reader captures test and control line intensities within 30 seconds, enabling rapid and highly sensitive point-of-care diagnosis. Reproduced from ref. 197 with permission from Royal Society of Chemistry, copyright 2025. (c) Coloured dCNPs@P-Ab used in competitive and sandwich-format multiplex lateral flow assays (mLFAs). In the competitive format (left), increasing analyte concentration reduces the test line signal, while in the sandwich format (right), signal intensity correlates with target concentration. Distinct colors enable visual differentiation of multiple targets at separate test lines. Reproduced from ref. 198 with permission from ACS Publications, copyright 2025.

a sample pad that contains buffer salts and surfactants to optimize flow and stabilize the sample. It then moves into a conjugate pad, where labelled antibodies—typically conjugated to coloured or fluorescent particles like colloidal gold—bind to the target analyte if present. This mixture flows into the detection zone, usually composed of a nitrocellulose membrane, where specific capture antibodies or antigens are immobilized in defined lines.¹⁸⁶ These capture agents trap the analyte-labelled antibody complexes, forming visible test and control lines. Finally, the fluid is drawn into an absorbent pad that maintains the flow and ensures the test completes properly. Results can be read by eye or with a reader. Attention to all components—including the backing card, adhesive layers, and cover tape—is crucial to ensure consistent, high-quality performance.

To improve the sensitivity and performance of LFAs, a range of new materials and technologies have been developed that enhance how targets are captured and how signals are read¹⁸⁶ (Fig. 3a–c). Quantum dots, for example, are nano-scale fluorescent particles that can be chemically linked to several biological probes.^{187,188} When they bind

to a specific target analyte and reach the test line, they emit a strong, stable light signal under LED or UV light, making it possible to detect even very low concentrations of the target. Magnetic nanoparticles are used earlier in the process: they are coated with molecules that bind to the target analyte and then concentrated using a magnet before the sample is applied to the strip.^{189–191} This “pre-enrichment” step increases the number of target molecules reaching the test line, boosting sensitivity in complex samples like blood or saliva. In addition, label-free sample enrichment methods such as dialysis with polyethylene glycol (PEG) remove interfering molecules from the sample, helping to reduce background noise and concentrate the analyte. Similarly, ion concentration polarization (ICP) uses a small electric current to trap and concentrate charged target molecules at the start of the strip before they migrate, increasing the signal strength.^{192,193} Lastly, modifying the shape and structure of nanomaterials—such as using star-shaped gold nanoparticles instead of spherical ones—has been shown to improve binding at the test line and produce stronger signals.^{194,195}



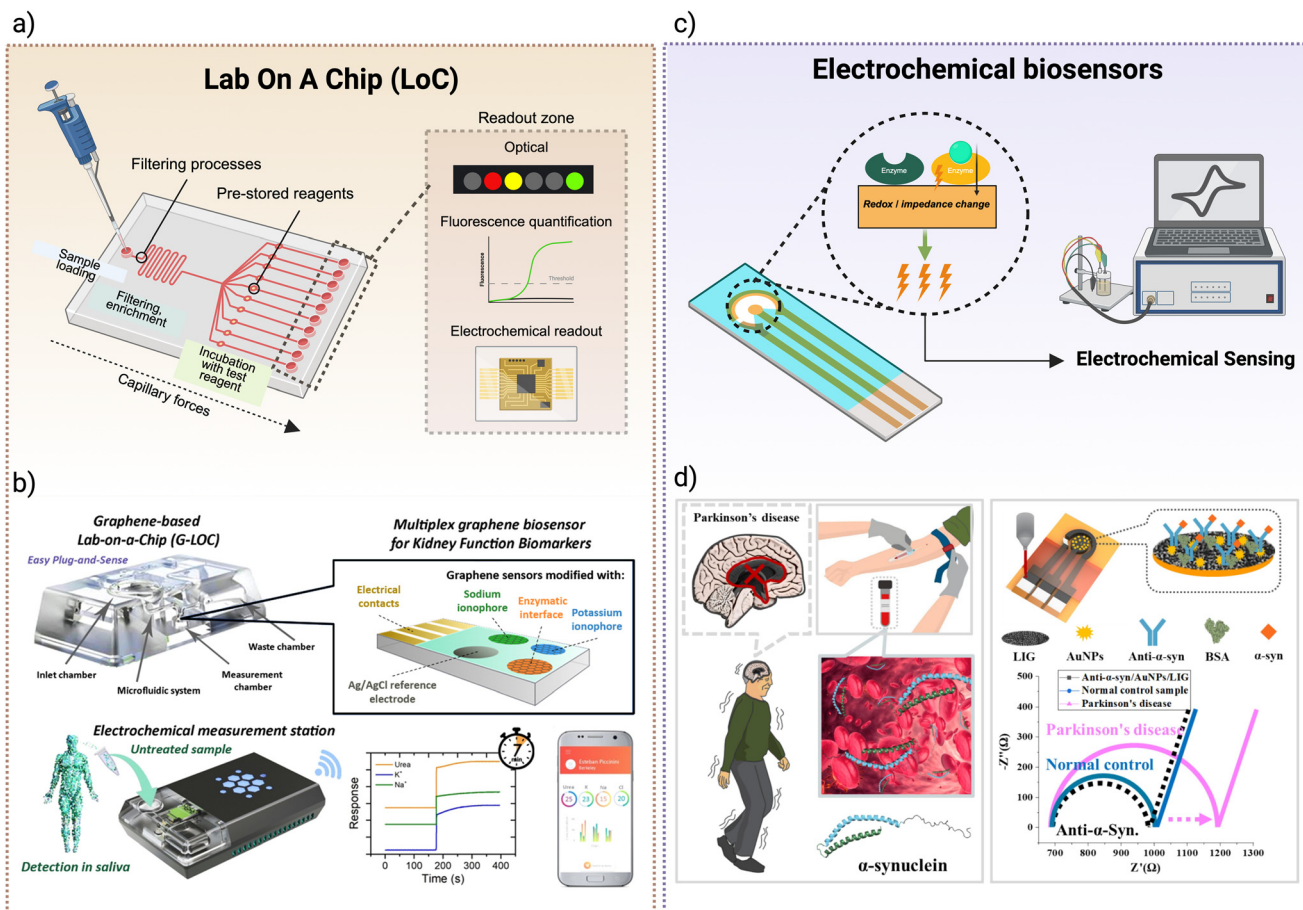


Fig. 4 Point-of-care diagnostic devices. (a) Schematic of a lab-on-a-chip (LoC) device utilizing capillary-driven flow through microfluidic channels. Detection zones support both optical and electrochemical readouts for versatile biomarker quantification. (b) Graphene-based lab-on-a-chip (G-LOC) platform for multiplexed, non-invasive detection of kidney function biomarkers (e.g., Na^+ , K^+ , urea) in saliva. Graphene sensors are functionalised with ionophores and enzymatic interfaces, enabling real-time monitoring via a mobile electrochemical station. Reproduced from ref. 212 with permission from ACS Publications, copyright 2024. (c) Electrochemical biosensors use enzymatic reactions to induce redox or impedance changes upon target binding. These electrical changes are quantified via portable potentiostats or impedance analyzers, offering rapid and sensitive detection at the point of care. (d) Electrochemical immunosensor for the detection of α -synuclein in Parkinson's disease. The platform integrates a laser-induced graphene electrode modified with gold nanoparticles and antibodies, enabling label-free impedance-based detection with high sensitivity. Reproduced from ref. 213 with permission from Elsevier, copyright 2025.

3.1.2 Lab-on-a-chip. While LFAs are widely used for simple, low-cost diagnostics, LoC devices offer improved analytical precision, flexibility, and automation, making them a promising alternative for more complex point-of-care testing.^{179,199} LoCs miniaturise laboratory functions onto a single chip and allow small fluid samples—such as blood or saliva—to move through microchannels that guide them through various assay steps (Fig. 4a). Depending on the design, samples are either injected using a syringe (active systems) or drawn in automatically by capillary forces, surface tension, pressure, gravity-driven flow or hydrostatic flow (passive systems).²⁰⁰ What makes LoCs particularly powerful is their ability to control fluid timing and routing without electronics. This is achieved through design features such as channel geometry, where longer or serpentine channels delay flow; capillary stop valves and burst valves, which hold fluids in place until enough pressure builds; and surface chemistry, where hydrophilic or hydrophobic coatings

determine how and where fluids move.^{201,202} In addition, reagents can be pre-stored on the chip, activating only when contacted by the sample, allowing for complex workflows such as mixing, incubation, washing, and detection to occur in sequence. Compared to LFAs, which generally perform one-step, qualitative assays, LoCs enable automated, multi-step, quantitative diagnostics—including ELISAs or nucleic acid amplification—from a single drop of sample. Recent innovations have also improved portability and affordability, including freeze-dried reagents for better shelf-life, smartphone-based readouts, and low-cost fabrication methods like 3D printing^{203,204} (Fig. 4b). Together, these advances make LoCs a powerful and versatile platform for POC diagnostics.

3.1.3 Electrochemical biosensors. In contrast to LFAs and lab-on-a-chip platforms, which rely primarily on optical signals or capillary flow, electrochemical sensors detect analytes by converting biochemical interactions into electrical



signals, offering a highly sensitive and inherently quantitative alternative for POC diagnostics.^{182,205} These systems typically consist of a recognition element—such as an enzyme, antibody, or aptamer—immobilized on the surface of an electrode (Fig. 4c). When the target analyte binds to this surface, it induces an electrochemical reaction (e.g., redox or impedance change), which is measured as current or voltage. Electrochemical sensors can be easily miniaturised, require minimal sample preparation, and are well-suited to real-time monitoring, even in wearable formats. Recent technological advances have focused on improving electrode performance using nanomaterials like carbon nanotubes, gold nanoparticles, graphene, and Prussian blue, which enhance conductivity and increase the surface area for biomolecule

attachment^{206–208} (Fig. 4d). These modifications allow for greater sensitivity and faster response times, even at a very low analyte concentration. Other innovations include enzyme stabilization methods using nanostructured films or hydrogels, and signal amplification strategies using redox cycling in immunosensors.^{209,210} Additionally, electrochemical sensors are increasingly being developed for non-invasive sampling, using fluids like saliva, sweat, or tears, and incorporated into wearable devices such as flexible skin patches, tattoo sensors, or contact lenses.²¹¹

3.1.4 Optical biosensors. Optical sensors generate signals based on light absorption, emission, reflection, or interference when a target analyte binds to a biological recognition element²¹⁴ (Fig. 5a). These sensors are often



Fig. 5 Point-of-care diagnostic devices. (a) General schematic of an optical biosensor: a light source excites the sample at a functionalised sensing surface, where the interaction with specific analytes induces measurable changes in optical properties (e.g., absorbance, fluorescence, or refractive index). These changes are then detected by a photodetector for signal quantification. (b) Paper-based biosensor for blood urea nitrogen (BUN) detection using an integrated optical film and photodiode-based detection unit. Color intensity from enzymatic reactions is quantified digitally, enabling rapid and low-cost clinical assessment. Reproduced from ref. 229 with permission from Elsevier, copyright 2023. (c) Plasmonic glucose biosensor featuring self-assembled anisotropic gold nanoparticles on a paper substrate. Glucose-induced etching alters nanoparticle shape and color, enabling semi-quantitative visual analysis with high stability in biological fluids. Reproduced from ref. 230 with permission from Elsevier, copyright 2021. (d) Smartphone-based POC diagnostic platform using a 3D-printed chamber with integrated RGB LEDs and a smartphone camera. Fluorescent lateral flow strips can be inserted for real-time image-based quantification of nucleic acid amplification signals. Reproduced from ref. 231 with permission from Elsevier, copyright 2019. (e) Electrochemical glucose biosensor with a smartphone-connected interface. A screen-printed carbon electrode is modified with Fe_3O_4 -poly(thiophene) nanocomposites to enable sensitive and stable glucose detection in saliva, urine, and blood. Reproduced from ref. 232 with permission from Elsevier, copyright 2022.



label-free, real-time, and highly sensitive, making them well-suited for rapid diagnostics. Common formats include fluorescence, colorimetric, surface plasmon resonance (SPR), and interferometric biosensors, each offering unique advantages depending on the application.^{184,215,216} New materials such as gold and silver nanoparticles, quantum dots, photonic crystals, graphene, metal-organic frameworks (MOFs), and biocompatible polymers have been employed to improve signal strength, specificity, and multiplexing^{217–219} (Fig. 5b and c). For example, plasmonic nanomaterials like gold nanoparticles enhance the sensitivity of SPR-based sensors by amplifying the change in refractive index upon analyte binding, while quantum dots provide bright fluorescence for detecting multiple biomarkers simultaneously. Colorimetric sensors, which produce visible colour changes, are particularly useful for low-cost, naked-eye readouts and are often combined with smartphone cameras for semi-quantitative analysis. Additionally, flexible and wearable optical sensors, such as tattoo-based sensors or smart patches, enable continuous, non-invasive monitoring of glucose, cortisol, and other health indicators in sweat or interstitial fluid.²²⁰ Emerging platforms like lab-on-chip optical sensors and implantable sensors further extend their capabilities, integrating complex detection mechanisms with miniaturised fluidics for real-time *in vivo* analysis.²²⁰

3.1.5 Smartphone-integrated POC. Smartphone-integrated POC diagnostics have emerged as a powerful extension to conventional POC technologies, combining sensor-based detection with real-time connectivity and user-friendly interfaces.²²¹ Unlike LFAs, LoC devices, or stand-alone biosensors, smartphone-based platforms offer an all-in-one solution for sample acquisition, detection, analysis, and data sharing (Fig. 5d and e). These systems operate by either using the smartphone's built-in features—such as cameras, microphones, and flash LEDs—or through external attachments like optical cradles, electrochemical modules, or microfluidic adapters.^{222,223} They can support both *in vivo* sensing (e.g., monitoring heart rate or skin images) and *in vitro* diagnostics (e.g., detecting biomarkers in saliva, blood, or urine) using various detection principles including colorimetric, fluorescence, electrochemical, and spectrometric assays.^{223–225} Recent advancements have focused on improving detection sensitivity, portability, and automation by integrating nanomaterials, microfluidics, and miniaturised optics into compact adapters that align with smartphone cameras. These platforms also leverage software innovations, such as machine learning algorithms and cloud-based databases, to enhance result interpretation, pattern recognition, and remote clinical feedback.^{226,227} Importantly, smartphones allow direct data sharing *via* Wi-Fi, Bluetooth, or mobile networks, enabling real-time communication with healthcare professionals, centralized labs, or epidemiological tracking systems. In resource-limited settings, smartphone-based POC tools provide affordable, decentralised diagnostics without requiring full laboratory infrastructure.²²⁸ Applications span across infectious diseases

(e.g., COVID-19, malaria), chronic conditions (e.g., diabetes, cardiovascular diseases), reproductive health, and even fertility screening. Their low power needs, high accessibility, and compatibility with wearable biosensors make smartphones a key enabler of mobile health systems, supporting personalised medicine and continuous patient monitoring outside of clinical environments.

3.2 POC technologies in cancer research

Diagnosing cancer is rarely straightforward, particularly in its early stages. Most cancers don't cause clear symptoms until the disease is already in a highly advanced state. When symptoms do appear, they're often vague or easily mistaken for more common conditions, which delays proper diagnosis.²³³ Once a diagnosis is suspected, patients typically go through a series of tests. These are effective but depend on skilled personnel, complex equipment, and can take days or even weeks.²³⁴ Biological variability—tumour heterogeneity—adds another layer of complexity, making it difficult to rely on a single biomarker for diagnosis or prognosis.²³⁵

POC technologies offer a promising solution for these challenges (Fig. 6). They often work with easily accessible samples like blood, saliva, or urine, and can be used outside of a hospital setting.³⁵ For patients in remote or underserved regions, this kind of access could be transformative, helping detect disease earlier and supporting more regular monitoring.¹⁷⁶ Lateral flow assays, widely recognized for their affordability, rapidity, and ease of use, have been developed for the detection of protein biomarkers such as prostate-specific antigen (PSA), cancer antigen 125 (CA125), and carcinoembryonic antigen (CEA).²³⁶ Paper-based microfluidic devices, or μ PADs, are another exciting development. These disposable, low-cost platforms can detect cancer cells or DNA using colour change or fluorescence.²³⁷ In one case, a μ PAD combined with a smartphone-based reader successfully identified ROR1-positive cells in blood—bypassing the need for flow cytometry.²³⁸ More advanced technologies are also emerging. CRISPR-based diagnostics, aptamer-modified sensors, and hybrid electrochemical-optical devices are all being explored for cancer detection.²³⁹ Genetic and epigenetic markers like methylated DNA and miRNAs are gaining traction too, given their potential to offer insight into tumour subtype or treatment resistance. A recent platform was able to reach a limit of detection as low as 0.16 pM miRNA.²⁴⁰ Other cancer LFAs for detection of cancer biomarkers DNA methylation,^{74,75} single nucleotide polymorphisms,²⁴¹ and circulating tumour DNA (ctDNA) have also been developed; all of which are implicated as biomarkers for several cancers. Kalligosfyri *et al.*^{137,242,243} developed a rapid gold nanoparticle-based LFA for visual detection of KRAS gene mutations in ctDNA, relevant to colorectal cancer, using streptavidin-biotin affinity and four primer extensions at the test zone.

Commercial examples of cancer POC tests are still rare, but a few exist. A one-step PSA test has been developed, and



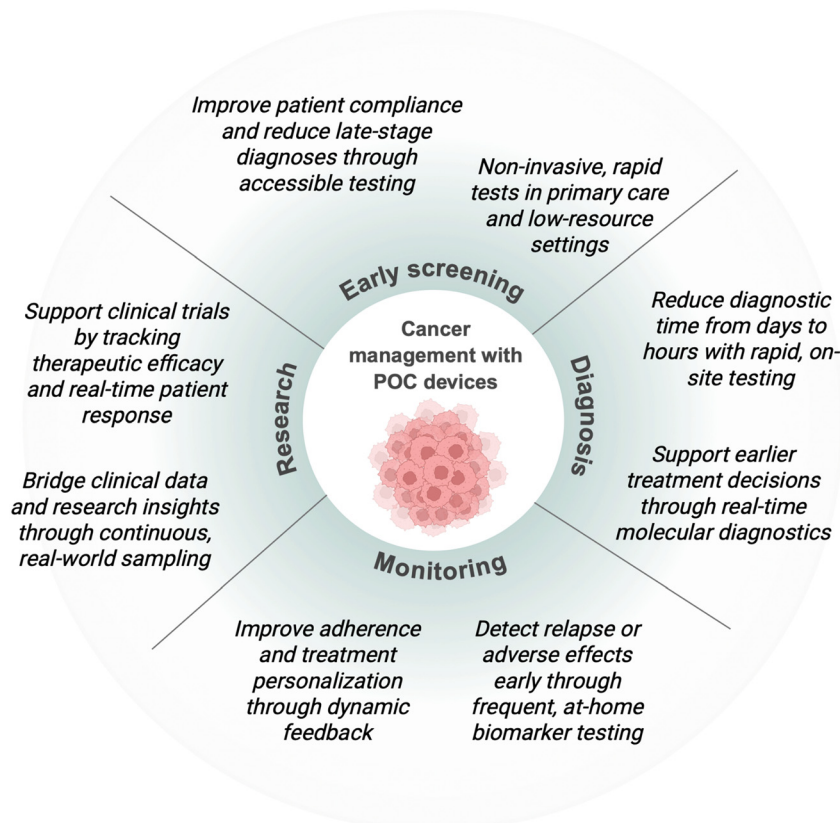


Fig. 6 Schematic representation of how point-of-care (POC) devices can enhance cancer management across the care continuum. POC technologies support early screening through accessible, non-invasive tests; enable faster, real-time diagnosis; facilitate treatment monitoring via at-home biomarker tracking; and contribute to research by generating high-frequency, real-world clinical data. Together, these applications promote timely interventions, personalised care, and improved outcomes in oncology.

Abbott's NMP22 BladderCheck test can detect a urinary bladder cancer marker in under 30 minutes using just a few drops of urine.^{244,245} However, both have faced criticism due to poor sensitivity and specificity, highlighting the need for further optimization, namely through adding washing steps to reduce background noise. Additionally, relying on a single biomarker is often not sufficient for reliable cancer detection.²³⁵ As a result, interest is growing in multiplexed lateral flow assays that can detect several targets simultaneously.²⁴⁶ When paired with smartphone-based readers, these multiplexed devices could offer more accurate and accessible diagnostics. LoC has been used to measure miRNAs,^{247,248} detect circulating tumour cells, and analyse markers such as CEA and EGFR in lung cancer.²⁴⁹ Compared to traditional LFAs, LoCs can handle more complex assays and often don't require amplification steps—making them ideal for molecular diagnostics. One recent study demonstrated a microfluidic chip that could detect tumour-associated miRNAs in serum without amplification, achieving high specificity and a detection limit below 40 pmol L⁻¹.²⁴⁷ Wearable cancer diagnostics, however, are still in early stages, with some interesting proof of concepts developed, but with few *in vivo* and clinical validation. Calderón-Santiago *et al.* used sweat to screen for lung cancer,²⁵⁰ while

the GILUPI CellCollector® captured circulating tumour cells (CTCs) directly from the blood.²⁵¹ Lai *et al.*²⁵² enhanced CTC capture using a graphene oxide nano-net, and Park *et al.* developed a microfluidic device to isolate CTCs based on mechanical properties, while Pekin *et al.* detected ctDNA mutations with a microfluidic digital PCR platform.²⁵³ Beyond initial diagnosis, POC devices hold significant potential for monitoring treatment response, predicting therapeutic efficacy, and identifying early signs of relapse.²⁵⁴ For instance, phosphoCDK levels could be tracked during trials involving CDK inhibitors, giving real-time insight into drug activity.²⁵⁵ POC devices also lend themselves to time-point sampling, allowing clinicians to track changes in biomarker levels throughout treatment. In the future, they could help predict aggressive disease, monitor resistance patterns, or even anticipate metastasis.

In the context of neuroblastoma, POC detection for the detection of VMA and HVA in urine has been achieved through the use of nickel-doped zinc oxide nanomaterials.¹⁵⁸ Other POC immunosensors have been developed that detect GD2 (ref. 159) and dopamine release.¹⁵⁷ As POC platforms continue to evolve and integrate with AI, 3D printing, and mobile technology, they are steadily moving toward a new standard: diagnostics that are not only fast and portable, but



also personalised, predictive, and deeply embedded in everyday care. However, while advances in engineering and device miniaturisation are critical, the success of POC technologies ultimately depends on our understanding of the disease itself. In cancer, this means uncovering the molecular events that drive tumour development, progression, and resistance to treatment.²⁵⁶ Without reliable biomarkers—whether genetic mutations, epigenetic changes, protein expression patterns, or metabolic signatures—POC tools lack meaningful targets to measure.²⁵⁷ As such, progress in cancer biology, including the identification of early indicators of malignancy or predictors of therapeutic response, is essential for informing the design of clinically useful POC diagnostics. The more precisely we understand tumour heterogeneity, microenvironmental cues, and disease evolution, the more targeted and effective these tools can become.

3.3 Biomarkers for POC neuroblastoma diagnosis

POC offer the promise of rapid testing and immediate clinical decision support directly at the site of patient care. The potential for POC systems to utilise nanotechnology for biomarker detection is gaining traction within the oncological landscape, including neuroblastoma diagnosis.²⁵⁸ These innovations facilitate timely and accurate diagnoses, which are critical given the aggressive nature of neuroblastoma and the time-sensitive nature of paediatric oncology interventions. Only a few POC devices have been developed for neuroblastoma diagnosis, and these aim to detect catecholamine metabolites. These are still in the early stages of development and, whilst not invasive, do not differentiate between high risk and low risk disease – something which will be essential to the development of an effective screening and relapse monitoring tool. In this section, possible biomarkers for neuroblastoma are explored, and the potential to apply these to different POC platforms, and the concentrations at which these should be measured, is investigated (Table 2).

3.3.1 Genetic and genomic biomarkers. Circulating tumour DNA can be non-invasively assessed in blood or serum, and their implications in diagnosis and prognostication of cancer has been demonstrated.²⁵⁹ In neuroblastoma patients, the presence of cell-free DNA (cfDNA) and ctDNA have been documented. Studies have reported that cfDNA is correlated to tumour burden, treatment response and incidence of relapse.^{260–262} Specifically, copy number alterations,²⁵⁹ segmental chromosome aberrations,²⁶³ and mutations or amplifications¹³² in cfDNA can all be used to predict prognosis in neuroblastoma patients and provide a potential avenue for future treatment stratification. So, circulating DNA could be the target for future diagnostic devices to differentiate high risk patients, which will enable personalised treatment of patients, thus working to reduce morbidity related to ineffective therapy. Recently, George *et al.*²⁶⁴ have demonstrated a panel-based approach to

identify genetic alterations from plasma samples through ctDNA sequencing. This is a promising step towards development of rapid devices for risk and treatment stratification through biomarker monitoring. Later, Stankunaite *et al.*²⁶⁵ described the successful novel development of a capture panel to detect genetic variants in cfDNA in children with solid tumours. Detection of mRNA and microRNAs is another recent area of interest to researchers. Studies have suggested that the presence of mRNA of neuroblastoma-associated genes can be linked to tumour stage and clinical outcome.^{146,266–269} Implementation of genetic biomarkers in POC platforms is difficult due to the low abundance of ctDNA and miRNA and the requirement for multiplexing due to genetic heterogeneity. However, advances in microfluidics, smartphone readouts and CRISPR-based detection means these challenges are being actively addressed. Thus, such biomarkers are of great interest.

3.3.1.1 MYCN amplification. *MYCN* amplification is the most significant poor prognostic marker in neuroblastoma patients.²⁷⁰ *MYCN* amplification is present in around 20–30% of neuroblastoma patients, and survival in these patients is less than 50%.^{18,271} Low risk patients lacking *MYCN* amplification can never progress to high-risk disease.^{272,273} In high-risk patients with upregulation of *MYCN*, amplification is always present at diagnosis, thus, amplification of *MYCN* is an early factor which is perhaps driving development of aggressive phenotypes in young patients. Traditionally, fluorescent *in situ* hybridisation (FISH) and southern blot analysis are used to measure *MYCN* copy numbers in tissue samples.¹¹ This presents with many technical difficulties, such as interference of cells and other tissue components leading to false negative results, as well as lack of reliability of results due to small DNA quantities. More recently, real-time PCR has been used to quantify *MYCN* copy number in ctDNA.¹³² Detection of *MYCN* amplification is thus difficult, time consuming and requires biopsy samples, however PCR-based techniques are adaptable to portable microfluidic POC devices. Currently, its measurement is only indicated once patients have been diagnosed with neuroblastoma, for the purpose of risk and treatment stratification. Early detection of *MYCN* amplification for screening could be achieved through the detection of *MYCN* protein in biofluids such as blood.²⁷⁴ However, there are currently no confirmed reference ranges for the concentration of the protein in healthy patients. This would be essential to know before a device to detect it could be developed. Furthermore, it is not yet known whether levels of this protein are elevated in neuroblastoma patients, and studies would be required to determine this, although it can be hypothesised that patients with elevated expression of *MYCN* would have higher levels of the protein within circulating tumour cells. When these cells lyse, they may release their contents into the blood stream thus leading to elevated concentrations of the protein in blood. Another issue would be that *MYCN* protein has a short half-life of around 30 minutes,²⁷⁴ and this may present difficulties in



Table 2 Summary of key neuroblastoma biomarkers, including sample type, detection methods, and diagnostic relevance

Biomarker type	Example biomarker	Sample type	Detection method	Stage (early/late)	Key features	
Genetic biomarkers	MYCN amplification	Blood	FISH, PCR, cfDNA analysis	Early	Associated with high-risk NB, poor prognosis	
	ALK mutation/amplification	Blood	FISH, PCR, cfDNA analysis	Early	Promotes MYCN activity; poor survival	
	NSE (neuron-specific enolase)	Spinal fluid, serum or urine	Blood assay	Late	Decreased survival indicator	
	Circulating tumour DNA (ctDNA)	Blood	Next-generation sequencing (NGS), dPCR	Early and late	Detection of tumour-specific mutations; useful for monitoring and relapse prediction	
	cfDNA	Blood	qPCR, ddPCR-method, whole genome sequencing	Early	Common alterations detected non-invasively; correlated with NB stage	
	Ferritin	Blood	Blood assay	Early	Associated with worse prognosis	
	LDH	Blood	Blood assay	Late	Increased metastatic burden	
RNA biomarkers	ATRX	Tissue biopsy	IHC, genome sequencing, FISH	Late	Loss of ATRX associated with poor prognosis	
	TERT	Tissue biopsy, blood	FISH, RT-qPCR, NGS	Late	TERT mutations linked with aggressive tumour features	
	TH mRNA	Blood	RT-qPCR	Early	High in advanced stages, relapse predictor	
	PHOX2B mRNA	Blood	RT-qPCR	Early	Strong prognostic marker	
	Circulating MiRNA	miR-124-3p	Blood	RT-qPCR	Early	Regulates PI3K/AKT, TGF- β , and p53 signalling, impacting cell proliferation, apoptosis, and metastasis
		miR-9-3p			Early	Prognostic for high-risk NB
		miR-21			Late	Increased to enable escape from immune detection
		miR-16-5p			Early	Regulates apoptosis
		miR-21-5p			Late	Similar to miR-21, cancer-related, late progression
	miR-125b-5p			Early	Promote tumour cell proliferation and inhibit p53-dependent apoptosis	
Circulating cells	miR-199a-3p			Early	Facilitate proliferation and migration	
	CTCs expressing GD2, CD90, CD45, and CD235a	Blood	Blood assays	Late	Associated with metastasis, relapse	
Metabolic biomarkers	VMA	Urine	HPLC, LC-MS/MS	Early	Classical NB markers; good sensitivity	
	HVA			Early		
	3-Methoxytyramine (3-MTS), NMN			Early	Additional urinary markers	
	ODC1	Blood, saliva or urine	Western blot, ELISA, IHC	Late	Tumour progression, aggressiveness, poor prognosis	
	HLA-G	Blood	ELISA	Late	Increased to enable escape from immune detection	
	Polyamines	Blood, urine	HPLC, fluorescence	Early	Elevated urine levels can suggest cancer	
	Serum cholesterol	Blood	Lipid profile, enzyme colorimetric method	Early	Elevated levels associated with poor prognosis	
	NLR	Blood	Full blood count	Early	Elevated NLR suggests inflammation, associated with poor prognosis	
Exosomal proteins	HALP	Blood	Blood tests	Early	Elevated HALP score associated with better prognosis	
	NCAM, NCL, MYH9, FN1, LTBP1	Blood	LC-MS/MS, ELISA, Western blot	Early and late	High risk patients, role in cell migration, and metastasis	
	Vitronectin	Blood	ELISA, western blot	Early	Elevated levels associated with poor prognosis	
	Butyrylcholinesterase	Blood	Fluorescent activity assay	Early	Decreased levels associated with poor prognosis	
	Neuropeptide Y	Sweat, blood	Electrochemical detection, GMR biosensors	Early	Elevated levels linked to stress	
	GD2	Blood	Immunoassay	Early	Can distinguish between high and low risk disease	
	Trk	Tissue	IHC, FISH	Early	Trk A associated with good prognosis; Trk B associated with poor prognosis	

determining accurate reference ranges for the protein. One study in 2016 by Smith *et al.*²⁷⁵ described the optimisation of

an ELISA test for MYCN protein measurement in cell lysates derived from patient bone marrow samples. Devices such as



ELISA tests are commercially available for this; however, their use is limited to research purposes and have not been employed for routine clinical use.

3.3.1.2 ALK mutations. Anaplastic lymphoma kinase (ALK) codes for a receptor tyrosine kinase and mutations are present in around 14% of high risk forms of neuroblastoma.²⁷⁶ Along with PHOX2B, ALK is associated with some forms of familial neuroblastoma. ALK is important for neural development but postnatally, it has little to no expression in healthy tissues. In mouse and zebrafish models, ALK mutations have been correlated with *MYCN* amplification. ALK status is mainly tested for in lung cancer, using techniques such as FISH or other immunohistochemical methods, which are not suitable for POC testing.²⁷⁷ Combaret *et al.*²⁷⁸ used a droplet digital PCR system to test ALK status in neuroblastoma patients using peripheral blood. This showed promising results with sensitivity and specificity both around 90–100%. Despite this, the process is not suitable for POC testing but is a good alternative to test for ALK status, if there is no tumour tissue available. Developing low cost POC platforms for ALK mutation screening could facilitate early identification of disease.

3.3.1.3 5hmC. 5hmC profiling in cfDNA is a recently discovered biomarker for neuroblastoma which could distinguish high risk disease with high sensitivity and specificity. Currently, this technology requires sequencing-based analysis, however there is potential to miniaturise this, for example *via* nanopore sequencing or electrochemical biosensors, thus eventually enabling POC-based risk stratification.

3.3.1.4 ATRX mutations and TERT rearrangements. Like *MYCN*, mutations in the alpha-thalassemia/mental retardation, X-linked (*ATRX*) and telomerase reverse transcriptase (*TERT*) genes are associated with high-risk forms of neuroblastoma.²⁷⁹ The majority of these genetic mutations lead to telomere lengthening. *ATRX* and *TERT* mutations are more commonly found in patients older than the age of 18 months, with *TERT* being associated with stage 4 disease and *ATRX* being associated with a refractory clinical subtype – all of which are unfavourable signs of neuroblastoma. No POC testing of these genes are evident in current literature. The current method for detecting *ATRX* status is through biopsy or surgery, which are invasive, and so currently it is not feasible to transform this into POC.

3.3.1.5 Novel gene biomarkers. Other genes, such as *H2AFX*, *DDX39A*, *BCL11A* and *S100A9* have been shown to be associated with high-risk neuroblastoma and unfavourable prognoses.^{280–283} Current research has not covered POC detection of these genes but this could be a potential avenue for research in the future.

3.3.1.6 MicroRNAs. MiRNAs are made of 20–22 non-coding nucleotide molecules and are mainly found in the introns of protein-coding genes, and can control the expression of genes, such as *MYCN* and *TERT*.²⁸⁴ Studies have found there to be an upregulation of several miRNAs in aggressive forms of neuroblastoma.²⁸⁵ MiRNA proves to be resilient in harsh pHs and resistant to RNase activity, which allows it to be an

effective detection tool.²⁸⁶ Several POC platforms have been developed for miRNA detection, including LFAs, electrochemical sensors, and portable qPCR systems. This shows the high feasibility of developing such a device for neuroblastoma in the near future.

3.3.2 Proteomic biomarkers

3.3.2.1 Neuro-specific enolase. Another biomarker that holds valuable prognostic information for neuroblastoma is neuron-specific enolase (NSE); a glycolytic protein found in neurons. NSE is elevated in patients with neuroblastoma, among other neuroendocrine tumours such as small-cell carcinomas and islet cell tumours.²⁸⁷ There is still a need to establish normal ranges for NSE, however it has been suggested that concentrations of this marker in serum remain between 16.95–26.71 ng mL⁻¹ in healthy new-borns and 13.94–22.19 ng mL⁻¹ in healthy infants.²⁸⁸ Such low concentrations make accurately measuring such biomarkers difficult, however given that NSE is not specific to neuroblastoma, it can be used as a prognostic predictor in patients with confirmed disease.²⁸⁹ NSE can be measured using assays such as enzyme-linked immunosorbent assay (ELISA). ELISA is a plate-based technique for detection and quantification of analyte measurement. While these devices are not POC and require trained professionals, they are very rapid and are widely used for the detection of disease biomarkers. NSE can be measured in biofluids including serum and pleural effusion fluid. Fan *et al.* developed a wireless POC testing system that involved testing NSE using microfluidic paper-based analytical devices, an electrochemical detector and smartphone.²⁹⁰ Comparing their results to ELISA, their device showed results within an acceptable range and has good selectivity towards NSE. Detection limits range from 1 to 500 ng mL⁻¹ with a LOD of 10 pg mL⁻¹, which would be suitable for NSE in neuroblastoma. Although this was developed for the detection of NSE in small cell lung cancer, this POC testing system proves to be promising for other tumours like neuroblastoma too. This suggests that POC assays, such as LFAs, are highly feasible for NSE detection. In terms of diagnosis of neuroblastoma, NSE cannot be used in isolation but could be used alongside the measurement of other biomarkers to confirm a diagnosis.

3.3.2.2 Lactate dehydrogenase. Serum lactate dehydrogenase (LDH) is also used as a tumour biomarker for several cancers since it is indicative of tissue damage and has been shown to be elevated in *MYCN*-amplified neuroblastoma patients.²⁹¹ High LDH values have been shown to correlate with poorer prognosis in both localised and metastatic disease states.²⁹² In metastatic patients over the age of 18 months, LDH has recently been implicated as a predictor of poor event-free and overall survival rate.²⁹³ In new-borns, normal serum total LDH concentrations lie between 160 and 540 IU L⁻¹.²⁹⁴ In children, serum LDH should be around 60–170 IU L⁻¹.²⁹⁴ Studies have shown LDH to increase with increased tumour burden; thus, levels of the protein remain low in early stages of the disease.^{15,49}



Separate studies have confirmed the strength of serum LDH in prognostication.²⁹⁵ Therefore, serum LDH measurement could be used as a diagnostic tool for high-risk neuroblastoma, although its ability to detect disease as an early stage is unknown. LDH can be measured using protein assays in samples of blood, cerebrospinal fluid or biopsies, as well as urine which provides a much less invasive alternative which is especially important for younger patients.²⁹⁶ However, assaying of biomarkers takes around 1–2 hours, and this does not qualify as POC; nonetheless, it is highly feasible that cheaper and more rapid devices such as LFAs could be developed for its detection.

3.3.3 Chromogranin A. Chromogranin A is a known marker for neuroendocrine tumours due to its expression in the neuroendocrine system. In 1995, an ELISA to detect chromogranin A was developed specifically for diagnosis of neuroblastoma and a similar malignancy (phaeochromocytoma).²⁹⁷ It was found that 27% of neuroblastoma patients had normal levels of chromogranin A. Previous studies by Hsiao *et al.*²⁹⁸ suggested that chromogranin A was 91% sensitive for diagnosis of neuroblastoma; therefore, this ELISA test was not as sensitive as expected. The study concluded that the test added little benefit to current methods used in the diagnosis of these diseases at the time and that the measurement of plasma and urinary catecholamines had higher sensitivity overall. This analyte is co-released with catecholamines from storage vesicles;²⁹⁸ thus, it is not specific to high-risk neuroblastoma and therefore not a useful biomarker for implementation as a screening tool.

3.3.3.1 Plasma-derived exosome proteins. Plasma-derived exosome proteins (exo-pro) show different properties depending on if the neuroblastoma is high or low risk.²⁹⁹ These differences can be seen in the proteins involved in cell migration, proliferation and metastasis. Exo-pro of neuroblastoma carry vital information about the primary origins of the neuroblastoma and has potential to be both a diagnostic and prognostic biomarker. Lateral flow immunoassays (LFIA) have been developed to test for exo-pros. Oliveira-Rodriguez *et al.*³⁰⁰ successfully developed an LFIA to analyse exo-pros from patient plasma. Each test can be done within 15 minutes. This was tested on metastatic melanoma cells but can be adapted to other cancers such as neuroblastoma.

3.3.3.2 Vitronectin. Vitronectin is a glycoprotein important for cell migration. It is found in the plasma and extracellular matrix.³⁰¹ Studies show higher levels of vitronectin are associated with poor neuroblastoma prognosis. The range of vitronectin in neuroblastoma patients range from 52.4 to 870 $\mu\text{g mL}^{-1}$, with a suggested cut-off of 361 $\mu\text{g mL}^{-1}$ as this is when patients over the age of 18 months had worse prognosis. As a new biomarker, more research is needed for the development of a POC device testing for vitronectin.

3.3.3.3 Butyrylcholinesterase. Butyrylcholinesterase (BChE) is an enzyme that is altered in could neuroblastoma patients.³⁰² When comparing BChE activity in *MYCN* amplified patients, this is around 40% lower than compared

to non-*MYCN* amplified cases. BChE is a good biomarker to track treatments as its levels have been shown to normalise during treatment. In the context of burns and systemic inflammation, a POC testing device has been utilised in hospitals to measure BChE levels using blood samples.^{303,304} Thus, it is likely that such a device could be validated for neuroblastoma.

3.3.3.4 Neuropeptide Y. Neuropeptide Y (NPY) is a sympathetic neurotransmitter. NPY is expressed in neuroblastoma, with elevated levels of NPY being associated with unfavourable outcomes of neuroblastoma.³⁰⁵ A novel sweat-detection based POC device has been developed for NPY detection in chronic anxiety orders, but the applicability of this to neuroblastoma needs to be assessed.³⁰⁶

3.3.3.5 HLA-g. HLA-G is overexpressed in several tumours and is advantageous for tumour cell survival and development.³⁰⁷ ELISA tests have been developed for the detection of HLA-G³⁰⁸ which is overexpressed in neuroblastoma patients. In neuroblastoma, its levels also correlate with relapse, and thus a tool to rapidly measure this marker at POC could be used regularly by patients in remission, for earlier identification of relapse and improvement in outcomes for these patients. The use of such a device for neuroblastoma diagnosis, however, has not explored but could be a potential avenue of research for the future.

3.3.4 Metabolic and biochemical biomarkers

3.3.4.1 Polyamines. Polyamines are small molecules that regulate cell growth and differentiation. Thus, the polyamine pathway is implicated in cancer growth and progression, and in neuroblastoma, these molecules support processes regulated by the *MYC* family.³⁰⁹ Therefore, elevated levels of polyamines in patients could be used as a poor prognostic marker in children. Polyamines can be measured directly in blood or urine through detection of their metabolites, namely spermine, spermidine and putrescine. These molecules can be assayed in blood, saliva and urine samples,³¹⁰ thus development of POC devices for their quantitation should not be difficult nor invasive. In the context of colorectal cancer, Igarashi *et al.* developed a multisegment injection capillary electrophoresis triple quadrupole tandem mass spectrometry (MSI-CE-MS/MS).³¹¹ This was used to detect polyamines to help differentiate between colorectal cancer, benign polyps and healthy controls. They successfully screened 359 salivary samples within 6 hours. This method proved to be sensitive and selective and shows promising applications within the field of POC screening. In polyamine synthesis, ornithine decarboxylase 1 (ODC1) is a rate-limiting enzyme involved in the conversion of ornithine to putrescine. ODC1 is also one of the transcriptional targets of *MYCN*, and thus high expression of ODC1 is found in *MYCN*-amplified neuroblastoma, linking this marker to poor outcomes in children.³⁰⁹ Another interesting consideration is the recent development of difluoromethylornithine (DFMO) which has been developed for inhibition of ODC1.³¹² Thus, a tool for



the detection of ODC1 could be used not only for diagnosis, but also for monitoring of treatment efficacy.

3.3.4.2 Catecholamines. Urine catecholamines, namely dopamine, epinephrine, and norepinephrine, are important liquid biomarkers for neuroblastoma since they, and their metabolites such as VMA and HVA, are elevated in patients. While studies have suggested that elevated VMA and HVA are linked to later stage disease, previous implementation of devices to screen for this were unsuccessful.^{23,98,313} HVA and VMA concentrations in urine should remain below 16.8 and 13.2 mmol mol⁻¹ creatinine in infants under 6 months of age, respectively.³¹⁴ Several assay methods are currently available for their detection, although liquid chromatography coupled with tandem mass spectrometry (LC-MS/MS) is the gold standard for measurement of catecholamines and their metabolites.³¹⁵ Detection of these analytes is one of the first-line diagnostic tests performed when a patient presents with symptoms of neuroblastoma and could be used in the future as part of multiplexed POC devices for rapid screening and diagnosis. However, catecholamines are elevated in the majority of neuroblastoma patients, and their rise is not linked to poorer outcomes, thus limiting their use in risk stratification.

3.3.4.3 Glycosylated ferritin. Neuroblastoma cells secrete abnormal forms of ferritin (glycosylated ferritin). This biomarker is a poor prognostic marker for the disease, as levels of glycosylated ferritin are elevated mainly in stage 3 and 4S disease states.³¹⁶ Levels of glycosylated ferritin can be measured in the blood using assays such as ELISA which are commercially available, and thus integrating this onto POC platforms should be possible.

3.3.4.4 Serum cholesterol. Total serum cholesterol (Tchol) in neuroblastoma patients was analysed through a retrospective study.³¹⁷ It found that neuroblastoma prognosis was associated with TChol and that it was significantly increased in patients with neuroblastoma that had relapsed and patients who died from neuroblastoma. The study concluded that TChol was also a risk factor for neuroblastoma as well as a prognostic biomarker. Traditionally TChol is measured through blood tests, but POC systems have been developed, but again, need to be validated in the context of neuroblastoma screening.³¹⁸ Even though Tchol is not specific to neuroblastoma, it could contribute to a POC risk stratification panel combined with other, more specific biomarkers. Handheld, POC Tchol meters are widely available and can be implemented easily into a multiplexed biosensor.

3.3.4.5 Neutrophil to lymphocyte ratio. Neutrophil to lymphocyte ratio (NLR) is a marker of systemic inflammation for solid cancers.³¹⁹ It has been shown to have prognostic capabilities in other cancers, such as oesophageal and squamous cell carcinomas and could possibly predict overall survival in paediatric solid tumours. The information to work out the NLR is part of the initial work up for diagnosis, so would not require further invasive testing, so NLR could be a potential useful prognostic biomarker in the neuroblastoma space. NLR can be calculated from complete blood counts, which is already feasible in portable haematology analysers. So, integrating these already

developed technologies into a rapid tool for neuroblastoma risk stratification is practical.

3.3.4.6 HALP scores. Haemoglobin, albumin, lymphocyte, and platelet (HALP) scores have been used as a prognostic marker in other solid tumours.³²⁰ It is calculated by the product of haemoglobin (g/L), albumin (g/L), lymphocyte count (per L) and platelet count (per L). Qi *et al.*³²⁰ conducted a retrospective study which showed a low HALP score was associated with poor prognosis. An optimal HALP cut off score was suggested at 27.0. Although invasive, as the components of the HALP score would need to be obtained through blood tests, these tests would be required anyway for a NB diagnosis, so a HALP score would be convenient to calculate.

3.3.5 Cell surface of structural biomarkers

3.3.5.1 Ganglioside GD2. Ganglioside GD2 is a glycolipid that is expressed on the membrane of NB tumours. It is shed into circulation, with its most predominant circulating form being C18 lipiform. Research has shown that ganglioside GD2 is a specific and sensitive tumour biomarker that can distinguish between high and low risk forms of NB, showing promising qualities for a diagnostic and prognostic NB biomarker.³²¹ Balis *et al.* found that GD2 concentrations were significantly higher in patients with MYCN amplified tumours. Other studies corroborate this and showed that C18 and C20 forms of GD2 were higher in metastatic disease.³²² Plasma concentrations of C18 and C20 were found to decrease during treatment, but increased during relapse, showing potential of GD2 monitoring treatment and disease. Current tests to detect GD2 in plasma involve high-pressure liquid chromatography/tandem mass spectrometry (HPLC/MS/MS), which can be adapted for clinical use.³²¹

3.3.5.2 Trk family. Tyrosine kinase receptors (Trk) play an important role in the development and clinical behaviour of NB.³²³ The Trk family consists of 3 Trks: Trk A, B and C. High expression of Trk A is associated with a good prognosis, with tumours displaying favourable features and is seen in tumours that spontaneously regress.^{323,324} On the other hand, high Trk B expression is associated with features such as MYCN amplification and unfavourable features and prognosis. The role of Trk C is less well known, but current literature shows that it is associated with positive outcomes.³²⁴ Tanaka *et al.*³²⁵ developed an immunohistochemical method to examine Trk A in tumours in a clinical setting. They concluded that Trk A was a strong predictor of good prognosis. This study however was performed in 1995 and little research on Trks as a biomarker has been conducted in recent times.

3.4 Challenges associated with diagnosing neuroblastoma at POC

Despite the clear advantages of POC devices for diagnosis of diseases, many issues can be faced in their development. Firstly, it is unlikely that POC technologies will completely replace current diagnostic devices, owing to the fact that they could not aid in identification of tumour location and may be of limited use for staging.³²⁶ However, they can improve time



taken to diagnosis and be used as a companion to current methods.⁹ Developing POC devices with sufficient sensitivity to match gold-standard technologies is one of the biggest concerns; this is especially true for diseases for which the analyte may be in very low concentrations.¹⁷ For many biomarkers considered in this review, they are present in small quantities in blood and urine. One major disadvantage of POC devices is that samples should not be processed before detecting the biomarker as this will increase detection time. In infants, it is difficult to collect large enough blood samples, and urine tests rely on 24 hour collection.³²⁷ Sample enrichment or pre-concentration could be important for the detection of analytes, but this would increase detection times which should be a major consideration during development.³²⁸ Such issues can be overcome through the use of POC enhancement techniques, for example the use of fluorescent labels in LFAs or ELISA tests.³²⁹ Furthermore, since assays such as LFAs often utilise antibodies as detection reagents, cross-reactivity is a major concern. This has greater implications for childhood illnesses such as neuroblastoma, as false positive or negative results may lead to stress and anxiety for the child and their family, or even unnecessary invasive measures to investigate the child.³³⁰ Thus, the use of aptamers or methods which do not involve antibodies, such as chip technologies, could be a potential future move in the neuroblastoma field. Another major challenge would be validation of the device once it has been developed. A clinical trial would need to be undertaken to test that the device can be used routinely as a diagnostic device, and to compare its abilities to current methods.³³¹ This would require a large sample size; however, neuroblastoma is a rare disease and recruiting enough subjects would be extremely difficult. The ability to overcome these issues and develop rapid POC devices for neuroblastoma diagnosis will be essential to the future management of this disease. The use of any developed tools for mass screening is a major concern, as it can lead to unnecessary interventions in children without hereditary germline risks. Thus, future development of diagnostic tools for neuroblastoma should focus on the differential diagnosis of high-risk disease.

4. Conclusion

Neuroblastoma is a clinically and biologically heterogeneous childhood malignancy, presenting mainly in babies and infants.¹⁸ The disease is characterised by significant morbidity in high-risk patients, which is often difficult to diagnose, and early screening attempts have been unsuccessful.^{13,332} Current diagnostic techniques for neuroblastoma rely on several biochemical, imaging, and histochemical tests. Patients often present to the hospital due to symptoms of the disease, most commonly palpable abdominal masses.³³³ From here, blood and urine tests showing hormone imbalances coupled with abnormal findings on CT/X-ray are enough to strongly suggest the diagnosis of neuroblastoma, although positive biopsy results are often required to confirm this.²¹ Thus, diagnosing

neuroblastoma is extremely invasive and time-consuming, requiring several visits and causing significant stress and long-term health effects in young children. Furthermore, the cost of diagnosing neuroblastoma patients, and subsequent treatment of high-risk patients whose disease has progressed due to late diagnosis, is high. Over the past two decades, the diagnostic landscape of neuroblastoma has evolved significantly. Technological advancements have led to the discovery of several biomarkers, including genetic, proteomic and metabolic.³³⁴ Importantly, these diagnostic tools are increasingly being designed to be portable, cost-effective and rapid. Urine-based sensors for catecholamines and blood-based detection of exosomal proteins prove this.¹⁵⁸ Furthermore, in integration of AI and machine learning algorithms holds great potential, and will allow researchers to automate interpretations, delivering rapid results without the requirement for specific equipment or training.¹⁵⁶ The future of neuroblastoma is likely to rest on technologies that enable risk stratification at the bedside.

POC diagnostic devices have gained interest over recent years as they enable rapid diagnosis of disease at the patient's location, thus enabling more rapid implementation of interventions, saving time and money associated with long waiting times. Some POC devices such as LFAs are particularly useful since they are very cheap and rapid, and do not require trained professionals.⁴⁰ In the future, POC devices can be manufactured to measure high-risk disease biomarkers such as MYCN protein and polyamine metabolites in biological samples.³³⁵ For other more generic biomarkers, such as catecholamine metabolites, this may also be useful as patients can use them at home and they can be used not only as diagnostic tools, but also for patient monitoring. Given that levels of biomarkers such as polyamine metabolites and catecholamine metabolites are known to be elevated in the blood and urine, and that this is well-documented in literature, developing and training POC devices is a logical step forward. Moreover, novel POC techniques are being developed and will continue to do so. Multiplexing is an emerging field of research which enables simultaneous biomarker measurement from a single sample at POC.³³⁶ This will ensure that for childhood diseases such as neuroblastoma, the impacts of false positive or negative results are minimised given that multiple analytes will be investigated before a conclusion is reached about the child's health. Such a device could act as a first step in patient care or as a screening tool in babies, helping to eliminate late diagnosis of this devastating disease.

Data availability

All data used in this review are available in the cited literature. No new datasets were generated.

Conflicts of interest

The authors declare no competing financial interest.



Acknowledgements

A. K. Y. and Y. H. thank the Engineering and Physical Sciences Research Council for a New Investigator Award (EP/T013567/1). N. J. acknowledges the Fundamental Research Funds for the Central Universities (YJ202152) and the National Natural Science Foundation of China (No. 82102182). A. K. Y. thanks the CRUK Convergence Science iPhD Award (WSCA_P84261).

References

- J. I. Johnsen, C. Dyberg and M. Wickström, Neuroblastoma-A Neural Crest Derived Embryonal Malignancy, *Front. Mol. Neurosci.*, 2019, **12**, 9, DOI: [10.3389/fnmol.2019.00009](https://doi.org/10.3389/fnmol.2019.00009), From NLM.
- E. K. Barr and M. A. Applebaum, Genetic Predisposition to Neuroblastoma, *Children*, 2018, **5**(9), 119, DOI: [10.3390/children5090119](https://doi.org/10.3390/children5090119), From NLM.
- E. Ward, C. DeSantis, A. Robbins, B. Kohler and A. Jemal, Childhood and adolescent cancer statistics, 2014, *Ca-Cancer J. Clin.*, 2014, **64**(2), 83–103.
- J. Becker and J. Wilting, WNT Signaling in Neuroblastoma, *Cancers*, 2019, **11**(7), 1013, DOI: [10.3390/cancers11071013](https://doi.org/10.3390/cancers11071013), From NLM.
- K. Nolan, C. Kattamuri, D. M. Luedeke, E. B. Angerman, S. A. Rankin, M. L. Stevens, A. M. Zorn and T. B. Thompson, Structure of neuroblastoma suppressor of tumorigenicity 1 (NBL1): insights for the functional variability across bone morphogenetic protein (BMP) antagonists, *J. Biol. Chem.*, 2015, **290**(8), 4759–4771, DOI: [10.1074/jbc.M114.628412](https://doi.org/10.1074/jbc.M114.628412), From NLM.
- K. C. Helming, X. Wang and C. W. M. Roberts, Vulnerabilities of mutant SWI/SNF complexes in cancer, *Cancer Cell*, 2014, **26**(3), 309–317, DOI: [10.1016/j.ccr.2014.07.018](https://doi.org/10.1016/j.ccr.2014.07.018), From NLM.
- Y. P. Mossé, M. Laudenslager, L. Longo, K. A. Cole, A. Wood, E. F. Attiyeh, M. J. Laquaglia, R. Sennett, J. E. Lynch and P. Perri, *et al.*, Identification of ALK as a major familial neuroblastoma predisposition gene, *Nature*, 2008, **455**(7215), 930–935, DOI: [10.1038/nature07261](https://doi.org/10.1038/nature07261), From NLM.
- A. G. Knudson, Jr. and L. C. Strong, Mutation and cancer: neuroblastoma and pheochromocytoma, *Am. J. Hum. Genet.*, 1972, **24**(5), 514–532, From NLM.
- K. K. Matthay, J. M. Maris, G. Schleiermacher, A. Nakagawara, C. L. Mackall, L. Diller and W. A. Weiss, Neuroblastoma, *Nat. Rev. Dis. Primers*, 2016, **2**, 16078, DOI: [10.1038/nrdp.2016.78](https://doi.org/10.1038/nrdp.2016.78), From NLM.
- J. M. Maris, Y. P. Mosse, J. P. Bradfield, C. Hou, S. Monni, R. H. Scott, S. Asgharzadeh, E. F. Attiyeh, S. J. Diskin and M. Laudenslager, *et al.*, Chromosome 6p22 locus associated with clinically aggressive neuroblastoma, *N. Engl. J. Med.*, 2008, **358**(24), 2585–2593, DOI: [10.1056/NEJMoa0708698](https://doi.org/10.1056/NEJMoa0708698), From NLM.
- P. Mathew, M. B. Valentine, L. C. Bowman, S. T. Rowe, M. B. Nash, V. A. Valentine, S. L. Cohn, R. P. Castleberry, G. M. Brodeur and A. T. Look, Detection of MYCN gene amplification in neuroblastoma by fluorescence in situ hybridization: a pediatric oncology group study, *Neoplasia*, 2001, **3**(2), 105–109, DOI: [10.1038/sj.neo.7900146](https://doi.org/10.1038/sj.neo.7900146), From NLM.
- P. A. Marks, Thioredoxin in cancer—role of histone deacetylase inhibitors, *Semin. Cancer Biol.*, 2006, **16**(6), 436–443, DOI: [10.1016/j.semcancer.2006.09.005](https://doi.org/10.1016/j.semcancer.2006.09.005), From NLM.
- A. Nakagawara, Y. Li, H. Izumi, K. Muramori, H. Inada and M. Nishi, Neuroblastoma, *Jpn. J. Clin. Oncol.*, 2018, **48**(3), 214–241, DOI: [10.1093/jjco/hyx176](https://doi.org/10.1093/jjco/hyx176), From NLM.
- Cancer.Net, *Neuroblastoma - Childhood: Statistics*, 2021, <https://www.cancer.net/cancer-types/neuroblastoma-childhood/statistics>, (accessed 23/03/2023).
- S. L. Cohn, A. D. Pearson, W. B. London, T. Monclair, P. F. Ambros, G. M. Brodeur, A. Faldum, B. Hero, T. Iehara and D. Machin, The International Neuroblastoma Risk Group (INRG) classification system: an INRG task force report, *J. Clin. Oncol.*, 2009, **27**(2), 289.
- Society, A. C., *Neuroblastoma Survival Rates by Risk Group*, 2021, <https://www.cancer.org/cancer/neuroblastoma/detection-diagnosis-staging/survival-rates.html> (accessed 01/12/2023).
- N. Aygun, Biological and Genetic Features of Neuroblastoma and Their Clinical Importance, *Curr. Pediatr. Rev.*, 2018, **14**(2), 73–90, DOI: [10.2174/1573396314666180129101627](https://doi.org/10.2174/1573396314666180129101627), From NLM.
- J. M. Maris, Recent advances in neuroblastoma, *N. Engl. J. Med.*, 2010, **362**(23), 2202–2211, DOI: [10.1056/NEJMra0804577](https://doi.org/10.1056/NEJMra0804577), From NLM.
- C. B. Matthias Schell, Neuroblastoma, in *Orphanet*, 2003.
- J. Chamberlain, Screening for Neuroblastoma: A Review of the Evidence Jocelyn Chamberlain, *J. Med. Screen.*, 1994, **1**(3), 169–175.
- C. C. Swift, M. J. Eklund, J. M. Kravaka and A. L. Alazraki, Updates in Diagnosis, Management, and Treatment of Neuroblastoma, *Radiographics*, 2018, **38**(2), 566–580, DOI: [10.1148/rg.2018170132](https://doi.org/10.1148/rg.2018170132), From NLM.
- M. A. Musarella, H. S. Chan, G. DeBoer and B. L. Gallie, Ocular involvement in neuroblastoma: prognostic implications, *Ophthalmology*, 1984, **91**(8), 936–940.
- F. Berthold, D. Hunneman, D. Harms, H. Käser and J. Zieschang, Serum vanillylmandelic acid/homovanillic acid contributes to prognosis estimation in patients with localised but not with metastatic neuroblastoma, *Eur. J. Cancer*, 1992, **28**(12), 1950–1954.
- K. Yamamoto, Y. Hayashi, R. Hanada, A. Kikuchi, M. Ichikawa, M. Tanimura and S. Yoshioka, Mass screening and age-specific incidence of neuroblastoma in Saitama Prefecture, Japan, *J. Clin. Oncol.*, 1995, **13**(8), 2033–2038.
- Y. Kaneko, N. Kanda, N. Maseki, K. Nakachi, T. Takeda, I. Okabe and M. Sakurai, Current urinary mass screening for catecholamine metabolites at 6 months of age may be detecting only a small portion of high-risk neuroblastomas: a chromosome and N-myc amplification study, *J. Clin. Oncol.*, 1990, **8**(12), 2005–2013.



- 26 W. G. Woods, R.-N. Gao, J. J. Shuster, L. L. Robison, M. Bernstein, S. Weitzman, G. Bunin, I. Levy, J. Brossard and G. Dougherty, Screening of infants and mortality due to neuroblastoma, *N. Engl. J. Med.*, 2002, **346**(14), 1041–1046.
- 27 F. H. Schilling, C. Spix, F. Berthold, R. Erttmann, N. Fehse, B. Hero, G. Klein, J. Sander, K. Schwarz and J. Treuner, Neuroblastoma screening at one year of age, *N. Engl. J. Med.*, 2002, **346**(14), 1047–1053.
- 28 D. Fénart, A. Deville, M. Donzeau and J. Bruneton, Retroperitoneal neuroblastoma diagnosed in utero. Apropos of 1 case, *J. Radiol.*, 1983, **64**(5), 359–361.
- 29 L. Helson, *Neuroblastoma: early diagnosis a key to successful treatment*, SLACK Incorporated Thorofare, NJ, 1974, vol. 3, pp. 46–54.
- 30 Future, M. R., *Global Neuroblastoma Research Report*, 2021, <https://www.marketresearchfuture.com/reports/neuroblastoma-market-6555#description> (accessed).
- 31 Watch, M., *Neuroblastoma Treatment Market Trends 2021*, 2021, <https://www.marketwatch.com/press-release/neuroblastoma-treatment-market-trends-2021-global-industry-share-size-industry-analysis-market-growth-analysis-segments-emerging-technologies-opportunity-and-forecast-2021-to-2027-2021-11-11> (accessed).
- 32 C. Yue, Q. Zhang, F. Sun and Q. Pan, Global, regional and national burden of neuroblastoma and other peripheral nervous system tumors, 1990 to 2021 and predictions to 2035: visualizing epidemiological characteristics based on GBD 2021, *Neoplasia*, 2025, **60**, 101122, DOI: [10.1016/j.neo.2025.101122](https://doi.org/10.1016/j.neo.2025.101122).
- 33 Y. Hayashi, R. Hanada and K. Yamamoto, Biology of neuroblastomas in Japan found by screening, *Am. J. Pediatr. Hematol./Oncol.*, 1992, **14**(4), 342–347, From NLM.
- 34 J. L. Weinstein, H. M. Katzenstein and S. L. Cohn, Advances in the diagnosis and treatment of neuroblastoma, *Oncologist*, 2003, **8**(3), 278–292, DOI: [10.1634/theoncologist.8-3-278](https://doi.org/10.1634/theoncologist.8-3-278), From NLM.
- 35 C. P. Price, Point of care testing, *BMJ*, 2001, **322**(7297), 1285–1288, DOI: [10.1136/bmj.322.7297.1285](https://doi.org/10.1136/bmj.322.7297.1285), From NLM.
- 36 B. Hayes, C. Murphy, A. Crawley and R. O'Kennedy, Developments in Point-of-Care Diagnostic Technology for Cancer Detection, *Diagnostics*, 2018, **8**(2), 39, DOI: [10.3390/diagnostics8020039](https://doi.org/10.3390/diagnostics8020039), From NLM.
- 37 M. Rodrigues, I. Andrade and R. Cruz, Current Point-of-Care testing in cancer and future perspectives: a systematic review, *Eur. J. Public Health*, 2020, **30**(Supplement_2), ckaa040.033.
- 38 D. Crosby, S. Bhatia, K. M. Brindle, L. M. Coussens, C. Dive, M. Emberton, S. Esener, R. C. Fitzgerald, S. S. Gambhir and P. Kuhn, *et al.*, Early detection of cancer, *Science*, 2022, **375**(6586), eaay9040, DOI: [10.1126/science.aay9040](https://doi.org/10.1126/science.aay9040), From NLM.
- 39 L. Syedmoradi, M. L. Norton and K. Omidfar, Point-of-care cancer diagnostic devices: From academic research to clinical translation, *Talanta*, 2021, **225**, 122002, DOI: [10.1016/j.talanta.2020.122002](https://doi.org/10.1016/j.talanta.2020.122002), From NLM.
- 40 K. M. Koczula and A. Gallotta, Lateral flow assays, *Essays Biochem.*, 2016, **60**(1), 111–120.
- 41 T. Mahmoudi, M. de la Guardia and B. Baradaran, Lateral flow assays towards point-of-care cancer detection: A review of current progress and future trends, *TrAC, Trends Anal. Chem.*, 2020, **125**, 115842.
- 42 H. N. Lee, J. Lee, Y. K. Kang, J. H. Lee, S. Yang and H. J. Chung, A lateral flow assay for nucleic acid detection based on rolling circle amplification using capture ligand-modified oligonucleotides, *BioChip J.*, 2022, **16**(4), 441–450.
- 43 C. Özyurt, İ. Uludağ, B. İnce and M. K. Sezgintürk, Lab-on-a-chip systems for cancer biomarker diagnosis, *J. Pharm. Biomed. Anal.*, 2023, **226**, 115266.
- 44 N. C. Colon and D. H. Chung, Neuroblastoma, *Adv. Pediatr.*, 2011, **58**(1), 297–311, DOI: [10.1016/j.yapd.2011.03.011](https://doi.org/10.1016/j.yapd.2011.03.011), From NLM.
- 45 K. Kuchalska, M. Barelkowska, K. Derwich, K. Jończyk-Potoczna and A. Gotz-Więckowska, Incidence of Horner syndrome associated with neuroblastic disease, *Childs Nerv. Syst.*, 2021, **37**(4), 1243–1247.
- 46 J. W. Rudolf and M. Thapa, Thoracic neuroblastoma, *Radiol. Case Rep.*, 2011, **6**(2), 440, DOI: [10.2484/rcr.v6i2.440](https://doi.org/10.2484/rcr.v6i2.440), From NLM.
- 47 K. Połczyńska, E. Bień, J. Stefanowicz, E. Drożyńska, A. Szolkiewicz, T. Stachowicz-Stencel, D. Sierota, B. Kaczorowska-Hać, W. Kosiak and A. Balcerska, Neurologic symptoms in the course of neuroblastoma in children. Own observations, *Med. Wieku Rozwoj.*, 2005, **9**(3 Pt 2), 477–486, From NLM.
- 48 S. G. DuBois, Y. Kalika, J. N. Lukens, G. M. Brodeur, R. C. Seeger, J. B. Atkinson, G. M. Haase, C. T. Black, C. Perez and H. Shimada, Metastatic sites in stage IV and IVS neuroblastoma correlate with age, tumor biology, and survival, *J. Pediatr. Hematol./Oncol.*, 1999, **21**(3), 181–189.
- 49 D. A. Morgenstern, W. B. London, D. Stephens, S. L. Volchenboum, T. Simon, A. Nakagawara, H. Shimada, G. Schleiermacher, K. K. Matthay and S. L. Cohn, Prognostic significance of pattern and burden of metastatic disease in patients with stage 4 neuroblastoma: A study from the International Neuroblastoma Risk Group database, *Eur. J. Cancer*, 2016, **65**, 1–10.
- 50 A. F. Belgaumi, W. M. Kauffman, J. J. Jenkins, J. Cordoba, L. C. Bowman, V. M. Santana and W. L. Furman, Blindness in children with neuroblastoma, *Cancer*, 1997, **80**(10), 1997–2004, From NLM.
- 51 B. Hero and G. Schleiermacher, Update on pediatric opsoclonus myoclonus syndrome, *Neuropediatrics*, 2013, **44**(06), 324–329.
- 52 E. Bluhm, D. E. McNeil, S. Cnattingius, G. Gridley, L. El Ghormli and J. F. Fraumeni, Jr., Prenatal and perinatal risk factors for neuroblastoma, *Int. J. Cancer*, 2008, **123**(12), 2885–2890, DOI: [10.1002/ijc.23847](https://doi.org/10.1002/ijc.23847), From NLM.
- 53 S. Narod, C. Stiller and G. Lenoir, An estimate of the heritable fraction of childhood cancer, *Br. J. Cancer*, 1991, **63**(6), 993–999.
- 54 M. Hashemi, S. Sarabandi, S. Karami, J. Śmieja, A. Moazeni-Roodi, S. Ghavami and M. J. Łos, LMO1 polymorphisms and the risk of neuroblastoma: Assessment



- of meta-analysis of case-control studies, *J. Cell. Mol. Med.*, 2020, **24**(2), 1160–1168, DOI: [10.1111/jemm.14836](https://doi.org/10.1111/jemm.14836), From NLM.
- 55 M. N. Cook, A. F. Olshan, H. A. Guess, D. A. Savitz, C. Poole, J. Blatt, M. L. Bondy and B. H. Pollock, Maternal medication use and neuroblastoma in offspring, *Am. J. Epidemiol.*, 2004, **159**(8), 721–731.
- 56 S. Kramer, E. Ward, A. T. Meadows and K. Malone, Medical and drug risk factors associated with neuroblastoma: a case-control study, *J. Natl. Cancer Inst.*, 1987, **78**(5), 797–804.
- 57 J. Schüz, U. Kaletsch, R. Meinert, P. Kaatsch, C. Spix and J. Michaelis, Risk factors for neuroblastoma at different stages of disease. Results from a population-based case-control study in Germany, *J. Clin. Epidemiol.*, 2001, **54**(7), 702–709.
- 58 J. Schüz, T. Wehkopf and P. Kaatsch, Medication use during pregnancy and the risk of childhood cancer in the offspring, *Eur. J. Pediatr.*, 2007, **166**(5), 433–441.
- 59 M. R. Spitz and C. C. Johnson, Neuroblastoma and Paternal Occupation A Case-Control Analysis, *Am. J. Epidemiol.*, 1985, **121**(6), 924–929.
- 60 A. J. De Roos, A. F. Olshan, K. Teschke, C. Poole, D. A. Savitz, J. Blatt, M. L. Bondy and B. H. Pollock, Parental occupational exposures to chemicals and incidence of neuroblastoma in offspring, *Am. J. Epidemiol.*, 2001, **154**(2), 106–114.
- 61 S. E. Hamrick, A. F. Olshan, J. P. Neglia and B. H. Pollock, Association of pregnancy history and birth characteristics with neuroblastoma: a report from the Children's Cancer Group and the Pediatric Oncology Group, *Paediatr. Perinat. Epidemiol.*, 2001, **15**(4), 328–337.
- 62 K. Y. Urayama, J. Von Behren and P. Reynolds, Birth characteristics and risk of neuroblastoma in young children, *Am. J. Epidemiol.*, 2007, **165**(5), 486–495.
- 63 E. J. Chow, D. L. Friedman and B. A. Mueller, Maternal and perinatal characteristics in relation to neuroblastoma, *Cancer*, 2007, **109**(5), 983–992.
- 64 C. C. Johnson and M. R. Spitz, Neuroblastoma: case-control analysis of birth characteristics, *J. Natl. Cancer Inst.*, 1985, **74**(4), 789–792.
- 65 F. Menegaux, A. F. Olshan, P. J. Reitnauer, J. Blatt and S. L. Cohn, Positive association between congenital anomalies and risk of neuroblastoma, *Pediatr. Blood Cancer*, 2005, **45**(5), 649–655.
- 66 J. P. Neglia, W. A. Smithson, P. Gunderson, F. L. King, L. J. Singher and L. L. Robison, Prenatal and perinatal risk factors for neuroblastoma. A case-control study, *Cancer*, 1988, **61**(11), 2202–2206.
- 67 M. Dumba, N. Jawad and K. McHugh, Neuroblastoma and nephroblastoma: a radiological review, *Cancer Imaging*, 2015, **15**(1), 1–14.
- 68 B. S. Shamsian, M. Kajizadi, N. Rezaei, N. Ghojehvand, R. Azma, M. Rouzrokh, M. Kazemi Aghdam, S. M. Mesbah, F. Ghazizadeh and M. T. Arzanian, Primary intrarenal neuroblastoma with hypertension and disseminated intravascular coagulation, *Case Rep. Oncol. Med.*, 2013, **2013**, 684939, DOI: [10.1155/2013/684939](https://doi.org/10.1155/2013/684939), From NLM.
- 69 M. Fawzy, M. El-Beltagy, M. E. Shafei, M. S. Zaghloul, N. A. Kinaai, A. Refaat and S. Azmy, Intraspinal neuroblastoma: Treatment options and neurological outcome of spinal cord compression, *Oncol. Lett.*, 2015, **9**(2), 907–911, DOI: [10.3892/ol.2014.2795](https://doi.org/10.3892/ol.2014.2795), From NLM.
- 70 D. A. Morgenstern, W. B. London, D. Stephens, S. L. Volchenboum, B. Hero, A. Di Cataldo, A. Nakagawara, H. Shimada, P. F. Ambros and K. K. Matthay, *et al.*, Metastatic neuroblastoma confined to distant lymph nodes (stage 4N) predicts outcome in patients with stage 4 disease: A study from the International Neuroblastoma Risk Group Database, *J. Clin. Oncol.*, 2014, **32**(12), 1228–1235, DOI: [10.1200/jco.2013.53.6342](https://doi.org/10.1200/jco.2013.53.6342), From NLM.
- 71 R. T. Peaston and C. Weinkove, Measurement of catecholamines and their metabolites, *Ann. Clin. Biochem.*, 2004, **41**(Pt 1), 17–38, DOI: [10.1258/000456304322664663](https://doi.org/10.1258/000456304322664663), From NLM.
- 72 N. J. Lacayo, *Pediatric Neuroblastoma Workup*, 2021, <https://emedicine.medscape.com/article/988284-workup> (accessed).
- 73 A. E. Evans and K. Hummeler, The significance of primitive cells in marrow aspirates of children with neuroblastoma, *Cancer*, 1973, **32**(4), 906–912, DOI: [10.1002/1097-0142\(197310\)32:4<906::aid-cnrcr2820320423>3.0.co;2-6](https://doi.org/10.1002/1097-0142(197310)32:4<906::aid-cnrcr2820320423>3.0.co;2-6), From NLM.
- 74 V. L. Reid, A. Mullan and L.-P. Erwig, Rapid recovery of membrane cofactor protein (MCP; CD46) associated atypical haemolytic uraemic syndrome with plasma exchange, *Case Rep.*, 2013, **2013**, bcr2013200980.
- 75 S. Nishikawa, H. Noguchi, T. Tokumitsu, A. Ohno, S. Moriguchi-Goto, K. Maekawa, Y. Asada, H. Moritake, M. Kinoshita and A. Yamada, Diagnosis of pediatric neuroblastoma by urine cytology: a case report, *Diagn. Cytopathol.*, 2018, **46**(3), 280–283.
- 76 J. H. H. Alsaadi and S. Y. Yousif, Study of influence Chemotherapy on Sii, ESR and Liver Functions Tests in Children with Neuroblastoma in Southern Iraq, *Lat. Am. J. Pharm.*, 2024, **43**(2), 466–471.
- 77 C. Wang, Y. Zhang, F. Wang, W. Lu, J. Wen, L. Zhao, X. Feng and J. Li, A case of recurrent abnormal liver function in children resulting from neuroblastoma amplified sequence gene defect, *Zhonghua Ganzangbing Zazhi*, 2020, **28**(1), 80–82.
- 78 M. B. McCarville, Imaging neuroblastoma: what the radiologist needs to know, *Cancer Imaging*, 2011, **11 Spec No A**(1a), S44–S47, DOI: [10.1102/1470-7330.2011.9008](https://doi.org/10.1102/1470-7330.2011.9008), From NLM.
- 79 G. Papaioannou and K. McHugh, Neuroblastoma in childhood: review and radiological findings, *Cancer Imaging*, 2005, **5**(1), 116.
- 80 J. Youngblood, Neuroblastoma: Sonography's Major Role in Its Diagnosis and Treatment, *J. Diagn. Med. Sonogr.*, 2012, **28**(2), 58–65.
- 81 S. Acharya, S. Jayabose, S. J. Kogan, O. Tugal, D. Beneck, D. Leslie and M. Slim, Prenatally diagnosed neuroblastoma, *Cancer*, 1997, **80**(2), 304–310.



- 82 T. Monclair, G. M. Brodeur, P. F. Ambros, H. J. Brisse, G. Cecchetto, K. Holmes, M. Kaneko, W. B. London, K. K. Matthay and J. G. Nuchtern, The international neuroblastoma risk group (INRG) staging system: an INRG task force report, *J. Clin. Oncol.*, 2009, **27**(2), 298.
- 83 M. P. Hiorns and C. M. Owens, Radiology of neuroblastoma in children, *Eur. Radiol.*, 2001, **11**(10), 2071–2081, DOI: [10.1007/s003300100931](https://doi.org/10.1007/s003300100931), From NLM.
- 84 K. Mehta, J. O. Haller and A. C. Legasto, Imaging neuroblastoma in children, *Crit. Rev. Comput. Tomogr.*, 2003, **44**(1), 47–61, From NLM.
- 85 F. Sauvat, S. Sarnacki, H. Brisse, J. Medioni, H. Rubie, Y. Aigrain, F. Gauthier, G. Audry, P. Helardot and P. Landais, *et al.*, Outcome of suprarenal localized masses diagnosed during the perinatal period: a retrospective multicenter study, *Cancer*, 2002, **94**(9), 2474–2480, DOI: [10.1002/cncr.10502](https://doi.org/10.1002/cncr.10502), From NLM.
- 86 J. S. Meyer, M. P. Harty and Z. Khademian, Imaging of neuroblastoma and Wilms' tumor, *Magn. Reson. Imaging Clin. N. Am.*, 2002, **10**(2), 275–302, DOI: [10.1016/s1064-9689\(01\)00010-1](https://doi.org/10.1016/s1064-9689(01)00010-1), From NLM.
- 87 I. Ilias, A. Sahdev, R. H. Reznick, A. B. Grossman and K. Pacak, The optimal imaging of adrenal tumours: a comparison of different methods, *Endocr.-Relat. Cancer*, 2007, **14**(3), 587–599.
- 88 B. H. Kushner, Neuroblastoma: A Disease Requiring a Multitude of Imaging Studies*, *J. Nucl. Med.*, 2004, **45**(7), 1172–1188.
- 89 M. Rogosnitzky and S. Branch, Gadolinium-based contrast agent toxicity: a review of known and proposed mechanisms, *BioMetals*, 2016, **29**(3), 365–376, DOI: [10.1007/s10534-016-9931-7](https://doi.org/10.1007/s10534-016-9931-7), From NLM.
- 90 B. Decarolis, C. Schneider, B. Hero, T. Simon, R. Volland, F. Roels, M. Dietlein, F. Berthold and M. Schmidt, Iodine-123 metaiodobenzylguanidine scintigraphy scoring allows prediction of outcome in patients with stage 4 neuroblastoma: results of the Cologne interscore comparison study, *J. Clin. Oncol.*, 2013, **31**(7), 944–951.
- 91 V. S. Dhull, P. Sharma, C. Patel, P. Kundu, S. Agarwala, S. Bakhshi, V. Bhatnagar, C. Bal and R. Kumar, Diagnostic value of 18F-FDG PET/CT in paediatric neuroblastoma: comparison with 131I-MIBG scintigraphy, *Nucl. Med. Commun.*, 2015, **36**(10), 1007–1013.
- 92 D. D. Stark, A. A. Moss, R. C. Brasch, A. A. deLorimier, A. R. Albin, D. A. London and C. A. Gooding, Neuroblastoma: diagnostic imaging and staging, *Radiology*, 1983, **148**(1), 101–105, DOI: [10.1148/radiology.148.1.6856817](https://doi.org/10.1148/radiology.148.1.6856817), From NLM.
- 93 H. K. Hussain, J. E. Kingston, P. Domizio, A. J. Norton and R. H. Reznick, Imaging-guided core biopsy for the diagnosis of malignant tumors in pediatric patients, *Am. J. Roentgenol.*, 2001, **176**(1), 43–47.
- 94 T. Metz, A. Heider, R. Vellody, M. D. Jarboe, J. J. Gemmete, J. J. Grove, E. A. Smith, R. Mody, E. A. Newman and J. R. Dillman, Image-guided percutaneous core needle biopsy of soft-tissue masses in the pediatric population, *Pediatr. Radiol.*, 2016, **46**(8), 1173–1178.
- 95 M. Sklair-Levy, P. D. Lebensart, Y. H. Applbaum, N. Ramu, A. Freeman, D. Gozal, E. Gross, Y. Sherman, J. Bar-Ziv and E. Libson, Percutaneous image-guided needle biopsy in children—summary of our experience with 57 children, *Pediatr. Radiol.*, 2001, **31**(10), 732–736.
- 96 H. Wang, F. Li, J. Liu and S. Zhang, Ultrasound-guided core needle biopsy in diagnosis of abdominal and pelvic neoplasm in pediatric patients, *Pediatr. Surg. Int.*, 2014, **30**(1), 31–37.
- 97 P. Rastogi, S. Naseem, N. Varma, R. Das, J. Ahluwalia, M. U. S. Sachdeva, P. Sharma, N. Kumar and R. K. Marwaha, Bone marrow involvement in neuroblastoma: a study of hemato-morphological features, *Indian J. Hematol. Blood Transfus.*, 2015, **31**(1), 57–60.
- 98 I. R. Verly, A. B. van Kuilenburg, N. G. Abeling, S. M. Goorden, M. Fiocco, F. M. Vaz, M. M. van Noesel, C. M. Zwaan, G. L. Kaspers and J. H. Merks, *et al.*, Catecholamines profiles at diagnosis: increased diagnostic sensitivity and correlation with biological and clinical features in neuroblastoma patients, *Eur. J. Cancer*, 2017, **72**, 235–243, DOI: [10.1016/j.ejca.2016.12.002](https://doi.org/10.1016/j.ejca.2016.12.002), From NLM.
- 99 M. Dumba, N. Jawad and K. McHugh, Neuroblastoma and nephroblastoma: a radiological review, *Cancer Imaging*, 2015, **15**(1), 5, DOI: [10.1186/s40644-015-0040-6](https://doi.org/10.1186/s40644-015-0040-6), From NLM.
- 100 M. Asim, G. Mudassir, A. A. Hashmi, M. Abid, A. K. Sheikh, H. Naveed, M. Habib, M. M. Edhi and A. Khan, Diagnostic accuracy of fine needle aspiration biopsy in pediatric small round cell tumors, *BMC Res. Notes*, 2018, **11**(1), 1–5.
- 101 E. Bombardieri, F. Giammarile, C. Aktolun, R. P. Baum, A. Bischof Delaloye, L. Maffioli, R. Moncayo, L. Mortelmans, G. Pepe and S. N. Reske, 131I/123I-Metaiodobenzylguanidine (mIBG) scintigraphy: procedure guidelines for tumour imaging, *Eur. J. Nucl. Med. Mol. Imaging*, 2010, **37**, 2436–2446.
- 102 G. Bleeker, G. A. Tytgat, J. A. Adam, H. N. Caron, L. C. Kremer, L. Hooft and E. C. van Dalen, 123I-MIBG scintigraphy and 18F-FDG-PET imaging for diagnosing neuroblastoma, *Cochrane Database Syst. Rev.*, 2015, **2015**(9), Cd009263, DOI: [10.1002/14651858.CD009263.pub2](https://doi.org/10.1002/14651858.CD009263.pub2), From NLM.
- 103 W. P. Fendler, H. I. Melzer, C. Walz, D. von Schweinitz, E. Copenrath, I. Schmid, P. Bartenstein and T. Pfluger, High ¹²³I-MIBG uptake in neuroblastic tumours indicates unfavourable histopathology, *Eur. J. Nucl. Med. Mol. Imaging*, 2013, **40**(11), 1701–1710, DOI: [10.1007/s00259-013-2491-y](https://doi.org/10.1007/s00259-013-2491-y), From NLM.
- 104 S. Biasotti, A. Garaventa, G. P. Villavecchia, M. Cabria, M. Nantron and B. De Bernardi, False-negative metaiodobenzylguanidine scintigraphy at diagnosis of neuroblastoma, *Med. Pediatr. Oncol.*, 2000, **35**(2), 153–155, DOI: [10.1002/1096-911x\(200008\)35:2<153::aid-mpo18>3.0.co;2-7](https://doi.org/10.1002/1096-911x(200008)35:2<153::aid-mpo18>3.0.co;2-7), From NLM.
- 105 Z. Bar-Sever, L. Biassoni, B. Shulkin, G. Kong, M. S. Hofman, E. Lopci, I. Manea, J. Koziorowski, R. Castellani and A. Boubaker, *et al.*, Guidelines on nuclear medicine



- imaging in neuroblastoma, *Eur. J. Nucl. Med. Mol. Imaging*, 2018, **45**(11), 2009–2024, DOI: [10.1007/s00259-018-4070-8](https://doi.org/10.1007/s00259-018-4070-8).
- 106 S. E. Sharp, A. T. Trout, B. D. Weiss and M. J. Gelfand, MIBG in neuroblastoma diagnostic imaging and therapy, *Radiographics*, 2016, **36**(1), 258–278.
- 107 N. Pandit-Taskar, P. Zanzonico, K. D. Staton, J. A. Carrasquillo, D. Reidy-Lagunes, S. Lyashchenko, E. Burnazi, H. Zhang, J. S. Lewis and R. Blasberg, Biodistribution and dosimetry of 18F-meta-fluorobenzylguanidine: a first-in-human PET/CT imaging study of patients with neuroendocrine malignancies, *J. Nucl. Med.*, 2018, **59**(1), 147–153.
- 108 C. Beijst, B. de Keizer, M. G. Lam, G. O. Janssens, G. A. Tytgat and H. W. de Jong, A phantom study: Should 124I-mIBG PET/CT replace 123I-mIBG SPECT/CT?, *Med. Phys.*, 2017, **44**(5), 1624–1631.
- 109 H. I. Melzer, E. Coppentrath, I. Schmid, M. H. Albert, D. von Schweinitz, C. Tudball, P. Bartenstein and T. Pfluger, 123I-MIBG scintigraphy/SPECT versus 18 F-FDG PET in paediatric neuroblastoma, *Eur. J. Nucl. Med. Mol. Imaging*, 2011, **38**, 1648–1658.
- 110 G. M. Kramer, V. Frings, N. Hoetjes, O. S. Hoekstra, E. F. Smit, A. J. de Langen and R. Boellaard, Repeatability of quantitative whole-body 18F-FDG PET/CT uptake measures as function of uptake interval and lesion selection in non-small cell lung cancer patients, *J. Nucl. Med.*, 2016, **57**(9), 1343–1349.
- 111 L. K. Shankar, Standardization of PET imaging in clinical trials, *PET Clin.*, 2008, **3**(1), 1–4.
- 112 N. D. Papathanasiou, M. N. Gaze, K. Sullivan, M. Aldridge, W. Waddington, A. Almuhaideb and J. B. Bomanji, 18F-FDG PET/CT and 123I-metaiodobenzylguanidine imaging in high-risk neuroblastoma: diagnostic comparison and survival analysis, *J. Nucl. Med.*, 2011, **52**(4), 519–525.
- 113 J. E. Gains, M. D. Aldridge, M. V. Mattoli, J. B. Bomanji, L. Biassoni, A. Shankar and M. N. Gaze, 68Ga-DOTATATE and 123I-mIBG as imaging biomarkers of disease localisation in metastatic neuroblastoma: implications for molecular radiotherapy, *Nucl. Med. Commun.*, 2020, **41**(11), 1169–1177.
- 114 J. E. Gains, J. B. Bomanji, N. L. Fersht, T. Sullivan, D. D'Souza, K. P. Sullivan, M. Aldridge, W. Waddington and M. N. Gaze, 177Lu-DOTATATE molecular radiotherapy for childhood neuroblastoma, *J. Nucl. Med.*, 2011, **52**(7), 1041–1047.
- 115 M. E. Mayerhoefer, A. Materka, G. Langs, I. Häggström, P. Szczypiński, P. Gibbs and G. Cook, Introduction to radiomics, *J. Nucl. Med.*, 2020, **61**(4), 488–495.
- 116 H. Wu, C. Wu, H. Zheng, L. Wang, W. Guan, S. Duan and D. Wang, Radiogenomics of neuroblastoma in pediatric patients: CT-based radiomics signature in predicting MYCN amplification, *Eur. Radiol.*, 2021, **31**(5), 3080–3089, DOI: [10.1007/s00330-020-07246-1](https://doi.org/10.1007/s00330-020-07246-1), From NLM.
- 117 X. Chen, H. Wang, K. Huang, H. Liu, H. Ding, L. Zhang, T. Zhang, W. Yu and L. He, CT-based radiomics signature with machine learning predicts MYCN amplification in pediatric abdominal neuroblastoma, *Front. Oncol.*, 2021, **11**, 687884.
- 118 S. Ghosh, T. Gupta, N. Rastogi, A. Gaur, A. Misra, S. N. Tripathi, D. P. Paul, V. Tare, O. Prakash and D. Bhattu, Chemical characterization of summertime dust events at Kanpur: insight into the sources and level of mixing with anthropogenic emissions, *Aerosol Air Qual. Res.*, 2014, **14**(3), 879–891.
- 119 L.-D. Qian, S.-X. Zhang, S.-Q. Li, L.-J. Feng, Z.-A. Zhou, J. Liu, M.-Y. Zhang and J.-G. Yang, Predicting MYCN amplification in paediatric neuroblastoma: development and validation of a 18F-FDG PET/CT-based radiomics signature, *Insights Imaging*, 2023, **14**(1), 205.
- 120 G. Furlanetto, F. Spagnol, A. P. Alegretti, M. G. Farias, V. J. Soares, L. E. Daudt, J. F. Loss, M. L. Scroferneker and M. B. Michalowski, Flow cytometry as a diagnostic tool in neuroblastoma, *J. Immunol. Methods*, 2021, **498**, 113135, DOI: [10.1016/j.jim.2021.113135](https://doi.org/10.1016/j.jim.2021.113135), From NLM.
- 121 N. Jain, S. Sattar, S. Inglott, S. Burchill, J. Fisher, A. M. Serban, R. Thomas, C. Connor, N. Ghara and T. Chowdhury, *et al.*, Flow cytometry of bone marrow aspirates from neuroblastoma patients is a highly sensitive technique for quantification of low-level neuroblastoma, *F1000Research*, 2021, **10**, 947, DOI: [10.12688/f1000research.53133.2](https://doi.org/10.12688/f1000research.53133.2), From NLM.
- 122 J. Y. Cai, Y. J. Tang, L. M. Jiang, C. Pan, J. Chen and J. Y. Tang, Prognostic influence of minimal residual disease detected by flow cytometry and peripheral blood stem cell transplantation by CD34+ selection in childhood advanced neuroblastoma, *Pediatr. Blood Cancer*, 2007, **49**(7), 952–957, DOI: [10.1002/pbc.21253](https://doi.org/10.1002/pbc.21253), From NLM.
- 123 W. Ye, J. Wang, W. Li and H. Shen, Comparative Analysis of Flow Cytometry and Cytomorphology for Neuroblastoma Cell Detection in Effusion and Bone Marrow Specimens, *Fetal Pediatr. Pathol.*, 2019, **38**(1), 1–7, DOI: [10.1080/15513815.2018.1494231](https://doi.org/10.1080/15513815.2018.1494231), From NLM.
- 124 A. B. Shrirao, Z. Fritz, E. M. Novik, G. M. Yarmush, R. S. Schloss, J. D. Zahn and M. L. Yarmush, Microfluidic flow cytometry: The role of microfabrication methodologies, performance and functional specification, *Technology*, 2018, **6**(1), 1–23, DOI: [10.1142/s2339547818300019](https://doi.org/10.1142/s2339547818300019), From NLM.
- 125 Accelix, 2025, <https://www.accelix.com/> (accessed).
- 126 J. Hu, B. Xia, X. Yuan, H. Chen, F. Ou, L. Huang, L. Xu and X. Feng, Neuroblastoma with superficial soft tissue mass as the first symptom: case reports with atypical ultrasonic image and literature review, *Braz. J. Med. Biol. Res.*, 2023, **56**, e12975.
- 127 C. B. Haley and D. Mackenzie, Cat got your artery? Point of care ultrasound in the evaluation of penetrating trauma by a feline: a case report, *Clin. Exp. Emerg. Med.*, 2022, **9**(1), 63.
- 128 R. S. Jamjoom, Y. Etoom, T. Solano, M.-P. Desjardins and J. W. Fischer, Emergency point-of-care ultrasound detection of cancer in the pediatric emergency department, *Pediatr. Emerg. Care*, 2015, **31**(8), 602–604.
- 129 V. A. Dinh, W. S. Dukes, J. Prigge and M. Avila, Ultrasound integration in undergraduate medical education: comparison of ultrasound proficiency between trained and



- untrained medical students, *J. Ultrasound Med.*, 2015, **34**(10), 1819–1824.
- 130 M. Lodrini, J. Graef, T. M. Thole-Kliesch, K. Astrahantseff, A. Sprüssel, M. Grimaldi, C. Peitz, R. B. Linke, J. F. Hollander and E. Lankes, Targeted analysis of cell-free circulating tumor DNA is suitable for early relapse and actionable target detection in patients with neuroblastoma, *Clin. Cancer Res.*, 2022, **28**(9), 1809–1820.
- 131 Y. Su, L. Wang, C. Jiang, Z. Yue, H. Fan, H. Hong, C. Duan, M. Jin, D. Zhang and L. Qiu, Increased plasma concentration of cell-free DNA precedes disease recurrence in children with high-risk neuroblastoma, *BMC Cancer*, 2020, **20**, 1–7.
- 132 M. Kojima, E. Hiyama, I. Fukuba, E. Yamaoka, Y. Ueda, Y. Onitake, S. Kurihara and T. Sueda, Detection of MYCN amplification using blood plasma: noninvasive therapy evaluation and prediction of prognosis in neuroblastoma, *Pediatr. Surg. Int.*, 2013, **29**(11), 1139–1145, DOI: [10.1007/s00383-013-3374-9](https://doi.org/10.1007/s00383-013-3374-9), From NLM.
- 133 M. Morini, D. Cangelosi, D. Segalerba, D. Marimpietri, F. Raggi, A. Castellano, D. Fruci, J. Font de Mora, A. Cañete and Y. Yáñez, Exosomal microRNAs from longitudinal liquid biopsies for the prediction of response to induction chemotherapy in high-risk neuroblastoma patients: a proof of concept SIOPEN study, *Cancers*, 2019, **11**(10), 1476.
- 134 K. Klega, A. Imamovic-Tuco, G. Ha, A. N. Clapp, S. Meyer, A. Ward, C. Clinton, A. Nag, E. Van Allen and E. Mullen, Detection of somatic structural variants enables quantification and characterization of circulating tumor DNA in children with solid tumors, *CO Precis. Oncol.*, 2018, **2**, 1–13.
- 135 M. Chennakesavalu, K. Moore, G. Chaves, S. Veeravalli, R. TerHaar, T. Wu, R. Lyu, A. Chlenski, C. He and A. Piunti, 5-hydroxymethylcytosine profiling of cell-free DNA identifies bivalent genes that are prognostic of survival in high-risk neuroblastoma, *CO Precis. Oncol.*, 2024, **8**, e2300297.
- 136 I. H. Mahardika, S. Naorungroj, W. Khamcharoen, S. Kin, N. Rodthongkum, O. Chailapakul and K. Shin, Point-of-Care Testing (POCT) Devices for DNA Detection: A Comprehensive Review, *Adv. NanoBiomed Res.*, 2023, **3**(11), 2300058.
- 137 P. Kalligosfyri, S. Nikou, V. Bravou and D. P. Kalogianni, Liquid biopsy genotyping by a simple lateral flow strip assay with visual detection, *Anal. Chim. Acta*, 2021, **1163**, 338470, DOI: [10.1016/j.aca.2021.338470](https://doi.org/10.1016/j.aca.2021.338470), From NLM.
- 138 M. Kojima, T. Harada, T. Fukazawa, S. Kurihara, R. Touge, I. Saeki, S. Takahashi and E. Hiyama, Single-cell next-generation sequencing of circulating tumor cells in patients with neuroblastoma, *Cancer Sci.*, 2023, **114**(4), 1616–1624.
- 139 S. Merugu, L. Chen, E. Gavens, H. Gabra, M. Brougham, G. Makin, A. Ng, D. Murphy, A. S. Gabriel and M. L. Robinson, Detection of circulating and disseminated neuroblastoma cells using the ImageStream flow cytometer for use as predictive and pharmacodynamic biomarkers, *Clin. Cancer Res.*, 2020, **26**(1), 122–134.
- 140 T. Kuroda, N. Morikawa, K. Matsuoka, A. Fujino, T. Honna, A. Nakagawa, M. Kumagai, H. Masaki and M. Saeki, Prognostic significance of circulating tumor cells and bone marrow micrometastasis in advanced neuroblastoma, *J. Pediatr. Surg.*, 2008, **43**(12), 2182–2185.
- 141 C. Lu, J. Han, X. Sun and G. Yang, Electrochemical detection and point-of-care testing for circulating tumor cells: current techniques and future potentials, *Sensors*, 2020, **20**(21), 6073.
- 142 Y. Chen, X. Chen, M. Li, P. Fan, B. Wang, S. Zhao, W. Yu, S. Zhang, Y. Tang and T. Gao, A new analytical platform for potential point-of-care testing of circulating tumor cells, *Biosens. Bioelectron.*, 2021, **171**, 112718.
- 143 F. Farshchi and M. Hasanzadeh, Microfluidic biosensing of circulating tumor cells (CTCs): Recent progress and challenges in efficient diagnosis of cancer, *Biomed. Pharmacother.*, 2021, **134**, 111153.
- 144 I. Goldstein, S. Alyas, W. Asghar and A. Ilyas, Biosensors for the isolation and detection of circulating tumor cells (CTCs) in point-of-care settings, *Micromachines*, 2023, **14**(5), 1035.
- 145 R. Yang, S. Zheng and R. Dong, Circulating tumor cells in neuroblastoma: Current status and future perspectives, *Cancer Med.*, 2023, **12**(1), 7–19.
- 146 N. H. Lee, M. H. Son, Y. B. Choi, E. Yi, J. W. Lee, K. H. Yoo, K. W. Sung and H. H. Koo, Clinical significance of tyrosine hydroxylase mRNA transcripts in peripheral blood at diagnosis in patients with neuroblastoma, *Cancer Res. Treat.*, 2016, **48**(4), 1399.
- 147 A. Marachelian, J. G. Villablanca, C. W. Liu, B. Liu, F. Goodarzian, H. A. Lai, H. Shimada, H. C. Tran, J. A. Parra and R. Gallego, Expression of five neuroblastoma genes in bone marrow or blood of patients with relapsed/refractory neuroblastoma provides a new biomarker for disease and prognosis, *Clin. Cancer Res.*, 2017, **23**(18), 5374–5383.
- 148 F. Zeka, A. Decock, A. Van Goethem, K. Vanderheyden, F. Demuynck, T. Lammens, H. H. Helmoortel, J. Vermeulen, R. Noguera and A. P. Berbegall, Circulating microRNA biomarkers for metastatic disease in neuroblastoma patients, *JCI Insight*, 2018, **3**(23), e97021.
- 149 S. K. Ramraj, S. Aravindan, D. B. Somasundaram, T. S. Herman, M. Natarajan and N. Aravindan, Serum-circulating miRNAs predict neuroblastoma progression in mouse model of high-risk metastatic disease, *Oncotarget*, 2016, **7**(14), 18605.
- 150 K. B. Challagundla, P. M. Wise, P. Neviani, H. Chava, M. Murtadha, T. Xu, R. Kennedy, C. Ivan, X. Zhang and I. Vannini, Exosome-mediated transfer of microRNAs within the tumor microenvironment and neuroblastoma resistance to chemotherapy, *J. Natl. Cancer Inst.*, 2015, **107**(7), djv135.
- 151 J. Ma, M. Xu, M. Yin, J. Hong, H. Chen, Y. Gao, C. Xie, N. Shen, S. Gu and X. Mo, Exosomal hsa-miR199a-3p promotes proliferation and migration in neuroblastoma, *Front. Oncol.*, 2019, **9**, 459.
- 152 C. Wang, Y. Zhang, C. Liu, S. Gou, S. Hu and W. Guo, A portable colorimetric point-of-care testing platform for MicroRNA detection based on programmable entropy-



- driven dynamic DNA network modulated DNA-gold nanoparticle hybrid hydrogel film, *Biosens. Bioelectron.*, 2023, **225**, 115073.
- 153 S. Erzegovesi, R. M. Martoni, M. Oliva, L. Bellodi, R. G. Grgic and A. Ogliari, Neonatal Neuroblastoma in a Full Term Saudi Girl: A Case Report, *J. Neonatal. Stud.*, 2022, **5**(1), 1.
- 154 Y. Liu, Q. Shi, Y. Su, Z. Chen and X. He, Heat shock transcription factor 1 facilitates liver cancer progression by driving super-enhancer-mediated transcription of MYCN, *Cancer Med.*, 2024, **13**(17), e70157.
- 155 I. R. Verly, A. B. van Kuilenburg, N. G. Abeling, S. M. Goorden, M. Fiocco, F. M. Vaz, M. M. van Noesel, C. M. Zwaan, G. L. Kaspers and J. H. Merks, Catecholamines profiles at diagnosis: increased diagnostic sensitivity and correlation with biological and clinical features in neuroblastoma patients, *Eur. J. Cancer*, 2017, **72**, 235–243.
- 156 M. Hassani-Marand, S. Jafarnejad and M. R. Hormozi-Nezhad, An AI-Enabled multi colorimetric sensor array: Towards Rapid and Noninvasive Detection of Neuroblastoma Urinary Markers, *Sens. Actuators, B*, 2023, **396**, 134571, DOI: [10.1016/j.snb.2023.134571](https://doi.org/10.1016/j.snb.2023.134571).
- 157 S. S. Shetty, B. Moosa, L. Zhang, B. Alshankiti, W. Baslyman, V. Mani, N. M. Khashab and K. N. Salama, Polyoxometalate-cyclodextrin supramolecular entities for real-time in situ monitoring of dopamine released from neuroblastoma cells, *Biosens. Bioelectron.*, 2023, **229**, 115240, DOI: [10.1016/j.bios.2023.115240](https://doi.org/10.1016/j.bios.2023.115240).
- 158 R. Abdalla, A. Mahmoud, A. Al-Alamein, M. Galal and D. Mously, Point-of-Care Sensor Using Modified Nickel-doped Zinc Oxide Nanoparticle Carbon Paste Electrode for Homovanillic Acid Cancer Biomarker Detection in Urine, *J. Electrochem. Soc.*, 2024, **171**, DOI: [10.1149/1945-7111/ad8ca9](https://doi.org/10.1149/1945-7111/ad8ca9).
- 159 C. Chen, C. Hu, B. He, Y. Bai, F. He, S. Li and C. S. Tan, Functionalized GD2 electrochemical immunosensor to diagnose minimum residual disease of bone marrow in neuroblastoma effectively, *Biosensors*, 2023, **13**(10), 920.
- 160 Y.-S. Lin, Y. Chen, Y.-H. Tsai, S.-H. Tseng and K.-S. Lin, In vivo imaging of neuroblastomas using GD2-targeting graphene quantum dots, *J. Pediatr. Surg.*, 2021, **56**(7), 1227–1232.
- 161 J. C. Jacobson, R. A. Clark and D. H. Chung, High-risk neuroblastoma: a surgical perspective, *Children*, 2023, **10**(2), 388.
- 162 K. K. Matthay, Neuroblastoma: a clinical challenge and biologic puzzle, *Ca-Cancer J. Clin.*, 1995, **45**(3), 179–192.
- 163 C. Hesko, W. Liu, D. K. Srivastava, T. M. Brinkman, L. Diller, T. M. Gibson, K. C. Oeffinger, W. M. Leisenring, R. Howell and G. T. Armstrong, Neurocognitive outcomes in adult survivors of neuroblastoma: A report from the Childhood Cancer Survivor Study, *Cancer*, 2023, **129**(18), 2904–2914.
- 164 D. J. Zheng, K. R. Krull, Y. Chen, L. Diller, Y. Yasui, W. Leisenring, P. Brouwers, R. Howell, J. S. Lai and L. Balsamo, Long-term psychological and educational outcomes for survivors of neuroblastoma: a report from the Childhood Cancer Survivor Study, *Cancer*, 2018, **124**(15), 3220–3230.
- 165 S. B. Whittle, V. Smith, E. Doherty, S. Zhao, S. McCarty and P. E. Zage, Overview and recent advances in the treatment of neuroblastoma, *Expert Rev. Anticancer Ther.*, 2017, **17**(4), 369–386, DOI: [10.1080/14737140.2017.1285230](https://doi.org/10.1080/14737140.2017.1285230), From NLM.
- 166 V. P. Tolbert and K. K. Matthay, Neuroblastoma: clinical and biological approach to risk stratification and treatment, *Cell Tissue Res.*, 2018, **372**(2), 195–209.
- 167 S. Nayak, N. R. Blumenfeld, T. Laksanasopin and S. K. Sia, Point-of-care diagnostics: recent developments in a connected age, *Anal. Chem.*, 2017, **89**(1), 102–123.
- 168 C. Wang, M. Liu, Z. Wang, S. Li, Y. Deng and N. He, Point-of-care diagnostics for infectious diseases: From methods to devices, *Nano Today*, 2021, **37**, 101092.
- 169 J. A. Goble and P. T. Rocafort, Point-of-care testing: future of chronic disease state management?, *J. Pharm. Pract.*, 2017, **30**(2), 229–237.
- 170 N. K. Tran, S. Albahra, H. Rashidi and L. May, Innovations in infectious disease testing: leveraging COVID-19 pandemic technologies for the future, *Clin. Biochem.*, 2023, **117**, 10–15.
- 171 S.-M. Yang, S. Lv, W. Zhang and Y. Cui, Microfluidic point-of-care (POC) devices in early diagnosis: A review of opportunities and challenges, *Sensors*, 2022, **22**(4), 1620.
- 172 W. Huang, L. Shenglin, Y. Dong and S. Zhang, Applications of smartphone-based near-infrared (NIR) imaging, measurement, and spectroscopy technologies to point-of-care (POC) diagnostics, *J. Zhejiang Univ., Sci., B*, 2021, **22**(3), 171.
- 173 B. Purohit, A. Kumar, K. Mahato and P. Chandra, Smartphone-assisted personalized diagnostic devices and wearable sensors, *Curr. Opin. Biomed. Eng.*, 2020, **13**, 42–50.
- 174 D. Kuupiel, V. Bawontuo and T. P. Mashamba-Thompson, Improving the accessibility and efficiency of point-of-care diagnostics services in low-and middle-income countries: lean and agile supply chain management, *Diagnostics*, 2017, **7**(4), 58.
- 175 C. P. Price and L. J. Kricka, Improving healthcare accessibility through point-of-care technologies, *Clin. Chem.*, 2007, **53**(9), 1665–1675.
- 176 B. Heidt, W. F. Siqueira, K. Eersels, H. Diliën, B. van Grinsven, R. T. Fujiwara and T. J. Cleij, Point of care diagnostics in resource-limited settings: A review of the present and future of PoC in its most needed environment, *Biosensors*, 2020, **10**(10), 133.
- 177 A. Sena-Torrallba, R. Álvarez-Diduk, C. Parolo, A. Piper and A. Merkoçi, Toward next generation lateral flow assays: integration of nanomaterials, *Chem. Rev.*, 2022, **122**(18), 14881–14910.
- 178 Y. Liu, L. Zhan, Z. Qin, J. Sackrison and J. C. Bischof, Ultrasensitive and highly specific lateral flow assays for point-of-care diagnosis, *ACS Nano*, 2021, **15**(3), 3593–3611.
- 179 S. Arshavsky-Graham and E. Segal, Lab-on-a-chip devices for point-of-care medical diagnostics, *Microfluid. Biotech.*, 2020, 247–265.



- 180 N. Azizipour, R. Avazpour, D. H. Rosenzweig, M. Sawan and A. Aji, Evolution of biochip technology: A review from lab-on-a-chip to organ-on-a-chip, *Micromachines*, 2020, **11**(6), 599.
- 181 W. Li, W. Luo, M. Li, L. Chen, L. Chen, H. Guan and M. Yu, The impact of recent developments in electrochemical POC sensor for blood sugar care, *Front. Chem.*, 2021, **9**, 723186.
- 182 E. T. da Silva, D. E. Souto, J. T. Barragan, J. de F. Giarola, A. C. de Moraes and L. T. Kubota, Electrochemical biosensors in point-of-care devices: recent advances and future trends, *ChemElectroChem*, 2017, **4**(4), 778–794.
- 183 S. Rasheed, T. Kanwal, N. Ahmad, B. Fatima, M. Najam-ul-Haq and D. Hussain, Advances and challenges in portable optical biosensors for onsite detection and point-of-care diagnostics, *TrAC, Trends Anal. Chem.*, 2024, 117640.
- 184 Y.-T. Chen, Y.-C. Lee, Y.-H. Lai, J.-C. Lim, N.-T. Huang, C.-T. Lin and J.-J. Huang, Review of integrated optical biosensors for point-of-care applications, *Biosensors*, 2020, **10**(12), 209.
- 185 N. Jiang, R. Ahmed, M. Damayantharan, B. Ünal, H. Butt and A. K. Yetisen, Lateral and Vertical Flow Assays for Point-of-Care Diagnostics, *Adv. Healthcare Mater.*, 2019, **8**(14), 1900244.
- 186 S. Kakkar, P. Gupta, S. P. S. Yadav, D. Raj, G. Singh, S. Chauhan, M. K. Mishra, E. Martín-Ortega, S. Chiussi and K. Kant, Lateral flow assays: Progress and evolution of recent trends in point-of-care applications, *Mater. Today Bio*, 2024, 101188.
- 187 R. Wu, S. Zhou, T. Chen, J. Li, H. Shen, Y. Chai and L. S. Li, Quantitative and rapid detection of C-reactive protein using quantum dot-based lateral flow test strip, *Anal. Chim. Acta*, 2018, **1008**, 1–7.
- 188 Y. Wu, Y. Hu, N. Jiang, M. W. Georgi, A. K. Yetisen and M. F. Cordeiro, Dual lateral flow assay using quantum nanobeads for quantitative detection of BDNF and TNF- α in tears, *Lab Chip*, 2025, **25**(9), 2291–2303.
- 189 S. Gao, X. Zheng, J. Zhu, Y. Zhang, R. Zhou, T. Wang, J. Katona, D. Zhang and X. Zou, Magnetic nanoprobe-enabled lateral flow assays in the applications of food safety and in vitro diagnostic, *Coord. Chem. Rev.*, 2025, **534**, 216588.
- 190 W. Ren and J. Irudayaraj, Magnetic control-enhanced lateral flow technique for ultrasensitive nucleic acid target detection, *ACS Omega*, 2022, **7**(33), 29204–29210.
- 191 R. H. Althomali, H. Uinarni, K. Gandla, A. M. Mayet, R. M. Romero-Parra, I. Cahalib, K. H. Oudaha, A. F. Almulla and Y. S. Bisht, Applications of magnetic nanomaterials in the fabrication of lateral flow assays toward increasing performance of food safety analysis: Recent advances, *Food Biosci.*, 2023, **56**, 103149.
- 192 K. L. Rahn, S. Y. Osman, Q. G. Pollak and R. K. Anand, Electrokinetic focusing of SARS-CoV-2 spike protein via ion concentration polarization in a paper-based lateral flow assay, *Anal. Methods*, 2024, **16**(1), 91–104.
- 193 S. I. Han, Y. K. Yoo, J. Lee, C. Kim, K. Lee, T. H. Lee, H. Kim, D. S. Yoon, K. S. Hwang and R. Kwak, High-ionic-strength pre-concentration via ion concentration polarization for blood-based biofluids, *Sens. Actuators, B*, 2018, **268**, 485–493.
- 194 L. Zhan, S.-z. Guo, F. Song, Y. Gong, F. Xu, D. R. Boulware, M. C. McAlpine, W. C. Chan and J. C. Bischof, The role of nanoparticle design in determining analytical performance of lateral flow immunoassays, *Nano Lett.*, 2017, **17**(12), 7207–7212.
- 195 A. Tukova, N. T. T. Nguyen, A. Garcia-Bennett, A. Rodger and Y. Wang, Plasmonic nanostars: Unique properties that distinguish them from spherical nanoparticles from a biosensing perspective, *Adv. Opt. Mater.*, 2024, **12**(28), 2401183.
- 196 J. B. Shao, Z. M. Gao, W. Y. Huang and Z. B. Lu, The mechanism of epithelial-mesenchymal transition induced by TGF- β 1 in neuroblastoma cells, *Int. J. Oncol.*, 2017, **50**(5), 1623–1633, DOI: [10.3892/ijo.2017.3954](https://doi.org/10.3892/ijo.2017.3954), From NLM.
- 197 H. Li, X. Fu, Q. You, D. Shi, L. Su, M. Song, R. Peng, T. Fu, P. Wang and W. Tan, Multiple aptamer recognition-based quantum dot lateral flow platform: ultrasensitive point-of-care testing of respiratory infectious diseases, *J. Mater. Chem. B*, 2025, **13**(5), 1681–1689.
- 198 Y. Tian, L. Chen, X. Liu, Y. Chang, R. Xia, J. Zhang, Y. Kong, Y. Gong, T. Li and G. Wang, Colored Cellulose Nanoparticles with High Stability and Easily Modified Surface for Accurate and Sensitive Multiplex Lateral Flow Assay, *ACS Nano*, 2025, **19**(4), 4704–4717.
- 199 W. Jung, J. Han, J.-W. Choi and C. H. Ahn, Point-of-care testing (POCT) diagnostic systems using microfluidic lab-on-a-chip technologies, *Microelectron. Eng.*, 2015, **132**, 46–57.
- 200 V. Narayanamurthy, Z. Jeroish, K. Bhuvaneshwari, P. Bayat, R. Premkumar, F. Samsuri and M. M. Yusoff, Advances in passively driven microfluidics and lab-on-chip devices: A comprehensive literature review and patent analysis, *RSC Adv.*, 2020, **10**(20), 11652–11680.
- 201 A. Olanrewaju, M. Beaugrand, M. Yafia and D. Juncker, Capillary microfluidics in microchannels: from microfluidic networks to capillary circuits, *Lab Chip*, 2018, **18**(16), 2323–2347.
- 202 P. Azizian, J. Casals-Terré, J. Ricart and J. M. Cabot, Diffusion-free valve for preprogrammed immunoassay with capillary microfluidics, *Microsyst. Nanoeng.*, 2023, **9**(1), 91.
- 203 S. Moon, Extending the shelf-life of immunoassay-based microfluidic chips through freeze-drying sublimation techniques, *Sensors*, 2023, **23**(20), 8524.
- 204 A. Chiadò, G. Palmara, A. Chiappone, C. Tanzanu, C. F. Pirri, I. Roppolo and F. Frascella, A modular 3D printed lab-on-a-chip for early cancer detection, *Lab Chip*, 2020, **20**(3), 665–674.
- 205 C. Zhu, G. Yang, H. Li, D. Du and Y. Lin, Electrochemical sensors and biosensors based on nanomaterials and nanostructures, *Anal. Chem.*, 2015, **87**(1), 230–249.
- 206 A. Azadbakht, M. Roushani, A. R. Abbasi and Z. Derikvand, A novel impedimetric aptasensor, based on functionalized carbon nanotubes and prussian blue as labels, *Anal. Biochem.*, 2016, **512**, 58–69.



- 207 M. D. Jerez-Masaquiza, L. Fernández, G. González, M. Montero-Jiménez and P. J. Espinoza-Montero, Electrochemical sensor based on prussian blue electrochemically deposited at ZrO₂ doped carbon nanotubes glassy carbon modified electrode, *Nanomaterials*, 2020, **10**(7), 1328.
- 208 R. Eivazzadeh-Keihan, E. B. Noruzi, E. Chidar, M. Jafari, F. Davoodi, A. Kashtiaray, M. G. Gorab, S. M. Hashemi, S. Javanshir and R. A. Cohan, Applications of carbon-based conductive nanomaterials in biosensors, *Chem. Eng. J.*, 2022, **442**, 136183.
- 209 X. Liu, X. Mei, J. Yang and Y. Li, Hydrogel-involved colorimetric platforms based on layered double oxide nanozymes for point-of-care detection of liver-related biomarkers, *ACS Appl. Mater. Interfaces*, 2022, **14**(5), 6985–6993.
- 210 K. Yan, J. Wu, W. Ji, J. Wu and J. Zhang, Integration of redox cycling in a photoelectrochemical sensing platform for tyrosinase activity evaluation, *Electrochem. Commun.*, 2019, **108**, 106555.
- 211 N. Tiwari, S. Chatterjee, K. Kaswan, J.-H. Chung, K.-P. Fan and Z.-H. Lin, Recent advancements in sampling, power management strategies and development in applications for non-invasive wearable electrochemical sensors, *J. Electroanal. Chem.*, 2022, **907**, 116064.
- 212 J. F. Diforti, T. Cunningham, E. Piccinini, W. A. Marmisollé, J. M. Piccinini and O. Azzaroni, Noninvasive and Multiplex Self-Test of Kidney Disease Biomarkers with Graphene-Based Lab-on-a-Chip (G-LOC): Toward Digital Diagnostics in the Hands of Patients, *Anal. Chem.*, 2024, **96**(15), 5832–5842.
- 213 S. Jeong, S.-H. Park, S. Lee, H. Cho, K.-y. Lee, B. K. Ju, Y. J. Lee and S. H. Lee, Electrochemical biosensor based on gold nanoparticles/laser induced graphene for diagnosis of Parkinson's disease by detecting phosphorylated α -synuclein in human blood, *Chem. Eng. J.*, 2025, **509**, 161329.
- 214 S. M. Borisov and O. S. Wolfbeis, Optical biosensors, *Chem. Rev.*, 2008, **108**(2), 423–461.
- 215 A. B. González-Guerrero, J. Maldonado, S. Herranz and L. M. Lechuga, Trends in photonic lab-on-chip interferometric biosensors for point-of-care diagnostics, *Anal. Methods*, 2016, **8**(48), 8380–8394.
- 216 C. Serafinelli, A. Fantoni, E. C. Alegria and M. Vieira, Recent progresses in plasmonic biosensors for point-of-care (POC) devices: A critical review, *Chemosensors*, 2023, **11**(5), 303.
- 217 X. Liu, W. Wu, D. Cui, X. Chen and W. Li, Functional micro-/nanomaterials for multiplexed biodetection, *Adv. Mater.*, 2021, **33**(30), 2004734.
- 218 A. S. Manna, S. Ghosh, T. Ghosh, N. Karchaudhuri, S. Das, A. Roy and D. K. Maiti, Smart Luminescent Materials for Emerging Sensors: Fundamentals and Advances, *Chem. – Asian J.*, 2025, **20**(6), e202401328.
- 219 Z. Li, M. Guo and W. Zhong, Multiplex Detection of Biomarkers Empowered by Nanomaterials, *Precis. Chem.*, 2025, **3**(6), 297–318.
- 220 L. Kong, W. Li, T. Zhang, H. Ma, Y. Cao, K. Wang, Y. Zhou, A. Shamim, L. Zheng and X. Wang, Wireless technologies in flexible and wearable sensing: from materials design, system integration to applications, *Adv. Mater.*, 2024, **36**(27), 2400333.
- 221 S. Ye, C. Xu, H. Li, S. Feng, Y. Wang and F. Gao, Enhancing lateral flow immunoassay performance for cardiac troponin I detection with pore-size tailored silica nanoparticles and smartphone-based “AdaptiScan” analysis, *Front. Bioeng. Biotechnol.*, 2025, **13**, 1568719.
- 222 D. V. Baker, J. Bernal-Escalante, C. Traaseth, Y. Wang, M. V. Tran, S. Keenan and W. R. Algar, Smartphones as a platform for molecular analysis: concepts, methods, devices and future potential, *Lab Chip*, 2025, **25**(5), 884–955.
- 223 Y. Xia, J. Hu, S. Zhao, L. Tao, Z. Li, T. Yue and J. Kong, Build-in sensors and analysis algorithms aided smartphone-based sensors for point-of-care tests, *Biosens. Bioelectron.: X*, 2022, **11**, 100195.
- 224 Y. Zhang, Y. Hu, Y. Montelongo, M. Hsu, J. Blyth, N. Jiang and A. K. Yetisen, A conformable holographic sensing bandage for wound monitoring, *Adv. Funct. Mater.*, 2024, **34**(16), 2308490.
- 225 A. Sajeevan, R. A. Sukumaran, L. R. Panicker and Y. G. Kotagiri, Trends in ready-to-use portable electrochemical sensing devices for healthcare diagnosis, *Microchim. Acta*, 2025, **192**(2), 80.
- 226 A. Firoozbakhtian, M. Hosseini, M. N. Sheikholeslami, F. Salehnia, G. Xu, H. Rabbani and E. Sobhanie, Detection of COVID-19: a smartphone-based machine-learning-assisted ECL immunoassay approach with the ability of RT-PCR CT value prediction, *Anal. Chem.*, 2022, **94**(47), 16361–16368.
- 227 S. Bhatt, S. Kumar, M. K. Gupta, S. K. Datta and S. K. Dubey, Colorimetry-based and smartphone-assisted machine-learning model for quantification of urinary albumin, *Meas. Sci. Technol.*, 2023, **35**(1), 015030.
- 228 K. E. McCracken and J.-Y. Yoon, Recent approaches for optical smartphone sensing in resource-limited settings: a brief review, *Anal. Methods*, 2016, **8**(36), 6591–6601.
- 229 L. Yan, Y. Bai, J. Zhou, Y. He, C. Shen, J. Huang and P. Chen, Enzyme-free nucleic acid and luminescent material cascade amplifications enable urinary dual miRNAs assay for non-invasive bladder cancer diagnosis, *Sens. Actuators, B*, 2023, **396**, 134627.
- 230 A. Reda, S. A. El-Safty, M. M. Selim and M. A. Shenashen, Optical glucose biosensor built-in disposable strips and wearable electronic devices, *Biosens. Bioelectron.*, 2021, **185**, 113237.
- 231 J. Liu, Z. Geng, Z. Fan, J. Liu and H. Chen, Point-of-care testing based on smartphone: The current state-of-the-art (2017–2018), *Biosens. Bioelectron.*, 2019, **132**, 17–37.
- 232 A. Jędrzak, M. Kuznowicz, T. Rębiś and T. Jesionowski, Portable glucose biosensor based on polynorepinephrine@magnetite nanomaterial integrated with a smartphone analyzer for point-of-care application, *Bioelectrochemistry*, 2022, **145**, 108071.



- 233 A. Sampagar, S. Keerthana, M. C. Dias, N. A. Reddy and N. Patil, A Study of Factors Influencing Delayed Diagnosis in Pediatric Cancers: A Step Towards Better Outcomes-A Cross-sectional Study, *J. Pediatr. Hematol./Oncol.*, 2023, **45**(6), 327–332, DOI: [10.1097/mpb.0000000000002664](https://doi.org/10.1097/mpb.0000000000002664), From NLM.
- 234 A. Pulumati, A. Pulumati, B. S. Dwarakanath, A. Verma and R. V. L. Papineni, Technological advancements in cancer diagnostics: Improvements and limitations, *Cancer Rep.*, 2023, **6**(2), e1764, DOI: [10.1002/cnr2.1764](https://doi.org/10.1002/cnr2.1764), From NLM.
- 235 A. Marusyk and K. Polyak, Tumor heterogeneity: causes and consequences, *Biochim. Biophys. Acta*, 2010, **1805**(1), 105–117, DOI: [10.1016/j.bbcan.2009.11.002](https://doi.org/10.1016/j.bbcan.2009.11.002), From NLM.
- 236 P. Bhardwaj, B. Arora, S. Saxena, S. Singh, P. Palkar, J. S. Goda and R. Banerjee, Paper-based point of care diagnostics for cancer biomarkers, *Sens. Diagn.*, 2024, **3**(4), 504–535.
- 237 B. Asci Erkocuyigit, O. Ozufuklar, A. Yardim, E. Guler Celik and S. Timur, Biomarker detection in early diagnosis of cancer: recent achievements in point-of-care devices based on paper microfluidics, *Biosensors*, 2023, **13**(3), 387.
- 238 T.-H. Ulep, R. Zenhausem, A. Gonzales, D. S. Knoff, P. A. L. Diaz, J. E. Castro and J.-Y. Yoon, Smartphone based on-chip fluorescence imaging and capillary flow velocity measurement for detecting ROR1+ cancer cells from buffy coat blood samples on dual-layer paper microfluidic chip, *Biosens. Bioelectron.*, 2020, **153**, 112042.
- 239 T. Mo, X. Liu, Y. Luo, L. Zhong, Z. Zhang, T. Li, L. Gan, X. Liu, L. Li and H. Wang, *et al.*, Aptamer-based biosensors and application in tumor theranostics, *Cancer Sci.*, 2022, **113**(1), 7–16, DOI: [10.1111/cas.15194](https://doi.org/10.1111/cas.15194), From NLM.
- 240 H. Wei, Y. Peng, Z. Bai, Z. Rong and S. Wang, Duplex-specific nuclease signal amplification-based fluorescent lateral flow assay for the point-of-care detection of microRNAs, *Analyst*, 2021, **146**(2), 558–564, DOI: [10.1039/d0an01673j](https://doi.org/10.1039/d0an01673j), From NLM.
- 241 M. Adampourezare, G. Dehghan, M. Hasanzadeh and M. A. Hosseinpoure Feizi, Application of lateral flow and microfluidic bio-assay and biosensing towards identification of DNA-methylation and cancer detection: Recent progress and challenges in biomedicine, *Biomed. Pharmacother.*, 2021, **141**, 111845, DOI: [10.1016/j.biopha.2021.111845](https://doi.org/10.1016/j.biopha.2021.111845), From NLM.
- 242 J. F. Edd, A. Mishra, T. D. Dubash, S. Herrera, R. Mohammad, E. K. Williams, X. Hong, B. R. Mutlu, J. R. Walsh and F. M. de Carvalho, Microfluidic concentration and separation of circulating tumor cell clusters from large blood volumes, *Lab Chip*, 2020, **20**(3), 558–567.
- 243 S. H. Au, J. Edd, A. E. Stoddard, K. H. Wong, F. Fachin, S. Maheswaran, D. A. Haber, S. L. Stott, R. Kapur and M. Toner, Microfluidic isolation of circulating tumor cell clusters by size and asymmetry, *Sci. Rep.*, 2017, **7**(1), 2433.
- 244 R. Miano, G. O. Mele, S. Germani, P. Bove, S. Sansalone, P. F. Pugliese and F. Micali, Evaluation of a new, rapid, qualitative, one-step PSA Test for prostate cancer screening: the PSA RapidScreen test, *Prostate Cancer Prostatic Dis.*, 2005, **8**(3), 219–223, DOI: [10.1038/sj.pcan.4500802](https://doi.org/10.1038/sj.pcan.4500802), From NLM.
- 245 P. Moonen, L. Kiemeny and J. Witjes, Urinary NMP22® BladderChek® test in the diagnosis of superficial bladder cancer, *Eur. Urol.*, 2005, **48**(6), 951–956.
- 246 L. Huang, S. Tian, W. Zhao, K. Liu, X. Ma and J. Guo, Multiplexed detection of biomarkers in lateral-flow immunoassays, *Analyst*, 2020, **145**(8), 2828–2840, DOI: [10.1039/c9an02485a](https://doi.org/10.1039/c9an02485a), From NLM.
- 247 W.-Q. Ye, Y.-X. Wei, Y.-Z. Zhang, C.-G. Yang and Z.-R. Xu, Multiplexed detection of micro-RNAs based on microfluidic multi-color fluorescence droplets, *Anal. Bioanal. Chem.*, 2020, **412**(3), 647–655, DOI: [10.1007/s00216-019-02266-3](https://doi.org/10.1007/s00216-019-02266-3).
- 248 D. Chatterjee, D. S. Mansfield and A. T. Woolley, Microfluidic devices for label-free and non-instrumented quantitation of unamplified nucleic acids by flow distance measurement, *Anal. Methods*, 2014, **6**(20), 8173–8179.
- 249 Y. Song, Y. Zhang, P. E. Bernard, J. M. Reuben, N. T. Ueno, R. B. Arlinghaus, Y. Zu and L. Qin, Multiplexed volumetric bar-chart chip for point-of-care diagnostics, *Nat. Commun.*, 2012, **3**(1), 1–9.
- 250 M. Calderón-Santiago, F. Priego-Capote, N. Turck, X. Robin, B. Jurado-Gómez, J. C. Sanchez and M. D. Luque de Castro, Human sweat metabolomics for lung cancer screening, *Anal. Bioanal. Chem.*, 2015, **407**, 5381–5392.
- 251 L. Dizdar, G. Fluegen, G. van Dalum, E. Honisch, R. P. Neves, D. Niederacher, H. Neubauer, T. Fehm, A. Rehders and A. Krieg, *et al.*, Detection of circulating tumor cells in colorectal cancer patients using the GILUPI CellCollector: results from a prospective, single-center study, *Mol. Oncol.*, 2019, **13**(7), 1548–1558, DOI: [10.1002/1878-0261.12507](https://doi.org/10.1002/1878-0261.12507), From NLM.
- 252 C.-H. Lai, W.-S. Tsai, M.-H. Yang, T.-Y. Chou and Y.-C. Chang, A two-dimensional immunomagnetic nano-net for the efficient isolation of circulating tumor cells in whole blood, *Nanoscale*, 2019, **11**(44), 21119–21127.
- 253 S. Park and Y. J. Lee, AFM-based dual nano-mechanical phenotypes for cancer metastasis, *J. Biol. Phys.*, 2014, **40**, 413–419.
- 254 K. R. Khondakar, M. S. Anwar, H. Mazumdar and A. Kaushik, Perspective of point-of-care sensing systems in cancer management, *Mater. Adv.*, 2023, **4**(21), 4991–5002.
- 255 E. Poon, T. Liang, Y. Jamin, S. Walz, C. Kwok, A. Hakkert, K. Barker, Z. Urban, K. Thway and R. Zeid, Orally bioavailable CDK9/2 inhibitor shows mechanism-based therapeutic potential in MYCN-driven neuroblastoma, *J. Clin. Invest.*, 2020, **130**(11), 5875–5892.
- 256 D. Hanahan and R. A. Weinberg, Hallmarks of cancer: the next generation, *Cell*, 2011, **144**(5), 646–674, DOI: [10.1016/j.cell.2011.02.013](https://doi.org/10.1016/j.cell.2011.02.013), From NLM.
- 257 A. Passaro, M. Al Bakir, E. G. Hamilton, M. Diehn, F. André, S. Roy-Chowdhuri, G. Mountzios, I. I. Wistuba, C. Swanton and S. Peters, Cancer biomarkers: Emerging trends and clinical implications for personalized treatment, *Cell*, 2024, **187**(7), 1617–1635, DOI: [10.1016/j.cell.2024.02.041](https://doi.org/10.1016/j.cell.2024.02.041), From NLM.



- 258 D. A. Giljohann and C. A. Mirkin, Drivers of biodiagnostic development, *Nature*, 2009, **462**(7272), 461–464.
- 259 V. Combaret, M. D. Hogarty, W. B. London, P. McGrady, I. Iacono, S. Brejon, K. Swerts, R. Noguera, N. Gross and R. Rousseau, Influence of neuroblastoma stage on serum-based detection of MYCN amplification, *Pediatr. Blood Cancer*, 2009, **53**(3), 329–331.
- 260 X. Wang, L. Wang, Y. Su, Z. Yue, T. Xing, W. Zhao, Q. Zhao, C. Duan, C. Huang and D. Zhang, Plasma cell-free DNA quantification is highly correlated to tumor burden in children with neuroblastoma, *Cancer Med.*, 2018, **7**(7), 3022–3030.
- 261 N. Van Roy, M. Van Der Linden, B. Menten, A. Dheedene, C. Vandeputte, J. Van Dorpe, G. Laureys, M. Renard, T. Sante and T. Lammens, Shallow whole genome sequencing on circulating cell-free DNA allows reliable noninvasive copy-number profiling in neuroblastoma patients, *Clin. Cancer Res.*, 2017, **23**(20), 6305–6314.
- 262 Y. Su, L. Wang, X. Wang, Z. Yue, T. Xing, W. Zhao, Q. Zhao, C. Duan, C. Huang and Y. Han, Dynamic alterations of plasma cell free DNA in response to chemotherapy in children with neuroblastoma, *Cancer Med.*, 2019, **8**(4), 1558–1566.
- 263 S. Yagy, T. Iehara, T. Gotoh, M. Miyachi, Y. Katsumi, K. Kikuchi, K. Tsuchiya, S. Osone, H. Kuroda and T. Sugimoto, Preoperative analysis of 11q loss using circulating tumor-released DNA in serum: a novel diagnostic tool for therapy stratification of neuroblastoma, *Cancer Lett.*, 2011, **309**(2), 185–189.
- 264 S. L. George, E. Izquierdo, J. Campbell, E. Koutroumanidou, P. Proszek, S. Jamal, D. Hughes, L. Yuan, L. V. Marshall and F. Carceller, A tailored molecular profiling programme for children with cancer to identify clinically actionable genetic alterations, *Eur. J. Cancer*, 2019, **121**, 224–235.
- 265 R. Stankunaite, S. L. George, L. Gallagher, S. Jamal, R. Shaikh, L. Yuan, D. Hughes, P. Z. Proszek, P. Carter and G. Pietka, Circulating tumour DNA sequencing to determine therapeutic response and identify tumour heterogeneity in patients with paediatric solid tumours, *Eur. J. Cancer*, 2022, **162**, 209–220.
- 266 S. M. Tolaney, M. Toi, P. Neven, J. Sohn, E.-M. Grischke, A. Llombart-Cussac, H. Soliman, L. M. Litchfield, S. Wijayawardana and T. Forrester, Clinical significance of PIK3CA and ESR1 mutations in ctDNA and FFPE samples from the MONARCH 2 study of abemaciclib plus fulvestrant, *Clin. Cancer Res.*, 2019, **28**(8), 1500–1506.
- 267 C. Trager, P. Kogner, M. Lindskog, F. Ponthan, A. Kullman and B. Kågedal, Quantitative analysis of tyrosine hydroxylase mRNA for sensitive detection of neuroblastoma cells in blood and bone marrow, *Clin. Chem.*, 2003, **49**(1), 104–112.
- 268 V. F. Viprey, W. M. Gregory, M. V. Corrias, A. Tchirkov, K. Swerts, A. Vicha, S. Dallorso, P. Brock, R. Luksch and D. Valteau-Couanet, Neuroblastoma mRNAs predict outcome in children with stage 4 neuroblastoma: a European HR-NBL1/SIOPEN study, *J. Clin. Oncol.*, 2019, **32**(10), 1074–1083.
- 269 S. A. Burchill, I. J. Lewis, K. R. Abrams, R. Riley, J. Imeson, A. D. Pearson, R. Pinkerton and P. Selby, Circulating neuroblastoma cells detected by reverse transcriptase polymerase chain reaction for tyrosine hydroxylase mRNA are an independent poor prognostic indicator in stage 4 neuroblastoma in children over 1 year, *J. Clin. Oncol.*, 2001, **19**(6), 1795–1801.
- 270 J. Otte, C. Dyberg, A. Pepich and J. I. Johnsen, MYCN function in neuroblastoma development, *Front. Oncol.*, 2021, 3210.
- 271 M. Schwab, J. Ellison, M. Busch, W. Rosenau, H. E. Varmus and J. M. Bishop, Enhanced expression of the human gene N-myc consequent to amplification of DNA may contribute to malignant progression of neuroblastoma, *Proc. Natl. Acad. Sci. U. S. A.*, 1984, **81**(15), 4940–4944.
- 272 D. S. Rickman, J. H. Schulte and M. Eilers, The expanding world of N-MYC-driven tumors, *Cancer Discovery*, 2018, **8**(2), 150–163.
- 273 M. Huang and W. A. Weiss, Neuroblastoma and MYCN, *Cold Spring Harbor Perspect. Med.*, 2013, **3**(10), a014415.
- 274 M. V. Ruiz-Pérez, A. B. Henley and M. Arsenian-Henriksson, The MYCN Protein in Health and Disease, *Genes*, 2017, **8**(4), 113, DOI: [10.3390/genes8040113](https://doi.org/10.3390/genes8040113), From NLM.
- 275 J. R. Smith, L. Moreno, S. P. Heaton, L. Chesler, A. D. Pearson and M. D. Garrett, Novel pharmacodynamic biomarkers for MYCN protein and PI3K/AKT/mTOR pathway signaling in children with neuroblastoma, *Mol. Oncol.*, 2016, **10**(4), 538–552, DOI: [10.1016/j.molonc.2015.11.005](https://doi.org/10.1016/j.molonc.2015.11.005), From NLM.
- 276 R. M. Trigg and S. D. Turner, ALK in Neuroblastoma: Biological and Therapeutic Implications, *Cancers*, 2018, **10**(4), 113, DOI: [10.3390/cancers10040113](https://doi.org/10.3390/cancers10040113), From NLM PubMed-not-MEDLINE.
- 277 T. Mok, S. Peters, D. R. Camidge, J. Noe, S. Gadgeel, S. I. Ou, D. W. Kim, K. Konopa, E. Pozzi and T. Liu, *et al.*, Outcomes According to ALK Status Determined by Central Immunohistochemistry or Fluorescence In Situ Hybridization in Patients With ALK-Positive NSCLC Enrolled in the Phase 3 ALEX Study, *J. Thorac. Oncol.*, 2021, **16**(2), 259–268, DOI: [10.1016/j.jtho.2020.10.007](https://doi.org/10.1016/j.jtho.2020.10.007), From NLM Medline.
- 278 V. Combaret, I. Iacono, A. Bellini, S. Brejon, V. Bernard, A. Marabelle, C. Coze, G. Pierron, E. Lapouble and G. Schleiermacher, *et al.*, Detection of tumor ALK status in neuroblastoma patients using peripheral blood, *Cancer Med.*, 2015, **4**(4), 540–550, DOI: [10.1002/cam4.414](https://doi.org/10.1002/cam4.414), From NLM Medline.
- 279 G. Gonzales-Cespedes and S. Navarro, High-risk neuroblastoma: ATRX and TERT as prognostic markers and therapeutic targets. Review and update on the topic, *Rev. Esp. Patol.*, 2025, **58**(1), 100790, DOI: [10.1016/j.patol.2024.100790](https://doi.org/10.1016/j.patol.2024.100790), From NLM Medline.
- 280 M. Ognibene, S. Parodi, L. Amoroso, F. Zara and A. Pezzolo, Overexpression of H2AFX gene in neuroblastoma is associated with worse prognosis,



- Pediatr. Blood Cancer*, 2024, **71**(9), e31146, DOI: [10.1002/pbc.31146](https://doi.org/10.1002/pbc.31146), From NLM Medline.
- 281 K. Otake, K. Uchida, S. Ide, Y. Kobayashi, I. Kobayashi and M. Kusunoki, Identification of DDX39A as a Potential Biomarker for Unfavorable Neuroblastoma Using a Proteomic Approach, *Pediatr. Blood Cancer*, 2016, **63**(2), 221–227, DOI: [10.1002/pbc.25778](https://doi.org/10.1002/pbc.25778), From NLM Medline.
- 282 I. Sultan and A. Tbakhi, BCL11A gene over-expression in high risk neuroblastoma, *Cancer Genet.*, 2020, **244**, 30–31, DOI: [10.1016/j.cancergen.2020.02.003](https://doi.org/10.1016/j.cancergen.2020.02.003), From NLM Medline.
- 283 X. Chen, Y. Xue, J. Feng, Q. Tian, Y. Zhang and Q. Wang, Identification S100A9 as a potential biomarker in neuroblastoma, *Mol. Biol. Rep.*, 2021, **48**(12), 7743–7753, DOI: [10.1007/s11033-021-06783-2](https://doi.org/10.1007/s11033-021-06783-2), From NLM Medline.
- 284 N. Andreeva, N. Usman and A. Druy, MicroRNAs as prospective biomarkers, therapeutic targets and pharmaceuticals in neuroblastoma, *Mol. Biol. Rep.*, 2023, **50**(2), 1895–1912, DOI: [10.1007/s11033-022-08137-y](https://doi.org/10.1007/s11033-022-08137-y), From NLM Medline.
- 285 M. Mohammadi, M. Goodarzi, M. R. Jaafari, H. R. Mirzaei and H. Mirzaei, Circulating microRNA: a new candidate for diagnostic biomarker in neuroblastoma, *Cancer Gene Ther.*, 2016, **23**(11), 371–372, DOI: [10.1038/cgt.2016.45](https://doi.org/10.1038/cgt.2016.45), From NLM Medline.
- 286 G. Moro, C. D. Fratte, N. Normanno, F. Polo and S. Cinti, Point-of-Care Testing for the Detection of MicroRNAs: Towards Liquid Biopsy on a Chip, *Angew. Chem., Int. Ed.*, 2023, **62**(51), e202309135, DOI: [10.1002/anie.202309135](https://doi.org/10.1002/anie.202309135), From NLM Medline.
- 287 P. Zeltzer, A. Parma, A. Dalton, S. Siegel, P. Marangos, H. Sather, D. Hammond and R. Seeger, Raised neuron-specific enolase in serum of children with metastatic neuroblastoma: A report from the Children's Cancer Study Group, *Lancet*, 1983, **322**(8346), 361–363.
- 288 A. Abbasoglu, F. Sarialioglu, N. Yazici, N. Bayraktar, A. Haberal and A. Erbay, Serum neuron-specific enolase levels in preterm and term newborns and in infants 1–3 months of age, *Pediatr. Neonatol.*, 2015, **56**(2), 114–119.
- 289 P. M. Zeltzer, P. J. Marangos, A. E. Evans and S. L. Schneider, Serum neuron-specific enolase in children with neuroblastoma. Crelationship to stage and disease course, *Cancer*, 1986, **57**(6), 1230–1234.
- 290 Y. Fan, J. Liu, Y. Wang, J. Luo, H. Xu, S. Xu and X. Cai, A wireless point-of-care testing system for the detection of neuron-specific enolase with microfluidic paper-based analytical devices, *Biosens. Bioelectron.*, 2017, **95**, 60–66, DOI: [10.1016/j.bios.2017.04.003](https://doi.org/10.1016/j.bios.2017.04.003), From NLM Medline.
- 291 D. Thompson, K. T. Vo, W. B. London, M. Fischer, P. F. Ambros, A. Nakagawara, G. M. Brodeur, K. K. Matthay and S. G. DuBois, Identification of patient subgroups with markedly disparate rates of MYCN amplification in neuroblastoma: a report from the International Neuroblastoma Risk Group project, *Cancer*, 2016, **122**(6), 935–945.
- 292 G. Cangemi, G. Reggiardo, S. Barco, L. Barbagallo, M. Conte, P. D'Angelo, M. Bianchi, C. Favre, B. Galleni and G. Melioli, *et al.*, Prognostic value of ferritin, neuron-specific enolase, lactate dehydrogenase, and urinary and plasmatic catecholamine metabolites in children with neuroblastoma, *Onco Targets Ther*, 2012, **5**, 417–423, DOI: [10.2147/ott.S36366](https://doi.org/10.2147/ott.S36366), From NLM.
- 293 D. A. Morgenstern, U. Pötschger, L. Moreno, V. Papadakis, C. Owens, S. Ash, C. Pasqualini, R. Luksch, A. Garaventa and A. Canete, Risk stratification of high-risk metastatic neuroblastoma: a report from the HR-NBL-1/SIOPEN study, *Pediatr. Blood Cancer*, 2018, **65**(11), e27363.
- 294 Center, U. o. R. M., *Lactate Dehydrogenase (Blood)*, https://www.urmc.rochester.edu/encyclopedia/content.aspx?contenttypeid=167&contentid=lactic_acid_dehydrogenase_blood#:~:text=The%20normal%20range%20for%20total,60%20to%20170%20units%2FL (accessed).
- 295 V. Moroz, D. Machin, B. Hero, R. Ladenstein, F. Berthold, P. Kao, Y. Obeng, A. D. J. Pearson, S. L. Cohn and W. B. London, The prognostic strength of serum LDH and serum ferritin in children with neuroblastoma: A report from the International Neuroblastoma Risk Group (INRG) project, *Pediatr. Blood Cancer*, 2020, **67**(8), e28359, DOI: [10.1002/pbc.28359](https://doi.org/10.1002/pbc.28359), From NLM.
- 296 A. Farhana and S. Lappin, *Biochemistry, Lactate Dehydrogenase*, StatPearls, 2022, <https://www.ncbi.nlm.nih.gov/books/NBK557536/> (accessed).
- 297 F. Boomsma, U. M. Bhaggoe, A. J. Man in 't Veld and M. A. Schalekamp, Sensitivity and specificity of a new ELISA method for determination of chromogranin A in the diagnosis of pheochromocytoma and neuroblastoma, *Clin. Chim. Acta*, 1995, **239**(1), 57–63, DOI: [10.1016/0009-8981\(95\)06100-r](https://doi.org/10.1016/0009-8981(95)06100-r), From NLM.
- 298 R. J. Hsiao, R. C. Seeger, A. L. Yu and D. T. O'Connor, Chromogranin A in children with neuroblastoma. Serum concentration parallels disease stage and predicts survival, *J. Clin. Invest.*, 1990, **85**(5), 1555–1559, DOI: [10.1172/jci114604](https://doi.org/10.1172/jci114604), From NLM.
- 299 M. Morini, F. Raggi, M. Bartolucci, A. Petretto, M. Ardito, C. Rossi, D. Segalerba, A. Garaventa, A. Eva and D. Cangelosi, *et al.*, Plasma-Derived Exosome Proteins as Novel Diagnostic and Prognostic Biomarkers in Neuroblastoma Patients, *Cells*, 2023, **12**(21), 2516, DOI: [10.3390/cells12212516](https://doi.org/10.3390/cells12212516), From NLM Medline.
- 300 M. Oliveira-Rodriguez, S. Lopez-Cobo, H. T. Reyburn, A. Costa-Garcia, S. Lopez-Martin, M. Yanez-Mo, E. Cernuda-Morollon, A. Paschen, M. Vales-Gomez and M. C. Blanco-Lopez, Development of a rapid lateral flow immunoassay test for detection of exosomes previously enriched from cell culture medium and body fluids, *J. Extracell. Vesicles*, 2016, **5**, 31803, DOI: [10.3402/jev.v5.31803](https://doi.org/10.3402/jev.v5.31803), From NLM PubMed-not-MEDLINE.
- 301 A. Lopez-Carrasco, I. Vieco-Marti, S. Granados-Aparici, D. Acevedo-Leon, N. Estan-Capell, R. Portugal, J. Huerta-Aragones, A. Canete, S. Navarro and R. Noguera, Vitronectin Levels in the Plasma of Neuroblastoma Patients and Culture Media of 3D Models: A Prognostic Circulating Biomarker?, *Int. J.*



- Mol. Sci.*, 2024, 25(16), 8733, DOI: [10.3390/ijms25168733](https://doi.org/10.3390/ijms25168733), From NLM Medline.
- 302 D. W. Coulter, A. D. Boettner, Z. P. Kortylewicz, S. P. Enke, J. A. Luther, V. Verma and J. Baranowska-Kortylewicz, Butyrylcholinesterase as a Blood Biomarker in Neuroblastoma, *J. Pediatr. Hematol./Oncol.*, 2017, 39(4), 272–281, DOI: [10.1097/MPH.0000000000000828](https://doi.org/10.1097/MPH.0000000000000828), From NLM Medline.
- 303 K. Schmidt, A. R. Zivkovic, M. Thiele, J. Horter, T. Brenner, M. A. Weigand, S. Kleinschmidt and S. Hofer, Point-of-care measured serum cholinesterase activity predicts patient outcome following severe burns, *Burns*, 2021, 47(4), 863–872, DOI: [10.1016/j.burns.2020.10.027](https://doi.org/10.1016/j.burns.2020.10.027), From NLM Medline.
- 304 A. R. Zivkovic, K. Schmidt, A. Sigl, S. O. Decker, T. Brenner and S. Hofer, Reduced serum butyrylcholinesterase activity indicates severe systemic inflammation in critically ill patients, *Mediators Inflammation*, 2015, 2015, 274607, DOI: [10.1155/2015/274607](https://doi.org/10.1155/2015/274607), From NLM Medline.
- 305 S. Galli, A. Naranjo, C. Van Ryn, J. U. Tilan, E. Trinh, C. Yang, J. Tsuei, S. H. Hong, H. Wang and E. Izycka-Swieszewska, *et al.*, Neuropeptide Y as a Biomarker and Therapeutic Target for Neuroblastoma, *Am. J. Pathol.*, 2016, 186(11), 3040–3053, DOI: [10.1016/j.ajpath.2016.07.019](https://doi.org/10.1016/j.ajpath.2016.07.019), From NLM Medline.
- 306 N. K. Mintah Churcher, S. Upasham, P. Rice, S. Bhadsavle and S. Prasad, Development of a flexible, sweat-based neuropeptide Y detection platform, *RSC Adv.*, 2020, 10(39), 23173–23186, DOI: [10.1039/d0ra03729j](https://doi.org/10.1039/d0ra03729j), From NLM PubMed-not-MEDLINE.
- 307 M. Loustau, F. Anna, R. Dréan, M. Lecomte, P. Langlade-Demoyen and J. Caumartin, HLA-G neo-expression on tumors, *Front. Immunol.*, 2020, 11, 1685.
- 308 F. Morandi, I. Levreri, P. Bocca, B. Galleni, L. Raffaghello, S. Ferrone, I. Prigione and V. Pistoia, Human neuroblastoma cells trigger an immunosuppressive program in monocytes by stimulating soluble HLA-G release, *Cancer Res.*, 2007, 67(13), 6433–6441.
- 309 L. D. Gamble, S. Purgato, J. Murray, L. Xiao, D. M. T. Yu, K. M. Hanssen, F. M. Giorgi, D. R. Carter, A. J. Gifford and E. Valli, *et al.*, Inhibition of polyamine synthesis and uptake reduces tumor progression and prolongs survival in mouse models of neuroblastoma, *Sci. Transl. Med.*, 2019, 11(477), 1099, DOI: [10.1126/scitranslmed.aau1099](https://doi.org/10.1126/scitranslmed.aau1099), From NLM.
- 310 B. Lu, L. Wang, X. Ran, H. Tang and D. Cao, Recent Advances in Fluorescent Methods for Polyamine Detection and the Polyamine Suppressing Strategy in Tumor Treatment, *Biosensors*, 2022, 12(8), 633.
- 311 K. Igarashi, S. Ota, M. Kaneko, A. Hirayama, M. Enomoto, K. Katumata, M. Sugimoto and T. Soga, High-throughput screening of salivary polyamine markers for discrimination of colorectal cancer by multisegment injection capillary electrophoresis tandem mass spectrometry, *J. Chromatogr. A*, 2021, 1652, 462355, DOI: [10.1016/j.chroma.2021.462355](https://doi.org/10.1016/j.chroma.2021.462355), From NLM Medline.
- 312 G. L. S. Sholler, W. Ferguson, G. Bergendahl, J. P. Bond, K. Neville, D. Eslin, V. Brown, W. Roberts, R. K. Wada and J. Oesterheld, *et al.*, Maintenance DFMO Increases Survival in High Risk Neuroblastoma, *Sci. Rep.*, 2018, 8(1), 14445, DOI: [10.1038/s41598-018-32659-w](https://doi.org/10.1038/s41598-018-32659-w).
- 313 E. Zambrano and M. Reyes-Múgica, Hormonal activity may predict aggressive behavior in neuroblastoma, *Pediatr. Dev. Pathol.*, 2002, 5(2), 190–199.
- 314 NHS, VMA & HVA, <https://www.gloshospitals.nhs.uk/our-services/services-we-offer/pathology/tests-and-investigations/vma-hva/> (accessed).
- 315 Y. Shen and L. Cheng, *Biochemical Diagnosis of Pheochromocytoma and Paraganglioma*, Codon Publications, 2019, DOI: [10.15586/paraganglioma.2019.ch2](https://doi.org/10.15586/paraganglioma.2019.ch2).
- 316 H.-W. L. Hann, A. E. Evans, S. E. Siegel, K. Y. Wong, H. Sather, A. Dalton, D. Hammond and R. C. Seeger, Prognostic importance of serum ferritin in patients with Stages III and IV neuroblastoma: the Childrens Cancer Study Group experience, *Cancer Res.*, 1985, 45(6), 2843–2848.
- 317 J. Min, Y. Wu, S. Huang, Y. Li, X. Lv, R. Tang, H. Zhao and J. Wang, Serum cholesterol level as a predictive biomarker for prognosis of Neuroblastoma, *BMC Pediatr.*, 2024, 24(1), 205, DOI: [10.1186/s12887-024-04700-7](https://doi.org/10.1186/s12887-024-04700-7), From NLM Medline.
- 318 A. Pluddemann, M. Thompson, C. P. Price, J. Wolstenholme and C. Heneghan, Point-of-care testing for the analysis of lipid panels: primary care diagnostic technology update, *Br. J. Gen. Pract.*, 2012, 62(596), e224–e226, DOI: [10.3399/bjgp12X630241](https://doi.org/10.3399/bjgp12X630241), From NLM Medline.
- 319 C. Qi, L. Wang and G. Duan, Preoperative neutrophil-to-lymphocyte ratio (NLR) as a prognostic biomarker for patients with high-risk neuroblastoma, *Asian J. Surg.*, 2023, 46(6), 2474–2475, DOI: [10.1016/j.asjsur.2022.12.069](https://doi.org/10.1016/j.asjsur.2022.12.069), From NLM Medline.
- 320 C. Qi, L. Wang and G. Duan, Nutritional and inflammatory immune-based hemoglobin, albumin, lymphocyte, and platelet (HALP) score as a prognostic biomarker in patients with high-risk neuroblastoma, *Asian J. Surg.*, 2023, 46(9), 4068–4069.
- 321 F. M. Balis, C. M. Busch, A. V. Desai, E. Hibbitts, A. Naranjo, R. Bagatell, M. Irwin and E. Fox, The ganglioside GD2 as a circulating tumor biomarker for neuroblastoma, *Pediatr. Blood Cancer*, 2020, 67(1), e28031.
- 322 M. Morini, S. Barco, M. Ardito, A. Cafaro, F. Pigliasco, L. Rossi, M. Fragola, D. Segalerba, M. Conte and A. Garaventa, Detection of plasma circulating GD2 ganglioside in patients with neuroblastoma and age-matched healthy children. Diagnostic and prognostic evaluation, *Oncologist*, 2025, 30(2), oyaf008.
- 323 A. Eggert, N. Ikegaki, X.-g. Liu and G. Brodeur, Prognostic and biological role of neurotrophin-receptor TrkA and TrkB in neuroblastoma, *Klin. Padiatr.*, 2000, 212(04), 200–205.
- 324 S. Maher, K. Wynne, V. Zhernovkov and M. Halasz, A temporal (phospho-) proteomic dataset of neurotrophic receptor tyrosine kinase signalling in neuroblastoma, *Sci. Data*, 2024, 11(1), 1111.



- 325 T. Tanaka, E. Hiyama, T. Sugimoto, T. Sawada, M. Tanabe and N. Ida, *trk A* gene expression in neuroblastoma. The clinical significance of an immunohistochemical study, *Cancer*, 1995, **76**(6), 1086–1095.
- 326 K. Haney, P. Tandon, R. Divi, M. R. Ossandon, H. Baker and P. C. Pearlman, The Role of Affordable, Point-of-Care Technologies for Cancer Care in Low- and Middle-Income Countries: A Review and Commentary, *IEEE J. Transl. Eng. Health Med.*, 2017, **5**, 2800514, DOI: [10.1109/jtehm.2017.2761764](https://doi.org/10.1109/jtehm.2017.2761764), From NLM.
- 327 H. Hjelmgren, B. M. Ygge, B. Nordlund and N. Andersson, Nurses' experiences of blood sample collection from children: a qualitative study from Swedish paediatric hospital care, *BMC Nurs.*, 2022, **21**(1), 62, DOI: [10.1186/s12912-022-00840-2](https://doi.org/10.1186/s12912-022-00840-2), From NLM.
- 328 D. J. Harney and M. Larance, The Small-Protein Enrichment Assay (SPEA) for Analysis of Low Abundance Peptide Hormones in Plasma, *Methods Mol. Biol.*, 2023, **2628**, 265–276, DOI: [10.1007/978-1-0716-2978-9_17](https://doi.org/10.1007/978-1-0716-2978-9_17), From NLM.
- 329 K. Omidfar, F. Riahi and S. Kashanian, Lateral Flow Assay: A Summary of Recent Progress for Improving Assay Performance, *Biosensors*, 2023, **13**(9), 837, DOI: [10.3390/bios13090837](https://doi.org/10.3390/bios13090837), From NLM.
- 330 G. Dobrovoljski, R. Kerbl, C. Strobl, W. Schwinger, H. J. Dornbusch and H. Lackner, False-positive results in neuroblastoma screening: the parents' view, *J. Pediatr. Hematol./Oncol.*, 2003, **25**(1), 14–18, DOI: [10.1097/00043426-200301000-00005](https://doi.org/10.1097/00043426-200301000-00005), From NLM.
- 331 B. H. Chew, Planning and Conducting Clinical Research: The Whole Process, *Cureus*, 2019, **11**(2), e4112, DOI: [10.7759/cureus.4112](https://doi.org/10.7759/cureus.4112), From NLM.
- 332 K. K. Matthay, Stage 4S neuroblastoma: what makes it special?, *J. Clin. Oncol.*, 1998, **16**(6), 2003–2006.
- 333 C. M. Chu, D. D. Rasalkar, Y. J. Hu, F. W. Cheng, C. K. Li and W. C. Chu, Clinical presentations and imaging findings of neuroblastoma beyond abdominal mass and a review of imaging algorithm, *Br. J. Radiol.*, 2011, **84**(997), 81–91, DOI: [10.1259/bjr/31861984](https://doi.org/10.1259/bjr/31861984), From NLM.
- 334 F. Shawraba, H. Hammoud, Y. Mrad, Z. Saker, Y. Fares, H. Harati, H. F. Bahmad and S. Nabha, Biomarkers in Neuroblastoma: An Insight into Their Potential Diagnostic and Prognostic Utilities, *Curr. Treat. Options Oncol.*, 2021, **22**(11), 102, DOI: [10.1007/s11864-021-00898-1](https://doi.org/10.1007/s11864-021-00898-1), From NLM.
- 335 H. S. Chan, B. L. Gallie, G. DeBoer, G. Haddad, N. Ikegaki, J. Dimitroulakos, H. Yeger and V. Ling, MYCN protein expression as a predictor of neuroblastoma prognosis, *Clin. Cancer Res.*, 1997, **3**(10), 1699–1706, From NLM.
- 336 L. Anfossi, F. Di Nardo, S. Cavalera, C. Giovannoli and C. Baggiani, Multiplex lateral flow immunoassay: an overview of strategies towards high-throughput point-of-need testing, *Biosensors*, 2019, **9**(1), 2.

