

Cite this: *J. Mater. Chem. C*, 2019,
7, 13224

Balancing charge-transfer strength and triplet states for deep-blue thermally activated delayed fluorescence with an unconventional electron rich dibenzothiophene acceptor†

Rongjuan Huang,^{‡,a} Nadzeya A. Kukhta,^{‡,b} Jonathan S. Ward,^{‡,b}
Andrew Danos,^{‡,a} Andrei S. Batsanov,^{‡,b} Martin R. Bryce^{‡,b} and
Fernando B. Dias^{‡,a*}

Manipulation of the emission properties of deep-blue emitters exhibiting thermally activated delayed fluorescence (TADF) through molecular design is challenging. We present an effective strategy to probe deeper into the role of localized (LE) and charge transfer (CT) states in the reverse intersystem crossing (RISC) mechanism. In a series of donor–acceptor–donor (D–A–D) blue emitters the dibenzothiophene functionality is used as an unconventional acceptor, while derivatives of 9,10-dihydro-9,9-dimethylacridine are used as electron-donors. *tert*-Butyl and methoxy substituents in the *para*-positions of the donor greatly enhance the donor strength, which allows exploration of different energy alignments among CT and LE triplet states. In the *tert*-butyl substituted compound the low energy triplet is localized on the acceptor unit, with the RISC mechanism ($k_{\text{RISC}} = 0.17 \times 10^5 \text{ s}^{-1}$) likely involving the mixture of CT and LE triplet states that are separated by less than 0.09 eV. An optimized organic light-emitting diode (OLED) based on the *t*Bu-compound presents a maximum external quantum efficiency of 10.5% and deep-blue emission with Commission Internationale de l'Éclairage coordinates of (0.133, 0.129). However, when methoxy substituents are used, the low-energy triplet state moves away from the emissive ¹CT singlet increasing the energy gap to 0.24 eV. Despite a larger ΔE_{ST} , a faster RISC rate ($k_{\text{RISC}} = 2.28 \times 10^5 \text{ s}^{-1}$) is observed due to the upper-state RISC occurring from the high-energy triplet state localized on the D (or A) units. This work shows the importance of fine-tuning the electronic interactions of the donor and acceptor units to control the TADF mechanism and achieve a deep-blue TADF OLED.

Received 24th April 2019,
Accepted 23rd September 2019

DOI: 10.1039/c9tc02175b

rsc.li/materials-c

Introduction

Organic molecules with emission in the visible and near-infrared regions have attracted significant interest, owing to their application in organic light-emitting diodes (OLEDs).^{1–5} The potential to fabricate flexible, thin, low-weight light-emitting devices, at a fraction of the cost of existing inorganic-based LEDs is highly desirable. OLEDs are capable of generating electroluminescence with high efficiency and colour quality, with fast response. Therefore OLEDs have the potential to revolutionise the display and lighting markets, including the development

of wearable technologies for sensing and medical treatment.^{6–12} For these applications to advance further, it is necessary to develop materials that emit light with high efficiency in the blue, green and red regions of the visible spectrum. Materials must also show enhanced stability, particularly under electrical excitation.^{13–16}

Simple fluorescent emitters were the first widely investigated materials for application in OLEDs.^{6,16,17} Due to spin statistics,^{18,19} the external quantum efficiency (EQE) in pure fluorescent OLEDs is limited to 5%, since only the 25% singlet excitons created under electrical excitation contribute to the device electroluminescence. Phosphorescent emitters using heavy-metals were introduced later and offer much improved EQE and brightness.^{20–22} Despite this improvement, the scarcity of noble metals such as iridium and platinum, and degradation issues (especially for emitters in the blue region) is a significant problem.^{23,24} Additional environmental problems that arise from heavy-metal processing following product disposal make the utilization of phosphorescent OLEDs less than ideal.²⁵

^a Department of Physics, Durham University, South Road, Durham, DH1 3LE, UK.
E-mail: f.m.b.dias@durham.ac.uk

^b Department of Chemistry, Durham University, South Road, Durham, DH1 3LE,
UK. E-mail: m.r.bryce@durham.ac.uk

† Electronic supplementary information (ESI) available. CCDC 1901568–1901571.
For ESI and crystallographic data in CIF or other electronic format see DOI:
10.1039/c9tc02175b

‡ R. H. and N. A. K. contributed equally.



The third generation of OLED emitters use all-organic molecules that exhibit thermally activated delayed fluorescence (TADF).²⁶ This photophysical mechanism was originally demonstrated in Eosin in 1961,²⁷ and was applied in efficient OLEDs by Adachi and co-workers in 2012.²⁸ TADF materials provide a promising alternative to phosphors in achieving high device efficiency without using heavy-metals, and show great promise in terms of the cost-efficiency, brightness and external quantum efficiency (EQE).

Unlike conventional fluorescent and phosphorescent emitters, TADF compounds can utilize up to 100% of excitons *via* a reverse intersystem crossing (RISC) mechanism that is able to promote the low-energy triplet states (T_1) up to the singlet excited state manifold (S_n).^{29,30} This process requires a small singlet–triplet energy splitting (ΔE_{ST}), which can be achieved in donor–acceptor molecules where the highest occupied molecular orbital (HOMO) and the lowest unoccupied molecular orbital (LUMO) have minimal overlap. In such TADF molecules, the transition between the ground and excited states (promoted by photon absorption or electrical excitation) invokes a significant alteration to the electronic density and dipole moment. Excited states with such characteristics are known as charge-transfer states (CT) and involve minimal electronic exchange interactions which result in very small ΔE_{ST} .

Ideal TADF emitters with high RISC rates should also have a fast 1CT radiative rate constant to promote strong luminescence and a short excited state lifetime, which is highly beneficial to device stability.^{31,32} Rigid chromophores that ensure effective control of the dihedral angle between the D and A units, while still allowing dynamic rocking about the D–A bridge, are preferred to obtain fast RISC rates and minimize non-radiative internal conversion.^{33,34} However, a trade-off exists between the luminescence and the triplet harvesting efficiencies. Maximizing the RISC rate results in TADF molecules designed with excited states that have strong CT character, which is detrimental to radiative decay rates. Nonetheless, TADF molecules can in principle be designed with sufficiently fast ISC/RISC rates and even faster singlet radiative decay. Unfortunately, no clear rules currently exist to guide molecular design of high efficiency TADF emitters with sufficiently fast radiative decay to avoid the build-up of triplet states and non-radiative channels.³⁵

A multitude of various colour TADF emitters have been reported to date.^{36–42} The majority are composed of well-decoupled D and A units, which create excited states with strong CT character. This molecular design works remarkably well for the preparation of red, green and even sky-blue TADF emitters.^{29,37,38,43–45} However, developing design rules to effectively match D and A units in order to maximize TADF emission and simultaneously achieve fast radiative decay rates remains challenging, especially in the deep-blue region most desirable for applications.^{36,40,46,47} A small ΔE_{ST} requires careful consideration and matching of electron acceptor and donor strengths, but emission with strong CT character is almost inevitably shifted to longer wavelengths and shows slow radiative decay rate. In contrast, with weaker electron acceptor or donor units, the CT excited states are created with more blue emission and faster radiative

rates, but a larger ΔE_{ST} is created due to a larger HOMO–LUMO overlap and a slower RISC rate is obtained. This results in longer-lived triplet excited states that are more susceptible to suffer from luminescence quenching, leading to pronounced efficiency roll-off and potential device instability.

Despite the current reasonable understanding of the RISC mechanism, many aspects are still unclear. In particular, the role of localized triplet and charge transfer states is not comprehensively understood. In the present work, a new strategy to design an efficient deep-blue TADF emitter is presented. The new emitter (**Dac-DBT**) has the unconventional dibenzothio- phene (DBT) unit as a weak electron acceptor and 9,10-dihydro-9,9-dimethylacridine (Ac) derivatives as the donor units in a D–A–D configuration. The motivation for the present work was to exploit the high energy triplet levels of both DBT and Ac. The strategy was to align both the localized triplet states of the donor and acceptor (3LE_D and 3LE_A respectively) and the singlet 1CT emissive state of the **Dac-DBT** molecule, to generate deep-blue TADF with high efficiency. DBT is renowned for its rigid planar structure, narrow emission spectrum, and strong inter-system crossing properties due to the sulfur atom.⁴⁸ DBT is thus expected to enhance ISC/RISC rates. Moreover, the DBT fragment was utilized previously as an electron acceptor in a series of carbazole-based host materials,⁴⁹ but we are not aware of its previous use as an acceptor in TADF emitter materials. As DBT and Ac units possess similar triplet levels, both 3LE_D and 3LE_A are expected to participate in the RISC mechanism for highly efficient triplet-harvesting. The fine-tuning of the donor strength by substitution on the Ac units allows modulation of the CT energy to probe varying energy alignments between LE and CT states. Investigations into how the different states contribute to RISC are presented.

Three **Dac-DBT** derivatives are discussed. The analogue of the parent **Dac-DBT** molecule substituted with *tert*-butyl groups, **DtBuAc-DBT**, shows ΔE_{ST} of 0.09 eV compared to 0.20 eV in **Dac-DBT** in zeonex. When the strength of the CT character is further enhanced, by replacing the *tert*-butyl with methoxy groups in **DOMeAc-DBT**, the 3CT state is shifted below the local triplet states. ΔE_{ST} then increases to 0.24 eV in **DOMeAc-DBT**. Weaker TADF is observed in **DOMeAc-DBT**, compared with **DtBuAc-DBT**, but surprisingly with a faster TADF decay (10.5 μ s), compared to 136.4 μ s in **DtBuAc-DBT**. As the TADF decays with the triplet state lifetime, and the rate of non-radiative processes (IC and ISC) is faster in **DtBuAc-DBT** than in **DOMeAc-DBT**, the observation of a faster TADF decay in **DOMeAc-DBT** is attributed to a faster RISC rate. However, this raises a puzzling question: How can a faster RISC rate be compatible with a larger ΔE_{ST} and observation of weaker TADF contribution? In this manuscript we unravel how upper triplet–singlet state crossing and self-quenching of the triplet population by a low energy triplet supports this scenario. To the best of our knowledge an acceleration of the RISC rate when ΔE_{ST} increases has not been reported and interpreted in detail before. Moreover, the deep-blue OLED derived from **DtBuAc-DBT** with a smaller ΔE_{ST} achieved a maximum EQE of 10.5% and EQE of 9.8% at the practical brightness of 100 cd m^{-2} , with narrow



emission spectrum. This device also shows Commission Internationale de l'Eclairage (CIE) coordinates of (0.133, 0.129).

Results and discussion

Molecular design and synthesis

The molecular structures of the **DAC-DBT** derivatives studied in this work are presented in Fig. 1. The design of the **DAC-DBT** derivatives is inspired by a previously synthesized molecule (DPTZ-DBT), which used DBT as the electron acceptor and phenothiazine (PTZ) as the electron donors to promote efficient room-temperature phosphorescence (RTP).⁴⁸ The fast ISC rate⁵⁰ and high triplet level⁴⁸ of DBT aligned with the singlet ¹CT state of DPTZ-DBT, efficiently populates a lower triplet state localized on the PTZ unit. The low triplet level of PTZ resulted in an inefficient RISC rate and thus TADF was not observed, instead making DPTZ-DBT an excellent RTP emitter.

Using inspiration from the previous DPTZ-DBT work, it was recognised that the singlet and triplet states of the D and A constituents could be aligned together in **DAC-DBT** emitters. This strategy has facilitated RISC, promoted high TADF efficiency, and shifted the emission into the deep-blue region. Firstly, the low triplet level of PTZ was replaced by a high triplet of the Ac unit to achieve a small ΔE_{ST} . Secondly, the donor strength of the Ac unit was tuned by functionalisation with electron-donating *tert*-butyl and methoxy groups, which simultaneously protect the 2,7-positions of Ac to enhance the chemical and electrochemical stability. The ¹CT state of **DAC-DBT** is aligned with its triplet

excited states localized on the Ac and DBT units, thereby promoting fast ISC/RISC rates.

The synthetic procedures of **DAC-DBT**, **DtBuAc-DBT** and **DOMeAc-DBT** utilizing palladium-catalyzed Buchwald–Hartwig chemistry⁵¹ are presented in the ESI† (Section S1). Their structures and high purity were established using ¹H and ¹³C{¹H} NMR spectroscopy, mass spectrometry, elemental analysis and single-crystal X-ray crystallography.

The X-ray molecular structures of **DAC-DBT** and **DtBuAc-DBT** are presented in Fig. 2 and Fig. S1–S3 (ESI†). Due to the possible disorder of the methoxy substituents, growth of crystals suitable for X-ray crystallography using **DOMeAc-DBT** was not possible. The DBT unit is planar in **DAC-DBT** and slightly twisted (by 5° between the arene rings) in **DtBuAc-DBT**. The dihydroacridine moieties are practically perpendicular to the DBT (dihedral angles ranging from 83 to 90°) and show variable folding angles (θ) along the N...C(9) vector. Above 170 K, the **DAC-DBT**·CD₂Cl₂ solvate has a single molecule per asymmetric unit; one dihydroacridine has $\theta = 30.5^\circ$ and the other is disordered (57 to 43%) between two conformations with $\theta = 22.3^\circ$ and 10.5° , respectively. Below 170 K, the crystal structure is modulated with doubled *a* parameter and two ordered molecules per asymmetric unit, one showing $\theta = 30.8^\circ$ and 25.4° , the other $\theta = 32.7^\circ$ and 8.7° . In **DtBuAc-DBT**, which has essentially the same crystal structure at 200 and 120 K, the dihydroacridine folding is smaller and more symmetrical, θ averaging 15.3° at 200 K and 13.7° at 120 K. Such flexibility is in agreement with the literature: the November 2018 issue of the Cambridge Structural Database⁵² lists 19 structures with 26 unique 9,9-dimethyldihydroacridine moieties with a C(sp²) substituent at N, the θ varying from 1.2° to 48.3° ; indeed, two independent molecules in the structure of *N*-(4-*tert*-butylphenyl)-1,8-naphthalimide-9,9-dimethyl-9,10-dihydroacridine⁵³ show $\theta = 4.8^\circ$ and 21.9° .

Theoretical calculations

DFT calculations were carried out at the rBMK level of theory.⁵⁴ The BMK functional was preferred for the geometry optimization and the prediction of the optical properties of all the studied molecules as this functional was shown to be suitable for the description of the low energy absorption band of D–A CT compounds.^{54–56} For additional insight, the highest occupied molecular orbital (HOMO) and lowest unoccupied molecular orbital (LUMO) energies of the D and A fragments were

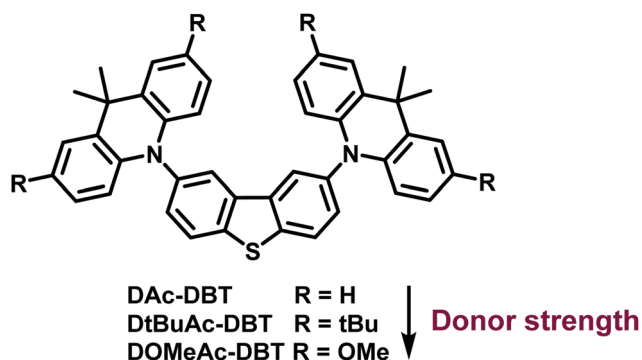


Fig. 1 Chemical structures of the **DAC-DBT** derivatives.

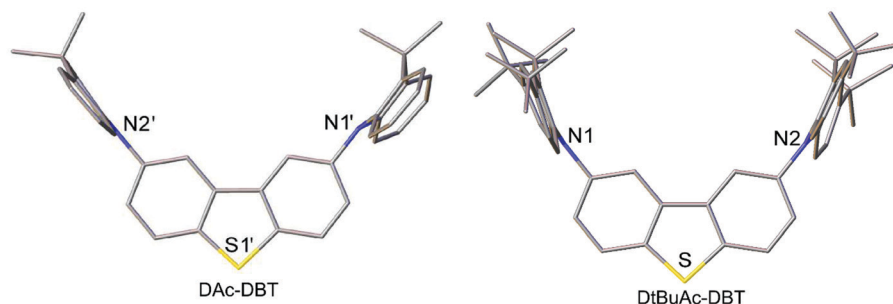


Fig. 2 X-ray crystal structures of **DAC-DBT** and **DtBuAc-DBT**.



calculated (Fig. S4a, ESI[†]). While all the units possess planar and rigid molecular skeletons, the wave-function distribution and frontier orbital energies show clear differences. DBT has a shallow E_{LUMO} (-0.29 eV) and a very deep E_{HOMO} (-6.62 eV) suggesting that it could act as a weaker acceptor when connected to a stronger Ac donor.³⁶ While the LUMO remains almost unchanged with the introduction of substituents on the Ac derivatives, the HOMO energy is raised from -5.59 eV (Ac) to -5.09 eV in OMe-Ac. The methoxy substituents induce a relatively larger electron density delocalization throughout the molecule. Increased electron density in OMe-Ac is consistent with the red-shifted theoretical absorption (onset at 330 nm for OMe-Ac and 300 nm for Ac, *t*Bu-Ac and DBT) (Fig. S5, ESI[†]). The DFT calculations establish that OMe-Ac is the strongest electron donor of the three units. The singlet and triplet energy diagram (Fig. S4b, ESI[†]) indicates that *tert*-butyl groups on the Ac donor slightly lower the S_1 level while maintaining the T_1 energy close to that of the DBT acceptor. In contrast, the methoxy substituents lower the S_1 energy significantly and only slightly affect the T_1 energy, leading to a smaller energy-gap between S_1 and T_1 .

The overall geometry of the **DAC-DBT** derivatives is determined by the rigid skeleton of the DBT acceptor, to which planar Ac donors are attached almost orthogonally (Fig. 2). All the Ac donors show planar geometries in the calculated structures in contrast to the X-ray results (folded Ac units). The difference in geometry between gas phase and X-ray data is likely due to the influence of crystal packing. More importantly, the HOMO/LUMO wave functions vary significantly in the molecular series despite similar geometries. The HOMO and LUMO are effectively decoupled in all cases, consistent with the CT character of the excited state, but with the HOMO expanding slightly onto the DBT unit with the addition of electron donating substituents (Fig. 3 and Table S2, ESI[†]). The HOMO levels increase in the D-A-D series, with **DAC-DBT** (-5.65 eV) < **DtBuAc-DBT** (-5.47 eV) < **DOMeAc-DBT** (-5.14 eV), while the LUMO is localized solely on the DBT unit and remains almost unchanged. Thus, the energy of the CT states is lower in **DOMeAc-DBT** compared to **DtBuAc-DBT**.

The UV-vis absorption spectra of the DBT derivatives were calculated (Fig. S6, ESI[†]). The absorption profiles of **DAC-DBT** and **DtBuAc-DBT** are similar: both feature two peaks. In contrast, **DOMeAc-DBT** shows only a single absorption band with Gaussian shape. The onset of the **DOMeAc-DBT** absorption band is red-shifted (353 nm vs. 331 nm for **DAC-DBT** and **DtBuAc-DBT**, respectively), confirming stronger CT character in **DOMeAc-DBT**. The nature of the lowest energy band was described by means of natural transition orbitals (NTOs)⁵⁷ for a selected set of pertinent excited states ($S_0 \rightarrow S_{1-3}$) (Fig. S7, ESI[†]). The hole and particle are well separated in all transitions ($S_0 \rightarrow S_{1-3}$) demonstrating the CT character of the excited states.

The calculated triplet energy of the three target compounds varies significantly. The introduction of *tert*-Bu groups does not significantly affect the T_1 value (3.37 eV and 3.36 eV for **DAC-DBT** and **DtBuAc-DBT**, respectively), while the methoxy groups on the Ac lower the triplet energy of **DOMeAc-DBT** significantly

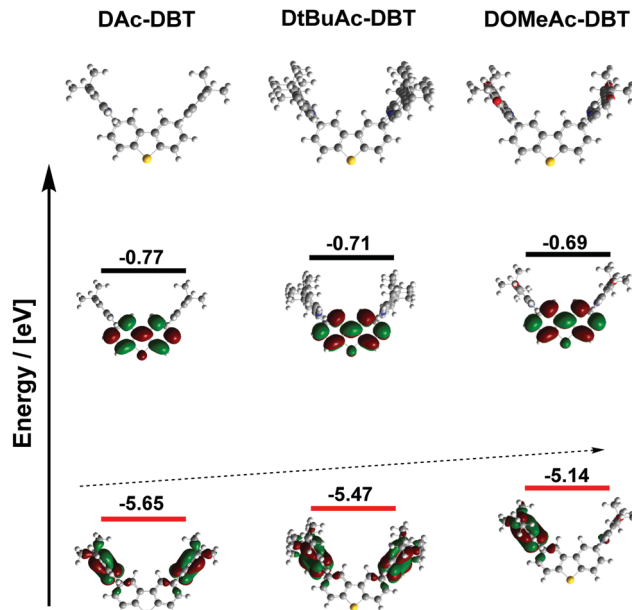


Fig. 3 Optimized molecular geometries with HOMO (red) and LUMO (black) levels and energies of **DAC-DBT**, **DtBuAc-DBT** and **DOMeAc-DBT** (rBMK/6-31G(d) level of theory).

to 3.18 eV. Triplet NTOs (Fig. 4a) indicate that **DAC-DBT** and **DtBuAc-DBT** have the T_1 localized on the DBT acceptor, demonstrating the LE character of the triplet state. However, the triplet hole and particle of **DOMeAc-DBT** involve both DBT and OMe-Ac units, thus indicating a CT character for the lowest triplet state. Interestingly, the higher triplet states ($T_{2,3}$) are located in a close proximity to the S_1 level and possess more delocalized character (Fig. S8 and S9, ESI[†]). It can be clearly seen that the triplet level of **DtBuAc-DBT** almost coincides with the local triplets of the DBT acceptor and the *t*Bu-Ac donor (Fig. 4b), suggesting that both units might participate in triplet harvesting. Thus, the difference in triplet energies is expected to be a significant contributor to the differences in the observed TADF efficiency.

Cyclic voltammetry (CV) measurements pointed at the improvement of the electrochemical stability of the **DAC-DBT** derivatives with the introduction of the substituents (Section S5, ESI[†]). The increase of the experimentally obtained HOMO values is in line with the calculated data.

The compounds under study displayed outstanding thermal stability which was probed by thermal gravimetric analysis (TGA) (Section S6, ESI[†]). The decomposition temperature was found to increase in the sequence **DAC-DBT** < **DOMe-DBT** < **DtBuAc-DBT**.

Optical and photophysical characterization

Absorption and steady-state emission properties. The low-lying energy levels and photophysical properties of **DAC-DBT**, **DtBuAc-DBT** and **DOMeAc-DBT** were investigated in solutions and in zeonex (a nonpolar polymer host). UV-vis absorption and photoluminescence (PL) spectra of all the molecules in toluene are shown in Fig. 5a. Slightly red-shifted absorption tails are observed in **DAC-DBT**, **DtBuAc-DBT** and **DOMeAc-DBT** compared



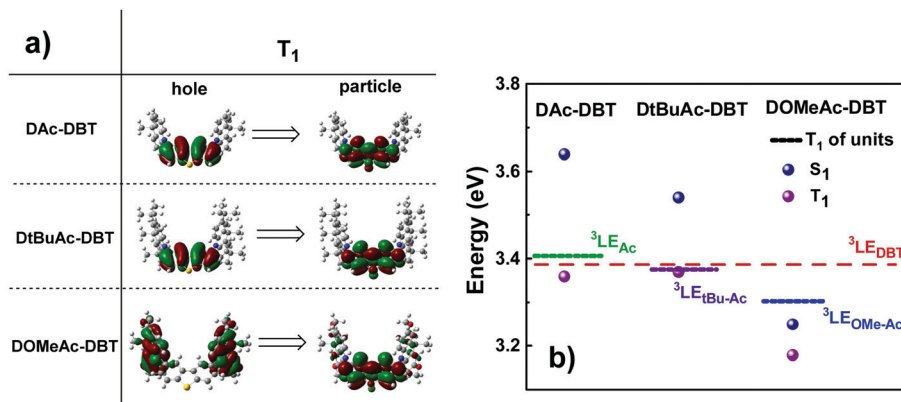


Fig. 4 (a) Natural transition orbitals (NTO) corresponding to the first triplet transitions and (b) singlet and triplet energy diagram of **DAC-DBT**, **DtBuAc-DBT** and **DOMEAc-DBT** along with the energy levels of the individual units (TD-DFT rBMK/6-31G(d)). Hole refers to the highest occupied natural transition orbital (HONTO), while particle refers to lowest unoccupied natural transition orbital (LUNTO).⁵⁷

with their individual units (Fig. S12 and S13, ESI[†]). The absorption tails are attributed to the direct CT transition. All compounds show emission spectra ranging from deep-blue to sky-blue with structureless and Gaussian shape, consistent with the CT character of the excited state. The emission peaks of **DAC-DBT**, **DtBuAc-DBT** and **DOMEAc-DBT** in toluene solution are at 424 nm, 437 nm and 488 nm, respectively. With the increasing solvent polarity, solvatochromic behaviour is observed (Fig. S14, ESI[†]), further confirming the CT nature of the excited states. The emission peaks of **DtBuAc-DBT** and **DOMEAc-DBT** are red-shifted by 25 and 49 nm respectively, compared with that of **DAC-DBT** in toluene. This is consistent with the theoretical calculations, showing that by increasing the electron-donating ability of the substituted donor moieties the HOMO energy levels are shifted upwards while the LUMO levels remain essentially unchanged. Therefore, narrowed band gaps and red-shifted spectra are obtained. Emission measurements are also in agreement with the direct experimental estimates of the HOMO and LUMO energies from CV measurements (Fig. S10, ESI[†]).^{58,59}

As shown in Fig. 5b, the fluorescence spectra of **DAC-DBT**, **DtBuAc-DBT** and **DOMEAc-DBT** observed in zeonex films show very similar spectral shapes as in non-polar methylcyclohexane (Fig. S14, ESI[†]). This indicates that excimers or aggregates are unlikely to be formed in the solid state at low concentrations in

steady-state conditions. With the increasing donor strength, **DAC-DBT**, **DtBuAc-DBT** and **DOMEAc-DBT** films show red-shifted emission, with the peak emission wavelength remaining in the blue region (398 nm, 414 nm and 460 nm, respectively). The 1CT energies calculated from the high-energy onsets of the emission spectra are 3.28 eV, 3.17 eV and 3.00 eV, for **DAC-DBT**, **DtBuAc-DBT** and **DOMEAc-DBT**, respectively.

The phosphorescence spectra of the three molecules in zeonex films at 80 K are shown in Fig. 5b. **DAC-DBT** and **DtBuAc-DBT** show well-resolved phosphorescence spectra with clear vibronic structure, indicating the localized character of their triplet excited states (3LE). The triplet energies of **DAC-DBT** and **DtBuAc-DBT** in zeonex were determined from the onsets of their phosphorescence spectra to be 3.08 eV, both isoenergetic with the triplet of the DBT unit. The phosphorescence spectrum of **DtBuAc-DBT** shows contributions from both the donor *t*Bu-Ac and acceptor DBT units (Fig. S15, ESI[†]). Thus, the *tert*-butyl-substituted molecule **DtBuAc-DBT** represents an ideal case with 3D and 3A at essentially identical energies.

In contrast, the introduction of the methoxy substituents significantly enhances the donor strength and efficiently increases the HOMO energy in **DOMEAc-DBT**. A rather broad and unstructured phosphorescence spectrum is observed, indicating that the lowest energy T_1 state can be identified as a 3CT state. The CT character

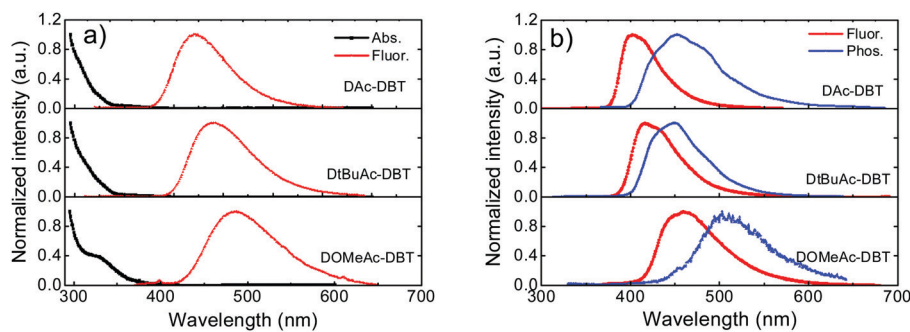


Fig. 5 (a) UV-vis absorption and fluorescence spectra of **DAC-DBT**, **DtBuAc-DBT** and **DOMEAc-DBT** in toluene solutions (1.0×10^{-4} M) measured at room temperature. (b) Steady-state fluorescence collected at room temperature and time-resolved phosphorescence spectra collected with delay time of 56 ns at 80 K for the three molecules in zeonex films (1 wt%). Excitation at 355 nm.



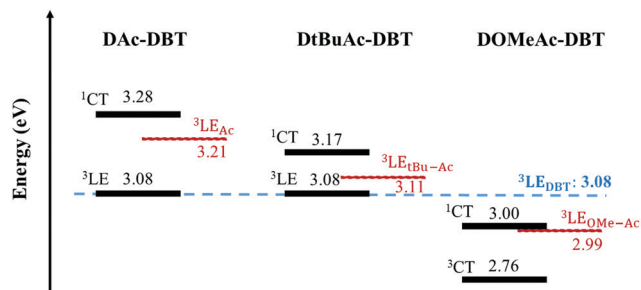


Fig. 6 A schematic energy diagram of **DAC-DBT**, **DtBuAc-DBT** and **DOMeAc-DBT**. All energies are given in eV and were calculated from the onsets of the corresponding spectra in zeonex films, compared with their individual D and A moieties. No indication of ^3CT states is obtained in **DAC-DBT** and **DtBuAc-DBT** from calculations, neither are they observed in our experiments, therefore, their ^3CT states are not represented in this diagram.

is further confirmed by the solvatochromism of the **DOMeAc-DBT** phosphorescence spectra in hosts of different polarity (Fig. S17, ESI[†]). This is also in agreement with the analysis of the triplet NTOs, which show donor-localized hole and acceptor-localized particle for the $S_0 \rightarrow T_1$ excitation. Consequently, the low energy singlet and triplet states in **DOMeAc-DBT** are both of CT character. The phosphorescence of **DOMeAc-DBT** appears at a lower energy (2.76 eV) compared to **DAC-DBT** and **DtBuAc-DBT** and is no longer isoenergetic with either D or A unit (Fig. S16, ESI[†]). Therefore, it is very interesting to evaluate the effect of the triplet character on the efficiency of the RISC mechanism. A schematic energy diagram of **DAC-DBT**, **DtBuAc-DBT** and **DOMeAc-DBT** based on all the reported data is presented in Fig. 6.

As oxygen is a well-known triplet quencher, delayed fluorescence (DF) appearing as a result of triplet harvesting is not able to contribute to the overall emission when oxygen is present.⁶⁰ The effect of oxygen-quenching on the PL spectra of **DAC-DBT**, **DtBuAc-DBT** and **DOMeAc-DBT** was thus analysed in toluene solution and zeonex films to quantitatively determine the contribution of DF to the total emission (Fig. S18, ESI[†]). A larger DF contribution is observed in **DtBuAc-DBT** and can be easily explained. The introduction of *tert*-butyl groups increases the donor strength and shifts the ^1CT state to a lower energy, narrowing the energy gap (ΔE_{ST}) to 0.09 eV in **DtBuAc-DBT** in comparison to **DAC-DBT** (0.20 eV). Therefore, the alignment of singlet and triplet excited states in **DtBuAc-DBT** gives rise to an efficient RISC rate for a higher DF contribution. The high triplet contribution and deep-blue emission in **DtBuAc-DBT** makes it a very promising deep-blue TADF emitter.

The methoxy groups on **DOMeAc-DBT** were introduced to red-shift and tune the ^1CT state closer to the two localized triplet states. However, the donating ability of the two methoxy groups is too strong and the ^3CT drops even lower in energy, which decreases the DF contribution. This leads to a relatively small increase of the PL quantum yields (PLQYs) in **DOMeAc-DBT** zeonex film from 35% in air to 48% in nitrogen, compared to **DtBuAc-DBT** with well-aligned energy states (20% in air and 54% in nitrogen). Calculations also show that a further increase of donor strength induced by the presence of the methoxy

groups leads to an expanded HOMO distribution, resulting in a relatively large overlap between the frontier orbitals. This is consistent with the experimental results, which show a large ΔE_{ST} of 0.24 eV. This in turn explains the observation of a higher PLQY in air (35% in **DOMeAc-DBT** vs. 20% in **DtBuAc-DBT**), the reduced formation of triplet states, and less DF contribution to the overall emission. However, the PLQYs of **DAC-DBT** are very low (1% in air), as it is unstable as shown by time-resolved measurements.

Time-dependent spectroscopy

To further investigate the photophysical properties, time-resolved emission decays were collected. **DAC-DBT** was also measured but found to undergo irreversible laser induced breakdown over the timescale of the measurements, which is confirmed by the red-shifted prompt emission appearing at a very early delay time (Fig. S19, ESI[†]). The instability in **DAC-DBT** is also evidenced by the extra CV feature of a new oxidation peak (Fig. S10, ESI[†]) and the lowest TGA degradation temperature (Fig. S11, ESI[†]) compared with the substituted molecules. As the emission decays very rapidly (in the nanosecond region), we tentatively suggest that this may be due to the dimerization by intermolecular π - π stacking, which occurs even in zeonex at low concentrations but is too weak to be detected in steady-state emission (Fig. S20a, ESI[†]). Therefore, the DF spectra and decay lifetimes of **DAC-DBT** are unreliable and are not included. Such shifts were not observed for the substituted compounds of the series (Fig. S21 (ESI[†]) and Fig. 8a), suggesting that blocking the 2,7-positions of acridine can help to prevent possible aggregation.

The time-resolved emission decays of **DtBuAc-DBT** and **DOMeAc-DBT** zeonex films are shown in Fig. 7. The nanosecond timescale prompt fluorescence (PF) decay component shows no significant change with temperature, as expected. In contrast, the microsecond DF and millisecond phosphorescence (PH) components show clear temperature dependence. The DF intensity increases with increasing temperature, indicating a TADF mechanism in both **DtBuAc-DBT** and **DOMeAc-DBT**. The strictly linear power dependence on the excitation dose also confirms this scenario (Fig. S22, ESI[†]). The PH component shows the opposite dependence on temperature, also as expected since non-radiative processes dominate at higher temperatures in this time region. The PF component shows a shorter fluorescence lifetime in **DtBuAc-DBT** (5.9 ns), compared with that of **DOMeAc-DBT** (9.6 ns). The radiative rate (k_f) and non-radiative rate (k_{nr}) including both internal conversion (k_{ic}) and intersystem crossing (k_{isc}), are determined from the PLQY measurements in the presence of oxygen and from the PF lifetime⁶¹ (see Table 1). For **DtBuAc-DBT**, k_f and k_{nr} are $3.4 \times 10^7 \text{ s}^{-1}$ and $14 \times 10^7 \text{ s}^{-1}$, respectively, indicating that in **DtBuAc-DBT** the triplet formation rate effectively competes with the radiative rate, thus favouring ISC and RISC processes. Time-resolved area normalized spectra of **DtBuAc-DBT** in zeonex matrix at 290 K and 80 K are shown in Fig. S21 (ESI[†]). In both cases, the DF spectra perfectly match the PF emission (delay time at 1.2 ns), indicating an efficient triplet up-conversion to the lowest singlet state. At 80 K, no delayed fluorescence is observed, with only PH occurring from the $^3\text{LE}_A$ state.



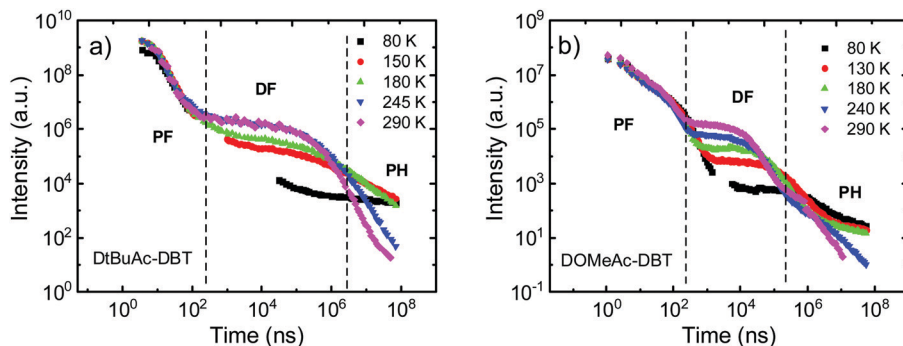


Fig. 7 Temperature dependent time-resolved decays of (a) **DtBuAc-DBT** and (b) **DOMeAc-DBT** in zeonex films (1 wt%) collected at various temperatures from 290 K to 80 K.

Table 1 Photophysical parameters of **DAC-DBT**, **DtBuAc-DBT** and **DOMeAc-DBT** in zeonex films

Compound	λ_{em}^a (nm)	S_1/T_1^b (eV)	ΔE_{ST}^c (eV)	Φ_f/Φ_{PL}^d ($\pm 5\%$)	τ_f^e (ns)	τ_{DF}^e (μ s)	k_f^f ($\times 10^7$ s $^{-1}$)	k_{nr}^f ($\times 10^7$ s $^{-1}$)	k_{RISC}^f ($\times 10^5$ s $^{-1}$)
DAC-DBT	398	3.28/3.08	0.20	1/6	—	—	—	—	—
DtBuAc-DBT	414	3.17/3.08	0.09	20/54	5.9	136.4	3.4	14	0.2
DOMeAc-DBT	460	3.00/2.76	0.24	35/48	9.6	10.5	3.6	6.8	2.3

^a The peak of photoluminescence at room temperature. ^b S_1 and T_1 energies calculated from the onsets of the fluorescence (290 K) and phosphorescence spectra (500 ms at 80 K), respectively. ^c Experimentally determined singlet-triplet energy splitting (ΔE_{ST}). ^d PLQY measured in air (Φ_f) and in nitrogen (Φ_{PL}) atmosphere at room temperature. ^e Lifetimes of PF and DF components fitting from the time-resolved decays at room temperature. ^f Calculated rate constants of fluorescence (k_f), non-radiative decay (k_{nr}) including intersystem crossing (k_{ISC}) and internal conversion (k_{IC}), and reverse intersystem crossing (k_{RISC}).

For **DOMeAc-DBT**, using the data obtained $k_f = 3.6 \times 10^7$ s $^{-1}$, similar to the rate determined for **DtBuAc-DBT**. However, k_{nr} for **DOMeAc-DBT** is slower at 6.8×10^7 s $^{-1}$. The shorter PF lifetime of **DtBuAc-DBT** is thus consistent with the faster ISC or IC pathways in this compound. The ISC rate (k_{ISC}) in **DtBuAc-DBT** can be estimated using the DF/PF ratio obtained from the comparison between PLQY measurements in nitrogen atmosphere and under air.⁶¹ Using the PLQY values given in Table 1, the ISC rate in **DtBuAc-DBT** is determined as $k_{ISC} = 10 \times 10^7$ s $^{-1}$, which is faster than the total rate of non-radiative decay for **DOMeAc-DBT**, further explaining the shorter fluorescence lifetime of **DtBuAc-DBT** and consistent with the smaller ΔE_{ST} (0.09 eV). Moreover, a faster RISC rate in **DtBuAc-DBT** is also expected compared to **DOMeAc-DBT**, as the S_1 - T_1 gap is much larger in **DOMeAc-DBT** (0.24 eV).

Surprisingly, **DOMeAc-DBT** shows a shorter TADF lifetime $\tau_{DF} = 10.5$ μ s, than **DtBuAc-DBT**, $\tau_{DF} = 136.4$ μ s. As the non-radiative processes are slower in **DOMeAc-DBT** ($k_{nr} = 6.8 \times 10^7$ s $^{-1}$) than in **DtBuAc-DBT** ($k_{nr} = 14 \times 10^7$ s $^{-1}$), note also that the phosphorescence decays in the same ms time range in both compounds (Fig. 7), the faster TADF decay in **DOMeAc-DBT** suggests a faster RISC rate in this compound. However, the TADF contribution to the overall emission is smaller. This apparent discrepancy is puzzling and therefore warranted further study of the TADF mechanism in **DOMeAc-DBT**.

The 1CT and the 3LE_D states in **DOMeAc-DBT** are very well aligned, showing an energy gap of < 0.01 eV (< 0.08 between 1CT and 3LE_A as seen in Fig. 6), while the 3CT state is at a much lower energy ($\Delta E_{1CT-3CT} = 0.24$ eV). RISC originating directly from the low-lying 3CT state is thus inefficient. However, any triplets occupying the 3LE_A (or 3LE_D) states would be able to undergo down-hill RISC to 1CT proceeding very rapidly as the

$\Delta E_{1CT-3LE} < 0.01$ eV. This ordering of excited states therefore explains why the DF lifetime is faster in **DOMeAc-DBT**, but the overall TADF contribution is smaller. We propose that rapid upper-state crossing RISC between 3LE and 1CT in **DOMeAc-DBT** competes with 3LE triplets relaxing to the low energy 3CT triplet. This IC relaxation to a non-emissive triplet state quenches TADF contribution, resulting in a smaller contribution to the total emission despite a faster RISC rate.

Crucially, the time-resolved spectra shown in Fig. 8b and c, obtained for time delays longer than 5 ms, where no TADF is observed, even at RT, give strong evidence to support the role of the high-energy triplet state in the emission process. The iso-emissive point observed in Fig. 8b shows unequivocally that two different triplet states are involved in the phosphorescence emission of **DOMeAc-DBT**, one that perfectly matches the phosphorescence of the OMe-Ac single unit, at higher energy, and another at lower energy which we assign to the 3CT phosphorescence, in agreement with the frontier orbital distributions shown in the DFT calculations (see Fig. S8 and S9 in ESI †). At 290 K, the emission spectrum shows practically no shift over the entire time range from 1.1 ns to 11.2 ms, showing that TADF mostly dominates the long-lived emission at RT. However, at a low temperature an emission intensity increase is observed in the millisecond time region (Fig. 7b), showing that phosphorescence instead of TADF is dominant. The emission of **DOMeAc-DBT** is therefore composed of PF at early times (< 100 ns), TADF in the microsecond range, and PH at later times (ms). Strikingly, the fluorescence and phosphorescence spectra at RT are very similar to each other, which is only possible if the PH originates from the triplet state localized on



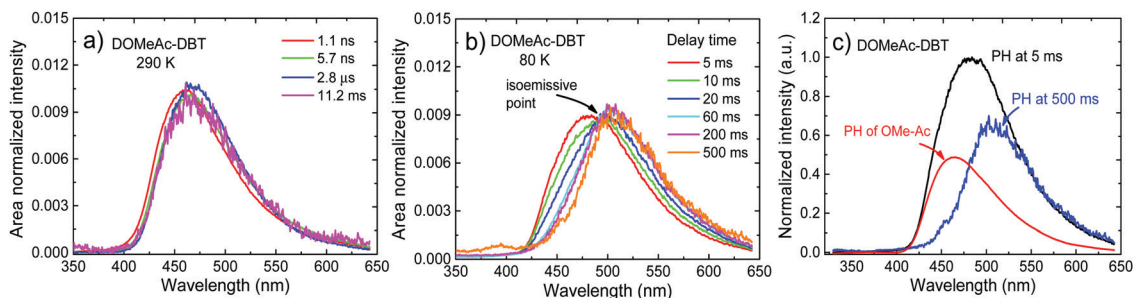


Fig. 8 **DOMEAc-DBT** in zeonex film: time-resolved area normalized emission spectra at (a) 290 K and (b) 80 K. (c) Phosphorescence spectra recorded at delay times of 5 ms and 500 ms, compared with that of the donor OMe-Ac unit measured at 80 K.

the donor unit ($^3\text{LE}_D$) which is isoenergetic with the ^1CT state. Consistently, the emission spectrum of **DOMEAc-DBT** at very-long delay times, obtained at room temperature, matches the PH of the OMe-Ac single fragment (Fig. S16, ESI †). The PH from the ^3CT state is not observed at RT as this state has a much slower radiative rate, thus longer lifetime, and can be easily quenched. However, importantly, PH from both ^3LE and ^3CT states are observed at low temperature, as shown in Fig. 8b. At delay time of 5 ms, the PH of **DOMEAc-DBT** shows features from both the $^3\text{LE}_D$ state localized on the OMe-Ac donor unit and the ^3CT state (Fig. 8c). The ^3LE phosphorescence appears at a higher energy and relaxes over time, whereas the ^3CT phosphorescence appears at a lower energy and shows longer lifetime, as expected. The time-resolved spectra therefore give full support to the role of the ^3LE state in mediating RISC, and assist in revealing the upper-state RISC mechanism in **DOMEAc-DBT**.

Devices

To evaluate the electroluminescent (EL) characteristics of **DtBuAc-DBT**, OLEDs were fabricated by vacuum thermal evaporation using the following device structure (Fig. 9a): ITO/NPB (40 nm)/TSBPA (10 nm)/DPEPO:*x*%**DtBuAc-DBT** (30 nm)/DPEPO (10 nm)/TPBi (40 nm)/LiF/Al, which was recently employed successfully for other similar blue TADF materials.⁶² Here *N,N'*-bis-(naphthalene-1-yl)-*N,N'*-bis(phenyl)benzidine (NPB), 4,4-(diphenylsilanediyl)-bis(*N,N*-diphenylaniline) (TSBPA), and 1,3,5-tris(*N*-phenylbenzimidazol-2-yl)benzene (TPBi) were employed as hole-injecting,

hole-transporting and electron-transporting layers, respectively. Bis[2-(diphenylphosphino)phenyl]ether oxide (DPEPO) was chosen as a suitable host for the blue material based on its high energy triplet state. An additional 10 nm DPEPO layer was used as a hole-blocking layer. The doping concentration of **DtBuAc-DBT** in DPEPO was optimized at 22% after screening concentrations of 10–35%. As DPEPO has a very poor hole conductivity,⁶³ the hole current in the emissive layer mainly depends on the hole transport of the emitter. Thus, a higher doping concentration is required for a better charge balance and efficiency.

The device shows a deep-blue emission peaking at 455 nm with a full width at half maximum of 84 nm, which is almost identical with the PL spectrum of the DPEPO:10%**DtBuAc-DBT** film (Fig. 9b), and results in high colour purity. The spectra are also independent of the driving voltages (Fig. S23a, ESI †), revealing that the charge recombination is well confined within the emissive layer in the EL process. The current density–voltage–luminance curves are shown in Fig. S23b (ESI †). The device shows a turn-on voltage of 4.0 V, the current and power efficiencies are 13.9 cd A $^{-1}$ and 9.7 lm W $^{-1}$, respectively. A maximum external quantum efficiency (EQE) of 10.5% is obtained as shown in Fig. 9a, which is in agreement with the measured PLQYs assuming there is no outcoupling enhancement. Remarkably, the EQE only drops slightly (9.8%) at the brightness of 100 cd m $^{-2}$. Noteworthy, the device shows CIE chromaticity coordinates of (0.133, 0.129) as shown in the inset of Fig. 9b, which is deeper blue than most of the recent devices of TADF emitters.^{62,64–68}

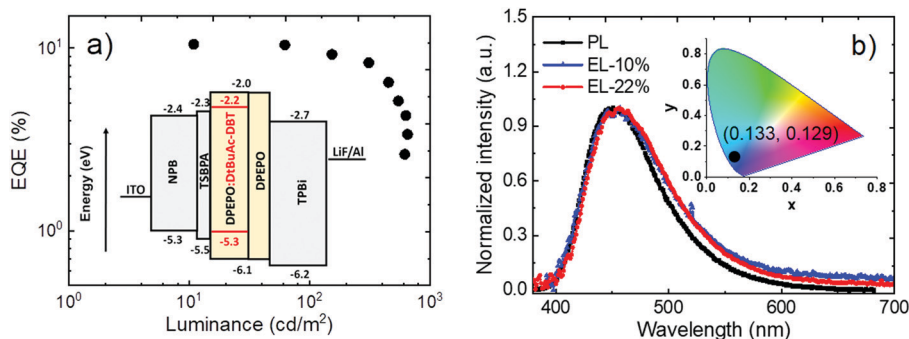


Fig. 9 (a) EQE vs. luminance characteristics. Inset shows the device structure and energy levels. (b) The comparison of PL spectrum of DPEPO:10%**DtBuAc-DBT** film and EL spectra of 10% and 22% doping concentration in blue devices collected at 9 V. The inset shows the CIE coordinates of the devices.



Conclusions

In summary, the synthesis and in-depth photophysical characterization of a series of blue TADF emitters with a D–A–D architecture utilizing the unconventional electron-rich DBT unit as the acceptor and Ac derivatives as donor units are reported. The introduction of *tert*-butyl or methoxy groups to the D unit enhances the donor strength of the Ac and helps to tune the singlet and triplet energy levels. Excellent energy alignment between the $^3\text{LE}_\text{D}$ and $^3\text{LE}_\text{A}$ triplet states and the ^1CT singlet state is obtained in the *tert*-butyl substituted compound **DtBuAc-DBT**. This leads to a decrease in the energy gap ($\Delta E_{1\text{CT}-3\text{LE}}$) from 0.20 eV in **DAc-DBT** to 0.09 eV in **DtBuAc-DBT**, which greatly facilitates the RISC process and results in triplet harvesting with great efficiency. Surprisingly, despite the excellent singlet–triplet energy alignment between the low energy ^3LE triplet and the ^1CT state in **DtBuAc-DBT**, the RISC rate is slower than in other highly efficient TADF emitters where RISC proceeds with rates of approximately 10^6 s^{-1} . However, the prototype proof-of-concept OLED based on **DtBuAc-DBT** emitter exhibits a deep-blue EL spectrum peaking at 455 nm with the CIE coordinates of (0.133, 0.129) and a maximum EQE of 10.5%.

Interestingly, when the donor strength is further increased by using methoxy groups in **DOMeAc-DBT**, a small energy gap of $<0.01 \text{ eV}$ between ^1CT and the high-energy triplet $^3\text{LE}_\text{D}$ is obtained. However, a lower energy triplet state of CT character is also observed, showing an energy gap of 0.24 eV to the ^1CT state. **DOMeAc-DBT** shows a smaller TADF contribution in comparison to **DtBuAc-DBT**, but notably with a much faster RISC rate, ($k_{\text{RISC}} = 2.3 \times 10^5 \text{ s}^{-1}$), despite a larger ΔE_{ST} . The faster RISC is ascribed to an upper-state crossing from $^3\text{LE}_\text{D}$ to ^1CT promoted by the small $\Delta E_{1\text{CT}-3\text{LE}} = 0.01 \text{ eV}$. The small TADF contribution in **DOMeAc-DBT** is thus attributed to the competition between the RISC rate (from $^3\text{LE}_\text{D}$ to ^1CT) and the rate of triplet $^3\text{LE}_\text{D}$ relaxation to the low ^3CT state by rapid IC. We have shown here that even when a material is designed in ways that the singlet ^1CT and triplet ^3LE states are specifically energy aligned to maximize the RISC rate, the low-energy ^3CT may act as a quenching state in certain conditions, competing with RISC and having a detrimental effect on the triplet harvesting outcome. This work expands the range of acceptor units that can be used in TADF emitters and shows the importance of precisely tuning the local and triplet states by carefully selecting complementary donor and acceptor units to achieve efficient TADF.

Author contributions

R. H. and N. A. K. contributed equally to this manuscript. N. A. K. and J. S. W. designed, synthesized and characterized the studied compounds under the supervision of M. R. B. R. H. carried out the photophysical characterization of all compounds under the supervision of F. B. D. N. A. K. performed and analysed all the DFT calculations. R. H. and N. A. K. lead the writing and coordination of the manuscript with additional contribution from all authors. F. B. D. lead the interpretation of the

experimental photophysical data with assistance from R. H. A. D. performed and interpreted PLQY and OLED measurements with R. H. A. S. B. collected X-ray diffraction data and performed data analysis. The manuscript was read, corrected and approved by all authors.

Conflicts of interest

There are no conflicts of interest to declare.

Acknowledgements

R. H. acknowledges a PhD grant funded by Durham University. N. A. K., J. S. W., A. D. and M. R. B. thank EU Horizon 2020 Grant Agreement No. 732103 (HyperOLED) for funding. F. B. D. acknowledges Samsung-SAIT for funding this work using their Global Research Outreach (GRO) Program, and F. B. D. and M. R. B. acknowledge the EPSRC for funding under grant numbers EP/L02621X/1 and EP/N028511/1.

References

- 1 K. Wang, Y. Z. Shi, C. J. Zheng, W. Liu, K. Liang, X. Li, M. Zhang, H. Lin, S. L. Tao, C. S. Lee, X. M. Ou and X. H. Zhang, *ACS Appl. Mater. Interfaces*, 2018, **10**, 31515–31525.
- 2 G. Grybauskaite-Kaminskiene, K. Ivaniuk, G. Bagdziunas, P. Turyk, P. Stakhira, G. Baryshnikov, D. Volyniuk, V. Cherpak, B. Minaev, Z. Hotra, H. Ågren and J. V. Grazulevicius, *J. Mater. Chem. C*, 2018, **6**, 1543–1550.
- 3 H. F. Higginbotham, C. L. Yi, A. P. Monkman and K. T. Wong, *J. Phys. Chem. C*, 2018, **122**, 7627–7634.
- 4 X. Yang, H. Guo, B. Liu, J. Zhao, G. Zhou, Z. Wu and W.-Y. Wong, *Adv. Sci.*, 2018, **5**, 1800950.
- 5 J. W. Sun, J. Y. Baek, K.-H. Kim, J.-S. Huh, S.-K. Kwon, Y.-H. Kim and J.-J. Kim, *J. Mater. Chem. C*, 2017, **5**, 1027–1032.
- 6 C. W. Tang and S. A. VanSlyke, *Appl. Phys. Lett.*, 1987, **51**, 913–915.
- 7 P. E. Burrows, G. Gu, V. Bulovi, Z. Shen, S. R. Forrest and M. E. Thompson, *IEEE Trans. Electron Devices*, 1997, **44**, 1188–1203.
- 8 B. Geffroy, P. le Roy and C. Prat, *Polym. Int.*, 2006, **55**, 572–582.
- 9 S. Reineke, M. Thomschke, B. Lüssem and K. Leo, *Rev. Mod. Phys.*, 2013, **85**, 1245–1293.
- 10 M. Gmelch, H. Thomas, F. Fries and S. Reineke, *Sci. Adv.*, 2019, **5**, 7310.
- 11 N. K. Patel, S. Cina and J. H. Burroughes, *IEEE J. Sel. Top. Quantum Electron.*, 2002, **8**, 346–361.
- 12 X. Cai and S. J. Su, *Adv. Funct. Mater.*, 2018, **28**, 1802558.
- 13 S. Reineke, *Nat. Photonics*, 2014, **8**, 269–270.
- 14 S. Scholz, D. Kondakov, B. Lüssem and K. Leo, *Chem. Rev.*, 2015, **115**, 8449–8503.
- 15 R. Meerheim, B. Lüssem and K. Leo, *Proc. IEEE*, 2009, **97**, 1606–1626.



- 16 M. Zhu and C. Yang, *Chem. Soc. Rev.*, 2013, **42**, 4963–4976.
- 17 H. Kuma and C. Hosokawa, *Sci. Technol. Adv. Mater.*, 2014, **15**, 034201.
- 18 S. J. Su, E. Gonmori, H. Sasabe and J. Kido, *Adv. Mater.*, 2008, **20**, 4189–4194.
- 19 A. P. Monkman, *ISRN Mater. Sci.*, 2013, **2013**, 670130.
- 20 H. Xu, R. Chen, Q. Sun, W. Lai, Q. Su, W. Huang and X. Liu, *Chem. Soc. Rev.*, 2014, **43**, 3259–3302.
- 21 J. Lee, C. Jeong, T. Batagoda, C. Coburn, M. E. Thompson and S. R. Forrest, *Nat. Commun.*, 2017, **8**, 15566.
- 22 H. Fukagawa, T. Shimizu, T. Kamada, S. Yui, M. Hasegawa, K. Morii and T. Yamamoto, *Sci. Rep.*, 2015, **5**, 9855.
- 23 I. R. De Moraes, S. Scholz, B. Lüssem and K. Leo, *Org. Electron.*, 2011, **12**, 341–347.
- 24 R. Seifert, I. Rabelo De Moraes, S. Scholz, M. C. Gather, B. Lüssem and K. Leo, *Org. Electron.*, 2013, **14**, 115–123.
- 25 H. Fukagawa, T. Shimizu, Y. Iwasaki and T. Yamamoto, *Sci. Rep.*, 2017, **7**, 1735.
- 26 C. Adachi, *Jpn. J. Appl. Phys.*, 2014, **53**, 060101.
- 27 C. A. Parker and C. G. Hatchard, *Trans. Faraday Soc.*, 1961, **57**, 1894–1904.
- 28 Q. Zhang, J. Li, K. Shizu, S. Huang, S. Hirata, H. Miyazaki and C. Adachi, *J. Am. Chem. Soc.*, 2012, **134**, 14706–14709.
- 29 Q. Zhang, B. Li, S. Huang, H. Nomura, H. Tanaka and C. Adachi, *Nat. Photonics*, 2014, **8**, 326–332.
- 30 F. B. Dias, K. N. Bourdakos, V. Jankus, K. C. Moss, K. T. Kamtekar, V. Bhalla, J. Santos, M. R. Bryce and A. P. Monkman, *Adv. Mater.*, 2013, **25**, 3707–3714.
- 31 P. L. Santos, J. S. Ward, P. Data, A. S. Batsanov, M. R. Bryce, F. B. Dias and A. P. Monkman, *J. Mater. Chem. C*, 2016, **4**, 3815–3824.
- 32 M. K. Etherington, F. Franchello, J. Gibson, T. Northey, J. Santos, J. S. Ward, H. F. Higginbotham, P. Data, A. Kurowska, P. L. Dos Santos, D. R. Graves, A. S. Batsanov, F. B. Dias, M. R. Bryce, T. J. Penfold and A. P. Monkman, *Nat. Commun.*, 2017, **8**, 14987.
- 33 J. Gibson, A. P. Monkman and T. J. Penfold, *ChemPhysChem*, 2016, **17**, 2956–2961.
- 34 M. K. Etherington, J. Gibson, H. F. Higginbotham, T. J. Penfold and A. P. Monkman, *Nat. Commun.*, 2016, **7**, 13680.
- 35 P. L. dos Santos, J. S. Ward, D. G. Congrave, A. S. Batsanov, J. Eng, J. E. Stacey, T. J. Penfold, A. P. Monkman and M. R. Bryce, *Adv. Sci.*, 2018, **5**, 1700989.
- 36 Y. Im, M. Kim, Y. J. Cho, J.-A. Seo, K. S. Yook and J. Y. Lee, *Chem. Mater.*, 2017, **29**, 1946–1963.
- 37 J. Choi, D.-S. Ahn, K. Y. Oang, D. W. Cho and H. Ihee, *J. Phys. Chem. C*, 2017, **121**, 24317–24323.
- 38 H. Tanaka, K. Shizu, H. Miyazaki and C. Adachi, *Chem. Commun.*, 2012, **48**, 11392–11394.
- 39 K. Kawasumi, T. Wu, T. Zhu, H. S. Chae, T. Van Voorhis, M. A. Baldo and T. M. Swager, *J. Am. Chem. Soc.*, 2015, **137**, 11908–11911.
- 40 T. T. Bui, F. Goubard, M. Ibrahim-Ouali, D. Gigmes and F. Dumur, *Beilstein J. Org. Chem.*, 2018, **14**, 282–308.
- 41 I. Lee and J. Y. Lee, *Org. Electron.*, 2016, **29**, 160–164.
- 42 F.-M. Xie, H.-Z. Li, G.-L. Dai, Y.-Q. Li, T. Cheng, M. Xie, J.-X. Tang and X. Zhao, *ACS Appl. Mater. Interfaces*, 2019, **11**, 26144–26151.
- 43 H. Tachibana, N. Aizawa, Y. Hidaka and T. Yasuda, *ACS Photonics*, 2017, **4**, 223–227.
- 44 Q. Zhang, D. Tsang, H. Kuwabara, Y. Hatae, B. Li, T. Takahashi, S. Y. Lee, T. Yasuda and C. Adachi, *Adv. Mater.*, 2015, **27**, 2096–2100.
- 45 P. L. Dos Santos, J. S. Ward, M. R. Bryce and A. P. Monkman, *J. Phys. Chem. Lett.*, 2016, **7**, 3341–3346.
- 46 R. S. Nobuyasu, Z. Ren, G. C. Griffiths, A. S. Batsanov, P. Data, S. Yan, A. P. Monkman, M. R. Bryce and F. B. Dias, *Adv. Opt. Mater.*, 2016, **4**, 597–607.
- 47 Y. Tao, K. Yuan, T. Chen, P. Xu, H. Li, R. Chen, C. Zheng, L. Zhang and W. Huang, *Adv. Mater.*, 2014, **26**, 7931–7958.
- 48 R. Huang, J. S. Ward, N. A. Kukhta, J. Avó, J. Gibson, T. Penfold, J. C. Lima, A. S. Batsanov, M. N. Berberan-Santos, M. R. Bryce and F. B. Dias, *J. Mater. Chem. C*, 2018, **6**, 9238–9247.
- 49 J. S. Kang, T. R. Hong, H. J. Kim, Y. H. Son, R. Lampande, B. Y. Kang, C. Lee, J.-K. Bin, B. S. Lee, J. H. Yang, J. Kim, S. Park, M. J. Cho, J. H. Kwon and D. H. Choi, *J. Mater. Chem. C*, 2016, **4**, 4512–4520.
- 50 R. Huang, J. Avó, T. Northey, E. Channing-Pearce, P. L. dos Santos, J. S. Ward, P. Data, M. Etherington, M. A. Fox, T. J. Penfold, M. N. Berberan-Santos, J. C. C. Lima, M. R. Bryce and F. Dias, *J. Mater. Chem. C*, 2017, **5**, 6269–6280.
- 51 M. M. Heravi, Z. Kheilkordi, V. Zadsirjan, M. Heydari and M. Malmir, *J. Organomet. Chem.*, 2018, **861**, 17–104.
- 52 C. R. Groom, I. J. Bruno, M. P. Lightfoot and S. C. Ward, *Acta Crystallogr., Sect. B: Struct. Sci., Cryst. Eng. Mater.*, 2016, **72**, 171–179.
- 53 W. Zeng, H. Y. Lai, W. K. Lee, M. Jiao, Y. J. Shiu, C. Zhong, S. Gong, T. Zhou, G. Xie, M. Sarma, K. T. Wong, C. C. Wu and C. Yang, *Adv. Mater.*, 2018, **30**, 1704961.
- 54 A. D. Boese and J. M. L. Martin, *J. Chem. Phys.*, 2004, **121**, 3405–3416.
- 55 N. A. Kukhta, D. A. Da Silva Filho, D. Volyniuk, J. V. Grazulevicius and G. Sini, *Chem. Mater.*, 2017, **29**, 1695–1707.
- 56 J.-L. Brédas, *Chem. Mater.*, 2017, **29**, 477–478.
- 57 R. L. Martin, *J. Chem. Phys.*, 2003, **118**, 4775–4777.
- 58 V. F. Pais, H. S. El-Sheshtawy, R. Fernández, J. M. Lassaletta, A. Ros and U. Pischel, *Chem. – Eur. J.*, 2013, **19**, 6650–6661.
- 59 C. Y. Chan, L. S. Cui, J. U. Kim, H. Nakanotani and C. Adachi, *Adv. Funct. Mater.*, 2018, **28**, 1706023.
- 60 O. L. J. Gijzeman and F. Kaufman, *J. Chem. Soc., Faraday Trans. 2*, 1973, **69**, 721–726.
- 61 F. B. Dias, J. Santos, D. R. Graves, P. Data, R. S. Nobuyasu, M. A. Fox, A. S. Batsanov, T. Palmeira, M. N. Berberan-Santos, M. R. Bryce and A. P. Monkman, *Adv. Sci.*, 2016, **3**, 1600080.
- 62 P. Stachelek, J. S. Ward, P. L. dos Santos, A. Danos, M. Colella, N. Haase, S. J. Raynes, A. S. Batsanov, M. R. Bryce and A. P. Monkman, *ACS Appl. Mater. Interfaces*, 2019, **11**, 27125–27133.



- 63 G. W. Kim, H. W. Bae, R. Lampande, I. J. Ko, J. H. Park, C. Y. Lee and J. H. Kwon, *Sci. Rep.*, 2018, **8**, 16263.
- 64 S. J. Woo, Y. Kim, S. K. Kwon, Y. H. Kim and J. J. Kim, *ACS Appl. Mater. Interfaces*, 2019, **11**, 7199–7207.
- 65 X. Li, J. Zhang, Z. Zhao, L. Wang, H. Yang, Q. Chang, N. Jiang, Z. Liu, Z. Bian, W. Liu, Z. Lu and C. Huang, *Adv. Mater.*, 2018, **30**, 1705005.
- 66 W. Liu, S. Ying, R. Guo, X. Qiao, P. Leng, Q. Zhang, Y. Wang, D. Ma and L. Wang, *J. Mater. Chem. C*, 2019, **7**, 1014–1021.
- 67 Y. Xu, X. Liang, Y. Liang, X. Guo, M. Hanif, J. Zhou, X. Zhou, C. Wang, J. Yao, R. Zhao, D. Hu, X. Qiao, D. Ma and Y. Ma, *ACS Appl. Mater. Interfaces*, 2019, **11**, 31139–31146.
- 68 D. Liu, K. Sun, G. Zhao, J. Wei, J. Duan, M. Xia, W. Jiang and Y. Sun, *J. Mater. Chem. C*, 2019, **7**, 11005–11013.

