



Cite this: *Metallomics*, 2019, 11, 914

Lanthanides compete with calcium for binding to cadherins and inhibit cadherin-mediated cell adhesion†

Lewis L. Brayshaw,^a Rosanna C. G. Smith,^{ab} Magd Badaoui,^c James A. Irving^c and Stephen R. Price^{ib*^a}

Lanthanides are rare-earth metals with a broad range of applications in biological research and medicine. In addition to their unique magnetic and spectroscopic properties, lanthanides are also effective mimics of calcium and can stimulate or inhibit the function of calcium-binding proteins. Cadherins are a large family of calcium-binding proteins that facilitate cell adhesion and play key roles in embryo development, tissue homeostasis and tumour metastasis. However, whether lanthanides can bind cadherins and functionally replace calcium binding has not been comprehensively explored. In this study, we investigated the effect of lanthanide binding on cadherin structure and function using terbium, which is a commonly used lanthanide for protein spectroscopy and a proposed anti-cancer agent. We demonstrate that terbium can compete with calcium for binding to calcium-binding sites in cadherins. Terbium binding to cadherins abolished their cell adhesive activity and rendered cadherins sensitive to proteolysis by trypsin. Molecular dynamics simulations indicate that replacement of calcium by terbium results in structural rearrangements and increases the flexibility of the cadherin ectodomain. These changes in structure and dynamics are likely to underlie the inability of lanthanide-bound cadherins to support cell adhesion. Taken together, our findings further knowledge on lanthanide interactions with calcium-binding proteins and provide new insight into the influence of metal chemistry on cadherin structure, dynamics and function.

Received 2nd November 2018,
Accepted 20th February 2019

DOI: 10.1039/c8mt00317c

rsc.li/metallomics

Significance to metallomics

Lanthanides are widely used in medicine and biological research. A unique feature of lanthanides is their ability to mimic calcium in biological processes and the binding of lanthanides is known to induce a range of effects in calcium-binding proteins. This study investigated the effect of lanthanides binding to cadherins, which are calcium-dependent cell adhesion molecules that have key roles in embryo development and tumour metastasis. Our findings expand knowledge on the bioactivity of lanthanides and provide new insight into the sensitivity of cadherin function to the chemistry of binding metals.

Introduction

Lanthanides are a group of metals with extensive use in biological research and medicine.^{1–4} They are frequently used in clinical magnetic resonance imaging and, due to their spectroscopic properties, are powerful tools for probing physiological processes. For example, lanthanides have been used to monitor E- and N-cadherin dynamics in the membranes of cells undergoing

epithelial-to-mesenchymal transition.⁵ Additionally, lanthanides are highly bioactive and there is significant interest in their use as therapeutics.⁶ Lanthanum carbonate for instance, is a potent binder of phosphate and is an approved treatment for hyperphosphatemia in patients with chronic kidney disease.⁷ Furthermore, considerable research exists to support the use of lanthanides (in particular Tb³⁺ and Gd³⁺) as anti-cancer agent, given their ability to induce apoptosis and inhibit cell motility in cancer cells.^{8–11}

A significant characteristic of lanthanide ions is their chemical similarity to Ca²⁺ ions, which is a result of their comparable ionic radii and metal coordination chemistry.¹² For example, Tb³⁺ has an ionic radius of 0.98 Å and Ca²⁺ has an ionic radius of 1.06 Å, and both are typically coordinated by 6–8 ligands.^{13–15} Lanthanides binding within a number of Ca²⁺-binding

^a Research Department of Cell and Developmental Biology, UCL, Gower Street, WC1E 6BT, London, UK. E-mail: Stephen.price@ucl.ac.uk

^b Centre for Human Development, Stem Cells, and Regeneration, University of Southampton, Southampton, SO17 1BJ, UK

^c Research Department of Respiratory Medicine, UCL, Gower Street, WC1E 6BT, London, UK

† Electronic supplementary information (ESI) available. See DOI: 10.1039/c8mt00317c



proteins has been demonstrated, and due to their greater electropositivity, lanthanides often have a stronger binding affinity to proteins than Ca^{2+} .^{16,17} However, the effect that lanthanide binding has on the function of proteins is hard to predict. For certain proteins, lanthanide binding has been shown to effectively substitute for Ca^{2+} in terms of protein function.^{18,19} For example, Tb^{3+} binding to β 1-bungarotoxin stimulates the protein's phospholipase A2 activity.²⁰ For others, such as Gd^{3+} binding to stretch activated Ca^{2+} channels, lanthanide ions have a potent inhibitory effect.^{21–23} Given their wide-ranging application in biology, it is important to understand the bioactivity of lanthanides on Ca^{2+} -binding proteins.

Cadherins are a large family of calcium-dependent membrane proteins with over 100 members. Cadherins have vital roles in embryo development and tissue homeostasis, and a number of human diseases, such as cancer, are associated with alterations in cadherin function.^{24–27} Cadherins facilitate cell–cell adhesion through trans-binding of their extracellular regions, which are known as ectodomains.²⁸ The ectodomains of classical cadherins are composed of five extracellular domains (EC1–5), which are connected by flexible linker regions. X-ray crystal structures indicate that three Ca^{2+} ions can bind at each of the four linker regions and that the cadherin protein gradually attains its functional conformation as Ca^{2+} ions bind to the 12 binding sites.^{29–31} Successive Ca^{2+} -binding results in the precise relative positioning of EC domains and imparts rigidity and curvature onto the cadherin molecule which is an essential feature for cadherin function.^{32–34} Furthermore, as Ca^{2+} ions bind to a cadherin molecule, the binding affinity for successive Ca^{2+} ions increases due to cooperativity in binding and conformational changes which are transmitted distally along the cadherin.^{35,36} Whether lanthanides can bind cadherins and effectively replace calcium in supporting cadherin function has not been comprehensively investigated.

In this study, we investigated the binding of the lanthanide Tb^{3+} to two classical cadherins with fundamental functions in embryo development and tumour metastasis, E-cadherin and N-cadherin. Cell-based assays, protein biophysics and molecular dynamics have been used to demonstrate that Tb^{3+} competes with Ca^{2+} for binding to cadherin Ca^{2+} -binding sites, and Tb^{3+} -bound cadherins have enhanced flexibility and do not support cell–cell adhesion.

Methods

Cell culture

Chinese hamster ovary cells were stably transfected with human N-cadherin (N-CHO cells) or human E-cadherin (E-CHO cells) using Lipofectamine 2000 (Thermo), and cells were selected for expression using G418 (Gibco). Parental CHO, N-CHO and E-CHO cells were cultured in DMEM/F12 1:1 (Gibco) containing 10% FBS (Gibco). Hs578t and MCF-7 cells were obtained from ATCC and were cultured in DMEM containing 10% FBS. Culture media for Hs578t additionally contained $10 \mu\text{g mL}^{-1}$ bovine insulin (Sigma).

Aggregation assays

Monolayer cell cultures were treated with 0.01% trypsin + 1 mM CaCl_2 in HBSS (Gibco) for 30 minutes at 37 °C. This trypsin treatment dissociates monolayers into single cells whilst leaving surface cadherins intact. Cells were resuspended in HBSS + 1% BSA (Sigma) + 10% FBS to inhibit further trypsin degradation and then resuspended in HBSS + 1% BSA to give a concentration of 150 000 cells per 50 μL . 150 000 cells were seeded into 24-well ultra-low attachment plates (Corning Costar) in 0.5 mL HBSS + 1% BSA containing CaCl_2 , TbCl_3 or combinations of both. Plates were rotated horizontally at 75 rpm at 37 °C on an orbital shaker Model 3500 (WR) for either 30 minutes (N-CHO) or 40 minutes (E-CHO, Hs578t, MCF-7). The aggregation potential was calculated by 1 minus the number of single cells at end of aggregation (N_e) divided by the number of single cells at the beginning of aggregation (N_s). Aggregation potential = $1 - N_e/N_s$. The number of single cells was quantified using a 0.2 mm Improved Neubauer haemocytometer counting chamber (Hawksley).

Trypsin protection assays

1.5×10^6 cells were seeded into 10 cm culture plates (Triple Red) with media 24 h prior to experimentation. The cells were washed twice with HBSS and then incubated with HBSS + 5 mM EDTA for 8 min to remove Ca^{2+} ions. Cells were washed with HBSS and then incubated with HBSS + required ions (Ca^{2+} , EGTA, Tb^{3+}) for 10 min. Trypsin (Sigma) was added to a final concentration of 0.04% and cells were incubated for 80 min at 25 °C. Cells were then pelleted, resuspended in HBSS + 0.5 mg trypsin inhibitor (Sigma) and placed on ice.

Western blotting

Cells were lysed and protein collected using MEM-PER Plus membrane extraction kit (Thermo) with trypsin inhibitor and Halt protease inhibitor cocktail (Thermo). Protein concentration in samples was quantified using Pierce BCA Protein Assay Kit (Thermo). Samples were boiled in SDS-DTT sample buffer for 5 min, separated on an 8% SDS-polyacrylamide gel and then transferred to a nitrocellulose membrane (Biorad). The membrane was blocked with TBS-T (tris buffered saline plus 0.1% Tween) + 5% milk for 1 hour at room temperature and then incubated with primary antibody diluted in TBS-T + 5% milk overnight at 4 °C. Membranes were washed four times in TBS-T and incubated with secondary antibody for 1 hour at 25 °C. Following four further washes in TBS-T, membranes were developed with Luminata Western HRP substrate (Millipore) and exposed using a ChemiDoc MP system (Biorad). Image collection and analysis was performed with ImageLab software (Biorad).

Primary antibodies used include mouse anti-N-cadherin (BD Biosciences, 610920) (1:2500), mouse anti-E-cadherin (BD Biosciences, 610181) (1:2500), and rabbit anti- β -actin (Cell Signaling Technology, 4970) (1:1000). Secondary antibodies used include anti-mouse HRP-conjugate (Promega, W4021) (1:2000) and anti-rabbit HRP-conjugate (Promega, W4011) (1:2000).



Tb³⁺-FRET

Wild-type human E-cadherin recombinant protein fragment aa155-710 (Sigma) was dialysed within 2 × 5 L 10 mM Tris-HCl, 100 mM KCl, 120 mM NaCl (all Sigma) pH 7.4 at 4 °C using Slide-A-Lyzer Dialysis cassettes (Thermo). The protein sample was aliquoted and stored at -20 °C. E-cadherin titration and Tb³⁺ titration experiments were carried out on a SpectraMax-M5 (Molecular Devices). For the E-cadherin titration, a stock solution of E-cadherin was added to 100 μM TbCl₃ in buffer (10 mM Tris-HCl, 100 mM KCl, 120 mM NaCl) or buffer alone and emission at 543 nm measured during excitation at 282 nm. For the Tb³⁺ titration, a stock solution of Tb³⁺ was added to 43.7 nM E-cadherin in buffer and emission at 543 nm measured during excitation at 282 nm. The fluorescence competition assay was carried out on a Cary Eclipse Fluorescence Spectrophotometer (Agilent). Stock concentrations of Ca²⁺ were added to 3 μM E-cadherin in 170 μM Tb³⁺ and buffer. Emission was measured at 542 nm during excitation at 280 nm. For all experiments, spectra were corrected for the background contribution of Tb³⁺ to 542–543 nm emissions by measuring and subtracting the 542–543 nm emissions of each Tb³⁺ concentration in the absence of protein. All samples were gently mixed and allowed to equilibrate for 15 minutes prior to data collection.

Molecular dynamics

The LEaP software, part of AmberTools, was used to generate systems from the crystal structure of mouse E-cadherin (PDB code 3Q2V).^{31,37} Residues 504–507 were not resolved by crystallography and were modelled in using Pymol.³⁸ Disulphide bridges found in physiological conditions were generated in all systems.³¹ The Ca-Ecad system consisted of the protein and the 12 crystallographically resolved Ca²⁺ ions found at the linker regions between EC domains. All 12 crystallographically resolved Ca²⁺ ions were replaced with Tb³⁺ ions for the Tb-Ecad system, and the 12 Ca²⁺ ions were removed for the Apo-Ecad system. All other crystallographically resolved non-protein molecules were removed in systems. Systems were neutralised through the addition of bulk Na⁺ ions and solvated explicitly in boxes of TIP3P water molecules with edges no closer than 10 Å from atoms in the protein.³⁹

Simulations were carried out using the SANDER package in Amber16 with the Parm99 parameter sets for Ca²⁺ and Tb³⁺ ions.³⁷ For all simulations, 2 fs time steps were used and a potential cut-off of 8 Å was assumed for van der Waals interactions. Constant volume periodic boundary conditions were assumed. The systems were minimized with 500 steps of steepest descent minimization followed by 500 steps of conjugate gradient minimization using 2 kcal mol⁻¹ Å⁻² quadratic constraints. After minimisation, the temperature of the systems was increased to 300 K over 2500 steps using Langevin dynamics. Free molecular dynamics simulations were then carried out for 40 ns.

The coordinates of atoms in the systems were saved every 10 ps during simulation and trajectories were analysed in VMD.^{40,41} RMSDs were calculated using non-hydrogen atoms in VMD.

Results

Tb³⁺ inhibits E-cadherin- and N-cadherin-mediated cell adhesion

To investigate whether Tb³⁺ affects cadherin-mediated cell adhesion, cell aggregation assays were used which assess the ability of single cells to form cadherin-dependent aggregates. Cadherin-expressing cells were dissociated into single cells using 0.01% trypsin + 1 mM Ca²⁺ treatment, which cleaves proteins on the cell surface but does not affect cadherins. This treatment produces a single-cell population which can only form adhesions and aggregates *via* cadherin-mediated cell adhesion.^{30,42,43} To demonstrate that this method only permits cadherin-mediated cell aggregation, parental CHO cells were treated with 0.01% trypsin + 1 mM Ca²⁺ and assayed for 40 min in the presence of 1 mM Ca²⁺. Parental CHO cells have no endogenous cadherin expression and thus no aggregation was observed (Fig. S1, ESI[†]).

In contrast, CHO cells stably expressing E-cadherin (E-CHO) and CHO cells stably expressing N-cadherin (N-CHO) formed dense aggregates within 40 minutes and 30 minutes respectively in the presence of 1 mM Ca²⁺ (Fig. 1A and E). However, no aggregation was visible in the presence of only 1 mM Tb³⁺ (Fig. 1B and F). Quantification of aggregation through the counting of unaggregated single cells confirmed that cadherin-mediated aggregation of E-CHO and N-CHO cells is significantly reduced in 1 mM Tb³⁺ compared with aggregation in 1 mM Ca²⁺ (Fig. 1I and J). Interestingly, cell aggregation in 1 mM Ca²⁺ + 1 mM Tb³⁺ was not significantly different from that in 1 mM Ca²⁺, but cell aggregation was significantly inhibited for both E-CHO and N-CHO cells in the presence of 1 mM Ca²⁺ + 2 mM Tb³⁺ (Fig. 1C, D, G, H, I and J). Similar results were obtained in cell aggregation assays in the presence of another lanthanide, Gd³⁺, suggesting that cadherin-mediated cell adhesion is inhibited by Ca²⁺-mimicking lanthanides (Fig. S2, ESI[†]).

In order to determine if Tb³⁺ had the same effect on cells expressing cadherins endogenously, aggregation assays using two human cancer cell lines were carried out. MCF-7 is an E-cadherin expressing breast cancer cell line and, similarly to E-CHO, MCF-7 E-cadherin mediated cell aggregation was significantly reduced in the presence of 1 mM Tb³⁺ and 1 mM Ca²⁺ + 2 mM Tb³⁺ compared with aggregation in the presence of 1 mM Ca²⁺ (Fig. S3A–D, I, ESI[†]).⁴⁴ In the N-cadherin expressing breast cancer cell line Hs578t, cell aggregation was also significantly impaired in 1 mM Tb³⁺ and 1 mM Ca²⁺ + 2 mM Tb³⁺ (Fig. S3E–H, J, ESI[†]). Taken together, the lack of aggregation in 1 mM Tb³⁺ for all cell lines indicates Tb³⁺ cannot substitute for Ca²⁺ in mediating E- and N-cadherin adhesion. Additionally, Tb³⁺ is able to inhibit Ca²⁺-dependent cadherin cell adhesion when at a higher concentration than Ca²⁺, suggesting competitive binding between the two metal ions for cadherins.

Tb³⁺ does not protect E-cadherin or N-cadherin from trypsin degradation

To determine how Tb³⁺ inhibits cadherin-mediated adhesion and whether Tb³⁺ competes with Ca²⁺ for binding at Ca²⁺



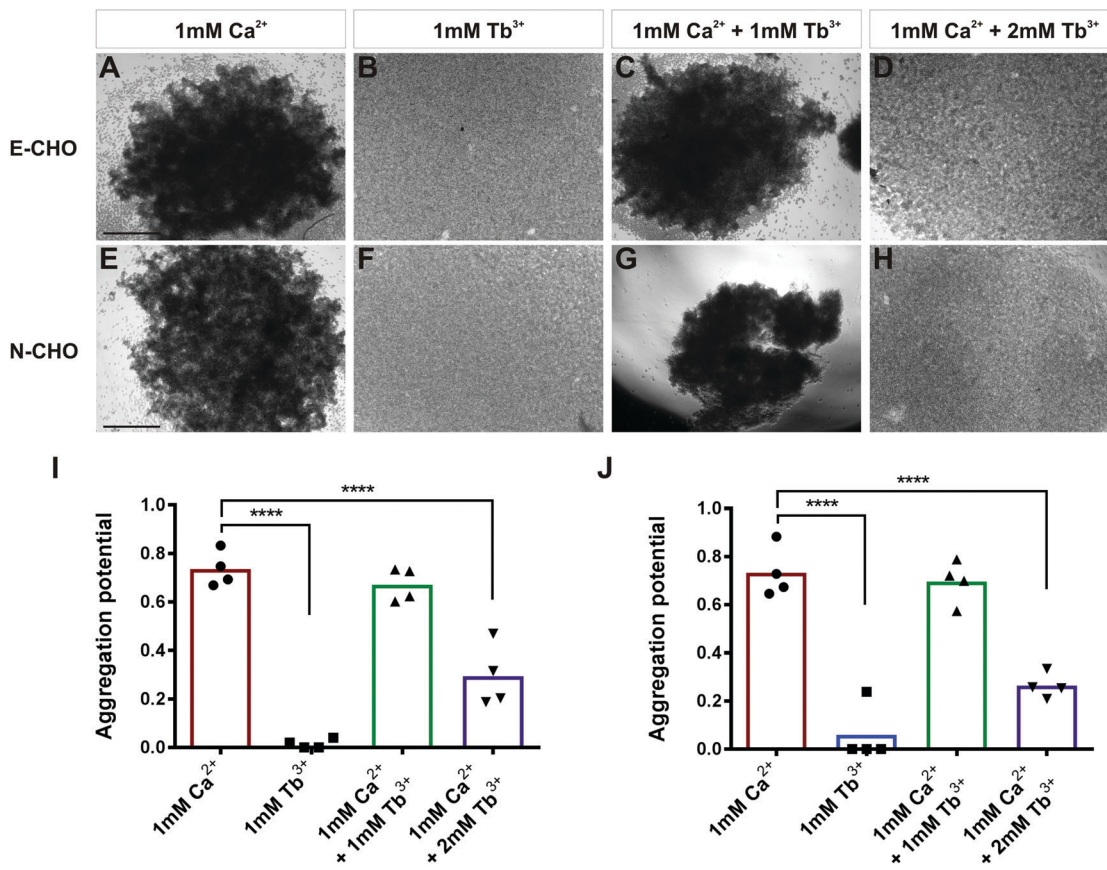


Fig. 1 Influence of Tb^{3+} on cadherin-mediated cell aggregation. (A–D) Cell aggregation assays of E-cadherin expressing CHO (E-CHO) and (E–H) N-cadherin expressing CHO (N-CHO) cells in different combinations of Ca^{2+} and Tb^{3+} . Prior to aggregation, cells were treated with 0.01% trypsin + 1 mM Ca^{2+} . Aggregation potential of (I) E-CHO and (J) N-CHO cells. The aggregation potential was calculated by $1 - N_e/N_s$, where N_e is the number of single cells at end of aggregation and N_s is the number of single cells at the beginning of aggregation. Aggregation potential = $1 - N_e/N_s$. Scatterplots show individual values and bars represent the mean from four biological replicates (one-way ANOVA with Tukey's multiple comparisons test, significant differences are to 1 mM $CaCl_2$, **** indicates $p \leq 0.0001$). Scale bar = 200 μm .

binding sites, trypsin resistance assays were carried out. When cadherins are fully bound to Ca^{2+} , they are resistant to trypsin-mediated proteolysis when using a low concentration of trypsin.^{30,42,43} This is because Ca^{2+} -bound cadherins adopt a rigid structural conformation that has no accessible trypsin recognition sites. In the absence of Ca^{2+} binding, cadherins adopt a flexible conformation that is sensitive to degradation as the trypsin recognition sites can become exposed. Thus, by assessing the resistance of cadherins to trypsin, we can demonstrate whether Tb^{3+} -bound cadherins differ in structure or rigidity to Ca^{2+} -bound cadherins and determine if Tb^{3+} can compete with Ca^{2+} for binding. Monolayers of E-CHO and N-CHO cells were first stripped of Ca^{2+} via EDTA treatment and then treated with a low concentration of trypsin (0.04%) in the presence of different combinations of Ca^{2+} and Tb^{3+} for 80 min. Proteins were then extracted and western blots were carried out to analyse E-cadherin and N-cadherin proteins. To measure how Ca^{2+} and Tb^{3+} protects E-cadherin and N-cadherin from trypsin degradation, the densitometry of the protein bands corresponding to full-length cadherin proteins (120 kD for E-cadherin and 135 kD for N-cadherin) at each condition was quantified after normalisation to a β -actin

protein loading control. The densitometry of the full-length band in each treatment was expressed as relative to measurement of the full-length band in the no trypsin control.

As expected, when E-CHO cells were treated with trypsin + 1 mM Ca^{2+} , there was significantly more detectable full-length E-cadherin than when E-CHO cells were treated with trypsin + 1 mM EGTA (Ca^{2+} chelator), demonstrating that Ca^{2+} is able to protect E-cadherin from trypsin degradation (Fig. 2). However, when cells were treated with trypsin + 1 mM Tb^{3+} , significant loss of full-length E-cadherin protein occurred, indicating Tb^{3+} offers no trypsin protection to E-cadherin. Interestingly, trypsin treatment of E-CHO cells in 1 mM Ca^{2+} + 1 mM Tb^{3+} resulted in no significant difference in E-cadherin degradation compared with trypsin + 1 mM Ca^{2+} . However, when the concentration of Tb^{3+} was greater than that of Ca^{2+} , significant trypsin degradation of E-cadherin protein was observed. Trypsin resistance assays revealed similar results for N-CHO cells. Following treatment of N-CHO cells with trypsin, N-cadherin was significantly degraded when in the presence of 1 mM Tb^{3+} or 1 mM Ca^{2+} + 2 mM Tb^{3+} compared with N-cadherin in the presence of 1 mM Ca^{2+} . Importantly, when E-CHO and N-CHO cells were incubated with the same combinations of Ca^{2+} and Tb^{3+} in the



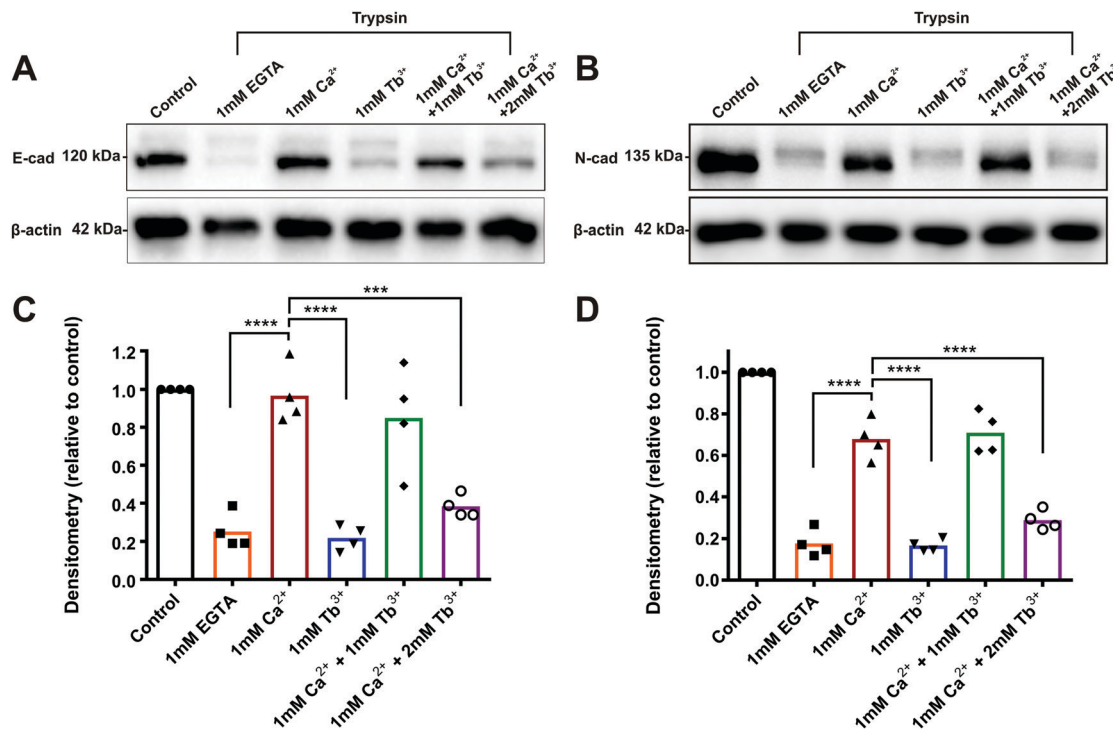


Fig. 2 Protection of E-cadherin and N-cadherin from trypsin degradation by Ca^{2+} and Tb^{3+} . Western blot of (A) E-cadherin after E-CHO cells and of (B) N-cadherin after N-CHO cells were treated with 0.04% trypsin in the presence of 1 mM EGTA, 1 mM Ca^{2+} , 1 mM Tb^{3+} , 1 mM Ca^{2+} + 1 mM Tb^{3+} , and 1 mM Ca^{2+} + 2 mM Tb^{3+} for 80 minutes. Control cells were not treated with trypsin and β -actin was used as a loading control. (C) Quantification of E-cadherin expression normalised to β -actin expression and (D) N-cadherin expression normalised to β -actin expression. Densitometry is expressed as fold change relative to the no trypsin control. Scatterplots show individual values and bars represent the mean from four biological replicates (one-way ANOVA with Tukey's multiple comparisons test, significant differences are to 1 mM CaCl_2 , **** indicates $p \leq 0.0001$, *** indicates $p \leq 0.001$).

absence of trypsin, no significant differences in the amount of full-length cadherin were observed among the samples (Fig. S4, ESI[†]). This demonstrates that the different ion conditions have no effect on cadherin expression levels and only effect how sensitive cadherins are to trypsin degradation.

These results show that cadherins are degraded by trypsin when in the presence of Tb^{3+} . Given that Ca^{2+} -bound cadherins are resistant to trypsin, this indicates that Tb^{3+} -bound cadherins adopt a different and/or more flexible structure that has exposed trypsin recognition sites. Additionally, when Tb^{3+} is present at a higher concentration than Ca^{2+} , cadherins become sensitive to trypsin degradation. This suggests that Tb^{3+} has the ability to displace Ca^{2+} from cadherins and compete with Ca^{2+} for binding at cadherin Ca^{2+} -binding sites.

Binding of Tb^{3+} to E-cadherin

The previous experiments suggest that Tb^{3+} binds cadherins and competes with Ca^{2+} for binding at Ca^{2+} -binding sites, however direct biophysical evidence of this is required. In order to gather this evidence, we measured the fluorescence resonance energy transfer (FRET) between Tb^{3+} ions and human E-cadherin EC1–5 recombinant protein. Tb^{3+} ions are naturally fluorescent and their excitation is within the range of tryptophan and tyrosine emissions (348 nm and 303 nm respectively). Thus, when tryptophan and tyrosine residues in E-cadherin are excited (280–282 nm), one can quantify the amount of bound

Tb^{3+} ions by the FRET to Tb^{3+} ions and the resulting Tb^{3+} emission (542–543 nm).

There are 12 Ca^{2+} -binding sites that Tb^{3+} ions might bind to, but FRET can only take place at sites within 10 Å of a tryptophan or tyrosine residue. There is no structure available for human E-cadherin EC1–5, thus the crystal structure for mouse E-cadherin EC1–5 (PDB 3Q2V) was used to identify binding sites potentially capable of FRET. The human and mouse homologues share an 81% sequence identity (450/553), and tryptophan (6/6) and tyrosine (13/13) residues are found in identical positions (Fig. S5B, ESI[†]).^{31,45} In the mouse E-cadherin crystal structure, there are tryptophan and/or tyrosine residues within 10 Å to binding sites 3 (EC1-2), 5 (EC2-3), 6 (EC2-3), 8 (EC3-4), and 10 (EC4-5) (Fig S5A, ESI[†]). If Tb^{3+} ions were to bind to these sites in E-cadherin, one would expect FRET to take place.

We first determined if FRET could be measured between tryptophan and tyrosine residues in E-cadherin and Tb^{3+} ions in order to confirm if Tb^{3+} binds to E-cadherin. E-cadherin was either titrated into buffer (10 mM Tris-HCl, 100 mM KCl, 120 mM NaCl) or into buffer + 100 μM Tb^{3+} , and Tb^{3+} fluorescence at 543 nm was measured following excitation at 282 nm. In the absence of 100 μM Tb^{3+} , the addition of E-cadherin protein resulted in no change in 543 nm emission (Fig. 3A). However, addition of E-cadherin protein to 100 μM Tb^{3+} resulted in a linear increase of Tb^{3+} fluorescence emission at 543 nm.



This result indicates that FRET can occur between tryptophan and tyrosine residues in E-cadherin and bound Tb^{3+} ions, and thus suggests that Tb^{3+} can directly bind E-cadherin molecules.

In order to quantify the binding affinity of Tb^{3+} to E-cadherin, Tb^{3+} was titrated into a solution of E-cadherin and 543 nm emission was measured during 282 nm excitation. Data was fit to a Hill model using non-linear regression and the K_D measured by this method was 143 μM (Fig. 3B). A Hill coefficient of 0.69 was obtained for the data, indicating that binding of Tb^{3+} to the E-cadherin protein had negative cooperativity.

A fluorescence competition assay was then carried out to determine if Tb^{3+} and Ca^{2+} compete for the same sites on E-cadherin. Ca^{2+} was titrated into a solution of E-cadherin in 170 μM Tb^{3+} and the change in Tb^{3+} fluorescence (542 nm) was measured during excitation of tryptophan and tyrosine residues (280 nm). Increasing the Ca^{2+} concentration reduced the level of Tb^{3+} fluorescence, suggesting displacement of Tb^{3+} ions at Ca^{2+} -binding sites on E-cadherin by Ca^{2+} ions. Addition of Ca^{2+} was unable to completely remove Tb^{3+} fluorescence ($\sim 60\%$ total reduction with a half-maximal effect at ~ 60 μM).

Differences in the molecular dynamics of Ca^{2+} - and Tb^{3+} -bound E-cadherin

Our results indicate that Tb^{3+} can bind cadherins, but that Tb^{3+} -bound cadherins are non-functional. In order to investigate the molecular basis of this, computational molecular dynamics simulations were performed to predict the differences in structure and dynamics of a cadherin protein bound to Ca^{2+} or Tb^{3+} . Simulations were carried out using the crystal structure of the full ectodomain of E-cadherin (PDB 3Q2V) resolved to 3.4 \AA .³¹ Three scenarios based on this E-cadherin were simulated: one with the 12 crystallographically resolved Ca^{2+} ions (Ca-Ecad), one with the 12 Ca^{2+} ions replaced with Tb^{3+} ions (Tb-Ecad) and one with the 12 Ca^{2+} ions removed (Apo-Ecad).

The replacement of Ca^{2+} with Tb^{3+} resulted in a re-structuring of the cadherin linker regions, particularly in the charged residues in proximity to the metal ions (Fig. 4A and B). This is unsurprising given the greater electropositivity of Tb^{3+} ions and that Tb^{3+} ions typically exhibit higher coordination numbers within proteins.^{16,29,31} However, due to the resolution of the molecular dynamics simulations, it is not possible to comment on the exact coordination geometry and coordinating ligands of the metal ions. As expected, removal of Ca^{2+} in Apo-Ecad caused significant structural changes in the linker region as negative residues presumably undergo electrostatic repulsion (Fig. 4C).

Root mean-square deviations (RMSD) were used to determine how much the theoretical E-cadherin tertiary structure changed over a simulation and the RMSD was calculated for Ca-Ecad, Tb-Ecad and Apo-Ecad (Fig. 5). As observed in previous studies with other cadherin ectodomains, the E-cadherin ectodomain experienced a higher RMSD, and thus higher structural fluctuation, when in the absence of Ca^{2+} (Apo-Ecad, RMSD average = 9.82 \AA) compared when in the presence of Ca^{2+} (Ca-Ecad, RMSD average = 4.19 \AA).^{33,34,46} These results are also consistent with structural studies which demonstrate the

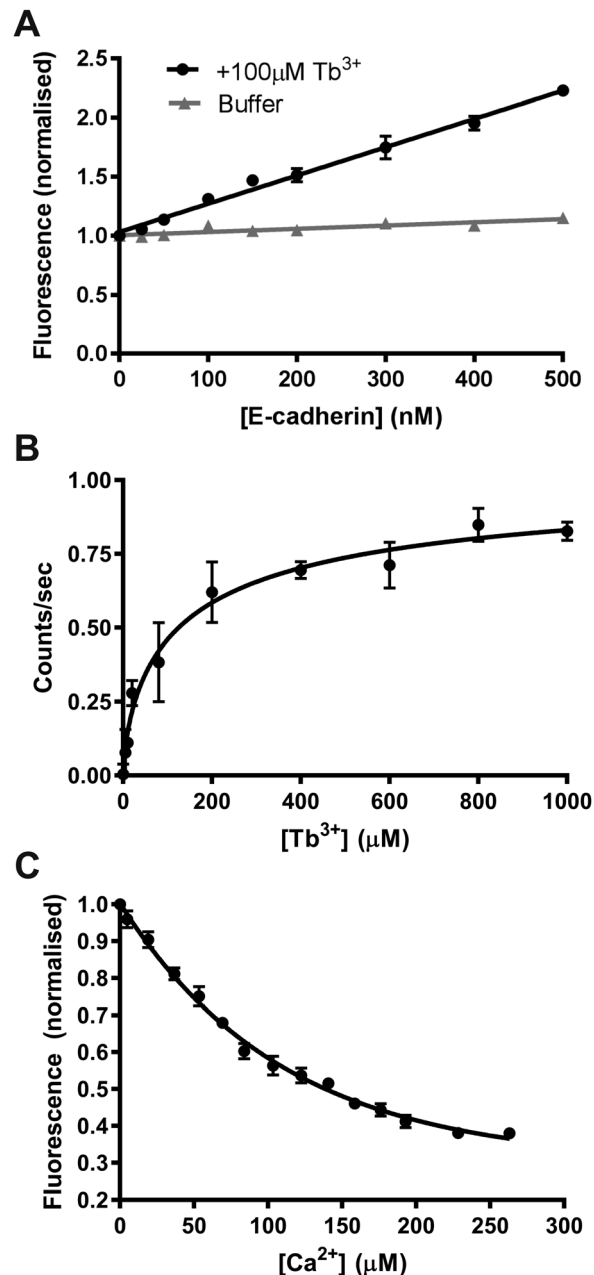


Fig. 3 Tb^{3+} binding to E-cadherin measured by Tb^{3+} -FRET. (A) Fluorescence at 543 nm in the absence and presence of 100 μM Tb^{3+} when excited at 282 nm with increasing amounts of E-cadherin protein. Data points are normalised to fluorescence at 0 μM E-cadherin. (B) Fluorescence at 543 nm during excitation at 282 nm when increasing concentrations of Tb^{3+} were added into 47.5 nM E-cadherin protein. Data points are fit to a non-linear regression hill model using Graphpad Prism. (C) Fluorescence at 542 nm during excitation at 280 nm when increasing concentrations of Ca^{2+} were added into 3 μM E-cadherin protein with 170 μM Tb^{3+} . Data points are normalised to fluorescence at 0 μM Ca^{2+} . Smoothed curves are fitted for visualisation. All graphs plotted from three biological repeats; error bars represent the SEM. All measurements were performed in 10 mM Tris-HCl, 100 mM KCl, 120 mM NaCl pH 7.4.

rigidification of cadherin ectodomains upon Ca^{2+} binding.^{29,30} Interestingly, the E-cadherin ectodomain in the presence of Tb^{3+} (Tb-Ecad, RMSD average = 9.74 \AA) had a high overall RMSD



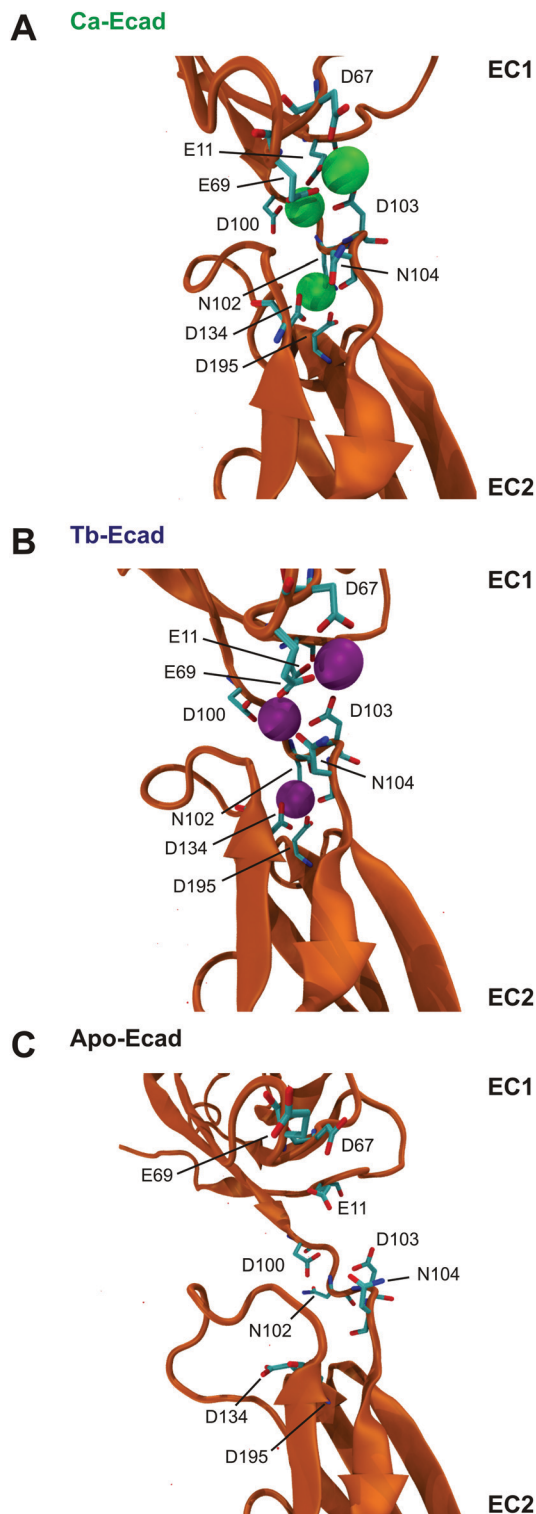


Fig. 4 E-cadherin linker regions in the presence of Ca^{2+} and Tb^{3+} ions. Snapshots of the linker region between repeats EC1–EC2 of E-cadherin in the presence of (A, Ca-Ecad) Ca^{2+} , (B, Tb-Ecad) Tb^{3+} , or (C, Apo-Ecad) absence of Ca^{2+} and Tb^{3+} ions after 40 ns of simulated free molecular dynamics. Ca^{2+} ions are represented as green spheres and Tb^{3+} ions are represented as purple spheres. Residues in proximity to metal ions are shown in liquorice representation.

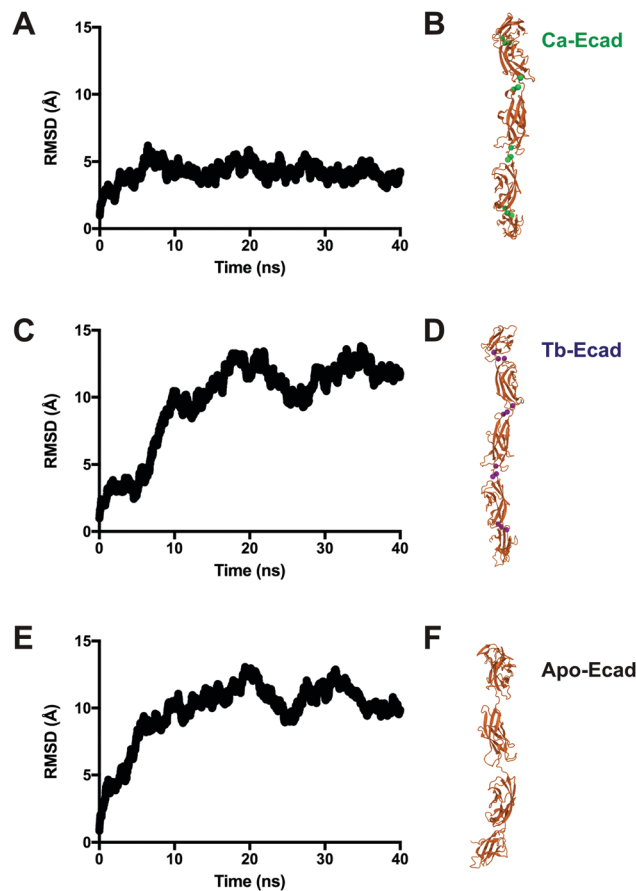


Fig. 5 Influence of Ca^{2+} and Tb^{3+} ions on the molecular dynamics of the E-cadherin ectodomain. RMSD of the E-cadherin ectodomain in the (A, Ca-Ecad) presence of Ca^{2+} , (C, Tb-Ecad) presence of Tb^{3+} or (E, Apo-Ecad) absence of Ca^{2+} and Tb^{3+} during 40 ns of simulated free molecular dynamics. (B, D and F) Snapshots of the ectodomains at the end of the simulation. Ca^{2+} ions are represented as green spheres and Tb^{3+} ions are represented as purple spheres.

that was similar to Apo-Ecad ectodomains, indicating a high level of structural flexibility. It is important to note that, like Ca^{2+} ions, all Tb^{3+} ions remained bound within the Ca^{2+} -binding sites over the course of the simulation.

In order to compare how the structure and dynamics of the E-cadherin ectodomain differ in the presence of Ca^{2+} and Tb^{3+} , the end-to-end distance and curvature of the ectodomains were measured (Fig. 6). The distance between α -Carbon atoms of two distal residues, Glu31 and Arg451, was measured for both scenarios over the 40 ns simulation. It was found that the E-cadherin ectodomain had a longer average end-to-end distance when in presence of Tb^{3+} compared with Ca^{2+} (209.6 Å vs. 192.6 Å). The curvatures of the ectodomains were compared by measuring the angle made between α -Carbon atoms of distal residues Glu31 and Arg451, and the residue that was closest to the geometric centre of EC3, Leu282. The curvature angle of the E-cadherin ectodomain with Tb^{3+} was also found to be larger than that for the ectodomain with Ca^{2+} (146.1° vs. 123.4°). Together these results suggest that the binding of Tb^{3+} leads to significant structural changes in the E-cadherin ectodomain and



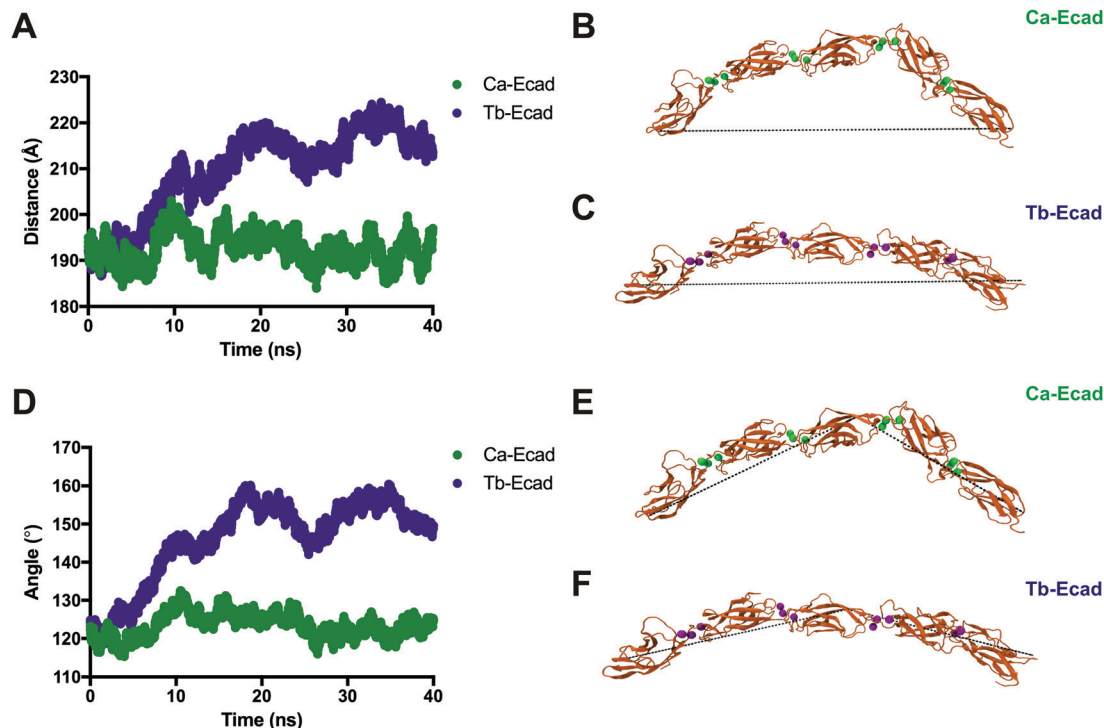


Fig. 6 Tertiary structural differences between E-cadherin bound to Ca^{2+} and Tb^{3+} . (A) End-to-end distance of the E-cadherin ectodomain in the presence of Ca^{2+} (Ca-Ecad) or Tb^{3+} (Tb-Ecad) during 40 ns of simulated free molecular dynamics. (B and C) Snapshots of the ectodomains at the end of the simulation. Ca^{2+} ions are represented as green spheres and Tb^{3+} ions are represented as purple spheres. Black dotted line indicates the end-to-end distance drawn between identical atoms in Ca-Ecad and Tb-Ecad. (D) Angle of curvature of the E-cadherin ectodomain in the presence of Ca^{2+} (Ca-Ecad) or Tb^{3+} (Tb-Ecad) during 40 ns of simulated free molecular dynamics. (E and F) Snapshots of the ectodomains at the end of the simulation. Black dotted line indicates the angle of curvature drawn between three identical atoms in Ca-Ecad and Tb-Ecad.

results in elongated structures with more shallow curvature compared with Ca^{2+} -bound E-cadherin ectodomains. Furthermore, the Tb-Ecad ectodomain had greater fluctuation in both the end-to-end distance (Tb-Ecad, SD = 9.32 Å vs. Ca-Ecad, SD = 3.30 Å) and curvature angle (Tb-Ecad, SD = 10.66° vs. Ca-Ecad, SD = 3.18°), which indicates greater structural flexibility in the Tb^{3+} -bound ectodomain. The outcomes from the simulations agree well with our experimental data, which demonstrated that Tb^{3+} -bound cadherins cannot mimic the functional conformation of Ca^{2+} -bound cadherins.

Our molecular dynamics simulations were used here to explore the impact of metal ion chemistry on cadherin structure and dynamics and provide atomistic explanations for our experimental findings. Further experimental work, such as crystallography or NMR, would be necessary to validate these computational predictions.

Discussion

The present study shows that Tb^{3+} inhibits cadherin-mediated cell adhesion and our evidence suggests that this is a result of competitive binding at cadherin Ca^{2+} -binding sites. Cadherins require Ca^{2+} -binding at all 12 sites in order to achieve a functional conformation and loss of Ca^{2+} -binding at a single site is sufficient to disrupt cadherin-mediated cell adhesion.^{36,47}

Here, we demonstrate that Tb^{3+} functions as a competitive antagonist in Ca^{2+} -dependent cadherin-mediated cell aggregation assays and our trypsin resistance assays suggest that Tb^{3+} competes with Ca^{2+} for binding to cadherins. Furthermore, Tb^{3+} is a well-documented mimic of Ca^{2+} in biological processes and our molecular dynamics simulations show that Tb^{3+} remained bound within Ca^{2+} -binding sites throughout the simulations. This is in contrast to Na^+ and K^+ , which have no experimental evidence of binding to cadherins and these ions become unbound from cadherin Ca^{2+} -binding sites during simulations.³³ The Tb^{3+} FRET experiments additionally provide biophysical evidence for Tb^{3+} binding to cadherins and suggest that Tb^{3+} ions compete for the same sites as Ca^{2+} ions.

Results from the fluorescence competition assay demonstrate that not all the observed Tb^{3+} fluorescence can be attributed to Tb^{3+} binding at Ca^{2+} -binding sites. This might be an artefact of Tb^{3+} autofluorescence or potentially the result of Tb^{3+} binding to E-cadherin at sites other than Ca^{2+} -binding sites. Whether Tb^{3+} binding at non- Ca^{2+} -binding sites is possible and what effect this might have on cadherin structure remains to be determined.

It is not possible to determine at how many or at which Ca^{2+} -binding sites Tb^{3+} ions can bind to. Only 5 out of the 12 Ca^{2+} -binding sites in human E-cadherin are potentially reportable by FRET, and of these 5 sites one cannot accurately calculate how binding at each site would contribute to the Tb^{3+} fluorescence signal. For the same reasons, it is unknown



how many Tb³⁺ ions could bind each E-cadherin molecule at non-Ca²⁺-binding sites. There might only be a very small amount of Tb³⁺ binding to non-Ca²⁺-binding sites but this binding might contribute to a large amount of the observed Tb³⁺ fluorescence, which is dependent on the distances between Tb³⁺ ions and tryptophan and tyrosine residues. Structural determination studies would be required to conclude exactly where and how Tb³⁺ binds to cadherins.

The ratio of [Tb³⁺]:[Ca²⁺] required to inhibit cell adhesion and cadherin trypsin protection suggests that Ca²⁺ has a higher binding affinity than Tb³⁺ to cadherins. The competition fluorescence assay additionally suggests this as ~60 μM Ca²⁺ had a half-maximal effect in reducing Tb³⁺ fluorescence in E-cadherin when in the presence of 170 μM Tb³⁺. A difference in binding affinity does not, however, fully explain why a steep dose-response relationship was observed for the cellular assays: no effect was observed at a [Tb³⁺]:[Ca²⁺] ratio of 1:1 but effective inhibition was seen at a ratio of 2:1. One explanation for these results is the potential binding of Tb³⁺ to both Ca²⁺- and non-Ca²⁺-binding sites on cadherins. At a ratio of 1:1, Tb³⁺ might bind elsewhere on cadherins as Ca²⁺ occupies the Ca²⁺-binding sites, but at a ratio of 2:1, Tb³⁺ may be at a sufficiently high concentration to outcompete Ca²⁺ for the Ca²⁺-binding sites and thus inhibit the Ca²⁺-dependent cadherin processes.

It would be unusual if Tb³⁺ had a weaker binding affinity than Ca²⁺ to cadherins. Tb³⁺ typically binds more strongly to Ca²⁺-binding proteins, such as calmodulin, due to the greater electropositivity of Tb³⁺.^{16,17} One possible explanation for the apparent higher binding affinity of Ca²⁺ to cadherins is that Ca²⁺ binds to the 12 sites on cadherins with a high level of cooperativity.^{35,36,48} Binding of Ca²⁺ to one Ca²⁺-binding site induces specific structural changes that enhances the binding affinity of Ca²⁺ to the other sites on a cadherin molecule. Given that the extensive cooperativity of Ca²⁺ binding requires a precise network of molecular interactions across 12 binding sites, it is plausible that slight differences in metal chemistry result in Tb³⁺ being unable to mimic the cooperative binding of Ca²⁺ to cadherins. Results from the Tb³⁺ FRET assay suggest that Tb³⁺ binds to E-cadherin with negative cooperativity ($K_D = 143 \mu\text{M}$, hill coefficient = 0.69), however values from this experiment should be treated with caution, as they are not specific for Tb³⁺ binding to only Ca²⁺-binding sites. Overall, it is possible that Ca²⁺-cooperative binding may be essential for cadherin's preferential binding of Ca²⁺ over other ions. This may be one mechanism by which cadherins maintain robust function in stochastic biological environments.

Upon Tb³⁺ binding to cadherins, data from trypsin protection assays indicate that cadherins differ in structure and/or conformational flexibility to Ca²⁺-bound cadherins. Molecular dynamics simulations support these findings and suggest that Tb³⁺-bound cadherins have a more elongated, less curved structure that exhibits enhanced structural fluctuations. These changes in tertiary structure are likely responsible for the inability of Tb³⁺-bound cadherins to support cell adhesion. Interestingly, a recent study found that binding of Tb³⁺ to

another Ca²⁺-dependent protein, calmodulin, resulted in enhanced structural flexibility within Ca²⁺-binding sites and this was caused by the more electropositive Tb³⁺ adopting an alternative and more disordered coordination geometry.⁴⁹ In the case of cadherins, changes in coordination geometry and flexibility within binding sites may also be the chemical driving forces behind global differences in Tb³⁺-bound and Ca²⁺-bound molecules. However, unlike in calmodulin, cadherins are non-functional upon binding to Tb³⁺, which provides further insight into the high level of sensitivity of cadherins to Ca²⁺ chemistry.^{50,51} Overall, it is fascinating that seemingly slight differences in the chemistry between Tb³⁺ and Ca²⁺ can significantly influence the structure, dynamics and function of cadherin proteins. Follow-on structural determination studies would be invaluable in providing conclusive evidence for how substitution of Ca²⁺ with Tb³⁺ affects the tertiary structure of cadherins and interactions within the binding sites.

We also show that Gd³⁺ inhibits cadherin adhesion in a similar Ca²⁺-competing manner and there is some evidence of La³⁺ competing with Ca²⁺ for binding to cadherins.⁵² Many lanthanide ions are known to chemically mimic Ca²⁺ and the Ca²⁺-binding pockets of classical cadherins are highly conserved, thus one would predict that the interaction elucidated here is universal between lanthanides and classical cadherins.^{16,53}

Conclusion

Cadherin adhesions have widespread roles in physiology and there is a growing appreciation for how the interaction of cadherins with non-Ca²⁺ ions can regulate cadherin function. For example, Zn²⁺ ions have been shown to bind and inhibit N-cadherin binding and this interaction is believed to play a regulatory role in synaptic plasticity.^{54,55} Here, the lanthanide Tb³⁺, which has applications in protein spectroscopy and cancer therapy, was found to compete with Ca²⁺ for binding to cadherins. We show that Tb³⁺-bound cadherins are unable to support cell adhesion and demonstrate this is a result of differences in the structure and dynamics of cadherins following Ca²⁺- and Tb³⁺-binding. Unlike in other Ca²⁺-dependent proteins, Tb³⁺ cannot functionally-replace Ca²⁺ in cadherins and our work provides new insight into the sensitivity of cadherin structure, dynamics and function to the chemistry of Ca²⁺. Furthermore, our characterisation of the interaction between lanthanides and cadherins should be of value as lanthanides continue to be used in biology and medicine.

Abbreviations

Ca ²⁺	Calcium
Tb ³⁺	Terbium
Gd ³⁺	Gadolinium
EC	Extracellular domain
FRET	Fluorescence resonance energy transfer
N-CHO	N-Cadherin expressing CHO cell
E-CHO	E-Cadherin expressing CHO cell



aa	Amino acids
RMSD	Root mean square deviation
SEM	Standard error of the mean

Financial support

This work was funded by the BBSRC, EPSRC and Wellcome Trust of the UK.

Conflicts of interest

The authors indicate no potential conflicts of interest.

Acknowledgements

We thank Dr Anwen Brown, Dr Shaline Fazal and Dr Tina Daviter for technical assistance.

References

- 1 E. Blumfield, M. M. Moore, M. K. Drake, T. R. Goodman, K. N. Lewis, L. T. Meyer, T. D. Ngo, C. Sammet, A. L. Stanescu, D. W. Swenson, T. L. Slovis and R. S. Iyer, Survey of gadolinium-based contrast agent utilization among the members of the Society for Pediatric Radiology: a Quality and Safety Committee report, *Pediatr. Radiol.*, 2017, **47**, 665–673.
- 2 M. Bottrill, L. Kwok and N. J. Long, Lanthanides in magnetic resonance imaging, *Chem. Soc. Rev.*, 2006, **35**, 557–571.
- 3 P. Caravan, J. J. Ellison, T. J. McMurry and R. B. Lauffer, Gadolinium(III) Chelates as MRI Contrast Agents: Structure, Dynamics, and Applications, *Chem. Rev.*, 1999, **99**, 2293–2352.
- 4 Z. Zhou and Z.-R. Lu, Gadolinium-Based Contrast Agents for MR Cancer Imaging, *Wiley Interdiscip. Rev.: Nanomed. Nanobiotechnol.*, 2013, **5**, 1–18.
- 5 S. Linden, M. K. Singh, K. D. Wegner, M. Regairaz, F. Dautry, F. Treussart and N. Hildebrandt, Terbium-based time-gated Förster resonance energy transfer imaging for evaluating protein-protein interactions on cell membranes, *Dalton Trans.*, 2015, **44**, 4994–5003.
- 6 S. P. Fricker, The therapeutic application of lanthanides, *Chem. Soc. Rev.*, 2006, **35**, 524–533.
- 7 A. J. Hutchison, R. J. Wilson, S. Garafola and J. B. Copley, Lanthanum carbonate: safety data after 10 years, *Nephrology*, 2016, **21**, 987–994.
- 8 I. Kostova, Lanthanides as anticancer agents, *Curr. Med. Chem.: Anti-Cancer Agents*, 2005, **5**, 591–602.
- 9 J. L. Cox, T. Lancaster and C. G. Carlson, Changes in the motility of B16F10 melanoma cells induced by alterations in resting calcium influx, *Melanoma Res.*, 2002, **12**, 211–219.
- 10 Y. Dai, J. Li, J. Li, L. Yu, G. Dai, A. Hu, L. Yuan and Z. Wen, Effects of rare earth compounds on growth and apoptosis of leukemic cell lines, *In Vitro Cell. Dev. Biol.: Anim.*, 2002, **38**, 373–375.
- 11 P. Shi and Z. Huang, Proteomic detection of changes in protein synthesis induced by lanthanum in BGC-823 human gastric cancer cells, *Biometals*, 2005, **18**, 89–95.
- 12 W. D. Horrocks and D. R. Sudnick, Lanthanide Ion Probes of Structure in Biology. Laser- Induced Luminescence Decay Constants Provide a Direct Measure of the Number of Metal-Coordinated Water Molecules, *J. Am. Chem. Soc.*, 1979, **101**, 334–340.
- 13 A. K. Katz, J. P. Glusker, S. A. Beebe and C. W. Bock, Calcium ion coordination: A comparison with that of beryllium, magnesium, and zinc, *J. Am. Chem. Soc.*, 1996, **118**, 5752–5763.
- 14 R. D. Shannon, Revised effective ionic radii and systematic studies of interatomic distances in halides and chalcogenides, *Acta Crystallogr., Sect. A: Cryst. Phys., Diffr., Theor. Gen. Crystallogr.*, 1976, **32**, 751–767.
- 15 E. E. Snyder, B. W. Buoscio and J. J. Falke, Calcium(II) site specificity: effect of size and charge on metal ion binding to an EF-hand-like site, *Biochemistry*, 1990, **29**, 3937–3943.
- 16 E. Pidcock and G. R. Moore, Structural characteristics of protein binding sites for calcium and lanthanide ions, *J. Biol. Inorg. Chem.*, 2001, **6**, 479–489.
- 17 S. M. Mustafi, S. Mukherjee, K. V. R. Chary, C. Del Bianco and C. Luchinat, Energetics and Mechanism of Ca²⁺ Displacement by Lanthanides in a Calcium Binding Protein, *Biochemistry*, 2004, **43**, 9320–9331.
- 18 B. C. Furie, K. G. Mann and B. Furie, Substitution of lanthanide ions for calcium in the activation of bovine prothrombin by activated factor X: high affinity metal binding sites, *J. Biol. Chem.*, 1976, **251**, 3235–3241.
- 19 A. D. Sherry, A. D. Newman and C. G. Gutz, The activation of concanavalin A by lanthanide ions, *Biochemistry*, 1975, **14**, 2191–2196.
- 20 S. T. Chu and Y. H. Chen, The intrinsic tryptophan fluorescence of beta 1-bungarotoxin and the Ca²⁺-binding domains of the toxin as probed with Tb³⁺ luminescence., *Biochem. J.*, 1989, **262**, 773–779.
- 21 L. C. Adding, G. L. Bannenberg and L. E. Gustafsson, Basic experimental studies and clinical aspects of gadolinium salts and chelates, *Cardiovasc. Drug Rev.*, 2001, **19**, 41–56.
- 22 C. R. Halaszovich, C. Zitt, E. Jungling and A. Luckoff, Inhibition of TRP3 channels by lanthanides. Block from the cytosolic side of the plasma membrane, *J. Biol. Chem.*, 2000, **275**, 37423–37428.
- 23 Y. Wu, Lanthanide ions inhibit the activity of dihydrofolate reductase from chicken liver, *Biometals*, 2000, **13**, 195–201.
- 24 M. Astick, K. Tubby, W. M. Mubarak, S. Guthrie and S. R. Price, Central topography of cranial motor nuclei controlled by differential cadherin expression, *Curr. Biol.*, 2014, **24**, 2541–2547.
- 25 L. L. Brayshaw and S. R. Price, in *The Cadherin Superfamily: Key Regulators of Animal Development and Physiology*, ed. T. S. Suzuki and S. Hirano, Springer, Japan, Tokyo, 2016, pp. 315–340.
- 26 H. G. Munshi, S. Ghosh, S. Mukhopadhyay, Y. I. Wu, R. Sen, K. J. Green and M. S. Stack, Proteinase suppression by E-



- cadherin-mediated cell-cell attachment in premalignant oral keratinocytes, *J. Biol. Chem.*, 2002, **277**, 38159–38167.
- 27 A. Jeanes, C. Gottardi and A. Yap, Cadherins and cancer: how does cadherin dysfunction promote tumor progression?, *Oncogene*, 2008, **27**, 6920–6929.
- 28 D. Leckband and A. Prakasam, Mechanism and dynamics of cadherin adhesion, *Annu. Rev. Biomed. Eng.*, 2006, **8**, 259–287.
- 29 O. Pertz, D. Bozic, A. W. Koch, C. Fauser, A. Brancaccio and J. Engel, A new crystal structure, Ca²⁺ dependence and mutational analysis reveal molecular details of E-cadherin homoassociation, *EMBO J.*, 1999, **18**, 1738–1747.
- 30 S. Pokutta, K. Herrenknecht, R. Kemler and J. Engel, Conformational changes of the recombinant extracellular domain of E-cadherin upon calcium binding, *Eur. J. Biochem.*, 1994, **223**, 1019–1026.
- 31 O. J. Harrison, X. Jin, S. Hong, F. Bahna, G. Ahlsen, J. Brasch, Y. Wu, J. Vendome, K. Felsovalyi, C. M. Hampton, R. B. Troyanovsky, A. Ben-Shaul, J. Frank, S. M. Troyanovsky, L. Shapiro and B. Honig, The extracellular architecture of adherens junctions revealed by crystal structures of type I cadherins, *Structure*, 2011, **19**, 244–256.
- 32 T. J. Boggon, J. Murray, S. Chappuis-Flament, E. Wong, B. M. Gumbiner and L. Shapiro, *Science*, 2002, **296**, 1308–1313.
- 33 M. Sotomayor and K. Schulten, The allosteric role of the Ca²⁺ switch in adhesion and elasticity of C-cadherin, *Biophys. J.*, 2008, **94**, 4621–4633.
- 34 J. Oroz, A. Valbuena, A. M. Vera, J. Mendieta, P. Gomez-Puertas and M. Carrion-Vazquez, Nanomechanics of the cadherin ectodomain: ‘Canalization’ by Ca²⁺ binding results in a new mechanical element, *J. Biol. Chem.*, 2011, **286**, 9405–9418.
- 35 O. Courjean, G. Chevreux, E. Perret, A. Morel, S. Sanglier, N. Potier, J. Engel, A. Van Dorsselaer and H. Feracci, Modulation of E-cadherin monomer folding by cooperative binding of calcium ions, *Biochemistry*, 2008, **47**, 2339–2349.
- 36 A. Prakasam, Y. H. Chien, V. Maruthamuthu and D. E. Leckband, Calcium site mutations in cadherin: impact on adhesion and evidence of cooperativity, *Biochemistry*, 2006, **45**, 6930–6939.
- 37 D. A. Case, R. M. Betz, W. Botello-Smith, D. S. Cerutti, T. E. Cheatham, III, T. A. Darden, R. E. Duke, T. J. Giese, H. Gohlke, A. W. Goetz, N. Homeyer, S. Izadi, P. Janowski, J. Kaus, A. Kovalenko, T. S. Lee, S. LeGrand, P. Li, C. Lin, T. Luchko, R. Luo and B. Madej, *AMBER 2016*, University of California, San Francisco, 2016.
- 38 L. Schrödinger, *The PyMOL Molecular Graphics System, Version 1.8*, 2015.
- 39 W. L. Jorgensen, J. Chandrasekhar, J. D. Madura, R. W. Impey and M. L. Klein, Comparison of simple potential functions for simulating liquid water, *J. Chem. Phys.*, 1983, **79**, 926.
- 40 W. Humphrey, A. Dalke and K. Schulten, VMD-Visual Molecular Dynamics, *J. Mol. Graphics*, 1996, **14**, 33–38.
- 41 J. Eargle, D. Wright and Z. Luthey-Schulten, Multiple Alignment of protein structures and sequences for VMD, *Bioinformatics*, 2006, **22**, 504–506.
- 42 M. Takeichi, Functional correlation between cell adhesive properties and some cell surface proteins, *J. Cell Biol.*, 1977, **75**, 464–474.
- 43 M. Takeichi, Cadherins: a molecular family important in selective cell-cell adhesion, *Annu. Rev. Biochem.*, 1990, **59**, 237–252.
- 44 L. Hughes, C. Malone, S. Chumsri, A. M. Burger and S. McDonnell, Characterisation of breast cancer cell lines and establishment of a novel isogenic subclone to study migration, invasion and tumourigenicity, *Clin. Exp. Metastasis*, 2008, **25**, 549–557.
- 45 S. F. Altschul, T. L. Madden, A. A. Schäffer, J. Zhang, Z. Zhang, W. Miller and D. J. Lipman, Gapped BLAST and PSI-BLAST: a new generation of protein database search programs, *Nucleic Acids Res.*, 1997, **25**, 3389–3402.
- 46 F. Cailliez and R. Lavery, Cadherin mechanics and complexation: the importance of calcium binding, *Biophys. J.*, 2005, **89**, 3895–3903.
- 47 M. Ozawa, J. Engel and R. Kemler, Single amino acid substitutions in one Ca²⁺ binding site of uvomorulin abolish the adhesive function, *Cell*, 1990, **63**, 1033–1038.
- 48 J. R. Alattia, J. B. Ames, T. Porumb, K. I. Tong, Y. M. Heng, P. Ottensmeyer, C. M. Kay and M. Ikura, Lateral self-assembly of E-cadherin directed by cooperative calcium binding, *FEBS Lett.*, 1997, **417**, 405–408.
- 49 S. C. Edington, A. Gonzalez, T. R. Middendorf, D. B. Halling, R. W. Aldrich and C. R. Baiz, Coordination to lanthanide ions distorts binding site conformation in calmodulin, *Proc. Natl. Acad. Sci. U. S. A.*, 2018, **115**, 201722042.
- 50 R. W. Wallace, E. A. Tallant, M. E. Dockter and W. Y. Cheung, Calcium Binding Domains of Calmodulin, *J. Biol. Chem.*, 1982, **257**, 1845–1854.
- 51 W. Li and R. W. Aldrich, Activation of the SK potassium channel-calmodulin complex by nanomolar concentrations of terbium, *Proc. Natl. Acad. Sci. U. S. A.*, 2009, **106**, 1075–1080.
- 52 F. Hyafil, C. Babinet and F. Jacob, Cell-cell interactions in early embryogenesis: a molecular approach to the role of calcium., *Cell*, 1981, **26**, 447–454.
- 53 L. Shapiro and W. I. Weis, Structure and biochemistry of cadherins and catenins, *Cold Spring Harbor Perspect. Biol.*, 2009, **1**, a003053.
- 54 E. Heiliger, A. Osmanagic, H. Haase, N. Golenhofen, A. M. Grabrucker, A. Weth and W. Baumgartner, N-cadherin-mediated cell adhesion is regulated by extracellular Zn²⁺, *Metallomics*, 2015, **7**, 355–362.
- 55 C. Wolf, A. Weth, S. Walcher, C. Lax and W. Baumgartner, Modeling of Zinc Dynamics in the Synaptic Cleft: Implications for Cadherin Mediated Adhesion and Synaptic Plasticity, *Front. Mol. Neurosci.*, 2018, **11**, 1–13.

