

Cite this: *J. Mater. Chem. B*, 2020,
8, 6252

The rise of bio-inspired polymer compartments responding to pathology-related signals

Luisa Zartner, Moritz S. Muthwill,  Ionel Adrian Dinu,
Cora-Ann Schoenenberger  and Cornelia G. Palivan *

Self-organized nano- and microscale polymer compartments such as polymersomes, giant unilamellar vesicles (GUVs), polyion complex vesicles (PICsomes) and layer-by-layer (LbL) capsules have increasing potential in many sensing applications. Besides modifying the physicochemical properties of the corresponding polymer building blocks, the versatility of these compartments can be markedly expanded by biomolecules that endow the nanomaterials with specific molecular and cellular functions. In this review, we focus on polymer-based compartments that preserve their structure, and highlight the key role they play in the field of medical diagnostics: first, the self-assembling abilities that result in preferred architectures are presented for a broad range of polymers. In the following, we describe different strategies for sensing disease-related signals (pH-change, reductive conditions, and presence of ions or biomolecules) by polymer compartments that exhibit stimuli-responsiveness. In particular, we distinguish between the stimulus-sensitivity contributed by the polymer itself or by additional compounds embedded in the compartments in different sensing systems. We then address necessary properties of sensing polymeric compartments, such as the enhancement of their stability and biocompatibility, or the targeting ability, that open up new perspectives for diagnostic applications.

Received 21st February 2020,
Accepted 1st May 2020

DOI: 10.1039/d0tb00475h

rsc.li/materials-b

Introduction

There is a growing demand for new approaches that allow for the easy and sensitive detection of pathological conditions. Thus, engineering novel polymer-based materials that are able to sense in a fast and specific manner different parameters associated with different states of diseases is a compelling research topic. Moreover, the precise detection and control of fluctuations in analyte bioactivity or concentration will lead to a better understanding of self-regulation processes in living organisms. Predominant environmental changes that can trigger a specific response from a polymer assembly include the variation of pH or ionic strength, the presence of reactive oxygen species, redox agents and other bio- or chemical molecules.^{9–15} Externally applied stimuli, such as light, temperature, ultrasound and electrical or magnetic fields can also trigger a response in polymer-based assemblies,^{12,17–20} but we did not include them in this overview.

To act as biosensors, polymer systems should minimally consist of two main components: (i) a receptor molecule or moiety that functions as a recognition element by specifically interacting with the stimulus and (ii) a transducer that converts the analyte–receptor interaction into a measurable signal.

For example, a specific pathological condition can trigger a detectable color transition or a change in fluorescence in a polymer assembly specifically designed to respond to such changes by the incorporation of dye molecules.^{3,22–25}

Among the novel responsive materials that are being developed as biosensors, polymer systems play a major role because they offer multiple advantages including a large diversity of chemical features, variable molecular weight and composition of the repeating units, changeable functionalities and a variety of architectures. In this review, we present spherical polymer compartments with dimensions from the nano to the micro-scale and how they are rendered responsive to changes in their environment. First, we briefly introduce the synthesis strategies of polymer building blocks that assemble compartments with a spherical architecture: vesicles, polyion complex vesicles (PICsomes) and layer-by-layer (LbL) capsules. The main driving forces that promote the self-organization of individual polymer chains into such compartments are: (i) hydrophobic interactions that induce the segregation of polymer blocks during the self-assembly of amphiphilic block copolymers (vesicles) and (ii) electrostatic interactions between oppositely charged polymer blocks and/or homopolymers (PICsomes and LbL capsules).^{10,27–35} There are a number of excellent reviews that summarize the recent advances in the development of polymeric nanovesicles and other assemblies for biomedical applications.^{13,36–43} These reviews predominantly discuss systems that respond to one

Chemistry Department, University of Basel, Mattenstr. 24a, BPR1096, Basel, Switzerland. E-mail: cornelia.palivan@unibas.ch



or multiple stimuli by disassembling the polymeric membrane, leading to the release of the dye or a drug cargo. Moreover, many of the stimuli that these systems respond to are externally applied.

Here, we want to provide an overview over the current progress in the development of polymeric structures that stay intact for extended periods of time and thus, have the potential to function as sensors under pathological conditions. We focus on polymeric compartments because they allow the encapsulation of hydrophilic cargoes, the insertion of hydrophobic molecules, or even the simultaneous encapsulation and insertion thereof.^{2,10,28,36,45–48} Moreover, the efficacy of polymer compartments can be increased by localizing them *via* targeting moieties to specific sites in the body.^{15,29,45,49}

Specifically, we present how polymer biosensors can be tailored to change their properties in response to the presence of stimuli in a bioinspired manner based on the behavior of natural organelles inside cells or cells that respond to specific intracellular or intercellular signals while preserving their integrity. Stimuli-responsiveness is a key property both for drug delivery systems where physical or chemical changes of the polymer induce the release ‘on demand’ of the encapsulated cargo, and for sensors that detect changes associated with pathological conditions. While in the case of drug delivery systems, the majority of compartments are designed to rupture and release their cargo,^{8,24,37,50–56} in sensors, the compartment integrity should be preserved in the presence of a stimulus, preferably for a long period of time.

We review different approaches to design compartments for sensing purposes: either by combining ‘reporter’ molecules with compartments made of intrinsically stimuli-responsive polymers, or by the incorporation/insertion of sensitive biomolecules into non-responsive compartments for converting the stimulus into a detectable signal. The second type of ‘sensing’ compartment depends on the insertion/attachment of a stimuli-responsive biomolecule or on the encapsulation of active molecules able to perform an *in situ* reaction inside the compartment. This type of compartment is known as nano-reactors or catalytic compartments that represent simple bioinspired models for cells or organelles. They have served as confined spaces for model reactions, as biosensors, or for the design of functional compartments with higher complexity, such as artificial organelles and cell mimics.^{2,16,21,57–70} In this review, we include catalytic compartments with demonstrated biosensing abilities and systems with other functions, which also have potential for biosensing.

There are numerous systems proposed as carriers for contrast agents, dyes or other imaging molecules/nano-objects that specifically improve the imaging of pathological regions. Here, the carrier containing the ‘imaging’ component is usually stable, without response to specific stimuli that are associated with the respective pathological conditions. However, we provide a complementary overview of bio-inspired compartments at the nano- and micro-scale whose response to the presence of stimuli together with a rapid signal will open new avenues for the efficient biosensing of various pathological conditions.

Polymer building blocks for the assembly of compartments

The building blocks of compartments are polymers and copolymers that are based on a variety of hydrophobic and hydrophilic monomers, and are synthesized by various routes.^{71–77} Depending on their chemical nature, the resulting homo- and copolymers serve to build either compartments with intrinsic stimuli-responsive properties (Table 1) or compartments with stable, non-responsive architectures that can be combined with stimuli-responsive molecules (Table 2). Conventional free radical polymerization (free RP) can be employed in the polymerization of vinyl monomers under mild conditions. However, polymers synthesized *via* this technique have limited use in the preparation of spherical compartments as biosensors (only for LbL capsules) since with this method there is no control over the molecular weight, polydispersity, chemical composition, chain architecture or end-group functionality. To obtain homo-polymers and copolymers with well-defined properties and narrow polydispersity, several synthetic strategies have been developed, such as: (a) living ionic polymerization, (b) controlled/quasi-‘living’ radical polymerization (CRP), and (c) ring-opening polymerization (ROP). As all these synthetic pathways have been comprehensively reviewed,^{71–75,78–83} we only present a short description thereof and point at their advantages and limitations.

Living ionic polymerization (LIP), either anionic or cationic, is frequently used for the synthesis of polymers with desired molecular weights, molecular weight distribution, polymer chain composition, and tailored end-chain moieties that can be added due to the absence of irreversible chain transfer and chain termination processes.^{71–73} In LIP, all polymer chains are spontaneously initiated, and the highly reactive propagating chains (anions or cations) are growing simultaneously in the presence of their ionic counterparts (counterions), such as to preserve the system’s overall electroneutrality. However, the ends of growing ionic chains must retain their reactivity over the whole reaction process for further extension of the polymer chain or functionalization with the desired terminal groups. In this respect, it is necessary to ‘control’ the reactivity of the ionic species by carefully optimizing the reaction conditions (adequate selection of monomers, initiators, temperature, solvent, and terminating agents) and avoiding the presence of impurities. To overcome these limitations, controlled ionic polymerizations have been recently performed under ambient conditions in unconventional reaction media, which endow the growing chains with high stability and excellent chain-end fidelity.^{84,85} Various non-responsive polymers, such as polystyrene and polydienes or poly[alkyl (meth)acrylates], have been obtained by LIP (Table 2). In addition, styrene derivatives substituted with various functional groups (OH, NH₂, SH, alkyne, SiOH, aldehyde, keto, and COOH) or other vinyl monomers carrying N atoms (2- or 4-vinyl pyridine) can also undergo successful ionic polymerizations after the appropriate protection of the functional groups. Finally, the removal of ‘masking’ groups after polymerization allows for the regeneration of the original functionality.^{74,86}

‘Controlled’/quasi-‘living’ radical polymerization (CRP), also known as reversible deactivation radical polymerization (RDRP),



Table 1 Stimuli-responsive hydrophilic and hydrophobic polymer building blocks used in the design of polymer biosensors

Polymer building block	Abbreviation	Structure	Method of synthesis	pK _a values	Ref.
Hydrophilic					
Poly(acrylic acid)	PAA		Free RP, CRP	~4.5	102 and 103
Poly(styrene sulfonate)	PSS		CRP	~1.6	104–106
Poly(aspartic acid)	PAsp		ROP	~3.7	52, 60 and 107
Poly(allylamine hydrochloride)	PAH		Free RP	~8.5	106, 108 and 109
Poly[2-(dimethylamino)ethyl methacrylate]	PDMAEMA		CRP	~7.5	65 and 110–112
Poly(diallyldimethylammonium chloride)	PDADMAC		Free RP	Not attainable	108 and 113
Poly(ethylenimine)	PEI		ROP	~9.7	114 and 115
Hydrophobic or hydrophilic, depending on the stimulus					
Poly[2-(diethylamino)ethyl methacrylate]	PDEAEMA		CRP	~7.3	116–118
Poly[2-(diisopropylamino)ethyl methacrylate]	PDPA		CRP	~6.3	105
Poly(N-isopropylacrylamide)	PNIPAM		Free RP, CRP	Thermo-responsive	53
Poly[(N-amidino)dodecyl acrylamide]	PAD		CRP	~5.4	114

is one of the most investigated strategies for the synthesis of (co)polymers. CRP includes various synthesis techniques, such as atom transfer radical polymerization (ATRP), reversible addition-fragmentation chain transfer polymerization (RAFT), and nitroxide-mediated radical polymerization (NMP).^{78,79,87–91} These methods have been used in the synthesis of stimuli-responsive polymers based on acrylates and acrylamides, such as poly(acrylic acid) (PAA), poly(styrene sulfonate) (PSS), poly[2-(dimethylamino)ethyl methacrylate] (PDMAEMA) and poly[2-(diisopropylamino)ethyl methacrylate] (PDPA) (Table 1), or non-responsive polymers, such

as polystyrene (PS) and poly(butyl methacrylate) (PBMA). CRP synthetic pathways have various advantages compared to LIP including low-cost, conditions that promote the chain growth more favorably compared to ionic processes, low dispersity, high chain-end fidelity and a lower impact of impurities.^{92,93} Moreover, the growing chains are in a “dormant” state, and therefore, can be reactivated and functionalized or can react with other types of monomers to obtain block copolymers. The limitations of CRP are the low oxygen tolerance, the increased number of “dead chains” or the decrease of end chain



Table 2 Hydrophilic and hydrophobic polymer blocks used for non-responsive compartments that are combined with stimuli-responsive molecules

Polymer building block	Abbreviation	Structure	Method of synthesis	Ref.
Hydrophilic				
Poly(ethylene glycol)/poly(ethylene oxide)	PEG/PEO		ROP	7, 60, 107, 114 and 117
Poly(2-methyl-2-oxazoline)	PMOXA		ROP	1, 3, 59 and 119–123
Poly(2-hydroxypropyl methacrylate)	PHPMA		CRP	7 and 124
Hydrophobic				
Poly(ϵ -caprolactone)	PCL		ROP	103 and 117
Poly(butyl methacrylate)	PBMA		CRP	112
Polydimethylsiloxane	PDMS		ROP	1, 3, 59 and 119–123
Polystyrene	PS		CRP; anionic	125

functionality, especially when polymers with high molecular weight are being synthesized.^{82,94}

Starting from cyclic monomers, ring-opening polymerization (ROP) techniques allow the synthesis of polymers with well-defined molecular weight and chemical composition.^{95–99}

For example, polyesters have been synthesized from cyclic esters (lactones), polysiloxanes from cyclosiloxanes, and polyamides from cyclic amides (lactams) (Tables 1 and 2). However, the ROP mechanism and the polydispersity of the resulting polymer are strongly influenced by the type and concentration of the monomer and the catalyst which calls for extensive optimization procedures. An additional drawback of these methods is the use of heavy metal compounds as catalysts. In particular, when polymers are used in bio-applications, ROP is problematic because complete removal of the catalyst is challenging. This drawback of anionic ROP reactions was recently overcome by metal-free ROPs, where the activation of monomers is performed in the presence of organocatalysts, such as N-heterocyclic carbenes, N-heterocyclic olefins or phosphazene bases.^{100,101}

Stimuli with relevance for sensing pathological conditions

Gradients and fluctuations of pH are the most explored triggers of biosensors since they are associated with a broad variety of diseases, for example cancer or Alzheimer's disease.¹²⁶ A slightly acidic extracellular microenvironment (pH 6.5–7.2) and a slightly basic intracellular pH are typical for many solid

tumors, while intracellular compartments, such as endosomes and lysosomes have pH values of 5.0–6.0 and 4.5–5.0, respectively.^{127,128} The blood pH of a healthy person is considered to be between 7.35 and 7.45. Alteration to a pH below 7.35 and above 7.45 is called acidosis and alkalosis, respectively, and can indicate pathological metabolic conditions as seen in diabetes or chronic renal disease.¹²⁹ Another trigger of medical relevance is changes in CO₂ levels. For example, elevated CO₂ levels in the blood occur in a medical condition called hypercapnic acidosis which is related to other respiratory diseases including cystic fibrosis and chronic obstructive pulmonary disease (COPD).¹³⁰

The cellular redox state reflects the redox environment of a cell and defines its potential to maintain the redox balance and eliminate reactive oxygen species (ROS).¹³¹ More precisely, the redox state can be derived from the actual cellular reduction potential related to one specific redox pair. The most important cellular redox pairs are 2GSH/GSSG (glutathione), NAD(P)⁺/NAD(P)H (nicotinamide adenine dinucleotide (phosphate)) and TrxSS/Trx(SH)₂ (thioredoxin),¹³² of which glutathione is the main redox buffer of the cell.¹³³ It plays a role in a plethora of functions, including the protection of cells from oxidative stress, regulation of cellular signaling, and apoptosis.^{134,135} Oxidative stress resulting from elevated ROS of endogenous and exogenous sources is well known to damage biomacromolecules, and is associated with a variety of pathological conditions, in particular so-called “free radical diseases” such



as cancer, neurodegeneration, atherosclerosis or inflammation.¹³¹ Besides ROS, also reactive nitrogen species (RNS) and reactive sulfur species (RSS) can cause oxidative stress.³⁷

Other pathological conditions are associated with an imbalance in ion concentrations or the presence of various biomolecules such as uric acid,¹³⁶ lactate,¹³⁷ glucose,¹³⁸ sugar alcohols,¹³⁹ urea¹⁴⁰ and cholesterol,¹⁴¹ which can be metabolites, substrates in enzymatic catalysis, mediators in many cellular processes, or can be part of signaling pathways.

This diversity of inter- and intracellular changes serves as the basis for specifically designing sensing systems that allow for a rapid and efficient detection of such changes. The diversity and extent of these, as well as the simultaneous presence of multiple changes, lead to a complex scenario of requirements for which sophisticated systems need to be developed.

Polymerosomes as compartments for developing biosensors

Polymer vesicles in the nanometer range, usually called polymerosomes, are generated by the self-assembly of amphiphilic block-copolymers with a specific hydrophilic-to-hydrophobic ratio in aqueous dilute solutions.¹⁴² Polymerosome formation can be achieved by different methods such as the “solvent switch” method, the “solvent-free” method and polymerization-induced self-assembly (PISA).

The “solvent switch” method for polymerosome assembly is based on dissolving the copolymer in an organic solvent, followed by its dropwise addition into an aqueous solution. The high dilution induces the self-assembly into nanostructures and subsequently, the organic solvent is removed by evaporation or dialysis.¹⁴³

In the “solvent-free” method, the copolymer solution is first dried to an anhydrous copolymer film. Slowly hydrating the film with an aqueous buffer induces the self-assembly process which results in the formation of nano-assemblies (polymerosomes, micelles, and nanotubes). Additional shaking or stirring can fasten the process provided the assemblies are not perturbed.¹⁴³

PISA is an assembly procedure allowing for polymerosome formation in parallel to polymerization. More precisely, a hydrophilic macroinitiator block in aqueous solution is coupled with a second, water-soluble monomer. The latter, which initially is hydrophilic, is polymerized and becomes more hydrophobic with ongoing polymerization. With increasing block length and depending on the hydrophilic-to-hydrophobic block ratio, the resulting copolymers assemble *in situ* into supramolecular structures. The reaction can be stopped when the copolymer reaches a block ratio that will induce the assembly of a desired structure, *e.g.* polymerosomes. PISA has become an effective strategy to produce polymeric assemblies with various morphologies at higher polymer concentrations than by conventional methods (<1%).^{27,144–146}

The location of the “reporting” cargoes (molecules/nano-objects) as key functional elements is an important factor in

obtaining efficient biosensor systems. When aiming at the encapsulation of reporting cargoes by polymerosomes, the preparation methods need to be carefully chosen to avoid degradation of these cargoes. For example, the film rehydration method, due to its mild conditions, is suitable for the encapsulation of sensitive hydrophilic molecules (enzymes,^{5,147,148} proteins,¹⁴⁹ DNA,¹⁵⁰ or dyes¹⁵¹) and the entrapment or insertion of hydrophobic molecules (drugs¹⁵² and membrane proteins¹⁵³), while solvent switch methods can only be used for molecules that are not sensitive to organic solvents (*e.g.* solvent-stable enzymes).¹⁵⁴ Similarly, PISA also allows for the encapsulation of cargo molecules in aqueous solution under mild conditions, as reported in several examples for functional proteins and enzymes,^{7,155} nanoparticles,^{156–158} and for hydrophilic and hydrophobic dyes and drugs.^{159,160} A prerequisite for the accessibility of reporting cargoes inside polymerosomes is that polymer membranes are permeable to the stimulus, either intrinsically or induced by the corresponding stimuli, or by the insertion of biopores. Chemical approaches to obtain permeable membranes are based on: (i) selection of copolymers forming porous membranes for example poly(styrene)-*block*-poly[isocyanatoalanine(2-thiophene-3-yl-ethyl)amide] (PS-PIAT),^{147,161,162} (ii) chemical modification of the membrane with a hydroxyalkylphenone¹⁶³ or by exposure to visible light,¹⁶⁴ and (iii) selection of polymers forming membranes that change their permeability in a stimuli-responsive manner, *e.g.* in response to pH changes.^{165,166} However, these approaches result in membrane permeability without or with very limited selectivity as the pore size determines the molecular cut-off of constituents that can pass through. At the same time, in the case of permeabilizing polymerosome membranes for macromolecules or nanoparticles, the softness rather than the size of this aimed cargo is a major factor influencing the pH-induced permeability of polymerosome membranes towards these macromolecules or nanoparticles.¹⁶⁷ Alternatively, the membrane is permeabilized by the insertion of membrane proteins or biopores that, depending on their specific bio-functionality, achieve non-selective or selective permeability.¹⁶⁸ This strategy is bio-inspired from the cell membrane that exchanges molecules with the extracellular environment by a variety of membrane proteins and biopores. Membranes based on poly(2-methyl-oxazoline)-*block*-poly(dimethylsiloxane)-*block*-poly(2-methyl-oxazoline) (PMOXA-*b*-PDMS-*b*-PMOXA) copolymers, reported as being impermeable to molecules/ions other than oxygen and superoxide radical anions (O₂^{•-}),¹⁶⁹ have been permeabilized by insertion of channel porins such as OmpF,^{170,171} Aquaporin Z¹⁷², aquaglyceroporin GlpF¹⁹ or biopores such as Melittin.¹⁵³

Polymerosomes sensing pH changes

pH responsiveness is promoted (i) by polymer membranes with an intrinsic pH sensitivity and (ii) by pH-sensitive pores inserted in non-responsive membranes.

When appropriately selected, copolymers can form polymerosomes with “breathing” membranes that reversibly swell at specific pH values and shrink at others. This effect has been reported for copolymers containing protonatable tertiary amine



groups. For example, a change from pH 5 to pH 10 induced reversible swelling in polymersomes consisting of copolymers with a PDEAEMA (poly[2-(diethylamino)ethyl methacrylate]) block.¹¹⁸ Polymersomes which breath upon pH changes are interesting candidates for sensing when they are loaded with reporting molecules (*e.g.* sensitive dyes) that emit a pH-dependent signal. For instance, polymersomes assembled from poly(ethylene oxide)₄₅-*block*-polystyrene₁₃₀-*block*-poly[2-(diethylamino)ethyl methacrylate]₁₂₀ (PEO₄₅-*b*-PS₁₃₀-*b*-PDEAEMA₁₂₀), which showed reversible breathing between pH 10.4 and 3.4, were used to encapsulate a pH sensitive pyrene-derived dye.¹²⁵ Under acidic conditions, the pH-dependent breathing led to a dramatic increase in membrane permeability towards protons, which shifted the absorption maximum of the encapsulated dye to a second peak at a smaller wavelength and thus allowed for proton concentration determination by calculating an excitation intensity ratio measured at two wavelengths.

Combination of the chromophore from the green fluorescent protein with an amphiphilic, intrinsically pH-sensitive block copolymer allowed for the development of pH-sensing polymersomes bearing the bio-inspired sensing moiety covalently integrated in the membrane (Fig. 1).⁴ The chromophore (IE) was inserted between a hydrophilic polyethylene glycol (PEG) and a protonatable PDEAEMA block (PEG-IE-*b*-PDEAEMA). Protonation and deprotonation of the PDEAEMA block were achieved by CO₂ and N₂, respectively (Fig. 1A). Although the study did not include size data reflecting the reversible swelling and shrinking of the polymersomes, it revealed a reversible change of fluorescence intensity from pH 6.8 to pH 5 (Fig. 1B). When the PDEAEMA block is deprotonated and hydrophobic, the chromophore is protected from water and showed high fluorescence intensity, whereas when PDEAEMA is protonated and more hydrophilic, exposure of the chromophore to water reduced the fluorescence intensity.

Similarly, reversible permeability of the membrane was reported for polymersomes assembled from poly(ethylene glycol)-*b*-poly[*N*-amidino)dodecyl acrylamide] (PEG-*b*-PAD) diblock copolymers which resulted from the protonation and deprotonation of the polyamidino block in the presence of CO₂ and N₂ in solution.¹¹⁴ Depending on the time of CO₂ incubation,

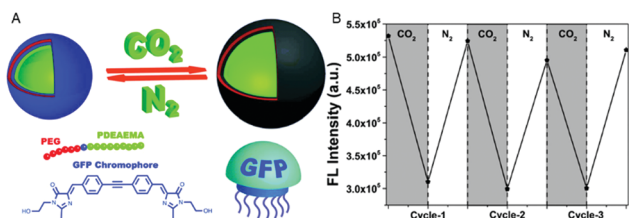


Fig. 1 pH-Sensing polymersomes with the GFP chromophore. (A) The chromophore (IE) of the green fluorescent protein is inserted between two polymer blocks, yielding PEG-IE-*b*-PDEAEMA polymersomes with pH-responsive breathing character, induced by CO₂ and N₂ introduction. (B) Reversible change of fluorescence intensity of IE-containing polymersome sensors upon pH decrease from 6.8 to 5 (after CO₂ treatment) and *vice versa* (after N₂ treatment). Adapted with permission from ref. 4. Published by the PCCP Owner Societies.

PEG-*b*-PAD vesicles expanded in diameter and pores were formed with a tuneable diameter as visualized by a size-dependent release of dye-labeled poly(ethylene imine) nanoparticles (PEI-NPs) that were encapsulated inside the PEG-*b*-PAD polymersomes. Size-specific release of PEI-NPs indicated an increase in pore size from ≤4 nm to more than 10 nm upon the stepwise transformation from a hydrophobic, entangled polyamidino block to a hydrophilic, stretched polyamidinium block. The increased pore size allowed an enzyme, trypsin, to diffuse into the polymersome cavity where it catalyzed the hydrolysis of the encapsulated oxygenated myoglobin, thereby inducing a measurable photometric change. Permeabilization that enables even larger biomolecules to pass the membrane was observed with polymersomes assembled from a hyperbranched poly(ε-caprolactone)-*b*-(poly[2-(diethylamino)-ethyl methacrylate]-*b*-poly(ethylene glycol)) (PCL-*b*-PDEAEMA-*b*-PEG) triblock copolymer.¹¹⁷ With increasing CO₂ exposure, the vesicles first swelled and after 15 min, sudden release of fluorescent rhodamine occurred. Eventually, macropores of several 100 nm in diameter were revealed by transmission electron microscopy. These examples show that enhanced pore formation can be corroborated by sensing moieties such as large enzymes which produce a fluorescence signal or the release of labelled nanoparticles. Further studies are needed to precisely understand how different pH values gradually affect permeabilization/pore formation of these polymersomes.

A similar concept resulting in pH-responsive polymersomes is to specifically induce the membrane to become porous only at a certain pH. A copolymer of acrylic acid and distearin acrylate poly(AA-*co*-DSA) formed polymersomes which showed reversible opening (pH 8) and closing (pH 5) due to the deprotonation of PAA under basic conditions.¹⁰² Ensuing pores allowed the influx of calcein which could then be detected in the compartment interior *via* confocal laser scanning microscopy (CLSM). Thus, PAA turned the polymersomes into a pH-sensor with an output signal that was detectable by fluorimetry.

A different means of achieving pH responsiveness is reflected in so-called “schizophrenic vesicles” that are based on zwitterionic diblock copolymers or polyampholytes, whose blocks are interchangeable in terms of hydrophilicity. More specifically, a change in pH induces the change of the hydrophilic block to a hydrophobic block and *vice versa*, predominantly through changes in conformation and charge. There are many polymers that exhibit this behaviour. Yet, only a few examples applicable in sensing exist because the most important part, the sensing moiety, is lacking. Not so in PDEAEMA-*b*-PAP (poly(*N*-acryloyl-*L*-phenylalanine)) functionalized at the PDEAEMA block with a fluorescent pyrene group as a pH sensing entity.¹¹⁶ This polymer formed “flower-like” polymersomes with switchable coronas and thus schizophrenic behaviour upon a pH change from 2 to 12. At pH 2, PDEAEMA is positively charged and hydrophilic, and forms the corona, while PAP is uncharged and hydrophobic. At high pH, PAP is negatively charged and hydrophilic and PDEAEMA is uncharged and hydrophobic, and the corona is inverse.

Besides the above-mentioned strategies that are based on pH responsiveness inherent to the polymer, a completely



different strategy to endow polymersomes with pH responsiveness is to integrate biomolecules with specific functions. For example, by inserting gramicidin (gA), a small pore forming polypeptide, into the membrane of PMOXA-*b*-PDMS-*b*-PMOXA polymersomes, the pH-sensitive dye encapsulated in the cavity was able to respond to pH changes in the polymersomes' environment.¹⁷³ The bio-inspired strategy has been further extended in various ways. For instance, pH-sensitivity was achieved by inserting chemically or genetically modified channel porins in the polymersome membrane where they function as pH-triggered "gates".^{58,120} In particular, the outer membrane protein F (OmpF) from *E. coli*, which allows diffusion of molecules up to 600 Da, has been modified by a pH-responsive molecular cap that was chemically attached to the channel.⁵⁸ When the pH in the polymersome environment was lowered from 7.4 to 5.5, the OmpF pore was unplugged. A genetic modification of OmpF, which enabled the stable conjugation of a pH-responsive peptide cap, turned OmpF into a "biovalve" that reversibly allowed molecular flow when the pH increased from 6 to 7.4.¹²⁰ In both cases of polymersomes equipped with modified OmpF channels, the sensor capacity was established by encapsulating horseradish peroxidase (HRP), thereby transforming the polymersomes into catalytic nanocompartments: in response to external pH changes, the OmpF pores opened and the substrate (Amplex UltraRed) gained access to the encapsulated HRP, which catalyzed its conversion to a fluorescent product (Resorufin) *in situ*.

Polymersomes sensing changes in the reductive conditions of the surrounding

Polymersomes that are inherently sensitive to the surrounding reduction/oxidation conditions have been reported to function as drug delivery systems, but their architecture disintegrated to release the cargo.^{50,174–176} Nevertheless, intact polymersomes exist that are turned into reduction-sensitive systems by biomolecules. A recent example of reduction-responsive polymersomes with preserved integrity has been obtained by inserting genetically engineered OmpF in the membrane of PMOXA₆-PDMS₄₄-PMOXA₆-based polymersomes.³ The genetic modification allowed the conjugation of a fluorescent molecular cap to OmpF *via* disulphide bonds that are cleaved in a reducing environment (Fig. 2A). As a result of the cleavage, the pores open to a substrate, which is then converted to a fluorescent product by the HRP confined in the polymersome cavity (Fig. 2B). This biosensor served as an artificial organelle that was able to sense reductive conditions *in vivo*.

Ion-sensing polymersomes

Ion-sensing polymersomes that maintain their structural integrity have similarly been obtained by intrinsically permeable membranes and by the insertion of biomolecules in non-responsive polymersomes. For example, the membranes of polymersomes based on PMOXA-*b*-PDMS-*b*-PMOXA copolymers are permeable to different oxygen species.

Accordingly, superoxide anions diffused through the membrane and were enzymatically converted to hydrogen peroxide

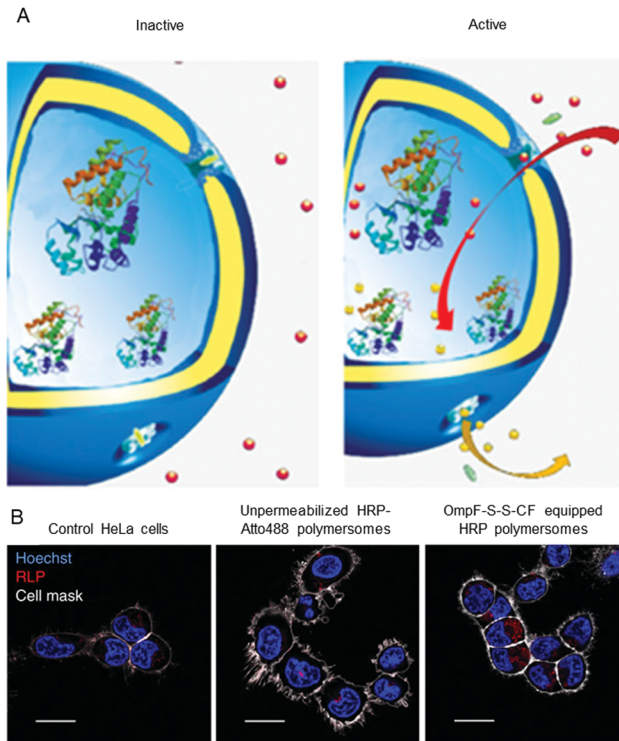


Fig. 2 Catalytic nanocompartments as sensors for reduction, based on incorporation of reduction-sensitive membrane protein OmpF. Two reduction-sensitive cysteine residues of genetically engineered OmpF were chemically conjugated with a molecular cap. (A) Scheme of bio-sensor with modified OmpF as a membrane gate and encapsulated horseradish peroxidase acting as a catalytic moiety. In the inactive state (left), the gates stay closed and are impermeable for the substrate. Upon activation by reduction stimulus (right), the gates open and the enzyme produces a fluorescent product, representing the sensing moiety. (B) Polymersome biosensors are taken up and activated in HeLa cells. Comparison between CLSM images of untreated cells, cells treated with unpermeabilised catalytic compartments and catalytic compartments permeabilised with reduction-sensitive OmpF (OmpF-SS-CF) (from left to right). Blue: nucleus (Hoechst 33342 nuclear stain); grey: plasma membrane (CellMask Deep Red Plasma membrane stain); red: resorufin-like product (RLP) from activated catalytic biosensors (scale bar: 20 μm). Adapted with permission from ref. 3. Copyright 2018[®] Springer Nature.

and oxygen by the superoxide dismutase (SOD) encapsulated in the polymersome cavity.¹⁶⁹ By co-encapsulation of a second enzyme, lactoperoxidase (LPO) or catalase, an *in situ* cascade reaction occurred, which further degraded H₂O₂ to water and oxygen.¹⁷⁷ Such detoxifying polymersomes internalized by HeLa cells remained active as indicated by an increased fluorescence of a reporter product. Thus, catalytic compartments with a confined SOD-LPO cascade reaction represent a straightforward way to simultaneously detect and degrade superoxide radicals and associated H₂O₂, both well known to be involved in oxidative stress.

The specific ion sensitivity of PMOXA-*b*-PDMS-*b*-PMOXA polymersomes was also achieved by insertion of biopores such as the gramicidin A (gA) into the membranes. Polymersomes permeabilized with gA allowed for the diffusion of Na⁺ and K⁺, which was detected by a change in the fluorescence intensity of the encapsulated reporting molecules.¹⁷³ The responsiveness of



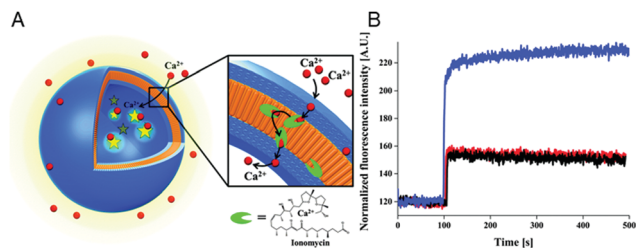


Fig. 3 Scheme of polymersome sensors for Ca^{2+} . (A) The Ca^{2+} transporter ionomycin is inserted into polymersome membranes, allowing for the sensing of Ca^{2+} ions by the encapsulated Ca^{2+} -sensitive fluorescent dye Asante Calcium Green (ACG). (B) Ca^{2+} influx through PMOXA₆-*b*-PDMS₄₄-*b*-PMOXA₆ triblock copolymer membrane. The graph compares the fluorescence intensities of ACG encapsulated in unpermeabilised polymersomes (black curve), in unpermeabilised polymersomes in the presence of EtOH (red curve), which was used for ionomycin solubilisation and insertion into the membrane, and in ionomycin-permeabilised polymersomes in the presence of 830 mM CaCl_2 (blue curve). Adapted with permission from ref. 16. Published by the PCCP Owner Societies.

such bio-equipped polymersomes can be adjusted by selecting specific biomolecules for insertion. For example, PMOXA-*b*-PDMS-*b*-PMOXA polymersomes have been rendered Ca^{2+} -sensitive by the incorporation of ionomycin, a specific ionophore for calcium ions (Fig. 3A).¹⁶ The sensor detected the presence of Ca^{2+} ions in a range corresponding to the intra- and extracellular concentrations *via* an encapsulated Ca^{2+} -sensitive dye (Fig. 3B). Integration of such ion channels and transporters may pave the way for the development of advanced cellular ion sensors.

Biomolecule-sensitive catalytic polymersomes

The concept of producing catalytic nanocompartments by incorporating enzymes in polymersomes has been reported to induce responsiveness to specific surrounding biomolecules which are substrates for the enzymes encapsulated inside. Due to its potential in cancer therapy,^{24,51} the glucose-sensitive enzyme glucose oxidase (GOx) lends itself to encapsulation into catalytic polymersomes. H_2O_2 , which is quantitatively produced by the catalytic activity of GOx, can participate in a second reaction catalysed by a peroxidase (such as horseradish peroxidase, HRP) that is able to oxidize specific substrates easily detectable by fluorimetry or UV/Vis spectroscopy. The GOx-HRP enzyme cascade was integrated into glucose-sensing catalytic polymersomes assembled from poly(ethylene glycol)-*b*-poly(2-hydroxypropyl methacrylate) (PEG-*b*-PHPMA) which were formed by visible light-mediated PISA (photo-PISA).⁷ These polymersomes possessed intrinsic permeability for glucose and H_2O_2 . Glucose was indirectly sensed *via* the formation of a chromophoric product (Fig. 4). The same reaction has been exploited by GOx catalytic polymersomes assembled from PMOXA-*b*-PDMS-*b*-PMOXA which were rendered permeable by the pore-forming peptide Melittin.¹⁵³ These catalytic nanocompartments (CNCs) produced H_2O_2 which was used to convert nonfluorescent Amplex Red to the fluorescent resorufin in a reaction catalyzed by horseradish peroxidase (HRP).

Another biomolecule that has been efficiently detected by catalytic nanocompartments is uric acid, known to be

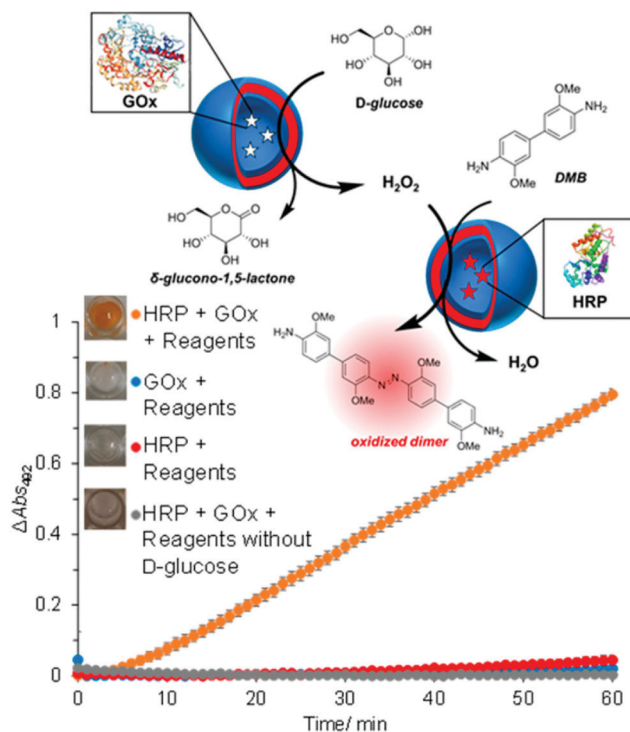


Fig. 4 Glucose-sensing catalytic polymersomes working in tandem, generating a chromophoric product. Upper scheme shows polymersomes assembled from PEG-*b*-PHPMA, which possess intrinsic permeability. Enzymes GOx and HRP were encapsulated into separate, communicating compartments, where the GOx polymersomes represent the sensing moiety and the HRP polymersomes represent the signal-generating moiety. The graph shows the product formation of the cascade reaction between HRP and GOx-loaded vesicles with negative controls. Error bars show the standard deviation from four repeats. Insets: End-point photographs of wells after 1.5 h. Adapted with permission from ref. 7. Published by the American Chemical Society.

associated with the occurrence of gout. By encapsulation of uricase into CNCs assembled from PMOXA₆-PDMS₄₄-PMOXA₆ equipped with OmpF, uric acid was successfully detected by a second enzyme present in serum acting as a catalyst.¹⁷⁸ Taking the development of sensing devices one step further, catalytic nanocompartments containing uricase or lactoperoxidase that were equipped with a biopore for permeabilization of their membrane, were immobilized in tandem on a surface.⁵ Specifically, CNCs were immobilized *via* streptavidin-biotin interactions on polymer brushes synthesized on a silicon surface (Fig. 5). This sensor system successfully sensed uric acid present in the environment of the surface. Such active surfaces have large potential for the development of biosensors on a chip.

A biosensor for sugar alcohols that has similar potential to be used on a chip was developed by the encapsulation of the enzyme ribitol dehydrogenase (RDH) into polymersomes which were selectively permeable for sugar alcohols.¹¹⁹ The selective permeability was accomplished by insertion and reconstitution of the aquaglyceroporin GlpF from *E. coli*, which conducts water and linear polyalcohols across the inner bacterial membrane, into the polymersome membrane.



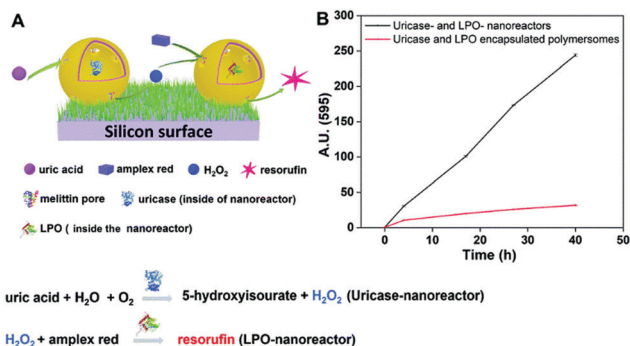


Fig. 5 Uric acid-sensing nanoreactors immobilized on a surface. (A) Schematic diagram of the cascade reaction on uricase and LPO-nanoreactor immobilized surface. (B) Fluorescence intensity of resorufin in PBS solution produced by uricase and LPO nanoreactor immobilized soft surface (black curve) and uricase and LPO encapsulated polymersome (without melittin as control) immobilized soft surface (red curve). Adapted with permission from ref. 5. Published by The Royal Society of Chemistry.

Polymersomes with dual sensitivity

Extending the responsiveness to multiple stimuli evidently renders the systems more efficient in the detection of certain pathological conditions. Furthermore, it offers the possibility of inducing a specific response by the external application of a second stimulus. However, there are only very few examples of the dual-responsiveness of polymersomes simultaneously preserving their integrity during the sensing period of time. The combination of pH-sensitive “breathing” polymersomes with the biological principle of feedback-regulated systems was used to create catalytic nanocompartments able to sense the presence of an acidic “fuel” (Fig. 6A and B).²¹ Addition of “fuel” (urea acidified with HCl) changed the catalytic compartments from an “OFF” to an “ON” state. In the ON state, hydrolysis of the fuel by urease produced basic ammonia. The increased pH turned the catalytic compartments to the “OFF” state again. Based on the co-encapsulation of HRP and the turnover of a chromogenic substrate, the urease activity could be followed over time-programmed several cycles (Fig. 6C). A complementary approach has been obtained by clustering polymersomes together to use them as distinct but colocalized nanocompartments: one type containing the enzyme human Dopa decarboxylase (DDC) and the second type loaded with fluorescent probes for the detection, respectively (Fig. 6D and E). The catalytic compartment containing the active DDC triggers the cellular expression of a secreted reporter enzyme *via* production of dopamine, while the second type of polymersomes allows tractability *via* dye-loading as the imaging component.²⁶ Such bio-inspired systems have high potential for the development of dual-responsive sensors with the advantage, to allow for detoxification or conversion of the biomolecules as well.

Synthetic giant unilamellar vesicles (GUVs) as potential compartments for biosensors

Giant unilamellar vesicles (GUVs) are usually based on a chemical composition similar to that of polymersomes but they

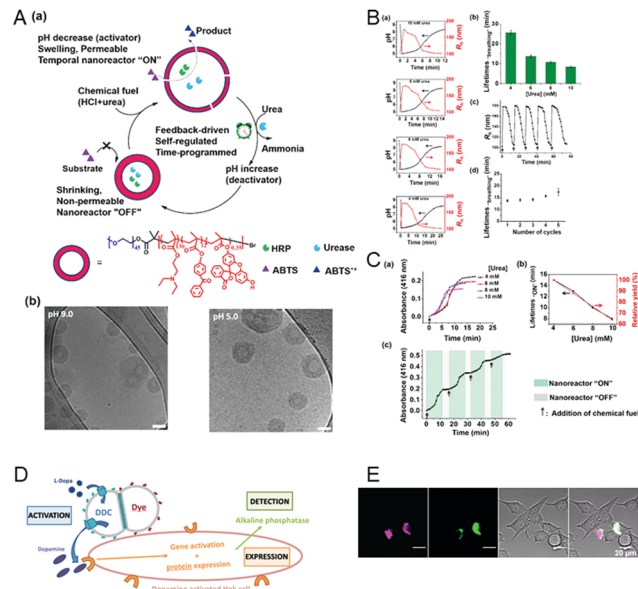


Fig. 6 (A) (a) Schematic overview of feedback-induced temporal control of polymersome nanoreactors. (b) Cryo-TEM images of polymersomes at pH 9.0 (left) and pH 5.0 (right). All scale bars are 100 nm. (B) (a) Influence of the urea concentration on the size changes of the polymersome nanoreactor solution. Urea concentrations from top to bottom: 10, 8, 6, and 4 mM. (b) Average transient periods of polymersome “breathing” as a function of the urea concentration. (c) Reversible hydrodynamic radius (R_h) changes of the polymersomes in time following repeated additions of chemical fuel (6 mM urea). (d) Average transient periods of “breathing” within five cycles (6 mM urea in all cases). Concentration of urease in the polymersomes is 30 U mL⁻¹. (C) UV absorbance at 416 nm of the oxidation of ABTS by nanoreactors upon the addition of different concentrations of urea. (b) Lifetimes (black line) of the nanoreactor “ON” state and relative yield (red line) as a function of urea concentration. (c) Reversible nanoreactor “ON–OFF” modulation in time following repeated additions of 6.0 mM urea. Experimental conditions: urease, 30 U mL⁻¹; HRP, 10 U mL⁻¹; ABTS, 8 mM; H₂O₂, 5 mM. Adapted with permission from ref. 21. Published by the American Chemical Society. (D) Schematic representation of segregated clustered nanocompartments containing DDC and imaging compound.²⁶ (E) CLSM pictures from four different locations of dye-loaded nanocompartment clusters attached to the surface of HEK_{REWARD} cells⁴⁴ after 24 h of incubation, with separated DY-633 and Atto-488 channels, transmission channel and merged images (scale bar = 20 μm). (D and E) Unpublished data.

differ in size. GUVs typically have diameters in the micrometer range (10–100 μm) and thus, represent an elegant tool to prepare cell-sized compartments that can sense changes in their environment.^{68,69,179–182} There are different methods to prepare polymer GUVs, including “solvent switch” and “solvent-free” approaches,^{46,183} which have been described above for the generation of polymersomes, others specific for GUV production, such as electroformation and gel-assisted hydration of a dry polymer film.^{46,122,184,185} Unfortunately, each of the solvent-free techniques also has its own drawbacks. Overall, they are less controllable than the “solvent switch” methods, generating polymer GUVs with a broader size distribution. Moreover, the encapsulation of reporting molecules is more challenging, especially with the electroformation method, which involves the application of an electric field.¹⁸³



The advantage of polymer GUVs is that they allow for the direct visualization of the interactions and reactions occurring inside their cavity by established microscopic techniques. Thus, they are suitable for investigating in real time pathological changes at the cellular level. However, because of the instability of their membrane, GUVs are prone to burst and release their content, which excludes them from more advanced applications.

GUVs reporting changes in pH and the presence of ions

To induce selective permeability for ions and molecules in GUVs or to sustain reactions inside their cavity while preserving the architecture is a challenging goal. Membrane insertion of ionophores or biopores has been achieved only in few cases. For example, ionophores including Lasalocid A, Alamethicin, *N,N*-dicyclohexyl-*N',N'*-dioctadecyl-3-oxapentane-1,5-diamide and calcimycin inserted into the membranes of GUVs based on PMOXA-PDMS-PMOXA block copolymers made them permeable to calcium ions,^{186,187} while gramicidin rendered GUV sensitive to pH and monovalent ions.⁵⁹ The stability of giant compartments and biopore functionality were assessed by encapsulating specific dyes that respond to the presence of the corresponding ions as a straightforward means of detection.

GUVs sensing changes in the reductive conditions of the surrounding

An elegant approach to sense the reductive conditions of the GUV environment was achieved by forming GUVs from a mixture of amphiphilic block copolymers PMOXA-*b*-PDMS-*b*-PMOXA and PDMS-*b*-heparin.¹ The resulting GUV allowed the redox reagent dithiothreitol (DTT) to access the cavity where it disassembled encapsulated nanoparticles loaded with reporter dyes. By encapsulating different nanoparticles, each loaded with a specific biomolecule, inside the GUVs, DTT was able to induce signaling cascades that mimic cell signaling. As a first step inside the GUV, DTT triggered the disassembly of nanoparticles loaded with gA. The released gA inserted in the GUV membrane and rendered it sensitive to the presence of ions which then function as a second stimulus (Fig. 7A). In addition, enzymes confined in the GUV's cavity converted the corresponding substrates and provided biopores or channel porins that were inserted in the GUV membrane let them enter the cavity as in the case of polymersomes. Compared to polymersomes, insertion of biopores/membrane proteins in the GUV membrane is by far more challenging because of its instability. To present, only one example of PMOXA-*b*-PDMS-*b*-PMOXA based GUVs that contained a functional HRP was reported.² When OmpF was inserted in the GUV's membrane, H₂O₂ and AmplexRed could enter the cavity and react with the encapsulated HRP to form fluorescent resorufin as a "reporter" for H₂O₂ (Fig. 7B).

PICsomes as compartments for the development of biosensors

PICsomes are special types of polymersomes, which are based on a polyion complex (PIC).¹⁸⁸ PICsomes are formed by

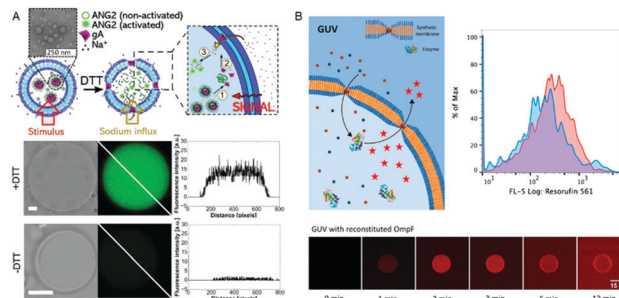


Fig. 7 (A) Schematic representation (top) of gramicidin (gA)-mediated sensing of sodium ions. Upon DTT addition, the encapsulated gA is released from nanoparticles and inserts into the GUV membrane boundary. This allows the flux of sodium ions into the GUV cavity where they activate the sodium sensitive dye ANG2. Bright field image (left), fluorescence image (middle), and histogram along the diagonal of the fluorescence image (right) in the presence (middle) and absence (bottom) of DTT.¹ (B) Schematic representation of a synthetic giant unilamellar vesicle (GUV) (top left) with encapsulated enzyme (horseradish peroxidase – HRP) and selective permeability to substrates (Amplex UltraRed – AR) induced by reconstitution of outer membrane protein F (OmpF). Top right, flow cytometry analysis of PMOXA₇-PDMS₄₉-PMOXA₇ GUVs with (red) and without (blue) OmpF membrane insertion. Bottom, CLSM fluorescence micrographs of an individual HRP-containing GUV with OmpF membrane insertion, recorded over time after the addition of H₂O₂ and Amplex UltraRed. Adapted from ref. 2 with permission of John Wiley & Sons.

self-assembling mixtures of anionic and cationic block copolymers selected so that the resulting assembly is neutral. The mixture for PIC systems is usually based on poly(ethylene glycol) PEG block "anioner" (negatively charged polymer) and a second "homocationer" (positively charged polymer) neutralizing each other's charge.¹⁸⁹ Due to the immiscibility of the two components and the large steric hindrance of PEG, a rather small volume of PEG is considered to preferentially form hollow spheres. When long PEG chains were mixed with the homocationer chains, micelles were formed due to the large volume of PEG-units.¹⁰⁷

An advantage of PICsomes is their intrinsic membrane permeability which allows ions and small compounds (e.g. O₂ and Na₂S₂O₄) to pass through, while molecules with larger molecular weight (enzymes and proteins) remain inside and are protected from pathological attack.¹⁹⁰ In addition, PICsomes are only formed in aqueous media, which makes them particularly suitable for combining with sensitive biomolecules such as enzymes.¹⁰⁷ In aqueous solutions with a physiological salt concentration (150 mM NaCl), micron-sized vesicles were obtained, which are called "the first generation PICsomes" (1st-G PICsomes). In the absence of NaCl, submicron-sized PICsomes were formed presenting the second generation of PICsomes that were named "Nano-PICsomes".¹⁰⁷ Nano-PICsomes are well suited for medical applications because they showed longevity (a mean residence time of over 40 h) and a prolonged blood circulation if they were smaller than 200 nm.^{191,192} As PICsomes are formed by anioners and cationers, depending on their pK_a values, these polymers facilitate specific charge changes within the PICsome membrane that induce structural fluctuations (tightness of the membrane and size of the PICsome). Because such structural modifications can be coupled to a fast and easily



measurable signal, e.g. fluorescence, PICsomes lend themselves to designing biosensors.

Intrinsically pH sensitive PICsomes

PICsomes have already been developed and exploited for the use as diagnostic nanocarriers with sensitivity towards changes in pH. 1st-G PICsomes based on PEG–poly[(5-aminopentyl)- α , β -aspartamide] (PEG–P(Asp-AP)) as a homo-cationer and PEG–poly(α , β -aspartic acid) (PEG–PAsp) as an anioner were able to sense slight, acid-based pH changes by reversibly changing their morphology.¹⁰⁷ This kind of PICsomes maintained their structure at pH 7.4, while they fragmented into smaller particles below a pH of 3.8. When the pH changed again to neutral, the PICsomes were reformed. During this regeneration process, it was possible to encapsulate macromolecules. In addition, 1st-G PICsomes showed permeability changes in response to different pH values. This was observed by measuring the fluorescence of dextran conjugates ($M_n = 70\,000$) that were able to get through the PICsome membrane at pH 5.8 but not at pH 6.2 to 7.4.¹⁹³ Such pH-sensitive properties of the membrane components make PICsomes a promising tool for cancer diagnosis since tumor cells exhibit an increased glucose metabolism that results in a higher H^+ -concentration outside the cell.⁵⁴

Layer-by-layer (LbL) capsules as compartments for the development of biosensors

LbL capsules are hollow microcapsules prepared by the assembly of a polyelectrolyte multilayer (PEM) film onto colloidal particles that serve as a spherical template. Layers of positively and negatively charged polyelectrolytes are alternatively adsorbed onto the template (Fig. 8). In addition, various charged nano-objects (e.g. magnetic nanoparticles or quantum dots, QDs) can be incorporated within the multilayers in order to achieve different functionalities of the capsules.⁸ After the assembly process, the

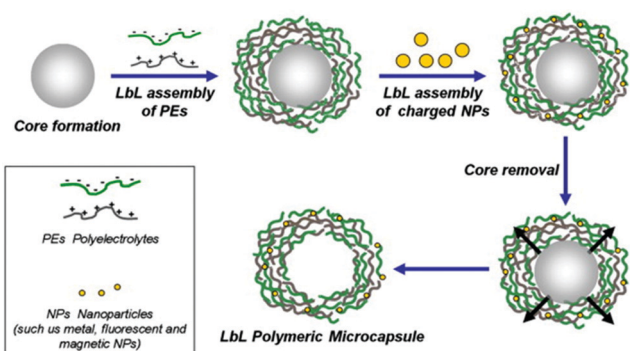


Fig. 8 Schematic representation of LbL assembly. PEM capsules are produced by LbL adsorption of oppositely charged polyelectrolytes (green and gray) onto spherical charged spheres, followed by dissolution of sacrificial templates. During LbL coating, various charged elements can be incorporated within the multilayers to add functionality to the capsules. Adapted from ref. 8 with permission of Elsevier B.V.

$CaCO_3$ or silica based core¹⁹⁴ is removed by dissolving under mild pH conditions (Fig. 8).

LbL microcapsules have attracted interest for diagnostic applications because they enable the incorporation of sensitive fluorophores and enzymes in the same capsule for multiplexed detection of different pathological signals. LbL capsules containing “reporting” molecules/nano-assemblies have been used for sensing (i) pH, (ii) ions and (iii) biomolecules (Fig. 9). The functionality of pH- or ion-sensitive capsules was based on “reporting molecules” that functioned either as ratiometric ion-sensitive indicators or non-ratiometric indicator dyes with a reference dye inside the cavity (Type 1). A more complex scenario allowing detection of biomolecules has been achieved by co-loading their cavity with enzymes and dye indicators (Type II), while multiple detection of ions has been performed by incorporating QD-based barcodes in the shell of Type I LbL (Type III).⁸

pH and ion sensitive LbL capsules

LbL capsules based on anionic and cationic polymer layers were able to reversibly respond to changes in pH or ionic strength because the polymer chains became uncharged if proton or ion concentrations increased. This reduction of charge caused an electrostatic repulsion between the different layers. As a result, the capsules swelled¹⁹⁴ with a concomitant increase in membrane permeability.¹⁹⁵ By decreasing the ion concentration to the starting conditions, the capsules shrunk again.

For sensing pH-changes in particular, LbL microcapsules based on sodium polystyrene sulfonate (PSS) as an anionic and poly(allylamine hydrochloride) (PAH) as a cationic layer were modified with pH-responsive dextran-conjugates that emit a strong fluorescence signal lasting for several days.^{106,196} The resulting capsules were able to exhibit different colorimetric changes depending on alkaline, neutral and acidic pH values. To obtain pH-sensitivity, capsules were prepared that contain microparticles loaded with seminaphthorhodafluor (SNARF)-dextran conjugates.

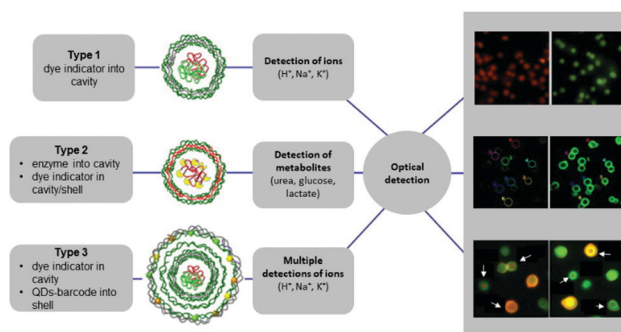


Fig. 9 Different types of LbL-based sensors. Type 1 (typically for ion detection): ion-sensitive indicators reside in the cavity. Type 2 (typically for metabolite detection): metabolite-degrading enzymes and indicator dyes are present inside the cavity, or indicator dyes are incorporated in the outer shell. Type 3 (for multiplex ion detection): Type 1 with QD-based barcode placed in the outermost shell. Modified from ref. 8 with permission of Elsevier B.V.



Using the same PEM but an adapted preparation method, other LbL sensing systems based on incorporated fluorophores were developed that allowed for the optical ratiometric sensing of Na^+ , K^+ or Cl^- . Besides H^+ -sensor capsules based on fluorescein isothiocyanate (FITC) or SNARF, Na^+ -sensors based on sodium-binding benzofuran isophthalate (SBFI), K^+ -sensors based on PBFI and Cl^- -sensors based on the halide-sensitive fluorescence indicator amino-MQAE were reported.³² All the different capsules were equipped with a reference dye (AF594) and with the respective ion-sensitive fluorophore. In the case of the cation sensors (H^+ , Na^+ and K^+), the response of the fluorophore reflected the ability of the capsules to sense low, medium and high concentrations of these ions.

The simultaneous detection of multiple ions is a main goal in diagnostics but is impeded by the emission cross-talk between different reporter fluorophores. To sidestep this limitation, porous microcapsules which carry a reference dye (Dy647) and one of 3 different ion-sensitive (FITC, SBFI, and PBFI) probes in their inner cavity were each marked with a unique fluorescent quantum dot (QD) barcode in their outermost wall to identify individual sensors.⁶ In mixtures of H^+ -sensor, Na^+ -sensor and K^+ -sensor capsules, the fluorescence emitted by the QDs was used for sensing the type of ion (orange: H^+ , green: Na^+ and yellow: K^+), while the ratio of the measured intensities of the ion-sensitive fluorophore and reference dye reflected the corresponding ion-concentration (Fig. 10). Thus, based on ion-sensitive QD barcode identification, combined H^+ -sensor, Na^+ -sensor and K^+ -sensor capsules could be used for the multiplexed analysis of proton, sodium, and potassium ions in solution. The engineering of QD barcodes to capsule walls represents a promising strategy for optical multianalyte measurements.

Oxygen and metabolite-sensitive LbL capsules

Although LbL capsules based on PSS as an anionic layer and PAH as a cationic layer were initially used for sensing pH changes or different ions, the same LbL capsules have been intensively explored for their ability to sense different molecules, such as oxygen (O_2),^{197,198} or metabolites, for example

urea,¹⁰⁹ lactate,¹⁰⁸ cholesterol¹⁹⁹ and glucose.^{200–203} LbL capsules allowed the ratiometric detection of oxygen by entrapment of a ruthenium-based oxygen fluorophore (Ru(bpy)) together with fluorescein serving as reference.¹⁹⁷ With increasing oxygen concentration, the fluorescence emitted by Ru(bpy) decreased while the fluorescein signal remained constant. All metabolite-sensitive capsules used one of the following two strategies for sensing: (i) the capsules contained an O_2 -quenchable fluorophore in order to detect a decreasing O_2 -concentration caused by the respective metabolite and (ii) LbL capsules served as catalytic compartments that produce a fluorescent product in the presence of a certain metabolite.

(i) Besides the ratiometric detection of oxygen, different O_2 -quenchable fluorophores have been used for sensing different types of metabolites in coupled reactions. LbL capsules sensing cholesterol were based on cholesterol oxidase (ChOx) immobilized in alginate–silica cores together with platinum(II)-octaethylporphine (PtOEP) as an extraordinary O_2 -quenchable luminescent dye.¹⁹⁹ The resulting sensing mechanism for cholesterol involves the ChOx-catalyzed production of Δ -cholestenone and H_2O_2 . This reaction results in a decreased O_2 -concentration causing the characteristic luminescence of PtOEP in a highly sensitive and selective manner. Glucose-detecting capsules present a very attractive platform for the clinical monitoring of the blood glucose in patients with diabetes. The sensing concept is based on incorporated glucose oxidase (GOx) for the selective catalyzed reaction of glucose and O_2 to gluconic acid and H_2O_2 . GOx-loaded alginate hydrogel microspheres served as the core and as the immobilization matrix for the enzyme. The O_2 -quenchable ruthenium fluorophore Rh(dpp) was distributed throughout this alginate-core along with GOx to observe a decreased O_2 -concentration in the presence of glucose.²⁰⁰

(ii) A complementary strategy to obtain metabolite-responsive LbL capsules involved the development of catalytic LbL capsules with metabolite-degrading enzymes inside. Enzyme catalyzed reactions were used to convert the respective metabolite into a product that reacts with sensitive dyes to cause a colorimetric response. The selective permeability of the capsule shells allowed the metabolite to pass through freely, while the enzymes inside remained protected. For example, urea-sensing LbL capsules are based on the co-encapsulation of urease as metabolite-sensitive enzyme and a SNARF-dextran conjugate as a pH-sensitive fluorophore.¹⁰⁹ The urease-catalyzed hydrolysis of urea produces carbon dioxide and ammonia. The latter results in an increased pH that is reflected in the change in fluorescence emission of the pH-sensitive indicator SNARF. This system was suggested to sense rather high natural urea concentrations usually found in blood or urine. Lactate-biosensors based on LbL assemblies follow a similar principle.¹⁰⁹

The negatively charged polyelectrolyte PSS was labelled with dihydrorhodamine 123 as a peroxide-sensitive fluorophore prior to PEM assembly. Lactate oxidase and peroxidase were incorporated into the capsules by loading the CaCO_3 core with both enzymes. The enzyme catalyzed detection of lactate includes two consecutive steps: lactate oxidase converts the

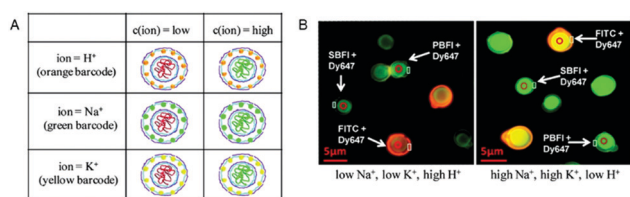


Fig. 10 Multiplexed measurements of ions with QD barcoded poly-electrolyte sensor capsules. (A) Three different types of capsules loaded with Dy647-modified dextran and with either FITC-, SBFI-, or PBFI-modified dextran. These capsules were labeled with a QD barcode incorporated in their outer wall. (B) Fluorescence image of a mixture of the three different types of capsules in two solutions with different ion concentrations. By changing from a low Na^+ - and K^+ -concentration (5 mM) at pH 5 (left panel) to a high Na^+ - and K^+ -concentration (140 mM) at pH 9 (right panel), the $I_{\text{SBFI}}/I_{\text{Dy647}}$ ratio of Na^+ -responsive capsules increased. Adapted and modified from ref. 6. Copyright © 2011 American Chemical Society.



lactate to pyruvate and H_2O_2 which is then used by the peroxidase to catalyze the reaction of the nonfluorescent ROS indicator dihydrorhodamine 123 to fluorescent rhodamine 123. Another type of glucose-sensing LbL capsule used a coupled reaction involving co-encapsulated HRP to monitor the enzymatic activity of GOx.²⁰¹ In this bienzymatic catalytic system, H_2O_2 produced by the GOx activity was used in a following HRP-catalyzed reaction to convert Amplex Red to fluorescent resorufin. By measuring the fluorescence, these LbL capsules enabled real-time monitoring of the glucose consumption and showed high potential for technologies sensing minimal amounts glucose.

Other LbL capsules based on alginate microspheres were investigated for their potential use as implantable fluorescent biosensors, so called “smart tattoos”.^{202,203} Such implants were intended for injections directly into the dermis in order to measure local changes in blood glucose levels. The optical glucose-sensors worked on the principle of fluorescence resonance energy transfer (FRET) between GOx and an FITC dextran-conjugate that took place in the absence of glucose. Due to the high binding affinity of GOx towards glucose, glucose was able to displace FITC as a donor dye resulting in a measurable decrease of energy transfer.

Another bio-inspired approach for sensing intracellular hydrogen peroxide (H_2O_2) has been introduced by using LbL capsules based on a combination of PSS and poly(diallyldimethylammonium chloride) (PDADMAC).¹¹³ Inside these capsules, H_2O_2 -sensitive bovine serum albumin-capped gold nanoclusters (BSA-AuNCs) were co-encapsulated with insensitive FluoSpheres as reference fluorescent nanoparticles, allowing for the ratiometric detection of peroxide.

Perspectives of bio-inspired compartments as efficient sensors

As illustrated by the examples above, considerable efforts have been made for the development of bio-inspired compartments that rapidly produce a measurable signal reflecting the changes related to a pathological condition. Although this field is in its early stage of research and development the potential of polymer nanocompartments is immense. Yet, there is a complex scenario of factors that need to be significantly improved to optimise such nano- and micro-sized sensing systems and make them viable as novel efficient medical solutions.

First, there are few polymer systems with intrinsic responsiveness to bio-relevant stimuli other than pH changes or the presence of specific ions, and also preserve their integrity during the detection process. In this respect, there are different options to expand the chemistry of polymersome membranes such as to achieve responsiveness to other stimuli. For example, polymers containing phenylboronic acid were reported to possess glucose-responsiveness,^{204,205} and thus, represent a viable option for making glucose-sensitive polymersomes. Furthermore, self-assembly of diacetylene monomers (DAs) into spherical structures followed by polymerization leads to polydiacetylene

vesicles (PDAs) that exhibit a unique chromatic transition from red to blue induced by several stimuli, including pH, temperature, mechanical stress or the presence of various chemical compounds.^{206–210} Considering this interesting property of PDA assemblies, various colorimetric sensors have been developed for detecting pathogens and their toxins, DNA,²⁰⁹ histamine,²¹¹ and urease,²¹² and for the discrimination of lysine enantiomers.²¹³ This variability underlines the high potential in developing PDAs as components of polymer multicompartments, for example inside of other spherical assemblies or attached to their surface, that will be able to signal the presence of different environmental stimuli.

In the case of PICsomes or LbL capsules, their responsiveness can be extended to stimuli other than pH by coupling self-assembling natural polymers, lipids, proteins and enzymes to hollow polyelectrolyte structures. For example, LbL capsules based on hemoglobin and glucose oxidase were reported as glucose-sensitive multilayers that show enhanced permeability when consuming glucose.²¹⁴ In addition to distinct glucose-responsiveness, these LbL capsules showed higher biocompatibility due to their environmentally friendly self-assembled components. To this day, this system is regarded as a carrier for insulin delivery and release, but we consider such LbL capsules also as an option towards developing non-toxic glucose-biosensors. Forming sensing systems based on biodegradable, natural polymers will overcome the actual issues of toxicity, which is described more precisely in this section.

It is equally important to optimise the methods for the generation of compartments with intrinsic stimuli-responsiveness such as to improve the resulting architecture, loading efficiency, and controlled range of responsiveness. For example, more controllable PICsome formation is one of the gaps remaining to be closed in the development of PICsome-based sensors. Molecular factors such as (i) the degree of cross-linking, (ii) molecular weight and (iii) the degree of branching of the polymer backbone showed a high impact on PICsomes' shape and size.⁵² These different influencers of PIC formation should be exploited in order to achieve more controllable PIC systems as the next generation of diagnostic sensors. The increase of cargo loading efficiency in the biosensors is another important point that needs to be addressed, as is decreasing the amount of polymer necessary for these systems. In this respect, microfluidic approaches are expected to significantly increase the loading efficiency, as demonstrated for lipid-based GUVs^{215,216} or non-responsive polymers.²¹⁷

As architectural integrity of the bio-inspired compartments is a prerequisite for the detection process, a key factor is their stability in biological environments. Polymersomes can be rendered more stable by cross-linking approaches, but only if the resulting assemblies retain a very low cytotoxicity.^{53,55,110,115,218}

The structure of PICsomes was stabilized in different smart ways that should be adopted for future PICsome-based sensors. The contributions of the molecular backbone play a very important role in enhancing the stability of PICsomes and in expanding the preparation conditions.²¹⁹ The introduction of guanidinium groups to the side chains of polycations, for



example, led to a very narrow PICsome distribution and stability in the blood-stream.²²⁰ The reason is that guanidinium groups facilitated intermolecular hydrogen bonding in addition to electrostatic interactions within the backbone. A corresponding approach might be applied to establish sensing PICsomes in order to improve their stability without the need for chemical cross-linking. Omitting the chemical cross-linking may also result in lower PICsome toxicity which would be a definite advantage for diagnostic applications. Regarding the specific stabilization of PIC membranes, PIC systems formed by a charge-neutral diblock copolymer and a reversible metal-coordination polymer have considerable potential because the resulting PICsomes were very robust but permeable enough to allow rapid water exchange.³⁵

For further improvement of the stability, sensors with a stable silica core and additional silica NPs in the outer shell have been fabricated by the LbL method.²²¹ The resulting porous microspheres have been proven to be promising candidates for ratiometric acidic pH sensing. In the future, such structures could be optimized by using a diversity of dyes to allow multianalyte detection.

A crucial factor when the bio-inspired compartments are used *in vivo* is their toxicity. Therefore, while several of the examples presented above have potential for sensing changes in their environment, not all have been tested in terms of their cytotoxicity. For example, biogenic LbL capsules have been developed to enhance biocompatibility and biodegradability. Compared to the former capsules based on PSS and PAH, biogenic capsules are biomimetic systems containing polyelectrolyte structures with incorporated biological materials (lipids, proteins, enzymes, natural polymers, and human serum albumin)²²² or consist entirely of self-assembled bio-macromolecules such as hemoglobin which are inherently less toxic.²¹⁴ Bio-inspired capsules like traditional LbL assemblies afford complete encapsulation of guest molecules in their inner compartment while blocking various external molecules due to their adjustable permeability and versatile mechanical properties. Therefore, when loaded with the corresponding reporting molecules/nanoobjects, bio-inspired capsules have great potential as hybrid platforms that sense environmental signals in biomedical applications.²²³

Catalytic nano/micro-compartments, where non-sensitive compartments are rendered sensitive by the combination with biomolecules and reporters producing a specific readout, represent a robust tool for the further development of biosensors.^{3,7,21,58,119,120,153,169,178,224} Their advantage over intrinsically stimuli-responsive compartments is not only improved stability, but a larger diversity and better control over the types of stimuli that can be detected in the surrounding environment. Such catalytic compartments can be further refined by: (i) the co-encapsulation of enzymes that function in tandem provided their activities do not interfere,¹⁷⁷ (ii) the combination of individual, communicating compartments¹⁷⁸ and (iii) engineering multicompartment architectures where small internal compartments loaded with biomolecules act as sensors while the GU's boundary protects and concentrates

them on the inside.^{1,225} In this context, mimicking the sub-cellular compartmentalization of cells and controlling the responsiveness and/or communication inside of an artificial polymer-based architecture are two major goals for the development of new bio-inspired materials with potential application as sensors in biomedicine. The large variety of biomolecules, their specificity and precise functionality support the extension of the sensing ability of such bio-inspired compartments and provide ideal conditions for multiplexed sensing approaches. However, in order to advance as viable diagnostic solutions, catalytic compartments have to be still optimized both in terms of the compartment properties (stability, biocompatibility, and biodegradability) and the encapsulated enzymes (encapsulation efficiency). Besides, inducing stimuli-responsiveness of the compartments by insertion of membrane proteins remains a significant challenge because of the differences between cell or lipid-based membranes and synthetic membranes (flexibility and thickness). First examples of scrutinizing the factors that play a role in the successful insertion of membrane proteins in synthetic membranes^{23,105,226} indicate that the conditions for compartment assembly have to be carefully optimized to preserve the functionality of the membrane proteins in a synthetic environment.

Another important aspect to be taken into account for the development of efficient biosensors is their localization to relevant pathologic regions such as to allow rapid detection of the associated changes. In this respect, the combination of bio-inspired sensing compartments with targeting approaches is a necessary step for improving these systems. Ligand-receptor and antibody-antigen interactions lead to specific accumulation of surface-functionalized polymer compartments at the target site where they either (i) are taken up by the cells, (ii) identify the presence of certain biomolecules, and/or (iii) attach to the cell membrane and signal the changes to and from the cell. For example, attachment of cyclic arginylglycylaspartic acid (cRGD) peptides onto PICsomes supported their accumulation predominantly in the neovascular system, and the tumor imaging by encapsulated contrast agents *in vivo* was improved maintaining a signal for more than 6 h after administration.⁴⁹

The prevailing view in the field is that the design of polymer assemblies with proven *in vivo* functionality and persistent biosensing properties for the diagnosis of pathological changes remains a challenging task. Overcoming these challenges provides incentive for many research groups to systematically explore approaches that can cope with the complexity of the real-time biosensing.

Conclusions

We here present an overview of bio-inspired polymer compartments whose response to the presence of stimuli together with rapid signal generation allow an effective, immediate sensing of changes associated with different pathologies. The supra-molecular hollow architectures are versatile polymer compartments that can exhibit a distinct response to various stimuli.



They represent a fundamental for nontoxic biosensors that in future will be valuable in diagnostic fields. When the polymers were assembled into nano- and micro-sized compartments, they have shown great potential in the selective detection of different disease-related signals, both *in vitro* and *in vivo*, via triggered reactions that convert the signals into specific read-outs such as fluorescence. With a properly tuned design and corresponding surface modifications, these assemblies have been proven to be promising stimuli-responsive platforms. Additionally, several approaches have been already developed to improve their stability, biocompatibility, biodegradability, and non-toxicity, in order to put *in vivo* applications into effect.

Due to the vast possibilities of combining various polymer building blocks and the ability to integrate biomolecules or biomimicking molecules, polymer vesicles represent a promising tool for biomedical applications as sensors. Moreover, self-assembled 3D architectures could be chemically designed through their polymer components to respond to a large variety of stimuli, and thus, provide new opportunities for broadening the knowledge about disease-causing factors and pathological conditions. Many efforts have been made so far to improve the existing biosensing systems. However, there is still a pressing need for developing new responsive materials. Novel components include both polymer building blocks and biomolecules. Moreover, there is an increasing demand from the scientific community and funding agencies to develop *in vitro* surrogates for important tissues and organs. This clear request is motivated by the complexity and high-cost of using animal models. Certain aspects of pathogenesis are also too fleeting to be recorded in animal models and, therefore, *in vitro* analysis is needed. Our vision is that biosensors will be integrated within cell-culture systems and will be used to dissect the signaling underlying tissue injury or regeneration. In general, we foresee that the use of biosensors for cell analysis will expand exponentially during the next several years and provide novel functionalities in the fields of biology and medicine. In conclusion, our perspective briefly highlighted different types of hollow polymer compartments that are promising candidates in biosensing. We pointed at new opportunities for the combination of polymer compartments with a plethora of active biomolecules to create bio-inspired detection platforms. In addition, we provided outlooks and forecasts on various pathways to be followed when designing novel stimuli-responsive polymer-based compartments as diagnostic tools with improved sensing properties.

Conflicts of interest

There are no conflicts to declare.

Acknowledgements

We gratefully acknowledge the financial support provided by the Swiss National Science Foundation, the Swiss Nanoscience Institute, the University of Basel and the National Centre of

Competence in Research – Molecular Systems Engineering (NCCR-MSE).

Notes and references

- 1 S. Thamboo, A. Najer, A. Belluati, C. Planta, D. Wu, I. Craciun, W. Meier and C. G. Palivan, *Adv. Funct. Mater.*, 2019, **29**, 1904267.
- 2 M. Garni, T. Einfalt, R. Goers, C. G. Palivan and W. Meier, *ACS Synth. Biol.*, 2018, **7**, 2116–2125.
- 3 T. Einfalt, D. Witzigmann, C. Edlinger, S. Sieber, R. Goers, A. Najer, M. Spulber, O. Onaca-Fischer, J. Huwyler and C. G. Palivan, *Nat. Commun.*, 2018, **9**, 1127.
- 4 L. Xu, N. Ren, J. Pang, H. Deng, X. Zhu, M. Sun and D. Yan, *Polym. Chem.*, 2017, **8**, 6283–6288.
- 5 C. E. Housecroft, D. Wu, S. Rigo, S. Di Leone, A. Belluati, E. C. Constable and C. G. Palivan, *Nanoscale*, 2019, **12**, 1551–1562.
- 6 L. L. del Mercato, A. Z. Abbasi, M. Ochs and W. J. Parak, *ACS Nano*, 2011, **5**, 9668–9674.
- 7 L. D. Blackman, S. Varlas, M. C. Arno, A. Fayter, M. I. Gibson and R. K. O'Reilly, *ACS Macro Lett.*, 2017, **6**, 1263–1267.
- 8 L. L. del Mercato, M. M. Ferraro, F. Baldassarre, S. Mancarella, V. Greco, R. Rinaldi and S. Leporatti, *Adv. Colloid Interface Sci.*, 2014, **207**, 139–154.
- 9 J. Hu and S. Liu, *Macromolecules*, 2010, **43**, 8315–8330.
- 10 X. Hu, Y. Zhang, Z. Xie, X. Jing, A. Bellotti and Z. Gu, *Biomacromolecules*, 2017, **18**, 649–673.
- 11 Y. Gao, M. Wei, X. Li, W. Xu, A. Ahiabu, J. Perdiz, Z. Liu and M. J. Serpe, *Macromol. Res.*, 2017, **25**, 513–527.
- 12 J. M. Korde and B. Kandasubramanian, *Ind. Eng. Chem. Res.*, 2019, **58**, 9709–9757.
- 13 L. Hu, Q. Zhang, X. Li and M. J. Serpe, *Mater. Horiz.*, 2019, **6**, 1774–1793.
- 14 M. Wei, Y. Gao, X. Li and M. J. Serpe, *Polym. Chem.*, 2017, **8**, 127–143.
- 15 A. M. Pethe and K. S. Yadav, *Artif. Cells, Nanomed., Biotechnol.*, 2019, **47**, 395–405.
- 16 M. Lomora, F. Ite, I. A. Dinu and C. G. Palivan, *Phys. Chem. Chem. Phys.*, 2015, **17**, 15538–15546.
- 17 F. Doberenz, K. Zeng, C. Willems, K. Zhang and T. Groth, *J. Mater. Chem. B*, 2020, **8**, 607–628.
- 18 Y. Zhou, R. Chen, H. Yang, C. Bao, J. Fan, C. Wang, Q. Lin and L. Zhu, *J. Mater. Chem. B*, 2020, **8**, 727–735.
- 19 A. Abdollahi, H. Roghani-Mamaqani and B. Razavi, *Prog. Polym. Sci.*, 2019, **98**, 101149.
- 20 A. P. Blum, J. K. Kammeyer, A. M. Rush, C. E. Callmann, M. E. Hahn and N. C. Gianneschi, *J. Am. Chem. Soc.*, 2015, **137**, 2140–2154.
- 21 H. Che, S. Cao and J. C. M. Van Hest, *J. Am. Chem. Soc.*, 2018, **140**, 5356–5359.
- 22 S. H. C. Askes, N. Bossert, J. Bussmann, V. S. Talens, M. S. Meijer, R. E. Kieltyka, A. Kros, S. Bonnet and D. Heinrich, *Biomaterials*, 2018, **168**, 54–63.



- 23 R. Goers, J. Thoma, N. Ritzmann, A. Di Silvestro, C. Alter, G. Gunkel-Grabole, D. Fotiadis, D. J. Müller and W. Meier, *Commun. Chem.*, 2018, **1**, 35.
- 24 W. Ke, J. Li, F. Mohammed, Y. Wang, K. Tou, X. Liu, P. Wen, H. Kinoh, Y. Anraku, H. Chen, K. Kataoka and Z. Ge, *ACS Nano*, 2019, **13**, 2357–2369.
- 25 M. E. Idrissi, C. E. Meyer, L. Zartner and W. Meier, *J. Nanobiotechnol.*, 2018, **16**, 63.
- 26 C. E. Meyer, J. Liu, I. Craciun, D. Wu, H. Wang, M. Xie, M. Fussenegger and C. G. Palivan, *Small*, 2020, 1906492, DOI: 10.1002/smll.201906492.
- 27 Y. Zhu, B. Yang, S. Chen and J. Du, *Prog. Polym. Sci.*, 2017, **64**, 1–22.
- 28 A. Larrañaga, M. Lomora, J. R. Sarasua, C. G. Palivan and A. Pandit, *Prog. Mater. Sci.*, 2017, **90**, 325–357.
- 29 S. T. Poschenrieder, S. K. Schiebel and K. Castiglione, *Eng. Life Sci.*, 2017, **17**, 58–70.
- 30 N. Aibani, T. N. Khan and B. Callan, *Int. J. Pharm. X*, 2020, **2**, 100040.
- 31 A. H. Groschel and A. H. Muller, *Nanoscale*, 2015, **7**, 11841–11876.
- 32 L. L. del Mercato, A. Z. Abbasi and W. J. Parak, *Small*, 2011, **7**, 351–363.
- 33 K. C. Bentz and D. A. Savin, *Polym. Chem.*, 2018, **9**, 2059–2081.
- 34 M. G. Bah, H. M. Bilal and J. Wang, *Soft Matter*, 2020, **16**, 570–590.
- 35 W. Zhou, J. Wang, P. Ding, X. Guo, M. A. Cohen Stuart and J. Wang, *Angew. Chem., Int. Ed.*, 2019, **58**, 8494–8498.
- 36 C. G. Palivan, R. Goers, A. Najer, X. Zhang, A. Car and W. Meier, *Chem. Soc. Rev.*, 2016, **45**, 377–411.
- 37 Z. Deng, J. Hu and S. Liu, *Macromol. Rapid Commun.*, 2017, **38**, 1600685.
- 38 X. Hu, Y. Zhang, Z. Xie, X. Jing, A. Bellotti and Z. Gu, *Biomacromolecules*, 2017, **18**, 649–673.
- 39 M. E. Idrissi, C. E. Meyer, L. Zartner and W. Meier, *J. Nanobiotechnol.*, 2018, **16**, 63.
- 40 J. Leong, J. Y. Teo, V. K. Aakalu, Y. Y. Yang and H. Kong, *Adv. Healthcare Mater.*, 2018, **7**, 1701276.
- 41 C. Lu and M. W. Urban, *Prog. Polym. Sci.*, 2018, **78**, 24–46.
- 42 B. Iyisan and K. Landfester, *Macromol. Rapid Commun.*, 2019, **40**, 1800577.
- 43 O. Rifaie-Graham, E. A. Apebende and N. Bruns, *Chimia*, 2019, **73**, 21–24.
- 44 K. Rössger, G. Charpin-El Hamri and M. Fussenegger, *Proc. Natl. Acad. Sci. U. S. A.*, 2013, **110**, 18150.
- 45 M. Mohammadi, M. Ramezani, K. Abnous and M. Alibolandi, *Int. J. Pharm.*, 2017, **519**, 287–303.
- 46 E. Rideau, F. R. Wurm and K. Landfester, *Polym. Chem.*, 2018, **9**, 5385–5394.
- 47 S. Yorulmaz Avsar, M. Kyropoulou, S. Di Leone, C. A. Schoenenberger, W. P. Meier and C. G. Palivan, *Front. Chem.*, 2018, **6**, 645.
- 48 L. Rodriguez-Arco, A. Poma, L. Ruiz-Perez, E. Scarpa, K. Ngamkham and G. Battaglia, *Biomaterials*, 2019, **192**, 26–50.
- 49 W. Kawamura, Y. Miura, D. Kokuryo, K. Toh, N. Yamada, T. Nomoto, Y. Matsumoto, D. Sueyoshi, X. Liu, I. Aoki, M. R. Kano, N. Nishiyama, T. Saga, A. Kishimura and K. Kataoka, *Sci. Technol. Adv. Mater.*, 2015, **16**, 035004.
- 50 Z. Sun, G. Liu, J. Hu and S. Liu, *Biomacromolecules*, 2018, **19**, 2071–2081.
- 51 J. Li, Y. Li, Y. Wang, W. Ke, W. Chen, W. Wang and Z. Ge, *Nano Lett.*, 2017, **17**, 6983–6990.
- 52 O. F. Mutaf, Y. Anraku, A. Kishimura and K. Kataoka, *Polymer*, 2017, **133**, 1–7.
- 53 F. Du, S. Bobbala, S. Yi and E. A. Scott, *J. Controlled Release*, 2018, **282**, 90–100.
- 54 L. Liang, J. Fu and L. Qiu, *ACS Appl. Mater. Interfaces*, 2018, **10**, 5213–5226.
- 55 H. Gumz, S. Boye, B. Iyisan, V. Kronert, P. Formanek, B. Voit, A. Lederer and D. Appelhans, *Adv. Sci.*, 2019, **6**, 1801299.
- 56 X. Liu, X. Wang, B. Voit and D. Appelhans, *Chemistry*, 2019, **25**, 13694–13700.
- 57 S. Chuanoi, Y. Anraku, M. Hori, A. Kishimura and K. Kataoka, *Biomacromolecules*, 2014, **15**, 2389–2397.
- 58 T. Einfalt, R. Goers, I. A. Dinu, A. Najer, M. Spulber, O. Onaca-Fischer and C. G. Palivan, *Nano Lett.*, 2015, **15**, 7596–7603.
- 59 M. Lomora, M. Garni, F. Ite, P. Tanner, M. Spulber and C. G. Palivan, *Biomaterials*, 2015, **53**, 406–414.
- 60 Y. Anraku, A. Kishimura, M. Kamiya, S. Tanaka, T. Nomoto, K. Toh, Y. Matsumoto, S. Fukushima, D. Sueyoshi, M. R. Kano, Y. Urano, N. Nishiyama and K. Kataoka, *Angew. Chem., Int. Ed.*, 2016, **55**, 560–565.
- 61 P. Baumann, M. Spulber, O. Fischer, A. Car and W. Meier, *Small*, 2017, **13**, 1603943.
- 62 M. Godoy-Gallardo, M. J. York-Duran and L. Hosta-Rigau, *Adv. Healthcare Mater.*, 2018, **7**, 1700917.
- 63 L. Klermund and K. Castiglione, *Bioprocess Biosyst. Eng.*, 2018, **41**, 1233–1246.
- 64 T. S. Schwarzer, L. Klermund, G. Wang and K. Castiglione, *Nanotechnology*, 2018, **29**, 44LT01.
- 65 Y. Zhang, N. Gal, F. Ite, I. N. Westensee, E. Brodzskij, D. Mayer, S. Stenger, M. Castellote-Borrell, T. Boesen, S. R. Tabaei, F. Hook and B. Stadler, *Nanoscale*, 2019, **11**, 11530–11541.
- 66 A. Najer, D. Wu, A. Bieri, F. Brand, C. G. Palivan, H.-P. Beck and W. Meier, *ACS Nano*, 2014, **8**, 12560–12571.
- 67 T. Osaki and S. Takeuchi, *Anal. Chem.*, 2017, **89**, 216–231.
- 68 A. Peyret, E. Ibarboue, J. F. Le Meins and S. Lecommandoux, *Adv. Sci.*, 2018, **5**, 1700453.
- 69 E. Rideau, R. Dimova, P. Schwill, F. R. Wurm and K. Landfester, *Chem. Soc. Rev.*, 2018, **47**, 8572–8610.
- 70 T. Einfalt, M. Garni, D. Witzigmann, S. Sieber, N. Baltisberger, J. Huwyler, W. Meier and C. G. Palivan, *Adv. Sci.*, 2020, **7**, 1901923.
- 71 K. Hong, W. Wang and J. W. Mays, *Reference Module in Materials Science and Materials Engineering*, 2016, DOI: 10.1016/b978-0-12-803581-8.03738-3.
- 72 S. G. Roy, S. Banerjee and P. De, *Reference Module in Materials Science and Materials Engineering*, 2016, DOI: 10.1016/b978-0-12-803581-8.01357-6.



- 73 S. Kanaoka and S. Aoshima, *Polymer Science: A Comprehensive Reference*, 2012, pp. 527–558, DOI: 10.1016/b978-0-444-53349-4.00075-3.
- 74 A. Hirao, R. Goseki and T. Ishizone, *Macromolecules*, 2014, **47**, 1883–1905.
- 75 M. Hong, J. Chen and E. Y. Chen, *Chem. Rev.*, 2018, **118**, 10551–10616.
- 76 W. N. Ottou, H. Sardon, D. Mecerreyes, J. Vignolle and D. Taton, *Prog. Polym. Sci.*, 2016, **56**, 64–115.
- 77 M. Kamigaito, K. Satoh and M. Uchiyama, *J. Polym. Sci., Part A: Polym. Chem.*, 2018, **57**, 243–254.
- 78 A. Kermagoret and D. Gigmes, *Tetrahedron*, 2016, **72**, 7672–7685.
- 79 G. Moad, *Polym. Chem.*, 2017, **8**, 177–219.
- 80 K. Matyjaszewski, *Adv. Mater.*, 2018, **30**, e1706441.
- 81 X. Pan, M. Fantin, F. Yuan and K. Matyjaszewski, *Chem. Soc. Rev.*, 2018, **47**, 5457–5490.
- 82 D. J. Walsh, M. G. Hyatt, S. A. Miller and D. Guironnet, *ACS Catal.*, 2019, **9**, 11153–11188.
- 83 S. L. Baker, B. Kaupbayeva, S. Lathwal, S. R. Das, A. J. Russell and K. Matyjaszewski, *Biomacromolecules*, 2019, **20**, 4272–4298.
- 84 A. Sanchez-Condado, G. A. Carriedo, A. Presa Soto, M. J. Rodriguez-Alvarez, J. Garcia-Alvarez and E. Hevia, *ChemSusChem*, 2019, **12**, 3134–3143.
- 85 V. Kottisch, J. O'Leary, Q. Michaudel, E. E. Stache, T. H. Lambert and B. P. Fors, *J. Am. Chem. Soc.*, 2019, **141**, 10605–10609.
- 86 M.-J. Kim, Y.-G. Yu, N.-G. Kang, B.-G. Kang and J.-S. Lee, *Macromol. Chem. Phys.*, 2017, **218**, 1600445.
- 87 K. Matyjaszewski and N. V. Tsarevsky, *J. Am. Chem. Soc.*, 2014, **136**, 6513–6533.
- 88 J. Rieger, *Macromol. Rapid Commun.*, 2015, **36**, 1458–1471.
- 89 C. Boyer, N. A. Corrigan, K. Jung, D. Nguyen, T. K. Nguyen, N. N. Adnan, S. Oliver, S. Shanmugam and J. Yeow, *Chem. Rev.*, 2016, **116**, 1803–1949.
- 90 J. C. Theriot, B. G. McCarthy, C. H. Lim and G. M. Miyake, *Macromol. Rapid Commun.*, 2017, **38**, 1700040.
- 91 T. G. Ribelli, F. Lorandi, M. Fantin and K. Matyjaszewski, *Macromol. Rapid Commun.*, 2019, **40**, e1800616.
- 92 M. H. Stenzel and C. Barner-Kowollik, *Mater. Horiz.*, 2016, **3**, 471–477.
- 93 D. J. Lunn, E. H. Discekici, J. Read de Alaniz, W. R. Gutekunst and C. J. Hawker, *J. Polym. Sci., Part A: Polym. Chem.*, 2017, **55**, 2903–2914.
- 94 J. Yeow, R. Chapman, A. J. Gormley and C. Boyer, *Chem. Soc. Rev.*, 2018, **47**, 4357–4387.
- 95 K. Kempe, *Macromol. Chem. Phys.*, 2017, **218**, 1700021.
- 96 S. Hu, J. Zhao, G. Zhang and H. Schlaad, *Prog. Polym. Sci.*, 2017, **74**, 34–77.
- 97 Y. Xia and J. Zhao, *Polymer*, 2018, **143**, 343–361.
- 98 H. Li, R. M. Shakaroun, S. M. Guillaume and J. F. Carpentier, *Chemistry*, 2020, **26**, 128–138.
- 99 D. Bandelli, J. Alex, C. Weber and U. S. Schubert, *Macromol. Rapid Commun.*, 2020, **41**, e1900560.
- 100 J. Herzberger, K. Niederer, H. Pohlitz, J. Seiwert, M. Worm, F. R. Wurm and H. Frey, *Chem. Rev.*, 2016, **116**, 2170–2243.
- 101 S. Liu, C. Ren, N. Zhao, Y. Shen and Z. Li, *Macromol. Rapid Commun.*, 2018, **39**, e1800485.
- 102 H.-C. Chiu, Y.-W. Lin, Y.-F. Huang, C.-K. Chuang and C.-S. Chern, *Angew. Chem., Int. Ed.*, 2008, **47**, 1875–1878.
- 103 J. Qin, Q. Liu, J. Zhang, J. Chen, S. Chen, Y. Zhao and J. Du, *ACS Appl. Mater. Interfaces*, 2015, **7**, 14043–14052.
- 104 R. Enomoto, M. Khimani, P. Bahadur and S.-I. Yusa, *J. Taiwan Inst. Chem. Eng.*, 2014, **45**, 3117–3123.
- 105 J. Gaitzsch, S. Hirschi, S. Freimann, D. Fotiadis and W. Meier, *Nano Lett.*, 2019, **19**, 2503–2508.
- 106 O. Kreft, A. M. Javier, G. B. Sukhorukov and W. J. Parak, *J. Mater. Chem.*, 2007, **17**, 4471–4476.
- 107 A. Kishimura, *Polym. J.*, 2013, **45**, 892–897.
- 108 L. I. Kazakova, L. I. Shabarchina, S. Anastasova, A. M. Pavlov, P. Vadgama, A. G. Skirtach and G. B. Sukhorukov, *Anal. Bioanal. Chem.*, 2013, **405**, 1559–1568.
- 109 L. I. Kazakova, L. I. Shabarchina and G. B. Sukhorukov, *Phys. Chem. Chem. Phys.*, 2011, **13**, 11110–11117.
- 110 W. Yang, G. Zhu, S. Wang, G. Yu, Z. Yang, L. Lin, Z. Zhou, Y. Liu, Y. Dai, F. Zhang, Z. Shen, Y. Liu, Z. He, J. Lau, G. Niu, D. O. Kiesewetter, S. Hu and X. Chen, *ACS Nano*, 2019, **13**, 3083–3094.
- 111 H. Gumz, T. H. Lai, B. Voit and D. Appelhans, *Polym. Chem.*, 2017, **8**, 2904–2908.
- 112 X. Liu, D. Appelhans and B. Voit, *J. Am. Chem. Soc.*, 2018, **140**, 16106–16114.
- 113 A. Biswas, S. Banerjee, E. V. Gart, A. T. Nagaraja and M. J. McShane, *ACS Omega*, 2017, **2**, 2499–2506.
- 114 Q. Yan, J. Wang, Y. Yin and J. Yuan, *Angew. Chem., Int. Ed.*, 2013, **52**, 5070–5073.
- 115 X. Xu, W. Yang, Q. Liang, Y. Shi, W. Zhang, X. Wang, F. Meng, Z. Zhong and L. Yin, *Nano Res.*, 2019, **12**, 659–667.
- 116 J. Du and R. K. O'Reilly, *Macromol. Chem. Phys.*, 2010, **211**, 1530–1537.
- 117 A. Feng, J. Liang, J. Ji, J. Dou, S. Wang and J. Yuan, *Sci. Rep.*, 2016, **6**, 23624.
- 118 B. Iyisan, J. Kluge, P. Formanek, B. Voit and D. Appelhans, *Chem. Mater.*, 2016, **28**, 1513–1525.
- 119 X. Zhang, M. Lomora, T. Einfalt, W. Meier, N. Klein, D. Schneider and C. G. Palivan, *Biomaterials*, 2016, **89**, 79–88.
- 120 C. Edlinger, T. Einfalt, M. Spulber, A. Car, W. Meier and C. G. Palivan, *Nano Lett.*, 2017, **17**, 5790–5798.
- 121 S. L. Loo, W. Siti, M. Thiyagarajan, J. Torres, R. Wang and X. Hu, *Langmuir*, 2017, **33**, 12336–12343.
- 122 L. Martin, P. Gurnani, J. Zhang, M. Hartlieb, N. R. Cameron, A. M. Eissa and S. Perrier, *Biomacromolecules*, 2019, **20**, 1297–1307.
- 123 D. Wu, S. Rigo, S. Di Leone, A. Belluati, E. C. Constable, C. E. Housecroft and C. G. Palivan, *Nanoscale*, 2020, **12**, 1551–1562.
- 124 S. Varlas, J. C. Foster, P. G. Georgiou, R. Keogh, J. T. Husband, D. S. Williams and R. K. O'Reilly, *Nanoscale*, 2019, **11**, 12643–12654.
- 125 S. Yu, T. Azzam, I. Rouiller and A. Eisenberg, *J. Am. Chem. Soc.*, 2009, **131**, 10557–10566.



- 126 V. I. Martynov, A. A. Pakhomov, I. E. Deyev and A. G. Petrenko, *Biochim. Biophys. Acta, Gen. Subj.*, 2018, **1862**, 2924–2939.
- 127 D. Schmaljohann, *Adv. Drug Delivery Rev.*, 2006, **58**, 1655–1670.
- 128 P. Swietach, R. D. Vaughan-Jones, A. L. Harris and A. Hulikova, *Philos. Trans. R. Soc., B*, 2014, **369**, 20130099.
- 129 J. Pizzorno, *Integr. Med. (Encinitas)*, 2015, **14**, 8–12.
- 130 I. T. Helenius, T. Krupinski, D. W. Turnbull, Y. Gruenbaum, N. Silverman, E. A. Johnson, P. H. S. Sporn, J. I. Sznajder and G. J. Beitel, *Proc. Natl. Acad. Sci. U. S. A.*, 2009, **106**, 18710–18715.
- 131 E. Georgieva, D. Ivanova, Z. Zhelev, R. Bakalova, M. Gulubova and I. Aoki, *Anticancer Res.*, 2017, **37**, 5373–5381.
- 132 F. Q. Schafer and G. R. Buettner, *Free Radicals Biol. Med.*, 2001, **30**, 1191–1212.
- 133 H. F. Gilbert, *Adv. Enzymol. Relat. Areas Mol. Biol.*, 1993, **63**, 69.
- 134 Y. Hatori, Y. Yan, K. Schmidt, E. Furukawa, N. M. Hasan, N. Yang, C.-N. Liu, S. Sockanathan and S. Lutsenko, *Nat. Commun.*, 2016, **7**, 10640.
- 135 C. J. Dunnill, K. Ibraheem, A. Mohamed, J. Southgate and N. T. Georgopoulos, *Oncogene*, 2016, **36**, 2515–2528.
- 136 F. Perez-Ruiz, N. Dalbeth and T. Bardin, *Adv. Ther.*, 2015, **32**, 31–41.
- 137 S. Kushimoto, S. Akaishi, T. Sato, R. Nomura, M. Fujita, D. Kudo, Y. Kawazoe, Y. Yoshida and N. Miyagawa, *Acute Med. Surg.*, 2016, **3**, 293–297.
- 138 M. Stumvoll, B. J. Goldstein and T. W. Van-Haeften, *Lancet*, 2005, **365**, 1333–1346.
- 139 K. K. Mäkinen, *Int. J. Dent.*, 2016, **2016**, 1–16.
- 140 R. Vanholder, T. Gryp and G. Glorieux, *Nephrol., Dial., Transplant.*, 2018, **33**, 4–12.
- 141 C.-J. Lin, C.-K. Lai, M.-C. Kao, L.-T. Wu, U. G. Lo, L.-C. Lin, Y.-A. Chen, H. Lin, J.-T. Hsieh, C.-H. Lai and C.-D. Lin, *Biomedicine*, 2015, **5**, 7.
- 142 D. E. Discher, *Science*, 2002, **297**, 967–973.
- 143 J. Cui, M. P. Van Koeverden, M. Müllner, K. Kempe and F. Caruso, *Adv. Colloid Interface Sci.*, 2014, **207**, 14–31.
- 144 J. Gaitzsch, X. Huang and B. Voit, *Chem. Rev.*, 2016, **116**, 1053–1093.
- 145 J.-L. Six and K. Ferji, *Polym. Chem.*, 2019, **10**, 45–53.
- 146 N. J. W. Penfold, J. Yeow, C. Boyer and S. P. Armes, *ACS Macro Lett.*, 2019, **8**, 1029–1054.
- 147 S. M. Kuiper, M. Nallani, D. M. Vriezema, J. J. L. M. Cornelissen, J. C. M. Van Hest, R. J. M. Nolte and A. E. Rowan, *Org. Biomol. Chem.*, 2008, **6**, 4315.
- 148 M. Spulber, P. Baumann, S. S. Saxer, U. Pieleles, W. Meier and N. Bruns, *Biomacromolecules*, 2014, **15**, 1469–1475.
- 149 G. Liu, S. Ma, S. Li, R. Cheng, F. Meng, H. Liu and Z. Zhong, *Biomaterials*, 2010, **31**, 7575–7585.
- 150 H. Lomas, I. Canton, S. Macneil, J. Du, S. P. Armes, A. J. Ryan, A. L. Lewis and G. Battaglia, *Adv. Mater.*, 2007, **19**, 4238–4243.
- 151 H. O. Kim, J. W. Lim, J. Choi, H. Lee, H. Y. Son, J. Kim, G. Park, H. Chun, D. Song, Y. M. Huh and S. Haam, *J. Mater. Chem. B*, 2017, **5**, 9571–9578.
- 152 H. E. Colley, V. Hearnden, M. Avila-Olias, D. Cecchin, I. Canton, J. Madsen, S. Macneil, N. Warren, K. Hu, J. A. McKeating, S. P. Armes, C. Murdoch, M. H. Thornhill and G. Battaglia, *Mol. Pharmaceutics*, 2014, **11**, 1176–1188.
- 153 A. Belluati, V. Mikhalevich, S. Yorulmaz Avsar, D. Daubian, I. Craciun, M. Chami, W. P. Meier and C. G. Palivan, *Biomacromolecules*, 2019, **21**, 701–715.
- 154 S. F. van Dongen, M. Nallani, J. J. Cornelissen, R. J. Nolte and J. C. van Hest, *Chemistry*, 2009, **15**, 1107–1114.
- 155 L. D. Blackman, S. Varlas, M. C. Arno, Z. H. Houston, N. L. Fletcher, K. J. Thurecht, M. Hasan, M. I. Gibson and R. K. O'Reilly, *ACS Cent. Sci.*, 2018, **4**, 718–723.
- 156 R. Deng, M. J. Derry, C. J. Mable, Y. Ning and S. P. Armes, *J. Am. Chem. Soc.*, 2017, **139**, 7616–7623.
- 157 J. Tan, H. Sun, M. Yu, B. S. Sumerlin and L. Zhang, *ACS Macro Lett.*, 2015, **4**, 1249–1253.
- 158 J. Tan, D. Liu, X. Zhang, C. Huang, J. He, Q. Xu, X. Li and L. Zhang, *RSC Adv.*, 2017, **7**, 23114–23121.
- 159 X.-F. Xu, C.-Y. Pan, W.-J. Zhang and C.-Y. Hong, *Macromolecules*, 2019, **52**, 1965–1975.
- 160 B. Karagoz, C. Boyer and T. P. Davis, *Macromol. Rapid Commun.*, 2014, **35**, 417–421.
- 161 I. Louzao and J. C. M. Van Hest, *Biomacromolecules*, 2013, **14**, 2364–2372.
- 162 D. M. Vriezema, P. M. L. Garcia, N. Sancho Oltra, N. S. Hatzakis, S. M. Kuiper, R. J. M. Nolte, A. E. Rowan and J. C. M. Van Hest, *Angew. Chem., Int. Ed.*, 2007, **119**, 7522–7526.
- 163 M. Spulber, A. Najer, K. Winkelbach, O. Glaied, M. Waser, U. Pieleles, W. Meier and N. Bruns, *J. Am. Chem. Soc.*, 2013, **135**, 9204–9212.
- 164 O. Rifaie-Graham, S. Ulrich, N. F. B. Galensowske, S. Balog, M. Chami, D. Rentsch, J. R. Hemmer, J. Read de Alaniz, L. F. Boesel and N. Bruns, *J. Am. Chem. Soc.*, 2018, **140**, 8027–8036.
- 165 J. Gaitzsch, D. Appelhans, L. Wang, G. Battaglia and B. Voit, *Angew. Chem., Int. Ed.*, 2012, **51**, 4448–4451.
- 166 D. Gräfe, J. Gaitzsch, D. Appelhans and B. Voit, *Nanoscale*, 2014, **6**, 10752–10761.
- 167 H. Gumz, S. Boye, B. Iyisan, V. Krönert, P. Formanek, B. Voit, A. Lederer and D. Appelhans, *Adv. Sci.*, 2019, **6**, 1801299.
- 168 M. Garni, T. Einfalt, M. Lomora, A. Car, W. Meier and C. G. Palivan, *Chimia*, 2016, **70**, 424–427.
- 169 F. Axthelm, O. Casse, W. H. Koppenol, T. Nausser, W. Meier and C. G. Palivan, *J. Phys. Chem. B*, 2008, **112**, 8211–8217.
- 170 C. Nardin, S. Thoeni, J. Widmer, M. Winterhalter and W. Meier, *Chem. Commun.*, 2000, 1433–1434, DOI: 10.1039/b004280n.
- 171 W. Meier, C. Nardin and M. Winterhalter, *Angew. Chem., Int. Ed.*, 2000, **39**, 4599–4602.
- 172 M. Kumar, M. Grzelakowski, J. Zilles, M. Clark and W. Meier, *Proc. Natl. Acad. Sci. U. S. A.*, 2007, **104**, 20719–20724.
- 173 M. Lomora, M. Garni, F. Itel, P. Tanner, M. Spulber and C. G. Palivan, *Biomaterials*, 2015, **53**, 406–414.
- 174 J. Zhang, L. Wu, F. Meng, Z. Wang, C. Deng, H. Liu and Z. Zhong, *Langmuir*, 2012, **28**, 2056–2065.
- 175 A. Zhu, K. Miao, Y. Deng, H. Ke, H. He, T. Yang, M. Guo, Y. Li, Z. Guo, Y. Wang, X. Yang, Y. Zhao and H. Chen, *ACS Nano*, 2015, **9**, 7874–7885.
- 176 L. Ding, W. Gu, Y. Zhang, S. Yue, H. Sun, J. J. L. M. Cornelissen and Z. Zhong, *Biomacromolecules*, 2019, **20**, 3855–3863.



- 177 P. Tanner, V. Balasubramanian and C. G. Palivan, *Nano Lett.*, 2013, **13**, 2875–2883.
- 178 A. Belluati, I. Craciun, J. Liu and C. G. Palivan, *Biomacromolecules*, 2018, **19**, 4023–4033.
- 179 K. Kamiya, R. Kawano, T. Osaki, K. Akiyoshi and S. Takeuchi, *Nat. Chem.*, 2016, **8**, 881–889.
- 180 K. Kamiya and S. Takeuchi, *J. Mater. Chem. B*, 2017, **5**, 5911–5923.
- 181 M. Weiss, J. P. Frohnmayer, L. T. Benk, B. Haller, J. W. Janiesch, T. Heitkamp, M. Borsch, R. B. Lira, R. Dimova, R. Lipowsky, E. Bodenschatz, J. C. Baret, T. Vidakovic-Koch, K. Sundmacher, I. Platzman and J. P. Spatz, *Nat. Mater.*, 2018, **17**, 89–96.
- 182 Y. Ai, R. Xie, J. Xiong and Q. Liang, *Small*, 2019, e1903940, DOI: 10.1002/smll.201903940.
- 183 E. Rideau, F. R. Wurm and K. Landfester, *Adv. Biosyst.*, 2019, **3**, 1800324.
- 184 A. Kubilis, A. Abdulkarim, A. M. Eissa and N. R. Cameron, *Sci. Rep.*, 2016, **6**, 32414.
- 185 A. C. Greene, I. M. Henderson, A. Gomez, W. F. Paxton, V. VanDelinder and G. D. Bachand, *PLoS One*, 2016, **11**, e0158729.
- 186 M. Sauer, T. Haefele, A. Graff, C. Nardin and W. Meier, *Chem. Commun.*, 2001, 2452–2453, DOI: 10.1039/b107833j.
- 187 A. Picker, H. Nuss, P. Guenoun and C. Chevillard, *Langmuir*, 2011, **27**, 3213–3218.
- 188 A. Koide, A. Kishimura, K. Osada, W.-D. Jang, Y. Yamasaki and K. Kataoka, *J. Am. Chem. Soc.*, 2006, **128**, 5988–5989.
- 189 Y. Anraku, A. Kishimura, M. Oba, Y. Yamasaki and K. Kataoka, *J. Am. Chem. Soc.*, 2010, **132**, 1631–1636.
- 190 A. Kishimura, A. Koide, K. Osada, Y. Yamasaki and K. Kataoka, *Angew. Chem., Int. Ed.*, 2007, **46**, 6085–6088.
- 191 Y. Anraku, A. Kishimura, A. Kobayashi, M. Oba and K. Kataoka, *Chem. Commun.*, 2011, **47**, 6054–6056.
- 192 N. Bertrand and J.-C. Leroux, *J. Controlled Release*, 2012, **161**, 152–163.
- 193 A. Kishimura, S. Liamswan, H. Matsuda, W.-F. Dong, K. Osada, Y. Yamasaki and K. Kataoka, *Soft Matter*, 2009, **5**, 529–532.
- 194 T. Mauser, C. Déjugnat and G. B. Sukhorukov, *Macromol. Rapid Commun.*, 2004, **25**, 1781–1785.
- 195 A. A. Antipov and G. B. Sukhorukov, *Adv. Colloid Interface Sci.*, 2004, **111**, 49–61.
- 196 P. Rivera Gil, M. Nazarenus, S. Ashraf and W. J. Parak, *Small*, 2012, **8**, 943–948.
- 197 M. J. McShane, J. Q. Brown, K. B. Guice and Y. M. Lvov, *J. Nanosci. Nanotechnol.*, 2002, **2**, 2–3.
- 198 B. B. Collier, S. Singh and M. McShane, *Analyst*, 2011, **136**, 962–967.
- 199 J. Prasad, A. Joshi, R. D. Jayant and R. Srivastava, *Biotechnol. Bioeng.*, 2011, **108**, 2011–2021.
- 200 J. Q. Brown, R. Srivastava and M. J. McShane, *Biosens. Bioelectron.*, 2005, **21**, 212–216.
- 201 E. W. Stein, D. V. Volodkin, M. J. McShane and G. B. Sukhorukov, *Biomacromolecules*, 2006, **7**, 710–719.
- 202 A. Chaudhary, M. J. McShane and R. Srivastava, *Analyst*, 2010, **135**, 2620–2628.
- 203 R. Srivastava, R. D. Jayant, A. Chaudhary and M. J. McShane, *J. Diabetes Sci. Technol.*, 2011, **5**, 76–85.
- 204 Q. Wang, G. Li, W. Xiao, H. Qi and G. Li, *Sens. Actuators, B*, 2006, **119**, 695–700.
- 205 K. Lacina, P. Skladal and T. D. James, *Chem. Cent. J.*, 2014, **8**, 60.
- 206 X. Chen, G. Zhou, X. Peng and J. Yoon, *Chem. Soc. Rev.*, 2012, **41**, 4610–4630.
- 207 S. Lee, J. Y. Kim, X. Chen and J. Yoon, *Chem. Commun.*, 2016, **52**, 9178–9196.
- 208 J. Huo, Q. Deng, T. Fan, G. He, X. Hu, X. Hong, H. Chen, S. Luo, Z. Wang and D. Chen, *Polym. Chem.*, 2017, **8**, 7438–7445.
- 209 E. Lebègue, C. Farre, C. Jose, J. Saulnier, F. Lagarde, Y. Chevalier, C. Chaix and N. Jaffrezic-Renault, *Sensors*, 2018, **18**, 599.
- 210 F. Fang, F. Meng and L. Luo, *Mater. Chem. Front.*, 2020, **4**, 1089–1104.
- 211 Q. Li, S. Ren, Y. Peng, Y. Lv, W. Wang, Z. Wang and Z. Gao, *Anal. Chem.*, 2020, **92**, 1611–1617.
- 212 F. Jannah and J.-M. Kim, *Dyes Pigm.*, 2019, **169**, 15–21.
- 213 G. Yang, J. Ji, S. Zhang, G. Li and B. Li, *Anal. Methods*, 2020, **12**, 673–678.
- 214 W. Qi, X. Yan, L. Duan, Y. Cui, Y. Yang and J. Li, *Biomacromolecules*, 2009, **10**, 1212–1216.
- 215 S. Joshi, M. T. Hussain, C. B. Roces, G. Anderluzzi, E. Kastner, S. Salmaso, D. J. Kirby and Y. Perrie, *Int. J. Pharm.*, 2016, **514**, 160–168.
- 216 W. S. Lin and N. Malmstadt, *Eur. Biophys. J.*, 2019, **48**, 549–558.
- 217 L. J. C. Albuquerque, V. Sincari, A. Ja Ger, R. Konefa, J. I. Pa Nek, P. C. Ernoch, E. Pavlova, P. S. T. Pa Nek, F. C. Giacomelli and E. Z. Ja Ger, *Langmuir*, 2019, **35**, 8363–8372.
- 218 G. Wang, A. Hoornweg, H. T. Wolterbeek, L. E. Franken, E. Mendes and A. G. Denkova, *J. Phys. Chem. B*, 2015, **119**, 4300–4308.
- 219 K. Naoyama, T. Mori, Y. Katayama and A. Kishimura, *Macromol. Rapid Commun.*, 2016, **37**, 1087–1093.
- 220 M. Hori, H. Cabral, K. Toh, A. Kishimura and K. Kataoka, *Biomacromolecules*, 2018, **19**, 4113–4121.
- 221 I. Acquah, J. Roh and D. J. Ahn, *Macromol. Res.*, 2017, **25**, 950–955.
- 222 Y. Wang, J. Zhou, X. Guo, Q. Hu, C. Qin, H. Liu, M. Dong and Y. Chen, *Mater. Sci. Eng., C*, 2017, **81**, 13–19.
- 223 M. Xuan, J. Zhao, J. Shao, C. Du, W. Cui, L. Duan, W. Qi and J. Li, *J. Colloid Interface Sci.*, 2017, **487**, 107–117.
- 224 S. M. Kuiper, M. Nallani, D. M. Vriezema, J. J. Cornelissen, J. C. van Hest, R. J. Nolte and A. E. Rowan, *Org. Biomol. Chem.*, 2008, **6**, 4315–4318.
- 225 S. Thamboo, A. Najer, A. Belluati, C. von Planta, D. L. Wu, I. Craciun, W. Meier and C. C. Palivan, *Adv. Funct. Mater.*, 2019, **29**, 1904267.
- 226 A. Belluati, V. Mikhalevich, S. Yorulmaz Avsar, D. Daubian, I. Craciun, M. Chami, W. P. Meier and C. G. Palivan, *Biomacromolecules*, 2020, **21**, 701–715.

