



Cite this: *Soft Matter*, 2025, 21, 3922

Received 30th January 2025,
Accepted 22nd April 2025

DOI: 10.1039/d5sm00101c

rsc.li/soft-matter-journal

Curvature-sensing and generation by membrane proteins: a review

Hiroshi Noguchi 

Membrane proteins are crucial in regulating biomembrane shapes and controlling the dynamic changes in membrane morphology during essential cellular processes. These proteins can localize to regions with their preferred curvatures (curvature sensing) and induce localized membrane curvature. Thus, this review describes the recent theoretical development in membrane remodeling performed by membrane proteins. The mean-field theories of protein binding and the resulting membrane deformations are reviewed. The effects of hydrophobic insertions on the area-difference elasticity energy and that of intrinsically disordered protein domains on the membrane bending energy are discussed. For the crescent-shaped proteins, such as Bin/Amphiphysin/Rvs superfamily proteins, anisotropic protein bending energy and orientation-dependent excluded volume significantly contribute to curvature sensing and generation. Moreover, simulation studies of membrane deformations caused by protein binding are reviewed, including domain formation, budding, and tubulation.

1 Introduction

Cell membranes and organelles exhibit a variety of shapes. Various types of proteins are known to control dynamical changes in membrane morphology during essential cellular processes, such as endocytosis, exocytosis, vesicle transport, mitosis, and cell locomotion.^{1–7} During *in vitro* experiments, protein binding has been observed to induce membrane budding and tubulation. Additionally, membrane proteins can localize to membrane regions of specific curvature. These two phenomena are referred to as curvature generation and curvature sensing, respectively. This review focuses on the theoretical studies of protein behaviors with emphasis on thermal equilibrium and relaxation to the

equilibrium. Non-equilibrium membrane dynamics, such as non-thermal fluctuations^{8–11} and wave propagations,^{12–18} are covered in our recent review.¹⁹ Moreover, because membrane simulation models and methods have previously been reviewed in ref. 20–26, this review primarily describes the mean-field theory and presents relevant simulation results without delving into detailed simulation methodologies.

Section 2 provides an overview of the bending energy of lipid membranes and their morphology in the absence of proteins. Section 3 discusses curvature-sensing. Certain proteins exhibit laterally isotropic shapes in a membrane and bend the membrane isotropically. Section 3.1 presents the theoretical aspects of isotropic proteins, and Section 3.2 explores how intrinsically disordered protein (IDP) domains influence membrane bending properties. Section 3.3 addresses the behavior of anisotropic proteins. Crescent-shaped proteins, such as Bin/Amphiphysin/Rvs (BAR) superfamily proteins, induce membrane bending along their major protein axes. Section 3.4 examines protein binding to tethered vesicles and presents the estimation of protein bending properties. Section 4 focuses on curvature generation, with Sections 4.1 and 4.2 reviewing membrane deformations induced by the isotropic and anisotropic proteins, respectively. Section 4.3 discusses the membrane deformation by the adhesion of colloidal nanoparticles. Finally, Section 5 provides a summary and outlook.

2 Lipid membranes

In a fluid phase, lipid membranes are laterally isotropic, and their bending energy can be expressed using the second-order

Institute for Solid State Physics, University of Tokyo, Kashiwa, Chiba 277-8581, Japan. E-mail: noguchi@issp.u-tokyo.ac.jp



Hiroshi Noguchi

Hiroshi Noguchi received his PhD degree at Nagoya University in 2000. He worked at the Institute for Molecular Science for three years and at Forschungszentrum Juelich for five years. He has been an associate professor at the University of Tokyo since 2008. The main research focus is understanding dynamics of biomembranes and complex fluids using theory and coarse-grained simulations.



expansion of the membrane curvature, known as the Canham-Helfrich model.^{27,28}

$$F_{\text{cv}0} = \int \left[\frac{\kappa_{\text{d}}}{2} (2H - C_{\text{mb}})^2 + \bar{\kappa}_{\text{d}} K \right] dA, \quad (1)$$

where A represents the membrane area. The membrane mean and Gaussian curvatures are defined as $H = (C_1 + C_2)/2$ and $K = C_1 C_2$, respectively, where C_1 and C_2 represent the principal curvatures (see Fig. 1). The coefficients κ_{d} and $\bar{\kappa}_{\text{d}}$ denote the bending rigidity and saddle-splay modulus (also referred to as the Gaussian curvature modulus), respectively. The parameter C_{mb} denotes the spontaneous curvature. Note that the spontaneous curvature is often expressed as $H_{\text{mb}} = C_{\text{mb}}/2$, which is particularly useful in the analysis of spherical membranes, while C_{mb} is useful for cylindrical membranes. For lipid bilayers with symmetric leaflets, the membrane has zero spontaneous curvature ($C_{\text{mb}} = 0$). The last term in eqn (1) can be neglected when considering the shape transformation of vesicles with a fixed topology, owing to the Gauss-Bonnet theorem, $\oint C_1 C_2 dA = 4\pi(1 - g)$, where g represents the genus of the vesicle. Lipid membranes typically exhibit a bending rigidity in the range of $\kappa_{\text{d}} = 10\text{--}100 k_{\text{B}}T^{29\text{--}32}$ and $\bar{\kappa}_{\text{d}}/\kappa_{\text{d}} \approx -1^{33}$, where $k_{\text{B}}T$ is the thermal energy. In this review, we use $\kappa_{\text{d}} = -\bar{\kappa}_{\text{d}} = 20 k_{\text{B}}T$ and $C_{\text{mb}} = 0$, unless otherwise specified.

In lipid membranes, the traverse movement of phospholipids between the two leaflets, known as flip-flop, occurs at an extremely slow rate, with half-lives ranging from hours to days.³⁴ In contrast, amphiphilic molecules with small hydrophilic head groups, such as cholesterol, exhibit significantly faster flip-flop dynamics, occurring within seconds to minutes.^{35–37} In living cells, proteins facilitate flip-flop. Flippase and floppase proteins actively transport specific lipids from the outer to the inner leaflets (flip) or in the opposite direction (flop), respectively, through ATP hydrolysis, leading to an asymmetric lipid distribution. Conversely, scramblases mediate the bidirectional translocation of lipids, allowing the bilayer to relax toward a thermal-equilibrium lipid distribution.³⁵ As a result, the number of lipids in each leaflet remains constant over typical experimental time-scales, although it can relax with the addition of cholesterol,^{38,39} ultra-long-chain fatty acids,^{40,41} and scramblases. Consequently, the area difference $\Delta A = 2h \oint H dA$ of the two leaflets in a liposome may differ from the lipid-preferred area difference $\Delta A_0 = (N_{\text{out}} - N_{\text{in}})a_{\text{lip}}$, where N_{out} and N_{in} represent the numbers of lipids in the outer and inner leaflets, respectively, a_{lip} is the area per lipid, and $h \approx 2$ nm denotes the distance between the centers of the two

leaflets. In the area difference elasticity (ADE) model,^{42–44} the energy associated with the mismatch $\Delta A - \Delta A_0$ is accounted for by a harmonic potential:

$$F_{\text{ade}} = \frac{\pi k_{\text{ade}}}{2Ah^2} (\Delta A - \Delta A_0)^2 \quad (2)$$

$$= \frac{k_{\text{ade}}}{2} (m - m_0)^2 \quad (3)$$

$$= 8\pi k_{\text{r}} (\Delta a - \Delta a_0)^2, \quad (4)$$

where the coefficient $k_{\text{r}} = \pi k_{\text{ade}}$. In eqn (3) and (4), the area differences are normalized as $m = \Delta A/2hR_{\text{A}}$ and $\Delta a = \Delta A/8\pi hR_{\text{A}}$, where the lengths are normalized using the vesicle surface area as $R_{\text{A}} = (A/4\pi)^{1/2}$. These two formulations were used in ref. 42 and ref. 43 and 44, respectively. For typical lipid membranes, $k_{\text{ade}} \approx \kappa_{\text{d}}$ was estimated.⁴⁵

Because the critical micelle concentration (CMC) of lipids is extremely low,⁴⁶ the number of lipid molecules within a vesicle remains essentially constant over typical experimental time-scales. Additionally, the internal volume is maintained nearly constant due to osmotic pressure, since water molecules can slowly permeate the lipid bilayer, whereas the penetration of ions or macromolecules is negligible. Under the constraints of a constant volume V and constant surface area A at $C_{\text{mb}} = 0$, the global energy minimum of $F_{\text{cv}0}$ corresponds to different vesicle shapes depending on the reduced volume $V^* = 3V/(4\pi R_{\text{A}}^3)$. In the mechanical (force) viewpoint, the stress caused by the bending energy is balanced by the surface tension (γ) and the osmotic pressure difference between the inner and outer solutions. For vesicles with genus $g = 0$, stomatocyte, discocyte, and prolate shapes achieve global energy minima within the ranges $0 < V^* \leq 0.59$, $0.59 \leq V^* \leq 0.65$, and $0.65 \leq V^* < 1$, respectively.^{42,47,48} These three shapes can coexist as (*meta*-) stable states at $V^* \approx 0.6$,⁴⁹ and the prolate shape can persist as a *meta*-stable state even at $V^* \leq 0.6$, as illustrated in Fig. 2.^{50,51} Note that red blood cells have a discocyte shape with $V^* \approx 0.6$ in the physiological condition, and their membranes have shear elasticity due to the cytoskeletons underneath the membranes.⁵² When the ADE energy is included, additionally, branched tubular vesicles and budding (where spherical buds form on the outside of a spherical vesicle)^{42,53} emerge alongside the stomatocyte, discocyte, and prolate shapes. Notably, experimental observations have been well reproduced by this theoretical model.⁴⁵ Furthermore, rapid changes in ΔA_0 induced by chemical reactions and other factors can lead to the protrusion of bilayer sheets, reducing the area difference.^{54,55}

3 Curvature sensing

Peripheral and transmembrane proteins tend to accumulate in membrane regions that match their preferred curvatures. The surface densities of peripheral proteins are governed by the balance between the protein binding and unbinding processes in thermal equilibrium. In contrast, in typical *in vitro*

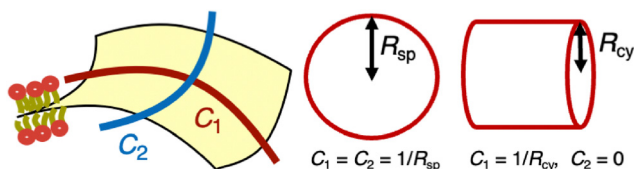


Fig. 1 Schematic of lipid membranes. A membrane locally bends with two principal curvatures C_1 and C_2 . A spherical membrane has $C_1 = C_2 = 1/R_{\text{sp}}$ ($H = 1/R_{\text{sp}}$ and $K = 1/R_{\text{sp}}^2$), while a cylindrical membrane has $C_1 = 1/R_{\text{cy}}$, $C_2 = 0$ ($H = 1/2R_{\text{cy}}$ and $K = 0$).



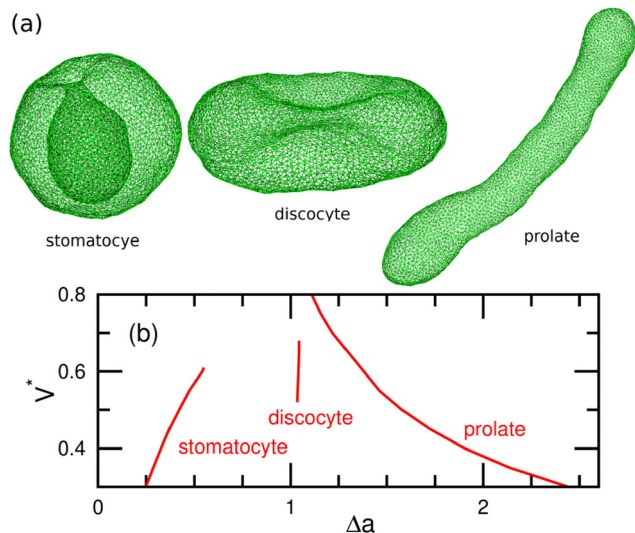


Fig. 2 Stable and meta-stable shapes of vesicles in the Canham–Helfrich model (eqn (1)) with $C_{mb} = 0.49, 50$ (a) Snapshots obtained by dynamically-triangulated MC simulations. Stomatocyte at $V^* = 0.5$, discocyte at $V^* = 0.6$, and prolate at $V^* = 0.5$. (b) Area difference Δa of (meta-) stable shapes. Adapted from ref. 50 with permission from the Royal Society of Chemistry (2015).

experiments, the total number of transmembrane proteins within a vesicle remains fixed. These scenarios correspond to grand canonical and canonical ensembles in the membrane, respectively. While the choice between these two conditions does not affect average properties, such as surface protein density and alignment, it influences kinetics and fluctuations (the second derivatives of free energy).

3.1 Theory of isotropic proteins

First, we discuss the curvature-sensing phenomenon of proteins with a laterally isotropic shape. The insertion of a hydrophobic α -helix and the anchoring of IDP domains do not exhibit a preferred bending direction. Moreover, proteins or protein assemblies possessing threefold, fivefold, or higher rotational symmetry exhibit laterally isotropic bending energy, when their asymmetric deformations are negligible.⁵⁶ Several types of ion channels^{57,58} and G-protein coupled receptors (GPCRs),^{59–62} have rotationally symmetric structures. For instance, the trimer and pentamer of microbial rhodopsins exhibit threefold and fivefold symmetry, respectively.⁶² Furthermore, certain peripheral proteins, such as a clathrin monomer⁶³ and annexin A5 trimer,^{64,65} also possess threefold symmetry.

The presence of membrane-bound proteins can alter the membrane bending rigidity and spontaneous curvature relative to a bare (unbound) membrane. The bending energy of a vesicle can be expressed as⁶⁶

$$F_{cv1} = 4\pi\bar{\kappa}_d(1-g) + \int dA \left\{ 2\kappa_d H^2(1-\phi) + \frac{\kappa_{pi}}{2}(2H - C_0)^2\phi + (\bar{\kappa}_{pi} - \bar{\kappa}_d)K\phi \right\}, \quad (5)$$

where κ_{pi} , $\bar{\kappa}_{pi}$, and $C_0 = 2H_0$ denote the bending rigidity, saddle-splay modulus, and spontaneous curvature of the protein-occupied membrane, respectively, and ϕ represents the local protein density (area fraction, *i.e.*, $\phi = 1$ indicates complete coverage). This formulation accounts for the bending energy induced by the protein–membrane interactions. Additionally, inter-protein interactions – such as the steric effects arising from the brush region of IDP chains discussed in Section 3.2 – can further influence membrane rigidity and spontaneous curvature. In that case, κ_{pi} , $\bar{\kappa}_{pi}$, and C_0 become functions of ϕ .⁶⁶

At $\kappa_{pi} > \kappa_d$, the bending energy can also be expressed as $F_{cv1} = F_{cv0} + F_{pi}$ with

$$F_{pi} = \int dA \left[\frac{\kappa_{pa}}{2}(2H - C_{0a})^2 + \bar{\kappa}_{pa}K \right] \phi, \quad (6)$$

where $\kappa_{pi} = \kappa_{pa} + \kappa_d$, $\bar{\kappa}_{pi} = \bar{\kappa}_{pa} + \bar{\kappa}_d$ and $C_0 = [\kappa_{pa}/(\kappa_{pa} + \kappa_d)]C_{0a}$. This formulation is known as the curvature mismatch model, where κ_{pa} represents the additional bending rigidity by protein binding, while κ_{pi} accounts for the combined rigidity of the protein and the underlying membrane. The curvature mismatch model with $\bar{\kappa}_{pa} = 0$ was used in ref. 67–69.

The total free energy F of a vesicle consists of the bending energy F_{cv1} , the inter-protein interaction energy, and the mixing entropy:

$$F = F_{cv1} + \int dA \left\{ b\phi^2 + \frac{k_B T}{a_p} [\phi \ln(\phi) + (1-\phi) \ln(1-\phi)] \right\}, \quad (7)$$

where a_p denotes the area occupied by a single protein. The second term in eqn (7) represents the pairwise inter-protein interactions, where $b < 0$ and $b > 0$ indicate attractive and repulsive interactions between bound proteins, respectively. The third term in eqn (7) accounts for the mixing entropy of the bound proteins.

The binding equilibrium of peripheral proteins is determined by minimizing $J = F - \mu N$, where μ is the binding chemical potential of the protein binding, and $N = \int \phi dA/a_p$ is the number of the bound proteins. Consequently, the local protein density ϕ is given by $\partial J/\partial \phi = \mu/a_p$, where $F = \int f dA$. When the inter-protein interactions are negligible ($b = 0$), ϕ is expressed by a sigmoid function of μ :⁶⁶

$$\phi = \frac{1}{1 + \exp(w_b)}, \quad (8)$$

$$w_b = -\frac{\mu}{k_B T} + \frac{a_p}{k_B T} \left[2(\kappa_{pi} - \kappa_d)H^2 + (\bar{\kappa}_{pi} - \bar{\kappa}_d)K - 2\kappa_{pi}C_0H + \frac{\kappa_{pi}C_0^2}{2} \right]. \quad (9)$$

This relation reflects the detailed balance between protein binding and unbinding at a local membrane region: $\eta_{ub}/\eta_b = \exp(w_b)$ for the kinetic equation $d\phi/dt = \eta_b(1-\phi) - \eta_{ub}\phi$.^{70,71} For $b \neq 0$, ϕ can be solved iteratively by replacing w_b with $w_b + 2b\phi a_p/k_B T$ in eqn (8).⁶⁶

For $\kappa_{pi} > \kappa_d$ ($\kappa_{pa} > 0$), the protein density ϕ exhibits a peak at a finite curvature (referred to as the sensing curvature H_s ,



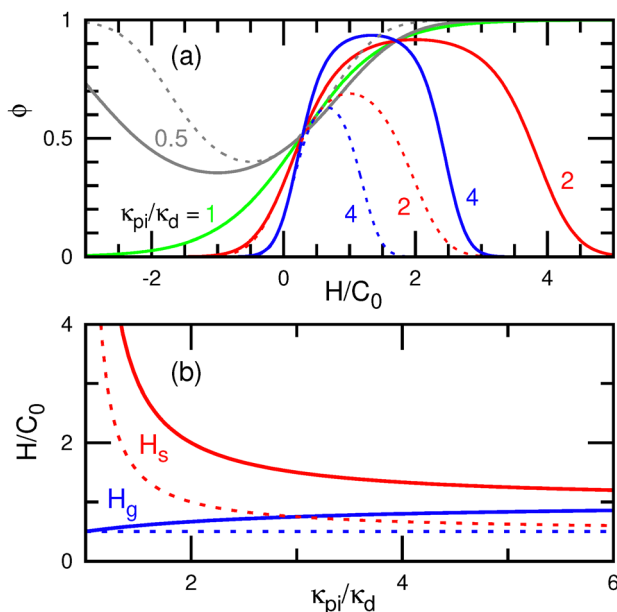


Fig. 3 Curvature sensing of isotropic proteins at $C_0^2 a_p = 0.04$ (e.g., $C_0 = 0.02 \text{ nm}^{-1}$ for $a_p = 100 \text{ nm}^2$) and $\bar{\kappa}_{pi}/\kappa_{pi} = \bar{\kappa}_d/\kappa_d = -1$.^{66,70} (a) Protein density ϕ as a function of the local mean curvature H at $\kappa_{pi}/\kappa_d = 0.5, 1, 2,$ and 4 for $\mu = 0$. (b) Sensing curvature H_s and the maximum generation curvature H_g as a function of bending rigidity ratio κ_{pi}/κ_d . H_s and H_g are given by eqn (10) and (30) with $\phi = 1$, respectively. The solid and dashed lines represent the data for spherical and cylindrical membranes, respectively.

see Fig. 3(a). The maximum value of ϕ increases from 0 to 1 with increasing μ . Notably, the protein binding differ between spherical and cylindrical membranes with the same mean curvature H , when $\bar{\kappa}_{pi} \neq \bar{\kappa}_d$. The proteins bind more to spherical membranes compared to cylindrical membranes at $(\bar{\kappa}_{pi} - \bar{\kappa}_d)/(\kappa_{pi} - \kappa_d) = -1$ (see Fig. 3(a)). The sensing curvature H_s is obtained by solving $d\phi/dH = 0$ using eqn (8) under the conditions $K = H^2$ for spherical membranes and $K = 0$ for cylindrical membranes:

$$H_s = \frac{\kappa_{pi}}{2\kappa_{dif}} C_0, \quad (10)$$

where $\kappa_{dif} = \kappa_{pi} - \kappa_d + (\bar{\kappa}_{pi} - \bar{\kappa}_d)/2$ and $\kappa_{dif} = \kappa_{pi} - \kappa_d$ for the spherical and cylindrical membranes, respectively. As κ_{pi} increases from κ_d to ∞ , H_s decreases from ∞ to $C_0/(2 + \bar{\kappa}_{pi}/\kappa_{pi})$ for spherical membranes and to $C_0/2$ for cylindrical membranes (see Fig. 3(b)). It is important to note that $\phi(H)$ is mirror symmetric with respect to the sensing curvature for both cylindrical and spherical membranes (see Fig. 3(a)).

In contrast, for $\kappa_{pi} < \kappa_d$, the bound membrane exhibits a lower bending rigidity compared to the bare membrane. This scenario may arise when the bound proteins (or other molecules) remodel the bound membrane. For example, a reduction in membrane thickness can lead to decreased bending rigidity. Interestingly, the proteins hold a negative curvature sensing at $\kappa_{pi} < \kappa_d$, where ϕ exhibits a minimum instead of a maximum (see the gray lines in Fig. 3(a)).⁷⁰ In other words, the fraction of bare membrane, $1 - \phi$, reaches its maximum at the negative

sensing curvature. Owing to the lower rigidity, the bound membranes bend passively to reduce the bending energy of bare membrane regions, sometimes even in the opposite direction to their spontaneous curvatures. Consequently, these proteins cannot induce membrane bending to their spontaneous curvatures. Therefore, a higher bending rigidity ($\kappa_{pi} > \kappa_d$) is required to bend membranes to a specific curvature.

For $\kappa_{pi} = \kappa_d$, ϕ follows a monotonic sigmoid function of H without any distinct peaks (see the green line in Fig. 3(a)). In several previous studies,^{72–75} the condition $\kappa_{pi} = \kappa_d$ was set as a simplified model, and the following bending energy was used:

$$F_{cv1} = \int dA \left\{ \frac{\kappa_d}{2} (2H - C_0\phi)^2 \right\}. \quad (11)$$

This formulation corresponds to the condition of $\kappa_{pi} = \kappa_d$, $\bar{\kappa}_{pi} = \bar{\kappa}_d$, and $b = \kappa_d C_0^2/2$. The quadratic term $(\kappa_d C_0^2/2)\phi^2$ is often neglected.^{76,77} Since this quadratic term is independent of membrane curvature and represents a pairwise inter-protein interaction, its inclusion in the bending energy is not recommended. Similarly, preaveraging both bending rigidity and spontaneous curvature as $F_{cv1} = \int dA (\kappa_d + \kappa_1\phi)(2H - C_0\phi)^2/2$ is not advisable, because it implicitly accounts for pairwise and three-body inter-protein interactions $((2\kappa_1 C_0 H + \kappa_d C_0^2/2)\phi^2$ and $(\kappa_1 C_0^2/2)\phi^3$, respectively).^{70,78} Although the previous studies^{69,74,79} have compared the two models given by eqn (6) and (11) as distinct approaches, they are, in fact, the subsets of eqn (6) for $\kappa_{pi} \neq \kappa_d$ and $\kappa_{pi} = \kappa_d$, respectively.

The chemical potential μ can be modulated by adjusting the bulk protein concentration ρ . For a dilute solution, it is expressed as $\mu(\rho) = \mu(1) + k_B T \ln(\rho)$. In experiments, the ratio of surface protein densities at different curvatures has often been used, making the estimation of μ unnecessary. For a large spherical vesicle with $R_A C_0 \gg 1$, the membrane can be approximated as flat ($H = K = 0$), and the protein density is given by $\phi_{flat} = 1/\{1 + \exp[(-\mu + a_p \kappa_{pi} C_0^2/2)/k_B T]\}$ for $b = 0$. Hence, for the protein density ϕ_{cy} in a cylindrical membrane with radius R_{cy} , eqn (8) can be rewritten as⁸⁰

$$\phi_{cy} = \frac{1}{1 + \frac{1 - \phi_{flat}}{\phi_{flat}} \exp \left[\frac{a_p}{k_B T} \left(\frac{\kappa_{pi} - \kappa_d}{2R_{cy}^2} - \frac{\kappa_{pi} C_0}{R_{cy}} \right) \right]}. \quad (12)$$

In the low-density limit ($\phi_{flat} \ll 1$ and $\phi_{cy} \ll 1$), the density ratio is simplified to an exponential function as^{67,81}

$$\begin{aligned} \frac{\phi_{cy}}{\phi_{flat}} &= \exp \left[-\frac{a_p}{k_B T} \left(\frac{\kappa_{pi} - \kappa_d}{2R_{cy}^2} - \frac{\kappa_{pi} C_0}{R_{cy}} \right) \right] \\ &= \exp \left[-\frac{a_p}{k_B T} \left(\frac{\kappa_{pa}}{2R_{cy}^2} - \frac{\kappa_{pa} C_{0a}}{R_{cy}} \right) \right], \end{aligned} \quad (13)$$

for the bending-energy formulations given in eqn (5) and (6), respectively. In this limit, the ratio ϕ_{cy}/ϕ_{flat} is independent of ϕ_{flat} .

3.2 Intrinsically disordered protein (IDP) domains

Many curvature-inducing proteins contain IDP domains. Stachowiak and coworkers have investigated the effects of varying



the length of IDP domains in BAR and other proteins and have reported that the disordered domains facilitate curvature sensing and that the longer IDP chains promote the formation of small vesicles.^{82–85} A disordered domain behaves as a linear polymer chain in a good solvent,⁸⁶ that is, its mean radius of gyration scales as $\langle R_g \rangle \sim n_{\text{poly}}^{\nu}$, where $\langle \dots \rangle$ denotes the ensemble average, n_{poly} represents the number of Kuhn segments, and $\nu = 0.6$ is the scaling exponent for an excluded volume chain.^{87,88} The Kuhn length of IDP chains is approximately 0.8 nm.⁸⁶ The interactions between membrane-anchored polymer chains and membrane have been extensively studied through theory,^{89–93} simulations,^{94–97} and experiments.^{98–102} The formation of spherical buds^{98,99,101} and membrane tubes^{99,100,102} have been observed experimentally. Polymer anchoring induces a positive spontaneous curvature of the membrane and increases the bending rigidity in a good solvent.

At low polymer densities (referred to as the “mushroom regime”), the polymer chain exists in isolation on the membrane forming a mushroom-like distribution, where the inter-polymer interactions are negligible. In this regime, both the spontaneous curvature and bending rigidity increase linearly with the grafting density ϕ_{poly} of the polymer chains. Analytically, the relations^{89,90}

$$\kappa_{\text{pi}}\Delta H_0 = k_{\text{h0}}k_{\text{B}}TR_{\text{end}}\phi_{\text{poly}}, \quad (14)$$

$$\Delta\kappa = k_{\kappa}k_{\text{B}}TR_{\text{end}}^2\phi_{\text{poly}}, \quad (15)$$

$$\Delta\bar{\kappa} = -\bar{k}_{\kappa}k_{\text{B}}TR_{\text{end}}^2\phi_{\text{poly}}, \quad (16)$$

are predicted, where $\Delta H_0 = \Delta C_0/2$, $\Delta\kappa$, and $\Delta\bar{\kappa}$ represent the differences in the spontaneous curvatures, bending rigidities, and saddle-splay moduli between the polymer-decorated and bare membranes, respectively, and R_{end} represents the mean end-to-end distance of the polymer chain. These coefficients have been analytically derived using Green's function for ideal chains^{89,90} and have also been estimated by Monte Carlo (MC) simulations of single anchored polymer chains:⁹⁴ $k_{\text{h0}} = 0.18$ and 0.17 ; $k_{\kappa} = 0.21$ and 0.2 ; and $\bar{k}_{\kappa} = 0.17$ and 0.15 ; for ideal and excluded-volume chains, respectively.

At a polymer density sufficiently higher than the overlap density (referred to as “brush regime”), the polymer chains extend perpendicularly from the membrane surface, forming a brush-like structure. In this regime, polymers grafting further enhance both the bending rigidity and spontaneous curvature of the membrane. In the limit of small curvature, the bending rigidity and saddle-splay modulus are given by⁹⁰

$$\Delta\kappa = \frac{\nu + 2}{12\nu^2}n_{\text{poly}}^3\phi_{\text{poly}}^{*3/2\nu}k_{\text{B}}T, \quad (17)$$

$$\Delta\bar{\kappa} = -\frac{1}{6\nu}n_{\text{poly}}^3\phi_{\text{poly}}^{*3/2\nu}k_{\text{B}}T, \quad (18)$$

where ϕ_{poly}^* is the polymer density normalized by the maximum coverage. Consequently, brush polymers increases the membrane rigidity in proportion to $\phi_{\text{poly}}^{2.5}$, as show in Fig. 4.

In addition, polymer grafting reduces the line tension of membrane edges, thereby stabilizing the microdomains with a

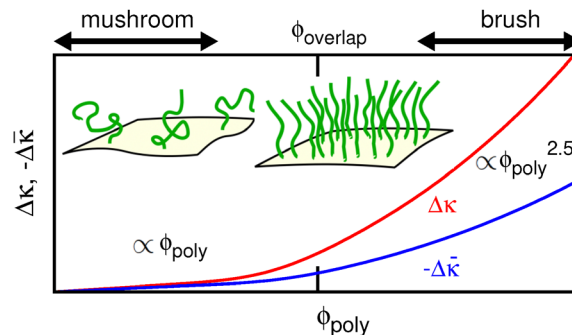


Fig. 4 Schematic graph of the bending modulus modification by IDP chains. The red and blue lines represent the differences in the bending rigidities ($\Delta\kappa$), and saddle-splay moduli ($\Delta\bar{\kappa}$) between the IDP-decorated and bare membranes, respectively. At sufficiently lower and higher densities than the overlap density (ϕ_{overlap}), the IDP chains exhibit mushroom and brush shapes, respectively, as drawn in the inset. In the mushroom region, $\Delta\kappa$ and $\Delta\bar{\kappa}$ are expressed by eqn (15) and (16), respectively, with the coefficients for a good solvent.⁹⁴ In the brush region, $\Delta\kappa$ and $\Delta\bar{\kappa}$ are expressed by eqn (17) and (18), respectively, in the small curvature limit.⁹⁰

size of the polymer-chain length.⁹⁷ Furthermore, in a poor solvent environment, the polymer grafting can induce a negative spontaneous curvature, leading to the formation of a dimple-shaped membrane structure.^{96,103}

3.3 Theory of anisotropic proteins

Here, we consider the binding of anisotropic proteins to membranes. A prominent example of anisotropic proteins is the BAR superfamily proteins, which features a banana-shaped binding domain known as the BAR domain. This binding domain is a dimer and holds twofold rotational symmetry. The BAR domain binds to the membrane, inducing curvature along the domain axis and generating cylindrical membrane tubes.^{1,3,73,104–109} The BAR domains have lengths from 13 to 27 nm.¹⁰⁴ N-BAR and F-BAR domains have a positive curvature along the domain axis and I-BAR (Inverse-BAR) domains have a negative curvature. Some BAR proteins also have extra binding domains, such as phox homology (PX) and pleckstrin homology (PH) domains, and N-BAR and some extra domains have membrane insertion modules.^{105,110,111} These domains and modules can modify the bending energy of bound regions, with maintaining the rotational symmetry.

Not all curvature-inducing proteins exhibit rotational symmetry. For example, dynamin,^{112–114} which has an asymmetric structure, forms helical assemblies that constrict membrane neck, leading to membrane fission. Similarly, melittin and amphipathic peptides^{115–118} bind to membranes, and their circular assemblies result in membrane pore formation. Recent coarse-grained simulation of a buckled membrane by Gómez-Llobregat and coworkers demonstrated the curvature sensing of three amphipathic peptides.¹¹⁹ They revealed that melittin and the amphipathic peptides LL-37 (PDB: 2k6O) exhibited asymmetric curvature sensing, meaning that their angular distribution relative to the buckled axis is not symmetric.

Several bending-energy models have been proposed to describe the behavior of anisotropic proteins. For the crescent-



shaped symmetric proteins, such as BAR proteins, the bending energy can be expressed as^{70,120,121}

$$U_p = \frac{\kappa_p a_p}{2} (C_{lm} - C_p)^2 + \frac{\kappa_s a_p}{2} (C_{ls} - C_s)^2, \quad (19)$$

where κ_p and C_p represent the bending rigidity and spontaneous curvature along the major protein axis, respectively, while κ_s and C_s denote those along the minor (side) axis. The membrane curvatures along these major and minor axes are given by

$$C_{lm} = C_1 \cos^2(\theta_{pc}) + C_2 \sin^2(\theta_{pc}) = H + D \cos(2\theta_{pc}), \quad (20)$$

$$C_{ls} = C_1 \sin^2(\theta_{pc}) + C_2 \cos^2(\theta_{pc}) = H - D \cos(2\theta_{pc}), \quad (21)$$

respectively, where $D = (C_1 - C_2)/2$ represents the deviatoric curvatures of the membrane ($D^2 = H^2 - K$), and θ_{pc} represents the angle between the protein axis and the direction of one of the principal membrane curvatures (typically, the azimuthal direction is selected for cylindrical membranes). The protein bends the membrane with κ_p and C_p along the major axis and with κ_s and C_s along the minor axis. If the side regions of the linear-shaped proteins bind strongly to the membrane, they exhibit a negative side curvature ($C_s < 0$).^{122,123} Conversely, the excluded-volume repulsion between adjacent proteins can generate a positive side curvature.¹²⁴

A protein can comprise binding domains with distinct bending axes (where C_{ij} denotes the membrane curvature along the axis of the j -th domain) and isotropic bending regions (IDP domains *etc.*). Consequently, the bending energy of a single protein is generally expressed as⁵⁶

$$U_p = F_{pi} + \sum_j \frac{\kappa_{pj} a_p}{2} (C_{ij} - C_{pj})^2 \quad (22)$$

$$= k_1 H^2 + k_2 H + k_3 K + k_4 D \cos(2\theta_{pc}) + k_5 H D \cos(2\theta_{pc})$$

$$+ k_6 D^2 \cos(4\theta_{pc}) + k_7 D \sin(2\theta_{pc}) + k_8 H D \sin(2\theta_{pc})$$

$$+ k_9 D^2 \sin(4\theta_{pc}) + U_0, \quad (23)$$

in the second-order expansion of membrane curvature. The constant term U_0 can be neglected by incorporating it into the chemical potential, such that $\mu' = \mu + U_0$. Isotropic proteins are characterized by the first three terms with the coefficients $k_1 = 2\kappa_{pa} a_p$, $k_2 = -2\kappa_{pa} a_p C_{0a}$, and $k_3 = \bar{\kappa}_{pa} a_p$ for F_{pi} (compare eqn (6) and (23)). Proteins with twofold rotational or mirror symmetry can have the first six terms (k_1 – k_6), while asymmetric proteins may exhibit all nine terms. The protein major axis can be chosen to be $k_7 = 0$ in order to reduce the number of coefficients. To express asymmetry, $k_8 \neq 0$ or $k_9 \neq 0$ is needed at this axis. The protein model in eqn (19) is considered with $N_{ax} = 2$ and $F_{pi} = 0$, assuming orthogonal axes where $C_{/1} = C_{/m}$ and $C_{/2} = C_{/s}$, and the coefficients are mapped accordingly as $k_1 = 3(\kappa_p + \kappa_s) a_p / 4$, $k_2 = -(\kappa_p C_p + \kappa_s C_s) a_p$, $k_3 = -(\kappa_p + \kappa_s) a_p / 4$, $k_4 = -(\kappa_p C_p - \kappa_s C_s) a_p$, $k_5 = (\kappa_p - \kappa_s) a_p$, and $k_6 = (\kappa_p + \kappa_s) a_p / 4$.⁵⁶ Akabori and Santangelo¹²⁵ have added $U_{asy} = k_{asy} [D \sin(2\theta_{pc}) - C_{asy}]^2$ to eqn (19) in order to include an asymmetric bending effect. Their formulation corresponds to eqn (23) with

$k_7 = -2k_{asy} C_{asy}$ and $k_8 = k_9 = 0$, modifying k_1 , k_3 , and k_6 . Kralj-Iglic and coworkers have considered the protein energy with a symmetric shape,^{126,127} $U_p = k_a (H - H_0)^2 / 2 + (k_a + k_b) [D^2 - 2DD_0 \cos(2\theta_{pc}) + D_0^2] / 4$. The second term assumes an energy proportional to a rotational average of $(d(C_l - C_m)/d\theta)^2$, where C_l is the normal membrane curvature at the angle θ , and $C_m = C_{m0} + C_{m1} \cos(2\theta)$ is the angle-dependent spontaneous curvature. In this formulation, $k_1 = 3k_a/4 + k_b/4$, $k_2 = -k_a H_0$, $k_3 = -(k_a + k_b)/4$, $k_4 = -(k_a + k_b) D_0 / 2$, and $k_5 = k_6 = 0$. They have also used the first term of eqn (19) for rod-like proteins (*i.e.*, $\kappa_s = 0$).¹²⁷ Fournier combined an anisotropic bending energy with the tilt energy of lipids for transmembrane proteins.¹²⁸

3.3.1 Isolated proteins. First, we consider protein binding in the low-density limit, in which bound proteins are isolated on the membrane and inter-protein interactions are negligible. Hence, the density ϕ of bound proteins is given by $\phi = (1/2\pi) \int_{-\pi}^{\pi} \exp[(\mu - U_p)/k_B T] d\theta_{pc}$. The binding ratio of proteins to a cylindrical membrane tube relative to a flat membrane is expressed as⁵⁶

$$\frac{\phi_{cy}}{\phi_{flat}} = \frac{\exp\left(\frac{U_p^{flat}}{k_B T}\right)}{2\pi} \int_{-\pi}^{\pi} \exp\left(-\frac{U_p^{cy}}{k_B T}\right) d\theta_{pc}, \quad (24)$$

where U_p^{flat} is the bending energy for the flat membrane, and U_p^{cy} is that for the cylindrical membrane. This ratio ϕ_{cy}/ϕ_{flat} is independent of μ in the low-density limit, as in the isotropic proteins.

Anisotropic proteins can adjust their lateral orientation to reduce their bending energy. Let us consider a crescent symmetric protein (eqn (19) with $\kappa_s = 0$) and its variants as simple anisotropic protein models. This crescent protein has the lowest bending energy at $\theta_{pc} = 0$ (the protein orients in the azimuthal direction) in a wide cylinder ($1/R_{cy} C_p \leq 1$), whereas tilt proteins have the lowest at $\theta_{pc} = \pm \arccos(\sqrt{R_{cy} C_p})$ in a narrow cylinder ($1/R_{cy} C_p > 1$). Hence, the protein density exhibits peaks at these preferred orientations (see the red lines in Fig. 5(b) and (c)). The average density ϕ_{cy} also exhibits a peak at a membrane curvature slightly higher than $1/R_{cy} C_p = 1$ (see Fig. 5(a)). Unlike isotropic proteins, $\phi_{cy}(R_{cy})$ is not mirror symmetric and decreases gradually at larger curvatures, owing to the angular adjustment of proteins. When an isotropic bending energy component, F_{pi} , is added with a relative strength of 10% ($\kappa_{pi}/\kappa_p = 0.1$ and $C_{0a} = 0$), the density profile of ϕ_{cy} approaches a mirror symmetric shape (see the green line in Fig. 5(a)). Some amphipathic peptides have a kink structure, which allows significant bending. To mimic this behavior, a kink is introduced at 20% of the protein length from the protein end; at the kink, the protein bends laterally at an angle of $\pi/4$. Owing to the resulting asymmetry, the angular distribution becomes skewed, with the highest peak appearing at $\theta_{pc} < 0$ and $\theta_{pc} > 0$ for the curvature ranges $1 < 1/R_{cy} C_p < 2$ and $1/R_{cy} C_p > 2$, respectively (see the blue lines in Fig. 5).⁵⁶ A similar asymmetric angular distribution was reported in molecular simulation.¹¹⁹ The above discussion focuses on the binding of rigid proteins; however, the deformation of the



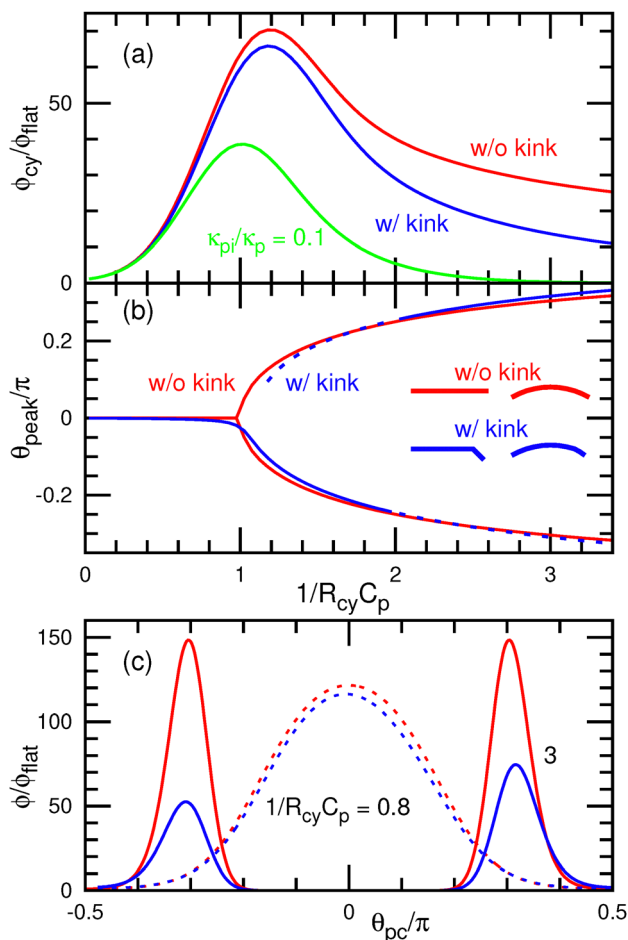


Fig. 5 Binding of anisotropic proteins in the low-density limit with $C_p^2 a_p = 0.2$, $\kappa_p = 50 k_B T$, and $\kappa_s = 0$.⁵⁶ The red lines represent the data of a twofold rotationally symmetric protein (crescent-rod shape without kinks). The blue lines represent the data of an asymmetric protein, where the rod-shaped protein bends at a kink with an angle of $\pi/4$, positioned at 20% of the protein length from the end. The axis of the asymmetric protein is set to be $\theta_{\text{peak}} = 0$ at $1/R_{\text{cy}} \ll 1$. The green line represents the data of the twofold rotationally symmetric protein with an isotropic segment of $\kappa_{\text{pi}}/\kappa_p = 0.1$. (a) Binding density ϕ_{cy} on a cylindrical membrane with respect to the density ϕ_{flat} on a flat membrane. (b) Peak position of the angle θ_{pc} . The solid and dashed lines represent the first and second peaks, respectively. The inset shows the schematics of the top and side views of proteins. (c) Distribution of the angle θ_{pc} . The solid and dashed lines represent the data for $1/R_{\text{cy}} C_p = 3$ and 0.8, respectively.

binding domains can modify the protein density as demonstrated in ref. 56.

3.3.2 High protein density. Next, we describe a mean-field theory^{121,129} that accounts for orientation-dependent excluded area, in which Nascimentos' theory¹³⁰ for three-dimensional (3D) liquid-crystals is applied to the 2D membrane. Bound proteins are assumed to adopt an elliptical shape laterally on the membrane and can be aligned based on their inter-protein interactions and their preferred bending direction. The degree of orientational order S is given by $S = 2\langle s_p(\theta_{\text{ps}}) \rangle$, where $s_p(\theta_{\text{ps}}) = \cos^2(\theta_{\text{ps}}) - 1/2$ and θ_{ps} denotes the angles between the major protein axis and nematic orientation S . The protein area is

defined as $a_p = \pi \ell_1 \ell_2 / 4$, where ℓ_1 and ℓ_2 represent the lengths of the major and minor protein axes, respectively.

The free energy F_p of bound proteins is expressed as¹²¹

$$F_p = \int f_p dA, \quad (25)$$

$$f_p = \frac{\phi k_B T}{a_p} \left[\ln(\phi) + \frac{S\Psi}{2} - \ln \left(\int_{-\pi/2}^{\pi/2} w(\theta_{\text{ps}}) d\theta_{\text{ps}} \right) \right], \quad (26)$$

where

$$w(\theta_{\text{ps}}) = g \exp[\Psi s_p(\theta_{\text{ps}}) + \bar{\Psi} \sin(\theta_{\text{ps}}) \cos(\theta_{\text{ps}}) - U_p/k_B T] \Theta(g), \quad (27)$$

$$g = 1 - \phi[b_0 - b_2 S s_p(\theta_{\text{ps}})]. \quad (28)$$

Ψ and $\bar{\Psi}$ represent the symmetric and asymmetric components of the nematic tensor, respectively. The factor g accounts for the weight of the orientation-dependent excluded volume interaction, and $\Theta(x)$ denotes the unit step function. When two proteins are aligned parallel to each other, the excluded area A_{exc} between them is smaller compared to when they are oriented perpendicularly. This difference increases with increasing aspect ratio $d_{\text{el}} = \ell_1/\ell_2$. The area A_{exc} can be approximated as $A_{\text{exc}} = [b_0 - b_2(\cos^2(\theta_{\text{pp}}) - 1/2)]a_p/\lambda$, where θ_{pp} is the angle between the major axes of two proteins, and λ represents the packing ratio. The maximum density is given by $\phi_{\text{max}} = 1/\lambda(b_0 - b_2/2)$.¹²⁹

For a flat membrane, proteins exhibit an isotropic orientation at low densities and a first-order transition to a nematic order at high densities owing to the orientation-dependent excluded volume interactions.¹²¹ In this review, we consider the anisotropic bending energy described by eqn (19) with $\kappa_s = 0$ for U_p . As the curvature $1/R_{\text{cy}}$ of a membrane tube increases, proteins tend to align in the azimuthal direction even in the dilute limit (see Fig. 5(c)), and the transition to the nematic state becomes continuous.

For narrow tubes with $1/R_{\text{cy}} > C_p$, the preferred protein orientation tilts away from the azimuthal direction. At low ϕ , proteins tilted in both the left and right directions coexist equally (Fig. 5). However, at high protein densities, only one type of tilt direction dominates due to orientation-dependent excluded volume interactions. Thus, second-order and first-order transitions occur between these two states at medium and large curvatures, respectively.¹²⁹

This theory well reproduces the simulation results for crescent protein rods on a membrane tube, when the proteins are isotropically distributed.¹²⁹ However, the discrepancies arise when the proteins form a significant amount of clusters, since the current theory does not account for inter-protein attraction and assumes a homogeneous protein distribution.¹²⁹

3.4 Binding to tethered vesicle

A vesicle held by a micropipette forms a narrow membrane tube (tether) under a pulling force applied by optical tweezers,



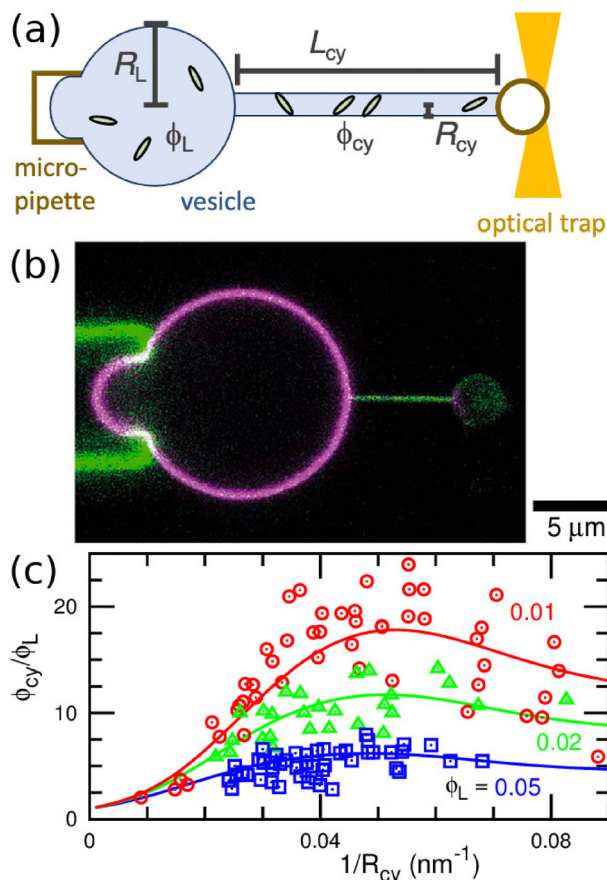


Fig. 6 Binding of I-BAR domain of IRSp53 to tethered vesicle. (a) Schematic of the experimental setup. A cylindrical membrane tube (tether) is extended by an optical trap and micropipette. (b) Confocal image of a vesicle with a tube of $R_{cy} = 25$ nm. Green and magenta indicate the fluorescence for I-BARs and lipids, respectively. (c) Protein density ϕ_{cy} in the tube normalized by that of the large spherical region ϕ_L . Circles, triangles, and squares indicate the experimental data of ϕ_{cy}/ϕ_L for $\phi_L = 0.01$, 0.02 , and 0.05 , respectively. The solid lines are obtained using fitting by the anisotropic protein model with $\kappa_p/k_B T = 82$ and $C_p = -0.047$ nm $^{-1}$. The experimental data in (b) and (c) are reproduced from ref. 67. Licensed under CC BY (2015). The plot in (c) is reproduced from ref. 80 with permission from the Royal Society of Chemistry (2023).

as illustrated in Fig. 6(a).^{30,131–133} The tube radius can be controlled by adjusting the force strength. Tethered vesicles have been widely employed to study the curvature sensing of membrane proteins, including BAR proteins,^{67,69,72,79,134} ion channels,^{135,136} GPCRs,⁶⁸ dynamin,¹³⁷ annexins,¹³⁸ and Ras proteins.¹³⁹

Protein density in the membrane can be quantified using fluorescence intensity measurement, as shown in Fig. 6(b). For I-BAR domains, the density ratio ϕ_{cy}/ϕ_L between the membrane tube to large spherical regions reaches a peak at a tube curvature of approximately 0.05 nm $^{-1}$ and gradually decreases at larger curvature (see Fig. 6(c)).⁶⁷ This curvature dependence can be reproduced by the theory for elliptic proteins (eqn (25)–(28)) with $\kappa_p/k_B T = 82$, $C_p = -0.047$ nm $^{-1}$, and $\kappa_s = 0$.⁸⁰ Note that the theory for isotropic proteins (eqn (12) or (13)) can reproduce each curve using different κ_{pi} and C_0 ⁶⁷ but cannot

simultaneously fit all three experimental curves.⁸⁰ This finding strongly supports the anisotropic nature of the curvature sensing in I-BAR domains. Therefore, the tethered vesicle serves as a valuable tool not only for investigating curvature sensing but also for estimating the bending properties of various membrane proteins. However, the dependence on the saddle-splay modulus (k_3 in eqn (23)) cannot be directly measured using the tethered vesicle, since $K = 0$ in the membrane tube. Instead, k_3 can be estimated by comparing curvature sensing data from the membrane tubes and spherical vesicles with the same mean curvature (see Fig. 3). Curvature sensing has been observed through protein binding to spherical vesicles with various sizes,^{84,139,140} and the comparisons with the data in membrane tube were also reported in ref. 139 at small membrane curvatures. For the estimation of the protein properties, the sensing data at large curvatures are particularly significant, since the anisotropic characteristics become more pronounced in this regime (see Fig. 5(a)).

The force generated by the bending energy, while maintaining a fixed volume and surface area, is balanced with the external force f_{ex} at equilibrium. Under typical experimental conditions of the tethered vesicle, the membrane tube is extremely narrow, making the volume of the cylindrical tube negligible, as $R_{cy}^2 L_{cy}/R_A^3 \ll 1$.^{81,141} In this limit condition, the vesicle shape is obtained from $\partial F_{cv1}/\partial L_{cy} = f_{ex}|_{A_{cy}}$ of the cylindrical tube with $A_{cy} = 2\pi R_{cy} L_{cy}$.

For the binding of isotropic proteins, it is expressed as⁸¹

$$f_{ex} \approx \frac{2\pi [(\kappa_p - \kappa_d)\phi_{cy} + \kappa_d]}{R_{cy}} - 2\pi\kappa_p C_0 \phi_{cy}, \quad (29)$$

where ϕ_{cy} is given by eqn (8). For the bare membrane ($\phi_{cy} = 0$), a linear relation is obtained between the force and the tube curvature as $f_{ex} = 2\pi\kappa_d/R_{cy}$, which is widely used to estimate the bending rigidity of the bare membrane.^{29–32,131} The protein density ϕ_{cy} and the tube curvature $1/R_{cy}$ exhibit mirror and point symmetry with respect to $f_{ex}/f_0 = 1$, as shown in Fig. 7(a) and (b), respectively, where $f_0 = 2\pi\kappa_d C_s$ represents the force at the sensing curvature $C_s = 2H_s = \kappa_{pi} C_0/(\kappa_{pi} - \kappa_d)$. At high μ , a first-order transition occurs twice symmetrically at both weak and strong forces f_{ex} (see the red and green curves in Fig. 7(a) and (b)). At the transition point, narrow and wide tubes with different protein densities can coexist.

For the anisotropic proteins, the membrane curvature is obtained from the force balance as $f_{ex}/2\pi = \partial f_p/\partial(1/R_{cy})|_{\phi_{cy}} + \kappa_d/R_{cy}$, where f_p is given by eqn (26).^{80,129} The f_{ex} dependence curves of ϕ_{cy} and $1/R_{cy}$ are not symmetric, unlike for isotropic proteins (compare Fig. 7(c) and (d) with Fig. 7(a) and (b)). The density and curvature exhibit a weaker dependence on f_{ex} at $f_{ex} > f_0$ owing to the protein tilting in narrow tubes, where $f_0 = 2\pi\kappa_d C_p$. Consequently, at high μ , the first-order transition occurs only once in wide tubes. This transition has been experimentally observed, showing the coexistence of high and low I-BAR density regions within the same membrane tube in ref. 67. The sensing curvature of anisotropic proteins is



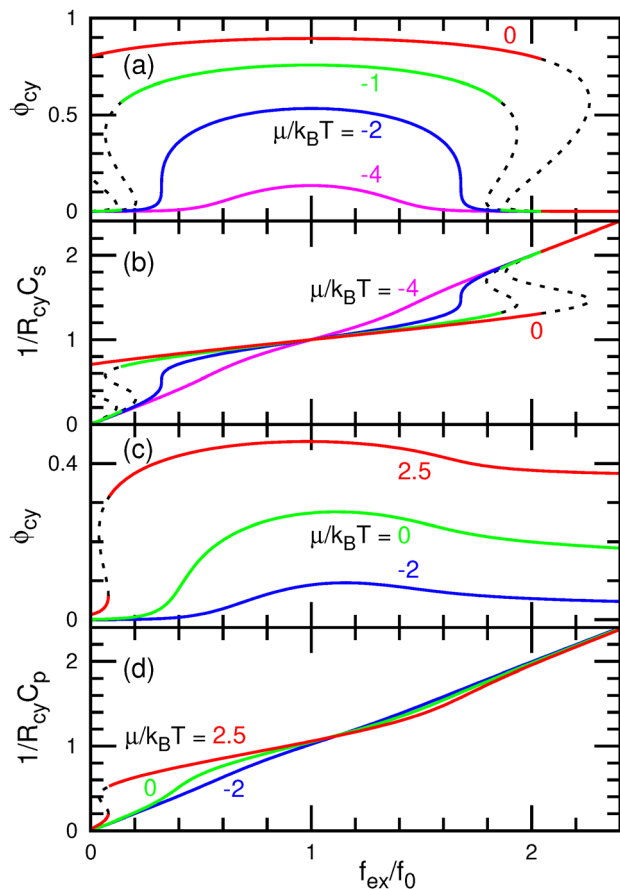


Fig. 7 Protein binding to a membrane tube pulled by an external force f_{ex} . Protein density ϕ and tube curvature $1/R_{\text{cy}}$ are shown in (a), (c) and in (b), (d), respectively. (a) and (b) Isotropic proteins for $\mu/k_{\text{B}}T = -4, -2, -1$, and 0 at $\kappa_{\text{p}}/\kappa_{\text{d}} = 4$ and $a_{\text{p}}C_0^2 = 0.16$. (c) and (d) Crescent elliptic proteins for $\mu/k_{\text{B}}T = -2, 0$, and 2.5 at $\kappa_{\text{p}}/\kappa_{\text{B}}T = 60$, $\kappa_{\text{s}} = 0$, $d_{\text{el}} = 3$, and $a_{\text{p}}C_{\text{p}}^2 = 0.26$. The solid lines represent equilibrium states. The black dashed lines represent metastable and free-energy barrier states (van der Waals loops). The isotropic proteins exhibit a first-order transition twice at large μ .⁸¹ In contrast, the anisotropic proteins exhibit it only once at a small curvature.¹²⁹

influenced not only by C_{p} but also by the protein density, as shown in Fig. 7(c) and (d).¹²⁹

4 Curvature generation

4.1 Isotropic proteins

Curvature-inducing proteins alter the local membrane curvature, bringing it closer to their preferred curvatures. In the absence of constraints, the curvature H_{g} generated by isotropic proteins is determined by minimizing the free-energy, given by the condition $dF_{\text{cv1}}/dH = 0$ using eqn (5):⁶⁶

$$H_{\text{g}} = \frac{\kappa_{\text{pi}}\phi}{2(\kappa_{\text{dif}}\phi + \kappa_{\text{d}})}C_0, \quad (30)$$

where κ_{dif} represents the bending-rigidity difference as used in eqn (10). Since the proteins bend the underlying membrane together, H_{g} is smaller than the sensing curvature H_{s} and depends on the membrane rigidity κ_{d} , unlike the sensing curvature

(see Fig. 3(b)). Moreover, H_{g} differs between spherical and cylindrical membranes at $\bar{\kappa}_{\text{pi}} \neq \bar{\kappa}_{\text{d}}$ (see Fig. 3(b)). In the presence of constraints, the membrane may bend to a lesser extent than this generation curvature, since the constraints can suppress the membrane deformation.

4.1.1 Budding and vesicle formation. As an example of constraints, we consider the budding of a vesicle induced by protein binding. Here, the volume and surface area of the vesicle is fixed (constrained) so that local membrane deformation maintains these constraints by entailing deformation in other membrane regions.

In living cells, spherical buds typically form during vesicle formation. In clathrins-mediated endocytosis, clathrins assemble on the membrane, forming spherical buds with diameters ranging from 20 to 200-nm.^{4,142–144} Similarly, in the membrane trafficking between the endoplasmic reticulum and the Golgi apparatus, COPI and COPII coated vesicles with diameters ranging from 60 to 100-nm are generated through budding under typical conditions.^{5,145,146} These proteins can be considered as laterally isotropic, and their budding processes have been theoretically analyzed using a spherical-cap geometry^{147–149} and more detailed geometry.¹⁵⁰

The budding of a vesicle can be understood using the mean-field theory with simplified geometries.⁶⁶ A budded vesicle is modeled as small spheres connected to a large spherical membrane, as depicted in the inset of Fig. 8(c). Assuming that all buds have the same radius R_{bud} , the free energy minimum can be easily solved using eqn (7) for one degree of freedom, since the other two lengths can be determined by the area and volume constraints. A prolate vesicle can be modeled by a cylinder shape capped with two hemispheres. As the chemical potential μ increases, the protein density ϕ_{bud} in the buds increases greater than ϕ_{L} in the large spherical region, leading to the formation of a greater number of buds with a smaller radius (see Fig. 8). At a small spontaneous curvature ($C_0R_{\text{A}} = 200$), The number of buds increases continuously, whereas, at a large spontaneous curvature ($C_0R_{\text{A}} = 300$), a first-order transition occurs from a few buds with a large radius to many buds with a small radius, as shown in Fig. 8. Thus, many buds can suddenly form after a long incubation period at slightly higher than the transition point.

This simplified geometrical framework can be easily applied to other shape transformations and is useful for investigating the effects of additional interactions. For instance, the ADE energy is incorporated into the budding process (see Fig. 8(b)). Initially, the ADE energy is considered to be relaxed in the prolate vesicle ($\Delta A = \Delta A_0$ in the prolate). When the bound proteins do not change ΔA_0 , the ADE energy only slightly reduces the budding (see the magenta curve in Fig. 8(b)).⁶⁶ However, the insertion of hydrophobic segments into the membrane can modify ΔA_0 . When the segments insert only the outer leaflet with the ratio γ_{in} of the inserted area (*i.e.*, $\Delta A_0 = \Delta A(\text{prolate}) + \gamma_{\text{in}}\int\phi dA$), the budding can be promoted (see the green curve in Fig. 8(b)). The insertion can induce the budding even at $C_0 = 0$ through the protein binding to the large spherical region.



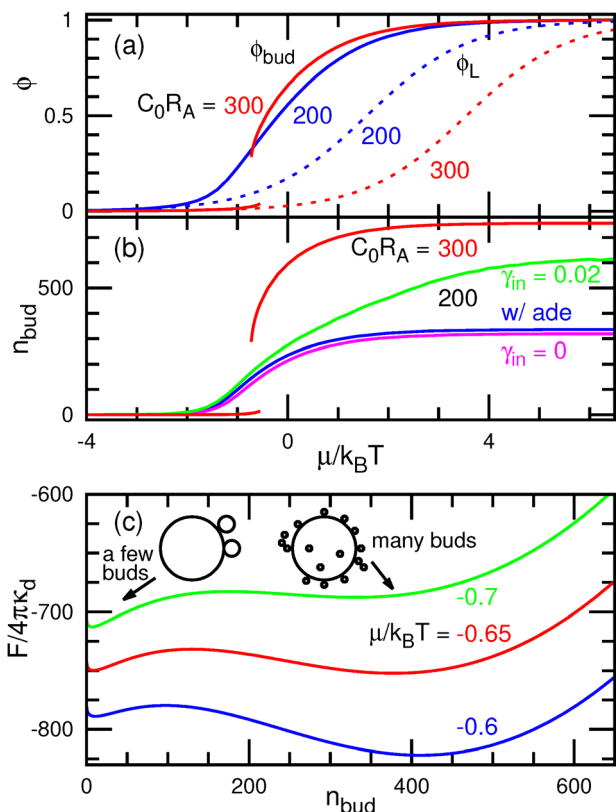


Fig. 8 Budding of a vesicle induced by the binding of proteins with a spontaneous curvature C_0 at $V^* = 0.95$, $\kappa_p/\kappa_d = 4$, and $\bar{\kappa}_p/\bar{\kappa}_d = 1$.⁶⁶ (a) Protein density on the vesicle surface in the absence of the ADE energy. The solid and dashed lines represent the densities in the buds ϕ_{bud} and spherical vesicle region ϕ_L , respectively. The blue and red lines indicate the continuous and discontinuous transitions at $C_0 R_A = 200$ and 300 , respectively. (b) Number n_{bud} of buds. The blue and red lines represent the data at $C_0 R_A = 200$ and 300 , respectively, in the absence of the ADE energy (corresponding to the data shown in (a)). The green and magenta lines represent the data with the ADE energy in the presence and absence of protein insertion (the insertion area ratio of the protein $\gamma_{in} = 0.02$ and 0), respectively, at $R_A/h = 5000$. (c) Free energy profiles at $\mu/k_B T = -0.7$, -0.65 , and -0.6 (from top to bottom) at $C_0 R_A = 300$ (corresponding to the red lines in (a)). Two minima for a few and many buds appear around the transition point.

Lipid membranes supported on a solid substrate are widely used as model systems for biological membranes, providing a valuable platform to study both protein functions and membrane properties.^{151–155} Boye and coworkers reported that the annexin proteins^{64,156,157} can detach lipid membranes from the substrate.^{158,159} Their observation revealed membrane rolling and budding from open edges, with variations depending on the types of annexins. The budding and vesicle formation observed in these experiments can be interpreted as the binding behavior of isotropic proteins. Fig. 9 shows the membrane detachment dynamics obtained by a meshless membrane simulation,¹⁶⁰ in which particles with a diameter of σ self-assemble into one-layer sheets in a fluid phase. The bound proteins (represented as red particles) induce membrane bending, counteracting the adhesion to the substrate, leading to the formation of small vesicles from the membrane edge.

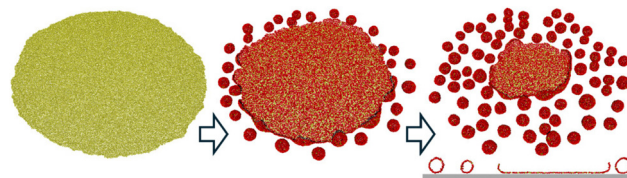


Fig. 9 Sequential snapshots of membrane detachment from a substrate induced by the binding of isotropic proteins at $C_0\sigma = 0.2$, $\kappa_p/k_B T = 34$, $\kappa_d/k_B T = 16$, and $\mu/k_B T = 5$.¹⁶⁰ Detached membranes form small vesicles. A sliced snapshot from the side view is shown for the right bird's-eye view snapshot. The red and yellow spheres represent the membrane particles with and without the protein binding, respectively. In the side view, the light gray rectangle represents the substrate.

4.1.2 Phase separation. Proteins exhibit both direct and membrane-mediated interactions, and their assemblies often influence the membrane morphology. The curvature generated by proteins can drive phase separation, resulting in protein-rich and protein-poor membrane domains with distinct curvatures. The vesicle budding process described in the Section 4.1.1 represents an extreme case of phase separation, where protein-rich buds form in contrast to the protein-poor large spherical region.

Under conditions of high surface tension compared to the spontaneous curvature of the domain and the line tension of the domain boundary, curved domains do not fully close into spherical buds but instead adopt a spherical-cap shape. When these spherical-cap domains expand to cover most of the membrane surface, they organize into a hexagonal array, representing the closest packing configuration in 2D space, as shown in Fig. 10(a).⁷¹ As the binding chemical potential μ of proteins increases, the membrane undergoes a continuous transition from an unbound state to a hexagonal phase. This is followed by a first-order transition to the homogeneously bound phase, where the entire membrane becomes saturated with proteins.⁷¹

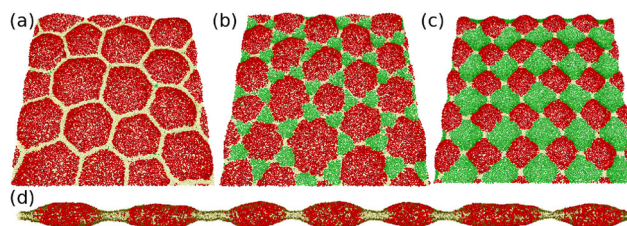


Fig. 10 Phase separation induced by binding of isotropic proteins. (a)–(c) Binding to upper and lower membrane surfaces at $C_0\sigma = \pm 0.1$, $\kappa_p/k_B T = 144$, $\kappa_d/k_B T = 16$, $\mu_u/k_B T = 7.5$, and $\mu_l = \mu_u$.¹⁶⁰ The red and green spheres represent membrane particles bound from the upper and lower surfaces, respectively. The yellow spheres represent unbound membrane particles. (a) Hexagonal pattern of the upper-bound domains in the unbound membrane at $\mu_d/k_B T = 4$. Lower bound particles are negligible. (b) Kagome-lattice pattern at $\mu_d/k_B T = 6$. The upper- and lower-bound domains form hexagonal and triangular shapes, respectively. (c) Checkerboard pattern at $\mu_d = \mu_u$. Both upper- and lower-bound domains form square shapes. (d) Beaded-necklace-shaped membrane tube induced by binding to the outer surface.⁸¹ The red and yellow spheres represent bound and unbound membrane particles, respectively.



When proteins bind to both membrane surfaces from the upper and lower buffers, the membrane can form both convex and concave domains, as shown in Fig. 10(b) and (c).^{160,161} Under symmetric conditions, where the chemical potentials of the upper and lower surfaces are equal ($\mu_u = \mu_d$), the membrane exhibits distinct patterns depending on the chemical potential. At low chemical potentials, square domains arranged in a checkerboard pattern obtained, while at higher chemical potentials, striped patterns emerge. Small unbound membrane patches stabilize the vertices of the square domains (see Fig. 10(c)). When repulsive interactions are added between the unbound and bound membranes, these unbound patches expand and take on a square shape, and the bound domains adopt an octagonal shape, resembling the 4.8.8 tiling pattern.¹⁶¹ Under asymmetric conditions, where the chemical potential of the upper surface exceeds that of the lower surface ($\mu_u > \mu_d$), a kagome-lattice pattern can form. In this configuration, triangular concave domains are arranged within a hexagonal array of convex domains (see Fig. 10(b)). As the chemical-potential difference further increases, concave domains disappear and a hexagonal pattern of convex domains form (see Fig. 10(a)). Additionally, the transfer (flip-flop) of proteins between the two surfaces can be accounted for using the flip-flop chemical potential μ_{ff} . At thermal equilibrium ($\mu_{ff} = \mu_d - \mu_u$), the flip-flop does not change the equilibrium behavior owing to the principle of detailed balance. However, under non-equilibrium conditions ($\mu_{ff} \neq \mu_d - \mu_u$), the ballistic motion of biphasic domains and time-irreversible fluctuations of patterns can be observed.¹⁶¹

Phase separation can also occur in both spherical and cylindrical membranes. In spherical vesicles, the formation of hexagonal arrays of concave domains has been theoretically investigated.¹⁶² In cylindrical membrane, a 1D periodic pattern can emerge, in which round bound and narrow straight unbound domains alternate in a beaded-necklace-like arrangement (see Fig. 10(d)).⁸¹

Even in the absence of spontaneous-curvature differences between bound and unbound membranes, attraction between bound membrane regions can arise due to hydrophobic mismatch of transmembrane proteins and Casimir-like interactions in rigid proteins. The height of the transmembrane proteins can differ from the thickness of surrounding membrane,^{163–165} resulting in an effective attraction between proteins to reduce the hydrophobic mismatch.^{166–169} In thermal equilibrium, the membrane height fluctuations follow the relation $\langle |h_q|^2 \rangle = k_B T / (\gamma q^2 + \kappa q^4)$, where h_q represents the Fourier transform of the membrane height in the Monge representation.^{170,171} Here, the surface tension γ corresponds to the mechanical frame tension conjugated to the projected membrane area.¹⁷² Rigid proteins with high bending rigidity κ_p suppress membrane fluctuations in their vicinity. As a result, protein assembly mitigates entropy loss, leading to a Casimir-like attractive interaction.^{71,173} This interaction is expressed in the leading order as $6 k_B T (r_p/r)^4$, where r is the inter-protein distance and r_p represents the protein length. Consequently, the binding of rigid proteins induces a first-order transition between unbound and bound states.⁷¹ Additionally, Casimir-like interaction also arises between

ligand–receptor pairs that connect adjacent membranes, effectively reducing the fluctuations in the membrane separation distance.^{174,175}

4.2 Anisotropic proteins

4.2.1 Interprotein interactions. For anisotropic proteins, excluded volume interactions are orientation-dependent, as discussed in Section 3.3.2. Membrane-mediated interactions also depend on the protein orientation.^{124,176,177} In a tensionless membrane ($\gamma = 0$), the curvature-mediated interaction energy for an isolated protein pair can be expressed in the leading order as¹²⁴

$$H_{pp}^{(0)}(r_{12}) = \frac{16\pi r_p^4}{9r_{12}^2} \kappa_d C_{r1} C_{r2} [\cos(2\theta_1) + \cos(2\theta_2) - \cos(2\theta_1 - 2\theta_2)], \quad (31)$$

where θ_1 and θ_2 denote the angles between the bending axis of proteins 1 and 2 and the vector \mathbf{r}_{12} connecting their centers. Two rigid proteins with curvatures C_{r1} and C_{r2} and a length of r_p are modeled as point-like objects,^{124,178–180} which allows the derivation of eqn (31). Similar angular-dependent interactions have been reported by assuming elliptical¹⁷⁶ and circular protein shapes.¹⁷⁷

When two proteins bend the membrane in the same direction ($C_{r1}C_{r2} > 0$), they exhibit an attractive interaction when oriented side-by-side ($\theta_1 = \theta_2 = \pi/2$) and a weaker repulsive interaction when aligned along the membrane axis ($\theta_1 = 0$ or $\theta_2 = 0$). In the side-by-side dimer configuration (*i.e.*, $\theta_1 = \theta_2 = \pi/2$), the membrane experiences reduced deformation. This bending-energy reduction is the origin of this attraction. Conversely, when the proteins bend the membrane in the opposite directions ($C_{r1}C_{r2} < 0$), the interactions are reversed. In this case, the proteins exhibit weak attraction when aligned along the membrane axis ($\theta_1 = 0$ or $\theta_2 = 0$) and repulsion when positioned side-by-side ($\theta_1 = \theta_2 = \pi/2$). Therefore, proteins with similar curvatures preferentially interact in a side-by-side configuration, whereas proteins with opposite curvatures prefer tip-to-tip alignment. These interactions have been quantitatively confirmed through the meshless membrane simulations.¹²⁴ Furthermore, the Casimir-like interaction between straight rods exhibits a different angular dependence but decay over a shorter range, proportional to r_{12}^{-4} .^{181,182}

For positive surface tensions ($\gamma > 0$), the bending energy dominates interactions on length scales shorter than $r_{ten} = \sqrt{\kappa_d/\gamma}$, whereas surface tension effects become dominant at length scale greater than r_{ten} . As a result, the interaction energy changes from a bending-dominant regime to a tension-dominant regime at approximately $r_{12} \approx 3r_{ten}$.¹²⁴

$$H_{pp}(r_{12}) = \begin{cases} H_{pp}^{(0)}(r_{12}), & \text{for } r_p < r_{12} \ll r_{ten}, \\ H_{pp}^{(1)}(r_{12}), & \text{for } r_{12} \gg r_{ten} \text{ if } \cos[2(\theta_1 - \theta_2)] \neq 0, \\ H_{pp}^{(2)}(r_{12}), & \text{for } r_{12} \gg r_{ten} \text{ if } \cos[2(\theta_1 - \theta_2)] = 0, \end{cases} \quad (32)$$



where

$$\frac{H_{pp}^{(1)}(r_{12})}{\kappa_d C_{r1} C_{r2}} = -\frac{64\pi r_p^4 r_{ten}^2}{3r_{12}^4} \cos[2(\theta_1 - \theta_2)], \quad (33)$$

$$\frac{H_{pp}^{(2)}(r_{12})}{\kappa_d C_{r1} C_{r2}} = \frac{(2\pi)^{3/2} r_p^4}{9r_{ten}^{3/2} r_{12}^{1/2}} \exp\left(-\frac{r_{12}}{r_{ten}}\right) \times [2 + 2\cos(2\theta_1) + 2\cos(2\theta_2) + \cos(2\theta_1 + 2\theta_2)]. \quad (34)$$

In some coarse-grained simulations, the tip-to-tip assembly of crescent proteins on membranes has been reported.^{122,123} In these systems, proteins sink into the bound membrane by a strong protein-membrane attraction, resulting in a strongly negative spontaneous curvature perpendicular to the major axis of the crescent proteins. Consequently, the protein bending axis is perpendicular to the major axis, meaning that tip-to-tip alignment, from the perspective of the protein's shape, corresponds to side-to-side alignment when viewed from the bending axis.¹²⁴

4.2.2 Tubulation. The binding of BAR superfamily proteins to the membrane induces the formation of tubules. Tubulation from liposomes has been observed in *in vitro* experiments (see Fig. 11(a)).^{73,105–107,109} In living cells, different types of BAR proteins localize to tubular membranes in specific organelles and membrane regions.^{1,3} Within these tubules, the helical assembly of BAR domains has been visualized using cryo-electron microscopy (EM), as shown in Fig. 11(b).^{106–108}

Tubulation and other membrane deformations have been realized using meshless membrane simulations (Fig. 11–14). In these simulations, the protein rods are modeled as linear chains consisting of ten membrane particles, with or without two kink particles to account for chirality, as shown in Fig. 11(c). The rod curvature $C_{rod} r_{rod} \simeq 3$ corresponds to that of BAR-PH domains,¹⁸⁴ where r_{rod} is the rod length. Additionally, excluded polymer chains, each containing n_{poly} Kuhn segments

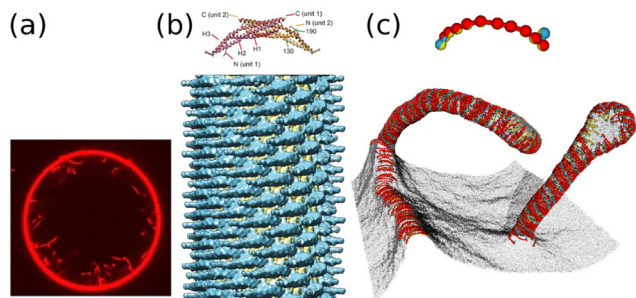


Fig. 11 Tubulation generated by BAR domains. (a) Confocal image of tubular invagination generated by the binding of I-BAR domains. Reproduced from ref. 109. Licensed under CC BY (2016). (b) N-BAR (amphiphysin/B1N1s)-coated tube with a diameter of 280 Å. 3D reconstruction from cryo-EM images. Reproduced from ref. 108. Licensed under CC BY (2015). (c) Tubulation simulated by a meshless membrane model.¹⁸³ The BAR domain and membrane beneath are modeled as a linear chain of (red and yellow) particles with two kink (light blue and yellow) particles for the molecular chirality. In the upper panel, a protein rod is extracted to show the structure. The gray spheres represent the bare membrane particles.

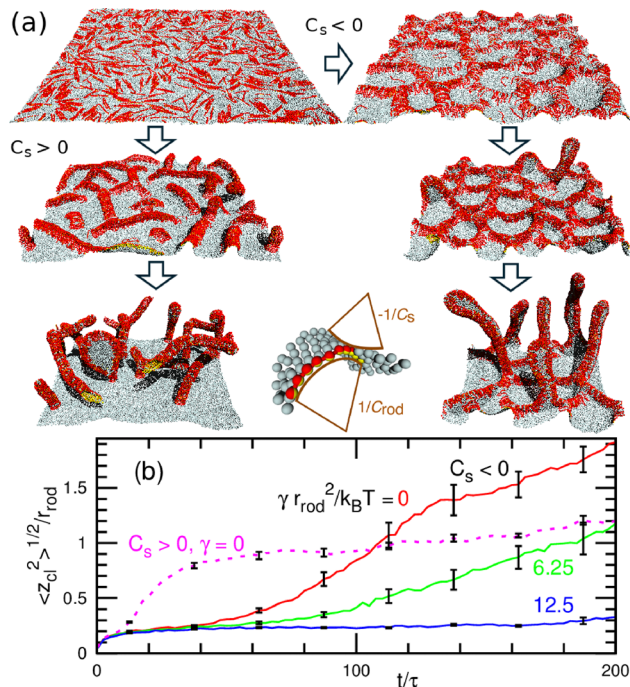


Fig. 12 Tubulation from a flat membrane by crescent-rod proteins at $\phi_{rod} = 0.4$ and $C_{rod} r_{rod} = 4$.¹²⁰ The proteins have the spontaneous curvatures C_{rod} and C_s along the protein axis and perpendicular (side) direction, respectively, as shown at the middle bottom in (a). The initial state is an equilibrium state at $C_{rod} = C_s = 0$, and the rod curvatures are tuned at $t = 0$. (a) The left panels show the sequential snapshots at $t/\tau = 0, 12.5$, and 100 for a positive side curvature ($C_s r_{rod} = 1$). The right panels show the sequential snapshots at $t/\tau = 10, 100$, and 200 for a negative side curvature ($C_s r_{rod} = -1$). The chains of spheres (upper and lower half surfaces are in red and yellow, respectively) represent the protein rods, and the gray spheres represent the bare membrane particles. (b) Time evolution of mean cluster height $\langle z_{cl}^2 \rangle^{1/2}$ normalized by the protein length r_{rod} . The solid lines represent the data at the surface tension $\gamma r_{rod}^2 / k_B T = 0, 6.25$, and 12.5 for $C_s r_{rod} = -1$. The dashed line represents the data at $\gamma = 0$ for $C_s r_{rod} = 1$. Reproduced from ref. 120. Licensed under CC BY (2016).

to represent IDP domains, are incorporated, as shown in Fig. 13(a). Tubulation with a helical protein assembly can be effectively reproduced using meshless simulations of chiral protein rods (see Fig. 11(c)).¹⁸³ While tubulation can also be induced by the achiral protein rods, the chirality has been shown to enhance the tubulation process.¹⁸³

Fig. 12 shows the tubulation dynamics of the achiral straight crescent rods.¹²⁰ The same type of protein rods exhibit a membrane-mediated attractive interaction when aligned side-by-side, as discussed in Section 4.2.1. Consequently, these protein rods initially form linear assemblies perpendicular to their axis. Over time, the contacts of these assemblies lead to the development of a network structure at a sufficiently high protein densities. Eventually, tubules protrude from the network (see Fig. 12(a)). The stability of this network structure is influenced by the side curvature C_s of the proteins and the membrane surface tension γ . A negative side curvature C_s reduces the bending energy at network branch points, leading to slower tubulation compared to the case where $C_s > 0$ (compare the dashed and solid lines at $\gamma = 0$ in Fig. 12(b)).



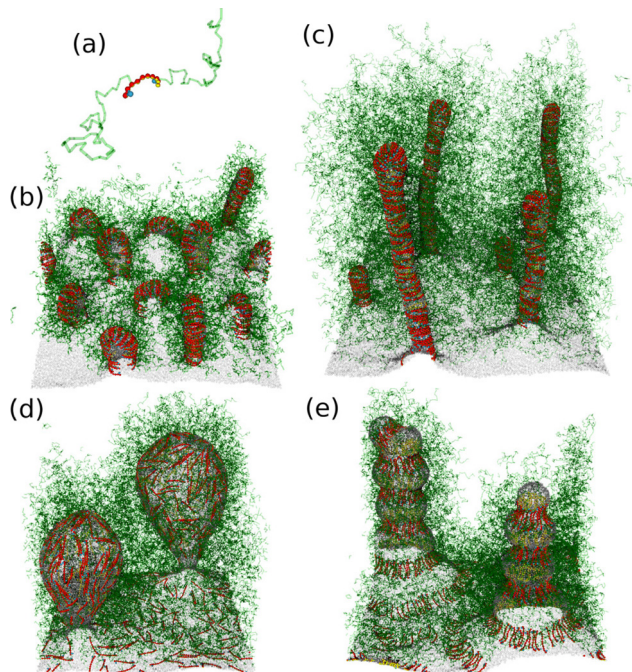


Fig. 13 Tubulation and budding induced by crescent-rod proteins with anchoring excluded-volume chains at $\phi_{\text{rod}} = 0.24$.¹⁸⁵ (a) A protein comprising a crescent rod with two (light blue) kink particles (for chirality) and two excluded-volume chains of n_{poly} particles, as a model of BAR proteins. (b) An array of short tubules at $C_{\text{rod}f_{\text{rod}}} = 3$ and $n_{\text{poly}} = 25$. (c) Long tubules at $C_{\text{rod}f_{\text{rod}}} = 3$ and $n_{\text{poly}} = 100$. (d) Ellipsoidal buds at $C_{\text{rod}} = 0$ and $n_{\text{poly}} = 50$. (e) Shish-kebab-shaped tubules at $C_{\text{rod}f_{\text{rod}}} = -3$ and $n_{\text{poly}} = 50$.

Since tubulation results in a reduction of the projected membrane surface area, increasing membrane tension γ inhibits tubulation (see three solid lines in Fig. 12(b)).^{73,183}

The addition of the IDP domains can either promote or suppress tubulation, depending on the conditions.¹⁸⁵ For a short IDP with $n_{\text{poly}} = 25$, the tubulation dynamics slow down and become trapped in a short-tubule array, as shown in Fig. 13(b). In this case, the crowded IDP domains induce repulsion between tubules, preventing their fusion. Conversely, when $n_{\text{poly}} = 100$, the IDP chains extend beyond the mean distance between tubules, allowing fusion and promoting tubule elongation in the vertical direction (see Fig. 13(c)). Thus, interactions between IDP chains and membranes enhance tubulation, while interactions between the IDP chains of neighboring tubules slow it down. In the absence of spontaneous curvature in the binding domains, IDP domains facilitate the formation of ellipsoidal buds, since the IDP chains gain more conformational entropy in vertically elongated shapes (see Fig. 13(d)). When IDPs are introduced to negatively bent crescent rods – where the binding domain and IDPs exhibit the opposite spontaneous curvatures – periodically bumped tubules are formed (see Fig. 13(e)). For short IDP chains, the proteins assemble into a network structure, resembling Fig. 12(a), on the membrane. This assembly causes the membrane to become rugged due to the bumped assemblies. Notably, a similar rugged vesicle has been observed in

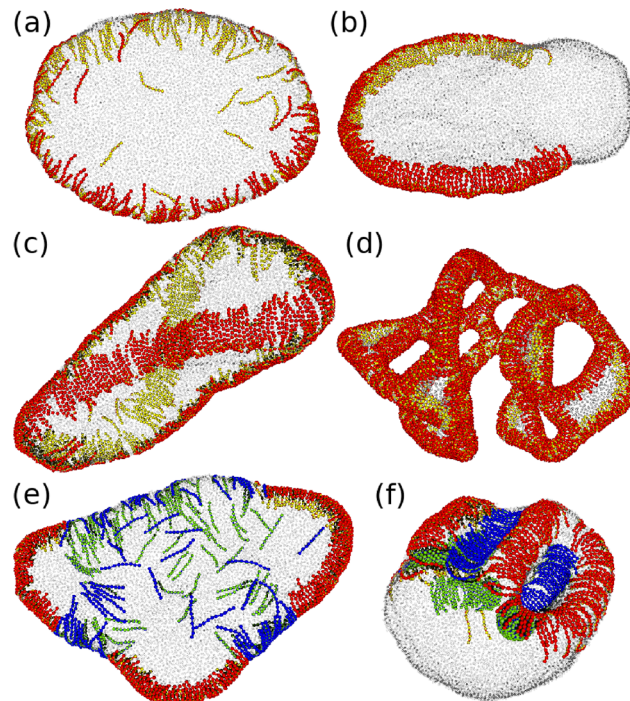


Fig. 14 Snapshots of vesicles with crescent protein rods. (a)–(d) A single type of protein is bound. Here, a protein is represented by a linear chain of ten spheres, whose upper and lower halves are in red and yellow, respectively. Unbound membrane particles are displayed in transparent gray. (a) Disk-shaped vesicle at $\phi = 0.167$ and $C_{\text{rod}f_{\text{rod}}} = 2.5$. The proteins are in the disk edge.^{78,186} (b) Linear protein assembly at $\phi = 0.167$ and $C_{\text{rod}f_{\text{rod}}} = 3.75$.^{78,186} (c) Tetrahedral vesicle at $\phi = 0.4$ and $C_{\text{rod}f_{\text{rod}}} = 2.5$.⁷⁸ (d) High-genus vesicle at $\phi = 0.8$ and $C_{\text{rod}f_{\text{rod}}} = 4$.¹⁸⁷ (e) and (f) Two types of proteins are bound with the densities $\phi_1 = \phi_2 = 0.15$.¹²⁴ Two types of proteins are displayed in red and yellow and in blue and green, respectively. (e) Disk-shaped vesicle at $C_{\text{rod}1f_{\text{rod}}} = 4$ and $C_{\text{rod}2f_{\text{rod}}} = 2$. The proteins are phase-separated in the disk edge. (f) Vesicle with bumps at $C_{\text{rod}1f_{\text{rod}}} = 3$ and $C_{\text{rod}2f_{\text{rod}}} = -3$. The linear protein assemblies with opposite curvatures are alternately aligned side-by-side.

experiments involving a chimeric protein composed of I-BAR and IDP domains.⁸⁵

4.2.3 Other membrane deformations. Fig. 14 shows vesicles deformed by the crescent protein rods. In vesicles and membrane tubes, protein assembly occurs in two distinct steps as the rod curvature C_{rod} increases.^{78,186} At low C_{rod} , the proteins are randomly distributed. As C_{rod} increases to an intermediate level, the vesicle deforms into a disk-like shape, with proteins concentrating at the disk edge (see Fig. 14(a)). At high C_{rod} , proteins form an arc-shaped linear assembly, resulting in vesicle with flat disk and spherical regions (see Fig. 14(b)). In membrane tubes, proteins initially assemble in the azimuthal direction, causing the membrane to adopt an elliptic shape at a medium C_{rod} . As C_{rod} further increases, proteins also assemble along the tube axis. These assembly processes occur continuously, since each transformation progresses in a 1D manner.

At high C_{rod} and increasing protein density, the length of the protein assembly exceeds the edge length of the disk-shaped vesicle. Initially, the vesicle elongates into an elongated



elliptical shape, eventually, forming polyhedral structures, such as a tetrahedral vesicle shown in Fig. 14(c). In membrane tubes, this process results in polygonal deformations, with proteins assembling along the edge lines of the polygon vertices.^{70,78} Unlike the continuous transition described earlier, the transformations between polyhedral vesicles and between polygonal tubes are discontinuous.⁷⁸ Notably, similar triangular membrane tubes have been observed in the inner mitochondrial membranes of astrocytes.^{188,189} At high C_{rod} and protein density, excessive protein-induced stress can lead to membrane rupture, giving rise to high-genus vesicles (see Fig. 14(d)).^{187,190}

When multiple types of proteins bind to a membrane, differences in their preferred curvatures can induce phase separation.^{124,191–193} When two types of proteins exhibit positive curvatures with different magnitudes, they can segregate into regions of large and small curvatures. In the case of a disk-shaped vesicle, proteins with larger curvature preferentially assemble at the corners of the triangular disk (see Fig. 14(e)). Conversely, when two types of proteins possess opposite curvatures, their 1D assemblies align alternately in a side-by-side arrangement, forming periodic bumps (see Fig. 14(f)).¹²⁴ Within this alternating pattern, the different proteins establish tip-to-tip contact, which is consistent with the attractive interactions in the tip-to-tip direction described in Section 4.2.1. Notably, this alternating assembly can also occur in flat membranes; however, it is disassembled under high surface tension.¹²⁴

Simulations showed that identical protein rods formed 1D linear assemblies through membrane-mediated interactions. The introduction of direct inter-protein interactions can modify the assemblies. The formation of helical tubular assemblies is further enhanced by direct attraction.¹⁸³ Specific types of direct interactions may be necessary to accurately describe the assemblies of certain proteins. The endosomal sorting complex required for transport (ESCRT) forms a distinctive assembly, characterized by a spiral-spring-like structure on flat membranes and a helical tube configuration on cylindrical membranes.^{194–197} This spiral assembly is involved in endosomal fission. In dynamically triangulated membrane simulations,^{192,193,198,199} proteins are often represented as point-like inclusions with orientational degrees of freedom. In their models, protein interactions are governed by an orientation-dependent yet laterally isotropic potential. As a result, when the orientations and the distance between two proteins are fixed, the interaction energy remains identical for both side-by-side and tip-to-tip alignments. Owing to the attractive nature of this potential in both lateral directions, the resulting protein assemblies exhibit a thickness of a few proteins rather than forming a strict single-layer 1D structure.

4.3 Adhesion of nanoparticles

During phagocytosis, large objects, such as viruses and cell debris, are engulfed by the plasma membrane and internalized into the cell. The engulfment of colloidal nanoparticles has been extensively studied as a model system for phagocytosis, and nanoparticles are also widely considered as the carriers for drug delivery.^{200–203} Unlike curvature-inducing proteins,

an adhesive spherical nanoparticle can become fully wrapped by the membrane;^{204–207} however, as surface tension increases, the membrane undergoes a first-order transition to a partially wrapped state.²⁰⁸ Similarly, liquid droplets can also be wrapped by the membrane, but in contrast, the partially wrapped droplets deform to satisfy the wetting conditions at the contact lines.^{209,210} For non-spherical particles, the wrapping process may be accompanied by changes in particle orientation.^{204,211,212}

Nanoparticles exhibit membrane-mediated interactions, similar to those observed in membrane proteins.^{204,213,214} Nanoparticles can induce the formation of membrane tubules, wrapping the nanoparticle assembly.²¹⁵ Simulations of nanoparticles with crescent²¹⁶ and hinge-like²¹⁷ shapes have been conducted as model systems for protein binding, revealing orientational assemblies analogous to those formed by anisotropic proteins. Note that these nanoparticles have negative spontaneous curvatures along their minor axes due to their rounded shapes.

5 Summary and outlook

This review examined the curvature-sensing and generation mechanisms of membrane proteins. Laterally isotropic proteins are capable of sensing both the mean and Gaussian curvatures of membranes, with their curvature dependence well described by the mean-field theory. The IDP chains increase the bending rigidity and spontaneous curvature of membranes, while decreasing the saddle-splay modulus. The binding of isotropic proteins can lead to the formation of spherical buds and periodic patterns, such as hexagonal, kagome-lattice, checkerboard arrangements, and beaded necklace tubes. The curvatures generated by proteins play a crucial role in stabilizing these phase-separated patterns. Additionally, the insertion of hydrophobic segments can modify the area difference between the two leaflets of the bilayer within the ADE model, ultimately inducing membrane budding.

The binding behavior of anisotropic proteins, such as those from the BAR superfamily proteins, depends not only on the membrane curvatures but also on protein orientations. Orientation-dependent excluded-volume interactions can drive an isotropic-to-nematic transition among the proteins. In the dilute limit, an isolated protein preferentially binds to wide cylindrical membrane tubes with its orientation aligned along the azimuthal or axial directions, whereas it binds to narrow tubes with two distinct tilted orientations. As protein density increases, these proteins undergo the first-order and second-order transitions from a state characterized by the coexistence of two tilt angles to an ordered phase with a single orientation angle, depending on the membrane curvature.

Anisotropic proteins are also capable of driving tubulation. Protein chirality enhances tubulation, whereas negative side curvature and positive surface tension counteract it. The IDP domains of BAR proteins promote tubulation while simultaneously inhibiting tubule fusion, leading to either accelerated



or decelerated tubulation dynamics depending on the condition. Furthermore, anisotropic proteins can facilitate the formation of disk-shaped and polyhedral vesicles, polygonal tubes, and periodically bumped membranes.

For a quantitative understanding of the curvature sensing and generation, accurate estimation of protein bending properties is essential. This review described the estimation of bending properties of I-BAR domains through curvature-sensing studies using tethered vesicles. The same approach can be extended to other curvature-inducing proteins. To analyze the effects of Gaussian curvature, comparisons between cylindrical and spherical membranes with equivalent mean curvature are particularly important, especially at large curvatures. Additionally, the asymmetric protein shapes of proteins can be assessed by examining their orientation distributions in cylindrical and buckled membranes. Molecular dynamics simulations of proteins on a buckled membrane^{119,218} provide valuable insights into their curvature-sensing properties and behavior.

Data availability

No primary research results, software or code have been included as part of this review.

Conflicts of interest

There are no conflicts to declare.

Acknowledgements

This work was supported by JSPS KAKENHI Grant Number JP24K06973.

Notes and references

- H. T. McMahon and J. L. Gallop, *Nature*, 2005, **438**, 590–596.
- J. Zimmerberg and M. M. Kozlov, *Nat. Rev. Mol. Cell Biol.*, 2006, **7**, 9–19.
- S. Suetsugu, S. Kurisu and T. Takenawa, *Physiol. Rev.*, 2014, **94**, 1219–1248.
- M. Kaksonen and A. Roux, *Nat. Rev. Mol. Cell Biol.*, 2018, **19**, 313–326.
- J. Béthune and F. T. Wieland, *Annu. Rev. Biophys.*, 2018, **47**, 63–83.
- T. Svitkina, *Cold Spring Harbor Perspect. Biol.*, 2018, **10**, a018267.
- J. Lutkenhaus, *Trends Microbiol.*, 2012, **20**, 411–418.
- H. Turlier and T. Betz, *Annu. Rev. Condens. Matter Phys.*, 2019, **10**, 213–232.
- J.-B. Manneville, P. Bassereau, S. Ramaswamy and J. Prost, *Phys. Rev. E: Stat., Nonlinear, Soft Matter Phys.*, 2001, **64**, 021908.
- P. Lenz, J.-F. Joanny, F. Jülicher and J. Prost, *Phys. Rev. Lett.*, 2003, **91**, 108104.
- H. Noguchi and O. Pierre-Louis, *Sci. Rep.*, 2021, **11**, 7985.
- Z. Wu, M. Su, C. Tong, M. Wu and J. Liu, *Nat. Commun.*, 2018, **9**, 136.
- S. Takada, N. Yoshinaga, N. Doi and K. Fujiwara, *Sci. Adv.*, 2022, **8**, eabm8460.
- B. Peleg, A. Disanza, G. Scita and N. Gov, *PLoS One*, 2011, **6**, e18635.
- N. Tamemoto and H. Noguchi, *Sci. Rep.*, 2020, **10**, 19582.
- N. Tamemoto and H. Noguchi, *Soft Matter*, 2021, **17**, 6589–6596.
- N. Tamemoto and H. Noguchi, *Phys. Rev. E*, 2022, **106**, 024403.
- H. Noguchi, *Sci. Rep.*, 2023, **13**, 6207.
- H. Noguchi, *ChemSystemsChem*, 2025, **7**, e202400042.
- M. Müller, K. Katsov and M. Schick, *Phys. Rep.*, 2006, **434**, 113–176.
- M. Venturoli, M. M. Sperotto, M. Kranenburg and B. Smit, *Phys. Rep.*, 2006, **437**, 1–54.
- H. Noguchi, *J. Phys. Soc. Jpn.*, 2009, **78**, 041007.
- W. Shinoda, R. DeVane and M. L. Klein, *Curr. Opin. Struct. Biol.*, 2012, **22**, 175–186.
- W. Pezeshkian and S. J. Marrink, *Curr. Opin. Cell Biol.*, 2021, **71**, 103–111.
- S. J. Marrink, L. Monticelli, M. N. Melo, R. Alessandri, D. P. Tieleman and P. C. T. Souza, *Wiley Interdiscip. Rev.: Comput. Mol. Sci.*, 2023, **13**, e1620.
- A. K. Dasanna and D. A. Fedosov, *Eur. Phys. J.: Spec. Top.*, 2024, **233**, 3053–3071.
- P. B. Canham, *J. Theor. Biol.*, 1970, **26**, 61–81.
- W. Helfrich, *Z. Naturforsch.*, 1973, **28c**, 693–703.
- M. A. S. Karal, M. M. Billah, M. Ahmed and M. K. Ahamed, *Soft Matter*, 2023, **19**, 8285–8304.
- R. Dimova, *Adv. Colloid Interface Sci.*, 2014, **208**, 225–234.
- D. Marsh, *Chem. Phys. Lipids*, 2006, **144**, 146–159.
- W. Rawicz, K. C. Olbrich, T. McIntosh, D. Needham and E. Evans, *Biophys. J.*, 2000, **79**, 328–339.
- M. Hu, J. J. Briguglio and M. Deserno, *Biophys. J.*, 2012, **102**, 1403–1410.
- R. D. Kornberg and H. M. McConnell, *Biochemistry*, 1971, **10**, 1111–1120.
- F.-X. Contreras, L. Sánchez-Magraner, A. Alonso and F. M. Goñi, *FEBS Lett.*, 2009, **584**, 1779–1786.
- J. A. Hamilton, *Curr. Opin. Lipidol.*, 2003, **14**, 263–271.
- T. L. Steck, J. Ye and Y. Lange, *Biophys. J.*, 2002, **83**, 2118–2125.
- R. J. Bruckner, S. S. Mansy, A. Ricardo, L. Mahadevan and J. W. Szostak, *Biophys. J.*, 2009, **97**, 3113–3122.
- M. S. Miettinen and R. Lipowsky, *Nano Lett.*, 2019, **19**, 5011–5016.
- K. Kawaguchi, K. M. Nakagawa, S. Nakagawa, H. Shindou, H. Nagao and H. Noguchi, *J. Chem. Phys.*, 2020, **153**, 165101.
- K. Kawaguchi, H. Nagao, H. Shindou and H. Noguchi, *J. Phys. Chem. B*, 2022, **126**, 9316–9324.
- U. Seifert, *Adv. Phys.*, 1997, **46**, 13–137.
- S. Svetina, *ChemPhysChem*, 2009, **10**, 2769–2776.



- 44 S. Svetina and B. Žekš, *Eur. Biophys. J.*, 1989, **17**, 101–111.
- 45 A. Sakashita, N. Urakami, P. Zihler and M. Imai, *Soft Matter*, 2012, **8**, 8569–8581.
- 46 C. Tanford, *The hydrophobic effect: formation of micelles and biological membranes*, Wiley, New York, 1980.
- 47 in *Structure and Dynamics of Membranes*, ed. R. Lipowsky and E. Sackmann, Elsevier Science, Amsterdam, 1995.
- 48 U. Seifert, K. Berndl and R. Lipowsky, *Phys. Rev. A: At., Mol., Opt. Phys.*, 1991, **44**, 1182–1202.
- 49 H. Noguchi and G. Gompper, *Phys. Rev. E: Stat., Nonlinear, Soft Matter Phys.*, 2005, **72**, 011901.
- 50 H. Noguchi, A. Sakashita and M. Imai, *Soft Matter*, 2015, **11**, 193–201.
- 51 A. H. Bahrami and G. Hummer, *ACS Nano*, 2017, **11**, 9558–9565.
- 52 H. W. G. Lim, M. Wortis and R. Mukhopadhyay, *Lipid bilayers and red blood cells*, Wiley-VCH, Weinheim, 2008.
- 53 P. Zihler and S. Svetina, *Europhys. Lett.*, 2005, **70**, 690–696.
- 54 K. M. Nakagawa and H. Noguchi, *Soft Matter*, 2018, **14**, 1397–1407.
- 55 A. Sreekumari and R. Lipowsky, *Soft Matter*, 2022, **18**, 6066–6078.
- 56 H. Noguchi, *Phys. Rev. E*, 2024, **109**, 024403.
- 57 S. F. Traynelis, L. P. Wollmuth, C. J. McBain, F. S. Menniti, K. M. Vance, K. K. Ogden, K. B. Hansen, H. Yuan, S. J. Myers and R. Dingledine, *Pharmacol. Rev.*, 2010, **62**, 405–496.
- 58 J. Syrjanen, K. Michalski, T. Kawate and H. Furukawa, *J. Mol. Biol.*, 2021, **433**, 166994.
- 59 O. P. Ernst, D. T. Lodowski, M. Elstner, P. Hegemann, L. S. Brown and H. Kandori, *Chem. Rev.*, 2014, **114**, 126–163.
- 60 T. Nagata and K. Inoue, *J. Cell Sci.*, 2021, **134**, jcs258989.
- 61 A. J. Venkatakrisnan, X. Deupi, G. Lebon, C. G. Tate, G. F. Schertler and M. M. Babu, *Nature*, 2013, **494**, 185–194.
- 62 M. Shibata, K. Inoue, K. Ikeda, M. Konno, M. Singh, C. Kataoka, R. Abe-Yoshizumi, H. Kandori and T. Uchihashi, *Sci. Rep.*, 2018, **8**, 8262.
- 63 J. H. Hurley, E. Boura, L.-A. Carlson and B. Różycki, *Cell*, 2010, **143**, 875–887.
- 64 V. Gerke, C. E. Creutz and S. E. Moss, *Nat. Rev. Mol. Cell Biol.*, 2005, **6**, 449–461.
- 65 F. Oling, J. S. de Oliveira Santos, N. Govorukhina, C. Mazères-Dubut, W. Bergsma-Schutter, G. Oostergetel, W. Keegstra, O. Lambert, A. Lewit-Bentley and A. Brisson, *J. Mol. Biol.*, 2000, **304**, 561–573.
- 66 H. Noguchi, *Phys. Rev. E*, 2021, **104**, 014410.
- 67 C. Prévost, H. Zhao, J. Manzi, E. Lemichez, P. Lappalainen, A. Callan-Jones and P. Bassereau, *Nat. Commun.*, 2015, **6**, 8529.
- 68 K. R. Rosholm, N. Leijnse, A. Mantsiou, V. Tkach, S. L. Pedersen, V. F. Wirth, L. B. Oddershede, K. J. Jensen, K. L. Martinez, N. S. Hatzakis, P. M. Bendix, A. Callan-Jones and D. Stamou, *Nat. Chem. Biol.*, 2017, **13**, 724–729.
- 69 F.-C. Tsai, M. Simunovic, B. Sorre, A. Bertin, J. Manzi, A. Callan-Jones and P. Bassereau, *Soft Matter*, 2021, **17**, 4254–4265.
- 70 H. Noguchi, *Int. J. Mod. Phys. B*, 2022, **36**, 2230002.
- 71 Q. Goutaland, F. van Wijland, J.-B. Fournier and H. Noguchi, *Soft Matter*, 2021, **17**, 5560–5573.
- 72 B. Sorre, A. Callan-Jones, J. Manzi, B. Goud, J. Prost, P. Bassereau and A. Roux, *Proc. Natl. Acad. Sci. U. S. A.*, 2012, **109**, 173–178.
- 73 Z. Shi and T. Baumgart, *Nat. Commun.*, 2015, **6**, 5974.
- 74 C. Tozzi, N. Walani and M. Arroyo, *New J. Phys.*, 2019, **21**, 093004.
- 75 T. V. Sachin Krishnan, S. L. Das and P. B. Sunil Kumar, *Soft Matter*, 2019, **15**, 2071–2080.
- 76 S. Ramaswamy, J. Toner and J. Prost, *Phys. Rev. Lett.*, 2000, **84**, 3494–3497.
- 77 R. Shlomovitz and N. S. Gov, *Phys. Biol.*, 2009, **6**, 046017.
- 78 H. Noguchi, *J. Chem. Phys.*, 2015, **143**, 243109.
- 79 C. Has and S. L. Das, *Biochim. Biophys. Acta*, 2021, **1865**, 129971.
- 80 H. Noguchi, N. Walani and M. Arroyo, *Soft Matter*, 2023, **19**, 5300–5310.
- 81 H. Noguchi, *Soft Matter*, 2021, **17**, 10469–10478.
- 82 J. C. Stachowiak, E. M. Schmid, C. J. Ryan, H. S. Ann, D. Y. Sasaki, M. B. Sherman, P. L. Geissler, D. A. Fletcher and C. C. Hayden, *Nat. Cell Biol.*, 2012, **14**, 944–949.
- 83 D. J. Busch, J. R. Houser, C. C. Hayden, M. B. Sherman, E. M. Lafer and J. C. Stachowiak, *Nat. Commun.*, 2015, **6**, 7875.
- 84 W. F. Zeno, W. T. Snead, A. S. Thatte and J. C. Stachowiak, *Soft Matter*, 2019, **15**, 8706–8717.
- 85 W. T. Snead, W. F. Zeno, G. Kago, R. W. Perkins, J. B. Richter, C. Zhao, E. M. Lafer and J. C. Stachowiak, *J. Cell Biol.*, 2019, **218**, 664–682.
- 86 H. Hofmann, A. Soranno, A. Borgia, K. Gast, D. Nettels and B. Schuler, *Proc. Natl. Acad. Sci. U. S. A.*, 2012, **109**, 16155–16160.
- 87 M. Doi and S. F. Edwards, *The Theory of Polymer Dynamics*, Oxford University, Oxford, 1986.
- 88 G. R. Strobl, *The physics of polymers: concepts for understanding their structures and behavior*, Springer, Berlin, 2nd edn, 1997.
- 89 R. Lipowsky, *Europhys. Lett.*, 1995, **30**, 197–202.
- 90 C. Hiergeist and R. Lipowsky, *J. Phys. II*, 1996, **6**, 1465–1481.
- 91 T. Bickel, C. Jeppesen and C. M. Marques, *Eur. Phys. J. E: Soft Matter Biol. Phys.*, 2001, **4**, 33–43.
- 92 D. Marsh, R. Bartucci and L. Sportelli, *Biochim. Biophys. Acta*, 2003, **1615**, 33–59.
- 93 T. Bickel and C. M. Marques, *J. Nanosci. Nanotechnol.*, 2006, **6**, 2386–2395.
- 94 T. Auth and G. Gompper, *Phys. Rev. E: Stat., Nonlinear, Soft Matter Phys.*, 2003, **68**, 051801.
- 95 T. Auth and G. Gompper, *Phys. Rev. E: Stat., Nonlinear, Soft Matter Phys.*, 2005, **72**, 031904.
- 96 M. Werner and J.-U. Sommer, *Eur. Phys. J. E: Soft Matter Biol. Phys.*, 2010, **31**, 383–392.
- 97 H. Wu, H. Shiba and H. Noguchi, *Soft Matter*, 2013, **9**, 9907–9917.
- 98 I. Tsafrir, D. Sagi, T. Arzi, M.-A. Guedeau-Boudeville, V. Frette, D. Kandel and J. Stavans, *Phys. Rev. Lett.*, 2001, **86**, 1138–1141.



- 99 I. Tsafirir, Y. Caspi, M.-A. Guedeau-Boudeville, T. Arzi and J. Stavans, *Phys. Rev. Lett.*, 2003, **91**, 138102.
- 100 K. Akiyoshi, A. Itaya, S. I. M. Nomura, N. Ono and K. Yoshikawa, *FEBS Lett.*, 2003, **534**, 33–38.
- 101 V. Nikolov, R. Lipowsky and R. Dimova, *Biophys. J.*, 2007, **92**, 4356–4368.
- 102 A. Köth, D. Appelhans, D. Robertson, B. Tiersch and J. Koetz, *Soft Matter*, 2011, **7**, 10581–10584.
- 103 A. R. Evans, M. S. Turner and P. Sens, *Phys. Rev. E: Stat., Nonlinear, Soft Matter Phys.*, 2003, **67**, 041907.
- 104 M. Masuda and N. Mochizuki, *Semin. Cell Dev. Biol.*, 2010, **21**, 391–398.
- 105 T. Itoh and P. De Camilli, *Biochim. Biophys. Acta*, 2006, **1761**, 897–912.
- 106 C. Mim and V. M. Unger, *Trends Biochem. Sci.*, 2012, **37**, 526–533.
- 107 A. Frost, V. M. Unger and P. D. Camilli, *Cell*, 2009, **17**, 191–196.
- 108 J. Adam, N. Basnet and N. Mizuno, *Sci. Rep.*, 2015, **5**, 15452.
- 109 Y. F. Barooji, A. Rørvig-Lund, S. Semsey, S. N. S. Reihani and P. M. Bendix, *Sci. Rep.*, 2016, **6**, 30054.
- 110 M. A. Lemmon, *Nat. Rev. Mol. Cell Biol.*, 2008, **9**, 99–111.
- 111 M. Chandra, Y. K.-Y. Chin, C. Mas, J. R. Feathers, B. Paul, S. Datta, K.-E. Chen, X. Jia, Z. Yang, S. J. Norwood, B. Mohanty, A. Bugarcic, R. D. Teasdale, W. M. Henne, M. Mobli and B. M. Collins, *Nat. Commun.*, 2019, **10**, 1528.
- 112 S. M. Ferguson and P. D. Camilli, *Nat. Rev. Mol. Cell Biol.*, 2012, **13**, 75–88.
- 113 B. Antonny, C. Burd, P. D. Camilli, E. Chen, O. Daumke, K. Faelber, M. Ford, V. A. Frolov, A. Frost, J. E. Hinshaw, T. Kirchhausen, M. M. Kozlov, M. Lenz, H. H. Low, H. McMahon, C. Merrifield, T. D. Pollard, P. J. Robinson, A. Roux and S. Schmid, *EMBO J.*, 2016, **35**, 2270–2284.
- 114 M. Pannuzzo, Z. A. McDargh and M. Deserno, *eLife*, 2018, **7**, e39441.
- 115 H. Sato and J. B. Feix, *Biochim. Biophys. Acta*, 2006, **1758**, 1245–1256.
- 116 I. Rady, I. A. Siddiqui, M. Rady and H. Mukhtar, *Cancer Lett.*, 2017, **402**, 16–31.
- 117 S. Guha, J. Ghimire, E. Wu and W. C. Wimley, *Chem. Rev.*, 2019, **119**, 6040–6085.
- 118 Y. Miyazaki and W. Shinoda, *Biochim. Biophys. Acta*, 2022, **1864**, 183955.
- 119 J. Gómez-Llobregat, F. Elías-Wolff and M. Lindén, *Biophys. J.*, 2016, **110**, 197–204.
- 120 H. Noguchi, *Sci. Rep.*, 2016, **6**, 20935.
- 121 C. Tozzi, N. Walani, A.-L. L. Roux, P. Roca-Cusachs and M. Arroyo, *Soft Matter*, 2021, **17**, 3367–3379.
- 122 M. Simunovic, A. Srivastava and G. A. Voth, *Proc. Natl. Acad. Sci. U. S. A.*, 2013, **110**, 20396–20401.
- 123 A. D. Olinger, E. J. Spangler, P. B. Sunil Kumar and M. Laradji, *Faraday Discuss.*, 2016, **186**, 265–275.
- 124 H. Noguchi and J.-B. Fournier, *Soft Matter*, 2017, **13**, 4099–4111.
- 125 K. Akabori and C. D. Santangelo, *Phys. Rev. E: Stat., Nonlinear, Soft Matter Phys.*, 2011, **84**, 061909.
- 126 V. Kralj-Iglič, V. Heinrich, S. Svetina and B. Žekš, *Eur. Phys. J. B*, 1999, **10**, 5–8.
- 127 A. Iglič, T. Slivnika and V. Kralj-Iglič, *J. Biomech.*, 2007, **40**, 2492–2500.
- 128 J.-B. Fournier, *Phys. Rev. Lett.*, 1996, **76**, 4436–4439.
- 129 H. Noguchi, C. Tozzi and M. Arroyo, *Soft Matter*, 2022, **18**, 3384–3394.
- 130 E. S. Nascimento, P. Palfy-Muhoray, J. M. Taylor, E. G. Virga and X. Zheng, *Phys. Rev. E*, 2017, **96**, 022704.
- 131 L. Bo and R. Waugh, *Biophys. J.*, 1989, **55**, 509–517.
- 132 E. Evans, H. Bowman, A. Leung, D. Needham and D. Tirrell, *Science*, 1996, **273**, 933–935.
- 133 D. Cuvelier, I. Derényi, P. Bassereau and P. Nassoy, *Bio-phys. J.*, 2005, **88**, 2714–2726.
- 134 T. Baumgart, B. R. Capraro, C. Zhu and S. L. Das, *Annu. Rev. Phys. Chem.*, 2011, **62**, 483–506.
- 135 S. Aimon, A. Callan-Jones, A. Berthaud, M. Pinot, G. E. Toombes and P. Bassereau, *Dev. Cell*, 2014, **28**, 212–218.
- 136 S. Yang, X. Miao, S. Arnold, B. Li, A. T. Ly, H. Wang, M. Wang, X. Guo, M. Pathak, W. Zhao, C. D. Cox and Z. Shi, *Nat. Commun.*, 2022, **13**, 7467.
- 137 A. Roux, G. Koster, M. Lenz, B. Sorre, J.-B. Manneville, P. Nassoy and P. Bassereau, *Proc. Natl. Acad. Sci. U. S. A.*, 2010, **107**, 4141–4146.
- 138 G. Moreno-Pescador, C. D. Florentsen, H. Østbye, S. L. Sønder, T. L. Boye, E. L. Veje, A. K. Sonne, S. Semsey, J. Nylandsted, R. Daniels and P. M. Bendix, *ACS Nano*, 2019, **13**, 6689–6701.
- 139 J. B. Larsen, K. R. Rosholm, C. Kennard, S. L. Pedersen, H. K. Munch, V. Tkach, J. J. Sakon, T. Bjørnholm, K. R. Weninger, P. M. Bendix, K. J. Jensen, N. S. Hatzakis, M. J. Uline and D. Stamou, *ACS Cent. Sci.*, 2020, **6**, 1159–1168.
- 140 N. S. Hatzakis, V. K. Bhatia, J. Larsen, K. L. Madsen, P.-Y. Bolinger, A. H. Kunding, J. Castillo, U. Gether, P. Hedegård and D. Stamou, *Nat. Chem. Biol.*, 2009, **5**, 835–841.
- 141 A.-S. Smith, E. Sackmann and U. Seifert, *Phys. Rev. Lett.*, 2004, **92**, 208101.
- 142 H. T. McMahon and E. Boucrot, *Nat. Rev. Mol. Cell Biol.*, 2011, **12**, 517–533.
- 143 O. Avinoam, M. Schorb, C. J. Beese, J. A. G. Briggs and M. Kaksonen, *Science*, 2015, **348**, 1369–1372.
- 144 M. Saleem, S. Morlot, A. Hohendahl, J. Manzi, M. Lenz and A. Roux, *Nat. Commun.*, 2015, **6**, 6249.
- 145 F. Brandizzi and C. Barlowe, *Nat. Rev. Mol. Cell Biol.*, 2013, **14**, 382–392.
- 146 M. Faini, R. Beck, F. T. Wieland and J. A. Briggs, *Trends Cell Biol.*, 2013, **23**, 279–288.
- 147 F. Frey and U. S. Schwarz, *Phys. Rev. E*, 2024, **110**, 064403.
- 148 R. Lipowsky, *J. Phys. II*, 1992, **2**, 1825–1840.
- 149 P. Sens, *Phys. Rev. Lett.*, 2004, **93**, 108103.
- 150 L. Foret, *Eur. Phys. J. E: Soft Matter Biol. Phys.*, 2014, **37**, 42.
- 151 M. Tanaka and E. Sackmann, *Nature*, 2005, **437**, 656–663.
- 152 E. T. Castellana and P. S. Cremer, *Surf. Sci. Rep.*, 2006, **61**, 429–444.



- 153 A. S. Achalkumar, R. J. Bushby and S. D. Evans, *Soft Matter*, 2010, **6**, 6036–6051.
- 154 A. Alessandrini and P. Facci, *Soft Matter*, 2014, **10**, 7145–7164.
- 155 J. van Weerd, M. Karperien and P. Jonkheijm, *Adv. Healthcare Mater.*, 2015, **4**, 2743–2779.
- 156 A. Bouter, R. Carmeille, C. Gounou, F. Bouvet, S. A. Degrelle, D. Evain-Brion and A. R. Brisson, *Placenta*, 2015, **36**, S43–S49.
- 157 A. D. Blazek, B. J. Paleo and N. Weisleder, *Physiol.*, 2015, **30**, 438–448.
- 158 T. L. Boye, K. Maeda, W. Pezeshkian, S. L. Sønder, S. C. Haeger, V. Gerke, A. C. Simonsen and J. Nylandsted, *Nat. Commun.*, 2017, **8**, 1623.
- 159 T. L. Boye, J. C. Jeppesen, K. Maeda, W. Pezeshkian, V. Solovyeva, J. Nylandsted and A. C. Simonsen, *Sci. Rep.*, 2018, **8**, 10309.
- 160 H. Noguchi, *Soft Matter*, 2019, **15**, 8741–8748.
- 161 H. Noguchi, *Soft Matter*, 2025, **21**, 1113–1121.
- 162 T. Auth and G. Gompper, *Phys. Rev. E: Stat., Nonlinear, Soft Matter Phys.*, 2009, **80**, 031901.
- 163 A. G. Lee, *Biochim. Biophys. Acta*, 2003, **1612**, 1–40.
- 164 O. S. Andersen and R. E. Koeppe, *Annu. Rev. Biophys. Biomol. Struct.*, 2007, **36**, 107–130.
- 165 M. Venturoli, B. Smit and M. M. Sperotto, *Biophys. J.*, 2005, **88**, 1778–1798.
- 166 R. Phillips, T. Ursell, P. Wiggins and P. Sens, *Nature*, 2009, **459**, 379–385.
- 167 F. J. de Meyer, M. Venturoli and B. Smit, *Biophys. J.*, 2008, **95**, 1851–1865.
- 168 U. Schmidt, G. Guigas and M. Weiss, *Phys. Rev. Lett.*, 2008, **101**, 128104.
- 169 J.-B. Fournier, *Eur. Phys. J. B*, 1999, **11**, 261–272.
- 170 S. A. Safran, *Statistical Thermodynamics of Surfaces, Interfaces, and Membranes*, Addison-Wesley, Reading, MA, 1994.
- 171 R. Goetz, G. Gompper and R. Lipowsky, *Phys. Rev. Lett.*, 1999, **82**, 221–224.
- 172 H. Shiba, H. Noguchi and J.-B. Fournier, *Soft Matter*, 2016, **12**, 2373–2380.
- 173 M. Goulian, R. Bruinsma and P. Pincus, *Europhys. Lett.*, 1993, **22**, 145.
- 174 N. Weil and O. Farago, *Eur. Phys. J. E: Soft Matter Biol. Phys.*, 2010, **33**, 81–87.
- 175 H. Noguchi, *EPL*, 2013, **102**, 68001.
- 176 Y. Schweitzer and M. M. Kozlov, *PLoS Comput. Biol.*, 2015, **11**, e1004054.
- 177 T. Kohyama, *J. Phys. Soc. Jpn.*, 2019, **88**, 024008.
- 178 P. G. Dommersnes and J.-B. Fournier, *Eur. Phys. J. B*, 1999, **12**, 9–12.
- 179 P. G. Dommersnes and J.-B. Fournier, *Biophys. J.*, 2002, **83**, 2898–2905.
- 180 C. Yolcu, R. C. Haussman and M. Deserno, *Adv. Colloid Interface Sci.*, 2014, **208**, 89.
- 181 R. Golestanian, M. Goulian and M. Kardar, *Phys. Rev. E: Stat. Phys., Plasmas, Fluids, Relat. Interdiscip. Top.*, 1996, **54**, 6725.
- 182 A.-F. Bitbol, K. Sin Ronia and J.-B. Fournier, *EPL*, 2011, **96**, 40013.
- 183 H. Noguchi, *Sci. Rep.*, 2019, **9**, 11721.
- 184 G. Zhu, J. Chen, J. Liu, J. S. Brunzelle, B. Huang, N. Wakeham, S. Terzyan, X. Li, Z. Rao, G. Li and X. C. Zhang, *EMBO J.*, 2007, **26**, 3484–3493.
- 185 H. Noguchi, *J. Chem. Phys.*, 2022, **157**, 034901.
- 186 H. Noguchi, *EPL*, 2014, **108**, 48001.
- 187 H. Noguchi, *Phys. Rev. E*, 2016, **93**, 052404.
- 188 K. Blinzinger, N. B. Rewcastle and H. Hgaer, *J. Cell Biol.*, 1965, **25**, 293–303.
- 189 B. Fernandez, I. Suarez and C. Gianonatti, *J. Anat.*, 1983, **137**, 483–488.
- 190 G. S. Ayton, E. Lyman, V. Krishna, R. D. Swenson, C. Mim, V. M. Unger and G. A. Voth, *Biophys. J.*, 2009, **97**, 1616–1625.
- 191 H. Noguchi, *Soft Matter*, 2017, **13**, 7771–7779.
- 192 N. Ramakrishnan, P. B. Sunil Kumar and J. H. Ipsen, *Biophys. J.*, 2013, **104**, 1018–1028.
- 193 G. Kumar and A. Srivastava, *J. Chem. Theory Comput.*, 2022, **18**, 5659–5671.
- 194 N. Jukic, A. P. Perrino, L. Redondo-Morata and S. Scheuring, *J. Biol. Chem.*, 2023, **299**, 104575.
- 195 T. Wollert, C. Wunder, J. Lippincott-Schwartz and J. H. Hurley, *Nature*, 2009, **458**, 172–177.
- 196 B. Meadowcroft, I. Palaia, A.-K. Pfitzner, A. Roux, B. Baum and A. Šarić, *Phys. Rev. Lett.*, 2022, **129**, 268101.
- 197 K. Azad, D. Guilligay, C. Boscheron, S. Maity, N. D. Franceschi, G. Sulbaran, G. Effantin, H. Wang, J.-P. Kleman, P. Bassereau, G. Schoehn, W. H. Roos, A. Desfosses and W. Weissenhorn, *Nat. Struct. Mol. Biol.*, 2023, **30**, 81–90.
- 198 N. Ramakrishnan, J. H. Ipsen and P. B. Sunil Kumar, *Soft Matter*, 2012, **8**, 3058–3061.
- 199 N. Ramakrishnan, R. P. Bradley, R. W. Tourdot and R. Radhakrishnan, *J. Phys.: Condens. Matter*, 2018, **30**, 273001.
- 200 S. Behzadi, V. Serpooshan, W. Tao, M. A. Hamaly, M. Y. Alkawareek, E. C. Dreaden, D. Brown, A. M. Alkilany, O. C. Farokhzad and M. Mahmoudi, *Chem. Soc. Rev.*, 2017, **46**, 4218–4244.
- 201 N. D. Donahue, H. Acar and S. Wilhelm, *Adv. Drug Delivery Rev.*, 2019, **143**, 68–96.
- 202 M. S. de Almeida, E. Susnik, B. Drasler, P. Taladriz-Blanco, A. Petri-Fink and B. Rothen-Rutishauser, *Chem. Soc. Rev.*, 2021, **50**, 5397–5434.
- 203 M. J. Mitchell, M. M. Billingsley, R. M. Haley, M. E. Wechsler, N. A. Peppas and R. Langer, *Nat. Rev. Drug Discovery*, 2021, **20**, 101–124.
- 204 S. Dasgupta, T. Auth and G. Gompper, *J. Phys.: Condens. Matter*, 2017, **29**, 373003.
- 205 H. Noguchi and M. Takasu, *Biophys. J.*, 2002, **83**, 299–308.
- 206 Y. Li and N. Gu, *J. Phys. Chem. B*, 2010, **114**, 2749–2754.
- 207 C. van der Wel, A. Vahid, A. Šarić, T. Idema, D. Heinrich and D. J. Kraft, *Sci. Rep.*, 2016, **6**, 32825.
- 208 M. Deserno and T. Bickel, *Europhys. Lett.*, 2003, **62**, 767–773.



- 209 R. Dimova and R. Lipowsky, *Adv. Mater. Interfaces*, 2017, **4**, 1600451.
- 210 V. Satarifard and R. Lipowsky, *Nat. Commun.*, 2023, **6**, 6.
- 211 S. Dasgupta, T. Auth, N. S. Gov, T. J. Satchwell, E. Hanssen, E. S. Zuccala, D. T. Riglar, A. M. Toye, T. Betz, J. Baum and G. Gompper, *Biophys. J.*, 2014, **107**, 43–54.
- 212 S. van der Ham, J. Agudo-Canalejo and H. R. Vutukuri, *ACS Nano*, 2024, **18**, 10407–10416.
- 213 B. J. Reynwar, G. Ilya, V. A. Harmandaris, M. M. Müller, K. Kremer and M. Deserno, *Nature*, 2007, **447**, 461–464.
- 214 A. Šarić and A. Cacciuto, *Phys. Rev. Lett.*, 2012, **108**, 118101.
- 215 A. Šarić and A. Cacciuto, *Phys. Rev. Lett.*, 2012, **109**, 188101.
- 216 X. Liu, F. Tian, T. Yue, X. Zhang and C. Zhong, *Nanoscale*, 2020, **12**, 3029–3037.
- 217 B. Li and S. M. Abel, *J. Chem. Phys.*, 2024, **160**, 194901.
- 218 M. I. Mahmood, H. Noguchi and K. Okazaki, *Sci. Rep.*, 2019, **9**, 14557.

