

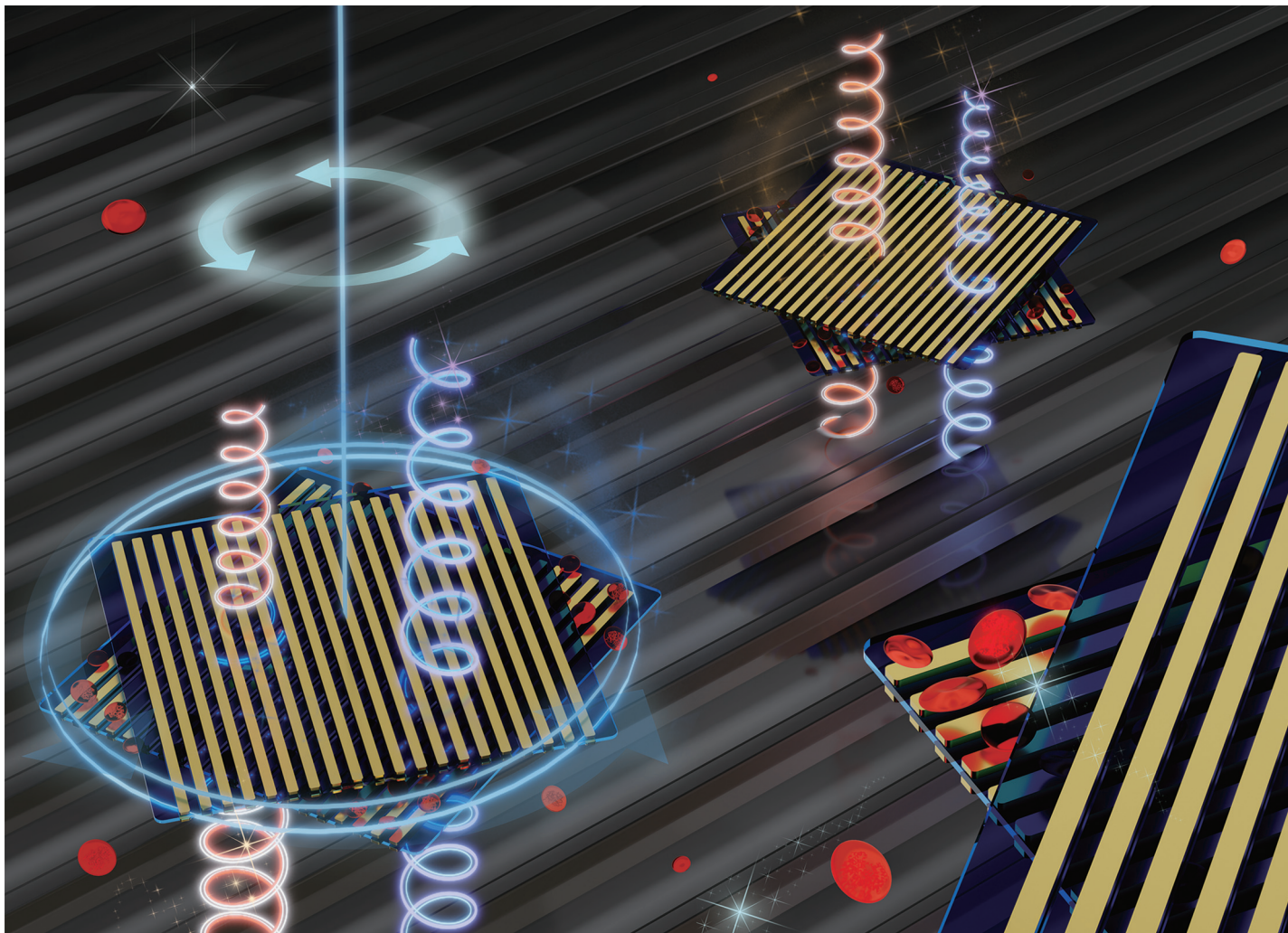
RSC Applied Polymers

**The application of polymers,
both natural and synthetic**

Interdisciplinary and open access

rsc.li/RSCApplPolym

**Fundamental questions
Elemental answers**

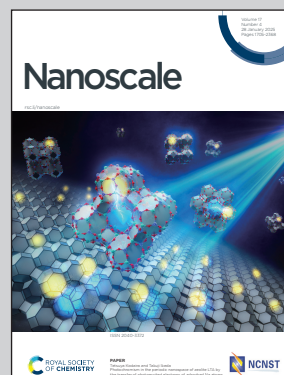


Showcasing research from Prof. Yan Jun Liu's group at the Department of Electrical and Electronic Engineering, Southern University of Science and Technology, Shenzhen, China.

Moiré metasurfaces with tunable near-infrared-I chiroptical responses for biomolecular chirality discrimination

Moiré metasurfaces, consisting of two sheets of suspended bilayer metagratings in twisted stacking arrangement, have been demonstrated with tunable chiroptical responses and applied to biomolecular chirality discrimination. By changing the twisting angle, reversed post-fabrication manipulation of chirality can be achieved. With significant spin-dependent interactions, chiral signals of proteins located in the inter-sheet region are enhanced with strong dissymmetry in circular dichroism.

As featured in:



See Huanian Zhang, Yan Jun Liu
et al., *Nanoscale*, 2025, 17, 1970.