



Cite this: *J. Mater. Chem. C*, 2015, **3**, 7632

## Electronic and optical properties of reduced graphene oxide

Mark Lundie,<sup>a</sup> Željko Šljivančanin<sup>b</sup> and Stanko Tomić\*<sup>a</sup>

Controlled reduction of graphene oxide is an alternative and promising method to tune the electronic and optically active energy gap of this two-dimensional material in the energy range of the visible light spectrum. By means of *ab initio* calculations, based on hybrid density functional theory, that combine the Hartree–Fock method with the generalized gradient approximation (GGA), we investigated the electronic, optical, and radiative recombination properties of partially reduced graphene oxide, modelled as small islands of pristine graphene formed in an infinite sheet of graphene oxide. We predict that tuning of optically active gaps, in the wide range from  $\sim 6.5$  eV to  $\sim 0.25$  eV, followed by the electron radiative transition times in the range from ns to  $\mu$ s, can be effected by controlling the level of oxidation.

Received 12th February 2015,  
Accepted 6th June 2015

DOI: 10.1039/c5tc00437c

www.rsc.org/MaterialsC

## 1 Introduction

The unique electronic properties of pristine graphene are highly desirable for a vast range of applications.<sup>1</sup> Unfortunately, its semi-metallic nature greatly limits its utilisation in a number of these, not least photonics. For such a use, the existence of an optically active and preferably direct electronic band gap is essential.<sup>2</sup>

The disruption of pristine graphene's two-dimensional (2D) network of  $sp^2$  hybridized bonds is typically exploited as a means of energy gap opening.<sup>3</sup> This can be accomplished in a number of ways, including periodic lattice modulation, the formation of nano-ribbons<sup>4</sup> or anti-dots,<sup>5,6</sup> and patterned surface adsorption. The functionalization of graphene by surface adsorption of atomic oxygen,<sup>7,8</sup> fluorine,<sup>9</sup> and hydrogen<sup>10,11</sup> has been demonstrated experimentally to effect such an electronic modification. To date, hydrogenation of graphene has been the most common experimental approach toward energy gap formation.<sup>12</sup> In this case, hydrogen's single 1s electron breaks the  $sp^2$  hybridized C–C double bond to form an  $sp^3$  hybridized bond, disrupting the  $\pi$ -electron network.

The modified Hummers method<sup>13,14</sup> combines oxidation and sonification to convert graphite into graphene oxide (GO) and then the GO is exposed to reducing chemicals such as hydrazine.<sup>14</sup> Since the produced graphene is only partially reduced<sup>15,16</sup> its conductivity is considerably lower compared to that in high quality samples obtained through mechanical exfoliation of graphite.<sup>17</sup> Even though it is still unsuitable for applications in high performance nano-electronics, reduced graphene

oxide (rGO) is expected to be exploited in supercapacitors for energy storage, electrodes in Li-ion batteries or for transparent electrodes in solar cells.<sup>18,19</sup>

It turns out that the physical properties of rGO are very sensitive to the degree of reduction. For example a recent study by Eda *et al.*<sup>20</sup> demonstrated that by changing the degree of reduction of GO the intensity of photoluminescence in rGO can be increased by a factor of ten compared to the value measured in as-synthesized GO samples. At variance with the insulating nature of fully oxidized graphene, rGO shows both insulating and conducting characters, depending on the percentage of oxygen left on the graphene sheet. The structure of rGO is usually described by nanometric  $sp^2$  graphitic islands separated by regions of oxidized graphene.<sup>17</sup> The tendency of oxygen to agglomerate into highly oxidized domains surrounded by areas of pristine graphene has been recently demonstrated by first-principles and statistical calculations.<sup>21</sup> Strong dependence of the electronic properties of graphene islands on their size opens up the prospect for efficient band gap engineering of this two-dimensional material.

An alternative approach to the harsh chemistry of “top-down” methods has been demonstrated by exposing graphene grown epitaxially on a SiC(001) surface to atomic oxygen under ultrahigh vacuum (UHV) conditions.<sup>22</sup> The chemisorption of atomic oxygen in this “bottom-up” technique results only in the formation of epoxy functional groups, with no damage to the underlying honeycomb lattice. The process was shown to be reversible by annealing or desorption with a scanning tunnelling microscope (STM) tip. This leads to the prospect of producing GO with highly tunable properties.

Measurements of optical absorption taken during experiments with graphene oxide in aqueous suspension have shown interesting trends.<sup>23</sup> Strong absorption is observed in the

<sup>a</sup> Joule Physics Laboratory, University of Salford, Salford, UK.

E-mail: s.tomic@salford.ac.uk; Tel: +44 (0)161 295 3847

<sup>b</sup> Vinča Institute of Nuclear Sciences, Belgrade, Serbia



ultraviolet (UV) range of the spectrum, with absorption peaks shifting towards the visible range as the level of oxidation is increased.<sup>20,24</sup> Photoluminescence emission in the infrared (IR) and visible ranges has also been observed in nanometre scale flakes of graphene oxide.<sup>25</sup> Composite carbon-nanodot (CND)-GO structures have also demonstrated fluorescence quenching, attributed to sub-picosecond electron transfer processes.<sup>26</sup>

Computational modelling based on density functional theory (DFT) is able to provide a detailed description of different stages of graphene oxide reduction, which is not easily accessible even by the state-of-the-art experimental methods. In this paper, we present theoretical results from *ab initio* calculations focussing on the electronic and optical properties of GO and rGO. We based our study on the hybrid density functional theory, which has been shown to yield highly accurate estimates of optical properties of common semiconductor and simple oxide materials.<sup>27–30</sup> After the Introduction, we describe the computational implementation of GO and rGO in the section Theoretical Considerations. In the same section, we briefly outline the derivation of the dipole matrix elements as implemented in the crystal code,<sup>31–33</sup> and how they can be used to calculate the electron radiative transition times and absorption cross-section. In the Results and Discussion section, we present our theoretical results on GO and rGO, before we conclude our discussion in the final section.

## 2 Theoretical considerations

### 2.1 Methodology

Calculations were performed using DFT in localized Gaussian type orbital (GTO) formalism as implemented in the crystal code. Structural calculations were carried out at the GGA level using the renowned PBE exchange–correlation functional.<sup>34</sup>

Since the GGA functionals are in general able to rather well describe the energetics of O adsorption on graphene, all formation energies of multiple O vacancies in the oxidized graphene layer reported here are calculated by applying the PBE exchange–correlation functional. However, it is well known that Kohn–Sham (KS) DFT inside local approximations alone is incapable of accurately predicting optical properties. As such, these properties were calculated using hybrid exchange with the PBE0<sup>35</sup> and B3LYP<sup>36</sup> functionals, in which a fraction of 25% and 20%, respectively, of exact exchange calculated in the Hartree–Fock (HF) formalism is included.

Fully oxidized graphene was simulated using an irreducible rectangular unit cell with eight carbon atoms and four oxygen atoms. Partially oxidized graphene was modelled by removing oxygen adatoms from these cells to leave regions of free graphene. To prevent artificial Coulomb and quantum interactions between graphene islands due to periodic boundary conditions, modelling of rGO was carried out within a rectangular cell with 96 atoms in the graphene sub-lattice.

We exploit the properties of the localised basis set to treat a structure aperiodic in the *z*-direction without the need for introducing large vacuum regions. Atomic coordinates and cell

parameters were relaxed using the BFGS algorithm, with an energy convergence tolerance of  $10^{-8}$  Ha ( $\sim 10^{-7}$  eV) between optimization steps. The irreducible Brillouin zone (IBZ) was sampled using the Monkhorst–Pack scheme,<sup>37</sup> with 4 *k*-points for geometry relaxation, and 130 *k*-points for electronic property calculations.

By using the GTO implementation of DFT, it is possible to use all-electron basis sets. To select a suitable basis set, the relaxed bond lengths and carbon–oxygen binding energies were compared to those calculated using projector-augmented wave (PAW) and plane-wave (PW) basis sets. The most suitable were found to be Dunning's correlation-consistent cc-pCVDZ sets.<sup>38</sup> For carbon adjustment and reoptimization of the most diffuse orbital, a 2p polarization function was required, while for oxygen, no modification was necessary. Bond lengths were found to be within 0.1 Å and binding energies were within 0.01 eV in PAW and PW calculations.

### 2.2 Radiative properties

To examine the radiative properties of rGO we based our analysis on the optical dipole elements that we have calculated at the  $\Gamma$  point for all structures. Due to the large supercells employed, the band structures are almost dispersionless. The vertical transition probabilities under external radiation are given by

$$\mathbf{d}_{i \rightarrow f} = i \int d\mathbf{r} u_{\mathbf{k}f}^*(\mathbf{r}) \nabla_{\mathbf{k}} u_{\mathbf{k}i}(\mathbf{r}), \quad (1)$$

where the Bloch functions,  $u_{\mathbf{k}i}(\mathbf{r})$ , are related to the Kohn–Sham orbitals as,  $\psi_{\mathbf{k}i}(\mathbf{r}) = e^{i\mathbf{k} \cdot \mathbf{r}} u_{\mathbf{k}i}(\mathbf{r})$ , and are obtained after the SCF procedure. The calculation of the matrix elements of the  $\nabla_{\mathbf{k}}$  operator is carried out analytically using the method discussed in ref. 39. The light polarisation dependence of the transition probabilities on the Cartesian direction  $\nu \in \{x, y, z\}$  is given by integrating over the volume of a single cell:

$$d_{i \rightarrow f}^{\nu} = i \int d\mathbf{r} u_{\mathbf{k}f}^*(\mathbf{r}) \nabla_{k_{\nu}} u_{\mathbf{k}i}(\mathbf{r}), \quad (2)$$

where  $\nabla_{k_{\nu}} = \partial/\partial k_{\nu}$ . In the limit of an infinite basis set, the relation  $\hat{\mathbf{r}} = i \nabla_{\mathbf{k}}$  holds.<sup>40</sup> From vertical transition probabilities given in eqn (1), the optical dipole matrix elements were obtained as:

$$\mathbf{p}_{if} = (E_f - E_i) \mathbf{d}_{i \rightarrow f} \quad (3)$$

and are given in units of eV Å,<sup>41</sup> where  $E_i$  and  $E_f$  are the Kohn–Sham eigenvalues of states involved in the transition.<sup>39</sup>

Radiative transition times between the highest occupied and lowest unoccupied states were calculated using the optical dipole matrix elements as given in eqn (3) and KS eigenvalues as:

$$\frac{1}{\tau_{if}^{\text{rad}}} = \frac{F^2 E_{if}}{3\pi \hbar^2 c^2 m_0^2} \sum_{\nu} \bar{n}_{\nu} |\hat{\mathbf{e}}_{\nu} \cdot \mathbf{p}_{if}|^2, \quad (4)$$

where  $F$  is a dielectric screening parameter,  $\hbar$  is the reduced Planck's constant,  $c$  is the vacuum speed of light,  $E_{if}$  is the photon energy,  $e_0$  is the fundamental charge,  $m_0$  is the electron rest mass, and  $\bar{n}_{\nu}$  and  $\hat{\mathbf{e}}_{\nu}$  are the refractive index and light polarisation unit vectors along different Cartesian directions. The refractive index normal to the surface,  $\bar{n}_z$  is set to unity. Due to strong 3D confinement of the wavefunction in the case



of all rGO structures (see Fig. 7) we assume a screening parameter for rGO of  $(4\epsilon_{\text{GO}} + 2\epsilon_0)/(3\epsilon_{\text{G}} + 2\epsilon_{\text{GO}} + \epsilon_0)$ , where  $\epsilon_0 = 1$  is the vacuum permittivity,  $\epsilon_{\text{G}} = 3.0$  is the relative permittivity of graphene,<sup>42</sup> and  $\epsilon_{\text{GO}}$  is that of GO. For GO the screening parameter is equal to unity. The calculated dielectric tensor components for GO are listed below.

To assess the absorption properties of various GO and rGO structures we use the expression for the absorption cross-section:

$$\sigma(\hbar\omega) = \frac{\pi}{c\epsilon_0\omega} \left(\frac{e}{m_0}\right)^2 \sum_{\nu,\text{if}} \frac{|\hat{\mathbf{e}}_{\nu} \cdot \mathbf{p}_{\text{if}}|^2}{\bar{n}_{\nu}} \delta(E_{\text{f}} - E_{\text{i}} - \hbar\omega), \quad (5)$$

given in units of  $\text{cm}^2$ , where  $\mathbf{p}_{\text{if}}$  are the optical dipole matrix elements as defined in eqn (3),  $\epsilon_0$  is the permittivity of the free space,  $e$  is the electron charge, and  $\omega$  is the incident light frequency. The delta function,  $\delta(x)$ , in eqn (5), is replaced with a Gaussian function  $\exp[-(x/\sqrt{2}\Delta)^2]/(\sqrt{2\pi}\Delta)$ , defined by the phenomenological line broadening,  $\Delta$ , set to 50 meV in all structures considered.

## 3 Results and discussion

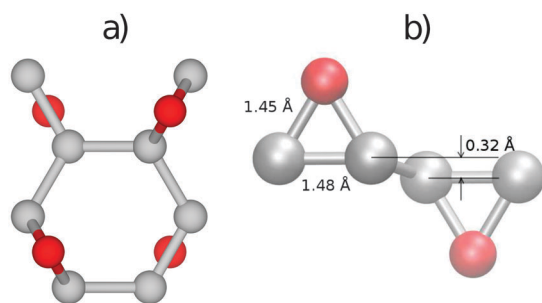
### 3.1 Structural model and electronic properties of reduced graphene oxide

The most stable structure of fully oxidized graphene, Fig. 1(a), has a C:O ratio of 2:1 with alternating oxygen adsorption above and below the graphene lattice.<sup>43</sup> Using the PBE-GGA exchange correlation functional for our structural analysis, we observe that the O adsorption in the bridge sites increases the distance between C atoms to 1.48 Å, which is 0.06 Å larger compared to the value found in pristine graphene. Since the calculated C–O bond-length is 1.45 Å, three atoms from the epoxy group form a nearly equilateral triangle, Fig. 1(b). The O binding energy of 3.25 eV per atom renders this structure highly stable. This adsorption geometry minimizes Coulomb repulsion between adsorbates, thereby increasing stability. Each oxygen atom forms an epoxy functional group with two carbon atoms, with bonding between the  $2p_z$  orbitals. This results in the

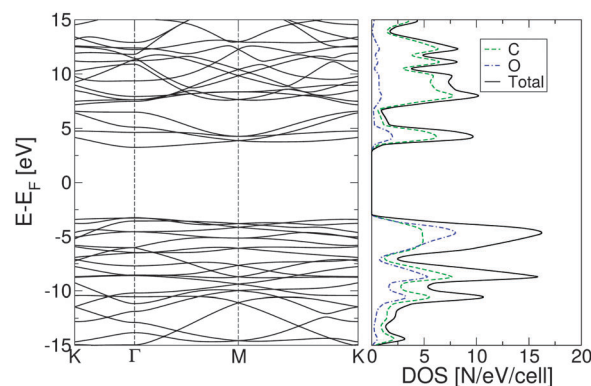
rehybridization of the graphene lattice from  $sp^2$  to  $sp^3$ , analogous to the type of bonding in diamond allotropes. The carbon atoms are displaced vertically from their positions in the hexagonal lattice of pristine graphene, relaxing the strain caused by the  $2p_z$  bond formation. The alternating oxygen coverage balances the effects of this buckling, making this structure considerably more stable than that with oxygen coverage only on one side.

While chemical synthesis and reduction of GO produce considerable defects and leave a combination of carbonyl, carboxyl and hydroxyl groups in addition to the epoxy groups, the latter are dominant. In the following text we therefore refer to this purely epoxy functionalised structure as GO. However, the effect of the presence of OH groups on the electronic and optical properties of GO has been carefully examined, as described at the end of this subsection. The O adsorbates profoundly alter the electronic properties of the graphene layer as seen from the band structure and density of states (DOS) plots in Fig. 2. At variance with pristine graphene, GO is a wide band gap insulator. From PBE-GGA calculations we estimated the energy gap to be 4.09 eV at the  $\Gamma$  point. In order to improve the accuracy of the predicted gap, we proceeded with our analysis using the PBE0 and B3LYP hybrid functionals, giving the band gap values of 6.85 eV and 6.50 eV, respectively.

The plot of the DOS projected onto O-2p and C-2p states (Fig. 2) suggests that the electrons occupying the highest valence bands are mainly from the O-2p states, while the electronic states of the conduction zones are predominantly of C-2p character. The energy gap opening in GO is also followed by an increase in the electron and hole effective masses. The GO structure shows a very anisotropic band structure around the  $\Gamma$  point, Fig. 2, as reflected in the effective masses at the bottom of the conduction band and at the top of the valence band. These are  $m_e^* = 1.361(1.395)m_0$  and  $m_h^* = 0.558(0.597)m_0$  along the direction  $\Gamma \rightarrow M$ , and  $m_e^* = 0.399(0.417)m_0$  and  $m_h^* = 0.442(0.447)m_0$  along the direction  $\Gamma \rightarrow K$ . The principal components of the elastic tensor are  $c_{11} = 245 \text{ Nm}^{-1}$ ,  $c_{22} = 240 \text{ Nm}^{-1}$ ,  $c_{12} = 25 \text{ Nm}^{-1}$  and  $c_{66} = 110 \text{ Nm}^{-1}$ . By comparison, using the same basis set and methodology, we calculated the elastic constants of



**Fig. 1** (a) The top view of the 8-C and 4-O atom unit cell of the most stable structure of fully oxidized graphene and (b) the  $60^\circ$  relative to the x-axis side view of the epoxy groups formed by O atoms adsorbed on opposite sides of the graphene sheet, together with the C–C and C–O bond-lengths. The C and oxygen atoms are represented by grey and red spheres, respectively.



**Fig. 2** Electronic band structure of fully oxidized graphene (left) and total density of states (right), calculated using the PBE0 exchange correlation functional.



**Table 1** Energy gaps at several characteristic points in the first 2D Brillouin zone of the fully oxidized graphene, estimated by PBE0 (B3LYP) functionals

$\Gamma$ [eV]	$M$ [eV]	$K$ [eV]
6.850 (6.502)	7.463 (7.073)	7.358 (6.893)

pristine graphene to be  $c_{11} = 357 \text{ Nm}^{-1}$ ,  $c_{22} = 371 \text{ Nm}^{-1}$ ,  $c_{12} = 51 \text{ Nm}^{-1}$  and  $c_{66} = 137 \text{ Nm}^{-1}$ , the in-plane components of which compare well to the experimentally obtained value of  $340 \pm 50 \text{ Nm}^{-1}$ .<sup>44</sup> This indicates that GO is substantially softer than pristine graphene, which can likely be attributed to the corrugation of the graphene sub-lattice upon O adsorption (Table 1).

The reduction of GO proceeds by the removal of oxygen adsorbates, which results in carbon  $\text{sp}^2$  rehybridisation in the regions with oxygen-free C atoms, together with the local restoration of the flat honeycomb lattice. The segments of pristine graphene represent graphene quantum dots (GQDs) embedded into the GO layer. In this study we assumed that the GO reduction is not accompanied with the disruption of the honeycomb lattice, and thus the occurrence of point defects within the graphene layer was neglected. The reduced GO can then be considered as a 2D structure which contains GQDs of different sizes, randomly distributed across the GO surface. Using GO as the initial configuration, Fig. 1, we modelled different structural motifs present in partially reduced GO by removing a selected number of O atoms from the fully oxidized graphene sheet. The configurations produced upon removal of one, two, four, eight and twelve O atoms from the simulation cell are presented in Fig. 3. The smallest GQD is formed when a single O atom is removed from GO, Fig. 3(a). We calculated the O vacancy formation energy as 4.23 eV. This structure is accompanied with a reduction of the energy gap to 5.40 eV, a reduction of  $\sim 1.45 \text{ eV}$  compared to GO, due to the appearance of new electronic states. The energy gap values calculated with all three exchange–correlation functionals we used are given in Table 2. As is well known, PBE-GGA underestimates the realistic energy gaps and is given here just for a reference.

Three different topologies with two adjacent O atoms removed from GO are presented in Fig. 3(b–d). The most stable

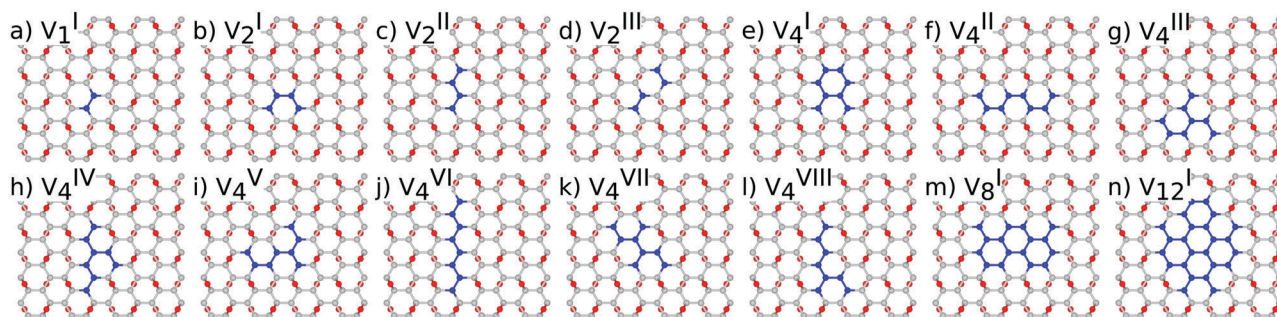
**Table 2** LUMO–HOMO energy gaps of the anti-dot structures with,  $n_v$ , oxygen vacancies

$n_v$	PBE	PBE0	B3LYP
1	3.238	5.397	5.038
2	2.502	4.264	3.927
4	1.249	2.594	2.327
8	0.372	1.056	0.902
12	0.000	0.338	0.258

is the configuration  $V_2^I$  with two O vacancies along the armchair direction of the graphene lattice. Yet, the formation energies of the other two structures, calculated per missing O atom, differ by only 0.12 eV or less. The corresponding PBE0 energy gaps are in the range from 4.26 to 4.98 eV. We carefully inspected structures formed upon removal of four O adatoms from the surface. In total eight different configurations, presented in Fig. 3(e–l), were calculated. The most stable among studied structures is  $V_4^I$ , with a highly symmetric GQD left on the surface after four O atoms were desorbed, Fig. 3(e). The corresponding PBE0 energy gap is 2.59 eV. The formation energies of various topologies are presented in the Appendix, while the energy gaps of the energetically most favourable GQDs are listed in Table 2. The energy gaps vary approximately 1.0 eV among different topologies with four adjacent O vacancies (Table 7, see the Appendix).

Since the number of possible configurations with more than four neighbouring O atoms removed from the GO surface is progressively increasing, we restricted our study of larger GQDs to the two structures depicted in Fig. 3(m) and (n). The structure  $V_8^I$  corresponds to a GQD with eight missing O adatoms, formed when the GQD in the configuration  $V_4^I$  is enlarged twice along the armchair direction. The  $V_{12}^I$  structure is a highly symmetric GQD with twelve O atoms being removed from the unit cell. The configurations  $V_8^I$  and  $V_{12}^I$  are included in this study with the aim to further confirm trends in the energy gap evolution with the size of the GQDs, found from a thorough examination of the rGO structures obtained upon removal of one, two and four O atoms from the GO layer.

As expected, the larger fraction of exact exchange energy incorporated in PBE0 results in the prediction of slightly



**Fig. 3** Atomic structure of the 96 carbon atom sub-lattice and  $n_v$  oxygen vacancies of the unit cell: (a)  $n_v = 1$ , (b–d)  $n_v = 2$ , (e–l)  $n_v = 4$ , (m)  $n_v = 8$ , and (n)  $n_v = 12$ . For  $n_v = 8$  and  $n_v = 12$  only the most stable structure is presented. The superscript in  $V_{n_v}^I$  represents different topologies with the same  $n_v$ . Carbon atoms that do not form part of functional groups coloured green for clarity.







Fig. 4 Dependence of the fundamental energy gap as a function of the number of O vacancies,  $n_v$ . For  $n_v = 2$  and  $n_v = 4$  energy gaps for all possible configurations are depicted. Solid lines are fits through the calculated values for most stable structures. Circles and squares represent structures with added hydroxyl groups.

larger gaps compared to those calculated using the B3LYP functional.<sup>45</sup>

To simplify understanding of the evolution of the energy gaps with respect to the number of removed O atoms, only the most energetically favourable GQDs with a given number of removed O atoms are compared. It turns out that the calculated energy gaps fit a very simple relationship, plotted in Fig. 4, based on the level of oxygen coverage:

$$E_g(n_v) \approx E_g(0)\exp(-0.25n_v), \quad (6)$$

where  $E_g(0)$  is the band gap of fully oxidized graphene and  $n_v$  is the number of oxygen adatoms removed. These trends differ from experimental results found for free GQDs, which show that their energy gap is inversely proportional to the diameter.<sup>46</sup> Yet, both experimental and theoretical studies of graphene nanoflakes, as well as graphene nanoribbons, demonstrate a strong influence of the edges on their electronic properties.<sup>47</sup> Nanostructures with a larger fraction of zig-zag edges show a smaller energy gap than those with a similar size to mainly armchair edges.<sup>48</sup> The GQDs in Fig. 3, produced upon partial reduction of GO, feature odd shapes which could not be preserved in the form of free nanoparticles due to a large number of under-coordinated C atoms. However, when embedded in GO, the C atoms at the boundaries of GQDs are stabilized due to binding to the surrounding GO layer.

Eigenstates of the GQDs and total DOS are plotted in Fig. 5 and 6, respectively. These clearly show the  $sp^2$  states localized on the GQDs, positioned at energies within the band gap of GO, which is the energy gap between the highest occupied and lowest unoccupied  $sp^3$  states.

The electronic structure of reduced graphene oxide is readily explained by detailed inspection of the Bloch functions. Fig. 7(a) and (b) depict the HOMO and LUMO states of fully oxidized graphene, respectively, distinctly showing the  $sp^3$  hybridized bonds. By contrast, Fig. 7(c) and (d) illustrate the

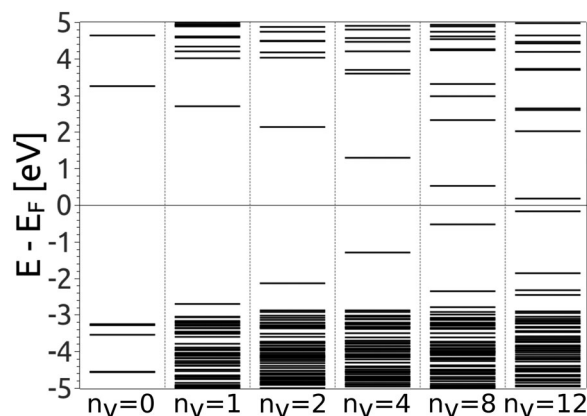


Fig. 5 Evolution of the electronic structure change and the energy gap with the increase of the number of O vacancies,  $n_v$ . On the left side the electronic states at the  $\Gamma$  point of the fully oxidized graphene are also presented. All results are obtained by the PBE0 exchange correlation functional.

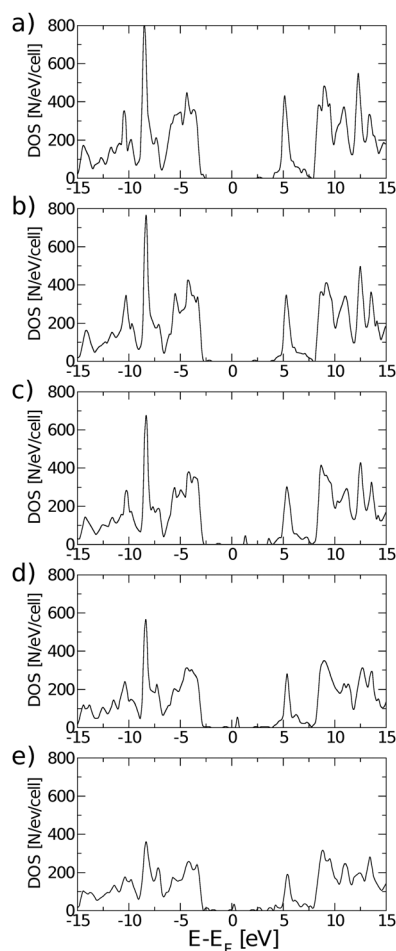


Fig. 6 Evolution of the total density of states of rGO with: (a) one O vacancy, (b) two O vacancies, (c) four O vacancies, (d) eight O vacancies, and (e) twelve O vacancies, for most stable structures inside each configuration. All total DOS were calculated using the PBE0 exchange correlation functional.

HOMO and the LUMO for the structure with one O atom removed, showing both to be largely localised on C atoms (node sites), but with partial contribution of p type orbitals





Fig. 7 Highest occupied (HOMO) and lowest unoccupied (LUMO) molecular orbitals: (a and b) fully oxidized graphene, (c and d) one O vacancy, (e and f) two O vacancies, (g and h) four O vacancies, (i and j) eight O vacancies, and (k and l) 12 O vacancies. Red and blue denote opposite signs of the wavefunction.

from the four nearest neighbouring O atoms (bridge sites). Also evident is the reappearance of pristine graphene's characteristic  $sp^2$  hybridized  $\pi$ -bonds. Orbitals above the LUMO and below the HOMO are seen to be still of  $sp^3$  nature (not shown). According to Fig. 7 the HOMO and LUMO of all studied GQDs are mainly located at the edge of the C atoms. These electronic states of the three smallest quantum dots (Fig. 7c–h) are localized on the nearest neighbour C atoms and thus there is a strong overlap between the corresponding C-2p<sub>z</sub> orbitals which results in significant energy gap values. Since the frontier electronic states in larger GQDs (Fig. 7i–l) are to a large extent composed of the C-2p<sub>z</sub> orbitals centered on the atoms which are the second nearest neighbours, their weak overlapping is accompanied with small values of the energy gap.

With a view to further justifying the model adopted, simulations were performed on a representative number of structures with hydroxyl groups present in addition to the epoxy motifs.

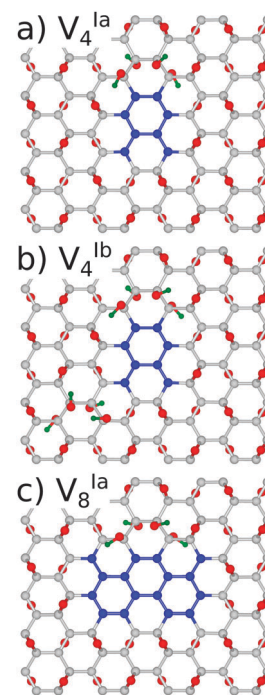


Fig. 8 Unit cell structures with added OH groups. H atoms are coloured green for clarity.

Table 3 LUMO–HOMO energy gaps of the anti-dot structures with epoxy and hydroxyl groups

$E_{\text{LUMO}} - E_{\text{HOMO}}$			
Topology	PBE	PBE0	B3LYP
$V_4^{\text{Ia}}$	1.293	2.630	2.364
$V_4^{\text{Ib}}$	1.275	2.209	1.814
$V_8^{\text{Ia}}$	0.388	1.050	0.900

To maintain the minimisation of repulsive Coulomb forces by even distribution of adsorbates above and below the graphene lattice, a single epoxy group was replaced by two hydroxyl groups and the epoxy groups were removed in pairs. The symmetry was deliberately preserved in structures  $V_4^{\text{Ia}}$  and  $V_8^{\text{Ia}}$ , and broken in the case of  $V_4^{\text{Ib}}$ , as shown in Fig. 8.

We have found the energy gaps predicted for the structures with the same symmetry,  $V_4^{\text{Ia}}$  and  $V_8^{\text{Ia}}$ , differ only very slightly from the purely epoxy functionalised structures, as shown in Table 3. For  $V_4^{\text{Ia}}$  the difference is predicted by PBE0 (B3LYP) to be 36(37) meV, while for  $V_8^{\text{Ia}}$  it is 6(2) meV. The effect of the breaking of symmetry is much greater, with a calculated difference of 0.385(0.513) eV. This is in line with the calculations for the epoxy functionalised structures with different symmetries (see the Appendix, Table 7).

### 3.2 Optical properties of reduced graphene oxide

For all structures considered, *i.e.*, GO and rGO with various numbers of O vacancies,  $n_v$ , we examine whether the energy gap modulation with  $n_v$  is also followed by changes in their optical activity. To examine this we use eqn (3), by setting  $u_{\Gamma_1}(\mathbf{r})$  and





Fig. 9 Symmetries of several representative unit cell structures: (a) fully oxidized graphene surface,  $C_{2v}$ , (b) single O vacancy,  $C_{2v}$ , (c) two vacancies,  $C_{2v}$ , and (d) four O vacancies,  $C_{2v}$ . All arrangements in unit cells with  $n_v \neq 0$  corresponding to those with minimal energy.

$u_{\text{TF}}(\mathbf{r})$  to HOMO and LUMO states, respectively. All rGO structures considered in this subsection are those with minimal total energy among configurations with the same number of removed O atoms and are all highly symmetric (Fig. 9). The correct values of optical matrix elements cannot be obtained unless the choice of the 2D unit cell also incorporates the point-group symmetry of the bulk.<sup>49,50</sup> To ensure that this is the case, in all of our calculations we have aligned the “armchair” edge of the carbon sub-lattice along the x-axis. All calculations of optical properties were carried out on fully relaxed GO or rGO structures. We have observed that for all structures with minimal energy, which are also highly symmetric, relaxation preserves the perfect point group symmetry of motifs. As can be seen from Table 7 (see the Appendix), among structures with the same  $n_v$  those with the highest vacancy formation energies are those with the unit cells of highest symmetry. As such, we have adopted only these cells for further analysis.

As can be seen from Table 4, for all structures considered the HOMO–LUMO transitions are optically active at least in one polarization direction. If we ignore for the moment the structure with  $n_v = 1$ , the general trend is that optical dipole matrix elements are reduced with increasing number of O vacancies, suggesting the reduced overlap between HOMO and LUMO

states with  $n_v$ . In order to explain the presence or the absence of transitions in particular polarization directions, we recall the arguments of group theory.<sup>51</sup> Moving from a graphene ribbon (another C based structure with an energy gap) to fully oxidized GO the symmetry is reduced from  $C_{2v}$  to  $C_{2v}^y$ , where the super-script denotes the principal axis [according to the orientation in Fig. 9(a)]. According to the character table for the  $C_{2v}^y$  group the optically allowed transitions are either y or (z, x) polarized. Our results, Table 4, show only  $p_x$  polarization is bright suggesting by selection rule forbidden z-polarized transition. All other rGO structures with  $n_v \geq 2$ , stemming out from the energy minimisation procedure, are also  $C_{2v}^y$ , and show that both  $p_x$  and  $p_z$  allowed dipole polarizations. All the other rGO configurations inside the same  $n_v$  will break the symmetry in all three Cartesian directions and all polarisations will be optically allowed. However, the polarization parallel to the “armchair” direction will still be dominant. The remaining structure is that with  $n_v = 1$ . There is only one such possible arrangement. The structure with  $n_v = 1$  is of  $C_{2v}^z$  symmetry and according to group theory has either z or (x, y) polarized optically allowed transitions. Indeed, our results show that both  $p_x$  and  $p_y$  associated transitions are bright, while  $p_z$  is dark. These interesting optical features open up possibilities for producing polarization sensitive optical devices by controlling the shape of voids of functionalized atoms, or by applying external strain or pressure on such structures in order to produce desirable reduction or restoration of symmetry.

Table 4 contains dipole matrix elements at the fundamental gap calculated at  $\Gamma$  using the PBE0 and B3LYP exchange–correlation functionals, respectively. These are in the range between  $\sim 1/3$  and  $\sim 1/10$  of those for bulk III–V semiconductors commonly used in photonic applications. For a monolayer material, this is indicative of strong optical absorption.

As with the energy gaps, the addition of hydroxyl functional groups without altering the symmetry of the structure,  $V_4^{\text{ia}}$  and  $V_8^{\text{ia}}$ , has only a negligible effect on the dipole matrix elements (compare Tables 5 and 7, appendix). The structure  $V_4^{\text{ib}}$ , being of only  $C_1$  point group symmetry, is optically active in all three polarisation directions. Compared to the highly symmetric structures, the optical activity is greatly weakened.

In order to calculate the absorption cross-section and radiative lifetimes, in addition to gain knowledge of the electronic structure and polarization direction selective dipole matrix elements, it is necessary to estimate accurately the dielectric properties. In a layered system, such as graphene or rGO, it is reasonable to expect the element of the dielectric tensor normal to the surface to be very close to the vacuum dielectric permittivity and significantly different to the in-plane components. Using time-dependent density functional theory (TD-DFT) in

Table 4 Optical dipole matrix elements along different polarization directions, at the  $\Gamma$  point for the fully oxidized structure,  $n_v = 0$ , and energetically most favourable structures with  $n_v$  oxygen vacancies, predicted by PBE0 (B3LYP) functionals

$n_v$	$p_x$ [eV Å]	$p_y$ [eV Å]	$p_z$ [eV Å]
0	3.880 (3.656)	0	0
1	2.810 (2.662)	3.090 (3.051)	0
2	3.615 (3.355)	0	0.673 (0.635)
4	2.778 (2.510)	0	0.366 (0.335)
8	2.576 (2.248)	0	0.126 (0.111)
12	1.003 (0.784)	0	0.022 (0.016)

Table 5 Optical dipole matrix elements of the epoxy and hydroxyl functionalised structures predicted by PBE0 (B3LYP) functionals

Topology	$p_x$ [eV Å]	$p_y$ [eV Å]	$p_z$ [eV Å]
$V_4^{\text{ia}}$	2.803 (2.536)	0	0.368 (0.336)
$V_4^{\text{ib}}$	0.424 (0.327)	0.140 (0.160)	0.187 (0.165)
$V_8^{\text{ia}}$	2.571 (2.248)	0	0.142 (0.124)





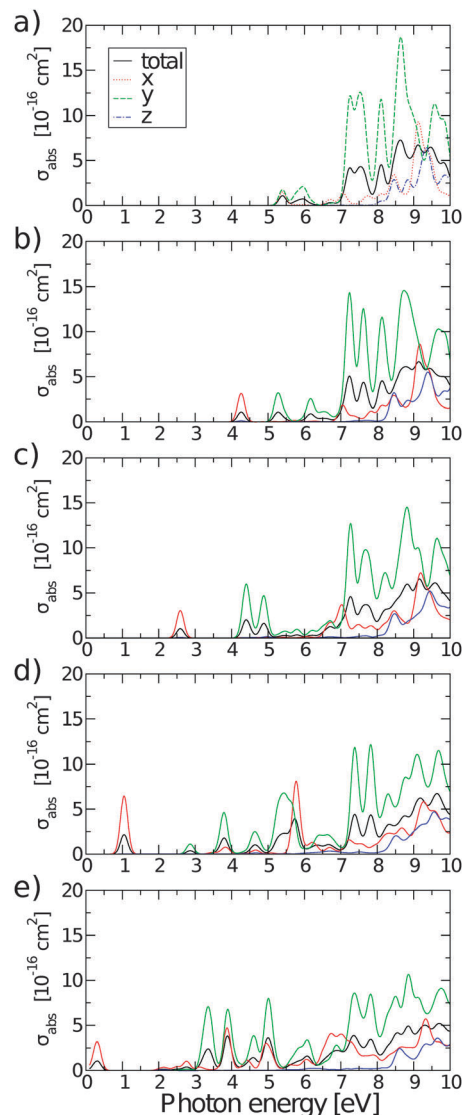
**Table 6** Radiative transition times in ns at the  $\Gamma$  point for the fully oxidized structure,  $n_v = 0$ , and energetically most stable structures with  $n_v$  oxygen vacancies, predicted by PBE0 (B3LYP) functionals

$n_v$	$\tau_{if}^{rad}$ [ns]
0	11.40 (13.52)
1	29.40 (33.52)
2	48.02 (60.49)
4	135.97 (185.54)
8	394.05 (605.84)
12	8138.31 (17547.80)

the linear response formalism,<sup>28,39,41</sup> again with the PBE0 (B3LYP) exchange–correlation functionals, we have estimated the principal components of the dielectric tensor to be  $\epsilon_{xx} = 1.261(1.291)$ ,  $\epsilon_{yy} = 1.346(1.387)$ , and  $\epsilon_{zz} = 1.078(1.087)$ . Due to the localized nature of the (Gaussian) basis set used, our approach is less sensitive to the choice of size of the embedding box in the z-direction.

From calculated HOMO–LUMO gaps, dipole matrix elements and dielectric constants, we estimated the electron radiative transition times for the most favourable structures considered, which are listed in Table 6. As expected with  $n_v$  increasing both the gaps and dipole matrix elements decrease, contributing to the increase of  $\tau_{if}^{rad}$ . It is interesting to note that by comparing other semiconducting material systems with the similar  $E_g \approx 1$  eV, like in InAs/GaAs QD's,<sup>52</sup> in rGO with  $n_v = 8$ , the radiative transition times are elevated to the  $\sim 300$  ns range (compared to  $\sim 1$ –2 ns in inorganic semiconductor QDs with similar optical gaps).<sup>52</sup> The large difference between our calculated radiative times and those reported for similar graphene based structures, albeit doped with nitrogen,<sup>53,54</sup> can be attributed to very fast non-radiative processes that very likely take place in the actual structures measured. It has been already shown theoretically that the band gap opening and strong edge localization in graphene nanostructures lead to strong electron–phonon coupling, which may explain one such non-radiative process.<sup>6</sup> Nevertheless, long radiative relaxation times could be of potential benefit to the electron transport processes in solar cells or photo-detectors, should suppression of non-radiative processes be achieved.<sup>55,56</sup>

Fig. 10 shows absorption cross-sections for all GQDs from PBE0 calculations, highlighting the dichroic nature of the material. In line with the dipole matrix elements presented in Table 4, the layer with one O vacancy, Fig. 9(a), has a similar absorption cross-section in the vicinity of the optical gap in both in-plane directions, while no absorption takes place in the z polarization direction. At higher energies y-polarized absorption dominates, with z-polarized absorption only becoming apparent at  $\sim 8$  eV. The behaviour of all structures with two or more O vacancies is qualitatively similar. After the first peak associated with the optical gap, with in-plane absorption, particularly in the y direction, again being dominant. Absorption at the optical gap is exclusively x-polarized in-plane and the evident weak z-polarized absorption falls off dramatically with the level of O reduction. These observations are in line with the



**Fig. 10** Polarisation selective and total absorption cross-sections of rGO structures with: (a)  $n_v = 1$ , (b)  $n_v = 2$ , (c)  $n_v = 4$ , (d)  $n_v = 8$ , and (e)  $n_v = 12$ .

previous assertion, based on Fig. 2, that the conduction region of the electronic structure is dominated by C-2p states. By extension, the absorption of z-polarized light can be largely attributed to that of O-2p<sub>z</sub> states higher in energy that do contribute to conduction. Again, taking into account that we are dealing with a single atomic layer, the optical absorption cross-section can be regarded as strong.

## 4 Conclusions

Using *ab initio* calculations, we have demonstrated that effective tuning of the electronic and optical properties of oxidized graphene can be achieved by careful manipulation of the level of oxygen reduction. Combining density functional theory and time-dependent density functional theory with the PBE0 and B3LYP hybrid exchange–correlation functionals, it is possible to make quantitative predictions of these properties.





The tuning of electronic and optical properties is effected by modification of the electronic structure so as to form islands of pristine graphene, or graphene quantum dots, within the GO sheet. The energy gap decreases with the number of O adatoms removed, or the dot diameter, allowing tuning through the ranges of UV, visible and IR light. The gap fits a simple exponential decay relation, eqn (6). We have also shown that rGO has a strong optical absorption cross-section when taking into consideration the fact that it is a monolayer material. Furthermore, the long radiative transition times may lead to favourable electron transport properties for charge separation and extraction of work in the case of photovoltaic and optoelectronic applications. The characteristics of this absorption can be controlled by the manipulation of the GQD symmetry, allowing for selection of the light polarization. This anisotropy of the optical response may also lead to applications in polarization sensitive optical devices.

Importantly, from our analysis of structure,  $V_4^{\text{b}}$ , with OH groups we conclude that disruption of the symmetry of the quantum dot structures degrades the optical properties of rGO.

## Appendix

**Table 7** Properties of all topologies presented in Fig. 3. Vacancy formation energies are calculated using PBE-GGA calculations. Presented energy gaps and optical dipole matrix elements are from PBE0 calculations

Topology	$E_f$ [eV]	$E_g$ [eV]	$p_x$ [eV Å]	$p_y$ [eV Å]	$p_z$ [eV Å]
$V_1^{\text{I}}$	4.231	5.397	2.811	3.090	0
$V_2^{\text{I}}$	4.119	4.262	3.615	0.003	0.673
$V_2^{\text{II}}$	4.132	4.048	2.389	4.486	0.613
$V_2^{\text{III}}$	4.231	4.985	2.977	0.037	0.144
$V_4^{\text{I}}$	3.996	2.594	2.778	0	0.366
$V_4^{\text{II}}$	4.074	3.424	2.884	1.924	0.790
$V_4^{\text{III}}$	4.051	3.112	4.466	0	0.296
$V_4^{\text{IV}}$	4.062	3.247	3.533	1.663	0.191
$V_4^{\text{V}}$	4.054	3.004	3.338	1.044	0.147
$V_4^{\text{VI}}$	4.071	2.535	1.604	5.336	0.228
$V_4^{\text{VII}}$	4.076	3.024	2.194	3.823	0.178
$V_4^{\text{VIII}}$	4.060	2.816	2.368	3.280	0.194
$V_8^{\text{I}}$	3.877	1.056	2.576	0	0.126
$V_{12}^{\text{I}}$	3.865	0.338	1.003	0	0.021

## Acknowledgements

The authors wish to thank the Royal Society, London, for the grants “Functionalized Graphene for Solar Cell Devices: insight from *ab Initio* Theory” and “High Performance Computing in Modelling of Innovative Photo-Voltaic Devices” and would like to acknowledge the contribution of COST Action MP1406 and The Great Britain Sasakawa Foundation. M. L. acknowledges the University of Salford, UK, for the award of Graduate Teaching Studentship. Ž. Š acknowledges financial support from Serbian Ministry of Education and Science under Grant No. 171033 and from the COST Action CM1104. The authors also thank B. G. Searle and L. Bernasconi for useful discussions.

## References

- 1 K. Novoselov, A. Geim, S. Morozov, D. Jiang, Y. Zhang, S. Dubonos, I. Grigorieva and A. Firsov, *Science*, 2004, **306**, 666–669.
- 2 F. Bonaccorso, Z. Sun, T. Hasan and A. C. Ferrari, *Nat. Photonics*, 2010, **4**, 611–622.
- 3 L. Cao, S. Sahu, P. Anilkumar, C. Y. Kong and Y.-P. Sun, *MRS Bull.*, 2012, **37**, 1283–1289.
- 4 L. Pisani, J. A. Chan, B. Montanari and N. M. Harrison, *Phys. Rev. B: Condens. Matter Mater. Phys.*, 2007, **75**, 064418.
- 5 T. G. Pedersen, C. Flindt, J. Pedersen, N. A. Mortensen, A.-P. Jauho and K. Pedersen, *Phys. Rev. Lett.*, 2008, **100**, 136804.
- 6 V. M. Stojanović, N. Vukmirović and C. Bruder, *Phys. Rev. B: Condens. Matter Mater. Phys.*, 2010, **82**, 165410.
- 7 N. A. Vinogradov, K. Schulte, M. L. Ng, A. Mikkelsen, E. Lundgren, N. Mårtensson and A. B. Preobrajenski, *J. Phys. Chem. C*, 2011, **115**, 9568–9577.
- 8 R. Larciprete, S. Fabris, T. Sun, P. Lacovig, A. Baraldi and S. Lizzit, *J. Am. Chem. Soc.*, 2011, **133**, 17315–17321.
- 9 R. R. Nair, W. Ren, R. Jalil, I. Riaz, V. G. Kravets, L. Britnell, P. Blake, F. Schedin, A. S. Mayorov, S. Yuan, M. I. Katsnelson, H.-M. Cheng, W. Strupinski, L. G. Bulusheva, A. V. Okotrub, I. V. Grigorieva, A. N. Grigorenko, K. S. Novoselov and A. K. Geim, *Small*, 2010, **6**, 2877–2884.
- 10 R. Balog, B. Jørgensen, J. Wells, E. Lægsgaard, P. Hofmann, F. Besenbacher and L. Hornekær, *J. Am. Chem. Soc.*, 2009, **131**, 8744–8745.
- 11 R. Balog, M. Andersen, B. Jørgensen, Z. Sljivancanin, B. Hammer, A. Baraldi, R. Larciprete, P. Hofmann, L. Hornekær and S. Lizzit, *ACS Nano*, 2013, **7**, 3823–3832.
- 12 R. Balog, B. Jørgensen, L. Nilsson, M. Andersen, E. Rienks, M. Bianchi, M. Fanetti, E. Laegsgaard, A. Baraldi, S. Lizzit, Z. Sljivancanin, F. Besenbacher, B. Hammer, T. G. Pedersen, P. Hofmann and L. Hornekær, *Nat. Mater.*, 2010, **9**, 315–319.
- 13 W. S. Hummers and R. E. Offeman, *J. Am. Chem. Soc.*, 1958, **80**, 1339.
- 14 D. R. Dreyer, S. Park, C. W. Bielawski and R. S. Ruoff, *Chem. Soc. Rev.*, 2010, **39**, 228–240.
- 15 T. Dufaux, J. Boettcher, M. Burghard and K. Kern, *Small*, 2010, **6**, 1868–1872.
- 16 K. Erickson, R. Erni, Z. Lee, N. Alem, W. Gannett and A. Zettl, *Adv. Mater.*, 2010, **22**, 4467–4472.
- 17 C. Gomez-Navarro, R. T. Weitz, A. M. Bittner, M. Scolari, A. Mews, M. Burghard and K. Kern, *Nano Lett.*, 2007, **7**, 3499–3503.
- 18 K. S. Novoselov, V. I. Fal’ko, L. Colombo, P. R. Gellert, M. G. Schwab and K. Kim, *Nature*, 2012, **490**, 192–200.
- 19 W. Lu, P. Soukiassian and J. Boeckl, *MRS Bull.*, 2012, **37**, 1119–1124.
- 20 G. Eda, Y.-Y. Lin, C. Mattevi, H. Yamaguchi, H.-A. Chen, I.-S. Chen, C.-W. Chen and M. Chhowalla, *Adv. Mater.*, 2010, **22**, 505.
- 21 S. Zhou and A. Bongiorno, *Sci. Rep.*, 2013, **3**, 2484.
- 22 M. Z. Hossain, J. E. Johns, K. H. Bevan, H. J. Karmel, Y. T. Liang, S. Yoshimoto, K. Mukai, T. Koitaya, J. Yoshinobu,



- M. Kawai, A. M. Lear, L. L. Kesmodel, S. L. Tait and M. C. Hersam, *Nat. Chem.*, 2012, **4**, 305–309.
- 23 S. Niyogi, E. Bekyarova, M. Itkis, J. McWilliams, M. Hamon and R. Haddon, *J. Am. Chem. Soc.*, 2006, **128**, 7720–7721.
- 24 C. Y. Kong, W.-L. Song, M. J. Mezziani, K. N. T. II, L. Cao, A. J. Farr, A. Anderson and Y.-P. Sun, *J. Supercrit. Fluids*, 2012, **61**, 206–211.
- 25 X. Sun, Z. Liu, K. Welsher, J. T. Robinson, A. Goodwin, S. Zaric and H. Dai, *Nano Res.*, 2008, **1**, 203–212.
- 26 P. Yu, X. Wen, Y.-R. Toh, Y.-C. Lee, K.-Y. Huang, S. Huang, S. Shrestha, G. Conibeer and J. Tang, *J. Mater. Chem. C*, 2014, **2**, 2894–2901.
- 27 S. Tomić, B. Montanari and N. M. Harrison, *Physica E*, 2008, **40**, 2125–2127.
- 28 L. Bernasconi, S. Tomić, M. Ferrero, M. Rérat, R. Orlando, R. Dovesi and N. M. Harrison, *Phys. Rev. B: Condens. Matter Mater. Phys.*, 2011, **83**, 195325.
- 29 C. L. Bailey, L. Liborio, G. Mallia, S. Tomić and N. M. Harrison, *Phys. Rev. B: Condens. Matter Mater. Phys.*, 2010, **81**, 205214.
- 30 L. Liborio, G. Mallia and N. Harrison, *Phys. Rev. B: Condens. Matter Mater. Phys.*, 2009, **79**, 245133.
- 31 R. Dovesi, V. R. Saunders, C. Roetti, R. Orlando, C. Zicovich-Wilson, F. Pascale, B. Civalleri, K. Doll, N. M. Harrison, I. J. Bush, P. D'Arco and M. Llunell, *CRYSTAL 09 Manual*, 2009.
- 32 I. J. Bush, S. Tomić, B. G. Searle, G. Mallia, C. L. Bailey, B. Montanari, L. Bernasconi, J. M. Carr and N. M. Harrison, *Proc. R. Soc. A*, 2011, **467**, 2112–2126.
- 33 R. Dovesi, R. Orlando, A. Erba, C. M. Zicovich-Wilson, B. Civalleri, S. Casassa, L. Maschio, M. Ferrabone, M. De La Pierre, P. D'Arco, Y. Noël, M. Causà, M. Rérat and B. Kirtman, *Int. J. Quantum Chem.*, 2014, **114**, 1287–1317.
- 34 J. P. Perdew, K. Burke and M. Ernzerhof, *Phys. Rev. Lett.*, 1996, **77**, 3865–3868.
- 35 J. P. Perdew, M. Ernzerhof and K. Burke, *J. Chem. Phys.*, 1996, **105**, 9982–9985.
- 36 A. D. Becke, *J. Chem. Phys.*, 1993, **98**, 1372–1377.
- 37 H. J. Monkhorst and J. D. Pack, *Phys. Rev. B: Condens. Matter Mater. Phys.*, 1976, **13**, 5188–5192.
- 38 T. H. Dunning, *J. Chem. Phys.*, 1989, **90**, 1007–1023.
- 39 M. Ferrero, M. Rérat, R. Orlando and R. Dovesi, *J. Comput. Chem.*, 2008, **29**, 1450–1459.
- 40 L. Bernasconi, M. Sprik and J. Hutter, *J. Chem. Phys.*, 2003, **119**, 12417–12431.
- 41 S. Tomić, L. Bernasconi, B. G. Searle and N. M. Harrison, *J. Phys. Chem. C*, 2014, **118**, 14478–14484.
- 42 Y. Wang, V. W. Brar, A. V. Shytov, Q. Wu, W. Regan, H.-Z. Tsai, A. Zettl, L. S. Levitov and M. F. Crommie, *Nat. Phys.*, 2012, **8**, 653–657.
- 43 Ž. Šljivanaanin, A. S. Milošević, Z. S. Popović and F. R. Vukajlović, *Carbon*, 2013, **54**, 482–488.
- 44 C. Lee, X. Wei, J. W. Kysar and J. Hone, *Science*, 2008, **321**, 385–388.
- 45 S. Tomić and N. M. Harrison, *AIP Conf. Proc.*, 2010, **1199**, 65–66.
- 46 A. D. Güçlü, P. Potasz and P. Hawrylak, *Phys. Rev. B: Condens. Matter Mater. Phys.*, 2010, **82**, 155445.
- 47 Y.-W. Son, M. L. Cohen and S. G. Louie, *Phys. Rev. Lett.*, 2006, **97**, 216803.
- 48 K. A. Ritter and J. W. Lyding, *Nat. Mater.*, 2009, **8**, 235–242.
- 49 K. Gundra and A. Shukla, *Physica B*, 2011, **406**, 3538–3543.
- 50 K. Gundra and A. Shukla, *Phys. Rev. B: Condens. Matter Mater. Phys.*, 2011, **83**, 075413.
- 51 M. S. Dresselhaus, G. Dresselhaus and A. Jorio, *Group Theory*, Springer, 2008.
- 52 S. Tomić, *Phys. Rev. B: Condens. Matter Mater. Phys.*, 2010, **82**, 195321.
- 53 Y. Dai, H. Long, X. Wang, Y. Wang, Q. Gu, W. Jiang, Y. Wang, C. Li, T. H. Zeng, Y. Sun and J. Zeng, *Part. Part. Syst. Charact.*, 2014, **31**, 597–604.
- 54 D. Qu, M. Zheng, L. Zhang, H. Zhao, Z. Xie, X. Jing, R. E. Haddad, H. Fan and Z. Sun, *Sci. Rep.*, 2014, **4**, 5294.
- 55 K. Nishikawa, Y. Takeda, T. Motohiro, D. Sato, J. Ota, N. Miyashita and Y. Okada, *Appl. Phys. Lett.*, 2012, **100**, 113105.
- 56 S. Tomić, *Appl. Phys. Lett.*, 2013, **103**, 072112.

