



Cite this: *Biomater. Sci.*, 2014, 2, 1210

Personalized protein coronas: a “key” factor at the nanobiointerface†

Mohammad J. Hajipour,^a Sophie Laurent,^{b,c} Afsaneh Aghaie,^d Farhad Rezaee*^{‡e,f} and Morteza Mahmoudi*^{‡a,g}

It is now well known that the primary interactions of biological entities (*e.g.*, tissues and cells) with nanoparticles (NPs) are strongly influenced by the protein composition of the “corona” (*i.e.*, the NP surface attached proteins). The composition of the corona strongly depends on the protein source (*e.g.*, human plasma). Because the protein source determines the NP corona, it is reasonable to hypothesize that humans with specific disease(s) may have specific NP coronas. To test this hypothesis, we incubated two different hydrophobic/hydrophilic types of NPs (polystyrene and silica) with plasma from human subjects with different diseases and medical conditions (*e.g.*, breast cancer, diabetes, hypercholesterolemia, rheumatism, favism, smoking, hemodialysis, thalassemia, hemophilia A and B, pregnancy, common cold and hypofibrinogenemia). Our results demonstrate that the type of disease has a crucial role in the protein composition of the NP corona. Based on these results, we introduce the concept of the “personalized protein corona” (PPC) as a determinant factor in nano-biomedical science. This study will help researchers rationally design experiments based on the “personalized protein corona” for clinical and biological applications.

Received 18th April 2014,
Accepted 5th May 2014

DOI: 10.1039/c4bm00131a

www.rsc.org/biomaterialsscience

1. Introduction

Nanoparticles (NPs) are recognized as promising agents for various biomedical applications. Due to their ultra-small size, NPs are able to reach otherwise inaccessible sites within the human body (*e.g.*, the cell nucleus). Thus, from a medical point of view, the safety of NPs is an important concern.^{1–3} The first important issue for biological evaluation of NPs is the composition of the protein corona on the surface of a NP,

which determines the biological function of the NP in a biological fluid.^{4–7} The protein corona imparts a unique biological identity to a NP, which is much different from the pristine coated surface.^{8–10} The protein composition of the corona layer (which can significantly alter the biological fate) is strongly dependent on various factors such as the physico-chemical properties of the NP (*e.g.*, the composition, size, shape, charge and hydrophobicity/hydrophilicity),^{11–16} the temperature,¹⁷ the protein concentration,¹⁸ the protein gradient,¹⁹ and the protein source (*e.g.*, fetal bovine serum (FBS) or human plasma).²⁰

The plasma proteomes of patients with different diseases show that each type of disease has significant effects on the concentration/conformation of plasma proteins. In addition, the genetic background, post-translational modification, life style, and geographical origin play an important role in the changes in plasma proteins in healthy individuals.^{21–23} It is well known that the concentration/structure of some critical proteins present in human plasma can be significantly altered by diseases and medical conditions (*e.g.*, cancer, hemodialysis, obesity, diabetes, hypercholesterolemia, rheumatism, favism, hemophilia, smoking, hypofibrinogenemia and pregnancy).^{24–35} It must be noted that the major cause of type 2 diabetes is obesity. Obesity is associated with many other diseases, including coagulation disorders, dyslipidemia and atherosclerosis, all of which affect the protein composition of plasma.^{23–25} It should be noted that changed/modified plasma

^aDepartment of Nanotechnology and Nanotechnology Research Center, Faculty of Pharmacy, Tehran University of Medical Sciences, Tehran, Iran.

E-mail: mahmoudi@stanford.edu

^bDepartment of General, Organic, and Biomedical Chemistry, NMR and Molecular Imaging Laboratory, University of Mons, Avenue Maistriau 19, B-7000 Mons, Belgium

^cCenter for Microscopy and Molecular Imaging (CMMI), Rue Adrienne Bolland, 8, B-6041 Gosselies, Belgium

^dBlood Transfusion Research Center, High Institute for Research and Education in Transfusion Medicine, Tehran, Iran

^eUniversity of Groningen, University Medical Center Groningen, Department Cell Biology, Department Medical Proteomics, Groningen, the Netherlands.

E-mail: f.rezaee@med.umcg.nl, f.rezaee@erasmusmc.nl

^fDepartment of Gastroenterology and Hepatology, Erasmus Medical Center, Rotterdam, the Netherlands

^gBiomaterials & Advanced Drug Delivery Laboratory, School of Medicine, Stanford University, Stanford, CA 94305, USA

†Electronic supplementary information (ESI) available. See DOI: 10.1039/c4bm00131a

‡These authors equally contributed to this manuscript.

proteins can be considered as potential prognostic or diagnostic biomarkers for predicting/treating specific disorders. For example, compared to short hemodialysis, the long hemodialysis patients have higher plasma vitamin D binding protein and lower clusterin, haptoglobin, hemopexin, apolipoprotein A-IV, complement factor B, and complement factor H. Moreover, the isoforms of alpha 1-antitrypsin and the fibrinogen γ -chain are different in these patients. Albumin is the most abundant protein in the plasma,^{26–29} where it plays a key role in the formation of the protein corona.^{15,30} Depending on the physicochemical properties of the NP, albumin tends to be adsorbed on the NP surface after a short incubation due to its high concentration in the human plasma. It is subsequently replaced by other proteins, which have higher affinities for the NP surface.¹⁴ It is now well recognized that different diseases/situations affect the plasma homeostasis. For example, plasma protein glycosylation in diabetic patients can increase the catabolism of low-density lipoproteins, which in turn reduces the solubility of albumin. Similarly, there is a linear relationship between fibrinogen levels and the number of cigarettes smoked, age, physical exercise, stress, blood glucose/cholesterol, inflammation and pregnancy.^{24,27,32,36–45} Fibrinogen, an acute phase protein, and fibrinolysis play an important role in the wound healing process.^{46–54}

Although there are extensive reports on the effect of various factors on the corona composition, the effects of altered human plasma protein composition due to different diseases defined as a protein source, which is a determinant factor in the formation of corona (a crucial feature in nano-biomedical applications), have not been studied extensively. Here, we investigate the effects of various human plasma samples with different disease backgrounds on the corona composition of commercially available NPs (*i.e.*, silica and polystyrene NPs with very narrow size distributions). A range of experimental approaches including one-dimensional sodium dodecyl sulfate polyacrylamide gel electrophoresis (1D-SDS-PAGE), dynamic light scattering (DLS), zeta potential analysis and semi-quantitative densitometry were employed to elucidate the effects of the altered plasma on the corona composition.

2. Experimental section

2.1. Plasma preparation

Blood samples from different human subjects (patients and healthy volunteers) were collected following signed informed consent based on ethical laws (see ESI† for details) in citrate-coated tubes (anti-coagulant tubes) and retained for 5 min. The citrated tubes were then centrifuged at 2500g for 5 min at 4 °C. The supernatants were collected and maintained at –20 °C. The plasma samples were aliquoted into 1.5 ml cryovials to avoid re-thawing and re-freezing of the plasma. In some cases, the plasma was centrifuged again at 2500g for 3 min at 4 °C to completely remove the blood cells.

More than ten patients were considered for each group. Preliminary analyses showed that there are no considerable differ-

ences among the protein composition of coronas from patients with the same disease/health condition. Indeed, the same plasmas showed more similarity in their hard corona composition. In the next step, the hard corona of the age and sex-matched patients, with different diseases/states, was obtained from three subjects. The intensity of protein bands involved in the hard corona of each disease was calculated using the Image J software and the variance was calculated according to the typical formula.

2.2. Nanoparticles (NPs)

Sulfonated polystyrene NPs with an average size of 100 nm and amorphous silica NPs with an average size of 90 nm were used as received from Invitrogen by Life Technologies (USA) and Kisker-Biotech Inc. (Germany), respectively. According to the company, both nanoparticles must have the same size (100 nm). But our particle size analysis revealed that the silica NPs are slightly smaller. However the aim of the study is to investigate the effect of protein source (*i.e.* plasma derived from patients with different diseases) on the formation of corona regardless of NPs; neither the NP size in general nor this slight NP size variation affect the interpretation of results. The silica and polystyrene NPs are part of the first materials group investigated for safety at the nanoscale (see this report for example <http://www.ehsnanonews.com/nanoarchive/ehsnv03no4update.pdf>) and these NPs are the focus of researchers for the biological and medical application.^{15,18,39} That is the reason why these NPs were chosen in this study.

2.3. Hard corona preparation from the human plasma with various diseases

The plasma from different patients (*e.g.*, cancer, hemodialysis, diabetes, rheumatism, favism, hypercholesterolemia, hemophilia, hypofibrinogenemia, common cold, pregnancy and smoking) was diluted with PBS to a final concentration of 50% and incubated at 37 °C for 10 min. The NPs (1 mg ml^{–1}) were diluted with PBS and incubated at 37 °C for 10 min. The NPs were then incubated with the plasma solutions at a final concentration of 100 μ g ml^{–1} at 37 °C for 1 hour. The solutions were then centrifuged for 30 min at 14 000 rpm (18 krcf) at 15 °C to pellet the NP-protein corona complexes. After removal of the supernatant, the NPs were resuspended in 1 ml of cold PBS (15 °C) and centrifuged again for 20 min at 14 000 rpm at 15 °C to remove the loosely attached proteins. The washing step was repeated three times to obtain the final pellet (*i.e.*, the NP-hard corona sample). To obtain a final concentration of 100 μ g ml^{–1}, 100 μ l of NP stock solution (1 mg ml^{–1}) was added to 900 μ l of plasma–PBS solution (500 μ l of plasma + 400 μ l of PBS). The total volume of each reaction mixture was 1000 μ l containing 500 μ l (of plasma) + 400 μ l (of PBS) + 100 μ l (of NP stock solution (1 mg ml^{–1})). Since slight temperature changes affect the adsorption of proteins on the NP-surface, the NPs (100 μ l of stock solution) and plasma–PBS solution (900 μ l) were pre-incubated for 10 min at 37 °C. Then the NPs and plasma–PBS solution having exactly the same temperature (37 °C) were mixed and the process of protein corona prepa-

ration was continued. This strategy increases the accuracy of hard corona preparation and decreases the experimental bias.^{17,55,56} Of note, the employed procedure for the hard corona preparation is a well-established method, which was introduced by other investigators in the field (in terms of particle concentration and incubation time).^{8,18,39}

2.4. SDS-PAGE

The hard corona-coated NPs were re-suspended in 500 μ l of PBS containing loading buffer and boiled for 10 min at 100 $^{\circ}$ C. Identical volumes of each sample were loaded on a 15% polyacrylamide gel and run at 120 V, 80 mA for approximately 100 min. Since the aim of the study was to investigate whether plasma as a protein source (patient with different disorder) determines the corona composition, we stain the proteins in SDS-PAGEs with highly sensitive silver. All protein bands in SDS-PAGEs were stained with highly sensitive silver nitrate. The silver staining allows us to observe much more protein bands and in particular low abundant proteins than coomassie blue staining. The limit of the silver staining appeared to be between 0.1 and 0.5 ng for each protein band in a SDS-PAGE. To evaluate the protein content of the plasma derived from different patients, the collected plasmas were diluted (1%) and re-suspended in 10 μ l of loading buffer and boiled for 10 minutes at 100 $^{\circ}$ C (without NPs). Finally, the gel was stained using the coomassie blue method.

2.5. Characterization of sulfonated polystyrene (SPS) and SiO₂ NPs

The SPS and SiO₂ NPs were characterized using a FEI Titan 80-300 transmission electron microscope (TEM) to examine their morphology and size (Table S2 of ESI[†] and Fig. 1). DLS measurements were performed with a Malvern PCS-4700 instrument equipped with a 256-channel correlator. The 488.0 nm line of a Coherent Innova-70 Ar ion laser was used as the incident beam with a power of 250 mW. The temperature was maintained at 25 $^{\circ}$ C by means of an external circulator. The zeta potentials were determined using a Malvern Zetasizer 3000 HSa.

2.6. Densitometry analysis of protein bands from the hard coronas of different diseases

A semi-quantitative densitometry analysis was performed to measure the intensity of the protein bands from the hard coronas of different patients. The intensities of the protein bands in various ranges (*i.e.*, >100 kDa, 100–40 kDa and <40 kDa) were measured using the Image J software (Version1.410).

3. Results

3.1. The effect of plasma source on NP coronas

3.1.1. Effects of plasma source on the NP corona composition. To investigate the effect of various human plasmas (obtained from patients with different diseases) on the composition of the hard coronas adsorbed on the surface of the NPs, we employed two types of NPs, including hydrophobic sulfonated polystyrene with a diameter of 100 nm and hydrophilic amorphous silica (SiO₂) with a diameter of 90 nm (see Fig. 1). The NPs had narrow particle size distributions, different chemistries, and different structures (crystalline *vs.* amorphous). The polystyrene and SiO₂ NPs were selected because they are presently under evaluation for safety at the nanoscale level.^{18,39}

After incubation with the various plasma samples, the hard corona-coated NPs were analyzed under the same conditions (see ESI[†] for details). Based on the protein patterns of the various hard coronas (Fig. 2), it is clear that the protein compositions of various diseases are completely different. For example, there were significant differences in the composition and band intensities of the hard coronas of rheumatism, thalassemia and blood cancer cases compared to healthy subjects. In contrast, the protein composition of the corona from the favism and breast cancer patients showed only a slight difference compared to the control (Fig. 2a and b). As shown in Fig. 2c and d, the protein patterns of the coronas derived from various patients were completely different from each other (for silica NPs). For example, the corona composition of blood cancer patients and smokers was different from that of the healthy man. Of note, the most striking observation was the appearance of two protein bands at \sim 37 and \sim 57 kDa and the disappearance of the protein band at \sim 90 kDa in these cases.

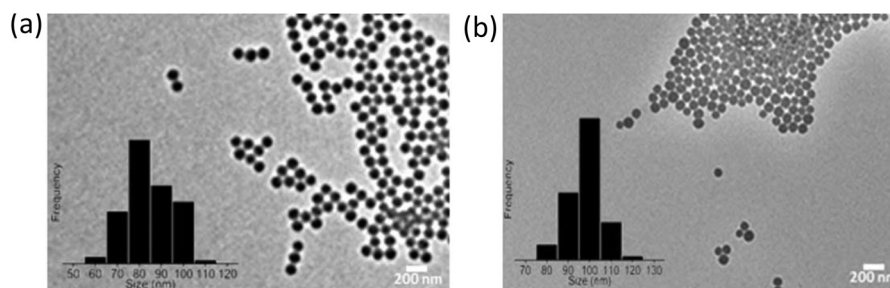


Fig. 1 TEM images of (a) hydrophobic sulfonated polystyrene and (b) hydrophilic amorphous silica (SiO₂).

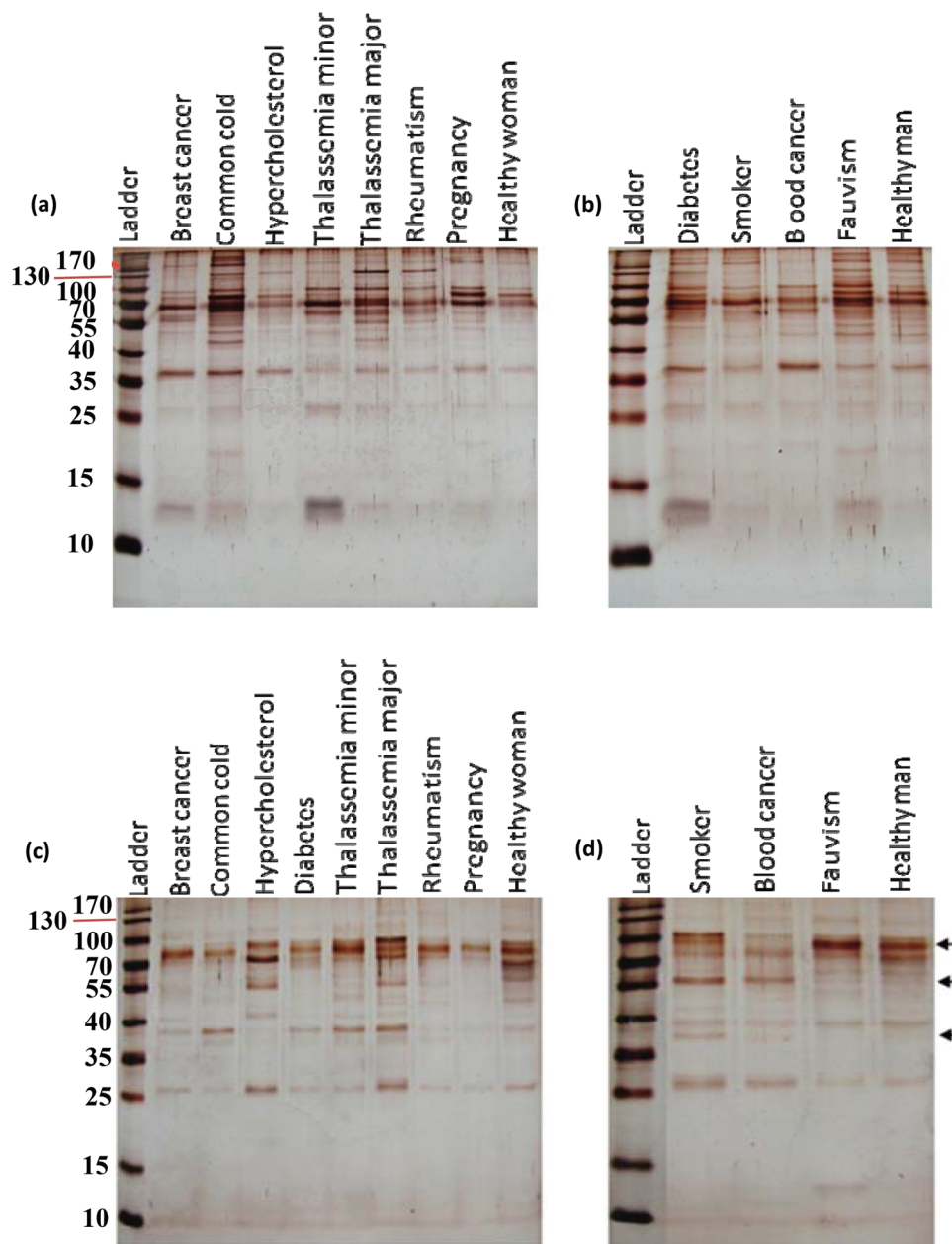


Fig. 2 SDS-PAGE gel (15%) of human plasma proteins obtained from (a and b) polystyrene NP-protein complexes and (c and d) from silica NP-protein complexes "free from excess plasma" following incubation with human plasma (50%) from various diseases.

3.1.2. Effects of deficiencies/decrease in specific plasma proteins on the corona composition. To study the effects of decrease/deficiencies in plasma proteins (coagulation factors) on the corona content, the effects of altered plasma mediated by diseases such as hypofibrinogenemia, hemophilia A and hemophilia B were studied. It is well known that hypofibrinogenemia patients have low concentrations of fibrinogen and that hemophilia A and B patients have deficiencies in FVIII and FIX coagulation factors, respectively.^{29,40} For polystyrene NPs, there was an absence of a protein band at ~72 kDa compared to the healthy subject. Moreover, another protein band at ~65 kDa was abundant in the corona derived from the

plasma of the hemophilia A patient, but was not detected in the other subjects. In contrast, a protein band at ~69 kDa was abundant in the corona of the other cases, but not in the corona of the hemophilia A patient (Fig. 3a). For silica NPs, the coronas of hemophilia A and B patients had additional protein bands at ~60 and ~45 kDa, which were not detected in the healthy and hypofibrinogenemia samples. In spite of the similarities in the coronas of hemophilia A and B patients, a protein band at ~27 kDa was only detected in the hard corona of the hemophilia A patient (Fig. 3c). This analysis shows that deficiencies/decrease in specific coagulation factors affect the bound protein compositions of NP coronas.

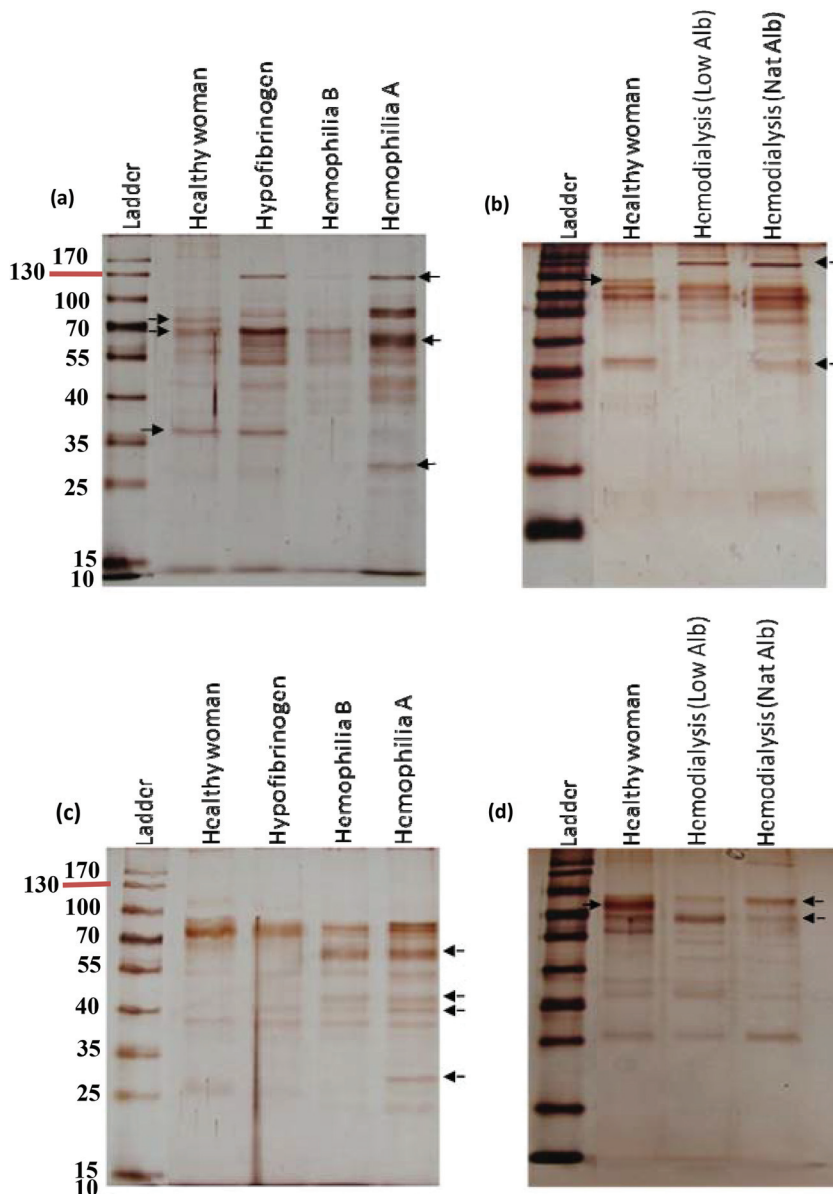


Fig. 3 SDS-PAGE gel (15%) of human plasma proteins obtained from (a and b) polystyrene NP-protein complexes and (c and d) from silica NP-protein complexes "free from excess plasma" following incubation with human plasma (50%) of hemophilia (A and B), hypofibrinogenemia and hemodialysis (with low and natural albumin) patients.

3.1.3. Effects of concurrent disorders on the corona composition. It is very important to investigate whether concurrent disorders, which occur during disease, can affect hard corona formation. To address this issue, the effects of modified plasma samples from hemodialysis patients with natural and low albumin concentrations on the protein coronas were investigated. As depicted in Fig. 3b, the high molecular weight proteins (*e.g.*, bands at ~ 80 kDa and ~ 130 kDa) were observed only in the coronas of healthy and hemodialysis patients respectively. In addition, the protein band at ~ 37 kDa was not detected in the corona of the hemodialysis patient with low albumin. As shown in Fig. 3d (for silica NPs), the intensity of the two protein bands at ~ 90 and ~ 70 kDa was significantly different from hemodialysis patients, while the intensity of the

other proteins was approximately similar (Fig. 5b). Moreover, a sharp protein band at ~ 80 kDa was absent from the coronas of hemodialysis patients, as compared to healthy subjects.

3.2. Plasma source and corona formation

3.2.1. Plasma from healthy subjects. To study the effect of plasma composition from the same plasma sources on the protein corona composition, the hard coronas of various healthy cases of the same age and gender with similar health characteristics and geographical locations were investigated. In Fig. 4a and 4c, it is apparent that the compositions and intensities of the hard coronas from various healthy cases vary. For example, a protein band at ~ 80 kDa was detected only in the hard coronas of healthy subjects 1 and 3. Moreover, protein

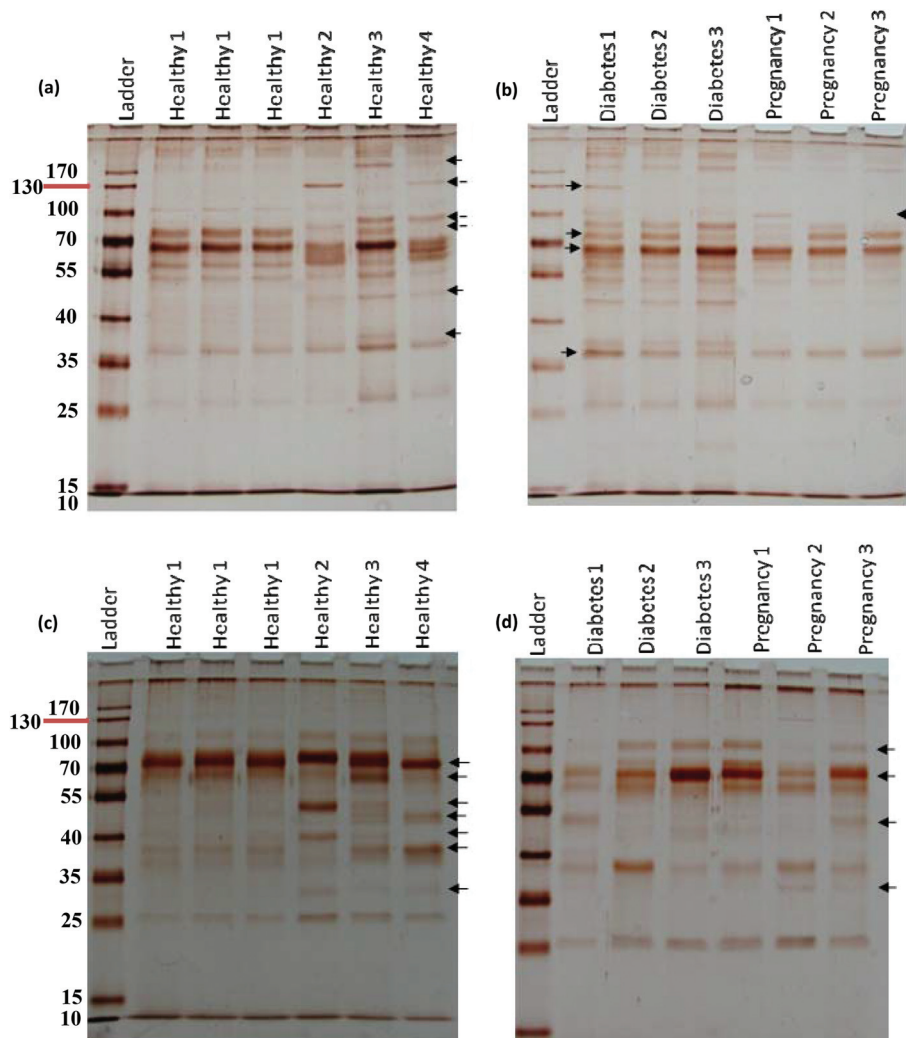


Fig. 4 SDS-PAGE gel (15%) of human plasma proteins obtained from (a and b) polystyrene NP-protein complexes and (c and d) from silica NP-protein complexes "free from excess plasma" following incubation with human plasma (50%) from various healthy, pregnant and diabetic patients.

bands at ~ 130 kDa and ~ 90 kDa were observed in healthy subjects 2 and 4 and healthy subjects 3 and 4, respectively, for polystyrene NPs (Fig. 4a). The appearance and disappearance of protein bands were also observed in the hard coronas of different healthy cases when using silica NPs (see Fig. 4c). According to these results, we suggest that the differences in the hard coronas of various healthy cases may be related to typical plasma variations that occur among individuals (*e.g.*, different structural forms/variants, post-translational modifications, undiagnosed disorder, point mutations, alternative splicing and other personalized factors).

3.2.2. Pregnancies (period of plasma alteration). Plasma compositions during diseases or pregnancy are important for determining the extent and severity of plasma alterations.^{43–45} A number of changes in plasma proteins can be observed during pregnancy. These changes evolve over time. To investigate the corona of NPs with respect to the period of plasma alterations, we used the altered plasma from pregnant women of the same age and period of pregnancy (7 months) with

similar general health characteristics. In Fig. 4b, an additional protein band at ~ 100 kDa appeared for the hard corona of polystyrene NPs from pregnancy number 1. For the silica NPs, a protein band at ~ 50 kDa was detected in the hard corona of pregnancy number 3, while a band at ~ 37 kDa protein was observed in pregnancy number 2 and 3 (Fig. 4d). Therefore, it is logical to assume that the composition of hard coronas may vary among pregnant women with the same period of pregnancy. Few differences were generally observed among the hard corona of pregnant women with the same period of pregnancy. It means that the individuals with the same medical condition/situation, which may have the same plasma, will have more similarity in their protein corona.

3.2.3. The effect of disease severity on the corona composition. It is well recognized that diseases determine the protein compositions of plasma. There is a direct relationship between the blood glucose concentration and the plasma protein glycosylation, which leads to significant changes in the structure, solubility, concentration and function of critical

proteins.^{41,42} To study the coronas of NPs with respect to disease severity, we used the plasma from diabetic patients of the same age and gender with similar general health characteristics and blood glucose concentrations. As shown in Fig. 4b, a 130 kDa protein band was detected only in the hard corona of diabetic patient number 1 (for polystyrene NPs). For silica NPs, no ~110 kDa protein was detected in the corona of diabetic patient 1, while a protein band at ~50 kDa was observed only in the corona of this patient (Fig. 4d). Furthermore, the intensities of the protein bands from the coronas of various diabetic patients varied. These data showed that the coronas may vary for identical diseases with similar severities. On the other hand, the general pattern of corona from diabetic

patients with similar severity was relatively similar. This indicates that the same plasmas may have more similarity in their protein pattern of corona.

3.3. Densitometry analysis of the protein bands in the coronas of different patients

For further analysis, a semi-quantitative densitometry experiment was performed to assess the relative amounts of proteins (based on the protein band intensity), which were classified based on various molecular weight ranges (*i.e.*, >100 kDa, 40–100 kDa, and <40 kDa) of hard coronas from NPs incubated with different plasma samples. The results (see Fig. 5a and 5b) showed variations in the pattern of NP coronas for plasma

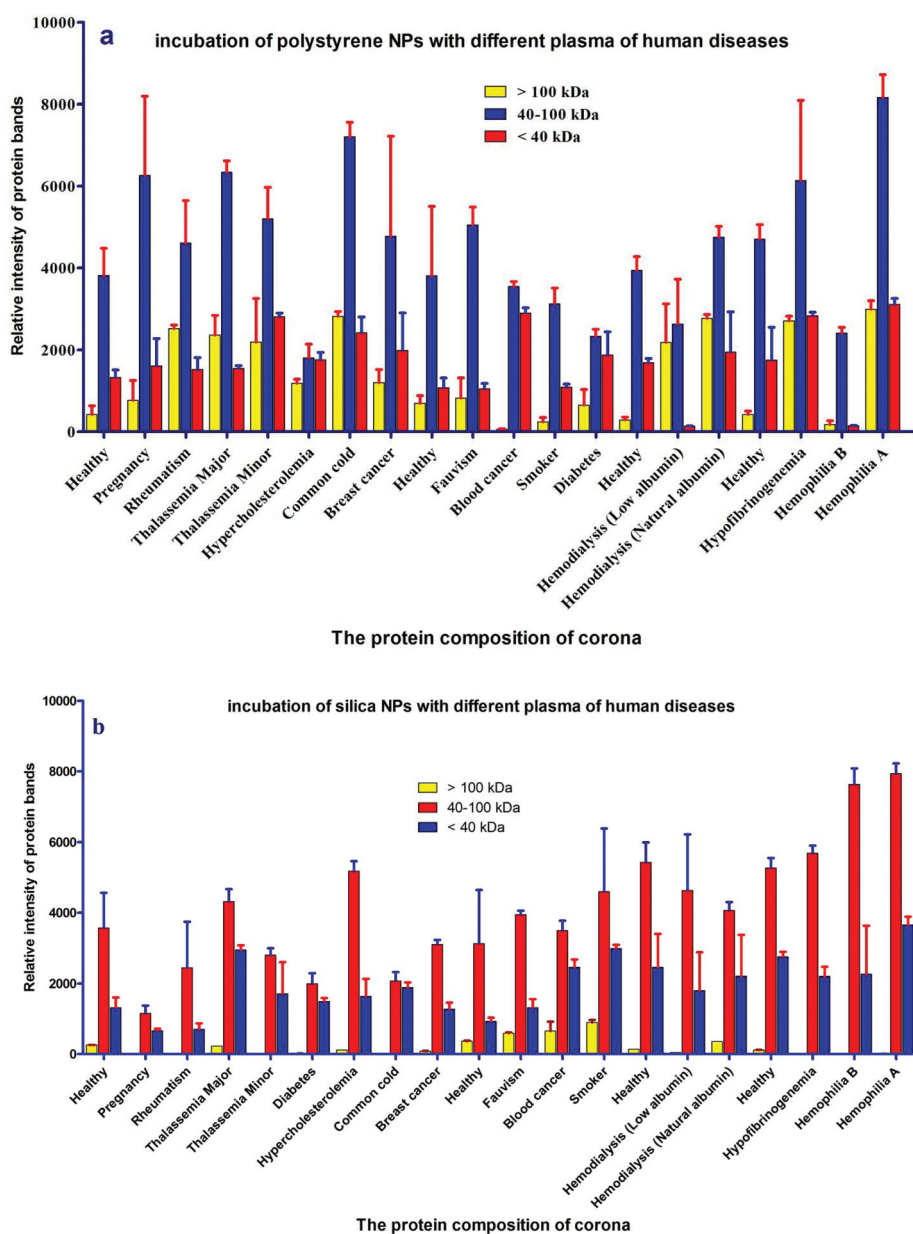


Fig. 5 Histogram of the alterations in band intensities during incubation of (a) polystyrene and (b) silica NPs with plasma (50%) from different patients (healthy, pregnant, rheumatism, thalassemia major, thalassemia minor, hypercholesterolemia, common cold, breast cancer, favism, blood cancer, smoker, diabetes, hemodialysis (low albumin), hemodialysis (natural albumin), hyperfibrinogenemia, hemophilia B and hemophilia A).

samples from different diseases. More specifically, there were variations in the intensity of most protein bands (see Fig. S1 and S2 of ESI†), while the intensities of protein bands in the hard coronas of the same subject (diabetes and pregnancy) were similar (see Fig. 5a and 5b). Moreover, the relative amounts of protein in different hard coronas obtained from the same plasma (healthy number 1) were exactly the same (see Fig. S3 and S4 of ESI†). Therefore, it seems that there is no considerable variation in the intensity of proteins in the hard coronas from the plasma of the same subject (Fig. 6).

3.4. Dynamic light scattering (DLS) and zeta-potential of the NP hard corona complex for different patients

The protein content of the corona affects the size and surface charge of the NP.¹⁸ To investigate whether altered plasmas from different diseases influence the size and surface charge of the NPs, the size and surface charge of NP hard coronas were measured in different patient plasma samples. Dynamic

light scattering (DLS) demonstrated that the sizes of the polystyrene/silica NP-protein complexes were higher than for the bare NPs (without hard coronas). On the other hand, the zeta potential for polystyrene/silica NP-protein complexes was lower compared to the bare NPs. As predicted by the SDS-PAGE results, the size distribution and zeta potential values of the hard coronas from various diseases were different from each other, implying that plasma alterations affect the compositions of hard coronas in different patients (Tables 1 and 2).

4. Discussion

A comprehensive understanding of the interaction of NPs with plasma proteins is important for designing safe NPs with well-regulated biological identities and physiological effects. Because plasma contains various types of proteins, from a personal medicine perspective it may be helpful to establish the

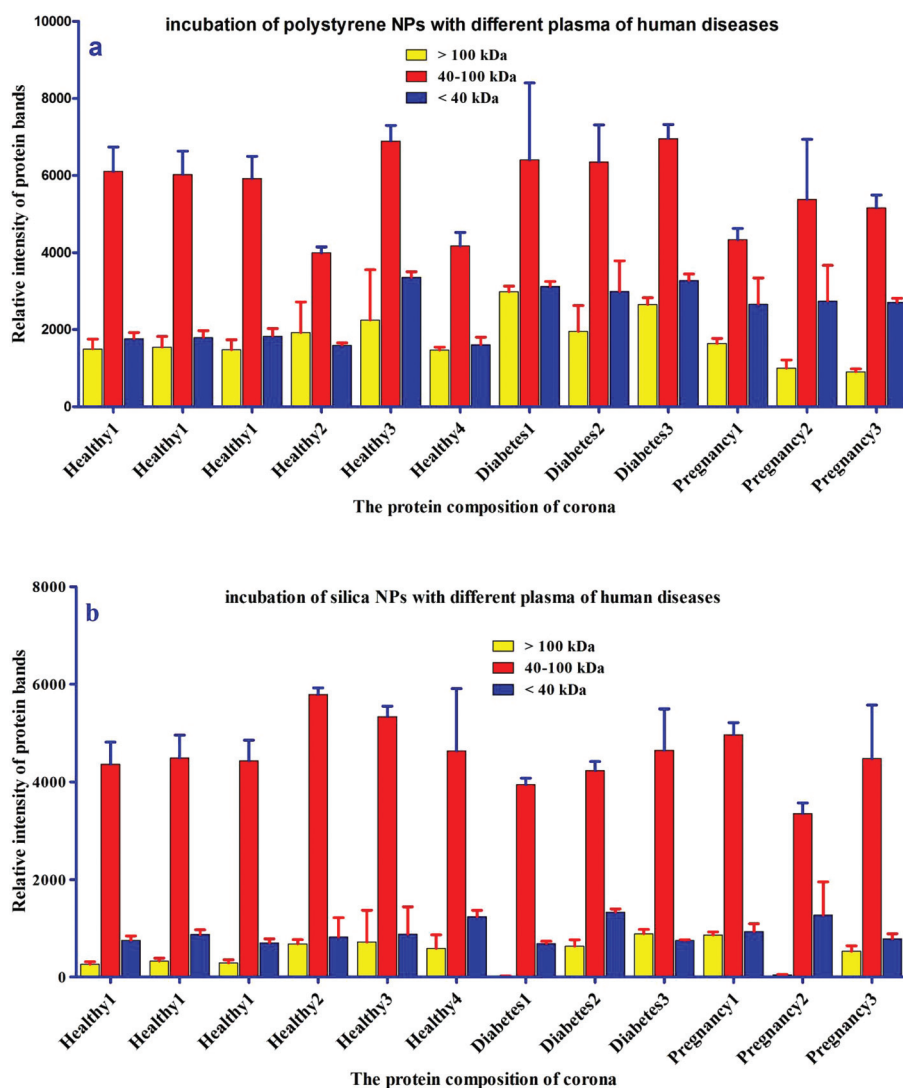


Fig. 6 Histogram of the alterations in band intensity during incubation of (a) polystyrene and (b) silica NPs with plasma (50%) from different healthy, pregnant and diabetic cases.

Table 1 Zeta potential and dynamic light scattering (DLS) data for polystyrene and silica hard corona complexes after incubation with plasma from different patients

Disease	ζ -Potential (mV) of hard corona (PS)	ζ -Potential (mV) of hard corona (silica)	DLS (nm) of hard corona (PS)	DLS (nm) of hard corona (silica)
Thalassemia minor	0.54	-5.43	134.42 \pm 31.34	125.23 \pm 35.67
Thalassemia major	-8.47	-7.68	119.8 \pm 41.55	116.55 \pm 39.74
Hemodialysis (low albumin)	-10.50	-6.78	131.34 \pm 44.68	140.93 \pm 33.96
Hemodialysis (natural albumin)	-7.96	-6.37	127.53 \pm 36	133.64 \pm 41.46
Hemophilia B	-9.54	-8.96	135.73 \pm 30.55	131.73 \pm 32.37
Hemophilia A	-10.20	-9.13	132.68 \pm 38.93	126.49 \pm 43.49
Hypofibrinogenemia	-6.44	-7.76	120.92 \pm 36.95	122.30 \pm 47.40
Healthy man	-9.72	-8.79	124.67 \pm 40.33	135.30 \pm 34.78
Fauvism	-10.60	-9.41	143.65 \pm 48.71	129.43 \pm 46.43
Pregnancy	-7.59	-5.54	132.47 \pm 43.149	137.72 \pm 31.87
Common cold	-8.58	-9.12	130.98 \pm 49.52	125.53 \pm 42.67
Breast cancer	-10.30	-7.39	130.14 \pm 43.84	143.92 \pm 39.44
Rheumatism	-9.76	-5.93	123.89 \pm 30.98	137.64 \pm 36.85
Smoker	-9.58	-8.27	122.816 \pm 39.53	134.28 \pm 47.11
Diabetes	-11.80	-10.31	134.86 \pm 42.16	119.83 \pm 31.92
Hypercholesterolemia	-9.27	-4.61	118.93 \pm 37.36	132.73 \pm 41.83
Blood cancer	-9.56	-2.94	127.84 \pm 39.49	141.27 \pm 33.46
Healthy woman	-17.90	-6.57	132.88 \pm 37.38	130.53 \pm 36.59

PS, polystyrene.

Table 2 Zeta potential and dynamic light scattering (DLS) data for polystyrene and silica nanoparticles

Nanoparticle	ζ -Potential (mV) of bare NPs	DLS (nm) of bare NPs
Polystyrene	37.4 \pm 0.5	107.55 \pm 30.15
Silica	-24	103.14 \pm 32.54

concept of personalized NP applications.^{43–45} Human plasma contains more than 10 000 proteins of which a very small fraction of proteins are highly abundant (such as albumin, IgG, fibrinogen, apolipoproteins, complement factors, *etc.*) and the rest of proteins are very low abundant. This small fraction of highly abundant proteins constitutes approximately more than 90% of plasma protein concentrations, which hampers the identification of low abundant proteins in plasma by mass spectrometry analysis.^{57–62} Previous studies showed that for silica and polystyrene NPs, the hard corona mainly consists of albumin, fibrinogen, immunoglobulin, complement factors and apolipoproteins.^{15,18} These are the highly abundant proteins of plasma. Of note, the aim of this study is to discover a key factor at the nano-bio interface, which implies that the hard corona of different patients/individuals (protein source) is different from each other and the assumption is not correct. As the images of SDS-PAGE gels strongly approved the significant changes in the hard corona of different patients/individuals in terms of the composition and amount of bound proteins (protein source), and these gels are silver stained, further analyses were not reasonable to perform due to the silver staining, which is highly sensitive and many proteins can be visualized by such staining, but the amount of stained proteins observed in the SDS-band is not enough for mass spectrometry analysis (in this regard, highly abundant proteins are exceptions). Since plasma as a protein source derived from

different patients with different diseases (the so-called genetic background) plays an important role in the formation of corona, we applied highly sensitive silver staining to visualize as much as possible protein bands in the SDS gels made from patient plasma with different diseases. However, we measured the intensity of each band to assess the relative amount of each protein present in the fraction derived from each patient. Indeed, our approach makes it possible to observe the clear effect of the plasma source (derived from different genetic backgrounds = patients with different diseases) on the formation of corona. The formation of the protein corona is complex and continuous, whereby many proteins compete to bind to the NP surface as a function of their concentrations, structures and affinities to the NP surface.¹⁶ The hard corona consists of strongly adsorbed proteins having a long residence time on the NP surface.⁴⁴ The formation of hard corona occurred so quickly (during the first seconds of incubation) and the composition of hard corona is constant over different time periods.¹⁰ It must be mentioned that in this study, we precisely used the most common method of hard corona preparation. In this method, the NPs should be incubated with plasma for 1 hour.^{10,15,17,18,39,55} Recently, Tenzer *et al.*¹⁰ showed that the hard corona composition (for different NPs) had no change during different exposure time (0.5–480 minutes), whereas the amount of adsorbed proteins changed significantly over time. They suggested that the adsorption of proteins on the NP-surface cannot be explained by the Vroman effect alone. For the first time, we showed that the diseases/conditions influencing the concentration/conformation of plasma proteins may affect the competitive binding of proteins to the NP-surface. This may lead to significant changes in the hard corona of different patients in terms of the composition and amount of bound proteins. Therefore, we suggest that the adsorption of plasma proteins on the

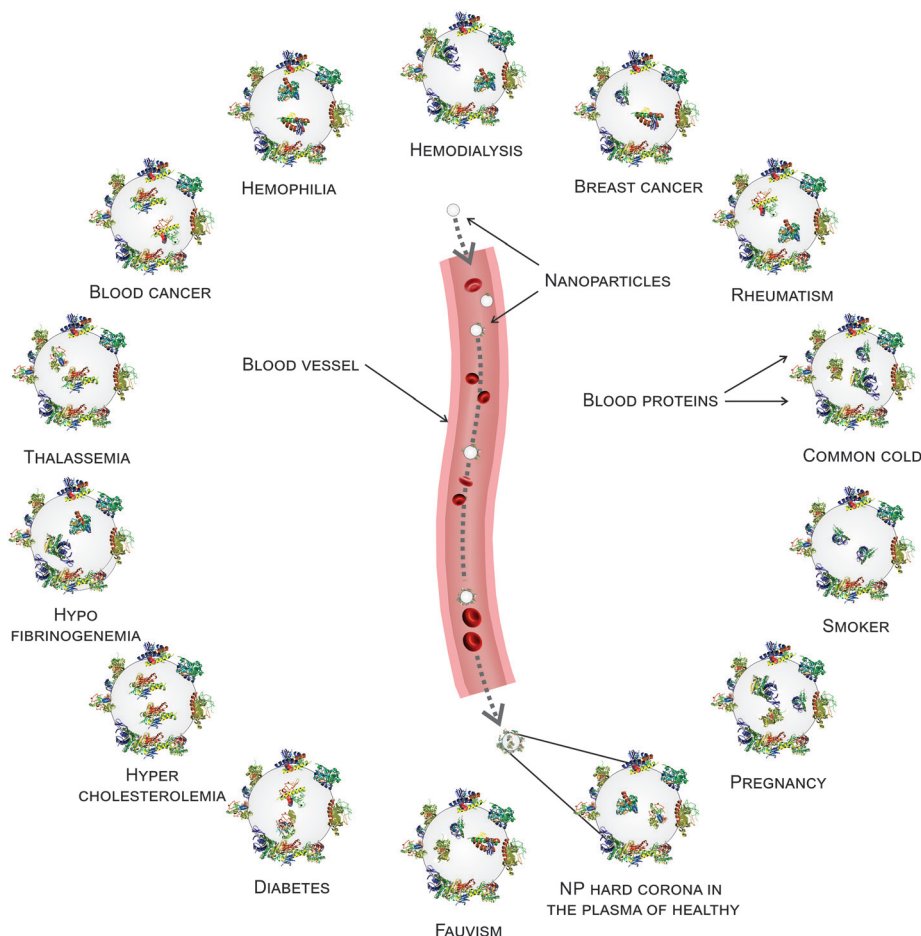


Fig. 7 Schematic of the personalized protein corona from different diseases/states. Plasma alterations in different diseases/medical conditions may affect the protein adsorption on the NP surface, leading to the formation of a personalized protein corona for each patient. Many proteins are associated with the protein corona for different patients, while some proteins only appear or disappear in the hard corona for particular diseases.

NP-surface is a multi-factorial process in which the protein source (*e.g.* plasma source) plays an important role in the constitution of corona.

It is well known that each patient has distinct plasma alterations that depend on the heterogeneity, period and severity of the disease, individual genetic variations and environmental factors.^{20–22} Therefore, we hypothesized that alterations in plasma protein concentrations/structures are mediated by diseases, thus affecting the composition of the hard corona. Intriguingly, changes in the plasma protein composition due to disease alter the NP hard corona composition, which in turn gives the NPs an unpredictable biological identity (compared to the current *in vitro* data, which do not consider the plasma alteration effect) that determines their biological fate. Notably, the association of multiple disorders can also affect the composition of the hard corona. In addition, the data demonstrate that the composition of the hard corona varies among healthy individuals, as well as among patients with various diseases/medical conditions. This may be due to individual heterogeneity, unspecified disorders, and gene–gene interactions. Thus, the same NPs may have different protein coronas in different individuals. More specifi-

cally, depending on the type, period and severity of the disease (which determines the plasma alterations), each patient may have a personalized protein corona; in this case, the patients with the same disease/medical conditions showed more similarity in their protein pattern of corona. It means that precise corona information is needed for safe and high yielding nano-based therapy (see Fig. 7). Therefore, the PPC concept must be considered not only to obtain reliable data on protein corona formation but also to develop high yielding personally designed nanomaterials for therapy.

5. Conclusion

Our results reveal that human plasma samples obtained from different diseases differentially affect the decoration of the protein coronas on the surfaces of NPs. More specifically, we found that changes in plasma protein concentrations and structures (mediated by different disease states) affect the formation of the protein corona on a NP. This study provides an in-depth knowledge on plasma samples from many different diseases and their interactions with NPs, opening new avenues for

designing safe and high yielding NPs for clinical and biological applications with respect to personalized nanomedicine.

Caution

To collect samples from patients who had only one disorder, we counseled the patients and their doctors. In addition, with permission we checked the medical profiles of the patients. However, it is possible that unrecognized concurrent disorders may occur in patients that could influence the formation of the hard corona.

Notes and references

- M. J. Hajipour, K. M. Fromm, A. AkbarAshkarran, D. Jimenez de Aberasturi, I. R. d. Larramendi, T. Rojo, V. Serpooshan, W. J. Parak and M. Mahmoudi, *Trends Biotechnol.*, 2012, **30**, 609–610.
- S. Krol, R. Macrez, F. Docagne, G. Defier, S. Laurent, M. Rahman, M. J. Hajipour, P. G. Kehoe and M. Mahmoudi, *Chem. Rev.*, 2012, **113**, 1877–1903.
- M. Mahmoudi, M. A. Sahraian, M. A. Shokrgozar and S. Laurent, *ACS Chem. Neurosci.*, 2011, **2**, 118–140.
- I. Lynch and K. A. Dawson, *Nano Today*, 2008, **3**, 40–47.
- M. Mahmoudi, S. Sant, B. Wang, S. Laurent and T. Sen, *Adv. Drug Delivery Rev.*, 2011, **63**, 24–46.
- M. F. Engel, A. J. Visser and C. P. van Mierlo, *Proc. Natl. Acad. Sci. U. S. A.*, 2004, **101**, 11316–11321.
- A. E. Nel, L. Mädler, D. Velegol, T. Xia, E. M. Hoek, P. Somasundaran, F. Klaessig, V. Castranova and M. Thompson, *Nat. Mater.*, 2009, **8**, 543–557.
- M. P. Monopoli, C. Åberg, A. Salvati and K. A. Dawson, *Nat. Nanotechnol.*, 2012, **7**, 779–786.
- M. Lundqvist, J. Stigler, T. Cedervall, T. Berggård, M. B. Flanagan, I. Lynch, G. Elia and K. Dawson, *ACS Nano*, 2011, **5**, 7503–7509.
- S. Tenzer, D. Docter, J. Kuharev, A. Musyanovych, V. Fetz, R. Hecht, F. Schlenk, D. Fischer, K. Kiouptsi and C. Reinhardt, *Nat. Nanotechnol.*, 2013, **8**, 772–781.
- S. Tenzer, D. Docter, S. Rosfa, A. Wlodarski, J. r. Kuharev, A. Rekić, S. K. Knauer, C. Bantz, T. Nawroth and C. Bier, *ACS Nano*, 2011, **5**, 7155–7167.
- S. Laurent, E. NG, C. Thirifays, L. Lakiss, G. Goupil, S. Mintova, C. Burtea, E. Oveisi, H. Cecile and M. Mahmoudi, *Toxicol. Res.*, 2013, **2**, 270–279.
- M. Mahmoudi, M. P. Monopoli, M. Rezaei, I. Lynch, F. Bertoli, J. J. McManus and K. A. Dawson, *ChemBioChem*, 2013, **14**, 525–525.
- M. S. Ehrenberg, A. E. Friedman, J. N. Finkelstein, G. Oberdörster and J. L. McGrath, *Biomaterials*, 2009, **30**, 603–610.
- M. Lundqvist, J. Stigler, G. Elia, I. Lynch, T. Cedervall and K. A. Dawson, *Proc. Natl. Acad. Sci. U. S. A.*, 2008, **105**, 14265–14270.
- M. Mahmoudi, I. Lynch, M. R. Ejtehadi, M. P. Monopoli, F. B. Bombelli and S. Laurent, *Chem. Rev.*, 2011, **111**, 5610.
- M. Mahmoudi, A. M. Abdelmonem, S. Behzadi, J. H. Clement, S. Dutz, M. R. Ejtehadi, R. Hartmann, K. Kantner, U. Linne, P. Maffre and W. Parak, *ACS Nano*, 2013, **7**, 6555–6562.
- M. P. Monopoli, D. Walczyk, A. Campbell, G. Elia, I. Lynch, F. Baldelli Bombelli and K. A. Dawson, *J. Am. Chem. Soc.*, 2011, **133**, 2525–2534.
- M. Ghavami, S. Saffar, B. A. Emamy, A. Peirovi, M. A. Shokrgozar, V. Serpooshan and M. Mahmoudi, *RSC Adv.*, 2013, **3**, 1119–1126.
- S. Laurent, C. Burtea, C. Thirifays, F. Rezaee and M. Mahmoudi, *J. Colloid Interface Sci.*, 2013, **392**, 431–445.
- G. P. Chrousos, *Nat. Rev. Endocrinol.*, 2009, **5**, 374–381.
- J. Brewer and O. Gurel, *Nanotech. L. & Bus.*, 2009, **6**, 45.
- D. Nedelkov, U. A. Kiernan, E. E. Niederkofler, K. A. Tubbs and R. W. Nelson, *Proc. Natl. Acad. Sci. U. S. A.*, 2005, **102**, 10852–10857.
- L. Kennedy, T. D. Mehl, E. Elder, M. Varghese and T. J. Merimee, *Diabetes*, 1982, **31**, 52–56.
- K. B. Pandey, N. Mishra and S. I. Rizvi, *Clin. Biochem.*, 2010, **43**, 508–511.
- G. Engström, P. Lind, B. Hedblad, L. Stavenow, L. Janzon and F. Lindgärde, *Circulation*, 2002, **105**, 2632–2637.
- Y.-P. Lin, C.-Y. Yang, C.-C. Liao, W.-C. Yu, C.-W. Chi and C.-H. Lin, *PLoS One*, 2012, **7**, e40232.
- H. B. Salt, *Ann. Rheumat. Dis.*, 1951, **10**, 46.
- S. Acharya and D. Dimichele, *Haemophilia*, 2008, **14**, 1151–1158.
- J. Joseph, C. Baker, M. Sprang and E. Bermes, *Ann. Clin. Lab. Sci.*, 1978, **8**, 130–141.
- K. S. Kelly-Spratt, S. J. Pitteri, K. E. Gurley, D. Liggitt, A. Chin, J. Kennedy, C.-H. Wong, Q. Zhang, T. B. Buson and H. Wang, *PLoS One*, 2011, **6**, e19721.
- H. Jin, B.-J. Webb-Robertson, E. S. Peterson, R. Tan, D. J. Bigelow, M. B. Scholand, J. R. Hoidal, J. G. Pounds and R. C. Zangar, *Environ. Health Perspect.*, 2011, **119**, 1314.
- J. E. Frank, *Am. Family Phys.*, 2005, **72**, 1277–1282.
- D. Bowen, *Mol. Pathol.*, 2002, **55**, 1–18.
- N. Chu, J. Chang and S. Shieh, *Int. J. Obesity*, 2003, **27**, 735–739.
- C. P. Riley, X. Zhang, H. Nakshatri, B. Schneider, F. E. Regnier, J. Adamec and C. Buck, *J. Trans. Med.*, 2011, **9**, 1–11.
- S. Alonso-Orgaz, L. Moreno, C. Macaya, L. Rico, P. J. Mateos-Cáceres, D. Sacristán, F. Pérez-Vizcaíno, A. Segura, J. Tamargo and A. López-Farré, *J. Proteome Res.*, 2006, **5**, 2301–2308.
- K. R. Viel, A. Ameri, T. C. Abshire, R. V. Iyer, R. G. Watts, C. Lutcher, C. Channell, S. A. Cole, K. M. Fernstrom and S. Nakaya, *N. Engl. J. Med.*, 2009, **360**, 1618–1627.
- D. Walczyk, F. B. Bombelli, M. P. Monopoli, I. Lynch and K. A. Dawson, *J. Am. Chem. Soc.*, 2010, **132**, 5761–5768.
- B. Furie and B. C. Furie, *Cell*, 1988, **53**, 505–518.
- L. K. Curtiss and J. L. Witztum, *Diabetes*, 1985, **34**, 452–461.

- 42 R. Bucala and A. Cerami, *Adv. Pharmacol.*, 1992, **23**, 222.
- 43 X.-Q. Zhang, X. Xu, N. Bertrand, E. Pridgen, A. Swami and O. C. Farokhzad, *Adv. Drug Delivery Rev.*, 2012, **64**, 1363–1384.
- 44 C. D. Walkey and W. C. Chan, *Chem. Soc. Rev.*, 2012, **41**, 2780–2799.
- 45 H. Mao, W. Chen, S. Laurent, C. Thirifays, C. Burtea, F. Rezaee and M. Mahmoudi, *Colloids Surf., B*, 2013, **109**, 212–218.
- 46 F. Rezaee, A. Maas, J. H. Verheijen and J. Koopman, *Thromb. Haemostasis*, 2001, **85**, 1025–1030.
- 47 F. Rezaee, M. J. Gijbels, E. H. Offerman, M. van der Linden, M. P. M. De Maat and J. H. Verheijen, *Thromb. Haemostasis*, 2002, **88**, 329–334.
- 48 A. A. Gulledge, F. Rezaee, J. H. Verheijen and S. T. Lord, *Thromb. Haemostasis*, 2001, **86**, 511–516.
- 49 M. Dashty, V. Akbarkhanzadeh, C. J. Zeebregts, C. A. Spek, E. J. Sijbrands, M. P. Peppelenbosch and F. Rezaee, *Sci. Rep.*, 2012, **2**, 787.
- 50 F. Rezaee, A. Maas, M. P. M. De Maat, J. H. Verheijen and J. Koopman, *Atherosclerosis*, 2002, **164**, 37–44.
- 51 J. Koopman, A. Maas, F. Rezaee, J. Havekes, J. Verheijen, M. Gijbels and F. Haverkate, *Fibrinolysis Proteolysis*, 1997, **11**, 19.
- 52 B. Badlou and F. Rezaee, *Blood Transfus.*, 2013, **11**, 315.
- 53 B. Badlou and F. Rezaee, *Blood Transfus.*, 2014, **12**(Suppl 1), S245.
- 54 F. Rezaee, M. J. Gijbels, E. H. Offerman and J. H. Verheijen, *Thromb. Haemostasis*, 2003, **90**, 710–716.
- 55 M. Mahmoudi, M. A. Shokrgozar and S. Behzadi, *Nano-scale*, 2013, **5**, 3240–3244.
- 56 A. Lensiak, F. Fenaroli, M. P. Monopoli, C. Åberg, K. A. Dawson and A. Salvati, *J. Am. Chem. Soc.*, 2012, **6**, 5845–5857.
- 57 N. L. Anderson and N. G. Anderson, *Mol. Cell Proteomics*, 2002, **1**, 845–867.
- 58 M. Dashty, M. Motazacker, H. Levels, M. Mahmoudi, M. Peppelenbosch and F. Rezaee, *Thromb. Haemostasis*, 2014, **111**, 518–530.
- 59 F. Rezaee, B. Casetta, J. Levels, D. Speijer and J. C. M. Meijers, *Proteomics*, 2006, **6**, 721–730.
- 60 K. C. S. Queiroz, R. A. Tio, C. Zeebregts, M. F. Bijlsma, F. Zijlstra, C. V. Ferreira, C. A. Spek, B. A. Badlou, M. I de Vries, M. P. Peppelenbosch and F. Rezaee, *J. Proteome Res.*, 2010, **9**, 6052–6059.
- 61 M. Dashti, W. Kulik, F. Hoek, E. Veerman, M. P. Peppelenbosch and F. Rezaee, *Sci. Rep.*, 2011, **1**, 139.
- 62 K. Meijer, M. de Vries, S. Al-Lahham, M. Bruinenberg, D. Weening, M. Dijkstra, N. Kloosterhuis, R. J. van der Leij, H. van der Want, B. J. Kroesen, R. Vonk and F. Rezaee, *Sci. Rep.*, 2011, **6**, e17154.