

Metallomics

Accepted Manuscript



This is an *Accepted Manuscript*, which has been through the Royal Society of Chemistry peer review process and has been accepted for publication.

Accepted Manuscripts are published online shortly after acceptance, before technical editing, formatting and proof reading. Using this free service, authors can make their results available to the community, in citable form, before we publish the edited article. We will replace this *Accepted Manuscript* with the edited and formatted *Advance Article* as soon as it is available.

You can find more information about *Accepted Manuscripts* in the [Information for Authors](#).

Please note that technical editing may introduce minor changes to the text and/or graphics, which may alter content. The journal's standard [Terms & Conditions](#) and the [Ethical guidelines](#) still apply. In no event shall the Royal Society of Chemistry be held responsible for any errors or omissions in this *Accepted Manuscript* or any consequences arising from the use of any information it contains.

An evolutionary perspective on zinc uptake by human fungal pathogens.

Abstract

The mammalian immune system has evolved sophisticated mechanisms to withhold essential micronutrients from invading pathogens. These processes, collectively known as *nutritional immunity* serve to limit microbial proliferation and bolster killing of the invader. Successful pathogens, therefore, have developed strategies to counteract nutritional immunity and acquire essential micronutrients in the restrictive environment of the infected host. Here I take advantage of the now large number of sequenced fungal genomes to explore the zinc acquisition strategies of human fungal pathogens and reflect on the evolutionary context of these uptake pathways.

Fungal pathogens of humans

Pathogenic fungi represent an enormous, but under-appreciated burden on human health, with invasive mycoses killing approximately one and a half million people each year [1]. The most common invasive fungal diseases of humans, and the dominant aetiological agents are: aspergillosis (*Aspergillus fumigatus*), candidiasis (*Candida albicans*), cryptococcosis (*Cryptococcus neoformans*), mucormycosis (*Rhizopus oryzae/delemar*), pneumocystis (*Pneumocystis jirovecii*), and the endemic mycoses histoplasmosis (*Histoplasma capsulatum*),

1
2
3
4
5
6
7
8
9
10
11
12
13
14
15
16
17
18
19
20
21
22
23
24
25
26
27
28
29
30
31
32
33
34
35
36
37
38
39
40
41
42
43
44
45
46
47
48
49
50
51
52
53
54
55
56
57
58
59
60

coccidioidomycosis (*Coccidioides immitis*), blastomycosis (*Blastomyces dermatitidis*),
paracoccidioidomycosis (*Paracoccidioides brasiliensis*) and penicilliosis (*Penicillium marneffei*)
[1].

These major fungal pathogens are highly diverse from both evolutionary and ecological perspectives [2]. Pathogenic species are distributed throughout the Fungal Kingdom and found in three of the major fungal phyla: the Mucormycotina (*Rhizopus*), the Basidiomycota (*Cryptococcus*) and the Ascomycota (all other major invasive pathogenic species). For orientation, **Figure 1A** shows a simplified overview of the Fungal Kingdom, with highlights of key events in the evolution of zinc acquisition pathways, which are discussed below. The Chytridiomycota represent the most basal fungal lineage shown in **Figure 1A**. The next to diverge, the Mucormycotina, encompasses several important human pathogenic species, including *Rhizopus oryzae/delemar*. Within the Basidiomycota, the only major invasive pathogen of humans are the *Cryptococcal* species, *C. neoformans* and *C. gattii*, however *C. neoformans* is a major killer, responsible for more than one million life-threatening infections per year, predominantly in HIV infected individuals [1]. Both *Rhizopus* and *Cryptococci* exist in environmental niches such as soil or bird guano. Finally, the Ascomycota encompasses the largest number of human pathogenic species. However, even within this phylum, the major pathogenic species are evolutionarily diverse. The moulds, such as *A. fumigatus*, and the endemic fungal pathogens (e.g. *C. immitis* and *H. capsulatum*) both inhabit environmental niches such as compost or soil and cause disease in susceptible individuals, typically upon inhalation of spores or hyphal fragments (hyphae are the long, thin filamentous structures formed by fungi). In contrast, *Candida* species, such as *C. albicans*, are not found in the

1
2
3 environment, but are commensal members of the normal mucosal microbial flora of humans.

4
5
6 *P. jirovecii* is also intimately associated with humans and cannot be cultured *ex vivo*.

7
8
9 Despite these evolutionary and ecological differences, these species are devastating human
10
11 pathogens and must therefore be able to effectively utilise zinc from their host environment
12
13 during infection [3].
14
15
16
17
18
19

20 ***Evolutionary dynamics of fungal zinc transporters***

21
22 Fungi import zinc via members of the ZIP (ZRT/IRT protein) family of zinc transporters.

23
24 Members of the ZIP family transport their substrate from the extracellular environment, or
25
26 from subcellular compartments, into the cytoplasm, and thus facilitate cellular utilisation of
27
28 zinc. To date, fungal ZIP family transporters have been functionally characterised in *C. albicans*,
29
30
31
32
33 *A. fumigatus* and the model yeast, *Saccharomyces cerevisiae* [3].
34

35
36 I will begin with a comparison of cellular zinc importers in these three characterised species.

37
38 *S. cerevisiae*, encodes two cellular zinc importers: the high affinity Zrt1 and the low affinity Zrt2
39
40 [4]. Like *S. cerevisiae*, the pathogenic yeast *C. albicans* also encodes two zinc importers (also
41
42 named Zrt1 and Zrt2); however, as illustrated in **Figure 1B**, whilst the *ZRT2* genes of both
43
44 species are homologous^(iv), *C. albicans* Zrt1 and *S. cerevisiae* Zrt1 are not directly related to each
45
46 other, aligning to distinct branches of the tree^{(i),(iii)}. Interestingly, the more distantly related
47
48 pathogenic mould, *A. fumigatus*, encodes homologues of *S. cerevisiae* Zrt1 (ZrfA), *C. albicans*
49
50 Zrt1 (ZrfC) and a third transporter (ZrfB), which shares similarity with Zrt2 from both yeast
51
52
53
54
55
56 species.
57
58
59
60

1
2
3 From a functional perspective, whilst the *S. cerevisiae* Zrt1 and Zrt2 are optimised for high- and
4
5 low- affinity zinc import, respectively, the *A. fumigatus* zinc importers are pH-specialists: AfZrfC
6
7 operates at neutral-alkaline pH, whilst ZrfA and ZrfB are required for zinc utilisation under acidic
8
9 pH [5].
10
11

12
13 Despite the closer evolutionary relationship between the yeasts *C. albicans* and *S. cerevisiae* [2],
14
15 *C. albicans* zinc import appears to be functionally analogous to the more distantly related
16
17 mould, *A. fumigatus*. For example, CaZrt1 (the AfZrfC orthologue) is upregulated and functional
18
19 under neutral-alkaline pH whilst CaZrt2 is expressed at acidic pH [6,7]. *A. fumigatus* and
20
21 *C. albicans* are not closely related and the two species inhabit very different ecological niches in
22
23 nature (soil/compost and human mucosal surfaces, respectively). Therefore, it would appear
24
25 that pH-dependent regulation of zinc import may be conserved in fungi, at least within the
26
27 major Ascomycota phylum (**Figure 1A**). There are several possible explanations for the pH-
28
29 optimisation of fungal zinc transporters. For example, zinc typically becomes much less soluble
30
31 and bioavailable as pH increases. Moreover, histidine residues of zinc transporters have been
32
33 implicated in metal binding and import [8]. As the protonation state of histidine (and thus its
34
35 chemical properties) is pH-dependent, it is possible that the arrangement of histidines has been
36
37 optimised for function at acidic and alkaline pH in fungal zinc importers.
38
39
40
41
42
43
44
45
46
47
48

49
50 In addition to these three characterised zinc transporters (ZrfA, B and C), *A. fumigatus* encodes
51
52 a further two putative cellular zinc importers. Orthologues of these alternative transporters
53
54 (**Figure 1B^(v)**) are not present in *Mucormycotina* or *Basidiomycete* species, or in the
55
56 *Saccharomycotina* (e.g. *Candida* and *Saccharomyces* species), but rather appear to have arisen
57
58
59
60

1
2
3 independently in the Pezizomycetes subphylum of filamentous fungi, which encompasses
4
5 numerous environmental species, including the *Aspergilli* and the endemic fungal pathogens,
6
7 *H. capsulatum* and *C. immitis*. An alignment of *A. fumigatus* zinc importer sequences is available
8
9 in Supplementary Figure S1.
10
11

12
13 *Rhizopus delemar*, which belongs to the basal Mucormycotina lineage, encodes three cell
14
15 surface zinc importers (**Figure 1B⁽ⁱⁱ⁾**). However, these three proteins are more closely related to
16
17 each other than to transporters in other species, suggesting that a single ancestral ZIP family
18
19 zinc importer has undergone sequential duplication in *Rhizopus* since divergence of the
20
21 Mucormycotina.
22
23
24

25
26 ZIP family gene expansion has also occurred in other fungal sub-phyla; let's consider the
27
28 medically-important *Candida* genus in more detail. Although most cases of candidiasis are
29
30 caused by *C. albicans*, several other *Candida* species are of medical relevance. The genus
31
32 *Candida* is actually polyphyletic. However, with the exception of *C. glabrata* and *C. krusei*, all
33
34 other medically relevant species belong to the "CUG clade", a monophyletic group of yeasts
35
36 which uniquely decode the CUG codon to serine instead of leucine [9].
37
38
39

40
41 **Figure 1C⁽ⁱⁱⁱ⁾** shows that all *Candida* species encode orthologues of *C. albicans* Zrt2. All CUG
42
43 species, with the exception of *C. lusitaniae*, encode orthologues of *C. albicans* Zrt1 (**Figure**
44
45 **1C^(iv)**), indicating that this single (sequenced) member of the CUG clade has lost this gene. On
46
47 the other hand, only *C. guilliermondii* encodes an orthologue of *S. cerevisiae* Zrt1 (**Figure 1C⁽ⁱ⁾**).
48
49 This is interesting because, barring horizontal gene transfer, it implies that the ScZrt1
50
51 orthologue was present in the *Candida* ancestor, but has only been maintained by this single
52
53 (sequenced) modern-day species. Moreover, because *C. guilliermondii* is unlikely to represent
54
55
56
57
58
59
60

1
2
3 the most basal *Candida* species [9], it would appear that the ScZrt1 orthologue has been lost at
4
5 least twice within the CUG clade.
6
7

8
9 In counterpoint to these gene loss events in the CUG clade, *Candida tropicalis*, *parapsilosis*,
10
11 *lusitaniae*, *D. hansenii* and *L. elongisporus* all possess additional zinc importers, which, whilst
12
13 most closely related to CaZrt2, form a distinct clade on the tree (**Figure 1C⁽ⁱⁱⁱ⁾**). As these
14
15 transporters are more closely related to *Candida* Zrt2, than to other classes of transporters, this
16
17 sub-set of Zrt2-relatives (**Figure 1C⁽ⁱⁱⁱ⁾**) must have arisen from gene duplication (of *ZRT2*)
18
19 following divergence of the CUG clade. Since then, this sub-family has been independently lost
20
21 by both *C. albicans* and *C. guilliermondii*. This conclusion can be drawn because *C. albicans*
22
23 (together with *C. tropicalis* and *C. parapsilosis*) and *C. guilliermondii* (together with *D. hansenii*)
24
25 belong to distinct sub-clades of the CUG clade [9].
26
27
28
29
30

31
32 As well as being twice lost, this sub-family has also undergone recent expansion in *C. tropicalis*
33
34 and *C. parapsilosis*. Indeed, in these two species, this recent expansion appears to have been
35
36 via independent tandem gene duplication, as the encoding genes are syntenically arranged in
37
38 the genome of *C. tropicalis* and *C. parapsilosis*. Therefore, even amongst these seven species of
39
40 the CUG clade, the ZIP family of zinc importers has experienced a series of expansion and
41
42 contraction events.
43
44
45
46

47
48 Outside the CUG clade, perhaps the most striking example of gene loss is for *P. jirovecii*, which
49
50 encodes only a single ZIP family zinc importer (**Figure 1B**). This fungus is obligately associated
51
52 with its human host and cannot be cultured *in vitro*. Therefore reduction in zinc transporter
53
54 copy number may reflect an adaptation to the specific environment of the human lung. In this
55
56
57
58
59
60

1
2
3 context, it is worthwhile noting that *Malassezia globosa*, which also intimately associates with
4
5 its human host, also encodes only one predicted zinc importer (not shown).
6
7

8
9 The major Basidiomycete pathogen of humans, *C. neoformans*, conservatively possesses only
10
11 two zinc importers. One is related to the Ascomycete neutral/alkaline pH-optimised
12
13 transporters (e.g. *C. albicans* Zrt1 and *A. fumigatus* ZrfC), whilst the second (CNAG_00895)
14
15 clusters with the Zrt2 importers (**Figure 1B^{(i),(iv)}**). This suggest that the ancestor of the two
16
17 major fungal phyla (the Basidiomycota and the Ascomycota - **Figure 1A**) possessed (at least)
18
19 two zinc importers and that these have been maintained by many modern Basidiomycete and
20
21 Ascomycete species.
22
23
24
25
26
27
28

29
30 In the above section I have examined cell surface zinc importers; however, in addition to zinc
31
32 acquisition from the environment, fungi can utilise zinc from intracellular storage
33
34 compartments. The most notable of these “zinc sinks” is the fungal vacuole, an organelle, which
35
36 in *S. cerevisiae*, can hold up to 7×10^8 ions (100 mM) of zinc [4]. This extraordinary capacity for
37
38 storage can allow a single mother cell to generate up to 200 progenitor cells without utilisation
39
40 of exogenous zinc. Yeast cells shuttle zinc from the vacuole for use in the cytoplasm via the
41
42 vacuolar-associated ZIP transporter, Zrt3 [4]. Interestingly, within the Fungal Kingdom, only
43
44 species from the Basidiomycota appear to lack an orthologue of *ZRT3*. This is a significant
45
46 observation because the Mucormycotina (a more basal lineage than the Basidiomycota) do
47
48 possess *ZRT3* orthologues, indicating that that the entire Basidiomycota lineage (or at least all
49
50 Basidiomycetes which have been sequenced so far) may have lost the vacuolar zinc exporter.
51
52
53
54
55
56
57
58
59
60

1
2
3 Therefore, the molecular mechanism employed by Basidiomycota for zinc shuttling out of the
4
5 vacuole remains unknown.
6
7
8
9

10 11 ***Conserved transcriptional control of zinc uptake in the Fungi*** 12 13

14
15 In spite of the dramatic mutability in transporter copy number discussed above, the
16
17 transcriptional network governing the expression of zinc importers appears to be highly
18
19 conserved in fungi. The transcription factor, Zap1 (Zinc-responsive Activator Protein), is the
20
21 master regulator of zinc uptake and homeostasis [4]. Since its discovery in *S. cerevisiae*, Zap1
22
23 orthologues have been characterised in the human fungal pathogens, *C. albicans*, *A. fumigatus*
24
25 and *Cryptococcus gattii* [10-12]. In all three of these distantly related species, Zap1 (also known
26
27 as Csr1 in *C. albicans* and ZafA in *A. fumigatus*) positively regulates the expression of the cell
28
29 surface zinc importers, facilitating growth under zinc-limiting conditions. Significantly, mutant
30
31 strains of *C. albicans*, *A. fumigatus* and *C. gattii* lacking their respective *ZAP1* orthologues have
32
33 all been tested for virulence in relevant animal infection models and all three mutants exhibit
34
35 reduced virulence in comparison to wild type fungi. These three independent studies, spanning
36
37 at least half a billion years of fungal evolution, underline the essentiality of coordinated zinc
38
39 assimilation by pathogens during infection.
40
41
42
43
44
45
46
47
48
49

50 51 ***The dynamic history of the fungal zincophore*** 52 53

54
55 In addition to transporter mediated uptake, *C. albicans* has also been shown to scavenge zinc
56
57 via a secreted “zincophore” [7]. *C. albicans* secretes a zinc binding protein (Pra1) which can
58
59
60

1
2
3 sequester zinc and subsequently reassociate with the fungal cell. *C. albicans* was found to
4
5 sequester zinc from host cells; whilst deletion of *PRA1* blocked this zinc scavenging. *PRA1* was
6
7 also found to be essential for growth on and damage of host cells only in the absence of
8
9 exogenous zinc, and recombinant Pra1 exhibited zinc-binding activity *in vitro*. Interestingly,
10
11 reassociation of soluble Pra1 to the fungal cell appears to be mediated by the cell surface zinc
12
13 transporter (Zrt1), because deletion of *ZRT1* precluded cellular reassociation of soluble Pra1.
14
15
16 The two genes of this system, *PRA1* and *ZRT1*, are syntenic - encoded at the same genetic locus
17
18 in *C. albicans* with a shared promoter. In line with its function in zinc scavenging from host cells,
19
20 this locus is positively regulated by zinc starvation and by physiological (neutral/alkaline) pH
21
22 [6,7].
23
24
25
26
27

28
29 Although zincophore activity has, as yet, only been demonstrated for *C. albicans*, the
30
31 orthologous genes in *A. fumigatus* are also required for growth under zinc-depletion at neutral-
32
33 alkaline pH [13] (Supplementary Figure S2 displays an alignment of *C. albicans* Pra1 and it's
34
35 *A. fumigatus* orthologue, AspF2). As *A. fumigatus* and *C. albicans* are not closely related species,
36
37 this would suggest a conserved role for *PRA1* orthologues in zinc scavenging, at least within the
38
39 Ascomycota.
40
41
42

43
44 *A. fumigatus* *aspF2* (the orthologue of *C. albicans* *PRA1*) also shares its promoter with *zrfC* (the
45
46 orthologue of *C. albicans* *ZRT1*), and deeper phylogenetic analysis revealed that this syntenic
47
48 arrangement of secreted zinc binding protein- and zinc transporter- encoding genes is
49
50 conserved in numerous fungal species [7]. Indeed conserved synteny is present in both
51
52 Ascomycete and Basidiomycete species - the two major fungal phyla, which diverged at least
53
54 half a billion years ago. Although a *PRA1* orthologue was identified in the Chytrid, *S. punctatus*,
55
56
57
58
59
60

1
2
3 this gene does not share synteny with a *ZRT1* orthologue. Therefore, whilst the *PRA1* ancestor
4
5 gene arose in an ancestral fungal lineage (*PRA1* orthologues are not found outside the Fungal
6
7 Kingdom), synteny with the *ZRT1* ancestor probably occurred after divergence of the
8
9 Chytridiomycota from higher phyla (**Figure 1A**). However, it should be noted that only a small
10
11 number of Chytridiomycota species have been sequenced, and the *PRA1* orthologue was only
12
13 identified in one (*S. punctatus*). Although present in the basal Chytrid lineage, *PRA1* appears to
14
15 have undergone wholesale loss from the Mucormycotina phylum, as the orthologue is not
16
17 present in any sequenced *Mucor* species. However, again, it should be noted that drawing firm
18
19 conclusions on gene loss and maintenance in the Chytridiomycota and Mucormycotina is
20
21 problematic due to the relative scarcity of sequenced species.
22
23
24
25
26
27

28
29 On the other hand, a large number of genome sequences are available for fungi of the
30
31 Basidiomycota and the Ascomycota. This has revealed perhaps an even more interesting
32
33 phenomenon: *PRA1* has been lost a remarkable number of times throughout fungal evolution.
34
35 Within the *Candida* CUG clade alone, *PRA1* is encoded by *C. albicans*, *C. dubliniensis*,
36
37 *C. tropicalis*, *C. guilliermondii* and *D. hansenii* and has been lost by *C. lusitaniae*, *C. orthopsilosis*,
38
39 *C. parapsilosis* and *L. elongisporus*. This pattern is noteworthy, because it means that *PRA1* has
40
41 been maintained and lost by species in both the haploid (e.g. *C. guilliermondii* and *C. lusitaniae*)
42
43 and the diploid (e.g. *C. albicans* and *C. parapsilosis*) sub-clades of the CUG clade [9], and
44
45 indicates that Pra1 is under dynamic selective pressure.
46
47
48
49
50

51
52 Outside the CUG clade, Pra1 has been lost independently from multiple fungal lineages,
53
54 including the major human pathogens *C. neoformans*, *H. capsulatum* and *C. glabrata*. Is there
55
56 any relationship between zincophore status and fungal physiology? In *C. albicans* and
57
58
59
60

1
2
3 *A. fumigatus* (the two species in which Pra1/AspF2 has been characterised), this system is
4
5 involved in zinc assimilation at neutral-alkaline pH and tightly repressed under acidic conditions.
6
7
8 It is therefore conceivable that, in species which inhabit acidic ecological niches, Pra1 is not
9
10 under positive selective pressure.

11
12
13 *C. immitis* and *H. capsulatum* are both endemic fungal pathogens of North America which have
14
15 maintained and lost the *PRA1* orthologue, respectively. Although these two species are quite
16
17 closely related, they exhibit discrete geographical localisation. *C. immitis* is endemic to the
18
19 south-western United States, whilst *H. capsulatum* is found in central eastern areas. Direct
20
21 comparison of the soil pH with endemic areas shows that *C. immitis* is limited to regions of
22
23 neutral-alkaline soil (**Figure 2**). This correlation is most clearly evident in California, where a
24
25 finger-like projection of *C. immitis* endemicity stretches up the central region of this state,
26
27 enclosed on both sides by areas of acidic soil (**Figure 2**).

28
29 In contrast, regions of *H. capsulatum* endemicity map clearly with areas of acidic soil. In
30
31 addition to soil, *H. capsulatum* is frequently associated with bird guano, which is also an acidic
32
33 environment. Therefore, at least for these two endemic species, their ecological pH correlates
34
35 with the presence or absence of the zincophore system. Obviously, pH is only one
36
37 environmental factor among many which have driven the speciation of *C. immitis* and
38
39 *H. capsulatum*; however, persistent occupation of acidic ecological niches may have driven the
40
41 loss of Pra1, as a neutral-alkaline pH-adapted zincophore would not be under selective
42
43 evolutionary pressure in such environments. This is supported by the fact that, in the distantly
44
45 related species, *C. neoformans*, which inhabits similar environmental niches as *H. capsulatum*
46
47 (e.g. bird guano), the Pra1 orthologue has also been lost [7].
48
49
50
51
52
53
54
55
56
57
58
59
60

1
2
3 Zincophore loss may have more far-reaching implications than an evolutionary adaptation to
4
5
6 acidic environments: in addition to its function in zinc acquisition, the secreted factor
7
8 (Pra1/AspF2) is also highly immunogenic in the context of human infections. The *Aspergillus*
9
10 orthologue, AspF2, cross-reacts with the sera of over 80% of individuals suffering from
11
12 aspergilloma or allergic bronchopulmonary aspergillosis and serves as a major allergen in
13
14 humans. Moreover, Pra1 from *C. albicans* has several immune-modulatory roles [14]. In
15
16 addition to a well-established role in modulating the human complement system, CaPra1 serves
17
18 as a major ligand for the neutrophil $\alpha_M\beta_2$ receptor, and *C. albicans* cells can be killed by
19
20 neutrophils via Pra1-mediated recognition. Indeed, genetic deletion of *PRA1* in *C. albicans*
21
22 renders the fungus more resistant to neutrophil killing both *in vitro* and *in vivo* [15].
23
24
25
26
27
28

29 This raises the question of whether wild type fungal pathogen zincophore status impacts
30
31 pathogenesis? As noted above, Pra1 serves to recruit neutrophils during systemic candidiasis. In
32
33 this context, it is noteworthy that both characterised zincophore⁺ species, *C. albicans* and
34
35 *A. fumigatus*, exhibit aggressive invasive infections associated with a high degree of
36
37 inflammation. In contrast, *C. neoformans*, *H. capsulatum* and *C. glabrata*, three distantly related
38
39 species, each of which has independently lost the zincophore gene, are all facultative
40
41 intracellular parasites of macrophages. Notably, the macrophage phagolysosome is an acidic
42
43 environment. It is conceivable that the long-term ecological adaptation of species such as
44
45 *C. neoformans* and *H. capsulatum* to environments of acidic soil and bird guano has prepared
46
47 these fungi for life within the macrophage phagosome. Finally, it is tempting to speculate that,
48
49 like the genetically manipulated *C. albicans* *PRA1*-deletion strain [15], these natural “*pra1* Δ
50
51 mutants” may benefit by avoiding aggressive immune responses during human infections.
52
53
54
55
56
57
58
59
60

1
2
3 However, future studies, perhaps utilising ectopic zincophore expression in these natural *pra1Δ*
4 null mutants, will be required to confirm this.
5
6

7
8 Nevertheless, based on the observations made in *C. albicans* and *A. fumigatus*, it is evident that
9 our immune system has learned to recognise this fungal zinc uptake system. This seems to be a
10 recurrent immunological theme, as several bacterial zinc uptake systems are effectively
11 recognised by our immune systems and are now being considered as vaccine targets - e.g. [16].
12
13

14 From the perspective of nutritional immunity, this is perhaps not surprising: during infection,
15 zinc is a generally limiting factor, and thus, in this setting, pathogens *must* express high affinity
16 uptake systems in order to proliferate. Indeed, it is possible that our immune system has
17 developed this positive feedback loop for the recognition and killing of microbial invaders [17].
18
19

20 By creating a circuit whereby zinc deficiency is enforced via nutritional immunity and microbial
21 high-affinity zinc uptake systems are targeted, our immune systems force the invader to reveal
22 itself.
23
24
25
26
27
28
29
30
31
32
33
34
35
36
37
38
39

40 In summary, zinc uptake pathways have experienced a dynamic evolutionary history in the
41 Fungal Kingdom. The environmental Ascomycete species, *A. fumigatus*, *H. capsulatum* and
42 *C. immitis* (along with other members of the Pezizomycetes) have experienced expansion in zinc
43 importer copy number, resulting in an entirely new sub family (**Figure 1B^(v)**). The CUG clade
44 have also generated new zinc importers, most likely via the duplication of Zrt2 (**Figure 1C⁽ⁱⁱ⁾**) and
45 these have been subsequently lost by important pathogenic species, including *C. albicans*. The
46 basal Mucormycotina, *R. delemar* has generated three importers, again via lineage-specific
47 duplication (**Figure 1B⁽ⁱⁱⁱ⁾**). Finally, the obligately host-associated *P. jirovecii* has maintained only
48
49
50
51
52
53
54
55
56
57
58
59
60

1
2
3 one zinc importer. Paralleling zinc transporter family expansion and retraction, the zincophore
4
5 encoding gene (*PRA1*) has experienced a staggering number of independent losses from
6
7 modern fungal genomes. Together, these events have coincided with the emergence of a
8
9 diverse group of modern-day pathogenic species (**Figure 1A**), capable of assimilating sufficient
10
11 zinc from their host environment to proliferate and cause disease. It is becoming increasingly
12
13 apparent that efficient zinc acquisition represents a critical component of microbial
14
15 pathogenicity. This is because the mammalian host actively attempts to withhold essential trace
16
17 nutrients (such as zinc) [18]. Therefore, the challenge now will be to understand the
18
19 mechanisms of fungal metal acquisition from host tissues, and how these processes contribute
20
21 to the pathogenesis of the devastating diseases caused by fungi.
22
23
24
25
26
27
28
29
30
31

32 **Acknowledgements.** DW is supported by a Sir Henry Dale Fellowship jointly funded by the
33
34 Wellcome Trust and the Royal Society (Grant Number 102549/Z/13/Z).
35
36
37
38
39

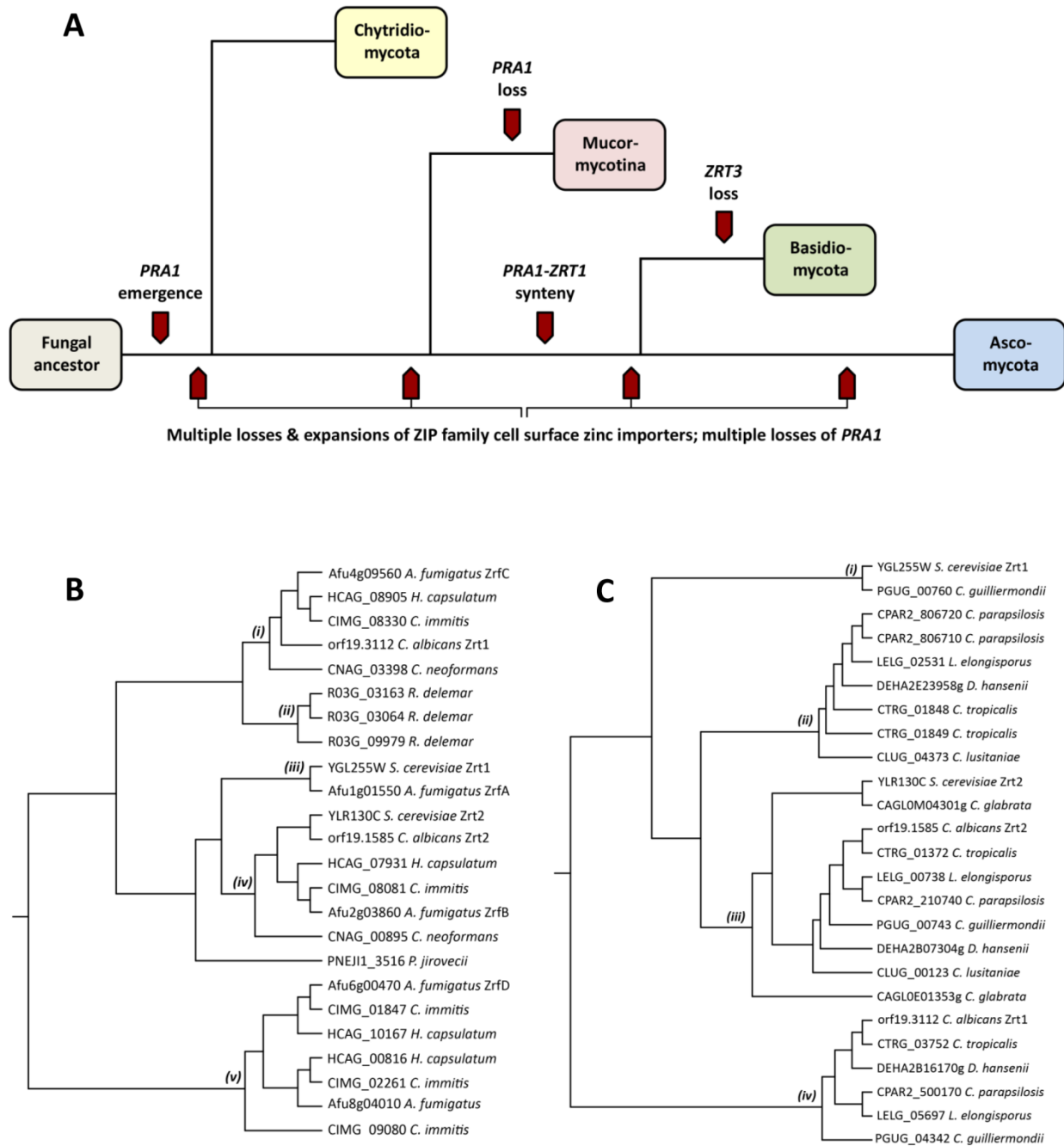
40 **Figure Legends**

41
42
43 **Figure 1. Key events in the evolution of fungal zinc uptake pathways and phylogeny of fungal**
44
45 **zinc importers.** Overview of the relationship of the four major phyla of the Kingdom Fungi with
46
47 key events related to zinc uptake highlighted (**A**). Phylogenetic trees of the predicted cell
48
49 surface zinc importers of the major human fungal pathogens of humans (**B**) and those of the
50
51 genus *Candida* (**C**). In both cases, *S. cerevisiae* is included for comparison. Predicted cell surface
52
53 zinc importer amino acid sequences were downloaded from FungiDB (www.fungidb.org), the
54
55
56
57
58
59
60

1
2
3 Broad Institute (www.broadinstitute.org), the *Candida* genome database
4
5
6 (www.candidagenome.org) and the *Aspergillus* genome database (www.aspgd.org) and aligned
7
8
9 using CLUSTALW (www.genome.jp).

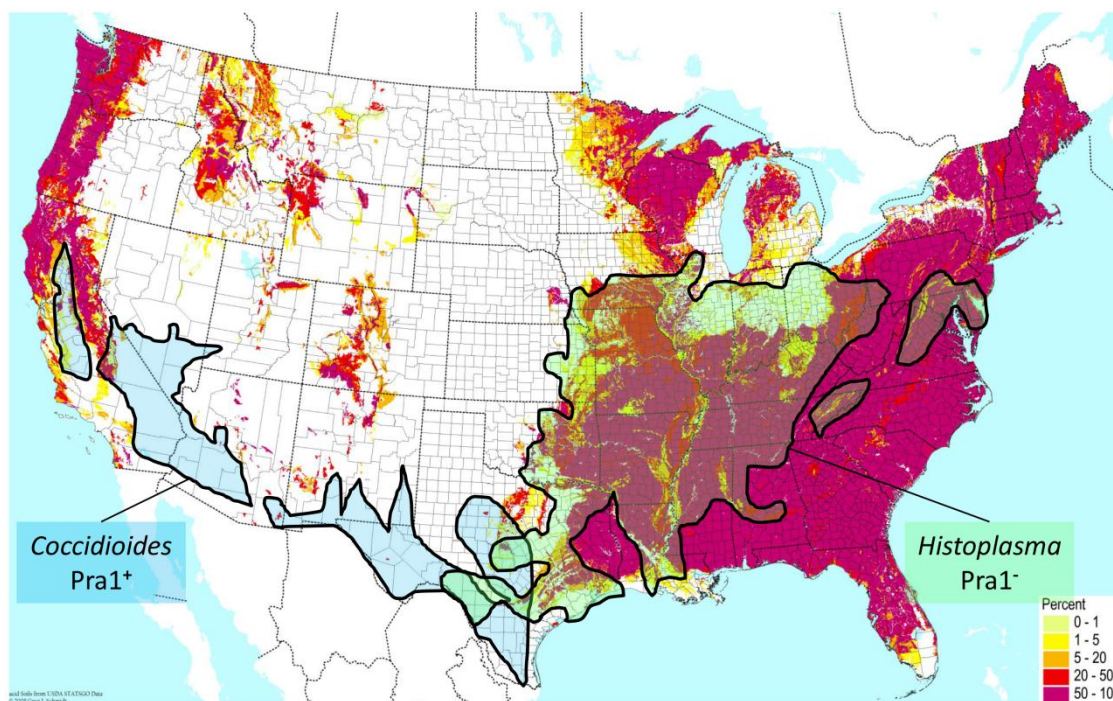
10
11 **Figure 2. Distribution of endemic fungal pathogens relative to zincophore status and**
12 **environmental pH.** Map of soil acidity in the contiguous USA is from the BONAP website
13
14 (<http://www.bonap.org/>), reproduced with permission from Greg Schmidt, 2008, and includes
15
16
17 data from the USDA Natural Resource Conservation Service. The pink colouring on the map
18
19 indicates areas with high percentages (50-100%) of acidic soil (pH <6). Superimposed is
20
21
22
23
24
25
26
27
28
29
30
31
32
33
34
35
36
37
38
39
40
41
42
43
44
45
46
47
48
49
50
51
52
53
54
55
56
57
58
59
60
60
endemicity data for *C. immitis* and *H. capsulatum* from reference [19].

Figure 1.



Metallomics Accepted Manuscript

Figure 2.



References.

1. Brown GD, Denning DW, Gow NA, Levitz SM, Netea MG, White TC (2012) Hidden killers: human fungal infections. *Sci Transl Med* 4: 165rv113.
2. Fitzpatrick DA, Logue ME, Stajich JE, Butler G (2006) A fungal phylogeny based on 42 complete genomes derived from supertree and combined gene analysis. *BMC Evol Biol* 6: 99.
3. Wilson D, Citiulo F, Hube B (2012) Zinc exploitation by pathogenic fungi. *PLoS Pathog* 8: e1003034.
4. Eide DJ (2006) Zinc transporters and the cellular trafficking of zinc. *Biochim Biophys Acta* 1763: 711-722.
5. Amich J, Calera JA (2014) Zinc Acquisition: A Key Aspect in *Aspergillus fumigatus* Virulence. *Mycopathologia* 178: 379-385.
6. Bensen ES, Martin SJ, Li M, Berman J, Davis DA (2004) Transcriptional profiling in *Candida albicans* reveals new adaptive responses to extracellular pH and functions for Rim101p. *Mol Microbiol* 54: 1335-1351.
7. Citiulo F, Jacobsen ID, Miramon P, Schild L, Brunke S, Zipfel P, Brock M, Hube B, Wilson D (2012) *Candida albicans* scavenges host zinc via Pra1 during endothelial invasion. *PLoS Pathog* 8: e1002777.

- 1
 - 2
 - 3
 - 4
 - 5
 - 6
 - 7
 - 8
 - 9
 - 10
 - 11
 - 12
 - 13
 - 14
 - 15
 - 16
 - 17
 - 18
 - 19
 - 20
 - 21
 - 22
 - 23
 - 24
 - 25
 - 26
 - 27
 - 28
 - 29
 - 30
 - 31
 - 32
 - 33
 - 34
 - 35
 - 36
 - 37
 - 38
 - 39
 - 40
 - 41
 - 42
 - 43
 - 44
 - 45
 - 46
 - 47
 - 48
 - 49
 - 50
 - 51
 - 52
 - 53
 - 54
 - 55
 - 56
 - 57
 - 58
 - 59
 - 60
8. Milon B, Wu Q, Zou J, Costello LC, Franklin RB (2006) Histidine residues in the region between transmembrane domains III and IV of hZip1 are required for zinc transport across the plasma membrane in PC-3 cells. *Biochim Biophys Acta* 1758: 1696-1701.
9. Butler G, Rasmussen MD, Lin MF, Santos MA, Sakthikumar S, Munro CA, Rheinbay E, Grabherr M, Forche A, Reedy JL, Agrafioti I, Arnaud MB, Bates S, Brown AJ, Brunke S, Costanzo MC, Fitzpatrick DA, de Groot PW, Harris D, Hoyer LL, Hube B, Klis FM, Kodira C, Lennard N, Logue ME, Martin R, Neiman AM, Nikolaou E, Quail MA, Quinn J, Santos MC, Schmitzberger FF, Sherlock G, Shah P, Silverstein KA, Skrzypek MS, Soll D, Staggs R, Stansfield I, Stumpf MP, Sudbery PE, Srikantha T, Zeng Q, Berman J, Berriman M, Heitman J, Gow NA, Lorenz MC, Birren BW, Kellis M, Cuomo CA (2009) Evolution of pathogenicity and sexual reproduction in eight *Candida* genomes. *Nature* 459: 657-662.
10. Moreno MA, Ibrahim-Granet O, Vicente-franqueira R, Amich J, Ave P, Leal F, Latge JP, Calera JA (2007) The regulation of zinc homeostasis by the ZafA transcriptional activator is essential for *Aspergillus fumigatus* virulence. *Mol Microbiol* 64: 1182-1197.
11. Nobile CJ, Nett JE, Hernday AD, Homann OR, Deneault JS, Nantel A, Andes DR, Johnson AD, Mitchell AP (2009) Biofilm matrix regulation by *Candida albicans* Zap1. *PLoS Biol* 7: e1000133.
12. Schneider Rde O, Fogaca Nde S, Kmetzsch L, Schrank A, Vainstein MH, Staats CC (2012) Zap1 regulates zinc homeostasis and modulates virulence in *Cryptococcus gattii*. *PLoS One* 7: e43773.
13. Amich J, Vicente-franqueira R, Leal F, Calera JA (2010) *Aspergillus fumigatus* survival in alkaline and extreme zinc-limiting environments relies on the induction of a zinc homeostasis system encoded by the *zrfC* and *aspf2* genes. *Eukaryot Cell* 9: 424-437.
14. Zipfel PF, Skerka C, Kupka D, Luo S (2011) Immune escape of the human facultative pathogenic yeast *Candida albicans*: the many faces of the *Candida* Pra1 protein. *Int J Med Microbiol* 301: 423-430.
15. Soloviev DA, Fonzi WA, Sentandreu R, Pluskota E, Forsyth CB, Yadav S, Plow EF (2007) Identification of pH-regulated antigen 1 released from *Candida albicans* as the major ligand for leukocyte integrin alphaMbeta2. *J Immunol* 178: 2038-2046.
16. Stork M, Bos MP, Jongerius I, de Kok N, Schilders I, Weynants VE, Poolman JT, Tommassen J (2010) An outer membrane receptor of *Neisseria meningitidis* involved in zinc acquisition with vaccine potential. *PLoS Pathog* 6: e1000969.
17. LeGrand EK, Alcock J (2012) Turning up the heat: immune brinkmanship in the acute-phase response. *Q Rev Biol* 87: 3-18.
18. Subramanian Vignesh K, Landero Figueroa JA, Porollo A, Caruso JA, Deepe GS, Jr. (2013) Zinc sequestration: arming phagocyte defense against fungal attack. *PLoS Pathog* 9: e1003815.
19. Meyerson S, Harpole DA, in *General Thoracic Surgery*, ed. Shields TW, LoCicero J, Reed CE, Feins RH, 7th edn., 2011, ch. 92, pp. 1159-1178.