

Cite this: *J. Mater. Chem. B*, 2020,  
8, 3566

# Functionalized tungsten disulfide nanotubes for dopamine and catechol detection in a tyrosinase-based amperometric biosensor design

Quentin Palomar,<sup>a</sup> Chantal Gondran,<sup>\*a</sup> Jean-Paul Lellouche,<sup>b</sup>  
Serge Cosnier<sup>a</sup> and Michael Holzinger<sup>a</sup>

WS<sub>2</sub> nanotubes functionalized with carboxylic acid functions (WS<sub>2</sub>-COOH) were used for improved immobilization of the enzyme tyrosinase in order to form an electrochemical biosensor towards catechol and dopamine. The nanotubes were deposited on glassy carbon electrodes using a dispersion-filtration-transfer procedure to assure the reproducibility of the deposits. After the electrochemical and morphological characterization of these WS<sub>2</sub>-COOH nanotube deposits, the formed biosensors showed very satisfying performance towards catechol detection with a linear range of 0.6–70 μmol L<sup>-1</sup> and a sensitivity of 10.7 ± 0.2 mA L mol<sup>-1</sup>. The apparent Michaelis Menten constant of this system is slightly lower than the K<sub>M</sub> value of tyrosinase in solution, reflecting an excellent accessibility of the active site of the enzyme combined with a good mass transport of the target molecule through the deposit. For dopamine detection, we observed an accumulation of this substrate due to electrostatic interactions between the amine function of dopamine and the carboxylic acid groups of the nanotubes. This led to improved signal capture at low dopamine concentrations. With linear ranges of 0.5–10 μmol L<sup>-1</sup> and 10–40 μmol L<sup>-1</sup>, and respective sensitivities of 6.2 ± 0.7 mA L mol<sup>-1</sup> and 3.4 ± 0.4 mA L mol<sup>-1</sup>, the overall sensor performance is within the average of comparable results using carbon nanotubes. Nonetheless, the simplified handling of these nanotubes and their reduced environmental impact make these WS<sub>2</sub>-COOH nanotubes a promising nanomaterial for biosensing applications.

Received 5th September 2019,  
Accepted 21st November 2019

DOI: 10.1039/c9tb01926j

rsc.li/materials-b

## Introduction

Nanomaterials are nowadays essential tools in biosensor research not only due to the enhanced surface area but also due to a variety of particular phenomena related to their nanosized structures.<sup>1–3</sup> Within the vast availability of different nanomaterials, carbon nanotubes<sup>4,5</sup> and later graphene<sup>6,7</sup> became prominent candidates for biosensing applications because of their beneficial electronic and optical properties for enhanced signal capture of the biological recognition event. More recently, 2D transition metal dichalcogenides such as WS<sub>2</sub> and MoS<sub>2</sub> showed promising properties in biosensor designs,<sup>8</sup> which are principally based on the layered form of these metal dichalcogenides. The detection of the target is commonly transduced *via* optical detection<sup>9</sup> or in a field effect transistor design,<sup>10</sup> but such dichalcogenides have also shown their appropriateness in electrochemical biosensor setups.<sup>11</sup> The synthesis of WS<sub>2</sub> and MoS<sub>2</sub> can also form differently shaped materials like nanotubes

or nanorods<sup>12,13</sup> with improved surface activities and might be more appropriate for biosensor applications.<sup>14</sup> Raichman *et al.* reported an efficient functionalization method for tungsten disulfide inorganic nanotubes using a highly electrophilic acidic Vilsmeier–Haack reagent for homogeneous covalent carboxylation of the WS<sub>2</sub> walls. The carboxylic acid functions lead to improved dispersions in aqueous media and represent efficient anchor groups for the immobilization of bioreceptor units.<sup>15,16</sup> Furthermore, the clearly reduced cytotoxicity of such transition-metal dichalcogenides compared to carbon nanomaterials represents an advantage when combined with biological entities.<sup>17,18</sup> In this work, we used such carboxylated WS<sub>2</sub> (WS<sub>2</sub>-COOH) nanotubes for the immobilization of the tyrosinase enzyme as a protein model and evaluated this sensor for the detection of catechol and dopamine.

Catechol (CA) is a toxic compound<sup>19</sup> but that serves as a starting material for the synthesis of many different chemicals and therein a wide variety of pesticides.<sup>20</sup> This compound therefore contributes to the pollution of soils and groundwater. It further has a low degradation rate that worsens its environmental impact.

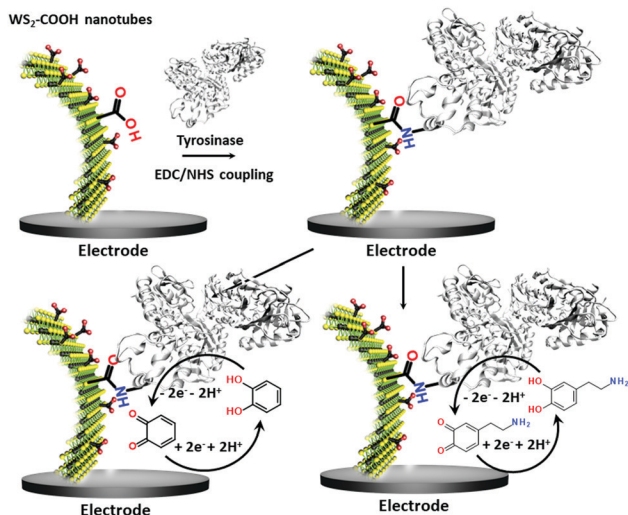
Dopamine (DA) is a neurotransmitter and plays an important role as an extracellular chemical messenger in the cardiovascular, renal, hormonal and nervous systems. It is at the centre of cell

<sup>a</sup> Univ. Grenoble Alpes, CNRS, DCM UMR 5250, F 38000, Grenoble, France.

E-mail: chantal.gondran@univ-grenoble-alpes.fr,

michael.holzinger@univ-grenoble-alpes.fr

<sup>b</sup> Bar Ilan University, Ramat Gan, 5290002, Israel



**Scheme 1** Sketch of the functionalization of WS<sub>2</sub> modified glassy carbon electrodes with the enzyme tyrosinase via a standard EDC/NHS coupling reaction. These modified bioelectrodes served in the detection of catechol (bottom left) and dopamine (bottom right) at  $-0.2$  V vs. Ag<sup>+</sup>/Ag.

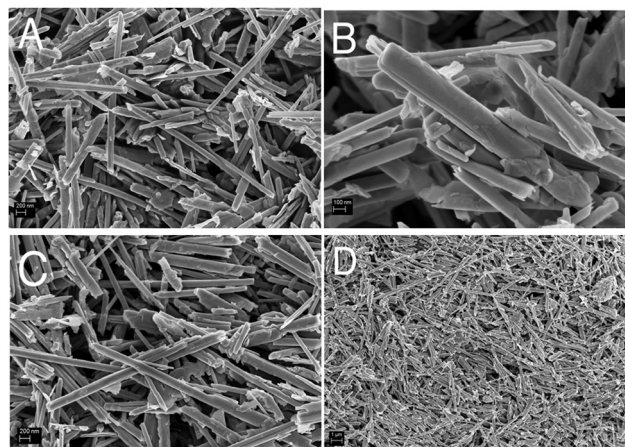
signal transmission and therefore has a strong influence on human behaviour. Abnormal concentrations of DA in biological fluids are an indicator of several diseases such as schizophrenia, Huntington's disease or Parkinson's disease.<sup>21,22</sup> An efficient filtration and transfer technique<sup>23</sup> to form identical WS<sub>2</sub>-COOH nanotube deposits was adjusted for the electro-enzymatic detection of these two compounds. As illustrated in Scheme 1, the carboxylic acid groups served as an anchor for the immobilization of tyrosinase, an enzyme that oxidises specifically catechol and dopamine to its respective quinones. These quinones are then monitored at cathodic potentials *via* electrochemical reduction to the initial hydroquinones. The WS<sub>2</sub>-COOH nanotubes serve here principally as porous nanostructures on the working electrodes to immobilize and enhance the amount of tyrosinase enzymes.

## Results and discussion

### Characterization of the WS<sub>2</sub>-COOH nanotubes

Before the construction of the biosensor, the morphology and electrochemical behaviour of the WS<sub>2</sub>-COOH nanotubes were characterized. Fig. 1 shows the scanning electron microscopy images of these as synthesized nanotubes (Fig. 1A and B) and after film formation and transfer onto a GCE (Fig. 1C and D). At the same magnification (Fig. 1A and C), the as synthesized WS<sub>2</sub>-COOH nanotubes and the formed films do not show significant differences and demonstrate that the stirring-dispersion, filtration and transfer procedures do not affect these nanotubes.

The length of these nanotubes comprises between 2 and 10 microns for a diameter of about 100 to 200 nm. It also seems that the WS<sub>2</sub>-COOH nanotubes are formed of rolled-up WS<sub>2</sub> sheets. This lamellar structure is particularly visible at higher magnification, as shown in Fig. 1B. Fig. 1D shows the deposits at lower magnification and reveals an assembly of randomly oriented nanotubes forming a highly porous structure.



**Fig. 1** SEM images of (A and B) as synthesized WS<sub>2</sub>-COOH powder at magnifications of (A)  $\times 20\,000$  and (B)  $\times 50\,000$ . SEM images of (C and D) thin films of WS<sub>2</sub>-COOH nanotubes at magnifications of (C)  $\times 20\,000$  and (D)  $\times 5000$ .

To determine the thickness and roughness of the formed WS<sub>2</sub>-COOH films, a confocal laser microscope was used. This technique allows mapping the height and the morphology of the films by profilometry. Fig. 2 shows images taken at the boundary between the gold substrate and the WS<sub>2</sub>-COOH films.

A thickness of  $6.2\ \mu\text{m}$  was determined for a roughness of  $\pm 0.6\ \mu\text{m}$ . This relatively high roughness, 10% of the total thickness, can be explained by the highly porous nature of the formed films. Finally, it appears that thickness and roughness values for 3 different films exhibit a relative standard deviation of 6% and 3.6%, respectively, highlighting the reproducibility of the procedure.

The electrochemical behaviour of these films on GCEs was studied using cyclic voltammetry in organic media (Fig. 3). Within a scan range of  $-2.0$  and  $+2.0$  V vs. Ag<sup>+</sup>/Ag, the first cycle shows a strong and large irreversible anodic peak at 1.7 V that starts at 0.6 V. This peak almost disappears during the second scan. According to the studies about the inherent electrochemistry of transition-metal dichalcogenides by Bonde *et al.*,<sup>24</sup>



**Fig. 2** Height mapping images and 3D views realized with a confocal laser microscope at a magnification of  $\times 50$  of WS<sub>2</sub>-COOH film at the cut edge (A and B) with the film on the left and the substrate on the right. Microscope images of the center of the film (C and D).

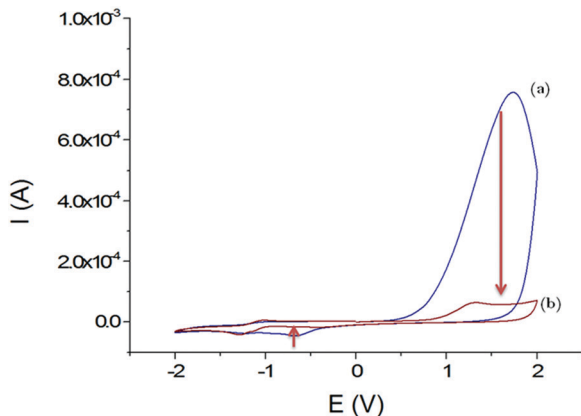


Fig. 3 Voltammograms obtained in  $\text{CH}_3\text{CN} + 0.1 \text{ mol L}^{-1}$  TBAP; first cycle (a) and second cycle (b) with the GCE/ $\text{WS}_2\text{-COOH}$  modified electrode between  $-2.0$  and  $+2.0 \text{ V}$  vs.  $\text{Ag}^+/\text{Ag}$ ; scan rate:  $100 \text{ mV s}^{-1}$ .

this peak can be assigned to the irreversible oxidation of  $\text{WS}_2$  on surface forming  $\text{WO}_4^{2-}$ . The potential shift in the second scan is related to the oxidation of remaining  $\text{WS}_2$  in a  $\text{WO}_4^{2-}$  environment. At the reverse scan towards negative potentials, an irreversible cathodic peak was observed at  $-0.7 \text{ V}$ , which also disappeared at the second scan. Here, it is more likely that loosely adsorbed species are released during the first scan or a reduction of the protons since  $\text{WS}_2$  can be used as electrocatalysts for hydrogen evolution reaction (HER).<sup>25</sup>

Most importantly, the  $\text{WS}_2\text{-COOH}$  nanotubes are electrochemically silent in the potential range around  $-0.2 \text{ V}$  where the amperometric detection of dopamine and catechol with the tyrosinase based biosensor should occur. Unfortunately, films of  $\text{WS}_2\text{-COOH}$  are almost not conductive at this potential ( $1.6 \pm 0.1 \times 10^{-7} \text{ S cm}^{-1}$ , measured using a four-point probe) and can therefore not be considered as an extension of the electrode.

### Detection of catechol

The detection of catechol using tyrosinase is based on the enzymatic oxidation of phenols and *o*-bisphenols like catechol to *o*-quinones. The product of the enzymatic reaction is then reduced at the electrode at  $-0.2 \text{ V}$  vs. SCE. The resulting chronoamperometric current density is proportional to the analyte concentration. In addition, the target molecule is regenerated during the reduction at the electrode, which allows the amplification of the electrochemical signal and leads to increased sensitivity.<sup>26,27</sup> The measurements were done by immersing the modified electrode in an electrochemical cell containing  $20 \text{ mL}$  of PBS ( $0.1 \text{ mol L}^{-1}$ ,  $\text{pH} = 7.4$ ).

Fig. 4A shows the increase of steady-state current response of the bioelectrode upon successive additions of catechol and illustrates the fast response time ( $3 \text{ s}$ ). Fig. 4B shows the amperometric response of the bioelectrode as a function of catechol concentration in the range of  $0.3\text{--}220 \mu\text{mol L}^{-1}$  resulting in a calibration curve that follows Michaelis-Menten kinetics.

The maximum current density,  $j_{\text{max}}$ , is related to the amount of immobilized enzymes on the electrode surface and to the affinity of the enzyme for its target and thus to the apparent

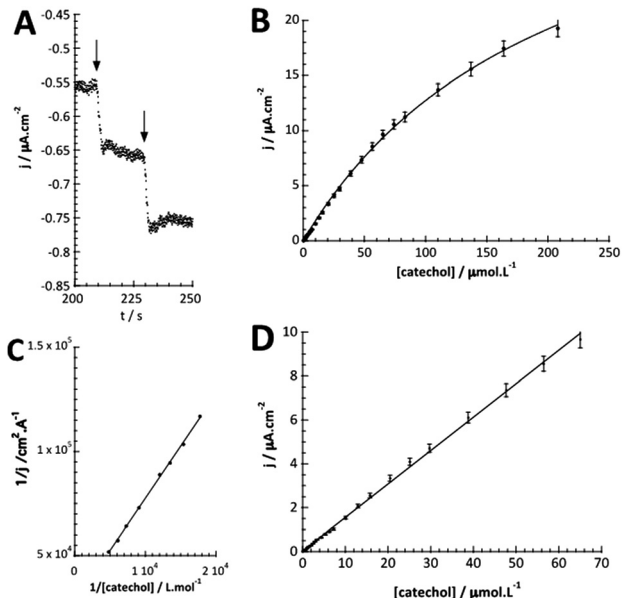


Fig. 4 (A) Chronoamperometric response of the GC/ $\text{WS}_2\text{-COOH}$ /tyrosinase electrode ( $E = -0.2 \text{ V}$  vs. SCE;  $0.1 \text{ mol L}^{-1}$  PBS;  $\text{pH} 7.4$ ) upon successive increase of catechol concentration from  $0.3 \mu\text{mol L}^{-1}$  to  $220 \mu\text{mol L}^{-1}$ . (B) Plot of the current density vs. catechol concentration on tyrosinase/ $\text{WS}_2\text{-COOH}$ /GCE. (C) Lineweaver-Burk plot of the corresponding data. (D) Plot of the linear part of the current density vs. increasing catechol concentrations.

Michaelis-Menten constant ( $K_M^{\text{app}}$ ). The linear fit equation ( $R^2 = 0.99897$ ) obtained with the Lineweaver-Burk representation leads to  $36 \mu\text{A cm}^{-2}$  and  $183 \mu\text{mol L}^{-1}$  for  $j_{\text{max}}$  and  $K_M^{\text{app}}$ , respectively (Fig. 4C):

$$\frac{1}{j} = \frac{1}{j_{\text{max}}} + \frac{K_M^{\text{app}}}{j_{\text{max}} \times [\text{catechol}]} = 27\,406 + \frac{5.015}{[\text{catechol}]}$$

The  $K_M^{\text{app}}$  used here reflects the kinetics of the immobilized enzyme and not that of the free enzyme in solution. Surprisingly, the determined  $K_M^{\text{app}}$  is slightly lower than the  $K_M$  of free enzymes ( $300 \mu\text{mol L}^{-1}$  with catechol<sup>28</sup>) in spite of the constraints on the mass transport at immobilized states. Nevertheless, this behaviour is quite common and was already observed with tyrosinase biosensors.<sup>29,30</sup> To explain this phenomenon, it is necessary to consider the formula for  $K_M$ :

$$K_M = \frac{k_{-1} + k_2}{k_1}$$

where  $k_1$  represents the kinetics of the enzyme-substrate complex formation and  $k_2$  represents the transformation of enzyme-substrate complex into the product of the enzymatic reaction and the regenerated enzyme. This formula for  $K_M$  does not take into account the co-substrate (oxygen) concentration of the enzymatic reaction but this is actually the case since tyrosinase reduces oxygen to water to regenerate itself. By integrating the co-substrate concentration in the equation for  $k_2$  ( $k_2 = k_2^0 \times [\text{O}_2]$ ),  $K_M^{\text{app}}$  can be calculated:

$$K_M^{\text{app}} = \frac{k_{-1} + k_2^0[\text{O}_2]}{k_1}$$

Thus, the value of  $K_M^{\text{app}}$  is directly related to the oxygen concentration. However, the use of nanomaterials considerably increases the quantity

**Table 1** Comparison of the characteristics (system used,  $K_M^{\text{app}}$ ,  $i_{\text{max}}$ , linearity and sensibility) of different nanostructured electrochemical catechol biosensors

System used	$K_M^{\text{app}}/\mu\text{mol L}^{-1}$	$i_{\text{max}}/\mu\text{A}$	Linearity/ $\mu\text{mol L}^{-1}$	Sensitivity/ $\text{mA L mol}^{-1}$
This work	$183 \pm 20$	$2.5 \pm 0.6$	0.6–70	$10.7 \pm 0.2$
Karim <i>et al.</i> <sup>31</sup>	—	—	0.01–80	13 720
Sethuraman <i>et al.</i> <sup>32</sup>	30.48	92	0.04–62	1600
Zhou <i>et al.</i> <sup>33</sup>	11.07	11.07	0.05–12.5	593
Bujduveanu <i>et al.</i> <sup>34</sup>	7	39.2	0–8	2500
Mei <i>et al.</i> <sup>35</sup>	—	—	500–1155 1655–5155	12.65 5.51

of immobilized enzymes and the co-substrate amount is rapidly consumed. Since the oxygen supply is limited by diffusion, a concentration gradient of oxygen can thus be established between the solution and the enzyme. The co-substrate concentration in the enzyme's environment is then lower than in solution and results in a decrease of  $K_M^{\text{app}}$  since the value of  $k_2$  is lower than expected. Assuming that the enzyme is here in a favorable environment, it may then be assumed that the oxygen concentration decreases to 40%, close to that of the enzyme compared to the rest of the solution.

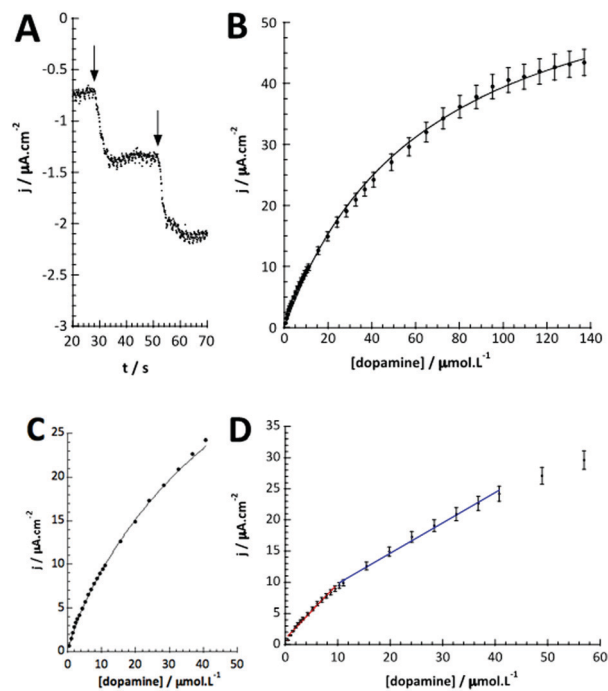
The linear part of the calibration curve within the concentration range of  $0.6 \mu\text{mol L}^{-1}$  and  $70 \mu\text{mol L}^{-1}$  reveals a sensitivity value of  $152.5 \text{ mA L cm}^{-2} \text{ mol}^{-1}$  ( $R^2 = 0.9986$ ). It should be noted that the linearity range and the sensitivity are identical for the two electrodes. The electrochemical characteristics in terms of molecular architecture,  $K_M^{\text{app}}$ , maximum current density, linearity, and sensitivity are summarized in Table 1.

The linearity range of our system is similar to those found in the literature.<sup>35</sup> This can be explained by the presence of  $\text{WS}_2\text{-COOH}$  nanotubes, which allow a high amount of immobilized enzymes on the electrode surface, as do other nanomaterials. However, the sensitivity remains relatively low compared to other reports.<sup>34</sup> This may be due either to the rapid oxygen consumption and/or to reduced permeability of the  $\text{WS}_2\text{-COOH}$  film but finally results most likely from the almost inexistent conductivity at this potential.

### Detection of dopamine

As for catechol, tyrosinase also oxidizes dopamine to dopamine-*o*-quinone, which can be detected at the same potential ( $-0.2 \text{ V vs. SCE}$ ). The detection of dopamine was thus performed under identical conditions as described above. Fig. 5A illustrates the chronoamperometric response of the modified GC/ $\text{WS}_2\text{-COOH}$ /tyrosinase electrodes as a function of the dopamine concentrations. It can be seen that the current stabilizes rapidly after dopamine injection, confirming the fast electronic transfer and the permeation of the substrate through the  $\text{WS}_2\text{-COOH}$  nanotube deposit. The range of concentrations tested varies from  $0.5 \mu\text{mol L}^{-1}$  to  $137 \mu\text{mol L}^{-1}$ . From the shape of the curve, it seems that the dopamine oxidation *via* tyrosinase is also governed by Michaelis–Menten kinetics. Fig. 5B shows the evolution of the current density as a function of the dopamine concentration. The observed maximum current density is clearly higher than for catechol detection.

This may be due to the fact that the amine function of dopamine is partially positively charged at pH 7.4 and hence



**Fig. 5** (A) Chronoamperometric response of the GC/ $\text{WS}_2\text{-COOH}$ /tyrosinase electrodes ( $E = -0.2 \text{ V vs. SCE}$ ;  $0.1 \text{ mol L}^{-1}$  PBS; pH 7.4) for increasing dopamine concentrations from  $0.5 \mu\text{mol L}^{-1}$  to  $137 \mu\text{mol L}^{-1}$ , (B) plot of the current density vs. dopamine concentration, (C) Fit of the calibration curve with the Michaelis–Menten equation taking into account the accumulation of dopamine in the biosensor matrix, (D) Plot of linear parts of the current density vs. increasing dopamine concentrations measured with GC/ $\text{WS}_2\text{-COOH}$ /tyrosinase electrode.

can display a faster and deeper penetration inside the  $\text{WS}_2\text{-COOH}$  matrix, which is negatively charged. As a consequence, the calibration curve, which is obtained by plotting the current density as a function of the dopamine concentration in solution, does not necessarily reflect the dopamine concentration in the  $\text{WS}_2\text{-COOH}$  matrix.

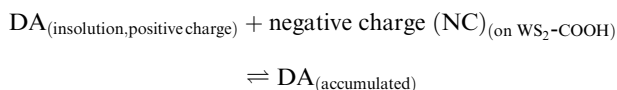
From the Lineweaver–Burk representation (not shown), a  $K_M^{\text{app}}$  of  $41 \mu\text{mol L}^{-1}$  and  $j_{\text{max}}$  of  $57 \mu\text{A cm}^{-2}$  could be determined following the linear fit equation ( $R^2 = 0.99344$ ):

$$\frac{1}{j} = \frac{1}{j_{\text{max}}} + \frac{K_M^{\text{app}}}{j_{\text{max}} \times [\text{dopamine}]} = 17\,614 + \frac{0.72938}{[\text{dopamine}]}$$

The maximum current density,  $j_{\text{max}}$ , is higher for the detection of dopamine ( $57 \mu\text{A cm}^{-2}$ ) than for the detection of catechol

(36  $\mu\text{A cm}^{-2}$ ) at the same amounts of enzymes. It seems that the  $\text{WS}_2\text{-COOH}$  nanotubes provide a better accessibility to the enzyme for the dopamine rather than for catechol.

The experimental  $K_M^{\text{app}}$  value is, as for the catechol experiments, lower than the  $K_M$  of the free enzyme ( $K_M = 2.2 \text{ mmol L}^{-1}$  for the tyrosinase towards dopamine),<sup>28</sup> which is related to the limited oxygen concentration. It should be noted that the experimentally determined  $K_M^{\text{app}}$  is lower for dopamine (41  $\mu\text{mol L}^{-1}$ ) than for catechol (183  $\mu\text{mol L}^{-1}$ ). In solution, the  $K_M$  value of tyrosinase for dopamine is higher (2.2  $\text{mmol L}^{-1}$ ) compared to catechol (300  $\mu\text{mol L}^{-1}$ ). This inversion may be related to an accumulation of dopamine in the  $\text{WS}_2\text{-COOH}$  matrix related to electrostatic interactions. This can be deduced by the arc shaped (and not linear) calibration curve at low dopamine concentrations. In order to estimate this accumulation effect, we fitted this part of the calibration curve in Fig. 5C using an equation that takes the concentration change of dopamine into account:



at the equilibrium:

$$K_d = \frac{[\text{DA}] \times [\text{NC}]}{[\text{DA}]_{\text{acc}}}$$

with  $K_d$  as the equilibrium dissociation constant.  $[\text{DA}]$ ,  $[\text{NC}]$  and  $[\text{DA}]_{\text{acc}}$  are the dopamine concentrations in solution, negative charges on  $\text{WS}_2\text{-COOH}$  nanotubes, and accumulated dopamine in the deposit, respectively. The unknown amount of negative charges on  $\text{WS}_2\text{-COOH}$  can be substituted by the difference between the maximum accumulating dopamine concentration,  $[\text{DA}]_{\text{acc}}^{\text{max}}$  and the actually accumulated dopamine concentration,  $[\text{DA}]_{\text{acc}}$ :

$$K_d = \frac{[\text{DA}] \times ([\text{DA}]_{\text{acc}}^{\text{max}} - [\text{DA}]_{\text{acc}})}{[\text{DA}]_{\text{acc}}}$$

leading for  $[\text{DA}]_{\text{ads}}$  to:

$$[\text{DA}]_{\text{acc}} = \frac{[\text{DA}] \times [\text{DA}]_{\text{acc}}^{\text{max}}}{K_d + [\text{DA}]}$$

The integration of this equation inside the Michaelis–Menten equation gives:

$$j = \frac{j_{\text{max}} \times \left( \frac{[\text{DA}] \times [\text{DA}]_{\text{acc}}^{\text{max}}}{K_d + [\text{DA}]} \right)}{K_M^{\text{app}} + \left( \frac{[\text{DA}] \times [\text{DA}]_{\text{acc}}^{\text{max}}}{K_d + [\text{DA}]} \right)}$$

By fitting the first part of the calibration curve with this equation (Fig. 5C,  $R^2 = 0.99728$ ), the dissociation constant,  $K_d$ , is estimated at  $5 \times 10^{-5}$  and the maximum accumulating dopamine concentration,  $[\text{DA}]_{\text{acc}}^{\text{max}}$ , is estimated at 35  $\mu\text{mol L}^{-1}$ . It can therefore be concluded that below the value of 35  $\mu\text{mol L}^{-1}$ , the dopamine concentration is greater around the enzymes than in solution. At higher values, the dopamine concentration is the same in the  $\text{WS}_2\text{-COOH}$  matrix and in solution.

Fig. 5D shows that at low dopamine concentration, the calibration curve presents two successive linear parts, as in other examples reported in the literature for PPO biosensors.<sup>36–38</sup> For a concentration range varying from 0.5 to 10  $\mu\text{mol L}^{-1}$ , the biosensor sensitivity for dopamine is 88.0  $\text{mA L cm}^{-2} \text{mol}^{-1}$  (or 6.2  $\text{mA L mol}^{-1}$ ) and 48.8  $\text{mA L cm}^{-2} \text{mol}^{-1}$  (or 3.4  $\text{mA L mol}^{-1}$ ) between 10 and 40  $\mu\text{mol L}^{-1}$  dopamine. This setup and phenomena are quite good reproducible with a relative standard deviation of 4.8% for the three different electrodes.

Table 2 compares our findings with representative examples found in the literature for dopamine detection using tyrosinase combined with a nanomaterial focusing on various criteria such as sensitivity, linearity, the maximum current densities and the calculated  $K_M^{\text{app}}$ . The system presented here has slightly lower performance in terms of linearity range, sensitivity, and limit of detection compared to carbon nanotubes (CNTs), widely used for biosensing application, despite the good maximum current densities.

We have shown that our  $\text{WS}_2\text{-COOH}$  nanotube deposits are not conductive at appropriate potentials and therefore, in contrast to CNTs, they cannot contribute to the electrochemical signal capture. However, the increased surface area of the nanotubes for improved enzyme loading and the particular interaction with dopamine almost compensate this lack of conductivity.

## Experimental

### Chemicals

Dopamine hydrochloride 98%, 1,2-dihydroxybenzene (catechol), phosphate buffered saline (PBS) tablets, *N*-hydroxysuccinimide (NHS) 98%, 4-(dimethylamino)pyridine (DMAP) and tyrosinase from mushroom were purchased from Sigma-Aldrich.  $\text{WS}_2$  nanotubes were provided by NanoMaterials Ltd (Yavne, Israel). *N*-(3-Dimethylaminopropyl)-*N'*-ethylcarbodiimide hydrochloride (EDC) was purchased from Fluka. All chemicals and solvents were of analytical grade and were used as received, without further purification.  $\text{WS}_2\text{-COOH}$  nanotubes were synthesized

**Table 2** Comparison of the obtained characteristics (system used,  $K_M^{\text{app}}$ ,  $i_{\text{max}}$ , linearity and sensibility) of different nanostructured electrochemical dopamine biosensors

	System used	$K_M^{\text{app}}/\mu\text{mol L}^{-1}$	$i_{\text{max}}/\mu\text{A}$	Linearity/ $\mu\text{mol L}^{-1}$	Sensitivity/ $\text{mA L mol}^{-1}$
This work	$\text{WS}_2\text{-COOH}$ nanotube + GCE	$41 \pm 2$	$4 \pm 0.5$	0.5–10 10–40	$6.2 \pm 0.7$ $3.4 \pm 0.4$
Bujduveanu <i>et al.</i> <sup>34</sup>	CNT + $\text{CaCO}_3$ nanoparticles + GCE	30	—	0.015–30	250
Wang <i>et al.</i> <sup>39</sup>	$\text{SiO}_2$ nanoparticle + acid phytic + GCE (laccase)	—	—	0.99–103.1	1.9
Lete <i>et al.</i> <sup>40</sup>	CNT + glutaraldehyde + PEDOT + gold IDE	11.1	—	100–500	14.1
Zhuang <i>et al.</i> <sup>36</sup>	Overoxidized polypyrrole/graphene + GCE	—	—	0.5–10 25–1000	$94 \pm 15$

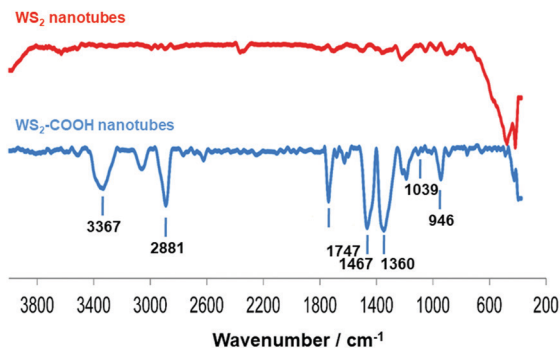


Fig. 6 IR spectra of WS<sub>2</sub> nanotubes before (top) and after (below) carboxylation.

and characterized as described in ref. 15. The obtained material was characterized using FT-IR spectroscopy (Fig. 6), where the appearance of characteristic peaks, summarized in Table 3, indicates the successful grafting of carboxylic acid functions.

Moreover and as additional proof for COOH functionalization, characteristic fluorescence-based KAISER tests<sup>41</sup> have been performed after EDC-based derivatization/activation of the polyCOOH shell by 1,3-diaminopropane and ninhydrin reactivity. Fluorescence measurements helped to obtain the optimized carboxylation degree of 0.5 mmol COOH group g<sup>-1</sup> of the functional WS<sub>2</sub> nanotubes.

### Apparatus

FE-SEM images were recorded using an ULTRA 55 FESEM with a GEMINI FESEM column, beam booster (Nanotechnology Systems Division, Carl Zeiss NTS GmbH, Germany), and a tungsten gun with an accelerating voltage of 3 kV. The WS<sub>2</sub>-COOH deposits were studied in terms of surface roughness and thickness by using a Keyence Vega confocal laser microscope. For this study, WS<sub>2</sub>-COOH films were deposited onto a flat gold substrate. In order to determine a representative surface roughness, the images were recorded at low magnifications ( $\times 50$ ).

Cyclic voltammetry and chronoamperometric experiments were performed using an Autolab potentiostat 100 (Eco Chemie, Utrecht, The Netherlands). The data were recorded and operated using Nova software (version 2.1). Modified glassy carbon electrodes ( $\phi = 3$  mm) were used as the working electrode for all characterization experiments. Platinum wire was used as the counter electrode. All electrochemical experiments were carried out using a basic three-electrode cell. A 10<sup>-2</sup> mol L<sup>-1</sup> Ag<sup>+</sup>/Ag electrode was used as a reference electrode in organic media (CH<sub>3</sub>CN + 0.1 mol L<sup>-1</sup> tetrabutylammonium perchlorate, TBAP), whereas a saturated calomel electrode (SCE) was used as a reference electrode in aqueous media.

### Preparation of the WS<sub>2</sub>-COOH nanotube films

Prior to any modification, the surface of the glassy carbon electrodes (GCE,  $\phi = 3$  mm) was polished with a 2  $\mu$ m diamond paste purchased from Presi (France) and rinsed successively with water, acetone, and ethanol under sonication (5 min). Afterwards, the GCEs were modified with the WS<sub>2</sub>-COOH nanotubes.

Table 3 Selected characteristic FT-IR peaks with vibrational modes

Wavenumber (cm <sup>-1</sup> )	FT-IR vibrational modes
3367	O-H stretching
2881	C-H stretching
1747	C=O stretching of carboxylic acid functionality
1467	C-H bends
1360	C-H rocks
1039	C-S stretching
946	O-H stretching of carboxylic acid functions

These nanotubes were dispersed by mechanical stirring in distilled water (15 mg of WS<sub>2</sub>-COOH in 1 L of H<sub>2</sub>O). The solution was then allowed to settle for 60 min in order to sediment the larger nanotube clusters. The supernatant was then filtered over cellulose nitrate filter (Sartorius, 0.45  $\mu$ m,  $\phi$  3.5 cm). The obtained film was finally transferred to a GCE surface by dissolution of the cellulose nitrate filter according to a procedure described in ref. 23. The same deposition technique was used during laser microscopy characterization, this time using a gold substrate.

### Enzyme immobilization on the WS<sub>2</sub>-COOH nanotube films

The WS<sub>2</sub>-COOH nanotube films with a controlled thickness of 6.2  $\mu$ m, were then used as a support for the immobilization of tyrosinase. This reaction involves the activation of the carboxylic acid functional groups of the film in order to allow the coupling of the NHS function.

For this, the electrode is incubated with PBS (75  $\mu$ L) containing EDC (20 mmol L<sup>-1</sup>), NHS (10 mmol L<sup>-1</sup>) and DMAP (10 mmol L<sup>-1</sup>) for 12 h at 4  $^{\circ}$ C. EDC and DMAP serve as activation agents. Eventually, the GCE is incubated with a solution having the concentration of tyrosinase of 0.3 mg mL<sup>-1</sup> in PBS 0.1 mol L<sup>-1</sup> at pH 7.4 for 12 h at 4  $^{\circ}$ C in order to immobilize the enzyme. This enzyme concentration was chosen after a short optimization procedure using 0.1, 0.3, and 0.5 mg mL<sup>-1</sup> tyrosinase in a cyclic voltammetric setup. The reduction peak currents at -0.1 V vs. SCE were recorded in 0.1 mol L<sup>-1</sup> PBS; pH 7.4, containing 5  $\mu$ mol L<sup>-1</sup> catechol. Fig. 7 shows the obtained values revealing an optimal concentration of 0.3 mg mL<sup>-1</sup>.

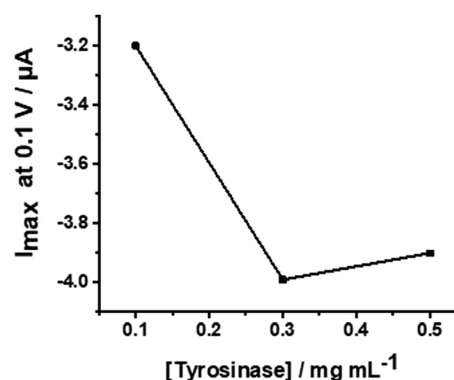


Fig. 7 Plot of the peak currents at -0.1 V versus different tyrosinase concentrations from 0.1 to 0.5 mg mL<sup>-1</sup>.

The resulting electrodes were then washed carefully several times with PBS solution.

## Conclusions

COOH functionalized WS<sub>2</sub> nanotubes were used as a platform for enhanced immobilization of the tyrosinase enzyme leading to a biosensor for catechol and dopamine, with very satisfying performance. Despite the lack of conductivity of this semiconductor material at appropriate redox potentials for amperometric biosensor applications, these tubes form highly porous deposits with improved enzyme wiring capacity. The determined  $K_M^{\text{app}}$  values of immobilized tyrosinase are close to the values for the enzyme in solution, which represents optimal accessibility of the target molecules to the active site of the enzyme. For dopamine detection, we observed an accumulation of the enzymatically produced dopamine *o*-quinone leading to enhanced signals at low analyte concentration. The possibility to functionalize these WS<sub>2</sub> nanotubes with carboxylic acid functions makes this material easier to process and facilitate post functionalization. At the current state of research, these WS<sub>2</sub>-COOH nanotubes do not provide superior properties, compared to other described nanomaterials, for electrochemical biosensing applications, but they can become promising components in electrochemical biosensor setups as additives due to the shown beneficial properties.

## Conflicts of interest

There are no conflicts to declare.

## Acknowledgements

We gratefully acknowledge the University Grenoble Alpes (Contrats Doctoraux thématiques UJF 2014) for the PhD fellowship funding of Quentin Palomar, and the CNRS PICS program 6344 France Israel for further support. The authors wish also to acknowledge the support from the platform Chimie NanoBio ICMG FR 2607 (PCN-ICMG), from the LabEx ARCANÉ (ANR-11-LABX-0003-01 and CBH-EUR-GS, ANR-17-EURE-0003), and from the Institut Carnot PolyNat (CARN 0007-01).

## Notes and references

- M. Holzinger, A. Le Goff and S. Cosnier, *Sensors*, 2017, **17**, 1010.
- P. Mehrotra, *J. Oral Biol. Craniofac. Res.*, 2016, **6**, 153–159.
- X. Jia, S. Dong and E. Wang, *Biosens. Bioelectron.*, 2016, **76**, 80–90.
- N. Yang, X. Chen, T. Ren, P. Zhang and D. Yang, *Sens. Actuators, B*, 2015, **207**(Part A), 690–715.
- C.-M. Tîlmaciu and M. C. Morris, *Front. Chem.*, 2015, **3**, 59.
- E. Morales-Narváez, L. Baptista-Pires, A. Zamora-Gálvez and A. Merkoçi, *Adv. Mater.*, 2017, **29**, 1604905.
- Y. Song, Y. Luo, C. Zhu, H. Li, D. Du and Y. Lin, *Biosens. Bioelectron.*, 2016, **76**, 195–212.
- M. Pumera and A. H. Loo, *TrAC, Trends Anal. Chem.*, 2014, **61**, 49–53.
- X. Sun, J. Fan, C. Fu, L. Yao, S. Zhao, J. Wang and J. Xiao, *Sci. Rep.*, 2017, **7**, 10290.
- D. Sarkar, W. Liu, X. Xie, A. C. Anselmo, S. Mitragotri and K. Banerjee, *ACS Nano*, 2014, **8**, 3992–4003.
- N. Rohaizad, C. C. Mayorga-Martinez, Z. Sofer and M. Pumera, *ACS Appl. Mater. Interfaces*, 2017, **9**, 40697–40706.
- Y. Q. Zhu, W. K. Hsu, N. Grobert, B. H. Chang, M. Terrones, H. Terrones, H. W. Kroto, D. R. M. Walton and B. Q. Wei, *Chem. Mater.*, 2000, **12**, 1190–1194.
- M. Nath, A. Govindaraj and C. N. R. Rao, *Adv. Mater.*, 2001, **13**, 283–286.
- S. Barua, H. S. Dutta, S. Gogoi, R. Devi and R. Khan, *ACS Appl. Nano Mater.*, 2018, **1**, 2–25.
- D. Raichman, D. A. Strawser and J.-P. Lellouche, *Nano Res.*, 2015, **8**, 1454–1463.
- D. Raichman, D. Strawser and J.-P. Lellouche, *Inorganics*, 2014, **2**, 455.
- W. Z. Teo, E. L. K. Chng, Z. Sofer and M. Pumera, *Chem. – Eur. J.*, 2014, **20**, 9627–9632.
- J. Laloy, H. Haguët, L. Alpan, D. Raichman, J.-M. Dogné and J.-P. Lellouche, *Nano Convergence*, 2018, **5**, 31.
- N. Schweigert, A. J. B. Zehnder and R. I. L. Eggen, *Environ. Microbiol.*, 2001, **3**, 81–91.
- H. Fiege, H. Voges, T. Hamamoto, S. Umemura, T. Iwata, H. Miki, Y. Fujita, H. Buysch, D. Garbe and W. Paulus, *Ullmann's Encyclopedia of Industrial Chemistry*, 2000, DOI: 10.1002/14356007.a19\_313.
- G. Lunardi, S. Galati, D. Tropepi, V. Moschella, L. Brusa, M. Pierantozzi, A. Stefani, S. Rossi, F. Fornai, E. Fedele, P. Stanzione, A. H. Hainsworth and A. Pisani, *Parkinsonism & Related Disorders*, 2009, vol. 15, pp. 383–389.
- Y. Tao, Y. Lin, J. Ren and X. Qu, *Biosens. Bioelectron.*, 2013, **42**, 41–46.
- Q. Palomar, C. Gondran, M. Holzinger, R. Marks and S. Cosnier, *Biosens. Bioelectron.*, 2017, **97**, 177–183.
- J. Bonde, P. G. Moses, T. F. Jaramillo, J. K. Nørskov and I. Chorkendorff, *Faraday Discuss.*, 2009, **140**, 219–231.
- L. Cheng, W. Huang, Q. Gong, C. Liu, Z. Liu, Y. Li and H. Dai, *Angew. Chem., Int. Ed.*, 2014, **53**, 7860–7863.
- S. Cosnier, J. J. Fombon, P. Labbé and D. Limosin, *Sens. Actuators, B*, 1999, **59**, 134–139.
- S. Cosnier and I. C. Popescu, *Anal. Chim. Acta*, 1996, **319**, 145–151.
- J. C. Espín, R. Varón, L. G. Fenoll, M. A. Gilabert, P. A. García-Ruiz, J. Tudela and F. García-Cánovas, *Eur. J. Biochem.*, 2000, **267**, 1270–1279.
- D. Shan, M. Zhu, E. Han, H. Xue and S. Cosnier, *Biosens. Bioelectron.*, 2007, **23**, 648–654.
- V. Carralero Sanz, M. L. Mena, A. González-Cortés, P. Yáñez-Sedeño and J. M. Pingarrón, *Anal. Chim. Acta*, 2005, **528**, 1–8.
- M. N. Karim, J. E. Lee and H. J. Lee, *Biosens. Bioelectron.*, 2014, **61**, 147–151.
- V. Sethuraman, P. Muthuraja, J. Anandha Raj and P. Manisankar, *Biosens. Bioelectron.*, 2016, **84**, 112–119.

- 33 Y. Zhou, L. Tang, G. Zeng, J. Chen, Y. Cai, Y. Zhang, G. Yang, Y. Liu, C. Zhang and W. Tang, *Biosens. Bioelectron.*, 2014, **61**, 519–525.
- 34 M.-R. Bujduveanu, W. Yao, A. Le Goff, K. Gorgy, D. Shan, G.-W. Diao, E.-M. Ungureanu and S. Cosnier, *Electroanalysis*, 2013, **25**, 613–619.
- 35 L.-P. Mei, J.-J. Feng, L. Wu, J.-Y. Zhou, J.-R. Chen and A.-J. Wang, *Biosens. Bioelectron.*, 2015, **74**, 347–352.
- 36 Z. Zhuang, J. Li, R. Xu and D. Xiao, *Int. J. Electrochem. Sci.*, 2011, **6**, 2149–2161.
- 37 X. Liu, Y. Peng, X. Qu, S. Ai, R. Han and X. Zhu, *J. Electroanal. Chem.*, 2011, **654**, 72–78.
- 38 B. Rezaei, E. Havakeshian and A. A. Ensafi, *Sens. Actuators, B*, 2015, **213**, 484–492.
- 39 K. Wang, P. Liu, Y. Ye, J. Li, W. Zhao and X. Huang, *Sens. Actuators, B*, 2014, **197**, 292–299.
- 40 C. Lete, S. Lupu, B. Lakard, J.-Y. Hihn and F. J. del Campo, *J. Electroanal. Chem.*, 2015, **744**, 53–61.
- 41 E. Kaiser, R. L. Colescott, C. D. Bossinger and P. I. Cook, *Anal. Biochem.*, 1970, **34**, 595–598.