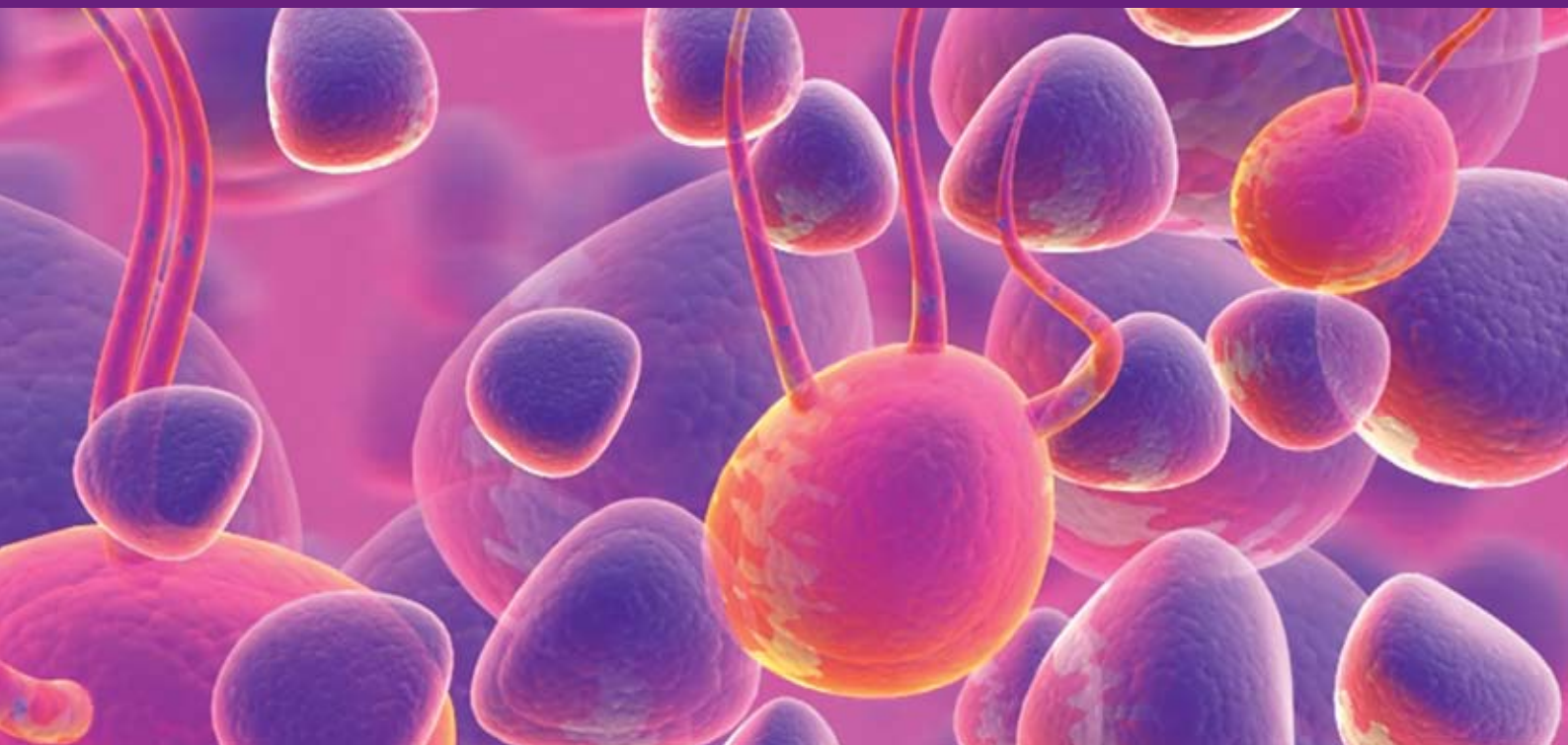


Launching 2009



Integrative Biology

Quantitative biosciences from nano to macro

'What the RSC is doing through the publication of this journal is important for progress of science and integration of physical sciences and biology' Dr Mina Bissell

Integrative Biology is a unique, highly interdisciplinary journal focused on quantitative multi-scale biology using enabling technologies and tools to exploit the convergence of biology with physics, chemistry, engineering, imaging and informatics.



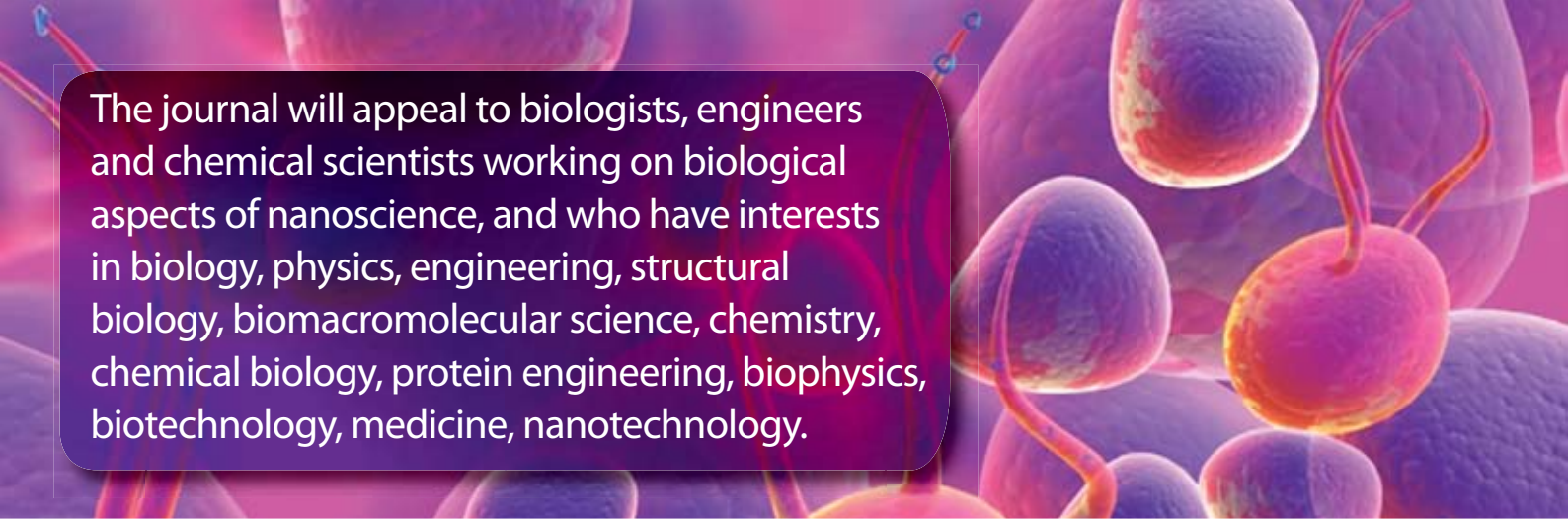
The latest issue of *Integrative Biology* will be made freely available to all readers via the website. Free institutional online access to all 2009/2010 content will be available following a simple registration process at www.rsc.org/ibiology_registration.

Sign up for free access today  

RSC Publishing

www.rsc.org/ibiology

Registered Charity Number 207890



The journal will appeal to biologists, engineers and chemical scientists working on biological aspects of nanoscience, and who have interests in biology, physics, engineering, structural biology, biomacromolecular science, chemistry, chemical biology, protein engineering, biophysics, biotechnology, medicine, nanotechnology.

Topics include:

- Nanodevices including chip-based/microfluidic, bioMEMS.....
- Quantitative cell biology
- Systems integration (e.g. bioPOEMS (biomolecular Polymer Opto-Electro-Mechanical Systems))
- Biomolecular engineering
- Single cell/molecule manipulation/measurement techniques/analysis (AFM, magnetic and optical tweezers, microfluidics and bioMEMS devices)
- Biophotonics
- Imaging
- Bioelectronics/biophysics/nanophotonics
- Biosensors
- Nanomedicine – drug/gene delivery (nanotechnology for health)
- DNA computers
- Medical advancement in cancer, cardiovascular disease etc.....
- Regenerative medicine
- Targeted delivery
- Drug-delivery systems
- Tissue engineering

ISSN 1757-9694 (print + online)

ISSN 1757-9708 (online only)

First Issue January 2009

International Editorial Board members include:

Distinguished Scientist Dr Mina Bissell
Lawrence Berkeley National Laboratory,
USA (Editorial Board Chair)

Professor David Beebe
University of Wisconsin, USA (Scientific Editor)

Professor Mary-Helen Barcellos-Hoff
New York University, USA (Scientific Editor)

Professor John McCarthy
Manchester Interdisciplinary Biocentre, UK

Professor Luke Lee
University of California, Berkeley, USA

Professor Philip Day
University of Manchester, UK

Professor Mehmet Toner
Harvard Medical School, Boston, USA

Would you like to evaluate this new journal before making a purchase or license decision? No problem – register for free institutional online access during 2009 and 2010 by filling in the form at

www.rsc.org/ibiology_registration