



Cite this: *Soft Matter*, 2024,  
20, 1047

## Residual cells and nutrient availability guide wound healing in bacterial biofilms†

Yusong Ye,<sup>a</sup> Mnar Ghayeb,<sup>b</sup> Sarah Miercke,<sup>e</sup> Sania Arif,<sup>f</sup> Susann Müller,<sup>f</sup> Thorsten Mascher,<sup>e</sup> Liraz Chai<sup>b,\*cd</sup> and Vasily Zaburdaev<sup>b,\*ab</sup>

Biofilms are multicellular heterogeneous bacterial communities characterized by social-like division of labor, and remarkable robustness with respect to external stresses. Increasingly often an analogy between biofilms and arguably more complex eukaryotic tissues is being drawn. One illustrative example of where this analogy can be practically useful is the process of wound healing. While it has been extensively studied in eukaryotic tissues, the mechanism of wound healing in biofilms is virtually unexplored. Combining experiments in *Bacillus subtilis* bacteria, a model organism for biofilm formation, and a lattice-based theoretical model of biofilm growth, we studied how biofilms recover after macroscopic damage. We suggest that nutrient gradients and the abundance of proliferating cells are key factors augmenting wound closure. Accordingly, in the model, cell quiescence, nutrient fluxes, and biomass represented by cells and self-secreted extracellular matrix are necessary to qualitatively recapitulate the experimental results for damage repair. One of the surprising experimental findings is that residual cells, persisting in a damaged area after removal of a part of the biofilm, prominently affect the healing process. Taken together, our results outline the important roles of nutrient gradients and residual cells on biomass regrowth on macroscopic scales of the whole biofilm. The proposed combined experiment–simulation framework opens the way to further investigate the possible relation between wound healing, cell signaling and cell phenotype alternation in the local microenvironment of the wound.

Received 3rd August 2023,  
Accepted 13th December 2023

DOI: 10.1039/d3sm01032e

[rsc.li/soft-matter-journal](http://rsc.li/soft-matter-journal)

## Introduction

Biofilms are complex aggregates of microbial cells that form in association with almost any kind of a surface and are held together by a self-secreted extracellular matrix (ECM).<sup>1–5</sup> Prominent examples from our daily life are dental plaque that we remove when brushing teeth,<sup>6</sup> biofilms helping to ferment cheese<sup>7</sup> or protecting roots of plants.<sup>8,9</sup> Biofilms are highly heterogeneous in their architecture as well as in their cell phenotype distribution, both conveying remarkable degrees of spatio-temporal organization during their growth and development.<sup>1,10–13</sup> Heterogeneity is often linked to the physical

durability and tolerance of biofilms to environmental stresses, which makes biofilms very difficult to eradicate both chemically and mechanically.<sup>14–16</sup> Biofilms are therefore often undesired, for example, in many technological settings when contaminating pipes and devices or in biomedical contexts when posing a huge challenge and threat as they colonize catheters or cause microbial infections that are difficult to treat.<sup>17–21</sup> However, biofilms also contribute to positive utilities, including wastewater bio-filtration, remediation of contaminated soil, and microbial fuel cells.<sup>22–25</sup>

### Biofilm development

Biofilm growth is a complex, multi-stage process involving coordinated changes in the phenotype of bacterial cells and in their physiological state.<sup>12,26</sup> Biofilms are shaped by physical forces and augmented by the cross-talk with the environment as a source of water and nutrients as well as a sink of waste products.<sup>27–30</sup> While there is no single universal way of how broadly varying bacterial species form biofilms, it typically involves the following events. During initiation of biofilm formation, swimming planktonic bacteria adhere to a (solid) surface‡, alter their motility mode, and proliferate as the

<sup>a</sup> Department of Biology, Friedrich-Alexander-Universität Erlangen-Nürnberg, Erlangen, Germany. E-mail: [vasily.zaburdaev@fau.de](mailto:vasily.zaburdaev@fau.de)

<sup>b</sup> Max-Planck-Zentrum für Physik und Medizin, Erlangen, Germany

<sup>c</sup> Institute of Chemistry, The Hebrew University of Jerusalem, Jerusalem, Israel. E-mail: [liraz.chai@mail.huji.ac.il](mailto:liraz.chai@mail.huji.ac.il)

<sup>d</sup> The Center for Nanoscience and Nanotechnology, The Hebrew University of Jerusalem, Jerusalem, Israel

<sup>e</sup> General Microbiology, TU Dresden, Dresden, Germany

<sup>f</sup> Department of Environmental Microbiology, Helmholtz-Centre for Environmental Research, Leipzig, Germany

† Electronic supplementary information (ESI) available. See DOI: <https://doi.org/10.1039/d3sm01032e>

‡ However, biofilms can also form at liquid air interfaces and then referred to as pellicles<sup>31</sup>



bacterial colony expands.<sup>12,31</sup> When a subpopulation of bacteria switches their phenotype to ECM production, it is often referred to as a biofilm forming state.<sup>32</sup> Secretion of matrix fundamentally changes the material and biophysical properties of aggregates and contributes to further biofilm spread.<sup>33,34</sup> Other cell phenotypes emerge as groups of cells with certain functions in a spatially organized heterogeneous manner, in a process that is often compared to eukaryotic differentiation.<sup>35</sup>

Biofilm biomass increases at the cost of nutrient consumption and differential metabolic activity creates gradients of nutrients and waste products in the biofilm and in its immediate vicinity. In addition to metabolic changes across biofilms, physiological states of cells change from metabolically active and proliferating cells to stationary (not growing), and in some bacteria, such as *Bacillus subtilis* to dormant (sporulating state) and to cell death (programmed or compulsory).<sup>36,37</sup> While it is important to always keep track of the whole intrinsic complexity of biofilm development, here we will focus on the phenotype of ECM production and ability of cells to proliferate, as well as on nutrient availability. The fact that many of the above processes also take place during development of eukaryotic organisms and tissues pushed the appreciation of biofilms as models for differentiation of multi-cellular organisms.<sup>35,38</sup> One of the spectacular traits of eukaryotic tissues, recently attributed also to biofilms, is their ability to regenerate and recover from damage.<sup>39,40</sup>

### Wound healing in biofilms

A significant amount of research has been devoted to wound healing and regeneration after damage in eukaryotic organisms. It concerns multiple facets such as sensing of damage,<sup>41</sup> mechanical force exertion,<sup>42,43</sup> response of cellular signaling and directed cell migration,<sup>44–46</sup> secretion and modification of the extracellular matrix,<sup>47</sup> and immune response.<sup>48</sup> While everyday laboratory practice suggests that biofilms are capable of regeneration after a mechanical damage, systematic studies of this process are very limited.<sup>49–51</sup> Considering that biofilm-forming *B. subtilis* bacterial colonies growing on agar substrates, it has been studied how the colonies recover after cuts of different geometries, different ages of a wild type biofilm and several matrix mutants.<sup>49–51</sup>

In this work, we propose a combination of experiment and whole-biofilm lattice-based simulations to investigate the dynamics of wound healing in bacterial colonies grown on an agar substrate. Here we specifically focus on the large scale dynamics of biomass, effects of cell physiological state and nutrient gradients. We use the experimental observations on *B. subtilis* biofilm wound cuts to setup the theoretical model and then use the model to identify the key processes that affect the healing and test those in experiments. With the help of model simulations, we pinpoint the critical effects of nutrient gradient and the physiological state of the cells with respect to their ability to proliferate and generate matrix.

A significant and probably unavoidable experimental result in any natural setting, which we also include in our simulations, is the remaining amount of cells in the wound after the cut, which essentially affects the biofilm regrowth dynamics. We corroborate the theoretical predictions by comparing biofilm regeneration

following the formation of a cut on an original agar plate to the growth of a biofilm piece that was cut from a whole biofilm and moved to a fresh agar plate. Growth on a fresh plate eliminates any pre-existing gradient in nutrient, waste, and signaling molecules in the environment. Stochastic simulations of our multi-layer, lattice-based model can be adjusted to reproduce growth dynamics in space and time scales directly comparable to experiments while staying numerically efficient. A lattice-based model has the potential for developing towards further complexity, such as accounting for cell-signaling, additional cell phenotypes, and directed water/nutrient transport. At the same time, it provides a basis for rigorous coarse-graining and developing space-time continuum theory of biofilm growth.

The remaining parts of the manuscript are organized as follows. We first introduce the experimental system of *B. subtilis* biofilms grown on agar substrate and demonstrate the wound closure dynamics. Based on these observations and existing knowledge on biofilm growth, we setup a three-dimensional, coarse-grained, lattice-based model of biofilm growth on the agar substrate. We then recapitulate the wound closure dynamics and test which processes have the central effects on healing. We verify the predictions of the model in the experiments, by moving the wounded biofilms to fresh agar substrates and use spatially resolved fluorescence activated cell sorting (FACS) to quantify cellular dynamics during wound healing. We conclude with the summary of the results and the discussion of the future research directions.

## Results

In this work, we consider recovery of *B. subtilis* biofilms from macroscopic damage, where a significant fraction (25 to 50%) of the biofilm biomass is removed. We are thus interested in the global response at the multicellular scale and how it is affected by the interaction of the biofilm with its environment. Without strong affinity for any particular term we can also formulate this setting as a regeneration process.

The macroscopic scale of the damage also allows us to formulate a theoretical model that is coarse-grained and does not require single cell level of resolution. We next describe the experiments on the recovery of the damage, then formulate the theoretical model and see how both can be combined to provide insights into the processes underlying the recovery process.

### Wound recovery in *B. subtilis*

Biofilms grow on agar plates that are supplemented with media, providing nutrients to cells in biofilms. In our laboratory models, biofilm formation starts with a droplet of cell suspension, originating from liquid pre-culture, spotted onto the surface of an agar plate. Cells then grow and divide and they spread into a circular shape until they reach a mature form after 72 hours. We chose to perform cuts in 24 h old biofilms (see the Materials and methods section below) because at this time point most of the biofilm cells make extracellular matrix and there is almost no

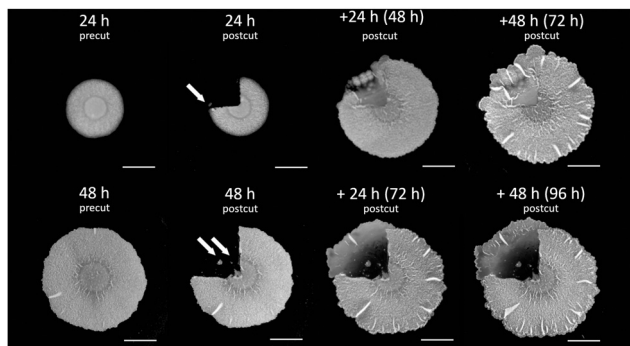


sporulation yet.<sup>13</sup> Indeed, it has been previously observed experimentally that the degree of healing is much more pronounced in biofilms that were cut after 24 h of growth than in older biofilms.<sup>49</sup> Specifically, we performed cuts of a quarter and of half the area of the biofilm to better visualize the time evolution of the closing wound (relative to smaller cuts).

Fig. 1 shows a 24 h old biofilm prior to performing a quarter of a biofilm cut, the biofilm after performing the cut and removing the cut biofilm piece, and the propagation of the healing process, as the gap that was created by the cut area is filled with biomass (cells and matrix). In addition to observing the gap in the biofilm being recovered with time, a few additional characteristics were noted. First, removal of the cut biofilm piece was not complete. Rather, cells remained in the cut area (arrows in Fig. 1, top row,  $t = 24$  h and bottom row,  $t = 48$  h). Furthermore, the healing process was not uniform in all directions and the healing process was progressing from the periphery of the biofilm inward (opposite to the direction of biofilm expansion) as it was greater and faster in the biofilm edges than in the center.

Finally, we often observed that the biofilm in the wound sector has outgrown the outline of the normal biofilm growth. This might be the accidental result of transporting cells during the removal of the cut biofilm piece but can also be a competitive advantage of cells getting access to more nutrients being further away from the colony center.

A previous study<sup>49</sup> has demonstrated that older biofilms heal more slowly and to a smaller degree, and therefore we wondered whether a similar effect is also observed for a different cut geometry where more of the biofilm is being removed. We repeated the experiment of cutting a quarter of the biofilms at later time points, namely at 48 h from the beginning of the biofilm growth.



**Fig. 1** Wound healing in biofilms. *B. subtilis* biofilm healing following a 1/4 cut. 1/4 of the biofilm mass was cut following 24 h (top row) and 48 h (bottom row) of growth on agar plates. Images show biofilms before (precut) and after (postcut) they were cut together with the healing process along time. Top row: a 24 h old biofilm (pre- and postcut) along with +24 h following the cut (48 h from the original biofilm formation), and +48 h following the cut (72 h from the original biofilm formation). Bottom row: a 48 h biofilm (pre- and postcut) along with +24 h following the cut (72 h from the original biofilm formation), and +48 h following the cut (96 h from the original biofilm formation). Scale bars correspond to 0.5 cm. Representative images are shown, further repeats can be found in Fig. S1 (ESI†).

Interestingly, as we performed the cut in older biofilms (see Fig. 1), the recovered area appeared thinner and it also extended further than the periphery of the original biofilm. Such a healing pattern may result from a combined effect of smaller number of cells remaining in the cut area that still can proliferate, overall depletion of nutrients, as well as migration of cells towards locations that are richer in nutrients, away from the original biofilm where they have been depleted.

To rationalize the above observations and help to determine which mechanisms can potentially contribute to the dynamics of the recovery, we proposed a theoretical model of biofilm growth on an agar substrate which we discuss below.

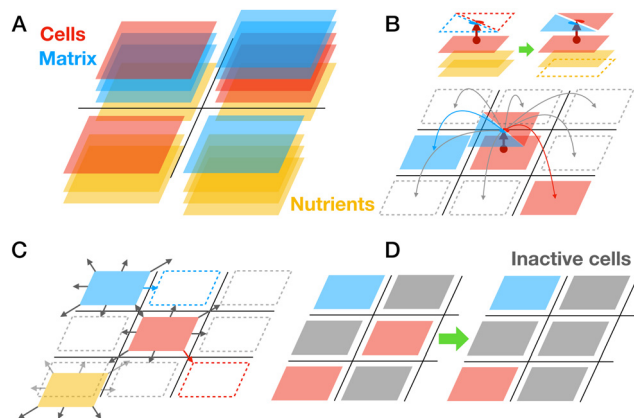
### Lattice-based model of biofilm growth

Following our observations of how *B. subtilis* biofilms growing on nutrient-containing agar recover from damage, we aimed to find a quantitative framework to describe this process. Our experimental observations and existing knowledge on biofilm growth suggest a certain set of minimal ingredients that the model should be able to cover. We aim to describe macroscopic growth of whole biofilms in a quasi-two-dimensional setting combined with explicit consideration of nutrient transport. Biomass consists of two major components, cells and ECM produced by cells. Different physiological states/phenotypes of the cells are also important to mirror the heterogeneity of the biofilm. The model should be able to describe the dynamics of growth over the scale of several days but does not need to capture single cell level detail.

To date there exists a broad range of theoretical approaches for biofilm modeling.<sup>52–55</sup> Arguably, for the space and time scale of the problem of wound healing the choice reduces to continuum theory or coarse-grained lattice-based models.<sup>34,56–58</sup> However, a need to include cell/matrix components and different physiological states of the cells makes it too complex for the continuum theory yet manageable for lattice-based models. Note that advanced hybrid models coupling lattice and continuum fields, taking into consideration biomass, water fluxes, osmotic effects, and biofilm mechanics were also developed specifically for *B. subtilis*.<sup>59</sup> Here, we aim to address a novel biological question of how biofilms recover from damage. In particular, we are interested in the effects of nutrients and the ability of cells to produce biomass during wound healing. To study these effects closely we chose a non-trivial lattice model with a minimal number of unknown parameters which still is able to capture experimentally observed behaviors. A lattice model is essentially a phenomenological model which absorbs the above mentioned complex transport and growth phenomena in effective diffusion, which, however, in combination with energy functional, can recapitulate the growing phenotypes of quasi-two-dimensional colonies.

**Model setup.** Specifically, here we develop a multi-layer, quasi-two-dimensional, lattice-based model of biofilm growth (see Fig. 2A) that represents biofilm biomass as two lattice-species (not to confuse with bacterial species) corresponding to cells (shown in red) and the ECM (shown in blue). A single lattice site can be occupied with multiple layers of both species





**Fig. 2** The lattice-based model of biofilm growth and basic schematics of simulations. (A) Two components in biofilm are cells (red), and matrix (blue) distributed on a two-dimensional square lattice in multiple layers. Single lattice site can be occupied by multiple elements of different species. Nutrients (yellow) evolve on their own lattice. (B) A cell can produce another cell or matrix element. Newly generated biomass can be deposited on the same site or on 8 neighboring sites. Production of new biomass requires consumption of nutrients. (C) Biomass and nutrients can diffuse in two dimensions by random hopping to 8 neighboring sites. (D) Cell inactivation happens irreversibly at a constant low rate; however, this rate is increased if the local microenvironment contains more inactive cells (grey). Inactive cells cannot duplicate and produce matrix elements and they also do not move.

which represents the third dimension reflecting the thickness of the biofilm. Cell species can duplicate and produce ECM species, and the new produced biomass can stay in the same lattice site or be deposited in the neighboring site (Fig. 2B). Duplication of cells and production of the ECM species can happen only *via* consumption of nutrients. Dynamics of nutrient lattice-species (shown in yellow, Fig. 2A) occurs on their own multi-layered lattice and nutrients are consumed by cells to produce more biomass (Fig. 2B).

Both cell and matrix lattice-species and nutrients can stochastically hop to 8 neighboring lattice sites representing their diffusion (Fig. 2C). The number of biomass layers accumulating in a lattice site is regulated by the energetic cost that aims to mimic the fact of reduced nutrient availability for too thick biofilms (see details of energetic cost discussed below). Finally, we assume that cell species may turn into an inactive state, which biologically can correspond to the stationary phase, persister cells, competent cells, spores, or dead cells. Cell species will turn inactive with a small basal rate; however, we also assume that accumulation of inactive cells will locally increase this rate, mimicking the impact of the local unfavorable microenvironment (Fig. 2D). We also assume that inactive cells cannot migrate or vanish, meaning that they still occupy a specific space in the lattice.

#### Lattice dynamics *via* the kinetic Monte Carlo method.

To bring the species on a lattice in motion we use a very powerful method of lattice kinetic Monte Carlo (LKMC) simulations. It has been previously successfully used to describe complex polymer dynamics, clustering and phase separation phenomena.<sup>60–62</sup> LKMC offers a coarse-grained representation

of the associated matrix/cells and describes the dynamics based on the energy of interspecies interactions.<sup>63</sup> In our case, all moves (diffusion of biofilms species and nutrients) and events (cell duplication, matrix production, and cell inactivation) happen stochastically with respective rates. The acceptance of a certain move/event is assessed based on the comparison of the energy state of the system before and after the move/event.

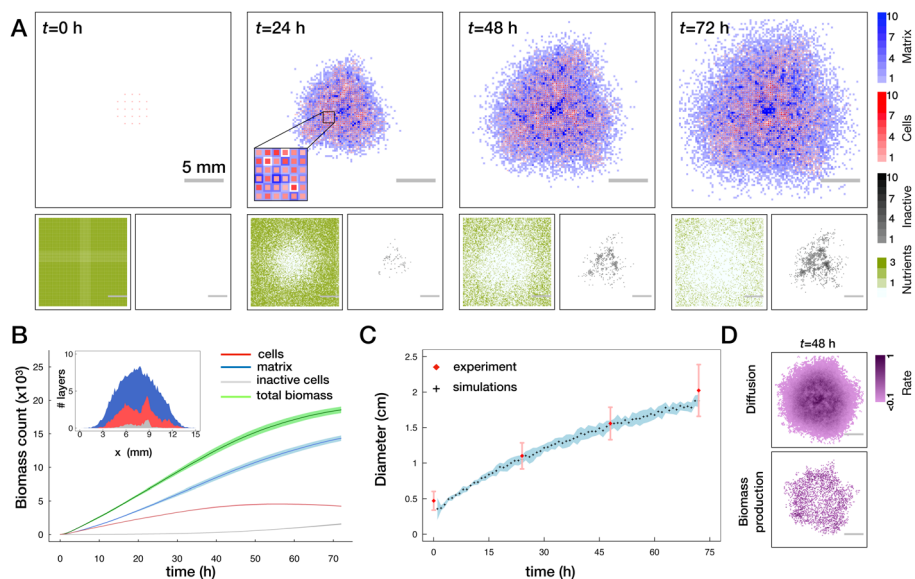
**Energy functional of the LKMC.** Occurrence of a certain type of event is governed by the respective energetic costs that are described by the energy functional or Hamiltonian. For our model, it has three contributions regulating competition for the space, repulsion between cells and matrix species, and the energetic cost of nutrient consumption (for more details and equations see Materials and methods). Competition for space means that it gets increasingly costly to build up multiple layers at the same lattice site mimicking the limitation of nutrient transport in the vertical direction. As a result, biomass is more likely to move to the lattice site with fewer occupied layers. Repulsion of cell and matrix species is introduced to describe the process of matrix self-assembly or phase separation<sup>64</sup> and also drive a certain degree of biomass heterogeneity. Finally, the third contribution describes a higher energy cost for consuming nutrients when they are depleted. Importantly, Monte Carlo time steps of the iterative scheme can be mapped to the physical time scales and thus quantitatively describe the system dynamics (see Materials and methods below).

**Linking LKMC to physical time and space.** The construction of the LKMC method allows linking the simulation step in the Monte Carlo scheme to the physical time scale. We use literature values on nutrient diffusion, proliferation rates, and inactivation rate (approximated by death rate) to set up these time scales in the model (see Materials and methods). Also, by choosing computationally feasible lattice discretization we can set the scale of the lattice site by comparing the diameter of the *in silico* colony corresponding to a certain physical time to the respective measured experimental value. With this model we are able to simulate the biofilm growth and the wound healing process.

#### Modeling of biofilm growth

To test the basic functionality of the lattice model we first simulated the normal biofilm growth with several basic perturbations (see Fig. 3A and Movie S1, ESI†). Consistent with multiple previous work the growth of the biofilm under the competition for space and for resources is slower than exponential (Fig. 3B). We see that in simulation time corresponding to 72 h, biofilms attain a near circular shape with a typical diameter of  $\sim 2$  cm. Due to introduced repulsion between cell and matrix species we see a formation of locally heterogeneous pattern in the biofilm. By making a virtual cut through a biofilm we can visualize the distribution of total biomass in cell (red) and matrix (blue) fractions (see inset in Fig. 3B). We can also see that in the middle part of the colony there is an accumulation of inactive cells (grey). We can also clearly observe the depletion of the nutrient concentration beneath the biofilm (Fig. 3A, bottom panels). To make the predictions of





**Fig. 3** Biofilm growth in the lattice model. (A) Top panels show one realization of the distribution of biomass layers in cells (red) and matrix (blue). In the first panel, uniformly distributed cell layers mimic the initial inoculation droplet. In the second panel, the inset shows the zoom in on an area of a biofilm. Smaller panels in the bottom show the corresponding distribution of nutrients (olive) and inactive cells (grey) (see also Movie S1, ESI<sup>†</sup>). (B) Evolution of biomass as a function of time quantified by the total number of occupied layers for total biomass (green), active and inactive cells (red and grey respectively) and the matrix (blue). Lines with shades show mean  $\pm$  SD ( $n = 5$  runs). The inset shows the cut through the center of the biofilm and the respective spatial distribution of the biomass. (C) Comparison of the biofilm diameter in the model (black crosses with a blue shade, mean  $\pm$  SD ( $n = 5$  runs)) to the experimentally measured colony diameters (red diamonds mean  $\pm$  SD, see Materials and methods). In simulations, diameter is defined as an average size of horizontal and vertical cross-sections where the biofilm is at least one layer thick. In experiments, diameter is the average of vertical and horizontal colony extension obtained from biofilm images. (D) Frequency of diffusion (top) and of biomass production events (bottom) averaged from 46 to 48 h for  $n = 5$  runs.

our model more quantitative we used the experimentally measured colony sizes (diameter) and tuned the parameters of the model to reproduce this growth curve, see Fig. 3C.

Two major drivers of colony expansion are the production of new biomass and its diffusion. For sufficiently old biofilms where the mid part already approaches the height limited by energetic penalty and availability (lack) of nutrients, mostly the cells at the periphery contribute to growth and further expansion of the colony, as shown in Fig. 3D.

### Modeling of the wound healing

To investigate the wound healing in the model, we first follow the experimental protocol. The colonies are left to grow unperturbed for the time corresponding to  $t = 24$  h in physical time, then a single quadrant of the biofilm is removed (all cell and matrix species), then the regrowth of the biofilm is followed over an extended period of time (see Fig. 4A).

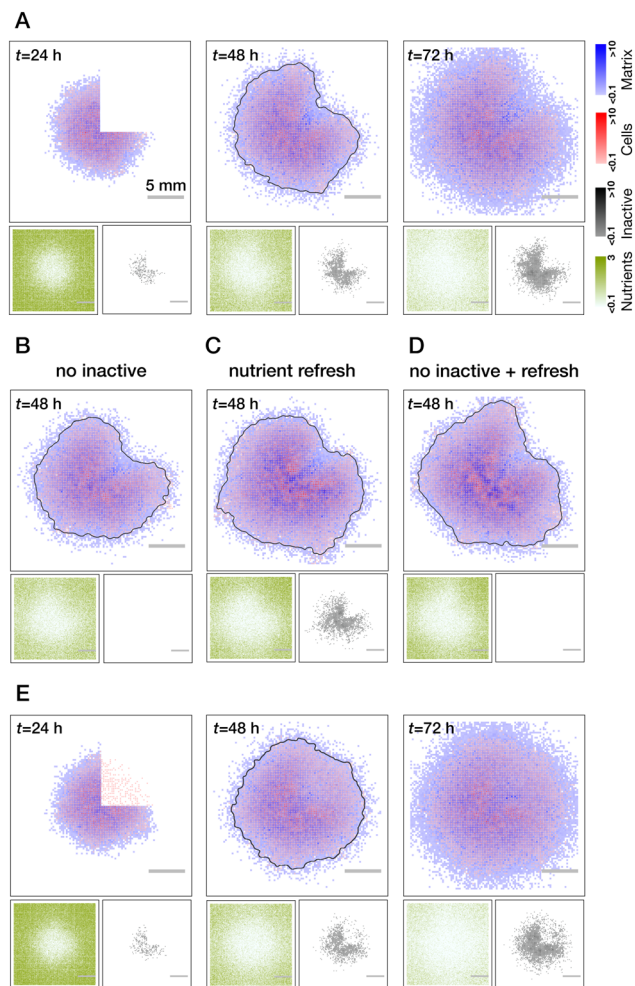
We first consider the case of clean wounds where no residual cells are left behind. For the parameter settings that were informed by existing literature and reproducing normal growth dynamics, we clearly see an effect of spatially inhomogeneous wound recovery. In particular, there is a faster re-growth of the biomass at the edges of the wound further away from the colony center. Such a behavior was previously experimentally observed for narrow, rectangular cuts along the biofilm radius.<sup>49</sup> Based on our observations of the normal growth we can propose (and test) two major mechanisms

responsible for such behavior: pre-existing gradient of the nutrients that was created by 24 hours of biofilm growth at the moment of the cut and the accumulation of inactive cells in the center of the colony. In simulations, we can easily control these two effects (see Fig. 4B–D). Indeed, we see a gradual reduction of inhomogeneity if we switch off the inactivation of cells (B) or refresh nutrients right after the cut was made (C). When both are implemented, effects complement each other (D) and regrowth is rather uniform (compare grey outlines of the colonies at  $t = 48$  h). These are the behaviors of the wound healing that would be predicted by the model in the case of an ideal cut.

**Effect of residual cells.** Importantly, we have seen that the essential feature of the wound healing in the experiment, is the presence of the residual cells in the area where the biomass was removed. We have replicated this effect in simulations by randomly placing a small fraction (10%) of active cells in the wound area (see below). Indeed we recover the nearly homogeneous regrowth in the whole wound area as compared to edge-driven regrowth in a sterile cut with no residual cells (Fig. 4E and Movie S3, ESI<sup>†</sup>).

**Erasing nutrient gradients.** We next wondered, how we can test the above described effects of nutrient gradients, inactivation of cells, and residual cells in a way that can also be reproduced in experiments. For that we suggest to cut exactly one half of the biofilm, take one half and transfer it to a fresh agar plate. Doing so we achieve a direct comparison of the





**Fig. 4** Modeling of wound healing. (A) Biofilm healing from a clean quarter cut (no residual cells in the wound). Wound recovery is inhomogeneous with respect to the radius: faster biomass production at the periphery of the colony due to the gradient of nutrients and inactive cells (see also Movie S2, ESI<sup>†</sup>). Testing of mechanisms leading to the inhomogeneous wound recovery: no inactive cells (B), refresh of the nutrients right after the cut (C) and both combined (D). While every perturbation alone reduces the degree of inhomogeneity, their combined effect leads to a more uniform wound closure. (E) Effect of the residual cells on wound recovery. Regrowth of biomass proceeds uniformly through the whole area of the wound (see Movie S3, ESI<sup>†</sup>). Grey lines in all  $t = 48$  h images show a threshold of the overall biomass to better indicate the outline of the colony. All results are averaged over  $n = 5$  realisations.

natural regrowth and a regrowth of a biofilm with effectively erased gradients of nutrients, but also signaling chemicals and waste products in its environment. Recovery of the biofilm that stays on the original agar plate proceeds largely similar to the above case of the smaller deleted section, see Fig. 5A and Movie S4 (ESI<sup>†</sup>). Experiments with half cut biofilms also exhibit very similar behavior, see Fig. 5B.

Regrowth of the half-biofilm transferred to the fresh plate (modeled as a refresh of nutrients and no residual cells) proceeds more interestingly, see Fig. 6A and Movie S5 (ESI<sup>†</sup>). We see that for intermediate times, the outline of the colony takes up a “croissant” shape (see grey outlines of colonies at

48 h in Fig. 5A and 6A) although we are not expecting any nutrient gradients to be present in this case (note that in Fig. 6A we show average over  $n = 5$  simulation runs. In individual realisations, a croissant shape is more pronounced, see Fig. S2, ESI<sup>†</sup>). Explanation of this shape in simulations, lies in the higher number of inactive cells at the middle of the colony, which, despite fully available refreshed nutrients can only generate a moderate amount of biomass compared to a larger number of active cells at the periphery of the biofilm. However, over time, due to the outgrowth of the colony the inhomogeneity of active/inactive cells is “forgotten” and the colony starts to approach a more symmetric circular shape. Importantly, we also see mirroring of the theoretical predictions in our experiment, where a half cut biofilm is transferred to a fresh agar plate. Here, the croissant shape is even more pronounced than in simulations, see Fig. 6 (see, however, Fig. S2, ESI<sup>†</sup>).

Now that we could rationalize our major qualitative findings with the model, we next wanted to better quantify the difference between the growth dynamics of healing and normal biofilms.

### Quantification of healing dynamics

Healing dynamics have been previously quantified using optical imaging, based on segmentation and light transmission through the biofilm mass.<sup>50</sup> The presence of the residual cells in the wound does not allow for the image segmentation of the wound outline in our case. Furthermore, optical methods would not be fully suitable because quantifying the thickness of the biofilm by an intensity of transmitted light also relies on the assumption of identical and homogeneous mass distribution which we cannot do *a priori*, especially when comparing healed to normal biofilms. Instead, we decided to rely on the methods allowing for direct cell counting and biomass quantification.

First, we performed optical density measurements of the biofilm samples (1/4 of biofilm) taken from biofilms healed after being wounded and control (unperturbed) areas at different time points, sonicated to break the biomass into individual cells, and then re-suspended in liquid medium at a given dilution. Optical density (turbidity) measurements of these cell suspensions thus serve as a proxy for the total number of cells (see Materials and methods for technical details) and are shown in Fig. 7A. In two independent experiment sets, we recovered the same remarkable trend that the number of cells in the healing wound is initially higher than in the normally growing biofilm, with a crossover happening at around 40 h where the normal growth takes over. We wondered if such a behavior is also recapitulated in our model. And indeed, by counting the number of active cells in healed *vs.* normal quarter of a biofilm we recover the same trend in our simulations and with a very similar crossover time (see Fig. 7B and overlay of simulations and data in Fig. S3, ESI<sup>†</sup>).

Second, we sought the ultimate way to cross-check our optical density measurements (which are still an indirect measure of cell numbers) and deployed recently developed, spatially resolved fluorescence activated cell sorting technique (FACS) to compare cell counts in the healing wounded and



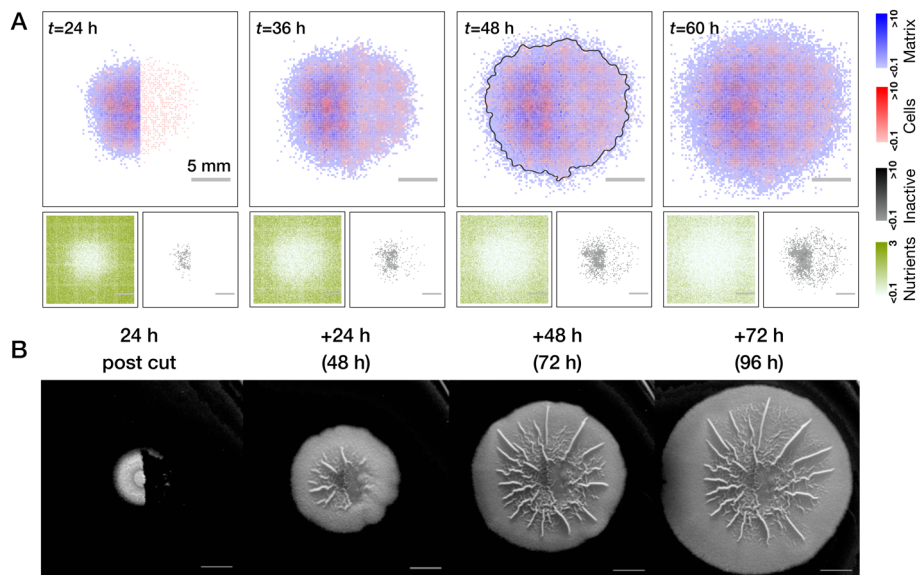


Fig. 5 Comparison of half-cut biofilms with nutrient gradients and residual cells in theory and experiment. (A) Biofilm recovers from removal of its half and with pronounced effect of residual cells, which is similar to earlier Fig. 4C (see also Movie S4, ESI†). Average over  $n = 5$  realisations is shown. (B) Same setup realized in the experiment. Scale bars in (B) correspond to 0.5 cm. Representative images are shown, further repeats can be found in Fig. S1 (ESI†).

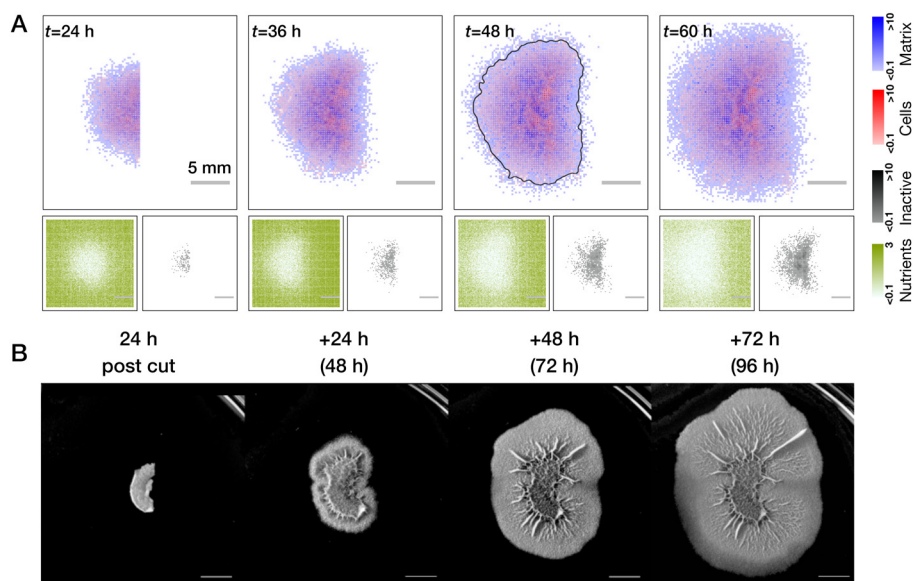


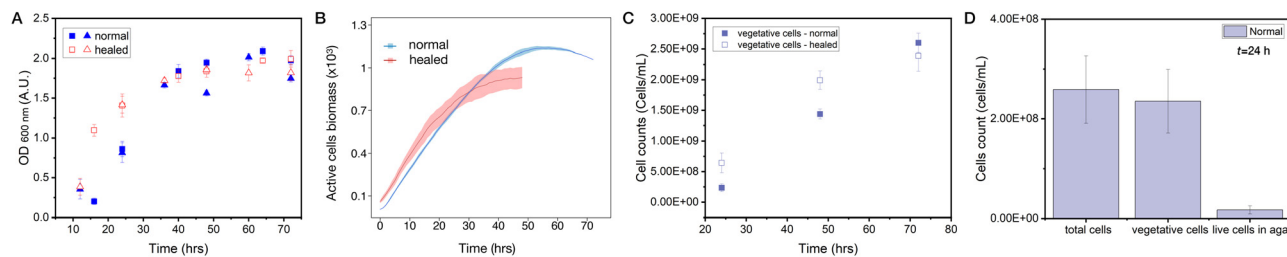
Fig. 6 Comparison of half-cut biofilms with no nutrient of gradients and no residual cells in theory and experiment. (A) Regrowth of the biofilm half with fully refreshed nutrients and no residual cells. Interestingly, despite full nutrient availability, regrowth at intermediate time is non-uniform, croissant-shaped (see, for example, the grey outline of biomass threshold at  $t = 48$  h). This is due to the effect of inactive cells in the center of the colony. At larger times this effect is screened by new regrown cells and growth becomes homogeneous (see also Movie S5, ESI†). Averages over  $n = 5$  simulations runs are shown. (B) Experiment exhibits very similar dynamics, where croissant shape is even more pronounced. Scale bars in (B) correspond to 0.5 cm. Representative images are shown, further repeats can be found in Fig. S1 (ESI†).

normal biofilms, as well as in the agar (to test for residual cells). Here we can specifically focus on counts of live, vegetative cells which contribute to growth and biomass production, see Fig. 7C. These results confirmed our observation that the healing biofilm initially grows faster than the normal biofilm of the same age and that there is a crossover where normal

biofilm growth takes over. However, crossover in these data occurs later in time relative to the turbidity measurements, which can be explained by different biofilm growth conditions in the two laboratories where these experiments took place.

We think there is an intuitive explanation of the observed crossover behavior. Residual cells and spores left on/in agar





**Fig. 7** Quantification of wound healing dynamics. (A) Optical density (turbidity) quantification of cell suspensions taken from 1/4 biofilm samples of a normal growing biofilm (solid symbols) and biofilms that healed from damage (open symbols). Two different symbol shapes represent two independent experimental sets ( $n = 4$  in each set). The healing biofilm initially has a higher number of cells and then at around  $t \sim 40$  h there is a cross over and the number of cells derived from normal biofilms surpasses that derived from healed biofilms. (B) Counts of active cell species in the lattice model in normally growing biofilms (blue) vs. biofilms healed from damage (red). Mean  $\pm$  SD ( $n = 5$  runs) are shown. For an overlay of simulations and turbidity data, see Fig. S3 (ESI $^\dagger$ ). (C) FACS cell counting as a function of time of cell suspensions from quarters of normal and healed biofilms also shows the same trend as turbidity (A) and simulations (B) data. (D) Quantification of cell subtypes at  $t = 24$  h using FACS cell sorting to dead cells, vegetative cells and spores, see also Fig. S5 (ESI $^\dagger$ ). Around 90% of all cells in a normal growing biofilm are vegetative cells (meaning that the rest are spores and dead cells). In the agar after removal of the biofilm during the cut, we can detect live cells (vegetative cells and spores) that mount to approximately 10% of vegetative cells in the biofilm.

after the removal of a biofilm quarter serve as an initial condition for the wound healing. This number of cells exceeds the number of cells found in the initial droplet from which the biofilm is inoculated. Provided with still enough nutrients, these cells drive rapid biomass regrowth in the wound. At a later stage, however, they face the nutrient deficit (the cells removed during the cut were consuming nutrients for 24 hours) and thus give up the lead to the normal growing biofilms.

Finally, we can also use FACS setup to quantify the amount of different cell types. Here we focus on total cells (including dead cells), their vegetative fraction, and number of live cells (vegetative and spores) in the agar beneath the removed biofilm at  $t = 24$  h, see Fig. 7D. Consistent with our simulations we see that  $\sim 90\%$  of all living cells are vegetative (active in the model). Remarkably, a number of living cells trapped in the agar when biofilm is removed is  $\sim 10\%$  of vegetative cells in the biofilm – also the number we initially used in our simulations. To us it was a surprisingly high number, which we have not seen mentioned in the literature. It would be an exciting direction of future research to further phenotype those remaining cells and their distribution in the agar.

So far we exclusively focused on the cell counts; however, biofilms also contain matrix. Experimentally, it is very difficult to properly identify the ECM fraction, but not in simulations. Interestingly, we observe that in the healing area there is a significant overproduction of the matrix as compared to normal growth (see Fig. S4, ESI $^\dagger$ ), an effect known to be present in the eukaryotic tissue wound healing process. It will be interesting to also check this model prediction in future experiments on biofilms.

## Discussion

In this work, we explored how a biofilm recovers a biomass that was removed by an areal cut. A combination of experiments with a numerical model allowed us to suggest and test the

relevance of several key factors that affect the regeneration process.

There is a clear effect of the pre-existing gradients. While in the model we only account for nutrient gradients, in experiment, it is a combination of two: nutrients and waste products, including potentially harmful or inhibitory secondary metabolites.<sup>65,66</sup> Generally, the effects of waste products on biofilm growth are still poorly understood and would be very important to consider for the problem of wound healing. When the gradients, at least in the agar environment, are removed, we still see transient heterogeneity which we attribute to the ability of cells to proliferate.

Perhaps the most unexpected observation is the dramatic effect of the residual cells which remain in agar and drive the regrowth in the wound and which we quantified to be of the order of 10% of number of cells in the biofilm. There are two potential sources of such cells. First, the removal of the biofilm material from the agar surface is never perfect and some cells embedded in the matrix might just stay in the wound area. However, there is a second possibility, where bacteria invade the agar beneath the biofilm.<sup>67,68</sup> In that case, it is impossible to remove these cells by mechanically cutting out the biofilm piece and peeling it off the agar surface. We have suggested that an analogy between the eukaryotic tissue wound healing and comparable processes occurring in biofilms may exist. However, the key questions that explore analogy of wound healing in biofilms and eukaryotic tissues still remain open: (i) whether biofilms can sense damage (ii) whether there is a programmed response (iii) what is the role of different cell phenotypes and matrix (iv) what are the roles of mechanical forces and biofilm material properties and, finally, (v) what is the effect of nutrients, waste and signaling molecule gradients on wound healing. These open questions guide the general direction of research and addressing them will require a consolidated interdisciplinary effort in the future.

Our model could make semi-quantitative predictions about biofilm growth and wound healing focusing on major effects of





nutrients and activity of cells. Specifically, we recover the normal biofilm growth, predict croissant shaped colonies on fresh agar, and recover the interesting effect of faster healing with a delayed taking over of normal growth, which is remarkable for that of a simple model. However, a large advantage of the lattice- and agent-based models is their extreme flexibility to include more cell phenotypes and/or signaling chemicals. Interestingly, effects of repair from damage and ageing can be potentially included at a single-cell level.<sup>69</sup> Furthermore, mechanics and water transport (and thus nutrient and waste transport) can be also included in the model.<sup>59</sup> The most obvious next step is to push the model to more explicitly incorporate the agar-fraction of cells which should be paralleled by the biological inquiry in their identity, distribution, and quantification. Finally, the lattice model can serve as the starting point for developing continuum mechanical theory of tissues combining cells and ECM and thus can be further applied in the context of eukaryotic wound healing.

## Materials and methods

### Biofilm formation experiments

A liquid culture of *Bacillus subtilis* (NCIB3610) was grown overnight at 37 °C to optical density (OD) 1.2–1.4. A 2  $\mu$ L drop from that liquid culture was spotted onto a 1.5% agar plate containing MSgg medium.<sup>70</sup> Plates were incubated at 30 °C for 24 h or 48 h as described in the text, and 1/4 or 1/2 pieces of biofilms were cut and removed using a spatula. Plates were then placed back into incubation at 30 °C following the cut and 1/4 or 1/2 piece removal. In addition, for the nutrient elimination experiment (Fig. 6), half cut biofilms were transferred to new MSgg plates and incubated further at 30 °C as indicated in the text. Biofilm images were taken using a P.CAM 360 or Nikon D3300 camera equipped with Nikkor 18–55 mm lens (Nikon, Thailand). The final images were brightness and contrast corrected.

### Biofilm diameter measurements

The diameter of biofilms was measured using images of normally growing colonies at different time points. We measured biofilms' maximum extension in *x*- and *y*-directions using ImageJ software (<https://imagej.net/ij/>) and took the mean of those as the report for the diameter. Multiple colonies from different experiments were used for the measurements at  $t = 24$  h ( $n = 86$ ),  $t = 48$  h ( $n = 12$ ),  $t = 72$  h ( $n = 18$ ). To estimate the size of the initial drop we used the diameter of the smooth circular part at colonies' center in a random subset of  $t = 24$  h images, which correspond to the size of the inoculation region ( $n = 48$ ). For every time point mean  $\pm$  SD is reported.

### Biofilm turbidity measurements

A liquid culture of *Bacillus subtilis* was grown overnight at 37 °C, 250 RPM, then diluted to optical density (OD) 0.8 using LB Broth. A 2  $\mu$ L drop of the liquid culture was placed onto a 1.5% MSgg-agar plate.<sup>70</sup> Plates were then incubated at 30 °C for

different time points. For normal biofilm cell count estimation, a 1/4 biofilm piece was cut and removed from the biofilm, resuspended with 1 mL of LB broth and sonicated using a Sonics VCX 750 probe sonicator (Sonics & Materials, Newtown, CT, USA) with 1 s pulse on, 1 s pulse off for 4 s in total (30% duty cycle, 18J). Optical density (turbidity) of cell suspension was measured at 600 nm. For healed biofilm cell count estimation, biofilms were re-incubated at 30 °C following the removal of a 1/4 biofilm piece at  $t = 24$  h. A 1/4 biofilm piece was cut from the healed area after different times, resuspended with 1 mL of LB broth and sonicated using a Sonics VCX 750 probe sonicator with 1 s pulse on, 1 s pulse off for 4 s in total (30%, duty cycle, 18J). Optical density (turbidity) of the cell suspensions was measured at 600 nm.

### Fluorescence-activated cell sorting (FACS)

**Cell sampling.** Biofilms were prepared as described above ('biofilm formation experiments'). Then, 1/4 biofilm pieces were cut from MSgg agar plates according to the procedure described above ('biofilm turbidity') and re-suspended in 1 mL phosphate-buffered saline (PBS: 6 mM Na<sub>2</sub>HPO<sub>4</sub>, 1.8 mM NaH<sub>2</sub>PO<sub>4</sub>, 145 mM NaCl in bi-distilled H<sub>2</sub>O, pH 7). This cell suspension was sonicated (20% duty cycle, 200 W) for 2  $\times$  12 s with Branson Ultrasonics<sup>TM</sup> Microtips and Branson Sonifier 250 (Branson Ultrasonics<sup>TM</sup>, Brookfield, CO, USA) and its cell density was adjusted to an OD ( $d_{\lambda 700\text{nm}} = 0.5$  cm) of 0.035 using PBS.

**Cell staining.** SYTO<sup>®</sup>9 (Ref. S-34854; Lot. 2397781; ThermoFisher Scientific, Waltham, MA, USA) is a cell-permeant nucleic acid stain, which was used in this study to stain fresh cell samples to distinguish cells from medium particles and dead cells. A 2.5  $\mu$ M stock solution of SYTO<sup>®</sup>9 was prepared daily and stored on ice. The final cell solution contained 475  $\mu$ L diluted cell sample and 25  $\mu$ L 2.5  $\mu$ M SYTO<sup>®</sup>9, with a final concentration of 0.125  $\mu$ M SYTO<sup>®</sup>9 per sample. The cell solution was mixed and incubated for 15 min at room temperature before cell counting. In addition, propidium iodide (PI, Ref. P4170; Lot. WXBD4453V; Sigma-Adrich, St Louis, MI, USA) was added at a concentration of 0.45  $\mu$ M per sample and cells were incubated further 15 min. The diluted and stained cell samples were measured on the same day. Reference beads (1  $\mu$ m yellow-green (YG) fluorescent fluospheres; Ref. F-8823, Lot. 2221782; ThermoFischer Scientific, Waltham, MA, USA) were added to the samples as internal standards. For measurements about 50 000 cells were recorded per cell gate.

**Flow cytometry.** The BD Influx v7 Cell Sorter (Becton Dickinson, Franklin Lakes, NJ, USA) was equipped with a stream-in-air nozzle and a blue 488 nm Sapphire OPS laser (400 mW). The 488 nm laser was used for the analysis of the forward scattering (FSC, 488/10), the side scattering (SSC, trigger signal, 488/10), the SYTO<sup>®</sup>9 fluorescence (530/40) and the PI fluorescence (616/23). The light was detected by Hamamatsu R3896 PMTs in C6270 sockets (Hamamatsu, 211 Hamamatsu City, Japan). The fluidics ran at 33 psi through a 70  $\mu$ m nozzle and cells were detected equivalent to an event rate of 2500 to 3000 events s<sup>-1</sup>. The sheath buffer consisted of FACSFlow Sheath Fluid (Ref. 342003; Becton



Dickinson, Franklin Lakes, NJ, USA). For calibration of the cytometer in the linear range, 1  $\mu\text{m}$  blue fluorescent FluoSpheres (Ref. F-8815, Lot. 69A1-1; Molecular Probes, Eugene, OR, USA) and 2  $\mu\text{m}$  yellow-green fluorescent FluoSpheres (Ref. F-8827, Lot. 1717426; ThermoFisher Scientific, Waltham, MA, USA) were used. Fluorescent-stained samples were measured as logarithmically scaled 2D-plots.

The flow cytometric raw data are available at the Flow-Repository website: <https://flowrepository.org/id/RvFrFKou3x4p9X9O0FmVwSymsn62Hi2k7gB01rn1PqIQnkB5OHRboQ9XLntDpSyB>.

Repository ID number: FR-FCM-Z72B.

**Cell counting.** Cell counting was performed with the BD Influx v7 Cell Sorter. OD-adjusted cells were stained with 2.5  $\mu\text{M}$  SYTO<sup>®</sup>9 and measured after 15 min. Fluorescent FluoSpheres (1  $\mu\text{m}$  yellow-green, Ref. F-8823, Lot. 2221782; ThermoFisher Scientific, Waltham, MA, USA) with a concentration of  $3.48 \times 10^7 \text{ mL}^{-1}$  were used as counting beads and were added to determine absolute cell numbers per mL. The resulting cell counts were determined after back-calculation of the dilution volumes used according to the formula:<sup>71</sup>

$$\# \text{cells mL}^{-1} = f \times C(\text{count}) \times B \times V[B(\text{YG})V(\text{stain})],$$

where,  $f$  is the dilution rate of sample for counting,  $C(\text{count})$  the virtual cell number in the cell gate,  $B$  is the defined concentration of 1  $\mu\text{m}$  of YG beads used for counting,  $V$  is the volume of defined concentration of 1  $\mu\text{m}$  YG beads used for counting,  $B(\text{YG})$  is the number of beads in the gate '1.0  $\mu\text{m}$  YG beads', and, finally,  $V(\text{stain})$  is the defined volume of SYTO<sup>®</sup>9 stained cell sample.

**Evaluation of cytometric data.** For gating, first a cell gate was defined on the basis of SYTO<sup>®</sup>9 green fluorescence and

which are in the cell gate and the numbers of cells which are in the different gates of the gate template.

**Numerical model.** We describe the dynamic process of biofilm formation and wound-healing using a lattice kinetic Monte Carlo model (LKMC). Cells and extracellular matrix are the two lattice-species describing the biofilm biomass that are included in this model and their growth is supported by nutrient species existing in their own lattice. Randomly selecting a particle at each step of the simulation, choosing a next possible system state, comparing its energy with the present energy of the system, and deciding whether to move to this possible state.

*Initial configuration.* Cells and extracellular matrix are required for the biofilm growth. In our simulations, all the initial configurations are made up of 21 lattices sites with one layer of cells uniformly and sparsely distributed in the center of the simulation box in the circle with the diameter of  $\sim 20$  lattice sites. This was made to mimic the initial inoculation drop of diameter 4.7 mm put on the agar to start the biofilm colony. It's size (lattice-sites vs. physical length) is determined by matching the parameters of the model to the growth data from experiments, see below.

*Allowed moves on the lattice.* When a cell produces another cell or a matrix it will consider 8 nearby lattices sites and the current lattice site (total of 9 potential placements) where the newly produced biomass can be deposited. However, only 8 neighboring lattice sites are considered for the diffusive movements of the biomass. Additionally, we assume that inactive cells are not allowed to move.

*Hamiltonian of the system.* We define the Hamiltonian (energy cost function) as

$$\left\{ \begin{array}{l} \text{Production of cells:} \\ \text{Production of matrix:} \\ \text{Diffusion:} \end{array} \right. \quad \begin{array}{l} \text{H} = \underbrace{C_w \sum_i (\sigma_i)}_{\text{Competition for space}} - \underbrace{J_w \sum_{i,j} \langle \sigma_i, \sigma_j \rangle}_{\text{Interaction}} + \underbrace{N_w^c \sum_i (A_{\max} - A_s(i))}_{\text{Consumption of nutrients}} \\ \text{H} = \underbrace{C_w \sum_i (\sigma_i)}_{\text{Competition for space}} - \underbrace{J_w \sum_{i,j} \langle \sigma_i, \sigma_j \rangle}_{\text{Interaction}} + \underbrace{N_w^m \sum_i (A_{\max} - A_s(i))}_{\text{Consumption of nutrients}} \\ \text{H} = \underbrace{C_w \sum_i (\sigma_i)}_{\text{Competition for space}} - \underbrace{J_w \sum_{i,j} \langle \sigma_i, \sigma_j \rangle}_{\text{Interaction}} \end{array}$$

Forward Scatter (FSC, Fig. S5A, ESI<sup>†</sup>) to differentiate the cells from instrumental and background noise and beads. All apparent cell clusters in 2D-plots (SYTO<sup>®</sup>9 green fluorescence vs. PI red fluorescence) were marked by a gate template (Fig. S5B, ESI<sup>†</sup>) to differentiate dead cells (PI stained) from spores and vegetative cells (SYTO<sup>®</sup>9 stained). The relative cell abundance per cell gate and per gate in the gate template were obtained *via* the program FlowJo 10.0.8.r1 directly from the raw.fcs files. Fig.S5C and D (ESI<sup>†</sup>) show how the gates are applied to a sample data of normal biofilms at  $t = 24$  h. The supplemental data file (FACS\_data.xlsx) shows the number of events (total counts), the number of counting beads, the numbers of cells

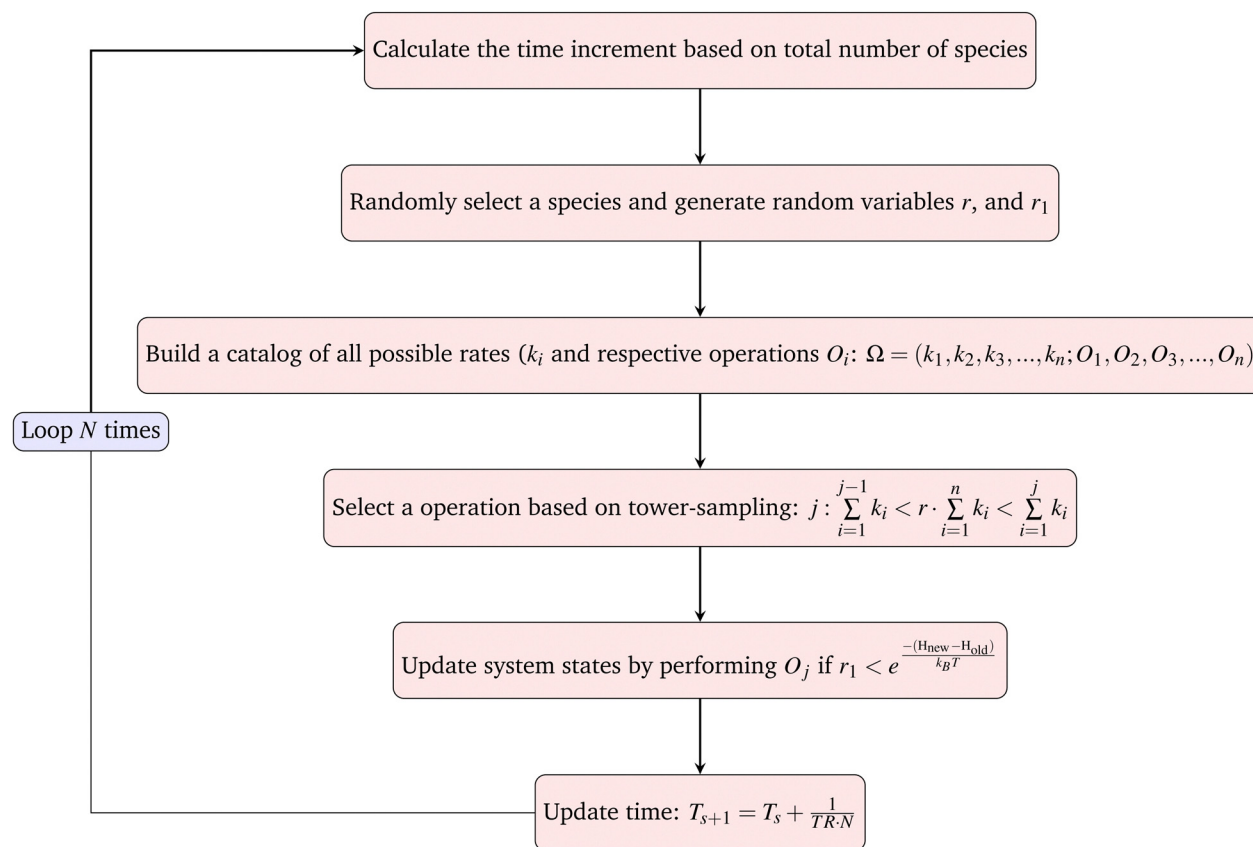
Three different energy functionals are invoked for cases of new cell production, matrix production and for diffusive moves.  $C_w, J_w, N_w^{c,m}$  are three weight parameters for space competition, interaction, and nutrient consumption respectively (different for cells and matrix), while  $i, j$  are the lattice indices.  $A_{\max}$  is the initial number of nutrient layers, and  $A_s$  shows the lattice's current number of nutrient layers (only for those who produce new biomass). Notice that if  $A_s = 0$ , then it is impossible to produce new biomass.

To summarize, the first part of H describes the competition for space where higher density of biomass (more occupied layers) will lead to a larger Hamiltonian. Here, the weight of



any biomass ( $\sigma_i$ , cells or matrix) is 1. Thus, during biomass production or diffusive moves, it is more likely to jump to the site with smallest number of layers, as it will lead to smaller energy penalty. The second term in  $H$  is the classical expression of interaction. Here, we introduce a small repulsion ( $J_w < 0$ ) between cells and matrix lattice-species.<sup>64</sup> This allows us to produce heterogeneous (in terms of cell/matrix distribution) biomass. The third term in  $H$  (when relevant) reflects the reduction of the ability to produce new biomass when nutrients get scarce.

**Monte-Carlo sweep and iteration steps.** A single loop of the Monte-Carlo iteration advances the dynamics of the system in time and is defined in the following chart.<sup>62</sup>



And the rates expressions for  $k_i$  are set to (see also below):

$$\left\{ \begin{array}{ll} \text{Cells division} & k_1 = \alpha \\ \text{Matrix secretion} & k_2 = \beta \\ \text{Diffusion} & k_3 = \gamma \end{array} \right.$$

The goal of one Monte-Carlo sweep is to go through all the species in the system to update the system state. We first calculate the total rate of reactions and moves in the system  $TR$  (see below), then randomly select a species from the current system and build the catalog of all possible operations. For cells, the possible operations include division, matrix production and diffusion. And for matrix and agar, the only possible operation is diffusion. By using the 'local update' rule (see below),

expressions for Hamiltonian and rates, one can easily calculate all the possible reaction rates  $k_i$  and build the catalog. By randomly choosing an operation from the catalog based on tower-sampling we perform the corresponding operation  $O_j$ . A full Monte-Carlo sweep should traverse all the species in the system, thus for a single simulation loop the updated  $\Delta T$  should be the inverse of  $TR$  and divided by the total number of all species  $N$ . We then have the increment of real physical time and can sum up all the increments and connect it to the physical time scale.

Rates of growth, secretion, and diffusion: our simulations rely on several rate constants: growth rate  $GR$  (inverse of cell doubling time), matrix secretion rate  $SR$  (rate at which matrix

particles are produced), and diffusion rates  $DR_{c,m,n}$  (the rate at which cells, matrix, and nutrient particles respectively hop to neighboring lattice sites).

We can now assemble all the rates to the total rate  $TR$ :

$$TR = GR + SR + DR_c + DR_m + DR_n$$

We next define the three relative rate coefficients for cell division ( $\alpha$ ), secretion ( $\beta$ ) and diffusion ( $\gamma$ ):

$$\alpha = \frac{GR}{TR}; \beta = \frac{SR}{TR}; \gamma_{c,m,n} = \frac{D_{c,m,n}}{TR}$$

The respective experimental values for the rates will help us to define the values of  $\alpha$ ,  $\beta$  and  $\gamma$  (see below).



**Inactivation of cells.** Additionally to biomass production and diffusion, we also have included the process of cell inactivation. Biologically, there are multiple transitions from the active proliferating and matrix producing state that a cell can go to. We collectively refer to all of those states when cells do not proliferate and do not produce matrix by an effective inactive state. The inactivation rate (IR) is defined as

$$\text{IR} = \frac{\text{IR}_{\text{base}} + \text{IR}_{\text{base}} \cdot N_{\text{inact}} \cdot \zeta}{\text{TR}}$$

The parameter  $\zeta$  encodes the positive feedback from inactive cells (*i.e.* rate of inactivation is higher if there are more inactive cells in the environment) mimicking, for example, a local accumulation of toxic compounds. Inactive cells do not move and do not produce new biomass. The number of surrounding inactive cells  $N_{\text{inact}}$  is defined as the total number of inactive cells in 9-sites neighborhood.

**Local update.** After each iteration, the system's energy is calculated. To improve computation efficiency, we only need to calculate the local updates. The only two lattices and their direct neighborhoods will be accounted for as there is only one particle that can be produced or moved in one Monte Carlo loop. We then only need to calculate the local energy differences to determine whether or not the particle will move.

Mapping of Monte Carlo steps to the physical time: for a particle of type  $p = c, m, n$  diffusing on a lattice, the diffusion constant can be written as<sup>72</sup>

$$D_p = \frac{\text{DR}_p}{2d\delta t} a^2,$$

where  $D_p$  is the diffusion coefficient,  $d = 2$  is the dimension of the lattice space,  $\text{DR}_p$  is the dimensionless jump rate in the stochastic simulations (diffusion rate),  $\delta t$  is the physical time scale (we take  $\delta t = 1$  s) and  $a$  is the physical space corresponding to the lattice size. Thus, for example for the size of one lattice  $a = 0.15$  mm and diffusion of nutrients in agar (see Table 1 and explanation of parameter values below) we can calculate the diffusion rate of the nutrients as  $\text{DR}_n = 5.33 \times 10^{-3}$ . The other

rates (*i.e.* division and secretion) can be obtained by using the experimental values and the scaling constants  $\alpha$ ,  $\beta$ , and  $\gamma$  introduced above.

In every Monte Carlo simulation loop, the updated physical time step is

$$\Delta t = \frac{1}{\text{TR} \cdot N}$$

Here,  $N$  represents to total number of all particles of all species, including cells, matrix and nutrients. Thus, because the total number of lattice-species in our system is not conserved over time, the rules for physical time updates need to be adjusted as the number of particles changes.

**Parameters of the biofilm model.** We should stress that we set a goal for the model to achieve semi-quantitative agreement with the experimental data in order to draw biologically meaningful conclusions about the processes that might affect wound healing. The advantage of the coarse-grained lattice-model with kinetic Monte Carlo algorithm for particle moves is the possibility to link stochastic time in the model to real physical time. While the lattice model is one of the most efficient systems to simulate, yet at the level of the whole biofilm, calculations corresponding to several days of biofilm growth get computationally extensive. Thus, in this study, we did not aim to perform extensive scan of the parameter space to get the best fit of the experimental data.

Instead, we started with the parameter values known from the literature and then used our own experimental data on biofilm diameter as a function of time to define the final parameter values to be used in the model. We use the biofilm size (*i.e.* diameter of the colony measured at a given time) to set the size scale of the lattice, the diffusion constants of nutrients to set the scale for the rates of lattice species' moves and adjust those to capture the growth dynamics as shown in Fig. 3C. The doubling time and death rate also inform our choice of the corresponding model parameters.

To illustrate how the model reacts to changes in the major parameters we are providing Fig. S6 (ESI†) where we altered

Table 1 List of parameters used in numerical simulations

Description	Value	Symbol
Lattice size	100 × 100	
Single lattice dimension	0.23 mm	$a$
Doubling time of <i>B. subtilis</i>	7200 s <sup>73,74</sup>	
Diffusion coefficient of nutrients	$7.096 \times 10^{-5} \text{ (mm}^2 \text{ s}^{-1}\text{)}^{75}$	$D_A$
Diffusion coefficient of cells	$5.322 \times 10^{-7} \text{ (mm}^2 \text{ s}^{-1}\text{)}^{75}$	$D_C$
Diffusion coefficient of matrix	$3.326 \times 10^{-6} \text{ (mm}^2 \text{ s}^{-1}\text{)}^{75}$	$D_m$
Phantom cells fraction	0.1 or 0	$\kappa$
Death rate of cells	$D_b = 6.05 \times 10^{-6} \text{ s}^{-1.76}$	$D_b$
Initial layers of agar	3	$A_{\text{max}}$
Layers of agar in the $i$ 'th lattice	—	$A_s(i)$
The $i$ 'th species in simulation (cells or ECM)	—	$\sigma_i$
Weight parameter of space competition	$0.1k_B T$	$C_w$
Weight parameter of nutrient consumption	$1.5k_B T$ (cells); $1k_B T$ (ECM)	$N_w$
Cell and matrix interaction	$0.03k_B T$	$J_w$
Coupling constant for inactivation	0.954	$\zeta$
Total particles	—	$N$



biomass production, diffusion of biomass, cell inactivation rate and degree of phase separation of cells and matrix. Fig. S6A and B (ESI<sup>†</sup>) show the low/high production with GR, SR =  $6.94 \times 10^{-5}$  and GR, SR =  $2.08 \times 10^{-4}$  respectively. Fig. S6C and D (ESI<sup>†</sup>) show the low/high diffusion of biomass with  $D_c = 2.66 \times 10^{-7}$  ( $\text{mm}^2 \text{s}^{-1}$ ) and  $7.98 \times 10^{-7}$  ( $\text{mm}^2 \text{s}^{-1}$ ),  $D_m = 1.66 \times 10^{-6}$  ( $\text{mm}^2 \times \text{s}^{-1}$ ) and  $4.99 \times 10^{-6}$  ( $\text{mm}^2 \times \text{s}^{-1}$ ) respectively. Fig. S6E and F (ESI<sup>†</sup>) show the low/high inactivation rate with  $D_b = 3.025 \times 10^{-6} \text{s}^{-1}$  and  $1.815 \times 10^{-5} \text{s}^{-1}$  respectively. Finally, Fig. S6G and H (ESI<sup>†</sup>) show the low/high interaction with  $J_w = 0k_B T$  and  $0.015k_B T$  respectively.

**Choosing parameter values.** We assume the average doubling time of around  $2 \text{ h}^{73,74}$  corresponding to the dimensionless growth rate: GR  $\approx 1.33 \times 10^{-4}$ . Next, for simplicity we assume that the matrix secretion rate is the same as the growth rate GR = SR.

The diffusion coefficient for a stereotypical molecule in agar is  $3 \times 10^{-5} \text{ (mm}^2 \text{ s}^{-1})$ .<sup>75</sup> While there are no directly measured values for cell or matrix diffusion within the biofilm we assume this process to happen roughly  $10^{-3}$  to  $10^{-4}$  times slower than nutrient diffusion, we take diffusion coefficient of cells  $D_c$  as  $2.25 \times 10^{-7} \text{ (mm}^2 \text{ s}^{-1})$ , and diffusion of matrix by an additional factor 6, 25 slower. Thus, the corresponding dimensionless rates of diffusion can be derived as  $DR_c = 4 \times 10^{-5}$ ,  $DR_m = 2.5 \times 10^{-4}$  and  $DR_n = 5.33 \times 10^{-3}$ .

**Numerical code availability.** The numerical code is available by the following link: [https://github.com/MikawaYys/Biofilm\\_simulation](https://github.com/MikawaYys/Biofilm_simulation).

## Author contributions

LC and VZ conceptualized the project, MG, SMi, and SA performed experiments, MG, SMü, LC analyzed data, YE developed numerical model and performed simulations, YE, VZ, and LC wrote the original draft, TM, SMü, LC, and VZ supervised the work, and all authors contributed to reviewing and editing the final manuscript.

## Conflicts of interest

There are no conflicts of interest to declare.

## Acknowledgements

This work is supported by Deutsche Forschungsgemeinschaft (DFG, German Research Foundation) Grants 504222949 (to YE, MG, VZ and LC), 504017689 (to SMi and TM) and 503905203 (to SA and SMü) in the framework of the Priority Program SPP2389 “Emergent functions of bacterial multicellularity”. MG acknowledges the support of the Neubauer Family Foundation for the PhD fellowship. We thank Kathrin Stückrath for her assistance with FACS data acquisition and analysis.

## Notes and references

- 1 D. López, H. Vlamakis and R. Kolter, *Cold Spring Harbor Perspect. Biol.*, 2010, **2**, a000398.
- 2 R. M. Donlan, *Emerging Infect. Dis.*, 2002, **8**, 881.
- 3 H.-C. Flemming, J. Wingender, U. Szewzyk, P. Steinberg, S. A. Rice and S. Kjelleberg, *Nat. Rev. Microbiol.*, 2016, **14**, 563–575.
- 4 H.-C. Flemming, E. D. van Hullebusch, T. R. Neu, P. H. Nielsen, T. Seviour, P. Stoodley, J. Wingender and S. Wuertz, *Nat. Rev. Microbiol.*, 2023, **21**, 70–86.
- 5 S. S. Branda, Å. Vik, L. Friedman and R. Kolter, *Trends Microbiol.*, 2005, **13**, 20–26.
- 6 T. Larsen and N.-E. Fiehn, *APMIS*, 2017, **125**, 376–384.
- 7 J. E. Button and R. J. Dutton, *Curr. Biol.*, 2012, **22**, R587–R589.
- 8 B. E. Ramey, M. Koutsoudis, S. B. von Bodman and C. Fuqua, *Curr. Opin. Microbiol.*, 2004, **7**, 602–609.
- 9 T. Danhorn and C. Fuqua, *Annu. Rev. Microbiol.*, 2007, **61**, 401–422.
- 10 M. J. Franklin and P. S. Stewart, *Nat. Rev. Microbiol.*, 2008, **6**, 199–210.
- 11 C. M. Toutain, N. C. Caiazza and G. A. O’Toole, *Microb. Biofilms*, 2004, 43–63.
- 12 K. Sauer, P. Stoodley, D. M. Goeres, L. Hall-Stoodley, M. Burmølle, P. S. Stewart and T. Bjarnsholt, *Nat. Rev. Microbiol.*, 2022, **20**, 608–620.
- 13 H. Vlamakis, C. Aguilar, R. Losick and R. Kolter, *Genes Dev.*, 2008, **22**, 945.
- 14 M. Simoes, M. O. Pereira and M. J. Vieira, *Water Res.*, 2005, **39**, 5142–5152.
- 15 H.-C. Flemming, J. Wingender, T. Griegbe and C. Mayer, *Biofilms: recent advances in their study and control*, Harwood Academic Publishers, Amsterdam, 2000, pp. 19–34.
- 16 H. Wolfmeier, D. Pletzer, S. C. Mansour and R. E. Hancock, *ACS Infect. Dis.*, 2018, **4**, 93–106.
- 17 M. G. Trulear and W. G. Characklis, *J. - Water Pollut. Control Fed.*, 1982, 1288–1301.
- 18 W. G. Characklis, M. Nevimons and B. Picologlou, *Heat Transfer Eng.*, 1981, **3**, 23–37.
- 19 Q. Wang and T. Zhang, *Solid State Commun.*, 2010, **150**, 1009–1022.
- 20 J. D. Bryers, *Biotechnol. Bioeng.*, 2008, **100**, 1–18.
- 21 P. S. Stewart and J. W. Costerton, *Lancet*, 2001, **358**, 135–138.
- 22 T. Eisele and K. Gabby, *Miner. Process. Extr. Metall. Rev.*, 2014, **35**, 75–105.
- 23 E. J. Gardel, M. E. Nielsen, P. T. Grisdela Jr and P. R. Girguis, *Environ. Sci. Technol.*, 2012, **46**, 5222–5229.
- 24 B. E. Logan, *Microbial fuel cells*, John Wiley & Sons, 2008.
- 25 R. Singh, D. Paul and R. K. Jain, *Trends Microbiol.*, 2006, **14**, 389–397.
- 26 H. Vlamakis, Y. Chai, P. Beaugard, R. Losick and R. Kolter, *Nat. Rev. Microbiol.*, 2013, **11**, 157–168.
- 27 T. R. Garrett, M. Bhakoo and Z. Zhang, *Prog. Nat. Sci.*, 2008, **18**, 1049–1056.
- 28 G. C. Wong and G. A. O’Toole, *MRS Bull.*, 2011, **36**, 339–342.



- 29 G. C. Wong, J. D. Antani, P. P. Lele, J. Chen, B. Nan, M. J. Kühn, A. Persat, J.-L. Bru, N. M. Høyland-Kroghsbo and A. Siryaporn, *et al.*, *Phys. Biol.*, 2021, **18**, 051501.
- 30 P. S. Stewart, *J. Bacteriol.*, 2003, **185**, 1485–1491.
- 31 K. Lemon, A. Earl, H. Vlamakis, C. Aguilar and R. Kolter, *Bact. Biofilms*, 2008, 1–16.
- 32 H.-C. Flemming and J. Wingender, *Nat. Rev. Microbiol.*, 2010, **8**, 623–633.
- 33 V. D. Gordon, M. Davis-Fields, K. Kovach and C. A. Rodesney, *J. Phys. D: Appl. Phys.*, 2017, **50**, 223002.
- 34 A. Seminara, T. E. Angelini, J. N. Wilking, H. Vlamakis, S. Ebrahim, R. Kolter, D. A. Weitz and M. P. Brenner, *Proc. Natl. Acad. Sci. U. S. A.*, 2012, **109**, 1116–1121.
- 35 D. Claessen, D. E. Rozen, O. P. Kuipers, L. Søgaard-Andersen and G. P. Van Wezel, *Nat. Rev. Microbiol.*, 2014, **12**, 115–124.
- 36 P. J. Piggot and D. W. Hilbert, *Curr. Opin. Microbiol.*, 2004, **7**, 579–586.
- 37 N. Allocati, M. Masulli, C. Di Ilio and V. De Laurenzi, *Cell Death Dis.*, 2015, **6**, e1609.
- 38 J. A. Shapiro, *Annu. Rev. Microbiol.*, 1998, **52**, 81–104.
- 39 I. George Broughton, J. E. Janis and C. E. Attinger, *Plast. Reconstr. Surg.*, 2006, **117**, 12S–34S.
- 40 A. Young and C.-E. McNaught, *Surgery*, 2011, **29**, 475–479.
- 41 G. Y. Chen and G. Nuñez, *Nat. Rev. Immunol.*, 2010, **10**, 826–837.
- 42 A. Brugués, E. Anon, V. Conte, J. H. Veldhuis, M. Gupta, J. Colombelli, J. J. Muñoz, G. W. Brodland, B. Ladoux and X. Trepat, *Nat. Phys.*, 2014, **10**, 683–690.
- 43 V. Nier, M. Deforet, G. Duclos, H. G. Yevick, O. Cochet-Escartin, P. Marcq and P. Silberzan, *Proc. Natl. Acad. Sci. U. S. A.*, 2015, **112**, 9546–9551.
- 44 L. G. Rodriguez, X. Wu and J.-L. Guan, *Cell Migration: Developmental Methods and Protocols*, 2005, pp. 23–29.
- 45 W. S. Krawczyk, *J. Cell Biol.*, 1971, **49**, 247–263.
- 46 V. Hakim and P. Silberzan, *Rep. Prog. Phys.*, 2017, **80**, 076601.
- 47 G. S. Schultz and A. Wysocki, *Wound Repair Regen.*, 2009, **17**, 153–162.
- 48 A. K. Tsirogianni, N. M. Moutsopoulos and H. M. Moutsopoulos, *Injury*, 2006, **37**, S5–S12.
- 49 X. Wang, F. Dong, J. Liu, Y. Tan, S. Hu and H. Zhao, *Arch. Microbiol.*, 2021, **203**, 5635–5645.
- 50 X. Wang, Y. Tan, J. Liu, S. Hu and H. Zhao, *J. Mech. Med. Biol.*, 2020, **20**, 2050048.
- 51 F. Dong, S. Liu, D. Zhang, J. Zhang and X. Wang, *Environ. Microbiol. Rep.*, 2022, **14**, 822–827.
- 52 R. J. Allen and B. Waclaw, *Rep. Prog. Phys.*, 2018, **82**, 016601.
- 53 M. A. Delavar and J. Wang, *Sustainability*, 2021, **13**, 7968.
- 54 F. L. Hellweger, R. J. Clegg, J. R. Clark, C. M. Plugge and J.-U. Kreft, *Nat. Rev. Microbiol.*, 2016, **14**, 461–471.
- 55 J.-U. Kreft, C. M. Plugge, C. Prats, J. H. Laveau, W. Zhang and F. L. Hellweger, *Front. Microbiol.*, 2017, **8**, 2299.
- 56 M. Mattei, L. Frunzo, B. D'acunto, Y. Pechaud, F. Pirozzi and G. Esposito, *J. Math. Biol.*, 2018, **76**, 945–1003.
- 57 J. Dong and S. Klumpp, *Soft Matter*, 2018, **14**, 1908–1916.
- 58 E. Alpkvista and I. Klapper, *Bull. Math. Biol.*, 2007, **69**, 765–789.
- 59 D. Espeso, A. Carpio and B. Einarsson, *Phys. Rev. E: Stat., Nonlinear, Soft Matter Phys.*, 2015, **91**, 022710.
- 60 M. Andersen, C. Panosetti and K. Reuter, *Front. Chem.*, 2019, **7**, 202.
- 61 C. C. Battaile, *Comput. Methods Appl. Mech. Eng.*, 2008, **197**, 3386–3398.
- 62 C. A. Miermans and C. P. Broedersz, *Soft Matter*, 2020, **16**, 544–556.
- 63 M. H. Flamm, *Lattice kinetic Monte Carlo simulations of platelet aggregation and deposition*, University of Pennsylvania, 2011.
- 64 P. Ghosh, J. Mondal, E. Ben-Jacob and H. Levine, *Proc. Natl. Acad. Sci. U. S. A.*, 2015, **112**, E2166–E2173.
- 65 M. G. Chevrette, C. S. Thomas, A. Hurley, N. Rosario-Meléndez, K. Sankaran, Y. Tu, A. Hall, S. Magesh and J. Handelsman, *Proc. Natl. Acad. Sci. U. S. A.*, 2022, **119**, e2212930119.
- 66 E. Sansinenea and A. Ortiz, *Biotechnol. Lett.*, 2011, **33**, 1523–1538.
- 67 M. T. Corcuera, F. Gómez-Aguado, M. L. Gómez-Lus, C. Ramos, M. A. de la Parte, M. J. Alonso and J. Prieto, *J. Microbiol. Methods*, 2013, **94**, 267–273.
- 68 T. Bhattacharjee and S. S. Datta, *Nat. Commun.*, 2019, **10**, 2075.
- 69 R. J. Wright, R. J. Clegg, T. L. Coker and J.-U. Kreft, *Msystems*, 2020, **5**, 10–1128.
- 70 S. S. Branda, J. E. González-Pastor, S. Ben-Yehuda, R. Losick and R. Kolter, *Proc. Natl. Acad. Sci. U. S. A.*, 2001, **98**, 11621–11626.
- 71 Z. Liu, N. Cichocki, T. Hübschmann, C. Süring, I. D. Ofiteru, W. T. Sloan, V. Grimm and S. Müller, *Environ. Microbiol.*, 2019, **21**, 164–181.
- 72 C. Merlet, A. C. Forse, J. M. Griffin, D. Frenkel and C. P. Grey, *J. Chem. Phys.*, 2015, **142**, 094701.
- 73 H. Nguyen, A. Ybarra, H. Basagaoglu and O. Shindell, *Sci. Rep.*, 2021, **11**, 1–17.
- 74 C. Deygout, A. Lesne, F. Campillo and A. Rapaport, *Ecol. Modell.*, 2013, **250**, 15–24.
- 75 X. Zhang, X. Wang and Q. Sun, *Procedia IUTAM*, 2017, **23**, 33–41.
- 76 P. Servais, G. Billen and J. V. Rego, *Appl. Environ. Microbiol.*, 1985, **49**, 1448–1454.

