

Cite this: *Chem. Sci.*, 2024, 15, 2763

All publication charges for this article have been paid for by the Royal Society of Chemistry

Evidence for Suzuki–Miyaura cross-couplings catalyzed by ligated Pd₃-clusters: from cradle to grave†

Neda Jeddi,^a Neil W. J. Scott,^a Theo Tanner,^a Simon K. Beaumont^b and Ian J. S. Fairlamb^{a*}

Pd_n clusters offer unique selectivity and exploitable reactivity in catalysis. Understanding the behavior of Pd_n clusters is thus critical for catalysis, applied synthetic organic chemistry and greener outcomes for precious Pd. The Pd₃ cluster, [Pd₃(μ-Cl)(μ-PPh₂)₂(PPh₃)₃][Cl] (denoted as Pd₃Cl₂), which exhibits distinctive reactivity, was synthesized and immobilized on a phosphine-functionalized polystyrene resin (denoted as immob-Pd₃Cl₂). The resultant material served as a tool to study closely the role of Pd₃ clusters in a prototypical Suzuki–Miyaura cross-coupling of 4-fluoro-1-bromobenzene and 4-methoxyphenyl boronic acid at varying low Pd ppm concentrations (24, 45, and 68 ppm). Advanced heterogeneity tests such as Hg poisoning and the three-phase test showed that leached mononuclear or nanoparticulate Pd are unlikely to be the major active catalyst species under the reaction conditions tested. EXAFS/XANES analysis from (pre)catalyst and filtered catalysts during and after catalysis has shown the intactness of the triangular structure of the Pd₃X₂ cluster, with exchange of chloride (X) by bromide during catalytic turnover of bromoarene substrate. This finding is further corroborated by treatment of immob-Pd₃Cl₂ after catalyzing the Suzuki–Miyaura reaction with excess PPh₃, which releases the cluster from the polymer support and so permits direct observation of [Pd₃(μ-Br)(μ-PPh₂)₂(PPh₃)₃]⁺ ions by ESI-MS. No evidence is seen for a proposed intermediate in which the bridging halogen on the Pd₃ motif is replaced by an aryl group from the organoboronic acid, *i.e.* formed by a transmetallation-first process. Our findings taken together indicate that the 'Pd₃X₂' motif is an active catalyst species, which is stabilized by being immobilized, providing a more robust Pd₃ cluster catalyst system. Non-immobilized Pd₃Cl₂ is less stable, as is followed by stepwise XAFS of the non-immobilized Pd₃Cl₂, which gradually changes to a species consistent with 'Pd_x(PPh₃)_y' type material. Our findings have far-reaching future implications for Pd₃ cluster involvement in catalysis, showing that immobilization of Pd₃ cluster species offers advantages for rigorous mechanistic examination and applied chemistries.

Received 1st December 2023
Accepted 8th January 2024

DOI: 10.1039/d3sc06447f

rsc.li/chemical-science

Introduction

Suzuki–Miyaura cross-coupling (SMCC) reactions are ubiquitous in applied chemical synthesis laboratories around the world, forming a keystone in the synthesis of an eclectic array of high value organic products.¹ Palladium is the metal catalyst of choice for many of these transformations, although to be sustainable this precious metal ought to be used responsibly, *i.e.* used at low catalyst loadings, and be efficiently recovered and recycled, particularly in large scale chemical processes.² Advances in the

design of well-defined ligand systems (*e.g.* the Buchwald-type ligands such as XPhos, SPhos and many others) have positively contributed towards applied SMCC reaction processes.³ On the other hand, multinuclear Pd species, from small Pd_n clusters to Pd nanoparticles, offer unique reactivity and activity in SMCC reactions, as well as other cross-coupling chemistries.⁴ Immobilized-Pd⁵ or the use of supported Pd nanoparticles allow for more effective⁶ catalyst recycling, particularly when used in conjunction with magnetic co-additives such as iron.⁷ Moving towards 2030, one can argue that simply improving the activity and recyclability of Pd catalysts is not enough. However, if one can alter reaction outcomes of cross-coupling reactions based on unique reactivity of a reproducible, well-defined multinuclear Pd species, then that could be a highly exploitable tool in synthetic chemistry.⁸ In this context, the identification of Pd₃ clusters of the type [Pd₃(μ-Cl)(μ-PPh₂)₂(PPh₃)₃]X (X can be a variety of coordinating or non-coordinating anions; structures originally discovered and characterized by Coulson and Dixon)⁹ as competent, highly active and selective catalysts for cross-coupling reactions has prompted

^aDepartment of Chemistry, University of York, York, YO20 5DD, UK. E-mail: ian.fairlamb@york.ac.uk

^bDepartment of Chemistry, Durham University, South Road, Durham, DH1 3LE, UK. E-mail: simon.beaumont@durham.ac.uk

† Electronic supplementary information (ESI) available: Full experimental details, compound characterization, catalysis results and XAFS data. Single crystal XRD data for [Pd₃(μ-Cl)(μ-PPh₂)₂(PPh₃)₃]SbF₆. CCDC 2281111. For ESI and crystallographic data in CIF or other electronic format see DOI: <https://doi.org/10.1039/d3sc06447f>



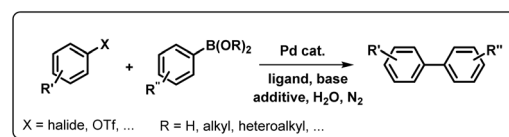
several research groups to exploit their distinctive and unique behavior.^{4d,10} SMCC reactions with di- and tetra-nuclear Pd complexes have also been reported, although with less detailed mechanistic evaluation.¹¹ A guiding example with Pd₃ is the cross-coupling of 2,4-dibromopyridine, where typical mononuclear Pd species containing phosphine ligands exhibit C2 site-selectivity.¹² On the other hand, [Pd₃(μ-Cl)(μ-PPh₂)₂(PPh₃)₃]X species (X = Cl or OAc) exhibit C4 site-selectivity.^{10b} Indeed, higher order stabilized Pd nanoparticles exhibit similar behavior.¹³ Although the mechanism for this site-selectivity switch is not fully known, the ability to program either reaction outcome by the choice of catalyst provides synthetic chemists with a powerful tool for wider applications.

In 2017, Li *et al.* reported the reactivity and behavior of [Pd₃(μ-Cl)(μ-PPh₂)₂(PPh₃)₃]X species in SMCC reactions, suggesting it to be a highly active catalyst for the cross-coupling of an array of coupling partners, including aryl chlorides.^{4d} The latter point is remarkable, as clearly the aggregated cyclic Pd₃ cluster increases the reactivity of this Pd-phosphorus based catalyst system. Moreover, the authors suggested that there was an inversion of the steps in SMCC reactions catalyzed by [Pd₃(μ-Cl)(μ-PPh₂)₂(PPh₃)₃]X species (X = SbF₆). Despite the mechanistic complexity of typical SMCC reactions, *i.e.* the difficulty in elucidating Pd nuclearity and speciation (both Pd and B), the scientific community broadly agrees with a sequence of oxidative addition, transmetalation and reductive elimination steps. However, a transmetalation-first step was proposed for the action of [Pd₃(μ-Cl)(μ-PPh₂)₂(PPh₃)₃]X species, which is followed by oxidative addition (σ-bond metathesis suggested) and reductive elimination at the intact Pd₃ cluster center. Thus it would appear that [Pd₃(μ-Cl)(μ-PPh₂)₂(PPh₃)₃]X operates in a mechanistically distinct manner to typical mononuclear Pd catalysts, particularly Pd₀(PPh₃)_n catalyst systems. Indeed, Fairlamb *et al.* demonstrated the normally expected sequence is only observed for Pd⁰(PPh₃)_n where *n* > 3 in reactions of 2-bromopyridine^{10a} or 2,4-dibromopyridine^{10b} with aryl boronic acids. When *n* < 3 higher order Pd_n clusters play a key role.

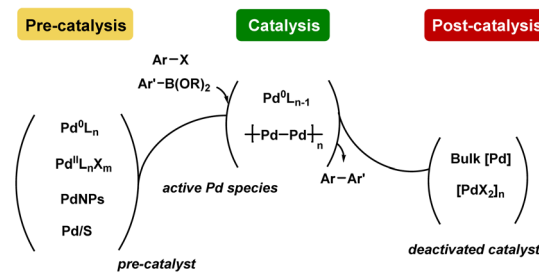
Despite the work conducted on [Pd₃(μ-Cl)(μ-PPh₂)₂(PPh₃)₃]X catalyst species, there is limited information available on the pathways for catalyst activation, understanding productive catalyst turnover and potential pathways for catalyst deactivation, *i.e.* from cradle to grave. Indeed, apart from our preliminary kinetic studies,^{10a} there is very little reported on the speciation and kinetic behavior of [Pd₃(μ-Cl)(μ-PPh₂)₂(PPh₃)₃]X species in catalytic cross-coupling reactions. Preliminary X-ray Absorption Spectroscopy (XAS) data on the behavior of [Pd₃(μ-Cl)(μ-PPh₂)₂(PPh₃)₃]X species reported by Li *et al.* show changes,^{4d} however the EXAFS data were not fitted to structures proposed making speciation assignments difficult. This prior work, in addition to Pd₃Cl₂'s distinct selectivity and high activity in cross couplings, prompted us to conduct further XAS studies and mechanistic experiments on the Pd₃ cluster system.

Herein, we report our findings on the behavior of a phosphine-supported (immobilized) [Pd₃(μ-Cl)(μ-PPh₂)₂(PPh₃)₂(-PPh₂-Ar-supported)]Cl species in SMCC reactions. Various immobilized systems have been applied to SMCC reactions and are reviewed elsewhere,¹⁴ however, we have focused on

a) General SMCC reaction for sp²-sp² couplings



b) General mechanistic approach on Pd catalysis



c) Current Work

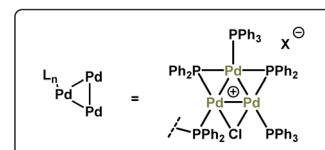
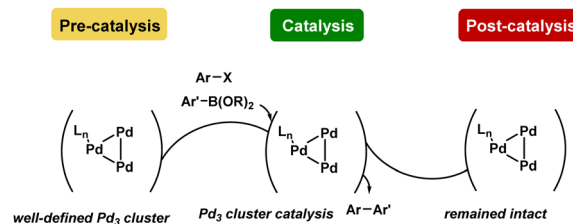


Fig. 1 (a) General Pd-catalyzed SMCC reaction scheme, (b) the mechanistic approach on Pd catalyst speciation during and after catalysis, (c) and current work showing the higher order Pd₃ catalyst robustness during and after catalysis.

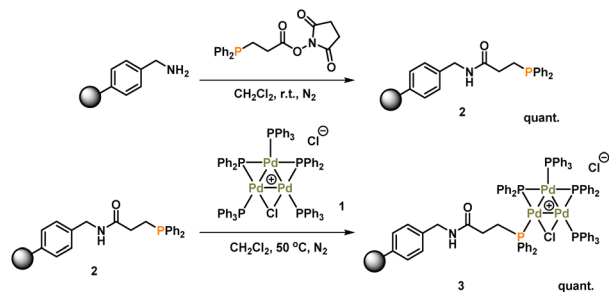
a supported catalyst system to facilitate our structural study of the intact Pd₃ cluster species in a manner that [Pd₃(μ-Cl)(μ-PPh₂)₂(PPh₃)₃]X cannot alone. We have further conducted studies using [Pd₃(μ-Cl)(μ-PPh₂)₂(PPh₃)₃]Cl as the catalyst system, so that there is a degree of comparability enabling broader conclusions to be reached. In a wider context, the combination of catalyst immobilization strategies and in solution structural characterization (XAS) presented in this study provides a robust approach for discriminating reaction participants and evaluating Pd speciation in SMCC reactions. In doing so we signpost how this approach can be invaluable for furthering our understanding of this important class of reactions, while recognizing the complexity of the catalyst speciation (summarized in Fig. 1).

Results and discussion

Synthesis and characterization of immobilized-Pd₃Cl₂ 3

The synthesis of [Pd₃(μ-Cl)(μ-PPh₂)₂(PPh₃)₃]Cl **1** (referred to as Pd₃Cl₂ **1**) can be accomplished by the reaction of *trans*-PdCl₂(-PPh₃)₂ with H₂ in aniline at 90 °C.^{10a} The immobilization of **1**



Scheme 1 Synthesis of immobilized-Pd₃Cl₂ cluster 3.

used of an (aminomethyl)polystyrene resin ($\sim 1.5 \text{ mmol g}^{-1}$ amine loading, 200–400 mesh), which was treated with a linkable *N*-succinimidyl 3-(diphenylphosphino)propionate phosphine ligand to afford 2, which was then directly reacted with Pd₃Cl₂ 1, giving the immobilized-Pd₃Cl₂ 3 (referred to as immob-Pd₃Cl₂ 3) (Scheme 1). The non-polar polystyrene resin was hypothesized to provide a suitable environment in which to interact with the Pd₃ cluster, since the PPh₃/PPh₂ groups give it a non-polar hydrophobic chemical environment, particularly above and below the plane of the triangular Pd₃ structural motif. Furthermore, we anticipated that these interactions protect the Pd₃ cluster from the harshness of the basic environment induced by the use of *n*-Bu₄NOH.

The connectivity of the Pd₃Cl₂ cluster motif during the immobilization process was confirmed by a solid-state ³¹P NMR

experiment (Fig. 2a). The ³¹P NMR spectra of Pd₃Cl₂ 1 and immob-Pd₃Cl₂ 3 confirm the presence of the triangular Pd₃ motif anchored with functionalized (aminomethyl)polystyrene resin; similar ³¹P chemical shifts are seen for the phosphorus chemical environments. For Pd₃Cl₂ 1 we observed a broad peak with some fine structure at *ca.* $\delta -7$ to 43 ppm, which possesses spinning side bands at $\delta -44$ and 80 ppm. These signals are attributed to the distal and proximal phosphines ligated to Pd. A similar but broadened ³¹P NMR spectrum is seen for immob-Pd₃Cl₂ 3 with the same main feature around -7 to 43 ppm, which given the sensitivity of ³¹P NMR points to the presence of the same phosphorous environments. The phosphine functionalized resin prior to addition of the Pd cluster is quite different with a singlet centered at -13 ppm with two side bands (Fig. 2a). None of this signal at -13 ppm remains in immob-Pd₃Cl₂, showing that all the resin bound phosphine is interacting with the Pd cluster. As expected, free PPh₃ and excess Pd₃Cl₂ are observed in the solution phase by ¹H and ³¹P NMR after the immobilization step (Fig. S3 and S4†).

A similar, but broader peak is seen for immob-Pd₃Cl₂ 3, along with spinning side bands. The ³¹P NMR chemical shifts of the coordinating terminal PPh₃ ligands share similarities with those seen in solution for Pd₃Cl₂ 1. The signals for the two bridging PPh₂ environments in Pd₃Cl₂ 1 are distinctive, centered at $\delta 162$, with spinning side bands at $\delta 220$ and 100 (note: there is further evidence of extended anisotropy at wider chemical shifts within this spectral data). Importantly, these chemical shifts closely match the signals observed for immob-Pd₃Cl₂ 3, noting the

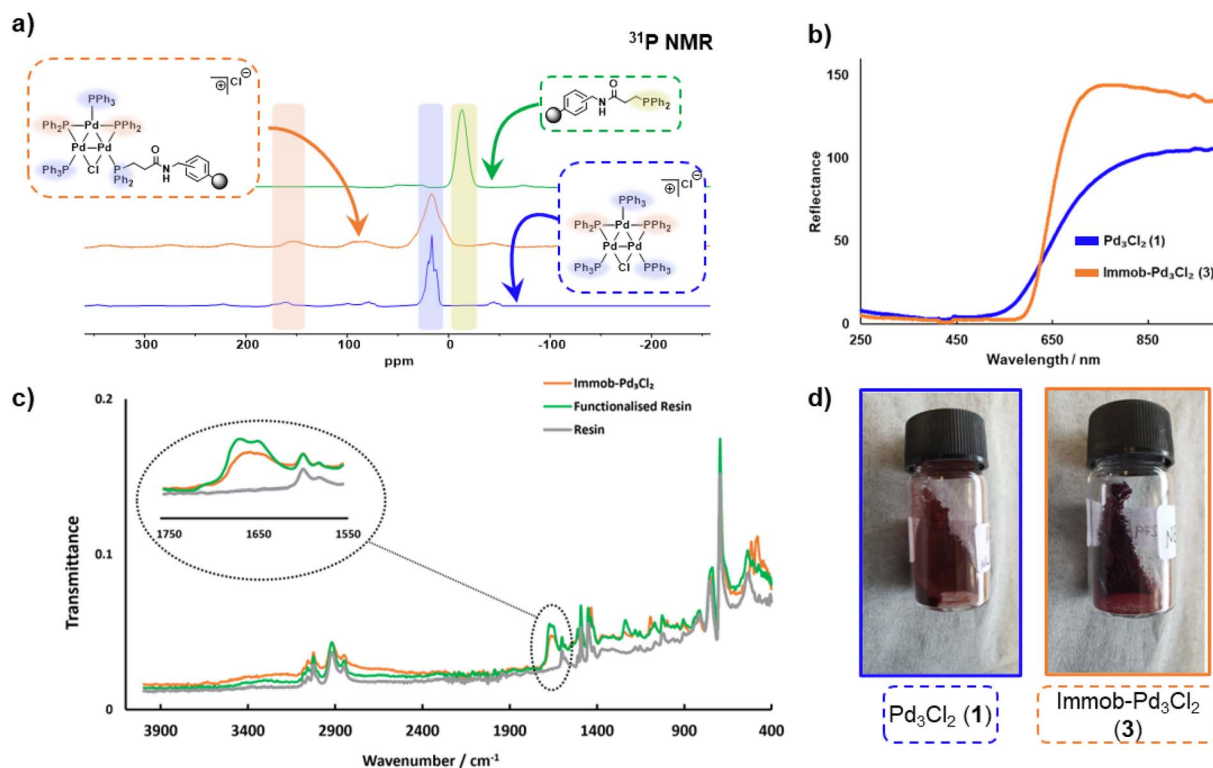


Fig. 2 (a) Solid-state ³¹P NMR spectral data for Pd₃Cl₂ 1, the functionalized resin and the immob-Pd₃Cl₂ 3 (at 10 kHz); (b) reflectance UV-vis spectra of Pd₃Cl₂ 1 and immob-Pd₃Cl₂ 3; (c) overlay ATR-IR spectral of (aminomethyl) polystyrene resin (blue), phosphine-functionalized resin 2 (green) and immob-Pd₃Cl₂ 3 (orange); (d) material appearance of 1 (dark red) and 3 (dark purple).



Table 1 Varying content of the palladium catalyst system in a standard SMCC reaction

Entry	Catalyst	Pd content (ppm) ^a	T (°C)	Time (min)	Conv. ^b (%)											
1	Supported Pd ₃ Cl ₂	68	40	15	99											
2	Supported Pd ₃ Cl ₂	45	40	18	97											
3	Supported Pd ₃ Cl ₂	24	40	28	4	Pd ₃ Cl ₂	68	23	5	95 ^c	5	Pd ₃ (OAc) ₆ /6PPh ₃	68	40	4	82
4	Pd ₃ Cl ₂	68	23	5	95 ^c											
5	Pd ₃ (OAc) ₆ /6PPh ₃	68	40	4	82											

^a Pd ppm (moles) is three times catalyst ppm (moles) for the Pd₃ cluster; the Pd concentration of 68 ppm (moles) equates to a 0.34 mol% catalyst loading with respect to 4 the [ArBr]. ^b Product 6 conversion (¹⁹F NMR; note product conversions mirrored in ¹H NMR spectral data) of crude reaction sample with internal standards, 1,3,5-trimethoxybenzene and 4,4'-difluorobenzophenone. ^c Conversion to 6 obtained at room temperature.

broader signals, which we associate with the subtly different pore environments of the resin support, and the substituted possibility of phosphine being distal or proximal to chloride. However, there is no evidence to show which phosphine (*i.e.* distal or proximal position to chloride) undergoes substitution or how many substitutions occur within the cluster. Importantly, the reflectance UV-vis spectrum of immob-Pd₃Cl₂ 3 (red-shifted) shares similarity with Pd₃Cl₂ 1 (Fig. 2b), confirming the structure of the triangular Pd₃ motif following immobilization. There is a physical difference in the color of these materials – immob-Pd₃Cl₂ 3 is dark purple whereas Pd₃Cl₂ 1 is of a dark red appearance (Fig. 2d). Attenuated total reflectance infrared spectroscopic analysis of immob-Pd₃Cl₂ 3 revealed the presence of the vibrational peaks associated with the amide carbonyl group, that overlay the amide group in the spectrum of the phosphine-functionalized resin 2 between 1640–1680 cm⁻¹ (Fig. 2c). This implies the preservation of the amide linkage in immob-Pd₃Cl₂ 3 and that the phosphine remained tethered to the polystyrene

during the Pd₃ immobilization reaction. These are not present in the stating resin material (no amide carbonyl). The retention of the amide linkage is important as it confirms the tethered phosphine was not released from the polystyrene anchor such that it was able to act as a new solution phase ligand and that any exchange really was the result of interaction of Pd₃Cl₂ 1 with the resin bound phosphine 2.

Summarizing the initial characterization of the immob-Pd₃Cl₂ 3, ³¹P SSNMR provides evidence of the Pd₃ motif remaining, and no significant other P containing species being present, UV-vis data show a lack of change to the metal–ligand interactions and ATR-IR confirms, *via* presence of the carbonyl, that the linker unit is intact.

Suzuki–Miyaura cross-coupling (SMCC) catalysis

The reactivity of immob-Pd₃Cl₂ 3 was examined in a benchmark SMCC reaction of 4-fluoro-bromobenzene 4 and 4-methoxyphenyl boronic acid 5 under optimized reaction conditions

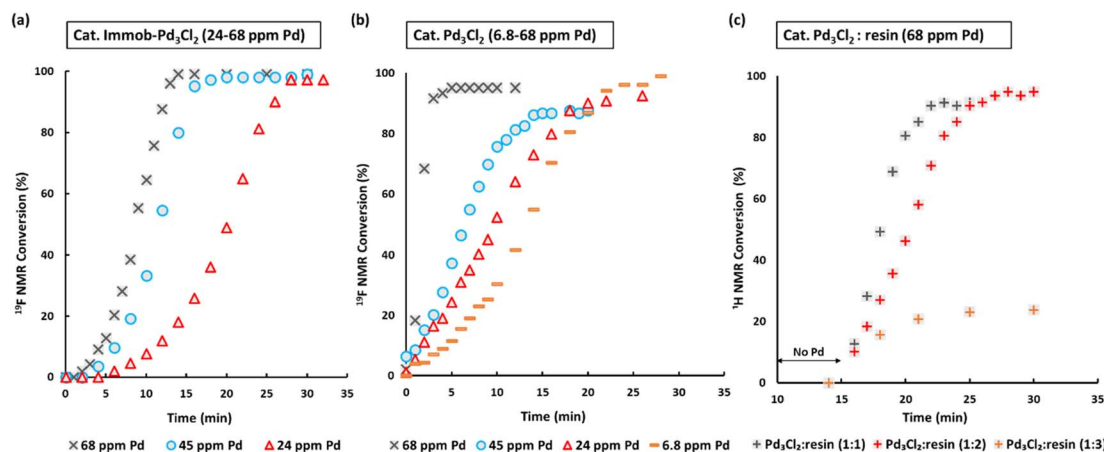


Fig. 3 SMCC reaction kinetic profiles using immob-Pd₃Cl₂ 3 and Pd₃Cl₂ 1 using different catalyst loadings (monitored by ¹H and ¹⁹F NMR; 1,3,5-trimethoxybenzene and 4,4'-difluorobenzophenone as internal standards): (a) immob-Pd₃Cl₂ 3; (b) Pd₃Cl₂ 1; (c) Pd₃Cl₂ 1 with exogenous phosphine resin support 2 (in a ratio of 1 : 1, to 1 : 2 and 1 : 3), with the reaction triggered by addition of Pd₃Cl₂ at t = 15 minutes. Note: the Pd concentration of 68 ppm (moles) equates to a 0.34 mol% catalyst loading with respect to 4 [the ArBr]. Details concerning sampling, NMR analysis and reproducibility are included in the ESI.†



(Table 1 and Fig. 3). The conditions were identified from our earlier study on the regioselective SMCC reaction of 2,4-dibromopyridine with aryl boronic acids, which revealed the unusual C4 site-selectivity for Pd_3Cl_2 **1** and $\text{Pd}(\text{OAc})_2/\leq 2\text{PPH}_3$ precatalyst systems.^{10b} As an aside, the same atypical C4 site selectivity is observed with immob- Pd_3Cl_2 **3** as catalyst, demonstrating the generalizability of immob- Pd_3Cl_2 **3** as a direct analogue for non-tethered Pd_3Cl_2 **1** in SMCC catalysis (Table S4†). In the present mechanistic study, however, we chose to focus on the simpler reaction of **4** with **5** to avoid possible regioselectivity complications. The base, *n*-Bu₄NOH, is employed in a THF/H₂O solvent mixture (1 : 1, v/v). While it is a highly basic, mixed solvent system, there is one single phase, where the organoboron species in solution is $[\text{ArB}(\text{OH})_3]^- [n\text{-Bu}_4\text{N}]^+$. Where there is a question about Pd speciation, it is imperative to limit speciation in respect to boron, which makes the conditions advantageous for studying Pd catalyst speciation.

We selected to employ 68 ppm (by moles) of Pd (note: total ppm Pd is three times catalyst ppm; this Pd concentration equates to a 0.34 mol% catalyst loading with respect to **4**). The SMCC reaction catalyzed by immob- Pd_3Cl_2 **3** reaches completion within 15 minutes to give cross-coupled product **6** (entry 1, Table 1). Lowering the Pd catalyst loadings to 0.22 mol% (immob- Pd_3Cl_2 **3**, 45 ppm by moles Pd) and 0.12 mol% (immob- Pd_3Cl_2 **3**, 24 ppm by moles Pd) led to extended reaction times (18 and 28 minutes, respectively) (entries 2 and 3, Table 1).

Remarkably, under comparable conditions using Pd_3Cl_2 **1**, the reaction proceeded to completion within 5 minutes (entry 4, Table 1). We anticipated a higher rate of catalysis for Pd_3Cl_2 **1** since the accessibility to the “ Pd_3Cl_2 ” core structure in immob- Pd_3Cl_2 **3** would be subject to greater substrate diffusion limitations. Nevertheless, the high rate of this reaction is remarkable, which supports the claims made about high reactivity using aryl cross-coupling partners (including aryl chlorides) made by Li and co-workers in their independent study.^{4d} By way of comparison, the “ $\text{Pd}(\text{OAc})_2/2\text{PPH}_3$ ” pre-catalyst system, known to invoke Pd₃ cluster catalysis in SMCC and Kumada cross-coupling reactions,^{10b} also effectively catalyzed the reaction (entry 5, Table 1).

The SMCC reaction progress was monitored using ¹H/¹⁹F NMR spectroscopic analysis, enabling kinetic profiles to be obtained. We examined both immob- Pd_3Cl_2 **3** and Pd_3Cl_2 **1**, at different catalyst loadings. Interestingly, sigmoidal kinetic profiles were seen for reactions catalyzed by both immob- Pd_3Cl_2 **3** and Pd_3Cl_2 **1**, suggesting that a pre-catalyst activation step is necessary. The induction period extends to slightly longer times on reducing the catalyst loading, which is longer for the immob- Pd_3Cl_2 **3** system than for Pd_3Cl_2 **1**, presumably because of diffusion issues for the former catalyst. For the Pd_3Cl_2 **1** catalyst, one needs to go down to very low catalyst loadings (6.8 ppm Pd, 0.034 mol%) to reveal the full extent of the induction period.

Given the high catalytic activity associated with Pd_3Cl_2 **1** we hypothesized that the influence of the exogenous phosphine resin support **2** also merited assessment. The kinetic profiles in Fig. 3c for the reaction catalyzed by Pd_3Cl_2 **1**: exogenous phosphine resin **2** in a 1 : 1, 1 : 2 and 1 : 3 ratio revealed that the activity is reduced *versus* Pd_3Cl_2 **1** alone and further reduced

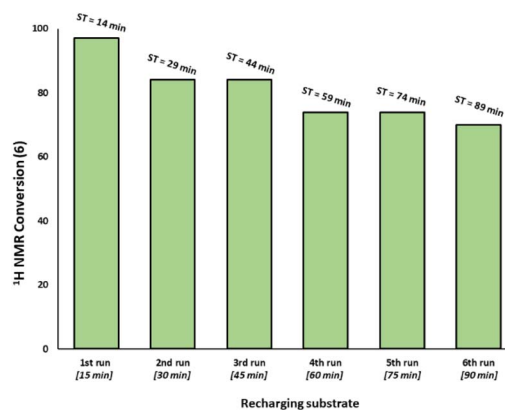


Fig. 4 Recharging SMCC reaction promoted by immob- Pd_3Cl_2 **3** (1 mol%, 68 ppm Pd) with fresh batch of substrates and base at the end of catalysis (taken to be at 15 minutes intervals based on earlier reaction profiles in Fig. 3) and monitoring the reaction progress up to six runs (ST = sampling time during the overall experiment). The reaction was analyzed by ¹H NMR using 1,3,5-trimethoxybenzene as internal standard.

with increasing equivalents of resin (Fig. 3c). The model SMCC reaction was also recharged with both reactants and additives at *t* = 15 min (based on when the reaction ends as judged from the kinetic curve shown in Fig. 3) to assess catalyst reactivity and catalyst deactivation. ¹H NMR analysis of samples taken at the end of each run revealed the temporal reactivity of **3** (six runs) with enduring good conversions to cross-coupled product (see Fig. 4). The result of this experiment suggests that the active catalyst can re-enter into the catalytic cycle in the presence of fresh reactants.

Probing the heterogeneous behavior in the SMCC reactions

To assess whether the SMCC reaction occurs heterogeneously, or through a Pd leaching mechanism from the polymer resin, experiments were conducted to gauge the heterogeneity/homogeneity of the processes involving the immob- Pd_3Cl_2 **3** catalyst system. The mercury-drop test has been one of the common tools for examining heterogeneous catalyst behavior, where a positive test can result in poisoning of any aggregated Pd⁰ present (inferred as being the active catalyst species). The alternative outcome is that mercury has no effect, indicating a role for soluble molecular catalyst species (likely of low metal nuclearity).¹⁵ However, the applicability of the test for reactions involving different molecular complexes of Pd,¹⁶ Pt¹⁷ and Rh¹⁸ has been recently questioned, due to direct reactions of mercury with homogenous metal species such as palladacycles,¹⁹ or a high dependence of the test outcomes to the operational conditions (*e.g.* stirring rate/size of the reaction vessel).²⁰ The validity of the mercury poisoning test for M⁰/NHC or M^{II}/NHC (M = Pd, Pt) complexes was brought into question by Ananikov *et al.*^{20,21} Certain mononuclear Pd^{II}L_{*n*} complexes react with metallic Hg through an oxidative-reductive transmetalation process to form Hg^{II}L_{*n*} and Hg_{*x*}Pd_{*y*} species, whereas Pd⁰L_{*n*} complexes decompose under exposure to metallic mercury.²⁰ Thus, the issue is that a poisoned catalytic reaction system



could have (potentially) involved mononuclear PdL_n complexes, bringing about an incorrect interpretation when poisoning does occur. Conversely, if a catalyst system is unperturbed by mercury addition, where the operational conditions are carefully selected to ensure the test can poison reactivity (see ESI†), the attribution of activity to aggregated $\text{Pd}(0)$ may still be reasonably ruled out. That is, if the test is conducted correctly to ensure mercury contacts the entire system in adequate excess, an outcome of unperturbed reactivity in the presence of Hg is sufficient to exclude $\text{Pd}(0)$ particles, which would suffer from Hg poisoning (while the converse test outcome is inconclusive for the reasons above).

With all these studies in mind, we conducted a mercury poisoning test for the model SMCC reaction catalyzed by $\text{immob-Pd}_3\text{Cl}_2$ **3** (68 ppm, 0.34 mol%), which reached 50% product conversion after 8 minutes (see Fig. 2a). Addition of metallic mercury (300 equiv. with fast agitation on a standard magnetic stirrer hot plate – see Section 2.8 in the ESI†) at $t = 8$ minutes had no effect on the reaction rate or product conversion, reaching completion within 15 minutes (Fig. 5). Interestingly, in a control reaction we determined that Pd_3Cl_2 **1** does react with metallic mercury, but only on longer timescales (see Fig. S21†), leading to decomposition. Our results, taken together show that: (a) Pd nanoparticles (Pd^0 species) are not operative in SMCC reactions catalyzed by $\text{immob-Pd}_3\text{Cl}_2$ **3**; (b) the Pd_3Cl_2 cluster motif is likely protected from metallic Hg in $\text{immob-Pd}_3\text{Cl}_2$ **3**, under the reaction conditions tested.

In another experiment, the $\text{immob-Pd}_3\text{Cl}_2$ **3** catalyst was separated from the model SMCC reaction after 4 minutes to monitor the reaction progress. The analysis showed that the reaction proceeds although at a significantly slower rate (see

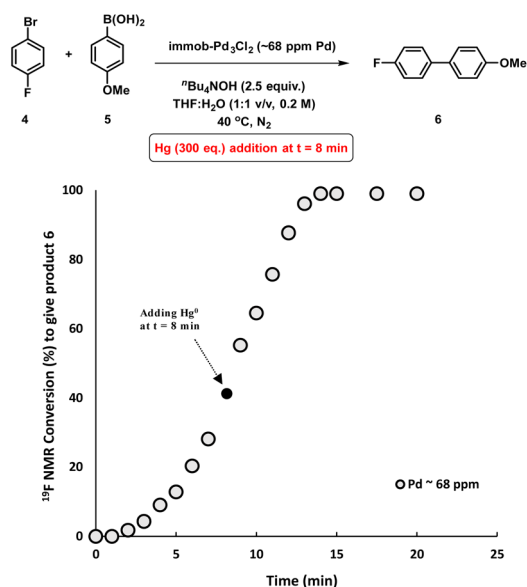


Fig. 5 Kinetic profile of the model SMCC reaction obtained when excess metallic Hg (300 eq.) added at $t = 8$ min and reaction progress monitored by ^{19}F NMR analysis. The Pd concentration of 68 ppm (moles) equates to a 0.34 mol% catalyst loading with respect to **4** [the ArBr].

Fig. S22†). While the result could suggest the leaching of soluble Pd^0 species into the solution (note: not supported by the Hg drop test), some of the supported Pd catalyst particles evaded removal by filtration, even using syringe filters (with 0.22-micron pore size). Moreover, the presence of small particles were observed in the reaction flask post-filtration. Nevertheless, the removal of the majority of $\text{immob-Pd}_3\text{Cl}_2$ **3** showed reaction retardation. Such retardation (taken in isolation) on filtration of the solid species can't explicitly exclude the possibility of leached Pd nanoparticles or leached molecular species becoming bound to the filter, but the much-decreased rate on filtration (given the difficulty of excluding all the solid material) is consistent with the attribution of reactivity drop to the removed solid $\text{immob-Pd}_3\text{Cl}_2$ **3**.

The three-phase test, devised by Rebek and Gavina,²² was used to test for potentially reactive soluble catalytic Pd species that detach from a heterogeneous (pre)catalyst and leach into the solution (being the active catalyst species). This is typically done by immobilizing one of the reactants and probing its reaction with another soluble coupling partner, in the presence of the immobilized catalyst.²³ The diffusion of two solids or solid-bound reaction components should be inhibited *versus* diffusion of soluble component(s). For this experiment, we prepared a polystyrene-bound aryl iodide **7**. SMCC reactions of **7** with **5** were examined using either $\text{immob-Pd}_3\text{Cl}_2$ **3** or soluble Pd_3Cl_2 **1**, under otherwise identical conditions (Table 2).

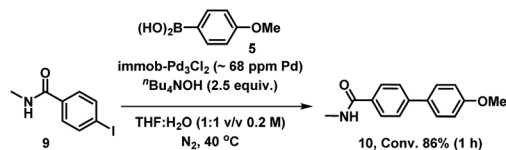
The $\text{immob-Pd}_3\text{Cl}_2$ **3** catalyst was effectively inactive in the three-phase test (less than 1% conversion to cross-coupled product **8** after 24 h). Immobilization of the aryl halide restricts the accessibility of the $\text{immob-Pd}_3\text{Cl}_2$ **3** catalyst; thus, any catalytic reaction cannot proceed under the employed reaction conditions. The outcome confirms that leached soluble Pd species are not playing a significant role under the reaction conditions tested. The equivalent reaction using Pd_3Cl_2 **1** as the catalyst was sluggish, as might be expected given the introduction of a diffusion constraint on one species involved, and the possibility the amide linker in immobilized derivative **7** might be considered inhibitory to the aryl halide (28% product

Table 2 SMCC on an immobilized aryl iodide substrate **7**

Catalyst	Conversion ^{a,b,c} to 8 (%)		
	1 hour	5 hours	24 hours
Pd_3Cl_2	1	8	28
$\text{Immobilized-Pd}_3\text{Cl}_2$	1	1	1

^a Conversion monitored by ^1H NMR (consumption of **5**). ^b <3% cross-coupled byproduct formed as result of amide hydrolysis. ^c The Pd concentration of 68 ppm (moles) equates to a 0.34 mol% catalyst loading with respect to **7** [the ArI].





Scheme 2 Control SMCC of 4-iodo-*N*-methylbenzamide **9** with 4-methoxyphenyl boronic acid **5**, catalyzed by immob- Pd_3Cl_2 **3**.

conversion noted after 24 h).²⁴ It should be noted that in an effort to keep the reactions more similar in timescale we have used the more reactive aryl iodide for these experiments (weak C–I bond, facile oxidative addition), which, while not perfect, removes the risk of speciation differences over longer time-scales of reaction.

We therefore also conducted a control to determine that immob- Pd_3Cl_2 **3** was able to effectively cross-couple 4-iodo-*N*-

methylbenzamide **9** with *p*-methoxy-phenyl boronic acid **5** (gave 86% conversion to **10** after 1 h) (Scheme 2). It was important to confirm this, as it shows similar reactivity to that of our normal test reaction between **4** and **5**, but with a similar inhibitory group/aryl iodide combination to that in immobilized derivative **7**. Table 2 three-phase test experiment for the SMCC reaction of an immobilized aryl iodide **7** with 4-methoxyphenyl boronic acid **5** to give immobilized product **8**.

The three-phase test results cannot rule out the potential release of a “ Pd_3Cl_2 ” species (or derivative) cluster from the support into the solution following a reaction with substrate(s), which could be subsequently redeposited on to the support. Supported Pd catalysts are known to exhibit release-redeposition (catch) mechanisms in catalysis.²⁵ There is no evidence for loss of the “ Pd_3Cl_2 ” species from immob- Pd_3Cl_2 **3**. Indeed, the only way to trigger release is by the reaction of exogenous (excess) PPh_3 with immob- Pd_3Cl_2 **3** in CH_2Cl_2 , which

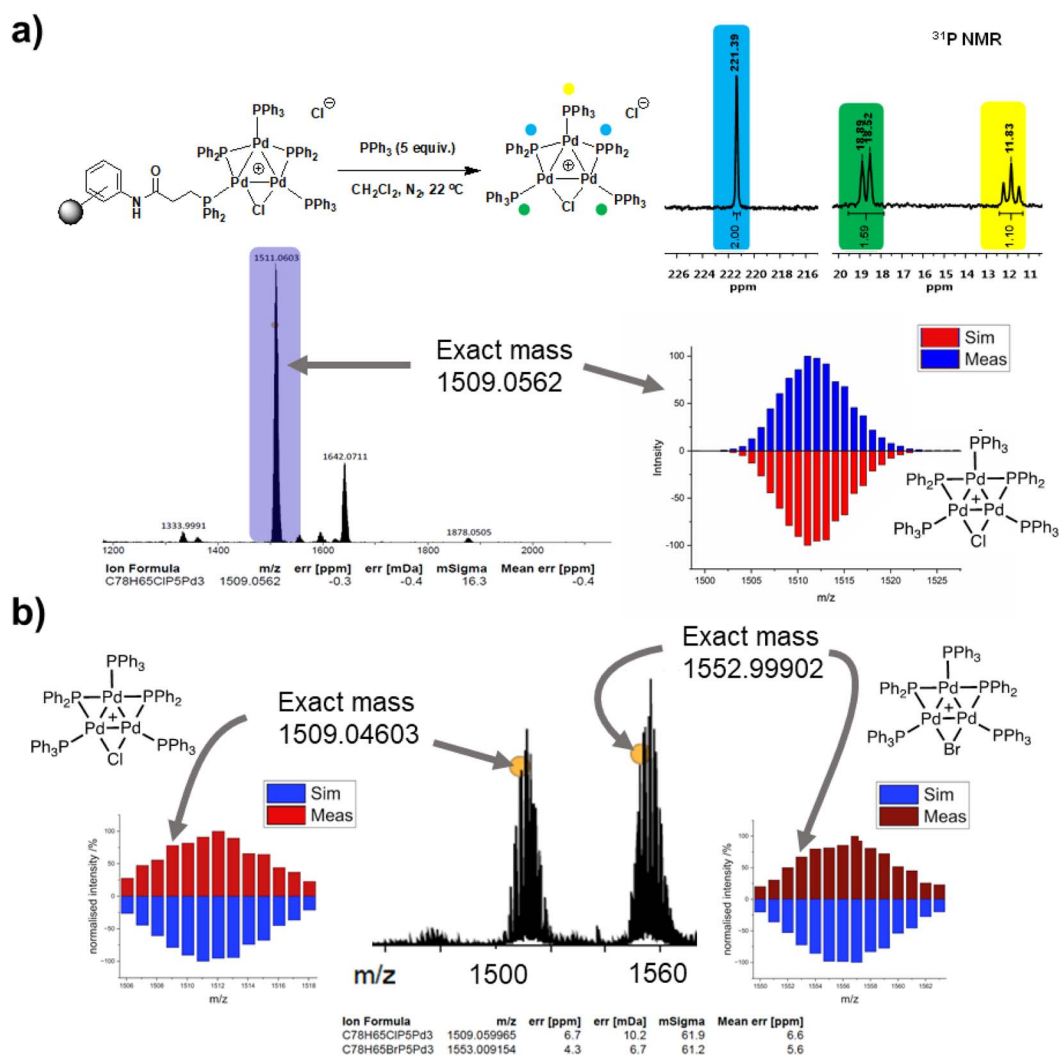


Fig. 6 (a) Reaction of immob- Pd_3Cl_2 **3** with 5 equiv. PPh_3 in CH_2Cl_2 at 22 °C; ^{31}P NMR spectrum was recorded upon dissolution (within 10 min). ESI-MS (+ve mode) confirms pseudo-molecular ion at m/z 1509, with the correct isotopic distribution pattern centered at m/z 1511 (bottom right); (b) ESI-MS (+ve mode) analysis of the solution after reaction of excess PPh_3 with post-reaction immob- Pd_3Cl_2 **3** cluster which was filtered off 10 minutes into Suzuki–Miyaura catalytic turnover and thoroughly washed, showing both $[\text{Pd}_3\text{Cl}]^+$ and $[\text{Pd}_3\text{Br}]^+$ ions shown, with their correct isotopic distribution patterns.



occurs instantaneously at room temperature to deliver Pd₃Cl₂ 1 into solution; confirmed by ³¹P NMR and ESI-MS (+ve mode) (Fig. 6a).

This ability to trigger release of the Pd₃ cluster from the resin support affords an additional test as to whether the Pd₃ cluster remains intact on the resin during reaction. An SMCC reaction of 4-fluoro-bromobenzene 4 and 4-methoxyphenyl boronic acid 5 was again performed under the normal reaction conditions with 68 ppm Pd, but stopped after 10 minutes by filtration (where Fig. 3 shows ~60% conversion, but catalytically relevant species are still present). The filtered resin was then washed thoroughly and reacted with excess PPh₃ to trigger release of the cluster into clean solvent (details given in the ESI†). ESI-MS of the released Pd₃ shows not only the initial [Pd₃Cl]⁺ ion, but also [Pd₃Br]⁺ (Fig. 6b), pointing to the resin bound species having been involved in a process that swaps out the bridging halide.

The results taken together suggest that the induction period observed from the cross-coupling catalysis is not a consequence of leached mononuclear or nanoparticulate Pd catalyst formation. At 10 minutes where >50% conversion has occurred ICP showed only leaching of 0.58% of the initial Pd into the liquid phase for a sample filtered to remove the solid (and some of the polymer bound material undoubtedly evades the filter, so this is a worst-case scenario). This is further corroborated by the quantification of the XAS step-edge height for the pre-reaction immob-Pd₃Cl₂ 3 and 'during reaction' samples—proportional to concentration—implying the solid contained the same Pd amount, within error, in both cases. In addition to these tests performed to exclude catalysis by leached molecular or nanoparticle species, the overall rates of reaction imply a minor component would have to exhibit far greater performance than those seen for SMCC reactions at these temperatures ~40 °C (see Table S11;† it should be noted that typical rates of "ppb Pd" SMCCs or catalysis by "impurity Pd" are generally identified only at significantly higher temperatures, e.g. 110 °C),^{26a} in keeping with relating Pd-catalyzed cross-coupling reactions where ppm-Pd descriptors have been rigorously examined.^{26b}

A possible explanation for the induction period is the interplay of planar aromatic [Pd₃X]⁺ species with structurally distorted non-aromatic [Pd₃X/X'] species, both of which are plausible species characterized by single crystal XRD methods.^{10a} The possible importance of d-orbital aromatic stability metal aromaticity²⁷ in rendering, for example the [Pd₃(μ-SR)₃(PR₃)₃]⁺Y⁻ cluster complexes as being oxygen and moisture-stable,²⁸ has been previously highlighted,²⁹ and its potential relevance to Pd₃ cross-coupling discussed.³⁰ Here the postulated change from more stable aromatic Pd₃Cl₂ to the structural-distorted bromide bridged cluster being accompanied by an induction and rate increase is consistent with this being an important effect in these systems. The primary point, however, is that the immob-Pd₃Cl₂ 3 is a viable tool to study the component mediating Pd_n cluster catalysis.

Studies by X-ray absorption spectroscopy (XAS: EXAFS/XANES)

XAS has been used widely to study the physical form of Pd catalysts,³¹ particularly immobilized Pd catalyst systems^{25b,32} and

well-defined and/or evolving Pd nanoparticle species.³³ The pros of the approach are: (1) X-ray absorption is unambiguously specific to a given element, in this case Pd; (2) the penetrating nature of X-rays makes it possible to obtain measurements in complex matrices without perturbing the system, here we do not remove from the solvent for analysis; (3) the spectral information obtained is rich, with information about oxidation state, co-ordination environment and geometries being possible to obtain with appropriate modelling; and (4) it is inherently quantitative with normalized spectra of different species allowing their relative contributions to a mixture to be ascribed. The cons of the XAS approach are: (1) it is an averaging method so small components can be overlooked (but this is true of many techniques); and (2) high intensity beam damage to the Pd samples is possible (reassuringly in the present case excellent agreement is seen for the as prepared immob-Pd₃Cl₂ 3; fitting models are based on expected structure). The reference standards selected in our study include combinations of bromide, phosphines and *n*Bu₄N⁺ species, the latter from the base used in reaction, and these have largely not been reported previously. PdBr₂ is consistent with spectra reported in the literature.³⁴

To explore the identity of the catalytic Pd species during the SMCC reactions, and to identify the fate of the catalyst after reaction completion, samples of reactions during and after catalysis were analyzed using Pd K-edge extended X-ray absorption fine structure (EXAFS) and X-ray absorption near edge structure (XANES) techniques. For preparation of the samples, the catalyst particles were separated from the reaction mixture by cannula filtration (paper filter), after 5 minutes (during productive catalyst turnover, *i.e.* catalyst activated) and also after reaction completed. We further examined the concentrated filtrate of the reaction solution after separation of the supported catalyst system, which was evaporated to dryness both after 5 minutes and after reaction completion (Fig. 7). Comparison of these samples allows us to understand whether Pd₃Cl₂ clusters remained intact and potentially give information about any leached Pd species present.

The Pd K-edge XAS spectra of the filtered catalyst, both during and after reaction in both the XANES region (Fig. 7a) and based on fits of the EXAFS data to the Pd₃ motif (Fig. 7b), are in excellent agreement with the data obtained for immob-Pd₃Cl₂ 3 before reaction (fitting parameters and details are given in the ESI†). The invariant XANES suggest no marked change in either oxidation state or local co-ordination environment, and the fact that the Pd₃ motif (with Pd, P and halogen nearest neighbors) is preserved well in the fitting of the EXAFS data strongly points to the fact that the structure of solid-supported Pd₃ clusters remains similar during the catalysis and even after catalysis. As was highlighted in Fig. 1, this situation afforded by our immobilization strategy is an unusual and valuable occurrence in mechanistic studies of Pd cross-coupling catalysts, where deactivated Pd species are typically all that remains upon post-mortem analysis. The structure of immob-Pd₃Cl₂ 3 therefore remains a realistic model for the species bound to the polymer throughout the reaction. Note: XAS and the use of nearest neighbor fits cannot strictly distinguish species 1 and 3, but the difference in reactivity between them, three-phase test and fact



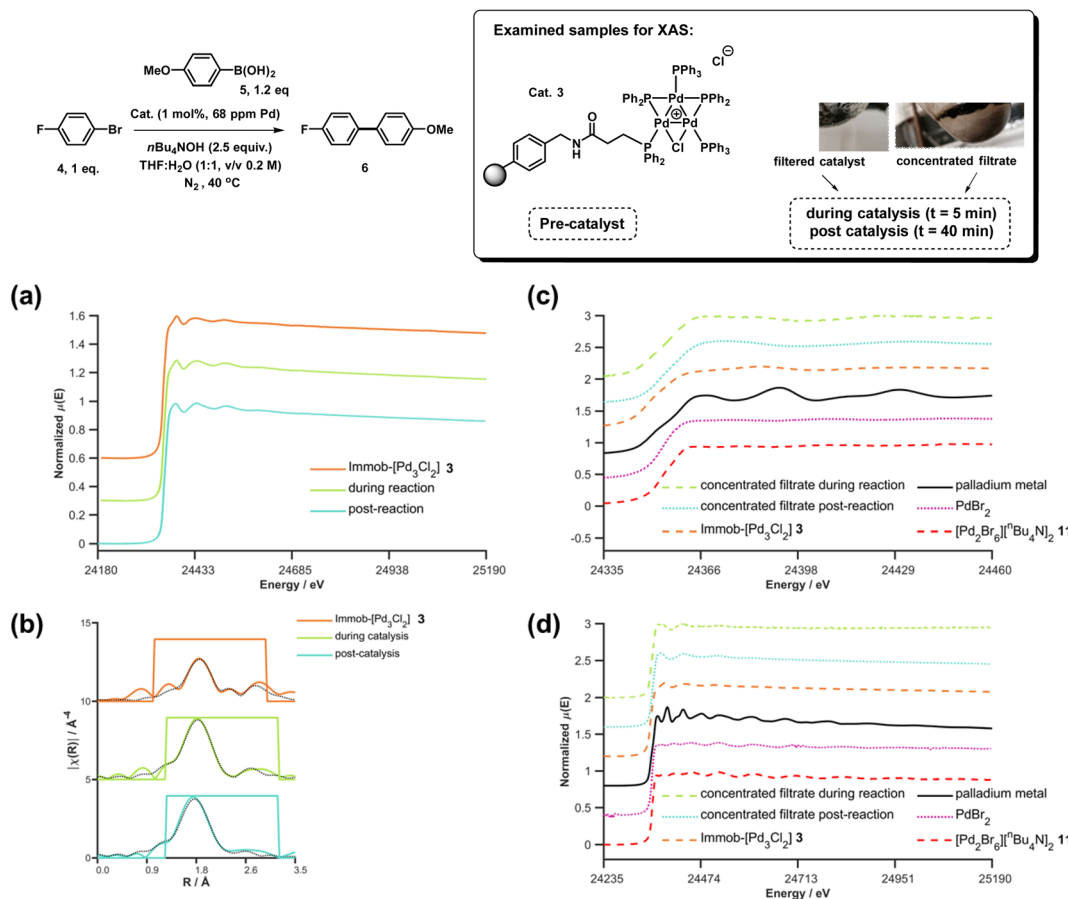
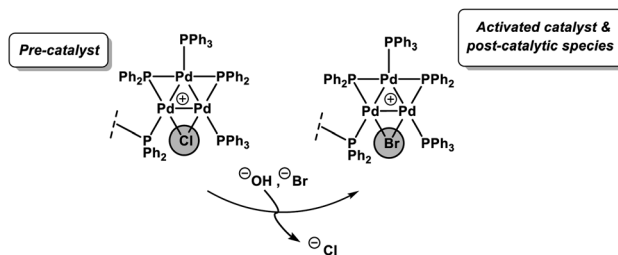


Fig. 7 Pd K-edge XANES spectra of the immobilized-[Pd₃Cl₂] cluster **3** as reference (orange), during reaction (green, reaction stopped at 5 min) and post-reaction (cyan) (a); Pd K-edge *R*-space EXAFS data and fits of the immobilized-[Pd₃Cl₂] cluster **3** before reaction, during reaction and post-reaction, solid colored lines denote the data, dotted black lines the fits, with the fitting window indicated in grey (full details given in the ESI†) (b); Pd K-edge XAS spectra (XANES (c) and extended (d)) of the concentrated filtrate during reaction and post-reaction, compared to immobilized-[Pd₃Cl₂] **3**, and PdBr₂ and [Pd₂Br₆][^tBu₄N]₂ as reference compounds. Spectra offset for clarity, the lowest spectrum correctly placed on the *y*-axis in each case, with XANES spectra all normalized between 0 and 1 and *R*-space EXAFS data offset by 5 units per spectrum.

that this species is extracted for analysis by filtration of the polymer all imply this is likely to be **3** rather than **1**.

Another significant finding from EXAFS analysis was revealed by comparing the goodness of fit for bridging -Br, -Cl and -Ar (a carbon atom in the 1st co-ordination shell, which scatters less than Cl) for each sample. As expected in the pre-reaction catalyst, Cl provides a suitable fit. For the post-reaction samples placing Br in the bridging position between two palladiums (average co-ordination number of Pd by Br = 0.67) provides a distinctly better fit, and in neither the during reaction or post-reaction sample will placing a carbon in the bridging position, representing a bridging aryl, provide an acceptable fit (see ESI†). The better fit for the bromide-bridged Pd₃ cluster suggested a substitution of chloride by bromide in the structure of the Pd₃ cluster. This is supported by the reaction clusters released from the resin post-filtration after 10 minutes of reaction in Fig. 6b being a mixture of Cl and Br bridged Pd₃ clusters (also seen by Li *et al.* using ESI-MS with both Br and I containing aryl halide reactants).^{4d} The precise steps by which the bromide-containing Pd₃ cluster forms likely

involve reactions with substrates (depicted in Scheme 3). Repetition of the reaction kinetic profile for immob-Pd₃Cl₂ **3**, but in the presence of a large excess of Br⁻ (1 equiv. ^tBu₄NBr with respect to aryl halide) showed no significant change in



Scheme 3 The halide exchange of bridging chloride by bromide sourcing from the substrate (in immob-Pd₃Cl₂ **3**). The best fit of the EXAFS spectra being obtained for Br-bridged Pd₃ cluster indicates that the exchange probably occurred during catalyst activation and remained intact during catalyst deactivation in the model SMCC reaction. Note that the EXAFS analysis cannot preclude formation of non-aromatic Pd₃Br₂ or Pd₃BrOH species.

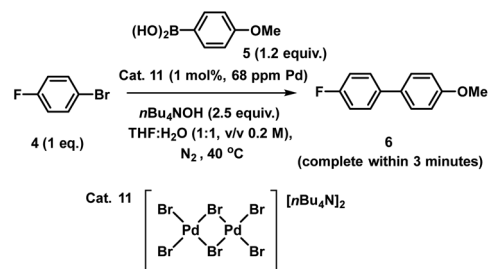


kinetics, suggesting this incorporation must occur reactively (see ESI†).

Plots of the filtrate samples (where polymer resin containing immob-Pd₃Cl₂ **3** was filtered out and the solvent removed to dryness) obtained during and after catalysis against a variety of reference samples in both XANES (Fig. 7c) and EXAFS (Fig. 7d) regions show no match to the spectral features for palladium metal, Pd₃ clusters, nor other reference samples, including PdBr₂ and [Pd₂Br₆][n-Bu₄N]₂ **11**. It should be noted at this point that only very subtle differences are seen experimentally (Pd_{7nm}-Pd_{foil})³⁵ or predicted theoretically as a function of metallic palladium nanoparticle size (Pd_{13-atom}-Pd_{foil})³⁶ and so the Pd foil standard is a suitable reference for metallic Pd particles of any size. Attempts to use mass spectrometry to identify the Pd species in the filtrate were unsuccessful, either due to other species present swamping the signal or there being a poorly defined mixture of end product species. The nature of this species is discussed later, but at this point we can confidently rule out this leached Pd being present as Pd₃ clusters, which would readily be seen by HRMS, metallic palladium particles (readily seen in XAS) or the other reference samples considered.

The reference sample [Pd₂Br₆][n-Bu₄N]₂ **11** is reported to be catalytically active in cross-coupling reactions and we were therefore careful to consider its possible formation from the Pd₃X₂ catalyst system.^{25b,37} Here, complex **11** was prepared through treatment of n-Bu₄NBr and PdBr₂ in THF and H₂O (1 : 1) under inert atmosphere at room temperature and was characterized by far infrared, elemental analysis and X-ray single crystal diffraction (Fig. 8).

The pre-catalyst **11** showed very high reactivity in forming cross-coupled product **6**. The result of this experiment supports the XAS outcome that leached Pd species (which were relatively inactive) do not share any similarity with **11**. It is also notable that even if such species were present at low concentration



Scheme 4 Model SMCC reaction of **4** and aryl **5** under the optimized reaction conditions, using [Pd₂Br₆][nBu₄N]₂ **11** (0.1 mol%, 68 ppm Pd) as catalyst, giving complete conversion to **6** within 3 minutes. The crude reaction mixture was analyzed by both ¹H and ¹⁹F NMR analysis using 1,3,5-trimethoxybenzene and 4,4'-difluorobenzophenone as internal standards.

(below those that we could detect), they would not be capable of promoting the cross-coupling reaction at this temperature at the rate seen by the present highly reactive immob-Pd₃Cl₂ **3** catalytic system.

The catalytic activity of **11** was examined in the model SMCC reaction of **4** and **5** (using 0.1 mol%, 68 ppm Pd), under our working reaction conditions, showing quantitative conversion to **6** within 3 minutes (Scheme 4), *cf.* 15 minutes for immob-Pd₃Cl₂ **3** (Table 1).

XAS analysis of Pd₃Cl₂ under SMCC reaction conditions. To provide further insight into the changes to the catalyst occurring, an analogous XAS study of the homogeneous Pd₃Cl₂ **1** undergoing the SMCC reaction under the same conditions was conducted. Unlike immob-Pd₃Cl₂ **3**, the homogeneous Pd₃Cl₂ **1** cannot be separated from any leached or reaction products by simple filtration (*i.e.* without risking significant perturbation of the catalyst species). Instead, at each stage of the reaction (Pd₃Cl₂ **1** alone; Pd₃Cl₂ **1** in THF/H₂O 1 : 1 v/v solvent after n-Bu₄NOH base added; after aryl boronic acid added; after aryl bromide added) an aliquot of the reaction mixture containing all components was rapidly quenched to LN₂ temperatures in a Nalgene cryovial for XAS analysis. The resulting sequence of XANES spectra are shown in Fig. 9a. The initial spectrum of Pd₃Cl₂ **1** is an excellent fit to the expected first shell coordination of Pd in the cluster (Fig. 9b).

However, it is immediately clear from the XANES that even combining with THF/H₂O/base begins to alter the Pd speciation. Further time and/or reagent addition caused further changes in the spectra (it is difficult to discriminate which, as both time and addition of reagents took place). The changes in the spectra mirror the visual observation that there was an immediate change to a black color upon adding the aqueous n-Bu₄NOH base to a THF solution of Pd₃Cl₂ **1**. While our first thoughts turned to precipitation of Pd black, no distinct large Pd particles were visible by eye from this point throughout the subsequent reagent addition steps performed (during which the appearance of the reaction solution remained unchanged). The impression of there being a single liquid phase can be misleading if the Pd is nanoparticulate in nature and does not precipitate. However, as will be seen shortly the conclusion that

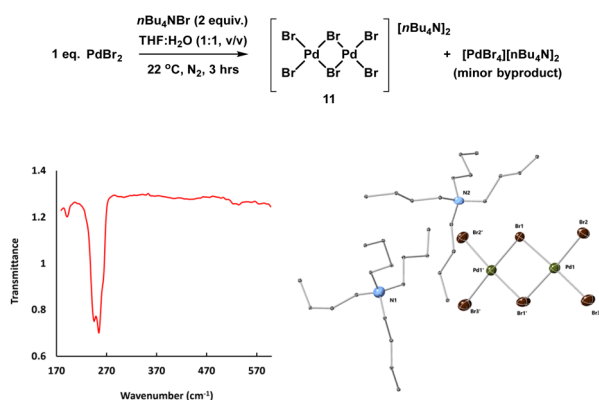


Fig. 8 Synthesis and key characterization for **11**: far IR spectrum (left) showing characteristic bridged Pd-Br stretch bands at 244.9 and 254.6 cm⁻¹ and X-ray single crystal structure of [Pd₂Br₆][nBu₄N]₂ **11** (right), thermal ellipsoids set at 30% probability and hydrogen atoms removed from both structures for clarity. Selected bond distances for **11** (Å): Pd₁-Br₁ = 2.445(2), Pd₁-Pd₂ = 2.407(2), selected bond angles (°): Br₁-Pd₁-Br₂: 91.114(8), Pd₁-Br₁-Pd₁': 93.547(7), Br₂-Pd₁-Br₃: 91.893(9).



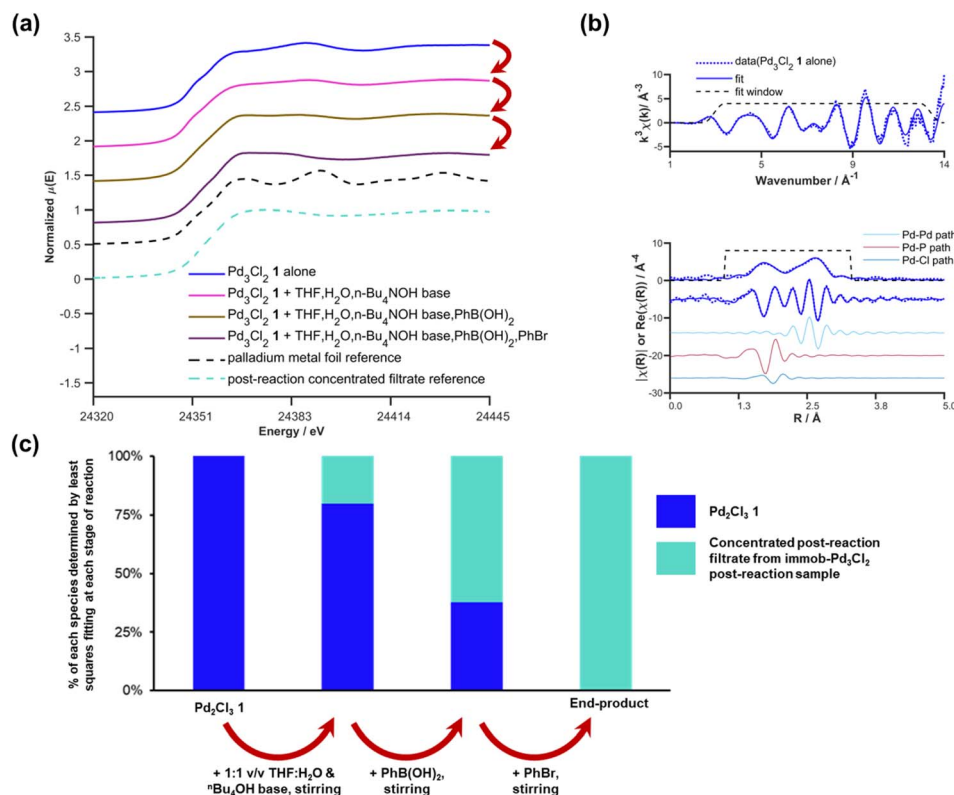


Fig. 9 Pd K-edge XANES spectra of the Pd₃Cl₂ cluster 1 alone (blue), and after stepwise addition of H₂O/THF and *n*Bu₄NOH base (pink), phenylboronic acid (brown), and phenyl bromide (platinat purple) (a); Pd K-edge *k*-space and *R*-space EXAFS data and fits of the initial Pd₃Cl₂ cluster 1, dashed blue lines denote the data, solid blue lines show the fit, with the fitting window shown above and the contributing paths from Pd–Pd, Pd–P and Pd–Cl shown below (b); plot of the contributions determined by least squares fitting the spectra shown in (a) for the stepwise reaction of the initial Pd₃Cl₂ cluster 1 and the concentrated post reaction filtrate from the immob-Pd₃Cl₂ experiments as explained in the text (c). Spectra offset for clarity, the lowest XANES spectrum is correctly placed on the *y*-axis with all XANES spectra normalized between 0 and 1 and EXAFS oscillations centered around *y* = 0 prior to any offset.

no Pd metal is being formed (nanoparticulate or otherwise) is supported by further analysis of the XAS data.

Qualitatively the XANES spectra through the reaction steps appear to become progressively more similar to the filtrate during reaction from the immob-Pd₃Cl₂ 3, while bearing little similarity to Pd metal (spectra both shown for reference in Fig. 9a). It is important to note that the above work on immob-Pd₃Cl₂ 3 showed that the leached species seen in the concentrated post-reaction filtrate were inactive for the test SMCC reaction *versus* either Pd₃Cl₂ 1 or immob-Pd₃Cl₂ 3.

A more quantitative analysis of the XANES data in Fig. 9a and *k*-space EXAFS data can be achieved with principal component analysis (PCA) and least squares fitting. PCA of the XANES series in Fig. 9a shows significance above the noise in the first two components (Fig. S34,† the edge region is slightly present in the third component, but noise at the edge where a large change is present leads to artificial variation because of slight energy misalignments). A scree plot (Fig. S34b†) also has an elbow after the first two points, pointing to only two principal components that contribute significantly. Similar analysis using an approach used elsewhere³⁴ on the *k*-space EXAFS spectrum region between *k* = 0 and *k* = 11.5 is again largely comprised of only two components that are significantly above the noise level of

the data (Fig. S36†). It should be noted that the sample after adding base, but no other reagents, is slightly less well fitted in the EXAFS region by only two components, which may hint at transitional species being present, but there is insufficient data to infer more than this being a possibility.

Given the visual similarity between the post-reaction filtrate sample (leached from immob-Pd₃Cl₂ 3) to the later stages of the reaction of Pd₃Cl₂ 1, a two-component linear combination fit was undertaken for each spectrum in the sequence in Fig. 9a. This produced a good fit in the XANES region of the data (Fig. S40†), with the corresponding quantities of Pd₃Cl₂ 1 and the filtrate-like species being shown in Fig. 9c. This pleasingly shows a similarity between the chemical fate of the homogeneous and albeit more stable immobilized Pd₃Cl₂ catalysts, supporting the idea that the immobilized system can facilitate broader studies of Pd₃Cl₂ 1. Given the above inactivity of the leached species in the filtrate that appears over time and the fast kinetics of the reaction, we have no evidence for other species besides Pd₃Cl₂ 1 being involved in the reaction process.

While the precise chemical identity of the species from the filtrate is somewhat unimportant if the species is ascribed as inactive, understanding the fate of Pd₃Cl₂ 1 is still of interest to understand the reactions that bring about its formation. As



noted earlier the XANES spectra of the species in the filtrate did not fit visually with spectra of any common standards, such as PdBr₂, Pd metal, or [Pd₂Br₆]²⁻. While a visual similarity in the spectra is a good first check, in the ESI† we consider a more quantitative approach using principal component analysis, which has been employed in XANES studies for some time (Section S2.16†).³⁸ This speculatively points to some form of Pd_x(PPh₃)_y-type species being the end fate of Pd in this system.

Finally, the stepwise approach used in this experiment allows us to re-examine the mechanistically surprising claim of Li and co-workers that an aryl-bridge Pd₃ cluster forms as a stable transmetallation intermediate that can be observed by XAS.^{4d} The details of the experiments conducted previously are unclear, but the concentrations used in transmission XAS appear to have been around 0.01 wt% Pd from the details given in their publication, lower than is typically suitable for transmission experiments and likely produce noisy data. The claim concerning transmetallation is on the basis of reduced amplitude at low values of *k* (<5 Å), but this is extremely susceptible to the background functions and the energy spectra from which the *k*-space data were obtained were not given. The *R*-space data presented by Li and coworkers seem distinctly different from those we have consistently obtained for the cluster (homogeneous or immobilized) with weaker than expected amplitudes for the Pd–Pd scatter (which dominates the region 2.5–3 Å), and an absence of the Pd–Cl scatter contribution (easier to identify when fitting the real part of the data than by inspection of the magnitude *R*-space plots). Repeating the stepwise experiment with the 1 : 1 v/v 2-propanol/H₂O solvent mixture they report and using K₂CO₃ base as they did (which is only moderately soluble, although can form methoxide with alcohols³⁹) we were able to see the Pd₃Cl₂ 1 cluster intact at each step of the process, with only a halogen exchange on adding bromobenzene (Fig. S36–S40†). Crucially in the sample after all other reagents were added except bromobenzene the spectrum is a significantly better fit to chloride than carbon (aryl) in the bridging position. In short, obtaining higher quality data at the low concentrations of Pd typically used in SMCC reactions by taking advantage of modern fluorescence detection capabilities (B18 Diamond Light Source) and fitting this using a summation of theoretically calculated scattering paths (ARTEMIS⁴⁰) we saw no evidence with either the immobilized cluster or attempts to reproduce their experiment using Pd₃Cl₂ 1 for the proposed [Pd₃Ar]⁺ intermediate. The other evidence they presented for this was based on ESI-MS of CH₂Cl₂ solutions of the reagents.^{4d} In our hands we found that the base (K₂CO₃) is insoluble in this solvent/it is not the medium in which the reactions were conducted (note: limited experimental details given in the original publication). It also appears the signal associated with [Pd₃Ar]⁺ is still <20% of the Pd₃Cl₂ 1 cluster signal, and so even if present in the same amount, XAS being an average technique the Cl bridge would still yield a better fit (and have dominated their data also). It is also noteworthy that using some routes to prepare the Pd₃Cl₂ 1 cluster, we have sometimes seen the aryl bridged Pd₃ cluster as a synthetic biproduct (rather than reactive intermediate – Fig. S27†), which is a possible alternative origin for such species. We have repeated the synthetic route to

1 described by Li and co-workers (yield = 2%) and have not been able to obtain evidence showing the intermediacy of [Pd₃Ar]⁺. One final point is a further potential for confusion in their study arises from the fact that the phenyl group in the PhB(OH)₂ substrate used is the same as that found in the PPh₃/PPh₂ ligands in Pd₃Cl₂ 1, avoided in the present study through the use of the methoxy-functionalized boronic acid 5. In short, the current study does not provide any evidence to support the existence of the aryl-bridged intermediate suggested by Li and co-workers.^{4d} However, additional work is required to fully investigate this hypothesis and establish if such a species is kinetically relevant, using a series of organoboron compounds to probe the transmetalation step first hypothesis.

Conclusions

In conclusion, we studied ‘Pd₃Cl₂’ catalytic behavior in a typical SMCC reaction by tethering it to a resin support to afford a valuable tool for mechanistic studies. Experimental heterogeneity tests, such as Hg drop test and three-phase test, showed no active Pd leached from the immobilized Pd catalyst within the reaction’s time scale. Analysis of XAS data from the filtered catalyst during and after reaction showed the triangular Pd₃ cluster motif intact, with only exchange of chloride for bromide in the bridging position during the substrate turnover. XAS of the filtrate after catalyst removal showed non-active Pd species, with no match to a series of reference samples such as PdBr₂, [Pd₂Br₆][*n*-Bu₄N]₂, and Pd foil. XAS analysis of non-tethered (non-mobilized) Pd₃Cl₂ 1 catalyst in the same SMCC reaction, conducted stepwise, indicates the Pd speciation at the later stages of the reaction is like that in the reaction filtrate when immob-Pd₃Cl₂ 3 was used as catalyst. Using principal component analysis and target transformation from a range of potential standards along with the available EXAFS data, the identity of the inactive Pd species in the filtrate sample from reaction of immob-Pd₃Cl₂ or later stage reaction of Pd₃Cl₂ was suggested to be Pd_x(PPh₃)_y, exhibiting a blend of Pd–Pd and Pd–P interactions. This study provides the first experimentally compelling insight³⁰ into the speciation of Pd involving the catalytic behavior of Pd₃ type clusters stabilized by phosphorus containing ligands within cross-coupling reactions. Finally, during the proof stage for our manuscript we became aware of a study reported by Scott *et al.* involving the temperature-inducated activation of the Coulson-cluster on a carbon support. The results are complementary to those described here, and provide insight into how changes in the ‘Pd₃Cl₂’ cluster can occur at significantly higher temperatures (between 150 and 250 °C).⁴¹

Abbreviations

EXAFS	Extended X-ray absorption fine structure
LN ₂	Liquid N ₂
PCA	Principal component analysis
SMCC	Suzuki–Miyaura cross-coupling
THF	Tetrahydrofuran



XANES X-ray absorption near edge structure
 XAS X-ray absorption spectroscopy

Data availability

A dataset containing raw experimental data has been deposited to Research Data York, which can be accessed through the following link (<https://pure.york.ac.uk/portal/en/datasets/evidence-for-suzukimiyaura-cross-couplings-catalyzed-by-ligated-p>).

Author contributions

I. J. S. F. conceived the project and plans, with input from N. J., concerning the design, synthesis and application of the immobilization Pd₃ cluster species. I. J. S. F. secured the research funding to support N. J. and N. W. J. S., S. K. B. led the synchrotron research work; S. K. B. and I. J. S. F. proposed experiments for and secured access to diamond facilities. S. K. B. assisted with the interpretation of catalytic data and design of appropriate control experiments, with input from N. J., N. W. J. S. and I. J. S. F., T. T. carried out the single crystal X-ray diffraction analysis. N. J., N. W. J. S., S. K. B. and I. J. S. F. executed the majority of synchrotron experiments at diamond (supported by diamond/UK Catalysis Hub teams – see acknowledgements). N. J. and S. K. B. conducted the XANES/EXAFS analysis, the interpretation of which was supported by discussion with I. J. S. F. N. J. wrote an initial draft manuscript, with input from all authors. The final version of the paper was written jointly between I. J. S. F. and S. K. B., with contributions and confirmation provided by all co-authors. Much of the synthetic and catalytic work was conducted by N. J. which forms an integral part of her PhD thesis.

Conflicts of interest

There are no conflicts to declare.

Acknowledgements

We thank Dr Tony Wild for PhD studentship funding (platinum scholarship) to support N. J., and the RSC Summer Bursary scheme (reference E21-3331237928) for specifically supporting the collaboration between Durham University and the University of York. We are grateful to the Royal Society for an Industry Fellowship to I. J. S. F., and to June Callison and Martin Wilding (EPSRC UK Catalysis Hub BAG) and Giannantonio Cibin, Veronica Celorrio and Diego Gianolio (STFC Diamond Light Source) for invaluable practical assistance with XAS measurements.

Notes and references

- (a) N. Miyaura and A. Suzuki, *Chem. Rev.*, 1995, **95**, 2457–2483; (b) A. Suzuki, *Acc. Chem. Res.*, 1982, **15**, 178–184; (c) A. B. Pagett and G. C. Lloyd-Jones, Suzuki–Miyaura Cross-Coupling, in *Organic Reactions*, pp. 547–620; (d) J. Almond-

- Thynne, D. C. Blakemore, D. C. Pryde and A. C. Spivey, *Chem. Sci.*, 2017, **8**, 40–62; (e) M. F. Lipton, M. A. Mauragis, M. T. Maloney, M. F. Veley, D. W. VanderBor, J. J. Newby, R. B. Appell and E. D. Dausg, *Org. Process Res. Dev.*, 2003, **7**, 385–392.
- (a) I. J. S. Fairlamb, Pd-catalysed Cross-couplings for the Pharmaceutical Sector and a Move to Cutting-edge C–H Bond Functionalization: Is Palladium Simply Too Precious?, in *Green and Sustainable Medicinal Chemistry: Methods, Tools and Strategies for the 21st Century Pharmaceutical Industry*, The Royal Society of Chemistry, 2016, pp. 129–139, ch. 11; (b) S. McCarthy, A. Lee Wei Jie, D. C. Braddock, A. Serpe and J. D. Wilton-Ely, *Molecules*, 2021, **26**, 5217; (c) S. McCarthy, D. C. Braddock and J. D. Wilton-Ely, *Coord. Chem. Rev.*, 2021, **442**, 213925; (d) T. Ma, Z. Li, R. Zhao, J. Song, Y. Tian, S. Ding and G. Zhu, *ACS Appl. Nano Mater.*, 2022, **5**, 15115–15122; (e) K. S. Song, T. Ashirov, S. N. Talapaneni, A. H. Clark, A. V. Yakimov, M. Nachtegaal, C. Copéret and A. Coskun, *Chem*, 2022, **8**, 2043–2059.
 - (a) R. Martin and S. L. Buchwald, *Acc. Chem. Res.*, 2008, **41**, 1461–1473; (b) S. H. Newman-Stonebraker, S. R. Smith, J. E. Borowski, E. Peters, T. Gensch, H. C. Johnson, M. S. Sigman and A. G. Doyle, *Science*, 2021, **374**, 301–308; (c) R. A. Altman and S. L. Buchwald, *Nat. Protoc.*, 2007, **2**, 3115–3121; (d) J. P. Norman, N. G. Larson and S. R. Neufeldt, *ACS Catal.*, 2022, **12**, 8822–8828; (e) T. Gensch, S. R. Smith, T. J. Colacot, Y. N. Timsina, G. Xu, B. W. Glasspoole and M. S. Sigman, *ACS Catal.*, 2022, **12**, 7773–7780.
 - (a) A. Monfredini, V. Santacroce, L. Marchiò, R. Maggi, F. Bigi, G. Maestri and M. Malacria, *ACS Sustain. Chem. Eng.*, 2017, **5**, 8205–8212; (b) M. Lanzi, T. Cañeque, L. Marchiò, R. Maggi, F. Bigi, M. Malacria and G. Maestri, *ACS Catal.*, 2018, **8**, 144–147; (c) C. Fricke, G. J. Sherborne, I. Funes-Ardoiz, E. Senol, S. Guven and F. Schoenebeck, *Angew. Chem., Int. Ed.*, 2019, **58**, 17788–17795; (d) F. Fu, J. Xiang, H. Cheng, L. Cheng, H. Chong, S. Wang, P. Li, S. Wei, M. Zhu and Y. Li, *ACS Catal.*, 2017, **7**, 1860–1867; (e) C. J. Diehl, T. Scattolin, U. Englert and F. Schoenebeck, *Angew. Chem.*, 2019, **131**, 217–221; (f) K. M. Appleby, E. Dzotsi, N. W. J. Scott, G. Dexin, N. Jeddi, A. C. Whitwood, N. E. Pridmore, S. Hart, S. B. Duckett and I. J. S. Fairlamb, *Organometallics*, 2021, **40**, 3560–3570.
 - (a) M. Wilson, R. Kore, R. Fraser, S. K. Beaumont, R. Srivastava and J. Badyal, *Colloids Surf., A*, 2017, **520**, 788–795; (b) S.-B. Jang, *Tetrahedron Lett.*, 1997, **38**, 1793–1796.
 - N. Nikbin, M. Ladlow and S. V. Ley, *Org. Process Res. Dev.*, 2007, **11**, 458–462.
 - Z. Zhu, Z. Wang, Y. Jian, H. Sun, G. Zhang, J. M. Lynam, C. R. McElroy, T. J. Burden, R. L. Inight, I. J. S. Fairlamb, W. Zhang and Z. Gao, *Green Chem.*, 2021, **23**, 920–926.
 - M. V. Polynski and V. P. Ananikov, *ACS Catal.*, 2019, **9**, 3991–4005.



- 9 (a) D. R. Coulson, *Chem. Commun.*, 1968, 1530–1531; (b) J. S. Cartwright, K. R. Dixon and A. D. Rattray, *Inorg. Chem.*, 1980, **19**, 1120–1124.
- 10 (a) N. W. J. Scott, M. J. Ford, C. Schotes, R. R. Parker, A. C. Whitwood and I. J. S. Fairlamb, *Chem. Sci.*, 2019, **10**, 7898–7906; (b) N. W. J. Scott, M. J. Ford, N. Jeddi, A. Eyles, L. Simon, A. C. Whitwood, T. Tanner, C. E. Willans and I. J. S. Fairlamb, *J. Am. Chem. Soc.*, 2021, **143**, 9682–9693; (c) Y. Yun, H. Sheng, J. Yu, L. Bao, Y. Du, F. Xu, H. Yu, P. Li and M. Zhu, *Adv. Synth. Catal.*, 2018, **360**, 4731–4743; (d) J. Campos, A. Nova, E. L. Kolychev and S. Aldridge, *Chem.–Eur. J.*, 2017, **23**, 12655–12667.
- 11 H. Qian, T. Zhang, L. Song, S. Yu, Q. Yuan, L. Sun, D. Zhang, Z. Yin and Y. Dai, *Eur. J. Org. Chem.*, 2017, 1337–1342.
- 12 (a) C. Sicre, J.-L. Alonso-Gómez and M. M. Cid, *Tetrahedron*, 2006, **62**, 11063–11072; (b) C. Y. Legault, Y. Garcia, C. A. Merlic and K. N. Houk, *J. Am. Chem. Soc.*, 2007, **129**, 12664–12665.
- 13 (a) D.-T. D. Tang, K. D. Collins and F. Glorius, *J. Am. Chem. Soc.*, 2013, **135**, 7450–7453; (b) M. Yang, J. Chen, C. He, X. Hu, Y. Ding, Y. Kuang, J. Liu and Q. Huang, *J. Org. Chem.*, 2020, **85**, 6498–6508.
- 14 (a) M. Opanasenko, P. Stepnicka and J. Cejka, *RSC Adv.*, 2014, **4**, 65137–65162; (b) M. Pagliaro, V. Pandarus, R. Ciriminna, F. Beland and P. D. Cara, *ChemCatChem*, 2012, **4**, 432–445; (c) Y. Uozumi, Recent progress in polymeric palladium catalysts for organic synthesis, in *Immobilized Catalysts: Solid Phases, Immobilization and Applications*, ed. A. Kirschning, vol. 242, 2004, pp. 77–112.
- 15 (a) K. C. Campbell and J. S. Hislop, *J. Catal.*, 1969, **13**, 12–19; (b) J. A. Steckel, *Phys. Rev. B: Condens. Matter Mater. Phys.*, 2008, **77**, 115412; (c) D. R. Anton and R. H. Crabtree, *Organometallics*, 1983, **2**, 855–859; (d) P. Foley, R. DiCosimo and G. M. Whitesides, *J. Am. Chem. Soc.*, 1980, **102**, 6713–6725.
- 16 N. G. Ol'ga, M. V. Livantsov, Y. K. Grishin, M. M. Ilyin Jr, K. A. Kochetkov, A. V. Churakov, L. G. Kuz'mina, V. N. Khrustalev and V. V. Dunina, *J. Organomet. Chem.*, 2013, **737**, 59–63.
- 17 J. Stein, L. Lewis, Y. Gao and R. Scott, *J. Am. Chem. Soc.*, 1999, **121**, 3693–3703.
- 18 E. Bayram, J. C. Linehan, J. L. Fulton, J. A. Roberts, N. K. Szymczak, T. D. Smurthwaite, S. Ozkar, M. Balasubramanian and R. G. Finke, *J. Am. Chem. Soc.*, 2011, **133**, 18889–18902.
- 19 O. N. Gorunova, I. M. Novitskiy, Y. K. Grishin, I. P. Gloriozov, V. A. Roznyatovsky, V. N. Khrustalev, K. A. Kochetkov and V. V. Dunina, *Organometallics*, 2018, **37**, 2842–2858.
- 20 V. M. Chernyshev, A. V. Astakhov, I. E. Chikunov, R. V. Tyurin, D. B. Eremin, G. S. Ranny, V. N. Khrustalev and V. P. Ananikov, *ACS Catal.*, 2019, **9**, 2984–2995.
- 21 In a control reaction we found that Hg does react with non-immobilized Pd₃Cl₂ **1** to give uncharacterizable species. Given that catalysis continues, it is unlikely we are seeing any appreciable leaching into solution for immobilized Pd₃Cl₂ **3**.
- 22 J. Rebek and F. Gavina, *J. Am. Chem. Soc.*, 1975, **97**, 1591–1592.
- 23 (a) M. Hori, D. J. Gravert, P. Wentworth Jr and K. D. Janda, *Bioorg. Med. Chem. Lett.*, 1998, **8**, 2363–2368; (b) I. W. Davies, L. Matty, D. L. Hughes and P. J. Reider, *J. Am. Chem. Soc.*, 2001, **123**, 10139–10140; (c) R. H. Crabtree, *Chem. Rev.*, 2012, **112**, 1536–1554.
- 24 (a) P. Albers, J. Pietsch and S. F. Parker, *J. Mol. Catal. A: Chem.*, 2001, **173**, 275–286; (b) P. Marcuzzan, B. O. Patrick and B. R. James, *Organometallics*, 2003, **22**, 1177–1179; (c) A. Meißner, E. Alberico, H.-J. Drexler, W. Baumann and D. Heller, *Catal. Sci. Technol.*, 2014, **4**, 3409–3425.
- 25 (a) C. Yue, Q. Xing, P. Sun, Z. Zhao, H. Lv and F. Li, *Nat. Commun.*, 2021, **12**, 1–14; (b) S. Reimann, J. Stötzel, R. Frahm, W. Kleist, J.-D. Grunwaldt and A. Baiker, *J. Am. Chem. Soc.*, 2011, **133**, 3921–3930; (c) F. Zhao, K. Murakami, M. Shirai and M. Arai, *J. Catal.*, 2000, **194**, 479–483; (d) P. A. Albinana, J. El Haskouri, M. D. Marcos, F. Estevan, P. Amorós, M. Á. Úbeda and F. Pérez-Pla, *J. Catal.*, 2018, **367**, 283–295; (e) C. Gnad, A. Abram, A. Urstöger, F. Weigl, M. Schuster and K. Köhler, *ACS Catal.*, 2020, **10**, 6030–6041.
- 26 (a) Z. Novák, R. Adamik, J. T. Csenki, F. Béke, R. Gavaldik, B. Varga, B. Nagy, Z. May, J. Daru, Z. Gonda and G. L. Tolnai, *Nat. Catal.*, 2021, **4**, 991–993; (b) C. S. Horbaczewskij and I. J. S. Fairlamb, *Org. Process Res. Dev.*, 2022, **26**, 2240–2269.
- 27 J. M. Mercero, A. I. Boldyrev, G. Merino and J. M. Ugalde, *Chem. Soc. Rev.*, 2015, **44**, 6519–6534.
- 28 Y. Wang, A. Monfredini, P.-A. Deyris, F. Blanchard, E. Derat, G. Maestri and M. Malacria, *Chem. Sci.*, 2017, **8**, 7394–7402.
- 29 F. Bigi, G. Cera, R. Maggi, Y. Wang, M. Malacria and G. Maestri, *J. Phys. Chem. A*, 2021, **125**, 10035–10043.
- 30 N. Jeddi, N. W. J. Scott and I. J. S. Fairlamb, *ACS Catal.*, 2022, **12**, 11615–11638.
- 31 (a) C. Lv, H. Cheng, W. He, M. I. A. Shah, C. Xu, X. Meng, L. Jiao, S. Wei, J. Li and L. Liu, *Nano Res.*, 2016, **9**, 2544–2550; (b) M. Tromp, J. R. Sietsma, J. A. van Bokhoven, G. P. van Strijdonck, R. J. van Haaren, A. M. van der Eerden, P. W. N. M. van Leeuwen and D. C. Koningsberger, *Chem. Commun.*, 2003, 128–129.
- 32 N. Yuan, V. Pascanu, Z. Huang, A. Valiente, N. Heidenreich, S. Leubner, A. K. Inge, J. Gaar, N. Stock and I. Persson, *J. Am. Chem. Soc.*, 2018, **140**, 8206–8217.
- 33 (a) P. J. Ellis, I. J. S. Fairlamb, S. F. Hackett, K. Wilson and A. F. Lee, *Angew. Chem., Int. Ed.*, 2010, **49**, 1820–1824; (b) A. F. Lee, P. J. Ellis, I. J. S. Fairlamb and K. Wilson, *Dalton Trans.*, 2010, **39**, 10473–10482; (c) B. D. Briggs, N. M. Bedford, S. Seifert, H. Koerner, H. Ramezani-Dakhel, H. Heinz, R. R. Naik, A. I. Frenkel and M. R. Knecht, *Chem. Sci.*, 2015, **6**, 6413–6419.
- 34 M. Tromp, J. A. van Bokhoven, G. P. F. van Strijdonck, P. W. N. M. van Leeuwen, D. C. Koningsberger and D. E. Ramaker, *J. Am. Chem. Soc.*, 2005, **127**, 777–779.
- 35 C.-M. Lin, T.-L. Hung, Y.-H. Huang, K.-T. Wu, M.-T. Tang, C.-H. Lee, C. T. Chen and Y. Y. Chen, *Phys. Rev. B: Condens. Matter Mater. Phys.*, 2007, **75**, 125426.



- 36 J. Nilsson, P.-A. Carlsson and M. Skoglundh, *Top. Catal.*, 2017, **60**, 283–288.
- 37 S. R. Wasserman, P. G. Allen, D. K. Shuh, J. J. Bucher and N. M. Edelstein, *J. Synchrotron Radiat.*, 1999, **6**, 284–286.
- 38 A. Manceau, M. Marcus and T. Lenoir, *J. Synchrotron Radiat.*, 2014, **21**, 1140–1147.
- 39 A. Y. Platonov, A. N. Evdokimov, A. V. Kurzin and H. D. Maiyoroova, *J. Chem. Eng. Data*, 2002, **47**, 1175–1176.
- 40 B. Ravel and M. Newville, *J. Synchrotron Radiat.*, 2005, **12**, 537–541.
- 41 S. Singh, K. O. Sulaiman, Mahwar and R. W. J. Scott, *Catal. Sci. Technol.*, 2023, DOI: [10.1039/d3cy01316b](https://doi.org/10.1039/d3cy01316b).

