



Cite this: *Catal. Sci. Technol.*, 2023, 13, 4978

Engineered aldolases catalyzing stereoselective aldol reactions between aryl-substituted ketones and aldehydes†

Eugenia Chukwu Cornelius,‡ Michael Bartl, ‡ Louise J. Persson, Ruisheng Xiong, Daniela Cederfelt, Farshid Mashayekhy Rad, Thomas Norberg, Sarah Engel, Erik G. Marklund, Doreen Dobritzsch and Mikael Widersten *

An A129G/R134V/S166G triple mutant of fructose 6-phosphate aldolase (FSA) from *Escherichia coli* was further engineered with the goal to generate new enzyme variants capable of catalyzing aldol reactions between aryl substituted ketones and aldehydes. Residues L107 and L163 were subjected to saturation mutagenesis and the resulting library of FSA variants was screened for catalytic activity with 2-hydroxyacetophenone and phenylacetaldehyde as substrates. A selection of aldolase variants was identified that catalyze the synthesis of 2,3-dihydroxy-1,4-diphenylbutanone. The most active enzyme variants contained an L163C substitution. An L107C/L163C variant was further tested for activity with substituted phenylacetaldehydes, and was shown to afford the production of the corresponding diphenyl substituted butanones with good diastereoselectivities (*anti:syn* dr of 10 to 30) and reasonable to good enantioselectivities of *syn* enantiomers (er of 5 to 25).

Received 8th February 2023,
Accepted 24th July 2023

DOI: 10.1039/d3cy00181d

rsc.li/catalysis

Introduction

Generation of new carbon-carbon bonds forms the foundation of synthetic chemistry. The diverse aldol reaction is one of the most important routes since it provides the facile formation of a new C-C bond between two prochiral centers.^{1,2} Aldol reactions can be facilitated by organo- and metallo-organic catalysts offering electrophilic groups stabilizing the intermediate enolate, or by forming a transient covalent enamine intermediate.^{1,3,4}

The enzyme fructose 6-phosphate aldolase A (FSA) from *Escherichia coli*⁵ is of interest as a biocatalyst in carbonylation reactions towards chiral ketols.⁶⁻¹⁴ The enzyme structure is that of a homodecamer of $\alpha_8\beta_8$ (TIM) barrel-folded subunits, arranged in two pentameric rings¹⁵ (see Fig. S1 in the ESI†). FSA is a class I type aldolase and catalysis depends on the stabilization of a reactive enamine with an active-site lysine residue. The catalytic cycle in the aldol reaction can be described to encompass five steps (Fig. 1): ① nucleophilic attack of the catalytic lysine residue (K85 in FSA) on a donor carbonyl substrate. Proton transfer from the ammonium nitrogen to the ketone-derived oxyanion generates an unstable carbinolamine intermediate. ② Protonation of the

hydroxyl group of the carbinolamine, presumably with a water molecule in the active site acting as proton donor,¹⁶ facilitates expulsion of a water, forming the iminium. ③ Deprotonation of the alpha carbon of the iminium, again involving the mentioned active-site water molecule as proton acceptor (presumably assisted by Y131), forming a nucleophilic enamine. ④ Nucleophilic attack by the enamine on bound aldehyde acceptor substrate and protonation of the

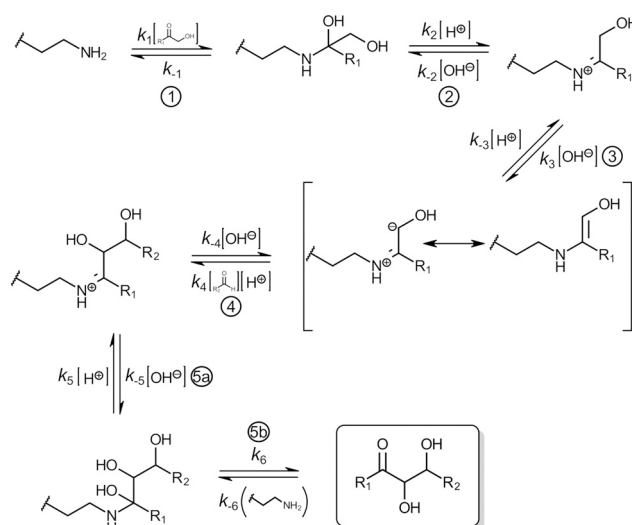


Fig. 1 Schematic representation of the catalytic mechanism of class I aldolases.

Department of Chemistry – BMC, Uppsala University, Box 576, SE-751 23 Uppsala, Sweden. E-mail: mikael.widersten@kemi.uu.se

† Electronic supplementary information (ESI) available. See DOI: <https://doi.org/10.1039/d3cy00181d>

‡ Have provided equal contributions to the presented work.



formed alcoholate, forms the new iminium intermediate. ⁵ Subsequent hydrolysis of the iminium releases the aldol product and concludes the catalytic cycle. Rate limiting step(s) of the reaction pathway has not been firmly established but can be assumed to be either the formation of the carbinolamine¹⁷ or the deprotonation of the iminium carbon acid.

The native enzyme accepts a broad range of acceptors, including alkyl and aryl-substituted aldehydes, and variants have been engineered to further widen the aldehyde acceptance.^{11,18} A limiting factor, however, has been the more narrow scope of accepted donor ketone substrates. The native enzyme can only make efficient use of short-chain aliphatic ketones such as hydroxyacetone (**1** in Chart 1) or dihydroxyacetone although also cyclic ketones can be conjugated to glyceraldehyde 3-phosphate.¹⁹ Again, enzyme engineering has created variants that exhibit wider scopes.^{20,21}

We set out to engineer FSA into accepting also aryl-substituted ketones such as acetophenone (**3**) or 2-hydroxyacetophenone (**4**). Such enzymes would open up additional avenues for biocatalytic synthesis of a more diverse range of polyhydroxylated ketols than currently available. Natural products built upon the phenone moiety have been isolated^{22–25} (Chart 2) that exhibit interesting biological activities such as cytotoxicity to tumor cells or anti-inflammatory activities. We have in an earlier study widened the aldehyde acceptance towards a range of substituted phenylacetaldehydes (**5**)¹¹ and used the variant enzymes for synthesis of chiral di- and trihydroxypentanone derivatives.¹² One of these engineered FSA variants contains two substitutions in the active site, R134V and S166G (dubbed 'VG'). The rationale for substituting R134 and S166, which in

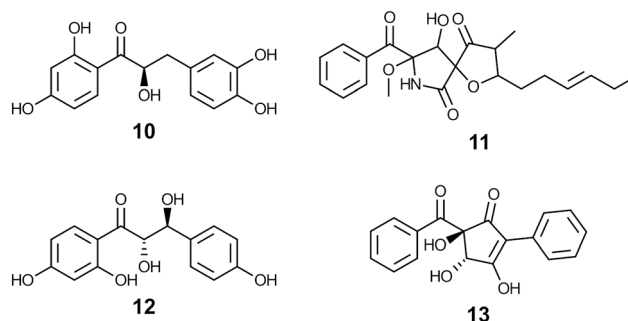


Chart 2 Examples of natural products sharing core elements with aldols synthesized in this work. Compound **10** is a precursor to insecticidal glycosides,²² cephalimysin C (**11**) is cytotoxic to cultured tumor cell lines,²³ compound **12** elicits growth inhibition in cultured tumor cells and displays anti-inflammatory properties,²⁴ and compound **13** has been tested for antifungal activity.²⁵

the native enzyme are assumed to interact with phosphorylated substrates, was to introduce amino acid residues that could better accept non-phosphorylated, aryl substituted acceptor aldehyde substrates.¹¹

We have solved the crystal structure of this VG variant to provide a detailed structural basis for further active-site engineering. Examination of its structure together with modeling and results from others^{26,27} led us to perform targeted mutagenesis in a step-wise manner, beginning with an A129G substitution that was expected to enlarge the active

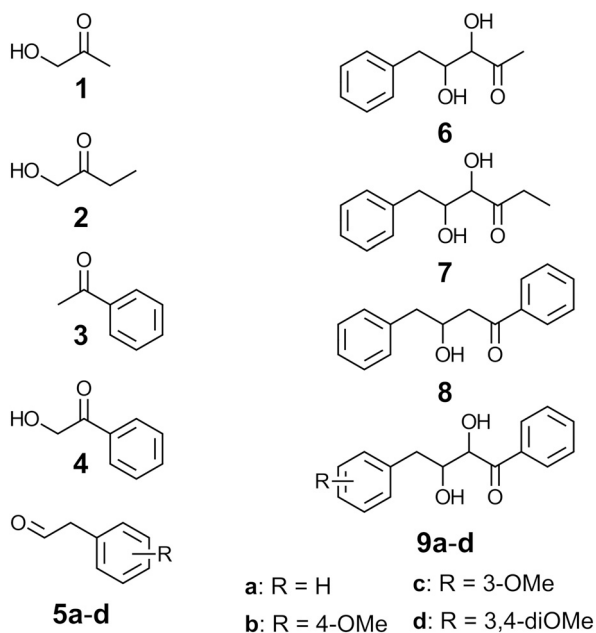


Chart 1 Compounds studied.

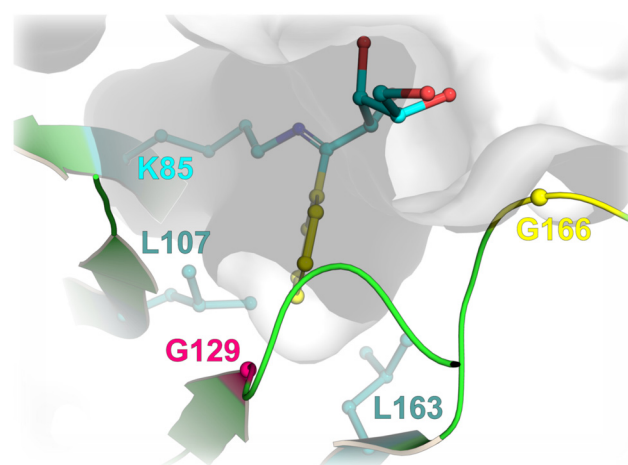


Fig. 2 Model of putative iminium formed following reaction of the VGG variant of FSA with ketone **4** and subsequent addition of glyceraldehyde. The model is based on the crystal structure of the VG variant of FSA¹¹ with the A129G mutation introduced *in silico*. The phenyl substituent (yellow) has also been modeled onto the trihydroxyhexanone linked to the active-site lysine (Fig. S1†). Albeit a crude model, it provides information of the expected spatial requirements for (productive) binding of the iminium intermediate generated from reaction with an arylated ketone such as **4**. Residue 129, that has been mutated into glycine in the VGG variant is shown together with the two residues subjected to saturation mutagenesis (L107 and L163) are shown. The surface represents available space in the active-site cavity. Image created in Pymol ver. 2.5 (ref. 28) from the atomic coordinates in PDB entry 7QXF.



site cavity to accommodate a bulky ketone substituent, such as phenyl (Fig. 2). This new variant, 'VGG', was subsequently subjected to saturation mutagenesis of L107 and L163, creating an enzyme library ('VGGX₁₀₇X₁₆₃') in theory consisting of 399 additional variants. Fig. 2 shows a model structure that illustrates the hypothesis and starting point for the construction of the aldolase VGGX₁₀₇X₁₆₃ library. The two leucines are located on opposite sides of the phenyl substituent in the modeled active site cavity. Thus, alterations in the active-site structure by residue replacements were hypothesized to influence productive ketone binding and facilitate the formation of the transient carbinolamine, and the resulting iminium. It is noteworthy that the same leucine residues were mutated in the study of Güclü *et al.* (2016), who demonstrated that a double L107A/L163A variant exhibits a wider ketone scope.²¹ In our work, the goal was to further widen the ketone acceptance and to identify FSA variants that catalyze aldol additions between arylated ketones and aldehydes.

Initially, the constructed enzyme library was screened *via* medium-throughput methods based on microtiter (96-wells) format for clone cultivation and crude enzyme sample production. The assay was based on coupling FSA catalyzed retroaldol cleavage of **9a** with an engineered aldehyde reductase consuming NADH.²⁹ Because of insufficient signal-to-noise ratios the library screening outcome was inconclusive and we instead turned to a low-throughput approach when searching the protein library; every aldolase variant was expressed and purified, and carbonylation activity was assayed by chromatographic analysis of the reaction mixtures. Here we present the collected data on structure–activity relationships of >70 VGG L107X/L163X variants. We have identified specific enzymes that are capable of catalyzing asymmetric synthesis of aldols from **4** with a series of substituted phenylacetaldehydes (**5a–d**).

Results

Crystal structure of FSA R134V/S166G

The structure was solved to a resolution of 2.6 Å. Comparison of the overall structure with wild-type FSA¹⁵ reveals very small changes in the structure (RMSD of 0.96 Å³ over 8990 atoms). The two substitutions are clearly visible in the electron density map (Fig. S1D†) and result in a widening of the active-site cavity, presumably facilitating the binding of the bulkier **5** series of aldehydes. The VG variant crystallized with 15 subunits in the unit cell (Fig. S1C†) where the extra pentameric ring is a part of an adjacent decamer.

The enzyme was co-crystallized with ketone **1** with the aim to obtain a crystal structure of the corresponding iminium. However, the electron density extending from the nucleophilic K85 rather suggests an adduct consisting of six carbons (Fig. S1D†). The relatively low resolution of the structure obscures a straightforward assignment of the bound molecule but it has been modeled as a proposed adduct between the iminium of **1** bound to K85 that has

subsequently reacted with glycerol from the crystallization liquor.

Library distribution and general characteristics of mutants

The constructed VGG L107X/L163X ('VGGX₁₀₇X₁₆₃') library was sampled by sequencing 96 randomly picked variant *E. coli* clones. The distribution of amino acids found at the two mutation sites L107 and L163 differed, but all 20 possible proteinogenic amino acids were observed at least once, resulting in a reasonable cross section of the 400 possible combinations (Fig. 3). While alanine and cysteine were over-represented at position L107, lysine or isoleucine were not observed at all. Position L163 also displayed an uneven distribution with an over-representation of cysteine and glycine. Phenylalanine, proline and asparagine were not spotted at this position. Therefore, some limitations regarding a fully representative cross section had to be accepted. The gene sequencing and subsequent expression and purification of 96 proteins resulted in a total of 66 VGGX₁₀₇X₁₆₃ mutants, which were analyzed further in the context of a possible structure–function relationship. Some aldolase variants showed additional, not pre-intended point-mutations and were compared to their closest VGGX₁₀₇X₁₆₃ relatives when present (*vide infra*). Proteins encoded by genes carrying frame-shift mutations were excluded from characterization. During expression and purification of the different variants, links between amino acid substitutions and protein behavior in solution became evident.

Mutations to proline, arginine, aspartate and tryptophan resulted in direct effects on the solubility of the proteins with substitution to proline in all cases resulting in the formation of inclusion bodies. Variants that had acquired substitutions to arginine, aspartate or tryptophan generally were soluble, *i.e.* present in the supernatant fraction of the cleared lysates, but displayed varying tendencies to aggregate after purification. L163R mutants remained soluble, whereas an L107R mutant was not. VGGW₁₀₇W₁₆₃ formed inclusion bodies as well. Aldolases with an L163W or L163D mutation formed precipitates when exposed to high imidazole concentrations but remained soluble in other buffers. L107W and L107E mutants precipitated only occasionally at high imidazole concentrations. Some variants were not obtained at adequate enough yields to allow for conclusive characterization. Out of the 96 isolates, 66 VGGX₁₀₇X₁₆₃ aldolase derived proteins were obtained. 13 mutants were obtained multiple times. Including the VGG parent, 48 unique variants were analyzed in full, equivalent to a library coverage of 12% (Fig. 3).

Isolation of FSA-VGGX₁₀₇X₁₆₃ variants able to synthesize di-phenyl substituted aldol **9a**

It has been established earlier that ketone **1** is a well-accepted donor substrate for FSA VG, combined with aldehyde **5a** to generate aldol **6**.¹¹ We confirmed that also the VGG variant catalyzed this reaction with comparable



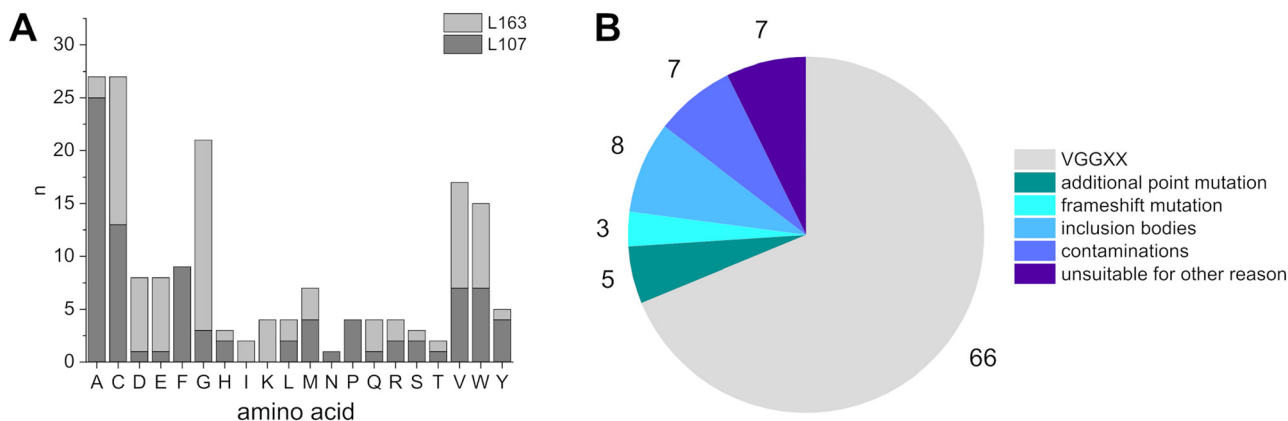


Fig. 3 (A) Total count of amino acids at the two mutation sites of all sequenced samples. Residues of frame-shift mutations were not included in the histogram if the frame-shift occurred upstream of the targeted position. (B) Overview of the results of members of the VGGX₁₀₇X₁₆₃-library following gene sequencing and enzyme purification. Mutants with multiple characteristics were assigned to only one category, resulting in a total number of 96 initial samples. The VGG parent enzyme was not included in this statistics.

efficiency. Thus, the reaction with these substrates was assayed as a control of basic catalytic function in parallel to the sought-after aldol addition activity with ketone **4** and aldehyde **5a** to generate **9a**. The respective reactions were analyzed for product formation by reversed phase HPLC where the product peaks could be identified after comparisons with reference compounds comprising mixtures of *anti*- and *syn*-isomers of **6** and **9a**.¹² The assay also allowed us to judge the relative amounts of product formation and to estimate the diastereomeric ratios directly from the HPLC chromatograms, using standardized conditions and enzyme concentrations.

(A) Hydroxyacetone (1) as ketone donor. The relative product amounts are visualized as a bar chart of the integrated peak areas of the product aldol (Fig. S2†), with the numerical values listed in Table S1.† Only the *syn*-**6** diastereomer was detected in all analyzed reactions. Most of the variants afforded aldol formation at levels similar to the VGG parent.

Others were scored as inactive and had apparently lost the ability to utilize this ketone.

(B) Hydroxyacetophenone (4) as ketone donor. The results of the screen for variants displaying activity with ketone **4** and aldehyde **5a** to form aldol **9a** are shown in Fig. 4. The observed activities suggest that the sole creation of new space, e.g. as in the double VGGG₁₀₇G₁₆₃ mutant, is not sufficient to improve activity with the bulky ketone **4**, since none of the VGGX₁₀₇-G₁₆₃-aldolases exhibited appreciable activity. Instead, introduction of cysteine(s) resulted in the most active variants, with enzymes of the L163C lineage showing highest efficiencies. Among them, VGGC₁₀₇C₁₆₃ and VGGV₁₀₇C₁₆₃ exhibited by far the best catalytic properties with **4** as ketone donor, whereas VGGG₁₀₇C₁₆₃ and other VGGX₁₀₇C₁₆₃ variants showed less activity. Although considerably more active than the VGG parent, VGGC₁₀₇C₁₆₃ is still a comparably poor enzyme in the catalyzed formation of **9a**; the apparent turnover number determined at relatively saturating concentrations of **5a** (2.7

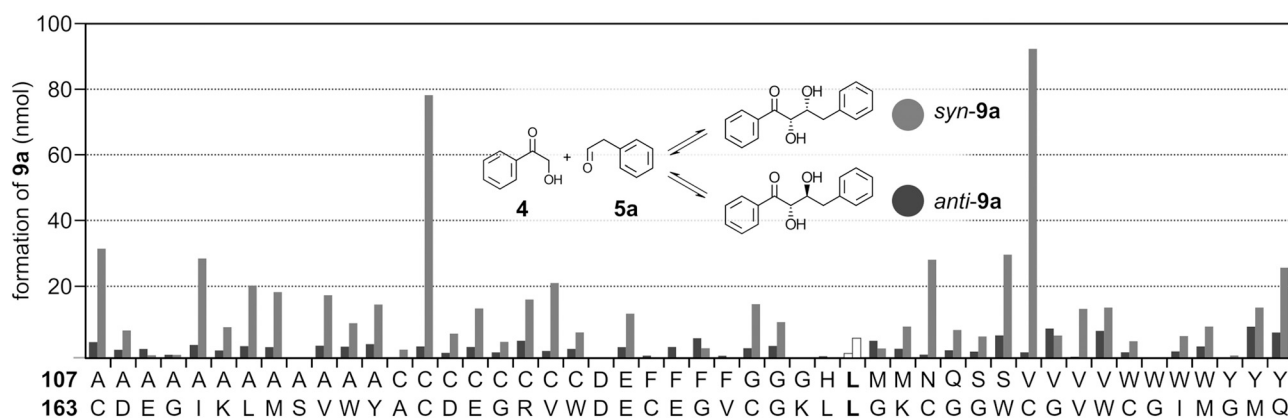


Fig. 4 Bar chart of scored activities in FSA VGGX₁₀₇X₁₆₃ catalyzed formation of *syn* or *anti*-**9a** following incubation of ketone and aldehyde substrates in the presence of 10 μM (2 nmol) of respective FSA variants. Reaction mixtures were analyzed by reversed phase HPLC. The FSA VGG₁₀₇L₁₆₃ parent data are shown as white bars with the *anti*-**9a** data to the left of *syn*-**9a**. The estimated error was ±13% (see the ESI† for experimental details, numerical values of integrated peak areas (Table S2†) and error estimation).



$\times K_M$) and varied concentrations of **4**, is only 0.067 min^{-1} (Table S3†). This is 1500-fold slower than the aldol reaction between **1** and **5a** catalyzed by the parent VGG variant.¹¹ In the screening process, candidate enzymes were incubated for 22 h and the VGGC₁₀₇C₁₆₃ variant produced approximately 39 nmol **9a** per nmol of enzyme (Fig. 4). Applying the apparent k_{cat} value would yield 88 nmol **9a** per nmol of enzyme, if allowed to continue for 22 h. One cause of this difference can be explained by the high K_M^4 displayed by the VGGC₁₀₇C₁₆₃ variant; in the screening process 20 mM **4** was included in the reactions which represents only $1.2 \times K_M$ resulting in reaction velocities far from V_{max} . The K_M values for **5a** are comparable between VG and VGGC₁₀₇C₁₆₃ (Table S3†).

The diastereomeric ratios between *anti* and *syn* isomers of **9a** were estimated from the respective integrated peak areas of the diastereomers (Fig. 4, Table S2†). Again, enzymes exhibiting higher degree of selectivity were found in the L163C lineage of variants. The highest diastereoselectivity was observed with VGGV₁₀₇C₁₆₃ and VGGC₁₀₇C₁₆₃, but also with VGGN₁₀₇C₁₆₃.

The VGGC₁₀₇C₁₆₃ variant was further employed in the synthesis of **9a** (10 μmol of **5a** and **4**, 0.2 μmol FSA VGGC₁₀₇C₁₆₃, purified yield: approximately 35%) to allow for NMR analysis of the aldol product.

The diastereomer ratio of 10:90 of *anti*:*syn* was estimated from the integrals of the C-2 and C-3 protons¹² (Table 1). The obtained ratio of the two *syn* enantiomers was estimated after chiral HPLC to be 71:29 (Table 1, Fig. S3†). The same enzyme variant was also tested for the ability to accept methoxy substituted aldehydes **5b–d** together with **4**, and indeed this enzyme produced aldols **9b–d** as judged by mass spectrometry analysis (Fig. S12†). Aldol **9b** was produced at good diastereomer ratio, favoring the formation of the *syn* diastereomer by >90% (Table 1). The enantiomeric ratios were 3 to 25 between the *syn* enantiomers of **9a** and **9b**, respectively (Fig. S3†).

Certain variants showed an increased formation of anti-**9a** relative to VGG. A combination of a hydrophobic and somewhat bulky residue at position 107 (V/M/F) with Gly at position 163 appears to favor formation of the *anti* diastereomer (Fig. 4). It is conceivable that the extra free volume introduced by the L163G substitution together with sterical limitations by a bulky residue at position 107 steers binding of the phenylacetaldehyde substrate to adapt a

Table 1 Diastereomer and enantiomer ratios of aldol products from reactions catalyzed by FSA VGGC₁₀₇C₁₆₃

Compound	dr <i>anti</i> : <i>syn</i>	er of <i>syn</i> enantiomers ^a
9a	7:93, ^b 10:90 ^c	71:29
9b	6:94 ^b	96:4

^a Estimated from integrated peak areas following chiral HPLC (Chiralpak AS-H). ^b Estimated from integrated peak areas following reversed-phase HPLC (C-18). ^c Estimated from integrated NMR peaks of protons at positions 2 and 3.

conformation favoring addition to the *re* face of the aldehyde, thereby preferentially forming the *anti* diastereomer. Reactions catalyzed by VGGV₁₀₇G₁₆₃ and VGGY₁₀₇M₁₆₃ gave the highest amounts of *anti*-**9a**, although also being promiscuous regarding stereoselectivities. These FSA variants thus appear to allow for less selective binding of aldehyde **5a**, thereby allowing for attack from both the *re* and *si* faces of the carbonyl.

(C) Aldolase activity with acetophenone (3) as ketone donor. Selected variants were further tested for their ability to catalyze the aldol reaction with the non-hydroxylated ketone **3** (Fig. S4†). VGGV₁₀₇W₁₆₃ showed the highest activity, followed by VGGC₁₀₇V₁₆₃. In all tested cases the activity with **3** was substantially lower as compared to the corresponding reactions with **4** as ketone donor. The ratios of catalyzed rates between **4** and **3** as ketone substrates ranged between 6 to 90-fold, where the parent VGG enzyme displayed the lowest ratio, mainly due to the poor activity with **4**, and the VGGC₁₀₇C₁₆₃ variant the highest preference for **4**. There was no clear correlation between variants that displayed highest relative activities with **4** with those that were most active with **3**.

(D) Hydroxybutanone as ketone donor. In the cases where variants catalyzed the formation of **6** with apparently similar or higher activity than VGG, we also tested how well ketone **2** was accepted as substrate by a selection of these variants (Fig. S5†). In most cases the activities with either **1** or **2** are comparable with a general preference for ketone **1**. Two variants containing a glycine at position 163, VGGQ₁₀₇G₁₆₃ and VGGY₁₀₇G₁₆₃, both displayed significantly lower production of **7** as compared to **6**. The least tolerant variant of those tested for activity with **2** was VGGY₁₀₇Q₁₆₃ that did not produce **7** in appreciable amounts under the assay conditions used.

Effects of additional mutations

Out of a total of five aldolases that had acquired additional, not pre-designed point mutations (considered as artifacts introduced during gene syntheses by polymerase chain reactions), two were suitable for direct comparison to their closest VGGX₁₀₇X₁₆₃ relatives, VGGA₁₀₇C₁₆₃ with an additional T185N-mutation (referred to as VGGA₁₀₇C₁₆₃N₁₈₅) and VGGV₁₀₇V₁₆₃ with a P187Q-mutation (VGGV₁₀₇V₁₆₃Q₁₈₇, Fig. 5). While VGGA₁₀₇C₁₆₃ showed better catalytic properties regarding the reaction of **4** and **5a**, as compared to VGG, the additional T185N-mutation impaired this activity approximately five-fold (Table S2†), and the activity with **1** and **5a** was even further reduced (Fig. 5). VGGV₁₀₇V₁₆₃Q₁₈₇ also displayed a lower degree of formation of **6** as compared to VGG or its closest relative VGGV₁₀₇V₁₆₃. The overall catalytic efficiency towards the **9a** product was comparable to the one of VGGV₁₀₇V₁₆₃, but the *anti*-**9a**:*syn*-**9a** diastereomeric ratio dropped dramatically from 1:40 to 1:1.5, mainly due to increased formation of the *anti* diastereomer. P187 is not part of the active site but is



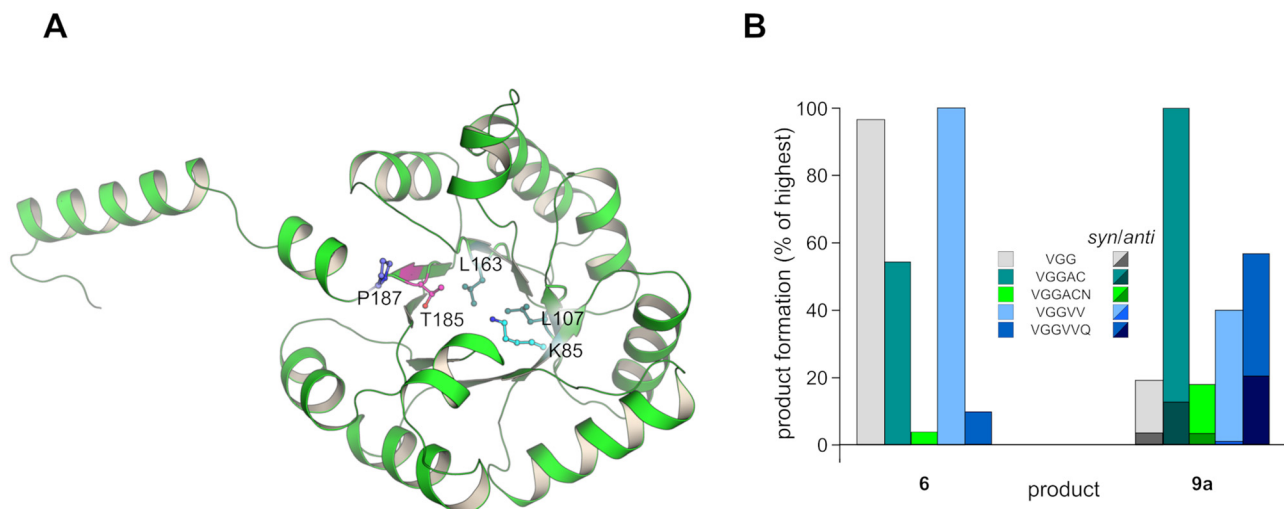


Fig. 5 (A) Localization of non-targeted T185N and P187Q mutations in the FSA VG monomer (a chain of the FSA VG decamer (PDB entry 7QXF)). (B) Effect of additional, unplanned mutations on the catalytic properties of the resulting variants. The FSA variants containing the additional T185N and P187Q-mutations, named VGG_{A107}C₁₆₃N₁₈₅ (light green) and VGGV₁₀₇V₁₆₃Q₁₈₇ (dark blue), respectively. This allowed a comparison to their closest relatives (VGG_{A107}C₁₆₃ in darker green and VGGV₁₀₇V₁₆₃ in light blue, respectively) as well as to VGG as parent reference (gray). Bars represent percentage of product formation as compared to the most active variant in this comparison. Product amounts were determined from the integrated peak areas detected at 212 (aldol **6**) or 244 (aldol **9a**) nm after separation of reaction mixtures by reversed phase HPLC. See Tables S1 and S2† for absolute values of peak integrals and the ESI† for experimental details and error estimations.

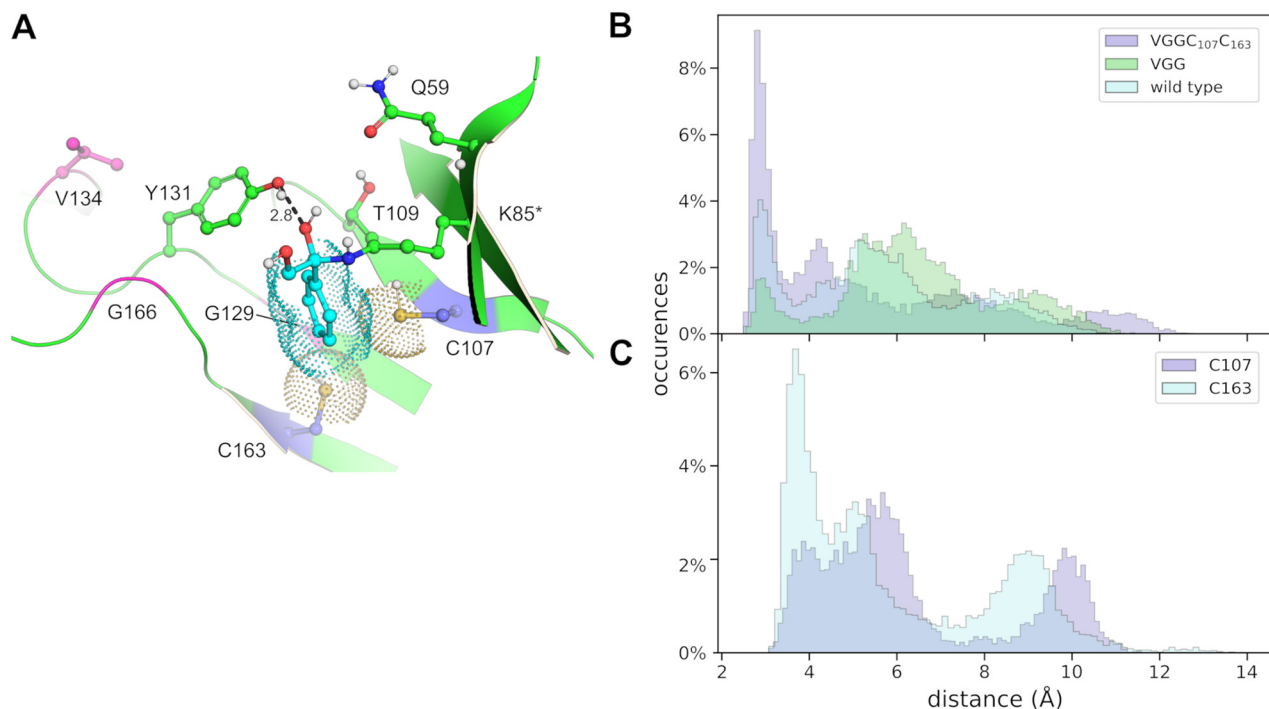


Fig. 6 (A) Model of VGGC₁₀₇C₁₆₃ with the (*R*)-configured carbinolamine, showing a structure of the highest populated structure cluster. The two introduced C107 and C163 residues are shown together with the R134V, A129G and S166G substitutions from the VGG parent and the proposed catalytic amino acid residues Q59, T109 and Y131. The ketone derived portion of the carbinolamine ('K85*'), is in cyan carbons connected to the K85 side-chain. The dot representation of the cysteines and the phenyl substituent illustrates a snug fit of the (*R*)-carbinolamine between these two residues. The atomic distance between the Y131 phenol oxygen and the leaving group hydroxyl of the carbinolamine is given in Å. (B) and (C), atomic distances observed during 100 ns molecular dynamics simulation between (B), the phenol oxygen of Y131 and the carbinol leaving group hydroxyl in either wild type (palecyan), VGG (green) or VGGC₁₀₇C₁₆₃ (palemagenta), or (C), between the sulfur atoms of C107 (palemagenta) or C163 (palecyan) and carbon-4 of the phenyl substituent of the (*R*)-carbinolamine in the VGGC₁₀₇C₁₆₃ variant.



situated at the C-terminal end of $\beta 8$ contributing to the loop connecting to $\alpha 8$. The substitution for glutamine could affect the local folding and thereby influence the active-site structure *via* $\beta 8$.

Molecular dynamics simulation of enzyme–carbinolamine interactions in the active sites

For the aldolase to be catalytically competent, a ketone derived enzyme bound iminium must be formed. The iminium is the result of dehydration of an intermediate carbinolamine. As an approach to gain further information regarding structure-dynamics in the formation of the iminium state, *via* the carbinolamine intermediate state, molecular dynamics simulations of FSA were carried out. The wild-type, VGG and VGGC₁₀₇C₁₆₃ enzymes were modeled with both possible enantiomers of the carbinolamine intermediates in the respective active sites and simulations were run over 200 ns. *t*. The initial models inferred neutralization through rapid proton transfer between the nitrogen and the oxygen in the initial zwitterionic species.

The simulations revealed that large conformational changes would be required to accommodate an (*S*)-configured carbinolamine, and hence, we consider this an improbable intermediate. Therefore, the analysis of the simulations were focused on the results obtained with the (*R*)-carbinolamine bound in these FSA variants (Fig. 6). The catalytically most active VGGC₁₀₇C₁₆₃ variant distinguished itself by favoring a shorter distance between the hydroxyls of Y131 and of the leaving group hydroxyl (Fig. 6B). The side-chains of the introduced C107 and C163 were frequently seen to stabilize the phenyl ring of the intermediate, as judged by the respective atomic distances (Fig. 6C), interactions that appear to result in a shortening of the distance between the Y131 phenol oxygen and the leaving group hydroxyl oxygen on the carbinolamine.

Discussion

The activity assays used in screening for functional variants were performed on individually purified enzymes which lowered the throughput of analyzed clones. We therefore ended the search after 96 tested enzyme expressing clones. However, the collected data provide a rich source of enzymes that exhibit altered, and in many cases non-overlapping, catalytic activities with different substrates. In this study, we limited ourselves to focus on the arylated ketone **4**, but the produced enzyme library may prove to be a source of also other aldolase activities. Added benefits of performing isolation of each individual enzyme variant were also that more accurate analyses of expression levels, solubility and stability were possible, which is usually not the case when screening enzyme activity directly from cell lysates.

Wild-type FSA favors low-molecular ketone substrates, and our preconception was that substitution into smaller amino acid residues such as Ala or Gly could be beneficial to allow productive binding of the bulkier ketone **4**. The added

accessible volume could possibly facilitate the initial imine formation since this process would be expected to include dynamic structural changes during the transition *via* the carbinolamine intermediate. However, somewhat surprisingly, the VGGX₁₀₇G₁₆₃ and VGGG₁₀₇X₁₆₃-variants did in general not exhibit notably increased activities with ketone **4**. One could argue that Gly may destabilize the structure and cause inactivation of the enzyme, but several of the glycine containing variants did display reasonable activities with hydroxyacetone (**1**) as donor (Fig. S2†) thereby demonstrating that the enzymes are indeed functional but not improved for activity with the bulkier ketone **4**. This underlines the elusiveness of the interplay between active-site architecture combined with structural dynamics that makes *a priori* structure–activity predictions challenging. The naive shotgun approach in the enzyme screening was therefore helpful in that beneficial amino acid combinations could be identified that would probably have been discarded in a more rational mutagenesis approach. The variants of highest aldol addition activities both contained cysteine at position 163 (VGGV₁₀₇-C₁₆₃ and VGGC₁₀₇C₁₆₃). The mechanistic reasons for the improvement in activity with **4** are at this stage speculative, and further muddled by the lack of detailed understanding of rate limitations in catalysis. However, *ab initio* studies have suggested that S– π interactions between thiols and aromatic rings may contribute substantially to inter-molecular stabilization up to as much as 2.6 kcal mol⁻¹ in relevant model systems, and with corresponding interactions between Cys thiols and aromatic rings of Phe or Tyr confirmed also in experimentally determined protein structures.^{30,31} It is therefore possible that the Cys substitutions indeed promote

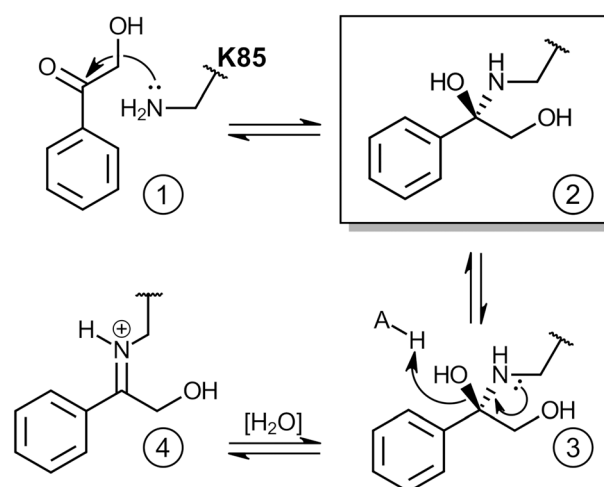


Fig. 7 Formation of enzyme iminium in the VGGC₁₀₇C₁₆₃ as suggested by molecular dynamics simulations. ① Nucleophilic attack by the amino group of K85 on the *si* face of bound **4**. ② Rapid proton exchange to generate an unstable carbinolamine intermediate. ③ Protonation of leaving group hydroxyl leading to expulsion of a water equivalent. ④ Formation of stable iminium. The iminium is subsequently deprotonated at the α -carbon to yield the nucleophilic enaminol that may react with an incoming aldehyde.



productive binding of the donor ketone and contribute to stabilization of the reactive enaminol intermediate.

The molecular dynamics simulations provided information that aids in rationalizing the observed improvement in activity with **4** as ketone donor. The pathway to the essential enzyme bound iminium is *via* formation of an unstable carbinolamine intermediate (2 in Fig. 7). Since the iminium is a prerequisite for the aldol reaction to proceed we hypothesized that a requirement for catalytic activity with aryl-substituted ketones would be the ability to facilitate the formation and accommodate the preceding carbinolamine and the subsequent dehydration into the stable iminium. Thus, both possible enantiomers of the carbinolamine that could be generated following reaction between K85 and **4** were modeled in the active sites of the wild-type, the VGG and the VGGC₁₀₇C₁₆₃ variants.

The simulation results suggest the following: (1) the sulfur atoms of the two introduced Cys residues in the VGGC₁₀₇C₁₆₃ variant are too far apart to form a disulfide bond (average distance ~6 Å, Table S7†). (2) The only carbinolamine enantiomer that can lead to the iminium state has the (*R*)-configuration. This conclusion is based on the necessary geometry for possible protonation of the leaving group hydroxyl by a proposed catalytic water molecule hydrogen bonded to Q59, T109 and Y131 (Fig. S15†).^{15,16} Furthermore, to generate the (*S*)-carbinolamine would require binding of the ketone in a conformation allowing for attack of K85 on the *re* face of the carbonyl. This would require extensive re-shaping of the active site, which is unlikely due to the expected unfavorable energy involved. To generate the (*R*) enantiomer, the initial attack by the K85 amino group has to occur on the *si* face of bound ketone **4** substrate. (3) Accommodation of the phenyl substituent appears to be favored in the VGGC₁₀₇C₁₆₃ variant, as judged by the atomic distances in the highest populated structure clusters of wild-type FSA, and the VGG and VGGC₁₀₇C₁₆₃ variants (Fig. 6). Two additional results from the simulations are worth noting: firstly, the sulfur of C₁₆₃ is in contact with the phenyl substituent of the carbinolamine to a larger extent compared to the sulfur of C₁₀₇ (Fig. 6C). This may explain the fact that the cysteine at position 163 also appears to be the main determinant for activity with ketone **4** as judged by the activity profile in Fig. 4, where also VGGC₁₀₇C₁₆₃, VGGN₁₀₇C₁₆₃ and VGGV₁₀₇C₁₆₃, all show improved activities with **4**, compared to the VGG parent. Secondly, the average distance between the phenol oxygen of Y131 and the leaving group hydroxyl oxygen is shortened in the highest populated structure cluster of the VGGC₁₀₇C₁₆₃ variant, compared to the VGG parent and the wild type (Fig. 6B and S15†). This may suggest direct proton transfer from Y131 to the leaving group, circumventing a water proton relay. If this observation is linked to the increased activity with ketone **4** is unlikely – rates of proton transfer reactions between electronegative atoms such as oxygen and nitrogen are expected to be many orders of magnitude faster than the catalytic rates determined here. Thus, the possible change in active site

geometry may just be an accommodation to allow productive binding of the bulkier ketone substrate. It may, however, result in that the hydroxyl of Y131 becomes better positioned in space for protonation of the leaving group hydroxyl, thereby increasing the frequency of iminium formation. Furthermore, when analyzing the abilities of these three FSA variants to accommodate a water molecule during molecular dynamics simulations, positioned for possible proton transfer to the carbinolamine leaving group, the wild-type enzyme displays the highest frequencies (Fig. S6†). However, further studies are clearly needed to establish the exact mechanism in this step of the catalytic cycle.

We have demonstrated, albeit at yet small scale and without any efforts of optimizing the product work-up, that the VGGC₁₀₇C₁₆₃ enzyme may be considered as a starting enzyme scaffold for development of useful biocatalysts affording asymmetric synthesis of bis-arylated ketols. The produced diphenyl substituted compounds share structural features with isolated natural products with biological activities, such as compounds **10** and **12** in Chart 2. The obtained isomeric ratios in the aldol products formed with methoxy substituted aldehyde **5b** by far exceed those that have been obtained with the organocatalyst cinchonine in the synthesis of this class of compounds.¹² The products are enriched enantiomers of the *syn* diastereomer configuration, in line with previously described reactions with short-chain ketones.^{7,11,12,18} The somewhat mediocre enantiomeric ratio between the *syn*-**9a** aldols, synthesized by the VGGC₁₀₇C₁₆₃ variant, will require further refinement to yield similar discrimination as obtained with the methoxy substituted aldehydes. However, differences in the respective proportions of enantiomer 'B' between aldols **9a** and **9b** (Fig. S3†), implies stereo-restricting mechanisms that depend on the different structures of the acceptor aldehydes. In order to shift the configuration around carbon-2, rotation of the nucleophilic enamine (or the preceding iminium) has to occur. If such rotations indeed are present it should be independent of the aldehyde since the enamine is supposedly generated before aldehyde binding. Thus, the higher degree of the enantiomeric ratios in aldol **9b** would then suggest restrictions in aldehyde binding that favor productive complexes preferentially leading to the '*syn*-A' isomer. These attempts to explain the observed differences in stereoselectivity are still speculative and demand further investigations for clarification of the mechanisms.

Experimental

Experiments and methods are summarized here with detailed descriptions in the ESI.† A C-terminally His-tagged A129G/R134V/S166G triple mutant of FSA, dubbed 'VGG' was employed as starting scaffold in the aldolase library construction. Its gene was employed to template codon unbiased saturation mutagenesis³² of codon positions L107 and L163 achieved by overlapping polymerase chain reactions (Fig. S2†). Library DNA was transformed into *E. coli* BL-21 AI



[pREP4-GroEL-ES] allowing for co-expression of chaperonins GroEL/ES.³³

FSA variants were expressed at 100 ml culture scale and purified by immobilized nickel ion chromatography. Purified proteins were subsequently challenged for aldolase activity with either hydroxyacetone (**1**) or 2-hydroxyacetophenone (**4**) as donor ketones and with phenylacetaldehyde (**5a**) as acceptor aldehyde. Reaction mixtures were analyzed by reversed phase (C-18) HPLC. A selection of isolated enzyme variants was also tested for activity with ketones **2** or **3** together with **5a**. Products were identified from their chromatographic properties after comparing with reference compounds, and in cases also by NMR spectroscopy and ESI-MS/MS spectrometry. Diastereomeric ratios of obtained aldol products were analyzed by reversed phase HPLC and ¹H-NMR (H2–H3 integrals in the case of aldol **9a**, Fig. S7†) and enantiomeric ratios by chiral HPLC.

Steady state kinetic parameters of the reaction between **4** and **5a**, catalyzed by VGGC₁₀₇C₁₆₃ were determined.

The FSA variant R134V/S166G ('VG') was crystallized and the 3-D structure solved by molecular replacement with wild type FSA¹⁵ as search model (Fig. S5†).

Molecular dynamics simulations were carried out with the Gromacs simulation package (<https://doi.org/10.1016/j.softx.2015.06.001>) for decameric wild-type FSA as well as the VGGC₁₀₇C₁₆₃ and VGG variants. In each monomer, K85 had been remodeled as the carbinolamine intermediate. Details are provided in the ESI.†

Conclusions

We have isolated new FSA derived enzyme variants that catalyze stereoselective synthesis of biphenyl substituted aldols. The enzymes provide protein scaffolds for refinement of (bio)catalytic properties and as models for studies of fundamental enzymological studies. The structure–activity data, points towards amino acid position 163 to be a determinant for improved activity with a bulky ketone.

Author contributions

ECC, MB, RX, DC, FMR, TN, SE and DD contributed different parts of the experimental work. LJP and EGM conducted the molecular dynamics simulations. MW planned the work together with all co-authors. All authors contributed to writing of the manuscript.

Conflicts of interest

There are no conflicts to declare.

Acknowledgements

The contributions of MSc Noha Saad are gratefully acknowledged. This work was supported by Olle Engkvist Byggmästare foundation (MW, #194-0638 and #218-0061). The computations were enabled by resources provided by the

Swedish National Infrastructure for Computing (SNIC) at NSC, partially funded by the Swedish Research Council through grant agreement no. 2018-05973.

Notes and references

- B. M. Trost and C. S. Brindle, *Chem. Soc. Rev.*, 2010, **39**, 1600–1632.
- Y. Yamashita, T. Yasukawa, W.-J. Yoo, T. Kitanosono and S. Kobayashi, *Chem. Soc. Rev.*, 2018, **47**, 4388–4480.
- B. List, *Synlett*, 2001, **11**, 1675–1686.
- W. Notz, F. Tanaka and C. F. Barbas, III, *Acc. Chem. Res.*, 2004, **37**, 580–591.
- M. Schürmann and G. A. Sprenger, *J. Biol. Chem.*, 2001, **276**, 11055–11061.
- A. K. Samland and G. A. Sprenger, *Appl. Microbiol. Biotechnol.*, 2006, **71**, 253–264.
- A. L. Concia, C. Lozano, J. A. Castillo, T. Parella, J. Joglar and P. Clapés, *Chem. – Eur. J.*, 2009, **15**, 3808–3816.
- P. Clapés, W.-D. Fessner, G. A. Sprenger and A. K. Samland, *Curr. Opin. Chem. Biol.*, 2010, **14**, 154–167.
- P. Clapés and X. Garrabou, *Adv. Synth. Catal.*, 2011, **353**, 2263–2283.
- K. Fesko and M. Gruber-Khadjawi, *ChemCatChem*, 2013, **5**, 1248–1272.
- H. Ma, S. Engel, T. R. Enugala, D. Al-Smadi, C. Gautier and M. Widersten, *Biochemistry*, 2018, **57**, 5877–5885.
- D. Al-Smadi, T. R. Enugala, V. Kessler, A. R. Mhasal, S. C. L. Kamerlin, J. Kihlberg, T. Norberg and M. Widersten, *J. Org. Chem.*, 2019, **84**, 6982–6991.
- M. Widersten, *Methods Enzymol.*, 2020, **644**, 149–167.
- V. Hélaïne, C. Gastaldi, M. Lemaire, P. Clapés and C. Guérard-Hélaïne, *ACS Catal.*, 2022, **12**, 733–761.
- S. Thorell, M. Schürmann, G. A. Sprenger and G. Schneider, *J. Mol. Biol.*, 2002, **319**, 161–171.
- L. Stellmacher, T. Sandalova, S. Lepthin, G. Schneider, G. A. Sprenger and A. K. Samland, *ChemCatChem*, 2015, **7**, 3140–3151.
- I. A. Rose, E. L. O'Connell and A. H. Mehler, *J. Biol. Chem.*, 1965, **240**, 1758–1765.
- A. Soler, M. L. Gutiérrez, J. Bujons, T. Parella, C. Minguillon, J. Joglar and P. Clapés, *Adv. Synth. Catal.*, 2015, **357**, 1787–1807.
- R. Roldán, I. Sanchez-Moreno, T. Scheidt, V. Hélaïne, M. Lemaire, T. Parella, P. Clapés, W.-D. Fessner and C. Guérard-Hélaïne, *Chem. – Eur. J.*, 2017, **23**, 5005–5009.
- R. Roldán, K. Hernandez, J. Joglar, J. Bujons, T. Parella, I. Sánchez-Moreno, V. Hélaïne, M. Lemaire, C. Guérard-Hélaïne, W.-D. Fessner and P. Clapés, *ACS Catal.*, 2018, **8**, 8804–8809.
- D. Güclü, A. Szekrenyi, X. Garrabou, M. Kickstein, S. Juncker, P. Clapés and W.-D. Fessner, *ACS Catal.*, 2016, **6**, 1848–1852.
- L. Alvarez and G. Delgado, *Phytochemistry*, 1999, **50**, 681–687.
- T. Yamada, E. Imai, K. Nakatuji, A. Numata and R. Tanaka, *Tetrahedron Lett.*, 2007, **48**, 6294–6296.



- 24 K. H. Kim, E. Moon, S. U. Choi, S. Y. Kim and K. R. Lee, *Phytochemistry*, 2013, **92**, 113–121.
- 25 D. Kälvä, A. Menkis and A. Broberg, *Molecules*, 2018, **23**, 1417–1427.
- 26 J. A. Castillo, C. Guérard-Hélaine, M. Gutiérrez, X. Garrabou, M. Sancelme, M. Schürmann, T. Inoue, V. Hélaine, F. Charmantray, T. Gefflaut, L. Hecquet, J. Joglar, P. Clapés, G. A. Sprenger and M. A. Lemaire, *Adv. Synth. Catal.*, 2010, **352**, 1039–1046.
- 27 A. Szekrenyi, A. Soler, X. Garrabou, C. Guérard-Hélaine, T. Parella, J. Joglar, M. Lemaire, J. Bujons and P. Clapés, *Chem. – Eur. J.*, 2014, **20**, 12572–12583.
- 28 *The PyMOL Molecular Graphics System, Version 2.0*, Schrödinger, LLC.
- 29 H. Ma, T. R. Enugala and M. Widersten, *ChemBioChem*, 2015, **16**, 2595–2598.
- 30 G. Duan, V. H. Smith Jr and D. F. Weaver, *Mol. Phys.*, 2001, **99**, 1689–1699.
- 31 A. L. Ringer, A. Seneneko and C. D. Sherrill, *Protein Sci.*, 2007, **16**, 2216–2223.
- 32 L. Tang, H. Gao, X. Zhu, X. Wang, M. Zhou and R. Jiang, *BioTechniques*, 2012, **52**, 149.
- 33 G. E. Dale, H.-J. Schönfeld, H. Langen and M. Stieger, *Protein Eng.*, 1994, **7**, 925–931.

