


 Cite this: *Lab Chip*, 2022, 22, 3898

## Bending stiffness of *Candida albicans* hyphae as a proxy of cell wall properties†

 Elodie Couttenier,<sup>ab</sup> Sophie Bachellier-Bassi, <sup>b</sup>  
 Christophe d'Enfert <sup>b</sup> and Catherine Villard <sup>‡\*a</sup>

The cell wall is a key component of fungi. It constitutes a highly regulated viscoelastic shell which counteracts internal cell turgor pressure. Its mechanical properties thus contribute to define cell morphology. Measurements of the elastic moduli of the fungal cell wall have been carried out in many species including *Candida albicans*, a major human opportunistic pathogen. They mainly relied on atomic force microscopy, and mostly considered the yeast form. We developed a parallelized pressure-actuated microfluidic device to measure the bending stiffness of hyphae. We found that the cell wall stiffness lies in the MPa range. We then used three different ways to disrupt cell wall physiology: inhibition of beta-glucan synthesis, a key component of the inner cell wall; application of a hyperosmotic shock triggering a sudden decrease of the hyphal diameter; deletion of two genes encoding GPI-modified cell wall proteins resulting in reduced cell wall thickness. The bending stiffness values were affected to different extents by these environmental stresses or genetic modifications. Overall, our results support the elastic nature of the cell wall and its ability to remodel at the scale of the entire hypha over minutes.

 Received 8th March 2022,  
 Accepted 31st May 2022

DOI: 10.1039/d2lc00219a

[rsc.li/loc](https://rsc.li/loc)

## Introduction

*Candida albicans* is one of the most important fungi from a clinical standpoint. It has been estimated that 70% of healthy individuals carry *C. albicans* at any given time during their lifetime.<sup>1</sup> *C. albicans* is also one of the most important human opportunistic fungal pathogens. It is responsible for mucosal diseases in otherwise healthy individuals (following for example an antibiotic treatment), as well as deep-seated infections in immunocompromised patients. Disseminated candidiasis, *i.e.* fungal invasion of internal organs through bloodstream infections is associated with a high mortality rate (~50%) even with current antifungal treatments.<sup>2</sup>

The pathogenicity of *C. albicans* relies largely on its ability to grow according to distinct morphological forms ranging from unicellular budding yeasts to elongated invasive filaments called hyphae.<sup>3,4</sup> A hypha consists of mononucleated compartments separated by walls (septa) which do not alter the regular tubular diameter of the overall filament (contrarily to pseudo-hyphae<sup>5</sup>). The filamentous

forms achieve tissue penetration and invasion, whereas the yeast form promotes dissemination, acting as seeds for future hyphal colonization in local or distant organs.<sup>6</sup> Filamentation can be induced *in vitro* by tuning the physicochemical growth parameters such as pH or temperature, or by adding *e.g.* serum or *N*-acetylglucosamine to the culture medium.<sup>3,7</sup>

As pollen tubes or root hairs, the growth of hyphae is driven by an internal turgor pressure<sup>8</sup> combined to a directional vesicular trafficking supplying proteins and lipids to the hyphal tip. The turgor pressure is counteracted by the existence of a bilayered cell wall, composed of an outer layer of mannan and glycoproteins, and of a denser inner layer containing polysaccharides, mainly  $\beta$ -glucans and chitin.<sup>9,10</sup> Any disturbance of cell wall composition and structure may impair cell physiology, and eventually cell integrity. The cell wall can be modeled as an elastic shell of decreased elasticity away from the tip.<sup>11,12</sup> Refinements of such models may include viscous aspects.<sup>13</sup> The combination of a stiff cell wall in subapical regions and of a softer tip leads to the lengthwise growth of hyphae.

The protrusive forces developed by the forward movement of the hyphal tip reach a few  $\mu\text{N}$ ,<sup>14</sup> and allow penetration of viscoelastic environments of rigidities up to 200 kPa,<sup>15</sup> which is also the upper limit of the range of soft tissues rigidities.<sup>16</sup> To achieve penetration, hyphal adhesion is instrumental.<sup>17</sup> In situations where the resistive forces experienced by the hyphal tip exceed the adhesive forces, hyphae must also resist buckling.<sup>15,18</sup> The beam theory applied to this turgid

<sup>a</sup> Université PSL, Physico-Chimie Curie, CNRS UMR168, F-75005 Paris, France.

 E-mail: [catherine.villard@u-paris.fr](mailto:catherine.villard@u-paris.fr)
<sup>b</sup> Institut Pasteur, Université Paris Cité, INRAE, USC2019, Unité Biologie et Pathogénicité Fongiques, F-75015 Paris, France

 † Electronic supplementary information (ESI) available: Fig. S1–S7. See DOI: <https://doi.org/10.1039/d2lc00219a>

‡ Present address: Laboratoire Interdisciplinaire des Energies de Demain, Université Paris Cité, UMR 8236 CNRS, F-75013, Paris, France.



hollow filament considered as an elastic thin rod<sup>19</sup> expresses the elastic flexural buckling load as a linear function of the bending stiffness  $EI$ ,<sup>20</sup> with  $E$  the Young modulus of the cell wall and  $I$  a geometrical parameter referred to as the second-moment of area. Knowing that the composition and structure of this protective shell change as a function of growth conditions<sup>21</sup> and environmental stress,<sup>22</sup> the bending stiffness constitutes an interesting overall mechanical parameter to quantify the cell wall stress-induced responses. Besides, it gives an access to the value of the Young modulus, whose measurement is usually performed using AFM. While AFM provides local measurements (see for instance<sup>23,24</sup> for results obtained on *C. albicans*), the bending stiffness reflects the mechanical properties of an entire hypha. These two methods appear therefore complementary in their ability to quantify the mechanical properties of the fungal cell wall.

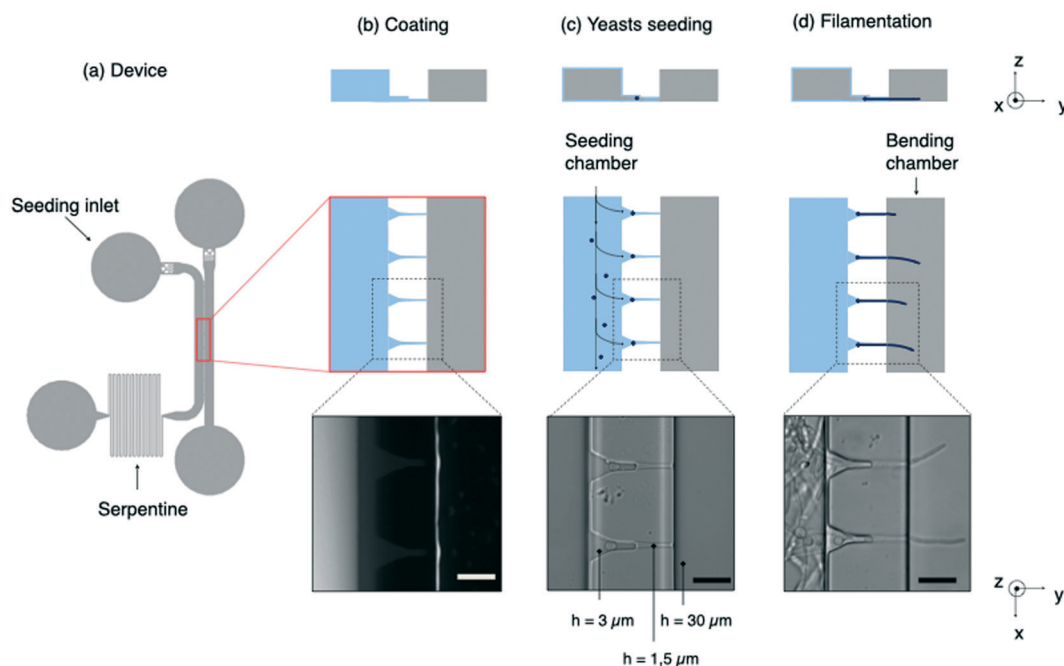
Microfluidic devices specifically dedicated to the measurement of various mechanical parameters of filamentous walled cells such as the growth-stalling<sup>15,25</sup> and protrusive<sup>15,26–28</sup> forces have been developed during the last two decades<sup>29</sup> for various biological systems, *i.e.* *Schizosaccharomyces pombe*,<sup>25</sup> the oomycete *Achlya bisexualis*,<sup>28</sup> pollen tubes,<sup>26,30</sup> and *C. albicans* hyphae.<sup>15,27</sup> These passive methods rely on the deformation of elements of the microfluidic device by the forces produced by the growing cells. Measuring the bending stiffness requires actuated devices. The seminal work of Sanati Nezhad *et al.* was dedicated to the deflection of single pollen tubes using

hydrodynamic forces.<sup>31</sup> More advanced microfluidics tools employed “mother machine” derived devices, originally designed to study long-term growth and division patterns of bacteria, to measure the bending properties of arrays of filamentous *E. coli* and *B. subtilis* cells.<sup>19,32</sup>

We have elaborated on these previous works to build a device performing two complementary tasks: the positioning of a set of *C. albicans* yeasts in a first (*i.e.* seeding) chamber and the application of hydrodynamic forces on the hyphae induced from these yeasts in a second (*i.e.* bending) chamber (Fig. 1a). An array of microchannels connects the two chambers and provides guidance for hyphal growth. Differently from a previous work,<sup>31</sup> we implemented a differential coating between the seeding and the bending chambers combined with a tight mechanical hold down of hyphae at the channel exit in order to stabilize both longitudinally and laterally the filaments (*e.g.* minimizing the contribution of artifactual lateral displacement of hyphae inside the channels). We also chose to work using a single focal plane to ensure multiplexed measurements.

The deflection of hyphae was measured and analyzed through a theoretical framework based on the elastic beam theory. We carried out simulations based on finite element analysis to size the different parts of our device and to refine the mechanical modeling used to extract the bending stiffness from the deflection of hyphae.

We present here measurements of the bending stiffness of *C. albicans* hyphae in the reference strain SC5314 in a control



**Fig. 1** Design of the chip and experimental procedure. (a) Scheme of the microfluidic device containing 2 main chambers connected by microchannels, a leftward seeding chamber and a rightward bending chamber. A long serpentine is used to increase the hydrodynamic resistance of the seeding compartment and consequently to reach an efficient positioning of the yeasts in front of the microchannels. (b) Fibronectin coating (in blue on the schemes) into the seeding chamber. The bending chamber remains uncoated, as assessed from the localization of the PLL-FITC coating replacing non fluorescent FN in mock experiments (image, obtained from fluorescence imaging). (c) Trapping of yeasts at the entrance of the microchannels, followed by (d) hyphal growth in the bending chamber where they are subjected to shear flow. Scale bars: 20  $\mu\text{m}$ .



situation as well as under various kinds of perturbations, *i.e.* pharmacological, mechanical and genetical with the use of a mutant strain. These three different conditions cover a range of situations suitable to challenge our methodological approach and to bring some insights into cell wall responses to different kinds of perturbations. We first assessed the action of caspofungin. This anti-fungal drug is known to target the synthesis of  $\beta$ -glucans, which predominantly occurs at new cell wall addition sites at the hyphal tip. Surprisingly, we observed dramatic reduction of the measured bending stiffness, suggesting that caspofungin affects the entire length of the hypha cell wall beyond the newly added material at the tip. The ability of the cell wall to remodel in response to an environmental stress could also be deduced from the observed decrease in bending stiffness following a hyperosmotic shock. Finally, a simple change in the cell wall thickness does not affect much its mechanical properties, as observed using a mutant of GPI-modified cell wall proteins. Overall, these findings provide new insights into how a hypha responds mechanically to various perturbations, and show that *C. albicans* is able to adjust its bending stiffness in a range of about one order of magnitude in response to environmental changes.

## Materials and methods

### Microfluidic chip fabrication

A first layer of SU-8 2002 (MicroChem) is spin-coated on a silicon wafer to obtain a final thickness of 1.5  $\mu\text{m}$ . After a soft bake, this layer of negative photoresist is exposed to UV light thanks to direct laser writing lithography (Heidelberg,  $\mu\text{PG101}$ ). Post-exposure bake and development with PGMEA are performed to obtain the first layer. The same process is repeated to add a second layer of 3  $\mu\text{m}$  height. It is precisely aligned on the first one thanks to reference crosses on both layers. Then a third layer of SU-8 2035 is spread out on top of the mold in order to get the macro-chambers of 30  $\mu\text{m}$  height. After an alignment step, the mold is then exposed to UV light through a chromium mask (MJB4 mask aligner). The heights of the mold were measured with a mechanical profilometer (Dektak).

The mold is first treated with trichloroperfluorooctylsilane (ABCR GmbH) deposited in vapor phase during 15 min in order to prevent adhesion of PDMS to the mold. Then PDMS is mixed with its curing agent (Sylgard 184 silicone elastomer kit) at the ratio 10:1 (w/w), degassed in bulk, poured on the mold, degassed again and finally cured at 75  $^{\circ}\text{C}$  overnight.

The cured PDMS is then peeled off from the mold, inlets and outlets are punched with a 1.5 mm diameter biopsy punch (Kai Industries).

### Differential surface coating

After a step of surface activation using an oxygen plasma, PDMS chips are bonded on glass Petri dishes (Fluorodish, VWR). An adhesive coating only in the seeding chamber (left channel on the Fig. 1b) is then performed. For this purpose, a small drop of fibronectin bovine plasma (FN, Sigma) at 50

$\mu\text{g mL}^{-1}$  is introduced in this chamber about 15 minutes after plasma treatment rather than immediately. This waiting time allows to tune the hydrophilicity of both chambers in order to favor spreading of the aqueous solution of FN in the seeding chamber while preventing it from invading the bending chamber through the microchannels. This protocol allows most of the hyphae to move as soon as the flow is applied. In less than 20% of the cases, hyphae remained still, showing that some adhesion is able to develop on moderately hydrophilic glass substrates. After 10 minutes, the chip is thoroughly washed with ethanol and dried.

### Yeast culture and hypha induction

Most of the experiments have been performed using the SC5314 reference strain of *C. albicans*. A mutant with deletion of two GPI-anchored proteins Pga59 and Pga62 has also been used.<sup>33,34</sup> Strains are stored at  $-80^{\circ}\text{C}$  in YPD medium (1% yeast extract, 2% peptone, and 2% glucose in distilled water (w/v)) supplemented with 25% of glycerol (v/v). They are streaked on YPD agar plates (YPD medium supplemented with 1.5% of agar (15  $\text{g L}^{-1}$  of agar)) and kept for maximum 3 weeks at 4  $^{\circ}\text{C}$ . Prior to each experiment, a preculture is done: a colony from the plate is put in 3 mL of YPD liquid medium, and kept under agitation overnight at 30  $^{\circ}\text{C}$ . Typically, 50  $\mu\text{L}$  of this solution diluted in 1 mL of YPD corresponds to an optical density slightly below 1, corresponding to  $\approx 10^7$  cells per mL. The 5  $\mu\text{L}$  volume of this preculture (*i.e.*  $\approx 10^6$  cells) is added to 495  $\mu\text{L}$  of the filamentation medium composed of 445  $\mu\text{L}$  of synthetic complete medium (*i.e.* SC medium, containing 0.67% yeast nitrogen base without amino-acids, 2% glucose, and 0.2% amino-acid mix<sup>35</sup> (w/v)) and 50  $\mu\text{L}$  of *N*-acetyl-D-glucosamine at 1  $\text{mg mL}^{-1}$ . Overall, the dilution of the preculture is carried out in such a way that the chip is seeded with approximately a thousand cells contained in a volume of the order of a  $\mu\text{L}$ .

### Bending hyphae under tangential flow

Hyphal growth takes place into an incubator regulated at 37  $^{\circ}\text{C}$  until most hyphae have crossed the microchannels and have started to invade the bending chamber. Usually a few hours are necessary to grow filaments that protrude 30  $\mu\text{m}$  approximately. The chip is then ready for bending experiments, which take place at room temperature using purified water (Millipore Milli-Q lab water system) to impose the tangential flow. In that aim, the chip is connected to a pressure-based flow controller (Flow EZ, Fluigent) and a flow sensor (Flow Unit, Fluigent) is added upstream. Water flow rate can then be controlled in the bending chamber, and flow rates ranging from 0 to 40  $\mu\text{L min}^{-1}$  (equivalent in our system to pressures ranging from 0 to 80 mbar) are incrementally used to deflect the filaments.

The above protocol is used to measure hyphae deflection in control situations. To assess the effect of caspofungin, it is followed by the replacement of the medium present in the whole chip by a fresh SC medium containing the desired



concentration of the drug (in our case  $1 \mu\text{g mL}^{-1}$ , prepared from  $0.5 \mu\text{L}$  of a stock solution at  $1 \text{ mg mL}^{-1}$  mixed with  $495 \mu\text{L}$  of the filamentation medium). The device is then put again 30 min into the incubator before the same protocol as for control experiments is applied to measure the hyphae deflection.

Regarding sorbitol, no incubation step is required and the concentration in sorbitol of the water bending solution, namely  $2.5 \text{ M}$  ( $455 \text{ g L}^{-1}$  of sorbitol powder) is set the same than in the seeding chamber to provide uniform osmotic conditions all over the device.

### Numerical simulations

3D simulations were performed with Comsol Multiphysics. First, simulations of the flow to get the velocity profile in the bending chamber was carried out. The flow calculated in a simplest model of the bending chamber, *i.e.* a rectangular channel, was compared to calculations using a more realistic design which includes the microchannels (ESI† Fig. S1a–c). A variation in the velocity profile of less than 5% was found, thus showing the negligible contribution of microchannels in the flow distribution near the surface of interest. We have thus considered in further simulations the flow in a rectangular channel without taking into account the rest of the device.

Then rigid cylinders were introduced in our simulations in order to model the bending of filaments under the flow. We chose to implement rigid cylinders instead of tubes for the sake of computation time, the thin meshing required for a tube being useless for this much larger spatial scale computation. We used the fluid–structure interaction module, considering that one end of the cylinders was fixed to the wall to reproduce the immobilization of hyphae by the microchannels.

### Design of the microfluidic chip

The microfluidic device is composed of 2 main compartments, *i.e.* the seeding and bending chambers, separated by an array of microchannels (Fig. 1a).

The first step of this experiment consists in positioning the yeasts in front of the microchannels prior to their filamentation (Fig. 1c). High-efficiency trapping of cells was previously obtained with designs of various complexity.<sup>36–38</sup> Here we chose to introduce a long serpentine at the exit of the seeding chamber. Its length and width were chosen so that its hydraulic resistance is equivalent to that of microchannels. This design allows a large fraction of the flow to be diverted toward the bending chamber through the microchannels, allowing yeasts to get trapped into small pockets designed to accommodate single yeasts. At the end of the seeding process, about 80% of the pockets are filled. The microchannels were sized smaller than the characteristic size of yeasts ( $5 \mu\text{m}$ ), so that these cells will not be able to penetrate further into these channels. Once most of the traps are occupied, the resistance on this path will increase due to yeasts blocking the channels. Any excess of cells will be thus redirected towards the outlet.

Beyond their filtering effect toward yeasts, the role of microchannels is threefold. First, they provide initial directional guidance, leading hyphae to emerge as perpendicularly as possible to the edge of the bending chamber (Fig. 1d). Secondly, they prevent these filaments to move laterally under the flow: it is essential to avoid this contribution by adjusting as much as possible the dimensions of the microchannels to the size of hyphae. Thirdly, they localize the exit of hyphae on the bottom surface of the bending chamber. We observed that about one third of the filaments continue to grow close to this surface. We thus choose, contrarily to,<sup>31</sup> to work within a single focal plane of observation, which simplifies both data acquisition and analysis procedures.

To fulfill these aforementioned functions at the best, we designed funnel-like channels characterized by 2 successive heights of  $3 \mu\text{m}$  and  $1.5 \mu\text{m}$  (ESI† Fig. S2). We observed that a  $3 \mu\text{m}$  height is well adapted to induction and guidance of the germ tube arising from the trapped yeast. However the space around the filament was too large to prevent its lateral or vertical movements. A reduction of the height in the final portion of the microchannel suppressed these unwanted effects.

Besides, backward movements had to be prevented. In the case of pollen tubes, this was performed by introducing kinks in the growth channel.<sup>31</sup> In the present study, FN coating of the seeding chamber and the use of narrow channels were enough to immobilize both the mother yeast cells and the hyphae against backward displacements under flow.

Lastly, while hyphae need to be fixed on one end, bending experiments also require them to be able to move and deflect under the flow in the bending chamber. It is thus crucial to avoid adhesion between hyphae and the substrate in these experiments. This is the reason why the FN coating was limited to the seeding chamber and therefore the glass substrate was left uncoated in the bending chamber (see Methods).

The length of these microchannels was set to  $40 \mu\text{m}$  to ensure a guided filamentation in a relatively short time, considering an elongation rate of the hyphae around  $0.3 \mu\text{m min}^{-1}$ . In order to maximize the number of filaments inside the bending chamber while avoiding a crosstalk in the velocity profiles from one hypha to its nearest neighbor, we determined the deflection of a single filament and compared it to the value obtained when the filament was surrounded by several others separated by various distances (ESI† Fig. S3a and S3b). We finally obtained an optimized distance of  $40 \mu\text{m}$  between microchannels.

### Theoretical model: elastic deformations of a beam

As in previous works,<sup>19,31,32</sup> we used the hollow tube deflection model to obtain the bending stiffness of hyphae. We also implemented some refinements of this general



modeling frame to better describe our system. We detail below the overall approach that we have set-up to retrieve the mechanical properties of hyphae from their deflection under flow.

### Filaments

We considered hyphae as hollow cylinders with a radius  $r$  and a cell wall thickness  $t_w$ . The second moment of area  $I$  (in  $\text{m}^4$ ) with respect to the flow direction axis is expressed as follow for these filaments:  $I = \pi r^3 t_w$ .

### Force exerted on the filaments

The flow is laminar and can be precisely computed in the rectangular bending chamber. As already stated above, only the filaments staying close to the surface are taken into account. In this frame, the force per unit length  $f$  exerted by the flow on a cylinder lying on a surface<sup>19,39</sup> is expressed as:

$$f = 4\pi\eta r \frac{dv}{dz}(z \rightarrow 0) \quad (1)$$

where  $\eta$  is the viscosity of the liquid (Pa s),  $r$  is the radius of the filament (m) and  $dv/dz$  is the gradient of velocity along the  $z$  direction close to the bottom of the channel ( $\text{s}^{-1}$ ).

Indeed, in this configuration, numerical simulations show that, close to the surface (where  $z$  goes to 0), the gradient of velocity along the  $y$  direction, *i.e.*  $dv/dy$ , is negligible compared to  $dv/dz$ . However,  $dv/dz$  is not constant along the  $y$  direction (see the spatial profiles of both  $dv/dy$  and  $dv/dz$  along the  $y$  direction in ESI† Fig. S4), meaning that the force  $f$  is not constant along  $y$ . This spatial variation of  $f(y)$  was taken into account to compute  $EI$  from the hydrodynamic force and the deflection. This point is detailed in the next section.

### Expression of the bending stiffness

Assuming small elastic deformations and a uniform force per unit length  $f$  on the filament along the  $y$  direction (Fig. 2a), the Euler-Bernoulli beam theory for a cantilever beam

subjected to a uniformly distributed load leads to the following relationship between the beam's maximal deflection  $\delta$ , the applied force  $f$  and the bending stiffness  $EI$ :<sup>19,40</sup>

$$EI = \frac{fl^4}{8\delta} \quad (2)$$

with:

$$\begin{cases} E \text{ the Young modulus in Pa} \\ I \text{ the second moment of area with respect to the } x\text{-axis in } \text{m}^4 \\ f \text{ the force per unit length applied on the filament in } N, \text{ see eqn (1)} \\ l \text{ the filament's length in m} \end{cases}$$

Although not considered in,<sup>19,31,32</sup> and as mentioned in the previous section, the force  $f$  is not constant along the length of the hyphae (*i.e.* along the  $y$  direction, see ESI† Fig. S4). The best linear approximation of these simulations is to consider the force not as a constant but as an increasing load over a length  $l_1$  before reaching a plateau for  $l > l_1$  (Fig. 2a). The value for  $l_1$ , determined using Comsol, is around  $15 \mu\text{m}$ . Considering that the mean value of the hyphal protruding length considered in this study is close to  $30 \mu\text{m}$ , this refinement of the model is particularly pertinent as otherwise we would get an overestimation of  $EI$  by 10% for this length, and by about 22% for a length of  $20 \mu\text{m}$ . Using this refinement of the model, eqn (2) becomes

$$EI = \frac{f}{\delta} \left[ \frac{1}{8} l^4 - \frac{1}{6} l_1^3 l + \frac{2}{15} l_1^4 \right] \quad (3)$$

for filament lengths  $l > l_1$ .

### Force-flow relationship

As shown in eqn (2) the bending stiffness  $EI$  is deduced from the  $\delta(f)$  variation. Experimentally, we record instead the  $\delta(Q)$  curves and then deduce  $f$  from the measure of  $Q$ .

The relation between  $f$  and  $Q$  can be obtained from the Poiseuille velocity distribution for a liquid flowing in a channel of width  $w$  and height  $h$ :  $v(z) = \frac{\Delta P}{2\eta w} z(h-z)$ . From

this  $v(z)$  relationship, we obtain  $\frac{dv}{dz}(z \rightarrow 0) = \frac{\Delta P}{2\eta w} h$ . On the

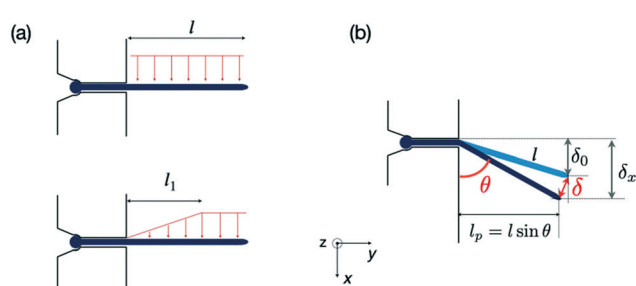
other hand,  $\langle v \rangle = \frac{1}{h} \int v(z) dz = \frac{\Delta P}{12\eta w} h^2$ , which leads to

$\frac{dv}{dz}(z \rightarrow 0) = \frac{6\langle v \rangle}{h}$ . From the straightforward relation  $\langle v \rangle = \frac{Q}{wh}$ ,

we finally obtain

$$f = 4\pi\eta r \frac{dv}{dz}(z \rightarrow 0) = 24\pi\eta r \frac{\langle v \rangle}{h} = 24\pi\eta r \frac{Q}{wh^2}.$$

The overall angular tilt induced by the applied hydrodynamic force, eventually superimposed to an initial growth tilt, implies different geometrical corrections to deduce the deflection value  $\delta(Q)$  (Fig. 2b). First, an initial deflection  $\delta_0$  may result from the eventual existence of a flow-free initial tilt, which should be subtracted to the overall deflection  $\delta_x$  measured along the  $x$  axis. Next,  $\delta(Q) = (\delta_x - \delta_0)/$



**Fig. 2** Forces exerted on a single hypha and deflection. (a) Scheme of hydrodynamic forces exerted on a hypha. Model considered in<sup>19</sup> (top) versus model developed in this study, taking into account the variation along  $y$  of the hydrodynamic forces (bottom). The length  $l_1$  is deduced from Comsol simulations, see ESI† Fig. S4. (b) Geometrical parameters characterizing a hypha of length  $l$  tilted by  $\theta$  under the action of hydrodynamic forces.



$\sin \theta$ , with  $\theta$  the angular tilt induced by the flow. Finally, the hydrodynamic force is exerted only over a length  $l_p = l \sin \theta$ , meaning that a tilted hypha will be submitted to a force reduced by  $\sin \theta$ . Considering eqn (3) and the above corrections, the general expression of  $EI$  is finally:

$$EI = 24\pi \frac{\eta r}{h^2 w} Q \frac{\sin^2 \theta}{\delta_x - \delta_0} \left[ \frac{1}{8} l^4 - \frac{1}{6} l_1^3 l + \frac{2}{15} l_1^4 \right]. \quad (4)$$

In practice, the term  $Q \frac{\sin^2 \theta}{\delta_x - \delta_0}$  will be deduced for each hypha initially deflected by  $\delta_0$  from the best linear fit of the variation of the deflection  $\delta_x$  and the associated angular tilt values  $\theta$  for a series of increasing flow rates  $Q$ .

## Results

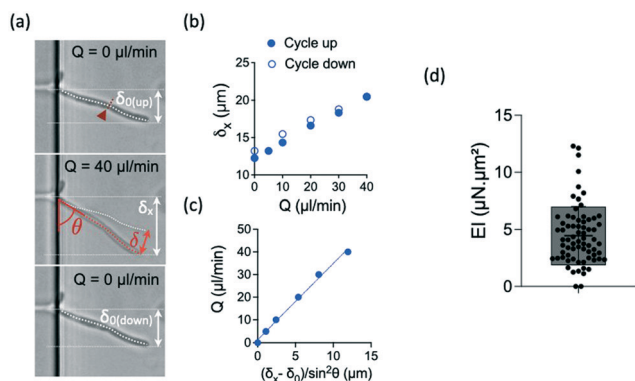
### Measurement of the bending stiffness of hyphae

We applied increasing and decreasing flow rates on hyphae in the bending chamber. The time allowed to each step was set to about 15 seconds, which is a good trade-off between reaching a stable flow and limiting the duration of the whole experiment, in particular to avoid any drift in hyphal length from the beginning to the end of the flow application, *i.e.* within the few minutes that a bending experiment lasts. The simplest case of a constant hyphal length, whatever its changes in orientation during bending, can then be considered in the calculation of the bending stiffness. The maximum flow rate was chosen to remain in the limit of reversible deformations, which was assessed by performing a

full cycle of flow increase and decrease and by checking the absence of major hysteresis. We computed then the bending stiffness  $EI$  by taking into account the points obtained during the increasing part of the flow cycle.

Typical images and data resulting from such experiments are shown in Fig. 3a–c. In this particular example, the hypha was initially tilted by  $\delta_0$  (Fig. 3a). Fig. 3b shows the raw deflection values  $\delta_x$  after a full cycle of flow increase and decrease. The calculation of the bending stiffness  $EI$  uses the inverse of the slope displayed in Fig. 3c (see eqn (4)).

For the reference strain SC5314 of *C. albicans*, we measured a mean bending stiffness  $EI = 4.5 \pm 2.5 \mu\text{N} \mu\text{m}^2$  ( $n = 69$ , Fig. 3d). This value is about 2 orders of magnitude above the bending stiffness reported for *E. coli*.<sup>19,32,41</sup> Considering the measured diameter values for each hypha and the assumption of a cell wall thickness of 230 nm,<sup>33</sup> we estimated the longitudinal Young modulus of the reference strain SC5314 to be  $6.4 \pm 3.4$  MPa, interestingly in the same range as the values obtained for *E. coli*.<sup>42</sup> The literature provides a few values of this parameter for different yeast species. The fission yeast displays a Young modulus of  $\approx 30$  MPa.<sup>25,43,44</sup> For *S. cerevisiae*, the reported values are distributed in a wide range, from around the MPa<sup>45–47</sup> to hundreds of MPa.<sup>48,49</sup> Values of the Young modulus of *C. albicans* are also quite distributed between very low (*i.e.*  $\approx 100$ – $200$  kPa)<sup>24,50,51</sup> to values in the MPa range.<sup>52–54</sup> The values we obtain with our method are thus coherent with the order of magnitude reported in part of the literature, whose inconsistencies remain to be elucidated.



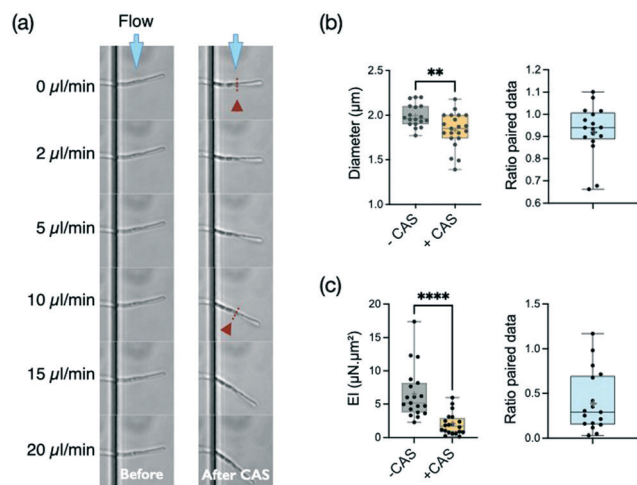
**Fig. 3** Bending properties of hyphae from the reference strain SC5314. (a) Images of an hypha initially deflected by  $\delta_0$  before (top), during (middle) and after (bottom) flow application. The initial tilted position of the hypha is indicated in the middle image. The amplitudes of the deflection  $\delta_0$ ,  $\delta_x$  and  $\delta$  are indicated according to the nomenclature used in Fig. 2. The position of the septum is indicated by the red arrowhead and dashed line. (b) Example of curves obtained for this hypha. Top: deflection  $\delta_x$  obtained during increasing (solid circles) and decreasing (open circles) flow rates  $Q$ . (c) Deflection data formatting to show the linear fit from which the bending stiffness  $EI$  will be deduced for each hypha (see eqn (4)). Only the data corresponding to increasing flow rate  $Q$  are considered. (d) Distribution (mean  $\pm$  SD =  $4.5 \pm 2.5 \mu\text{N} \mu\text{m}^2$ ) of bending stiffness  $EI$  deduced from the slope of the linear variation shown in (c).  $n = 69$  hyphae.

### Influence of caspofungin treatment on bending stiffness

Caspofungin belongs to a new class of antifungal agents, the echinocandins. This antifungal drug is known to inhibit the synthesis of  $\beta$ -1,3-glucan, which is a main component of the fungal cell wall. This synthesis is particularly active at the apex. It is thus expected that the cell wall at the tip should be the major target of caspofungin. However, this antifungal agent seems to also affect the cell wall outside the location where new synthesis occurs, *i.e.* the mature cell wall.<sup>55</sup> Considering that any disturbance of the cell wall should affect the bending stiffness of hyphae, we decided to explore the effect of this antifungal agent in our system.

Filaments were first subjected to a cycle of increasing and decreasing flow rates to obtain a reference stiffness for each filament in a medium devoid of caspofungin. Then, as described in the Materials and methods, the measured hyphae were incubated for 30 minutes at 37 °C in a culture medium supplemented with caspofungin at a concentration of  $1 \mu\text{g} \text{mL}^{-1}$ . Such an acute drug application at a concentration well above the minimum inhibitory concentration (MIC) of  $0.125 \mu\text{g} \text{mL}^{-1}$  in glucose-rich medium<sup>55</sup> was chosen to maximize the chance to see an effect of caspofungin while limiting changes in hyphal length and overall morphology (*i.e.* branching) and to prevent any





**Fig. 4** Consequences of an antifungal treatment using caspofungin at  $1 \mu\text{g mL}^{-1}$  for 30 min on the reference strain SC5314. Graphs display mean (cross symbol), min, max, and median with interquartile range (25th percentile; 75th percentile) values. (a) Images of a hypha bending under flow before and after caspofungin treatment. The location of the septum is indicated by the red arrowheads and dashed lines. (b) Diameters. Left: distribution of diameters before ( $n = 18$ ) and after ( $n = 21$ ) antifungal treatment;  $p = 0.0081$  (Mann-Whitney test); right: diameter ratio for paired data ( $n = 17$ ) (c) bending stiffness  $EI$ . Left: distribution of the bending stiffness  $EI$  before ( $n = 18$ ) and after ( $n = 21$ ) antifungal treatment,  $p < 0.0001$  (Mann-Whitney test); right: distribution of  $EI$  ratio for paired data ( $n = 17$ ).

adaptation mechanisms through the activation of cell wall compensatory pathways.<sup>56</sup> Control experiments (see ESI† Fig. S5a) without caspofungin in the second incubation medium were performed, showing that the 30 min incubation and medium change steps do not modify the bending stiffness of filaments. Note that there is no measurable growth after 30 minutes of caspofungin incubation whereas a 35% elongation is observed in the control situation, corresponding to a hypha elongation of about  $10 \mu\text{m}$  on average (see ESI† Fig. S5b). The behavior of most filaments could be followed before ( $n = 18$ ) and after ( $n = 21$ ) the application of the drug (see an example in Fig. 4a). For a minority of filaments however ( $n = 5$ ), we got data for only a single condition, the one related to caspofungin being more represented ( $n = 4$ ). In this case, hyphae previously immobile despite the applied flow were released from their adhesion to the surface after the introduction of the antifungal agent. We chose in Fig. 4b to present the distribution of all data together with the ratio of paired data. The distribution of paired data can be found in the ESI† figures (see ESI Fig. S6a).

We first observed that this concentration of caspofungin reduces slightly the diameter of hyphae, from  $1.99 \pm 0.13 \mu\text{m}$  without caspofungin to  $1.83 \pm 0.20 \mu\text{m}$  with this drug (Fig. 4b), of the hyphal tip. But the main effect of caspofungin application is a reduction by more than a factor of two (median ratio 0.29) of the bending stiffness  $EI$  of hyphae (Fig. 4b). The mean reduction of

the diameter  $d$  by a factor of 0.926 induced by caspofungin would lead to a reduction of the second moment of inertia  $I \propto d^3$  of  $\approx 0.79$ . The caspofungin-induced morphological effect can thus only partially account for the bending stiffness variation. We thus conclude that caspofungin affects the mechanical properties of the cell wall at the hypha scale.

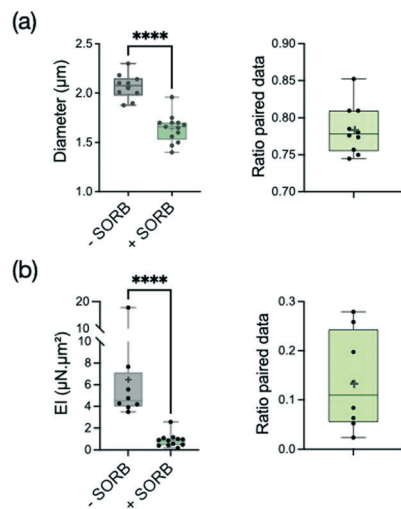
These filaments being composed of mononucleated compartments separated by septa,<sup>57</sup> we wanted to check if the presence of these internal cross-walls could be a preferential target for the action of caspofungin. The work of Bain *et al.*<sup>58</sup> gives an example of the dramatic bendability property of septa in *C. albicans*: hyphae engulfed by immune cells may fold after a residence time of tens of minutes to hours, and such events often occur at the septal sites. The length of individual compartments is typically  $20 \mu\text{m}$  while the hyphae protrude from 10 to  $55 \mu\text{m}$  in the bending chamber. First we did not observe angled hyphal shapes after caspofungin application that would suggest the presence of bending points at the septa. Then we looked for a variation in the bending stiffness as a function of length, as any specific impairment of the septa would lead to an additional increase of the deflection. We did not measure a significant variation of  $EI$  as a function of hyphal length ( $ESI^\dagger$  Fig. S8). We thus concluded that a large part of the reduction of the bending stiffness after a 30 minutes incubation in  $1 \mu\text{g mL}^{-1}$  of caspofungin should be attributed to a reduction of the cell wall Young modulus  $E$ , or the cell wall thickness, or a combination of both.

### Influence of sorbitol treatment on bending stiffness

In *C. albicans* yeast, osmotic shock induces a volume decrease within seconds, associated with major changes in cell wall architecture. These structural changes occur prior to the activation of high-osmolarity glycerol (Hog1) or cell integrity signaling pathways which take tens of minutes to manifest themselves.<sup>59</sup> This shrinkage of the cell wall perimeter in yeast, and its reversibility when returning to an osmoneutral medium, show its highly elastic properties, attributed mainly to the spring-like properties of the  $\beta$ -1,3-glucan chains found in the inner cell wall.<sup>60</sup> The time scale of these changes being too fast to allow a modification of the cell wall overall volume, the almost instantaneous reduction in cell diameter leads at very short term to an increase in the cell wall thickness, and specifically the inner  $\beta$ -glucan and chitin layers.<sup>59</sup>

However, if the cell wall properties of yeasts under osmotic stress have been explored, there is still little reports on hyphal properties under such stress. We thus set up experiments to measure the bending stiffness of hyphae submitted to an hyperosmotic shock provided by 2.5 M of sorbitol, a polyol compound known to increase the osmolarity of aqueous solutions.<sup>61</sup> Hydrodynamic forces were applied within about 5 minutes after sorbitol medium replacement.



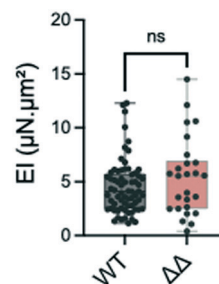


**Fig. 5** Behavior of the reference strain SC5314 before and after an hyperosmotic shock provided by 2.5 M of sorbitol. Graphs display mean (cross symbol), min, max, and median with interquartile range (25th percentile; 75th percentile) values. (a) Left: distribution of diameters before ( $n = 10$ ) and after ( $n = 13$ ) sorbitol application,  $p < 0.0001$  (Mann–Whitney test); right: diameter ratio for paired data ( $n = 10$ ). (b) Left: distribution of the bending stiffness  $EI$  before ( $n = 8$ ) and after ( $n = 12$ ) sorbitol application,  $p < 0.0001$  (Mann–Whitney test); right: distribution of  $EI$  ratio for paired data ( $n = 8$ ).

As expected, the hypha diameter decreased significantly (*i.e.* by a reduction factor 1.28) under the application of sorbitol (Fig. 5a). Similarly to what we observed using caspofungin, the reduction of diameter tends to free previously adherent hyphae, leading to more data for the condition with sorbitol (see ESI† Fig. S6b for the distribution of paired data only). The analysis of hypha deflection revealed an even more dramatic decrease of the bending stiffness by a factor of about 5 (Fig. 5b). The extent of this change cannot be attributed only to the hypha's diameter reduction which alone would lead to a factor of only 2 (*i.e.*  $1.28^3$ ) in the reduction of  $EI$  through the  $r^3$  dependence of the second moment of area  $I$ . Moreover, the contribution of  $I = \pi r^3 t_w$  in the measured  $EI$  values might be even reduced if taking into account an increase of the cell wall thickness  $t_w$  proportional to hyphal diameter reduction (considering the reasonable hypothesis of a conservation of the biomass of the cell wall). We conclude that most of the changes in the bending stiffness  $EI$  should therefore be attributed to a modification of the cell wall mechanical properties induced by a rapid remodeling of the cell wall.

### Study of a cell wall mutant

Most proteins in the yeast cell wall are glycosylphosphatidylinositol-anchored proteins (GPI-modified proteins) which are covalently linked to it. Simultaneous deletion of the genes for two of these cell wall proteins, Pga59 and Pga62, does not have a major impact on hyphal growth. However, it induces a modification of the cell wall thickness.<sup>33</sup> More precisely, the total thickness measured by



**Fig. 6** Distribution of the bending stiffness  $EI$  of the reference strain SC5314 (WT,  $n = 69$ ) and of the  $\Delta\text{pga59}\Delta\text{pga62}$  mutant ( $\Delta\Delta$ ,  $n = 26$ ),  $p = 0.329$  (Mann–Whitney test). Min, max, and median with interquartile range (25th percentile; 75th percentile) values are represented.

transmission electron microscopy increases from 230 nm in the SC5314 wild type strain to 290 nm for the  $\Delta\text{pga59}\Delta\text{pga62}$  mutants, while the inner wall thickness evolves from 150 to 230 nm.

We tested if these modifications would affect the bending stiffness of this mutant (Fig. 6). Although non significant, the increase in the mean value of the bending stiffness measured for the  $\Delta\text{pga59}\Delta\text{pga62}$  mutant strain as compared to the reference strain is similar to the ratio between the thickness of their total cell wall (1.2 compared to 1.26, respectively). We conclude that when the diameter of the hypha is not modified, as it is the case here, a change in the cell wall thickness affects the mechanical property, but the linearity between this morphological parameter and  $EI$  prevents any major change in the mechanical properties of the cell wall.

## Discussion

We have developed a microfluidic device capable of measuring the bending strength of individual *C. albicans* hyphae by applying hydrodynamic forces. The analysis of bending data implied some experimental precautions, that we have implemented (*e.g.* maintaining the base of the hypha during flow application). It also led to the adaptation of a general model by taking into account the geometry of our system (edge effects for the calculation of the gradient of the hydrodynamic force) as well as the deviations observed with respect to a canonical situation (initial inclination of the hypha, lateral displacement at the exit of the microchannel).

The measured bending stiffness is the product of an elastic modulus and of a term combining various morphological characteristics of the hyphae (diameter and wall thickness). It is tempting, and we have given some examples earlier in the text, to compare these values to those obtained from AFM indentation measurements. However, several remarks must be made at this stage. First of all, the elastic modulus obtained by indentation combines the moduli associated to the 3 directions of space. Milani *et al.* have showed for the cell wall of living shoot apical meristems that indentation experiments were essentially sensitive to the normal modulus (*i.e.* the module along the direction of





indentation), which contributes 4 times more than the longitudinal and transverse moduli to the global apparent modulus.<sup>62</sup> In contrast, the wall is tangentially stretched during bending deformations. In other terms, the tangential modulus should be a major component of the apparent elastic modulus involved in the bending stiffness. Moreover, considering the fibrous structure of the cell wall (in both fungi and plants), this tangential modulus should be higher than the two others. A normal force will indeed essentially deform the soft matrix surrounding the fibers while the stiffness of the fibers, higher than their surrounding matrix, will mostly be responsible for the strain induced by a tangential stretch. We therefore expect to deduce from our bending measurements higher elastic moduli than those measured by AFM.

Note that AFM measurements are very sensitive to the amplitude of indentation. It must remain low at the risk of probing the turgor pressure together with the cell wall rigidity. This is besides an elegant way to measure these two properties in a single experiment.<sup>49</sup> However, this point is rarely explicitly mentioned or discussed in the literature.

The two modalities of the AFM technique (normal direction and amplitude of the indentation) may have opposite effects on the estimation of the Young modulus: one would tend to minimize the resulting effective modulus (by giving an higher weight to the lowest, *i.e.* normal modulus), and the other would on the contrary lead to overestimate it (from a possible contribution of the turgor pressure in the case of a too large indentation depth). It is thus difficult to compare with precision our measurements with those published in the literature. However, despite a very wide disparity in the moduli published for *C. albicans*, we find that the values deduced from our measurements are in the high range, consistent with the above discussion.

In this study, we used a concentration of caspofungin well above the minimum inhibitory concentration (MIC) and an incubation time of 30 min, conditions that we identified in control experiments as capable of altering the adhesive properties of the yeast form of *C. albicans* while not affecting cell viability (not shown). This concentration is also expected to be lower than the concentrations giving rise to the “paradoxical effect”<sup>63</sup> characterized by activation of chitin synthesis in response to inhibition of  $\beta$ -1,3-glucan but also  $\beta$ -1,6-glucan<sup>64</sup> production. The deflection measurements show different effects related to caspofungin. The first one relates to a loss of hyphal adhesion, as evidenced by the detachment of the minority of filaments previously sticking on the glass surface during control experiments (*i.e.* before caspofungin application), consistent with our observations on the yeast form. This property of caspofungin has been previously reported from AFM adhesion strength measurements on yeast<sup>23</sup> and hyphae,<sup>24</sup> at concentrations similar and up to 3 orders of magnitude lower than those used in the present study. The other effect is a slight decrease in hyphal diameter after application of caspofungin, a property that could contribute to the observed loss of

adhesion, in complement to the hypothesis of a lowering of adhesin expression in response to caspofungin.<sup>24</sup>

The major effect of caspofungin observed in the present study remains the drastic decrease in the bending stiffness. This can come from two simultaneous effects: the decrease of the wall thickness (“*T*” component of the bending modulus) and a weakening of the Young's modulus of the wall. Wall thinning has been suggested in ref. 65 and 66 where it is stated that *C. albicans* strains with increased caspofungin susceptibility have thinner walls. This hypothesis was recently verified experimentally in the work of Davi *et al.*<sup>67</sup> by direct measurements in the fission yeast using a concentration of 5  $\mu\text{g mL}^{-1}$  and various incubation times. These authors report however significant thinning only beyond a 30 minutes incubation time, reaching about 10 percent after 1 hour. This phenomenon is accompanied by cell bulging, more and more pronounced with time (>hour), which we also sometimes distinguish at the hyphal tip (see Fig. 4). Thus, a thinning of the cell wall, even if it may occur in principle, is unlikely to be the major actor in the reduction of the bending stiffness observed in our experimental conditions. A decrease in the Young modulus of the cell wall should then be considered. Such a variation would be consistent with the concentration used, too low to induce a synthesis of chitin aiming at counteracting a weakening of the cell wall, but strong enough to trigger a loss of viability linked to cell wall or plasma membrane damages.<sup>55</sup> Our results are also in agreement with the results of AFM measurements performed for concentrations similar to ours.<sup>23</sup> Concentrations 20 to 2000 times lower over longer times, however, seem to give opposite results.<sup>24,50</sup> A decrease in Young's modulus at the scale of a hypha is however surprising, as the inhibition of  $\beta$ -glucan synthesis was expected to be localized only at the tip. Our results are nevertheless in line with the work of Hao *et al.*<sup>55</sup> who observed that for dividing *C. albicans* yeasts exposed to caspofungin, mother and daughter cells exhibited similar vitality loss, as evidenced by methylene blue staining intensity. These authors suggested a continuous cell wall remodeling process as an explanation to these results. Our results on hyphae constitute the first indication of such a cell wall remodeling in a time scale of 30 minutes. We hope that this finding will stimulate future works on the dynamics of the molecular turnover of cell wall components.

The significant decrease in hyphal diameter subjected to 2.5 M sorbitol reflects the expected loss of *C. albicans* turgor pressure following an hyper-osmotic shock. Turgor pressure should not be involved in the calculation of bending stiffness at low strains. This assumption is based on finite element simulations on one hand,<sup>31</sup> and on theoretical considerations based on the main argument that a bending deformation of a pressurized tube does not modify its internal volume.<sup>68,69</sup> However, we prefer to leave open the question of a possible contribution of the turgor pressure for future works, in particular because the deflections observed under sorbitol application might not fall anymore into the low deformation



range considered theoretically in.<sup>69</sup> Besides, the diameter reduction is expected to trigger a reconfiguration of the wall structure, which could even resemble to a destructuring considering the abruptness of this event. This impairment of the cell wall structure could contribute to the decrease of the Young's modulus value we observed.

## Conclusion

Many questions in plant and fungal biology address the mechanics of pressurized filaments. Complementary to local methods such as AFM, the strategy developed here allows an access to the mechanics of *Candida albicans* at the hypha scale through the measurement of their bending stiffness. This method is generic and could be applied to the hyphae of multiple species of filamentous fungi by a simple tuning of the dimensions of the microfluidic device. In this first study dedicated to *C. albicans*, we were able to highlight the consequences in hypha mechanical properties of an antifungal drug widely used in clinic and of a hyper-osmotic shock, while we noticed that modifications of the wall structure do not always lead to significant changes. Our work thus shows the complementarity of pharmacological, structural and biomechanical approaches in the study of the biology of the cell wall of hyphae.

## Conflicts of interest

There are no conflicts to declare.

## Acknowledgements

We warmly thank Arezki Boudaoud for his careful critical reading of the manuscript. This work benefited from the technical contribution of the joint service unit CNRS UAR 3750. The authors would like to thank the engineers of this unit for their advice during the development of the experiments. This work was supported by the European Research Council Advanced Grant 321107 "Cello", the Institut Pierre-Gilles de Gennes ("Investissements d'avenir" program ANR-10-IDEX-0001-02 PSL, ANR-10-LABX-31, and ANR-10-EQPX-34), the ANR-10-LABX-62-IBEID and the program "Adaptation du vivant" of the CNRS-MITI.

## Notes and references

- S. M. Noble, B. A. Gianetti and J. N. Witchley, *Candida albicans* cell-type switching and functional plasticity in the mammalian host, *Nat. Rev. Microbiol.*, 2017, **15**(2), 96–108, DOI: [10.1038/nrmicro.2016.157](https://doi.org/10.1038/nrmicro.2016.157).
- R. Gupta, A. Malik, M. Rizvi and M. Ahmed, An Alarming Increase of Fungal Infections in Intensive Care Unit: Challenges in the Diagnosis and Treatment, *J. Appl. Pharm. Sci.*, 2016, **6**(11), 114–119, DOI: [10.1016/j.semcd.2011.08.010](https://doi.org/10.1016/j.semcd.2011.08.010).
- P. Sudbery, N. Gow and J. Berman, The distinct morphogenic states of *Candida albicans*, *Trends Microbiol.*, 2004, **12**(7), 317–324.
- B. G. Seman, J. L. Moore, A. K. Scherer, B. A. Blair, S. Manandhar, J. M. Jones and R. T. Wheeler, Yeast and filaments have specialized, independent activities in a zebrafish model of *Candida albicans* infection, *Infect. Immun.*, 2018, **86**(10), e00415-18, DOI: [10.1128/IAI.00415-18](https://doi.org/10.1128/IAI.00415-18).
- P. E. Sudbery, Growth of *Candida albicans* hyphae, *Nat. Rev. Microbiol.*, 2011, **9**(10), 737–748.
- D. Kadosh and V. Mundodi, A re-evaluation of the relationship between morphology and pathogenicity in *Candida* species, *J. Fungi*, 2020, **6**(1), 13.
- E. Stewart, S. Hawser and N. A. Gow, Changes in internal and external pH accompanying growth of *Candida albicans*: studies of non-dimorphic variants, *Arch. Microbiol.*, 1989, **151**(2), 149–153.
- R. R. Lew, How does a hypha grow? The biophysics of pressurized growth in fungi, *Nat. Rev. Microbiol.*, 2011, **9**(7), 509–518.
- N. A. R. Gow, F. L. van de Veerdonk, A. J. P. Brown and M. G. Netea, *Candida albicans* morphogenesis and host defence: discriminating invasion from colonization, *Nat. Rev. Microbiol.*, 2011, **10**(2), 112–122.
- C. Munro and M. L. Richard, The Cell Wall: Glycoproteins, Remodeling, and Regulation, in *Candida and Candidiasis*, 2nd edn, 2012, pp. 197–223.
- A. Goriely, M. Tabor and A. Tongen, A morpho-elastic model of hyphal tip growth in filamentous organisms, in *IUTAM Symposium on Cellular, Molecular and Tissue Mechanics*, ed. K. Garikipati and E. M. Arruda, Springer, Dordrecht Netherlands, 2010, pp. 245–255.
- E. Eggen, M. Niels de Keijzer and B. M. Mulder, Self-regulation in tip-growth: The role of cell wall ageing, *J. Theor. Biol.*, 2011, **283**(1), 113–121.
- T. de Jong, J. Hulshof and G. Prokert, Modelling fungal hypha tip growth via viscous sheet approximation, *J. Theor. Biol.*, 2020, **492**, 110189.
- D. D. Thomson, S. Wehmeier, F. J. Byfield, P. A. Janmey, D. Caballero-Lima, A. Crossley and A. C. Brand, Contact-induced apical asymmetry drives the thigmotropic responses of *Candida albicans* hyphae, *Cell. Microbiol.*, 2015, **17**(3), 342–354.
- C. Puerner, N. Kukhaleishvili, D. Thomson, S. Schaub, X. Noblin, A. Seminara, M. Bassilana and R. A. Arkowitz, Mechanical force-induced morphology changes in a human fungal pathogen, *BMC Biol.*, 2020, 1–21, DOI: [10.1186/s12915-020-00833-0](https://doi.org/10.1186/s12915-020-00833-0).
- C. F. Guimarães, L. Gasperini, A. P. Marques and R. L. Reis, The stiffness of living tissues and its implications for tissue engineering, *Nat. Rev. Mater.*, 2020, **5**(3), 351–370, DOI: [10.1016/j.semcd.2011.08.010](https://doi.org/10.1016/j.semcd.2011.08.010).
- P. Sundstrom, Adhesion in *Candida* spp, *Cell. Microbiol.*, 2002, **4**(8), 461–469.
- T. Bedekovic and A. C. Brand, Microfabrication and its use in investigating fungal biology, *Mol. Microbiol.*, 2021, **117**(3), 569–577.
- A. Amir, F. Babaeipour, D. B. McIntosh, D. R. Nelson and S. Jun, Bending forces plastically deform growing bacterial cell



- walls, *Proc. Natl. Acad. Sci. U. S. A.*, 2014, **111**(16), 5778–5783.
- 20 F. A. Leckie and D. J. Dal Bello, Buckling, in *Strength and Stiffness of Engineering Systems*, Springer, 2009, pp. 1–29.
- 21 I. V. Ene, A. K. Adya, S. Wehmeier, A. C. Brand, D. M. MacCallum, N. A. Gow and A. J. Brown, Host carbon sources modulate cell wall architecture, drug resistance and virulence in a fungal pathogen, *Cell. Microbiol.*, 2012, **14**(9), 1319–1335.
- 22 D. S. Childers, G. M. Avelar, J. M. Bain, D. E. Larcombe, A. Pradhan, S. Budge, H. Heaney and A. J. Brown, Impact of the environment upon the *Candida albicans* cell wall and resultant effects upon immune surveillance, *Fungal Cell Wall*, 2019, 297–330.
- 23 S. Proa-Coronado, C. Séverac, A. Martinez-Rivas and E. Dague, Beyond the paradigm of nanomechanical measurements on cells using AFM: an automated methodology to rapidly analyse thousands of cells, *Nanoscale Horiz.*, 2020, **5**(1), 131–138.
- 24 A. Çolak, M. A. Ikeh, C. J. Nobile and M. Z. Baykara, In situ imaging of *Candida albicans* hyphal growth via atomic force microscopy, *mSphere*, 2020, **5**(6), e00946-20.
- 25 N. Minc, A. Boudaoud and F. Chang, Mechanical Forces of Fission Yeast Growth, *Curr. Biol.*, 2009, **19**(13), 1096–1101, DOI: [10.1016/j.cub.2009.05.031](https://doi.org/10.1016/j.cub.2009.05.031).
- 26 A. Sanati Nezhad, M. Naghavi, M. Packirisamy, R. Bhat and A. Geitmann, Quantification of cellular penetrative forces using lab-on-a-chip technology and finite element modeling, *Proc. Natl. Acad. Sci. U. S. A.*, 2013, **110**(20), 8093–8098.
- 27 D. D. Thomson, S. Wehmeier, F. J. Byfield, P. A. Janmey, D. Caballero-Lima, A. Crossley and A. C. Brand, Contact-induced apical asymmetry drives the thigmotropic responses of *Candida albicans* hyphae, *Cell. Microbiol.*, 2015, **17**(3), 342–354.
- 28 A. Tayagui, Y. Sun, D. Collings, A. Garrill and V. Nock, An elastomeric micropillar platform for the study of protrusive forces in hyphal invasion, *Lab Chip*, 2017, **17**(21), 3643–3653.
- 29 C. E. Stanley, G. Grossmann, X. C. Solvas and A. J. DeMello, Soil-on-a-Chip: microfluidic platforms for environmental organismal studies, *Lab Chip*, 2016, **16**(2), 228–241.
- 30 C. Hu, G. Munglani, H. Vogler, T. Ndinyanka Fabrice, N. Shamsudhin, F. K. Wittel, C. Ringli, U. Grossniklaus, H. J. Herrmann and B. J. Nelson, Characterization of size-dependent mechanical properties of tip-growing cells using a lab-on-chip device, *Lab Chip*, 2017, **17**(1), 82–90.
- 31 A. S. Nezhad, M. Naghavi, M. Packirisamy, R. Bhat and A. Geitmann, Quantification of the Young's modulus of the primary plant cell wall using Bending-Lab-On-Chip (BLOC), *Lab Chip*, 2013, **13**(13), 2599.
- 32 Y. Caspi, Deformation of filamentous *Escherichia coli* cells in a microfluidic device: A new technique to study cell mechanics, *PLoS One*, 2014, **9**(1), e83775, DOI: [10.1371/journal.pone.0083775](https://doi.org/10.1371/journal.pone.0083775).
- 33 E. Moreno-Ruiz, G. Ortu, P. W. de Groot, F. Cottier, C. Loussert, M. C. Prévost, C. de Koster, F. M. Klis, S. Goyard and C. D'Enfert, The GPI-modified proteins Pga59 and Pga62 of *Candida albicans* are required for cell wall integrity, *Microbiology*, 2009, **155**(6), 2004–2020.
- 34 A. M. Gillum, E. Y. Tsay and D. R. Kirsch, Isolation of the *Candida albicans* gene for orotidine-5'-phosphate decarboxylase by complementation of *S. cerevisiae* *ura3* and *E. coli* *pyrF* mutations, *Mol. Gen. Genet.*, 1984, **198**(1), 179–182.
- 35 *Cold Spring Harb. Protoc.*, Cold Spring Harbor Laboratory Press, 2016, DOI: [10.1101/pdb.rec090308](https://doi.org/10.1101/pdb.rec090308).
- 36 S. Kobel, A. Valero, J. Latt, P. Renaud and M. Lutolf, Optimization of microfluidic single cell trapping for long-term on-chip culture, *Lab Chip*, 2010, **10**(7), 857.
- 37 A. Sanati Nezhad, M. Ghanbari, C. G. Agudelo, M. Naghavi, M. Packirisamy, R. B. Bhat and A. Geitmann, Optimization of flow assisted entrapment of pollen grains in a microfluidic platform for tip growth analysis, *Biomed. Microdevices*, 2014, **16**(1), 23–33.
- 38 T. Geng, E. L. Bredeweg, C. J. Szymanski, B. Liu, S. E. Baker, G. Orr, J. E. Evans and R. T. Kelly, Compartmentalized microchannel array for high-throughput analysis of single cell polarized growth and dynamics, *Sci. Rep.*, 2015, **5**(1), 16111.
- 39 G. Schubert, Viscous flow near a cusped corner, *J. Fluid Mech.*, 1967, **27**(4), 647–656.
- 40 J. M. Gere and B. J. Goodno, *Mechanics of materials*, Dover Publications, Inc., New York, 2009.
- 41 S. Wang, H. Arellano-Santoyo, P. A. Combs and J. W. Shaevitz, Actin-like cytoskeleton filaments contribute to cell mechanics in bacteria, *Proc. Natl. Acad. Sci. U. S. A.*, 2010, **107**(20), 9182–9185.
- 42 M. Mathéli-Guinlet, C. Grauby-Heywang, A. Martin, H. Février, F. Morote, A. Vilquin, L. Beven, M.-H. Delville and T. Cohen-Bouhacina, Detrimental impact of silica nanoparticles on the nanomechanical properties of *Escherichia coli*, studied by AFM, *J. Colloid Interface Sci.*, 2018, **529**, 53–64.
- 43 V. Davi and N. Minc, Mechanics and morphogenesis of fission yeast cells, *Curr. Opin. Microbiol.*, 2015, **28**, 36–45.
- 44 N. Minc, A. Boudaoud and F. Chang, Mechanical forces of fission yeast growth, *Curr. Biol.*, 2014, **24**(1436), 10–1016.
- 45 A. E. Pelling, S. Sehati, E. B. Gralla and J. K. Gimzewski, Time dependence of the frequency and amplitude of the local nanomechanical motion of yeast, *Nanomed.: Nanotechnol., Biol. Med.*, 2005, **1**(2), 178–183.
- 46 B. Goldenbogen, W. Giese, M. Hemmen, J. Uhlendorf, A. Herrmann and E. Klipp, Dynamics of cell wall elasticity pattern shapes the cell during yeast mating morphogenesis, *Open Biol.*, 2016, **6**(9), 160136.
- 47 J. Arfsten, S. Leupold, C. Bradtmöller, I. Kampen and A. Kwade, Atomic force microscopy studies on the nanomechanical properties of *Saccharomyces cerevisiae*, *Colloids Surf., B*, 2010, **79**(1), 284–290.
- 48 A. E. Smith, Z. Zhang, C. R. Thomas, K. E. Moxham and A. P. Middelberg, The mechanical properties of *Saccharomyces cerevisiae*, *Proc. Natl. Acad. Sci. U. S. A.*, 2000, **97**(18), 9871–9874.



- 49 D. Vella, A. Ajdari, A. Vaziri and A. Boudaoud, The indentation of pressurized elastic shells: From polymeric capsules to yeast cells, *J. R. Soc., Interface*, 2012, **9**(68), 448–455.
- 50 S. Hasim, D. P. Allison, S. T. Retterer, A. Hopke, R. T. Wheeler, M. J. Doktycz and T. B. Reynolds,  $\beta$ -(1, 3)-glucan unmasking in some *Candida albicans* mutants correlates with increases in cell wall surface roughness and decreases in cell wall elasticity, *Infect. Immun.*, 2017, **85**(1), e00601-16.
- 51 C. Formosa, M. Schiavone, H. Martin-Yken, J. M. François, R. E. Duval and E. Dague, Nanoscale effects of caspofungin against two yeast species, *Saccharomyces cerevisiae* and *Candida albicans*, *Antimicrob. Agents Chemother.*, 2013, **57**(8), 3498–3506.
- 52 S. Ma, W. Ge and Y. Yan, *et al.*, Effects of *Streptococcus sanguinis* bacteriocin on deformation, adhesion ability, and young's modulus of *Candida albicans*, *BioMed Res. Int.*, 2017, **2017**, DOI: [10.1155/2017/5291486](https://doi.org/10.1155/2017/5291486).
- 53 I. V. Ene, A. K. Adya, S. Wehmeier, A. C. Brand, D. M. MacCallum, N. A. Gow and A. J. Brown, Host carbon sources modulate cell wall architecture, drug resistance and virulence in a fungal pathogen, *Cell. Microbiol.*, 2012, **14**(9), 1319–1335.
- 54 D. Alsteens, P. Van Dijck, P. N. Lipke and Y. F. Dufrêne, Quantifying the forces driving cell–cell adhesion in a fungal pathogen, *Langmuir*, 2013, **29**(44), 13473–13480.
- 55 B. Hao, S. Cheng, C. J. Clancy and M. H. Nguyen, Caspofungin kills *Candida albicans* by causing both cellular apoptosis and necrosis, *Antimicrob. Agents Chemother.*, 2013, **57**(1), 326–332, DOI: [10.1016/j.semcd.2011.08.010](https://doi.org/10.1016/j.semcd.2011.08.010).
- 56 L. A. Walker, C. A. Munro, I. De Bruijn, M. D. Lenardon, A. McKinnon and N. A. Gow, Stimulation of chitin synthesis rescues *Candida albicans* from echinocandins, *PLoS Pathog.*, 2008, **4**(4), e1000040.
- 57 G. W. Gooday and N. A. Gow, A model of the hyphal septum of *Candida albicans*, *Exp. Mycol.*, 1983, **7**(4), 370–373.
- 58 J. M. Bain, M. F. Alonso, D. S. Childers, C. A. Walls, K. Mackenzie, A. Pradhan, L. E. Lewis, J. Louw, G. M. Avelar and D. E. Larcombe, *et al.*, Immune cells fold and damage fungal hyphae, *Proc. Natl. Acad. Sci. U. S. A.*, 2021, **118**(15), e2020484118, DOI: [10.1073/pnas.2020484118](https://doi.org/10.1073/pnas.2020484118).
- 59 I. V. Ene, L. A. Walker, M. Schiavone, K. K. Lee, H. Martin-Yken, E. Dague, N. A. Gow, C. A. Munro and A. J. Brown, Cell wall remodeling enzymes modulate fungal cell wall elasticity and osmotic stress resistance, *MBio*, 2015, **6**(4), e00986-15.
- 60 F. M. Klis, P. Mol, K. Hellingwerf and S. Brul, Dynamics of cell wall structure in *Saccharomyces cerevisiae*, *FEMS Microbiol. Rev.*, 2002, **26**(3), 239–256.
- 61 P. Attfeld and S. Kletsas, Hyperosmotic stress response by strains of bakers' yeasts in high sugar concentration medium, *Lett. Appl. Microbiol.*, 2000, **31**(4), 323–327.
- 62 P. Milani, M. Gholamirad, J. Traas, A. Arnéodo, A. Boudaoud, F. Argoul and O. Hamant, In vivo analysis of local wall stiffness at the shoot apical meristem in Arabidopsis using atomic force microscopy, *Plant J.*, 2011, **67**(6), 1116–1123.
- 63 N. P. Wiederhold, D. P. Kontoyiannis, R. A. Prince and R. E. Lewis, Attenuation of the activity of caspofungin at high concentrations against *Candida albicans*: possible role of cell wall integrity and calcineurin pathways, *Antimicrob. Agents Chemother.*, 2005, **49**(12), 5146–5148.
- 64 D. A. Stevens, M. Ichinomiya, Y. Koshi and H. Horiuchi, Escape of *Candida* from caspofungin inhibition at concentrations above the mic (paradoxical effect) accomplished by increased cell wall chitin; evidence for  $\beta$ -1,6-glucan synthesis inhibition by caspofungin, *Antimicrob. Agents Chemother.*, 2006, **50**(9), 3160–3161.
- 65 A. Plaine, L. Walker, G. Da Costa, H. M. Mora-Montes, A. McKinnon, N. A. Gow, C. Gaillardin, C. A. Munro and M. L. Richard, Functional analysis of *Candida albicans* gpi-anchored proteins: roles in cell wall integrity and caspofungin sensitivity, *Fungal Genet. Biol.*, 2008, **45**(10), 1404–1414.
- 66 M. Toutounji, S. Tokajian and R. A. Khalaf, Genotypic and phenotypic characterization of *Candida albicans* lebanese hospital isolates resistant and sensitive to caspofungin, *Fungal Genet. Biol.*, 2019, **127**, 12–22.
- 67 V. Davì, H. Tanimoto, D. Ershov, A. Haupt, H. De Belly, R. Le Borgne, E. Couturier, A. Boudaoud and N. Minc, Mechanosensation dynamically coordinates polar growth and cell wall assembly to promote cell survival, *Dev. Cell*, 2018, **45**(2), 170–182.
- 68 E. Siéfert, E. Reyssat, J. Bico and B. Roman, Programming stiff inflatable shells from planar patterned fabrics, *Soft Matter*, 2020, **16**(34), 7898–7903.
- 69 R. Comer and S. Levy, Deflections of an inflated circular-cylindrical cantilever beam, *AIAA J.*, 1963, **1**(7), 1652–1655.

