

Showcasing research conducted at the European Centre for Theoretical Studies in Nuclear Physics and Related Areas (ECT*, Trento, Italy) with the collaboration of the Universities of Murcia and Alacant (Spain).

Electronic excitation spectra of cerium oxides: from *ab initio* dielectric response functions to Monte Carlo electron transport simulations

Ab initio-informed Monte Carlo electron transport simulations are carried out in cerium oxides, which are materials relevant for applications ranging from catalysis to radiotherapy sensitisation. The energy- and momentum-dependent dielectric properties of these solids, obtained from high-accuracy first principles calculations, allow accurate interpretation of their measured REEL spectra lineshapes, yielding fairly good agreement.

As featured in:



See Simone Taioli, Maurizio Dapor *et al.*, *Phys. Chem. Chem. Phys.*, 2021, **23**, 19173.



Cite this: *Phys. Chem. Chem. Phys.*,
2021, **23**, 19173

Electronic excitation spectra of cerium oxides: from *ab initio* dielectric response functions to Monte Carlo electron transport simulations†

Andrea Pedrielli,^{ab} Pablo de Vera,^a Paolo E. Trevisanutto,^c Nicola M. Pugno,^{bd}
Rafael Garcia-Molina,^{id e} Isabel Abril,^{id f} Simone Taioli^{id *ag} and Maurizio Dapor^{*a}

Nanomaterials made of cerium oxides CeO₂ and Ce₂O₃ have a broad range of applications, from catalysts in automotive, industrial or energy operations to promising materials to enhance hadrontherapy effectiveness in oncological treatments. To elucidate the physico-chemical mechanisms involved in these processes, it is of paramount importance to know the electronic excitation spectra of these oxides, which are obtained here through high-accuracy linear-response time-dependent density functional theory calculations. In particular, the macroscopic dielectric response functions $\bar{\epsilon}$ of both bulk CeO₂ and Ce₂O₃ are derived, which compare remarkably well with the available experimental data. These results stress the importance of appropriately accounting for local field effects to model the dielectric function of metal oxides. Furthermore, we reckon the energy loss functions $\text{Im}(-1/\bar{\epsilon})$ of the materials, including the accurate evaluation of the momentum transfer dispersion from first-principles calculations. In this respect, by using Mermin-type parametrization we are able to model the contribution of different electronic excitations to the dielectric loss function. Finally, from the knowledge of the electron inelastic mean free path, together with the elastic mean free path provided by the relativistic Mott theory, we carry out statistical Monte Carlo (MC) electron transport simulations to reproduce the major features of the reported experimental reflection electron energy loss (REEL) spectra of cerium oxides. The good agreement with REEL experimental data strongly supports our approach based on MC modelling, whose main inputs were obtained using *ab initio* calculated electronic excitation spectra in a broad range of momentum and energy transfers.

Received 25th April 2021,
Accepted 14th July 2021

DOI: 10.1039/d1cp01810h

rs.c.li/pccp

1 Introduction

Cerium oxides are inner transition metal oxides with promising applications ranging from fuel cells¹ to catalysis for hydrogen

and water splitting,^{2,3} coating technologies,⁴ glass-polishing tools,⁵ electrochromic devices,⁶ and locomotive industries.⁷ Ceria-based materials have also received increasing attention owing to the higher abundance of cerium among the rare-earth family elements, their relatively narrow band gap, which makes them active in the visible region of the light spectrum (near violet), and their stability under irradiation as well as their large adsorption capacity.

Recently, cerium dioxide (CeO₂) and dicerium trioxide (Ce₂O₃) nanoparticles (NPs) have been proposed also as possible enhancers of the relative biological effectiveness (RBE) in hadrotherapy for cancer treatment.^{8,9} In this technique, irradiation by protons or heavier ions is aimed to destroy tumor cells within well localized tumour regions. The use of high-Z materials (such as gold, platinum, gadolinium, and iron nanoparticles) in radiation therapy, with high concentration near the tumour region, has been shown to enhance the RBE due to an increase in both direct and indirect damage.^{10–17} However, while some of these NPs can be toxic for humans, high-Z ceramic oxides, such as CeO₂, might offer a viable biocompatible alternative to enhance localized dose and

^a European Centre for Theoretical Studies in Nuclear Physics and Related Areas (ECT*-Bruno Kessler Foundation) and Trento Institute for Fundamental Physics and Applications (TIFPA-INFN), Trento, Italy. E-mail: taioli@ectstar.eu, dapor@ectstar.eu

^b Laboratory of Bio-Inspired, Bionic, Nano, Meta Materials & Mechanics, Department of Civil, Environmental and Mechanical Engineering, University of Trento, Italy

^c Bruno Kessler Foundation, Trento, Italy

^d School of Engineering and Materials Science, Queen Mary University of London, UK

^e Departamento de Física, Centro de Investigación en Óptica y Nanofísica, Universidad de Murcia, Spain

^f Departament de Física Aplicada, Universitat d'Alacant, Spain

^g Peter the Great St. Petersburg Polytechnic University, Russia

† Electronic supplementary information (ESI) available: Several figures cited in the text, including the band structure, ELF, and optical properties of cerium oxides, convergence tests, etc. See DOI: 10.1039/d1cp01810h



biodamage in radiotherapy.⁹ Furthermore, ceria nanoparticles are also being investigated as possible radioprotectors in healthy cells,¹⁸ thus making this material more promising for hadrontherapy.

Besides these remarkable applications, the study of cerium-based oxides CeO₂ and Ce₂O₃ is of fundamental interest to understand the electronic and optical properties of materials that exhibit strong electron correlation, which is affected by the presence of highly localized 4f states. Indeed, while in experiments both oxides show insulator behaviours in their ground state,^{19–21} density functional theory (DFT) predicts correctly a non-magnetic insulator state only for CeO₂, while wrongly a metallic one for Ce₂O₃.^{22,23} The latter failure represents a known shortcoming of DFT to describe highly-localized orbitals²⁴ in antiferromagnetic materials that exhibit Mott insulating behaviour. The inaccurate description of ceria by first-principles DFT is due to the presence of multiple-valence states of cerium within the oxides, showing competing divalent and trivalent characteristics.²⁴ In this respect, ceria represents a challenging problem for DFT.

To open the fundamental gap one relies on approaches based either on DFT with hybrid density functionals using a fraction of nonlocal Fock exchange,^{23,25,26} which is able to describe better than DFT in the local density (LDA) (or in the generalized gradient correction GGA) approximation the electronic properties of ceria without applying any explicit localization constraints to the 4f bands, or on more rigorous many-body perturbation theory, such as GW,²⁷ in general aiming at a trade-off between accuracy and computational cost.

Finally, a more phenomenological way to correct DFT failure in this respect is based on the so-called DFT+*U* method²⁸ (or also on the GW+*U* approximation,^{29,30} where the GW correction^{27,31,32} is applied on top of LDA+*U*), in which the addition of an Hubbard correction increases the effective Coulomb repulsion $U_{\text{eff}} = U - J$ by the sum of the strong on-site Coulomb interaction of localized electrons U and the strength of the exchange interaction J .³³ Within this framework, the localization of the 4f states in CeO₂ and Ce₂O₃ can be achieved, resulting in band gap opening. Indeed, the introduction of an Hubbard correction U_{eff} shifts the Ce 4f states, and enhances the stability of the ground state reproducing correctly the insulating behaviour for all oxidation states. This makes the use of the Hubbard correction a valid approach for treating systems with multiple-valence states.

Several studies have reported the structural, electronic and optical properties of cerium oxides using first-principles calculations.^{19,20,22,34} However, to the best of our knowledge, significant differences between computer simulations and experimental results persist, particularly in the assessment of the optical properties.^{19,35} Here we focus our study on the *ab initio* calculations of the electronic band structure and of the dielectric response of bulk Ce(+IV)O₂ and Ce(+III)₂O₃, which are characterised by the two known oxidation states of cerium in solids, using the time-dependent density functional theory method (TDDFT)³⁶ in linear response (LR) approximation.³⁷

We adopt an interacting all-electron approach not plagued by the presence of pseudopotentials (that deal implicitly with the core and explicitly with chemically active valence states),

the only approximation being the interaction potential among electrons. The macroscopic dielectric function $\bar{\epsilon}(\mathbf{q}, W)$, or the closely related energy loss function ELF(\mathbf{q}, W), where \mathbf{q} and W are the momentum and energy transfers, respectively, is used to describe the material excitation spectrum and, thus, the inelastic interactions between charged particles and the medium constituents.^{38,39} In particular, we show that the inclusion of local field effects (LFE) overcomes the discrepancy between first-principles calculations and experimental measurements.

The ELF, conveniently weighted and integrated, provides the electron inelastic scattering cross-section,^{39,40} which is used, along with the elastic scattering cross-section derived from the relativistic Mott theory,⁴¹ as an input to a Monte Carlo (MC) routine to model the transport of charged particles within these solids and predict the reflection electron energy loss (REEL) spectra in particular.^{42–49} REEL spectroscopy is an analysis technique that uses an electron beam impinging with kinetic energy lower than 2 keV into thin films. Primary electrons penetrate a few nanometers into the material surface, lose their energy *via* inelastic collisions and some of them are eventually backscattered to the spectrometer,⁵⁰ resulting in spectra that are typically characterised by a number of structures attributed to both collective (plasmons) and single-electron excitations and can be directly benchmarked against the available experimental data. Here, the agreement between the simulated and the measured REELS is used to validate the TDDFT-calculated electronic excitation spectra of cerium oxides in a broad energy and momentum transfer region.

This paper is organized as follows. In Section 2 we summarize the theoretical methods used to perform the *ab initio* calculations of the dielectric function and the MC strategy. In Section 3 we discuss first the electronic and optical properties of cerium oxides, such as the ELF in momentum–energy space. Furthermore, a detailed analysis of the excitation spectra is carried out using the Mermin Energy-Loss Function-Generalized Oscillator Strength (MELF-GOS) approach.^{51–54} Finally, the REEL spectra are obtained by applying our MC method and compared with experimental measurements. Atomic units are used throughout this work except otherwise stated.

2 Theoretical and computational methods

Here we provide the fundamentals of the methodology used to obtain the atomic structures and the excitation spectra of bulk CeO₂ and Ce₂O₃. These properties are required to obtain reliable cross-sections needed to simulate the main interactions that affect the electron transport through these materials.

We stress that this work is aimed at the numerical assessment of the electron excitation spectra and of the ELF, where both collective excitations, such as plasmons, and high-energy single-electron excitations play a main role. We point out that the electron–hole (e–h) interactions are more relevant in the assessment of absorption spectra and determine the optical band gap (the on-set energy value in the ELF), while they have minor



influence on the ELF lineshape and on the assessment of the inelastic cross-sections. Thus, we decided to use TDDFT within the adiabatic local density approximation (ALDA) kernel, where e–h interactions are missing.

In principle, to calculate the excitation spectra of solids one could perform GW calculations (that usually open the fundamental band gap with respect to the DFT ground state calculations) in conjunction with the Bethe–Salpeter Equation (BSE), which is a Dyson-type equation for the two-particle Green's function, to include the excitonic effects. However, in view of the minor effects that e–h interactions have on the ELF lineshapes, of the much higher computational cost of GW + BSE with respect to TDDFT simulations, and finally of the good accuracy of the results attainable already at the level of the random phase approximation (RPA) (*i.e.* without electron–hole correlation terms in the kernel), we have chosen to use TDDFT to determine the ELF spectra of ceria solids.

At odds, the use of G_0W_0 many-body corrections (without the excitonic effects provided by BSE) could possibly result in a blue-shift of the ELF and thus in worsening the numerical simulation results. Therefore, being our main concern the accurate determination of the d and f state energies and the interpretation of the electron excitation spectra, related to the ELF, rather than a better estimation of the fundamental band gap, we decided to use the LDA+ U functional.

Here, we compare our numerical results with the REELS experimental measurements and we obtain a very good agreement. This is a confirmation of the correctness of this approach for the observables we are interested in.

2.1 Material structure

The DFT+ U method²⁸ has been employed to optimize both the cell volume and atomic positions of the cerium oxides by using the ELK code suite⁵⁵ (where the Hubbard correction U_{eff} was applied to the 4f orbitals of Ce). On the one hand, CeO₂ is characterised by a face centered cubic fluorite-type structure, belonging to the $Fm\bar{3}m$ point group. The primitive cell of CeO₂ (inset in Fig. 1) has a crystal basis defined by two oxygen atoms, which in lattice coordinates are positioned at (0.25, 0.25, 0.25) and (0.75, 0.75, 0.75), respectively, and one cerium atom, centered at (0, 0, 0).

On the other hand, Ce₂O₃ has a trigonal geometry, belonging to the $P3\bar{m}1$ point group. The primitive cell (inset in Fig. 2) includes three oxygen atoms at the crystallographic positions (0, 0, 0), (1/3, 2/3, 0.642), and (2/3, 1/3, 0.3574) in lattice coordinates, respectively, and two cerium atoms centered at (1/3, 2/3, 0.2459) and (1/3, 2/3, 0.754).

We report in Table 1 the lattice constants of the optimized cells. The motivations to fix the value of $U_{\text{eff}} = 5$ eV, which delivers good agreement with experimental data, will be discussed further below.

2.2 Dielectric response

The microscopic dielectric function of the materials depends on the bare Coulomb potential v_{C} and the polarization function $\chi(\mathbf{q}, W)$ through:⁵⁸

$$\varepsilon(\mathbf{q}, W) = 1 - v_{\text{C}}(\mathbf{q})\chi(\mathbf{q}, W). \quad (1)$$

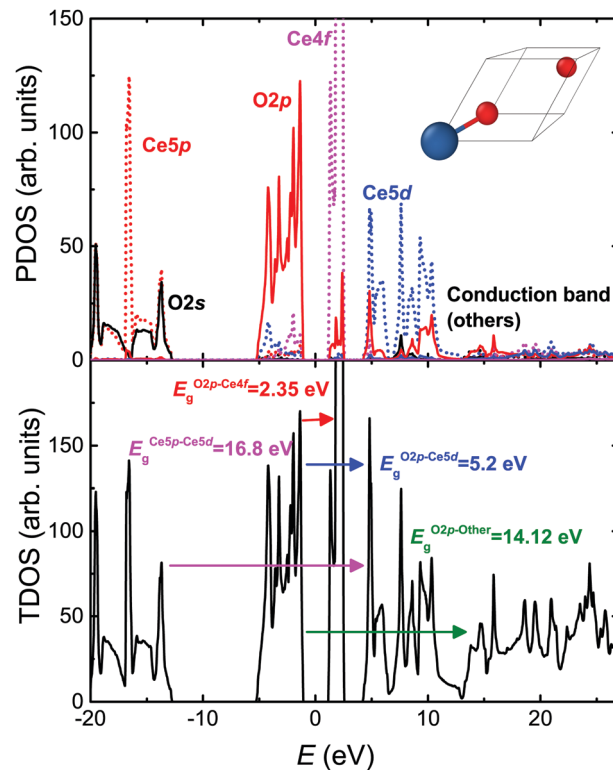


Fig. 1 Top panel: Partial DOS of bulk CeO₂ ($U_{\text{eff}} = 5$ eV) showing orbital contributions for both cerium (dashed lines) and oxygen (continuous lines). Bottom panel: Total DOS. The Fermi level is set to the origin of the energy axis. Inset: CeO₂ primitive cell, cerium and oxygen in blue and red color, respectively. The arrows show the possible electronic transitions between occupied and empty bands, while the relevant gaps are labelled by numbers. This information is correlated with the features of the optical ELF, see the text for details.

The polarization function can be obtained by solving the following Dyson-like equation:

$$\chi^{-1}(\mathbf{q}, W) = \chi_0^{-1}(\mathbf{q}, W) - v_{\text{C}}(\mathbf{q}) - f_{\text{xc}}(\mathbf{q}, W), \quad (2)$$

where $\chi_0^{-1}(\mathbf{q}, W)$ is the non-interacting (or independent-particle) polarization calculated from the Kohn–Sham wavefunctions and $f_{\text{xc}}(\mathbf{q}, W)$ is the TDDFT kernel. In this regard, we have used the adiabatic local density approximation (ALDA) kernel, which is related to the LDA exchange–correlation functional $v_{\text{xc}}[\rho]$ by:

$$f_{\text{xc}}(\mathbf{r}, t) = \left\{ \frac{\text{d}}{\text{d}\rho} v_{\text{xc}}[\rho] \right\}_{\rho=\rho(\mathbf{r}, t)}, \quad (3)$$

where ρ is the DFT ground state density. This approach is supported by previous studies on inelastic X-ray scattering (IXS) for finite momentum transfer calculations where the ALDA kernel showed good agreement with the experimental findings due to correct inclusion of short range terms.^{59–62}

For periodic crystals one can exploit the translational symmetry, and the microscopic dielectric function can be conveniently written in reciprocal space, *i.e.* $\varepsilon_{\mathbf{G}, \mathbf{G}'}(\mathbf{q}, W) = \varepsilon(\mathbf{q} + \mathbf{G}, \mathbf{q} + \mathbf{G}', W)$, where \mathbf{G} and \mathbf{G}' are the reciprocal lattice vectors, and \mathbf{q} is the transferred momentum vector in the first Brillouin zone (1BZ).



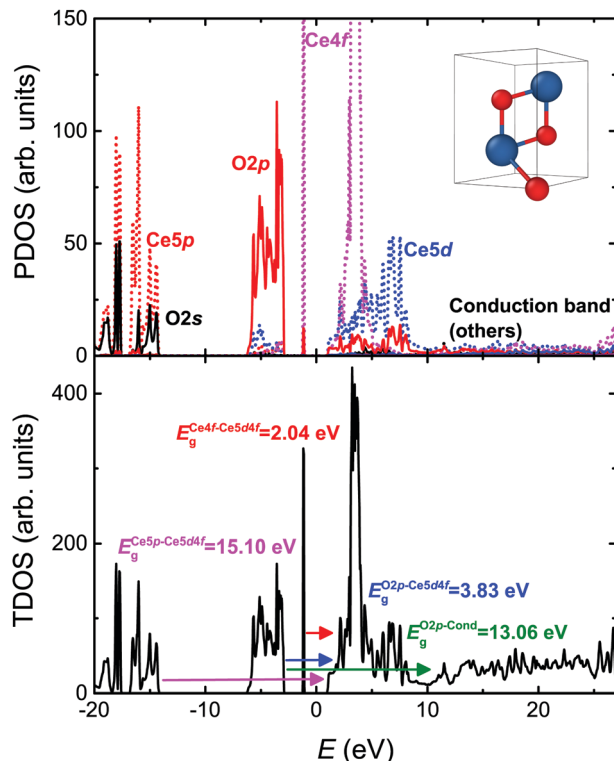


Fig. 2 Top panel: Partial DOS of bulk Ce_2O_3 ($U_{\text{eff}} = 5$ eV) showing orbitals contributions for both cerium (dashed lines) and oxygen (continuous lines). Bottom panel: Total DOS. The Fermi level is set to the origin of the energy axis. Inset: Ce_2O_3 primitive cell, cerium and oxygen in blue and red color, respectively. The arrows show the possible electronic transitions between the occupied and empty bands, while the relevant gaps are labelled by numbers. This information is correlated with the features of the optical ELF, see the text for details.

Table 1 Calculated CeO_2 and Ce_2O_3 cell parameters in comparison with experimental results

| Method | U_{eff} | CeO_2 | | Ce_2O_3 | | Ref. |
|-----------|------------------|----------------|---------|-------------------------|---------|-----------|
| | | a (Å) | c (Å) | a (Å) | c (Å) | |
| LSDA+ U | 5 | 5.36 | 5.95 | 3.83 | 5.95 | This work |
| Experim. | | 5.411 | | | | 56 |
| Experim. | | | | 3.891 | 6.059 | 57 |

Using this notation, $\varepsilon_{\mathbf{G},\mathbf{G}'}(\mathbf{q}, W)$ is also often called the dielectric matrix. It can be shown^{63,64} that the experimentally measurable macroscopic dielectric function $\bar{\varepsilon}$ and the microscopic one ε are related by the following expression:

$$\bar{\varepsilon}(\mathbf{q}, W) = \left[\varepsilon_{\mathbf{G}=0, \mathbf{G}'=0}^{-1}(\mathbf{q}, W) \right]^{-1}. \quad (4)$$

LFE, which are included by inverting the full dielectric matrix and taking subsequently the head of the inverse matrix. The effects of local density inhomogeneities in the dielectric response of a material are indeed embedded in the wings of the microscopic dielectric matrix.

The dielectric response function has been obtained using the LR-TDDFT implementation of the ELK code suite⁵⁵ on top

of the ground state obtained by the DFT+ U method. ELK uses an all-electron full-potential linearized augmented-plane-wave (FP-LAPW) approach. The Hubbard correction has been treated in the fully localised limit (FLL). To deal with the antiferromagnetism of Ce_2O_3 , we included both spin polarization and spin-orbit coupling. The local spin density approximation (LSDA) exchange correlation functional⁶⁵ has been used for the ground state calculations alongside the ALDA approximation for the time dependent exchange correlation functional. We also checked the convergence with respect to the number of k -points in the 1BZ, finding well converged results for a $10 \times 10 \times 10$ k -point grid for CeO_2 and for a $8 \times 8 \times 8$ k -point grid for Ce_2O_3 . A total of 50 empty bands for each atom have been used to obtain converged results up to 120 eV.

To perform the extension of the dielectric function in the optical limit (*i.e.* $\mathbf{q} = 0$) to finite momenta the transferred momentum has been selected along the [111], [110], and [211] directions in the reciprocal space for CeO_2 and along the [001], [110], and [100] directions for Ce_2O_3 , respectively, with the modulus set to 6 \AA^{-1} in the reciprocal space. Such an extension to finite momenta is necessary to carry out the accurate calculation of observables, such as the inelastic mean free path (IMFP) that depends critically on the momentum dispersion (see Section 2.4).

2.3 Energy loss function

To describe the propagation of charged particles through matter using the dielectric formalism,^{38–40} one relies on the material energy loss function ELF, which is related to the macroscopic dielectric function as follows:

$$\text{ELF} = \text{Im} \left[\frac{-1}{\bar{\varepsilon}(\mathbf{q}, W)} \right]. \quad (5)$$

In principle, to determine the inelastic scattering cross-section one needs to know the dependence of the ELF over the entire spectrum of meaningful excitation energies W and momentum transfer \mathbf{q} .^{43,46,53,66} However, typically one has access only to a limited range of energies, corresponding to those of the valence electrons ($\lesssim 100$ eV), owing to the prohibitive computational effort of including high-energy excitations as well as their momentum dispersion.

Thus, to extend the excitation energy range beyond the valence regime, we propose to use the MELF-GOS model,^{51–54} which implements a numerically effective and accurate method to compute the ELF over the entire Bethe surface (*i.e.*, the momentum and energy transfer plane) by including both valence and inner shell electronic excitations. In short, the derivation of the ELF within the MELF-GOS framework is based on a fitting procedure, whereby the optical-limit *ab initio* (or measured) energy-loss spectrum of the target material is equated to a zero-momentum-transfer functional form which, for the valence (outer) contribution, can be written as a sum of Mermin-type ELFs:^{67,68}

$$\begin{aligned} & \text{Im} \left[\frac{-1}{\bar{\varepsilon}(\mathbf{q} = 0, W)} \right]_{\text{outer}} \\ &= \sum_i F(W - W_{\text{th},i}) \text{Im} \left[\frac{-1}{\varepsilon_M(A_i, W_i, \gamma_i; \mathbf{q} = 0, W)} \right], \end{aligned} \quad (6)$$



where

$$\text{Im} \left[\frac{-1}{\varepsilon_{\text{M}}(A_i, W_i, \gamma_i; \mathbf{q} = 0, W)} \right] = \frac{A_i \gamma_i W}{(W_i^2 - W^2)^2 + (\gamma_i W)^2}, \quad (7)$$

and

$$F(W - W_{\text{th},i}) = \frac{1}{1 + e^{-A_i(W - W_{\text{th},i})}} \quad (8)$$

is a smooth switching function characterised by steepness A_i , which is used as an additional fitting parameter to soften the onset of the outer-shell electronic excitations at the threshold energies $W_{\text{th},i}$ (F can also be represented by a Heaviside step function). The other fitting parameters in eqn (6), A_i , W_i , and γ_i , are related, respectively, to the relative weight, position, and width of the peaks observed in the optical ELF spectrum; they are determined so as to reproduce the main features of the ELF obtained from *ab initio* calculations. Within the MELF-GOS framework one then makes an extrapolation of the TDDFT *ab initio* data to higher excitation energies. The contribution of inner-shell electrons is included by means of atomic generalized oscillator strengths (GOS) as follows:⁵⁴

$$\text{Im} \left[\frac{-1}{\varepsilon(\mathbf{q} = 0, W)} \right]_{\text{inner}} = \frac{2\pi^2 \mathcal{N}}{W} \sum_j \alpha_j \sum_{nl} \frac{d_{nl}^j(\mathbf{q}, W)}{dW} \Theta(W - W_{\text{th},nl}^j), \quad (9)$$

where $\frac{d_{nl}^j(\mathbf{q}, W)}{dW}$ are the analytical non-relativistic hydrogenic GOSs that are obtained using an effective nuclear charge for each inner shell identified by the atomic quantum numbers (n, l) of the target j -th constituent with stoichiometric weight α_j . In eqn (9), $W_{\text{th},nl}^j$ is the ionization energy of the orbital, and \mathcal{N} is the target atomic or molecular number density.

2.4 Monte Carlo simulations of electron transport

In the MC approach the interaction between the incident electron beam and a cerium oxide target is simulated by treating the electrons as point particles that follow classical trajectories within the material. This is a viable representation at high enough energy.⁶⁹ Electron trajectories are determined by the elastic and inelastic interactions, which are assessed using quantum mechanical methods. The occurrence of either an elastic or inelastic scattering event at kinetic energy T is assessed by comparing a random number uniformly distributed in the range $[0, 1]$ with the relevant probabilities $p_{\text{el}}(T) = A_{\text{el}}(T)/A_{\text{tot}}(T)$ and $p_{\text{inel}}(T) = A_{\text{inel}}(T)/A_{\text{tot}}(T)$, where $A_{\text{tot}}(T) = A_{\text{inel}}(T) + A_{\text{el}}(T)$.⁴² $\lambda_{\text{el/inel}}^{-1} = \lambda_{\text{el/inel}}^{-1}(T)$ is the inverse mean free path for the elastic or inelastic scattering.

Once the type of collision has been chosen, the angular deviation of the electron trajectory after an elastic collision, given by the scattering angle θ , can be evaluated by equating the elastic scattering cumulative probability

$$P_{\text{el}}(T, \theta) = \frac{2\pi}{A_{\text{el}}(T)} \int_0^\theta \frac{dA_{\text{el}}(T, \theta')}{d\Omega} \sin \theta' d\theta', \quad (10)$$

to a uniformly-distributed random number generated in the range $[0, 1]$. No energy loss is assumed in an elastic collision.

In a similar way, the energy loss W due to an inelastic scattering event of an electron with kinetic energy T can be reckoned by equating the inelastic scattering cumulative probability distribution:

$$P_{\text{inel}}(T, W) = \frac{1}{A_{\text{inel}}(T)} \int_0^W \frac{dA_{\text{inel}}(T, W')}{dW'} dW' \quad (11)$$

to another uniformly-distributed random number in the range $[0, 1]$. The angular deviation due to inelastic scattering is evaluated according to the classical binary collision theory.⁴² Although the angular distribution of the inelastically scattered electrons can be obtained from the ELF, we decided to keep this more computationally efficient scheme, as the largest contribution by far to the angular deviations is provided by the elastic scattering.

The main quantity to account for inelastic events that electrons with kinetic energy T undergo when moving through a medium characterised by an ELF is the differential inverse inelastic mean free path (DIIMFP):

$$\frac{dA_{\text{inel}}(T, W)}{dW} = \frac{1}{\pi T} \int_{q_-}^{q_+} \frac{1}{q} \text{Im} \left[\frac{-1}{\varepsilon(\mathbf{q}, W)} \right] dq, \quad (12)$$

where the integration limits, $q_{\pm} = \sqrt{2T} \pm \sqrt{2(T - W)}$, result from energy and momentum conservation in the interaction process.

From the knowledge of the DIIMFP one can reckon the IMFP to be used in the MC simulation of electron transport through the cerium oxides by calculating the following inelastic scattering cross-section:

$$A_{\text{inel}}(T) = \int_{W_{\text{min}}}^{W_{\text{max}}} \frac{dA_{\text{inel}}(T, W)}{dW} dW, \quad (13)$$

where the integration limit W_{min} is set to E_{gap} for semiconductors and insulating materials, while W_{max} represents the minimum between T and $(T + W_{\text{min}})/2$. By inverting eqn (13) one can obtain the IMFP, which represents the average distance between inelastic collisions. The effect on the IMFP of electron–polaron and electron–phonon scattering events will be neglected due to the high kinetic energy ($T \approx 1.6$ keV) considered in this work.

We notice that the dielectric formalism in our implementation includes the exchange–correlation effects only within the probed solid system at the mean field level in the local density approximation (LDA), as the ELF is derived by using the time-dependent extension of the “static” DFT LDA functional to include (non-local) energy-dependent interactions. Nevertheless, exchange–correlation interaction is also experienced between the electrons of the impinging primary beam and the system itself. We point out that the electron exchange, arising from the indistinguishability of the primary and target electrons, is not included in the dielectric formalism (*i.e.*, only the direct scattering amplitude is considered) as given by eqn (12). Indeed, the electron DIIMFP is assessed within the first Born approximation neglecting both relativistic and exchange effects between the primary and the target electrons. In principle, the electron exchange interaction can be included by means of the Born–Ochkur exchange factor.^{70,71} However, this correction only affects the calculated IMFP at energies of the



primary beam lower than those analysed here (<500 eV) (see ref. 70 and 71). Also the backscattered electrons recorded in the REELS measurements are characterised by a kinetic energy large enough (>1550 eV) to neglect the exchange interaction.

The elastic scattering is accounted for by means of the Mott theory,⁴¹ which generalizes the screened Rutherford scattering model also at low kinetic energy of the colliders and for high-Z materials. This approach provides the differential elastic scattering cross-section (DESCS) for an electron being scattered at an angle θ when impinging on a central potential as follows:⁴²

$$\frac{dA_{\text{el}}(T, \theta)}{d\Omega} = \mathcal{N} \left[|f(\theta)|^2 + |g(\theta)|^2 \right], \quad (14)$$

where $f(\theta)$ and $g(\theta)$ are the direct and spin-flip scattering amplitudes, respectively, which can be obtained by solving the Dirac equation in a central field. This observable represents the probability per unit solid angle that an electron is scattered by the target centers. In DESCs calculations the electrostatic potential in the Dirac equation was modelled by a screened Coulomb interaction. The latter is obtained by multiplying a bare Coulomb potential by a function expressed as a superposition of Yukawa functions, whose parameters were set according to a best fit of data from Hartree-Fock simulations.⁷² Exchange effects were described by using the Furness and McCarthy formula.⁷³

However, in condensed matter the central symmetry of atomic systems is lost, and thus we must generalize to some extent the Mott theory to take into account the presence of bonded interactions among neighbours in the periodic unit cell. Condensed phase effects can be achieved by allowing interference between the direct $f_m(\theta)$ and spin-flip $g_m(\theta)$ scattering amplitudes of the m th-atom and those of the neighbouring n th-atom. These interference terms account for multiple scattering events among the scattered waves modifying eqn (14) as follows:

$$\frac{dA_{\text{el}}(T, \theta)}{d\Omega} = \mathcal{N} \sum_{m,n} \exp(i\mathbf{q} \cdot \mathbf{r}_{mn}) \left[f_m(\theta) f_n^*(\theta) + g_m(\theta) g_n^*(\theta) \right], \quad (15)$$

where $\mathbf{r}_{mn} = \mathbf{r}_m - \mathbf{r}_n$ and \mathbf{r}_m (\mathbf{r}_n) identifies the position of the m th (n th) atom in the periodic unit cell. We stress that the potentials chosen at the positions \mathbf{r}_m in the unit cell are those of free atoms rather than pertaining to atoms in the solid. In principle, one should indeed make use of the self-consistent position-dependent potential of the solid as a whole, which can be derived from the direct numerical solution of the Dirac equation. However, while we use the spherical free atomic potentials expanded in partial waves, and thus the spherical potential approximation, eqn (15) does account for “molecular” effects as it “recovers” the interference between different atomic centers by multiplying the scattering amplitudes of different atomic centers (and not by simply summing up the probabilities) for both the direct and spin-flip terms weighted by a phase that is due to the translation of the atomic wavefunctions. This effect can be hardly seen only at very small angles in the differential elastic scattering cross-section (DESCS) of CeO₂ bulk solid in the studied energy range.

Finally, by integrating over the solid angle, one obtains the total elastic scattering cross-section as:

$$A_{\text{el}}(T) = \int_{\Omega} \frac{dA_{\text{el}}(T, \theta)}{d\Omega} d\Omega. \quad (16)$$

The relativistic (or Mott) approach to deal with the elastic scattering was chosen to include both the direct and spin-flip terms in the calculation of the elastic scattering cross-section. We notice that the Mott cross-section formula is the mathematical description of the scattering of a high energy electron beam scattered off the Coulomb field of heavy atoms, mostly used to measure the spin polarization upon collision. While we do not perform the spin polarization analysis in this work, we can safely assume that the spin-flip term is rather small ($\approx 10^{-4}$ times the direct term) compared to the energy of the primary beam (1.6 keV) impinging on cerium oxides. Thus, in principle, we could also use a non-relativistic approximation, such as the spinless Rutherford cross-section. However, the latter is the low-energy limit of the former for scattering centers characterised by a low atomic number. Our rationale is to use, wherever possible, the most rigorous approach unless this does correspond to an unjustifiable increase of the computational time, which is not the case of the relativistic elastic scattering theory.

3 Results and discussion

In the following, the main features of the electronic excitation spectra of CeO₂ and Ce₂O₃ will be discussed. First, the band structure, and the total and partial density of states (DOS) of electrons will be analyzed, which serves to set up the Hubbard parameter U_{eff} for the TDDFT calculations. These DOS will be then useful to interpret the dielectric properties of cerium oxides. Finally, the electron inelastic scattering cross-sections will be obtained from the complex dielectric functions, and will be used to perform the MC simulations of REEL spectra.

3.1 Band structures and DOS of bulk CeO₂ and Ce₂O₃

Ground state DFT calculations have been carried out, aiming particularly to check the dependence of the electronic band structure on different values of the Hubbard correction U_{eff} . After a number of tests carried out on the total density of states (DOS) (see Fig. S1 and S2 of the ESI[†]) and on the ELF in the optical limit (see Fig. S5 of the ESI[†]), U_{eff} was set to 5 eV. This value has been fixed so that (i) the localized 4f band blueshifts with respect to plane LDA and opens the fundamental gap, particularly in the case of Ce₂O₃ for which LDA wrongly predicts a metallic character; (ii) the optical ELF calculated with this value of U_{eff} is in fair agreement with the experimental data available for CeO₂.

In CeO₂ the fundamental gap occurs between the top of the valence band with O2p character and the bottom of the conduction band formed by the localized Ce4f orbitals. This can be observed in the bottom panel of Fig. 1, where we plot the total DOS of bulk CeO₂ along with the relevant band gaps (the Fermi level is set to the origin of the energy axis). In particular, in the top panel of Fig. 1 we show the contribution to the total DOS of



cerium (dashed lines in the top panel) and oxygen (continuous lines in the top panel), respectively, along with the projection on the relevant angular momenta (PDOS). This analysis shows clearly the hybridization between different symmetry orbitals of O and Ce. In particular, a deeper occupied band (below -10 eV in Fig. 1) is mainly formed by Ce5p mixed with O2s, while O2p and Ce4f hybridize between -5 eV and 0 eV. Above the valence band, between 0 eV and 5 eV, there is a localized Ce4f–O2p narrow band and beyond that we find a conduction band mainly of Ce5d nature with a mixture of several O and Ce levels at larger energies between 5 eV and 15 eV (see also Fig. S3 of the ESI†).

In Table 2 we also report, in comparison with other theoretical and experimental data, the gaps between the O2p valence band and the 4f states and between the O2p valence band and the Ce5d conduction band with the exclusion of the 4f states. The latter is more affected by the fine tuning of U_{eff} . Plain DFT values show the typical underestimation of the fundamental gap (2.05 eV) with respect to experimental measurements (ranging from 3.3 to 3.6 eV^{77–79}), slightly improved to 2.35 eV by adding the Hubbard correction U_{eff} .

The full band structure of CeO₂ calculated using DFT+ U is given in Fig. S3 of the ESI† for reference. Both conduction (above 4 eV) and valence (below -1 eV) bands show some significant dispersion, while the 4f states between 0.8 and 2 eV have a smaller bandwidth. From the band plot analysis it turns out that CeO₂ is an indirect gap insulator. While the relative values of the orbital energy gaps are underestimated by our DFT+ U approach, the emergence of localized 4f states is correctly predicted as in previous studies using hybrid functionals.^{19,23}

In the case of Ce₂O₃, the addition of the Hubbard correction is critical in the simulation of the electronic band structure and DOS as this material is wrongly predicted to be a metal by DFT-LDA. In fact, the Ce atom in Ce₂O₃ displays a +3 oxidation state, where one electron is expected to populate the 4f band leading to a possible ferromagnetic or antiferromagnetic ground state. By switching on the Hubbard correction we obtain the localization of the 4f states, with redshift of the latter bands by increasing the U_{eff} value from 5 to 6 eV (see a plot of the DOS of bulk Ce₂O₃ for $U_{\text{eff}} = 5$ and 6 eV in Fig. S2 of the ESI†) and with blueshift of the conduction bands at

Table 2 Band gap opening (eV) in bulk CeO₂ using different exchange–correlation functionals in DFT simulations. GGA refers to the generalized gradient approximations for the exchange and correlation energies using the specific parametrization of Perdew–Wang, while the Heyd–Scuseria–Ernzerhof hybrid functional is the so-called HSE06

| Method | U_{eff} | Band gap | | Ref. |
|-----------|------------------|------------|------------|-----------|
| | | O2p → Ce4f | O2p → Ce5d | |
| LSDA | | 2.05 | 5.8 | This work |
| LSDA+ U | 3 | 2.35 | 5.5 | This work |
| LSDA+ U | 5 | 2.35 | 5.3 | This work |
| GGA | | 2.3 | | 22 |
| PBE | | 1.7 | | 74 |
| PBE | | 1.7, 1.9 | | 23 |
| PBE | | 1.8 | 5.7 | 75 |
| HSE | | 3.5, 3.3 | 7.0 | 23 |
| Experim. | | 3 | 6–8 | 76 |

Table 3 Gaps between bands (eV) in bulk Ce₂O₃ using different U_{eff} values in DFT simulations

| Method | U_{eff} | Band gap | | |
|-----------|------------------|------------|------------|-----------------|
| | | O2p → Ce4f | O2p → Ce5d | Ce4f → Ce4f, 5d |
| LSDA+ U | 5 | 1.1 | 3.95 | 2.04 |
| LSDA+ U | 6 | 1.7 | 3.97 | 2.59 |

higher energies. The gaps between different bands are reported in Table 3.

In Fig. 2 we show the total (TDOS, bottom panel) and projected (PDOS, top panel) DOS of Ce₂O₃. The full band structure calculated using DFT+ U is given in Fig. S4 of the ESI† for reference. From the analysis of the PDOS we notice that the Ce4f band splits into two subbands, a very narrow occupied band, and a narrow and intense empty band that overlaps with the empty Ce5d band above the Fermi level (the origin of the energy axis), respectively. The DOS is also characterised by a valence band mainly of O2p nature, a deeper occupied band mainly of Ce5p origin, and an outer conduction band above 10 eV which is a mixture of high energy states from all constituents. The almost localized nature of the 4f band can be seen in Fig. S4 of the ESI† where a flat band around -1 eV from the Fermi level appears. At variance, the other conduction bands show a large dispersion owing to the hybridization of the Ce4f, 5d states with O2p orbitals. Finally, we notice that also Ce₂O₃ is an indirect gap insulator, being found at the top of the valence band at the Γ -point and the bottom of the conduction band at the K -point.

3.2 The excitation spectrum of bulk CeO₂

The excitation spectrum of bulk materials is determined by the real ($\bar{\epsilon}_1$) and imaginary ($\bar{\epsilon}_2$) parts of the complex macroscopic dielectric function (see eqn (4)). The former informs about the screening capacity of the material to electric fields, while the latter provides the spectrum of possible electronic transitions between occupied and empty states. They are directly connected to the optical refractive index and extinction coefficient (see Fig. S10 and eqn (S1) of the ESI†), so they can be straightforwardly checked against experimental optical determinations for $\mathbf{q} \rightarrow 0$. Particularly, $\bar{\epsilon}_2$ can be correlated with the PDOS obtained in Section 3.1, which allows identifying the origin of the different excitations. The latter are in turn connected to the structure of the ELF, and this identification may be relevant for the assessment of the quality of the obtained spectra (see Sections 3.2 and 3.3 below) and the calculation of the inelastic mean free path.⁶⁸

Fig. 3 shows the real ($\bar{\epsilon}_1$, top panel) and imaginary ($\bar{\epsilon}_2$, bottom panel) parts of the macroscopic dielectric function in the optical limit ($\mathbf{q} \rightarrow 0$), respectively, in comparison with experimental data.^{20,21,80,81} We notice how the inclusion of LFE in the description of the macroscopic dielectric function is critical to reproduce the experimental measurements, in particular in the flattening of the third major peak between 15 – 20 eV in $\bar{\epsilon}_1$ and between 20 – 25 eV for $\bar{\epsilon}_2$.

The features seen in Fig. 3 for $\bar{\epsilon}_2$ can be understood on the basis of the PDOS shown in the top panel of Fig. 1. The first peak around 3 eV corresponds to the transition from the O2p



valence band to the Ce4f localized states, with a fundamental band gap of 2.35 eV. The second gap extracted from Fig. 1 is of 5.2 eV, above which three main structures can be seen in the $\bar{\epsilon}_2$ spectrum of Fig. 3 below 15 eV. These peaks correspond to the superposition of the PDOS of the O2p occupied levels with that of the Ce5d empty levels. The next peaks above 15 eV correspond to a mix of transitions from the O2p band to the top part of the conduction band (being an hybridization of s, p, d and f states, labelled the “conduction band (others)” in Fig. 1) and from the Ce5p band to the conduction Ce5d band, as previously noted.¹⁹ The former presents an approximate onset of 14.12 eV (a dip in the PDOS of the conduction band should be noted in Fig. 1 around 14 eV), while the latter has a gap of 16.8 eV (see Fig. 1), approximately corresponding to the structures observed in Fig. 3. This assignment is in agreement with previous studies.^{20,21,82,83} Transitions with $\Delta l = \pm 1$ are allowed, despite the angular momentum selection rule, owing to the hybridization between p, d and f orbitals of O and Ce (see top panel of Fig. 1).

The optical ELF of CeO₂ is shown in Fig. 4. The top panel depicts the TDDFT results using the ALDA kernel or random phase approximation (RPA), with and without the inclusion of LFE. Both ALDA and RPA give similar results, while LFE plays

a crucial role in reducing the intensity of the optical ELF, bringing it closer to the experimental data.^{20,21,80,81} The ALDA calculation including LFE is compared to the recorded data in the bottom panel, where a broadening to the calculated ELF has been applied in order to account for the finite lifetime of the electronic excitations and the experimental resolution. To take into account the electron–electron and phonon dephasing, we have added an absolute Lorentzian width equal to 0.2 eV, a Lorentzian with quadratic energy dependence multiplied by a factor of 6×10^{-4} and a Gaussian with a width of $\sigma = 0.2$ eV. The calculations agree well with the experimental data below 40 eV, except for intensities of the peaks reported in ref. 81. We notice that the agreement between our calculations and the experimental findings by Goubin *et al.*²⁰ is remarkable in the entire energy range. Above 40 eV, the calculations overestimate the experiments, although they reproduce very well their shape.

The discrepancy found between our calculations and experiments at the larger energies in Fig. 4 can be rationalised in light of the f- and ps-sum rules,⁸⁴ which serve to check the accuracy of an optical ELF. The former gives the effective number of electrons per unit cell participating in the electronic excitations:

$$N_{\text{eff}} = \frac{2}{\pi\Omega_p^2} \int_0^{W'_{\text{max}}} W' \text{Im} \left[\frac{-1}{\epsilon(0, W')} \right] dW', \quad (17)$$

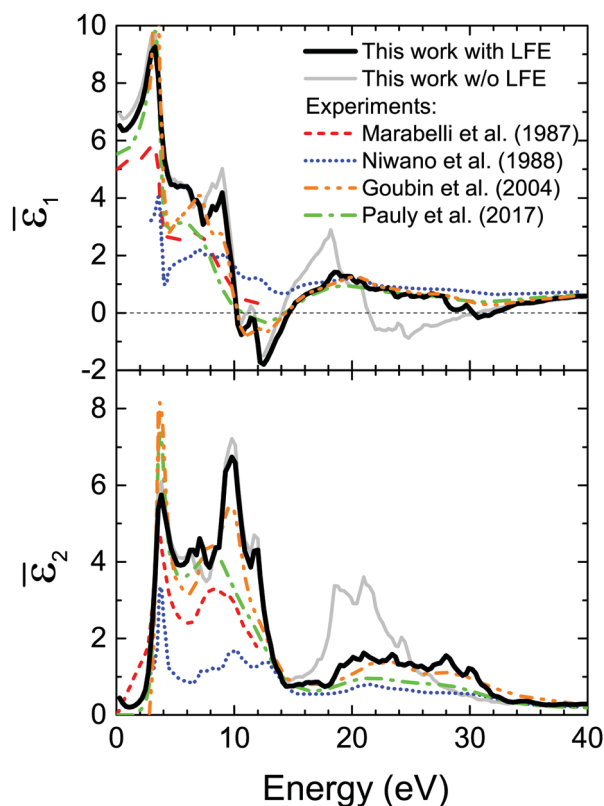


Fig. 3 Top panel: Comparison between the real part ($\bar{\epsilon}_1$) of the experimental dielectric function of bulk CeO₂^{20,21,80,81} and our calculation. Bottom panel: Comparison between the imaginary part ($\bar{\epsilon}_2$) of the experimental dielectric function of bulk CeO₂^{20,21,80,81} and our calculation. Both $\bar{\epsilon}_1$ and $\bar{\epsilon}_2$ are calculated along the [111] direction of the momentum transfer, taking afterwards the $\mathbf{q} \rightarrow 0$ limit. The inclusion of LFE improves the agreement with experimental data, flattening in particular the features in the range of 15–30 eV.

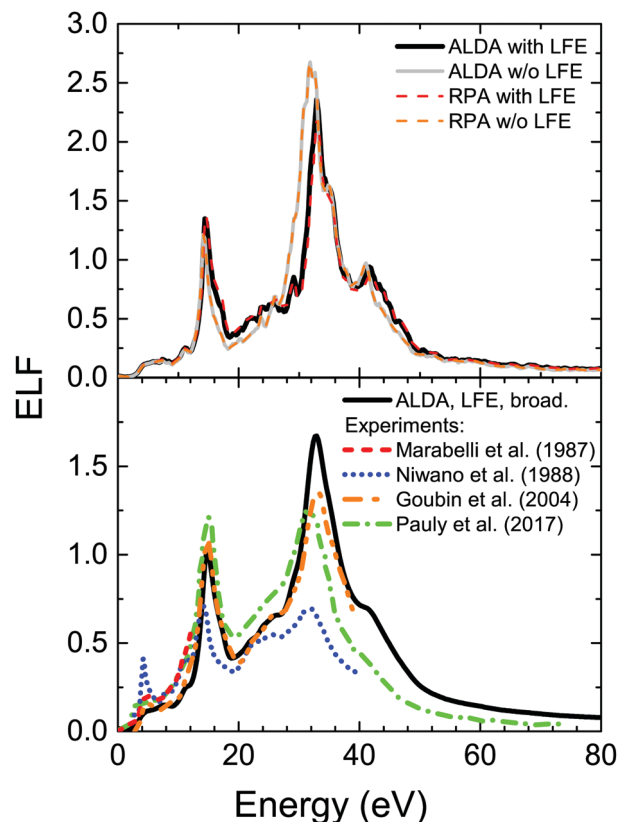


Fig. 4 Optical energy-loss function of CeO₂ under different approximations. Top panel: calculations using ALDA and RPA approximations, with and without the LFE. Bottom panel: optical ELF obtained within ALDA and LFE applying peak broadening, in comparison to different sets of experimental data.^{20,21,80,81}



where $\Omega_p = \sqrt{4\pi N e^2/m}$, which should converge to the atomic number as $W'_{\max} \rightarrow \infty$. The latter sum-rule states that the ELF should fulfill the following equation:

$$\frac{2}{\pi} \int_0^\infty \text{Im} \left[\frac{-1}{\bar{\epsilon}(0, W')} \right] \frac{dW'}{W'} + \frac{1}{n_0^2} = 1. \quad (18)$$

The f-sum rule can be required to be fulfilled also shell by shell, which allows a more in-depth assessment of the optical ELF.⁶⁸ The optical ELF can be fitted by means of the MELF-GOS model, see Section 2.3. This fitting does not only provide an appropriate extension of the first-principles ELF to large energy and momentum transfers (needed to compute both the sum rules and the electronic cross-sections), but can also help in assigning the different features of the ELF to particular transitions if the individual Mermin and GOS functions are associated with particular transitions, as suggested in ref. 68.

Note that, since we are dealing with all-electron simulations, in principle the inclusion of high-energy transitions above 120 eV is possible. However, the extension of the simulations in the energy axis well beyond the value of 120 eV cannot be typically achieved at an affordable computational cost from first-principles calculations. In this respect, this extension of the energy range (including the Ce and O core levels) has been performed by means of the atomic GOS within the MELF-GOS model, while at intermediate energies between valence and core excitations, a Mermin function fitting to the atomic X-ray data by Henke *et al.*⁸⁵ has been carried out.

The structures observed in the $\bar{\epsilon}_2$ spectrum can be translated to those seen in the optical ELF, where the peaks are generally shifted to larger energies as compared to $\bar{\epsilon}_2$, as $\text{ELF} = \text{Im}(-1/\bar{\epsilon}) = \bar{\epsilon}_2/(\bar{\epsilon}_1^2 + \bar{\epsilon}_2^2)$ (see Fig. 3 and 4 for a comparison between energy peaks) and typically $\bar{\epsilon}_1$ decreases with an increase in the energy

transfer. Additionally, plasmon excitations can be found by searching for the conditions $\bar{\epsilon}_1 \approx 0$ and $\bar{\epsilon}_2 \ll 1$. According to our calculations, only the excitations around 12–14 eV and 32 eV could have collective or plasmon-like character. While several authors^{21,82,86} attribute the first peak to plasmon excitation, this is not entirely evident from our simulations, even though the inclusion of LFE lowers the minimum of $\bar{\epsilon}_2$ in correspondence to $\bar{\epsilon}_1 \approx 0$ (see Fig. 3), resulting in a maximum of the ELF.

Following the trends in the band gaps and $\bar{\epsilon}_2$ features obtained from the PDOS analysis, we fitted the first-principles optical ELF of CeO₂ with 11 Mermin ELF's assigned to particular transitions, see Fig. 5. However, two of the Mermin functions (7 and 11, shown by a gray line) were intended to act as a “baseline” to obtain a smooth crossover between the valence and core levels and, thus, have not been assigned to any particular transition to fulfill the sum rules. Note that for the larger energies (Ce5s, O2s and larger energy excitations, including those described by GOS), threshold energies have been taken from atomic binding energies from the X-Ray Data Booklet,⁸⁷ see Table 4. The individual contributions to the Mermin function fitting of the first-principles optical ELF are depicted by thin solid lines in Fig. 5 and the corresponding parameters are given in Table S1 in the ESI.† Each Mermin function or group of functions has been assigned to particular transitions, as indicated in Table 4. The assignment has been made with the purpose of fulfilling the individual f-sum rules, *i.e.* that the effective number of electrons N_{eff} coming from each interband transition is close to the number of electrons expected in such transition N_{exp} .

To this respect, two further aspects should be taken into account. First, the Mermin functions 1 to 4 are associated with transitions from the occupied O2p band, as this is the main hybridization of the valence band. However, this being the outermost band, it also hosts the valence electrons from

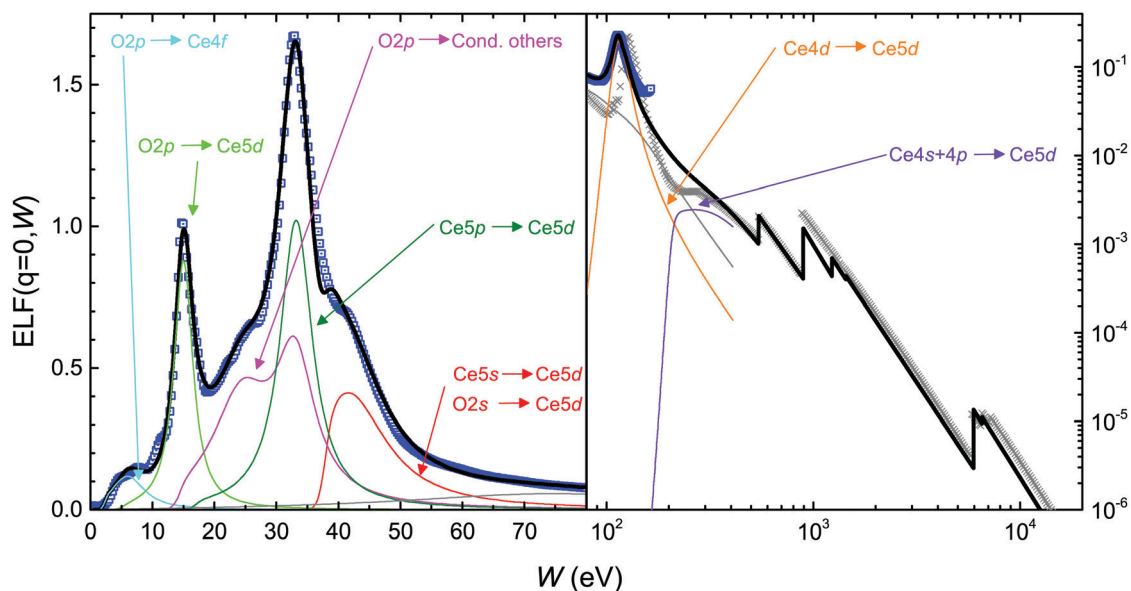


Fig. 5 Optical ELF of bulk CeO₂ at low (left panel) and high (right panel) energies obtained from ALDA with LFE and considering peak broadening (symbols), together with Mermin ELF fitting (thick black line) including contributions from different transitions indicated by labels (thin solid lines).



Ce6s, 5d, 4f, and so the total expected number of electrons there should be 12. Second, the hydrogenic GOS systematically underestimates the number of inner-shell electrons (see Table 4) as a consequence of Pauli's exclusion principle. Indeed, as the inner-shell electrons cannot be promoted to occupied outer-shells, they lose some amount of GOS. At the same time, the outer-shell electrons cannot fall into the occupied inner shells, thus losing some amount of negative GOS, resulting in a larger effective number of electrons.⁵⁰ In CeO₂ the number of core electrons in the O K, Ce K, L, M shells is 32, while we find ≈ 23 . Thus, the remaining electrons are relocated in the outer shells in order to fulfil the total f-sum rule. These missing electrons are located in the unassigned "baseline" Mermin functions (7 and 11), so they do not affect much the electron count in the other assigned contributions.

Despite some underestimation in the number of electrons in a few shells (e.g. of the 12 O2p and Ce4f, 5d and 6s electrons, only 8.08 electrons were found, see Table 4), the assignment of the levels is rather satisfactory for most of the transitions. The ~ 4 electrons missing from the O2p and Ce6s, 5d, 4f bands (Mermin functions 1 to 4) are contained in the seventh not assigned Mermin function (see Table 4), which possibly may represent a large energy tail of these transitions. The fulfilment of the total f- and ps-sum rules is remarkable, with errors of -0.15% and $+0.36\%$, respectively. Particularly, the effective number of electrons in our fitting corresponding to the Ce5p \rightarrow 5d (dark green line in Fig. 6) and Ce5s, O2s \rightarrow Ce5d transitions (red line) is very close to the expected number of electrons. This reveals an underestimation in the f-sum rule of the experimental ELF^{20,21,80,81} in the range of 30–70 eV, which may reveal some degree of experimental uncertainty. The Mermin functions corresponding to the Ce4d \rightarrow 5d (orange line) and Ce4s,

4p \rightarrow 5d transitions (purple line) also deliver an effective number of electrons remarkably close to the expected ones.

Finally, to determine the inelastic scattering cross-sections within the dielectric approach,^{39,40,42} we need to assess the dependence of the ELF in both the energy and momentum space (the so-called Bethe surface). We report in Fig. S6 of the ESI† the energy and momentum dependent ELF of bulk CeO₂ calculated according to eqn (4) and (5) in the range of 0–6 Å⁻¹ along the [111] direction in the reciprocal-space for energies up to 120 eV. We notice that the agreement between MELF-GOS and TDDFT results is reasonable at low energy and finite momentum, while the peak at 120 eV shows a momentum dispersion that does not increase in energy (see Fig. S6 of the ESI†). We assessed the dependence on the direction of the momentum transfer of the ELF of bulk CeO₂, finding a small difference between the [111], [110], and [211] orientations (see Fig. S7 of the ESI† showing this dependence). Therefore, we used the ELF in the [111] direction for the Monte Carlo simulations of the REEL spectrum.

3.3 The excitation spectrum of bulk Ce₂O₃

To identify the electronic transitions of bulk Ce₂O₃ we followed an approach similar to that of CeO₂, based on the MELF-GOS fit. The first-principles real ($\bar{\epsilon}_1$) and imaginary ($\bar{\epsilon}_2$) parts of the macroscopic dielectric function, together with the resulting ELF in the [001] (solid lines) and the equivalent [110] and [100] directions (dashed lines) are shown in Fig. 6, taking the $\mathbf{q} \rightarrow 0$ limit. Although there is a small difference in the crystal direction, it will be seen that it is not as significant to affect the REEL Monte Carlo simulations.

From the combined analysis of the PDOS (see Fig. 2) and of Fig. 6 we can argue that the first shoulder in $\bar{\epsilon}_2$ around 5 eV corresponds to the Ce4f \rightarrow Ce4f, 5d transition, with a gap of 2.04 eV. The next two peaks correspond to transitions from the O2p band to the narrow Ce4f band, and from the O2p band to the wider Ce5d band, with a threshold of 3.83 eV. The first peak above 13 eV corresponds to another O2p transition to the top of

Table 4 Assignment of Mermin functions and fulfillment of the individual f-sum rule of each interband transition for bulk CeO₂

| Mermin | Transition | W_{th} (eV) ^a | N_{exp} | N_{eff} |
|--------|---------------------------------------|----------------------------|-----------------|-----------|
| 1 | O2p \rightarrow Ce4f | 2.35 | | |
| 2 | O2p \rightarrow Ce5d (plasmon-like) | 5.20 | | |
| 3–4 | O2p \rightarrow cond. (others) | 14.12 | | |
| 1–4 | O2p, Ce6s, 5d, 4f ^b | | 12 ^b | 8.08 |
| 5 | Ce5p \rightarrow 5d (plasmon-like) | 16.80 | 6 | 6.13 |
| 6 | Ce5s, O2s \rightarrow Ce5d | 37.80 ^c | 6 | 5.91 |
| 7 | Not assigned | | | 5.32 |
| 8–9 | Ce4d \rightarrow 5d | 100.68 ^c | 10 | 10.87 |
| 10 | Ce4s, 4p \rightarrow 5d | 206.53 ^c | 8 | 7.89 |
| 11 | Not assigned | | | 6.39 |
| GOS | | Atomic shells | | |
| O K | O1s | 543.10 ^c | 4 | 3.48 |
| Ce M | Ce3s, 3p, 3d | 883.80 ^c | 18 | 14.23 |
| Ce L | Ce2s, 2p, 4f | 5723.00 ^c | 8 | 4.53 |
| Ce K | Ce1s | 40443.00 ^c | 2 | 1.07 |
| Total | | | 74 | 73.89 |

^a Threshold energies derived from the PDOS except otherwise stated.

^b The Mermin functions 1–4 describe the excitations of the outermost valence electrons, located in a band of mainly O2p origin, but which also contains the valence electrons Ce6s, 5d, and 4f, see Fig. 1. ^c From ref. 87.

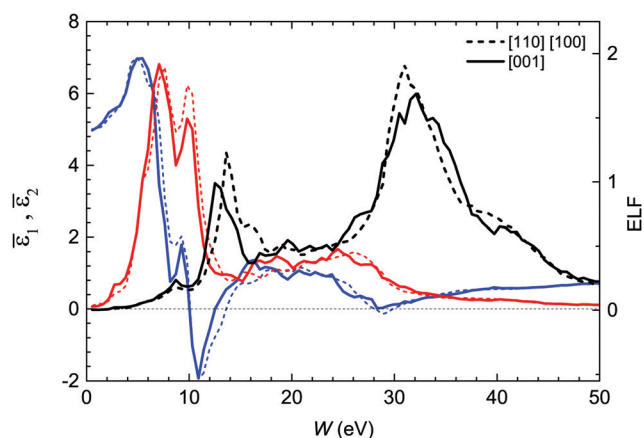


Fig. 6 Real ($\bar{\epsilon}_1$, blue lines) and imaginary ($\bar{\epsilon}_2$, red lines) part of the macroscopic dielectric function of bulk Ce₂O₃ along with the optical ELFs. $\bar{\epsilon}_1$, $\bar{\epsilon}_2$ and the optical ELF are presented along the [001] (solid lines) and the [110] and [100] directions (dashed lines) of the momentum transfer.



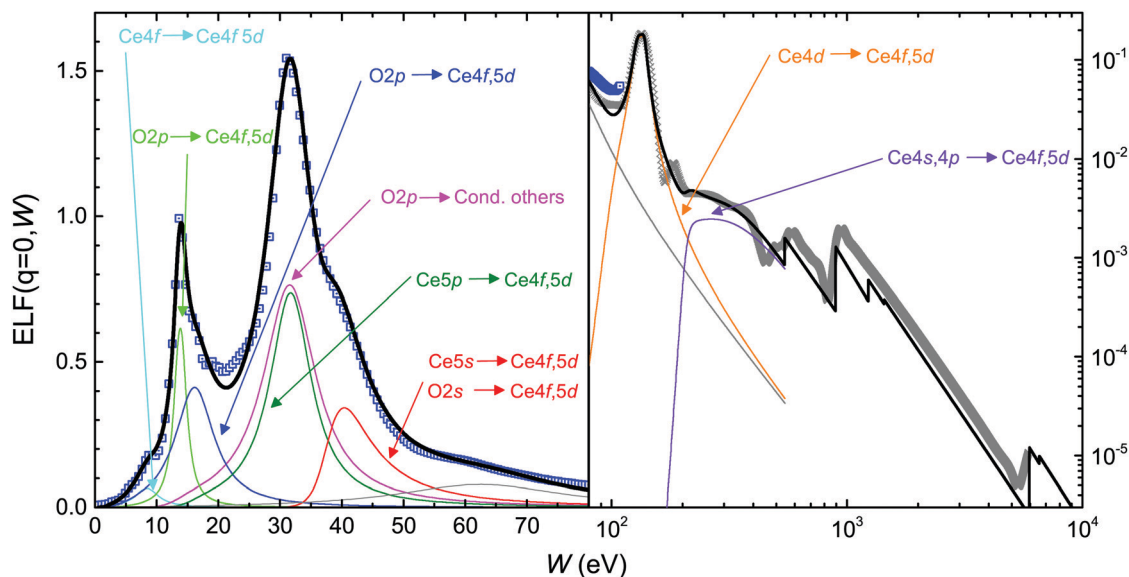


Fig. 7 Optical ELF of bulk Ce_2O_3 at low (left panel) and high (right panel) energies obtained from ALDA with LFE and considering peak broadening (symbols), together with Mermin ELF fitting (thick black line) including contributions from different transitions indicated by labels (thin solid lines).

the conduction band, composed of a mixture of states, with an approximated threshold of 13.06 eV (notice the dip in the TDOS at this energy in Fig. 2). The other peaks above 13 eV can be attributed to transitions from the Ce5p band to the Ce4f, 5d band, with a threshold of 15.10 eV. The O2s \rightarrow Ce4f, 5d transitions can be found at higher energies.

The optical ELF of bulk Ce_2O_3 is fitted using the MELF-GOS model following the above assignments and band gaps, and we report its low (< 70 eV) and high (up to 10 keV) energy structure in Fig. 7. As seen from Table 5, a number of 17.12 electrons are missing from the inner shells, which are relocated among the outer shells. The first Mermin function (cyan curve) represents the Ce4f (occupied) \rightarrow Ce4f, 5d (empty) transition. The transitions from the O2p band (also containing the outermost Ce4f, 5d, 4s electrons) can be separated in three distinguishable contributions. The green line corresponds to the transition from the O2p levels to the narrow empty band of Ce4f character with a threshold of 3.83 eV, and possibly having a plasmon-like character, as suggested by the results in Fig. 6. The blue line represents the transition to the wider Ce5d band with a threshold of 3.83 eV, and finally the magenta line indicates the transition to the upper part of the conduction band with an approximate threshold of 13.06 eV. A test of the f-sum rule by integrating all the 1–4 Mermin functions delivers 20.68 electrons, comparable to the expected value of 20.

As in the case of CeO_2 , the Ce5s, O2s \rightarrow Ce4f, 5d transition (red line) is located at higher energies with a threshold of 37.8 eV (from ref. 87). The f-sum rule test delivers 10.10 electrons of the 10 electrons expected. A seventh Mermin function (gray line) has not been assigned, and recovers a major part (11.81 of 17.12) of the electrons missing from the inner shells. Finally, we identify the transitions Ce4d \rightarrow Ce5d lying above 10.6 eV (orange line, 24.47 electrons of the 20 expected, containing also some of the electrons missing from the inner shells) and Ce4s, 4p \rightarrow Ce5d

Table 5 Assignment of Mermin functions and fulfillment of the individual f-sum rule of each interband transition for bulk Ce_2O_3

| Mermin | Transition | W_{th}^a (eV) | N_{exp} | N_{eff} |
|-------------------|---|------------------------|------------------|------------------|
| 1 | Ce4f \rightarrow 4f, 5d | 2.04 | | |
| 2 | O2p \rightarrow Ce4f, 5d (plasmon-like) | 3.83 | | |
| 3 | O2p \rightarrow Ce4f, 5d | 3.83 | | |
| 4 | O2p \rightarrow cond. (other) | 13.06 | | |
| 1–4 | O2p, Ce6s, Ce5d, Ce4f ^b | | 20 ^b | 20.68 |
| 5 | Ce5p \rightarrow 4f, 5d (plasmon-like) | 15.10 | 12 | 12.16 |
| 6 | Ce5s, O2s \rightarrow Ce4f, 5d | 37.8 ^c | 10 | 10.10 |
| 7 | Not assigned | | | 11.81 |
| 8–9 | Ce4d \rightarrow 4f, 5d | 100.68 ^c | 20 | 24.47 |
| 10 | Ce4s, 4p \rightarrow 4f, 5d | 206.53 ^c | 16 | 15.98 |
| GOS Atomic shells | | | | |
| O K | O1s | 543.68 ^c | 6 | 5.22 |
| Ce M | Ce3s, 3p, 3d | 883.80 ^c | 36 | 28.47 |
| Ce L | Ce2s, 2p | 5723.00 ^c | 16 | 9.06 |
| Ce K | Ce1s | 40443.00 ^c | 4 | 2.13 |
| Total | | | 140 | 140.19 |

^a Threshold energies derived from the PDOS except otherwise stated.

^b The Mermin functions 1–4 describe the excitations of the outermost valence electrons, located in a band of mainly O2p origin, but which also contains the valence electrons Ce6s, 5d, and 4f, see Fig. 1. ^c From ref. 87.

(purple line, 15.98 electrons of the 16 expected). We notice the satisfactory fulfillment of the total f-sum rule with an error of 0.14%, and of the ps-sum rule with an error of 0.70%.

The energy and momentum dependent ELF of bulk Ce_2O_3 along the [110] direction in reciprocal-space from 0 to 6 \AA^{-1} is provided in the bottom panel of Fig. S6 of the ESI†. We also checked the dependence on the direction of the momentum transfer of the ELF of bulk Ce_2O_3 , finding a difference between the [001], [110], and [100] orientations (depicted in Fig. S8 of the ESI†) without



significant effects on the MC simulations of REEL spectra. Thus, we used the ELF structure in the specific direction [110] for the momentum transfer in MC simulations.

3.4 Electron transport in the cerium oxides

The description of the inelastic interactions of charged particles moving through bulk solids in terms of the DIIMFP (see eqn (12)) and IMFP (see eqn (13)) is one of the inputs to carry out charge transport MC simulations. We thus calculated the latter observables for bulk CeO₂. We plot the IMFP in Fig. 8, alongside the experimental data obtained for CeO₂ on Ni (circles) and Au (squares) substrates.⁸⁸ While the agreement between calculations and experimental measurements is remarkable, we stress the crucial importance of including the semicore 4d → 5d transitions and deeper inner-shell excitations (those beyond 100 eV) in the assessment of the IMFP. Indeed, using only the *ab initio* data limited to 100 eV (the typical energy range affordable for TDDFT calculations) we notice a discrepancy up to 25% higher with respect to the experimental data (see the difference between the orange dot-dot-dashed and solid black curves around 120 eV in Fig. 8).

The IMFP of bulk Ce₂O₃ is also reported as a blue dot-dashed line in Fig. 8, showing no significant differences with that of CeO₂. It should be noted that, despite the resemblance of the IMFP of both oxides, they present some differences (not shown here explicitly) in their DIIMFP, eqn (12), arising from their diverse electronic excitation spectra (see Fig. 5, 7 and Fig. S6, ESI†).

Typically, elastic scattering occurs between electrons and the massive ionic constituents of the target, and results only in the deflection of electron trajectories. While in principle relativistic first-principles quantum mechanical calculations based on the formal theory of scattering^{47,49} can be used to calculate the DESCs,⁶⁶ the computational cost to include a large number of atoms required to carry out accurate relativistic simulations in a solid is prohibitive. Thus, we use the expression of the Mott's cross-section (see eqn (14) and (15)) within the cluster method, by which we carve out a portion of the material (which can be as

small as one atom) and reckon the DESCs only dealing with a molecular cluster surrounded by empty space. This approximation, which can be made more accurate by increasing the cluster size until the DESCs ceases to vary, can be drastic at times but works in our case. However, the exclusion (inclusion) of multiple scattering effects in the calculation of the DESCs reckoned by using eqn (14) and (15) leads to negligible discrepancies. Thus, using eqn (14), we have calculated the DESCs of CeO₂ and Ce₂O₃ at different primary beam kinetic energies.

The REEL spectra of the materials under investigation have been computed by our MC approach, where the electron trajectories ensemble is set to reach statistical significance and low noise of the simulated data ($\approx 10^9$ trajectories). We remind that the REEL spectrum probes the dielectric response of materials in the longitudinal direction (along the momentum transfer), being a purely longitudinal field a condition of propagation of the plasmon. Furthermore, the microscopic components of the transverse induced field are negligible in the optical limit.

In Fig. 9 we report the REEL spectra of bulk CeO₂ (red line) and Ce₂O₃ (blue line), and we also compare our simulations with the available experimental data,²¹ finding good agreement by reproducing all the main features of the experimental spectrum. These simulated REEL spectra have been obtained using the ELF of CeO₂ and Ce₂O₃ along the [111] and [110] directions in the reciprocal space, respectively. However, we noticed a negligible dependence on the momentum transfer direction of the REEL spectra (see Fig. S7 and S8 of the ESI† where we compare the calculated Bethe surfaces along different orientations of the momentum transfer). The REEL spectra are both normalized with respect to the area under the curves. We remind that surface effects, such as the presence of surface plasmons, are not included in our bulk simulations, while they may affect the measurements. This can explain *e.g.* the discrepancy of the brighter experimental peak intensity near the elastic peak with our simulations.

The overall satisfactory agreement with the experimental data makes us confident that both the simulated dispersion law with the momentum transfer and the MELF-GOS extension to very high energy are indeed accurate. We stress again the need for including the Ce4d transitions and LFE in the calculation of the dielectric response to achieve good accuracy of the REEL spectra. We notice that the experimental spectrum²¹ shows features reproduced in both our simulated REEL spectra of CeO₂ and Ce₂O₃ bulk structures, thus experimental determinations seem more consistent with polycrystalline samples possibly mixing these two stable allotropic forms of cerium oxide.

The REEL spectra are characterised by a number of structured peaks, due to plasmon-like losses and single electron intraband and interband transitions. In particular, the REEL spectral line-shape of CeO₂ in Fig. 9 (red line) shows three major structures below the elastic zero-energy loss peak of backscattered electrons (extreme right of the plot). According to our previous analysis of both the PDOS and $\bar{\epsilon}_2$, the first peak found at ≈ 3.7 eV from the elastic peak can be attributed to the interband transition from

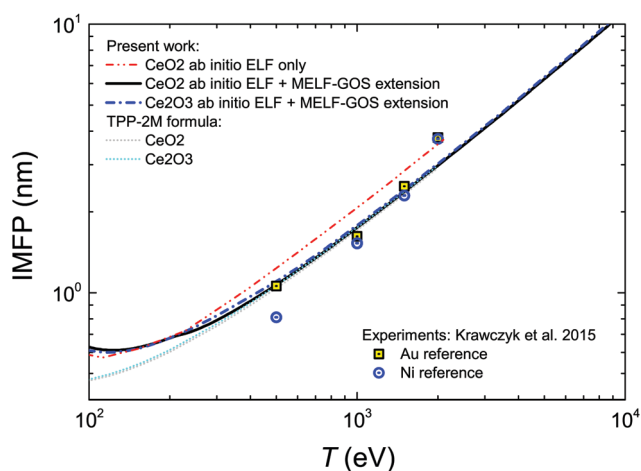


Fig. 8 Comparison of the *ab initio* IMFP of bulk CeO₂ and Ce₂O₃ calculated in this work with TPP-2M formula predictions and experimental data for CeO₂ obtained with respect to Ni and Au substrates.⁸⁸



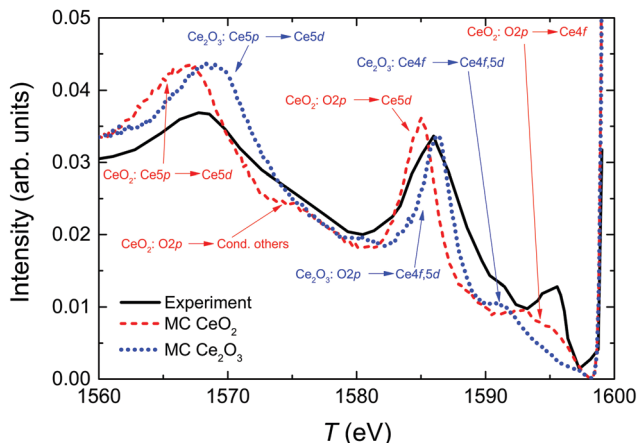


Fig. 9 Comparison between the REEL spectra of bulk CeO_2 (red line) and Ce_2O_3 (blue line) simulated by MC compared with the directly measured spectrum (black line).²¹ Spectra are normalized with respect to the area under the curves. Zero-loss peak is found at the extreme right of the spectrum. The primary beam impinges the material with an incident angle equal to 60° with respect to the surface's normal.

the O2p valence band to the localized Ce4f narrow band, the second peak around 15 eV to a plasmon-like excitation from O2p \rightarrow Ce5d reflecting the PDOS of Ce5d conduction band, and finally, the third broader loss structure at 32.5 eV from the elastic peak can be attributed to the Ce5p \rightarrow 5d interband transition.

Analogously, the REEL spectrum of bulk Ce_2O_3 reflects the previous analysis of the peaks found in the PDOS and in the ELF, showing a lineshape with orbital characters similar to CeO_2 . Interestingly, the experimental REELS²¹ shows three structures (a first peak around 1595 eV, a shoulder around 1598–1590 eV, and a second peak at 1575 eV), which are revealed to distinctly correspond to CeO_2 (red dashed line) and Ce_2O_3 (blue dotted line), respectively. Thus, the current approach demonstrates how first principles-based simulations may help in characterizing and identifying the features observed in experimental determinations. Finally, we notice that the REEL spectra are almost independent of the chosen direction of the momentum transfer.

4 Conclusions

In this work, we have computed the dielectric response functions of cerium oxides, which are materials with potential applications ranging from radiotherapy to catalysis industry, using linear response TDDFT on the top of ground state calculations based on DFT+*U*, adding the Hubbard correction to deal with the presence of 4f localized states. We found excellent agreement with most of the experimental determinations, showing in particular that an accurate assessment of the optical properties must include LFE.

We also performed also assignment of the different features of the spectra in terms of interband transitions, which allowed checking the accuracy of the results further by means of sum rules. The information collected *via* numerical simulations based on first-principles was extended to higher energies by

the MELF-GOS model to include core-level excitations. We stress that the inclusion of the interband transitions from the 4d levels of Ce and of the innermost Ce and O shells, as well as of the LFE into the dielectric response of these oxides is of paramount importance for calculating accurately the IMFP of electrons in their motion through the medium.

Furthermore, the ELF calculations of both bulk CeO_2 and Ce_2O_3 have also been performed by considering the full energy-momentum dispersion at finite values of momentum transfer. The inelastic collision parameters, directly obtainable from the ELF, along with the elastic scattering ones, are essential ingredients to feed a MC routine and follow the trajectory of electrons within the solid. In this respect, we were able to reproduce (or predict) in remarkably good agreement with the available experimental data the major REEL spectral features of bulk CeO_2 and Ce_2O_3 .

Our work, based on a statistical MC method performed with high-accuracy *ab initio* inputs, paves the way towards a thorough understanding of the electron transport and optical properties of cerium oxides, which can drive appropriate design of materials, also in terms of nanoparticle shapes, with potential disruptive impact on enhancing the local radiation damage in cancer cure treatments and catalysis applications.

Conflicts of interest

There are no conflicts to declare.

Acknowledgements

The authors acknowledge Bruno Kessler Foundation (FBK) for providing unlimited access to the KORE computing facility. A. P. acknowledges Fondazione Caritro and DICAM (University of Trento) for the financial support under the CARITRO project High-Z ceramic oxide nanosystems for mediated proton cancer therapy. A. P. also acknowledges fruitful discussion with the ELK code developers. This project has received funding from the European Union's Horizon 2020 Research and Innovation programme under the Marie Skłodowska-Curie grant agreement no. 840752 NanoEnHanCement of P. d. V., as well as from the Spanish Ministerio de Economía y Competitividad and the European Regional Development Fund (Project no. PGC2018-096788-B-I00), from the Fundación Séneca (Project no. 19907/GERM/15) and from the Conselleria d'Educació, Investigació, Cultura i Esport de la Generalitat Valenciana (Project no. AICO/2019/070).

Notes and references

- 1 C. Sun, R. Hui and J. Roller, *J. Solid State Electrochem.*, 2010, **14**, 1125–1144.
- 2 G. H. Gunasekar, J. Shin, K.-D. Jung, K. Park and S. Yoon, *ACS Catal.*, 2018, **8**, 4346–4353.
- 3 O. Matz and M. Calatayud, *ACS Omega*, 2018, **3**, 16063–16073.



- 4 J. Tang, Z. Han, Y. Zuo and Y. Tang, *Appl. Surf. Sci.*, 2011, **257**, 2806–2812.
- 5 X. Feng, D. C. Sayle, Z. L. Wang, M. S. Paras, B. Santora, A. C. Sutorik, T. X. T. Sayle, Y. Yang, Y. Ding, X. Wang and Y.-S. Her, *Science*, 2006, **312**, 1504–1508.
- 6 N. Özer, *Sol. Energy Mater. Sol. Cells*, 2001, **68**, 391–400.
- 7 J. Kašpar, P. Fornasiero and M. Graziani, *Catal. Today*, 1999, **50**, 285–298.
- 8 S. McKinnon, S. Guatelli, S. Incerti, V. Ivanchenko, K. Konstantinov, S. Corde, M. Lerch, M. Tehei and A. Rosenfeld, *Phys. Med.*, 2016, **32**, 1584–1593.
- 9 A. Briggs, S. Corde, S. Oktaria, R. Brown, A. Rosenfeld, M. Lerch, K. Konstantinov and M. Tehei, *Nanomedicine*, 2013, **9**, 1098–1105.
- 10 S. Jain, D. Hirst and J. O'Sullivan, *Br. J. Radiol.*, 2012, **85**, 101–113.
- 11 E. Porcel, S. Liehn, H. Remita, N. Usami, K. Kobayashi, Y. Furusawa, C. L. Sech and S. Lacombe, *Nanotechnology*, 2010, **21**, 085103.
- 12 L. Sancey, F. Lux, S. Kotb, S. Roux, S. Dufort, A. Bianchi, Y. Crémillieux, P. Fries, J.-L. Coll, C. Rodriguez-Lafrasse, M. Janier, M. Dutreix, M. Barberi-Heyob, F. Boschetti, F. Denat, C. Louis, E. Porcel, S. Lacombe, G. Le Duc, E. Deutsch, J.-L. Perfettini, A. Detappe, C. Verry, R. Berbeco, K. T. Butterworth, S. J. McMahon, K. M. Prise, P. Perriat and O. Tillement, *Br. J. Radiol.*, 2014, **87**, 20140134.
- 13 J. C. Polf, L. F. Bronk, W. H. P. Driessen, W. Arap, R. Pasqualini and M. Gillin, *Appl. Phys. Lett.*, 2011, **98**, 193702.
- 14 J.-K. Kim, S.-J. Seo, H.-T. Kim, K.-H. Kim, M.-H. Chung, K.-R. Kim and S.-J. Ye, *Phys. Med. Biol.*, 2012, **57**, 8309–8323.
- 15 Z. Kuncic and S. Lacombe, *Phys. Med. Biol.*, 2018, **63**, 02TR01.
- 16 J. Schuemann, A. F. Bagley, R. Berbeco, K. Bromma, K. T. Butterworth, H. L. Byrne, B. D. Chithrani, S. H. Cho, J. R. Cook, V. Favaudon, Y. H. Gholami, E. Gargioni, J. F. Hainfeld, F. Hespeels, A.-C. Heuskin, U. M. Ibeh, Z. Kuncic, S. Kunjachan, S. Lacombe, S. Lucas, F. Lux, S. McMahon, D. Nevozhay, W. Ngwa, J. D. Payne, S. Penninckx, E. Porcel, K. M. Prise, H. Rabus, S. M. Ridwan, B. Rudek, L. Sanche, B. Singh, H. M. Smilowitz, K. V. Sokolov, S. Sridhar, Y. Stanishevskiy, W. Sung, O. Tillement, N. Virani, W. Yantasee and S. Krishnan, *Phys. Med. Biol.*, 2020, **65**, 21RM02.
- 17 I. Kempson, *Wiley Interdiscip. Rev.: Nanomed. Nanobiotechnol.*, 2021, **13**, e1656.
- 18 B. W. Swartz, PhD thesis, Doctoral dissertation, East Carolina University, 2015.
- 19 M. El Khalifi, F. Picaud and M. Bizzi, *Anal. Methods*, 2016, **8**, 5045–5052.
- 20 F. Goubin, X. Rocquefelte, M.-H. Whangbo, Y. Montardi, R. Brec and S. Jobic, *Chem. Mater.*, 2004, **16**, 662–669.
- 21 N. Pauly, F. Yubero, J. P. Espinós and S. Tougaard, *Appl. Opt.*, 2017, **56**, 6611.
- 22 N. V. Skorodumova, R. Ahuja, S. I. Simak, I. A. Abrikosov, B. Johansson and B. I. Lundqvist, *Phys. Rev. B: Condens. Matter Mater. Phys.*, 2001, **64**, 115108.
- 23 P. J. Hay, R. L. Martin, J. Uddin and G. E. Scuseria, *J. Chem. Phys.*, 2006, **125**, 034712.
- 24 S. Fabris, S. de Gironcoli, S. Baroni, G. Vicario and G. Balducci, *Phys. Rev. B: Condens. Matter Mater. Phys.*, 2005, **71**, 041102.
- 25 J. Graciani, A. M. Márquez, J. J. Plata, Y. Ortega, N. C. Hernández, A. Meyer, C. M. Zicovich-Wilson and J. F. Sanz, *J. Chem. Theory Comput.*, 2011, **7**, 56–65.
- 26 L. Brugnoli, A. M. Ferrari, B. Civalleri, A. Pedone and M. C. Menziani, *J. Chem. Theory Comput.*, 2018, **14**, 4914–4927.
- 27 F. Aryasetiawan and O. Gunnarsson, *Rep. Prog. Phys.*, 1998, **61**, 237–312.
- 28 V. I. Anisimov, F. Aryasetiawan and A. I. Lichtenstein, *J. Phys.: Condens. Matter*, 1997, **9**, 767–808.
- 29 H. Jiang, R. I. Gomez-Abal, P. Rinke and M. Scheffler, *Phys. Rev. Lett.*, 2009, **102**, 126403.
- 30 H. Jiang, P. Rinke and M. Scheffler, *Phys. Rev. B: Condens. Matter Mater. Phys.*, 2012, **86**, 125115.
- 31 P. Umari, O. Petrenko, S. Taioli and M. M. De Souza, *J. Chem. Phys.*, 2012, **136**, 181101.
- 32 S. Taioli, P. Umari and M. De Souza, *Phys. Status Solidi B*, 2009, **246**, 2572–2576.
- 33 S. L. Dudarev, G. A. Botton, S. Y. Savrasov, C. J. Humphreys and A. P. Sutton, *Phys. Rev. B: Condens. Matter Mater. Phys.*, 1998, **57**, 1505–1509.
- 34 J. A. Aguiar, Q. M. Ramasse, M. Asta and N. D. Browning, *J. Phys.: Condens. Matter*, 2012, **24**, 295503.
- 35 D. Tian, C. Zeng, Y. Fu, H. Wang, H. Luo, C. Xiang, Y. Wei, K. Li and X. Zhu, *Solid State Commun.*, 2016, **231–232**, 68–79.
- 36 E. Runge and E. K. U. Gross, *Phys. Rev. Lett.*, 1984, **52**, 997–1000.
- 37 S. Botti, A. Schindlmayr, R. D. Sole and L. Reining, *Rep. Prog. Phys.*, 2007, **70**, 357–407.
- 38 J. Lindhard, *Det Kongelige Danske Videnskabernes Selskab Matematisk-fysiske Meddelelser*, 1954, **28(8)**, 1–57.
- 39 R. H. Ritchie, *Phys. Rev.*, 1959, **114**, 644–654.
- 40 R. H. Ritchie, *Phys. Rev.*, 1957, **106**, 874–881.
- 41 N. F. Mott, *Proc. R. Soc. London, Ser. A*, 1929, **124**, 425–442.
- 42 M. Dapor, *Transport of Energetic Electrons in Solids. Computer Simulation with Applications to Materials Analysis and Characterization*, Springer Nature Switzerland AG, 3rd edn, 2020.
- 43 M. Azzolini, O. Y. Ridzel, P. S. Kaplya, V. Afanasev, N. M. Pugno, S. Taioli and M. Dapor, *Comput. Mater. Sci.*, 2020, **173**, 109420.
- 44 M. Azzolini, M. Angelucci, R. Cimino, R. Larciprete, N. M. Pugno, S. Taioli and M. Dapor, *J. Phys.: Condens. Matter*, 2018, **31**, 055901.
- 45 M. Azzolini, T. Morresi, K. Abrams, R. Masters, N. Stehling, C. Rodenburg, N. M. Pugno, S. Taioli and M. Dapor, *J. Phys. Chem. C*, 2018, **122**, 10159–10166.
- 46 M. Azzolini, T. Morresi, G. Garberoglio, L. Calliari, N. M. Pugno, S. Taioli and M. Dapor, *Carbon*, 2017, **118**, 299–309.
- 47 S. Taioli and S. Simonucci, *Annu. Rep. Comput. Chem.*, 2015, **11**, 191–310.
- 48 S. Taioli, S. Simonucci, L. Calliari, M. Filippi and M. Dapor, *Phys. Rev. B: Condens. Matter Mater. Phys.*, 2009, **79**, 085432.
- 49 S. Taioli, S. Simonucci, L. Calliari and M. Dapor, *Phys. Rep.*, 2010, **493**, 237–319.
- 50 R. Egerton, *Electron Energy-Loss Spectroscopy in the Electron Microscope*, Springer, Boston, MA, 1996.



- 51 I. Abril, R. Garcia-Molina, C. D. Denton, F. J. Pérez-Pérez and N. R. Arista, *Phys. Rev. A: At., Mol., Opt. Phys.*, 1998, **58**, 357–366.
- 52 S. Heredia-Avalos, R. Garcia-Molina, J. M. Fernández-Varea and I. Abril, *Phys. Rev. A: At., Mol., Opt. Phys.*, 2005, **72**, 052902.
- 53 R. Garcia-Molina, I. Abril, I. Kyriakou and D. Emfietzoglou, Energy Loss of Swift Protons in Liquid Water: Role of Optical Data Input and Extension Algorithms, in *Radiation Damage in Biomolecular Systems*, ed. G. Gómez-García Tejedor and M. C. Fuss, Springer Netherlands, Dordrecht, 2012, pp. 239–261.
- 54 R. Garcia-Molina, I. Abril, I. Kyriakou and D. Emfietzoglou, *Surf. Interface Anal.*, 2017, **49**, 11–17.
- 55 <http://elk.sourceforge.net/>.
- 56 L. Gerward, J. Staun Olsen, L. Petit, G. Vaitheeswaran, V. Kanchana and A. Svane, *J. Alloys Compd.*, 2005, **400**, 56–61.
- 57 H. Bärnighausen and G. Schiller, *J. Less-Common Met.*, 1985, **110**, 385–390.
- 58 G. Onida, L. Reining and A. Rubio, *Rev. Mod. Phys.*, 2002, **74**, 601–659.
- 59 A. A. Shukri, F. Bruneval and L. Reining, *Phys. Rev. B*, 2016, **93**, 035128.
- 60 H.-C. Weissker, J. Serrano, S. Huotari, E. Luppi, M. Cazzaniga, F. Bruneval, F. Sottile, G. Monaco, V. Olevano and L. Reining, *Phys. Rev. B: Condens. Matter Mater. Phys.*, 2010, **81**, 085104.
- 61 A. Seidu, A. Marini and M. Gatti, *Phys. Rev. B*, 2018, **97**, 125144.
- 62 O. A. Paredes-Mellone, J. Koskelo, S. A. Ceppi and G. E. Stutz, *Phys. Status Solidi B*, 2020, **257**, 1900780.
- 63 S. L. Adler, *Phys. Rev.*, 1962, **126**, 413–420.
- 64 N. Wisser, *Phys. Rev.*, 1963, **129**, 62–69.
- 65 J. P. Perdew and Y. Wang, *Phys. Rev. B: Condens. Matter Mater. Phys.*, 1992, **45**, 13244–13249.
- 66 S. Taioli, P. E. Trevisanutto, P. de Vera, S. Simonucci, I. Abril, R. Garcia-Molina and M. Dapor, *J. Phys. Chem. Lett.*, 2020, **12**, 487–493.
- 67 N. D. Mermin, *Phys. Rev. B: Solid State*, 1970, **1**, 2362–2363.
- 68 P. de Vera and R. Garcia-Molina, *J. Phys. Chem. C*, 2019, **123**, 2075–2083.
- 69 D. Liljequist and H. Nikjoo, *Radiat. Phys. Chem.*, 2014, **99**, 45–52.
- 70 J. M. Fernandez-Varea, R. Mayol, D. Liljequist and F. Salvat, *J. Phys.: Condens. Matter*, 1993, **5**, 3593–3610.
- 71 P. de Vera, I. Abril and R. Garcia-Molina, *Phys. Chem. Chem. Phys.*, 2021, **23**, 5079–5095.
- 72 A. Jablonski, F. Salvat and C. J. Powell, *J. Phys. Chem. Ref. Data*, 2004, **33**, 409–451.
- 73 J. B. Furness and I. E. McCarthy, *J. Phys. B: At. Mol. Phys.*, 1973, **6**, L204–L207.
- 74 Y. Jiang, J. B. Adams and M. van Schilfhaarde, *J. Chem. Phys.*, 2005, **123**, 064701.
- 75 Z. Yang, T. K. Woo, M. Baudin and K. Hermansson, *J. Chem. Phys.*, 2004, **120**, 7741–7749.
- 76 E. Wuilloud, B. Delley, W. D. Schneider and Y. Baer, *Phys. Rev. Lett.*, 1984, **53**, 202–205.
- 77 S. Guo, H. Arwin, S. N. Jacobsen, K. Järrendahl and U. Helmerson, *J. Appl. Phys.*, 1995, **77**, 5369–5376.
- 78 A. Pfau and K. Schierbaum, *Surf. Sci.*, 1994, **321**, 71–80.
- 79 J.-F. Jerratsch, X. Shao, N. Nilius, H.-J. Freund, C. Popa, M. V. Ganduglia-Pirovano, A. M. Burov and J. Sauer, *Phys. Rev. Lett.*, 2011, **106**, 246801.
- 80 F. Marabelli and P. Wachter, *Phys. Rev. B: Condens. Matter Mater. Phys.*, 1987, **36**, 1238–1243.
- 81 M. Niwano, S. Sato, T. Koide, T. Shidara, A. Fujimori, H. Fukutani, S. Shin and M. Ishigame, *J. Phys. Soc. Jpn.*, 1988, **57**, 1489–1496.
- 82 G. Strasser, G. Rosina, E. Bertel and P. Netzer, *Surf. Sci.*, 1985, **152–153**, 765–775.
- 83 J. Pflüger, J. Fink, W. Weber, K. P. Bohnen and G. Creelius, *Phys. Rev. B: Condens. Matter Mater. Phys.*, 1984, **30**, 1155–1163.
- 84 D. Y. Smith and E. Shiles, *Phys. Rev. B: Condens. Matter Mater. Phys.*, 1978, **17**, 4689–4694.
- 85 B. Henke, E. Gullikson and J. Davis, *At. Data Nucl. Data Tables*, 1993, **54**, 181–342.
- 86 J. Bloch, N. Shamir, M. H. Mintz and U. Atzmony, *Phys. Rev. B: Condens. Matter Mater. Phys.*, 1984, **30**, 2462–2469.
- 87 G. Williams, *X-ray properties of the elements*, ed. A. C. Thompson, X-Ray Data Booklet, Lawrence Berkeley National Laboratory, University of California, Berkeley, California, 2009, <https://xdb.lbl.gov/>.
- 88 M. Krawczyk, M. Holdynski, W. Lisowski, J. Sobczak and A. Jablonski, *Appl. Surf. Sci.*, 2015, **341**, 196–202.

