



Cite this: *Phys. Chem. Chem. Phys.*,
2021, **23**, 13473

First principles characterisation of bio–nano interface†

Ian Rouse,^{id a} David Power,^a Erik G. Brandt,^{id b} Matthew Schneemilch,^c
Konstantinos Kotsis,^{id a} Nick Quirke,^c Alexander P. Lyubartsev^{id b} and
Vladimir Lobaskin^{id *a}

Nanomaterials possess a wide range of potential applications due to their novel properties and exceptionally high activity as a result of their large surface to volume ratios compared to bulk matter. The active surface may present both advantage and risk when the nanomaterials interact with living organisms. As the overall biological impact of nanomaterials is triggered and mediated by interactions at the bio–nano interface, an ability to predict those from the atomistic descriptors, especially before the material is produced, can present enormous advantage for the development of nanotechnology. Fast screening of nanomaterials and their variations for specific biological effects can be enabled using computational materials modelling. The challenge lies in the range of scales that needs to be crossed from the material-specific atomistic representation to the relevant length scales covering typical biomolecules (proteins and lipids). In this work, we present a systematic multiscale approach that allows one to evaluate crucial interactions at the bionano interface from the first principles without any prior information about the material and thus establish links between the details of the nanomaterials structure to protein–nanoparticle interactions. As an example, an advanced computational characterization of titanium dioxide nanoparticles (6 different surfaces of rutile and anatase polymorphs) has been performed. We computed characteristics of the titanium dioxide interface with water using density functional theory for electronic density, used these parameters to derive an atomistic force field, and calculated adsorption energies for essential biomolecules on the surface of titania nanoparticles *via* direct atomistic simulations and coarse-grained molecular dynamics. Hydration energies, as well as adsorption energies for a set of 40 blood proteins are reported.

Received 12th March 2021,
Accepted 13th May 2021

DOI: 10.1039/d1cp01116b

rsc.li/pccp

Introduction

Throughout the 21st century, Feynman’s vision of the control of materials down to the atomistic level has begun to take shape in the form of nanotechnology: the study and use of materials of characteristic sizes on the order of 1–100 nanometres. At this scale, matter behaves significantly differently to bulk materials as a consequence of increased surface area, modified coordination of surface atoms, and different electronic band structures, amongst other properties. Consequently, these nanoparticles (NPs) may exhibit properties varying dramatically from the bulk materials, from absorbing specific wavelengths of light to increased catalytic

activity. These effects may be tuned by manipulating the average size and shape of the NP, and as a result, nanoscale particles and fibres have found use in areas as diverse as food, medicine, cosmetics, and construction materials.

In nanotechnology applications involving biological tissues there is an enormous diversity and complexity of responses and impacts, which are believed to be induced and steered by interactions at the NP surface. These biomolecules consist of a relatively small number of components, with only 20 amino acids present in tens of thousands of proteins, and only 6 elements – carbon, hydrogen, nitrogen, oxygen, phosphorus and sulphur – comprising most of the biomolecules. Given this highly structured and repetitive nature, it can be hoped that the bio–nano interactions are controlled by only a few material parameters. While there are many possible combinations of these atoms that may be biologically relevant, some of these combinations are far more frequent and may play the dominant role in the entire chain of molecular events following the contact of an NP with biological fluids and tissues. In particular, it can be expected that the interaction of NPs

^a School of Physics, University College Dublin, Belfield, Dublin 4, Ireland.
E-mail: vladimir.lobaskin@ucd.ie

^b Department of Materials and Environmental Chemistry, Stockholm University,
S-10691 Stockholm, Sweden

^c Department of Chemistry, Imperial College, 301G Molecular Sciences Research
Hub, White City Campus, 80 Wood Lane, London W12 0BZ, UK

† Electronic supplementary information (ESI) available. See DOI: 10.1039/d1cp01116b



with water, amino acids, segments of lipids, sugars, and nucleic acids is especially important. The interactions with these representative fragments may constitute the material's fingerprint that is predictive of consecutive biological responses.¹ Indeed, the NP–protein corona, the layer of adsorbed molecules formed upon immersion of the NP into a biological fluid, was found to be predictive of the NP biological activity such as association with live cells.² It is reasonable to assume that the contents of this corona is highly dependent on the interaction of the NP with individual amino acid residues.

In contrast to the relatively stable and well-defined realm of biomolecules, the world of nanomaterials is heterogeneous and subject to continuous innovation. Thousands of novel NP variations come to market annually. The materials are adjusted and modified for specific purposes through multiple methods. The optimisation of nanomaterials for the best performance and the lowest risk may require experiments with live cells or live animals, which often represents the most expensive and time-consuming part of the material development and approval for applications. Replacement of such experiments by *in silico* methods could not only help to save resources but would also enable a much deeper approach to material development that is based on the knowledge of the relationships between the material characteristics and their activities. In this way, one can create materials that are safe by design. An establishment of quantitative models relating the NP structure to specific activities is therefore a sacred goal of materials research.

The possibility to model and predict the biological activity of NPs from first principles seems to be beyond the capacity of even the most modern computers due to the typical time and length scale involved and complexity of the biological response. An alternative is the construction of a predictive system by combining physics-based modelling (up to the limits imposed by the system size) with a data-driven approach to relate the physical molecular events to the biological events of interest. Such physical molecular events (*e.g.* biomolecular adsorption on the NPs, biomembrane contact, penetration, or disruption) can be considered as initiating events of biological pathways, and thus be predictive of the outcomes.^{3,4} Although direct molecular simulation can reach the relevant system sizes that include a NP and proteins or lipid membranes, in practice obtaining results on meaningful timescales using atomistic models would take an infeasible amount of computational time, with even state-of-the-art techniques enabling only a few microseconds of the system's evolution.⁵ To be able to discern between variations of NPs by their interaction with various biomolecules we therefore require a multiscale modelling scheme that can tackle the bio–nano interface and relate the respective interactions to the details of the NP structure derived from the first principles.

Recent literature presents multiple examples of models predicting biological activity of nanomaterials to their physico-chemical properties. It is known that metal ion release rates from metal oxide NPs and conduction band gaps correlate with cytotoxicity.^{6–8} The overlap of conduction band energy levels with the cellular redox potential in such systems determines

the ability of NPs to induce oxygen radicals, oxidative stress, and inflammation.^{7,8} Beside the hazard itself, the transport and exposure characteristics can also be related to the NP properties. Specifically, it has been shown that statistics of protein adsorption on NPs correlates with the NP cell association.^{9,10} Some of the properties, such as hydrophobicity, protein adsorption affinity, dissolution rates and the ability to generate reactive oxygen species, were identified by the nanosafety expert community as determinants of biological activity,² and their provision is seen as a crucial step towards the development of predictive schemes. Where such properties are not available experimentally, materials modelling can be useful to provide the necessary data. From the point of view of rational materials design, such an approach would be most valuable if the modelling did not rely on any experimental characteristics and evaluated the materials' characteristics from first principles.

In this work, we introduce a systematic method for characterizing the interactions between inorganic NPs and biomolecules from first principles using coupled quantum chemistry, atomistic molecular dynamics, and mesoscopic methods. We obtain results for both the rutile and anatase forms of TiO₂ and demonstrate the calculation of the free energy of adsorption of a range of proteins to titania NPs of varying radius and surface potential. The methodology proposed here can straightforwardly be adapted to other nanomaterials and the force field obtained for atomistic simulations of titanium dioxide applied to its interactions with molecules other than the biomaterials considered here.

Methods

We propose here a systematic approach to generating a quantitative description of a specific bio–nano interface using materials modelling. Our multiscale method includes:

- evaluation of detailed properties of the NP interface with water and parameterization of the atomistic force field for the material using electronic structure methods.
- calculation of interactions of the biomolecule building blocks (amino acids, lipid segments, DNA bases) with the surface of the material and interaction between the building blocks at the atomistic level at the specified conditions.
- parameterization of the coarse-grained (CG) force field for biomaterial building blocks and construction of the sample of arbitrary size and shape.
- CG modelling of interaction of entire biomolecules with the NP surface and calculation of preferred orientation and the mean adsorption energy.

We start with evaluation of intrinsic properties of the target nanomaterial, namely titania, using common electronic structure methods. We first evaluate the relevant material (TiO₂) characteristics (band structure, ionisation potential, electronegativity, *etc.*) relating to the electronic structure using *ab initio* models. We further use *ab initio* molecular dynamics (MD) to quantify the hydration state of the material surface and derive parameters of an atomistic force field. We then perform



atomistic MD simulations with the obtained force field to evaluate the immersion enthalpy for the material in water, as well as adsorption energy profiles (the potentials of mean force (PMF)) for essential biomolecules such as lipids and proteins, lipid bilayers, and molecular fragments. To compute further characteristics of the bionano interface we use these PMFs within the recently proposed CG United Atom approach (UA)^{11,12} to obtain binding free energies of proteins on NPs constructed from these materials over a range of radii and surface charges.

Semi-empirical, DFT and DFTB

We used density functional theory and semi-empirical methods to calculate the electronic structure descriptors of TiO₂ materials. Semi-empirical calculations have been performed with the MOPAC computational code.¹³ All material properties (band gap, ionization potential, Mulliken electronegativity, absolute hardness, dispersion, polarizability and dipole moment) were obtained with the PM6 method using the D3 correction on the DFT optimized structures.¹⁴ Geometry optimizations of the rutile and anatase TiO₂ bulk structures were performed with SCC-DFTB¹⁵ using the DFTB+ software¹⁶ with the parametrization tiorg-0-1¹⁷ and with the SIESTA code¹⁸ with the PBE functional¹⁹ and a DZP (double-z polarized) basis. Troullier–Martins pseudopotentials²⁰ were applied on the core electrons.

Force field parameterization

The quality of the force field used in classical atomistic simulations is of primary importance for the simulation to produce reliable results. While there exist validated force fields describing bulk materials or aqueous solutions of organic and biomolecules, they are less developed for description of surface properties of (nano)materials. For modelling of metal or metal oxide surface in aqueous media an additional problem is adequate representation of the material surface which is modified (in comparison to the bulk material structure) by reactions with water building a surface-specific layer containing hydroxyl groups, bound molecular water or other surface modifications.

Previously, a force field for classical MD simulations of TiO₂ was developed by Matsui and Akaogi.²¹ In that force field Ti and O atoms interact by Buckingham and electrostatic potentials without bonded interactions. The force field of ref.21 was designed to model bulk materials and possible phase transformations, but its applicability to describe TiO₂ hydrated surface and compatibility with biomolecular force fields remain unclear. Recently, some of us²² have developed TiO₂ force field of a standard molecular-mechanical form with electrostatic, Lennard-Jones and bonded interactions, which was further modified by scaling of charges according to the electronic continuum correction theory.²³ The force field of ref.22 was parametrized to fit available experimental data on crystal structures and water adsorption enthalpies. This use of only non-extensive experimental data left uncertainties in the definition of some parameters as well as about details of the hydrated surface structure. We therefore adopted a new strategy

to derive force field for classical MD simulations of nanoparticles in aqueous biomolecular environment based on high quality *ab initio* modelling.

To parameterize the force field for titanium dioxide as employed in the atomistic simulations presented here, we used a multiscale approach. In this method, the detailed structure of the hydroxylated layer of a metal oxide surface, as well as parameters of the force field describing interactions of the fully hydrated surface with surrounding biomolecular solution are obtained from high-quality *ab initio* MD simulations. *Ab initio* MD simulations provide a representative set of snapshots correctly representing thermal fluctuations of the studied systems, which is used for the further analysis. The method of deriving force field parameters is based on partitioning the quantum mechanical electron density into atomic basins. We apply the population analysis method by Manz²⁴ to partition the electron density among the atoms and extract individual net atomic charges and atomic volumes for individual atoms, as well as information on the bond orders for individual pairs. Briefly, the method consists of the following.

First, the net atomic charges (NAC), defined by the DDEC6 partitioning method,²⁵ are computed:

$$q = z - N = z - \int d^3r w(r)n(r) \quad (1)$$

Here z is the atomic number and N is the number of electrons assigned to the atom. $n(r)$ is the total electron density, and $w(r)$ is the spherical weight attributed to the atom by the partitioning method. NACs provide partial atom charges which are routinely used to model electrostatic interactions in molecular simulations with empirical force fields.

Second, the cubed atomic moment (CAM) are determined:

$$V = r^3 = \int d^3r r^3 w(r)n(r) \quad (2)$$

CAM corresponds to the volume occupied by the atom in the material and it is proportional to the local polarizability.²⁵

Third, the concept of bond order (BO), defined by²⁶

$$D_{ij} = 2 \iint d^3r d^3r' \frac{w_i(r)w_j(r')}{w(r)w(r')} n(r)n^{\text{DXH}}(r, r') \quad (3)$$

which quantifies the amount of shared electron density between atoms i and j . Here, $w(r) = \sum_i w_i(r)$ is the total spherical weight, $n^{\text{DXH}}(r, r')$ is a normalized probability distribution (over r' such as to exclude exactly one electron) that quantifies the so-called dressed exchange hole. The electron density close to the nucleus is depleted due to the exchange interaction. This concept can be modified for bond order by contraction/expansion of the density to align bond orders with the conventional view. With this definition the bond order between two atoms decreases smoothly to zero as the distance between them approaches infinity.

As a training ensemble, we have used trajectories generated in *ab initio* molecular dynamics simulations described previously.²⁷ Briefly, six fully hydrated TiO₂ planar surfaces of low surface energy (rutile 110, 100 and 001, and anatase 101,



100 and 001), each arranged in 2D periodic slab immersed in water, were simulated with DFT computed forces during 50 ps, and 20 snapshots for each surface taken each 1 ps from the last 20 ps of the simulations were taken for the analysis. This set of surfaces form a good representation of the surface of a rutile or anatase nanoparticle without requiring the significant computational time required to simulate an entire nanoparticle. Each member of the ensemble was subject to atom-in-molecule analysis with the Density-Derived and Chemical (DDEC6) method²⁵ to determine net atomic charges, volumes, and bond order parameters using ChargeMol v3.5 software.²⁸

We have used the calculated bond order to determine whether any two atoms are bound by setting a threshold value of 0.25. The local connectivity of atoms was used to determine the force field types. Disregarding atom coordinations which were observed in less than 1% cases, we identified two force field types for Ti-atoms, five types of oxygen atoms, and one type of hydrogen, as described in the Results section below. For each type of atom, we have computed average net atom charges, eqn (1), and cubic atomic volumes, eqn (2). Computed net atomic charges were used directly to determine partial atom charges of the force field, with a minor modification providing total zero charge for stoichiometric sample of TiO₂. Net atomic volumes defined by eqn (2) and averaged over identified force field types were used to determine parameters *B* of the Lennard-Jones potential using the theory developed by Tkachenko and Scheffler,²⁹ and *B(V)* dependences numerically computed and tabulated for each atom nucleus by Gould.^{30,31} Finally, the repulsive Lennard-Jones parameters *A* were determined by simple scaling relationships from the atomic volumes:

$$A = \frac{1}{2}B(2R_A)^6 \quad (4)$$

where *R_A* is effective van der Waals radius (equal to the minimum of the Lennard-Jones potential) corresponding to the atomic volume *V*. For hydrogen, we assumed zero Lennard-Jones parameters, to make it compatible with TIP3P water model.

Lipid-NP interaction and heat of immersion

The interaction of NPs with lipids can be expected to differ depending on whether single lipids or larger structures are considered, and to parameterise these we consider both adhesion energies for a bilayer of lipids and the binding energy of single lipids, calculated through atomistic simulations as detailed previously.³² We additionally calculate heats of immersion as follows. The change in enthalpy upon immersion was estimated by conducting simulations of three systems: the surface in contact with water, the surface in a vacuum, and a simulation of bulk water containing an identical number of water molecules as the first system. The immersion enthalpy was calculated from

$$\Delta H_{\text{imm}} = \frac{1}{2A_i}(H_{\text{surface-water}} - H_{\text{surface-vacuum}} - H_{\text{water}}) \quad (5)$$

where *H* is the enthalpy of the system and *A_i* is the area of the interface. All systems were simulated for 400 ns with 10 ns equilibration.

Adsorption of biomolecular fragments

To characterize interactions between NP surface and small biomolecular fragments, we have selected a set of 30 small molecules which represent all typical molecular fragments present in biomolecular fluids, and computed PMF and binding free energies of these fragments to NP. There are 20 naturally occurring amino acids of which the proteins of living organisms consist. Each full amino acid contains a peptide backbone fragment which is common to all amino acids. In order to avoid redundancy, we excluded the backbone fragment and considered the side chain analogues for all amino acids excluding glycine (for which the side chain analogue is just an H atom) and proline which has a different structure. This set of side chain analogues consists of 18 molecules. Histidine exists in two isomeric forms (denoted as HIE and HID) and we include both. These side chain analogues also have the same structure as hydrophobic lipid tails and certain common lipid head groups (phosphatidylserine, PS and sphingomyelin, SM), further extending the range of larger biomolecules covered by this set. Furthermore, components of headgroups of lipids and sugars are included. The full list of chosen biomolecules consists of:

- Amino acid side chain analogues where backbone fragment is substituted by a hydrogen atom. We use notations of conventional amino acids for the side chain analogues.
- Glycine and proline amino acids with the backbone fragment (GLY, PRO).
- Modified charged forms of amino acids with pKa values between 4 and 10 (HIS+, GLU-protonated, CYS-, denoted HIP, GAN, CYM)
- Segments of the most abundant lipids: choline (CHL) and phosphate (PHO) group of phosphatidylcholine (PC) lipids; amino group (ETA) of ethanolamine lipids (PE), ester group (EST)
- D-Glucose representing sugars (DGL).

The list of molecules introduced here covers all the main types of chemical entities: hydrophobic, polar, aromatic, and charged, and represent all typical molecular fragments present in biofluids. Thus, the set of PMFs and binding free energies of these molecules makes a “fingerprint” of NP with respect to bio-nano interactions.

Calculations of PMFs and binding free energy for each small molecule from the set near a fully hydrated 2D-periodic TiO₂ slab were performed in 300 ns adaptive well-tempered metadynamics simulations using simulation setup previously reported¹² and summarized in the ESI.†

Biomolecular adsorption

Given the complexity of protein-NP systems, it is of interest to produce a scheme to produce adsorption free energies for large proteins based on these simple fragments. The amino acid PMFs can, in principle, be used to calculate the binding energy to nanoparticles for larger biomolecules (e.g. proteins) assembled from these fragments under the approximation of pairwise additivity. However, the PMFs include only interactions between the biomolecule and the nanomaterial up to a distance of about 1 nm, whereas the bulk of the nanomaterial interacts



with these molecular fragments *via* the long-range van der Waals interaction which may remain significant at distances beyond the cut-off used for the calculation of the PMFs. To include these effects while avoiding the need to explicitly sum over the interaction between each atom in the NP and in the target biomolecule, we employ the continuum approximation and treat each AA bead as a sphere interacting with the spherical NP through the Hamaker approach. In this model, the bulk interaction between two spheres of radii R_1 , R_2 with the surface-surface distance d is given by,^{33,34}

$$U(d) = \frac{-A_{12}}{6} \left(\frac{2R_1 R_2}{(2R_1 + 2R_2 + d)d} + \frac{2R_1 R_2}{(2R_1 + d)(2R_2 + d)} \right. \\ \left. + \ln \frac{(2R_1 + 2R_2 + d)d}{(2R_1 + d)(2R_2 + d)} \right), \quad (6)$$

where the quantity $A_{12} = \pi^2 \lambda \rho_1 \rho_2$ is referred to as the Hamaker constant (in vacuum) and is a measure of the magnitude of the long-range dispersion interaction based on the number density of the two materials ρ_1 , ρ_2 and the vdW interaction strength λ . A derivation of the dispersion interaction including the effects of the medium in which these particles are immersed is achieved through Lifshitz theory.³⁴ For materials denoted $i = 1, 2$ interacting through a medium $i = 3$, the constant A_{12} must be replaced by another one A_{123} expressed in terms of the refractive indices (at visible wavelengths) of the materials n_i , their dielectric constants ϵ_i and the main electronic absorption frequency ν_e (in the UV) for material 2:³⁴

$$A_{123} = \frac{3}{4} k_B T \frac{(\epsilon_1 - \epsilon_3)(\epsilon_2 - \epsilon_3)}{(\epsilon_1 + \epsilon_3)(\epsilon_2 + \epsilon_3)} \\ + \frac{3h\nu_e}{8\sqrt{2}} \frac{(n_1^2 - n_3^2)(n_2^2 - n_3^2)}{(n_1^2 + n_3^2)^{\frac{1}{2}}(n_2^2 + n_3^2)^{\frac{1}{2}} \left((n_1^2 + n_3^2)^{\frac{1}{2}} + (n_2^2 + n_3^2)^{\frac{1}{2}} \right)} \quad (7)$$

Clearly, this value will be different for each biomolecule that may interact with the NP. The characteristic radii of the amino acids and the Hamaker constants were calculated as described elsewhere.³⁵

Once the PMFs and Hamaker constants for the set of amino acids and other fragments of interests have been calculated, we employ the UA methodology¹² to calculate the binding energies of a set of reference proteins (see ESI[†]) onto spherical titania NPs. In this model, the protein is represented as a set of beads, with each bead representing one amino acid. The interaction potential between the NP and a bead consists of three components. The first is the PMF describing the short-range potential obtained through atomistic simulations as described in the previous section and corrected to take into account the radius of the NP by applying a distance-dependent scaling factor.¹² Using this correction, a set of PMFs calculated for a planar slab of the material may be applied to all spherical NPs of this material, substantially reducing the computational time required to evaluate the binding energy for a set of NPs of the same material. To account for the bulk of the NP beyond

the cut-off range of the PMF, the van der Waals interaction is added as the second component. This term is corrected to exclude the volume of the NP sufficiently close to the AA that it would be included in the PMF.

The final component is the electrostatic interaction in the Debye–Hückel approximation, which accounts for the interaction between the surface charge of the NP and charged residues and is specified in terms of the surface (zeta) potential.¹² The total potential for a given bead type is calculated by summing over these three contributions, and then summed over all beads to produce the total interaction potential at a given orientation of the biomolecule relative to the surface of the NP, denoted $U(z, \phi, \theta)$. Here, z gives the distance between the centre of the NP and the closest point of the protein. The binding energy for a protein on a spherical NP of radius R as a function of the orientation of the protein ϕ, θ is given by,¹¹

$$E(\phi, \theta) = -k_B T \ln \left[\frac{3}{(R+a)^3 - R^3} \int_R^{R+a} z^2 \exp\left(\frac{-U(z, \phi, \theta)}{k_B T}\right) dz \right], \quad (8)$$

where a is a function of ϕ, θ and gives the maximum distance of the protein from the NP before the protein is deemed to be unbound. Performing a Boltzmann-weighted average over orientations produces the mean binding energy,¹¹

$$E_{\text{ad}} = \frac{\iint P(E, \phi, \theta) E(\phi, \theta) d\phi d\theta}{\iint P(E, \phi, \theta) d\phi d\theta} \quad (9)$$

with the weighting function $P(E, \phi, \theta) = \sin \theta \exp(-E(\phi, \theta)/k_B T)$.

Electrostatic potentials were calculated assuming a Debye length of 0.766 nm as calculated for an electrolyte concentration of 150 mmol in water at 300 K. Binding energies were calculated for radii in the interval 5–200 nm and for five values of the electrostatic surface potential between -50 and $+50$ mV.

Results & discussion

Intrinsic NP properties

Electronic properties of a specific nanomaterial can be obtained through computational techniques such as quantum mechanical semi-empirical calculations based on the Hartree–Fock formalism¹³ and density functional theory methods, with results for TiO₂ shown in Table 1 and Table S1 of the ESI.[†] This allows for both the optimization of the structure of a given nanomaterial on the density functional tight binding (DFTB) level¹⁶ and the density functional theory (DFT) level and the calculation of physicochemical properties of this material by semi-empirical quantum mechanical calculations.¹³ Temperature and the size of the NP are important factors that determine the stability of the TiO₂ forms. Here, we calculate electronic band gaps, ionization potentials, electronegativity, hardness, dispersion corrections, polarizability and the dipole moment for bulk anatase and rutile representing the core of a TiO₂ NP at the semi-empirical level of theory in comparison to DFT and DFTB calculations for band gaps and ionization potentials. Such descriptors have been applied in statistical models to describe toxicity of metal oxide



Table 1 Material properties calculated through MOPAC,¹³ DFTB+,¹⁶ and SIESTA¹⁸ for the anatase and rutile forms of TiO₂

TiO ₂ solid systems	Band gap, eV	Ionization potential-Valence band maximum energy, eV	Mulliken Electronegativity	Parr & Pople absolute hardness	Dispersion energy per atom, kJ mol ⁻¹	Polarizability, Å ³	Dipole moment, Debye
Semi-empirical							
Anatase	9.41	6.67	1.96	4.70	-4.92	133.01	0.34
Rutile	9.66	5.51	0.68	4.83	-5.41	122.32	6.16
DFTB							
Anatase	3.42	3.36	—	—	—	—	—
Rutile	2.68	3.64	—	—	—	—	—
DFT							
Anatase	2.49	8.75	—	—	—	—	—
Rutile	2.25	9.46	—	—	—	—	—

nanomaterials in relation to the core properties of a NP.^{8,36,37} Moreover, we employ DFT calculations (Table S1 in ESI†) using the SIESTA code¹⁸ where the unit cells of anatase and rutile TiO₂ are used to describe the extended bulk structures by Monkhorst-Pack meshes for the point sampling of the Brillouin zone integration.³⁸

Extrinsic NP properties

Bio-nano interaction characteristics. It is well-known that a NP immersed in a biological medium forms a corona of adsorbed proteins, lipids and sugars, and that the composition of this corona is highly dependent on the affinity of each type of protein and lipid present to the NP.³⁹ Thus, the energy of adsorption, also referred to as the binding energy, of biomolecules to an NP is an important set of values characterizing interactions of NPs with biomolecules. To calculate these adsorption energies, we employ a coarse-graining approach in which the interactions between small biomolecules, e.g. amino acids, and the NP surface are evaluated using atomistic molecular dynamics to obtain PMFs. These potentials, together with additional terms describing the electrostatic potential and long-range van der Waals attraction, are used as the input for a calculation of the binding energy of proteins built up from these smaller fragments. In this way, parameterizing a small number of building blocks is sufficient to evaluate the strength of binding between NPs and proteins for which an atomistic molecular-dynamics simulation would be prohibitively time-consuming.

The first step in this parameterization is a development of a force field for atomistic simulations between biomolecular fragments and the NP. This issue was handled as discussed in the Methods section (part Force Field Parameterization) and a summary of the identified force field types and force field parameters are given in Tables 2 and 3.

Using the bond order concept, we have determined local connectivity of the atoms in AIMD trajectories of ref. 27, and identified the following atom types at the hydrated surface of TiO₂: Ti-O6 and Ti-O5, which are Ti atoms coordinated by 6 respectively 5 oxygens; O-Ti3 which is oxygen coordinated by 3 Ti atoms, normally present in the bulk of material; O-Ti2 which is bridge oxygen at the TiO₂ surface; O-H1Ti1 which is oxygen of a hydroxyl group attached to the surface; O-H1Ti2 which is

Table 2 Non-bonded force field parameters for TiO₂ in water environment

Atom type	Coordination	Description	Partial charge, <i>e</i>	σ , Å	ϵ , kJ mol ⁻¹
H	H-O1	Hydrogen	0.417	0	0
TiA	Ti-O6	Bulk Ti	2.248	1.99	13.79
TiB	Ti-O5	Surface Ti/defect	2.159	1.9	13.79
OA	O-Ti3	Bulk TiO ₂ oxygen	-1.124	3.51	0.409
OB	O-Ti2	Bridge oxygen	-1.035	3.42	0.401
OF	O-H1Ti1	Hydroxyl oxygen	-0.913	3.29	0.389
OG	O-H1Ti2	Protonated oxygen bridge	-1.035	3.42	0.401
OH	O-H2Ti1	Adsorbed water	-0.923	3.151	0.634

Table 3 Bonded force field parameters for TiO₂ in aqueous environment

Bond	Equilibrium distance, Å	Force constant, kJ mol ⁻¹ Å ⁻¹
Ti*-OA	1.9	8000
Ti*-OB	1.9	8000
Ti*-OF	1.9	8000
Ti*-OG	1.9	8000
Ti*-OH	1.8	400.
OF-H	1.0	3267
OH-H	1.0	3267
Angle	Equilibrium angle, deg	Force constant, kJ mol ⁻¹ deg ⁻¹
OF-Ti*-OH	90.	500.
OH-Ti*-OH	90.	500.
Ti*-OF-H	114.85	543.
Ti*-OG-H	112.6	564.
Ti*-OH-H	114.85	543.
H-OH-H	104.2	628.

protonated bridge oxygen, and O-H2Ti1, which is oxygen of the molecularly adsorbed water. Analysis of AIMD simulation results showed however very low fraction of protonated oxygen bridges. While formation of protonated oxygen bridges was observed in simulations of hydrated TiO₂ surfaces using Reax force field,⁴⁰ in *ab initio* simulations²⁷ such protonated bridges were unstable, resulting in one of Ti-O bond cleavage and formation of additional OH-group. We did not include protonated oxygen bridges in classical atomistic simulations because of their low (about 1%) abundance in *ab initio* simulations, but we include force field parameters for them in Tables 2 and 3 having in mind that content of protonated bridges is pH-dependent and may increase at low pH.



As observed in *ab initio* simulations,²⁷ undercoordinated surface Ti-atoms have either adsorbed water or hydroxyl groups bound to them. Each hydroxyl group contributes a charge of about $-0.4e$ (taking in mind that if an OH group is attached to undercoordinated Ti-O5 atom, its force field type is changed to Ti-O6). We selected the fraction of hydroxyl groups at the surface as 30%, from the condition that the experimentally measured surface charge of TiO₂ NPs at neutral pH is about $-0.62e \text{ nm}^{-2}$.⁴¹ In the atomistic simulations, the OH-groups were attached to Ti surface atoms in a random manner. Molecularly bound water was attached to all other sites. While such setup excludes eventual surface diffusion of OH-groups, *ab initio* simulations²⁷ showed that after settling equilibrium structure further diffusion in the first hydration layer is practically absent on a ten-picoseconds time scale. Eventual diffusion of adsorbed water or protons on a longer time scale would only change the localization of the OH groups at the surface, which still can be well represented by a random localization of these groups at the surface. Thus, this diffusion will not have a major influence on binding of biomolecules to the surface.

After setting up hydroxyl groups and adsorbed water, the total charge of the TiO₂ slab was brought to the nearest integer value by a minimal scaling of the atom charges, and the corresponding amount of Na⁺ counterions was added to the system. Furthermore, ions of NaCl salt were added to the solution in concentration 0.15 M.

Biomolecular adsorption on NPs

Using this force field, we computed PMFs for the range of biomolecular fragments to rutile (110) and anatase (101) planar surfaces. These surfaces are the lowest energy surfaces in the respective forms of TiO₂, and by this reason one can expect that they represent most of the surface of the NPs. A similar model has been used previously to study adsorption of proteins on a surface of rutile NP.⁴² We extend the previous calculations by covering a wider range of biomolecular fragments and using a more advanced force field accounting for the difference between bulk and surface titania, allowing multiple chemical environments for oxygen atoms, and moreover taking into account structural differences between the anatase and rutile forms. The PMFs are depicted in the ESI,[†] and the computed binding free energies extracted from them are shown in Fig. 1, from which differences in the adsorption profile for the two forms of TiO₂ can clearly be seen. The most strongly binding molecules for anatase are glutamic acid (GLU), cysteine anion

(CYM) and aspartic acid (ASP), all these are negatively charged molecules with either carboxyl group or thiolate. None of these molecules show significant binding to rutile. The difference in binding could originate in the specific structure of the anatase surface where negatively charged groups of the molecules can coordinate favourably with hydrated positively charged titanium atoms. On the rutile surface, access to titanium atoms is screened by the bridging oxygen atoms, thus preventing the binding of anionic molecules. The different character of binding of small molecules have consequences for the binding of larger biomolecules and formation of the protein corona. The Hamaker constants associated with these fragments were calculated using parameters found from the literature and are listed in Table 4.^{43,44}

To further investigate the difference between the two materials, we calculated the binding energies of a set of 40 proteins on anatase and rutile NPs of a range of radii and zeta potentials using the coarse grained model discussed previously. The proteins were chosen primarily based on ones for which PDB structures exist for the human form of the protein with complete coverage of the sequence and include insulin (4EWZ), transferrin (1D3K) and an IgG domain (4HVW). To these, we have further added HSA (4K2C), BSA (4F5S), lung surfactant SP-D (3DBZ) and a lysozyme (1REX) as these are of biological interest. The resulting binding free energies, of which some are presented in Fig. 2 and the complete set provided in the ESI,[†] depend strongly on the radius of the NP and on a lesser extent on the value of zeta potential as depicted in Fig. 2(c and d).

Immersion and adhesion enthalpies, lipid wrapping

A key measure of the degree of interaction between NPs and membranes is the extent to which the NP adheres to or is wrapped by the membrane. According to the Helfrich membrane model⁴⁵ applied by Deserno and Gelbart⁴⁶ to the wrapping of spherical particles by membranes, the outcome is determined by whether the adhesion strength w (the free energy of adsorption per unit area) is sufficient to overcome the bending energy penalty associated with the required membrane deformation. Particles smaller than certain critical size will not adhere to the membrane. Larger particles will adhere and undergo wrapping; the extent to which wrapping occurs is determined by the membrane tension. With low tension and/or strong adhesion, particles will be completely engulfed, following which the particle may detach from the membrane leaving a membrane pore and potentially to cytotoxicity. The adhesion strength drives the particle wrapping process, so that any assessment of the NP interaction with cells must include an estimate of its adhesion strength w for a given membrane, which may be approximated by the adhesion strength with respect to the membrane lipids. Adhesion strength data can then be used to estimate the probability of passive NP uptake by human cells as well as pulmonary surfactant disruption due to the interaction with NPs in the alveolar spaces of lungs for evaluation of NP toxicity. A major obstacle to progress is the lack of quantitative experimental data for NP/lipid bilayer adsorption. We have previously proposed methods of calculating w from molecular

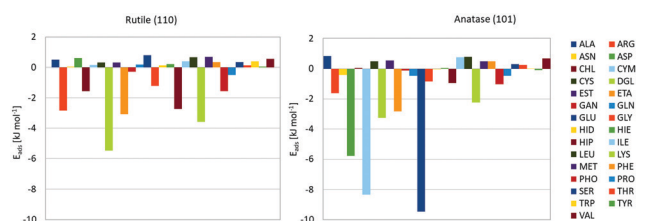
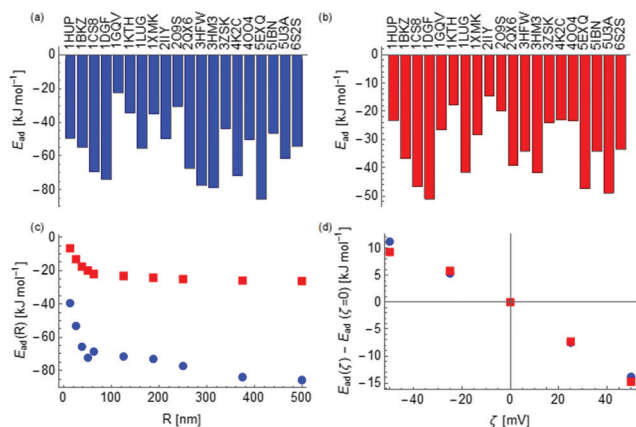


Fig. 1 Adsorption free energies of biomolecule fragments to rutile (left) and anatase (right) TiO₂ surfaces.



Table 4 Hamaker constants (in units of kJ mol^{-1}) describing the bulk interaction between anatase and rutile with twenty common amino acids

AA	ALA	ARG	ASN	ASP	CYS	GLN	GLU	GLY	HIS	ILE
A (anatase-AA)	19.53	23.47	25.28	25.88	24.88	23.87	22.86	24.88	25.89	16.86
A (rutile-AA)	17.19	21.90	22.30	22.83	21.94	21.05	20.15	21.94	22.83	14.87
AA	LEU	LYS	MET	PHE	PRO	SER	THR	TRP	TYR	VAL
A (anatase-AA)	16.65	20.13	22.25	24.68	18.82	24.27	20.33	29.42	22.04	17.07
A (rutile-AA)	14.66	17.74	19.61	21.77	16.57	21.41	17.92	25.97	19.43	15.03

**Fig. 2** Adsorption free energies of a set of proteins (labelled by their Protein Databank identifier) onto spherical anatase (a) and rutile (b) NPs of radius 50 nm and zero zeta potential. The variation as a function of the radius for human serum albumin (PDB-ID: 4K2C) is shown in (c) and variation as a function of zeta potential for a particle of radius 50 nm in (d) for both anatase (blue) and rutile (red).

simulation and applied these to a range of materials including gold,³² silica,⁴⁷ and titania.⁴⁸ Some data for DMPC lipids on titania surfaces are shown in Table 5, calculated through atomistic simulations using the force field developed here.

Discussion

In silico material characterization provides valuable information on the NP properties that may not be readily available from experiments. Yet, due to principal technical limitations such as the large required system size or time scale, the computations at the nanoscale are necessarily approximate and often cannot guarantee quantitative accuracy in reproducing experimentally observed properties in absolute terms. The possible mismatches with experimental data may be caused by unrealistic assumptions

about the material such as its crystalline order, structure of the NP surface, material purity, or the coating. Unfortunately, such assumptions are unavoidable as experimental datasheets are often lacking the relevant information.

In our calculations of intrinsic properties of titanium oxides, we used common quantum mechanical methods on anatase and rutile polymorphs of bulk TiO_2 . The methods show different accuracy with respect to different material properties. It is known that the band gap of rutile is lower than anatase TiO_2 by *ca.* 0.2 eV⁴⁹ and the ionization potential is larger for anatase than rutile. Our DFT and DFTB band gap results show the trend consistent with experiments, while semi-empirical calculations predict the opposite trend. For the ionization potential, the semi-empirical calculations give the trend consistent with experiments, while both DFT and DFTB show larger values for rutile. More accurate approaches have been used in literature to reproduce not only the relative trends between rutile and anatase TiO_2 but accurate values of band gaps and band alignment in accordance with measurements.⁴⁹

In the evaluation of extrinsic properties of titania NPs, such as interaction with water, lipids and proteins, we used the new force field developed in this work. All titania surfaces exhibited a large degree of hydrophilicity as reflected in the uniformly exothermic heats of immersion, which were an order of magnitude greater than the silica surfaces studied previously. A far greater range in heat of immersion was observed on the anatase surfaces than for rutile. From the data on the lowest energy surfaces, (110) for rutile and (101) for anatase, rutile appears to be more hydrophilic. Thus, as discussed in Section 2.2, the anatase surface is more strongly binding to the amino acid molecules than the rutile surface is, and this in turn leads to a difference in the calculated binding energies for the proteins considered as can be seen in Fig. 2, providing further evidence that a wide range of biomolecules should be selected for the calculation of predictive descriptors. The stronger binding of proteins to anatase correlates with the weaker binding of water as compared to rutile, as seen from the heats

Table 5 A summary of the calculated heats of immersion, adsorption energy for single DMPC molecules and adhesion strength for DMPC bilayers on a range of titania⁴⁸ surfaces

Polymorph	Rutile	Rutile	Rutile	Rutile	Anatase	Anatase	Anatase	Anatase
Miller index	110	100	101	001	101	100	001	110
Heat of immersion (mN m^{-1})	1024	1009	847	1102	774	1176	392	1006
Single lipid adsorption energy (kJ mol^{-1})	-1.8	-3.4	-13.8	-0.4	-1.7	-0.2	-0.1	-1.9
Adhesion strength (mN m^{-1})	-1.8	-3.6	-4.0	-0.3	-1.0	-1.1	-0.6	-4.0



of immersion. The observed trends for the protein binding energies here are in agreement with experiments showing that anatase titania binds blood serum proteins more strongly than the rutile polymorph.⁵⁰

For the majority of the surfaces, the energy of adsorption of single lipids was less than the thermal energy indicating that lipids do not spontaneously adsorb on these surfaces. The only surface to display strong adsorption was the rutile 101 surface with a minimum of $-13.8 \text{ kJ mol}^{-1}$. The average adhesion strength across the cleavage planes for rutile and anatase is relatively weak at $-2.0 \pm 0.4 \text{ mN m}^{-1}$. However, rutile has two surface (100 and 101) which strongly bind lipids (-4 mN m^{-1}), while anatase has only one (110). Since particle surfaces are expected to comprise a range of low energy cleavage planes, this observation suggests a slightly greater tendency for bilayers to wrap rutile NPs compared to anatase NPs, but both forms wrap less than amorphous silica.

The computed binding affinities of amino acids/proteins and lipids to TiO_2 would allow further to address questions of cellular uptake of nanoparticles covered by biomolecular corona, and further evolution of corona after cellular uptake and encapsulation of nanoparticles in phagosomes. This can be done either by direct modelling of such processes within UA models, or by providing adsorption energies data as extrinsic descriptors in the nanoinformatics approaches.

As discussed previously,¹² the UA model contains a number of approximations, which may cause systematic errors in the protein adsorption energies. The most significant of these is the assumption that all contributions to the NP-protein potential can be treated additively and that the orientation of AA side chains can be neglected. Moreover, charge regulation in both the protein and the NPs are neglected, and the protein is assumed to be fixed to its native structure and cannot relax due to binding to the surface of the NP. Finally, we note that the Hamaker constants required are typically not available *ab initio* and must be obtained from the literature, with different sources providing different values for these constants. Thus, the calculated adsorption energies do not necessarily predict the correct absolute value. We expect, however, that these factors are not significant due to the characteristic sizes of the NP-protein complex, and we expect it to produce the correct ranking of proteins by affinity to a particular NP. This, in turn, should enable the correct ranking of the corona abundances. Moreover, the simplifications in this model present substantial time savings in comparison to more computationally intense calculations of protein adsorption using atomistic simulations.^{5,51} These atomistic simulations are limited to providing binding energies for a single NP, whereas the method outline here enables the rapid calculation of binding energies for a whole class of NPs of the same material but varying sizes, shapes, and zeta potentials.

The set of descriptors given here is by no means definitive but are selected as a set of reasonably simple properties that can be evaluated using standard computational techniques and can be employed to further characterize the surface. As an example, we note that the binding energies calculated here may

be of use in estimating the composition of the protein corona which forms around a NP by using these as input for simple models of the steady-state corona.^{52,53} They may additionally be of use for machine-learning models of more complex phenomena such as uptake by cells, as they provide a quantitative means to encode the chemical identity of the NP. In this work, we have presented results for titanium dioxide as this is a particularly important nanomaterial and is being extensively investigated by toxicological studies,⁵⁴ however, we stress that the methodology used here is completely general and can be applied to a wide range of nanomaterials other than titanium dioxide, *e.g.* metals, metal oxides, silica and carbon-based nanomaterials. Likewise, the range of biomolecules that can be evaluated can readily be extended by identifying further basic structures and generating PMFs and Hamaker constants for these.

Conclusions

In this work, we have performed an in-depth parameterization of titanium dioxide nanoparticles on scales ranging from the atomic to mesoscopic. In particular, we have developed a novel forcefield for atomistic simulations in which multiple coordinate sites are considered, and we have demonstrated that the crystal phase of the titanium dioxide (anatase or rutile) leads to different affinities towards biomolecules. Our general methodology can be straightforwardly adapted to other nanomaterials, enabling their in-depth characterization and prediction of their interactions with a range of biomolecules.

Author contributions

IR, DP, MS, EGB, KK, APL: software, investigation, analysis, visualisation; IR, KK, APL, NQ, VL: conceptualisation, writing; NQ, APL, VL: funding acquisition, supervision.

Conflicts of interest

There are no conflicts to declare.

Acknowledgements

The work has been funded by EU Horizon 2020 under grant agreements No. 686098 (SmartNanoTox project), No. 731032 (NanoCommons project), and 814572 (NanoSolveIT project), and by Science Foundation Ireland through grant 16/IA/4506. The computations of binding free energies were performed on resources provided by the Swedish National Infrastructure for Computing (SNIC) at the Parallel Computer Center (PDC).

Notes and references

- 1 X.-R. Xia, N. A. Monteiro-Riviere and J. E. Riviere, *Nat. Nanotechnol.*, 2010, 5, 671.
- 2 OECD-NANoREG-ProSafe joint meeting in Paris, Nov 29–Dec 1, 2016, <http://www.h2020-prosafe.eu/?p=954>.



- 3 E. Valsami-Jones and I. Lynch, *Science*, 2015, **350**, 388.
- 4 S. A. Love, M. A. Maurer-Jones, J. W. Thompson, Y.-S. Lin and C. L. Haynes, *Annu. Rev. Anal. Chem.*, 2012, **5**, 181.
- 5 H. Lee, *Small*, 2020, **17**, 1906598.
- 6 T. Puzyn, B. Rasulev, A. Gajewicz, X. Hu, T. P. Dasari, A. Michalkova, H. M. Hwang, A. Toropov, D. Leszczynski and J. Leszczynski, *Nat. Nanotechnol.*, 2011, **6**, 175.
- 7 H. Zhang, Z. Ji, T. Xia, H. Meng, C. Low-Kam, R. Liu, S. Pokhrel, S. Lin, X. Wang, Y. P. Liao, M. Wang, L. Li, R. Rallo, R. Damoiseaux, D. Telesca, L. Mädler, Y. Cohen, J. I. Zink and A. E. Nel, *ACS Nano*, 2013, **6**, 4349.
- 8 A. Gajewicz, N. Schaeublin, B. Rasulev, S. Hussain, D. Leszczynska, T. Puzyn and J. Leszczynski, *Nanotoxicology*, 2015, **9**, 313.
- 9 C. D. Walkey, J. B. Olsen, F. Song, R. Liu, H. Guo, D. W. H. Olsen, Y. Cohen, A. Emili and W. C. W. Chan, *ACS Nano*, 2014, **8**, 2439.
- 10 P. Kamath, A. Fernandez, F. Giralt and C. R. Rallo, *Top. Med. Chem.*, 2015, **15**, 1930.
- 11 H. Lopez and V. Lobaskin, *J. Chem. Phys.*, 2015, **143**, 243138.
- 12 D. Power, I. Rouse, S. Poggio, E. Brandt, H. Lopez, A. Lyubartsev and V. Lobaskin, *Modell. Simul. Mater. Sci. Eng.*, 2019, **27**, 084003.
- 13 J. J. P. Stewart, *Computational Chemistry*, Colorado Springs, CO, USA, 2016, [HTTP://OpenMOPAC.net](http://OpenMOPAC.net).
- 14 S. Grimme, J. Antony, S. Ehrlich and H. Krieg, *J. Chem. Phys.*, 2010, **132**, 154104.
- 15 M. Elstner, D. Porezag, G. Jungnickel, J. Elsner, M. Haugk, T. Frauenheim, S. Suhai and G. Seifert, *Phys. Rev. B: Condens. Matter Mater. Phys.*, 1998, **58**, 7260.
- 16 B. Aradi, B. Hourahine and T. Frauenheim, *J. Phys. Chem. A*, 2007, **111**, 5678.
- 17 G. Dolgonos, B. Aradi, N. H. Moreira and T. Frauenheim, *J. Chem. Theory Comput.*, 2010, **6**, 266.
- 18 J. M. Soler, E. Artacho, J. D. Gale, A. García, J. Junquera, P. Ordejón and D. Sánchez-Portal, *J. Phys.: Condens. Matter*, 2002, **14**, 2745.
- 19 J. P. Perdew, K. Burke and M. Ernzerhof, *Phys. Rev. Lett.*, 1996, **77**, 3865.
- 20 N. Troullier and J. L. Martins, *Phys. Rev. B: Condens. Matter Mater. Phys.*, 1991, **43**, 1993.
- 21 M. Matsui and M. Akaogi, *Mol. Simul.*, 1991, **6**, 239.
- 22 E. G. Brandt and A. P. Lyubartsev, *J. Phys. Chem. C*, 2015, **119**, 18110.
- 23 D. Biriukov, O. Kroutil and M. Predota, *Phys. Chem. Chem. Phys.*, 2018, **20**, 23954.
- 24 T. A. Manz and N. G. Limas, *RSC Adv.*, 2016, **6**, 47771.
- 25 F. O. Kannemann and A. D. Becke, *J. Chem. Phys.*, 2012, **136**, 034109.
- 26 T. A. Manz, *RSC Adv.*, 2017, **7**, 45552.
- 27 L. Agosta, E. G. Brandt and A. P. Lyubartsev, *J. Chem. Phys.*, 2017, **147**, 024704.
- 28 ChargeMol v3.5 software [<https://sourceforge.net/projects/ddec/>].
- 29 A. Tkatchenko and M. Scheffler, *Phys. Rev. Lett.*, 2009, **102**, 073005.
- 30 T. Gould, *J. Chem. Phys.*, 2016, **145**, 084308.
- 31 T. Gould and T. Bučko, *J. Chem. Theory Comput.*, 2016, **12**, 3603.
- 32 M. Schneemilch and N. Quirke, *Chem. Phys. Lett.*, 2016, **664**, 199.
- 33 H. C. Hamaker, *Physica*, 1937, **4**, 1058.
- 34 J. N. Israelachvili, *Intermolecular and Surface Forces*, 3rd edn, AP, 2011.
- 35 S. Alsharif, D. Power, I. Rouse and V. Lobaskin, *Nanomaterials*, 2020, **10**(10), 1967.
- 36 K. Tämm, L. Sikk, J. Burk, R. Rallo, S. Pokhrel, L. Mädler, J. J. Scott-Fordsmand, P. Burk and T. Tämm, *Nanoscale*, 2016, **8**, 16243.
- 37 S. Kar, A. Gajewicz, T. Puzyn, K. Roy and J. Leszczynski, *Ecotoxicol. Environ. Saf.*, 2014, **9**, 162.
- 38 H. J. Monkhorst and J. D. Pack, *Phys. Rev. B: Solid State*, 1976, **13**, 5188.
- 39 T. Cedervall, I. Lynch, S. Lindman, T. Berggård, E. Thulin, H. Nilsson and S. Linse, *Proc. Natl. Acad. Sci. U. S. A.*, 2007, **104**, 2050.
- 40 Z. Futera and N. J. English, *J. Phys. Chem. C*, 2017, **121**, 6701.
- 41 A. Vakurov, R. Drummond-Brydson, O. Ugwumsinachi and A. Nelson, *J. Colloid Interface Sci.*, 2016, **473**, 75.
- 42 S. Liu, X. Y. Meng, J. M. Perez-Aguilar and R. Zhou, *Sci. Rep.*, 2016, **6**, 37761.
- 43 M. N. Polyanskiy, Refractive Index Database, <https://refractiveindex.info>, accessed: 01, 2020.
- 44 H. Zhao, P. H. Brown and P. Schuck, *Biophys. J.*, 2011, **100**, 2309.
- 45 W. Helfrich, *Z. Naturforsch., C: Biochem., Biophys., Biol., Virol.*, 1973, **28**, 693.
- 46 M. Deserno and W. M. Gelbart, *J. Phys. Chem. B*, 2002, **21**, 5543.
- 47 M. Schneemilch and N. Quirke, *J. Chem. Phys.*, 2018, **148**, 194704; Erratum, 2019, 150, 229901.
- 48 M. Schneemilch and N. Quirke, *J. Chem. Phys.*, 2019, **151**, 134707.
- 49 D. O. Scanlon, C. W. Dunnill, J. Buckeridge, S. A. Shevlin, A. J. Logsdail, S. M. Woodley, R. R. A. Catlow, M. J. Powell, R. G. Palgrave, I. P. Parkin and G. W. Watson, *Nat. Mater.*, 2013, **12**, 798.
- 50 M. S. Zaqout, T. Sumizawa, H. Igisu, T. Higashi and T. Myojo, *J. Occup. Health*, 2011, **53**, 75.
- 51 C. Ge, J. Du, L. Zhao, L. Wang, Y. Liu, D. Li, Y. Yang, R. Zhou, Y. Zhao, Z. Chai and C. Chen, *Proc. Natl. Acad. Sci. U. S. A.*, 2011, **108**, 16968.
- 52 D. Dell'Orco, M. Lundqvist, C. Oslakovic, T. Cedervall and S. Linse, *PLoS One*, 2010, **5**, e10949.
- 53 F. D. Sahneh, C. Scoglio and R. Riviere, *PLoS One*, 2013, **8**, e64690.
- 54 P. H. Danielsen, K. B. Knudsen, J. Štrancar, P. Umek, T. Koklič, M. Garvas, E. Vanhala, S. Savukoski, Y. Ding, A. M. Madsen, N. R. Jacobsen, I. K. Weydahl, T. Berthing, S. S. Poulsen, O. Schmid, H. Wolff and U. Vogel, *Toxicol. Appl. Pharmacol.*, 2020, **386**, 114830.

