



Cite this: *Phys. Chem. Chem. Phys.*, 2021, **23**, 7280

Conformational energies and equilibria of cyclic dinucleotides *in vacuo* and in solution: computational chemistry vs. NMR experiments†

Ondrej Gutten, *^a Petr Jurečka, ^b Zahra Aliakbar Tehrani, ‡^a
 Miloš Buděšínský, ^a Jan Řezáč ^a and Lubomir Rulíšek *^a

Performance of computational methods in modelling cyclic dinucleotides – an important and challenging class of compounds – has been evaluated by two different benchmarks: (1) gas-phase conformational energies and (2) qualitative agreement with NMR observations of the orientation of the χ -dihedral angle in solvent. In gas-phase benchmarks, where CCSD(T) and DLPNO-CCSD(T) methods have been used as the reference, most of the (dispersion corrected) density functional approximations are accurate enough to justify prioritizing computational cost and compatibility with other modelling options as the criterion of choice. NMR experiments of 3'3'-c-di-AMP, 3'3'-c-di-GAMP, and 3'3'-c-di-GMP show the overall prevalence of the *anti*-conformation of purine bases, but some population of *syn*-conformations is observed for guanines. Implicit solvation models combined with quantum-chemical methods struggle to reproduce this behaviour, probably due to a lack of dynamics and explicitly modelled solvent, leading to structures that are too compact. Molecular dynamics simulations overrepresent the *syn*-conformation of guanine due to the overestimation of an intramolecular hydrogen bond. Our combination of experimental and computational benchmarks provides “error bars” for modelling cyclic dinucleotides in solvent, where such information is generally difficult to obtain, and should help gauge the interpretability of studies dealing with binding of cyclic dinucleotides to important pharmaceutical targets. At the same time, the presented analysis calls for improvement in both implicit solvation models and force-field parameters.

Received 18th November 2020,
 Accepted 21st February 2021

DOI: 10.1039/d0cp05993e

rsc.li/pccp

1. Introduction

Cyclic dinucleotides (CDNs) are an intriguing class of molecules that act as second messengers in prokaryotes and vertebrates.^{1,2} In vertebrates they bind to the stimulator of interferon genes (STING), a protein involved in the innate immune system.³ The role of CDNs in defense against pathogens as well as sensing of tumor cells render them important for understanding, and potentially for treatment, of a number of autoimmune diseases,^{4–6} cancers,⁷ and viral diseases, as well as having potential as adjuvants in vaccines.^{8,9} For these reasons, CDNs have attracted a lot of interest which resulted in the design of various analogues that could improve the affinity, bioavailability,

and pharmacokinetic properties of the parent compounds.^{10–12} The importance of these efforts is highlighted by a number of registered patents,^{13–15} and even some of the candidate molecules entering clinical trials.^{16,17}

Understanding the processes that involve this class of compounds and development of new derivatives have been greatly assisted by computational chemistry. These studies include molecular dynamics simulations of protein:ligand complexes,^{18–21} as well as modelling of the free ligand in solvent.^{20,22–25} Studies on modelling the free ligand can provide valuable information about the propensity of a ligand to adopt a bound-like conformation, which has been shown to be a relevant consideration for studying protein:ligand interactions.^{26,27} Some form of molecular dynamics is typically used for generating structures, followed either by directly comparing relative populations with certain structural features^{22,23} or by identifying the most relevant ones using *e.g.* density functional theory (DFT) for calculation of conformational energies.^{23,24} Alternatively, the obtained conformations can be used as a starting point for ensemble docking.²⁵ Recently, we have shown that the difference in binding to STING between a series of ‘natural’ CDNs and their difluorinated analogues is a subtle interplay between ligand

^a Institute of Organic Chemistry and Biochemistry of the Czech Academy of Sciences, Flemingovo náměstí 2, 166 10, Praha 6, Czech Republic.

E-mail: gutten@uochb.cas.cz, rulisek@uochb.cas.cz

^b Department of Physical Chemistry, Faculty of Science, Palacky University Olomouc, 17. listopadu 12, 771 46, Olomouc, Czech Republic

† Electronic supplementary information (ESI) available. See DOI: 10.1039/d0cp05993e

‡ Currently at the Institute of Biotechnology of the Czech Academy of Sciences, BIOCEV, Průmyslová 595, 252 50 Vestec, Czech Republic.



conformational strain and the loss of conformational entropy.²⁰ In addition, combination of QM/MM and ‘QM-in-solvent’ methodology has been used to rationalize effect of single-point mutations in STING on binding of selected CDNs.²¹

The need for the accurate description of the conformational flexibility of CDNs is further highlighted by the variety of conformations found in various protein:CDN complexes.²⁸ This raises the question of how accurate are the underlying quantum chemical (and/or solvation) methods. The choice of an appropriate computational method is dependent not only on the problem at hand,^{29,30} but may change dramatically from one class of compounds to another. This is reflected by the high number of data sets that aim to evaluate the accuracy of conformational energies in different contexts.^{29,31–51} The data set most relevant to CDNs is the UPU46 data set,⁴⁷ which examines non-cyclic dinucleotides as models for representative RNA backbone families. Similarly to this data set, CDNs require an accurate description of weak dispersion forces, due to the presence of purine bases. The overall charge is increased by the presence of an additional phosphate group, which increases the need for treatment of polarization, especially in a solvent environment. Perhaps most importantly, the macrocyclic nature of CDNs renders them challenging to the accurate description of torsions. Torsional angles and their role in conformational equilibria of nucleic acids are a subject of active research, e.g. A/B-DNA,⁵² BI/BII-DNA,⁵³ ZI/ZII-DNA,⁵⁴ or α/γ equilibria in RNA.⁵⁵ However, the question of the transferability of force-field parameters remains relevant, due to significant internal stresses and shifts of values of optimal dihedral angles that commonly occur in the macrocyclic compounds.

In summary, CDNs represent a complex and highly relevant case, both for their potential application and their complexity. Moreover, the availability of experimental data, reported both previously²³ and herein, describing the structural features of molecules in solvent provides a benchmarking opportunity beyond the usual gas-phase CCSD(T) testing.

The aim of this study is comprehensive analysis of CDN conformational energies and equilibria, both *in vacuo* and in solvent, by employing a range of computational chemistry methods (including molecular mechanics, semiempirical quantum-mechanical (SQM) methods, popular DFT functionals, and wave-function methods up to gold standard CCSD(T) benchmarks) and NMR experiments. First, we perform gas-phase benchmarks to establish the level of accuracy of DFT, SQM, and wave-function methods. These serve as a starting point for examining modelling in a solvent environment, which we explore by looking at NMR measurements of three selected CDNs (3′/3′-*c*-di-AMP, 3′/3′-*c*-GAMP, and 3′/3′-*c*-di-GMP) in solvent. We specifically focus on distinguishing between the *anti*- and *syn*-orientation of purine bases – a structural feature that is in fine equilibrium, providing a very enticing, albeit qualitative, experimental benchmark. Finally, we compare these observations with predictions of molecular dynamics simulations and with QM methods in combination with some available solvation methods. It needs to be mentioned that

observation of multiple conformers implies free-energy separation of at most units of kcal mol⁻¹. Such a small difference is an immensely difficult test case for systems where modelling of aspects across a wide range of strengths (“weak” dispersion *vs.* “strong” polarization of charged groups) and scales (“local” torsional angles *vs.* “global” solvent-solute interactions) is required.

2. Computational details

2.1 Systems and structures

We use two separate sets of structures – one to address the overall accuracy of computational methods for predicting gas-phase conformational energies (CDN set), and the other is employed to reproduce experimentally observed structural features of CDNs (*syn-/anti-set*).

2.1.1 CDN set (180 conformers). The CDN set aims to capture the structural variability of cyclic dinucleotides as well as a range of conformational energies. It comprises of nine cyclic dinucleotides, shown in Fig. 1. These were selected to include a range of structural modifications encountered e.g. in synthetically available STING agonists, such as combinations of adenine and guanine nucleobases, substitution of phosphate for thiophosphate, substitution of 2′-hydroxyl for fluorine, and different linkages between nucleotides.

For each of the nine compounds we selected 20 conformers by the following procedure: (1) each compound was first subjected to conformational sampling by the Prime algorithm⁵⁶ as implemented in Schrodinger 2017-1 suite.⁵⁷ (2) From the obtained set of several hundreds of initial conformers (ranked by their force field energies), 20 conformers were selected for each system. The only selection criterion was to cover the energy spectrum of the sets (*ca.* 35 kcal mol⁻¹), in order to avoid bias towards low-energy conformers. (3) The selected structures were then optimized using the BP86+D3(0)/def-TZVP/COSMO($\epsilon = 80$) method (*vide infra*) to obtain structures relevant for water environments.

2.1.2 *Syn-/anti-set* (26 conformers). We are ultimately interested in the behavior of CDNs in solvent (in our case water), where accurate reference conformational energies are not available. Instead, we focus on a specific structural feature that can provide an experimental benchmark for computational modelling of CDNs, the χ -dihedral angle (*i.e.* O4′-C1′-N9-C4, shown in Fig. 2). The χ -dihedral angle determines the orientation of the (purine) bases: *syn*- ($-90^\circ < \chi < 90^\circ$) and *anti*- ($|\chi| > 90^\circ$) conformations. *Anti*-Conformers are more typical for RNA-like molecules, but the *syn*-orientation does occur as well.^{58,59} Crystal structures of CDNs bound to proteins are also typically found in the *anti*-conformation.²⁸ Orientation of the χ -dihedral is observable from multiple NMR experimental setups (see Section 2.3) and provides a less quantitative, but challenging and relevant benchmark for modelling of these systems in solution.

The two main orientations of the χ -dihedral angle allow for several combinations of the two bases, namely *anti-/anti-*, *syn-/anti-*, *anti-/syn-* or *syn-/syn-* (further denoted as *classes*).



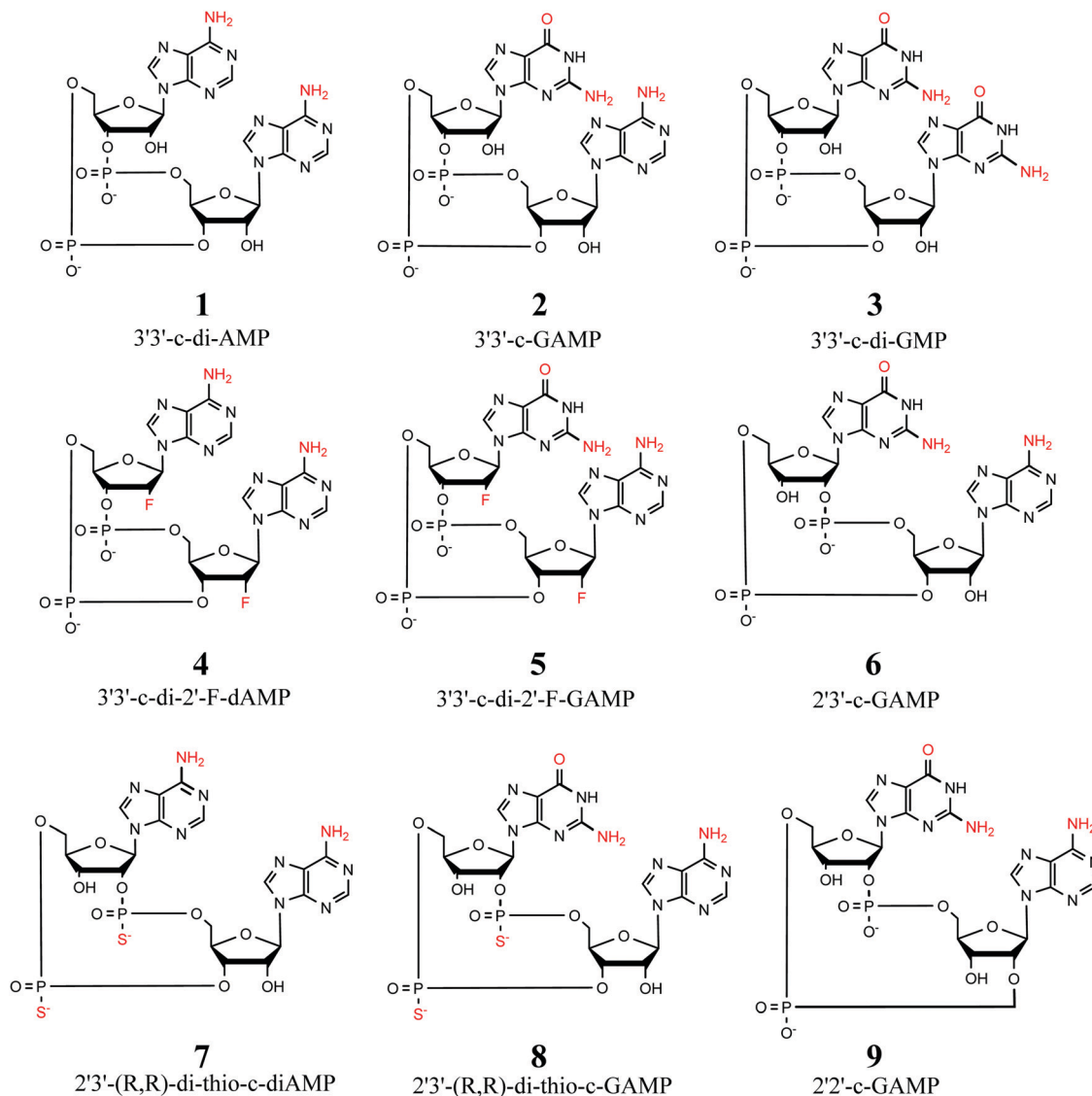


Fig. 1 Selection of 9 cyclic dinucleotides studied herein. All CDNs are considered in their doubly-deprotonated state, *i.e.* with a total charge of -2 .

Therefore, we conceived the *syn/anti*-set comprising the energetically most favorable conformers within each χ -dihedral class for the 3'3'-c-di-AMP, 3'3'-c-GAMP, and 3'3'-c-di-GAMP compounds. This set contains up to three energetically most favorable candidates (obtained from conformational sampling described above in Section 2.1.1, ranked by the BP86+D3(0)/COSMO-RS energy values) for each class of each of the three selected CDNs. At the same time, we request that the conformational energy of any member (conformer) of the *syn/anti*-set is not higher than 10 kcal mol^{-1} above the global minimum of the particular compound. This trimmed final selection to 8 conformers for 3'3'-c-di-AMP, 9 for 3'3'-c-GAMP, and 9 for 3'3'-c-di-GAMP (yielding 26 conformers in *syn/anti*-set, in total).

2.2 Computational methods

2.2.1 Wave function methods. To obtain accurate gas-phase energies we employ a composite scheme,⁵⁰ which requires

contributions from the extrapolation to the complete basis set, E_{CBS} and higher-order correlation contributions, E_{hoc} :

$$E_{\text{gp}} = E_{\text{CBS}} + E_{\text{hoc}} \quad (1)$$

Specifically, we use the following setup for obtaining reference energies:⁵⁰

$$E_{\text{CBS}} = E^{\text{MP2-F12/cc-pVDZ-F12}} + E^{\text{HF/cc-pVDZ-F12}}$$

$$E_{\text{hoc}} = E^{\text{DLPNO-CCSD(T)/aug-cc-pVDZ}} - E^{\text{MP2/aug-cc-pVDZ}} \quad (2)$$

It can be mentioned that the MP2-F12 method^{60–62} is computationally more demanding than canonical MP2 but converges faster to the complete basis set limit. The DLPNO-CCSD(T) method is used with the TightPNO thresholds. The mean difference between MP2-F12 and a Helgaker extrapolation formula⁶³ to CBS limit based on triple- ζ /quadruple- ζ (aug-cc-pVXZ basis set) for a subset of 20 studied conformers



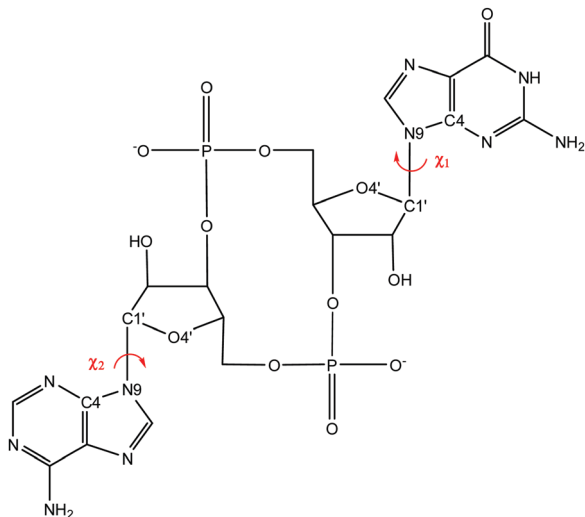


Fig. 2 Definition of the χ -dihedral, given by O4'–C1'–N9–C4, shown on the example of 3'/3'-c-GAMP. Values of $|\chi| > 90^\circ$ correspond to *anti*-orientation, while values of $-90^\circ < \chi < 90^\circ$ correspond to *syn*-orientation.

was 0.11 kcal mol⁻¹, with a maximum absolute value of 0.26 kcal mol⁻¹.

The choice of these methods is driven by computational cost. Using full CCSD(T) for E_{hoc} , and triple- ζ to quadruple- ζ basis set extrapolation using canonical MP2⁶³ is too demanding for CDNs molecule (*ca.* 70 atoms). Still, we benchmarked DLPNO approximation (*vs.* full CCSD(T)) on a set of fragments taken from studied CDNs (described in detail in Section S1 of the ESI†). This allowed us to estimate mean unsigned error for CDNs between our reference (eqn (2) and the “gold standard” (CCSD(T)+MP2/CBS) to be *ca.* 0.2 kcal mol⁻¹.

2.2.2 Density functional theory methods. Gas-phase conformational energies for the CDN data set were obtained using a selection of DFT methods, including GGA functionals (B-LYP,^{64,65} B-P,^{64,66} PBE,⁶⁷ OLYP,^{65,68} revPBE,⁶⁹ B97-D⁷⁰), meta-GGA functionals (TPSS,⁷¹ rev-TPSS,⁷² SCAN,⁷³ M06-L⁷⁴), hybrid functionals (B3-LYP,^{64,65,75} BH-LYP,^{64,65,76} M06-2X,⁷⁷ PBE0,⁷⁸ TPSSH,⁷⁹ ω B-97X,⁸⁰ M06,⁷⁷ PW6B95⁸¹), and two double-hybrid functionals (B2PLYP,^{64,65,82} PWPB95⁸³).

All of the functionals are tested employing a triple- ζ basis set (def2-TZVPD^{84,85}). Basis set dependence is further tested by calculating conformational energies for a subset of functionals with double- ζ (specifically DZVP-DFT basis set⁸⁶) and quadruple- ζ (def2-QZVP⁸⁷) basis sets. In a few specifically discussed cases we also test the triple- ζ basis set without the additional diffuse functions, *i.e.* def2-TZVP.⁸⁵

Effects of dispersion are tested by employing several correction parametrizations: D3 with zero, D3(0),⁸⁸ or Becke–Johnson damping, D3(BJ),⁸⁹ and D4.⁹⁰ A reparametrized version of D3(BJ) and D3(0) for use with a small DZVP-DFT basis set was reported previously⁹¹ and, therefore, we further test its transferability to the CDN test set.

Default grid sizes were used for most of the DFT calculations, with the exception of SCAN and double-hybrid functionals

B2PLYP and PWPB95. Detailed information about the grids used is listed in Table S1 (ESI†). The effects of changing a grid size were examined for several functionals and are shown in Table S2 (ESI†).

2.2.3 Semi-empirical methods. We tested multiple efficient semiempirical or empirically corrected quantum-mechanical methods. Out of classical SQM methods based on the neglect of diatomic differential overlap (NDDO) approximation, we tested PM6⁹² and RM1⁹³ with D3H4 corrections for dispersion and hydrogen bonding (PM6-D3H4, RM1-D3H4)⁹⁴ and PM7.⁹⁵ Another class of tested methods is based on the tight binding approach. The third-order self-consistent-charges density-functional tight binding with the 3OB parameter set^{96,97} (abbreviated as DFTB3)⁹⁸ is coupled with D3H4⁹⁹ and D3H5¹⁰⁰ corrections for non-covalent interactions. A second group of self-consistent-charges tight binding schemes tested included GFN-xTB¹⁰¹ and GFN-xTB2¹⁰² methods. Finally, the “3c” methods based on using small basis sets accompanied with compensating corrections included HF-3c,¹⁰³ PBEh-3c¹⁰⁴ and B97-3c.¹⁰⁵

2.2.4 Force fields. Molecular dynamics simulations were performed under NPT conditions at 1 bar and 300 K with Monte Carlo barostat and Langevin thermostat and hydrogen mass repartitioning with a 4 fs time step.¹⁰⁶ Direct-space non-bonded cutoff was 9 Å and the SHAKE algorithm was applied to bonds to hydrogen atoms with the default tolerance (1×10^{-5} Å). The particle–mesh Ewald (PME) algorithm was used with default grid settings (1 Å) and default tolerance (1×10^{-5}). The octahedral simulation box contained 767, 809 and 831 SPC/E¹⁰⁷ water molecules for 3'/3'-c-di-AMP, 3'/3'-c-GAMP and 3'/3'-c-di-GMP, respectively, and the phosphate charge was compensated by two potassium ions.¹⁰⁸ Nucleic acid was described with the ff99¹⁰⁹ AMBER force field with bsc0¹¹⁰ and χ OL3¹¹¹ dihedral corrections. After an initial equilibration (described elsewhere¹¹²) we ran 50 μ s of unrestrained MD simulations. A nucleotide was considered to be *syn*-oriented if its glycosidic torsion angle was less than 125° and *anti*-orientated if it was greater. The *syn/anti*-equilibrium was well converged on the 50 μ s time scale as we observed between 650 and 9180 *syn/anti*-transitions for each nucleotide, see Table S25 (ESI†) for details.

2.2.5 Software used. CCSD(T), MP2 and MP2-F12 calculations were done using the TurboMole 7.2 program. DLPNO-CCSD(T) and calculations of “3c” methods were carried out using ORCA 4.0.1. DFT calculations were performed in both TurboMole and ORCA, the detailed list is provided in Table S1 (ESI†).

Semiempirical PM6, RM1, PM7 calculations and their variants with corrections for non-covalent interactions were carried out using MOPAC2016.¹¹³ DFTB3 calculations were performed using the DFTB+ program,¹¹⁴ which now also implements all the corrections for non-covalent interactions used herein. For GFN-xTB and GFN-xTB2 calculations, we used the software provided by the authors of the method.¹¹⁵

MD simulations were carried out using PMEMD for the CUDA program¹¹⁶ of the AMBER 16 software package¹¹⁷ and trajectory analysis was performed using CPPTRAJ software.¹¹⁸



2.2.6 Statistical processing of the results. Conformational energies are relative quantities, which we define in reference to the average energy of the 20 conformers of a given CDN molecule:

$$E_i^{\text{conf}} = E_i - \frac{1}{20} \sum_{j=1}^{20} E_j \quad (3)$$

In our previous study⁵⁰ we found this definition more convenient than setting $E_{\text{global minimum}} = 0$. We use this definition for obtaining several statistics:

Mean Unsigned Error (MUE):

$$\text{MUE}(\text{method}) = \frac{1}{9} \sum_{s=m_1}^{m_9} \frac{1}{20} \sum_{i \in s} |E_i^{\text{conf,method}} - E_i^{\text{conf,reference}}|, \quad (4)$$

where m_1 to m_9 signifies the 9 subsets, one for each molecule in the CDN set, see Fig. 1. Thus, the average of mean unsigned error over the 9 subsets of the CDN set is reported for each method.

Maximum Absolute Deviation (MAD):

$$\text{MAD}(\text{method}) = \max_i (|E_i^{\text{conf,method}} - E_i^{\text{conf,reference}}|) \quad (5)$$

The maximum absolute deviation across all 180 conformers is reported.

Root Mean Square Error (RMSE):

$$\begin{aligned} \text{RMSE max}(\text{method}) \\ = \max_{s=\{m_1, \dots, m_9\}} \sqrt{\frac{1}{20} \sum_{i \in s} (E_i^{\text{conf,method}} - E_i^{\text{conf,reference}})^2} \quad (6) \end{aligned}$$

Thus, we calculate the root mean square error for each of the 9 subsets of 20 conformers and report the maximum of these values.

Mean Signed Error (MSE):

$$\text{MSE}(\text{method}, s) = \frac{1}{|s|} \sum_{i \in s} (E_i^{\text{conf,method}} - E_i^{\text{conf,reference}}), \quad (7)$$

where s signifies a specific subset of conformers. Note that because the definition of E_i^{conf} centers the conformational energies around the average energy of the 20 conformers, the value of MSE for each of the 9 subsets of the CDN set is necessarily zero. Instead, this statistic is used for exploring systematic errors of “closed” and “open” conformers (see Fig. 3) in Section 3.1.

2.3 Experimental methods

¹H and ¹³C NMR spectra of CDNs were measured on a Bruker AVANCE-600 spectrometer (¹H at 600 MHz and ¹³C at 150.9 MHz frequency) and ³¹P NMR spectra on a Bruker AVANCE-500 instrument (³¹P at 202.4 MHz) in D₂O at 25 °C. The homonuclear 2D-H,H-COSY, 2D-H,H-ROESY, and heteronuclear 2D-H,C-HSQC, 2D-H,C-HMBC spectra were recorded and used for the structural assignment of proton and carbon signals. The 2D-H,H-ROESY spectra were measured with a spinlock

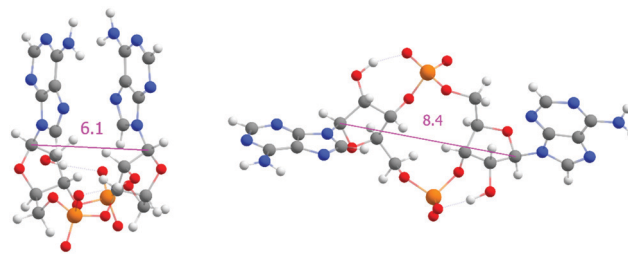


Fig. 3 Examples of closed (left) and open (right) conformations of a cyclic dinucleotide. The C1'–C1' distance in Ångstroms is shown.

mixing time of 300 ms. Proton-coupled ¹³C NMR spectra of CDNs were used for estimation of $J(\text{C,H})$ values of adenine and guanine carbon atoms. Experimental proton and carbon-13 NMR parameters are summarized in Tables S4 and S5 (ESI[†]). The ¹H and ¹³C chemical shifts were referenced to dioxane as the internal standard and recalculated to TMS using δ_{H} (dioxane) = 3.75 ppm and δ_{C} (dioxane) = 69.3 ppm; ³¹P chemical shifts are referenced to H₃PO₄ as the external standard.

3. Results and discussion

3.1 Gas-phase conformational energies (CDN set)

We evaluate the accuracy of gas-phase conformational energies by employing a range of DFT and semi-empirical methods on 9×20 conformers of the “CDN” set (see Section 2.1.1). These will serve as a starting point for examining modelling of CDNs in solvent in later sections of this work. The reference is provided by the DLPNO-CCSD(T)/MP2-F12 composite scheme (see eqn (2)). This represents an affordable compromise to a “gold standard” CCSD(T)+MP2-CBS composite scheme (see the discussion in Section S1 of the ESI[†]), which is computationally prohibitive for CDN systems of ~ 70 atoms. The estimated MUE between the two composite schemes (DLPNO-CCSD(T)/MP2-F12 vs. full CCSD(T)/MP2-CBS) for CDN systems is expected to be 0.2 kcal mol⁻¹, based on a fragmentation scheme that we explain in detail in the ESI[†].

3.1.1 DFT approximations. We examine the overall performance of various DFT functionals in combination with the def2-TZVPD basis and with dispersion corrections. We then elaborate on the effects of basis set size and some notable aspects of some setups regarding dispersion corrections. We examined several statistics, including MUE (defined in eqn (4), MAD (defined in eqn (5)) and RMSE_{max} (defined in eqn (6)). We focus the discussion around the values of MUE, while detailed values of additional statistics may be found in Tables S6–S18 (ESI[†]).

A summary of comparison among different DFT functionals is shown in Table 1. The best performing GGA functionals include B-LYP+D3(0)/D4 and B-97D+D3(BJ) with MUE of 0.7 kcal mol⁻¹. However, even the worst GGA result, the OLYP+D3(0) functional, shows MUE of ca. 1.2 kcal mol⁻¹. This corresponds to only about 4% of the energy range. These values are reasonably low and suggest that for modelling of gas-phase conformational energies of CDNs the choice of the functional is actually not critical. Still, while the MUE values are comparable,



Table 1 Averaged MUE values (see eqn (4)) of several DFT functionals obtained for the CDN set with triple- ζ (def2-TZVPD) basis set and several dispersion corrections. Entries marked as 'n.a.' indicate combinations that are not available. DLPNO-CCSD(T)/MP2-F12 is used as a reference, see eqn (2). All values are in kcal mol⁻¹

Functional	Jacob's ladder class	No dispersion correction	D3(0)	D3(BJ)	D4
B-LYP	GGA	6.2	0.7	0.8	0.7
B-P	GGA	5.3	1.0	1.0	0.9
B97-D	GGA	6.9	0.9	0.7	n.a.
OLYP	GGA	9.1	1.2	0.9	1.0
PBE	GGA	4.4	0.9	1.0	0.9
revPBE	GGA	6.9	0.9	0.7	0.9
M06-L	Meta-GGA	0.6	1.0	n.a.	n.a.
revTPSS	Meta-GGA	3.8	n.a.	n.a.	0.8
SCAN	Meta-GGA	1.5	0.5	0.4	0.5
TPSS	Meta-GGA	5.2	0.7	0.9	0.8
B3-LYP	Hybrid	5.3	0.5	0.6	0.6
BH-LYP	Hybrid	4.2	0.5	0.6	0.6
M06	Hybrid	0.6	1.6	n.a.	n.a.
M06-2X	Hybrid	0.6	0.7	n.a.	n.a.
PBE0	Hybrid	4.0	0.6	0.7	0.7
PW6B95	Hybrid	2.7	0.6	0.6	0.7
TPSSH	Hybrid	5.0	0.7	0.7	0.7
ω B-97X	Hybrid	1.4	0.9	1.0	n.a.
B2PLYP	Double-hybrid	1.4	1.6	1.6	1.9
PWPB95	Double-hybrid	1.0	1.7	1.4	1.2
MP2/aug-cc-pVTZ		2.6			

the MAD and RMSEmax values suggest better performance of *e.g.* B-LYP over PBE and OLYP functionals, see Tables S6 and S7 (ESI[†]). Among meta-GGA, SCAN+D3(BJ) deserves a special mention as it marginally outperforms all the other functionals, with MUE of 0.4 kcal mol⁻¹, which is close to the error of DLPNO-CCSD(T) NormalPNO/MP2-F12 (which is around 0.2 kcal mol⁻¹). We can recommend this functional for single-point evaluations. However, geometry optimizations proved to be problematic even with finer integration grids.

Hybrid functionals provide satisfactory results, with MUE values between 0.5 and 1.0 kcal mol⁻¹. The best performer is B3-LYP+D3(0) and BH-LYP+D3(0) with MUE of 0.5 kcal mol⁻¹, although only by a very small margin to other functionals. However, the B3-LYP+D3(0) combination exhibits the overall lowest MAD value of only 1.6 kcal mol⁻¹, while the typical value of this statistic was in between 2–3 kcal mol⁻¹ (see Table S6, ESI[†]). On the other hand, the long-range corrected ω B-97X shows good overall performance with MUE of 0.9 kcal mol⁻¹, but some of the highest MAD values among all tested calculations (5–6 kcal mol⁻¹).

The importance of dispersion correction for our dataset is exacerbated by relative orientation of bases (*i.e.* "open" and "closed", see Fig. 3), which interact primarily *via* dispersion. However, the rather discrete distribution of base distances renders our dataset unsuitable for in-depth testing of different dispersion corrections. Indeed, combination of tested DFT functionals with D3(0), D3(BJ), and D4 corrections exhibit differences below our established error of 0.2 kcal mol⁻¹.

However, there are a few exceptions. In our tests, the (empirical dispersion)_non-corrected versions of Minnesota functionals (M06, M06L, M06-2X) perform better compared to

the D3(0) corrected versions. For M06-2X the difference is mild, but for M06 and M06L the decrease in performance is notable, from MUE of *circa* 0.6 kcal mol⁻¹ for both M06 and M06L, to 1.6 and 1.0 kcal mol⁻¹ after addition of D3(0) correction, respectively. This decrease in performance is even more notable in MAD and RMSEmax statistics shown in Tables S6 and S7 (ESI[†]). The problematic relationship between Minnesota functionals and their ability to capture non-covalent interactions has been discussed before.^{29,119}

Surprisingly, the most underwhelming performance is exhibited by both tested double-hybrid functionals, PWPB95 and B2PLYP. In both cases, adding dispersion correction actually degrades their MUE values to 1.6 and 1.2 kcal mol⁻¹, way behind even the worst GGA functionals. This result is surprising, as double-hybrid functionals have been recommended as superior for conformational energies.²⁹

A more detailed inspection suggests that the culprit lies in the evaluation of interaction of the bases. Closed conformers (*i.e.* conformers with stacked purine bases, see Fig. 3), which interact primarily *via* dispersion, are greatly overstabilized if dispersion correction is included, leading to higher errors compared to dispersion-uncorrected versions of these functionals. We show this by examining mean signed errors (MSE, see eqn (7), for a subset of closed $|s| = 74$ conformers). We present these values for some of the methods in Table 2, while the full list can be found in Table S8 (ESI[†]).

Table 2 and Table S8 (ESI[†]) show that the dispersion-uncorrected functionals under-stabilize the closed conformers, leading to positive MSE values. Adding the empirical dispersion remedies the situation in most cases. The exceptions include the Minnesota functionals and the double-hybrids, where it leads to significant overstabilization of these conformers, *i.e.* negative MSE values. This behaviour is similar to regular MP2, which is added for comparison.

Surprisingly, removing the diffuse basis functions, *i.e.* using the def2-TZVP basis, remedies the situation, bringing the MUE values of both double-hybrid functionals down to *ca.* 0.5 kcal mol⁻¹. It is worth mentioning that for several other functionals (B-P, B-LYP, SCAN) the removal of diffuse basis functions has a very minor effect. These values are listed in Table S9–S12 (ESI[†]).

Concerning basis set effects, all of the previous discussion on DFT was based on using triple- ζ basis set def2-TZVPD. For a

Table 2 MSE values (see eqn (7)) for a subset of 74 closed conformers of the CDN set. Negative values indicate systematic overstabilization of these conformers. DLPNO-CCSD(T)/MP2-F12 is used as a reference, see eqn (2). All values are in kcal mol⁻¹

Functional	Jacob's ladder class	No dispersion correction	D3(0)	D3(BJ)	D4
B-P	GGA	6.0	-0.8	-0.5	-0.3
TPSS	Meta-GGA	5.9	0.6	0.7	0.5
B3-LYP	Hybrid	5.8	0.0	-0.1	0.0
M06	Hybrid	0.1	-1.8	n.a.	n.a.
B2PLYP	Double-hybrid	1.2	-1.7	-1.8	-2.1
PWPB95	Double-hybrid	0.6	-1.7	-1.5	-1.2
MP2/aug-cc-pVTZ		-2.9			



few selected functionals we test the use of quadruple- ζ and double- ζ basis sets. Using a quadruple- ζ basis set (def2-QZVP) produces virtually identical results, changing MUE by less than 0.1 kcal mol⁻¹ in all cases, see Table S13 (ESI[†]). Thus, triple- ζ basis set results can be considered as essentially converged for the purpose of obtaining accurate conformational energies.

A more interesting case is the use of the cheaper double- ζ basis set, DZVP-DFT. In combination with standard D3 or D4 empirical corrections this does lead to a significant decrease in performance (by *ca.* 0.5 to 1 kcal mol⁻¹). However, the performance can be recovered by use of reparametrized DZVP-D3 corrections⁹¹ instead. This leads to MUE values which are comparable to the much more expensive triple- ζ basis set, see Table S14 (ESI[†]). We also confirm the equalizing effect of this dispersion correction reported previously.⁵⁰ All of the 7 tested functionals (B-LYP, B-P, B97-D, PBE, PBE0, B3-LYP, TPSS) show MUE between 0.7 and 0.9 kcal mol⁻¹, and RMSEmax values between 1.1 and 1.4 kcal mol⁻¹. It is also worth mentioning that most of the bias regarding closed/open subset division is eliminated using this reparametrization (compare to Tables S8 and S17, ESI[†]). Thus, the setup consisting of any of these functionals in combination with the DZVP-DFT basis set and DZVP-D3 reparametrization can be recommended as the most cost-effective approach for calculation of conformational energies. This extends the previous observations of good transferability⁵⁰ of these methods to CDN systems as well.

In conclusion, most of the tested DFT functionals, when paired with proper dispersion correction, perform with MUE of approximately 1 kcal mol⁻¹, which correspond to *ca.* 3% of the energy range of the conformers in the dataset. The SCAN functional stands out as a cheap and very accurate option. Possibility of using a small DZVP-DFT basis set with DZVP-D3 reparametrization offers a very fast and accurate computational setup as well.

3.1.2 Semiempirical (SQM) methods. The results for studied SQM methods are presented in Table 3. We include the empirically corrected “3c” methods in this group.

Most of the semiempirical methods provide very unsatisfactory results, with MUE values reaching up to 5 kcal mol⁻¹. Only two of

them, DFTB3-D3H4 and GFN2-xTB, approach the accuracy of 2 kcal mol⁻¹. The HF-3c method based on HF calculation in a minimal basis set, the cheapest one among the “3c” methods, is only slightly better with MUE of 1.9 kcal mol⁻¹. The remaining triple-correction (“3c”) methods, PBEh-3c and B97-3c yield MUE around 1 kcal mol⁻¹, which is comparable to DFT results obtained for larger basis sets.

The errors of the semiempirical methods observed here are comparable to previous tests on conformational energies of non-cyclic dinucleotides⁴⁷ and other compound classes that include small peptides⁵⁰ or sugars.³⁵ The approximations involved in these methods lead to an inaccurate description of torsional profiles,¹²⁰ and in the charged systems studied here, further errors may result from limitations in the description of electrostatic induction.

Evaluating conformational energies with force-field methods is in principle possible, but not very informative. Force-fields are very sensitive to minor structural changes, rendering conformational energies on structures not optimized with respect to a given energy function dominated by deviations from optimal bond lengths and angles rather than by interplay of structural features. Moreover, force-fields are developed to reproduce dynamical behavior of the system and its free-energy landscape, rather than conformational energies specifically. For these reasons, we examine a force-field approach in Section 3.3.2 by correlating MD simulations to the measured experimental data.

3.2 Experimental benchmarks

We are ultimately interested in the behaviour of CDNs in a water environment, where accurate reference conformational energies are not available. Instead, we focus specifically on the χ -dihedral angle (*i.e.* O4'-C1'-N9-C4), a structural feature that distinguishes between significantly populated conformers. The orientation of this angle is accessible to multiple NMR experimental setups. These features promise a less quantitative, but challenging and relevant benchmark for modelling of these systems in solution.

We focused on three molecules, 3'3'-*c*-di-AMP, 3'3'-*c*-GAMP, and 3'3'-*c*-di-GMP (see Fig. 1.1-3), selected for the *syn/anti*-dataset. Information about the orientation of χ -dihedral can be discerned from comparison of ³J(H1',C8) and ³J(H1',C4) coupling constants Fig. S2 (ESI[†]). The relative magnitude of coupling constants ³J(H1',C8) > ³J(H1',C4) indicates *anti*-orientation; ³J(H1',C8) < ³J(H1',C4) indicates *syn*-orientation. Our observed values of ³J(H1',C8) = 2.1 to 3.0 Hz and ³J(H1',C4) < 1 Hz therefore indicate *anti*-orientation. Alternatively, correlation of measured and calculated ¹H chemical shifts also suggest prevalence of the *anti/anti*-conformation, see Table S19 (ESI[†]).

This conclusion is further supported by transient NOE signals between a purine proton (*e.g.* H8) and a ribose proton (*e.g.* H1'), see Table S20 (ESI[†]). In line with conclusions presented by Wang *et al.*,²³ we observe that for all three molecules, these measurements clearly suggest a dominant population of *anti*-conformers.

Table 3 Averaged MUE values (see eqn (4)) of several SQM methods obtained for the CDN set with triple- ζ (def2-TZVPD) basis set and several dispersion corrections. DLPNO-CCSD(T)/MP2-F12 is used as a reference, see eqn (2). All values are in kcal mol⁻¹

Method	MUE [kcal mol ⁻¹]
PM6	4.9
PM6-D3	3.9
PM6-D3H4	3.6
PM7	4.1
RM1-D3H4	4.0
DFTB3	4.2
DFTB3-D3H4	2.1
DFTB3-D3H5	3.2
GFN-xTB	2.7
GFN2-xTB	2.3
HF-3c	1.9
PBEh-3c	1.0
B97-3c	0.8



Table 4 Signal intensity of H8/H1' relative to the H1'/H2' signal as obtained from 2D ROESY experiments and calculated using lowest-energy structures from the *syn-/anti*-data set

CDN	ROESY	<i>Anti-/anti-</i>	<i>Syn-/anti-</i>	<i>Anti-/syn-</i>	<i>Syn-/syn-</i>
3'3'- <i>c</i> -di-AMP ^a	0.19	0.17	1.48	1.48	3.04
Adenine of 3'3'- <i>c</i> -GAMP	0.30	0.14	0.15	2.79	2.81
Guanine of 3'3'- <i>c</i> -GAMP	0.43	0.17	2.21	0.17	2.99
3'3'- <i>c</i> -di-GMP ^a	0.52	0.17	1.44	1.44	2.68

^a *Syn-/anti-* and *anti-/syn-* designations refer to the same conformers for these molecules.

Even more detailed information may be provided by relative NOE signals from 2D-ROESY spectra. Here too, the relative intensities of cross-peaks indicate a general preference for the *anti*-conformation. However, the weak observed cross-peaks H2/H2' and H2/H3' may indicate the presence of a certain population of *syn*-conformations. Selected observed NOEs together with calculated "inter-proton" distances are summarized in Table S21 (ESI[†]).

Moreover, the $1/r^6$ decay of the signals and their relative strength to proton pairs with known mutual distance (such as H1'-H2' ribose proton pair) may be used to assess compliance of a candidate structure with the measured signals. We focus on the relative strength of the H8/H1' signal. According to MD simulations, this proton pair provides well separated peaks of distance distributions (see Fig. S3, ESI[†]), which allows for distinguishing between *anti*- and *syn*-conformations.

Experimental ROESY signals of H8/H1' as well as hypothetical signal strengths of the lowest-energy conformers of the *syn-/anti*-data set are shown in Table 4. In the case of 3'3'-*c*-GAMP and 3'3'-*c*-di-GMP, the observed values are not consistent with any of the considered conformers. An intermediate χ -conformer (corresponding to $\chi \approx 140^\circ$ or $\chi \approx -20^\circ$) would justify observed signal strength, but such a conformer was not found in a conformational search. Hence, we interpret this as an indication of a mixed population of *anti*- and *syn*-conformers, which can be estimated from a linear combination of signals of individual conformers. Such an estimate is underdetermined, but permissible solutions are in a narrow range (see Table 5).

Alternatively, we may use an ensemble of χ -conformers from MD trajectories (see below) for calculating hypothetical signal strength and compare them to their experimental counterparts. This leads to very similar conclusions regarding the population of purely *anti*-conformations. This is because the H8/H1' signal strength is primarily determined by the value of χ -dihedral and

Table 5 Estimated populations of *anti*- χ -conformers using H8/H1' signal relative to H1'/H2' signal as obtained from 2D ROESY experiment and calculated using lowest-energy structures from a *syn-/anti*-data set and ensemble of MD structures

CDN	<i>Syn-/anti</i> -dataset	MD ensembles
3'3'- <i>c</i> -di-AMP	98–99%	98%
Adenine of 3'3'- <i>c</i> -GAMP	94%	90%
Guanine of 3'3'- <i>c</i> -GAMP	87–91%	81%
3'3'- <i>c</i> -di-GMP	72–86%	74%

thus even if the QM structures and/or MD ensembles are not entirely accurate, the result of the analysis is robust.

3.3 Accuracy of modelling structural features in solvent (*syn-/anti*-set and MD simulations)

3.3.1 QM Calculations with implicit solvent. We have performed extensive conformational sampling (see the methods section) for these three systems (3'3'-*c*-di-AMP, 3'3'-*c*-GAMP, and 3'3'-*c*-di-GMP). As introduced in Section 2.1.2, we can categorize the resulting CDN conformations (local minima) into several classes – *anti-/anti-*, *syn-/anti-*, *syn-/anti-*, and *syn-/syn-* based on the values of the two χ dihedral angles. The *syn-/anti*-set of structures collects candidates for global minimum from each of these classes for each of the three ligands. Combining some of the methods tested in Section 3.1 with common solvation methods, we present the conformational energies of the lowest-energy candidates for each class in Table 6.

In all cases, the gas-phase energy strongly prefers the *syn*-orientation for the guanine base as this allows for formation of an intramolecular hydrogen bond. This results in a very straightforward ranking of conformers for all electronic structure methods (only the B-LYP functional is shown here), where adenines prefer *anti*-orientation, while guanines prefer *syn*-orientation.

Including solvation treatment flattens the energy range of conformer classes down to mere units of kcal mol⁻¹. Indeed, the solvation treatment largely counteracts the preference for the intramolecular hydrogen bond.

The NMR experiments presented in the previous section showed two qualitative trends – a higher propensity for the *syn*-conformation of guanine and predominant *anti-/anti*-orientation for all three studied molecules. Although the details vary across the methods and both of these trends can be recognized to some extent, none of the methods/solvation models reproduce both of these trends at the same time.

Observed differences of 1–3 kcal mol⁻¹ between *anti-/anti*- and *syn-/anti*-conformers in Table 6 make it unlikely for the electronic structure methods to be responsible for the disagreement, as these are observed even for DLPNO-CCSD(T) TightPNO/MP2-F12(+COSMO-RS) for which the estimated error is one order of magnitude smaller.

A potential reason for the incorrect relative free energies are inaccurate structures. In Section 3.1 we showed that some of the methods show systematic bias by over- or under-stabilizing closed structures. Table 6 shows the results for structures optimized with B-P/COSMO, which showed a bias for over-stabilizing the closed structures. For this reason, we reoptimized the structures in the *syn-/anti*-dataset with TPSS (which showed an under-stabilizing bias for closed structures) and B3-LYP (which was bias free), see Table 2. We combined both methods with CPCM and SMD solvation models and reevaluated the relative free conformational energies. The results are shown in Table S22 (ESI[†]), which shows that the situation is not remedied by optimization by other methods. Even with structures obtained with different approaches, none of the methods consistently reproduce both of the trends observed in the NMR experiments.

Another potential reason for underestimating *anti*-conformers are the entropic contributions, which have been neglected so far.



Table 6 Conformational energies of lowest free-energy χ -conformers of the *syn*-/*anti*-set of 3′3′-*c*-di-AMP, 3′3′-*c*-GAMP, and 3′3′-*c*-di-GMP. The lowest free-energy conformer for each of the molecules is highlighted in bold. All values are in kcal mol⁻¹

CDN	χ -Conformer class	Reference E_{gp}^a /COSMO-RS	B-LYP/COSMO-RS	B-LYP/COSMO	B-LYP/SMD	B-LYP (gas-phase)
3′3′- <i>c</i> -di-AMP	<i>Anti</i> -/ <i>anti</i> -	0.9	0.4	0.0	0.0	0.0
	<i>Syn</i> -/ <i>anti</i> -	0.0	0.0	2.3	2.9	10.9
	<i>Syn</i> -/ <i>syn</i> -	2.9	2.4	5.9	5.8	22.6
3′3′- <i>c</i> -GAMP	<i>Anti</i> -/ <i>anti</i> -	2.3	2.9	2.1	1.6	17.1
	<i>Anti</i> -/ <i>syn</i> -	0.0	0.0	4.7	4.8	27.6
	<i>Syn</i> -/ <i>anti</i> -	0.3	0.6	0.0	0.0	0.0
	<i>Syn</i> -/ <i>syn</i> -	2.5	2.9	2.0	2.5	13.3
3′3′- <i>c</i> -di-GMP	<i>Anti</i> -/ <i>anti</i> -	2.1	2.7	2.0	0.0	18.3
	<i>Syn</i> -/ <i>anti</i> -	0.0	0.0	0.8	0.0	10.3
	<i>Syn</i> -/ <i>syn</i> -	3.9	3.9	0.0	0.6	0.0

^a DLPNO-CCSD(T) TightPNO/MP2-F12 used as reference gas-phase energies, see eqn (2).

We have performed normal-mode analysis on all 26 structures of the *syn*-/*anti*-data set. Inclusion of the thermal contributions and zero-point vibrational energies do not, however, reverse the observed trends. A more detailed look into the magnitude of these terms can be found in Table S23 (ESI[†]). Moreover, normal-mode analysis only provides “local” entropic information, not accounting for (co)existence of other conformers.

3.3.2 MD simulations. Molecular dynamics (MD) trajectories may account for entropic effects by providing a statistical ensemble of conformers. This is additional information that would be difficult to obtain from QM calculations. Table 7 shows populations of conformers obtained from our 50 μ s MD simulations. The dominant conformations present in MD are those that have the lowest energy in the QM calculations, however, the relative populations of the *syn*-/*anti*-conformers differ significantly from what we would expect from the relative QM energies.

The most prominent feature in Table 7 is the different preference for *syn*-/*anti*-conformations of guanine and adenine. Similarly to the result provided by gas-phase conformational energies (Table 6), guanine does show higher preference for *syn*-, the *syn*- to *anti*-ratio being approximately 3:1. On the other hand, adenine prefers the *anti*-conformation by about the same margin, *i.e.* 1:3. This points to strong overestimation of the *syn*-conformations for guanine (*e.g.*, *syn*-conformation for 3′3′-*c*-di-GMP is 77% in MD compared to less than 25% estimate from ROESY spectra), but not so much for adenine.

We traced this to an overly stable hydrogen bond, which occurs between the amino group of guanine and phosphate oxygen that is present only when guanine is in the *syn*-orientation. It has recently been pointed out that this type of base-phosphate hydrogen bond appears to be too stable in current amber force fields,^{121,122} and therefore we consider this inaccuracy to be a consequence of a known force field artifact. It is worth noting that the orientation of bases in the MD simulations are mostly independent of each other. Assuming the probability of the *anti*-conformation to be 76% for adenine and 22% for guanine describes the overall conformer population reasonably well, see Table S24 (ESI[†]).

Thus, while higher propensity of guanine for *syn*-compared to adenine is reproduced by both the QM single-point approach and by force-field MD simulations, this trait usually overshadows the overall observed preference for the *anti*-conformation in all three molecules. The rare case where the *anti*-/*anti*-conformation is correctly reproduced to be prevalent is in MD simulations of 3′3′-*c*-di-AMP, but even here the prevalence is marginal over the *syn*-/*anti*-conformation, while the experiments indicate the strongest presence of *anti*-conformations. Although the BLYP/SMD solvation model prefers *anti*-/*anti*- for 3′3′-*c*-di-AMP as well, it is at the expense of the other qualitative trend, *i.e.* higher propensity for the *syn*-conformation of the guanine base. Thus, both QM and MD underestimate the *anti*-/*anti*-conformation in all three cases, albeit to a varying extent.

Table 7 Populations from MD simulations (50 μ s) using an χ OL3 force-field of χ -conformers of 3′3′-*c*-di-AMP, 3′3′-*c*-GAMP, and 3′3′-*c*-di-GMP with explicit SPC/E solvent

CDN	χ -Conformer	MD population %	MD population <i>syn</i> -/ <i>anti</i> -ratio %	Estimates for ROESY %
3′3′- <i>c</i> -di-AMP	<i>Anti</i> -/ <i>anti</i> -	57	23 : 77	2 : 98
	<i>Syn</i> -/ <i>anti</i> -	40		
	<i>Syn</i> -/ <i>syn</i> -	3		
3′3′- <i>c</i> -GAMP	<i>Anti</i> -/ <i>anti</i> -	18	G: 73 : 27 A: 21 : 79	G: 19 : 81 A: 10 : 90
	<i>Gsyn</i> -/ <i>Aanti</i> -	61		
	<i>Ganti</i> -/ <i>Asyn</i> -	9		
	<i>Syn</i> -/ <i>syn</i> -	12		
	<i>Anti</i> -/ <i>anti</i> -	8		
3′3′- <i>c</i> -di-GMP	<i>Anti</i> -/ <i>anti</i> -	8	77 : 23	26 : 74
	<i>Syn</i> -/ <i>anti</i> -	31		
	<i>Syn</i> -/ <i>syn</i> -	61		



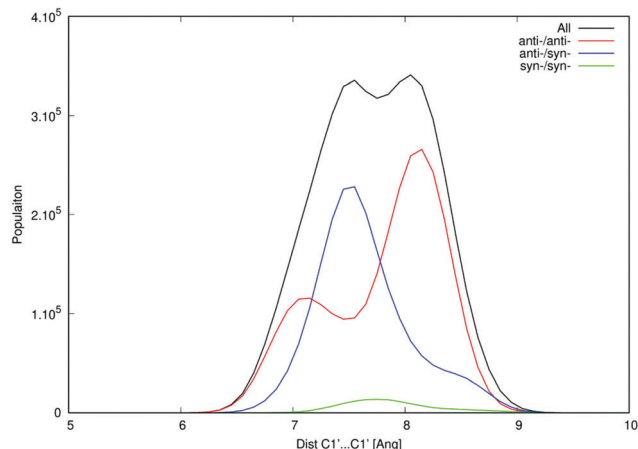


Fig. 4 Distribution of C1'–C1' distances of 3'/3'-c-di-AMP in MD simulations. This structural parameter indicates openness of the macrocycle. The bimodal distribution of the *anti-/anti-* conformers clearly demonstrates the presence of the open (the more prevalent population at ca. 8 Å) and closed conformers (ca. 7 Å).

One of the apparent differences between structures provided by DFT/COSMO optimization (the *syn-/anti-* dataset) and structures from MD trajectories is the openness of the macrocycle, see Fig. 3. Even a small deformation of several backbone angles is enough to open the structure and expose both sides of the bases to the solution. For the force-field, the distributions of the backbone angles in the closed form are shifted slightly outside their usual energy minima, which leads to its lower thermodynamic stability. This is reflected by the C1'–C1' distances obtained for 3'/3'-c-di-AMP in Fig. 4. It remains unclear whether predominance of the open form is natural or whether it is a force field artifact. However, both of the distribution peaks in Fig. 4 are significantly higher than corresponding distances obtained in the *syn-/anti-* dataset (ca. 6 Å for *anti-/anti-* conformers of 3'/3'-c-di-AMP, compared to peaks of ca. 7 Å and 8 Å in MD populations).

We can obtain some insight about the openness of the structure (discussed above in terms of C1'–C1' distances) by looking at the torsion angles of the macrocycle. We refrain from exhaustive comparison of structural parameters and focus instead on two torsion angles, namely β and ε (see Fig. S4, ESI†), which highlight the issue. For both angles, MD populations show better agreement with values obtained from NMR than the QM structures of the *syn-/anti-* dataset (see Tables S26 and S27, ESI†). Moreover, a restrained optimization of the QM structures that pushes C1'–C1' further apart does force β and ε torsions towards the experimental values (data not shown). This indicates that QM structures obtained by optimization in implicit solvent are inaccurate, leading to slight deformations of the macrocycle and geometries that are too closed, which contributes to inaccurate prediction of relative conformational energies.

4. Conclusions

In this work, we evaluated the performance of modelling approaches by two different benchmarks: (1) gas-phase

conformational energies referenced to a DLPNO-CCSD(T)/MP2-F12 composite scheme and (2) qualitative prediction of a structural feature (orientation of the purine base) in solvent vs. NMR experiment.

First, we have shown that most of the density functional approximations provide conformational energies with good accuracy, provided that a dispersion correction is used. A typical mean unsigned error is below 1 kcal mol⁻¹, which represents around 3% of the conformational energy range in the dataset. Hybrid functionals outperform GGA and meta-GGA functionals by only a very small margin (ca. 0.1 kcal mol⁻¹ in mean unsigned error). Thus, computational cost and compatibility with other modelling options are recommended as the criteria of choice. In particular, use of the economical DZVP-DFT basis set even in combination with a GGA functional gives results comparable to the best DFT setups that come at significantly higher computational cost. However, use of DZVP-DFT is only efficient in combination with reparametrized dispersion correction.⁹¹ On the other hand, semi-empirical methods do not provide a satisfactory approximation for conformational energies. A typical error of tested MNDO methods and tight-binding schemes is on the order of several units of kcal mol⁻¹.

Second, we addressed the conformational behavior of cyclic dinucleotides in solvent (water), which represents a more realistic setup. NMR experiments, carried out for 3'/3'-c-di-AMP, 3'/3'-c-GAMP, and 3'/3'-c-di-GMP, unequivocally identified the dominant *anti*-orientation of the purine bases. Presence of a certain population of the *syn*-conformer is, however, apparent for the two systems containing guanine.

While higher occurrence of the *syn*-conformation for guanine is recognized by most approaches, the overall dominance of the *anti*-conformation for all molecules is not. Nevertheless, the differences still provide valuable insights.

Guanine's propensity for the *syn*-conformation is most likely due to the intramolecular hydrogen bond with a phosphate. This interaction is, unsurprisingly, very strong in a gas-phase context and is weakened to a limited extent by introduction of solvent. In MD simulations the interaction remains over-stabilized, leading to incorrectly predicting the *syn*-conformation to be dominant for guanine. Population of the χ -conformation in MD simulations is largely determined by the base, suggesting that improving the description of this specific interaction might improve the results significantly. For quantum-mechanical methods the reasons behind the discrepancy are not straightforward. Lack of explicit solvent and dynamical interactions with solvent likely lead to geometries that are too compact, which leads to inaccuracies in relative free-energies.

It should be reiterated that the chosen structural feature – the *syn-/anti*-equilibrium of the purine bases – remains an extremely challenging case for modelling. Despite the observed shortcomings, computational methods do provide useful insights into identifying relative trends (adenine vs. guanine preferences), less sensitive structural features (such as ribose phase angles), or interpretation of experimental data



(e.g. H8/H1' distances obtained from MD for the interpretation of ROESY spectra). By pointing to some of the inaccuracies provided by a range of available approaches we attempted to gauge the interpretability of the results in context where estimating computational "error bars" is often difficult.

Conflicts of interest

There are no conflicts to declare.

Acknowledgements

The project was supported by the Grant Agency of the Czech Republic (17-16107S to P. J. and 20-08772S to L. R.). Computer time at the IT4I supercomputer center (project LM2018140 of the MSMT CR) is gratefully acknowledged.

References

- O. Danilchanka and J. J. Mekalanos, Cyclic Dinucleotides and the Innate Immune Response, *Cell*, 2013, **154**, 962–970.
- U. Römling, M. Y. Galperin and M. Gomelsky, Cyclic di-GMP: the First 25 Years of a Universal Bacterial Second Messenger, *Microbiol. Mol. Biol. Rev.*, 2013, **77**, 1–52.
- X. Cai, Y.-H. Chiu and Z. J. Chen, The cGAS-cGAMP-STING Pathway of Cytosolic DNA Sensing and Signaling, *Mol. Cell*, 2014, **54**, 289–296.
- R. Fang, C. Wang, Q. Jiang, M. Lv, P. Gao, X. Yu, P. Mu, R. Zhang, S. Bi, J.-M. Feng and Z. Jiang, NEMO-IKK β Are Essential for IRF3 and NF- κ B Activation in the cGAS-STING Pathway, *J. Immunol.*, 2017, **199**, 3222–3233.
- Q. Chen, L. Sun and Z. J. Chen, Regulation and function of the cGAS-STING pathway of cytosolic DNA sensing, *Nat. Immunol.*, 2016, **17**, 1142–1149.
- J. Papinska, H. Bagavant, G. B. Gmyrek, M. Sroka, S. Tummala, K. A. Fitzgerald and U. S. Deshmukh, Activation of Stimulator of Interferon Genes (STING) and Sjögren Syndrome, *J. Dent. Res.*, 2018, **97**, 893–900.
- M. Musella, G. Manic, R. De Maria, I. Vitale and A. Sistigu, Type-I-interferons in infection and cancer: Unanticipated dynamics with therapeutic implications, *Oncoimmunology*, 2017, **6**, e1314424.
- X.-D. Li, J. Wu, D. Gao, H. Wang, L. Sun and Z. J. Chen, Pivotal Roles of cGAS-cGAMP Signaling in Antiviral Defense and Immune Adjuvant Effects, *Science*, 2013, **341**, 1390–1394.
- G. N. Barber, STING: infection, inflammation and cancer, *Nat. Rev. Immunol.*, 2015, **15**, 760–770.
- B. Novotná, L. Vaneková, M. Zavřel, M. Buděšínský, M. Dejmek, M. Smola, O. Gutten, Z. A. Tehrani, M. Pimková Polidarová, A. Brázdová, R. Liboska, I. Štěpánek, Z. Vavřina, T. Jandoušek, R. Nencka, L. Rulišek, E. Bouřa, J. Brynda, O. Páv and G. Birkuš, Enzymatic Preparation of 2'-5',3'-5'-Cyclic Dinucleotides, Their Binding Properties to Stimulator of Interferon Genes Adaptor Protein, and Structure/Activity Correlations, *J. Med. Chem.*, 2019, **62**, 10676–10690.
- H. Zhang, Q.-D. You and X.-L. Xu, Targeting Stimulator of Interferon Genes (STING): A Medicinal Chemistry Perspective, *J. Med. Chem.*, 2020, **63**, 3785–3816.
- T. Lioux, M.-A. Mauny, A. Lamoureux, N. Bascoul, M. Hays, F. Vernejoul, A.-S. Baudru, C. Boullaran, J. Lopes-Vicente, G. Qushair and G. Tiraby, Design, Synthesis, and Biological Evaluation of Novel Cyclic Adenosine-Inosine Monophosphate (cAIMP) Analogs That Activate Stimulator of Interferon Genes (STING), *J. Med. Chem.*, 2016, **59**, 10253–10267.
- J. Chang, F. Guo, T. M. Block and J.-T. Guo, *Use of Sting Agonists to Treat Chronic Hepatitis B Virus Infection*, *US pat.*, US10045961B2, 2018.
- T. Ebensen, M. Morr and C. A. Guzman, *Cyclic-Dinucleotides and Its Conjugates as Adjuvants and Their Uses in Pharmaceutical Compositions*, *US pat.*, US9597391B2, 2017.
- F. Vernejoul, G. Tiraby and T. Lioux, *Fluorinated Cyclic Dinucleotides for Cytokine Induction*, *World Intellectual Property Organization Patent*, WO2016096174A1, 2016.
- Study of MK-1454 Alone or in Combination With Pembrolizumab (MK-3475) in Participants With Advanced/Metastatic Solid Tumors or Lymphomas (MK-1454-001) - Full Text View - ClinicalTrials.gov, <https://clinicaltrials.gov/ct2/show/NCT03010176>, accessed May 5, 2020.
- Safety and Efficacy of MIW815 (ADU-S100) +/- Ipilimumab in Patients With Advanced/Metastatic Solid Tumors or Lymphomas - Full Text View - ClinicalTrials.gov, <https://clinicaltrials.gov/ct2/show/NCT02675439>, accessed May 5, 2020.
- J. Guo, J. Wang, J. Fan, Y. Zhang, W. Dong and C.-P. Chen, Distinct Dynamic and Conformational Features of Human STING in Response to 2'3'-cGAMP and c-di-GMP, *Chem-BioChem*, 2019, **20**, 1838–1847.
- B. Tang, B. Li, B. Li, Z. Li, J. Qin, X. Zhou, Y. Qiu, Z. Wu and M. Fang, The effect of V155M mutation on the complex of hSTING and 2'3'-cGAMP: an in silico study case, *RSC Adv.*, 2017, **7**, 39185–39196.
- M. Smola, O. Gutten, M. Dejmek, M. Kožíšek, T. Evangelidis, Z. Aliakbar Tehrani, B. Novotná, R. Nencka, G. Birkuš, E. Boura and L. Rulišek, Ligand Strain and Its Conformational Complexity Is a Major Factor Determining Binding of Cyclic Dinucleotides to STING Protein, *Angew. Chem., Int. Ed.*, 2021, DOI: 10.1002/anie.202016805.
- Z. Vavřina, O. Gutten, M. Smola, M. Zavřel, Z. Aliakbar Tehrani, V. Charvát, M. Kožíšek, E. Boura, G. Birkuš and L. Rulišek, Protein-Ligand Interactions in the STING Binding Site Probed by Rationally Designed Single-Point Mutations: Experiment and Theory, *Biochemistry*, 2021, **60**, 607–620, DOI: 10.1021/acs.biochem.0c00949.
- X. Che, J. Zhang, Y. Zhu, L. Yang, H. Quan and Y. Q. Gao, Structural Flexibility and Conformation Features of Cyclic Dinucleotides in Aqueous Solutions, *J. Phys. Chem. B*, 2016, **120**, 2670–2680.



- 23 B. Wang, Z. Wang, U. Javornik, Z. Xi and J. Plavec, Computational and NMR spectroscopy insights into the conformation of cyclic di-nucleotides, *Sci. Rep.*, 2017, **7**, 16550.
- 24 H. Shi, J. Wu, Z. J. Chen and C. Chen, Molecular basis for the specific recognition of the metazoan cyclic GMP-AMP by the innate immune adaptor protein STING, *Proc. Natl. Acad. Sci. U. S. A.*, 2015, **112**, 8947–8952.
- 25 X. Che, J. Zhang, H. Quan, L. Yang and Y. Q. Gao, CDNs–STING Interaction Mechanism Investigations and Instructions on Design of CDN-Derivatives, *J. Phys. Chem. B*, 2018, **122**, 1862–1868.
- 26 E. Perola and P. S. Charifson, Conformational Analysis of Drug-Like Molecules Bound to Proteins: An Extensive Study of Ligand Reorganization upon Binding, *J. Med. Chem.*, 2004, **47**, 2499–2510.
- 27 D. L. Mobley and K. A. Dill, Binding of Small-Molecule Ligands to Proteins: “What You See” Is Not Always “What You Get”, *Structure*, 2009, **17**, 489–498.
- 28 J. He, W. Yin, M. Y. Galperin and S.-H. Chou, Cyclic di-AMP, a second messenger of primary importance: tertiary structures and binding mechanisms, *Nucleic Acids Res.*, 2020, **48**, 2807–2829.
- 29 L. Goerigk, A. Hansen, C. Bauer, S. Ehrlich, A. Najibi and S. Grimme, A look at the density functional theory zoo with the advanced GMTKN55 database for general main group thermochemistry, kinetics and noncovalent interactions, *Phys. Chem. Chem. Phys.*, 2017, **19**, 32184–32215.
- 30 N. Mardirossian and M. Head-Gordon, Thirty years of density functional theory in computational chemistry: an overview and extensive assessment of 200 density functionals, *Mol. Phys.*, 2017, **115**, 2315–2372.
- 31 L. Goerigk and S. Grimme, A General Database for Main Group Thermochemistry, Kinetics, and Noncovalent Interactions – Assessment of Common and Reparameterized (meta-)GGA Density Functionals, *J. Chem. Theory Comput.*, 2010, **6**, 107–126.
- 32 L. Goerigk, A. Karton, J. M. L. Martin and L. Radom, Accurate quantum chemical energies for tetrapeptide conformations: why MP2 data with an insufficient basis set should be handled with caution, *Phys. Chem. Chem. Phys.*, 2013, **15**, 7028–7031.
- 33 L.-J. Yu, F. Sarrami, A. Karton and R. J. O’Reilly, An assessment of theoretical procedures for π -conjugation stabilisation energies in enones, *Mol. Phys.*, 2015, **113**, 1284–1296.
- 34 D. Folmsbee and G. Hutchison, Assessing conformer energies using electronic structure and machine learning methods, *Int. J. Quantum Chem.*, 2021, **121**, e26381.
- 35 M. Marianski, A. Supady, T. Ingram, M. Schneider and C. Baldauf, Assessing the Accuracy of Across-the-Scale Methods for Predicting Carbohydrate Conformational Energies for the Examples of Glucose and α -Maltose, *J. Chem. Theory Comput.*, 2016, **12**, 6157–6168.
- 36 Y. Li, S. Zhang, J. Z. H. Zhang and X. He, Assessing the performance of popular QM methods for calculation of conformational energies of trialanine, *Chem. Phys. Lett.*, 2016, **652**, 136–141.
- 37 M. K. Kesharwani, A. Karton and J. M. L. Martin, Benchmark *ab Initio* Conformational Energies for the Proteino-genic Amino Acids through Explicitly Correlated Methods. Assessment of Density Functional Methods, *J. Chem. Theory Comput.*, 2016, **12**, 444–454.
- 38 S. Kozuch, S. M. Bachrach and J. M. L. Martin, Conformational equilibria in butane-1,4-diol: a benchmark of a prototypical system with strong intramolecular H-bonds, *J. Phys. Chem. A*, 2014, **118**, 293–303.
- 39 J. J. Wilke, M. C. Lind, H. F. Schaefer, A. G. Császár and W. D. Allen, Conformers of Gaseous Cysteine, *J. Chem. Theory Comput.*, 2009, **5**, 1511–1523.
- 40 D. Manna, M. K. Kesharwani, N. Sylvetsky and J. M. L. Martin, Conventional and Explicitly Correlated *ab Initio* Benchmark Study on Water Clusters: Revision of the BEGDB and WATER27 Data Sets, *J. Chem. Theory Comput.*, 2017, **13**, 3136–3152.
- 41 A. Mládek, P. Banáš, P. Jurečka, M. Otyepka, M. Zgarbová and J. Šponer, Energies and 2’-Hydroxyl Group Orientations of RNA Backbone Conformations. Benchmark CCSD(T)/CBS Database, Electronic Analysis, and Assessment of DFT Methods and MD Simulations, *J. Chem. Theory Comput.*, 2014, **10**, 463–480.
- 42 G. I. Csonka, A. D. French, G. P. Johnson and C. A. Stortz, Evaluation of Density Functionals and Basis Sets for Carbohydrates, *J. Chem. Theory Comput.*, 2009, **5**, 679–692.
- 43 A. Karton and J. M. L. Martin, Explicitly correlated benchmark calculations on C_8H_8 isomer energy separations: how accurate are DFT, double-hybrid, and composite *ab initio* procedures?, *Mol. Phys.*, 2012, **110**, 2477–2491.
- 44 V. K. Prasad, A. Otero-de-la-Roza and G. A. DiLabio, PEPCONF, a diverse data set of peptide conformational energies, *Sci. Data*, 2019, **6**, 1–9.
- 45 D. Gruzman, A. Karton and J. M. L. Martin, Performance of *Ab Initio* and Density Functional Methods for Conformational Equilibria of $C_nH_{2n} + 2$ Alkane Isomers ($n = 4–8$), *J. Phys. Chem. A*, 2009, **113**, 11974–11983.
- 46 H. Kruse, M. Havrila and J. Šponer, QM Computations on Complete Nucleic Acids Building Blocks: Analysis of the Sarcin-Ricin RNA Motif Using DFT-D3, HF-3c, PM6-D3H, and MM Approaches, *J. Chem. Theory Comput.*, 2014, **10**, 2615–2629.
- 47 H. Kruse, A. Mladek, K. Gkionis, A. Hansen, S. Grimme and J. Sponer, Quantum Chemical Benchmark Study on 46 RNA Backbone Families Using a Dinucleotide Unit, *J. Chem. Theory Comput.*, 2015, **11**, 4972–4991.
- 48 D. Řeha, H. Valdés, J. Vondrášek, P. Hobza, A. Abu-Riziq, B. Crews and M. S. de Vries, Structure and IR Spectrum of Phenylalanyl-Glycyl-Glycine Tripeptide in the Gas-Phase: IR/UV Experiments, *Ab Initio* Quantum Chemical Calculations, and Molecular Dynamic Simulations, *Chem. – Eur. J.*, 2005, **11**, 6803–6817.
- 49 U. R. Fogueri, S. Kozuch, A. Karton and J. M. L. Martin, The Melatonin Conformer Space: Benchmark and Assessment of Wave Function and DFT Methods for a Paradigmatic Biological and Pharmacological Molecule, *J. Phys. Chem. A*, 2013, **117**, 2269–2277.



- 50 J. Řezáč, D. Bím, O. Gutten and L. Rulišek, Toward Accurate Conformational Energies of Smaller Peptides and Medium-Sized Macrocycles: MPCONF196 Benchmark Energy Data Set, *J. Chem. Theory Comput.*, 2018, **14**, 1254–1266.
- 51 J. M. L. Martin, What Can We Learn about Dispersion from the Conformer Surface of n-Pentane?, *J. Phys. Chem. A*, 2013, **117**, 3118–3132.
- 52 M. Zgarbová, P. Jurečka, J. Šponer and M. Otyepka, A- to B-DNA Transition in AMBER Force Fields and Its Coupling to Sugar Pucker, *J. Chem. Theory Comput.*, 2018, **14**, 319–328.
- 53 M. Zgarbová, F. J. Luque, J. Šponer, T. E. Cheatham, M. Otyepka and P. Jurečka, Toward Improved Description of DNA Backbone: Revisiting Epsilon and Zeta Torsion Force Field Parameters, *J. Chem. Theory Comput.*, 2013, **9**, 2339–2354.
- 54 M. Zgarbová, J. Šponer, M. Otyepka, T. E. Cheatham, R. Galindo-Murillo and P. Jurečka, Refinement of the Sugar–Phosphate Backbone Torsion Beta for AMBER Force Fields Improves the Description of Z- and B-DNA, *J. Chem. Theory Comput.*, 2015, **11**, 5723–5736.
- 55 M. Zgarbová, P. Jurečka, P. Banáš, M. Havrila, J. Šponer and M. Otyepka, Noncanonical α/γ Backbone Conformations in RNA and the Accuracy of Their Description by the AMBER Force Field, *J. Phys. Chem. B*, 2017, **121**, 2420–2433.
- 56 D. Sindhikara, S. A. Spronk, T. Day, K. Borrelli, D. L. Cheney and S. L. Posy, Improving Accuracy, Diversity, and Speed with Prime Macrocyclic Conformational Sampling, *J. Chem. Inf. Model.*, 2017, **57**, 1881–1894.
- 57 *Maestro Release 2017-1*, Schrödinger LLC, New York, NY, 2017.
- 58 J. S. Richardson, B. Schneider, L. W. Murray, G. J. Kapral, R. M. Immormino, J. J. Headd, D. C. Richardson, D. Ham, E. Hershkovits, L. D. Williams, K. S. Keating, A. M. Pyle, D. Micallef, J. Westbrook and H. M. Berman, RNA backbone: Consensus all-angle conformers and modular string nomenclature (an RNA Ontology Consortium contribution), *RNA*, 2008, **14**, 465–481.
- 59 J. E. Sokoloski, S. A. Godfrey, S. E. Dombrowski and P. C. Bevilacqua, Prevalence of syn nucleobases in the active sites of functional RNAs, *RNA*, 2011, **17**, 1775–1787.
- 60 A. J. May and F. R. Manby, An explicitly correlated second order Møller-Plesset theory using a frozen Gaussian geminal, *J. Chem. Phys.*, 2004, **121**, 4479–4485.
- 61 D. P. Tew and W. Klopper, New correlation factors for explicitly correlated electronic wave functions, *J. Chem. Phys.*, 2005, **123**, 074101.
- 62 R. A. Bachorz, F. A. Bischoff, A. Glöß, C. Hättig, S. Höfener, W. Klopper and D. P. Tew, The MP2-F12 method in the TURBOMOLE program package, *J. Comput. Chem.*, 2011, **32**, 2492–2513.
- 63 T. Helgaker, W. Klopper, H. Koch and J. Noga, Basis-set convergence of correlated calculations on water, *J. Chem. Phys.*, 1997, **106**, 9639–9646.
- 64 A. D. Becke, Density-functional exchange-energy approximation with correct asymptotic behavior, *Phys. Rev. A: At., Mol., Opt. Phys.*, 1988, **38**, 3098–3100.
- 65 C. Lee, W. Yang and R. G. Parr, Development of the Colle-Salvetti correlation-energy formula into a functional of the electron density, *Phys. Rev. B: Condens. Matter Mater. Phys.*, 1988, **37**, 785–789.
- 66 J. P. Perdew, Density-functional approximation for the correlation energy of the inhomogeneous electron gas, *Phys. Rev. B: Condens. Matter Mater. Phys.*, 1986, **33**, 8822–8824.
- 67 J. P. Perdew, K. Burke and M. Ernzerhof, Generalized Gradient Approximation Made Simple, *Phys. Rev. Lett.*, 1996, **77**, 3865–3868.
- 68 N. C. Handy and A. J. Cohen, Left-right correlation energy, *Mol. Phys.*, 2001, **99**, 403–412.
- 69 Y. Zhang and W. Yang, Comment on “Generalized Gradient Approximation Made Simple”, *Phys. Rev. Lett.*, 1998, **80**, 890.
- 70 S. Grimme, Semiempirical GGA-type density functional constructed with a long-range dispersion correction, *J. Comput. Chem.*, 2006, **27**, 1787–1799.
- 71 J. Tao, J. P. Perdew, V. N. Staroverov and G. E. Scuseria, Climbing the Density Functional Ladder: Nonempirical Meta-Generalized Gradient Approximation Designed for Molecules and Solids, *Phys. Rev. Lett.*, 2003, **91**, 146401.
- 72 J. P. Perdew, A. Ruzsinszky, G. I. Csonka, L. A. Constantin and J. Sun, Workhorse Semilocal Density Functional for Condensed Matter Physics and Quantum Chemistry, *Phys. Rev. Lett.*, 2009, **103**, 026403.
- 73 J. Sun, A. Ruzsinszky and J. P. Perdew, Strongly Constrained and Appropriately Normed Semilocal Density Functional, *Phys. Rev. Lett.*, 2015, **115**, 036402.
- 74 Y. Zhao and D. G. Truhlar, A new local density functional for main-group thermochemistry, transition metal bonding, thermochemical kinetics, and noncovalent interactions, *J. Chem. Phys.*, 2006, **125**, 194101.
- 75 A. D. Becke, Density-functional thermochemistry. III. The role of exact exchange, *J. Chem. Phys.*, 1993, **98**, 5648–5652.
- 76 A. D. Becke, A new mixing of Hartree–Fock and local density-functional theories, *J. Chem. Phys.*, 1993, **98**, 1372–1377.
- 77 Y. Zhao and D. G. Truhlar, The M06 suite of density functionals for main group thermochemistry, thermochemical kinetics, noncovalent interactions, excited states, and transition elements: two new functionals and systematic testing of four M06-class functionals and 12 other functionals, *Theor. Chem. Acc.*, 2008, **120**, 215–241.
- 78 C. Adamo and V. Barone, Toward reliable density functional methods without adjustable parameters: The PBE0 model, *J. Chem. Phys.*, 1999, **110**, 6158–6170.
- 79 V. N. Staroverov, G. E. Scuseria, J. Tao and J. P. Perdew, Comparative assessment of a new nonempirical density functional: Molecules and hydrogen-bonded complexes, *J. Chem. Phys.*, 2003, **119**, 12129–12137.
- 80 J.-D. Chai and M. Head-Gordon, Systematic optimization of long-range corrected hybrid density functionals, *J. Chem. Phys.*, 2008, **128**, 084106.
- 81 Y. Zhao and D. G. Truhlar, Design of Density Functionals That Are Broadly Accurate for Thermochemistry,



- Thermochemical Kinetics, and Nonbonded Interactions, *J. Phys. Chem. A*, 2005, **109**, 5656–5667.
- 82 S. Grimme, Semiempirical hybrid density functional with perturbative second-order correlation, *J. Chem. Phys.*, 2006, **124**, 034108.
- 83 L. Goerigk and S. Grimme, Efficient and Accurate Double-Hybrid-Meta-GGA Density Functionals—Evaluation with the Extended GMTKN30 Database for General Main Group Thermochemistry, Kinetics, and Noncovalent Interactions, *J. Chem. Theory Comput.*, 2011, **7**, 291–309.
- 84 D. Rappoport and F. Furche, Property-optimized Gaussian basis sets for molecular response calculations, *J. Chem. Phys.*, 2010, **133**, 134105.
- 85 F. Weigend and R. Ahlrichs, Balanced basis sets of split valence, triple zeta valence and quadruple zeta valence quality for H to Rn: Design and assessment of accuracy, *Phys. Chem. Chem. Phys.*, 2005, **7**, 3297–3305.
- 86 N. Godbout, D. R. Salahub, J. Andzelm and E. Wimmer, Optimization of Gaussian-type basis sets for local spin density functional calculations. Part I. Boron through neon, optimization technique and validation, *Can. J. Chem.*, 1992, **70**, 560–571.
- 87 F. Weigend, F. Furche and R. Ahlrichs, Gaussian basis sets of quadruple zeta valence quality for atoms H–Kr, *J. Chem. Phys.*, 2003, **119**, 12753–12762.
- 88 S. Grimme, J. Antony, S. Ehrlich and H. Krieg, A consistent and accurate ab initio parametrization of density functional dispersion correction (DFT-D) for the 94 elements H–Pu, *J. Chem. Phys.*, 2010, **132**, 154104.
- 89 S. Grimme, S. Ehrlich and L. Goerigk, Effect of the damping function in dispersion corrected density functional theory, *J. Comput. Chem.*, 2011, **32**, 1456–1465.
- 90 E. Caldeweyher, S. Ehlert, A. Hansen, H. Neugebauer, S. Spicher, C. Bannwarth and S. Grimme, A generally applicable atomic-charge dependent London dispersion correction, *J. Chem. Phys.*, 2019, **150**, 154122.
- 91 J. Hostaš and J. Řezáč, Accurate DFT-D3 Calculations in a Small Basis Set, *J. Chem. Theory Comput.*, 2017, **13**, 3575–3585.
- 92 J. J. P. Stewart, Optimization of parameters for semiempirical methods V: Modification of NDDO approximations and application to 70 elements, *J. Mol. Model.*, 2007, **13**, 1173–1213.
- 93 G. B. Rocha, R. O. Freire, A. M. Simas and J. J. P. Stewart, RM1: A reparameterization of AM1 for H, C, N, O, P, S, F, Cl, Br, and I, *J. Comput. Chem.*, 2006, **27**, 1101–1111.
- 94 J. Řezáč and P. Hobza, Advanced Corrections of Hydrogen Bonding and Dispersion for Semiempirical Quantum Mechanical Methods, *J. Chem. Theory Comput.*, 2012, **8**, 141–151.
- 95 J. J. P. Stewart, Optimization of parameters for semiempirical methods VI: more modifications to the NDDO approximations and re-optimization of parameters, *J. Mol. Model.*, 2013, **19**, 1–32.
- 96 M. Gaus, A. Goetz and M. Elstner, Parametrization and Benchmark of DFTB3 for Organic Molecules, *J. Chem. Theory Comput.*, 2013, **9**, 338–354.
- 97 M. Gaus, X. Lu, M. Elstner and Q. Cui, Parameterization of DFTB3/3OB for Sulfur and Phosphorus for Chemical and Biological Applications, *J. Chem. Theory Comput.*, 2014, **10**, 1518–1537.
- 98 M. Gaus, Q. Cui and M. Elstner, DFTB3: Extension of the self-consistent-charge density-functional tight-binding method (SCC-DFTB), *J. Chem. Theory Comput.*, 2012, **7**, 931–948.
- 99 V. M. Miriyala and J. Řezáč, Description of non-covalent interactions in SCC-DFTB methods, *J. Comput. Chem.*, 2017, **38**, 688–697.
- 100 J. Řezáč, Empirical Self-Consistent Correction for the Description of Hydrogen Bonds in DFTB3, *J. Chem. Theory Comput.*, 2017, **13**, 4804–4817.
- 101 S. Grimme, C. Bannwarth and P. Shushkov, A Robust and Accurate Tight-Binding Quantum Chemical Method for Structures, Vibrational Frequencies, and Noncovalent Interactions of Large Molecular Systems Parametrized for All spd-Block Elements ($Z = 1–86$), *J. Chem. Theory Comput.*, 2017, **13**, 1989–2009.
- 102 C. Bannwarth, S. Ehlert and S. Grimme, GFN2-xTB—An Accurate and Broadly Parametrized Self-Consistent Tight-Binding Quantum Chemical Method with Multipole Electrostatics and Density-Dependent Dispersion Contributions, *J. Chem. Theory Comput.*, 2019, **15**, 1652–1671.
- 103 R. Sure and S. Grimme, Corrected small basis set Hartree-Fock method for large systems, *J. Comput. Chem.*, 2013, **34**, 1672–1685.
- 104 S. Grimme, J. G. Brandenburg, C. Bannwarth and A. Hansen, Consistent structures and interactions by density functional theory with small atomic orbital basis sets, *J. Chem. Phys.*, 2015, **143**, 054107.
- 105 J. G. Brandenburg, C. Bannwarth, A. Hansen and S. Grimme, B97-3c: a revised low-cost variant of the B97-D density functional method, *J. Chem. Phys.*, 2018, **148**, 064104.
- 106 C. W. Hopkins, S. Le Grand, R. C. Walker and A. E. Roitberg, Long-Time-Step Molecular Dynamics through Hydrogen Mass Repartitioning, *J. Chem. Theory Comput.*, 2015, **11**, 1864–1874.
- 107 H. J. C. Berendsen, J. R. Grigera and T. P. Straatsma, The missing term in effective pair potentials, *J. Phys. Chem.*, 1987, **91**, 6269–6271.
- 108 I. S. Joung and T. E. Cheatham, Determination of Alkali and Halide Monovalent Ion Parameters for Use in Explicitly Solvated Biomolecular Simulations, *J. Phys. Chem. B*, 2008, **112**, 9020–9041.
- 109 T. E. C. III, P. Cieplak and P. A. Kollman, A Modified Version of the Cornell *et al.* Force Field with Improved Sugar Pucker Phases and Helical Repeat, *J. Biomol. Struct. Dyn.*, 1999, **16**, 845–862.
- 110 A. Pérez, I. Marchán, D. Svozil, J. Spöner, T. E. Cheatham, C. A. Laughton and M. Orozco, Refinement of the AMBER Force Field for Nucleic Acids: Improving the Description of α/γ Conformers, *Biophys. J.*, 2007, **92**, 3817–3829.
- 111 M. Zgarbová, M. Otyepka, J. Spöner, A. Mládek, P. Banáš, T. E. Cheatham and P. Jurečka, Refinement of the Cornell



- et al.* Nucleic Acids Force Field Based on Reference Quantum Chemical Calculations of Glycosidic Torsion Profiles, *J. Chem. Theory Comput.*, 2011, 7, 2886–2902.
- 112 M. Zgarbová, M. Otyepka, J. Šponer, F. Lankaš and P. Jurečka, Base Pair Fraying in Molecular Dynamics Simulations of DNA and RNA, *J. Chem. Theory Comput.*, 2014, 10, 3177–3189.
- 113 J. J. P. Stewart, *MOPAC2016*, Stewart Computational Chemistry, Colorado Springs, CO, USA, 2016.
- 114 B. Hourahine, B. Aradi, V. Blum, F. Bonafé, A. Buccheri, C. Camacho, C. Cevallos, M. Y. Deshayé, T. Dumitrică, A. Dominguez, S. Ehlert, M. Elstner, T. van der Heide, J. Hermann, S. Irle, J. J. Kranz, C. Köhler, T. Kowalczyk, T. Kubař, I. S. Lee, V. Lutsker, R. J. Maurer, S. K. Min, I. Mitchell, C. Negre, T. A. Niehaus, A. M. N. Niklasson, A. J. Page, A. Pecchia, G. Penazzi, M. P. Persson, J. Řezáč, C. G. Sánchez, M. Sternberg, M. Stöhr, F. Stuckenberg, A. Tkatchenko, V. W.-Z. Yu and T. Frauenheim, DFTB+, a software package for efficient approximate density functional theory based atomistic simulations, *J. Chem. Phys.*, 2020, 152, 124101.
- 115 *XTB*, Grimme lab, 2020.
- 116 A. W. Götz, M. J. Williamson, D. Xu, D. Poole, S. Le Grand and R. C. Walker, Routine Microsecond Molecular Dynamics Simulations with AMBER on GPUs. 1. Generalized Born, *J. Chem. Theory Comput.*, 2012, 8, 1542–1555.
- 117 D. Case, R. Betz, D. S. Cerutti, T. Cheatham, T. Darden, R. Duke, T. J. Giese, H. Gohlke, A. Götz, N. Homeyer, S. Izadi, P. Janowski, J. Kaus, A. Kovalenko, T.-S. Lee, S. LeGrand, P. Li, C. Lin, T. Luchko and P. Kollman, *Amber 16*, University of California, San Francisco., 2016.
- 118 D. R. Roe and T. E. Cheatham, PTRAJ and CPPTRAJ: Software for Processing and Analysis of Molecular Dynamics Trajectory Data, *J. Chem. Theory Comput.*, 2013, 9, 3084–3095.
- 119 N. Mardirossian and M. Head-Gordon, How Accurate Are the Minnesota Density Functionals for Noncovalent Interactions, Isomerization Energies, Thermochemistry, and Barrier Heights Involving Molecules Composed of Main-Group Elements?, *J. Chem. Theory Comput.*, 2016, 12, 4303–4325.
- 120 B. D. Sellers, N. C. James and A. Gobbi, A Comparison of Quantum and Molecular Mechanical Methods to Estimate Strain Energy in Druglike Fragments, *J. Chem. Inf. Model.*, 2017, 57, 1265–1275.
- 121 C. Bergonzo and T. E. Cheatham, Improved Force Field Parameters Lead to a Better Description of RNA Structure, *J. Chem. Theory Comput.*, 2015, 11, 3969–3972.
- 122 P. Kührová, R. B. Best, S. Bottaro, G. Bussi, J. Šponer, M. Otyepka and P. Banáš, Computer Folding of RNA Tetraloops: Identification of Key Force Field Deficiencies, *J. Chem. Theory Comput.*, 2016, 12, 4534–4548.

