

Cite this: *Mol. Syst. Des. Eng.*, 2020, 5, 602

Modeling of stimuli-responsive nanoreactors: rational rate control towards the design of colloidal enzymes

Matej Kanduč, *^a Won Kyu Kim, *^b Rafael Roa *^c and Joachim Dzubiella *^{d,e}

In modern applications of heterogeneous liquid-phase nanocatalysis, the catalysts (e.g., metal nanoparticles) need to be typically affixed to a colloidal carrier system for stability and easy handling. “Passive carriers” (e.g., simple polyelectrolytes) serve for a controlled synthesis of the nanoparticles and prevent coagulation during catalysis. Recently, however, hybrid conjugates of nanoparticles and synthetic thermosensitive polymers have been developed that enable to change the catalytic activity of the nanoparticles by external triggers. In particular, nanoparticles embedded in a stimuli-responsive network made from poly (*N*-isopropylacrylamide) (PNIPAM) have become the most-studied examples of such hybrids. It has been demonstrated that the permeability of the polymer network and thus the reactant flux can be switched and controlled by external stimuli. Such “active carriers” may thus be viewed as true nanoreactors that open up new design routes in nano-catalysis and elevate synthesis to create highly selective, programmable “colloidal enzymes”. However, only a comprehensive understanding of these materials on all time and length scales can lead to a rational design of future, highly functional materials. Here we review the current state of the theoretical and multi-scale simulation approaches, aiming at a fundamental understanding of these nanoreactors. In particular, we summarize a theoretical approach for reaction rates of surface-catalyzed bimolecular reactions in responsive nanoreactors in terms of the key material parameters, the polymer shell permeability \mathcal{P} and the reactant partition ratio \mathcal{K} . We discuss recent computer simulation studies of both atomistic and coarse-grained polymer models in which these quantities have been characterized in some detail. We conclude with an outlook on selected open questions and future theoretical challenges in nanoreactor modeling.

Received 14th August 2019,
Accepted 5th November 2019

DOI: 10.1039/c9me00106a

rsc.li/molecular-engineering

Design, System, Application

In liquid phase catalysis, catalytic nanoparticles need to be stabilized by polymeric or colloidal carrier systems. If the nanoparticles are embedded within a thermosensitive, permeable polymer matrix, stimuli-responsive nanoreactors can be created based on the phenomenon that the polymer properties can respond to environmental triggers, such as the local pH or osmotic pressure, thereby modifying the catalytic processes. Two of the key control parameters are the partition ratio of the reactants within the polymer matrix as well as the polymer permeability, which are both defined by the molecular topology of the polymer matrix, e.g., a cross-linked hydrogel, and the microscopic interactions of the polymers with the reactant. Rational design rules must thus be based on a microscopic understanding on how molecular details and polymer structure relate to macroscopic thermodynamic and transport properties and how they enter continuum rate theory. Based on such a multi-scale understanding, ‘programmable’ nanoreactors can potentially be designed to create catalytic devices that, like enzymes, are highly selective, adaptive and interactive with their environment, and can accelerate, decelerate, or even switch on and off a specific reaction, e.g., for the purpose of locally decreasing or increasing the concentration of a toxic or functionally important substance, respectively.

1 Introduction

Synthetic nanoreactors are an emerging and promising new nanotechnology for liquid-phase heterogeneous catalysis. In these nanoreactors, the catalysts are confined in a permeable nanostructure, which acts as a carrier and can be used to shelter and control the catalytic processes. In particular, the catalysis can be made selective and responsive if the nanoreactor permeability differentiates among molecules and can be modulated by external stimuli.^{1–14} These nanoreactors

^a Jožef Stefan Institute, Jamova 39, SI-1000 Ljubljana, Slovenia.

E-mail: matej.kanduc@ijs.si

^b Korea Institute for Advanced Study, 85 Hoegiro, Seoul 02455, Republic of Korea.

E-mail: wonkyukim@kias.re.kr

^c Departamento de Física Aplicada I, Facultad de Ciencias, Universidad de

Málaga, Campus de Teatinos s/n, E-29071 Málaga, Spain.

E-mail: rafarao@uma.es

^d Research Group for Simulations of Energy Materials, Helmholtz-Zentrum Berlin,

Hahn-Meitner-Platz 1, D-14109 Berlin, Germany

^e Institut für Physik, Albert-Ludwigs-Universität Freiburg, Hermann-Herder-Str. 3,

D-79104 Freiburg, Germany. E-mail: joachim.dzubiella@physik.uni-freiburg.de



can be used for a large variety of applications, ranging from analytical tools to study chemical reactions^{1–12} to biosensors for the diagnosis of diseases.^{10–14} Examples of natural nanoreactors are lipid-based membranes (*e.g.*, liposomes), cage-like proteins (*e.g.*, ferritins), protein-based bacterial microcompartments, and viruses.^{11–13,15} Artificial nanoreactors (based on spherical polyelectrolyte brushes, dendrimers, ligands, or even DNA) are simpler than the natural ones and thus easier to control for targeted applications.^{4–12,16,17}

In particular, nanoreactors containing metal nanoparticles have emerged as a promising catalytic system.^{4–9,18–21} For example, gold becomes an active catalyst when divided down to the nanophase.^{22–27} However, the handling of the particles in the liquid phase is an important problem: the surface of the particles should be easily accessible for the mixture of the reactants. This condition would require the nanoparticles to be freely suspended in the solution, and coagulation or any type of Ostwald ripening of the nanoparticles should not occur during the catalytic reaction. Also, leaching of metal or loss of nanoparticles from the carrier must be prevented to ensure a meaningful and repeated use of the catalyst. The latter requirements necessitate a suitable carrier that ensures a safe and repeated handling of the nanoparticles.^{28,29} It was demonstrated that suitable carrier systems include colloidal particles,^{30,31} dendrimers,^{32–42} mesoporous materials,^{43–45} spherical polyelectrolyte brushes,^{46,47} and other systems⁴⁸ structured on a length scale between one and a few hundred nm.

In recent years, the concept of such carrier systems has been further advanced with the synthesis of hydrogel-based nanoreactors, for which rate control by external stimuli has become possible.^{6,7,10,12,15,18,49–57} Thermosensitive hydrogels made from a network of poly(*N*-isopropylacrylamide) (PNIPAM) and its copolymers provide a good example:^{4–8,18–21,58–67} typical colloidal carrier architectures are of core-shell or yolk-shell type where the polymer gel constitutes a permeable shell around a solid core (core-shell) or around a hollow void (yolk-shell).⁶ The core can be the nanoparticle itself, *cf.* Fig. 1, or, for example, a polystyrene core. The catalytic nanoparticles can be located during synthesis in a well controlled fashion, *e.g.*, into the voids, onto the cores, or distributed within the polymer shell. Sometimes simply a pure hydrogel (nano- or microgel) particle is the carrier for the catalysts. In this case, carrier and polymer shell in our context are essentially the same. A survey of selected but very typical experimental architectures and results for polymer-based nanoreactor carriers is provided in Table 1.

The responsive polymer shell is in a swollen hydrophilic state at low temperature, but sharply collapses into a rather hydrophobic state above the critical solution temperature.⁶⁸ The sharp volume transition of the gel is reversible^{69–75} and depends on the temperature,^{76,77} or more generally, solvent quality. This has substantial influence on reactant partitioning close to the catalysts as well as reactant transport towards it.⁷⁸ Hence, there are two key roles of the polymer shell. On the one hand, the shell acts as an integral part of the whole carrier that protects nanoparticles from aggregation

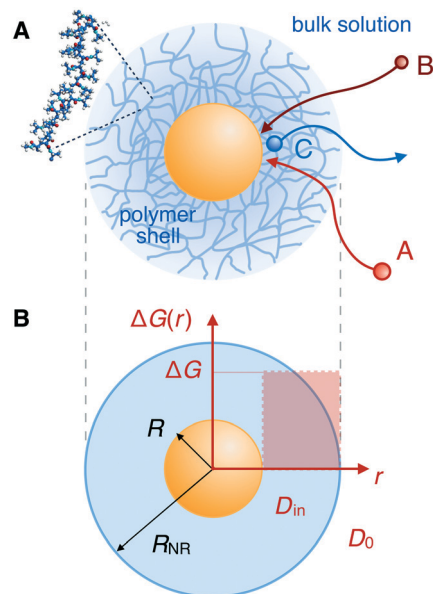


Fig. 1 Bimolecular reactions in core-shell nanoreactors. (A) Two reactants, A and B, diffusing from a bulk solution, generate a product, C, in the proximity of a catalyst nanoparticle (central yellow sphere) embedded in a PNIPAM polymer network. (B) Schematic representation of a core-shell nanoreactor. A nanoparticle of radius R is embedded in a spherical shell of outer radius R_{NR} . The shell permeability depends on the diffusivity, $D(r)$, and on the transfer free energy profiles, $\Delta G(r)$. We model both as step functions with values D_{in} and ΔG inside, and D_0 and zero reference free energy outside the shell, respectively.

and hinders chemical degradation processes, *e.g.*, oxidation.⁸ On the other hand, the polymer ability to switch between states with different physicochemical properties upon changes in environmental parameters, *e.g.*, temperature, pH, or concentration of certain solutes, provides a handle to actively control the nanoreactor's catalytic properties.⁷⁸

A quantitative study and understanding of a nanoreactor requires kinetic data measured with the highest precision possible. Up to now, most of the testing of the catalytic activity of nanoparticles in aqueous phase has been done using the reduction of 4-nitrophenol by borohydride. Pal *et al.*⁷⁹ and Esumi *et al.*³⁶ have been the first who have demonstrated the usefulness of this reaction. In the meantime, the reduction of 4-nitrophenol has become the most used model reaction for the quantitative testing and analyzing of the catalytic activity of nanoparticles in the liquid phase.^{80,81} Further examples of catalytic reactions in aqueous solution studied in this system are the reductions of nitrobenzene and hexacyanoferrate (III) by borohydride ions^{6,7,18,19} and the decomposition of methyl orange under visible light.⁸

All the aforementioned examples deal with surface-catalyzed *bimolecular* reactions, being a very common type. As pointed out before,^{5–7,78} pseudo-unimolecular surface-catalyzed reactions in responsive nanoreactors can be described by combining a thermodynamic two-state model for the polymer volume transition with the appropriate reaction-diffusion equations. In particular, the important effect of a change of the shell permeability on the reactants' approach to the catalyst's surface



Table 1 Survey of selected publications on responsive nanoreactor catalytic experiments with different architectures. Polymer abbreviations: poly(*N*-isopropylacrylamide) (PNIPAM), polystyrene (PS), maleated carboxymethylchitosan (MACACS), poly(*N*-vinylcaprolactam) (PVCL), poly(styrene-*N*IPAM) (P(S-*N*IPAM)), poly(*N*IPAM-*co*-methacrylic acid) (P(*N*IPAM-*co*-MAA)), poly(*N*IPAM-*co*-2-(dimethylamino)ethyl methacrylate) (P(*N*IPAM-*co*-AMPS)), poly(4-vinylphenylboronic acid-*co*-*N*IPAM-*co*-acrylamide) (P(VPBA-*N*IPAM-AAm)). Solute abbreviations: 4-nitrophenol (NP), 4-aminophenol (AP), nitrobenzene (NB), aminobenzene (AB), hexacyanoferrate(III) (HCF), hexacyanoferrate(II) (HCF2), *o*-nitrophenyl- β -D-glucopyranoside (oNPG)

Ref.	Architecture	Core-polymer	Catalyst	Reaction	Result
7	Yolk-shell	Au-PNIPAM	Au	Reduction: NP \rightarrow AP & NB \rightarrow AB	<i>T</i> -Dependence on gel swelling and reaction rate
5, 6	Core-shell	Au-PNIPAM	Au	Reduction: HCF \rightarrow HCF2	<i>T</i> -Dependence on gel swelling and reaction rate, rate dependence on nanoreactor concentration and cross-linking density
6, 67	Core-shell	Pt/Au-PNIPAM	Pt/Au	Reduction: NP \rightarrow AP	Rate dependence on reactant concentration
8	Core-shell	Cu ₂ O-PNIPAM	Cu ₂ O	Decomposition by visible light: methyl orange	<i>T</i> -Dependence on gel swelling and reaction rate
21	Core-shell	Au-PNIPAM	Ag	Reduction: NP \rightarrow AP	Photoresponsive gel size and reaction rate
65	Core-shell	Au-P(VPBA- <i>N</i> IPAM-AAm)	Au	Reduction: NP \rightarrow AP & NB \rightarrow AB	Glucose concentration dependence on gel swelling and reaction rate
4, 51	Core-shell	PS-PNIPAM	Au/Pt/Rh	Oxidation: benzyl alcohol \rightarrow benzaldehyde	<i>T</i> -Dependence on gel swelling and reaction rate
4, 56	Core-shell	PS-PNIPAM	β -D-Glucosidase	Hydrolysis: oNPG \rightarrow D-glucose + <i>o</i> -nitrophenol	<i>T</i> -Dependence on gel swelling and reaction rate
57	Core-shell	PS-PNIPAM	Ag	Reduction: NP \rightarrow AP	<i>T</i> -Dependence on gel swelling and reaction rate
59	Core-shell	P(S- <i>N</i> IPAM)-P(<i>N</i> IPAM- <i>co</i> -MAA)	Ag	Reduction: NP \rightarrow AP & NB \rightarrow AB	<i>T</i> -Dependence on gel swelling and reaction rate
19	Microgel	PNIPAM/MACACS	Ag	Reduction: NP \rightarrow AP	<i>T</i> -Dependence on gel swelling and reaction rate
55	Microgel	PVCL- α -cyclodextrin	Au	Reduction: NP \rightarrow AP	<i>T</i> -Dependence on gel swelling and reaction rate
60	Microgel	P(<i>N</i> IPAM- <i>co</i> -MAA)	Au	Reduction: NP \rightarrow AP	<i>T</i> -Dependence on gel swelling and reaction rate
61	Microgel	Cellulose	Cellulase (enzyme)	Hydrolysis: cellulose \rightarrow glucose	<i>T</i> -Dependence on gel swelling and time-dependent product concentration
62	Hydrogel	P(<i>N</i> IPAM- <i>co</i> -AMPS)	Ni	Reduction: NP \rightarrow AP	<i>T</i> -Dependence on gel swelling and reaction rate
63	Microgel	P(<i>N</i> IPAM- <i>co</i> -AMPS)	Ag	Reduction: methylene blue	<i>T</i> -Dependence on gel swelling and reaction rate, pH-dependence on gel swelling

can be described by theory of diffusion through an energy landscape,^{7,78,82,83} in the spirit of Debye-Smoluchowski diffusion-controlled rate theory.⁸⁴⁻⁸⁸ Importantly, the latter also takes into account the local reactant concentration, *i.e.*, the partitioning inside the polymer shell close to the catalyst. Recently, we have presented an extended theory of diffusion-limited bimolecular reactions in nanoreactors, which can be employed to rationally design the activity and selectivity of a nanoreactor.^{78,83} The main result of our consideration was the following formula for the total catalytic rate in bimolecular reactions in core-shell nanoreactors (*cf.* Fig. 1):

$$k_{\text{tot}} = \frac{1}{2} \left[\frac{k_{D^A} k_{D^B}}{k_R} + k_{D^A} + k_{D^B} - \sqrt{\left(\frac{k_{D^A} k_{D^B}}{k_R} + k_{D^A} + k_{D^B} \right)^2 - 4k_{D^A} k_{D^B}} \right]. \quad (1)$$

Here, $k_{D^A}(\mathcal{P}^A)$ and $k_{D^B}(\mathcal{P}^B)$ are the diffusion rates of the reactants A and B, which *explicitly* depend on the shell

permeability \mathcal{P}^i , and $k_R(\mathcal{K}^A, \mathcal{K}^B)$ is the surface reaction rate, *explicitly* depending on partitioning \mathcal{K}^i as defined below.

In general, permeability of a material defines the ability of the penetrating molecules (*e.g.*, gas, ligands, reactants, *etc.*) to permeate and flow through a given medium under the action of an external field or chemical gradient. It is thus without doubt one of the most fundamental transport descriptors employed in the physical sciences and material engineering. In the standard 'solution-diffusion' picture for permeable membranes, it is commonly defined on the linear response level by⁸⁹⁻⁹⁹

$$\mathcal{P} = \mathcal{K} D_{\text{in}}, \quad (2)$$

where

$$\mathcal{K} = \frac{c_{\text{in}}}{c_0} \quad (3)$$

is the partition ratio, in this work simply referred to as *partitioning*, defined as the ratio of number densities of the



solutes inside (c_{in}) and outside (c_o) the medium in equilibrium, and D_{in} is the diffusion coefficient of those inside. Permeability can be thus defined as the inverse of a diffusional resistance of a medium regarding the total mass transport (flux) towards the catalyst driven by the reaction. The optimization of permeability, especially for being highly selective among different solutes, has been a grand challenge in material design over the last decades.^{95,99,100} Prominent applications revolve around gas separation and recovery,^{90,95,99,101–103} desalination and nanofiltration ('molecular sieving'),^{104–106} medical treatments by dialysis or selective drug transport,^{107,108} hydrogel-based soft sensors, and the nanoreactors.^{2,4,83,93} We have studied partitioning and permeability of polymer networks and PNIPAM polymers recently on the molecular level by coarse-grained^{109,110} as well as all-atom molecular dynamics computer simulations.^{111–114}

Hence, in the last couple of years many quantitative concepts have emerged both on the continuum and the microscopic level that will eventually lead to a more fundamental understanding of nanoreactors in the future. The possibility arises to optimize responsive nanoreactors to reach the high recognition, selectivity, and feedback control as found for enzymes,^{115,116} to create "colloidal enzymes". Here we review the state-of-the-art of the current understanding of the intricate links between nanoreactor reaction rate and polymer permeability. Most of the results presented here are based on our recent research endeavor of multi-scale modeling schemes of hydrogel systems in order to establish rational design principles of responsive nanoreactors. We start in section 2 by summarizing the rate theory for nanoparticle-catalyzed bimolecular reactions including partitioning and permeability of the polymer shell. The key property to be tuned and 'programmed' during the synthesis in order to select and switch catalytic activity is the permeability. In section 3 we thus proceed with mesoscale coarse-grained computer models, which give fundamental insights on partition-diffusion correlations in the permeability and how they can be tuned qualitatively by microscopic interactions. In the last part we turn to atomistically-resolved molecular simulations of the PNIPAM hydrogel models in swollen and collapsed state. There we address the question of the influence of the 'chemistry' of the interactions, *e.g.*, role of (temperature-dependent) hydration, polarity, reactant type and size, *etc.* Obviously, there are many open questions, missing connections, and remaining challenges to overcome to obtain a comprehensive multi-scale model. We will briefly discuss those and give an outlook in the final, concluding section.

2 Bimolecular reactions in nanoreactors

2.1 Macroscopic rates and dependence on permeability

We review the rate theory for nanoreactors for the case of surface-catalyzed bimolecular reactions in one of the simplest nanoreactor geometries, a core-shell nanoreactor,⁸³ depicted

in Fig. 1A, where a catalytically active metal nanoparticle of radius R is embedded in a thermoresponsive hydrogel matrix of outer radius R . In this spherically symmetric system, we consider that two species A and B diffuse from a bulk solution with respective (initial) concentration c_o^A and c_o^B through the polymer shell towards the catalyst nanoparticle. A fraction of the reactants arriving at the surface combines with each other to produce a third molecular species C. Assuming a total concentration of nanoreactors c_{NR} , the experimentalist would measure the transformation of a reactant (say reactant A) per time, according to

$$\frac{dc^A(t)}{dt} = -k_{tot}(c^A(t), c^B(t))c_{NR} \quad (4)$$

with instantaneous bulk concentrations $c^A(t)$ and $c^B(t)$, and k_{tot} has the units of inverse time and is a non-trivial function of the reactant concentrations. In general, and as we will see below, the chemical reaction has no well-defined order. In some limits, *e.g.*, in an abundance of species B, it may reduce to pseudo unimolecular or even pseudo first-order kinetics⁸³ (see also section 2.2 later).

To derive the functional form of the total catalytic rate, we assume k_{tot} (number of molecules reacting per unit of time) is equal to the radial flux of reactants at the nanoparticle surface. In bimolecular reactions, the fraction of molecules A reacting is then proportional to the number of molecules B at the same location, and *vice versa*. Thus, k_{tot} can be estimated through the standard mean-field relation^{78,117}

$$k_{tot} = K_{vol}c^A(R)c^B(R), \quad (5)$$

where $c^A(R)$ and $c^B(R)$ are the reactant concentrations at the nanoparticle surface, and K_{vol} the probability that the two species react on the surface (with units per time and per concentration squared). To calculate k_{tot} , we solve the stationary continuity equation for the density fields of reactants,

$$\nabla \cdot \mathbf{J}^i = 0 \quad (6)$$

with $\mathbf{J}^i(r)$ being the radial flux of the species $i = A, B, C$ as a function of the distance from the nanoparticle. We make the stationarity assumption that the system is always in a steady-state and there is no explicit time-dependence of the fluxes. In other words, we assume the microscopic relaxation of the system, roughly given by the time of reactants to diffuse through the nanoreactor R_{NR}^2/D_0 , is faster than the reaction time as defined in eqn (4). If we use the fastest, diffusion-controlled (Smoluchowski) rate $k_{tot} \simeq k_D^0 = 4\pi RD_0c_o$ as the reaction rate scale, we find the condition for stationarity that $c_o \ll 1/(4\pi R_{NR}^2R) \simeq 10^{-5} \text{ mol l}^{-1}$ for typical geometries where $R \simeq 1 \text{ nm}$ and $R_{NR} \simeq 10^2 \text{ nm}$. In experiments, typically sub-micromolar reactant concentrations are used and the reaction rate is at least 1–2 orders slower than the fastest,



fully diffusion-controlled limit, so that the condition is in most cases very well satisfied.

In their diffusive approach to the catalyst nanoparticle, reactants have to permeate the shell. The kinetics of this process is thus governed by the shell permeability, which depends on the diffusivity profile, $D^i(r)$, and on the thermodynamic barrier, *i.e.*, the transfer free energy between bulk and shell, $\Delta G^i(r)$. For simplicity, we take both profiles to be shell-centered step functions of the width equal to the polymer shell width (see Fig. 1B), *i.e.*

$$D^i(r) = \begin{cases} D_{\text{in}}^i & R \leq r \leq R_{\text{NR}}, \\ D_0^i & \text{elsewhere,} \end{cases} \quad (7)$$

and

$$\Delta G^i(r) = \begin{cases} \Delta G^i & R \leq r \leq R_{\text{NR}}, \\ D_0^i & \text{elsewhere,} \end{cases} \quad (8)$$

Here, D_{in}^i and D_0^i stand for the diffusion coefficients in the polymer shell and solution, respectively. ΔG^i represents the transfer free energy from bulk water into the shell and as such strongly depends on the state (swollen/collapsed) of the nanoreactor. Using standard thermodynamic relations, we connect the flux of the species *i* to its local concentration $c^i(r)$

$$\mathbf{j}^i = -D^i c^i \nabla \mu^i, \quad (9)$$

where $\mu^i(r)$ is the chemical potential of the species *i*, and $\beta = 1/k_{\text{B}}T$, with k_{B} denoting the Boltzmann's constant and T the absolute temperature of the system. The chemical potential of a molecule interacting with an external environment with a spatially dependent concentration and free energy is

$$\beta \mu^i = \ln \left(\frac{c^i}{c_{\text{ref}}^i} \right) + \beta \Delta G^i, \quad (10)$$

where c_{ref}^i is a reference concentration whose value can be chosen arbitrarily. Eqn (10) can now be used to relate the transfer free energy ΔG^i and partitioning, eqn (3),

$$\mathcal{K}^i = \exp(-\beta \Delta G^i). \quad (11)$$

With the aforementioned definitions, the shell permeability to the species *i* is calculated as

$$\mathcal{P}^i = \mathcal{K}^i D_{\text{in}}^i, \quad (12)$$

where for $r > R_{\text{NR}}$ we have $\mathcal{P}^i = D_0^i$.

We found⁸³ that the total catalytic rate for bimolecular reactions in responsive nanoreactors is obtained as in eqn (1). In this expression,

$$k_{\text{R}} = K_{\text{vol}} c_0^{\text{A}} e^{-\beta \Delta G^{\text{A}}(R)} c_0^{\text{B}} e^{-\beta \Delta G^{\text{B}}(R)} = K_{\text{vol}} c_0^{\text{A}} c_0^{\text{B}} \mathcal{K}^{\text{A}} \mathcal{K}^{\text{B}} \quad (13)$$

stands for the surface-part of the reaction rate, which is explicitly partitioning-dependent, and

$$k_{D^i} = 4\pi c_0^i \left[\int_R^{\infty} \frac{1}{\mathcal{P}^i(r) r^2} dr \right]^{-1} \quad (14)$$

is the permeability-dependent diffusion part of the reaction rate of the reactant *i*. In the absence of the shell, $\mathcal{P}^i(r) = D_0^i$, and the diffusion rate turns into the Smoluchowski rate $k_{D^i}^0 = 4\pi R D_0^i c_0^i$. For the core-shell configuration depicted in Fig. 1B the step profiles in eqn (7) and eqn (8) apply and the relation between the shell permeability and the diffusion rate, eqn (14), simplifies to

$$\frac{k_{D^i}}{k_{D^i}^0} = \left[1 + \left(\frac{D_0^i}{\mathcal{P}^i} - 1 \right) \left(1 - \frac{R}{R_{\text{NR}}} \right) \right]^{-1}. \quad (15)$$

Eqn (1) is the main analytical result for nanoparticle surface-catalyzed bimolecular reactions. It shows that, in the fully bimolecular case, the diffusional fluxes of the different reactants are *coupled*. Thus, k_{tot} depends in a non-trivial way on the surface and the diffusion rates and nanoreactor shell permeability, in contrast to the simple unimolecular case (*i.e.*, in general $k_{\text{tot}}^{-1} \neq k_{\text{D}}^{-1} + k_{\text{R}}^{-1}$ in bimolecular reactions).

Eqn (1) together with eqn (13) and (15) can be used to predict the total catalytic rate once the nanoreactor shell permeability and the reactant partition ratios are known (*e.g.*, from experiments, or from simulations, see sections 3 and 4), or, conversely, to extract the parameters by fitting to experimental data. Carregal-Romero *et al.*⁵ investigated the bimolecular electron-transfer reaction between hexacyanoferrate(III), $\text{Fe}(\text{CN})_6^{3-}$ (HCF), and borohydride BH_4^- ions in Au-PNIPAM core-shell nanoreactors. In a previous work⁸³ we demonstrated that this bimolecular reaction is diffusion-controlled and can be treated as pseudo-unimolecular (see also next section 2.2), that is, $dc^{\text{HCF}}(t)/dt = -k_{\text{obs}} c^{\text{HCF}}(t)$.

The temperature dependence of the measured pseudo-first-order constant is shown by blue filled squares in Fig. 2A. We observe that the reaction rate decreases by one order of magnitude when the temperature of the solution exceeds the lower critical solution temperature (LCST) of the PNIPAM polymer. The measured nanoreactor hydrodynamic radius data, displayed by orange open circles in Fig. 2A, exhibit the well-known volume transition between the swollen and the collapsed states below and above the LCST, respectively. As we pointed out before, this transition changes the physicochemical properties of the polymer, which leads to different reactant diffusivity and transfer free energy values resulting in a nanoreactor permeability switch at the LCST. In the diffusion-controlled limit for pseudo-unimolecular



MSDE

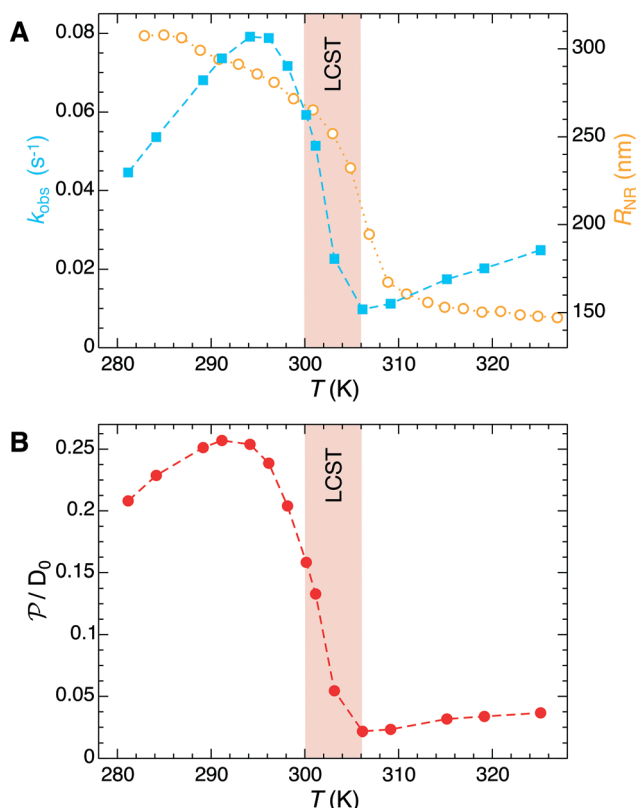


Fig. 2 (A) Temperature dependence of the measured pseudo-first-order constant k_{obs} (blue filled squares) of the electron-transfer reaction between HCF and borohydride ions in Au-PNIPAM nanoreactors. The measured temperature dependence of the nanoreactor hydrodynamic radius is shown by orange open circles. All data were taken from ref. 5. (B) Temperature dependent nanoreactor shell permeability for HCF estimated using eqn (15).

kinetics we can identify $k_{\text{obs}} = k_D^{\text{HCF}} c_{\text{NR}}^{\text{HCF}} / c_0^{\text{HCF}}$. The c_0^{HCF} is the initial bulk concentration, which can be replaced by the instantaneous $c^{\text{HCF}}(t)$ in the equations during the reaction because of the stationarity assumption. Using eqn (15) together with the experimental data from Fig. 2A, we estimate the temperature dependence of the nanoreactor shell permeability for HCF (Fig. 2B) and clearly observe the aforementioned permeability switch below and above the LCST. The permeability decreases around one order of magnitude from the swollen to the collapsed state. By comparing Fig. 2A and B we clearly see that the nanoreactor shell permeability is the essential ingredient to understand the reaction rate response of nanoreactors in diffusion-controlled reactions. Detailed mesoscopic and microscopic insights on the influence of effective interaction potentials, hydrogel density, and chemistry on the permeability of polymer shells is presented in sections 3 and 4.

2.2 Pseudo-unimolecular reactions in nanoreactors

Bimolecular reactions are typically treated as pseudo-unimolecular when one of the reactants is in large excess with respect to the other. The reasoning behind this

assumption is that, according to the simple Smoluchowski rate, the reactant in larger concentration would diffuse towards the nanoparticle surface at a much larger rate than the other one. Therefore, when the reactant in limiting concentration arrives to the catalyst, it will always find a reactant of the other species to combine with. However, this is not always true when considering nanoreactors. In this case, the diffusion rate, eqn (14), not only depends on the bulk reactant concentration but also on the shell permeability and thus on the molecular interactions of reactants with the shell. It is thus the combination of both quantities that determines whether a bimolecular reaction can be treated as pseudo-unimolecular or not.

If one of the reactants has a much larger diffusion rate than the other one, *e.g.*, $k_{D^B} \gg k_{D^A}$, the total reaction rate, eqn (1), reduces to (see ESI in ref. 83)

$$k_{\text{tot}} \rightarrow k_{\text{tot}}^1 = (k_{D^A}^{-1} + k_R^{-1})^{-1}, \quad (16)$$

which is the well-known expression of the total reaction rate in unimolecular reactions, k_{tot}^1 . In this case, the total catalytic time is the sum of the diffusion time of the slower reactant and the surface reaction time. Hence, in nanoreactors, unimolecular reactions can be diffusion- or surface-controlled if $k_D \ll k_R$ or $k_D \gg k_R$, respectively. If both rates are comparable in magnitude, the reaction is termed diffusion-influenced. Analogously, a reaction is diffusion- or surface-controlled if $\text{Da}_{\text{II}} \gg 1$ or $\text{Da}_{\text{II}} \ll 1$, respectively, where $\text{Da}_{\text{II}} = k_{\text{tot}}/k_D$ is the second Damköhler number.⁶ If both reactants diffuse from the bulk solution, according to eqn (14), this condition is satisfied when $c_0^B \mathcal{P}^B \gg c_0^A \mathcal{P}^A$. This means that one of the reactants should be in a much higher bulk concentration and/or subject to a much larger shell permeability than the other.

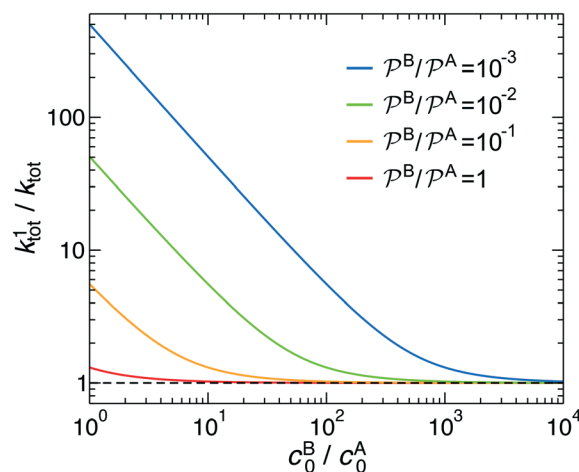


Fig. 3 Total rate for unimolecular reactions k_{tot}^1 , eqn (16), divided by the total reaction rate k_{tot} for bimolecular reactions, eqn (1), as a function of the relative reactant bulk concentration, c_0^B/c_0^A . The lines stand for different relative nanoreactor shell permeabilities to the reactants, $\mathcal{P}^B/\mathcal{P}^A$. We assume $k_R = k_{D^A}$.



In Fig. 3 we analyze how large should be the excess of reactant B for the pseudo-unimolecular reaction limit to be valid. This value depends on the relative nanoreactor shell permeability, $\mathcal{P}^B/\mathcal{P}^A$. For simplicity, we consider that the

surface rate is equal to the diffusion rate of the reactant in limiting concentration ($k_R = k_{D^A}$, diffusion-influenced reaction). When both reactants have the same permeability (red line), the concentration of reactant B should be roughly

Table 2 Survey of selected publications on computer simulations of diffusion D , partitioning, \mathcal{K} , permeability \mathcal{P} , or related adsorption or transport phenomena of (co)solutes in polymers. Abbreviations: all-atom (AA), coarse-grained (CG), molecular dynamics (MD), Monte-Carlo (MC), Langevin dynamics (LD), Brownian dynamics (BD), dissipative particle dynamics (DPD)

Ref.	Simulation methods	Architecture	Polymer	Resulting quantity	Comment
145	AA-MD	Swollen cross-linked network	Polyethyleneglycole	Diffusivity of water, ions, rhodamine	Water content: 75–91%, mesh size: 2.3–5.5 nm
146	AA-MD	Collapsed	Polyethylene	Diffusivity and partitioning of oxygen and water	Permeability for oxygen 5–6 orders of magnitude larger than for water
147	AA-MD	Collapsed	Poly(vinyl alcohol)	Diffusivity of O ₂	Water uniformly distributes
148, 149	AA-MD	Collapsed	Poly(vinyl alcohol)	Diffusivity of water	Hydrogel with 4–40% water
150	AA-MD	Collapsed	Polydimethylsiloxane	Diffusivity of water and ethanol	Water/ethanol mixtures; water molecules faster than ethanol
151	AA-MD + transition state approach	Collapsed	Polystyrene and its copolymers	Diffusivity and partitioning of gas and water molecules	
152	AA-MD	Single chain	PNIPAM	Adsorption of urea	Studying volume phase transition
153	AA-MD	Single chain	PNIPAM	Adsorption of TMAO, urea	Studying volume phase transition
154	AA-MD	Collapsed and solvent phase	PNIPAM	Partitioning of ions	Thin core-shell membrane, direct measuring of partitioning
155	AA-MD	Cross-linked network	PNIPAM	Diffusivity of water; volume transition	Studying volume transition; cross-linking inhibits the collapse
156	AA-MD	Collapsed and solvent phase	PNIPAM (3mer)	Water-polymer coexistence	Also 30mer of PNIPAM: no conclusions on chain configuration
157	AA-MD	Swollen & collapsed finite aggregate	PNIPAM	Partitioning of large ions	Umbrella sampling of the potential of mean force of the ions
158	Gibbs-ensemble CG-MD	Cubic network	Bead-spring	Solvent sorption and swelling isotherm	Effects of solvents on swelling
119	Two-box-particle-transfer CG-MD	Cubic network	Bead-spring	Solvent sorption and swelling isotherm	Effects of cross-linkers on swelling
159, 160	CG-MC	Tetra-functional network	Bead-spring	Solvent sorption and swelling isotherm	Effects of polymer network density and deformation on swelling
120	CG-MC	Cubic network	Rigid rod	Cosolute diffusivity	Effects of cosolute size and polymer density on cosolute diffusivity
121	CG-LD	Cubic network	Charged bead-spring	Energy conversion	Effects of compression and solvents on energy contribution
122	CG-LD	Highly swollen cubic network	Charged bead-spring	Adsorption and conformational response	Counterion-induced deformation
123	LD	Cubic network	Charged bead-spring	Ion transport	Effects of electrostatic coupling between polymer and ions on ion transport
136	CG-MC	Tetra-functional network	Bead-spring	Cosolute partitioning	Effects of polymer density on partitioning
139	CG-MD	Polymer melt	Semi-flexible	Gas partitioning, diffusivity and permeability	Effect of gas size and polymer semi-flexibility on gas transport
161	CG-BD	Cubic network	Bead-spring	Cosolute diffusivity	Effects of cosolute density on cosolute diffusivity
162	CG-DPD	Random network	Semi-flexible	Permeability and cosolute diffusivity	Effects of porosity and deformation on permeability
163–165	CG-BD	Cubic network	Rigid rod	Cosolute diffusivity	Effects of interactions, hydrodynamics, and network heterogeneity on cosolute diffusivity
166	CG-BD	Random cubic network	Rigid rod	Cosolute diffusivity	Effects of network porosity, flexibility, degree of cross linking, and electrostatic interaction on cosolute diffusivity



10 times larger than the one of A to have a unimolecular reaction. If we then decrease the shell permeability to the reactant B by 10 times, its concentration has thus to become 100 times higher with respect to that of A to keep this limit. Fig. 3 also shows that the catalytic rate predicted for a pseudo-unimolecular reaction for the reactant in limiting concentration may differ from the fully bimolecular one by orders of magnitude. Thus, when dealing with nanoreactors, it is necessary to consider not only the difference between the bulk concentrations of the reactants but also the difference in the shell permeability to the reactants.

Hence, when considering nanoreactors, care should be taken since in these systems it is not the bulk mobility and concentration that determine the reaction type (diffusion *versus* surface control), but the values in the polymer shell, which can be the limiting factor. The latter is defined by the shell permeability \mathcal{P} and can thus strongly differ from the bulk value. Because of the responsive nature of the gating shell of nanoreactors, this dependence crucially implies that the identity of the limiting reactant can switch upon a change in the external stimulus. Failure to recognize this fact can lead to very large discrepancies between the correct and the approximate rate. This theoretical framework for pseudo-unimolecular reactions qualitatively rationalizes the large and sharp variations in catalytic rate observed in the relevant nanoreactor experiments.^{6–8,78}

3 Partitioning and diffusion: coarse-grained simulations

As we have just described, key parameters to understand a nanoreactor's selectivity and rate response to stimuli are the permeability of its polymeric shell and the reactant partitioning within. In the following, we review two selected coarse-grained (CG) simulation studies of partitioning, diffusion, and permeability in model membranes.^{109,110} Mesoscopic models, neglecting chemical resolution, play a pivotal role not only as a bridge between the aforementioned macroscopic reaction model and the following microscopic

all-atom models but also for the deeper understanding of essential physics, *e.g.*, of molecular adsorption and transport in polymer systems. Particle-based simulations on various scales with increasing complexity and chemical detail are now emerging. For the convenience of the reader, we have summarized selected relevant simulation efforts in Table 2.

3.1 Influence of gel volume transition on reactant partitioning in a model polymeric membrane

Responsive polymers feature a sharp volume transition where the density of the polymer drastically changes. The partitioning of reactants across the volume transition and the feedback of the polymer to the permeation is complex and poorly understood. We thus first discuss a CG simulation model with details described previously¹⁰⁹ consisting of permeating reactants in a polymer-based thin membrane (Fig. 4A), where we aim at a qualitative study of the effects of structural transitions of gels on the reactant partitioning and its back-coupling to the volume transition. In the following, we refer to the permeating reactants generally as 'solutes'.

The membrane is constructed as cross-linked semi-flexible network of polymers formed on a regular cubic lattice,^{118–123} and the solutes can diffuse throughout the membrane and the bulk regions. This enables a direct sampling of the solute partitioning from the simulations simply according to eqn (3). We use the Lennard-Jones (LJ) pair potential and its size unit σ as the diameter for all particles and the monomer–monomer (bonded) distance in the polymers. In order to model such a gel in the presence of various solutes, we employ inter- and intra-particle interactions in terms of LJ pair potentials. We focus on two key interaction parameters: the membrane–membrane interaction ϵ_{mm} controls the solvent quality, turning it from good to poor upon the increase of ϵ_{mm} . The membrane–solute interaction ϵ_{ms} governs the membrane–solute *coupling* and thus models different kinds of solutes. For the solute–solute interaction we always use $\epsilon_{ss} = 0.1k_B T$, essentially being a steep (r^{-12}) repulsion.

In Fig. 4A we show the landscape of the gel structural phases, depending on both interaction parameters. The red

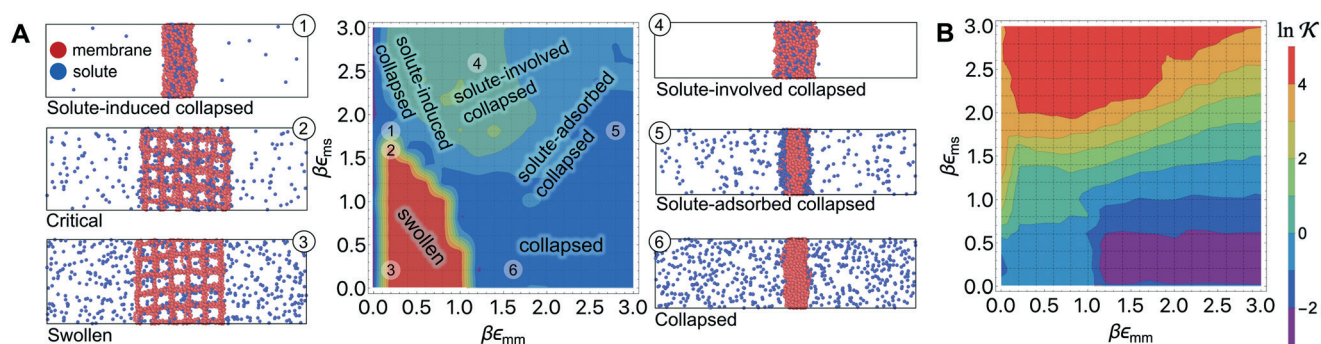


Fig. 4 (A) Various conformational states and regimes in the mesoscopic network membrane–solute system from CG computer simulations are depicted in the main phase diagram (center) depending on the Lennard-Jones (LJ) interactions ϵ_{mm} and ϵ_{ms} : (1) is a 'solute-induced collapsed' state, (2) is a 'critical' transition line (yellow contour) between the intrinsic (3) 'swollen' and (6) 'collapsed' states. (4) is a 'solute-involved collapsed' state, while (5) is a 'solute-adsorbed' collapsed state where solutes adsorb mostly on the membrane surface. For details see text. Reprinted with permission from ref. 109, copyright 2017 American Chemical Society. (B) Solute partitioning landscape \mathcal{K} depending on ϵ_{mm} and ϵ_{ms} .



region depicts swollen states, where the gel volume is relatively large, while the blue region indicates collapsed states. Without the solutes ($\epsilon_{\text{ms}} = 0$) our model exhibits a collapse transition at around $\epsilon_{\text{ms}} \simeq 1.0k_{\text{B}}T$. In the presence of the solutes, however, the picture becomes more complex: the ‘critical’ transition line (yellow contour line) between swollen and collapsed states depends substantially on the membrane–solute interaction, as shown by the label (2). The stark color contrast around this critical line signifies the sharp transition. In addition, one can identify in total five distinct phase regions (or states), classified into (1) “solute-induced collapsed”, (3) “swollen”, (4) “solute-involved collapsed”, (5) “solute-adsorbed collapsed”, and (6) “collapsed” states, indexed by the numbers in the colored center panel of Fig. 4A. Interestingly, the “solute-induced collapsed” state (state 1) can occur even in good solvent conditions, where the membrane undergoes a relatively sharp collapse transition induced by a strong ‘bridging’ attraction between the solutes and the network monomers. The effect has been reported in computer simulations before but only on the single polymer level.^{124–131} The “solute-involved” collapsed state (state 4) occurs at the intermediate solvent quality where the membrane collapses with most of the internal solutes embedded, yielding a bulkier collapsed gel than the intrinsically collapsed case. The “solute-adsorbed collapsed” state (state 5) is an example for the limiting case, where both of the membrane–membrane and membrane–solute attractions are strong, but the first one dominates and excludes the solutes, therefore leading to a strong surface accumulation of those.

The solute partitioning \mathcal{K} (on a log-scale) averaged over the membrane slab is shown in Fig. 4B in a 2D-landscape plot, and is related to the transfer free energy from the bulk into the network, $\Delta G = -k_{\text{B}}T \ln \mathcal{K}$, which quantifies the average transfer free energy for the solute transfer from bulk to the membrane. The partitioning varies by several orders of magnitude, depending not only on the membrane–solute interaction but also significantly on the solvent quality. The partitioning overall becomes large (*i.e.*, higher adsorption) as

the membrane–solute attraction, ϵ_{ms} , increases, while it has large regions of unity in the swollen states (light blue-greenish areas). Note that when compared with the structural landscape in Fig. 4A, both extrema of \mathcal{K} (*i.e.*, the minimum and the maximum) are in the collapsed regions, indicating that the collapsed phase can relate to extremely different partitionings and there is no unique mapping. Moreover, at intermediate values of ϵ_{ms} , \mathcal{K} is a nonmonotonic function of the solvent quality, meaning that it can be maximized by an optimal solvent quality. The maximization of the partitioning is in fact a quite general feature in attractive but crowded systems as we will discuss in the following section.

To sum up, the CG simulation model of a polymer network in the presence of solutes reveals a rich topology of structure phases and their relation to solute partitioning, entering the rate equations eqn (13) and (15). In particular, for very attractive solute–membrane interactions ($\epsilon_{\text{ms}} \gtrsim 1k_{\text{B}}T$) the network structure and partitioning are coupled. The mesoscopic model thus provides a landscape of the partitioning, thereby bridging the macroscopic continuum model and microscopic discrete data in terms of the generic interaction parameters. In addition, the results will be helpful for the interpretation of experiments for certain polymer–reactant systems and could also be useful to design *feedback-systems* where the local reactant (or product) concentration may couple back to polymer structure in a prescribed way.

3.2 Partitioning, diffusion, and permeability in a model lattice membrane

Now we present a related but different CG model¹¹⁰ of a membrane–solute system (Fig. 5A) in order to study permeability in dense media qualitatively on a generic level. We demonstrate how the permeability can be tuned massively in magnitude by systematically varying the membrane–solute interactions and the density of the membrane. The study also gives important insights about how partitioning and diffusion are correlated.

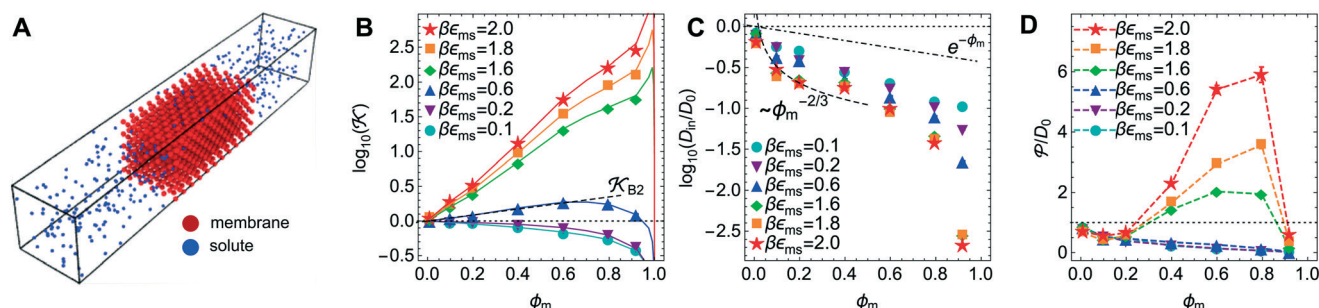


Fig. 5 (A) Snapshot of the mesoscopic lattice membrane–solute system. The membrane sites (red) are fixed on a face-centered-cubic (fcc) lattice with the volume fraction ϕ_{m} , and the penetrating solutes (blue) are diffusing and interacting *via* the LJ potentials with ϵ_{ms} . (B) Solute partitioning $\mathcal{K}(\phi_{\text{m}})$ at different ϵ_{ms} . The solid lines depict the exact relation, eqn (17), and the dashed line depicts the approximated partitioning \mathcal{K}_{B2} with $\beta\epsilon_{\text{ms}} = 0.6$ (see text for details). (C) Solute diffusivity $D_{\text{in}}(\phi_{\text{m}})/D_0$ with different ϵ_{ms} . The dashed lines depict the approximation $D_{\text{in}}/D_0 = \exp(-\phi_{\text{m}})$ valid for low ϵ_{ms} and ϕ_{m} , and the scaling $D_{\text{in}}/D_0 \sim \phi_{\text{m}}^{-2/3}$ valid for high ϵ_{ms} and low ϕ_{m} . (D) Permeability $\mathcal{P}(\phi_{\text{m}})/D_0$ at different ϵ_{ms} . Reprinted with permission from ref. 110, copyright 2019 American Physical Society.



The permeability is defined following the solution-diffusion theory^{89–91,94–99} by eqn (2). There have been pioneering theoretical models to elucidate the transport phenomena in membranes^{89–91,94,132–135} based on simple theories for either partitioning or diffusion. Recently, a simulation study revealed maximization of partitioning of penetrating solutes in polymer membranes tuned by the polymer volume fraction.¹³⁶ Diffusion in dense membranes is usually quite complex and highly dependent on details of the interaction potentials.^{102,103,113,137–141} Nevertheless, there have been no comprehensive studies on the permeability \mathcal{P} , being a product of partitioning and diffusion.

In the CG model membrane-solute system as shown in Fig. 5A the diffusive solutes are ideal ($\epsilon_{ss} = \sigma_{ss} = 0$), and the membrane consists of immobile interaction sites, located on a face-centered-cubic (fcc) lattice with a fixed unit cell size l , variation of which tunes the monomer packing fraction ϕ_m . The simplicity of such an ordered and rigid model membrane with ideal solutes renders the problem easier for interpretation and perhaps theoretically tractable. The ideal solutes diffuse throughout the simulation box but interact only with the membrane sites *via* the LJ potential with the coupling strength ϵ_{ms} . For the ideal solutes the partitioning can be exactly computed *via* the transfer free energy shown in eqn (11). In our case $\Delta G = -k_B T \ln e^{-\beta H_{ms}}$,¹⁴² where $H_{ms}(\mathbf{r}) = \sum_i U_{ms}(|\mathbf{r} - \mathbf{r}_i|)$ is the total Hamiltonian (summing over all membrane sites i), and $\bar{x} = \int dV x / V_m$ is the volume average, yielding

$$\mathcal{K} = e^{-\beta H_{ms}} \quad (17)$$

which verifies the simulation results (Fig. 5B).

The computed partitioning as a function of the membrane volume fraction ϕ_m is shown in Fig. 5B for various ϵ_{ms} . For relatively low membrane-solute couplings ($\beta\epsilon_{ms} \lesssim 0.3$), the LJ interaction between solutes and membrane sites is essentially repulsive (signified by a positive second virial coefficient), and the partitioning monotonically decreases as the membrane becomes dense, owing to the dominant exclusion by the membrane. For intermediate couplings around $\beta\epsilon_{ms} = 0.6$, which is moderately attractive, partitioning reaches a maximum at an optimal membrane density around $\phi_m = 0.6$. The partitioning maximization is attributed to a balance between adsorption and steric exclusion. In addition, a leading order approximation of \mathcal{K}

on a two-body level, $\mathcal{K}_{B2}(\phi_m, \epsilon_{ms}) = \exp[-2c_m B_2^{ms}]$ for $\beta\epsilon_{ms} = 0.6$ is depicted by the dashed line, where $c_m \propto \phi_m$ is the membrane concentration, and B_2^{ms} is the second virial coefficient. Fig. 5C shows the solute diffusivity D_{in}/D_0 in the membrane as a function of ϕ_m , rescaled by the free diffusivity in the bulk. As the membrane becomes dense, D_{in} tends to exponentially decrease, showing more complex behavior with higher couplings. We compare the simulation results with scaling theories for diffusion in two limiting cases. The upper dashed line indicates the limiting law $D_{in}/D_0 = \exp(-\phi_m)$ based on the ‘volume-exclusion’ theory.^{102,134,135,143,144} It is indeed valid only for low couplings,

which acts essentially repulsive. For high membrane-solute attractions and low membrane density, the diffusivity follows the power law $D_{in}/D_0 \sim \phi_m^{-2/3}$. The scaling relation is derived by the limiting law from the Kramers’ barrier crossing over the distance $l \sim \phi^{-1/3}$, and therefore $D_{in} \sim l^2/\tau \sim \phi_m^{-2/3}$.¹¹⁰

The resulting permeability, the product of \mathcal{K} and D_{in} , shown in Fig. 5D, exhibits intriguing features. For essentially repulsive solutes, \mathcal{P} decreases monotonically as the membrane density increases, and the overall magnitude is below unity, almost approaching zero for very dense membranes. We speculate that this essentially repulsive case maybe the scenario in the experiments with the highly charged reactant HCF in section 2.1, which probably does not like to enter the collapsed gel, but this suspicion needs further scrutiny. On the other hand, for high couplings (attraction) the permeability is first minimal around $\phi_m = 0.1$, then maximized at large membrane densities $\phi_m \simeq 0.8$. The permeability vanishes at the maximum overlapping density ($\phi_m \sim 1$), where no percolating holes for diffusion are present anymore. This demonstrates a clear maximization of permeability when the system is highly attractive and dense. The nonmonotonic behavior of permeability results from drastic nontrivial cancellations between the partitioning and the diffusivity, which exponentially increase and decrease, respectively. The massive cancellation between two largely varying functions over several orders of magnitude yields a permeability of the order of unity,¹¹⁰ implying a high potential for fine-tuning of the permeability behavior in experiments by small changes in density or interactions.

Mesoscopic models of membrane-solute systems demonstrate that the permeability, typically resulting from large cancellation effects of partitioning and diffusion, is very sensitively tuned by the effective interaction potentials and the membrane density. The results indicate that most drastic selectivity effects are at high membrane densities and significant ($\gtrsim k_B T$) membrane-solute attractions. The effective potentials in realistic material design assemblies can be somewhat controlled by various external parameters, such as temperature, ionic strength, pH, and possibly various additives in the solution. The results from the mesoscopic models thus provide useful physical insight and may bear important applications in design and engineering of molecular systems to achieve a selective transport by fine-tuning interactions and topologies, particularly in highly attractive membrane systems.

4 Partitioning and diffusion: all-atom simulations

The advantage of the mesoscopic simulations in the previous section is that we can obtain fundamental and qualitative insights on how permeability depends on basic input parameters such as interaction energies, lattice geometry, and single solute diffusion. However, in experiments we deal with specific, chemical systems, where the effects of interactions are highly convoluted and solvation, polarity, electrostatics, and specific steric constraints come explicitly into play. Hence, for a



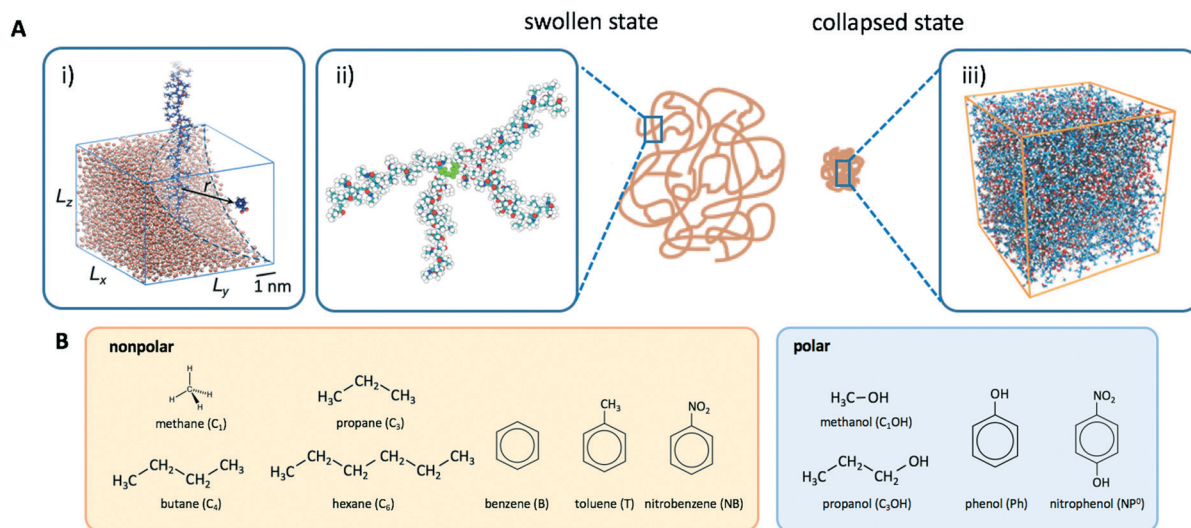


Fig. 6 (A) Atomistic modeling of PNIPAM hydrogels: i) elongated, infinitely long chain (mimicking a part of a swollen network where the adjacent chains are far apart), ii) a cross-linker connected with four chains in a tetrahedral structure (representing a unit of a swollen network), iii) dense aggregate of PNIPAM polymers at 340 K (a model for a collapsed PNIPAM hydrogel). (B) Solute molecules in our study; polarity is characterized by the hydroxyl (OH) group.

more detailed insight and quantitative numbers for the continuum approach to reaction rates in section 2, we need to resort to higher resolution, molecular dynamics computer simulations. All-atom simulation studies of partitioning and diffusion through polymer networks with increasing complexity and chemical detail are now emerging and growing in the literature. Selected works in this field are given in Table 2. In the following, we will review our recent efforts to understand partitioning and diffusion of solutes in swollen and collapsed PNIPAM hydrogels by all-atom MD simulations.^{111–114}

4.1 Swollen state

In order to model the swollen state of a hydrogel shell one can focus on one elongated PNIPAM chain, as shown in Fig. 6A.i, where the chain is replicated through periodic boundary conditions. The cylindrical geometry allows for a simple extraction of adsorption properties¹¹¹ of solvated molecules in the solution. The first step is to evaluate the

cylindrical radial distribution function (RDF) of the solute molecules from the backbone, $g_{2D}(r)$, as shown in an example for nitrobenzene (NB) in Fig. 7A. The adsorption coefficient Γ_m^* per monomer of the polymer is then obtained by integration along the spatial coordinates,¹⁶⁷

$$\Gamma_m^* = \Delta L_m \int_0^\infty [g_{2D}(r) - 1] 2\pi r dr, \quad (18)$$

where $\Delta L_m = 0.265$ nm is the distance between neighboring monomers in the chain. The total adsorbed number of molecules Γ_{chain} on the chain is proportional to the number of monomers N_m and, in the infinite dilution limit, to the bulk solute concentration c_0 ,

$$\Gamma_{\text{chain}} = \Gamma_m^* N_m c_0. \quad (19)$$

Another setup of swollen hydrogels, shown in Fig. 6.ii, mimics the cross-linker unit of a hydrogel network, and thus

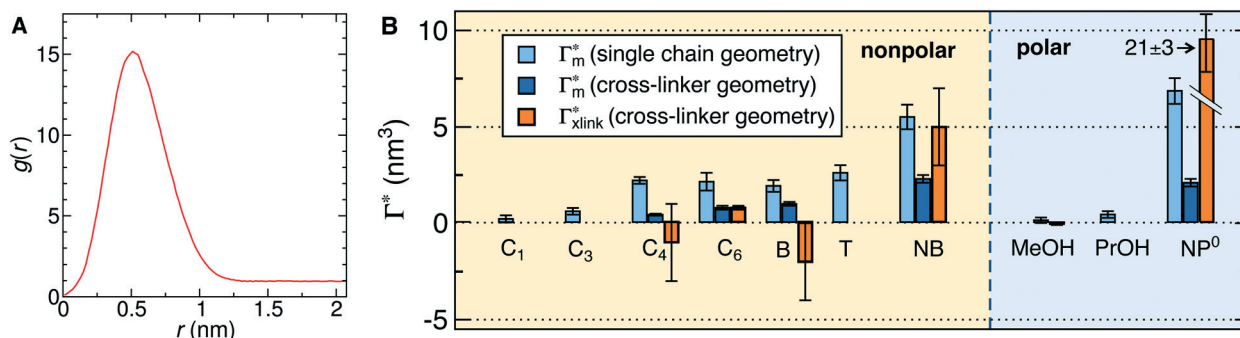


Fig. 7 (A) Cylindrical RDF of backbone–NB for an extended PNIPAM chain¹¹¹ (see Fig. 6A.i). (B) Adsorption coefficients of various solutes (see Fig. 6B) to a PNIPAM monomer Γ_m^* (from single-chain geometry and the OPLS¹¹¹ force field, and from cross-linker geometry using the OPLS-QM2 (ref. 112) force field) and to a cross-linker Γ_{xlink}^* ¹¹² (OPLS-QM2 force field) at 300 K.



lends itself to study the influence of cross-linkers on adsorption of molecules. In our previous study,¹¹² we considered a very common *N,N'*-methylenebisacrylamide (BIS) cross-linker, connecting four PNIPAM chains with their ends tethered in a tetrahedral geometry. The solute molecules in general adsorb in different proportions to the chain regions and the cross-linker neighborhood. The overall adsorption in the radial interval $[r_1, r_2]$ from the cross-linker is obtained in a straightforward manner by integrating the (spherical) RDF $g(r)$ of the solutes

$$\Gamma(r_1, r_2) = c_0 \int_{r_1}^{r_2} [g(r) - 1] 4\pi r^2 dr. \quad (20)$$

With this, we can scan the adsorption in different regions with respect to the cross-linker. It also allows us to evaluate Γ_m^* , as in the single-chain geometry. Finally, the total adsorption can be decomposed into two contributions,

$$\Gamma_{\text{tot}} = \Gamma_{\text{chain}} + \Gamma_{\text{xlink}}. \quad (21)$$

The adsorption on the chains Γ_{chain} (unperturbed by the presence of cross-linker) is given by eqn (19), whereas Γ_{xlink} represents the effect on the adsorption due to the presence of the cross-linker. The value of Γ_{xlink} can be evaluated from known Γ_{tot} and Γ_{chain} . In the infinite-dilution limit, the adsorption on the cross-linker is proportional to the bulk solute concentration, $\Gamma_{\text{xlink}} = \Gamma_{\text{xlink}}^* c_0$, where Γ_{xlink}^* is the adsorption coefficient of the cross-linker.

The resulting adsorption coefficients Γ_m^* are shown in Fig. 7B (blue shaded bars), from the single-chain¹¹¹ and cross-linker¹¹² geometries. Quite generally, the adsorption grows with the molecular size. The effect of the cross-linker, Γ_{xlink}^* , is shown in Fig. 7B by orange bars: the apolar compounds C₄, C₆, and B show a low affinity to the cross-linker. In contrast, the adsorption of nitro-aromatic solutes to the cross-linker is significant, in particular for NP⁰.¹¹² NB shows more than doubled and NP⁰ even an order of magnitude higher adsorption to the cross-linker region than to a monomer of the polymer. Note that the BIS cross-linker has two amide groups and is slightly more hydrophilic than the PNIPAM chain, hence favoring polar molecules.

From the known adsorptions on individual chains and cross-linkers we can predict the partitioning in extensive hypothetical swollen polymer architectures, such as hydrogels. The partitioning follows from $\mathcal{K} = 1 + \Gamma_{\text{tot}} / (c_0 V)$, where V is the volume of the gel and Γ_{tot} the total adsorption of molecules on all the chains and cross-linkers [eqn (21)], which leads to

$$\mathcal{K} = 1 + n_m \Gamma_m^* + n_{\text{xlink}} \Gamma_{\text{xlink}}^*, \quad (22)$$

where n_m and n_{xlink} are the monomer and cross-linker number densities, respectively. The former can be easily linked to the

polymer volume fraction ϕ_m as $n_m = \phi_m / (\pi R_0^2 \Delta L_m)$, where $R_0 = 0.5$ nm is an estimated effective radius of the polymer chain.¹¹¹ Assuming $\phi_m = 0.1$ for a typical architecture of a swollen state, we compute \mathcal{K} for several solutes from the obtained MD parameters in Fig. 8. The values range around unity, $\mathcal{K} \approx 1-3$, as also resulted from the CG models in Fig. 5B for this polymer fraction range. As we will see in the following, the collapsed state can give rise to much higher partitioning.

4.2 Collapsed state

The collapsed state of the PNIPAM hydrogel can be modeled as a bulk of aggregated polymeric chains (in our case 20 monomeric units long) at 340 K (above the LCST), where cross-linkers are ignored. The amount of sorbed water between the polymeric chains is chosen such that it corresponds to the chemical equilibrium with bulk water.¹¹³ The amount of water in the collapsed state depends on temperature, and amounts to around 20 wt% (somehow less than experimental estimates of around 30 wt% (ref. 168–172)), which roughly correspond to the polymer volume fraction of $\phi_m = 0.8$. Note that this is in the range of packing fractions for which we observed the most interesting behavior of permeability in the CG simulations in section 3.

Water molecules are very non-uniformly distributed throughout the phase and tend to flock together into irregular clusters of various nanoscopic sizes, which were observed also in simulations of other amorphous polymer structures.^{151,173–176} This water-polymer spatial heterogeneity is a crucial player in the solvation of small molecules, whereby the nature of the solute (being polar, nonpolar, or ionic¹⁷⁷) is a decisive property. Two representative snapshots in Fig. 9A, showing a benzene (nonpolar) and a phenol (polar) molecule, demonstrate that nonpolar solutes are preferentially expelled from water clusters and tend to reside in ‘drier’ regions of the gel, whereas polar molecules tend to partition closer to or

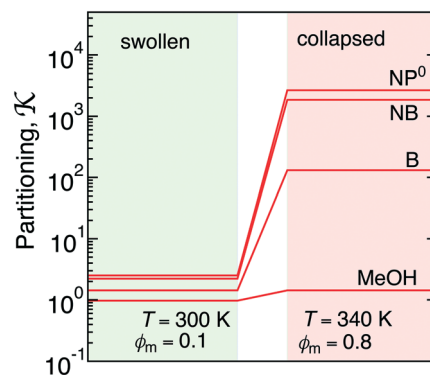


Fig. 8 Partitioning of several molecules resulting from the atomistic models of a swollen (at 300 K and polymer fraction of $\phi_m = 0.1$) and collapsed (at 340 K and $\phi_m = 0.8$) state of a PNIPAM gel. The values for the swollen state are computed from eqn (22) and assuming polymer volume fraction $\phi_m = 0.1$, whereas the values for the collapsed state are computed from eqn (11).



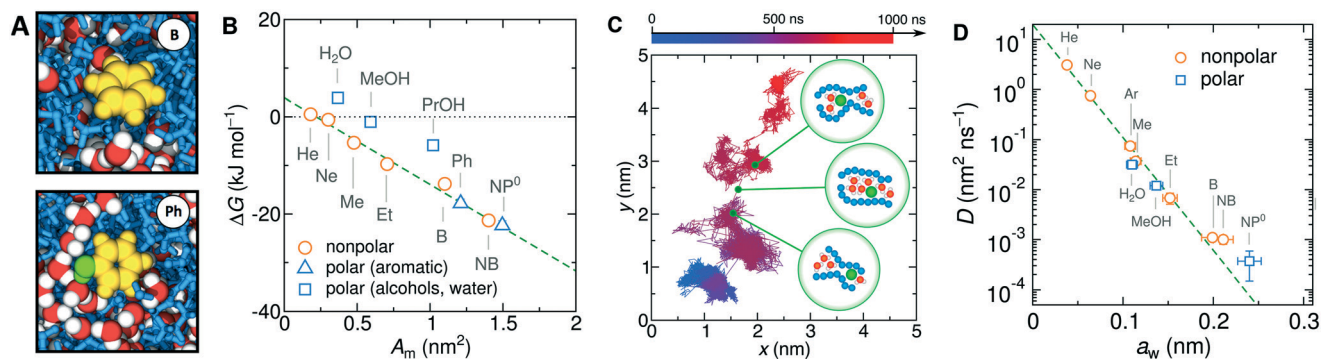


Fig. 9 (A) Snapshots of benzene and phenol molecules solvated in the PNIPAM phase. Hydrophobic parts of the solutes are shown in yellow, the hydroxyl groups in green, PNIPAM polymers in blue, and water in red-white. (B) Transfer free energies from water to PNIPAM versus the molecular surface area. The dashed line is a fit of eqn (23) to the data points of nonpolar solutes. (C) Microsecond-long trajectory sequence of a NP^0 molecule projected on a 2D plane (color coded from blue at $t = 0$ to red at $t = 1000$ ns). The green bubbles schematically depict the hopping transition with a transient pore opening. (D) Diffusion coefficients of molecules in the collapsed PNIPAM polymer versus their Stokes radii in water. The dashed line shows a fit of eqn (24) to the data points.

inside water clusters. Thus, the “dual” character of the gel can favorably accommodate both polar and nonpolar species.

The transfer free energy for a given molecule is obtained as the difference between the solvation free energy in PNIPAM (G_g) and in water (G_w), $\Delta G = \Delta G_g - \Delta G_w$, both evaluated *via* the thermodynamic integration procedure.¹¹⁴ Fig. 9B shows ΔG for various solutes plotted *versus* the molecular surface area A_m of the solutes (defined as the envelope area of the fused union of the atoms¹⁷⁸). The results follow a clear linear trend for the groups of nonpolar and aromatic solutes as well as alcohols and water. The linearity in the very heterogeneous polymer–water medium is rather surprising. The results can be conveniently described in terms of an effective *molecular surface tension* γ_m ,^{179,180}

$$\Delta G = \Delta G_0 + \gamma_m A_m. \quad (23)$$

γ_m is strongly related to the difference in the molecule–PNIPAM and molecule–water surface tension. Note that the sign depends on the transfer direction. The fit of eqn (23) to the nonpolar solutes (dashed line in Fig. 9B) gives the value $\gamma_m = -18 \text{ kJ mol}^{-1} \text{ nm}^{-2}$. For the alcohols and water, the transfer free energies are by about 7 kJ mol^{-1} above the trend of the nonpolar solutes, owing to a slightly different character of the hydroxyl group than in alkyl chains.¹⁸¹ The molecular size is hence the dominant factor that determines its affinity to the hydrogel. In the CG description (section 3) the molecular size is therefore reflected in the interaction parameter ϵ_{ms} .

Using eqn (11), we show the partitioning in the collapsed state in Fig. 8. In general, the partitioning of our neutral molecules is larger in the collapsed state. Also, the larger the partitioning in the swollen state, the progressively larger it is in the collapsed state. With some heuristic arguments, we showed that the partitioning roughly follows the relation $\mathcal{K}_{\text{collapsed}} \propto \mathcal{K}_{\text{swollen}}^2$.¹¹⁴ This is in line with the universal observation from our CG model (section 3.1), namely that a

collapsed state can have much more extreme effects on partitioning than a swollen state.

Moving on to the diffusion properties of solutes in the collapsed PNIPAM, we first look at the projected trajectory of a NP^0 molecule in Fig. 9C. Its connected blob-like structure suggests that the diffusion advances *via* the hopping mechanism:^{182,183} a penetrating solute resides for longer time in a local cavity and suddenly performs a longer jump into a neighboring cavity through a transient water channel¹¹³ that forms between the chains (schematically illustrated in the bubbles in Fig. 9C). We plot the diffusion coefficients *versus* the size of the solutes a_w (defined as the Stokes radius in pure water) in Fig. 9D. As the size of a solute increases by a factor of 7, the diffusion coefficients decreases by dramatic 5 orders of magnitude. The diffusion coefficients depend on the solute size a_w roughly exponentially,

$$D = D_0 e^{-a_w/\lambda}. \quad (24)$$

The fit to the data points yields the decay length $\lambda = 0.019 \text{ nm}$.¹¹³

Note that the rate-determining step in the hopping diffusion is the opening of a channel, which is associated with a free energy barrier ΔF_a and can be *via* Boltzmann probability related to the diffusion coefficient as $D \sim \exp(-\Delta F_a/k_B T)$. In conjunction with the empirically obtained diffusion relation [eqn (24)], this implies

$$\Delta F_a(a_w) = \frac{k_B T}{\lambda} a_w. \quad (25)$$

That is, the free energy barrier depends linearly on the particle size, and hence represents a special case of possible scenarios predicted by an assortment of different theories. The majority of theories that are based on activated diffusion predict either square or cubic scaling. A possible linear dependence of the free energy barrier has recently been theoretically envisioned in scaling theories



for particle mobility in dense polymer solutions^{137,184} and in dense liquids by using a self-consistent cooperative hopping theory.¹⁴⁰ As also seen from eqn (25) the height of the free energy barrier is related to the decay length λ in eqn (24). We also showed that in a less hydrated gel, the diffusion of solutes is lower (*i.e.*, higher ΔF_a) and at the same time the diffusion coefficients indeed decay faster with solute size.¹¹³

In conclusion, all-atom MD simulations offer insights into the molecular nature of the transport and solvation properties of molecules in hydrogels. These mechanisms are not only important for PNIPAM hydrogels, but most probably play important roles also in other responsive hydrogels, and their understanding is important for the rational design of novel materials. Notably, we see drastically larger effects for \mathcal{K} and D in the collapsed phase than in the swollen states, but apparently also a large anti-correlation between them, like in the coarse-grained simulations in section 3. *The dense, collapsed state is thus more decisive for nanoreactor design and control.* Very recent studies indicate that in particular for charged molecular reactants, the presence of water clusters and resulting substantial interfacial effects within a dense hydrogel may decisively affect their permeability behavior.¹¹⁷

5 Concluding remarks

Stimuli-responsive nanoreactors are of high potential for the design of programmable and selective nano-devices for controlled catalysis and can therefore serve as candidates to create novel synthetic enzymes on the colloidal scale. However, they constitute complex devices with non-equilibrium processes starting at the electronic scale, defining the chemical surface reactions, coupled to those at the polymer network scale with all the intrinsic complexity of polymer-reactant interactions, including the feedback of responsive polymers, up to the device scale where reactants diffuse and react in a suspension of colloids. Here we reviewed the recent theoretical attempts of understanding some parts of the processes by focussing mostly on the key roles played by the permeability of the polymer shell and the reactant partitioning in order to control activity and selectivity, and how those enter the continuum rate predictions for the nanoreactors.

As an important general result, we see substantial variations and correlations among \mathcal{K} and D in the dense, collapsed polymer phases, in both coarse-grained and atomistically-resolved simulations, which are thus more decisive and tuneable for nanoreactor rate control than for the swollen states. Results for the temperature-induced rate switch observed in reference experiments, like the HCF reduction briefly discussed in section 2.1, can be thus traced back to, for example, the large exclusion (low partition ratio) and significant slowing down (low diffusion) of reactants in the collapsed state of neutral PNIPAM. However, a quantification of partitioning and diffusion of molecular ions

by simulation approaches remains a challenge because of the water heterogeneities in the collapsed states.¹⁷⁷

A large number of challenges and questions remain, which we try to tackle currently or leave open for future studies. For example, continuum approaches to diffusion- and permeability-influenced rates in confinement are often based on mean-field theories (like presented here), but more elaborate and accurate treatments, like Green's-function approaches,¹⁸⁵ are yet to be devised.

The polymer permeability and the knowledge of how reactants partition in the polymer are the keys to program the desired function and response into a nanoreactor. Clearly, the number of experimental and chemical ways to synthesize a responsive hydrogel shell (*e.g.*, with various combinations of copolymerization) is basically infinite. Modeling the features of diverse polymer systems on various scales is therefore out of reach. Our CG and all-atom studies so far delivered some basic but important insights into the physics of these systems. However, we are continuing the endeavors towards even more refined notions of the general response features of hydrogels both experimentally and theoretically. Some of such features are ions, charged reactants,^{6,177} and even charged (pH-responsive) hydrogels,² which we ignored in this review, but are of high practical relevance. Combining all the simulations with continuum-based approaches will help devising models, or at least semi-empirical rules how the hydrogel properties, in particular the permeability of certain molecular species, are connected and can be tuned by stimuli.

In order to formulate improved rate equations that carry more physical information, also the chemical processes on the nanoparticle surface in the solvent/polymer environment have to be better understood, which we did not touch in this review. For instance, rate-limiting chemical intermediates⁶⁷ could be present. It would be also important to know whether and how strong the (often charged) reactants and products adsorb and diffuse on the nanoparticle surface in the crowded polymer environment. In some cases this may lead to steric hindrance and reaction inhibition on the reactive surface by both reactants and products and highly nonlinear rate behavior.¹⁸⁶ Here, particle-based reaction-diffusion simulations may also help illuminating dynamical transitions and collective effects during the reaction.¹⁸⁷

Only the fundamental understanding on all scales will enable us to reach the high recognition, selectivity, and feedback behavior in these colloidal devices as found for the nano-sized enzymes.^{115,116} On the other hand, the large scale and diverse building blocks that constitute the nanoreactors in various architectures establish the opportunity to develop many new design directions within the goal of programmable, 'intelligent' nanoparticle catalysis in the liquid phase.

Author contribution

All authors contributed equally to this manuscript.



Conflicts of interest

There are no conflicts to declare.

Acknowledgements

The authors thank Richard Chudoba, Karol Palczynski, Sebastian Milster, Arturo Moncho-Jordá, Stefano Angioletti-Uberti, Daniel Besold, Yan Lu, and Matthias Ballauff for inspiring discussions. This project has received funding from the European Research Council (ERC) under the European Union's Horizon 2020 research and innovation programme (Grant Agreement No. 646659-NANOREACTOR). M.K. acknowledges the financial support from the Slovenian Research Agency (research core funding No. P1-0055). The simulations were performed with resources provided by the North-German Supercomputing Alliance (HLRN).

References

- 1 S. H. Petrosko, R. Johnson, H. White and C. A. Mirkin, *J. Am. Chem. Soc.*, 2016, **138**, 7443–7445.
- 2 M. A. C. Stuart, W. T. S. Huck, J. Genzer, M. Müller, C. Ober, M. Stamm, G. B. Sukhorukov, I. Szleifer, V. V. Tsukruk, M. Urban, F. Winnik, S. Zauscher, I. Luzinov and S. Minko, *Nat. Mater.*, 2010, **9**, 101–113.
- 3 S. Campisi, M. Schiavoni, C. Chan-Thaw and A. Villa, *Catalysts*, 2016, **6**, 185.
- 4 Y. Lu and M. Ballauff, *Prog. Polym. Sci.*, 2011, **36**, 767–792.
- 5 S. Carregal-Romero, N. J. Buurma, J. Pérez-Juste, L. M. Liz-Marzán and P. Hervés, *Chem. Mater.*, 2010, **22**, 3051–3059.
- 6 P. Hervés, M. Pérez-Lorenzo, L. M. Liz-Marzán, J. Dzubielia, Y. Lu and M. Ballauff, *Chem. Soc. Rev.*, 2012, **41**, 5577–5587.
- 7 S. Wu, J. Dzubielia, J. Kaiser, M. Drechsler, X. Guo, M. Ballauff and Y. Lu, *Angew. Chem., Int. Ed.*, 2012, **51**, 2229–2233.
- 8 H. Jia, R. Roa, S. Angioletti-Uberti, K. Henzler, A. Ott, X. Lin, J. Möser, Z. Kochovski, A. Schnegg, J. Dzubielia, M. Ballauff and Y. Lu, *J. Mater. Chem. A*, 2016, **4**, 9677–9684.
- 9 G. Prieto, H. Tüysüz, N. Duyckaerts, J. Knossalla, G.-H. Wang and F. Schüth, *Chem. Rev.*, 2016, **116**, 14056–14119.
- 10 J. Gaitzsch, X. Huang and B. Voit, *Chem. Rev.*, 2015, **116**, 1053–1093.
- 11 D. M. Vriezema, M. Comellas Aragonès, J. A. A. W. Elemans, J. J. L. M. Cornelissen, A. E. Rowan and R. J. M. Nolte, *Chem. Rev.*, 2005, **105**, 1445–1490.
- 12 K. Renggli, P. Baumann, K. Langowska, O. Onaca, N. Bruns and W. Meier, *Adv. Funct. Mater.*, 2011, **21**, 1241–1259.
- 13 P. Tanner, P. Baumann, R. Enea, O. Onaca, C. Palivan and W. Meier, *Acc. Chem. Res.*, 2011, **44**, 1039–1049.
- 14 Y. Guan and Y. Zhang, *Soft Matter*, 2011, **7**, 6375–6384.
- 15 A. Liu, C. H. H. Traulsen and J. J. L. M. Cornelissen, *ACS Catal.*, 2016, **6**, 3084–3091.
- 16 S. Montolio, C. Vicent, V. Aseyev, I. Alfonso, M. I. Burguete, H. Tenhu, E. García-Verdugo and S. V. Luis, *ACS Catal.*, 2016, **6**, 7230–7237.
- 17 A. Zinchenko, Y. Che, S. Taniguchi, L. I. Lopatina, V. Sergeyev and S. Murata, *J. Nanopart. Res.*, 2016, **18**, 1–9.
- 18 Y. Lu, Y. Mei, M. Drechsler and M. Ballauff, *Angew. Chem., Int. Ed.*, 2006, **45**, 813–816.
- 19 J.-T. Zhang, G. Wei, T. F. Keller, H. Gallagher, C. Stötzler, F. A. Müller, M. Gottschaldt, U. S. Schubert and K. D. Jandt, *Macromol. Mater. Eng.*, 2010, **295**, 1049–1057.
- 20 R. Contreras-Cáceres, A. Sánchez-Iglesias, M. Karg, I. Pastoriza-Santos, J. Pérez-Juste, J. Pacifico, T. Hellweg, A. Fernández-Barbero and L. M. Liz-Marzán, *Adv. Mater.*, 2008, **20**, 1666–1670.
- 21 S. Li, D. Lin, J. Zhou and L. Zha, *J. Phys. Chem. C*, 2016, **120**, 4902–4908.
- 22 M. Haruta, *Chem. Rec.*, 2003, **3**, 75–87.
- 23 G. J. Hutchings and M. Haruta, *Appl. Catal., A*, 2005, **291**, 2–5.
- 24 Y. Zhang, X. Cui, F. Shi and Y. Deng, *Chem. Rev.*, 2012, **112**, 2467–2505.
- 25 D. Astruc, in *Nanoparticles and Catalysis*, ed. D. Astruc, Wiley-VCH Verlag GmbH, Weinheim, Germany, 2008, ch. 1, pp. 1–48.
- 26 P. Zhao, N. Li and D. Astruc, *Coord. Chem. Rev.*, 2013, **257**, 638–665.
- 27 N. Li, P. Zhao and D. Astruc, *Angew. Chem., Int. Ed.*, 2014, **53**, 1756–1789.
- 28 E. Boisselier and D. Astruc, *Chem. Soc. Rev.*, 2009, **38**, 1759–1782.
- 29 U. Taylor, C. Rehbock, C. Streich, D. Rath and S. Barcikowski, *Nanomedicine*, 2014, **9**, 1971–1989.
- 30 G. Sharma and M. Ballauff, *Macromol. Rapid Commun.*, 2004, **25**, 547–552.
- 31 Y. Mei, G. Sharma, Y. Lu, M. Ballauff, M. Drechsler, T. Irrgang and R. Kempe, *Langmuir*, 2005, **21**, 12229–12234.
- 32 N. C. Antonels and R. Meijboom, *Langmuir*, 2013, **29**, 13433–13442.
- 33 R. M. Crooks, M. Zhao, L. Sun, V. Chechik and L. K. Yeung, *Acc. Chem. Res.*, 2001, **34**, 181–190.
- 34 R. M. Anderson, D. F. Yancey, L. Zhang, S. T. Chill, G. Henkelman and R. M. Crooks, *Acc. Chem. Res.*, 2015, **48**, 1351–1357.
- 35 C. Deraedt, N. Pinaud and D. Astruc, *J. Am. Chem. Soc.*, 2014, **136**, 12092–12098.
- 36 K. Esumi, K. Miyamoto and T. Yoshimura, *J. Colloid Interface Sci.*, 2002, **254**, 402–405.
- 37 N. Bingwa and R. Meijboom, *J. Phys. Chem. C*, 2014, **118**, 19849–19858.
- 38 N. Bingwa and R. Meijboom, *J. Mol. Catal. A: Chem.*, 2015, **396**, 1–7.
- 39 J.-H. Noh and R. Meijboom, *Appl. Surf. Sci.*, 2014, **320**, 400–413.
- 40 J.-H. Noh and R. Meijboom, *Appl. Catal., A*, 2015, **497**, 107–120.
- 41 Z. D. Pozun, S. E. Rodenbusch, E. Keller, K. Tran, W. Tang, K. J. Stevenson and G. Henkelman, *J. Phys. Chem. C*, 2013, **117**, 7598–7604.



- 42 J. A. Johnson, J. J. Makis, K. A. Marvin, S. E. Rodenbusch and K. J. Stevenson, *J. Phys. Chem. C*, 2013, **117**, 22644–22651.
- 43 E. Gross and G. A. Somorjai, *Top. Catal.*, 2014, **57**, 812–821.
- 44 A. Calvo, M. C. Fuertes, B. Yameen, F. J. Williams, O. Azzaroni and G. J. A. A. Soler-Illia, *Langmuir*, 2010, **26**, 5559–5567.
- 45 S. L. Brock, N. Duan, Z. R. Tian, O. Giraldo, H. Zhou and S. L. Suib, *Chem. Mater.*, 1998, **10**, 2619–2628.
- 46 M. Ballauff and O. Borisov, *Curr. Opin. Colloid Interface Sci.*, 2006, **11**, 316–323.
- 47 M. Ballauff, *Prog. Polym. Sci.*, 2007, **32**, 1135–1151.
- 48 J. Cao, S. Mei, H. Jia, A. Ott, M. Ballauff and Y. Lu, *Langmuir*, 2015, **31**, 9483–9491.
- 49 Y. Lu, M. Hoffmann, R. S. Yelamanchili, A. Terrenoire, M. Schrunner, M. Drechsler, M. W. Möller, J. Breu and M. Ballauff, *Macromol. Chem. Phys.*, 2009, **210**, 377–386.
- 50 M. Ballauff and Y. Lu, *Polymer*, 2007, **48**, 1815–1823.
- 51 Y. Lu, S. Proch, M. Schrunner, M. Drechsler, R. Kempe and M. Ballauff, *J. Mater. Chem.*, 2009, **19**, 3955–3961.
- 52 S. Wu, J. Kaiser, X. Guo, L. Li, Y. Lu and M. Ballauff, *Ind. Eng. Chem. Res.*, 2012, **51**, 5608–5614.
- 53 A. Lu and R. K. O'Reilly, *Curr. Opin. Biotechnol.*, 2013, **24**, 639–645.
- 54 M. Resmini, K. Flavin and D. Carboni, in *Molecular Imprinting*, Springer, 2010, pp. 307–342.
- 55 H. Jia, D. Schmitz, A. Ott, A. Pich and Y. Lu, *J. Mater. Chem. A*, 2015, **3**, 6187–6195.
- 56 N. Welsch, A. Wittemann and M. Ballauff, *J. Phys. Chem. B*, 2009, **113**, 16039–16045.
- 57 Y. Lu, Y. Mei, M. Drechsler and M. Ballauff, *Angew. Chem., Int. Ed.*, 2006, **45**, 813–816.
- 58 Y. Lu, Y. Mei, M. Ballauff and M. Drechsler, *J. Phys. Chem. B*, 2006, **110**, 3930–3937.
- 59 L.-Q. Yang, M.-M. Hao, H.-Y. Wang and Y. Zhang, *Colloid Polym. Sci.*, 2015, **293**, 2405–2417.
- 60 S. Shi, Q. Wang, T. Wang, S. Ren, Y. Gao and N. Wang, *J. Phys. Chem. B*, 2014, **118**, 7177–7186.
- 61 A. Chang, Q. Wu, W. Xu, J. Xie and W. Wu, *Chem. Commun.*, 2015, **51**, 10502–10505.
- 62 J. Liu, J. Wang, Y. Wang, C. Liu, M. Jin, Y. Xu, L. Li, X. Guo, A. Hu, T. Liu, S. F. Lincoln and R. K. Prud'homme, *Colloid Interface Sci. Commun.*, 2015, **4**, 1–4.
- 63 Y. Tang, T. Wu, B. Hu, Q. Yang, L. Liu, B. Yu, Y. Ding and S. Ye, *Mater. Chem. Phys.*, 2015, **149**, 460–466.
- 64 J. Plazas-Tuttle, L. S. Rowles, H. Chen, J. H. Bisesi, T. Sabo-Attwood and N. B. Saleh, *Nanomaterials*, 2015, **5**, 1102–1123.
- 65 Q. Wu, H. Cheng, A. Chang, W. Xu, F. Lu and W. Wu, *Chem. Commun.*, 2015, **51**, 16068–16071.
- 66 F. A. Plamper and W. Richtering, *Acc. Chem. Res.*, 2017, **50**, 131–140.
- 67 S. Gu, S. Wunder, Y. Lu, M. Ballauff, R. Fenger, K. Rademann, B. Jaquet and A. Zaccone, *J. Phys. Chem. C*, 2014, **118**, 18618–18625.
- 68 R. Pelton, *Adv. Colloid Interface Sci.*, 2000, **85**, 1–33.
- 69 A. Khokhlov, *Polymer*, 1980, **21**, 376–380.
- 70 B. Erman and P. Flory, *Macromolecules*, 1986, **19**, 2342–2353.
- 71 A. Khokhlov, S. Starodubtzev and V. Vasilevskaya, in *Responsive gels: Volume transitions I*, Springer, 1993, pp. 123–171.
- 72 T. M. Barenbrug, J. Smit and D. Bedeaux, *Polym. Gels Networks*, 1995, **3**, 331–373.
- 73 M. Heskins and J. E. Guillet, *J. Macromol. Sci., Chem.*, 1968, **2**, 1441–1455.
- 74 K. Dušek and D. Patterson, *J. Polym. Sci., Polym. Phys. Ed.*, 1968, **6**, 1209–1216.
- 75 A. Habicht, W. Schmolke, G. Goerigk, F. Lange, K. Saalwächter, M. Ballauff and S. Seiffert, *J. Polym. Sci., Part B: Polym. Phys.*, 2015, **53**, 1112–1122.
- 76 S. Zhou and C. Wu, *Macromolecules*, 1996, **29**, 4998–5001.
- 77 C. Wu and S. Zhou, *Macromolecules*, 1997, **30**, 574–576.
- 78 S. Angioletti-Uberti, Y. Lu, M. Ballauff and J. Dzubiella, *J. Phys. Chem. C*, 2015, **119**, 15723–15730.
- 79 N. Pradhan, A. Pal and T. Pal, *Colloids Surf., A*, 2002, **196**, 247–257.
- 80 T. Aditya, A. Pal and T. Pal, *Chem. Commun.*, 2015, **51**, 9410–9431.
- 81 P. Zhao, X. Feng, D. Huang, G. Yang and D. Astruc, *Coord. Chem. Rev.*, 2015, **287**, 114–136.
- 82 M. Galanti, D. Fanelli, S. Angioletti-Uberti, M. Ballauff, J. Dzubiella and F. Piazza, *Phys. Chem. Chem. Phys.*, 2016, **18**, 20758–20767.
- 83 R. Roa, W. K. Kim, M. Kanduč, J. Dzubiella and S. Angioletti-Uberti, *ACS Catal.*, 2017, **7**, 5604–5611.
- 84 M. v. Smoluchowski, *Z. Phys. Chem.*, 1917, **92**, 129–168.
- 85 P. Debye, *Trans. Electrochem. Soc.*, 1942, **82**, 265–272.
- 86 G. Wilemski and M. Fixman, *J. Chem. Phys.*, 1973, **58**, 4009–4019.
- 87 D. F. Calef and J. M. Deutch, *Annu. Rev. Phys. Chem.*, 1983, **34**, 493–524.
- 88 P. Hänggi, P. Talkner and M. Borkovec, *Rev. Mod. Phys.*, 1990, **62**, 251–341.
- 89 H. Yasuda, A. Peterlin, C. Colton, K. Smith and E. Merrill, *Makromol. Chem.*, 1969, **126**, 177–186.
- 90 L. M. Robeson, *J. Membr. Sci.*, 1991, **62**, 165–185.
- 91 J. Williams and R. W. Baker, *J. Membr. Sci.*, 1995, **107**, 1–21.
- 92 J. M. Diamond and Y. Katz, *J. Membr. Biol.*, 1974, **17**, 121–154.
- 93 M. Palasis and S. H. Gehrke, *J. Controlled Release*, 1992, **18**, 1–11.
- 94 S. Gehrke, J. Fisher, M. Palasis and M. E. Lund, *Ann. N. Y. Acad. Sci.*, 1997, **831**, 179–207.
- 95 P. Pandey and R. Chauhan, *Prog. Polym. Sci.*, 2001, **26**, 853–893.
- 96 S. C. George and S. Thomas, *Prog. Polym. Sci.*, 2001, **26**, 985–1017.
- 97 M. Ulbricht, *Polymer*, 2006, **47**, 2217–2262.
- 98 R. W. Baker and B. T. Low, *Macromolecules*, 2014, **47**, 6999–7013.
- 99 H. B. Park, J. Kamcev, L. M. Robeson, M. Elimelech and B. D. Freeman, *Science*, 2017, **356**, 1137.



- 100 J. K. Guesta and J. H. Prévost, *Comput. Methods Appl. Mech. Eng.*, 2007, **196**, 1006–1017.
- 101 E. Atci, I. Erucar and S. Keskin, *J. Phys. Chem. C*, 2011, **115**, 6833–6840.
- 102 K. Falk, B. Coasne, R. Pellenq, F.-J. Ulm and L. Bocquet, *Nat. Commun.*, 2015, **6**, 6949.
- 103 A. Obliger, R. Pellenq, F.-J. Ulm and B. Coasne, *J. Phys. Chem. Lett.*, 2016, **7**, 3712–3717.
- 104 M. A. Shannon, P. W. Bohn, M. Elimelech, J. G. Georgiadis, B. J. Mariñas and A. M. Mayes, *Nature*, 2008, **452**, 301–310.
- 105 G. M. Geise, H. B. Park, A. C. Sagle, B. D. Freeman and J. E. McGrath, *J. Membr. Sci.*, 2011, **369**, 130–138.
- 106 B. Tansel, J. Sager, T. Rector, J. Garland, R. F. Strayer, L. Levine, M. Roberts, M. Hummerick and J. Bauer, *Sep. Purif. Technol.*, 2006, **51**, 40–47.
- 107 C. S. Brazel and N. A. Peppas, *Polymer*, 1999, **40**, 3383–3398.
- 108 D. F. Stamatialis, B. J. Papenburg, M. Gironés, S. Saiful, S. N. M. Bettahalli, S. Schmitmeier and M. Wessling, *J. Membr. Sci.*, 2008, **308**, 1–34.
- 109 W. K. Kim, A. Moncho-Jordá, R. Roa, M. Kanduč and J. Dzubiella, *Macromolecules*, 2017, **50**, 6227–6237.
- 110 W. K. Kim, M. Kanduč, R. Roa and J. Dzubiella, *Phys. Rev. Lett.*, 2019, **122**, 108001.
- 111 M. Kanduč, R. Chudoba, K. Palczynski, W. K. Kim, R. Roa and J. Dzubiella, *Phys. Chem. Chem. Phys.*, 2017, **19**, 5906–5916.
- 112 S. Milster, R. Chudoba, M. Kanduč and J. Dzubiella, *Phys. Chem. Chem. Phys.*, 2019, **21**, 6588.
- 113 M. Kanduč, W. K. Kim, R. Roa and J. Dzubiella, *Macromolecules*, 2018, **51**, 4853–4864.
- 114 M. Kanduč, W. K. Kim, R. Roa and J. Dzubiella, *J. Phys. Chem. B*, 2019, **123**, 720–728.
- 115 M. Garcia-Viloca, J. Gao, M. Karplus and D. G. Truhlar, *Science*, 2004, **303**, 186–195.
- 116 K. M. Ramsey, J. Yoshino, C. S. Brace, D. Abrassart, Y. Kobayashi, B. Marcheva, H.-K. Hong, J. L. Chong, E. D. Buhr, C. Lee, J. S. Takahashi, S. Ichiro Imai and J. Bass, *Science*, 2009, **324**, 651–654.
- 117 P. Atkins and J. de Paula, *Physical Chemistry*, ed. W. H. Freeman and Company, 2010.
- 118 E. Aydt and R. Hentschke, *J. Chem. Phys.*, 2000, **112**, 5480–5487.
- 119 Z. Y. Lu and R. Hentschke, *Phys. Rev. E: Stat., Nonlinear, Soft Matter Phys.*, 2002, **66**, 1–8.
- 120 P. A. Netz and T. Dorfmueller, *J. Chem. Phys.*, 1997, **107**, 9221–9233.
- 121 A. Erbaş and M. Olvera de la Cruz, *ACS Macro Lett.*, 2015, **4**, 857–861.
- 122 A. Erbaş and M. Olvera de la Cruz, *Macromolecules*, 2016, **49**, 9026–9034.
- 123 H. Li, A. Erbaş, J. Zwanikken and M. Olvera de la Cruz, *Macromolecules*, 2016, **49**, 9239–9246.
- 124 J. Heyda, A. Muzdalo and J. Dzubiella, *Macromolecules*, 2013, **46**, 1231–1238.
- 125 D. Mukherji and K. Kremer, *Macromolecules*, 2013, **46**, 9158–9163.
- 126 D. Mukherji, C. M. Marques and K. Kremer, *Nat. Commun.*, 2014, **5**, 4882.
- 127 F. Rodríguez-Ropero, T. Hajari and N. F. van der Vegt, *J. Phys. Chem. B*, 2015, **119**, 15780–15788.
- 128 F. Rodríguez-Ropero and N. F. van der Vegt, *Phys. Chem. Chem. Phys.*, 2015, **17**, 8491–8498.
- 129 J. Rika, M. Meewes, R. Nyffenegger and T. Binkert, *Phys. Rev. Lett.*, 1990, **65**, 657.
- 130 L.-T. Lee and B. Cabane, *Macromolecules*, 1997, **30**, 6559–6566.
- 131 J. Heyda, H. I. Okur, J. Hladílková, K. B. Rembert, W. Hunn, T. Yang, J. Dzubiella, P. Jungwirth and P. S. Cremer, *J. Am. Chem. Soc.*, 2017, **139**, 863–870.
- 132 H. Yasuda, C. Lamaze and L. D. Ikenberry, *Makromol. Chem.*, 1968, **118**, 19–35.
- 133 H. Yasuda, L. Ikenberry and C. Lamaze, *Makromol. Chem.*, 1969, **125**, 108–118.
- 134 L. Masaro and X. Zhu, *Prog. Polym. Sci.*, 1999, **24**, 731–775.
- 135 B. Amsden, *Macromolecules*, 1998, **31**, 8382–8395.
- 136 L. Pérez-Mas, A. Martín-Molina, M. Quesada-Pérez and A. Moncho-Jordá, *Phys. Chem. Chem. Phys.*, 2018, **20**, 2814–2825.
- 137 L.-H. Cai, S. Panyukov and M. Rubinstein, *Macromolecules*, 2015, **48**, 847–862.
- 138 B. Rotenberg, J.-F. Dufreche, B. Bagchi, E. Giffaut, J.-P. Hansen and P. Turq, *J. Chem. Phys.*, 2006, **124**, 154701.
- 139 K. Zhang and S. K. Kumar, *ACS Macro Lett.*, 2017, **6**, 864–868.
- 140 R. Zhang and K. S. Schweizer, *J. Chem. Phys.*, 2017, **146**, 194906.
- 141 P. M. Kekenus-Huskey, C. E. Scott and S. Atalay, *J. Phys. Chem. B*, 2016, **120**, 8696–8706.
- 142 A. Leo, C. Hansch and D. Elkins, *Chem. Rev.*, 1971, **71**, 525–616.
- 143 J. Haus and K. Kehr, *Phys. Rep.*, 1987, **150**, 263–406.
- 144 S. K. Ghosh, A. G. Cherstvy and R. Metzler, *Phys. Chem. Chem. Phys.*, 2014, **17**, 1847–1858.
- 145 Y. Wu, S. Joseph and N. R. Aluru, *J. Phys. Chem. B*, 2009, **113**, 3512–3520.
- 146 A. Börjesson, E. Erdtman, P. Ahlström, M. Berlin, T. Andersson and K. Bolton, *Polymer*, 2013, **54**, 2988–2998.
- 147 G. E. Karlsson, U. W. Gedde and M. S. Hedenqvist, *Polymer*, 2004, **45**, 3893–3900.
- 148 F. Müller-Plathe, *Ber. Bunsenges. Phys. Chem.*, 1998, **102**, 1679–1682.
- 149 F. Müller-Plathe, *J. Membr. Sci.*, 1998, **141**, 147–154.
- 150 L. Fritz and D. Hofmann, *Polymer*, 1997, **38**, 1035–1045.
- 151 E. Kucukpinar and P. Doruker, *Polymer*, 2003, **44**, 3607–3620.
- 152 F. Rodríguez-Ropero and N. F. van der Vegt, *J. Phys. Chem. B*, 2014, **118**, 7327–7334.
- 153 M. A. Schroer, J. Michalowsky, B. Fischer, J. Smiatek and G. Grübel, *Phys. Chem. Chem. Phys.*, 2016, **18**, 31459–31470.
- 154 I. Adroher-Benítez, A. Moncho-Jordá and G. Odriozola, *J. Chem. Phys.*, 2017, **146**, 194905.
- 155 S. Deshmukh, D. A. Mooney, T. McDermott, S. Kulkarni and J. D. MacElroy, *Soft Matter*, 2009, **5**, 1514–1521.



- 156 V. Boğan, V. Ustach, R. Faller and K. Leonhard, *J. Phys. Chem. B*, 2016, **120**, 3434–3440.
- 157 L. Pérez-Fuentes, C. Drummond, J. Faraudo and D. Bastos-González, *Soft Matter*, 2015, **11**, 5077–5086.
- 158 E. Aydıt and R. Hentschke, *J. Chem. Phys.*, 2000, **112**, 5480–5487.
- 159 F. A. Escobedo and J. J. de Pablo, *J. Chem. Phys.*, 1997, **106**, 793–810.
- 160 F. A. Escobedo and J. J. De Pablo, *Phys. Rep.*, 1999, **318**, 85–112.
- 161 D. Sandrin, D. Wagner, C. Sitta, R. Thoma, S. Felekyan, H. Hermes, C. Janiak, N. de Sousa Amadeu, R. Kühnemuth and H. Löwen, *et al.*, *Phys. Chem. Chem. Phys.*, 2016, **18**, 12860–12876.
- 162 H. Masoud and A. Alexeev, *Macromolecules*, 2010, **43**, 10117–10122.
- 163 J. Hansing and R. R. Netz, *Macromolecules*, 2018, **51**, 7608–7620.
- 164 J. Hansing and R. R. Netz, *Biophys. J.*, 2018, **114**, 2653–2664.
- 165 J. Hansing, J. R. Duke III, E. B. Fryman, J. E. DeRouchey and R. R. Netz, *Nano Lett.*, 2018, **18**, 5248–5256.
- 166 H. Zhou and S. B. Chen, *Phys. Rev. E: Stat., Nonlinear, Soft Matter Phys.*, 2009, **79**, 021801.
- 167 D. Horinek and R. R. Netz, *J. Phys. Chem. A*, 2011, **115**, 6125–6136.
- 168 L.-C. Dong and A. S. Hoffman, *J. Controlled Release*, 1990, **13**, 21–31.
- 169 S. Sasaki, S. Koga and H. Maeda, *Macromolecules*, 1999, **32**, 4619–4624.
- 170 R. Raccis, R. Roskamp, I. Hopp, B. Menges, K. Koynov, U. Jonas, W. Knoll, H.-J. Butt and G. Fytas, *Soft Matter*, 2011, **7**, 7042–7053.
- 171 Y. Kaneko, R. Yoshida, K. Sakai, Y. Sakurai and T. Okano, *J. Membr. Sci.*, 1995, **101**, 13–22.
- 172 L. C. Dong and A. S. Hoffman, *J. Controlled Release*, 1986, **4**, 223–227.
- 173 Y. Tamai, H. Tanaka and K. Nakanishi, *Macromolecules*, 1994, **27**, 4498–4508.
- 174 M. Fukuda, *J. Chem. Phys.*, 1998, **109**, 6476–6485.
- 175 S. Goudeau, M. Charlot, C. Vergelati and F. Müller-Plathe, *Macromolecules*, 2004, **37**, 8072–8081.
- 176 G. Marque, S. Neyertz, J. Verdu, V. Prunier and D. Brown, *Macromolecules*, 2008, **41**, 3349–3362.
- 177 M. Kandıç, W. K. Kim, R. Roa and J. Dzubiella, *ACS Nano*, 2019, **13**, 11224–11234.
- 178 M. Karelson, *Molecular Descriptors in QSAR/QSPR*, Wiley-Interscience, 2000.
- 179 C. Tanford, *Proc. Natl. Acad. Sci. U. S. A.*, 1979, **76**, 4175–4176.
- 180 H. S. Ashbaugh and L. R. Pratt, *Rev. Mod. Phys.*, 2006, **78**, 159.
- 181 C. Hansch, A. Leo and R. Taft, *Chem. Rev.*, 1991, **91**, 165–195.
- 182 H. Takeuchi, *J. Chem. Phys.*, 1990, **93**, 2062–2067.
- 183 F. Müller-Plathe, *J. Chem. Phys.*, 1991, **94**, 3192–3199.
- 184 L.-H. Cai, S. Panyukov and M. Rubinstein, *Macromolecules*, 2011, **44**, 7853–7863.
- 185 O. Bénichou, M. Coppey, M. Moreau and G. Oshanin, *J. Chem. Phys.*, 2005, **123**, 194506.
- 186 R. Roa, T. Siegl, W. K. Kim and J. Dzubiella, *J. Chem. Phys.*, 2018, **148**, 065705.
- 187 M. J. del Razo, H. Qian and F. Noé, *J. Chem. Phys.*, 2018, **149**, 044102.

