

RESEARCH ARTICLE

View Article Online
View Journal | View IssueCite this: *Mater. Chem. Front.*,
2019, 3, 2051

Bright electrochemiluminescent films of efficient aggregation-induced emission luminogens for sensitive detection of dopamine†

Zihua Li,^a Wei Qin,^{ID} ^{*,a} Jialong Wu,^a Zhiyong Yang,^{ID} ^b Zhenguo Chi^{ID} ^b and Guodong Liang^{ID} ^{*,a}

The development of electrochemiluminescent (ECL) luminogens is of great importance for sensitive detection of biomolecules in various applications. Herein, two efficient red luminogens bearing benzothiadiazole and arylamino moieties, namely **BTD-TPA** and **BTD-NPA**, have been synthesized through one-step Suzuki reaction. They show aggregation-induced emission (AIE) features with high fluorescence quantum efficiency and reversible redox pairs with high stability. Taking advantage of these merits, bright ECL non-doped films are achieved based on the AIE luminogens. Interestingly, the ECL intensity of the films is proportional to the film thickness, which enables the optimization of their brightness through the variation of luminogen loading. Furthermore, the bright ECL films are utilized for sensitive detection of dopamine (DA) with a broad linear range (0.05–350 μ M) and a low detection limit of 17.0 nM. Such bright ECL films provide an ideal platform for sensitive analysis of important biomolecules with high selectivity.

Received 20th June 2019,
Accepted 29th July 2019

DOI: 10.1039/c9qm00401g

rsc.li/frontiers-materials

Introduction

Electrochemiluminescence (ECL) has attracted enormous attention in immunoassay and analytical science due to its remarkable advantages, including simple instruments, low background, and high sensitivity.^{1–3} To date, different ECL systems based on metal complexes and quantum dots have been developed for *in vitro* diagnosis, DNA detection,^{4,5} and other biological applications.^{6–9} However, they encounter a few inherent problems such as high cost, heavy-metal toxicity, and poor processability. To circumvent the problems, organic fluorescent materials based on anthracene, fluorene, thienyltriazole, boron dipyrromethene (BODIPY), and pyridopyrimidine functional moieties have been developed for ECL applications due to their low cost, easy functionalization, and good biocompatibility.^{10–13} Most of the organic chromophores are constructed from hydrophobic aromatic moieties and used in solution.¹⁴ Compared with solution-based ECL systems, solid ECL films have overwhelming advantages, such as environmental friendliness,

enhanced and stable ECL signal, and high cost-efficiency.¹⁵ However, conventional organic chromophores suffer from severe aggregation-caused quenching (ACQ) effect when used in solid films. Indeed, limited by the ACQ effect, efficient ECL films based on conventional organic chromophores are rarely reported.¹⁶ Although doping or labeling in polymers alleviates the ACQ effect, the chromophores are normally retained at low concentration (<3 wt%) in the host materials, which greatly hinders their practical applications.¹⁷

The discovery of the aggregation-induced emission (AIE) phenomenon has opened a new avenue to solve the ACQ problem.^{18–20} Opposite to the ACQ effect, the fluorescence emission of AIE luminogens is enhanced by aggregate formation, which offers a new chance for the development of solid ECL films.^{21,22} A few of the efficient luminogens with AIE features have been developed and utilized in bioimaging and organic light-emitting diodes (OLEDs) due to their high brightness in the aggregated state.^{23–26} However, to our best knowledge, there is no report of efficient organic luminogens for bright ECL film applications, possibly due to their irreversible redox waves and poor stability.^{27–29}

Dopamine (DA) is a significant neurotransmitter, which plays a key role in the function of the central nervous, hormonal, and cardiovascular systems. The abnormal concentration levels of DA are associated with some notorious diseases of the nervous system, such as Parkinson's, Alzheimer's and schizophrenia disease.³⁰ Common methods for DA detection are based on high-performance liquid chromatography (HPLC) or mass

^a PCFM Lab, School of Materials Science and Engineering, Sun Yat-sen University, Guangzhou 510275, P. R. China. E-mail: qinw9@mail.sysu.edu.cn, lgdong@mail.sysu.edu.cn

^b PCFM Lab, School of Chemistry, Sun Yat-sen University, Guangzhou 510275, P. R. China

† Electronic supplementary information (ESI) available: Reagents, experimental details, apparatus and characterization. Movies, UV and PL spectra, electrochemical data, ECL measurements, and quantitative detection. See DOI: 10.1039/c9qm00401g

spectrometry (MS).^{31,32} However, these methods are limited in practical applications due to expensive instruments, time-consuming analysis, and laborious sample pretreatment.³³ Recently, electrochemical methods based on fullerene, ZnO nanowires, and carbon nanotubes, were employed to detect DA with a detection limit in the range of 0.1–60 nM.^{34–40}

Herein, we develop a type of bright ECL film based on efficient AIE luminogens (**BTD-TPA** and **BTD-NPA**). The AIE luminogens are constructed with a benzothiadiazole (BTD) core as an electron acceptor and an arylamino unit as an electron donor,^{41,42} giving rise to red luminogens through intramolecular charge transfer effect. Freely rotating rotors from the functional arylamino units endow them with AIE features. They show stable and reversible redox pairs inherited from the functional arylamino moieties. Taking advantage of the AIE features and reversible redox pairs, bright and tunable ECL films are achieved. Moreover, the bright ECL films are further utilized for sensitive detection of DA with a high Stern–Volmer constant ($5.5 \times 10^5 \text{ M}^{-1}$) and a low detection limit (17.0 nM). The interference experiment demonstrates the sensitive detection of DA with good selectivity. Such bright ECL films provide a promising platform for rapid and quantitative analysis of bioassays with high sensitivity and selectivity.

Experimental

Synthesis of **BTD-Ph**, **BTD-TPA**, and **BTD-NPA**

The compounds were synthesized according to the procedure reported in the literature.⁴³ The detailed synthetic procedure is presented in the ESI.[†]

Preparation of non-doped films

The films were facily prepared by drop-casting 5 μL of DCM solution of luminogens on L-type GCE, followed by air drying. The film thickness is regulated by using luminogen solutions at various concentrations. The film thickness of **BTD-TPA** was measured using a fluorescence microscope (Leica M205 FA).

Electrochemical and ECL measurements

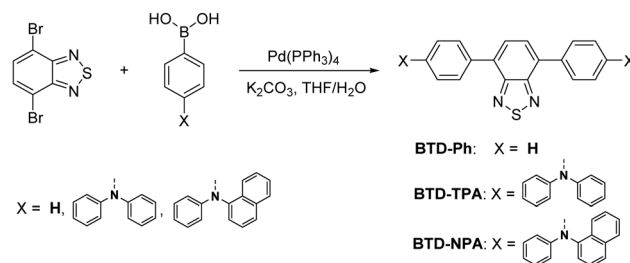
All electrochemistry experiments were performed with a three-electrode cell on an electrochemical workstation (CHI 660D, Chenhua instrument, China). Glassy carbon electrodes (GCE, 3 mm diameter) and gold ultramicroelectrodes (UME, 12.5 μm diameter) were employed as the working electrodes. Platinum wire was used as the counter electrode and silver wire was used as the quasi-reference electrode. An L-type GCE (3 mm diameter) was used as the working electrode for ECL experiments. Before usage, all working electrodes were polished with 0.5, 0.3, and 0.05 μm alumina powder dispersed in water and sonicated in ethanol and deionized water. Before the end of each experiment, the Ag reference electrode was calibrated against ferrocene as an internal redox standard (0.464 V vs. SCE).⁴⁴ Electrochemistry and ECL experiments were obtained in DCM and the ECL of **BTD-TPA** and **BTD-NPA** films were performed in $\text{CH}_3\text{CN}/\text{H}_2\text{O}$ (v/v = 7:1) mixture with 0.1 M TBAPF₆ as the supporting

electrolyte. 20 mM TPrA was used as a co-reactant in the ECL experiments of **BTD-TPA** and **BTD-NPA**, while 5 mM BPO was employed as a co-reactant in the ECL experiment of **BTD-Ph**. A photomultiplier tube detector (PMT, Hamamatsu, Japan) with the voltage at 800 V was employed to collect the ECL signal. The ECL spectrum was obtained *via* pulsing 80 mV past the peak potentials of the oxidation or reduction waves for **BTD-TPA**, **BTD-NPA**, and **BTD-Ph** with a pulse width of 1 s by differential pulse amperometry. The ECL intensity-time profiles were obtained by pulsing between 80 mV past the oxidation peak and 0 V for **BTD-TPA** and **BTD-NPA**, and pulsing between 80 mV past the reduction peak and 0 V for **BTD-Ph** by means of multi-potential steps, with a pulse width of 1 s. The relative ECL efficiencies of **BTD-Ph**, **BTD-TPA**, and **BTD-NPA** in the solution state are calculated through integration of both ECL intensity and current value *versus* time with DPA (Φ_{ECL} is about 0.25% in DMF¹¹) or $[\text{Ru}(\text{bpy})_3]^{2+}$ (Φ_{ECL} is about 5.0% in acetonitrile¹²) as a standard (eqn (S1), ESI[†]).

Results and discussion

BTD-TPA, **BTD-NPA**, and their counterpart (**BTD-Ph**) for comparison were facily synthesized through one-step Suzuki coupling with satisfactory yields as shown in Scheme 1 (Fig. S1–S6, ESI[†]). They possess good solubility in common organic solvents, such as toluene (Tol), chloroform, dichloromethane (DCM), 1,4-dioxane (DO), and tetrahydrofuran (THF), but are insoluble in acetonitrile or water. The UV spectra of **BTD-TPA** and **BTD-NPA** in THF are peaked at 458 nm with a large red-shift of 78 nm compared to **BTD-Ph** (380 nm) (Fig. S7, ESI[†]). Compared to that of **BTD-Ph**, the fluorescence emission of **BTD-TPA** and **BTD-NPA** is more sensitive to solvent polarity (Fig. 1 and Fig. S8, Table S1, ESI[†]). All the results indicate that **BTD-TPA** and **BTD-NPA** demonstrate strong charge transfer effects from the electron-donating arylamino units to the electron-accepting benzothiadiazole core.⁴⁵

To study the effects of aggregation and solvent polarity on the emission process, the photoluminescence (PL) spectra of **BTD-Ph**, **BTD-TPA**, and **BTD-NPA** were explored in THF/water mixtures with different water fractions (f_w). As shown in Fig. 2 and Fig. S9 (ESI[†]), **BTD-Ph** emits green fluorescence with an emission maximum at 481 nm in pure THF. After the addition of water into THF, its PL intensity is decreased gradually. At $f_w = 90\%$, the PL intensity is merely 15% of that in pure THF



Scheme 1 Synthetic routes and chemical structures of **BTD-Ph**, **BTD-TPA** and **BTD-NPA**.

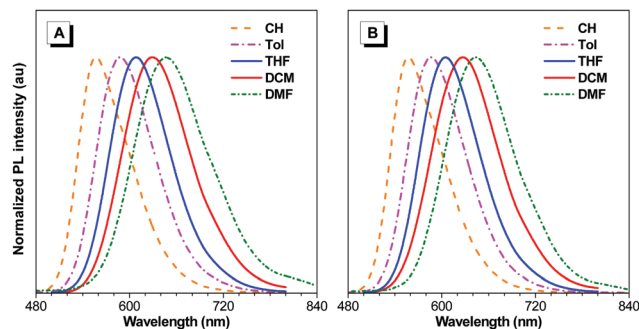


Fig. 1 Normalized PL emission spectra of (A) **BTD-TPA**, and (B) **BTD-NPA** in solvents with different polarities.

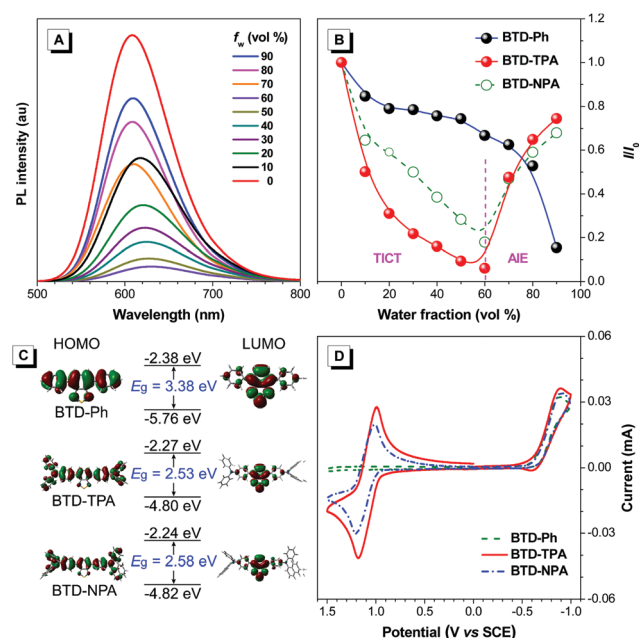


Fig. 2 (A) PL spectra of **BTD-TPA** in THF/water mixtures with different water fractions (f_w). (B) Plots of the relative PL intensity (I/I_0) versus the composition of the THF/water mixtures of **BTD-Ph**, **BTD-TPA**, and **BTD-NPA**. I_0 denotes emission intensity in pure THF. Concentration: 10 μ M. (C) Optimized geometries and molecular orbitals of HOMO and LUMO levels of the molecules. (D) CVs of **BTD-Ph**, **BTD-TPA**, and **BTD-NPA** in anhydrous DCM.

solution accompanied by a 25 nm red-shift, indicative of the typical ACQ feature. In contrast, **BTD-TPA** and **BTD-NPA** in pure THF emit orange-red fluorescence with an emission maximum at 609 and 605 nm, respectively. With the gradual addition of water into THF ($f_w \leq 60\%$), the emission is weakened and red-shifted to ca. 625 nm due to transformation to the twisted intramolecular charge transfer (TICT) state in mixed solvents.⁴⁶ Afterwards ($f_w > 60\%$), the PL intensity starts to increase due to the formation of luminogen aggregates and the AIE effect from the freely rotating rotors of the arylamino units. The higher the water fraction, the stronger the emission intensity. At $f_w = 90\%$, the PL intensity recovers remarkably, and the emission maximum moves to 609 and 606 nm, respectively. **BTD-TPA** and **BTD-NPA** solids possess high fluorescence

quantum yields (Φ_F) of 44% and 56%, respectively, which favors their application in solid films.

To study the photophysical properties of the compounds at the molecular level, density functional theory (DFT) calculations were carried out (Fig. 2C). The highest occupied molecular orbitals (HOMOs) of the studied molecules are dispersed on the whole molecules. While the electron clouds of the lowest unoccupied molecular orbitals (LUMO) are dominated on the BTD core and the adjacent benzene rings. The remarkable difference in electron distributions of the HOMO and LUMO levels of **BTD-TPA** and **BTD-NPA** indicates an intrinsic intramolecular charge transfer effect. Compared to the bandgap of **BTD-Ph**, the narrow band gaps of **BTD-TPA** and **BTD-NPA** are indicative of stronger electron donor-acceptor systems, which is consistent with the experimental data (Fig. S7–S9, ESI†).

Cyclic voltammetry (CV) measurements were carried out to investigate the electrochemical behaviours of **BTD-Ph**, **BTD-TPA**, and **BTD-NPA** (Fig. 2D). **BTD-TPA** and **BTD-NPA** exhibit a stable and reversible redox pair at about +1.1 V due to the presence of arylamine moieties. The anodic peak current (i_{pa}) and cathodic peak current (i_{pc}) are linearly dependent on the square root of the scan rate ($\nu^{1/2}$) (Fig. S10–S12, ESI†), demonstrating diffusion control in these redox processes. The peak current ratio (i_{pa}/i_{pc}) of the redox pair of **BTD-TPA** and **BTD-NPA** is close to unity, revealing that radical cations generated during anodic potential scanning are stable.⁴⁷ CVs of **BTD-TPA** and **BTD-NPA** using gold ultramicroelectrodes (UME) obtain similar results (Fig. S13, S14 (ESI†), and Table 1). Such stable and reversible redox properties of **BTD-TPA** and **BTD-NPA** are essential for their further ECL applications.

The ECL properties of **BTD-Ph**, **BTD-TPA**, and **BTD-NPA** in DCM solution were investigated. In a co-reactant system, the ECL and corresponding CVs of all compounds were performed in DCM solution in the presence of benzoyl peroxide (BPO) or tripropylamine (TPA) (Fig. S15, ESI†). The bright ECL of **BTD-Ph**, **BTD-TPA**, and **BTD-NPA** can be observed by the naked eye with emission peaks at 493, 633, and 632 nm, respectively (Fig. S16, ESI†). The ECL spectra resemble their PL spectra, which confirms that the ECL is from the luminogens. The ECL efficiencies of **BTD-Ph**, **BTD-TPA**, and **BTD-NPA** in solution are calculated to be 0.02%, 2.5%, and 2.4%, respectively. The ECL

Table 1 Electrochemical data

Compound	$E_{1/2}$ (V vs. SCE) ^a		$10^{-6} D^b$ [cm ² s ⁻¹]	E_g^c [eV]	E_{HOMO}^d [eV]	E_{LUMO}^e [eV]
	A/A ⁺ ^a	A/A ⁻ ^a				
BTD-Ph	nd ^f	-0.74	nd ^f	2.87	-5.74	-2.87
BTD-TPA	1.09	-0.76	4.37	2.33	-5.24	-2.91
BTD-NPA	1.11	-0.77	14.3	2.33	-5.27	-2.94

^a The values of $E_{1/2}$ are obtained by averaging between the cathodic and anodic peak potentials. ^b $D = \pi a^2 / 16 S^2$, a is the radius of gold UME, S is the slope of $i-t^{-1/2}$ in chronoamperometry. ^c HOMO–LUMO band gap (E_g) is calculated from the onset of the absorption spectrum. ^d HOMO is the highest occupied molecular orbital derived from the onset oxidation potential. ^e LUMO is the lowest unoccupied molecular orbital estimated by using the equation $E_{LUMO} = E_{HOMO} + E_g$. ^f nd: not detected due to without oxidation wave of **BTD-Ph**.

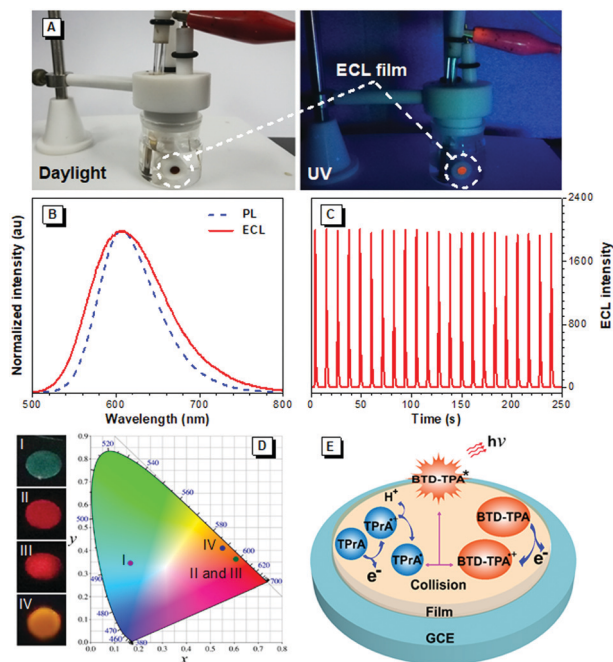


Fig. 3 (A) Digital photos of the experimental setup after the ECL experiment under daylight and UV illumination. (B) Normalized ECL and PL spectra of the **BTD-TPA** films. Excitation: 460 nm. (C) ECL stability of the **BTD-TPA** films. (D) ECL photos of **BTD-Ph** (I), **BTD-TPA** (II), and **BTD-NPA** (III) in DCM solution, the **BTD-TPA** film (IV), and CIE chromaticity coordinates of their ECL spectra. (E) Proposed ECL mechanism of **BTD-TPA** films.

stabilities of **BTD-Ph**, **BTD-TPA**, and **BTD-NPA** were investigated by the pulsing technique (Fig. S17, ESI†). **BTD-TPA** and **BTD-NPA** show good ECL stabilities and retain at an almost constant value during the consecutive cyclic potential scanning with a relative standard derivation (RSD) of 1.0% and 2.3%, respectively. In contrast, the ECL signal of **BTD-Ph** is decreased with increasing scanning cycles. The decreased ECL signal of **BTD-Ph** is ascribed to the unstable radical anion, which greatly hinders the generation of the excited state of **BTD-Ph**.¹⁰

Encouraged by their promising solution ECL results and AIE features, we developed solid ECL films based on **BTD-TPA** and **BTD-NPA** (Fig. 3A). The films were facily prepared by drop-casting DCM solution of the luminogens on a glassy carbon electrode (GCE). The solid films of **BTD-TPA** and **BTD-NPA** turn on at low voltages of +0.80 V and +0.65 V, respectively, which are much lower than that of $\text{Ru}(\text{bpy})_3^{2+}$ (+1.2 V).⁴⁸ The ECL intensities of **BTD-TPA** and **BTD-NPA** reach the maximum values at +1.05 V and +1.14 V, respectively (Fig. S18–S20, ESI†). The ECL spectrum of the **BTD-TPA** film resembles its PL spectrum (Fig. 3B). The ECL quantum efficiency of **BTD-TPA** films is calculated to be 4.0%, using $\text{Ru}(\text{bpy})_3^{2+}$ as a reference with the ECL quantum efficiency of 5.0% (eqn (S1), ESI†). The ECL signal of **BTD-TPA** films remains almost at a constant value during consecutive cyclic potential scanning with an RSD of 1.4% (Fig. 3C). In contrast, the ECL intensity of **BTD-NPA** films gradually decreases to 36.5% of its maximum value after 27 cycles (Fig. S21, ESI†) due to the formation of a thin polymer film on the electrode surface.¹³ The corresponding Commission Internationale

de l'Eclairage (CIE) coordinates of **BTD-Ph** (I), **BTD-TPA** (II), and **BTD-NPA** (III) in DCM solution are calculated to be (0.17, 0.35), (0.62, 0.36), and (0.62, 0.36), respectively. While the CIE coordinates of the spectrum of **BTD-TPA** solid film are calculated to be (0.56, 0.41), as shown in Fig. 3D. The ECL of **BTD-TPA** films is explained through an oxidative-reduction co-reactant mechanism (Fig. 3E). Both **BTD-TPA** and co-reactant TPrA are first oxidized to the corresponding radical cation **BTD-TPA**^{•+} and intermediate radical cation TPrA^{•+}. TPrA^{•+} loses a proton to generate the neutral radical TPrA[•] on the electrode surface. Then **BTD-TPA**^{•+} is reduced by TPrA[•] to form excited-state **BTD-TPA**^{*}, which finally emits light and returns to its ground state (eqn (S2)–(S6), ESI†).^{49,50}

The brightness of the ECL films is tunable. The ECL intensity of the **BTD-TPA** films is remarkably enhanced with the increase in the luminogen loading from 25 ng mm^{−2} to 1 μg mm^{−2} (Fig. 4). The thickness of the solid films was further measured using a fluorescence microscope. Interestingly, the ECL intensity of the **BTD-TPA** films with increasing thickness demonstrates a linear relationship ($R = 0.9973$). The ECL intensity of the films is enhanced by 58-fold when the film thickness is increased from 26 μm to 130 μm. Evidently, the ECL intensity of **BTD-TPA** films is tunable through facily regulating luminogen loading or film thickness, which is useful for their practical applications. Such tunable ECL intensity of **BTD-TPA** films benefits from AIE features of the luminogen. The current during ECL of **BTD-TPA** films was monitored. The current increases linearly with increasing luminogen loading (Fig. S22, ESI†), suggesting that **BTD-TPA** molecules in the films involve ECL reactions.

To investigate the morphologies and microstructure of **BTD-TPA** films, scanning electron microscopy (SEM) and X-ray diffraction (XRD) were performed. As shown in Fig. S23 (ESI†), continuous and dense films are observed. **BTD-TPA** films have a smooth surface. No ordered sub-structures are recognized in the films. Moreover, the XRD spectrum displays that the diffraction peaks of **BTD-TPA** film are in good agreement with the simulated peak from single crystals,⁴⁵ confirming the formation of a crystal

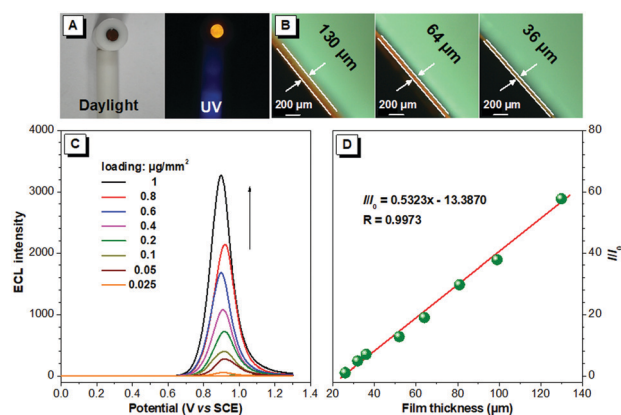


Fig. 4 (A) Digital photos of **BTD-TPA** film under daylight and UV illumination. (B) Optical microscope images of **BTD-TPA** films with different thicknesses. (C) ECL intensity of **BTD-TPA** films with various loadings. (D) Plot of relative ECL intensity (I/I_0) versus the different thickness of **BTD-TPA** films; I_0 denotes the ECL emission intensity of **BTD-TPA** film with a thickness of 26 μm.

structure in **BTD-TPA** films (Fig. S24, ESI†). Furthermore, electrochemical impedance spectroscopy (EIS) was employed to monitor the electrochemical properties of **BTD-TPA** films at various loadings. The semicircle diameter at higher frequencies reflects the electron-transfer resistance (R_{ct}), which is related to the electron-transfer kinetics. The bare GCE displays a small R_{ct} value (225 Ω , Fig. S25, ESI†). Modification of the GCE with **BTD-TPA** at 0.1 $\mu\text{g mm}^{-2}$ leads to a 5-fold R_{ct} value (1022 Ω). With increasing **BTD-TPA** loading, the R_{ct} value increases. The GCE modified with 1 $\mu\text{g mm}^{-2}$ of **BTD-TPA** shows an R_{ct} value of 2199 Ω . The moderate R_{ct} values of the **BTD-TPA** modified GCE in the order of $\text{k}\Omega$ show an acceptable electrical conductivity of **BTD-TPA** films and efficient electrical communication among the GCE, **BTD-TPA** films, and supporting electrolyte.

In ECL films, a small amount of luminogens (typically 50 ng to 14 μg) is used.¹⁶ In contrast, much higher amounts of luminogens by two orders of magnitude are required in solution ECL systems (typically 2.0 mg).^{10,51} Thus, the present ECL films greatly reduce the consumption of luminogens. Moreover, in ECL films, luminogens are loaded on the electrode surface. Poor solvents of luminogens such as water and acetonitrile are used as supporting liquid. A large volume of toxic and volatile solvents such as DCM is required in solution ECL systems. Evaporation of the toxic solvents during ECL measurements causes not only unstable ECL but also environmental issues. Thus, the ECL films are a promising platform for further applications. In recent years, there have been a few reports of immobilization of metal complexes on the electrode surface for ECL through the Langmuir–Blodgett method or self-assembly.¹⁵ However, the immobilization methods are far from satisfactory due to the problems from unstable biased potentials and easy desorption of luminophores from solid electrodes. Although a series of approaches for ECL enhancement through the preparation of modified electrodes are reported,^{52–54} they involve complicated modification processes on electrodes. This greatly hinders their practical applications. Thus, the present work using inexpensive organic AIE luminogens demonstrates a simple and direct approach for the development of bright and tunable ECL devices without involving any ancillary methods.

With the merits of bright ECL and superior stability, **BTD-TPA** films were used for the detection of dopamine (DA). The blank **BTD-TPA** film emits strong ECL with an emission maximum at 607 nm. The ECL signal of **BTD-TPA** films is stable and reproducible. ECL intensity changes rarely during consecutive scanning (Fig. S26, ESI†). The ECL intensity of **BTD-TPA** films is gradually quenched with increasing concentration of DA. When the concentration of DA is increased to 350 μM , the ECL intensity of **BTD-TPA** thin film is almost quenched with only <4% of its initial ECL intensity (Fig. 5A). ECL quenching of **BTD-TPA** films follows the Stern–Volmer equation at low DA concentration.⁵⁵

$$I_0/I = K[Q] + 1 \quad (1)$$

where I_0 and I are the ECL intensities in the absence and presence of a quencher, respectively. K denotes the Stern–Volmer constant in the unit of M^{-1} , which represents the sensitivity of

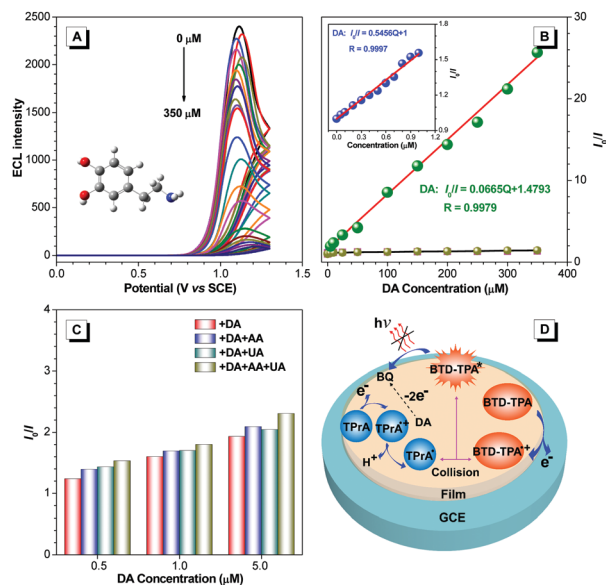


Fig. 5 (A) ECL intensity *versus* potential profiles of **BTD-TPA** film with different concentrations of DA. (B) Stern–Volmer plots of I_0/I of **BTD-TPA** film *versus* the concentration of DA, AA, and UA. Inset: Stern–Volmer plot at low concentration of DA (0–1 μM). (C) I_0/I of **BTD-TPA** film with different concentrations of DA containing 100-fold concentrations of AA and UA. (D) Proposed ECL quenching mechanism of the **BTD-TPA** film modified GCE.

the luminogen toward the quencher. A larger K value suggests higher sensitivity toward the quencher. $[Q]$ is the concentration of the quencher in the unit of M. The plot is composed of two regions (Fig. 5B). In region I with DA concentration $\leq 1 \mu\text{M}$, the plot demonstrates a linear relationship with a K_I value of $5.5 \times 10^5 \text{ M}^{-1}$. The detection limit is calculated as low as 17.0 nM (eqn (S7), ESI†). When the DA concentration is increased from 1 to 350 μM , the Stern–Volmer plot is deviated from the initial linear relationship in region I and follows another linear relationship with a K_{II} value of $6.6 \times 10^4 \text{ M}^{-1}$. For comparison, the quenching properties of AA and UA were also investigated (Fig. 5B and Fig. S27, ESI†). The quenching constants of ascorbic acid (AA) and uric acid (UA) are lowered by three orders of magnitude compared to that of DA ($9.0 \times 10^2 \text{ M}^{-1}$ and $5.0 \times 10^2 \text{ M}^{-1}$, respectively), suggesting higher sensitivity toward DA. The interference of AA and UA on the detection process was further tested. Even containing an excessive amount of AA and UA (100-fold of DA), similar values of I_0/I were obtained, further demonstrating high specificity of the ECL films toward DA (Fig. 5C and Fig. S28, ESI†). The ECL quenching mechanism is proposed (Fig. 5D). DA is electrochemically oxidized into quinone species such as *o*-benzoquinone (BQ) during the ECL process,^{56,57} which consumes the energy of the excited state of **BTD-TPA**. The proposed mechanism is supported by the antioxidation experiment (Fig. 6). Indeed, upon addition of antioxidant 2-mercapoethanol (βME) into the detection solution, the quenched ECL emission of the **BTD-TPA** film is greatly recovered.⁵⁷

Thus, the ECL films in this work offer a promising platform for specific detection of DA. Recently, there have been a few reports of DA detection using different modified electrodes (Fig. 7 and Table S2, ESI†).^{58–73} Most of the reported methods

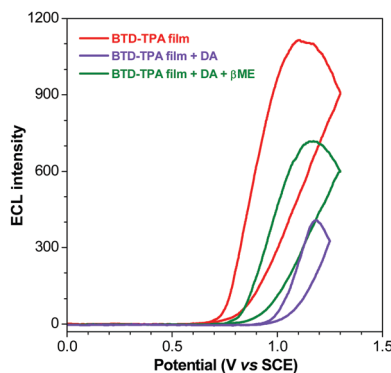


Fig. 6 ECL curves of the BTD-TPA film (red line), +5 μM DA (violet line) and +100 μM βME (green line).

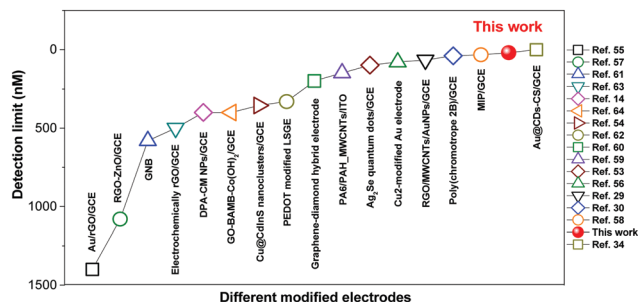


Fig. 7 Summary of detection limits for DA using different modified electrodes in the literature.

have detection limits from 33 nM to 1400 nM. Moreover, relevant quenching constants are rarely reported.^{58,60} Compared to previous reports, the present results are interesting with a high quenching constant ($5.5 \times 10^5 \text{ M}^{-1}$), a wider linear range (0.05–350 μM), and a lower detection limit (17.0 nM).

Conclusions

In summary, we have constructed two red luminogens from benzothiadiazole (BTD) and arylamino units, abbreviated as BTD-TPA and BTD-NPA, through one-step Suzuki reaction. The resultant molecules show AIE effects with high fluorescence efficiency and reversible redox pairs with high stability. Bright ECL solid films are fabricated based on the efficient AIE luminogens. Interestingly, the ECL intensity of the non-doped films is proportional to the film thickness, which allows tuning their brightness through facile variation of luminogen loading. Moreover, the bright ECL films are utilized for sensitive detection of dopamine (DA). A high Stern–Volmer constant ($5.5 \times 10^5 \text{ M}^{-1}$) and a low detection limit of 17.0 nM are achieved with good selectivity. Such bright ECL films open a promising avenue for rapid and quantitative analysis of bioassays with high sensitivity and selectivity.

Conflicts of interest

There are no conflicts to declare.

Acknowledgements

The financial support is partially from NSFC (21374136), and the Fundamental Research Funds for the Central Universities (17lgjc03 and 18lgpy04).

Notes and references

- 1 M. M. Richter, *Chem. Rev.*, 2004, **104**, 3003–3036.
- 2 L. Hu and G. Xu, *Chem. Soc. Rev.*, 2010, **39**, 3275–3304.
- 3 L. Li, Y. Chen and J. J. Zhu, *Anal. Chem.*, 2017, **89**, 358–371.
- 4 W. Cao, J. P. Ferrance, J. Demas and J. P. Landers, *J. Am. Chem. Soc.*, 2006, **128**, 7572–7578.
- 5 G. Jie, H. Huang, X. Sun and J. J. Zhu, *Biosens. Bioelectron.*, 2008, **23**, 1896–1899.
- 6 S. Liu, H. Yuan, H. Bai, P. Zhang, F. Lv, L. Liu, Z. Dai, J. Bao and S. Wang, *J. Am. Chem. Soc.*, 2018, **140**, 2284–2291.
- 7 G. Valenti, S. Scarabino, B. Goudeau, A. Lesch, M. Jović, E. Villani, M. Sentic, S. Rapino, S. Arbault, F. Paolucci and N. Sojic, *J. Am. Chem. Soc.*, 2017, **139**, 16830–16837.
- 8 S. Voci, B. Goudeau, G. Valenti, A. Lesch, M. Jović, S. Rapino, F. Paolucci, S. Arbault and N. Sojic, *J. Am. Chem. Soc.*, 2018, **140**, 14753–14760.
- 9 P. Bertoncello and R. J. Forster, *Biosens. Bioelectron.*, 2009, **24**, 3191–3200.
- 10 R. Zhang, F. Tong, L. Yang, J. R. Adsetts, T. Yan, R. Wang, Z. Ding and H. B. Wang, *Chem. Commun.*, 2018, **54**, 9897–9900.
- 11 F. Rizzo, F. Polo, G. Bottaro, S. Fantacci, S. Antonello, L. Armelao, S. Quici and F. Maran, *J. Am. Chem. Soc.*, 2017, **139**, 2060–2069.
- 12 H. Qi, J. J. Teesdale, R. C. Pupillo, J. Rosenthal and A. J. Bard, *J. Am. Chem. Soc.*, 2013, **135**, 13558–13566.
- 13 F. Polo, F. Rizzo, M. Veiga Gutierrez, L. De Cola and S. Quici, *J. Am. Chem. Soc.*, 2012, **134**, 15402–15409.
- 14 H. Qi, Y. H. Chen, C. H. Cheng and A. J. Bard, *J. Am. Chem. Soc.*, 2013, **135**, 9041–9049.
- 15 Z. Guo and S. Dong, *Anal. Chem.*, 2004, **76**, 2683–2688.
- 16 M. Shen, X. H. Zhu and A. J. Bard, *J. Am. Chem. Soc.*, 2013, **135**, 8868–8873.
- 17 Z. Wang, S. Chen, J. W. Y. Lam, W. Qin, R. T. K. Kwok, N. Xie, Q. Hu and B. Z. Tang, *J. Am. Chem. Soc.*, 2013, **135**, 8238–8245.
- 18 J. Mei, N. L. C. Leung, R. T. K. Kwok, J. W. Y. Lam and B. Z. Tang, *Chem. Rev.*, 2015, **115**, 11718–11940.
- 19 J. Mei, Y. Huang and H. Tian, *ACS Appl. Mater. Interfaces*, 2018, **10**, 12217–12261.
- 20 C. Wang and Z. Li, *Mater. Chem. Front.*, 2017, **1**, 2174–2194.
- 21 X. Wei, M. J. Zhu, Z. Cheng, M. Lee, H. Yan, C. Lu and J. J. Xu, *Angew. Chem.*, 2019, **131**, 3194–3198.
- 22 Z. Han, Z. Yang, H. Sun, Y. Xu, X. Ma, D. Shan, J. Chen, S. Huo, Z. Zhang, P. Du and X. Lu, *Angew. Chem.*, 2019, **131**, 5976–5980.
- 23 W. Qin, P. Zhang, H. Li, J. W. Y. Lam, Y. Cai, R. T. K. Kwok, J. Qian, W. Zheng and B. Z. Tang, *Chem. Sci.*, 2018, **9**, 2705–2710.

- 24 W. Qin, Z. Yang, Y. Jiang, J. W. Y. Lam, G. Liang, H. S. Kwok and B. Z. Tang, *Chem. Mater.*, 2015, **27**, 3892–3901.
- 25 X. Han, B. Zhang, J. Chen, S. H. Liu, C. Tan, H. Liu, M. J. Lang, Y. Tan, X. Liu and J. Yin, *J. Mater. Chem. B*, 2017, **5**, 5096–5100.
- 26 X. Y. Wang, J. Zhang, Y. B. Dong, Y. Zhang, J. Yin and S. H. Liu, *Dyes Pigm.*, 2018, **156**, 74–81.
- 27 L. Chen, Y. Jiang, H. Nie, P. Lu, H. H. Y. Sung, I. D. Williams, H. S. Kwok, F. Huang, A. Qin, Z. Zhao and B. Z. Tang, *Adv. Funct. Mater.*, 2014, **24**, 3621–3630.
- 28 Y. Liu, S. Chen, J. W. Y. Lam, P. Lu, R. T. K. Kwok, F. Mahtab, H. S. Kwok and B. Z. Tang, *Chem. Mater.*, 2011, **23**, 2536–2544.
- 29 Y. Liu, Y. Lv, H. Xi, X. Zhang, S. Chen, J. W. Y. Lam, R. T. K. Kwok, F. Mahtab, H. S. Kwok, X. Tao and B. Z. Tang, *Chem. Commun.*, 2013, **49**, 7216–7218.
- 30 S. R. Ali, Y. Ma, R. R. Parajuli, Y. Balogun, W. Y. C. Lai and H. He, *Anal. Chem.*, 2007, **79**, 2583–2587.
- 31 C. Muzzi, E. Bertocci, L. Terzuoli, B. Porcelli, I. Ciari, R. Pagani and R. Guerranti, *Biomed. Pharmacother.*, 2008, **62**, 253–258.
- 32 V. Carrera, E. Sabater, E. Vilanova and M. A. Sogorb, *J. Chromatogr. B: Anal. Technol. Biomed. Life Sci.*, 2007, **847**, 88–94.
- 33 F. Shang, L. Zhou, K. A. Mahmoud, S. Hrapovic, Y. Liu, H. A. Moynihan, J. D. Glennon and J. H. T. Luong, *Anal. Chem.*, 2009, **81**, 4089–4098.
- 34 Z. Su, Y. Liu, Q. Xie, L. Chen, Y. Zhang, Y. Meng, Y. Li, Y. Fu, M. Ma and S. Yao, *Biosens. Bioelectron.*, 2012, **36**, 154–160.
- 35 L. Wei, Y. Lei, H. Fu and J. Yao, *ACS Appl. Mater. Interfaces*, 2012, **4**, 1594–1600.
- 36 H. Y. Yue, S. Huang, J. Chang, C. Heo, F. Yao, S. Adhikari, F. Gunes, L. C. Liu, T. H. Lee, E. S. Oh, B. Li, J. J. Zhang, T. Q. Huy, N. V. Luan and Y. H. Lee, *ACS Nano*, 2014, **8**, 1639–1646.
- 37 H. Muguruma, Y. Inoue, H. Inoue and T. Ohsawa, *J. Phys. Chem. C*, 2016, **120**, 12284–12292.
- 38 L. Jiang, G. W. Nelson, J. Abda and J. S. Foord, *ACS Appl. Mater. Interfaces*, 2016, **8**, 28338–28348.
- 39 F. Wu, T. Huang, Y. Hu, X. Yang, Y. Ouyang and Q. Xie, *Microchim. Acta*, 2016, **183**, 2539–2546.
- 40 W. Deng, X. Yuan, Y. Tan, M. Ma and Q. Xie, *Biosens. Bioelectron.*, 2016, **85**, 618–624.
- 41 J. Chen, F. Ye, Y. Lin, Z. Chen, S. Liu and J. Yin, *Sci. China: Chem.*, 2019, **62**, 440–450.
- 42 J. Chen, D. Li, W. Chi, G. Liu, S. H. Liu, X. Liu, C. Zhang and J. Yin, *Chem. – Eur. J.*, 2018, **24**, 3671–3676.
- 43 K. Shin Ichiro, M. Taisuke, S. Motoyuki, G. Hideki, M. Shuichi, I. I. Tsutomu and M. Shuntaro, *Chem. – Eur. J.*, 2010, **12**, 2303–2317.
- 44 S. Sahami and M. J. Weaver, *J. Electroanal. Chem. Interfacial Electrochem.*, 1981, **122**, 155–170.
- 45 S. i. Kato, T. Matsumoto, T. Ishi, T. Thiemann, M. Shigeiwa, H. Gorohmaru, S. Maeda, Y. Yamashita and S. Mataka, *Chem. Commun.*, 2004, 2342–2343.
- 46 W. Qin, D. Ding, J. Liu, W. Z. Yuan, Y. Hu, B. Liu and B. Z. Tang, *Adv. Funct. Mater.*, 2012, **22**, 771–779.
- 47 J. Suk, Z. Wu, L. Wang and A. J. Bard, *J. Am. Chem. Soc.*, 2011, **133**, 14675–14685.
- 48 M. Mayer, S. Takegami, M. Neumeier, S. Rink, A. Jacobi von Wangelin, S. Schulte, M. Vollmer, A. G. Griesbeck, A. Duerkop and A. J. Baumann, *Angew. Chem., Int. Ed.*, 2018, **57**, 408–411.
- 49 R. Y. Lai and A. J. Bard, *J. Phys. Chem. A*, 2003, **107**, 3335–3340.
- 50 W. Miao, J. P. Choi and A. J. Bard, *J. Am. Chem. Soc.*, 2002, **124**, 14478–14485.
- 51 K. N. Swanick, S. Ladouceur, E. Zysman Colman and Z. Ding, *Chem. Commun.*, 2012, **48**, 3179–3181.
- 52 B. Wu, C. Miao, L. Yu, Z. Wang, C. Huang and N. Jia, *Sens. Actuators, B*, 2014, **195**, 22–27.
- 53 Y. P. Dong, G. Chen, Y. Zhou and J. J. Zhu, *Anal. Chem.*, 2016, **88**, 1922–1929.
- 54 Y. Yu, C. Lu and M. Zhang, *Anal. Chem.*, 2015, **87**, 8026–8032.
- 55 O. Stern and M. Volmer, *Phys. Z.*, 1919, **20**, 183–188.
- 56 J. McCall, C. Alexander and M. M. Richter, *Anal. Chem.*, 1999, **71**, 2523–2527.
- 57 X. Liu, H. Jiang, J. Lei and H. Ju, *Anal. Chem.*, 2007, **79**, 8055–8060.
- 58 H. Liu, L. Wang, H. Gao, H. Qi, Q. Gao and C. Zhang, *ACS Appl. Mater. Interfaces*, 2017, **9**, 44324–44331.
- 59 D. Yuan, S. Chen, R. Yuan, J. Zhang and X. Liu, *Sens. Actuators, B*, 2014, **191**, 415–420.
- 60 R. Cui, Y. P. Gu, L. Bao, J. Y. Zhao, B. P. Qi, Z. L. Zhang, Z. X. Xie and D. W. Pang, *Anal. Chem.*, 2012, **84**, 8932–8935.
- 61 F. Wang, J. Lin, H. Wang, S. Yu, X. Cui, A. Ali, T. Wu and Y. Liu, *Nanoscale*, 2018, **10**, 15932–15937.
- 62 X. B. Li, M. M. Rahman, G. R. Xu and J. J. Lee, *Electrochim. Acta*, 2015, **173**, 440–447.
- 63 C. Wang, J. Du, H. Wang, C. E. Zou, F. Jiang, P. Yang and Y. Du, *Sens. Actuators, B*, 2014, **204**, 302–309.
- 64 G. Jiang, X. Gu, G. Jiang, T. Chen, W. Zhan and S. Tian, *Sens. Actuators, B*, 2015, **209**, 122–130.
- 65 X. Zhang, Y. C. Zhang and L. X. Ma, *Sens. Actuators, B*, 2016, **227**, 488–496.
- 66 M. Zhong, Y. Teng, S. Pang, L. Yan and X. Kan, *Biosens. Bioelectron.*, 2015, **64**, 212–218.
- 67 L. A. Mercante, A. Pavinatto, L. E. O. Iwaki, V. P. Scagion, V. Zucolotto, O. N. Oliveira, L. H. C. Mattoso and D. S. Correa, *ACS Appl. Mater. Interfaces*, 2015, **7**, 4784–4790.
- 68 Q. Yuan, Y. Liu, C. Ye, H. Sun, D. Dai, Q. Wei, G. Lai, T. Wu, A. Yu, L. Fu, K. W. A. Chee and C. T. Lin, *Biosens. Bioelectron.*, 2018, **111**, 117–123.
- 69 P. K. Kannan, S. A. Moshkalev and C. S. Rout, *Nanotechnology*, 2016, **27**, 075504.
- 70 Q. Huang, H. Zhang, S. Hu, F. Li, W. Weng, J. Chen, Q. Wang, Y. He, W. Zhang and X. Bao, *Biosens. Bioelectron.*, 2014, **52**, 277–280.
- 71 G. Xu, Z. A. Jarjes, V. Desprez, P. A. Kilmartin and J. T. Sejdic, *Biosens. Bioelectron.*, 2018, **107**, 184–191.
- 72 L. Yang, D. Liu, J. Huang and T. You, *Sens. Actuators, B*, 2014, **193**, 166–172.
- 73 A. Ejaz, Y. Joo and S. Jeon, *Sens. Actuators, B*, 2017, **240**, 297–307.