



Cite this: *RSC Adv.*, 2018, 8, 35594

Significantly improved piezoelectric performance of PZT-PMnN ceramics prepared by spark plasma sintering

Li-Qian Cheng,^a Ze Xu,^a Chunlin Zhao,^b Hao-Cheng Thong,^b Zhen-Yong Cen,^b Wei Lu,^c Yu Lan^c and Ke Wang^b

A high-performance piezoelectric material, $0.95\text{Pb}(\text{Zr}_{0.52}\text{Ti}_{0.48})\text{O}_3\text{-}0.05\text{Pb}(\text{Mn}_{1/3}\text{Nb}_{2/3})\text{O}_3$ (PZT-PMnN) ceramic, was prepared by using a spark plasma sintering (SPS) method. By systematically comparing the electrical properties, the spark-plasma-sintered sample was demonstrated to be superior to a conventionally sintered sample. With respect to conventionally sintered ceramic, the d_{33} of spark-plasma-sintered ceramic increases from 323 pC/N to 412 pC/N, and the d_{33}^* increases from 318 pm V⁻¹ to 553 pm V⁻¹. More importantly, the mechanical quality factor (Q_m) reaches 583, which is three times higher than the conventionally sintered sample ($Q_m \sim 182$). Furthermore, the SPS method was found to be capable of promoting other electrical properties simultaneously. Therefore, the SPS method is proposed to be an effective processing method to fabricate PZT-PMnN ceramics of higher performance.

Received 30th July 2018
 Accepted 30th September 2018

DOI: 10.1039/c8ra06421k

rsc.li/rsc-advances

1. Introduction

Piezoelectric ceramic is a kind of functional material which can convert mechanical energy into electrical energy and *vice versa*. It is widely used in microelectronics, such as in camera focusing systems, fuel injectors, and medical ultrasound.^{1–4} Inside these devices, the piezoelectric actuator is the most important element, and it can provide a very precise and accurate movement under an applied electric field. Therefore, it gains a lot of interest from industry.⁵ As a powerful and cost-effective piezoelectric material, $\text{Pb}(\text{Zr}, \text{Ti})\text{O}_3$ (PZT) and its family have dominated the market of piezoelectric ceramics for a long period.

It is mostly accepted that the criteria for practical applications include an excellent piezoelectric coefficient, good temperature stability, low dielectric loss, and high mechanical quality factor.^{6–8} However, some of these properties are not necessarily required to be outstanding under certain circumstances, *e.g.* a high mechanical quality factor is more important than a high piezoelectric coefficient in the application of high-frequency ultrasonic transducers. In 1954, Jaffe discovered the $\text{PbZrO}_3\text{-PbTiO}_3$ system, possessing high piezoelectricity.^{9,10} Different elements, acting as a soft or hard doping, when they were doped in PZT ceramics, can improve the ferroelectric properties of ceramics.¹¹ On the other hand, Priya *et al.* analyzed

and proved that $\text{Pb}(\text{Zr}, \text{Ti})\text{O}_3\text{-Pb}(\text{Mn}_{1/3}\text{Nb}_{2/3})\text{O}_3$ is suitable for applications, on the basis of the dielectric and piezoelectric magnitudes.¹²

However, PZT ceramics still face many problems, such as the volatilization of lead at the high sintering temperature.^{13–16} Spark plasma sintering (SPS) could be favorable in suppressing the lead loss because of the rapid heating rate, lower sintering temperature and shorter sintering time.¹⁷ It is well known that SPS is an effective tool to achieve dense and fine-grained ceramics at a relatively low temperature.¹⁸ For example, Han *et al.* demonstrated that SPS can reduce the sintering temperature of $\text{Pb}(\text{Zr}_{0.52}\text{Ti}_{0.42}\text{Sn}_{0.02}\text{Nb}_{0.04})\text{O}_3$ ceramic by about 200–300 °C while maintaining a high relative density (>99%).¹⁹ Besides, the SPS method is capable of promoting the performance of piezoceramics. For example, Shen *et al.* improved the electrical and mechanical properties of $(\text{Na}_{0.535}\text{K}_{0.485})_{1-x}\text{Li}_x(\text{Nb}_{0.8}\text{Ta}_{0.2})\text{O}_3$ ($x = 0.02\text{--}0.07$) ceramic using SPS method.²⁰ This provides a promising alternative to fabricate lead-based ceramics with high mechanical strength and homogeneous fine-grain sizes.²¹ However, there is barely a few papers which systematically investigate and compare the comprehensive electrical properties of spark-plasma-sintered (SPSed) and conventionally sintered (CSed) ceramics.

In this work, Mn and Nb co-doped PZT ceramics with the composition $0.95\text{Pb}(\text{Zr}_{0.52}\text{Ti}_{0.48})\text{O}_3\text{-}0.05\text{Pb}(\text{Mn}_{1/3}\text{Nb}_{2/3})\text{O}_3$ (PZT-PMnN) were prepared by the SPS method at 900–1000 °C. For comparison, the similar composition was prepared by using the conventional sintering (CS) method at 1250 °C. Both ceramic samples were systematically studied. A dense microstructure and high piezoelectric performance are obtained in the SPSed ceramic. This work herein suggests that SPS is an effective

^aDepartment of Materials Science and Engineering, China University of Mining and Technology (Beijing), Beijing 100083, China. E-mail: chenglq@cumtb.edu.cn

^bState Key Laboratory of New Ceramics and Fine Processing, School of Materials Science and Engineering, Tsinghua University, Beijing 100084, China

^cAcoustic Science and Technology Laboratory, Harbin Engineering University, Harbin 150001, China. E-mail: luwei@hrbeu.edu.cn



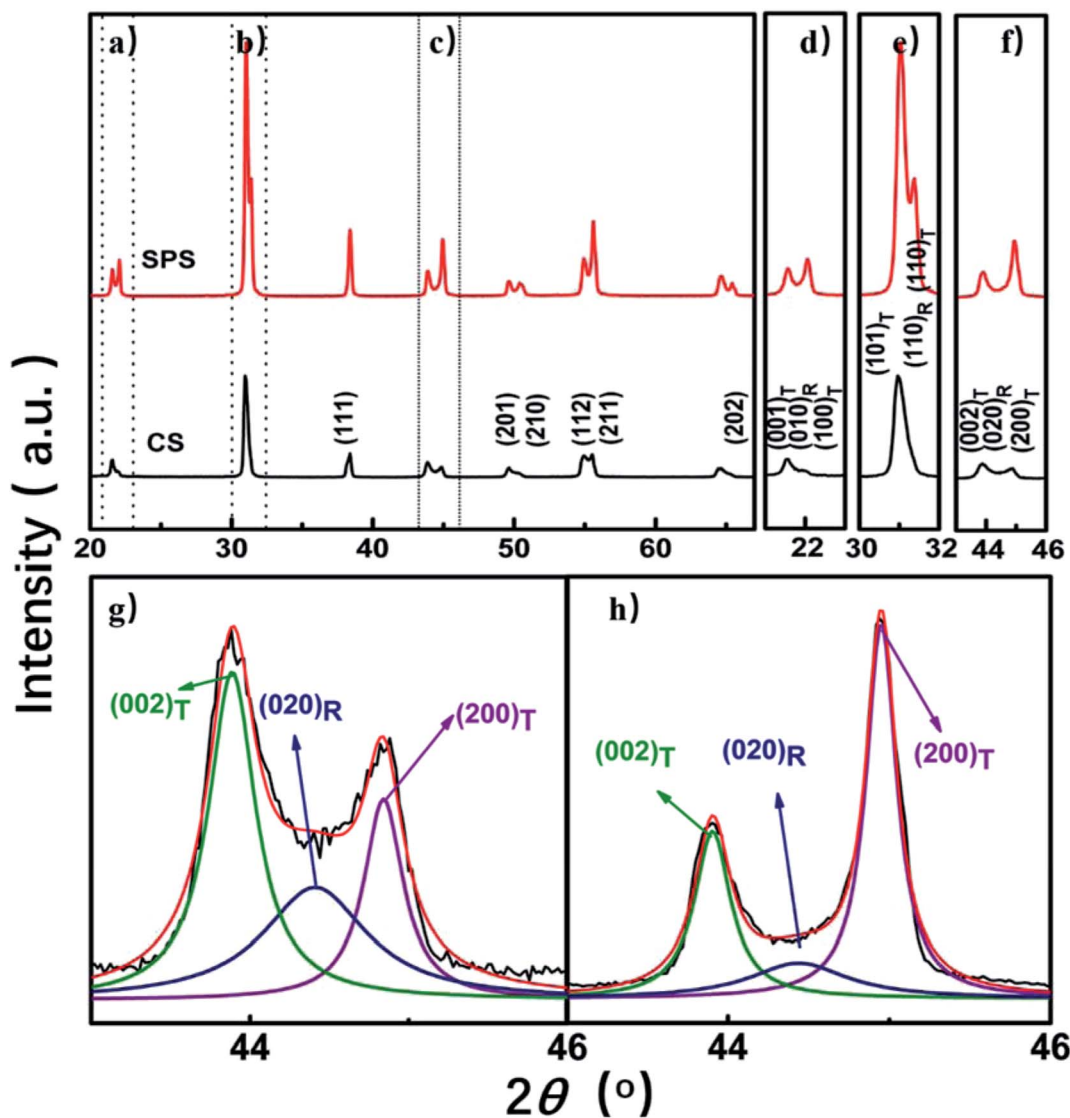


Fig. 1 XRD patterns of PZT-PMnN ceramics prepared by different sintering methods. Peaks at (a), (b) and (c) in the figure are enlarged in (d), (e) and (f), respectively; corresponding XRD patterns at $2\theta = 43\text{--}46^\circ$ of PZT-PMnN samples sintered by (g) CS, (h) SPS.

method for fabricating high-performance piezoceramics at a low sintering temperature, which is believed to be beneficial for further development of the piezoceramics.

2. Experimental

PZT-PMnN piezoceramics were prepared by the SPS and CS method. Pb_3O_4 (99%), BaCO_3 (99%), TiO_2 (98%), ZrO_2 (99%), Nb_2O_5 (99.99%) and MnO_2 (97.5%) were weighed according to the stoichiometric formula and mixed together by ball milling in ethanol for 10 hours. The mixture was dried for 2 hours and then calcined for 2 hours at 850°C . Later, the calcined powder was subjected to the second ball milling process before sintering. The conventional solid-state sintering of PZT-PMnN was performed at 1250°C for two hours. For spark plasma sintering, the sintering temperature is generally about $200\text{--}300^\circ\text{C}$ lower than the conventional solid-state method. Hence, the temperature range of $900\text{--}1000^\circ\text{C}$ was used in the SPS process.¹⁹

Approximately 3.5 g of calcined powder was compacted into a graphite mold with an inner diameter of 10 mm. After the SPS chamber was evacuated (4–6 Pa), the compacted powder was heated to $900\text{--}1000^\circ\text{C}$ at a rate of $100^\circ\text{C min}^{-1}$ and held for 5 min. A constant pressure of 50 MPa was applied on the compacted powder inside the graphite die along the Z-axis until the sintering process finished. The graphite die was cooled down naturally to room temperature, after which the sintered samples were taken out and cut into disks with a thickness of 1 mm. Post-annealing was then carried out in two steps. First, the SPS samples were annealed in air at 700°C for 4 h, followed by another annealing in air at 1000°C for 6 h to eliminate oxygen vacancies formed during the SPS process. Finally, the sintered disks were coated with silver paste on the upper and bottom surfaces and then baked at 600°C for 10 min to form electrodes for electrical measurements.

The density of the samples was determined by the Archimedes method. A high-resolution X-ray diffractometer (Rigaku,



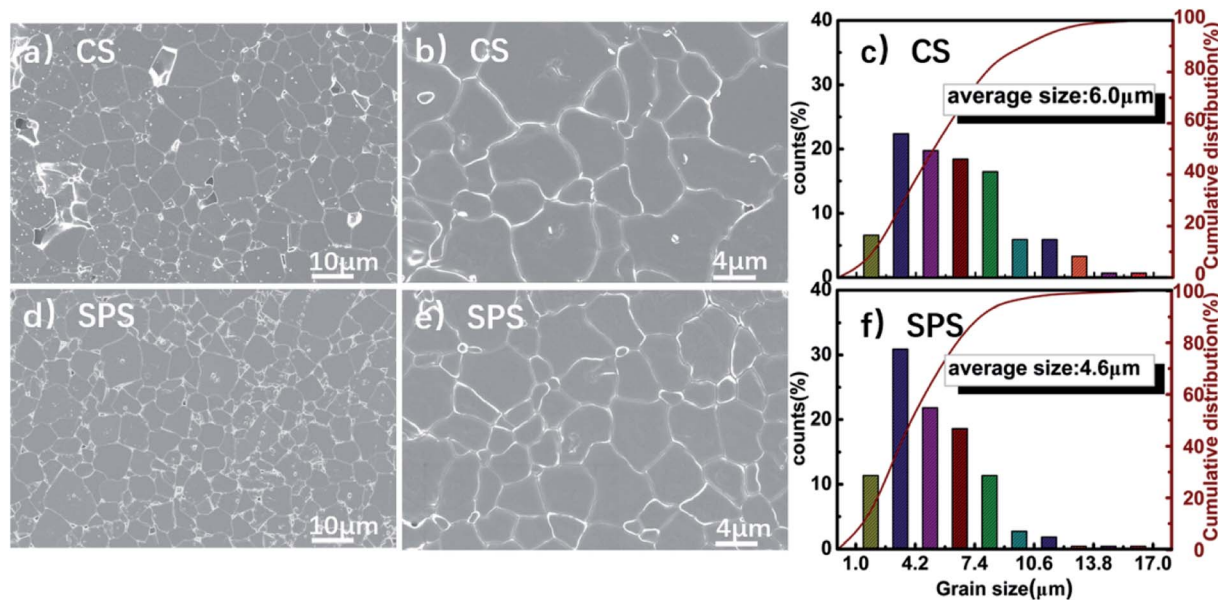


Fig. 2 SEM images of PZT-PMnN ceramics prepared by different sintering methods. (a) and (b) CSed ceramic after thermal etching at 1100 °C; (c) grain size distribution of CSed ceramic; (d) and (e) SPSed ceramic after thermal etching at 1150 °C; (f) grain size distribution of SPSed ceramic.

D/Max2500, Tokyo, Japan) is implemented to examine the crystal structure. Microstructures of sintered disks were examined by using a scanning electron microscopy (SEM, JSM-6460LV, JEOL, Tokyo, Japan). The quasi-static piezoelectric coefficient d_{33} of the poled samples was measured using a quasi-static d_{33} meter (ZJ-3A, Institute of Acoustics, Beijing, China). Field-dependent parameters were measured by a ferroelectric tester (aixACCT TF Analyzer 1000, Germany), bipolar/unipolar strain curves (S-E) and ferroelectric hysteresis (P-E) loops were included. The dielectric properties were measured at a frequency of 1 kHz using an impedance analyzer (TH2827, Changzhou Tonghui Electronic Co, China). Resistance $|Z|$ and phase angle θ were measured at room temperature, using an Agilent 4294A precision impedance analyzer.

3. Results and discussions

3.1 Microstructure analysis

Fig. 1 shows the X-ray diffraction patterns of PZT-PMnN ceramics prepared by using CS and SPS methods. It can be found that both ceramics present typical and pure perovskite structures, indicating that Mn and Nb are completely doped into the PZT, forming a good solid solution. T and R represent the rhombohedral and tetragonal phases, respectively. There is one peak (200) between 44° and 46° in the diffraction pattern of R phase and two peaks (002) and (200) between 44° and 46° in the diffraction pattern of T phase.¹⁹ The split peaks shown in

Fig. 1(d)–(f) confirm the presence of coexistence of R-T phase,^{22,23} which is consistent with the reported R-T morphotropic phase boundary in PZT-PMnN ceramics.^{24,25} The coexistence of R-T phases provides more polarization directions and flexible domain rotation to the ceramic, which makes it easier to be polarized under an external electric field.^{26,27} Comparing the XRD results of CSed and SPSed samples, it can be found that the sample prepared by SPS contains higher content of T phase, due to the value of $I(002)/I(200)$ of the T phase between 44° and 46° is 1 : 2, and the peak of the SPSed samples is closer to 1 : 2 here.^{28–30} In addition, as shown in Fig. 1(g) and (h), the R-phase characteristic peak of CSed ceramic more higher than that of SPSed ceramic, indicating the more R phase shows in CSed ceramic.

It can be seen from the SEM images (Fig. 2) that the SPSed ceramic possesses a denser microstructure than CSed ceramic. A lot of pores can be found in the CSed ceramic, as shown in Fig. 2(a), while there is no visible pore in SPSed ceramic, as shown in Fig. 2(d). Hence, the density of SPS-prepared ceramic is obviously larger than the CS-prepared ceramic (see Table 1).²⁷ In addition, SPS-prepared ceramic has a suitable grain size distribution [see Fig. 2(f)], so that the grains can distribute more densely. The average grain size of the CSed ceramic is about 6.0 μm, while the average grain size of SPSed ceramic is about 4.6 μm. This is in agreement with the previous reports because the relatively short holding time during SPS will limit the grain growth.¹⁹ It is proposed that electrical properties depend on the

Table 1 The comparison of electrical properties of conventional sintering and spark-plasma-sintered PZT-PMnN ceramics sintered

	ρ (g cm ⁻³)	d_{33} (pC/N)	d_{33}^* (pm V ⁻¹)	P_r (μC cm ⁻²)	E_c (kV mm ⁻¹)	k_p	Q_m	T_c (°C)	ϵ_r (1 kHz)	$\tan \delta$ (1 kHz)
CS	7.71	323	318	11.9	0.92	0.553	182	359	451	0.0045
SPS	7.89	412	553	18.8	1.49	0.585	583	354	827	0.0018



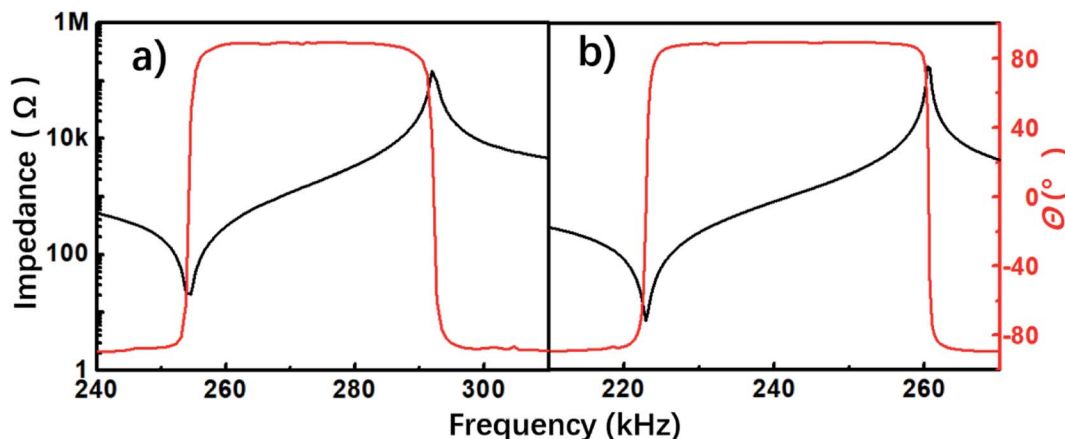


Fig. 3 Impedance $|Z|$ and phase angle θ spectra of PZT-PMnN ceramics prepared by different sintering methods measured as a function of the frequency of PZT-PMnN ceramics prepared by different sintering methods.

grain size.³¹ At an appropriate grain size, the electrical properties can be highly enhanced. As shown in Table 1, it can improve piezoelectric coefficient and strain of ceramics with decreased grain size and porosity.¹⁷ The piezoelectric effect of the piezoelectric ceramics is affected by the 90° domain wall movement.³² It is because that domain wall area will change as a function of grain size. A smaller domain can react strongly to the applied electric field as it can rotate more easily.³¹ The piezoelectric coefficients d_{33} of CSed and SPSed samples were measured by using a quasi-static d_{33} meter, as shown in Table 1. SPSed sample was found to possess an unexceptionally high d_{33} when compared to the CSed sample. Therefore, it is conjectured that the smaller grain size achieved by using SPS method helps reduce the domain size, which potentially plays a significant role on the enhancement of piezoelectric performance.

3.2 Measurement of electrical properties

The impedance spectra and phase angle θ measured at 20°C are presented in Fig. 3. From the figure, the mechanical quality factor (Q_m) and the planar mode electromechanical coupling factor (k_p) can be evaluated, as shown in Table 1. It can be seen that the Q_m of the SPSed ceramic (583) is three times higher than that of the CSed ceramic (182). Also, SPS method has also improved the k_p from 0.553 to 0.585. This is related to the more T phase content in the phase structure of the ceramic and smaller grain size and porosity.^{17,28} This is consistent with the previous phase structure analysis (see Fig. 1 and phase structure analysis) and microstructure analysis (see Fig. 2 and microstructure analysis).

Fig. 4 shows P - E hysteresis loops of PZT-PMnN prepared by different sintering methods. Typical ferroelectric loops were observed for both ceramics. Maximum polarization (P_{\max}), residual polarization (P_r) and coercive field (E_c) were summarized in Table 1. It can be seen that the SPSed ceramic possesses a better ferroelectric performance ($P_{\max} = 28.2 \mu\text{C cm}^{-2}$ and $P_r = 18.8 \mu\text{C cm}^{-2}$) than the CSed ceramic ($P_{\max} = 20.1 \mu\text{C cm}^{-2}$ and $P_r = 11.9 \mu\text{C cm}^{-2}$). In addition, the coercive field of SPSed ceramic is also higher than that of CSed ceramic. It is generally believed that the coercive field is related to the flexibility of

domain and domain walls, and the coercive field of T-phase is generally larger than that of R-phase.²⁹ SPS ceramic shows higher E_c (1.49 kV mm^{-1}) than CS ceramic (0.92 kV mm^{-1}). This phenomenon is consistent with their XRD conclusions, and the XRD of SPS shows more obvious T-phase. It can be found that the content of the T phase in the coexisting phase affects the piezoelectric properties of the ceramic.

Fig. 5 shows temperature-dependent dielectric constant and loss of both SPSed and CSed PZT-PMnN ceramics. It can be seen from Fig. 5(a) that the Curie temperatures of the ceramics are quite similar. The Curie temperature of the SPSed ceramic is only 5°C lower than that of the CSed ceramic. On the other hand, SPS can significantly increase the peak dielectric constant and the dielectric constant at room temperature. The dielectric constant at Curie temperature was increased from 21 000 to 37 000 and it was increased from 472 to 824 at room temperature. Besides, in Fig. 5(b), it can be seen that the SPS can largely reduce the dielectric loss of ceramic in various temperature ranges, and the loss was reduced from 0.0045 to 0.0018 at room temperature.

Fig. 6(a) shows bipolar strain curves of PZT-PMnN ceramics. It can be observed that the strain value of SPSed ceramic at room temperature is almost twice that of the CSed ceramic. In order to

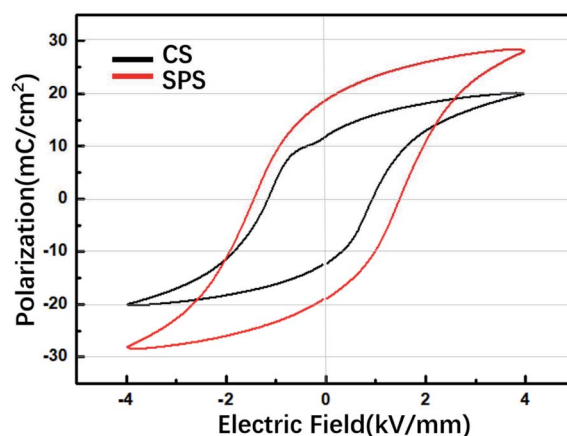


Fig. 4 P - E hysteresis loops of PZT-PMnN ceramics prepared by different sintering methods.



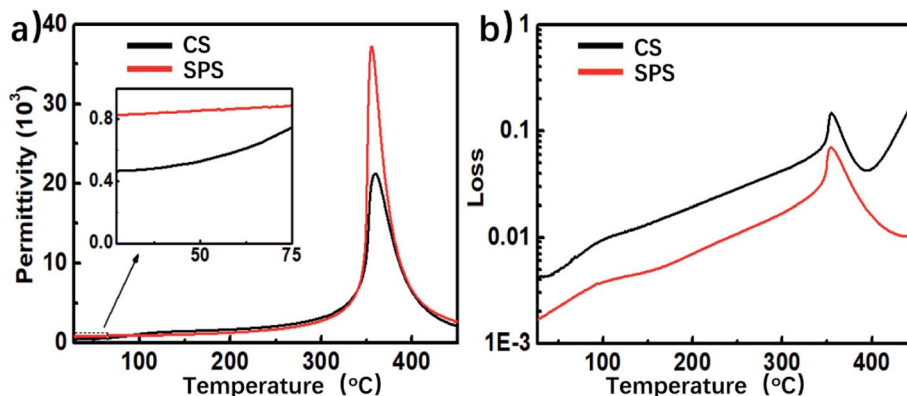


Fig. 5 Dielectric constants and losses of PZT-PMnN ceramics prepared by different sintering methods.

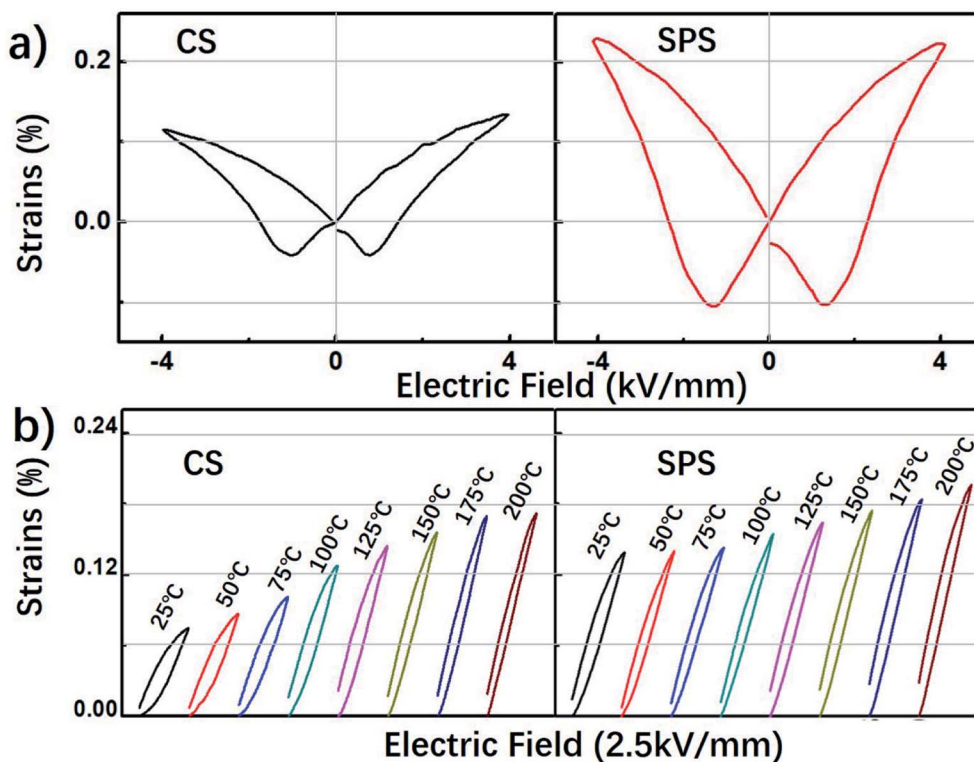


Fig. 6 Strain curves of PZT-PMnN ceramics prepared by different sintering methods. (a) Bipolar strain curves (b) unipolar strain curves as a function of temperature measured at an applied electric field of 2.5 kV mm^{-1} .

verify the thermal stability of the strain performance, the unipolar strain was measured at various temperatures, ranging from 25°C to 200°C . The unipolar strain can be normalized as d_{33}^* , which is also known as the converse piezoelectric coefficient. Similar to bipolar strain performance, a higher d_{33}^* (553 pm V^{-1}) is observed in SPSed ceramic at room temperature, when compared to the CSed ceramic (318 pm V^{-1}). As shown in Fig. 6(b), when the temperature rises from 25°C , the unipolar strain of CSed ceramic greatly increases from 0.08% to 0.17% (variation of 112.5%) while the SPSed ceramic only changes from 0.13% to 0.17% (variation of 33%). The result suggests that SPSed ceramic possesses a thermally stable strain performance.

According to the above comparison, it is easy to find that the performance of PZT-PMnN ceramics can be optimized *via* SPS method. And SPSed ceramic has the higher strain, d_{33} , ϵ_r , P_r , E_C , compactness, and lowest loss. The R-T phase structure with more T phase and denser and finer grain distribution are the main reasons for improving the ferroelectric properties of SPS ceramics. Hence, SPS not only reduced the sintering temperature by 300°C , but also greatly improved the ceramic performance. This work provides a powerful reference for future researchers, how to improve the d_{33} and Q_m while the performance requirements getting bigger in practical applications. SPS may be a reliable means.



4. Conclusions

A high-performance PZT-PMnN ceramic was prepared by SPS at 900–950 °C. The SPS method can effectively reduce the sintering temperature and time, compared to the CS method. SPS was found to be able to enhance the density of the sintered ceramic, and meanwhile, decrease its average grain size. Besides, a remarked enhancement is observed in piezoelectric performances, including the piezoelectric coefficient and the converse piezoelectric coefficient. Furthermore, SPS also help improve the other properties, e.g. k_p , Q_m , and ϵ_r . The unstable strain performance of CSed PZT-PMnN ceramics against rising temperature has been greatly mitigated in the SPSed ceramic as well. All of these improvements demonstrate that SPS is an exceptionally good processing method for PZT-PMnN system, which can provide upgraded materials for future applications.

Conflicts of interest

There are no conflicts to declare.

Acknowledgements

The authors acknowledge the financial supports from the National Natural Science Foundation of China (Grant No. 51602345), the State Key Laboratory of New Ceramics and Fine Processing, Tsinghua University (Grant No. KF201512), Fundamental Research Funds for the Central Universities (Grant No. 2016QJ01) and the Opening Fund of Acoustics Science and Technology Laboratory (Grant No. SSKF2016003).

References

- X. Gao, X. Xin, J. Wu, Z. Chu and S. Dong, *Appl. Phys. Lett.*, 2018, **112**, 152902.
- B. Narayan, J. S. Malhotra, R. Pandey, K. Yaddanapudi, P. Nukala, B. Dkhil, A. Senyshyn and R. Ranjan, *Nat. Mater.*, 2018, **17**, 427–431.
- F. Li, S. Zhang, Z. Xu and L.-Q. Chen, *Adv. Funct. Mater.*, 2017, **27**, 1700310.
- J. Li, F. Li, Z. Xu and S. Zhang, *Adv. Mater.*, 2018, 1802155.
- W. Jo, R. Dittmer, M. Acosta, J. Zang, C. Groh, E. Sapper, K. Wang and J. Rödel, *J. Electroceram.*, 2012, **29**, 71–93.
- K. Song, Z. Li, H. Guo, Z. Xu and S. Fan, *J. Appl. Phys.*, 2018, **123**, 154107.
- A. K. Yadav, A. Verma, S. Kumar, V. Srihari, A. K. Sinha, V. R. Reddy, S. W. Liu, S. Biring and S. Sen, *J. Appl. Phys.*, 2018, **123**, 124102.
- F. Li, S. Zhang, T. Yang, Z. Xu, N. Zhang, G. Liu, J. Wang, J. Wang, Z. Cheng, Z.-G. Ye, J. Luo, T.-R. ShROUT and L.-Q. Chen, *Nat. Commun.*, 2016, 13807.
- B. Jaffe, R. S. Roth and S. Marzullo, *J. Appl. Phys.*, 1954, **25**, 809–810.
- B. Jaffe, R. S. Roth and S. Marzullo, *J. Res. Natl. Bur. Stand.*, 1955, **55**, 239–254.
- M. Hammer, C. Monty, A. Endriss and M. J. Hoffmann, *J. Am. Ceram. Soc.*, 1998, **81**, 721–724.
- S. Priya, H.-W. Kim and K. Uchino, *J. Am. Ceram. Soc.*, 2004, **87**, 1907–1911.
- K. Wang, J.-F. Li and J.-J. Zhou, *Appl. Phys. Express*, 2011, **4**, 061501.
- M.-H. Zhang, K. Wang, Y.-J. Du, G. Dai, W. Sun, G. Li, D. Hu, H. C. Thong, C. Zhao, X.-Q. Xi, Z.-X. Yue and J.-F. Li, *J. Am. Chem. Soc.*, 2017, **139**, 3889–3895.
- H. C. Thong, Q. Li, M.-H. Zhang, C. Zhao, K. X. Huang, J.-F. Li and K. Wang, *J. Am. Ceram. Soc.*, 2018, 15488.
- L.-Q. Cheng, K. Wang, Q. Yu and J.-F. Li, *J. Mater. Chem. C*, 2014, **2**, 1519–1524.
- C. Chen, R. Liang, Z. Zhou, W. Zhang and X. Dong, *Ceram. Int.*, 2018, **44**, 3563–3570.
- T. Hungria, J. Galy and A. Castro, *Adv. Eng. Mater.*, 2009, **11**, 615–631.
- B. Han, C. Zhao, Z. X. Zhu, X. Chen, Y. Han, D. Hu, M.-H. Zhang, H. C. Thong and K. Wang, *ACS Appl. Mater. Interfaces*, 2017, **9**, 34078–34084.
- Z.-Y. Shen, J.-F. Li, K. Wang, S. Xu, W. Jiang and Q. Deng, *J. Am. Ceram. Soc.*, 2010, **93**, 1378–1383.
- K. Wang, J.-F. Li and N. Liu, *Appl. Phys. Lett.*, 2008, **93**, 092904.
- T. Wu, Q. Sun, W. Ma and Z. Liu, *J. Electroceram.*, 2013, **31**, 28–34.
- S. Shen, J. Chen, J. Jian, F. Luo, J. Mei and J. Cheng, *J. Am. Ceram. Soc.*, 2018, 15804.
- Y. Zhou, Q. Li, C. Xu, F. Zhuo, Q. Yan, Y. Zhang and X. Chu, *J. Am. Ceram. Soc.*, 2018, **101**, 3054–3064.
- S. M. Gupta and D. Viehland, *J. Appl. Phys.*, 1998, **83**, 407–414.
- B. Hanrahan, Y. Espinal, C. Neville, R. Rudy, M. Rivas, A. Smith, M.-T. Kesim and S.-P. Alpay, *J. Appl. Phys.*, 2018, **123**, 124104.
- F. Bian, S. Yan, C. Xu, Z. Liu, X. Chen, C. Mao, F. Cao, J. Bian, G. Wang and X. Dong, *J. Eur. Ceram. Soc.*, 2018, **38**, 3170–3176.
- Z. Wu and R. E. Cohen, *Phys. Rev. Lett.*, 2005, **95**, 037601.
- Z. Tan, J. Tian, Z. Fan, Z. Lu, D. Zheng, Y. Wang, D. Chen, M. Qin, M. Zeng, X. Lu, X. Gao and J.-M. Liu, *Appl. Phys. Lett.*, 2018, **112**, 152905.
- A. Prasatkhetragarn and R. Yimnirun, *Ceram. Int.*, 2013, **39**, S91–S95.
- N. Ma, B.-P. Zhang, W.-G. Yang and D. Guo, *J. Eur. Ceram. Soc.*, 2012, **32**, 1059–1066.
- D. Damjanovic and M. Demartin, *J. Phys. D: Appl. Phys.*, 1996, **29**, 2057.

