

Cite this: *RSC Adv.*, 2018, 8, 32799

# Study on adsorption of methylene blue by a novel composite material of TiO<sub>2</sub> and alum sludge

Yani Geng,<sup>ID</sup>\*<sup>ab</sup> Jun Zhang,<sup>abc</sup> Jinhong Zhou<sup>ab</sup> and Ji Lei<sup>ab</sup>

A composite material of TiO<sub>2</sub> and alum sludge (TiO<sub>2</sub>@AS) is reported in this paper. The samples of alum sludge (AS) and TiO<sub>2</sub>@AS were characterized using a field emission scanning electron microscope (FE-SEM), an energy dispersive spectrometer (EDS) and an Ultima IV X-ray diffractometer (XRD). In order to study the adsorption capacity and the adsorption mechanism of methylene blue by TiO<sub>2</sub>@AS in aqueous solution, three indexes – pH, adsorbent dosage and initial concentration of methylene blue – were investigated to evaluate the adsorption capacity of TiO<sub>2</sub>@AS. Moreover, thermodynamic, kinetic and isothermal model analyses of the adsorption process were carried out. The results showed that pH has little effect on the adsorption capacity. The maximum adsorption efficiency occurred at an optimized pH value of 11 for the aqueous solution. The adsorbed amount of methylene blue on TiO<sub>2</sub>@AS increased with the initial concentration of adsorbate and decreased with an increase in TiO<sub>2</sub>@AS dosage. The adsorption kinetics of methylene blue by TiO<sub>2</sub>@AS were in good agreement with the quasi-second-order kinetic model ( $R^2 \geq 0.9964$ ), indicating that chemisorption is the main rate-controlling step. The Freundlich isotherm equation can best describe the experimental data ( $R^2 = 0.9788$ ). It is revealed that the adsorption is mainly multilayer adsorption. Because  $\Delta G < 0$  and  $\Delta H > 0$ , the adsorption is a spontaneous endothermic process. Furthermore, the TiO<sub>2</sub>@AS can be regenerated under ultraviolet light, thus prolonging the service life of AS and facilitating a solution to the problem of adsorption plugging.

Received 12th July 2018

Accepted 30th August 2018

DOI: 10.1039/c8ra05946b

rsc.li/rsc-advances

## 1 Introduction

AS is usually discharged as waste from the coagulation process in a water supply plant. It is considered cheap, easily obtainable, and environmentally friendly to utilize for the removal of pollutants from water.<sup>1–3</sup> Initially, AS was used to remove dyes from dyeing wastewater.<sup>4</sup> Moreover, a large amount of research focused on the use of AS to adsorb phosphate in water.<sup>5–11</sup> Later, AS was successfully used for the adsorption of some inorganic substances, such as hexavalent chromium<sup>12</sup> and fluoride ions<sup>13</sup> in water. Duan *et al.*<sup>14</sup> found that AS has a good adsorption effect on humic acid in water. Most studies on adsorption by AS focus only on the removal by adsorption of inorganic substances in water, and the removal of organic matter is rarely involved. Considering that the adsorption process is only a simple phase transfer of the material and cannot achieve the degradation of the pollutants,<sup>15</sup> especially the degradation of organic pollutants in water, degradation can achieve a more thorough removal of pollutants. In addition, saturated adsorbents are normally difficult to regenerate, so adsorption capacity will be

significantly reduced, resulting in the limited service life of the AS adsorbent. This is the main factor leading to the limitation of the service life of the AS sorbent. Zhao Xiaohong believes that the life of an AS filter used in constructed wetlands is 4 to 17 years.<sup>16</sup>

TiO<sub>2</sub> presents many physical and chemical advantages, such as large surface area, large surface energy,<sup>17,18</sup> good chemical stability, and photocatalytic reactions<sup>19,20</sup> in natural light.<sup>21,22</sup> However, suspended TiO<sub>2</sub> is difficult to recycle and regenerate.<sup>23</sup> Therefore, TiO<sub>2</sub> may be immobilized on AS to create new materials. These new materials can better adsorb and degrade organic pollutants in water. Besides, these new materials are easily regenerated to improve their useful life. This provides new methods and new ideas for the removal of organic pollutants in water and for the improvement of water treatment technology.

Methylene blue is an organic compound widely added to chemical indicators,<sup>24–26</sup> dyes and biological dyes, *etc.* In the dye wastewater, it is usually one of the most toxic substances<sup>27,28</sup> discharged into natural water bodies, as it will affect the growth of plants and animals and threaten the safety of human drinking water, and is found in sewage, rivers and soils.<sup>29,30</sup> Common methods for treating dye wastewater are biodegradation and physicochemical methods,<sup>31–34</sup> but most of these are expensive and complicated. Therefore, finding new materials

<sup>a</sup>College of Geography and Environment, Baoji University of Arts and Sciences, Baoji 721013, P. R. China

<sup>b</sup>Shaanxi Key Laboratory of Disasters Monitoring and Mechanism Simulation, Baoji 721013, P. R. China. E-mail: gyn1977@126.com

<sup>c</sup>Key Laboratory of Subsurface Hydrology and Ecological Effect in Arid Region of Ministry of Education, Chang'an University, Xi'an 710054, China



with low cost and high adsorption efficiency is necessary for the treatment of dye wastewater.

In this paper, a novel composite adsorbent, TiO<sub>2</sub>@alum sludge (TiO<sub>2</sub>@AS), was prepared using TiO<sub>2</sub> loaded onto AS. Methylene blue was used as the treatment target, and the adsorption process and mechanism of TiO<sub>2</sub>@AS were analyzed by a study of adsorption-influencing factors, isothermal adsorption lines, adsorption kinetics and adsorption thermodynamics. The adsorption and regeneration capability of TiO<sub>2</sub>@AS were verified, which provided a theoretical basis for solving the problem of the plugging of AS filters in the sewage treatment process.

## 2 Materials and methods

### 2.1 Preparation of TiO<sub>2</sub>@AS

The AS (taken from the coagulation pool of a water plant in Baoji City) was dried, ground, and sieved through an 80–160 mesh. Thereafter, 5 g of treated AS and 2 g of TiO<sub>2</sub> colloid (prepared by the sol–gel method<sup>35</sup>) were mixed in a crucible. Then the mixture was baked at 60 °C (40 min), placed in a muffle furnace and calcined (600 °C, 2 h) and cooled at room temperature to obtain TiO<sub>2</sub>@alum sludge (TiO<sub>2</sub>@AS).

### 2.2 Adsorption experiments

The pH values of the test solutions were adjusted with concentrated hydrochloric acid and sodium hydroxide. The volume of methylene blue solution was 50 mL in the adsorption experiment. Adsorption reactions were performed in a shaker (25 °C, 250 rpm). At the end of the reaction, the sample was centrifuged (6000 rpm, 8 min) in a high-speed centrifuge (5810 R, Saiyataike), and the supernatant was taken to determine the concentration of residual methylene blue in the solution using a UV-Vis spectrophotometer (DR6000, Hash, USA) (665 nm).

**2.2.1 Effect on experiment of pH.** Five samples of 50 mg L<sup>-1</sup> methylene blue solution were placed in centrifuge tubes and the pH adjusted to 3.0 ± 0.1, 5.0 ± 0.1, 7.0 ± 0.1, 9.0 ± 0.1, 11.0 ± 0.1, respectively. Then, 0.1 g of TiO<sub>2</sub>@AS was added to each centrifuge tube. The tubes were placed on a shaker (25 °C, 250 rpm) and sampled at 5, 10, 15, 20, 30, 45 and 60 minutes. Then, all the samples were centrifuged and the remaining methylene blue concentration determined.

**2.2.2 Effect of initial concentration of methylene blue.** Methylene blue solutions (pH 11.0 ± 0.1) of different concentrations (10, 20, 40, 60, 80 and 100 mg L<sup>-1</sup>) were placed in 6 centrifuge tubes, and 0.1 g of TiO<sub>2</sub>@AS was added to each. Then, each sample was oscillated, sampled periodically, and finally the concentration of residual methylene blue was determined in the solution.

**2.2.3 Effect of TiO<sub>2</sub>@AS dosage on adsorption.** 0.05 g, 0.1 g, 0.2 g, 0.3 g, 0.4 g and 0.5 g of TiO<sub>2</sub>@AS were added to 6 samples of 50 mg L<sup>-1</sup> methylene blue solution (pH 11.0 ± 0.1). The adsorption reaction was then conducted. Samples were taken periodically to determine the concentration of residual methylene blue in the solution.

**2.2.4 Adsorption isothermal experiment.** 0.1 g of TiO<sub>2</sub>@AS was added to 6 different concentrations (10, 20, 40, 60, 80 and 100 mg L<sup>-1</sup>) of methylene blue solution (pH 11.0 ± 0.1) in centrifuge tubes. After the adsorption reaction (120 minutes), the concentrations of methylene blue in the supernatants were determined.

**2.2.5 Adsorption kinetics experiment.** Different amounts of TiO<sub>2</sub>@AS (0.05, 0.1, 0.2, 0.3, 0.4 and 0.5 g) were added to 50 mg L<sup>-1</sup> samples of methylene blue solution (pH 11.0 ± 0.1), to conduct the adsorption reaction. Then, samples were taken at different times (5, 10, 15, 20, 30, 45 and 60 min) to determine the remaining concentrations of methylene blue in the solutions.

**2.2.6 Adsorption thermodynamics experiment.** 7 parts of 0.1 g of TiO<sub>2</sub>@AS were added to seven samples of 50 mg L<sup>-1</sup> methylene blue solution. The adsorption reaction (250 rpm, 120 min) was conducted at different temperatures (15, 25, 35, 45, 55 and 65 °C) to determine the concentrations of methylene blue in the supernatants.

**2.2.7 Physical and morphological characterization.** The original alum sludge (AS) mud and the TiO<sub>2</sub>@AS were dried in an oven (105 °C, 2 h). The morphologies of the original mud and TiO<sub>2</sub>@AS were observed using a Quanta FEG 250G field emission scanning electron microscope (FE-SEM) from FEI, USA. The chemical element analysis of the sample was performed by an X-ray energy dispersive spectrometer (EDS), (DAX Inc., USA), (voltage 220 V, temperature ≤ 18 °C, concentration ≤ 60%, acceleration voltage 20 kV, counting rate 103–104 cps, counting time 10–100 s). The crystal characteristics of the samples were analyzed using an Ultima IV X-ray diffractometer (XRD) (Japan Science and Technology Corporation). The measurement conditions were Cu and Co target, working voltage 30 kV, measurement angle 10–80°, scan rate 5° min<sup>-1</sup>.

### 2.3 Data processing

Test data were measured using 3 replicates. All tests were conducted in a dark room except for the regeneration experiments.

## 3 Results and discussion

### 3.1 The appearance of TiO<sub>2</sub>@AS

Scanning electron microscope photographs (SEM) and energy dispersive spectra (EDS) of AS and TiO<sub>2</sub>@AS samples are shown in Fig. 1

Fig. 1(a) shows that the surface of the AS in a muffle furnace after being calcined at 600 °C for 2 h has a sheet-like structure, and the surface is dense with sporadic particulate matter. TiO<sub>2</sub>@AS has a relatively loose composite structure. The main body is AS, and there is a large amount of white granular material on its surface (Fig. 1(b)), indicating that TiO<sub>2</sub> has been loaded onto the surface of AS. Meanwhile the AS surface still maintains a layered structure, and there are a lot of loose pores, indicating that there are still many vacancies on the surface of AS after loading with titanium dioxide, which can be used to adsorb organic pollutants in water.



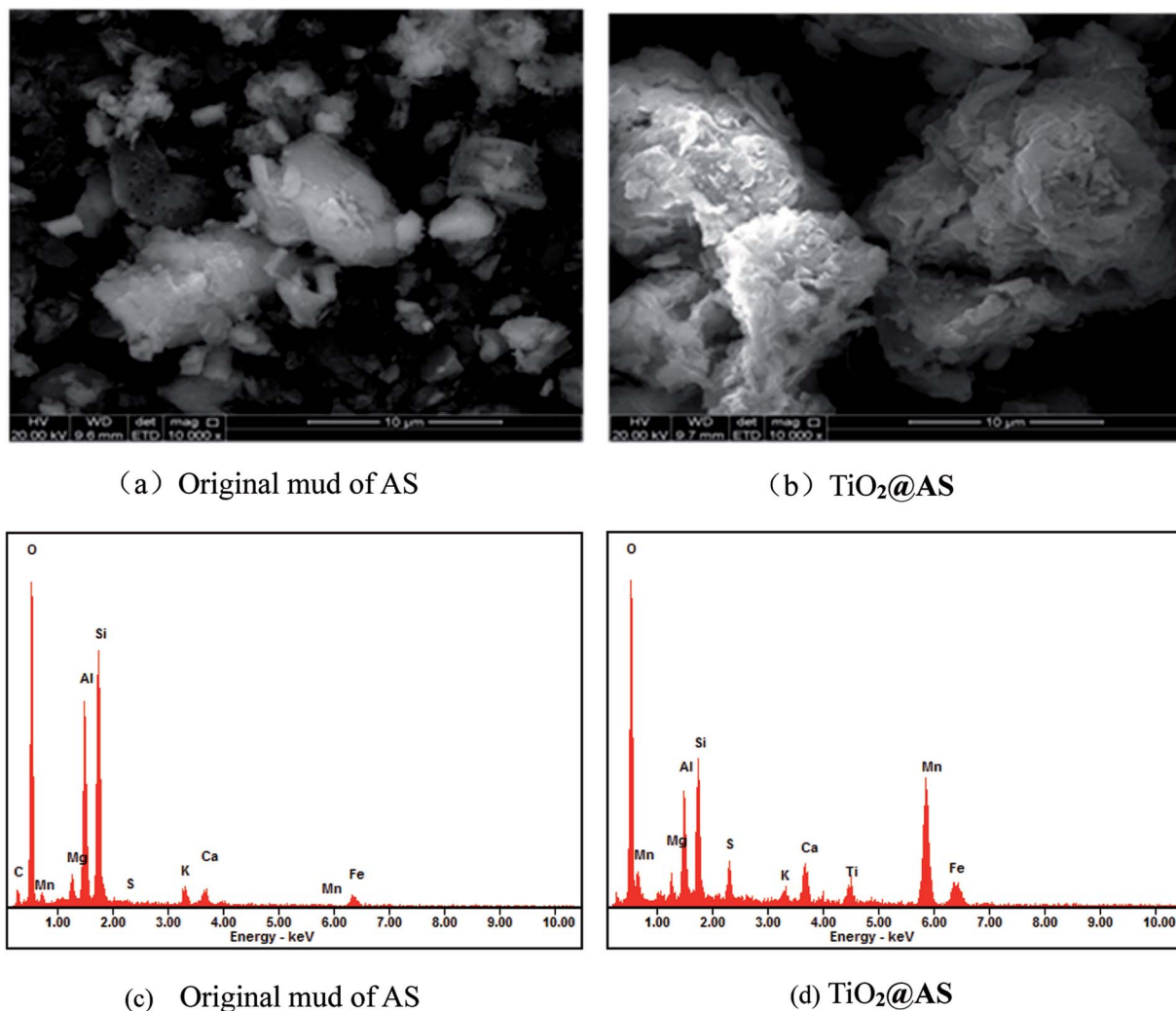


Fig. 1 FE-SEM images and EDS of AS and TiO<sub>2</sub>@AS samples.

The EDS diagrams of AS and TiO<sub>2</sub>@AS are shown in Fig. 1(c) and (d), respectively. It can be seen that the diffraction peak of

Ti appears in Fig. 1(d) compared with Fig. 1(c), illustrating that TiO<sub>2</sub> has been successfully loaded onto the original mud of AS.

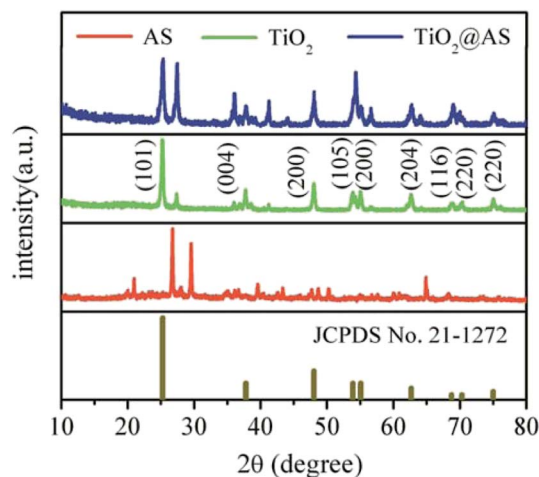


Fig. 2 XRD patterns of AS, TiO<sub>2</sub> and TiO<sub>2</sub>@AS samples.

### 3.2 Crystal structure of TiO<sub>2</sub>@AS

XRD patterns of AS, titanium dioxide, and TiO<sub>2</sub>@AS are shown in Fig. 2. It can be seen that the AS is in an amorphous state, and the main diffraction peaks correspond to quartz (SiO<sub>2</sub>), albite and calcium carbonate (see Fig. 2(a)). After loading with TiO<sub>2</sub>, as shown in Fig. 2(c), 9 new diffraction peaks appeared at 25.2°, 37.8°, 48.0°, 53.9°, 55.1°, 62.7°, 68.8°, 70.3°, and 75.0°. Comparing them with the JCPDS no. 21-1272 anatase titanium dioxide PDF card, these roughly correspond to the crystal planes (101), (004), (200), (105), (204), (116), and (220). This indicates that titanium dioxide has been loaded onto the AS and exists as an anatase crystal form.

### 3.3 Influencing-factors experiment

**3.3.1 Effect of solution pH on adsorption.** The pH is usually an important factor affecting the adsorption effect. In this paper, the capabilities of methylene blue for adsorption by



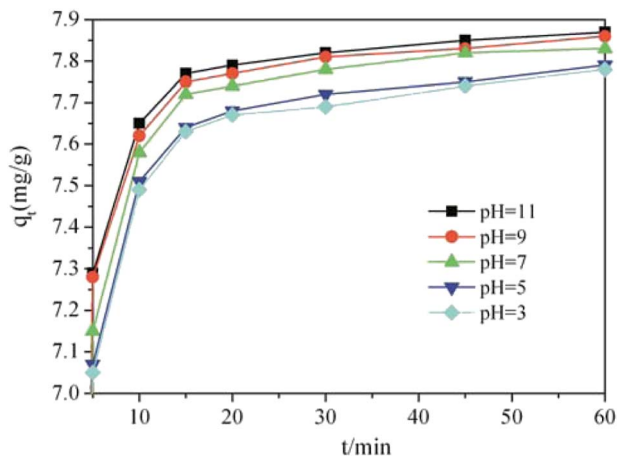


Fig. 3 Effects of different pH values on adsorption of methylene blue by  $\text{TiO}_2\text{@AS}$ .

$\text{TiO}_2\text{@AS}$  were investigated at different pH values (3, 5, 7, 9, 11, respectively). The results are shown in Fig. 3.

At different pH values, the  $\text{TiO}_2\text{@AS}$  presented a good adsorption effect on methylene blue, and the adsorption capacities of the adsorbent were continuously strengthened with an increase in pH. When the pH value was 11, the adsorption capacity of  $\text{TiO}_2\text{@AS}$  was the greatest and the adsorption rate reached 80%. The above phenomenon may be attributed to the different  $\text{pH}_{\text{pzc}}$  values of  $\text{TiO}_2$  and the aluminum hydroxy compound being 6.1618 (ref. 36) and 8.5–9.5.<sup>7</sup> When the pH of the solution is greater than the  $\text{pH}_{\text{pzc}}$  of the adsorbent, the adsorbent is negatively charged, whereas the adsorbent surface is positive. However, the methylene blue molecule is cationic. And the capacity of methylene blue to be adsorbed by  $\text{TiO}_2\text{@AS}$  was enhanced due to electrostatic attraction in alkaline conditions. Furthermore, the change in pH had little effect on the adsorption capacity.

**3.3.2 Effect of initial concentration of methylene blue on adsorption.** Methylene blue as an adsorbate is an important factor in the adsorption process. And for adsorbents to adsorb the adsorbate usually requires a certain time to achieve adsorption equilibrium. Therefore, in this paper, the influences of the initial concentration of methylene blue and the adsorption time ( $t$ ) on the adsorption capacity per unit adsorbent ( $q_e$ ) were investigated at room temperature and at a certain pH value.

As shown in Fig. 4, the unit adsorption capacities of  $\text{TiO}_2\text{@AS}$  increased with an increase in the concentration of methylene blue in the solution. The concentrations of methylene blue increased from  $10 \text{ mg L}^{-1}$  to  $100 \text{ mg L}^{-1}$ , and the unit adsorption capacities of  $\text{TiO}_2\text{@AS}$  increased from  $10 \text{ mg g}^{-1}$  to  $25 \text{ mg g}^{-1}$ . In addition, the removal rate is above 88%. The above results show that the initial concentration of methylene blue is an important factor affecting the adsorption capacity of  $\text{TiO}_2\text{@AS}$ . This may be because with an increase in the initial concentration of methylene blue, the adsorption sites on the surface of  $\text{TiO}_2\text{@AS}$  were quickly surrounded by more methylene blue molecules, which improved the mass transfer rate of

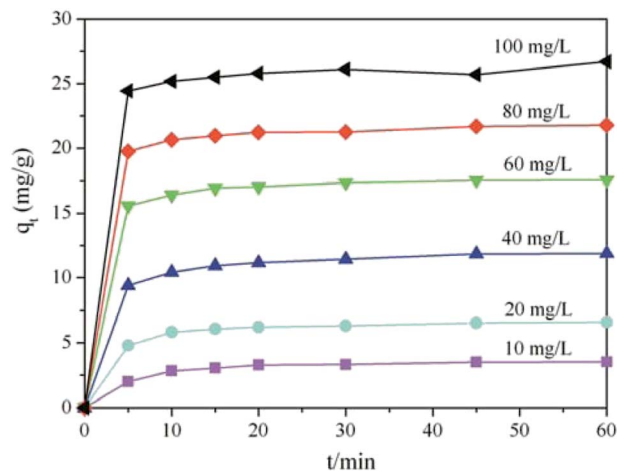


Fig. 4 Effect of different initial concentrations of methylene blue on adsorption by  $\text{TiO}_2\text{@AS}$ .

the adsorbate to the surface of the adsorbent, so the adsorption capacity of  $\text{TiO}_2\text{@AS}$  was enhanced.

In addition, methylene blue was adsorbed rapidly by  $\text{TiO}_2\text{@AS}$  at 0–10 min, the adsorption reached saturation at 5 min and adsorption equilibrium was achieved after 60 min. The time of adsorption equilibrium was independent of the initial concentration of the adsorbate. The adsorption process was roughly divided into 3 stages. The initial stage was 0–5 min, and the adsorption capability increased rapidly with time. At this point, this may be because  $\text{TiO}_2\text{@AS}$  had a larger specific surface area, larger pores, and many adsorption vacancies on the surface. Moreover, the concentration of methylene blue in the solution was high. Therefore, the diffusion rate was high, and methylene blue molecules diffused rapidly to the surface of  $\text{TiO}_2\text{@AS}$  to be adsorbed. Stage 2 was between 5 and 45 min. With the filling of  $\text{TiO}_2\text{@AS}$  adsorption vacancies and a decrease in the concentration of the adsorbate in the external solvent, the adsorption rate slowed down, and the adsorption capability was gradually reduced. In the third stage (after 45 min), adsorption by  $\text{TiO}_2\text{@AS}$  basically achieved equilibrium, the concentration of methylene blue in the external solvent was low, the adsorption rate was basically unchanged and the adsorption capability was basically unchanged, when the adsorption time was prolonged.

**3.3.3 Effect of  $\text{TiO}_2\text{@AS}$  dosage on adsorption.** The effect of different dosages of  $\text{TiO}_2\text{@AS}$  on adsorption capacity varied with time (see Fig. 5).

At the same time, the unit adsorption capability of  $\text{TiO}_2\text{@AS}$  decreased with an increase in adsorbent dosage. When the adsorbent dosage was a minimum ( $1.25 \text{ g L}^{-1}$ ), the adsorbent exhibited the largest adsorption capacity, and the maximum unit adsorption capacity was  $26 \text{ mg g}^{-1}$  at adsorption equilibrium. When the adsorbent dosage was a maximum ( $12.5 \text{ g L}^{-1}$ ), the adsorbent presented the smallest unit adsorption amount ( $2.5 \text{ mg g}^{-1}$ ), and the utilization rate of the adsorbent was reduced. This is because the dose of adsorbent is inversely proportional to the unit adsorption capability in the adsorption



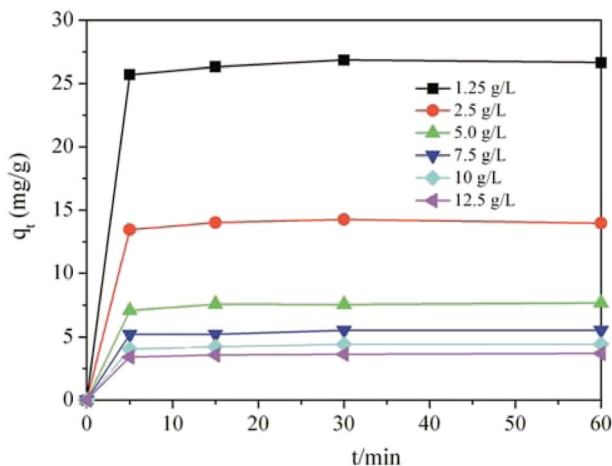


Fig. 5 Effect of different dosages of  $\text{TiO}_2\text{@AS}$  on adsorption.

equation. Moreover, high doses of adsorbent may also cause aggregation, which results in a decrease in the surface area of the adsorbent and a decrease in its adsorption capacity.<sup>37</sup>

### 3.4 Adsorption isotherm

In order to better determine the adsorption process, an adsorption isotherm model was used to describe the equilibrium relationship and the affinity between the adsorbent and the adsorbant and to investigate the adsorption capacity and surface characteristics of the adsorbent. In the present study, both linear Langmuir and Freundlich adsorption isotherm model formula (1) and formula (2)<sup>38–40</sup> were used to describe the adsorption data.

$$\text{Langmuir model } \frac{C_e}{q_e} = \frac{1}{Kq_m} + \frac{C_e}{q_m} \quad (1)$$

$$\text{Freundlich model } \ln q_e = \ln K_f + \frac{1}{n} \ln C_e \quad (2)$$

where  $C_e$  is the concentration of methylene blue in the solution at adsorption equilibrium ( $\text{mg L}^{-1}$ );  $K_f$  is the adsorption equilibrium constant ( $(\text{mg g}^{-1})(\text{mg L}^{-1})^{-1/n}$ ), which is related to the capacity and intensity of the adsorbent;  $n$  is the characteristic constant, which can describe the favorability of the adsorption process;  $q_e$  and  $q_m$  are the adsorption amounts of solid methylene blue per unit mass and the maximum methylene blue adsorption amount ( $\text{mg g}^{-1}$ ); and  $K$  is a constant associated with the enthalpy of adsorption ( $\text{L mg}^{-1}$ ), which represents the affinity of the binding site. For the fitting results, see Fig. 6 and Table 1.

The adsorption data is in good agreement with the Langmuir and Freundlich models ( $R^2 > 0.95$ ) (see Table 1). One can conclude that the adsorption of methylene blue by  $\text{TiO}_2\text{@AS}$  includes monolayer and multimolecule adsorption processes.<sup>37</sup> However, the Freundlich model was more consistent with the data ( $R^2 = 0.9788$ ), indicating the probability that multilayer adsorption dominates in the adsorption process of  $\text{TiO}_2\text{@AS}$ . The  $K_f$  value increased along with an increase in adsorption temperature. This can be explained as the increase in temperature being favorable to the adsorption of methylene blue by  $\text{TiO}_2\text{@AS}$ , and this adsorption reaction is an endothermic reaction. The value of  $1/n$  is between 0 and 1, indicating that the adsorption process is favorable to adsorption.<sup>41</sup> That is, methylene blue molecules are easily adsorbed on the surface of  $\text{TiO}_2\text{@AS}$ .

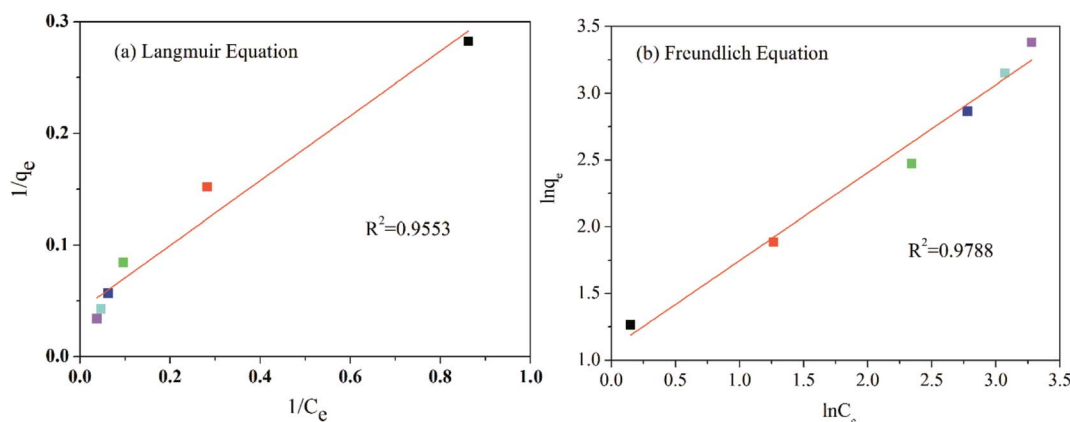


Fig. 6 Isothermal fitting of  $\text{TiO}_2\text{@AS}$  adsorbing methylene blue.

Table 1 Parameters of Langmuir and Freundlich adsorption isotherms

Dosage of $\text{TiO}_2\text{@AS}/(\text{g L}^{-1})$	Langmuir model			Freundlich model		
	$q_m/(\text{mg g}^{-1})$	$K/(\text{L mg}^{-1})$	$R^2$	$K_f/((\text{mg g}^{-1})(\text{mg L}^{-1})^{-1/n})$	$n^{-1}$	$R^2$
2.5	23.95	0.14	0.9533	2.97	0.66	0.9788



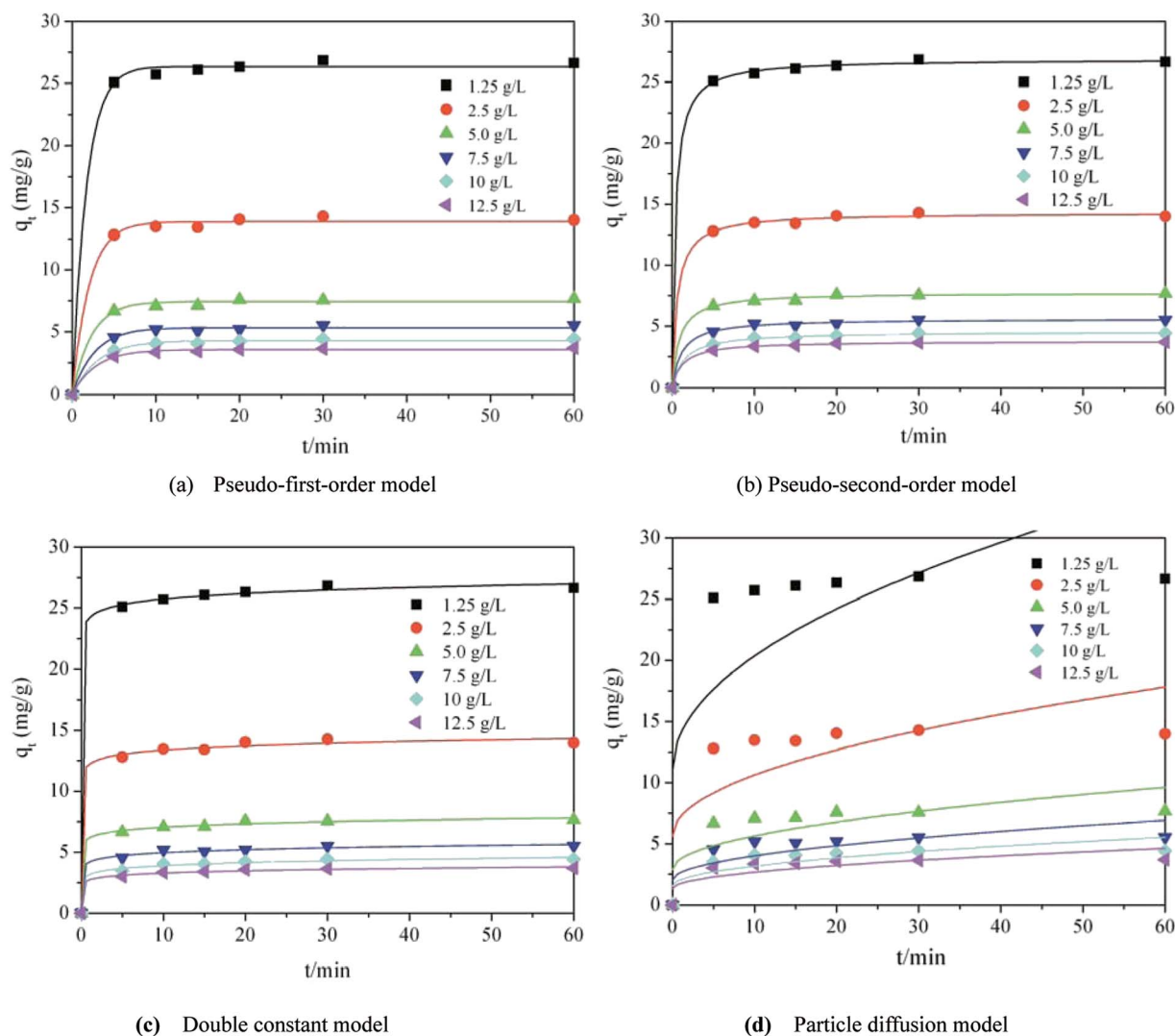


Fig. 7 Kinetic curves of methylene blue adsorbed by  $\text{TiO}_2\text{@AS}$ .

### 3.5 Adsorption kinetics

Adsorption kinetics are usually used to describe the adsorption rate between the adsorbent and the adsorbate.<sup>42–44</sup> In this paper, the pseudo-first-order kinetic model,<sup>45,46</sup> the pseudo-second-order kinetic model,<sup>47,48</sup> the dual constant model, and the intragranular diffusion model (as in formulae (3)–(6))<sup>49</sup> were used to describe the relevant data.

$$\text{Pseudo-first-order kinetic model } \frac{dq_t}{dt} = k_1(q_e - q_t) \quad (3)$$

$$\text{Pseudo-second-order kinetic model } \frac{dq_t}{dt} = k_2(q_e - q_t)^2 \quad (4)$$

$$\text{Intragranular diffusion model } q_t = k_p t^{0.5} + c \quad (5)$$

$$\text{Dual constant model } \ln q_t = a + k \ln t \quad (6)$$

where  $q_e$  and  $q_t$  are the amounts of methylene blue adsorbed by  $\text{TiO}_2\text{@AS}$  at equilibrium and at time  $t$  ( $\text{mg g}^{-1}$ );  $k_1$  is a constant

of pseudo-first-order kinetics ( $\text{h}^{-1}$ );  $k_2$  is a constant of pseudo-second-order kinetic [ $\text{g} (\text{mg h})^{-1}$ ];  $k_p$  is the intraparticle diffusion coefficient [ $\text{mg} (\text{g h})^{-1}$ ]. Constant  $c$  is related to the thickness of the boundary layer. The larger  $c$  is, the more significant the effect of the boundary layer is. Constants  $a$  and  $k$  are constants of the dual constant model.

Fig. 7 and Table 2 clearly show that the pseudo-second-order kinetic model was the most consistent with the experimental data ( $R^2 \geq 0.9964$ ). This indicates that the adsorption of methylene blue by  $\text{TiO}_2\text{@AS}$  is mainly chemical adsorption. Therefore, the main rate control step is chemical adsorption, and the adsorption process is controlled by chemical reaction.<sup>50</sup> The bond strength was generated by electron sharing or exchange between adsorbate and adsorbent.<sup>48</sup> Furthermore, it can be seen that with an increase in  $\text{TiO}_2\text{@AS}$  dosage, the fitting effect was gradually getting worse, and  $k_2$  showed an increasing trend. This is attributed to the fact that it will take less time to reach a certain  $q_t/q_e$  value at high dosages:<sup>7</sup> ie the adsorption rate is improved. The  $c$  continuously declined with increasing



Table 2 Kinetic parameters of methylene blue adsorbed by TiO<sub>2</sub>@AS<sup>a</sup>

Dosage of TiO <sub>2</sub> @AS/(g L <sup>-1</sup> )	Q <sub>e,exp</sub> /(mg g <sup>-1</sup> )	Pseudo-first-order kinetic model			Pseudo-second-order kinetic model		
		k <sub>1</sub>	q <sub>e</sub>	R <sup>2</sup>	k <sub>2</sub>	q <sub>e</sub>	R <sup>2</sup>
1.25	26.65	0.60	26.35	0.9985	0.10	26.88	0.9997
2.5	13.98	0.50	13.86	0.9962	0.12	14.27	0.9982
5.0	7.67	0.44	7.44	0.9934	0.15	7.75	0.9981
7.5	5.53	0.38	5.34	0.9924	0.15	5.62	0.9964
10.0	4.42	0.32	4.28	0.9931	0.15	4.56	0.9981
12.5	3.70	0.35	3.57	0.9934	0.20	3.78	0.9994

Dosage of TiO <sub>2</sub> @AS/(g L <sup>-1</sup> )	Q <sub>e,exp</sub> /(mg g <sup>-1</sup> )	Dual constant model			Intragranular diffusion model		
		k	a	R <sup>2</sup>	k <sub>p</sub>	c	R <sup>2</sup>
1.25	26.65	24.22	0.03	0.999	2.93	11.09	0.436
2.5	13.98	12.21	0.04	0.997	1.57	5.66	0.461
5.0	7.67	6.19	0.06	0.997	0.87	2.90	0.505
7.5	5.53	4.21	0.07	0.994	0.63	2.00	0.536
10.0	4.42	3.19	0.09	0.992	0.52	1.53	0.567
12.5	3.70	2.75	0.08	0.996	0.43	1.31	0.553

<sup>a</sup> Q<sub>e,exp</sub> refers to the saturated adsorption amount of methylene blue by TiO<sub>2</sub>@AS.

dosage of TiO<sub>2</sub>@AS, indicating that the effect of boundary layer thickness on the mass transfer rate is reducing. It can also be deduced that the *c* value will increase with an increase in adsorbate, indicating that the increase in adsorbate can improve the influence of the thickness of the boundary layer.

### 3.6 Adsorption thermodynamics

In order to study the thermodynamic properties of the adsorption process, three important parameters, Gibbs free energy ( $\Delta G^0$ ), enthalpy ( $\Delta H^0$ ), entropy ( $\Delta S^0$ ), must be calculated, as in formulae (7)–(9).<sup>38</sup>

$$K_c = \frac{C_i - C_e}{C_e} \quad (7)$$

where *C<sub>i</sub>* and *C<sub>e</sub>* are the initial and equilibrium concentrations of methylene blue (g L<sup>-1</sup>). *K<sub>c</sub>* is the equilibrium rate constant of the adsorption reaction.

$$\Delta G = -RT \ln(K_c) \quad (8)$$

where *R* is the ideal gas constant [8.314 kJ (kmol K)<sup>-1</sup>]. *T* is the absolute temperature (K).

$$\log K_c = \frac{\Delta S^0}{2.303R} - \frac{\Delta H^0}{2.303RT} \quad (9)$$

The values of the thermodynamic parameters are listed in Table 3. The value of  $\Delta G^0$  is negative under all set temperature conditions ( $\Delta G^0 < 0$ ), indicating that the reaction is spontaneous. And with an increase in *T*,  $\Delta G^0$  decreased, indicating that warming is favorable to adsorption. The positive value of  $\Delta H^0$  indicates that the reaction is endothermic. The value of  $\Delta H^0$  is less than 100 kJ mol<sup>-1</sup>, which shows that the temperature has little effect on the adsorption reaction, and the interaction

between TiO<sub>2</sub>@AS and methylene blue is not strong. The positive value of  $\Delta S^0$  indicates that there is an affinity between TiO<sub>2</sub>@AS and methylene blue molecules, and the adsorption reaction increases the disorder of the solid–liquid interface of TiO<sub>2</sub>@AS.

### 3.7 Regeneration of TiO<sub>2</sub>@AS

The regeneration experiment was performed on the basis of the adsorption equilibrium experiment, and the experimental conditions were all optimized. After the first adsorption equilibrium, the TiO<sub>2</sub>@AS was centrifugally separated from the solution and placed in 20 mL of distilled water. Then, ultraviolet light was used to catalyze the methylene blue adsorbed on TiO<sub>2</sub>@AS.

The trend of the regeneration cycle is shown in Fig. 8. Unregenerated TiO<sub>2</sub>@AS reduced the removal rate of methylene blue from 85% to 41% after 4 cycles. This shows that the adsorption sites of TiO<sub>2</sub>@AS are saturated and it cannot continue to effectively adsorb methylene blue. After 4 cycles of regenerated TiO<sub>2</sub>@AS, the removal rate of methylene blue can

Table 3 Thermodynamic parameters of methylene blue adsorbed by TiO<sub>2</sub>@AS

<i>T</i> (K <sup>-1</sup> )	<i>K<sub>c</sub></i>	$\Delta G^0/$ (kJ mol <sup>-1</sup> )	$\Delta H^0/$ (kJ mol <sup>-1</sup> )	$\Delta S^0/$ (kJ (mol K) <sup>-1</sup> )
288.15	3.42	-2.94	13.065	0.747
298.15	3.71	-3.25		
308.15	4.11	-3.622		
318.15	4.06	-3.707		
328.15	4.05	-3.815		
338.15	4.34	-4.124		



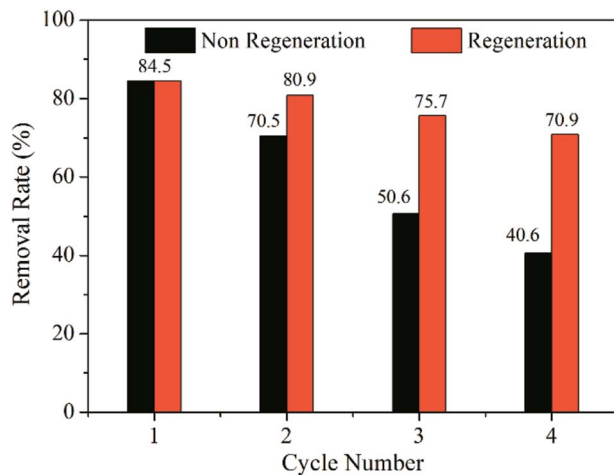


Fig. 8 Regeneration of TiO<sub>2</sub>@AS.

still reach over 70%, and the removal efficiency is not reduced significantly. This shows that by irradiation with ultraviolet light, electrons in the valence band of titanium dioxide absorb ultraviolet light energy, react with water molecules to generate hydroxyl radicals, and degrade methylene blue into carbon dioxide and water.<sup>15</sup> Due to the better adsorption capacity of AS, this can provide a higher substrate concentration for photocatalysis and accelerate the decomposition of methylene blue. Moreover, the presence of titania particles in TiO<sub>2</sub>@AS composites can make TiO<sub>2</sub>@AS composites regenerate in UV light, prolong the service life of AS, and provide high-quality filters that can be recycled for use in constructed wetlands and other water treatment industries.

## 4 Conclusion

In the present study, a new type of composite adsorbent TiO<sub>2</sub>@AS was prepared. Then the structural evolution and morphological features were investigated using XRD, EDS and SEM. The titanium dioxide was loaded onto the surface of the AS with anatase crystal form. The surface of the TiO<sub>2</sub>@AS presented a layered structure and good adsorption capacity. The adsorption capacity of TiO<sub>2</sub>@AS for methylene blue was analyzed. The results showed that pH had little effect on the adsorption capacity, the adsorption capacity of TiO<sub>2</sub>@AS for methylene blue increased with an increase in the initial concentration of adsorbate, and decreased with an increase in TiO<sub>2</sub>@AS dosage. The isothermal adsorption equation was most consistent with the Freundlich model. The adsorption is multi-layer adsorption. The fact that  $n^{-1} < 1$  indicates that the adsorption process is easy to carry out. The kinetic equation was consistent with the pseudo-second-order kinetic equation, indicating that the adsorption is chemical adsorption, and the chemical adsorption process is the rate control step. The negative  $\Delta G^0$  and positive  $\Delta H^0$  indicate that the adsorption process is a spontaneous, entropy-increasing endothermic process, and a temperature increase is conducive to the adsorption process. The TiO<sub>2</sub>@AS had a good adsorption effect on methylene blue. Moreover, it can be regenerated under

ultraviolet light, thus prolonging the service life of AS and facilitating a solution to the problem of adsorption plugging.

## Conflicts of interest

There are no conflicts to declare.

## Acknowledgements

This work was supported by the Key Program of National Natural Science Foundation of China (41771215), the program for Changjiang Scholars and Innovative Research Team of the Chinese Ministry of Education (IRT0811), the Open Fund of Key Laboratory of Subsurface Hydrology and Ecological Effects in Arid Region (Ministry of Education) (No. 310829151140), the Open Fund of Key Laboratory of Subsurface Hydrology and Ecological Effects in Arid Region (Ministry of Education) (No. 310829151141).

## Notes and references

- L. Largette and R. Pasquier, *Chem. Eng. Res. Des.*, 2016, **109**, 495–504.
- J. Li, L. Liu, J. Liu, T. Ma, A. Yan and Y. Ni, *J. Environ. Chem. Eng.*, 2016, **4**, 746–752.
- M. A. Tantawy, *Mater. Res. Bull.*, 2015, **61**, 415–421.
- W. Chu, *Water Res.*, 2001, **35**, 3147–3152.
- Y. Yang, Y. Q. Zhao, A. O. Babatunde, L. Wang, Y. X. Ren and Y. Han, *Sep. Purif. Technol.*, 2006, **51**, 193–200.
- X. H. Zhao and Y. Q. Zhao, *Sep. Purif. Technol.*, 2009, **66**, 71–75.
- W. H. Hu, H. F. WU, M. Xu and F. Wu, *Chin. J. Environ. Eng.*, 2011, **10**, 2287–2292.
- K. B. Dassanayake, G. Y. Jayasinghe, A. Surapaneni and C. Hetherington, *Waste Management*, 2015, **38**, 321–335.
- F. G. Qiu, C. Lu, J. T. Xu, Y. F. Dai and K. M. Fu, *Technol. Water Treat.*, 2017, **43**, 77–81.
- R. Liu, Y. Zhao, C. Sibille and B. Ren, *Chem. Eng. J.*, 2016, **302**, 120–127.
- Y. Wang, Y. Yu, H. Li and C. Shen, *J. Environ. Sci.*, 2016, **50**, 79–86.
- C. Liu, Y. Z. Yang and N. Wan, *Chin. J. Environ. Eng.*, 2013, **7**, 97–102.
- H. Y. Xu, Z. L. Li, Q. Zhang, Y. N. Wang and S. K. Yang, *Appl. Chem. Ind.*, 2016, **10**, 1808–1811.
- E. G. Duan, H. F. Wu and R. Y. Yang, *Technol. Water Treat.*, 2015, **41**, 66–69.
- P. Zheng, B. Bai and W. S. Guan, *Environ. Sci. Technol.*, 2016, **39**, 128–133.
- X. H. Zhao, Y. Q. Zhao, W. K. Wang, Y. Z. Yang, Y. S. Hu and L. Kumar, *China Water Wastewater*, 2015, **31**, 131–136.
- H. Khani, M. K. Rofouei, P. Arab, V. K. Gupta and Z. Vafaei, *J. Hazard. Mater.*, 2010, **1**, 402–409.
- V. K. Gupta, R. Kumar, A. Nayak, T. A. Saleh and M. A. Barakat, *Adv. Colloid Interface Sci.*, 2013, **193–194**, 24–34.





- 19 V. K. Gupta, R. Jain, A. Nayak, S. Agarwal and M. Shrivastava, *Mater. Sci. Eng., C*, 2011, **5**, 1062–1067.
- 20 T. A. Saleh and V. K. Gupta, *J. Colloid Interface Sci.*, 2012, **1**, 101–106.
- 21 M. Abdullah and S. K. Kamarudin, *Renewable Sustainable Energy Rev.*, 2017, **76**, 212–225.
- 22 R. Dai, X. Y. Zheng, L. T. Cao, X. Wu, M. S. Zhang, Y. Z. Han and K. Zheng, *Ion Exch. Adsorpt.*, 2016, **32**, 368–376.
- 23 Y. Liu, P. Liang, L. Guo and H. B. Lu, *Acta Chim. Sin.*, 2005, **63**, 312–316.
- 24 W. Liu, X. L. Zhu and L. Q. Zhang, *J. Tianjin Polytech. Univ.*, 2017, **63**, 1–6.
- 25 J. Q. Jia, K. Q. Li, Y. X. Zhang and X. D. Qiao, *Chin. J. Environ. Eng.*, 2014, **8**, 92–97.
- 26 Q. W. Lin, Q. Zhao, M. F. Gao, J. L. Chang and H. Z. Ma, *Chin. J. Environ. Eng.*, 2016, **11**, 1–6.
- 27 M. Ghaedi, S. Hajjati, Z. Mahmudi, I. Tyagi, S. Agarwal, A. Maity and V. K. Gupta, *Chem. Eng. J.*, 2015, **268**, 28–37.
- 28 R. Saravanan, S. Joicy, V. K. Gupta, V. Narayanan and A. Stephen, *Mater. Sci. Eng., C*, 2013, **8**, 4725–4731.
- 29 R. Saravanan, S. Karthikeyan, V. K. Gupta, G. Sekaran, V. Narayanan and A. Stephen, *Mater. Sci. Eng., C*, 2013, **1**, 91–98.
- 30 R. Saravanan, E. Sacari, F. Gracia, M. M. Khan, E. Mosquera and V. K. Gupta, *J. Mol. Liq.*, 2016, **221**, 1029–1033.
- 31 C. Chang, T. Q. Liu, Y. T. Wang and Y. Y. Zhao, *Acta Scientiae Circumstantiae*, 2017, **37**, 2680–2690.
- 32 Q. H. Liao, Q. Y. Liu, M. W. Meng, Y. M. Zhao, X. M. Ji, C. Y. Kang and S. Y. Huang, *Chin. J. Environ. Eng.*, 2011, **5**, 2447–2452.
- 33 D. Robati, B. Mirza, M. Rajabi, O. Moradi, I. Tyagi, S. Agarwal and V. K. Gupta, *Chem. Eng. J.*, 2016, **284**, 687–697.
- 34 T. A. Saleh and V. K. Gupta, *J. Colloid Interface Sci.*, 2011, **2**, 337–344.
- 35 L. D. Liang, X. X. Yan, Z. H. Ping, W. C. Xia and C. H. Qin, *Chem. Ind. Eng.*, 2003, **20**, 256–260.
- 36 X. Zhou, C. Lai, D. Huang, G. Zeng, L. Chen, L. Qin, P. Xu, M. Cheng, C. Huang, C. Zhang and C. Zhou, *J. Hazard. Mater.*, 2018, **346**, 113–123.
- 37 K. Nithya, A. Sathish, P. Senthil Kumar and T. Ramachandran, *J. Ind. Eng. Chem.*, 2018, **59**, 230–241.
- 38 M. Abbas and M. Trari, *Process Saf. Environ. Prot.*, 2015, **98**, 424–436.
- 39 H. W. B. Teo, A. Chakraborty, Y. Kitagawa and S. Kayal, *Int. J. Heat Mass Transfer*, 2017, **114**, 621–627.
- 40 S. Yang, D. Ding, Y. Zhao, W. Huang, Z. Zhang, Z. Lei and Y. Yang, *J. Environ. Chem. Eng.*, 2013, **1**, 355–362.
- 41 A. Tor and Y. Cengeloglu, *J. Hazard. Mater.*, 2006, **138**, 409–415.
- 42 N. F. Abd Razak, M. Shamsuddin and S. L. Lee, *Chem. Eng. Res. Des.*, 2018, **130**, 18–28.
- 43 E. Gunasundari and P. S. Kumar, *Ind. Eng. Chem.*, 2017, **56**, 129–144.
- 44 R. Mohamed, H. H. El-Maghrabi, M. Riad and S. Mikhail, *Journal of Water Process Engineering*, 2017, **16**, 212–222.
- 45 H. Von Daake and D. Stephan, *Cem. Concr. Res.*, 2017, **102**, 119–126.
- 46 J. Ye, X. Cong, P. Zhang, E. Hoffmann, G. Zeng, Y. Liu, W. Fang, Y. Wu and H. Zhang, *Appl. Surf. Sci.*, 2015, **356**, 128–134.
- 47 A. Wang, K. Zhou, X. Liu, F. Liu, C. Zhang and Q. Chen, *J. Colloid Interface Sci.*, 2017, **505**, 947–955.
- 48 W. Konicki, A. Helminiak, W. Arabczyk and E. Mijowska, *Chem. Eng. Res. Des.*, 2018, **129**, 259–270.
- 49 A. O. Babatunde and Y. Q. Zhao, *J. Hazard. Mater.*, 2010, **184**, 746–752.
- 50 M. Chahkandi, *Mater. Chem. Phys.*, 2017, **202**, 340–351.

